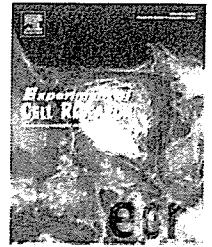


- 39) Kirshenbaum LA, Schneider MD: Adenovirus E1A represses cardiac gene transcription and reactivates DNA synthesis in ventricular myocytes, via alternative pocket protein- and p300-binding domains. *J Biol Chem*, 270: 7791-7794, 1995.
- 40) Soonpaa MH, Koh GY, Pajak L, Jing S, Wang H, Franklin MT, Kim KK, Field LJ: Cyclin D1 overexpression promotes cardiomyocyte DNA synthesis and multinucleation in transgenic mice. *J Clin Invest*, 99: 2644-2654, 1997.
- 41) Soonpaa MH, Field LJ: Survey of studies examining mammalian cardiomyocyte DNA synthesis. *Circ Res*, 83: 15-26, 1998.
- 42) Takeda Y, Mori T, Imabayashi H, Kiyono T, Gojo S, Miyoshi S, Hida N, Ito M, Segawa K, Ogawa S, Sakamoto M, Nakamura S, Umezawa A: Can the life span of human marrow stromal cells be prolonged by bmi-1, E6, E7, and/or telomerase without affecting cardiomyogenic differentiation? *J Gene Med*, 6: 833-845, 2004.
- 43) Hakuno D, Fukuda K, Makino S, Konishi F, Tomita Y, Manabe T, Suzuki Y, Umezawa A, Ogawa S: Bone marrow-derived regenerated cardiomyocytes (CMG Cells) express functional adrenergic and muscarinic receptors. *Circulation*, 105: 380-386, 2002.
- 44) Yamada Y SK, Takeda Y, Gojo S, Umezawa A.: Single-cell-derived mesenchymal stem cells overexpressing 3 Csx/Nkx2.5 and GATA4 undergo the stochastic 4 cardiomyogenic fate and behave like transient amplifying cells. *Exp Cell Res*, (in press).
- 45) Mori T, Kiyono T, Imabayashi H, Takeda Y, Tsuchiya K, Miyoshi S, Makino H, Matsumoto K, Saito H, Ogawa S, Sakamoto M, Hata J, Umezawa A: Combination of hTERT and bmi-1, E6, or E7 induces prolongation of the life span of bone marrow stromal cells from an elderly donor without affecting their neurogenic potential. *Mol Cell Biol*, 25: 5183-5195, 2005.
- 46) Olsen BR, Reginato AM, Wang W: Bone development. *Annu Rev Cell Dev Biol*, 16: 191-220, 2000.
- 47) Taylor SM, Jones PA: Multiple new phenotypes induced in 10T1/2 and 3T3 cells treated with 5-azacytidine. *Cell*, 17: 771-779, 1979.
- 48) Santi DV, Norment A, Garrett CE: Covalent bond formation between a DNA-cytosine methyltransferase and DNA containing 5-azacytosine. *Proc Natl Acad Sci USA*, 81: 6993-6997, 1984.
- 49) Kochanek S, Toth M, Dehmel A, Renz D, Doertler W: Interindividual concordance of methylation profiles in human genes for tumor necrosis factors alpha and beta. *Proc Natl Acad Sci USA*, 87: 8830-8834, 1990.
- 50) Behn-Krappa A, Holker I, Sandaradura de Silva U, Doerfler W: Patterns of DNA methylation are indistinguishable in different individuals over a wide range of human DNA sequences. *Genomics*, 11: 1-7, 1991.
- 51) Umezawa A, Yamamoto H, Rhodes K, Klemsz MJ, Maki RA, Oshima RG: Methylation of an ETS site in the intron enhancer of the keratin 18 gene participates in tissue-specific repression. *Mol Cell Biol*, 17: 4885-4894, 1997.
- 52) Owen M: Marrow stromal stem cells. *J Cell Sci Suppl*, 10: 63-76, 1988.
- 53) Jaiswal N, Haynesworth SE, Caplan AI, Bruder SP: Osteogenic differentiation of purified, culture-expanded human mesenchymal stem cells in vitro. *J Cell Biochem*, 64: 295-312, 1997.
- 54) Pittenger MF, Mackay AM, Beck SC, Jaiswal RK, Douglas R, Mosca JD, Moorman MA, Simonetti DW, Craig S, Marshak DR: Multilineage potential of adult human mesenchymal stem cells. *Science*, 284: 143-147, 1999.
- 55) Sekiya J, Larson BL, Vuoristo JT, Cui JG, Prockop DJ: Adipogenic differentiation of human adult stem cells from bone marrow stroma (MSCs). *J Bone Miner Res*, 19: 256-264, 2004.
- 56) Green H, Meuth M: An established pre-adipose cell line and its differentiation in culture. *Cell*, 3: 127-133, 1974.
- 57) Sudo H, Kodama HA, Amagai Y, Yamamoto S, Kasai S: In vitro differentiation and calcification in a new clonal osteogenic cell line derived from newborn mouse calvaria. *J Cell Biol*, 96: 191-198, 1983.
- 58) Shukunami C, Shigeno C, Atsumi T, Ishizeki K, Suzuki F, Hiraki Y: Chondrogenic differentiation of clonal mouse embryonic cell line ATDC5 in vitro: differentiation-dependent gene expression of parathyroid hormone (PTH)/PTH-related peptide receptor. *J Cell Biol*, 133: 457-468, 1996.
- 59) Goodwin HS, Bicknese AR, Chien SN, Bogucki BD, Quinn CO, Wall DA: Multilineage differentiation activity by cells isolated from umbilical cord blood: expression of bone, fat, and neural markers. *Biol Blood Marrow Transplant*, 7: 581-588, 2001.
- 60) Lee OK, Kuo TK, Chen WM, Lee KD, Hsieh SL, Chen TH: Isolation of multipotent mesenchymal stem cells from umbilical cord blood. *Blood*, 103: 1669-1675, 2004.
- 61) Terai M, Uyama T, Sugiki T, Li XK, Umezawa A, Kiyono T: Immortalization of human fetal cells: the life span of umbilical cord blood-derived cells can be prolonged without manipulating p16INK4a/RB braking pathway. *Mol Biol*

- Cell, 16: 1491-1499, 2005.
- 62) Hayflick L: The cell biology of human aging. *N Engl J Med*, 295: 1302-1308, 1976.
- 63) Campisi J: The biology of replicative senescence. *Eur J Cancer*, 33: 703-709, 1997.
- 64) Kiyono T, Foster SA, Koop JJ, McDougall JK, Galloway DA, Klingelutz AJ: Both Rb/p16INK4a inactivation and telomerase activity are required to immortalize human epithelial cells. *Nature*, 396: 84-88, 1998.
- 65) Romanov SR, Kozakiewicz BK, Holst CR, Stampfer MR, Haupt LM, Tlsty TD: Normal human mammary epithelial cells spontaneously escape senescence and acquire genomic changes. *Nature*, 409: 633-637, 2001.
- 66) Rheinwald JG, Hahn WC, Ramsey MR, Wu JY, Guo Z, Tsao H, De Luca M, Catricala C, O'Toole KM: A two-stage, p16(INK4A)- and p53-dependent keratinocyte senescence mechanism that limits replicative potential independent of telomere status. *Mol Cell Biol*, 22: 5157-5172, 2002.
- 67) Bodnar AG, Ouellette M, Frolkis M, Holt SE, Chiu CP, Morin GB, Harley CB, Shay JW, Lichtsteiner S, Wright WE: Extension of life-span by introduction of telomerase into normal human cells. *Science*, 279: 349-352, 1998.
- 68) Ogawa M: Stochastic model revisited. *Int J Hematol*, 69: 2-5, 1999.
- 69) Watt FM, Hogan BL: Out of Eden: stem cells and their niches. *Science*, 287: 1427-1430, 2000.
- 70) Tenen DG, Hromas R, Licht JD, Zhang DE: Transcription factors, normal myeloid development, and leukemia. *Blood*, 90: 489-519, 1997.
- 71) Wakitani S, Goto T, Pineda SJ, Young RG, Mansour JM, Caplan AI, Goldberg VM: Mesenchymal cell-based repair of large, full-thickness defects of articular cartilage. *J Bone Joint Surg Am*, 76: 579-592, 1994.
- 72) Bruder SP, Kurth AA, Shea M, Hayes WC, Jaiswal N, Kadiyala S: Bone regeneration by implantation of purified, culture-expanded human mesenchymal stem cells. *J Orthop Res*, 16: 155-162, 1998.
- 73) Young RG, Butler DL, Weber W, Caplan AI, Gordon SL, Fink DJ: Use of mesenchymal stem cells in a collagen matrix for Achilles tendon repair. *J Orthop Res*, 16: 406-413, 1998.
- 74) Walsh CJ, Goodman D, Caplan AI, Goldberg VM: Meniscus regeneration in a rabbit partial meniscectomy model. *Tissue Eng*, 5: 327-337, 1999.
- 75) Koc ON, Gerson SL, Cooper BW, Dyhouse SM, Haynesworth SE, Caplan AI, Lazarus HM: Rapid hematopoietic recovery after coinfusion of autologous-blood stem cells and culture-expanded marrow mesenchymal stem cells in advanced breast cancer patients receiving high-dose chemotherapy. *J Clin Oncol*, 18: 307-316, 2000.
- 76) Horwitz EM, Prockop DJ, Fitzpatrick LA, Koo WW, Gordon PL, Neel M, Sussman M, Orchard P, Marx JC, Pyeritz RE, Brenner MK: Transplantability and therapeutic effects of bone marrow-derived mesenchymal cells in children with osteogenesis imperfecta. *Nat Med*, 5: 309-313, 1999.
- 77) Gerson SL: Mesenchymal stem cells: no longer second class marrow citizens. *Nat Med*, 5: 262-264, 1999.

available at www.sciencedirect.comwww.elsevier.com/locate/yexcr

Research Article

Single-cell-derived mesenchymal stem cells overexpressing Csx/Nkx2.5 and GATA4 undergo the stochastic cardiomyogenic fate and behave like transient amplifying cells

Yoji Yamada^a, Kazuhiro Sakurada^{a,1}, Yukiji Takeda^{b,2}, Satoshi Gojo^{b,3}, Akihiro Umezawa^b

^aBioFrontier Laboratories, Kyowa Hakko Kogyo Co. Ltd., 3-6-6 Asahi-machi, Machida-shi, Tokyo 194-8533, Japan

^bNational Research Institute for Child Health and Development, 2-10-1 Okura, Setagaya-ku, Tokyo 157-8535, Japan

ARTICLE INFORMATION

Article Chronology:

Received 22 June 2006

Revised version received

31 October 2006

Accepted 15 November 2006

Available online 30 November 2006

Keywords:

Mesenchymal stem cells

Cardiomyocytes

Transient amplifying cells

Csx/Nkx2.5

GATA4

ABSTRACT

Bone marrow-derived stromal cells can give rise to cardiomyocytes as well as adipocytes, osteocytes, and chondrocytes in vitro. The existence of mesenchymal stem cells has been proposed, but it remains unclear if a single-cell-derived stem cell stochastically commits toward a cardiac lineage. By single-cell marking, we performed a follow-up study of individual cells during the differentiation of 9-15c mesenchymal stromal cells derived from bone marrow cells. Three types of cells, i.e., cardiac myoblasts, cardiac progenitors and multipotent stem cells were differentiated from a single cell, implying that cardiomyocytes are generated stochastically from a single-cell-derived stem cell. We also demonstrated that overexpression of Csx/Nkx2.5 and GATA4, precardiac mesodermal transcription factors, enhanced cardiomyogenic differentiation of 9-15c cells, and the frequency of cardiomyogenic differentiation was increased by co-culturing with fetal cardiomyocytes. Single-cell-derived mesenchymal stem cells overexpressing Csx/Nkx2.5 and GATA4 behaved like cardiac transient amplifying cells, and still retained their plasticity in vivo.

© 2006 Elsevier Inc. All rights reserved.

Introduction

Cell-based therapy is a novel therapeutic strategy, based on the concept of the cell-mediated restoration of damaged or diseased tissue. Candidate cell sources include embryonic stem (ES) cells, hematopoietic stem cells (HSCs), neural stem cells (NSCs), mesenchymal stem cells (MSCs) [1], and so on. Clinical trials with MSCs have been performed in patients with

graft-versus-host disease through immunomodulatory effects [2], and osteogenesis imperfecta [3,4], and MSCs are expected to be one of the most available cells. The source of MSCs includes bone marrow [5], adipose tissue [6], umbilical cord [7] and placenta [8].

Bone marrow-derived stromal cells [9] can differentiate into mesenchymal progenitors, including osteoblasts [10], chondroblasts [11], skeletal myoblasts [12], adipoblasts [13],

Corresponding author.

E-mail address: umezawa@1985.jukuin.keio.ac.jp (A. Umezawa).¹ Present address: Research Center, Nihon Schering K.K., 1-5-5 Minatojima-minamicho, Chuo-ku, Kobe-shi, Hyogo 650-0047, Japan.² Present address: Department of General Medicine and Clinical Investigation, Nara Medical University, 840 Shijo-cho, Kashihara-city, Nara 634-8522, Japan.³ Present address: Department of Cardiovascular Surgery, Saitama Medical Center, 1981 Kamoda, Kawagoe, Saitama 350-8550, Japan.

and neurons [14,15] when placed in appropriate *in vitro* and *in vivo* environments. We have shown that bone marrow-derived stromal cells are also able to differentiate into cardiomyocytes *in vitro* and *in vivo* [13,14,16,17]. However, the characteristics of the cells that can differentiate into cardiomyocytes are poorly understood, and how the progeny of multipotent cells adopt one fate among several possible fates remains a fundamental question.

Hematopoietic stem cells are defined as cells that are capable of self-renewal to maintain a long-term supply of progeny and are capable of differentiating into multiple hematopoietic lineages [18]. Retroviral labeling of individual cells is one of the useful clonal assays to monitor lineage commitment at the single cell level [16,17,19]. At present, several models have been proposed in which hematopoietic lineage determination is driven intrinsically [20], extrinsically [21], or both [22]. We therefore performed retroviral labeling experiments of bone marrow-derived stromal cells to investigate whether cardiomyocytes are generated from committed cardiac precursor cells or uncommitted stem cells.

In the present study, we provide evidence that cardiomyocytes are stochastically differentiated from MSCs, and we demonstrate that forced expression of cardiomyocyte-specific transcription factors, *i.e.*, *Csx/Nkx2.5* and *GATA4*, destined these MSCs to a cardiomyocytic lineage.

Materials and methods

Cell culture

9-15c cells were used as a source of uncommitted stem cells in this study [23,24]. 9-15c cells are available through one of the cell banks (JHSF cell bank: http://www.jhsf.or.jp/English/index_gc.html; RIKEN cell bank: <http://www.brc.riken.go.jp/lab/cell/english/guide.shtml>). 9-15c cells were cultured using methods described previously [25]. The cells were cultured in Iscove's modified Dulbecco's medium (IMDM) supplemented with 20% fetal bovine serum and penicillin (100 g/ml)/streptomycin (100 g/ml)/amphotericin B (250 ng/ml) at 33°C with 5% CO₂.

Primary cultures of cardiac myocytes were prepared from the hearts of 16-day-old fetal C3H/HeJ mice (CLEA Japan, Inc., Tokyo, Japan) according to the method of Simpson *et al.* [26] with minor modifications. In brief, cardiomyocytes were dissociated into single isolated cells by trypsinization and the cells were plated in culture medium (IMDM with 20% fetal bovine serum).

Cloning of *Csx/Nkx2.5* and *GATA4* cDNAs

The full open reading frames of mouse *Csx/Nkx2.5* and *GATA4* cDNAs were cloned by RT-PCR from poly(A) RNA obtained from the hearts of fetal mice using the following primers: *Csx/Nkx2.5*, sense: 5'-TGAAACCTGCGTCGCCAC-CATGT-3', antisense: 5'-GGCTCTTCCCTACCAGGCTCGG-3'; *GATA4*, sense: 5'-TAGTTCTTGTCTGCCTCGTCTCA-3', antisense: 5'-GGCGCTGATTACGGGTGATTATG-3'. The PCR products were subcloned into pGEM-T vector (Promega). DNA sequencing confirmed that the plasmids contained the full-

length fragments of the mouse *Csx/Nkx2.5* and *GATA4* coding regions.

Retroviral transduction

The retroviral vectors pCLNCX (Imgenex), pCLPCX and pCLHCX were used. pCLPCX was constructed from pCLNCX by replacing the neomycin resistance gene with a puromycin resistance gene (pPUR; CLONTECH). pCLHCX was constructed from pCLNCX by replacing the neomycin resistance gene with a hygromycin resistance gene (pcDNA3.1/Hygro+; Invitrogen). Fragments containing the EGFP, *Csx/Nkx2.5*, and *GATA4* genes were cloned into pCLNCX, pCLPCX, or pCLHCX. Each of these DNAs and pCMV-Eco (kindly provided by Nikunj Somia) were transfected into the producer cells (293 gag pol; kindly provided by Nikunj Somia) using TransFast (Promega). Two days after the transfection, the culture supernatant was filtered through a 0.45- μ m filter. 9-15c cells were treated with viruses and hexadimethine bromide (polybrene) (Sigma) (8 g/ml) for 4–6 h. To generate stably expressing cells, 9-15c cells were cultured in the presence of 300 g/ml G418, 300 ng/ml puromycin or 300 g/ml hygromycin. The mixtures of drug-resistant clones were used to average the clonal variation of the transfected gene expression.

Cardiomyogenic induction

To induce differentiation, cells were initially plated at a density of 2×10^4 cells/ml. The cells were treated with 3 M 5-azacytidine (Sigma) for 24 h the next day. In some experiments, PDGF-BB (Peprotech) and retinoic acid (Sigma) were added to the culture dish coated with fibronectin (BD Biosciences) to give a final concentration of 10 ng/ml and 1 nM, respectively, for 6 days. Total number of beating cells was estimated under phase contrast microscopy.

RT-PCR

Total RNA was extracted from adult mouse hearts, skeletal muscles and cultured cells with an RNeasy kit (QIAGEN), and cDNA was made using the SuperScript First-strand Synthesis System (Invitrogen) from 1 μ g of total RNA. First-strand cDNA was diluted 20 fold and 1 μ l of cDNA was used for each PCR reaction. The following primer sets for cardiomyocyte-associated genes were used: atrial natriuretic peptide (ANP), sense: 5'-TTCCTCGTCTGGCCCTTTGG-3', antisense: 5'-GCTGGATCTTCGTAGGCTCCG-3'; cardiac troponin I (cTnI), sense: 5'-GATCCTGTTCTCTGCCTCTGGA-3', antisense: 5'-TCATCCACTTTGTCCACCCGAG-3'; fast troponin I (fTnI), sense: 5'-GAAGCGCAACAGGGCCATCAGC-3', antisense: 5'-CCACGTCACGCAGGTCCCGTTC-3'; *Csx/Nkx2.5*, sense: 5'-TGGCGTCTGGGGACCTGTCTG-3', antisense: 5'-GAGTCTGGTCTCGCCGCTGTC-3'; *GATA4*, sense: 5'-TACATGGCCGACGTGGGAGCA-3', antisense: 5'-TGGAGT-TACCGTGGAGGCAC-3'; exogenous *GATA4*, sense: 5'-CCAGAAAACGGAAGCCCAAGAA-3' (the sequence derived from mouse *GATA4* gene), antisense: 5'-GCTTGCCAAACCTA-CAGGTGGG-3' (the sequence derived from pCLPCX vector); adiponectin, sense: 5'-CTGAAGAGCTAGCTCCTGCTTTG-3', antisense: 5'-GAAGAGAACGGCTTGTCTCTC-3'; glyceraldehyde-

3-phosphate dehydrogenase (G3PDH), sense: 5'-CCGATCAC-CATCTTCCAGGAGC-3', antisense: 5'-TTCAGCAGCTTCTT-GATGTCATCATA-3'. G3PDH was used as an internal control. PCR was performed with TaKaRa Ex-Taq (TAKARA SHUZO CO., LTD) for 30–35 cycles, with each cycle consisting of 94°C for 1 min, 61–68°C for 1 min, and 72°C for 2 min, with an additional 7 min incubation at 72°C after completion of the final cycle.

RT-PCR samples were electrophoresed through agarose gels and stained with ethidium bromide and visualized through a UV light digital imaging system. Densities of electrophoresis bands were analyzed using ScnImage software (Scion Corporation).

Western blot analyses

Western blots were performed using whole-cell extracts according to the standard protocol [27]. Aliquots (30 μ g) of whole-cell extracts were electrophoresed in SDS-polyacrylamide gels and transferred onto Immobilon-P polyvinylidene difluoride membrane (Millipore) by electroblotting. After treatment in blocking buffer, membranes were sequentially probed with the antibodies against Nkx2.5 (sc-8697, Santa Cruz) or Gata4 (sc-9053, Santa Cruz), and then with HRP-conjugated anti-goat or rabbit IgG. The bands were revealed using the ECL Plus standard protocol (Amersham Pharmacia Biotechnology).

Cellular transplantation

Following priming by 5-azacytidine for 24 h, the cells were cultured for an additional 3 days. Then the cells were harvested with 0.05% trypsin and 0.25 mM EDTA, and

suspended as single cells at a concentration of 1×10^5 cells/ml with PBS. The cell viability in suspension, determined by 0.05% erythrosine dye exclusion, was 90% to 95%. After general anesthesia of the recipient mice by an intraperitoneal injection of 0.05 mg/g body weight pentobarbitone, cell transplantation was performed into the quadrant muscles of syngeneic adult recipient C3H/HeJ mice (CLEA Japan, Inc., Tokyo, Japan), aged 8 to 10 weeks old at a dose of 1×10^6 and 1×10^8 cells per mouse. All animals received humane care in compliance with the "Principles of Laboratory Animal Care" formulated by Keio University School of Medicine and the National Research Institute for Child Health and Development, and the experimental procedures were approved by the Laboratory Animal Care and Use Committee of Keio University School of Medicine.

Histological analyses

Tissues were fixed in 10% neutral buffered formalin and embedded in paraffin. Tissue sections (6 μ m) were mounted on poly-L-lysine-coated slides. After deparaffinization with xylene, tissues were rinsed in acetone or ethanol. Slides were incubated in 0.3% H₂O₂ for 30 min. After washing in PBS, tissues were preblocked for 30 min with 5% normal swine serum. They were incubated overnight at 4°C with mouse monoclonal antibody against recombinant GFP (CLONTECH Laboratories, Inc.) diluted 1:500. After rinsing in PBS, the slides were incubated with horseradish peroxidase-conjugated swine anti-mouse immunoglobulin diluted 1:100 with 1% BSA in PBS, and washed in cold PBS. Staining was developed using a solution containing DAB and 0.01% H₂O₂ in 0.05 M Tris-HCl buffer, pH 6.7. Slides were counterstained with hematoxylin. Slices with positive signals for EGFP were further stained

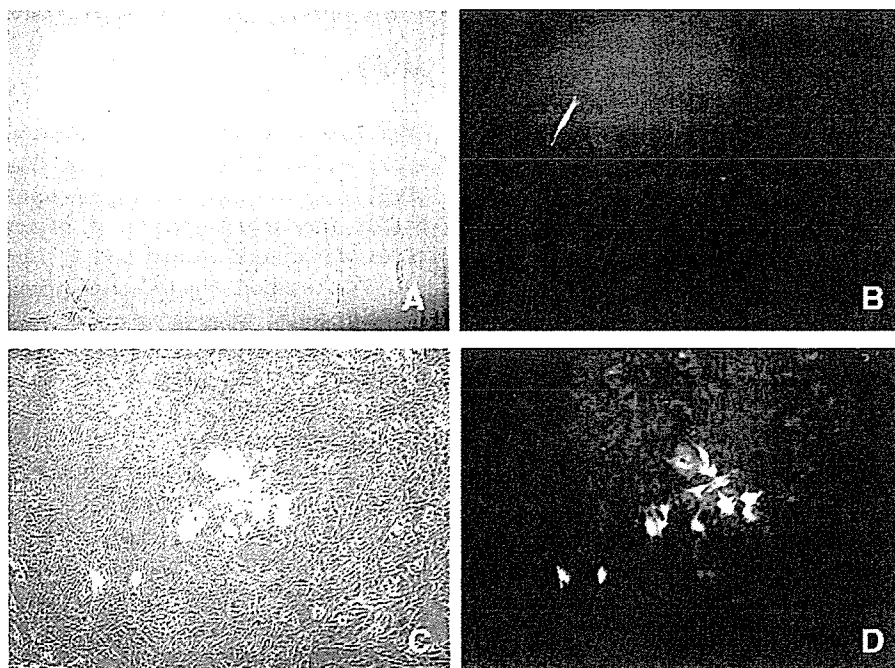


Fig. 1 – Single cell marking by infection of retrovirus carrying EGFP. Phase contrast photomicrograph (A, C) and fluorescent photomicrograph (B, D) of 9-15c cells 1 day (A, B) or 7 days (C, D) after infection with retroviruses carrying EGFP. EGFP-positive single cell-derived cells were clustered.

with anti-CD31 (PECAM-1) antibody (M-20, Santa Cruz Biotechnology, Inc, California, USA).

Frozen sections (6 μ m) of the samples were used to detect the donor cells and the differentiation status by examination under a fluorescence microscope. After fixation with acetone and blocking with PBS containing 5% rabbit serum, anti-CD31 or anti-desmin (Bio-Science Products AG, Switzerland) antibodies was used as the first antibody, and rat anti-mouse IgG antibody conjugated with tetramethylrhodamine isothiocyanate (T4280, Sigma, Missouri, USA) and goat anti-mouse IgG antibody conjugated with rhodamine (M116, Leinco Technology, Inc., MO, USA) were used as the second antibody, respectively.

Results

Single-cell marking of 9-15c cells

9-15c cells are mesenchymal stem cells [23,24] capable of differentiating into cardiomyocytes in vitro with the use of 5-azacytidine. To determine if cardiomyocytes were generated from committed cardiac precursor cells or uncommitted stem cells during the differentiation of 9-15c cells, we carried out a single-cell marking experiment. Following retrovirus-mediated EGFP gene infection, a single EGFP-labeled cell could be detected at Day 1 after infection (Figs. 1A, B). The fate of

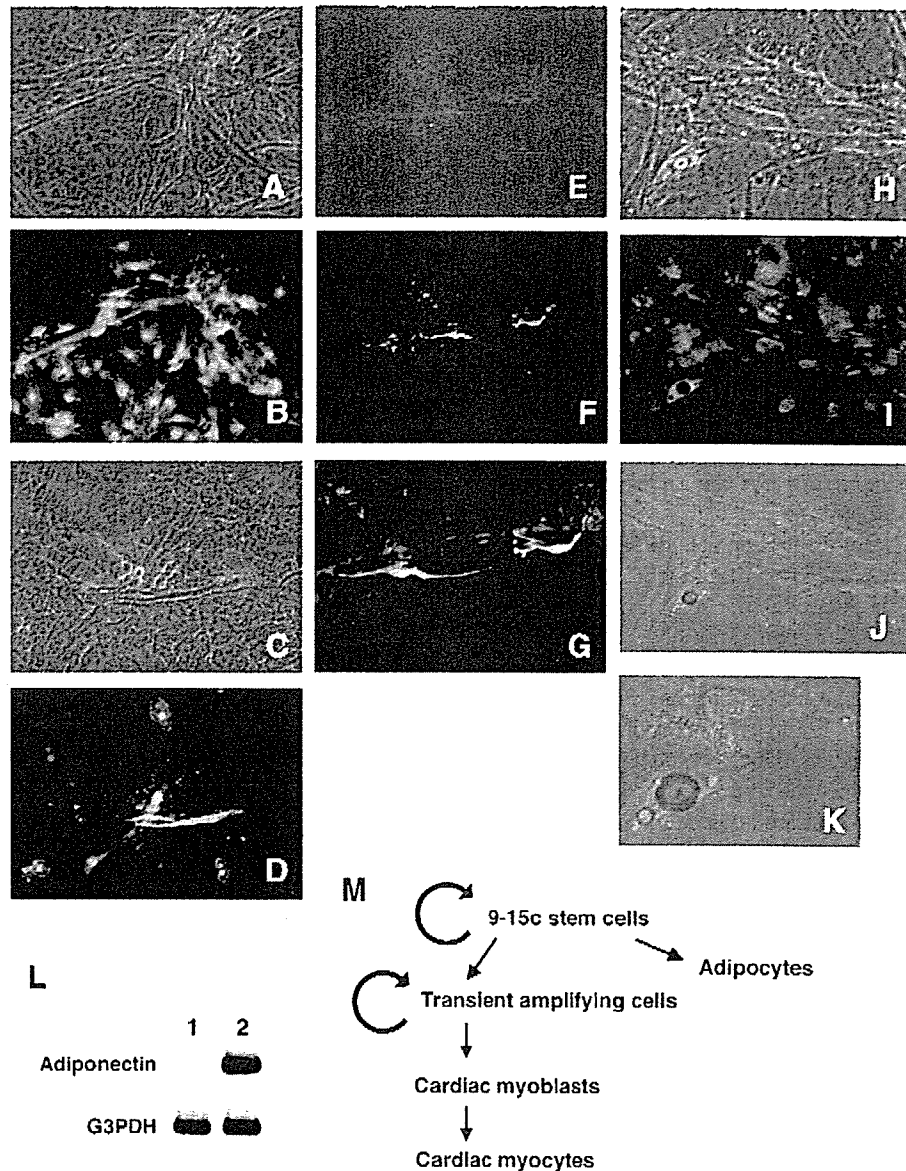


Fig. 2 – Bipotency, i.e., cardiomyogenic and adipogenic differentiation, of single cell-derived cells. Single-cell-derived 9-15c cells marked by EGFP exhibited cardiomyogenic and adipogenic differentiation after exposure to 5-azacytidine. (A–B) Cardiomyogenic and undifferentiated EGFP-marked, single-cell-derived 9-15c cells; (C–G) Cardiomyogenic differentiation of EGFP-marked, single-cell-derived 9-15c cells; (H–J) Cardiomyogenic and adipogenic differentiation of EGFP-marked, single-cell-derived 9-15c cells. (A, C, E, H, J) Phase contrast photomicrographs; (B, D, F, G, I) fluorescent photomicrographs. (K) Enlargement of the panel J. (L) RT-PCR analysis of the adiponectin and G3PDH genes in 9-15c cells at the growing phase without any treatment (lane 1) and 4 weeks after exposure to 5-azacytidine (lane 2). (M) Scheme of 9-15c cell differentiation.

retrovirally tagged 9-15c cells could be traced by monitoring EGFP throughout the differentiation process after exposure to 5-azacytidine. Seven days later, the EGFP-positive, single-cell-derived cells were clustered (Figs. 1C, D). Four weeks after 5-azacytidine treatment, the EGFP-positive cells were examined for differentiated phenotypes. We identified beating cells as cardiomyocytes and oil-red-positive cells as adipocytes. Three kinds of cell populations were observed: a) a cell population in which cardiomyocytes and undifferentiated stem cells were EGFP-positive (Figs. 2A, B); b) a cell population in which all the EGFP-positive cells were cardiomyocytes (Figs. 2C–G); c) a cell population in which cardiomyocytes, adipocytes and undifferentiated stem cells were EGFP-positive (Figs. 2H–K). RT-PCR analysis shows that these cells express adiponectin (Fig. 2L), suggesting the presence of adipocytes among the differentiated population. These results imply that cardiomyocytes are generated from uncommitted stem cells (Fig. 2M).

9-15c multipotent cells were preferentially destined to generate cardiomyocytes by forced expression of transcription factors *Csx/Nkx2.5* and *GATA4*

In order to elucidate the roles of *Csx/Nkx2.5* and *GATA4* in 9-15c cell differentiation, we infected 9-15c cells with retroviruses carrying *Csx/Nkx2.5* and *GATA4*. We detected *Csx/Nkx2.5* and *GATA4* gene expression in the infected cell by RT-PCR and Western blotting (Figs. 3A and B). *GATA4* gene was originally expressed in 9-15c; we detected the *GATA4* transgene with specific primers, but not the endogenous *GATA4* gene (Fig. 3A).

Four weeks after the induction of differentiation by 5-azacytidine treatment, we examined the efficiency of cardiomyogenic differentiation or the expression of cardiomyogenic markers. The expression of the ANP and *cTnI* genes was up-regulated in 9-15c cells overexpressing *Csx/Nkx2.5* and *GATA4* (9-15c-CG cells) compared to the uninfected 9-15c cells (Fig. 3C, lanes 5 and 9). When 9-15c-CG cells were treated with PDGF and retinoic acid on dishes coated with fibronectin in addition to 5-azacytidine, the expression of the ANP and *cTnI* gene was further up-regulated (Fig. 3C, lane 10).

Cell implantation into immunodeficient mice

To investigate whether 9-15c-CG cells differentiate *in vivo*, the cells treated with 10^{-6} M 5-azacytidine for 24 h were injected into immunodeficient mice (Figs. 4A–F). The donor cells clearly formed striated muscles without a branched structure as well as undifferentiated cells 81 days after implantation. The implanted 9-15c-CG cells clearly expressed desmin (Fig. 4G). The grafted cells also generated neovascularization near the injected site 1 month after injection; the EGFP-positive donor cells could be identified as the endothelium of these vessels (Fig. 4H). Immunohistochemistry with an antibody against CD31, a marker for endothelium, confirmed that the donor cells of the newly formed vessels had differentiated into endothelium (Fig. 4Hb). Engrafted donor cells appeared to maintain the characteristics of stem cells, that is, they continued to produce progeny, i.e., differentiated endothelial cells in this case.

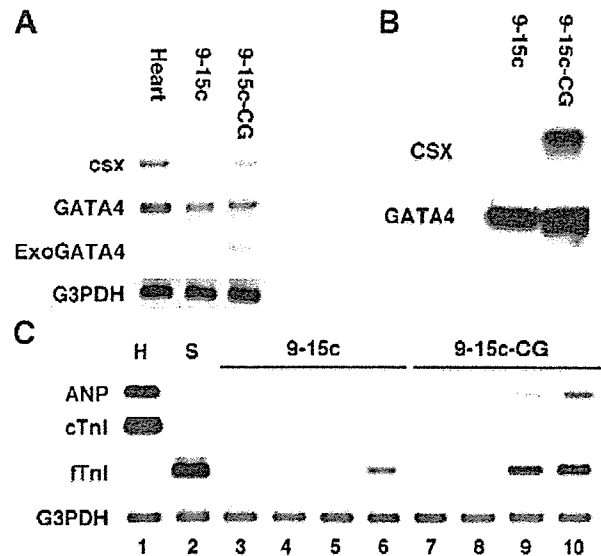


Fig. 3 – Expression of cardiomyocyte-specific or associated genes in 9-15c cells. **A:** RT-PCR analysis of the *Csx*, *GATA4*, exogenous *GATA4* and *G3PDH* genes (from top to bottom) in adult mouse heart, 9-15c cells and 9-15c cells overexpressing the *Csx* and *GATA4* genes (9-15c-CG cells). **B:** Western blotting analysis of the *Csx* and *GATA4* proteins in 9-15c cells and 9-15c-CG cells. **C:** RT-PCR analysis of the ANP, *cTnI*, and *G3PDH* genes (from top to bottom) in 9-15c cells (lanes 3–6) and 9-15c-CG cells (lanes 7–10). 9-15c cells (lane 3) and 9-15c-CG cells (lane 7) were cultured without any treatment (lanes 4 and 8) or with exposure to 5-azacytidine alone (lanes 5 and 9), or 5-azacytidine, PDGF, retinoic acid, and fibronectin coating on a dish (lanes 6 and 10) for 4 weeks. Heart (lane 1: H) and skeletal muscle (lane 2: S) served as controls.

Enhancement of cardiomyogenic differentiation by the co-cultivation with cardiomyocytes

We co-cultured EGFP-labeled 9-15c-CG cells with cardiomyocytes of fetal mice *in vitro*. Four weeks after 5-azacytidine treatment, EGFP-positive beating cardiomyocytes were increased (Figs. 5A, B). To determine whether factors secreted from the cultured cardiomyocytes promoted cardiomyocytic differentiation, 9-15c cells and 9-15c-CG cells were cultured in growth medium supplemented with conditioned medium from cardiomyocyte cultures. The expression of the ANP and *cTnI* genes was up-regulated in both 9-15c cells and 9-15c-CG cells with exposure to the conditioned medium of cardiomyocyte cultures (Fig. 5C, lanes 3 and 7). Furthermore, treatment with PDGF and retinoic acid, and fibronectin coating on a dish enhanced cardiomyogenic marker expression in both 9-15c cells and 9-15c-CG cells (Fig. 5C, lanes 4 and 8).

Discussion

Different models arise from different conceptions of the MSCs as in hematopoietic stem cells' differentiation [28,29]. A hierarchical model of MSCs has been proposed based on the *in vitro* differentiation potential of human MSCs as observed

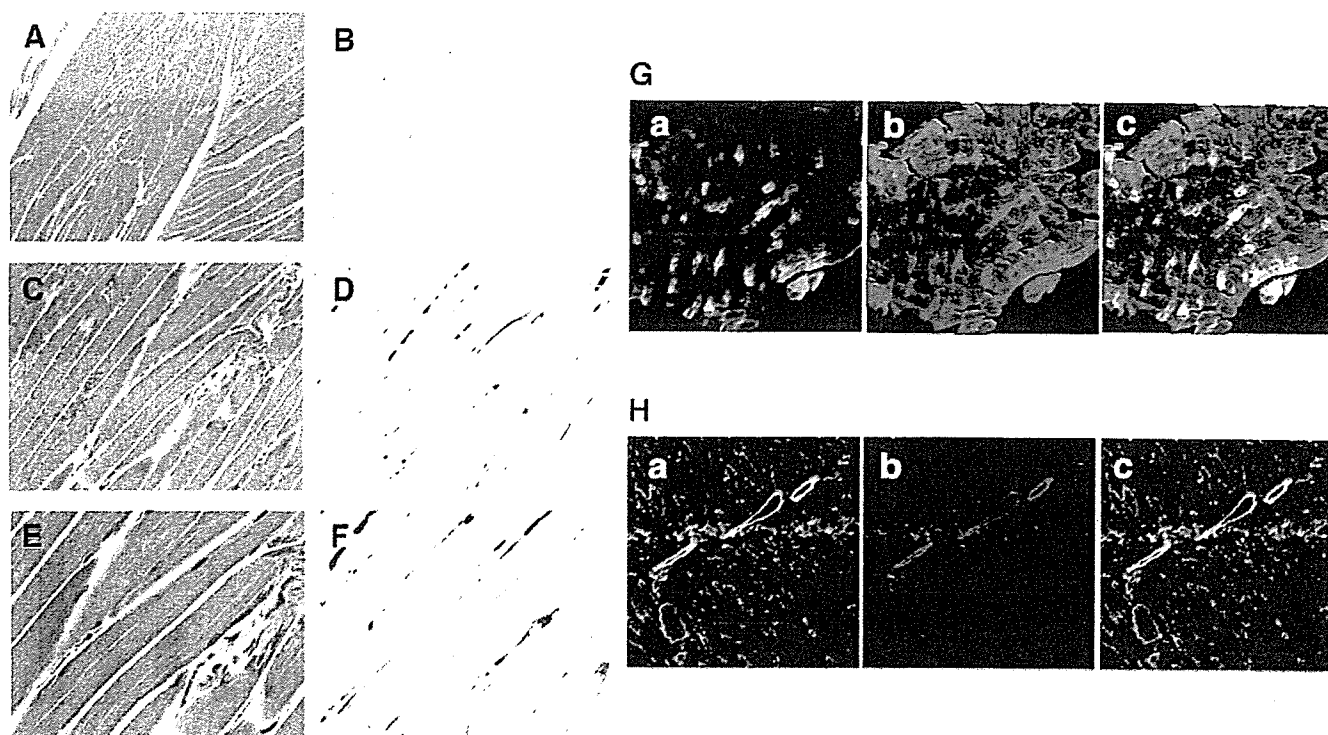


Fig. 4 – Myogenic differentiation of the EGFP-labeled 9-15c-CG cells into the quadriceps femoris muscle. EGFP-labeled 9-15c-CG cells could be recognized morphologically as the skeletal myocytes in the quadriceps femoris muscle 3 months after transplantation (A, C, E: HE staining; B, D, F: immunohistochemistry using anti-GFP antibody). The EGFP-positive donor cells exhibited skeletal myocyte-specific features such as multiple nuclei in the periphery of the cells and striation. Generation of myocytes (G) and endothelial cells (H) by the EGFP-labeled 9-15c cells. The injected donor 9-15c cells labeled with EGFP were detected by green fluorescence. (Ga, Ha) Green fluorescence of EGFP-labeled donor cells. (Gb, Hb) Immunohistochemistry for desmin (Gb, red) or CD31 (Hb, red). (Gc, Hc) The merged images of green fluorescence of injected 9-15c cells and rhodamine of desmin or CD31 clearly demonstrated that 9-15c cells differentiated into myocytes or endothelium. A–F: Longitudinal section; G, H: Cross section.

by clonal analysis [30]. In the present study using single-cell marking, we found that 9-15c cells in culture consisted of a mixture of at least three types of cells, i.e., cardiac myoblasts, cardiac progenitors and multipotent stem cells. Cardiac myoblasts are defined as cells which can differentiate into only cardiac myocytes and have low proliferative potential; cardiac progenitors have proliferative capability and the ability to become cardiomyocytes; multipotent stem cells have both proliferative capability and multipotency. The results obtained in the present study suggest that 9-15c cells are stochastically committed toward the cardiac lineage, and that following this commitment they proliferate as transient amplifying cells and differentiate into cardiac myocytes through the differentiation process, and the hierarchical model applies in the case of 9-15c multipotent cells.

In the present study, we used 5-azacytidine to induce differentiation. 5-azacytidine is a cytosine analog that causes extensive demethylation. The demethylation is attributable to covalent binding of DNA methyltransferase to 5-azacytidine in the DNA [31], with the subsequent reduction of enzyme activity in cells resulting in random loss of methylation at many sites in the genome. Previously, it has been thought that 5-azacytidine activates cardiomyogenic master genes, such as Nkx2.5/Csx, GATA4, and MEF-2C, leading to stochastic trans-

differentiation of MSCs into cardiomyocytes [32,33]. This concept is difficult to account for the existence of cardiac progenitors and multipotent stem cells we identified, and we propose two possibilities how 5-azacytidine works. First, treatment of 5-azacytidine modulates heterochromatin remodeling and leads to dedifferentiation of 9-15c cells. Second, 9-15c cells are stochastically committed toward the cardiac lineage, being independent of treatment of 5-azacytidine. At this time we cannot conclude which is feasible, but it is certain cardiomyocytes are not only transdifferentiated by treatment of 5-azacytidine.

Csx/Nkx2.5 and GATA4 are two cardiac-enriched transcription factors that are expressed in precardiac mesoderm from the very early developmental stage [34,35]. In the present study, increased frequency of cardiomyogenic differentiation of 9-15c cells was successfully achieved in vitro by forced expression of Csx/Nkx2.5 and GATA4. These results are consistent with a report showing that both Csx/Nkx2.5 and GATA4 are required for the cardiac differentiation of P19CL6 cells derived from embryonic teratocarcinoma cells [36]. Cardiomyogenic differentiation, however, could proceed only after treatment with 5-azacytidine in our experimental setting, implying that Csx/Nkx2.5 and GATA4 are required but not sufficient for cardiac differentiation. Unknown factors

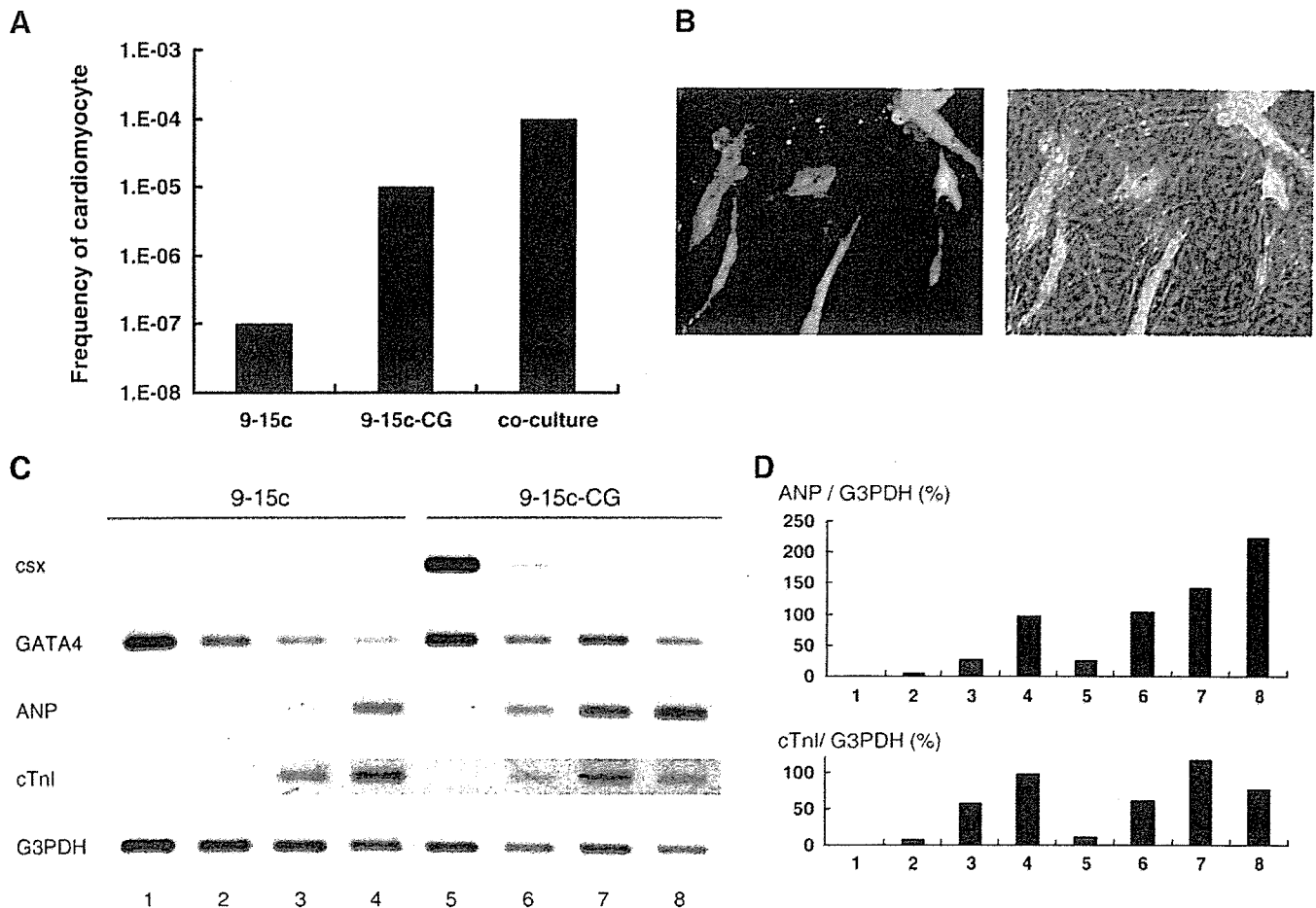


Fig. 5 – Enhancement of cardiomyogenic differentiation of 9-15c cells by co-cultivation with murine fetal cardiomyocytes.
A: Frequencies of cardiomyogenic differentiation in 9-15c cells, 9-15c cells overexpressing the *Csx* and *GATA4* genes (9-15c-CG cells), and 9-15c-CG cells co-cultured with murine fetal cardiomyocytes. **B:** Cardiomyogenic differentiation of EGFP-positive 9-15c-CG cells co-cultured with murine fetal cardiomyocytes. Left: Green fluorescence of EGFP-positive 9-15c-CG cells. Right: Same field visualized by phase-contrast microscopy merged with fluorescence image. **C:** RT-PCR analysis of the *Csx*, *GATA4*, *ANP*, *cTnI* and *G3PDH* genes in 9-15c cells (lanes 1–4) and 9-15c-CG cells (lanes 5–8). 9-15c cells (lane 1) and 9-15c-CG cells (lane 5) were cultured with exposure to 5-azacytidine alone (lanes 2 and 6) or 5-azacytidine and conditioned medium of cardiomyocyte cultures (lanes 3 and 7), or 5-azacytidine, conditioned medium of cardiomyocyte cultures, PDGF, retinoic acid, and fibronectin coating on a dish (lanes 4 and 8) for 4 weeks. **D:** Ratio mRNA expression level of *ANP* and *cTnI* to *G3PDH* in C. The mRNA level of 9-15c cells (lane 4) was regarded as equal to 100%.

induced by 5-azacytidine or microRNAs, whose key roles in stem cell biology are just emerging [37], also seem to be needed.

Adipogenic 3T3-L1 [38], osteogenic MC3T3-E1 [39], and chondrogenic ATDC5 cells [40] have been isolated from stem cells with a mesenchymal nature. In addition, cardiomyogenic precursors may be obtained from stem cells such as cardiac stem cells, embryonic stem cells, and mesenchymal stem cells. Fetal cardiomyocytes are differentiated cardiomyocytes, but not stem cells that can proliferate *in vitro*. Recently, cardiac stem cells capable of clonogenically self-renewing have been isolated from the adult heart [41–43]. Some cardiac stem cells also retain plasticity. The retention of plasticity, i.e., the ability to transdifferentiate into skeletal myocytes and endothelium, of 9-15c cells overexpressing *Csx/Nkx2.5* and *GATA4* supports the idea that these cells may be considered cardiac stem or amplifying cells in terms of differentiation and

self-renewal. On the other hand, *Csx/Nkx2.5* inhibits the myogenic differentiation of C2C12 cells and promotes neuronal differentiation [44]. This unexpected effect of *Csx/Nkx2.5* may be due to differential effects of the gene in different cell types, or of transient versus constitutive expression of the infected gene; dependency of the differentiated phenotypes on the gene expression period is observed for the Notch gene [45,46] and *noggin* gene [47].

Cell transplantation has been attempted to improve cardiac function in severe heart failure; MSCs have been transplanted to functionally restore damaged or diseased tissue in animal models, and mononuclear cells or myoblasts have been injected into ischemic hearts clinically. MSCs are capable of differentiating into many types of cells, and 'cardiomyogenic master genes' are able to enhance the commitment or determine the path to cardiomyogenic differentiation of these MSCs. The stemness of MSCs determined by single-cell

marking in this study needs to be taken into consideration when we are considering mesenchymal stem cell-based therapy: we should pay attention to the possible unexpected differentiation of donor MSCs such as osteogenesis or chondrogenesis in the implanted heart.

In conclusion, we demonstrated that cardiomyocytes were stochastically differentiated from MSCs and that forced expression of *Csx/Nkx2.5* and *GATA4* enhanced the commitment or determined the path to cardiogenic differentiation of these MSCs. Our findings suggest that single-cell-derived MSCs overexpressing *Csx/Nkx2.5* and *GATA4* behave like cardiac transient amplifying cells and that *Csx/Nkx2.5* and *GATA4* could be interesting target molecules for enhancing cardiogenesis of MSCs.

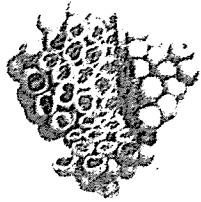
Acknowledgments

We would like to express our sincere thanks to H. Miyaji and M. Ishihara for support throughout the work, and to H. Yokoyama and S. Kusakari for providing expert technical assistance. This study was supported by grants from the Ministry of Education, Culture, Sports, Science, and Technology (MEXT) of Japan; by Research on Health Science Focusing on Drug Innovation (KH71064) from the Japan Health Science Foundation; by the Program for Promotion of Fundamental Studies in Health Science of the Pharmaceuticals and Medical Devices Agency (PMDA); by a research Grant for Cardiovascular Disease (H16C-6) from the Ministry of Health, Labour and Welfare; and was supported by a Grant for Child Health and Development (H15C-2) from the Ministry of Health, Labour and Welfare.

REFERENCES

- [1] E.M. Horwitz, K. Le Blanc, M. Dominici, I. Mueller, I. Slaper-Cortenbach, F.C. Marini, R.J. Deans, D.S. Krause, A. Keating, Clarification of the nomenclature for MSC: The International Society for Cellular Therapy position statement, *Cytotherapy* 7 (2005) 393–395.
- [2] K. Le Blanc, I. Rasmusson, B. Sundberg, C. Gotherstrom, M. Hassan, M. Uzunel, O. Ringden, Treatment of severe acute graft-versus-host disease with third party haploidentical mesenchymal stem cells, *Lancet* 363 (2004) 1439–1441.
- [3] E.M. Horwitz, D.J. Prockop, L.A. Fitzpatrick, W.W. Koo, P.L. Gordon, M. Neel, M. Sussman, P. Orchard, J.C. Marx, R.E. Pyritz, M.K. Brenner, Transplantability and therapeutic effects of bone marrow-derived mesenchymal cells in children with osteogenesis imperfecta, *Nat. Med.* 5 (1999) 309–313.
- [4] K. Le Blanc, C. Gotherstrom, O. Ringden, M. Hassan, R. McMahon, E. Horwitz, G. Anneren, O. Axelsson, J. Nunn, U. Ewald, S. Norden-Lindeberg, M. Jansson, A. Dalton, E. Astrom, M. Westgren, Fetal mesenchymal stem-cell engraftment in bone after in utero transplantation in a patient with severe osteogenesis imperfecta, *Transplantation* 79 (2005) 1607–1614.
- [5] M.F. Pittenger, A.M. Mackay, S.C. Beck, R.K. Jaiswal, R. Douglas, J.D. Mosca, M.A. Moorman, D.W. Simonetti, S. Craig, D.R. Marshak, Multilineage potential of adult human mesenchymal stem cells, *Science* 284 (1999) 143–147.
- [6] A. Dicker, K. Le Blanc, G. Astrom, V. van Harmelen, C. Gotherstrom, L. Blomqvist, P. Arner, M. Ryden, Functional studies of mesenchymal stem cells derived from adult human adipose tissue, *Exp. Cell Res.* 308 (2005) 283–290.
- [7] O.K. Lee, T.K. Kuo, W.M. Chen, K.D. Lee, S.L. Hsieh, T.H. Chen, Isolation of multipotent mesenchymal stem cells from umbilical cord blood, *Blood* 103 (2004) 1669–1675.
- [8] Y. Fukuchi, H. Nakajima, D. Sugiyama, I. Hirose, T. Kitamura, K. Tsuji, Human placenta-derived cells have mesenchymal stem/progenitor cell potential, *Stem Cells* 22 (2004) 649–658.
- [9] D.J. Prockop, Marrow stromal cells as stem cells for nonhematopoietic tissues, *Science* 276 (1997) 71–74.
- [10] M. Ochi, Y. Uchio, K. Kawasaki, S. Wakitani, J. Iwasa, Transplantation of cartilage-like tissue made by tissue engineering in the treatment of cartilage defects of the knee, *J. Bone Jt. Surg. Br.* 84 (2002) 571–578.
- [11] H. Imabayashi, T. Mori, S. Gojo, T. Kiyono, T. Sugiyama, R. Irie, T. Isogai, J. Hata, Y. Toyama, A. Umezawa, Redifferentiation of dedifferentiated chondrocytes and chondrogenesis of human bone marrow stromal cells via chondrosphere formation with expression profiling by large-scale cDNA analysis, *Exp. Cell Res.* 288 (2003) 35–50.
- [12] M. Dezawa, H. Ishikawa, Y. Itokazu, T. Yoshihara, M. Hoshino, S. Takeda, C. Ide, Y. Nabeshima, Bone marrow stromal cells generate muscle cells and repair muscle degeneration, *Science* 309 (2005) 314–317.
- [13] A. Umezawa, K. Tachibana, K. Harigaya, S. Kusakari, S. Kato, Y. Watanabe, T. Takano, Colony-stimulating factor 1 expression is down-regulated during the adipocyte differentiation of H-1/A marrow stromal cells and induced by cachectin/tumor necrosis factor, *Mol. Cell. Biol.* 11 (1991) 920–927.
- [14] J. Kohyama, H. Abe, T. Shimazaki, A. Koizumi, K. Nakashima, S. Gojo, T. Taga, H. Okano, J. Hata, A. Umezawa, Brain from bone: efficient “meta-differentiation” of marrow stroma-derived mature osteoblasts to neurons with Noggin or a demethylating agent, *Differentiation* 68 (2001) 235–244.
- [15] T. Mori, T. Kiyono, H. Imabayashi, Y. Takeda, K. Tsuchiya, S. Miyoshi, H. Makino, K. Matsumoto, H. Saito, S. Ogawa, M. Sakamoto, J. Hata, A. Umezawa, Combination of hTERT and bmi-1, E6, or E7 induces prolongation of the life span of bone marrow stromal cells from an elderly donor without affecting their neurogenic potential, *Mol. Cell. Biol.* 25 (2005) 5183–5195.
- [16] S. Gojo, N. Gojo, Y. Takeda, T. Mori, H. Abe, S. Kyo, J. Hata, A. Umezawa, In vivo cardiovascularogenesis by direct injection of isolated adult mesenchymal stem cells, *Exp. Cell Res.* 288 (2003) 51–59.
- [17] D. Hakuno, K. Fukuda, S. Makino, F. Konishi, Y. Tomita, T. Manabe, Y. Suzuki, A. Umezawa, S. Ogawa, Bone marrow-derived regenerated cardiomyocytes (CMG Cells) express functional adrenergic and muscarinic receptors, *Circulation* 105 (2002) 380–386.
- [18] T. Hoang, The origin of hematopoietic cell type diversity, *Oncogene* 23 (2004) 7188–7198.
- [19] I.R. Lemischka, D.H. Raulet, R.C. Mulligan, Developmental potential and dynamic behavior of hematopoietic stem cells, *Cell* 45 (1986) 917–927.
- [20] M. Ogawa, Stochastic model revisited, *Int. J. Hematol.* 69 (1999) 2–5.
- [21] F.M. Watt, B.L. Hogan, Out of Eden: stem cells and their niches, *Science* 287 (2000) 1427–1430.
- [22] D.G. Tenen, R. Hromas, J.D. Licht, D.E. Zhang, Transcription factors, normal myeloid development, and leukemia, *Blood* 90 (1997) 489–519.
- [23] A.A. Sharov, Y. Piao, R. Matoba, D.B. Dudekula, Y. Qian, V. VanBuren, G. Falco, P.R. Martin, C.A. Stagg, U.C. Bassey, Y. Wang, M.G. Carter, T. Hamatani, K. Aiba, H. Akutsu, L. Sharova, T.S. Tanaka, W.L. Kimber, T. Yoshikawa, S.A. Jaradat, S. Pantano, R. Nagaraja, K.R. Boheler, D. Taub, R.J.

- Hodes, D.L. Longo, D. Schlessinger, J. Keller, E. Klotz, G. Kelsoe, A. Umezawa, A.L. Vescovi, J. Rossant, T. Kunath, B.L. Hogan, A. Curci, M. D'Urso, J. Kelso, W. Hide, M.S. Ko, Transcriptome analysis of mouse stem cells and early embryos, *PLoS Biol.* 1 (2003) 410–419.
- [24] S. Matsumoto, I. Shibuya, S. Kusakari, K. Segawa, T. Uyama, A. Shimada, A. Umezawa, Membranous osteogenesis system modeled with KUSA-A1 mature osteoblasts, *Biochim. Biophys. Acta* 1725 (2005) 57–63.
- [25] S. Makino, K. Fukuda, S. Miyoshi, F. Konishi, H. Kodama, J. Pan, M. Sano, T. Takahashi, S. Hori, H. Abe, J. Hata, A. Umezawa, S. Ogawa, Cardiomyocytes can be generated from marrow stromal cells in vitro, *J. Clin. Invest.* 103 (1999) 697–705.
- [26] P. Simpson, A. McGrath, S. Savion, Myocyte hypertrophy in neonatal rat heart cultures and its regulation by serum and by catecholamines, *Circ. Res.* 51 (1982) 787–801.
- [27] M. Sano, A. Umezawa, H. Abe, A. Akatsuka, S. Nonaka, H. Shimizu, M. Fukuma, J. Hata, EAT/mcl-1 expression in the human embryonal carcinoma cells undergoing differentiation or apoptosis, *Exp. Cell Res.* 266 (2001) 114–125.
- [28] J.E. Dennis, P. Charbord, Origin and differentiation of human and murine stroma, *Stem Cells* 20 (2002) 205–214.
- [29] J. Suda, T. Suda, M. Ogawa, Analysis of differentiation of mouse hemopoietic stem cells in culture by sequential replating of paired progenitors, *Blood* 64 (1984) 393–399.
- [30] A. Muraglia, R. Cancedda, R. Quarto, Clonal mesenchymal progenitors from human bone marrow differentiate in vitro according to a hierarchical model, *J. Cell. Sci.* 113 (Pt. 7) (2000) 1161–1166.
- [31] D.V. Santi, A. Norment, C.E. Garrett, Covalent bond formation between a DNA-cytosine methyltransferase and DNA containing 5-azacytosine, *Proc. Natl. Acad. Sci. U. S. A.* 81 (1984) 6993–6997.
- [32] H. Oh, S.B. Bradfute, T.D. Gallardo, T. Nakamura, V. Gaussin, Y. Mishina, J. Pocius, L.H. Michael, R.R. Behringer, D.J. Garry, M.L. Entman, M.D. Schneider, Cardiac progenitor cells from adult myocardium: homing, differentiation, and fusion after infarction, *Proc. Natl. Acad. Sci. U. S. A.* 100 (2003) 12313–12318.
- [33] K. Fukuda, Development of regenerative cardiomyocytes from mesenchymal stem cells for cardiovascular tissue engineering, *Artif. Organs* 25 (2001) 187–193.
- [34] R.J. Arceci, A.A. King, M.C. Simon, S.H. Orkin, D.B. Wilson, Mouse GATA-4: a retinoic acid-inducible GATA-binding transcription factor expressed in endodermally derived tissues and heart, *Mol. Cell. Biol.* 13 (1993) 2235–2246.
- [35] I. Komuro, S. Izumo, Csx: a murine homeobox-containing gene specifically expressed in the developing heart, *Proc. Natl. Acad. Sci. U. S. A.* 90 (1993) 8145–8149.
- [36] K. Monzen, I. Shiojima, Y. Hiroi, S. Kudoh, T. Oka, E. Takimoto, D. Hayashi, T. Hosoda, A. Habara-Ohkubo, T. Nakaoka, T. Fujita, Y. Yazaki, I. Komuro, Bone morphogenetic proteins induce cardiomyocyte differentiation through the mitogen-activated protein kinase kinase TAK1 and cardiac transcription factors Csx/Nkx-2.5 and GATA-4, *Mol. Cell. Biol.* 19 (1999) 7096–7105.
- [37] L.C. Cheng, M. Tavazoie, F. Doetsch, Stem cells: from epigenetics to microRNAs, *Neuron* 46 (2005) 363–367.
- [38] H. Green, M. Meuth, An established pre-adipose cell line and its differentiation in culture, *Cell* 3 (1974) 127–133.
- [39] H. Sudo, H.A. Kodama, Y. Amagai, S. Yamamoto, S. Kasai, In vitro differentiation and calcification in a new clonal osteogenic cell line derived from newborn mouse calvaria, *J. Cell Biol.* 96 (1983) 191–198.
- [40] C. Shukunami, C. Shigeno, T. Atsumi, K. Ishizeki, F. Suzuki, Y. Hiraki, Chondrogenic differentiation of clonal mouse embryonic cell line ATDC5 in vitro: differentiation-dependent gene expression of parathyroid hormone (PTH)/PTH-related peptide receptor, *J. Cell Biol.* 133 (1996) 457–468.
- [41] A.P. Beltrami, L. Barlucchi, D. Torella, M. Baker, F. Limana, S. Chimenti, H. Kasahara, M. Rota, E. Musso, K. Urbanek, A. Leri, J. Kajstura, B. Nadal-Ginard, P. Anversa, Adult cardiac stem cells are multipotent and support myocardial regeneration, *Cell* 114 (2003) 763–776.
- [42] K.L. Laugwitz, A. Moretti, J. Lam, P. Gruber, Y. Chen, S. Woodard, L.Z. Lin, C.L. Cai, M.M. Lu, M. Reth, O. Platoshyn, J.X. Yuan, S. Evans, K.R. Chien, Postnatal isl1+ cardioblasts enter fully differentiated cardiomyocyte lineages, *Nature* 433 (2005) 647–653.
- [43] K. Matsuura, T. Nagai, N. Nishigaki, T. Oyama, J. Nishi, H. Wada, M. Sano, H. Toko, H. Akazawa, T. Sato, H. Nakaya, H. Kasanuki, I. Komuro, Adult cardiac Sca-1-positive cells differentiate into beating cardiomyocytes, *J. Biol. Chem.* 279 (2004) 11384–11391.
- [44] A.M. Riazzi, H. Lee, C. Hsu, G. Van Arsdell, CSX/Nkx2.5 modulates differentiation of skeletal myoblasts and promotes differentiation into neuronal cells in vitro, *J. Biol. Chem.* 280 (2005) 10716–10720.
- [45] K. Shindo, N. Kawashima, K. Sakamoto, A. Yamaguchi, A. Umezawa, M. Takagi, K. Katsube, H. Suda, Osteogenic differentiation of the mesenchymal progenitor cells, Kusa is suppressed by Notch signaling, *Exp. Cell Res.* 290 (2003) 370–380.
- [46] K. Tezuka, M. Yasuda, N. Watanabe, N. Morimura, K. Kuroda, S. Miyatani, N. Hozumi, Stimulation of osteoblastic cell differentiation by Notch, *J. Bone Miner. Res.* 17 (2002) 231–239.
- [47] S. Yuasa, Y. Itabashi, U. Koshimizu, T. Tanaka, K. Sugimura, M. Kinoshita, F. Hattori, S. Fukami, T. Shimazaki, S. Ogawa, H. Okano, K. Fukuda, Transient inhibition of BMP signaling by Noggin induces cardiomyocyte differentiation of mouse embryonic stem cells, *Nat. Biotechnol.* 23 (2005) 607–611.



STEM CELLS®

A Comparison of Neural Differentiation and Retinal Transplantation with Bone Marrow-Derived Cells and Retinal Progenitor Cells

Minoru Tomita, Taisuke Mori, Kazuichi Maruyama, Tasneem Zahir, Matthew Ward, Akihiro Umezawa and Michael J. Young

Stem Cells 2006;24;2270-2278

DOI: 10.1634/stemcells.2005-0507

This information is current as of October 5, 2006

The online version of this article, along with updated information and services, is located on the World Wide Web at:

<http://www.StemCells.com/cgi/content/full/24/10/2270>

STEM CELLS®, an international peer-reviewed journal, covers all aspects of stem cell research: embryonic stem cells; tissue-specific stem cells; cancer stem cells; the stem cell niche; stem cell genetics and genomics; translational and clinical research; technology development.

STEM CELLS® is a monthly publication, it has been published continuously since 1983. The Journal is owned, published, and trademarked by AlphaMed Press, 318 Blackwell Street, Suite 260, Durham, North Carolina, 27701. © 2006 by AlphaMed Press, all rights reserved. Print ISSN: 1066-5099. Online ISSN: 1549-4918.

AlphaMed Press

A Comparison of Neural Differentiation and Retinal Transplantation with Bone Marrow-Derived Cells and Retinal Progenitor Cells

MINORU TOMITA,^a TAISUKE MORI,^{b,c} KAZUICHI MARUYAMA,^a TASNEEM ZAHIR,^a MATTHEW WARD,^a AKIHIRO UMEZAWA,^b MICHAEL J. YOUNG^a

^aThe Schepens Eye Research Institute, Department of Ophthalmology, Harvard Medical School, Boston, Massachusetts, USA; ^bDepartment of Reproductive Biology and Pathology, National Research Institute for Child Health and Development, Tokyo, Japan; ^cDepartment of Pathology, Keio University, Tokyo, Japan

Key Words. Bone marrow stromal cells • Microglia • Retinal stem cells • Retinal transplantation • Neural differentiation

ABSTRACT

Retinal progenitor cells (RPCs) are immature precursors that can differentiate into retinal neurons, including photoreceptors. Recently, it has been reported that bone marrow-derived cells may also be capable of differentiation into cells of central nervous system lineage, including retinal neurons. We compared these two cell types to evaluate their potential as a source of cells for retinal transplantation. Marrow stromal cells (MSCs) and macrophages were isolated from enhanced green fluorescence protein mice. MSCs were cultured with brain-derived neurotrophic factor, nerve growth factor, and basic fibroblast growth factor to induce neuronal differentiation. RPCs were cultured under the same conditions or with 10% fetal bovine serum. Neuronal marker expression was examined and compared between MSCs and RPCs. MSCs, macrophages, and RPCs were also cultured

with explanted retinas from rhodopsin knockout mice to study their potential for retinal integration. MSCs expressed neuronal and retina-specific markers by reverse transcription-polymerase chain reaction and immunocytochemistry. Both types of cells migrated into retinal explants and expressed neurofilament 200, glial fibrillary acidic protein, protein kinase C- α , and recoverin. RPCs expressed rhodopsin, a photoreceptor marker we never detected in MSCs. A majority of bone marrow derived-macrophages differentiated into cells that resembled microglia, rather than neural cells, in the explanted retina. This study shows that RPCs are likely to be a preferred cell type for retinal transplantation studies, compared with MSCs. However, MSCs may remain an attractive candidate for autologous transplantation. *STEM CELLS* 2006;24:2270–2278

INTRODUCTION

Marrow stromal cells (MSCs) are a population of multipotent mesenchymal stem cells distinct from hematopoietic stem cells. MSCs were originally reported to contribute to the microenvironment of bone marrow and to be necessary for the proliferation of hematopoietic stem cells [1]. It has recently been shown that MSCs can differentiate into various cell lineages, including bone [2, 3], muscle [4], fat [5], cartilage [6], cardiomyocytes [7–9], and hepatocytes [10]. Recently, some studies claimed that MSCs could differentiate cells expressing markers of neurons and glia in vitro [11–17]. MSCs also have the capacity to migrate into the uninjured [18] and diseased brain [19, 20] and spinal cord [21, 22]. Interestingly, studies show that MSCs differentiate into cells expressing markers of photoreceptors and glia in the retina [23, 24].

The two major clinical subtypes of retinal degeneration (RD) are retinitis pigmentosa and age-related macular degeneration. A hallmark of these diseases is photoreceptor cell degeneration, resulting in visual loss. No effective restorative treatment exists for either RD subtype. Previously, we reported that brain-derived progenitor cells can migrate and differentiate into cells expressing markers of mature neurons and glia when grafted to the retina of mice and rats with RD [25–29]. Despite incorporation into the host retina and morphological similarities to various retinal cell types, the transplanted cells failed to express retina-specific markers in each of these studies. Recently, the transplantation of stem and progenitor cells isolated from retina has shown promise as a strategy for photoreceptor replacement [26, 28, 30–32]. Many mammalian tissues, including the retina, contain stem or progenitor cells that can be

Correspondence: Minoru Tomita, M.D., Ph.D., The Schepens Eye Research Institute, Department of Ophthalmology, Harvard Medical School, 20 Staniford St., Boston, Massachusetts 02114, USA. Telephone: 1-617-912-7419; Fax: 1-617-912-0101; e-mail: Minoru Tomita: tomita@vision.eri.harvard.edu; or Michael J. Young, Ph.D.: e-mail: mikey@vision.eri.harvard.edu Received October 12, 2005; accepted for publication May 23, 2006. © AlphaMed Press 1066-5099/2006/\$20.00/0 doi: 10.1634/stemcells.2005-0507.

isolated, propagated, and grafted into animal models of RD [26, 32]. The goal of retinal transplantation is the replacement of dead or diseased host cells with healthy, functional donor cells. In the present study, we investigated whether MSCs could effectively differentiate into retinal cells by using a cocktail of brain-derived neurotrophic factor (BDNF), nerve growth factor (NGF), and basic fibroblast growth factor (bFGF), which (as we previously reported) induces MSC differentiation into neurons [17]. Because there are reports of the differentiation of microglial cells into neurons [33] and bone marrow-derived macrophages into brain microglia [34, 35], we examined the differentiation of macrophages when grafted into the retina. Here, we compared the potential of retinal progenitor cells (RPCs) and MSCs for use in retinal transplantation studies.

MATERIALS AND METHODS

Experimental Animals

All experiments were performed in adherence with the ARVO (Association for Research in Vision and Ophthalmology) Statement for the Use of Animals in Ophthalmic and Vision Research and with the Schepens Eye Research Institute Animal Care and Use Committee (Boston, MA). Rhodopsin knockout mice ($\rho^{-/-}$ mice; C57/Bl6 background, provided by Peter Humphries, University of Dublin, Trinity College, Dublin, Ireland) and postnatal day 1 (P1) enhanced green fluorescence protein (EGFP) mice (C57BL/6 background; Dr. Masaru Okabe, University of Osaka, Osaka, Japan) were euthanized by CO₂ gas.

Isolation of MSCs and Macrophages

Humeri, femurs, and tibiae were obtained from P1 EGFP mice and divided into small pieces. These small pieces were cultured in Dulbecco's modified Eagle's medium (DMEM)/F-12 with 10% fetal bovine serum (FBS), and the nonadherent cells were removed by replacement of the media. After approximately 2 weeks, the adherent cells became confluent and were incubated with trypsin for 3 minutes and removed from the flask. All cell cultures were maintained at 37°C, 5% CO₂.

After two or three passages, bone marrow-derived adherent cells were incubated with trypsin for 3 minutes to generate a single-cell suspension. Cells (1×10^6) were labeled with phycoerythrin-conjugated antibody against CD11b (1:50, marker for macrophages; BD Biosciences PharMingen, San Diego, <http://www.bdbiosciences.com>) and Cy-5-conjugated antibody against CD45 (1:50, marker for hematopoietic cells; BD Biosciences PharMingen). To isolate MSCs (CD45⁻, CD11b⁻) and macrophages (CD45⁺, CD11b⁺) from bone marrow-derived adherent cells, cell sorting was performed (data not shown). After sorting, the isolated MSCs and macrophages were cultured in 20% FBS for 2–3 days and then used for the subsequent experiments.

RPC Line

RPCs harvested from the retina of P1 EGFP mice were isolated and maintained in culture as previously described [32]. Briefly, retinas were surgically removed. The tissue was finely minced with two scalpel blades (no. 10), these whole retina homogenates were incubated in 0.1% collagenase, and a single-cell suspension was obtained. Dissociated cells were then cultured in

DMEM/F-12 supplemented with B27 (Invitrogen, Carlsbad, CA, <http://www.invitrogen.com>) and 20 ng/ml of epidermal growth factor (EGF). The neurospheres that were generated could in turn be dissociated and subcultured to generate new spheres [26, 32].

Neural Differentiation and Characterization of MSCs

To examine the differentiation of GFP-expressing MSCs in vitro, MSCs were incubated with trypsin for 3 minutes to generate a single-cell suspension. Cells (1×10^3) were plated on eight-well poly(D-lysine)/laminin-coated chamber slides (BD Biosciences, San Jose, CA, <http://www.bdbiosciences.com>) in DMEM/F-12 medium supplemented with 25 ng/ml BDNF (R&D Systems, Minneapolis, <http://www.rndsystems.com>), 40 ng/ml NGF (R&D Systems), and 20 ng/ml bFGF (R&D Systems) and were fixed with 4% paraformaldehyde (PFA) at 2 weeks after plating. The cells were blocked in 1% bovine serum albumin (Sigma-Aldrich, St. Louis, <http://www.sigmaaldrich.com>) + 0.2% Triton-100 (Sigma-Aldrich) and then incubated for 2 hours with primary antibody to Ki67 (1:100, cell proliferation marker; Vector Laboratories, Burlingame, CA, <http://www.vectorlabs.com>), nestin (1:1, immature neuronal marker; Developmental Studies Hybridoma Bank, Iowa City, IA, <http://www.uiowa.edu/~dshbwww/>), glial fibrillary acidic protein (GFAP) (1:50, astrocyte marker, Dako), MAP-2 (1:500, neuronal markers; Sigma-Aldrich), anti-protein kinase C (PKC)- α (1:200, bipolar cell marker; Santa Cruz Biotechnology, Inc., Santa Cruz, CA, <http://www.scbt.com>), 2D4 rhodopsin (1:500, rod photoreceptor marker; kind gift of Dr. R. Molday, University of British Columbia, Vancouver, BC, Canada), and recoverin antibodies (1:1,000, photoreceptor and bipolar cell marker; Chemicon International, Temecula, CA, <http://www.chemicon.com>). After rinsing in phosphate-buffered saline (PBS [0.1 M]), samples were incubated in Cy3-conjugated species-specific IgG (1:800) for 1 hour. Samples were rinsed again and then covered with polyvinyl alcohol-1,4-diazabicyclo (2.2.2) octane (PVA-Dabco) with 4',6-diamidino-2-phenylindole (DAPI) and viewed under fluorescent illumination. As a control, the untreated MSCs were fixed with 4% PFA and labeled with the same antibodies.

Differentiation and Characterization of RPCs

To examine the differentiation of GFP-expressing RPCs in vitro, RPC spheres were incubated with trypsin for 1 minute to generate a single-cell suspension. In two separate experiments, cells (1×10^3) were plated on eight-well poly(D-lysine)/laminin-coated chamber slides (BD Biosciences) in DMEM/F-12 medium supplemented either with 10% FBS or with BDNF, NGF, and bFGF (the same growth factors used in MSCs differentiation experiments [17]) and were then fixed with 4% PFA at 1 day and 2 weeks after plating. The cells were then reacted and prepared with the antibodies described for MSCs.

Morphometry of Differentiated Cells

In each of the three culture conditions (MSCs with BDNF, NGF, and bFGF; RPCs with 10% FBS; and RPCs with BDNF, NGF, and bFGF), quantitative morphometry was performed by counting positive cells from a total cell number of at least 200 cells per well in randomly selected wells, selected based on DAPI

labeling ($n = 5$). In this counting study, cells (1×10^3) were plated on eight-well poly(D-lysine)/laminin-coated chamber slides (BD Biosciences). Five of eight wells were randomly chosen (by a masked observer), and all cells in the wells were counted. Nestin-positive cells from RPCs were counted at day 1, and MSCs and RPCs positive for other markers were counted after 2 weeks of treatment.

Reverse Transcription-Polymerase Chain Reaction Analysis of MSCs

For reverse transcription-polymerase chain reaction (RT-PCR) analysis, total RNA was extracted using TRIzol (Invitrogen) from MSCs grown in the presence or absence of BDNF, NGF, and bFGF in poly(D-lysine)/laminin-coated culture dishes (BD Biosciences) and from P1 EGFP mice retina for a positive control. First-strand cDNA was prepared from total RNA by reverse transcriptase using oligo(dT) primers. To detect nestin, β -tubulin class III (BT-III; neuronal marker), Map2, GFAP, PKC- α , recoverin, and rhodopsin, primers were used as described in Table 1.

Retinal Organ Culture

Retinal organ culture was performed as previously described [36–38] with minor modifications. Briefly, eyes were enucleated from rhodopsin knockout ($\rho^{-/-}$) mice and transferred to ice-cold Hanks' balanced salt solution (Invitrogen). The retinas were separated from the retinal pigment epithelium and placed onto Millicell-CM membrane culture inserts (diameter 30 mm, pore size 0.4 μ m; Millipore Corporation, Billerica, MA, <http://www.millipore.com>) with the ganglion cell layer downward. The inserts with neural retina were placed in six-well plates containing approximately 1 ml/well of medium containing DMEM/F-12 supplemented with B27 neural supplement (Invitrogen), 2 mM L-glutamine (Sigma-Aldrich), 2,000 U of nystatin (Invitrogen), and 100 μ l/ml penicillin-streptomycin (Sigma-Aldrich). Organ cultures were maintained at 37°C, 5% CO₂ and fed every 2–3 days.

Explant Coculture

The host retinas were explanted from $\rho^{-/-}$ mice (4–8 weeks of age). Cell suspensions (1 μ l, 5×10^3 cells/ μ l) containing (a) RPCs ($n = 12$); (b) MSCs with ($n = 12$) or without ($n = 6$)

pretreatment with BDNF, NGF, and bFGF for 1 week; and (c) macrophages ($n = 6$) were added to the retinas using a pipette immediately after isolation of recipient retinas. We placed the grafted cells onto the surface of retinal explants using a 200- μ l pipette. The cells were spread out over the entire surface of the explant, confirmed by viewing under fluorescent illumination. The explanted retinas were cultured for 1 week.

Tissue Preparation

After 1 week in explant coculture, the explanted retinas were fixed with 4% PFA, followed by cryoprotection with 20% sucrose. The retinas were sectioned at 12 μ m on a cryostat. Sections were stained with neurofilament (NF) 200 (1:1,000, neuronal marker; Sigma-Aldrich), GFAP, PKC- α , recoverin, and rhodopsin antibodies as described above. After fixation with PFA and sucrose, some whole-mount retinas were stained with biotin-*Griffonia simplicifolia* (GS)-lectin (5 μ g/ml, microglia and macrophages marker; Sigma-Aldrich) for 15 minutes and NF200 antibody for 2 hours. After rinsing in PBS, samples were respectively incubated in Cy3-conjugated streptavidin (Jackson ImmunoResearch Laboratories, Inc., West Grove, PA, <http://www.jacksonimmuno.com>) and Cy3-conjugated species-specific IgG (1:800) for 1 hour. Samples were rinsed again and then coverslipped in PVA-Dabco and viewed under fluorescent illumination.

RESULTS

Characterization of MSCs

When grown on conventional substrates in media supplemented with 10% FBS, GFP-transgenic MSCs exhibited high levels of endogenous green fluorescence (Fig. 1A). The untreated MSCs did not express nestin, Map2, GFAP, PKC- α , recoverin, or rhodopsin (data not shown). To examine differentiation in vitro, medium without 10% FBS was supplemented with BDNF, NGF, and bFGF. After 2 weeks of culture under differentiation conditions, MSCs differentiated into cells with neuronal morphologies and neurite-like processes (Fig. 1B) and also formed spheres (Fig. 1C). Subpopulations of MSCs expressed nestin (Fig. 1D–1F), Map2 (Fig. 1G–1I), GFAP (Fig. 1J–1L), PKC- α (Fig. 1M–1O), and recoverin (Fig. 1P–1R). These markers are consistent, although not conclusive, with differentiation into

Table 1. Primers used for reverse transcription-polymerase chain reaction analysis

| Genes | Primer sequences (5'–3') | Product size (bp) | Temperature (°C) |
|---------------|---------------------------|-------------------|------------------|
| Nestin | F: AACTGGCACACCTCAAGATGT | 235 | 60 |
| | R: TCAAGGGTATTAGGCAAGGGG | | |
| GFAP | F: CACGAACGAGTCCCTAGAGC | 234 | 60 |
| | R: ATGGTGATGCGTTTTCTTC | | |
| TB-III | F: ACCTCAACCACCTGGTATCG | 344 | 60 |
| | R: TGCTGTTCTTGCTCTGGATG | | |
| Map2 | F: CTGGACATCAGCCTCACTCA | 164 | 60 |
| | R: AATAGGTGCCCTGTGACCTG | | |
| PKC- α | F: CCCATTCCAGAAGGAGATGA | 212 | 60 |
| | R: TTCCTGTGTCAGCAAGCATCAC | | |
| Recoverin | F: ATGGGGAATAGCAAGAGCGG | 179 | 60 |
| | R: GAGTCCGGGAAAACTTGAATA | | |
| Rhodopsin | F: TCACCACCACCTCTACACA | 216 | 60 |
| | R: TGATCCAGGTGAAGACCACA | | |

Abbreviations: bp, base pair; F, forward; GFAP, glial fibrillary acidic protein; PKC, protein kinase C; R, reverse; TB, tubulin.

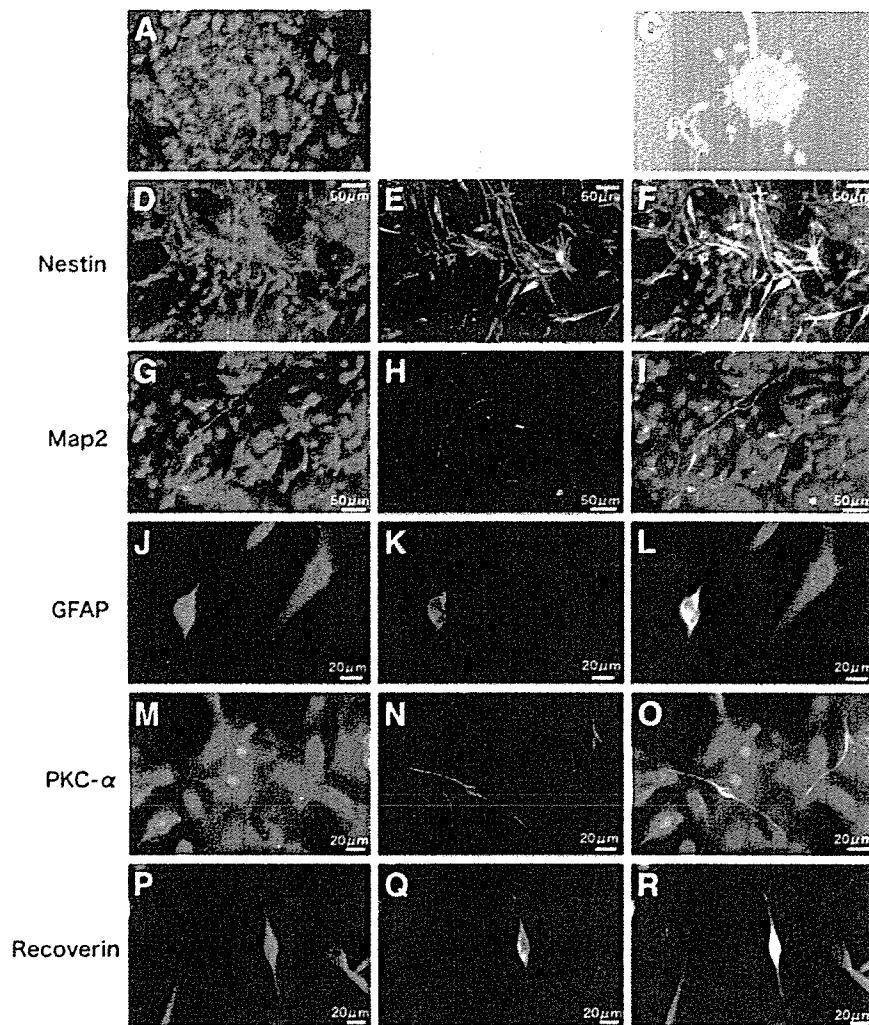


Figure 1. Differentiation and characterization of marrow stromal cell (MSCs) in vitro. Undifferentiated GFP⁺ MSCs grown in Dulbecco's modified Eagle's medium with 10% fetal bovine serum, viewed under fluorescein isothiocyanate illumination (A). MSCs cultured in serum-free medium with brain-derived neurotrophic factor, nerve growth factor, and basic fibroblast growth factor for 14 days (B–R). After 2 weeks of culture under differentiation conditions, MSCs morphologically differentiated into neuronal shape and had neuronal processes (B) and also formed spheres (C). Constitutive GFP expression (D, G, J, M, P), antibody/cytokeratin-3 immunoreactivity for nestin (E), Map2 (H), GFAP (K), PKC- α (N), and recoverin (Q), and merged images (F, I, L, O, R). Abbreviations: GFAP, glial fibrillary acidic protein; GFP, green fluorescent protein; PKC, protein kinase C.

retinal neurons. Interestingly, these immunopositive cells also showed morphological evidence suggestive of differentiation into immature photoreceptors, bipolar cell types, glial cells, and neuronal cells (Fig. 1F, 1I, 1L, 1O, 1R). We could not find any rhodopsin-positive cells from treated MSCs.

Characterization of RPCs

When grown on conventional substrates in medium supplemented with EGF, GFP-transgenic RPCs exhibited high levels of endogenous green fluorescence (Fig. 2A) and maintained an undifferentiated state characterized by ubiquitous Ki67 and nestin immunoreactivity (Fig. 2B, 2C). Cells could be maintained in this state for up to 1 year or 50 passages as neurospheres. To examine differentiation in vitro, medium without EGF was supplemented with 10% FBS. After 2 weeks culture under differentiation conditions, the cells were analyzed immunocytochemically. The number of Ki67⁺ cells markedly decreased (data not shown), and subpopulations expressed GFAP (Fig. 2D), Map2 (Fig. 2E), PKC- α (Fig. 2F), recoverin (Fig. 2G), or rhodopsin (Fig. 2H). These markers are consistent with differentiation into rod photoreceptors, bipolar cells, and Muller glia, all of which are known to be born late in retinogenesis. More-

over, these immunopositive cells also showed morphological evidence suggestive of immature photoreceptor differentiation, as well as of other retinal cell types (Fig. 2D–2H).

Quantitative Evaluation of Differentiated Cell Numbers: MSCs Versus RPCs

To examine the optimal source of cells for retinal transplantation, quantitative evaluation of differentiation into neuronal and retinal cells was carried out using cell counting as previously described [39].

After 2 weeks of BDNF, NGF, and bFGF treatment, the percentages of surviving MSCs expressing nestin, Map2, GFAP, PKC- α , and recoverin were 5.55%, 3.27%, 1.42%, 3.97%, and 13.9%, respectively. The percentages of nestin-, Map2-, GFAP-, PKC- α -, recoverin-, and rhodopsin-positive cells from RPCs treated with 10% FBS were 90.5%, 15.2%, 64.4%, 12.9%, 23.6%, and 3.17%, respectively. The rates of nestin-, Map2-, GFAP-, PKC- α -, recoverin-, and rhodopsin-positive cells from RPCs treated with BDNF, NGF, and bFGF were 89.2%, 29.4%, 10.9%, 28.2%, 22.3%, and 2.25%, respectively (Fig. 3A).

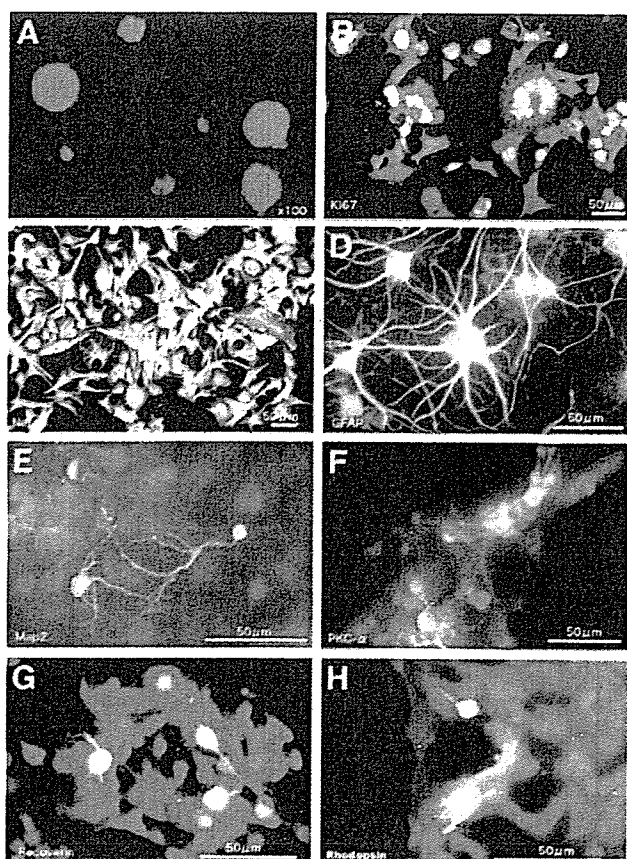


Figure 2. Differentiation and characterization of retinal progenitor cell (RPCs) in vitro. RPCs formed green fluorescent protein-positive neurospheres (A). RPCs cultured in the absence of epidermal growth factor and in the presence of 10% fetal bovine serum for 1 (B, C) or 14 (D–H) days. The cells were stained for Ki67 (B), nestin (C), GFAP (D), Map2 (E), PKC- α (F), recoverin (G), and rhodopsin (H). Abbreviations: GFAP, glial fibrillary acidic protein; MSC, marrow stromal cell; PKC, protein kinase C.

RT-PCR Analysis of BDNF, NGF, and bFGF Treatment

Semiquantitative RT-PCR analysis was carried out to determine the effect of BDNF, NGF, and bFGF on MSCs (Fig. 3B). MSCs without treatment showed only weak recoverin expression. (MSCs without treatment did not express nestin, BT-III, Map2, GFAP, PKC- α , or rhodopsin.) After 2 weeks of BDNF, NGF, and bFGF treatment, MSCs expressed nestin, BT-III, Map2, GFAP, PKC- α , and recoverin. Rhodopsin expression was not found. Recoverin expression was increased in treated MSCs.

Macrophages Differentiated into Microglia After Coculture with Explanted Retinas

After coculture with explanted rho^{-/-} mouse retinas, macrophages were viewed by fluorescent illumination at 3 and 7 days. Macrophages migrated into the retina and assumed morphology very reminiscent of microglial cells (Fig. 4A–4C). The cocultured macrophages also expressed GS-lectin, a marker of microglia (Fig. 4D–4F). There was no evidence of neuronal differentiation upon immunocytochemical and morphological analyses (data not shown).

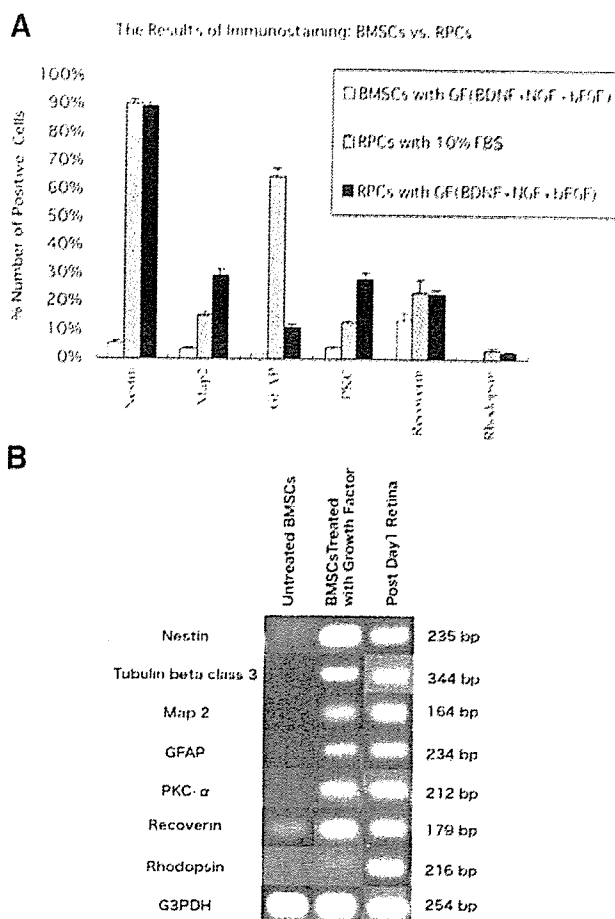


Figure 3. Comparison of BMSCs and RPCs. (A): The number of cells differentiated into retinal cells: comparison of marrow stromal cell (MSCs) and RPCs. In this study, nestin-positive cells were counted at day 1, and other markers cells were counted at 2 weeks after treatment. (B): Effect of BDNF, NGF, and bFGF on transcription of retinal cell markers. Semiquantitative reverse transcription-polymerase chain reaction analysis was carried out to determine the effect of BDNF, NGF, and bFGF on MSCs. MSCs without treatment showed only weak recoverin expression. (MSCs without treatment did not express nestin, BT-III, Map2, GFAP, PKC- α , and rhodopsin completely.) After 2 weeks of BDNF, NGF, and bFGF treatment, treated MSCs expressed nestin, BT-III, Map2, GFAP, PKC- α , and recoverin; however, rhodopsin expression was not found. Recoverin expression was increased in treated MSCs. Abbreviations: BDNF, brain-derived neurotrophic factor; bFGF, basic fibroblast growth factor; BMSC, bone marrow stromal cell; bp, base pair; BT-III, β -tubulin class III; FBS, fetal bovine serum; GF, growth factor; GFAP, glial fibrillary acidic protein; NGF, nerve growth factor; PKC, protein kinase C; RPC, retinal progenitor cell.

Migration and Differentiation of MSCs

At 1 week in coculture, MSCs with and without pretreatment of BDNF, NGF, and bFGF migrated into explanted rho^{-/-} retina (Fig. 5A). MSCs without pretreatment did not show morphological or immunocytochemical evidence of neural differentiation (data not shown). On the other hand, pretreated MSCs showed morphological and immunocytochemical evidence of neuronal differentiation. Pretreated MSCs migrated into explanted retinas (Fig. 5A) and expressed NF200 (Fig. 5B–5G), GFAP (Fig. 5H–5J), PKC- α (Fig. 5K–5M), and recoverin (Fig.

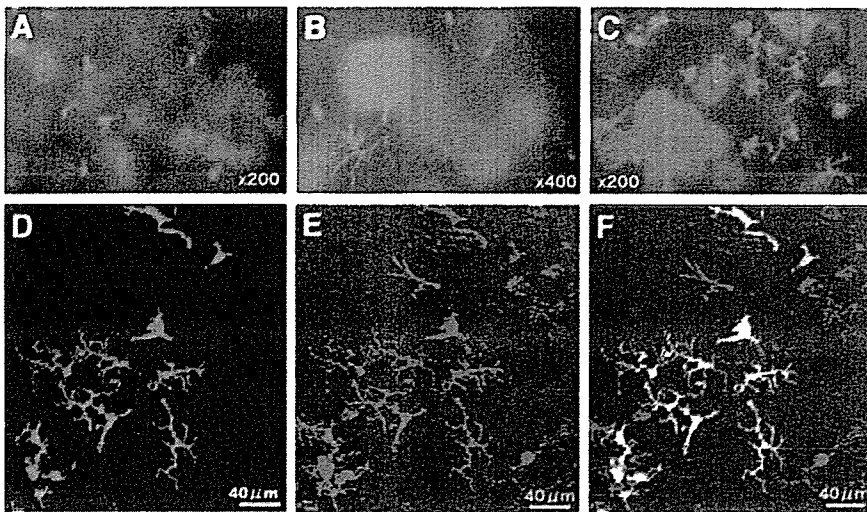


Figure 4. Macrophages differentiated into microglia after transplantation to explanted retinas. *Rho*^{-/-} mice retina at 3 (A) and 7 (B, C) days. Macrophages migrated into retina and morphologically changed their shape to that resembling microglia (A–C). Confocal (D–F) images seen at 1 week after grafting; constitutive green fluorescent protein expression (D), macrophage/microglia antibody/cytokeratin-3 immunoreactivity (E), and merged images (F).

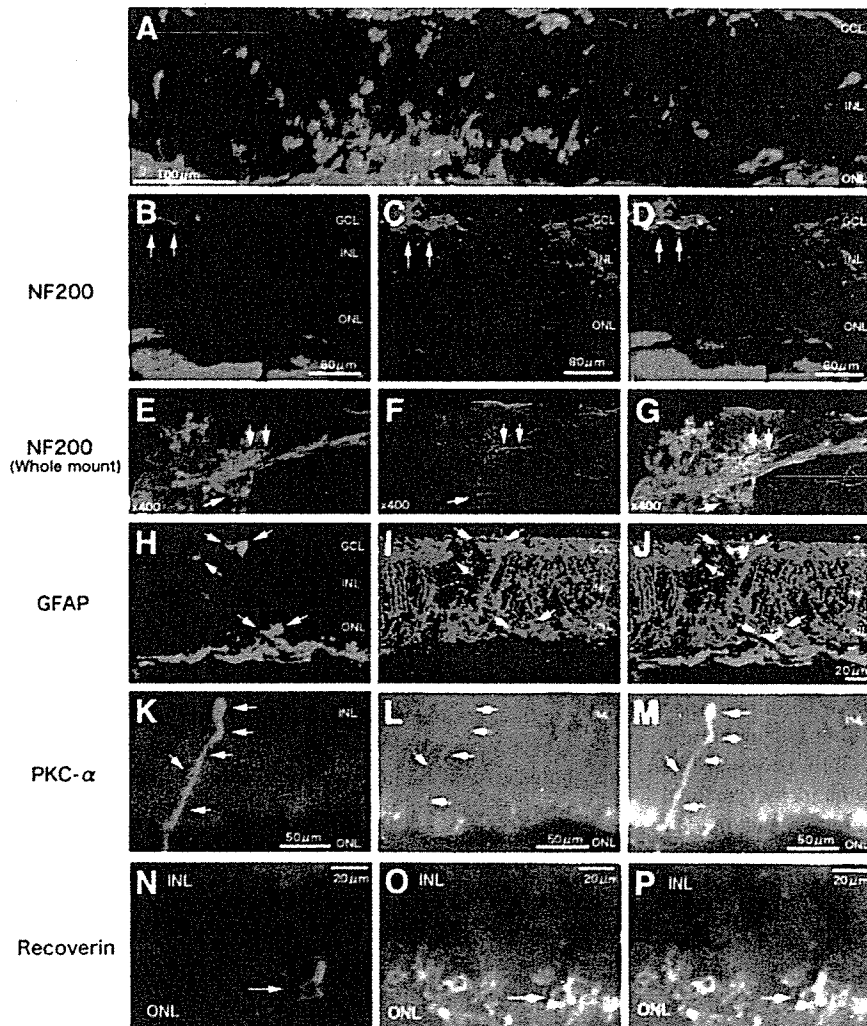


Figure 5. Migration and differentiation of pretreated marrow stromal cell (MSCs) into explanted retinas of *rho*^{-/-} mice. A large number of MSCs migrated into explanted retinas of *rho*^{-/-} mice (A). Epi-fluorescent (K–P) and confocal (B–J) images of the expression of neural and photoreceptor markers by pretreated MSCs that were grafted onto explanted retinas from *rho*^{-/-} mice, seen at 1 week after grafting; constitutive green fluorescent protein expression (B, E, H, K, N), antibody/cytokeratin-3 immunoreactivity for NF200 (C, F) (whole mount), GFAP (I), PKC-α (L), recoverin (O), and merged images (D, G, J, M, P). Abbreviations: GCL, ganglion cell layer; GFAP, glial fibrillary acidic protein; INL, inner nuclear layer; NF, neurofilament; ONL, outer nuclear layer; PKC, protein kinase C.

5N–5P). We also found morphological evidence of neuronal differentiation (Fig. 5B–5P). However, we could not find any rhodopsin-positive cells among coculture, pretreated MSCs.

Migration and Differentiation of RPCs

At 1 week in coculture, RPCs migrated into all retinal lamina adjacent to the graft after addition to the outer retina and showed

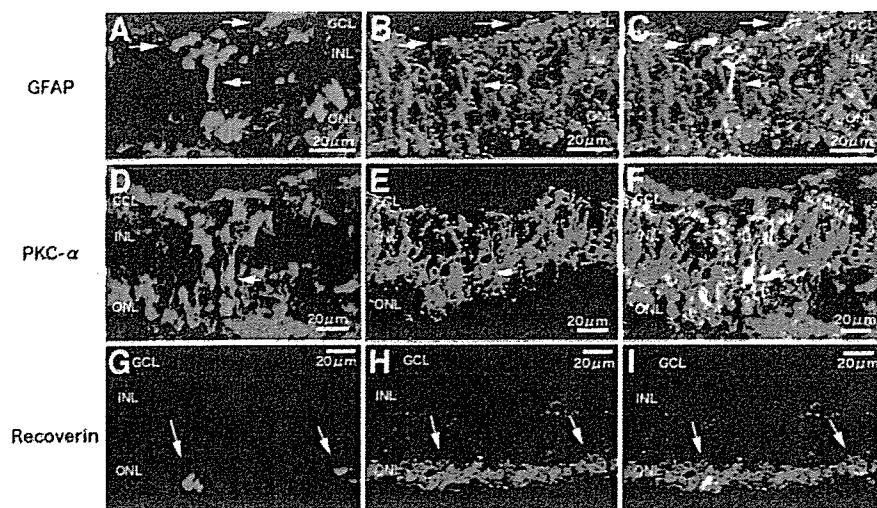


Figure 6. Migration and differentiation of pretreated retinal progenitor cells (RPCs) into explanted retinas of $\rho^{-/-}$ mice. Confocal images of the expression of neural and photoreceptor markers by RPCs grafting to explanted retinas of $\rho^{-/-}$ mice, seen at 1 week after grafting; constitutive green fluorescent protein expression (A, D, G), antibody/cytokeratin-3 immunoreactivity for GFAP (B), PKC- α (E), recoverin (H), and merged images (C, F, I). Abbreviations: GCL, ganglion cell layer; GFAP, glial fibrillary acidic protein; INL, inner nuclear layer; MSC, marrow stromal cell; ONL, outer nuclear layer; PKC, protein kinase C.

morphological evidence of neuronal differentiation (Fig. 6D–6I). GFP⁺ donor cells coexpressed a number of markers indicative of phenotypic maturation, including GFAP (Fig. 6A–6C), PKC- α (Fig. 6D–6F), and recoverin (Fig. 6G–6I). In the $\rho^{-/-}$ mice, the rod marker rhodopsin was not detected in either grafted RPCs or the host outer nuclear layer.

DISCUSSION

The results presented here demonstrate that MSCs treated with BDNF, NGF, and bFGF can differentiate into retinal cells expressing Map2, BT-III, GFAP, PKC- α , and recoverin by immunocytochemistry and RT-PCR. In the explanted retina, pretreated MSCs showed differentiation into retinal cells expressing NF200, GFAP, PKC- α , and recoverin, although nonpretreated MSCs did not show any evidence of differentiation into retinal cells. This shows that treatment with growth factors (as in our previous report [17]) is very important for neural induction of MSCs. Moreover, our data show that using growth factors promoted neuronal differentiation over glial differentiation in RPCs (Fig. 3A). In the present study, RPCs clearly showed a higher level of differentiation into retinal cells compared with MSCs. Induced MSCs expressed neuronal and glial markers and morphologically differentiated into neuron- and glia-like cells; however, RPCs showed better morphological differentiation and also expressed rhodopsin (Figs. 1, 2). Although a subpopulation of MSCs differentiated morphologically into neuronal-like cells and expressed neuronal markers, the majority remained undifferentiated both in terms of morphology and marker expression during the time course examined. The lack of rhodopsin expression *in vivo* and *in vitro* by MSCs may be an impediment to their use in photoreceptor replacement. One must be cognizant of the fact that the absence of evidence is not evidence of absence. The lack of differentiation *in vitro* indicates that the optimal conditions have yet to be determined. This is especially true in the case of RPC photoreceptor differentiation, which we have shown to be dependent upon specific conditions *in vivo*. The fact that RPCs failed to express rhodopsin after migration into explants is not surprising, considering that our previous studies found no evidence for rhodopsin among RPCs transplanted to $\rho^{-/-}$

mice *in vivo* [32]. The same study showed that RPCs expressed rhodopsin in another mouse strain with RD, the C3H mouse [32].

As with previous studies in the brain [34, 35], our results showed that macrophages migrated into explanted retina and appeared to differentiate into microglia. Although a previous report showed that microglia have potential for neuronal differentiation [33], we did not find evidence of differentiation into neuronal or glial cells in our explant study. Further studies will be needed to determine the neuronal potential of macrophages and microglia.

From a clinical perspective, MSCs are a good source for stem cell transplantation. Bone marrow cell transplantation is already an approved therapy for some kinds of hematological diseases and has the advantage of the possibility of autologous cell transplantation. Moreover, because recent reports have shown that MSCs have the capacity to modulate allogeneic cellular immunity [40, 41], MSCs may be useful for allogeneic transplantation.

Cell fusion has recently been proposed as the underlying explanation for the apparent plasticity and “transdifferentiation” of stem cells, including MSCs. This raises questions about the mechanisms of transdifferentiation *in vitro* and *in vivo* [42, 43]. Evidence against cell fusion has begun to mount; recent studies reported that MSCs can undergo transdifferentiation into various organ cell types, including neurons, without fusion [10, 44, 45]. We believe that our results cannot be attributed to cell fusion; this study shows that MSC differentiation into post-mitotic neuronal and retinal cells occurred in a controlled culture environment. Recent studies have shown that MSCs have a potential of transdifferentiation as cultured MSCs express mesodermal, endodermal, ectodermal, and germline genes, suggesting the potential to differentiate into all these cell types [46–48]. Moreover, our previous study [17], using the same methods for neuronal induction as this study, showed neuroectodermal induction, neural differentiation, and calcium uptake in response to a depolarizing stimulus from human MSCs. It has also been reported that neuroectodermal induction and electrophysiological characteristics of midbrain dopaminergic, serotonergic, and GABA-ergic neurons arise from treated MSCs [16].

CONCLUSION

The present study shows that RPCs have clear advantages over MSCs in potential retinal transplantation applications. First, no evidence was found for MSC differentiation into rod photoreceptors. Second, RPCs showed more complete differentiation into retinal cell subtypes than did MSCs, and this occurred at a significantly higher rate. Finally, we have previously reported that neuronal progenitor cells (NPCs) have inherent immune privilege, suggesting increased resistance of allogeneic NPC grafts to host rejection [49, 50]. Such findings suggest the possibility that RPCs possess immune privilege properties as well. MSCs also have significant therapeutic potential in transplantation medicine because they can be readily obtained through a well-established clinical procedure. They are relatively easy to isolate and expand

for autologous transplantation without the need for immunosuppression or the risk of rejection. In this comparison study, we submit that RPCs possess significant advantages for differentiation into retinal cells compared with MSCs.

ACKNOWLEDGMENTS

This work was supported by grants from the U.S. Department of Defense, National Institutes of Health (09595; M.J.Y.), and by a gift from Richard and Gail Siegal. We thank Prof. Susumu Ikehara (Department of Pathology, Kansai Medical University, Osaka, Japan) for advice.

DISCLOSURES

The authors indicate no potential conflicts of interest.

REFERENCES

- Dexter TM, Allen TD, Lajtha LG. Conditions controlling the proliferation of haemopoietic stem cells in vitro. *J Cell Physiol* 1977;91:335–344.
- Rickard DJ, Sullivan TA, Shenker BJ et al. Induction of rapid osteoblast differentiation in rat bone marrow stromal cell cultures by dexamethasone and BMP-2. *Dev Biol* 1994;161:218–228.
- Tsuchiya K, Mori T, Chen G et al. Custom-shaping system for bone regeneration by seeding marrow stromal cells onto a web-like biodegradable hybrid sheet. *Cell Tissue Res* 2004;316:141–153.
- Ferrari G, Cusella-De Angelis G, Coletta M et al. Muscle regeneration by bone marrow-derived myogenic progenitors. *Science* 1998;279:1528–1530.
- Umezawa A, Tachibana K, Harigaya K et al. Colony-stimulating factor 1 expression is down-regulated during the adipocyte differentiation of H-1/A marrow stromal cells and induced by cachectin/tumor necrosis factor. *Mol Cell Biol* 1991;11:920–927.
- Ashton BA, Allen TD, Howlett CR et al. Formation of bone and cartilage by marrow stromal cells in diffusion chambers in vivo. *Clin Orthop Relat Res* 1980;151:294–307.
- Orlic D, Kajstura J, Chimenti S et al. Bone marrow cells regenerate infarcted myocardium. *Nature* 2001;410:701–705.
- Takeda Y, Mori T, Imabayashi H et al. Can the life span of human marrow stromal cells be prolonged by bmi-1, E6, E7, and/or telomerase without affecting cardiomyogenic differentiation? *J Gene Med* 2004;6:833–845.
- Makino S, Fukuda K, Miyoshi S et al. Cardiomyocytes can be generated from marrow stromal cells in vitro. *J Clin Invest* 1999;103:697–705.
- Sato Y, Araki H, Kato J et al. Human mesenchymal stem cells xenografted directly to rat liver differentiated into human hepatocytes without fusion. *Blood* 2005;106:756–763.
- Woodbury D, Schwarz EJ, Prockop DJ et al. Adult rat and human bone marrow stromal cells differentiate into neurons. *J Neurosci Res* 2000;61:364–370.
- Kohyama J, Abe H, Shimazaki T et al. Brain from bone: Efficient “meta-differentiation” of marrow stroma-derived mature osteoblasts to neurons with Noggin or a demethylating agent. *Differentiation* 2001;68:235–244.
- Suzuki H, Taguchi T, Tanaka H et al. Neurospheres induced from bone marrow stromal cells are multipotent for differentiation into neuron, astrocyte, and oligodendrocyte phenotypes. *Biochem Biophys Res Commun* 2004;322:918–922.
- Sanchez-Ramos J, Song S, Cardozo-Pelaez F et al. Adult bone marrow stromal cells differentiate into neural cells in vitro. *Exp Neurol* 2000;164:247–256.
- Neuhuber B, Gallo G, Howard L et al. Reevaluation of in vitro differentiation protocols for bone marrow stromal cells: Disruption of actin cytoskeleton induces rapid morphological changes and mimics neuronal phenotype. *J Neurosci Res* 2004;77:192–204.
- Jiang Y, Henderson D, Blackstad M et al. Neuroectodermal differentiation from mouse multipotent adult progenitor cells. *Proc Natl Acad Sci U S A* 2003;100:11854–11860.
- Mori T, Kiyono T, Imabayashi H et al. Combination of hTERT and bmi-1, E6, or E7 induces prolongation of the life span of bone marrow stromal cells from an elderly donor without affecting their neurogenic potential. *Mol Cell Biol* 2005;25:5183–5195.
- Kopen GC, Prockop DJ, Phinney DG. Marrow stromal cells migrate throughout forebrain and cerebellum, and they differentiate into astrocytes after injection into neonatal mouse brains. *Proc Natl Acad Sci U S A* 1999;96:10711–10716.
- Chopp M, Li Y. Treatment of neural injury with marrow stromal cells. *Lancet Neurol* 2002;1:92–100.
- Dezawa M, Kanno H, Hoshino M et al. Specific induction of neuronal cells from bone marrow stromal cells and application for autologous transplantation. *J Clin Invest* 2004;113:1701–1710.
- Akiyama Y, Radtke C, Honmou O et al. Remyelination of the spinal cord following intravenous delivery of bone marrow cells. *Glia* 2002;39:229–236.
- Hofstetter CP, Schwarz EJ, Hess D et al. Marrow stromal cells form guiding strands in the injured spinal cord and promote recovery. *Proc Natl Acad Sci U S A* 2002;99:2199–2204.
- Tomita M, Adachi Y, Yamada H et al. Bone marrow-derived stem cells can differentiate into retinal cells in injured rat retina. *STEM CELLS* 2002;20:279–283.
- Kicic A, Shen WY, Wilson AS et al. Differentiation of marrow stromal cells into photoreceptors in the rat eye. *J Neurosci* 2003;23:7742–7749.
- Mizumoto H, Mizumoto K, Shatos MA et al. Retinal transplantation of neural progenitor cells derived from the brain of GFP transgenic mice. *Vision Res* 2003;43:1699–1708.
- Klassen H, Sakaguchi DS, Young MJ. Stem cells and retinal repair. *Prog Retin Eye Res* 2004;23:149–181.
- Young MJ, Ray J, Whiteley SJ et al. Neuronal differentiation and morphological integration of hippocampal progenitor cells transplanted to the retina of immature and mature dystrophic rats. *Mol Cell Neurosci* 2000;16:197–205.
- Klassen H, Ziaian B, Kirov II et al. Isolation of retinal progenitor cells from post-mortem human tissue and comparison with autologous brain progenitors. *J Neurosci Res* 2004;77:334–343.
- Lu B, Kwan T, Kurimoto Y et al. Transplantation of EGF-responsive neurospheres from GFP transgenic mice into the eyes of rd mice. *Brain Res* 2002;943:292–300.