

胃部分切除術	K6552
胃全摘出術	K6571
胃全摘出術	K6572
膵臓切除	K7021
膵臓切除	K7022
膵臓切除	K7023
膵臓切除	K7024
膵臓切除	K7031
膵臓切除	K7032
膵臓切除	K7033
膵臓切除	K7034
膵臓切除	K704
小腸切除	K716-2
小腸切除	K7161
小腸切除	K7162
結腸切除	K719-2
結腸切除	K7191
結腸切除	K7192
結腸切除	K7193
大腸 EMR	K7211
大腸 EMR	K7212
人工肛門造設	K726
直腸腫瘍切除	K7391
直腸腫瘍切除	K7392
直腸腫瘍切除	K7393
直腸切除	K7401
低位前方切除	K7402
低位前方切除	K7403
腹会陰式直腸切断術	K7404
直腸腫瘍切除	K747

とし、これ以外の手術は1つに集約した。

ix K606-2\$

x K618\$

xi K702\$,K703\$,K704

xii K726

xiii K386

xiv K6121

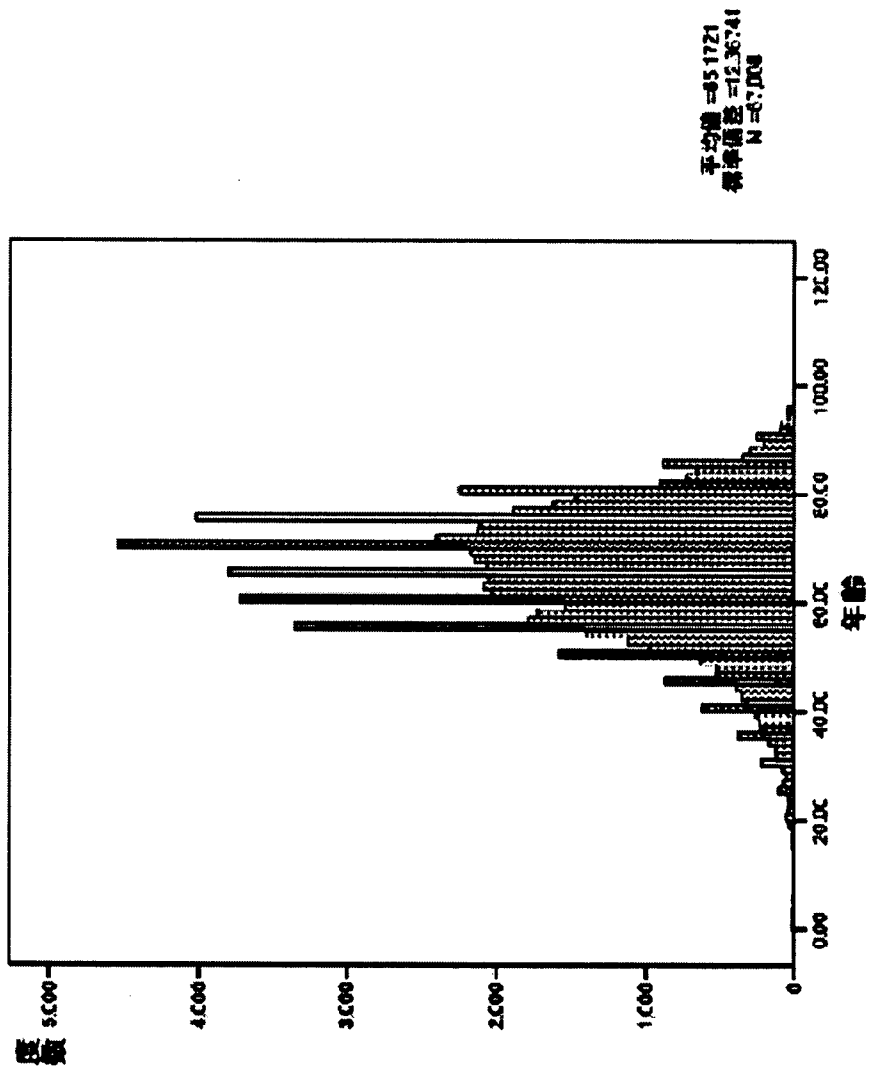
xv C(Comorbidity),C(Complication)と称する。更に Complication を併発症（入院後手術、処置と直接因果関係のない疾患）と続発症（入院後行われた手術・処置に直接因果関係のあるもの）とに区別することがある。本報告書では Complication を手術処置関連続発症は T81\$-87\$とした。

xvi 今回副傷病に関しては、重み付けとしての Charlson comorbidity index を活用し整理した。
dcinami : 1 点 ; I21\$-2\$,I252, dcinchf : 1 点 ; I50\$, dcinpvd : 1 点 ; I71\$,I790,I739,R02,Z958-9,
dcincvd : 1 点 ; I60\$-6\$,I670-2,I674-9,I681-2,I688,I69\$,G450-2,G454,G458-9,G46\$,
dcindem : 1 点 ; F00\$,F01\$,F02\$,F051,
dcinpd : 1 点 ; J40,J41\$-7\$,J60-1,J62\$-3\$,J64-5,J66\$-7\$,
dcinctd : 1 点 ; M05\$,M060,M063,M069,M32\$,M332,M34\$,M353, dcinpu : 1 点 ; K25\$-8\$,
dcinld : 1 点 ; K702-3,K73\$,K717,K740,K742-6, dcinmdm : 1 点 ;
E101,E109,E111,E119,E131,E139,E141,E149,E105,E115,E135,E145,
dcinsdm : 2 点 ; E102,E112,E132,E142,E103,E113,E133,E143,E104,E114,E134,E144,
dcinrd : 2 点 ; N03\$,N052-6,N072-4,N01\$,N18\$,N19,N25\$, dcinprp : 2 点 ; G81,G041,G820-2,
dcinmal : 2 点 ; C00\$-C41\$,C43\$,C45\$-76\$,C80,C81\$-5\$,C883,C887,C889,C900,C901,
C91\$-3\$,C940-3,C945,C947,C95\$-6\$, dcinmst : 3 点 ; C77\$-9\$,
dcinsld : 3 点 ; K729,K766,K767,K721, dcinhiv : 6 点 ; B20\$-3\$,B24 [参考文献 1]

xvii dcccvt : I260,I269,I80\$, dccccomp : T81\$-87\$を手術関連続発症とした。創感染、出血、膿瘍形成、人工物挿入合併症などが該当する。

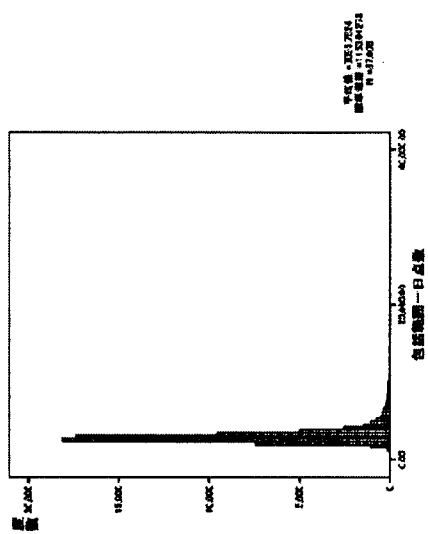
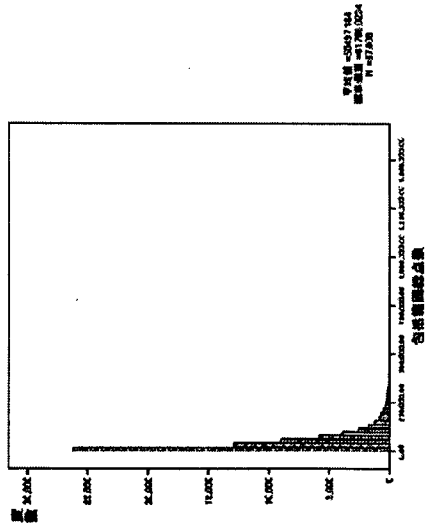
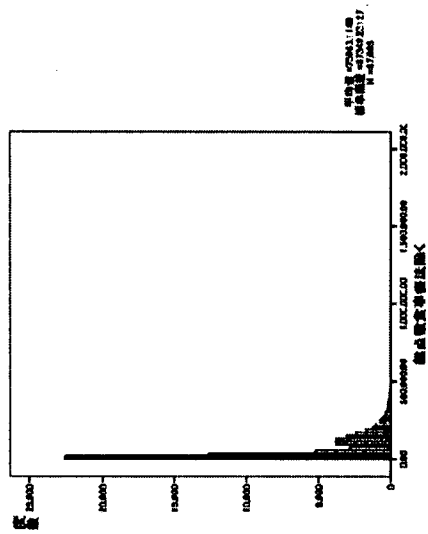
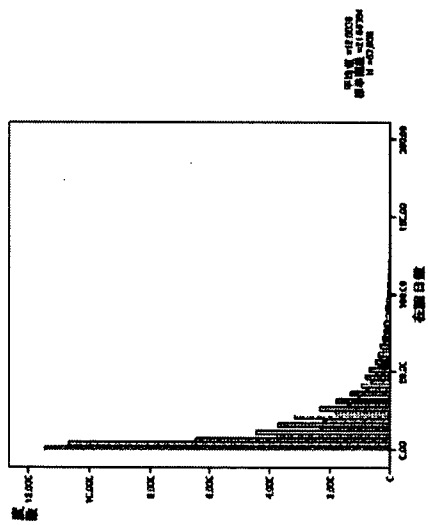
xviii 対照は年齢で 15 歳以上 65 歳未満群、女性、地域では東京、DPC 調査病院、民間病院とした。病態は『小腸大腸の良性疾患（良性腫瘍を含む。）（DPC6 桁番号 060100）』、年度は 2004 年度、癌ステージ分類では『Stage unknown』、手術は『手術なし他群』、副傷病は CCI0 点を対照とした。他因子は無群を対照とした。重回帰分析に投入する因子の件数は 20 例以上とした。

図A群(年齢)

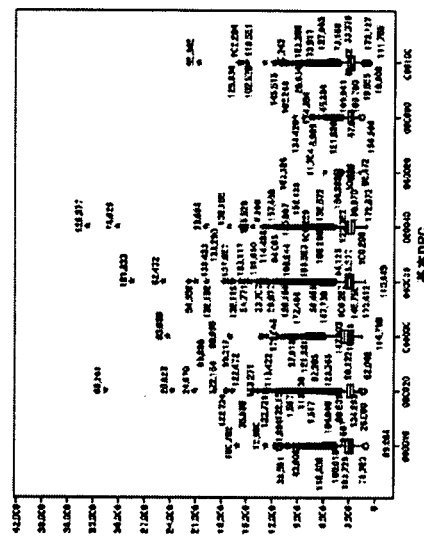
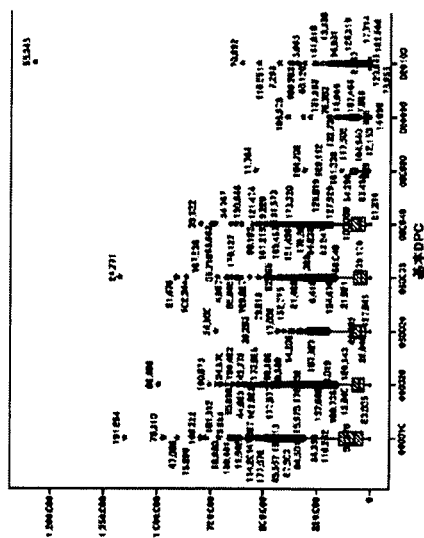
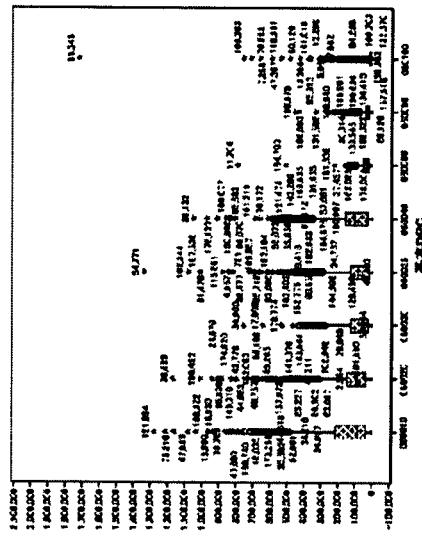
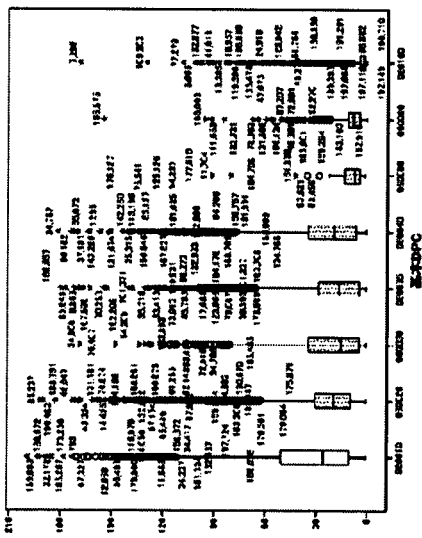


図A群

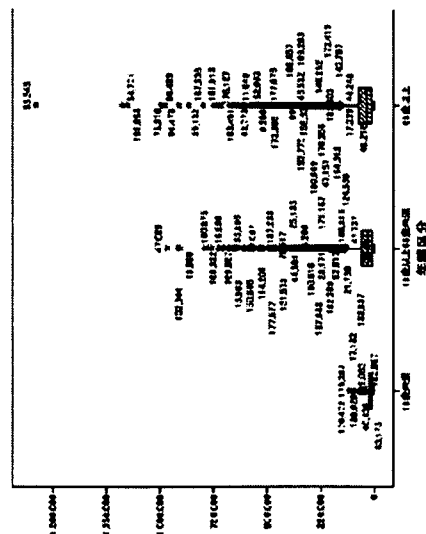
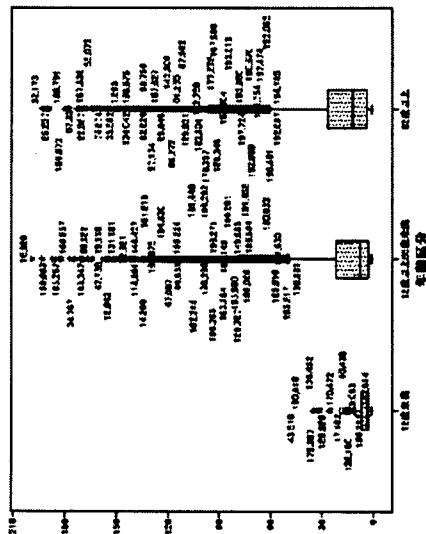
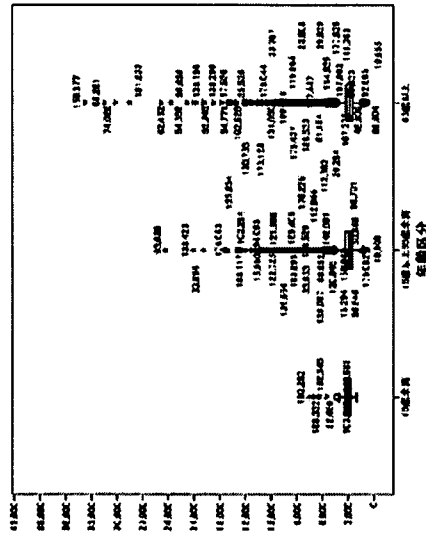
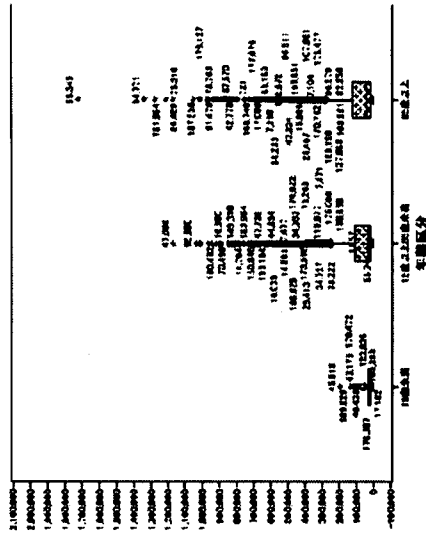
在院日数、総点数、包括範囲総点数、包括範囲一日点数



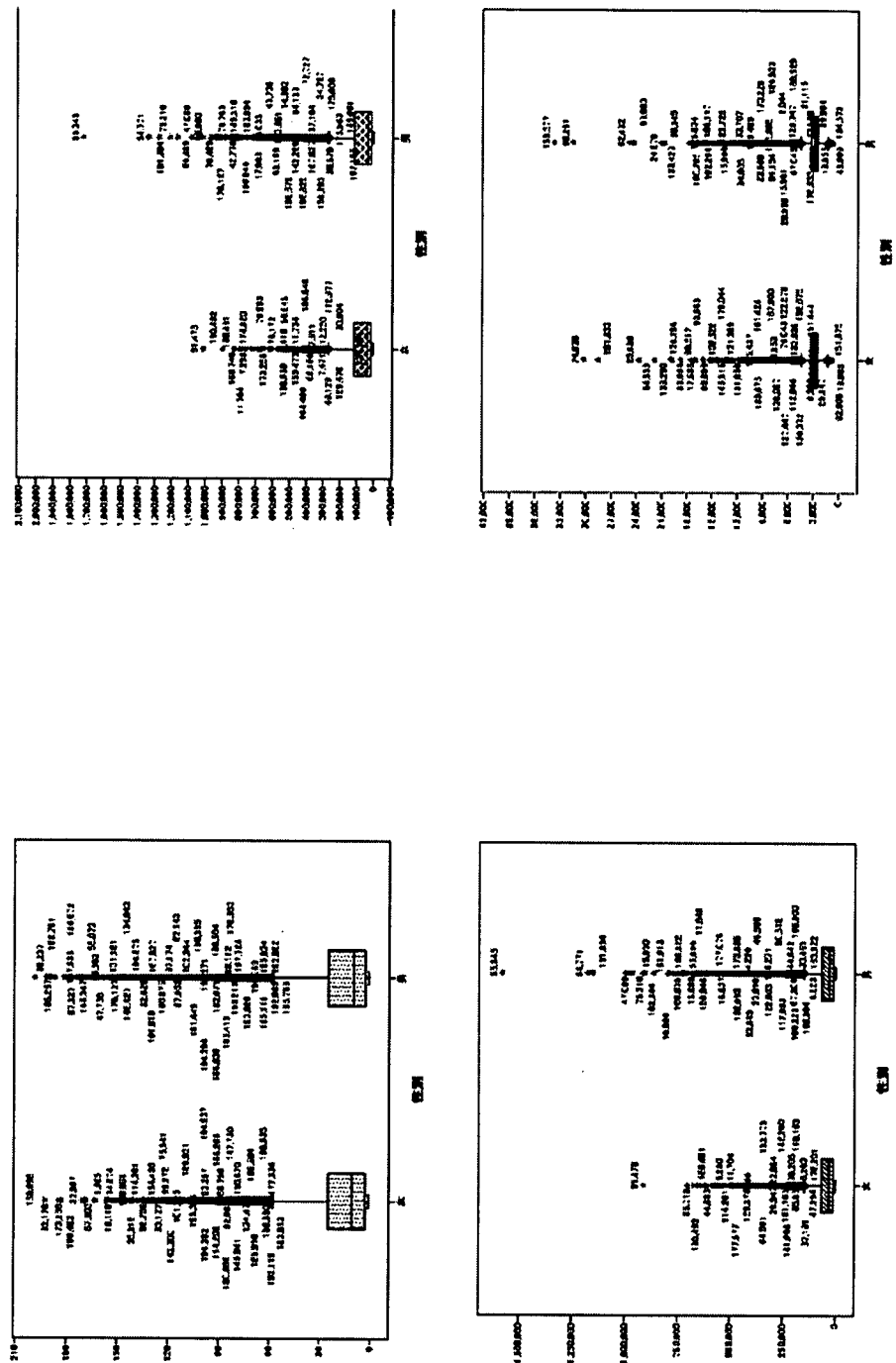
図B群(基本DPC)



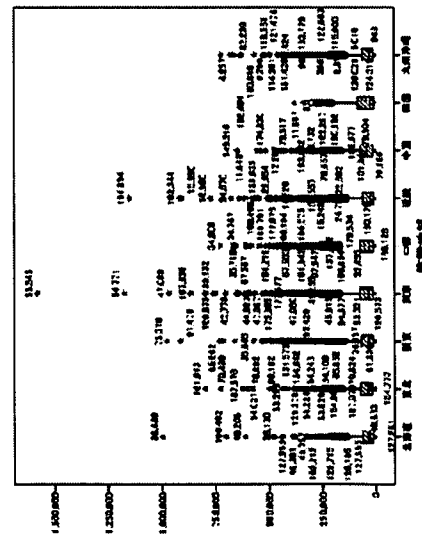
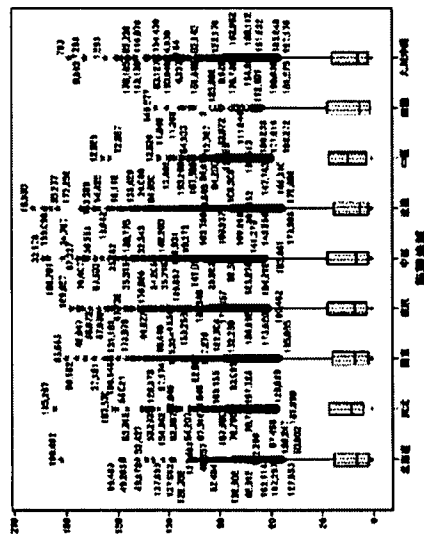
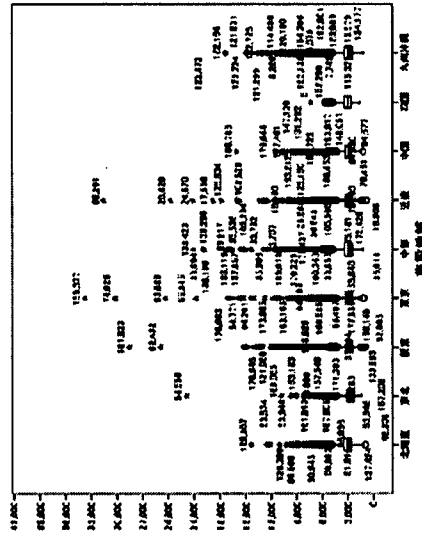
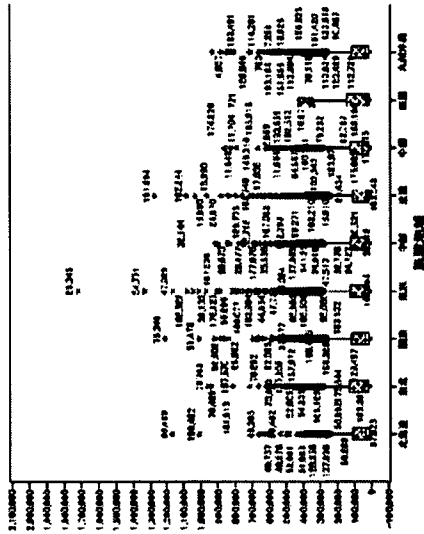
図B群(年齢)



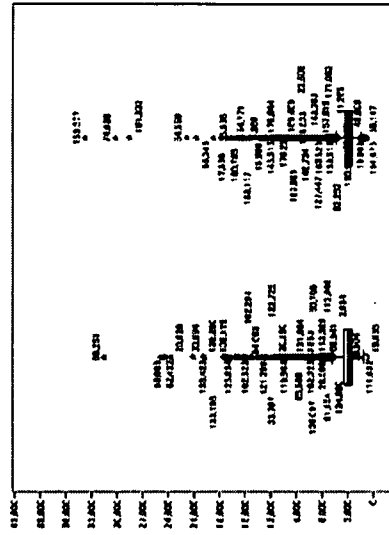
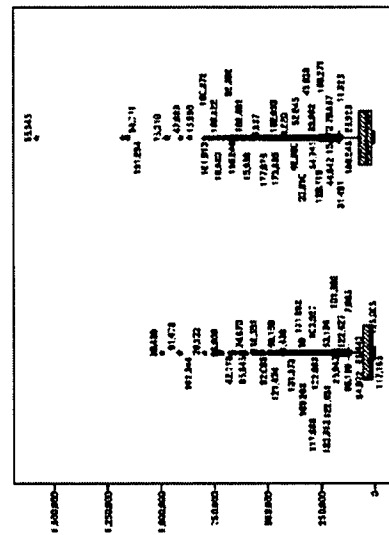
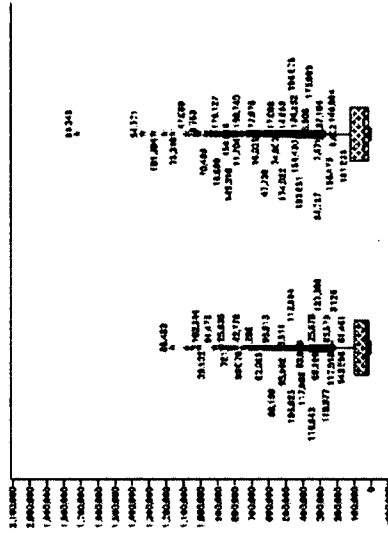
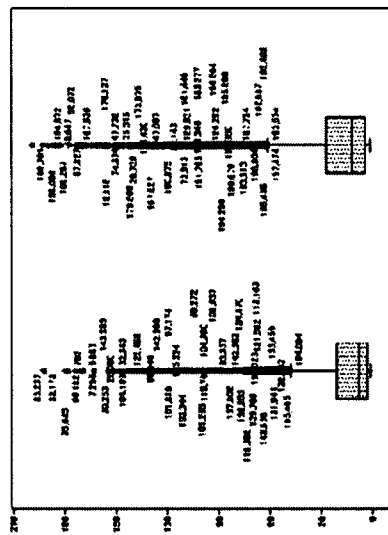
図B群(性別)



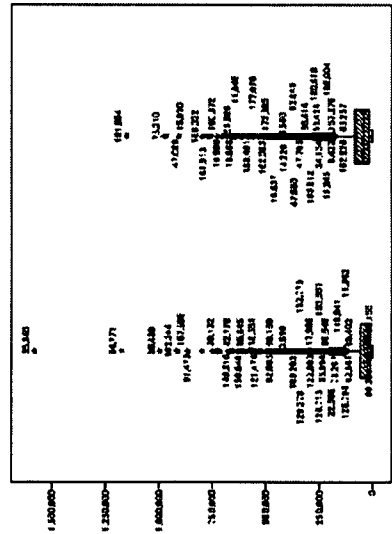
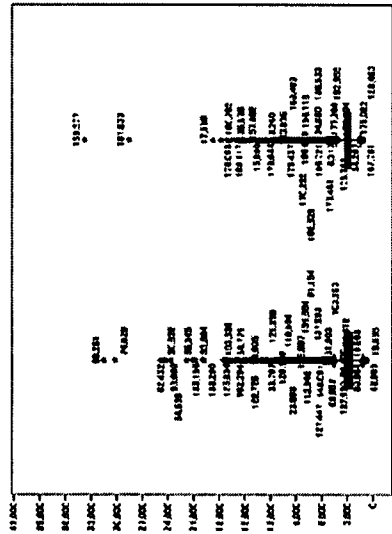
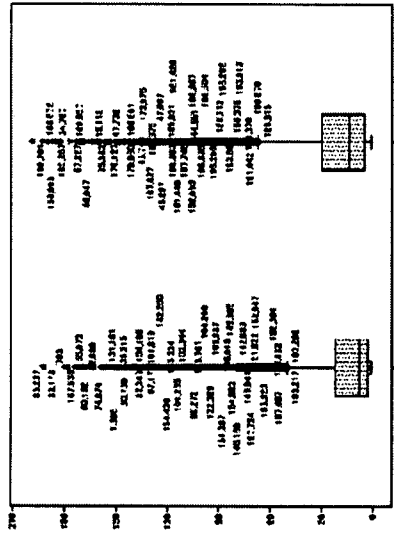
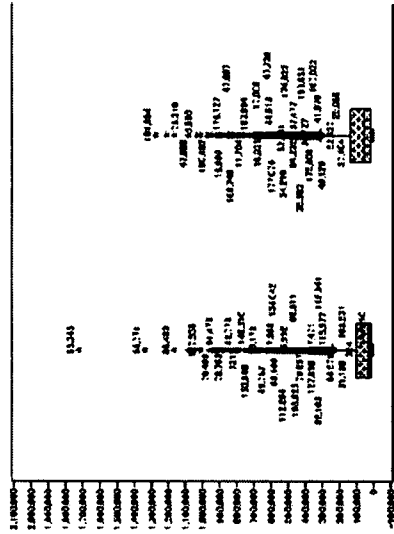
図B群(施設地域)



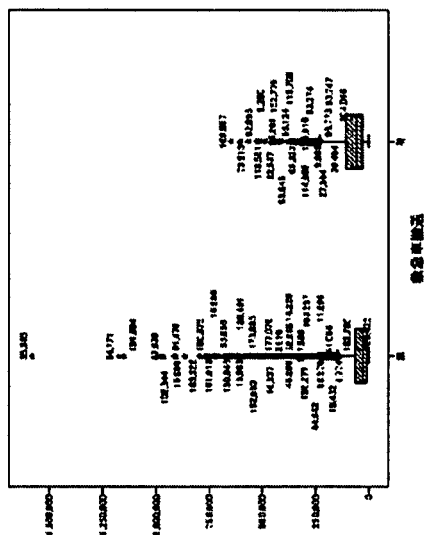
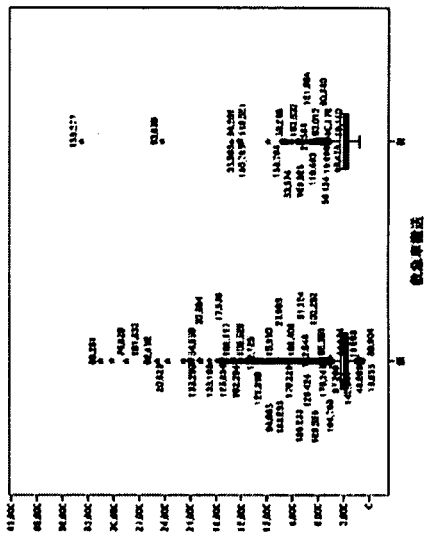
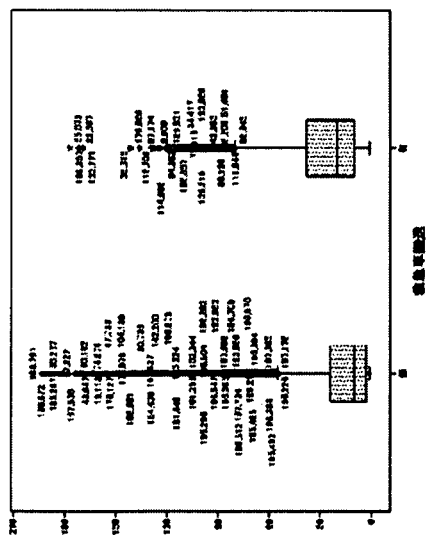
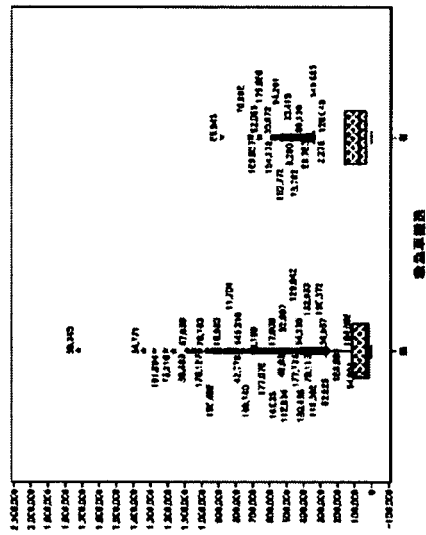
図B群(DPC病院)



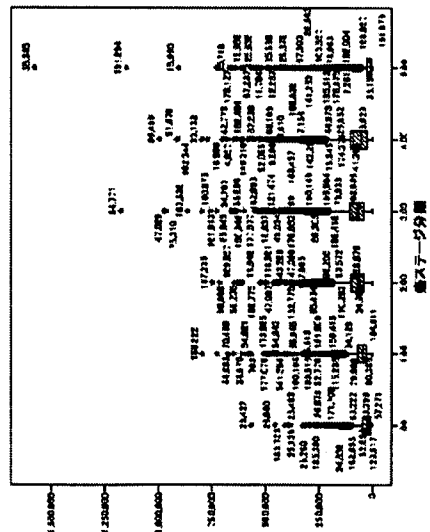
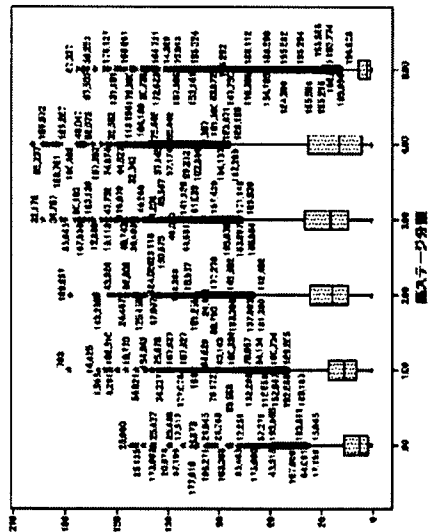
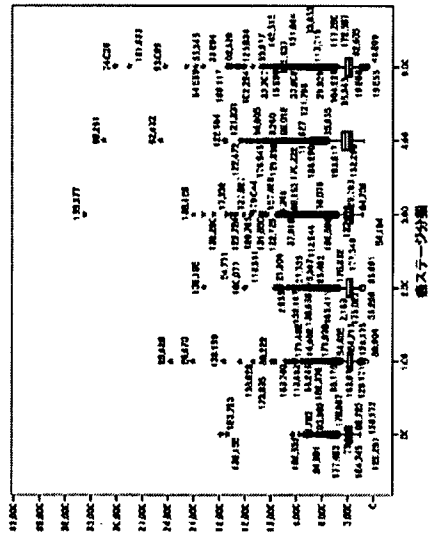
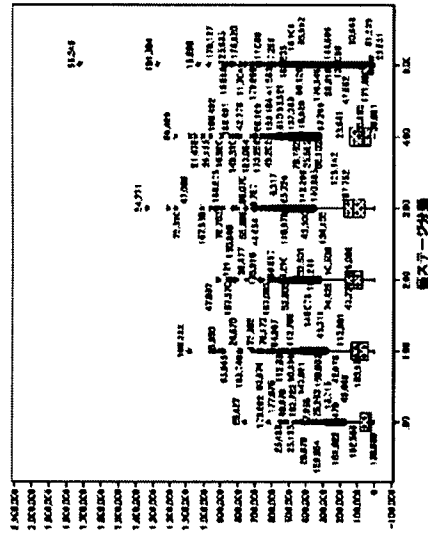
図B群(施設機能)



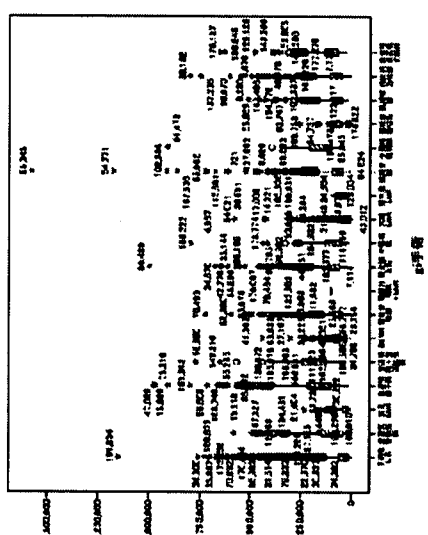
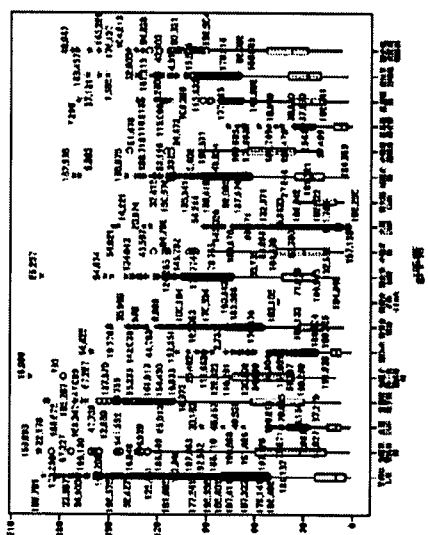
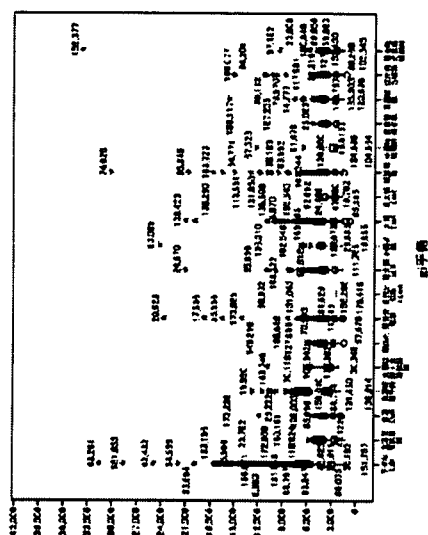
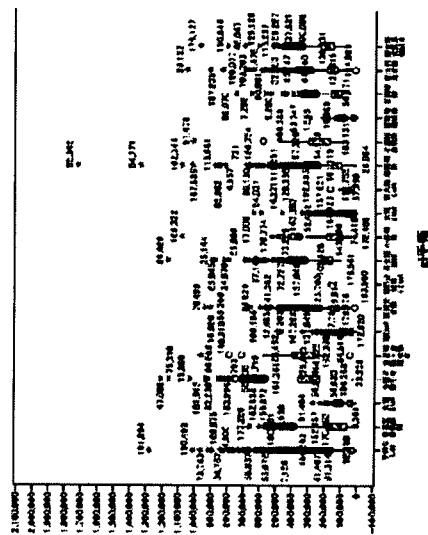
図B群(救急車搬送)



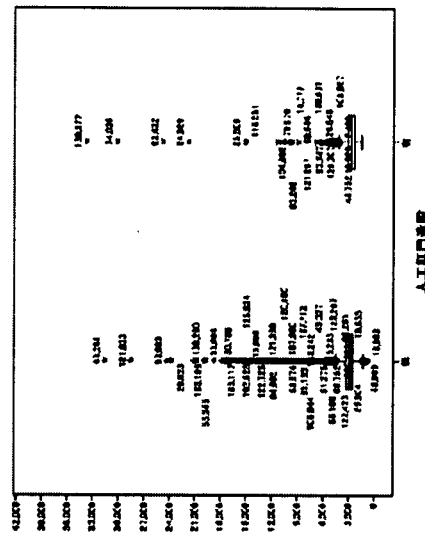
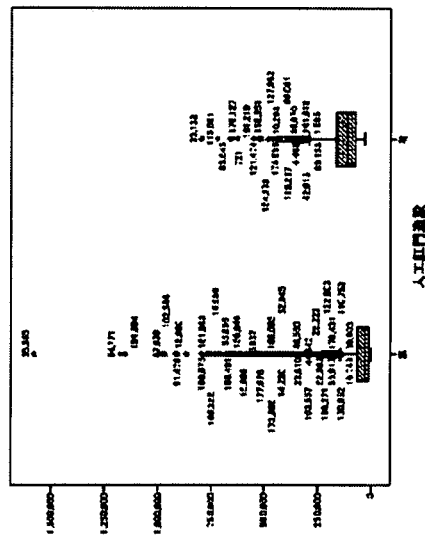
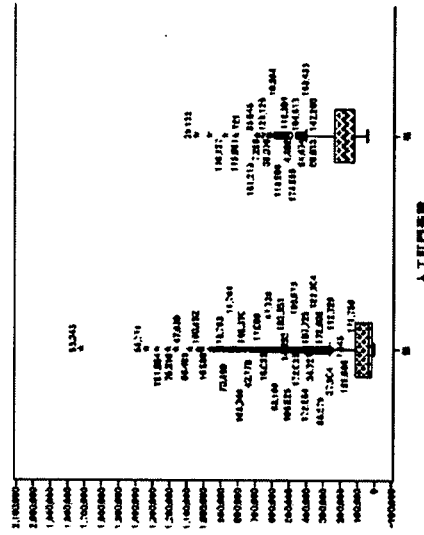
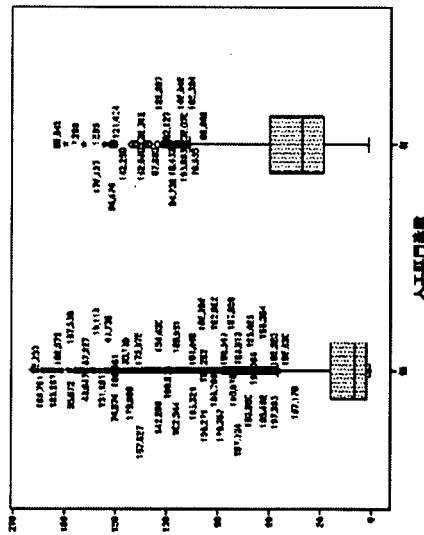
図B群(ステージ分類)



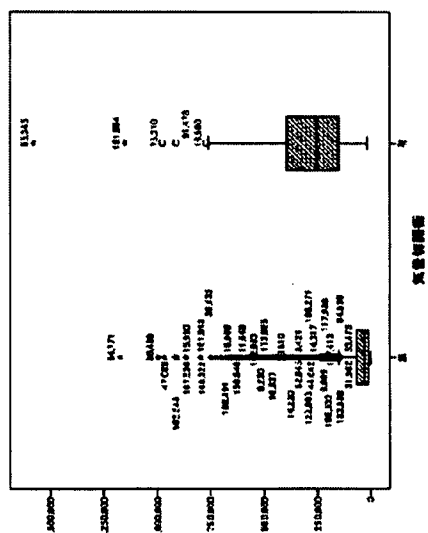
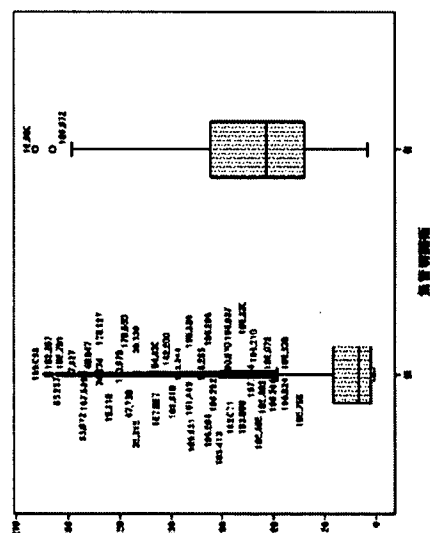
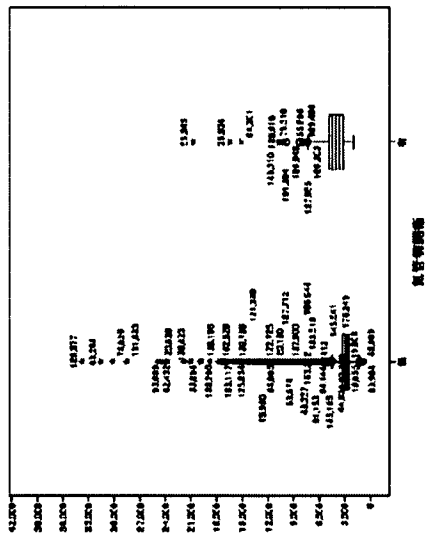
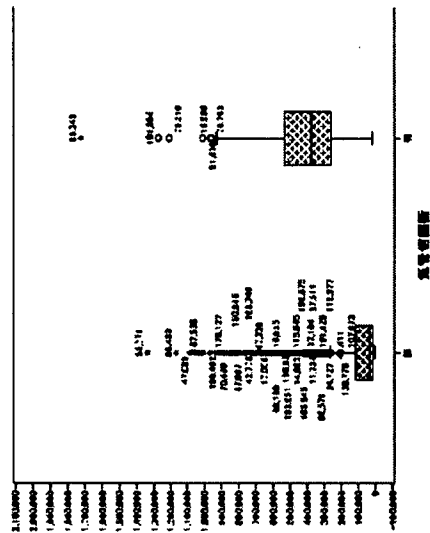
図B群(手術)在院日数



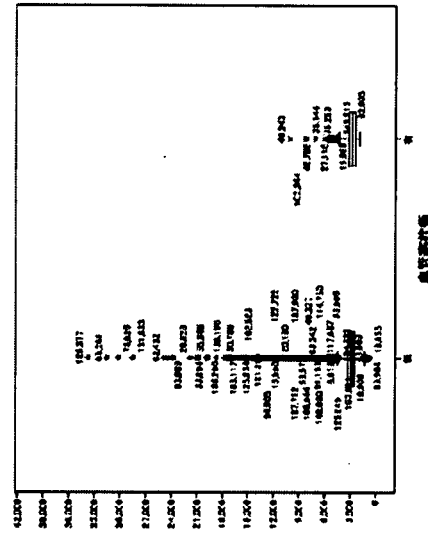
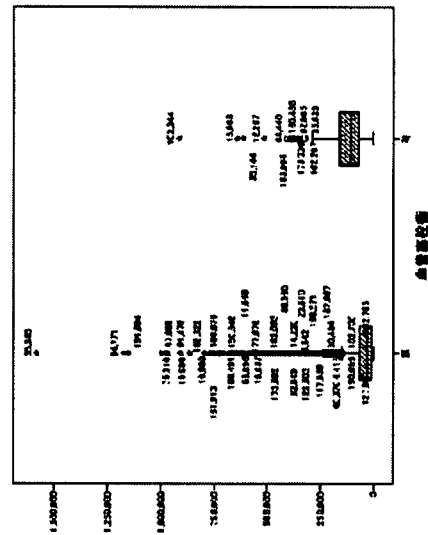
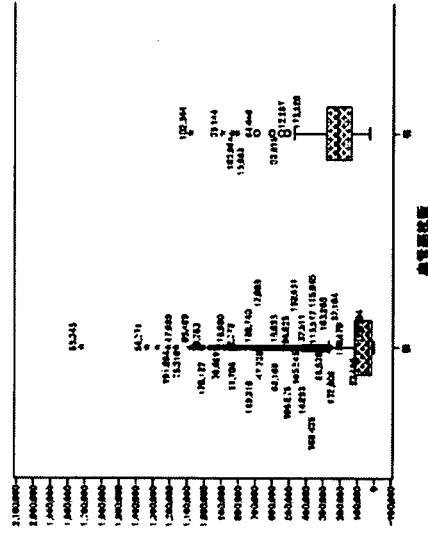
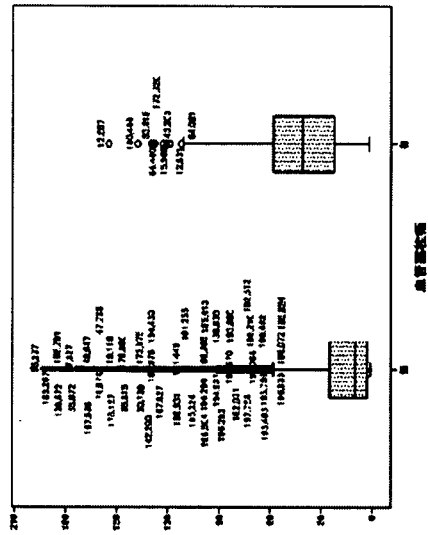
図B群(人工肛門)



図B群(気管切開)



図B群(血管塞栓術)



図B群(化学療法力テ—テル埋め込み術)

