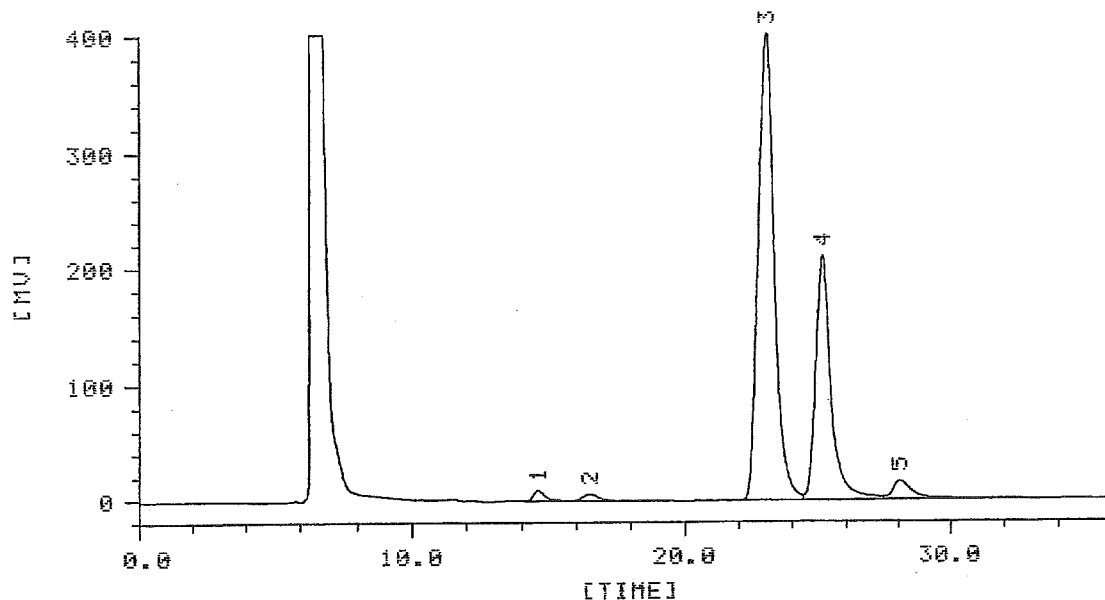


05/12/13 15:08 SER.NO=0045 CH.NO=1 PR12072-⑥



05/12/13 15:08 JOB FILE 1

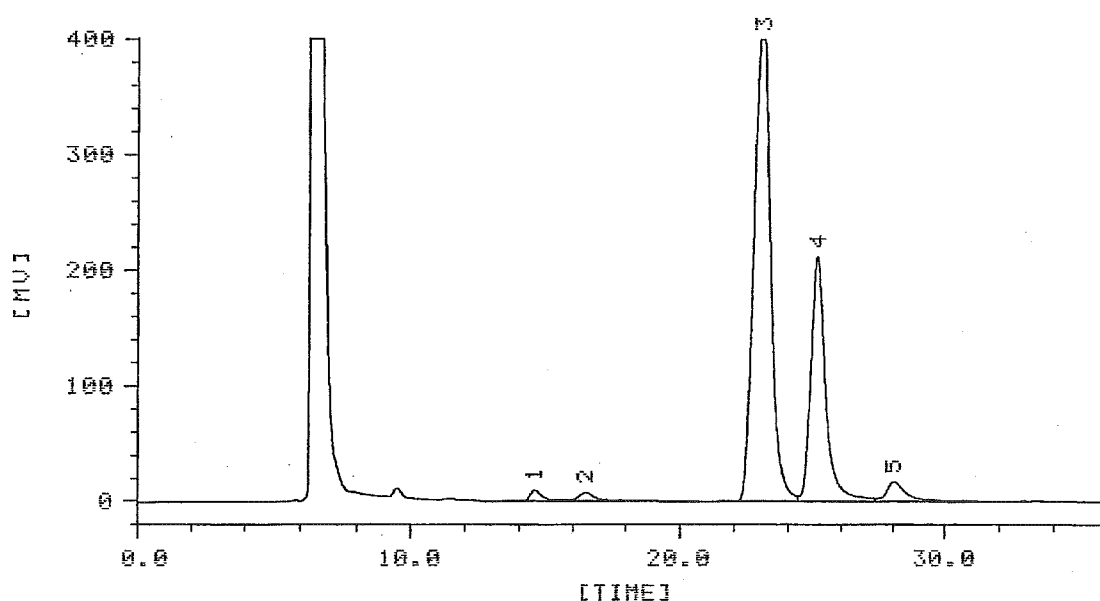
VIAL NO. 3 NAME: SERIAL NO. 0045

CHANNEL NO. 1 METHOD: NORMALIZATION

NO.	MK	TIME	AREA	HEIGHT	WIDTH	A-%	TP	RS
1	B	14.60	2.94513x10 <sup>2</sup>	9.43	26.3	1.100	6137	2.09
2	U	16.48	2.60741x10 <sup>2</sup>	6.21	37.3	0.974	3895	6.17
3	B	23.05	1.68511x10 <sup>4</sup>	402.63	37.9	62.957	7361	2.05
4	U	25.10	8.42738x10 <sup>3</sup>	210.17	32.9	31.486	11622	2.74
5	U	28.03	9.32124x10 <sup>2</sup>	16.67	42.8	3.483	8555	
TOTAL			2.67659x10 <sup>4</sup>	645.12		100.000		

05/12/13 16:00 SER.NO=0046 CH.NO=1

PR12073-①



05/12/13 16:00 JOB FILE 1

VIAL NO. 1 NAME: SERIAL NO. 0046

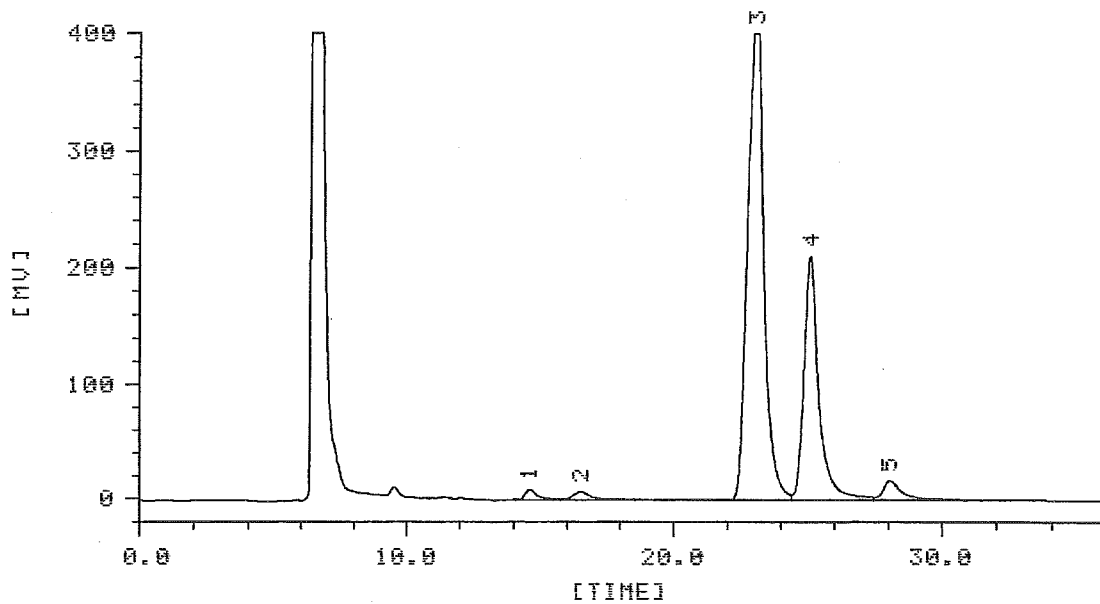
CHANNEL NO. 1 METHOD: NORMALIZATION

NO.	PK	TIME	AREA	HEIGHT	WIDTH	A-%	TP	RS
1	B	14.57	2.98718x10 <sup>2</sup>	9.36	26.6	1.068	5998	2.17
2	V	16.47	2.88264x10 <sup>2</sup>	7.19	35.2	1.051	4365	6.37
3	B	23.05	1.76742x10 <sup>4</sup>	426.98	37.8	64.422	7409	2.06
4	V	25.10	8.27205x10 <sup>3</sup>	212.29	32.4	30.151	12002	2.79
5	V	28.02	9.09996x10 <sup>2</sup>	17.18	41.5	3.317	9077	

TOTAL 2.74352x10<sup>4</sup> 673.01 100.000

05/12/13 16:40 SER.NO=0047 CH.NO=1

PR12073-②



05/12/13 16:40 JOB FILE 1

VIAL NO. 1 NAME:

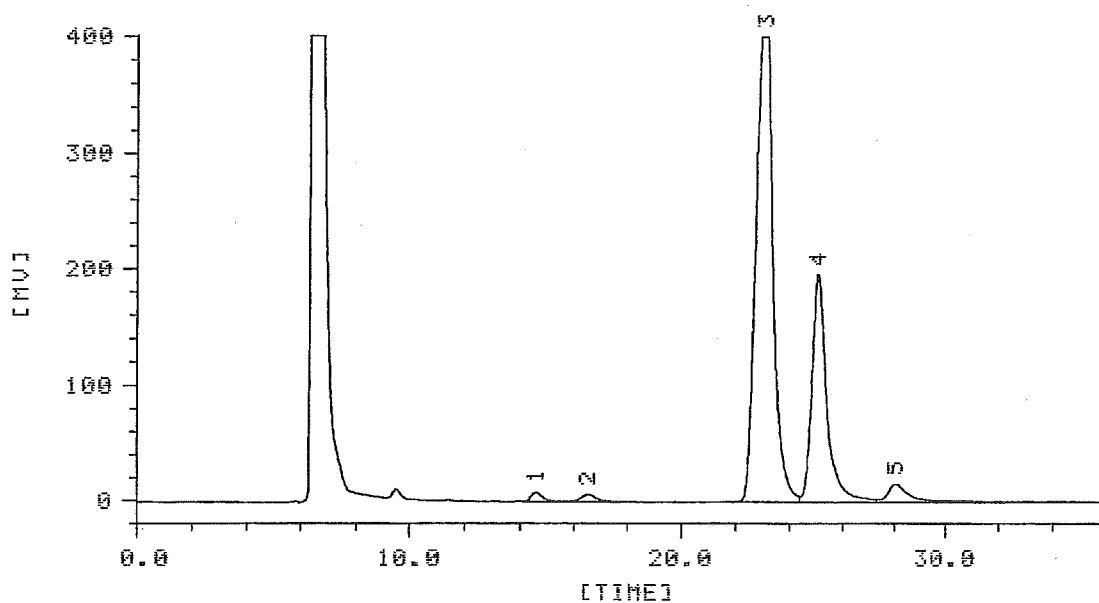
SERIAL NO. 0047

CHANNEL NO. 1 METHOD: NORMALIZATION

NO.	MK	TIME	AREA	HEIGHT	WIDTH	A-%	TP	RS
1	B	14.57	3.47774x10 <sup>2</sup>	9.35	27.5	1.245	5601	2.00
2	U	16.52	4.21430x10 <sup>2</sup>	7.54	41.3	1.509	3104	5.83
3	U	23.07	1.78353x10 <sup>4</sup>	424.97	38.1	63.869	7297	2.05
4	U	25.12	8.41199x10 <sup>2</sup>	211.22	32.7	30.124	11758	2.80
5	U	28.03	9.08277x10 <sup>2</sup>	16.81	40.9	3.253	9381	
TOTAL			2.79248x10 <sup>4</sup>	669.89		100.000		

05/12/13 17:20 SER.NO=0048 CH.NO=1

PR12073-③



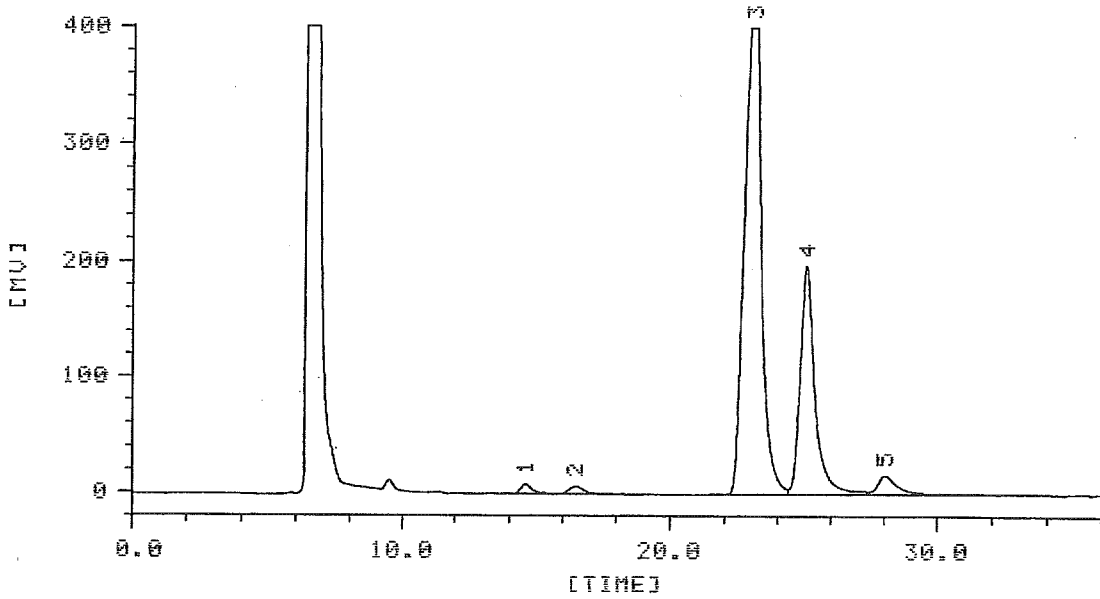
05/12/13 17:20 JOB FILE 1

VIAL NO. 2 NAME: SERIAL NO. 0048

CHANNEL NO. 1 METHOD: NORMALIZATION

NO.	PK	TIME	AREA	HEIGHT	WIDTH	A-%	TP	RS
1	B	14.58	2.38086x10 <sup>2</sup>	7.92	26.4	0.841	6073	2.16
2	U	16.50	2.77451x10 <sup>2</sup>	6.46	36.3	0.980	4118	6.26
3	B	23.00	1.90205x10 <sup>4</sup>	453.91	38.1	67.166	7330	1.99
4	U	25.07	7.79301x10 <sup>3</sup>	196.41	32.4	27.519	11919	2.73
5	U	28.03	9.89602x10 <sup>2</sup>	16.02	44.4	3.495	7963	
TOTAL			2.83187x10 <sup>4</sup>	680.72		100.000		

05/12/13 18:00 SER.NO=0049 CH.NO=1 PR12073-④



05/12/13 18:00 JOB FILE 1

VIAL NO. 2 NAME: SERIAL NO. 0049

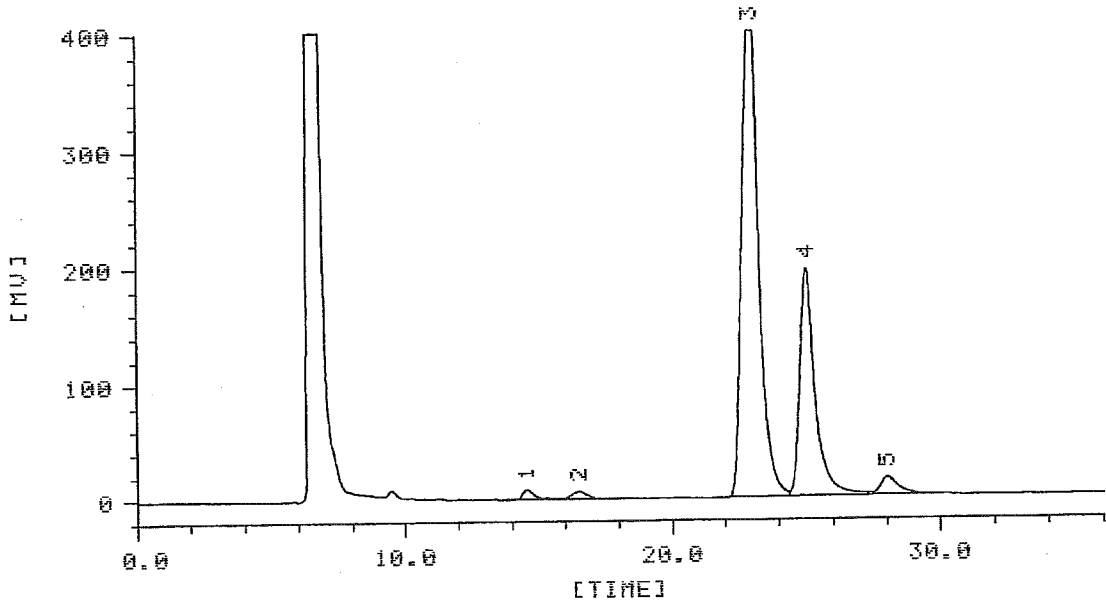
CHANNEL NO. 1 METHOD: NORMALIZATION

NO.	NK	TIME	AREA	HEIGHT	WIDTH	A-%	TP	RS
1	B	14.60	2.73939×10 <sup>2</sup>	8.48	26.3	0.969	6127	2.10
2	U	16.47	2.69136×10 <sup>2</sup>	6.65	36.5	0.952	4054	6.25
3	B	23.07	1.90594×10 <sup>4</sup>	454.45	38.1	67.396	7310	2.02
4	U	25.08	7.79532×10 <sup>3</sup>	197.77	32.4	27.565	11983	2.78
5	U	28.03	8.81950×10 <sup>2</sup>	16.06	42.6	3.119	8623	

---

TOTAL 2.82797×10<sup>4</sup> 683.41 100.000

05/12/13 18:40 SER.NO=0050 CH.NO=1 PR12073-⑤



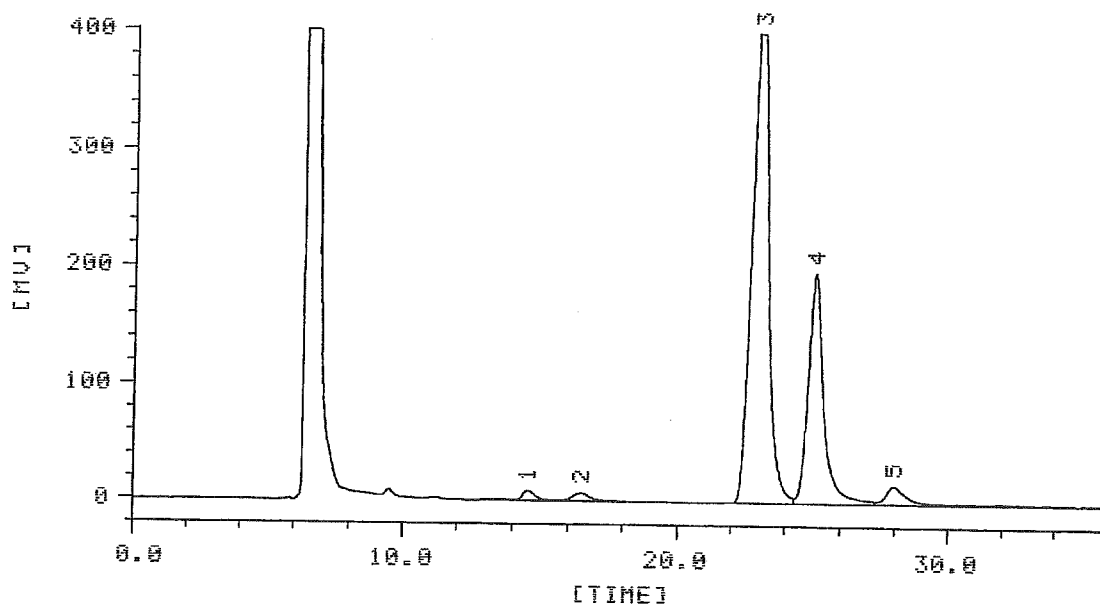
05/12/13 18:40 JOB FILE 1

VIAL NO. 3 NAME: SERIAL NO. 0050

CHANNEL NO. 1 METHOD: NORMALIZATION

NO.	MK	TIME	AREA	HEIGHT	WIDTH	A-%	TP	RS
1	B	14.55	3.14914x10 <sup>2</sup>	8.89	27.3	1.145	5666	2.10
2	U	16.48	3.05737x10 <sup>2</sup>	7.02	37.7	1.112	3807	6.12
3	B	23.03	1.84341x10 <sup>4</sup>	442.21	37.9	67.018	7353	2.06
4	U	25.00	7.70744x10 <sup>3</sup>	196.30	32.5	28.021	11872	2.82
5	U	28.00	7.44145x10 <sup>2</sup>	15.27	40.6	2.705	9464	
TOTAL			2.75063x10 <sup>4</sup>	669.68		100.000		

05/12/13 19:20 SER.NO=0051 CH.NO=1 PR12073-⑥



05/12/13 19:20 JOB FILE 1

VIAL NO. 3

NAME:

SERIAL NO. 0051

CHANNEL NO. 1

METHOD: NORMALIZATION

NO.	MK	TIME	AREA	HEIGHT	WIDTH	A-%	TP	RS
1	B	14.53	2.42606x10 <sup>2</sup>	0.36	25.6	0.879	6420	2.14
2	U	16.47	3.05993x10 <sup>2</sup>	6.80	38.3	1.108	3683	6.08
3	B	23.02	1.84035x10 <sup>4</sup>	441.73	37.8	66.669	7300	2.01
4	U	25.02	7.79771x10 <sup>3</sup>	196.89	32.4	28.248	11876	2.76
5	U	27.98	8.54687x10 <sup>2</sup>	15.64	43.4	3.096	8274	
TOTAL			2.76045x10 <sup>4</sup>	669.41		100.000		

α-グルコシルトランスフェラーゼ測定結果

品名 α-グルコシルトランスフェラーゼ(トレハロース製造用) (Pseudomonas mesoacidophila 由来)

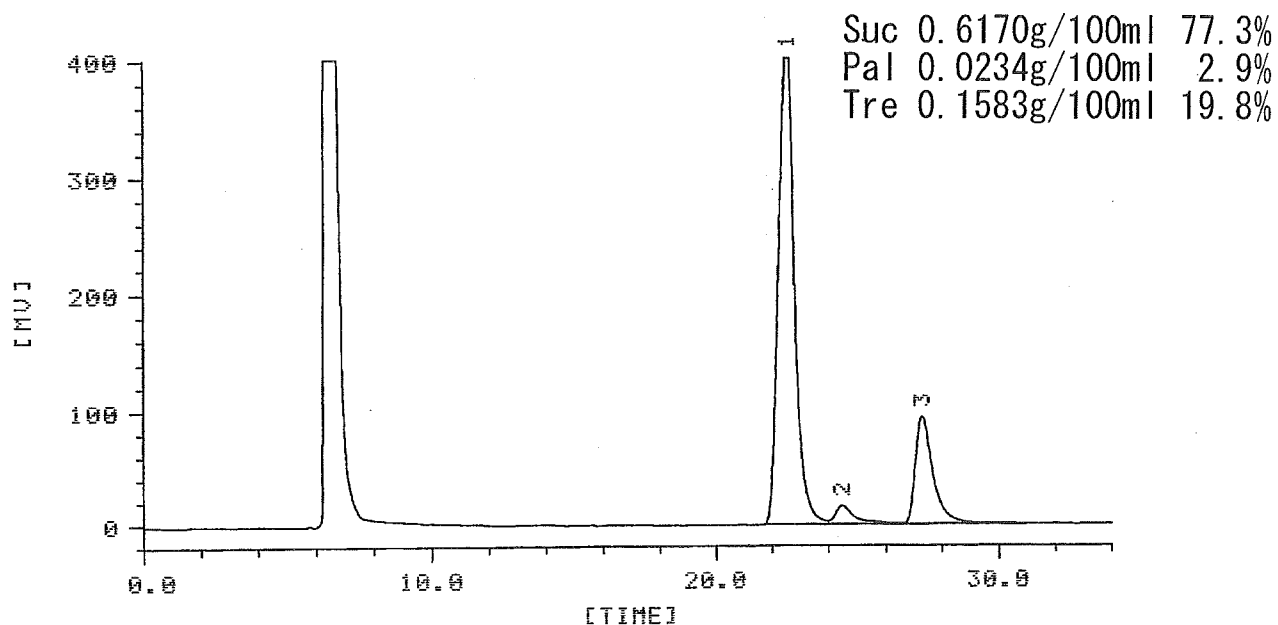
規格項目	規格	測定回数	製造番号		
			MX12201A	MX12202A	MX12203A
性状	白～濃褐色の粉末若しくは粒状又はペースト状、又は無～濃褐色の液体である。においはないか又は特異なにおいがある。	①	褐色の液体でわずかに特異なにおいがある	褐色の液体でわずかに特異なにおいがある	褐色の液体でわずかに特異なにおいがある
		②	褐色の液体でわずかに特異なにおいがある	褐色の液体でわずかに特異なにおいがある	褐色の液体でわずかに特異なにおいがある
		③	褐色の液体でわずかに特異なにおいがある	褐色の液体でわずかに特異なにおいがある	褐色の液体でわずかに特異なにおいがある
確認試験	α-グルコシルトランスフェラーゼ活性測定法により酵素活性を示す。	①	酵素活性を示した。	酵素活性を示した	酵素活性を示した
		②	酵素活性を示した	酵素活性を示した	酵素活性を示した
		③	酵素活性を示した	酵素活性を示した	酵素活性を示した
鉛	Pbとして 5.0 μg/g以下	①	5.0 μg/g以下	5.0 μg/g以下	5.0 μg/g以下
		②	5.0 μg/g以下	5.0 μg/g以下	5.0 μg/g以下
		③	5.0 μg/g以下	5.0 μg/g以下	5.0 μg/g以下
ヒ素	As <sub>2</sub> O <sub>3</sub> として 4.0 μg/g以下	①	4.0 μg/g以下	4.0 μg/g以下	4.0 μg/g以下
		②	4.0 μg/g以下	4.0 μg/g以下	4.0 μg/g以下
		③	4.0 μg/g以下	4.0 μg/g以下	4.0 μg/g以下
細菌数	10,000/g以下	①	84/g	31/g	8/g
		②	68/g	17/g	9/g
		③	72/g	30/g	4/g
大腸菌	認めない	①	認めない	認めない	認めない
		②	認めない	認めない	認めない
		③	認めない	認めない	認めない
酵素活性 (α-グルコシルトランスフェラーゼ活性測定法)	単位/g	①	274	189	219
		②	274	192	222
		③	244	201	214
		④	236	201	218
		⑤	227	197	212
		⑥	226	199	217
	平均 (n=6)	247	196	217	
	標準偏差	22.1	5.0	3.7	
	CV(%)	9.0	2.5	1.7	
	最大値	274	201	222	
最小値	226	189	212		



# Pseudomonas mesoacidophila由来酵素

05/12/22 13:44 SER.NO=0096 CH.NO=1

標準サンプル-1回目



05/12/22 13:44 JOB FILE 1

VIAL NO. 12

NAME: MX45

SERIAL NO. 0096

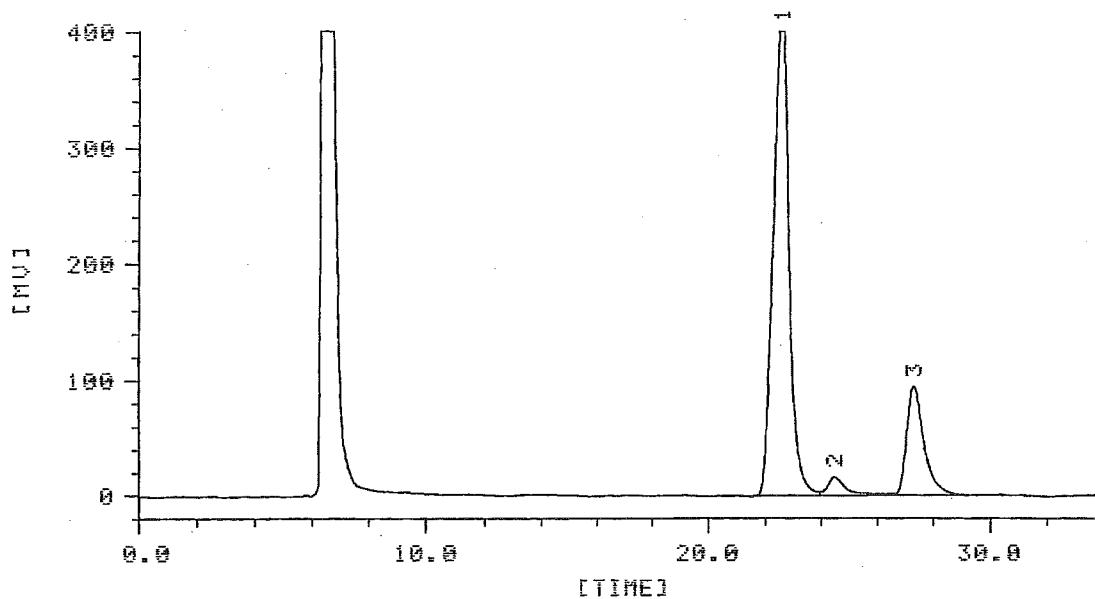
CHANNEL NO. 1

METHOD\ NORMALIZATION

NO.	NK	TIME	AREA	HEIGHT	WIDTH	A-%	TP	RS
1	B	22.58	1.63805x10 <sup>4</sup>	429.41	34.3	76.536	8671	1.85
2	U	24.45	8.32198x10 <sup>2</sup>	16.78	37.1	3.888	8670	2.67
3	U	27.38	4.18953x10 <sup>3</sup>	94.31	38.3	19.575	10110	
TOTAL			2.14022x10 <sup>4</sup>	540.50		100.000		

05/12/22 14:26 SER.NO=0097 CH.NO=1

標準サンプル-2回目



05/12/22 14:26 JOB FILE 1

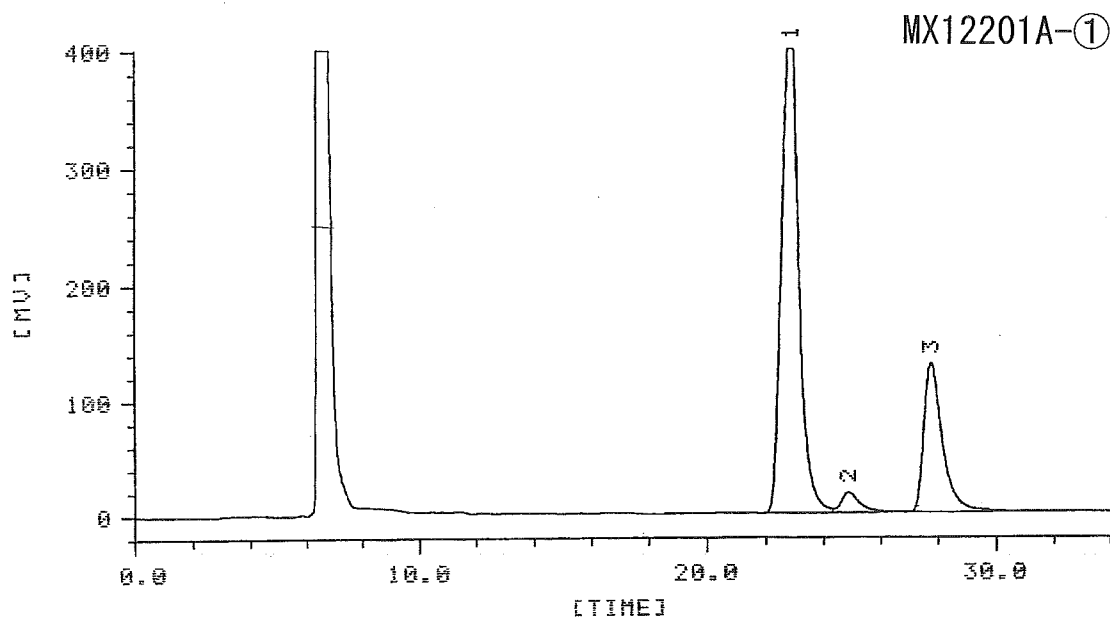
VIAL NO. 12 NAME: MX45

SERIAL NO. 0097

CHANNEL NO. 1 METHOD: NORMALIZATION

NO.	PK	TIME	AREA	HEIGHT	WIDTH	A-%	TP	RS
1	B	22.57	1.63452x10 <sup>4</sup>	429.58	34.2	76.897	8679	1.92
2	V	24.47	7.94368x10 <sup>2</sup>	16.54	35.9	3.737	9287	2.69
3	U	27.28	4.11648x10 <sup>3</sup>	94.24	38.1	19.366	10217	
TOTAL			2.12561x10 <sup>4</sup>	540.36		100.000		

05/12/21 11:26 SER.NO=0064 CH.NO=1



MX12201A-①

05/12/21 11:26 JOB FILE 1

VIAL NO. 1 NAME: MX45

SERIAL NO. 0064

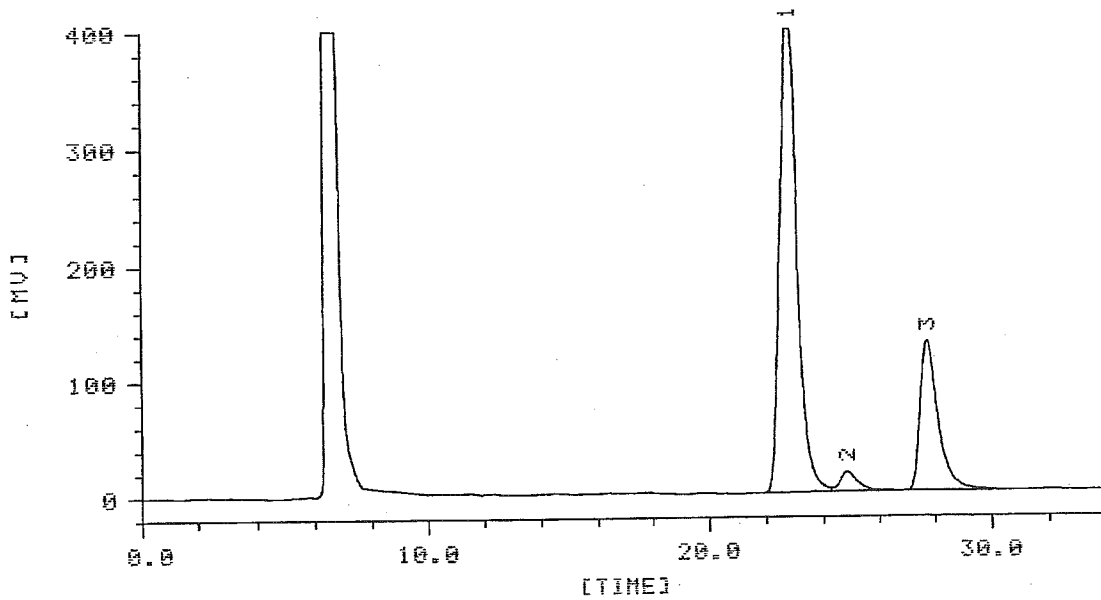
CHANNEL NO. 1 METHOD: NORMALIZATION

NO.	MK	TIME	AREA	HEIGHT	WIDTH	A-%	TP	RS
1	B	22.90	1.75381x10 <sup>4</sup>	438.53	36.0	72.150	8049	1.87
2	U	24.87	8.47559x10 <sup>2</sup>	17.93	38.4	3.488	8375	2.64
3	U	27.77	5.91923x10 <sup>2</sup>	129.91	39.2	24.362	9981	

---

TOTAL 2.42969x10<sup>4</sup> 586.37 100.000

05/12/21 13:10 SER.NO=0065 CH.NO=1 MX12201A-②



05/12/21 13:10 JOB FILE 1

VIAL NO. 1 NAME: MX45

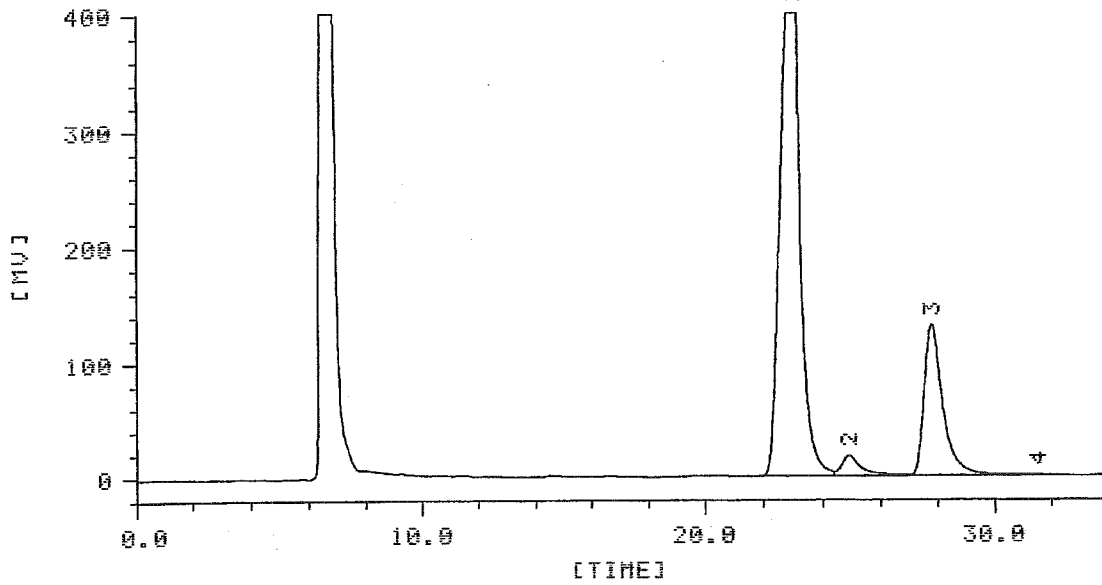
SERIAL NO. 0065

CHANNEL NO. 1 METHOD: NORMALIZATION

NO.	MK	TIME	AREA	HEIGHT	WIDTH	A-%	TP	RS
1	B	22.86	1.74745x10 <sup>4</sup>	437.85	36.1	72.613	8024	1.87
2	U	24.93	7.61567x10 <sup>2</sup>	17.00	37.5	3.165	8731	2.69
3	B	27.75	5.82908x10 <sup>3</sup>	128.94	39.2	24.222	9978	
TOTAL			2.40651x10 <sup>4</sup>	583.79		100.000		

05/12/21 14:11 SER.NO=0066 CH.NO=1

MX12201A-(3)



05/12/21 14:11 JOB FILE 1

VIAL NO. 1 NAME: MX45

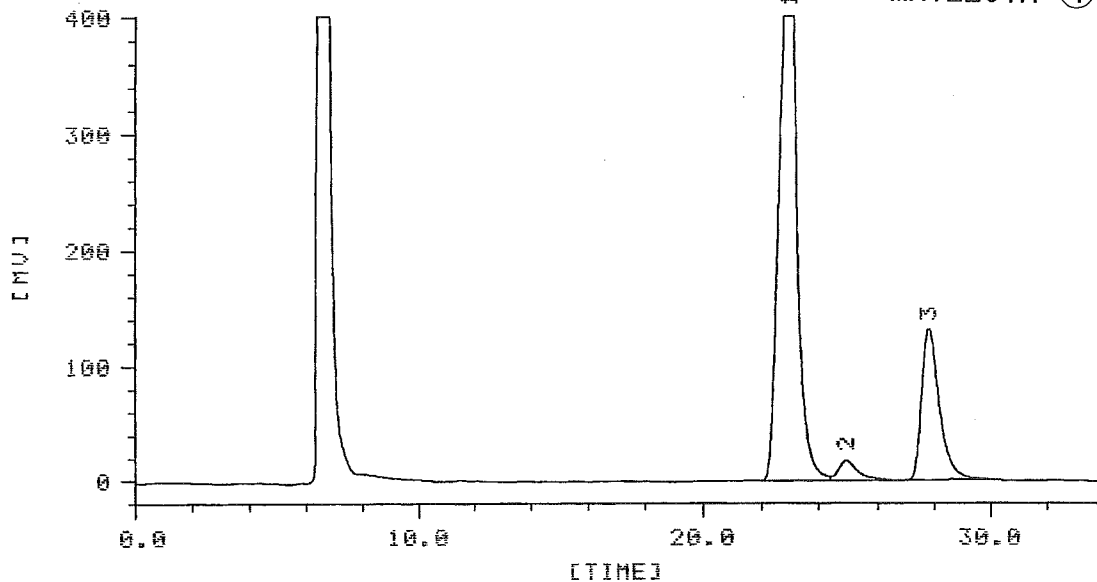
SERIAL NO. 0066

CHANNEL NO. 1 METHOD: NORMALIZATION

NO.	MK	TIME	AREA	HEIGHT	WIDTH	A-%	TP	RS
1	B	22.95	2.09310x10 <sup>4</sup>	514.76	36.9	75.054	7702	1.84
2	U	24.88	8.77288x10 <sup>2</sup>	17.73	37.5	3.146	8769	2.68
3	U	27.78	6.01677x10 <sup>3</sup>	131.15	39.1	21.575	10092	
4	U	31.52	6.30093x10 <sup>1</sup>	1.04		0.226		
TOTAL			2.78881x10 <sup>4</sup>	664.68		100.000		

05/12/21 14:52 SER.NO=0067 CH.NO=2

MX12201A-(4)



05/12/21 14:52 JOB FILE 2

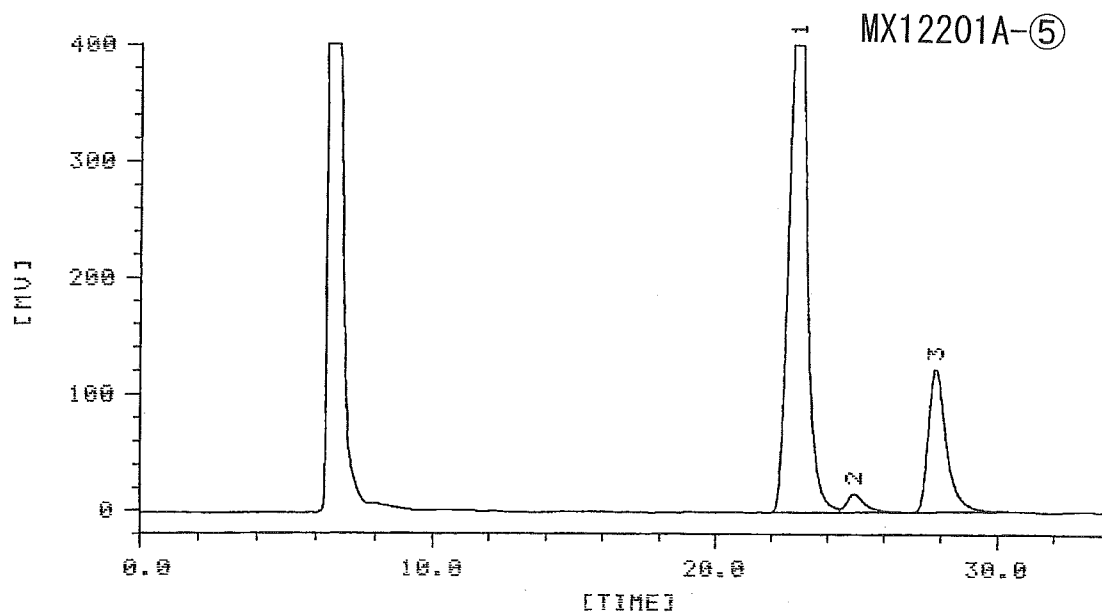
VIAL NO. 1 NAME: MX45

SERIAL NO. 0067

CHANNEL NO. 2 METHOD: NORMALIZATION

NO.	NK	TIME	AREA	HEIGHT	WIDTH	A-%	TP	RS
1	B	22.98	2.07752x10 <sup>4</sup>	511.56	36.9	76.087	7717	1.83
2	V	24.90	7.87796x10 <sup>2</sup>	17.48	37.3	2.885	8906	2.67
3	B	27.78	5.74149x10 <sup>3</sup>	130.19	38.9	21.028	10155	
TOTAL			2.73045x10 <sup>4</sup>	659.22		100.000		

05/12/21 15:34 SER.NO=0068 CH.NO=1



05/12/21 15:34 JOB FILE 1

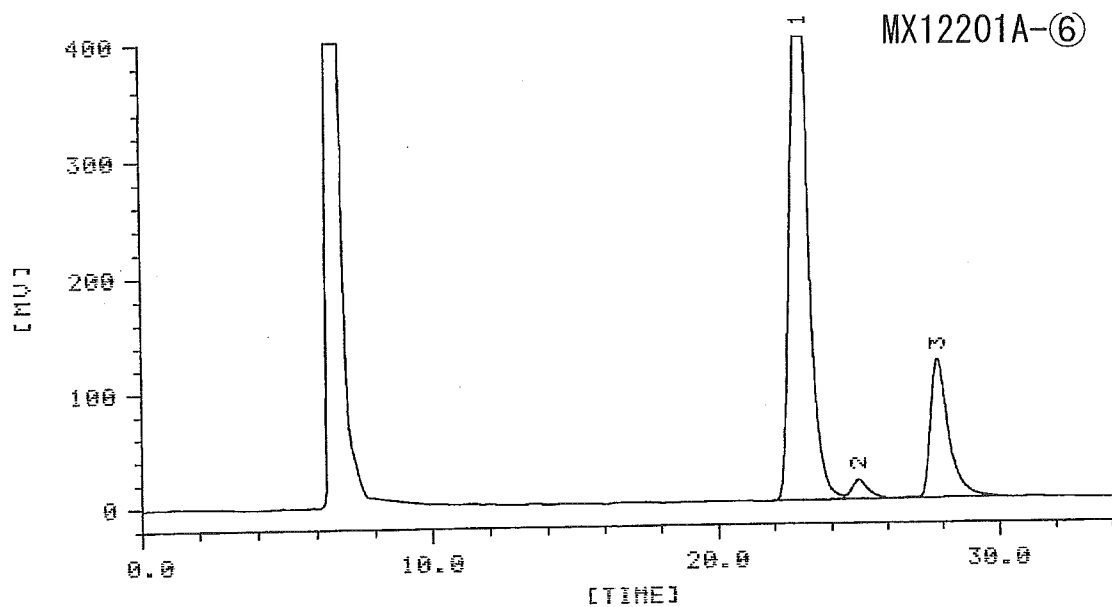
VIAL NO. 1 NAME: MX45

SERIAL NO. 0068

CHANNEL NO. 1 METHOD: NORMALIZATION

NO.	MK	TIME	AREA	HEIGHT	WIDTH	A-%	TP	RS
1	B	22.95	2.09480x10 <sup>4</sup>	513.52	36.9	76.944	7728	1.84
2	U	24.92	7.84042x10 <sup>2</sup>	16.65	38.6	2.880	8307	2.63
3	U	27.80	5.49284x10 <sup>3</sup>	122.76	39.0	20.176	10138	
TOTAL			2.72249x10 <sup>4</sup>	652.93		100.000		

05/12/21 16:13 SER.NO=0069 CH.NO=1



05/12/21 16:13 JOB FILE 1

VIAL NO. 1 NAME: MX45

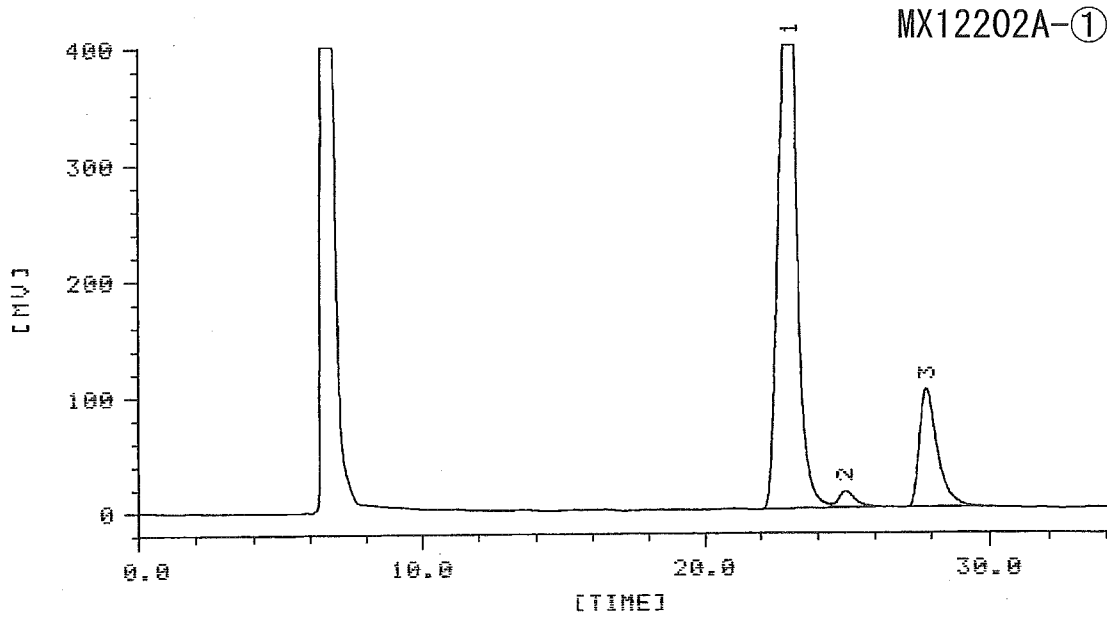
SERIAL NO. 0069

CHANNEL NO. 1 METHOD: NORMALIZATION

NO.	PK	TIME	AREA	HEIGHT	WIDTH	A-%	TP	RS
1	B	22.98	2.10021×10 <sup>4</sup>	511.83	37.2	77.066	7626	1.87
2	U	24.95	7.16689×10 <sup>2</sup>	16.55	37.3	2.630	8917	2.66
3	U	27.83	5.53324×10 <sup>3</sup>	121.24	39.3	20.304	10022	
TOTAL			2.72520×10 <sup>4</sup>	649.61		100.000		



05/12/21 17:02 SER.NO=0070 CH.NO=2



05/12/21 17:02 JOB FILE 2

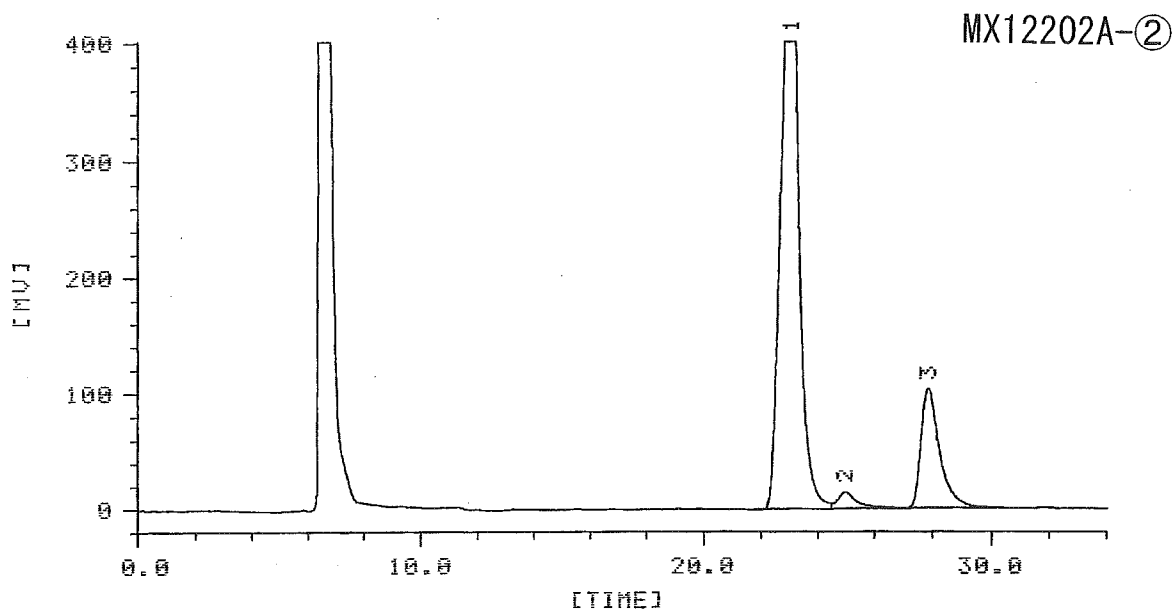
VIAL NO. 1 NAME: MX45

SERIAL NO. 0070

CHANNEL NO. 2 METHOD: NORMALIZATION

NO.	PK	TIME	AREA	HEIGHT	WIDTH	A-%	TP	RS
1	B	23.03	2.17317×10 <sup>4</sup>	535.06	37.0	80.849	7728	1.84
2	U	24.93	6.08498×10 <sup>2</sup>	14.24	36.0	2.264	9557	2.73
3	B	27.83	4.53967×10 <sup>2</sup>	102.47	38.9	16.887	10192	
TOTAL			2.68793×10 <sup>4</sup>	651.77		100.000		

05/12/21 17:40 SER.NO=0071 CH.NO=1



05/12/21 17:40 JOB FILE 1

VIAL NO. 1 NAME: MX45 SERIAL NO. 0071

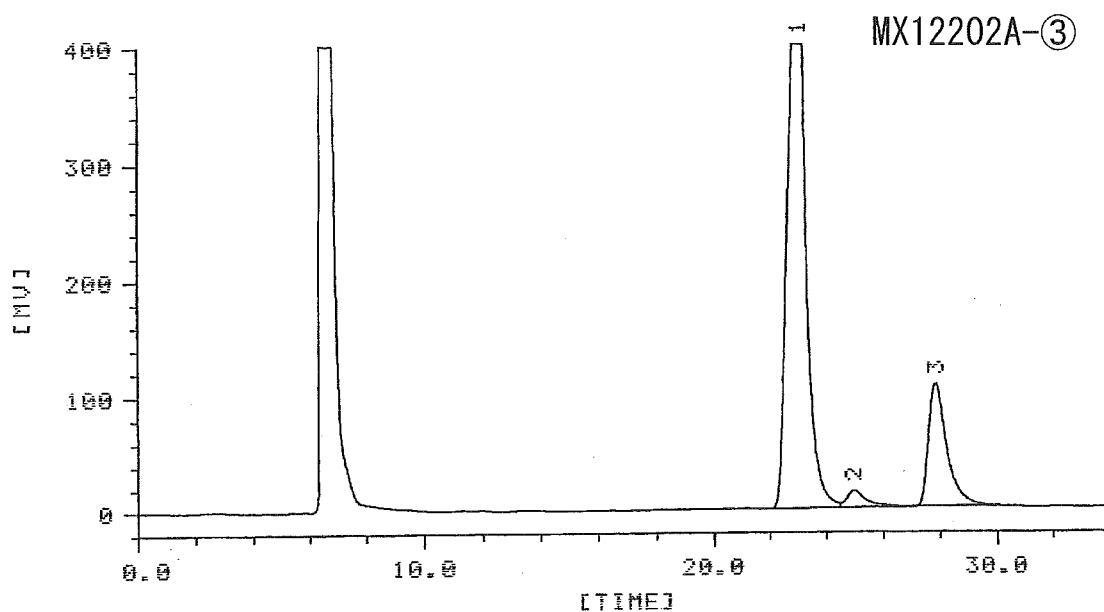
CHANNEL NO. 1 METHOD: NORMALIZATION

NO.	MK	TIME	AREA	HEIGHT	WIDTH	A-%	TP	RS
1	B	23.85	2.19997×10 <sup>4</sup>	534.42	37.2	86.489	7646	1.79
2	U	24.95	7.03645×10 <sup>2</sup>	14.43	38.0	2.574	8608	2.63
3	V	27.83	4.62926×10 <sup>3</sup>	102.55	39.5	16.937	9920	

---

TOTAL			2.73326×10 <sup>4</sup>	651.40		100.000		
-------	--	--	-------------------------	--------	--	---------	--	--

05/12/21 18:18 SER.NO=0072 CH.NO=2



05/12/21 18:18 JOB FILE 2

VIAL NO. 2 NAME: MX45

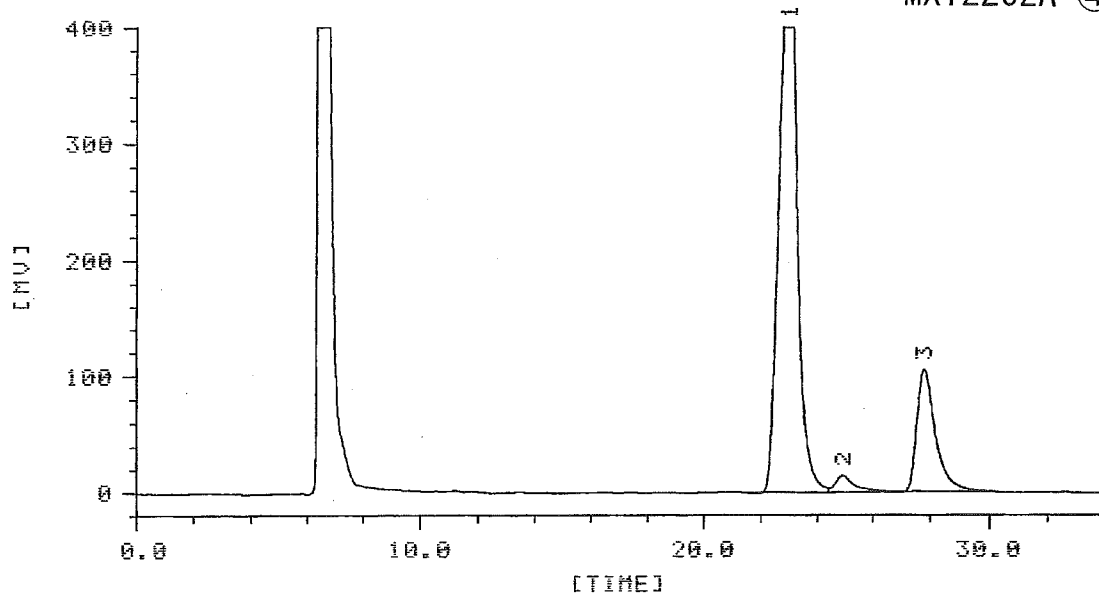
SERIAL NO. 0072

CHANNEL NO. 2 METHOD: NORMALIZATION

NO.	NK	TIME	AREA	HEIGHT	WIDTH	A-%	TP	RS
1	B	23.03	2.16430×10 <sup>4</sup>	527.15	37.1	79.553	7693	1.79
2	V	24.95	7.53998×10 <sup>2</sup>	15.18	38.7	2.771	8275	2.60
3	B	27.83	4.88905×10 <sup>2</sup>	106.08	39.5	17.676	9883	
TOTAL			2.72068×10 <sup>4</sup>	648.41		100.000		

05/12/21 18:56 SER.NO=0073 CH.NO=1

MX12202A-④



05/12/21 18:56 JOB FILE 1

VIAL NO. 2 NAME: MX45

SERIAL NO. 0073

CHANNEL NO. 1 METHOD: NORMALIZATION

NO.	MK	TIME	AREA	HEIGHT	WIDTH	A-%	TP	RS
1	B	22.98	2.14871x10 <sup>4</sup>	524.78	37.8	79.588	7695	1.61
2	U	24.92	7.41910x10 <sup>2</sup>	14.83	38.4	2.748	8383	2.59
3	U	27.77	4.77147x10 <sup>3</sup>	105.58	39.4	17.672	9920	

---

TOTAL			2.70004x10 <sup>4</sup>	645.11		100.000		
-------	--	--	-------------------------	--------	--	---------	--	--