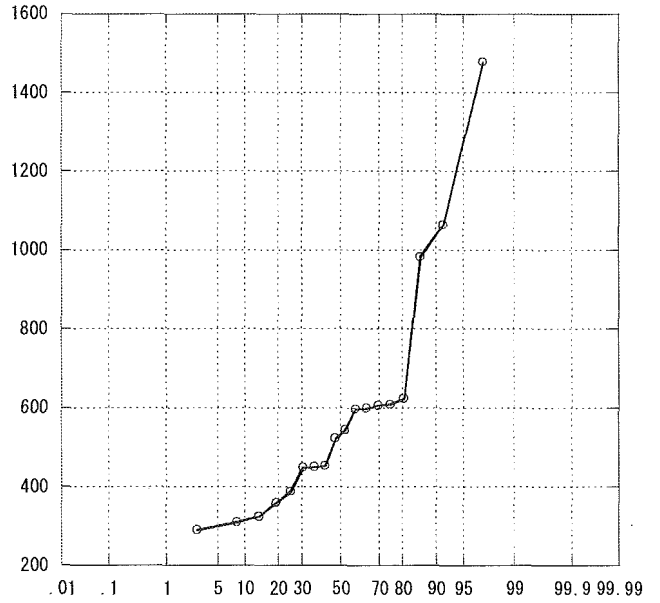
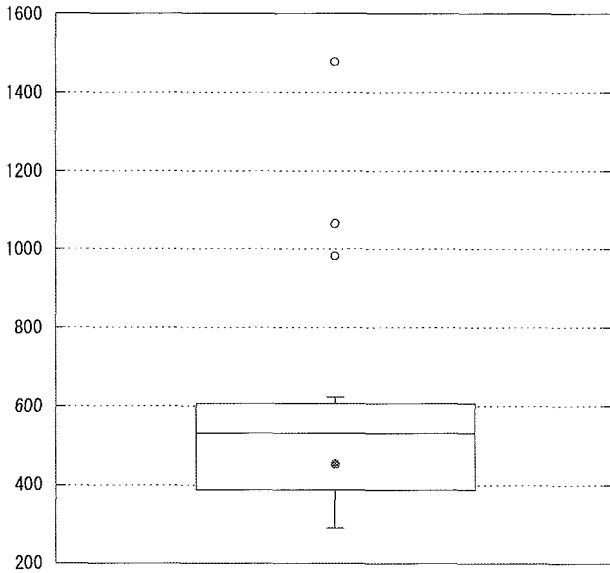
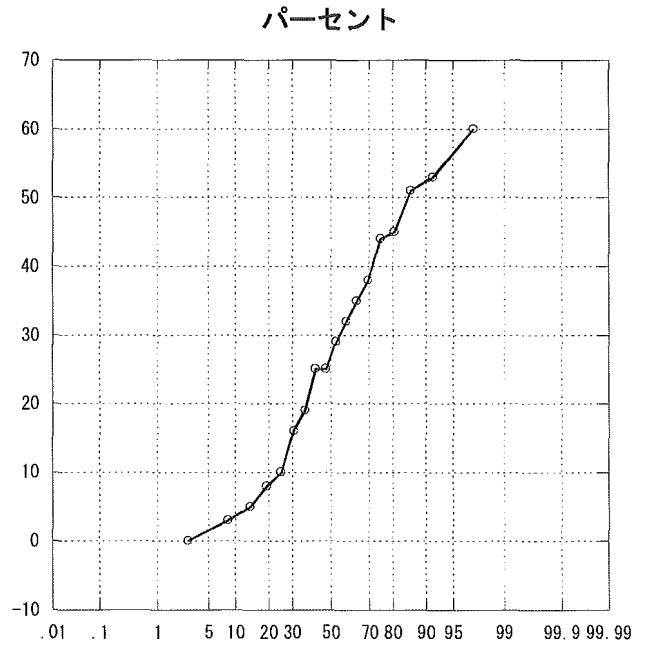
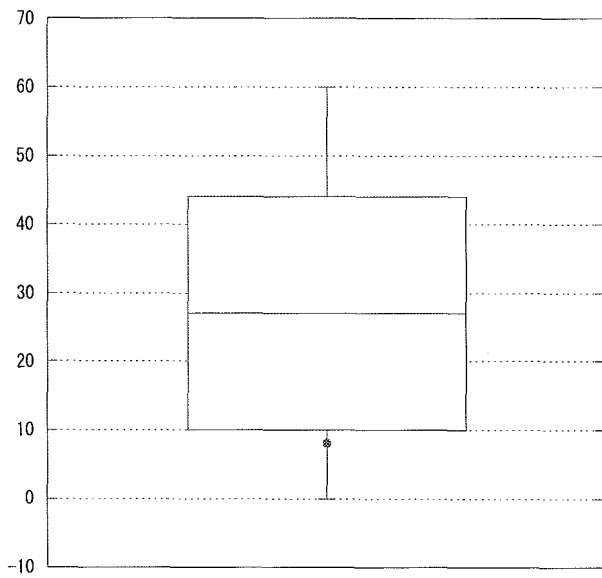


# ICU研究班2004年施設間比較

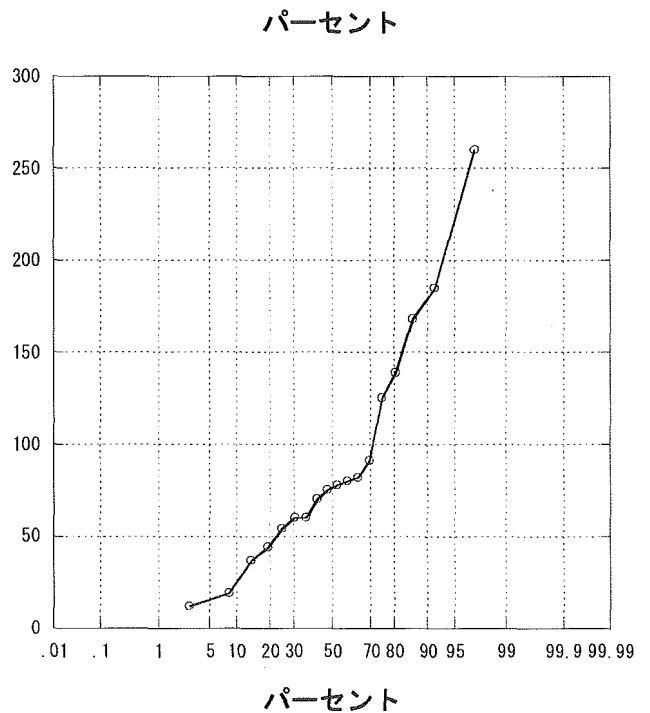
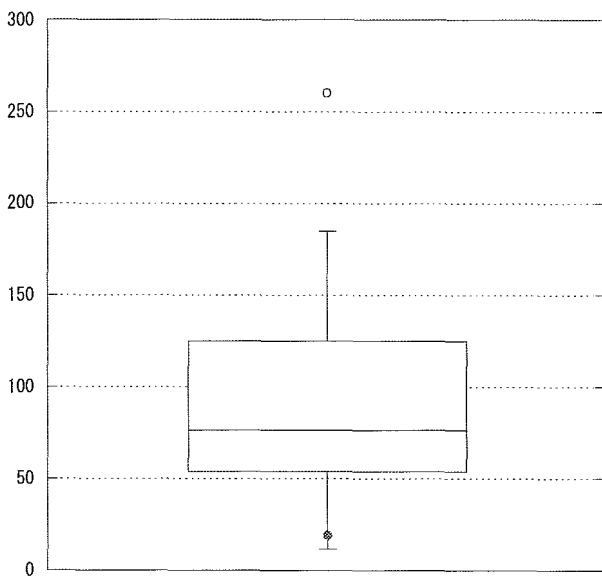
年間収容患者数



APACHE 0~4

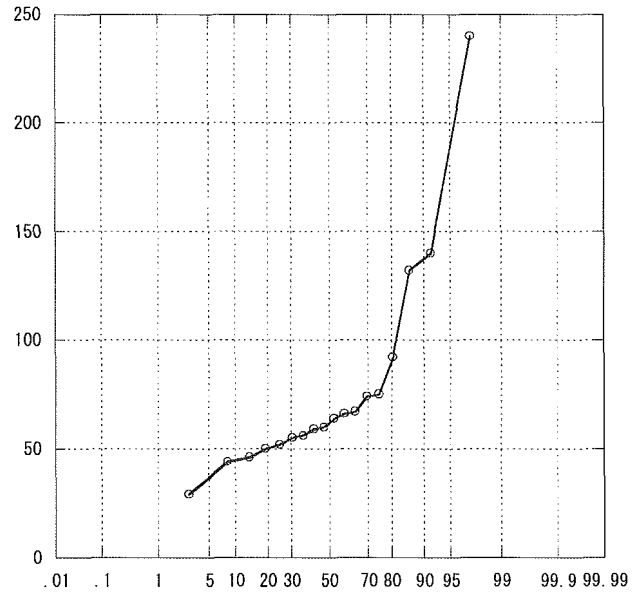
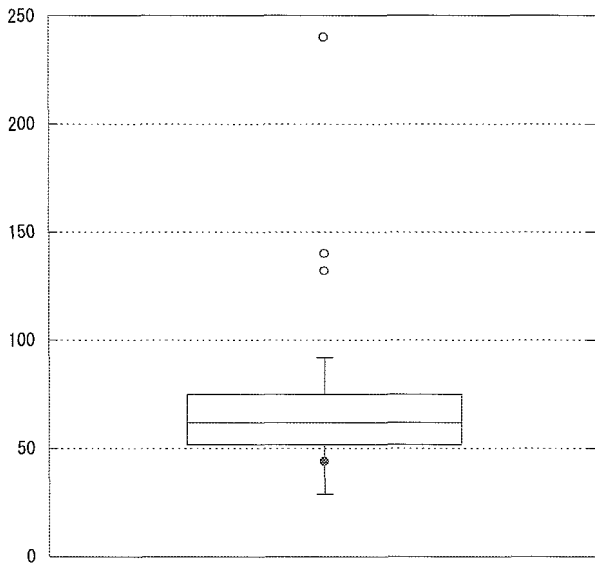


APACHE 5~9



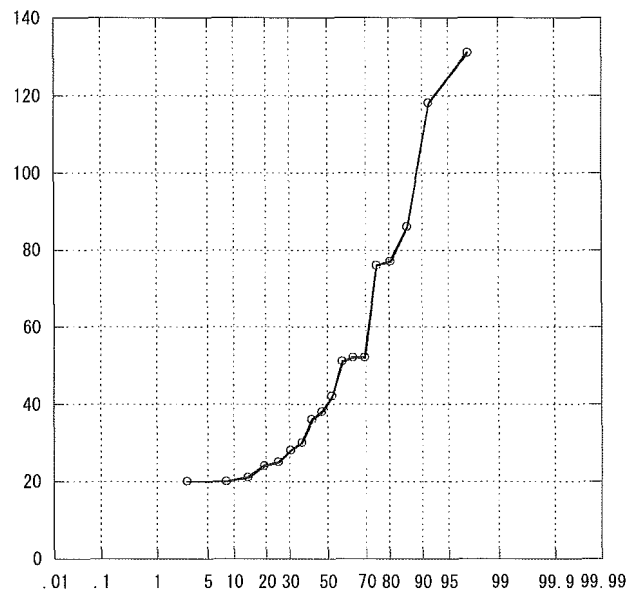
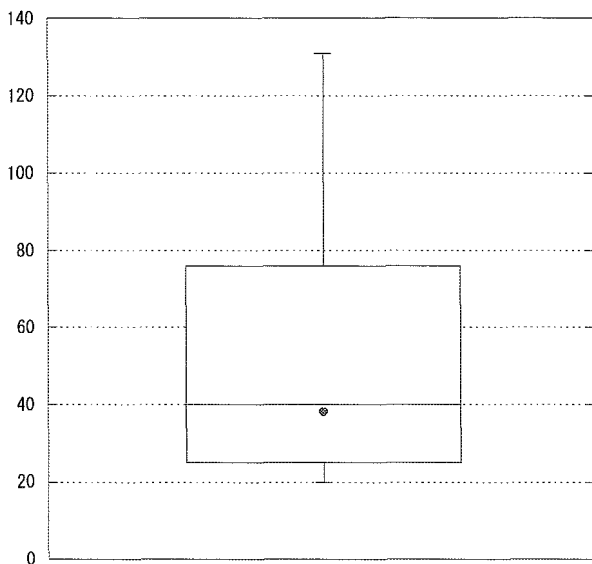
# ICU研究班2004年施設間比較

## APACHE 10~14



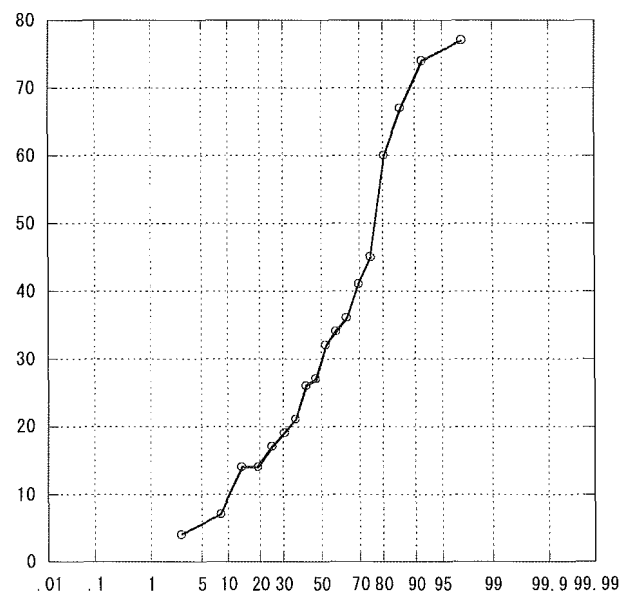
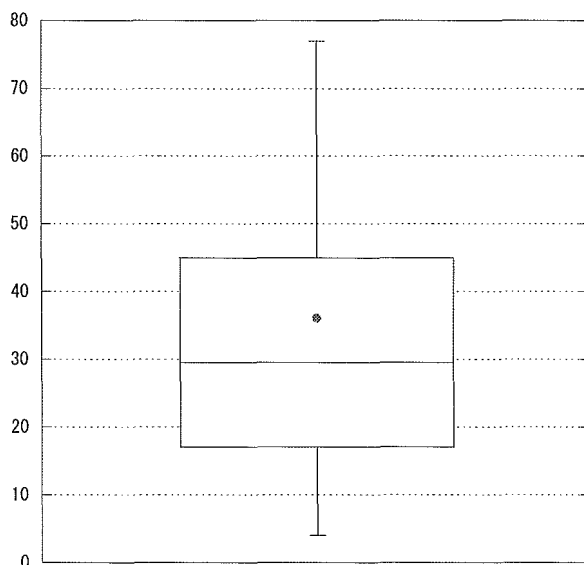
パーセント

## APACHE 15~19



パーセント

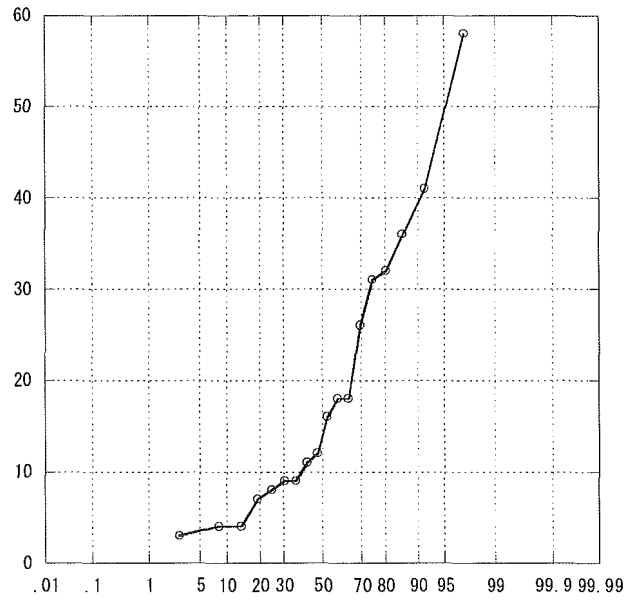
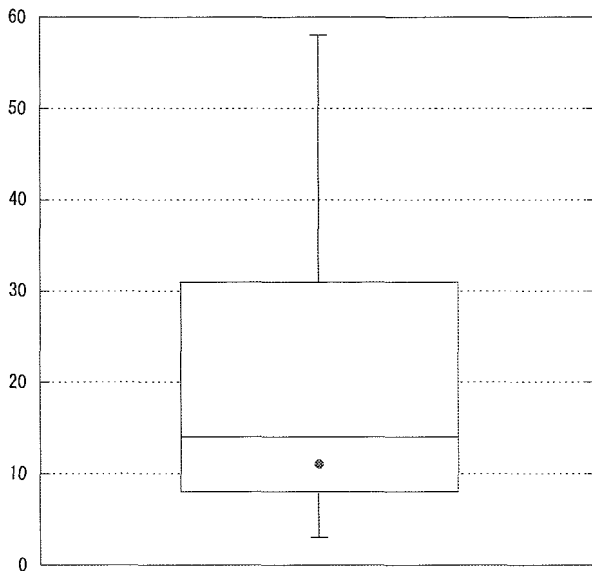
## APACHE 20~24



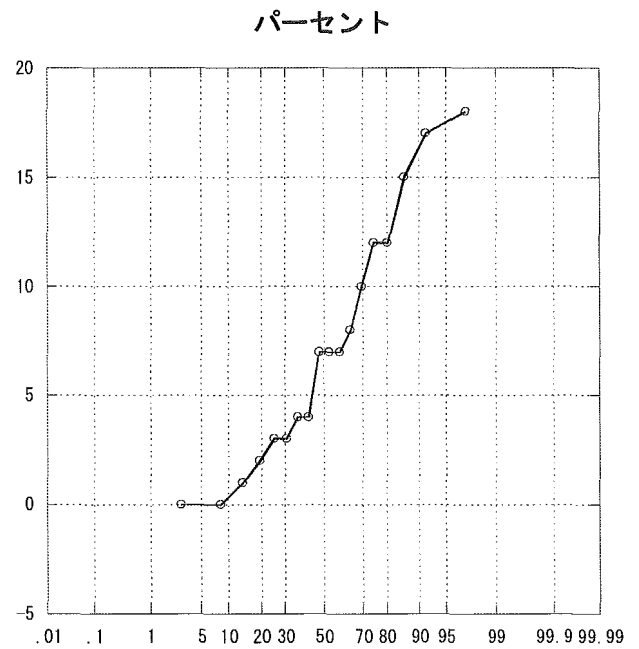
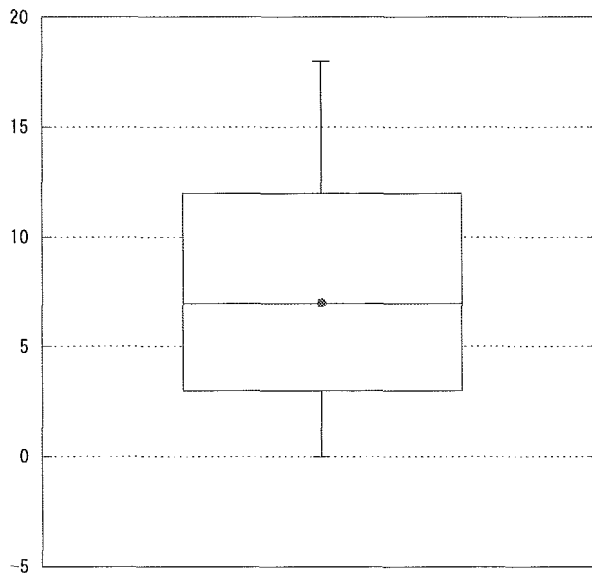
パーセント

ICU研究班2004年施設間比較

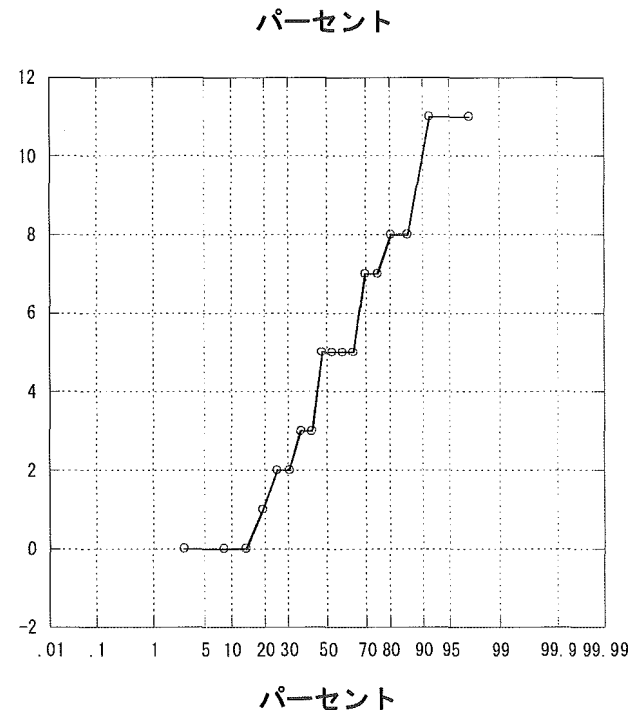
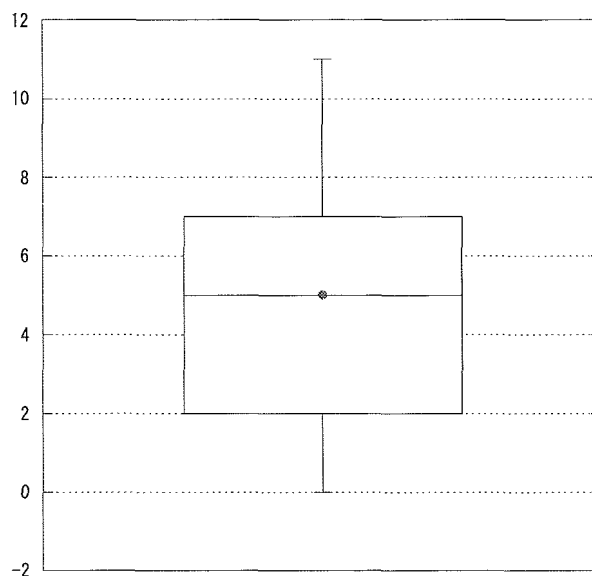
APACHE 25~29



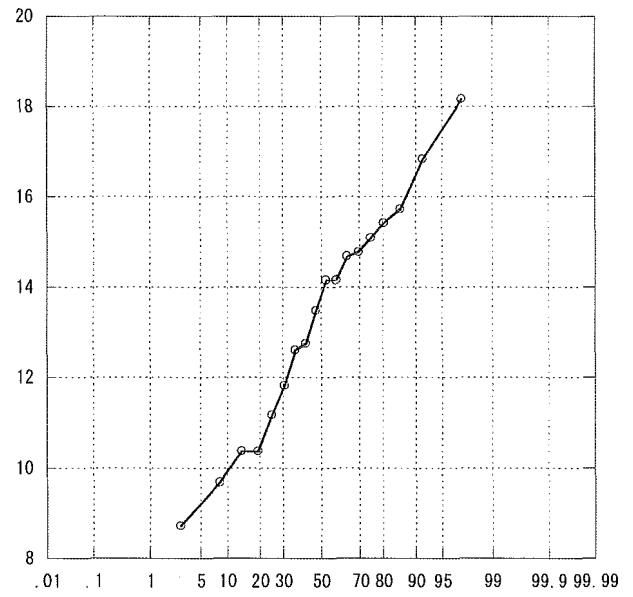
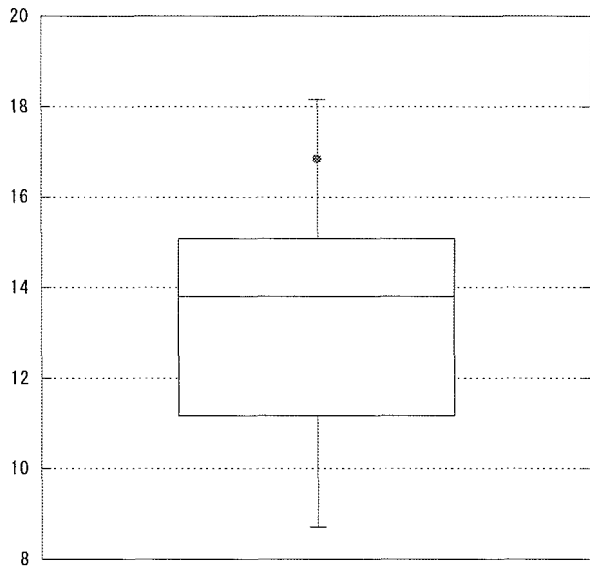
APACHE 30~34



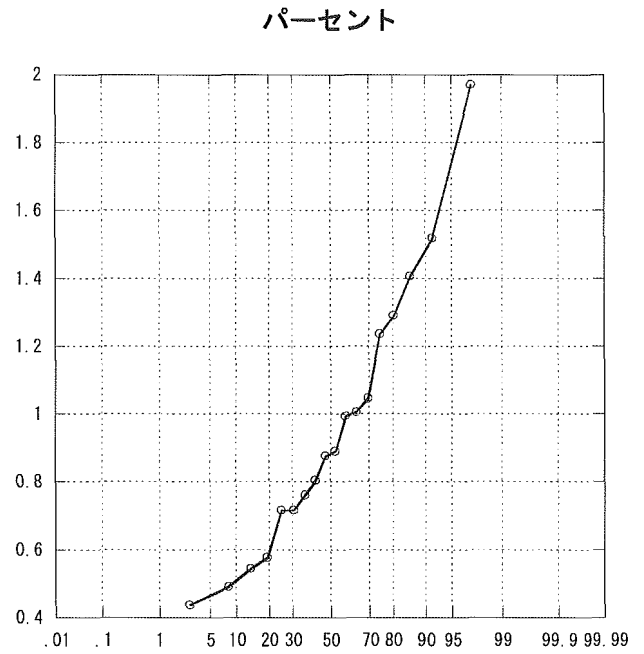
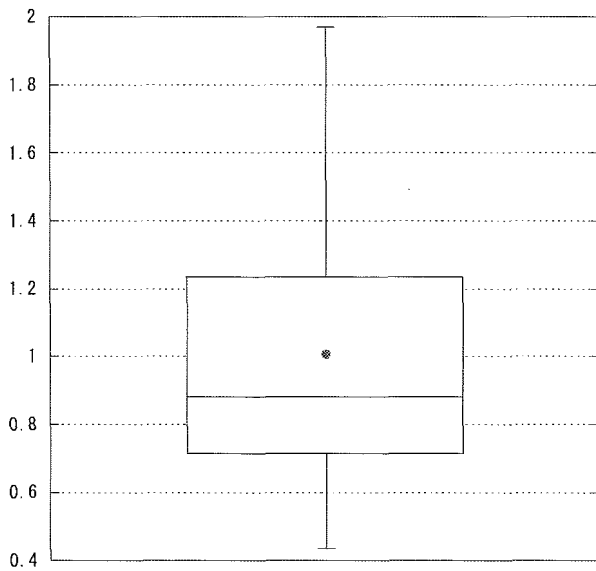
APACHE 35~



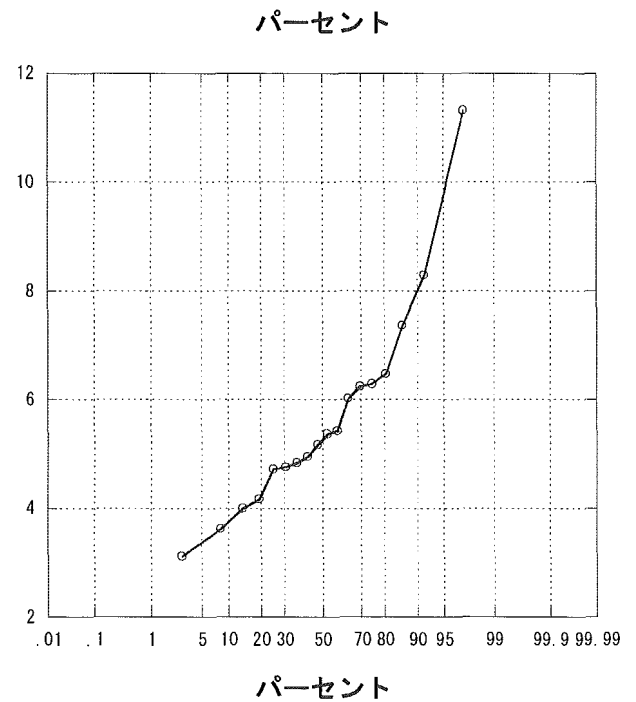
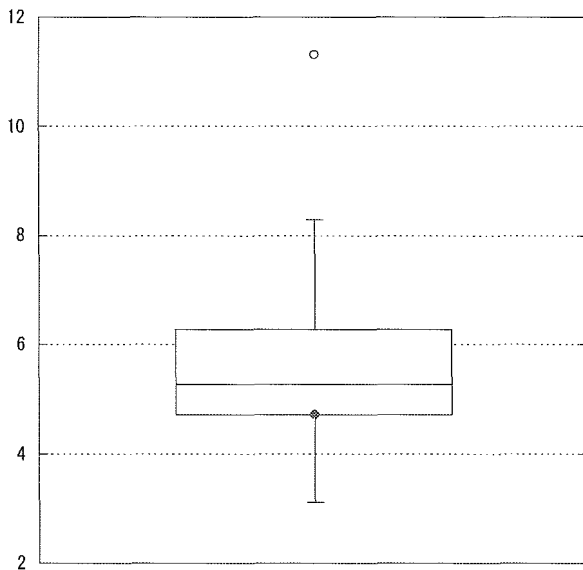
APACHE平均



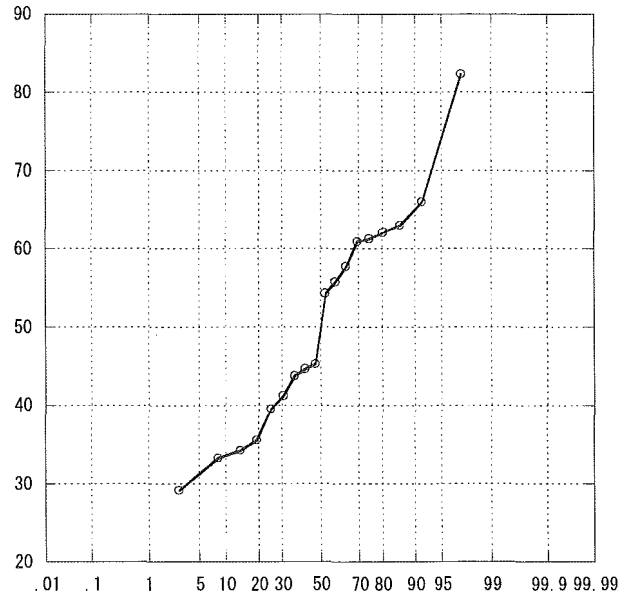
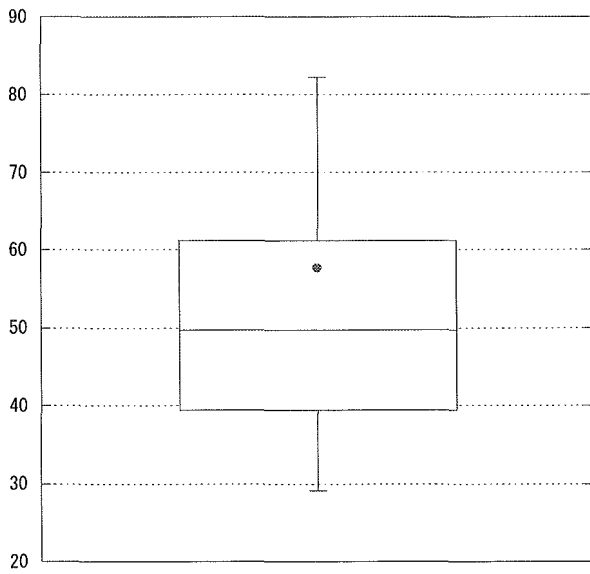
標準化死亡比



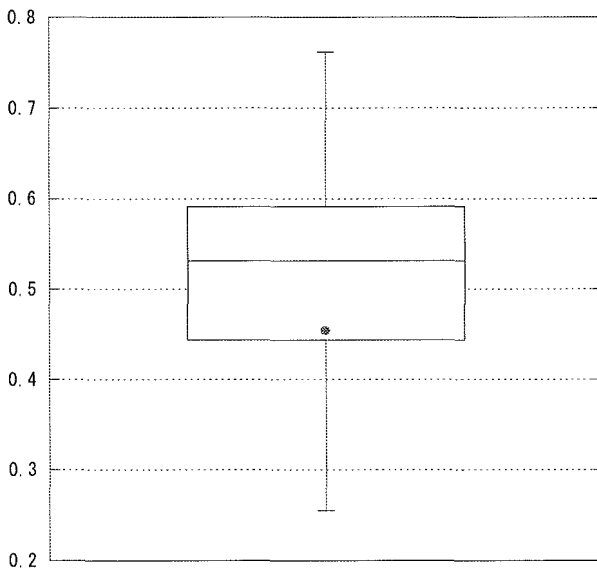
平均在室日数



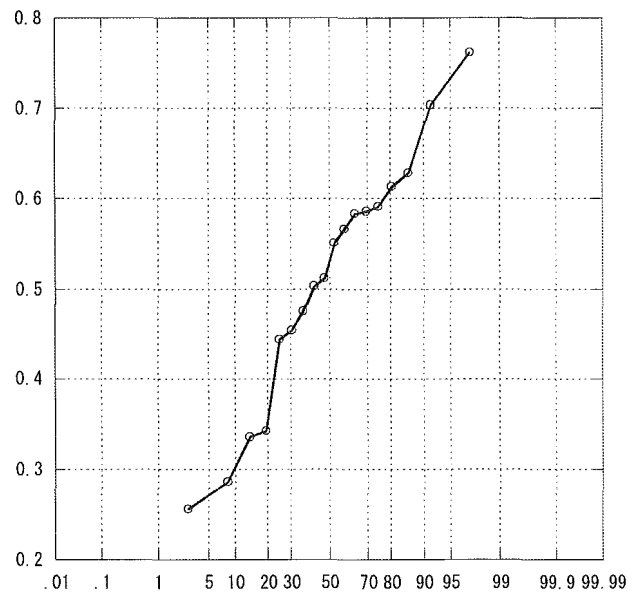
平均在院日数



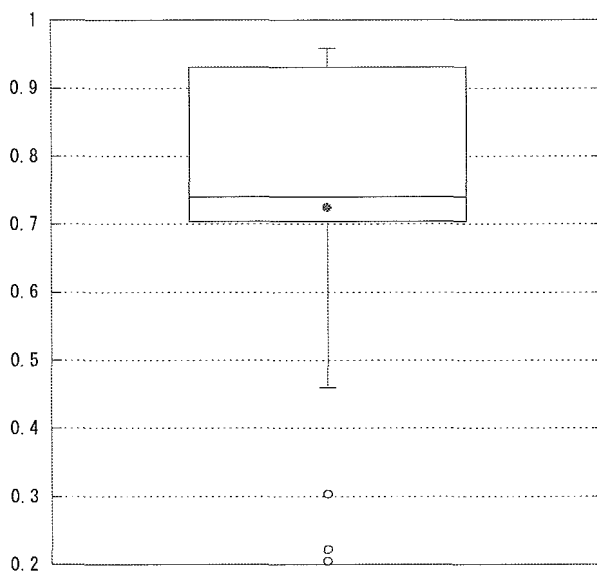
人工呼吸器利用率



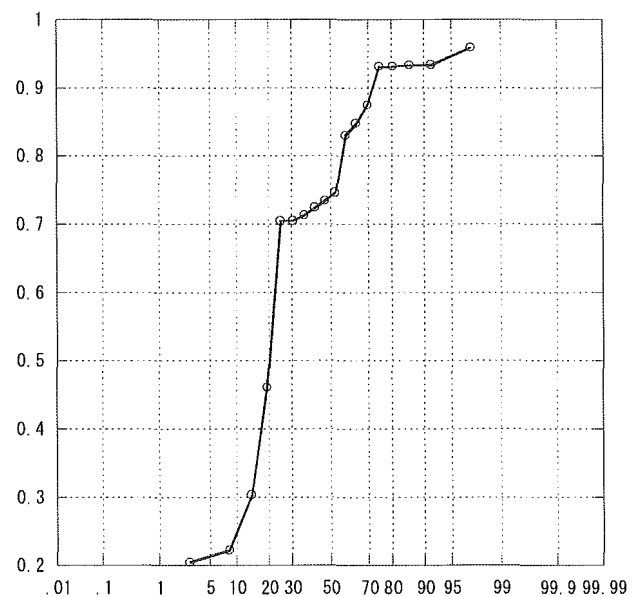
パーセント



中心静脈カテ利用率

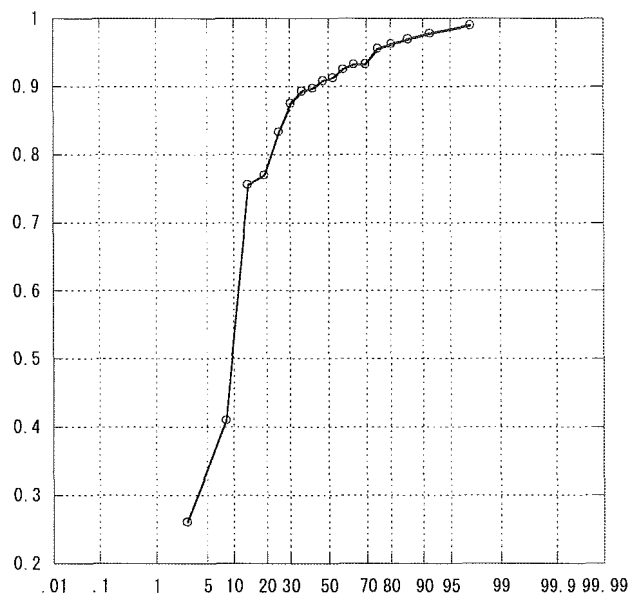
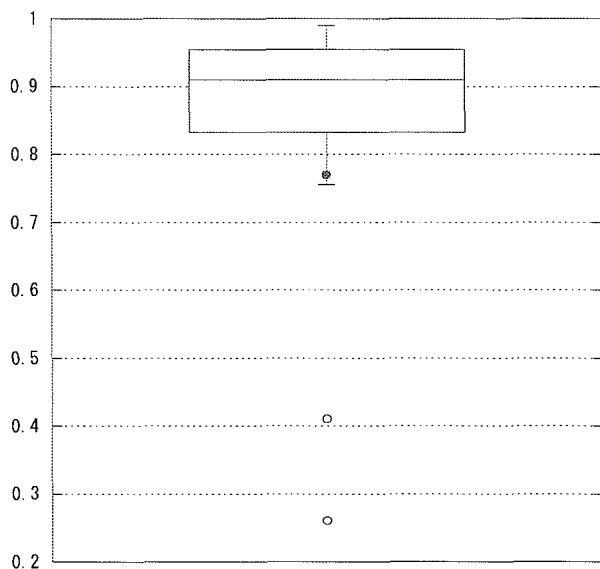


パーセント

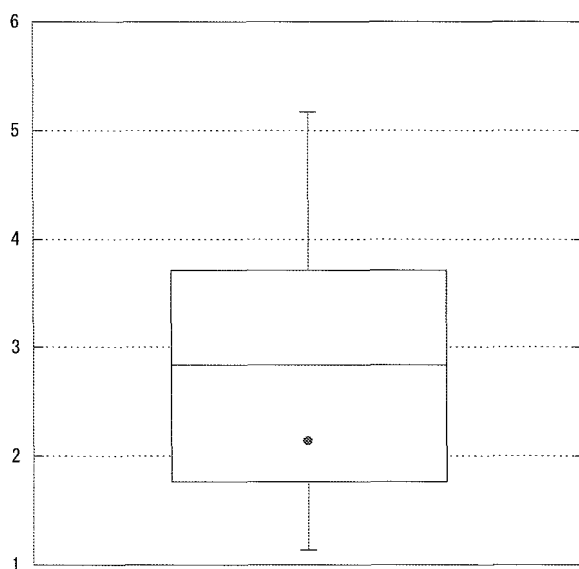


パーセント

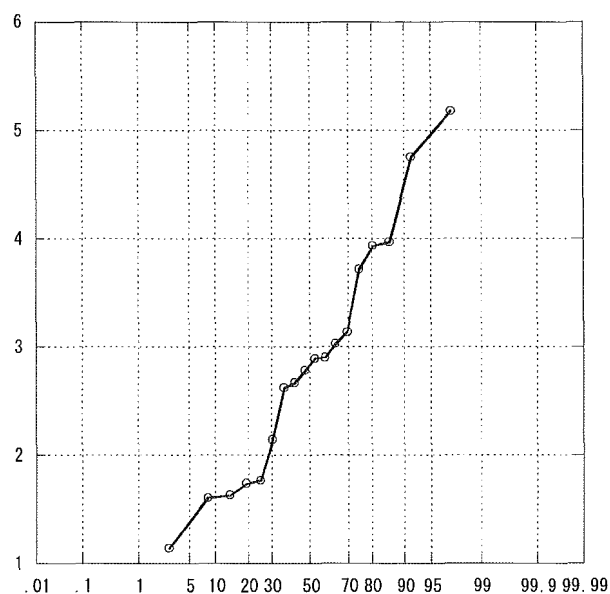
尿道カテ利用率



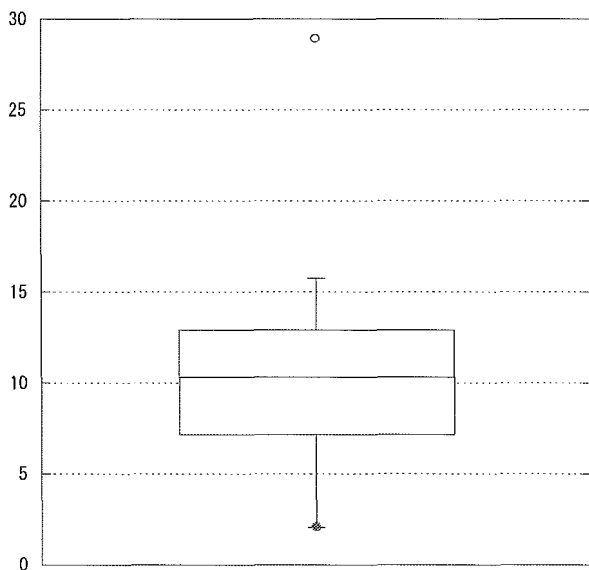
人工呼吸日／患者数



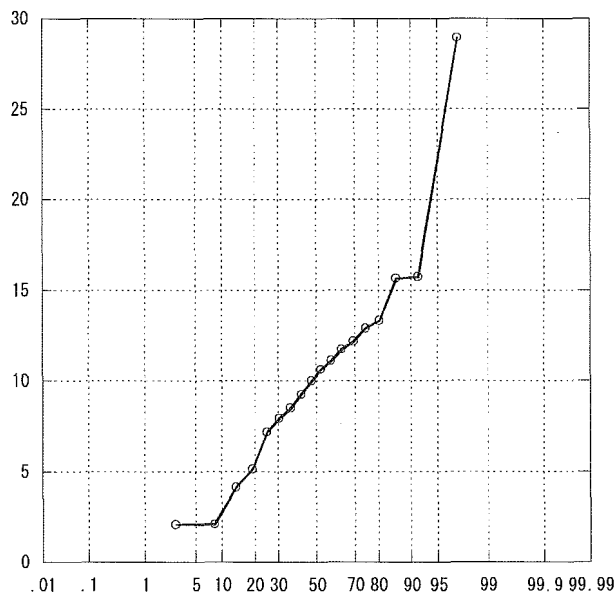
パーセント



リスク調整感染率（肺炎）

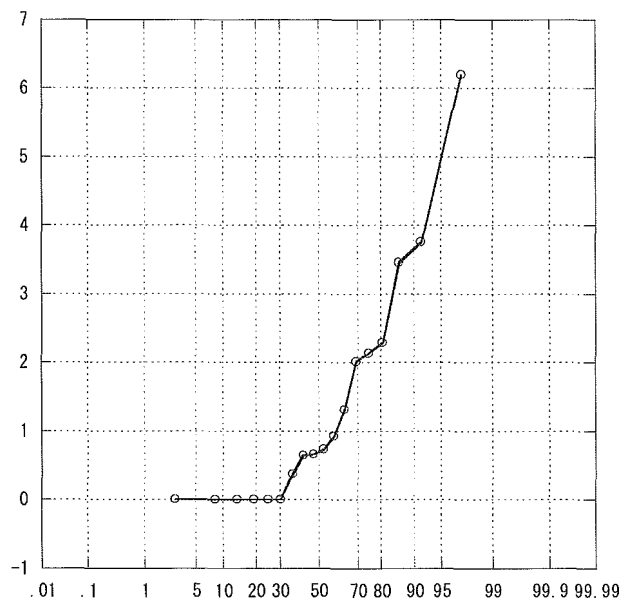
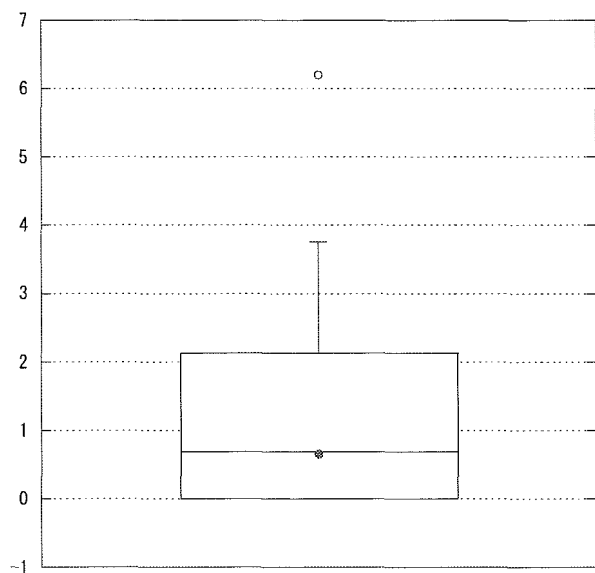


パーセント

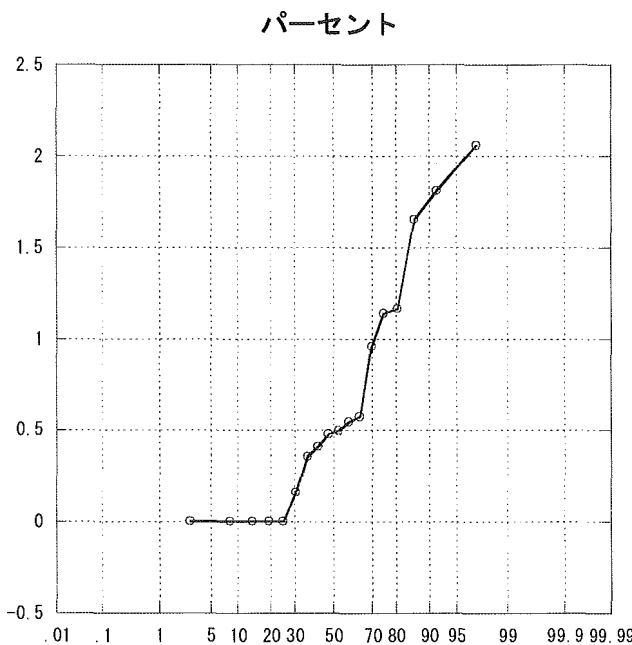
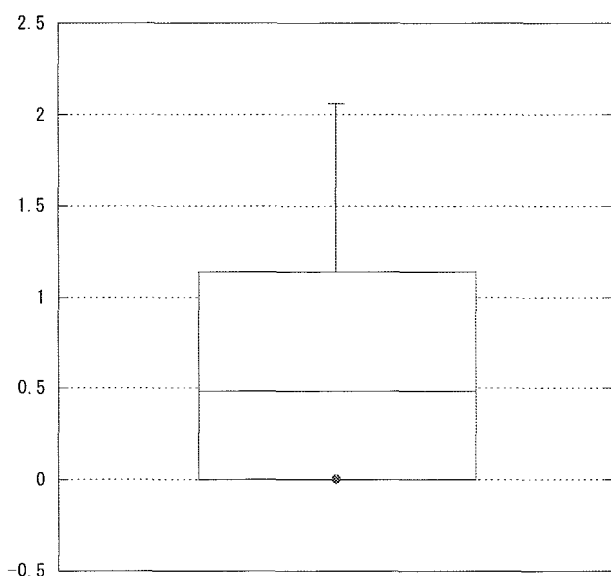


パーセント

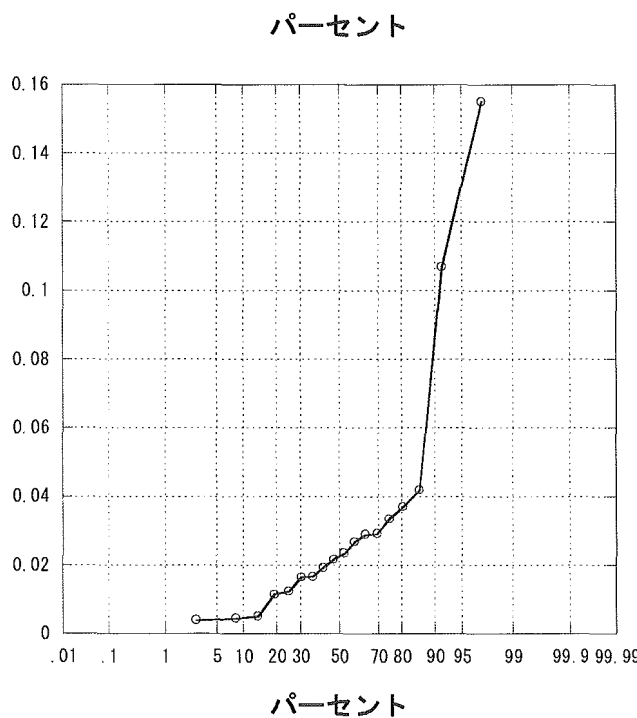
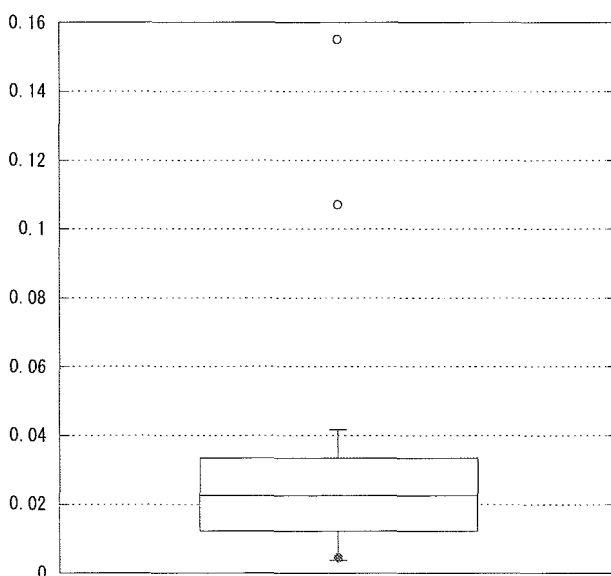
リスク調整感染率（カテ）



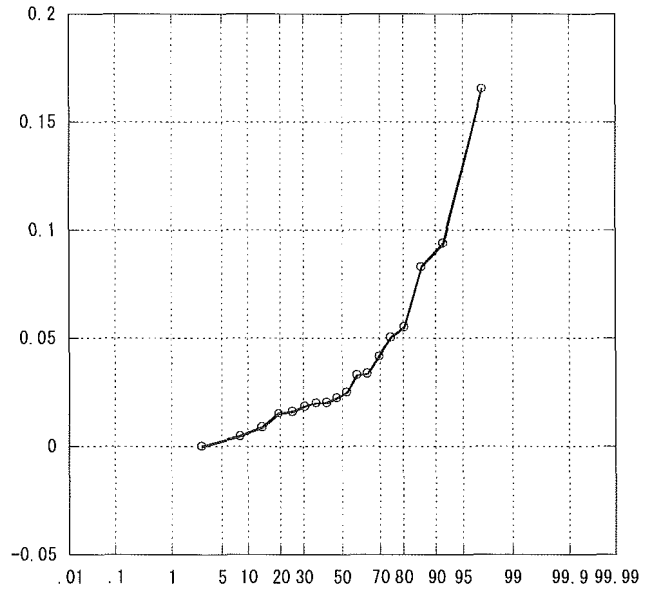
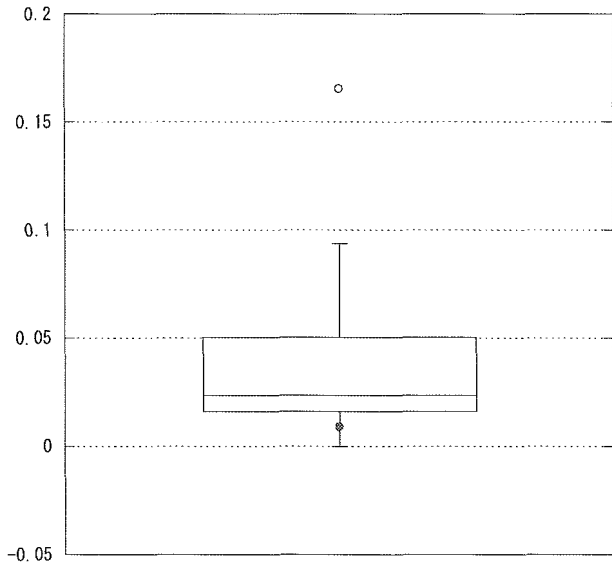
リスク調整感染率（尿路）



全感染率（耐性）

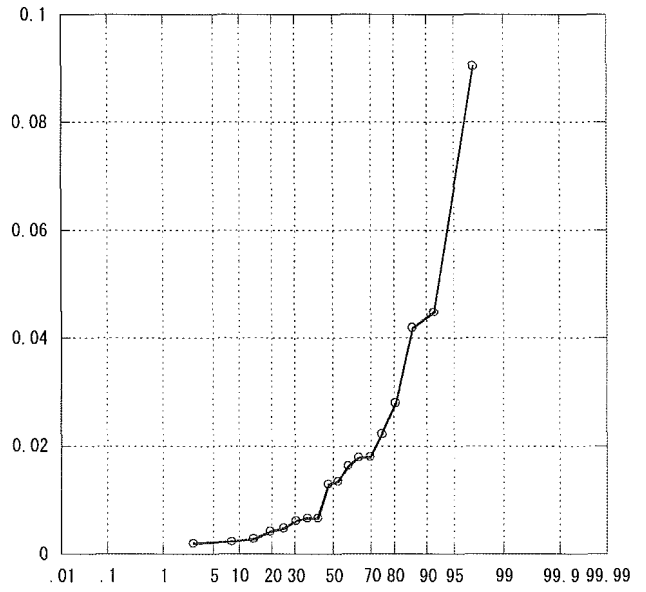
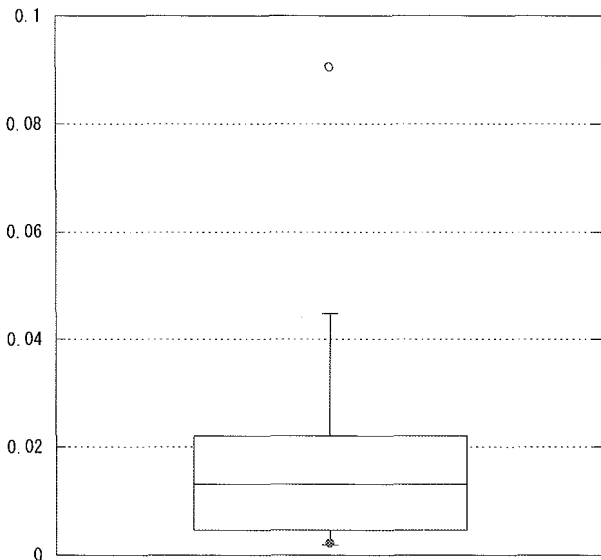


全感染率（感性）



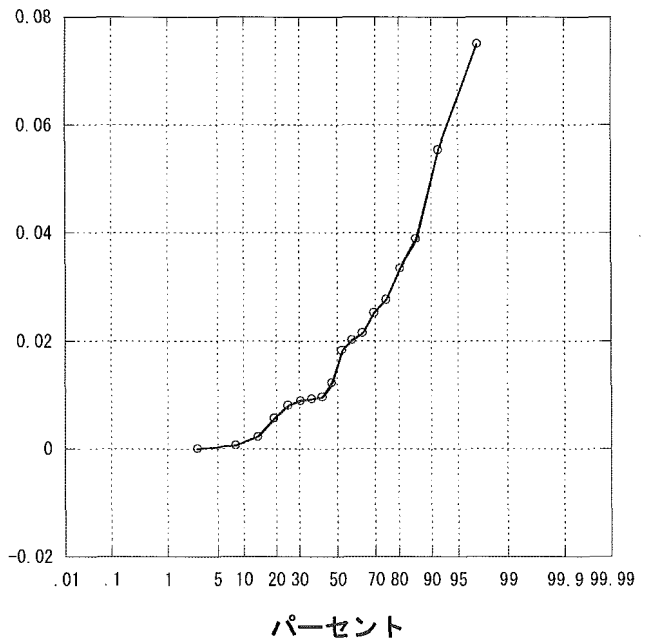
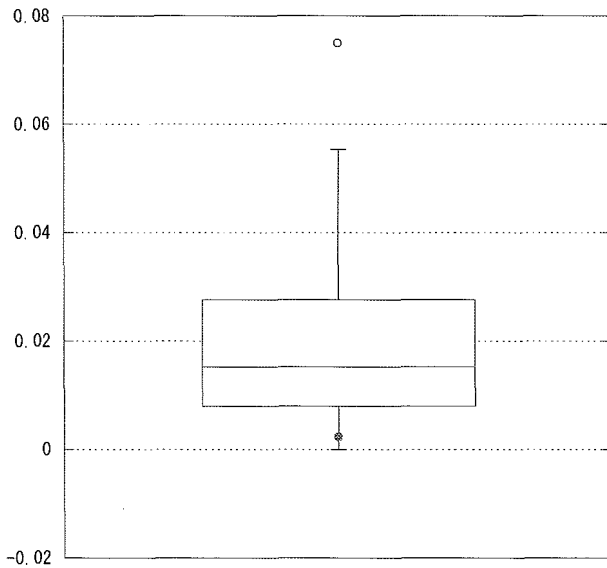
パーセント

肺炎感染率（耐性）



パーセント

肺炎感染率（感性）

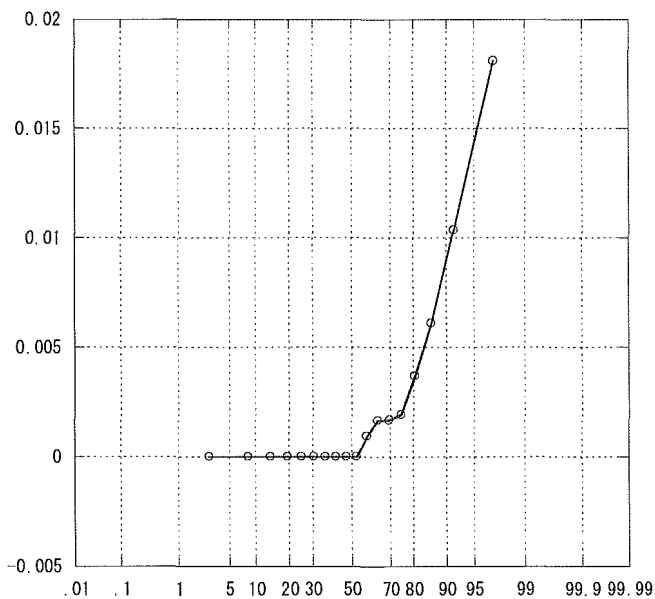
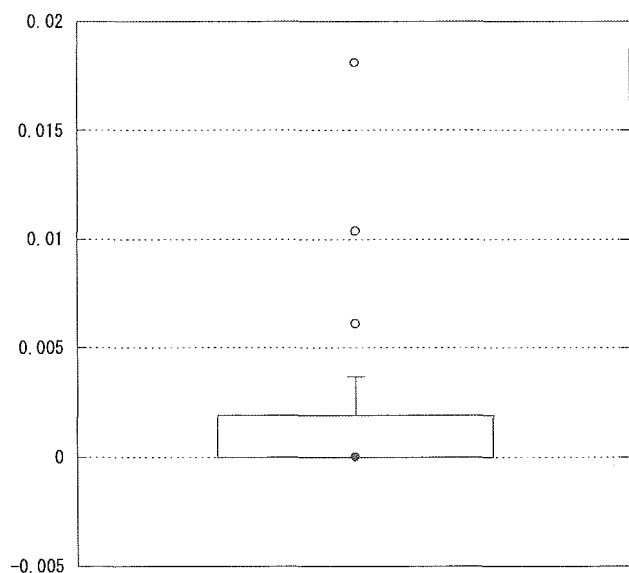


パーセント

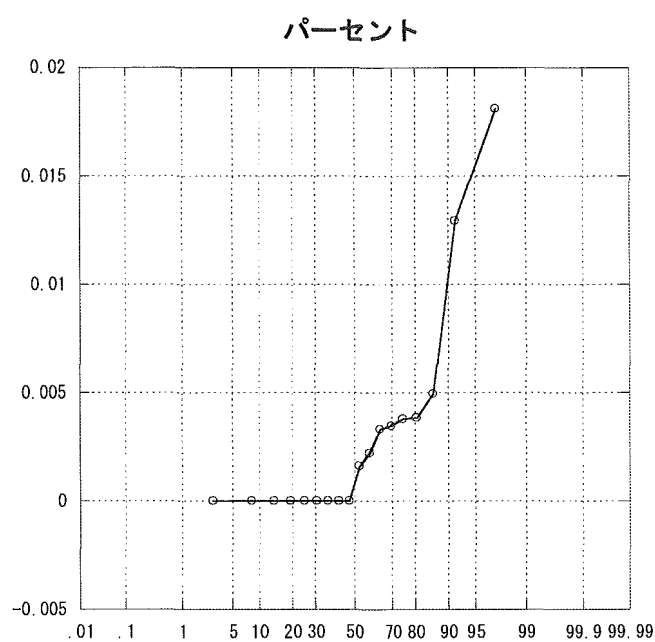
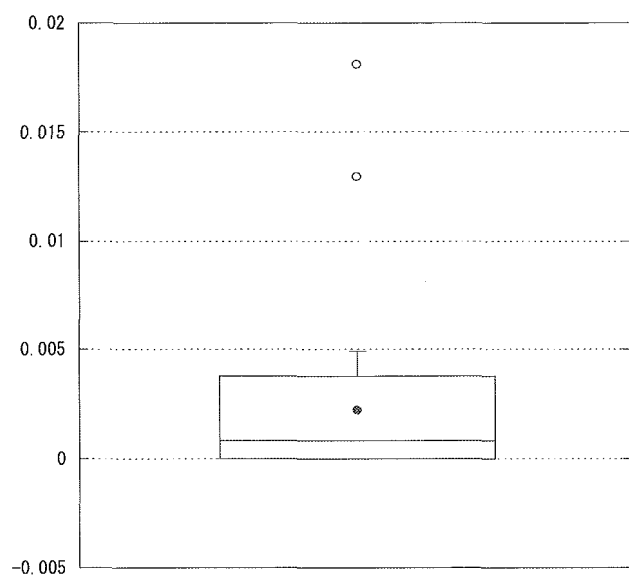


# ICU研究班2004年施設間比較

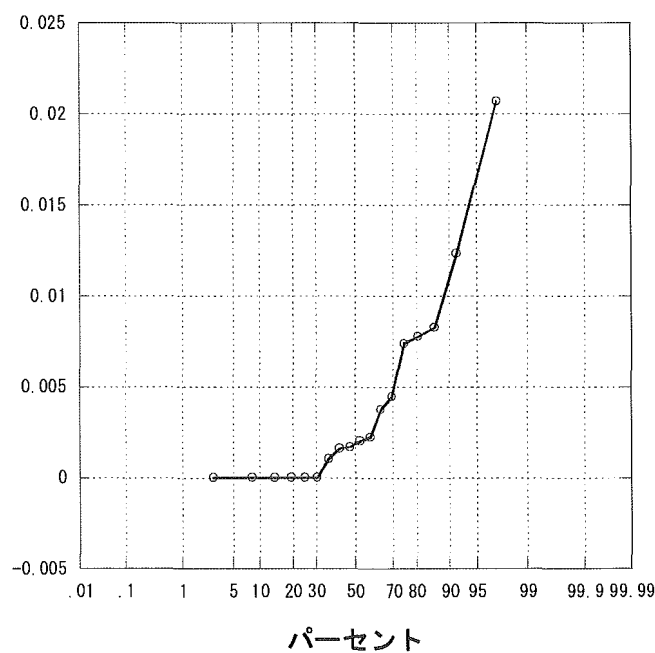
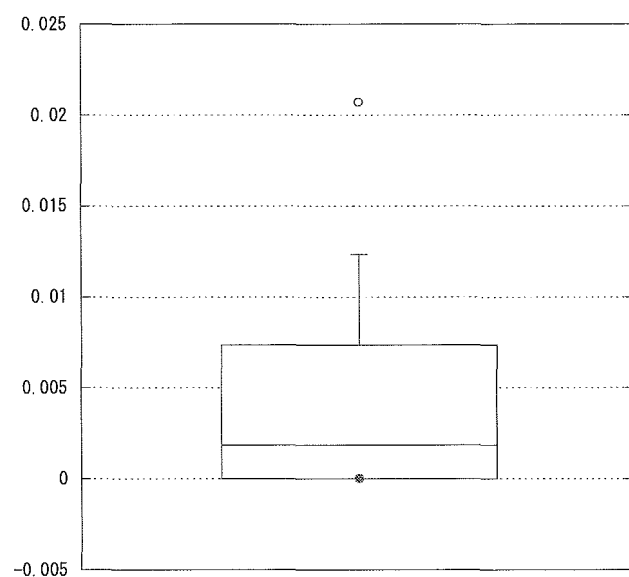
カテ感染率（耐性）



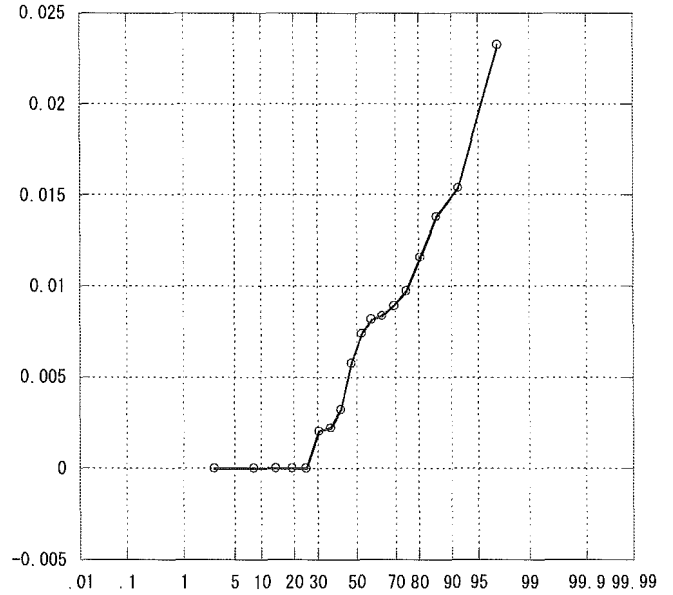
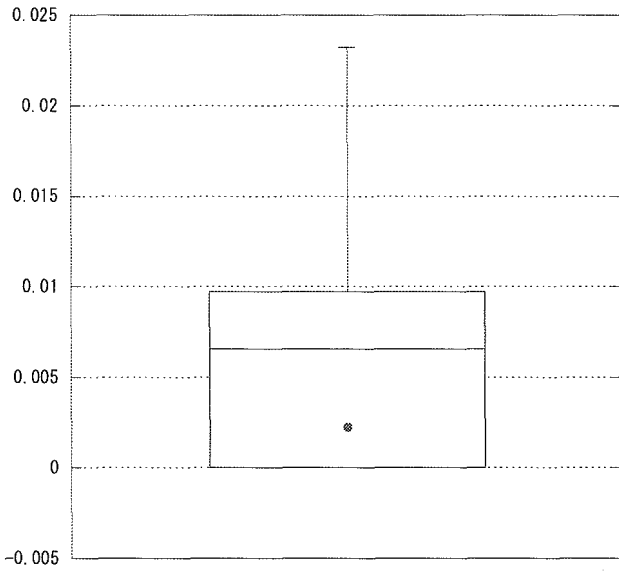
カテ感染率（感性）



創感染率（耐性）

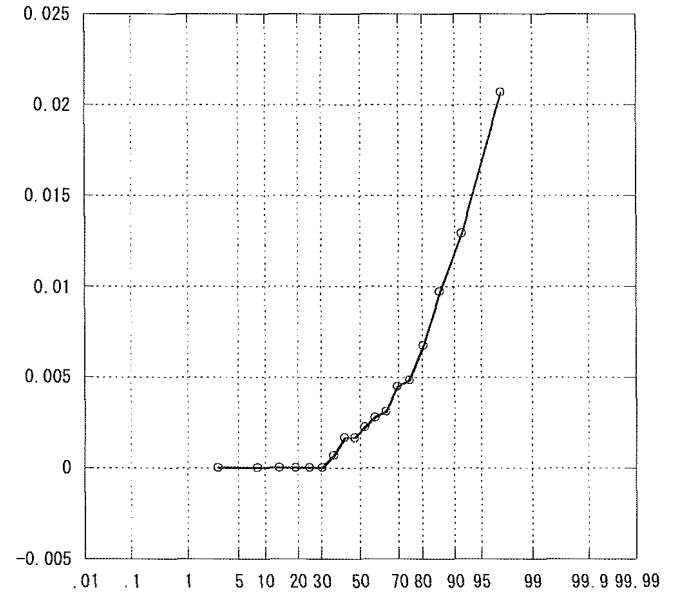
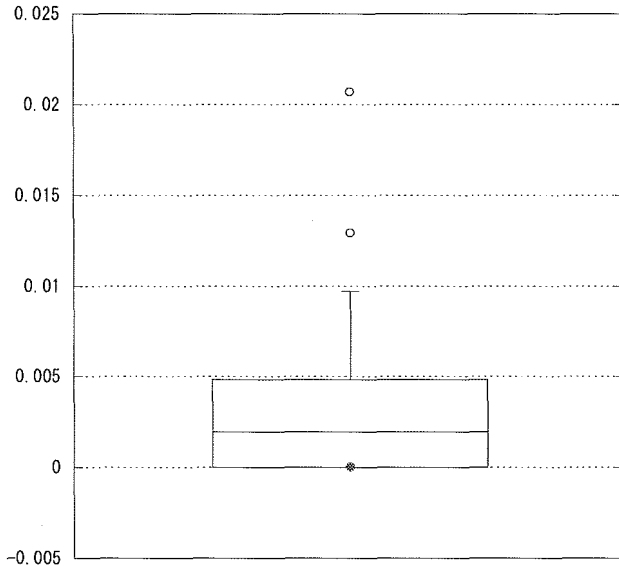


創感染率（感性）



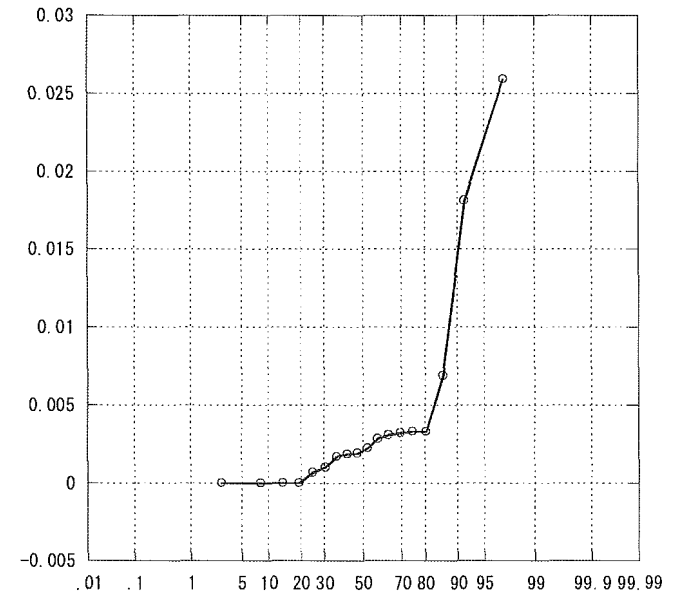
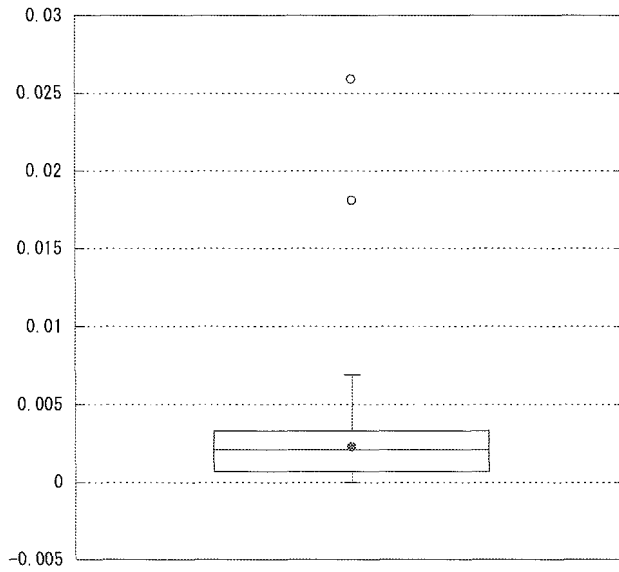
パーセント

敗血症感染率（耐性）



パーセント

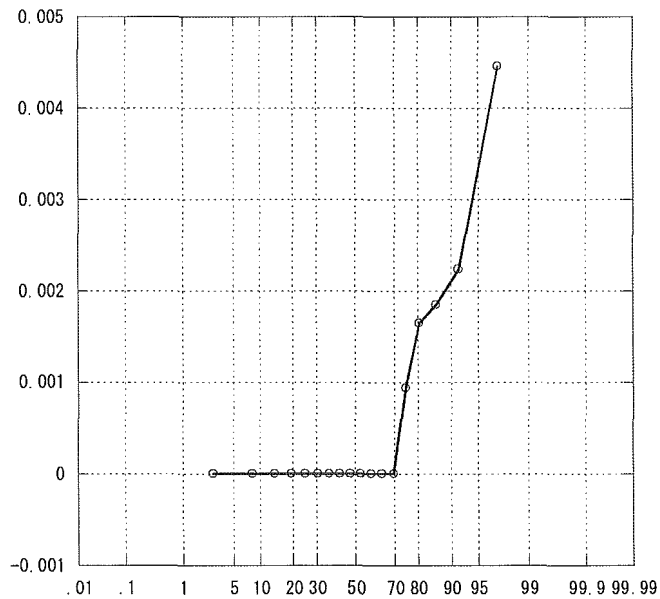
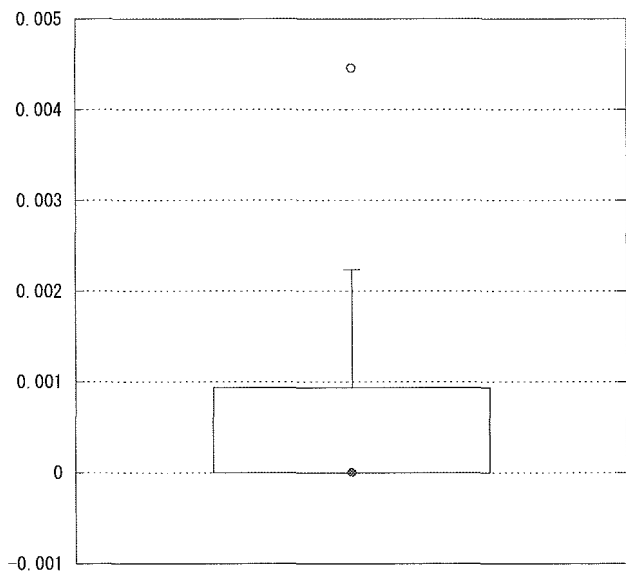
敗血症感染率（感性）



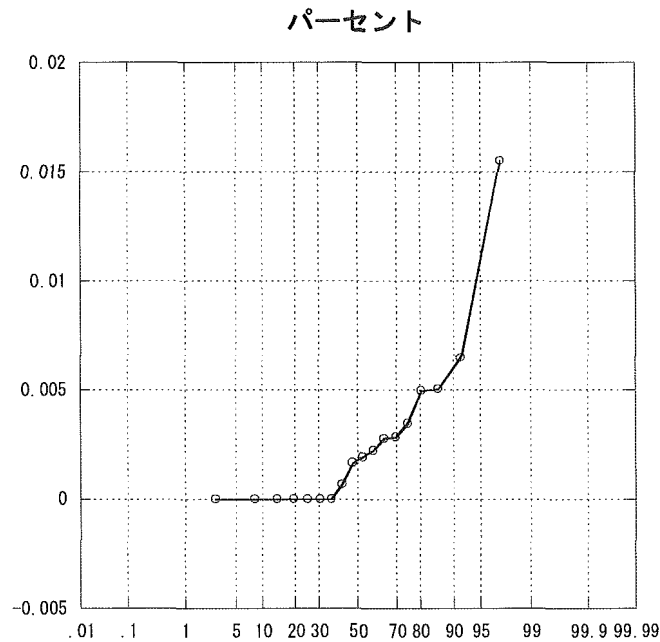
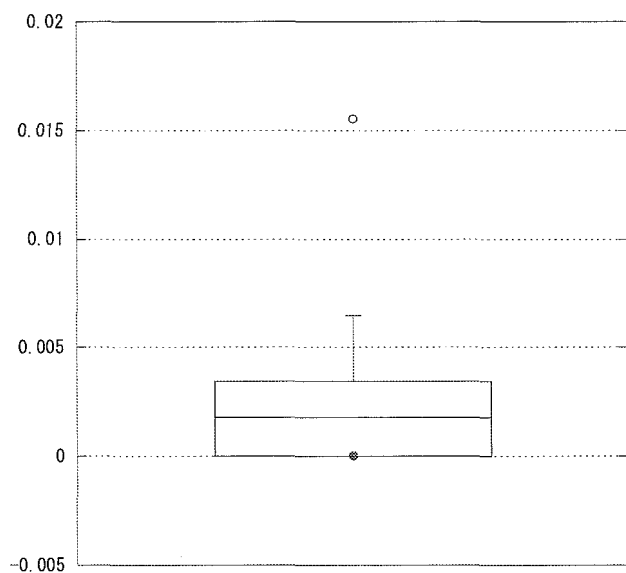
パーセント

# ICU研究班2004年施設間比較

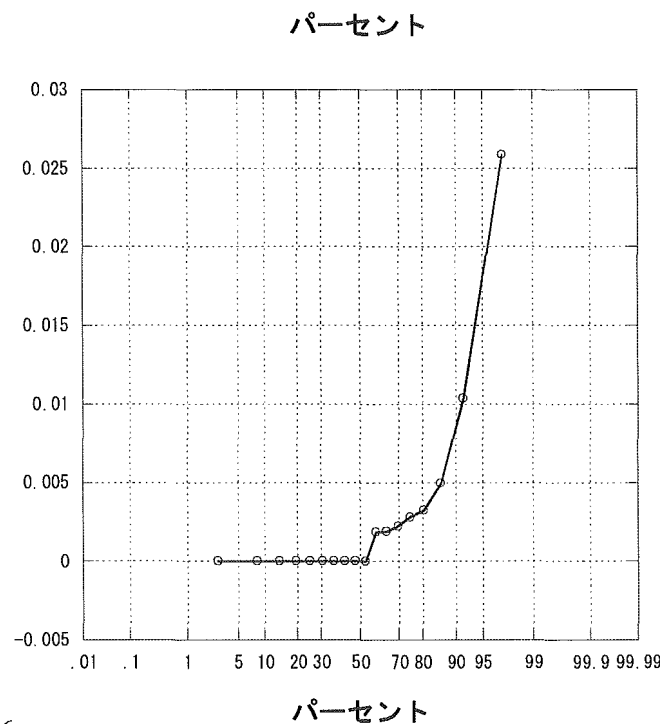
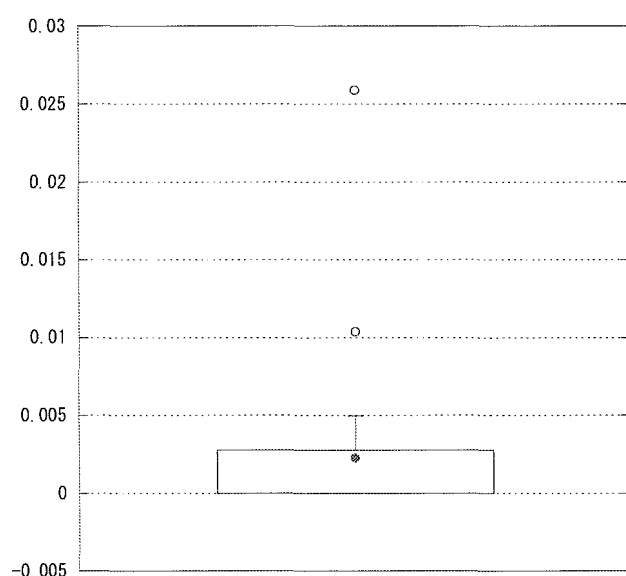
尿路感染率（耐性）



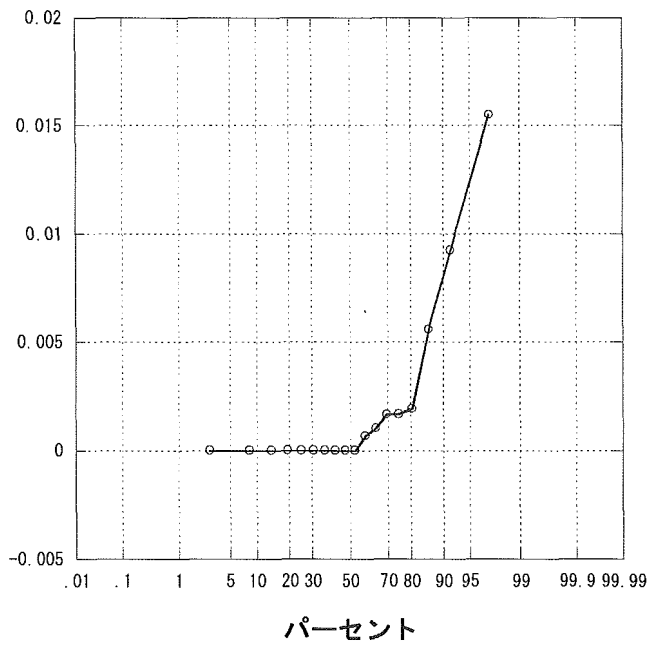
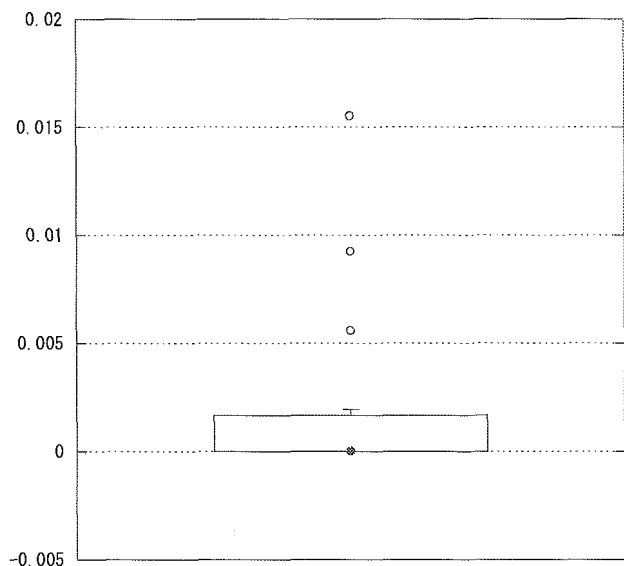
尿路感染率（感性）



その他感染率（耐性）



その他感染率（感性）

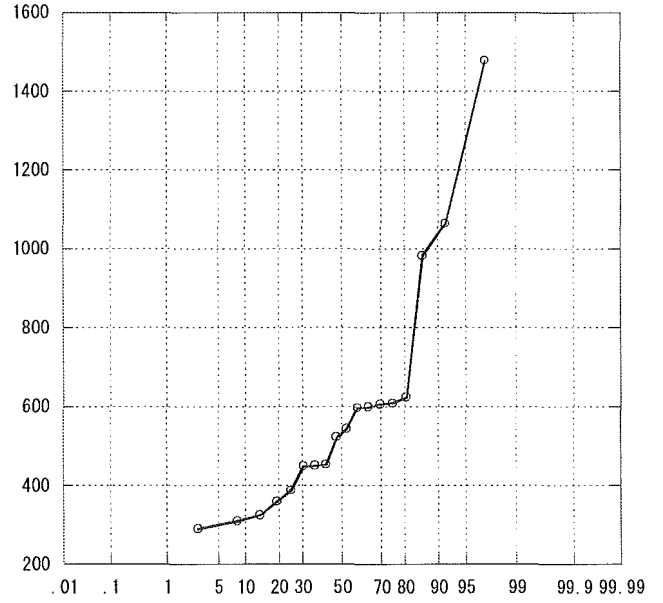
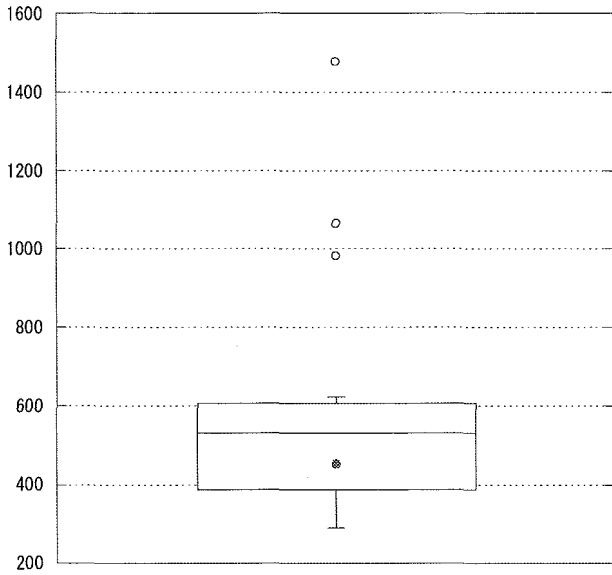


## ○ 施設

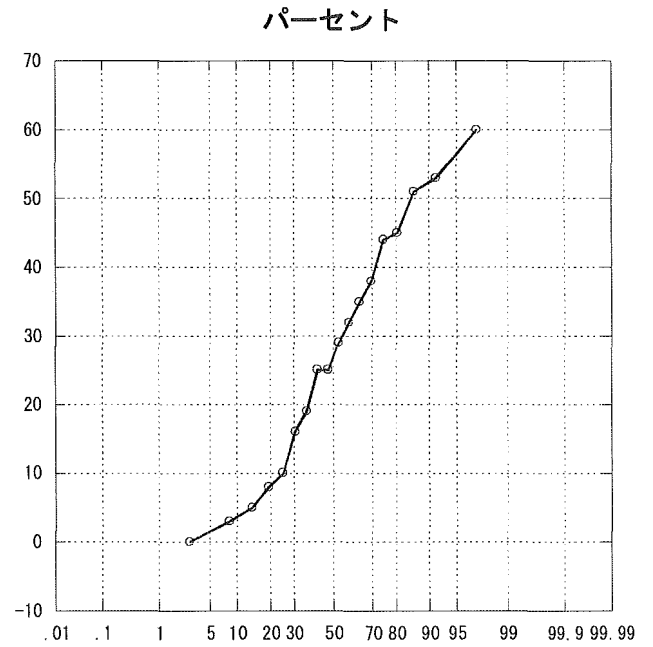
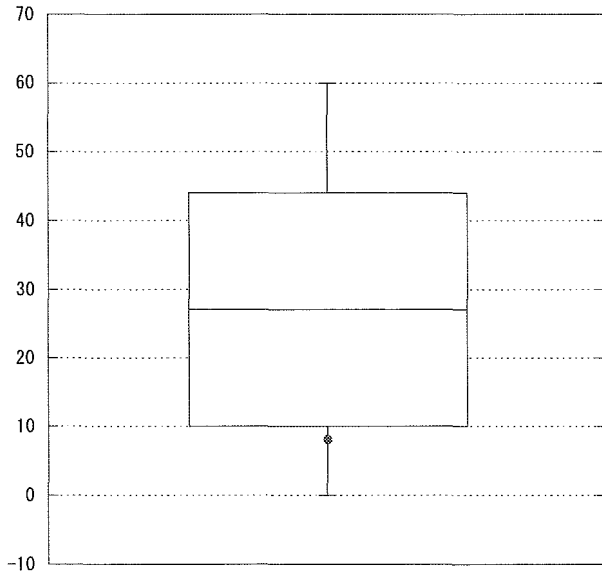
2004年1月～12月

# ICU研究班2004年施設間比較

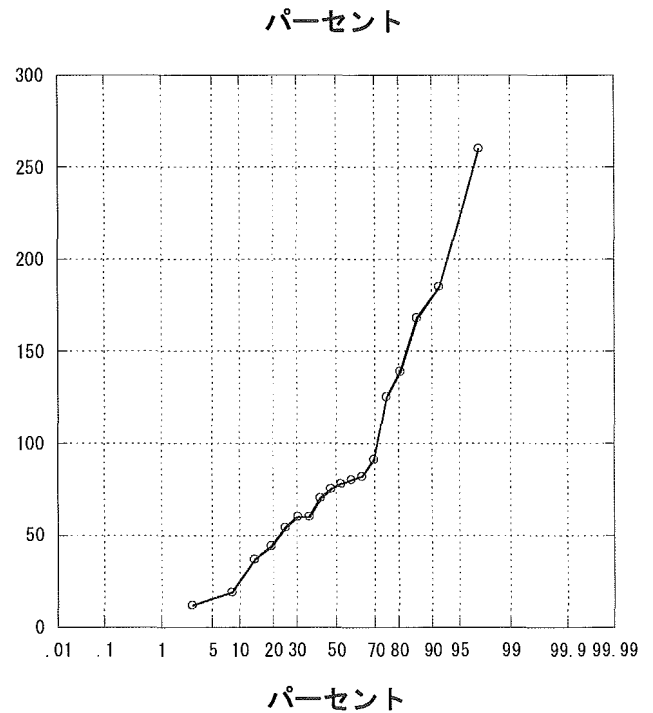
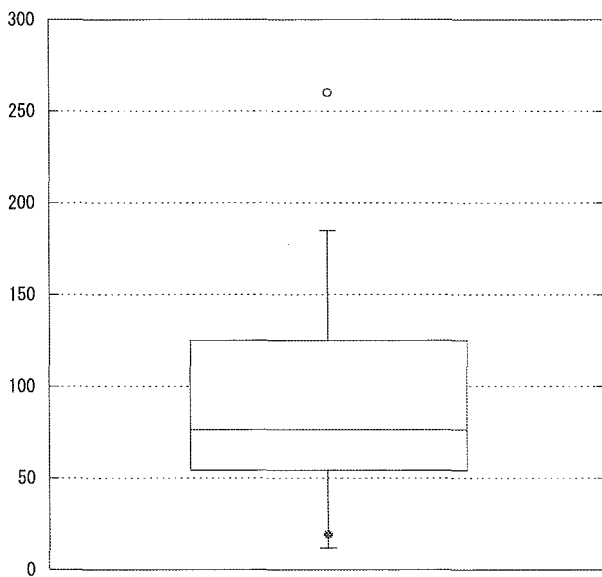
## 年間収容患者数



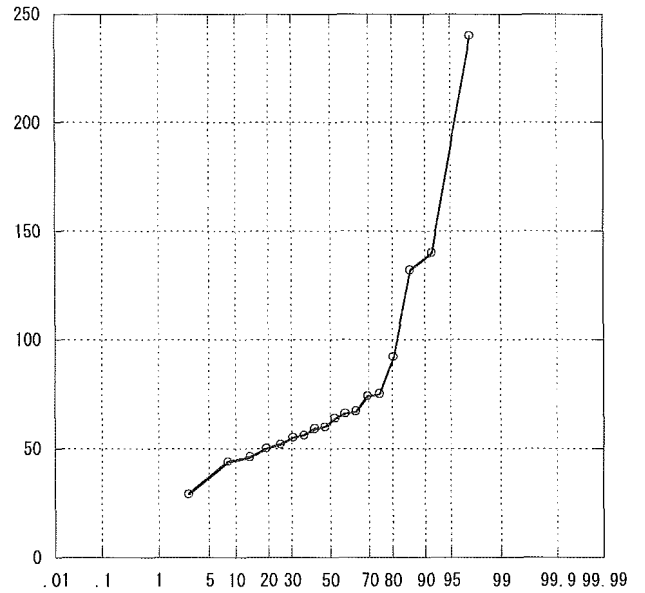
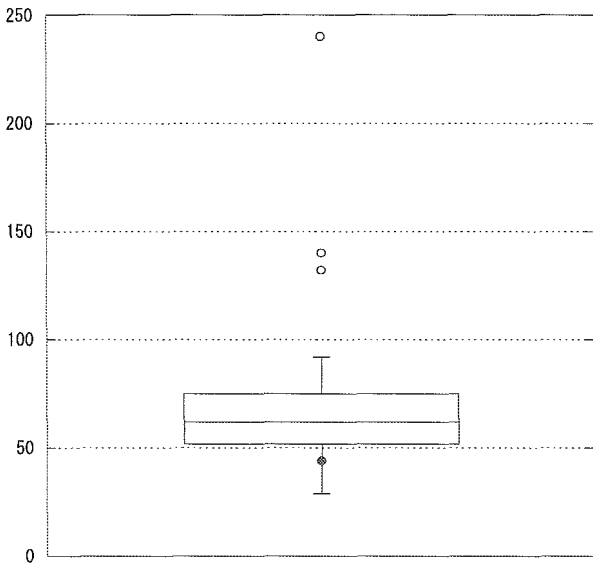
## APACHE 0~4



## APACHE 5~9

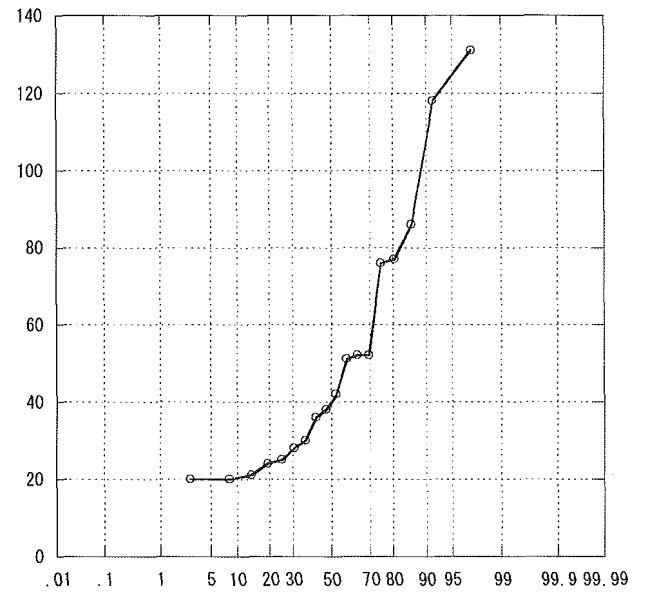
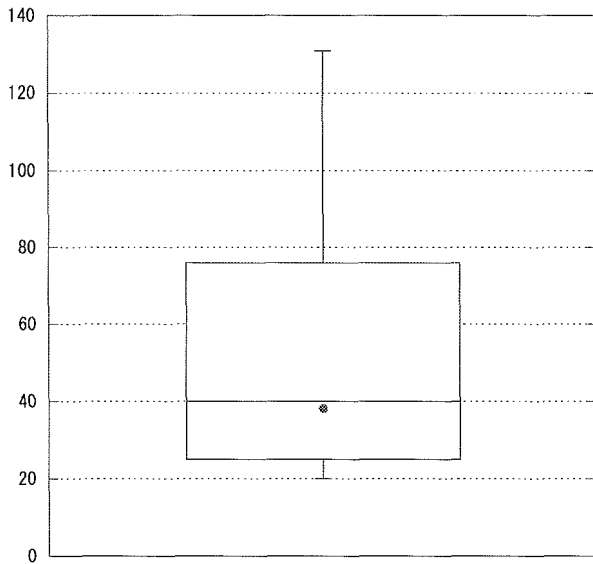


APACHE 10~14



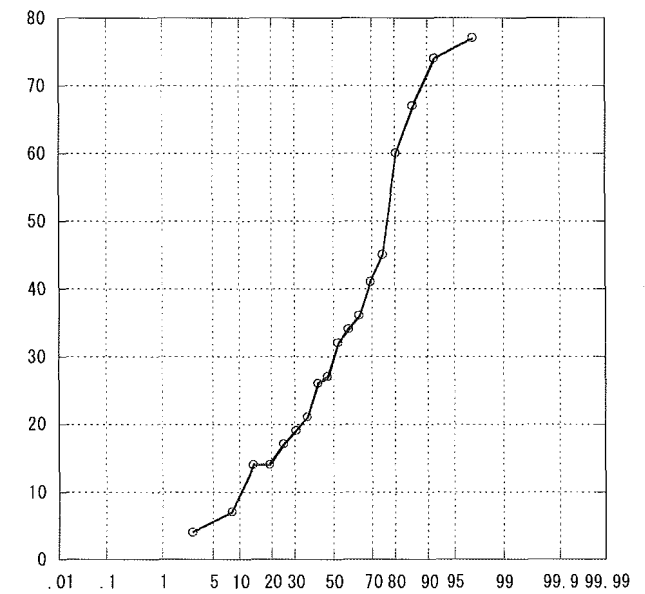
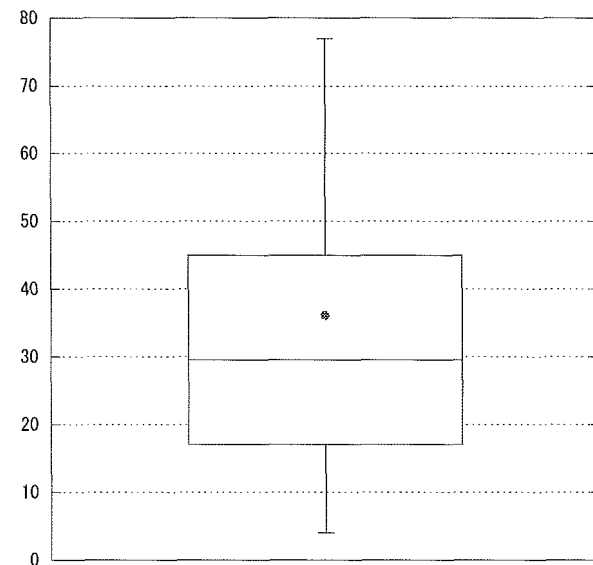
パーセント

APACHE 15~19



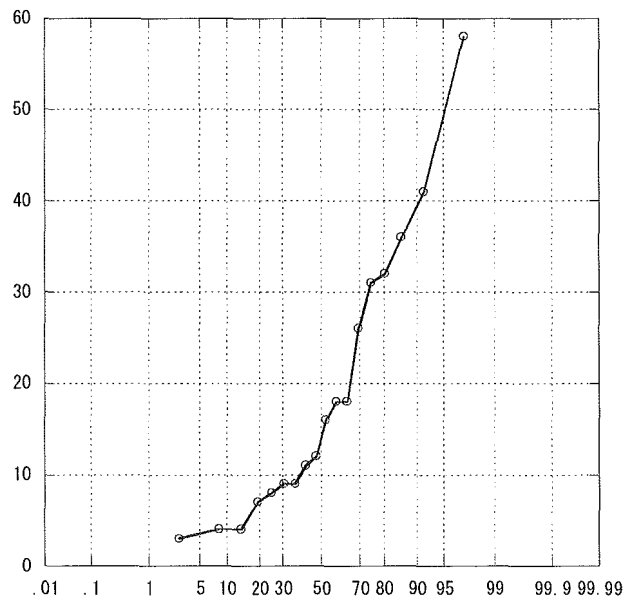
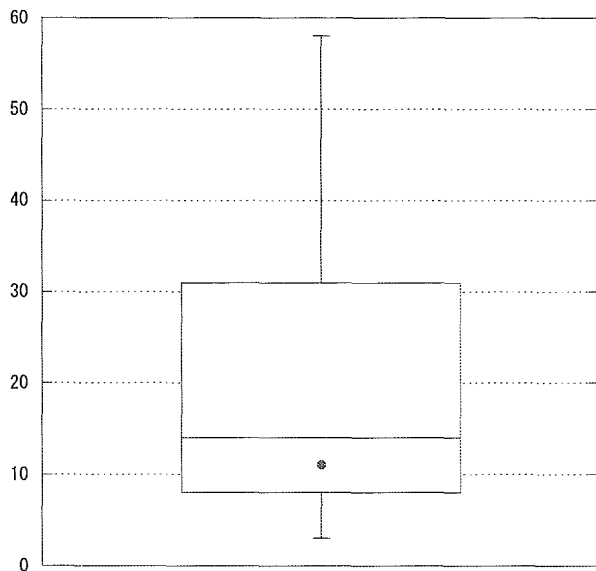
パーセント

APACHE 20~24

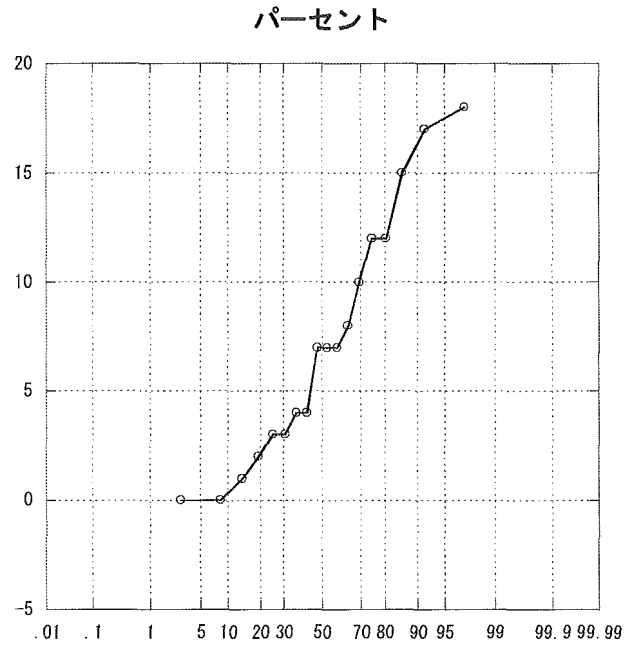
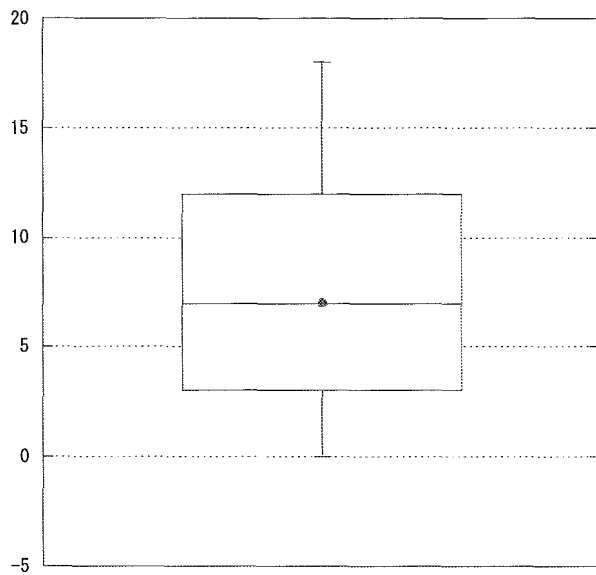


パーセント

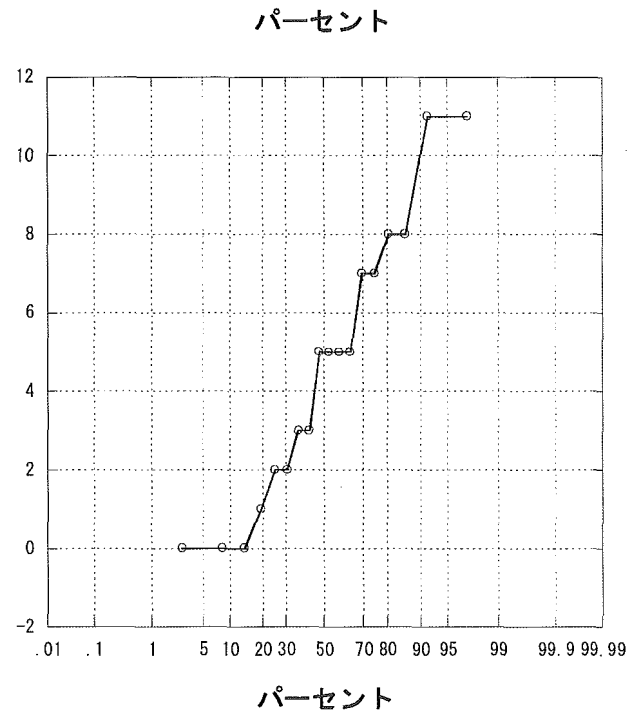
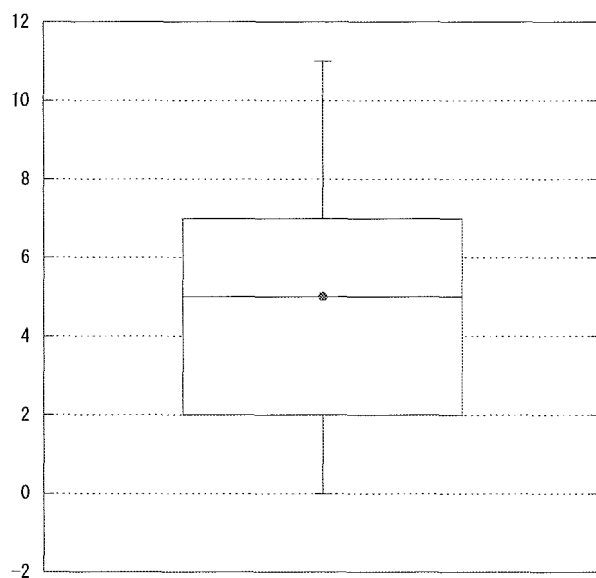
APACHE 25~29



APACHE 30~34

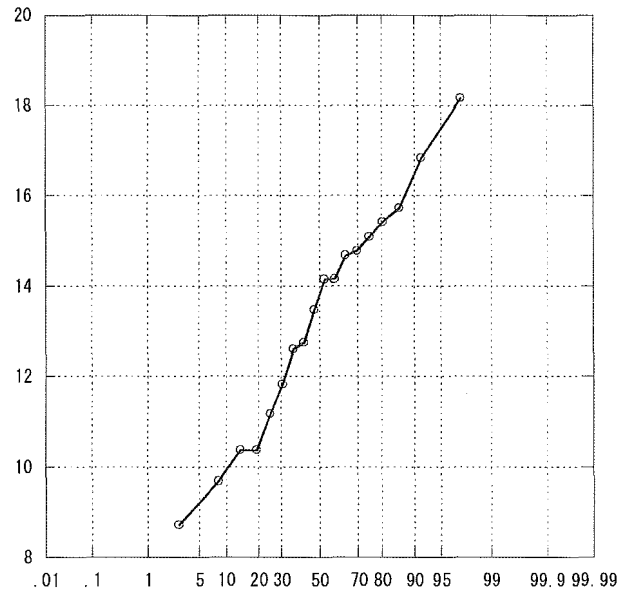
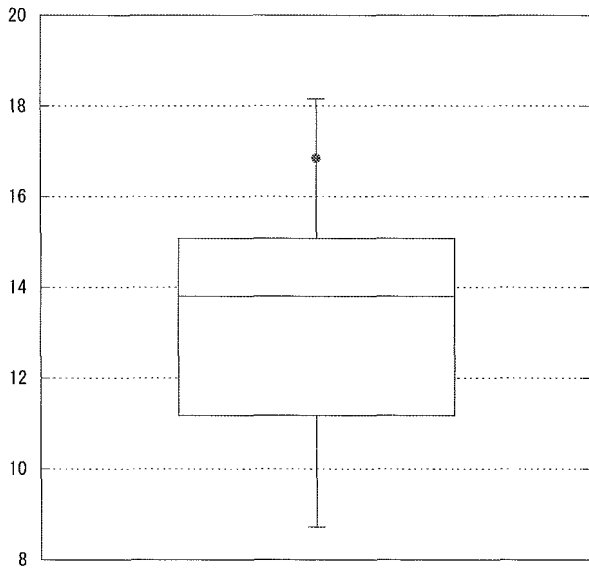


APACHE 35~

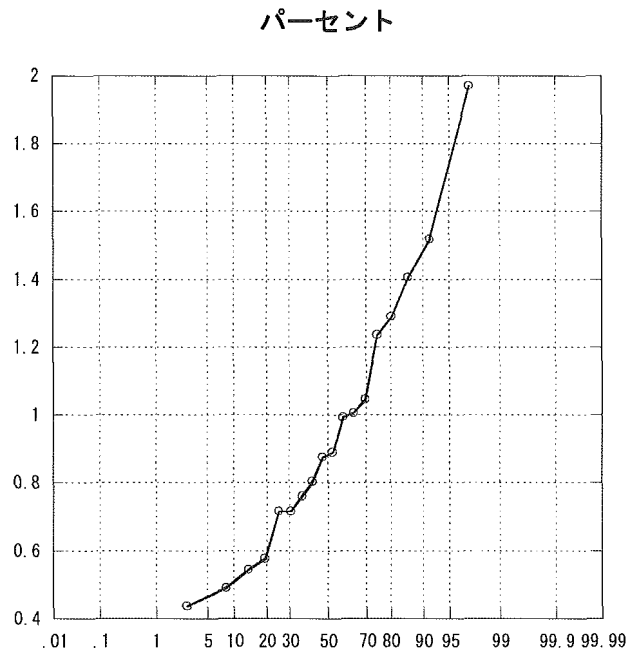
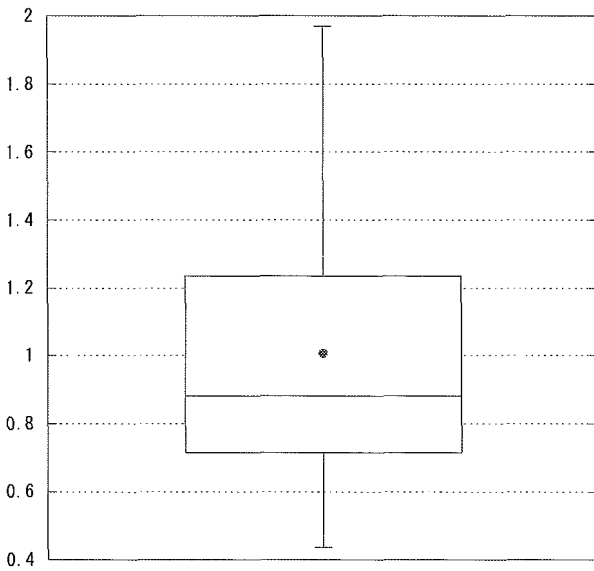




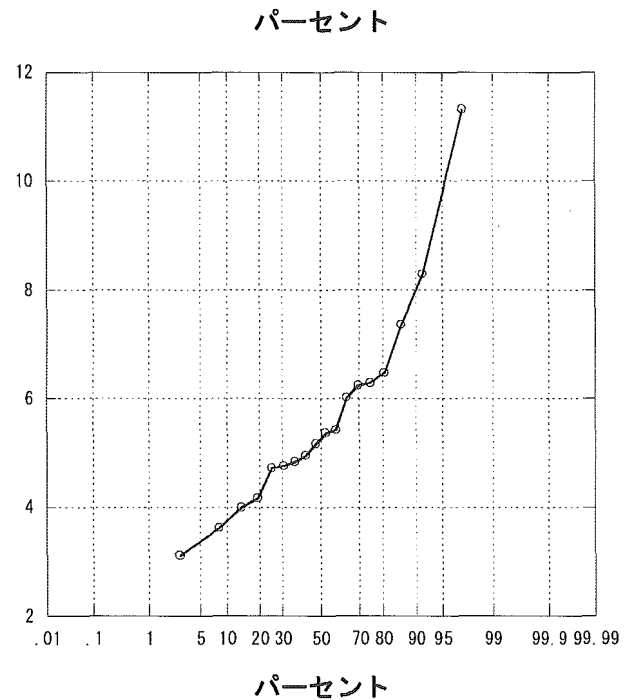
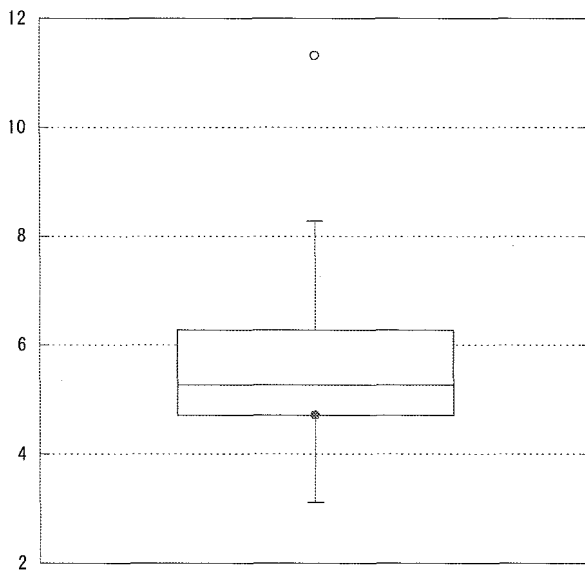
APACHE平均



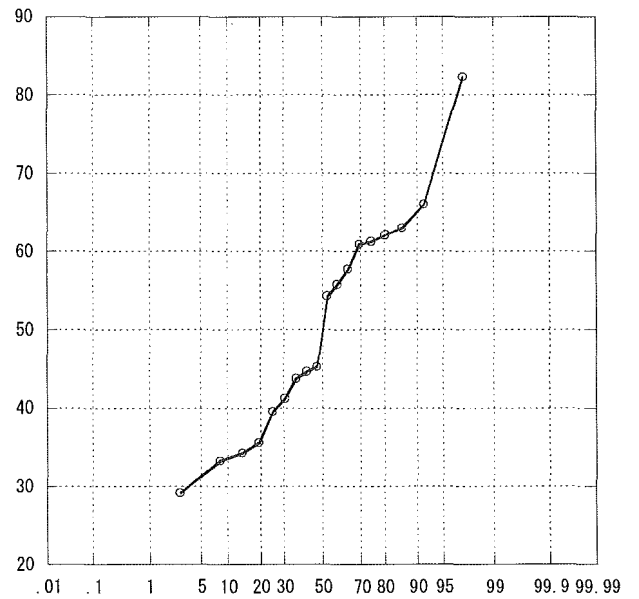
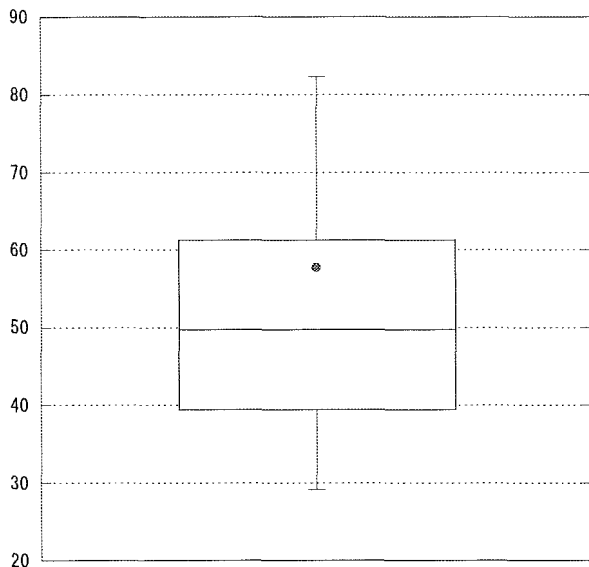
標準化死亡比



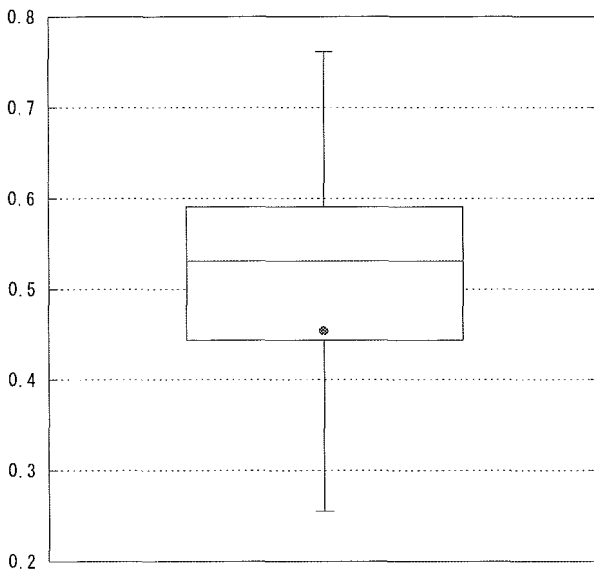
平均在室日数



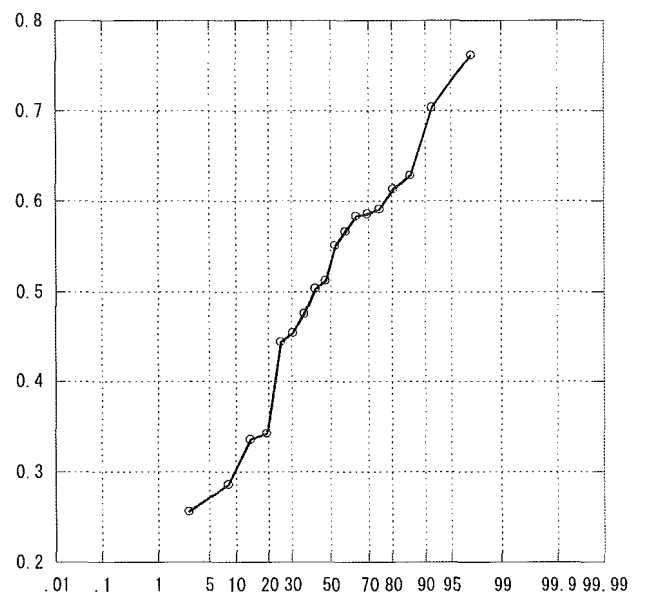
平均在院日数



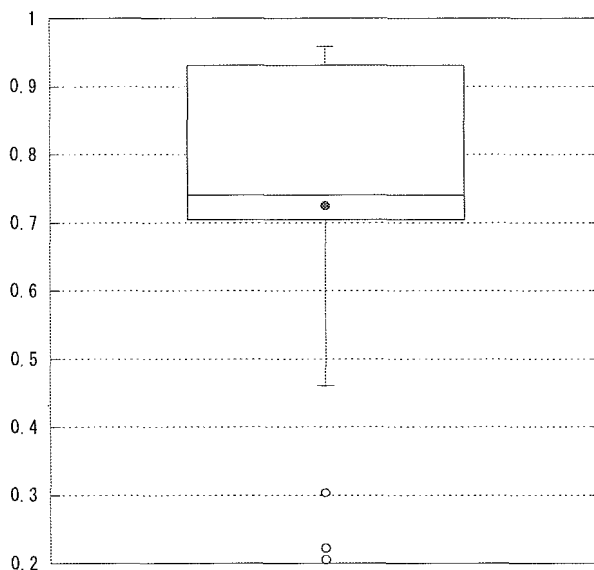
人工呼吸器利用率



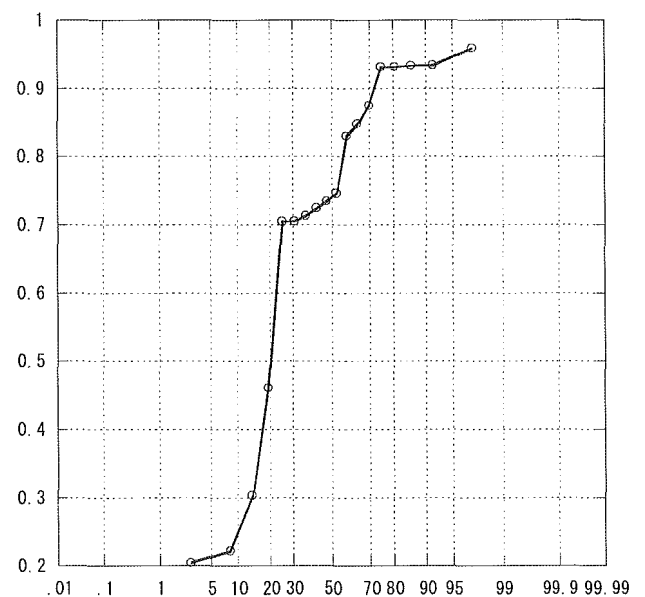
パーセント



中心静脈カテ利用率

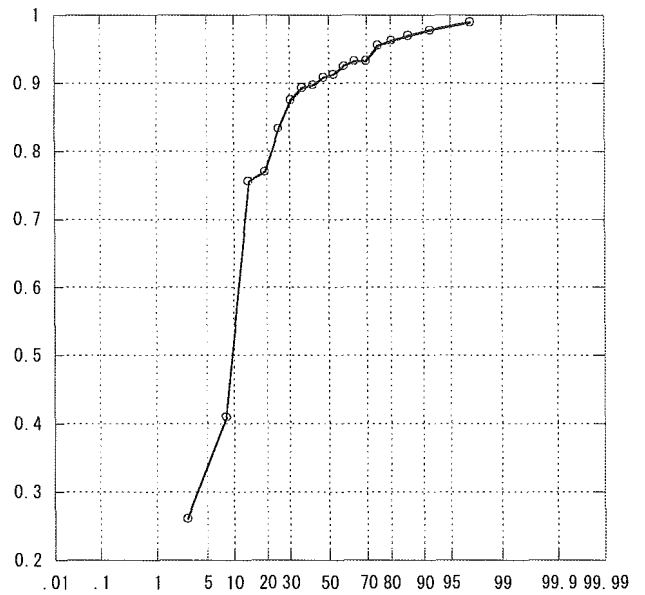
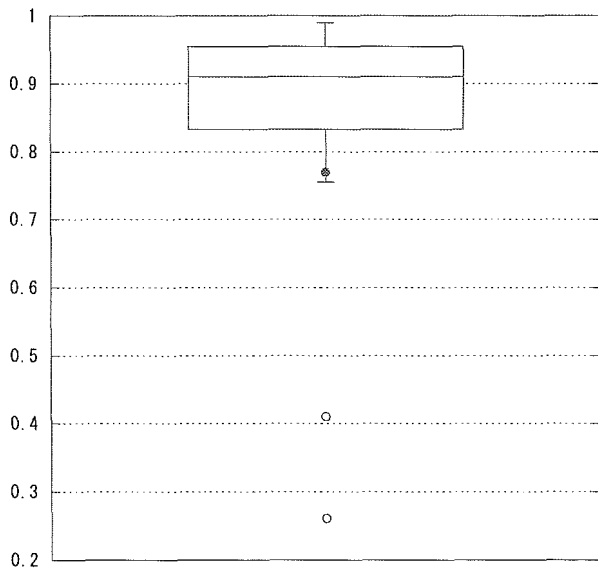


パーセント

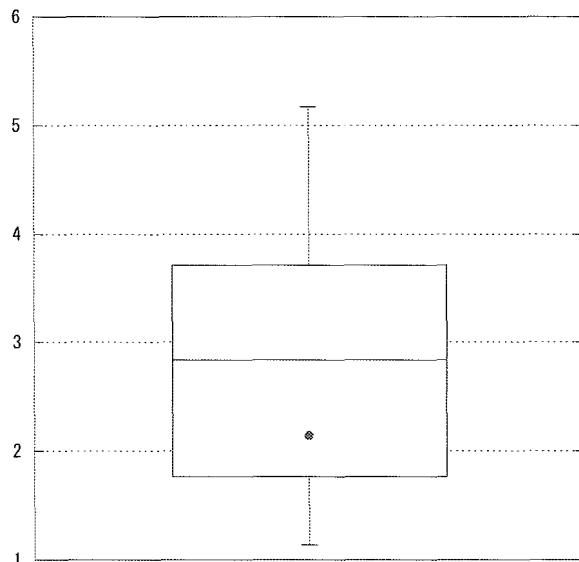


パーセント

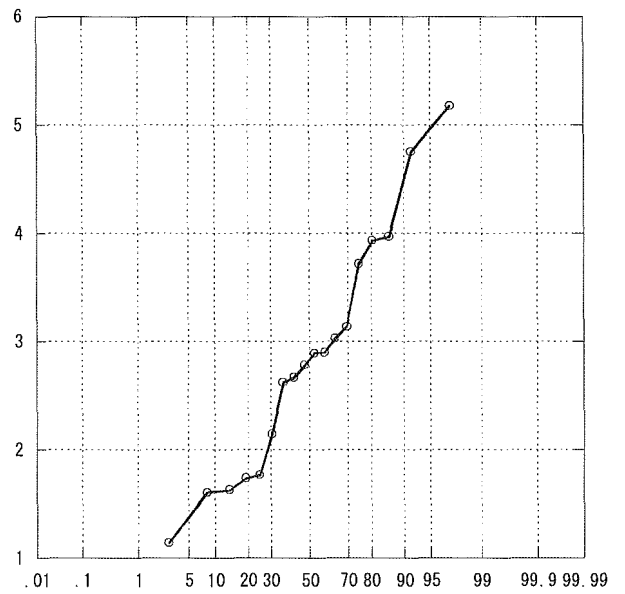
尿道カテ利用率



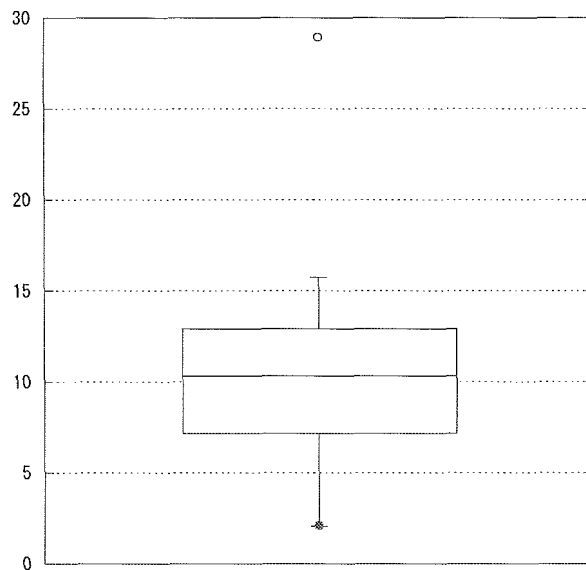
人工呼吸日／患者数



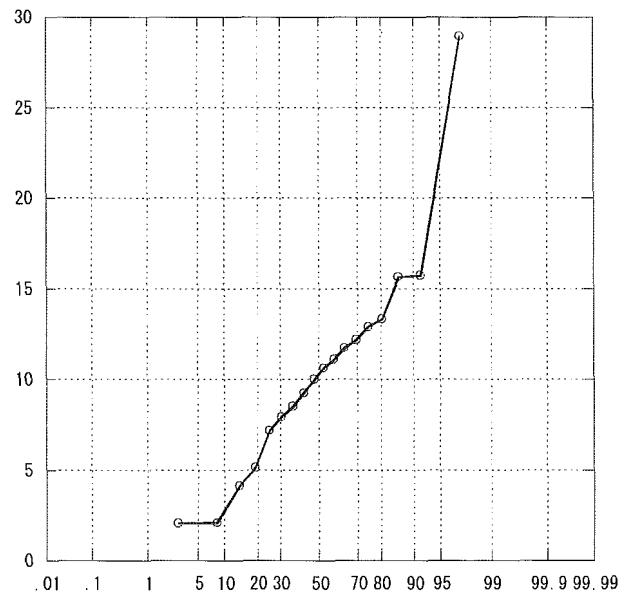
パーセント



リスク調整感染率（肺炎）

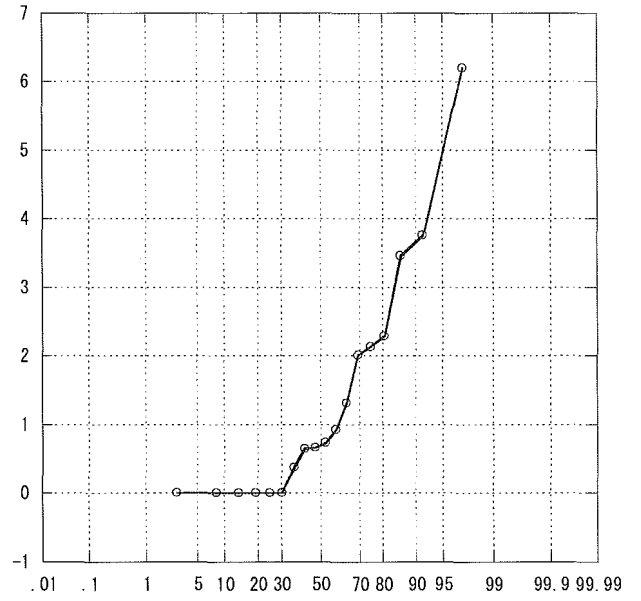
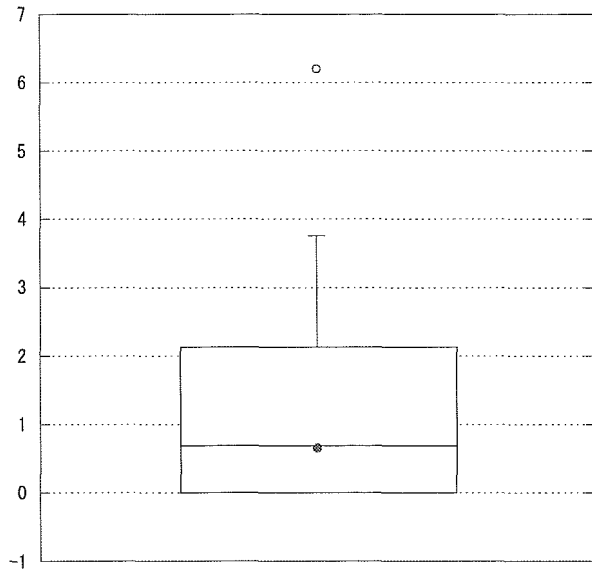


パーセント

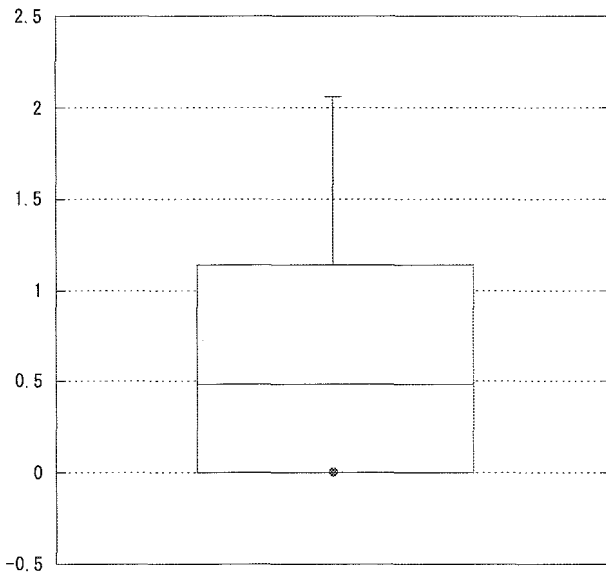


パーセント

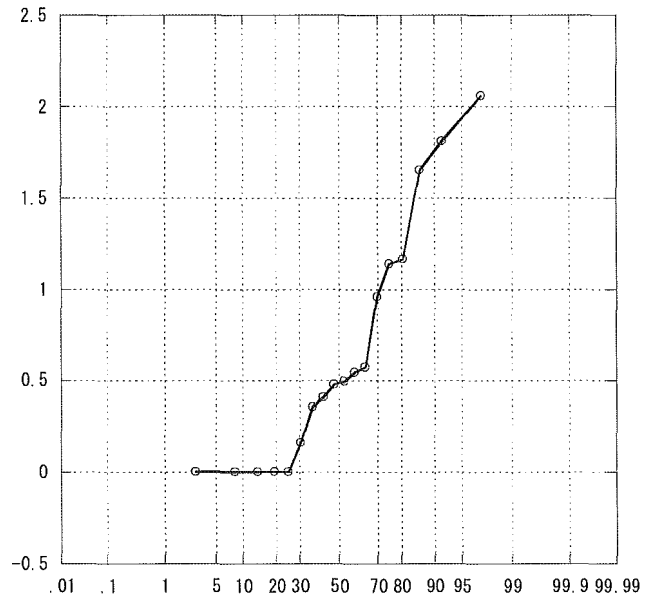
リスク調整感染率（カテ）



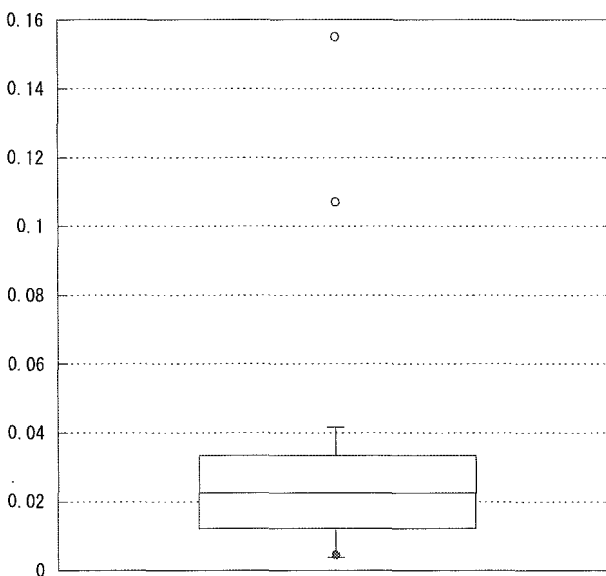
リスク調整感染率（尿路）



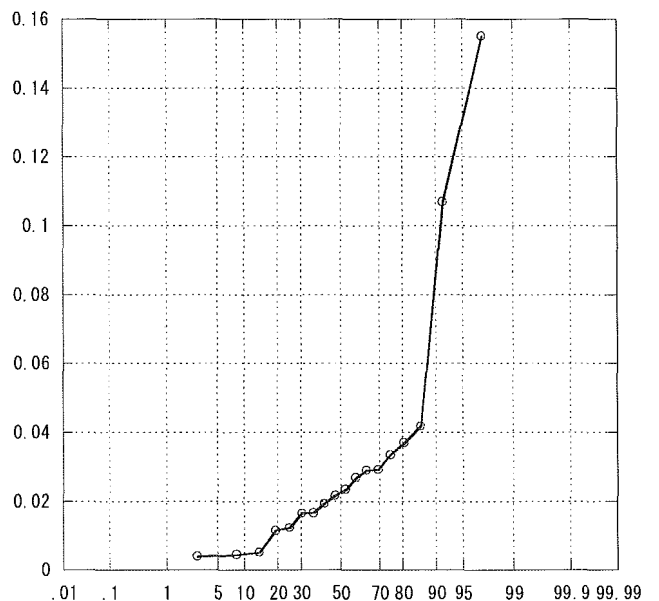
パーセント



全感染率（耐性）



パーセント



パーセント