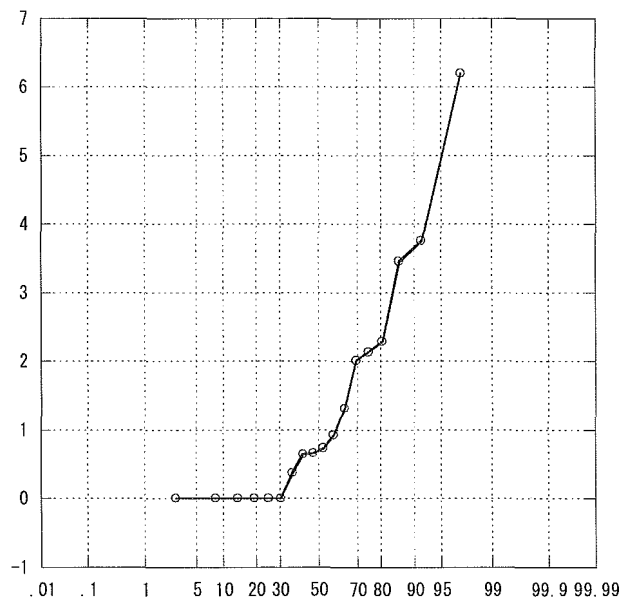
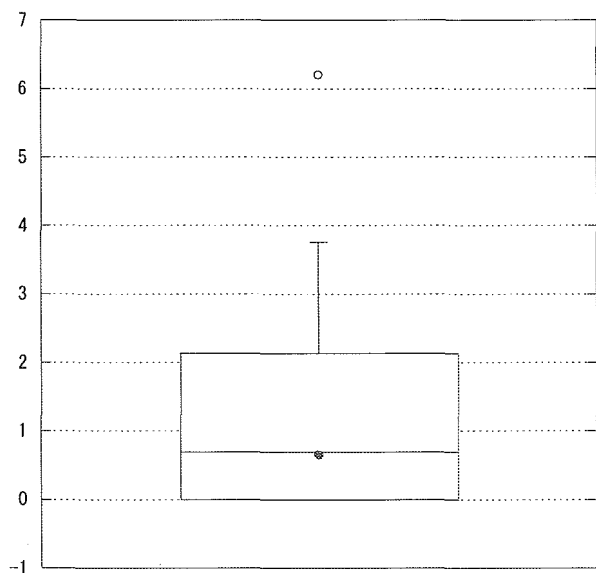
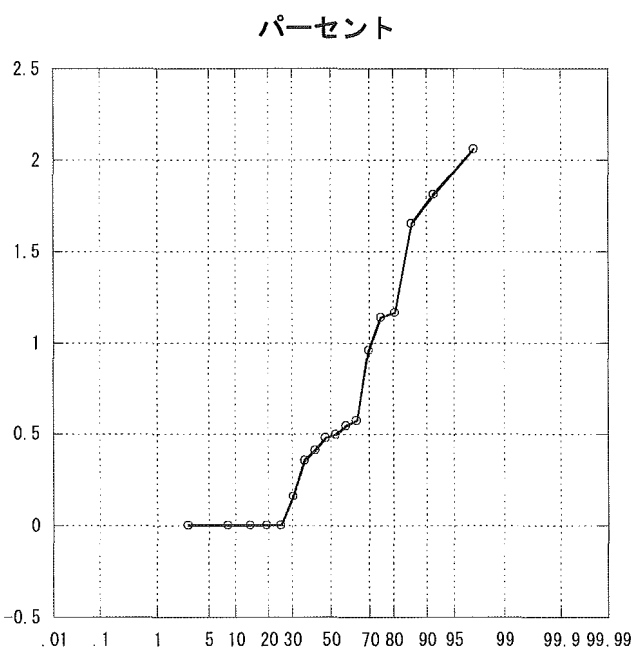
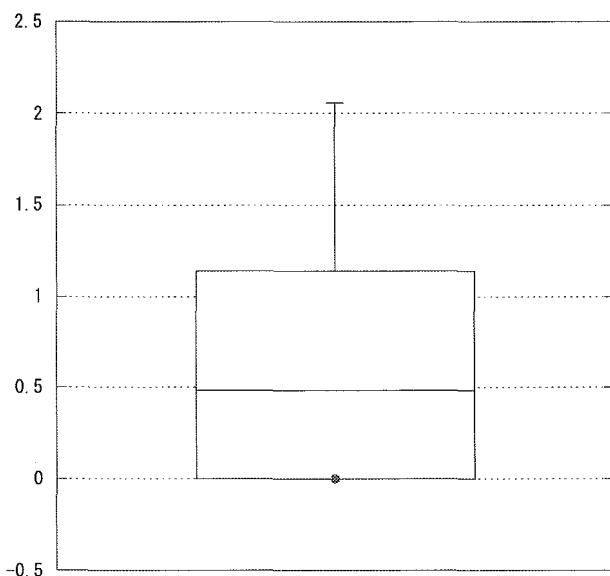


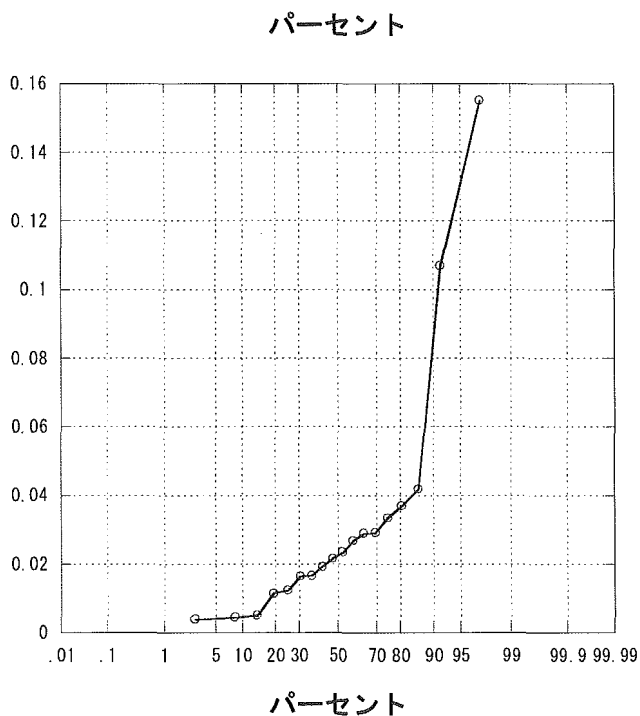
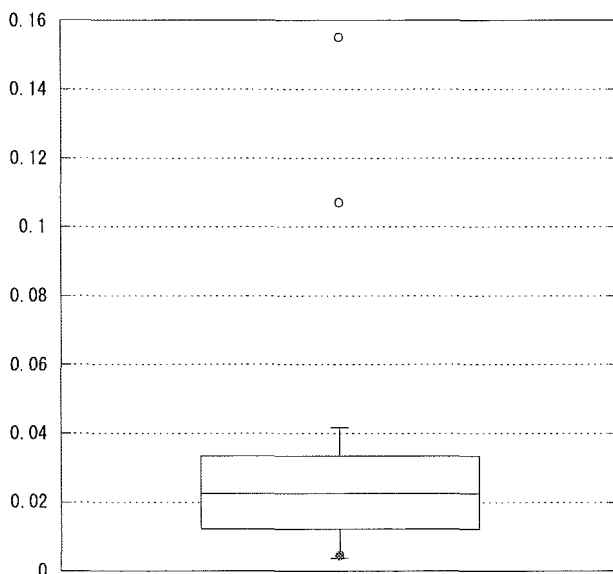
リスク調整感染率（カテ）



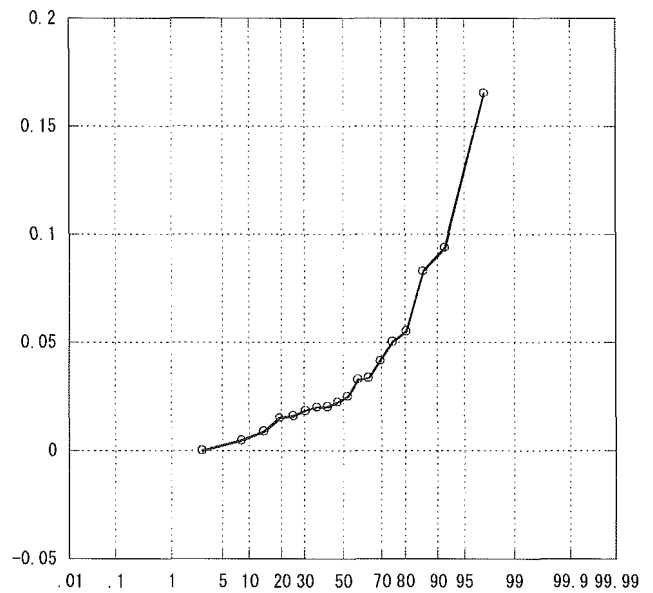
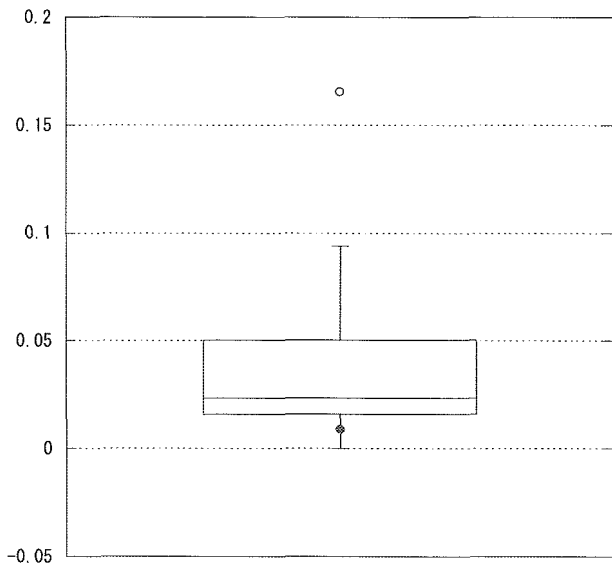
リスク調整感染率（尿路）



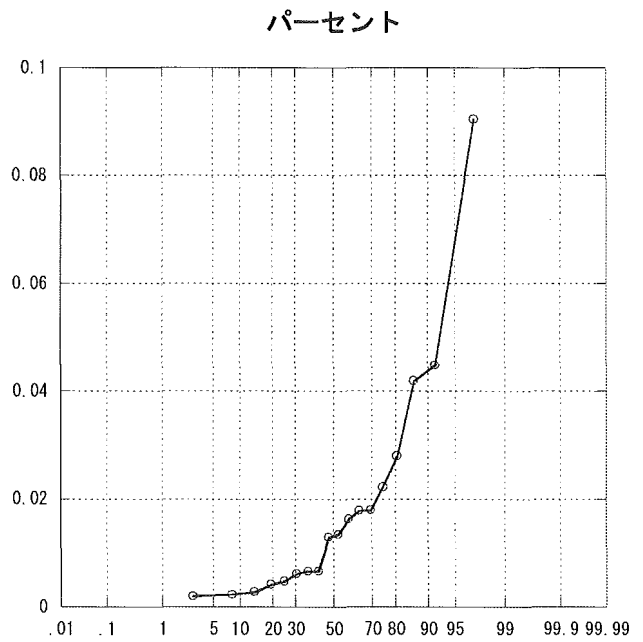
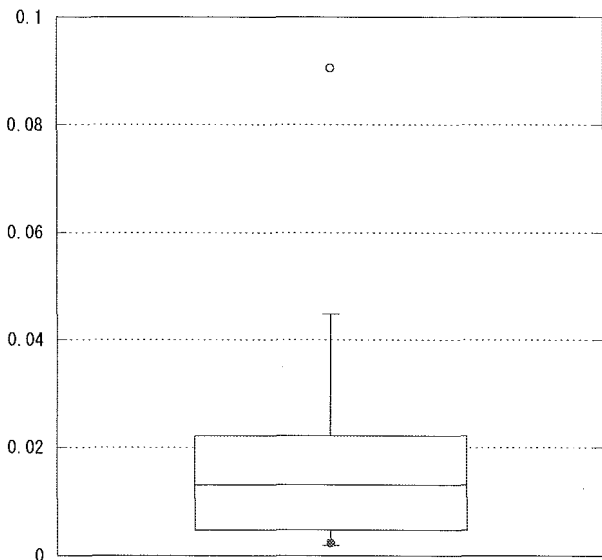
全感染率（耐性）



全感染率（感性）

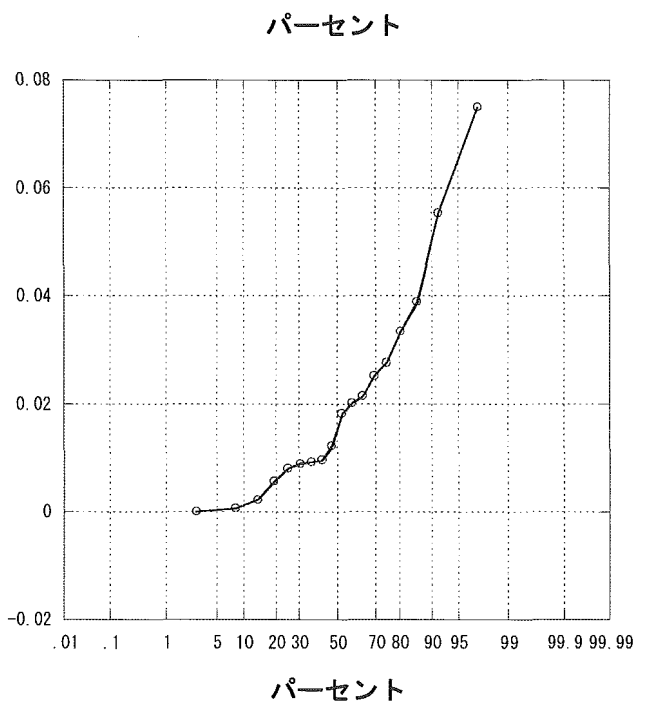
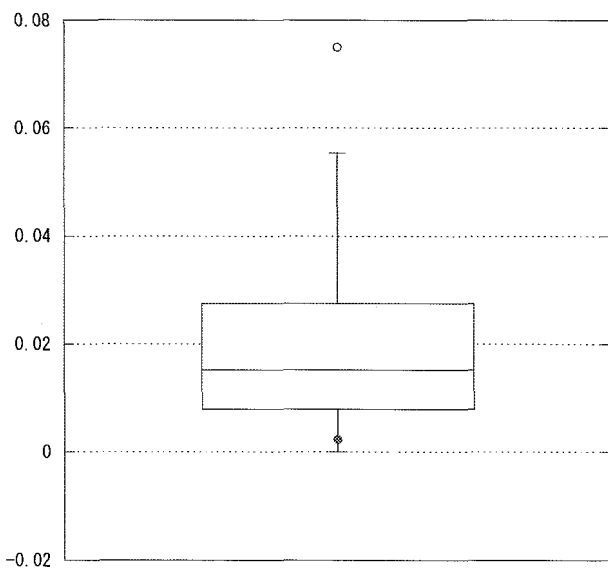


肺炎感染率（耐性）



パーセント

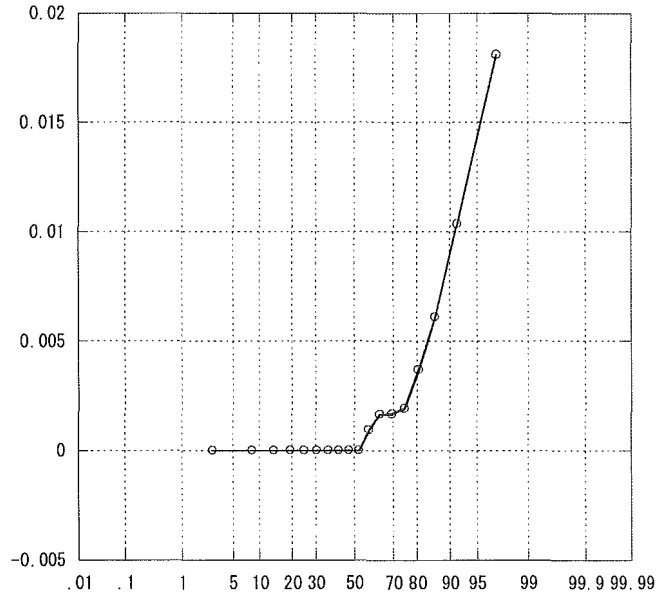
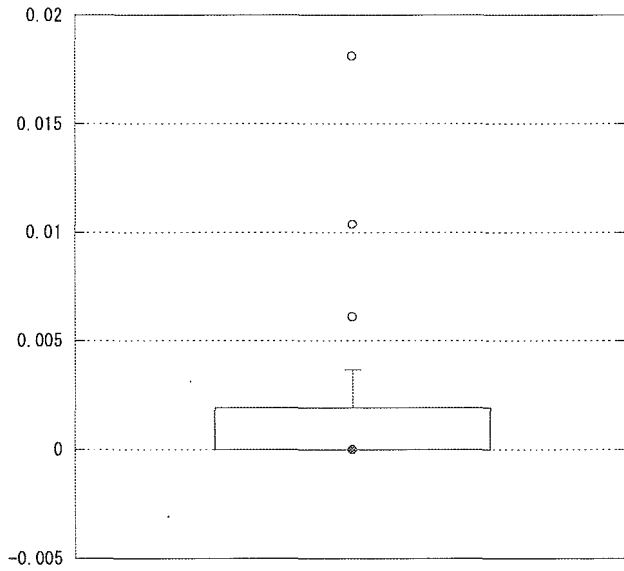
肺炎感染率（感性）



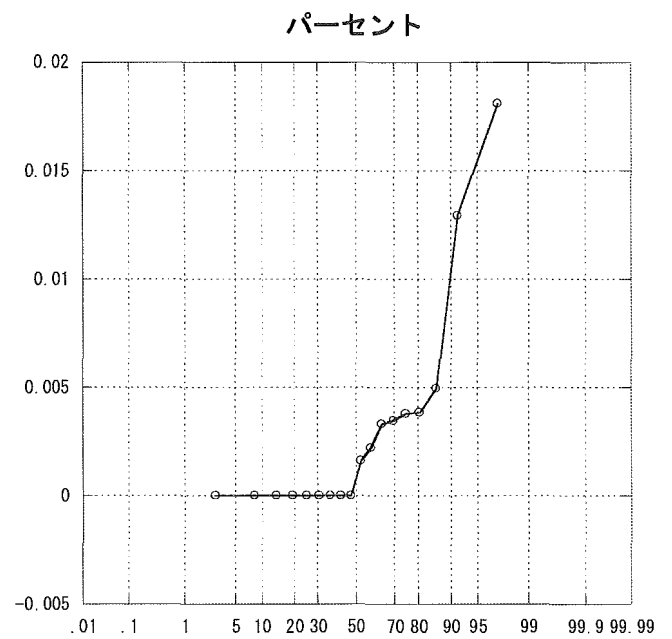
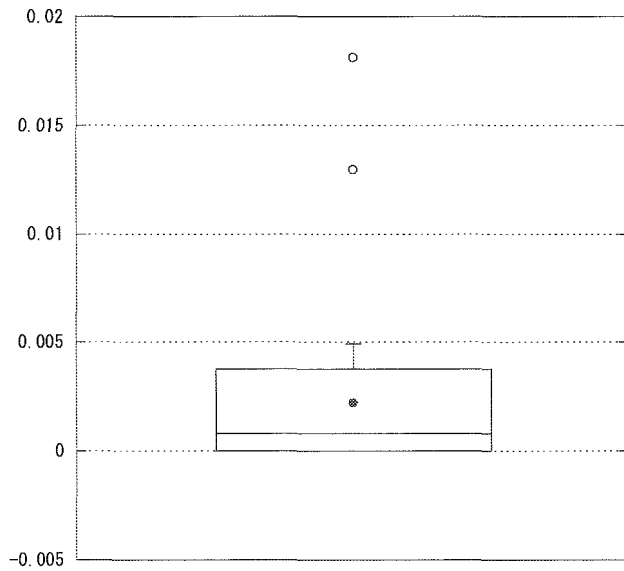
パーセント

ICU研究班2004年施設間比較

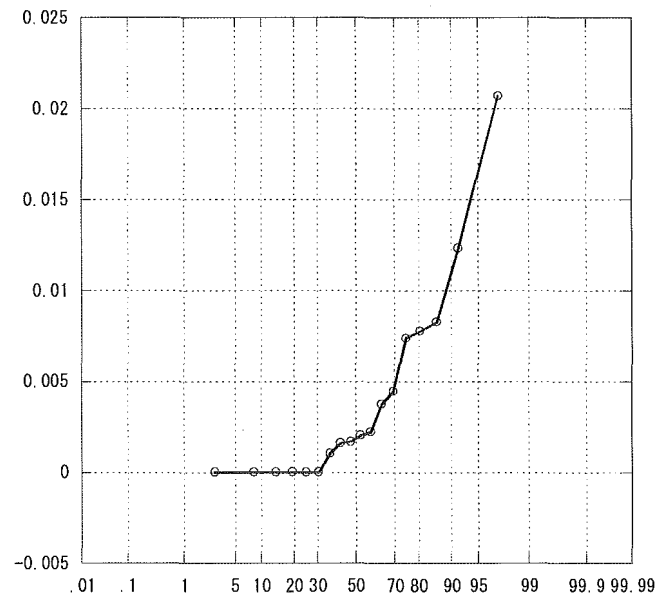
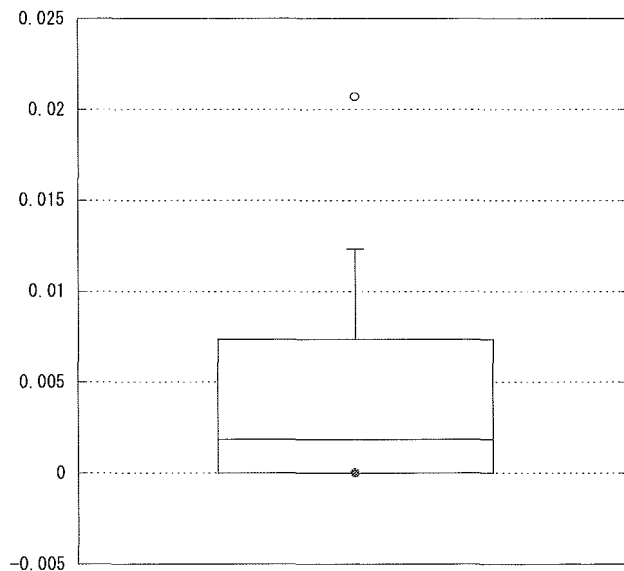
カテ感染率（耐性）



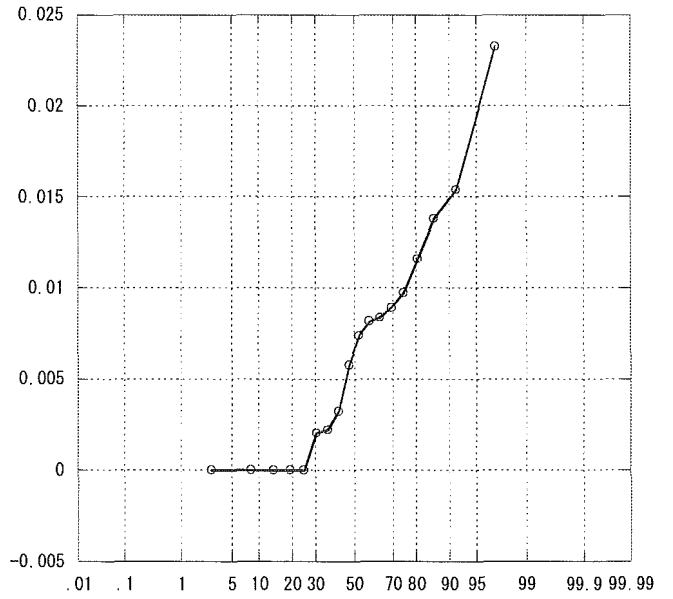
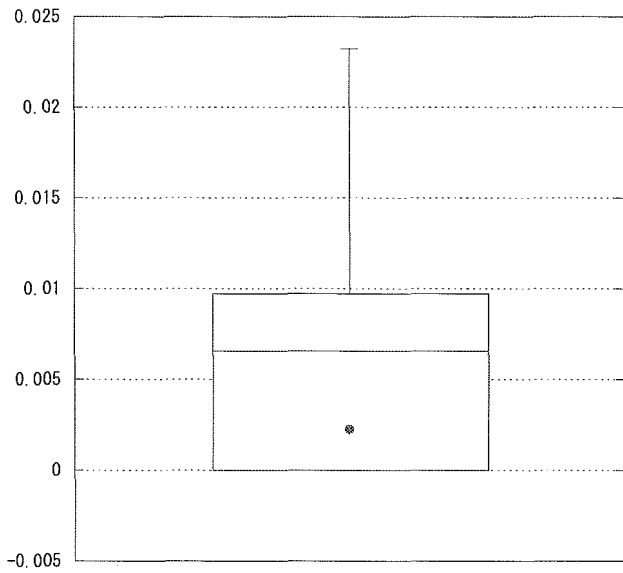
カテ感染率（感性）



創感染率（耐性）

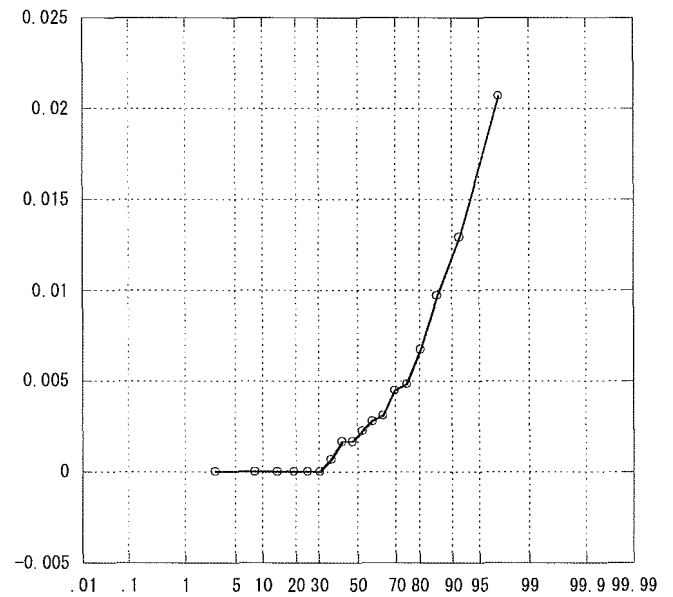
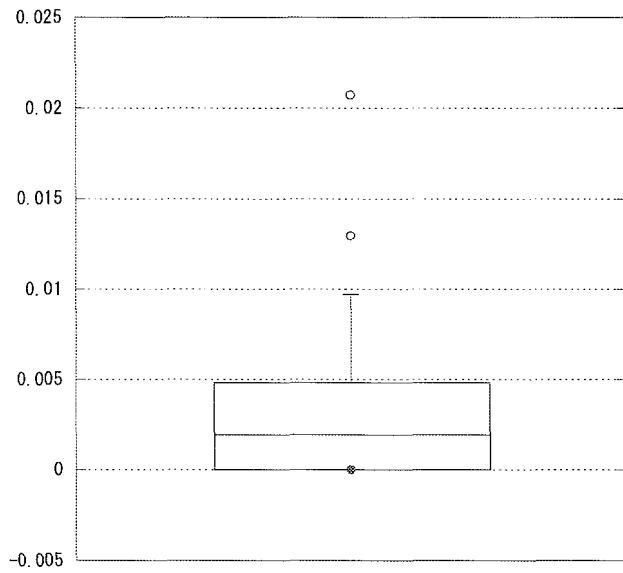


創感染率（感性）



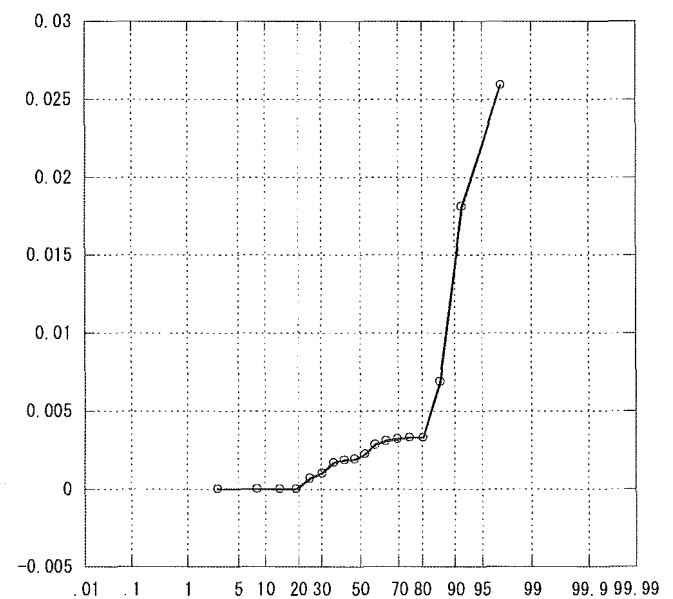
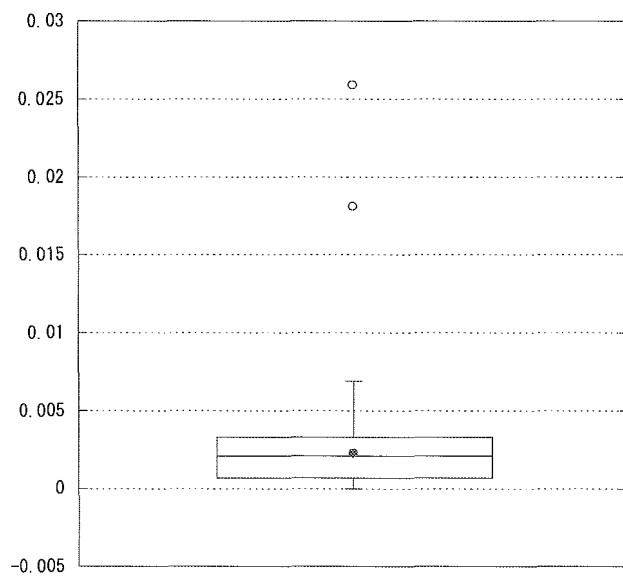
パーセント

敗血症感染率（耐性）



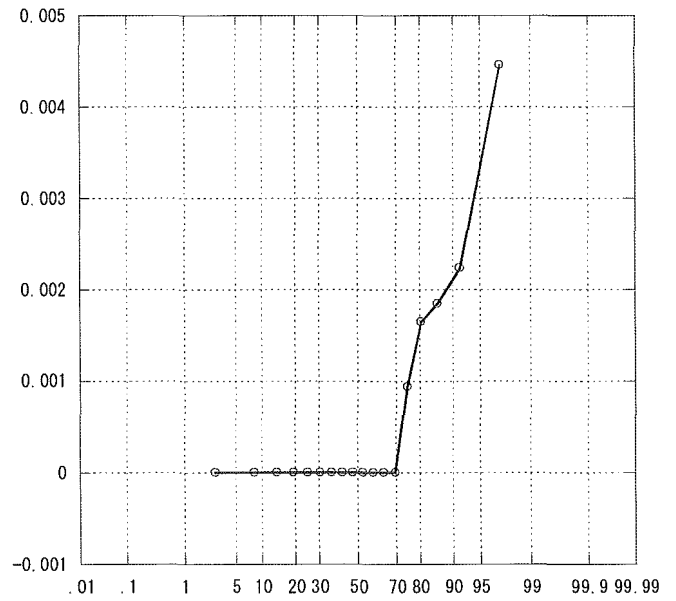
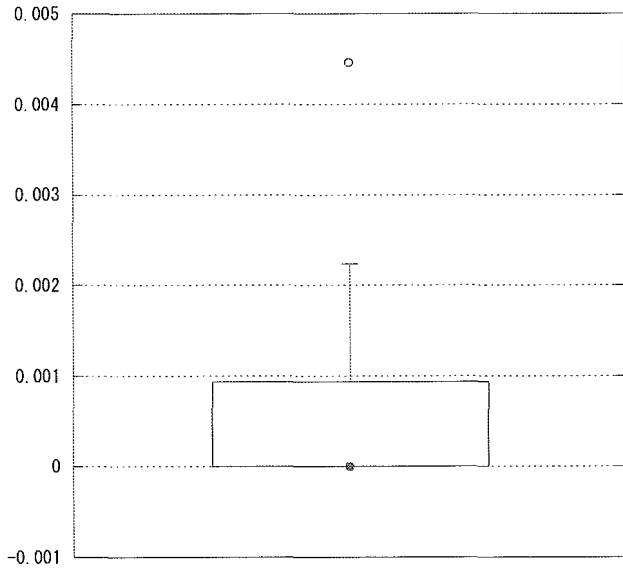
パーセント

敗血症感染率（感性）

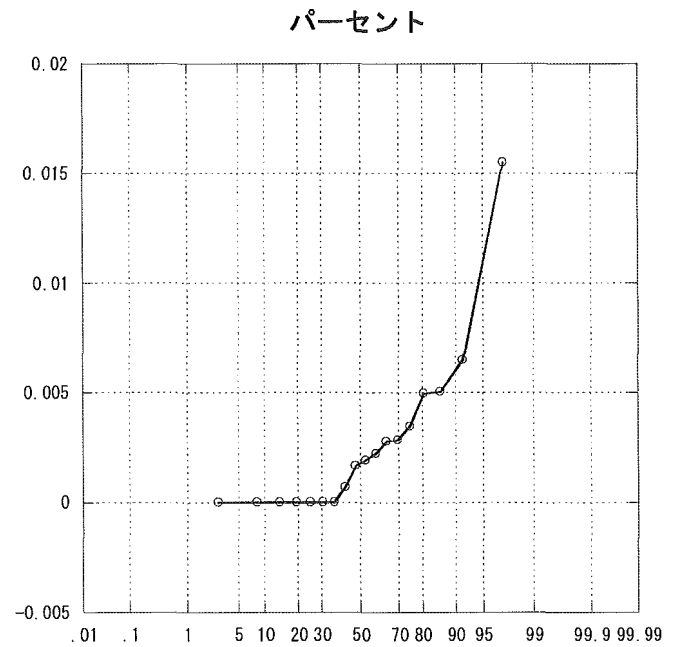
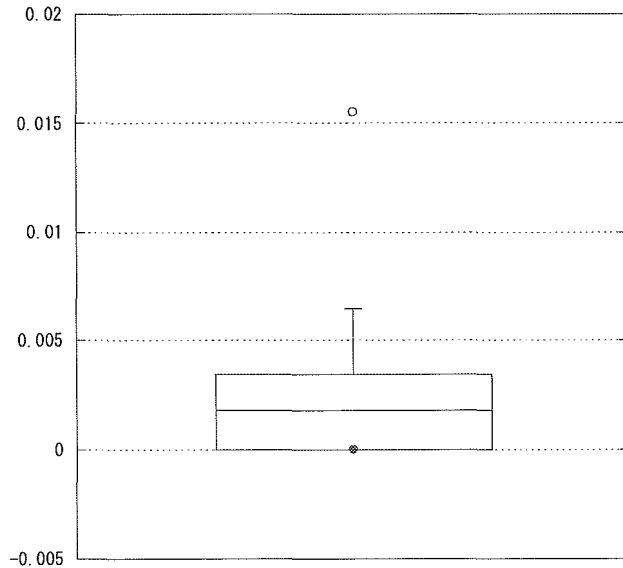


パーセント

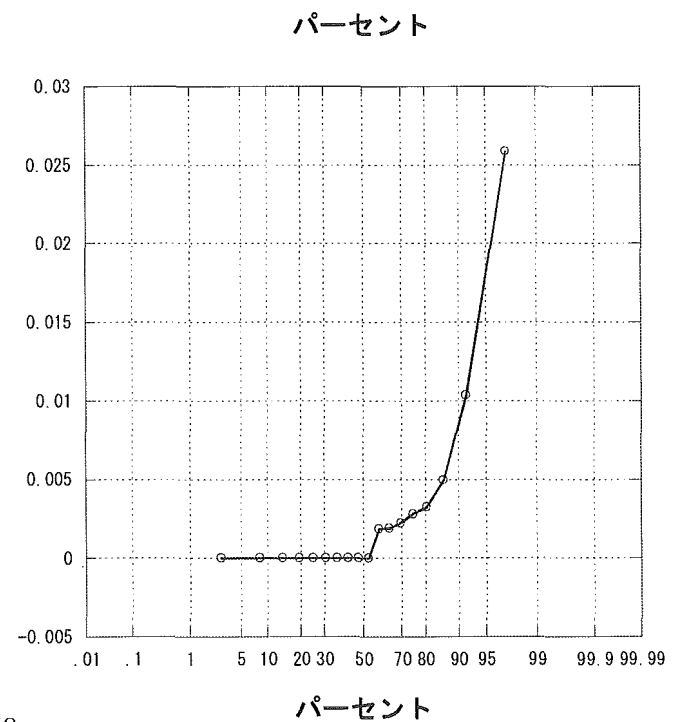
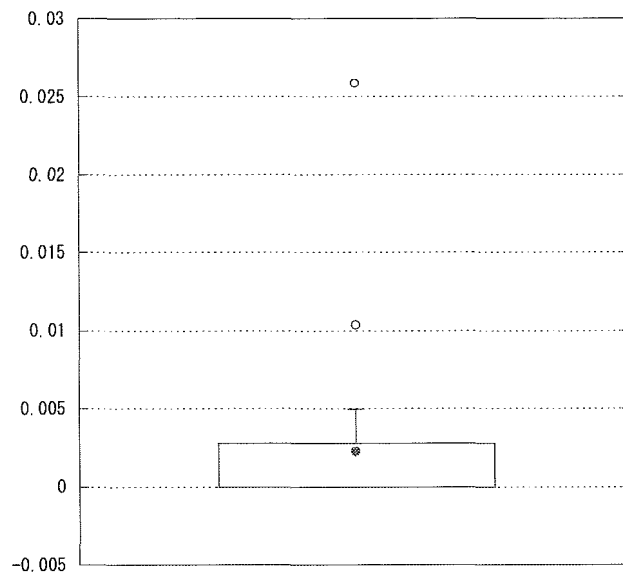
尿路感染率（耐性）



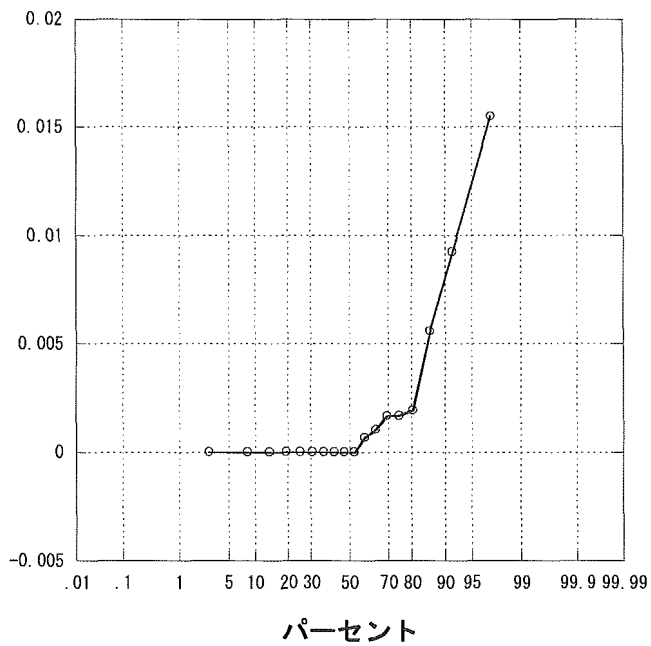
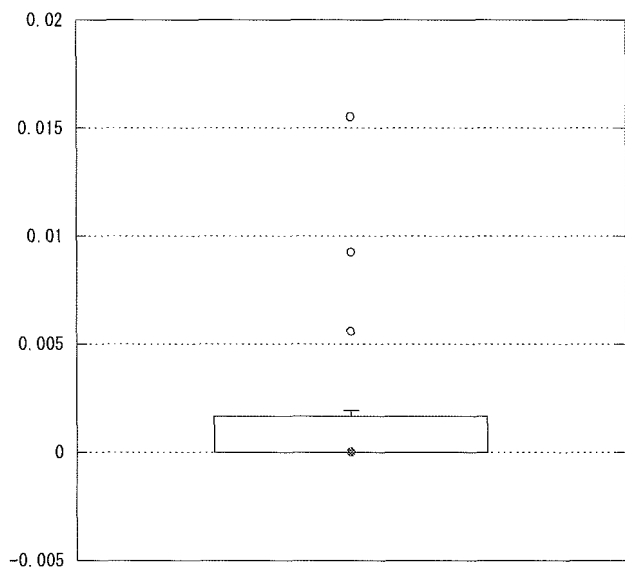
尿路感染率（感性）



その他感染率（耐性）



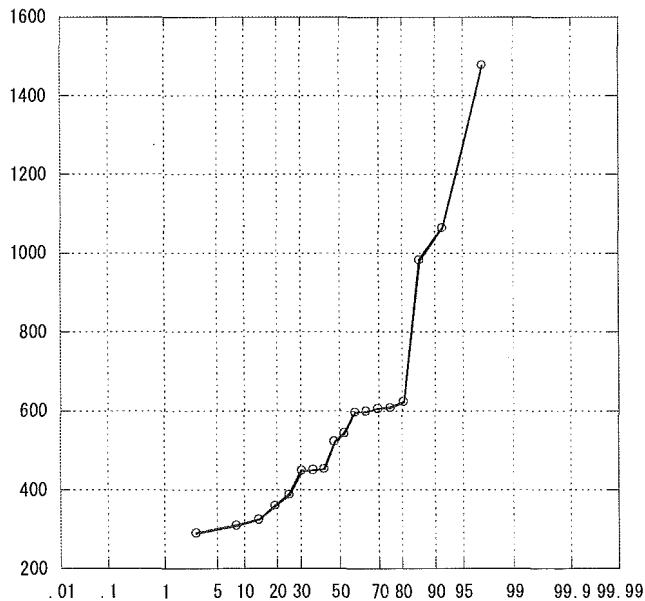
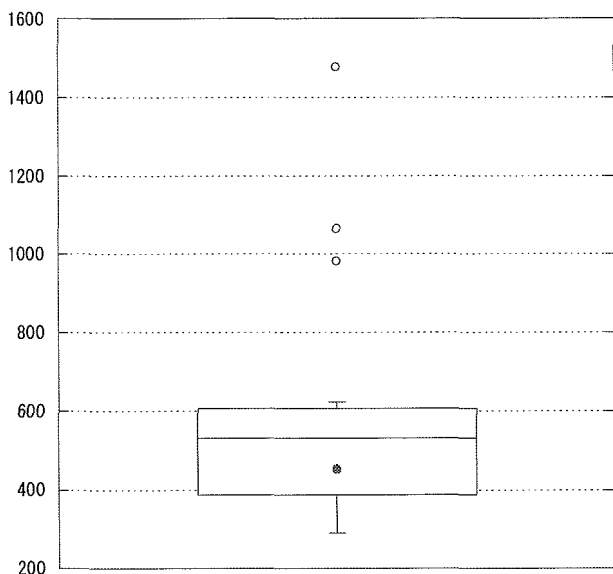
その他感染率（感性）



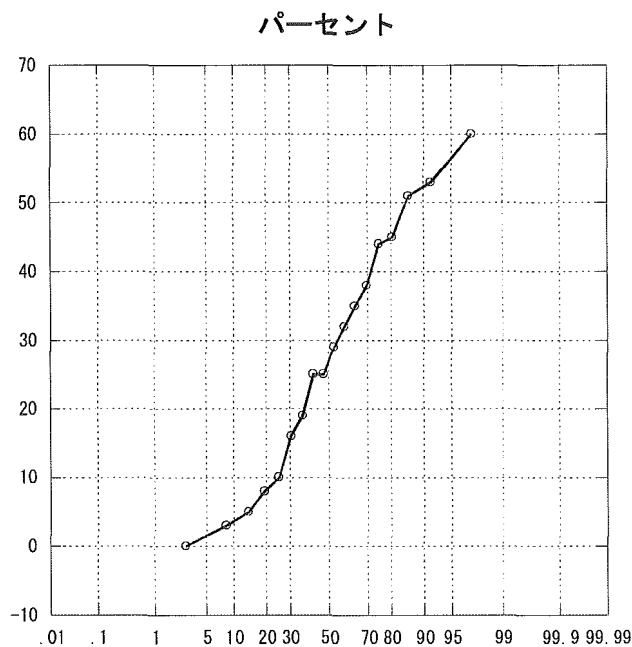
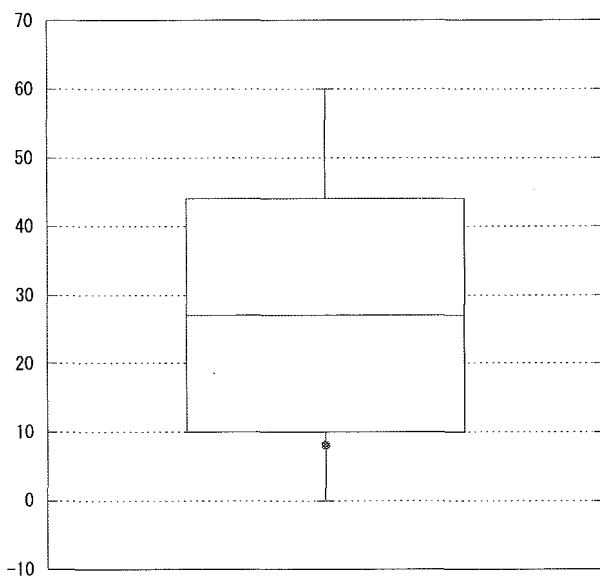
## M 施設

2004年1月～12月

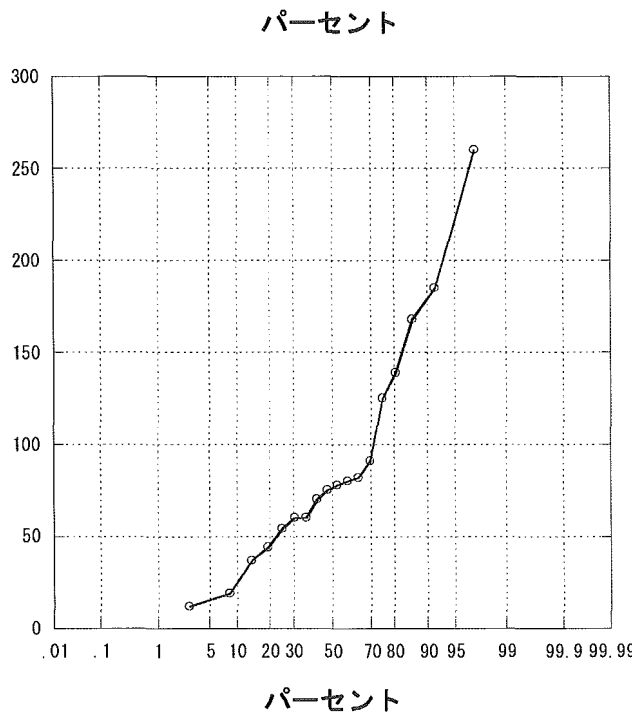
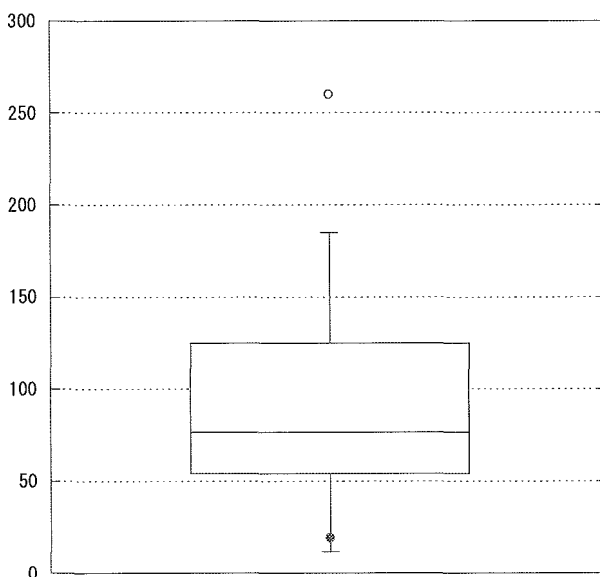
年間収容患者数



APACHE 0~4

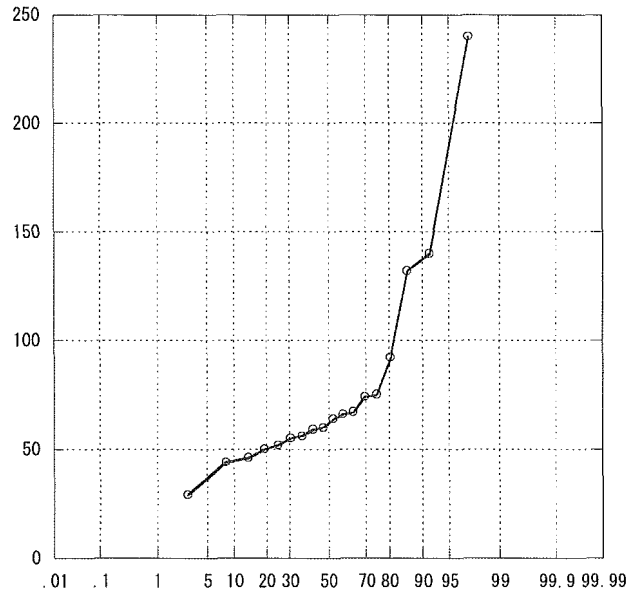
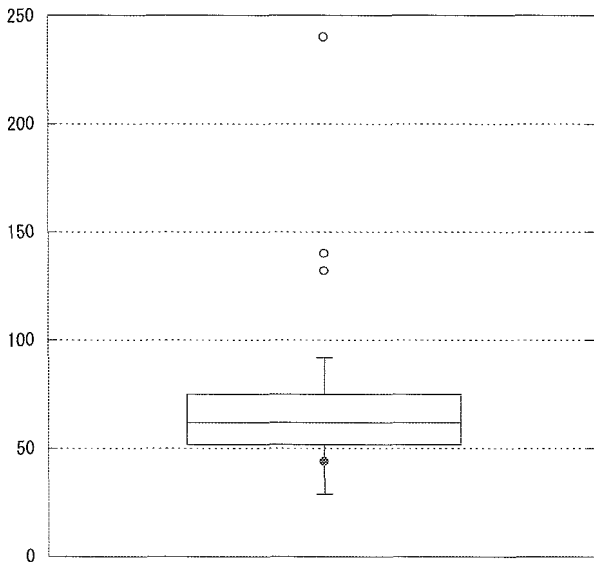


APACHE 5~9

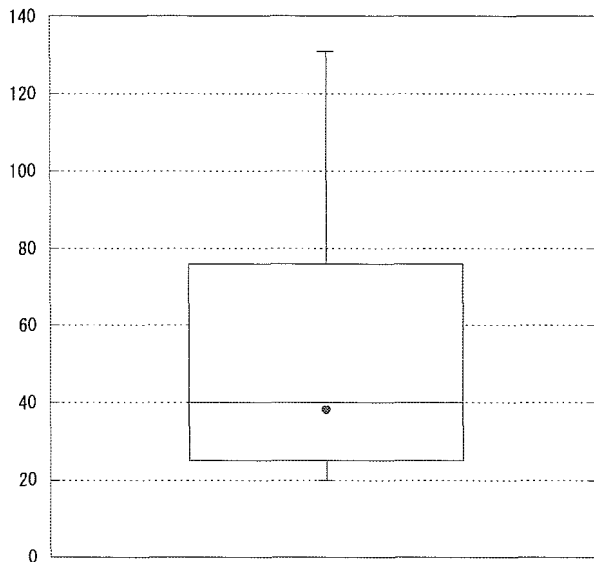




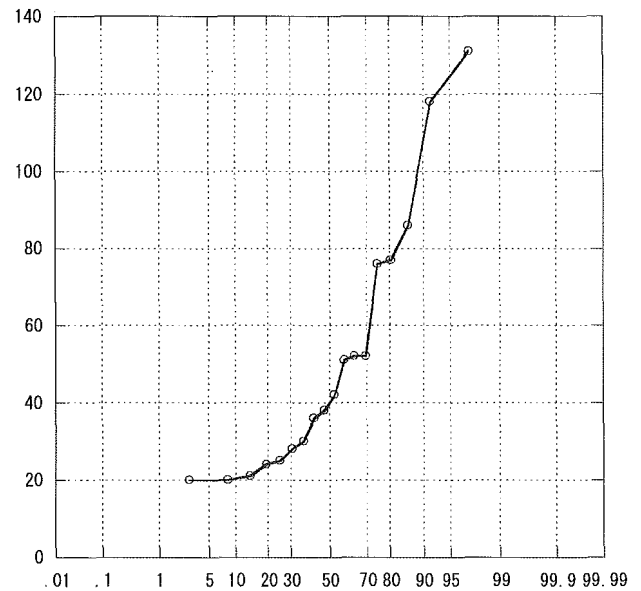
APACHE 10~14



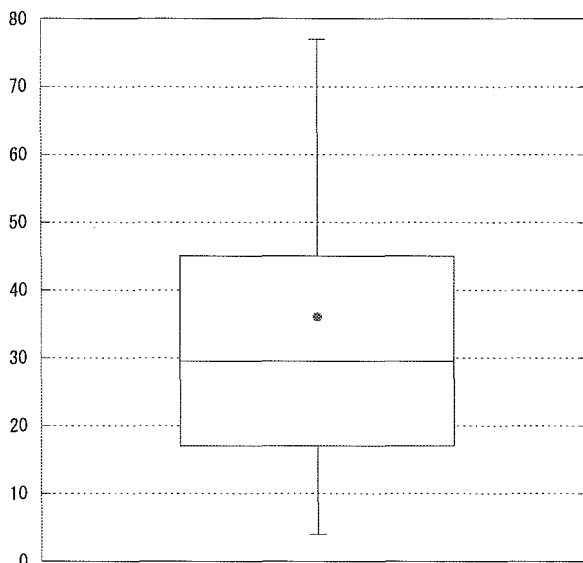
APACHE 15~19



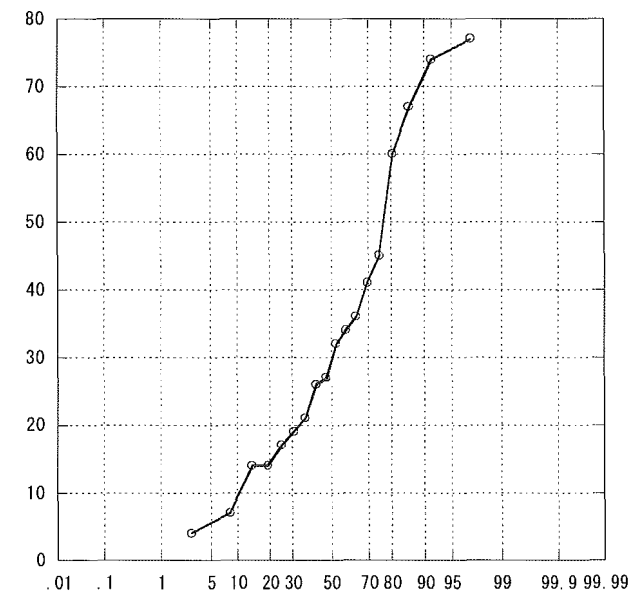
パーセント



APACHE 20~24

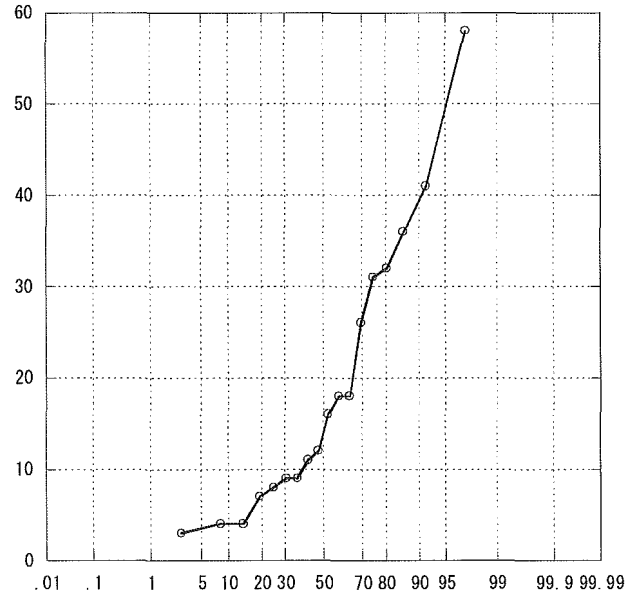
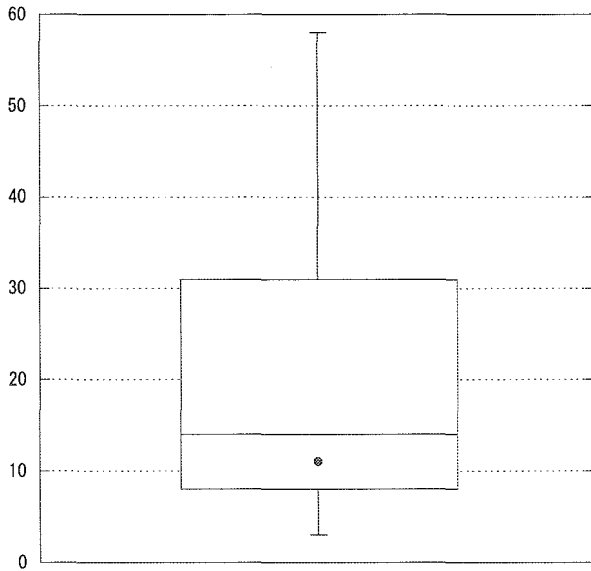


パーセント

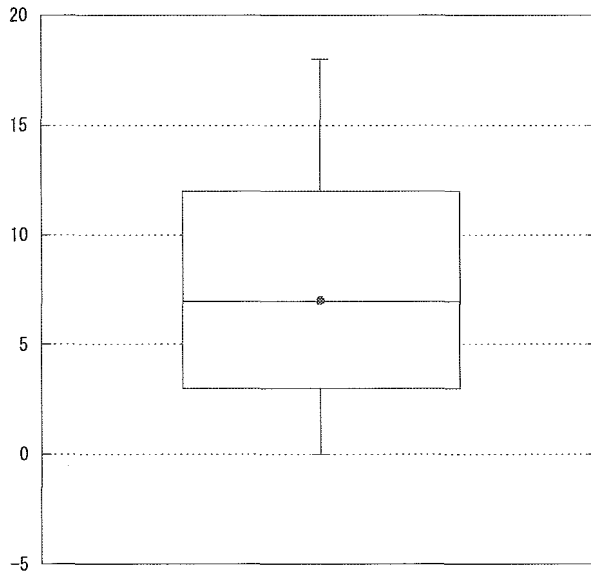


パーセント

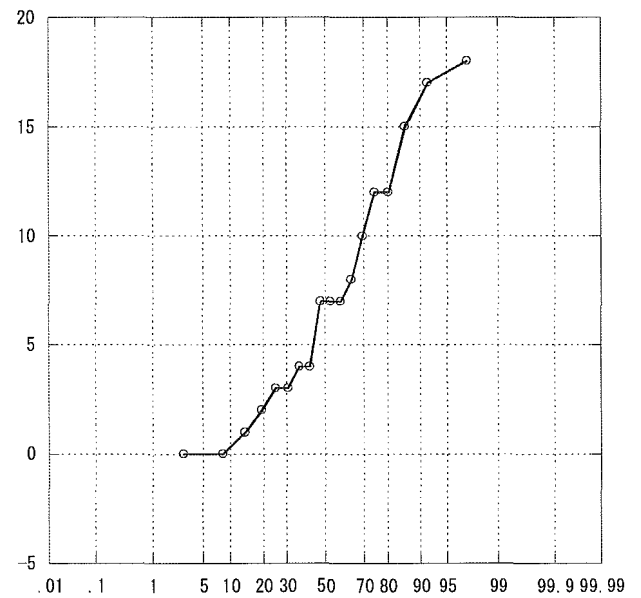
APACHE 25~29



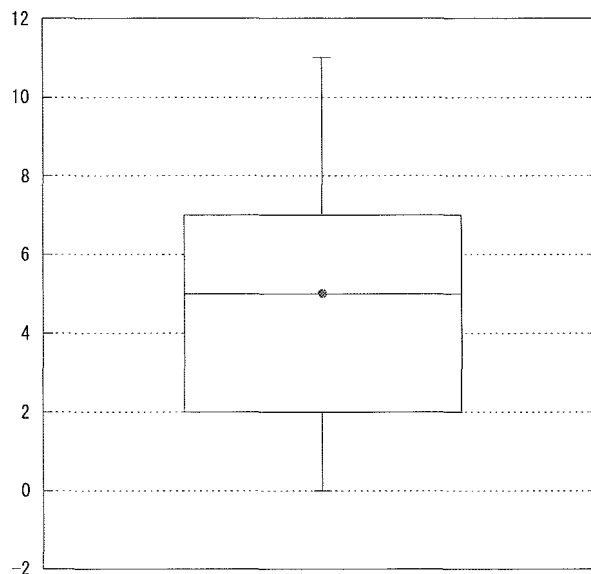
APACHE 30~34



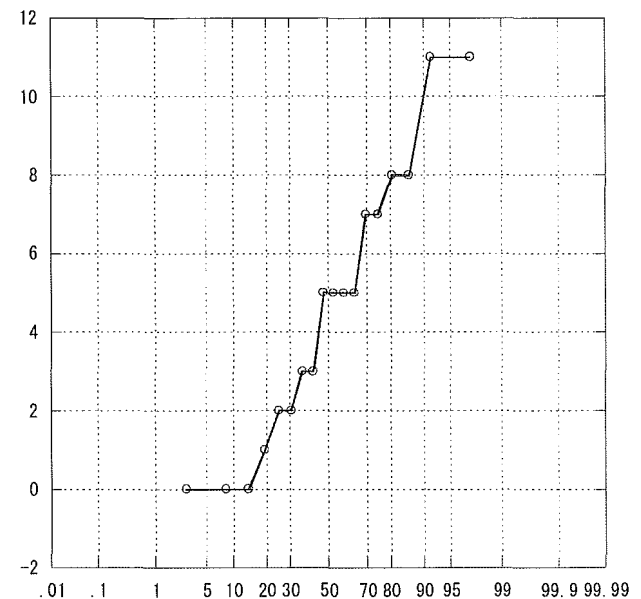
パーセント



APACHE 35~

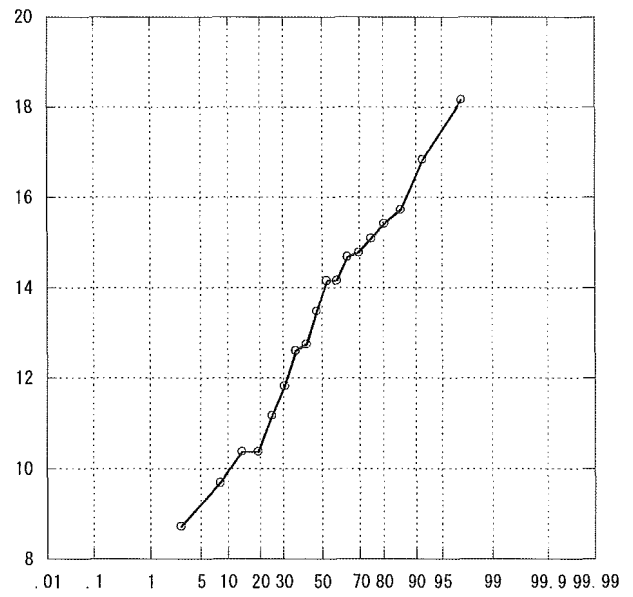
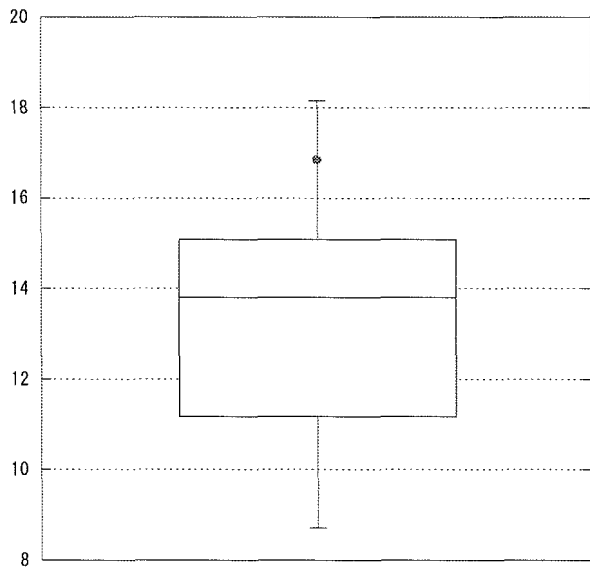


パーセント

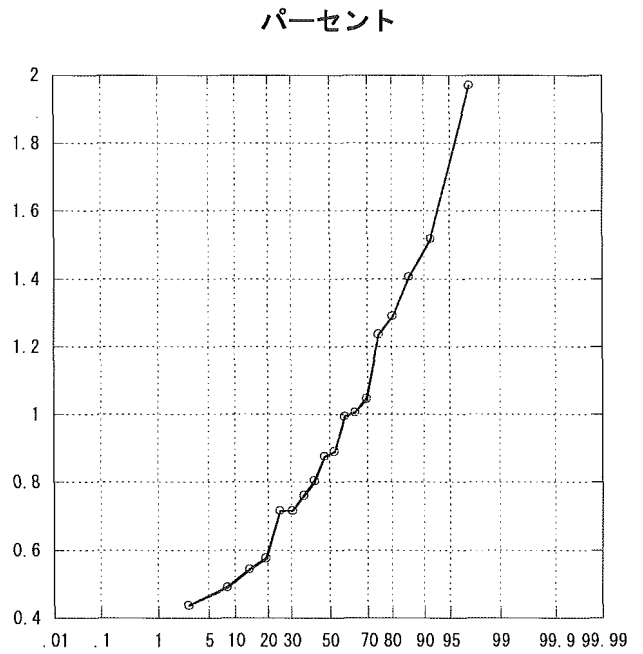
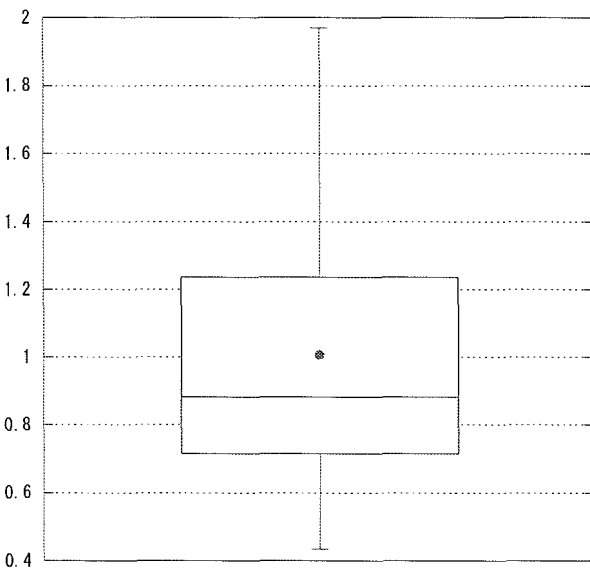


パーセント

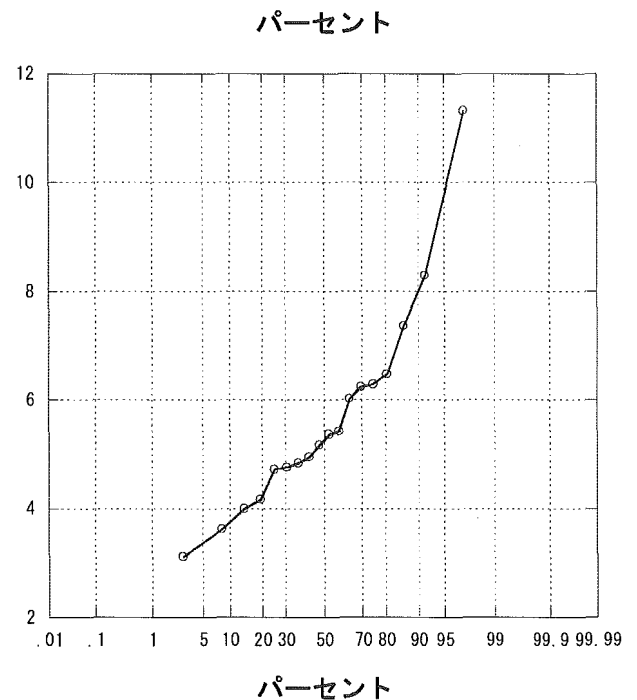
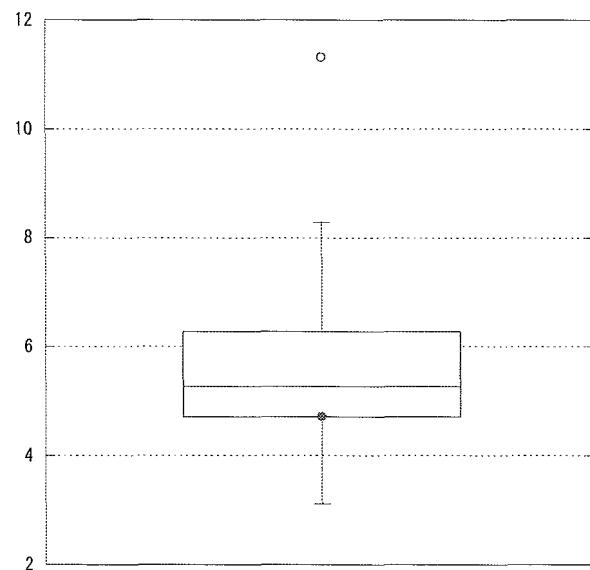
APACHE平均



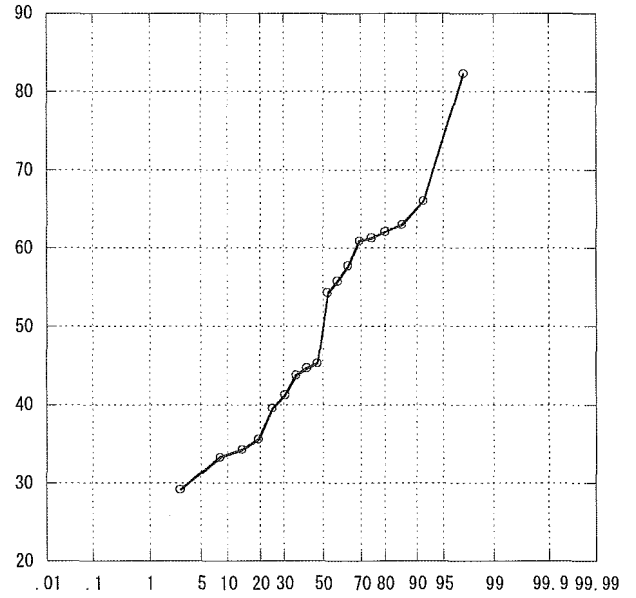
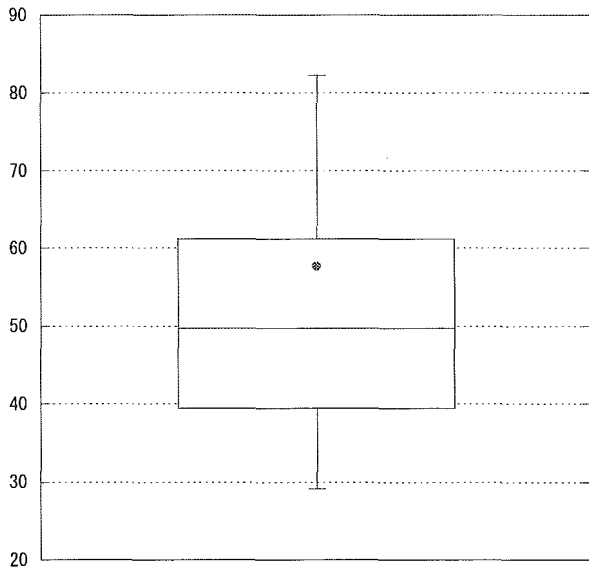
標準化死亡比



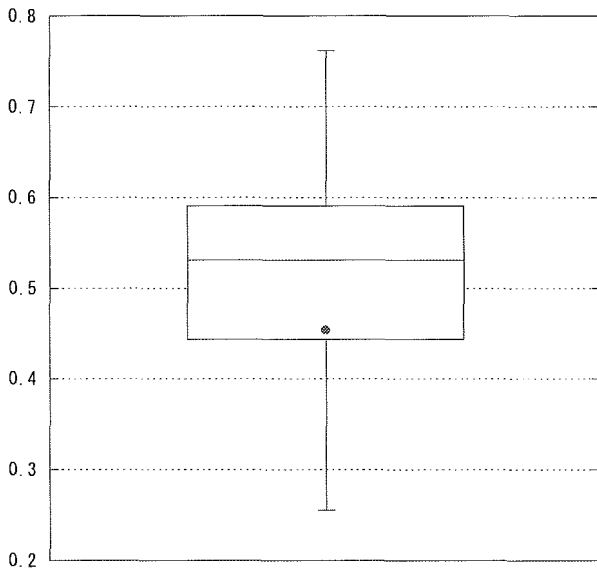
平均在室日数



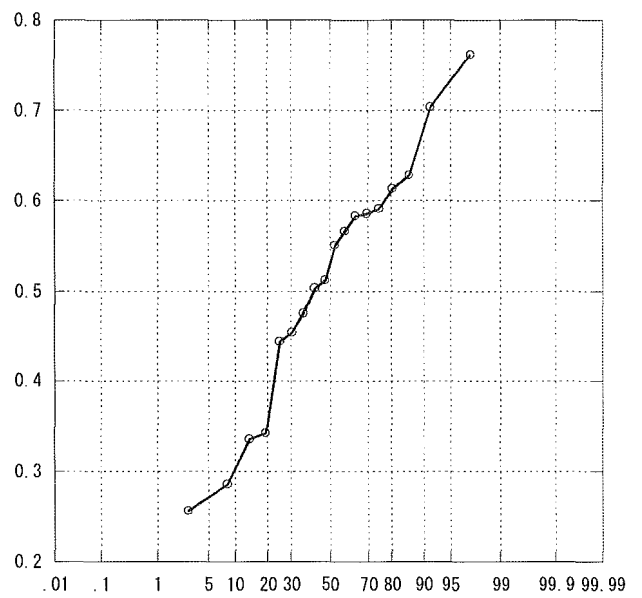
平均在院日数



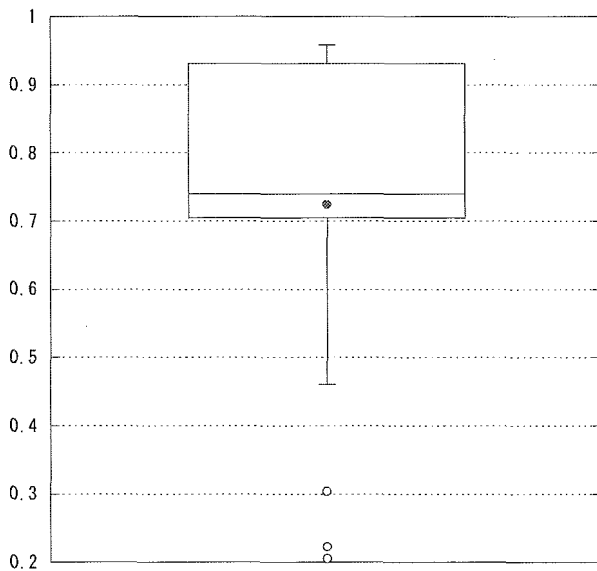
人工呼吸器利用率



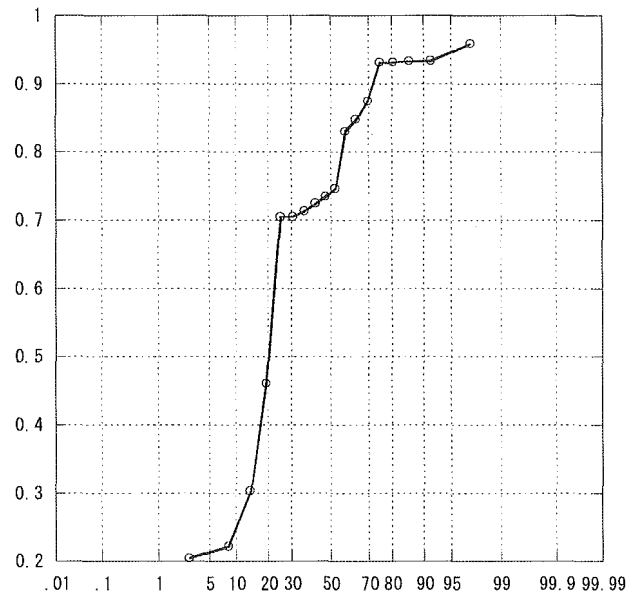
パーセント



中心静脈カテ利用率

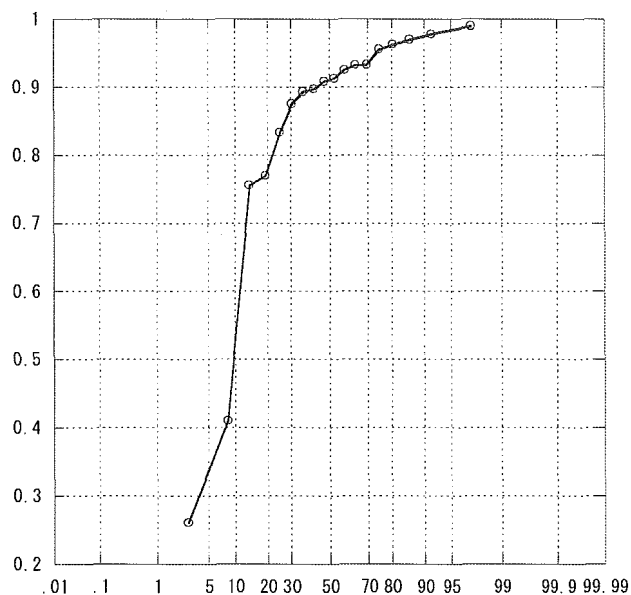
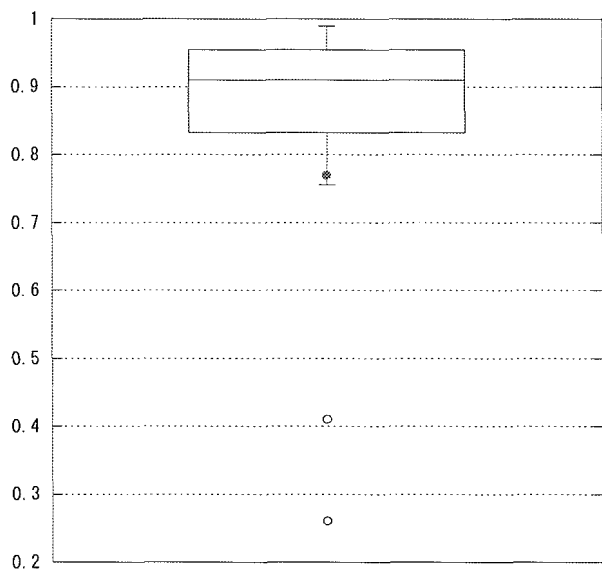


パーセント

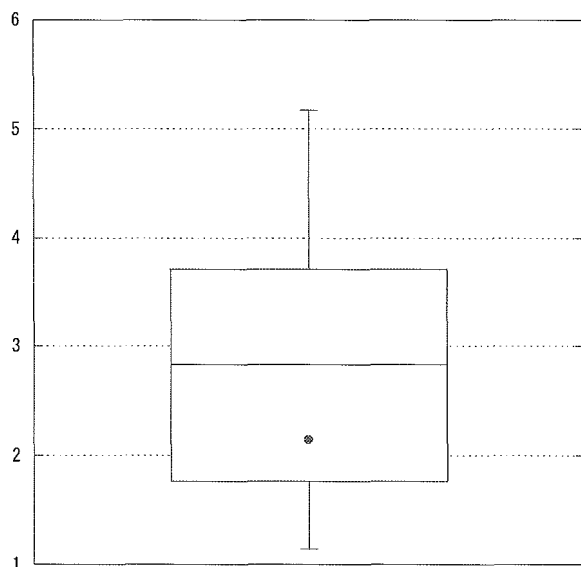


パーセント

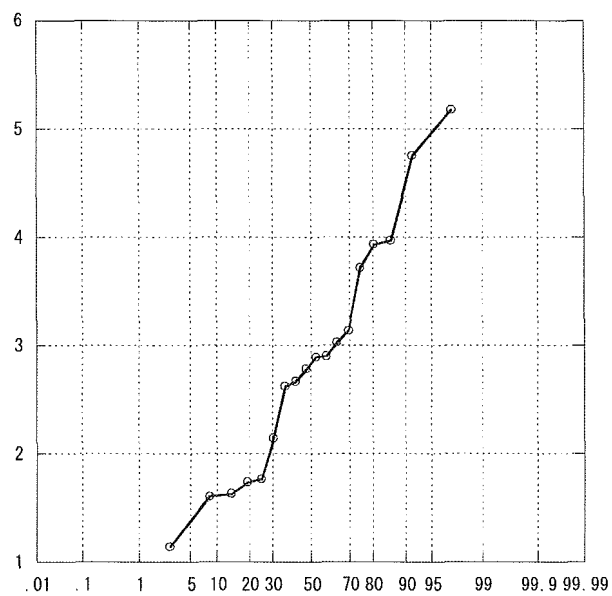
尿道カテ利用率



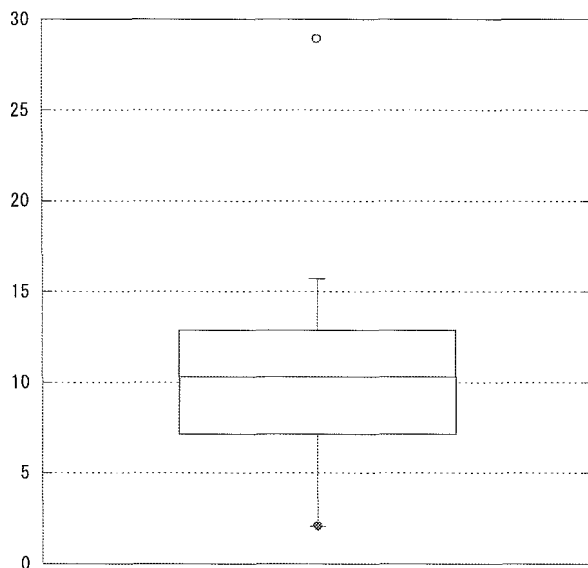
人工呼吸日／患者数



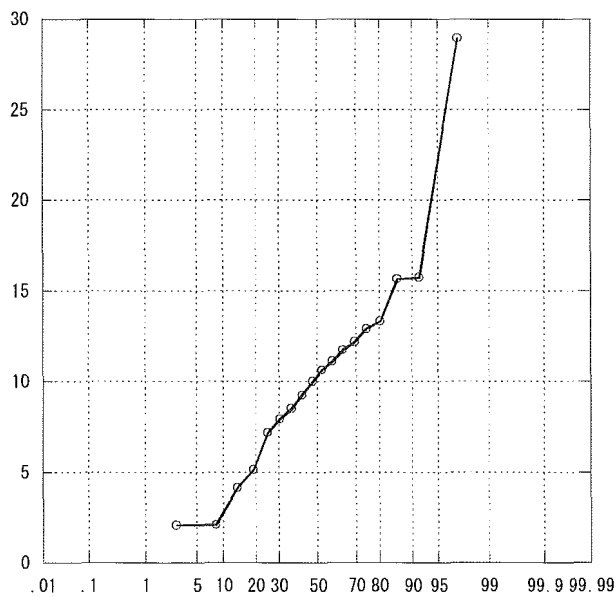
パーセント



リスク調整感染率（肺炎）

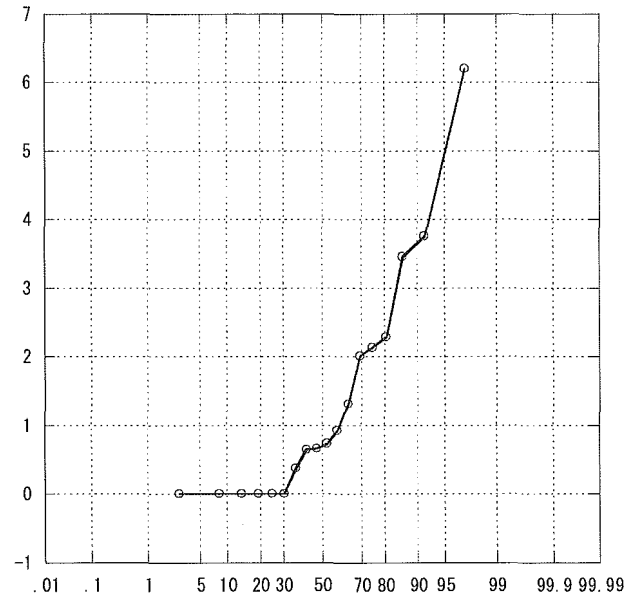
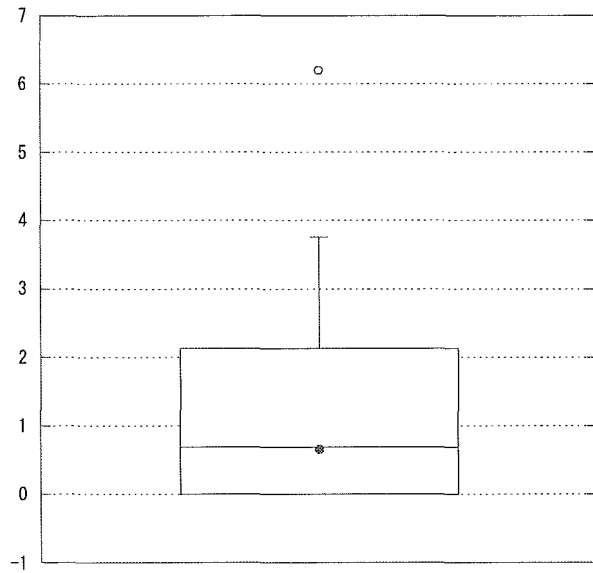


パーセント

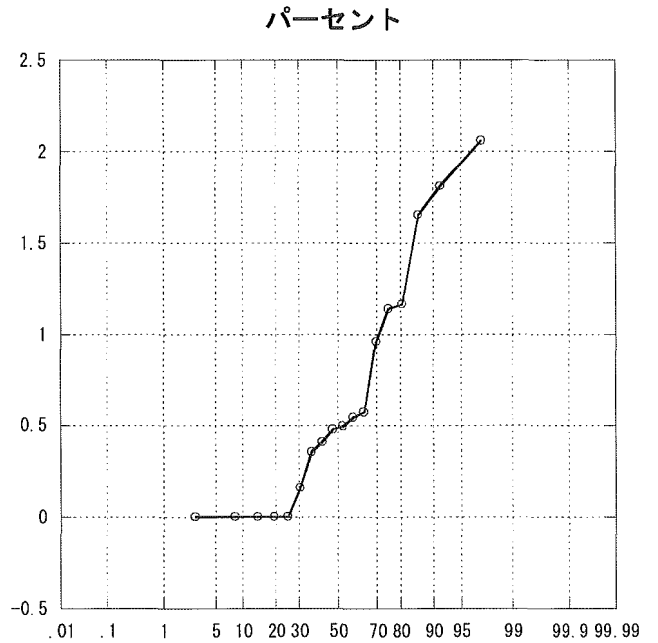
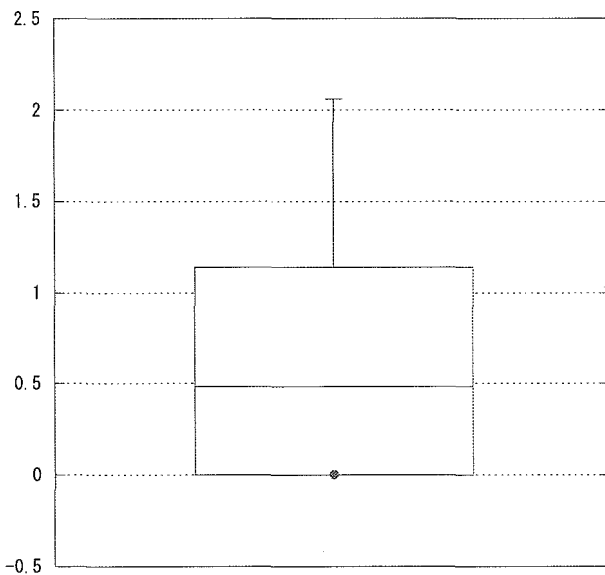


パーセント

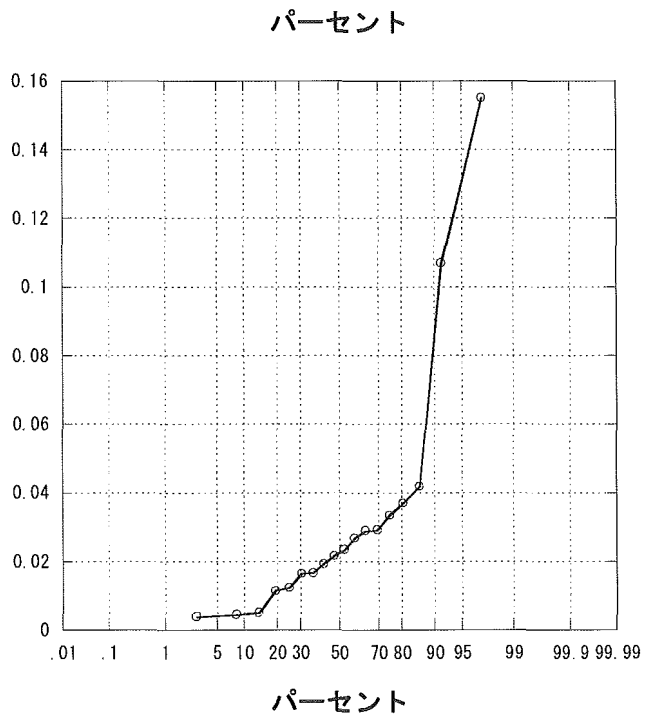
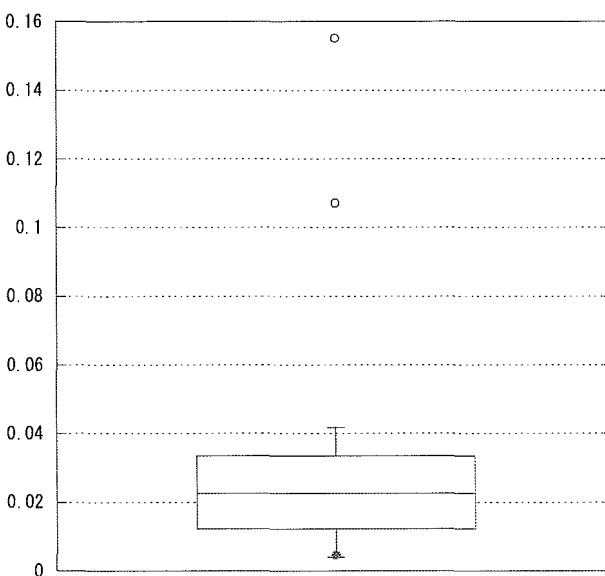
リスク調整感染率（カテ）



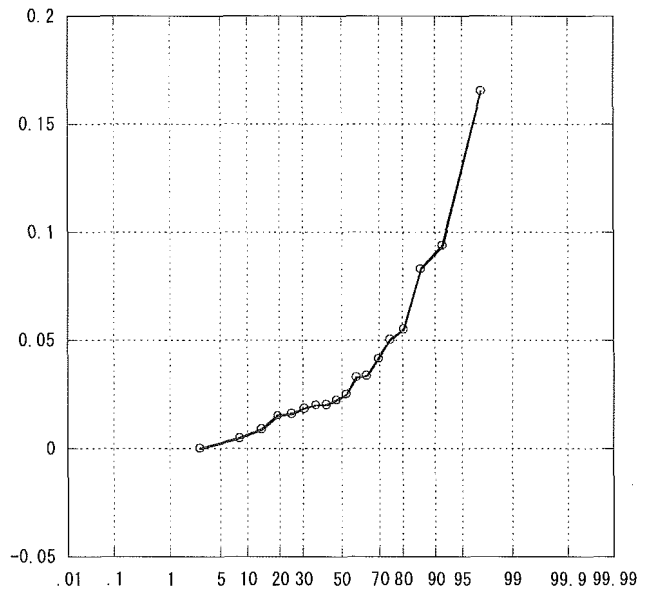
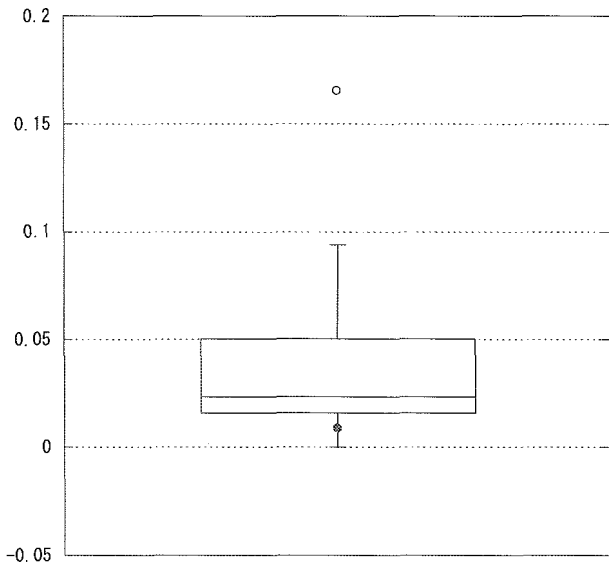
リスク調整感染率（尿路）



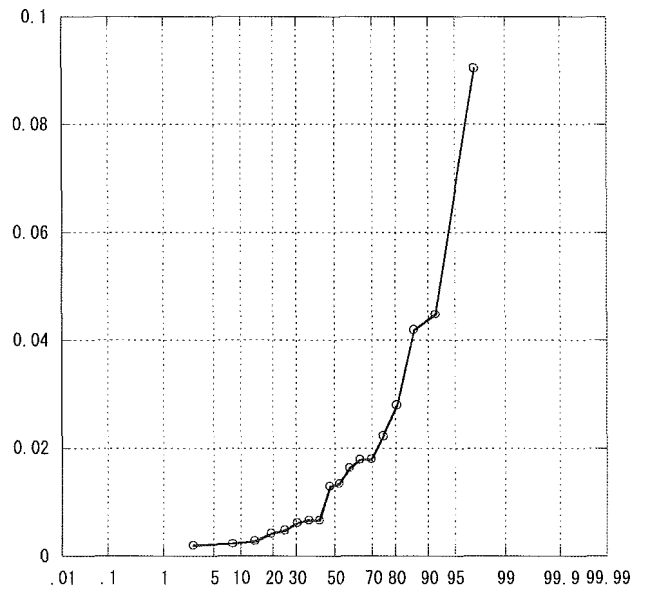
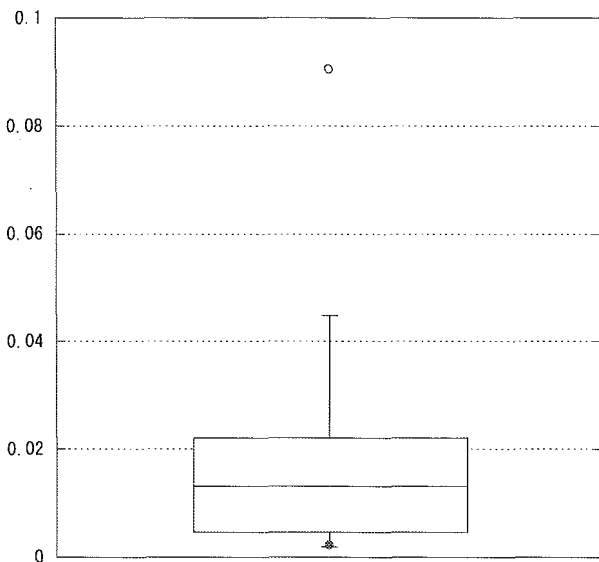
全感染率（耐性）



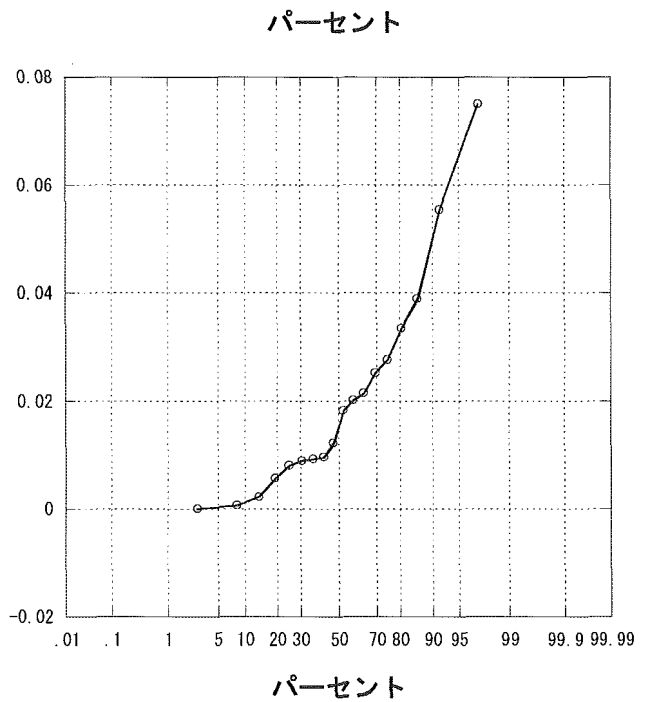
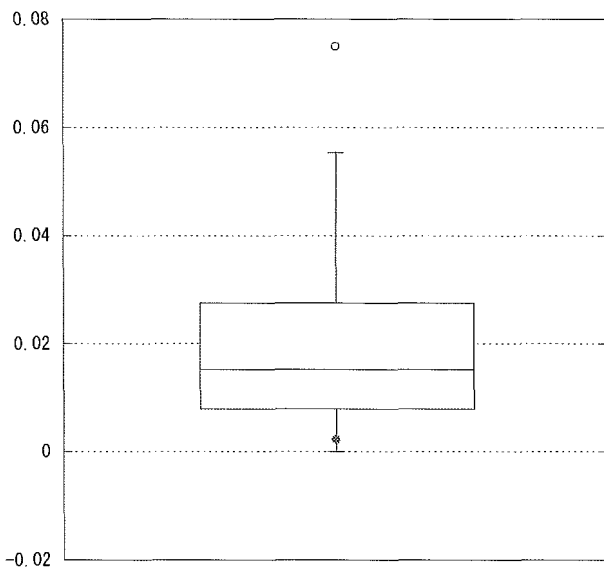
全感染率（感性）



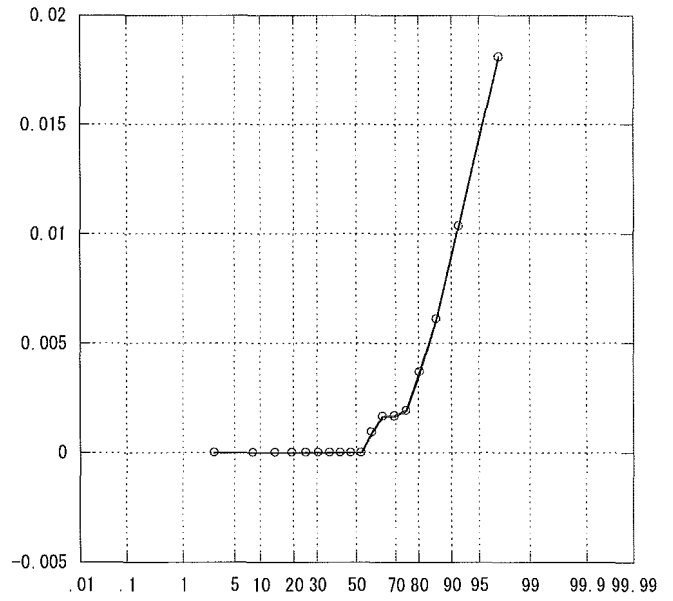
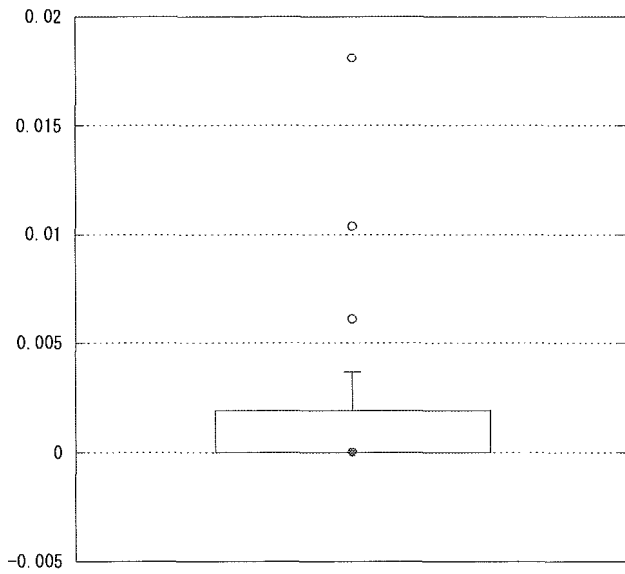
肺炎感染率（耐性）



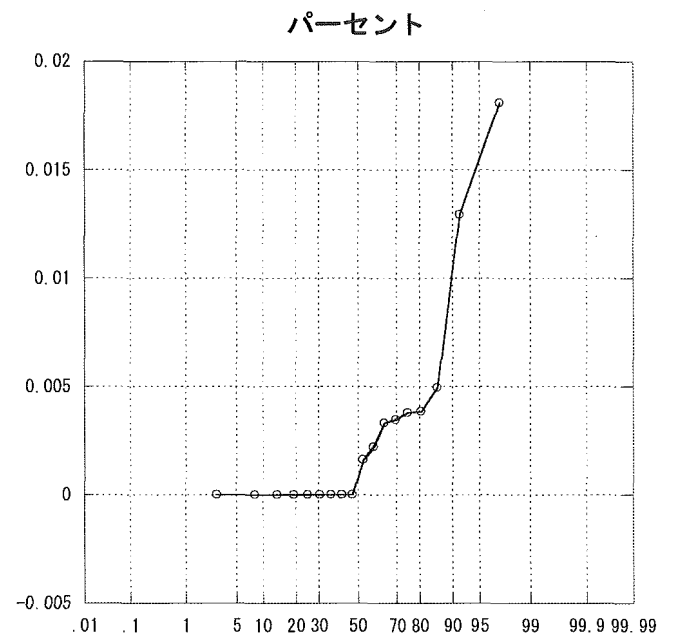
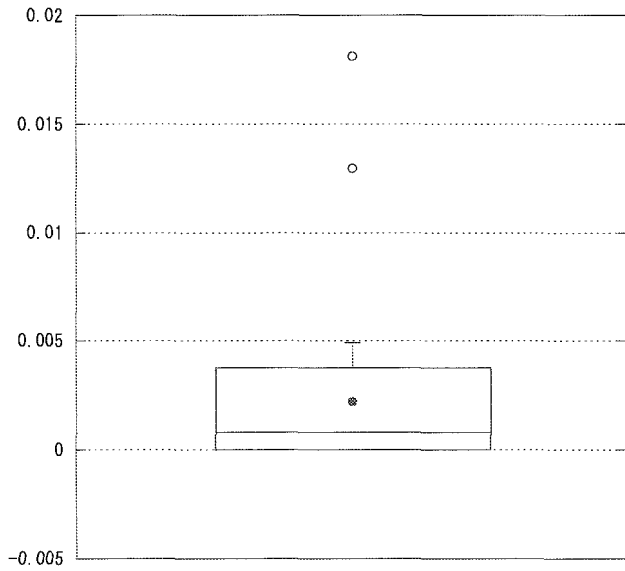
肺炎感染率（感性）



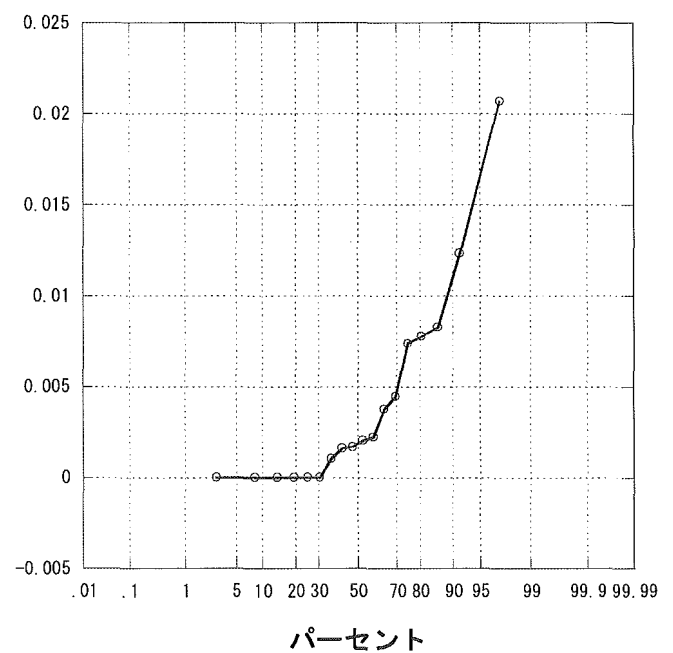
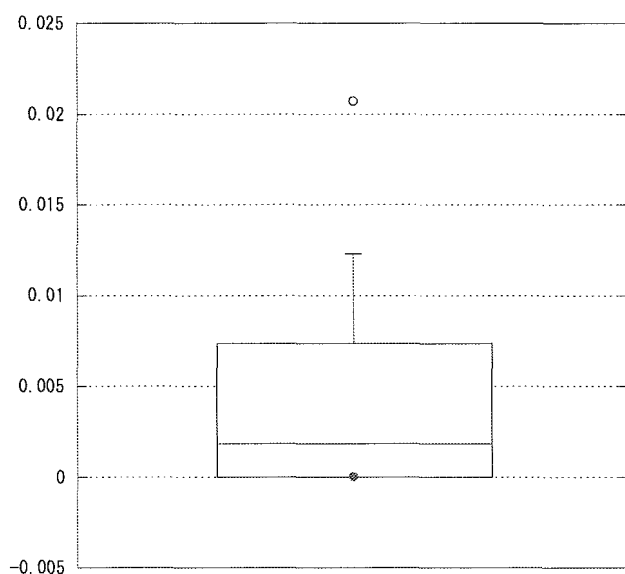
カテ感染率（耐性）



カテ感染率（感性）



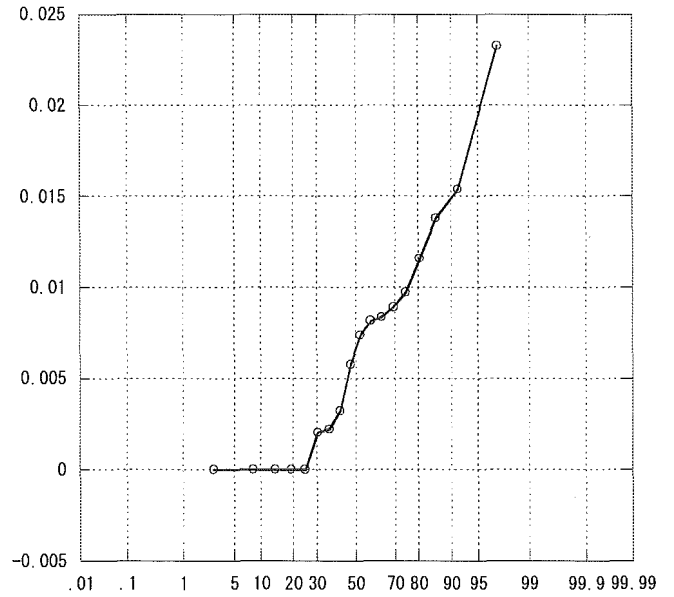
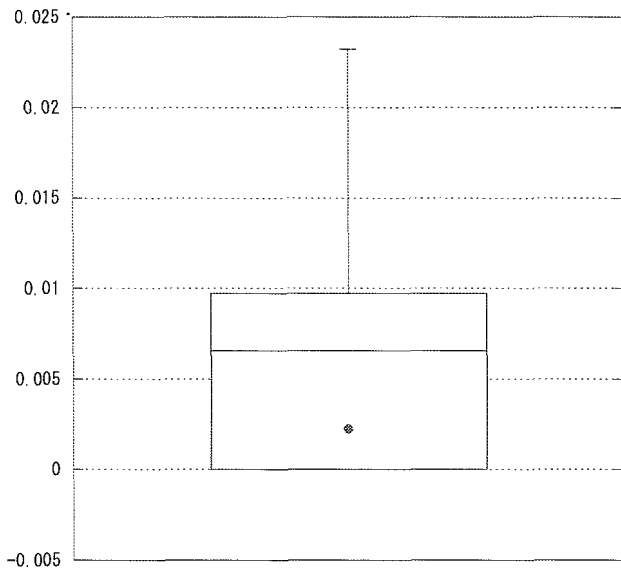
創感染率（耐性）



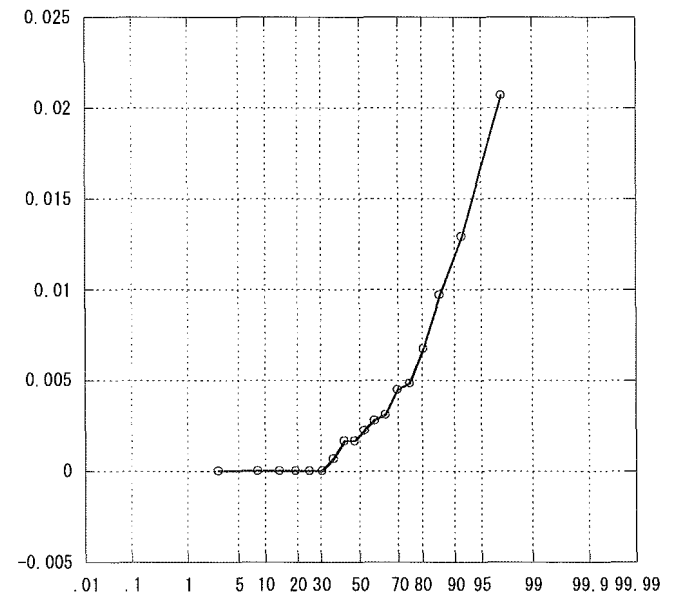
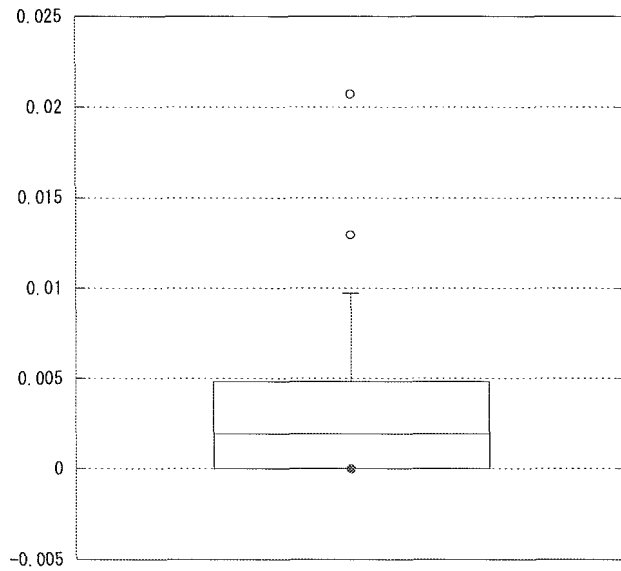


# ICU研究班2004年施設間比較

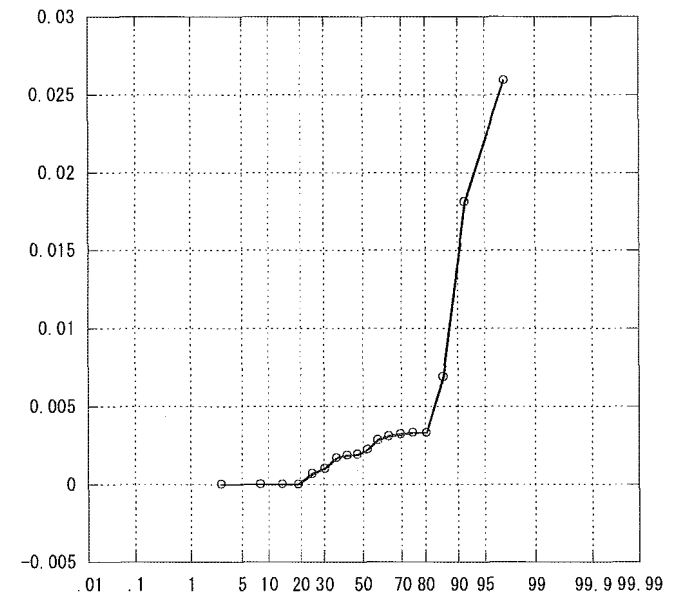
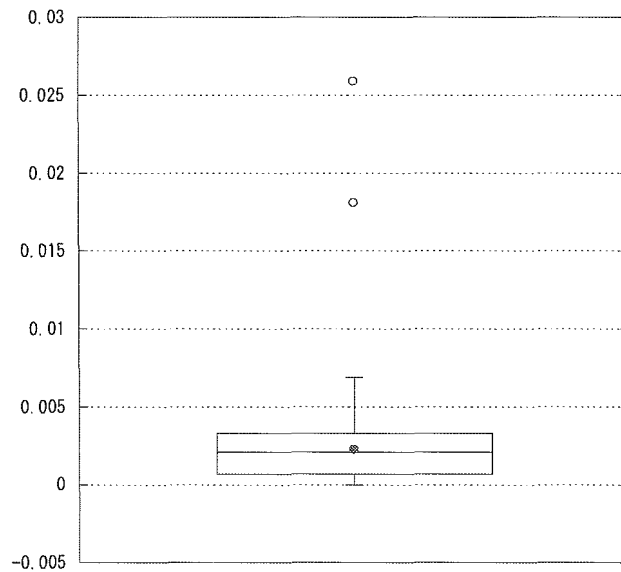
創感染率（感性）



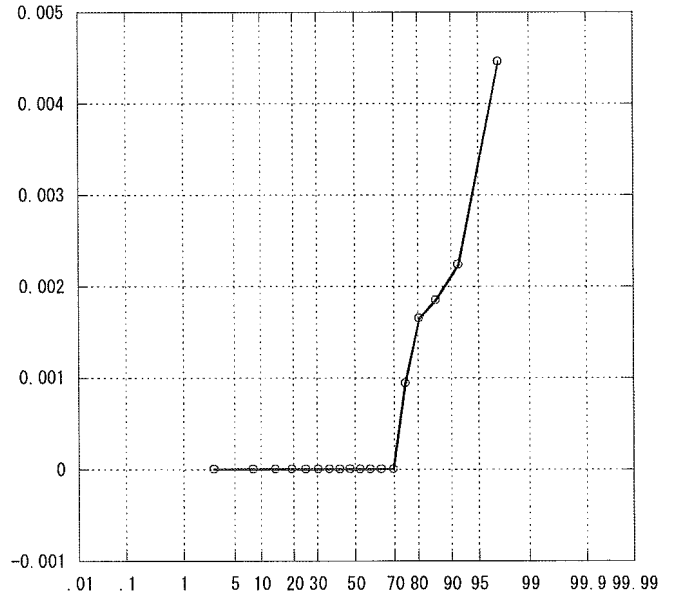
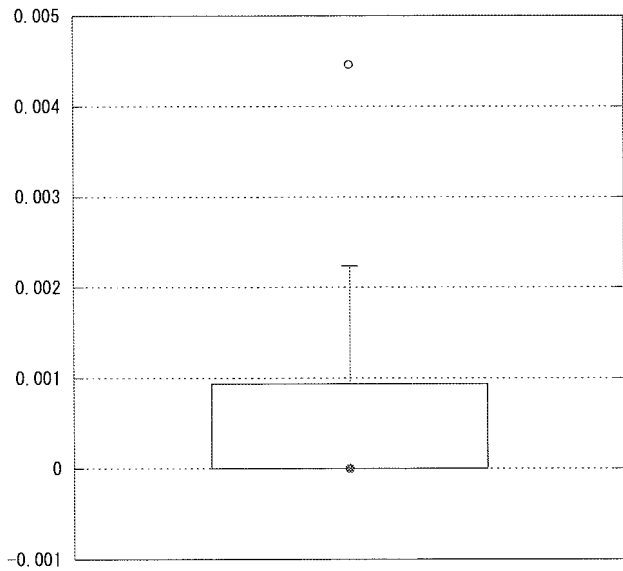
敗血症感染率（耐性）



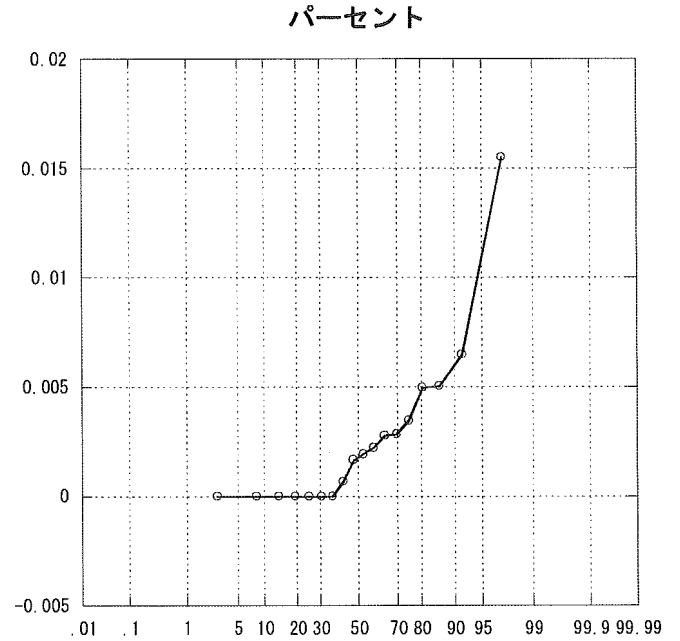
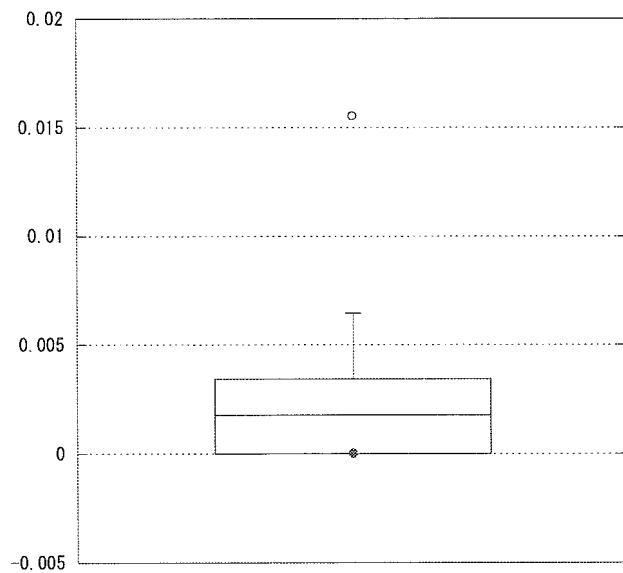
敗血症感染率（感性）



尿路感染率（耐性）

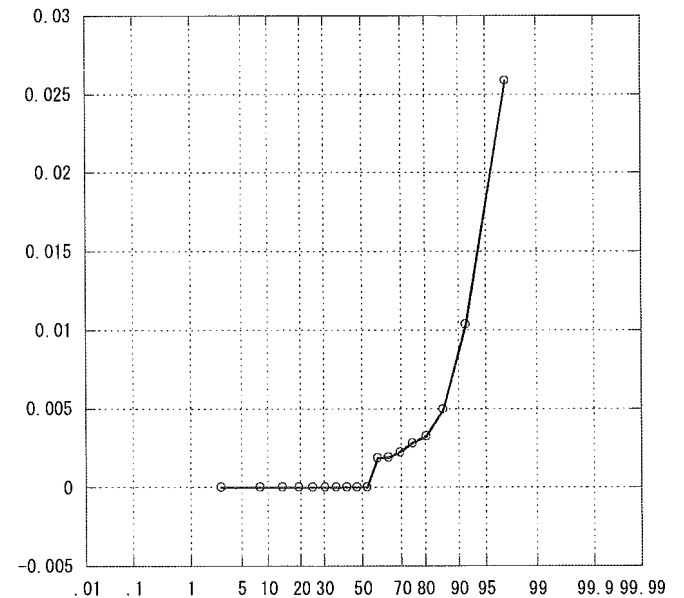
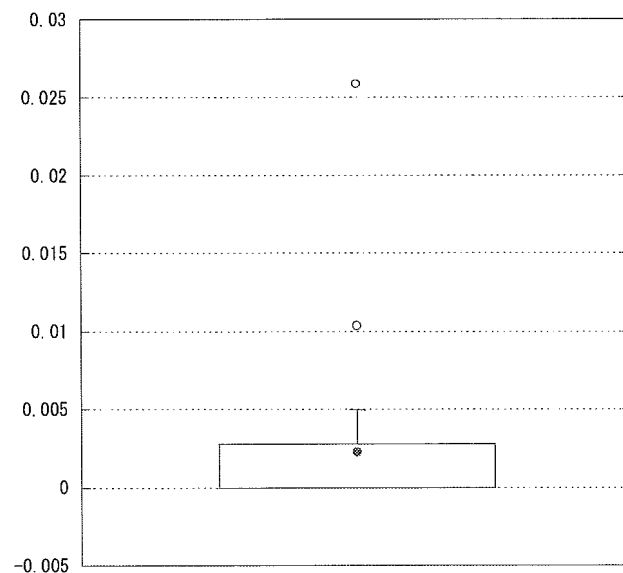


尿路感染率（感性）



パーセント

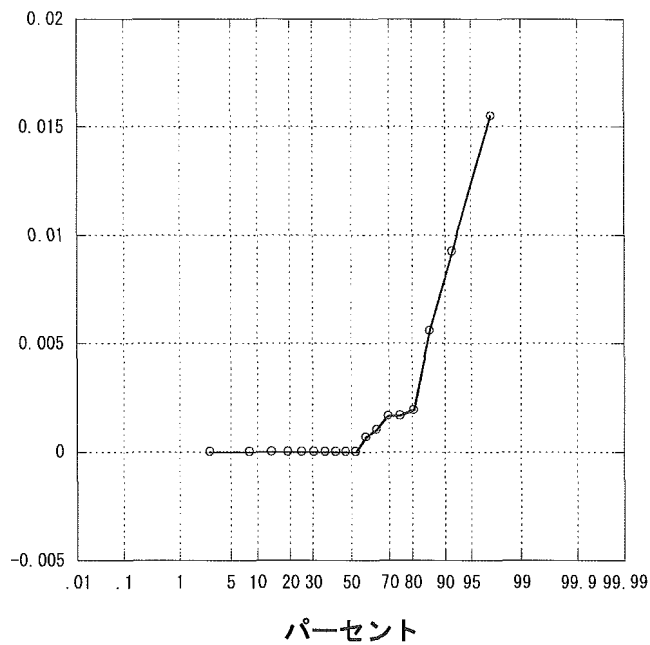
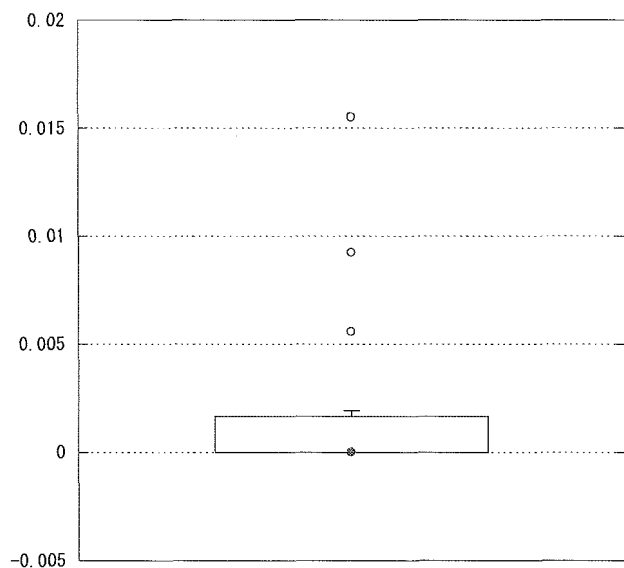
その他感染率（耐性）



パーセント

パーセント

その他感染率（感性）



## N 施設

2004年1月～12月