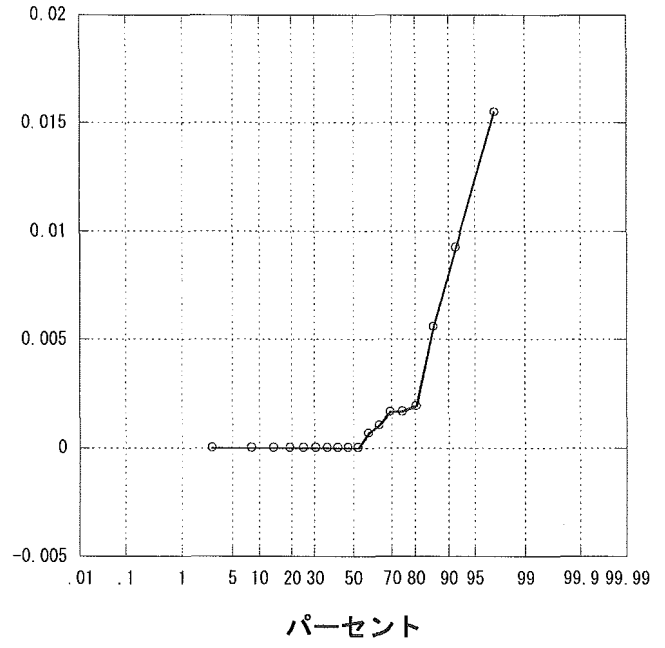
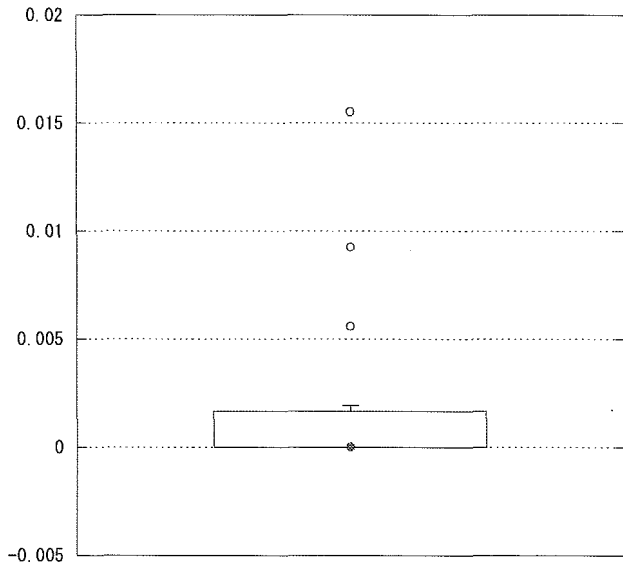


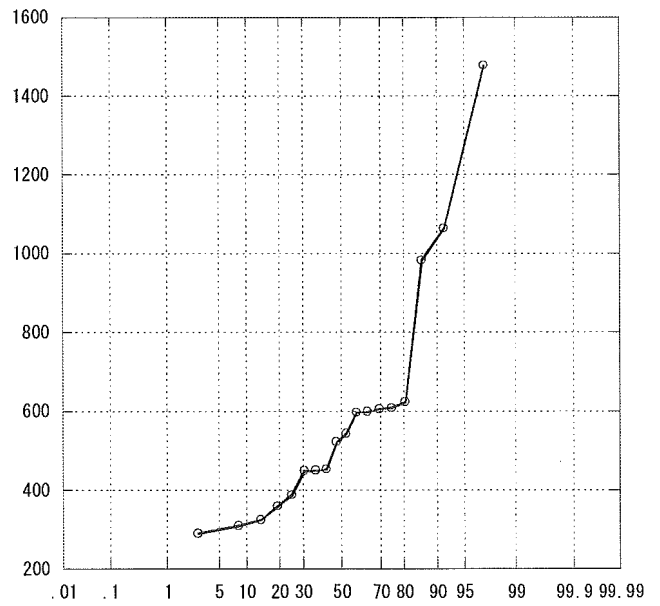
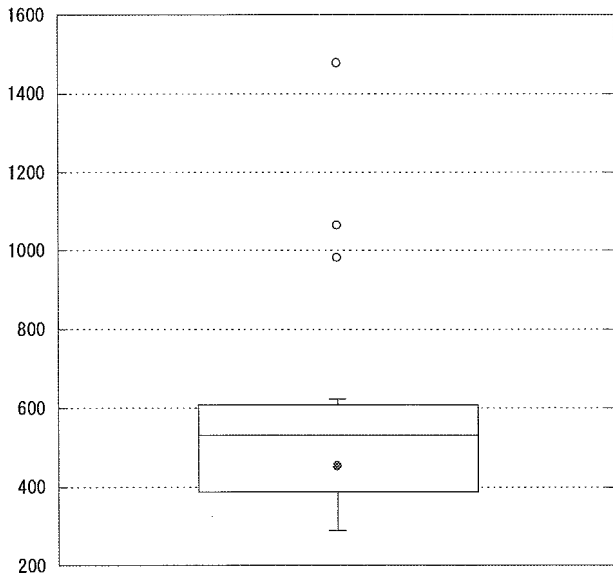
その他感染率（感性）



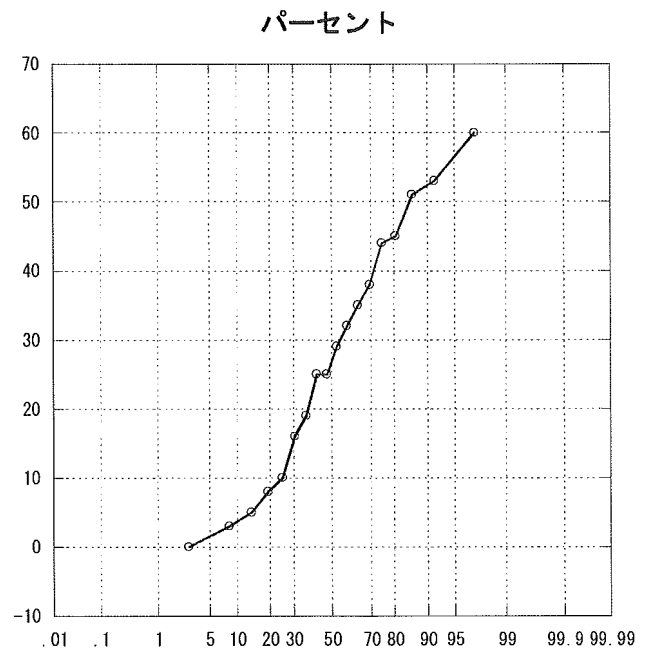
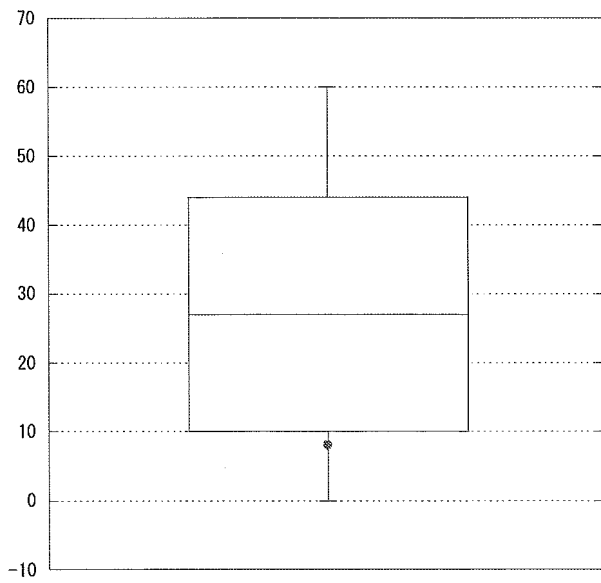
## G 施設

2004年1月～12月

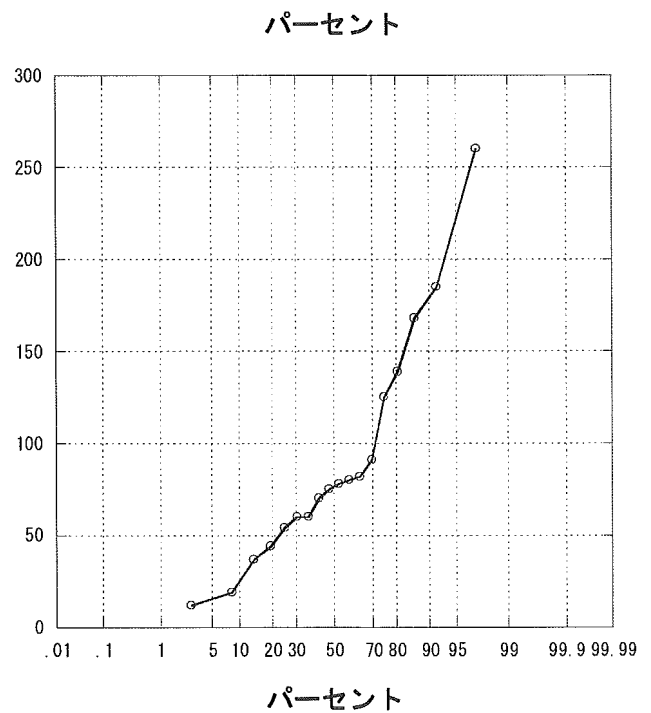
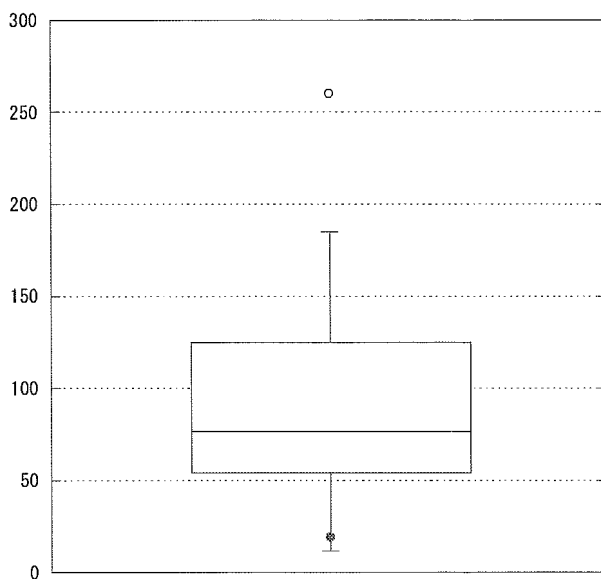
年間収容患者数



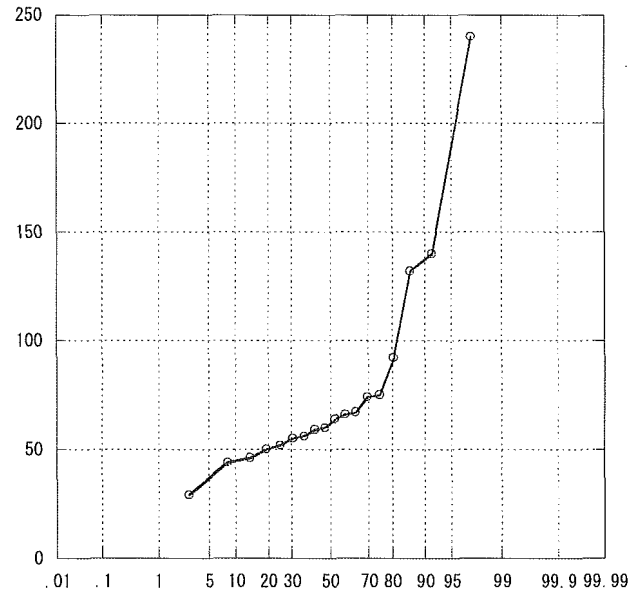
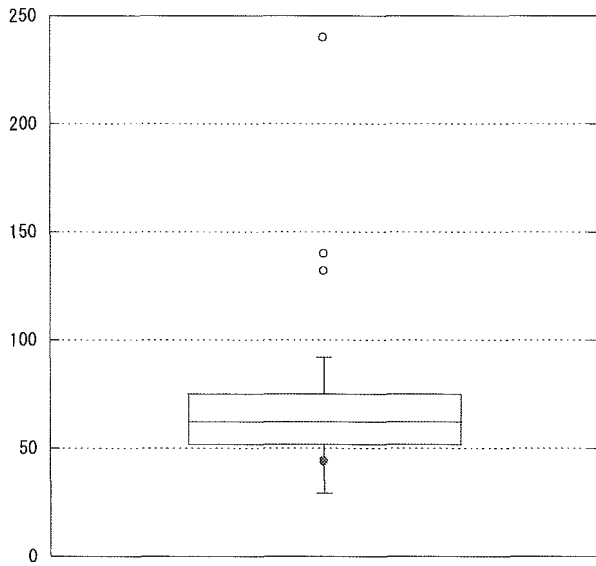
APACHE 0~4



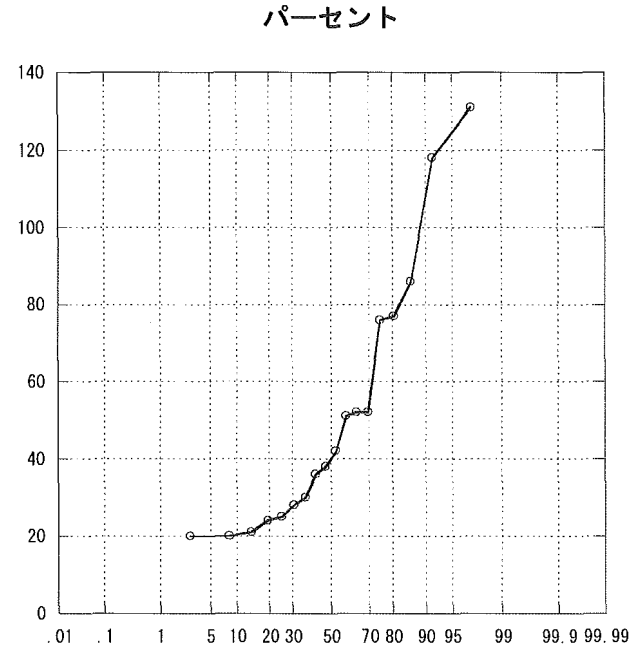
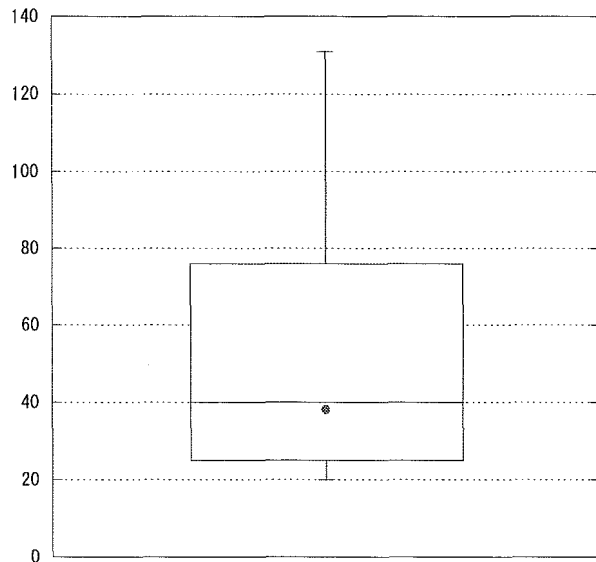
APACHE 5~9



APACHE 10~14

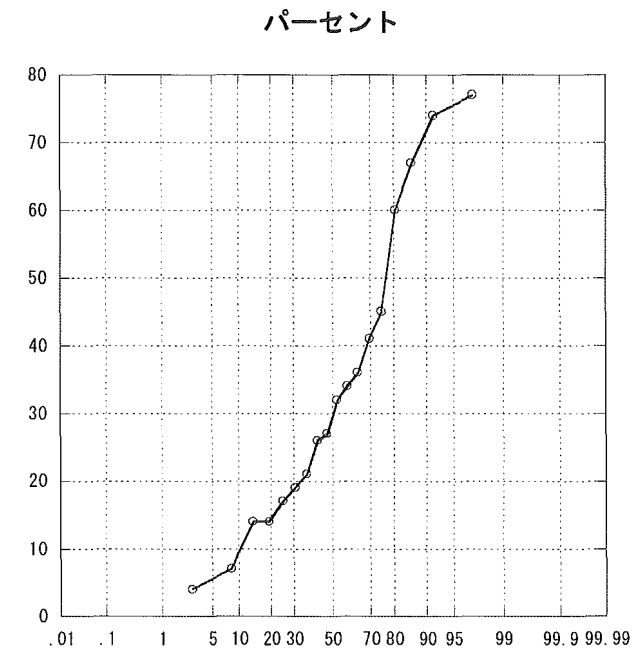
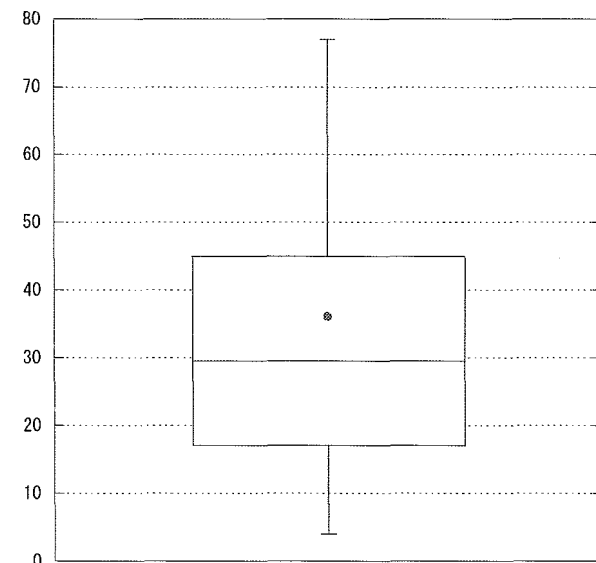


APACHE 15~19



パーセント

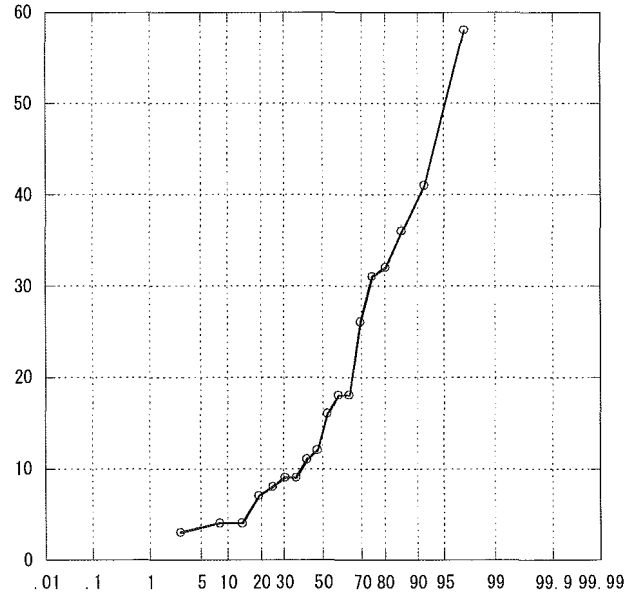
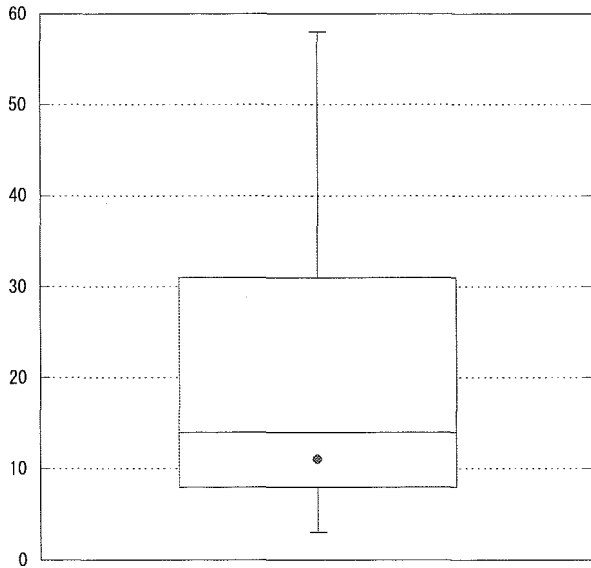
APACHE 20~24



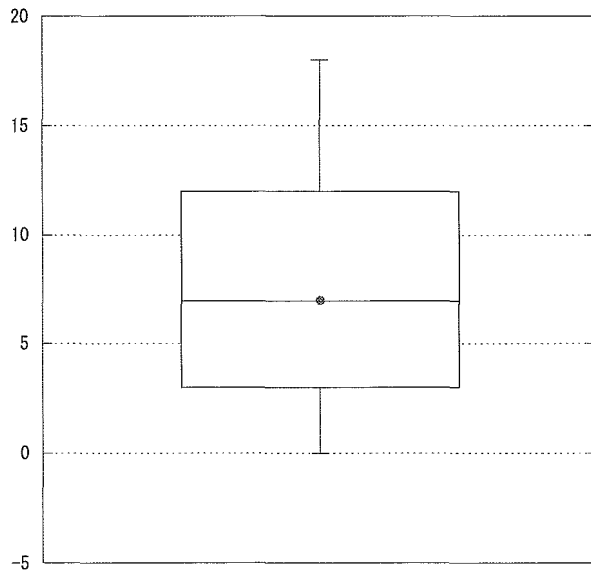
パーセント

パーセント

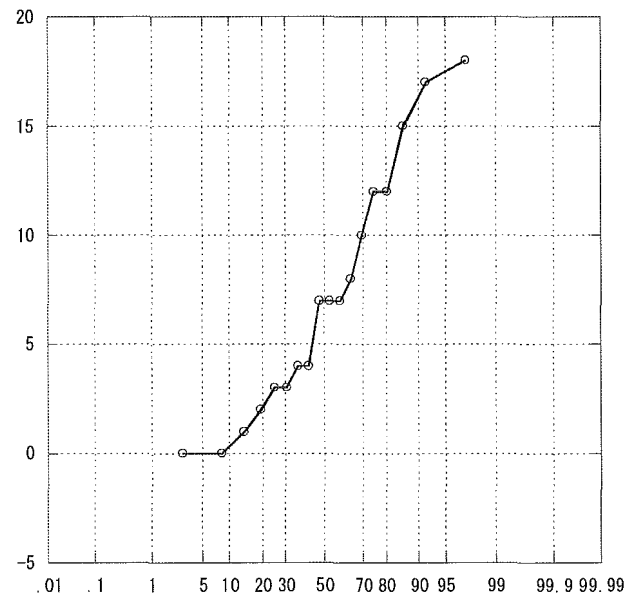
APACHE 25~29



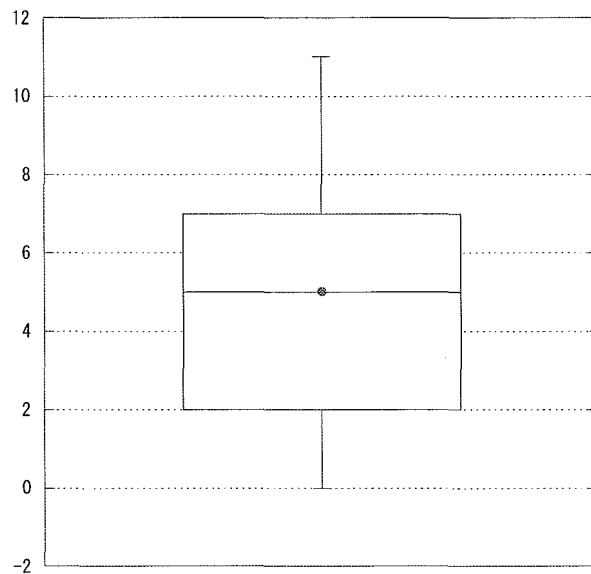
APACHE 30~34



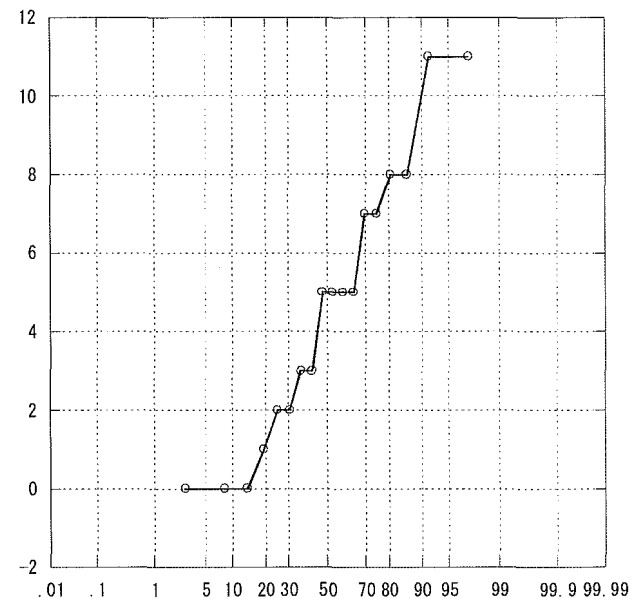
パーセント



APACHE 35~

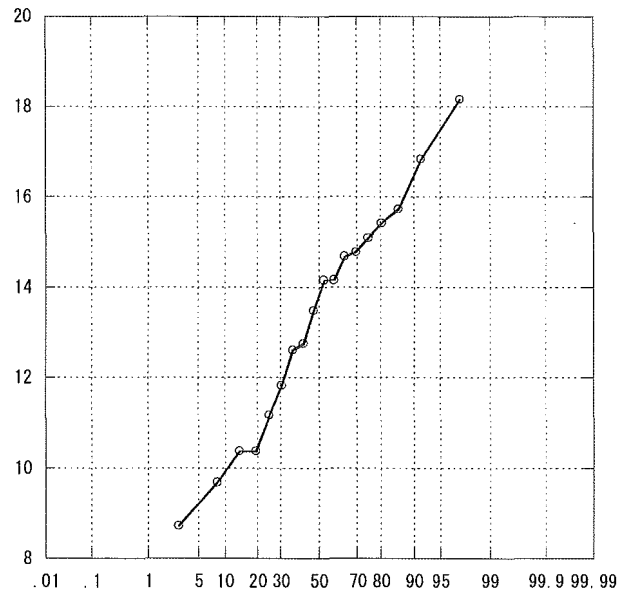
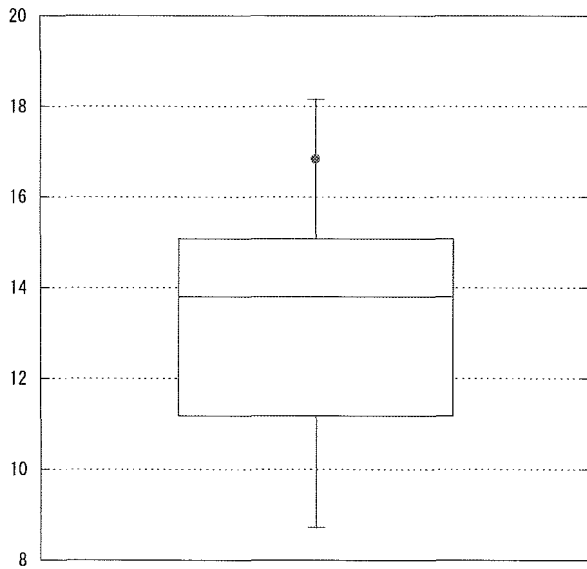


パーセント

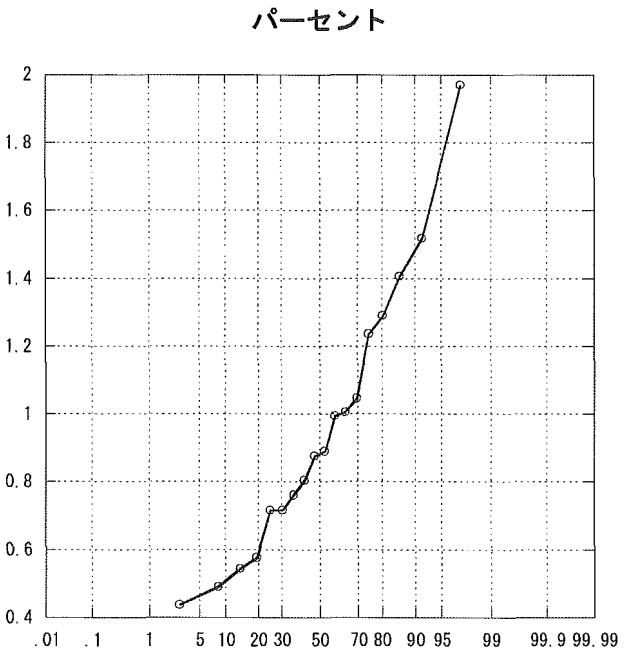
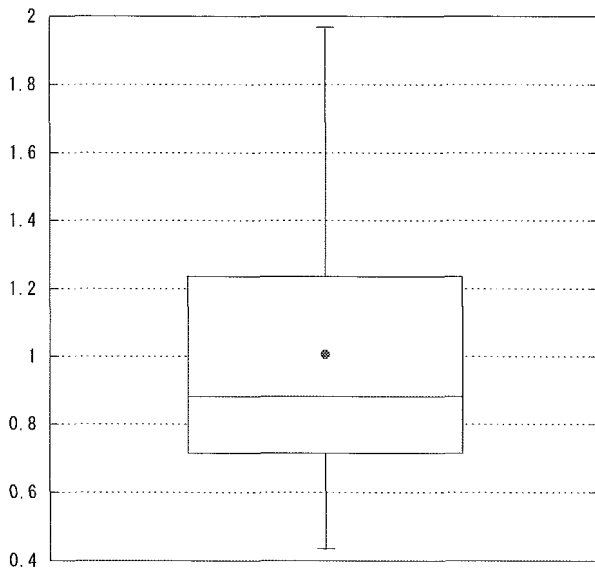


パーセント

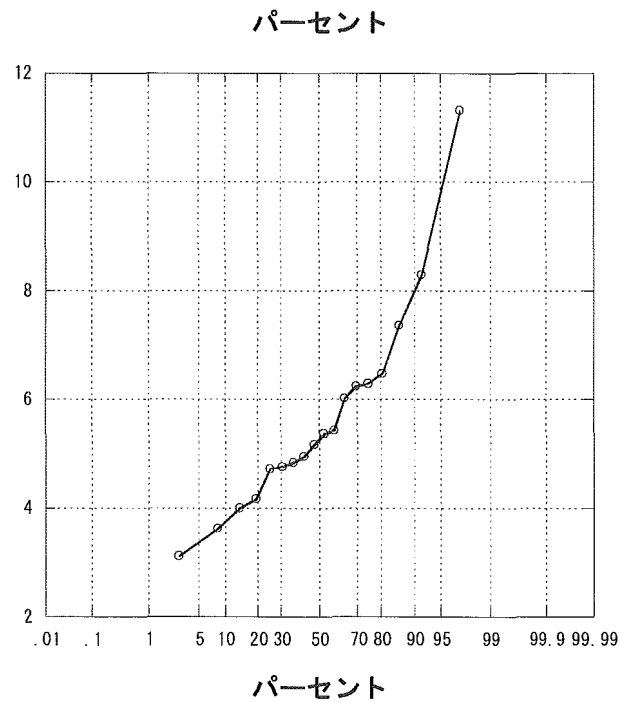
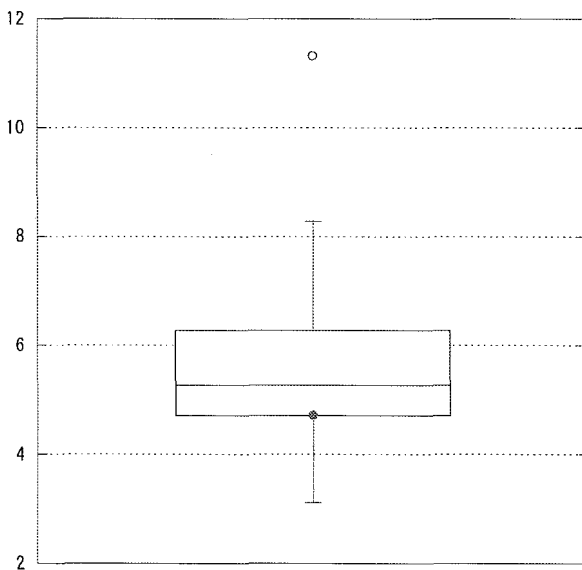
APACHE平均



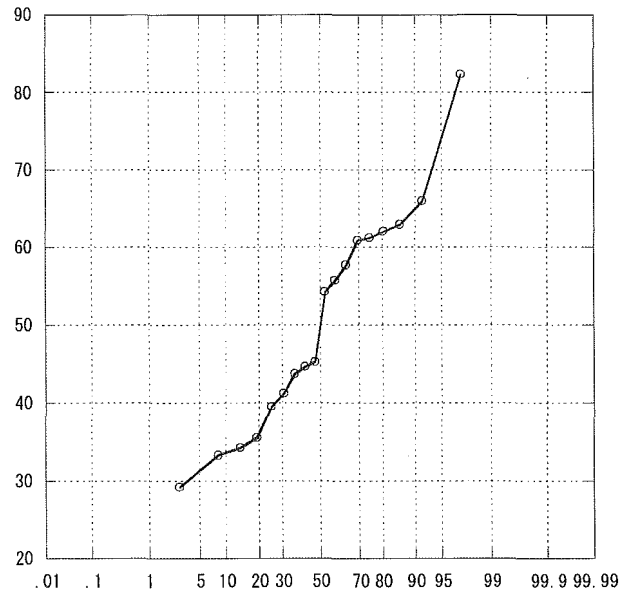
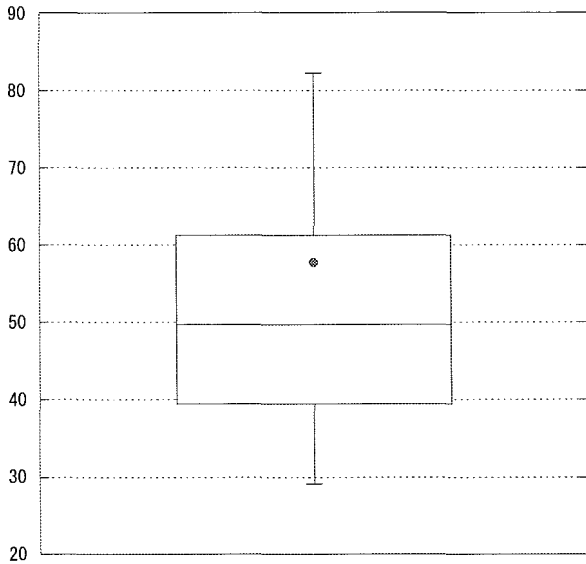
標準化死亡比



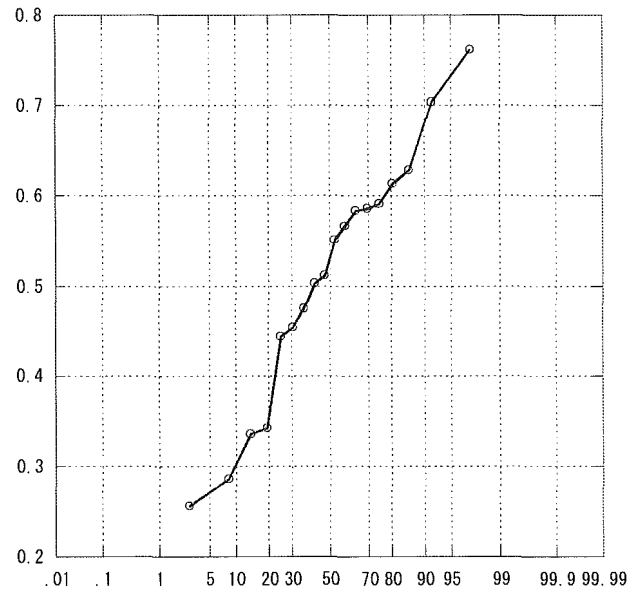
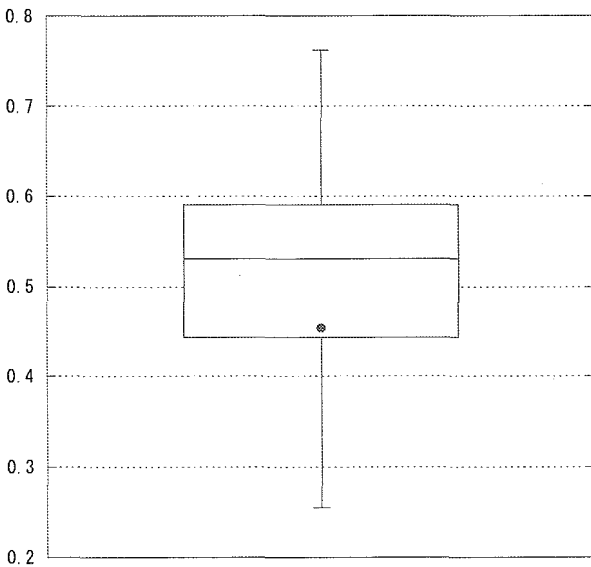
平均在室日数



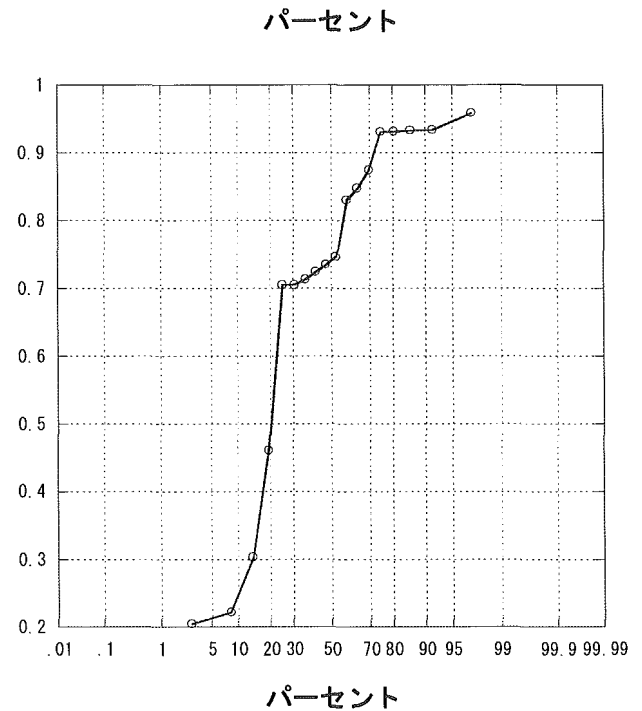
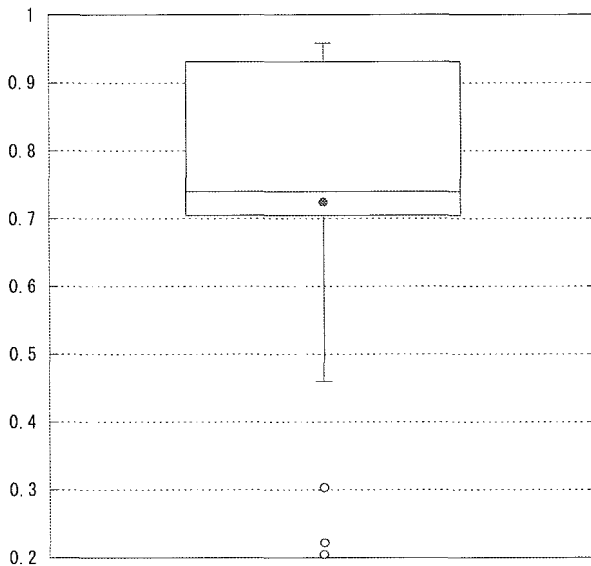
平均在院日数



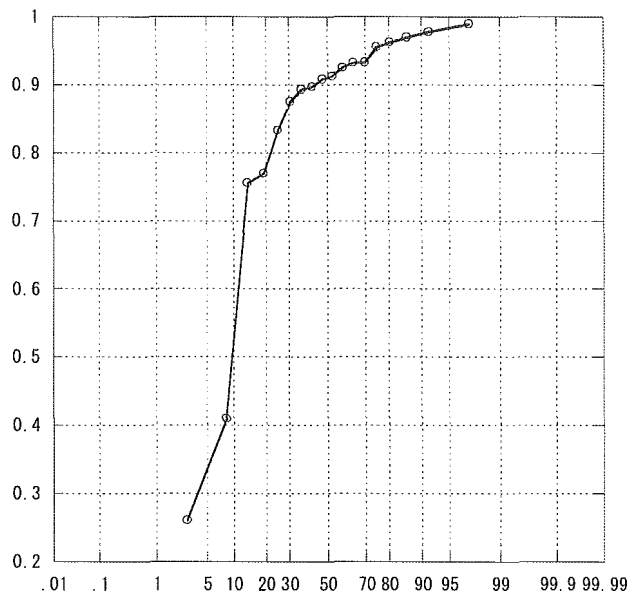
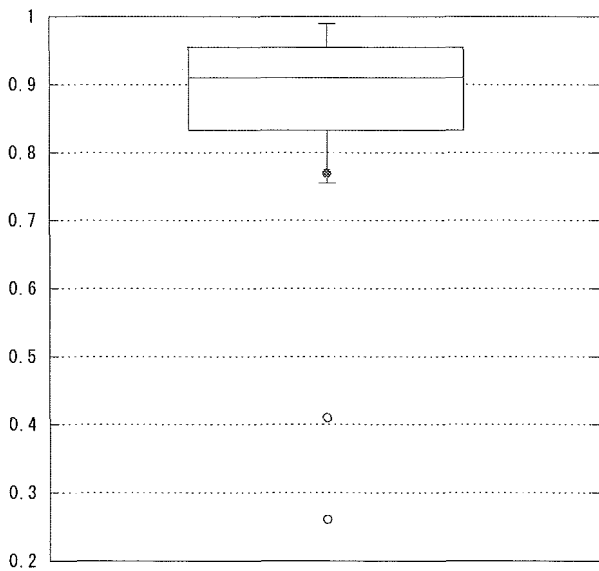
人工呼吸器利用率



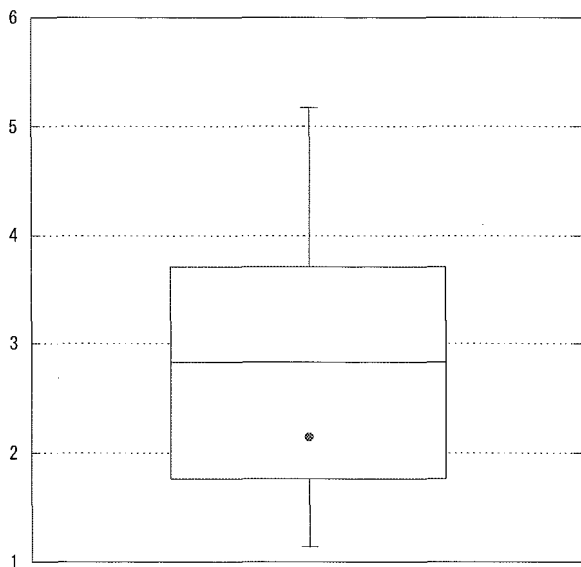
中心静脈カテ利用率



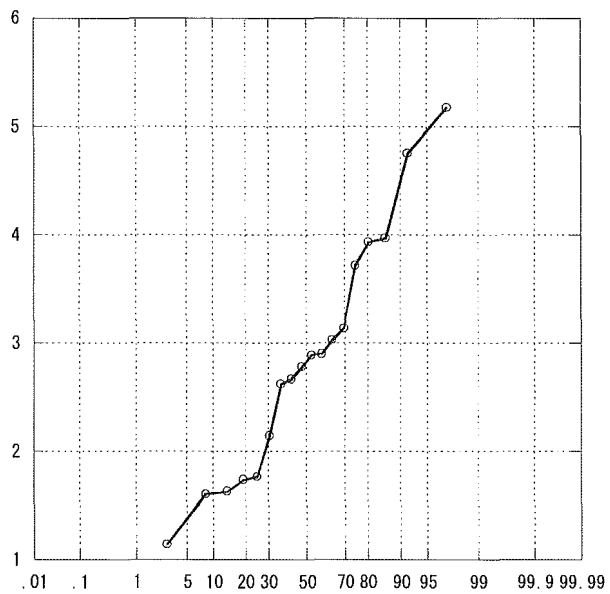
尿道カテ利用率



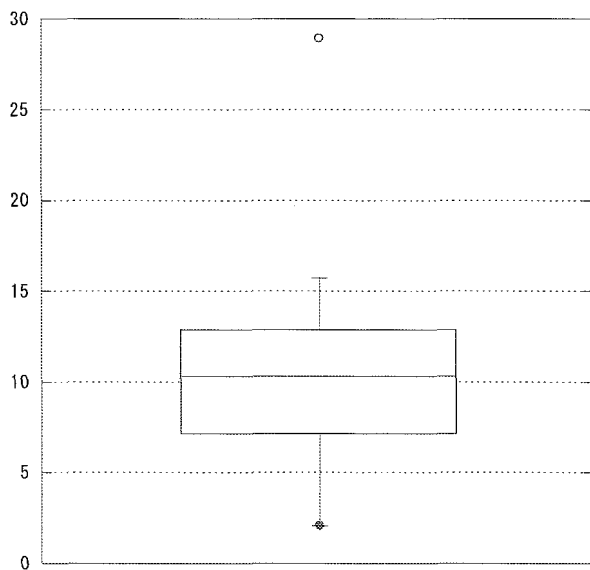
人工呼吸日／患者数



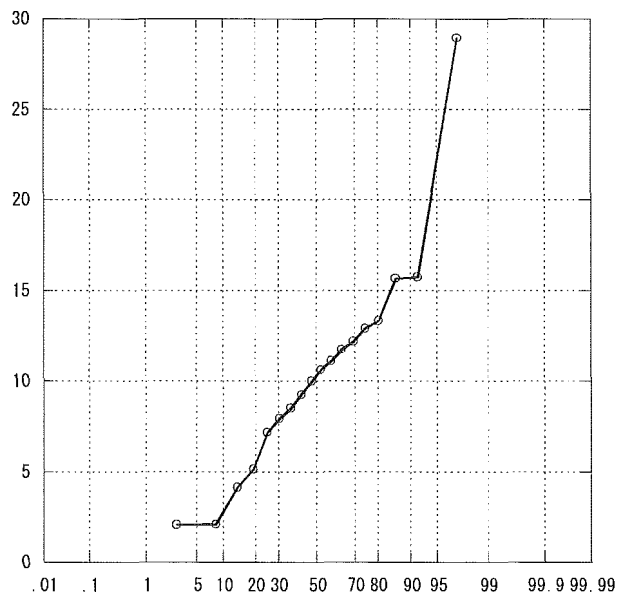
パーセント



リスク調整感染率（肺炎）



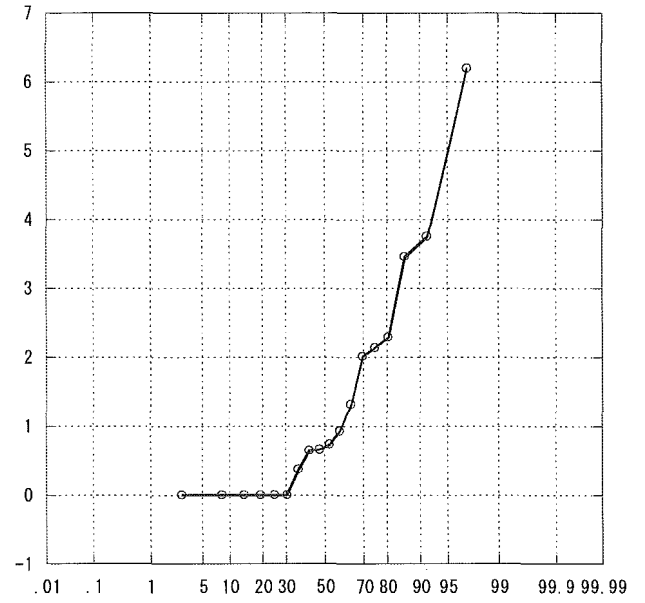
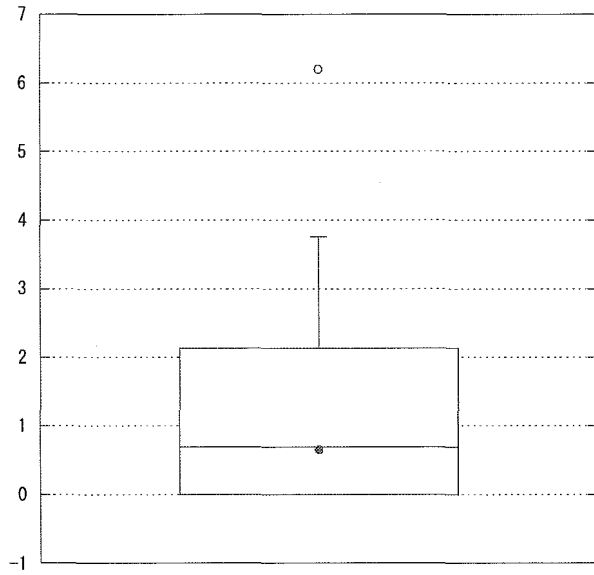
パーセント



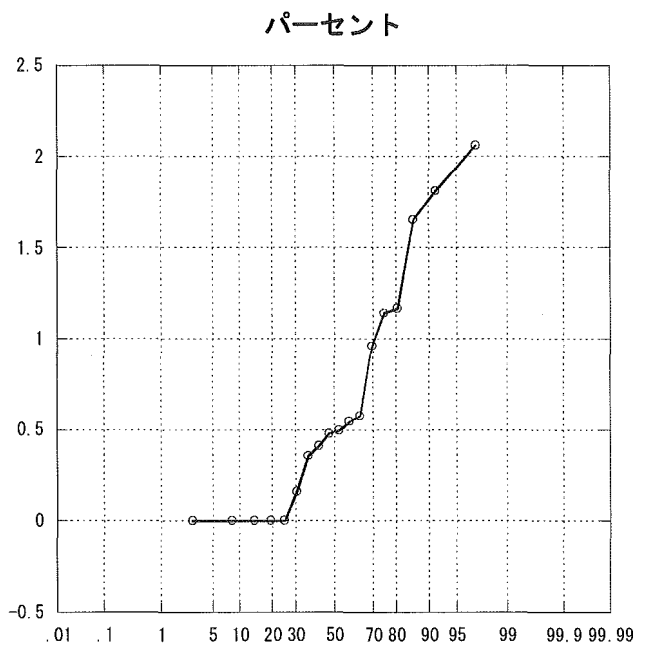
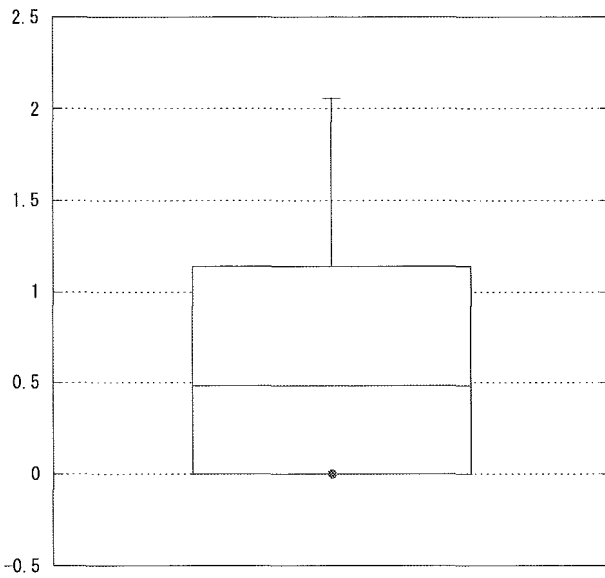
パーセント



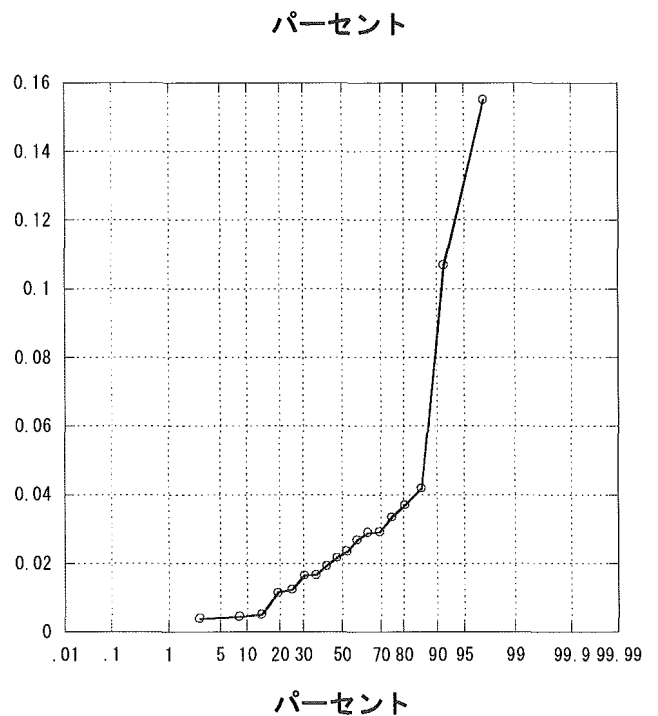
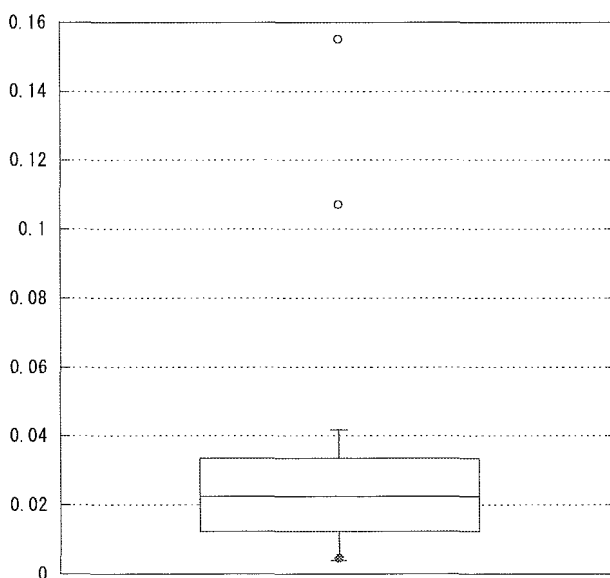
リスク調整感染率（カテ）



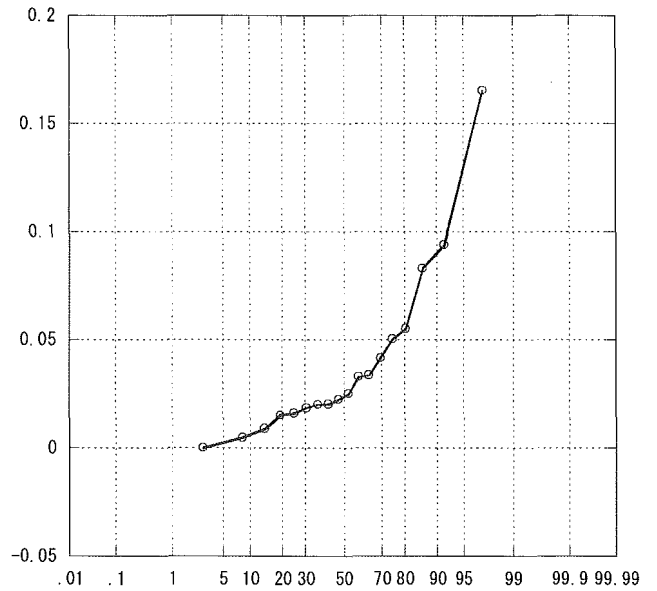
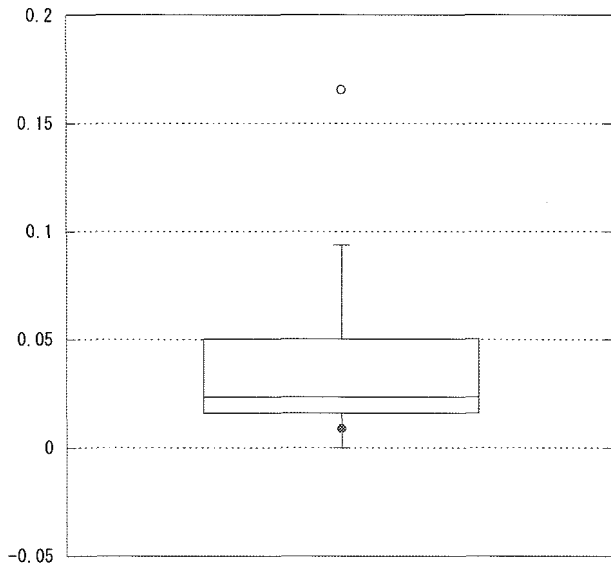
リスク調整感染率（尿路）



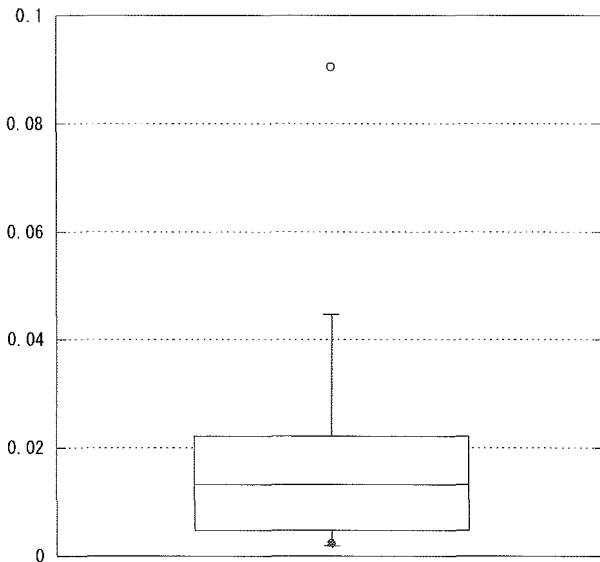
全感染率（耐性）



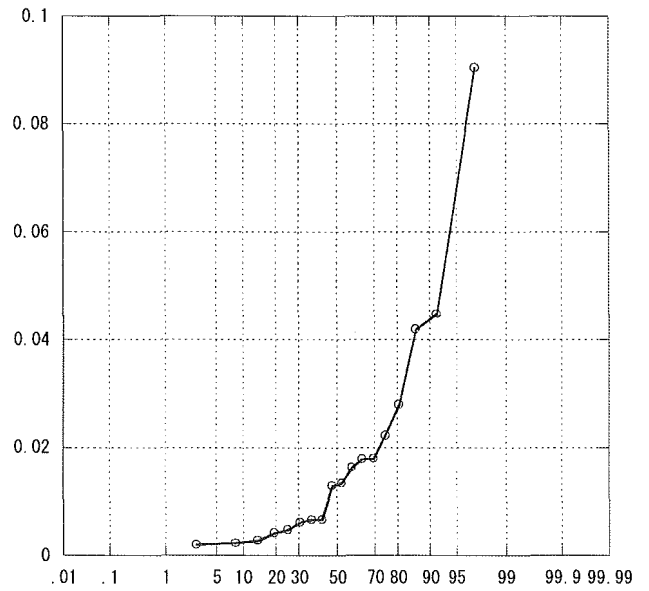
全感染率（感性）



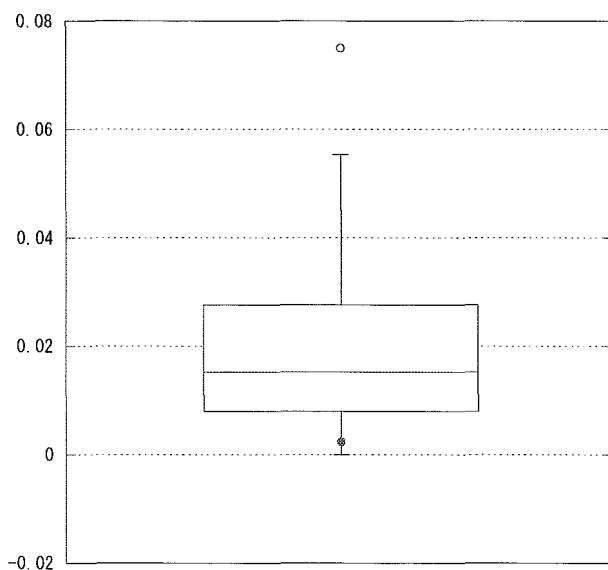
肺炎感染率（耐性）



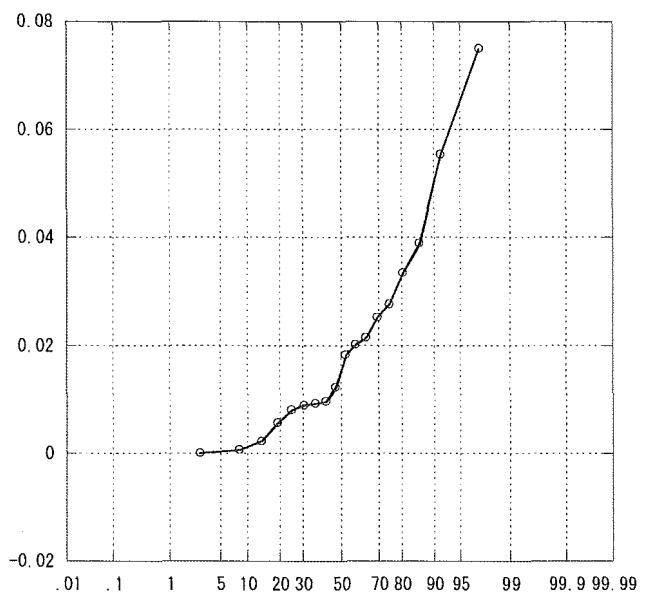
パーセント



肺炎感染率（感性）



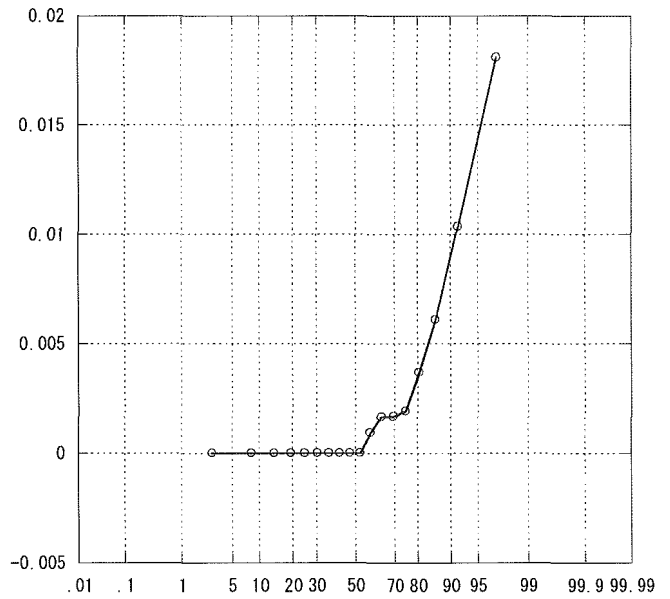
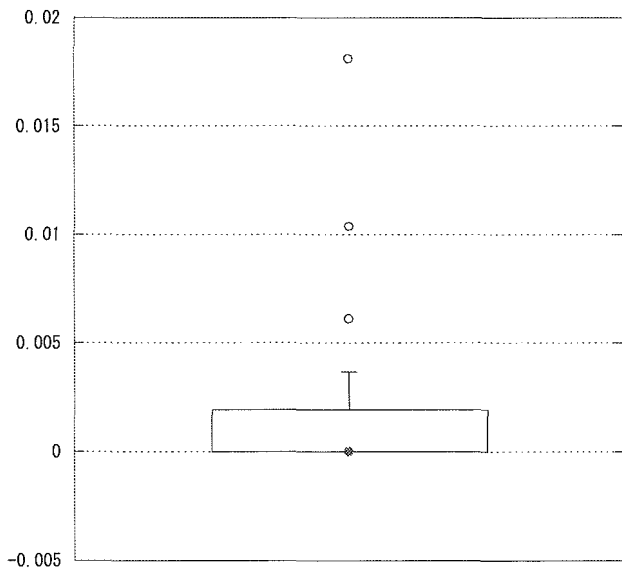
パーセント



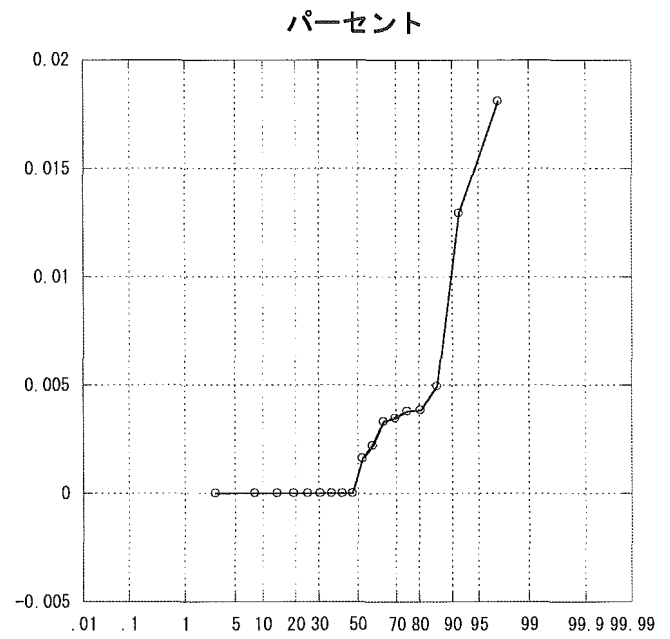
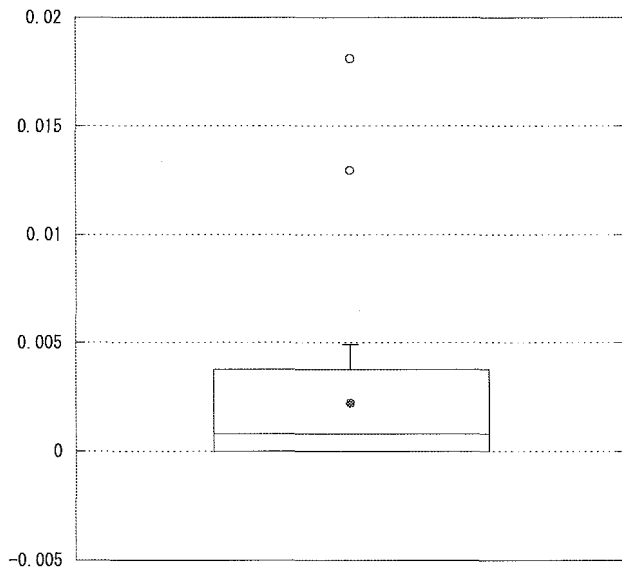
パーセント

ICU研究班2004年施設間比較

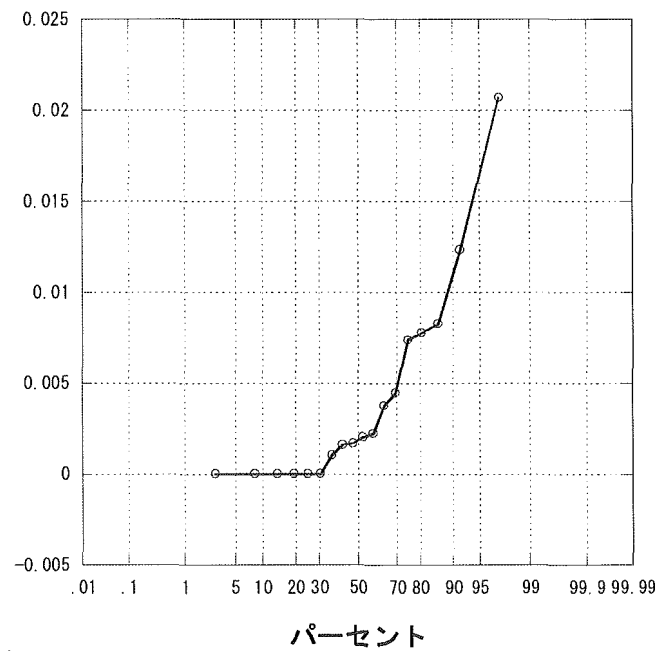
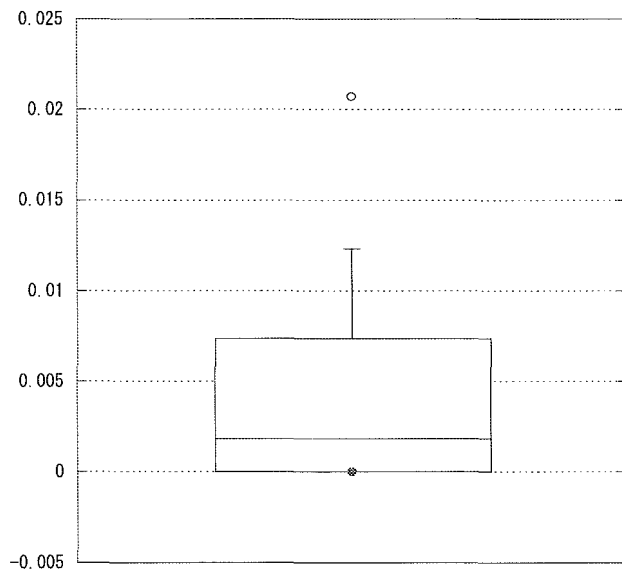
カテ感染率（耐性）



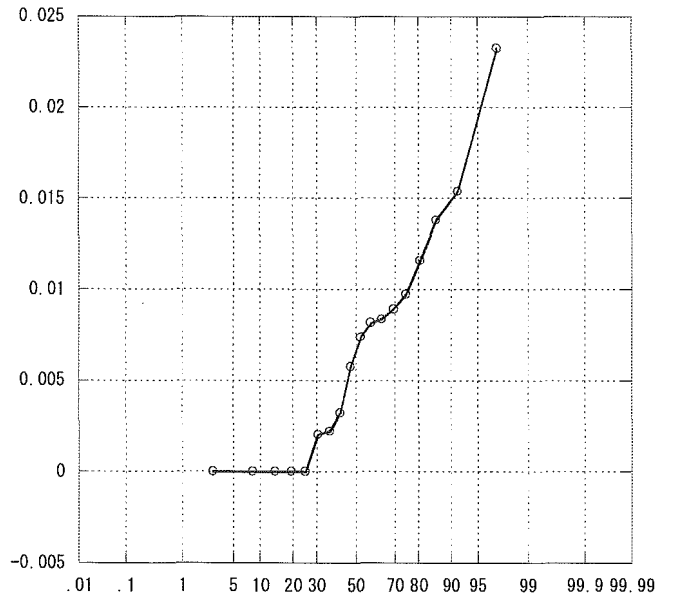
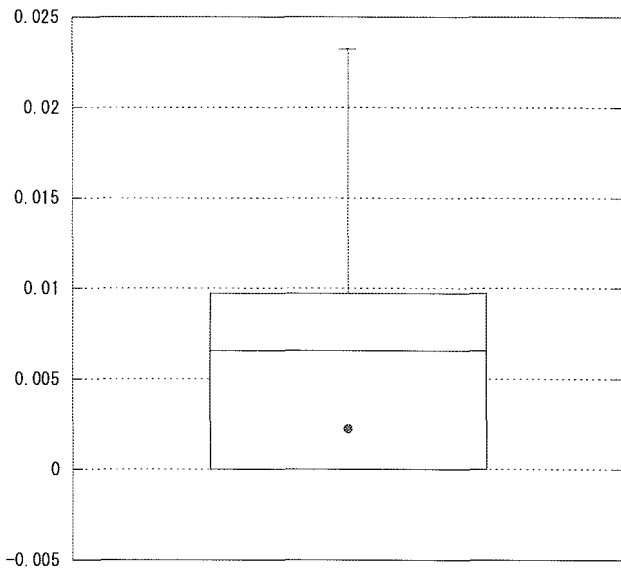
カテ感染率（感性）



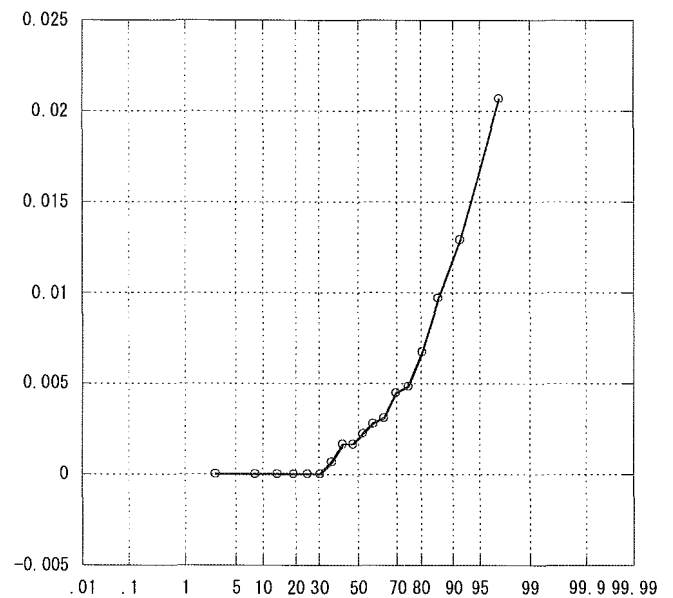
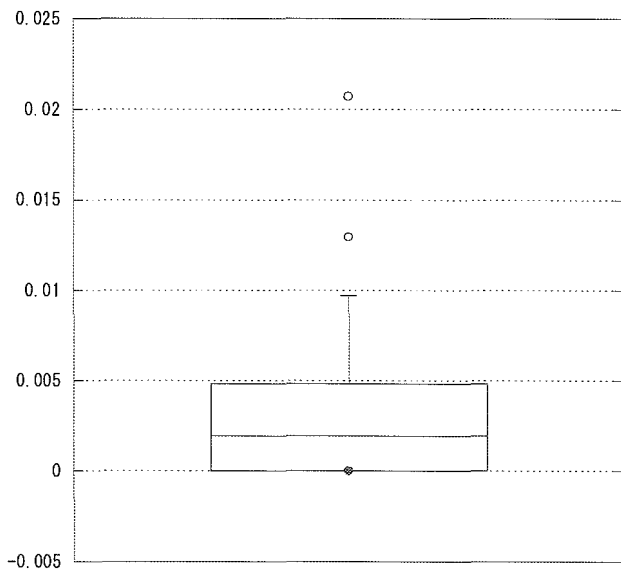
創感染率（耐性）



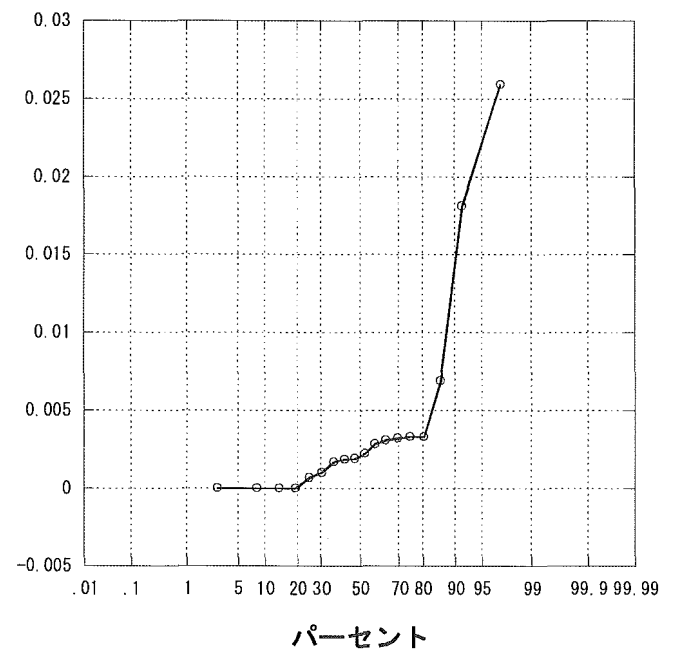
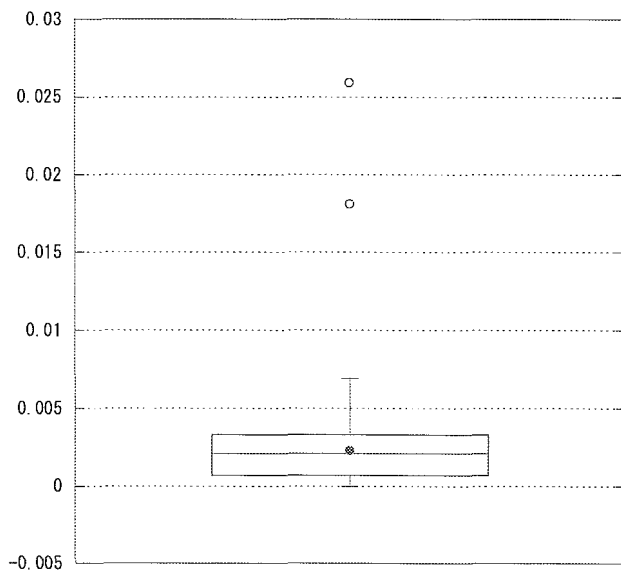
創感染率（感性）



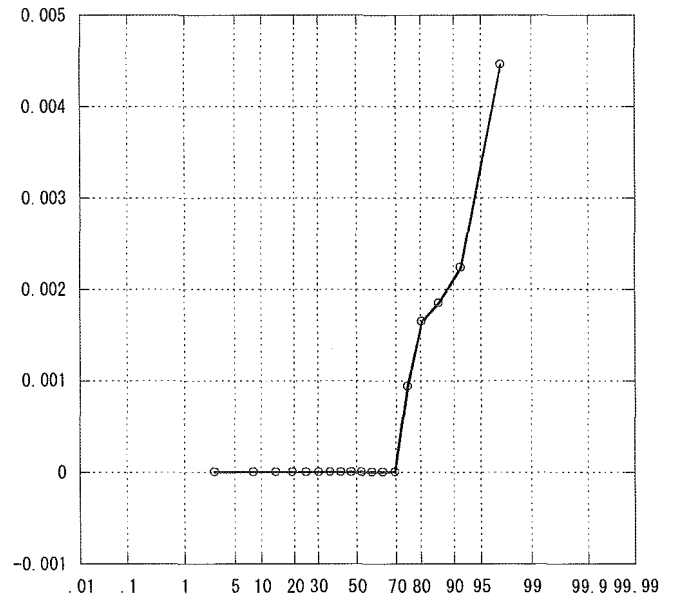
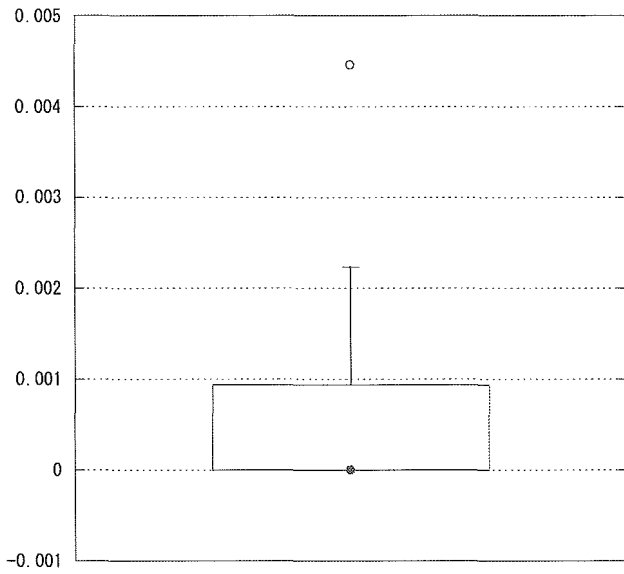
敗血症感染率（耐性）



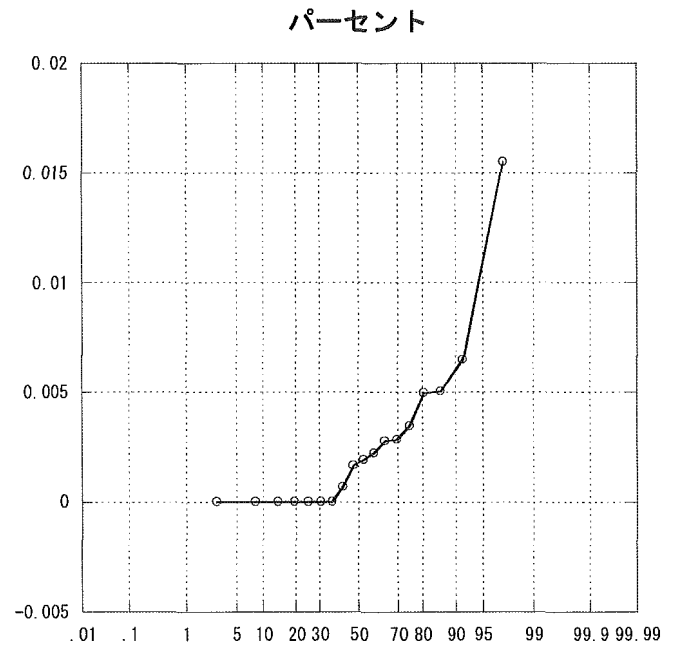
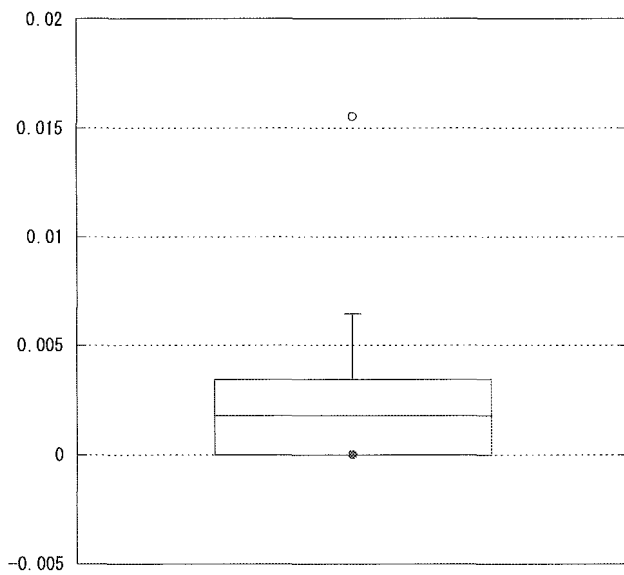
敗血症感染率（感性）



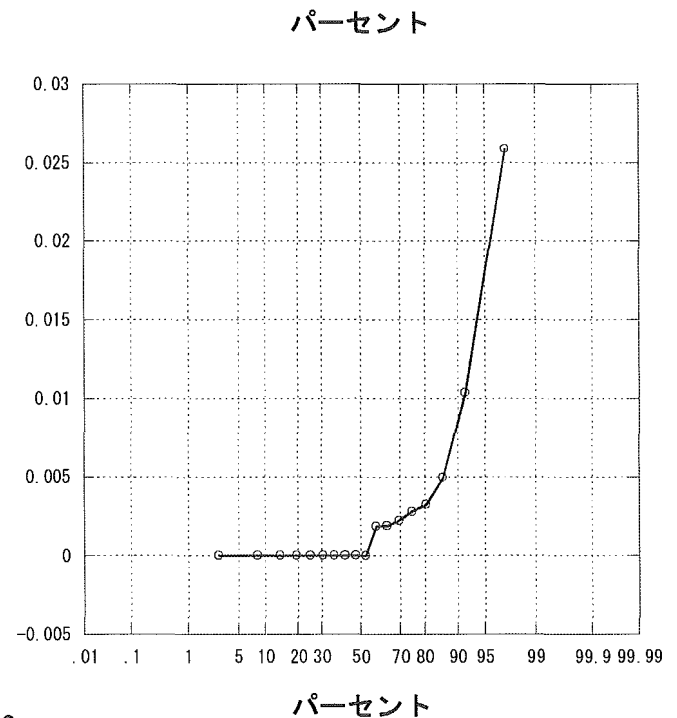
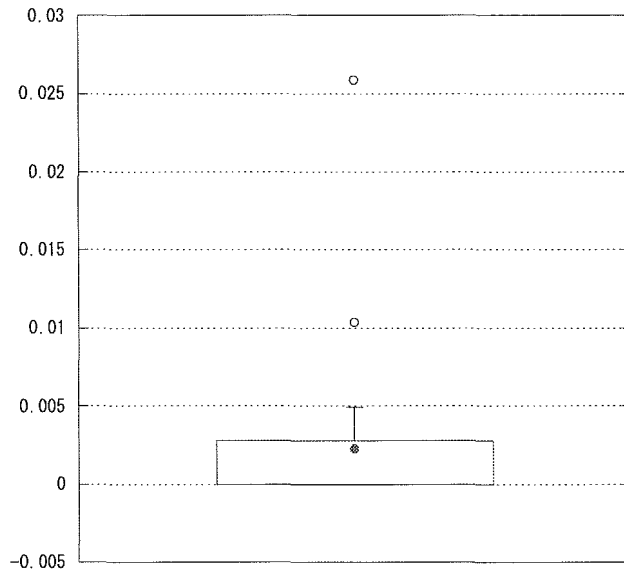
尿路感染率（耐性）



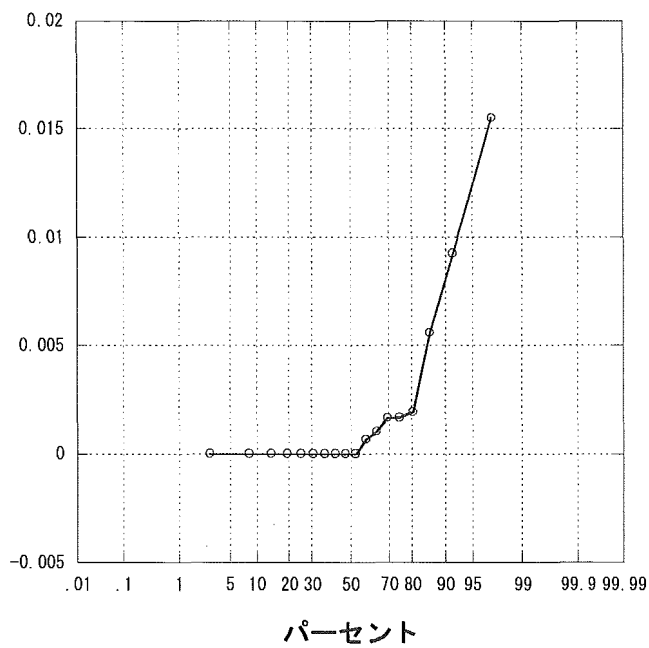
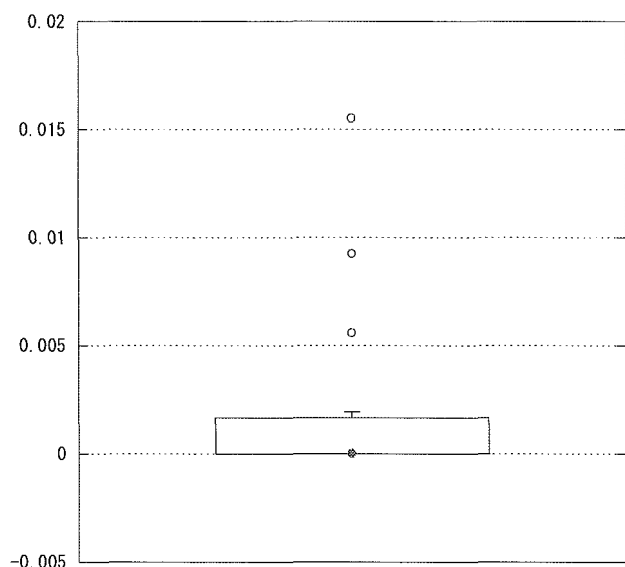
尿路感染率（感性）



その他感染率（耐性）



その他感染率（感性）



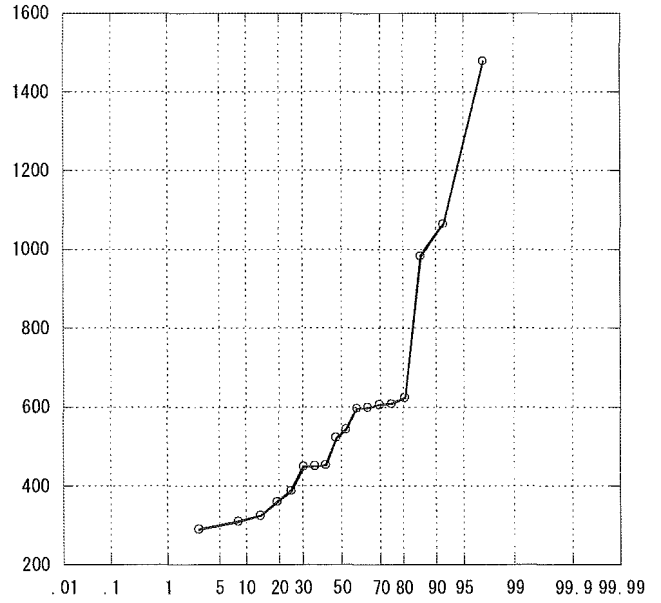
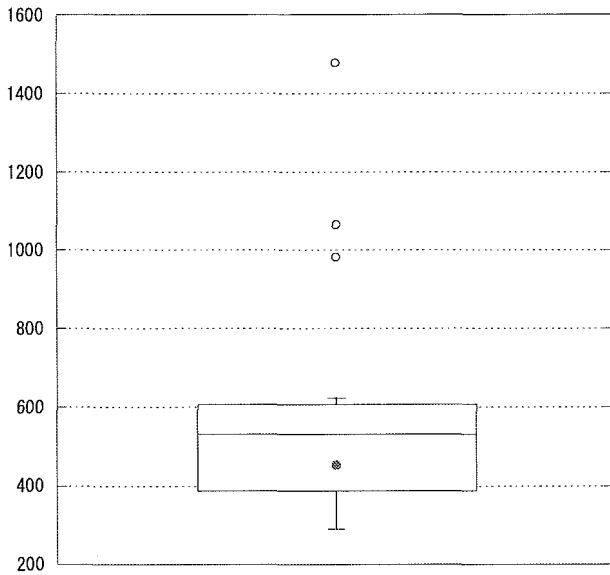
7

## H 施設

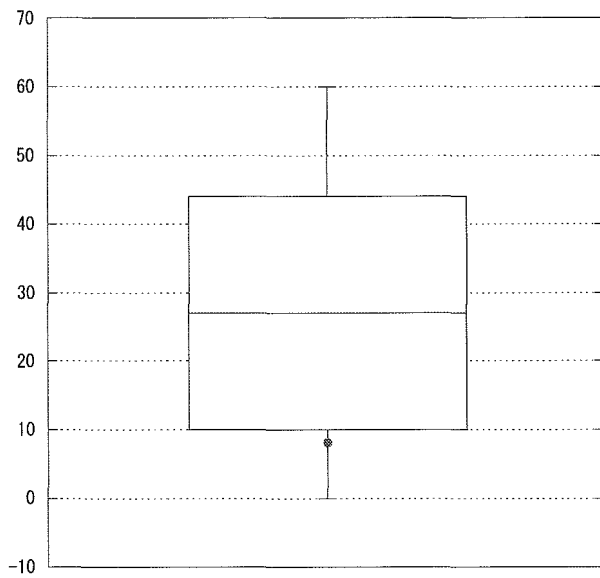
2004年1月～12月

# ICU研究班2004年施設間比較

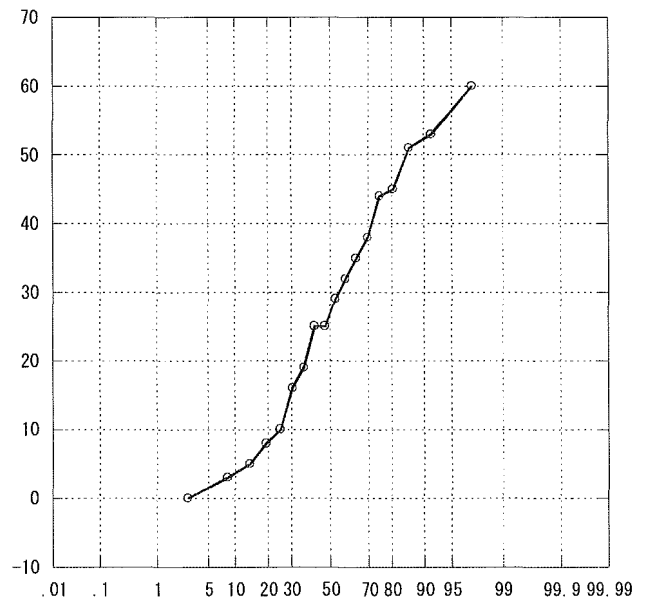
## 年間収容患者数



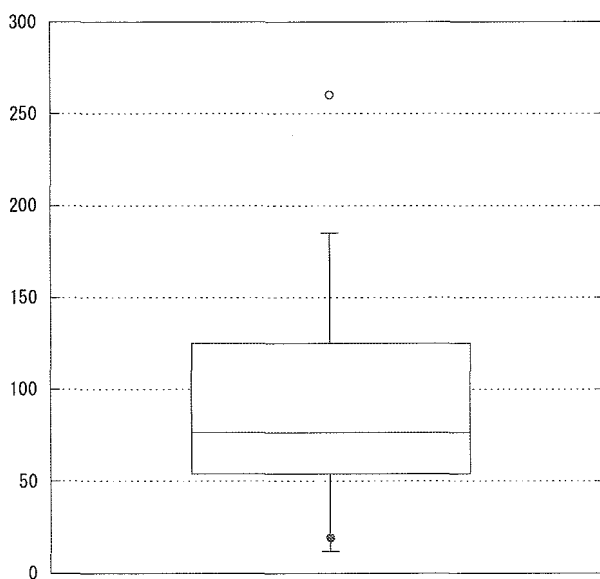
## APACHE 0~4



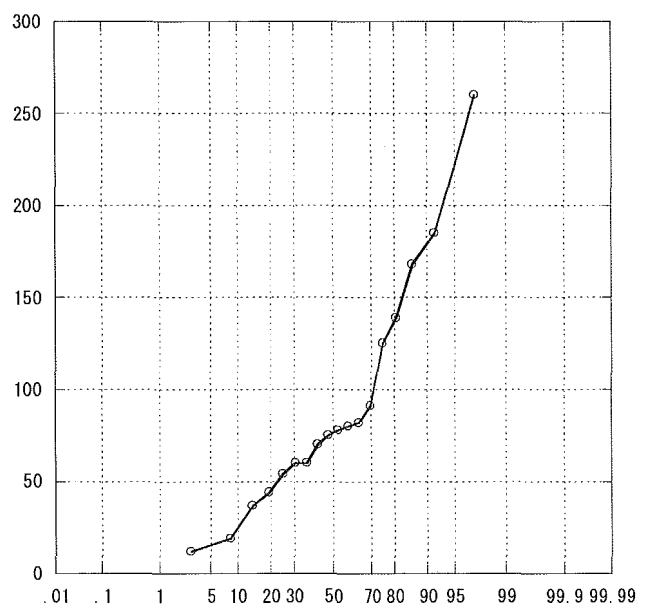
## パーセント



## APACHE 5~9

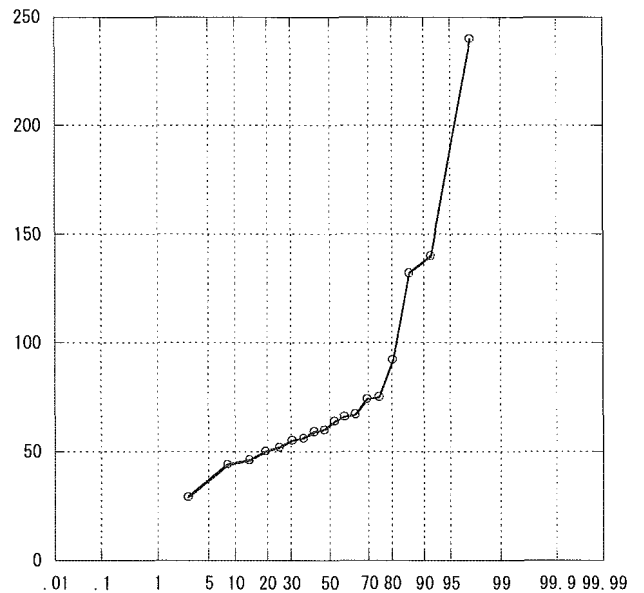
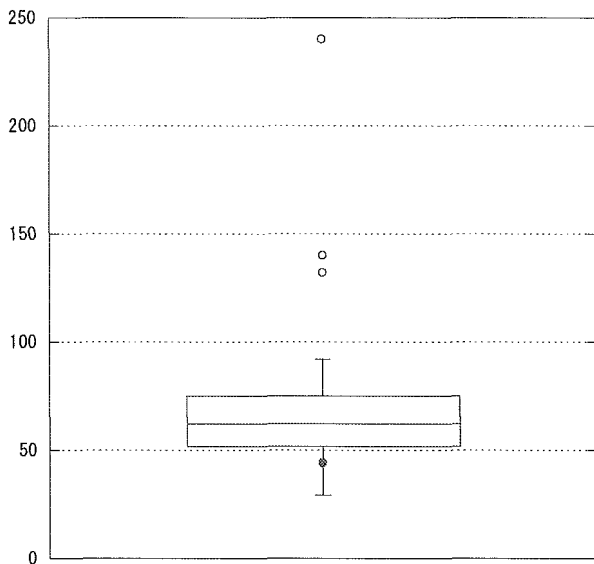


## パーセント



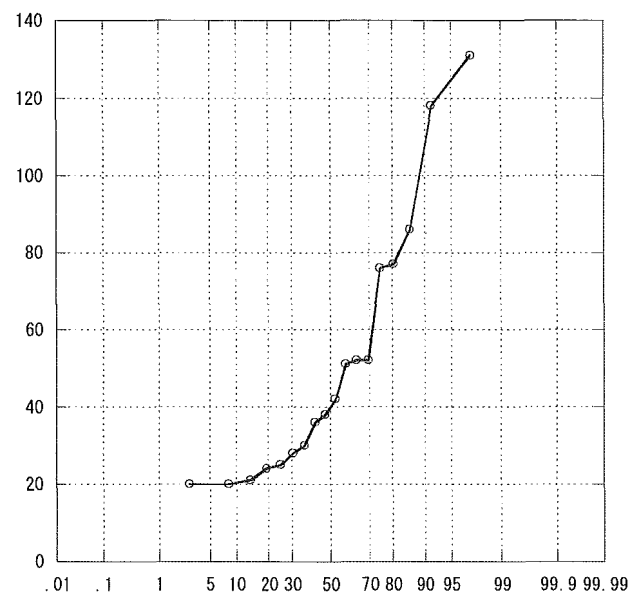
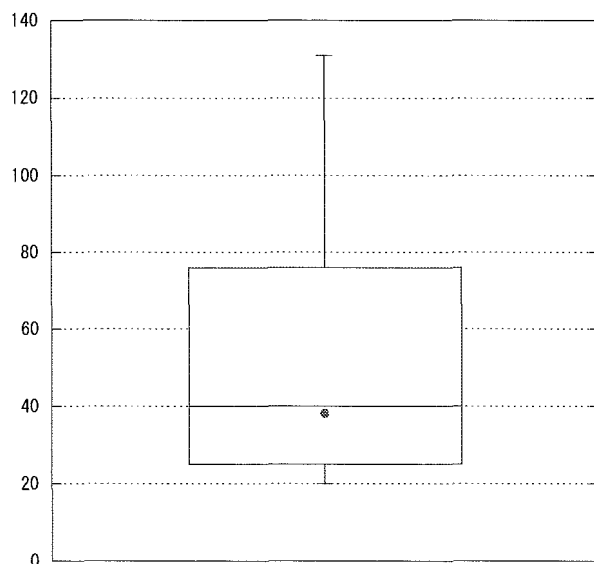


APACHE 10~14



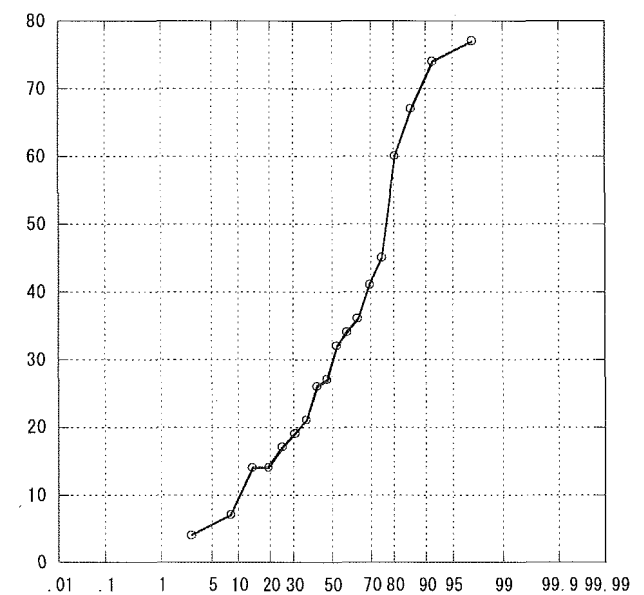
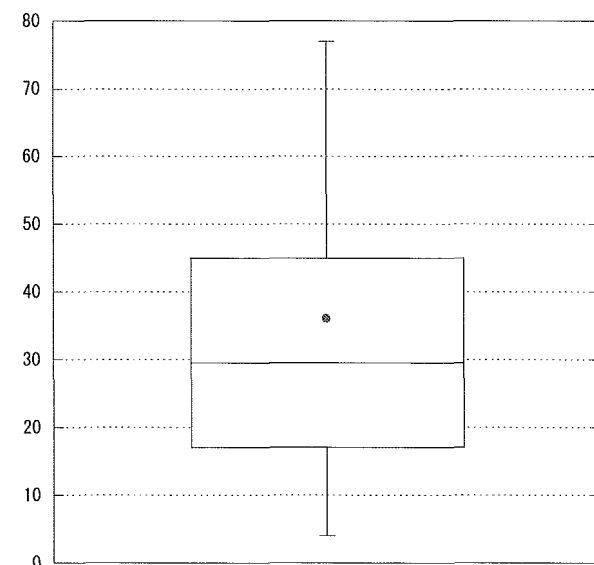
パーセント

APACHE 15~19



パーセント

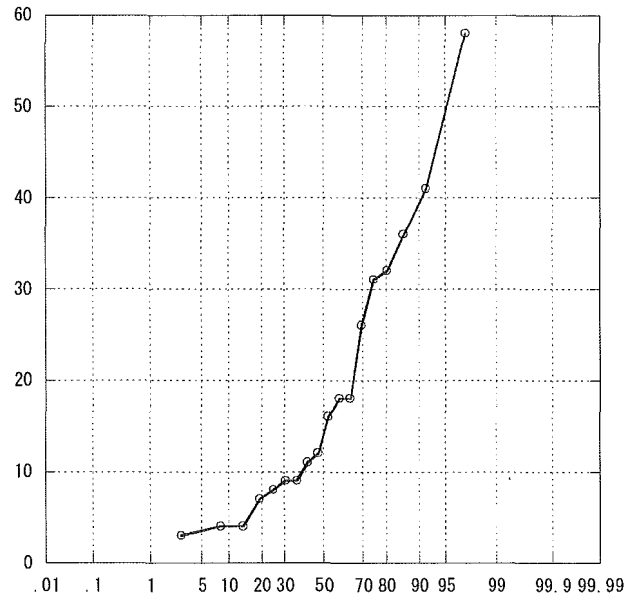
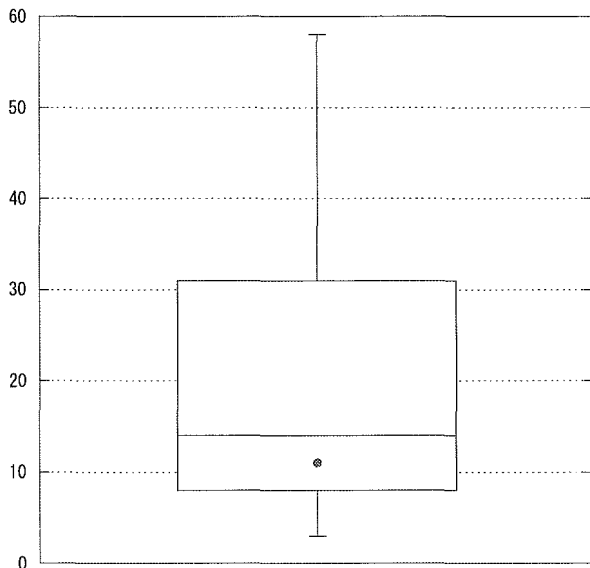
APACHE 20~24



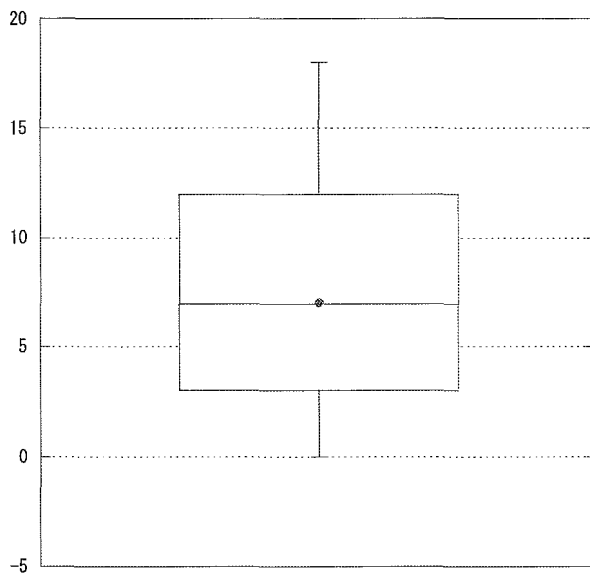
パーセント

ICU研究班2004年施設間比較

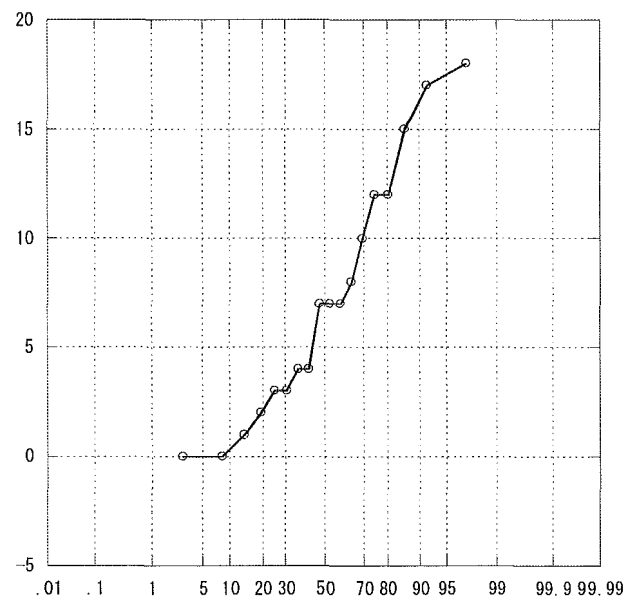
APACHE 25~29



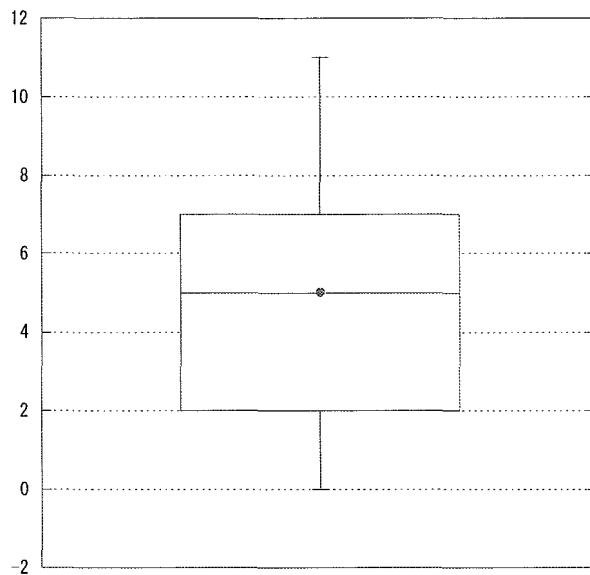
APACHE 30~34



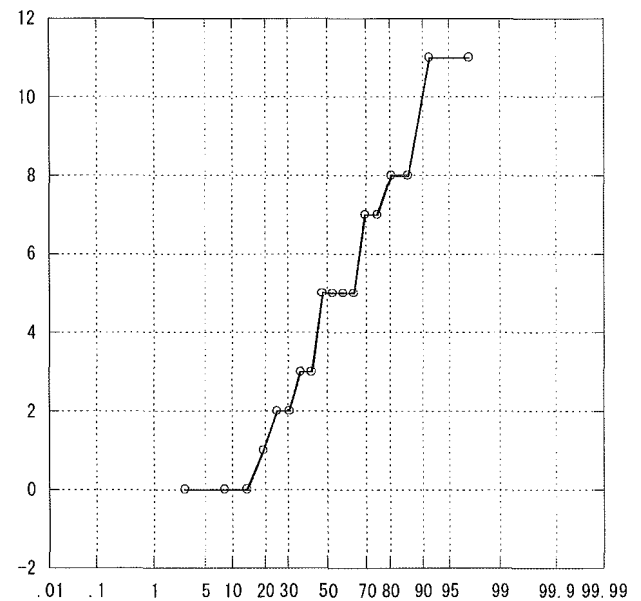
パーセント



APACHE 35~

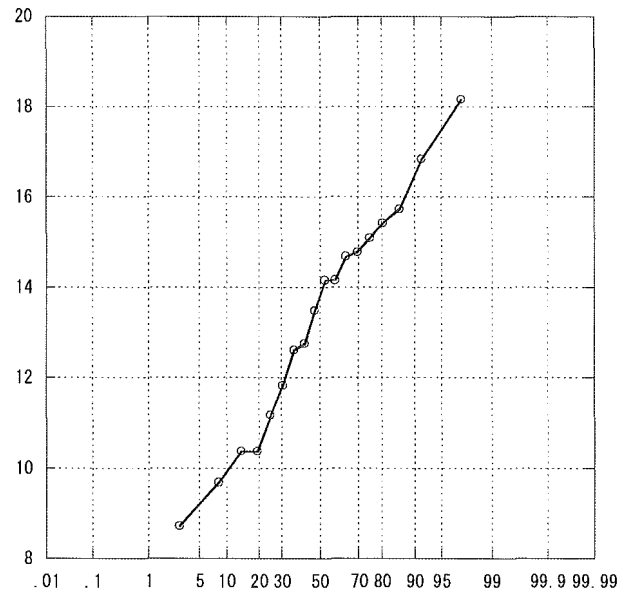
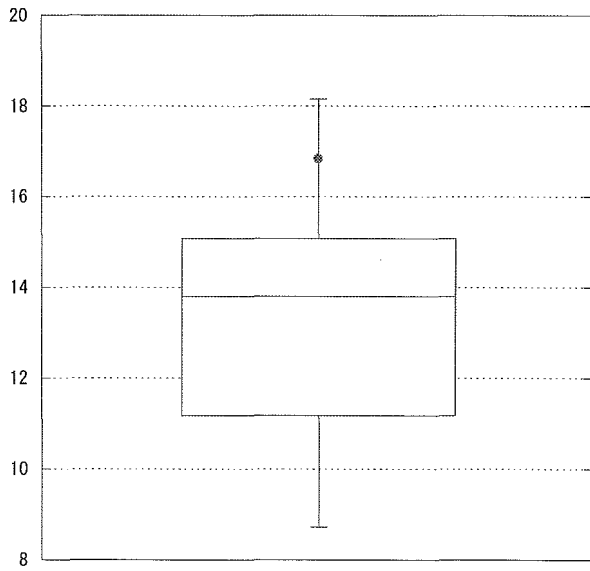


パーセント

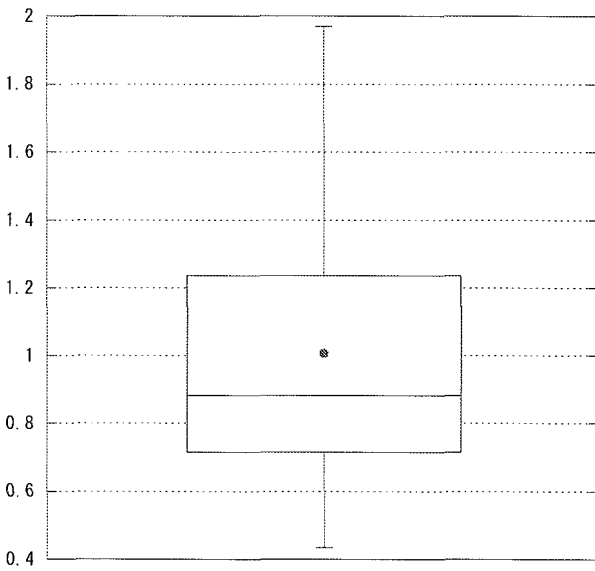


パーセント

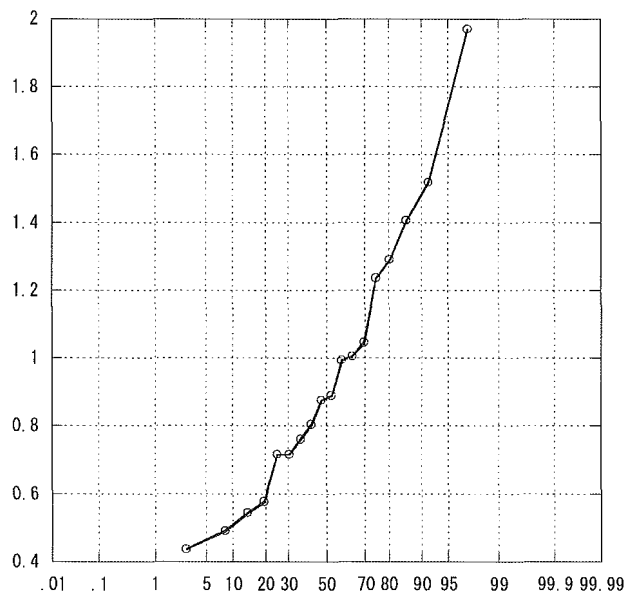
APACHE平均



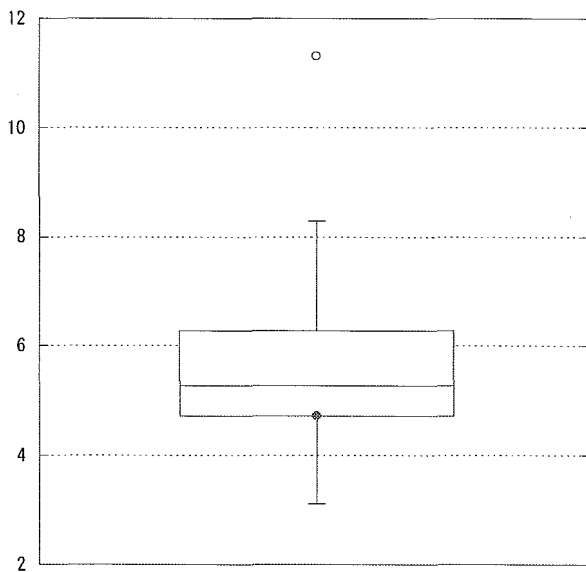
標準化死亡比



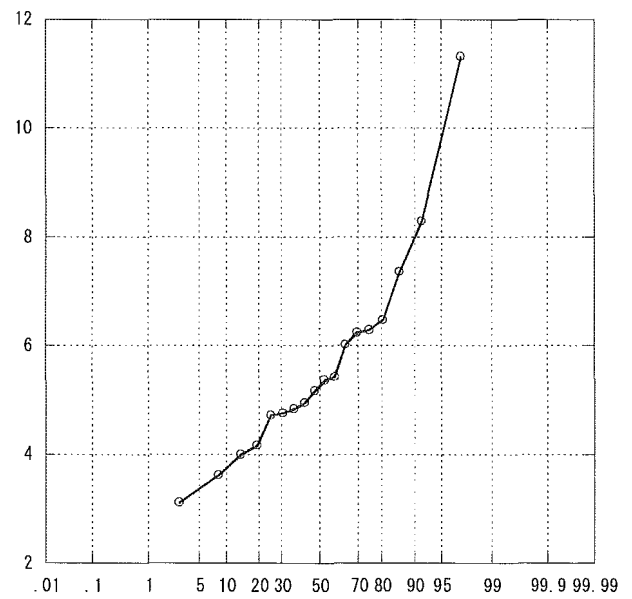
パーセント



平均在室日数

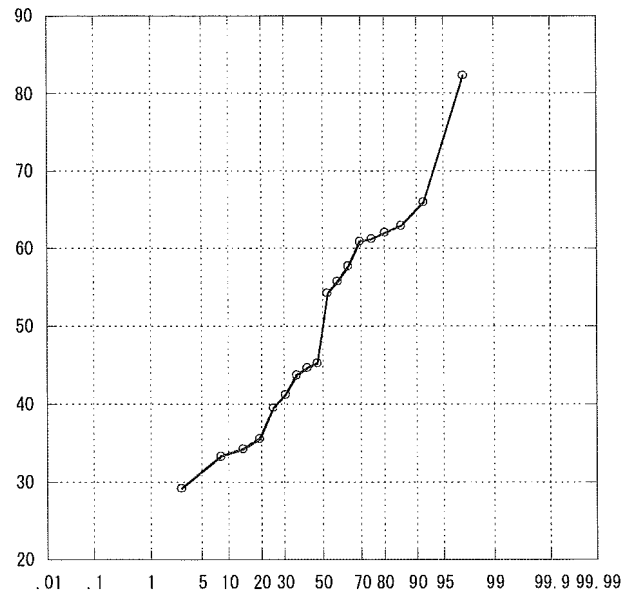
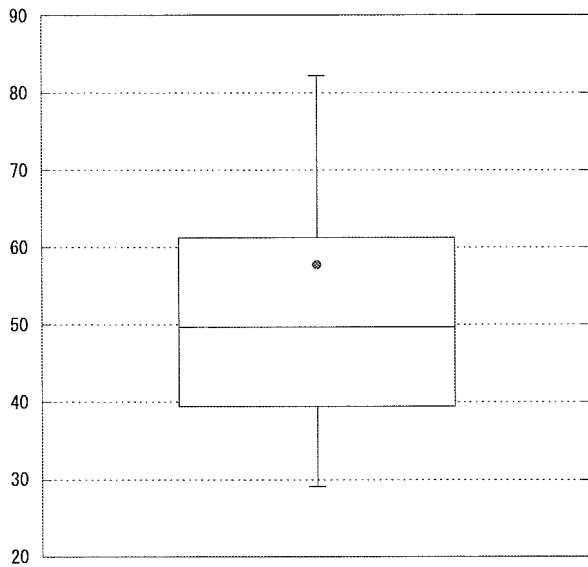


パーセント

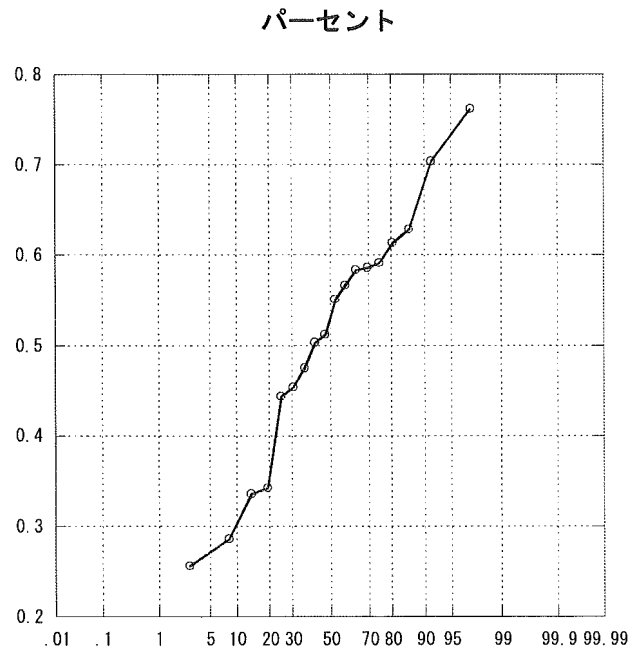
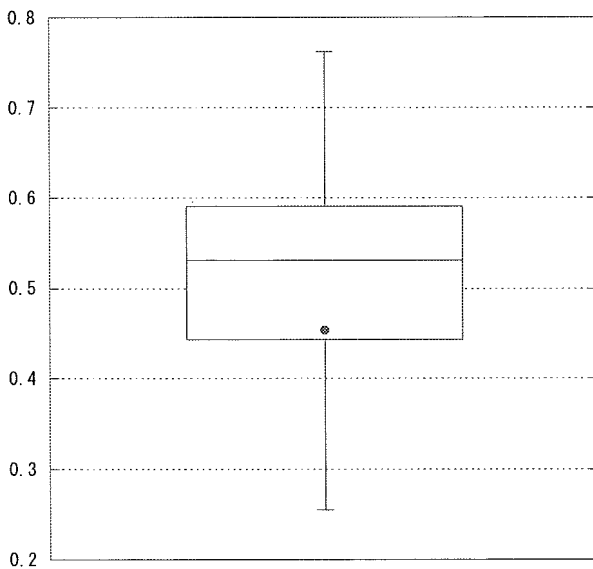


パーセント

平均在院日数



人工呼吸器利用率



中心静脈カテ利用率

