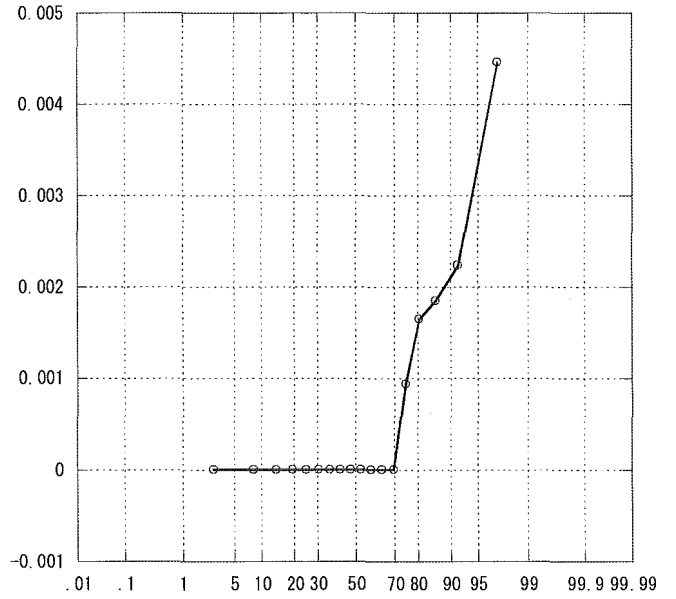
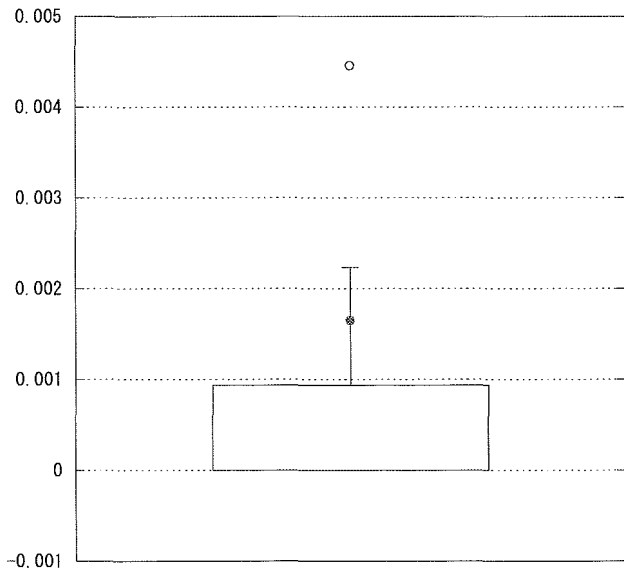
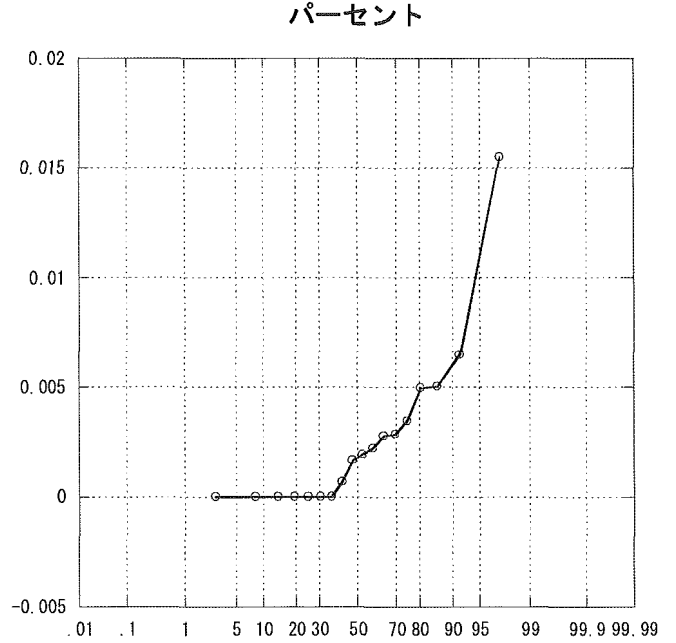
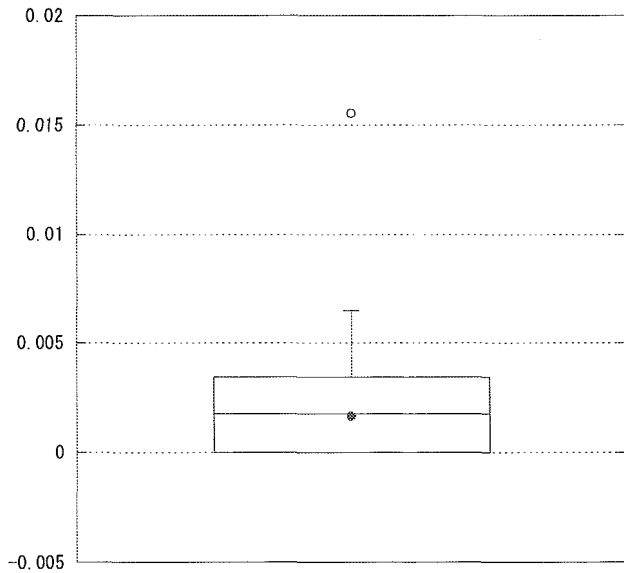


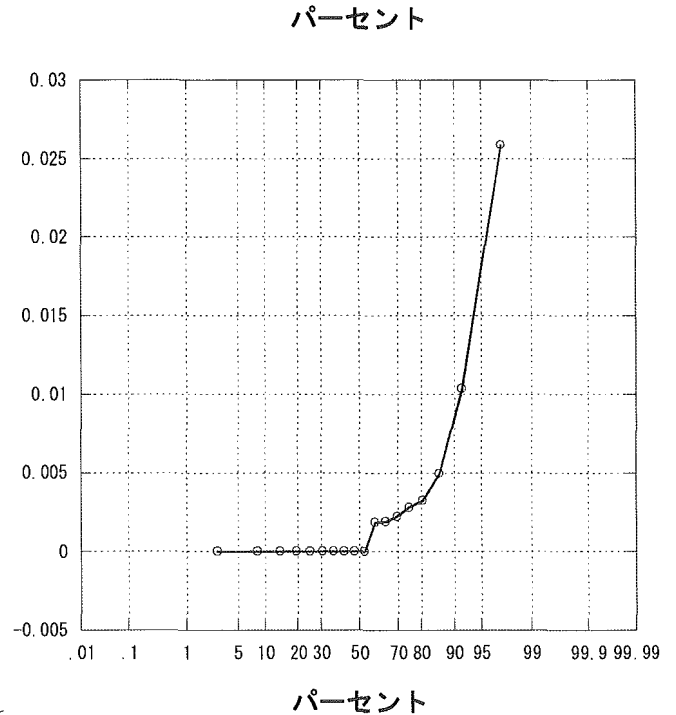
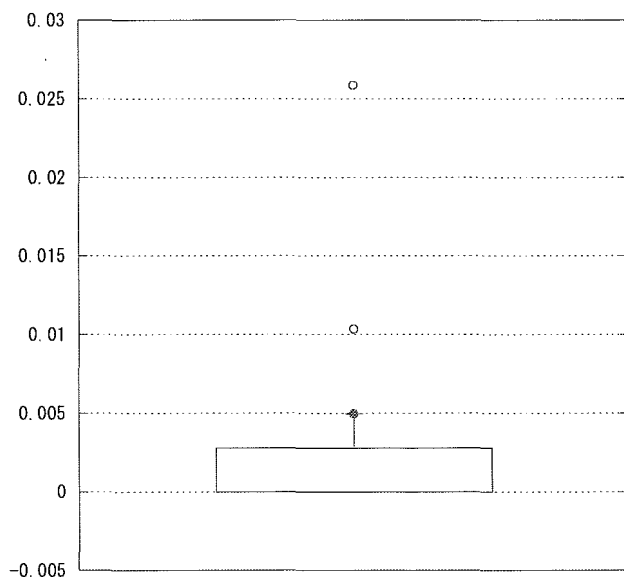
尿路感染率（耐性）



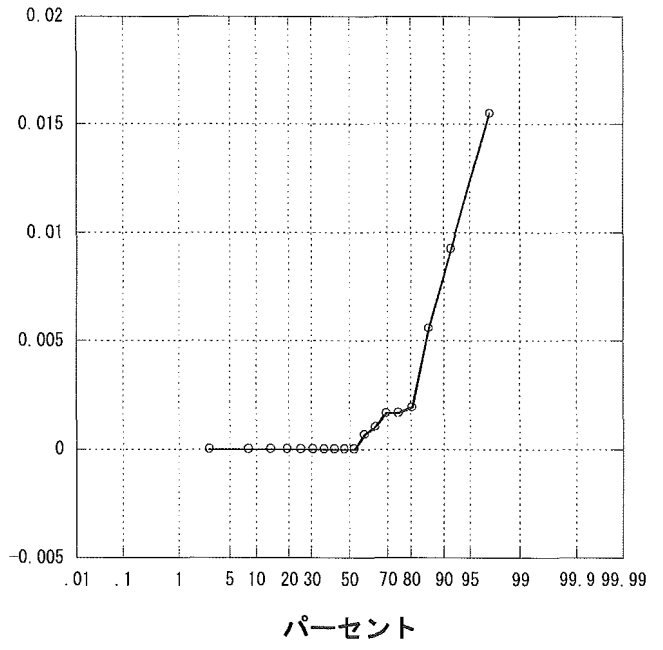
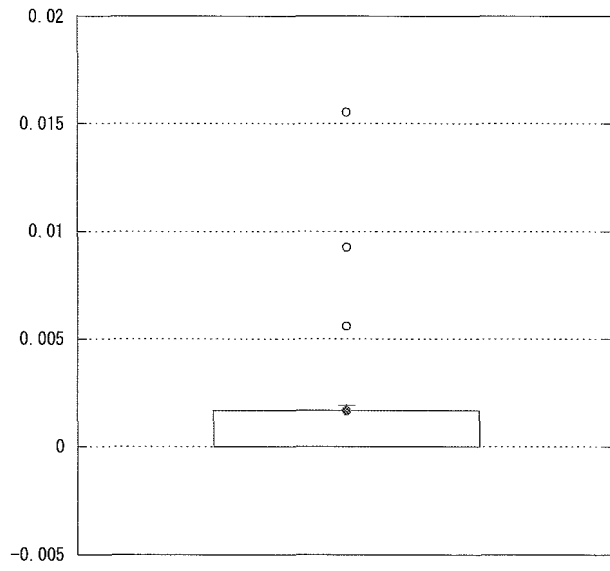
尿路感染率（感性）



その他感染率（耐性）



その他感染率（感性）

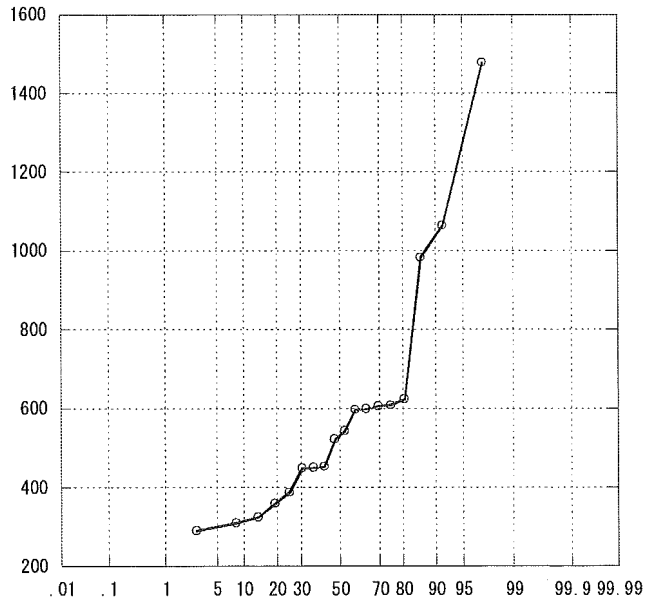
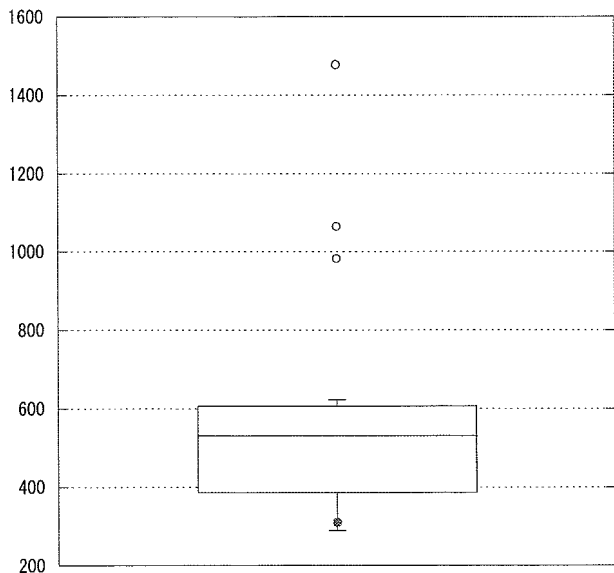


D 施設

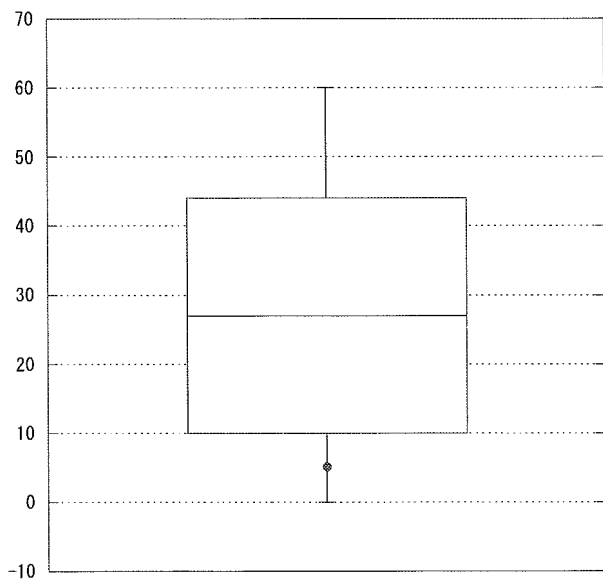
2004年1月～12月

ICU研究班2004年施設間比較

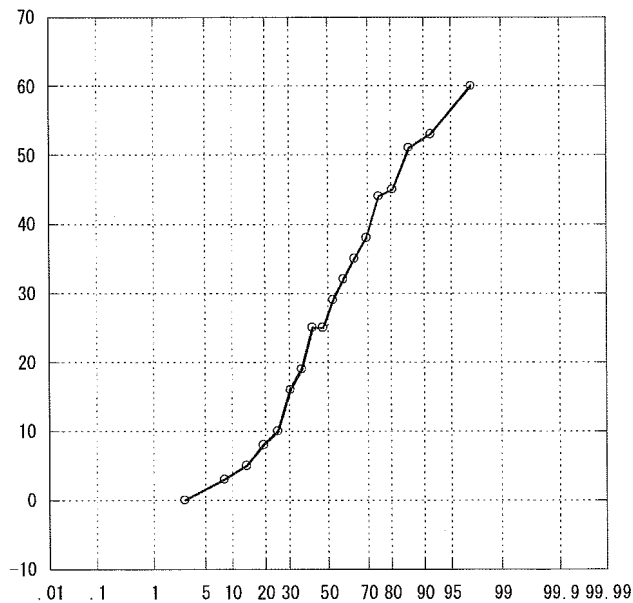
年間収容患者数



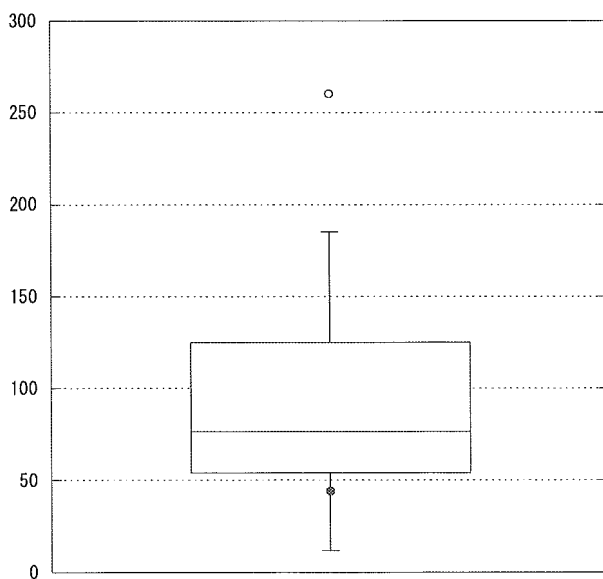
APACHE 0~4



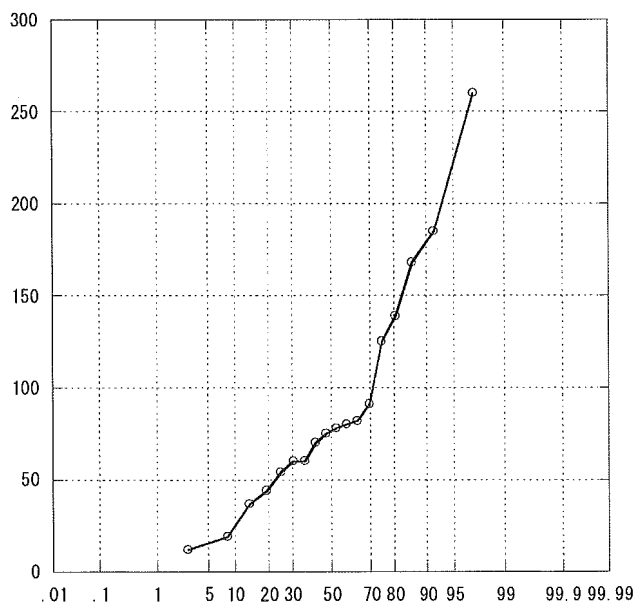
パーセント



APACHE 5~9

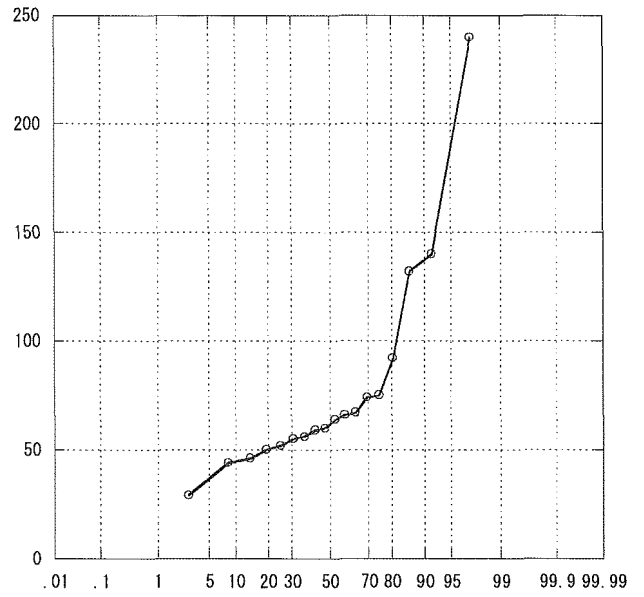
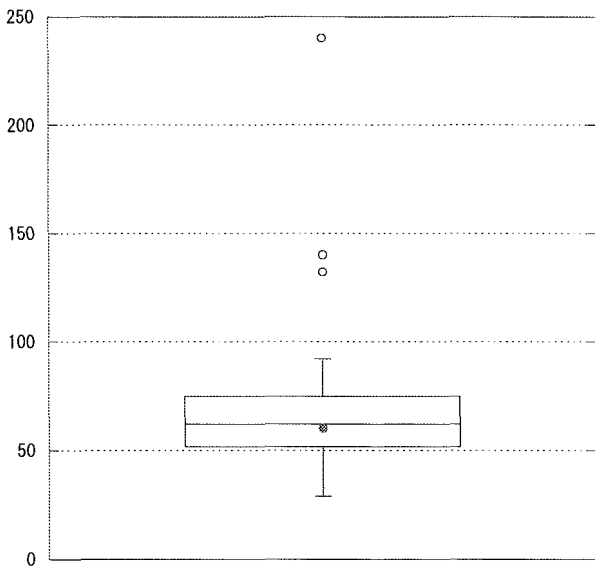


パーセント

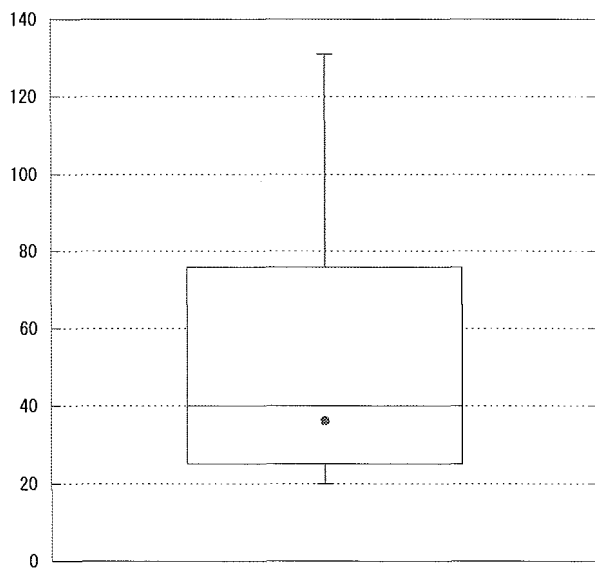


パーセント

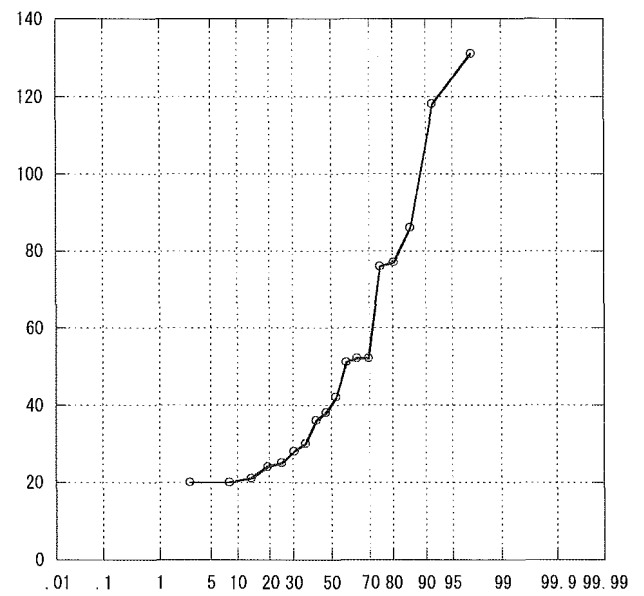
APACHE 10~14



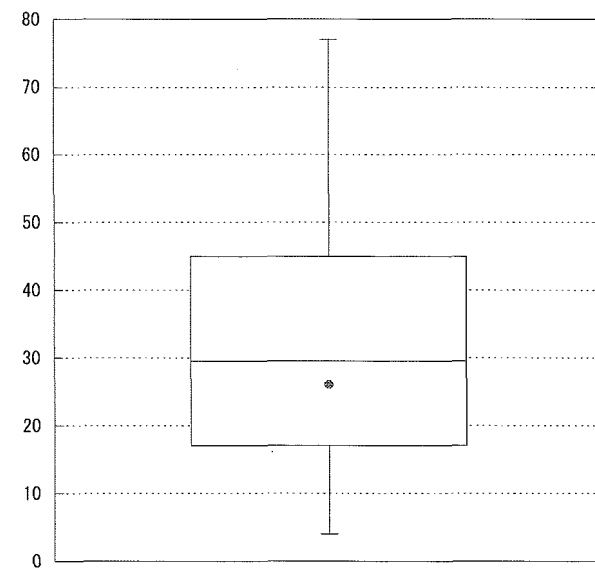
APACHE 15~19



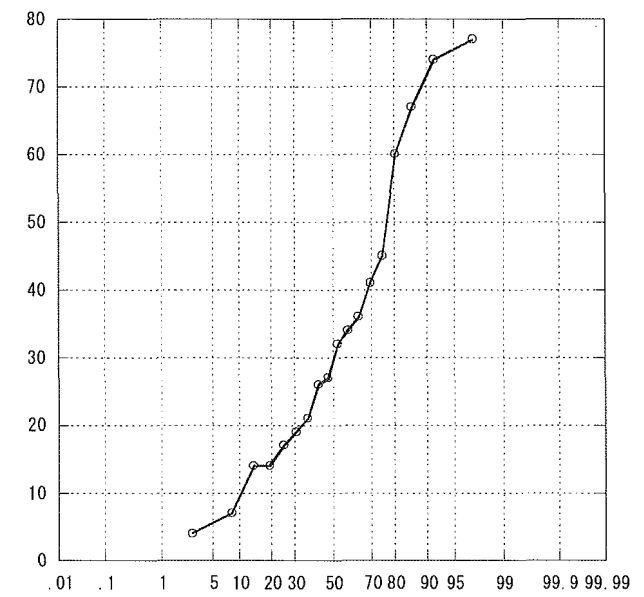
パーセント



APACHE 20~24

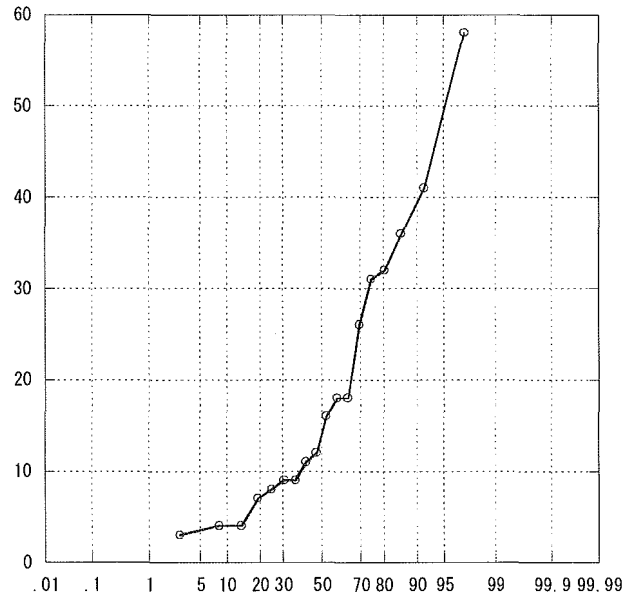
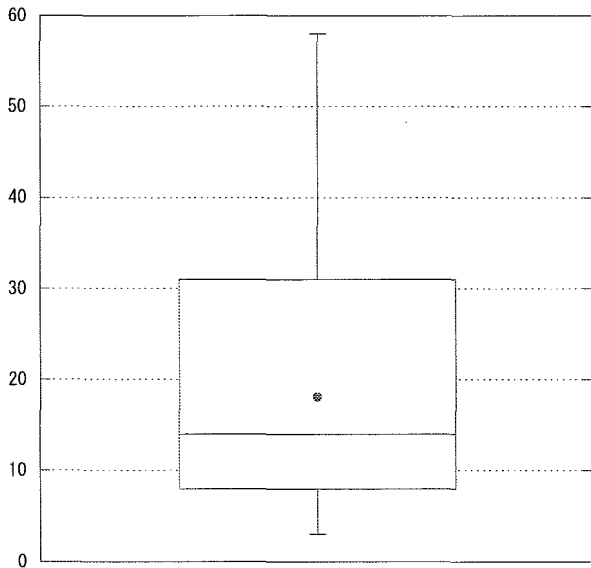


パーセント

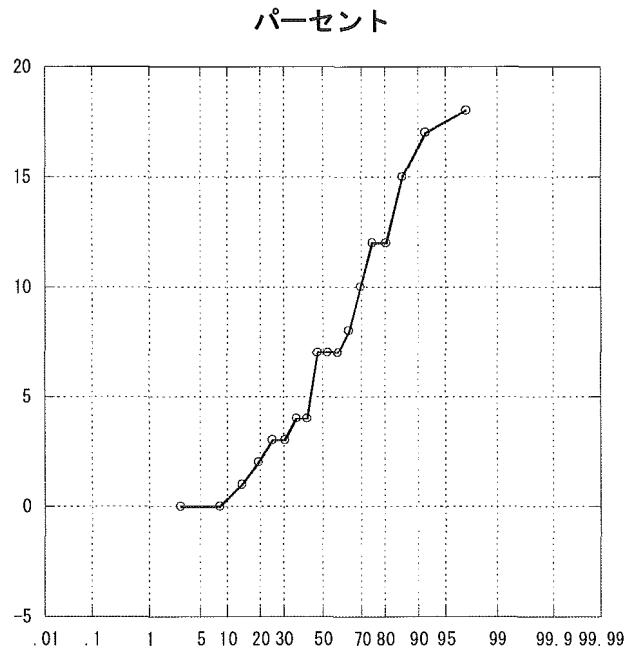
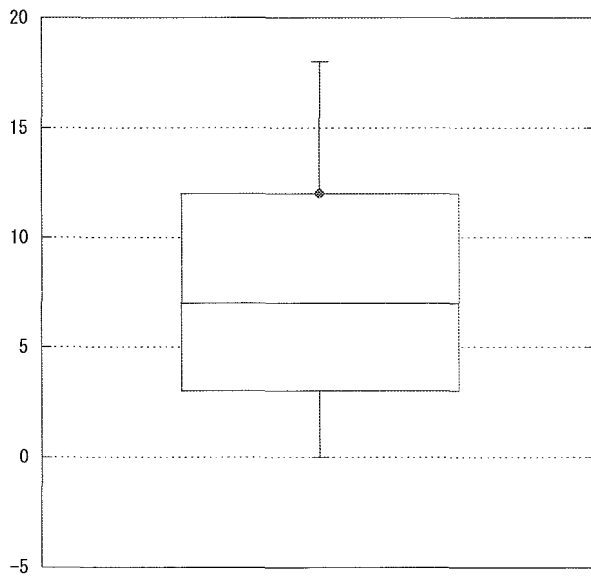


パーセント

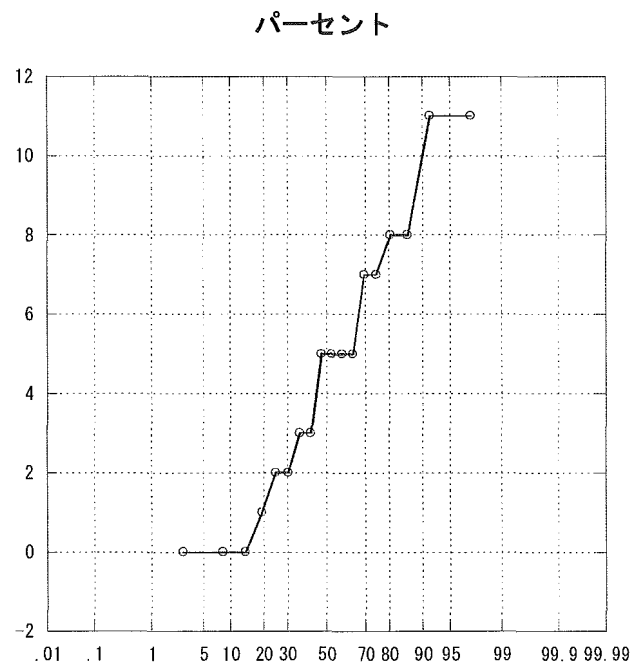
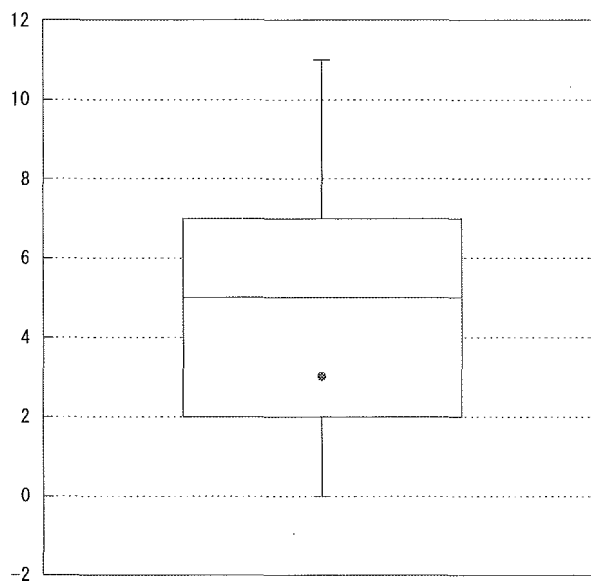
APACHE 25~29



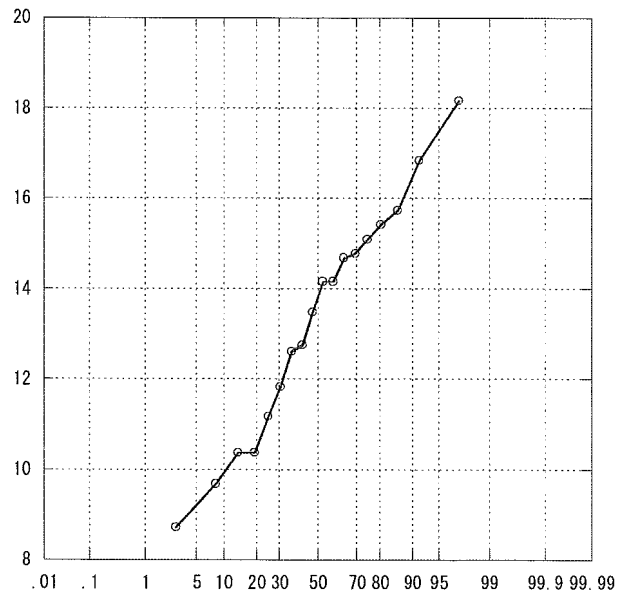
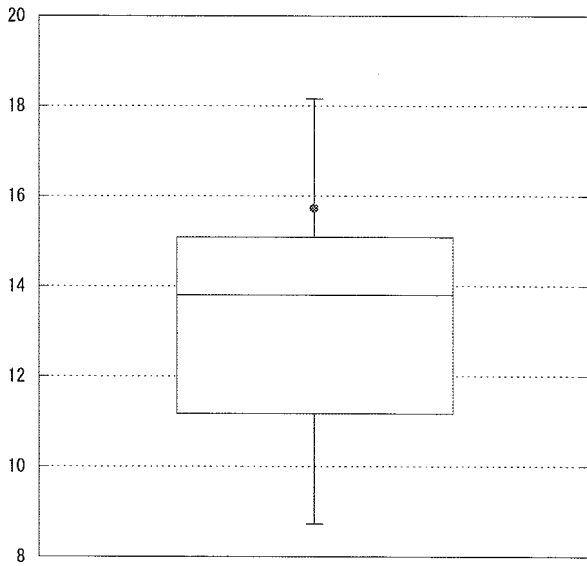
APACHE 30~34



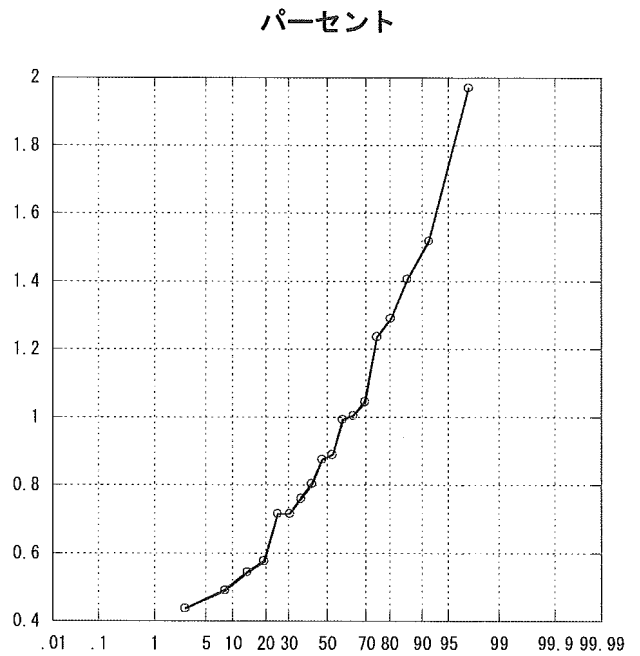
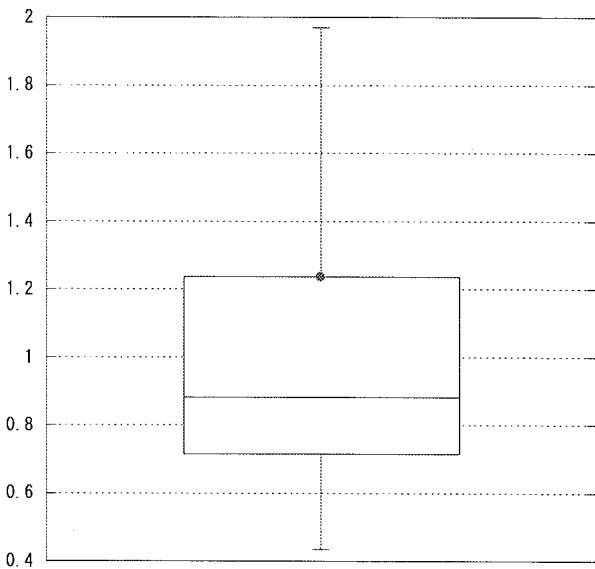
APACHE 35~



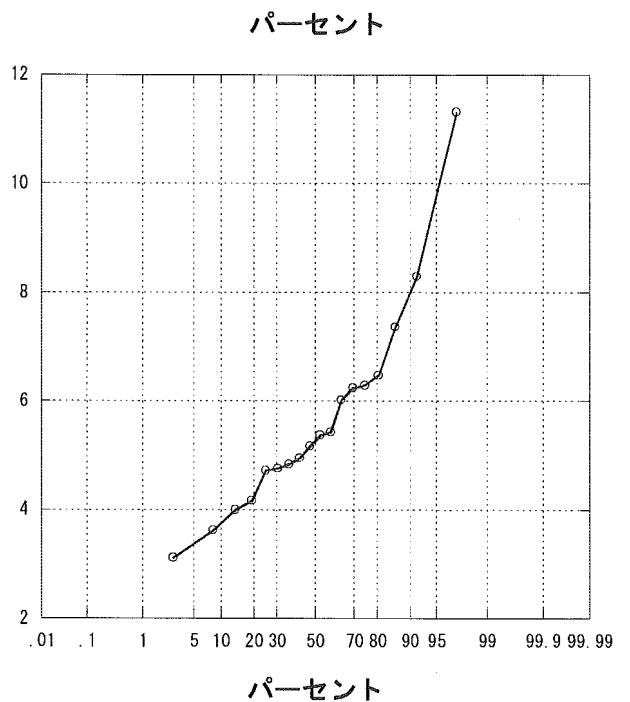
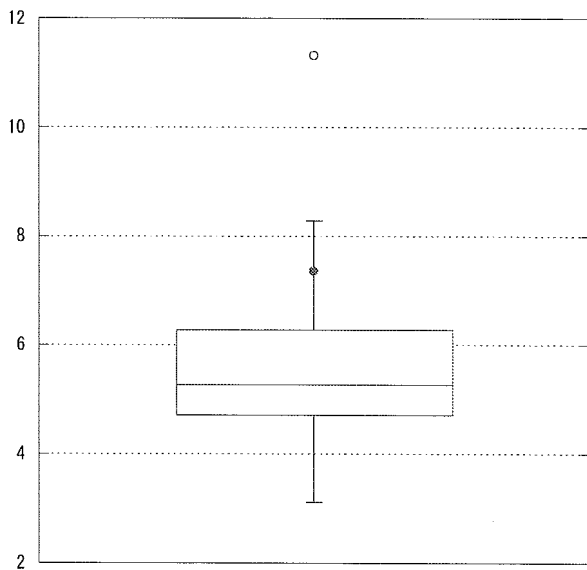
APACHE平均



標準化死亡比

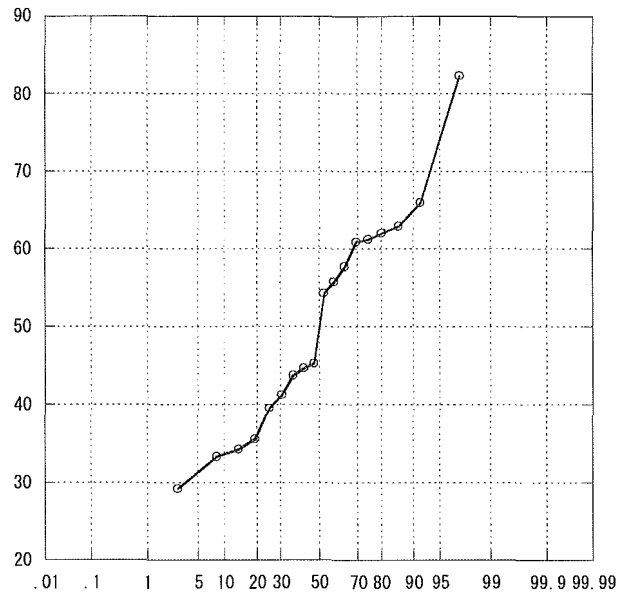
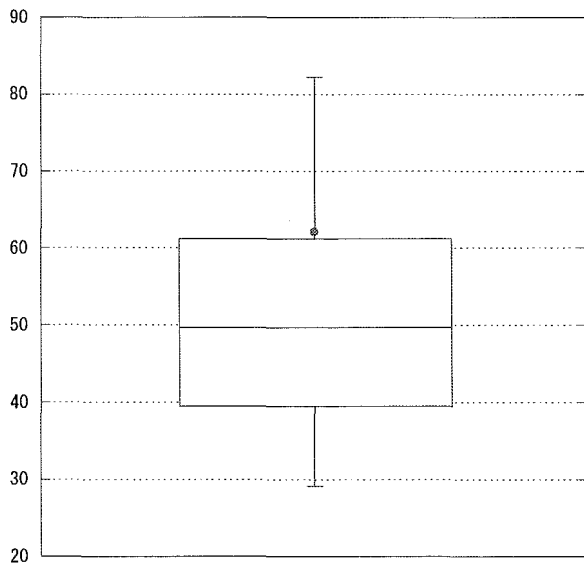


平均在室日数

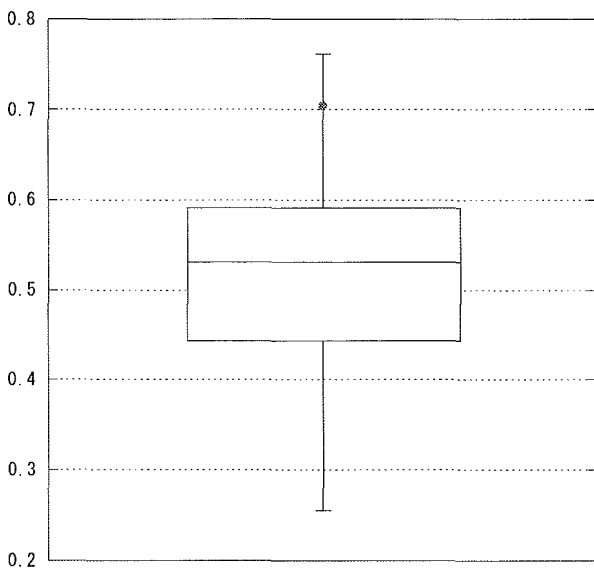


ICU研究班2004年施設間比較

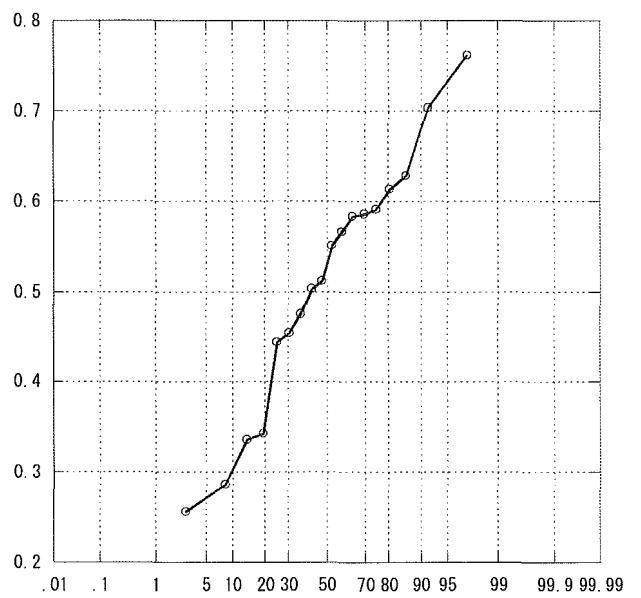
平均在院日数



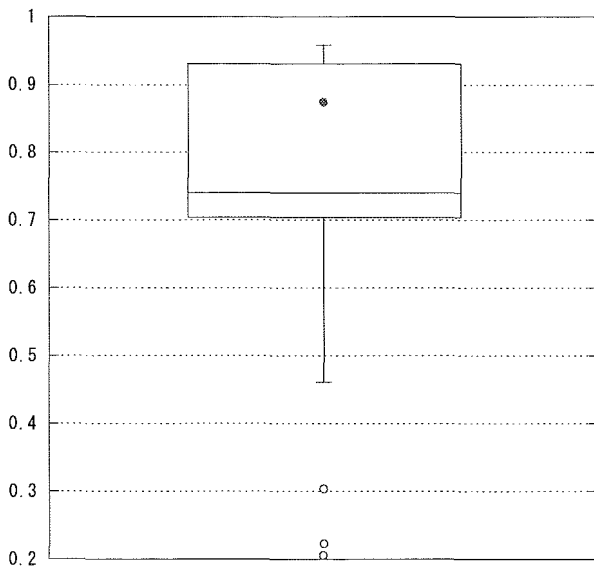
人工呼吸器利用率



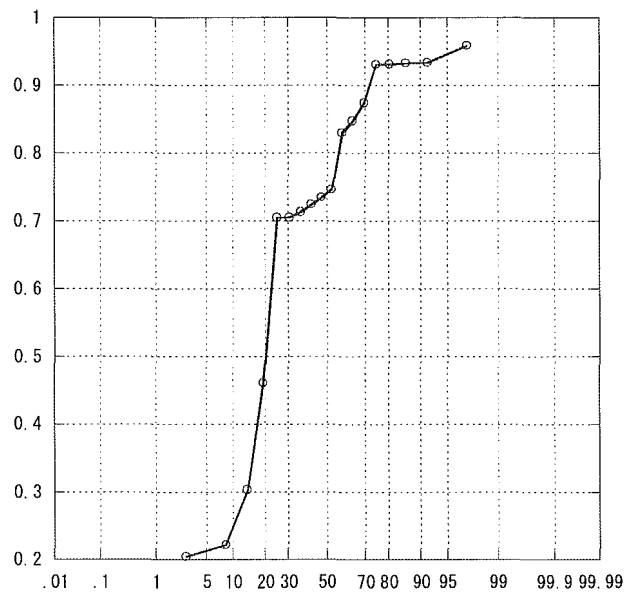
パーセント



中心静脈カテ利用率

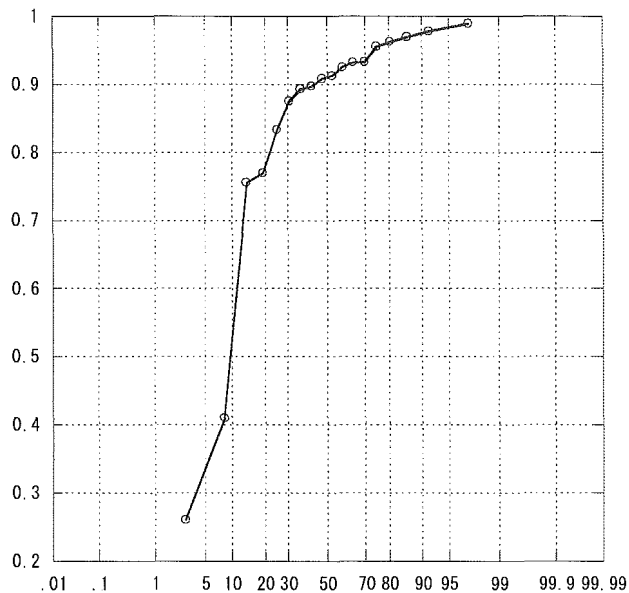
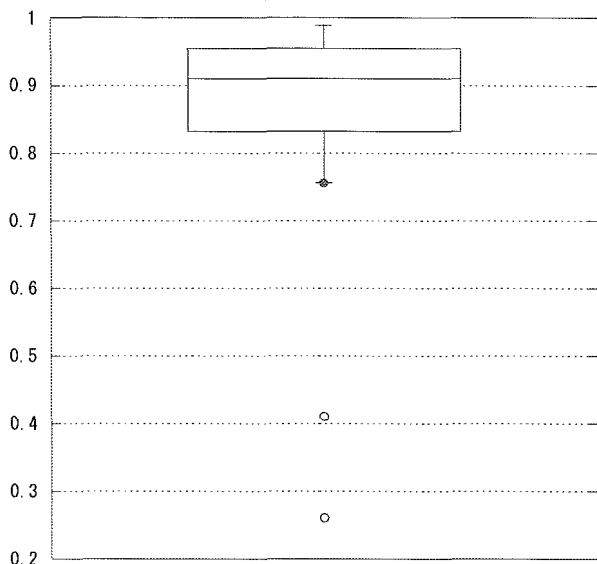


パーセント

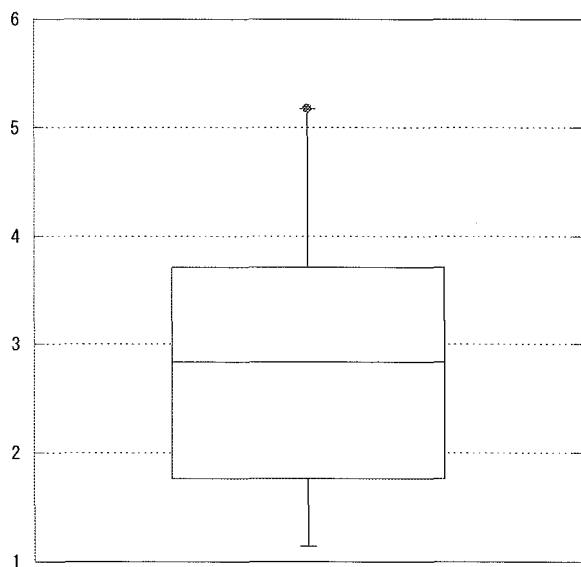


パーセント

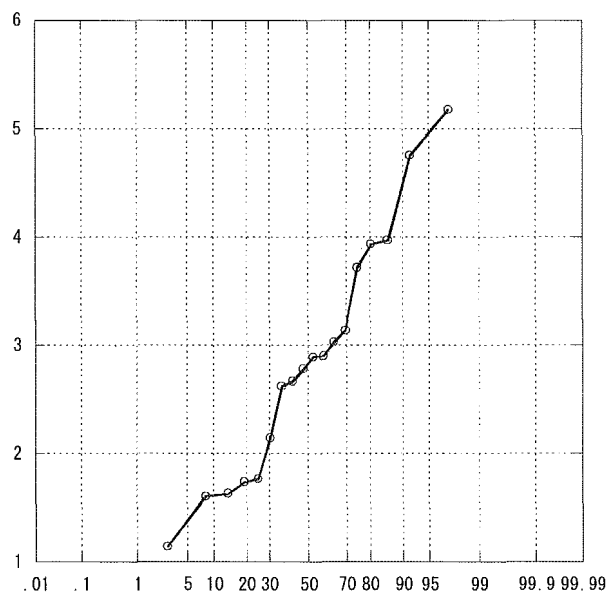
尿道カテ利用率



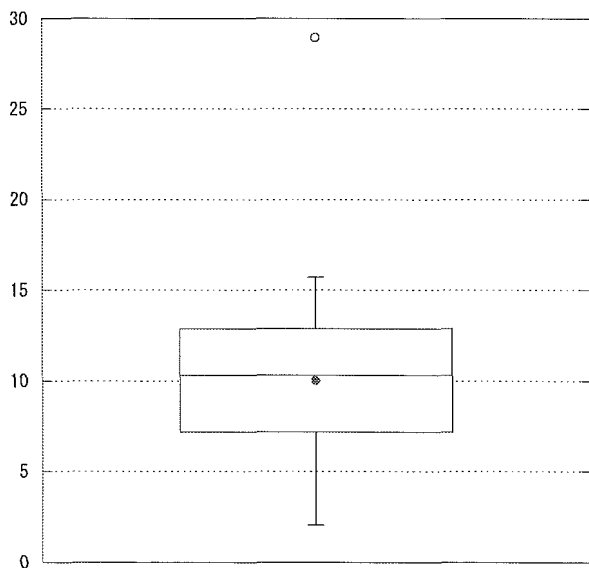
人工呼吸日／患者数



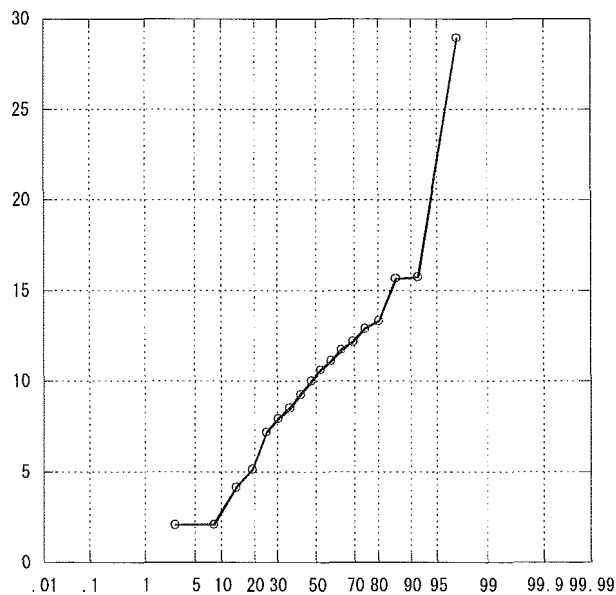
パーセント



リスク調整感染率（肺炎）

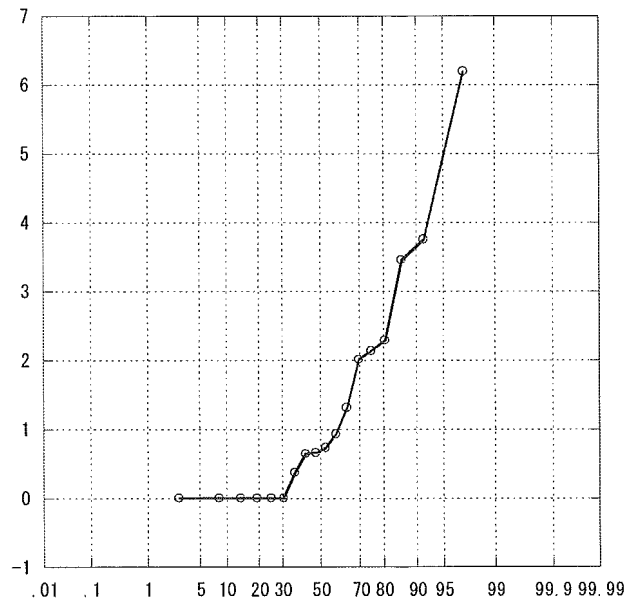
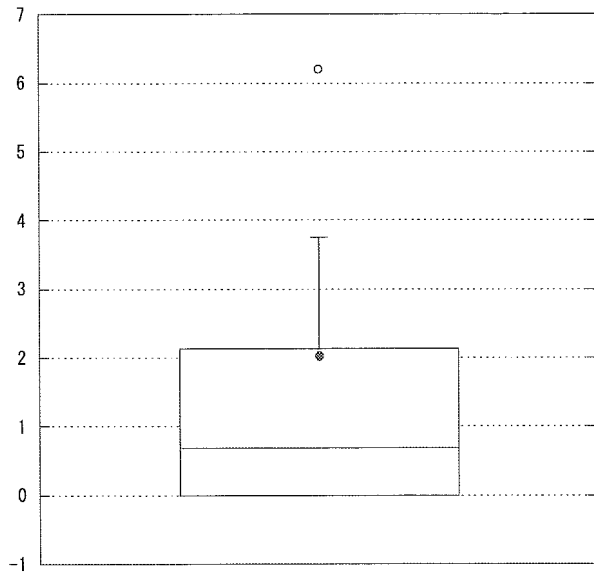


パーセント

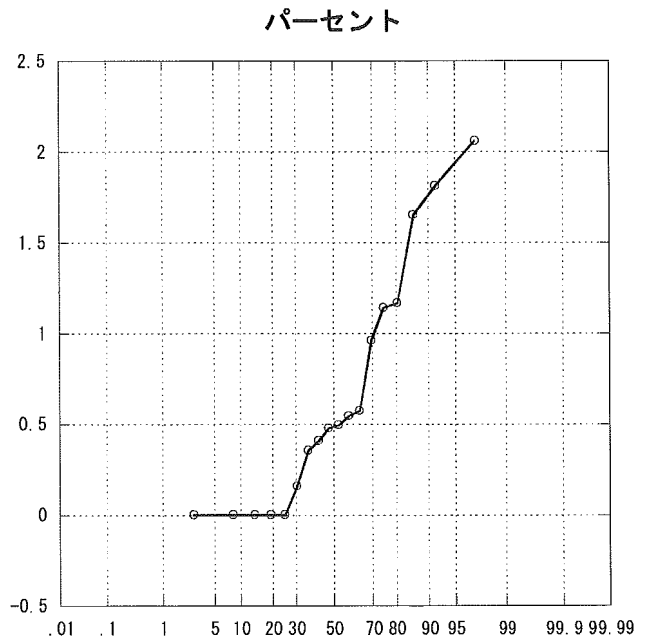
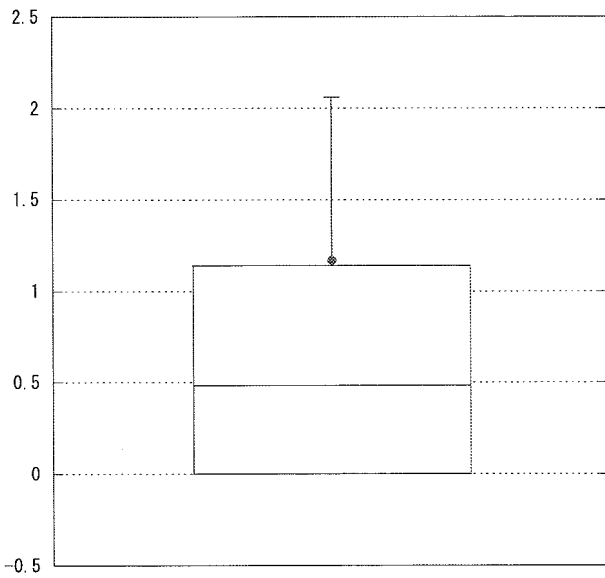


パーセント

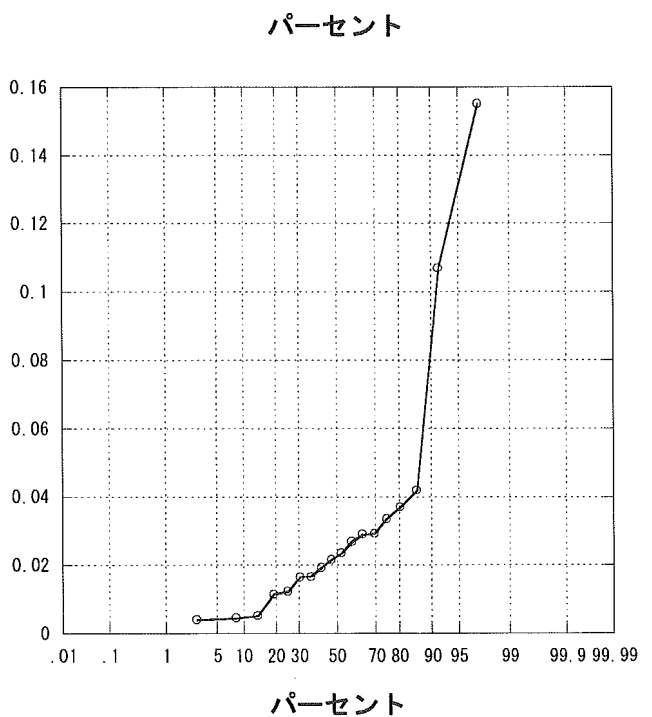
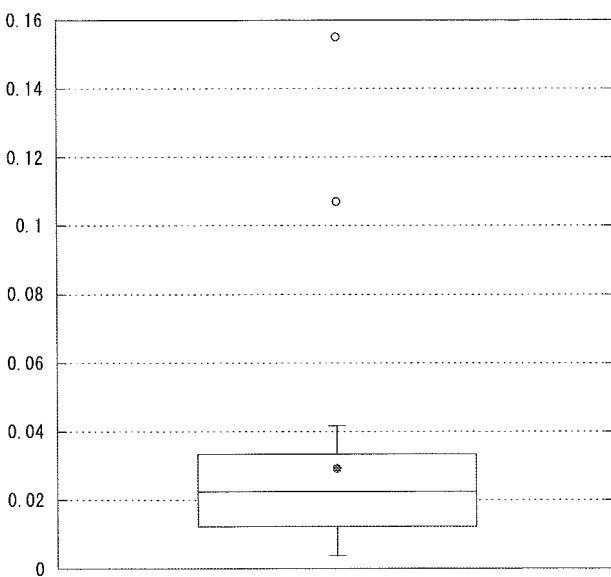
リスク調整感染率（カテ）



リスク調整感染率（尿路）

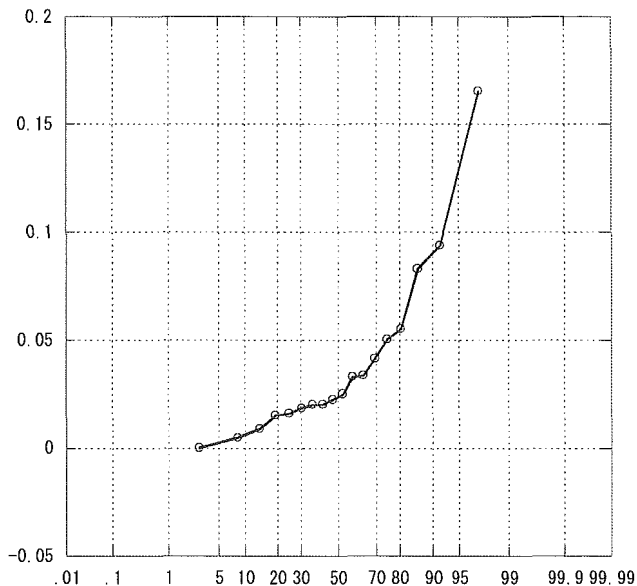
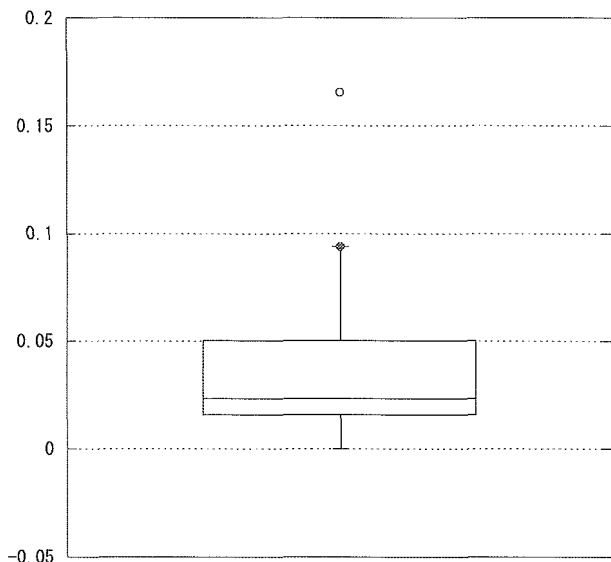


全感染率（耐性）

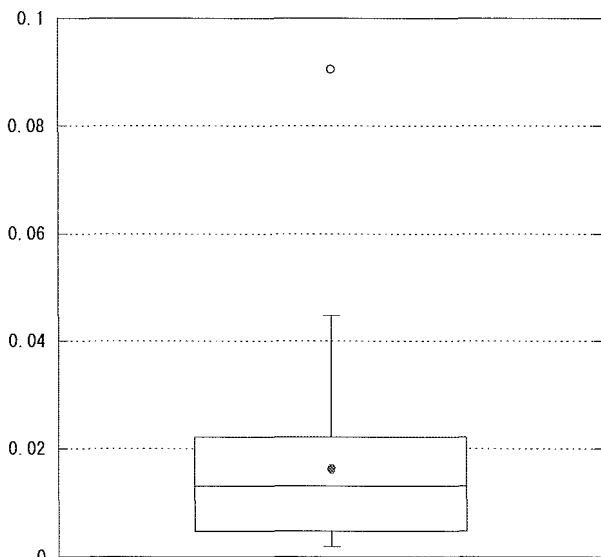


ICU研究班2004年施設間比較

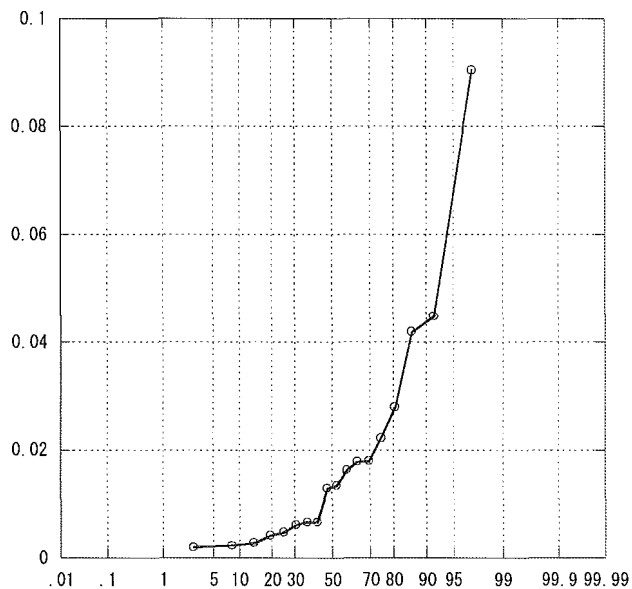
全感染率（感性）



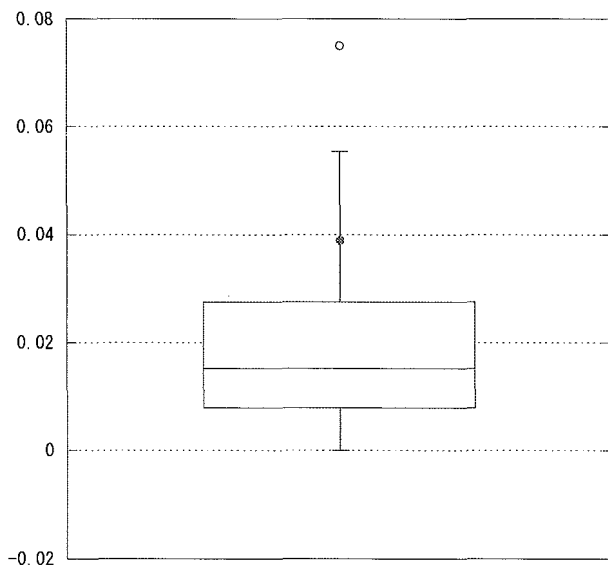
肺炎感染率（耐性）



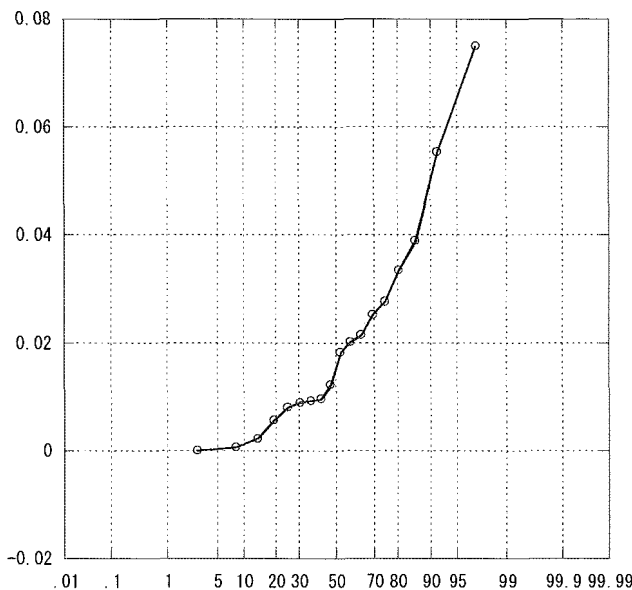
パーセント



肺炎感染率（感性）



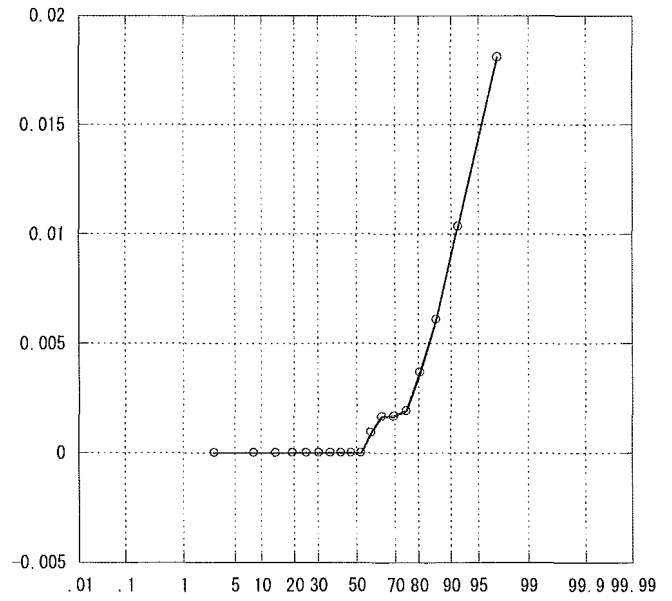
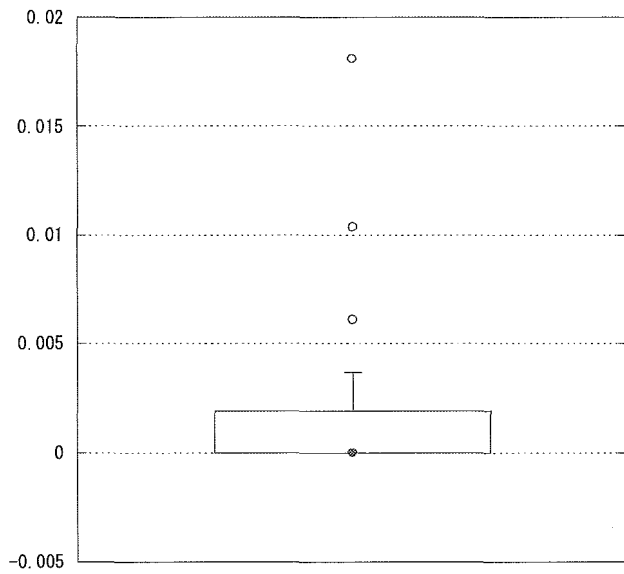
パーセント



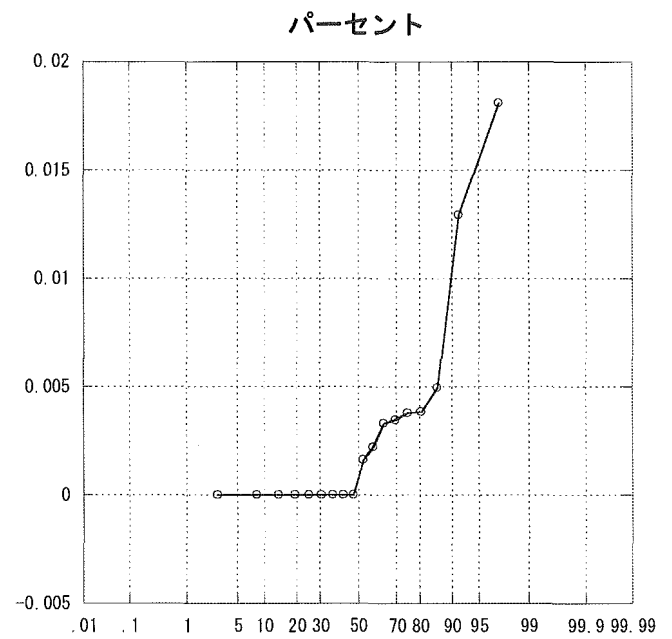
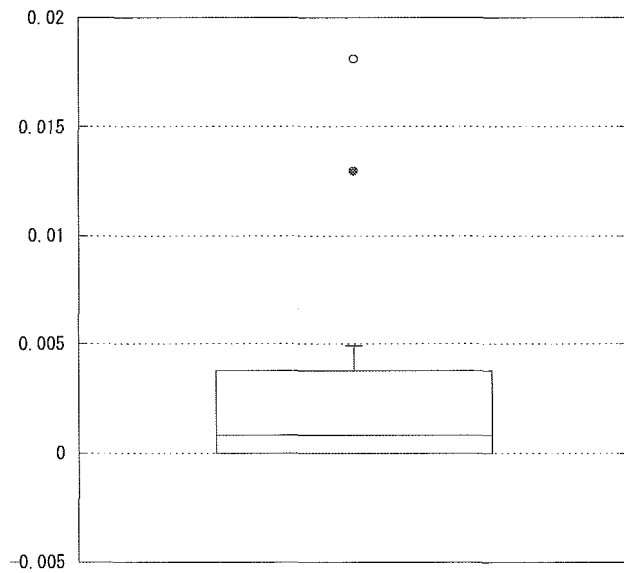
パーセント

ICU研究班2004年施設間比較

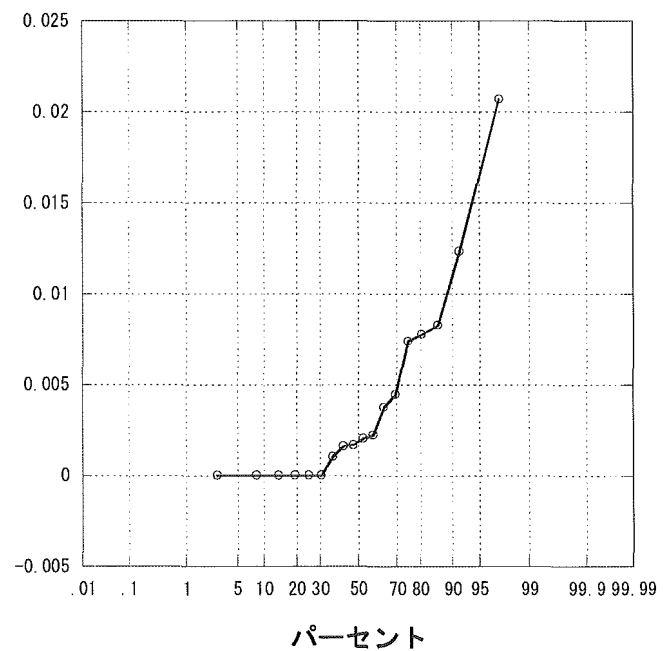
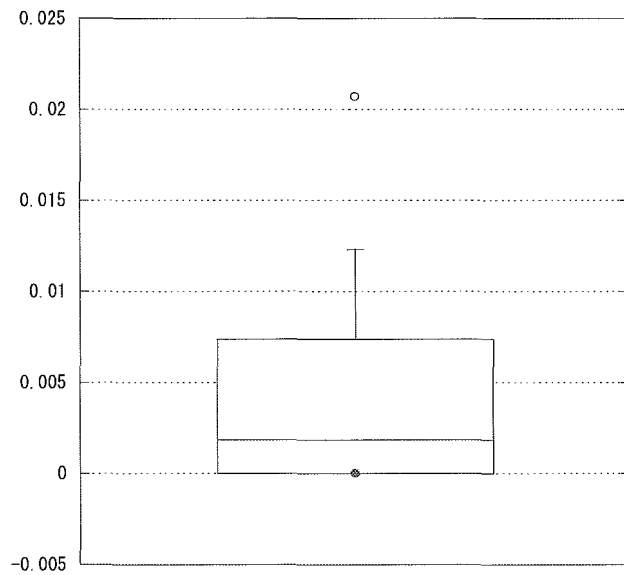
カテ感染率（耐性）



カテ感染率（感性）

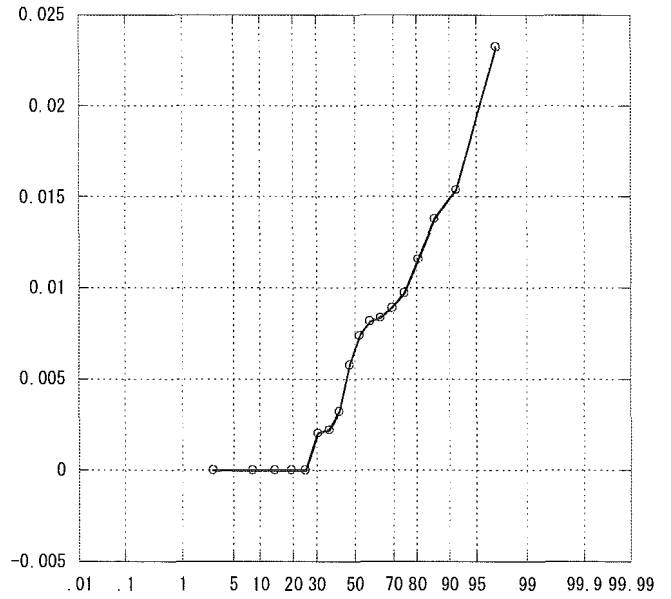
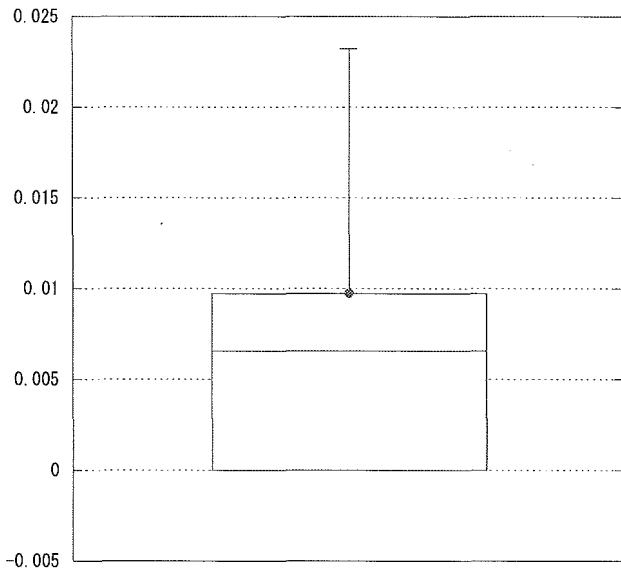


創感染率（耐性）

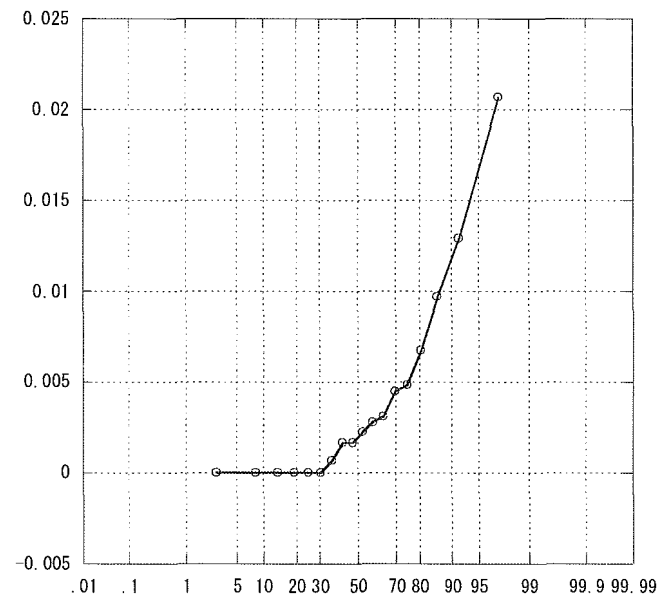
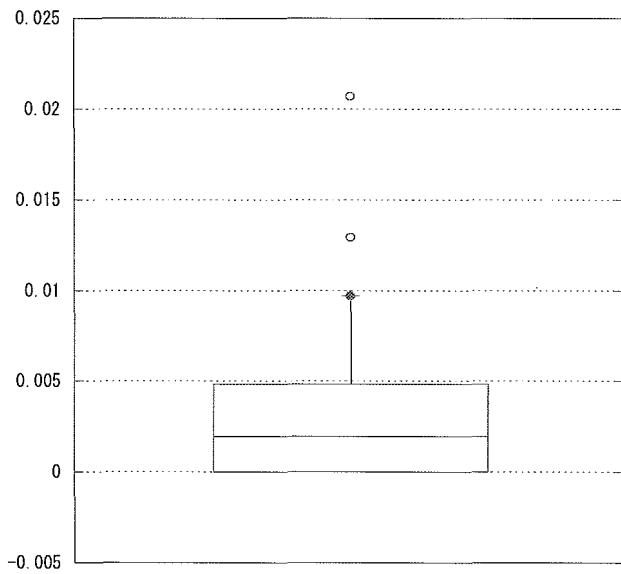


ICU研究班2004年施設間比較

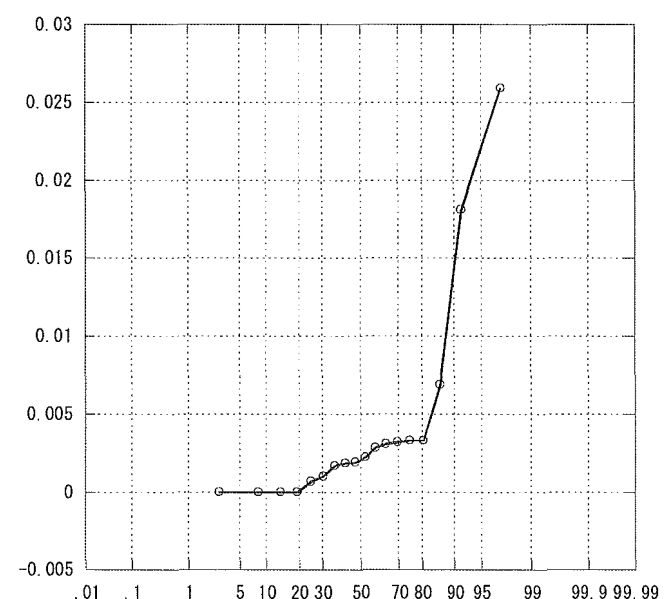
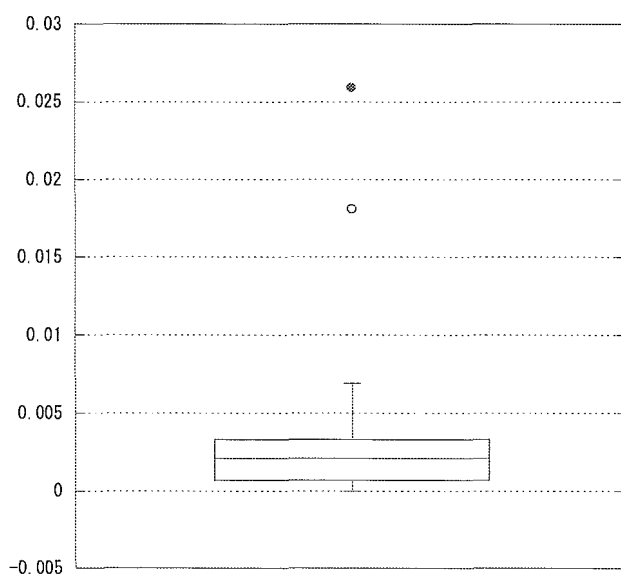
創感染率（感性）



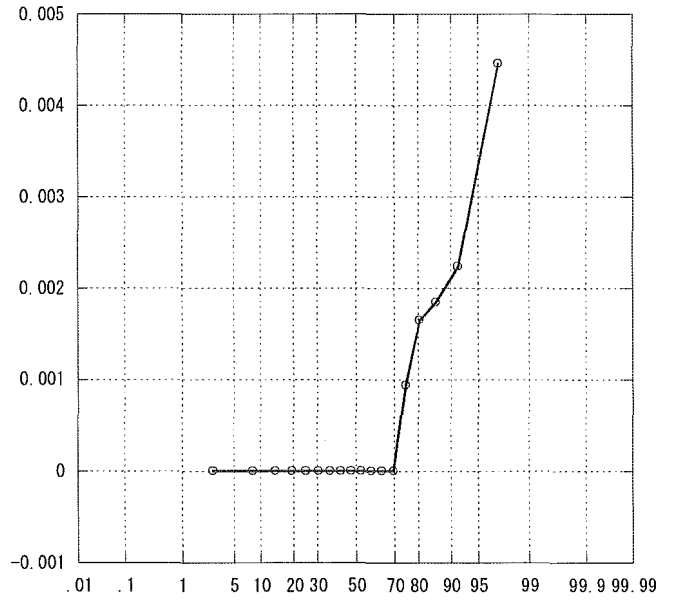
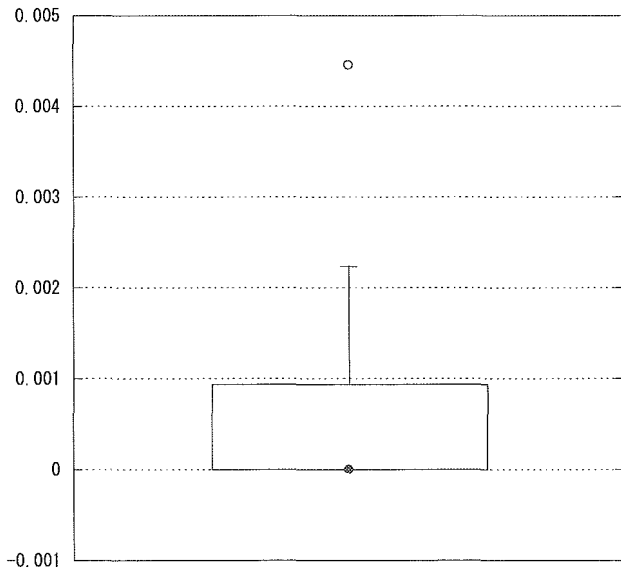
敗血症感染率（耐性）



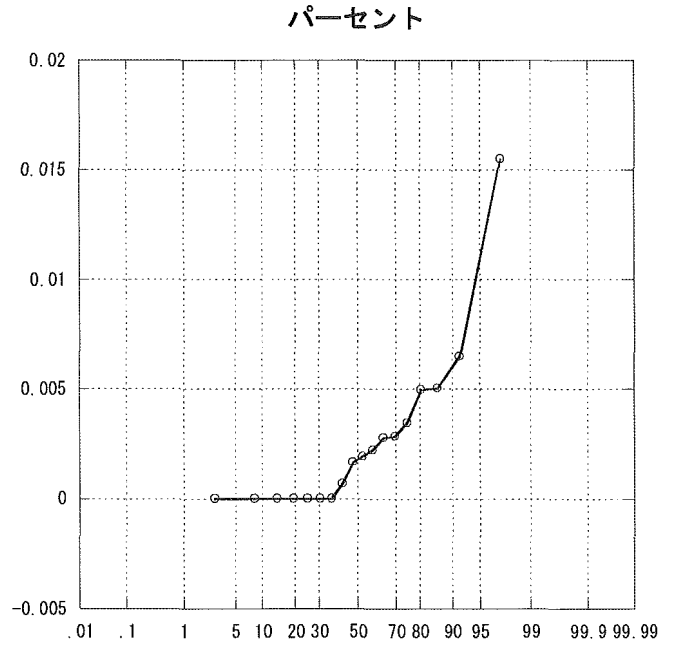
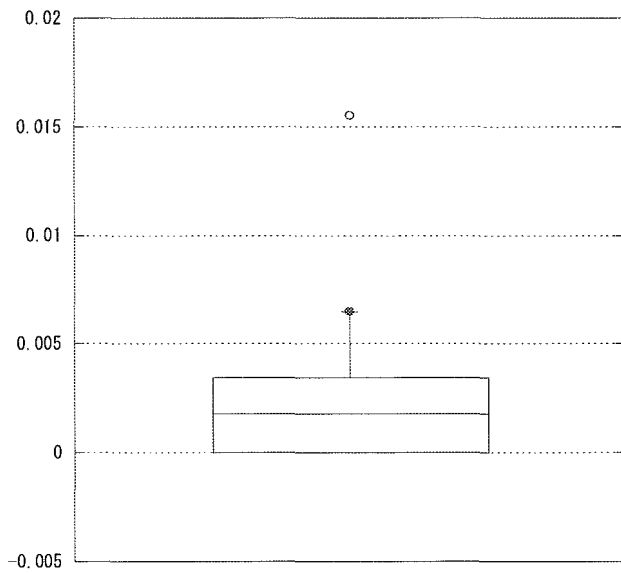
敗血症感染率（感性）



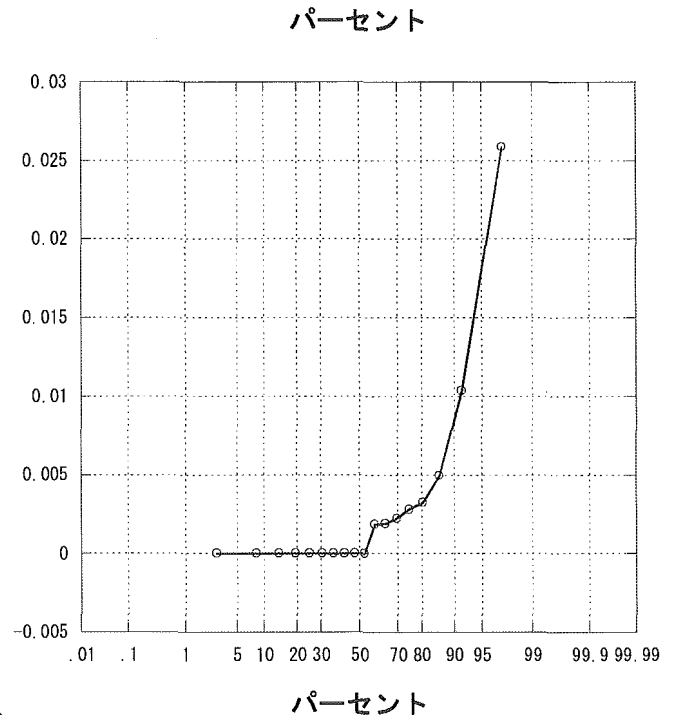
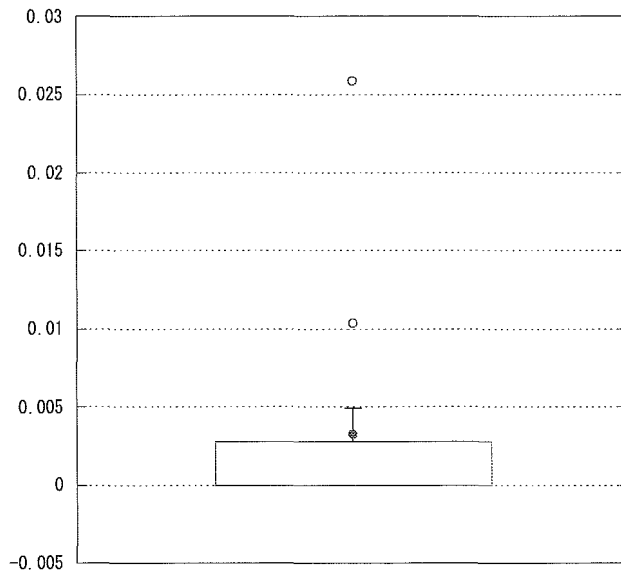
尿路感染率（耐性）



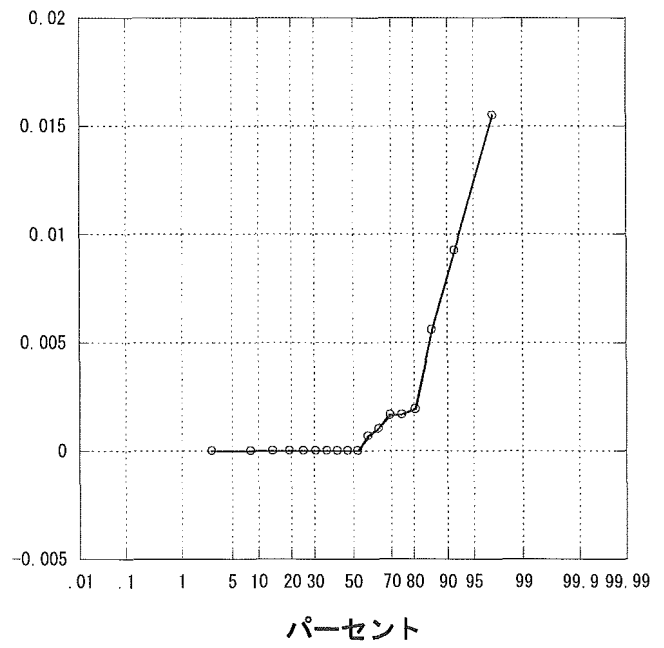
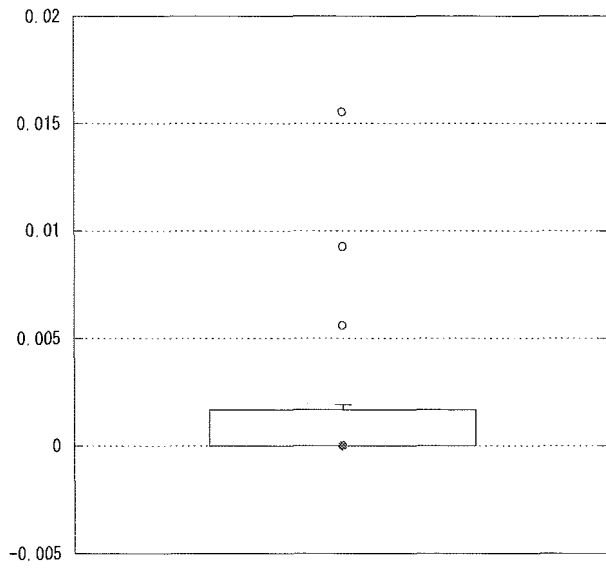
尿路感染率（感性）



その他感染率（耐性）



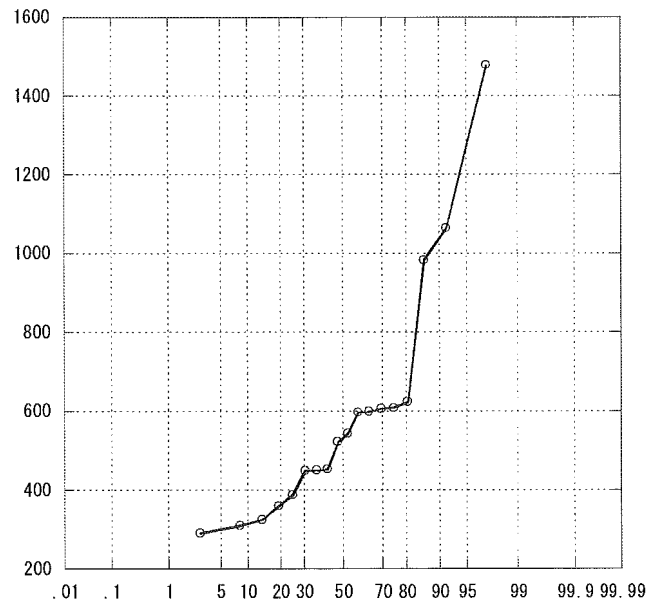
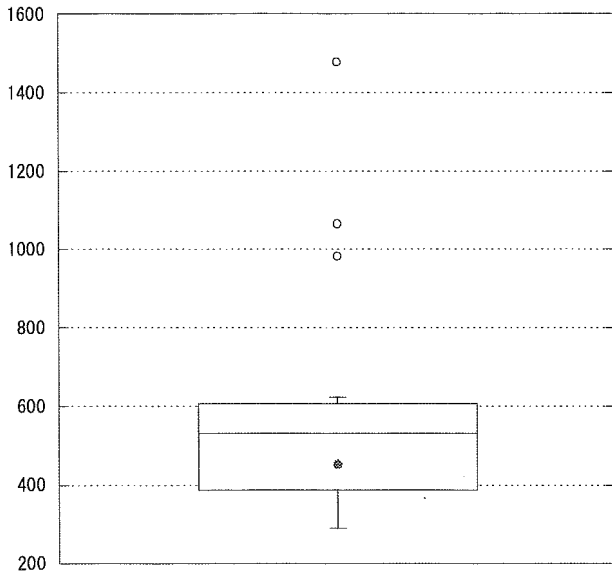
その他感染率（感性）



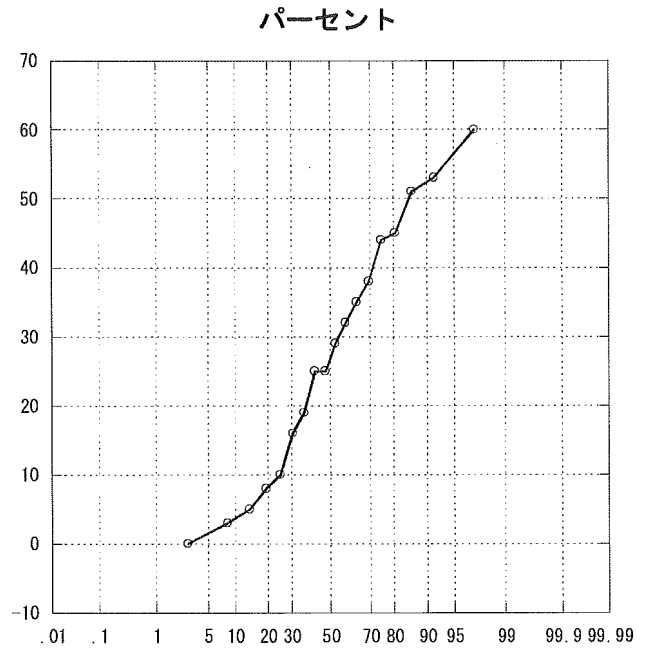
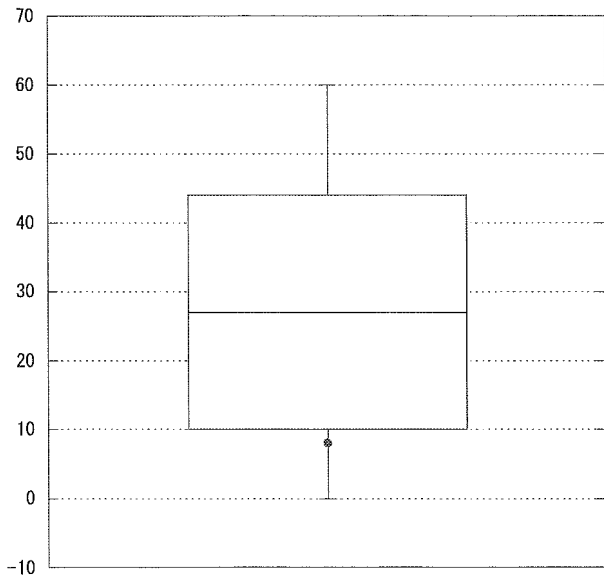
E 施設

2004年1月～12月

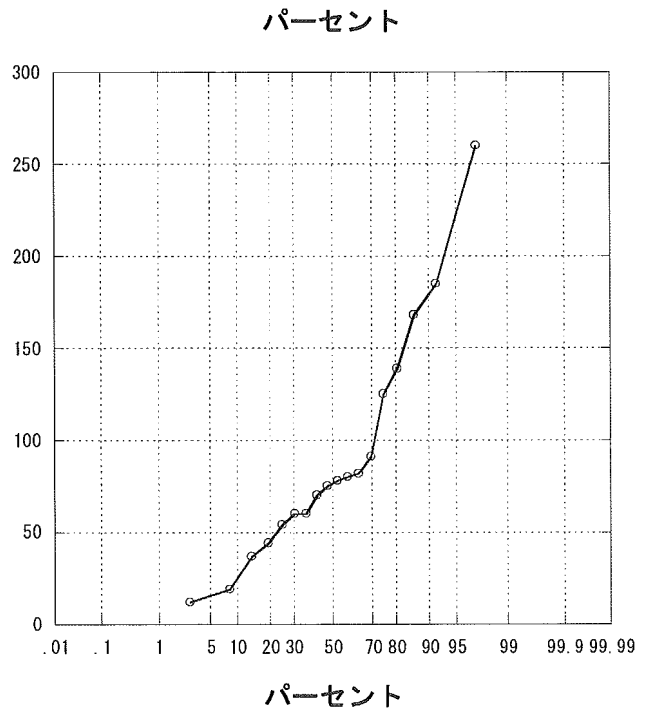
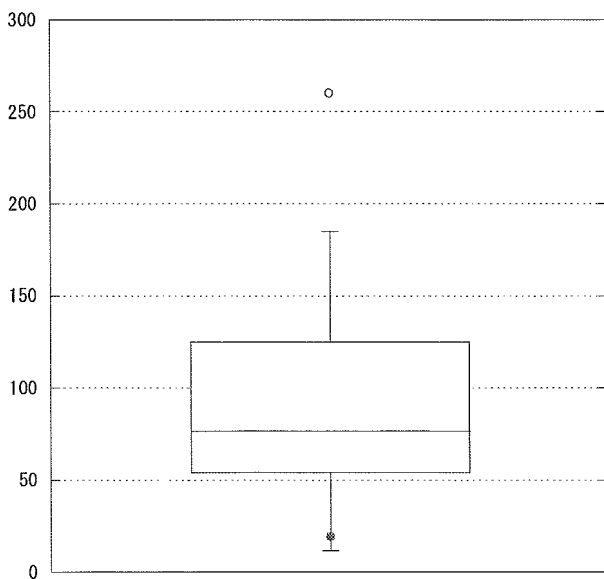
年間收容患者数



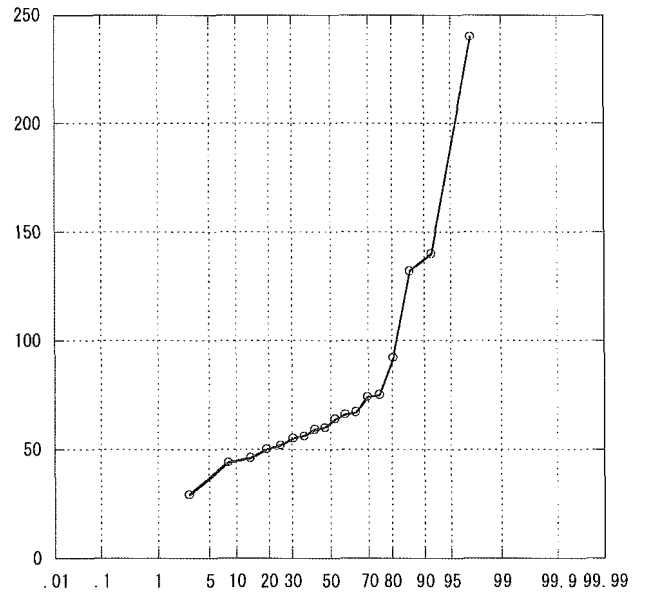
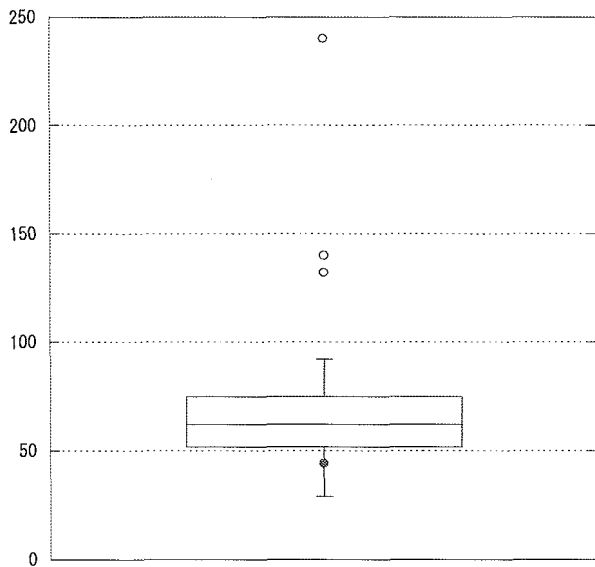
APACHE 0~4



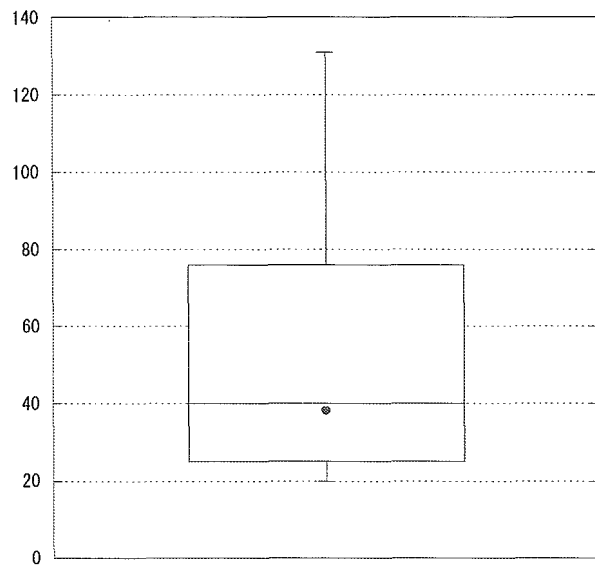
APACHE 5~9



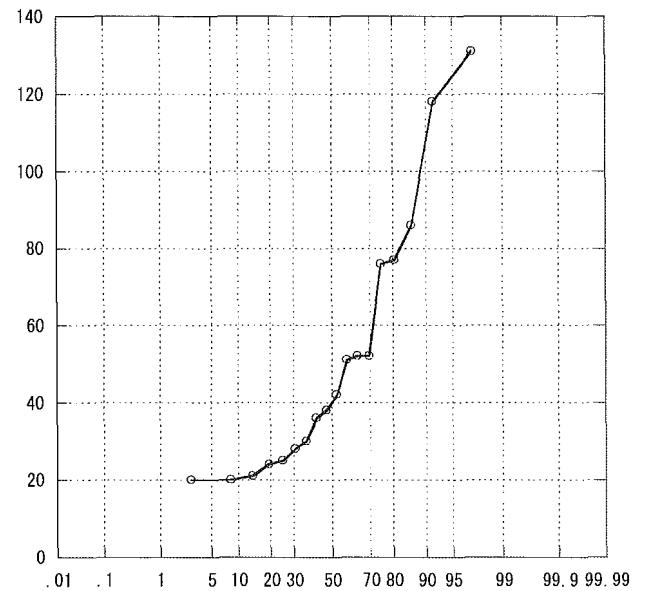
APACHE 10~14



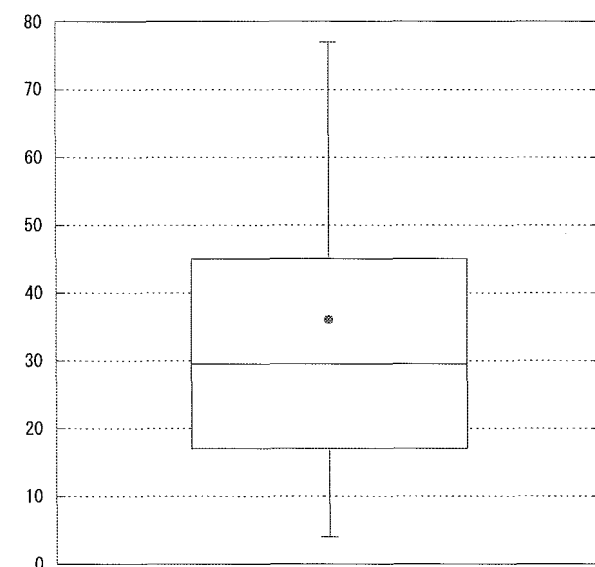
APACHE 15~19



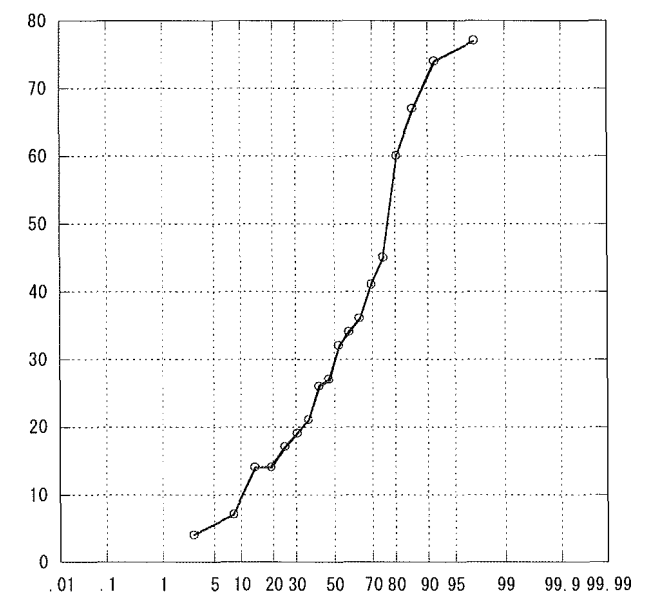
パーセント



APACHE 20~24

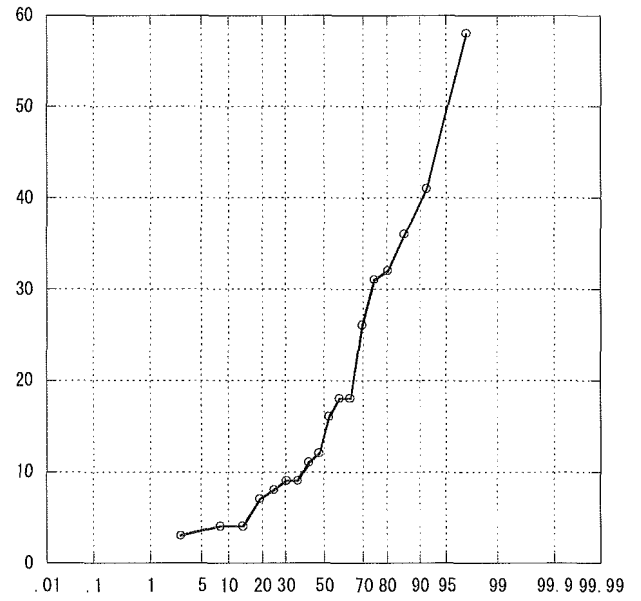
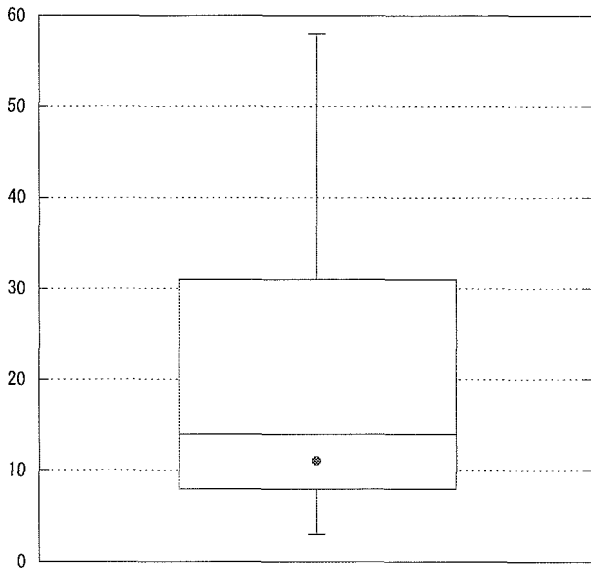


パーセント

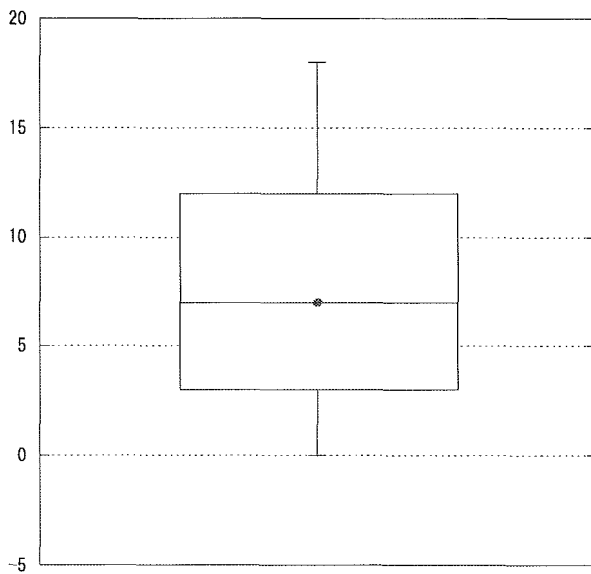


パーセント

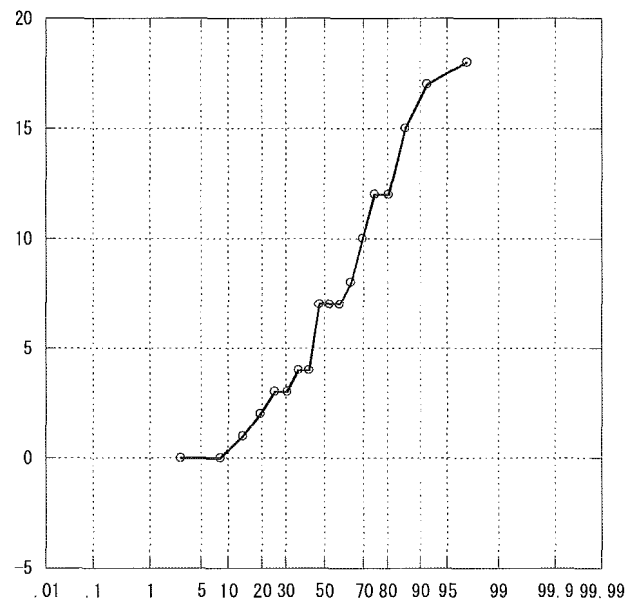
APACHE 25~29



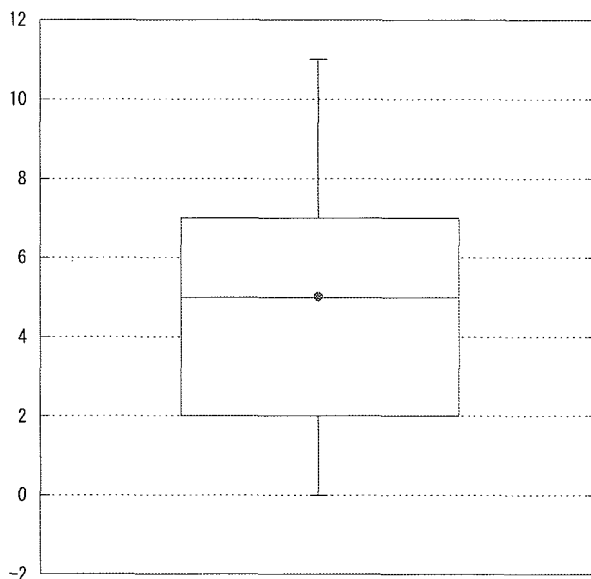
APACHE 30~34



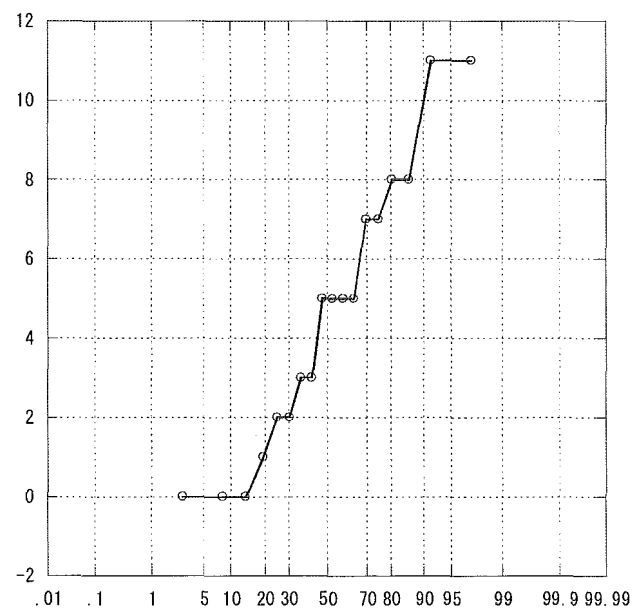
パーセント



APACHE 35~

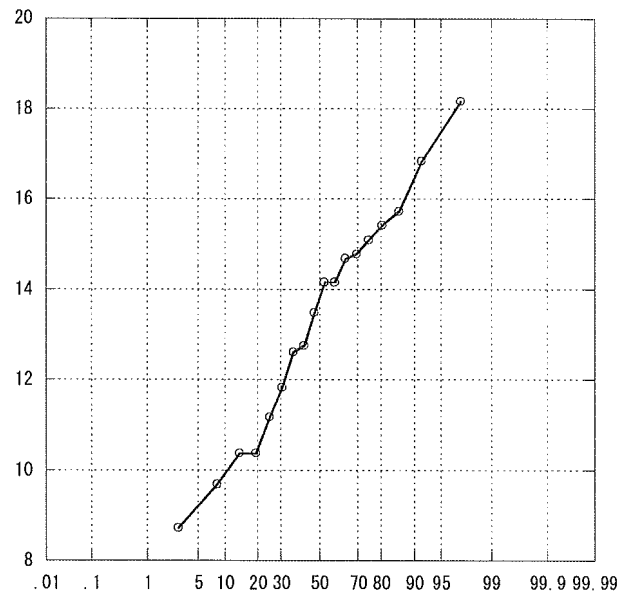
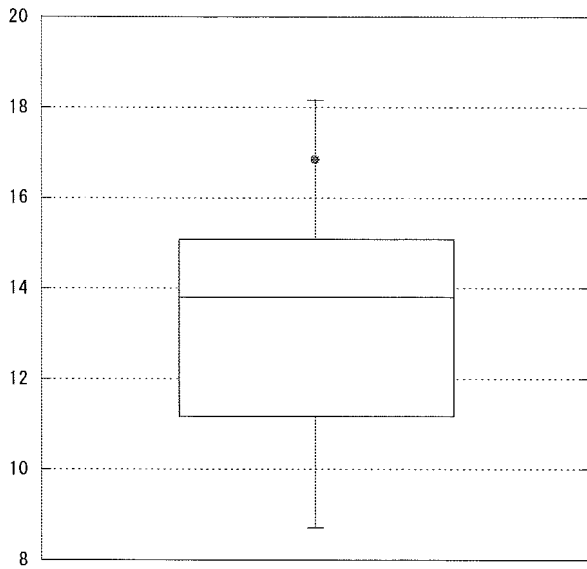


パーセント

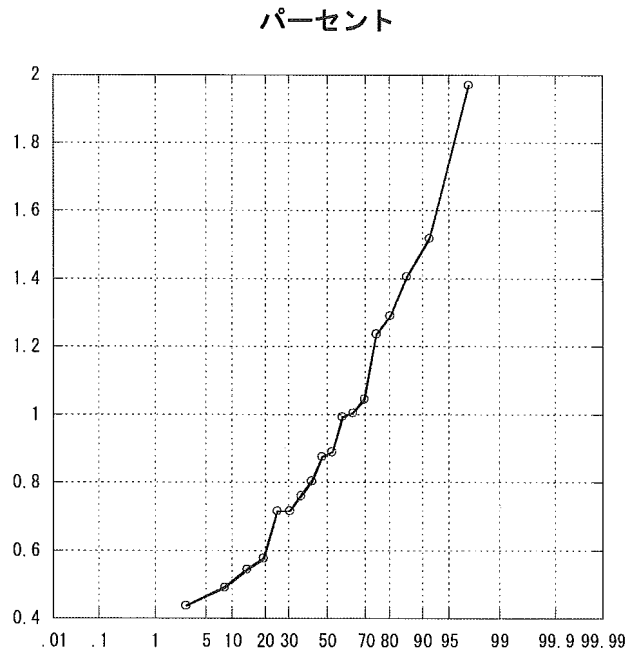
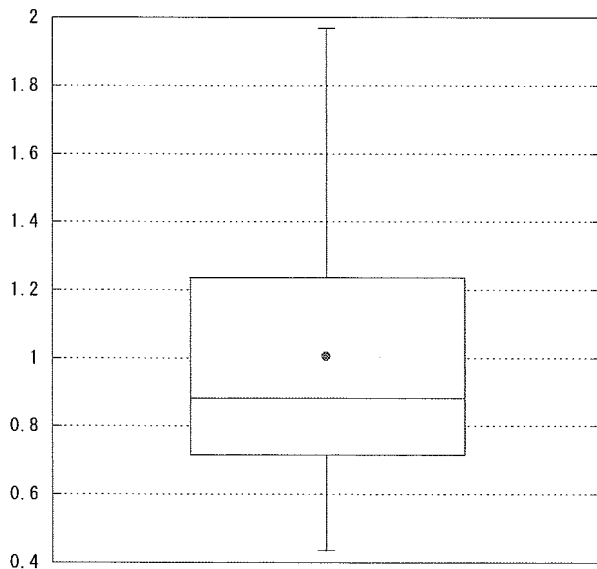


パーセント

APACHE平均



標準化死亡比



平均在室日数

