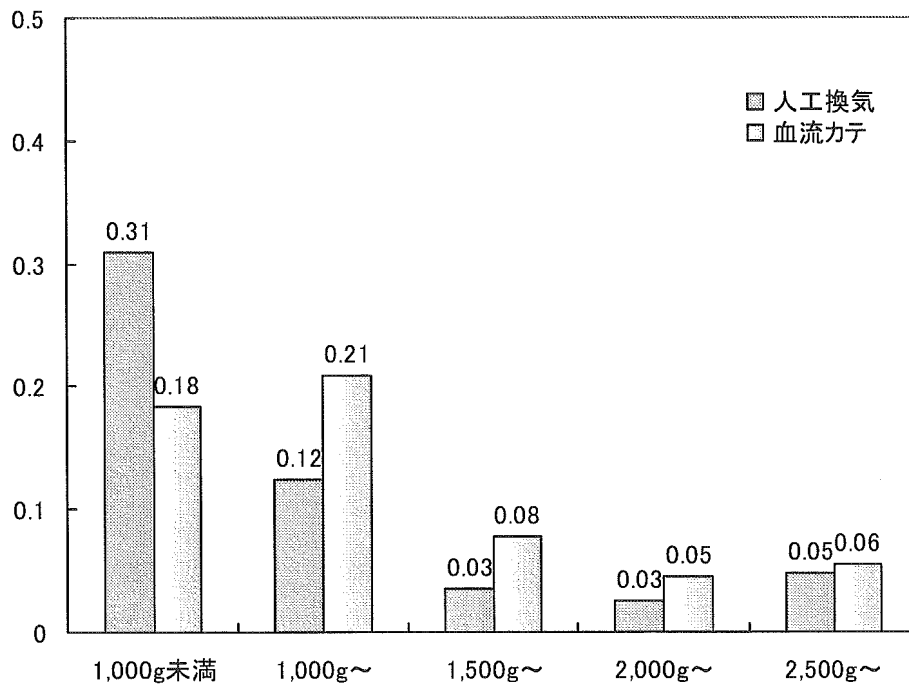


図7. デバイス利用率



総括研究者資料 1

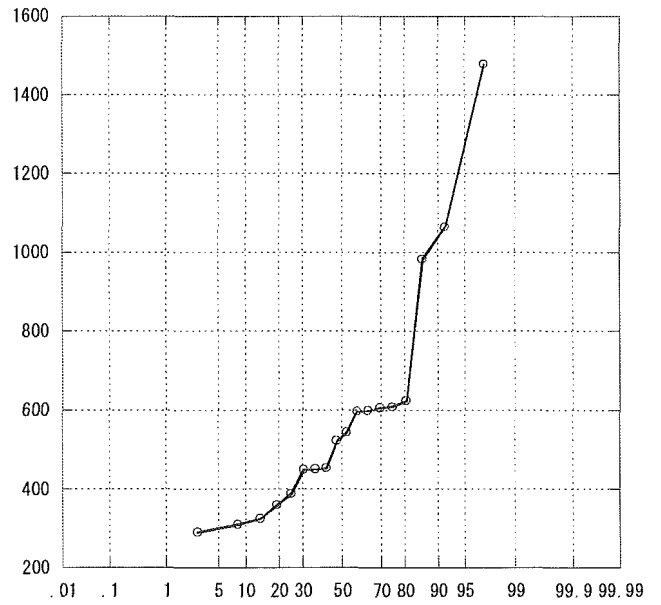
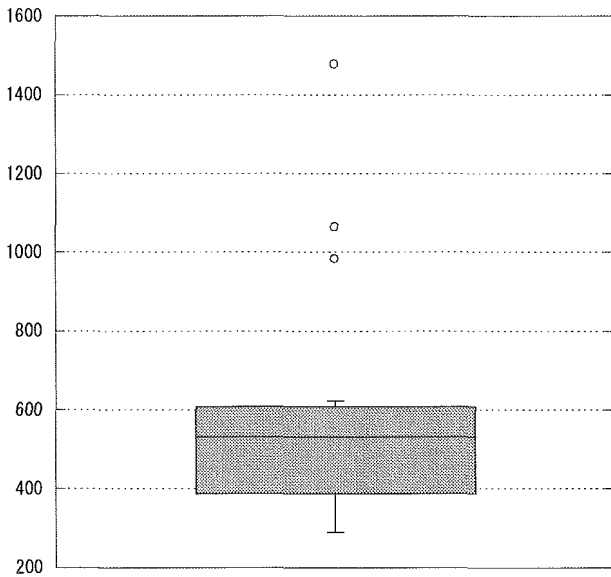
院内感染関連指標の施設間比較  
(ICU 部門 2004 年)

## 2004年1月～12月 ICU施設間比較

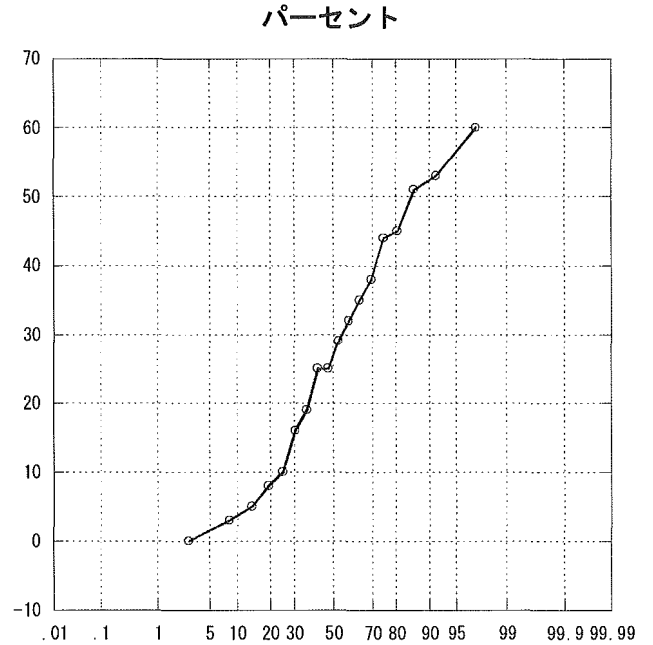
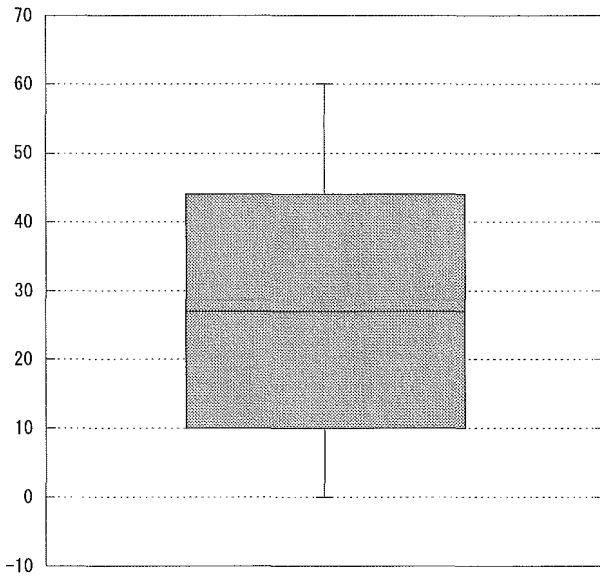
|                 | 1      | 2     | 3      | 4     | 5     | 6     | 7     | 8     | 9      | 10    | 11     | 12    | 13     | 14     | 15     | 16     | 17     | 18     |
|-----------------|--------|-------|--------|-------|-------|-------|-------|-------|--------|-------|--------|-------|--------|--------|--------|--------|--------|--------|
| 年間収容患者数         | 290    | 607   | 309    | 452   | 1063  | 1477  | 982   | 605   | 598    | 521   | 623    | 449   | 596    | 542    | 387    | 448    | 359    | 325    |
| APACHE 0～4      | 3      | 32    | 5      | 8     | 38    | 53    | 0     | 29    | 45     | 19    | 60     | 10    | 51     | 44     | 35     | 25     | 16     | 25     |
| APACHE 5～9      | 37     | 125   | 44     | 19    | 139   | 260   | 12    | 75    | 185    | 78    | 168    | 54    | 82     | 70     | 60     | 60     | 91     | 80     |
| APACHE 10～14    | 67     | 92    | 60     | 44    | 132   | 240   | 74    | 52    | 140    | 75    | 66     | 64    | 59     | 50     | 55     | 46     | 56     | 29     |
| APACHE 15～19    | 52     | 77    | 36     | 38    | 86    | 131   | 118   | 76    | 20     | 52    | 25     | 30    | 51     | 24     | 42     | 20     | 28     | 21     |
| APACHE 20～24    | 21     | 77    | 26     | 36    | 67    | 74    | 60    | 45    | 32     | 19    | 14     | 27    | 34     | 14     | 41     | 17     | 7      | 4      |
| APACHE 25～29    | 4      | 58    | 18     | 11    | 36    | 41    | 32    | 26    | 18     | 9     | 4      | 16    | 31     | 12     | 9      | 7      | 3      | 8      |
| APACHE 30～34    | 2      | 17    | 12     | 7     | 18    | 8     | 7     | 10    | 0      | 4     | 3      | 7     | 12     | 3      | 15     | 4      | 0      | 1      |
| APACHE 35～      | 2      | 11    | 3      | 5     | 7     | 8     | 5     | 8     | 0      | 2     | 0      | 7     | 5      | 5      | 11     | 3      | 1      | 0      |
| APACHE平均        | 14.1   | 15.4  | 15.7   | 16.8  | 14.2  | 12.7  | 18.2  | 15.1  | 10.4   | 12.6  | 8.7    | 14.8  | 13.5   | 11.2   | 14.7   | 11.8   | 10.4   | 9.7    |
| 標準化死亡比          | 1.045  | 0.760 | 1.236  | 1.004 | 0.804 | 0.993 | 0.715 | 0.576 | 1.406  | 0.436 | 0.715  | 1.290 | 0.890  | 0.490  | 0.544  | 0.874  | 1.518  | 1.969  |
| 平均在室日数          | 6.5    | 11.3  | 7.4    | 4.7   | 4.0   | 4.8   | 3.1   | 5.4   | 6.0    | 3.6   | 5.2    | 4.2   | 4.9    | 5.4    | 8.3    | 4.8    | 6.2    | 6.3    |
| 平均在院日数          | 60.9   | 44.6  | 62.1   | 57.7  | 33.3  | 41.2  | 45.2  | 61.2  | 34.2   | 62.9  | 55.7   | 54.2  | 35.5   | 39.5   | 29.1   | 65.9   | 43.7   | 82.3   |
| 人工呼吸器利用率        | 61.3%  | 25.5% | 70.4%  | 45.3% | 28.6% | 34.2% | 56.6% | 58.3% | 50.3%  | 44.3% | 33.6%  | 62.8% | 58.6%  | 51.2%  | 47.5%  | 55.1%  | 76.2%  | 59.1%  |
| 中心静脈カテーテル利用率    | 93.1%  | 22.2% | 87.4%  | 72.4% | 20.5% | 30.3% | 84.8% | 93.3% | 70.4%  | 74.6% | 83.0%  | 93.3% | 46.1%  | 73.5%  | 70.5%  | 71.3%  | 95.8%  | 93.1%  |
| 尿道カテーテル利用率      | 97.8%  | 41.0% | 75.6%  | 77.0% | 26.0% | 89.7% | 99.0% | 96.2% | 87.5%  | 92.5% | 95.5%  | 97.0% | 89.3%  | 83.3%  | 90.9%  | 93.2%  | 93.3%  | 91.3%  |
| 人工呼吸日/患者数       | 4.0    | 2.9   | 5.2    | 2.1   | 1.1   | 1.6   | 1.8   | 3.1   | 3.0    | 1.6   | 1.7    | 2.6   | 2.9    | 2.8    | 3.9    | 2.7    | 4.8    | 3.7    |
| リスク調整感染率(肺炎)    | 15.639 | 5.128 | 10.006 | 2.068 | 4.125 | 2.078 | 9.243 | 7.916 | 12.161 | 7.177 | 11.101 | 8.503 | 13.326 | 10.631 | 28.909 | 11.735 | 12.896 | 15.728 |
| リスク調整感染率(カテーテル) | 2.290  | 1.314 | 2.014  | 0.648 | 3.456 | 3.756 | 0.000 | 0.660 | 0.000  | 2.132 | 0.374  | 0.000 | 0.736  | 0.926  | 6.195  | 0.000  | 0.000  | 0.000  |
| リスク調整感染率(尿路)    | 0.545  | 0.355 | 1.165  | 0.000 | 1.810 | 0.158 | 0.000 | 0.960 | 0.000  | 0.573 | 0.000  | 1.653 | 1.141  | 0.408  | 2.059  | 0.495  | 0.479  | 0.000  |
| 全感染率(耐性)        | 10.7%  | 1.6%  | 2.9%   | 0.4%  | 1.2%  | 1.2%  | 0.5%  | 1.7%  | 4.2%   | 0.4%  | 1.9%   | 2.9%  | 2.3%   | 3.7%   | 15.5%  | 2.7%   | 3.3%   | 2.2%   |
| 全感染率(感性)        | 5.5%   | 3.3%  | 9.4%   | 0.9%  | 1.5%  | 0.5%  | 2.2%  | 4.1%  | 0.0%   | 2.5%  | 1.6%   | 2.0%  | 3.4%   | 1.8%   | 16.5%  | 2.0%   | 5.0%   | 8.3%   |
| 肺炎感染率(耐性)       | 4.5%   | 0.7%  | 1.6%   | 0.2%  | 0.5%  | 0.3%  | 0.4%  | 0.7%  | 4.2%   | 0.2%  | 1.3%   | 1.8%  | 1.3%   | 2.2%   | 9.0%   | 1.8%   | 2.8%   | 0.6%   |
| 肺炎感染率(感性)       | 2.8%   | 2.1%  | 3.9%   | 0.2%  | 0.6%  | 0.1%  | 1.2%  | 1.8%  | 0.0%   | 1.0%  | 0.8%   | 0.9%  | 2.5%   | 0.9%   | 7.5%   | 2.0%   | 3.3%   | 5.5%   |
| カテーテル感染率(耐性)    | 1.0%   | 0.2%  | 0.0%   | 0.0%  | 0.1%  | 0.6%  | 0.0%  | 0.0%  | 0.0%   | 0.2%  | 0.0%   | 0.0%  | 0.2%   | 0.4%   | 1.8%   | 0.0%   | 0.0%   | 0.0%   |
| カテーテル感染率(感性)    | 0.3%   | 0.5%  | 1.3%   | 0.2%  | 0.4%  | 0.0%  | 0.0%  | 0.3%  | 0.0%   | 0.4%  | 0.2%   | 0.0%  | 0.0%   | 0.0%   | 1.8%   | 0.0%   | 0.0%   | 0.0%   |
| 創傷感染率(耐性)       | 2.1%   | 0.0%  | 0.0%   | 0.0%  | 0.4%  | 0.2%  | 0.1%  | 0.8%  | 0.0%   | 0.0%  | 0.2%   | 0.4%  | 0.2%   | 0.7%   | 0.8%   | 0.2%   | 0.0%   | 1.2%   |
| 創傷感染率(感性)       | 1.4%   | 0.0%  | 1.0%   | 0.2%  | 0.0%  | 0.2%  | 0.8%  | 1.2%  | 0.0%   | 0.6%  | 0.3%   | 0.9%  | 0.0%   | 0.7%   | 2.3%   | 0.0%   | 0.8%   | 1.5%   |
| 敗血症感染率(耐性)      | 2.1%   | 0.2%  | 1.0%   | 0.0%  | 0.0%  | 0.1%  | 0.0%  | 0.2%  | 0.0%   | 0.0%  | 0.5%   | 0.2%  | 0.7%   | 0.0%   | 1.3%   | 0.4%   | 0.3%   | 0.3%   |
| 敗血症感染率(感性)      | 0.7%   | 0.3%  | 2.6%   | 0.2%  | 0.3%  | 0.1%  | 0.1%  | 0.3%  | 0.0%   | 0.2%  | 0.3%   | 0.0%  | 0.2%   | 0.2%   | 1.8%   | 0.0%   | 0.0%   | 0.3%   |
| 尿路感染率(耐性)       | 0.0%   | 0.2%  | 0.0%   | 0.0%  | 0.1%  | 0.0%  | 0.0%  | 0.0%  | 0.0%   | 0.0%  | 0.0%   | 0.4%  | 0.0%   | 0.2%   | 0.0%   | 0.2%   | 0.0%   | 0.0%   |
| 尿路感染率(感性)       | 0.3%   | 0.2%  | 0.6%   | 0.0%  | 0.3%  | 0.1%  | 0.0%  | 0.5%  | 0.0%   | 0.2%  | 0.0%   | 0.2%  | 0.5%   | 0.0%   | 1.6%   | 0.0%   | 0.3%   | 0.0%   |
| その他感染率(耐性)      | 1.0%   | 0.5%  | 0.3%   | 0.2%  | 0.2%  | 0.0%  | 0.0%  | 0.0%  | 0.0%   | 0.0%  | 0.0%   | 0.0%  | 0.0%   | 0.2%   | 2.6%   | 0.0%   | 0.3%   | 0.0%   |
| その他感染率(感性)      | 0.0%   | 0.2%  | 0.0%   | 0.0%  | 0.0%  | 0.1%  | 0.1%  | 0.0%  | 0.0%   | 0.2%  | 0.0%   | 0.0%  | 0.2%   | 0.0%   | 1.6%   | 0.0%   | 0.6%   | 0.9%   |

# ICU研究班2004年施設間比較

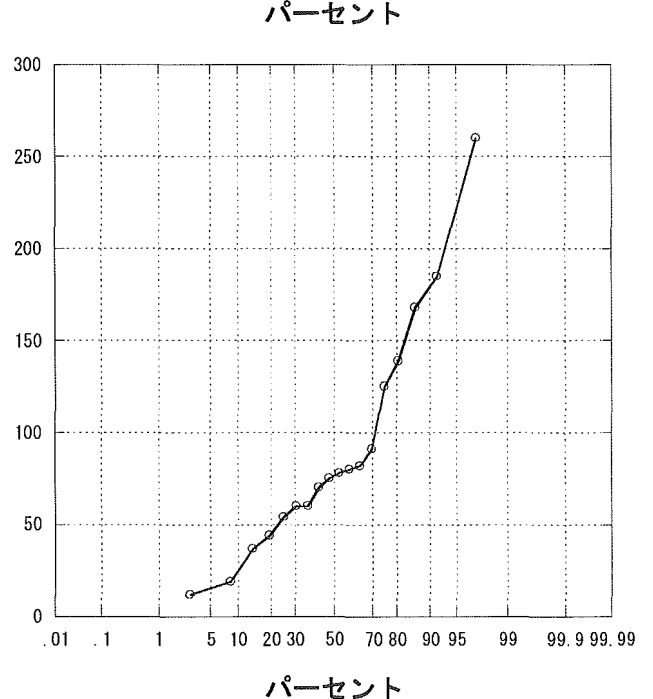
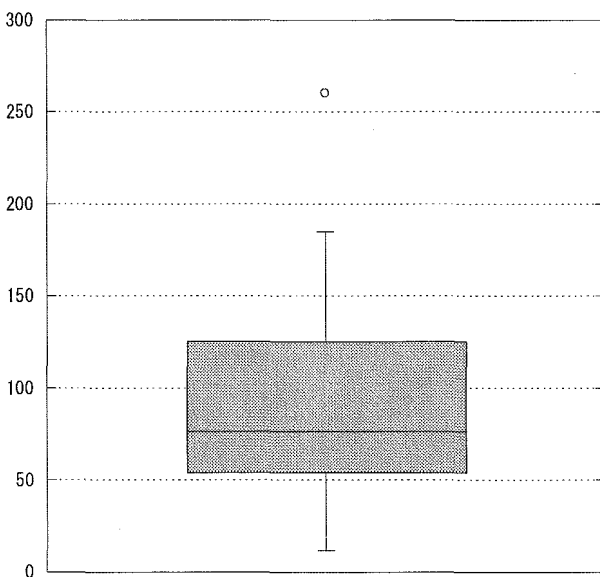
## 年間収容患者数



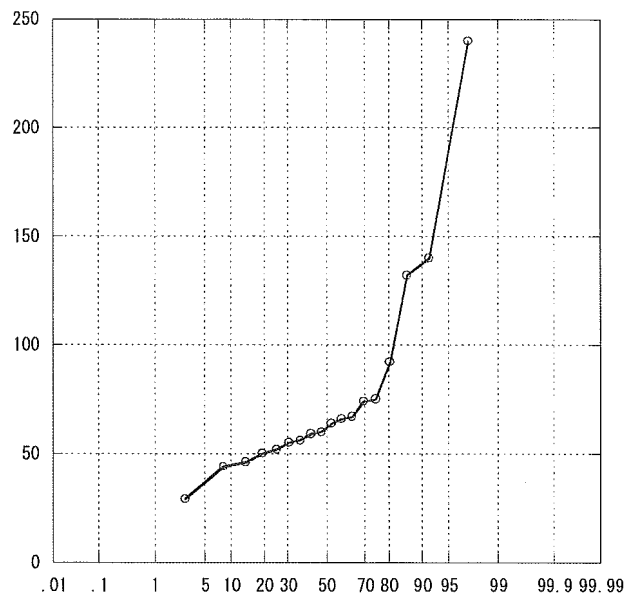
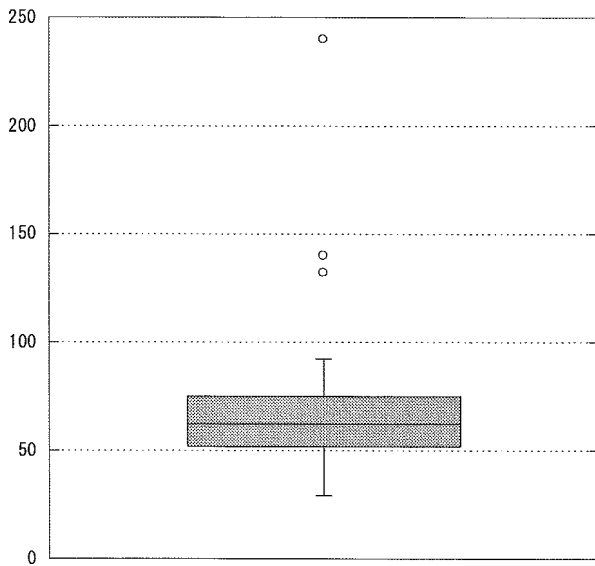
## APACHE 0~4



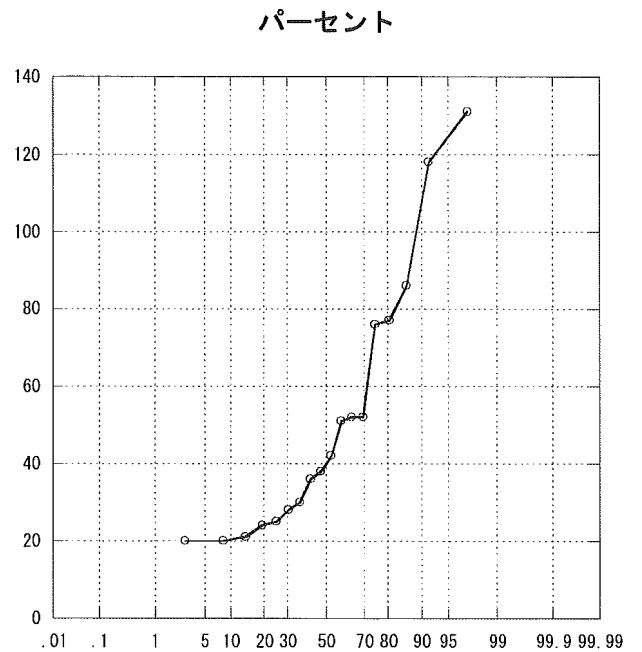
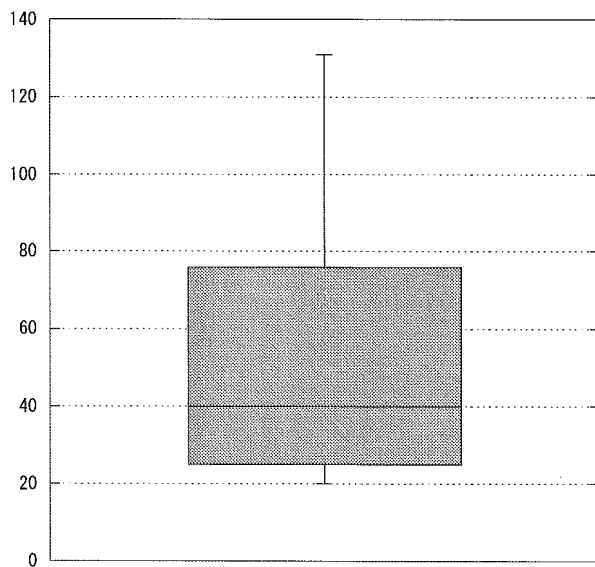
## APACHE 5~9



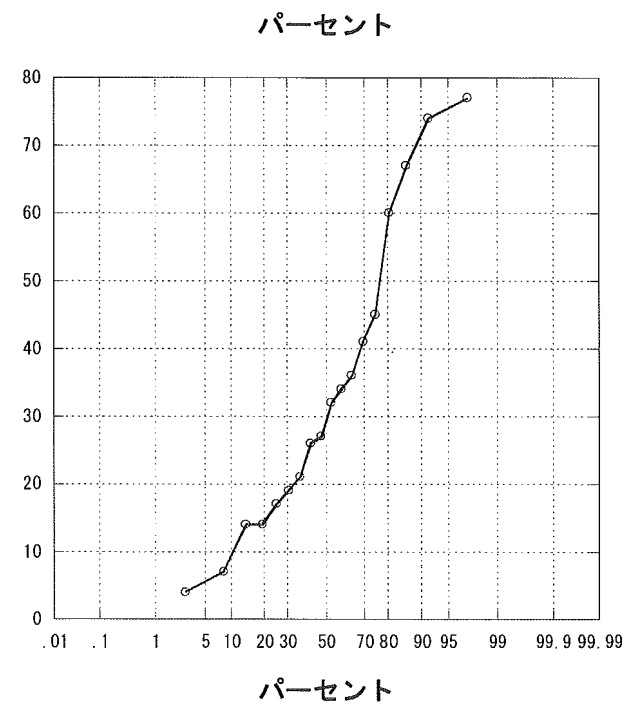
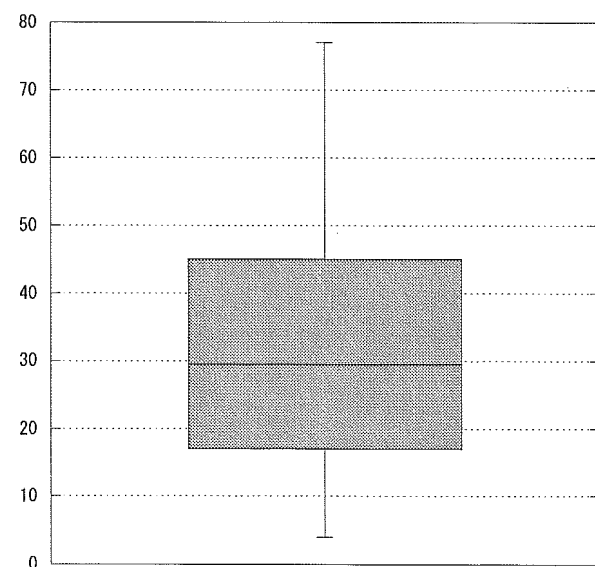
APACHE 10~14



APACHE 15~19

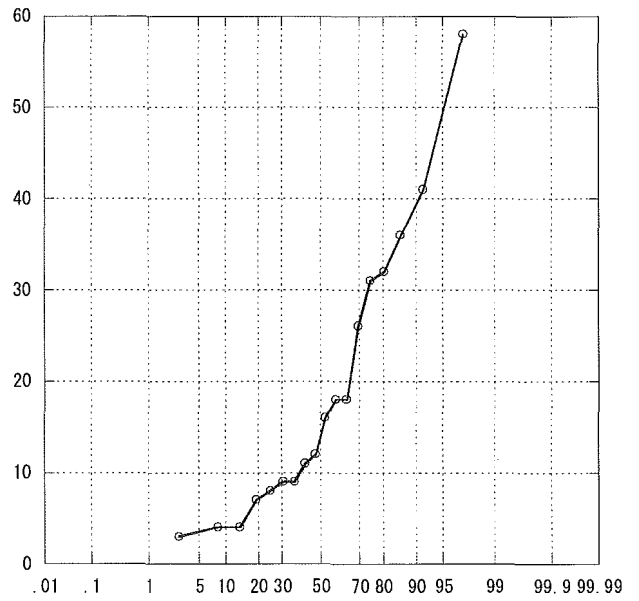
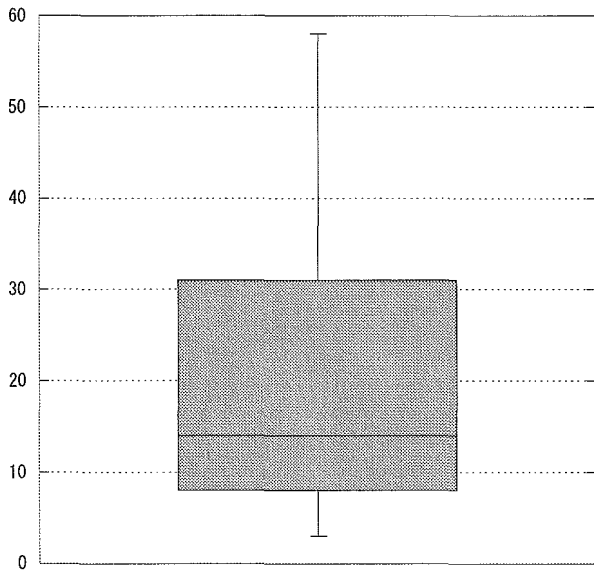


APACHE 20~24

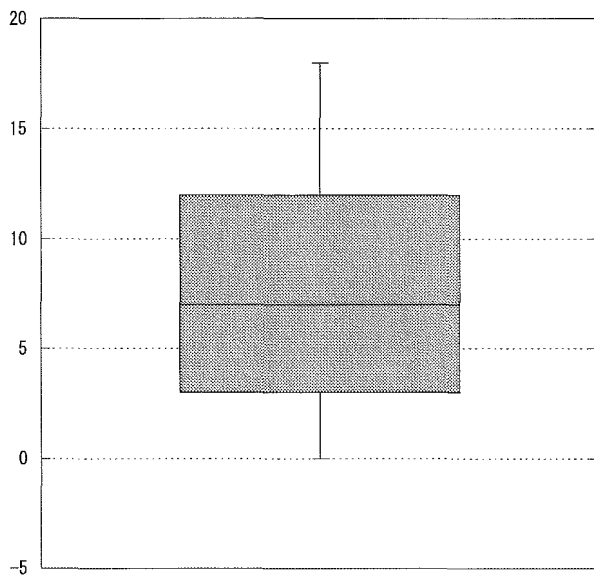


# ICU研究班2004年施設間比較

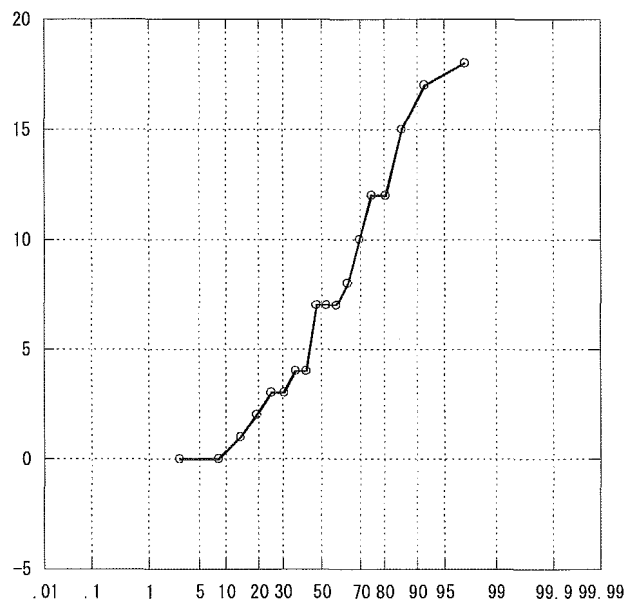
## APACHE 25~29



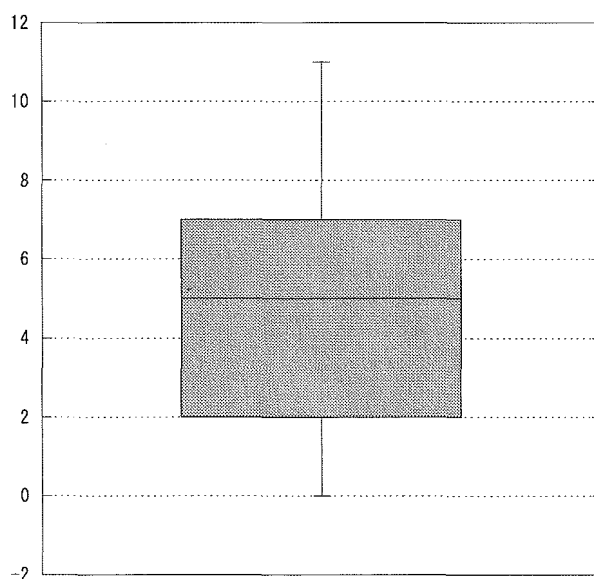
## APACHE 30~34



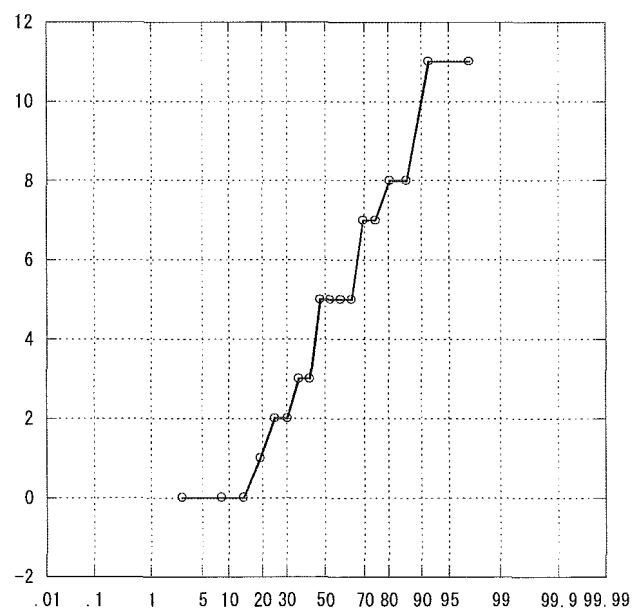
### パーセント



## APACHE 35~

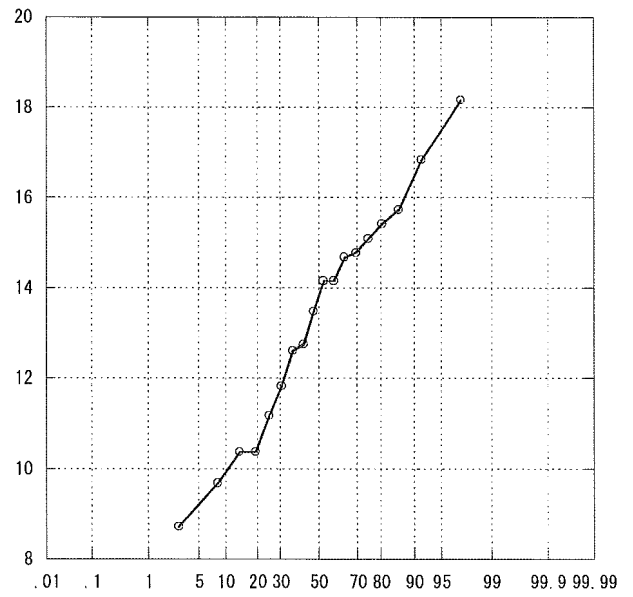
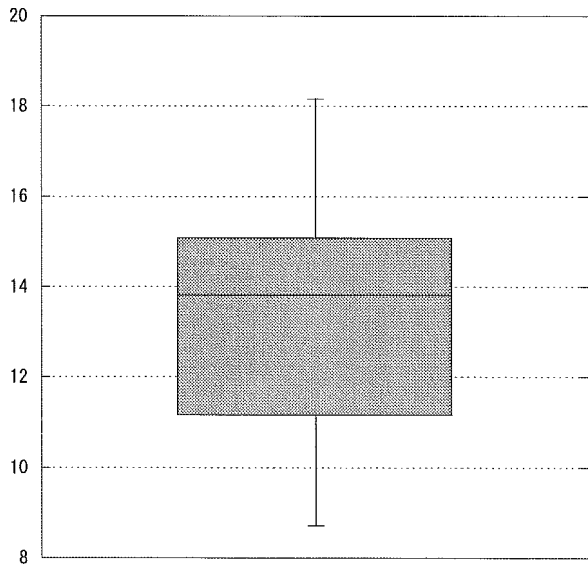


### パーセント



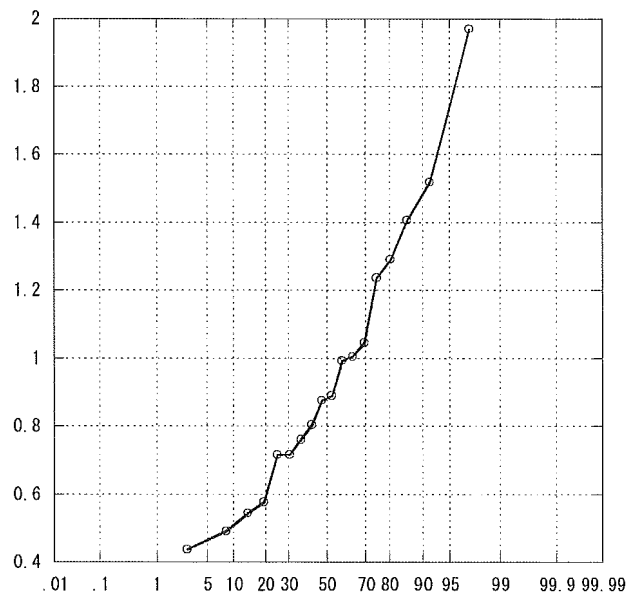
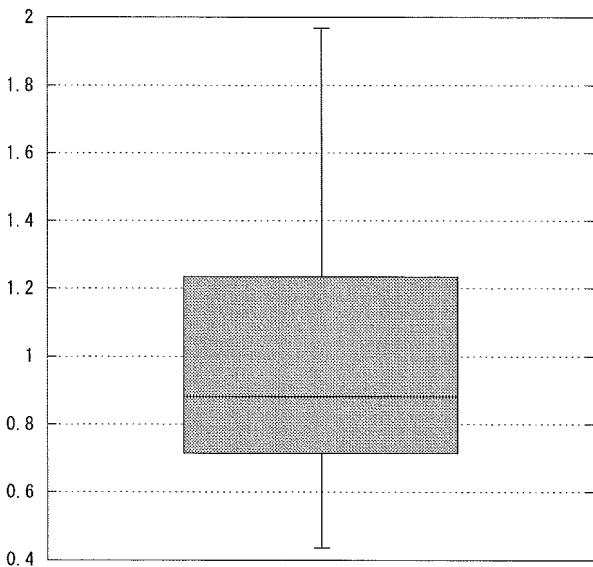
### パーセント

APACHE平均



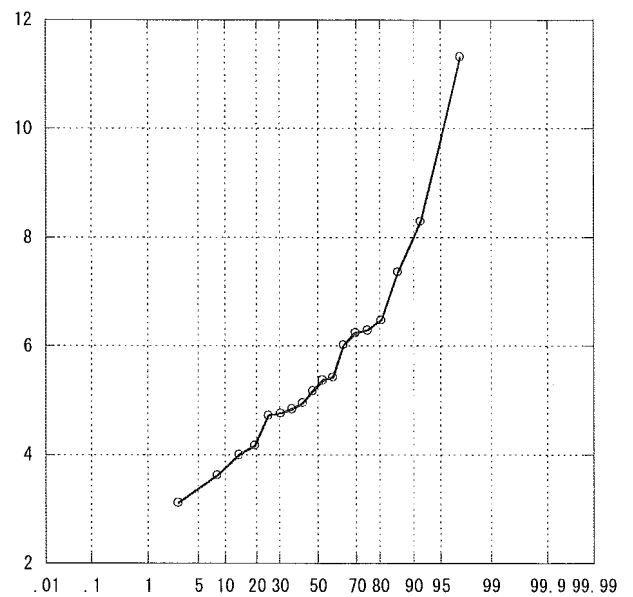
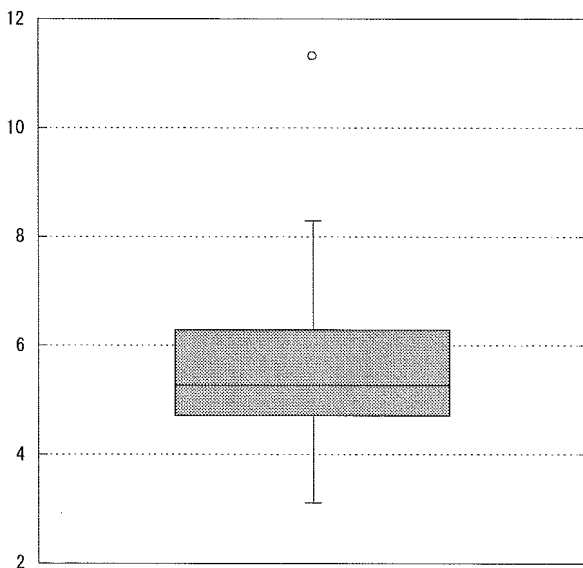
パーセント

標準化死亡比



パーセント

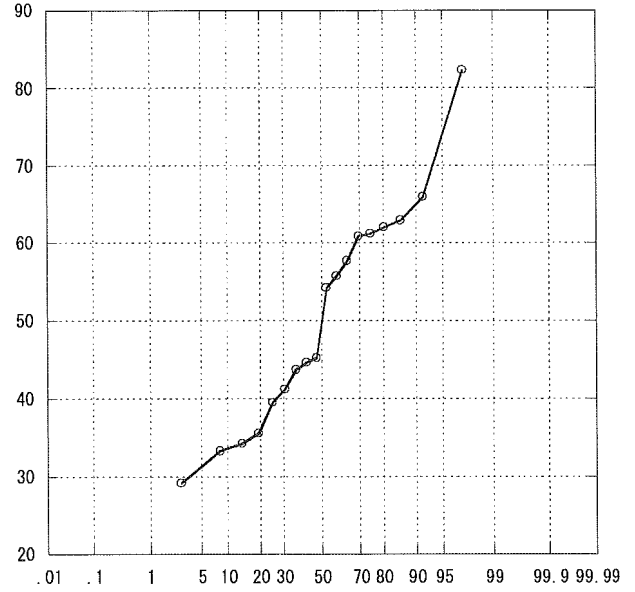
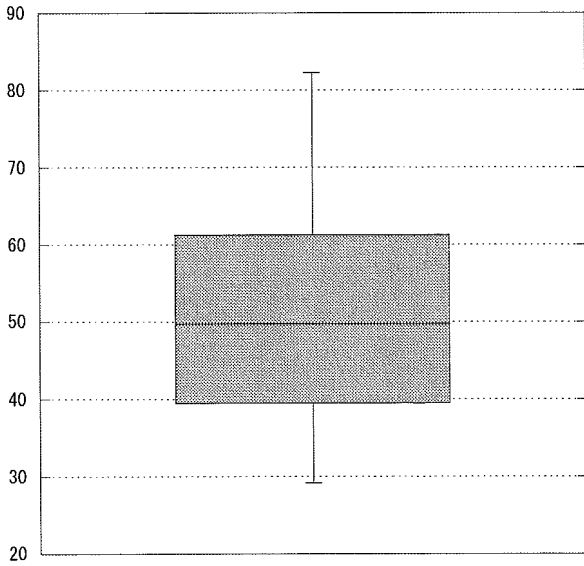
平均在室日数



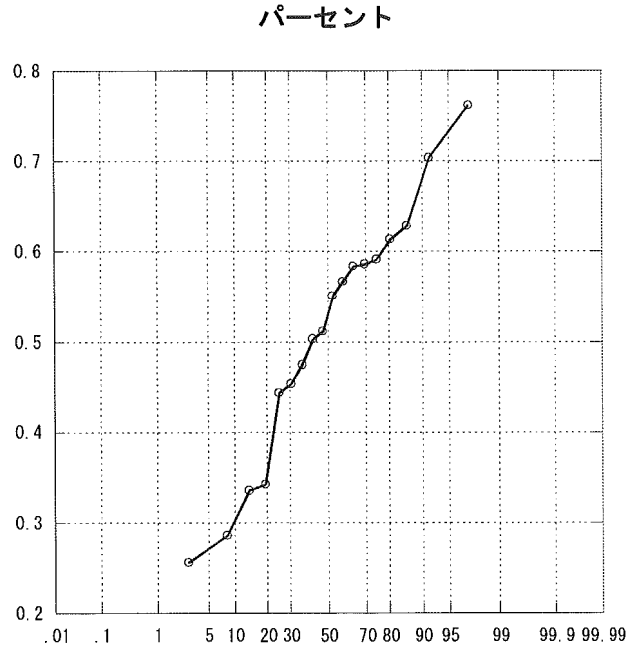
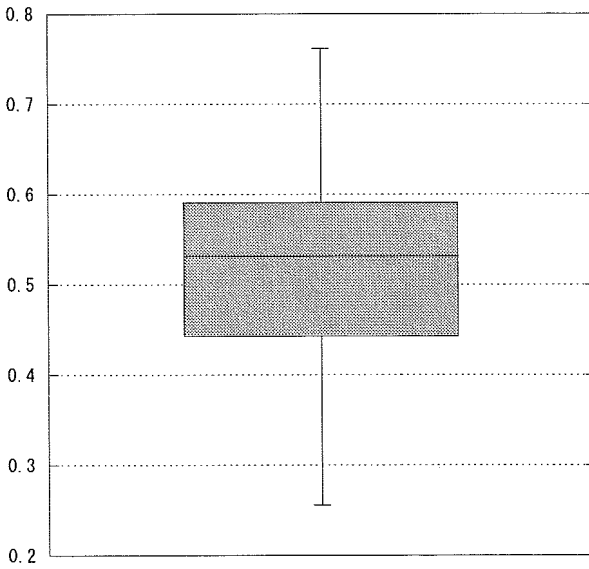
パーセント

# ICU研究班2004年施設間比較

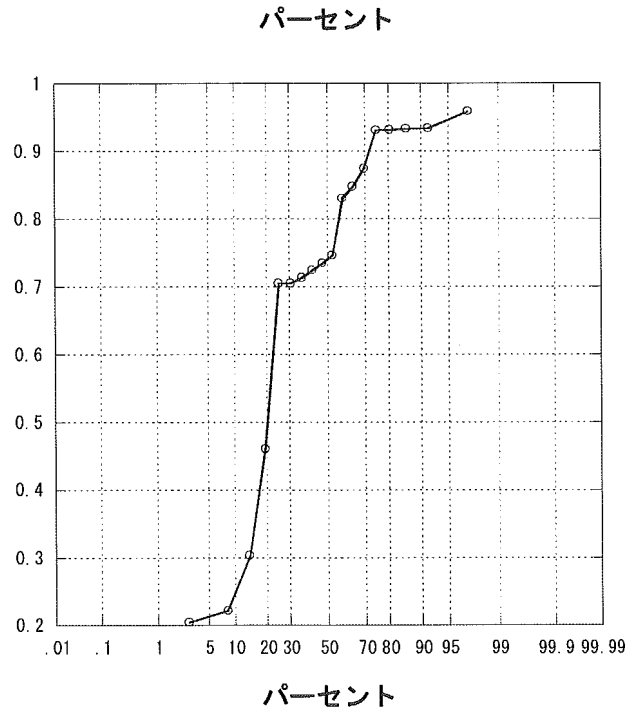
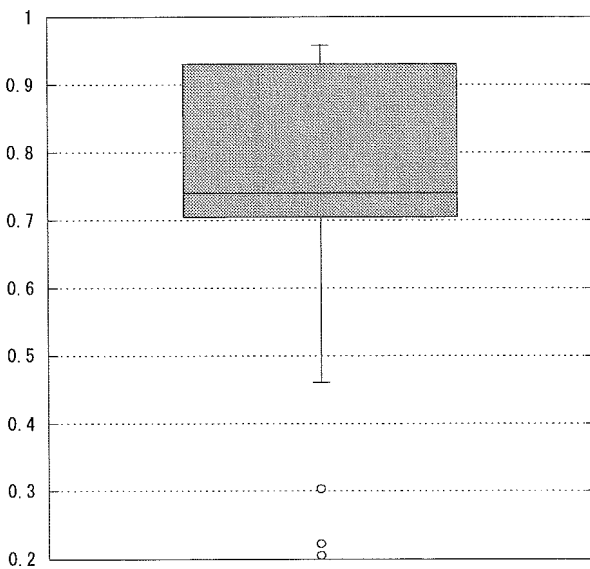
平均在院日数



人工呼吸器利用率

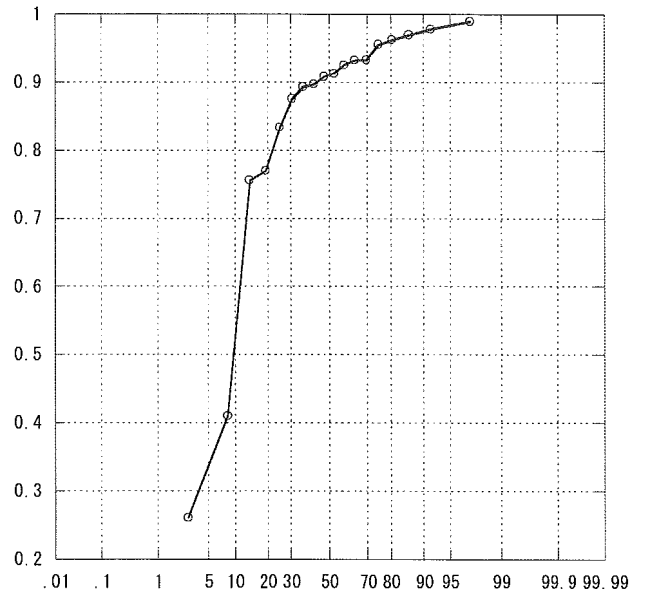
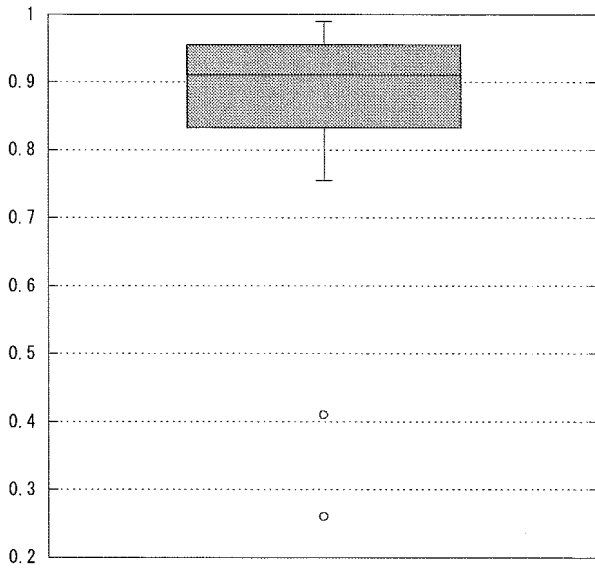


中心静脈カテ利用率

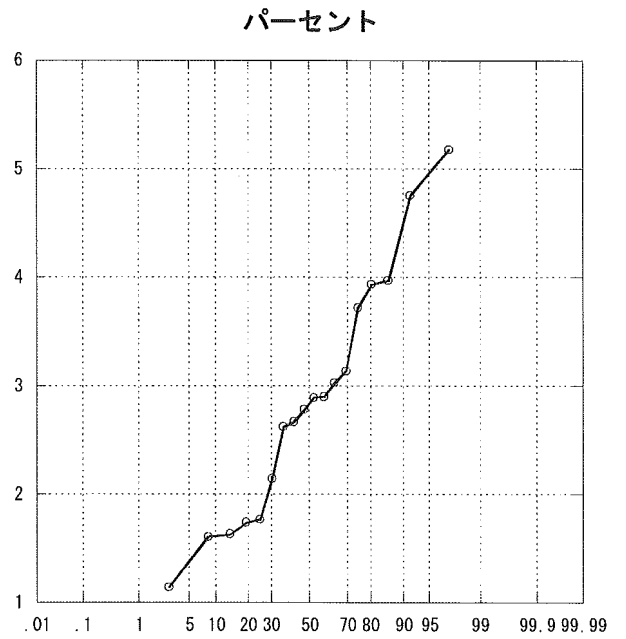
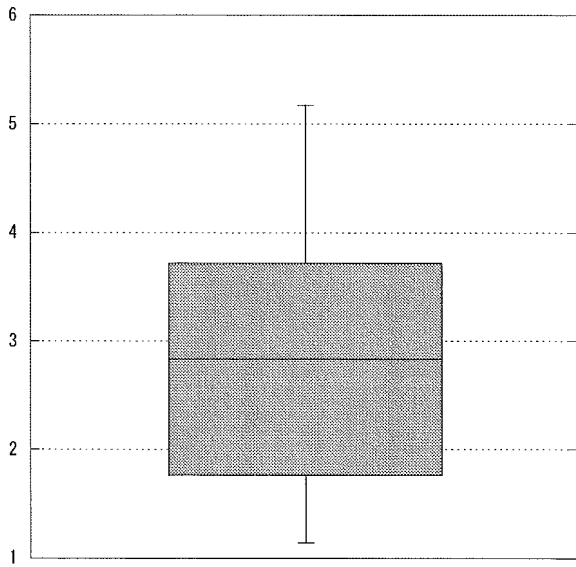




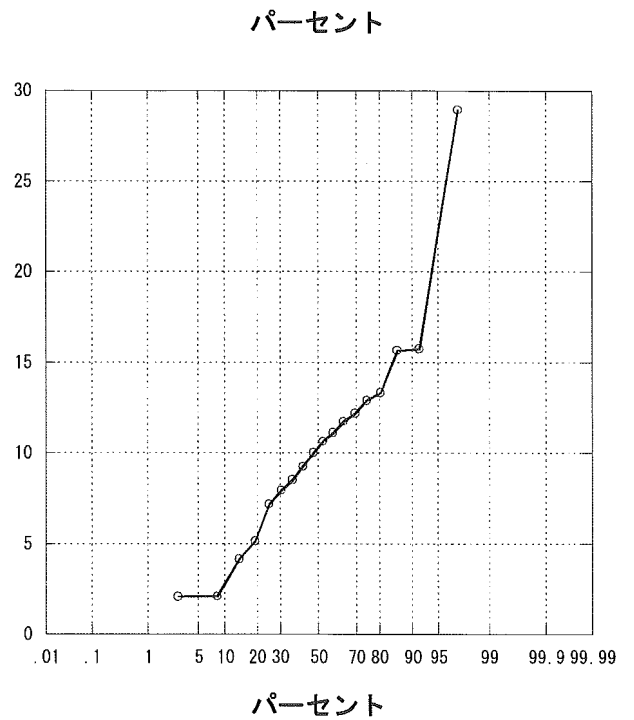
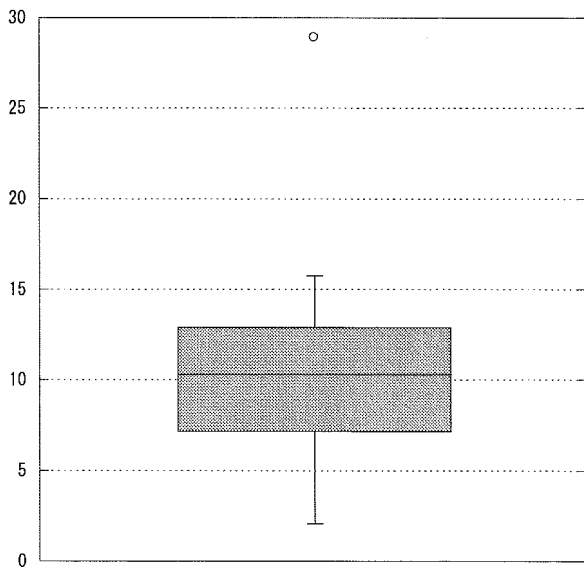
尿道カテ利用率



人工呼吸日／患者数

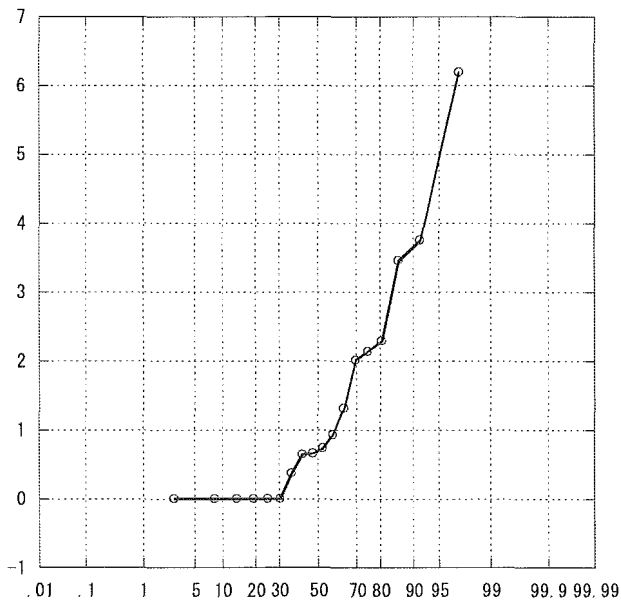
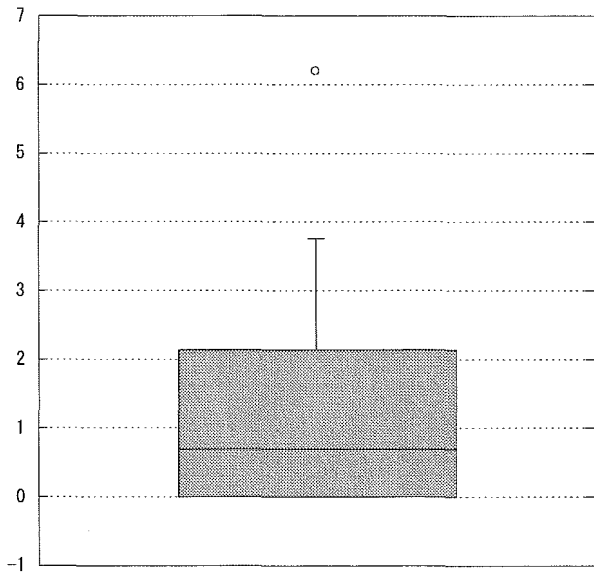


リスク調整感染率（肺炎）

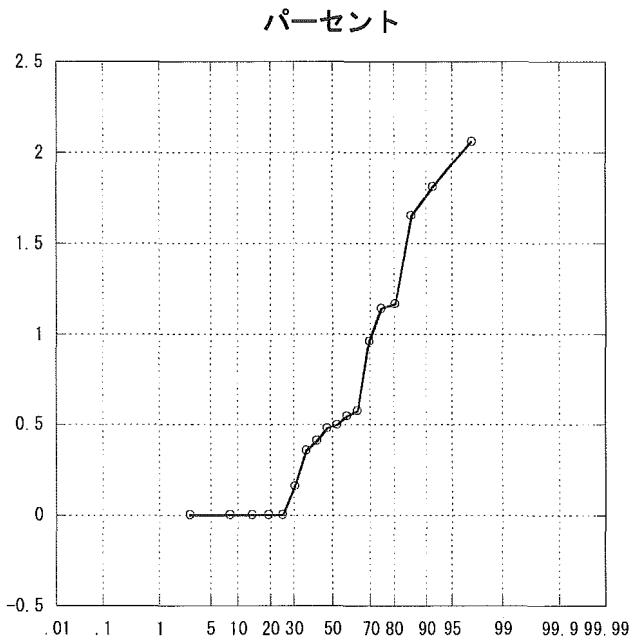
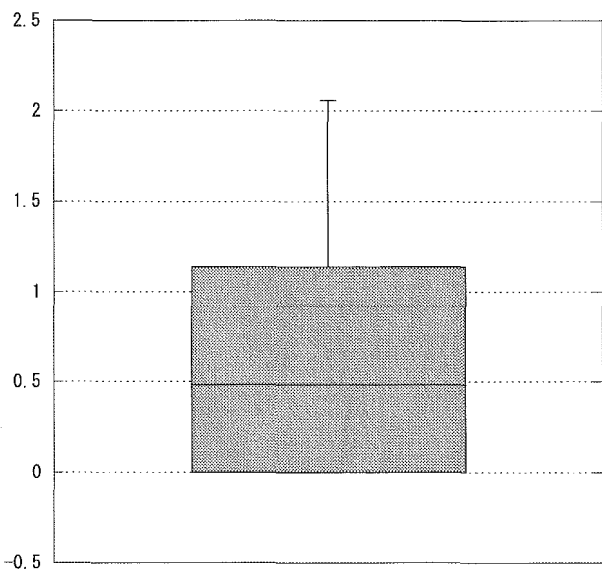


# ICU研究班2004年施設間比較

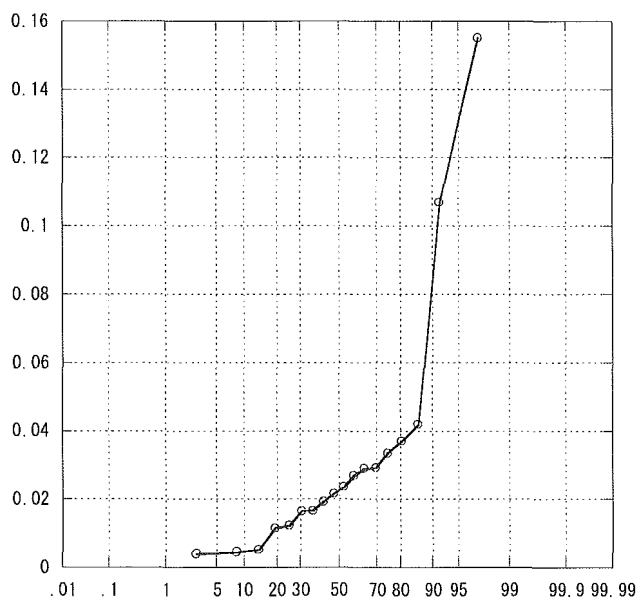
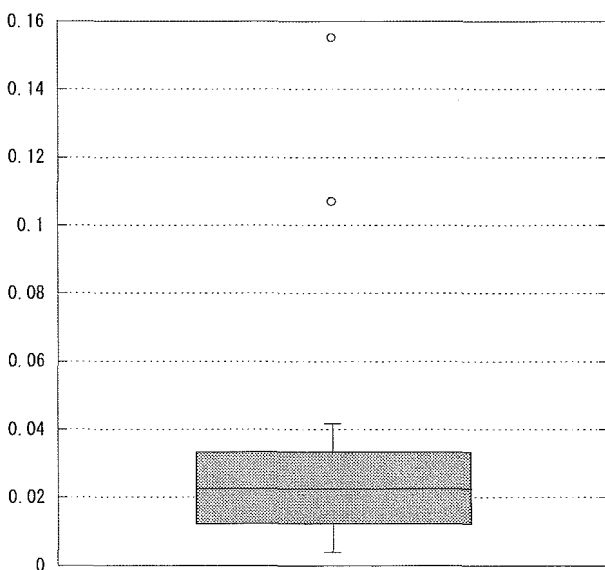
リスク調整感染率（カテ）



リスク調整感染率（尿路）

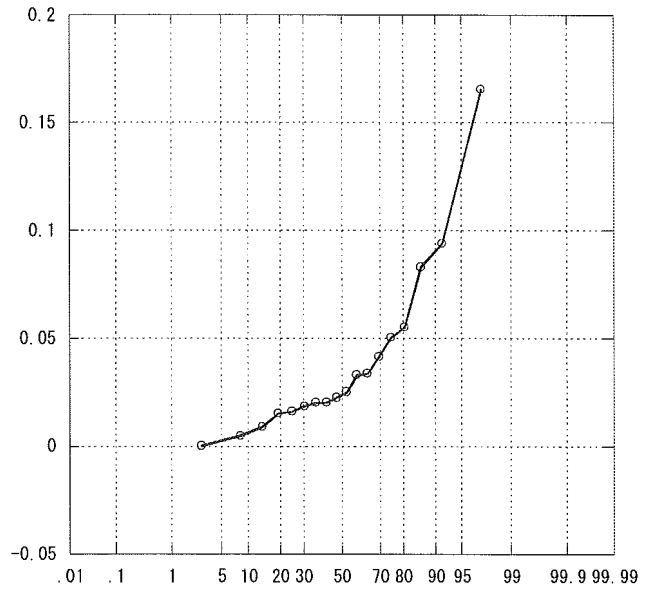
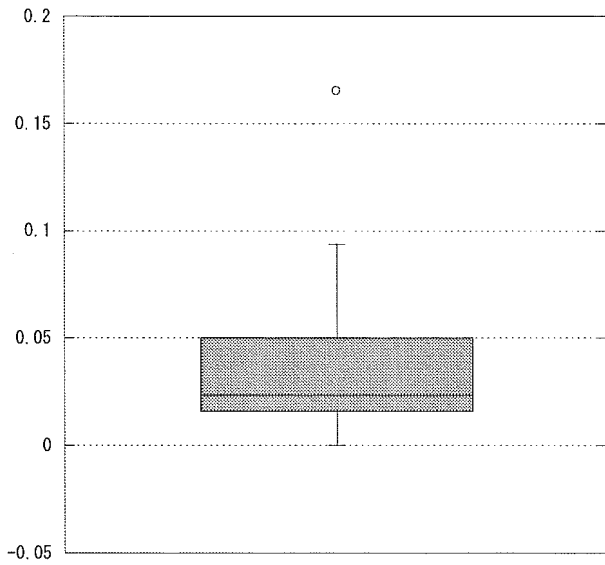


全感染率（耐性）

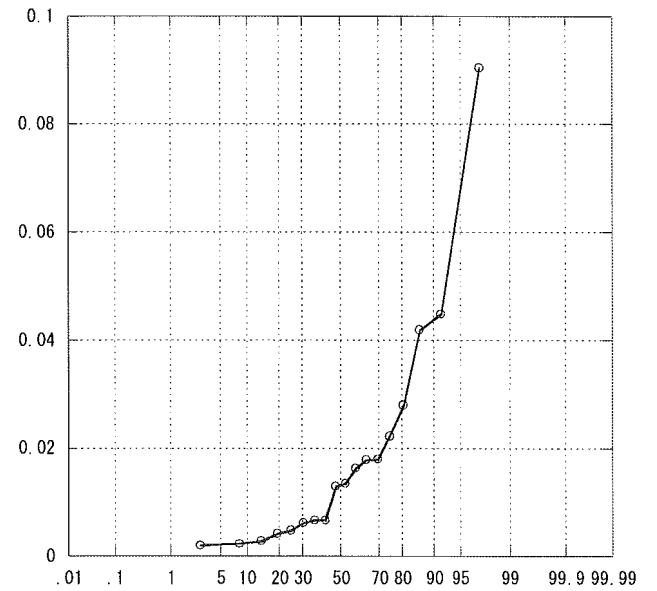
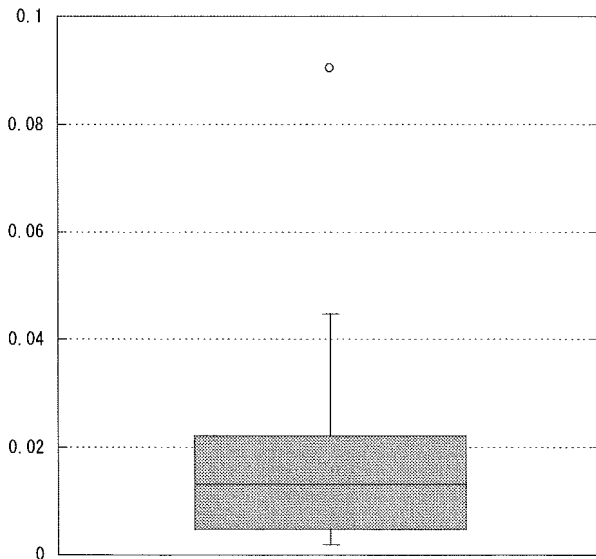


# ICU研究班2004年施設間比較

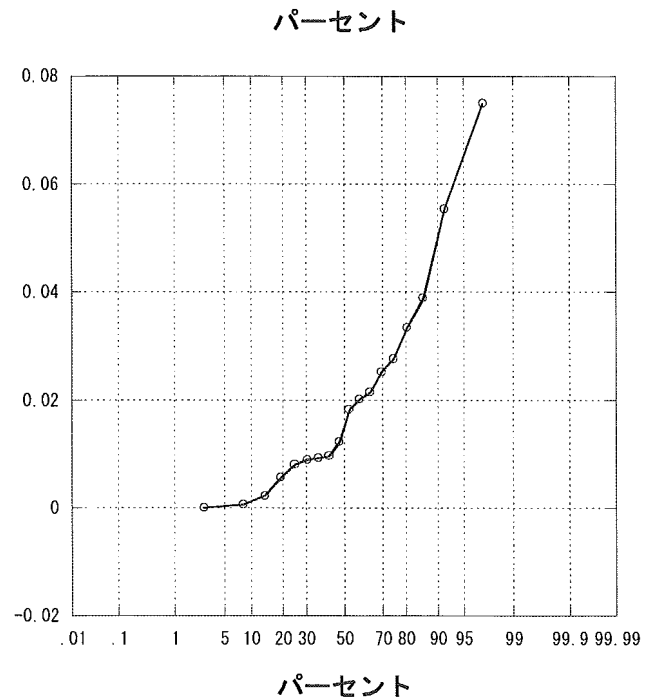
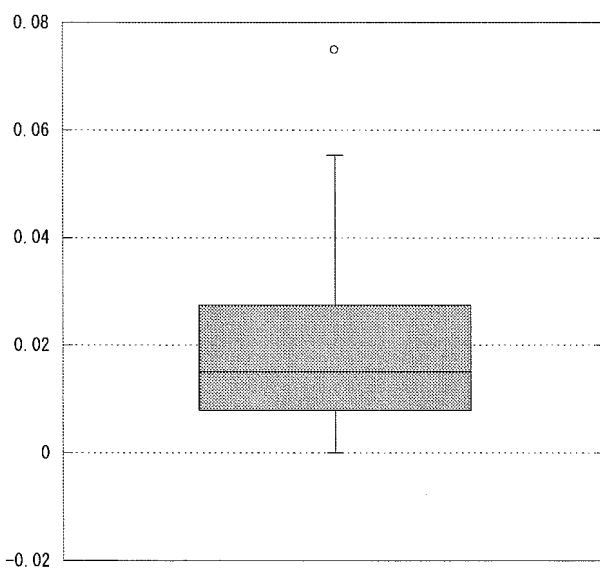
全感染率（感性）



肺炎感染率（耐性）

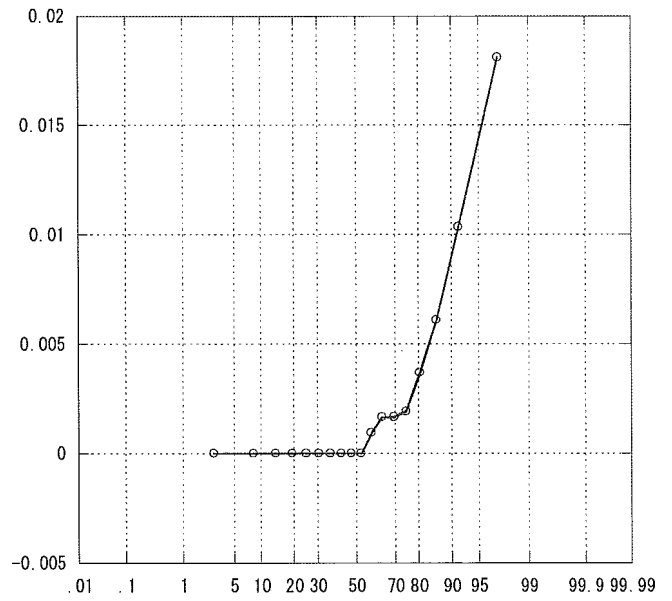
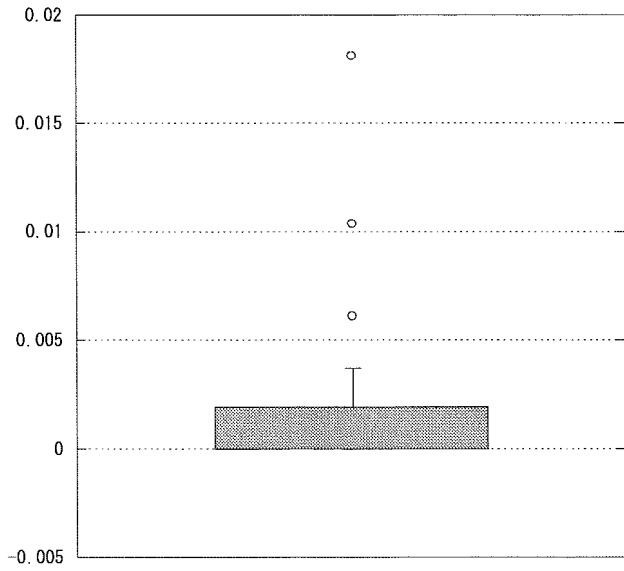


肺炎感染率（感性）



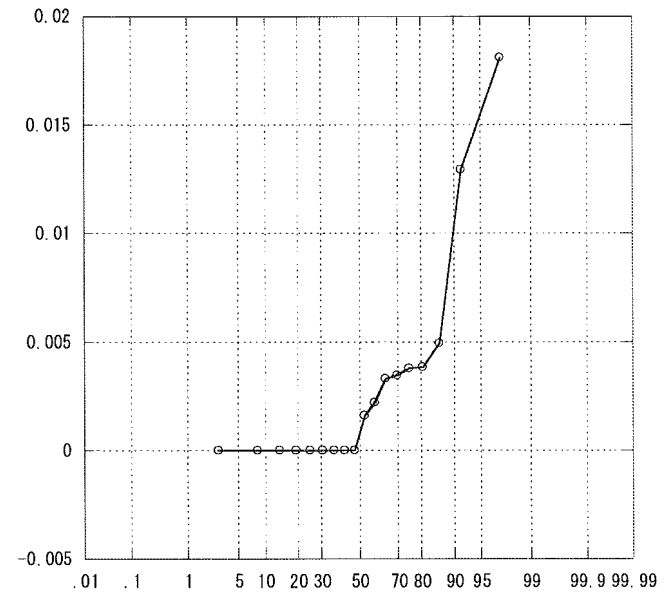
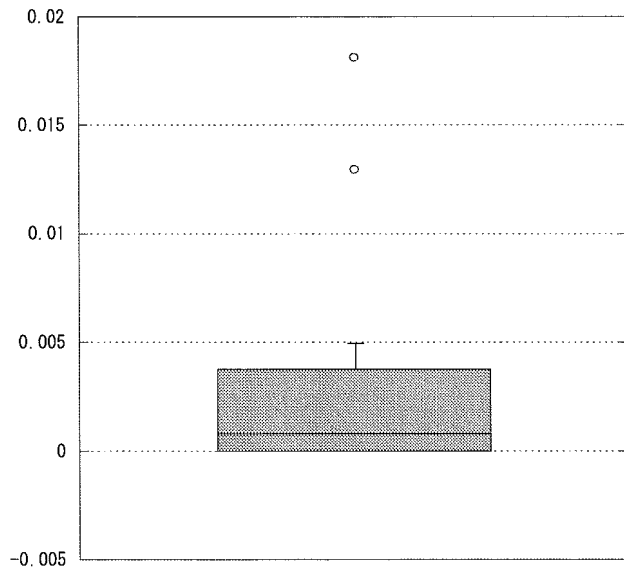
# ICU研究班2004年施設間比較

カテ感染率（耐性）



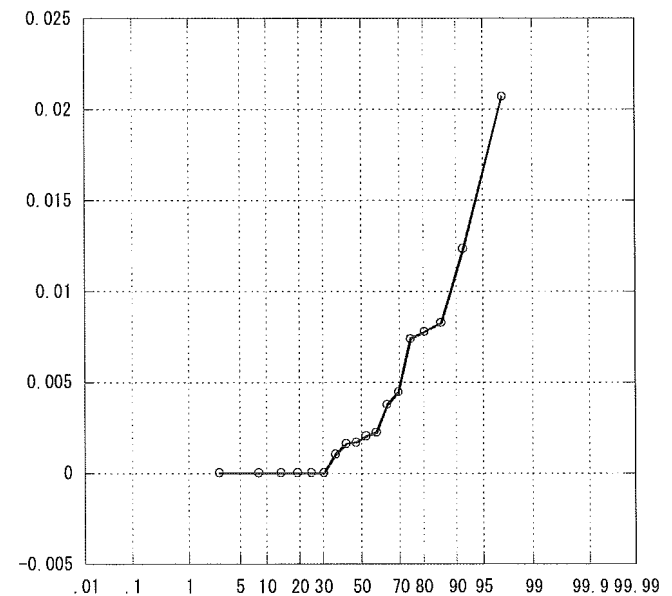
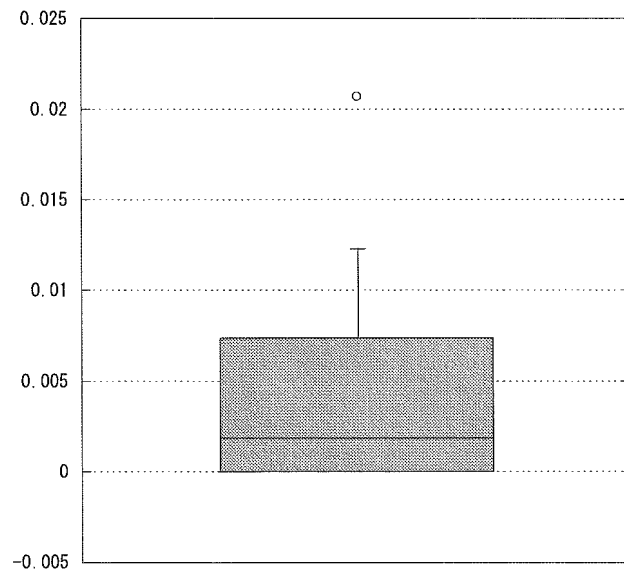
パーセント

カテ感染率（感性）



パーセント

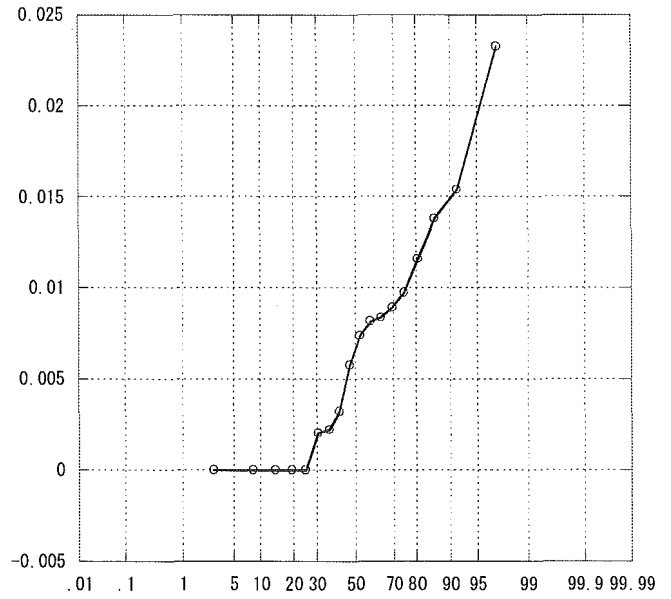
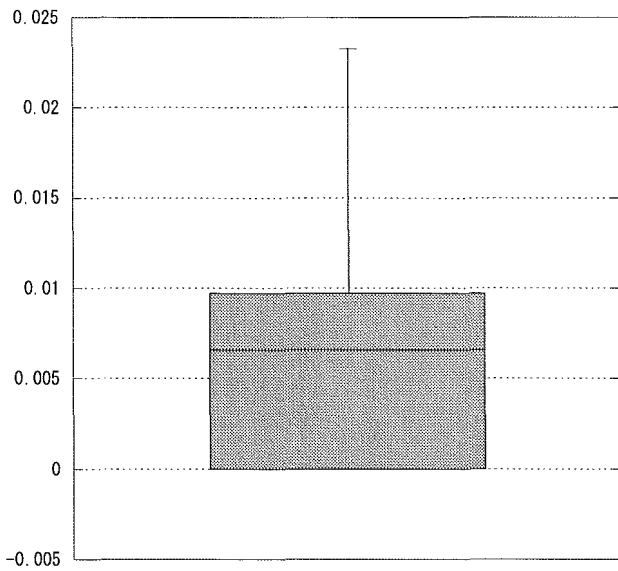
創感染率（耐性）



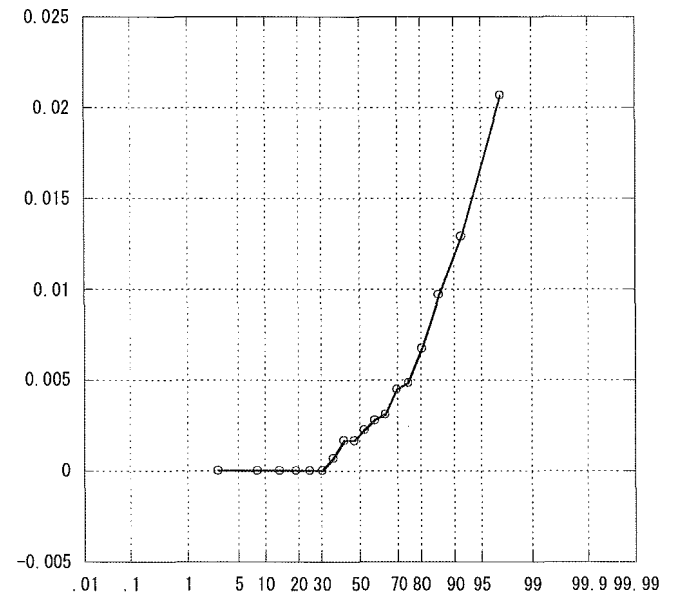
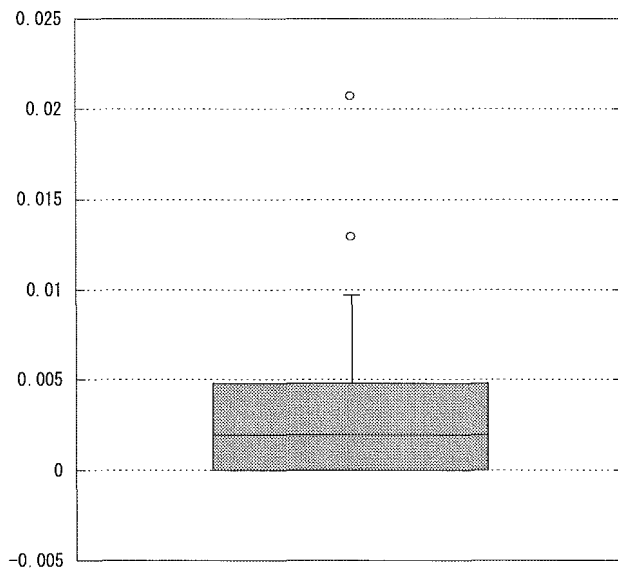
パーセント

# ICU研究班2004年施設間比較

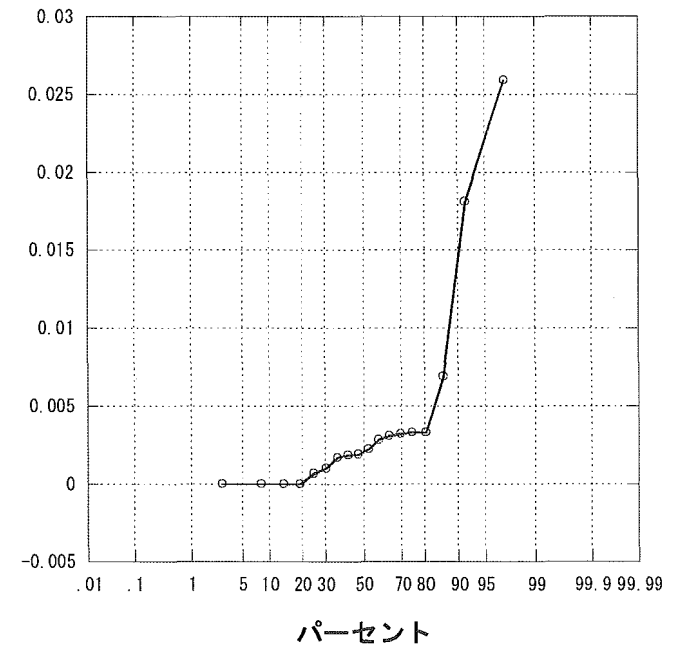
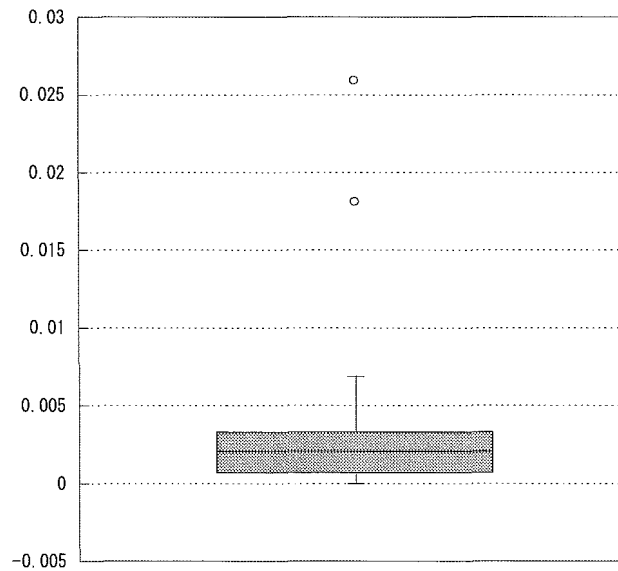
創感染率（感性）



敗血症感染率（耐性）

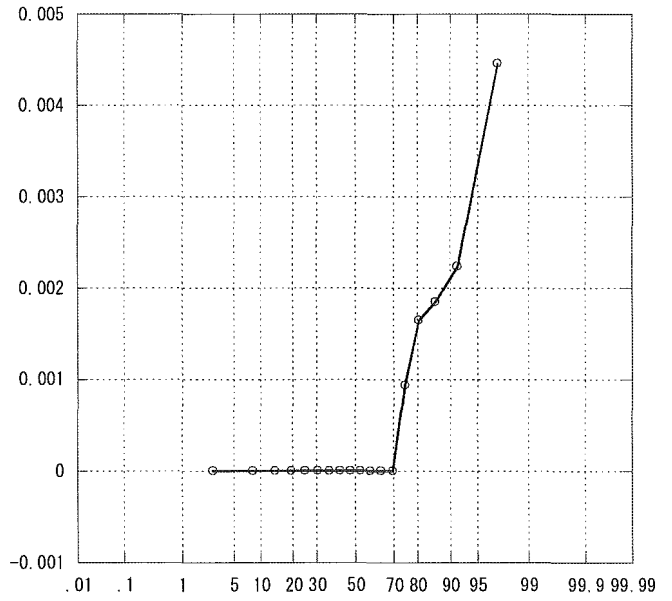
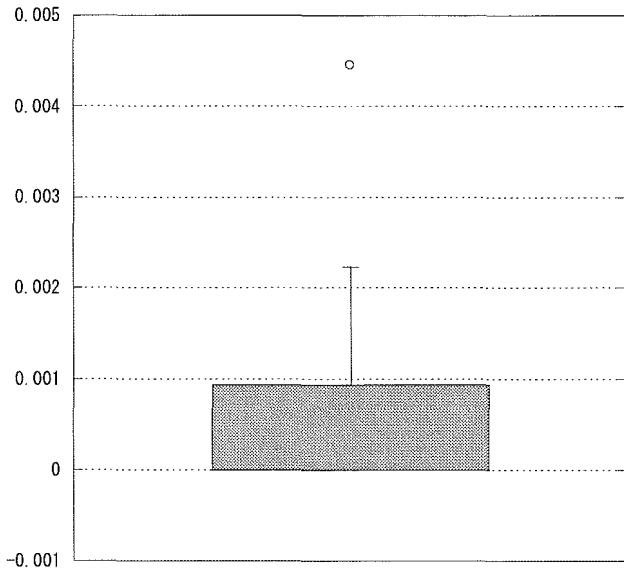


敗血症感染率（感性）

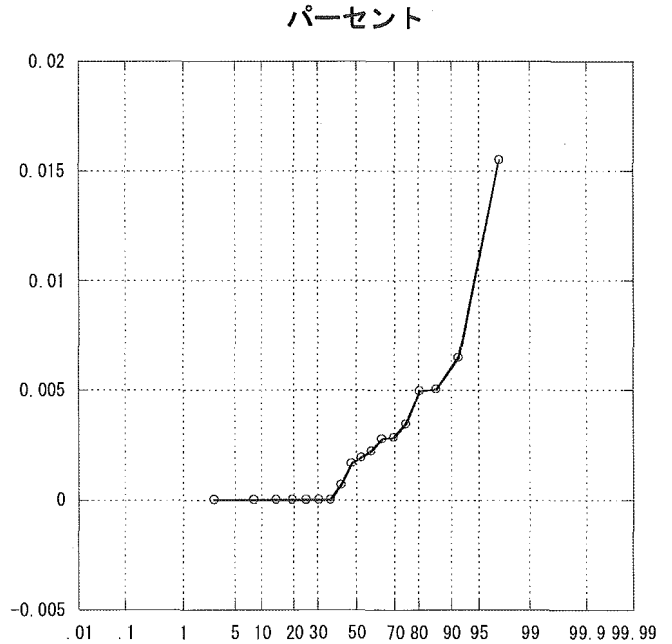
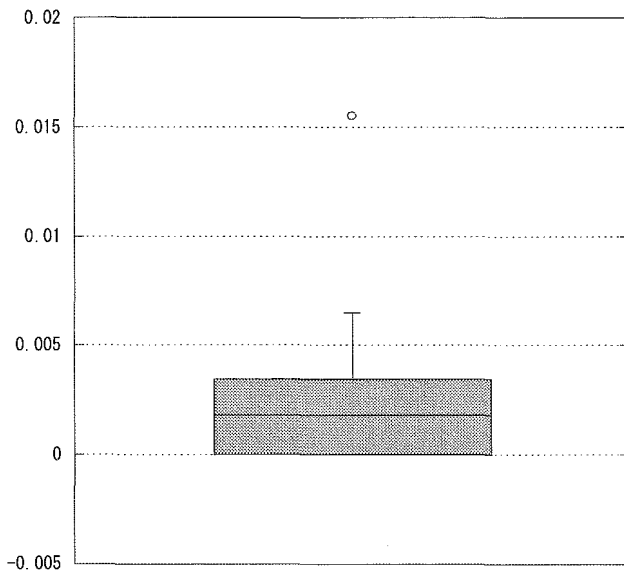


# ICU研究班2004年施設間比較

尿路感染率（耐性）

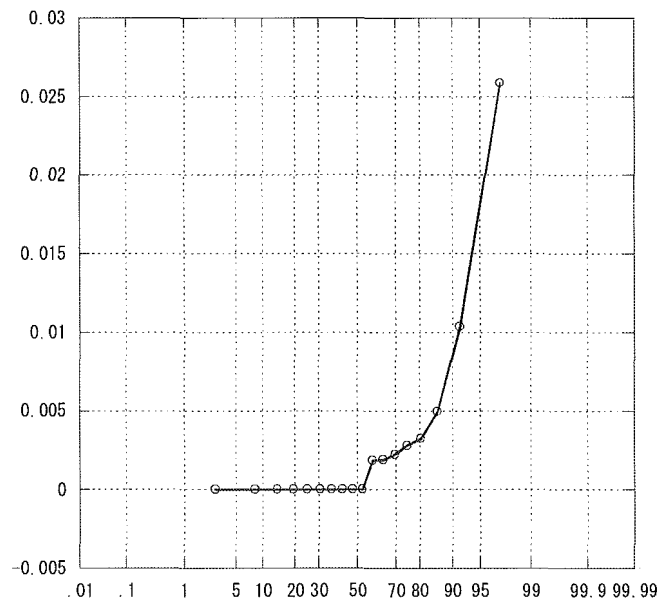
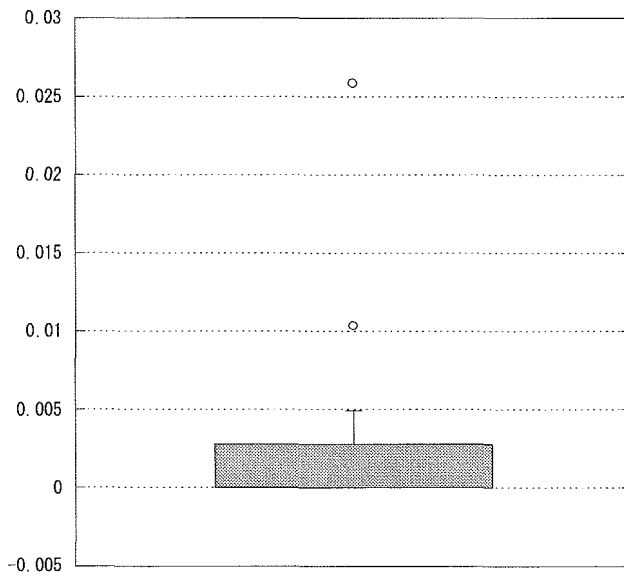


尿路感染率（感性）



パーセント

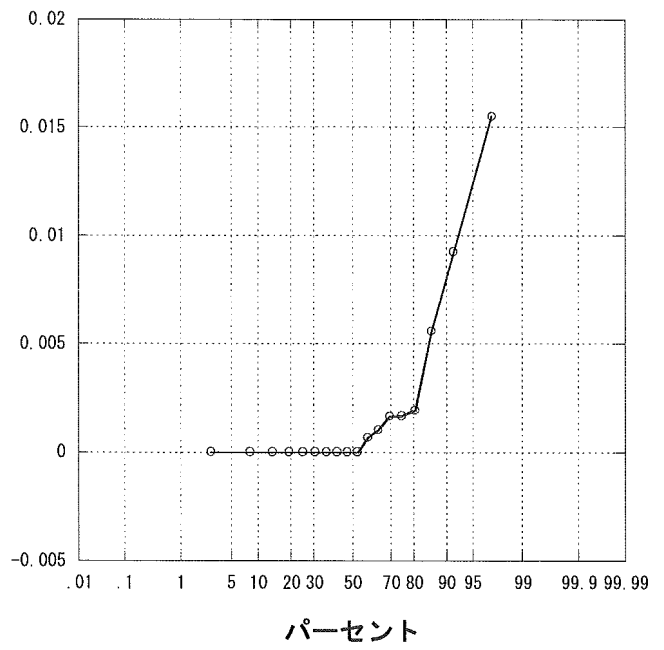
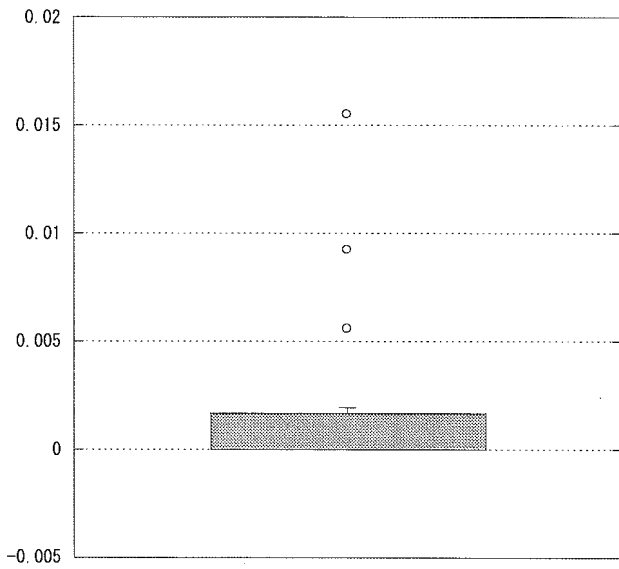
その他感染率（耐性）



パーセント

パーセント

その他感染率（感性）



## 総括研究者資料 2

院内感染関連指標の施設別データ  
(NICU 部門 2004 年)

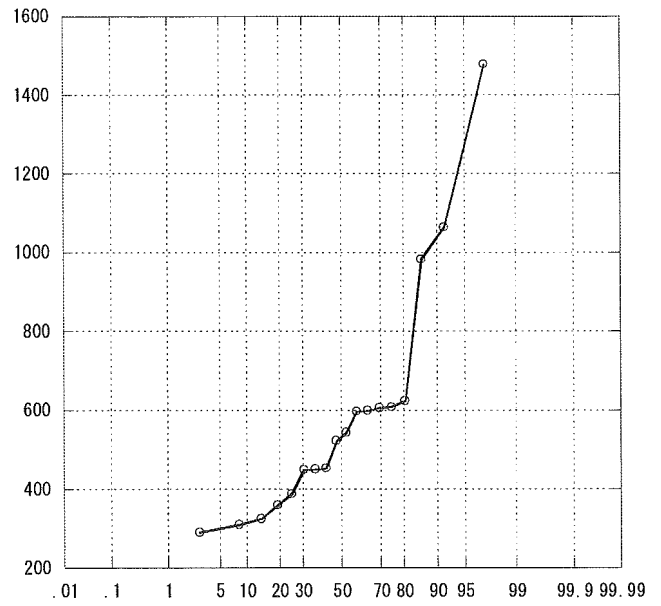
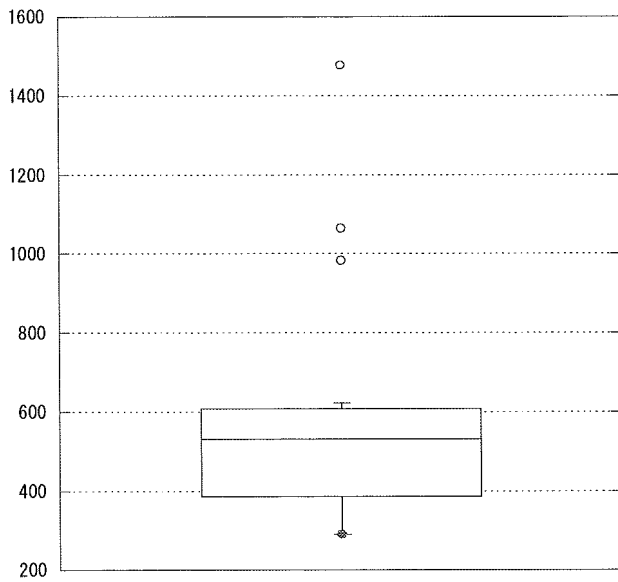


## B 施設

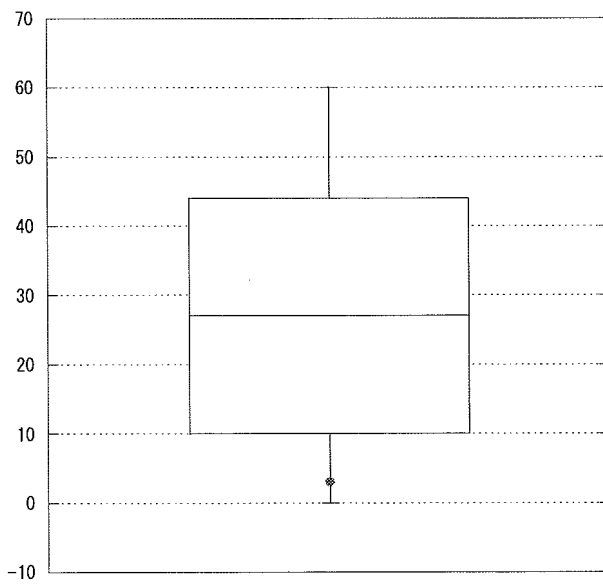
2004年1月～12月

# ICU研究班2004年施設間比較

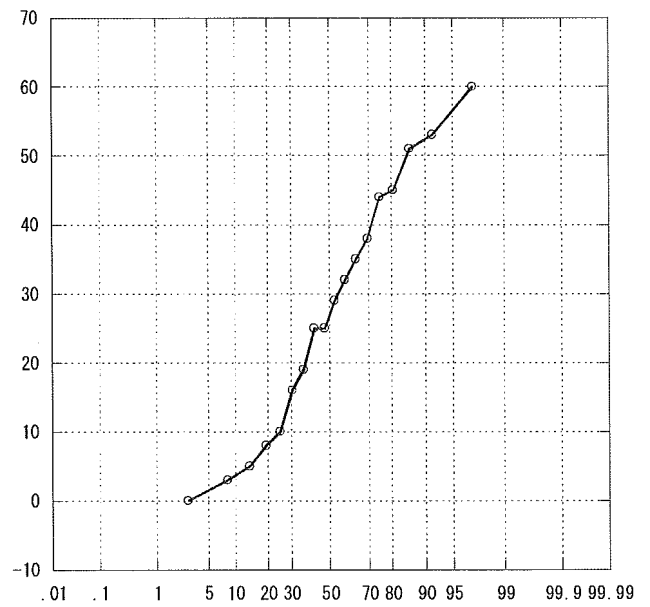
年間收容患者数



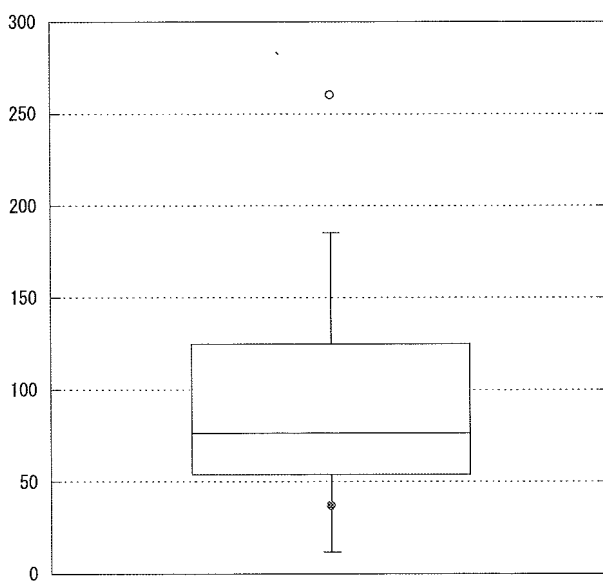
APACHE 0~4



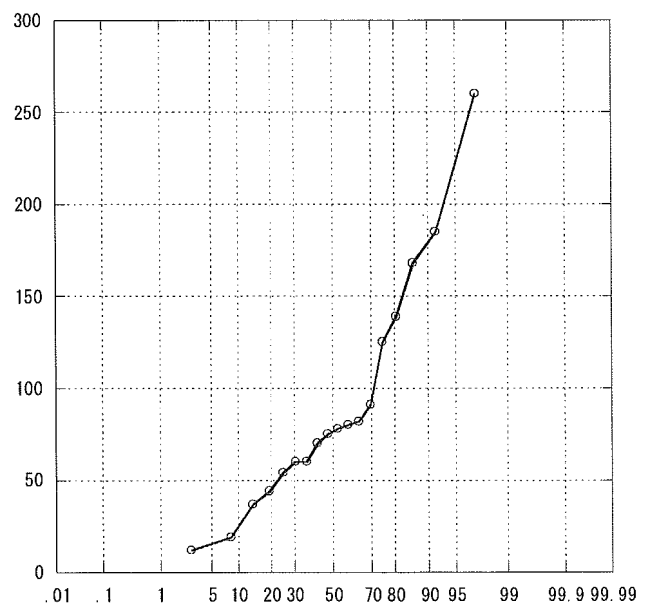
パーセント



APACHE 5~9

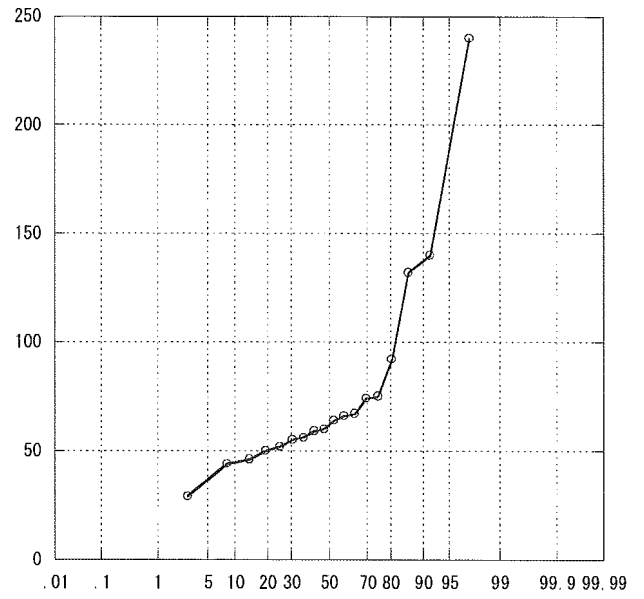
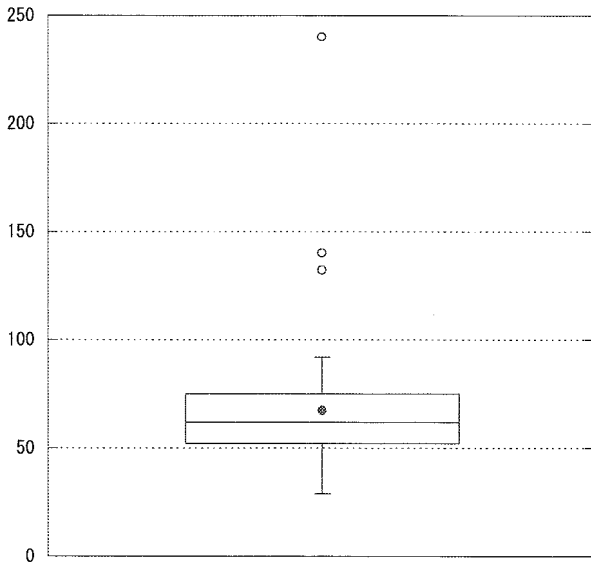


パーセント

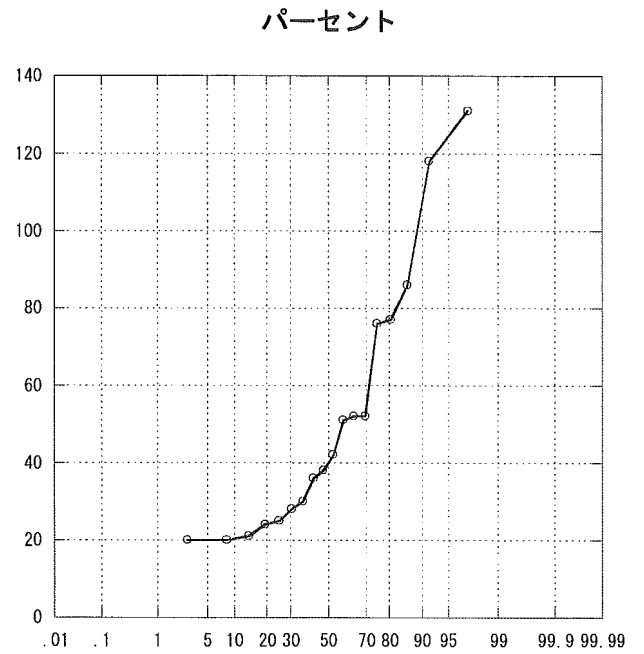
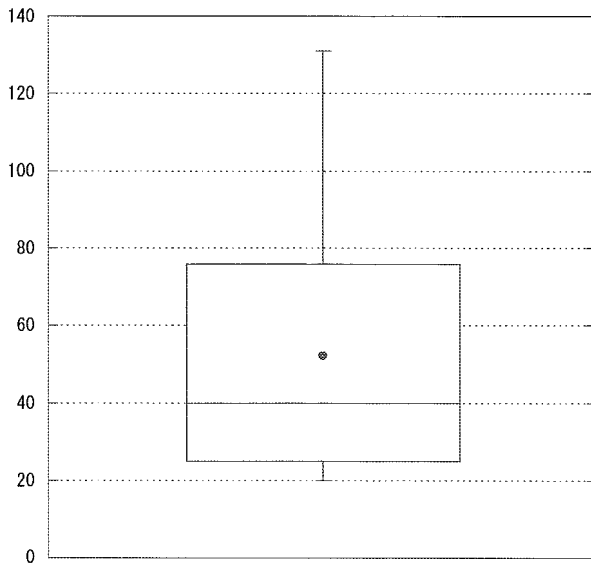


パーセント

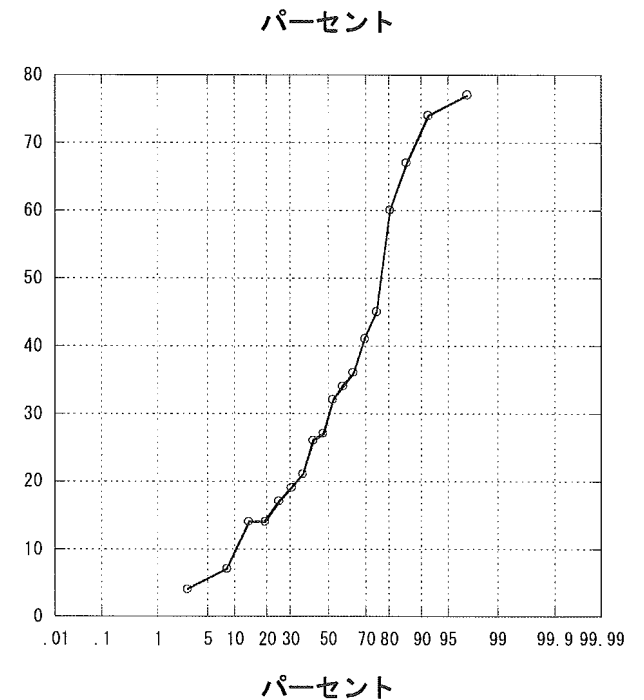
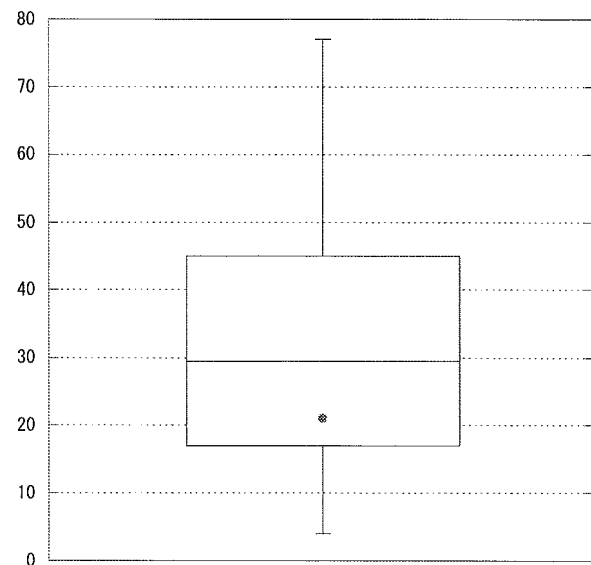
APACHE 10~14



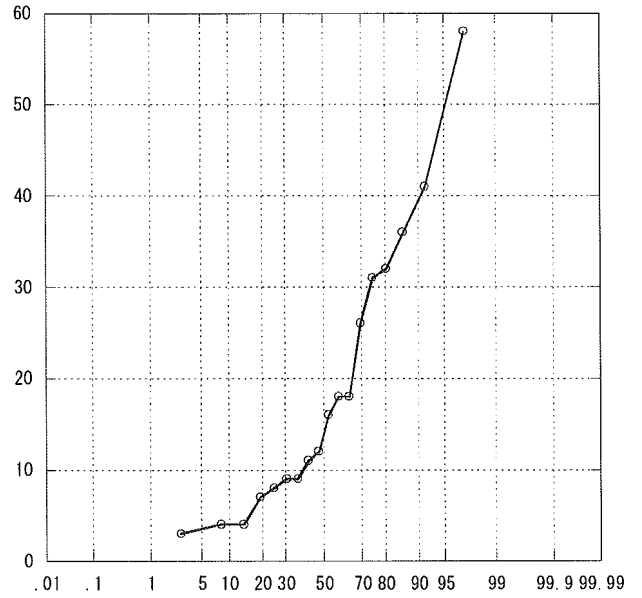
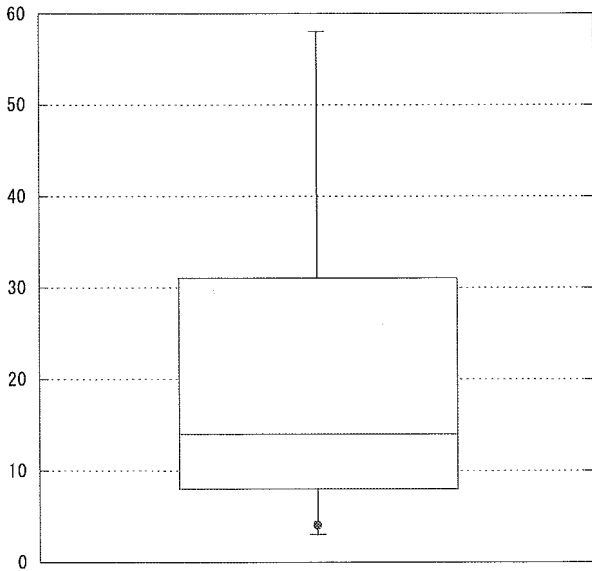
APACHE 15~19



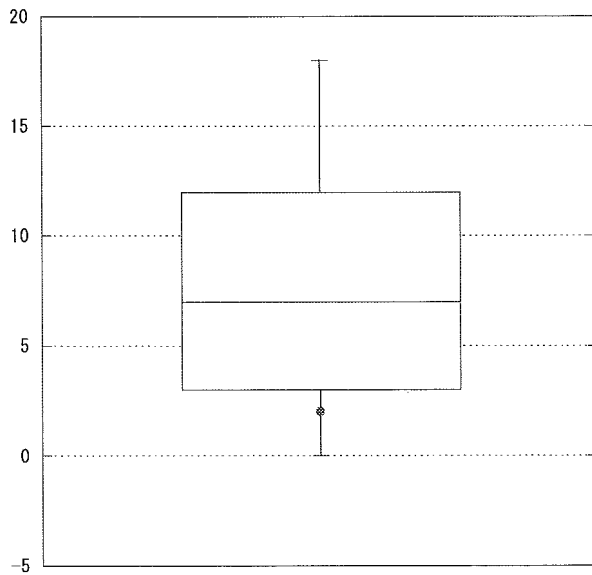
APACHE 20~24



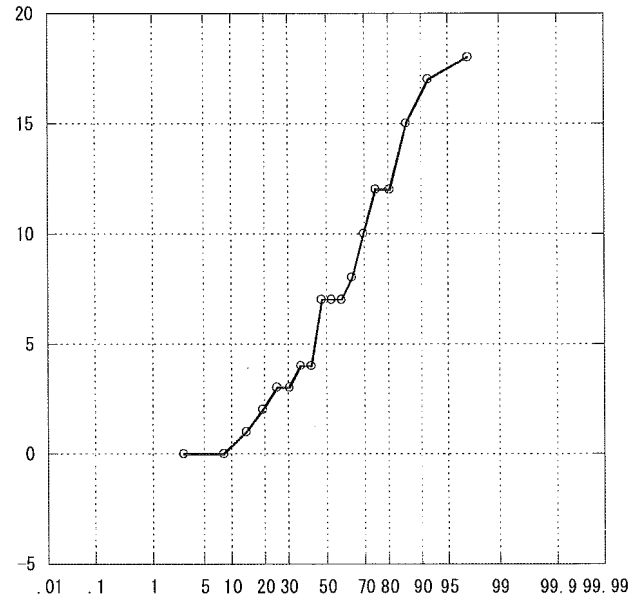
APACHE 25~29



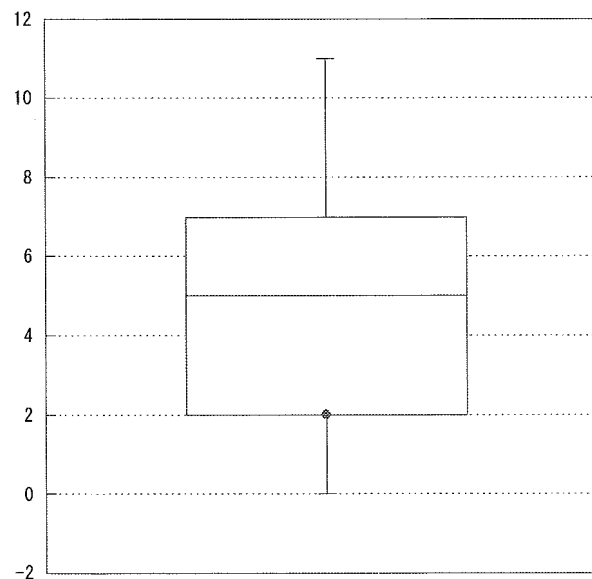
APACHE 30~34



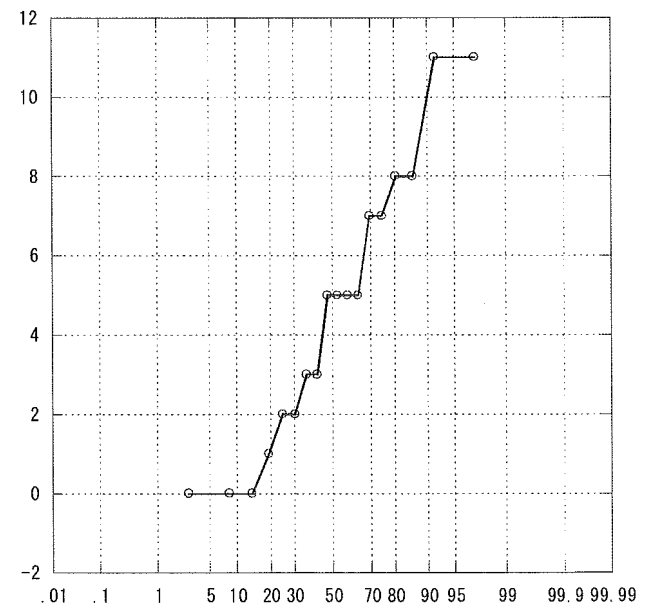
パーセント



APACHE 35~



パーセント



パーセント