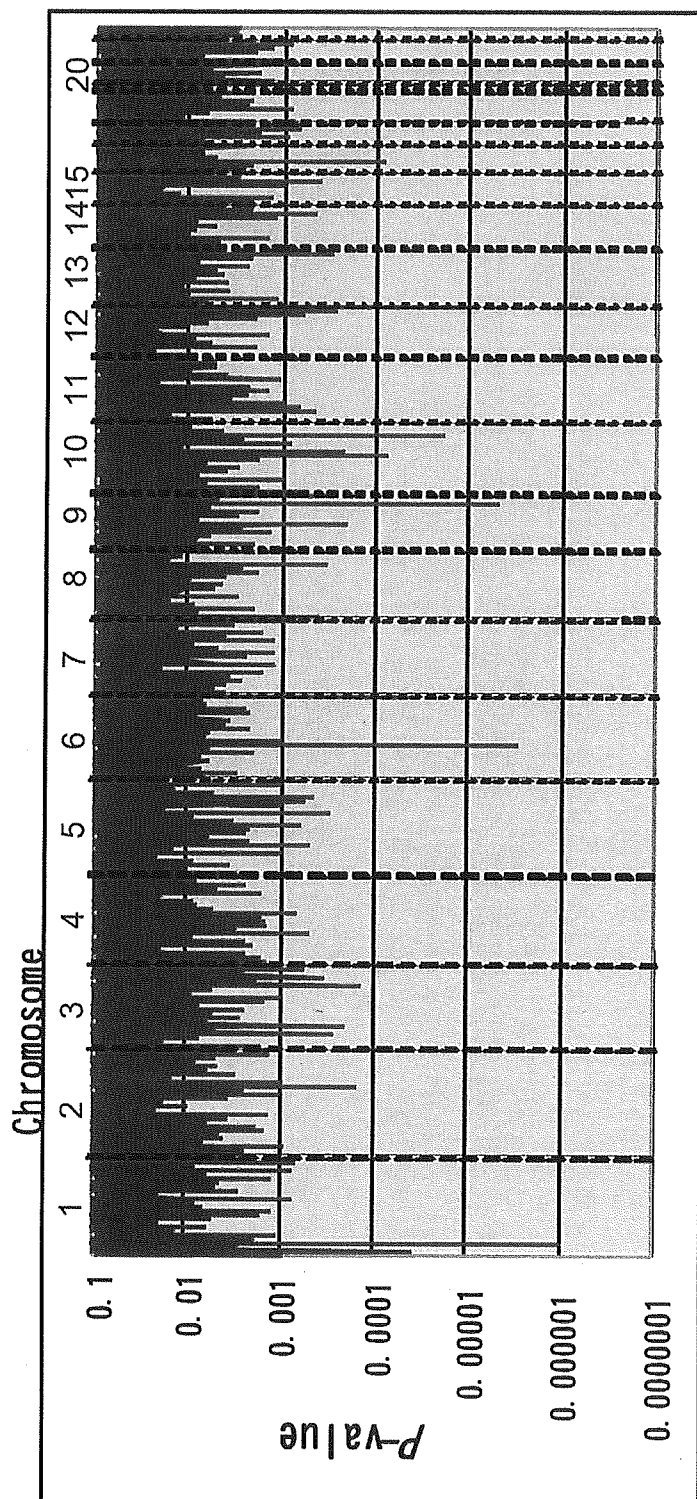


参考資料12

P-values of genome-wide allelic association



研究成果の刊行に関する一覧表

雑誌

発表者氏名	論文タイトル名	発表誌名	巻	ページ	出版年
Yoshitsugu K, Meerabux JMA, Asai K, Yoshikawa T	Fine mapping of an isodictic Y chromosomal break point from a schizophrenic patient.	Am J Med Genet Neuro psychiatric Genet	116B	27-31	2003
Iwayama-Shigeno Y, Yamada K, Toyota T, Shimizu H, Hattori E, Yoshitsugu K, Fujisawa T, Yoshida Y, Kobayashi T, Toru M, Kurumaji A, Detera-Wadleigh SD, Yoshikawa T	Distribution of haplotypes derived from three common variants of the NR4A2 gene in Japanese schizophrenic patients.	Am J Med Genet Neuro psychiatric Genet	118B	20-24	2003
Ebihara M, Ohba H, Hattori E, Yamada K, Yoshikawa T	Transcriptional activities of cholecystokinin promoter haplotypes and their relevance to panic disorder susceptibility.	Am J Med Genet Neuro psychiatric Genet	118B	32-35	2003
Kikuchi M, Yamada K, Toyota T, Itokawa M, Hattori E, Yoshitsugu K, Shimizu H, Yoshikawa T	Two-step association analyses of the chromosome 18p11.2 region in schizophrenia detect a locus encompassing C18orf1.	Mol Psychiatry	8	467-469	2003
Toyota T, Yamada K, Detera-Wadleigh SD, Yoshikawa T	Analysis of a cluster of polymorphisms in AKT1 gene in bipolar pedigrees: a family-based association study.	Neurosci Lett	339	5-8	2003
Arinami T, Ishiguro H, Minowa Y, Ohtsuki T, Tsujita T, Imamura A, Yoshikawa T, Toyota T, Yamada K, Shimizu H, K Yoshitsugu K, Shibata H, Fujii Y, Fukumaki Y, Tashiro N, Inada T, Iijima Y, Kitao Y, Furuno T, Someya T, Muratake T, Kaneko N, Tsuji S, Mineta M, Takeichi M, Ujike H, Takehisa Y, Tanaka Y, Nakata K, Kitajima T, Nishiyama T, Yamanouchi Y, Iwata N, Ozaki N, Ohara K, Ohara K, Suzuki Y, Shibuya H, Ohmori O, Shinkai T, Hori H, Nakamura J, Kojima T, Takahashi S, Tanabe E, Yara K, Nanko S, Yoneda H, Kusumi I, Kameda K, Koyama T, Fukuzako H, Hashiguchi T, Tanabe K, Okazaki Y.	Initial genome-wide scan for linkage with schizophrenia in the Japanese Schizophrenia Sib-pair Linkage Group (JSSLG) families.	Am J Med Genet Neuro psychiatric Genet	120B	22-28	2003

Itokawa M, Yamada K, Yoshitsugu K, Toyota T, Suga T, Ohba H, Watanabe A, Hattori E, Shimizu H, Kumakura T, Ebihara M, Meerabux JMA, Toru M, Yoshikawa T	A microsatellite repeat in the promoter of the NMDA receptor 2A subunit (GRIN2A) gene suppresses transcriptional activity and correlates with chronic outcome in schizophrenia.	Pharmacogenetics	13	271-278	2003
Segurado R, Detera-Wadleigh SD, Levinson DF, Lewis CM, Gill M, Nurnberger J Jr., Craddock N, Raymond DePaulo J, Baron M, Gershon ES, Ekholm J, Cichon S, Tureck G, Claes S, Kelseo JR, Schofield PR, Badenhop RF, Morissette J, Coon H, Blackwood D, Curtis D, McInnes LA, Foroud T, Edenberg HJ, Reich T, Rice JP, Goate A, McInnis MG, McMahon FJ, Badner JA, Goldin LR, Bennett P, Willour VL, Zand PP, Jianjun Liu J, Gilliam C, Juo S-H, Berttini WH, Yoshikawa T, Peltonen L, Lonndqvist J, Nothen MM, Schumacher J, Windemuth C, Rietschel M, Propping P, Maier W, Alda M, Grof P, Rouleau G.A, Del-Favero J, Van Broeckhoven C, Mendlewicz J, Adolfsson R, Spence MA, Luebert H, Adams LJ, Donald JA, Mitchell PB, Barden N, Shink E, Byerley W, Muir W, Visscher PM, Macgregor S, Gurling H, Kalsi G, McQuillan A, Escamilla MA, Reus VI, Leon P, Freimer NB, Ewald H, Kruse TA, Mors O, Radhakrishna U, Blouin J-L, Antonarakis SE, Akarsu N	Genome scan meta-analysis of schizophrenia and bipolar disorder part III: bipolar disorder.	Am J Hum Genet	73	49-62	2003
Itokawa M, Yamada K, Iwayama-Shigeno Y, Ishitsuka Y, Detera-Wadleigh SD, Yoshikawa T	Genetic analysis of a functional GRIN2A promoter (G/T)n repeat in bipolar disorder pedigrees in humans.	Neurosci Lett	345	53-56	2003
Yamada K, Watanabe A, Iwayama-Shigeno Y, Yoshikawa T	Evidence of association between gamma-aminobutyric acid type A receptor genes located on 5q34 and female patients with mood disorders.	Neurosci Lett	349	9-12	2003
Kikuchi M, Yamada K, Toyota T, Yoshikawa T	C18orf located on chromosome 18p11.2 may confer susceptibility to schizophrenia.	J Med Dent Sci	50	225-229	2003
Yamanouchi Y, Iwata N, Suzuki T, Kitajima T, Ikeda M, Ozaki N	Effect of DRD2, 5-HT2A, and COMT genes on antipsychotic response to risperidone.	Pharmacogenomics J	3	356-361	2003

Suzuki T, Iwata N, Kitamura Y, Kitajima T, Yamanouchi Y, Ikeda M, Kamatani N, Ozaki N	Association of a haplotype in the serotonin 5-HT ₄ receptor gene (HTR4) with Japanese schizophrenia.	Am J Med Genet	121B	7-13	2003
Ozaki N, Goldman D, Kaye W H, Plotnicov K, Greenberg BD, Lappalainen J, Rudnick G, Murphy DL	Serotonin transporter missense mutation associated with a complex neuropsychiatric phenotype.	Mol Psychiatry	8	933-936	2003
Okada M, Irie S, Sawada M, Urae R, Urae A, Iwata N, Ozaki N, Akazawa K, Nakanishi H	Pepstatin A induces extracellular acidification distinct from aspartic protease inhibition in microglial cell lines.	Glia	43	167-174	2003
Noda M, Yasuda S, Okada M, Higashida H, Shimada A, Iwata N, Ozaki N, Nishikawa K, Shirasawa S, Uchida M, Aoki S, Wada K	Recombinant human serotonin 5A receptors stably expressed in C6 glioma cells couple to multiple signal transduction pathways.	J Neurochem	84	222-232	2003
Ujike H, Harano M, Inada T, Yamada M, Komiyama T, Sekine Y, Sora I, Iyo M, Katsu T, Nomura A, Nakata K, Ozaki N	Nine- or fewer repeat alleles in VNTR polymorphism of the dopamine transporter gene is a strong risk factor for prolonged methamphetamine psychosis.	Pharmacogenomics J	3	242-247	2003
Kato T, Ishiwata M, Mori K, Washizuka S, Tajima O, Akiyama T, Kato N	Mechanisms of altered intracellular calcium signaling in transformed lymphoblastoid cells from patients with bipolar disorder.	International Journal of Neuropsychopharmacology	6	379-389	2003
Kakiuchi C, Iwamoto K, Ishiwata M, Bundo M, Kasahara T, Kusumi I, Tsujita T, Okazaki Y, Nanko S, Kunugi H, Sasaki T, Kato T	Impaired feedback regulation of XBP1 as a genetic risk factor for bipolar disorder.	Nature Genetics	35	171-175	2003
Washizuka S, Ikeda A, Kato N, Kato T	Possible relationship between mitochondrial DNA polymorphisms and lithium response in bipolar disorder.	International Journal of Neuropsychopharmacology	6	421-424	2003
Washizuka S, Kakiuchi C, Mori K, Kunugi H, Tajima O, Akiyama T, Nanko S, Kato T	Association of decreased expression and promoter polymorphisms of mitochondrial complex I subunit gene NDUFV2 with bipolar disorder.	American Journal of Medical Genetics Part B (Neuropsychiatric Genetics)	120B	72-78	2003
Kokai M, Inada T, Ohara K, Shimizu M, Iwado H, Morita Y	Inter-rater and test-retest reliability of the Japanese version of the subjective deficit syndrome scale.	Hum Psychopharmacol Clin Exp	18	145-149	2003
Hori K, Oda T, Tominaga I, Inada T	"Awakening" in demented patients.	Psychiatr Clin Neurosci	57	237	2003

Inada T, Beasley C, Tanaka Y, Walker D	Extra- pyramidal Symptom Profiles Assessed with DIE PSS: Comparison with Western Scales in the Clinical Double-Blind Studies of Schizophrenic Patients Treated with either Olanzapine or Haloperidol.	Int Clin Psychopharmacol	18	39-48	2003
Hori K, Inada T, Sengan S, Ikeda M	Is Charles Bonnet syndrome an early manifestation of dementia?	Acta Neuropsychiatr	15	102	2003
Suzuki E, Kitao Y, Ono Y, Iijima Y, Inada T	Cytochrome P450 2D6 Polymorphism and Character Traits.	Psychiatr Genet	13	111-113	2003
Inada T, Nakamura A, Iijima Y	Catechol-O-Methyltransferase (COMT) Polymorphism and Schizophrenia: Possible relation with the treatment-resistant subgroup.	Am J Med Genet (Neuropsychiatr Genet)	120B	35-39	2003
Inada T, Nozaki S, Inagaki A, Furukawa T	Efficacy of diazepam as an anti-anxiety agent: meta-analysis of the double-blind randomized controlled trials in Japan.	Hum Psychopharmacol Clin Exp	18	483-487	2003
Inada T, Senoo H, Iijima Y, Yamauchi T, Yagi G	Cytochrome P450 2D6 gene polymorphism and the neuroleptic-induced extrapyramidal symptoms in schizophrenic patients.	Psychiatr Genet	13	163-168	2003
Hori K, Tominaga I, Inada T, Oda T, Hirai S, Hori I, Onaya M, Teramoto H	Donepezil-responsive alcohol related prolonged delirium.	Psychiatr Clin Neurosci	57	603-604	2003
Shioe K, Ichimiya T, Suhara T, Takano A, Sudo Y, Yasuno F, Hirano M, Shinohara M, Kagami M, Okubo Y, Nankai M, Kanba S	No association between genotype of the promoter region of serotonin transporter gene and serotonin transporter binding in human brain measured by PET.	Synapse	48	184-188	2003
吉川武男, 石塚祐一, 中谷紀章, 渡辺明子	気分障害（うつ病）の遺伝的基盤—動物モデルのQTL解析.	Molecular Medicine	40	280-287	2003
服部栄治, 吉川武男	統合失調症の候補遺伝子および連鎖領域の多型解析.	Schizophrenia Frontier	4	12-17	2003
中谷紀章, 吉川武男	動物モデルを用いたうつ病感受性遺伝子群同定のアプローチ.	日本神経精神薬理学雑誌	23	161-169	2003
糸川昌成, 吉川武男	遺伝子研究からみた統合失調症のグルタミン酸仮説.	精神神経学雑誌	105	1349-1362	2003
河野稔明, 稲田俊也, 高国子, 山之内芳雄, 野畑綾子, 栗田廣, 上島国利, 尾崎紀夫, 伊豫雅臣, 樋口輝彦	DIGS 日本語版信頼性確立のための予備的検討.	脳と精神の医学	14	51-58	2003

中村 中, 稲田俊也	Catechol-O-Methyltransferase (COMT) 遺伝子多型と精神科疾患.	分子精神医学	3	54-58	2003
氏家 寛, 勝 強志, 関根吉統, 稲田俊也	Methamphetamine 精神病の分子遺伝学.	臨床精神薬理	6	1135-1141	2003
三浦英樹, 稲田俊也	クロモグラニンと精神疾患.	精神科	3	293-295	2003
野崎昭子, 稲田俊也	EBM におけるうつ病の薬物療法	Depression Frontier	1	59-64	2003

発表者氏名	論文タイトル名	発表誌名	巻号	ページ	出版年
Ebihara, T., Ohba, H., Kikuchi, M., Yoshikawa, T.	Structural characterization and promoter analysis of human potassium channel Kv8.1 (<i>KCNV1</i>) gene.	Gene	325	89-96	2004
Horiuchi, Y., Nakayama, J., Ishiguro, H., Ohtsuki, T., Detera-Wadleigh, S.D., Toyota, T., Yamada, K., Nankai, N., Shibuya, H., Yoshikawa, T., Arinami, T.	Possible association between a haplotype of the GABA-A receptor alpha 1 subunit gene (<i>GABRA1</i>) and mood disorders.	Biol. Psychiatry	55	40-45	2004
Toyota, T., Yoshitsugu, K., Ebihara, M., Yamada, K., Ohba, H., Fukasawa, M., Minabe, Y., Nakamura, K., Sekine, Y., Takei, N., Suzuki, K., Itokawa, M., Meerabux, J.M.A., Iwayama-Shigeno, Y., Tomaru, Shimizu, H., Hattori, E., Mori, N., Yoshikawa, T.	Association between schizophrenia with ocular misalignment and polyalanine length variation in <i>PMX2B</i> .	Hum.Mol. Genet.	13	551-561	2004
Nakatani, N., Aburatani, H., Nishimura, K., Semba, J., Yoshikawa, T.	Comprehensive expression analysis of a rat depression model.	Pharmacogenomics J	4	114-126	2004
Arai, M., Itokawa, M., Yamada, K., Toyota, T., Arai, M., Haga, S., Ujike, H., Sora, I., Ikeda, K., Yoshikawa, T.	Association of neural cell adhesion molecule 1 gene polymorphisms with bipolar affective disorder in Japanese.	Biol. Psychiatry	55	804-810	2004
Itokawa, M., Kasuga, T. Yoshikawa, T., Matsushita, M.	Identification of a male schizophrenic patient carrying a de novo balanced translocation, t(4;13)(p16.1;q21.31).	Psychiatry Clin. Neurosci.	58	333-337	2004
Yamada, K., Iwayama-Shigeno, Y., Yoshida, Y., Toyota, T., Itokawa, M., Hattori, E., Shimizu, H., Yoshikawa, T.	Family-based association study of schizophrenia with 444 markers and analysis of a new susceptibility locus mapped to 11q13.3.	Am. J. Med.Genet. (Neuropsychiatr.Genet.)	127B	11-19	2004

Ide,M.,Muratake,T.,Yamada,K.,Iwayama-Shigeno,Y.,Iwamoto,K.,Takao,H.,Toyota,T.,Kaneko,N.,Minabe,Y.,Nakamura,K.,Kato,T.,NorioMori,N.,Asada,T.,Toshiyuki Someya, T.,TakeoYoshikawa,T.	Genetic and expression Analyses of <i>FZD3</i> in Schizophrenia.	Biol. Psychiatry	56	462-465	2004
Yamada,K.,NakamuraK.,Minabe,Y.,Iwayama-Shigeno,Y., Takao,H., Toyota, T., Hattori, E., Takei,N.,Sekine,Y.,Suzuki,K.,Iwata,Y.,Miyoshi, K., Honda, A.,Baba,K.,Katayama,T., Tohyama,M.,Mori,N., Yoshikawa, T.	Association analysis of <i>FEZ1</i> variants with schizophrenia in Japanese.	Biol. Psychiatry	56	683-690	2004
Kunugi, H., Iijima, Y., Tatsumi, M., Yoshida, M., Hashimoto, R., Kato, T., Sakamoto, K., Inada,T., Suzuki, T., Iwata, N., Ozaki, N., Yamada, K., Yoshikawa, T.	No association between the Val66Met polymorphism of the brain-derived neurotrophic factor (BDNF) gene and bipolar disorder in Japanese: a multi-center study.	Biol. Psychiatry	56	376-378	2004
Fukasawa, M., Aoki,M.,Yamada, K.,Iwayama-Shigeno, Y., Takao,H.,Meerabux,J.,Toyota,T.,Nishikawa, T., Yoshikawa T.	Case-control association study of human netrin G1 gene in Japanese schizophrenia.	J. Med. Dent. Sci.	51	121-128	2004
Stork,O.,Zhdanov,A.,Kudersky, A., Yoshikawa,T.,Obata,K.,Pape, H-C.	Neuronal functions of the novel serine/threonine kinase Ndr2.	J. Biol. Chem.	279	45773 - 45781	2004
Munakata, K., Tanaka, M., Mori, K., Washizuka,S.,Yoneda,M.,Tajima,O.,Akiyama,T.,Nanko,S.,Kunugi,H.,Tadokoro,K.,Ozaki,N.,Inada,T.,Sakamoto,K.,Fukunaga, T., Iijima, Y., Iwata, N., Tatsumi, M., Yamada, K., Yoshikawa, T., Kato, T	Mitochondrial DNA 3644T→C mutation associated with bipolar disorder.	Genomics	84	1041 -1050	2004

Washizuka S, IwamotoK,Kazuno A, Kakiuchi C, MoriK,Kametani M, Yamada K, Kunugi H, Tajima O,AkiyamaT,NankoS,Yoshikawa T, Kato F	Association of mitochondrial complex I subunit gene <i>NDUFV2</i> at 18p11 with bipolar disorder in Japanese and the National Institute of Mental Health Pedigrees.	Biol. Psychiatry	56	483-489	2004
Takano,A.UchiyamaM,Kajimura N, Mishima K, Inoue Y, Kamei Y, Kitajima T, Shibui K, Katoh M, Watanabe T, Hashimotodani Y, Ozeki Y, Hori T, Yamada N, Toyoshima R, Ozaki N, Okawa M, NagaiK,Takahashi K, Isojima Y, Yamauchi T, Ebisawa T	A Missense Variation in Human Casein Kinase I Epsilon Gene that Induces Functional Alteration and Shows an Inverse Association with Circadian Rhythm Sleep Disorders.	Neuro psychopharmacology	(4)	1-9	2004
Ozaki N	Pharmacogenetics of antipsychotics.	Nagoya J Med Sci	67 (1-2)	1-7	2004
Okada M, Goldman D, Linnoila M, Iwata N, Ozaki N, Northup JK	Comparison of G-Protein Selectivity of Human 5-HT _{2C} and 5-HT _{1A} Receptors.	Ann N Y Acad Sci	1025	570-7	2004
Okada M, Northup J, Ozaki N, Russell J, Linnoila M, Goldman D	Modification of Human 5-HT _{2C} Receptor Function by Cys23Ser, an Abundant, Naturally Occurring Amino Acid Substitution.	Mol Psychiatry	9 (1)	55-64	2004
Numakawa T, Yagasaki Y, Ishimoto T, Okada T, Suzuki T, Iwata N, Ozaki N, Taguchi T, Tatsumi M, Kamijima K, Straub RE, Weinberger DR, Kunugi H, Hashimoto R	Evidence of novel neuronal functions of dysbindin, a susceptibility gene for schizophrenia.	Hum Mol Genet	13 (21)	2699-2708	2004
Nokura K, Kanbayashi T, Ozeki T, Koga H, Zettsu T, Yamamoto H, Ozaki N, Shimizu T, Kawase T	Hypersomnia, asterixis and cataplexy in association with orexin A-reduced hypothalamic tumor.	J Neurol	251 (12)	1534-5	2004
Koizumi H, Hashimoto K, Kumakiri C, Shimizu E, Sekine Y, Ozaki N, Inada T, Harano M, Komiyama T, Yamada M, Sora I, Ujike H, Takei N, Iyo M	Association between the glutathione S-transferase M1 gene deletion and female methamphetamine abusers.	Am J Med Genet	126B (1)	43-45	2004

Kobayashi H, Ide S, Hasegawa J, Ujike H, Sekine Y, Ozaki N, Inada T, Harano M, Komiyama T, Yamada M, Iyo M, Shen HW, Ikeda K, Sora I	Study of Association between alpha-Synuclein Gene Polymorphism and Methamphetamine Psychosis/Dependence.	Ann N Y Acad Sci	1025	325-334	2004
Iwata N, Inada T, Harano M, Komiyama T, Yamada M, Sekine Y, Iyo M, Sora I, Ujike H, Ozaki N:	No Association Is Found between the Candidate Genes of t-PA/Plasminogen System and Japanese Methamphetamine -Related Disorder: A Collaborative Study by the Japanese Genetics Initiative for Drug Abuse.	Ann N Y Acad Sci	1025	34-38	2004
Iwata N, Suzuki T, Ikeda M, Kitajima T, Yamanouchi Y, Inada T, Ozaki N	No Association With the Neuregulin 1 Haplotype to Japanese Schizophrenia.	Mol Psychiatry	9(2)	126-127	2004
Itoh K, Hashimoto K, Shimizu E, Sekine Y, Ozaki N, Inada T, Harano M, Iwata N, Komiyama T, Yamada M, Sora I, Nakata K, Ujike H, Iyo M	Association study between brain-derived neurotrophic factor gene polymorphisms and methamphetamine abusers in Japan.	Am J Med Genet B Neuropsychiatr Genet	132B (1)	70-73	2004
Inada T, Iijima Y, Uchida N, Maeda T, Iwashita S, Ozaki N, Harano M, Komiyama T, Yamada M, Sekine Y, Iyo M, Sora I, Ujike H	No Association Found between the Type 1 Sigma Receptor Gene Polymorphisms and Methamphetamine Abuse in the Japanese Population : A Collaborative Study by the Japanese Genetics Initiative for Drug Abuse.	Ann N Y Acad Sci	1025	27-33	2004
Ikeda M, Iwata N, Suzuki T, Kitajima T, Yamanouchi Y, Kinoshita Y, Inada T, Ozaki N	Association of AKT1 with schizophrenia confirmed in a Japanese population.	Biol Psychiatry	56 (9)	698-700	2004
Ide S, Kobayashi H, Tanaka K, Ujike H, Sekine Y, Ozaki N, Inada T, Harano M, Komiyama T, Yamada M, Iyo M, Ikeda K, Sora I :	Gene polymorphisms of the mu opioid receptor in methamphetamine abusers.	Ann N Y Acad Sci	1025	316-324	2004

Hashimoto R, Yoshida M, Ozaki N, Yamanouchi Y, Iwata N, Suzuki T, Kitajima T, Tatsumi M, Kamijima K, Kunugi H:	Association analysis of the G308A promoter polymorphism of the tumor necrosis factor alpha (TNF- α) gene in Japanese patients with schizophrenia.	Journal of Neural Transmission	111 (2)	217-222	2004
Harano M, Uchimura N, Abe H, Ishibashi M, Iida N, Yanagimoto K, Tanaka T, Maeda H, Sora I, Iyo M, Komiyama T, Yamada M, Sekine Y, Inada T, Ozaki N, Ujike H:	A Polymorphism of DRD2 Gene and Brain Atrophy in Methamphetamine Psychosis.	Ann N Y Acad Sci	1025	307-315	2004
Deng XX, Shibata HH, Ninomiya HH, Tashiro NN, Iwata NN, Ozaki NN, Fukumaki YY:	Association study of polymorphisms in the excitatory amino acid transporter 2 gene (SLC1A2) with schizophrenia.	BMC Psychiatry	4 (1)	21	2004
Kakiuchi C, Ishiwata M, Umekage T, Tochigi M, Kohda K, Sasaki T, Kato T	Association of the XBP1-116C/G polymorphism with schizophrenia in the Japanese population.	Psychiatry and Clinical Neurosciences	58	438-440	2004
Ohtsuki T, Tanaka S, Ishiguro H, Noguchi E, Arinami T, Tanabe E, Yara K, Okubo T, Takahashi S, Matsuura M, Sakai T, Muto M, Kojima T, Matsushima E, Toru M, Inada T:	Failure to find association between PRODH deletion and schizophrenia: population screening using simple PCR method.	Schizophr Res	67	111-113	2004
Takahashi N, Tomita K, Higuchi T, Inada T:	The inter-rater reliability of the Montgomery-Asberg Depression Rating Scale (MADRS) using a Structured Interview Guide for Montgomery-Asberg Depression Scale (SIGMA).	Hum Psychopharmacol Clin Exp	19	187-192	2004
Iijima Y, Inada T, Ohtsuki T, Senoo H, Nakatani M, Arinami T:	Association between chromogranin B gene polymorphisms and schizophrenia in the Japanese population.	Biol Psychiatry	56 (1)	10-17	2004

Ohtsuki T, Inada T, Arinami T:	Failure to confirm association between AKT1 haplotype and schizophrenia in a Japanese case-control population.	Mol Psychiatry	9(11)	981-983	2004
Tadokoro K, Hashimoto R, Tatsumi M, Kamijima K, Kunugi H:	Analysis of enhancer-activity of a dinucleotide repeat polymorphism in the neurotrophin-3 gene and its association with bipolar disorder.	Neuropsychobiology	50 (3)	206-210	2004
Suzuki K, Takei N, Iwata Y, Sekine Y, Toyoda T, Nakamura K, Minabe Y, Mori N:	Do olfactory reference syndrome and Jiko-shu-kyofu share a common entity?	Acta Psychiatrica Scandinavia	109	150-155	2004
Sekizawa T, Iwata Y, Nakamura K, Matsumoto H, Suzuki A, Minabe Y, Mori N:	Childhood-onset schizophrenia and tryptophan hydroxylase gene polymorphism.	American Journal of Medical Genetics	128B	24-26	2004
Takebayashi K, Sekine Y, Takei N, Minabe Y, Isoda H, Sakahara H, Mori N:	Metabolite alterations in basal ganglia associated with psychiatric symptoms of abstinent users: A proton MRS study.	Neuropsychopharmacology	29	1019-1026	2004
Tani K, Takei N, Kawai M, Suzuki K, Sekine Y, Toyoda T, Minabe Y, Mori N:	Augmentation of milnacipran by risperidone in treatment for major depression.	International Journal of Neuropsychopharmacology	7	55-58	2004
Minabe Y, Shirayama Y, Hashimoto K, Routledge C, Hagan JJ, Ashby CR:	The effect of the acute and chronic administration of the selective 5-HT ₆ receptor antagonist SB-271046 on the activity of midbrain dopamine neurons in rats: An in vivo electrophysiological study.	Synapse	52	20-28	2004

Kawai M, Minabe Y, Takagai S, Ogai M, Matsumoto H, Mori N, Takei N:	Poor maternal care and high maternal body mass index in pregnancy as a risk factor for schizophtrenis in offspring.	Acta Psychiatrica Scandinavica	110	257-263	2004
Kockelkorn TT, Arai M, Matsumoto H, Fukuda N, Yamada K, Minabe Y, Toyota T, Ujike H, Sora I, Mori N, Yoshikawa T, Itokawa M:	Association study of polymorphisms in the 5' upstream region of human DISC1 gene with schizophrenia.	Neuroscience Letters	368	41-45	2004
Inoue K, Yamada A, Fujii R, Nakatani J, Matsubara C, Ishii M, Aburatani H, Umino A, Nishikawa T, Takumi T:	Fez1 is layer-specifically expressed in the adult mouse neocortex..	Eur J Neurosci	20	2909-2916	2004
Sakurai S, Ishii S, Umino A, Shimazu D, Yamamoto N, Nishikawa T:	Effects of psychotomimetic and antipsychotic agents on neocortical and striatal concentrations of various amino acids in the rat.	J Neurochem	90	1378-1388	2004
Kawamoto, T., Horikawa, Y., Tanaka, T., Kabe, N., Takeda, J., and Mikuni, M.	Genetic variations in the WFS1 gene in Japanese with type 2 diabetes and bipolar disorder.	Molecular Genetics and Metabolism	82	238-245	2004
Tanaka, T., Horikawa, Y., Kawamoto, T., Kabe-Sakurai, N., Takeda, J., and Mikuni, M.	Expression profile of mRNAs from rat hippocampus and its application to microarray.	Molecular Brain Research	129	20-32	2004
Shinohara,M., Mizushima,H., Hirano,M., Shioe,K., Nakazawa, M., Hiejima,Y., Ono, Kanba,S.:	Eating disorders with binge eating behavior are associated with s allele of 3'-UTR VNTR polymorphism of dopamine transporter gene.	Journal of Psychiatry & Neuroscience	29 (2)	134-137	2004
新井誠、山田和男、豊田倫子、羽賀誠、氏家寛、曾良一郎、池田和彦、吉川武男、糸川昌成	双極性障害および統合失調症における性差と神経細胞接着分子の関連研究	脳と精神の医学	15	477-488	2004

吉川武男、中谷紀章	動物モデルを用いた気分障害標的遺伝子探索.	分子精神医学	Vol.4 No.1	98-99	2004
中谷紀章、吉川武男	うつ病の病態動物モデル	CLINICAL NEUROSCIENCE	Vol. 22	170-172	2004
服部栄治、吉川武男	気分障害において注目される遺伝子	分子精神医学	Vol.4 No.2	120-125	2004
山田和男、吉川武男	連鎖不平衡マッピング	生体の科学	55	548-549	2004
山田和男、吉川武男	感情障害疾患関連遺伝子の探索	臨床精神医学	Vol.33 No.10	1321 -1326	2004
吉川武男、豊田倫子、吉次聖志、山田和男、糸川昌成、三辺義雄、中村和彦、都丸義郎、武井教使、熊倉徹雄、森則夫	精神疾患関連表現型の遺伝子解析	精神神経学雑誌	Vol. 106, No.12	1585 -1592	2004
吉川武男	動物モデルと遺伝子研究—動物モデルが示唆するもの	精神神経学雑誌	Vol. 106, No.8	1037 -1044	2004
西川 徹	Schizophreniaの分子病態—内在性D-セリンおよび発達依存的発現制御を受ける遺伝子の意義—第1回Schizophrenia研究会	臨床精神薬理	7	87-112	2004
西川 徹	統合失調症のグルタミン酸仮説	生体の科学	55	544-545	2004
西川 徹	mrt1をめぐる統合失調症の神経生物学. mrt1; Possible implication in the pathophysiology of schizophrenia.	Schizophrenia Frontier	5	18-24	2004
西川 徹	Special Review 「脳内D-セリンの代謝と生理作用」	細胞工学	23	1180 -1185	2004
村岡新一郎、梶井 靖、山本直樹、海野麻未、柏 淳、伊藤卓、金子雄二郎、西川 徹	統合失調症の発症に関与する遺伝子の発達薬理学的研究	精神薬療研究年報	36	49-52	2004
内匠 透、藤井律子、吉村淳、井上 浄、渡辺康仁、漆戸智恵、岡部繁男、西川 徹	抗精神病薬標的分子としてのRNA結合蛋白の機能解析	精神薬療研究年報	36	90-94	2004

研究成果の刊行に関する一覧表

書籍

著者氏名	論文タイトル名	書籍全体の編集者名	書籍名	出版社名	出版地	出版年	ページ
岡崎祐土, 峯田 聖, 谷井久志	統合失調症の遺伝学.	澤明	脳神経疾患病態の分子生物学	南山堂	東京	2005	73-84
稲田俊也, 稲垣 中, 中谷真樹, 堀 宏治, 樋口輝彦, 岩本邦弘		稲田俊也	ヤング躁病評価尺度日本語版 (YMRS-J) による躁病の臨床評価	じほう	東京	2005	1-54
稲田俊也, 笹田和見		稲田俊也, 笹田和見	ひと目でわかる向精神薬の薬効比較 エビデンス・グラフィックバージョン第4巻. 副作用と有害事象のエビデンス<抗不安薬・睡眠薬>	じほう	東京	2005	1-138
西川徹	6 神経化学から	風祭元, 山下格	心の科学セレクション 統合失調症	日本評論社	東京	2005	73-90
西川徹	1 統合失調症. 第7 章神経・精神疾患の分子機構.	森寿, 真鍋俊也, 渡辺雅彦, 岡野榮之, 宮川剛	脳神経科学イラストレイテッド (改訂第2 版)	羊土社	東京	2006	276 - 283
岩本邦弘, 徳倉達也, 稲田俊也	抗パーキンソン病薬は出来るだけ併用するべきでないか?	上島国利, 三村将, 中込和幸, 平島奈津子	EBM精神疾患の治療2006-2007	中外医学社	東京	2006	70-76
岩本邦弘, 稲田俊也, 稲垣中		稲田俊也	各種ガイドライン・アルゴリズムから学ぶ統合失調症の薬物療法	アルタ出版	東京	2006	1-87
Nishikawa T	Neuroanatomical and molecular changes in stress responses.	Kato N, Kawata M and PitmanRK (eds)	PTSD brain mechanisms and clinical implications.	Springer-Verlag	Tokyo	2005	3-11
Morio A, Ujike H, Nomura A, Tanaka Y, Morita Y, Otani K, Kishimoto M, Harano M, Inada T, Komiyama T, Yamada M, Sekine Y, Iwata N, Iyo M, Sora I, Ozaki N, Kuroda S	No Association between CART (Cocaine- and Amphetamine-regulated Transcript) Gene and Methamphetamine Dependence			Ann NY Acad Sci	New York		印刷中
Ujike H, Sakai A, Nakata K, Tanaka Y, Kodaka T, Okahisa Y, Harano M, Inada T, Yamada M, Komiyama T, Hori T, Sekine Y, Iwata N, Sora I, Iyo M, Ozaki N, Kuroda S	Association Study Between The Dihydropyrimidinase-related Protein 2 Gene And Methamphetamine Psychosis			Ann NY Acad Sci	New York		印刷中
Morita Y, Ujike H, Tanaka Y, Uchida N, Nomura A, Otani K, Kishimoto M, Morio A, Inada T, Harano M, Komiyama T, Yamada M, Sekine Y, Iwata N, Iyo M, Sora I, Ozaki N, Kuroda S	The glycine transporter 1(GlyT-1) gene is associated with methamphetamine-induced psychosis			Ann NY Acad Sci	New York		印刷中
Nomura A, Ujike H, Tanaka Y, Kishimoto M, Otani K, Morita Y, Morio A, Harano M, Inada T, Yamada M, Komiyama T, Sekine Y, Iwata N, Sora I, Iyo M, Ozaki N, Kuroda S	Association studies of the tumor necrosis factor-alpha gene and its receptor gene in methamphetamine dependence			Ann NY Acad Sci	New York		印刷中
Otani K, Ujike H, Sakai A, Tanaka Y, Uchida N, Nomura A, Kishimoto M, Morio A, Morita Y, Inada T, Harano M, Komiyama T, Yamada M, Sekine Y, Iwata N, Iyo M, Sora I, Ozaki N, Kuroda S	Association study between cytochrome P450 2D6 genotype and patients with methamphetamine Dependence / Psychosis			Ann NY Acad Sci	New York		印刷中

Kishimoto M, Ujiike H, Tanaka Y, Nomura A, Otani K, Morita Y, Morio A, Harano M, Inada T, Yamada M, Komiyama T, Sekine Y, Iwata N, Sora I, Iyo M, Ozaki N, Kuroda S	Association study between the FZD3 gene and methamphetamine psychosis			Ann NY Acad Sci	New York	印刷中
---	---	--	--	-----------------	----------	-----

雑誌

Aoki-Suzuki M, Yamada K, Meerabux J, Iwayama-Shigeno Y, Ohba H, Iwamoto K, Takao H, Toyota T, Suto Y, Nakatani N, Dean B, Nishimura S, Seki K, Kato T, Itohara S, Nishikawa T, Yoshikawa T	A family-based association study and gene expression analyses of netrin-G1 and -G2 genes in schizophrenia.	Biol. Psychiatry	57	382-39	2005
Iwayama-Shigeno Y, Yamada K, Itokawa M, Toyota T, Meerabux JMA, Minabe Y, Mori N, Inada T, Yoshikawa T	Extended analyses support the association of a functional (GT) _n polymorphism in the GRIN2A promoter with Japanese schizophrenia.	Neurosci. Lett	378	102-105	2005
Yamada K, Ohnishi T, Hashimoto K, Ohba H, Iwayama-Shigeno Y, Toyoshima M, Okuno A, Takao H, Toyota T, Minabe Y, Nakamura K, Shimizu E, Itokawa M, Mori N, Iyo M and Yoshikawa T	Identification of multiple serine racemase (SRR) mRNA isoforms and genetic analyses of SRR and DAO in schizophrenia and D-serine levels.	Biol Psychiatry	57	1493-1503	2005
Iwamoto K, Bundo M, Yamada K, Takao H, Iwayama-Shigeno Y, Yoshikawa T, Kato T	DNA methylation status of the SOX10 CpG island correlates with its down-regulation and oligodendrocyte dysfunction in schizophrenia.	J Neurosci	25	5376-5381	2005
Meerabux JMA, Ohba H, Fukasawa M, Suto Y, Aoki-Suzuki M, Nakashiba T, Nishimura S, Itohara S and Yoshikawa T	Human netrin-G1 isoforms show evidence of differential expression.	Genomics	86	112-116	2005
Meerabux J, Iwayama-Shigeno Y, Sakurai T, Ohba H, Toyota T, Yamada K, Ruby Nagata R, Irukayama-Tomobe Y, Shimizu H, Yoshitsugu K, Ohta K and Yoshikawa T	Association of an orexin 1 receptor 408Val variant with polydipsia- hyponatremia in schizophrenics.	Biol Psychiatry	58	401-407 Cover Photo	2005
Hattori E, Liu C, Zhu Hand, Gershon ES	Genetic tests of biologic systems in affective disorders.	Molecular Psychiatry	10	719-740	2005
Ide M, Yamada K, Toyota T, Iwayama-Shigeno Y, Ishitsuka Y, Minabe Y, Nakamura K, Hattori N, Asada T, Mizuno Y, Mori N, Yoshikawa T	Genetic association analyses of PHOX2B and ASCL1 in neuropsychiatric disorders: evidence for association of ASCL1 with Parkinson's disease.	Human Genetics	117	520-527	2005
Kato T, Iwayama-Shigeno Y, Kakiuchi C, Iwamoto K, Yamada K, Minabe Y, Nakamura K, Mori N, Fujii K, Nanko S, Yoshikawa T	Gene expression and association analyses of LIM (PDLIM5) in bipolar disorder and schizophrenia.	Molecular Psychiatry	10	1045-1055	2005
Iwamoto K, Bundo M, Nakatani N, Yoshikawa T, Kato T	Altered RNA editing of serotonin 2C receptor in a rat model of depression.	Neuroscience Research	53	69-76	2005
Kakiuchi C, Ishiwata M, Nanko S, Kunugi H, Minabe Y, Nakamura K, Mori N, Fujii K, Umekage T, Tochigi M, Kohda K, Sasaki T, Yamada K, Yoshikawa T, Kato T	Functional polymorphisms of HSPA5: possible association with bipolar disorder.	Biochem Biophys Res Commun	336	1136-43	2005
JSSLG, Arinami T, Ohtsuki T, Ishiguro H, Ujiike H, Tanaka Y, Morita Y, Mineta M, Takeichi M, Yamada S, Imamura A, Ohara K, Shibuya H, Ohara K, Suzuki Y, Muratake T, Kaneko N, Someya T, Inada T, Yoshikawa T, Toyota T, Yamada K, Kojima T, Takahashi S, Osamu O, Shinkai T, Nakamura M, Fukuzako H, Hashiguchi T, Niwa S, Ueno T, Tachikawa H, Hori T, Asada T, Nanko S, Kunugi H, Hashimoto R, Ozaki N, Iwata N, Harano M, Arai H, Ohnuma T, Kusumi I, Koyama T, Yoheda H, Fukumaki Y, Shibata H, Kaneko S, Higuchi H, Yasui-Furukori N, Numachi Y, Itokawa M, Okazaki Y	Genome-wide high density SNP linkage analysis of 236 Japanese families supports the existence of schizophrenia susceptibility loci on chromosomes 1p, 14q, and 20p.	Am J Hum Genet	77	937-944	2005
Kato T, Iwamoto K, Kakiuchi C, Kuratomi G, Okazaki Y	Genetic or epigenetic difference causing discordance between monozygotic twins as a clue to molecular basis of mental disorders.	Mol Psychiatry	10	622-30	2005
Kaiya H, Umekage T, Harada S, Okazaki Y, Sasaki T	Factors associated with the development of panic attack and panic disorder: survey in the Japanese population.	Psychiatry Clin Neurosci	59	177-82	2005

Kazuno A, Munakata K, Mori K, Tanaka M, Nanko S, Kunugi H, Umekage T, Tochigi M, Kohda K, Sasaki T, Akiyama T, Kato N, Kato T	Mitochondrial DNA sequence analysis of patients with "atypical psychosis".	Psychiatry and Clinical Neurosciences	59	497-503	2005
Munakata K, Bundo M, Kato T, Ono H, Sakura N, Oosaki M, Waki C, Tanaka M	Co-existing point mutations of mitochondrial DNA in a patient with a heart abnormality and pearson syndrome-like symptoms.	American Journal of Medical Genetics	139A	162-164	2005
Horiuchi Y, Arai M, Niizato K, Iritani S, Noguchi E, Ohtsuki T, Koga M, Kato T, Itokawa M, Arinami T	A polymorphism in the PDLIM5 gene associated with gene expression and schizophrenia.	Biological Psychiatry		434-439	2005
Kato T, Kuratomi G, Kato N	Genetics of bipolar disorder.	Drugs of Today	41-5	335-344	2005
Saito S, Ikeda M, Iwata N, Suzuki T, Kitajima T, Yamanouchi Y, Kinoshita Y, Takahashi N, Inada T, Ozaki N	No association was found between a functional SNP in ZDHHC8 and schizophrenia in a Japanese case-control population	Neurosci Lett	374(1)	21-24	2005
Morita Y, Ujiike H, Tanaka Y, Uchida N, Nomura A, Ohtani K, Kishimoto M, Morio A, Imamura T, Sakai A, Inada T, Harano M, Komiyama T, Yamada M, Sekine Y, Iwata N, Iyo M, Sora I, Ozaki N, Kuroda S	A nonsynonymous polymorphism in the human fatty acid amide hydrolase gene did not associate with either methamphetamine dependence or schizophrenia	Neurosci Lett	376	182-187	2005
Iwayama-Shigeno Y, Yamada K, Itokawa M, Toyota T, Mccrabux JMA, Minabe Y, Mori N, Inada T, Yoshikawa T	Extended analyses support the association of a functional (GT) _n polymorphism in the GRIN2A promoter with Japanese schizophrenia	Neurosci Lett	378	102-105	2005
Nishiyama T, Ikeda M, Iwata N, Suzuki T, Kitajima T, Yamanouchi Y, Sekine Y, Iyo M, Harano M, Komiyama T, Yamada M, Sora I, Ujiike H, Inada T, Furukawa T, Ozaki N	Haplotype association between GABA _A receptor gamma2 subunit gene (GABRG2) and methamphetamine use disorder	Pharmacogenomics J	5(2)	89-95	2005
Morita Y, Ujiike H, Tanaka Y, Uchida N, Nomura A, Otani K, Kishimoto M, Morio A, Inada T, Harano M, Komiyama T, Yamada M, Sekine Y, Iwata N, Iyo M, Sora I, Ozaki N	The X-box binding protein 1 (XBP1) gene is not associated with methamphetamine dependence	Neurosci Lett	383(1-2)	194-198	2005
Hori K, Funaba Y, Konishi K, Moriyasu M, Hirata K, Oyama R, Tominaga I, Inada T	Assessment of pharmacological toxicity using serum anticholinergic activity in a patient with dementia	Psychiatr Clin Neurosci	59(4)	508-510	2005
Itoh K, Hashimoto K, Shimizu E, Sekine Y, Ozaki N, Inada T, Harano M, Iwata N, Komiyama T, Yamada M, Sora I, Nakata K, Ujiike H, Iyo M	Association Study Between Brain-Derived Neurotrophic Factor Gene Polymorphisms and Methamphetamine Abusers in Japan	Am J Med Genet (Neuropsychiatr Genet)	132B	70-73	2005
Taniguchi G, Yamamoto N, Tsuchida H, Umino A, Shimazu D, Sakurai S, Takebayashi H, Nishikawa T	Cloning of a d-serine-regulated transcript dsr - 2 from rat cerebral neocortex.	J Neurochem	95	1541-1549	2005
Nishikawa T	Metabolism and Functional Roles of Endogenous D-Serine in Mammalian Brains.	Biol Pharm Bull	28	1561-1565	2005
Fujii R, Okabe S, Urashido T, Inoue K, Yoshimura A, Tachibana T, Nishikawa T, Hicks CG, Takumu T	The RNA binding protein TLS is translocated to dendritic spines by mGluR5 activation and regulate spine morphology.	Curr Biol	15	587-593	2005
Ikeda M, Iwata N, Suzuki T, Kitajima T, Yamanouchi Y, Kinoshita Y, Inada T, Ozaki N	No association of haplotype-tagging SNPs in TRAR4 with Schizophrenia in Japanese patients	Schizophr Res		online	2005
Kinoshita Y, Suzuki T, Ikeda M, Kitajima T, Yamanouchi Y, Inada T, Yoneda H, Iwata N, Ozaki N	Association study of the calcineurin A-gamma subunit gene (PPP3CC) haplotype in Japanese schizophrenia	J Neural Transm		online	2005
Hashimoto T, Hashimoto K, Matsuzawa D, Shimizu E, Sekine Y, Inada T, Ozaki N, Iwata N, Harano M, Komiyama T, Yamada M, Sora I, Ujiike H, Iyo M	A functional glutathione-S-transferase P1 polymorphism is associated with methamphetamine-induced psychosis in Japanese population	Am J Med Genet B Neuropsychiatr Genet	135(1)	5-9	2005
Hakamata Y, Takahashi N, Ishihara R, Saito S, Ozaki N, Honjo S, Ono Y, Inada T	No association between monoamine oxidase A promoter polymorphism and personality traits in Japanese females	Neurosci Lett	389	121-123	2005

Ikeda M, Iwata N, Suzuki T, Kitajima T, Yamanouchi Y, Kinoshiya Y, Sekine Y, Iyo M, Harano M, Komiya T, Yamada M, Sora I, Ujiike H, Inada T, Ozaki N	Positive association of AKT1 haplotype to Japanese methamphetamine use disorder	Int J Neuropsychopharmacol	8	1-5	2005
Ikeda M, Iwata N, Suzuki T, Kitajima T, Yamanouchi Y, Kinoshita Y, Inada T, Ujiike H, Ozaki N	Association Analysis of Chromosome 5 GABA(A) Receptor Cluster in Japanese Schizophrenia Patients	Biol Psychiatry	58	440-445	2005
Ohgake S, Hashimoto K, Shimizu E, Koizumi H, Okamura N, Koike K, Matsuzawa D, Sekine Y, Inada T, Ozaki N, Iwata N, Harano M, Komiya T, Yamada M, Sora I, Ujiike H, Shirayama Y, Iyo M	Functional polymorphism of the NQO2 gene is associated with methamphetamine psychosis	Addict Biol	10(2)	145-148	2005
Hori K, Oda T, Azaoka T, Yoshida M, Watanabe S, Oyama R, Tominaga I, Inada T	First episodes of behavioral symptoms in Alzheimer's disease patients at age 90 and over, and early-onset Alzheimer's disease: Comparison with senile dementia of Alzheimer's type	Psychiatry Clin Neurosci	59(6)	730-735	2005
Hashimoto R, Okada T, Kato T, Kosuga A, Tatsumi M, Kamijima K, Kunugi H	The Breakpoint Cluster Region Gene on Chromosome 22q11 is Associated with Bipolar Disorder	Biological Psychiatry	57(10)	1097-1102	2005
Tadokoro K, Hashimoto R, Tatsumi M, Kosuga A, Kamijima K, Kunugi H	The Gem interacting protein (GIMP) gene is associated with major depressive disorder.	Neurogenetics	6(3)	127-133	2005
Arai M, Yamada K, Toyota T, Obata N, Haga S, Yoshida Y, Nakamura K, Minabe Y, Ujiike H, Sora I, Ikeda K, Mori N, Yoshikawa T, Itokawa M	Association between polymorphisms in the promoter region of the sialyltransferase 8B (SIAT8B) gene and schizophrenia.	Biol Psychiatry	59	652-659	2006
Iwayama Y, Hashimoto K, Nakajima M, Toyota T, Yamada K, Shimizu E, Itokawa M, Hoshika A, Iyo M, Yoshikawa T	Analysis of correlation between serum D-serine levels and functional promoter polymorphisms of GRIN2A and GRIN2B genes.	Neurosci Lett	394	101-104	2006
Nakamura K, Yamada K, Iwayama Y, Tomoko Toyota T, Furukawa A, Takimoto T, Terayama H, Iwahashi K, Takei N, Minabe Y, Sekine Y, Suzuki K, Iwata Y,	Evidence that variation in the peripheral benzodiazepine receptor (PBR) gene influences susceptibility to panic disorder.	Am J Med Genet	141B	222-226	2006
Tanii H, Fujita K, Okazaki Y	Neuroleptic malignant syndrome related to a switch to perospirone and anticholinergic withdrawal.	Am J Psychiatry	163	547-548	2006
Masui T, Hashimoto R, Kusumi I, Suzuki K, Tanaka T, Nakagawa S, Kunugi H, Koyama T	A possible association between the -116C/G single nucleotide polymorphism of the XBP1 gene and lithium prophylaxis in bipolar disorder.	International Journal of Neuropsychopharmacol	9(1)	83-88	2006
Shimazu D, Yamamoto N, Umino A, Ishii S, Sakurai S, Nishikawa T	Inhibition of d-serine accumulation in the Xenopus oocyte by expression of the rat ortholog of human 3'-phosphoadenosine-5' phosphosulfate transporter gene isolated from the neocortex as d-serine	JNeurochem	96	30-42	2006
Arai M, Obata N, Kockelkorn TJP, Yamada K, Toyota T, Haga S, Yoshida Y, Ujiike H, Sora I, Ikeda K, Yoshikawa T, Itokawa M	Lack of association between polymorphisms in the 5' upstream region of the DISC1 gene and mood disorders.	Psychiat Genet		in press	
Yoshitsugu K, Yamada K, Toyota T, Aoki-Suzuki M, Minabe Y, Nakamura K, Sekine Y, Suzuki K, Takei N, Itokawa M, Mori M, Yoshikawa T	Novel scale including strabismus and 'cuspidal ear' for distinguishing schizophrenia patients from controls using minor physical anomalies.	Psychiatry Research		in press	
Yamada K, Hattori E, Iwayama Y, Ohnishi T, Ohba H, Toyota T, Takao H, Minabe Y, Nakatani N, Higuchi T, Detera-Wadleigh SD, Yoshikawa T	Distinguishable haplotype blocks in the HTR3A and HTR3B region in the Japanese reveal evidence of association of HTR3B with female major depression.	Biol Psychiatry		in press	
Hatada I, Fukasawa M, Kimura M, Morita S, Yamada K, Yoshikawa T, Sakurada A, Sato M, Horii A, Kato A, Tsujimoto A, Matsubara K, Ushijima T, Sasaki H	Genome-wide profiling of promoter methylation in humans.	Oncogene		in press	
Iwamoto K, Bundo M, Yamada K, Takao H, Iwayama Y, Yoshikawa T, Kato T	A family-based and case-control association study of SOX10 in schizophrenia.	Am J Med Genet		in press	
Shimizu H, Iwayama Y, Yamada K, Toyota T, Yoshio Minabe Y, Nakamura K, Nakajima M, Hattori E, Mori N, Osumi N, Yoshikawa T	Genetic and expression analyses of the STOP (MAP6) gene in schizophrenia.	Schizophrenia Research		in press	

Doi N, Itokawa M, Hoshi Y, Arai M, Furukawa A, Ujike H, Sora I, Yoshikawa T in press.	A resistance gene in disguise for schizophrenia?	Am J Med Genet	in press		
Nakamura K, Chen C-K, Yoshimoto Sekine Y, Iwata Y, Pillai A, El-Wui Loh E-W, Takei N, Suzuki A, Kawai M, Takebayashi K, Suzuki K, Minabe Y, Tsuchiya K, Yamada K, Iyo M, Ozaki N, Toshiya Inada T, Iwata N, Harano M, Komiyama T, Yamada M, Sora I, Ujike H, David M Ball DM, Yoshikawa T, Lin S-K, Mori N	Association Analysis of SOD2 Variants with Methamphetamine Psychosis in Japanese and Taiwanese Populations.	Hum Genet	in press		
Washizuka S, Kametani M, Sasaki T, Tochigi M, Umekage T, Kohda K, Kato T in press	Association of mitochondrial complex I subunit gene NDUFB2 at 18p11 with schizophrenia in the Japanese population.	American Journal of Medical Genetics (Neuropsychiatric Genetics)	in press		
Suzuki A, Nakamura K, Sekine Y, Minabe Y, Takei N, Suzuki K, Iwata Y, Kawai M, Takebayashi K, Iyo M, Ozaki N, Inada T, Iwata N, Harano M, Komiyama T, Yamada M, Sora I, Ujike H, Mori N	An association study between COMT gene polymorphism and methamphetamine psychotic disorder	Psychiatr Genet	in press		
Takahashi N, Ishihara R, Saito S, Maeno N, Aoyama N, Ji X, Miura H, Ikeda M, Iwata N, Suzuki T, Kitajima T, Yamanouchi Y, Kinoshita Y, Ozaki N, Inada T	Association between chromogranin A gene polymorphism and schizophrenia in the Japanese population	Schizophr Res	in press		
Ide S, Kobayashi H, Ujike H, Ozaki N, Sekine Y, Inada T, Harano M, Komiyama T, Yamada M, Iyo M, Iwata N, Tanaka K, Shen H, Iwahashi K, Itokawa M, Minami M, Satoh M, Ikeda K, Sora I	Linkage disequilibrium and association with methamphetamine dependence/psychosis of mu-opioid receptor gene polymorphisms	Pharmacogenomics J	in press		
Aoyama N, Takahashi N, Saito S, Maeno N, Ishihara R, Ji X, Miura H, Ikeda M, Suzuki T, Kitajima T, Yamanouchi Y, Kinoshita Y, Yoshida K, Iwata N, Inada T, Ozaki N	Association study between kynurenine 3-monooxygenase gene (KMO) and schizophrenia in the Japanese population	Genes, Brain and Behavior	in press		
Kobayashi H, Hata H, Ujike H, Harano M, Inada T, Komiyama T, Yamada M, Sekine Y, Iwata N, Iyo M, Ozaki N, Itokawa M, Naka M, Ide S, Ikeda K, Numachi Y, I Sora I	Association analysis of d-opioid receptor gene polymorphisms in methamphetamine dependence/psychosis.	Am J Med Genet B Neuropsychiatr Genet	in press		
Ikeda M, Ozaki N, Suzuki T, Kitajima T, Yamanouchi Y, Kinoshita Y, Kishi T, Sekine Y, Iyo M, Harano M, Komiyama T, Yamada M, Sora I, Ujike H, Inada T, Iwata N	Possible Association of b-Arrestin 2 Gene with Methamphetamine Use Disorder, but Not Schizophrenia.	Genes, Brain and Behavior	in press		
Suzuki A., Nakamura K., Sekine Y., Minabe Y., Takei N., Suzuki K., Iwata Y., JGIDA members, Mori N.	An association between COMT gene polymorphism and methamphetamine psychotic disorder.	Psychiatric Genetics	in press		
山田和男、岩山佳美、吉川武男	マイクロアレイを用いた疾患感受性遺伝子の同定	臨床検査	49-5	509-511	2005
大西哲生、大羽尚子、佐藤友美、Sung-Kee Chung、平林義雄、山田和男、岩山佳美、古市貞一、吉川武男	精神疾患感受性候補遺伝子 IMPA2 の機能解析	精神薬療研究年報	37	42-48	2005
糸川昌成、新井誠、古川愛造、小幡菜々子、柴田伸江、佐藤加奈、太朗良久美、吉田有希、氏家寛、曾良一郎、吉川武男	統合失調症の治療抵抗性・難治性に関与する候補遺伝子研究。	精神薬療研究年報	37	116-120	2005
糸川昌成、吉川武男	統合失調症関連遺伝子。	日本臨床	63	437-440	2005
岡崎祐士、伊藤 勉、藤丸浩輔、今村 明	FIGS (遺伝研究用間接家族診断)	分子精神医学	5	159-170	2005
木村 卓、岩田健司、舟橋龍秀、関谷亮子、尾崎紀夫、稲田俊也	遅発性ジストニアに対するA型ボツリヌス毒素の使用経験	臨床精神薬理	8	507-514	2005
岩本邦弘、稲田俊也	遺伝研究のための精神科診断面接Diagnostic Interview for Genetic Studies (DIGS)	分子精神医学	5 (3)	43 (291) -47 (295)	2005
稲田俊也	精神症状評価尺度の基礎知識	月刊薬事	47 (8)	1367-1372	2005

宗像奈織野, 稲田俊也	わが国における抗不安薬および睡眠薬の無作為化プラセボ対照試験	臨床精神薬理	8 (9)	1391-1396	2005
稲田俊也	非定型抗精神病薬にみられる錐体外路系副作用	薬局	56 (10)	2716-2720	2005
稲垣 中, 稲田俊也	クロルプロマジン換算	コラボネット	No. 6	8	2005
稲田俊也	精神症状評価尺度の基礎知識	精神科	7 (3)	231-235	2005
斉藤信一, 稲田俊也, 尾崎紀夫	ZDHC8と統合失調症	精神科	7 (3)	236-239	2005
袴田優子, 稲田俊也, 尾崎紀夫	人格行動特性と遺伝子多型	脳と精神の医学	16 (3)	179-193	2005
新垣浩, 岩間久行, 西川徹	特集Clozapine 症例集; Clozapine による治療が社会機能の改善をもたらした一例.	臨床精神薬理学	8	1993-1996	2005
新垣浩, 小林一広, 岩間久行, 西川徹	特集Clozapine 症例集; Clozapine 抵抗性の体感幻覚統合失調症の一例	臨床精神薬理学	8	2108-2111	2005
黒田裕子, 新垣浩, 宮崎美里, 正木秀和, 大島一成, 車地暁生, 西川徹	治療経過中に退行し、復職プログラムと集団精神療法が有効であった遷延うつ病の症例. 2005 ;	精神科	8	65 - 70	2005
西川徹	ヒトの脳に存在する遊離型D-セリンの機能と病態—精神神経疾患の治療への応用—	ファルマシア	41	863 - 868	2005
西川徹	統合失調症の分子薬理学的解析—ドーパミン受容体およびNMDA 受容体作用薬を用いたアプローチ— 特集1 統合失調症：分子から治療まで	脳21	8	9-15	2005
古田光, 西川徹	統合失調症 標準治療と最新治療—メリットとデメリット法—	Clin Neurosci	23	106 - 107	2005
嶋津奈, 西川徹	モノアミン障害・アンフェタミンモデル 統合失調症の仮説とそのモデル検証	分子精神医学	5	58-63	2005
山本直樹, 谷口豪, 海野麻未, 石井澄和, 機井新一郎, 嶋津奈, 竹内崇, 金子雄二郎, 竹林裕直, 柏淳, 新垣浩, 車地暁生, 土田英人, 西川徹	脳のD-セリンシステムを標的とした統合失調症の新規薬物療法開発に関する研究	精神科薬療研究年報	37	62-68	2005
糸川昌成, 吉川武男	統合失調症のグルタミン酸低下仮説.	Clinical Neuroscience	24-2	215-218	2006
糸川昌成, 吉川武男	話題になった遺伝子多型その後—DISC1.	分子精神医学	6-1	77-83	2006
久江洋企, 稲田俊也	認知機能障害と陰性症状の改善を目指したスイッチング	臨床精神薬理		印刷中	