

have more profound cytotoxic activity at low concentrations of the Pol peptide than CTL 55, although the difference was modest under the assay conditions tested (Fig. 1A). CTL 589 also showed substantial cytotoxic activities toward cells infected with vaccinia virus expressing HIV-1 Gag-Pol polyproteins (Fig. 1B) as well as toward those infected with HIV-1 (Fig. 1C). In sharp contrast, CTL 55 was not cytotoxic toward cells infected with either viruses, even at increased E:T cell ratios (Fig. 1, B and C). Addition of the Pol peptide to the culture medium restored the cytotoxic activity of CTL 55 toward target cells (Fig. 1C), indicating the cytotoxic potential of CTL 55 during the assay.

As observed in cytotoxic assays, intracellular cytokine staining experiments showed that both clones had substantial ability to produce IFN- γ (Fig. 1D) and TNF- α (Fig. 1E) in response to the Pol peptide-loaded cells, although CTL 55 responded to a lesser extent than CTL 589. In response to HIV-infected cells, CTL 55 did not show production of IFN- γ or TNF- α (Fig. 1F), whereas CTL 589 produced both cytokines, confirming the impaired responsiveness of CTL 55 toward HIV-infected cells. Moreover, the other Pol peptide-specific CTL clones, 349 and 562, that had TCRs identical with CTL 55 and 589, respectively, showed a similar pattern of functional differences as that observed for CTL 55 and 589 (data not shown), suggesting that the impaired responsiveness toward HIV-infected cells was an inherent property of certain T cell subsets specific to the Pol peptide, rather than of a particular CTL clone.

Different proliferation capacities between the tetramer⁺ CD8 T cell subsets in response to HIV-infected cells *ex vivo*

To further investigate the functional difference between these CD8⁺ T cells toward HIV-infected cells, we examined the *ex vivo* proliferation capacity of these CD8 T cells in response to HIV-infected cells, because the Pol peptide-specific T cell clonotypes corresponding to CTL 55 and 589 can be exclusively stained by anti-TCR V δ 1 (21) and V α 12 Abs in association with the tetramer. In addition, TCR analysis of CD8⁺tetramer⁺ cells of the patient, followed by cell sorting, revealed that all TCR α transcripts that carried either V δ 1- or V α 12-encoded region had the CDR 3 α se-

quence identical with that of TCR 55 α or 589 α , respectively (data not shown), confirming the T cell clonality and Ag specificity of tetramer⁺ cells in the flow cytometric analysis.

Firstly, direct analysis of unstimulated peripheral lymphocytes of the HIV-infected patient *ex vivo* revealed that the frequency of tetramer⁺ CD8 T cells was \sim 0.1% of the total CD8 T cell population and that the V δ 1⁺ and V α 12⁺ subsets were 75 and 8%, respectively, within this tetramer⁺ fraction (Fig. 2B and Table I), whereas analysis of peripheral lymphocytes of the HIV-negative donors *ex vivo* revealed that the frequency of tetramer⁺ CD8 T cells was \sim 0.02% of the total CD8 T cell population, and that the V δ 1⁺ and V α 12⁺ subsets were $<$ 5% within this tetramer⁺ fraction (Fig. 2A).

Peripheral lymphocytes of the HIV-infected patient were then stimulated with cells that had been either pulsed with the Pol peptide or infected with HIV-1 and cultured for 12 days. When stimulated with the Pol peptide, frequencies of the V δ 1⁺ and V α 12⁺tetramer⁺ CD8 T cell subsets in the total CD8 T cells were increased 7- and 30-fold (Table I and Fig. 2D), respectively, indicating that both subsets had substantial proliferation capacity in response to the Pol peptide-loaded cells. This observation was consistent with our previous finding that CTL 55 and 589 had been generated by repeated stimulation of the patient's lymphocytes by the Pol peptide. In contrast, when stimulated with HIV-infected cells, the frequency of the V α 12⁺tetramer⁺ CD8 T cell subset was increased $>$ 70-fold, whereas the frequency of the V δ 1⁺tetramer⁺ CD8 T cell subset was decreased (Fig. 2E and Table I), indicating that the V δ 1⁺tetramer⁺ CD8 T cell subset could not respond to HIV-infected cells. Noticeably, the frequency of the tetramer⁺ CD8 T cell subset, without any Ag stimulation, was virtually constant after a 12-day culture period (Fig. 2C and Table I), confirming the Ag-specific proliferation response of the V α 12⁺tetramer⁺ subset. It is also of interest that the V α 12⁺ cells showed more profound proliferation when stimulated by cells infected with HIV than when pulsed with the Pol peptide (Fig. 2 and Table I), suggesting a qualitative difference in Ag presentation to T cells between infected cells and peptide-loaded cells.

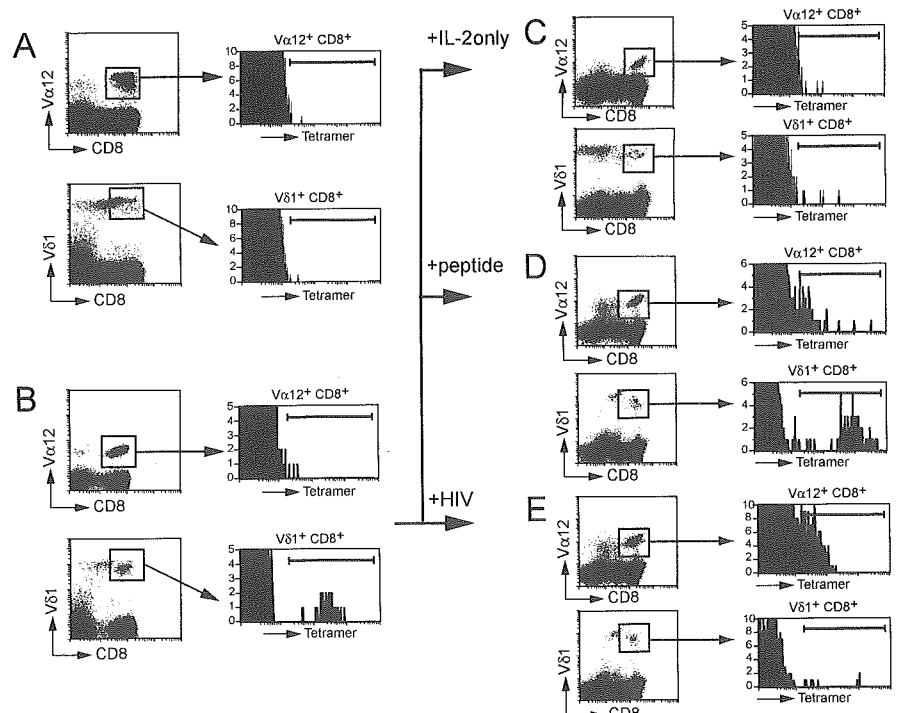


FIGURE 2. Ex vivo analysis of the tetramer⁺ CD8 T cells in the peripheral lymphocytes in response to Ag stimulation. Cryopreserved PBMC of a representative HIV-negative donor (5×10^6 ; A) and the HIV-infected patient (1×10^6 ; B) were stained with the tetramer and anti-CD8 and anti-TCR Abs. The PBMC of the HIV-infected patient after stimulation with IL-2 alone (C) or with .221-B*3501 cells either pulsed with the Pol peptide (D) or infected with HIV-1 (E) were stained as described above. The V δ 1⁺ and V α 12⁺ CD8⁺ subsets were gated, then analyzed for their levels of tetramer binding. Similar data were obtained in a separate independent experiment. The frequencies and MFI values of the tetramer⁺ cells in each subset of the HIV-infected patient are summarized in Table I.

Table I. Summary of ex vivo flow cytometric analysis of tetramer⁺ CD8⁺ cells^a

Subset	Before Stimulation		+IL-2 Only		+Peptide-Pulsed Cells		+HIV-Infected Cells	
	Cell number	MFI	Cell number	MFI	Cell number	MFI	Cell number	MFI
CD8 ⁺ Tet ⁺	113	173	46	83.9	1025	525	863	128
CD8 ⁺ Tet ⁺ Vα12 ⁺	10	50.9	13	51.9	310	123	755	97.2
CD8 ⁺ Tet ⁺ Vδ1 ⁺	86	291	20	105	502	710	12	705

^a Cell number is the number of cells in the indicated subset per 1×10^5 total CD8 T cells. Mean fluorescence intensity (MFI) for the tetramer in each tetramer⁺ (Tet⁺) subset is also shown.

Distinct binding kinetics in HIV-specific CD8 T cell subsets to tetramer

During the flow cytometric analysis, we noticed that the Vα12⁺ and Vδ1⁺ subsets had different binding activities toward the tetramer (Fig. 2D, for example). Staining CTL clones with the tetramer showed that Vδ1⁺ CTL 55 had >2-fold greater binding activity than Vα12⁺ CTL 589 (Fig. 3), whereas both clones showed comparable surface expression of the CD3 Ags (Fig. 3), indicating that the apparent difference in tetramer binding was not due to the surface density of the TCR/CD3 complex. Consistent with this, when the tetramer⁺ cells were divided into two subsets in the ex vivo flow cytometric analysis, the Vδ1⁺ cells were mostly found in the tetramer^{high} subset, whereas the Vα12⁺ cells were in the tetramer^{low} subset (Fig. 4A). These observations are interesting, because the extent of T cell activation is known to be sensitive to subtle differences in the duration of TCR-ligand interactions (12, 13, 17).

Because large temperature effects on TCR-pMHC interactions have been noted (12, 25, 26), we first examined the effect of reaction temperature on binding activity toward the tetramer. Pol peptide-stimulated lymphocytes were stained with various concentrations of the tetramer at 4 or 37°C, and the mean fluorescence intensity (MFI) of both subsets was determined by flow cytometry. At either temperature, the Vδ1⁺CD8⁺tetramer⁺ cells showed ~3-fold higher MFI for the tetramer than the corresponding Vα12⁺ cells (Fig. 4B), indicating that both T cell subsets could bind the tetramer with sufficient sensitivity and specificity.

We next examined the kinetic interactions of the tetramer with the Vδ1⁺ or Vα12⁺ subset at 4°C, because the level of tetramer binding and its half-life were previously shown to correlate with monomer affinity and off-rate, respectively (13, 27). Although the

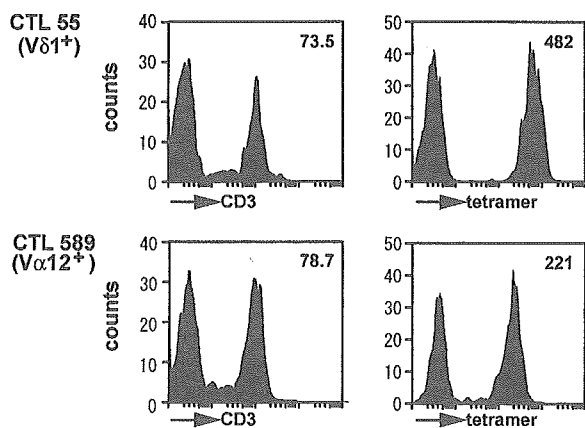


FIGURE 3. Flow cytometric analysis of CTL clones. Two CTL clones, CTL 55 and 589, selected from the Vδ1⁺ and Vα12⁺ CD8 T cell subsets, respectively, were stained (■) or not stained (□) with anti-CD3 mAb or the tetramer at 4°C, and analyzed by flow cytometry. MFI values are shown in the upper right corners.

association of the tetramer with the two subsets was not significantly different (Fig. 4C), the dissociation of the tetramer from Vδ1⁺ cells substantially delayed compared with that from Vα12⁺ cells (Fig. 4D). The half-lives of the tetramer dissociation from the Vδ1⁺ and Vα12⁺ subsets were calculated to be 30.0 ± 1.6 and 8.1 ± 0.4 min, respectively. These results suggest that the >3-fold longer half-life of the Vδ1⁺ subset for interaction with the tetramer than that of the Vα12⁺ subset was a cause of the impaired antiviral effector functions of the Vδ1⁺ subset.

Impaired responsiveness of CD8 T cells to HIV-infected cells solely caused by TCR

To clarify whether the high affinity interaction with the tetramer and the impaired responsiveness to HIV-infected cells observed in the Vδ1⁺tetramer⁺CD8 T cell subset were caused by the ligand recognition property of the TCR, we transduced human primary CD8 T cells with both TCR genes separately.

Both α and β TCR genes for CTL 55 (Vδ1.1/Vβ13.3) and 589 (Vα12.1/Vβ5.6) were cloned into a pGC-based retrovirus vector with the gene encoding murine CD24 or GFP downstream of IRES for bicistronic expression of α or β TCR genes, respectively (Fig. 5A). Human primary CD8 T cells prepared from an HIV-negative donor carrying *HLA-B*3501* were sequentially transduced with α and β TCR genes and analyzed by flow cytometry. As shown in Fig. 5B, tetramer⁺CD8⁺ subsets reached 15 and 34% of the total lymphocytes for 55 TCR and 589 TCR-transduced cells, respectively, whereas the tetramer⁺CD8⁺ subset remained 0.05% of the total lymphocyte population in the case of mock-transduced cells. As measured by the MFI values for the tetramer, the tetramer⁺CD8⁺ fraction (gated cells in Fig. 5B) of 55 TCR-transduced cells appeared to have 2.8-fold greater binding activity toward the tetramer than that of the 589 TCR-transduced ones. In contrast, both tetramer⁺CD8⁺ fractions showed comparable MFI values for CD24 and GFP (within 1.5-fold; Fig. 5, B and C), which should reflect the expression levels of α and β TCR genes, respectively. These data indicate that the difference in tetramer binding activity observed between the Vδ1⁺ and Vα12⁺tetramer⁺CD8 T cells was solely due to their TCR.

The tetramer⁺CD8⁺ fractions of the TCR-transduced cells were then sorted and tested for their cytotoxic activity toward cells either pulsed with the Pol peptide or infected with HIV-1. Both 55 and 589 TCR-transduced cells showed substantial cytotoxic activity toward peptide-loaded cells (Fig. 6A), and the activities were as potent as those of their parental CTL clones (cf., Figs. 1A and 6A). Also, both transduced cells showed modest differences in cytotoxic activities at low concentrations of the Pol peptide (Fig. 6A), consistent with the observations made on parental CTL clones (Fig. 1A). In contrast, the 55 TCR-transduced cells did not show cytotoxic activity toward HIV-infected cells, whereas 589 TCR-transduced ones killed cells infected with HIV-1 (Fig. 6B), again in agreement with the observations made on the parental CTL clones (Fig. 1C). These data strongly support our conclusion that the different cytotoxic activities toward HIV-infected cells observed in

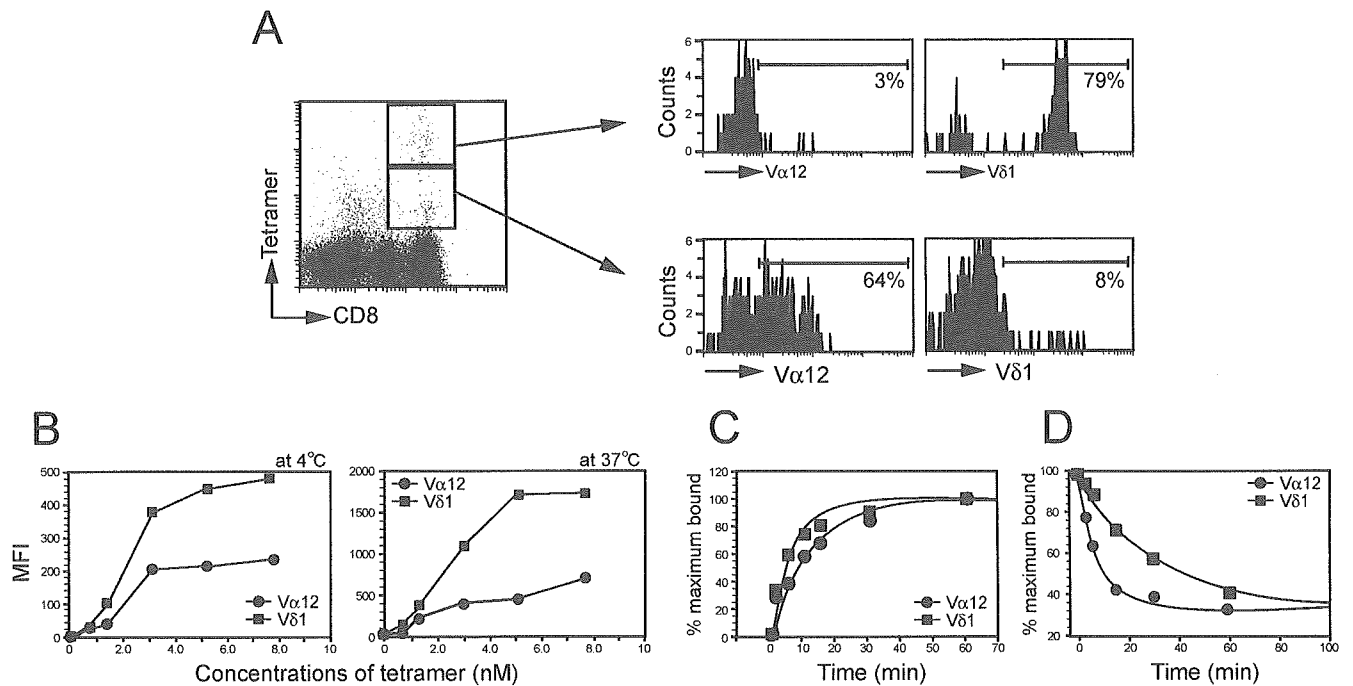


FIGURE 4. Flow cytometric analysis of kinetic interaction between the tetramer and CD8 T cell subsets. *A*, TCR analysis of tetramer^{high} and tetramer^{low} CD8 T cell subsets in Pol peptide-stimulated peripheral lymphocytes of the HIV-infected patient. *B*, Tetramer binding activities of Vδ1⁺ and Vα12⁺ CD8 T cell subsets determined at 4 or 37°C. *C* and *D*, Association (*C*) and dissociation (*D*) kinetic analysis of interaction between the tetramer and the Vδ1⁺ and Vα12⁺ CD8 T cell subsets at 4°C. Data are shown as the means of duplicate assays. An independent experiment gave similar results.

the Vδ1⁺ and Vα12⁺tetramer⁺CD8 T cells were solely due to the difference in the TCR.

Discussion

We showed in this study that CD8 T cells with relatively high affinity TCR for an HIV-derived peptide were present *in vivo* and that these T cells had substantially diminished functional outcomes in response to cells infected with HIV. The difference in functional outcome of the two CD8⁺tetramer⁺ T cell subsets (Vα12⁺ and Vδ1⁺) was evaluated in terms of both the cytotoxic and cytokine production activities of T cell clones *in vitro* and their proliferation capacity, as assessed by direct *ex vivo* assays. The results revealed the impaired responsiveness of the higher affinity T cell subset (Vδ1⁺) to virus-infected cells. In contrast, the Vδ1⁺ T cells showed functional avidity to cells pulsed with the HIV-derived epitope peptide comparable to that of the other HIV-specific CD8 T cell subset (Vα12⁺), which was competent for effector functions toward HIV-infected cells, indicating that the functional impairment observed in this study did not result from T cell energy, skewed maturation of CD8 T cells in the periphery, or any defect in signal transduction machinery reported previously (1, 2, 6). There are a myriad of studies that focused on functional differences among Ag-specific (tetramer⁺) CD8 T cells for HIV (6, 7, 28–30) as well as for other viruses and tumors (31–33), and such studies indicated functional heterogeneity of tetramer⁺ CD8 T cells. In our study we demonstrated that the duration of TCR-pMHC interactions could have considerable effects on the antiviral effector functions and proliferation capacity of HIV-specific CD8 T cells.

It is known that the T cell is sensitive to subtle differences in the duration of TCR-ligand interactions and that, in general, a longer duration of TCR-pMHC interactions corresponds to higher T cell activation (14, 34, 35). However, Kalergis et al. (18) showed that T cell hybridoma cells transfected with a mutant TCR displayed impaired T cell activation and had an ~2-fold longer half-life for

interaction with the tetramer than cells transfected with the wild-type TCR. The present study focused on the human primary CD8 T cells specific for an HIV Ag and showed that a >3-fold increased duration of the TCR-pMHC interaction resulted in impaired, rather than increased, T cell reactivity toward HIV-infected cells, supporting the findings by Kalergis et al. (18). It is likely that HIV-specific T cells have a means to improve their functional avidity to virus-infected cells because only limited numbers of the cognate epitope peptide could be presented on the surface of HIV-infected cells. A serial triggering model (36), based on the T cell integrating the number of TCRs that have interacted with pMHC, predicts that too long an interaction of TCR-pMHC slows the dissociation of TCR from pMHC, so that fewer TCRs are triggered; this may explain our observation. Indeed, we reproducibly observed the different cytotoxic activities of CTL 55 and 589 at low concentrations of the Pol peptide. If the amount of the Pol peptide presented on the surface of virus-infected cells was close to this range, their functional difference in contact with virus-infected cells could be simply explained by their different avidity to low density Ags. However, considering that CTL 55 and 589 showed significant difference in specific killing activity toward HIV-infected cells (<5 and >30%, respectively), the HIV-derived Ag would be preferentially presented at certain sites on the surface of HIV-infected cells with a local density sufficient to activate CTL 589, but not CTL 55. In this regard, it may be helpful to analyze the density and localization of the presenting epitopes on the surface of virus-infected and peptide-pulsed cells using a reagent such as a recombinant Fab specific to the peptide-MHC class I complex.

One of the CTL clones showing the higher affinity TCR-ligand interaction, CTL 55 demonstrated significant differences between their response to peptide-pulsed and virus-infected target cells in this study. It is conceivable that T cells bearing the high affinity TCR can be unduly susceptible to an inhibitory mechanism of HIV-infected cells. Alternatively, a longer duration of TCR-ligand

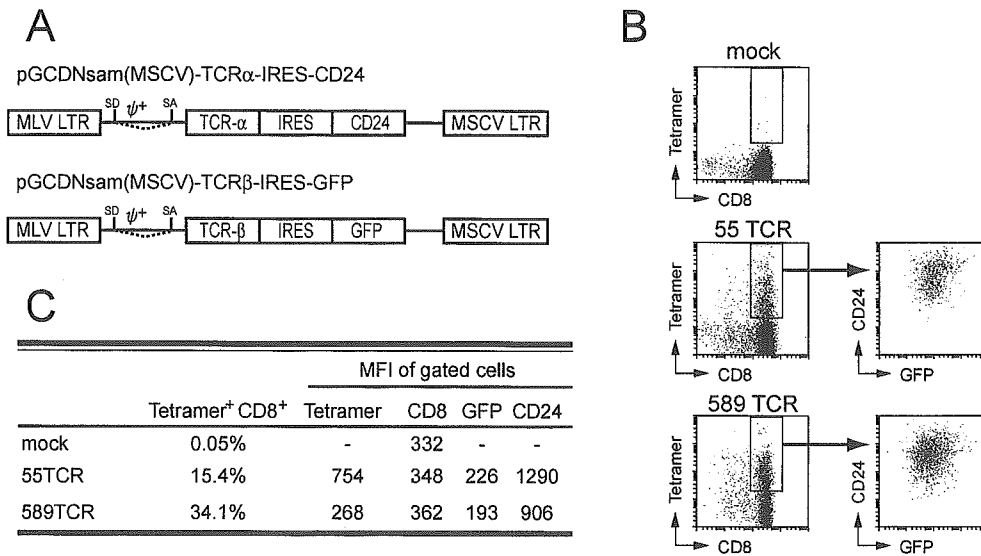


FIGURE 5. Retrovirus-mediated transduction of human primary CD8 T cells with TCR genes. *A*, Linear representations of the retroviral vector constructs used for transduction with α and β TCR genes. SD, splicing donor; SA, splicing acceptor; ψ^+ , packaging signal; MLV, murine leukemia virus; MSCV, murine stem cell virus; LTR, long terminal repeat. *B*, Human primary CD8 T cells isolated from an HIV-negative donor, mock-transduced or transduced with 55 TCR or 589 TCR, and analyzed by flow cytometry. The tetramer⁺CD8⁺ subsets were gated, and their expression levels of GFP and CD24 were analyzed. *C*, Summary of frequencies and MFI values of the gated cells. Data shown are similar to those obtained in separate independent experiments.

interaction can lead to recruiting inhibitory receptors or molecules to the sites where the ligand-engaged TCR/CD3 signaling complexes were in action. However, similar different outcomes were observed in CTL 55 when the target cells were infected with vaccinia virus expressing HIV Pol protein, implying the existence of a general inhibitory mechanism of virus-infected cells, rather than an HIV-specific one. It is therefore interesting to see the differences in gene expression profiles of CTL 55 in contact with cells pulsed with the peptide and infected with viruses that had the epitope sequence.

We used an HLA class I tetramer for HIV-specific CD8 T cell subsets to analyze the relationship between affinity and cellular responses. The avidity of tetramer binding gives relative values that can be used as a surrogate for true affinity measurements, such as by surface plasmon resonance (19, 27). Tetramer binding more closely reflects the avidity of the T cell, rather than the intrinsic affinity of the TCR, because the tetramer binding to TCR is measured on the surface of the T cell in the presence of CD3 elements, coreceptors, and other molecules. In our study retrovirus-mediated transfer of TCR genes into human primary CD8 T cells showed

that differences in the two CD8 T cells in terms of tetramer binding activity and effector functions toward HIV-infected cells solely depended on the TCR used for transduction. This experimental result clearly indicates that the affinity difference between the two TCRs interacting with the same pMHC ligand is the cause of their distinct responsiveness to HIV-infected cells.

It is reported that the Pol peptide was presented by both HLA-B*3501 and HLA-B*5101, and that CTL 589 cross-recognized the Pol peptide in complex with both HLA molecules (22). Although HLA-B*5101 bound the Pol peptide to a >50-fold lesser extent than HLA-B*3501, it is still possible that CTL 55 and 589 were differently restricted by either HLA-B*3501 or HLA-B*5101, yet specific to the same Pol peptide, because the patient has both HLA-B*3501 and HLA-B*5101. However, this is unlikely because CTL 55 did not respond to HLA-B*5101-expressing cells pulsed with the Pol peptide or to those infected with viruses expressing the epitope (H. Tomiyama and T. Ueno, unpublished observations), indicating that the different functional outcomes between CTL 55 and 589 were not due to the difference in their restriction elements.

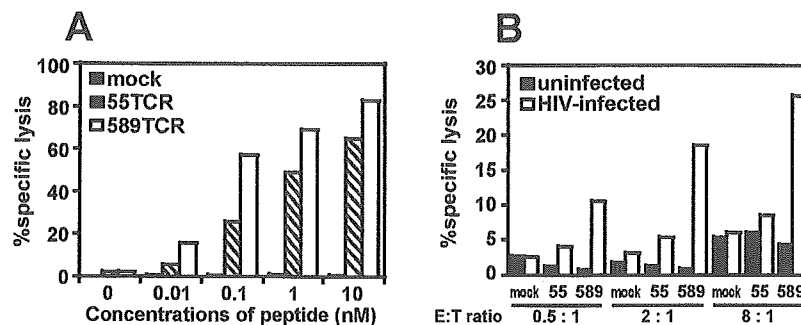


FIGURE 6. Cytotoxic activity of the 55 and 589 TCR-transduced CD8 T cells. The CD8⁺tetramer⁺ subsets of the 55 and 589 TCR-transduced cells were sorted (see Fig. 5) and analyzed for their cytotoxic activity toward C1R-B*3501 cells pulsed with the indicated concentrations of the Pol peptide at an E:T cell ratio of 1:1 (*A*). The same set of TCR-transduced cells was assessed for their cytotoxic activity toward C1R-B*3501 cells, infected or not with vesicular stomatitis virus envelope glycoprotein-pseudotyped HIV-1 HXB2D at the indicated E:T cell ratio (*B*). Data are shown as the means of duplicate assays for three independent experiments.

It remains unclear how such a high affinity TCR was generated in the periphery of the patient with chronic HIV infection. It was reported that T cells with high affinity TCR for foreign pMHC appear to be present in the thymus, but that these T cells are eliminated and not exported to the periphery (19). This scenario is most likely because TCRs with high affinity for foreign pMHC show considerable self-reactivity and therefore are negatively selected in the thymus (37). Considering the HIV-infected thymus, a significant increase in the expression of MHC class I molecules was reported, with this MHC class I up-regulation resulting in decreased surface expression of CD8 Ags on thymocytes (38, 39). This could lead to a decrease in the overall avidity of the TCR-CD8 signaling complex for self-pMHC ligands, allowing T cells with high affinity TCR to escape negative selection in the thymus and be exported to the periphery. Although we have only tested limited numbers of T cells, we provide evidence that the high affinity TCR-pMHC interactions can cause an additional level of functional defect in HIV-specific CD8 T cells. Also, it is strongly suggested that such defective CD8 T cells could undermine their control of HIV in vivo.

Acknowledgments

We thank Drs. M. Onodera and L. Moretta for providing reagents. We also thank Y. Idegami, H. Chatoko, S. Douki, and K. Akiyama for their technical help.

References

- McMichael, A. J., and S. L. Rowland-Jones. 2001. Cellular immune responses to HIV. *Nature* 410:980.
- Lieberman, J., P. Shankar, N. Manjunath, and J. Andersson. 2001. Dressed to kill? A review of why antiviral CD8 T lymphocytes fail to prevent progressive immunodeficiency in HIV-1 infection. *Blood* 98:1667.
- van Baarle, D., S. Kostense, M. H. van Oers, D. Hamann, and F. Miedema. 2002. Failing immune control as a result of impaired CD8⁺ T-cell maturation: CD27 might provide a clue. *Trends Immunol.* 23:586.
- Yang, O. O. 2003. Will we be able to "spot" an effective HIV-1 vaccine? *Trends Immunol.* 24:67.
- Hanke, T. 2003. Development of prophylactic AIDS vaccines: the current state of affairs. *Curr. Opin. Mol. Ther.* 5:25.
- Appay, V., D. F. Nixon, S. M. Donahoe, G. M. Gillespie, T. Dong, A. King, G. S. Ogg, H. M. Spiegel, C. Conlon, C. A. Spina, et al. 2000. HIV-specific CD8⁺ T cells produce antiviral cytokines but are impaired in cytolytic function. *J. Exp. Med.* 192:63.
- Miguelles, S. A., A. C. Laborico, W. L. Shupert, M. S. Sabbaghian, R. Rabin, C. W. Hallahan, D. Van Baarle, S. Kostense, F. Miedema, M. McLaughlin, et al. 2002. HIV-specific CD8⁺ T cell proliferation is coupled to perforin expression and is maintained in nonprogressors. *Nat. Immunol.* 3:1061.
- Spencer, J., and T. Braciale. 2000. Incomplete CD8⁺ T lymphocyte differentiation as a mechanism for subdominant cytotoxic T lymphocyte responses to a viral antigen. *J. Exp. Med.* 191:1687.
- Franco, A., D. Tilly, I. Gramaglia, M. Croft, L. Cipolla, M. Meldal, and H. Grey. 2000. Epitope affinity for MHC class I determines helper requirement for CTL priming. *Nat. Immunol.* 1:145.
- Fuller, C., and V. Braciale. 1998. Selective induction of CD8⁺ cytotoxic T lymphocyte effector function by staphylococcus enterotoxin B. *J. Immunol.* 161:5179.
- Kersh, E. N., G. J. Kersh, and P. M. Allen. 1999. Partially phosphorylated T cell receptor ζ molecules can inhibit T cell activation. *J. Exp. Med.* 190:1627.
- Alam, S. M., P. J. Travers, J. L. Wung, W. Nasholds, S. Redpath, S. C. Jameson, and N. R. Gascoigne. 1996. T-cell-receptor affinity and thymocyte positive selection. *Nature* 381:616.
- Savage, P. A., J. J. Boniface, and M. M. Davis. 1999. A kinetic basis for T cell receptor repertoire selection during an immune response. *Immunity* 10:485.
- Holler, P. D., and D. M. Kranz. 2003. Quantitative analysis of the contribution of TCR/pepMHC affinity and CD8 to T cell activation. *Immunity* 18:255.
- al-Ramadi, B. K., M. T. Jelonek, L. F. Boyd, D. H. Margulies, and A. L. Bothwell. 1995. Lack of strict correlation of functional sensitization with the apparent affinity of MHC/peptide complexes for the TCR. *J. Immunol.* 155:662.
- Alam, S. M., G. M. Davies, C. M. Lin, T. Zal, W. Nasholds, S. C. Jameson, K. A. Hogquist, N. R. Gascoigne, and P. J. Travers. 1999. Qualitative and quantitative differences in T cell receptor binding of agonist and antagonist ligands. *Immunity* 10:227.
- Baker, B. M., S. J. Gagnon, W. E. Biddison, and D. C. Wiley. 2000. Conversion of a T cell antagonist into an agonist by repairing a defect in the TCR/peptide/MHC interface: implications for TCR signaling. *Immunity* 13:475.
- Kalergis, A. M., N. Boucheron, M. A. Doucey, E. Palmieri, E. C. Goyarts, Z. Vegh, I. F. Luescher, and S. G. Nathanson. 2001. Efficient T cell activation requires an optimal dwell-time of interaction between the TCR and the pMHC complex. *Nat. Immunol.* 2:229.
- Savage, P. A., and M. M. Davis. 2001. A kinetic window constricts the T cell receptor repertoire in the thymus. *Immunity* 14:243.
- Tomiya, H., K. Miwa, H. Shiga, Y. I. Moore, S. Oka, A. Iwamoto, Y. Kaneko, and M. Takiguchi. 1997. Evidence of presentation of multiple HIV-1 cytotoxic T lymphocyte epitopes by HLA-B*3501 molecules that are associated with the accelerated progression of AIDS. *J. Immunol.* 158:5026.
- Ferrini, S., I. Prigione, C. Bottino, E. Ciccone, G. Tambussi, S. Mammoliti, L. Moretta, and A. Moretta. 1989. Monoclonal antibodies which react with the T cell receptor $\gamma\delta$ recognize different subsets of CD3⁺ WT31⁻ T lymphocytes. *Eur. J. Immunol.* 19:57.
- Ueno, T., H. Tomiyama, and M. Takiguchi. 2002. Single T cell receptor-mediated recognition of an identical HIV-derived peptide presented by multiple HLA class I molecules. *J. Immunol.* 169:4961.
- Ueno, T., H. Tomiyama, M. Fujiwara, S. Oka, and M. Takiguchi. 2003. HLA class I-restricted recognition of an HIV-derived epitope peptide by a human T cell receptor α chain having a V δ 1 variable segment. *Eur. J. Immunol.* 33:2910.
- Kaneko, S., M. Onodera, Y. Fujiki, T. Nagasawa, and H. Nakauchi. 2001. Simplified retroviral vector GCSap with murine stem cell virus long terminal repeat allows high and continued expression of enhanced green fluorescent protein by human hematopoietic progenitors engrafted in nonobese diabetic/severe combined immunodeficient mice. *Hum. Gene Ther.* 12:35.
- Willcox, B. E., G. F. Gao, J. R. Wyer, J. E. Ladbury, J. I. Bell, B. K. Jakobsen, and P. A. van der Merwe. 1999. TCR binding to peptide-MHC stabilizes a flexible recognition interface. *Immunity* 10:357.
- Whelan, J. A., P. R. Dunbar, D. A. Price, M. A. Purhoo, F. Lechner, G. S. Ogg, G. Griffiths, R. E. Phillips, V. Cerundolo, and A. K. Sewell. 1999. Specificity of CTL interactions with peptide-MHC class I tetrameric complexes is temperature dependent. *J. Immunol.* 163:4342.
- Crawford, P. J., H. Kozono, J. White, P. Marrack, and J. Kappler. 1998. Detection of antigen-specific T cells with multivalent soluble class II MHC covalent peptide complexes. *Immunity* 8:675.
- Goulder, P. J., Y. Tang, C. Brander, M. R. Betts, M. Altfeld, K. Annamalai, A. Trocha, S. He, E. S. Rosenberg, G. Ogg, et al. 2000. Functionally inert HIV-specific cytotoxic T lymphocytes do not play a major role in chronically infected adults and children. *J. Exp. Med.* 192:1819.
- Kelleher, A. D., and S. L. Rowland-Jones. 2000. Functions of tetramer-stained HIV-specific CD4⁺ and CD8⁺ T cells. *Curr. Opin. Immunol.* 12:370.
- Kostense, S., K. Vandenberghe, J. Joling, D. Van Baarle, N. Nanlohy, E. Manting, and F. Miedema. 2002. Persistent numbers of tetramer⁺ CD8⁺ T cells, but loss of interferon- γ ⁺ HIV-specific T cells during progression to AIDS. *Blood* 99:2505.
- Demotte, N., D. Colau, S. Ottaviani, D. Godelaine, A. Van Pel, T. Boon, and P. van der Bruggen. 2002. A reversible functional defect of CD8⁺ T lymphocytes involving loss of tetramer labeling. *Eur. J. Immunol.* 32:1688.
- Echchakir, H., G. Dorothee, I. Vergnon, J. Menez, S. Chouaib, and F. Mami-Chouaib. 2002. Cytotoxic T lymphocytes directed against a tumor-specific mutated antigen display similar HLA tetramer binding but distinct functional avidity and tissue distribution. *Proc. Natl. Acad. Sci. USA* 99:9358.
- Lim, D. G., K. B. Bourcier, G. J. Freeman, and D. A. Hafler. 2000. Examination of CD8⁺ T cell function in humans using MHC class I tetramers: similar cytotoxicity but variable proliferation and cytokine production among different clonal CD8⁺ T cells specific to a single viral epitope. *J. Immunol.* 165:6214.
- McKeithan, T. W. 1995. Kinetic proofreading in T-cell receptor signal transduction. *Proc. Natl. Acad. Sci. USA* 92:5042.
- Davis, M., J. Boniface, Z. Reich, D. Lyons, J. Hampl, B. Arden, and Y. Chien. 1998. Ligand recognition by $\alpha\beta$ T cell receptors. *Annu. Rev. Immunol.* 16:523.
- Valitutti, S., and A. Lanzavecchia. 1997. Serial triggering of TCRs: a basis for the sensitivity and specificity of antigen recognition. *Immunity* 18:299.
- Holler, P. D., L. K. Chlewicki, and D. M. Kranz. 2003. TCRs with high affinity for foreign pMHC show self-reactivity. *Nat. Immunol.* 4:55.
- Keir, M. E., M. G. Rosenberg, J. K. Sandberg, K. A. Jordan, A. Wiznia, D. F. Nixon, C. A. Stoddart, and J. M. McCune. 2002. Generation of CD3⁺CD8^{low} thymocytes in the HIV type 1-infected thymus. *J. Immunol.* 169:2788.
- Keir, M. E., C. A. Stoddart, V. Linquist-Stepps, M. E. Moreno, and J. M. McCune. 2002. IFN- α secretion by type 2 dendritic cells up-regulates MHC class I in the HIV-1-infected thymus. *J. Immunol.* 168:325.

Reconstitution of anti-HIV effector functions of primary human CD8 T lymphocytes by transfer of HIV-specific $\alpha\beta$ TCR genes

Takamasa Ueno¹, Mamoru Fujiwara¹, Hiroko Tomiyama¹, Masafumi Onodera² and Masafumi Takiguchi¹

¹ Division of Viral Immunology, Center for AIDS Research, Kumamoto University, Kumamoto, Japan

² Major of Medical Sciences, Graduate School of Comprehensive Human Sciences, University of Tsukuba, Ibaragi, Japan

We redirected the antigen specificity of primary human CD8 T cells by retrovirus-mediated transduction of genes encoding $\alpha\beta$ TCR specific to HIV-1 Pol protein. A large polyclonal population of TCR-transduced CD8 T cells showed substantial cytotoxic and cytokine production activities toward target cells either pulsed with the peptide or infected with HIV-1, and their functional activities were comparable to those of the parental CTL clone. Peptide fine-specificity and promiscuous recognition of HLA class I supertypes of the parental CTL clone were also preserved in the TCR-transduced cells. There were no signs of allogeneic responses in these cells, although hybrid TCR dimers consisting of transduced TCR and endogenous TCR were suspected to have been formed in these cells, as the effect of transgene expression on the surface expression of the desired TCR was limited. Moreover, the TCR-transduced cells showed potent inhibitory activity against HIV-1 replication *in vitro*, although the differential surface expression of the desired TCR resulted in differential functional avidity of individual TCR-transduced cells toward the peptide-pulsed target cells. These data suggest that the reconstitution of HIV-specific immunoreactive T cells engineered by genetic transfer of HIV-specific TCR is a potential alternative to immunotherapeutic applications against HIV infections.

Key words: TCR / CD8 T cell / HIV/AIDS / Gene therapy

Received	13/8/04
Revised	20/9/04
Accepted	1/10/04

1 Introduction

The transfer of immunoreactive cells into patients, termed adoptive immunotherapy, for the control of viral infections as well as for the treatment of some tumors is an area of considerable interest both in basic research and clinical practice. Adoptive immunotherapy with CD8⁺ cytotoxic T lymphocytes (CTL) had direct clinical impact on the management of patients at risk for cytomegalovirus and Epstein-Barr virus diseases [1–5]. However, the transfer of HIV-specific CTL lines and clones into HIV-infected patients, although safe, has so far produced only modest results [6–9], despite a line of evidence demonstrating that HIV-specific CTL have an important role in the immunopathogenesis of HIV infection [10].

[DOI 10.1002/eji.200425568]

Abbreviations: GFP: Green fluorescent protein IRES: Internal ribosome entry site MSCV: Murine stem cell virus MFI: Mean fluorescence intensity

Such poor responses of autologous HIV-specific CTL in patients may be explained by recent findings showing that HIV-specific CTL taken *ex vivo* can have functional defects due to their impaired maturation in the periphery [10–13]. For example, whereas most HIV-specific CD8 T cells in patients with chronic HIV disease produced antiviral cytokines on contact with cognate antigen, these cells showed diminished perforin expression and capacity for proliferation compared with cytomegalovirus-specific T cells [14] and T cells in long-term non-progressors [15], respectively. Moreover, the evidence that structured treatment interruption-mediated control of viral replication was associated with expansion of virus-specific CD8 T cells with a fully differentiated effector phenotype in patients with treated acute HIV-1 infection [16] strongly supports the importance of functionally mature CD8 T cells in the control of HIV-1 replication.

Redirecting the antigen specificity of T lymphocytes by the transfer of antigen-specific T cell receptor (TCR) genes to T lymphocytes has recently been described as

a potential method of generating large numbers of tumor antigen-reactive T lymphocytes with appropriate effector phenotypes [17, 18]. Using this approach, various investigators demonstrated that retroviral transfer of high-avidity TCR into T lymphocytes is accompanied by the maintenance of the parental T cell avidity and that TCR-transferred T cells preserved peptide fine-specificity in comparison to the parental CTL clone [19, 20]. Furthermore, in a murine model, T cells retrovirally transduced with gene-encoding TCR could expand *in vivo* upon antigen challenge, efficiently home into effector sites, and mediate the rejection of antigen-expressing tumors [21–24].

Although all of these studies were done using TCR specific for tumor antigens, adoptive transfer of TCR-transduced T cells into patients for the control of HIV infections could also have considerable potential. In this regard, it was reported that T cells transduced with the gene encoding a TCR specific for the p17 Gag peptide presented by HLA-A3 into T cells showed cytolytic activity toward both target cells pulsed with the epitope peptide and those infected with HIV-1 [25]. However, such cytolytic activity was observed only after cloning the transduced T cells having the highest surface expression of the transduced TCR [25]. In addition, analysis of the anti-HIV effector function of TCR-transduced T cells, including their cytokine secretion activity and antiviral replication capacity, has not yet been performed.

In the present study, we redirected the antigen specificity of primary human CD8 T cells by sequential transduction of genes encoding $\alpha\beta$ TCR specific for an HIV-1 Pol peptide (IPLTEEAEL) using a retrovirus vector system that allows highly sustained transgene expression in the transduced T cells. A large polyclonal population of TCR-transduced CD8 T cells showed peptide fine-specificity and promiscuous recognition of HLA class I supertypes as well as cytotoxic and cytokine production activities that were all comparable to those of the parental CTL clone. Moreover, although the single-cell-sorted TCR-transduced CD8 T cells had a distributed pattern of functional avidity toward the peptide-pulsed target cells, all of the TCR-transduced T cells tested showed comparably potent inhibitory activity toward HIV-1 replication *in vitro*.

2 Results and discussion

2.1 Creation of functional TCR retroviral vectors

CTL clone 589, specific for an HIV Pol peptide (Pol_{448–456}; IPLTEEAEL) presented by HLA-B*3501, was previously found to express one β (V β 5.6) and two in-

frame α (V α 10 and V α 12.1) transcripts of TCR [26]. In addition, the transfer of individual α and β chains of TCR to TCR-negative mouse T cell hybridoma cells by use of a Moloney murine leukemia virus (MLV)-based retroviral vector construct pMX [27] revealed that the complex of V α 12.1 TCR and V β 5.6 was exclusively expressed on the cell surface and solely responsible for the peptide-specific responses [26]. In the present study, both α and β TCR genes of TCR 589 (V α 12.1/V β 5.6) were cloned into a pGC-based retrovirus vector with the gene encoding mouse CD24 or green fluorescent protein (GFP) downstream of internal ribosome entry site (IRES) for bicistronic expression of α or β TCR genes, respectively (Fig. 1A), in order to facilitate monitoring the expression levels of transduced TCR genes without the need for anti-TCR antibodies. We used a retroviral vector, designated pGCsap(MSCV) [28], in which the 3'-long-terminal repeat (LTR) of pGCsap had been replaced with that of murine stem cell virus (MSCV), allowing sustained expression of the transgene in the transduced T cells [28].

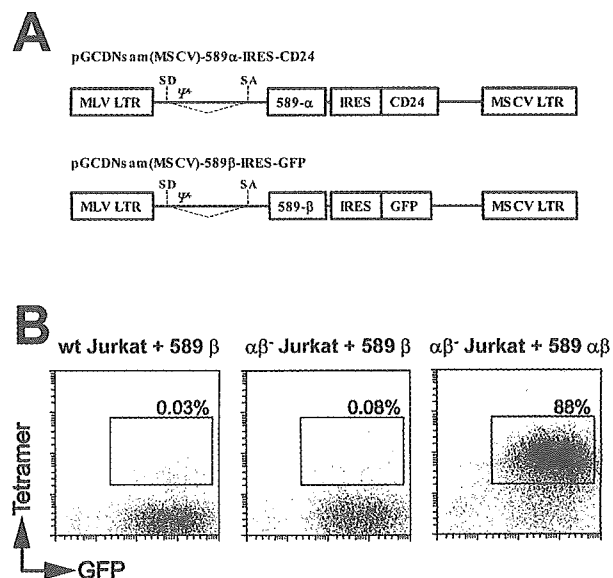


Fig. 1. Creation of functional retroviral vectors for TCR transduction. (A) Linear representation of retroviral vector constructs for transduction of $\alpha\beta$ TCR 589 genes. SD and SA, splicing donor and acceptor, respectively; Ψ^+ , packaging signal. (B) Wild-type (wt) and TCR-negative variant ($\alpha\beta^-$) of Jurkat cells were transduced with TCR 589 β -IRES-GFP alone, stained with HLA tetramer, and analyzed by flow cytometry. Other $\alpha\beta^-$ Jurkat cells that had been transduced with TCR 589 α -IRES-CD24 were further transduced with TCR 589 β -IRES-GFP and analyzed as above. GFP⁺ tetramer⁺ fractions were gated, and their frequencies within the total cell population are shown. The transduction efficiency for Jurkat cells was >90% as measured by the frequency of the GFP⁺ fraction.

In order to confirm the potency of the retroviral vectors, we transduced wild-type Jurkat cells and a Jurkat variant that harbors neither α nor β TCR ($\alpha\beta^-$ Jurkat) with these constructs, stained them with HLA tetramer, and analyzed them by flow cytometry (Fig. 1B). The $\alpha\beta^-$ Jurkat variant transduced with both α and β TCR 589 genes appeared to be stained by the HLA tetramer, whereas the Jurkat cells and the $\alpha\beta^-$ Jurkat variant transduced with the β gene alone were not stained by the HLA tetramer (Fig. 1B). These results clearly indicate that the TCR 589 complex was expressed on the surface of the transduced cells and that the TCR had antigen specificity identical to that of the parental CTL 589.

2.2 TCR gene transfer to primary human CD8 T cells

Primary human CD8 T cells prepared from an HIV-negative donor carrying *HLA-B*3501* were activated by plate-coated OKT3 mAb and sequentially transduced with α and β genes of TCR 589. The transduced CD8 T cells were selected for their expression of GFP and

CD24 antigen using fluorescence-activated cell sorting and stimulated again with the plate-coated OKT3 mAb. A fraction representing 9.5% of the resultant CD8 T cells bound the HLA tetramer in complex with the Pol peptide, whereas only 0.05% of the cells were stained by the tetramer in the case of the mock-transduced cells (Fig. 2A). We then stimulated these cells with the Pol peptide and cultured them for 10 days in the presence of rIL-2. Of great interest, the tetramer⁺ fraction increased to 35% of the TCR-transduced cells, whereas the level of GFP and CD24 expression remained comparable (Fig. 2A), suggesting preferential proliferation of the tetramer⁺ phenotype in response to antigen stimulation.

We then tested the TCR-transduced cells for their cytotoxic activity toward *HLA-B*3501*-expressing cells either pulsed with the Pol peptide or infected with HIV-1. The TCR-transduced cells showed substantial cytotoxic activity toward the peptide-loaded cells even at a peptide concentration down to 0.01 nM (Fig. 2B). Also, the cells showed cytotoxic activity toward HIV-infected cells, whereas they were not cytotoxic toward uninfected cells (Fig. 2C), indicating the antigen-specific and high-avidity nature of the TCR-transduced T cells.

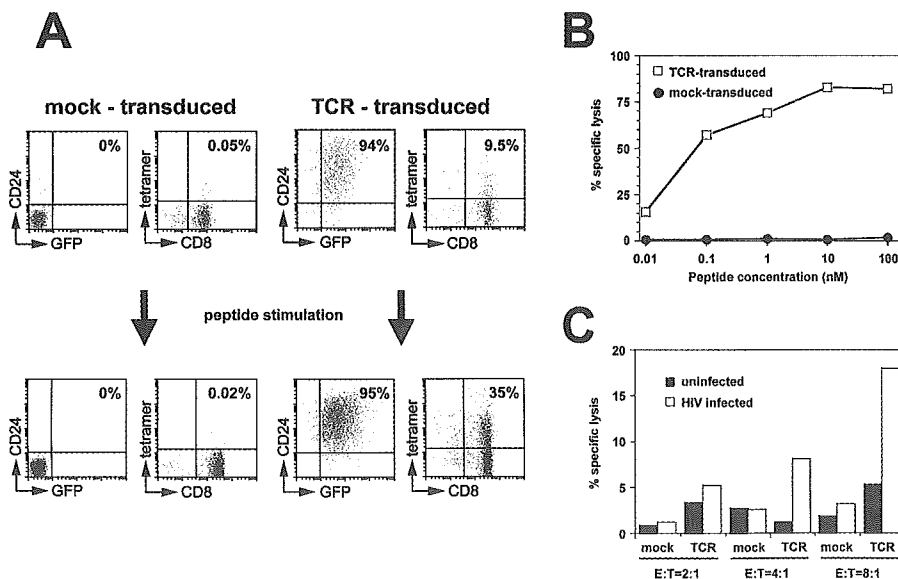


Fig. 2. Flow-cytometric and functional analysis of TCR-transduced primary CD8 T cells. (A) Primary human CD8 T cells that had been sorted into the GFP⁺ CD24⁺ fraction after transduction with TCR-encoded vectors were stained with anti-CD24-PE, anti-CD8-PerCP, and tetramer-allophycocyanin, and analyzed by flow cytometry before or after antigen stimulation. Mock-transduced cells were analyzed as above. Frequencies of GFP⁺ CD24⁺ or CD8⁺ tetramer⁺ fractions within the total cell population are indicated in the upper right corners of each dot plot. (B, C) The mock- or TCR-transduced cells were analyzed for their cytotoxic activity toward 221-CD4-B*3501 cells (2×10^4) either pulsed with the indicated concentrations of Pol peptide at an E/T ratio of 4:1 (B) or infected with HIV-1 LAI at the indicated E/T ratios (C). Data are shown as the means of duplicate assays in one experiment; an additional experiment gave similar results.

2.3 Maintenance of ligand specificity and functional avidity of TCR-transduced CD8 T cells

We next asked whether the ligand specificity and functional avidity of the parental CTL clone 589 would be preserved in the TCR-transduced T cells. The tetramer⁺ subset of the TCR-transduced T cells was sorted and cultured with autologous feeder cells pulsed with the Pol peptide. A fraction comprising 82% of the resulting tetramer⁺-sorted cells were CD8⁺ tetramer⁺ with a mean fluorescence intensity (MFI) value for the tetramer of 225; whereas >98% of the parental CTL 589 were CD8⁺ tetramer⁺ with an MFI for the tetramer of 411 (Fig. 3A).

Effector functions of the tetramer⁺-sorted cells and parental CTL 589 appeared to be comparable as assessed by their cytokine production activity (Fig. 3B) and their cytotoxic activity (Fig. 3C) in response to the Pol

peptide-pulsed target cells, indicating that the functional avidity of parental CTL 589 was maintained in the TCR-transduced T cells. In addition, the antigen specificity of both cells was tested using a series of naturally occurring mutations in the epitope region found in a database (<http://www.hiv.lanl.gov/content/index>). Both cells showed a similar pattern of reactivity toward the mutant peptides tested (Fig. 3C), indicating that the peptide fine-specificity of CTL 589 was preserved in the TCR-transduced T cells.

We also tested the TCR-transduced T cells for their ligand specificity toward HLA class I molecules, since CTL clone 589 was previously found to exhibit dual specificity, recognizing the Pol peptide presented by both HLA-B*3501 and HLA-B*5101 [26]. The TCR-transduced T cells showed a peptide-specific response to cells expressing either HLA-B*3501 or HLA-B*5101, and their cytotoxic activities were comparable to those of parental CTL 589 (Fig. 3D), indicating that the TCR-transduced

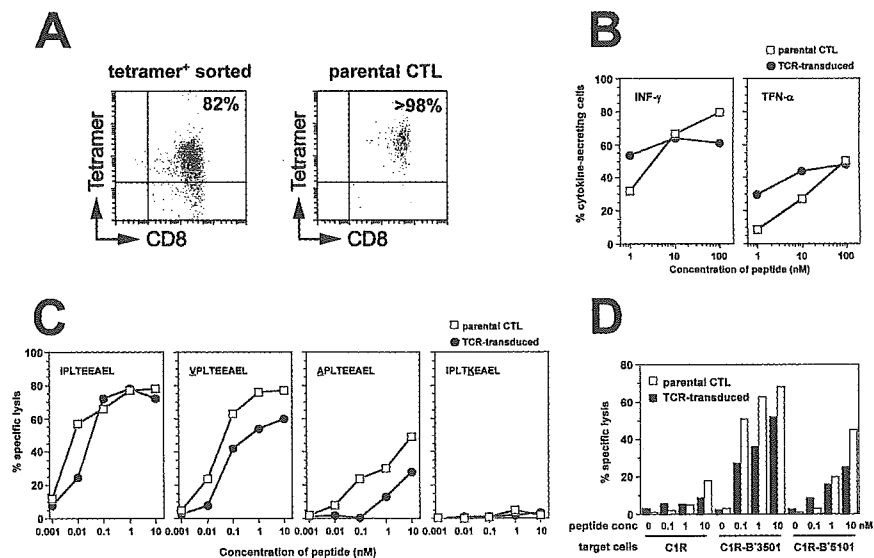


Fig. 3. Ligand specificity and functional avidity of TCR-transduced T cells compared with those of parental CTL 589. (A) The CD8⁺ tetramer⁺ subset of the TCR-transduced cells were sorted and cultured with autologous feeder cells pulsed with the Pol peptide. The resultant tetramer-sorted TCR-transduced cells and the parental CTL 589 were stained with anti-CD8-PerCP and tetramer-allophycocyanin and analyzed by flow cytometry. The frequency of the CD8⁺ tetramer⁺ subset within the total cell population is shown in the each dot plot. MFI values of tetramer-sorted TCR-transduced cells and the parental CTL 589 for the tetramer were 225 and 411, respectively. (B) Cytokine secretion activity of the tetramer-sorted TCR-transduced cells and the parental CTL 589 were analyzed in response to C1R-B*3501 cells pulsed with various concentrations of Pol peptide at an E/T ratio of 1:1. Percent cytokine-producing cells in response to C1R-B*3501 cells without pulsing the peptide was always <0.2%. Data shown are the means of duplicate assays. (C) Cytotoxic activity of the tetramer-sorted TCR-transduced cells and of the parental CTL 589 was analyzed in response to C1R-B*3501 cells pulsed with various concentrations of Pol peptide or a series of mutant peptides at an E/T ratio of 2:1. The sequences of the peptides tested are shown in each graph. The specific lysis activity of both cells in response to C1R-B*3501 cells without pulsing the peptide was always <5%. Data shown are the means of duplicate assays. (D) Cytotoxic activity of the tetramer-sorted TCR-transduced cells and of the parental CTL 589 was analyzed in response to C1R cells or transfectants expressing HLA-B*3501 or HLA-B*5101 pulsed with various concentrations of Pol peptide. The E/T ratio was 2:1. Data shown are the means of duplicate assays.

cells had promiscuous HLA restriction like their parental CTL 589. Moreover, there were virtually no signs of allogeneic responses in the TCR-transduced T cells toward target cells expressing these HLA molecules (Fig. 3D), despite the fact that the recipient T cells were derived from an individual who carries *HLA-B*3501* but not *HLA-B*5101*.

These results indicate that the genetic transfer of HIV-specific TCR resulted in redirection of the antigen specificity of recipient T cells toward the HIV antigen, with activity of cytotoxicity and cytokine secretion (Fig. 3B, C) as well as specificity to peptides and HLA restriction elements (Fig. 3C, D) that were all comparable to those of the parental CTL clone. However, the tetramer binding level of the TCR-transduced T cells was slightly lower than that of the parental CTL clone (Fig. 3A).

2.4 Relationships between levels of tetramer binding and functional avidity of the TCR-transduced T cells

Ectopic expression of α and β chains of TCR in mature T cells will lead to the heterologous pairing of either protein with endogenous α and β chains of TCR. These

‘hybrid’ TCR would also result in decreased surface expression of the desired pair of TCR (*i.e.* ectopic chains) and may potentially lead to reduced avidity of the TCR-transduced T cells. In fact, TCR-transduced T cells obtained after sorting tetramer⁺ fractions showed decreased tetramer binding activity compared to the parental CTL 589 (Fig. 3A). To examine this issue, we analyzed the relationships between HLA tetramer binding activity and functional capacity of the TCR-transduced T cells, since the tetramer binding activity of the TCR-transduced T cells could be dependent on the surface expression of the desired pair of TCR.

We first examined the effect of the expression level of transgenes on the surface expression of the desired TCR chains on the TCR-transduced T cells. The TCR-transduced T cells were gated in terms of tetramer⁺ and tetramer⁻ phenotypes, and each fraction was then analyzed for its expression levels of GFP and CD24 antigen (Fig. 4A). The tetramer⁺ subset showed about twofold higher MFI values for both GFP and CD24 than the tetramer⁻ subset (Fig. 4A), indicating that the difference in the levels of transgene expression contributed at some extent to the different tetramer binding activities of the TCR-transduced T cells. However, the tetramer⁺ and tetramer⁻ subsets showed markedly

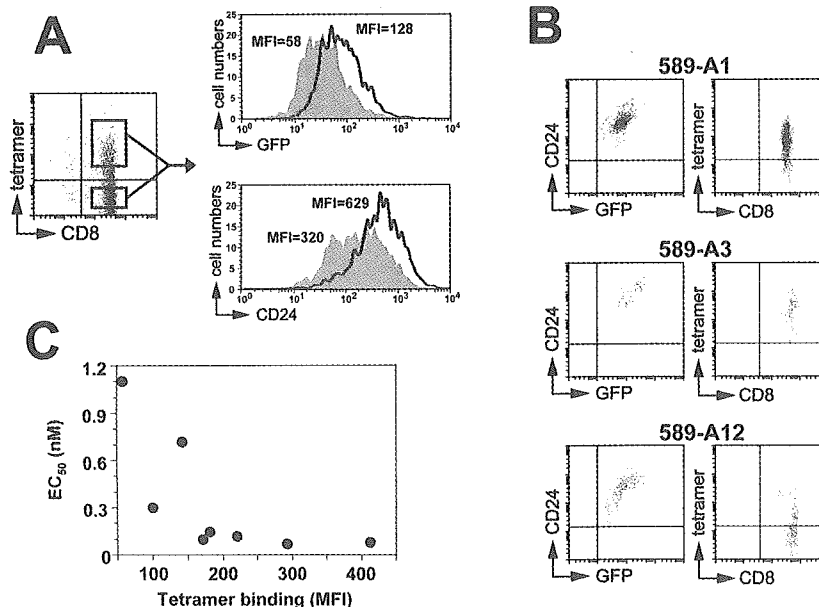


Fig. 4. Functional avidity versus tetramer binding activity of TCR-transduced cells. (A) The tetramer⁺ (solid lines) and tetramer⁻ (shaded areas) subsets of TCR-transduced, antigen-stimulated cells were gated and analyzed for their expression levels of GFP and CD24. The MFI values of each subset are indicated in the histograms. (B, C) The single-cell-sorted TCR-transduced cells were analyzed for their levels of tetramer binding and transgene expressions by flow cytometry. Representative dot plots are shown (B). Relationships between the tetramer binding levels and EC₅₀ values of the TCR-transduced clones were analyzed (C). The EC₅₀ values were determined from the cytolytic activities of these cells toward C1R-B*3501 cells pulsed with various concentrations of the Pol peptide at an E/T ratio of 2:1. The data are summarized in Table 1.

overlapped patterns in terms of both GFP and CD24 expression (Fig. 4A), suggesting that other factors, including heterodimer formation with endogenous TCR chains, influence the different surface expression of the desired TCR chains on the individual TCR-transduced T cells.

Next, the CD8⁺ GFP⁺ CD24⁺ subset of transduced cells, including both tetramer⁺ and tetramer⁻ fractions, was single-cell sorted and cultured for 12 days in the presence of autologous feeder cells pulsed with the Pol peptide. Among the cells that had been positive for growth, eight clones were analyzed for their expression levels of CD8, GFP, and CD24 as well as for their levels of tetramer binding (Table 1, Fig. 4B). Tetramer binding by these cells resulted in MFI values ranging from approximately 50 to 400 (Table 1).

We then analyzed their cytotoxic activities toward C1R-B*3501 cells pulsed with various concentrations of the Pol peptide and determined their functional avidities as the 50% effective concentration of the Pol peptide (EC₅₀). The EC₅₀ values of the TCR-transduced clones were also distributed widely, ranging from 0.07 to 1.1 nM (Table 1). A set of clones with the higher tetramer binding activity (MFI > 200) showed relatively constant EC₅₀ values (average EC₅₀ of 0.09 ± 0.026 nM), and these values were comparable to the value for the parental CTL 589 (EC₅₀ of 0.07 nM) (Fig. 4C). In contrast, another set of clones with the lower tetramer binding activity (MFI < 200) showed low functional avidity (average EC₅₀ of 0.47 ± 0.43 nM) and their EC₅₀ values varied, mostly depending on their tetramer binding activity (Fig. 4C). These results are in good agreement with the data showing that the tetramer-sorted TCR-transduced T cells

and the parental CTL 589 had comparable functional avidity (Fig. 3B, C) and yet had different tetramer binding activity (Fig. 3A).

Thus we concluded that although both the level of transgene expression and the extent of 'hybrid' TCR formation can differentially affect the surface expression levels of desired TCR chains in the individual TCR-transduced T cells, the fraction of TCR-transduced T cells with the surface expression of desired TCR chains above a certain threshold (*i.e.* MFI > 200 for the tetramer under the assay condition tested in this study) had virtually identical functional avidities toward peptide-pulsed target cells.

2.5 Antiviral replication activity of TCR-transduced CD8 T cells

We further examined the ability of TCR-transduced cells to inhibit HIV-1 replication *in vitro*. CD4-expressing 221-B*3501 cells were infected with HIV-1 HXB2D and co-cultured with the TCR-transduced clones for 6 days. We determined the amounts of p24 Gag antigen production in the culture supernatant by an enzyme-linked immunosorbent assay (Fig. 5A), and the frequency of p24⁺ cells, by flow cytometric analysis (Fig. 5B). In both assays, all of the TCR-transduced clones showed substantial suppression activity toward HIV-1 replication, whereas virtually no suppression activity was found in the case of mock-transduced cells (Fig. 5). It is of interest that all of the tested clones showed similar inhibitory activity against HIV replication (Fig. 5), although the functional avidity of these clones toward peptide-pulsed target cells showed a broad distribution, with EC₅₀ values ranging

Table 1. Summary of functional and phenotypic characterization of mock- or TCR-transduced cells

	EC ₅₀ (nM)	MFI			
		Tetramer	CD8	GFP	CD24
A1	0.10	172	453	143	769
A3	0.08	412	584	286	1,405
A6	0.72	143	434	55.5	1,353
A11	0.15	182	311	220	161
A12	1.10	57.5	529	106	633
A14	0.07	292	453	288	809
A16	0.12	221	422	650	1,239
A23	0.30	100	331	50.7	1,101
Mock	>100	3.8	303	3.3	2.7

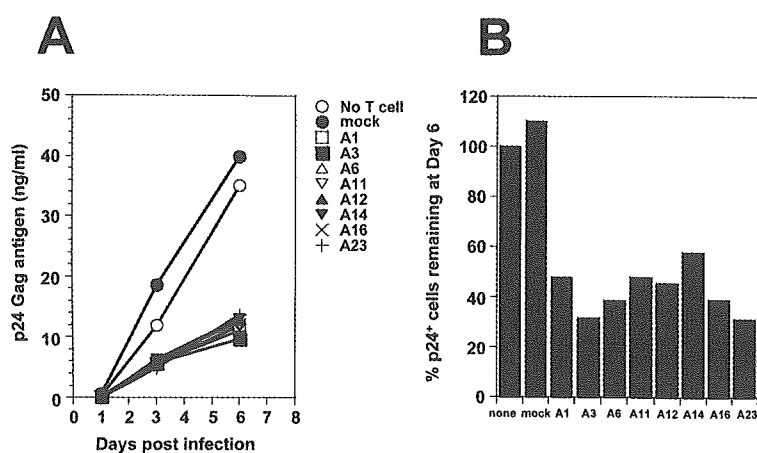


Fig. 5. Inhibitory potency of TCR-transduced clones toward HIV-1 replication *in vitro*. (A) The 221-CD4-B*3501 cells (2×10^4 cells/well) infected with HIV-1 HXB2D were co-cultured or not with the mock- or TCR-transduced clones at an E/T ratio of 0.5:1. On days 1, 3, and 6 post-infection, a portion of the culture supernatant was collected and the amounts of p24 antigen produced by the HIV-infected 221 cells were then determined. (B) The HIV-infected 221 cells were collected on day 6 and intracellularly stained with FITC-conjugated mAb specific for the p24 Gag antigen for flow cytometry. The relative frequency of p24⁺ cells at day 6 in the co-cultures with the indicated TCR-transduced T cells is shown. The data are given as the means of duplicate assays in one experiment. These results are representative of those of two additional independent experiments.

from 0.07 to 1.1 nM (Table 1). Particularly, clone A12 showed potent suppression activity for HIV replication (Fig. 5) despite its modest functional avidity and tetramer binding activity (Table 1). This finding appears to be consistent with the recently reported study demonstrating that epitope specificity of CTL, rather than functional avidity of CTL, is a key factor in the ability of CTL to control HIV replication, and that the process of epitope presentation on HIV-infected cells greatly influences CTL efficiency *in vivo* [29].

It should be noted that we used an Epstein-Barr virus-transformed B cell line as an HIV-infected target cell. Since kinetics of HIV replication is generally variable dependent on cell types as well as HIV strains, it may be possible that inhibition potency of HIV-specific CD8 T cells toward HIV replication is also variable, dependent on host cell types both *in vitro* and *in vivo*. In this regard, suppression activity of HIV-specific CD8 T cells toward HIV replication is intriguing as assessed using primary human CD4 T cells and macrophages as HIV-infected target cells.

The introduction of a chimeric TCR containing human CD4 or HIV-specific immunoglobulin sequences linked to the signaling domain of the TCR ζ chain (universal TCR) into CD8 T cells for targeting of HIV-infected cells has been reported [30–32]. In comparison with chimeric receptor approaches, the transfer of native TCR may have distinct advantages. In a chimeric receptor approach, high-affinity receptor-ligand interaction will most likely result in incomplete T cell activation owing to omission of

immunoreceptor tyrosine-based activation motifs normally present in the CD3 complex. More importantly, it is unclear whether or not chimeric receptor-ligand engagement results in functional maturation of transduced T cells to a fully differentiated effector phenotype, which character of CD8 T cells has been shown to be important to control HIV replication *in vivo* [16].

In summary, the data presented in this study suggest that the reconstitution of HIV-specific immunoreactive T cells engineered by genetic transfer of the native form of $\alpha\beta$ TCR into primary CD8 T cells is a viable strategy to suppress HIV replication. This approach represents a potential alternative to other types of immunotherapy for HIV infection, although further studies to elucidate the phenotypic and functional properties of such engineered HIV-specific CD8 T cells *in vivo* are required.

3 Materials and methods

3.1 T cell culture

The Jurkat variant that lacked expression of either α or β TCR was kindly provided by Bent Rubin (Unité de Physiopathologie Cellulaire et Moléculaire, CNRS, France) and maintained in RPMI 1640 and 10% fetal bovine serum. CTL clone 589 cells were generated before [33] from an HIV-infected patient (HLA-A*2402/A*2601, HLA-B*3501/B*5101) following stimulation of peripheral lymphocytes with an HLA-B*3501-restricted and HIV Pol-derived epitope peptide (HIV Pol_{448–456}; IPLTEEAEL). CTL clones were maintained in

RPMI 1640 and 10% human serum supplemented with 200 U/ml rIL-2, and were stimulated weekly with irradiated C1R-B*3501 cells or autologous PBMC pulsed with 100 nM Pol peptide as needed.

3.2 Construction of retroviral vectors and gene transfer

The genes encoding full-length α and β TCR of CTL 589 (DDBJ accession numbers AB164620 and AB164621, respectively) were subcloned into the pGC-based retroviral vector pGCDNsap(MSCV) [28]. The genes encoding a mouse heat-stable antigen (CD24) or GFP were also incorporated into the constructs along with an IRES following the α or β TCR gene (Fig. 1A) to facilitate monitoring the expression of α or β TCR genes, respectively, in the transduced cells. Amphotropic retrovirus containing each of these constructs was then prepared, essentially as described previously [28].

Human primary CD8 T cells were isolated from PBMC of an HIV-negative healthy donor (*HLA-A*0201/A*2402*, *HLA-B*3501/B*4002*) using anti-CD8 magnetic beads (Miltenyi Biotech, Bergisch Gladbach, Germany). The resultant CD8 T cells (>90% of the cells were CD8⁺) were activated by plate-coated anti-CD3 mAb (OKT3) for 3 days, plated on recombinant fibronectin-coated plates (Takara Shuzo, Otsu, Japan), and incubated with the retrovirus supernatant containing the TCR 589 α -IRES-CD24 gene for 72 h, during which interval the cells were exposed to fresh retrovirus supernatant every 12 h. Transduced CD8 T cells expressing CD24 antigens were isolated by use of PE-labeled anti-CD24 mAb (PharMingen, San Diego, CA) and anti-PE magnetic beads (Miltenyi Biotech). The isolated cells were subsequently transduced by the construct containing TCR 589 β -IRES-GFP, as above. The fraction of transduced CD8 T cells that were positive for GFP, CD24, and CD8 molecules was obtained by sorting with a FACS Vantage (BD Biosciences, San Jose, CA). The sorted T cells were propagated by stimulation with OKT3 mAb and subsequently by irradiated autologous PBMC pulsed with 100 nM Pol peptide. These T cells were maintained in RPMI 1640 and 10% human autologous serum supplemented with 200 U/ml rIL-2.

3.3 HLA-tetramer analysis

The HLA-B*3501-tetramer complex with allophycocyanin-conjugated avidin (Molecular Probes, Inc., Eugene, OR) was prepared as previously described [26]. T cells were first stained by the tetramer for 15 min at 37°C, and then stained for 20 min at 4°C with other antibodies, such as anti-CD8 mAb and anti-mouse CD24 mAb conjugated to peridinin chlorophyll protein (PerCP) and PE (BD Biosciences), respectively. They were then washed twice with a washing buffer (2% newborn bovine serum in phosphate-buffered saline) and fixed in a 1% paraformaldehyde solution. The resultant cells were analyzed by flow cytometry.

3.4 Cytotoxicity assay

The cytotoxic activity of the CTL clone 589 and the TCR-transduced T cells was determined by a standard ⁵¹Cr-release assay as described [26]. For peptide-pulsed target cells, ⁵¹Cr-labeled C1R-B*3501 cells (2 × 10³ cells/well) were pulsed with various concentrations of the peptide for 1 h and incubated with the effector T cells for an additional 4 h at 37°C. For virus-infected target cells, C1R-B*3501 cells or 221-B*3501 cells expressing human CD4 antigen (2 × 10³ cells/well) were infected with HIV-1 HXB2D or HIV-1 LAI. These viruses have the same epitope sequence as was used for the synthetic Pol peptide. The cells were subsequently labeled with ⁵¹Cr and incubated with the effector T cells for 6 h at 37°C. Note that >80% cells were positive for intracellular p24 Gag antigen when HIV-infected cells were used for CTL assays.

3.5 Cytokine secretion assay

CTL clone and TCR-transduced T cells were co-cultured with 221-CD4-B*3501 cells pulsed with various concentrations of the Pol peptide for 2 h at 37°C. Brefeldin A (10 µg/ml) was then added, and the cultures were continued for an additional 4 h. Cells were permeabilized and stained with anti-IFN- γ and anti-TNF- α mAb conjugated to PE and allophycocyanin, respectively (PharMingen), as previously described [34]. Frequencies of IFN- γ ⁺ and TNF- α ⁺ CD8⁺ cells were determined by flow cytometry.

3.6 Antiviral replication assay

The 221-CD4-B*3501 cells were infected with HIV-1 HXB2D at 10 TCID₅₀/ml for 6 h at 37°C and washed with culture medium. The resultant infected cells were plated in a 96-well U-bottom plate at 2 × 10⁴ cells/well, and then the mock- or TCR-transduced CD8⁺ T cells were added to each well at an E/T ratio of 0.5:1. The culture medium contained RPMI 1640 and 10% human serum supplemented with 200 U/ml rIL-2. On days 1, 3, and 6 post-infection, a portion of the culture supernatant was collected and the amounts of p24 antigen produced by HIV-infected 221 cells were determined by use of an enzyme-linked immunosorbent assay (ZeptoMetrix Corporation, New York, NY). In addition, on day 6, cells were collected, intracellularly stained with FITC-conjugated mAb specific for p24 Gag antigen (KC57; Coulter Immunology, Hialeah, FL), and analyzed by flow cytometry.

Acknowledgements: We thank Dr. B. Rubin for kindly providing the Jurkat cells. We also thank Y. Idegami, H. Chatoko, and S. Douki for their excellent technical help. This research was supported by grants-in-aid for scientific research from the Ministry of Education, Science, Sports, and Culture of Japan and by grants-in-aid for AIDS research from the Ministry of Health, Labor, and Welfare of Japan.

References

- 1 Greenberg, P. D. and Riddell, S. R., Deficient cellular immunity – finding and fixing the defects. *Science* 1999. **285**: 546–551.
- 2 Riddell, S. R., Warren, E. H., Gavin, M. A., Akatsuka, Y., Lewinsohn, D., Mutimer, H., Cooper, L., Topp, M. S., Bonini, C. and Greenberg, P. D., Immunotherapy of human viral and malignant diseases with genetically modified T cell clones. *Cancer J.* 2000. **6 Suppl. 3**: S250–S258.
- 3 Riddell, S. R. and Greenberg, P. D., T cell therapy of cytomegalovirus and human immunodeficiency virus infection. *J. Antimicrob. Chemother.* 2000. **45 Suppl. T3**: 35–43.
- 4 Smith, C. A., Ng, C. Y., Loftin, S. K., Li, C., Heslop, H. E., Brenner, M. K., Rooney, C. M. and Krance, R. A., Adoptive immunotherapy for Epstein-Barr virus-related lymphoma. *Leuk. Lymphoma* 1996. **23**: 213–220.
- 5 Heslop, H. E., Ng, C. Y., Li, C., Smith, C. A., Loftin, S. K., Krance, R. A., Brenner, M. K. and Rooney, C. M., Long-term restoration of immunity against Epstein-Barr virus infection by adoptive transfer of gene-modified virus-specific T lymphocytes. *Nat. Med.* 1996. **2**: 551–555.
- 6 Tan, R., Xu, X., Ogg, G. S., Hansasuta, P., Dong, T., Rostron, T., Luzzi, G., Conlon, C. P., Sreaton, G. R., McMichael, A. J. and Rowland-Jones, S., Rapid death of adoptively transferred T cells in acquired immunodeficiency syndrome. *Blood* 1999. **93**: 1506–1510.
- 7 Riddell, S. R., Elliott, M., Lewinsohn, D. A., Gilbert, M. J., Wilson, L., Manley, S. A., Lupton, S. D., Overell, R. W., Reynolds, T. C., Corey, L. and Greenberg, P. D., T cell mediated rejection of gene-modified HIV-specific cytotoxic T lymphocytes in HIV-infected patients. *Nat. Med.* 1996. **2**: 216–223.
- 8 Lieberman, J., Skolnik, P. R., Parkerson, G. R., 3rd, Fabry, J. A., Landry, B., Bethel, J. and Kagan, J., Safety of autologous, ex vivo-expanded human immunodeficiency virus (HIV)-specific cytotoxic T-lymphocyte infusion in HIV-infected patients. *Blood* 1997. **90**: 2196–2206.
- 9 Koenig, S., Conley, A. J., Brewah, Y. A., Jones, G. M., Leath, S., Boots, L. J., Davey, V., Pantaleo, G., Demarest, J. F., Carter, C. et al., Transfer of HIV-1-specific cytotoxic T lymphocytes to an AIDS patient leads to selection for mutant HIV variants and subsequent disease progression. *Nat. Med.* 1995. **1**: 330–336.
- 10 McMichael, A. J. and Rowland-Jones, S. L., Cellular immune responses to HIV. *Nature* 2001. **410**: 980–987.
- 11 Lieberman, J., Shankar, P., Manjunath, N. and Andersson, J., Dressed to kill? A review of why antiviral CD8 T lymphocytes fail to prevent progressive immunodeficiency in HIV-1 infection. *Blood* 2001. **98**: 1667–1677.
- 12 van Baarle, D., Kostense, S., van Oers, M. H., Hamann, D. and Miedema, F., Failing immune control as a result of impaired CD8⁺ T cell maturation: CD27 might provide a clue. *Trends Immunol.* 2002. **23**: 586–591.
- 13 Yang, O. O., Will we be able to ‘spot’ an effective HIV-1 vaccine? *Trends Immunol.* 2003. **24**: 67–72.
- 14 Appay, V., Nixon, D. F., Donahoe, S. M., Gillespie, G. M., Dong, T., King, A., Ogg, G. S., Spiegel, H. M., Conlon, C., Spina, C. A. et al., HIV-specific CD8(+) T cells produce antiviral cytokines but are impaired in cytolytic function. *J. Exp. Med.* 2000. **192**: 63–75.
- 15 Migueles, S. A., Laborico, A. C., Shupert, W. L., Sabbaghian, M. S., Rabin, R., Hallahan, C. W., Van Baarle, D., Kostense, S., Miedema, F., McLaughlin, M. et al., HIV-specific CD8⁺ T cell proliferation is coupled to perforin expression and is maintained in nonprogressors. *Nat. Immunol.* 2002. **3**: 1061–1068.
- 16 Hess, C., Altfeld, M., Thomas, S. Y., Addo, M. M., Rosenberg, E. S., Allen, T. M., Draenert, R., Eldrige, R. L., van Lunzen, J., Stellbrink, H. J. et al., HIV-1 specific CD8⁺ T cells with an effector phenotype and control of viral replication. *Lancet* 2004. **363**: 863–866.
- 17 Schumacher, T. N., T cell-receptor gene therapy. *Nat. Rev. Immunol.* 2002. **2**: 512–519.
- 18 Sadelain, M., Riviere, I. and Brentjens, R., Targeting tumours with genetically enhanced T lymphocytes. *Nat. Rev. Cancer* 2003. **3**: 35–45.
- 19 Schaft, N., Willemsen, R. A., de Vries, J., Lankiewicz, B., Essers, B. W., Gratama, J. W., Figdor, C. G., Bolhuis, R. L., Debets, R. and Adema, G. J., Peptide fine specificity of anti-glycoprotein 100 CTL is preserved following transfer of engineered TCR alpha beta genes into primary human T lymphocytes. *J. Immunol.* 2003. **170**: 2186–2194.
- 20 Rubinstein, M. P., Kadima, A. N., Salem, M. L., Nguyen, C. L., Gillanders, W. E., Nishimura, M. I. and Cole, D. J., Transfer of TCR genes into mature T cells is accompanied by the maintenance of parental T cell avidity. *J. Immunol.* 2003. **170**: 1209–1217.
- 21 Kessels, H. W. H. G., Wolkers, M. C., van den Boom, M. D., van der Valk, M. A. and Schumacher, N. M., Immunotherapy through TCR gene transfer. *Nat. Immunol.* 2001. **2**: 957–961.
- 22 Chamoto, K., Tsuji, T., Funamoto, H., Kosaka, A., Matsuzaki, J., Sato, T., Abe, H., Fujio, K., Yamamoto, K., Kitamura, T. et al., Potentiation of tumor eradication by adoptive immunotherapy with T cell receptor gene-transduced T-helper type 1 cells. *Cancer Res.* 2004. **64**: 386–390.
- 23 Tahara, H., Fujio, K., Araki, Y., Setoguchi, K., Misaki, Y., Kitamura, T. and Yamamoto, K., Reconstitution of CD8⁺ T cells by retroviral transfer of the TCR alpha beta-chain genes isolated from a clonally expanded P815-infiltrating lymphocyte. *J. Immunol.* 2003. **171**: 2154–2160.
- 24 Heemskerk, M. H., Hoogeboom, M., Hagedoorn, R., Kester, M. G., Willemze, R. and Falkenburg, J. H., Reprogramming of virus-specific T cells into leukemia-reactive T cells using T cell receptor gene transfer. *J. Exp. Med.* 2004. **199**: 885–894.
- 25 Cooper, L. J. N., Kalos, M., Lewinsohn, D. A., Riddell, S. R. and Greenberg, P. D., Transfer of specificity for human immunodeficiency virus type 1 into primary human T lymphocytes by introduction of T cell receptor genes. *J. Virol.* 2000. **74**: 8207–8212.
- 26 Ueno, T., Tomiyama, H. and Takiguchi, M., Single T cell receptor-mediated recognition of an identical HIV-derived peptide presented by multiple HLA class I molecules. *J. Immunol.* 2002. **169**: 4961–4969.
- 27 Kitamura, T., Onishi, M., Kinoshita, S., Shibuya, A., Miyajima, A. and Nolan, G. P., Efficient screening of retroviral cDNA expression libraries. *Proc. Natl. Acad. Sci. USA* 1995. **92**: 9146–9150.
- 28 Kaneko, S., Onodera, M., Fujiki, Y., Nagasawa, T. and Nakauchi, H., Simplified retroviral vector GCsaps with murine stem cell virus long terminal repeat allows high and continued expression of enhanced green fluorescent protein by human hematopoietic progenitors engrafted in nonobese diabetic/severe combined immunodeficient mice. *Hum. Gene Ther.* 2001. **12**: 35–44.
- 29 Yang, O. O., Sarkis, P. T., Trocha, A., Kalams, S. A., Johnson, R. P. and Walker, B. D., Impacts of avidity and specificity on the antiviral efficiency of HIV-1-specific CTL. *J. Immunol.* 2003. **171**: 3718–3724.
- 30 Roberts, M. R., Qin, L., Zhang, D., Smith, D. H., Tran, A. C., Dull, T. J., Groopman, J. E., Capon, D. J., Byrn, R. A. and Finer, M. H., Targeting of human immunodeficiency virus-infected cells by CD8⁺ T lymphocytes armed with universal T cell receptors. *Blood* 1994. **84**: 2878–2889.

- 31 **Yang, O. O., Tran, A. C., Kalams, S. A., Johnson, R. P., Roberts, M. R. and Walker, B. D.**, Lysis of HIV-1-infected cells and inhibition of viral replication by universal receptor T cells. *Proc. Natl. Acad. Sci. USA* 1997. **94**: 11478–11483.
- 32 **Severino, M. E., Sarkis, P. T., Walker, B. D. and Yang, O. O.**, Chimeric immune receptor T cells bypass class I requirements and recognize multiple cell types relevant in HIV-1 infection. *Virology* 2003. **306**: 371–375.
- 33 **Tomiyama, H., Miwa, K., Shiga, H., Moore, Y. I., Oka, S., Iwamoto, A., Kaneko, Y. and Takiguchi, M.**, Evidence of presentation of multiple HIV-1 cytotoxic T lymphocyte epitopes by HLA-B*3501 molecules that are associated with the accelerated progression of AIDS. *J. Immunol.* 1997. **158**: 5026–5034.
- 34 **Ueno, T., Tomiyama, H., Fujiwara, M., Oka, S. and Takiguchi, M.**, HLA class I-restricted recognition of an HIV-derived epitope peptide by a human T cell receptor α chain having a V δ 1 variable segment. *Eur. J. Immunol.* 2003. **33**: 2910–2916.

Correspondence: Takamasa Ueno, Division of Viral Immunology, Center for AIDS Research, Kumamoto University, 2-2-1 Honjo, Kumamoto, 860-0811, Japan
Fax: +81-96-373-6532
e-mail: uenot@kaiju.medic.kumamoto-u.ac.jp

CUTTING EDGE

Cutting Edge: Epitope-Dependent Effect of Nef-Mediated HLA Class I Down-Regulation on Ability of HIV-1-Specific CTLs to Suppress HIV-1 Replication¹Hiroko Tomiyama,* Mamoru Fujiwara,* Shinichi Oka,[†] and Masafumi Takiguchi^{2*}

*It is believed that Nef-mediated HLA class I down-regulation is one of the mechanisms that allow HIV-1-infected cells to escape from being killed by HIV-1-specific human CTLs. In this study, we show that the effect of Nef-mediated HLA class I down-regulation on the ability of HIV-1-specific CTLs to suppress HIV-1 replication is epitope dependent. The CTLs specific for two Pol epitopes presented by HLA-B*5101, one of the HLA alleles associated with slow progression to AIDS, effectively killed HIV-1-infected CD4⁺ T cells and suppressed HIV-1 replication. In contrast, those specific for the other four epitopes failed to kill HIV-1-infected CD4⁺ T cells and partially or hardly suppressed HIV-1 replication. The difference of the ability between these two types of CTLs may result from the difference of the number of HLA class I epitope complex on the surface of NL-432-infected CD4⁺ T cells. The Journal of Immunology, 2005, 174: 36–40.*

Human immunodeficiency virus-1 escape from HIV-1-specific CD8⁺ T cells occurs during acute and chronic phases of HIV-1 infections, although the mechanisms of the HIV-1 escape still remain unclear. Previously, various investigators proposed several hypotheses concerning mechanisms of HIV-1 escape from the host immune system such as mutations of immunodominant epitopes (1), reduction in the number of HIV-1-specific CTLs by apoptosis of CD8⁺ T cells via Fas and TNF (2), skewed maturation of HIV-1-specific CD8⁺ T cells (3), and impaired cytolytic activity of HIV-1-specific CTL toward HIV-1-infected CD4⁺ T cells by Nef-mediated down-regulation of HLA class I molecules (4).

Nef down-regulates the surface expression of both HLA-A and -B molecules in HIV-1-infected cells because of internalization of these molecules from the cell surface by endocytosis in the presence of Nef (5). A previous study showed that the expression of HLA-A2 molecules on Nef-positive (Nef⁺) HIV-1-infected primary CD4⁺ T cells was 200- to 300-fold lower than that on Nef-defective (Nef⁻) HIV-1-infected ones (6). These

observations suggested that the Nef-mediated HLA class I down-regulation may decrease the recognition of HIV-1-infected cells by HIV-1-specific CTLs. In fact, it was shown that HLA-A*0201-restricted HIV-1-specific CTLs failed to kill Nef⁺ HIV-1-infected CD4⁺ T cells but effectively killed Nef⁻ HIV-1-infected ones (4). This was further confirmed by a study using two HLA-B*3501-restricted, HIV-1-specific CTL clones (7). The ability of HIV-1-specific CTLs to suppress HIV-1 replication was also impaired by Nef-mediated HLA class I down-regulation (7, 8). These studies strongly suggest that Nef-mediated HLA class I down-regulation is one of the major mechanisms by which HIV-1 escapes from HIV-1-specific CTLs. However, because only a very restricted number of HIV-1-specific CTLs has been tested for their abilities to kill Nef⁺ and Nef⁻ HIV-1-infected CD4⁺ T cells and to suppress the HIV-1 replication, it still remains uncertain whether Nef-mediated HLA class I down-regulation affects the killing ability of all HIV-1-specific CTLs.

HLA-B57, -B51, and -B27 alleles are associated with slow progression to AIDS (9). It has been speculated that long-term nonprogressors (LTNPs)³ and slow progressors carry CTLs specific for conserved and dominant epitopes whose recognition is not affected by Nef-mediated HLA class I down-regulation. However, no study has yet investigated this hypothesis. To clarify the effect of Nef-mediated HLA class I down-regulation on CTLs specific for HIV-1 epitopes presented by HLA alleles that are associated with or not associated with slow progression to AIDS, we investigated the ability of both HLA-B*5101-restricted and HLA-A*3303-restricted HIV-1-specific CTLs to recognize HIV-1-infected CD4⁺ T cells. In this study, we show that HIV-1-specific CD8⁺ T cells have various ranges of ability to kill HIV-1-infected CD4⁺ T cells and to suppress the replication of HIV-1.

Materials and Methods

HIV-1-specific CTL clones and lines

HIV-1-specific CTL clones and CTL lines were generated previously (10–12). All CTLs were cultured in R10 medium supplemented with 200 U/ml recombinant human IL-2 and stimulated weekly with irradiated target cells prepulsed with the appropriate HIV-1-derived peptide.

*Division of Viral Immunology, Center for AIDS Research, Kumamoto University, Kumamoto, and [†]AIDS Clinical Center, International Medical Center of Japan, Tokyo, Japan

Received for publication August 18, 2004. Accepted for publication October 27, 2004.

The costs of publication of this article were defrayed in part by the payment of page charges. This article must therefore be hereby marked *advertisement* in accordance with 18 U.S.C. Section 1734 solely to indicate this fact.

¹ This research was supported by a Grant-in Aid for Scientific Research from the Ministry of Education, Science, Sport and Culture; a Grant-in Aid for Scientific Research from the

Ministry of Health, Labour and Welfare; the government of Japan; and a grant from Japan Health Science Foundation.

² Address correspondence and reprint requests to Dr. Masafumi Takiguchi, Division of Viral Immunology, Center for AIDS Research, Kumamoto University, 2-2-1 Honjo, Kumamoto 860-0811, Japan. E-mail address: masafumi@kaiju.medic.kumamoto-u.ac.jp

³ Abbreviation used in this paper: LTNP, long-term nonprogressor.

HIV-1 clones

An infectious proviral clone of HIV-1, pNL-432, and its mutant, pNL-M20A (containing a substitution of Ala for Met at residue 20 of Nef), were reported previously (13).

Infection of CD4⁺ T cells with HIV-1

CD4⁺ T cells were purified from PBMCs of HIV-1-seronegative individuals with HLA-B*5101 or HLA-A*3303 by means of anti-human CD4 mAb-coated magnetic beads (MACS beads; Miltenyi Biotec). The purified CD4⁺ T cells were cultured and infected with HIV-1 clones as previously shown (7).

CTL assay

The cytotoxicity of CTL clones for cultured CD4⁺ T cells infected with HIV-1 (>40% p24 Ag-positive cells) was determined by a standard ⁵¹Cr release assay as shown previously (7).

Flow cytometric analysis

To assess HLA class I expression in HIV-1-infected CD4⁺ T cells, the cells were stained with anti-B5 mAb 4D12 following staining with allophycocyanin-labeled anti-mouse Ig (BD Pharmingen), and thereafter were fixed and permeabilized for intracellular HIV-1 p24 staining with FITC-labeled anti-p24 mAb KC-57. The expression of HLA class I molecules on HIV-1-infected CD4⁺ T cells was analyzed by using a FACSCalibur with CellQuest software (BD Biosciences). For detection of intracellular cytokines, HIV-1-specific CTL clones were cocultured with peptide-pulsed CD4⁺ T cells or HIV-1-infected CD4⁺ T cells for 6 h at a CTL:CD4⁺ T cell ratio of 1:2. CTLs cocultured with CD4⁺ T cells were used as a negative control. After a 2-h incubation, brefeldin A was added to each well (10 μg/ml). The cells were then stained as previously described with a FITC-labeled anti-human CD8 mAb, PE-labeled anti-human IFN-γ mAb, and allophycocyanin-labeled anti-human TNF-α mAb.

Suppression of HIV-1 replication by HIV-1-specific CTLs

The ability of HIV-1-specific CTLs to suppress HIV-1 replication was examined as previously described (7). After CD4⁺ T cells had been incubated with the indicated HIV-1 clone following a 4-h incubation at 37°C with intermittent agitation, the cells were washed three times with R10 medium. HIV-1-infected CD4⁺ T cells were cocultured with HIV-1-specific CTLs. From days 2 to 7 postinfection, 10 μl of culture supernatant was collected, and the concentration of p24 Ag in the supernatant was measured by enzyme immunoassay (HIV-1 p24 Ag ELISA kit; ZeptoMetric). On days 3, 4, and 5 postinfection, cells were harvested and stained with a mixture of anti-CD4 and anti-CD8 mAbs and then with anti-p24 mAb. The percentage of intracellular p24 Ag-positive cells in the CD8⁻ population was determined by flow cytometry.

Peptide binding assay

Binding of HIV-1 epitope peptides to HLA-B*5101 was examined by a peptide stabilization assay using RMA-S-B*5101 cells as previously described (10).

Results and Discussion

Ability of HIV-1-specific CTLs to suppress HIV-1 replication in HIV-1-infected CD4⁺ T cells

To investigate the ability of HIV-1-specific CTLs to suppress HIV-1 replication, we selected the CTLs specific for four HLA-B*5101 epitopes and two HLA-A*3303 epitopes, whose sequences are found in the NL-432 clone. We measured the ability of seven CTL clones or lines specific for these epitopes to suppress HIV-1 replication in primary CD4⁺ T cells infected with either HIV-1 clone NL-432 or its mutant NL-M20A, in which 1 aa of Nef has mutated and which has the ability to down-regulate cell surface expression of CD4 but not that of HLA class I molecules (13). The surface expression of HLA-B*5101 was indeed down-regulated in NL-432-infected CD4⁺ T cells but not in NL-M20A-infected ones (Fig. 1A). CD4⁺ T cells infected with the HIV-1 clones were cocultured with or without the HIV-1-specific CTLs. p24-positive CD4⁺ T cells were not detected in the cultures of NL-M20A-infected CD4⁺ T cells with the SF2-Pol283-8-specific CTL line, SF2-Pol743-9-51 CTL clone, or SF2-Gag327-9-249 CTL clone. They were also undetected in the cultures of NL-432-infected CD4⁺ T

cells with the SF2-Pol283-8-specific CTL line or SF2-Pol743-9-51 CTL clone, whereas the number of the p24-positive CD4⁺ T cells was reduced by approximately one-half in the cultures with the SF2-Gag327-9-249 CTL clone. In contrast, the number of the p24-positive CD4⁺ T cells was not reduced in the cultures of NL-432-infected and NL-M20A-infected CD4⁺ T cells with HLA-mismatched HIV-1 Nef-specific CTL clones, SF2-6-218 and SF2-6-219 (Fig. 1B). These results suggest that SF2-Pol283-8-specific CTL line and SF2-Pol743-9-51 CTL clone completely suppressed Nef⁺ HIV-1 replication and that SF2-Gag327-9-249 CTL clone only partially suppressed it. Two HLA-A*3303-restricted CTLs, the SF2-Gag144-152-10 clone and the SF2-Env697-706 line, gave the same results as the latter clones (data not shown).

The enzyme immunoassay analysis confirmed the results of the flow cytometric analysis (Fig. 1C). The SF2-Pol283-8 line and SF2-Pol743-9-51 clone completely suppressed replication of both NL-M20A and NL-432, whereas two CTL clones, SF2-Gag144-152-10 and SF2-Gag327-9-249, as well as one CTL line, SF2-Env697-706, partially suppressed NL-432 replication (21.7–44.0%) and effectively suppressed NL-M20A replication (82.4–89.9%). These results taken together suggest that the recognition by the latter CTLs was affected by Nef-mediated HLA class I down-regulation but that by the former ones was not.

To compare quantitatively the ability of these CTLs to suppress NL-432 replication, we tested the ability of the SF2-Pol283-8 or SF2-Pol743-9-51 at various E:T ratios to suppress NL-432 replication (Fig. 1D). Approximately 50% suppression of NL-432 replication was found when SF2-Gag144-152-10 and SF2-Gag327-9-249 CTL clones were tested at an E:T ratio of 1:1, whereas both SF2-Pol283-8 and SF2-Pol743-9-51 CTL clones showed ~50% suppression at an E:T ratio of 0.001:1, indicating that these CTLs have 1000-fold stronger ability to suppress NL-432 replication than SF2-Gag144-152-10 and SF2-Gag327-9-249 CTL clones.

The number of p24-positive CD4⁺ T cells was not reduced in the culture of NL-432-infected CD4⁺ T cells with the SF2-Rev71-11-55 clone, whereas it was partially reduced in that of NL-M20A-infected CD4⁺ T cells with the same clone (data not shown). This clone also failed to suppress NL-432 replication but partially suppressed NL-M20A replication (Fig. 1C). These results suggest that this CTL clone can weakly recognize NL-M20A-infected CD4⁺ T cells but not NL-432-infected CD4⁺ T cells.

Ability of HIV-1-specific CTLs to kill HIV-1-infected CD4⁺ T cells and to produce cytokines by stimulation with HIV-1-infected CD4⁺ T cells

To clarify the mechanism by which HIV-1-specific CTLs suppress HIV-1 replication, we investigated the activity of the HIV-1-specific CTL clones and lines to kill HIV-1-infected CD4⁺ T cells and to produce cytokines when stimulated with HIV-1-infected CD4⁺ T cells. SF2-Pol743-9-51 CTL clone and SF2-Pol283-8-specific CTL line, which showed strong suppression of NL-432 replication, effectively killed CD4⁺ T cells infected with either NL-432 or NL-M20A. The result for the SF2-Pol743-9-51 clone was also confirmed by using the SF2-Pol743-9-specific CTL line (Fig. 2A). The cytolytic activity of these two CTLs for HLA-B*5101⁺CD4⁺ T cells infected with NL-432 was almost identical with that of those infected with NL-M20A at any E:T ratios (Fig. 2B). These results

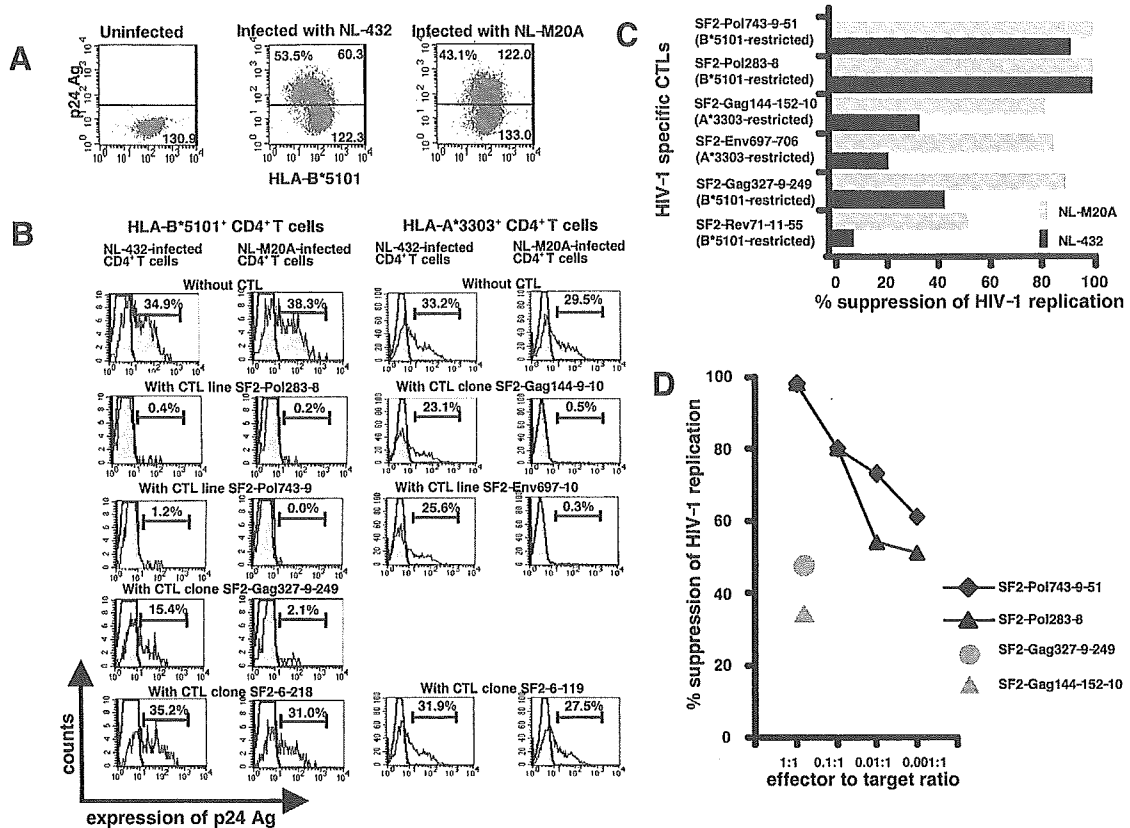


FIGURE 1. Suppression of HIV-1 replication in HIV-1-infected CD4⁺ T cells by HIV-1-specific CTLs. *A*, Expression of HLA class I molecules on CD4⁺ T cells infected with HIV-1 NL-432 or NL-M20A. CD4⁺ T cells from donor U-13 with HLA-B*5101 were cultured and then infected with HIV-1 NL-432 or NL-M20A. On day 3 postinfection, the cells were stained with HLA-B5/B35-specific mAb 4D12 and anti-HIV-1 p24 Ag-specific mAb. The expression of HLA-B*5101 on p24-positive or p24-negative cells is shown as the mean fluorescence intensity (MFI) in each figure. *B*, Number of HIV-1-infected CD4⁺ T cells in the cultures of HIV-1-infected CD4⁺ T cells with HIV-1-specific CTLs. CD4⁺ T cells isolated from donor U-13 were infected with NL-432 or NL-M20A and cocultured with HIV-1-specific CTLs at an E:T ratio of 1:1. The number of HIV-1 p24 Ag⁺ CD4⁺ T cells in the culture was measured by flow cytometry at the peak of HIV-1 infection. Uninfected and HIV-1-infected CD4⁺ T cells stained with anti-p24 mAb are shown as bold line and filled histogram, respectively. Percentages of p24 Ag⁺ cells are shown in each figure. *C*, Amount of HIV-1 p24 Ags in the cultures of HIV-1-infected CD4⁺ T cells with HIV-1-specific CTLs. Cultured CD4⁺ T cells from donors U-13 and U-27(A*3303⁺) were infected with NL-432 or NL-M20A and then cocultured with HIV-1-specific CTLs at an E:T ratio of 1:1. HIV-1 p24 Ags in the supernatant were measured on days 2–7 postinfection by enzyme immunoassay. The percentage of suppression of HIV-1 replication was calculated. *D*, Comparison of the ability of HIV-1-specific CTLs to strongly suppress Nef⁺ HIV-1 replication. CD4⁺ T cells isolated from donor U-13 were infected with NL-432 and then cocultured with the HIV-1-specific CTLs at various E:T ratios. HIV-1 p24 Ag in the supernatant at the peak of infection was measured by enzyme immunoassay, and the percent suppression of NL-432 replication was calculated.

indicate that Nef-mediated HLA class I down-regulation does not affect the ability of these CTLs to kill HIV-1-infected CD4⁺ T cells. In contrast, the three HIV-1-specific CTLs (SF2-Gag144-152-10 and SF2-Gag327-9-249 CTL clones, and SF2-Env697-706 CTL line) killed NL-M20A-infected CD4⁺ T cells but failed to kill NL-432-infected CD4⁺ T cells (Fig. 2A), suggesting that Nef-mediated HLA class I down-regulation affected the ability of these CTLs to kill HIV-1-infected CD4⁺ T cells. These results are consistent with those of a previous study showing that 2 HLA-B*3501-restricted CTL clones killed NL-M20A-infected CD4⁺ T cells but failed to kill NL-432-infected CD4⁺ T cells (7).

Next, we investigated the ability of these CTLs to produce IFN- γ and TNF- α after having been stimulated with HIV-1-infected CD4⁺ T cells (Fig. 2C). The total percentages of IFN- γ and TNF- α -producing cells were ~2–5% and 4–9% in the HIV-1 Pol-specific CTLs stimulated with NL-432-infected and NL-M20A-infected ones, respectively. In contrast, the total percentages of IFN- γ - and TNF- α -producing cells were ~4 and

4–6% in the HIV-1 Gag- and Env-specific CTLs stimulated with CD4⁺ T cells infected with NL-432 and NL-M20A, respectively. Thus, there was no difference in the number of cytokine-producing cells between these two groups of HIV-1-specific CTLs. These results suggest that the difference in the ability to suppress HIV-1 replication between the two groups results from that in cytolytic activity between them, and that cytokines secreted from the CTLs are partially involved in the suppression of HIV-1 replication.

The SF2-Rev71-11-55 clone failed to produce cytokines after stimulation with either CD4⁺ T cells infected with NL-432 or those infected with NL-M20A (Fig. 2C). This result together with that of suppression of HIV-1 replication indicate that the SF2-Rev71-11 epitope is very weakly presented by HLA-B*5101 in HIV-1-infected CD4⁺ T cells.

Ability of four HLA-B*5101-restricted CTLs to recognize HIV-1 epitopes

It is thought that the ability of CTLs to kill HIV-1-infected cells and to suppress HIV-1 replication is determined by the ability

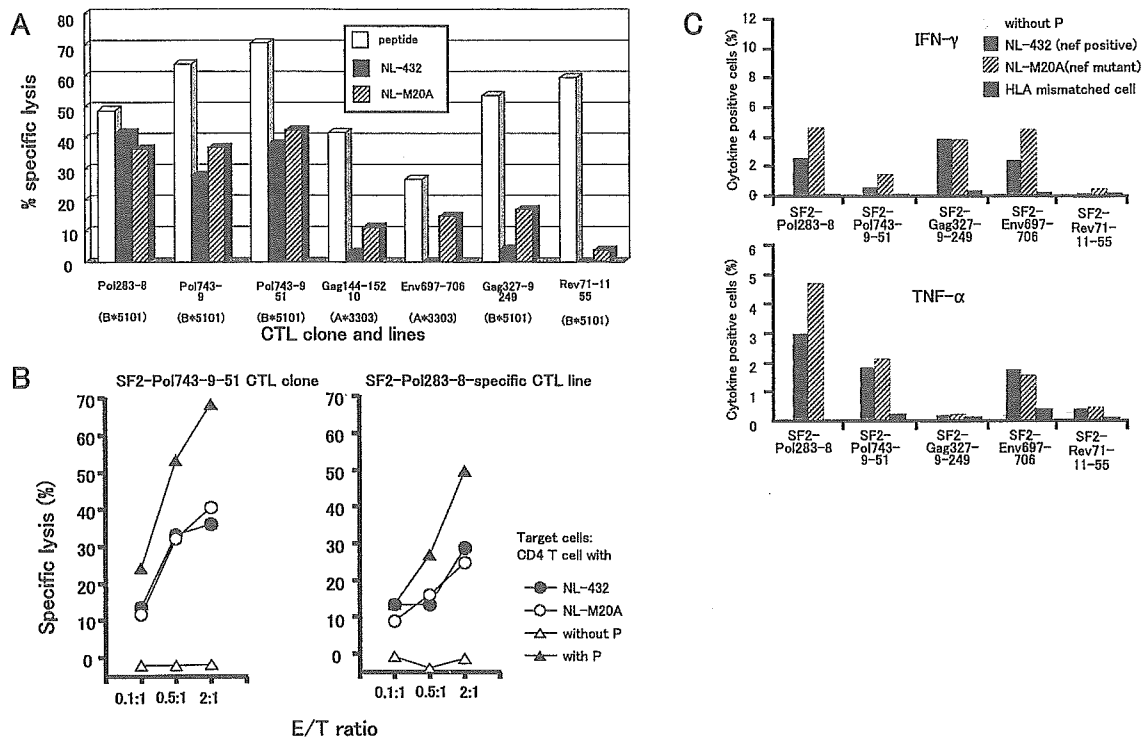


FIGURE 2. Activity of HIV-1-specific CTLs to kill HIV-1-infected CD4⁺ T cells and to produce cytokines after stimulation with HIV-1-infected CD4⁺ T cells. *A* and *B*, CD4⁺ T cells from donors U-13 and U-27 were infected with NL-432 or NL-M20A. On day 3 postinfection, the cells were harvested and used as target cells in the standard ⁵¹Cr release assay. Cytotoxic activity of two CTL lines and five CTL clones was examined for CD4⁺ T cells prepulsed with each epitope peptide (□) and those infected with NL-432 (■) or with NL-M20A (▨) at an E:T ratio of 2:1 (*A*). Cytotoxic activity of SF2-Pol283-8 and SF2-Pol743-9-51 for NL-432-infected CD4⁺ T cells or NL-M20A-infected CD4⁺ T cells was examined at E:T ratios of 2:1, 0.5:1, and 0.1:1 (*B*). The specific lysis of the CTLs for CD4⁺ T cells pulsed with epitope peptide (1 μM) or without peptide was examined by the same assay. Percentages of p24-positive cells in HLA-B*5101-positive CD4⁺ T cells infected with NL-432 and with NL-M20A were 42.0 and 37.0%, respectively. *C*, CD4⁺ T cells purified from the same donors were infected with NL-432 or NL-M20A. On day 3 postinfection, uninfected CD4⁺ T cells and NL-432- or NL-M20A-infected CD4⁺ T cells were mixed with HIV-1-specific CTLs, at an effector-to-stimulator ratio of 1:2 and then incubated for 6 h. Intracellular staining of IFN-γ or TNF-α was performed by using PE-labeled anti-IFN-γ and anti-TNF-α mAbs. The percentages of p24 Ag-positive cells among U-13 CD4⁺ T cells infected with NL-432 or NL-M20A were 36.6 and 32.1%, respectively, and those among U-27 CD4⁺ T cells infected with NL-432 or NL-M20A were 33.6 or 31.0%, respectively. The percentages of IFN-γ- and TNF-α-producing cells in the CTLs stimulated with peptide-pulsed CD4⁺ T cells were as follows: Pol283-8, IFN-γ, 46.3%, TNF-α, 22.0%; Pol745-9-51, IFN-γ, 49.7%, TNF-α, 18.5%; Gag327-9-249, IFN-γ, 17.4%, TNF-α, 0.4%; Env697-706, IFN-γ 33.0%, TNF-α, 31.5%; and Rev71-11-55, IFN-γ, 40.0%, TNF-α, 21.8%.

of TCR to recognize the epitope and by the amount of the epitope presented on the surface of HIV-1-infected cells. We investigated the ability of TCR to recognize the epitope among four HLA-B*5101-restricted CTLs. We measured the ability of the peptides to bind to HLA-B*5101 molecules (BL₅₀) by an HLA-B*5101 stabilization assay, and also measured the ability of CTLs to kill epitope peptide-pulsed cells (LL₅₀, peptide concentration providing a half of maximum percent specific lysis; Table I). A high BL₅₀/LL₅₀ ratio indicates a high ability of TCR to recognize the epitope. BL₅₀ values of Pol743-9 and Pol283-8 peptides were 10- and 100-fold lower than those of Rev71-11 and Gag327-9, respectively, indicating that the former peptides

had higher ability to bind to HLA-B*5101 than the latter ones. In contrast, LL₅₀ values of Pol743-9-51 and SF2-Rev71-11-55 CTLs were 6- and 20-fold lower than those of SF2-Pol283-8 and SF2-Gag327-9-249 CTLs, respectively. Thus, the Pol743-9-51 and Pol283-8-specific CTLs showed lower BL₅₀/LL₅₀ ratio than SF2-Gag327-9-249 and SF2-Rev71-11-55 CTLs (Table I). These results indicate that the ability of TCR of the former CTLs to recognize the epitope was much lower than that of the latter ones. Both Pol743-9-51 and Pol283-8-specific CTLs effectively killed NL-432-infected CD4⁺ T cells, whereas SF2-Gag327-9-249 and SF2-Rev71-11-55 CTLs failed to kill them. These findings together suggest that the

Table I. Ability of HLA-B*5101-restricted CTLs to recognize the epitopes

CTLs	Epitope Peptide	Sequence	(A)	(B)	(A)/(B)	Cytolytic Activity for NL-432-Infected Cells (% specific lysis)
			Binding Ability of Peptide (BL ₅₀)	Cytolytic Activity for Peptide-Pulsed Cells (LL ₅₀) ^a	Ability of TCR to Recognize the Epitope	
Pol743-9-51	Pol743-9	LPPVVAKEI	6.1 × 10 ⁻⁶ M	5.0 × 10 ⁻⁹ M	1,220	36.0
Pol283-8	Pol283-8	TAFTIPSI	6.8 × 10 ⁻⁶ M	3.0 × 10 ⁻⁸ M	227	28.7
Gag327-9-249	Gag327-9	NANPDCKTI	4.0 × 10 ⁻⁴ M	1.0 × 10 ⁻⁷ M	4,000	8.0
Rev71-11-55	Rev71-11	VPLQLPLERL	5.0 × 10 ⁻⁵ M	5.0 × 10 ⁻⁹ M	10,000	0

^a LL₅₀, Peptide concentration providing a half of maximum percent specific lysis.

difference in the ability between these CTLs to kill NL432-infected CD4⁺ T cells is due to that in the number of epitopes presented by HLA-B*5101 on the surface of NL-432-infected CD4⁺ T cells rather than that in the ability of TCR to recognize the epitope. A recent study also showed that the abilities of HIV-1-specific CTLs to kill cell lines infected with Nef-defective HIV-1 IIIB clone and to suppress replication of this clone were associated with specificity of the CTLs but not with functional avidity of the CTLs (14). Thus, the number of HLA-epitope complex presented on HIV-1-infected CD4⁺ T cells may be critical for recognition of HIV-1-specific CTLs.

HLA-B57 and -B27 alleles are well-known factors associated with slow progression to AIDS (10). A recent study revealed that HIV-1-specific CD8⁺ T cells have a high proliferation capacity that is coupled to perforin expression in HLA-B*5701⁺ LTNPs but not in HLA-B*5701⁺ or HLA-B*5701⁻ progressors (15), suggesting that HIV-1-specific CD8⁺ T cells, which have a high proliferation capacity and effector function, control HIV-1 replication in HLA-B*5701⁺ LTNPs. However, the mechanism of the association of these HLA alleles with slow progression to AIDS still remains unclear. The present study revealed that the CTLs specific for the two Pol epitopes presented by one of the HLA class I molecules associated with slow progression to AIDS, HLA-B*5101, completely suppressed HIV-1 replication and killed HIV-1-infected CD4⁺ T cells, implying that these cells effectively control HIV-1 replication in vivo. Because we investigated a limited number of CTLs restricted by HLA alleles that are not associated with slow progression of AIDS in the present and previous studies (8), it still remains unclear that the existence of these CTLs is associated with slow progression of AIDS. Further analysis of HIV-1-specific CTLs restricted by various HLA alleles will clarify the mechanism of the association of these HLA alleles with slow progression to AIDS.

In the present study, we showed that the effect of Nef-mediated HLA class I down-regulation on recognition by HIV-1-specific CD8⁺ T cells of HIV-1-infected CD4⁺ T cells vary in epitopes, and particularly demonstrated the existence of HIV-1-specific CTLs that could completely suppress Nef⁺ HIV-1 replication and effectively kill primary CD4⁺ T cells infected with Nef⁺ HIV-1. These CTLs are expected to suppress HIV-1 replication in vivo.

Acknowledgments

We thank Dr. Adachi for the generous gift of the NL-M20A clone; Sachi Doki for technical assistance; and Sachiko Sakai for secretarial assistance.

References

1. Borrow, P., H. Lewicki, X. Wei, M. S. Horwitz, N. Peffer, H. Meyers, J. A. Nelson, J. E. Gairin, B. H. Hahn, M. B. A. Oldstone, and G. M. Shaw. 1997. Antiviral pressure exerted by HIV-1-specific cytotoxic T lymphocytes (CTLs) during primary infection demonstrated by rapid selection of CTL escape virus. *Nat. Med.* 3:205.
2. Xu, X. N., B. Laffert, G. R. Screaton, M. Kraft, D. Wolf, W. Kolanus, J. Mongkolsapay, A. J. McMichael, and A. S. Baur. 1999. Induction of Fas ligand expression by HIV involves the interaction of Nef with the T cell receptor ζ chain. *J. Exp. Med.* 9:1489.
3. Champagne, P., G. S. Ogg, A. S. King, C. Knabenhans, K. Ellefsen, M. Nobile, V. Appay, G. P. Rizzardi, S. Fleury, M. Lipp, et al. 2001. Skewed maturation of memory HIV-specific CD8 T lymphocytes. *Nature* 410:106.
4. Collins, K. L., B. K. Chen, S. A. Kalams, B. D. Walker, and D. Baltimore. 1998. HIV-1 Nef protein protects infected primary cells against killing by cytotoxic T lymphocytes. *Nature* 391:397.
5. Schwartz, O., V. Marechal, S. LeGall, F. Lemonnier, and J. M. Heard. 1996. Endocytosis of major histocompatibility complex class I molecules is induced by the HIV-1 Nef protein. *Nat. Med.* 2:338.
6. Kasper, M. R., and K. L. Collins. 2003. Nef-mediated disruption of HLA-A2 transport to the cell surface in T cells. *J. Virol.* 77:3041.
7. Tomiyama, H., H. Akari, A. Adachi, and M. Takiguchi. 2002. Different effects of Nef-mediated HLA class I down-regulation on human immunodeficiency virus type 1-specific CD8⁺ T-cell cytotoxic activity and cytokine production. *J. Virol.* 76:7535.
8. Yang, O. O., P. T. Nguyen, S. A. Kalams, T. Dorfman, H. G. Gottlinger, S. Stewart, I. S. Chen, S. Threlkeld, and B. D. Walker. 2002. Nef-Mediated resistance of human immunodeficiency virus type 1 to antiviral cytotoxic T lymphocytes. *J. Virol.* 76:1626.
9. Kaslow, R. A., M. Carrington, R. Apple, L. Park, A. Munoz, A. J. Saah, J. J. Goedert, C. Winkler, S. J. O'Brien, C. Rinaldo, et al. 1996. Influence of combinations of human major histocompatibility complex genes on the course of HIV-1 infection. *Nat. Med.* 2:405.
10. Tomiyama, H., T. Sakaguchi, K. Miwa, S. Oka, A. Iwamoto, Y. Kaneko, and M. Takiguchi. 1999. Identification of multiple HIV-1 CTL epitopes presented by HLA-B*5101 molecules. *Hum. Immunol.* 60:177.
11. Tomiyama, H., H. Tomiyama, Y. Chujoh, T. Shioda, K. Miwa, S. Oka, Y. Kaneko, and M. Takiguchi. 1999. Cytotoxic T lymphocyte recognition of HLA-B*5101-restricted HIV-1 Rev epitope which is naturally processed in HIV-1-infected cells. *AIDS* 13:861.
12. Hossain, M. S., H. Tomiyama, T. Inagawa, S. Ida, S. Oka, and M. Takiguchi. 2003. Identification and characterization of HLA-A*3303-restricted, HIV type 1 Pol- and Gag-derived cytotoxic T cell epitopes. *AIDS Res. Hum. Retroviruses* 19:503.
13. Akari, H., S. Arold, T. Fukumori, T. Okazaki, K. Strebel, and A. Adachi. 2000. Nef-induced major histocompatibility complex class I down-regulation is functionally dissociated from its virion incorporation, enhancement of viral infectivity, and CD4 down-regulation. *J. Virol.* 74:2907.
14. Yang, O. O., P. T. Sarkis, A. Trocha, S. A. Kalams, R. P. Johnson, and B. D. Walker. 2003. Impacts of avidity and specificity on the antiviral efficiency of HIV-1-specific CTL. *J. Immunol.* 171:3718.
15. Migueles, S. A., A. C. Laborico, W. L. Shupert, M. S. Sabbaghian, R. Rabin, C. W. Hallahan, D. Van Baarle, S. Kostense, F. Miedema, M. McLaughlin, et al. 2002. HIV-specific CD8⁺ T cell proliferation is coupled to perforin expression and is maintained in nonprogressors. *Nat. Immunol.* 3:1061.