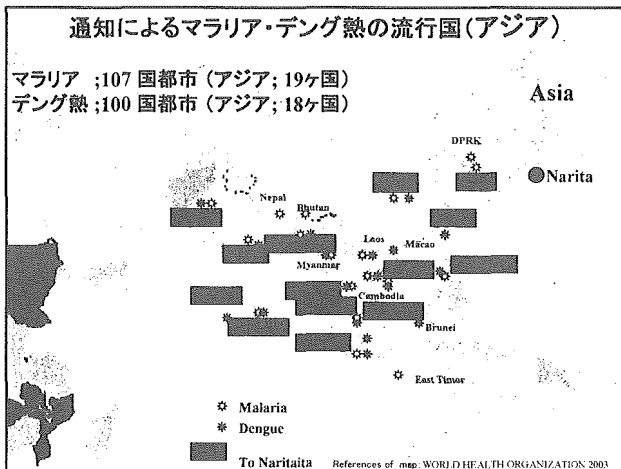
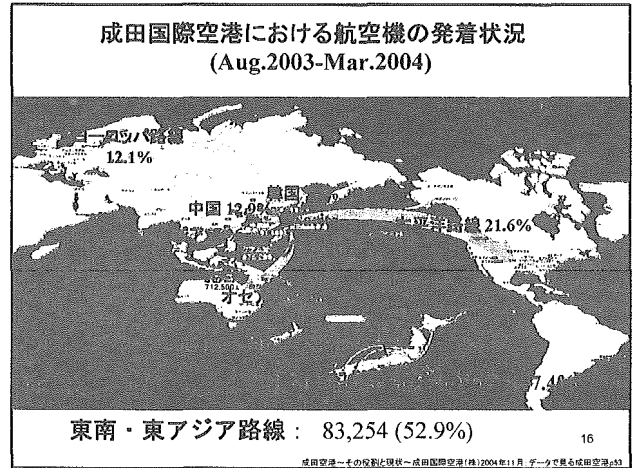


Summary of Surveillance Data, 2001-2005

15



航空機の調査結果 (2001-2005)

表1 機内衛生害虫調査の捕集状況

Year	Number of aircraft			Rate(%)	
	No. of survey(A)	Collected insecta(B)	Collected mosquitos (C)	B/A	C/A
2001	251	35	6	13.9	2.4
2002	288	61	1	21.2	0.3
2003	518	20 *	7 *	3.9	1.4
2004	609	31 *	8 *	5.1	1.3
2005	495	24 *	4 *	4.8	0.8
Total	2,161	171	26	8.0	1.2

* : 立ち入り調査は実施せず、持ち込まれた実績を含む

Data by Narita Airport quarantine station. (Jan.2006)

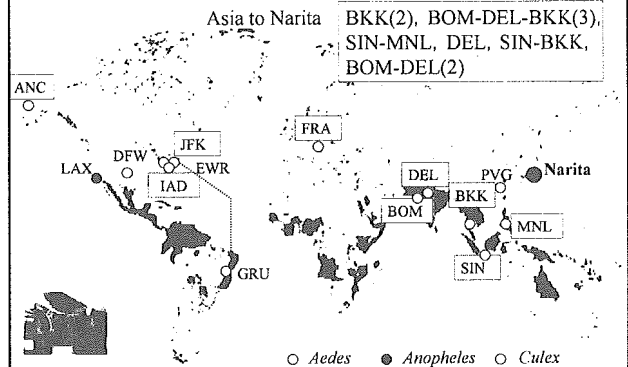
航空機調査で捕集された蚊族の種類と路線 (2001-2005)

表3 機内衛生害虫調査の捕集状況 (2001-2005年)

Species	Number of aircraft	Collected mosquitos					
		Europe	American Continent		Asia		
<i>Anopheles sinensis</i>	2		LAX-ANC	LAX			
<i>Aedes albopictus</i>	1		IAD				
<i>Aedes vexans nipponii</i>	1		JFK-ANC				
<i>Aedes sp.</i>	1		GRU-JFK				
<i>Culex pipiens pallens group</i>	9		EWB	LAX-ANC	DFW	BKK(2)	BOM-DEL-BKK(3)
<i>Culex tritaeniorhynchus</i>	1					DEL	
<i>Culex sp.</i>	6		LAX(2)	IAD(2)		SIN-BKK	PVG
Other mosquitoes	5	FRA	JFK-ANC			BOM-DEL(2)	BOM-DEL-BKK
Total	26	1		14			11

Data by Narita Airport quarantine station. (Jan 2006)

航空機調査で捕集された蚊族の種類と路線 (2001-2005)



Data by Narita Airport quarantine station. (Jan 2006)

Genus Anopheles and Aedes collected by aircraft

国際線航空機内で捕集した *Anopheles* 及び *Aedes* 属の蚊種

Species/origin of data report	Kusil., 1980 (May, 1975-Dec. 1976) 1)		Narita Airport quarantine station (1978-1988)		Narita Airport quarantine station (2001-2005)		Mitsuta., (1972-1999) 2)
	Number of aircraft	Route	Number of aircraft	Route	Number of aircraft	Route	
<i>An. sinensis</i>	2	MNL-TPE	5	MNL-BKK	2	LAX-LAS-ANC	○
<i>An. vagus</i>							○
<i>An. vagus imosus</i>	4	KHI-BKK-MNL, MNL-TPE	—	MNL, CAI-BKK-MNL, KHI-BKK-MNL			○
<i>An. subpictus</i>	1	RWP-RWP-PEK-SHA					○
<i>An. indistinctus</i>	2	CAI-BOM-BKK-MNL, MNL-TPE	3	MNL			○
<i>An. stephensi</i>			2	MNL-BKK			○
<i>Ae. sollicitans</i>							○
<i>Ae. vexans</i>	1	JFK			1	JFK-ANC	○
<i>Ae. sollicitans</i>	1	JFK					○
<i>Ae. albopictus</i>			3		1	IAD	
<i>Aedes sp.</i>			1		1	GRU-JFK	

MNL—Manila, BKK—Bangkok, CAI—Cairo, BOM—Mumbai, KHI—Karachi, LAX—Los Angeles, ANC—Anchorage, JFK—New York, IAD—Washington, D.C., GRU—Sao Paulo, TPE—Taipei, RWP—?, PEK—Peking, SHA—Shanghai

政令区域での成虫捕集状況 (2001-2005)

<i>An. sinensis</i>	(391)	<i>Cx. tritaeniorhynchus</i>	(2,580)
<i>Ae. albopictus</i>	(436)	<i>Cx. pipiens pallens group</i>	(20,618)
<i>Ae. vexans nipponii</i>	(1403)	<i>Cx. (Culicomyia) sp.</i>	(140)
<i>Ae. Japonicus</i>	(82)	<i>Cx. culicomyia pallidothorax</i>	(1)
<i>Ae. sp.</i>	(1)	<i>Cx. Orientalis</i>	(5)
<i>Tp. Bambusa</i>	(133)	<i>Cx. (Lutzia) halifaxii</i>	(10)
<i>Ar. subalbatus</i>	(59)	<i>Cx. sp.</i>	(8)
<i>Ar. sp</i>	(4)	Other spp. Unknown	(212)
<i>Ur. bimaculata</i>	(25)		

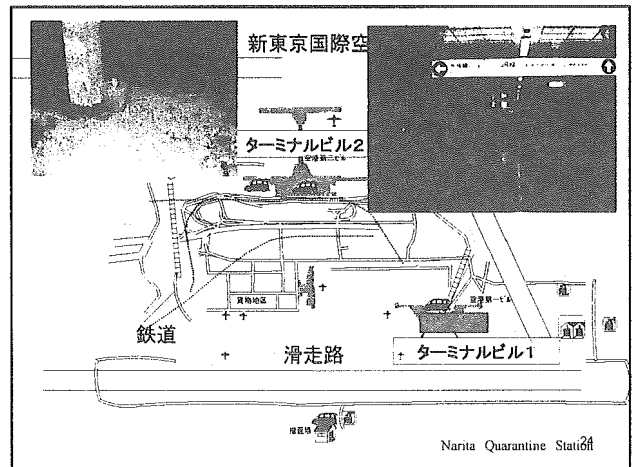
Data by Narita Airport quarantine station. (Jan 2006)

政令区域での幼虫捕集状況 (2001-2005)

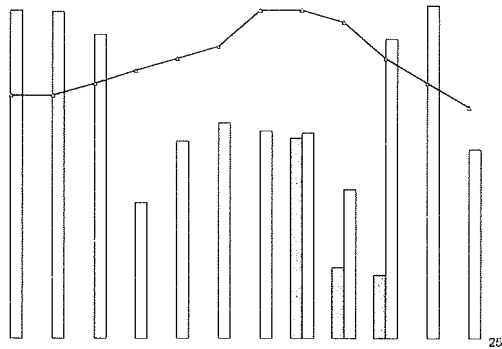
<i>An. sinensis</i>	<i>Cx. tritaeniorhynchus</i>
<i>Ae. albopictus</i>	<i>Cx. pipiens pallens</i>
<i>Ae. vexans nipponii</i>	<i>Cx. pipiens pallens group</i>
<i>Ae. japonicus</i>	<i>Cx. pipiens molestus</i>
<i>Tp. bambusa</i>	<i>Cx. (Lutzia) halifaxii</i>
<i>Ar. subalbatus</i>	<i>Cx. (Culicomyia) sp.</i>



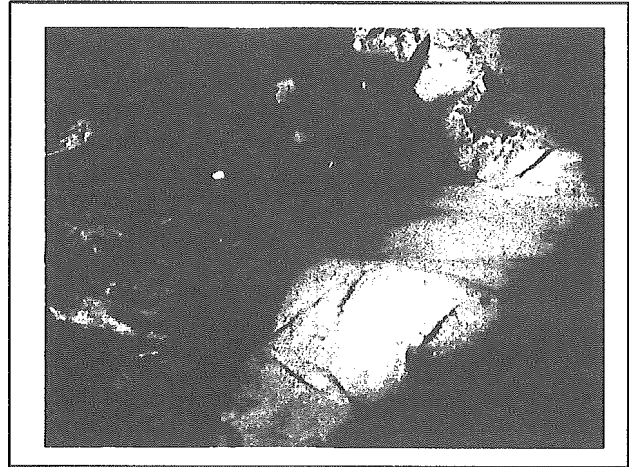
Data by Narita Airport quarantine station. (Jan 2006)



ターミナルビル内の捕集状況と環境(2001年)



25



Reported malaria and dengue fever Cases in Humans, Narita Int'l Airport (1997-2005)

Year	Narita Airport quarantine station/Infections Diseases Weekly Report		Narita Airport quarantine station			
	Malaria	Dengue Fever	Malaria positive/sample		Dengue Fever positive/sample	
			Pf	Pv		
1997	0/ND	ND	0/7			ND
1998	4/ND	8/ND	4/61	4		8/31
1999	2/112	0/9	2/51	1	1	0/20
2000	2/154	2/18	2/45	2		2/26
2001	1/109	8/50	1/84	1		8/69
2002	5/83	23/52	5/143	4	1	23/138
2003	1/78	14/32	1/147		1	14/155
2004	1/73	7/45	1/121	1		7/128
2005	0/ND	14/ND	0/101			14/105
Total	-	-	16/760	13	3	76/672

Pf: Falciparum malaria Pv: Vivax malaria

Data by Narita Airport quarantine station. (Jan 2006)

27

Results inspected for Human in Narita Airport quarantine station (1997-2005)

マラリア感染患者見舞事例(成田空港)

Year	Number of positive/sample	Voyage ahead
1997	0/7	-
1998	4/61	Senegal-Gambia-Guinea-Ghana(Pf), Mali-Senegal(Pf), Malaysia(Pf), Kenya-Uganda-Congo(Pf)
1999	2/51	Central African(Pf), Indonesia-China(Pv)
2000	2/45	India(Pf), Guinea-Mali-Senegal(Pf)
2001	1/84	Thailand-Myanmar(Pf)
2002	5/143	Uganda(Pf), Malawi(Pf), Thailand(Pf), Thailand(Pv), India(Pf)
2003	1/147	Venezuela(Pv)
2004	1/121	Gambia(Pf)
2005	0/101	-
Total	16/760	Senegal (3), Gambia (2), Mali (2), Uganda (2), Guinea (1), Ghana (1), Guinea (1), Malawi (1), Kenya (1), Congo (1), Central African (1), Thailand (3), India (2), Malaysia (1), Indonesia (1), Myanmar (1), China (1), Venezuela (1)

Pf: Falciparum malaria Pv: Vivax malaria

Data by Narita Airport quarantine station. (Jan 2006)

28

Summary and Discussion

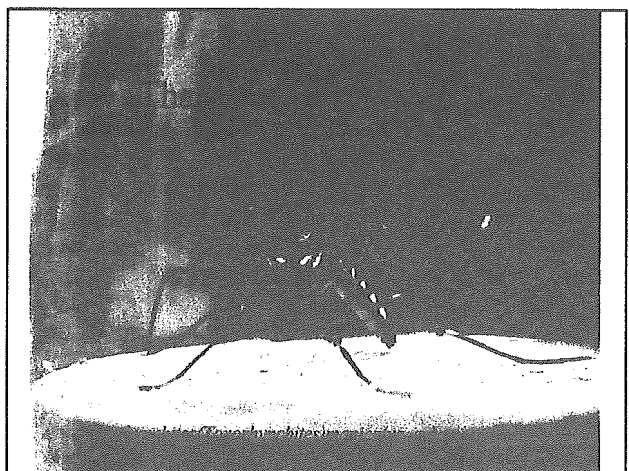
わが国の国際路線航空機の約60%は成田国際空港に到着する。その半数はアジアからの便でマラリアとデング熱の流行地域が含まれていた。

航空機の1.2%から蚊が捕集され、Culex属はアジア、Anopheles、Aedes属は北米路線であった。このことから蚊は航空機を介して移動していることが判明した。

政令区域では媒介種を含む15種が生息しており、いずれも在来種であった。また、マラリアおよびフラビウウイルスの病原体は確認されなかった。

捕集された期間は夏期が中心であったが、空港ビル内では冬期に優位に繁殖する種が確認され、季節をとわず生息する環境であった。

29



Published in final edited form as:

Mol Biol Evol. 2005 August ; 22(8): 1733–1739.

Mitochondrial Genome Sequences Support Ancient Population Expansion in *Plasmodium vivax*

Somchai Jongwutiwes^{*†}, Chaturong Putaporntip[†], Takuya Iwasaki[‡], Marcelo U. Ferreira[§], Hiroji Kanbara[¶], and Austin L. Hughes^{||.††}

^{*}Department of Molecular Epidemiology, Institute of Tropical Medicine, Nagasaki University, Nagasaki 852-8523, Japan; [†]Department of Parasitology, Faculty of Medicine, Chulalongkorn University, Bangkok 10330, Thailand; [‡]Department of Laboratory Investigation, Institute of Tropical Medicine, Nagasaki University, Nagasaki 852-8523, Japan; [§]Departamento de Parasitologia, Instituto de Ciências Biomédicas da Universidade de São Paulo, São Paulo 05508-900, Brazil; [¶]Department of Protozoology, Institute of Tropical Medicine, Nagasaki University, Nagasaki 852-8523, Japan; ^{||}Department of Biological Sciences, University of South Carolina, Columbia SC 29208, USA

Abstract

Examination of nucleotide diversity in 106 mitochondrial genomes of the most geographically widespread human malaria parasite, *Plasmodium vivax*, revealed a level of diversity similar to, but slightly higher than, that seen in the virulent human malaria parasite *Plasmodium falciparum*. The pairwise distribution of nucleotide differences among mitochondrial genome sequences supported the hypothesis that both of these parasites underwent ancient population expansions. We estimated the age of the most recent common ancestor (MRCA) of the mitochondrial genomes of both *P. vivax* and *P. falciparum* at around 200,000–300,000 years ago. This is close to previous estimates of the time of the human mitochondrial MRCA and the origin of modern *Homo sapiens*, consistent with the hypothesis that both of these *Plasmodium* species were parasites of the hominid lineage before the origin of modern *Homo sapiens* and that their population expansion coincided with the population expansion of their host.

Partial or complete sequences of mitochondrial genomes have proved to be useful markers for population studies in a wide variety of organisms (Avice and Walker 1998; Jorde, Bamshad, and Rogers 1998; Saccone 1994). In the malaria parasites of the genus *Plasmodium*, the mitochondrial genome is particularly convenient for such studies, since it is only about 6 kb in length and includes only three protein-coding genes: *cox3*, *cox1*, and *cytb* (Wilson and Williamson 1997). In the virulent human malaria parasite *P. falciparum*, early studies reported a lack of synonymous polymorphism in a small sample of nuclear genes (Rich et al. 1998) and of polymorphism in introns in a small sample of nuclear genes (Volkman et al. 2001), and on this basis it was hypothesized that the most recent common ancestor (MRCA) of *P. falciparum* was quite recent. However, analysis of more extensive data sets revealed abundant polymorphism at synonymous sites and in introns in nuclear genes and supported the hypothesis that *P. falciparum* has a large long-term effective population size and an ancient origin (Hughes and Verra 2001, 2002; Jongwutiwes et al. 2002; Mu et al. 2002). Likewise, early studies showed a relatively low level of polymorphism in complete mitochondrial

†† To whom correspondence should be addressed. E-mail: Austin@biol.sc.edu

genomes of *P. falciparum* (Conway et al. 2000), but a more extensive survey uncovered more extensive polymorphism (Joy et al. 2003).

Using a small number of complete mitochondrial genomes of *P. falciparum*, Hughes and Verra (2002) estimated the age of the most recent common ancestor (MRCA) of those genomes at 124,000–173,000 years ago. Based on a much larger data set, Joy and colleagues (2003) presented a somewhat more recent estimate (70,000–98,000 years ago) for the age of MRCA of *P. falciparum* mitochondrial genomes. However, the latter authors estimated the age of the MRCA incorrectly; what they computed was in fact the mean pairwise divergence time of mitochondrial genomes, which will always be considerably less than the age of the MRCA. Rather, the age of the MRCA of a set of allelic sequences should be estimated from the deepest branching point in their phylogeny. In addition, it is important to remember that, since the mitochondrial genome is inherited as a single gene, the mitochondrial MRCA is not the same as the MRCA of the population or species. Nonetheless, the mitochondrial MRCA represents a minimum estimate of the age of the species.

In comparison to *P. falciparum*, relatively little is known regarding the population genetics of *P. vivax*, the most geographically widespread of human malaria parasites. A recent analysis of single nucleotide polymorphisms in the nuclear genome suggested that polymorphism in *P. vivax* is similar to that in *P. falciparum* or slightly higher (Feng et al. 2003). In the case of *P. falciparum*, evolutionary studies have been aided by the availability of an isolate of the chimpanzee malaria parasite *P. reichenowi*. Since it can plausibly be assumed that the MRCA of *P. falciparum* and *P. reichenowi* occurred around the time that human and chimpanzee lineages diverged (5–7 million years ago), *P. reichenowi* provides a calibration point for estimating divergence times within *P. falciparum* (Escalante et al. 1998; Hughes and Verra 2001; Joy et al. 2003). Such a reference for calibration has so far been lacking for *P. vivax*.

A phylogenetic tree based on the mitochondrial *cytb* gene showed that *P. vivax* forms part of a monophyletic group of closely related species including the other human malaria parasites *P. malariae* and *P. ovale*, along with a number of monkey malaria parasites from Southeast Asia (Escalante et al. 1998). Relationships within this group were not well resolved (Escalante et al. 1998), but a more recent phylogenetic analysis based on the β -tubulin and CDC-2 genes placed *P. vivax* as a close relative of three Asian monkey malarias (Escalante et al. 2005). We sequenced the complete mitochondrial genome from 105 isolates of *P. vivax* from around the world, from single isolates of *P. malariae*, *P. ovale*, and the Southeast Asian monkey malaria *P. knowlesi*, and from reference strains of *P. simium*, *P. fragile* and *P. knowlesi*. By examining the pattern of nucleotide diversity among these genomes, we obtained evidence regarding the ancient demography of *P. vivax*. We applied phylogenetic analysis to these sequences in order to establish the closest relative of *P. vivax* among these species and in turn used this information to provide the first estimate of the age of the MRCA of the world population of *P. vivax*.

Materials and Methods

Malarial DNA Samples.

Blood samples were recruited from 105 *P. vivax*-infected individuals who acquired infections from 9 different countries including Thailand collected during 1996–2001 (n=39), Brasil during 1995–1999 (n=24), China in 1996 (n=12), Indonesia during 2002–2003 (n=11), Vietnam in 1996 (n=7), Bangladesh in 1994 (n=7), Solomon Islands in 1999–2002 (n=3), India in 1999 (n=1) and Papua New Guinea in 2001 (n=1). DNA was extracted from venous blood samples by using QIAamp kit (Qiagen, Germany) or finger-pricked blood spotted onto filter paper by the method described by others (Sakihama et al. 2001). These isolates had been previously analyzed for the presence of single infection with *P. vivax* by examination of Giemsa-stained thin and thick blood films and subsequently confirmed by species-specific

nested polymerase chain reaction as described by others (Kawamoto et al. 2002). All isolates contained a single clone infection as determined by hybridization of the PCR-amplified merozoite surface protein-1 gene (PvMsp-1) from each isolate with allele-specific probes derived from variable blocks 2, 6 and 12 of PvMsp-1 (Putaporntip et al. 2002). DNA samples incorporated for comparison were as follows: clinical isolates with single species infection comprising *P. ovale* from Thailand, *P. malariae* from Indonesia and *P. knowlesi* from a Thai patient (Jongwutiwes et al. 2004); and reference strains comprising *P. fragile* type strain, *P. simium* Howler strain, *P. knowlesi* Malayan strain and *P. vivax* Salvador 1 strain (MRA-352, MRA-353, MRA-487 and MRA-552, MR4, ATCC Manassas Virginia).

Amplification and DNA Sequencing.

The complete mitochondrial DNA of *P. vivax*, *P. ovale*, *P. malariae*, *P. fragile*, *P. simium* and *P. knowlesi* was amplified using 2 pairs of primers, mt-F/mt-FR and mt-R/mt-RF, generating 2 overlapping fragments of 3.4 and 2.9 kb, respectively. The reaction mixture was in 30 μ l containing malarial DNA, 2.5 mM MgCl₂, 300 μ M each dNTP, 3 μ l of 10xLA PCR buffer, 0.3 μ M of each primer and 1.25 units of LA TaqTM DNA polymerase (Takara, Japan). The thermal cycler profile contained a pre-amplification denaturation at 94°C for 1 min, 35 cycles of 96°C for 20 sec and 62°C for 5 min and a final extension at 72°C for 10 min (Sakihama et al. 2001). All amplification reactions were performed in Perkin-Elmer 2400 or 9600 thermal cycler (Perkin-Elmer, USA). The PCR-amplified products were purified by using a QIAamp PCR purification kit (Qiagen, Germany) and used as templates for sequencing. DNA sequencing was performed using the BigDyeTM Terminator V3.1 Cycle Sequencing kit on an ABI310 or ABI-Hitachi 3100 DNA sequencer (Applied Biosystems). Sequences were determined directly and from both directions using 23 sequencing primers (Table S1). Singletons and unique insertion/deletion of sequences were validated by sequencing of the PCR products from independent amplification reactions using the same genomic DNA as templates. Sequences have been deposited in the GenBankTM Database under the accession numbers AY598035-AY598143 and AY722797-AY722799.

Statistical Analyses.

In comparative analyses, we used 101 previously published mitochondrial genome sequences from *P. falciparum* (Genbank loci M76611, PFAMTCYTO, PFA276844 through -7, and AY82924 through -3019) and one from *P. reichenowi* (PRE251941). We did not include the highly divergent published *P. falciparum* sequence PFA298788, which may include sequencing errors. Note that most *P. falciparum* mitochondrial genome sequences are incomplete, with about 1267 base pairs missing from the largest noncoding region.

Sequences were aligned using the CLUSTAL W program (Thompson, Higgins, and Gibson 1994). In calculating evolutionary distances among a set of sequences, any site at which the alignment assumed a gap in any sequence was excluded from all pairwise comparisons. The number of nucleotide substitutions per site (d) in non-coding regions was estimated by the method of Jukes and Cantor (1969), by 2-parameter method, and by method. The Jukes-Cantor model is a simple model that assumes equal probability of each nucleotide change, while the Kimura 2-parameter model estimates separate rates for transitions and transversions, and the Tamura-Nei model incorporates nucleotide content bias. In coding regions, numbers of synonymous nucleotide substitutions per synonymous site (d_s) and numbers of nonsynonymous nucleotide substitutions per nonsynonymous site (d_n) were estimated by the Nei and Gojobori (1986) method and by method, which attempts to correct for the effects of transitional bias at two-fold degenerate sites.

All evolutionary distances were estimated using the MEGA2 computer program (Kumar et al. 2001); standard errors of pairwise distance estimates were estimated by the bootstrap method (Nei and Kumar 2000). Phylogenetic trees were reconstructed by the neighbor-joining method (Saitou and Nei 1987), and the reliability of clustering patterns in trees was assessed by bootstrapping (Felsenstein 1985). 1000 bootstrap replicates were used. The age of the MRCA was estimated by the linearized-tree method (Takezaki, Rzhetsky, and Nei 1985), applied to both non-coding regions and synonymous sites in codons.

In estimates of the age of the MRCA, we used the comparison of *P. falciparum* and *P. reichenowi* as a calibration. *P. falciparum* and *P. reichenowi* are sister taxa (Escalante and Ayala 1994), and the common ancestor of *P. falciparum* and *P. reichenowi* was assumed to have occurred at the same time as the common ancestor of human and chimpanzee. This assumption has been made in numerous previous studies and has yielded estimates of rates of nucleotide substitution similar to those for other eukaryotes (Escalante et al. 1998; Hughes and Verra 2001; Joy et al. 2003). We used two estimates (5 million years ago and 7 million years ago) for the time of the MRCA of human and chimpanzee. In order to test the molecular clock hypothesis, we used model-free relative rate test. We tested the equality of rates in *P. falciparum* and *P. reichenowi* using *P. knowlesi* and *P. vivax* as outgroups; similarly, we tested the equality of rates in *P. knowlesi* and *P. vivax* sequences using *P. falciparum* and *P. reichenowi* as outgroups. In all cases, the test failed to reject the hypothesis of a constant rate. All estimates of the age of the MRCA were based on the combined nucleotide divergence at non-coding sites and at synonymous sites in coding regions, corrected for multiple hits by the Jukes-Cantor model. The latter model was used because this simple model and more complex models yielded essentially identical results and because the simpler model is expected to have a lower variance of estimation (Nei and Kumar 2000).

The mismatch distribution (the distribution of the pairwise number of differences between sequences) was analyzed as an indicator of ancient population expansion as suggested by Rogers and Harpending (1992). The expected mismatch distribution under constant population size was estimated by the equation $F_i \approx \theta^i / (\theta + 1)^{i+1}$ (Rogers and Harpending 1992), where F_i is the expected frequency of pairwise comparisons showing i differences, and θ is estimated by the observed mean of pairwise differences.

Results

The phylogenetic tree based on combined non-coding sequences from the mitochondrial genome (Figure 1) showed that all genomes from *P. vivax* were closely related to one another; no branches within the *P. vivax* cluster received strong bootstrap support. The single *P. simium* sequence in our data set fell within the *P. vivax* cluster (Figure 1), and the cluster containing *P. vivax* and *P. simium* received 100% bootstrap support (Figure 1). This result is consistent with the conclusion of Leclerc et al. (2004), based on microsatellite loci, that *P. simium* is indistinguishable from *P. vivax*. *P. knowlesi* clustered most closely with *P. vivax* and *P. simium*, and this pattern received 100% bootstrap support (Figure 1).

The mean number of pairwise nucleotide differences at 5986 aligned nucleotide sites among *P. vivax* mitochondrial genome sequences was 4.90 ± 1.10 S.E. (Figure 2A). The distribution of pairwise differences showed a pattern characteristic of a population expansion and was significantly different from that expected under constant population size ($P < 0.001$; Figure 2A). The mean number of pairwise nucleotide differences among *P. falciparum* mitochondrial genome sequences was 1.88 ± 0.68 at 4700 aligned nucleotide sites. As in *P. vivax*, the distribution of pairwise differences in *P. falciparum* indicated a population expansion and was significantly different from that expected under constant population size ($P < 0.001$; Figure

2B). The mean proportion of nucleotide differences per site in *P. vivax* (0.0008 ± 0.0002) was higher than that in *P. falciparum* (0.0004 ± 0.0001); but the difference was not statistically significant (z-test).

When we examined the numbers of nucleotide substitutions in pairwise comparisons among unique complete mitochondrial genome sequences in *P. vivax* and in *P. falciparum*, the patterns were broadly similar (Table 1). The Nei and Gojobori method and Li's method yielded similar estimates of d_S and d_N (Table 1). As is expected in most genes because of purifying selection against deleterious nonsynonymous substitutions (Hughes 1999), d_S exceeded d_N in most comparisons (Table 1). The one exception was *cox3* of *P. vivax* (Table 1), but in this case the difference between d_S and d_N was not significant (z-test).

Both *P. vivax* and *P. falciparum* showed a very biased nucleotide content at third positions of protein-coding genes (Table 1). In both species, the nucleotide content in non-coding regions was much less biased than at third positions in coding regions. Nonetheless, d in non-coding regions was roughly similar to d_S in coding regions (Table 1). Thus, the differences in nucleotide content appeared not to have a major effect on estimation of these quantities. All three models yielded identical estimations for d in non-coding regions (Table 1).

The time of the MRCA was estimated for all *P. vivax* sequences; for the common ancestor of *P. vivax* and *P. knowlesi*; and for all *P. falciparum* sequences (Table 2). On the basis of the two estimates for the human-chimpanzee divergence, we obtained two separate estimates for the rate of nucleotide substitution (λ) (Table 2); these in turn were used to estimate the time of major branching points within the linearized trees. The sequence divergence between *P. vivax* and *P. knowlesi* was surprisingly similar to that between *P. falciparum* and *P. reichenowi* (Table 2). Thus, our estimates of the time of the MRCA of *P. vivax* and *P. knowlesi* were surprisingly close those for *P. falciparum* and *P. reichenowi* (Table 2). Similarly, the divergence at the deepest point in the *P. vivax* cluster was very similar to that at the deepest point in the *P. falciparum* cluster (Table 2). These estimates placed the mitochondrial ancestors of both of these parasites at around 200,000–300,000 years ago (Table 2).

Discussion

The sequence of 106 complete mitochondrial genomes from *P. vivax* revealed a level of nucleotide diversity comparable to that in *P. falciparum*. This is in agreement with the data of Feng et al. (2003), who showed extensive single-nucleotide polymorphism in the nuclear genome of *P. vivax*. *P. vivax* was found to be closely related to Asian monkey malarias, consistent with an origin in Asia. A phylogeny based on the nuclear-encoded β -tubulin and CDC-2 genes of 10 species of *Plasmodium* supported an Asian origin for *P. vivax*, whose closest relatives were three Asian monkey malarias (*P. cynomolgi*, *P. fieldi*, and *P. simiovale*) (Escalante et al. 2005). We estimated the age of the common ancestor of *P. vivax* and *P. knowlesi* at 5–7 Mya. This is somewhat earlier than previously discussed estimates for divergence times within the Southeast Asian clade of *Plasmodium* (Escalante et al. 1998; 2005). However, since the phylogeny of Escalante et al. (2005) shows the branching point of *P. vivax* and *P. knowlesi* to be the deepest in this clade, our estimate is consistent with Escalante et al.'s (2005) estimate, based on estimated radiation of their primate hosts, of 1.4–2.5 Mya for the divergence of the closely related species *P. cynomolgi* and *P. inui*.

We estimated the ages of the MRCA of mitochondrial genomes in *P. vivax* and *P. falciparum*, and the estimates were very similar, around 200,000–300,000 years ago. This age is similar to earlier estimates of the age of the MRCA of *P. falciparum* based on extensive sequence data from the nuclear genome (Hughes and Verra 2001, 2002; Mu et al. 2002).

Moreover, this time is close to the time of the mitochondrial ancestor of modern humans (Nei 1992) and to fossil-based estimates time of origin of modern *Homo sapiens* in Africa (Stringer and Andrews 1988).

Leclerc et al. (2004) found limited polymorphism at microsatellite loci in *P. vivax*. The rate of mutation at microsatellite loci is on the order of 10^{-4} to 10^{-2} mutations per locus per generation (Lai and Sun 2003). Assuming that generation time in *Plasmodium* is not greater than one year (Hughes and Verra 2001), it is expected that these loci will become saturated with changes after about 100–10,000 years. Therefore, microsatellite data cannot shed light on the population history of *P. vivax* before about 10,000 years ago.

Using data from four nuclear-encoded loci, Escalante et al. (2005) recently provided somewhat more recent estimates of the age of the MRCA of *P. vivax* than those presented here. However, these authors, like Joy et al. (2003), mistakenly used the mean sequence divergence of all pairwise comparisons to estimate MRCA. As mentioned previously, the estimation of the age of the MRCA must be based not on the mean of all pairwise comparisons, but on the deepest branching point of the phylogeny. When the age of the MRCA was estimated for Escalante et al.'s data by the linearized tree method based on d_S , using the calibration times proposed by Escalante et al. (2005), the estimates (mean for all four loci) of the age of the MRCA were 206,000–314,000 years (A.L. Hughes, unpublished), in good agreement with the present study.

There is ample genetic evidence that a population bottleneck and subsequent ancient population expansion occurred in the origin of modern *Homo sapiens* (Harpending et al. 1998). It is not surprising that the human mitochondrial MRCA occurred around the same time as this bottleneck, since the probability of fixation of selectively neutral variants increases during a bottleneck (Nei, Maruyama, and Chakraborty 1975). Given that the mitochondrial MRCA of both *P. vivax* and *P. falciparum* appear to have occurred in the same period, it might be predicted that these species also underwent population expansion along with their host. This prediction was supported by the mismatch distribution of mitochondrial genome sequences in both species. A parasite bottleneck and subsequent expansion coinciding with those of the host would in turn imply that both *P. falciparum* and *P. vivax* were parasites of *Homo* before the origin of modern *Homo sapiens*.

In the case of *P. falciparum*, this hypothesis receives strong support from the fact that the sister species of *P. falciparum* is *P. reichenowi*, a chimpanzee parasite (Escalante and Ayala 1994). Thus, *P. falciparum* apparently represents a lineage that has been parasitic on the hominid lineage since its divergence from chimpanzee. By contrast, the closest relatives of *P. vivax* are parasites of Southeast Asian primates (Escalante et al. 1998; 2005), strongly suggesting that the origin of *P. vivax* was in Southeast Asia. However, an Asian origin for *P. vivax* is problematic because of the high frequency of null alleles for the Duffy blood group antigen (erythrocyte chemokine receptor) in Sub-Saharan African (Carter and Mendis 2002). Duffy negative erythrocytes are resistant to invasion by *P. vivax*, and the high frequency of the null allele in Africa suggests the result of natural selection over a long association with *P. vivax*.

This paradox is resolved if *P. vivax* became a parasite of hominids – presumably in Asia – long before the origin of modern *Homo sapiens*. By about 1 Mya, *Homo erectus* is known to have inhabited both Africa and a wide geographic area of southern Asia (Anton 2003). We hypothesize that *P. vivax* transferred from a monkey host to *H. erectus* in Southeast Asia sometime before 1 Mya and subsequently spread across southern Asia into Africa through the *H. erectus* population. This model assumes that *P. vivax* reached Africa by dispersal through a *H. erectus* population that was distributed nearly continuously across Africa and southern

Asia. Consistent with this hypothesis is the evidence presented here that *P. vivax* underwent a bottleneck and subsequent expansion around the time of origin of modern *Homo sapiens*.

Supplementary Material

Supplementary Material 1.

Acknowledgements

We are grateful to all patients who participated in this study; to MR4 for providing us with malaria parasites contributed by W.E. Collins. This study received financial support from a research grant for the 21st Century: Center of Excellence Program (No. COE17301-F1) from Ministry of Education, Culture, Sports, Science and Technology of Japan; The Hitachi Scholarship Foundation to S.J. and C.P.; and grant GM43940 from the National Institutes of Health to A.L.H.

References

- Anton SC. Natural history of *Homo erectus* Yearbook Phys. Anthropol 2003;46:126–170.
- Avise JC, Walker D. Pleistocene phylogeographic effects on avian populations and the speciation process. Proc R Soc Lond B 1998;265:457–463.
- Carter R, Mendis KN. Evolutionary and historical aspects of the burden of malaria. Clin Microbiol Rev 2002;15:564–594. [PubMed: 12364370]
- Conway DJ, Fanello C, Lloyd JM, Al-Joubouri BM-AS, Baloch AH, Somanth SD, Roper C, Oduola AMJ, Mulder B, Pova M, Singh B, Thomas AW. Origin of *Plasmodium falciparum* malaria is traced by mitochondrial DNA. Mol Biochem Parasitol 2000;111:163–171. [PubMed: 11087926]
- Escalante AA, Ayala FJ. Phylogeny of the malarial genus *Plasmodium* derived from rRNA gene sequences. Proc Natl Acad Sci USA 1994;91:11372–11377.
- Escalante AA, Freeland DE, Collins WE, Lal AA. The evolution of primate malaria parasites based on the gene encoding cytochrome *b* from the linear mitochondrial genome. Proc Natl Acad Sci USA 1998;95:8124–8129. [PubMed: 9653151]
- Escalante AA, Cornejo OE, Freeland DE, Poe AC, Durrego E, Collins WE, Lal AA. A monkey's tale: the origin of *Plasmodium vivax* as a human malaria parasite. Proc Natl Acad Sci USA 2005;102:1980–1985. [PubMed: 15684081]
- Felsenstein J. Confidence limits on phylogenies: an approach using the bootstrap. Evolution 1985;39:783–791.
- Feng X, Carlton JM, Joy DA, Mu J, Furuya T, Suh BB, Wang Y, Barnwell JW, Su X-Z. Single-nucleotide polymorphisms and genome diversity in *Plasmodium vivax*. Proc Natl Acad Sci USA 2003;100:8502–8507. [PubMed: 12799466]
- Harpending HC, Batzer MA, Gurven M, Jorde LB, Rogers AR, Sherry ST. Genetic traces of ancient demography. Proc Natl Acad Sci USA 1998;95:1961–1967. [PubMed: 9465125]
- Hughes AL. 1999. Adaptive Evolution of Genes and Genomes. Oxford University Press, New York.
- Hughes AL, Verra F. Very large long-term effective population size in the virulent human malaria parasite *Plasmodium falciparum*. Proc R Soc Lond B 2001;268:1855–1860.
- Hughes AL, Verra F. Extensive polymorphism and ancient origin of *Plasmodium falciparum*. Trends Parasitol 2002;18:348–351. [PubMed: 12377283]
- Jongwutiwes S, Putaporntip C, Friedman R, Hughes AL. The extent of nucleotide polymorphism is highly variable across a 3-kb region on *Plasmodium falciparum* chromosome 2. Mol Biol Evol 2002;19:1585–1590. [PubMed: 12200485]
- Jongwutiwes S, Putaporntip C, Iwasaki T, Sata T, Kanbara H. Naturally acquired *Plasmodium knowlesi* malaria in human, Thailand. Emerg Infect Dis 2004;10:2211–2213. [PubMed: 15663864]
- Jorde LB, Bamshad M, Rogers AR. Using mitochondrial and nuclear DNA markers to reconstruct human evolution. Bioessays 1998;20:126–136. [PubMed: 9631658]
- Joy DA, Feng X, Mu J, Furuya F, Chotivanich K, Krettli AU, Ho M, Wang A, White NJ, Suh E, Beerli P, Su X. Early origin and recent expansion of *Plasmodium falciparum*. Science 2003;300:318–321. [PubMed: 12690197]

- Jukes, T.H. and J.C. Cantor. 1969. Evolution of protein molecules. Pp. 21–132 in Munro, H.N. (ed.) Mammalian protein metabolism. Academic Press, New York.
- Kawamoto F, Win TT, Mizuno S, Lin K, Kyaw O, Tantular S, Mason DP, Kimura M, Wongsrichanalai C. Unusual *Plasmodium malariae*-like parasites in southeast Asia. *J Parasitol* 2002;88:350–357. [PubMed: 12054010]
- Kimura M. A simple method for estimating evolutionary rate of base substitution through comparative studies of nucleotide sequences. *J Mol Evol* 1980;16:111–120. [PubMed: 7463489]
- Kumar S, Tamura K, Jakobsen B, Nei M, M. MEGA2: molecular evolutionary genetics analysis software. *Bioinformatics* 2001;17:1244–1245. [PubMed: 11751241]
- Lai Y, Sun F. The relationship between microsatellite slippage mutation rate and the number of repeat units. *Mol Biol Evol* 2003;20:2123–2131. [PubMed: 12949124]
- Leclerc MC, Durand P, Gauthier C, Patot S, Billotte N, Menegon M, Severini C, Ayala FJ, Renaud F. Meager genetic variability of the human malaria agent *Plasmodium vivax*. *Proc Natl Acad Sci USA* 2004;101:14455–14460. [PubMed: 15328406]
- Li W-H. Unbiased estimates of the rates of synonymous and nonsynonymous substitution. *J Mol Evol* 1993;36:96–99. [PubMed: 8433381]
- Mu J, Duan J, Markova K, Joy D, Huynh CQ, Branch OH, Li W-H, Su X. Chromosome-wide SNPs reveal an ancient origin for *Plasmodium falciparum*. *Nature* 2002;418:323–326. [PubMed: 12124624]
- Nei M. Age of the common ancestor of human mitochondrial DNA. *Mol Biol Evol* 1992;9:1176–1178. [PubMed: 1435241]
- Nei M, Gojobori T. Simple methods for estimating the number of synonymous and nonsynonymous nucleotide substitutions. *Mol Biol Evol* 1986;3:418–426. [PubMed: 3444411]
- Nei. M. and S. Kumar. 2000. *Molecular Evolution and Phylogenetics*. Oxford University Press, New York.
- Nei M, Maruyama T, Chakraborty R. The bottleneck effect and genetic variability in populations. *Evolution* 1975;29:1–10.
- Putaporntip C, Jongwutiwes S, Sakihama N, Ferreira MU, Kho WG, Kaneko A, Kanbara H, Hattori T, Tanabe K. Mosaic organization and heterogeneity in frequency of allelic recombination of the *Plasmodium vivax* merozoite surface protein-1 locus. *Proc Natl Acad Sci USA* 2002;99:16348–16353. [PubMed: 12466500]
- Rich SM, Licht MC, Hudson RR, Ayala FJ. Malaria's Eve: evidence of a recent population bottleneck throughout the world population of *Plasmodium falciparum*. *Proc Natl Acad Sci USA* 1998;95:4425–4430. [PubMed: 9539753]
- Rogers AR, Harpending H. Population growth makes waves in the distribution of pairwise genetic differences. *Mol Biol Evol* 1992;9:552–569. [PubMed: 1316531]
- Saccone C. The evolution of mitochondrial DNA. *Curr Opin Genet Dev* 1994;4:875–881. [PubMed: 7888758]
- Saitou N, Nei M. The neighbor-joining method: a new method for reconstructing phylogenetic trees. *Mol Biol Evol* 1987;4:406–425. [PubMed: 3447015]
- Sakihama N, Mitamura T, Kaneko A, Horii T, Tanabe K. Long PCR amplification of *Plasmodium falciparum* DNA extracted from filter paper blots. *Exp Parasitol* 2001;97:50–54. [PubMed: 11207114]
- Stringer CB, Andrews P. Genetic and fossil evidence for the origin of modern humans. *Science* 1988;239:1263–1268. [PubMed: 3125610]
- Tajima F. Simple methods for testing molecular clock hypothesis. *Genetics* 1993;135:599–607. [PubMed: 8244016]
- Takezaki N, Rzhetsky A, Nei M. Phylogenetic test of the molecular clock and linearized trees. *Mol Biol Evol* 1995;12:823–833. [PubMed: 7476128]
- Tamura K, Nei M. Estimation of the number of nucleotide substitutions in the control region of mitochondrial DNA in humans and chimpanzees. *Mol Biol Evol* 1993;10:512–526. [PubMed: 8336541]

- Thompson JD, Higgins DG, Gibson T. CLUSTALW: improving the sensitivity of progressive multiple sequence alignment through sequence weighting, position-specific gap penalties and weight matrix choice. *Nucleic Acids Res* 1994;22:4673–4680. [PubMed: 7984417]
- Volkman SK, Barry AE, Lyons EJ, Nielsen KM, Thomas SM, Choi M, Thakore SS, Day KP, Wirth DF, Hartl DL. Recent origin of *Plasmodium falciparum* from a single progenitor. *Science* 2001;293:482–484. [PubMed: 11463913]
- Wilson RJM, Williamson DH. Extrachromosomal DNA in the Apicomplexa. *Microbiol Mol Biol Reviews* 1997;61:1–16.

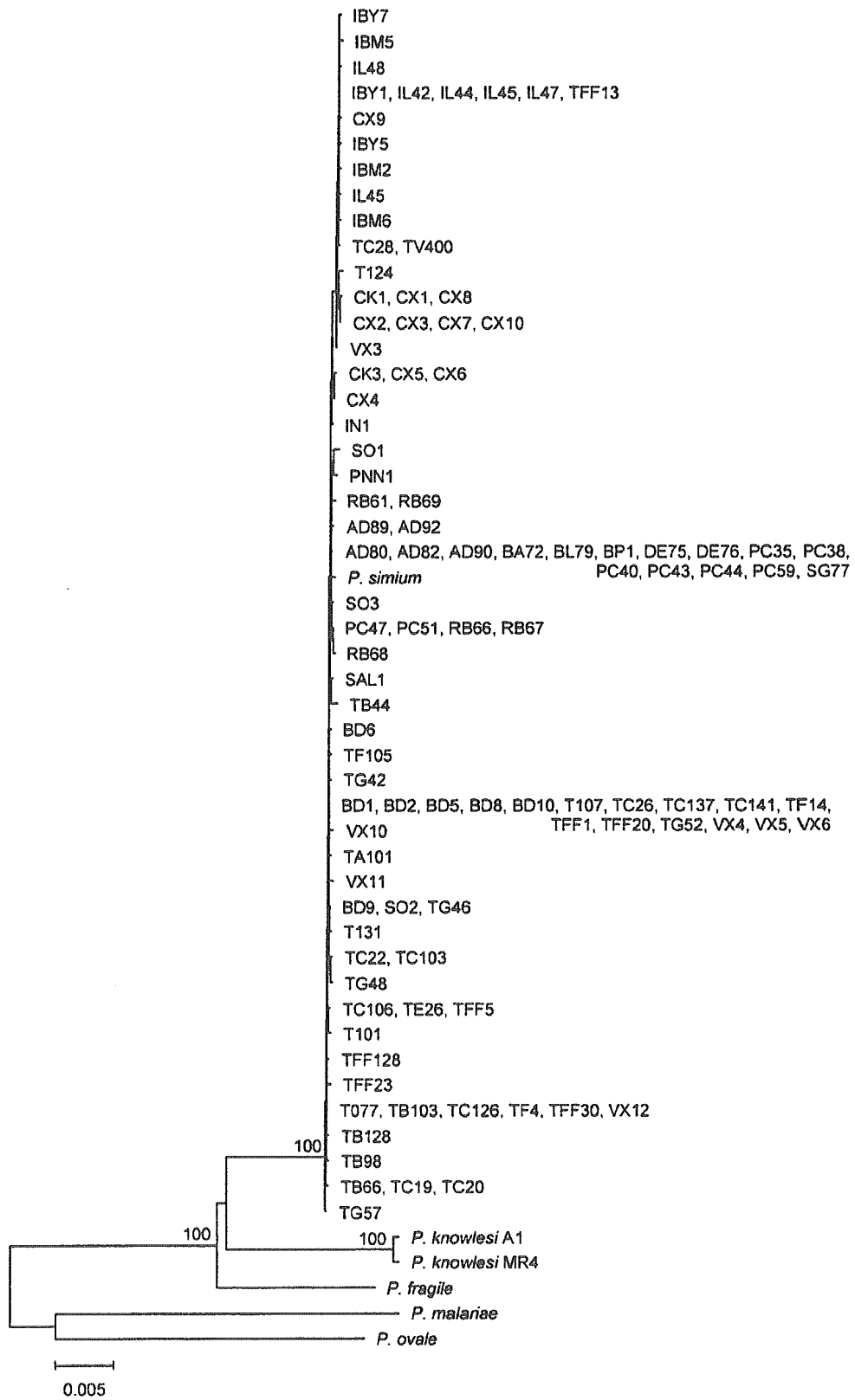


Figure 1.

Neighbor-joining tree based on Kimura 2-parameter distance at 2617 aligned nucleotide sites in non-coding portions of the mitochondrial genome of *Plasmodium vivax* and related species. Numbers on the branches represent the percent of 1000 bootstrap pseudo-samples supporting the branch; only values $\geq 95\%$ are shown.

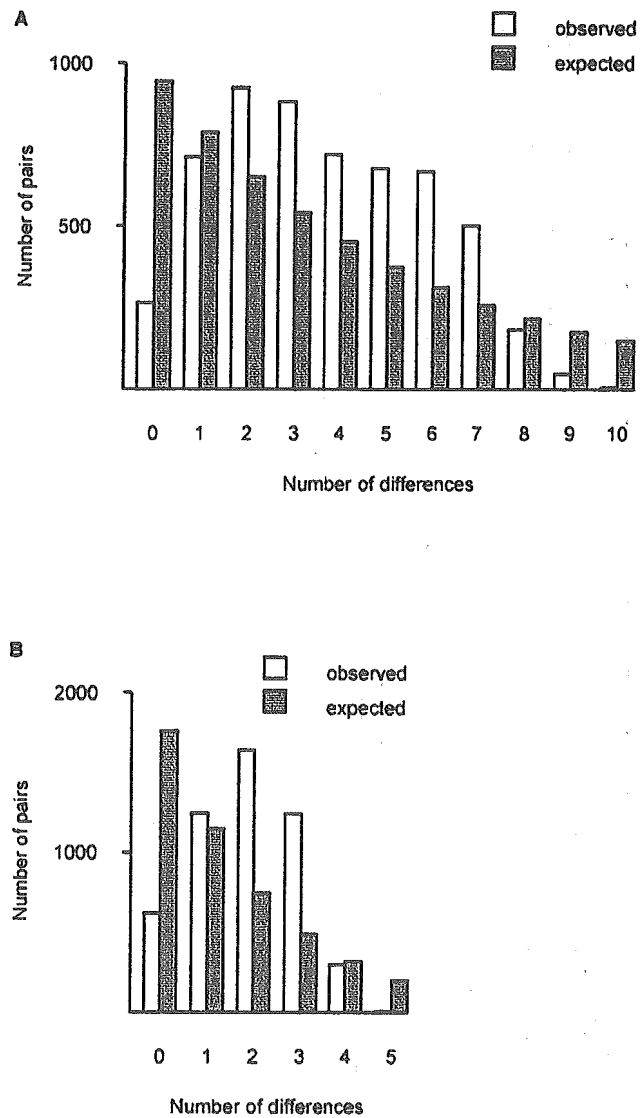


Figure 2. Mismatch distributions for mitochondrial genome sequences of (A) *P. vivax* and (B) *P. falciparum*. Observed distributions (clear bars) were compared with that expected under constant population size (shaded bars). In both species, the observed and expected patterns were significantly different. For *P. vivax*, $\chi^2 = 2076.8$, 10 d.f., $P < 0.001$; for *P. falciparum*, $\chi^2 = 3129.3$, 5 d.f., $P < 0.001$.

Table 1
Mean sequence distances (\pm S.E.) in different regions for all pairwise comparisons among unique *Plasmodium vivax* and *P. falciparum* mitochondrial genome sequences.

	<i>P. vivax</i> (N = 48)			<i>P. falciparum</i> (N = 28)		
	G + C content (%)	Estimation method ²	d_N	G + C content	Estimation method	d_N
<i>cox3</i>	7.6	NG	0.00049 \pm 0.00034	10.7	NG	0.00208 \pm 0.00090
		Li	0.00033 \pm 0.00023		Li	0.00243 \pm 0.00057
<i>cox1</i>	9.0	NG	0.00404 \pm 0.00166	12.3	NG	0.00085 \pm 0.00042
		Li	0.00465 \pm 0.00186		Li	0.00093 \pm 0.00046
<i>cytb</i>	10.7	NG	0.00064 \pm 0.00045	14.0	NG	0.00191 \pm 0.00082
		Li	0.00076 \pm 0.00053		Li	0.00218 \pm 0.00087
Non-coding	37.2	JC	d	37.7	JC	d
		K2P	0.00057 \pm 0.00023		K2P	0.00040 \pm 0.00018
	TN	0.00057 \pm 0.00023		TN	0.00040 \pm 0.00018	

¹ G + C content was measured at third positions in coding regions and at all positions in non-coding regions

² Methods used: NG = Nei and Gojobori (1986); Li = Li (1993); JC = Jukes and Cantor (1969); K2P = Kimura (1980) 2-parameter; TN = Tamura and Nei (1993).

Table 2
 Estimated times of the most recent common ancestor (MRCA) of *Plasmodium* mitochondrial genomes.

Species	Sequence divergence ¹ (noncoding + synonymous)	MRCA time estimate	
		$\lambda = 3.6 \times 10^{-9}$ subs./site/yr.	$\lambda = 2.6 \times 10^{-9}$ subs./site/yr.
<i>P. falciparum</i> and <i>P. reichenowi</i>	0.01800 ± 0.00232	5,000,000 ²	7,000,000 ¹
<i>P. falciparum</i>	0.00074 ± 0.00047	206,000	288,000
<i>P. vivax</i> and <i>P. knowlesi</i>	0.01867 ± 0.00238	5,200,000	7,300,000
<i>P. vivax</i>	0.00078 ± 0.00048	217,000	304,000

¹Distance from the branch point to the present time in the linearized tree.

²Calibration

Review

MALARIA ENDEMIC PATTERNS ON LOMBOK AND SUMBAWA ISLANDS, INDONESIA

YONES P. DACHLAN¹, SUBAGYO YOTOPRANOTO¹, BARIAH V. SUTANTO¹, SRI H. B. SANTOSO¹,
ANNI S. WIDODO¹, KUSMARTISNAWATI¹, AGUS SUTANTO², I. K. KOMANG GERUDUG²,
MASAHIRO TAKAGI³, YOSHIO TSUDA³, KAZUYUKI TANABE⁴, FUMIHIKO KAWAMOTO⁵,
KAZUMI YOSHINAGA³ and HIROJI KANBARA^{3*}

Accepted 20, May, 2005

ABSTRACT: Nusa Tenggara Barat (NTB) province consists of two main islands, Lombok and Sumbawa, to the east of Bali Island, Indonesia. Most of the area is known to be moderately malaria endemic, but the exact malaria epidemiology has not been elucidated. At least 30 deaths per year are thought to be caused by falciparum malaria in Lombok alone, judging from the hospital data. According to the Gebrak Malaria Team in West Lombok, the annual incidence in the district of West Lombok from 1996 to 1999 was consistently over 40%.

In the present report, we describe the small malaria endemic foci in the West Lombok and Sumbawa districts. Falciparum malaria is predominant over vivax malaria and other types of malaria. There are 11 species of *Anopheles* vector, but three of these species, *An. subpictus*, *An. maculates* and *An. barbirostris*, are of primary importance in malaria transmission and *An. sundaicus* and *An. aconitus* are of secondary importance. Our data from Sekotong, West Lombok, and Sumbawa supported the importance of *An. subpictus* in coastal areas but suggested the existence of different transmission peaks according to environmental conditions. The usual transmission peak comes in the dry season but is affected by climatic and geographical conditions. Although there were many malaria endemic foci along the coast, the width and grade of the foci varied widely. The presence of malaria endemic foci inland, although likely, has not been definitively reported to date.

INTRODUCTION

Indonesia is known as a country where tourists are at a high risk for malaria infection. But the incidence of malaria varies widely among different islands and even among different areas of the same island. It is important to obtain exact information on the epidemiological conditions of malaria on each island. In this report, we describe the epidemiology of malaria in parts of Lombok and Sumbawa islands on the basis of our experience and local data (Fig.1).

1) Malaria situation in Indonesia;

Malaria is still a major public health problem in Indonesia. In 1995, the National Health Household Survey estimated

that around 32,000 deaths were caused by malaria. [1]. Indonesia is a large archipelago consisting of 12,508 islands of various sizes and shapes located along the equator and had a total population of 209 million in 1999. About 70% of the population live in Java and Bali, where malaria has been mostly eradicated, although even today small outbreaks are reported every year. In the outer islands, however, a much higher incidence of malaria is seen in general. But the incidence of malaria varies from hypo- to hyper-endemic depending on the environmental and socio-economic conditions of an area. The natural and social environment of the Indonesian islands varies widely, resulting in different malaria conditions. Furthermore, even on a single island, malaria endemic situations vary in degree and

¹ Tropical Disease Center, Airlangga University, Surabaya, 60115, Indonesia
² NTB Provincial Health Office, Mataram, 83231, Lombok, Indonesia
³ Institute of Tropical Medicine, Nagasaki University, Nagasaki, 852-8523, Japan
⁴ Laboratory of Biology, Osaka Institute of Technology, Osaka 535-8585, Japan
⁵ Nagoya University School of Medicine, Nagoya 466-8550, Japan
* Author for correspondence;
Hiroji Kanbara
Institute of Tropical Medicine, Nagasaki University,
1-12-4, Sakamoto, Nagasaki-shi, 852-8523, Japan

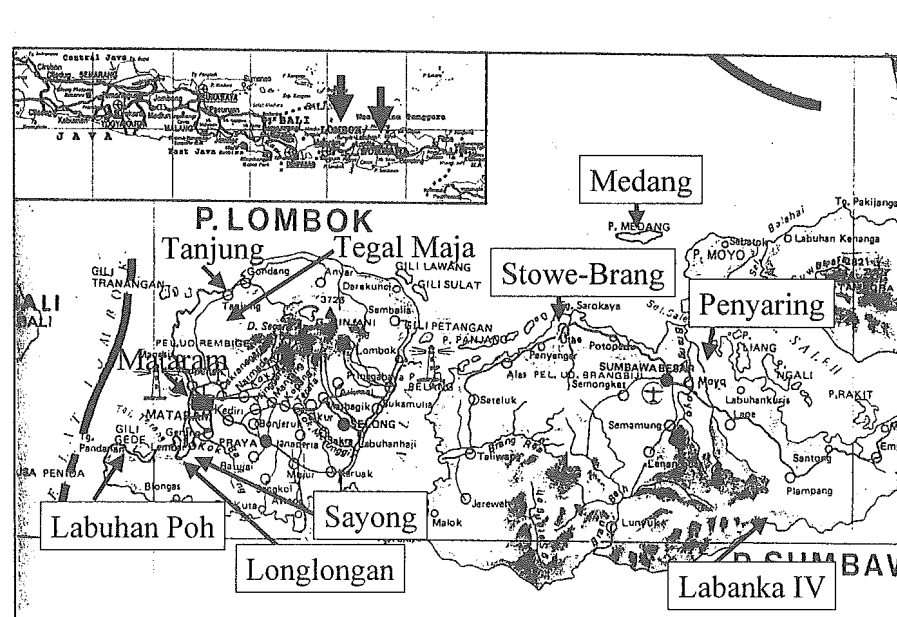


Fig. 1 Location of places described in the text on Lombok and Sumbawa islands, Indonesia

size according to geographical conditions. No exact information on malaria epidemiology in each area has been published, especially in English. In this review, we introduce the conditions of malaria in Lombok and Sumbawa islands based on our epidemiological studies conducted under Japan Society for the Promotion of Science (JSPS) sponsorship, and on local data and reports offered by concerned health organizations.

2) The collaborative survey of Indonesian and Japanese researchers; In 1991 we had an opportunity to conduct an epidemiological malaria survey on Lombok island as one of the collaborative works in a large scale cooperative study between Kobe University School of Medicine, Japan and the Tropical Disease Center (TDC), Airlangga University, Surabaya, Indonesia under the sponsorship of JSPS. The malaria epidemiological study was carried out continuously in Lombok and later in Sumbawa for ten years until the JSPS project reached completion in 2000.

3) Malaria situation in West Lombok; The West Lombok district is located in the western part of Lombok island, NTB province. The province is composed of two major islands, Lombok and Sumbawa, each of them containing three districts. The capital of the province is the municipality Mataram, which is located in the center of West Lombok district. West Lombok consists of nine subdistricts, in all of which malaria is endemic. According to the report by Gerback Malaria Team in West Lombok [2], the annual incidence in the district was over 40 per 1,000 population every year from 1996 to 1999. Falciparum malaria is more com-

mon than vivax and other types of malaria. The transmission peak is usually observed between July and September. There are 11 species of *Anopheles* vector but, of these, three, *An. subpictus*, *An. maculates* and *An. barbirostris*, are of primary importance in malaria transmission and *An. sundaicus* and *An. aconitus* are of secondary importance. Figure 2 shows the monthly slide-positive cases observed in 2000 and 2001 in Tanjung and Tegal Maja villages by the health center in Tanjung, which is located in the northernmost part of West Lombok. The village of Tanjung lies on the northern coast while the village of Tegal Maja is located south of it in the inland. At the former, the clear peak of malaria cases was seen in October, which was two months later than the usual transmission peak between July and

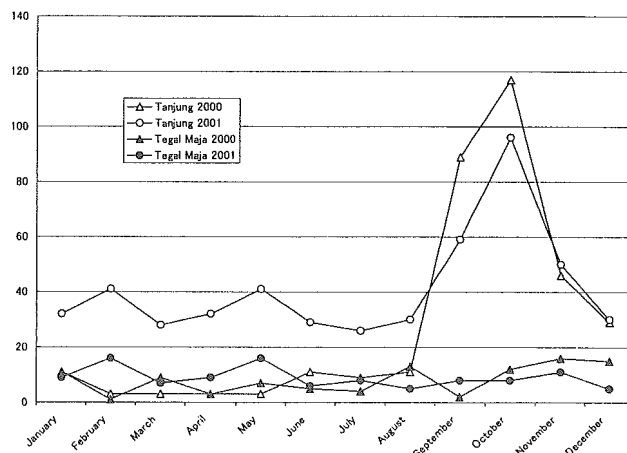


Fig. 2 Number of slide positive cases in two villages of Tanjung health center