

30. Burstein HJ, Kuter I, Campos SM, Gelman RS, Tribou L, Parker LM, et al. Clinical activity of trastuzumab and vinorelbine in women with HER2-overexpressing metastatic breast cancer. *J Clin Oncol* 2001;19:2722-30.
31. Jahanzeb M, Mortimer JE, Yunus F, Irwin DH, Speyer J, Koletsky AJ, et al. Phase II trial of weekly vinorelbine and trastuzumab as first-line therapy in patients with HER2<sup>+</sup> metastatic breast cancer. *Oncologist* 2002;7:410-7.
32. Burstein HJ, Harris LN, Marcom PK, Lambert-Falls R, Havlin K, Overmoyer B, et al. Trastuzumab and vinorelbine as first-line therapy for HER2-overexpressing metastatic breast cancer: multicenter phase II trial with clinical outcomes, analysis of serum tumor markers as predictive factors, and cardiac surveillance algorithm. *J Clin Oncol* 2003;21:2889-95.
33. Suzuki Y, Tokuda Y, Saito Y, Ohta M, Tajima T. Combination of trastuzumab and vinorelbine in metastatic breast cancer. *Jpn J Clin Oncol* 2003;33:514-7.

# Circadian Variability of Pharmacokinetics of 5-Fluorouracil and *CLOCK T311C* Genetic Polymorphism in Patients With Esophageal Carcinoma

Ikuya Miki,\* Takao Tamura,\* Tsutomu Nakamura,† Hiroo Makimoto,† Noriko Hamana,† Hitoshi Uchiyama,† Daisuke Shirasaka,\* Yoshinori Morita,\* Hiroyuki Yamada,\* Nobuo Aoyama,‡ Toshiyuki Sakaeda,† Katsuhiko Okumura,† and Masato Kasuga\*

**Abstract:** The variations of plasma concentrations of 5-fluorouracil (5-FU) were investigated in 30 esophageal cancer patients treated with repetitive protracted venous infusion (PVI) of 5-FU-based chemoradiotherapy, and in an attempt to find a new possible candidate that explains their variations, *CLOCK T311C* genetic polymorphism was examined. The patients have received 2 courses of chemoradiotherapy consisting of 2 cycles of 5-day PVI of 5-FU (400 mg/m<sup>2</sup>/d) with cisplatin and concurrent radiation. The plasma concentrations of 5-FU were determined at 5 PM on day 3 and 5 AM on day 4 after the beginning of each 5-FU infusion. The *CLOCK T311C* genotype was determined by polymerase chain reaction–restricted fragment length polymorphism (PCR-RFLP) and by direct sequencing. Plasma concentrations were measured in 239 samples. In the first course, the plasma concentrations of 5-FU at 5 AM were significantly lower than those at 5 PM in the first cycle, whereas a similar tendency was observed in the second cycle, although not significantly (Wilcoxon signed-rank test). The plasma concentrations of 5-FU at 5 PM and 5 AM in the second cycle were both significantly higher than those in the first cycle, and their coefficient of variation in the former was also significantly smaller than that in the latter. These phenomena in the first course were also observed in the second one. These results revealed the elevation of plasma drug concentration and its reduced circadian variation during repetitive PVI of 5-FU. In 5-FU-based chemotherapy, its administration schedule should be made in consideration of these phenomena. The *CLOCK T311C* genotype did not have a significant impact on the variation of the plasma concentrations of 5-FU in this study population. Further studies are needed to clarify the mechanism of these phenomena and to identify an easy-to-assess marker of circadian rhythms for use in individualizing delivery of 5-FU.

**Key Words:** esophageal cancer, 5-fluorouracil, circadian variation, *CLOCK*

(*Ther Drug Monit* 2005;27:369–374)

**5-F**luorouracil (5-FU) is widely used for the treatment of cancer in various tissues such as head and neck, gastrointestinal tract, pancreas, and cervix.<sup>1–5</sup> This drug is administered orally or intravenously as a rapid bolus injection or as a protracted infusion. 5-FU is a time-dependent drug whose cytotoxicity is increased by prolonging exposure in vitro,<sup>6,7</sup> and clinical evidence has confirmed that the size of its therapeutic window between effectiveness and toxicity is increased by the infusional method compared with the bolus method.<sup>8,9</sup> Based on this knowledge, among different delivery methods, protracted venous infusion (PVI) of 5-FU is frequently chosen in combination with other anticancer drugs and/or with radiation for synergistic effects.<sup>10,11</sup> In Japan, the infusional 5-FU-based chemoradiation regimen has been used for nonsurgical treatment of esophageal cancer, in which a course of treatment consisting of 2 successive 5-day cycles of PVI of 5-FU (400 mg/m<sup>2</sup>/d), cisplatin (CDDP), and concurrent radiation, separated by an interval of 2 days.<sup>3,12,13</sup> This regimen, established by Ohtsu and co-workers, is characteristic across the world and has been accepted by Japanese medical oncologists to give more effective response and less toxicity. In other countries, 5-FU is often administered at high dosage (800–1000 mg/m<sup>2</sup>/d) in a monthly repeated PVI regimen with CDDP and concurrent radiation for esophageal cancer, which is the recommended regimen of the Radiation Therapy Oncology Group (RTOG).<sup>14–17</sup> By using repetition of 5-day PVI with low-dose 5-FU, the Ohtsu regimen has the advantage of a high completion rate of planned courses without dose modification<sup>3,12,13</sup>; however, this regimen may have room for discussion on 5-FU dosage to improve treatment outcome. A higher dosage of 5-FU leads to more effective treatment response in vitro.<sup>7</sup> However, its dose escalation in clinical practice may bring severe adverse effects, and therefore, to provide 5-FU-based chemoradiotherapy safety and effectiveness, the information about its plasma concentrations in the Ohtsu regimen should be investigated before its dose escalation.

On the other hand, 5-FU is a typical drug showing a circadian variation of its plasma concentration during

Received for publication September 22, 2004; accepted March 2, 2005.

From the \*Division of Diabetes, Digestive, and Kidney Diseases, Department of Clinical Molecular Medicine, Kobe University Graduate School of Medicine, Kobe 650-0017, Japan; †Department of Hospital Pharmacy, Kobe University School of Medicine, Kobe 650-0017, Japan; and ‡Department of Endoscopy, Kobe University School of Medicine, Kobe 650-0017, Japan.

This work was supported in part by a Grant-in-Aid for Scientific Research from Japan Society for the Promotion of Science.

Reprints: Assistant Prof. Takao Tamura, MD, Division of Diabetes, Digestive, and Kidney Diseases, Department of Clinical Molecular Medicine, Kobe University Graduate School of Medicine, 7-5-2 Kusunoki-cho, Chuo-ku, Kobe 650-0017, Japan (e-mail: ttamura@med.kobe-u.ac.jp).

Copyright © 2005 by Lippincott Williams & Wilkins

PVI,<sup>18,19</sup> which results in the intra- and interpatient variability of plasma concentrations of this drug despite PVI administration at a constant rate.<sup>20,21</sup>

Circadian variations in physiological and behavioral processes are influenced by several endogenous and exogenous factors. Among these, *CLOCK* gene is considered one of the most important genetic factors, which plays a pivotal role in the generation and control of circadian rhythms.<sup>22</sup> The association of a single nucleotide polymorphism *T3111C* in the 3' flanking region of the human *CLOCK* gene with diurnal preference has been reported.<sup>23</sup> To the authors' knowledge, no previous reports were available about the relationship between *CLOCK T3111C* polymorphism and 5-FU pharmacokinetics.

In the present study, blood sampling was performed at 2 intervals, 5 PM and 5 AM on days 3 and 4, respectively, of each cycle, which should reflect daily active and inactive phases, respectively, to measure plasma concentrations of 5-FU in Japanese esophageal cancer patients treated with the Ohtsu regimen, and the variations of its plasma concentrations between times, cycles, and courses were evaluated. In addition, we also examined whether *CLOCK T3111C* polymorphism would influence the circadian variation of plasma concentrations of 5-FU.

## PATIENTS, MATERIALS, AND METHODS

### Patients and Treatment

The protocol for this study was approved by the Institutional Review Board of Kobe University Hospital, Japan. Written informed consent was obtained from all patients at the beginning of this study.

Thirty male patients with surgically untreated or recurrent esophageal squamous cell carcinoma diagnosed at Kobe University Hospital participated in this study. Diagnosis of esophageal carcinoma was based on clinical, endoscopic, radiologic, and histopathological findings. The following criteria were used for enrollment for this study: age <80 years, performance status (Eastern Cooperative Oncology Group) 0 to 2, clinical stage (International Union Against Cancer tumor-node-metastasis system, 1997) I to IV or recurrent cases

at lymph nodes after surgery, adequate organ function, and no other site of carcinoma except for early stage I. All clinical data were collected from the medical record, questionnaires, and interview at the time of enrollment. All patients hospitalized were treated with 5-FU-based chemoradiotherapy. Chemotherapy consisted of 2 successive cycles of 5-day PVI of 5-FU 400 mg/m<sup>2</sup>/d (5 days/wk) and 3-hour drip infusion of cisplatin (CDDP) 40 mg/m<sup>2</sup> on the first day (once/wk). External beam radiotherapy using megavoltage equipment was administered for 3 weeks (5 days/wk) at 2 Gy/d, concomitantly with chemotherapy. This schedule was repeated twice at an interval of 2 weeks (Fig. 1). An additional chemotherapy was administered after this study case by case. No attempt was made to impose a uniform sleep/awake cycle on each patient's activity.

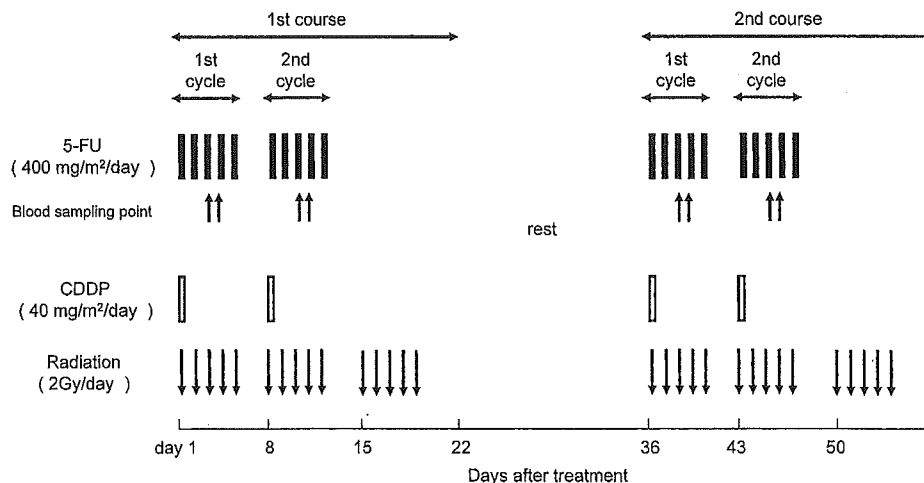
### Blood Sampling

Peripheral venous blood (5 mL) was drawn into 2 sampling tubes containing ethylenediaminetetraacetic acid (EDTA) at 8 time points from each subject as follows: 5 PM on days 3 and 5 AM on days 4 after the beginning of the 5-FU infusion in each cycle (Fig. 1). Each of the 8 peripheral venous blood (5 mL) samples drawn from each patient was split into 2 aliquots. One was immediately centrifuged (10 minutes at 2500 rpm) in the hospital ward, giving a plasma sample for the determination of plasma concentration of 5-FU. The other was used for the *CLOCK* genotyping. These whole-blood and plasma samples were stored at -20°C until assay.

### Determination of Plasma Concentration of 5-FU

5-Fluorouracil injection was purchased from Kyowa Hakko Kogyo Co. (Tokyo, Japan). 5-Bromouracil as the internal standard was purchased from Sigma-Aldrich Co. (St. Louis, MO). Other chemicals used were of the highest purity available.

The plasma concentrations of 5-FU were determined by a high-performance liquid chromatography (HPLC) assay as described previously.<sup>24</sup> A high-performance liquid chromatograph, LC-10A (Shimadzu, Kyoto, Japan), was equipped with a variable-wavelength UV detector, SPD-6AV (Shimadzu), adjusted to 266 nm and an analytic C<sub>18</sub> reverse-phase column



**FIGURE 1.** Treatment schedule of 5-FU-based chemoradiotherapy. 5-FU, 5-fluorouracil; CDDP, cisplatin. Blood sampling points were 5 PM on days 3 and 5 AM on days 4 after the beginning of the 5-FU infusion in each cycle.

(Chemcosorb 5-ODS-H, 25 cm × 4.6 cm, Chemco Co, Osaka, Japan). The mobile phase consisted of 10 mmol/L sodium acetate buffer (pH 4.0):methanol (99:1). The flow rate was 1.5 mL/min, and the column temperature was maintained at 40°C. The plasma concentration of 5-FU was calculated using a calibration curve that was constructed for each assay with standard samples with concentrations from 0.02 to 0.5 µg/mL and based on the peak height ratios to internal standard, 5-bromouracil. The elution time of 5-FU and 5-bromouracil was 3.3–3.5 minutes and 7.6–7.8 minutes, respectively. The calibration curve usually gave a correlation coefficient ( $r^2$ ) of more than 0.999, with an intercept corresponding to the concentration from -0.01 to 0.01 µg/mL. All assays were performed in duplicate for a plasma sample, and mean values were calculated. The limit of quantification was 0.01 µg/mL. The determination was routinely validated to confirm the precision and accuracy within 10% at all concentrations.

### Genotyping of *CLOCK T311C* Polymorphism

Genomic DNA was extracted by the method described previously.<sup>25</sup> The genotype at positions 3111 of the *CLOCK* gene was determined by polymerase chain-restriction fragment length polymorphism (PCR-RFLP) analysis and direct sequencing.<sup>26</sup> The following PCR primers synthesized by Hokkaido System Science Co., Ltd (Hokkaido, Japan) were used in this study<sup>23,26</sup>: forward primer 5'-TCC AGC AGT TTC ATG AGA TGC-3'; reverse primer 5'-GAG GTC ATT TCA TAG CTG AGC-3'. PCR consisted of an initial denaturation step at 94°C for 3 minutes, 29 cycles of 94°C for 20 seconds, 58°C for 20 seconds, and 72°C for 30 seconds, followed by 1 cycle of 72°C for 5 minutes. The temperature was controlled by a programmable heat block (DNA Engine PTC-200, MJ Japan Ltd, Tokyo, Japan). After amplification, PCR products were digested with restriction enzymes (Bsp 1286I, TaKaRa Bio Inc., Shiga, Japan). DNA fragments digested with appropriate restriction enzymes were separated on 3% agarose gels. The genotype determined by PCR-RFLP was confirmed by direct sequencing on an ABI PRISM 310 Genetic Analyzer (Applied Biosystems, Foster City, CA) using BigDye™ Terminator Cycle Sequencing Ready Reaction Kit (Applied Biosystems). The sense primers for PCR amplification were used as sequencing primers.

### Data Analysis and Statistics

Data are expressed as means ± SD. Comparisons between plasma concentrations of 5-FU at 5 PM and 5 AM were performed by means of Wilcoxon signed-rank test. The coefficients of variation (CV) were calculated as the ratio of SD to the mean value ( $CV\% = 100 \times SD/\text{mean}$ ). The CV values of all subjects in the first and second cycles were calculated, and those of each *CLOCK* genotype were also calculated. Multiple comparisons between CV values in the first and second cycles and *CLOCK* genotypes were performed by means of analysis of variance (ANOVA). *P* values of less than 0.05 (2-tailed) were considered to be significant.

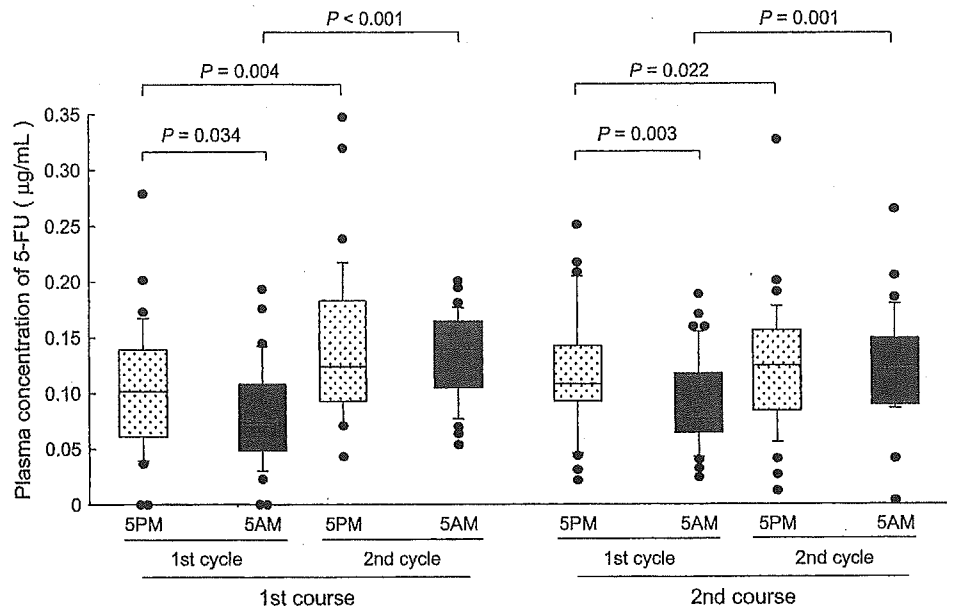
## RESULTS

Thirty male patients were enrolled in this study. The median age was  $63.7 \pm 7.7$  years (range 48–78). Most patients had a good performance status (performance status 0/1/2: 17/11/2, respectively). The median body surface area was  $19.3 \pm 4.9$  m<sup>2</sup>. The clinical staging was classified as follows: stage I in 6 patients, stage II in 5, stage III in 11, stage IV in 4, and lymph nodal recurrence after surgery in 4. *CLOCK T311C* genotype was classified as follows: C/C in 4, C/T in 9, and T/T in 17 patients. Treatment compliance was very satisfactory in 27 patients. Chemoradiotherapy was performed as initially scheduled except for in 3 cases. One patient interrupted his treatment on day 50 (Fig. 1) because of depression not seen before treatment. He did not complete planned radiotherapy (interruption at 52 Gy), but he completed chemotherapy as initially planned. The other 2 patients respectively needed additional intervals of 2 and 5 more days between initially planned chemotherapy cycles because of fever. No dose reductions of 5-FU and CDDP were found.

Plasma concentrations of 5-FU were measured on 239 samples obtained from the 30 patients, except for 1 missing data point. No consistent plasma concentrations were achieved at either sampling point, and large intra- and interpatient variations were observed. Therefore, analyses were performed by Wilcoxon signed-rank test to highlight the fluctuating patterns. In the first course, the plasma concentrations of 5-FU at 5 AM were significantly lower than those at 5 PM in the first cycle [ $0.08 \pm 0.05$  µg/mL and  $0.10 \pm 0.06$  µg/mL, respectively (mean ± SD);  $P = 0.034$ ]. A similar tendency was observed in the second cycle, but not significantly ( $0.13 \pm 0.04$  µg/mL and  $0.14 \pm 0.07$  µg/mL, respectively;  $P = 0.280$ ) (Fig. 2). These phenomena were also found in the second course ( $0.09 \pm 0.04$  µg/mL at 5 AM and  $0.11 \pm 0.05$  µg/mL at 5 PM;  $P = 0.003$  in the first cycle,  $0.12 \pm 0.05$  µg/mL 5 AM and  $0.14 \pm 0.06$  µg/mL at 5 PM;  $P = 0.393$  in the second cycle, respectively) (Fig. 2). In the first course, the plasma concentrations of 5-FU at both 5 PM and 5 AM in the second cycle were also significantly higher than the respective concentrations in the first cycle (5 PM,  $P = 0.004$ ; 5 AM,  $P < 0.001$ ) (Fig. 2). The variation of the plasma concentrations of 5-FU in the second course showed the same tendency observed in the first one (Fig. 2).

The CV value in the plasma concentrations of 5-FU in the first cycles of the first and second courses was  $43.6 \pm 22.5\%$ , ranging from 13.0% to 90.8%, and became significantly lower in the second cycles ( $30.3 \pm 16.0\%$ , ranging from 6.1% to 57.4%).

Figure 3 shows the relationship between the CV values in the plasma concentration of 5-FU in the first and second cycles and *CLOCK T311C* genotype. The CV values of the plasma concentrations of 5-FU in the first cycles were  $47.0 \pm 23.3\%$ ,  $37.9 \pm 23.9\%$ , and  $42.0 \pm 17.6\%$  in the patients with homozygotes of the wild-type allele (T/T), compound heterozygotes with the mutant C-allele (T/C), and homozygotes of the mutant allele (C/C), respectively. Those in the second cycles were  $34.8 \pm 17.6\%$ ,  $23.2 \pm 14.1\%$ , and  $27.6 \pm 5.4\%$ , respectively. These results showed that the CV values were not significantly different between genotypes, although the patients

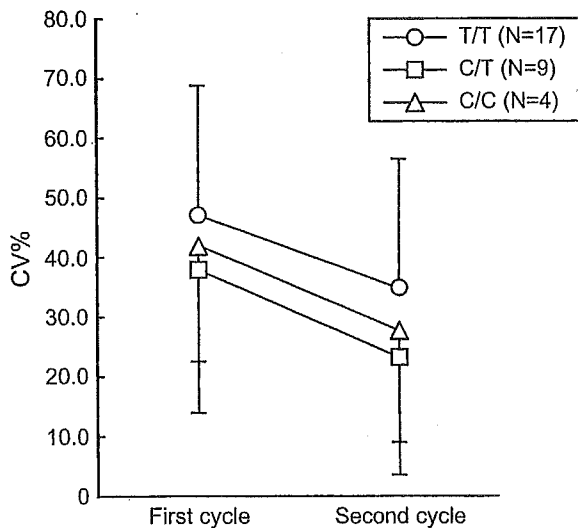


**FIGURE 2.** Plasma concentrations of 5-FU during repetitive PVI in 30 patients with esophageal cancer. PVI, protracted venous infusion. Comparisons between plasma concentrations of 5-FU at 5 PM and 5 AM were performed by means of Wilcoxon signed-rank test.

with the variant C-allele had a tendency for smaller CV values compared with those without the C-allele.

**DISCUSSION**

For the nonsurgical treatment of esophageal cancer, the present 5-FU-based chemoradiotherapy including weekly repeated PVI of 5-FU has been accepted, and the evidence



**FIGURE 3.** Effect of *T3111C* polymorphism on CV values of plasma concentrations of 5-FU in first and second cycles. The coefficient of variation (CV) was calculated as the ratio of standard deviation to the mean value (CV% = 100 × SD/mean). Open circles, T/T (n = 17), open squares, T/C (n = 9); open triangles, C/C (n = 4). Each point represents the average and standard deviation of the respective CV values in each cycle through the first and second courses for 3 genotype groups. There was no significant difference in CV values at any cycles.

supporting its clinical efficacy has been collected by Ohtsu and co-workers during the last decade in Japan.<sup>3,12,13</sup> The Ohtsu regimen is still open to discussion on the dose setting of 5-FU, but the pharmacological data are not available. Because 5-FU may have severe adverse effects such as myelosuppression, mucositis, and diarrhea, the importance of monitoring the plasma concentration of 5-FU has been discussed for safety and effectiveness. Yet there is little information about the therapeutic window of 5-FU in esophageal cancer.<sup>16</sup> As one possible cause of this, the large intra- and interpatient variability of plasma concentration of 5-FU has been considered in head and neck cancer, which is often treated using similar regimens to those of esophageal cancer.<sup>27-29</sup> 5-FU is a typical drug showing a circadian variation of its plasma concentration during PVI, which indicates that sampling time has a large influence on the interpretation of the drug concentration obtained.<sup>19,30</sup>

Reportedly, 5-FU is rapidly eliminated with a primary half-life between 4 and 25 minutes,<sup>31</sup> which indicates that this drug can achieve steady state within 1 day at the most. In the present study, blood samplings at steady state were performed at 5 PM on day 3 and 5 AM on day 4 after the start of PVI of 5-FU. These points lie in the middle of the duration of PVI. The Ohtsu regimen, used in the present study, includes 4 identical schedules of PVI of 5-FU (Fig. 1). This regimen has the advantage of evaluating the reproducibility of the plasma drug concentration and its variations between active and inactive phase, cycle to cycle, and course to course. Therefore, the data obtained in the present study were analyzed from the following 3 different angles.

First, analyzed according to phase of activity, there was a significant change in the plasma concentrations between active and inactive phases, with higher levels in active phase compared with inactive phase (Fig. 2). This is possibly because of the circadian rhythm with daily active and inactive phase as reported previously.<sup>18,19</sup> Different studies showed different results in the times of peak and trough plasma concentrations,

using a cosinor curve of plasma concentrations, and peak and trough were observed alternately every 12 hours.<sup>18,19,30,32</sup> From these reports, our sampling method every 12 hours was reasonable for analyses of fluctuating patterns.

Second, analyzed according to cycle, drug concentrations in the second cycles were significantly higher than those in the first cycles despite the 2-day interval between the first and second cycles (Fig. 2). The intervals of 2 days or more between cycles were considered to be enough for the plasma concentrations of 5-FU to be reset to zero at the beginning of the drug infusion in all cycles, although this was not checked in the present study. Interestingly, the variation of plasma drug concentrations between 5 AM and 5 PM in the second cycle was smaller than that in the first cycle.

Third, analyzed according to course, these phenomena as described above were observed in both the first and second courses. Furthermore, plasma concentrations in the first cycle of the second course were lower than those in the second cycle of the first course, and similar with those in the first cycle of the first course. In short, reproducibility was demonstrated in first and second courses.

These results suggested that the circadian variation of the plasma concentrations of 5-FU might converge gradually with the elevation of plasma levels. Interestingly, a 2-day interval could be insufficient to recover it, but a 3-week interval could be sufficient. This is possibly a result of the tolerance and recovery system of metabolic enzymes after the long exposure to 5-FU. The elimination of 5-FU takes place primarily by a saturable metabolic process and possibly achieves a saturated state with rapid bolus injection of a high dosage of 5-FU.<sup>33</sup> However, its metabolism may be unlikely to saturate at the concentration of at least 0.2  $\mu\text{g/mL}$  in plasma in the case of PVI, and the theory of drug saturation cannot by itself explain our findings.

The pharmacokinetics of 5-FU have been investigated from the viewpoint of circadian rhythm in catabolic activities of dihydropyrimidine dehydrogenase (DPD), which is an initial and rate-limiting enzyme in the degradation of 5-FU.<sup>18,35,36</sup> To date, dose-modified or chronomodulated chemotherapy has been used in consideration of circadian rhythms of DPD activity, drug concentrations and cell cycles.<sup>27,37,38</sup> However, it is very complicated to take these methods into clinical practice because of the required frequent samplings and variable circadian rhythms of 5-FU concentrations.<sup>19,29</sup> Furthermore, the relationship between 5-FU concentrations and DPD activities was not elucidated despite frequent samplings.<sup>30,39</sup> In the present study, fluctuating patterns of plasma concentrations were highlighted because even frequent samplings appear to have a limit in detailed explanation of pharmacokinetics of 5-FU. Here, in an attempt to determine a new and simple possible candidate that influences the circadian variation of drug concentrations, we focused on *CLOCK* genetic polymorphism. The *CLOCK* gene has a pivotal role in the generation and control of circadian rhythms.<sup>22</sup> The significance of *CLOCK T3111C* polymorphism has been reported in the psychiatric field,<sup>23,26</sup> but no previous reports were available about its impact on the pharmacokinetics of 5-FU. Our administration schedule of 5-FU is suitable to investigate its possible impact because the reproducibility of the same fluctuating patterns of plasma concentrations was

confirmed. To keep similar surroundings, patients hospitalized at the same hospital with the same disease were treated with the same regimen. The result did not show that *CLOCK T3111C* polymorphism had a statistically significant impact on CV values in the first and second cycles, although this SNP tended to give a lower fluctuation of the concentration (Fig. 3). This result was not different when CV values were analyzed according to phase, cycle, and course (data not shown). Unfortunately, blood sampling at other times could not be allowed in consideration of each patient's burden, and it remains unclear whether this result may be influenced by the progression of DPD activity, the clinical background of our study population, the shift of daily active-inactive phase, or other factors.

In conclusion, (1) pharmacokinetics of 5-FU may exhibit substantially higher plasma concentrations in the evening than in the morning, (2) plasma concentrations of 5-FU significantly increased at the second cycle of both first and second courses of chemotherapy despite the interval of 2 days between the first and second cycles and despite the very short half-life of 5-FU (4–25 minutes), probably because of the methods of administration, and (3) the variability in plasma concentrations of 5-FU was not statistically significant between each *CLOCK T3111C* genotype in this Japanese population. In 5-FU-based chemotherapy, the administration schedule should be made in consideration of these phenomena. Further studies are needed to clarify the mechanism of these phenomena and to determine an easy-to-assess marker of its circadian variation, yielding a clinical impact on treatment outcome for use in individualizing delivery of 5-FU.

## REFERENCES

1. Cohen EE, Linggen MW, Vokes EE. The expanding role of systemic therapy in head and neck cancer. *J Clin Oncol.* 2004;22:1743–1752.
2. Wilke HJ, Van Cutsem E. Current treatments and future perspectives in colorectal and gastric cancer. *Ann Oncol.* 2003;14(Suppl 2):ii49–ii55.
3. Hironaka S, Ohtsu A, Boku N, et al. Nonrandomized comparison between definitive chemoradiotherapy and radical surgery in patients with T(2–3)N(any)M(0) squamous cell carcinoma of the esophagus. *Int J Radiat Oncol Biol Phys.* 2003;57:425–433.
4. Shore S, Raraty MG, Ghaneh P, et al. Review article: chemotherapy for pancreatic cancer. *Aliment Pharmacol Ther.* 2003;18:1049–1069.
5. Nguyen HN, Nordqvist SR. Chemotherapy of advanced and recurrent cervical carcinoma. *Semin Surg Oncol.* 1999;16:247–250.
6. Drewinko B, Yang LY. Cellular basis for the inefficacy of 5-FU in human colon carcinoma. *Cancer Treat Rep.* 1985;69:1391–1398.
7. Calabro-Jones PM, Byfield JE, Ward JF, et al. Time-dose relationships for 5-fluorouracil cytotoxicity against human epithelial cancer cells in vitro. *Cancer Res.* 1982;42:4413–4420.
8. Meta-analysis Group In Cancer. Efficacy of intravenous continuous infusion of fluorouracil compared with bolus administration in advanced colorectal cancer. *J Clin Oncol.* 1998;16:301–308.
9. Meta-Analysis Group In Cancer. Toxicity of fluorouracil in patients with advanced colorectal cancer: effect of administration schedule and prognostic factors. *J Clin Oncol.* 1998;16:3537–3541.
10. Tannock IF. Treatment of cancer with radiation and drugs. *J Clin Oncol.* 1996;14:3156–3174.
11. Kallman RF. The importance of schedule and drug dose intensity in combinations of modalities. *Int J Radiat Oncol Biol Phys.* 1994;28:761–771.
12. Ohtsu A, Boku N, Muro K, et al. Definitive chemoradiotherapy for T4 and/or M1 lymph node squamous cell carcinoma of the esophagus. *J Clin Oncol.* 1999;17:2915–2921.

13. Kaneko K, Ito H, Konishi K, et al. Definitive chemoradiotherapy for patients with malignant stricture due to T3 or T4 squamous cell carcinoma of the oesophagus. *Br J Cancer*. 2003;88:18–24.
14. Cooper JS, Guo MD, Herskovic A, et al. Chemoradiotherapy of locally advanced esophageal cancer: long-term follow-up of a prospective randomized trial (RTOG 85-01). Radiation Therapy Oncology Group. *JAMA*. 1999;281:1623–1627.
15. Gaspar LE, Winter K, Kocha WI, et al. A phase I/II study of external beam radiation, brachytherapy, and concurrent chemotherapy for patients with localized carcinoma of the esophagus (Radiation Therapy Oncology Group Study 9207): final report. *Cancer*. 2000;88:988–995.
16. Denham JW, Ackland SP, Burmeister B, et al. Causes for increased myelosuppression with increasing age in patients with oesophageal cancer treated by chemoradiotherapy. *Eur J Cancer*. 1999;35:921–927.
17. Minsky BD, Pajak TF, Ginsberg RJ, et al. INT 0123 (Radiation Therapy Oncology Group 94-05) phase III trial of combined-modality therapy for esophageal cancer: high-dose versus standard-dose radiation therapy. *J Clin Oncol*. 2002;20:1167–1174.
18. Harris BE, Song R, Soong SJ, et al. Relationship between dihydropyrimidine dehydrogenase activity and plasma 5-fluorouracil levels with evidence for circadian variation of enzyme activity and plasma drug levels in cancer patients receiving 5-fluorouracil by protracted continuous infusion. *Cancer Res*. 1990;50:197–201.
19. Petit E, Milano G, Levi F, et al. Circadian rhythm-varying plasma concentration of 5-fluorouracil during a five-day continuous venous infusion at a constant rate in cancer patients. *Cancer Res*. 1988;48:1676–1679.
20. Erlichman C, Fine S, Elhakim T. Plasma pharmacokinetics of 5-FU given by continuous infusion with allopurinol. *Cancer Treat Rep*. 1986;70:903–904.
21. Thyss A, Milano G, Renee N, et al. Clinical pharmacokinetic study of 5-FU in continuous 5-day infusions for head and neck cancer. *Cancer Chemother Pharmacol*. 1986;16:64–66.
22. Piggins HD. Human clock genes. *Ann Med*. 2002;34:394–400.
23. Katzenberg D, Young T, Finn L, et al. A CLOCK polymorphism associated with human diurnal preference. *Sleep*. 1998;21:569–576.
24. Sawai Y, Yamaoka K, Ito T, et al. Simultaneous evaluation of intestinal absorption and hepatic extraction of 5-fluorouracil using portal-systemic concentration difference by short-period double dosing in a single conscious rat. *Biol Pharm Bull*. 1997;20:1313–1316.
25. Horinouchi M, Sakaeda T, Nakamura T, et al. Significant genetic linkage of MDR1 polymorphisms at positions 3435 and 2677: functional relevance to pharmacokinetics of digoxin. *Pharm Res*. 2002;19:1581–1585.
26. Desan PH, Oren DA, Malison R, et al. Genetic polymorphism at the CLOCK gene locus and major depression. *Am J Med Genet*. 2000;96:418–421.
27. Santini J, Milano G, Thyss A, et al. 5-FU therapeutic monitoring with dose adjustment leads to an improved therapeutic index in head and neck cancer. *Br J Cancer*. 1989;59:287–290.
28. Vokes EE, Mick R, Kies MS, et al. Pharmacodynamics of fluorouracil-based induction chemotherapy in advanced head and neck cancer. *J Clin Oncol*. 1996;14:1663–1671.
29. Bensadoun RJ, Etienne MC, Dassonville O, et al. Concomitant b.i.d. radiotherapy and chemotherapy with cisplatin and 5-fluorouracil in unresectable squamous-cell carcinoma of the pharynx: clinical and pharmacological data of a French multicenter phase II study. *Int J Radiat Oncol Biol Phys*. 1998;42:237–245.
30. Takimoto CH, Yee LK, Venzon DJ, et al. High inter- and inpatient variation in 5-fluorouracil plasma concentrations during a prolonged drug infusion. *Clin Cancer Res*. 1999;5:1347–1352.
31. Heggie GD, Sommadossi JP, Cross DS, et al. Clinical pharmacokinetics of 5-fluorouracil and its metabolites in plasma, urine, and bile. *Cancer Res*. 1987;47:2203–2206.
32. Metzger G, Massari C, Etienne MC, et al. Spontaneous or imposed circadian changes in plasma concentrations of 5-fluorouracil coadministered with folinic acid and oxaliplatin: relationship with mucosal toxicity in patients with cancer. *Clin Pharmacol Ther*. 1994;56:190–201.
33. McDermott BJ, van den Berg HW, Murphy RF. Nonlinear pharmacokinetics for the elimination of 5-fluorouracil after intravenous administration in cancer patients. *Cancer Chemother Pharmacol*. 1982;9:173–178.
34. Deleted in proof.
35. Etienne MC, Chatelut E, Pivrot X, et al. Co-variables influencing 5-fluorouracil clearance during continuous venous infusion. A NONMEM analysis. *Eur J Cancer*. 1998;34:92–97.
36. Milano G, Etienne MC. Individualizing therapy with 5-fluorouracil related to dihydropyrimidine dehydrogenase: theory and limits. *Ther Drug Monit*. 1996;18:335–340.
37. Fety R, Rolland F, Barberi-Heyob M, et al. Clinical impact of pharmacokinetically-guided dose adaptation of 5-fluorouracil: results from a multicentric randomized trial in patients with locally advanced head and neck carcinomas. *Clin Cancer Res*. 1998;4:2039–2045.
38. Milano G, Chamorey AL. Clinical pharmacokinetics of 5-fluorouracil with consideration of chronopharmacokinetics. *Chronobiol Int*. 2002;19:177–189.
39. Grem JL, Yee LK, Venzon DJ, et al. Inter- and intraindividual variation in dihydropyrimidine dehydrogenase activity in peripheral blood mononuclear cells. *Cancer Chemother Pharmacol*. 1997;40:117–125.

## 胃癌の腫瘍マーカーとその活用

辻 晃仁\*

### 要 旨

腫瘍マーカーは簡便な臨床検査である。しかし、現在の腫瘍マーカーは、胃癌に特異的なものとはいえず、かつ早期癌における陽性率は低いのが現状である。このため、CA 19-9, CA 50, SPan-1, CA 72-4, STn, NCC-ST-439, SLX, CEA など各種の腫瘍マーカーを、臨床診断にあわせて組み合わせ、使い分けている。

胃癌ハイリスク患者のスクリーニングには、ペプシノーゲン・アイソザイム I/II (PG I/II) 比やヘリコバクター・ピロリ血中 (HP) 抗体が用いられている。

また、胃癌の腫瘍マーカー陽性率は、一般的には stage III 以上のもので高いとされるが、高齢者、気管支炎、慢性膵炎、慢性肝炎、糖尿病などでは偽陽性を示すことも多く注意が必要である。

AFP 産生胃癌は転移しやすく、予後不良であることが多い。

stage I, II の患者においては、術前血清 CEA 高値の患者で再発症例が多く、潜在性の転移の可能性が高いとされる。特に、高度上昇例ではリンパ節転移や他臓器 (肝や肺など) の転移が疑われる。

術前 CA 19-9 値は深達度、リンパ節転移、遠隔転移に次ぐ重要な予後因子とされる。

腹膜播種がある際の CA 125 の陽性率は高い。

化学療法時、血中腫瘍マーカー値の 50% 以下への低下は、化学療法の効果と生命予後の延長効果を予測する指標になるとされる。

今後、さらに特異性の高い、また早期より検出可能な胃癌の腫瘍マーカーの開発が期待される。

### 診断における腫瘍マーカーの意義

胃癌における特異的な腫瘍マーカーは現時点では確立されていない。このため存在診断としての意義よりも、術前の進行度、転移の有無や術後の再発 follow-up としての有用性が高いと考えられている。臨床的には CEA, CA 19-9 などの腫瘍マーカーを、臨床診断にあわせて組み合わせ、使い分けているのが現状である。

#### 1. 胃癌ハイリスク患者のスクリーニング

腫瘍マーカーの存在診断の意義は決して高くないが、胃癌のハイリスク群のスクリーニングに以

下のものが用いられている。

#### 1) ペプシノーゲン・アイソザイム I/II (PG I/II) 比

胃癌のハイリスク群とされる慢性萎縮性胃炎と腸上皮化生をスクリーニングする方法である<sup>1)</sup>。

一部の住民健診、職場健診で従来の間接二重造影法に変えてスクリーニングに用いる試みも始まっている。

#### 2) ヘリコバクター・ピロリ血中 (HP) 抗体

HP 抗体は、WHO により胃癌の危険因子の一つとされ、ハイリスク患者のスクリーニングに期待されている。

HP 抗体 IgG 検査実施診断料は保険適用で 70

\*Tsuji Akihito 高知医療センター化学療法科・消化器科 (〒781-8555 高知市池 2125-1)

点となる。類似検査である便中 HP 抗原は 160 点, 尿素呼気試験は 70 点である。

ただヘリコバクター・ピロリ菌の除菌療法が, 胃癌予防に有用であるかはまだ証明されていない。

## 2. 胃癌診断の補助となるマーカー

- ・シアリル Le<sup>a</sup>グループ: CA 19-9, CA 50, SPan-1
- ・シアリル Tn 抗原グループ: CA 72-4, STn
- ・シアリル Le<sup>x</sup>抗原グループ: NCC-ST-439, SLX
- ・癌胎児性抗原: carcinoembryonic antigen (CEA)

### 1) 胃癌の腫瘍マーカー

胃癌の腫瘍マーカーとしては従来 CEA<sup>2)</sup>, CA 19-9 などが広く測定されてきた。

胃癌の腫瘍マーカーは, 一般に分化型胃癌に対し低分化型胃癌の陽性率は低いとされる<sup>3)</sup>。

ただ胃癌全体では, CEA よりも CA 19-9, CA 50, SPan-1 などのシアリルルイス A グループの糖鎖抗原や, CA 72-4, STn, CA 546 などのシアリル Tn 抗原グループの陽性率が高く, 予後との相関も高いとされている。

また, CA 72-4 などのシアリル Tn 抗原と, NCC-ST-439 などのシアリル Le<sup>x</sup>抗原グループは進行癌において陽性率が高く, 偽陽性率も低い。胃癌の治療効果のマーカーとしても期待される。

### 2) 臨床における腫瘍マーカーのとらえ方

一般的に胃癌の腫瘍マーカー陽性率は, stage III 以上のもので高い<sup>4)</sup> (図 1)。

CEA が非常に高いもの (30 ng/ml 以上) などの場合は, 肝転移やリンパ節転移を疑うことが多い。

偽陽性は高齢者, 気管支炎, 慢性膵炎, 慢性肝炎, 糖尿病などに多く, 10 ng/ml 以下のものが多い傾向にある。

現在の保険診療上, 癌を疑う場合の腫瘍マーカー精密測定の実施料は, 1 検体では検査の種類によって異なり 130~310 点 (多くは 200 点以下) であるが, 2 項目では 270 点, 3 項目では 340 点, 4 項目以上では 460 点のいわゆる「まるめ」となる。また, 癌の診断が付いているものについ

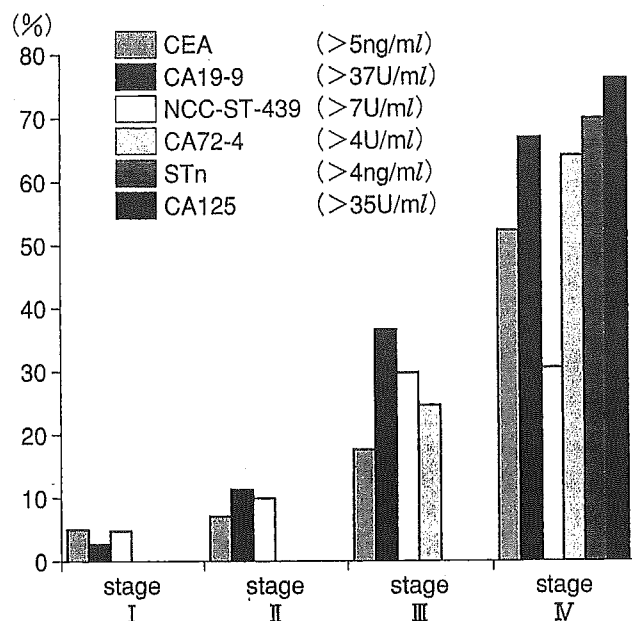


図 1 胃癌における腫瘍マーカーの陽性率 (文献<sup>4)</sup>より引用し改変)

ては, 管理料として 1 項目 360 点, 2 項目以上では 400 点 (初回月は +150 点加算) が適応される (表 1)。

### 3. 胃癌のサブタイプ鑑別を行う腫瘍マーカー

胃癌の陽性率は高くないが, 特殊なタイプの胃癌であることを示す腫瘍マーカーに AFP と hCG がある。

#### 1) AFP

AFP 産生胃癌は転移しやすく (特に肝転移が多い), AFP 高値 (20 ng/ml 以上) の症例は予後不良であることが知られている (図 2)<sup>5)</sup>。

AFP の検体検査実施料は 1 項目 40 点, 2 項目以上では 75 点である (癌の診断が付いているものについては, 管理料として一律 220 点が適応される)。

#### 2) hCG

hCG 産生胃癌は, 絨毛癌と似た性質を持ち, 胃の絨毛癌と分類されることもある<sup>6)</sup>。化学療法の反応性も比較的良い。

hCG の検体検査実施料は 1 検体では 180 点, 2 項目 270 点, 3 項目 340 点, 4 項目以上では 460 点である。

表1 検体検査実施料と悪性腫瘍特異物質治療管理料

検査項目名	悪性腫瘍であることが強く疑われる患者		悪性腫瘍であるとすでに診断が確定した患者
	検体検査実施料		悪性腫瘍特異物質治療管理料
一般測定	αフェトプロテイン (AFP)	40点	2項目以上 75点
	免疫抑制酸性蛋白 (IAP)	60点	
	尿中 BTA*1	(70点)	
精密測定	癌胎児性抗原 (CEA) 精密測定 αフェトプロテイン (AFP) 精密測定 組織ポリペプチド (TPA) 精密測定	130点	1項目 360点 2項目以上 400点  初回月加算 150点 当該初回月の前月に腫瘍マーカー検査実施料の所定点数を算定している場合は、当該初回月加算は算定できない
	扁平上皮癌関連抗原 (SCC 抗原) 精密測定	140点	
	DUPAN-2 精密測定 NCC-ST-439 精密測定 CA 15-3 精密測定	150点	
	エラスターゼ I 精密測定 前立腺酸性フォスファターゼ (PAP) 精密測定 前立腺特異抗原 (PSA) 精密測定	160点	
	塩基性フェトプロテイン (BFP) 精密測定 CA 19-9 精密測定 CA 72-4 精密測定 CA 50 精密測定 SPan-1 抗原精密測定 シアリル Tn 抗原 (STN) 精密測定 尿中 NMP 22 精密測定*2 神経特異エノラーゼ (NSE) 精密測定 PIVKA-II 精密測定	170点	
	SP 1 精密測定 シアリル Le <sup>x</sup> -i 抗原 (SLX) 精密測定 CA 125 精密測定	180点	
	尿中遊離型フコース (UFC) シアリル Le <sup>x</sup> (CSLEX) 精密測定 フリーPSA/トータルPSA 比精密測定	190点	
	BCA 225 精密測定	200点	
	CA 602 精密測定 CA 130 精密測定 サイトケラチン 19 フラグメント (シフラ) 精密測定 ガストリン放出ペプチド前駆体 (ProGRP) 精密測定	210点	
	AFP のレクチン反応性による分画比 (AFP-L 3%) CA 54/61 精密測定 癌関連ガラクトース転移酵素 (GAT) 精密測定	220点	
	膀胱癌胎児性抗原 (POA) 精密測定 γ-セミノプロテイン (γ-Sm) 精密測定	230点	
	尿中ヒト絨毛性ゴナドトロピン β 分画コア定量 (HCG-β コア定量) 精密測定	240点	
	乳頭分泌液中 CEA 精密測定 乳頭分泌液中 HER 2 タンパク測定 血清中 HER 2 タンパク測定	310点	
	I 型コラーゲン-C-テロペプチド (ICTP) 精密測定 I 型コラーゲン架橋 N-テロペプチド (NTx) 精密測定 尿中デオキシピリジノリン精密測定 I 型プロコラーゲン-C-プロペプチド (PICP) 精密測定		

[注]

\* 1: 「悪性腫瘍特異物質治療管理料」として、のみ算定。

\* 2: 「検体検査実施料」として、のみ算定。

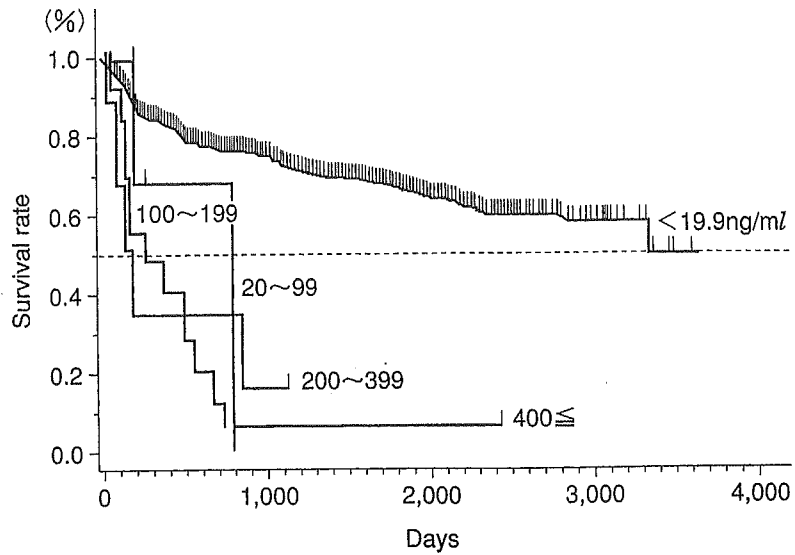


図2 術後 AFP 値と胃癌患者の予後

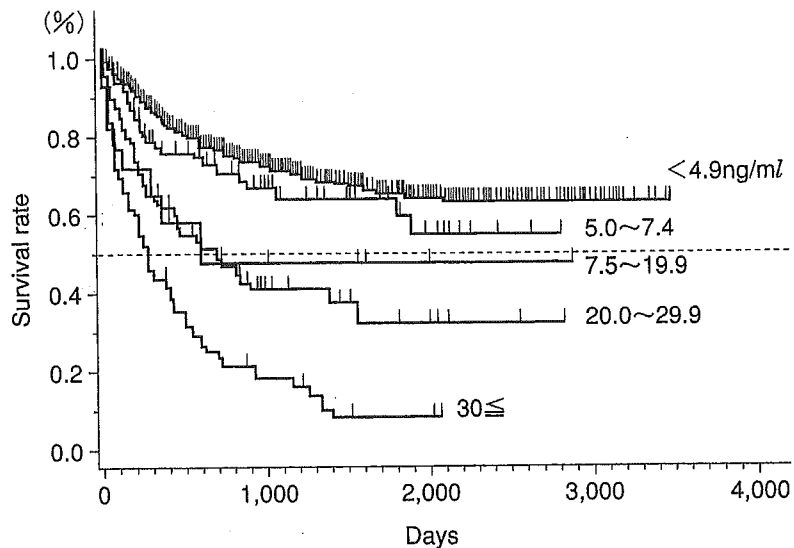


図3 術前 CEA 値と胃癌患者の予後

## 経過観察時の腫瘍マーカーの意義

### 1. 経過観察のモニターおよび予後因子としての腫瘍マーカー

血清腫瘍マーカーが基準値をわずかに超えるような場合は、その腫瘍マーカーが実際に陽性であるかの判断は困難である。ただ手術、化学療法開始後に血中レベルの低下があったり、経過観察時に経時的に増加したりする場合には経過観察時のモニターとなり得る。

一般的には画像診断で癌の再発が発見されるよ

りも、1~6カ月前(リードタイムと呼ばれる)より血清腫瘍マーカー値の上昇が観察されることが多い。

#### 1) CEA

stage I, IIの患者のうち、術前血清CEAが高値の患者には再発症例が多く、潜在性の転移の可能性が高いとされる(図3)7)。

また、20.0 ng/ml以上の高度上昇例では、リンパ節転移や他臓器(肝や肺など)の転移が疑われる。

CEA値の上昇で、比較的緩徐な上昇の際には局所再発が、急速な増加を示す際には血行性転移が

多いとされる<sup>9)</sup>。

## 2) CA 19-9

胃癌全体での CA 19-9 の陽性率は 25~30% である。

ただし胆管炎や胆道閉塞、糖尿病、間質性肺炎などで高値を示すことが多い (100 U/ml を超えることは少ない)。

術前 CA 19-9 値は深達度、リンパ節転移、遠隔転移に次ぐ重要な予後因子とされる<sup>9)</sup>。

## 3) CA 125

腫瘍が漿膜に達した場合と、腹膜播種のある場合に陽性となることが多い。

腹膜播種がある際の陽性率は、他の腫瘍マーカーが 10% 以下と低率であるのに対して、40% 以上の高い感度である。

ただ他の腫瘍マーカーと異なり、胃癌細胞からはほとんど産生されず、腹膜播種に伴う腹膜炎により上昇しているものと推測されているが、実際の臨床の場では、胃癌に腹膜炎を伴う症例の多くは癌性腹膜炎であり、腹膜播種は画像診断での指摘が困難なものも多く経験されるため、CA 125 の有用性は高い。

## 4) AFP

肝転移における AFP の陽性率は 10% 前後で決して高値ではないが、AFP 陽性の胃癌患者の肝転移率は 70% を超えるとの報告もある<sup>10)</sup>。

## 5) FDP

stage IV 症例にのみ異常値がみられ、高度の脈管侵襲による血管内凝固異常の存在と予後不良を示唆する。

## 6) IAP (免疫抑制酸性蛋白)

IAP は宿主の免疫能を反映するマーカーで、厳密には腫瘍マーカーとは異なるが予後の予測に有用とされる<sup>11)</sup>。

## 7) 肝転移

胃癌肝転移症例における腫瘍マーカーの陽性率は CEA : 38~65%, CA 19-9 : 35~60%, AFP : 8~15%, CA 125 : 15% である (表 2)。

## 8) 腹膜播種

胃癌腹膜播種症例における腫瘍マーカーの陽性率は CEA : 8~9%, CA 19-9 : 7~9%, AFP : 0~1%, CA 125 : 43~52% である<sup>12)</sup> (表 2)。

表 2 胃癌肝転移、腹膜播種と腫瘍マーカー

	肝転移	腹膜播種
CEA	38~65%	8~9%
CA 19-9	35~60%	7~9%
AFP	8~15%	0~1%
CA 125	15%	43~52%

(文献<sup>12)</sup>より引用し改変)

表 3 胃癌再発と CEA, CA 19-9

	術前陽性率	再発時陽性率
CEA	28.3%	65.8%
CA 19-9	29.2%	55.0%
Either/both	45.0%	85.0%

## 9) リンパ節

リンパ節転移の予測には CEA, CA 19-9 が有用である。どちらかもしくは双方が陽性の場合の特異度は 90% 以上とされる<sup>13)</sup>。

## 10) 再発時

CEA, CA 19-9 ともに陽性率が高まるとされている<sup>14)</sup> (表 3)。

## 11) 化学療法時の治療経過のマーカー

腫瘍マーカー値の 50% 以下への低下は、化学療法の効果と生命予後の延長効果を予測する指標になるとされる<sup>15)</sup>。

## 2. 腹水などの検体中の腫瘍マーカー

### 腹水・腹腔洗浄液中 CEA

腹膜播種の指標として一部施設で、細胞診などと併用で用いられている。

## おわりに

腫瘍マーカーは簡便な臨床検査である。しかし、現在の腫瘍マーカーは、胃癌に特異的な腫瘍マーカーであるとはいえず、かつ早期癌における陽性率は低い。このため、現時点での腫瘍マーカーの意義は、以下のようなものであると考えられる。

① 特異的な腫瘍マーカーは少ないが、各種腫瘍マーカーを組み合わせることにより術後の再発、転移の発見に有用な情報となり得る。

② 腫瘍マーカー値の経時的な変化が、手術、化学療法、放射線療法などの各種治療の効果判定の

良い指標となることが多い。

③ 画像診断が困難な腹膜播種に対する CA 125 や、画像診断可能となる時期以前のリンパ節転移に対する CEA, CA 19-9 などの症例において有効な診断情報となる。

今後、特異性の高い、また早期より検出可能な胃癌の腫瘍マーカーの開発が期待される。

..... 文 献 .....

- 1) 三木一正：胃癌の腫瘍マーカー. 癌の臨床 40 : 689-696, 1993
- 2) 黒木政秀：CEA. 日医雑誌 131 : 625-628, 2004
- 3) 大倉久直：胃癌の腫瘍マーカー. 臨床検査 38 : 1186-1187, 1994
- 4) 大倉久直：胃癌手術例における血清腫瘍マーカーの意義. 日外会誌 18 : 25-28, 1988
- 5) 児玉哲郎, 亀谷 徹, 下里幸雄, 他：胃癌 100 例の AFP, hCG および CEA の産生. 癌の臨床 27 : 291-293, 1981
- 6) Braunstein GD, Vaitukaitis JL, Carbone PP, et al : Ectopic production of human chorionic gonadotrophin by neoplasms. Ann Intern Med 78 : 39-45, 1973
- 7) 坂本純一, 中里博昭, 大倉久直, 他：胃癌の診断, ステージング, および予後に関する術前 CEA 値とその Follow up の意義. 日癌治療会誌 25 : 1095-1104, 1990
- 8) 杉山保幸, 佐治重豊, 国枝克之, 他：腫瘍マーカーの読み方の実際. 臨と検 78 : 1975-1978, 2001
- 9) Onorate A, et al : Non-anatomical prognostic response to chemotherapy for gastric cancer patients : significance of tumor markers. in Recent Advances in Management of Digestive Cancer, Springer, Tokyo, 1993, pp 227-229
- 10) 高橋 豊, 磨伊正義, 萩野知己, 他：AFP 産生胃癌の臨床病理学的研究. 日外会誌 88 : 697-700, 1987
- 11) Sakamoto J, Teramukai S, Koike A, et al : Prognostic value of preoperative immunosuppressive acidic protein in patients with gastric carcinoma. Cancer 77 : 2206-2212, 1996
- 12) 高橋 豊：臨床検査, 診断に用いる腫瘍マーカー 消化管腫瘍. 癌と化学療法 31 : 1275-1279, 2004
- 13) 高橋 豊, 山田志郎, 太田孝仁, 他：CEA と CA 19-9 の Combination Assay による胃癌の術前リンパ節転移の予測に関する検討. 外科 51 : 613-616, 1989
- 14) Takahashi Y, Taguchi T, Sakamoto J, et al : The significance of CEA and/or CA 19-9 in monitoring for recurrence in gastric cancer cases. A prospective clinical study. Gastric Cancer 6 : 142-145, 2003
- 15) Yamao T, Kai S, Kazami A, et al : Tumor marker CEA, CA 19-9 and CA 125 in monitoring of response to systemic chemotherapy in patients with advanced gastric cancer. Jpn J Clin Oncol 29 : 550-555, 1999

Toshikazu Moriwaki · Ichinosuke Hyodo  
Tomohiro Nishina · Ken Hirao · Takao Tsuzuki  
Satoshi Hidaka · Takeshi Kajiwara · Shinji Endo  
Junichirou Nasu · Shoji Hirasaki · Toshikazu Masumoto  
Akira Kurita

## A phase I study of doxifluridine combined with weekly paclitaxel for metastatic gastric cancer

Received: 6 April 2004 / Accepted: 26 May 2004 / Published online: 13 April 2005  
© Springer-Verlag 2005

**Abstract Purpose:** Based on the synergistic effect in preclinical studies, a phase I clinical trial for the combination of paclitaxel and doxifluridine (an intermetabolite of capecitabine) was performed to determine the recommended dose for the treatment of patients with metastatic gastric cancer. **Methods:** The dose of paclitaxel was increased from 60 mg/m<sup>2</sup> at level 1 to 90 mg/m<sup>2</sup> at level 5. It was administered as a 1-h infusion on days 1 and 8. The dose of doxifluridine was fixed at 600 mg/m<sup>2</sup> per day up to level 3, and escalated to 800 mg/m<sup>2</sup> per day at levels 4 and 5. It was administered orally for 2 weeks. The treatment was repeated every 3 weeks. **Results:** A total of 28 patients were enrolled. No dose-limiting toxicity (DLT) was observed at levels 1 and 2 (paclitaxel 70 mg/m<sup>2</sup>). A DLT of grade 4 neutropenia lasting for more than 4 days was observed in one patient at level 3 (paclitaxel 80 mg/m<sup>2</sup>). In addition, the first five of six patients in this group experienced grade 3 neutropenia during the first treatment cycle. A further six patients were added in order to confirm the safety of this dosage level, and no more DLTs except for grade 3 nausea in one patient were observed in the second cohort. No DLT was seen in three patients at level 4 (paclitaxel 80 mg/m<sup>2</sup>). DLTs (grade 3 neuropathy in one patient and a treatment delay of the second cycle for more than 1 week due to grade 3 neutropenia in another) were observed in two out of six patients at level 5 (paclitaxel 90 mg/m<sup>2</sup>), and this dose level was determined as the maximum tolerated

dose. The tumor response rate was 42% (95% confidence interval 20–67%) in 19 patients with measurable lesions. **Conclusions:** The recommended dose was determined as 80 mg/m<sup>2</sup> of paclitaxel (days 1 and 8) and 800 mg/m<sup>2</sup> of doxifluridine (days 1–14) every 3 weeks. The results of this phase I study are encouraging and a phase II trial is thus warranted.

**Keywords** Doxifluridine · Thymidine phosphorylase · Taxane · Gastric cancer · Clinical trial

### Introduction

The incidence of gastric carcinoma is still high in Asia and it remains one of the leading causes of death [13, 28]. The prognosis for patients with unresectable or metastatic gastric carcinoma is poor, but chemotherapy confers a benefit when compared with best supportive care alone [9, 23]. In the past over 20 years, several anticancer drugs such as 5-fluorouracil (5-FU), cisplatin, methotrexate, doxorubicin, epirubicin, mitomycin, and etoposide, have been studied either alone or in combination as treatments for this disease. However, no new combination has yet emerged that is superior to 5-FU alone or to 5-FU plus cisplatin in terms of overall survival [13, 22, 31]. There is a pressing need for the evaluation of new agents such as the oral fluoropyrimidines and taxanes.

Paclitaxel promotes microtubule assembly and then exhibits its antitumor effect by arresting the cell cycle in the G<sub>2</sub>/M phase. This mechanism of action is different from conventional anticancer drugs, and it has therefore been suggested that combination therapy with other anticancer drugs may be clinically effective [17]. The efficacy of paclitaxel has previously been confirmed clinically in various tumors including gastric cancer [1, 5, 10, 18, 19, 21, 33]. Furthermore, some promising regimens of paclitaxel combined with 5-FU/leucovorin/cisplatin, or with 5-FU/cisplatin have been reported in advanced gastric cancer [11, 14].

T. Moriwaki · I. Hyodo (✉) · T. Nishina · K. Hirao  
T. Tsuzuki · S. Hidaka · T. Kajiwara · S. Endo · J. Nasu  
S. Hirasaki · T. Masumoto  
Department of Medical Oncology,  
National Shikoku Cancer Center, 13 Horinouchi,  
Matsuyama, Ehime, 790-0007, Japan  
E-mail: ihyodo@shikoku-cc.go.jp  
Tel.: +81-89-9321111  
Fax +81-89-9312428

A. Kurita  
Department of Surgical Oncology,  
National Shikoku Cancer Center, Matsuyama, Japan

Preclinical studies have shown that paclitaxel induces thymidine phosphorylase (dThdPase) specifically in various human tumor tissues [26]. The oral fluoropyrimidine capecitabine and its intermetabolite doxifluridine are prodrugs that are converted to 5-FU by dThdPase in tumor tissues [6, 12]. A synergistic effect on inhibition of tumor growth has been reported when these agents are combined with paclitaxel [26]. Modest activity of capecitabine and doxifluridine has been reported in the treatment of advanced gastric cancer [7, 15, 20, 32]. Doxifluridine was approved for use in the treatment of advanced gastric cancer in 1987 in Japan, but capecitabine is still under investigation for this disease.

Thus, we conducted a phase I clinical trial in order to study the feasibility of paclitaxel/doxifluridine combined therapy. The tumor response was also investigated.

## Patients and methods

### Patients

All patients had to fulfill the following eligibility criteria: (1) histological confirmation of gastric adenocarcinoma; (2) inoperable metastatic disease or recurrent metastatic disease after surgery; (3) measurable or evaluable lesions; (4) aged from 20 to 75 years; (5) performance status (PS)  $\leq 2$  on the Eastern Cooperative Oncology Group (ECOG) scale; (6) a maximum of one prior chemotherapy other than paclitaxel or doxifluridine for advanced disease (prior chemotherapy for advanced disease must have been completed at least 4 weeks prior to enrollment); (7) adequate bone marrow function (absolute granulocyte count  $\geq 1500/\text{mm}^3$  and platelet count  $\geq 100,000/\text{mm}^3$ ); (8) adequate liver function (serum bilirubin  $< 1.5$  mg/dl and serum transaminase  $< 100$  U/l); (9) adequate renal function (serum creatinine  $< 1.2$  mg/dl); (10) no other severe medical conditions; (11) no other active malignancies; (12) no pregnant or lactating patients; (13) no peripheral neuropathy; and (14) provision of written informed consent.

This study was approved by the Institutional Review Board of the National Shikoku Cancer Center.

### Dose-limiting toxicity and maximum tolerated dose

Dose-limiting toxicities (DLTs) were determined during the first treatment cycle. The definitions of DLTs were as follows: (1) grade 4 neutropenia lasting for at least 4 days, or grade 3 or 4 neutropenia with fever, (2) grade 4 thrombocytopenia, (3) grade 3 non-hematological toxicity, and (4) treatment delay of more than 2 weeks following the last administration of doxifluridine. The maximum tolerated dose (MTD) was defined as the dose level at which two of the three to six treated patients experienced DLT, and the recommended dose (RD) was determined at one level below.

Baseline evaluation included a complete medical history, physical examination, complete blood cell count, serum chemistry, urinary analysis, ECG, gastroscopy, gastrography, abdominal CT scan, and chest radiography. Blood, chemistry, urinary analyses, and subjective/objective symptoms for toxicity were monitored on a weekly basis during the treatment. Blood cell counts were determined at least every 2 days if hematological toxicities of grade 3 or more were seen in the first treatment cycle. When patients received the subsequent treatment cycle, they had to fulfill the previous eligibility criteria (7), (8), and (9), and their non-hematological toxicities had to recover to grade 1.

Toxicities were evaluated according to the National Cancer Institute common toxicity criteria (version 2.0).

### Dosage and administration

The previous reports of phase I clinical trials studying the weekly administration of paclitaxel as a single agent in breast and ovarian cancer revealed that the RD was 80–100 mg/m<sup>2</sup> [16, 27]. We set the starting dose of paclitaxel (Taxol; Bristol-Myers Squibb Company, Tokyo, Japan) at 60 mg/m<sup>2</sup> and the dose was escalated by 10 mg/m<sup>2</sup> for each dose level up to dose level 3. Paclitaxel dissolved in 500 ml of an isotonic sodium chloride solution was administered on days 1 and 8 as an intravenous (i.v.) drip injection over 60 min following the short premedication (dexamethasone sodium phosphate 20 mg i.v. drip, diphenhydramine hydrochloride 50 mg orally, and ranitidine hydrochloride 50 mg i.v. 30 min before paclitaxel administration). Because 600–800 mg/m<sup>2</sup> per day of doxifluridine (Fulturon; Chugai Pharmaceutical Company, Tokyo, Japan) was considered the dose for patients with gastric cancer and this dose had been approved as the single-agent RD in Japan [20, 33], we fixed doxifluridine at the dose of 600 mg/m<sup>2</sup> per day and administered it orally at regular intervals four times a day (after each meal and before sleep) for 14 days. If the MTD did not reach level 3, the dose of each drug in the subsequent level was escalated in tandem by 10 mg/m<sup>2</sup> of paclitaxel and by 200 mg/m<sup>2</sup> of doxifluridine as shown in Table 1.

This treatment was repeated every 3 weeks (one cycle each) until disease progression or unacceptable toxicity was seen. The first cycle of the treatment was performed in the in-patient setting in our center. If the patient experienced DLT followed by no disease progression, the subsequent cycle was started at the next lower level after complete recovery from the toxic effects of the previous cycle.

### Tumor response

Tumor response was evaluated every 6 weeks by means of CT scan. Measurable lesions were assessed according to the Response Evaluation Criteria in Solid Tumors (RECIST) [30].

**Table 1** Dose level, number of patients enrolled, and DLT

Level	Paclitaxel (mg/m <sup>2</sup> )	Doxifluridine (mg/m <sup>2</sup> )	No. of patients	DLT
1	60	600	4	None
2	70	600	3	None
3	80	600	12	One grade 4 neutropenia lasting more than 4 days; one grade 3 nausea
4	80	800	3	None
5	90	800	6	One grade 3 neuropathy; one treatment delay due to neutropenia

## Results

A total of 28 patients were enrolled, with 4 patients dosed at level 1, 3 at level 2, 12 at level 3, 3 at level 4, and 6 at level 5 from September 2001 to January 2003 (Table 1). Because one patient dosed at level 1 developed a grade 1 hypersensitivity reaction during the first treatment cycle and refused further treatment, a replacement patient was added to this dosage group. The patient characteristics are shown in Table 2. Of the 28 patients, 21 exhibited a good PS (0 or 1), and 22 had had a prior chemotherapy. The most frequent prior chemotherapy was 5-FU (17 patients). Nine patients had differentiated histological gastric adenocarcinoma, and the remainder had the undifferentiated type. The major metastatic sites were peritoneum, lymph nodes and liver.

The adverse events in the first cycle are summarized in Table 3. The most frequently observed toxicity was neutropenia. DLTs were not observed at levels 1 and 2, but a DLT (grade 4 neutropenia which continued for more than 4 days) was observed in the second patient at level 3. Then three patients were added to this dosage group. No DLT was observed in these additional patients. However, grade 3 neutropenia was observed in five patients (83%) in the first treatment cycle at this dose level. In addition, a 1-week postponement of the second cycle was needed due to the neutropenia in one patient and grade 4 neutropenia developed in another patient in the second cycle. Therefore, an additional six patients were enrolled in order to confirm the safety of this dose level. No DLT except for grade 3 nausea in one patient was observed in this second cohort, and we moved to the next dosage level. At level 4, grade 3 neutropenia was observed in two of three patients. However, no DLT was seen in this cohort. DLT (more than a 1-week treatment delay due to grade 3 neutropenia) was observed in the third patient at level 5. Three patients were added to this level. DLT (grade 3 peripheral neuropathy) was observed in the sixth patient. Grade 2 neuropathy appeared following the first administration of paclitaxel on day 1 and increased to grade 3 immediately after the second administration on day 8. The treatment was continued up to three cycles at the next lower dosage level, although grade 1 or 2 peripheral neuropathy developed during every cycle. From these results, level 5 was determined as the MTD and level 4 (paclitaxel 80 mg/m<sup>2</sup>, doxifluridine 800 mg/

m<sup>2</sup>) was set as the RD. The lowest neutrophil counts in the first cycle at each dosage level are shown in Table 4. The medians of the lowest absolute neutrophil counts were graded as grade 3 neutropenia in levels 3, 4 and 5. Their values were apparently lower than those in levels 1 and 2. The period of recovery to grade 1 was around a week in levels 3, 4, and 5. It was also longer than that in levels 1 and 2.

The main toxicity of this combined therapy was myelotoxicity, neutropenia in particular. Grade 3 or 4 neutropenia was observed in 0 of 12 cycles (0%) at level 1, 1 of 20 cycles (5%) at level 2, 14 of 76 cycles (18%) at level 3, 3 of 13 cycles (23%) at level 4, and 3 of 15 cycles (20%) at level 5. Non-hematological toxicities of greater than grade 3 were observed in four patients during all treatment cycles. Two of these were the DLT. One of the remaining two patients showed grade 3 diarrhea in the fourth cycle at level 4, and the other patient showed grade 3 peripheral neuropathy after five cycles at level 5. A total of seven patients needed dose reduction during all treatment cycles. Four patients with DLT (Table 1) and two patients with grade 3 diarrhea and grade 3 peripheral neuropathy, respectively, were included. The other was the patient who showed grade 4 neutropenia in the second cycle at level 3. Peripheral neuropathy of grade 1 or 2 occurred in 2 of 12 patients at level 3, 1 of 3 patients at level 4, and 3 of 6 patients at level 5. It tended to be more severe following repeated administration of paclitaxel and seemed cumulative. Hand-foot syndrome

**Table 2** Characteristics of patients

Age (years)	
Median	63
Range	44–75
Sex	
Male/female	16/12
Performance status (ECOG)	
0/1/2	10/11/7
Prior therapy	
Gastrectomy	20
Chemotherapy (5-FU)	22 (17)
Histological type	
Differentiated	9
Undifferentiated	19
Sites of metastasis	
Liver	6
Abdominal lymph nodes	17
Lung	5
Peritoneum	19
Spleen	2

Table 3 Adverse reactions during the first treatment cycle

Toxicity	Level 1 (n = 4)		Level 2 (n = 3)		Level 3 (n = 6)		Level 4 (n = 3)		Level 5 (n = 6)	
	Grade 1/2	Grade 3/4	Grade 1/2	Grade 3/4	Grade 1/2	Grade 3/4	Grade 1/2	Grade 3/4	Grade 1/2	Grade 3/4
Hematological										
Leukopenia	2	0	2	1	5	1	1	2	5	0
Neutropenia	3	0	2	1	1	5 <sup>a</sup>	2	0	3	2 <sup>a</sup>
Lymphocytopenia	4	0	1	1	1	0	1	2	6	0
Anemia	3	1	3	0	4	1	5	0	4	1
Thrombocytopenia	2	0	0	0	0	0	2	0	1	0
Non-hematological										
Hypersensitivity reaction	1	0	0	0	0	0	0	0	0	0
Infection	0	0	0	0	0	0	0	0	0	0
Fatigue	2	0	0	0	1	0	1	3	0	0
Nausea	2	0	0	0	0	0	0	0	2	0
Vomiting	0	0	0	0	0	0	1	0	0	0
Anorexia	1	0	0	0	1	0	0	0	1	0
Diarrhea	0	0	0	0	2	0	0	2	0	0
Stomatitis	1	0	0	0	0	0	0	0	1	0
Alopecia	1	0	0	0	3	0	2	0	5	0
Edema	0	0	0	0	0	0	0	0	0	0
Hand-foot syndrome	0	0	0	0	0	0	0	0	0	0
Rash	1	0	0	0	0	0	1	0	0	0
Palpitations	0	0	0	0	0	0	1	0	0	0
Peripheral neuropathy	0	0	0	0	0	0	0	1	0	1 <sup>a</sup>

<sup>a</sup>DLT was observed in one patient

**Table 4** Lowest absolute neutrophil count (LNC) during the first treatment cycle

Level	LNC (per mm <sup>3</sup> )		Time to LNC (days)		Recovery from LNC (days)	
	Median	Range	Median	Range	Median	Range
1	1860	1287-1884	14	12-22	2	2-6
2	1700	558-1768	14	4-17	3	2-10
3	904	200-1672	14	6-16	8	4-15
4	867	738-996	14	14	8	7-8
5	902	801-1824	14	13-17	6	6-21

was not observed in any patient during any treatment cycle. There was no treatment-related death.

The median numbers of administration cycles were 2 (range 1-8) for level 1, 6 (range 3-11) for level 2, 6 (range 2-13) for level 3, 4 (range 3-6) for level 4, and 3 (range 2-5) cycles for level 5.

An objective tumor response was not observed in the patients at dosage levels 1 and 4. Three patients showed a partial response (PR) at level 2. Two patients showed a complete response (CR) and one patient showed a PR at level 3. Two patients showed a PR at level 5. The overall response rate in all 19 patients with measurable lesions was 42% (95% confidence interval 20-67%). The response rate in pretreated patients was 43% (6/14) and that in chemo-naïve patients was 40% (2/5). The ascites disappeared in two of three patients without measurable lesions at level 3.

## Discussion

Based on the results of phase I and II clinical trials of paclitaxel, the RD was set at 210 mg/m<sup>2</sup> over a 3-week dosing schedule in Japan, and a relatively high tumor response rate of 23% has been reported for advanced gastric cancer [29, 33]. In addition, paclitaxel yielded the same response rate in the second-line setting (23%) as in the first line setting (24%), and non-cross resistance with other anticancer drugs was suggested. In terms of the toxicity, leukopenia and neutropenia of higher than grade 3 were observed in 28% and 58% of patients, respectively. These results are supported by other studies [1, 5]. In recent years, the concept of dose-dense therapy whereby the interval between administrations is shortened to reduce the time for regrowth of neoplastic cells has been proposed [8]. Several clinical studies involving weekly dose-dense therapy of paclitaxel have been performed in lung, breast, and ovarian cancer [16, 24, 27]. Following a phase I clinical trial in 60 patients with advanced cancer who had been treated previously with systemic chemotherapy other than taxanes, the RD was 80 mg/m<sup>2</sup> of paclitaxel weekly, and grade 3 or higher toxicities were rarely observed [16]. In addition, a recent randomized trial comparing two administration methods of paclitaxel with the same dose intensity (conventional 3-week regimen of 200 mg/m<sup>2</sup> and weekly regimen of 67 mg/m<sup>2</sup>) in patients with recurrent ovarian cancer revealed equal response rates and overall survival, and

reduced toxicities with the weekly schedule [24]. Thus, weekly dosing of paclitaxel has been confirmed to have equal efficacy and lower toxicity than the conventional dosing regimen.

Capecitabine is still under investigation for advanced gastric cancer in Japan. Instead, the immediate precursor to capecitabine, doxifluridine, has been approved for the treatment of advanced gastric cancer. In preclinical evaluations, the therapeutic index of doxifluridine has been shown to be much more than that of 5-FU [4]. In clinical studies, high oral bioavailability of doxifluridine has been noted, and it has shown prominent antitumor activity in patients with breast, colorectal, and gastric cancers [2, 7, 20]. The DLT of doxifluridine is diarrhea. Recently, it has been reported that several anticancer drugs, including paclitaxel, upregulate the expression of dThdPase specifically in tumor tissues and that paclitaxel in combination with doxifluridine shows the synergistic activity in several human cancer xenograft models [26]. Furthermore, the major toxicities of paclitaxel and doxifluridine do not overlap. Therefore, we adopted a weekly dosing regimen of paclitaxel in combination with doxifluridine.

Neutropenia was the most frequently observed toxicity with this combination therapy, and was dose-limiting. However, no neutropenic fever was seen in this study. At dose level 3, one patient experienced a DLT (grade 4 neutropenia for more than 4 days), and five of six patients, including the patient with DLT, exhibited grade 3 or more neutropenia in the first treatment cycle. Based on these results, the investigators and the independent efficacy and safety committee considered it appropriate to stop dose loading at level 3. However, the MTD was not achieved at this level. Then six patients were added to confirm the safety of this dose level. No DLT except for a patient with grade 3 nausea was observed in this additional cohort. Thus, dose escalation was reopened and no grade 4 neutropenia was observed at level 4. Non-hematological toxicity was generally mild. Peripheral sensory neuropathy, one of DLTs of paclitaxel, was well tolerated up to level 4, and diarrhea, a DLT of doxifluridine, was not severe in the initial few cycles at all levels. At level 4, there was only one patient who needed dose reduction due to diarrhea after four treatment cycles. The median numbers of cycles administered were 6 (range 2-13) at level 3 and 4 (range 3-6) at level 4. The main reason for stopping the treatment was disease progression at levels 3 and 4. From

these results, the dosage schedule at level 3 or 4 seems to be highly feasible.

Conventional 3-h infusion of paclitaxel with a 3-week interval combined with infusional 5-FU and cisplatin was studied in Korean group in a phase II trial in advanced gastric cancer [14]. A high response rate of 51% and good tolerability was reported in this study. Recently, it has been reported from Germany that weekly administration of paclitaxel with a combination of 5-FU/folinic acid and cisplatin showed a reduced incidence of hematological toxicity, particularly leukopenia, and other toxicities, apart from a slightly higher incidence of peripheral neuropathy, were also comparable between the weekly regimen and the conventional regimen [11]. The response rate (50%) in this German phase II study in advanced gastric cancer was well maintained with the weekly regimen.

Active oral fluoropyrimidines, such as capecitabine, S-1, and uracil/ftorafur (UFT) plus leucovorin have recently been developed [3, 15, 25]. Based on promising reports, trials are being urgently undertaken in many countries to determine whether 5-FU combined with various agents could be replaced by these new oral fluoropyrimidines. Although most patients in our study had received prior chemotherapy, this doxifluridine and paclitaxel combined therapy yielded a high response rate of 42% (95% confidence interval 20–67%). In addition, elimination of ascites was observed in two of three patients. The efficacy of this combination therapy would also be expected in patients with peritoneal dissemination that is frequently seen in advanced gastric cancer. These results encouraged us to move to further trials.

In conclusion, we performed a phase I clinical trial using a combination of paclitaxel and doxifluridine, and determined the RD as 80 mg/m<sup>2</sup> of paclitaxel on days 1 and 8, and 800 mg/m<sup>2</sup> per day of doxifluridine for 2 weeks in a 3-week treatment schedule. The results of our present study are promising and a phase II clinical trial of this combination therapy is planned in which the safety of the RD will be investigated carefully in the first six or more patients.

**Acknowledgements** We thank Miss Noriko Amano for data management. This study was supported in part by a Grant-in-Aid (S14-3) from the Ministry of Health, Labor and Welfare, Japan.

## References

- Ajani JA, Fairweather J, Dumas P, Patt YZ, Pazdur R, Mansfield PF (1998) Phase II study of Taxol in patients with advanced gastric carcinoma. *Cancer J* 4:269–274
- Bajetta E, Colleoni M, Di Bartolomeo M, Buzzoni R, Bozzetti F, Doci R, Somma L, Cappuzzo F, Stampino CG, Guenzi A (1995) Doxifluridine and leucovorin: an oral treatment combination in advanced colorectal cancer. *J Clin Oncol* 13:2613–2619
- Bokemeyer C, Hartmann JT, Mayer F, Böhlke I, Kanz L, Von Pawel J, Derigs G, Schröder M (2000) UFT/leucovorin plus weekly paclitaxel in the treatment of solid tumors. *Oncology* 14:63–67
- Bollag W, Hartmann HR (1980) Tumor inhibitory effects of a new fluorouracil derivative: 5'-deoxy-5-fluorouridine. *Eur J Cancer* 16:427–432
- Cascinu S, Graziano F, Cardarelli N, Marcellini M, Giordani P, Menichetti ET, Catalano G (1998) Phase II study of paclitaxel in pretreated advanced gastric cancer. *Anticancer Drugs* 9:307–310
- Cook AF, Holman MJ, Kramer MJ, Trown PW (1979) Fluorinated pyrimidine nucleosides. 3. Synthesis and antitumor activity of a series of 5'-deoxy-5-fluoropyrimidine nucleosides. *J Med Chem* 22:1330–1335
- Di Bartolomeo M, Bajetta E, Somma L, Carnaghi C, Bandieri E, Del Vecchio M, Gallo Stampino C, Buzzoni R (1996) Doxifluridine as palliative treatment in advanced gastric and pancreatic cancer patients. *Oncology* 53:54–57
- Eisenhauer EA (1998) Phase I and II trials of novel anti-cancer agents: endpoints, efficacy and existentialism. The Michel Clavel Lecture, held at the 10th NCI-EORTC Conference on New Drugs in Cancer Therapy, Amsterdam, 16–19 June 1998. *Ann Oncol* 9:1047–1052
- Glimelius B, Hoffman K, Haglund U, Nyrén O, Sjöden PO (1994) Initial or delayed chemotherapy with best supportive care in advanced gastric cancer. *Ann Oncol* 5:189–190
- Holmes FA, Walters RS, Theriault RL, Forman AD, Newton LK, Raber MN, Buzdar AU, Frye DK, Hortobagyi GN (1991) Phase II trial of taxol, an active drug in the treatment of metastatic breast cancer. *J Natl Cancer Inst* 83:1797–1805
- Honecker F, Kollmannsberger C, Quietzsch D, Haag C, Schroeder M, Spott C, Hartmann JT, Baronius W, Hempel V, Kanz L, Bokemeyer C (2002) Phase II study of weekly paclitaxel plus 24-h continuous infusion 5-fluorouracil, folinic acid and 3-weekly cisplatin for the treatment of patients with advanced gastric cancer. *Anticancer Drugs* 13:497–503
- Ishitsuka H, Miwa M, Takemoto K, Fukuoka K, Itoga A, Maruyama HB (1980) Role of uridine phosphorylase for antitumor activity of 5'-deoxy-5-fluorouridine. *Gann* 71:112–123
- Kim NK, Park YS, Heo DS, Suh C, Kim SY, Park KC, Kang YK, Shin DB, Kim HT, Kim HJ (1993) A phase III randomized study of 5-fluorouracil and cisplatin versus 5-fluorouracil, doxorubicin, and mitomycin C versus 5-fluorouracil alone in the treatment of advanced gastric cancer. *Cancer* 71:3813–3818
- Kim YH, Shin SW, Kim BS, Kim JH, Kim JG, Mok YJ, Kim CS, Rhyu HS, Hyun JH, Kim JS (1999) Paclitaxel, 5-fluorouracil, and cisplatin combination chemotherapy for the treatment of advanced gastric carcinoma. *Cancer* 85:295–301
- Koizumi W, Saigenji K, Ujite S, Terashima M, Sakata Y, Taguchi T (2003) A pilot phase II study of capecitabine in advanced or recurrent gastric cancer. *Oncology* 64:232–236
- Löffler TM, Freund W, Lipke J, Hausamen TU (1996) Schedule- and dose-intensified paclitaxel as weekly 1-hour infusion in pretreated solid tumors: results of a phase I/II trial. *Semin Oncol* 23:32–34
- Lopes NM, Adams EG, Pitts TW, Bhuyan BK (1993) Cell kill kinetics and cell cycle effects of taxol on human and hamster ovarian cell lines. *Cancer Chemother Pharmacol* 32:235–242
- McGuire WP, Rowinsky EK, Rosenshein NB, Grumbine FC, Ettinger DS, Armstrong DK, Donehower RC (1989) Taxol: a unique antineoplastic agent with significant activity in advanced ovarian epithelial neoplasms. *Ann Intern Med* 111:273–279
- Murphy WK, Fossella FV, Winn RJ, Shin DM, Hynes HE, Gross HM, Davilla E, Leimert J, Dhingra H, Raber MN (1993) Phase II study of taxol in patients with untreated advanced non-small-cell lung cancer. *J Natl Cancer Inst* 85:384–388
- Niitani H, Kimura K, Saito T, Nakao I, Abe O, Urushizaki I, Ohta K, Yoshida Y, Kimura T, Kurihara M (1985) Phase II study of 5'-deoxy-5-fluorouridine (5'-DFUR) in patients with malignant cancer—a multi-institutional cooperative study. *Gan To Kagaku Ryoho* 12:2044–2051
- Ohtsu A, Boku N, Tamura F, Muro K, Shimada Y, Saigenji K, Akazawa S, Kitajima M, Kanamaru R, Taguchi T (1998) An early phase II study of a 3-hour infusion of paclitaxel for advanced gastric cancer. *Am J Clin Oncol* 21:416–419

22. Ohtsu A, Shimada Y, Shirao K, Boku N, Hyodo I, Saito H, Yamamichi N, Miyata Y, Ikeda N, Yamamoto S, Fukuda H, Yoshida S (2003) Randomized phase III trial of fluorouracil alone versus fluorouracil plus cisplatin versus uracil and tegafur plus mitomycin in patients with unresectable, advanced gastric cancer: The Japan Clinical Oncology Group Study (JCOG9205). *J Clin Oncol* 21:54-59
23. Pyrhönen S, Kuitunen T, Nyandoto P, Kouri M (1995) Randomised comparison of fluorouracil, epirubicin and methotrexate (FEMTX) plus supportive care with supportive care alone in patients with non-resectable gastric cancer. *Br J Cancer* 71:587-591
24. Rosenberg P, Andersson H, Boman K, Ridderheim M, Sorbe B, Puistola U, Parö G (2002) Randomized trial of single agent paclitaxel given weekly versus every three weeks and with peroral versus intravenous steroid premedication to patients with ovarian cancer previously treated with platinum. *Acta Oncol* 41:418-424
25. Sakata Y, Ohtsu A, Horikoshi N, Sugimachi K, Mitachi Y, Taguchi T (1998) Late phase II study of novel oral fluoropyrimidine anticancer drug S-1 (1 M tegafur-0.4 M gimestat-1 M otastat potassium) in advanced gastric cancer patients. *Eur J Cancer* 34:1715-1720
26. Sawada N, Ishikawa T, Fukase Y, Nishida M, Yoshikubo T, Ishitsuka H (1998) Induction of thymidine phosphorylase activity and enhancement of capecitabine efficacy by taxol/taxotere in human cancer xenografts. *Clin Cancer Res* 4:1013-1019
27. Seidman AD, Hudis CA, Albanell J, Tong W, Tepler I, Currie V, Moynahan ME, Theodoulou M, Gollub M, Baselga J, Norton L (1998) Dose-dense therapy with weekly 1-hour paclitaxel infusions in the treatment of metastatic breast cancer. *J Clin Oncol* 16:3353-3361
28. Shimada Y (1998) Clinical trials for advanced gastrointestinal cancers in Japan. Japan Clinical Oncology Group Gastrointestinal Oncology Study Group. *Cancer Chemother Pharmacol [Suppl]* 42:S80-S84
29. Tamura T, Sasaki Y, Nishiwaki Y, Saijo N (1995) Phase I study of paclitaxel by three-hour infusion: hypotension just after infusion is one of the major dose-limiting toxicities. *Jpn J Cancer Res* 86:1203-1209
30. Therasse P, Arbuck SG, Eisenhauer EA, Wanders J, Kaplan RS, Rubinstein L, Verweij J, Van Glabbeke M, van Oosterom AT, Christian MC, Gwyther SG (2000) New guidelines to evaluate the response to treatment in solid tumors. European Organization for Research and Treatment of Cancer, National Cancer Institute of the United States, National Cancer Institute of Canada. *J Natl Cancer Inst* 92:205-216
31. Vanhoefer U, Rougier P, Wilke H, Ducreux MP, Lacave AJ, Van Cutsem E, Planker M, Santos JG, Piedbois P, Paillot B, Bodenstern H, Schmoll HJ, Bleiberg H, Nordlinger B, Couvreur ML, Baron B, Wils JA (2000) Final results of a randomized phase III trial of sequential high-dose methotrexate, fluorouracil, and doxorubicin versus etoposide, leucovorin, and fluorouracil versus infusional fluorouracil and cisplatin in advanced gastric cancer: a trial of the European Organization for Research and Treatment of Cancer Gastrointestinal Tract Cancer Cooperative Group. *J Clin Oncol* 18:2648-2657
32. Wakui A (1988) Phase II study of 5'-deoxy-5-fluorouridine in the treatment of gastric cancer. *J Int Med Res* 16:17B-18B
33. Yamada Y, Shirao K, Ohtsu A, Boku N, Hyodo I, Saitoh H, Miyata Y, Taguchi T (2001) Phase II trial of paclitaxel by three-hour infusion for advanced gastric cancer with short premedication for prophylaxis against paclitaxel-associated hypersensitivity reactions. *Ann Oncol* 12:1133-1137