

NK1.1⁺ and NK1.1⁻ NKT cells expand after *in vitro* α -GalCer-stimulation.

Previous studies demonstrated that mouse and human invariant NKT cells could produce both Th1 and Th2 cytokines [1–3]. Furthermore, it was reported that adult V α 24⁺ V β 11⁺ NKT cells did not polarize into Th1 or Th2 after expansion [37]. However, NKT cells display polarization induced by type 1 or 2 dendritic cells [19]. Th1 or Th2 polarization of NKT cells is believed to be influenced by culture environment, such as the type of dendritic cell. We showed that *in vitro*-expanded V α 14i NKT cells continuously produced both IL-4 and IFN γ and did not polarize into Th1- or Th2-type. By contrast, a previous study has demonstrated that the robust expanded V α 14i NKT cells (after α -GalCer administration) continue to produce IFN γ *in vivo* [34]. This suggests that *in vivo*-expanded V α 14i NKT cells favor Th1 polarization. In contrast to *in vivo*-expanded V α 14i NKT cells, *in vitro*-expanded V α 14i NKT cells might remain continually activated and produce both IFN γ and IL-4 because they are continually exposed to α -GalCer in the culture conditions. Indeed, in the expansion phase of V α 14i NKT cells (after α -GalCer injection), these V α 14i NKT cells had the ability to secrete large amounts of both cytokines when re-injected with α -GalCer (Ikarashi et al., unpublished data).

In addition to the IFN γ production by *in vitro*-expanded V α 14i NKT cells, we showed that NK cells and NK1.1⁺ T cells acquired the ability to produce IFN γ when cultured with α -GalCer and IL-2. IL-2 alone could induce the proliferation, but not IFN γ production, by NK cells and NK1.1⁺ T cells *in vitro*. Our results indicate that α -GalCer-induced V α 14i NKT cell activation leads to IFN γ production of NK and NK1.1⁺ T cells *in vitro*. Previous *in vivo* studies have demonstrated rapid cytokine production by V α 14i NKT cells in response to α -GalCer triggered activation and IFN γ production by NK cells [7,8], and bystander activation by conventional T cells and B cells [38,39]. Taken together, the mechanisms of NK cell activation by V α 14i NKT cells *in vitro* might be similar to the *in vivo* mechanisms.

V α 14i NKT cells have been known to regulate immune responses [1–3]. In fact, previous studies have shown that adoptive transfer of thymic NKT cells prevented type I diabetes in NOD mice in an IL-4- and IL-10-dependent manner (T helper 2) [31]. Furthermore, hepatic metastasis of B16 melanoma was prevented by adoptive transfer of IL-12-activated V α 14i NKT cells from V α 14 TCR transgenic mice [32]. These observations indicate that adoptive V α 14i NKT cell immunotherapy is useful for autoimmune diabetes and cancer. However, important questions remain as to whether *in vitro*-expanded V α 14i NKT cells can survive in the recipients and maintain the ability to produce IFN γ and IL-4 after transfer, similar to resident V α 14i NKT cells. A previous study demonstrated that fresh mouse V α 14i thymocytes proliferated and survived in an IL-15-dependent manner after adoptive transfer into lymphopenic mice [40]. We found that *in vitro*-expanded V α 14i NKT cells survived and dominantly migrated into the liver of lymphopenic mice. Furthermore,

we revealed that *in vitro*-expanded V α 14i NKT cells 7 days after transfer could respond to α -GalCer and secrete IL-4 and IFN γ after administration of α -GalCer. However, IFN γ production patterns of lymphopenic mice transferred with *in vitro*-expanded V α 14i NKT cells after administration of α -GalCer were similar to those of α -GalCer-primed mice, as reported previously [27].

Previous studies have demonstrated that the antitumor effect of α -GalCer is mediated by V α 14i NKT cells [9–12] and that the IFN γ production by V α 14i NKT cells and the subsequent IFN γ production by NK cells are critical for α -GalCer to mediate antitumor activity [11,12]. Although it appears that α -GalCer-based immunotherapy is useful for cancer, treatment with α -GalCer has shown little therapeutic effect in patients with solid tumors [41]. For these reasons, it has been proposed that human V α 24i NKT cells from cancer patients have impaired proliferative responses to α -GalCer and have lost the ability to produce IFN γ [22,23]. We believe that adoptive V α 24i NKT cell therapy may be beneficial for cancer patients. Further studies are needed to clarify the mechanism and clinical applicability of *in vitro*-expanded V α 24i NKT cell therapy in cancer.

Acknowledgments

We thank Dr. Mitchell Kronenberg for his helpful suggestions and Dr. Gary Quinn for critical review of the manuscript. This work was supported in part by a Grant-in-Aid for Second Term Comprehensive 10-year Strategy for Cancer Control from the Ministry of Health, Labour and Welfare and by Grants-in-Aid for Cancer Research from the Ministry of Health, Labour and Welfare of Japan. Dr. Yoshinori Ikarashi was also supported by a Grant-in-Aid from the Ministry of Education, Science, Culture, Sports and Technology of Japan.

References

- [1] Godfrey DI, Hammond KJ, Poulton LD, Smyth MJ, Baxter AG. NKT cells: facts, functions and fallacies. *Immunol Today* 2000;21:573–83.
- [2] Kronenberg M, Gapin L. The unconventional lifestyle of NKT cells. *Nat Rev Immunol* 2002;2:557–68.
- [3] Taniguchi M, Harada M, Kojo S, Nakayama T, Wakao H. The regulatory role of V α 14 NKT cells in innate and acquired immune response. *Annu Rev Immunol* 2003;21:483–513.
- [4] Cui J, Shin T, Kawano T, Sato H, Kondo E, Taura I, et al. Requirement for V α 14 NKT cells in IL-12-mediated rejection of tumors. *Science* 1997;278:1623–6.
- [5] Smyth MJ, Thia KY, Street SE, Cretney E, Trapani JA, Taniguchi M, et al. Differential tumor surveillance by natural killer (NK) and NKT cells. *J Exp Med* 2000;191:661–8.
- [6] Kawano T, Cui J, Koezuka Y, Taura I, Kaneko Y, Sato H, et al. Natural killer-like nonspecific tumor cell lysis mediated by specific ligand-activated V α 14 NKT cells. *Proc Natl Acad Sci USA* 1998;95:5690–3.
- [7] Carnaud C, Lee D, Donnars O, Park SH, Beavis A, Koezuka Y, et al. Cutting edge: cross-talk between cells of the innate immune system: NKT cells rapidly activate NK cells. *J Immunol* 1999;163:4647–50.

- [8] Eberl G, MacDonald HR. Selective induction of NK cell proliferation and cytotoxicity by activated NKT cells. *Eur J Immunol* 2000;30:985–92.
- [9] Kobayashi E, Motoki K, Uchida T, Fukushima H, Koezuka Y. KRN7000 a novel immunomodulator, and its antitumor activities. *Oncol Res* 1995;7:529–34.
- [10] Nakagawa R, Motoki K, Ueno H, Iijima R, Nakamura H, Kobayashi E, et al. Treatment of hepatic metastasis of the colon26 adenocarcinoma with an α -galactosylceramide, KRN7000. *Cancer Res* 1998;58:1202–7.
- [11] Hayakawa Y, Takeda K, Yagita H, Kakuta S, Iwakura Y, Van Kaer L, et al. Critical contribution of IFN- γ and NK cells, but not perforin-mediated cytotoxicity, to anti-metastatic effect of α -galactosylceramide. *Eur J Immunol* 2001;31:1720–7.
- [12] Smyth MJ, Crowe NY, Pellicci DG, Kyriassoudis K, Kelly JM, Takeda K, et al. Sequential production of interferon-gamma by NK1.1⁺ T cells and natural killer cells is essential for the antimetastatic effect of α -galactosylceramide. *Blood* 2002;99:1259–66.
- [13] Brossay L, Chioda M, Burdin N, Koezuka Y, Casorati G, Dellabona P, et al. CD1d-mediated recognition of an α -galactosylceramide by natural killer T cells is highly conserved through mammalian evolution. *J Exp Med* 1998;188:1521–8.
- [14] Nishi N, van der Vliet HJ, Koezuka Y, von Blumberg BM, Scheper RJ, Pinedo HM, et al. Synergistic effect of KRN7000 with interleukin-15, -7, and -2 on the expansion of human V α 24⁺V β 11⁺ T cells in vitro. *Hum Immunol* 2000;60:357–65.
- [15] van der Vliet HJ, Nishi N, Koezuka Y, von Blumberg BM, van den Eertwegh AJ, Porcelli SA, et al. Potent expansion of human natural killer T cells using α -galactosylceramide (KRN7000)-loaded monocyte-derived dendritic cells, cultured in the presence of IL-7 and IL-15. *J Immunol Methods* 2001;247:61–72.
- [16] Asada-Mikami R, Heike Y, Harada Y, Kanai S, Ikarashi Y, Kato K, et al. Increased expansion of V α 24⁺ T cells derived from G-CSF-mobilized peripheral blood stem cells as compared to peripheral blood mononuclear cells following α -galactosylceramide stimulation. *Cancer Sci* 2003;94:383–8.
- [17] Rogers PR, Matsumoto A, Naidenko O, Kronenberg M, Miyakawa T, Kato S. Expansion of human V α 24⁺ NKT cells by repeated stimulation with KRN7000. *J Immunol Methods* 2004;285:197–214.
- [18] Nieda M, Nicol A, Koezuka Y, Kikuchi A, Takahashi T, Nakamura H, et al. Activation of human V α 24NKT cells by α -glycosylceramide in a CD1d-restricted and V α 24TCR-mediated manner. *Hum Immunol* 1999;160:10–9.
- [19] van der Vliet HJ, Molling JW, Nishi N, Masterson AJ, Kolgen W, Porcelli SA, et al. Polarization of V α 24⁺V β 11⁺ natural killer T cells of healthy volunteers and cancer patients using α -galactosylceramide-loaded and environmentally instructed dendritic cells. *Cancer Res* 2003;63:4101–6.
- [20] Kawano T, Nakayama T, Kamada N, Kaneko Y, Harada M, Ogura N, et al. Antitumor cytotoxicity mediated by ligand-activated human V α 24 NKT cells. *Cancer Res* 1999;59:5102–5.
- [21] Takahashi T, Nieda M, Koezuka Y, Nicol A, Porcelli SA, Ishikawa Y, et al. Analysis of human V α 24⁺CD4⁺ NKT cells activated by α -glycosylceramide-pulsed monocyte-derived dendritic cells. *J Immunol* 2000;164:4458–64.
- [22] Tahir SM, Cheng O, Shaulov A, Koezuka Y, Bublely GJ, Wilson SB, et al. Loss of IFN- γ production by invariant NK T cells in advanced cancer. *J Immunol* 2001;167:4046–50.
- [23] Yanagisawa K, Seino K, Ishikawa Y, Nozue M, Todoroki T, Fukao K. Impaired proliferative response of V α 24 NKT cells from cancer patients against α -galactosylceramide. *J Immunol* 2002;168:6494–9.
- [24] Ikarashi Y, Mikami R, Bendelac A, Terme M, Chaput N, Terada M, et al. Dendritic cell maturation overrules H-2D-mediated natural killer T (NKT) cell inhibition: critical role for B7 in CD1d-dependent NKT cell interferon γ production. *J Exp Med* 2001;194:1179–86.
- [25] Matsuda JL, Naidenko OV, Gapin L, Nakayama T, Taniguchi M, Wang CR, et al. Tracking the response of natural killer T cells to α glycolipid antigen using CD1d tetramers. *J Exp Med* 2000;192:741–54.
- [26] Benlagha K, Weiss A, Beavis A, Teyton L, Bendelac A. In vivo identification of glycolipid antigen-specific T cells using fluorescent CD1d tetramers. *J Exp Med* 2000;191:1895–903.
- [27] Matsuda JL, Gapin L, Baron JL, Sidobre S, Stetson DB, Mohrs M, et al. Mouse V α 14i natural killer T cells are resistant to cytokine polarization in vivo. *Proc Natl Acad Sci USA* 2003;100:8395–400.
- [28] Miyamoto K, Miyake S, Yamamura T. A synthetic glycolipid prevents autoimmune encephalomyelitis by inducing TH2 bias of natural killer T cells. *Nature* 2001;413:531–4.
- [29] Sharif S, Arreaza GA, Zucker P, Mi QS, Sondhi J, Naidenko OV, et al. Activation of natural killer T cells by α -galactosylceramide treatment prevents the onset and recurrence of autoimmune Type 1 diabetes. *Nat Med* 2001;7:1057–62.
- [30] Hong S, Wilson MT, Serizawa I, Wu L, Singh N, Naidenko OV, et al. The natural killer T-cell ligand α -galactosylceramide prevents autoimmune diabetes in non-obese diabetic mice. *Nat Med* 2001;7:1052–6.
- [31] Hammond KJ, Poulton LD, Palmisano LJ, Silveira PA, Godfrey DI, Baxter AG. α 1/ β -T cell receptor (TCR)⁺CD4⁺CD8⁻ (NKT) thymocytes prevent insulin-dependent diabetes mellitus in nonobese diabetic (NOD)/Lt mice by the influence of interleukin (IL)-4 and/or IL-10. *J Exp Med* 1998;187:1047–56.
- [32] Shin T, Nakayama T, Akutsu Y, Motohashi S, Shibata Y, Harada M, et al. Inhibition of tumor metastasis by adoptive transfer of IL-12-activated V α 14 NKT cells. *Int J Cancer* 2001;91:523–8.
- [33] Wilson MT, Johansson C, Olivares-Villagomez D, Singh AK, Stanic AK, Wang CR, et al. The response of natural killer T cells to glycolipid antigens is characterized by surface receptor down-modulation and expansion. *Proc Natl Acad Sci USA* 2003;100:10913–8.
- [34] Crowe NY, Uldrich AP, Kyriassoudis K, Hammond KJ, Hayakawa Y, Sidobre S, et al. Glycolipid antigen drives rapid expansion and sustained cytokine production by NK T cells. *J Immunol* 2003;171:4020–7.
- [35] Benlagha K, Kyin T, Beavis A, Teyton L, Bendelac A. A thymic precursor to the NK T cell lineage. *Science* 2002;296:553–5.
- [36] Pellicci DG, Hammond KJ, Uldrich AP, Baxter AG, Smyth MJ, Godfrey DI. A natural killer T (NKT) cell developmental pathway involving a thymus-dependent NK1.1⁺CD4⁺CD1d-dependent precursor stage. *J Exp Med* 2002;195:835–44.
- [37] Kadowaki N, Antonenko S, Ho S, Risoan MC, Soumelis V, Porcelli SA, et al. Distinct cytokine profiles of neonatal natural killer T cells after expansion with subsets of dendritic cells. *J Exp Med* 2001;193:1221–6.
- [38] Singh N, Hong S, Scherer DC, Serizawa I, Burdin N, Kronenberg M, et al. Cutting edge: activation of NK T cells by CD1d and α -galactosylceramide directs conventional T cells to the acquisition of a Th2 phenotype. *J Immunol* 1999;163:2373–7.
- [39] Kitamura H, Ohta A, Sekimoto M, Sato M, Iwakabe K, Nakui M, et al. α -Galactosylceramide induces early B-cell activation through IL-4 production by NKT cells. *Cell Immunol* 2000;199:37–42.
- [40] Matsuda JL, Gapin L, Sidobre S, Kieper WC, Tan JT, Ceredig R, et al. Homeostasis of V α 14i NKT cells. *Nat Immunol* 2002;3:966–74.
- [41] Giaccone G, Punt CJ, Ando Y, Ruijter R, Nishi N, Peters M. A phase I study of the natural killer T-cell ligand α -galactosylceramide (KRN7000) in patients with solid tumors. *Clin Cancer Res* 2002;8:3702–9.

TRANSRECTAL HIGH-INTENSITY FOCUSED ULTRASOUND IN THE TREATMENT OF LOCALIZED PROSTATE CANCER: A MULTICENTER STUDY

Toyoaki UCHIDA¹, Shiro BABA², Akira IRIE², Shigehiro SOH²,
Naoya MASUMORI³, Taiji TSUKAMOTO³, Hiroomi NAKATSU⁴, Hiroyuki FUJIMOTO⁵,
Tadao KAKIZOE⁵, Takeshi UEDA⁶, Tomohiko ICHIKAWA⁶, Nobutaka OHTA⁷,
Tadaichi KITAMURA⁷, Makoto SUMITOMO⁸, Masamichi HAYAKAWA⁸, Teiichiro AOYAGI⁹,
Masaaki TACHIBANA⁹, Ryusuke IKEDA¹⁰, Kohji SUZUKI¹⁰, Nobuo TSURU¹¹,
Kazuo SUZUKI¹¹, Seiichiro OZONO¹¹, Kiyohide FUJIMOTO¹², Yoshihiko HIRAO¹²,
Kohichi MONDEN¹³, Yasutomo NASU¹³, Hiromi KUMON¹³, Kazuhiko NISHI¹⁴,
Shoichi UEDA¹⁴, Hirofumi KOGA¹⁵ and Seiji NAITOH¹⁵

¹*The Department of Urology, Tokai University Hachioji Hospital*

²*The Department of Urology, Kitasato University*

³*The Department of Urology, Sapporo Medical University*

⁴*The Department of Urology, Asahi General Hospital*

⁵*The Department of Urology, National Cancer Center*

⁶*The Department of Urology, Chiba University*

⁷*The Department of Urology, Tokyo University*

⁸*The Department of Urology, National Defense Medical College*

⁹*The Department of Urology, Tokyo Medical University*

¹⁰*The Department of Urology, Kanazawa Medical University*

¹¹*The Department of Urology, Hamamatsu University School of Medicine*

¹²*The Department of Urology, Nara Medical University*

¹³*The Department of Urology, Okayama University*

¹⁴*The Department of Urology, Kumamoto University*

¹⁵*The Department of Urology, Kyusyu University*

We report a multicenter trial with transrectal high-intensity focused ultrasound (HIFU) in the treatment of localized prostate cancer. A total of 72 consecutive patients with stage T1c-2N0M0 prostate cancer were treated using the Sonablate 500TM HIFU device (Focus Surgery, Indianapolis, USA). Biochemical recurrence was defined according to the criteria recommended by the American Society for Therapeutic Radiology and Oncology Consensus Panel. The median age and prostate specific antigen (PSA) level were 72 years and 8.10 ng/ml, respectively. The median follow-up period for all patients was 14.0 months. Biochemical disease-free survival rates in all patients at 1 and 2 years were 78% and 76%, respectively. Biochemical disease-free survival rates in patients with stage T1c, T2a and T2b groups at 2 years were 89, 67% and 40% ($p=0.0817$). Biochemical disease-free survival rates in patients with Gleason scores of 2-4, 5-7 and 8-10 at 2 years were 88, 72% and 80% ($p=0.6539$). Biochemical disease-free survival rates in patients with serum PSA of less than 10 ng/ml and 10-20 ng/ml were 75% and 78% ($p=0.6152$). No viable tumor cells were noted in 68% of patients by postoperative prostate needle biopsy. Prostatic volume was decreased from 24.2 ml to 14.0 ml at 6 months after HIFU ($p<0.01$). No statistically significant differences were noted in International Prostate Symptom Score, maximum urinary flow rate and quality of life analysis with Functional Assessment of Cancer Therapy. HIFU therapy appears to be minimally invasive, efficacious and safe for patients with localized prostate cancer with pretreatment PSA levels less than 20 ng/ml.

(Hinyokika Kyo 51 : 651-658, 2005)

Key words: Prostate cancer, High-intensity focused ultrasound, Minimally invasive surgery

INTRODUCTION

Prostate cancer is the most common malignancy in men and the second leading cause of death due to cancer in the United States¹⁾. Prostate cancer has been treated in various ways, depending on the severity of the

condition, age of the patient, staging, Gleason score and serum prostate-specific antigen (PSA) level. Radical prostatectomy has long been regarded as appropriate therapy for patients with organ-confined prostate cancer. Despite excellent 5- to 10-year survival rates after radical prostatectomy for organ-confined disease, surgery is

associated with significant morbidity, including blood loss due to transfusion-related complications, erectile dysfunction in 30% to 70% of cases, and stress incontinence in up to 10% of patients^{2,3}). In addition, surgical intervention is not typically considered for patients whose life expectancy is less than 10 years. Recently, a number of alternative less invasive treatments have been developed for patients with localized prostate cancer, either not appropriate for surgery or who do not want to risk the potential side effects of surgery. Three-dimensional conformal radiotherapy (3D-CRT), brachytherapy, intensity-modulated external beam radiotherapy, cryosurgical ablation of the prostate and laparoscopic radical prostatectomy have all been applied for the treatment of this group of patients⁴⁻⁶). However, in the event of treatment failure, these cannot be repeated and salvage radical prostatectomy is associated with a high morbidity rate⁷.

High-intensity focused ultrasound (HIFU) delivers intense ultrasound energy with consequent heat destruction of tissue at a specific focal distance from the probe without damage to tissue in the path of the ultrasound beam⁸). HIFU non-invasively induces complete coagulative necrosis of a tumor without surgical exposure or insertion of instruments into the lesion. This advantage makes it one of the most attractive options for the localized treatment of tumors^{9,10}). We report here a multicenter trial with 72 consecutive patients treated with HIFU for clinical stage T1c-2N0M0 localized prostate cancer.

PATIENTS AND METHODS

Inclusion and Exclusion Criteria

As a rule, the inclusion criteria for treatment were patients with biopsy proven and untreated stage T1c-2N0M0 localized prostate cancer¹¹). Age, serum PSA levels, prostatic volume and WHO performance status should be less than 80 yrs, 20 ng/ml, treatable with a 4.0 focal length probe which means a prostatic volume less than 50 ml and 0-1. Patients with urethral stricture, anal stricture, bleeding tendency, renal dysfunction with serum Cr more than 2.0 mg/dl, hydronephrosis, larger than 5 mm calcifications in the prostate, uncontrolled diabetes mellitus, hypertension, angina, history of cardiac infarction or other malignant diseases were excluded from the study. None of the patients were receiving neoadjuvant hormonal and/or chemotherapy before HIFU. All patients were fully informed of the details of this treatment and gave written consent preoperatively.

HIFU Equipment

For this study, we used the Sonablate 500TM (Focus Surgery, Indianapolis, IN, USA) HIFU machine. This treatment module includes the ultrasound power generator, transrectal probes, the probe positioning system, and a continuous cooling system (Fig. 1). The



Fig. 1. The Sonablate-500TM type device consists of an operator's console, imaging monitor, transrectal probe and an automatic continuous cooling system.

transrectal HIFU probes use proprietary transducer technology with low-energy ultrasound (4 MHz) for imaging of the prostate and for the delivery of high-energy ablative pulses (site intensity, 1,300–2,200 W/cm²). The single piezoelectric crystal alternates between high-energy power for ablative (3 sec) and low-energy for ultrasound imaging (6 sec)¹⁰.

Prior to beginning the treatment, the operator uses longitudinal and transverse sonograms to obtain an image of the prostate and selects the prostate tissue volume to be ablated by a set of cursors on these images. The probe houses a computer-controlled positioning system that directs each ablative pulse to the targeted region of the prostate. Each discrete high-energy focused ultrasonic pulse ablates a volume of 3 × 3 × 10 mm³ of tissue¹⁰). The total acoustic power is initially set at 24 W and 37 W for 3.0 and 4.0 cm focal length probes, respectively. The individual focal lesion produces almost instantaneous coagulative necrosis of the tissue due to a temperature rise of 80° to 98°C in the focal zone⁸). Under computer control, the ultrasound beam is steered mechanically to produce consecutive lesions in a manner such that all focal lesions overlap

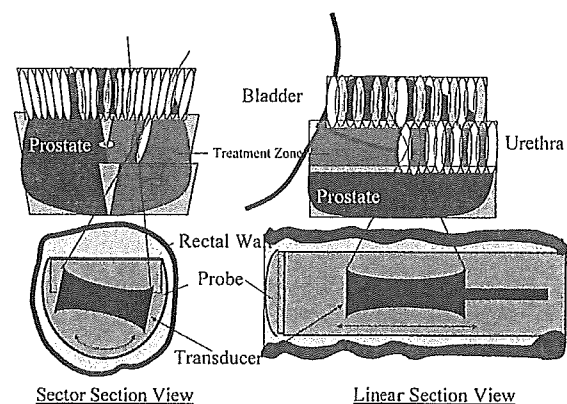


Fig. 2. The computer-controlled transducer ablates the entire prostate tissue. Focal lesions are overlapped in linear rows (left) at each of the lateral sector positions (right) to create a volume lesion.

laterally and longitudinally to ensure necrosis of the entire targeted prostate volume (Fig. 2). An automatic cooling device is used during treatment to maintain a constant baseline temperature of less than 18°C in the transrectal probe that helps to prevent thermal injury of the rectal mucosa.

HIFU Procedure

All patients were anesthetized by general, epidural, spinal or intravenous anesthesia, and were placed in a supine and open leg position. A condom was placed over the probe and degassed water was used to inflate the condom that was covered with ultrasound gel for close coupling of the ultrasound probe to the rectal wall, and the probe was inserted manually into the rectum. The probe was fixed in position by an articulating arm attached to the operating table. After selection of the treatment region of the prostate from the verumontanum to the bladder neck, the treatment was started. Transrectal probes with focal lengths of 3.0 and 4.0 cm were used according to the size of the prostate as determined by transrectal ultrasound (TRUS), with larger glands requiring longer focal lengths. The treatment continued layer by layer (10 mm thickness) from the apex to the base (Fig. 2). Usually, three successive target areas (anterior, mid-part and base) were defined to treat the whole prostate. After treatment was completed, a transurethral balloon catheter was inserted into the bladder¹⁰.

Clinical Follow-up and Definition of Outcome

Patient status and treatment-related complications were followed up by all available means, including periodic patient visits and self-administered questionnaires dealing with urinary continence and erectile function using Functional Assessment of Cancer Therapy (FACT) questionnaire. Urinary symptoms and urinary flow rate analysis were performed using International Prostate Symptom Score (I-PSS) index and uroflowmetry^{12,13}. Serum PSA was assayed every 1 to 6 months during follow-up. A postoperative prostate needle biopsy under TRUS was performed on all patients at 6 months. The American Society for Therapeutic Radiology and Oncology (ASTRO) consensus definition, i.e., three consecutive increases in post treatment PSA after a nadir has been achieved, was used to define biochemical failure¹⁴. The time to biochemical failure was defined as midway between the post treatment PSA nadir and the first of three consecutive PSA increases. None of the patients received androgen deprivation after HIFU or other anticancer therapy before documentation of a biochemical recurrence. HIFU related complications were defined by Japanese version of National Cancer Institute-Common Toxicity Criteria version 2.0¹⁵.

Statistical Analyses

All statistical analyses were performed by the Department Statistics in Indiana University. The chi-square test was used to assess the correlation between

preoperative and postoperative parameters. The distributions of biochemical disease-free survival times were calculated according to the Kaplan-Meier curves and the logrank test was used to compare curves for groups. All *p* values less than 0.05 reflected statistically significant differences.

RESULTS

A total of 75 patients were entered in the trial. The prostate was treated in 1 (75) or 2 (14) HIFU sessions in a total of 89 procedures (1.2 sessions/patient). One patient with stage T1b, 1 patient with a serum PSA of 20.60 ng/ml and 1 patient on whom treatment was stopped during the procedure because of appearance with large microbubbles in the prostate were excluded. The median age, serum PSA level and prostatic volume of the 72 patients analysed were 72 yrs (range 45 to 79), 8.10 ng/ml (range 2.10 to 19.80) and 22.1 ml (range 8.5 to 52.8), respectively. The TNM stage was T1c in 40 patients, T2a in 18 patients and T2b in 14 patients. All patients had a histological diagnosis of prostatic adenocarcinoma according to the Gleason grading system. The Gleason score was 2 to 4 in 9 patients, 5 to 7 in 55 patients, 8 to 10 in 6 patients and unknown in 2 patients (Table 1).

The median time of HIFU treatment and hospitalization was 169 min (range 65 to 485 min) and 5.0 days (range 2 to 55), respectively. The gland size decreased from an initial volume of 24.2 ml to a final median volume of 14.0 ml ($p < 0.01$) in 45 patients. Totally, 49 out of 72 (68%) had negative follow-up biopsies at 6 months after HIFU. Biochemical disease-free survival rates were analyzed in 60 patients. Twelve patients were excluded from the analysis for unsatisfactory followup. The median follow-up period for all patients was 14.0 months (range 2 to 24). Biochemical disease-free survival rates in all patients at 1

Table 1. Characteristics in 72 patients with localized prostate cancer

Median age (range)	72 (45-79)
Median PSA (range)	8.10 ng/ml (2.10-19.80)
Prostate volume (range)	22.1 (8.5-52.8)
Pretreatment PSA (%):	
10 or less	44 (61)
10.1-20	28 (39)
Clinical stage (%):	
T1c	40 (56)
T2a	18 (25)
T2b	14 (19)
Gleason score (%):	
2-4	9 (13)
5-7	55 (76)
8-10	6 (8)
Unknown	2 (3)
Median mos followup (range)	14.0 (2-24)

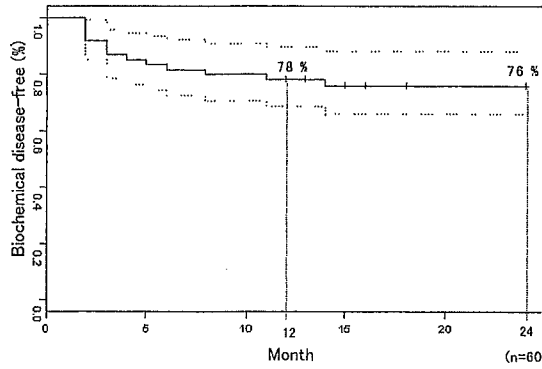


Fig. 3. Kaplan-Meier biochemical disease-free survival curves in all patients.

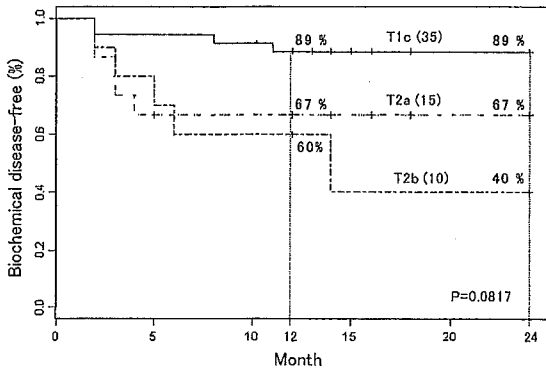


Fig. 4. Kaplan-Meier biochemical disease-free survival curves according to clinical stage.

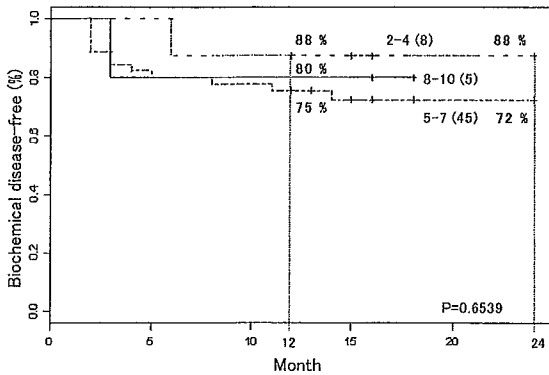


Fig. 5. Kaplan-Meier biochemical disease-free survival curves according to Gleason score.

and 2 years were 78% and 76%, respectively (Fig. 3). Biochemical disease-free survival rates in patients with stage T1c, T2a and T2b groups at 2 years were 89%, 67% and 40% ($p = 0.0817$, Fig. 4). Biochemical disease-free survival rates in patients with Gleason 2-4, 5-7 and 8-10 groups at 2 years were 88%, 72% and 80% ($p = 0.6539$, Fig. 5). The biochemical disease-free survival rate in patients whose serum PSA less than 10 ng/ml and 10 - 20 ng/ml were 75% and 78% ($p = 0.6152$).

Prostatic volume was decreased from 24.2 ml to 14.0 ml at 6 months after HIFU ($p < 0.01$, Fig. 6). No statistically significant difference was noted in I-PSS, Q-max and FACT quality of life analysis (Fig. 7, 8 and 9).

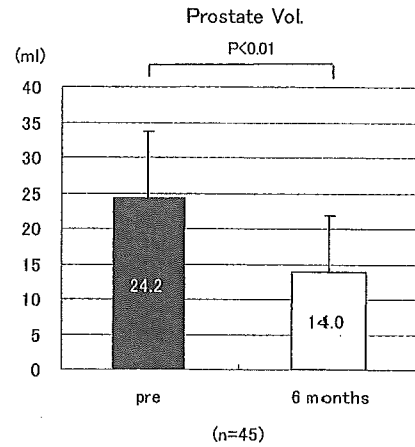


Fig. 6. Changes of prostatic volume.

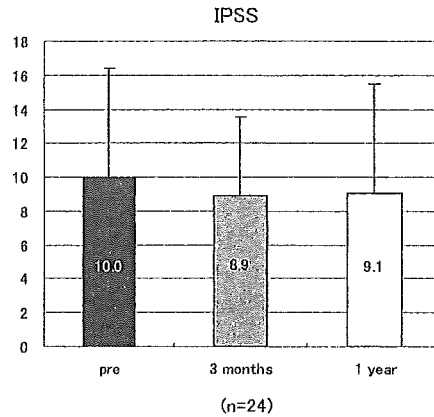


Fig. 7. Changes of International Prostatic Symptom Score.

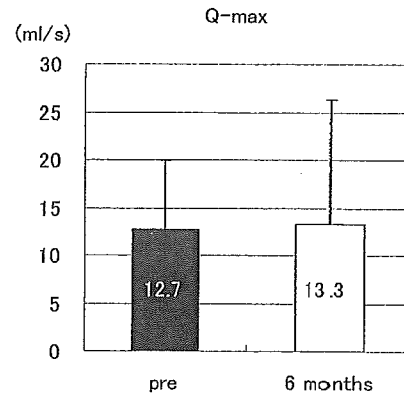


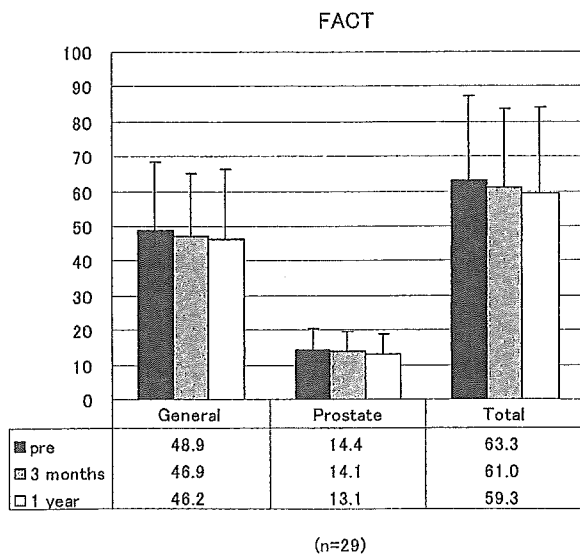
Fig. 8. Changes of maximum flow rate.

Thirteen out of 72 patients developed a urethral stricture, 6 and 4 patients developed epididymitis and prostatitis. Postoperative erectile dysfunction was noted in 12 out of 31 (39%) patients who were potent preoperatively. Nephrotic syndrome, transient urinary incontinence, transit stool incontinence, balanoposthitis or retrograde ejaculation was observed in 1 patient each (Table 2).

For analysis of HIFU treatment using Sonablate 500™, ultrasound imaging for identifying prostate and quality levels were categorized more than good in patients with 92%. A transrectal probe was easily

Table 2. Complications

Complication	Grade 1	Grade 2	Grade 3	Grade 4	Total
Urethral stricture	0	0	13	0	13
Erectile dysfunction (31 potent patients)	0	0	12	0	12
Epididymitis	2	2	2	0	6
Prostatitis	2	0	2	0	4
Nephrotic syndrome	0	0	1	0	1
Balanoposthitis	1	0	0	0	1
Urinary incontinence (grade 1)	1	0	0	0	1
Stooly incontinence	1	0	0	0	1
Retrograde ejaculation	1	0	0	0	1

**Fig. 9.** Quality of life change by FACT general and prostate.

inserted into the rectum in 97% of the patients. Totally, 96% of the HIFU treatment was categorized as an easy procedure.

DISCUSSION

In 1995, Madersbacher et al. reported the effectiveness of HIFU in 10 cases of localized prostate cancer⁸⁾. Histologically, HIFU-treated lesions of the prostate demonstrated a coagulation necrosis with sharp boundaries. In 1996, Gelet et al. reported preliminary experiences with HIFU using the Ablatherm device (EDAP-Technomed, Lyon, France) for treating localized prostate cancer¹⁶⁾. Beerlage et al. reported the results of HIFU treatments in 111 patients with clinical stage T1-3N0M0 prostate cancer and a PSA level less than 25 ng/ml. The treatment for the first 49 patients was performed selectively (i.e. unilateral or bilateral treatment in one or two sessions depending on findings from TRUS and biopsies) and the whole prostate was treated in the remaining 62 patients. A complete response (defined as a PSA level < 4.0 ng/ml and a negative biopsy) was achieved in 60% of the whole prostate treated patients with and in 25% of selectively treated patients¹⁷⁾.

In 2001, Gelet et al. reported their long-term follow-

up data in which a complete response was obtained in 66% of patients with no residual cancer (regardless of PSA levels) or no increases in PSA levels in three consecutive examinations with a PSA velocity < 0.75 ng/ml/year for patients with negative biopsies¹⁸⁾. More recently, Chaussy and Thuroff summarized clinical outcomes by the ASTRO definition as 84.2% stability rate in the HIFU group and 80% rate in the combination with transurethral resection of the prostate (TURP) and HIFU group in 1 year¹⁹⁾. In summarizing our clinical outcome using the ASTRO definition, the biochemically disease-free survival rate was 76% at 2 years follow-up. Patients with stage T1c, T2a and T2b showed respectively 89, 67% and 40% biochemical disease-free survival rates at 2 years follow-up (p=0.0817). The clinical outcome in our series of patients with preoperative PSA less than 20 ng/ml were comparable to the outcome of patients treated with radical prostatectomy^{2,3)}.

In our series, postoperative urethral strictures at near verumontanum in the prostatic urethra occurred in 21% of the patients. Recently, TURP or bladder neck incision immediately before or after HIFU was found to reduce the treatment-related morbidity such as postoperative prolonged urinary retention, urinary catheterization time and urinary infection^{20,21)}. Neoadjuvant hormonal therapy also might be useful to reduce the volume of the prostate which can reduce the time of treatment and rate of morbidity. However, the upper limit of the gland volume is 50 ml even after reducing the size of the prostate with neoadjuvant androgen deprivation or TURP in our series. Generally, radicalism of prostate cancer and preservation of sexual function are always controversial because postoperative impotence depends on preservation of neuro-vascular bundles that sometimes includes tumor invasion. In our study, 39% of the patients exhibited erectile dysfunction after the HIFU therapy. One out of 12 patients who desired treatment for postoperative erectile dysfunction recovered with sildenafil citrate. We considered this rate to be lower than that compared to radical prostatectomy^{2,3)}. Further experience is required to confirm this important conclusion.

D'Amico et al. compared the outcome of a cohort

treated with 3D-CRT versus a matched cohort treated with brachytherapy plus external radiation therapy. The 5-year estimate of PSA failure-free survival rate after 3D-CRT alone was 45% and 67% when both radiation treatments were combined²²⁾. More recently, Kupelian et al. compared the biochemical disease-free survival rate after permanent seed brachytherapy, external beam radiation therapy (EBRT), combined seeds and EBRT, or radical prostatectomy for clinical stage T1-2 localized prostate cancer²³⁾. The 5-year biochemical disease-free survival rate for radical prostatectomy, EBRT <72 Gy, EBRT ≥72 Gy, permanent seed brachytherapy and combined seeds and EBRT were 81, 51, 81, 83% and 77%, respectively. Although not directly comparable, the results after treatment with HIFU appear to be similar to those after radiotherapy, even when both brachytherapy and EBRT are combined.

For many reasons, transrectal HIFU appears to be highly attractive as a minimally invasive treatment for localized prostate cancer. HIFU treatment requires no incision or puncture, with no bleeding, can be performed on an outpatient basis and is repeatable even when patients with local recurrence have already been treated with radiation therapy²⁴⁾. In addition, radiation therapy including brachytherapy and even surgery can be performed after HIFU.

Transrectal HIFU has considerable potential as a noninvasive treatment modality for patients with localized prostate cancer especially whose PSA less than 20 ng/ml.

ACKNOWLEDGEMENTS

The authors express their appreciation to Mr. Y. Shimazaki, S. Kagasaki, K. Yamashita, K. Takai and N.T. Sanghvi for their technical assistance.

REFERENCES

- 1) Landis SH, Murray T, Bolden S, et al.: Cancer statistics, 1999. *CA Cancer J Clin* **49**: 8, 1999
- 2) Hull GW, Rabbani F, Abbas F, et al.: Cancer control with radical prostatectomy alone in 1,000 consecutive patients. *J Urol* **167**: 528-534, 2002
- 3) Roehl KA, Han M, Ramos CG, et al.: Cancer progression and survival rate following anatomical radical retropubic prostatectomy in 3,478 consecutive patients: long-term results. *J Urol* **172**: 910-914, 2004
- 4) Zelefsky MJ, Hollister T, Raben A, et al.: Five-year biochemical outcome and toxicity with transperineal CT-planned permanent I-125 prostate implantation for patients with localized prostate cancer. *Int J Radiat Oncol Biol Phys* **47**: 1261-1266, 2000
- 5) Guillonnet B, el-Fettouh H, Baumert H, et al.: Laparoscopic radical prostatectomy: oncological evaluation after 1,000 cases a Montsouris experience. *J Urol* **169**: 1261-1266, 2003
- 6) Han K-R, Cohen JK, Miller RJ, et al.: Treatment of organ confined prostate cancer with third generation cryosurgery: preliminary multicenter experience. *J Urol* **170**: 1126-1130, 2003
- 7) Lerner SE, Blute ML and Zinke H: Critical evaluation of salvage surgery for radio-recurrent/resistant prostate cancer. *J Urol* **154**: 1103-1109, 1995
- 8) Madersbacher S, Pedevilla M, Vingers L, et al.: Effect of high-intensity focused ultrasound on human prostate cancer in vivo. *Cancer Res* **55**: 3346-3351, 1995
- 9) Uchida T, Sanghvi NT, Gardner TA, et al.: Transrectal high-intensity focused ultrasound for treatment of patients with stage T1b-2N0M0 localized prostate cancer: a preliminary report. *Urology* **59**: 394-399, 2000
- 10) Uchida T, Tsumura H, Yamashita H, et al.: Transrectal high-intensity focused ultrasound for treatment of patients with stage T1b-2N0M0 localized prostate cancer: a preliminary report. *Jpn J Endourol* **16**: 108-114, 2003
- 11) Sobin LH and Wittekind CH: TNM classification of Malignant Tumors (5th ed). Wiley-Liss Inc, 1997
- 12) Cella DF, Tulsy DS, Gray G, et al.: The functional assessment of cancer therapy scale: development and validation of the general measure. *J Clin Oncol* **11**: 570-579, 1993
- 13) Japanese Urological Association and the Japanese Society of Pathology. General Rule for Clinical and Pathological Studies on Prostate Cancer. April 2001 (The 3rd edition). Tokyo, Kanehara Co
- 14) Consensus statement: Guidelines for PSA following radiation therapy. American Society for Therapeutic Radiology and Oncology Consensus Panel. *Int J Radiat Oncol Biol Phys* **37**: 1035-1041, 1997
- 15) National Cancer Institute-Common Toxicity Criteria. Version 2.0, April 30, 1999
- 16) Gelet A, Chaperon JY, Bouvier R, et al.: Treatment of prostate cancer with transrectal focused ultrasound: early clinical experience. *Eur Urol* **29**: 174-183, 1996
- 17) Beerlage HP, Thüroff S, Debruyne FMJ, et al.: Transrectal high-intensity focused ultrasound using the Ablatherm device in the treatment of localized prostate carcinoma. *Urology* **54**: 273-277, 1999
- 18) Gelet A, Chapelon JY, Bouvier R, et al.: Transrectal high-intensity focused ultrasound for the treatment of localized prostate cancer: factors influencing the outcome. *Eur Urol* **40**: 124-129, 2001
- 19) Chaussy CG and Thüroff S: The status of high-intensity focused ultrasound in the treatment of localized prostate cancer and the impact of a combined resection. *Curr Urol Rep* **4**: 248-252,

- 2003
- 20) Thüroff S, Chaussy C, Vallancien G, et al. : High-intensity focused ultrasound and localized prostate cancer: efficacy results from the European multicentric study. *J Endourol* **17** : 673-677, 2003
- 21) Vallancien G, Prapotnich D, Cathelineau Y, et al. : Transrectal focused ultrasound combined with transurethral resection of the prostate for the treatment of localized prostate cancer: feasibility study. *J Urol* **171** : 2265-2267, 2004
- 22) D'Amico AV, Schultz D, Schneider L, et al. : Comparing prostate specific antigen outcome after different types of radiotherapy management of clinically localized prostate cancer highlights the importance of controlling for established prognostic factors. *J Urol* **163** : 1797-1801, 2000
- 23) Kupelian PA, Potters L, Khuntia D, et al. : Radical prostatectomy, external beam radiotherapy <72 Gy, external beam radiotherapy ≥72 Gy, permanent seed implantation, or combines seed/external beam radiotherapy for stage T1-T2 prostate cancer. *Int J Radiat Biol Phys* **58** : 25-33, 2004
- 24) Gelet A, Chapelon JY, Poissonnier L, et al. : Local recurrence of prostate cancer after external beam radiotherapy: early experience of salvage therapy using high-intensity focused ultrasonography. *Urology* **63** : 625-629, 2004

(Received on March 17, 2005)
(Accepted on June 25, 2005)

(迅速掲載)

和文抄録

限局性前立腺癌に対する高密度焦点式超音波療法：多施設共同研究

内田 豊昭¹, 馬場 志郎², 入江 啓², 宋 成浩²
 舩森 直哉³, 塚本 泰司³, 中津 裕臣⁴, 藤元 博行⁵
 垣添 忠生⁵, 植田 健⁶, 市川 智彦⁶, 太田 信隆⁷
 北村 唯一⁷, 住友 誠⁸, 早川 正道⁸, 青柳貞一郎⁹
 橋 政昭⁹, 池田 龍介¹⁰, 鈴木 孝治¹⁰, 鶴 信雄¹¹
 鈴木 和雄¹¹, 大園誠一郎¹¹, 藤本 清秀¹², 平尾 佳彦¹²
 門田 晃一¹³, 那須 保友¹³, 公文 裕巳¹³, 西 一彦¹⁴
 上田 昭一¹⁴, 古賀 寛史¹⁵, 内藤 誠二¹⁵

¹東海大学八王子病院泌尿器科, ²北里大学医学部泌尿器科

³札幌医科大学泌尿器科, ⁴旭中央病院泌尿器科

⁵国立がんセンター泌尿器科, ⁶千葉大学医学部泌尿器科

⁷東京大学医学部泌尿器科, ⁸防衛医科大学泌尿器科

⁹東京医科大学泌尿器科, ¹⁰金沢医科大学医学部泌尿器科

¹¹浜松医科大学医学部泌尿器科, ¹²奈良県立医科大学医学部泌尿器科

¹³岡山大学医学部泌尿器科, ¹⁴熊本大学医学部泌尿器科

¹⁵九州大学医学部泌尿器科

限局性前立腺癌に対する高密度焦点式超音波療法の多施設共同研究の成績について報告する。対象は、stage T1-2N0M0 の72例の限局性前立腺癌で、治療にはソナプレート500 (Focus Surgery, IN, USA) を用いた。効果判定には、American Society for Therapeutics Radiology and Oncology の効果判定基準を用いた。症例の年齢中央値は72歳、血清 PSA 中央値は 8.10 n/ml であった。また、術後観察期間中央値は14.0カ月間であった。治療効果は、全体では1年78%、2年76%が非再発生存であった。浸潤度別に2年目の生化学的再発生存率を集計したところ、stage T1c が89%、stage T2a 67%、stage T2b は40% (p=0.0817) であった。悪性度別では、Gleason 2~4 群は88%、Gleason

5~7 群は72%、Gleason 8~10 群は80% (p=0.6539) であった。術前の血清 PSA 値別2年非再発生存率は、PSA が10 ng/ml 以下群は75%、10~20 ng/ml 群は78% (p=0.6152) であった。術後6カ月目の前立腺生検では68%において癌細胞は認められなかった。前立腺体積は、術前 24.2 ml から術後6カ月目 14.0 ml と縮小していた (p<0.01)。IPSS, 最大尿流量率, Functional Assessment of Cancer Therapy (FACT) を用いた生活の質項目は術前後に有意な変化は認められなかった。高密度焦点式超音波療法は、術前血清 PSA 値が20 ng/ml 以下の限局性前立腺癌に対して低侵襲性でかつ有用な治療法と思われる。

(泌尿紀要 51:651-658, 2005)

局所進行前立腺癌に対するホルモン療法と手術療法の併用療法

藤元 博行

Radical prostatectomy with neoadjuvant hormone therapy for cT3 prostate cancer

Hiroyuki Fujimoto

Urology Division, National Cancer Center Hospital

Abstract

The efficacy of neoadjuvant hormone therapy and radical prostatectomy for cT1-2 prostate cancer have been reported to be negative from some randomized prospective studies. On the other hand, radical prostatectomy alone for cT3 prostate cancer is understood as out of indication because of high rate of positive surgical margin and PSA failure. Several investigators have examined the role of neoadjuvant hormone therapy before radical prostatectomy for cT3 prostate cancer to improve outcome.

This document was reviewed the literature whether neoadjuvant hormone therapy is beneficial or not, for organ confined prostate cancer and for locally advanced prostate cancer, and presented our extended resection of prostate with neoadjuvant hormone therapy is improved the results in cT3 prostate cancer.

Key words: radical prostatectomy, neoadjuvant hormone therapy, surgical resection

はじめに

前立腺全摘(radical prostatectomy: RP)に先立ちある程度の期間、術前ホルモン療法(neoadjuvant hormone therapy: NHT)を実施することにより, downstaging (micrometastasisを消滅させることも含む)が起こることで治療成績の向上が期待されたが¹⁻⁴⁾, 各種のランダム化試験ではその効果は否定的である⁵⁻⁷⁾.

本稿ではまずNHTに関する各種の試験の結果を提示, 考察する. 最後にまだ経過観察期間が短く preliminary な結果ではあるが, NHTを施行した後, より確実な切除を目指した前立腺広汎全摘の成績を供覧して, 局所進行前立腺癌

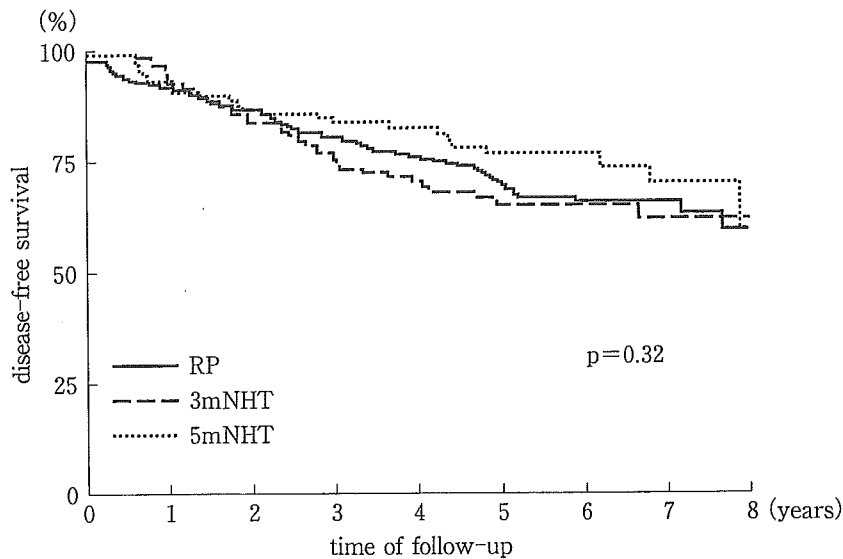
に対する前立腺全摘除術の意味を考察したい.

1. 術前内分泌療法の治療成績

既に述べたようにNHTに関するランダム化試験の結果の長期成績ではその効果は否定的である. しかし, 結果を解釈するときに注意が必要ではと考えている. 一つはNHTの期間に関してである. 多くのスタディでは3カ月程度のNHTが施行されている点である⁵⁻⁷⁾. もちろんカナダでの3カ月と8カ月のNHTのランダム化試験⁸⁾で8カ月のNHTでは切除断端陰性となりやすい(表1)が, 切除断端が陰性となっても最終的にはPSA failureには関与しないのではと考えられている⁹⁾ことも事実であるが, 3カ月

表 1 Statistically significant differences found : 3 versus 8 months' neoadjuvant hormone therapy (NHT)⁸⁾

	3 months NHT	8 months NHT	p-value
presurgery PSA nadir level	35% < 0.1ng/dl	73% < 0.1ng/dl	< 0.0001
TRUS prostate volume (mean)	40.5 cm ³ to 25.7 cm ³ (37%)	40.5 cm ³ to 22.8 cm ³ (48%)	0.0001
positive margins after surgery	23%	12%	0.01



	Hazard ratio	95% CI
RP alone	1	
3mNHT	1.01	0.70-1.45
5mNHT	0.60	0.38-0.94

図 1 Kaplan-Meier curves for disease-free survival until PSA failure and Hazard ratios⁹⁾

3m: 3 months, 5m: 5 months, NHT: neoadjuvant hormone therapy, RP: radical prostatectomy

程度のNHTでは効果が期待できないとの報告もある⁹⁾。この報告によるとRP単独に対して3カ月のNHTはhazard ratioが1.01, 5カ月のNHTでは0.60となっており(図1), 適切なNHT期間に関するエビデンスは乏しいと思われる。

またそもそもスタディの対象としている病態についても注意が必要ではと考えている。もともと前立腺癌の術前病態は過少評価される傾向があることより, 本来のRPの適応と考えられるT1-2主体のスタディと逆に, T3, T4といった本来monotherapyでは限界があるとされる局

所進行前立腺癌を対象にし, その生存率の向上を狙ったスタディかという点である。多くのランダム化⁵⁻⁷⁾あるいはphase IIスタディ¹⁰⁻¹²⁾では前者を対象としている。つまりスタディコンセプトとしてはT2癌の20-30%がpT3であり, NHTを施行することでdownstagingが起これ, pT3前立腺癌がpT2, つまり本来の前立腺全摘の適応となるのではということ期待したスタディである。しかし結果的にNHTによるdownstagingは期待できず, またNHTにより切除断端陽性(positive surgical margin: PSM)が回避

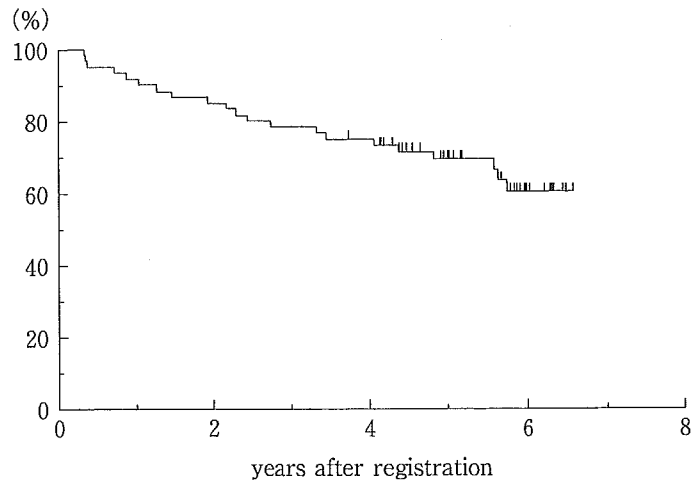


図2 Progression-free survival in SWOG 9109 study¹⁷⁾

されても NHT による artifact であり, PSA failure を回避することはできないとの結論¹³⁻¹⁵⁾ となっていると解釈される. 実際 NHT により pT0 となっても 2 割程度に再発を来すことがあり, このデータは RP 単独と同様ではと失望させられるという報告¹⁶⁾もある. 更に詳細は不明な文献もあるが, このような疾患を対象として実施された手術は神経温存前立腺全摘が大半であると想定される点である. downstaging が起こらなければ, pT3 前立腺癌に対して神経温存手術を行うことは PSM を来す危険性があることは当然である.

以上の結果は, cT1-2 前立腺癌に対して downstaging を狙って NHT を施行しても PSM をなくすことで治療成績を向上させるという目的は無効であるという解釈となる.

2. 局所進行前立腺癌に対する内分泌療法併用前立腺全摘の成績

本来手術の適応と考えられる cT1-2 前立腺癌に対して, 治療成績の向上を狙った NHT の試みは negative な結果となったわけであるが, 局所進行前立腺癌に対する治療成績を考察するうえで注意を有するのは NHT の後に施行される前立腺癌全摘においてどのような立場で手術がなされたかという点である. cT1-2 においては当然, 神経温存前立腺全摘, これが標準の手術療法というのがコンセンサスであり, cT3 に

おいても, NHT により downstaging を来すことにより, このような手術でも対応可能としてスタディがなされたのか, cT3 では神経温存を目的とせず, より切除断端を確保すべく wide resection がなされたか否かという点である.

この点で cT3 を対象とした NHT の phase II スタディとして Southwest Oncology Group (SWOG) Study 9109¹⁷⁾の結果と Walsh らが確立した前立腺全摘を施行した Gomella ら¹⁸⁾の結果の比較は興味深い. 図2に SWOG study の結果と図3に Gomella の結果を示した. Gomella のスタディは症例数が少なく, 背景も違うことから単純な比較はもちろんできないのであるが, 結果の違いはあまりに大きい. SWOG study では PSM の率が明らかに他のスタディと比較して低く, その理由として切除断端を広くとる努力がなされたことによるのではと考察している.

このように NHT を施行した後に実施する前立腺全摘の方法により治療成績が異なる可能性は十分に考えられる. 一方では NHT を施行しなくても神経温存を行わない前立腺全摘によって同様の結果が得られるのではとの仮定もあるが, この点を比較した試験はないように思われる.

3. 術前内分泌療法を併用した広汎前立腺全摘の治療成績

確実な切除断端を追求することは, 治療成績

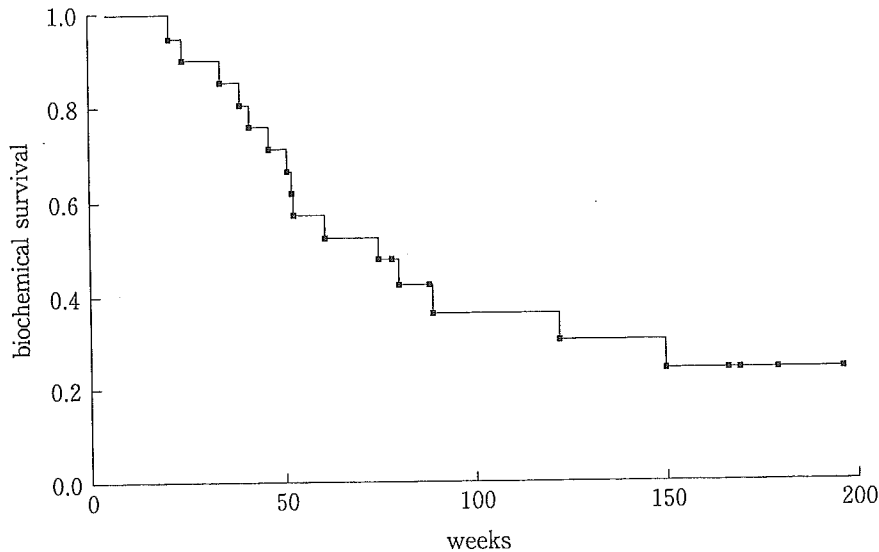


図3 cT3 prostate cancer: freedom from biochemical relapse¹⁸⁾

の向上につながる可能性があるはずである。もちろん細胞学的な転移があり、局所切除を追求してもその治療成績の向上につながらない病態が存在することは事実であるが、逆に局所施行癌であっても切除が可能な病態もあることも事実であり、著者らは局所の切除をより完全に行うことで局所進行前立腺癌に対して根治の可能性を追求してきた。このアプローチに関するスタディコンセプトを以下に述べる。

これまでのNHTのスタディの結果から downstaging はあまり期待せず、したがってNHTの効果を期待して縮小手術を行うのは危険である。NHTを施行することにより前立腺体積が減少することは明らかである。また確実な切除断端を確保することは治療成績の向上につながることも明らかである。したがってNHTは downsizing を目的に併用することで相対的に広汎な切除断端を確保することが可能となり、治療成績が期待できるのではと考えた。そもそも日本人の骨盤は狭く、大きな前立腺を摘出する場合には広く切除断端を確保することが困難である。また前立腺全摘において尖部の処理は断端の確保のみではなく、機能温存、出血量のコントロールなどに重要であることはいままでもない。近年ではPSAにより発見される前立腺癌が増えており、このような病態では前立腺尖部腹側に病巣が多く存在することが認識されている¹⁹⁾。

前立腺尖部と恥骨との間が拡大することにより少しでも距離が確保されることは切除に際して有利に働くはずである。また前立腺尖部が縮小することで相対的に尿道括約筋が長く温存できる可能性が高くなり、術後の尿禁制に対しても有利に作用すると考えられる。

NHTを施行することにより前立腺周囲に線維化が起こることによる手術の困難性が指摘されているが^{13,14)}、局所進行前立腺癌に対しては神経を温存することはその治療的意義から疑問があり、原則実施していないこと、精嚢は周囲から広汎に切除すること、更には手術に対する慣れもあり、著者らは特に困難を感じることはない。

またこれは我が国の患者の特徴の一つではないかと思われるが、性機能温存に対してそれほどのこだわりがなく、むしろ手術により癌根治を望む症例が多いことも本スタディを可能とした要因である。

以上のコンセプトに基づき、より確実な切除断端を確保する手術法‘広汎前立腺全摘: extended radical prostatectomy’²⁰⁾を開発し、cT3前立腺癌に対するNHT併用手術療法の治療を行ってきた。

a. 対象と方法

2000年からは術前3カ月以上、1年以内、推奨6カ月の術前ホルモン療法を施行した後、前

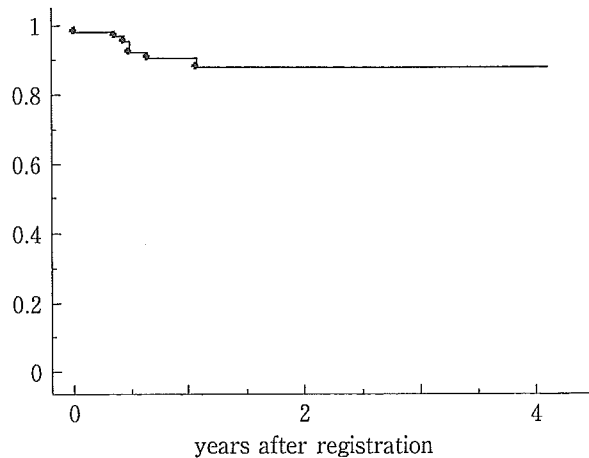


図4 Biochemical-free survival by extended radical prostatectomy in 70 cT3 prostate cancer

立腺全摘を施行し、病理結果のいかんにかかわらず術後は無治療経過観察を行う phase II スタディを施行している。今回、cT3N0M0 前立腺癌に対して上記のプロトコルで治療を行った広汎前立腺全摘症例 70 例の治療成績を検討した。後述するように本術式の適応拡大を狙った局所の相当な進行癌 (TxN0M0) に対してトライアル的に実施 (phase II 後期) した症例は除いている。広汎前立腺全摘に関する詳細は文献²⁰⁾に記載しているが、その概略を述べると、直腸固有筋膜を切開し、直腸筋層を露出し、剥離を進め、腱中心に至ることで前立腺尖部後面の把握を確実にする。神経を含む血管束を可及的末梢で完全切除するとともに、前立腺尖部を直腸の剥離を参考にしながら、前立腺尖部後面と腱中心との間を安全、確実に切断する。中枢に向かい逆行性処理を行い、腹膜臓転部を確認して精囊基部を露出することなく、また膀胱頸部を大きく切開し、膀胱筋層も含めて前立腺を摘出する手術手技である。

平均年齢は 64 歳、治療前 PSA 値は 2.4–124 ng/dl、Gleason score は 6–9 であり、平均観察期間は 581 日 (112–1,500 日、中央値 455 日) である。

b. 結果と考察

摘出標本における 70 例の pT 分類は pT0: 1 例、pT2a: 2 例、pT2b: 25 例 (pT2: 27 例 (38.6%)), pT3a: 20 例、pT3b: 6 例 (pT3: 26 例 (37.1%)),

pT4: 16 例 (22.9%) である。当然、術前診断の正当性が問題になるわけであるが、例えば cT3 前立腺癌に対する NHT として術後 pT 分類が記載されている European Study Group²¹⁾の結果と比較してみると、NHT の期間に差があり単純な比較はできないのであるが、少なくとも pT3 以上の病期が 50% 近くを占めており、特に著者らの臨床診断が overstaging であるということではないと思われる。著者らの症例の 40% 近くが pT2 と診断された症例が多いことは NHT の期間にも起因しているとも考えられるのであるが、一般的に cT3 に対しても 15–25% の overestimation があるとされており、NHT の効果とステージングエラーの両方を含む症例数としては理解可能な数字ではないかと考える。

図 4 に全体の成績を示す、PSA failure を 0.2 ng/dl 以上として検討した結果、88.4% が NED の状態であり、12% に PSA failure を認めた。摘出標本における病期別の治療成績を図 5 に示す。興味深いことに pT2a–pT3a では非常に良好な治療成績であり、局所限局癌と遜色がない。pT2a–pT3a 全体で 49 例中、1 例にのみ PSA failure を認めている。pT3b 6 例中 2 例、pT4 14 例中 4 例に PSA failure を認め、この群では 2 例にリンパ節転移を認めている。リンパ節転移陽性例は全例 400 日以内に PSA failure となったが、このことは当然のことと考えられた。PSM は NHT を施行しない RP 時の大きな予後規定因子

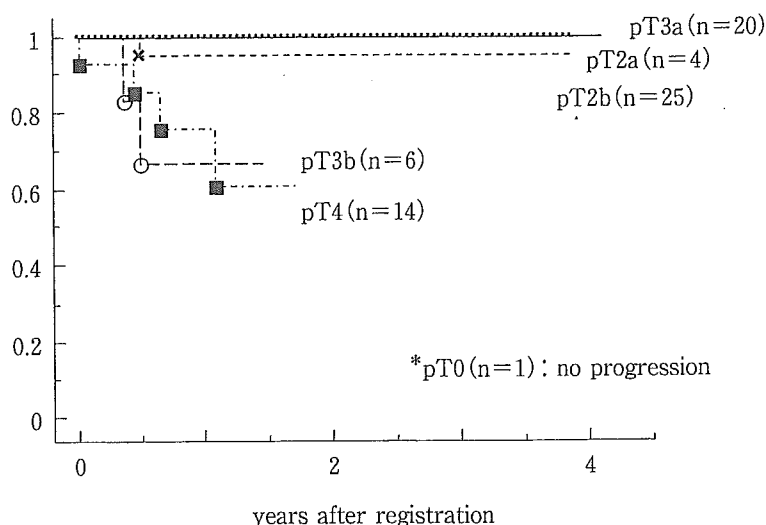


図5 Biochemical-free survival according to the pT stage by extended radical prostatectomy in cT3 prostate cancer

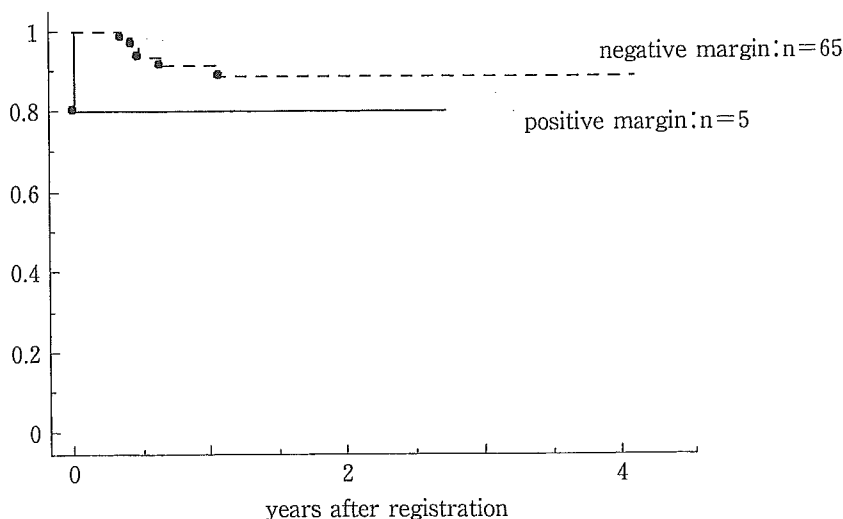


図6 Biochemical-free survival according to the surgical margin by extended radical prostatectomy in cT3 prostate cancer

となるが、NHT下のRPではその判定が artifact なども加わり明確な予後規定因子とならないとの意見¹³⁻¹⁵⁾もあるが、今回の症例群で明らかな PSM は 5 例に認められ、そのうち 1 例が PSA failure であった。逆に 65 例は negative surgical margin と判断されたがそのうち 6 例に PSA failure が認められた。図 6 にその成績を示す。ある程度の傾向は認められるが、negative surgical margin でも 10% 程度に PSA failure が認められたことになり、pT0 となった場合でも再発することが十分あり得る¹⁶⁾前立腺癌においては

病理学的に negative surgical margin と判断されても決して再発の危険が少ないことを意味するものではないことがやはり伺える。

いずれにしてもこの結果は cT3 を対象にした RP の成績としてはまだ観察期間が短いという問題はありますが文献的にみても best result になるのではないかと考えられる。

我が国の前立腺癌症例においては Partin nomogram²²⁾と比較しても node positive が低いという印象があり、局所の完全切除を追求することには治療的意義があると考えられる。ただ

し多くの文献でも指摘されているように、cT2前立腺癌にも約3割のunderestimationがあるように、cT3前立腺癌に対しても15-25%のoverestimationがあり得るし、cT3前立腺癌にもunderestimationがあり得る。今回の対象症例も画像などから被膜浸潤ぎりぎり陽性と判定された‘早期’のT3症例と、生検などから相当の腫瘍量が想定され、実際、術後pT4と診断された‘相当な’T3症例が混在しており、cT3前立腺癌にはcT2前立腺癌以上にその病態はheterogenousな状態と考えられる。cT3前立腺癌で真に局所切除の意味がある症例群の解析が今後の課題と考えており、現在施行している局所の‘相当な’進行癌(cTxN0M0癌)に対する広汎前立腺全摘のトライアルスタディの結果を待つ必要がある状況である。

また当初、NHTを併用する意義としてdownsizingによる相対的な切除断端の確実な確保を目的としていたが、元々前立腺の体積の小さな症例では不要ではという想定もあり、広汎全摘

におけるNHTの意義を確認する研究が必要とも考えている。

おわりに

cT3前立腺癌に対するNHTを併用したRPには限界があり、NHTの意義は見いだせないとの意見が多いが、局所をより完全に切除することにより、治療成績の向上が期待できないかとの問題意識から広汎前立腺全摘を開発した。この手術法をもってcT3前立腺癌に対して治療を行ったところ、cT3症例でもpT3aかそれ以下ではorgan confined diseaseと治療成績が全く異なることを確認した。我が国の前立腺癌患者では性機能障害よりも手術により根治を望むことが多く、また我が国の前立腺癌のリンパ節転移頻度は低いと想定され、このような環境下では欧米と異なり、cT3という理由で‘手術療法ではもはや根治不可’と断定することはできないことを示した。

■ 文 献

- 1) Vallett BS: Radical perineal prostatectomy subsequent to bilateral orchiectomy. *Del Med J* 16: 19, 1944.
- 2) Colston JH, Brendler H: Endocrine therapy in carcinoma of the prostate; preparation of patients for radical perineal prostatectomy. *JAMA* 134: 848, 1947.
- 3) Parlow AL, Scott WW: Hormone control therapy as a preparation for radical perineal prostatectomy in advanced carcinoma of the prostate. *NYJ Med* 49: 629, 1949.
- 4) Scott WW, Boyd HL: Combined hormonal control therapy and radical prostatectomy in the treatment of selected cases of advanced carcinoma of the prostate: a retrospective study based upon 25 years of experience. *J Urol* 101: 86, 1968.
- 5) Klotz LH, et al: CUOG randomized trial of neoadjuvant androgen ablation before radical prostatectomy: 36-month post-treatment PSA results. Canadian Urologic Oncology Group. *Urology* 53(4): 757-763, 1999.
- 6) Gleave ME, et al: Randomized comparative study of 3 versus 8-month neoadjuvant hormonal therapy before radical prostatectomy: biochemical and pathological effects. *J Urol* 166(2): 500-506, 2001.
- 7) Aus G, et al: Three-month neoadjuvant hormonal therapy before radical prostatectomy: a 7-year follow-up of a randomized controlled trial. *BJU Int* 90: 561-566, 2002.
- 8) Hurtado-coll A, et al: Preoperative neoadjuvant androgen withdrawal therapy in prostate cancer: the Canadian experience. *Urology* 60: 45-51, 2002.
- 9) Meyer F, et al: Duration of neoadjuvant androgen deprivation therapy before radical prostatectomy and disease-free survival in men with prostate cancer. *Urology* 58: 71-77, 2001.
- 10) Soloway MS, et al: Neoadjuvant androgen ablation before radical prostatectomy in cT2bNxM0 prostate cancer: 5-year results. *J Urol* 167: 112-116, 2002.

- 11) McLeod DG, et al: PSA levels and the rate of positive surgical margins in radical prostatectomy specimens preceded by androgen blockade in clinical B2(T2bNxMo) prostate cancer. The Lupron Depot Neoadjuvant Study Group. *Urology* **49**: 70-73, 1997.
- 12) Meyer F, et al: Neoadjuvant hormonal therapy before radical prostatectomy and risk of prostate specific antigen failure. *J Urol* **162**: 2024-2028, 1999.
- 13) Scolieri MJ, et al: Neoadjuvant hormonal ablative therapy before radical prostatectomy: a review. Is it indicated? *J Urol* **164**: 1465-1472, 2000.
- 14) Abbas F, Scardino PT: Why neoadjuvant androgen deprivation prior to radical prostatectomy is unnecessary. *Urol Clin North Am* **23**: 587-604, 1996.
- 15) Fair WR, Scher HI: Neoadjuvant hormonal therapy plus surgery for prostate cancer. The MSKCC experience. *Surg Oncol Clin N Am* **6**: 831-846, 1997.
- 16) Kollermann J, et al: Follow-up of nondetectable prostate carcinoma (pT0) after prolonged PSA-monitored neoadjuvant hormonal therapy followed by radical prostatectomy. *Urology* **62**: 476-480, 2003.
- 17) Powell IJ, et al: Neoadjuvant therapy before radical prostatectomy for clinical T3/T4 carcinoma of the prostate: 5-year followup, Phase II Southwest Oncology Group Study 9109. *J Urol* **168**: 2016-2019, 2002.
- 18) Gomella LG, et al: Induction androgen deprivation plus prostatectomy for stage T3 disease: failure to achieve prostate-specific antigen-based freedom from disease status in a phase II trial. *Urology* **47**: 870-877, 1996.
- 19) Takashima R, et al: Anterior distribution of Stage T1c nonpalpable tumors in radical prostatectomy specimens. *Urology* **59**: 692-697, 2002.
- 20) 藤元博行: 神経温存を意図しない前立腺広汎切除術. 癌の外科 手術手技シリーズ 2, p100-107, メジカルビュー社, 2001.
- 21) Schulman CC, et al: 4-Year follow-up results of a European prospective randomized study on neoadjuvant hormonal therapy prior to radical prostatectomy in T2-3N0M0 prostate cancer. European Study Group on Neoadjuvant Treatment of Prostate Cancer. *Eur Urol* **38**: 706-713, 2000.
- 22) Partin A, et al: Combination of prostate-specific antigen, clinical stage, and Gleason score to predict pathological stage of localized prostate cancer. A multi-institutional update. *JAMA* **277**: 1445, 1997.

本邦，前立腺癌症例に対する根治的前立腺全摘の可能性と限界

藤元博行*

はじめに

局所前立腺癌に対する根治的治療を取り巻く状況は大きく変化し，前立腺全摘においても腹腔鏡下前立腺全摘，あるいは会陰式前立腺全摘など前立腺全摘のオプションも増え，放射線治療では小線源療法，3D-CRT，IMRT，重粒子線，陽子線などの新しい技術も台頭してきている。いろいろな治療のモダリティが存在することは，症例により選択可能な治療法の幅が広がったことを意味し，望ましいことではあるが，治療者側にとってみればどのような治療法を勧めるべきか，確かに「棲み分け」が可能か，可能ならばどのようなポイントによるのかが問題となってきている。

現在，局所前立腺癌の治療選択に必要なポイントとしては，根治性，若年者では将来の安全性を考慮する必要性，手術療法においては，より確実かつ低侵襲な手術法を確立すること，局所進行癌に対しても手術療法の適応と限界を理解することではと考えている。本稿では局所前立腺癌を取り巻く現状，問題意識を概説し，前立腺癌の治療を行う放射線科医にとって有用な，あるいは注意が必要な情報を提示し，最後に我々が取り組んできた局所進行前立腺癌に対する治療成績を供覧した。

1. 局所前立腺癌に対する前立腺全摘への認識

現在，T1c～T2b (organ confined disease : OCD) N0M0前立腺癌に対して泌尿器科医は前立腺全摘を行うことが最も根治的であると信じている¹⁾。一方，T3以上の局所進行前立腺癌に対してはもはや手術の適応はないと考えられている^{2,6)}。OCDに対する前立腺全摘では術前病期診断の脆弱性から2～30%のunder/over estimationが起り⁷⁾，このことも相まって，本来，切除により根治が得られると想定されるOCD前立腺癌でも術後PSA failureが起ることは周知の事実である。そもそもこの手術は1982年にWalsh⁸⁾らが勃起神経の走行を解析し確実な静脈叢の処理，あるいは神経温存が可能な手術として確立した。

しかしOCDに対する前立腺全摘でもPSA failureをきたすことから3カ月程度内分泌療法を先行させることでdownstaging，つまり2～3割のunderstagingされたT3前立腺癌がこの術前治療により前立腺外の浸潤が消滅し，前立腺全摘の成績が向上するのではと考えられたが，ランダム化試験の後，その効果は否定された⁹⁻¹⁴⁾。したがって最近では前立腺全摘の適応としては，よりlow PSA, low Gleason, low stageの前立腺癌を適応とすべきであるという認識が米国を中心として広まっており，その概念がそのまま本邦でも適応されているように思われる。

* H. Fujimoto 国立がんセンター中央病院泌尿器科
〔索引用語：局所前立腺癌，根治的前立腺全摘〕

ところでこのようなデータを解釈する際に注意が必要ではと考えている。米国を中心として膨大な前立腺全摘に関する治療成績が発表されているが、その多くは神経温存手術によるものであり、神経を温存しない前立腺全摘に関する治療成績の発表は少ない。米国では性機能障害を回避できるかが治療方針決定の大きな要因となっていると想定され、手術療法の多くは神経温存が可能な症例のみ施行されているものと思われる。一方、本邦の癌に対する国民感情としては「癌」は「死の病」であり、「そこから生還するには手術ができるかどうか」、つまり「手術できない＝手遅れ」と短絡的に結びつく傾向があるように思われる。また性機能障害が精神的負担になりにくいという国民性もあるように思われる。

したがって筆者自身は本邦における前立腺全摘に求められるものとして、なによりも根治性が求められ、早期癌に対しては当然のこととしても、T3などのある程度の進行癌でも手術療法により根治が可能な病態があるとする、このような症例にこそ、外科的治療により根治を目指すこと本邦の前立腺癌患者がもめている点ではと考える。さらに外科的治療に求められるものとしては、低侵襲性、術後morbidityの最小化、つまり尿の禁制のみではなく、より自然な排尿が可能な手技が求められ、希望する症例に対する性機能温存がポイントとなるのではと考えている。

2. 前立腺癌の局在

前立腺全摘を施行する際のみならず、放射線治療を考える上でも前立腺癌の局在を理解することは治療の正否にかかわる重要な問題であると思われる。この点について最近の知見を概論する。

かつて前立腺には内腺と外腺があり、前立腺癌は外腺領域から発生するとの認識があった。近年PSA時代（PSA era）となり、触知できない前立腺癌が増加するに至り、この認識は現在では不正確であることがわかっている。T1c前立腺癌の腫瘍の局在をD' Amicoらのリスク分類¹⁵⁾別

に解析した北里大学のデータ¹⁶⁾では、腫瘍発生の主体は前立腺尖部に集中しており、リスクが高くなると前立腺middleあるいはbase側に進展していることを明らかにした。

同様の傾向は当センターで前立腺全摘を施行され、腫瘍のmappingが行われた141例のデータでも同様の傾向が伺えた。症例の多くは何らかの術前内分泌療法を施行された症例である。Mappingデータを元に、腫瘍の局在をD' Amicoらのリスク分類別にコンピュータにより処理したものを図1に示した。症例はT1c癌のみに留まらず触知可能癌も含めた分析である。Gleason score, PSA, T stage別にも分析されたが結果は同様であり、腫瘍は精丘の高さから前立腺尖部に向け分布することが多く、ドーナツ状に前立腺全周にわたり存在していた。確かに触知不能前立腺癌では前立腺腹側に存在する割合が高いが、触知可能な前立腺癌でも同様に腹側にも腫瘍が分布していることが多く認められた。腫瘍の局在はリスクには関係せず、同様の分布形式をとっていたがhigh Gleason, high PSAになると前立腺境界領域（transition zone）base側への進展が認められた。したがって結論的には近年のPSA eraにおける前立腺癌は前立腺尖部に分布していることが多いことを念頭に局所治療にあたる必要があると考えられた。

3. 前立腺に対する局所治療のための解剖学

日々、前立腺全摘を行っている、症例による前立腺の形態の違いを強く認識させられる。前立腺はいわゆる“ドーナツ型”あるいは“クロワッサン型”に代表されるような大きく2つの形態がある。前立腺癌の局所治療に対する前立腺尖部の重要性は前項で述べたが、前立腺尖部にはサントリーニ静脈叢と呼ばれる静脈が収束しており、前立腺全摘の処理においてこの静脈叢の処理は単に出血量をコントロールするに留まらず、出血のない良好な視野を確保することは尿道括約筋の温存、神経温存、さらには的確な切除による確実な断端の確保にきわめて重要なポイントである。近年、手術に慣れた施設ではサントリーニ静脈叢の処理法も安定