

問3 以下の質問は、日常よく行われている活動です。あなたは現在、健康上の理由で、こうした活動をするのがむずかしいと感じますか。むずかしいとすればどのくらいですか。
(ア～コまでのそれぞれの質問について、一番よくあてはまるものに☑印をつけて下さい)

とても むずかしい	少し むずかしい	ぜんぜん むずかしく ない
▼	▼	▼

- ア) 激しい活動、例えば、一生けんめい走る、
重い物を持ち上げる、激しいスポーツをするなど…………… ₁ …………… ₂ …………… ₃
- イ) 適度の活動、例えば、家や庭のそうじをする、
1～2時間散歩するなど…………… ₁ …………… ₂ …………… ₃
- ウ) 少し重い物を持ち上げたり、運んだりする
(例えば買い物袋など) …………… ₁ …………… ₂ …………… ₃
- エ) 階段を数階上までのぼる…………… ₁ …………… ₂ …………… ₃
- オ) 階段を1階上までのぼる…………… ₁ …………… ₂ …………… ₃
- カ) 体を前に曲げる、ひざまずく、かがむ…………… ₁ …………… ₂ …………… ₃
- キ) 1キロメートル以上歩く…………… ₁ …………… ₂ …………… ₃
- ク) 数百メートルくらい歩く…………… ₁ …………… ₂ …………… ₃
- ケ) 百メートルくらい歩く…………… ₁ …………… ₂ …………… ₃
- コ) 自分でお風呂に入ったり、着がえたりする…………… ₁ …………… ₂ …………… ₃

問4 過去1カ月間に、仕事やふだんの活動（家事など）をするにあたって、身体的な理由で次のような問題がありましたか。（ア～エまでのそれぞれの質問について、一番よくあてはまるものに☑印をつけて下さい）

いつも	ほとんど いつも	ときどき	まれに	ぜんぜん ない
▼	▼	▼	▼	▼

ア) 仕事やふだんの活動をする
時間をへらした……………₁……………₂……………₃……………₄……………₅

イ) 仕事やふだんの活動が
思ったほど、できなかつた……………₁……………₂……………₃……………₄……………₅

ウ) 仕事やふだんの活動の内容に
よっては、できないものが
あつた……………₁……………₂……………₃……………₄……………₅

エ) 仕事やふだんの活動をする
ことがむずかかつた
(例えばいつもより努力を
必要としたなど)……………₁……………₂……………₃……………₄……………₅

問5 過去1カ月間に、仕事やふだんの活動（家事など）をするにあたって、心理的な理由で（例えば、気分がおちこんだり不安を感じたりしたために）、次のような問題がありましたか。（ア～ウまでのそれぞれの質問について、一番よくあてはまるものに☑印をつけて下さい）

いつも	ほとんど いつも	ときどき	まれに	ぜんぜん ない
▼	▼	▼	▼	▼

ア) 仕事やふだんの活動をする
時間をへらした……………₁……………₂……………₃……………₄……………₅

イ) 仕事やふだんの活動が
思ったほど、できなかつた……………₁……………₂……………₃……………₄……………₅

ウ) 仕事やふだんの活動が
思ったほど、集中して
できなかつた……………₁……………₂……………₃……………₄……………₅

問6 過去1カ月間に、家族、友人、近所の人、その他の仲間とのふだんのつきあいが、身体的あるいは心理的な理由で、どのくらい妨げられましたか。
 (一番よくあてはまるものに☑印をつけて下さい)

ぜんぜん、 妨げられ なかった	わずかに、 妨げられた	少し、 妨げられた	かなり、 妨げられた	非常に、 妨げられた
▼	▼	▼	▼	▼
<input type="checkbox"/> 1	<input type="checkbox"/> 2	<input type="checkbox"/> 3	<input type="checkbox"/> 4	<input type="checkbox"/> 5

問7 過去1カ月間に、体の痛みをどのくらい感じましたか。
 (一番よくあてはまるものに☑印をつけて下さい)

ぜんぜん、 なかった	かすかな 痛み	軽い 痛み	中くらい の痛み	強い 痛み	非常に 激しい痛み
▼	▼	▼	▼	▼	▼
<input type="checkbox"/> 1	<input type="checkbox"/> 2	<input type="checkbox"/> 3	<input type="checkbox"/> 4	<input type="checkbox"/> 5	<input type="checkbox"/> 6

問8 過去1カ月間に、いつもの仕事（家事も含みます）が痛みのために、どのくらい妨げられましたか。 (一番よくあてはまるものに☑印をつけて下さい)

ぜんぜん、 妨げられ なかった	わずかに、 妨げられた	少し、 妨げられた	かなり、 妨げられた	非常に、 妨げられた
▼	▼	▼	▼	▼
<input type="checkbox"/> 1	<input type="checkbox"/> 2	<input type="checkbox"/> 3	<input type="checkbox"/> 4	<input type="checkbox"/> 5

問9 次にあげるのは、過去1カ月間に、あなたがどのように感じたかについての質問です。

(ア～ケまでのそれぞれの質問について、一番よくあてはまるものに☑印をつけて下さい)

	いつも ▼	ほとんど いつも ▼	ときどき ▼	まれに ▼	ぜんぜん ない ▼
ア) 元気いっぱいでしたか.....	<input type="checkbox"/> 1	<input type="checkbox"/> 2	<input type="checkbox"/> 3	<input type="checkbox"/> 4	<input type="checkbox"/> 5
イ) かなり神経質でしたか.....	<input type="checkbox"/> 1	<input type="checkbox"/> 2	<input type="checkbox"/> 3	<input type="checkbox"/> 4	<input type="checkbox"/> 5
ウ) どうにもならないくらい、 気分がおちこんでいましたか.....	<input type="checkbox"/> 1	<input type="checkbox"/> 2	<input type="checkbox"/> 3	<input type="checkbox"/> 4	<input type="checkbox"/> 5
エ) おちついていて、 おだやかな気分でしたか.....	<input type="checkbox"/> 1	<input type="checkbox"/> 2	<input type="checkbox"/> 3	<input type="checkbox"/> 4	<input type="checkbox"/> 5
オ) 活力（エネルギー）に あふれていましたか.....	<input type="checkbox"/> 1	<input type="checkbox"/> 2	<input type="checkbox"/> 3	<input type="checkbox"/> 4	<input type="checkbox"/> 5
カ) おちこんで、ゆううつな 気分でしたか.....	<input type="checkbox"/> 1	<input type="checkbox"/> 2	<input type="checkbox"/> 3	<input type="checkbox"/> 4	<input type="checkbox"/> 5
キ) 疲れはてていましたか.....	<input type="checkbox"/> 1	<input type="checkbox"/> 2	<input type="checkbox"/> 3	<input type="checkbox"/> 4	<input type="checkbox"/> 5
ク) 楽しい気分でしたか.....	<input type="checkbox"/> 1	<input type="checkbox"/> 2	<input type="checkbox"/> 3	<input type="checkbox"/> 4	<input type="checkbox"/> 5
ケ) 疲れを感じましたか.....	<input type="checkbox"/> 1	<input type="checkbox"/> 2	<input type="checkbox"/> 3	<input type="checkbox"/> 4	<input type="checkbox"/> 5

問10 過去1カ月間に、友人や親せきを訪ねるなど、人とのつきあいが、身体的あるいは心理的な理由で、時間的にどのくらい妨げられましたか。

(一番よくあてはまるものに☑印をつけて下さい)

いつも ▼	ほとんど いつも ▼	ときどき ▼	まれに ▼	ぜんぜん ない ▼
<input type="checkbox"/> 1	<input type="checkbox"/> 2	<input type="checkbox"/> 3	<input type="checkbox"/> 4	<input type="checkbox"/> 5

問11 次にあげた各項目はどのくらいあなたにあてはまりますか。(ア～エまでのそれぞれの質問について、一番よくあてはまるものに☑印をつけて下さい)

まったく そのとおり	ほぼ あてはまる	何とも 言えない	ほとんど あてはまら ない	ぜんぜん あてはまら ない
▼	▼	▼	▼	▼

- ア) 私は他の人に比べて病気になるやすいと思う……………₁……………₂……………₃……………₄……………₅
- イ) 私は、人並みに健康である……………₁……………₂……………₃……………₄……………₅
- ウ) 私の健康は、悪くなるような気がする……………₁……………₂……………₃……………₄……………₅
- エ) 私の健康状態は非常に良い……………₁……………₂……………₃……………₄……………₅

質問は以上です。

「記入もれ」がないかどうか、もう一度お確かめください。

ご協力ありがとうございました。

Ⅱ. 研究成果の刊行に 関する一覧表

発表者氏名	論文タイトル名	発表誌名	巻号	ページ	出版年
Osti OL, Gun R, Abraham G, Pratt NL, Eckerwell G, Nakamura H	Potential risk factors for prolonged recovery following whiplash injury.	European Spine Journal	14	90-94	2005
Namikawa T, Terai H, Suzuki E, Hoshino M, Toyoda H, Nakamura H, Miyamoto S, Takahashi N, Ninimiya T, Takaoka K.	Experimental spinal fusion with recombinant human bone morphogenic protein-2 delivered by a synthetic polymer and beta-tricalcium phosphate in a rabbit model.	Spine	30	1717-1722	2005
Nakamura H, Terai H, Nagayama R.	Endoscopic Spinal Surgery. -recent advances in the field of spinal surgery-	Current Medical Journal of India	11	45-48	2005
星野雅俊、中村博亮、高岡邦夫	【整形外科最新技術 手技のポイントとコツ】低侵襲手術 脊椎 骨粗鬆症性椎体骨折に対する内視鏡とバルーンを用いた椎体形成術.	新OSNOW	27	84-90	2005
中村博亮、高岡邦夫	【整形外科最新技術 手技のポイントとコツ】内視鏡手術 脊椎腰椎変性すべり症に対する後腹膜鏡下前方固定術.	新OSNOW	27	84-90	2005
山野慶樹、中村博亮	腰椎椎間板ヘルニアに対するLOVE 変法 (黄色靭帯温存法) .	上肢・脊椎手術完全マスター		201-205	2005
中村博亮、高岡邦夫	V. 骨粗鬆症の治療. 骨粗鬆症性椎体骨折に対する椎体形成術の現状.	CLINICAL CALCIUM	16	153-158	2005
Nawata M, Wakitani S, Nakaya H, Tanigami A, Seki T, Nakamura Y, Saito N, Sano K, Hidaka E, Takaoka K	Use of bone morphogenetic protein 2 and diffusion chambers to engineer cartilage tissue for the repair of defects in articular cartilage.	Arthritis & Rheum	52	155-163	2005
Tada M, Inui K, Koike T, Takaoka K	Use of local electroporation enhances methotrexate effects with minimum dose in adjuvant-induced arthritis.	Arthritis & Rheum	52	637-641	2005
Takeshi Komatsu, Yoshinori Kadoya, Shigeru Nakagawa, Gen Yoshida, Kunio Takaoka	Movement of the posterior cruciate ligament during knee flexion - MRI analysis.	Journal of Orthopaedic Research	23	334-339	2005
Yoshio Matsui, Yoshinori Kadoya, Kazunori Uehara, Akio Kobayashi, Kunio Takaoka	Rotational Deformity in Varus Osteoarthritis of the Knee.	Clinical Orthopaedics and Related Research	433	147-151	2005
Matsumoto I, Ito Y, Tomo H, Nakao Y, Takaoka K	Case reports: ossified mass of the rotator cuff tendon in the subacromial bursa.	Clinical Orthopaedics and Related Research.	437	247-250	2005
Ohta, H. Wakitani, S. Tenshou, K. Horiuchi, H. Wakabayashi, S. Saito, N. Nakamura, Y. Nozaki, K. Imai, Y. and Takaoka, K	The effect of heat on the biological activity of recombinant human bone morphogenetic protein-2.	J, Bone & Miner Metab	23	420-425	2005

発表者氏名	論文タイトル名	発表誌名	巻号	ページ	出版年
Nakamura, Y. Wakitani, S. Saito, N. and Takaoka, K	Expression profiles of BMP-related molecules induced by BMP or BMP-4 in muscle-derived primary culture cells.	J, Bone & Miner Metab	23	426-434	2005
Sugama, R. Koike, T. Imai, Y. Nomura-furuwatari, C. and Takaoka, K	Bone morphogenetic protein activities are enhanced by 3', 5' -cyclic adenosine monophosphate through suppression of smad6 expression in osteoprogenitor cells.	Bone	38	206-214	2005
Masahiko Tohyama, Tadao Tsujio, Ikuhisa Yanagida	Trigger Finger Caused by an Old Partial Flexor Tendon Laceration: a case report	Hand Surgery	10	105-108	2005
寺井秀憲, 高岡邦夫	卒後研修講座 骨再生医療と骨形成蛋白(BMP)	整形外科	56	1361-1366	2005
米田昌弘, 寺井秀憲, 高岡邦夫	【骨・軟骨移植 最近の知見】 骨移植基礎研究 骨形成蛋白(BMP) 新しい骨形成蛋白(BMP)デリバリーシステムを利用した長管骨骨欠損の修復の試み	別冊整形外科	47	26-30	2005
Namikawa, T. Terai, H. Suzuki, E. Hoshino, M. Toyoda, H. Nakamura, H. Miyamoto, S. Takahashi, N. Ninomiya, T. Takaoka, K.	Experimental spinal fusion with recombinant human bone morphogenetic protein-2 delivered by a synthetic polymer and beta-tricalcium phosphate in a rabbit model.	Spine	30	1717-1722	2005
Toyoda, H. Terai, H. Sasaoka, R. Oda, K. Takaoka, K.	Augmentation of bone morphogenetic protein-induced bone mass by local delivery of a prostaglandin E EP4 receptor agonist.	Bone	37	555-562	2005
Yoneda, M. Terai, H. Imai, Y. Okada, T. Nozaki, K. Inoue, H. Miyamoto, S. Takaoka, K.	Repair of an intercalated long bone defect with a synthetic biodegradable bone-inducing implant.	Biomaterials	26	5154-5152	2005

Ⅲ. 研究成果の
刊行物・別冊

Bone morphogenetic protein activities are enhanced by 3',5'-cyclic adenosine monophosphate through suppression of Smad6 expression in osteoprogenitor cells

Ryo Sugama, Tatsuya Koike*, Yuuki Imai, Chizumi Nomura-Furuwatari, Kunio Takaoka

Department of Orthopaedic Surgery, Osaka City University Medical School, Asahimachi 1-4-3, Abenoku, Osaka 545-8585, Japan

Received 4 June 2005; revised 30 July 2005; accepted 5 August 2005

Available online 3 October 2005

Abstract

Bone morphogenetic proteins (BMPs) belong to the transforming growth factor (TGF)- β superfamily, and some display potent osteogenic activity both *in vivo* and *in vitro*. The BMP signaling cascade involving BMP receptors at the cell membrane and intracellular messengers (Smads) has been elucidated, but the regulatory mechanisms of BMP signaling have not been clarified. We previously found that pentoxifyline (PeTx), a nonspecific inhibitor of phosphodiesterase (PDE), and rolipram, a PDE-4-specific inhibitor, enhance BMP-4-induced osteogenic differentiation of mesenchymal cells, probably through the elevation of intracellular cyclic adenosine monophosphate (cAMP) accumulation and modulation of BMP signaling pathways as enhanced BMP-4 action was reproduced by addition of dibutyl-AMP (dbcAMP). However, the precise mechanisms underlying the enhancing effects of those agents on BMP signaling were not completely revealed. As already reported, BMPs utilize a specific intracellular signaling cascade to target genes via R-Smads (Smad1,5,8), Co-Smad (Smad4) and I-Smads (Smad6,7). One possibility for cAMP-mediated effects on BMP signaling might be suppression of I-Smads expression since these proteins form a negative feedback loop in BMP signaling. To examine this possibility, changes in I-Smad (Smad6) expression on addition of dbcAMP or PeTx were examined in a bone-marrow-derived osteogenic cell line (ST2). Alkaline phosphatase activity in ST2 cells was consistently induced by BMP-4 treatment (300 ng/ml), and Smad6 mRNA expression was also induced by BMP-4 treatment. Although concurrent treatment of ST2 cells with BMP-4 and dbcAMP elicited further activation of alkaline phosphatase, addition of dbcAMP reduced BMP-4-induced Smad6 expression in a dose-dependent manner. Furthermore, detection of phosphorylated Smad1/5/8 on Western blotting analysis was prolonged, suggesting prolonged kinase activity of BMP receptors through suppressed expression of Smad6. Elevated intracellular cAMP might thus enhance BMP signaling by suppressing Smad6 induction and prolonging intracellular BMP signaling.

© 2005 Elsevier Inc. All rights reserved.

Keywords: Cyclic adenosine monophosphate; Osteoprogenitor cells; Bone morphogenetic protein; Smad6; Pentoxifyline

Introduction

The bone-inducing activity of bone morphogenetic proteins (BMPs) was originally identified in bone matrix through ectopic bone formation after implanting decalcified bone matrix into rodent muscle. A group of BMP molecules belonging to the transforming growth factor (TGF)- β

superfamily has since been identified and recognized as multi-functional growth factors.

In bone biology, BMPs are considered crucial in bone and cartilage formation for embryonic development, postnatal bone metabolism and repair of damaged bone. From a clinical perspective, BMPs and related molecules regulating BMP activity are expected to offer powerful tools for the treatment of systemic or local skeletal disorders like osteoporosis and repair of fracture or bone defects associated with bone tumor excision or trauma. For clinical purposes, BMP-2 and BMP-7/osteogenic protein

* Corresponding author. Fax: +81 6 6646 6260.

E-mail address: tatsuya@med.osaka-cu.ac.jp (T. Koike).

(OP)-1 have been synthesized using DNA recombination and utilized in a limited number of human cases in combination with local delivery systems [1]. Gene therapy using BMP genes has also been attempted in experimental animals [2], but efficacious and safe vectors for delivering BMP genes in gene therapy have remained problematic for gene therapy.

When considering the efficient use of BMPs either systemically or locally, one basic and important problem is the low responsiveness of human mesenchymal cells to BMPs [3]. Large doses (in the order of milligrams) of costly BMP are thus required for local lesions in each patient. To overcome such problems and enable more widespread and effective use of BMP molecules, additional agents or methods that intensify BMP activity are desirable. In this context, we screened the phosphodiesterase (PDE) inhibitors pentoxifyline (PeTx, a non-specific inhibitor of PDE) and rolipram (a PDE-4-specific inhibitor), revealing increases in BMP-2-induced bone mass following systemic daily injection of these agents [4,5]. However, the precise pharmacological basis of these effects was uncertain. Elevation of intracellular levels of cyclic adenosine monophosphate (cAMP) may have been involved and might intensify the intracellular BMP signaling cascade. One possible mechanism for cAMP to intensify BMP signaling would be interference with the negative feedback mechanism in BMP signaling formed by inhibitory Smads (I-Smads). The present study investigated changes in mRNA expression of major I-Smads, Smad6 and phosphorylated receptor-regulated Smads (R-Smads) levels after treatment with BMP-4 and dibutyl-*c*-AMP (dbcAMP), a cell-membrane permeable analog of cAMP, in lined murine osteogenic ST2 cells.

Materials and methods

Reagents

PeTx (1-(5-oxohexyl)-3,7-dimethylxanthine) and dbcAMP were purchased from Sigma Chemical Co. (St. Louis, MO, USA). PeTx and dbcAMP were prepared at 90 mM and 100 mM, respectively, as stock solutions in culture medium.

As a source of mouse BMP-4, conditioned medium from Chinese hamster ovary (CHO) cells transfected with murine BMP-4 (mBMP-4) cDNA was used. Details of the CHO cell have been described in our previous publication [6]. Briefly, cells transfected with mBMP-4 cDNA or mock vector (for controls) were inoculated at a density of 1.0×10^6 cells/100 mm plastic dish (Falcon #3003; Becton Dickinson Labware, Tokyo, Japan) in 10 ml of α -minimal essential medium (α -MEM; Sigma Chemical Co.) with 10% (vol/vol) heat-inactivated fetal bovine serum (FBS; Gibco, Grand Island, NY, USA) and antibiotics/antimycotics

(100 U/ml penicillin; 100 μ g/ml streptomycin; and 0.25 μ g/ml amphotericin B, Sigma Chemical Co.) at 37°C in 5% CO₂ atmosphere. Conditioned medium was collected after 5 days incubation, filtered through a membrane filter (Corning, NY, USA; pore size 0.22 μ m) and stored at 4°C. Under these conditions, judging from the induction of alkaline phosphatase (ALP) activity in osteoprogenitor cells, a 5% mixture of conditioned medium corresponded to approximately 100 ng/ml of recombinant human BMP-2 (generously provided by Yamanouchi Pharmaceutical, Tokyo, Japan) (data not shown). For experiments, conditioned medium from cells transfected with mock vector was used for negative controls.

Cell culture

Mouse mesenchymal cell line C3H10T1/2 [7], mouse bone marrow stromal cell line ST2 [8] and mouse osteoblastic cell line MC3T3-E1 [9] were obtained from the Riken Cell Bank (Ibaraki, Japan). The C3H10T1/2 and ST2 cell lines are widely regarded as osteogenic precursors as cells go on to exhibit osteoblastic phenotypes under the control of BMPs [10,11]. Cells were seeded at a density of 3×10^5 cells/100-mm plastic dish and cultured in α -MEM containing 10% FBS and antibiotics/antimycotics at 37°C in 5% CO₂ humidified air. Upon reaching confluence, cells were used in the following experiments.

Determination of alkaline phosphatase activity

Alkaline phosphatase activity was measured as a marker of osteoblastic differentiation in response to BMP-4 or other agents. Cells were seeded at a density of 1×10^5 cells/well in 48-well plates ($n = 4$ per group). Upon achieving confluence, medium was replaced by fresh medium containing 5% FBS and pre-incubated for 1 h. BMP-4 and other chemicals were then added to the cultures, and incubation was continued for 3 more days. Cells were pre-incubated with or without PeTx/dbcAMP for 15 min before treatment with BMP-4. After 3 days of incubation, medium was removed, and cells were washed 3 times with saline then lysed in 250 μ l of 0.2% Triton-X (Sigma Chemical Co.) with saline. Plates were frozen at -80°C and dissolved again then sonicated for 40 s. After centrifugation, supernatant was collected and used for ALP assay and protein assay. For ALP assay, samples were incubated with 0.5 mM *para*-nitrophenol phosphate, 0.5 mM MgCl₂ and 0.5 M Tris-HCl for 30 min at 37°C. To stop the reaction, a quarter volume of 1 N NaOH was added, and then absorbance was read at 405 nm. As a standard, 5 mM *para*-nitrophenol was used. Protein concentration was measured using a DC protein assay kit (Bio-Rad Laboratories, CA, USA). Experiments were performed independently in triplicate.

Determination of intracellular cAMP

When cultures maintained in 24-well plates ($n=4$ per group) reached confluence, medium was replaced using fresh medium of the same composition. After 1 h of pre-incubation, BMP-4 and other chemicals were added to the cultures, and incubation was continued for 5 or 15 min. The medium was then removed, and cells were overlaid with 250 μ l of 0.1 N HCl for 10 min at room temperature, collected by scraping and then centrifuged. Supernatant was then collected and used for cAMP assay, which was performed using a cAMP Kit (R&D Systems, Minneapolis, USA) according to the instructions of the manufacturer. The cAMP assay is based on the competitive binding technique, in which cAMP present in a sample competes with a fixed amount of ALP-labeled anti-cAMP rabbit polyclonal antibody.

Northern blot analysis

Cells were seeded in 100-mm diameter dishes and cultured until confluence. Upon achieving confluence, medium was replaced by fresh medium containing 5% FBS and cultured for 1 h. Cells were then treated with BMP-4 (300 ng/ml) or dbcAMP (2 mM) for 24 h. Cells were pre-incubated with or without dbcAMP for 15 min before treatment with BMP-4.

Total RNA was isolated from cells using Isogen (Wako Pure Chemical Industries, Osaka, Japan), and poly(A)⁺ RNA was obtained using Poly(A) Quik mRNA Isolation Kit (Stratagene, CA, USA) according to the instructions of the manufacturer. Poly(A)⁺ RNA (2 μ g) was electrophoresed in 1.0% agarose gels in the presence of 1.1 M formaldehyde and blotted to Hybond N membranes (Amersham Bioscience, NJ, USA). The complete coding regions of mouse Smad6 cDNA were labeled by [α -³²P]-dCTP using a Random Primer Labeling Kit (Takara Biochemicals, Otsu, Japan). Hybridization was performed in a solution containing 0.5 M phosphate buffer, 1 mM ethylene diamine tetra-acetic acid (EDTA) and 7% sodium dodecyl sulfate (SDS) at 65°C overnight, and the filter was washed at 65°C with 6 \times standard saline citrate (SSC), 0.1% SDS for 15 s, 2 \times SSC and 0.1% SDS for 10 min twice. Filters were stripped using boiled distilled water containing 0.1% SDS and rehybridized. Amounts of mRNA were verified by hybridizing filters with a glyceraldehyde 3-phosphate dehydrogenase (GAPDH) probe. Signals were detected using a BAS-2500 image analysis system (Fuji Photo Film Co., Tokyo, Japan).

Smad6 cDNA was generously provided by T. Imamura (Cancer Institute of the Japanese Foundation for Cancer Research, Tokyo, Japan), and GAPDH cDNA was generated by reverse transcription polymerase chain reaction (RT-PCR) using specific primer sets as follows: for GAPDH, sense primer 5'-ATGGTGAAGGTCGGTGTGAA-3' and anti-sense primer 5'-CTCTTGCTCAGTGTCTTGGCT-3'.

Quantitative real-time reverse transcription polymerase chain reaction

When cultures maintained in 6-well plates ($n=3$ per group) became confluent, medium was replaced by fresh medium containing 5% FBS and cultured for 1 h, then BMP-4 and other chemicals were added to cultures. In the case of combined treatment, BMP-4 was added 15 min later than other chemicals. Total RNA was isolated from cells treated with each chemical for each time period using NucleoSpin RNA II (Macherey-Nagel, Duren, Germany) according to the instructions of the manufacturer. A total of 1 μ g of total RNA was reverse-transcribed into first-strand cDNA with an oligo-dT primer using Superscript II reverse transcriptase (Invitrogen, CA, USA). Real-time RT-PCR was performed according to the instructions of the manufacturer (Applied Biosystems, Foster City, CA, USA). TaqMan fluorogenic probes for Smad6 were purchased from Applied Biosystems. Real time RT-PCR for GAPDH was performed using SYBR Green Supermix (Bio-Rad Laboratories). Experimental samples were matched to a standard curve generated by amplifying serially diluted products using the same PCR protocol. Amplified GAPDH cDNA was used for internal control. To correct for variability in RNA recovery and efficiency of reverse transcription, GAPDH cDNA was amplified and quantitated in each cDNA preparation. Normalization and calculation steps were performed as described by Pfaffl [12]. Experiments were performed on 3 independent occasions, and each experiment comprised of 3 samples.

Western blot analysis

Cells were plated at a density of 2×10^4 cells/well on 6-well plates and cultured until confluence. At 1 h after replacing with fresh medium containing 5% FBS, BMP-4 (300 ng/ml) and dbcAMP (2 mM) were added to the media, and cells were cultured for designated periods. Dibutyl cyclic AMP (dbcAMP) was added 15 min prior to BMP-4. The resultant sample was boiled for 5 min in 20 μ l of sample buffer for SDS polyacrylamide electrophoresis (SDS-PAGE) as described previously with minor modifications [13]. Equal amounts of protein samples were applied and run on each lane of SDS 5–20% acrylamide gels (40 mA, low voltage, 90 min) and ultimately blotted to ECLTM nitrocellulose membrane (Amersham Bioscience). Membranes were developed using ECLTM plus reagent (Amersham Bioscience). Signal intensities were measured according to staining of each band using a Chemi Doc XRS-J digital densitometer (Bio-Rad Laboratories).

Statistical analysis

Data are expressed as mean \pm SD for each group. Differences between treatment groups were analyzed using

Fisher's PLSD test. Values of $P < 0.05$ were considered statistically significant.

Results

ALP induction by BMP-4, PeTx and dbcAMP

PeTx, a methylxanthine-derived nonspecific inhibitor of PDEs, had no effect on ALP activity in ST2 cells at PeTx concentrations of 0.225–0.9 mM. In contrast, PeTx enhanced BMP-induced ALP activity in a dose-dependent manner (Fig. 1A), indicating a specific enhancing effect of PeTx on BMP-2 activity. Intracellular levels of cAMP increased about 7-fold in 15 min after the addition of PeTx (0.9 mM). Levels of cAMP were unaffected by addition of BMP-4 (50 ng/ml) with PeTx (Fig. 1B).

The potentiating effect of PeTx on BMP action in ST2 cells was mimicked by the addition of dbcAMP (Fig. 1C). Similar results were obtained using C3H10T1/2 and MC3T3-E1 cells (data not shown).

Smad6 mRNA induced by BMP-4 stimulation

Fig. 2 shows dose- and time-dependent changes in Smad6 mRNA expression following BMP-4 treatment, as deter-

mined using quantitative real-time RT-PCR methods. In ST2 cells, Smad6 mRNA expression was significantly up-regulated by mBMP-4 treatment in a dose-dependent manner over the BMP-4 dose range from 50 ng/ml to 300 ng/ml in 6 h (Fig. 2A). Up-regulated expression of Smad6 mRNA peaked in 3 h and lasted up to 24 h after BMP treatment (300 ng/ml) then gradually reduced to the baseline level within 72 h (Fig. 2B).

Suppression of Smad6 expression by cAMP

In order to elucidate how cAMP accelerates osteoblastic differentiation in ST2 cells, the expression of Smad6 mRNA after treatment with dbcAMP and BMP-4 was analyzed. Smad6 mRNA expression was induced by BMP-4 stimulation, but addition of dbcAMP significantly ameliorated BMP-4-induced Smad6 expression (Fig. 3).

Quantitative real-time RT-PCR of Smad6 mRNA expression treated with or without BMP-4 (300 ng/ml) and various doses of dbcAMP (100–2000 μ M) at 12 h revealed that dbcAMP reduced BMP-4-induced Smad6 expression in a dose-dependent manner (Fig. 4).

Results of quantitative real-time RT-PCR for Smad6 mRNA expression at 6, 12, 24 and 72 h are shown in Fig. 5. At 6, 12 and 24 h, dbcAMP reduced the expression of Smad6 mRNA that was induced by BMP-4 (Figs. 5A–C). Although level of Smad6 mRNA induced by BMP-4 returned to

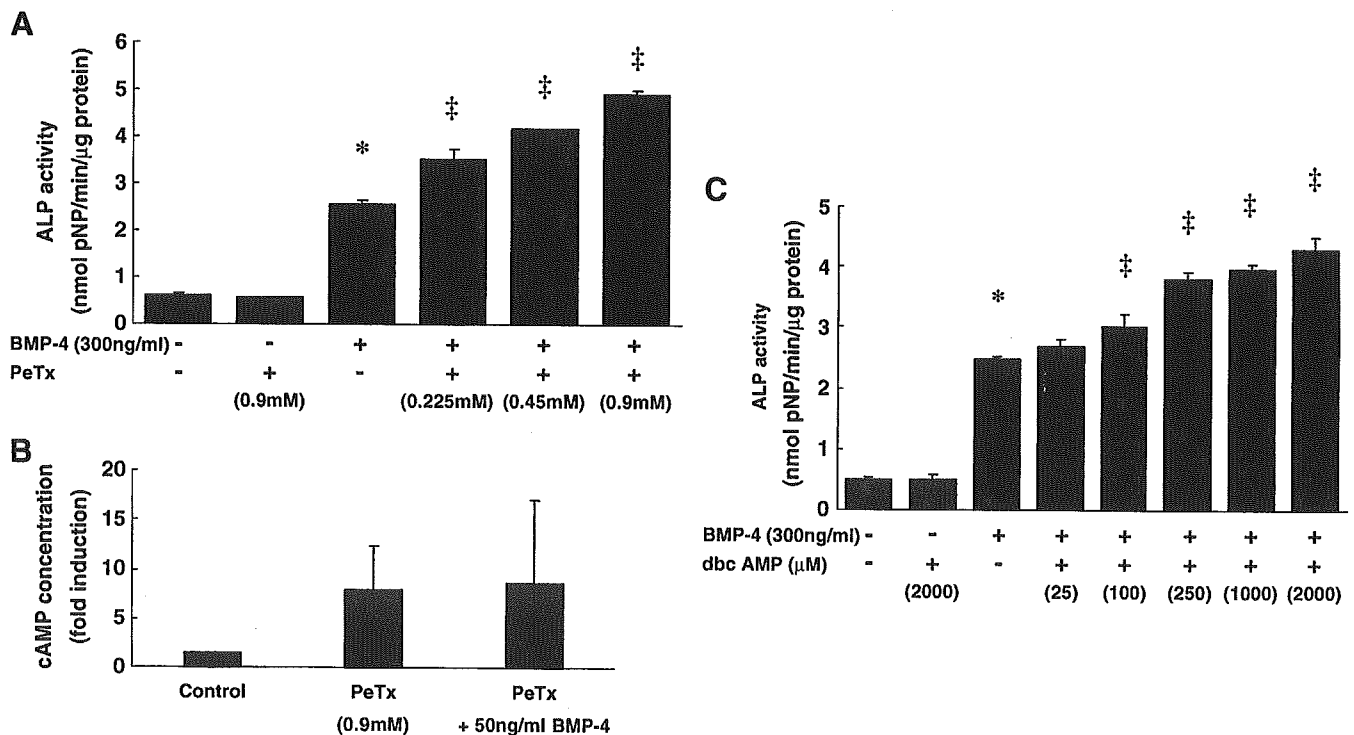


Fig. 1. (A, C) PeTx and dbcAMP intensified BMP-4-induced ALP activation in a dose-dependent manner. ST2 cells were cultured in 24-well plates until confluence then treated with BMP-4, PeTx (A) and dbcAMP (B). After 3 days, ALP activity was measured. (B) Concentration of cAMP in ST2 cells treated with BMP-4 and PeTx for 15 min. Bars and lines represent mean \pm SD for 4 wells. * $P < 0.05$, cells treated with BMP-4 compared with untreated cells. † $P < 0.05$, cells treated with BMP-4/PeTx or dbcAMP compared with BMP-4-treated cells.

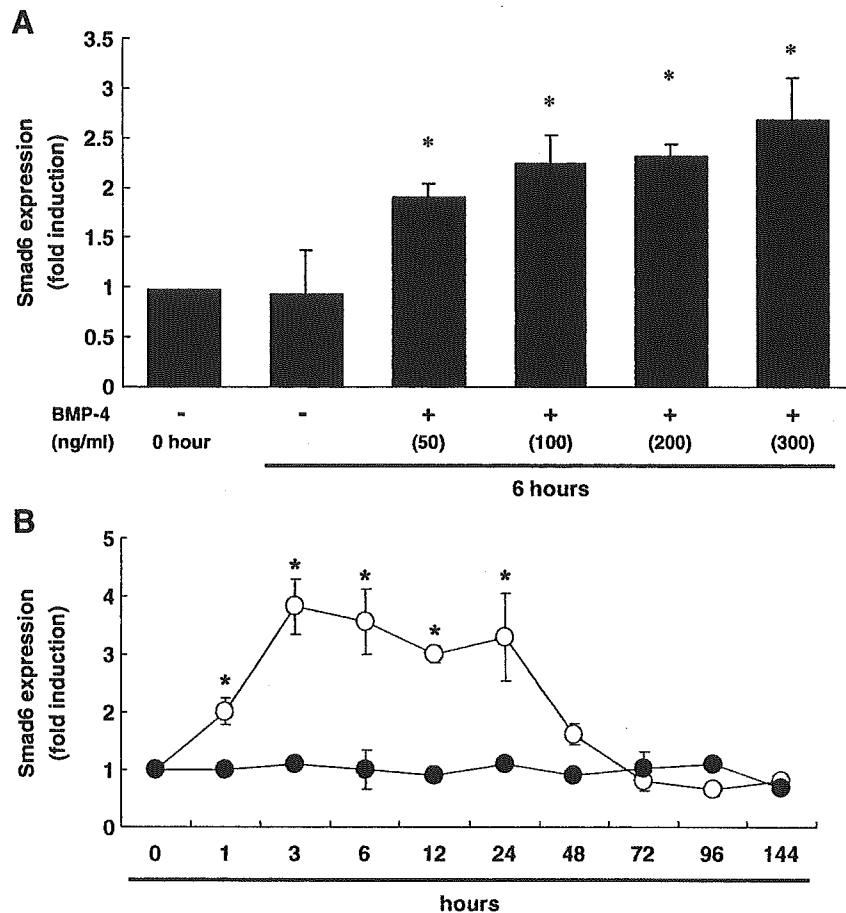


Fig. 2. Effects of BMP-4 on expression of Smad6 in ST2 cells. ST2 cells were cultured in 6-well plates to confluence then treated with BMP-4. After 6 h (A) or other designated times (B), total RNA was extracted, and levels of Smad6 expression were analyzed using real-time RT-PCR, normalized to GAPDH expression and presented as the expression level relative to that in control untreated cells. BMP-4 induced Smad6 expression in a dose-dependent manner at 6 h after stimulation (A). In panel B, closed circles represent Smad6 expression at each time point in untreated cells, and open circles represent expression in cells treated with BMP-4 (300 ng/ml). Bars and lines represent mean \pm SD for 3 wells. Similar results were obtained in 3 independent series of studies. * $P < 0.05$, cells treated with BMP-4 compared with untreated cells.

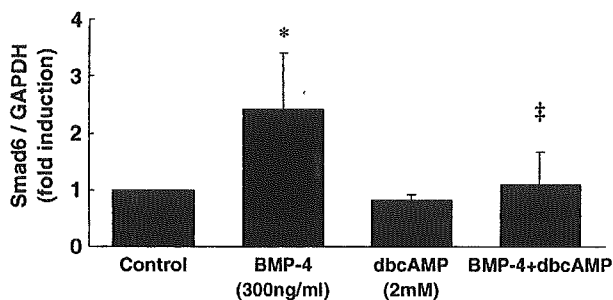


Fig. 3. Cyclic AMP reduced BMP-4-induced Smad6 expression in ST2 cells. Results of Northern blotting. After 24 h of treatment using BMP-4 (300 ng/ml), dbcAMP (2000 μ M) or both, mRNA was extracted and analyzed. Messenger RNA obtained using a Poly(A) Quik mRNA Isolation Kit was electrophoresed in agarose-formaldehyde gels, blotted to Hybond N membranes and hybridized with Smad6 and GAPDH probes. Showing the summary of 3 independent experiments. Bars and lines represent mean \pm SD for 3 experiments. * $P < 0.05$, cells treated with BMP-4 compared with untreated cells. [‡] $P < 0.05$, cells treated with BMP-4/dbcAMP compared with BMP-4 treated cells.

baseline by 72 h, dbcAMP still repressed Smad6 mRNA levels (Fig. 5D).

Prolonged phosphorylation of BMP-specific R-Smads by dbcAMP

Phosphorylation of BMP-specific R-Smads by BMP-4 was analyzed by immunoblotting using phospho-Smad1/5/8-specific antibody with or without dbcAMP treatment (Fig. 6). Phosphorylation of Smad1/5/8 after BMP-4 stimulation started from 1 h after BMP-4 stimulation and became undetectable after day 3. Addition of dbcAMP did not exhibit significant effects at 1 or 24 h after treatment, but phosphorylated Smad1/5/8 were detected until day 5.

Discussion

The cyclic nucleotide PDE family includes a large numbers of PDE isomers, which are encoded in at least 13

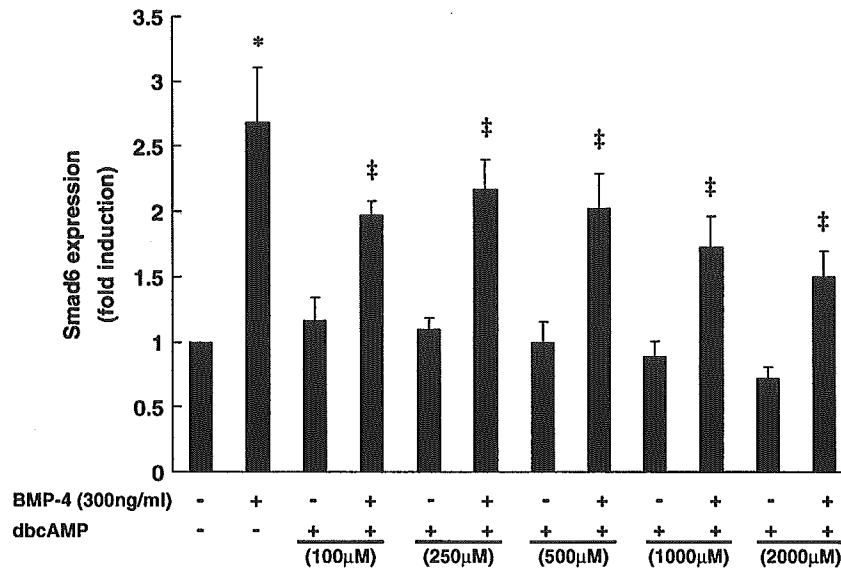
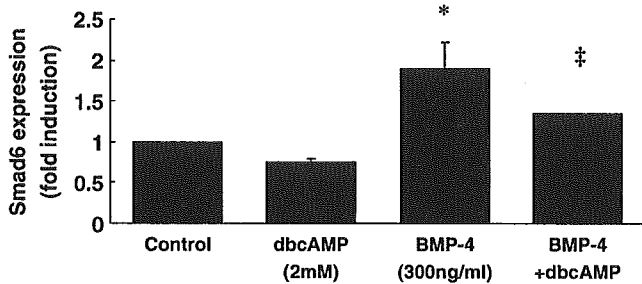


Fig. 4. Cyclic AMP reduced BMP-4-induced Smad6 expression in ST2 cells in a dose-dependent manner. After 12 h of treatment with BMP-4 (300 ng/ml), dbcAMP or both, total RNA was extracted, and expression of Smad6 was analyzed using real-time RT-PCR, normalized to GAPDH expression and presented as the expression level relative to that in control untreated cells. Bars and lines represent mean ± SD for 3 wells. **P* < 0.05, cells treated with BMP-4 compared with untreated cells. ‡*P* < 0.05, cells treated with BMP-4/dbcAMP compared with BMP-4 treated cells.

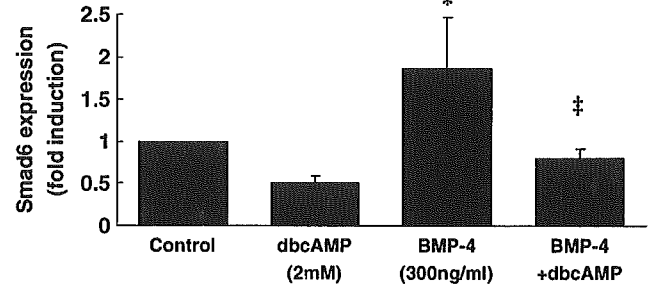
distinct genes and hydrolyze cAMP and/or cyclic guanosine monophosphate (cGMP), thereby contributing to the regulation of intracellular cAMP levels [14]. A number of compounds inhibiting respective PDE subfamily enzymes in

a selective or non-selective manner have already been developed [15]. Interestingly, some PDE inhibitors have been reported to stimulate osteoblastic differentiation and inhibit osteoclastic differentiation in vitro [16,17]. We have

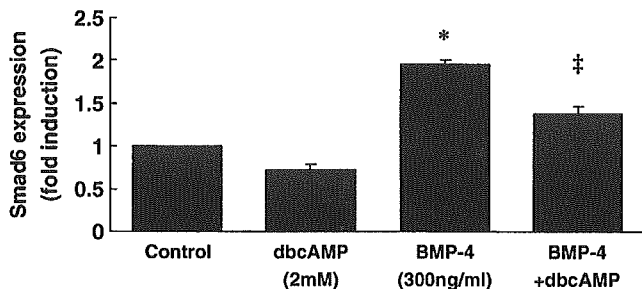
A: 6 hours



C: 24 hours



B: 12 hours



D: 72 hours

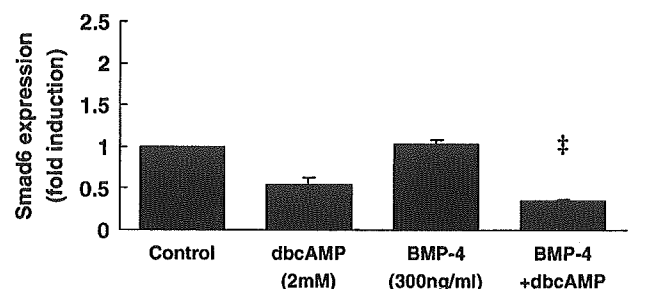


Fig. 5. Cyclic AMP reduced BMP-4-induced Smad6 expression in ST2 cells at 6, 12 and 24 h. ST2 cells were treated with BMP-4 (300 ng/ml), dbcAMP (2 mM) or both for 6 h (A), 12 h (B), 24 h (C) or 72 h (D). Total RNA was then extracted, and expression of Smad6 was analyzed using real-time RT-PCR, normalized to GAPDH expression and presented as expression level relative to that in control untreated cells. Bars and lines represent mean ± SD for 3 wells. **P* < 0.05, cells treated with BMP-4 compared with untreated cells. ‡*P* < 0.05, cells treated with BMP-4/dbcAMP compared with BMP-4 treated cells.

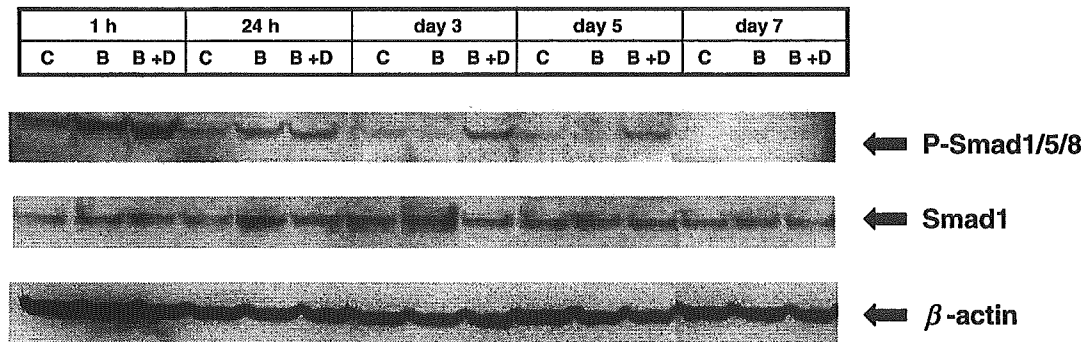


Fig. 6. Effects of dbcAMP on BMP-4-induced Smads signaling in ST2 cells. ST2 cells were pretreated for 1 h in 5% FBS before stimulation. Cells were treated with BMP-4 (300 ng/ml) or BMP-4 and dbcAMP (2 mM). Whole-cell extracts were prepared at indicated time points followed by immunoblotting. Identical amounts of protein samples were applied and run on each lane of a 10% acrylamide gels, blotted to an ECL nitrocellulose membrane, and membranes were developed using ECL plus reagent. Activated BMP-specific R-Smads were detected by anti-phospho-Smad1/5/8 antibody. Bands for Smad1 and β -actin are shown as a loading control. C, control; B, BMP-4; B + D, BMP-4 and dbcAMP.

reported that the PDE inhibitors, PeTx and Rolipram, increase bone mass mainly by promoting bone formation in normal mice [4,18]. Furthermore, PDE inhibitors have been shown to exert therapeutic effects in different experimental osteopenia models [17,19,20]. Although some PDE inhibitors reportedly promote bone formation under both in vivo and in vitro conditions, the precise mechanisms leading to the osteogenic effects of those PDE inhibitors are currently unknown. The present study was performed to gain clues regarding the anabolic effect of the PDE inhibitor PeTx on osteoblastic differentiation of bone marrow stroma cell-derived osteoprogenitor cells, ST2 cells.

Our previous report showed that daily injection of PeTx increased systemic bone mass by enhancing bone formation [18], and it also stimulated BMP-2 induced ectopic bone formation [4]. However, the mechanisms underlying the effects of PDE inhibitors on bone metabolism have remained obscure. Regarding mechanisms of action, one of the basic but major questions has been whether the anabolic effect of PDE inhibitors on bone metabolism is linked specifically to BMP signaling system to induce osteoblastic differentiation or results from functional activation of fully differentiated osteoblasts independent of BMP. Based on the results in our present and previous studies, the effect of PDE inhibitors might be brought about in association with BMP since the effects of PDE inhibitors in enhancing osteoblastic differentiation were not seen in the absence of BMP but were consistently noted in the presence of BMP, indicating a potential function of the PDE inhibitor in enhancing BMP signaling through elevation of intracellular cAMP levels [21]. In addition, intracellular cAMP-elevating agents such as dbcAMP and forskolin also increase BMP-4-stimulated osteoblastic differentiation when estimated by elevating ALP activity [21]. These results indicate that cAMP-elevating agents might enhance BMP signaling pathway to enhance bone formation. Regarding the effects of PDE inhibitors on BMP signaling, the results of a recent study suggest that the anabolic actions of PeTx might be attributable to cross-talk

between BMP signaling and protein kinase C (PKC) signaling cascades [22]. Rawadi et al. noted that PeTx could promote osteoblast differentiation not by protein kinase A (PKA) activation, since inhibition of PKA by H-89 (a protein kinase inhibitor) did not alter the PDE-induced osteogenic reaction, but through activation of extracellular signal-regulated kinase (ERK) 1/2 and p38 kinase pathways [22]. However, we could not exclude the possible contribution of cAMP-activated PKA to the acceleration of osteoblastic differentiation by PeTx since inhibition of PKA by H-89 partially abolishes PDE inhibitor-mediated increases in the induction of ALP by BMP-4 (data not shown). Cross-talk between the cAMP/PKA cascade and the Smads-mediated BMP signaling pathway awaits elucidation in future studies.

Among the 3 groups of Smad proteins involved in the BMP signaling pathway, Smad6 and Smad7 are classified as I-Smads. I-Smads interact with activated serine/threonine kinase BMP or TGF- β receptors and compete with R-Smads (Smad1/5/8) to activate the receptors [23]. Smad6 has also been reported to compete with common-partner Smad (Co-Smad, Smad4) in forming complexes with R-Smads. Smad6 might be more crucial in the negative feedback loop as Takase et al. [24] reported that Smad6 mRNA was markedly induced by BMP-2 or BMP-7/OP-1 in various osteoprogenitor cell lines, whereas Smad7 expression remained unchanged in most cells. In this context, Smad6 was targeted to examine involvement of the protein in the mechanism enhancing BMP signaling by cAMP. We confirmed up-regulation of Smad6 expression in response to BMP-4 stimulation in ST2 cells. Interestingly, up-regulated expression of Smad6 by BMP-4 stimulation appears to be partially suppressed by elevated intracellular cAMP levels on addition of cell-membrane-permeable dbcAMP in a dose-dependent manner in ST2 cells. Elevated levels of phosphorylated R-Smads following BMP-4 treatment and dbcAMP lasted longer than that with BMP-4 treatment alone on Western blot analyses. Although dbcAMP significantly suppressed the

expression of Smad6 mRNA induced by BMP-4 within 6 h (Fig. 5A), levels of phosphorylated R-Smads induced by BMP-4 at 24 h were not altered (Fig. 6). This discrepancy might be explained by following two points. First, Smad6 was evaluated by mRNA level, whereas phosphorylated R-Smads were determined by protein level. Second, Smad6 binds in a stable manner to serine/threonine kinase receptors and then interferes with phosphorylation of R-Smads by receptors. This negative feedback loop might require the appropriate time lag. These results suggest that the anabolic effects of cAMP on BMP-4-induced osteoblastic differentiation might be partially attributable to suppressed expression of Smad6 in the negative feedback loop and the facilitation of positive BMP-4 signaling in cells. In addition, dbcAMP enhanced the expression of Id-1 mRNA, an inhibitor of myogenesis, induced by BMP-4 (data not shown). These findings taken together suggest that cAMP might be a modulator of BMP signaling. Ishida et al. identified the 28-base pair regions responsible for transcriptional activation by BMPs in the mouse Smad6 promoter [25]. Ionescu et al. characterized a putative cAMP response element (CRE) site in the adjacent 17-base pair [26]. In that report, dominant negative cAMP response element binding protein reduced BMP-2-stimulated Smad6 gene transcription [26], but these results were not consistent with our current results. Potential causes for these inconsistencies include interactions of other transcriptional factors and differences in cells and BMPs. Similar mechanisms were reported to explain signal cross-talk between BMP and TGF- β [27]. Further studies are needed to elucidate relationships between cAMP and BMPs.

Smad proteins play important roles in BMP signaling and display characteristic pathways. Only a limited number of previous reports have examined relationships between the Smad pathway and cAMP. On addition of dbcAMP, BMP-4-induced Smad6 expression was significantly suppressed (Fig. 4). These results indicate that dbcAMP enhances BMP-4 osteogenic activity through the suppression of a self-regulated negative feedback loop. Parathyroid hormone (PTH) or its amino-terminal fragment is known to enhance systemic bone formation following daily subcutaneous injection and is currently utilized to recover bone mass in osteoporotic patients without the precise mechanisms of action being understood. As PTH also elevates intracellular levels of cAMP in cells with PTH-specific receptors, cAMP interference in the BMP negative feedback might be involved in PTH-enhanced systemic bone formation. Additional studies confirming suppression of I-Smads by PTH treatment are necessary to elucidate the mechanisms of action underlying the anabolic effects of PTH.

In conclusion, suppression of BMP-4-induced Smad6 expression appears to represent one of the mechanisms by which BMP action is enhanced by PeTx and dbcAMP treatments. Manipulation of the BMP signaling loop may also provide new insights into enhancing the efficacy of BMP-mediated local new bone formation for the treatment of damaged bone.

Acknowledgments

This work was supported in part by a Grant-in-Aid for Scientific Research from the Ministry of Education, Culture, Sports, Science and Technology of Japan and Japan Society for the Promotion of Science (No. 15591595).

References

- [1] Boden SD, Kang J, Sandhu H, Heller JG. Use of recombinant human bone morphogenetic protein-2 to achieve posterolateral lumbar spine fusion in humans: a prospective, randomized clinical pilot trial: 2002 Volvo Award in clinical studies. *Spine* 2002;27:2662–73.
- [2] Chen Y, Luk KD, Cheung KM, Xu R, Lin MC, Lu WW, et al. Gene therapy for new bone formation using adeno-associated viral bone morphogenetic protein-2 vectors. *Gene Ther* 2003;10:1345–53.
- [3] Valentin-Opran A, Wozney J, Csimma C, Lilly L, Riedel GE. Clinical evaluation of recombinant human bone morphogenetic protein-2. *Clin Orthop Relat Res* 2002;395:110–20.
- [4] Horiuchi H, Saito N, Kinoshita T, Wakabayashi S, Tsutsumimoto T, Takaoka K. Enhancement of bone morphogenetic protein-2-induced new bone formation in mice by the phosphodiesterase inhibitor pentoxifylline. *Bone* 2001;28:290–4.
- [5] Horiuchi H, Saito N, Kinoshita T, Wakabayashi S, Yotsumoto N, Takaoka K. Effect of phosphodiesterase inhibitor-4, rolipram, on new bone formations by recombinant human bone morphogenetic protein-2. *Bone* 2002;30:589–93.
- [6] Takaoka K, Yoshikawa H, Hashimoto J, Ono K, Matsui M, Nakazato H. Transfilter bone induction by Chinese hamster ovary (CHO) cells transfected by DNA encoding bone morphogenetic protein-4. *Clin Orthop* 1994;300:269–73.
- [7] Reznikoff CA, Brankow DW, Heidelberger C. Establishment and characterization of a cloned line of C3H mouse embryo cells sensitive to postconfluence inhibition of division. *Cancer Res* 1973;33:3231–8.
- [8] Ogawa M, Nishikawa S, Ikuta K, Yamamura F, Naito M, Takahashi K. B cell ontogeny in murine embryo studied by a culture system with the monolayer of a stromal cell clone, ST2: B cell progenitor develops first in the embryonal body rather than in the yolk sac. *EMBO J* 1988;7:1337–43.
- [9] Sudo H, Kodama HA, Amagai Y, Yamamoto S, Kasai S. In vitro differentiation and calcification in a new clonal osteogenic cell line derived from newborn mouse calvaria. *J Cell Biol* 1983;96:191–8.
- [10] Katagiri T, Yamaguchi A, Ikeda T, Yoshiki S, Wozney JM, Rosen V, et al. The non-osteogenic mouse pluripotent cell line, C3H10T1/2, is induced to differentiate into osteoblastic cells by recombinant human bone morphogenetic protein-2. *Biochem Biophys Res Commun* 1990;172:295–9.
- [11] Yamaguchi A, Ishizuya T, Kintou N, Wada Y, Katagiri T, Wozney JM, et al. Effects of BMP-2, BMP-4, and BMP-6 on osteoblastic differentiation of bone marrow-derived stromal cell lines, ST2 and MC3T3-G2/PA6. *Biochem Biophys Res Commun* 1996;220:366–71.
- [12] Pfaffl MW. A new mathematical model for relative quantification in real-time RT-PCR. *Nucleic Acids Res* 2001;29:e45.
- [13] Nakamura Y, Wakitani S, Nakayama J, Wakabayashi S, Horiuchi H, Takaoka K. Temporal and spatial expression profiles of BMP receptors and noggin during BMP-2-induced ectopic bone formation. *J Bone Miner Res* 2003;18:1854–62.
- [14] Soderling SH, Beavo JA. Regulation of cAMP and cGMP signaling: new phosphodiesterases and new functions. *Curr Opin Cell Biol* 2000;12:174–9.
- [15] Beavo JA, Reifsnnyder DH. Primary sequence of cyclic nucleotide phosphodiesterase isozymes and the design of selective inhibitors. *Trends Pharmacol Sci* 1990;11:150–5.

- [16] Robin JC, Ambrus JL. Study of antiosteoporotic agents in tissue culture. *J Med* 1984;15:319–22.
- [17] Waki Y, Horita T, Miyamoto K, Ohya K, Kasugai S. Effects of XT-44, a phosphodiesterase 4 inhibitor, in osteoblastogenesis and osteoclastogenesis in culture and its therapeutic effects in rat osteopenia models. *Jpn J Pharmacol* 1999;79:477–83.
- [18] Kinoshita T, Kobayashi S, Ebara S, Yoshimura Y, Horiuchi H, Tsutsumimoto T, et al. Inhibitors, pentoxifylline and rolipram, increase bone mass mainly by promoting bone formation in normal mice. *Bone* 2000;27:811–7.
- [19] Miyamoto K, Waki Y, Horita T, Kasugai S, Ohya K. Reduction of bone loss by denbufylline, an inhibitor of phosphodiesterase 4. *Biochem Pharmacol* 1997;54:613–7.
- [20] Robin JC, Ambrus JL. Studies on osteoporoses. XI. Effects of a methylxanthine derivative. A preliminary report. *J Med* 1983;14:137–45.
- [21] Tsutsumimoto T, Wakabayashi S, Kinoshita T, Horiuchi H, Takaoka K. A phosphodiesterase inhibitor, pentoxifylline, enhances the bone morphogenetic protein-4 (BMP-4)-dependent differentiation of osteoprogenitor cells. *Bone* 2002;31:396–401.
- [22] Rawadi G, Ferrer C, Spinella-Jaegle S, Roman-Roman S, Bouali Y, Baron R. 1-(5-oxohexyl)-3,7-Dimethylxanthine, a phosphodiesterase inhibitor, activates MAPK cascades and promotes osteoblast differentiation by a mechanism independent of PKA activation (pentoxifylline promotes osteoblast differentiation). *Endocrinology* 2001;142:4673–82.
- [23] Miyazawa K, Shinozaki M, Hara T, Furuya T, Miyazono K. Two major Smad pathways in TGF-beta superfamily signalling. *Genes Cells* 2002;7:1191–204.
- [24] Takase M, Imamura T, Sampath TK, Takeda K, Ichijo H, Miyazono K, et al. Induction of Smad6 mRNA by bone morphogenetic proteins. *Biochem Biophys Res Commun* 1998;244:26–9.
- [25] Ishida W, Hamamoto T, Kusanagi K, Yagi K, Kawabata M, Takehara K, et al. Smad6 is a Smad1/5-induced smad inhibitor. Characterization of bone morphogenetic protein-responsive element in the mouse Smad6 promoter. *J Biol Chem* 2000;275:6075–9.
- [26] Ionescu AM, Drissi H, Schwarz EM, Kato M, Puzas JE, McCance DJ, et al. CREB cooperates with BMP-stimulated Smad signaling to enhance transcription of the Smad6 promoter. *J Cell Physiol* 2004;198:428–40.
- [27] Maeda S, Hayashi M, Komiya S, Imamura T, Miyazono K. Endogenous TGF-beta signaling suppresses maturation of osteoblastic mesenchymal cells. *EMBO J* 2004;23:552–63.

ORIGINAL ARTICLE

Hiroshi Ohta · Shigeyuki Wakitani · Keiji Tensho
Hiroshi Horiuchi · Shinji Wakabayashi · Naoto Saito
Yukio Nakamura · Kazutoshi Nozaki · Yuuki Imai
Kunio Takaoka

The effects of heat on the biological activity of recombinant human bone morphogenetic protein-2

Received: January 17, 2005 / Accepted: May 25, 2005

Abstract This study was designed to investigate effects of heat on the bone-inducing activity of recombinant human bone morphogenetic protein (rhBMP)-2. rhBMP-2 samples were heated at 50, 70, 90, or 100°C for 15 min, or 1, 2, 4, or 8 h, or autoclaved at 120°C for 15 min. The bone-inducing activity of the rhBMP-2 before and after heating was assayed in *in vivo* and *in vitro* systems. For the *in vivo* assay, 5 µg rhBMP-2 samples were impregnated into porous collagen disks (6 mm in diameter, 1 mm thickness), freeze dried, and implanted into the back muscles of ddY mice. Three weeks later, the implant was harvested from the host and examined for ectopic new bone tissue by radiography. The new bone mass was quantified by single-energy X-ray absorptiometry. The *in vitro* activity of the rhBMP-2 was assayed by adding the BMP sample at a concentration of 100 ng/ml to cultures of MC3T3-E1 cells. After 48 h, the alkaline phosphatase activity was measured. After heating at 50° or 70°C, no significant reduction in bone-inducing activity was noted in either *in vivo* or *in vitro* assay systems unless the protein was exposed to sustained heat at 70°C for 8 h, based on *in vitro* assay data. However, heating above 90°C and for longer periods led to a decrease in the biological activity of the rhBMP-2 in a time- and temperature-dependent manner. rhBMP-2 was rendered inactive when exposed to temperatures at or in excess of 120°C.

Key words Heat stability · Bone induction · Molecular structure

Introduction

Bone morphogenetic proteins (BMPs) belong to the transforming growth factor- β superfamily [1] and possess unique biologic activity that leads to new bone formation [2–4]. BMP-2 is a member of the BMP family, and the human form (hBMP) has been successfully synthesized by the use of DNA recombination technology (rhBMP) for commercial purposes. This protein is now being evaluated as a bone-graft substitute for the treatment of nonunion fractures, bone defect repairs, and spinal fusions [5–11]. In order to use rhBMPs clinically, it is necessary to understand how the molecular structure or bone-inducing activity of BMPs may be modified during transportation, storage, and intraoperative handling. In particular, the stabilization of BMP-retaining devices, or the use of BMP-2 in combination with heat-generating bone cement, are two instances where the stability of the protein would be challenged. Several authors have described the heat resistance of natural crude BMP extracted from the rat, rabbit, and human [12–16], but there has been little work done to look at the effects of heat on the stability and biological activity of rhBMP-2. This study describes how the biological activity and molecular structure of rhBMP respond to varying degrees of heat using *in vivo* and *in vitro* assay systems.

Materials and methods

Heat treatment of rhBMP-2

rhBMP-2 was provided by Yamanouchi Pharmaceutical (Tokyo, Japan) in a buffered solution (1 mg rhBMP-2/ml). This was diluted 3-fold (15 µl saline containing 5 µg rhBMP-2) and heated at 50, 70, 90, or 100°C for 15 min, or 1, 2, 4, or 8 h using a heat block (Dry Thermo Unit, Taitec, Saitama, Japan), or autoclaved at 120°C for 15 min. The biological activity of these heat-treated rhBMP-2 samples was then evaluated in *in vitro* and *in vivo* experiments to examine

H. Ohta · S. Wakitani (✉) · K. Tensho · H. Horiuchi · S. Wakabayashi · N. Saito · Y. Nakamura
Department of Orthopaedic Surgery, Shinshu University School of Medicine, 3-1-1 Asahi, Matsumoto 390-8621, Japan
Tel. +81-263-37-2659; Fax +81-263-35-8844

K. Nozaki
Applied Pharmacology Laboratories, Institute for Drug Discovery Research, Yamanouchi Pharmaceutical, Tsukuba, Japan

Y. Imai · K. Takaoka
Department of Orthopaedic Surgery, Osaka City University Graduate School of Medicine, Osaka, Japan

changes in the biological activities of the rhBMP-2. As a control, rhBMP-2 that had not been exposed to heat was used in the assays.

Cell culture

A mouse osteoblastic cell line MC3T3-E1 was obtained from the RIKEN Cell Bank (Tsukuba Science City, Japan). These cells were seeded at a cell density of 3×10^5 cells/100-mm plastic dish and cultured with α -minimal essential medium (Gibco, Grand Island, NY, USA) supplemented with 10% (vol/vol) heat-inactivated fetal bovine serum (Gibco) at 37°C in an incubator with 95% humidified air and 5% CO₂.

Induction of alkaline phosphatase (ALP) by rhBMP-2

The biological activity of the rhBMP-2 was assayed based on the observation that BMP is capable of inducing expression of ALP in a dose-dependent manner. ALP activity is an early marker of osteoblastic differentiation [17]. The rhBMP-2 samples, heated as described above, were added to the MC3T3-E1 cells at a final concentration of 100 ng/ml. After 48 h, the osteoblastic cells were washed twice with phosphate-buffered saline, scraped from each well into 0.3 ml 0.5% NP-40 containing 1 mM MgCl₂ and 10 mM Tris (pH 7.5), and sonicated twice for 20 s with a sonicator (model W-220; Wakenyaku, Kyoto, Japan). The cell lysates were then centrifuged for 10 min at 3000 r.p.m., and the supernatants were used for the enzyme assay. ALP activity was assayed using the method of Kind-King [18] and a test kit (Alkaline Phosphatase K, Wako Pure Chemical Industries, Osaka, Japan) with phenylphosphate as a substrate.

The enzyme activity was expressed in King-Armstrong (K-A) units normalized to the protein content of the sample. The protein content was determined with a bicinchoninic acid protein assay kit (Pierce Chemical, Rockford, IL, USA) using bovine serum albumin as the standard. Each heat-treated rhBMP sample was measured in three separate dishes, and the ALP activity from each group was expressed as mean \pm SD.

Preparation of BMP-containing collagen disks

In order to evaluate the influence of heating on the bone-inducing activities of the rhBMP-2, a classical *in vivo* experimental system of ectopic bone induction in mice was utilized. In this system, BMP was combined with collagen and implanted into muscle, whereupon an ectopic ossicle was elicited if the BMP was biologically active. In order to deliver the BMP, commercially available porous collagen sheets made from bovine Achilles tendon (Helistat Integra Life Sciences, Plainsboro, NJ, USA) were cut into round strips (6 mm in diameter, 1 mm thick), soaked in the sample solutions containing 5 μ g of either the heated or nonheated control rhBMP-2, freeze-dried, and stocked at -20°C until implantation into mice.

Assay for the bone-inducing activities of heat-treated rhBMP-2

One hundred and seventy-six male ddY mice, 5 weeks of age, were purchased from Nippon SLC Co. (Shizuoka, Japan). The mice were housed in cages with free access to food and water for 1 week before the start of the experiment. Prior to surgery for implantation of the collagen/rhBMP-2 composite collagen disks, the mice were anesthetized with diethylether. The BMP-retaining pellets were implanted into the left dorsal muscle pouches (one pellet per animal). Twenty-two groups of mice (8 mice in each group) were implanted with collagen disks containing 5 μ g rhBMP-2 that had never been heated (control), or heated at 50, 70, 90, or 100°C for 15 min, or for 1, 2, 4, or 8 h, or autoclaved at 120°C for 15 min. The mice were fed for 3 weeks and then killed. The implants were harvested and examined for ectopic new bone formation *in situ* by radiographic and histological methods. X-rays of the harvested tissues were taken with a soft X-ray apparatus (Sofron Co., Tokyo, Japan). In order to quantify the ectopically induced bony mass, the bone mineral content (BMC, mg) of each ossicle was measured by single-energy X-ray absorptiometry using a bone mineral analyzer (DCS-600; Aloka Tokyo, Japan). For the histology, the harvested tissue mass from each group was fixed in neutralized 10% formalin, defatted in chloroform, decalcified with 10% ethylenediamine tetraacetic acid, and embedded in paraffin wax. Sections of 5 μ m thickness were cut, stained with hematoxylin-eosin, and observed under a light microscope.

All procedures for the animal experiments were carried out in compliance with the guidelines of the Institutional Animal Care Committee of Shinshu University.

Sodium dodecyl sulfate-polyacrylamide gel electrophoresis (SDS-PAGE)

In order to examine the effects of heat on the rhBMP-2 molecules, heated or nonheated samples of the protein were electrophoresed on a SDS-PAGE slab gel. Five micrograms of nonheated rhBMP-2 or protein heated at 90°C on a heat block or at 120°C in an autoclave for 2 h were dissolved into 20 μ l sample buffer solution (0.5 μ M, pH 6.8 Tris-HCl buffer solution/0.2% SDS/10% glycerol/0.01% bromophenol blue) with or without 100 mM dithiothreitol (DTT, a disulfide-bond reducing agent) and boiled for 5 min. Each sample was run on a SDS gel at 40 mA for 60 min. The gel was then stained with Coomassie brilliant blue and destained in 10% acetic acid solution.

Statistical analysis

Quantitative data were expressed as the mean \pm SD. Differences between control and experimental groups were considered to be statistically significant at $P < 0.05$ using the Kruskal-Wallis *H*-test with Bonferroni correction.