

16. Mansfield CM, Komarnicky LT, Schwartz GF, et al. Ten-year results in 1070 patients with stages I and II breast cancer treated by conservative surgery and radiation therapy. *Cancer*. 1995;75:2328-2336.
17. Singletary SE. Surgical margins in patients with early-stage breast cancer treated with breast conservation therapy. *Am J Surg*. 2002;184:383-393.
18. Smitt MC, Nowels K, Carlson RW, et al. Predictor of reexcision findings and recurrence after breast conservation. *Int J Radiat Oncol Biol Phys*. 2003;57:979-985.
19. Peterson ME, Schultz DJ, Reynolds C, et al. Outcomes in breast cancer patients relative to margin status after treatment with breast-conserving surgery and radiation therapy: the University of Pennsylvania experience. *Int J Radiat Oncol Biol Phys*. 1999;15:1029-1035.
20. Fisher B, Anderson S, Fisher ER, et al. Significance of ipsilateral breast tumour recurrence after lumpectomy. *Lancet*. 1991;338:327-331.
21. Veronesi U, Marubini E, Del Vecchio M, et al. Local recurrences and distant metastases after conservative breast cancer treatments: partly independent events. *J Natl Cancer Inst*. 1995;87:19-27.
22. Kurtz JM, Spitalier JM, Amalric R, et al. The prognostic significance of late local recurrence after breast-conserving therapy. *Int J Radiat Oncol Biol Phys*. 1990;18:87-93.
23. Whelan T, Clark R, Roberts R, et al. Ipsilateral breast tumor recurrence postlumpectomy is predictive of subsequent mortality: results from a randomized trial. *Int J Radiat Oncol Biol Phys*. 1994;30:11-16.
24. Kemperman H, Borger J, Hart A, et al. Prognostic factors for survival after breast conserving therapy for stage I and II breast cancer. The role of local recurrence. *Eur J Cancer*. 1995;31A:690-698.
25. Haffty BG, Reiss M, Beinfield M, et al. Ipsilateral breast tumor recurrence as a predictor of distant disease: implications for systemic therapy at the time of local relapse. *J Clin Oncol*. 1996;14:52-57.
26. Freedman GM, Fowble B. Local recurrence after mastectomy or breast-conserving surgery and radiation. *Oncology (Huntingt)*. 2000;14:1561-81.
27. Fowble BL. Ipsilateral breast tumor recurrence following breast-conserving surgery for early-stage invasive cancer. *Acta Oncol*. 1999;38(Suppl 13):9-17.
28. Meric F, Mirza NQ, Vlastos G, et al. Positive surgical margins and ipsilateral breast tumor recurrence predict disease-specific survival after breast-conserving therapy. *Cancer*. 2003;97:926-933.
29. Della Rovere GQ, Benson RJ. Ipsilateral breast tumor recurrence of breast cancer: determinant or indicator of poor prognosis. *Lancet Oncol*. 2002;3:183-187.
30. Vicini FA, Kestin L, Huang R, Martinez A. Does local recurrence affect the rate of distant metastases and survival in patients with early-stage breast carcinoma treated with breast-conserving therapy? *Cancer*. 2003;15:910-919.
31. McBain CA, Young EA, Swindell R, et al. Local recurrence of breast cancer following surgery and radiotherapy: incidence and outcome. *Clin Oncol (R Coll Radiol)*. 2003;15:25-23.
32. Fisher ER, Anderson S, Tan-Chiu E, et al. Fifteen-year prognostic discriminants for invasive breast carcinoma. National Surgical Adjuvant Breast and Bowel Project Protocol-06. *Cancer*. 2001;91:1679-1687.
33. Recht A, Silen W, Schnitt SJ, et al. Time-course of local recurrence following conservative surgery and radiotherapy for early stage breast cancer. *Int J Radiat Oncol Biol Phys*. 1988;15:255-261.
34. Fortin A, Larochelle M, Laverdiere J, et al. Local failure is responsible for the decrease in survival for patients with breast cancer treated with conservative surgery and postoperative radiotherapy. *J Clin Oncol*. 1999;17:101-109.
35. Cowen D, Houvenaeghel G, Bardou V, et al. Local and distant failures after limited surgery with positive margins and radiotherapy for node-negative breast cancer. *Int J Radiat Oncol Biol Phys*. 2000;47:305-312.
36. Kodaira T, Fuwa N, Itoh Y, et al. Aichi Cancer Center 10-year experience with conservative breast treatment of early breast cancer: retrospective analysis regarding failure patterns and factors influencing local control. *Int J Radiat Oncol Biol Phys*. 2001;49:1311-1316.
37. Ohsumi S, Sakamoto G, Takashima S, et al. Long-term results of breast-conserving treatment for early-stage breast cancer in Japanese women from multicenter investigation. *Jpn J Clin Oncol*. 2003;33:61-67.
38. Early Breast Cancer Trialists' Collaborative Group. Favourable and unfavourable effects on long-term survival of radiotherapy for early breast cancer: an overview of the randomized trials. *Lancet*. 2000;355:1757-1770.
39. Silverstein MJ, Lagios MD, Groshen S, et al. The influence of margin width on local control of ductal carcinoma in situ of the breast. *N Engl J Med*. 1999;13:1455-1461.
40. Harrold EV, Turner BC, Matloff ET, et al. Local recurrence in the conservatively treated breast cancer patients: a correlation with age and family history. *Cancer J Sci Am*. 1998;4:302-307.
41. Le MG, Arriagada R, Spielmann M, et al. Prognostic factors for death after an isolated local recurrence in patients with early-stage breast carcinoma. *Cancer*. 2002;94:2813-2820.
42. Schmoor C, Sauerbrei W, Bastert G, et al. Role of isolated locoregional recurrence of breast cancer: results of four prospective studies. *J Clin Oncol*. 2000;18:1696-1708.
43. Touboul E, Buffat L, Belkacemi Y, et al. Local recurrences and distant metastases after breast-conserving surgery and radiation therapy for early breast cancer. *Int J Radiat Oncol Biol Phys*. 1999;43:25-38.
44. Haffty BG, Fischer D, Beinfield M, et al. Prognosis following local recurrence in the conservatively treated breast cancer patient. *Int J Radiat Oncol Biol Phys*. 1991;21:293-298.
45. Vinh-Hung V, Verschraegen C. Breast-conserving surgery with or without radiotherapy: pooled-analysis for risks of ipsilateral breast tumor recurrence and mortality. *J Natl Cancer Inst*. 2004;96:115-121.
46. Smith TE, Lee D, Turner BC, et al. True recurrence vs. new primary ipsilateral breast tumor relapse: an analysis of clinical and pathologic differences and their implications in natural history, prognoses, and therapeutic management. *Int J Radiat Oncol Biol Phys*. 2000;48:1281-1289.
47. Huang E, Buchholz TA, Meric F, et al. Classifying local disease recurrences after breast conservation therapy based on location and histology: new primary tumors have more favorable outcomes than true local disease recurrences. *Cancer*. 2002;95:2059-2067.
48. Haffty BG, Carter D, Flynn SD, et al. Local recurrence versus new primary: clinical analysis of 82 breast relapses and potential applications for genetic fingerprinting. *Int J Radiat Oncol Biol Phys*. 1993;27:575-583.
49. Lannin D, Haffty BG. End results of salvage therapy after failure of breast-conservation surgery. *Oncology*. 2004;18:272-279.

## **TRANSRECTAL HIGH-INTENSITY FOCUSED ULTRASOUND IN THE TREATMENT OF LOCALIZED PROSTATE CANCER : A MULTICENTER STUDY**

**Toyoaki UCHIDA**

The Department of Urology, Tokai University Hachioji Hospital

**Shiro BABA, Akira IRIE and Shigehiro SOH**

The Department of Urology, Kitasato University

**Naoya MASUMORI and Taiji TSUKAMOTO**

The Department of Urology, Sapporo Medical University

**Hiroomi NAKATSU**

The Department of Urology, Asahi General Hospital

**Hiroyuki FUJIMOTO and Tadao KAKIZOE**

The Department of Urology, National Cancer Center

**Takeshi UEDA and Tomohiko ICHIKAWA**

The Department of Urology, Chiba University

**Nobutaka OHTA and Tadaichi KITAMURA**

The Department of Urology, Tokyo University

**Makoto SUMITOMO and Masamichi HAYAKAWA**

The Department of Urology, National Defense Medical College

**Teiichiro AOYAGI and Masaaki TACHIBANA**

The Department of Urology, Tokyo Medical University

**Ryusuke IKEDA and Kohji SUZUKI**

The Department of Urology, Kanazawa Medical University

**Nobuo TSURU, Kazuo SUZUKI and Seiichiro OZONO**

The Department of Urology, Hamamatsu University School of Medicine

**Kiyohide FUJIMOTO, Yoshihiko HIRAO**

The Department of Urology, Nara Medical University

**Kohichi MONDEN, Yasutomo NASU and Hiromi KUMON**

The Department of Urology, Okayama University

**Kazuhiko NISHI and Shoichi UEDA**

The Department of Urology, Kumamoto University

**Hirofumi KOGA and Seiji NAITOH**

The Department of Urology, Kyusyu University

## TRANSRECTAL HIGH-INTENSITY FOCUSED ULTRASOUND IN THE TREATMENT OF LOCALIZED PROSTATE CANCER : A MULTICENTER STUDY

Toyoaki UCHIDA<sup>1</sup>, Shiro BABA<sup>2</sup>, Akira IRIE<sup>2</sup>, Shigehiro SOH<sup>2</sup>,  
Naoya MASUMORI<sup>3</sup>, Taiji TSUKAMOTO<sup>3</sup>, Hiroomi NAKATSU<sup>4</sup>, Hiroyuki FUJIMOTO<sup>5</sup>,  
Tadao KAKIZOE<sup>5</sup>, Takeshi UEDA<sup>6</sup>, Tomohiko ICHIKAWA<sup>6</sup>, Nobutaka OHTA<sup>7</sup>,  
Tadaichi KITAMURA<sup>7</sup>, Makoto SUMITOMO<sup>8</sup>, Masamichi HAYAKAWA<sup>8</sup>, Teiichiro AOYAGI<sup>9</sup>,  
Masaaki TACHIBANA<sup>9</sup>, Ryusuke IKEDA<sup>10</sup>, Kohji SUZUKI<sup>10</sup>, Nobuo TSURU<sup>11</sup>,  
Kazuo SUZUKI<sup>11</sup>, Seiichiro OZONO<sup>11</sup>, Kiyohide FUJIMOTO<sup>12</sup>, Yoshihiko HIRAO<sup>12</sup>,  
Kohichi MONDEN<sup>13</sup>, Yasutomo NASU<sup>13</sup>, Hiromi KUMON<sup>13</sup>, Kazuhiko NISHI<sup>14</sup>,  
Shoichi UEDA<sup>14</sup>, Hirofumi KOGA<sup>15</sup> and Seiji NAITOH<sup>15</sup>

<sup>1</sup>*The Department of Urology, Tokai University Hachioji Hospital*

<sup>2</sup>*The Department of Urology, Kitasato University*

<sup>3</sup>*The Department of Urology, Sapporo Medical University*

<sup>4</sup>*The Department of Urology, Asahi General Hospital*

<sup>5</sup>*The Department of Urology, National Cancer Center*

<sup>6</sup>*The Department of Urology, Chiba University*

<sup>7</sup>*The Department of Urology, Tokyo University*

<sup>8</sup>*The Department of Urology, National Defense Medical College*

<sup>9</sup>*The Department of Urology, Tokyo Medical University*

<sup>10</sup>*The Department of Urology, Kanazawa Medical University*

<sup>11</sup>*The Department of Urology, Hamamatsu University School of Medicine*

<sup>12</sup>*The Department of Urology, Nara Medical University*

<sup>13</sup>*The Department of Urology, Okayama University*

<sup>14</sup>*The Department of Urology, Kumamoto University*

<sup>15</sup>*The Department of Urology, Kyusyu University*

We report a multicenter trial with transrectal high-intensity focused ultrasound (HIFU) in the treatment of localized prostate cancer. A total of 72 consecutive patients with stage T1c-2N0M0 prostate cancer were treated using the Sonablate 500™ HIFU device (Focus Surgery, Indianapolis, USA). Biochemical recurrence was defined according to the criteria recommended by the American Society for Therapeutic Radiology and Oncology Consensus Panel. The median age and prostate specific antigen (PSA) level were 72 years and 8.10 ng/ml, respectively. The median follow-up period for all patients was 14.0 months. Biochemical disease-free survival rates in all patients at 1 and 2 years were 78% and 76%, respectively. Biochemical disease-free survival rates in patients with stage T1c, T2a and T2b groups at 2 years were 89, 67% and 40% ( $p=0.0817$ ). Biochemical disease-free survival rates in patients with Gleason scores of 2-4, 5-7 and 8-10 at 2 years were 88, 72% and 80% ( $p=0.6539$ ). Biochemical disease-free survival rates in patients with serum PSA of less than 10 ng/ml and 10-20 ng/ml were 75% and 78% ( $p=0.6152$ ). No viable tumor cells were noted in 68% of patients by postoperative prostate needle biopsy. Prostatic volume was decreased from 24.2 ml to 14.0 ml at 6 months after HIFU ( $p<0.01$ ). No statistically significant differences were noted in International Prostate Symptom Score, maximum urinary flow rate and quality of life analysis with Functional Assessment of Cancer Therapy. HIFU therapy appears to be minimally invasive, efficacious and safe for patients with localized prostate cancer with pretreatment PSA levels less than 20 ng/ml.

(Hinyokika Kyo 51 : 651-658, 2005)

**Key words:** Prostate cancer, High-intensity focused ultrasound, Minimally invasive surgery

### INTRODUCTION

Prostate cancer is the most common malignancy in men and the second leading cause of death due to cancer in the United States<sup>1)</sup>. Prostate cancer has been treated in various ways, depending on the severity of the

condition, age of the patient, staging, Gleason score and serum prostate-specific antigen (PSA) level. Radical prostatectomy has long been regarded as appropriate therapy for patients with organ-confined prostate cancer. Despite excellent 5- to 10-year survival rates after radical prostatectomy for organ-confined disease, surgery is

associated with significant morbidity, including blood loss due to transfusion-related complications, erectile dysfunction in 30% to 70% of cases, and stress incontinence in up to 10% of patients<sup>2,3</sup>). In addition, surgical intervention is not typically considered for patients whose life expectancy is less than 10 years. Recently, a number of alternative less invasive treatments have been developed for patients with localized prostate cancer, either not appropriate for surgery or who do not want to risk the potential side effects of surgery. Three-dimensional conformal radiotherapy (3D-CRT), brachytherapy, intensity-modulated external beam radiotherapy, cryosurgical ablation of the prostate and laparoscopic radical prostatectomy have all been applied for the treatment of this group of patients<sup>4-6</sup>). However, in the event of treatment failure, these cannot be repeated and salvage radical prostatectomy is associated with a high morbidity rate<sup>7</sup>).

High-intensity focused ultrasound (HIFU) delivers intense ultrasound energy with consequent heat destruction of tissue at a specific focal distance from the probe without damage to tissue in the path of the ultrasound beam<sup>8</sup>). HIFU non-invasively induces complete coagulative necrosis of a tumor without surgical exposure or insertion of instruments into the lesion. This advantage makes it one of the most attractive options for the localized treatment of tumors<sup>9,10</sup>). We report here a multicenter trial with 72 consecutive patients treated with HIFU for clinical stage T1c-2N0M0 localized prostate cancer.

## PATIENTS AND METHODS

### Inclusion and Exclusion Criteria

As a rule, the inclusion criteria for treatment were patients with biopsy proven and untreated stage T1c-2N0M0 localized prostate cancer<sup>11</sup>). Age, serum PSA levels, prostatic volume and WHO performance status should be less than 80 yrs, 20 ng/ml, treatable with a 4.0 focal length probe which means a prostatic volume less than 50 ml and 0-1. Patients with urethral stricture, anal stricture, bleeding tendency, renal dysfunction with serum Cr more than 2.0 mg/dl, hydronephrosis, larger than 5 mm calcifications in the prostate, uncontrolled diabetes mellitus, hypertension, angina, history of cardiac infarction or other malignant diseases were excluded from the study. None of the patients were receiving neoadjuvant hormonal and/or chemotherapy before HIFU. All patients were fully informed of the details of this treatment and gave written consent preoperatively.

### HIFU Equipment

For this study, we used the Sonablate 500<sup>TM</sup> (Focus Surgery, Indianapolis, IN, USA) HIFU machine. This treatment module includes the ultrasound power generator, transrectal probes, the probe positioning system, and a continuous cooling system (Fig. 1). The

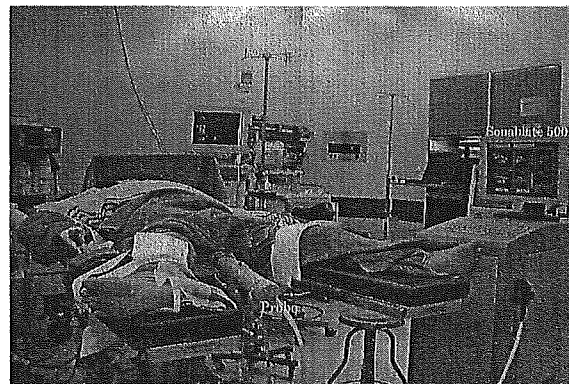


Fig. 1. The Sonablate-500<sup>TM</sup> type device consists of an operator's console, imaging monitor, transrectal probe and an automatic continuous cooling system.

transrectal HIFU probes use proprietary transducer technology with low-energy ultrasound (4 MHz) for imaging of the prostate and for the delivery of high-energy ablative pulses (site intensity, 1,300-2,200 W/cm<sup>2</sup>). The single piezoelectric crystal alternates between high-energy power for ablative (3 sec) and low-energy for ultrasound imaging (6 sec)<sup>10</sup>).

Prior to beginning the treatment, the operator uses longitudinal and transverse sonograms to obtain an image of the prostate and selects the prostate tissue volume to be ablated by a set of cursors on these images. The probe houses a computer-controlled positioning system that directs each ablative pulse to the targeted region of the prostate. Each discrete high-energy focused ultrasonic pulse ablates a volume of 3 × 3 × 10 mm<sup>3</sup> of tissue<sup>10</sup>). The total acoustic power is initially set at 24 W and 37 W for 3.0 and 4.0 cm focal length probes, respectively. The individual focal lesion produces almost instantaneous coagulative necrosis of the tissue due to a temperature rise of 80° to 98°C in the focal zone<sup>8</sup>). Under computer control, the ultrasound beam is steered mechanically to produce consecutive lesions in a manner such that all focal lesions overlap

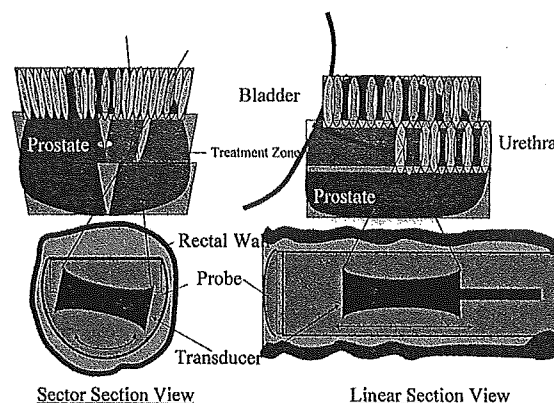


Fig. 2. The computer-controlled transducer ablates the entire prostate tissue. Focal lesions are overlapped in linear rows (left) at each of the lateral sector positions (right) to create a volume lesion.

laterally and longitudinally to ensure necrosis of the entire targeted prostate volume (Fig. 2). An automatic cooling device is used during treatment to maintain a constant baseline temperature of less than 18°C in the transrectal probe that helps to prevent thermal injury of the rectal mucosa.

#### HIFU Procedure

All patients were anesthetized by general, epidural, spinal or intravenous anesthesia, and were placed in a supine and open leg position. A condom was placed over the probe and degassed water was used to inflate the condom that was covered with ultrasound gel for close coupling of the ultrasound probe to the rectal wall, and the probe was inserted manually into the rectum. The probe was fixed in position by an articulating arm attached to the operating table. After selection of the treatment region of the prostate from the verumontanum to the bladder neck, the treatment was started. Transrectal probes with focal lengths of 3.0 and 4.0 cm were used according to the size of the prostate as determined by transrectal ultrasound (TRUS), with larger glands requiring longer focal lengths. The treatment continued layer by layer (10 mm thickness) from the apex to the base (Fig. 2). Usually, three successive target areas (anterior, mid-part and base) were defined to treat the whole prostate. After treatment was completed, a transurethral balloon catheter was inserted into the bladder<sup>10</sup>.

#### Clinical Follow-up and Definition of Outcome

Patient status and treatment-related complications were followed up by all available means, including periodic patient visits and self-administered questionnaires dealing with urinary continence and erectile function using Functional Assessment of Cancer Therapy (FACT) questionnaire. Urinary symptoms and urinary flow rate analysis were performed using International Prostate Symptom Score (I-PSS) index and uroflowmetry<sup>12,13</sup>. Serum PSA was assayed every 1 to 6 months during follow-up. A postoperative prostate needle biopsy under TRUS was performed on all patients at 6 months. The American Society for Therapeutic Radiology and Oncology (ASTRO) consensus definition, i.e., three consecutive increases in post treatment PSA after a nadir has been achieved, was used to define biochemical failure<sup>14</sup>. The time to biochemical failure was defined as midway between the post treatment PSA nadir and the first of three consecutive PSA increases. None of the patients received androgen deprivation after HIFU or other anticancer therapy before documentation of a biochemical recurrence. HIFU related complications were defined by Japanese version of National Cancer Institute-Common Toxicity Criteria version 2.0<sup>15</sup>.

#### Statistical Analyses

All statistical analyses were performed by the Department Statistics in Indiana University. The chi-square test was used to assess the correlation between

preoperative and postoperative parameters. The distributions of biochemical disease-free survival times were calculated according to the Kaplan-Meier curves and the logrank test was used to compare curves for groups. All *p* values less than 0.05 reflected statistically significant differences.

## RESULTS

A total of 75 patients were entered in the trial. The prostate was treated in 1 (75) or 2 (14) HIFU sessions in a total of 89 procedures (1.2 sessions/patient). One patient with stage T1b, 1 patient with a serum PSA of 20.60 ng/ml and 1 patient on whom treatment was stopped during the procedure because of appearance with large microbubbles in the prostate were excluded. The median age, serum PSA level and prostatic volume of the 72 patients analysed were 72 yrs (range 45 to 79), 8.10 ng/ml (range 2.10 to 19.80) and 22.1 ml (range 8.5 to 52.8), respectively. The TNM stage was T1c in 40 patients, T2a in 18 patients and T2b in 14 patients. All patients had a histological diagnosis of prostatic adenocarcinoma according to the Gleason grading system. The Gleason score was 2 to 4 in 9 patients, 5 to 7 in 55 patients, 8 to 10 in 6 patients and unknown in 2 patients (Table 1).

The median time of HIFU treatment and hospitalization was 169 min (range 65 to 485 min) and 5.0 days (range 2 to 55), respectively. The gland size decreased from an initial volume of 24.2 ml to a final median volume of 14.0 ml ( $p < 0.01$ ) in 45 patients. Totally, 49 out of 72 (68%) had negative follow-up biopsies at 6 months after HIFU. Biochemical disease-free survival rates were analyzed in 60 patients. Twelve patients were excluded from the analysis for unsatisfactory followup. The median follow-up period for all patients was 14.0 months (range 2 to 24). Biochemical disease-free survival rates in all patients at 1

**Table 1.** Characteristics in 72 patients with localized prostate cancer

Median age (range)	72 (45-79)
Median PSA (range)	8.10 ng/ml (2.10-19.80)
Prostate volume (range)	22.1 (8.5-52.8)
Pretreatment PSA (%):	
10 or less	44 (61)
10.1-20	28 (39)
Clinical stage (%):	
T1c	40 (56)
T2a	18 (25)
T2b	14 (19)
Gleason score (%):	
2-4	9 (13)
5-7	55 (76)
8-10	6 (8)
Unknown	2 (3)
Median mos followup (range)	14.0 (2-24)

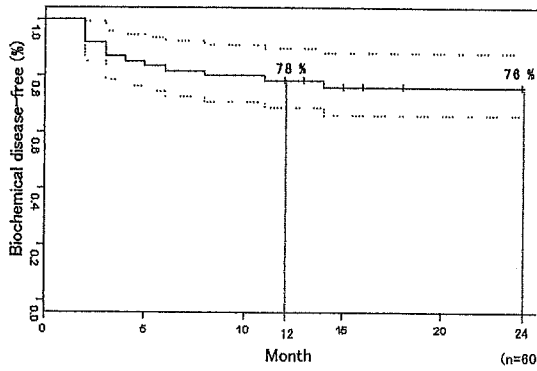


Fig. 3. Kaplan-Meier biochemical disease-free survival curves in all patients.

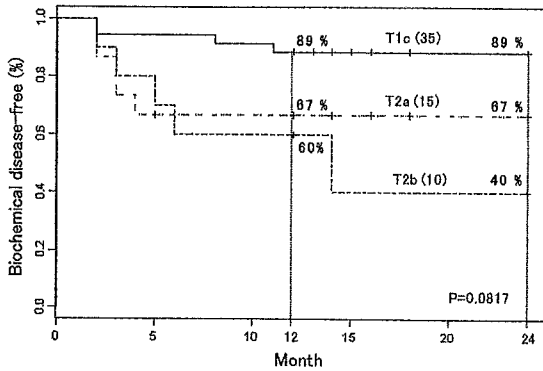


Fig. 4. Kaplan-Meier biochemical disease-free survival curves according to clinical stage.

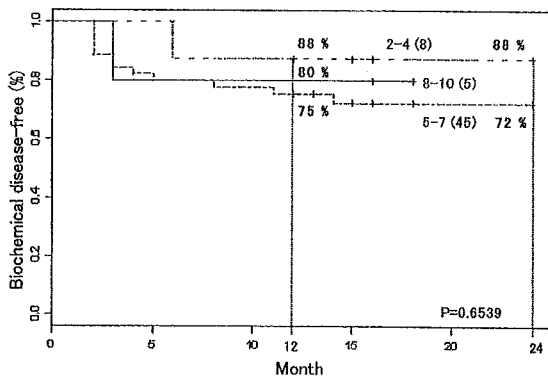


Fig. 5. Kaplan-Meier biochemical disease-free survival curves according to Gleason score.

and 2 years were 78% and 76%, respectively (Fig. 3). Biochemical disease-free survival rates in patients with stage T1c, T2a and T2b groups at 2 years were 89%, 67% and 40% ( $p = 0.0817$ , Fig. 4). Biochemical disease-free survival rates in patients with Gleason 2-4, 5-7 and 8-10 groups at 2 years were 88, 72% and 80% ( $p = 0.6539$ , Fig. 5). The biochemical disease-free survival rate in patients whose serum PSA less than 10 ng/ml and 10-20 ng/ml were 75% and 78% ( $p = 0.6152$ ).

Prostatic volume was decreased from 24.2 ml to 14.0 ml at 6 months after HIFU ( $p < 0.01$ , Fig. 6). No statistically significant difference was noted in I-PSS, Q-max and FACT quality of life analysis (Fig. 7, 8 and 9).

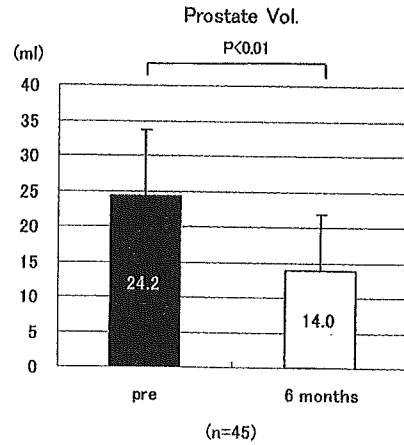


Fig. 6. Changes of prostatic volume.

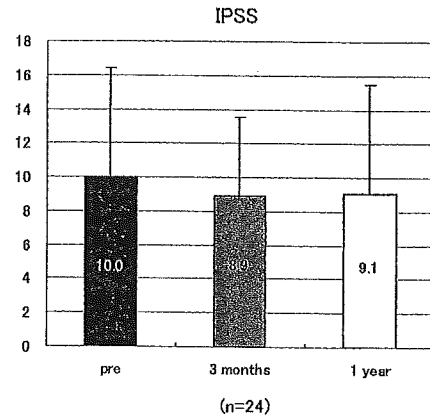


Fig. 7. Changes of International Prostatic Symptom Score.

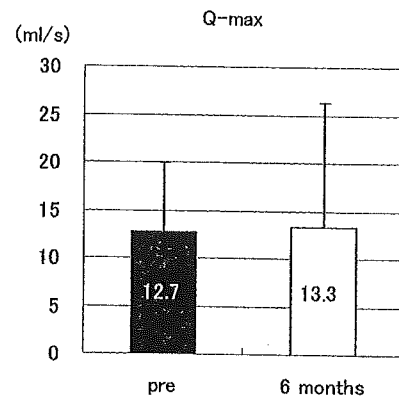


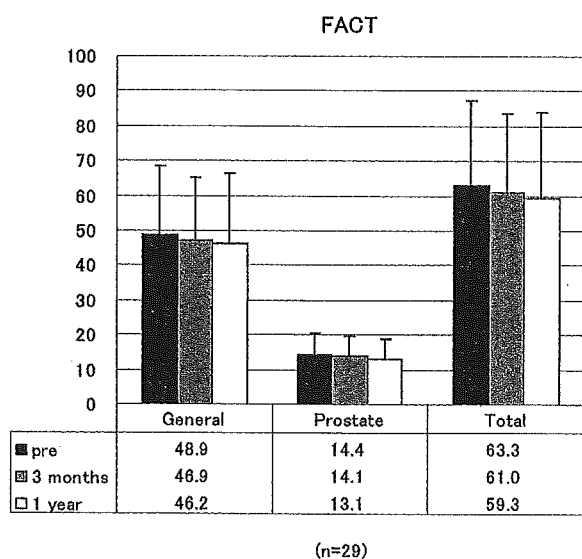
Fig. 8. Changes of maximum flow rate.

Thirteen out of 72 patients developed a urethral stricture, 6 and 4 patients developed epididymitis and prostatitis. Postoperative erectile dysfunction was noted in 12 out of 31 (39%) patients who were potent preoperatively. Nephrotic syndrome, transient urinary incontinence, transit stool incontinence, balanoposthitis or retrograde ejaculation was observed in 1 patient each (Table 2).

For analysis of HIFU treatment using Sonablate 500™, ultrasound imaging for identifying prostate and quality levels were categorized more than good in patients with 92%. A transrectal probe was easily

**Table 2.** Complications

Complication	Grade 1	Grade 2	Grade 3	Grade 4	Total
Urethral stricture	0	0	13	0	13
Erectile dysfunction (31 potent patients)	0	0	12	0	12
Epididymitis	2	2	2	0	6
Prostatitis	2	0	2	0	4
Nephrotic syndrome	0	0	1	0	1
Balanoposthitis	1	0	0	0	1
Uninary incontinence (grade 1)	1	0	0	0	1
Stooly incontinence	1	0	0	0	1
Retograde ejaculation	1	0	0	0	1

**Fig. 9.** Quality of life change by FACT general and prostate.

inserted into the rectum in 97% of the patients. Totally, 96% of the HIFU treatment was categorized as an easy procedure.

### DISCUSSION

In 1995, Madersbacher et al. reported the effectiveness of HIFU in 10 cases of localized prostate cancer<sup>8)</sup>. Histologically, HIFU-treated lesions of the prostate demonstrated a coagulation necrosis with sharp boundaries. In 1996, Gelet et al. reported preliminary experiences with HIFU using the Ablatherm device (EDAP-Technomed, Lyon, France) for treating localized prostate cancer<sup>16)</sup>. Beerlage et al. reported the results of HIFU treatments in 111 patients with clinical stage T1-3N0M0 prostate cancer and a PSA level less than 25 ng/ml. The treatment for the first 49 patients was performed selectively (i.e. unilateral or bilateral treatment in one or two sessions depending on findings from TRUS and biopsies) and the whole prostate was treated in the remaining 62 patients. A complete response (defined as a PSA level < 4.0 ng/ml and a negative biopsy) was achieved in 60% of the whole prostate treated patients with and in 25% of selectively treated patients<sup>17)</sup>.

In 2001, Gelet et al. reported their long-term follow-

up data in which a complete response was obtained in 66% of patients with no residual cancer (regardless of PSA levels) or no increases in PSA levels in three consecutive examinations with a PSA velocity < 0.75 ng/ml/year for patients with negative biopsies<sup>18)</sup>. More recently, Chaussy and Thuroff summarized clinical outcomes by the ASTRO definition as 84.2% stability rate in the HIFU group and 80% rate in the combination with transurethral resection of the prostate (TURP) and HIFU group in 1 year<sup>19)</sup>. In summarizing our clinical outcome using the ASTRO definition, the biochemically disease-free survival rate was 76% at 2 years follow-up. Patients with stage T1c, T2a and T2b showed respectively 89, 67% and 40% biochemical disease-free survival rates at 2 years follow-up (p=0.0817). The clinical outcome in our series of patients with preoperative PSA less than 20 ng/ml were comparable to the outcome of patients treated with radical prostatectomy<sup>2,3)</sup>.

In our series, postoperative urethral strictures at near verumontanum in the prostatic urethra occurred in 21% of the patients. Recently, TURP or bladder neck incision immediately before or after HIFU was found to reduce the treatment-related morbidity such as postoperative prolonged urinary retention, urinary catheterization time and urinary infection<sup>20,21)</sup>. Neoadjuvant hormonal therapy also might be useful to reduce the volume of the prostate which can reduce the time of treatment and rate of morbidity. However, the upper limit of the gland volume is 50 ml even after reducing the size of the prostate with neoadjuvant androgen deprivation or TURP in our series. Generally, radicalism of prostate cancer and preservation of sexual function are always controversial because postoperative impotence depends on preservation of neuro-vascular bundles that sometimes includes tumor invasion. In our study, 39% of the patients exhibited erectile dysfunction after the HIFU therapy. One out of 12 patients who desired treatment for postoperative erectile dysfunction recovered with sildenafil citrate. We considered this rate to be lower than that compared to radical prostatectomy<sup>2,3)</sup>. Further experience is required to confirm this important conclusion.

D'Amico et al. compared the outcome of a cohort

treated with 3D-CRT versus a matched cohort treated with brachytherapy plus external radiation therapy. The 5-year estimate of PSA failure-free survival rate after 3D-CRT alone was 45% and 67% when both radiation treatments were combined<sup>22)</sup>. More recently, Kupelian et al. compared the biochemical disease-free survival rate after permanent seed brachytherapy, external beam radiation therapy (EBRT), combined seeds and EBRT, or radical prostatectomy for clinical stage T1-2 localized prostate cancer<sup>23)</sup>. The 5-year biochemical disease-free survival rate for radical prostatectomy, EBRT <72 Gy, EBRT ≥72 Gy, permanent seed brachytherapy and combined seeds and EBRT were 81, 51, 81, 83% and 77%, respectively. Although not directly comparable, the results after treatment with HIFU appear to be similar to those after radiotherapy, even when both brachytherapy and EBRT are combined.

For many reasons, transrectal HIFU appears to be highly attractive as a minimally invasive treatment for localized prostate cancer. HIFU treatment requires no incision or puncture, with no bleeding, can be performed on an outpatient basis and is repeatable even when patients with local recurrence have already been treated with radiation therapy<sup>24)</sup>. In addition, radiation therapy including brachytherapy and even surgery can be performed after HIFU.

Transrectal HIFU has considerable potential as a noninvasive treatment modality for patients with localized prostate cancer especially whose PSA less than 20 ng/ml.

#### ACKNOWLEDGEMENTS

The authors express their appreciation to Mr. Y. Shimazaki, S. Kagasaki, K. Yamashita, K. Takai and N.T. Sanghvi for their technical assistance.

#### REFERENCES

- 1) Landis SH, Murray T, Bolden S, et al.: Cancer statistics, 1999. *CA Cancer J Clin* **49**: 8, 1999
- 2) Hull GW, Rabbani F, Abbas F, et al.: Cancer control with radical prostatectomy alone in 1,000 consecutive patients. *J Urol* **167**: 528-534, 2002
- 3) Roehl KA, Han M, Ramos CG, et al.: Cancer progression and survival rate following anatomical radical retropubic prostatectomy in 3,478 consecutive patients: long-term results. *J Urol* **172**: 910-914, 2004
- 4) Zelefsky MJ, Hollister T, Raben A, et al.: Five-year biochemical outcome and toxicity with transperineal CT-planned permanent I-125 prostate implantation for patients with localized prostate cancer. *Int J Radiat Oncol Biol Phys* **47**: 1261-1266, 2000
- 5) Guillonneau B, el-Fettouh H, Baumert H, et al.: Laparoscopic radical prostatectomy: oncological evaluation after 1,000 cases a Montsouris experience. *J Urol* **169**: 1261-1266, 2003
- 6) Han K-R, Cohen JK, Miller RJ, et al.: Treatment of organ confined prostate cancer with third generation cryosurgery: preliminary multicenter experience. *J Urol* **170**: 1126-1130, 2003
- 7) Lerner SE, Blute ML and Zinke H: Critical evaluation of salvage surgery for radio-recurrent/resistant prostate cancer. *J Urol* **154**: 1103-1109, 1995
- 8) Madersbacher S, Pedevilla M, Vingers L, et al.: Effect of high-intensity focused ultrasound on human prostate cancer in vivo. *Cancer Res* **55**: 3346-3351, 1995
- 9) Uchida T, Sanghvi NT, Gardner TA, et al.: Transrectal high-intensity focused ultrasound for treatment of patients with stage T1b-2N0M0 localized prostate cancer: a preliminary report. *Urology* **59**: 394-399, 2000
- 10) Uchida T, Tsumura H, Yamashita H, et al.: Transrectal high-intensity focused ultrasound for treatment of patients with stage T1b-2N0M0 localized prostate cancer: a preliminary report. *Jpn J Endourol ESWL* **16**: 108-114, 2003
- 11) Sobin LH and Wittekind CH: TNM classification of Malignant Tumors (5th ed). Wiley-Liss Inc, 1997
- 12) Cella DF, Tulsky DS, Gray G, et al.: The functional assessment of cancer therapy scale: development and validation of the general measure. *J Clin Oncol* **11**: 570-579, 1993
- 13) Japanese Urological Association and the Japanese Society of Pathology. General Rule for Clinical and Pathological Studies on Prostate Cancer. April 2001 (The 3rd edition). Tokyo, Kanehara Co
- 14) Consensus statement: Guidelines for PSA following radiation therapy. American Society for Therapeutic Radiology and Oncology Consensus Panel. *Int J Radiat Oncol Biol Phys* **37**: 1035-1041, 1997
- 15) National Cancer Institute-Common Toxicity Criteria. Version 2.0, April 30, 1999
- 16) Gelet A, Chaperon JY, Bouvier R, et al.: Treatment of prostate cancer with transrectal focused ultrasound: early clinical experience. *Eur Urol* **29**: 174-183, 1996
- 17) Beerlage HP, Thüroff S, Debruyne FMJ, et al.: Transrectal high-intensity focused ultrasound using the Ablatherm device in the treatment of localized prostate carcinoma. *Urology* **54**: 273-277, 1999
- 18) Gelet A, Chapelon JY, Bouvier R, et al.: Transrectal high-intensity focused ultrasound for the treatment of localized prostate cancer: factors influencing the outcome. *Eur Urol* **40**: 124-129, 2001
- 19) Chaussy CG and Thüroff S: The status of high-intensity focused ultrasound in the treatment of localized prostate cancer and the impact of a combined resection. *Curr Urol Rep* **4**: 248-252,



- 2003
- 20) Thüroff S, Chaussy C, Vallancien G, et al. : High-intensity focused ultrasound and localized prostate cancer: efficacy results from the European multicentric study. *J Endourol* **17** : 673-677, 2003
- 21) Vallancien G, Prapotnich D, Cathelineau Y, et al. : Transrectal focused ultrasound combined with transurethral resection of the prostate for the treatment of localized prostate cancer: feasibility study. *J Urol* **171** : 2265-2267, 2004
- 22) D'Amico AV, Schultz D, Schneider L, et al. : Comparing prostate specific antigen outcome after different types of radiotherapy management of clinically localized prostate cancer highlights the importance of controlling for established prognostic factors. *J Urol* **163** : 1797-1801, 2000
- 23) Kupelian PA, Potters L, Khuntia D, et al. : Radical prostatectomy, external beam radiotherapy <72 Gy, external beam radiotherapy ≥72 Gy, permanent seed implantation, or combines seed/external beam radiotherapy for stage T1-T2 prostate cancer. *Int J Radiat Biol Phys* **58** : 25-33, 2004
- 24) Gelet A, Chapelon JY, Poissonnier L, et al. : Local recurrence of prostate cancer after external beam radiotherapy: early experience of salvage therapy using high-intensity focused ultrasonography. *Urology* **63** : 625-629, 2004

(Received on March 17, 2005)

(Accepted on June 25, 2005)

(迅速掲載)

*Reprinted from*  
*Jpn J Clin Oncol* 2005;35(11):680-689  
*doi:10.1093/jjco/hyi180*

**Meeting Report**

---

## **The 18th International Symposium: Controversies in Prostate Cancer Diagnosis and Treatment**

**Yeong-Shiau Pu<sup>1</sup>, Hiroyuki Fujimoto<sup>2</sup>, Tadao Kakizoe<sup>3</sup> and Robert Myers<sup>4</sup>**

<sup>1</sup>Department of Urology, National Taiwan University Hospital, Taipei, Taiwan, <sup>2</sup>Urology Division, National Cancer Center Hospital, <sup>3</sup>National Cancer Center, Tokyo, Japan and <sup>4</sup>Department of Urology, Mayo Clinic College of Medicine, MN, USA

## Meeting Report

# The 18th International Symposium: Controversies in Prostate Cancer Diagnosis and Treatment

Yeong-Shiau Pu<sup>1</sup>, Hiroyuki Fujimoto<sup>2</sup>, Tadao Kakizoe<sup>3</sup> and Robert Myers<sup>4</sup>

<sup>1</sup>Department of Urology, National Taiwan University Hospital, Taipei, Taiwan, <sup>2</sup>Urology Division, National Cancer Center Hospital, <sup>3</sup>National Cancer Center, Tokyo, Japan and <sup>4</sup>Department of Urology, Mayo Clinic College of Medicine, MN, USA

Received August 16, 2005; accepted September 7, 2005; published online November 7, 2005

## INTRODUCTION

The 18th International Symposium of the Foundation for the Promotion of Cancer Research, 'Controversies in Prostate Cancer: Diagnosis and Treatment' was held in Tokyo on 24-26 January 2005. The symposium was organized by Drs Tadao Kakizoe, Robert Myers, Hiroyuki Fujimoto and Yoichi Arai with Dr Takashi Sugimura as the advisor.

## WELCOME AND INTRODUCTION

Dr Kakizoe chaired the session and expressed his sincere concerns about the ongoing big snow storm in the United States. Professor T. Sugimura opened the Eighteenth International Symposium. Since 1988, 578 speakers from 24 nations around the world have been invited to discuss various cancers comprehensively, usually one cancer at a time. This was the second time where prostate cancer (PC) was discussed. Dr Sugimura pointed out that prostate-specific antigen (PSA) has made a huge progress possible since late 1970s. Dr Sugimura then used himself as an example to explain the notion of cancer survivor. The Japanese Emperor is also a cancer survivor who had PC which has been surgically removed by Chairman Dr Kakizoe.

For reprints and all correspondence: Yeong-Shiau Pu, Department of Urology, National Taiwan University Hospital, Taipei, Taiwan. E-mail: yspu@ha.mc.ntu.edu.tw; ys.pu@msa.hinet.net

Abbreviations: ADT, androgen-deprivation therapy; AR, androgen receptor; BPH, benign prostatic hyperplasia; BCR, biochemical recurrence; DRE, digital rectal examination; 3D-CRT, 3-dimension conformal radiotherapy; EORTC, European Organization for Research and Treatment of Cancer; ED, erectile dysfunction; EBRT, external beam radiotherapy; GS, Gleason's score; HRPc, hormone-refractory prostate cancer; IMRT, intensity modulated radiotherapy; LHRHa, luteinizing hormone-releasing hormone agonist; MSKCC, Memorial Sloan-Kettering Cancer Center; NVB, neurovascular bundle; PZ, peripheral zone; PC, prostate cancer; PSA, prostate-specific antigen; PSADT, PSA-doubling time; PSAV, PSA velocity; QOL, quality-of-life; RP, radical prostatectomy; RT, radiotherapy; TZ, transition zone; TRUS, transrectal ultrasonography

Survivors from PC may be sensitive to follow-up PSA reports, which represents a new issue of care.

## OPENING REMARKS: PROSTATE CANCER—A CHALLENGE FOR THE 21ST CENTURY

Dr Robert Myers gave the opening remarks. He indicated that PC is a challenge for the early 21st century. There are several questions that need to be answered about PC, which includes: cancer significant or insignificant, screen or not to screen, chemoprevention, who should be treated, what is the optimal treatment and how, response to PSA rise after treatment, timing for androgen-deprivation, and the best approach for androgen-independent prostate cancer (AIPC)? Current American Cancer Society guidelines 2005 ([www.cancer.org](http://www.cancer.org)) suggests that doctors should offer PSA and digital rectal examination (DRE) at age 50 to men without serious medical problems expected to live at least 10 years. American Academy of Family Physicians ([www.aafp.org](http://www.aafp.org)), however, concludes that there is insufficient evidence on which to make recommendation for or against routine screening for PC using PSA or DRE. Similarly, US Services Preventive Task Force ([www.ahrq.gov](http://www.ahrq.gov)) also holds the opinion that PSA screening can detect early-stage PC but mixed and inconclusive evidence that early detection improves health outcomes. Dr T.A. Stamey even published a highly debatable article (*BJUI* 2004) entitled 'The era of serum PSA for biopsy of the prostate is now over in the USA'. Then what is beyond PSA? Dr Ornstein et al. and Dr Fradet et al. published a serum proteomic profiling and an uPM3 gene-based urine test, respectively, both of which seemed to increase the accuracy of PC detection. Dr Nelson et al. established in 2004 a 70-gene model to predict PC aggressiveness by genomic approach. The challenge in treatment was outlined nicely in the report of Prostate Cancer Foundation to the Nation 2004. Three major issues are the absence of reliable markers, how to predict treatment response and a low enrollment for clinical trials.

## SESSION 1: EPIDEMIOLOGY AND PATHOLOGY

CHAIRPERSON: DAVID BOSTWICK

*PROSTATE CANCER: CONTROLLING THE EPIDEMIC*  
(BY PETER BOYLE)

PC caused about 11 million incident cases or 6.1% of men worldwide in 2002. The second leading male cancer is PC, although the death rate is much lower than the incidence rate. In Europe, there were an estimated 2.8 million incident cases of cancer and 1.7 million cancer deaths in 2004. In men, there was an estimated 1.5 million incident cases of cancer of all forms (except skin cancer) diagnosed. In the United States, PC was the commonest form of incident cancer in men in 1996–2000. If we look at the mortality rate, however, lung cancer was the commonest form of cancer death in the same period and the PC death rate was much lower than its incidence rate. By person-years of life lost due to cancer, lung cancer caused most lives lost in 2000 in the United States, followed by breast, colorectal and pancreas cancer. PC, in fact, ranked in the middle. If compared with person-years of life lost per death, PC caused the least amount of lives lost compared with other cancers. PC has a steep rise of incidence with increasing age. There are no other cancers that have such a steep association between incidence rate and age. The underlying concept of PC control is to specify a series of actions in three domains, which will bring about a reduction in PC mortality: primary prevention, secondary prevention or screening, and tertiary prevention. Three randomized screening trials to see if screening reduces mortality have been done or are underway. The Quebec study should be omitted because of unsatisfactory methodology and unreliable data obtained. Two other trials with one in the United States and the other in Europe are still awaited. The major question today is 'will PSA screening reduce PC mortality'. The cohort-specific mortality rate for PC has remained virtually unchanged in generations of men born in last century in nearly every country of the world. More importantly, the adverse effects of radical prostatectomy (RP) on quality-of-life (QOL) could change a modest mortality reduction obtained by PSA screening into negative QOL-adjusted years.

*ACTIVE MONITORING USING PSA-DOUBLING TIME FOR STAGE T1c PROSTATE CANCER WITH FAVORABLE BIOPSY FEATURES*  
(BY YOSHIYUKI KAKEHI)

It is difficult to differentiate biologically aggressive cancers from indolent ones at diagnosis. Dr Kakehi and his associates performed a prospective cohort study of active monitoring of disease progression using PSA-doubling time (PSADT) in newly diagnosed T1c patients (PSA  $\leq$  20) who chose to have a delayed treatment. All of them had favorable pathological features. After registration, patients were monitored with PSA every 6 months and re-biopsied at the 13th month. Patients who showed a PSADT of <2 years at any check-point or out of the criteria by re-biopsy are recommended to start treatment. Eighty percent of the 197 patients accepted the active monitoring protocol. Among them, 53% had a PSADT longer than

10 years or even a decreasing PSA and 19%, however, were rapid PSA risers. Active monitoring protocol for stage T1c PC with selective delayed intervention using PSADT offers individualized strategy according to the biological behavior.

CHAIRPERSON: YEONG-SHIAU PU

*LATENT PROSTATE CANCER: CURRENT CONCEPTS*  
(BY DAVID BOSTWICK)

There are four ways of finding latent cancer: screening biopsy, transurethral resection of the prostate, cystoprostatectomy and autopsy. According to cystoprostatectomy series reported worldwide, the prevalence of latent cancer ranged from 9 to 61% with most being between 37 and 46%. Several reports indicated that the prevalence of latent cancer is about the same across countries or races but is progressively increased with aging. About 80% of men by age 80 develop PC. Dr Bostwick raised a working hypothesis of origins of PC that inflammation plus unique environment with time causes increased oxidative stress which with time causes genetic instability. Genetic instability then causes high-grade prostate intraepithelial neoplasia (PIN) after years and finally causes cancer. It has been shown that there were no differences between latent, screened and clinical cancers in terms of Gleason's score (GS), Ki-67 index, DNA ploidy and p53 overexpression. There are no consistent difference between latent and clinical cancer after controlling for patient age, cancer location and cancer volume; cancer volume and cancer doubling time account for many differences between latent and clinical cancer. To better detect cancer, Dr Bostwick advocate a novel PCA3 (uPM3) urine test which is a nucleic acid amplification assay that provides an innovative method for a more accurate detection of PC.

*LATENT CANCER, NODULAR HYPERPLASIA AND DIFFUSE ENLARGEMENT OF THE PROSTATE: MORPHOMETRIC AND HISTOPATHOLOGICAL ANALYSES* (BY TAIZO SHIRAIISHI)

To clarify the pathology of the development of these disorders Dr Shiraiishi et al. compared histopathological findings of the prostate from different age groups. Whole-mount sections of prostates obtained from males at autopsy without clinical diagnosis of PC and benign prostatic hyperplasia (BPH) were used to assess the relationship between age and prostate weight, prostate histological composition in the transition zone (TZ) and peripheral zone (PZ), and comparison of latent cancer prevalence by age groups. They found that a rapid increase in prostate weight from birth to the 20s was followed by a slow rise thereafter. Significant volume increases were observed in all three components of glandular epithelium, glandular lumen and stroma in the TZ from the 40s to 70s. The epithelial and stromal volumes, however, tended to decrease in the PZ in an age-dependent manner. Tumor and hyperplasia have a long natural history, usually starting in the fourth decade of life. There was an age-dependent prostatic enlargement, especially due to the TZ zone. Large prostates can be classified into three

types according to PZ/TZ ratio. TZ latent cancer is more common in enlarged prostates.

#### FAMILIAL PROSTATE CANCER (BY KAZUHIRO SUZUKI)

Positive family history is a strong risk factor for PC, and men with positive family history with PC are recommended to take cancer screening at the age of 40. HPC and FPC accounts for 3–5% and 15–20% in the United States, respectively. In Japan, Dr Suzuki and co-workers found that HPC and FPC accounts for ~1 and 3%, respectively. Clinical characteristics of HPC/FPC did not differ from sporadic cancers except for early onset. However, family history of PC increased the positive predictive value of patients with gray-zone PSA values. HPC served as a good model to analyse the genetic susceptibility to PC. Since the susceptibility locus at 1p24–25 named as HPC1 has been reported, several loci were reported in association with HPC development. In 2001, the first candidate susceptibility gene HPC2/ELAC2 was reported. Since then, several genes including RNASEL and MSR1 were identified as susceptibility genes. Their study showed that HPC2/ELAC2 and RNASEL were involved in the development of HPC/FPC in the Japanese population. Genome-wide linkage analysis demonstrated suggestive linkage near D8S550 on 8p23 and D1S2667 on 1p36.

## SESSION 2: PREVENTION AND DIAGNOSIS

CHAIRPERSON: PETER BOYLE

#### PRO'S AND CON'S OF SCREENING FOR PROSTATE CANCER IN 2005 (BY FRITZ SCHRÖDER)

The benefit of a cancer screening is based on clinically relevant decrease of cancer mortality with acceptable costs. PC mortality in the United States between 1979 and 2000 decreased for 19.2%. However, the only way of showing or disproving the value of population screening for PC is through a valid randomized trial of screening. Such trials are ongoing in Europe and in the US. Results, depending on power and mortality differences can be expected after 2006. The European Randomized Study of Screening for Prostate Cancer (ERSPC) had recruited more than 200 000 men aged between 50 and 74 from 1993 through 2004. The trial performed screening every 4 years and will follow-up subjects for 10 years. Different assumptions of mortality reduction ranged from 20 to 50% which impacts the power of the trial and also the end of follow-up year. There has been no significant difference in mortality between groups yet. Dr Draisma and co-workers developed simulation models (MISCAN) based on results of the Rotterdam section of the ERSPC, which enrolled 42 376 men and in which 1498 cases of PC were identified. The models were used to predict mean lead times and over-detection rates. Mean lead times and rates of over-detection depended on age at screening. For a single screening test at age 55, the estimated mean lead time was 12.3 years and the over-detection rate was 27%; at age 75, the estimates were 6.0 years and 56%, respectively. For a

screening program with a 4 year interval from age 55 to 67, the estimates were 11.2 years and 48%, respectively. This screening program raised the lifetime risk of PC from 6.4 to 10.6%, an increase of 65%. In annual screening from age 55 to 67, the estimated over-detection rate was 50% and the lifetime cancer risk was increased by 80%. It appears that these data support a screening interval of >1 year.

#### CURRENT CONTROVERSIES IN PROSTATE CANCER SCREENING (BY WILLIAM CATALONA)

About 17% of US men are diagnosed with PC during their lifetime and ~16% of these will die of it. Therefore, 3% die of PC and, thus, are eligible for screening benefits. PSA tests in the United States were introduced in around 1991 in a broad sense. By 1995 the mortality rates leveled off and have been decreasing from 3 to 4% per year, more rapidly than for any other cancer. When Dr Catalona started a PSA screening study in 1989, he used a 4 ng/ml PSA cutoff. When FDA approved in 1994 that PSA in conjunction with DRE can be used as a tool for early detection of PC, 4 ng/ml cutoff was chosen. However, PSA cutoff of 4 misses many clinically-significant PCs. If we do not adjust for the verification bias by statistical methods, the ideal cutoff would be 2.6. If we do, the figure would be 1.4. Thus, for a man with a healthy prostate, which means no BPH, prostatitis, or PC, his PSA should be <1 ng/ml. However, older men ( $\geq 60$  years) do have BPH or prostatitis, the ideal cutoff would then be 4.1 and 2.1 for unadjusted and adjusted calculations, respectively. So based on the Prostate Cancer Prevention Trial (PCPT), a significant proportion of men with a PSA <4 are found to have PC. Of note, even at a low PSA range (<4 ng/ml), PSA does correlate with the likelihood of having PC and high-grade PC. Dr Catalona pointed out that although PSA is not a good marker for curable PC in very large or small tumors, it is a good marker for both PC and curable PC in intermediate-sized tumors. Cancer volume also correlates well with tumor recurrence rate. PSA velocity (PSAV) is among all the most significant PSA measurements that we can make. PSAV is associated with the risk for cancer, biochemical progression and cancer-specific mortality.

#### SCREENING, BIOPSY AND LIFE EXPECTANCY (BY HIDETOSHI YAMANAKA)

Life expectancy may be one of the most important issues in the development of optimal screening systems, which can detect clinically significant (i.e. life-threatening) and also curable tumors. The risk of cancer-related death is being higher as the age at diagnosis being younger. The use of age-specific reference ranges of PSA (ASRR PSA) may be able to detect small cancer in younger men without increasing the number of unnecessary biopsies in older men, and may also be cost advantage for screening. Dr Yamanaka showed that among 6744 men participated, 556 men had at least one abnormal finding on PSA levels (>4 ng/ml), DRE or transrectal ultrasonography (TRUS). Of the 556 patients, 331 were biopsied, and 119 were diagnosed with PC. The diagnostic efficiency of

the ASRR PSA was optimal with cutoffs of 3.0, 3.5, 4.0 and 7.0 ng/ml for men with 60–64, 65–69, 70–79 and >80 years, respectively. The sensitivity of the ASRR PSA was higher than the traditional 4.0 cutoff without much compromise in specificity. Dr Yamanaka and co-workers initiated another prospective study in 2000. Between 2000 and 2003, 28 930 men aged 50–69 years old had their PSA levels measured in the population-based screening study. The cutoff for biopsy indication was set at 3.0 and 3.5 ng/ml in the age range of 50–64 and 65–69, respectively. A total of 719 men (2.5%) and 1307 men (4.7%) were in the PSA of ASRR to 4.0 and >4.0 ng/ml, respectively. Of the 719 men with PSA between ASRR to 4.0, 131 (18%) were biopsied, and the positive biopsy rate was 19% (25/131), which was slightly lower than the 31% in the PSA range from 4.1 to 10 ng/ml. ASRR PSA may be useful to detect early-stage PC in younger men with only 2.5% increase in the number of men with abnormal PSA, compared with the traditional PSA cutoff of 4.0 ng/ml for men aged 50–69. Dr Yamanaka also proposed that the number of biopsy cores should be set according to the life-expectancy and prostate volume in younger men.

CHAIRPERSON: WILLIAM CATALONA

*CANCER-ASSOCIATED CARBOHYDRATE ALTERATION OF PSA*  
(BY CHIKARA OHYAMA)

Carbohydrates on tumor cell surface play important roles in cancer invasion and metastasis. Cancer-associated carbohydrate alteration in serum PSA has never been demonstrated. PSA is a glycoprotein containing ~8% of carbohydrate composed of an *N*-glycan. The structure of carbohydrate on PSA is thought to be a biantennary *N*-linked oligosaccharide of the *N*-acetylglucosamine type. In order to apply the cancer-associated carbohydrate alteration to the improvement of PSA assay, Dr Ohyama and co-workers first performed an intensive structural analysis of PSA purified from human seminal fluid. The predominant core structure of *N*-glycan of seminal fluid PSA was a complex type biantennary oligosaccharide and was consistent with the structure reported previously. *Lens culinaris* (LcH), *Aleuria aurantia* (AAL), *Sambucus nigra* (SNA) and *Maackia amurensis* (MAA) lectins were tested for their binding affinity to the carbohydrates on PSA. They also analysed serum PSA from randomly selected patients with PC and BPH. Among the lectins examined, the MAA-bound fraction of PSA increased in LNCaP supernatant compared with seminal fluid and BPH tissue. Free PSA from PC patients had increased binding to MAA compared with that from BPH patients. Distinct binding of free PSA to MAA lectin between PC and BPH could be a potential measure for improved specificity of PSA assay.

*MOLECULAR MARKERS OF PROSTATE CANCER*  
(BY OSAMU OGAWA)

Development of PC is affected by both genetic and environmental factors. In case-control studies on a Japanese

population, Dr Ogawa and co-workers found that PC risk was significantly associated with particular polymorphisms on CYP17, SRD5A2, vitamin D receptor, cyclin D1 and PSA genes. Dr Ogawa further did a study that correlated 13 polymorphic markers with the cause-specific survival of 122 advanced PC. Among them, CYP19 and IGF-1 long-allele genotypes were found to be significantly associated with reduced survival. In a study using tissue microarray (TMA) technology, specimens were obtained from 52 patients undergoing RP, Ki-67, p53 and androgen receptor (AR) antigen expression were examined. They found that TMA GS ( $P = 0.038$ ), TMA primary Gleason grade ( $P = 0.013$ ), Ki-67 labeling index ( $P < 0.001$ ), p53 ( $P = 0.045$ ) and AR antigen expression ( $P = 0.046$ ) were significant variables for predicting biochemical relapse. Moreover, TMA primary Gleason grade and Ki-67 were independently associated with treatment failure. They demonstrated nicely that more accurate prediction of prognosis can be made by combining traditional clinicopathological parameters and molecular expressions determined by tissue TMA.

*IMAGING MODALITIES FOR STAGING PROSTATE CANCER*  
(BY HISATAKA KOBAYASHI)

CT, MRI, ultrasound and nuclear medicine are currently the major modalities for evaluating PC. They, however, have not provided satisfactory information about the local-regional extent of invasion. MRI is a powerful modality for evaluating PC with its high spatial resolution and excellent soft tissue contrast. Currently, three MRI methods: T2-weighted imaging, MR spectroscopic imaging and dynamic MRI with Gd-DTPA contrast are valuable for diagnosing loco-regional spread of primary tumors. Combination of these MR modalities gives more precise assessment of the prostate. Fluoro-deoxyglucose (FDG) does not work well for the diagnosis or local staging of PC. Nuclear medicine techniques with FDG or monoclonal antibodies have proven to be valuable for the detection of positive lymph nodes. The In-111-labeled PSMA (murine) monoclonal antibody (Prostascint) specifically detects metastasis-positive lymph nodes. With MRI using nanotechnology, Dr Kobayashi and co-workers have recently developed a method to visualize the lymphatic flow from cancer tissue to sentinel lymph nodes.

CHAIRPERSON: WILLIAM CATALONA

*CHEMOPREVENTION OF PROSTATE CANCER: ASSESSING BENEFIT AND RISK IN THE PROSTATE CANCER PREVENTION TRIAL (CONTENTS BY ERIC KLEIN; PRESENTED BY WILLIAM CATALONA)*

The PCPT that compares the rate of cancer reduction between finasteride 5 mg/day and placebo in 18 000 men (normal DRE and PSA <3.0 ng/ml) demonstrated a 25% reduction in the 7 year period prevalence of PC in the finasteride group. In brief, there was a 6.4% reduction (RR = 0.75) in the prevalence of PC and a 1.3% increase (RR = 1.27) in high-grade

disease. Tumors of GS  $\leq 6$ ,  $= 7$  and  $\geq 8$  markedly decreased, unchanged and slightly increased, respectively. More and more insignificant cancers are now being identified. The burden of cure, however, is heavy, which includes anxiety over initial diagnosis, discomfort of biopsy and staging procedures, uncertainty of cure, inconvenience of therapy, treatment-related morbidity, and cost of management of incontinence, bowel dysfunction, and erectile dysfunction (ED). A mathematical model of risk and benefit for finasteride was developed. The benefit/risk ratio of finasteride use was estimated by calculating the ratio of absolute risk reduction in the finasteride arm to the absolute risk of excess high-grade cancers. Using this model, for all cancers detected in the PCPT, the baseline benefit/risk ratio increased from 4.6/1 to 5.1/1, 6.2/1 and 9.2/1 for assumptions of 10, 25 and 50% histologic artifact, respectively. The baseline ratio increased from 4.6/1 to 8.2/1 for the assumption of a 25% overdetection bias, and to 9.1/1, 10.9/1 and 16.3/1 for combined assumptions of a 25% overdetection bias and 10, 25 and 50% histologic artifact, respectively.

*EQUOL: ONE ISOFLAVONE FOR CHEMOPREVENTION OF PROSTATE CANCER (BY HIDEYUKI AKAZA)*

Many reports have shown that soybean isoflavones may have a significant role in preventing PC. Dr Akaza's group has previously published a case-control study that some Japanese are able to metabolize daidzein, one of soybean isoflavones, to equol (equol producers), and that the incidence of PC is higher in non-producers. They recently conducted a similar case-control study involving Japanese living in Japan, Koreans living in Korea and Japanese immigrants to the United States. There were no differences in daidzein or genistein between each group. The percentage of equol producers differs significantly between cases and controls being 29 and 46% in Japan ( $P = 0.004$ ) and 30 and 59% in Korea ( $P = 0.001$ ), respectively. The percent equol producers for Japanese immigrants to the United States were markedly lower than that for Japanese and Koreans. Dietary factors may play important roles. The daily amount of green tea consumption may affect the production of equol in Japanese men.

### SESSION 3: THERAPY OF LOCALIZED PROSTATE CANCER

CHAIRPERSON: PETER SCARDINO

*HYPOFRACTIONATED CARBON-ION RADIOTHERAPY FOR PROSTATE CANCER (BY HIROHIKO TSUJII)*

The characteristics of carbon-ion radiotherapy (C-ion RT) include superior dose distribution and high biological effect. The therapeutic merit of heavy-ion radiation is that the density of ionization increases with depth of penetration, which generates a higher biological effect. The dose fractionation of 66.0 GyE in 20 fractions through three ports over 5 weeks has been used as a recommended regimen. The PTV is 10 mm

wider than the CTV but is only 5 mm next to the rectum to exclude the anterior rectal wall as much as possible. A total of 248 patients were treated with this regimen with the follow-up  $> 6$  months. An average pretreatment PSA value in these patients was 37.7 ng/ml and the median was 19. Incidence of radiation morbidities in the rectum and the genitourinary system were considered acceptable. Only four patients (1.6%) developed Grade 2 rectal bleeding, which eventually accounted for 0.4%. Seventeen patients (6.9%) developed Grade 2 urinary morbidities but most of them eventually improved to the incidence of 3.6% without specific treatment. These morbidity profiles compared favorably with contemporary series. All 248 patients have been free from local recurrence. The 5 year overall and cause-specific survival rates were 89.5 and 92.1%, respectively. The 5 year biochemical relapse-free survival (RFS) was 81.6%.

*RADICAL RETROPUBIC PROSTATECTOMY (BY ROBERT MYERS)*

In the only randomized prospective study from Scandinavian Prostatic Cancer Group showed that RP compared with watchful waiting significantly reduced disease-specific mortality, but there was no significant difference in terms of overall survival. At Mayo clinic, a significant stage migration has been seen from 1987 to 2003 with T3 disease dropping from 25 to 3% and T1c disease increasing from 2 to 56%. According to Dr Binder, the Da Vinci Surgical System costs very much including about 1.25 million of the robot, 110 000 yearly service contract, and 1600–3900 instruments (8–30 uses) with all in Euros. Dr Myers also pointed out the advantage of tactile sensation with open surgery and long learning curve with the laparoscopic surgery. Dr Myers then presented his results on RP on 307 patients within the last year. The positive margin rate was 13.6 and 11.7% for the total series and the ones with bilateral nerve bundle preservation, respectively. The overall pad-free rate was 93%. According to an unpublished retrospective study, the satisfactory intercourse rate with or without assistance in his patients was 84%.

*FUNCTIONAL OUTCOME OF RADICAL PROSTATECTOMY (BY YOICHI ARAI)*

Nerve-sparing RP is beneficial for the preservation of sexual potency. Whether urinary continence is also improved by the nerve-sparing procedure remains controversial. Dr Arai and co-workers examined the effect of neurovascular bundle (NVB) preservation during RP on short-term post-operative urinary continence. Eighty-five patients undergoing RP were prospectively enrolled. Electrophysiological testing was performed to confirm NVB preservation. Macroanatomical assessment was incorrect in 20% of the bundles compared with the electrophysiological assessment. The degree of NVB preservations (both NVB preserved or resected or one side preserved) were reclassified in 33% of the patients. Bilateral nerve-sparing group had significantly better post-operative urinary control than the unilateral nerve-sparing group and the non-nerve-sparing group. However, there was

no significant difference between groups in urinary control by macroanatomical classification. Similarly, the bilateral nerve-sparing group showed a significant better recovery of erectile function than the unilateral nerve-sparing and non-nerve-sparing group.

#### SESSION 4: CURRENT FAR EAST STATUS OF PROSTATE CANCER

CHAIRPERSON: FRITZ SCHRÖDER

##### *STATUS OF PROSTATE CANCER IN KOREA (BY CHONGWOOK LEE)*

The incidence rate of PC per 100 000 Koreans adjusted for the world population was reported to be only 2.98 in 1989. However, since the 1990s, the incidence of PC has dramatically increased in Korea. From 1995 to 2002, PC showed the highest rate of increase (2.11-fold increase) among all cancers in Korean males. In 1996, PC became one of the top 10 incident cancers in men in Korea and rose to the sixth in 2002 when the age-standardized incidence rate was 7.71 per 100 000. According to Korean Central Cancer Registry, PC accounts for 3% of male incident cancers in 2003. The mortality rate also rose rapidly in the past 10 years. The 5 year PC survival in 2003 was higher in the United States (over 90%) than Korea and Japan (~50–60%). At their institution of Seoul National University Hospital, over 70% of PCs diagnosed were of Stage D during the late 1980s, whereas Stage D cancers decreased to <50% during the new millennium. Meanwhile, the increases in average life span of Koreans and the westernization of life style, including diet pattern, may have contributed to the increase of PC. As the differences in PC incidence between Koreans residing in the United States and Korea have been observed, environmental changes may also be a significant factor.

##### *STATUS OF PROSTATE CANCER IN TAIWAN (BY YEONG-SHIAU PU)*

PC was the sixth leading male cancer (incidence rate 15.8 per 100 000 men) in 2000 and resulted in 742 deaths (mortality rate 6.45 per 100 000) in 2003. The incidence would rise up to 30 per 100 000 in 2004, over 7 times of that in 1990. The age-adjusted incidence and mortality rates in Taiwan are among the highest in Asian countries, which is higher than Japan and Korea but lower than Philippines. Widespread use of PSA and aging may be responsible for the rapid rise of PC in Taiwan in the past decade. However, westernized dietary habit is still controversial. It has been shown that among all risk factors, population aging was the strongest factor contributing to the increase of mortality rate in an age-period-cohort analysis in Taiwan. A case-control study on the risk factors of PC in a patient population comprised mainly of veterans (63%) in Taiwan showed that PC patients tended to have engaged in more physical activity (OR 2.2), have a lower body mass index (OR 2.0) and be less likely to consume vegetables cooked with pork lard (OR 0.47). In the past, up to 80% of PCs were locally

advanced or metastatic at diagnosis. Nowadays, a stage migration from late to early stages was seen in Taiwan. In 1999, a pathological review of 49 cystoprostatectomy specimens revealed latent PC in 33% and high-grade PIN in 49% of the prostates removed. The age-adjusted abnormal PSA ( $\geq 4.0$  ng/ml) rate was ~5%, very similar to that of a Japanese population. The cancer detection rate by screening in a health check-up setting was only 0.3%, which is significantly lower than those of Western countries. The PSA positive predictive value for a referral population was ~15% for subjects having a PSA between 4 and 10 ng/ml.

#### SESSION 5: MOLECULAR BIOLOGY AND NOVEL THERAPIES

CHAIRPERSON: EDWARD MESSING

##### *FUNCTION OF ANDROGEN RECEPTOR IN PROSTATE CANCER DEVELOPMENT (BY SHIGEAKI KATO)*

Androgen exerts a wide range of biological effects. Most of the biological actions of androgen are considered to exert through nuclear vitamin receptor-mediated gene expression. AR knockout (ARKO) male mice generated by the conventional method are expected to suffer from testicular feminization mutant (Tfm) abnormalities with infertility. Therefore, it is impossible to generate ARKO mouse lines by natural mutations. Dr Kato generated the floxed AR mice, and then crossed with female AR(-/+) heterozygote expressing Cre to generate ARKO mice line. The AR(-/Y) KO males grew healthy with typical features of Tfm abnormalities, and genital organs were atrophic with a marked decrease of serum testosterone levels, but with normal estrogen level. Hot spot mutation (T877A) in human AR ligand binding domain (LBD) is often found in hormone-refractory prostate cancer (HRPC). It is to be studied whether such an AR mutation leads to dominant proliferation. Dr Kato applied the floxed AR mice to 'knock' the human AR T877A mutant LBD cDNA into the corresponding mouse gene locus to express endogenous mouse-human hybrid AR mutant. The mice looked normal in external genital organs and reproduction. However, the prostate size in the AR (T877A/Y) mice observed at age of 17 weeks was clearly increased. No antagonistic action of hydroxyflutamide against prostate development was observed. These findings suggest that hypersensitivity of AR mutants to antagonists and endogenous steroid hormones may potentiate hormone dependency in PC development.

##### *PERSONALIZED PEPTIDE VACCINATION FOR PROSTATE CANCER (BY KYOGO ITOH)*

Antitumor vaccines have emerged as a promising therapeutic approach. Dr Itoh et al. recently devised a new peptide-based vaccination. In addition, they recently reported a benefit of the combination of the peptide vaccination and low-dose estramustine phosphate in patients with metastatic HRPC who had received the previous vaccination. Forty-nine patients



with HLA-A24+ or -A2+ HRPC were enrolled in the Phase I/II study. Those who showed a progressive disease in the vaccination alone treatment period were offered a combined treatment with vaccination and low-dose estramustine phosphate (280 mg/day). All patients developed Grade 1 or 2 local redness and swelling at the injection site. Best clinical response of the 49 cases with the vaccination alone was 5 partial responses, 5 stable diseases and 39 progressive diseases. Median time to progression was 2.5 months. Furthermore, the majority of patients treated with the combination therapy showed a decrease of PSA. Among the 14 patients receiving the combined treatment, 7 (50%) achieved partial responses. The median survival time with the combined therapy was 25 months. QOL were not deteriorated during the treatment. They did another study on 33 HRPC patients treated with the combined therapy and 33 matched HRPC control patients. All patients failed the estramustine phosphate-based therapy. Cause-specific survival in the 33 HRPC patients treated with the combined therapy was longer than that of the control group (log-rank  $P = 0.002$ ). Peptide vaccination was an independent factor of an improved survival by multivariate analysis.

*IN SITU GENE THERAPY FOR PROSTATE CANCER*  
(BY HIROMI KUMON)

More than 500 gene therapy protocols have been tested against cancer in the world by January 2005. Intraprostatic adenoviral vector transduction of the herpes simplex virus-thymidine kinase (HSV-tk) gene followed by the systemic administration of ganciclovir (GCV) is a form of cytoreductive gene therapy that has been examined extensively in preclinical studies and Phase I/II trials at Baylor College of Medicine (BCM). The safety and potential efficacy of HSV-tk + GCV *in situ* gene therapy were confirmed in 36 patients with biochemical recurrence (BCR) of localized PC after definitive radiation therapy. Dr Kumon et al. in collaboration with BCM conducted a Phase I/II study using the identical protocol. As of the time of presentation, seven patients have been treated with three at the first dose level of  $1 \times 10^9$  and four at the second dose level of  $1 \times 10^{10}$  PFU. No adverse events were observed, although transient vector shedding into urine and mild antibody response to adenovirus were detected. PSA responses were detected in 71% (5/7) of the patients. In one patient treated at the first dose level, PSA fell  $<4$  ng/ml for over 1 year. Recently, the patient received the second treatment at the higher level of  $1 \times 10^{10}$  2 years after the initial treatment, resulting in a repeated PSA response. In order to augment specific immune response, new strategies including immune gene therapy and combination therapy should be devised. IL-12 is a potent cytokine having antitumor activities involving IFN-gamma release, expansion and activation of NK and T cells, and differentiation of CD4+ cells into Th1 cells. *In situ* Adv-IL12 gene therapy was initiated on 17 May 2004 at BCM. A Phase I/II protocol was also approved by the IRB at Okayama University Hospital. In addition, novel therapeutic targets including RTVP-1 and REIC/DKK-3 for *in situ* gene

therapy for PC have been investigated extensively at both institutions. Extensive preclinical studies are underway at OUM.

**SESSION 6: THERAPY OF N+ AND ADVANCED PROSTATE CANCER**

CHAIRPERSON: CHONGWOOK LEE

*HORMONAL THERAPY FOR PROSTATE CANCER: TIMING AND CONTROVERSIES* (BY EDWARD MESSING)

Based on the VA cooperative studies in the early 1970s, in which 'early' androgen-deprivation therapy (ADT) delayed progression to metastatic disease but did not prolong survival, withholding ADT until there were symptomatic metastases (or at least documented bone metastases) became the standard of care for using this treatment. Recently, there have been several randomized trials indicating that for patients with aggressive local disease, early ADT, either alone or in combination with RT or RP has demonstrated significantly improved overall survival compared with deferred ADT. Morbidities may come from three aspects: treatment, cancer and PSA anxiety. As for RT, large mature randomized studies have shown a survival benefit in high-risk patients in the early ADT arm than in the deferred arm. Dr Messing summarized that local control is far better with early ADT group and the survival advantage is modest, primarily for very high-risk patients. For definitive ADT, the large MRC study showed that early treatment probably prolongs survival and reduces serious morbidity in those with T3, T4 and M+ disease. Dr Messing pointed out that in the trial EST 3886 where all patients underwent RP and were found to have micrometastatic disease in pelvic nodes (*NEJM* 1999), the overall survival, cancer-specific survival and progression-free survival were all better in the early ADT group than in the deferred group. In another randomized study European Organization for Research and Treatment of Cancer (EORTC) 30846 by Dr Schröder et al., there was only an insignificant trend favoring the early ADT group. Patients in this study appeared to have more advanced disease than those in EST 3886. In the large randomized trial enrolling 3000 men with non-metastatic PC, immediate orchiectomy or luteinizing hormone-releasing hormone agonist (LHRHa) compares favorably with delayed ADT in terms of cancer-specific survival but not non-cancer-specific survival. Dr Messing concluded that early ADT prolongs survival for poor risk or localized/regional PC. However, no clear data indicating early ADT confers a survival benefit for low and even moderate risk disease.

*CHEMOTHERAPY FOR ADVANCED PROSTATE CANCER*  
(BY DAVID SOLIT)

PC has long been considered as chemoresistant as shown by a meta-analysis of 26 studies done between 1987 and 1999 on 1683 patients, which showed only 8% response rate. Patients who have a PSA decline of over 50% after chemotherapy have

a better survival than those who do not. Both the two mitoxantrone trials showed benefits in palliative effects but not survival compared with steroid alone. However, these results cannot be extrapolated to other clinical states, specifically to asymptomatic patients. Several Phase II studies showed that single-agent docetaxel had PSA response rates ~40–50% and objective response rates ~24–40%. SWOG 9916 is a multicenter, randomized Phase III study comparing taxotere plus estramustine (D + E) versus mitoxantrone plus prednisone (M + P). The results showed that patients on D + E had a median overall survival of 18 months compared favorably with the M + P group where the median overall survival was 16 months ( $P = 0.01$ ). Another randomized study TAX327 that enrolled over 1000 patients was to compare docetaxel q3 weeks plus prednisone versus docetaxel q week plus prednisone versus M + P. The results showed a survival benefit with the group of docetaxel q3 week plus prednisone over the group of M + P (median survival 18.9 versus 16.4 months,  $P = 0.009$ ). Most patients treated with these docetaxel protocols were well tolerated. To build on hormone and chemotherapy, we may need more novel and active agents. Dr Solit specified as an example a novel cytotoxic agent ixabepilone, which targets a binding site in tubulin shared with taxanes but overcomes various mechanisms mediating resistance to taxanes. The agent is under clinical investigation in Memorial Sloan-Kettering Cancer Center (MSKCC), Dana Farber Cancer Center and UCSF.

## SESSION 7: THERAPY OF LOCALLY ADVANCED PROSTATE CANCER

CHAIRPERSON: DAVID SOLIT

### *RISEING PSA AFTER RADICAL PROSTATECTOMY: RESULTS OF RADIATION AND OF ANDROGEN DEPRIVATION THERAPY (BY PETER SCARDINO)*

After RP 25–40% of patients eventually experience BCR. Without further treatment the median time from BCR to metastases is 7–8 years. With ADT at metastases and other palliative measures, the median time from metastases to death is 5–6 years. Today, most patients with BCR are treated with RT or ADT before metastases appear. Dr Scardino and co-workers designed a nomogram (*JNCI* 1998) with which one can predict the 60-month recurrence-free probability after RP using preoperative PSA, biopsy Gleason's grade and clinical stage. Undetected local recurrence may give rise to late distant metastases, as has been shown after primary RT. Salvage RT is the only potentially curative therapy for men with failing RP. A multi-institutional study using salvage RT for failing RP showed that the 4 year progression-free probability is 45%. About 30% of them had a long-term disease-free state. The most important factor that predicts response to salvage RT is the PSA level at time of RT ( $PSA \leq 2$  ng/ml). Up to 50% of selected patients with a rising PSA after RP have locally recurrent PC. In the absence of positive lymph nodes at RP, two-thirds respond to salvage RT and one-third remain free of

disease 5 years later. These patients typically respond to ADT for over a decade. Individual prognosis depends on PSADT, Gleason grade and pathologic stage, and is predictable from a nomogram. Once the PSA rises again (BCR castrate) metastases rapidly appear (median 9 months) and patients succumb to their cancer (median 26 months).

### *TREATMENT OF PATIENTS WITH PSA RECURRENCE AFTER RADICAL PROSTATECTOMY (BY SEIJI NAITO)*

The standard therapy for patients with PSA recurrence after RP has not been established yet. Dr Naito and co-workers investigated the clinical outcome of RP by a multi-institutional randomized controlled trial to evaluate the significance of salvage RT and endocrine therapy for PSA recurrence after RP. They accrued 1192 patients who underwent RP during 1996–2002 with neither neoadjuvant nor adjuvant therapy from 36 institutes affiliated with the Japan Clinical Oncology Group (JCOG). All patients had a post-operative PSA < 0.2 ng/ml. PSA recurrence was defined as PSA  $\geq 0.2$  ng/ml. Extraprostatic extension (i.e. more than pT3) was observed in 33% of patients. During the median follow-up of 3.8 years, 25.3% developed a PSA recurrence. Preoperative PSA, pT stage and pathology GS were independent prognostic factors predicting PSA progression. In the protocol JCOG 0401, patients who have a PSA recurrence after RP are randomized into treatment group of either RT +/- ADT (experimental arm) or ADT alone (standard arm). In both arms, the treatment is started at PSA between 0.4 and 1.0 ng/ml. Patients in the standard arm are treated with bicalutamide and LHRHa if bicalutamide fails. In the experimental arm, a total dose of 64.8 Gy/36 Fr (50 days) external beam radiotherapy (EBRT) is delivered to the prostatic bed. In case of RT failure, bicalutamide will be started followed by LHRHa in case bicalutamide fails. The primary end point is time to treatment failure (TTF) of bicalutamide. The study was activated on 17 May 2004 and will clarify whether salvage RT has an advantage over ADT alone for PSA recurrence after RP.

CHAIRPERSON: HISATAKA KOBAYASHI

### *EXTERNAL BEAM RADIOTHERAPY FOR PROSTATE CANCER (BY MINAKO SUMI)*

Innovative treatment technologies of RT such as 3-dimension conformal radiotherapy (3D-CRT), intensity modulated radiotherapy (IMRT), image-guided RT (IGRT) and brachytherapy are being rapidly incorporated into practice in Japan. The Patterns of Care Study (PCS) evaluated the standard of practice for PC according to institutional stratification in Japan. Studies of practice patterns for patients treated in 1996–98 (PCS9698) and 1999–2001 (PCS9901) have been performed. The specific trends found in the study were the prevalence of higher radiation doses and the use of 3D-CRT for the treatment of clinically localized PC. In comparison with the United States, patients treated with RT in Japan were found to have more advanced and poorly differentiated diseases with higher PSA

levels. ADT was given before, during and after radiation therapy in 88.9, 88.1 and 79.8% of patients in PCS9901. Conformal therapy was performed in 43% and the median dose delivered was 68.4 Gy in PCS9901, which is increasing compared with 65 Gy in PCS9698. The PSA progression-free survival (<1.0 ng/ml) of patients receiving EBRT (66 Gy) and ADT at National Cancer Center Hospital (NCCH) was 65 and 57% at 5 and 10 years, respectively. The delivered dose was increased from 66 to 72 Gy about 2 years ago in NCCH. For patients in PCS9901, 24 and 16% had received dynamic and static 3D-CRT, respectively. Only 3% of them had received IMRT. RT has been recognized as curative treatment for PC in Japan.

*THE ROLE OF HIGH-DOSE EXTERNAL BEAM RADIOTHERAPY IN THE TREATMENT OF PROSTATE CANCER (BY MICHAEL ZELEFSKY)*

Clinical trials during the last 5–10 years have demonstrated the need for increased radiation doses to achieve a maximal local tumor control for patients with clinically localized PC. Conventional RT with 65–70 Gy provided only 50 and 24% PSA control rate for T1–2 and T3 tumors, respectively. The 10 year PSA RFS rates for favorable risk patients treated to 75.6 Gy was 85% compared with 58% for 70.2 Gy and 47% for <70.2 Gy. For intermediate-risk patients, the 10 year PSA RFS for patients treated to 75.6 Gy was 54% compared with 45% for those with 70.2 Gy and 23% for dose levels <70.2 Gy. For unfavorable risk patients the 10 year PSA RFS for 75.6 Gy was 41% compared with 26% for 70.2 Gy and 10% for <70.2 Gy. A Cox regression analysis demonstrated that pretreatment PSA ( $P < 0.001$ ), radiation dose, GS, clinical stage and neoadjuvant ADT were important independent predictors of PSA response. Post-treatment biopsy studies have also confirmed that higher doses >75.6 Gy have been associated with improved local control outcomes and improved metastasis-free survival. Higher radiation doses translate into improved tumor control which in turn reduces the risk of distant metastases and death from PC. With the advent of 3D-CRT and IMRT, the late side effects of therapy have been significantly reduced. These sophisticated treatment delivery systems have effectively reduced the volume of normal tissue carried to the higher radiation doses and have directly resulted in reduced frequencies of rectal bleeding and late urinary toxicities despite the application of dose levels as high as 86.4 Gy.

*WIDE RESECTION OF THE PROSTATE WITH NEOADJUVANT HORMONE THERAPY (BY HIROYUKI FUJIMOTO)*

From randomized prospective studies, the efficacy of combining RP with neoadjuvant hormone therapy (NHT) for cT1–2 PC has not proven to be adequate in terms of biochemical or local control. For cT3–4 disease, RP alone is not favored because of high rate of positive margins and PSA failure. Urologists at the National Cancer Center have developed a new surgical method of wide resection of the prostate with 6–12 months

of neoadjuvant ADT for patients with cT3–4 GS 7–9 tumors. From January 2000 to December 2003, 67 patients were enrolled for the non-nerve-sparing operation. Follow-up duration ranged from 210 to 1613 days (median 569 days). Wide resection was conducted without preservation of the bladder neck; the seminal vesicle, especially at their base, was covered by Denonvilliers' fascia. Pathological stage distribution was pT0 1 (2%), pT2 27 (42%), pT3a 17 (27%), pT3b 6 (9%) and pT4 13 (20%), respectively. The positive surgical margin rate was 10%. The projected 3 year PSA recurrence-free rate was 80% in all patients. Of note, pT0–pT3a patients had a 4 year PSA recurrence-free rate of 95%. No clinicopathological factors were found to be significant predictors for PSA recurrence. About 90% of patients were pad-free in 6 months. Preoperative risk analysis is necessary to avoid unsuccessful operation. Long-term follow-up is necessary.

CHAIRPERSON: ROBERT MYERS

*IMPROVED OUTCOMES WITH CONFORMAL PROSTATE BRACHYTHERAPY IN THE TREATMENT OF CLINICALLY LOCALIZED PROSTATE CANCER (BY MICHAEL ZELEFSKY)*

Permanent seed brachytherapy has become an important treatment modality for PC. The advantage of seed implantation with I-125 or Pd-103 radioactive seeds is that the seeds can deliver a substantially higher radiation dose to the prostate and surrounding tissue compared with modern EBRT. The results of TRUS-based preplan brachytherapy at 10–15 year for favorable risk patients were excellent. However, for high-risk patients, preplan brachytherapy is associated with a poor outcome. Dr Grimm's data on brachytherapy alone showed that 126 patients with PC of GS < 7 were treated by the 'Seattle' method of prostate brachytherapy. Median PSA at presentation was 5.1 ng/ml. Median PSA-based follow-up time was 81.4 months. PSA progression-free survival based on the ASTRO failure definition is 85% at 10 years. Acute side effects do exist with brachytherapy, such as: urinary symptoms (31%), urethral stricture (11%), rectal bleeding (11%) and ED (35–40%). The limitations also include that preplan will not consistently reflect the anatomic conditions in the operation room. To overcome the distortion mismatch, intraoperative 3D-conformal treatment planning for prostate brachytherapy was developed at MSKCC. Procedure relies on real-time imaging and planning. Minimum dose delivered is 144 Gy and can be up to 288 Gy. Consequently, the improvement in conformality of the radiation dose distribution did lead to a reduction in toxicity, which then translates into a better biochemical outcome.

*THE ROLE OF SALVAGE RADIOTHERAPY AFTER PROSTATECTOMY (BY MICHAEL ZELEFSKY)*

There has been an increasing interest in better defining the role of salvage RT for a rising PSA after RP. Only a select group of patients with disease confined to the prostate bed will benefit from RT. There are three ways of locating the possible source

of PSA relapse: diagnostic studies, PSA kinetics and prostatectomy pathology, albeit imprecise. The diagnostic studies may include MRI, bone scan, biopsy of the anastomosis, Prostatecint study and PET. Immediate detectability of PSA after surgery suggests micro-metastatic disease. Delayed PSA recurrence suggests local residual disease. PSADT > 6 months suggests local disease. Presalvage RT PSA > 0.6 suggests distant failure. The pathology information is also helpful. Positive margin and positive extracapsular extension suggest local recurrence, whereas seminal vesical invasion and lymph node micro-metastasis suggest distant failure. A multi-institutional study of salvage RT for failed RP ( $n = 537$ ; *JAMA* 2004) showed that the long-term biochemical progression-free and metastasis-free rate at 8 years is around 30 and 55%, respectively. By multivariate analysis, high pretreatment PSA, high GS, negative surgical margin and short PSADT are the four independent risk factors predicting biochemical relapse after salvage RT. A nomogram is available for the prediction.

*WHY IS PROSTATE CANCER INCREASING IN ASIAN COUNTRIES INCLUDING JAPAN? (BY TAJI TSUKAMOTO)*

Dr Tsukamoto first stated that 30 and 90 men die of PC every day in Japan and the United States, respectively, and that 60 and 600 men are diagnosed as PC every day in Japan and the United States, respectively. The age-adjusted mortality rates per 100 000 of PC in Japanese men have gradually increased with 0.5 in 1950, 3.8 in 1975, 6.0 in 1990 and 8.4 in 2001. The increase has skyrocketed since 1990. This increase pattern of the disease is similar to that found in the United States where the incidence suddenly started to increase in 1985, reached the maximum in 1993 and decreased thereafter. Prolongation of lifespan, early detection with PSA, changes in lifestyle and genetic predisposition may be responsible for elevated incidence and mortality rates. PSA examination in clinics detected 5–8% of patients with PC among those with lower urinary tract symptoms. The PC incidence for Japanese living in Hawaii is higher than Japanese living in Japan but still lower than Americans. It is reported that mutation pattern in surgical specimens is different between Caucasian and

Japanese men. It has been shown that Japanese men have a smaller prostate volume than American, Scotland and Dutch men across all age groups between 40 and 80 years of age.

## CLOSING

CHAIRPERSON: ROBERT MYERS

*SUMMARY OF SYMPOSIUM AND CLOSING REMARKS  
(BY TADAO KAKIZOE)*

Dr Kakizoe gave the closing remarks by summarizing the lectures that have been given in the past two-and-a-half days. We learned that PC is the most common cancer of males in several developed countries. PC is also increasing sharply in some Asian countries including Japan, Korea and Taiwan. PC is full of heterogeneity of phenotypes and genotypes. PSADT is a good marker for watchful waiting; latent cancer, screened cancer and clinical cancer show same over-expression of p53 and Ki-67. There definitely is harm from screening such as psychological stress, side effects and over-treatment and the benefit of screening is to be shown. Serum PSA is correlated with PC volume. PSA < 2.5 is advised as a new cut-point for Americans. We need to develop new markers and imaging procedures. In chemoprevention of PC, we doubted that 'prevented' tumors may not be biologically and clinically important. NVB preservation may be associated not only with sexual function but also with better continence recovery. Significant progress has been made in the molecular mechanism of prostate tumorigenesis, development of gene therapy and immunotherapy in Japan. We also had lectures that covered the optimal timing of ADT and the recent progress in chemotherapy for PC. There are multiple choices of therapies for PSA recurrence after RP. We also know the expected results of salvage RT and ADT for these patients. Various forms of RT have become major tools for the treatment of these patients. There are multiple nomograms available to be used to predict treatment outcome. A successful and fruitful symposium was concluded.