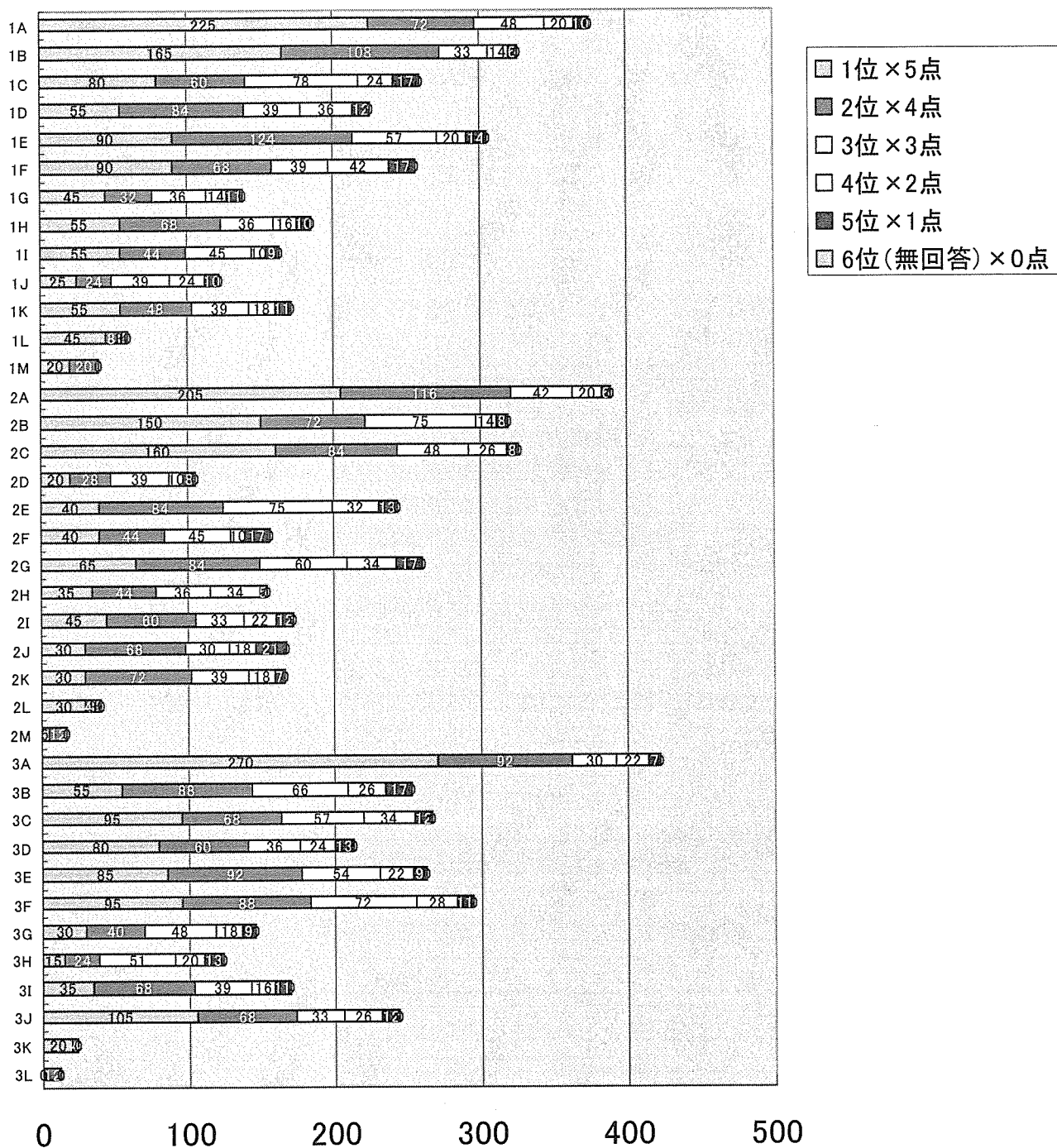
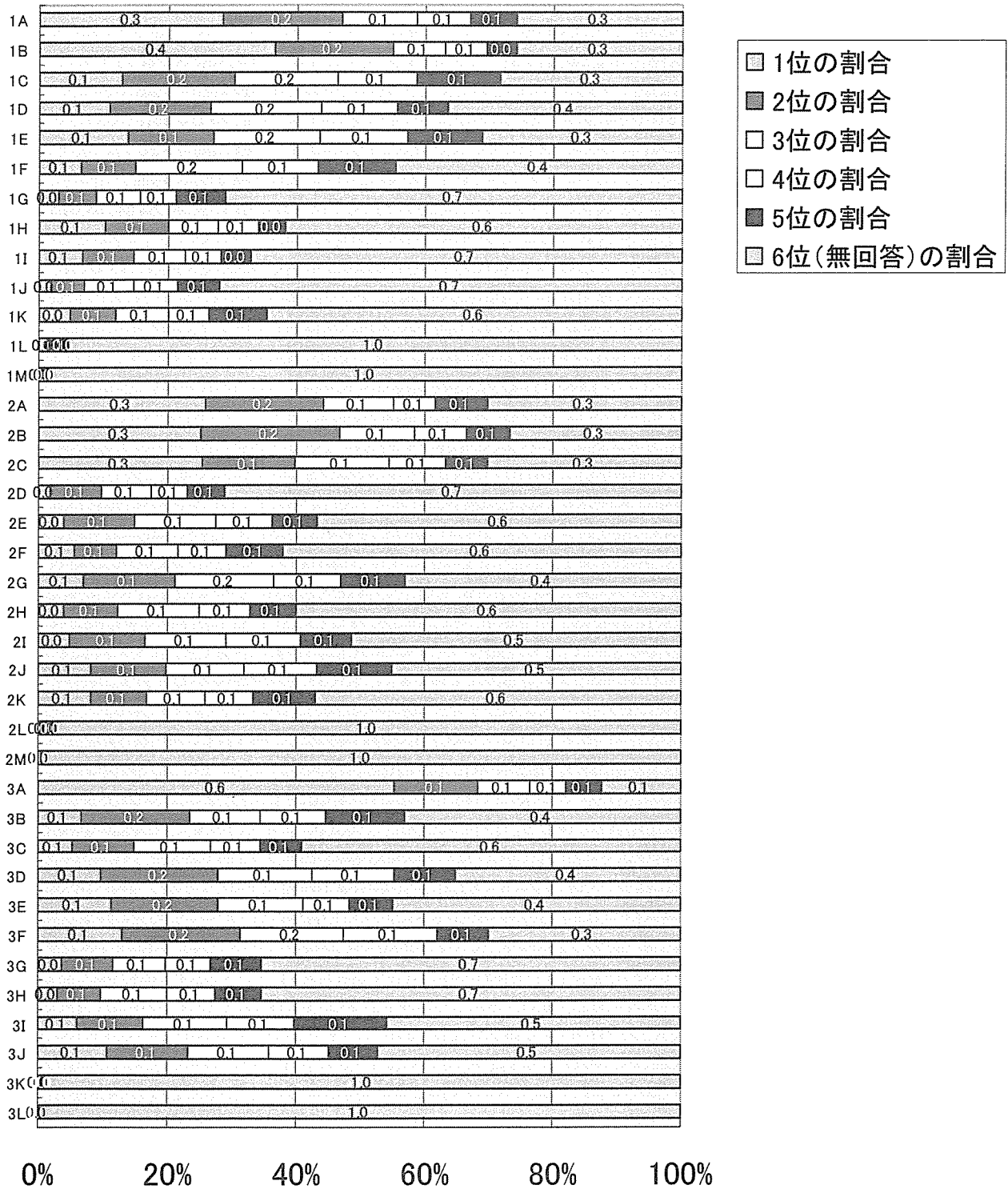


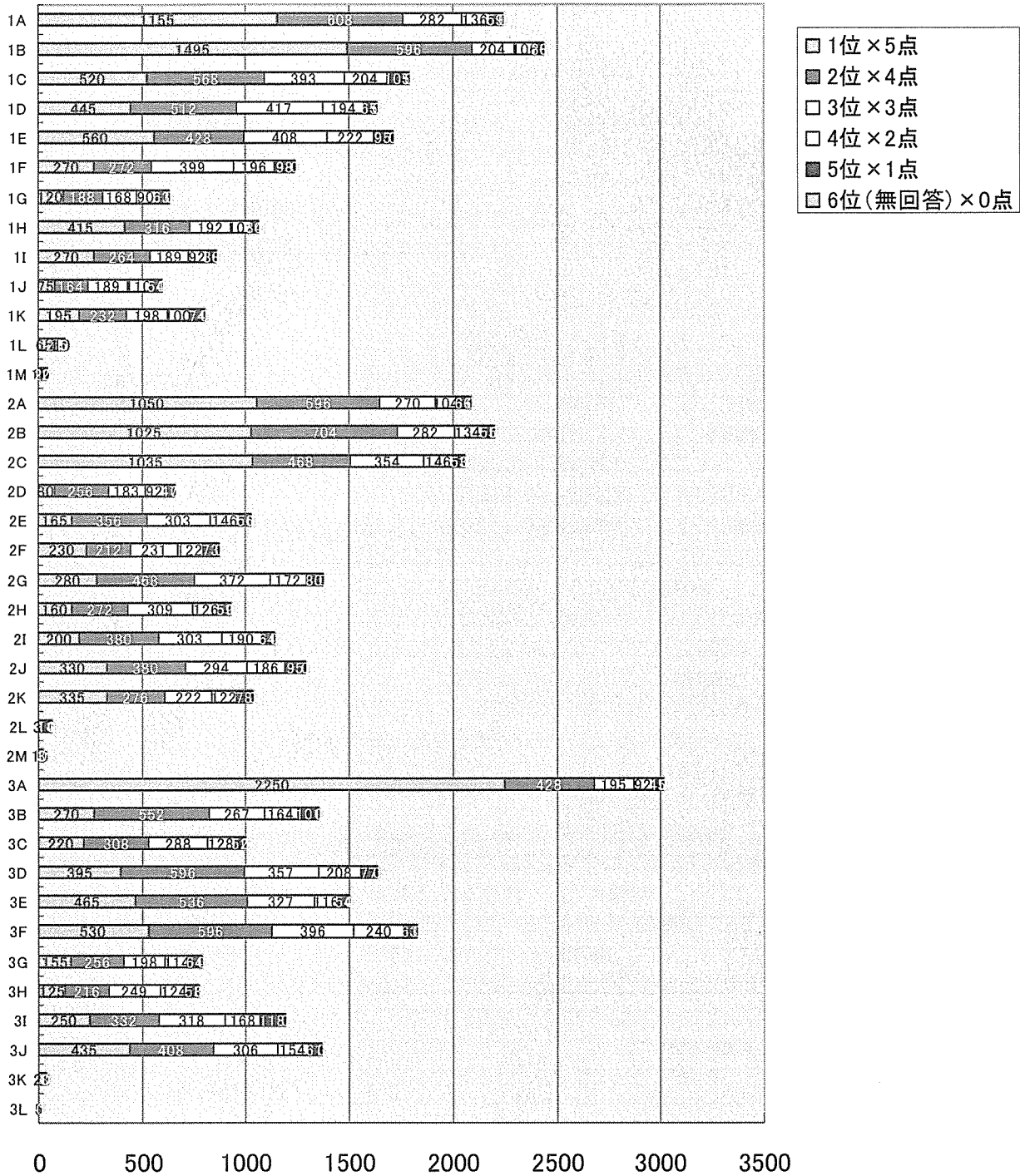
## 大学/大学以外に所属する研究者・社会医学系 加算率



## 大学/大学以外に所属する研究者・臨床系 100分率



## 大学/大学以外に所属する研究者・臨床系 加算率



## わが国の疾患別疾病負担について

主任研究者 佐藤 敏彦（北里大学医学部）

分担研究者 平尾 智広（香川大学医学部）

### 研究要旨：

WHO が推奨している National Burden of Disease Study の方法に順じ、2000 年時における我が国の疾患別 DALY の算出を行った。データとして死因統計と利用しうる罹患率、有病率、罹病期間等のデータを用いた。その結果、死因別の順位は脳卒中（死因の 14.3%）、肺炎（同 9.7%）、虚血性心疾患（同 9.6%）、肺がん（同 5.7%）、胃がん（同 5.5%）と続くのに対し、DALY では 1 位は脳卒中（全 DALY の 8.7%）と変わらないものの、以下はうつ病（同 5.5%）、アルツハイマー病および認知症（同 4.6%）、虚血性心疾患（同 4.2%）、自殺（同 4.1%）、難聴（同 3.9%）と続き、精神疾患等、非致死性疾患が上位に食い込む結果となった。

### A. 目的

世界保健機関（WHO）が推奨している方法により、わが国の疾患別の疾病負担を算出し、研究費配分に考慮すべき因子として資することを目的とする。

### B. 方法

WHO が推奨している National Burden of Disease Study の方法に順じ、2000 年時における我が国の疾患別 DALY の算出を行った。データとして死因統計と利用しうる罹患率、有病率、罹病期間等のデータを用いた。

### C. 結果

死因別の順位は脳卒中（死因の 14.3%）、肺炎（同 9.7%）、虚血性心疾患（同 9.6%）、肺がん（同 5.7%）、胃がん（同 5.5%）と続くのに対し、DALY では 1 位は脳卒中（全 DALY の 8.7%）と変わらないものの、以下はうつ病（同 5.5%）、アルツハイマー病および認知症（同 4.6%）、虚血性心疾患（同 4.2%）、自殺（同 4.1%）、難聴（同 3.9%）と続き、精神疾患等、非致死性疾患が上位に食い込む結果となった。

### D. 考察

今回の疾病負担の算出にあたっては WHO が用いている障害重み付け係数を用いているが、わが国独自の重み付け係数につき決定することが必要と思われる。最終年度においては新たな重み付け係数を決定することが必要である。また、今回算出に用いたデータのうち、わが国の非致死性データを用いられた割合は少ない。今後は、患者調査データおよびその他研究データの利用、疫学モデルの再考を含め、わが国の疾病負担の実態をより反映する詳細法による算出の改善を引き続き行う必要がある。

### 参考文献

1. Mathers CD, Stein C, Ma Fat D, Rao C, Inoue M, Tomijima N, Berbard C, Lopez AD, Murray CJL (2002). Global Burden of Disease 2000: Version 2 methods and results. Geneva, World Health Organization (GPE Discussion Paper No. 50). Available at <http://www.who.int/evidence>
2. World Health Organization. World Health Report 2002. Reducing Risks, Promoting

Healthy Life. Geneva: WHO, 2002. Available  
at  
<http://www.who.int/whr>

3. Mathers CD, Vos T, Lopez AD, Ezzati M.  
National Burden of Disease Studies: A  
Practical Guide. Edition 1.1. 2001. Geneva,  
World Health Organization, Global  
Program on Evidence for Health Policy.  
Available at  
<http://www.who.int/evidence/nbd>





Deaths by age, sex and cause in 2000

| Cause   | Females |     |     |     |     |       |       |       |       |       |       |        |        |        |        |        |        |        |         |
|---|---------|-----|-----|-----|-----|-------|-------|-------|-------|-------|-------|--------|--------|--------|--------|--------|--------|--------|---------|
|   | F0      | F1  | F5  | F10 | F15 | F20   | F25   | F30   | F35   | F40   | F45   | F50    | F55    | F60    | F65    | F70    | F75    | F80    | F85     |
| W000 All causes   | 1,867   | 626 | 300 | 257 | 678 | 1,208 | 1,591 | 1,868 | 2,472 | 3,682 | 6,664 | 11,829 | 14,183 | 18,434 | 26,108 | 40,064 | 56,725 | 73,488 | 174,300 |
| W001 Communicable, maternal, perinatal and nutritional conditions | 789     | 123 | 36  | 24  | 47  | 45    | 74    | 113   | 188   | 247   | 384   | 647    | 1,036  | 2,081  | 3,402  | 6,080  | 9,846  | 31,107 | 9,846   |
| W002 Infectious and parasitic diseases                            | 88      | 39  | 10  | 6   | 22  | 25    | 26    | 17    | 29    | 50    | 105   | 183    | 332    | 485    | 982    | 1,576  | 1,679  | 2,848  | 1,679   |
| W003 Tuberculosis   |         | 1   |     |     |     | 1     | 3     | 3     | 1     | 2     | 4     | 12     | 28     | 59     | 135    | 239    | 300    | 347    | 473     |
| W004 Sexually transmitted diseases excluding HIV                  |         |     |     |     |     |       |       |       |       |       | 2     | 3      | 3      | 3      | 5      | 8      | 7      | 15     | 32      |
| W005 Syphilis   |         |     |     |     |     |       |       |       |       |       | 1     | 1      | 1      | 1      | 1      | 1      | 1      | 2      | 2       |
| W006 Chlamydia  |         |     |     |     |     |       |       |       |       |       |       |        |        |        |        |        |        |        |         |
| W007 Gonorrhoea   |         |     |     |     |     |       |       |       |       |       |       |        |        |        |        |        |        |        |         |
| W008 Other STDs   |         |     |     |     |     |       |       |       |       |       |       |        |        |        |        |        |        |        |         |
| W009 HIV/AIDS   |         |     |     |     |     |       |       |       |       |       |       |        |        |        |        |        |        |        |         |
| W010 Diarrhoeal diseases  | 8       | 6   | 2   |     | 1   | 2     | 2     | 1     | 1     | 1     | 2     | 3      | 12     | 10     | 32     | 47     | 110    | 124    | 363     |
| W011 Childhood-cluster diseases                                   | 1       | 4   | 1   |     | 1   | 1     | 1     | 1     | 1     | 1     | 1     | 1      | 1      | 1      | 1      | 1      | 3      | 3      | 2       |
| W012 Pertussis  |         |     |     |     |     |       |       |       |       |       |       |        |        |        |        |        |        |        |         |
| W013 Poliomylitis   |         |     |     |     |     |       |       |       |       |       |       |        |        |        |        |        |        |        |         |
| W014 Diphtheria   |         |     |     |     |     |       |       |       |       |       |       |        |        |        |        |        |        |        |         |
| W015 Measles  | 1       | 4   | 1   |     | 1   | 1     | 1     | 1     | 1     | 1     |       |        |        |        |        |        |        |        |         |
| W016 Tetanus  |         |     |     |     |     |       |       |       |       |       |       |        |        |        |        |        |        |        |         |
| W017 Meningitis   | 8       | 2   |     | 1   | 2   | 2     | 1     | 2     | 2     | 13    | 33    | 50     | 66     | 64     | 73     | 64     | 56     | 44     | 34      |
| W018 Hepatitis B  | 2       |     |     | 1   | 1   | 1     | 3     | 3     | 8     | 8     | 7     | 13     | 30     | 99     | 146    | 312    | 371    | 240    | 229     |
| W019 Hepatitis C  |         |     |     |     |     |       |       |       |       |       |       |        |        |        |        |        |        |        |         |
| W020 Malaria  |         |     |     |     |     |       |       |       |       |       |       |        |        |        |        |        |        |        |         |
| W021 Tropical-cluster diseases                                    |         |     |     |     |     |       |       |       |       |       |       |        |        |        |        |        |        |        |         |
| W022 Trypanosomiasis  |         |     |     |     |     |       |       |       |       |       |       |        |        |        |        |        |        |        |         |
| W023 Chagas disease   |         |     |     |     |     |       |       |       |       |       |       |        |        |        |        |        |        |        |         |
| W024 Schistosomiasis  |         |     |     |     |     |       |       |       |       |       |       |        |        |        |        |        |        |        |         |
| W025 Leishmaniasis  |         |     |     |     |     |       |       |       |       |       |       |        |        |        |        |        |        |        |         |
| W026 Lymphatic filariasis   |         |     |     |     |     |       |       |       |       |       |       |        |        |        |        |        |        |        |         |
| W027 Onchocerciasis   |         |     |     |     |     |       |       |       |       |       |       |        |        |        |        |        |        |        |         |
| W028 Leprosy  |         |     |     |     |     |       |       |       |       |       |       |        |        |        |        |        |        |        |         |
| W029 Dengue   |         |     |     |     |     |       |       |       |       |       |       |        |        |        |        |        |        |        |         |
| W030 Japanese encephalitis  |         |     |     |     |     |       |       |       |       |       |       |        |        |        |        |        |        |        |         |
| W031 Trachoma   |         |     |     |     |     |       |       |       |       |       |       |        |        |        |        |        |        |        |         |
| W032 Intestinal nematode infections                               |         |     |     |     |     |       |       |       |       |       |       |        |        |        |        |        |        |        |         |
| W033 Ascariasis   |         |     |     |     |     |       |       |       |       |       |       |        |        |        |        |        |        |        |         |
| W034 Trichuriasis   |         |     |     |     |     |       |       |       |       |       |       |        |        |        |        |        |        |        |         |
| W035 Ancylostomiasis and necatoriasis                             |         |     |     |     |     |       |       |       |       |       |       |        |        |        |        |        |        |        |         |
| W036 Other intestinal infections                                  | 67      | 25  | 7   | 4   | 18  | 17    | 15    | 4     | 15    | 25    | 51    | 77     | 116    | 190    | 379    | 498    | 709    | 887    | 1,670   |
| W037 Other infectious diseases                                    | 48      | 78  | 23  | 17  | 21  | 15    | 26    | 51    | 44    | 52    | 95    | 184    | 302    | 530    | 1,073  | 2,147  | 4,414  | 7,992  | 27,595  |
| W038 Respiratory infections                                       | 43      | 71  | 22  | 16  | 20  | 14    | 23    | 49    | 42    | 51    | 93    | 163    | 295    | 523    | 1,065  | 2,135  | 4,382  | 7,928  | 27,431  |
| W039 Lower respiratory infections                                 |         |     |     |     |     |       |       |       |       |       |       |        |        |        |        |        |        |        |         |
| W040 Upper respiratory infections                                 | 5       | 6   | 1   | 1   | 1   | 1     | 1     | 2     | 1     | 1     | 2     | 1      | 1      | 7      | 8      | 12     | 29     | 52     | 164     |
| W041 Otitis media   |         |     |     |     |     |       |       |       |       |       |       |        |        |        |        |        |        |        |         |
| W042 Maternal conditions  |         |     |     |     |     |       |       |       |       |       |       |        |        |        |        |        |        |        |         |
| W043 Maternal haemorrhage   |         |     |     |     |     | 3     | 4     | 15    | 38    | 15    | 7     | 1      | 1      | 1      | 1      | 1      | 3      | 2      | 1       |
| W044 Maternal sepsis  |         |     |     |     |     | 1     |       | 5     | 10    | 7     | 2     |        |        |        |        |        |        |        |         |
| W045 Hypertensive disorders of pregnancy                          |         |     |     |     |     |       |       |       |       |       |       |        |        |        |        |        |        |        |         |
| W046 Obstructed labour  |         |     |     |     |     |       |       |       |       |       |       |        |        |        |        |        |        |        |         |
| W047 Abortion   |         |     |     |     |     |       |       |       |       |       |       |        |        |        |        |        |        |        |         |
| W048 Other maternal conditions                                    |         |     |     |     |     |       |       |       |       |       |       |        |        |        |        |        |        |        |         |
| W049 Conditions arising during the perinatal period               |         |     |     |     |     |       |       |       |       |       |       |        |        |        |        |        |        |        |         |
| W050 Low birth weight   | 602     | 5   | 2   |     |     | 2     | 6     | 23    | 5     | 5     | 1     | 1      | 2      | 2      | 8      | 19     | 25     | 57     | 294     |
| W051 Birth asphyxia and birth trauma                              | 40      |     |     |     |     |       |       |       |       |       |       |        |        |        |        |        |        |        |         |
| W052 Other perinatal conditions                                   | 329     | 5   |     |     |     |       |       |       |       |       |       |        |        |        |        |        |        |        |         |
| W053 Nutritional deficiencies                                     | 234     | 1   | 2   |     |     |       |       |       |       |       |       |        |        |        |        |        |        |        |         |
| W054 Protein-energy malnutrition                                  | 1       | 1   | 1   |     | 1   | 1     | 5     | 4     | 4     | 7     | 15    | 15     | 11     | 20     | 26     | 59     | 91     | 184    | 665     |
| W055 Iodine deficiency  |         |     |     |     |     |       |       |       |       |       |       |        |        |        |        |        |        |        |         |
| W056 Vitamin A deficiency   |         |     |     |     |     |       |       |       |       |       |       |        |        |        |        |        |        |        |         |
| W057 Iron-deficiency anaemia                                      |         |     |     |     |     |       |       |       |       |       |       |        |        |        |        |        |        |        |         |
| W058 Other nutritional disorders                                  | 1,020   | 375 | 166 | 167 | 270 | 436   | 696   | 1,077 | 1,734 | 2,877 | 5,541 | 10,015 | 12,056 | 15,823 | 24,213 | 34,413 | 47,834 | 60,692 | 138,082 |
| W059 Noncommunicable diseases                                     | 6       | 56  | 54  | 59  | 102 | 163   | 328   | 584   | 1,100 | 1,827 | 3,868 | 6,546  | 7,587  | 9,140  | 12,783 | 15,651 | 17,510 | 17,246 | 25,524  |
| W060 Malignant neoplasms  |         |     |     |     |     |       |       |       |       |       |       |        |        |        |        |        |        |        |         |
| W061 Mouth and oropharynx cancers                                 |         |     |     |     |     |       |       |       |       |       |       |        |        |        |        |        |        |        |         |
| W062 Oesophagus cancer  |         |     |     |     |     |       |       |       |       |       |       |        |        |        |        |        |        |        |         |
| W063 Stomach cancer   |         |     |     |     |     |       |       |       |       |       |       |        |        |        |        |        |        |        |         |
| W064 Colon and rectum cancers                                     |         |     |     |     |     |       |       |       |       |       |       |        |        |        |        |        |        |        |         |
| W065 Liver cancer   |         |     |     |     |     |       |       |       |       |       |       |        |        |        |        |        |        |        |         |
| W066 Pancreas cancer  |         |     |     |     |     |       |       |       |       |       |       |        |        |        |        |        |        |        |         |
| W067 Trachea, bronchus and lung cancers                           |         |     |     |     |     |       |       |       |       |       |       |        |        |        |        |        |        |        |         |
| W068 Melanoma and other skin cancers                              |         |     |     |     |     |       |       |       |       |       |       |        |        |        |        |        |        |        |         |
| W069 Breast cancer  |         |     |     |     |     |       |       |       |       |       |       |        |        |        |        |        |        |        |         |
| W070 Cervix uteri cancer  |         |     |     |     |     |       |       |       |       |       |       |        |        |        |        |        |        |        |         |
| W071 Corpus uteri cancer  |         |     |     |     |     |       |       |       |       |       |       |        |        |        |        |        |        |        |         |
| W072 Ovary cancer   |         |     |     |     |     |       |       |       |       |       |       |        |        |        |        |        |        |        |         |
| W073 Prostate cancer  |         |     |     |     |     |       |       |       |       |       |       |        |        |        |        |        |        |        |         |
| W074 Bladder cancer   |         |     |     |     |     |       |       |       |       |       |       |        |        |        |        |        |        |        |         |
| W075 Lymphomas and multiple myeloma                               |         |     |     |     |     |       |       |       |       |       |       |        |        |        |        |        |        |        |         |
| W076 Leukaemia  | 2       | 26  | 20  | 13  | 38  | 49    | 50    | 50    | 56    | 81    | 132   | 190    | 202    | 250    | 340    | 375    | 370    | 312    | 369     |
| W077 Other malignant neoplasms                                    | 4       | 24  | 31  | 41  | 42  | 45    | 58    | 67    | 87    | 141   | 251   | 509    | 689    | 906    | 1,646  | 2,104  | 2,679  | 2,804  | 4,395   |
| W078 Other neoplasms  | 2       | 4   | 16  | 24  | 15  | 25    | 30    | 29    | 25    | 49    | 98    | 144    | 151    | 206    | 269    | 488    | 626    | 782    | 1,430   |
| W079 Diabetes mellitus  | 1       | 1   |     |     |     |       |       |       |       |       |       |        |        |        |        |        |        |        |         |
| W080 Endocrine disorders  | 36      | 24  | 5   | 12  | 10  | 20    | 27    | 32    | 23    | 44    | 52    | 82     | 105    | 147    | 238    | 309    | 411    | 533    | 632     |



**Mortality inputs**

**Deaths by age, sex and cause in 2000**

**Females**

| Source  | F0 | F1 | F5 | F10 | F15 | F20 | F25 | F30 | F35 | F40 | F45 | F50 | F55 | F60 | F65 | F70 | F75 | F80 | F85 |  |
|---|----|----|----|-----|-----|-----|-----|-----|-----|-----|-----|-----|-----|-----|-----|-----|-----|-----|-----|--|
| W081 Neuro-psychiatric conditions                     |    |    |    |     |     |     |     |     |     |     |     |     |     |     |     |     |     |     |     |  |
| W082 Unipolar depressive disorders                    |    |    |    |     |     |     |     |     |     |     |     |     |     |     |     |     |     |     |     |  |
| W083 Bipolar affective disorder                       |    |    |    |     |     |     |     |     |     |     |     |     |     |     |     |     |     |     |     |  |
| W084 Schizophrenia                                    |    |    |    |     |     |     |     |     |     |     |     |     |     |     |     |     |     |     |     |  |
| W085 Epilepsy   |    |    |    |     |     |     |     |     |     |     |     |     |     |     |     |     |     |     |     |  |
| W086 Alcohol use disorders                            |    |    |    |     |     |     |     |     |     |     |     |     |     |     |     |     |     |     |     |  |
| W087 Alzheimer and other dementias                    |    |    |    |     |     |     |     |     |     |     |     |     |     |     |     |     |     |     |     |  |
| W088 Parkinson disease                                |    |    |    |     |     |     |     |     |     |     |     |     |     |     |     |     |     |     |     |  |
| W089 Multiple sclerosis                               |    |    |    |     |     |     |     |     |     |     |     |     |     |     |     |     |     |     |     |  |
| W090 Drug use disorders                               |    |    |    |     |     |     |     |     |     |     |     |     |     |     |     |     |     |     |     |  |
| W091 Posttraumatic stress disorder                    |    |    |    |     |     |     |     |     |     |     |     |     |     |     |     |     |     |     |     |  |
| W092 Obsessive-compulsive disorder                    |    |    |    |     |     |     |     |     |     |     |     |     |     |     |     |     |     |     |     |  |
| W093 Panic disorder                                   |    |    |    |     |     |     |     |     |     |     |     |     |     |     |     |     |     |     |     |  |
| W094 Insomnia (primary)                               |    |    |    |     |     |     |     |     |     |     |     |     |     |     |     |     |     |     |     |  |
| W095 Migraine   |    |    |    |     |     |     |     |     |     |     |     |     |     |     |     |     |     |     |     |  |
| W096 Mental Retardation attributable to lead exposure |    |    |    |     |     |     |     |     |     |     |     |     |     |     |     |     |     |     |     |  |
| W097 Other neuropsychiatric disorders                 |    |    |    |     |     |     |     |     |     |     |     |     |     |     |     |     |     |     |     |  |
| W098 Sense organ diseases                             |    |    |    |     |     |     |     |     |     |     |     |     |     |     |     |     |     |     |     |  |
| W099 Glaucoma   |    |    |    |     |     |     |     |     |     |     |     |     |     |     |     |     |     |     |     |  |
| W100 Cataracts  |    |    |    |     |     |     |     |     |     |     |     |     |     |     |     |     |     |     |     |  |
| W101 Vision disorders, age-related                    |    |    |    |     |     |     |     |     |     |     |     |     |     |     |     |     |     |     |     |  |
| W102 Hearing loss, adult onset                        |    |    |    |     |     |     |     |     |     |     |     |     |     |     |     |     |     |     |     |  |
| W103 Other sense organ disorders                      |    |    |    |     |     |     |     |     |     |     |     |     |     |     |     |     |     |     |     |  |
| W104 Cardiovascular diseases                          |    |    |    |     |     |     |     |     |     |     |     |     |     |     |     |     |     |     |     |  |
| W105 Rheumatic heart disease                          |    |    |    |     |     |     |     |     |     |     |     |     |     |     |     |     |     |     |     |  |
| W106 Hypertensive heart disease                       |    |    |    |     |     |     |     |     |     |     |     |     |     |     |     |     |     |     |     |  |
| W107 Ischaemic heart disease                          |    |    |    |     |     |     |     |     |     |     |     |     |     |     |     |     |     |     |     |  |
| W108 Cerebrovascular disease                          |    |    |    |     |     |     |     |     |     |     |     |     |     |     |     |     |     |     |     |  |
| W109 Inflammatory heart diseases                      |    |    |    |     |     |     |     |     |     |     |     |     |     |     |     |     |     |     |     |  |
| W110 Other cardiovascular diseases                    |    |    |    |     |     |     |     |     |     |     |     |     |     |     |     |     |     |     |     |  |
| W111 Respiratory diseases                             |    |    |    |     |     |     |     |     |     |     |     |     |     |     |     |     |     |     |     |  |
| W112 Chronic obstructive pulmonary disease            |    |    |    |     |     |     |     |     |     |     |     |     |     |     |     |     |     |     |     |  |
| W113 Asthma   |    |    |    |     |     |     |     |     |     |     |     |     |     |     |     |     |     |     |     |  |
| W114 Other respiratory diseases                       |    |    |    |     |     |     |     |     |     |     |     |     |     |     |     |     |     |     |     |  |
| W115 Digestive diseases                               |    |    |    |     |     |     |     |     |     |     |     |     |     |     |     |     |     |     |     |  |
| W116 Peptic ulcer disease                             |    |    |    |     |     |     |     |     |     |     |     |     |     |     |     |     |     |     |     |  |
| W117 Cirrhosis of the liver                           |    |    |    |     |     |     |     |     |     |     |     |     |     |     |     |     |     |     |     |  |
| W118 Appendicitis                                     |    |    |    |     |     |     |     |     |     |     |     |     |     |     |     |     |     |     |     |  |
| W119 Other digestive diseases                         |    |    |    |     |     |     |     |     |     |     |     |     |     |     |     |     |     |     |     |  |
| W120 Genito-urinary diseases                          |    |    |    |     |     |     |     |     |     |     |     |     |     |     |     |     |     |     |     |  |
| W121 Nephritis and nephrosis                          |    |    |    |     |     |     |     |     |     |     |     |     |     |     |     |     |     |     |     |  |
| W122 Benign prostatic hypertrophy                     |    |    |    |     |     |     |     |     |     |     |     |     |     |     |     |     |     |     |     |  |
| W123 Other genitourinary system diseases              |    |    |    |     |     |     |     |     |     |     |     |     |     |     |     |     |     |     |     |  |
| W124 Skin diseases                                    |    |    |    |     |     |     |     |     |     |     |     |     |     |     |     |     |     |     |     |  |
| W125 Musculoskeletal diseases                         |    |    |    |     |     |     |     |     |     |     |     |     |     |     |     |     |     |     |     |  |
| W126 Rheumatoid arthritis                             |    |    |    |     |     |     |     |     |     |     |     |     |     |     |     |     |     |     |     |  |
| W127 Osteoarthritis                                   |    |    |    |     |     |     |     |     |     |     |     |     |     |     |     |     |     |     |     |  |
| W128 Gout   |    |    |    |     |     |     |     |     |     |     |     |     |     |     |     |     |     |     |     |  |
| W129 Low back pain                                    |    |    |    |     |     |     |     |     |     |     |     |     |     |     |     |     |     |     |     |  |
| W130 Other musculoskeletal disorders                  |    |    |    |     |     |     |     |     |     |     |     |     |     |     |     |     |     |     |     |  |
| W131 Congenital anomalies                             |    |    |    |     |     |     |     |     |     |     |     |     |     |     |     |     |     |     |     |  |
| W132 Abdominal wall defect                            |    |    |    |     |     |     |     |     |     |     |     |     |     |     |     |     |     |     |     |  |
| W133 Anencephaly                                      |    |    |    |     |     |     |     |     |     |     |     |     |     |     |     |     |     |     |     |  |
| W134 Anorectal atresia                                |    |    |    |     |     |     |     |     |     |     |     |     |     |     |     |     |     |     |     |  |
| W135 Cleft lip  |    |    |    |     |     |     |     |     |     |     |     |     |     |     |     |     |     |     |     |  |
| W136 Cleft palate                                     |    |    |    |     |     |     |     |     |     |     |     |     |     |     |     |     |     |     |     |  |
| W137 Oesophageal atresia                              |    |    |    |     |     |     |     |     |     |     |     |     |     |     |     |     |     |     |     |  |
| W138 Renal agenesis                                   |    |    |    |     |     |     |     |     |     |     |     |     |     |     |     |     |     |     |     |  |
| W139 Down syndrome                                    |    |    |    |     |     |     |     |     |     |     |     |     |     |     |     |     |     |     |     |  |
| W140 Congenital heart anomalies                       |    |    |    |     |     |     |     |     |     |     |     |     |     |     |     |     |     |     |     |  |
| W141 Spina bifida                                     |    |    |    |     |     |     |     |     |     |     |     |     |     |     |     |     |     |     |     |  |
| W142 Other Congenital anomalies                       |    |    |    |     |     |     |     |     |     |     |     |     |     |     |     |     |     |     |     |  |
| W143 Oral conditions                                  |    |    |    |     |     |     |     |     |     |     |     |     |     |     |     |     |     |     |     |  |
| W144 Dental caries                                    |    |    |    |     |     |     |     |     |     |     |     |     |     |     |     |     |     |     |     |  |
| W145 Periodontal disease                              |    |    |    |     |     |     |     |     |     |     |     |     |     |     |     |     |     |     |     |  |
| W146 Edentulism                                       |    |    |    |     |     |     |     |     |     |     |     |     |     |     |     |     |     |     |     |  |
| W147 Other oral diseases                              |    |    |    |     |     |     |     |     |     |     |     |     |     |     |     |     |     |     |     |  |
| W148 Injuries   |    |    |    |     |     |     |     |     |     |     |     |     |     |     |     |     |     |     |     |  |
| W149 Unintentional injuries                           |    |    |    |     |     |     |     |     |     |     |     |     |     |     |     |     |     |     |     |  |
| W150 Road traffic accidents                           |    |    |    |     |     |     |     |     |     |     |     |     |     |     |     |     |     |     |     |  |
| W151 Poisonings                                       |    |    |    |     |     |     |     |     |     |     |     |     |     |     |     |     |     |     |     |  |
| W152 Falls  |    |    |    |     |     |     |     |     |     |     |     |     |     |     |     |     |     |     |     |  |
| W153 Fires  |    |    |    |     |     |     |     |     |     |     |     |     |     |     |     |     |     |     |     |  |
| W154 Drownings  |    |    |    |     |     |     |     |     |     |     |     |     |     |     |     |     |     |     |     |  |
| W155 Other unintentional injuries                     |    |    |    |     |     |     |     |     |     |     |     |     |     |     |     |     |     |     |     |  |
| W156 Intentional injuries                             |    |    |    |     |     |     |     |     |     |     |     |     |     |     |     |     |     |     |     |  |
| W157 Self-inflicted injuries                          |    |    |    |     |     |     |     |     |     |     |     |     |     |     |     |     |     |     |     |  |
| W158 Violence   |    |    |    |     |     |     |     |     |     |     |     |     |     |     |     |     |     |     |     |  |
| W159 War  |    |    |    |     |     |     |     |     |     |     |     |     |     |     |     |     |     |     |     |  |
| W160 Other intentional injuries                       |    |    |    |     |     |     |     |     |     |     |     |     |     |     |     |     |     |     |     |  |

YLD (3.1) by age, sex and cause in Japan for the year 2000

| Cause   | Date | Males   |         |         |         |         |         |         |         |  |  |
|---|------|---------|---------|---------|---------|---------|---------|---------|---------|--|--|
|   |      | M0      | M5      | M15     | M30     | M45     | M60     | M70     | M80     |  |  |
| W000 All causes   |      | 149,902 | 185,028 | 714,269 | 573,047 | 820,634 | 553,001 | 370,209 | 121,042 |  |  |
| W001 Communicable, maternal, perinatal and nutritional conditions |      | 44,851  | 9,908   | 11,394  | 13,141  | 14,858  | 10,014  | 5,029   | 1,321   |  |  |
| W002 Infectious and parasitic diseases                            |      | 18,872  | 2,875   | 7,356   | 8,084   | 7,846   | 4,992   | 2,870   | 930     |  |  |
| W003 Tuberculosis   |      | 7       | 36      | 1,160   | 1,816   | 3,163   | 1,920   | 1,276   | 489     |  |  |
| W004 Sexually transmitted diseases excluding HIV                  |      | 213     | 17      | 1,629   | 1,265   | 52      | 0       | -       | -       |  |  |
| W005 Syphilis   |      | 207     | 1       | 54      | 40      | 0       | 0       | -       | -       |  |  |
| W006 Chlamydia  |      | 6       | 7       | 766     | 589     | 25      | 4       | -       | -       |  |  |
| W007 Gonorrhoea   |      | 0       | 9       | 809     | 626     | 26      | 4       | -       | -       |  |  |
| W008 Other STDs   |      | -       | -       | -       | -       | -       | -       | -       | -       |  |  |
| W009 HIV/AIDS   |      | 2       | 2       | 741     | 361     | 62      | 10      | 1       | -       |  |  |
| W010 Diarrhoeal diseases  |      | 4,509   | 1,140   | 2,913   | 2,504   | 2,156   | 842     | 391     | 107     |  |  |
| W011 Childhood-cluster diseases                                   |      | 13,105  | 76      | -       | -       | -       | -       | -       | -       |  |  |
| W012 Pertussis  |      | 13,084  | 56      | -       | -       | -       | -       | -       | -       |  |  |
| W013 Polio  |      | -       | -       | -       | -       | -       | -       | -       | -       |  |  |
| W014 Diphtheria   |      | -       | -       | -       | -       | -       | -       | -       | -       |  |  |
| W015 Measles  |      | 11      | 19      | -       | -       | -       | -       | -       | -       |  |  |
| W016 Tetanus  |      | -       | -       | -       | -       | -       | -       | -       | -       |  |  |
| W017 Meningitis   |      | 578     | 85      | 78      | 151     | 168     | 102     | 34      | 6       |  |  |
| W018 Hepatitis B  |      | -       | -       | 44      | 180     | 718     | 377     | 134     | 42      |  |  |
| W019 Hepatitis C  |      | -       | -       | 14      | 114     | 804     | 1,455   | 659     | 129     |  |  |
| W020 Malaria  |      | -       | -       | -       | -       | -       | -       | -       | -       |  |  |
| W021 Tropical-cluster diseases                                    |      | -       | -       | -       | -       | -       | -       | -       | -       |  |  |
| W022 Trypanosomiasis  |      | -       | -       | -       | -       | -       | -       | -       | -       |  |  |
| W023 Chagas disease   |      | -       | -       | -       | -       | -       | -       | -       | -       |  |  |
| W024 Schistosomiasis  |      | -       | -       | -       | -       | -       | -       | -       | -       |  |  |
| W025 Leishmaniasis  |      | -       | -       | -       | -       | -       | -       | -       | -       |  |  |
| W026 Lymphatic filariasis   |      | -       | -       | -       | -       | -       | -       | -       | -       |  |  |
| W027 Onchocerciasis   |      | -       | -       | -       | -       | -       | -       | -       | -       |  |  |
| W028 Leprosy  |      | -       | -       | 1       | 1       | 3       | -       | -       | -       |  |  |
| W029 Dengue   |      | -       | -       | -       | -       | -       | -       | -       | -       |  |  |
| W030 Japanese encephalitis  |      | -       | -       | -       | -       | -       | -       | -       | -       |  |  |
| W031 Trachoma   |      | -       | -       | -       | -       | -       | -       | -       | -       |  |  |
| W032 Intestinal nematode infections                               |      | -       | -       | -       | -       | -       | -       | -       | -       |  |  |
| W033 Ascariasis   |      | -       | -       | -       | -       | -       | -       | -       | -       |  |  |
| W034 Trichuriasis   |      | -       | -       | -       | -       | -       | -       | -       | -       |  |  |
| W035 Ancylostomiasis and necatoriasis                             |      | -       | -       | -       | -       | -       | -       | -       | -       |  |  |
| W036 Other intestinal infections                                  |      | 459     | 1,318   | 777     | 1,692   | 720     | 278     | 372     | 156     |  |  |
| W037 Other infectious diseases                                    |      | 1,157   | 4,974   | 1,139   | 1,836   | 380     | 806     | 107     | 107     |  |  |
| W038 Respiratory infections                                       |      | 560     | 240     | 593     | 767     | 1,406   | 589     | 280     | 79      |  |  |
| W039 Lower respiratory infections                                 |      | 45      | 205     | 580     | 498     | 430     | 217     | 101     | 28      |  |  |
| W040 Upper respiratory infections                                 |      | 872     | 4,001   | -       | -       | -       | -       | -       | -       |  |  |
| W041 Otitis media   |      | -       | -       | -       | -       | -       | -       | -       | -       |  |  |
| W042 Maternal conditions  |      | -       | -       | -       | -       | -       | -       | -       | -       |  |  |
| W043 Maternal haemorrhage   |      | -       | -       | -       | -       | -       | -       | -       | -       |  |  |
| W044 Maternal sepsis  |      | -       | -       | -       | -       | -       | -       | -       | -       |  |  |
| W045 Hypertensive disorders of pregnancy                          |      | -       | -       | -       | -       | -       | -       | -       | -       |  |  |
| W046 Obstructed labour  |      | -       | -       | -       | -       | -       | -       | -       | -       |  |  |
| W047 Abortion   |      | -       | -       | -       | -       | -       | -       | -       | -       |  |  |
| W048 Other maternal conditions                                    |      | 19,739  | -       | -       | -       | -       | -       | -       | -       |  |  |
| W049 Conditions arising during the perinatal period               |      | 8,733   | -       | -       | -       | -       | -       | -       | -       |  |  |
| W050 Low birth weight   |      | 8,256   | -       | -       | -       | -       | -       | -       | -       |  |  |
| W051 Birth asphyxia and birth trauma                              |      | 2,750   | -       | -       | -       | -       | -       | -       | -       |  |  |
| W052 Other perinatal conditions                                   |      | 5,083   | -       | -       | -       | -       | -       | -       | -       |  |  |
| W053 Nutritional deficiencies                                     |      | 2,817   | 260     | 2,889   | 3,986   | 5,176   | 4,216   | 1,779   | 284     |  |  |
| W054 Protein-energy malnutrition                                  |      | -       | -       | -       | -       | -       | -       | -       | -       |  |  |
| W055 Iodine deficiency  |      | -       | -       | -       | -       | -       | -       | -       | -       |  |  |
| W056 Vitamin A deficiency   |      | 2,251   | 203     | 2,865   | 3,935   | 5,131   | 4,200   | 1,769   | 281     |  |  |
| W057 Iron-deficiency anaemia                                      |      | 14      | 57      | 33      | 31      | 45      | 16      | 10      | 4       |  |  |
| W058 Other nutritional disorders                                  |      | 82,934  | 141,085 | 614,380 | 511,404 | 768,419 | 529,861 | 366,932 | 117,825 |  |  |
| W059 Noncommunicable diseases                                     |      | 126     | 187     | 1,336   | 5,469   | 31,146  | 35,434  | 24,511  | 9,259   |  |  |
| W060 Malignant neoplasms  |      | 0       | 7       | 76      | 129     | 825     | 855     | 456     | 163     |  |  |
| W061 Mouth and oropharynx cancers                                 |      | -       | -       | 1       | 28      | 825     | 872     | 456     | 171     |  |  |
| W062 Oesophagus cancer  |      | -       | -       | 55      | 343     | 3,092   | 3,523   | 2,936   | 1,345   |  |  |
| W063 Stomach cancer   |      | 4       | 4       | 288     | 1,946   | 14,471  | 12,999  | 6,881   | 2,109   |  |  |
| W064 Colon and rectum cancers                                     |      | 5       | 4       | 30      | 66      | 1,153   | 1,530   | 957     | 267     |  |  |
| W065 Liver cancer   |      | 0       | 1       | 2       | 8       | 677     | 749     | 678     | 308     |  |  |
| W066 Pancreas cancer  |      | -       | -       | 17      | 208     | 1,953   | 2,875   | 3,125   | 1,366   |  |  |
| W067 Trachea, bronchus and lung cancers                           |      | -       | -       | 26      | 43      | 81      | 111     | 81      | 43      |  |  |
| W068 Melanoma and other skin cancers                              |      | -       | -       | -       | -       | -       | -       | -       | -       |  |  |
| W069 Breast cancer  |      | -       | -       | -       | -       | -       | -       | -       | -       |  |  |
| W070 Cervix uteri cancer  |      | -       | -       | -       | -       | -       | -       | -       | -       |  |  |
| W071 Corpus uteri cancer  |      | -       | -       | -       | -       | -       | -       | -       | -       |  |  |
| W072 Ovary cancer   |      | -       | -       | -       | -       | -       | -       | -       | -       |  |  |
| W073 Prostate cancer  |      | -       | 5       | 7       | 90      | 1,972   | 5,923   | 4,238   | 1,397   |  |  |
| W074 Bladder cancer   |      | -       | 199     | 199     | 219     | 2,274   | 2,027   | 1,507   | 680     |  |  |
| W075 Lymphomas and multiple myeloma                               |      | 2       | 12      | 104     | 131     | 920     | 942     | 767     | 300     |  |  |
| W076 Leukaemia  |      | 49      | 83      | 220     | 245     | 596     | 518     | 313     | 120     |  |  |
| W077 Other malignant neoplasms                                    |      | 65      | 75      | 341     | 357     | 2,122   | 2,809   | 2,244   | 990     |  |  |
| W078 Other neoplasms  |      | -       | -       | -       | -       | -       | -       | -       | -       |  |  |
| W079 Diabetes mellitus  |      | 77      | 507     | 5,499   | 28,834  | 50,826  | 17,934  | 6,432   | 1,425   |  |  |
| W080 Endocrine disorders  |      | 7,078   | 4,749   | 6,545   | 7,204   | 8,086   | 6,118   | 3,629   | 1,380   |  |  |

YLD (3.1) by age, sex and cause in Japan for the year 2000

| cause   | Males  |        |        |         |         |         |         |         |        |        |
|---|--------|--------|--------|---------|---------|---------|---------|---------|--------|--------|
|   | M0     | M5     | M15    | M30     | M45     | M60     | M70     | M80     | M80    |        |
| W081 Neuro-psychiatric conditions                     | 14,760 | 88,190 | 28,673 | 467,823 | 267,636 | 189,576 | 108,510 | 101,660 | 50,800 | 789    |
| W082 Unipolar depressive disorders                    | -      | -      | 28,673 | 92,306  | 91,573  | 70,887  | 11,391  | 3,988   | -      | -      |
| W083 Bipolar affective disorder                       | -      | -      | -      | 82,306  | 7,769   | -       | -       | -       | -      | -      |
| W084 Schizophrenia                                    | -      | -      | 34,067 | 58,194  | 4,738   | -       | -       | -       | -      | -      |
| W085 Epilepsy   | 973    | 3,632  | 7,147  | 1,682   | 1,682   | 2,437   | 1,076   | 517     | 127    | 33     |
| W086 Alcohol use disorders                            | 2,636  | 1,531  | 1,531  | 105,282 | 3,605   | 55,197  | 8,288   | 2,898   | 695    | 695    |
| W087 Alzheimer and other dementias                    | -      | 1,299  | -      | 2,395   | 108,284 | 11,889  | 56,026  | 79,263  | 46,046 | 1,795  |
| W088 Parkinson disease                                | -      | -      | -      | 1,662   | 1,662   | 11,327  | 19,568  | 9,646   | -      | -      |
| W089 Multiple sclerosis                               | -      | -      | 730    | 4,877   | 3,202   | 874     | -       | -       | -      | -      |
| W090 Drug use disorders                               | -      | -      | 11     | 1,152   | 459     | 20      | 1       | -       | -      | -      |
| W091 Post-traumatic stress disorder                   | -      | -      | 372    | 8,407   | 5,537   | 3,752   | 115     | 77      | 16     | 16     |
| W092 Obsessive-compulsive disorder                    | -      | -      | 186    | 7,284   | 1,791   | 1,791   | 296     | 74      | 8      | 8      |
| W093 Panic disorder                                   | -      | -      | 1,319  | 30,842  | 425     | 2,153   | 249     | 154     | 17     | 17     |
| W094 Insomnia (primary)                               | -      | -      | 520    | 12,514  | 12,514  | 12,719  | 6,388   | 2,451   | 370    | 370    |
| W095 Migraine   | 627    | 8,324  | 23,522 | 46      | 32      | 32      | 9       | 0       | 0      | 0      |
| W096 Mental Retardation attributable to lead exposure | -      | -      | -      | -       | -       | -       | -       | -       | -      | -      |
| W097 Other neuro-psychiatric disorders                | 3,841  | 7,526  | 20,903 | 19,648  | 14,816  | 14,816  | 4,163   | 2,498   | 904    | 904    |
| W098 Sense organ diseases                             | 6,684  | -      | 186    | 14,224  | 88,018  | 65,651  | 91,172  | 7,547   | 7,547  | 7,547  |
| W099 Glaucoma   | -      | -      | 10     | 152     | 1,171   | 1,171   | 1,677   | 805     | 186    | 186    |
| W100 Cataracts  | -      | -      | 280    | 2,292   | 13,624  | 13,624  | 14,787  | 709     | 161    | 161    |
| W101 Vision disorders, age-related                    | -      | -      | 5      | 156     | 11,490  | 11,490  | 73,347  | 8,443   | 2,103  | 2,103  |
| W102 Hearing loss, adult onset                        | -      | -      | -      | -       | -       | -       | -       | -       | -      | -      |
| W103 Other sense organ disorders                      | 307    | 10,947 | 10,947 | 47,577  | 144,216 | 117,208 | 74,993  | 25,042  | 5,098  | 5,098  |
| W104 Cardiovascular diseases                          | 0      | 0      | 2      | 58      | 31      | 468     | 544     | 118     | 50     | 50     |
| W105 Rheumatic heart disease                          | -      | -      | -      | 12      | 34      | 154     | 202     | 411     | 1,505  | 1,505  |
| W106 Hypertensive heart disease                       | -      | -      | 472    | 2,954   | 4,988   | 17,684  | 10,796  | 4,876   | 1,191  | 1,191  |
| W107 Ischaemic heart disease                          | 0      | 0      | 0      | 5       | 29,768  | 117,172 | 98,487  | 62,474  | 16,568 | 16,568 |
| W108 Cerebrovascular disease                          | 0      | 0      | 205    | 1,631   | 2,052   | 2,084   | 2,016   | 995     | 306    | 306    |
| W109 Inflammatory heart diseases                      | 215    | 350    | 350    | 6,288   | 10,694  | 6,652   | 5,162   | 6,118   | 5,421  | 5,421  |
| W110 Other cardiovascular diseases                    | 19,005 | 33,702 | 79,294 | 55,149  | 52,536  | 20,366  | 40,201  | 20,470  | 7,935  | 7,935  |
| W111 Chronic obstructive pulmonary disease            | -      | -      | 1,496  | 11,256  | 28,165  | 20,366  | 22,628  | 10,245  | 4,176  | 4,176  |
| W112 Asthma   | 16,127 | 29,270 | 63,243 | 16,636  | 9,768   | 9,768   | 1,699   | 480     | 110    | 110    |
| W113 Other respiratory diseases                       | 2,879  | 2,936  | 4,795  | 10,348  | 22,402  | 15,876  | 9,746   | 3,650   | 3,650  |        |
| W114 Other digestive diseases                         | 5,662  | 1,842  | 19,279 | 25,142  | 26,289  | 14,313  | 26,289  | 14,313  | 5,099  | 5,099  |
| W115 Digestive diseases                               | 12     | 12     | 37     | 1,263   | 1,213   | 2,263   | 467     | 1,333   | 39     | 39     |
| W116 Peptic ulcer disease                             | -      | -      | 477    | 6,181   | 11,481  | 11,481  | 3,488   | 1,019   | 318    | 318    |
| W117 Cirrhosis of the liver                           | 0      | 248    | 566    | 647     | 217     | 217     | 70      | 32      | 9      | 9      |
| W118 Appendicitis                                     | 5,650  | 1,554  | 16,892 | 17,191  | 53,270  | 22,265  | 13,128  | 4,733   | 4,733  |        |
| W119 Other digestive diseases                         | 250    | 146    | 1,521  | 1,734   | 26,462  | 17,447  | 8,353   | 2,506   | 2,506  |        |
| W120 Genitourinary diseases                           | 18     | 47     | 775    | 586     | 21,048  | 17,447  | 236     | 46      | 46     |        |
| W121 Nephritis and nephrosis                          | -      | -      | -      | -       | -       | -       | -       | -       | -      | -      |
| W122 Benign prostatic hypertrophy                     | 232    | 59     | 746    | 1,138   | 1,138   | 5,051   | 5,738   | 1,574   | 886    | 886    |
| W123 Other genitourinary system diseases              | 457    | 89     | 102    | 723     | 52,604  | 94,347  | 58,654  | 35,959  | 5,787  | 5,787  |
| W124 Skin diseases                                    | 55     | 401    | 2,719  | 13,004  | 13,004  | 5,522   | 2,100   | 486     | 486    |        |
| W125 Musculoskeletal diseases                         | -      | 14     | 3,262  | 25,275  | 45,944  | 29,537  | 45,944  | 3,580   | 3,580  |        |
| W126 Rheumatoid arthritis                             | -      | -      | 1,598  | 15,778  | 12,889  | 12,889  | 3,745   | 1,432   | 416    | 416    |
| W127 Osteoarthritis                                   | 381    | 1,276  | 3,399  | 5,529   | 4,921   | 1,543   | 616     | 129     | 129    |        |
| W128 Gout   | 20     | 20     | 229    | 1,982   | 4,410   | 2,800   | 2,800   | 1,207   | 1,207  |        |
| W129 Low back pain                                    | 43,616 | -      | -      | -       | -       | -       | -       | -       | -      | -      |
| W130 Other musculoskeletal disorders                  | 0      | -      | -      | -       | -       | -       | -       | -       | -      | -      |
| W131 Congenital anomalies                             | 0      | -      | -      | -       | -       | -       | -       | -       | -      | -      |
| W132 Abdominal wall defect                            | 0      | -      | -      | -       | -       | -       | -       | -       | -      | -      |
| W133 Anencephaly                                      | 3      | -      | -      | -       | -       | -       | -       | -       | -      | -      |
| W134 Anorectal atresia                                | 444    | -      | -      | -       | -       | -       | -       | -       | -      | -      |
| W135 Cleft lip  | 508    | -      | -      | -       | -       | -       | -       | -       | -      | -      |
| W136 Cleft palate                                     | 400    | -      | -      | -       | -       | -       | -       | -       | -      | -      |
| W137 Oesophageal atresia                              | 2      | -      | -      | -       | -       | -       | -       | -       | -      | -      |
| W138 Renal agenesis                                   | 0      | -      | -      | -       | -       | -       | -       | -       | -      | -      |
| W139 Down syndrome                                    | 11,747 | -      | -      | -       | -       | -       | -       | -       | -      | -      |
| W140 Congenital heart anomalies                       | 28,364 | -      | -      | -       | -       | -       | -       | -       | -      | -      |
| W141 Spina bifida                                     | 2,528  | -      | -      | -       | -       | -       | -       | -       | -      | -      |
| W142 Other Congenital anomalies                       | 1,596  | -      | -      | -       | -       | -       | -       | -       | -      | -      |
| W143 Oral conditions                                  | 8,718  | 8,718  | 9,233  | 7,028   | 14,490  | 14,490  | 10,196  | 2,171   | 349    | 349    |
| W144 Dental caries                                    | 1,567  | 8,718  | 8,529  | 3,666   | 3,666   | 3,643   | 2,302   | 1,068   | 294    | 294    |
| W145 Periodontal disease                              | -      | -      | 655    | 1,336   | 239     | 239     | 90      | 42      | 11     | 11     |
| W146 Edentulism                                       | -      | -      | 1,980  | 7,774   | 10,475  | 7,774   | 1,043   | 38      | 6      | 6      |
| W147 Other oral diseases                              | 29     | -      | 50     | 47      | 134     | 134     | 30      | 18      | 18     |        |
| W148 Injuries   | 12,116 | 36,035 | 88,495 | 48,501  | 37,357  | 37,357  | 13,107  | 6,248   | 1,896  | 1,896  |
| W149 Unintentional injuries                           | 12,041 | 28,673 | 41,196 | 82,805  | 32,878  | 32,878  | 12,027  | 5,806   | 1,808  | 1,808  |
| W150 Road traffic accidents                           | 733    | 2,547  | 7,418  | 20,772  | 5,414   | 5,414   | 1,213   | 555     | 87     | 87     |
| W151 Poisonings                                       | 110    | 146    | 453    | 315     | 315     | 315     | 128     | 28      | 6      | 6      |
| W152 Falls  | 4,249  | 7,328  | 26,059 | 11,270  | 9,697   | 4,616   | 3,141   | 1,147   | 1,147  |        |
| W153 Fires  | 628    | 583    | 1,006  | 801     | 1,462   | 1,462   | 125     | 101     | 19     | 19     |
| W154 Drownings  | 56     | 29     | 98     | 101     | 88      | 88      | 20      | 20      | 0      | 0      |
| W155 Other unintentional injuries                     | 6,264  | 18,033 | 33,626 | 21,154  | 15,892  | 15,892  | 5,997   | 1,951   | 549    | 549    |
| W156 Intentional injuries                             | 75     | 7,362  | 3,889  | 4,479   | 4,479   | 4,479   | 1,079   | 462     | 88     | 88     |
| W157 Self-inflicted injuries                          | -      | -      | 6,600  | 1,956   | 3,806   | 3,806   | 982     | 397     | 72     | 72     |
| W158 Violence   | 75     | 762    | 3,893  | 2,214   | 671     | 671     | 86      | 45      | 16     | 16     |
| W159 War  | -      | -      | -      | -       | -       | -       | -       | -       | -      | -      |
| W160 Other intentional injuries                       | -      | -      | -      | 41      | 7       | 1       | -       | -       | -      | -      |

YLD (3.1) by age, sex and cause in Japan for the year 2000

Females

| cause   | FO      | F5      | F15     | F30     | F45     | F60     | F70     | F80     |
|---|---------|---------|---------|---------|---------|---------|---------|---------|
| W000 All causes   | 139,301 | 184,909 | 823,912 | 578,737 | 819,201 | 580,785 | 488,065 | 309,834 |
| W001 Communicable, maternal, perinatal and nutritional conditions | 44,051  | 10,431  | 88,213  | 40,576  | 23,402  | 47,878  | 4,331   | 1,628   |
| W002 Infectious and parasitic diseases                            | 19,077  | 3,114   | 23,838  | 14,255  | 4,927   | 3,416   | 2,579   | 1,130   |
| W003 Tuberculosis   | 8       | 42      | 1,014   | 870     | 704     | 769     | 584     | 298     |
| W004 Sexually transmitted diseases excluding HIV                  | 202     | 245     | 15,955  | 3,928   | 137     | 22      | -       | -       |
| W005 Syphilis   | 196     | 220     | 84      | 48      | 0       | 0       | -       | -       |
| W006 Chlamydia  | 6       | 20      | 14,140  | 2,800   | 120     | 20      | -       | -       |
| W007 Gonorrhoea   | 0       | 24      | 1,751   | 1,080   | 16      | 3       | -       | -       |
| W008 Other STDs   | -       | -       | -       | -       | -       | -       | -       | -       |
| W009 HIV/AIDS   | 2       | 3       | 107     | 45      | 10      | 1       | 0       | -       |
| W010 Diarrhoeal diseases  | 4,272   | 1,086   | 2,789   | 2,450   | 2,116   | 917     | 527     | 229     |
| W011 Childhood-cluster diseases                                   | 13,212  | 76      | -       | -       | -       | -       | -       | -       |
| W012 Pertussis  | 13,205  | 58      | -       | -       | -       | -       | -       | -       |
| W013 Poliomyelitis  | -       | -       | -       | -       | -       | -       | -       | -       |
| W014 Diphtheria   | 10      | 18      | -       | -       | -       | -       | -       | -       |
| W015 Measles  | -       | -       | -       | -       | -       | -       | -       | -       |
| W016 Tetanus  | 848     | 125     | 174     | 142     | 159     | 113     | 51      | 13      |
| W017 Meningitis   | -       | -       | 10      | 52      | 296     | 152     | 44      | 44      |
| W018 Hepatitis B  | -       | -       | 6       | 31      | -       | 1,012   | 833     | 219     |
| W019 Hepatitis C  | -       | -       | -       | -       | -       | -       | -       | -       |
| W020 Malaria  | -       | -       | -       | -       | -       | -       | -       | -       |
| W021 Tropical-cluster diseases                                    | -       | -       | -       | -       | -       | -       | -       | -       |
| W022 Trypanosomiasis  | -       | -       | -       | -       | -       | -       | -       | -       |
| W023 Chagas disease   | -       | -       | -       | -       | -       | -       | -       | -       |
| W024 Schistosomiasis  | -       | -       | -       | -       | -       | -       | -       | -       |
| W025 Leishmaniasis  | -       | -       | -       | -       | -       | -       | -       | -       |
| W026 Lymphatic filariasis   | -       | -       | -       | -       | -       | -       | -       | -       |
| W027 Onchocerciasis   | -       | -       | -       | -       | -       | -       | -       | -       |
| W028 Leprosy  | -       | -       | -       | -       | -       | -       | -       | -       |
| W029 Dengue   | -       | -       | 1       | 1       | 4       | -       | -       | -       |
| W030 Japanese encephalitis  | -       | -       | -       | -       | -       | -       | -       | -       |
| W031 Trachoma   | -       | -       | -       | -       | -       | -       | -       | -       |
| W032 Intestinal nematode infections                               | -       | -       | -       | -       | -       | -       | -       | -       |
| W033 Ascariasis   | -       | -       | -       | -       | -       | -       | -       | -       |
| W034 Trichuriasis   | -       | -       | -       | -       | -       | -       | -       | -       |
| W035 Ancylostomiasis and necatoriasis                             | -       | -       | -       | -       | -       | -       | -       | -       |
| W036 Other intestinal infections                                  | 530     | 1,539   | 3,782   | 6,736   | 1,738   | 285     | 433     | 327     |
| W037 Other infectious diseases                                    | 1,100   | 4,958   | 1,127   | 1,099   | 866     | 866     | 499     | 217     |
| W038 Respiratory infections                                       | 223     | 943     | 530     | 479     | 530     | 629     | 364     | 158     |
| W039 Lower respiratory infections                                 | 42      | 196     | 648     | 569     | 434     | 238     | 136     | 59      |
| W040 Upper respiratory infections                                 | 834     | 3,819   | -       | -       | -       | -       | -       | -       |
| W041 Otitis media   | -       | -       | -       | -       | -       | -       | -       | -       |
| W042 Maternal conditions  | -       | -       | 31,456  | 19,568  | 0       | -       | -       | -       |
| W043 Maternal haemorrhage   | -       | -       | -       | -       | -       | -       | -       | -       |
| W044 Maternal sepsis  | -       | -       | 9,092   | 3,518   | -       | -       | -       | -       |
| W045 Hypertensive disorders of pregnancy                          | -       | -       | -       | -       | -       | -       | -       | -       |
| W046 Obstructed labour  | -       | -       | 417     | 288     | 0       | -       | -       | -       |
| W047 Abortion   | -       | -       | -       | -       | -       | -       | -       | -       |
| W048 Other maternal conditions                                    | -       | -       | 21,947  | 15,762  | 0       | -       | -       | -       |
| W049 Conditions arising during the perinatal period               | 18,937  | -       | -       | -       | -       | -       | -       | -       |
| W050 Low birth weight   | 8,428   | -       | -       | -       | -       | -       | -       | -       |
| W051 Birth asphyxia and birth trauma                              | 7,856   | -       | -       | -       | -       | -       | -       | -       |
| W052 Other perinatal conditions                                   | 2,654   | -       | -       | -       | -       | -       | -       | -       |
| W053 Nutritional deficiencies                                     | 4,936   | 2,359   | 31,792  | 5,654   | 16,518  | 1,577   | 1,252   | 281     |
| W054 Protein-energy malnutrition                                  | 2,681   | -       | -       | -       | -       | -       | -       | -       |
| W055 Iodine deficiency  | -       | -       | -       | -       | -       | -       | -       | -       |
| W056 Vitamin A deficiency   | -       | -       | -       | -       | -       | -       | -       | -       |
| W057 Iron-deficiency anaemia                                      | 2,228   | 2,344   | 31,578  | 5,448   | 16,432  | 1,556   | 1,237   | 272     |
| W058 Other nutritional disorders                                  | 17      | 45      | 214     | 205     | 86      | 21      | 15      | 9       |
| W059 Noncommunicable diseases                                     | 86,320  | 149,285 | 686,006 | 508,815 | 772,369 | 563,216 | 474,931 | 302,801 |
| W060 Malignant neoplasms  | 72      | 170     | 5,042   | 28,861  | 59,632  | 24,499  | 17,258  | 10,015  |
| W061 Mouth and oropharynx cancers                                 | -       | -       | 110     | 139     | 273     | 226     | 209     | 187     |
| W062 Oesophagus cancer  | -       | -       | 74      | 111     | 175     | 95      | 82      | 87      |
| W063 Stomach cancer   | -       | -       | 459     | 649     | 1,888   | 1,381   | 1,351   | 1,351   |
| W064 Colon and rectum cancers                                     | -       | -       | 17      | 2,308   | 11,355  | 7,527   | 5,890   | 3,296   |
| W065 Liver cancer   | 3       | 1       | 17      | 34      | 227     | 477     | 504     | 239     |
| W066 Pancreas cancer  | -       | 1       | 14      | 62      | 324     | 395     | 469     | 425     |
| W067 Trachea, bronchus and lung cancers                           | -       | 1       | 9       | 174     | 847     | 847     | 926     | 869     |
| W068 Melanoma and other skin cancers                              | -       | 2       | 37      | 60      | 128     | 53      | 52      | 72      |
| W069 Breast cancer  | -       | -       | 456     | 10,023  | 16,062  | 3,494   | 1,739   | 509     |
| W070 Cervix uteri cancer  | -       | -       | 688     | 2,874   | 2,975   | 675     | 279     | 110     |
| W071 Corpus uteri cancer  | -       | 4       | 1,199   | 6,586   | 18,579  | 5,176   | 1,977   | 485     |
| W072 Ovary cancer   | -       | 47      | 701     | 1,843   | 3,207   | 658     | 295     | 150     |
| W073 Prostate cancer  | -       | -       | -       | -       | -       | -       | -       | -       |
| W074 Bladder cancer   | -       | -       | 34      | 84      | 467     | 438     | 505     | 476     |
| W075 Lymphomas and multiple myeloma                               | 3       | 6       | 80      | 175     | 625     | 617     | 587     | 343     |
| W076 Leukaemia  | 33      | 61      | 143     | 353     | 292     | 242     | 242     | 132     |
| W077 Other malignant neoplasms                                    | 33      | 48      | 1,013   | 1,659   | 2,294   | 2,144   | 2,122   | 1,283   |
| W078 Other neoplasms  | -       | -       | -       | -       | -       | -       | -       | -       |
| W079 Diabetes mellitus  | 31      | 139     | 3,045   | 20,000  | 46,794  | 23,688  | 10,804  | 3,384   |
| W080 Endocrine disorders  | 7,322   | 3,518   | 11,953  | 11,953  | 26,837  | 7,736   | 5,612   | 3,403   |

YLD (3.1) by age, sex and cause in Japan for the year 2000

| cause   | Date | Females |        |         |         |         |         |         |         |         |     |  |
|---|------|---------|--------|---------|---------|---------|---------|---------|---------|---------|-----|--|
|   |      | F0      | F5     | F15     | F30     | F45     | F60     | F70     | F80     | F80     | F80 |  |
| W081 Neuropsychiatric conditions                      |      | 14,479  | 91,087 | 543,872 | 247,484 | 197,056 | 139,853 | 73,169  | 173,169 | 174,289 |     |  |
| W082 Unipolar depressive disorders                    |      |         | 26,535 | 126,369 | 130,630 | 103,979 | 37,342  | 7,923   | 2,827   |         |     |  |
| W083 Bipolar affective disorder                       |      |         | 3,816  | 85,781  | 11,083  | 573     | 194     |         |         |         |     |  |
| W084 Schizophrenia                                    |      |         | 14,814 | 59,777  | 7,638   | 1,680   | 289     | 128     | 53      |         |     |  |
| W085 Epilepsy   |      | 941     | 3,368  | 3,226   | 3,226   | 2,316   | 1,169   | 704     | 273     |         |     |  |
| W086 Alcohol use disorders                            |      |         | 1,191  | 67,086  | 23,904  | 11,320  | 577     | 26      | 3       |         |     |  |
| W087 Alzheimer and other dementias                    |      | 2,467   | 1,138  | 2,380   | 1,880   | 14,988  | 71,718  | 145,686 | 164,637 |         |     |  |
| W088 Parkinson disease                                |      |         |        | 8,368   | 1,680   | 8,368   | 13,453  | 9,490   | 3,575   |         |     |  |
| W089 Multiple sclerosis                               |      |         | 731    | 6,237   | 4,290   | 891     |         |         |         |         |     |  |
| W090 Drug use disorders                               |      |         | 4      | 502     | 195     | 3       |         |         |         |         |     |  |
| W091 Post-traumatic stress disorder                   |      |         | 397    | 21,862  | 13,415  | 11,920  | 275     | 361     | 72      |         |     |  |
| W092 Obsessive-compulsive disorder                    |      |         | 286    | 18,780  | 8,067   | 4,932   | 113     | 409     | 71      |         |     |  |
| W093 Panic disorder                                   |      |         | 1,051  | 62,287  | 643     | 4,702   | 567     | 409     |         |         |     |  |
| W094 Insomnia (primary)                               |      |         | 459    | 13,727  | 15,643  | 16,680  | 9,092   | 4,687   | 629     |         |     |  |
| W095 Migraine   |      | 2,279   | 31,341 | 54,762  | 3,610   | 29      | 8       | 2       | 0       |         |     |  |
| W096 Mental Retardation attributable to lead exposure |      | 3,665   | 5,957  | 18,157  | 17,440  | 16,624  | 5,051   | 3,752   | 2,149   |         |     |  |
| W097 Other neuropsychiatric disorders                 |      | 5,127   | 42     | 754     | 42,338  | 118,921 | 122,844 | 74,144  | 15,816  |         |     |  |
| W098 Sense organ diseases                             |      | 7       | 5      | 47      | 362     | 1,816   | 2,094   | 1,447   | 501     |         |     |  |
| W099 Glaucoma   |      |         | 5      | 47      | 390     | 1,943   | 1,957   | 1,281   | 417     |         |     |  |
| W100 Cataracts  |      |         | 31     | 59      | 3,435   | 19,164  | 17,968  | 13,424  | 5,709   |         |     |  |
| W101 Vision disorders, age-related                    |      | 7       |        | 339     | 38,152  | 95,998  | 100,834 | 57,992  | 9,190   |         |     |  |
| W102 Hearing loss, adult onset                        |      |         |        |         |         |         |         |         |         |         |     |  |
| W103 Other sense organ disorders                      |      |         |        |         |         |         |         |         |         |         |     |  |
| W104 Cardiovascular diseases                          |      | 189     | 841    | 8,149   | 28,408  | 71,119  | 69,632  | 66,408  | 44,630  |         |     |  |
| W105 Rheumatic heart disease                          |      | 1       | 3      | 32      | 38      | 753     | 984     | 222     | 309     |         |     |  |
| W106 Hypertensive heart disease                       |      |         |        |         |         |         |         |         |         |         |     |  |
| W107 Ischaemic heart disease                          |      | 0       | 571    | 3,940   | 3,757   | 7,478   | 7,283   | 4,048   | 4,27    |         |     |  |
| W108 Cerebrovascular disease                          |      | 0       | 1      | 3       | 16,511  | 57,390  | 57,865  | 4,596   | 2,508   |         |     |  |
| W109 Inflammatory heart diseases                      |      | 47      | 79     | 606     | 621     | 680     | 906     | 823     | 605     |         |     |  |
| W110 Other cardiovascular diseases                    |      | 16,074  | 39,866 | 60,944  | 44,439  | 33,145  | 19,597  | 16,785  | 7,463   |         |     |  |
| W111 Respiratory diseases                             |      |         |        | 7,291   | 26,431  | 8,902   | 4,080   | 6,872   | 3,451   |         |     |  |
| W112 Chronic obstructive pulmonary disease            |      | 13,821  | 38,296 | 47,139  | 9,881   | 14,608  | 10,499  | 8,655   | 5,67    |         |     |  |
| W113 Asthma   |      | 2,253   | 1,560  | 6,515   | 8,127   | 14,608  | 10,499  | 8,655   | 5,67    |         |     |  |
| W114 Other respiratory diseases                       |      | 3,865   | 1,753  | 19,578  | 19,546  | 54,820  | 30,715  | 22,872  | 12,876  |         |     |  |
| W115 Digestive diseases                               |      | 9       | 42     | 888     | 925     | 659     | 268     | 158     | 63      |         |     |  |
| W116 Peptic ulcer disease                             |      | 14      | 194    | 1,834   | 1,834   | 2,971   | 2,238   | 1,691   | 667     |         |     |  |
| W117 Cirrhosis of the liver                           |      | 0       | 195    | 452     | 397     | 167     | 57      | 33      | 14      |         |     |  |
| W118 Appendicitis                                     |      |         | 1,486  | 18,045  | 16,391  | 51,022  | 28,151  | 20,990  | 12,132  |         |     |  |
| W119 Other digestive diseases                         |      | 3,842   | 360    | 3,011   | 2,794   | 8,634   | 6,953   | 4,915   | 2,811   |         |     |  |
| W120 Genito-urinary diseases                          |      | 110     | 216    | 267     | 176     | 298     | 430     | 256     | 76      |         |     |  |
| W121 Nephritis and nephrosis                          |      |         |        |         |         |         |         |         |         |         |     |  |
| W122 Benign prostatic hypertrophy                     |      |         |        |         |         |         |         |         |         |         |     |  |
| W123 Other genitourinary system diseases              |      | 217     | 144    | 2,744   | 2,618   | 8,537   | 6,523   | 4,659   | 2,735   |         |     |  |
| W124 Skin diseases                                    |      | 39      | 39     | 120     | 676     | 933     | 803     | 1,103   | 1,702   |         |     |  |
| W125 Musculoskeletal diseases                         |      | 245     | 3,194  | 20,717  | 57,408  | 138,670 | 104,845 | 77,405  | 24,354  |         |     |  |
| W126 Rheumatoid arthritis                             |      | 61      | 1,170  | 7,612   | 15,170  | 33,857  | 13,659  | 5,328   | 1,953   |         |     |  |
| W127 Osteoarthritis                                   |      |         |        | 1,687   | 27,339  | 81,717  | 79,711  | 63,093  | 15,317  |         |     |  |
| W128 Gout   |      |         |        | 709     | 645     | 2,062   | 1,305   | 926     | 271     |         |     |  |
| W129 Low back pain                                    |      | 168     | 1,592  | 2,379   | 3,893   | 4,431   | 1,553   | 724     | 228     |         |     |  |
| W130 Other musculoskeletal disorders                  |      | 17      | 432    | 8,331   | 10,361  | 16,802  | 8,718   | 7,336   | 6,618   |         |     |  |
| W131 Congenital anomalies                             |      | 42,152  | 0      |         |         |         |         |         |         |         |     |  |
| W132 Abdominal wall defect                            |      | 0       |        |         |         |         |         |         |         |         |     |  |
| W133 Anencephaly                                      |      | 0       |        |         |         |         |         |         |         |         |     |  |
| W134 Anorectal atresia                                |      | 3       |        |         |         |         |         |         |         |         |     |  |
| W135 Cleft lip  |      | 459     |        |         |         |         |         |         |         |         |     |  |
| W136 Cleft palate                                     |      | 533     |        |         |         |         |         |         |         |         |     |  |
| W137 Oesophageal atresia                              |      | 2       |        |         |         |         |         |         |         |         |     |  |
| W138 Renal agenesis                                   |      | 0       |        |         |         |         |         |         |         |         |     |  |
| W139 Down syndrome                                    |      | 10,104  |        |         |         |         |         |         |         |         |     |  |
| W140 Congenital heart anomalies                       |      | 28,083  |        |         |         |         |         |         |         |         |     |  |
| W141 Spina bifida                                     |      | 2,968   |        |         |         |         |         |         |         |         |     |  |
| W142 Other Congenital anomalies                       |      |         |        |         |         |         |         |         |         |         |     |  |
| W143 Oral conditions                                  |      | 1,518   | 8,314  | 8,830   | 6,907   | 15,608  | 12,151  | 4,356   | 947     |         |     |  |
| W144 Dental caries                                    |      | 1,485   | 8,302  | 8,168   | 3,587   | 3,675   | 2,507   | 1,441   | 627     |         |     |  |
| W145 Periodontal disease                              |      |         |        | 627     | 1,307   | 241     | 98      | 56      | 24      |         |     |  |
| W146 Edentulism                                       |      |         |        |         | 1,979   | 11,505  | 9,483   | 2,812   | 269     |         |     |  |
| W147 Other oral diseases                              |      | 33      | 12     | 35      | 33      | 187     | 63      | 47      | 27      |         |     |  |
| W148 Injuries   |      | 8,931   | 25,193 | 49,693  | 29,406  | 23,430  | 11,710  | 8,803   | 5,406   |         |     |  |
| W149 Unintentional injuries                           |      | 8,902   | 19,718 | 46,010  | 24,941  | 20,146  | 10,414  | 7,951   | 5,089   |         |     |  |
| W150 Road traffic accidents                           |      | 679     | 1,726  | 8,798   | 3,155   | 3,370   | 1,143   | 713     | 142     |         |     |  |
| W151 Poisonings                                       |      | 105     | 146    | 683     | 542     | 324     | 189     | 41      | 17      |         |     |  |
| W152 Falls  |      | 3,565   | 4,293  | 10,901  | 4,396   | 3,748   | 3,641   | 4,821   | 3,924   |         |     |  |
| W153 Fires  |      | 221     | 352    | 420     | 217     | 45      | 52      | 84      | 20      |         |     |  |
| W154 Drownings  |      | 74      | 25     | 104     | 49      | 88      | 62      | 36      | 0       |         |     |  |
| W155 Other unintentional injuries                     |      | 4,258   | 13,176 | 26,093  | 16,582  | 12,571  | 5,328   | 2,256   | 986     |         |     |  |
| W156 Intentional injuries                             |      | 28      | 5,475  | 3,683   | 4,465   | 3,284   | 1,296   | 652     | 317     |         |     |  |
| W157 Self-inflicted injuries                          |      |         | 5,171  | 2,458   | 3,736   | 3,040   | 1,265   | 823     | 303     |         |     |  |
| W158 Violence   |      | 28      | 304    | 1,225   | 729     | 243     | 31      | 29      | 14      |         |     |  |
| W159 War  |      |         |        |         |         |         |         |         |         |         |     |  |
| W160 Other intentional injuries                       |      |         |        |         |         |         |         |         |         |         |     |  |

### Leading causes of death in Japan for the year 2000 <TOTAL>

| Persons                                  | % total deaths | Males                                    | % total deaths | Females                                  | % total deaths |
|--|----------------|--|----------------|--|----------------|
| 1 Cerebrovascular disease                | 14.3           | 1 Cerebrovascular disease                | 12.3           | 1 Cerebrovascular disease                | 16.8           |
| 2 Lower respiratory infections           | 9.7            | 2 Ischaemic heart disease                | 9.5            | 2 Lower respiratory infections           | 10.1           |
| 3 Ischaemic heart disease                | 9.6            | 3 Lower respiratory infections           | 9.4            | 3 Ischaemic heart disease                | 9.7            |
| 4 Trachea, bronchus and lung cancers     | 5.7            | 4 Trachea, bronchus and lung cancers     | 7.5            | 4 Stomach cancer                         | 4.3            |
| 5 Stomach cancer                         | 5.5            | 5 Stomach cancer                         | 6.4            | 5 Colon and rectum cancers               | 3.9            |
| 6 Colon and rectum cancers               | 3.9            | 6 Liver cancer                           | 4.5            | 6 Trachea, bronchus and lung cancers     | 3.5            |
| 7 Liver cancer                           | 3.6            | 7 Self-inflicted injuries                | 4.3            | 7 Nephritis and nephrosis                | 2.6            |
| 8 Self-inflicted injuries                | 3.3            | 8 Colon and rectum cancers               | 3.9            | 8 Liver cancer                           | 2.4            |
| 9 Nephritis and nephrosis                | 2.2            | 9 Pancreas cancer                        | 2.0            | 9 Breast cancer                          | 2.2            |
| 10 Pancreas cancer                       | 2.0            | 10 Chronic obstructive pulmonary disease | 1.9            | 10 Pancreas cancer                       | 2.0            |
| 11 Chronic obstructive pulmonary disease | 1.5            | 11 Cirrhosis of the liver                | 1.8            | 11 Self-inflicted injuries               | 2.0            |
| 12 Cirrhosis of the liver                | 1.4            | 12 Nephritis and nephrosis               | 1.8            | 12 Diabetes mellitus                     | 1.4            |
| 13 Diabetes mellitus                     | 1.3            | 13 Oesophagus cancer                     | 1.7            | 13 Lymphomas and multiple myeloma        | 1.2            |
| 14 Road traffic accidents                | 1.3            | 14 Road traffic accidents                | 1.6            | 14 Hypertensive heart disease            | 1.0            |
| 15 Lymphomas and multiple myeloma        | 1.2            | 15 Prostate cancer                       | 1.5            | 15 Ovary cancer                          | 0.9            |
| 16 Oesophagus cancer                     | 1.1            | 16 Diabetes mellitus                     | 1.3            | 16 Chronic obstructive pulmonary disease | 0.9            |
| 17 Breast cancer                         | 1.0            | 17 Lymphomas and multiple myeloma        | 1.2            | 17 Cirrhosis of the liver                | 0.9            |
| 18 Prostate cancer                       | 0.8            | 18 Leukaemia                             | 0.8            | 18 Road traffic accidents                | 0.8            |
| 19 Leukaemia                             | 0.7            | 19 Falls                                 | 0.7            | 19 Alzheimer and other dementias         | 0.7            |
| 20 Hypertensive heart disease            | 0.7            | 20 Mouth and oropharynx cancers          | 0.7            | 20 Corpus uteri cancer                   | 0.7            |

Leading causes of DALYs in Japan for the year 2000 <TOTAL>

| Persons                                  | Males                                    | Females                               | % total<br>DALYs | % total<br>DALYs | % total<br>DALYs |
|--|--|---------------------------------------|------------------|------------------|------------------|
| 1 Cerebrovascular disease                | 1 Cerebrovascular disease                | 1 Cerebrovascular disease             | 8.7              | 9.3              | 7.9              |
| 2 Unipolar depressive disorders          | 2 Self-inflicted injuries                | 2 Unipolar depressive disorders       | 5.5              | 5.5              | 7.0              |
| 3 Alzheimer and other dementias          | 3 Ischaemic heart disease                | 3 Alzheimer and other dementias       | 4.6              | 5.1              | 6.6              |
| 4 Ischaemic heart disease                | 4 Unipolar depressive disorders          | 4 Hearing loss, adult onset           | 4.2              | 4.2              | 4.9              |
| 5 Self-inflicted injuries                | 5 Alcohol use disorders                  | 5 Osteoarthritis                      | 4.1              | 4.0              | 4.3              |
| 6 Hearing loss, adult onset              | 6 Trachea, bronchus and lung cancers     | 6 Ischaemic heart disease             | 3.9              | 3.6              | 3.1              |
| 7 Osteoarthritis                         | 7 Stomach cancer                         | 7 Self-inflicted injuries             | 3.2              | 3.4              | 2.5              |
| 8 Alcohol use disorders                  | 8 Hearing loss, adult onset              | 8 Breast cancer                       | 3.0              | 3.0              | 2.4              |
| 9 Stomach cancer                         | 9 Alzheimer and other dementias          | 9 Colon and rectum cancers            | 2.8              | 2.9              | 2.3              |
| 10 Trachea, bronchus and lung cancers    | 10 Road traffic accidents                | 10 Diabetes mellitus                  | 2.7              | 2.7              | 2.2              |
| 11 Colon and rectum cancers              | 11 Liver cancer                          | 11 Asthma                             | 2.4              | 2.7              | 2.2              |
| 12 Lower respiratory infections          | 12 Colon and rectum cancers              | 12 Stomach cancer                     | 2.3              | 2.6              | 2.1              |
| 13 Diabetes mellitus                     | 13 Lower respiratory infections          | 13 Lower respiratory infections       | 2.2              | 2.6              | 2.0              |
| 14 Asthma                                | 14 Osteoarthritis                        | 14 Alcohol use disorders              | 2.2              | 2.2              | 1.8              |
| 15 Road traffic accidents                | 15 Diabetes mellitus                     | 15 Bipolar affective disorder         | 2.0              | 2.2              | 1.6              |
| 16 Liver cancer                          | 16 Asthma                                | 16 Trachea, bronchus and lung cancers | 1.9              | 2.1              | 1.6              |
| 17 Chronic obstructive pulmonary disease | 17 Chronic obstructive pulmonary disease | 17 Migraine                           | 1.5              | 1.9              | 1.5              |
| 18 Bipolar affective disorder            | 18 Cirrhosis of the liver                | 18 Rheumatoid arthritis               | 1.5              | 1.8              | 1.4              |
| 19 Schizophrenia                         | 19 Falls                                 | 19 Schizophrenia                      | 1.4              | 1.5              | 1.4              |
| 20 Congenital anomalies                  | 20 Schizophrenia                         | 20 Congenital anomalies               | 1.2              | 1.4              | 1.3              |

Leading causes of YLD in Japan for the year 2000 <TOTAL>

| Persons                                  | Males          |     | Females        |      |
|--|----------------|-----|----------------|------|
|  | % total<br>YLD | YLD | % total<br>YLD | YLD  |
| 1 Unipolar depressive disorders          | 10.0           | 9.3 | 11.1           | 11.1 |
| 2 Alzheimer and other dementias          | 8.2            | 8.8 | 10.3           | 10.3 |
| 3 Cerebrovascular disease                | 7.3            | 8.1 | 7.7            | 7.7  |
| 4 Hearing loss, adult onset              | 7.0            | 6.2 | 6.9            | 6.9  |
| 5 Osteoarthritis                         | 5.8            | 5.7 | 5.5            | 5.5  |
| 6 Alcohol use disorders                  | 5.3            | 4.7 | 3.2            | 3.2  |
| 7 Asthma                                 | 3.5            | 3.9 | 2.8            | 2.8  |
| 8 Diabetes mellitus                      | 3.0            | 3.2 | 2.8            | 2.8  |
| 9 Bipolar affective disorder             | 2.7            | 2.8 | 2.6            | 2.6  |
| 10 Schizophrenia                         | 2.5            | 2.8 | 2.3            | 2.3  |
| 11 Chronic obstructive pulmonary disease | 2.1            | 2.8 | 2.1            | 2.1  |
| 12 Migraine                              | 1.7            | 1.9 | 2.0            | 2.0  |
| 13 Rheumatoid arthritis                  | 1.5            | 1.4 | 1.8            | 1.8  |
| 14 Insomnia (primary)                    | 1.5            | 1.3 | 1.6            | 1.6  |
| 15 Falls                                 | 1.4            | 1.2 | 1.6            | 1.6  |
| 16 Panic disorder                        | 1.4            | 1.2 | 1.5            | 1.5  |
| 17 Vision disorders, age-related         | 1.4            | 1.2 | 1.5            | 1.5  |
| 18 Congenital anomalies                  | 1.2            | 1.1 | 1.2            | 1.2  |
| 19 Iron-deficiency anaemia               | 1.1            | 1.1 | 1.1            | 1.1  |
| 20 Parkinson disease                     | 1.0            | 1.1 | 1.0            | 1.0  |



Leading causes of death in Japan for the year 2000 <0to14>

|    | Persons  | % total deaths | Males | % total deaths | Females | % total deaths |
|----|--|----------------|-------|----------------|---------|----------------|
| 1  | Congenital anomalies                           | 28.9           | 1     | 26.4           | 1       | 32.2           |
| 2  | Conditions arising during the perinatal period | 19.2           | 2     | 18.7           | 2       | 20.0           |
| 3  | Lower respiratory infections                   | 4.5            | 3     | 4.8            | 3       | 5.0            |
| 4  | Road traffic accidents                         | 3.9            | 4     | 4.2            | 4       | 2.8            |
| 5  | Drownings                                      | 2.7            | 5     | 3.3            | 5       | 2.0            |
| 6  | Leukaemia                                      | 2.2            | 6     | 2.4            | 6       | 1.8            |
| 7  | Violence                                       | 1.6            | 7     | 1.6            | 7       | 1.6            |
| 8  | Inflammatory heart diseases                    | 1.2            | 8     | 1.5            | 8       | 1.3            |
| 9  | Falls  | 1.1            | 9     | 1.4            | 9       | 1.1            |
| 10 | Self-inflicted injuries                        | 1.1            | 10    | 1.2            | 10      | 0.8            |
| 11 | Fires  | 1.0            | 11    | 1.1            | 11      | 0.6            |
| 12 | Cerebrovascular disease                        | 0.8            | 12    | 0.9            | 12      | 0.6            |
| 13 | Asthma   | 0.7            | 13    | 0.6            | 13      | 0.5            |
| 14 | Diarrhoeal diseases                            | 0.5            | 14    | 0.6            | 14      | 0.4            |
| 15 | Epilepsy                                       | 0.5            | 15    | 0.5            | 15      | 0.4            |
| 16 | Nephritis and nephrosis                        | 0.4            | 16    | 0.4            | 16      | #VALUE!        |
| 17 | Upper respiratory infections                   | 0.4            | 17    | 0.4            | 17      | 0.4            |
| 18 | Lymphomas and multiple myeloma                 | 0.4            | 18    | 0.4            | 18      | 0.3            |
| 19 | Meningitis                                     | 0.3            | 19    | 0.3            | 19      | 0.2            |
| 20 | Liver cancer                                   | 0.2            | 20    | 0.3            | 20      | 0.2            |

Leading causes of DALYs in Japan for the year 2000 (0to14)

| Persons  | % total<br>DALYs | Males  | % total<br>DALYs | Females  | % total<br>DALYs |
|--|------------------|--|------------------|--|------------------|
| 1 Congenital anomalies                           | 17.1             | 1 Congenital anomalies                           | 16.8             | 1 Congenital anomalies                           | 17.5             |
| 2 Asthma   | 11.0             | 2 Asthma   | 9.8              | 2 Asthma   | 12.2             |
| 3 Conditions arising during the perinatal period | 9.3              | 3 Conditions arising during the perinatal period | 9.5              | 3 Conditions arising during the perinatal period | 9.1              |
| 4 Unipolar depressive disorders                  | 6.1              | 4 Schizophrenia                                  | 7.2              | 4 Migraine                                       | 7.8              |
| 5 Schizophrenia                                  | 5.4              | 5 Unipolar depressive disorders                  | 6.0              | 5 Unipolar depressive disorders                  | 6.2              |
| 6 Migraine                                       | 4.7              | 6 Falls  | 2.9              | 6 Schizophrenia                                  | 3.5              |
| 7 Pertussis                                      | 2.9              | 7 Pertussis                                      | 2.8              | 7 Pertussis                                      | 3.1              |
| 8 Falls  | 2.5              | 8 Road traffic accidents                         | 2.2              | 8 Dental caries                                  | 2.3              |
| 9 Dental caries                                  | 2.2              | 9 Dental caries                                  | 2.2              | 9 Falls  | 2.0              |
| 10 Road traffic accidents                        | 1.8              | 10 Migraine                                      | 1.9              | 10 Lower respiratory infections                  | 1.5              |
| 11 Self-inflicted injuries                       | 1.6              | 11 Self-inflicted injuries                       | 1.8              | 11 Diarrhoeal diseases                           | 1.4              |
| 12 Lower respiratory infections                  | 1.5              | 12 Lower respiratory infections                  | 1.5              | 12 Self-inflicted injuries                       | 1.4              |
| 13 Diarrhoeal diseases                           | 1.4              | 13 Diarrhoeal diseases                           | 1.3              | 13 Road traffic accidents                        | 1.3              |
| 14 Epilepsy                                      | 1.1              | 14 Epilepsy                                      | 1.2              | 14 Epilepsy                                      | 1.1              |
| 15 Otitis media                                  | 1.1              | 15 Drownings                                     | 1.0              | 15 Otitis media                                  | 1.1              |
| 16 Alzheimer and other dementias                 | 0.9              | 16 Otitis media                                  | 1.0              | 16 Iron-deficiency anaemia                       | 1.1              |
| 17 Drownings                                     | 0.8              | 17 Alzheimer and other dementias                 | 0.9              | 17 Bipolar affective disorder                    | 0.9              |
| 18 Iron-deficiency anaemia                       | 0.8              | 18 Leukaemia                                     | 0.8              | 18 Alzheimer and other dementias                 | 0.8              |
| 19 Leukaemia                                     | 0.7              | 19 Violence                                      | 0.6              | 19 Protein-energy malnutrition                   | 0.6              |
| 20 Protein-energy malnutrition                   | 0.6              | 20 Protein-energy malnutrition                   | 0.6              | 20 Leukaemia                                     | 0.5              |

Leading causes of YLD in Japan for the year 2000 <0to14>

| Persons  | Males |         | Females |         | % total YLD |
|--|-------|---------|---------|---------|-------------|
|  | YLD   | % total | YLD     | % total |             |
| 1 Asthma   | 14.8  |         | 13.6    |         | 16.1        |
| 2 Congenital anomalies                           | 13.0  |         | 13.0    |         | 13.0        |
| 3 Unipolar depressive disorders                  | 8.4   |         | 10.2    |         | 10.4        |
| 4 Schizophrenia                                  | 7.4   |         | 8.6     |         | 8.2         |
| 5 Migraine                                       | 6.5   |         | 5.9     |         | 5.8         |
| 6 Conditions arising during the perinatal period | 5.9   |         | 3.9     |         | 4.6         |
| 7 Pertussis                                      | 4.0   |         | 3.5     |         | 4.1         |
| 8 Dental caries                                  | 3.0   |         | 3.1     |         | 3.0         |
| 9 Falls  | 2.9   |         | 2.7     |         | 2.4         |
| 10 Self-inflicted injuries                       | 1.8   |         | 2.0     |         | 1.7         |
| 11 Diarrhoeal diseases                           | 1.7   |         | 1.7     |         | 1.6         |
| 12 Otitis media                                  | 1.4   |         | 1.5     |         | 1.4         |
| 13 Epilepsy                                      | 1.4   |         | 1.4     |         | 1.4         |
| 14 Alzheimer and other dementias                 | 1.1   |         | 1.2     |         | 1.3         |
| 15 Iron-deficiency anaemia                       | 1.1   |         | 1.0     |         | 1.2         |
| 16 Road traffic accidents                        | 0.9   |         | 0.8     |         | 1.1         |
| 17 Protein-energy malnutrition                   | 0.8   |         | 0.7     |         | 0.8         |
| 18 Bipolar affective disorder                    | 0.6   |         | 0.5     |         | 0.7         |
| 19 Low back pain                                 | 0.5   |         | 0.5     |         | 0.5         |
| 20 Alcohol use disorders                         | 0.4   |         | 0.4     |         | 0.4         |

**Leading causes of death in Japan for the year 2000 <15to59>**

|    | <b>Persons</b>                     | <b>Males</b>                         | <b>Females</b>                       | <b>% total deaths</b> | <b>% total deaths</b> | <b>% total deaths</b> |
|----|------------------------------------|--------------------------------------|--------------------------------------|-----------------------|-----------------------|-----------------------|
| 1  | Self-inflicted injuries            | 1 Self-inflicted injuries            | 1 Self-inflicted injuries            | 15.0                  | 16.9                  | 11.0                  |
| 2  | Cerebrovascular disease            | 2 Ischaemic heart disease            | 2 Breast cancer                      | 8.5                   | 8.7                   | 10.7                  |
| 3  | Ischaemic heart disease            | 3 Cerebrovascular disease            | 3 Cerebrovascular disease            | 7.1                   | 8.3                   | 8.8                   |
| 4  | Stomach cancer                     | 4 Stomach cancer                     | 4 Stomach cancer                     | 6.4                   | 6.0                   | 7.2                   |
| 5  | Trachea, bronchus and lung cancers | 5 Road traffic accidents             | 5 Colon and rectum cancers           | 5.0                   | 5.4                   | 5.8                   |
| 6  | Road traffic accidents             | 6 Trachea, bronchus and lung cancers | 6 Trachea, bronchus and lung cancers | 4.7                   | 5.2                   | 4.6                   |
| 7  | Colon and rectum cancers           | 7 Liver cancer                       | 7 Ischaemic heart disease            | 4.6                   | 4.9                   | 3.9                   |
| 8  | Liver cancer                       | 8 Cirrhosis of the liver             | 8 Ovary cancer                       | 3.9                   | 4.4                   | 3.6                   |
| 9  | Cirrhosis of the liver             | 9 Colon and rectum cancers           | 9 Road traffic accidents             | 3.5                   | 4.0                   | 3.0                   |
| 10 | Breast cancer                      | 10 Pancreas cancer                   | 10 Cervix uteri cancer               | 3.4                   | 2.1                   | 2.4                   |
| 11 | Pancreas cancer                    | 11 Oesophagus cancer                 | 11 Pancreas cancer                   | 2.2                   | 2.1                   | 2.3                   |
| 12 | Lower respiratory infections       | 12 Lower respiratory infections      | 12 Leukaemia                         | 1.9                   | 1.9                   | 1.9                   |
| 13 | Oesophagus cancer                  | 13 Leukaemia                         | 13 Lymphomas and multiple myeloma    | 1.6                   | 1.4                   | 1.8                   |
| 14 | Leukaemia                          | 14 Lymphomas and multiple myeloma    | 14 Liver cancer                      | 1.6                   | 1.4                   | 1.8                   |
| 15 | Lymphomas and multiple myeloma     | 15 Diabetes mellitus                 | 15 Lower respiratory infections      | 1.5                   | 1.4                   | 1.7                   |
| 16 | Diabetes mellitus                  | 16 Falls                             | 16 Corpus uteri cancer               | 1.2                   | 1.2                   | 1.7                   |
| 17 | Ovary cancer                       | 17 Mouth and oropharynx cancers      | 17 Cirrhosis of the liver            | 1.2                   | 1.1                   | 1.6                   |
| 18 | Drownings                          | 18 Drownings                         | 18 Diabetes mellitus                 | 1.0                   | 1.1                   | 1.0                   |
| 19 | Falls                              | 19 Inflammatory heart diseases       | 19 Drownings                         | 1.0                   | 0.9                   | 0.8                   |
| 20 | Hypertensive heart disease         | 20 Nephritis and nephrosis           | 20 Nephritis and nephrosis           | 0.7                   | 0.7                   | 0.7                   |