

# 腎病変と腎機能障害

TCDD	腎病変	頭数	腎機能 検討頭数	BUN mg/dl	Creatinine mg/dl
0 ng/kg	—	6	5	29.35 ±7.39	0.72 ±0.17
30 ng/kg	—	3	2	37.17	0.97
300 ng/kg	—	4	3	15.43 ±5.41	0.70 ±0.25
300 ng/kg	+	5	3	55.27 ±38.94	1.50 ±0.75

# 肉眼所見

L R



SBL 89-05-02  
2g  
No. 9 (F1)

L R



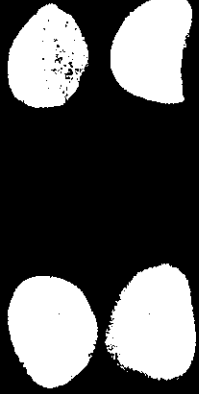
SBL 89-05-02  
2g  
No. 9 (F1)

L R



SBL 89-05-02  
2g  
No. 9 (F1)

L R



SBL 89-05-02  
2g  
No. 9 (F1)



SBL 89-05  
No. 106(F1)  
腎臓 (右) 1

SBL 89-05  
No. 106(F1)  
腎臓 (左)



SBL 89-05  
No. 109(F1)  
腎臓 (右) 1

SBL 89-05  
No. 109(F1)  
腎臓 (左)

臓器重量:

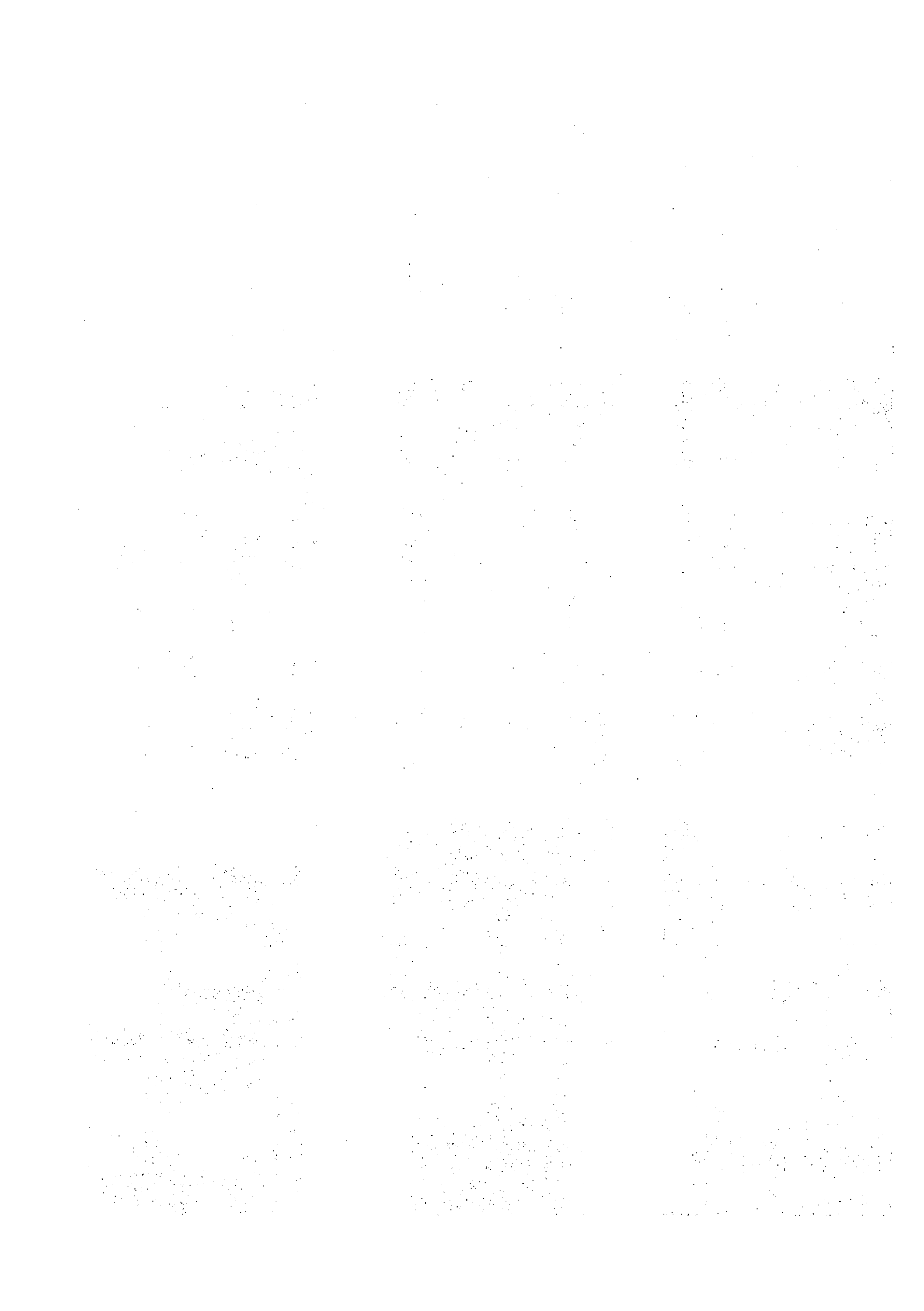
F1群の2頭で  
片側に高度萎  
縮があり。

F1a38(rt/lt:

1.52/2.93)

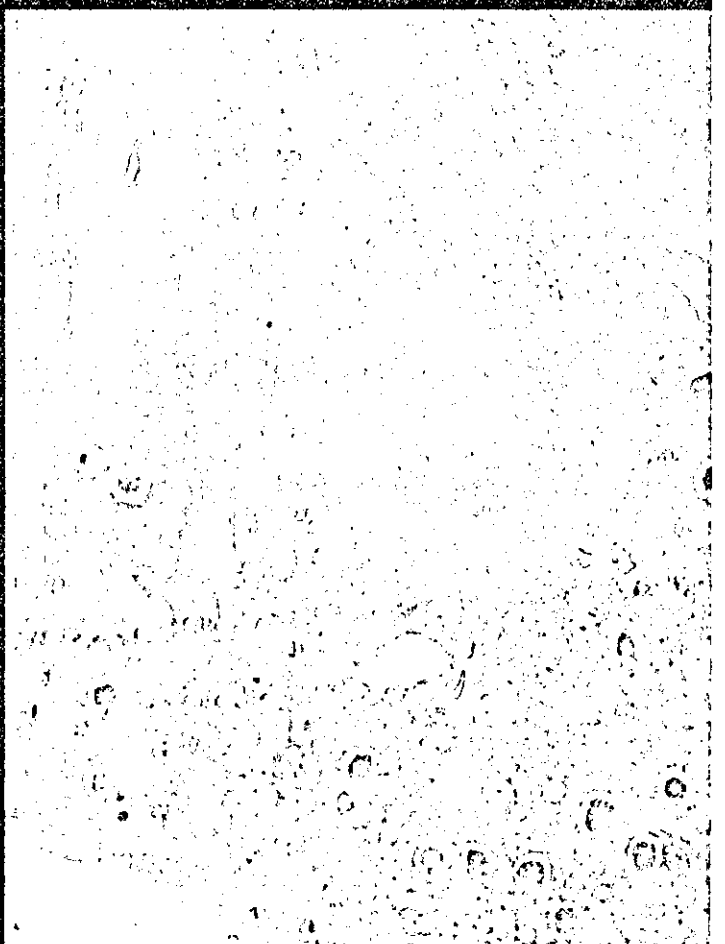
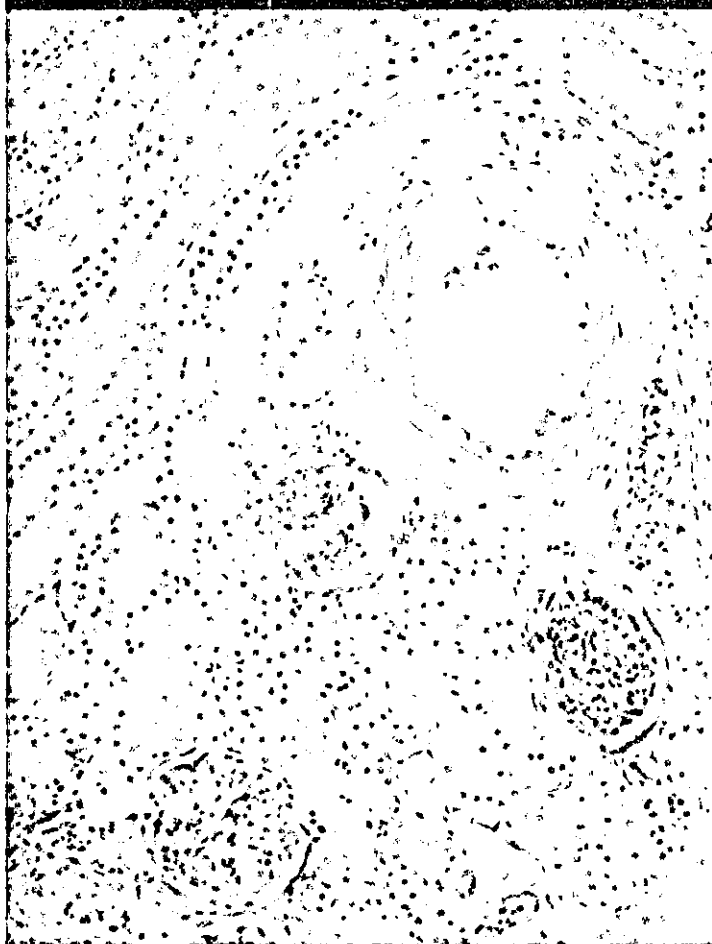
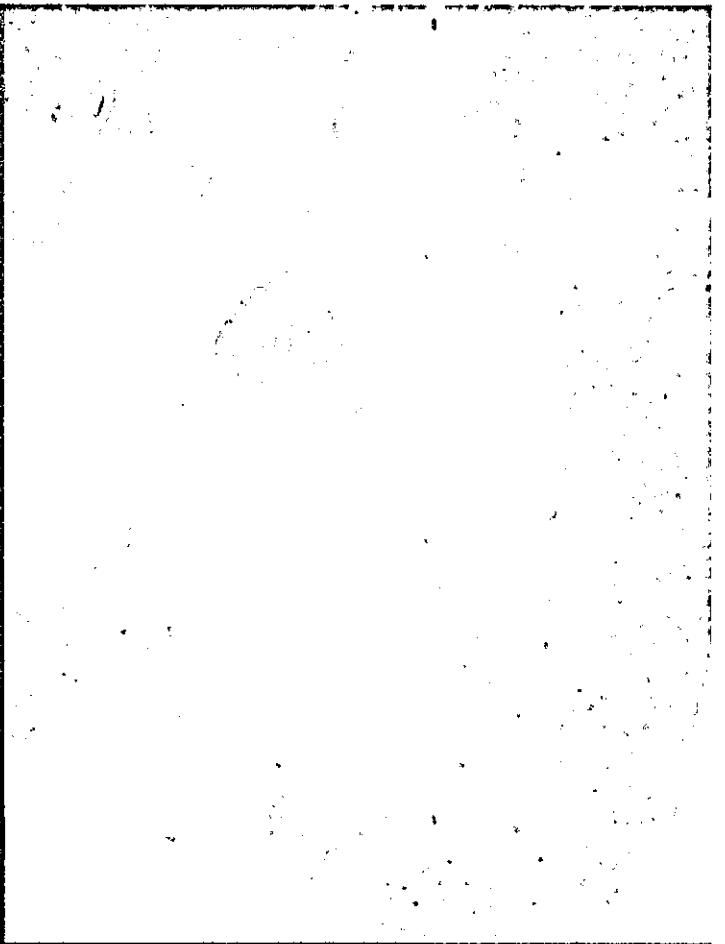
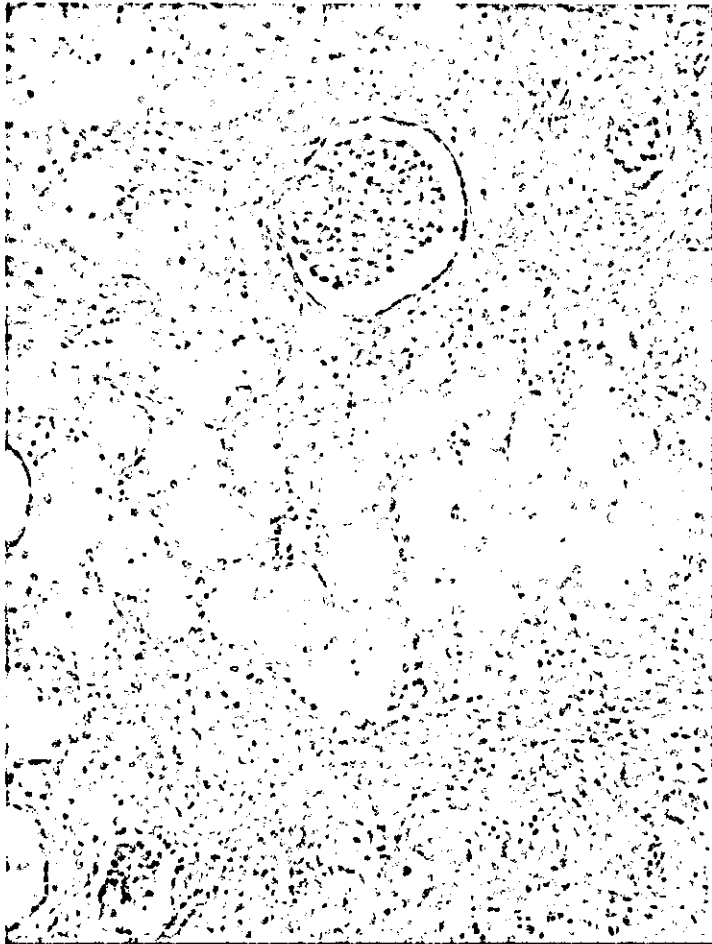
F1a8(rt/lt:

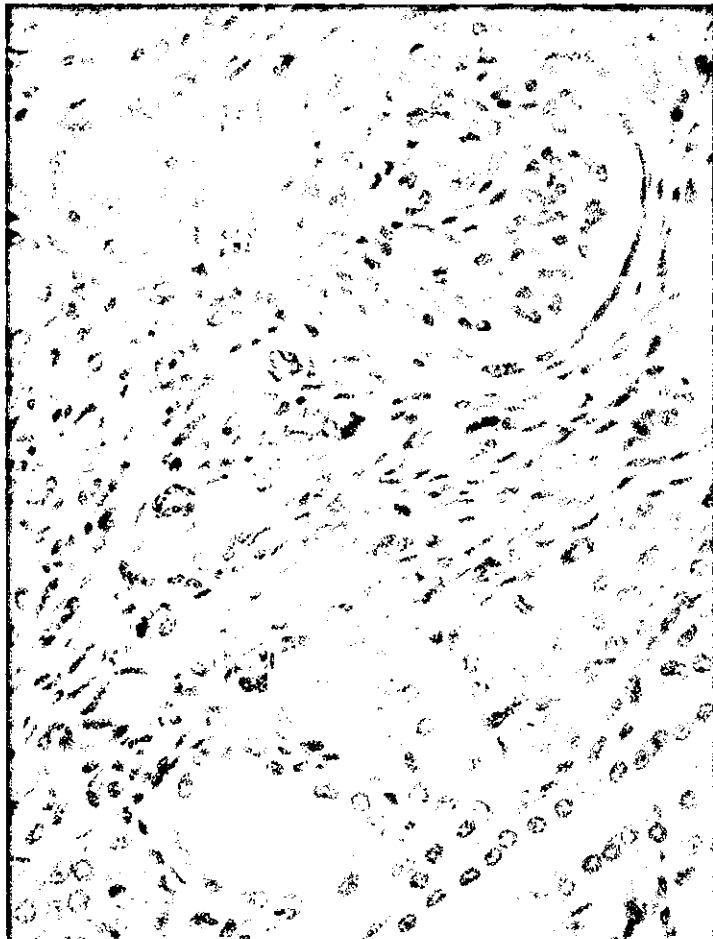
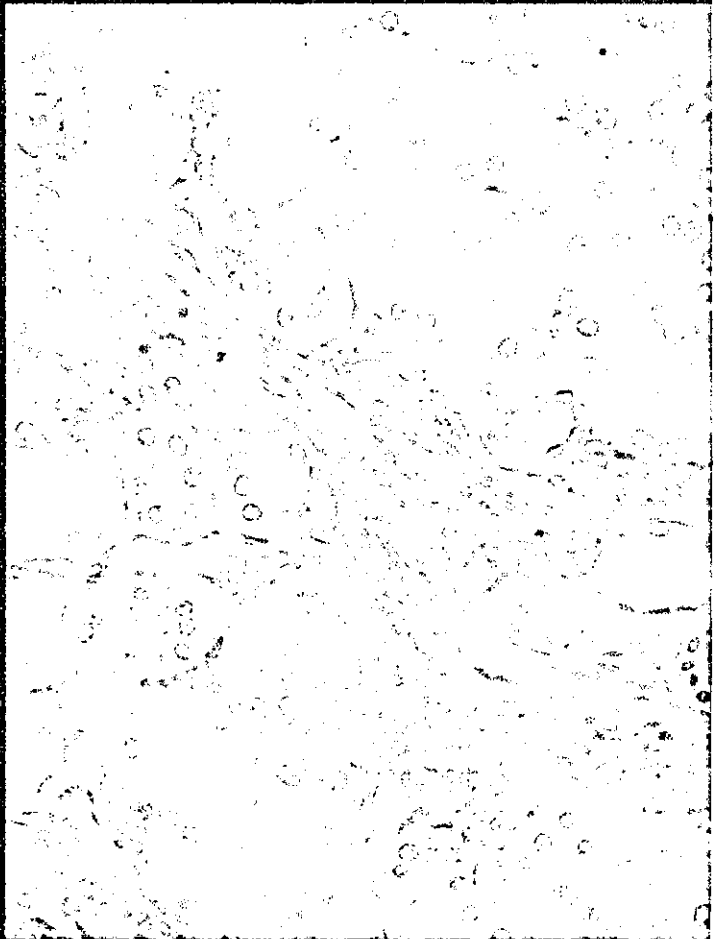
1.80/3.0)



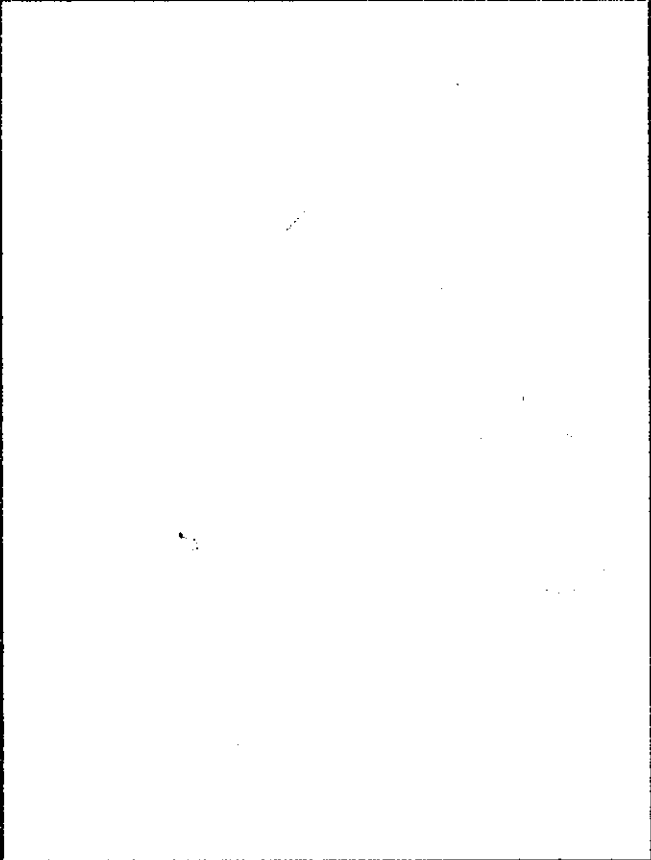


# 組織所見

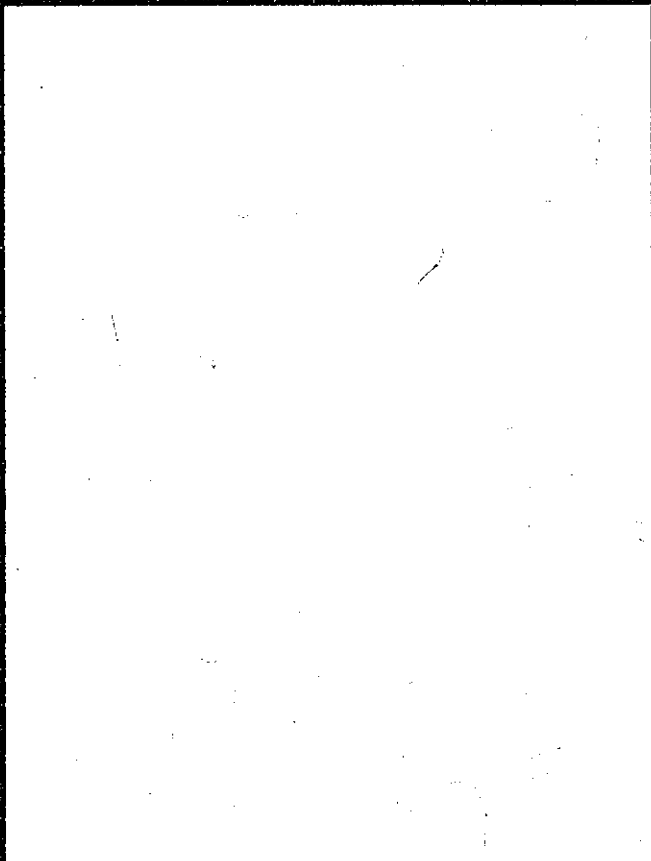




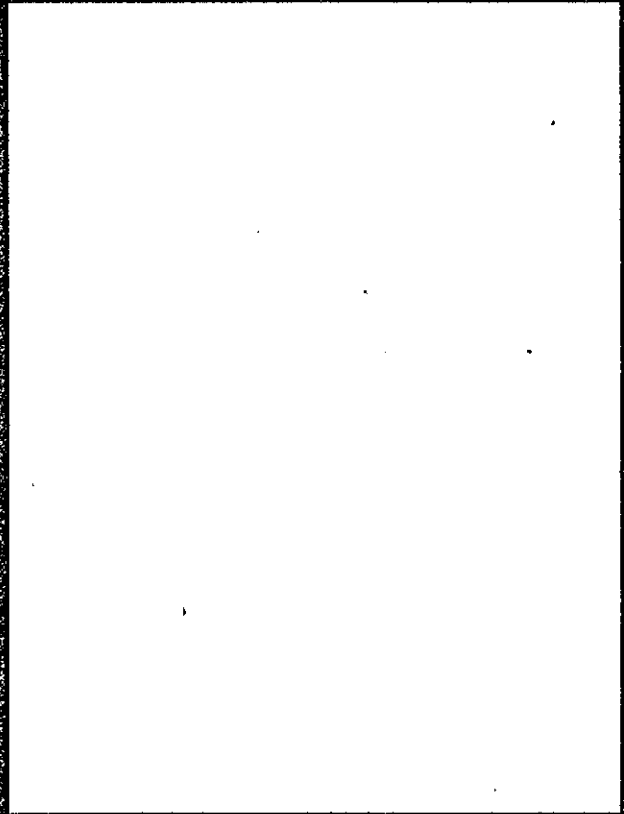
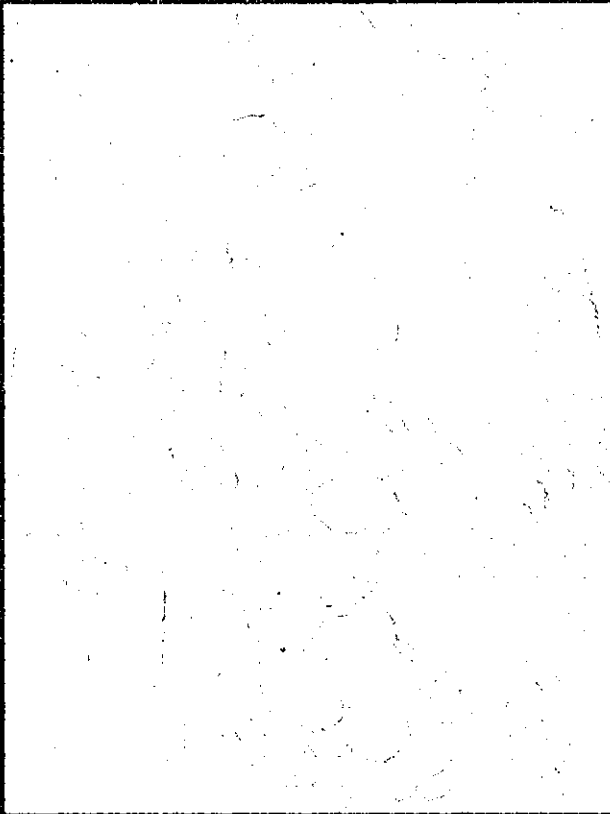
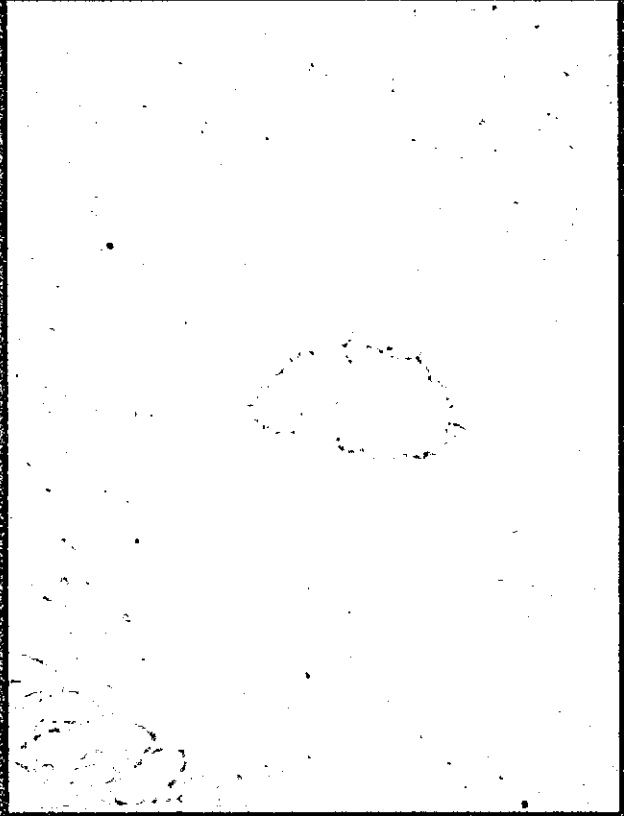
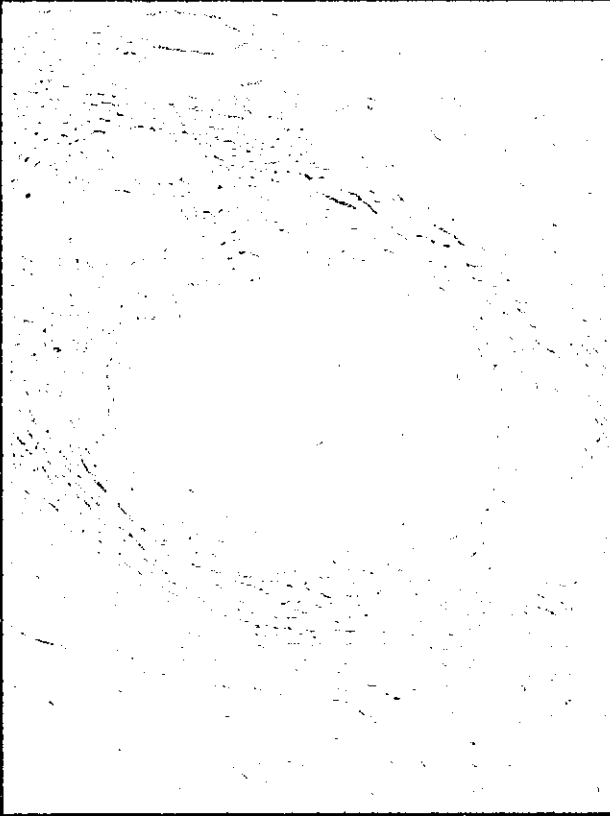
AZAN染色	Vimentin 免疫染色
LCA陽性 リンパ球	

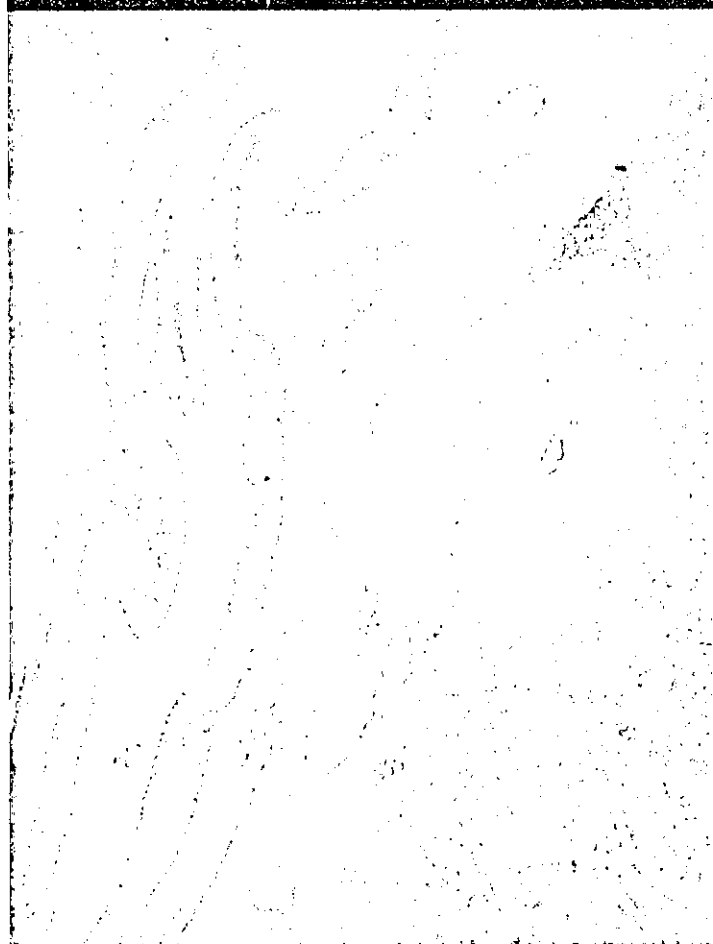


Control群

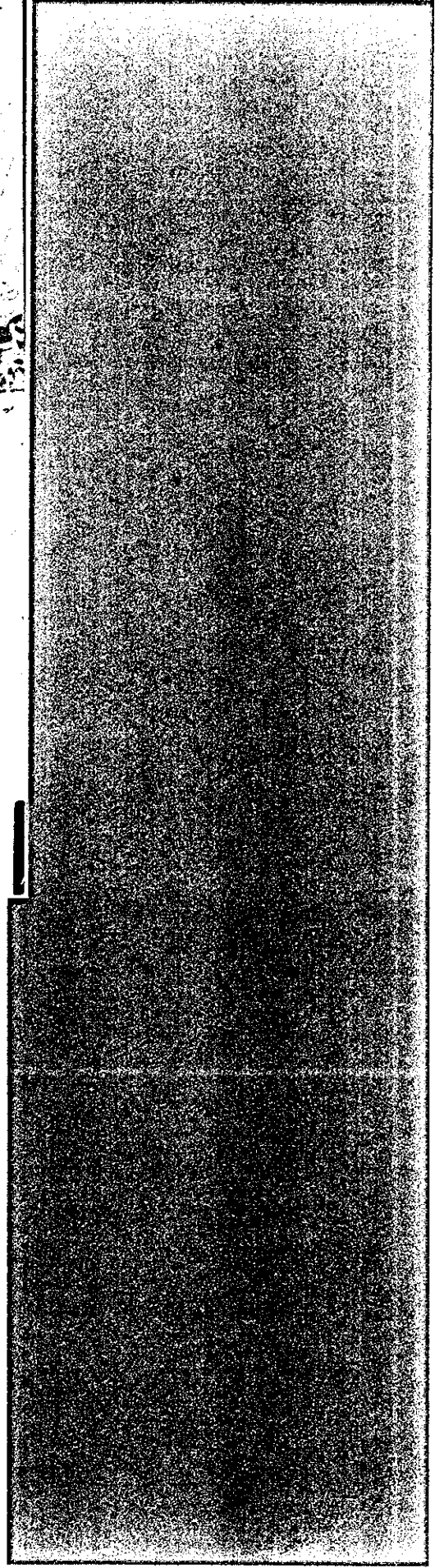
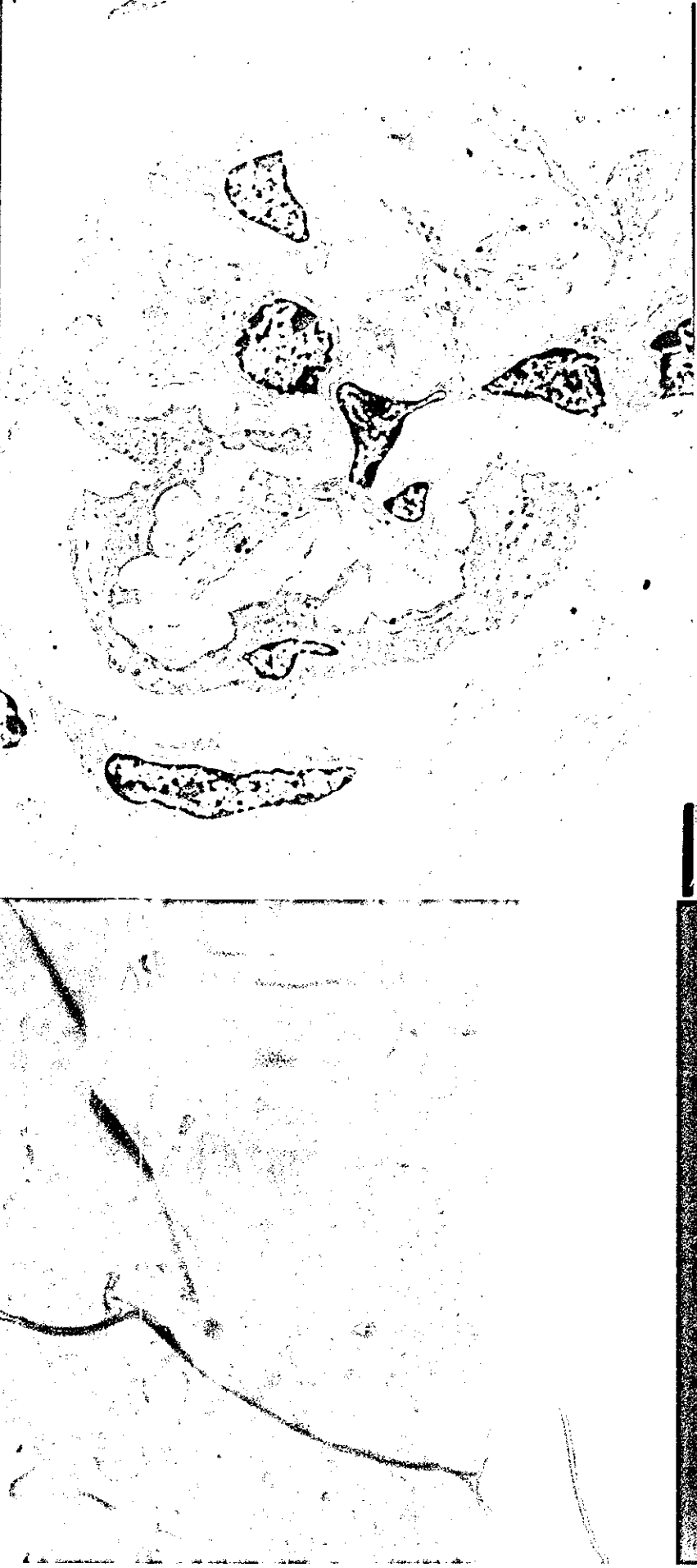


300ng群Fibrosis

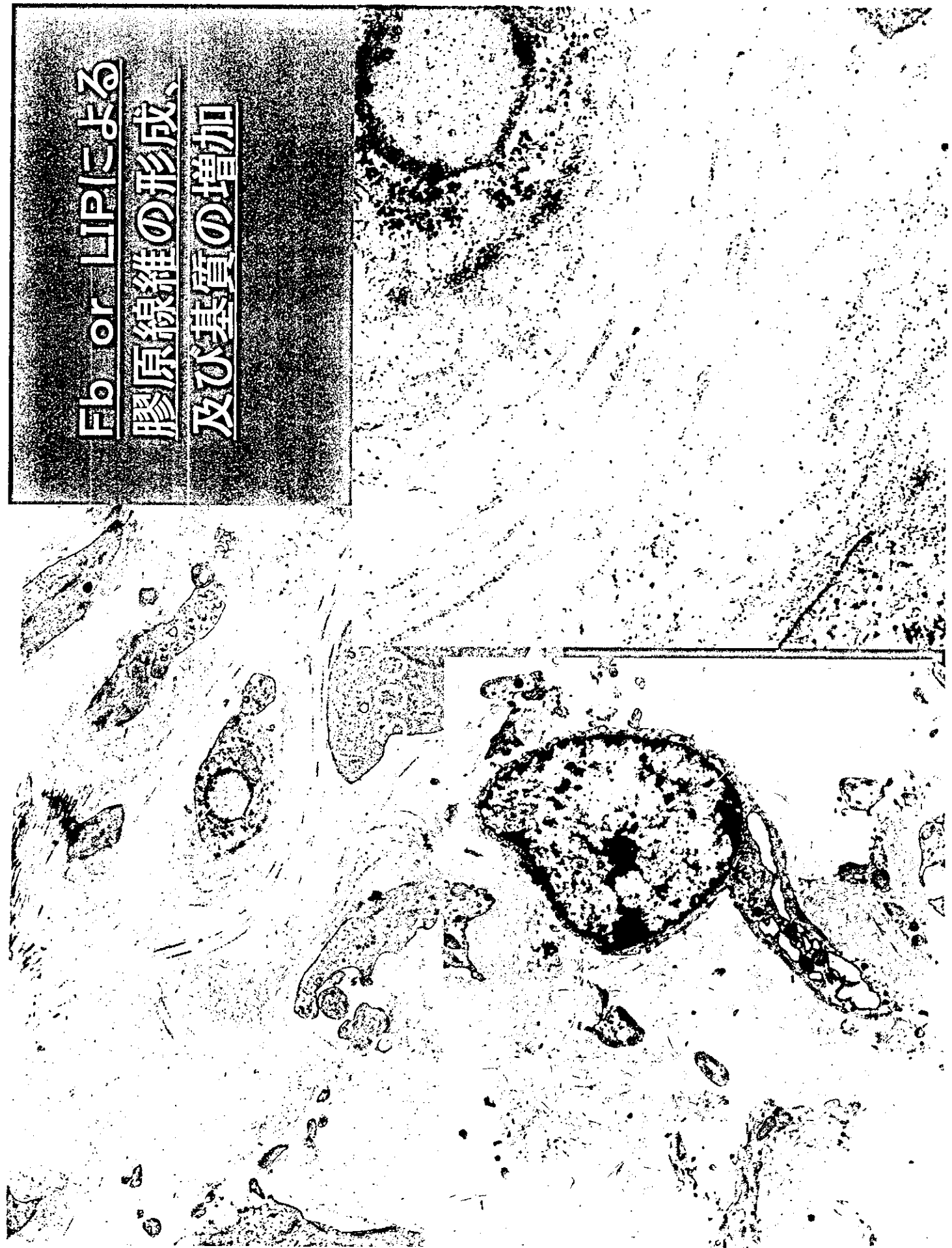




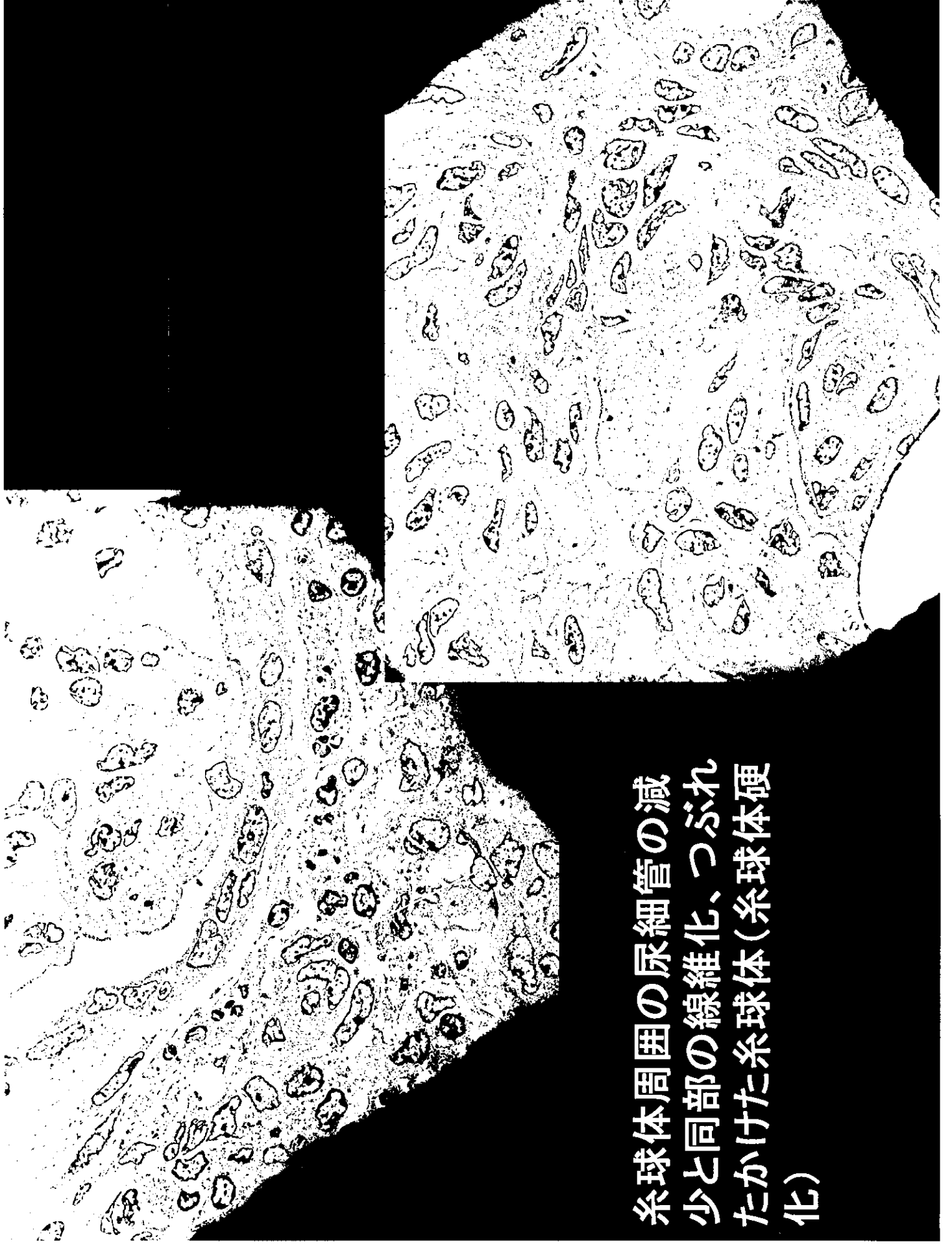
皮質：糸球体被膜下のつぶれた糸球体(散在)



**Fb or LIPによる  
膠原線維の形成、  
及び基質の増加**





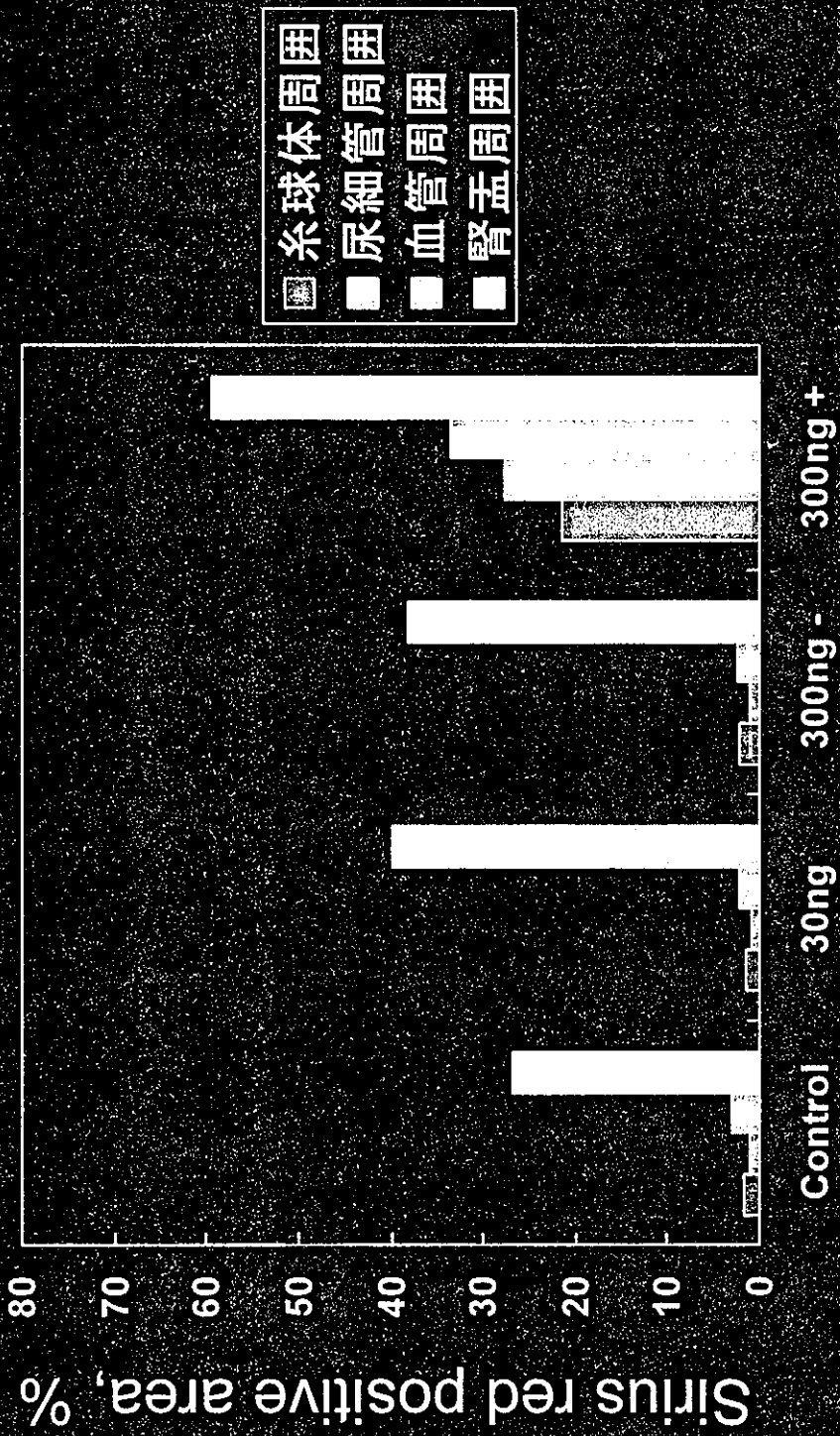


糸球体周囲の尿細管の減少と同部の線維化、つぶれたかけた糸球体(糸球体硬化)

# 腎病変形態計測

# 腎線維化の画像解析結果

TCDD量 (頭数)	腎線 維化	尿細管 周囲	糸球体 周囲	血管 周囲	腎盂 周囲	腎門部
0ng/kg (6)	—	1.16 ±0.63	1.65 ±0.67	3.06 ±1.77	26.73 ±7.55	25.25 ±8.35
30ng/kg (3)	—	0.87 ±0.43	1.59 ±0.61	2.23 ±0.70	39.80 ±15.6	14.30 ±7.18
300ng/kg (4)	—	1.10 ±0.69	2.22 ±0.66	2.40 ±0.84	38.17 ±8.27	24.69 ±7.18
300ng/kg (5)	+	27.57 ±15.1	21.36 ±8.27	33.37 ±7.25	59.39 ±15.4	36.60 ±7.69



Kidneys of offspring