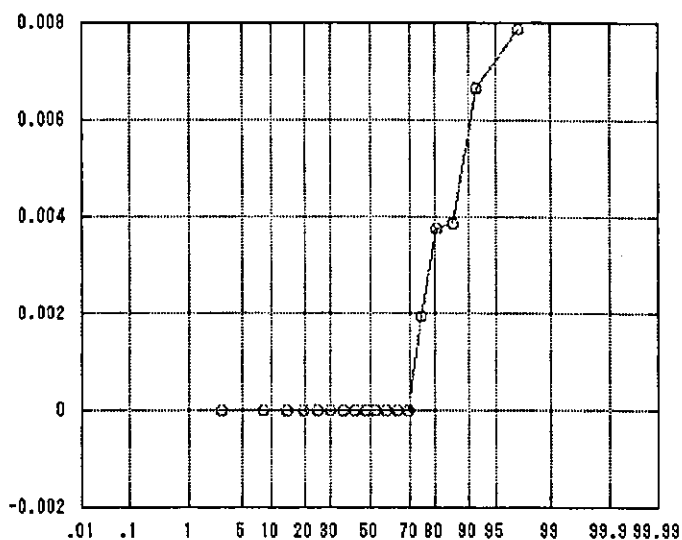
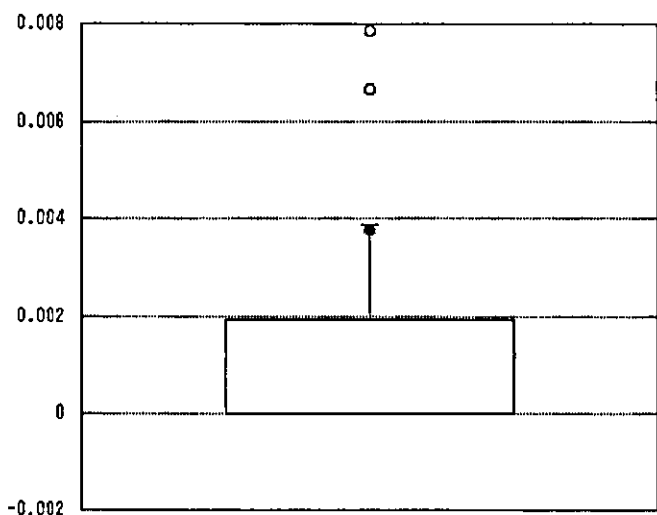
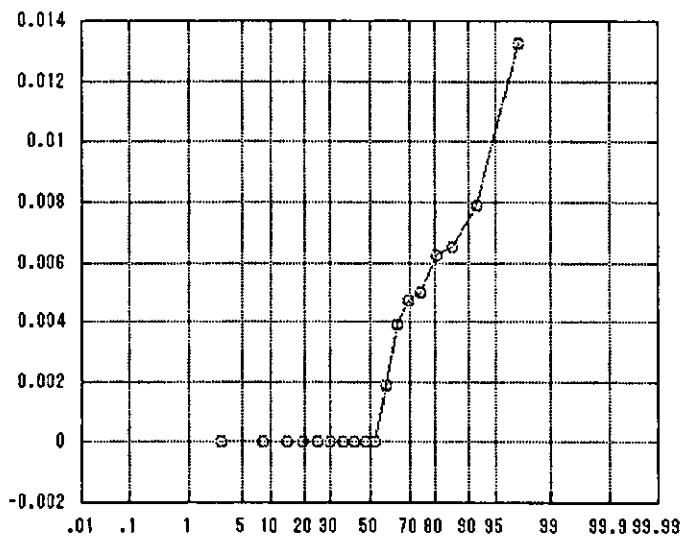
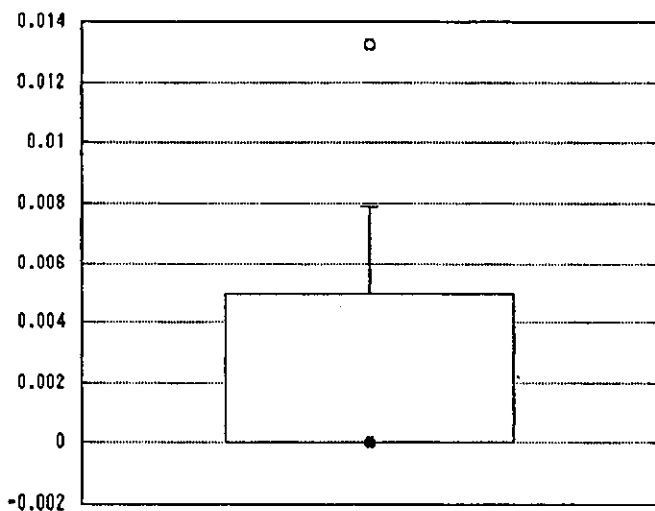


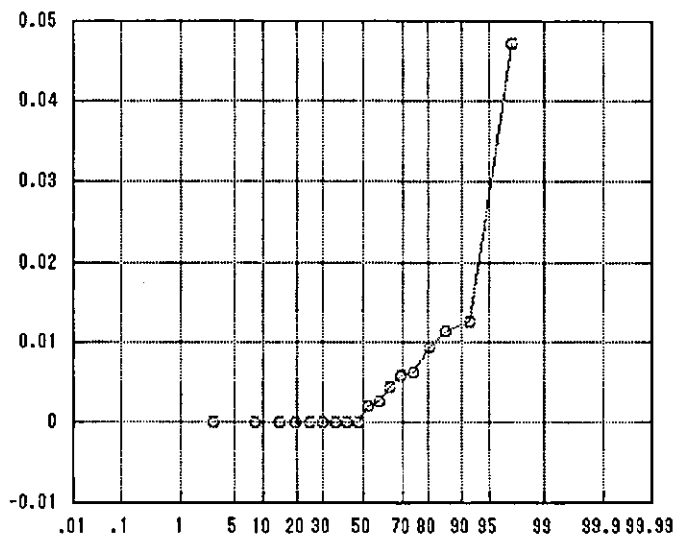
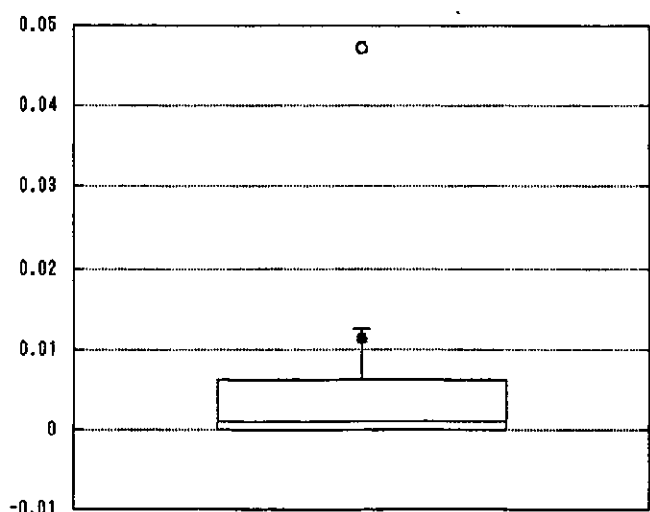
カテ感染率（耐性）



カテ感染率（感性）



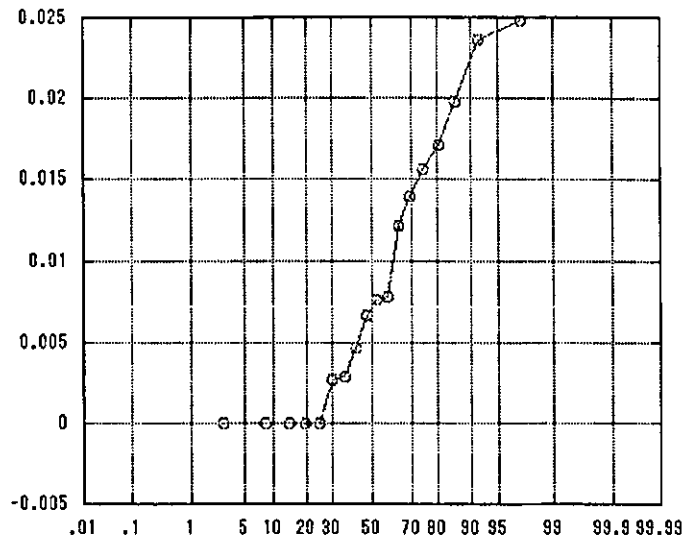
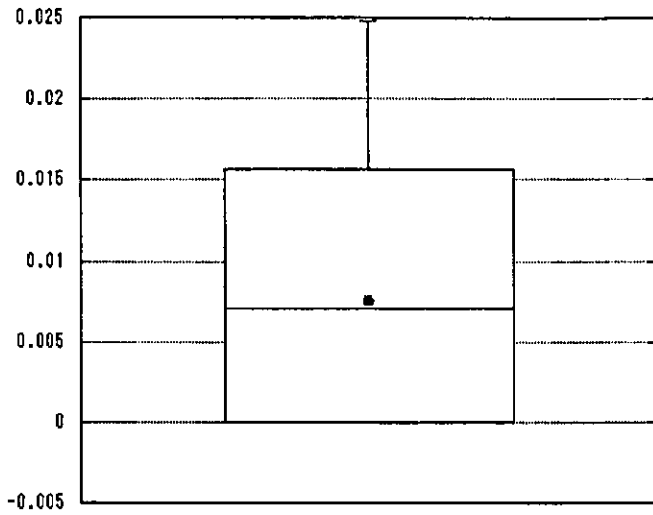
創感染率（耐性）



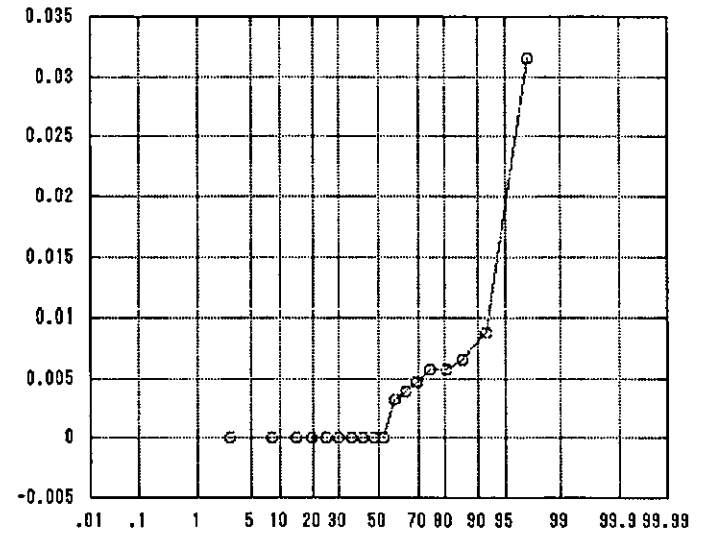
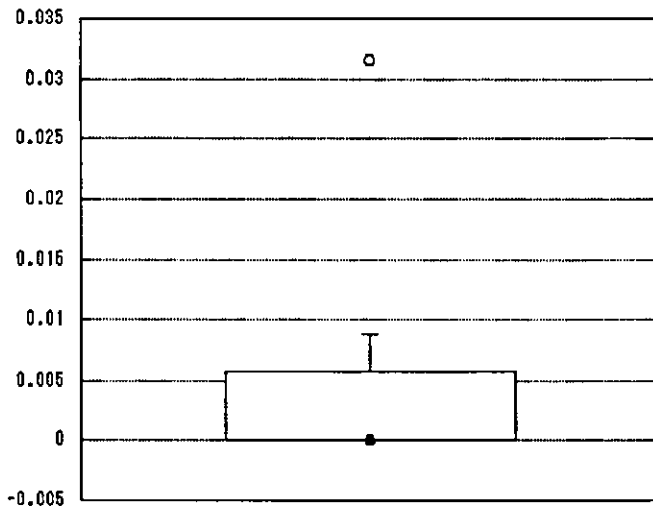
● 自施設

パーセント

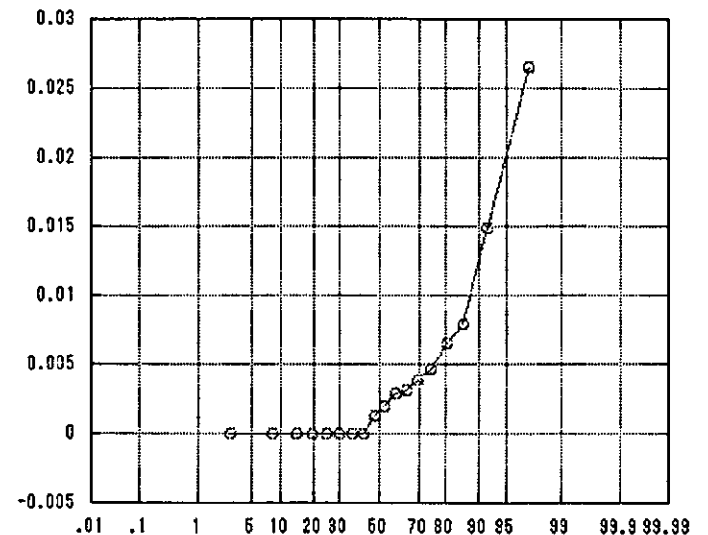
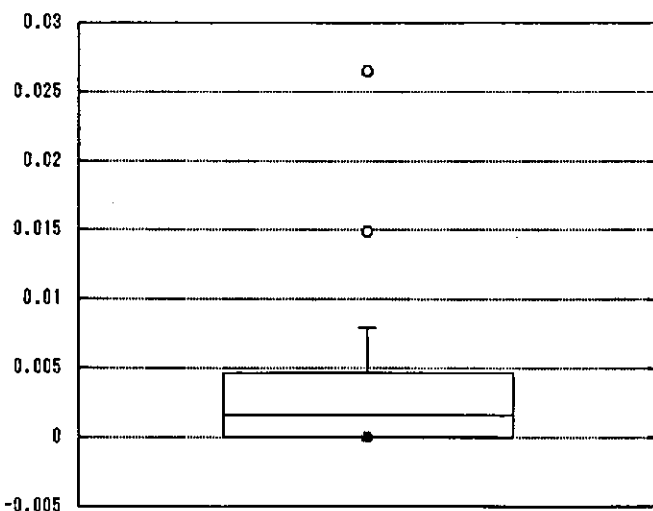
創感染率（感性）



敗血症感染率（耐性）

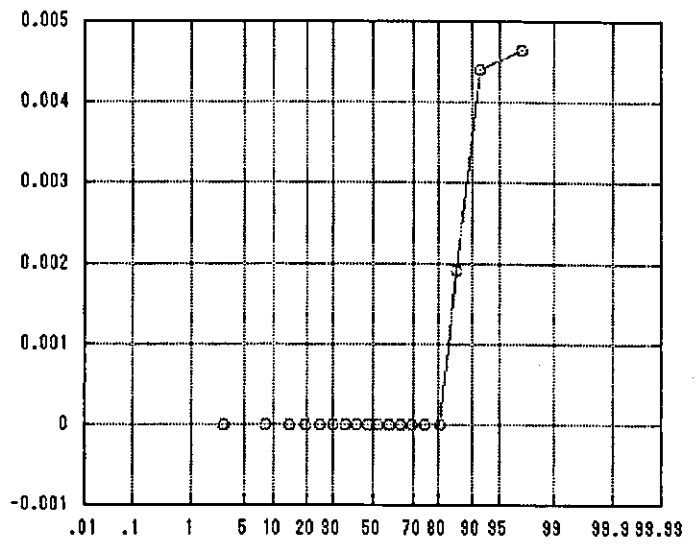
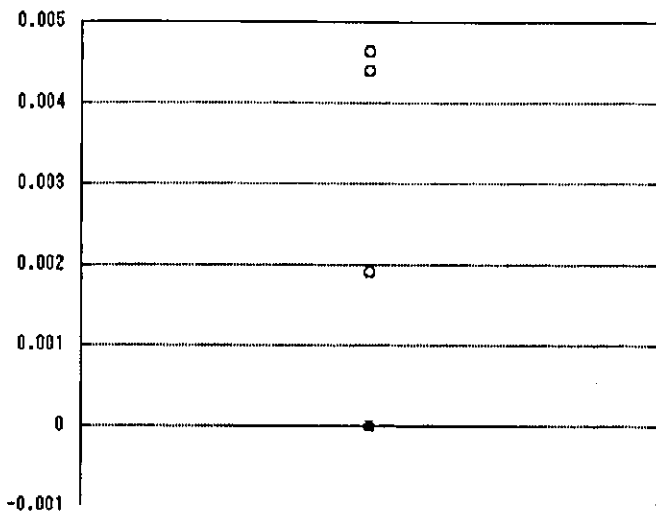


敗血症感染率（感性）

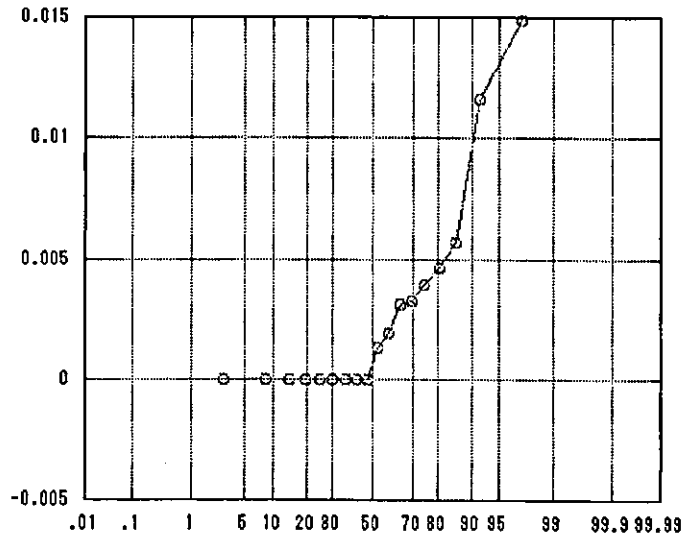
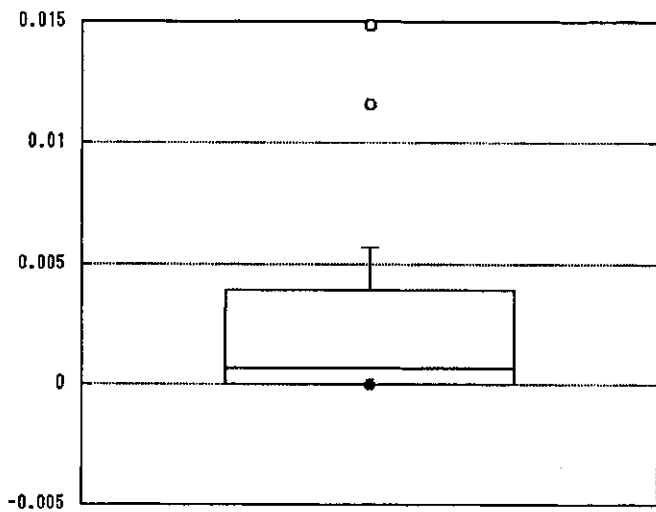


● 自施設

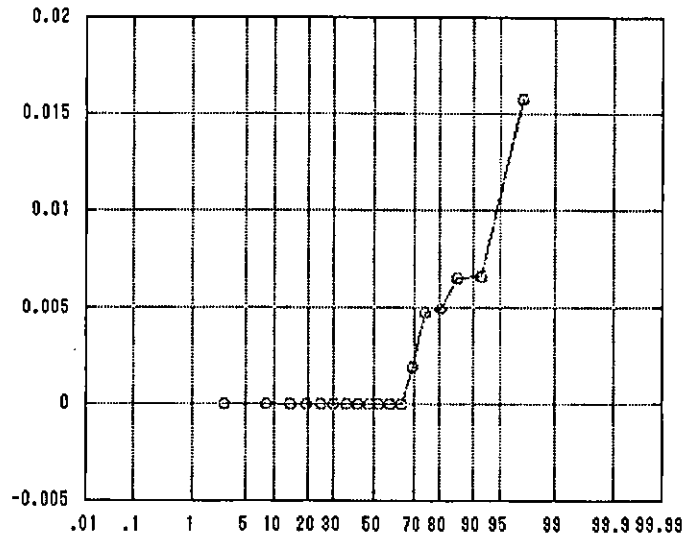
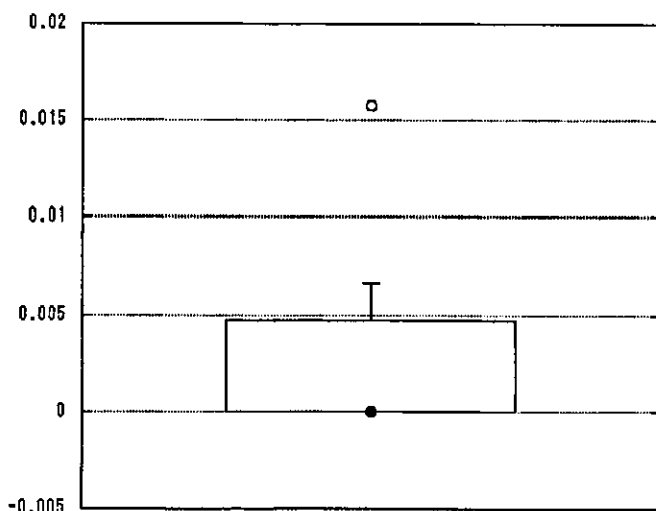
尿路感染率（耐性）



尿路感染率（感性）

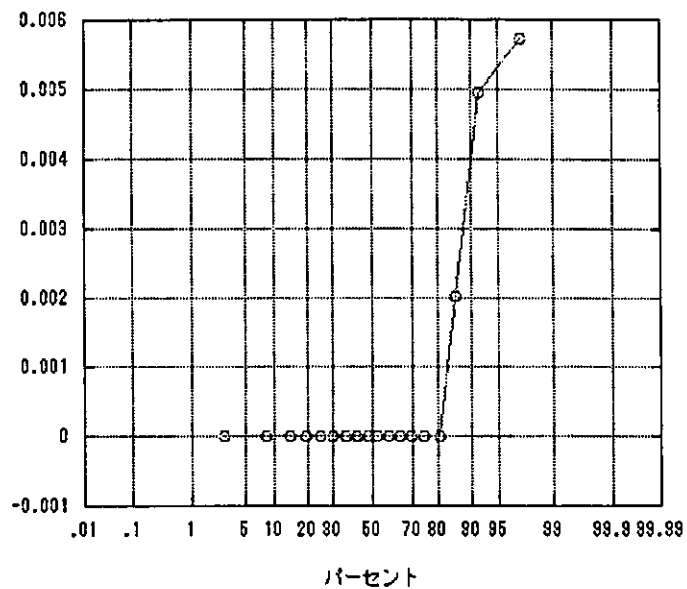
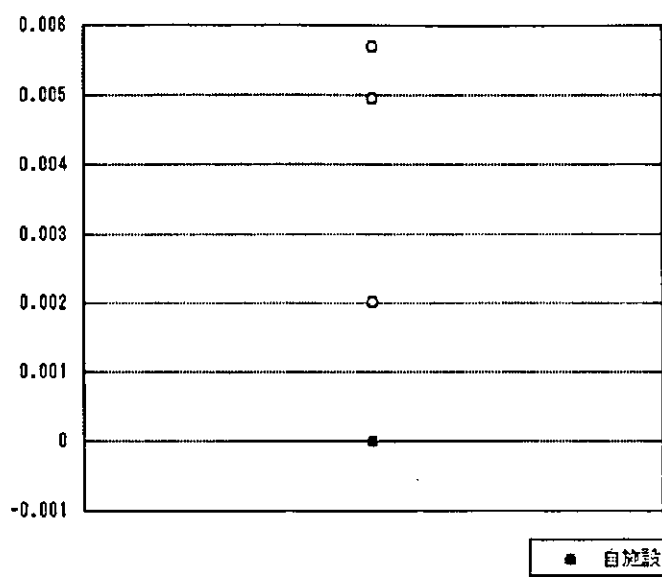


その他感染率（耐性）

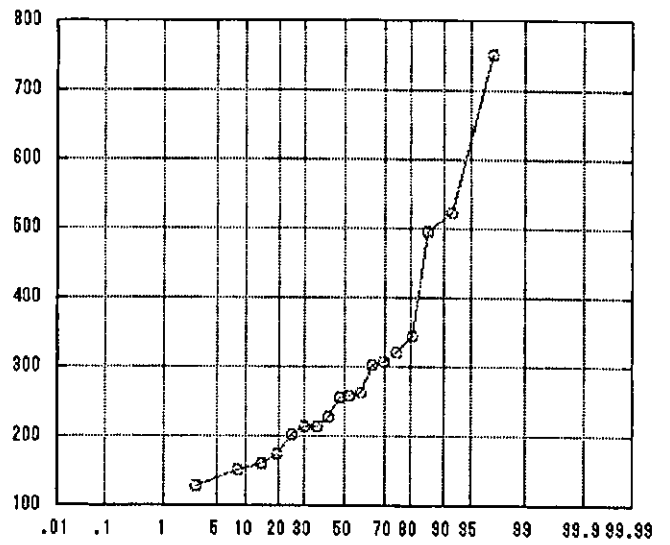
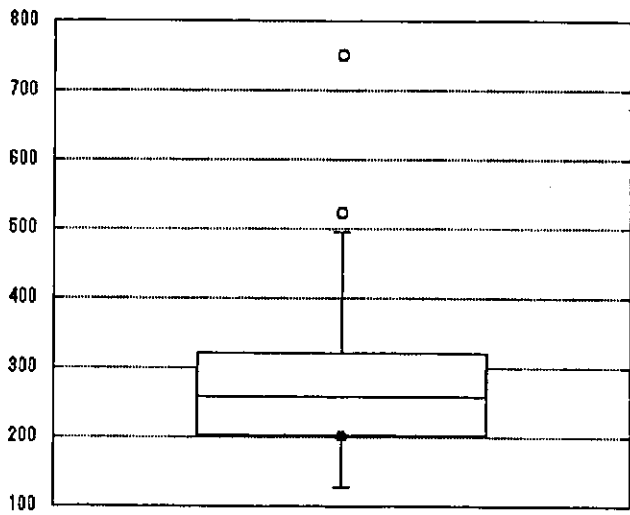


● 自施設

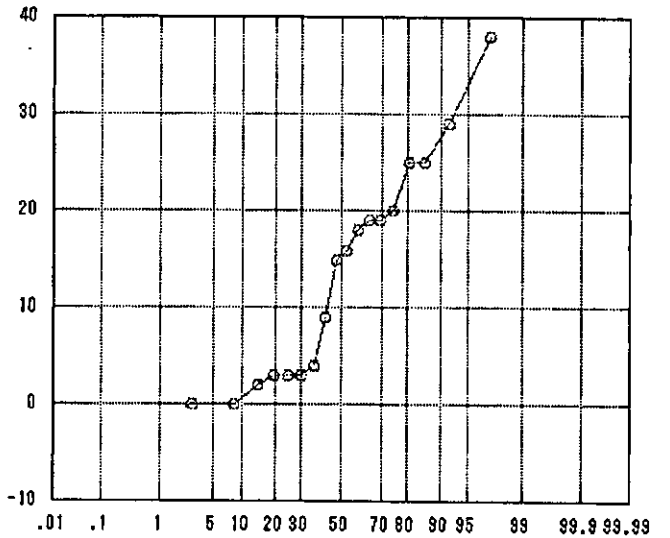
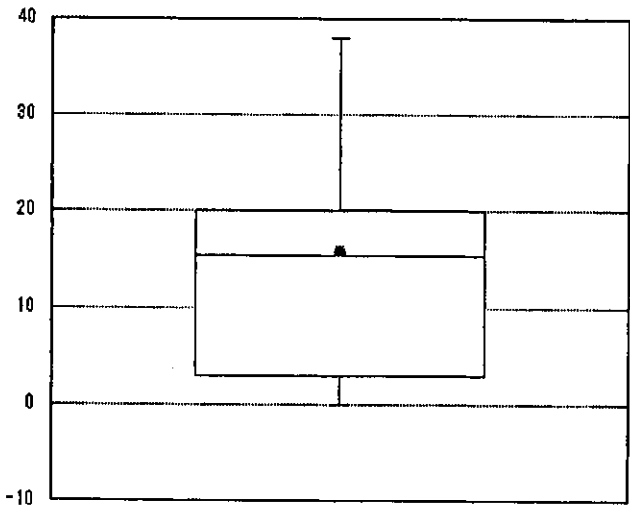
その他感染率（感性）



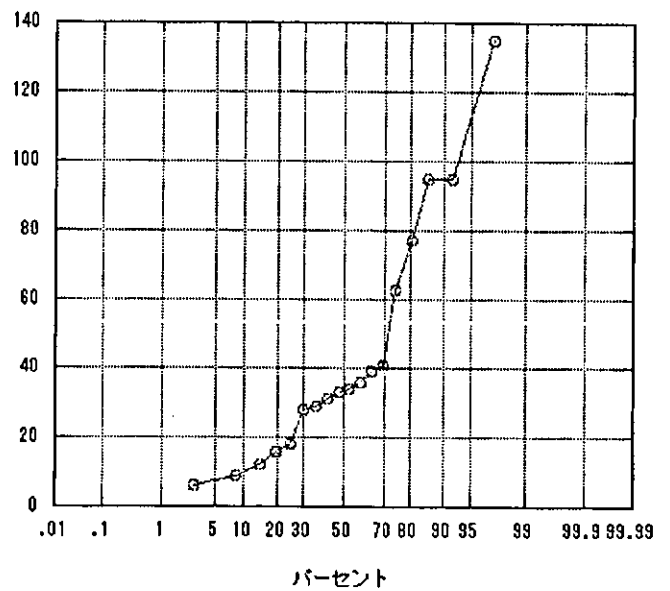
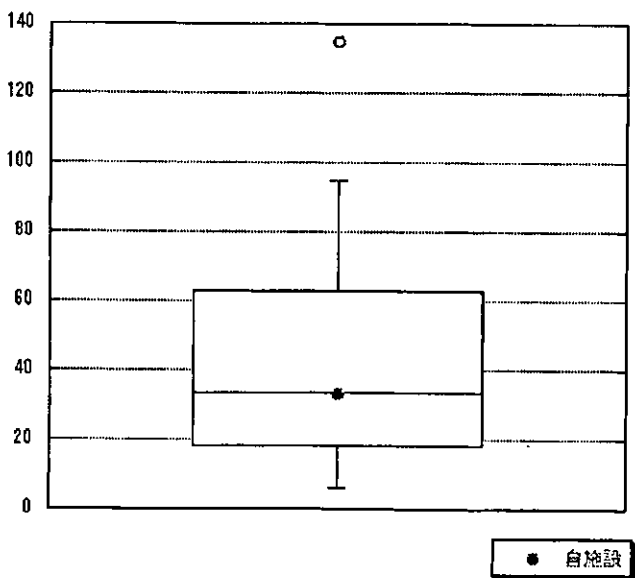
年間収容患者数



APACHE 0~4



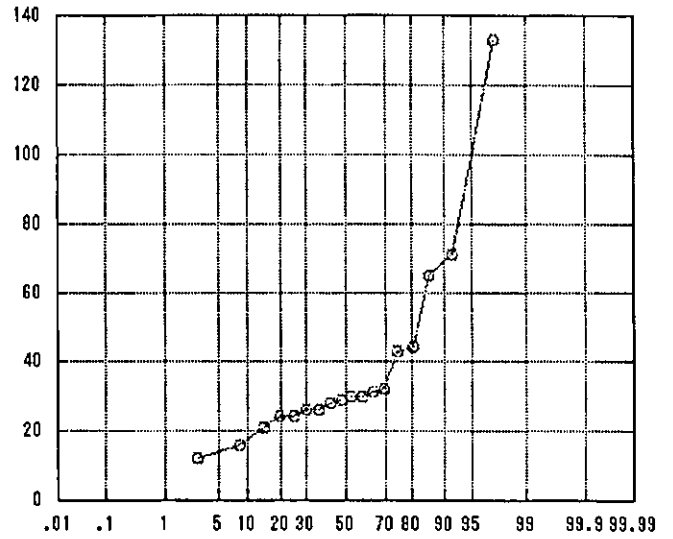
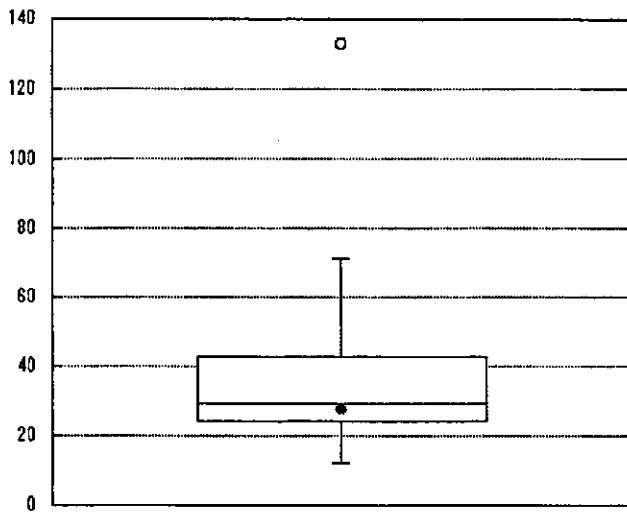
APACHE 5~9



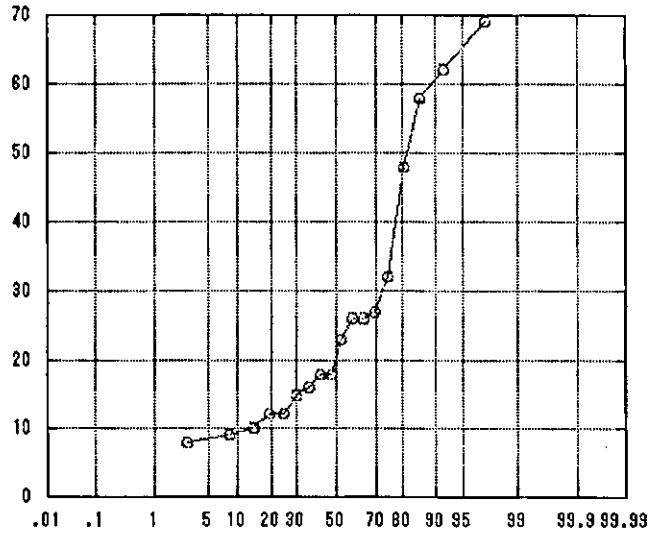
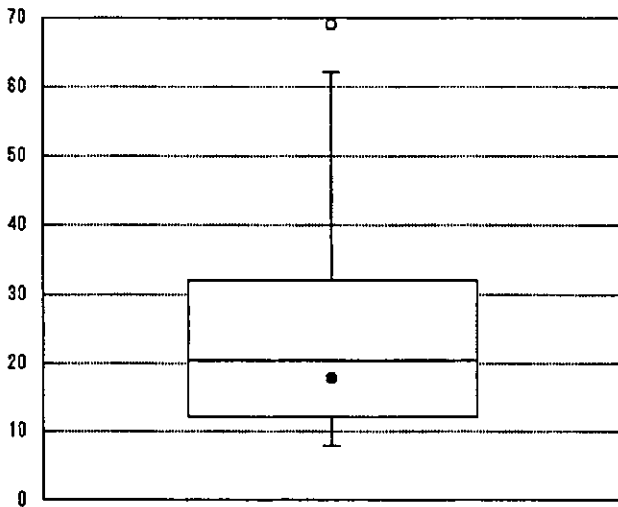
● 自施設

パーセント

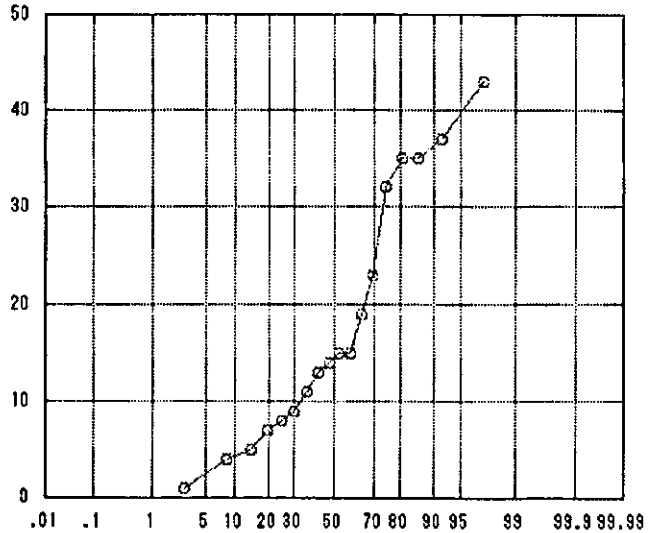
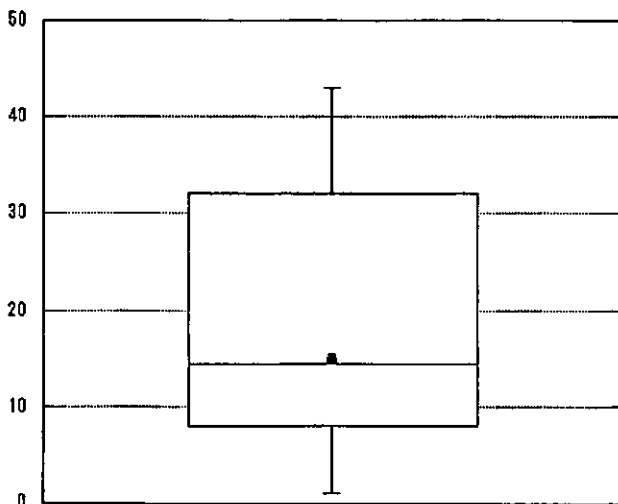
APACHE 10~14



APACHE 15~19



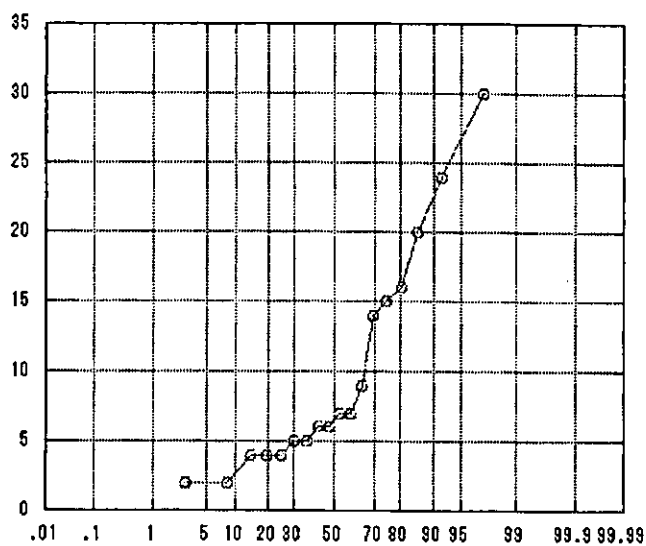
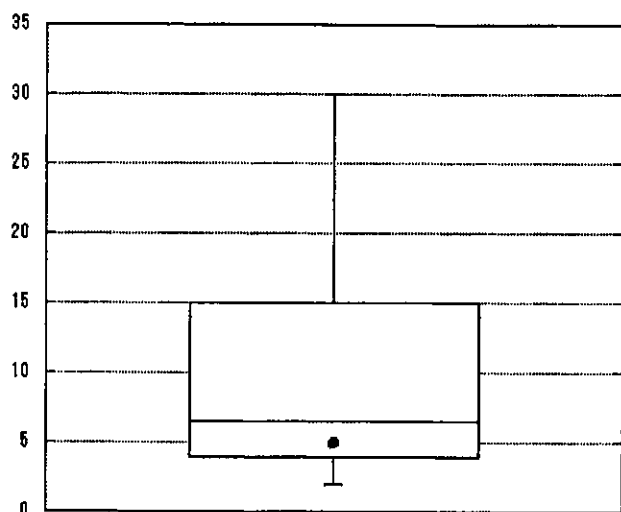
APACHE 20~24



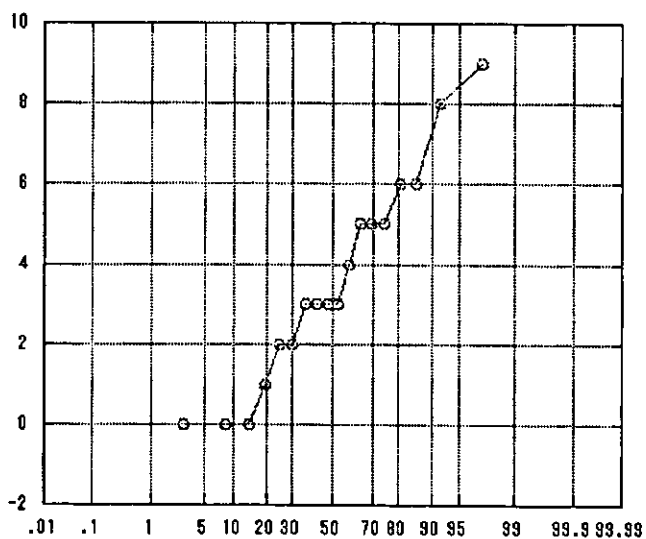
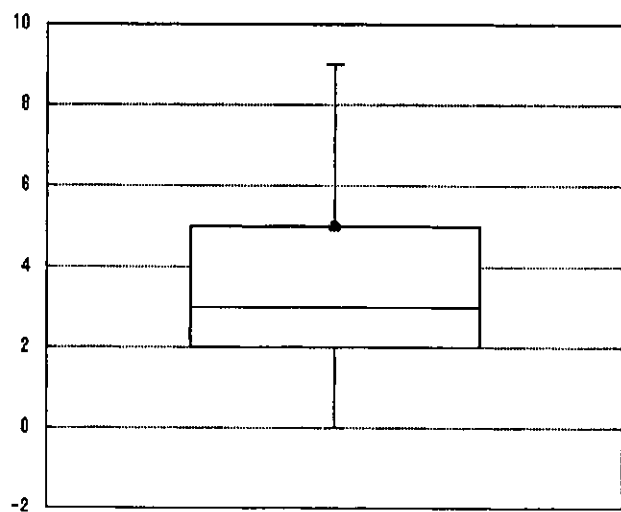
● 自施設

パーセント

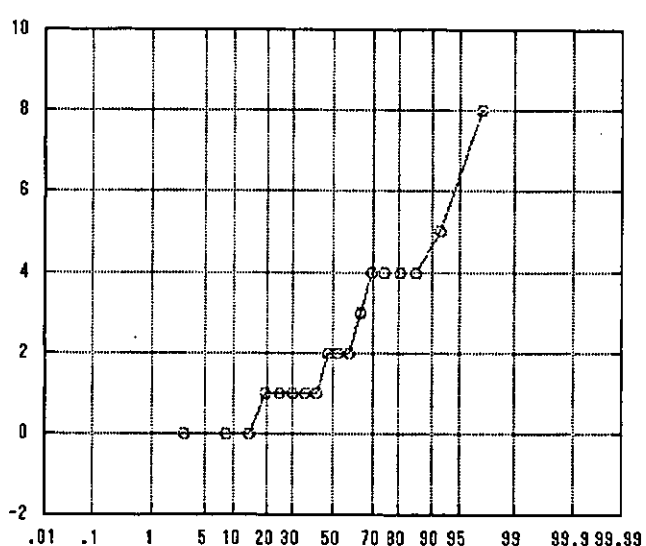
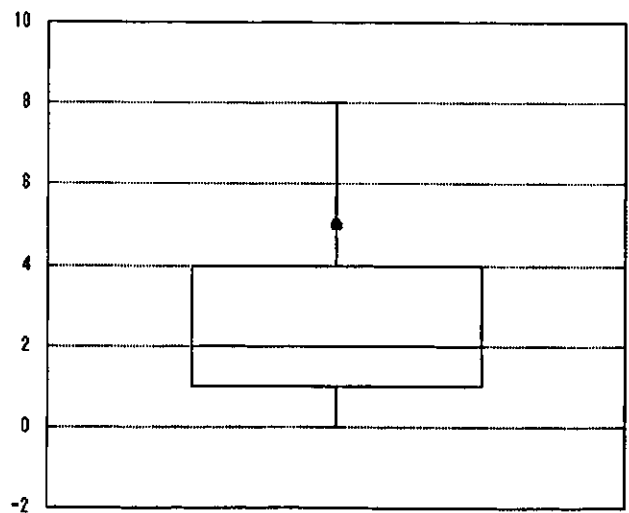
APACHE 25~29



APACHE 30~34



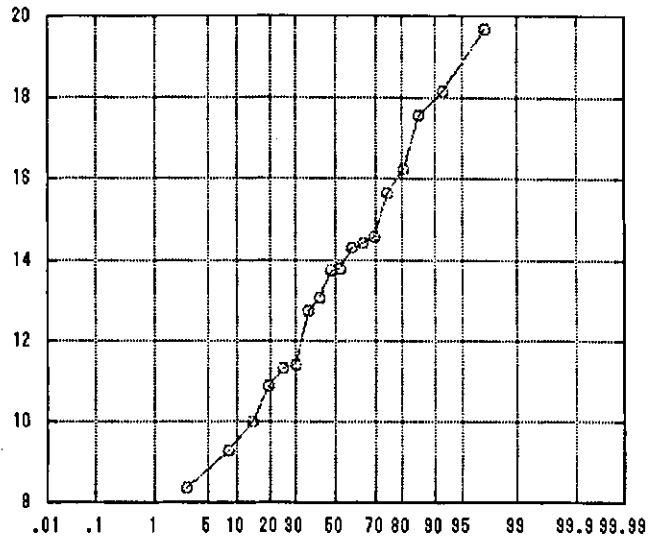
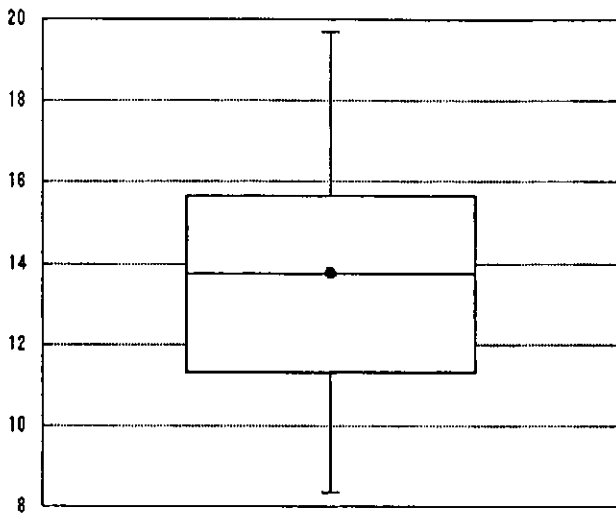
APACHE 35~



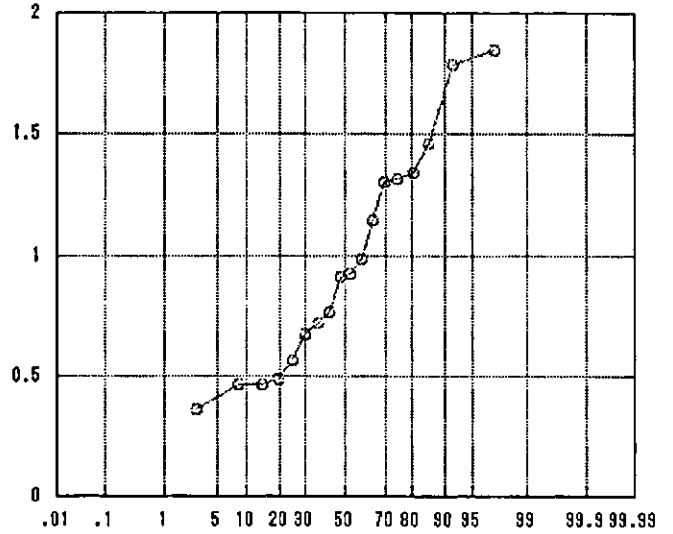
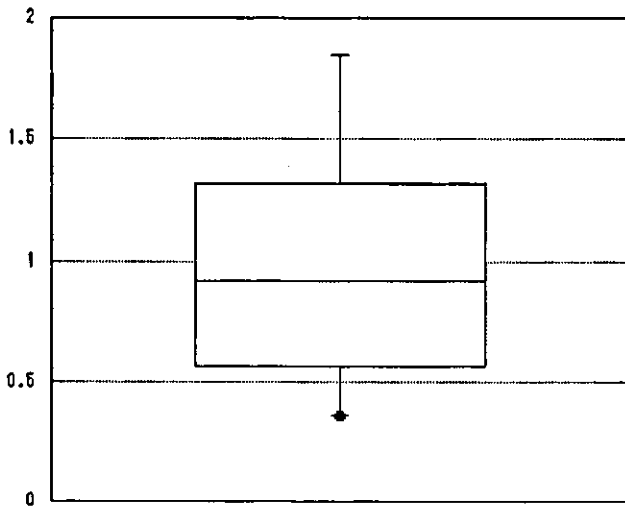
● 自施設

パーセント

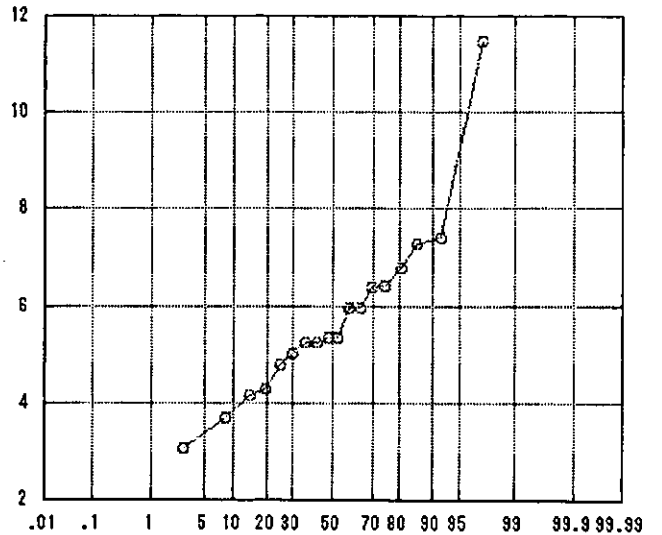
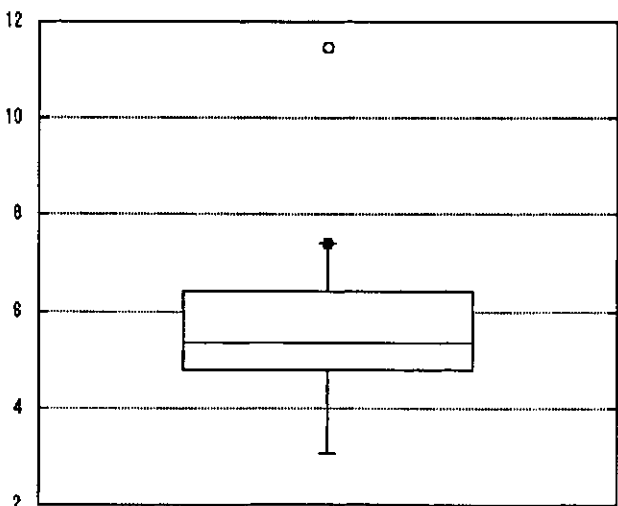
APACHE平均



標準化死亡比



平均在室日数

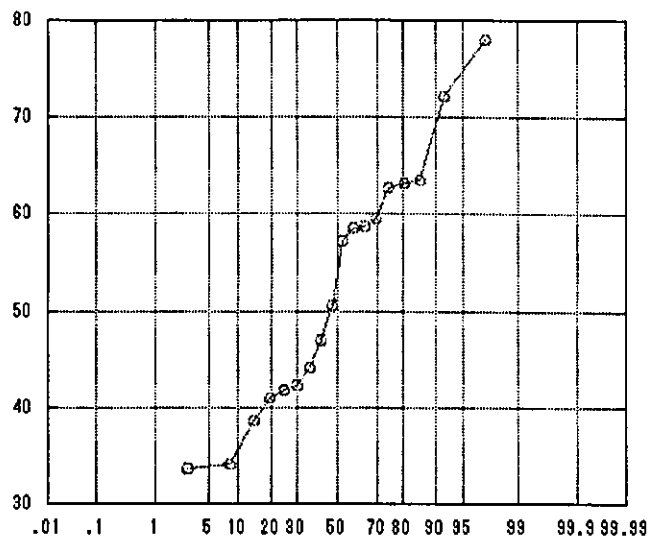
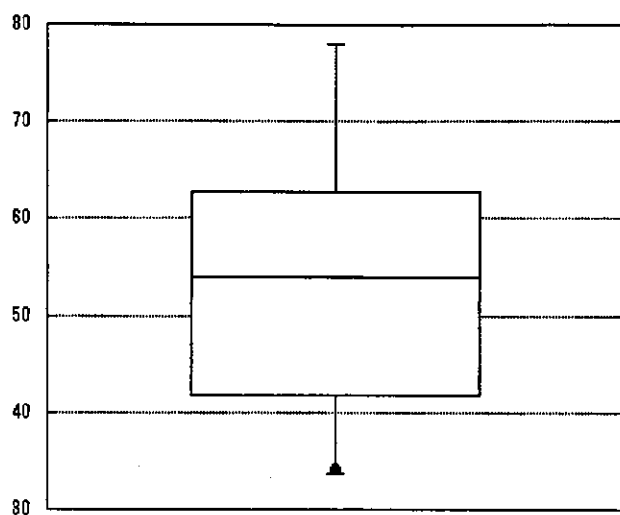


● 自施設

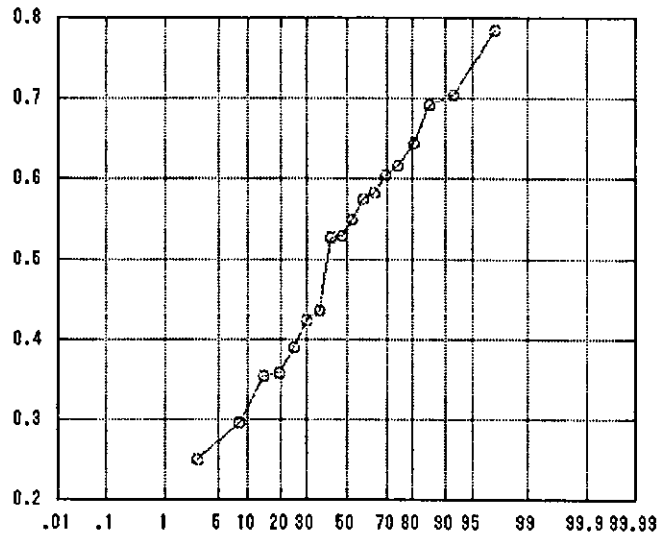
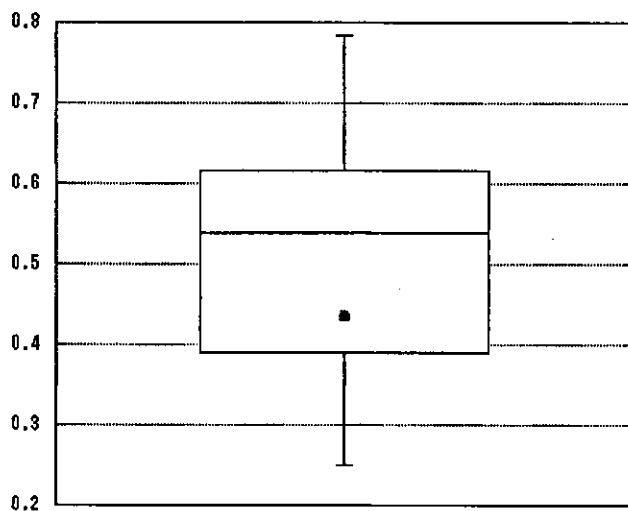
パーセント



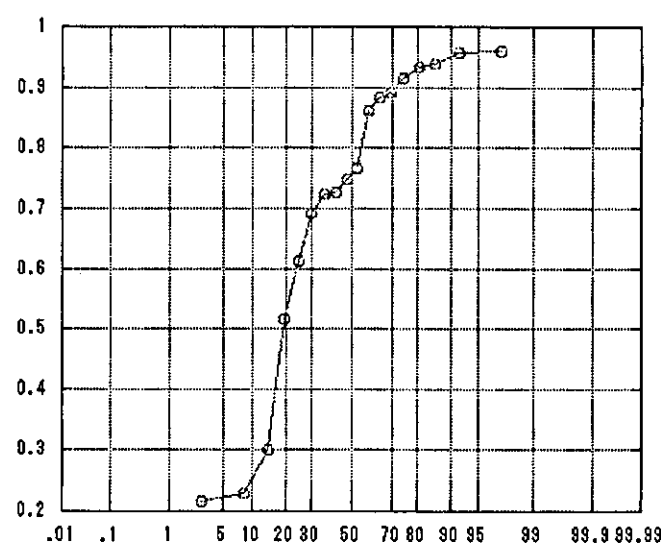
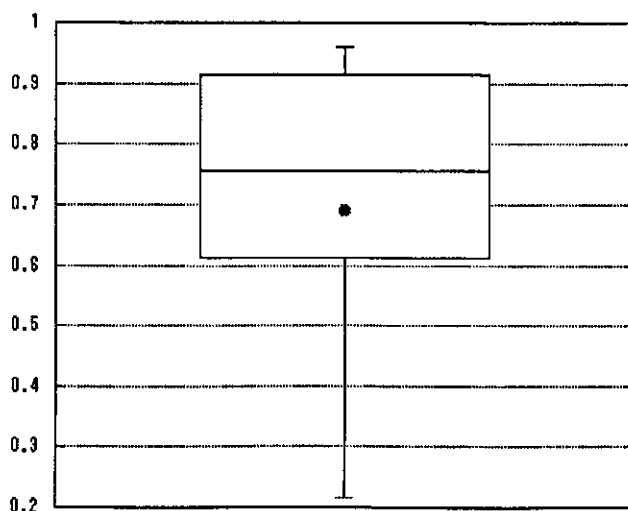
平均在院日数



人工呼吸器利用率



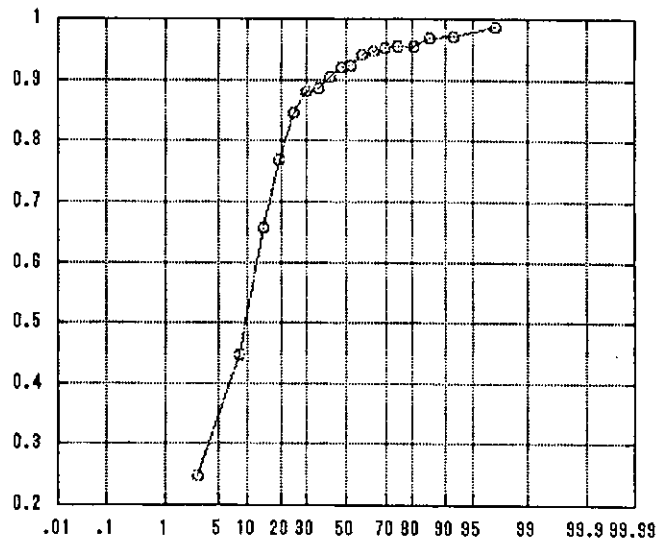
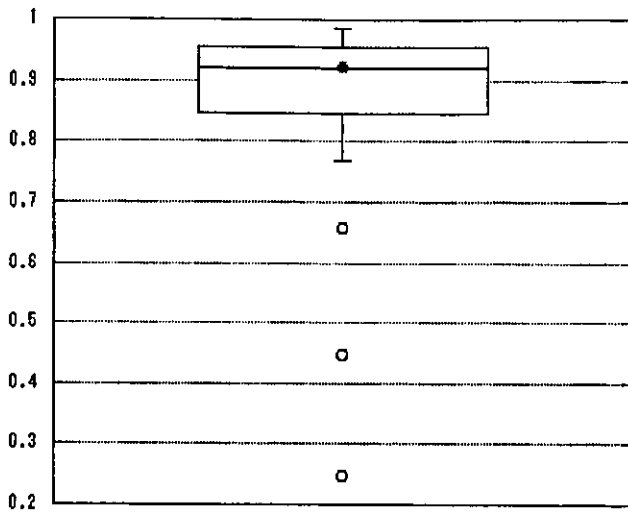
中心静脈カテ利用率



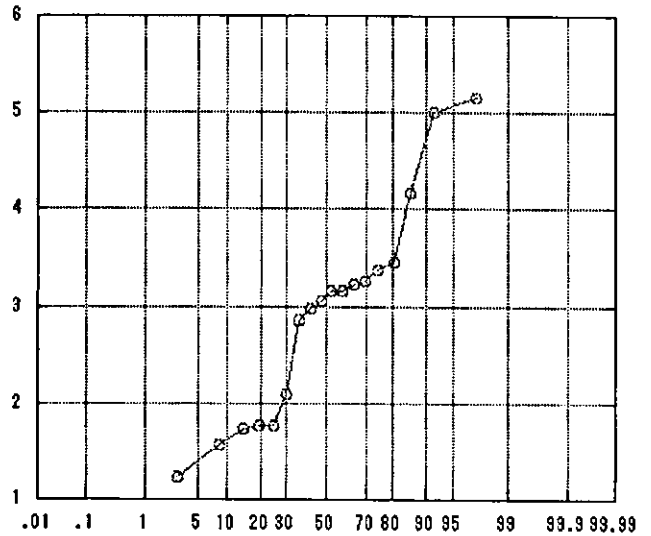
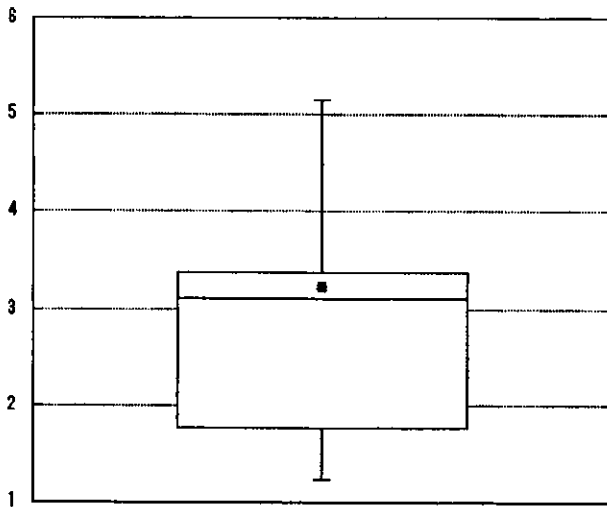
■ 自施設

パーセント

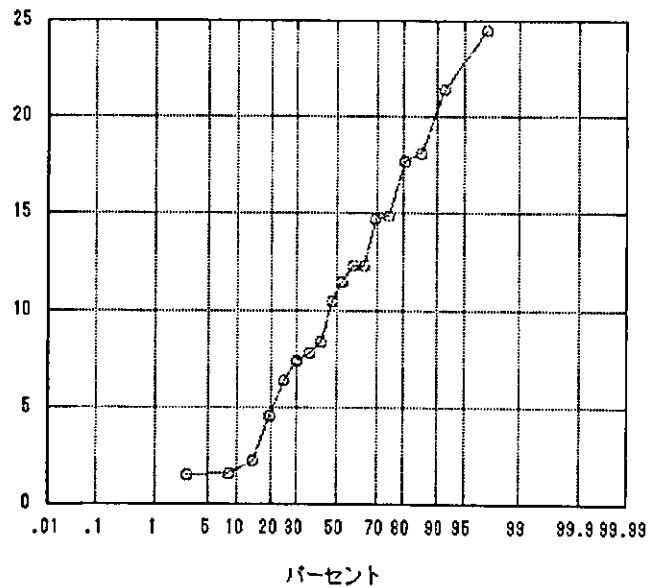
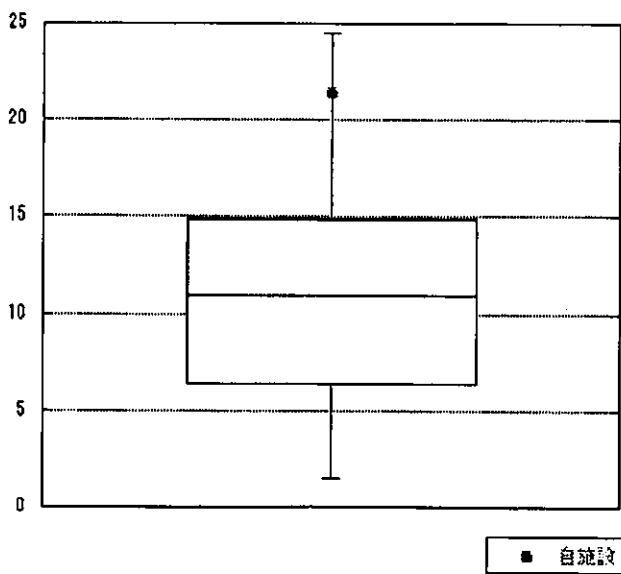
尿道カテ利用率



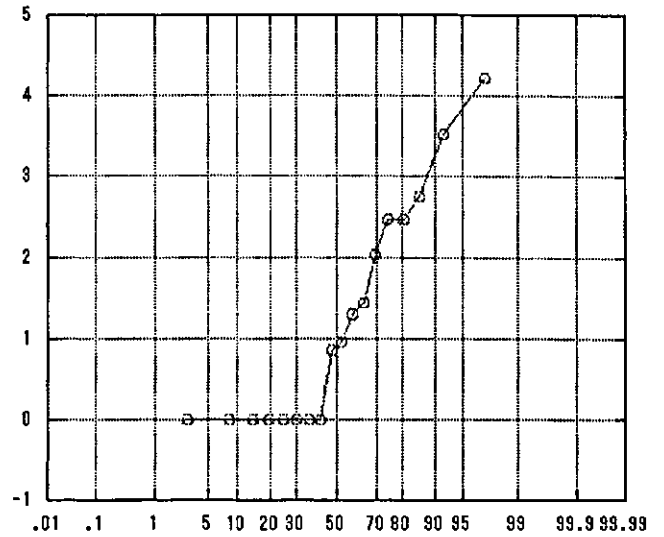
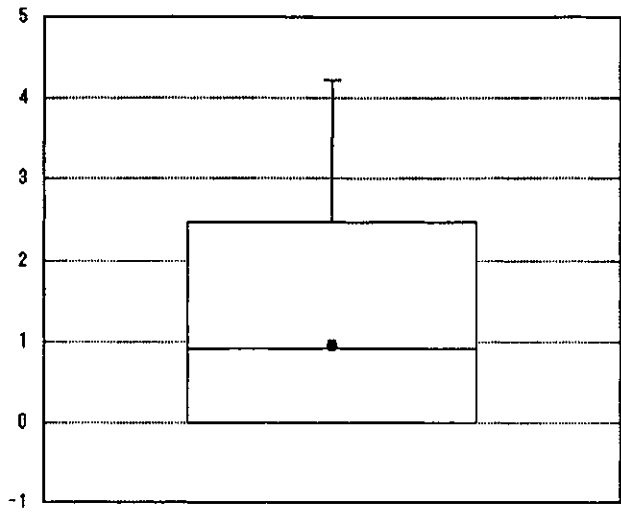
人工呼吸日／患者数



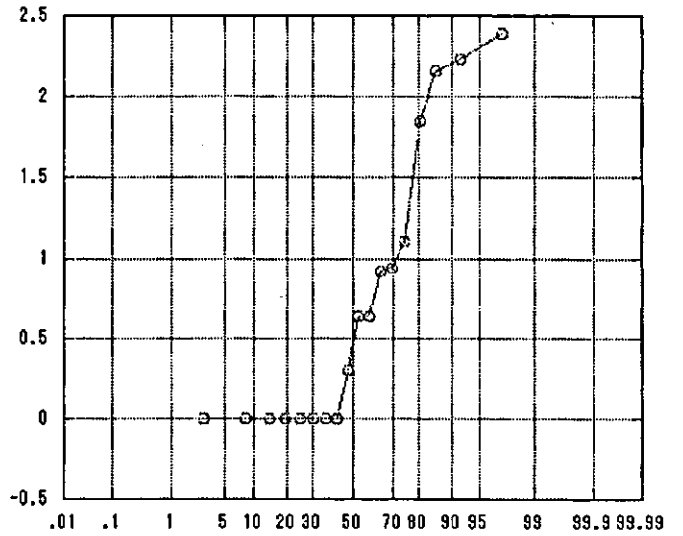
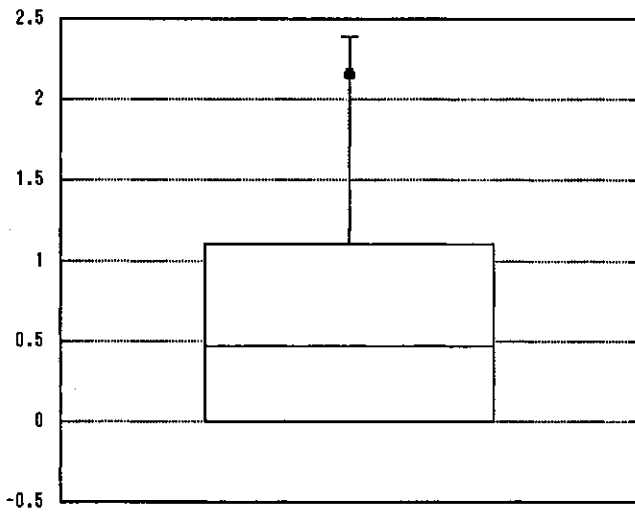
リスク調整感染率（肺炎）



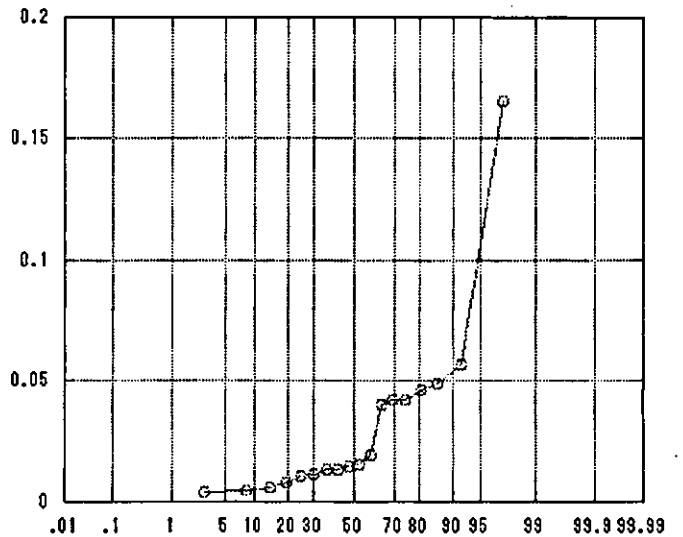
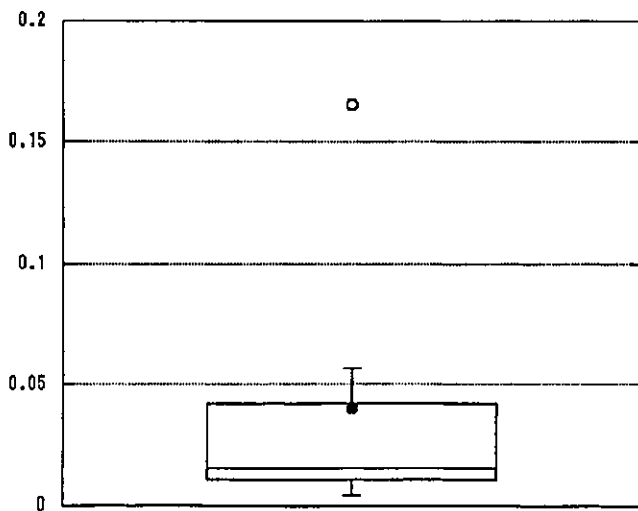
リスク調整感染率 (カテ)



リスク調整感染率 (尿路)



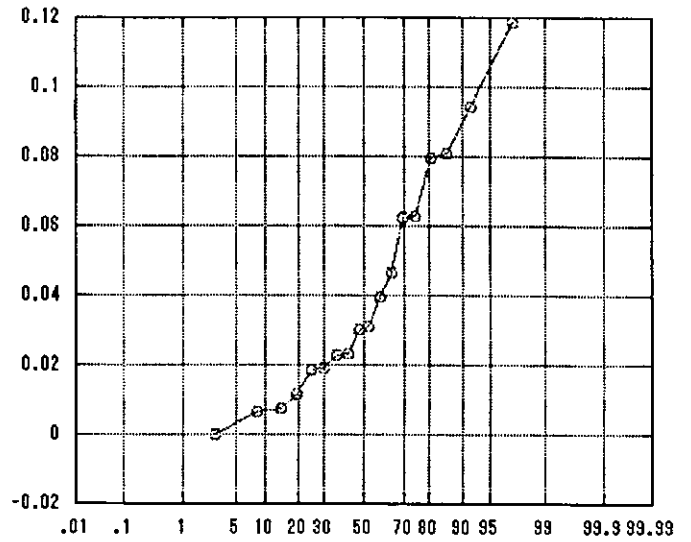
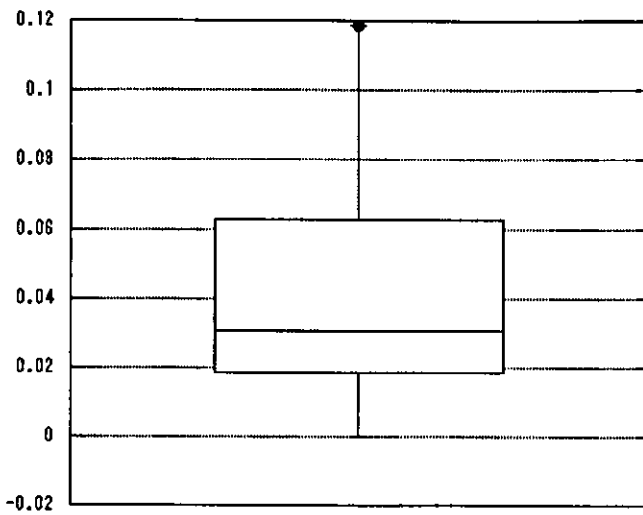
全感染率 (耐性)



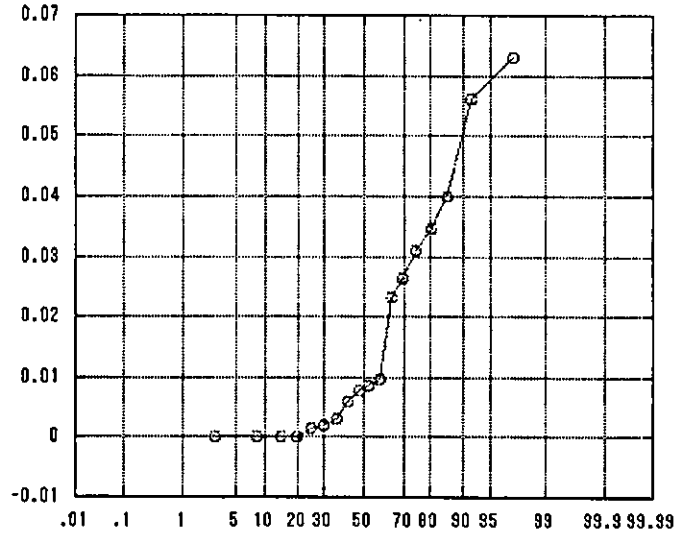
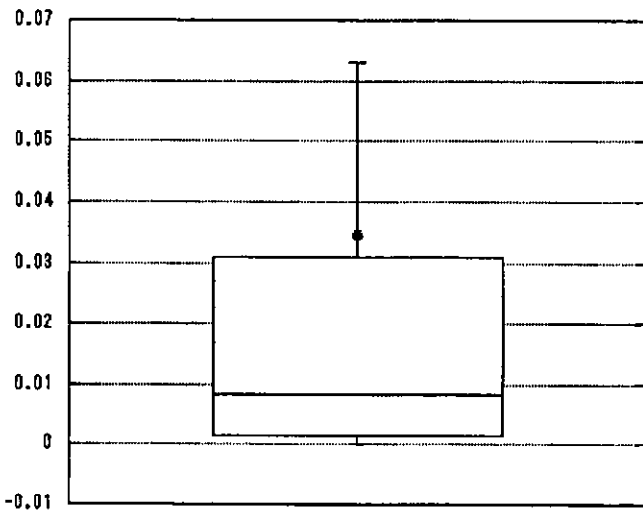
● 自施設

パーセント

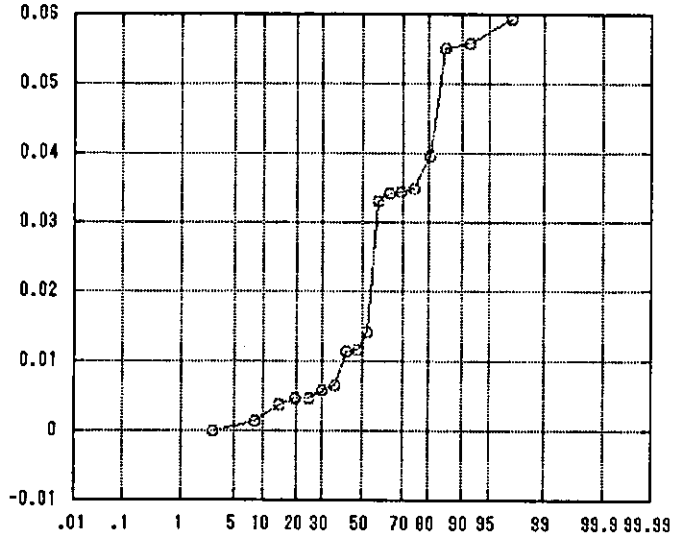
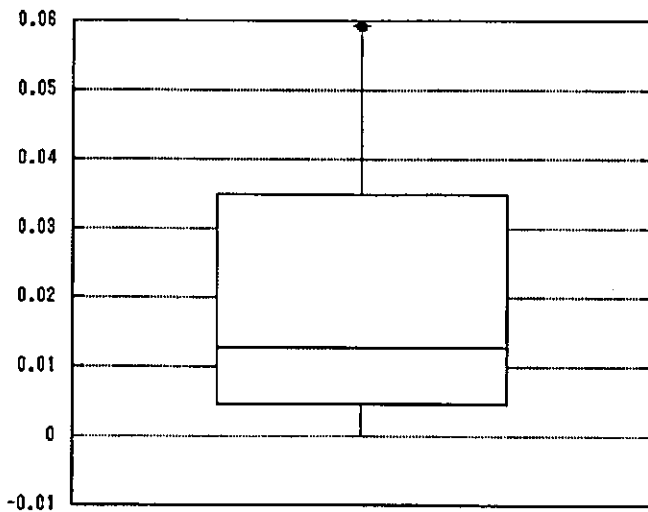
全感染率（感性）



肺炎感染率（耐性）

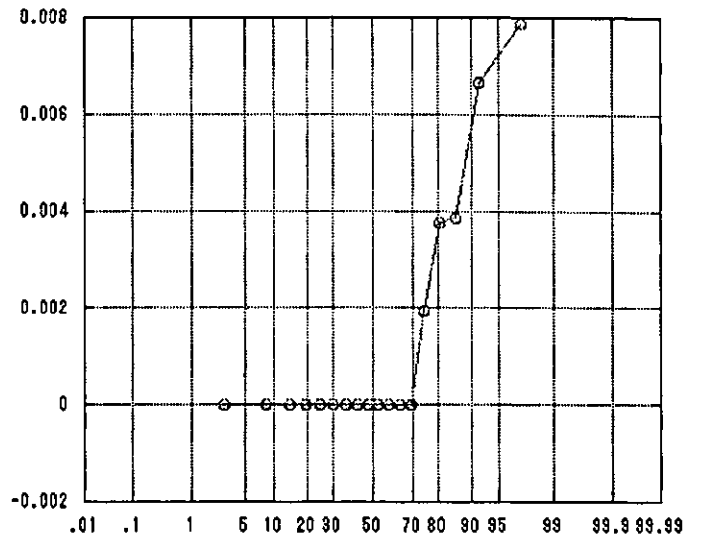
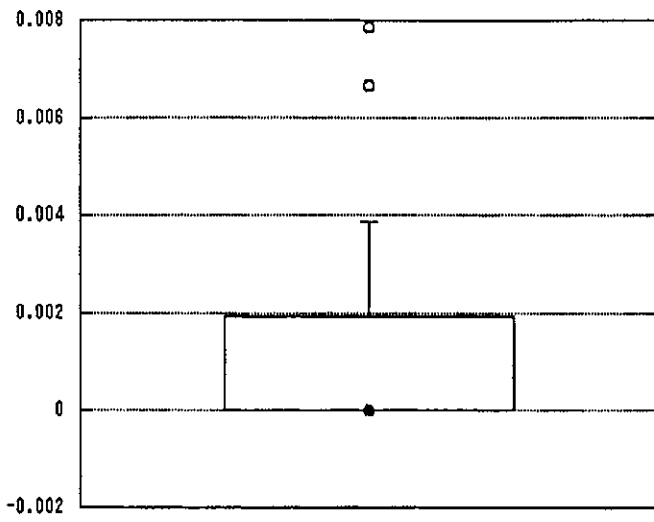


肺炎感染率（感性）

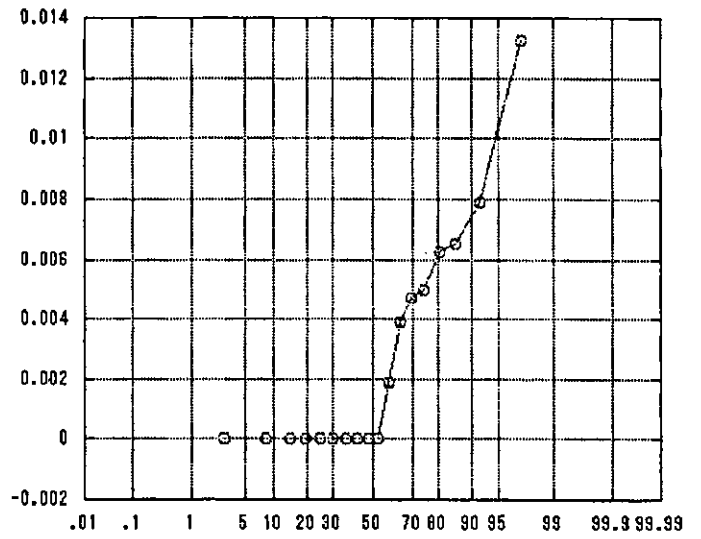
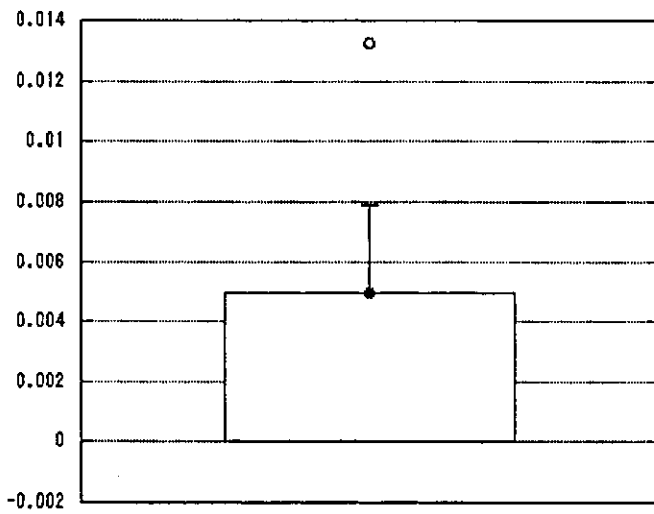


● 自施設

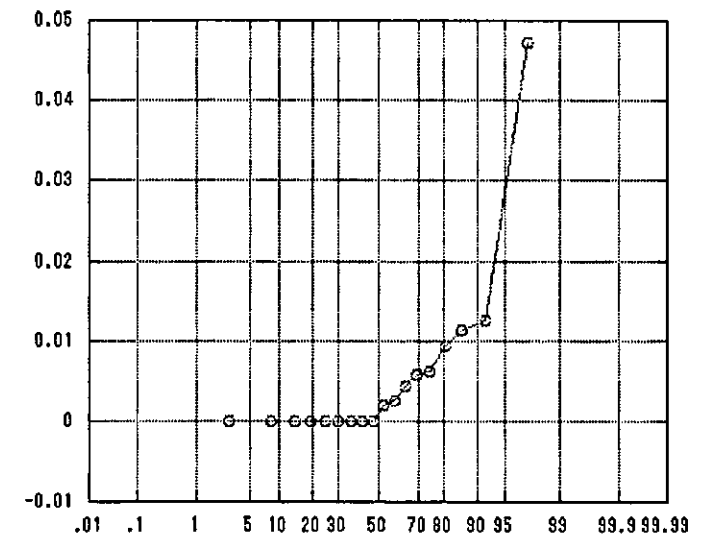
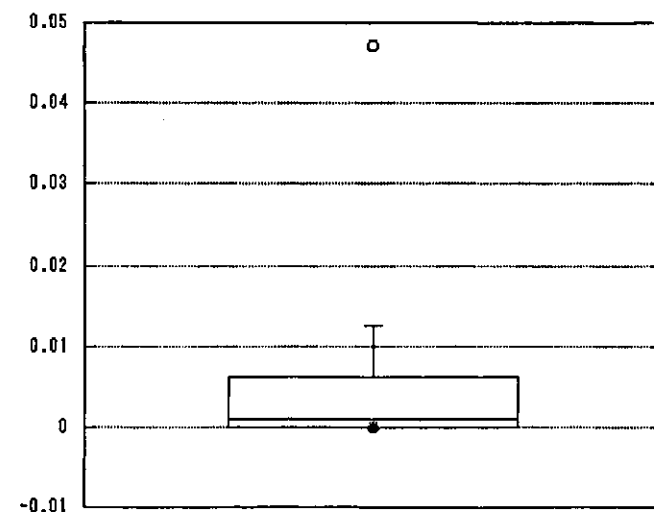
カテ感染率（耐性）



カテ感染率（感性）

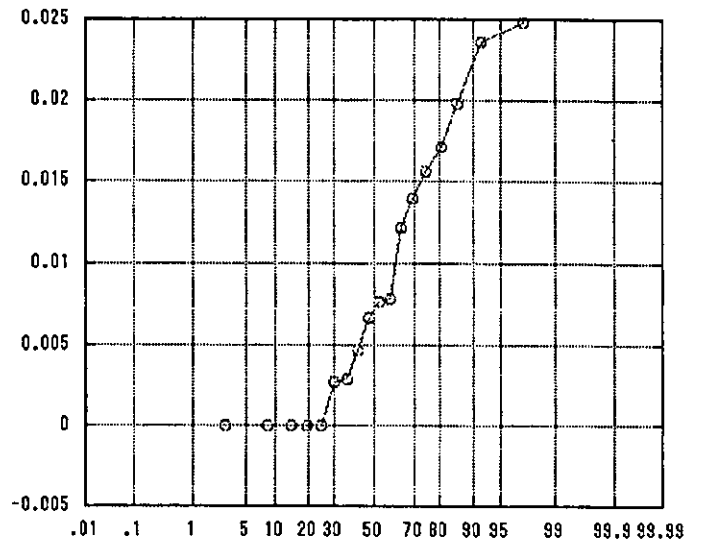
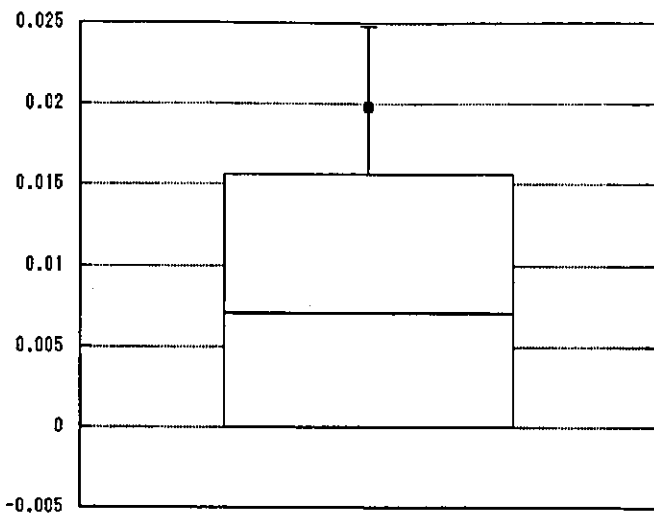


創感染率（耐性）

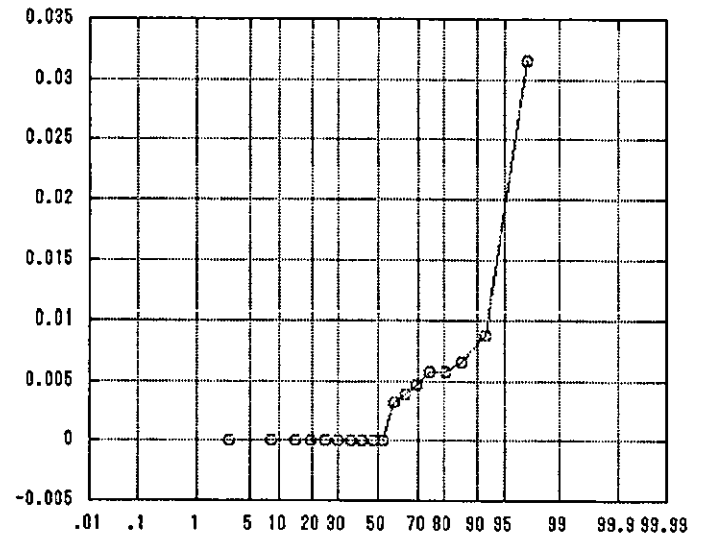
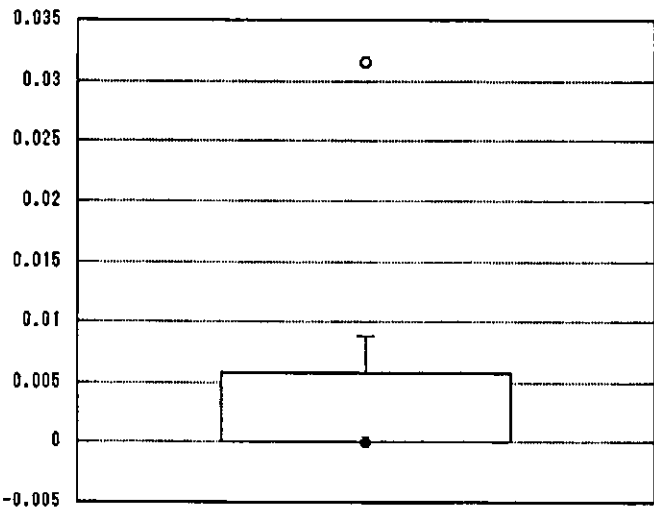


● 自施設

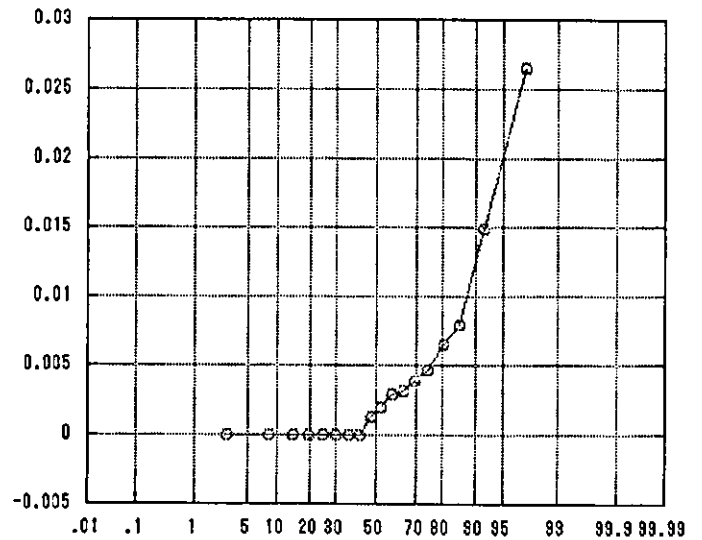
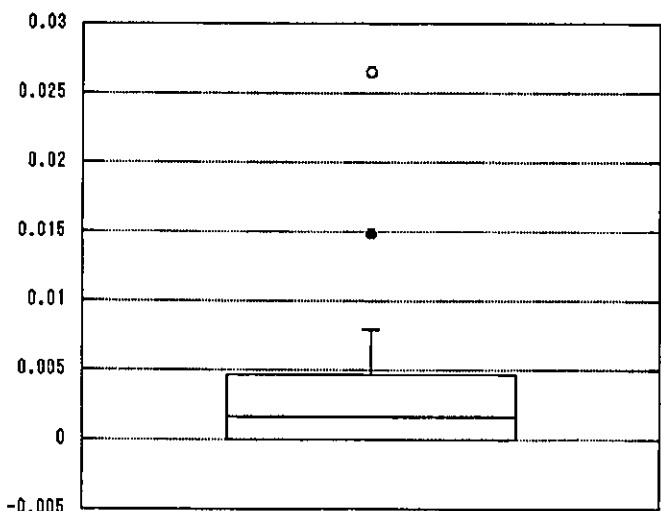
創感染率（感性）



敗血症感染率（耐性）

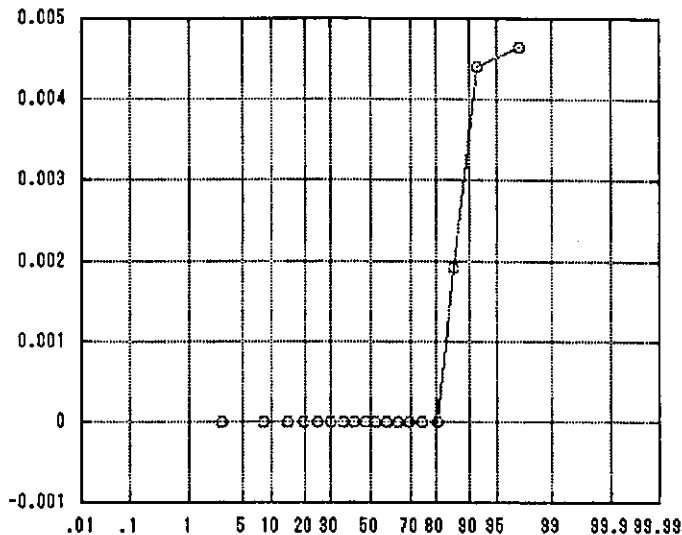
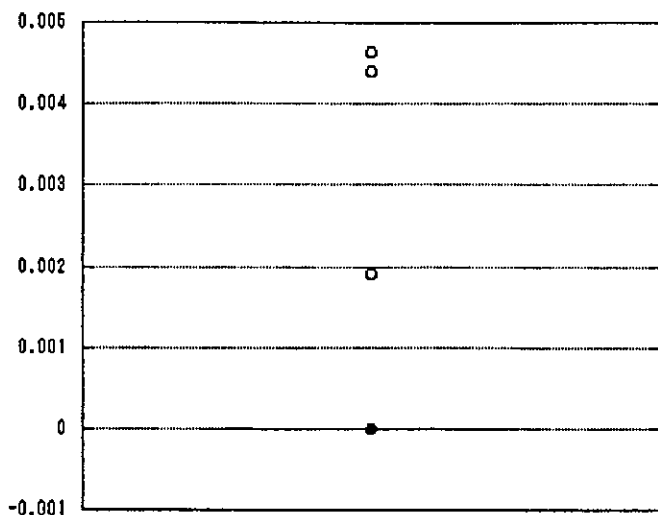


敗血症感染率（感性）

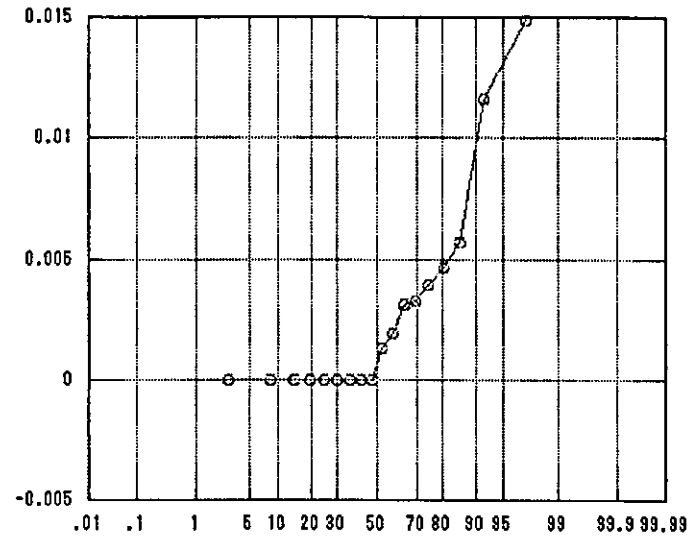
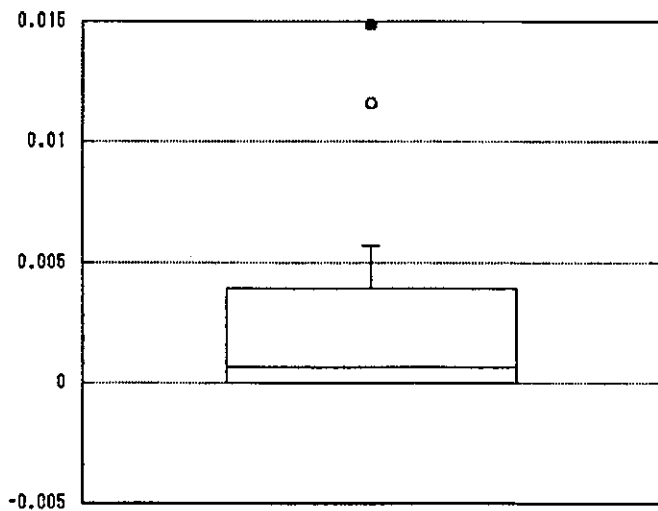


● 自施設

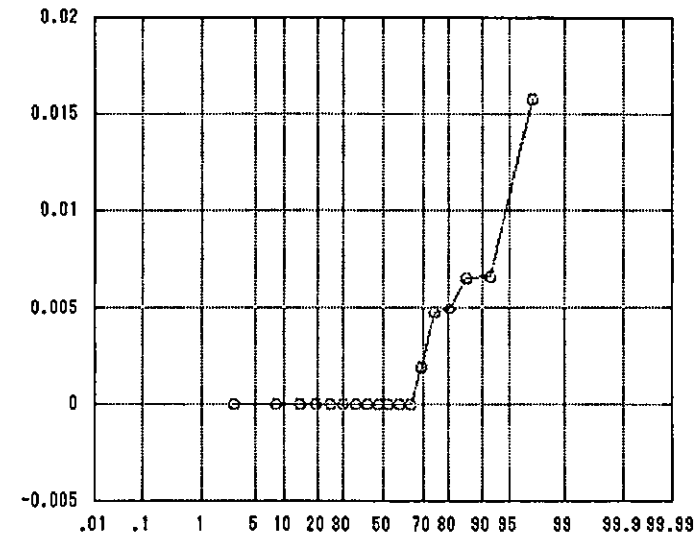
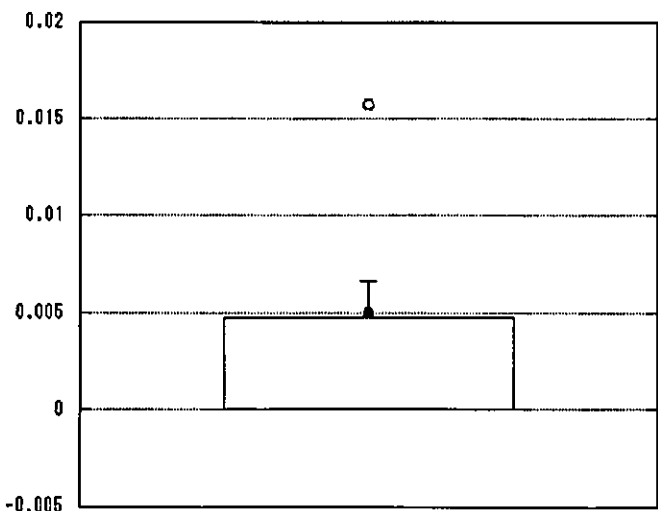
尿路感染率（耐性）



尿路感染率（感性）



その他感染率（耐性）

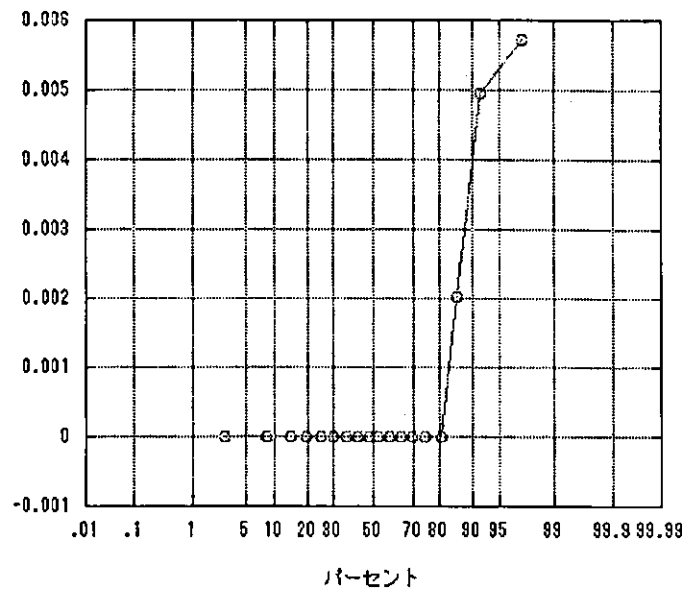
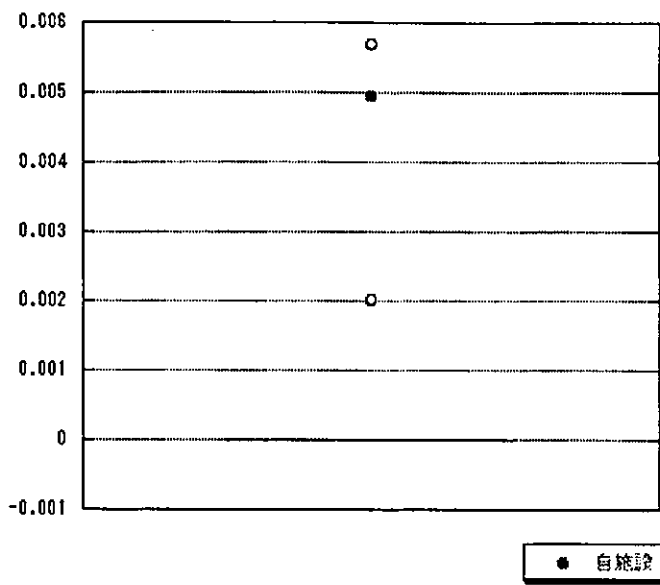


● 自施設

2004年1月から6月施設間比較

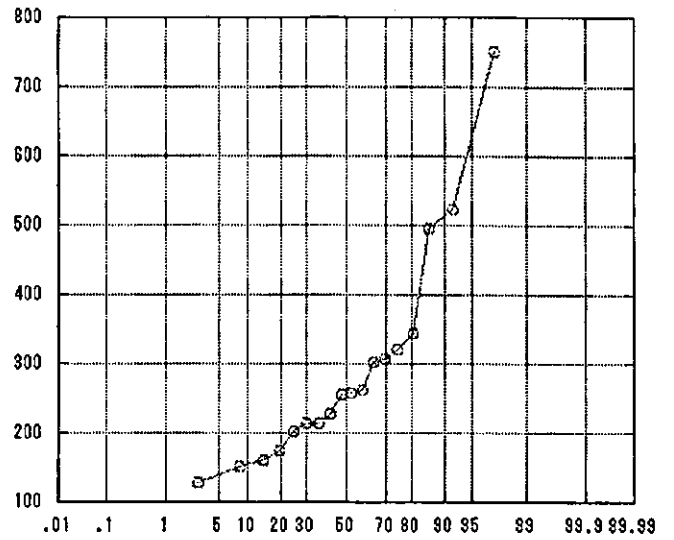
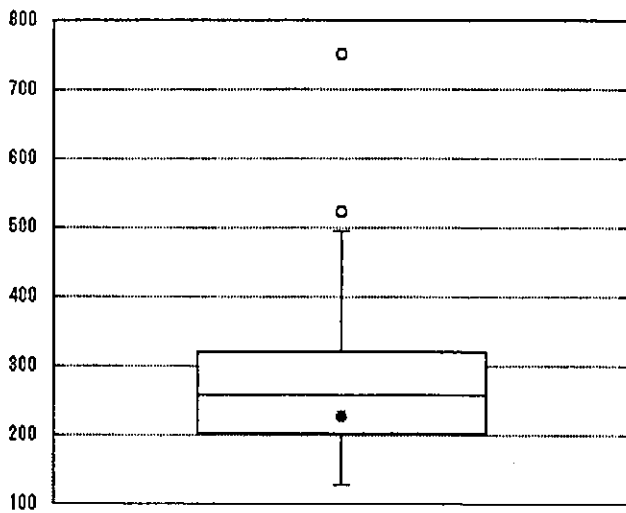
○ 施設

その他感染率（感性）

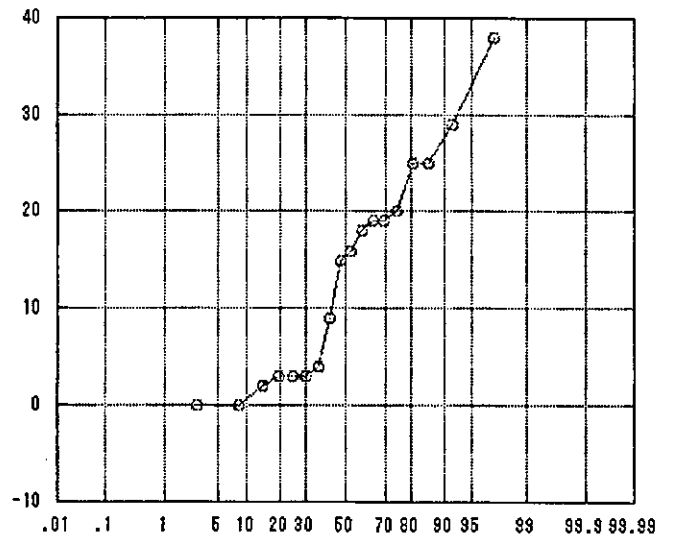
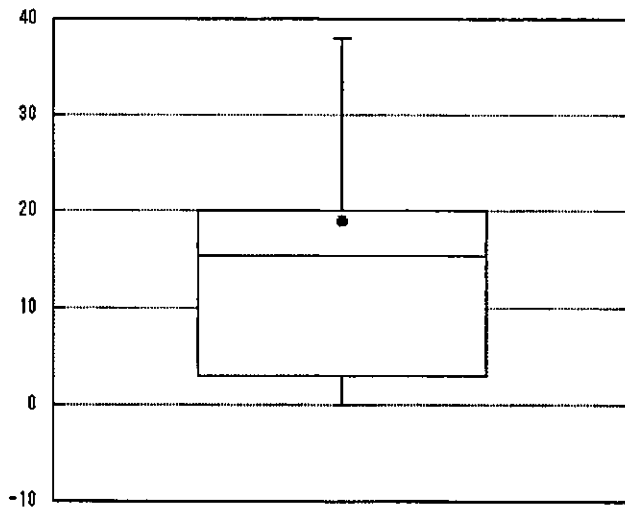




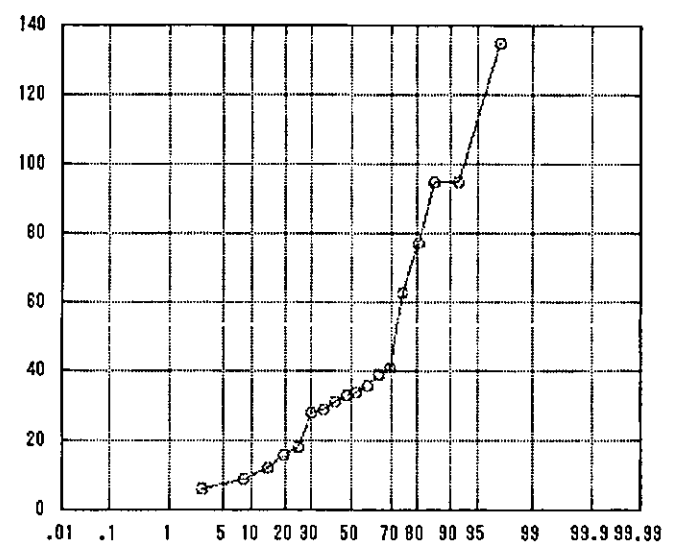
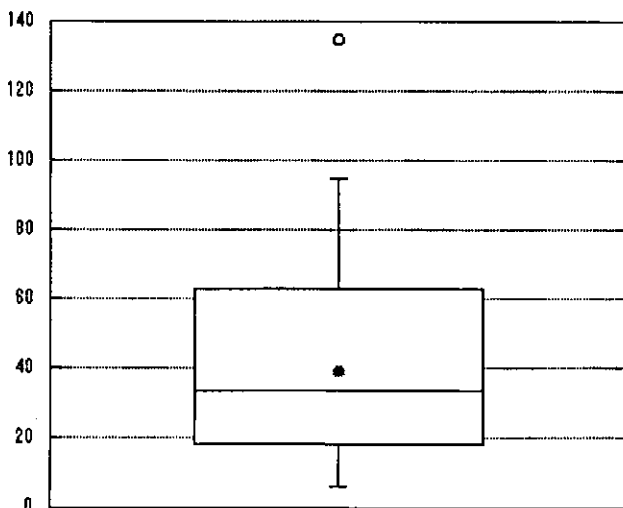
年間収容患者数



APACHE 0~4



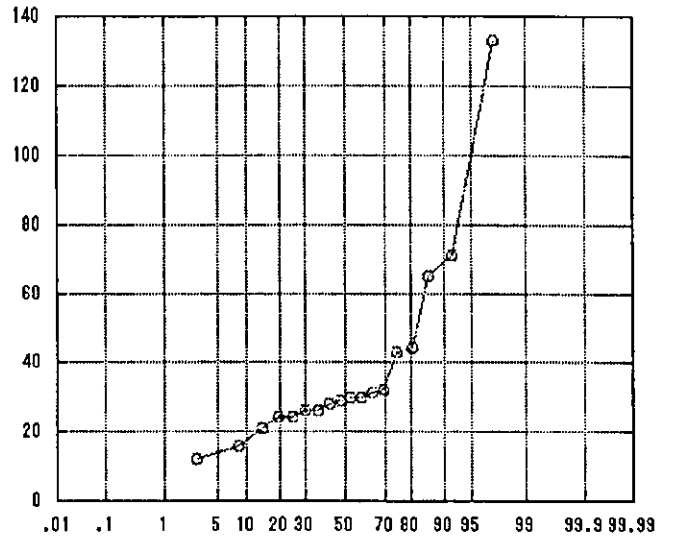
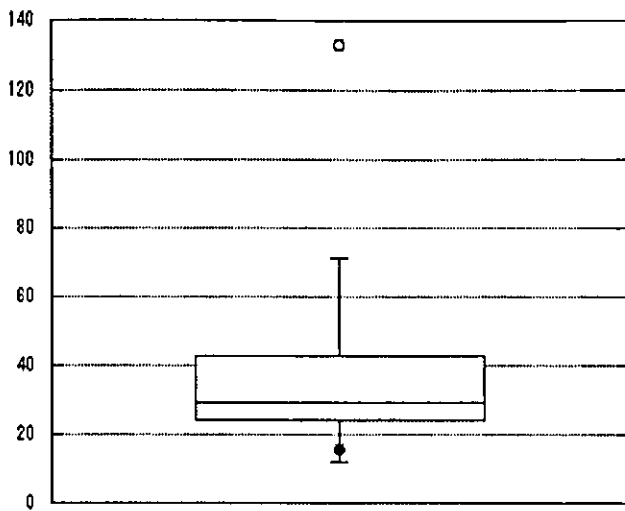
APACHE 5~9



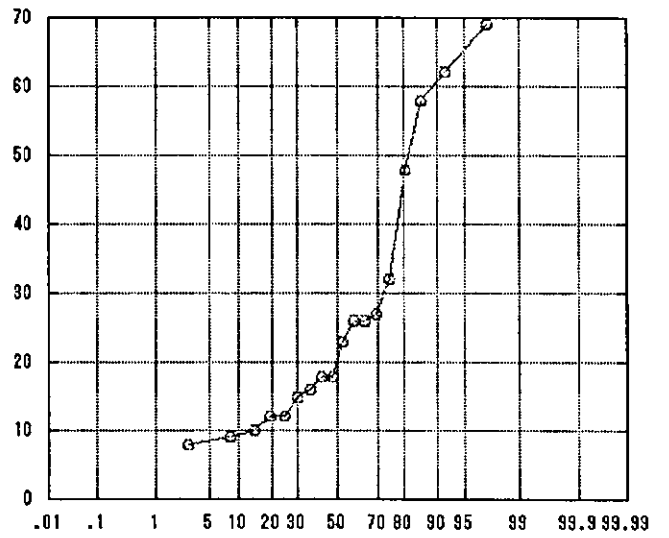
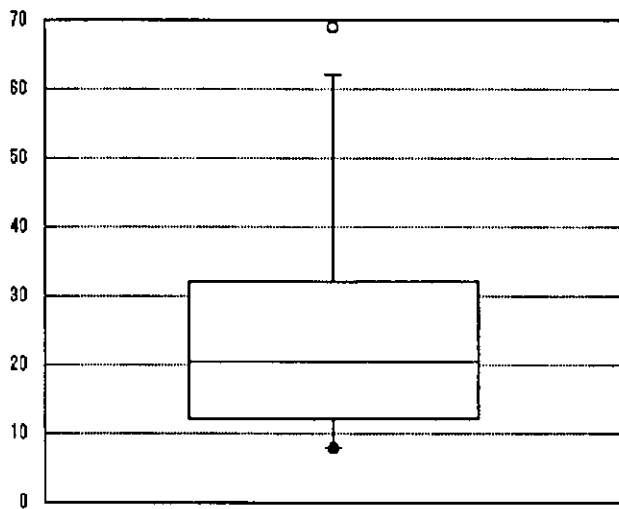
● 世施設

パーセント

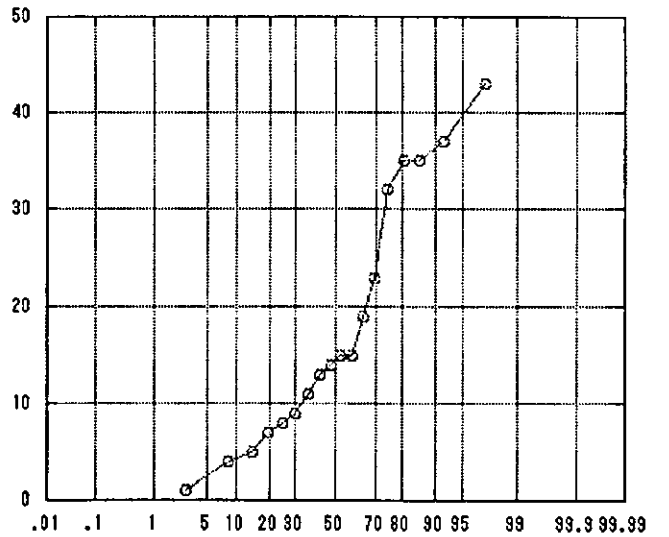
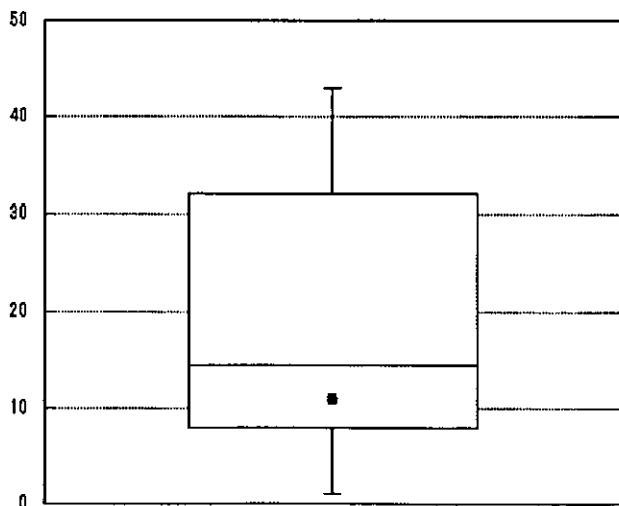
APACHE 10~14



APACHE 15~19



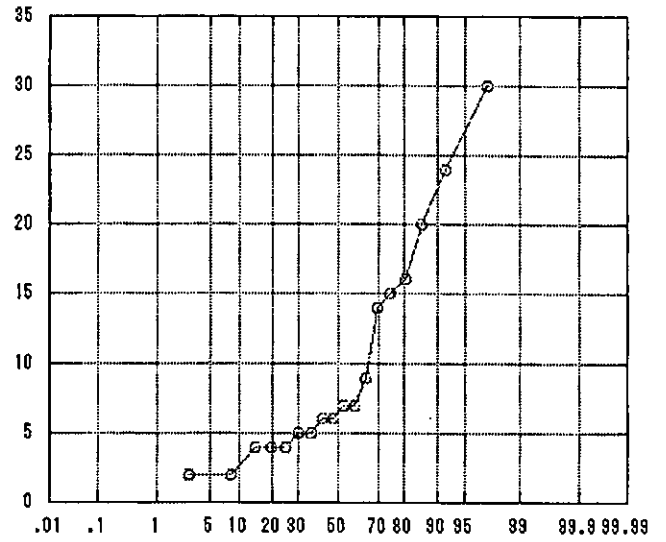
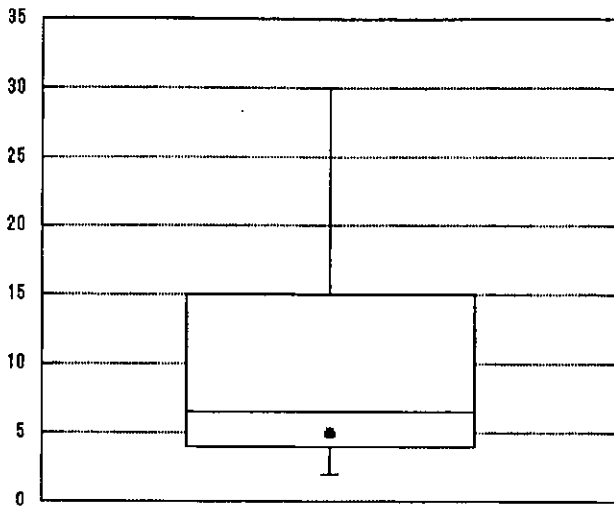
APACHE 20~24



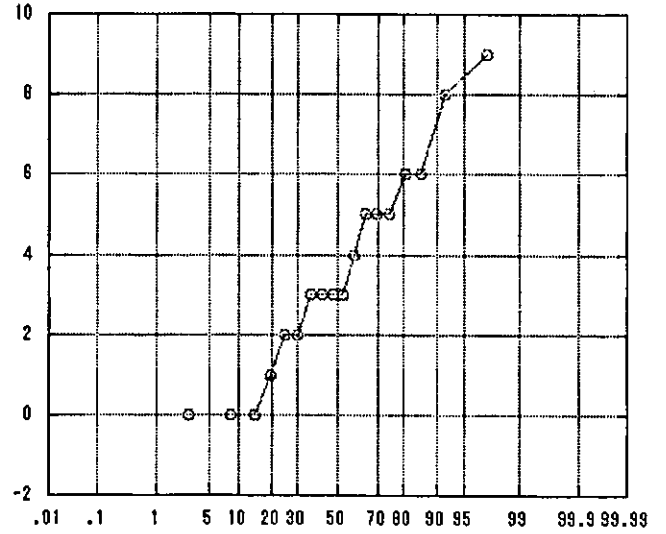
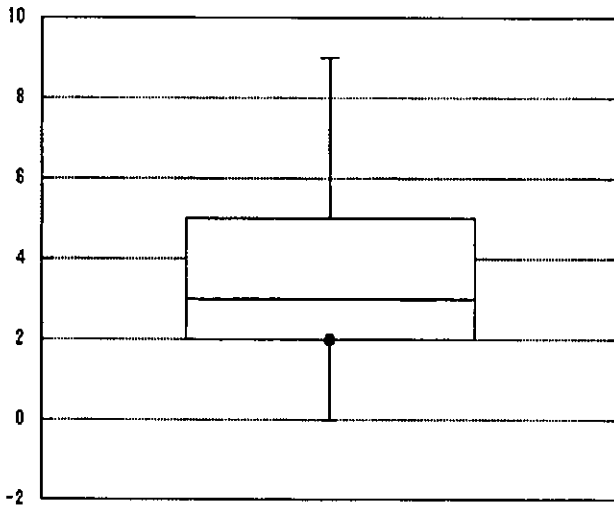
■ 自施設

パーセント

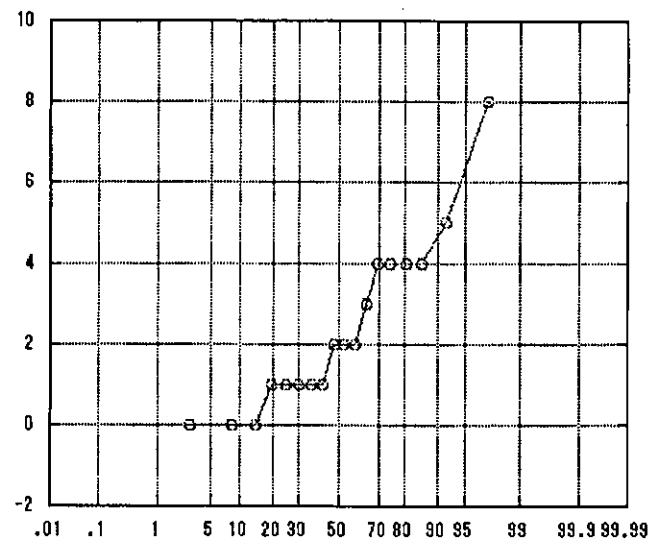
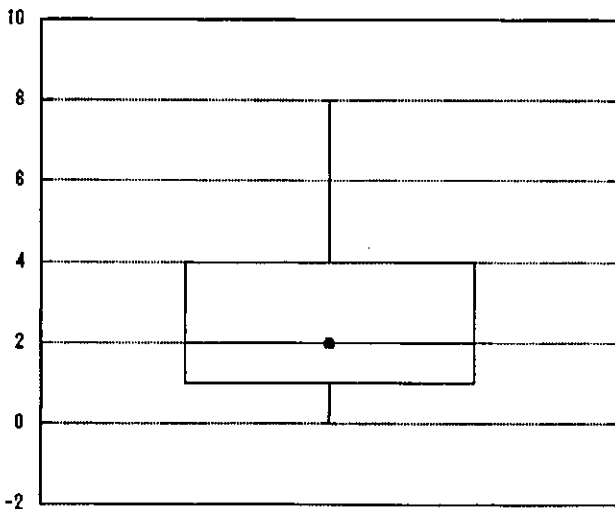
APACHE 25~29



APACHE 30~34

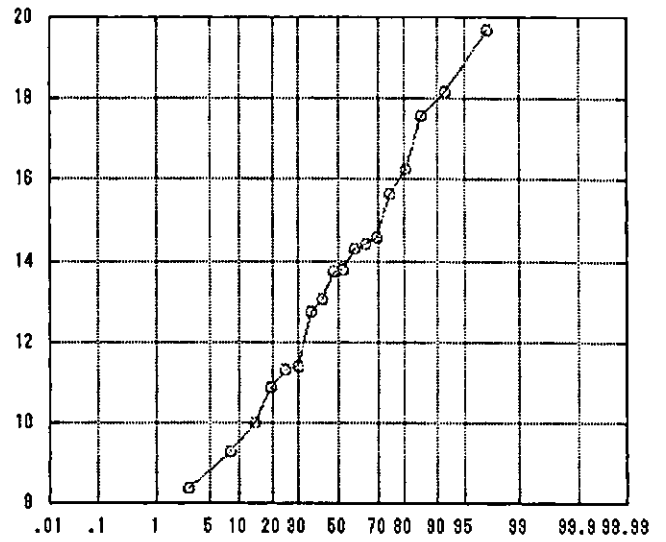
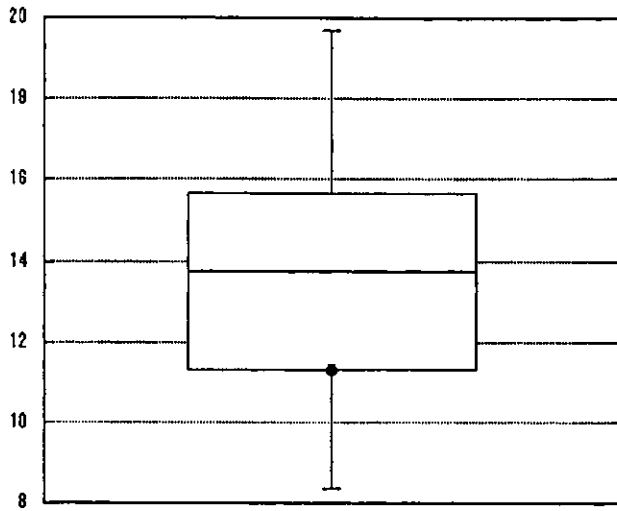


APACHE 35~

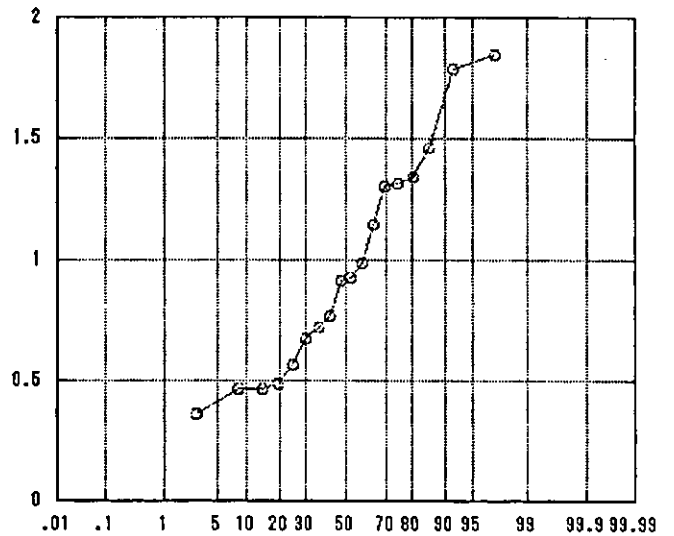
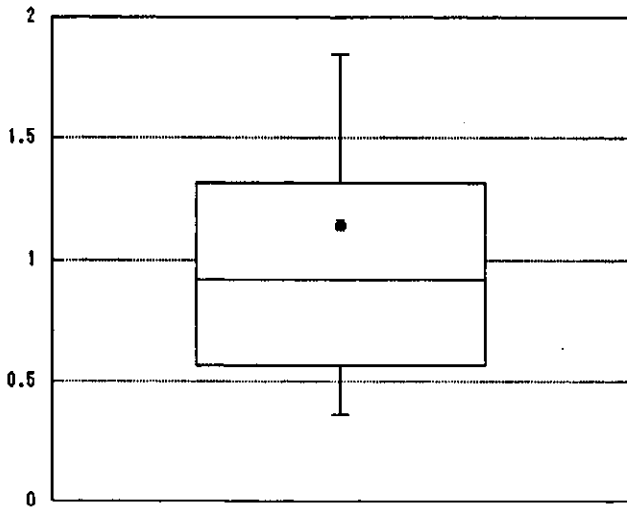


● 自施設

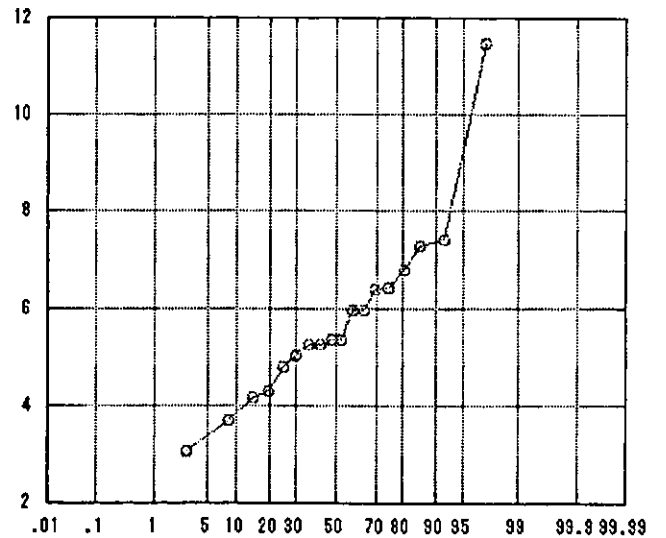
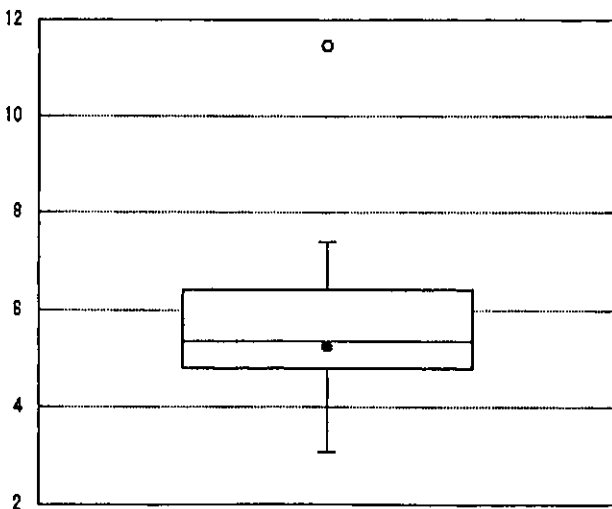
APACHE平均



標準化死亡比



平均在室日数



● 自施設

パーセント