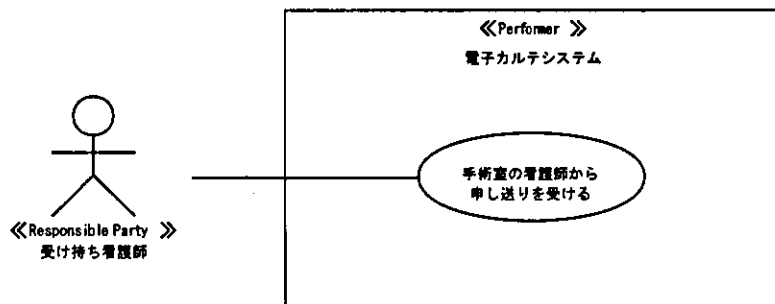
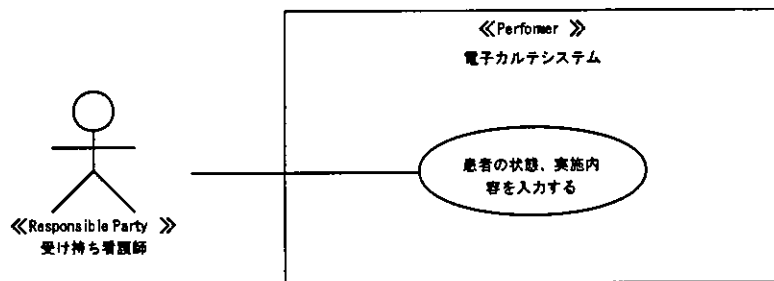


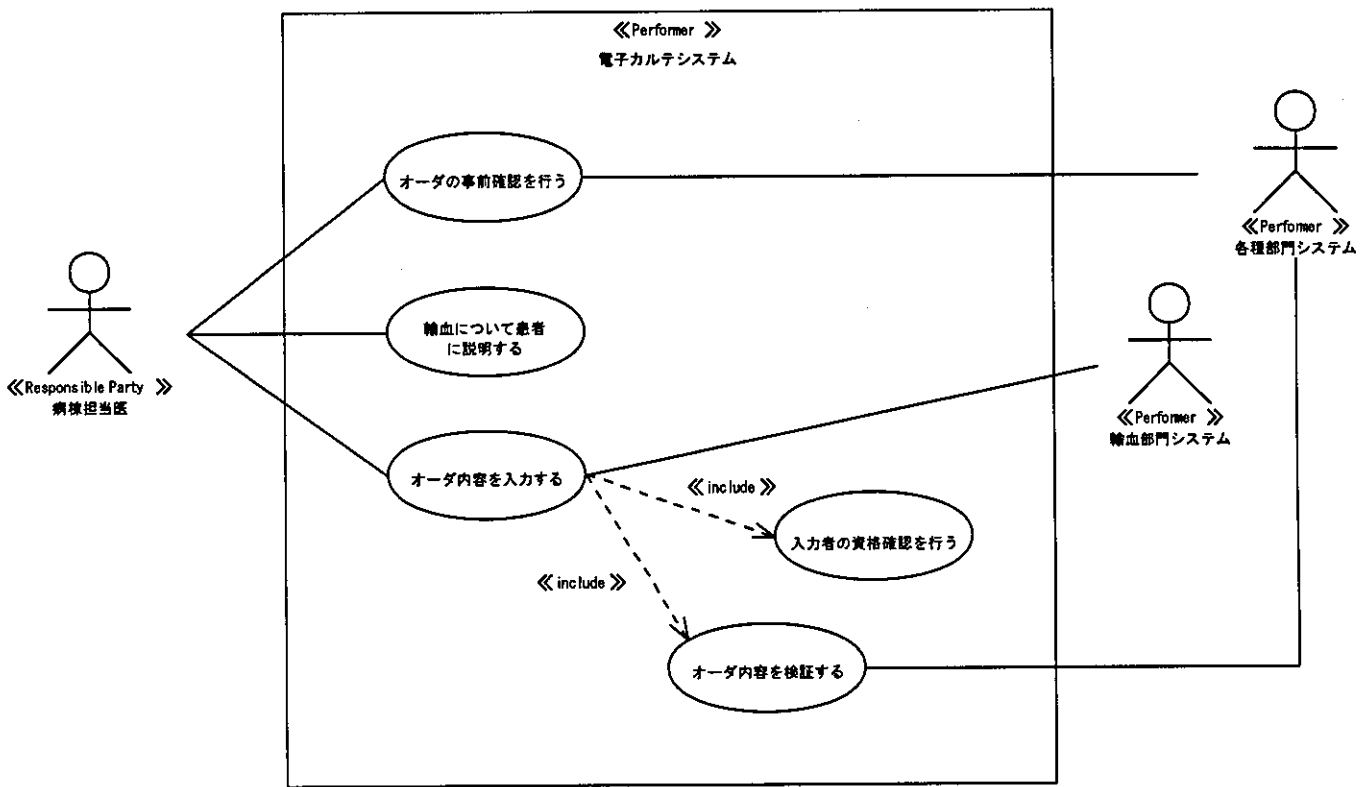
TI-036 移動介助（術後）プロセス



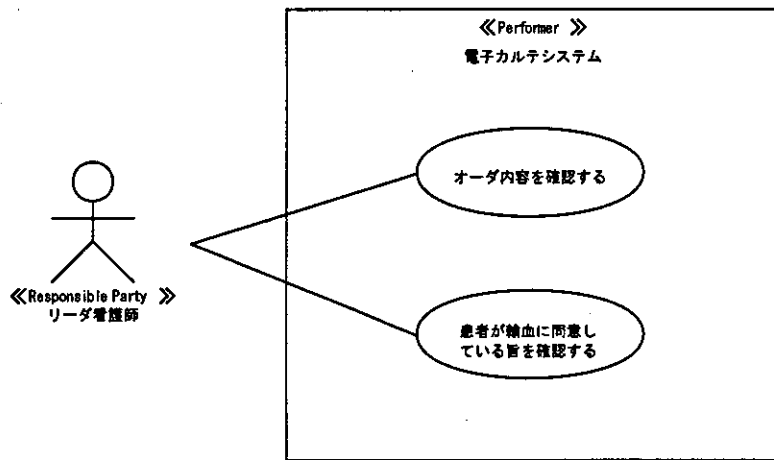
TI-037 術後プロセス



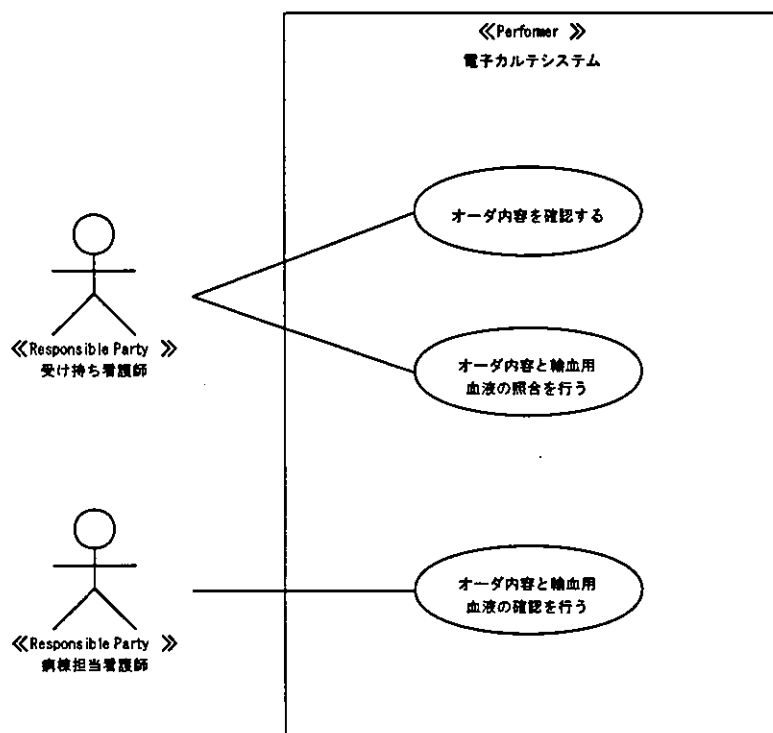
TI-038 輸血オーダープロセス



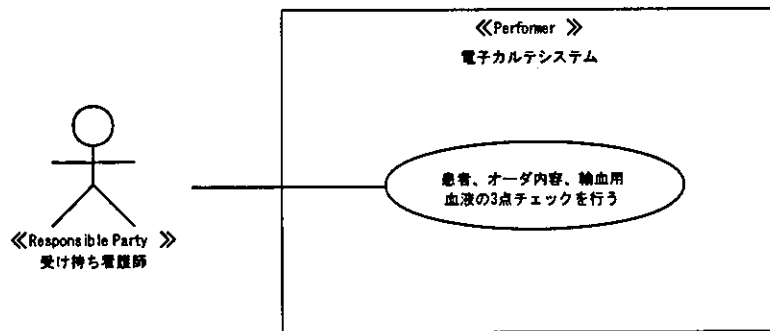
T1-039 指示受け（輸血）プロセス



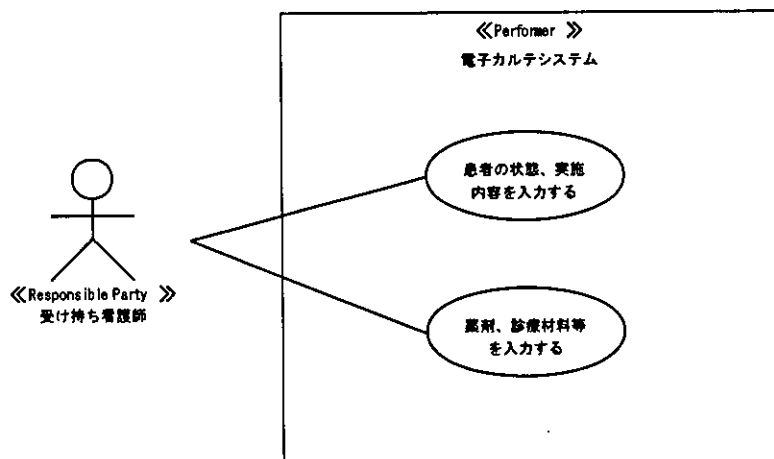
TI-040 輸血照合プロセス



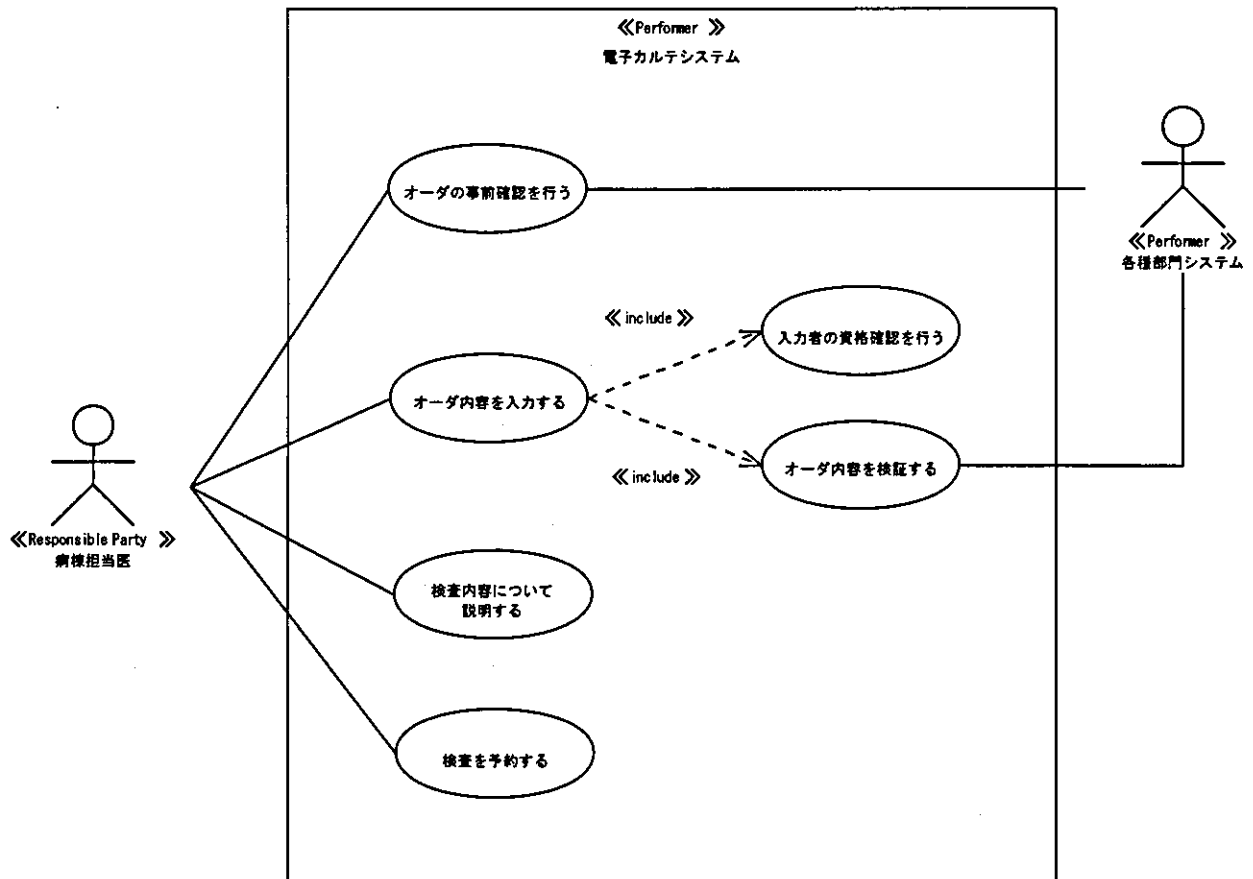
T1-041 輸血実施プロセス



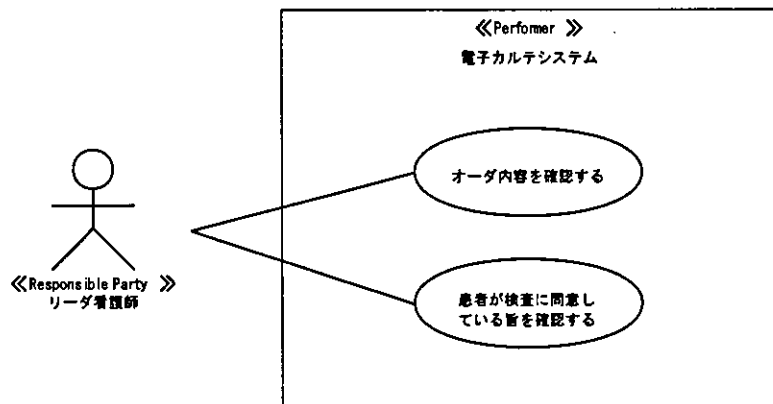
TI-042 輸血終了後プロセス



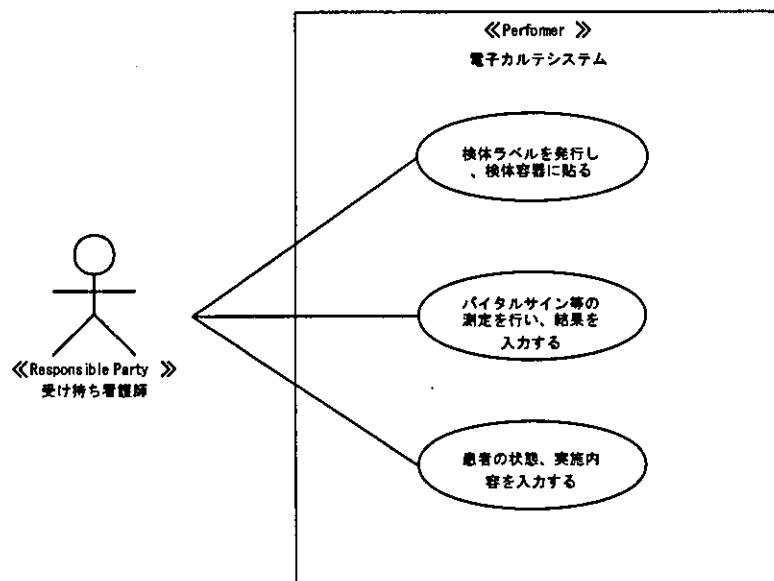
T1-043 検査オーダー（検体検査）プロセス



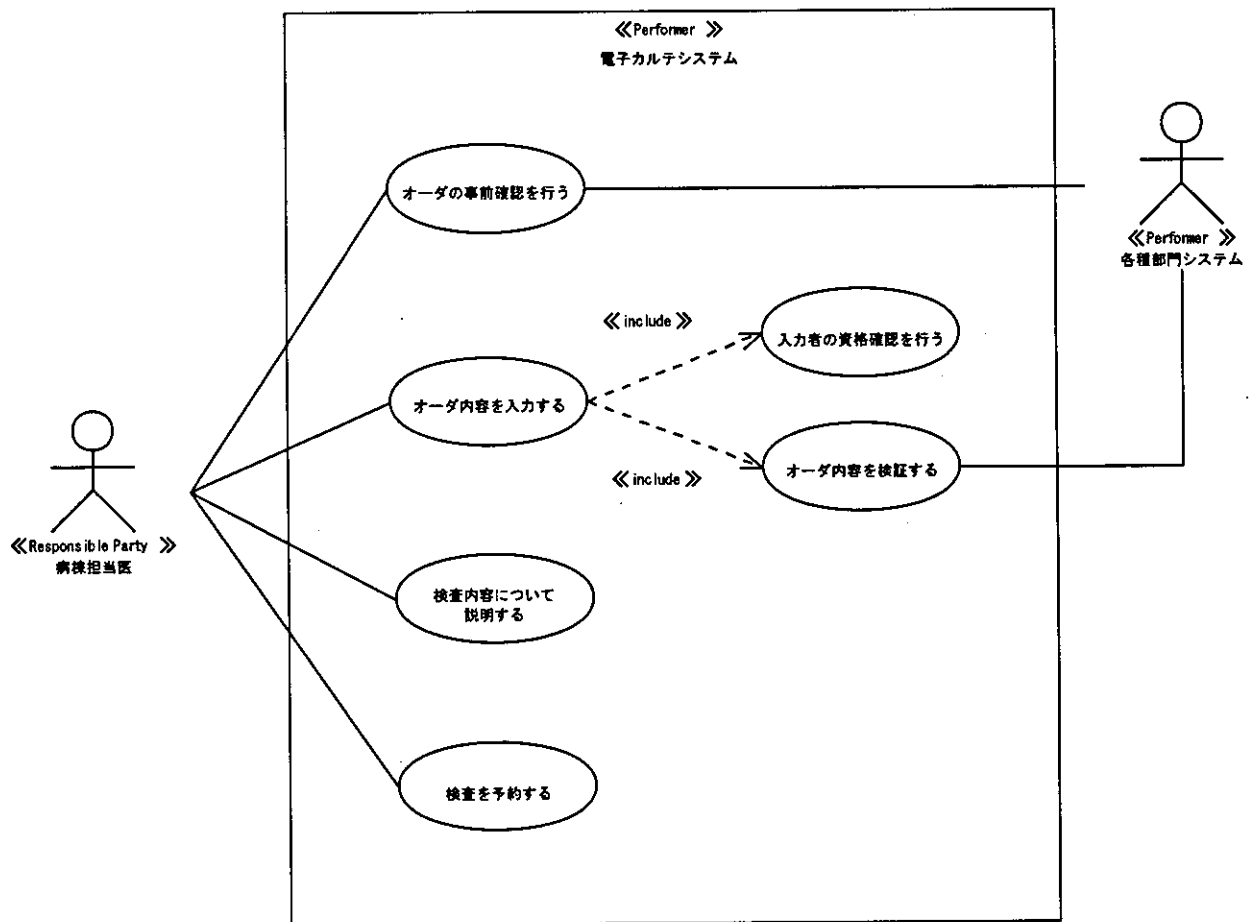
TI-044 指示受け（検体検査）プロセス



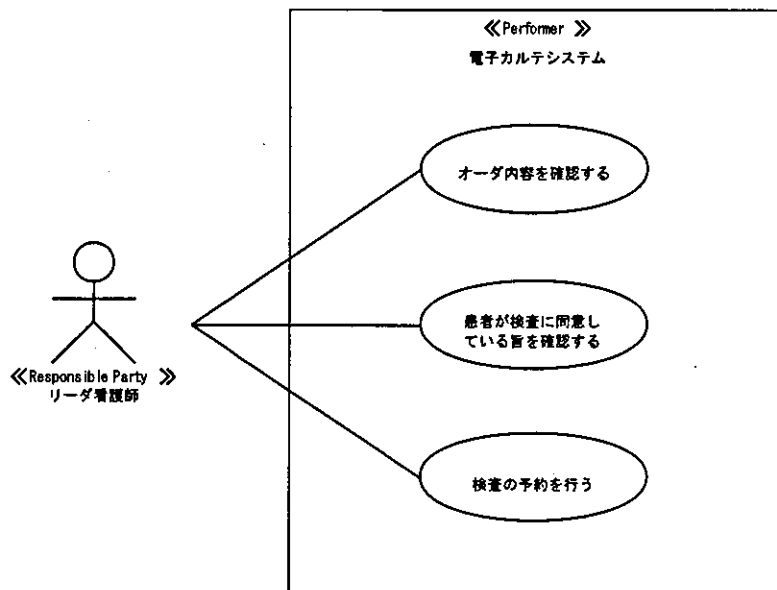
T1-045 検体採取プロセス



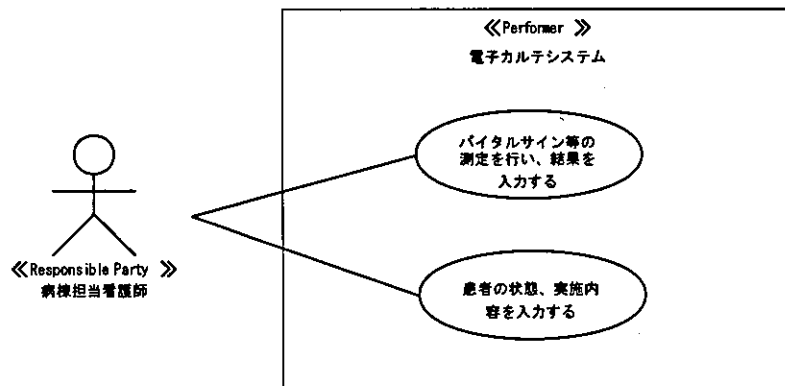
TI-046 検査オーダー（生理機能検査、放射線検査）プロセス



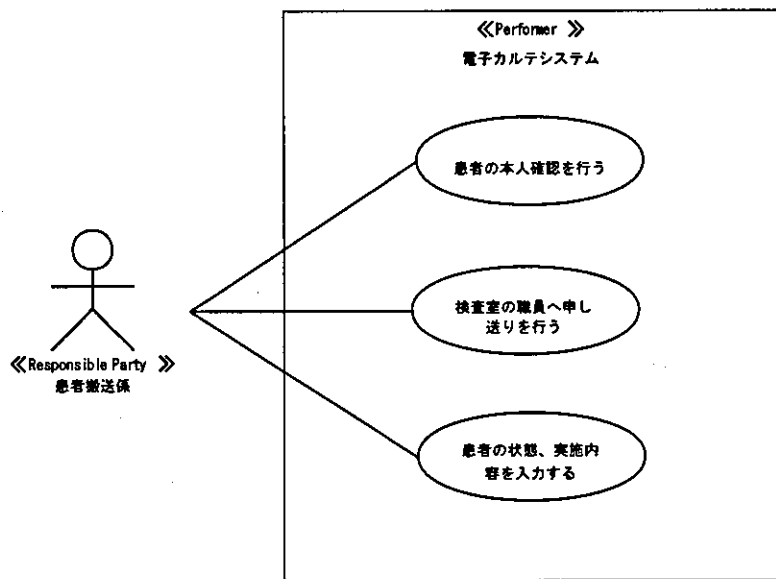
T1-047 指示受け（生理機能検査、放射線検査）プロセス



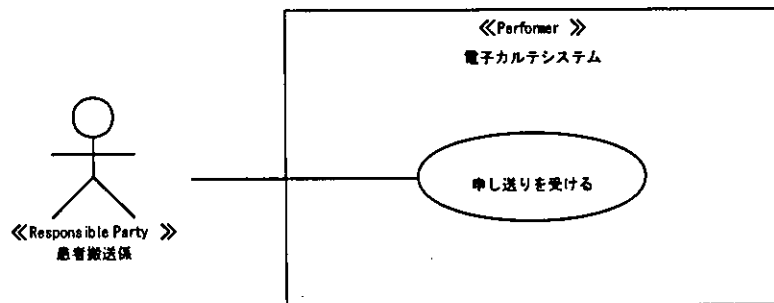
T1-048 検査準備プロセス



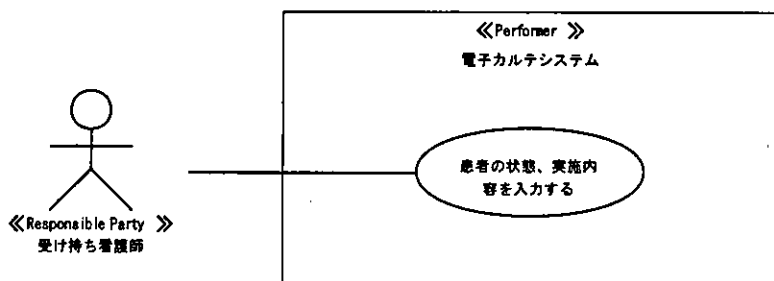
TI-049 移動介助（検査前）プロセス



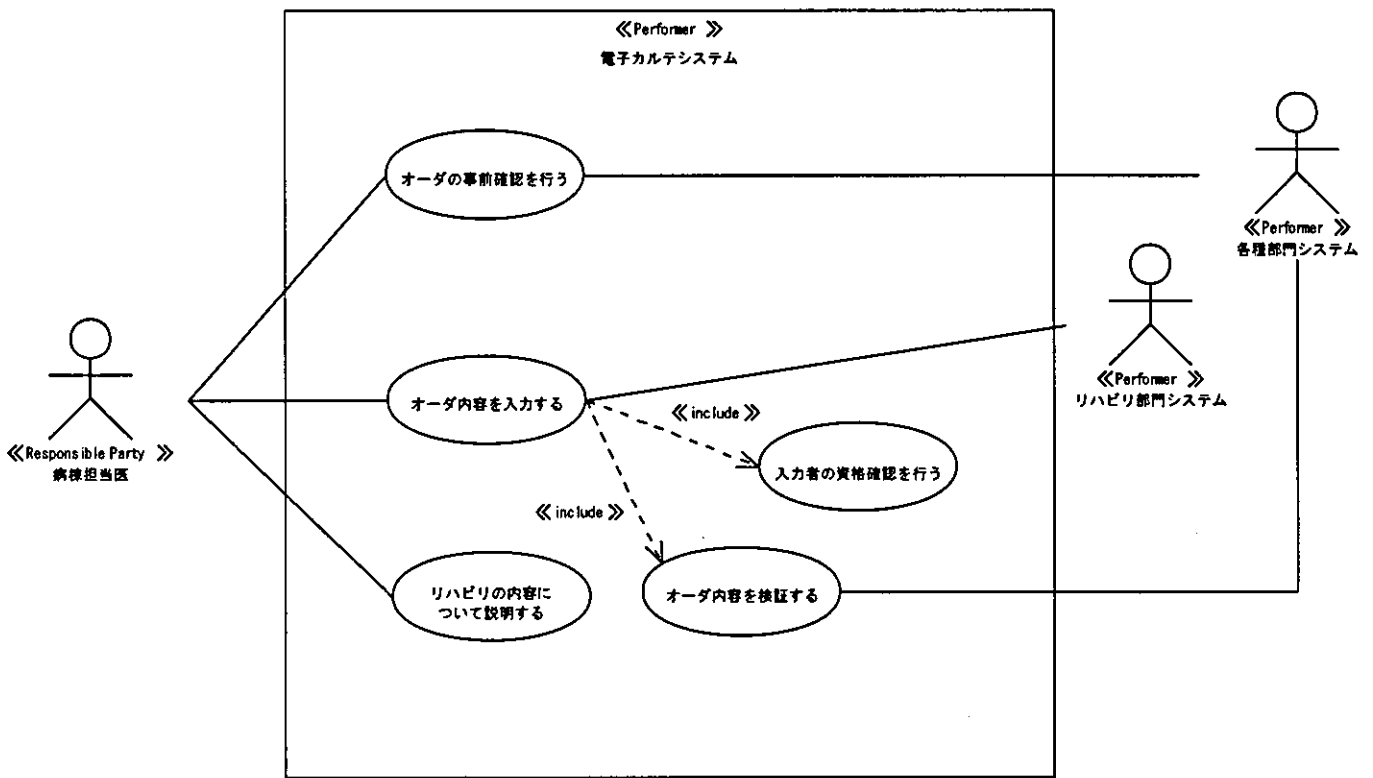
T1-050 移動介助（検査後）プロセス



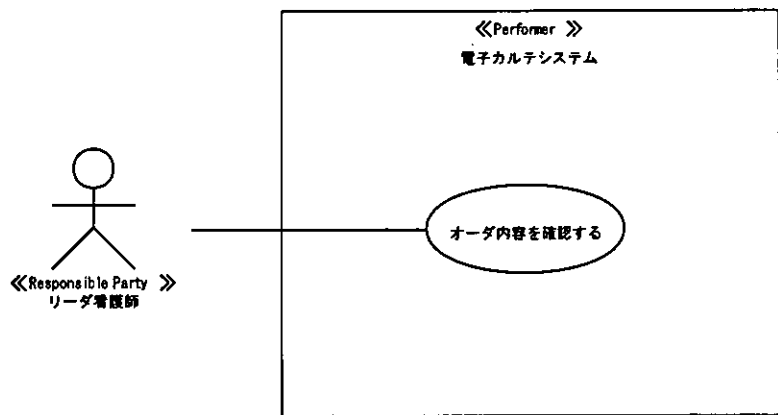
T1-051 検査後プロセス



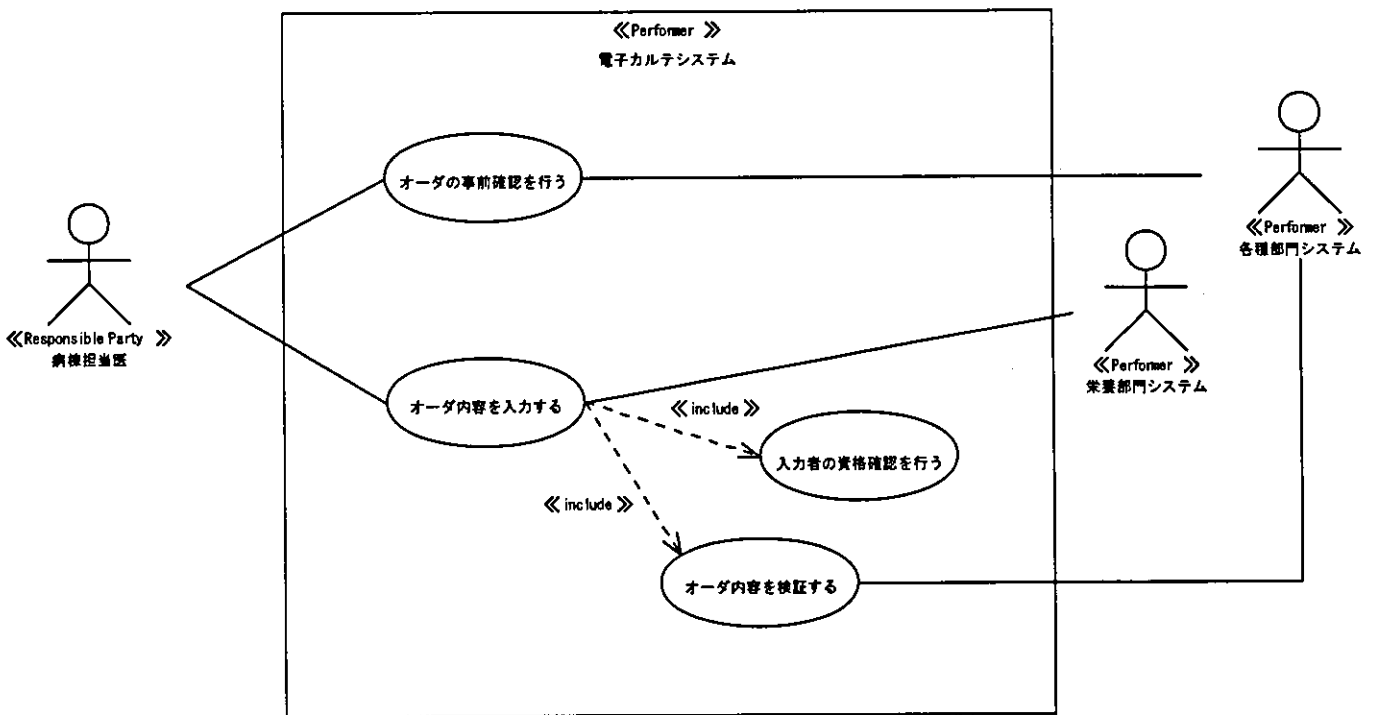
TI-052 リハビリオーダープロセス



T1-053 指示受け（リハビリ）プロセス



TI-054 食事オーダープロセス



TI-055 指示受け（食事）プロセス

