

Fig. 5. Absorption test. The immunoglobulin-G (IgG) activity to each of the S791, M207 and N161 peptides was absorbed by using a triplicate assay with an immobilized corresponding peptide and each of the five different irrelevant peptides. The method for the preparation of immobilized peptides was the same as the method used for ELISA plate preparation, as described in the legend of Fig. 4. The results of the absorption test were analysed by means of a two-tailed Student's *t*-test. All tests of significance were two-sided. In order to test the specificity of anti-peptide IgG in the serum samples, 100 µl/well of serum samples (1:100 dilution with 0.05% PBST) was absorbed with the immobilized peptide (200 µg/well: closed bar or 40 µg/well: open bar, as final concentrations) in wells kept for 2 h at room temperature. The absorption was repeated three times, and then the level of peptide-specific IgG in the resultant supernatant was measured. PBST, Tween-20 PBS.

The specificity of anti-peptide activities was then confirmed by means of the absorption test with two different concentrations of peptides (200 and 40 µg/ml) for immobilization. As expected, anti-S791, anti-M207 or anti-N161 activities were significantly reduced by absorption with the corresponding peptide, but not with any of the irrelevant peptides tested in Fig. 5. The same results were obtained at the two different doses of peptides for plate immobilization, suggesting that the 200 µg/ml of peptide, a concentration usually used for immobilization, was excessive.

Kinetic studies showed that anti-nucleocapsid protein antibodies could be detected in <20%, 70–80% and >90% of probable SARS patients 1–7 days, 8–14 days and 15–61 days after the illness began, respectively (11). However, there was no information on sera obtained 6 months after the onset of the disease, at least in the literatures we read. Viral RNA may persist for some time in patients, who have humoral responses to it, whereas some patients may lack an antibody response to the SARS-CoV after the onset of illness (12, 13). Prolonged shedding of viral RNA in respiratory secretions (11 days after the onset of illness), plasma (up to 9 days) and stool specimens (25 days) has been documented (13). Serum antibody levels do not correlate with protection, although local antibody is believed to play an important role in protection (14). Rather, the upsurge of the IgG antibody to the SARS-CoV and its correlation with the progression of SARS were observed (13). Therefore, a comprehensive investigation of the timing and intensity of humoral responses and their association with clinical manifestations of the disease is needed to better understand Fig. 5. the pathogenesis of the SARS-CoV and to develop appropriate treatment modalities. In order to achieve the necessary level of understanding, we will perform kinetic studies for humoral responses to the three peptides reported in this study in the near future.

Gao et al. (6) reported that an adenovirus-based vaccine could induce strong SARS-CoV-specific immune responses in the monkey, and this research holds promise for the development of a protective vaccine against the SARS causal agent. However, in order to develop this type of protective vaccine, many hurdles in terms of the safety, efficacy, cost benefits and durability must be overcome by performing basic and clinical studies. One of the key basic studies for vaccine development could be to identify immunogenic regions capable of inducing long-lasting immunity, and thus the results shown in this study may provide new information that will help us determine suitable vaccine candidates.

References

1. Drosten C, Gunther S, Preiser W et al. Identification of a novel coronavirus in patients with severe acute respiratory syndrome. *N Engl J Med* 2003; **348**: 1967–76.
2. Ksiazek TG, Erdman D, Goldsmith CS et al. A novel coronavirus associated with severe acute respiratory syndrome. *N Engl J Med* 2003; **348**: 1953–66.
3. Rota PA, Oberste MS, Monroe SS et al. Characterization of a novel coronavirus associated with severe acute respiratory syndrome. *Science* 2003; **300**: 1394–9.
4. Wang J, Wen J, Li J et al. Assessment of immunoreactive synthetic peptides from the structural proteins of severe acute respiratory syndrome coronavirus. *Clin Chem* 2003; **49**: 1989–96.
5. Cavanagh D. Severe acute respiratory syndrome vaccine development: experiences of vaccination against avian infectious bronchitis coronavirus. *Avian Pathol* 2003; **32**: 567–82.
6. Gao W, Tamin A, Soloff A et al. Effects of a SARS-associated coronavirus vaccine in monkeys. *Lancet* 2003; **362**: 1895–6.
7. Li W, Moore MJ, Vasilieva N et al. Angiotensin-converting enzyme 2 is a functional receptor for the SARS coronavirus. *Nature* 2003; **426**: 450–4.
8. He L, Ding YQ, Che XY et al. Expression of the monoclonal antibody against nucleocapsid antigen of SARS-associated coronavirus in autopsy tissues from SARS patients. *Di Yi Jun Yi Da Xue Xue Bao* 2003; **23**: 1128–30.
9. Komatsu N, Shichijo S, Nakagawa M, Itoh K. New multiplexed flow cytometric assay to measure anti-peptide antibody: a novel tool for monitoring immune responses to peptides used for immunization. *Scand J Clin Lab Invest* 2004; **64**: 535–546.
10. Wang YS, Shen H, Sun SH et al. Analysis of false-positive associated with antibody tests for SARS-CoV in SLE patients. *Shi Yan Sheng Wu Xue Bao* 2003; **36**: 314–7.
11. Pearson H. Antibodies to SARS-like virus hint at repeated infections. *Nature* 2004; **427**: 185.
12. Zhuang JH, Huang XZ, Zhou Q, Lin LY, Lin L. Dynamic observation IgG and IgM antibodies in patients with severe acute respiratory syndrome. *Zhongguo Wei Zhong Bing Ji Jiu Yi Xue* 2003; **15**: 579–81.
13. Hsueh PR, Hsiao CH, Yeh SH et al. Microbiologic characteristics, serologic responses, and clinical manifestations in severe acute respiratory syndrome, Taiwan. *Emerg Infect Dis* 2003; **9**: 1163–7.
14. Wang HB, Liu JH, Ouyang XL et al. Detection of the anti-SARS coronavirus-specific antibody levels in 156 SARS patients. *Zhongguo Shi Yan Xue Ye Xue Za Zhi* 2003; **11**: 441–3.
15. Gordon RF, McDade RL. Multiplexed quantification of human IgG, IgA, and IgM with the FlowMetrix™ system. *Clin Chem* 1997; **43**: 1799–801.
16. WHO. Severe acute respiratory syndrome (SARS). *Wkly Epidemiol Rec* 2003; **78**: 81–3.
17. Kawamoto N, Yamada A, Ohkouchi S et al. IgG reactive to CTL-directed epitopes of self-antigens is either lacking or unbalanced in atopic dermatitis patients. *Tissue Antigens* 2003; **61**: 1–10.

Pegylated interferon- α protects type 1 pneumocytes against SARS coronavirus infection in macaques

Bart L Haagmans^{1,6}, Thijs Kuiken^{1,6}, Byron E Martina¹, Ron A M Fouchier¹, Guus F Rimmelzwaan¹, Geert van Amerongen¹, Debby van Riel², Ton de Jong³, Shigeyuki Itamura⁴, Kwok-Hung Chan⁵, Masato Tashiro⁴ & Albert D M E Osterhaus¹

The primary cause of severe acute respiratory syndrome (SARS) is a newly discovered coronavirus¹⁻⁷. Replication of this SARS coronavirus (SCV) occurs mainly in the lower respiratory tract, and causes diffuse alveolar damage^{2,7,8}. Lack of understanding of the pathogenesis of SARS has prevented the rational development of a therapy against this disease. Here we show extensive SCV antigen expression in type 1 pneumocytes of experimentally infected cynomolgus macaques (*Macaca fascicularis*) at 4 d postinfection (d.p.i.), indicating that this cell type is the primary target for SCV infection early in the disease, and explaining the subsequent pulmonary damage. We also show that prophylactic treatment of SCV-infected macaques with the antiviral agent pegylated interferon- α (IFN- α) significantly reduces viral replication and excretion, viral antigen expression by type 1 pneumocytes and pulmonary damage, compared with untreated macaques. Postexposure treatment with pegylated IFN- α yielded intermediate results. We therefore suggest that pegylated IFN- α protects type 1 pneumocytes from SCV infection, and should be considered a candidate drug for SARS therapy

SARS has recently emerged in the human population as a potentially fatal respiratory disease. Severely affected patients develop acute respiratory distress syndrome⁷⁻¹⁰, which corresponds with diffuse alveolar damage (DAD) at autopsy^{2,11}. A newly discovered coronavirus, SCV, has been identified as the primary cause of SARS^{1,2,5-7}. SARS patients have been treated empirically with a combination of ribavirin, oseltamivir, antibiotics and corticosteroids⁷⁻⁹. However, neither case-control studies nor animal models have been used to determine the efficacy of these drugs. The choice and evaluation of potential drugs is also hampered by poor understanding of the pathogenesis of SARS.

We previously hypothesized that SCV infects type 1 pneumocytes, based on the character of the pulmonary lesions in experimentally infected macaques and the known tropism of other respiratory coronaviruses for type 1 pneumocytes². We found extensive type 2 pneumo-

cyte hyperplasia in the lungs of SCV-infected macaques at 6 d.p.i., suggesting that there had been loss of type 1 pneumocytes at an earlier stage of infection^{2,12}. To determine whether type 1 pneumocytes are infected by SCV at an earlier stage of infection, we conducted pathological and immunohistochemical examinations of the lungs of four SCV-infected macaques (control group) at 4 d.p.i. The lungs had multifocal, acute DAD, which was characterized by flooding of alveoli with protein-rich edema fluid mixed with neutrophils and rare syncytia, extensive loss of alveolar and bronchiolar epithelium, and occasional type 2 pneumocyte hyperplasia (Fig. 1a; for comparison, normal alveolar morphology is seen in Fig. 1b). Immunohistochemistry revealed extensive SCV antigen expression by squamous cells lining the alveolar walls (Fig. 1c,d; compare with Fig. 1e). These cells were identified as type 1 pneumocytes by their location, morphology and expression of keratin in serial sections. Transmission electron microscopy of alveolar cells revealed coronavirus-like particles measuring about 70 nm in diameter with typical internal nucleocapsid-like structure (Fig. 1f,g). These cells were identified as type 1 pneumocytes because they lined the alveolar lumen, were closely apposed to the basement membrane, were squamous, contained abundant pinocytotic vesicles, and—in contrast to type 2 pneumocytes—had neither lamellar bodies nor microvilli¹³. As found previously in experimentally infected macaques at 6 d.p.i., less extensive SCV antigen expression also was detected in hyperplastic type 2 pneumocytes within inflammatory foci² (Fig. 1h). Together, these histopathologic and immunohistochemical findings show that type 1 pneumocytes are the main target of SCV in early infection, and are associated with DAD.

An effective antiviral agent for the treatment of SCV infection is needed because decreasing viral replication in the first phase of SARS may reduce the severity of subsequent pathological damage, as has been found in another model of viral-induced DAD^{14,15}. IFN- α may inhibit replication of animal and human coronaviruses¹⁶⁻¹⁸. As a candidate drug, we tested the efficacy of pegylated recombinant IFN- α 2b, a registered drug for the treatment of chronic hepatitis C¹⁹. We chose this drug because it is registered and therefore directly available, because human recombinant IFNs inhibit SCV replication *in vitro*²⁰, and because pegylation optimizes the

¹Department of Virology, ²Department of Immunology and ³Department of Pathology, Erasmus Medical Centre, PO Box 1738, 3000 DR, Rotterdam, Netherlands. ⁴Department of Viral Diseases and Vaccine Control, National Institute of Infectious Diseases, Tokyo 208-0011, Japan. ⁵Department of Microbiology and Pathology, Queen Mary Hospital, University of Hong Kong SAR, China. ⁶These authors contributed equally to this work. Correspondence should be addressed to A.D.M.E.O. (a.osterhaus@erasmusmc.nl).

Published online 22 February 2004; doi:10.1038/nm1001



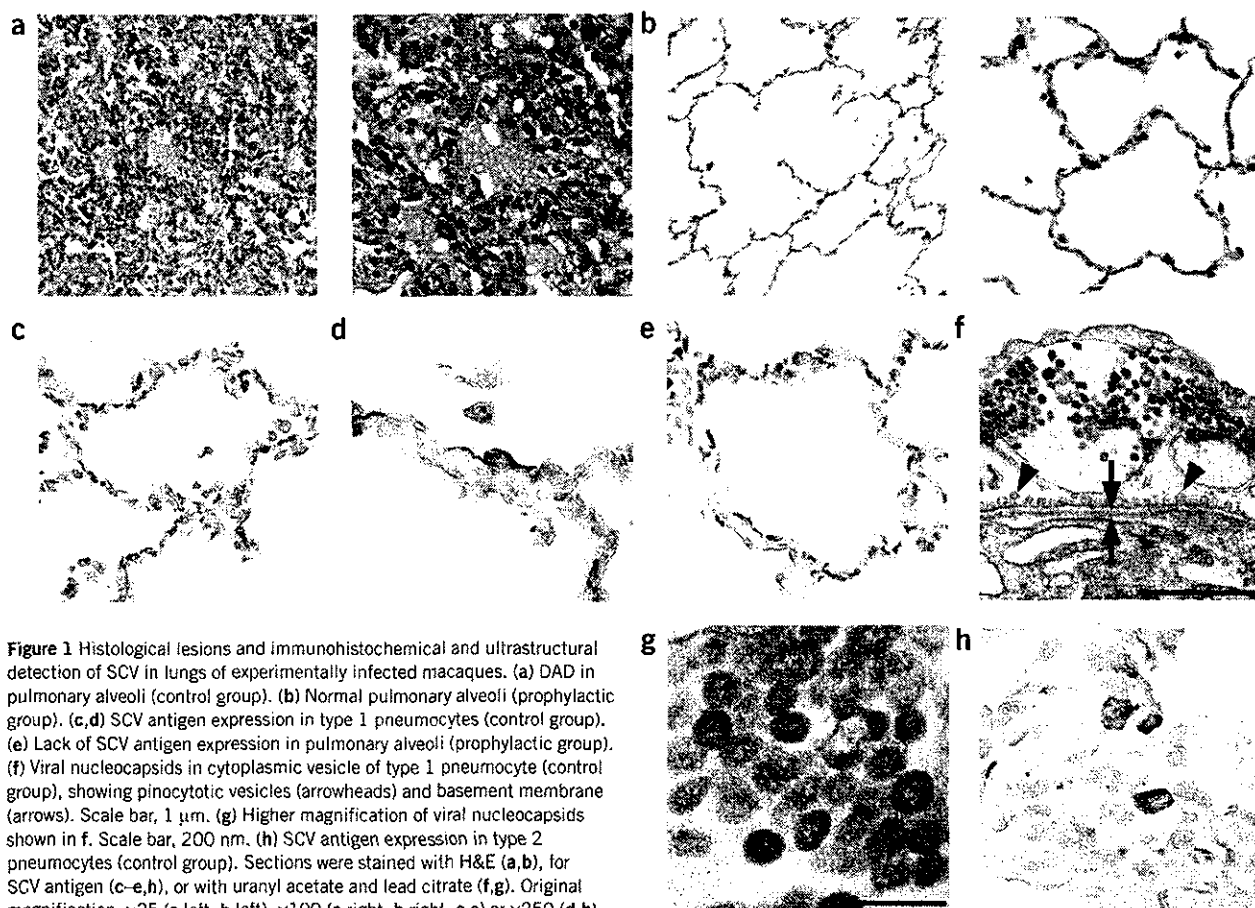


Figure 1 Histological lesions and immunohistochemical and ultrastructural detection of SCV in lungs of experimentally infected macaques. (a) DAD in pulmonary alveoli (control group). (b) Normal pulmonary alveoli (prophylactic group). (c,d) SCV antigen expression in type 1 pneumocytes (control group). (e) Lack of SCV antigen expression in pulmonary alveoli (prophylactic group). (f) Viral nucleocapsids in cytoplasmic vesicle of type 1 pneumocyte (control group), showing pinocytotic vesicles (arrowheads) and basement membrane (arrows). Scale bar, 1 μ m. (g) Higher magnification of viral nucleocapsids shown in f. Scale bar, 200 nm. (h) SCV antigen expression in type 2 pneumocytes (control group). Sections were stained with H&E (a,b), for SCV antigen (c–e,h), or with uranyl acetate and lead citrate (f,g). Original magnification, $\times 25$ (a left, b left), $\times 100$ (a right, b right, c,e) or $\times 250$ (d,h).

pharmacokinetic properties of IFN $^{\alpha 1}$. We first tested the effect of pegylated IFN- α on SCV-infected Vero cells, and observed a dose-dependent antiviral effect (Fig. 2a). We then determined the plasma levels of pegylated IFN- α after intramuscular injection into a group of six macaques (prophylactic group). High plasma levels were attained 1 d after injection (Fig. 2b), similar to peak levels found in patients after subcutaneous injection with 3- μ g/kg pegylated IFN- α^{21} . Because IFN- α is known to activate macrophages 22 , we measured plasma levels of neopterin after pegylated IFN- α treatment, as a measure of macrophage activation. Neopterin levels were increased in all animals (Fig. 2c), confirming the biological availability of pegylated IFN- α in the treated macaques.

To evaluate the prophylactic use of pegylated IFN- α , we experimentally infected the macaques in the prophylactic group with SCV 3 d after the start of pegylated IFN- α treatment, and compared virological and

pathological parameters with a control group of four macaques treated with PBS. We limited our investigation to pharyngeal swabs and the lung because an earlier study did not provide evidence of extensive viral replication in other organs 2 . We found that all parameters were significantly ($P < 0.05$) reduced in the prophylactic group compared with the control group. Virus excretion from the pharynx was abrogated (Fig. 3), and the virus titer in the lungs at 4 d.p.i. was significantly ($P < 0.01$) reduced (Fig. 4a). Immunohistochemistry showed that expression of SCV antigen in type 1 pneumocytes was reduced by 90% (Figs. 1e and 4b). By pathology, the extent and severity of DAD was reduced by 80% (Figs. 1b and 4c). These data indicate that prophylactic use of pegylated IFN- α substantially, although not completely, protects type 1 pneumocytes of experimentally infected macaques from SCV infection, with abrogation of virus excretion and reduced severity of pulmonary lesions.

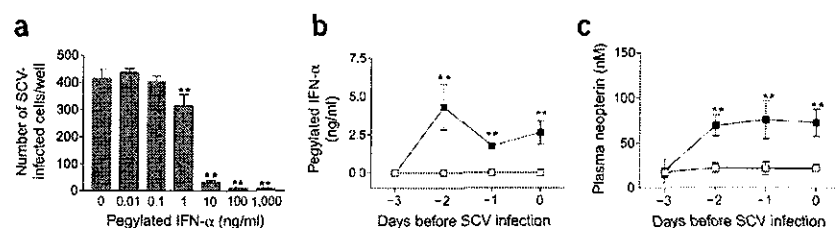


Figure 2 Antiviral activity of pegylated IFN- α against SCV *in vitro* and its biological activity in macaques. (a) Effect of pegylated IFN- α against SCV infection *in vitro*. Similar results were obtained in three separate experiments. (b) Pharmacokinetic analysis of pegylated IFN- α (b) and induction of neopterin (c) in macaques treated with PBS (\square , control group; $n = 4$) or pegylated IFN- α (\blacksquare , prophylactic group; $n = 4$) on days -3 and -1. Data are expressed as mean \pm s.d. **, $P < 0.01$ compared with control.

LETTERS

To test the efficacy of pegylated IFN- α as an antiviral agent postexposure, we injected pegylated IFN- α intramuscularly into a postexposure group of four macaques, 1 and 3 d after experimental SCV infection, and evaluated them in the same way as the prophylactic group. Excretion of SCV from the pharynx was found only 2 d.p.i., at a significantly ($P < 0.05$) reduced level compared with the control group (Fig. 3). Moreover, the virus titer in the lungs at 4 d.p.i. was significantly ($P < 0.01$) decreased, whereas the remaining parameters were less reduced (Fig. 4a–c). These results show that use of pegylated IFN- α 1 d postexposure protects type 1 pneumocytes of experimentally infected macaques from SCV infection, but is less effective than prophylactic use.

In this study, we have shown that type 1 pneumocytes are the main target cells for SCV infection of cynomolgus macaques early in the disease, and that pegylated IFN- α protects type 1 pneumocytes from SCV infection. The first point—type 1 pneumocytes as the primary target cell—is evident from the extensive presence of SCV in type 1 pneumocytes at 4 d.p.i. (Fig. 1c,d). Targeting of type 1 pneumocytes by SCV explains why clinical disease and lesions are centered on the lower respiratory tract^{7,11,23}, and fits with the lesions in early fatal SARS cases in humans^{11,23} and in experimentally infected macaques euthanized at 6 d.p.i. (ref. 2). When the pathological studies in humans and macaques are examined together, the following temporal sequence of lung lesions emerges: viral infection and subsequent loss of type 1 pneumocytes; acute DAD characterized by flooding of alveolar lumina with highly proteinaceous edema fluid; chronic DAD characterized by type 2 pneumocyte hyperplasia; and, in severe cases, extensive pulmonary fibrosis. This sequence of events corresponds to the stereotypic alveolar reaction to acute lung injury from a variety of causes¹². More detailed experimental studies will be needed to identify other possible target cells and further elucidate the pathogenesis of SARS.

The second point—that pegylated IFN- α protects type 1 pneumocytes from SCV infection—is based on the beneficial effect of pegylated IFN- α therapy initiated 3 d before SCV inoculation of macaques. In these macaques, SCV infection of type 1 pneumocytes and severity of lung lesions were significantly reduced (Fig. 4), and viral excretion was abrogated (Fig. 3). Pegylated IFN- α treatment may have an important influence on the outcome of SARS. In both virus-induced^{14,15} and toxin-induced²⁴ DAD, the severity of pulmonary damage is dose dependent, with higher doses causing increased pulmonary fibrosis, loss of lung function and mortality. Reduction of the viral load by pegylated IFN- α therapy at an early stage of SCV infection might therefore help prevent serious or fatal outcome of SARS

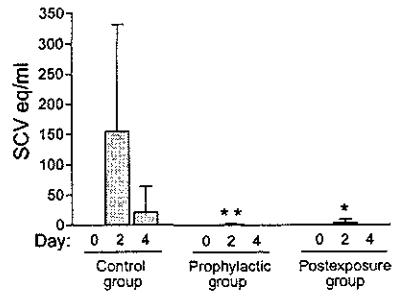


Figure 3 Effect of pegylated IFN- α on SCV excretion in macaques. SCV detection in pharyngeal swabs taken at 0, 2 or 4 d.p.i. from macaques treated with PBS (control group; $n = 4$) or pegylated IFN- α prophylactically ($n = 6$) or postexposure ($n = 4$). Eq, equivalents. Data are expressed as mean \pm s.d. *, $P < 0.05$; **, $P < 0.01$ compared with control group at 2 d.p.i.

associated with pulmonary fibrosis. In addition to potential disease mitigation, reduced viral excretion through pegylated IFN- α therapy may also have an epidemiological effect by reducing the spread of SCV in the human population. Whether the mechanism of pegylated IFN- α protection is by direct antiviral activity or immunostimulatory effects²⁵ remains to be determined.

The reduced protection of type 1 pneumocytes by pegylated IFN- α in the postexposure group compared with the prophylactic group was probably because the initiation of therapy (at 1 d.p.i.) was too close to the peak of viral infection in the lungs (at 2 d.p.i.; Fig. 3). Thus, substantial infection of type 1 pneumocytes may already have occurred by the time pegylated IFN- α reached therapeutic levels. These *in vivo* findings are in accordance with the reduced *in vitro* activity against SCV of IFN- α added after infection, compared with IFN- α added before infection²⁰. It also corresponds to the results of IFN therapy against acute virus infections in most animal models, where IFN is most effective when administered before virus inoculation or before the peak of virus replication in the target organ²⁶.

The time interval during which effective postexposure treatment with pegylated IFN- α can be initiated may be longer in humans than in experimentally infected macaques. This is because the peak of SCV infection in the lungs occurs around 16 d.p.i. in humans—based on an average incubation period of 6 d (refs. 9,27) and a peak in viral excretion 10 d after onset of symptoms²⁸—compared with 2 d.p.i. in the macaques (Fig. 3).

In conclusion, these studies show that type 1 pneumocytes are the main target cells for SCV infection of macaques early in the disease, and that pegylated IFN- α , a commercially available antiviral drug, protects these cells from SCV infection. We believe that these preliminary results warrant clinical studies with pegylated IFN- α , if and when SARS re-emerges. Prophylactic or early postexposure treatment with pegylated IFN- α may help reduce the impact of SCV infection on health-care workers and others possibly exposed to SCV, and may limit the spread of the virus in the human population.

METHODS

Antiviral assay. Wells containing Vero cells were treated in triplicate with pegylated recombinant IFN- α (PEG-Intron, Schering) for 16 h and infected

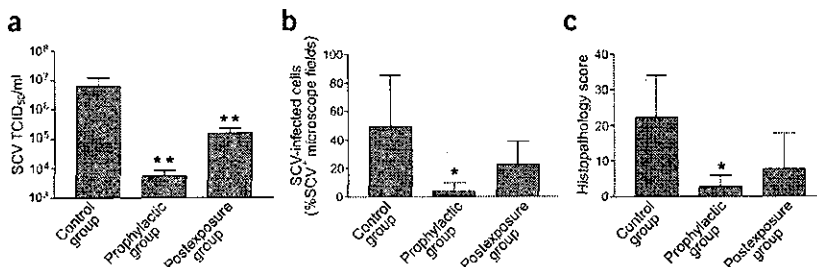


Figure 4 Effect of pegylated IFN- α on SCV replication, viral antigen expression and histological lesions in lungs of SCV-infected macaques at 4 d.p.i. (a) SCV titration of lung homogenates. TCID₅₀, median tissue culture infectious dose. (b) Immunohistochemical detection of SCV-infected cells in lung sections. (c) Histopathological scoring of lung sections. SCV-infected macaques were treated with pegylated IFN- α prophylactically ($n = 4$) or postexposure ($n = 4$), or with PBS (control group; $n = 4$). Data are expressed as mean \pm s.d. *, $P < 0.05$; **, $P < 0.01$ compared with control group.



with 100 median tissue culture infectious dose (TCID₅₀)/well SCV (obtained from patient 5688, who died of SARS²). After 16 h, the supernatant was removed and cells were fixed with 10% neutral-buffered formalin and 70% ethanol (10 min at room temperature). SCV antigen-positive cells were visualized by immunohistochemistry, as described below. The numbers of SCV-infected cells per well were summarized as mean \pm s.d.

Macaque studies. Approval for animal experiments was obtained from the Institutional Animal Welfare Committee. Three groups of cynomolgus macaques were infected intratracheally with 1×10^6 TCID₅₀ SCV suspended in 5 ml of PBS. The control group ($n = 4$) was injected intramuscularly with PBS, while the prophylactic ($n = 6$) and postexposure ($n = 4$) groups were treated with pegylated IFN- α at a dose of 3 mg/kg. The prophylactic group was injected with pegylated IFN- α on days -3, -1, 1 and 3 after SCV infection; the postexposure group was injected on days 1 and 3 after SCV infection. Four macaques from each group were euthanized on day 4 after infection. At days -3, -2, -1, 0, +2 and +4, we anesthetized the macaques with ketamine, collected 10 ml blood from inguinal veins and took pharyngeal swabs, which were placed in 1 ml transport medium¹⁹. Pharyngeal swabs were frozen at -70 °C until RT-PCR analysis. Pegylated IFN- α levels were determined using ELISA (Bender MedSystems Diagnostics) with PEG-Intron as a standard. Neopterin levels were determined as described²². Necropsies were done according to a standard protocol; one lung of each monkey was inflated with 10% neutral-buffered formalin by intrabronchial intubation and suspended in 10% neutral-buffered formalin overnight. Samples were collected in a standard manner (one from the cranial part of the lung, one from the medial part and two from the caudal part), embedded in paraffin, cut at 5 μ m and used for immunohistochemistry (see below) or stained with H&E.

For semiquantitative assessment of SCV infection-associated inflammation in the lung, each H&E-stained section was examined for inflammatory foci by light microscopy using a 10 \times objective. Each focus was scored for size (1, smaller than or equal to area of 10 \times objective; 2, larger than area of 10 \times objective and smaller than or equal to area of 2.5 \times objective; 3, larger than area of 2.5 \times objective) and severity of inflammation (1, mild; 2, moderate; 3, marked). The cumulative scores for the inflammatory foci provided the total score per animal. Sections were examined without knowledge of the identity of the macaques. The lung sections of one monkey in the postexposure group were not assessed because of the presence of inflammation from premortem aspiration of food remains. Lung samples from a control macaque were used for transmission electron microscopy as described².

Three lung tissue samples taken from the other lung (one from the cranial part of the lung, one from the medial part and one from the caudal part) were homogenized in 2 ml transport medium¹⁹ using Polytron PT2100 tissue grinders (Kinematica). After low-speed centrifugation, the homogenates were frozen at -70 °C until inoculation on Vero 118 cell cultures in tenfold serial dilutions. The identity of the isolated virus was confirmed as SCV by RT-PCR of the supernatant.

Immunohistochemistry. The same formalin-fixed, paraffin-embedded lung samples that were used for histology—one from the cranial part of the lung, one from the medial part and two from the caudal part—were cut at 5 μ m and stained for SCV antigen using either biotinylated purified human IgG from a convalescent SARS patient, negative-control biotinylated purified human IgG, or the dilution buffer, as described previously². Twenty-five arbitrarily chosen 20 \times objective fields of lung parenchyma in each lung section were examined by light microscopy for the presence of SCV antigen expression, without knowledge of the identity of the macaques. The cumulative scores for each animal were expressed as number of positive fields per 100 fields (%). Selected lung sections from macaques in the control group were stained with monoclonal antibody AE1/AE3 to cytokeratin (Neomarkers) for identification of epithelial cells, according to standard immunohistochemical procedures.

SCV RT-PCR. RT-PCR with primers and probe specific for the nucleoprotein gene of SCV was used to quantify SCV in swabs, as described². Serial dilutions of the SCV stock were used as a standard, and results were expressed as SCV equivalents per ml swab medium.

Statistical analysis. Data were compared using the Student *t*-test (antiviral activity of pegylated IFN- α against SCV *in vitro* and its biological activity in macaques) or one-way ANOVA and Dunnett's multiple-comparison test (effect of pegylated

IFN- α on SCV excretion, SCV replication, viral antigen expression and histological lesions in the lungs). Differences were considered significant at $P < 0.05$.

ACKNOWLEDGMENTS

We thank S. Bruijns, J.M. Vrolijk, G. Aron, F. van der Panne, R. Dias d'Ullois and D. Fekkes for assistance, and J.D. Laman for advice on immunohistochemistry.

COMPETING INTERESTS STATEMENT

The authors declare that they have no competing financial interests.

Received 25 September 2003; accepted 30 January 2004

Published online at <http://www.nature.com/naturemedicine/>

- Fouchier, R.A.M. *et al.* Koch's postulates fulfilled for SARS virus. *Nature* **423**, 240 (2003).
- Kuiken, T. *et al.* Newly discovered coronavirus as the primary cause of severe acute respiratory syndrome. *Lancet* **362**, 263–270 (2003).
- Marra, M.A. *et al.* The genome sequence of the SARS-associated coronavirus. *Science* **300**, 1399–1404 (2003).
- Rota, P.A. *et al.* Characterization of a novel coronavirus associated with severe acute respiratory syndrome. *Science* **300**, 1394–1399 (2003).
- Drosten, C. *et al.* Identification of a novel coronavirus in patients with severe acute respiratory syndrome. *N. Engl. J. Med.* **348**, 1967–1976 (2003).
- Ksiazek, T.G. *et al.* A novel coronavirus associated with severe acute respiratory syndrome. *N. Engl. J. Med.* **348**, 1953–1966 (2003).
- Peiris, J.S.M. *et al.* Coronavirus as a possible cause of severe acute respiratory syndrome. *Lancet* **361**, 1319–1325 (2003).
- Tsang, K.W. *et al.* A cluster of cases of severe acute respiratory syndrome in Hong Kong. *N. Engl. J. Med.* **348**, 1977–1985 (2003).
- Lee, N. *et al.* A major outbreak of severe acute respiratory syndrome in Hong Kong. *N. Engl. J. Med.* **348**, 1986–1994 (2003).
- Poutanen, S.M. *et al.* Identification of severe acute respiratory syndrome in Canada. *N. Engl. J. Med.* **348**, 1995–2005 (2003).
- Nicholls, J.M. *et al.* Lung pathology of fatal severe acute respiratory syndrome. *Lancet* **361**, 1773–1778 (2003).
- Ware, L.B. & Matthay, M.A. The acute respiratory distress syndrome. *N. Engl. J. Med.* **342**, 1334–1349 (2000).
- Williams, M.C. The alveolar epithelium: structure and study by immunohistochemistry. in *Electron Microscopy of the Lung* (ed. Schraufnagel, D.E.) 121–147 (Marcel Dekker, New York, 1990).
- Beilum, S.C. *et al.* Respiratory reovirus 1/L induction of intraluminal fibrosis. A model for the study of bronchiolitis obliterans organizing pneumonia. *Am. J. Pathol.* **150**, 2243–2254 (1997).
- London, L. *et al.* Respiratory reovirus 1/L induction of diffuse alveolar damage: pulmonary fibrosis is not modulated by corticosteroids in acute respiratory distress syndrome in mice. *Clin. Immunol.* **103**, 284–295 (2002).
- Pei, J., Sekellick, M.J., Marcus, P.I., Choi, I.S. & Collisson, E.W. Chicken interferon type 1 inhibits infectious bronchitis virus replication and associated respiratory illness. *J. Interferon Cytokine Res.* **21**, 1071–1077 (2001).
- Smith, A.L., Barthold, S.W. & Beck, D.S. Intranasally administered α/β interferon prevents extension of mouse hepatitis virus, strain JHM, into the brains of BALB/cByJ mice. *Ant. Res.* **8**, 239–245 (1987).
- Turner, R.B., Felton, A., Kosak, K., Kelsey, D.K. & Meschievitz, C.K. Prevention of experimental coronavirus colds with intranasal α -2b interferon. *J. Infect. Dis.* **154**, 443–447 (1986).
- Manns, M.P. *et al.* Peginterferon α -2b plus ribavirin compared with interferon α -2b plus ribavirin for initial treatment of chronic hepatitis C: a randomised trial. *Lancet* **358**, 958–965 (2001).
- Cinatl, J. *et al.* Treatment of SARS with human interferons. *Lancet* **362**, 293–294 (2003).
- Bukowski, R.M. *et al.* Treating cancer with PEG Intron: pharmacokinetic profile and dosing guidelines for an improved interferon- α 2b formulation. *Cancer* **95**, 389–396 (2002).
- Van Gool, A.R. *et al.* Serum amino acids, bioperin and neopterin during long-term immunotherapy with interferon- α in high-risk melanoma patients. *Psychiatry Res.* **119**, 125–132 (2003).
- Franks, T.J. *et al.* Lung pathology of severe acute respiratory syndrome (SARS): a study of 8 autopsy cases from Singapore. *Hum. Pathol.* **34**, 743–748 (2003).
- Bedrossian, C.W., Sussman, J., Conklin, R.H. & Kahan, B. Azathioprine-associated interstitial pneumonitis. *Am. J. Clin. Path.* **82**, 148–154 (1984).
- Biron, C.A. Interferons α and β as immune regulators: a new look. *Immunity* **14**, 661–664 (2001).
- Finter, N.B. & Oldham, R.K. (eds.) Interferons: *In Vivo* and Clinical Studies. Vol. 4 (Elsevier, Amsterdam, 1985).
- Booth, C.M. *et al.* Clinical features and short-term outcomes of 144 patients with SARS in the greater Toronto area. *JAMA* **289**, 2801–2809 (2003).
- Peiris, J.S.M. *et al.* Clinical progression and viral load in a community outbreak of coronavirus-associated SARS pneumonia: a prospective study. *Lancet* **361**, 1767–1772 (2003).
- Fouchier, R.A. *et al.* Detection of influenza viruses from different species by PCR amplification of conserved sequences in the matrix gene. *J. Clin. Microbiol.* **38**, 4096–5001 (2000).

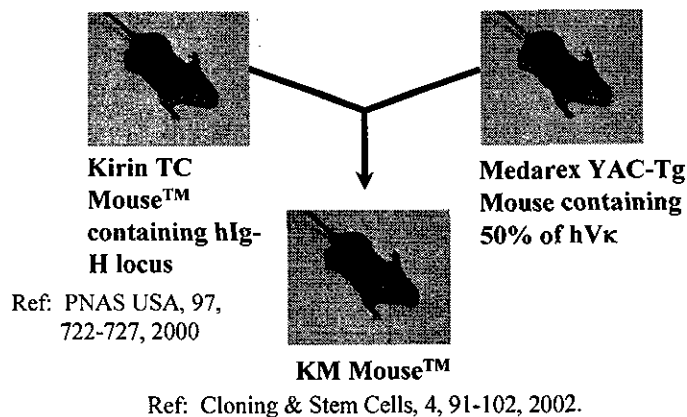


ヒト型抗体産生マウス及びウシ開発資料

1

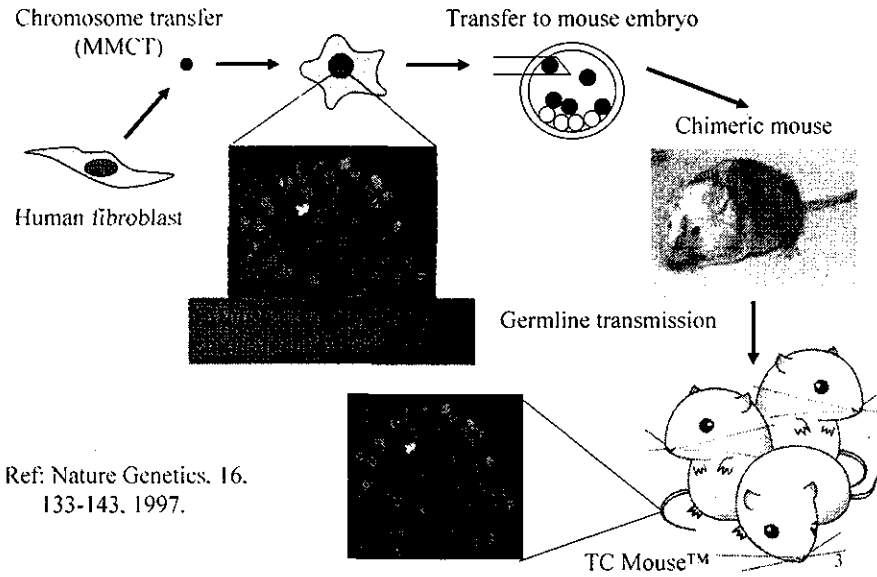
Human Antibody Project

Kirin has established the platform for human monoclonal antibody business since Kirin formed alliance with Medarex to develop the best human antibody mouse in the world on January of 2000.



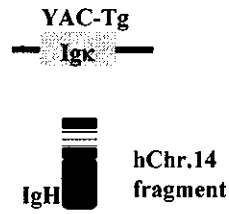
• Cross-licensing the IPs owned or controlled by Kirin and Medarex. 2

Generation of TC Mouse™

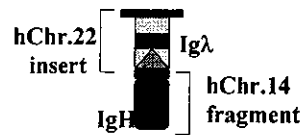


Human Antibody Mouse

KM Mouse™
 KM(FcγRIIb-KO)
 KM(C3H,C57B6)
 KM(H-2d)



HAC Mouse™
 HAC-KM

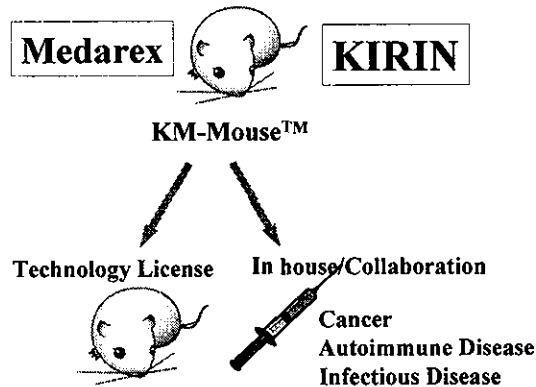


Ref: Nature Biotechnol., 20, 889-894, 2002 ; Gene Therapy, 9, 708-712, 2002.

4

Kirin Human Antibody Project

1. Kirin is developing human monoclonal antibody products in house and in collaboration mainly on cancer, immune-related and infectious disease area.
2. Kirin is licensing the human antibody mouse technology worldwide together with Medarex.

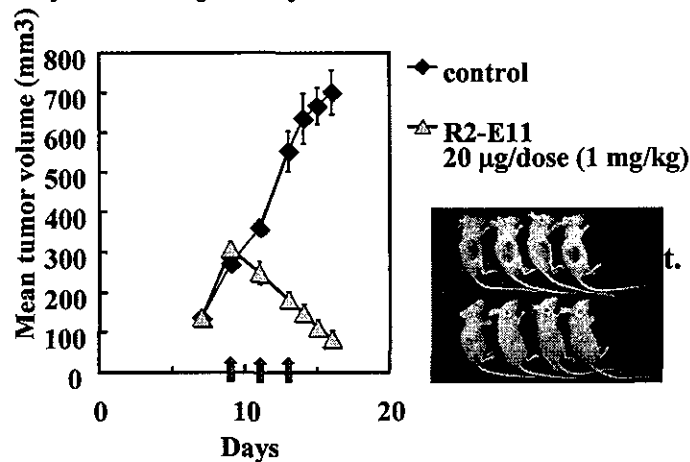


5

Development of Antibody Products

1. TRAIL-R2 human monoclonal antibody

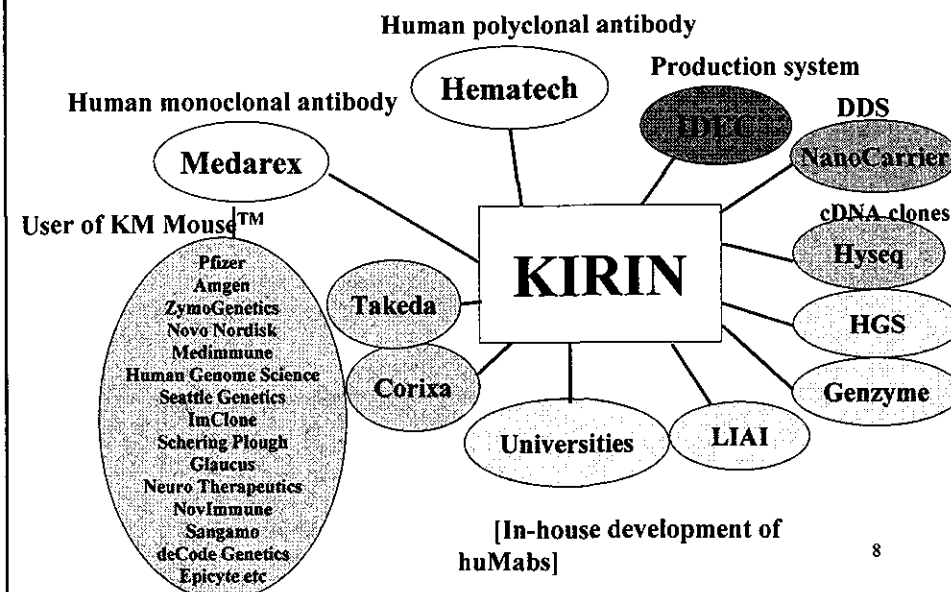
Effect of R2-E11 on growth of 300mm³ Colo205 tumors



Ref: Cell Death and Differentiation, 11, 203-207, 2004.

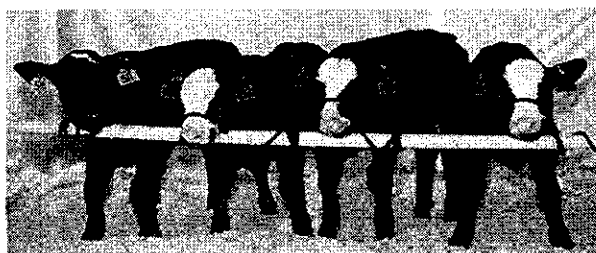
6

Licensing & Alliance

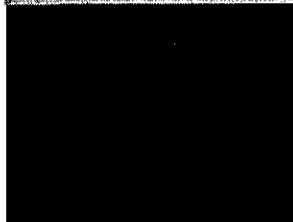


Kirin Human Antibody Project

Kirin has been developing human antibody producing cows in collaboration with Hematech who owns bovine cloning technology.

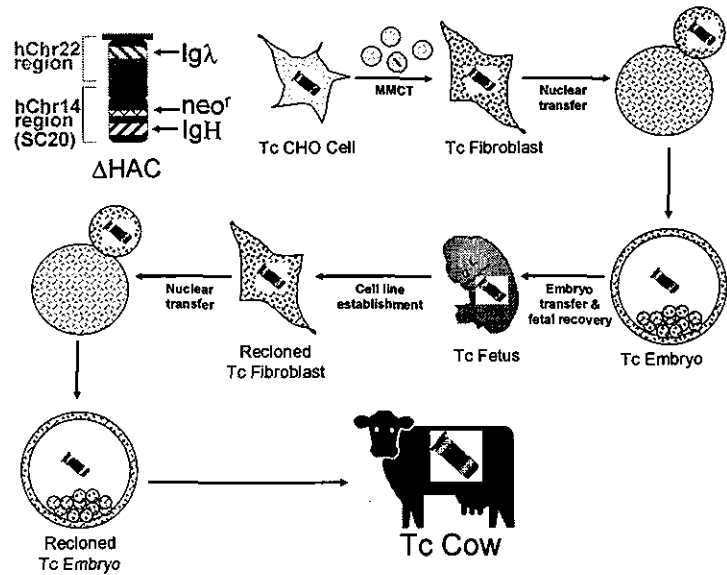


Cloned TransChromo Cow retaining a human chromosome fragment and expressing human immunoglobulin



A human chromosome in the Cloned TransChromo Cow

Generation of TC-cows



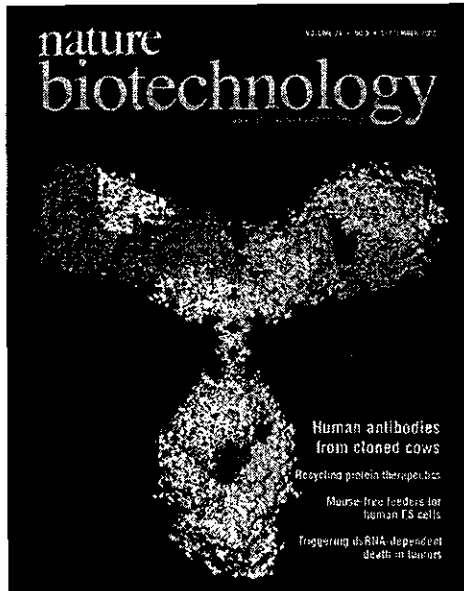
10

Kirin Human Antibody Project



We have generated more than 70 TC cows who express human immunoglobulin. The TC cows express various levels of the human Igs in their blood. Those TC cows produce antigen specific human Ig response upon immunization with the antigen. Endogenous bovine Ig- and PrP-gene KOs are now in progress to improve the human immunoglobulin expression for commercialization of the antibody products.¹¹

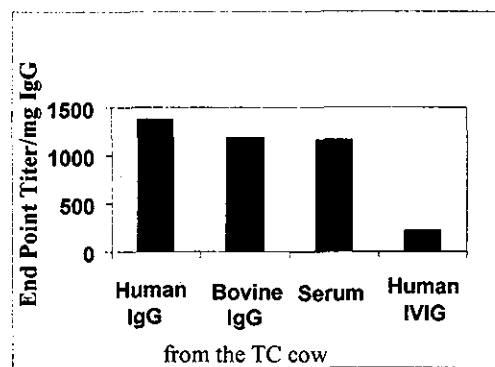
Publication in Nature Biotechnology



100 Top Science Stories of 2002
Published in DISCOVER Vol.
24 No. 1 (January 2003).

1. The Year of Cloning
Word in 2002 of new clones—including rabbits, cows, and a housecat—brings the tally of successfully cloned species to seven. The cloned cows had a human antibody gene added; the cloned pigs had a troublesome pig gene subtracted. And there was more than one boast that a human clone is in the works. How and why have we come this far? 12

Antigen specific immune response in the TC cow



A TC cow was immunized with bio-terro related pathogen. Human IgG or Bovine IgG was purified from the serum. The antigen specific titer of the human IgG or bovine IgG was measured by ELISA coated with the antigen.

13

Feasibility study using TC mouse (1)

Antisera against *Pseudomonas aeruginosa*

PBS (300 µl)	Human Plasma	TC-derived Serum (1/4 dil)	Human IgG (20 µg)	TC-derived Human IgG (20 µg)
5/5	5/5	<u>1/5</u>	5/5	<u>2/5</u>

The TC Mice were immunized by ip injection with about 100 mg per mouse of *Pseudomonas aeruginosa* (*Pa*) that had been fixed with 1% formalin for more than 24 h and washed with phosphate-buffered saline (PBS). Challenge involved inoculation of *Pa* (6.6×10^7 pfu/treated mice) was determined 4 days after *Pa* inoculation.

Ref: Cloning & Stem Cells, 4, 91-102, 2002.

14

Feasibility study using TC mouse (2)

***In vitro* neutralization activity of antisera against Japanese Encephalitis Virus**

	Titer (dilution)	Titer compensated ^a
Human plasma	29	<u>2.8</u>
TC-derived serum	971	<u>224.8</u>

^aThe titer values were compensated with the concentration of IgM and IgG contained in the serum samples.

The TC mice were immunized four times at 2-week intervals with Japanese encephalitis virus (JEV) vaccine prepared by the Chemo-Sero-Therapeutic Research Institute. Freund's adjuvant was included with the immunogen. Immobilized human or TC serum (56C for 30 min) diluted with buffer was mixed with the same volume of JEV (2,000PFU/ml) solution and incubated at 37C for 90 min, and then titrated using a plaque assay on vero cells. The neutralizing titer represents the dilution of the serum sample showing 50% plaque reduction compared to the control.

Ref: Cloning & Stem Cells, 4, 91-102, 2002.

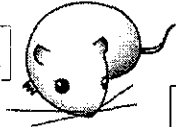
15

Human Antibody Business

Human monoclonal antibody

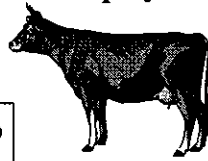
Human polyclonal antibody

Medarex



KIRIN

TransChromo
Technology



Hematech

KM-Mouse™

TC-Cow

Technology License

In house/Collaboration



Cancer
Autoimmune Disease
Infectious Disease



Infectious Disease
Autoimmune Disease

16