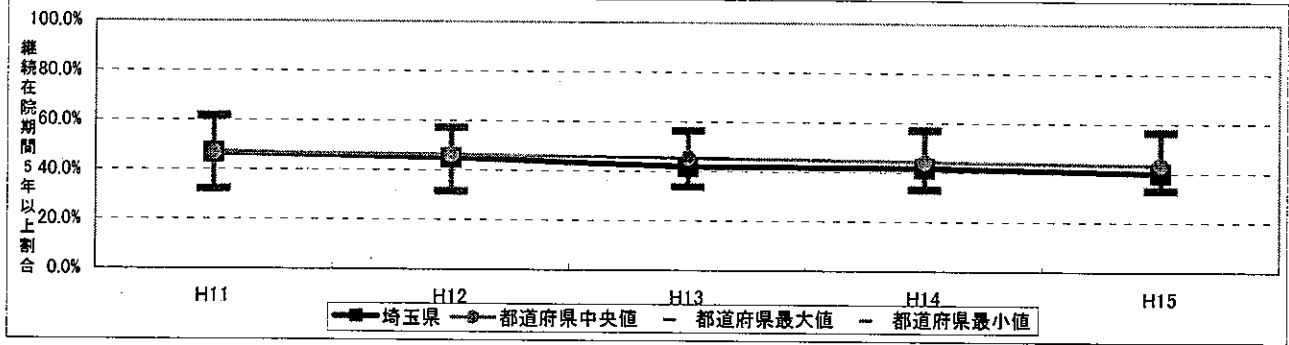
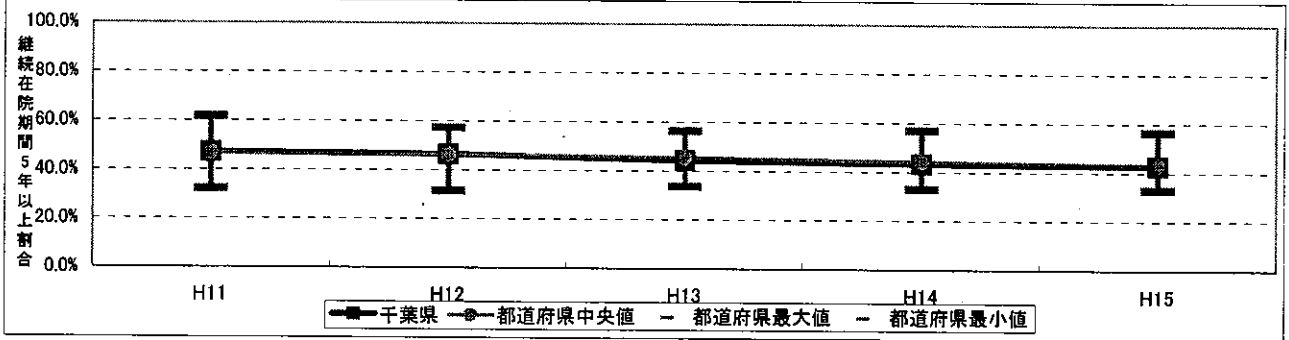


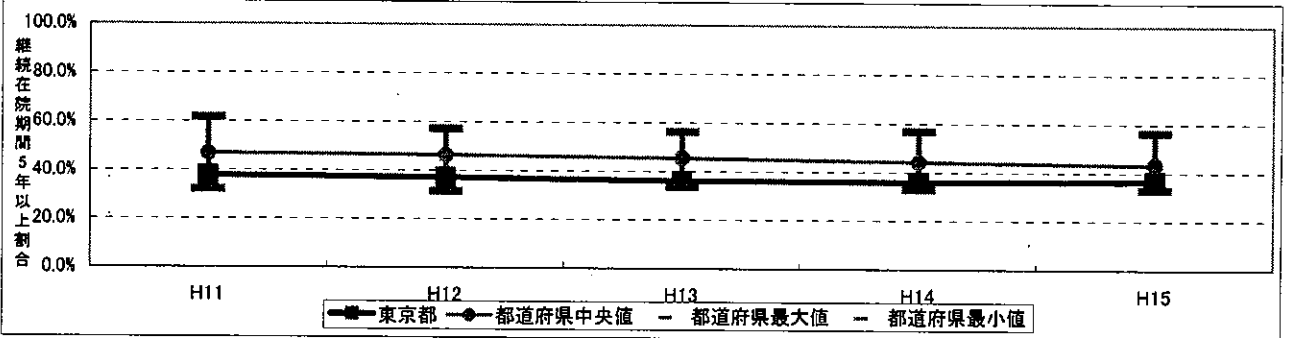
11. 埼玉県



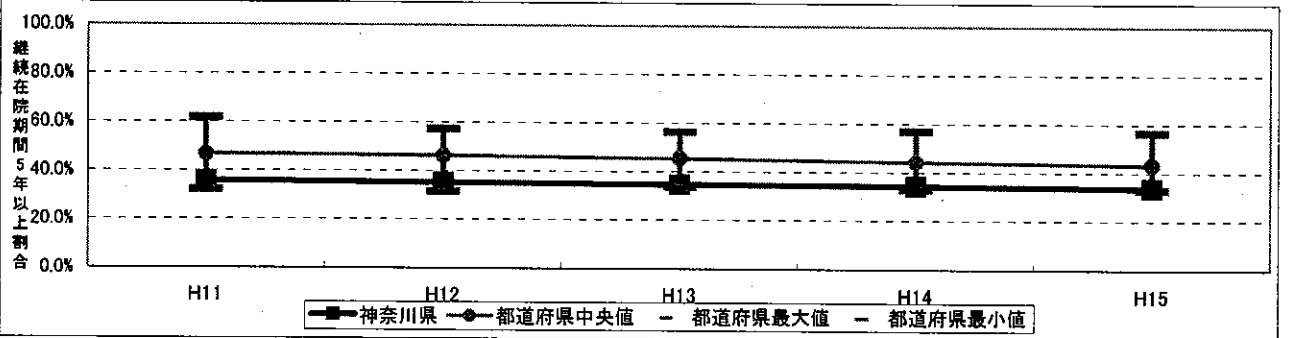
12. 千葉県



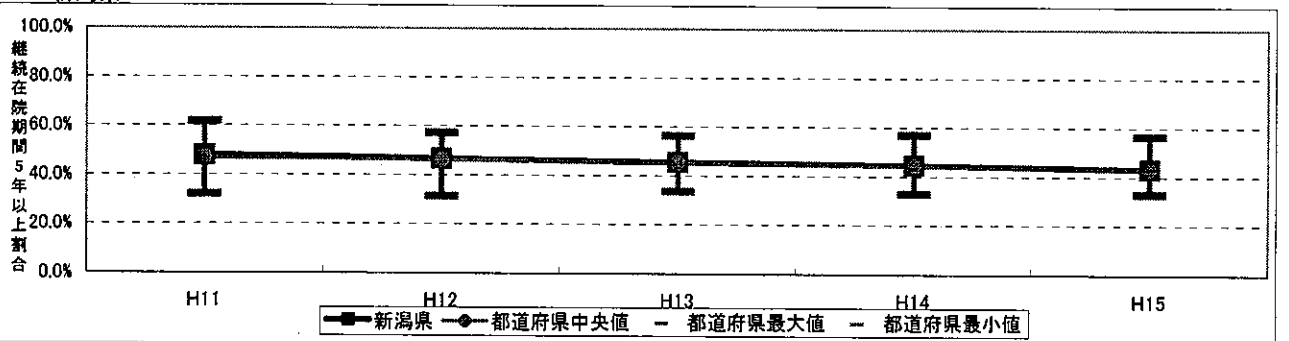
13. 東京都



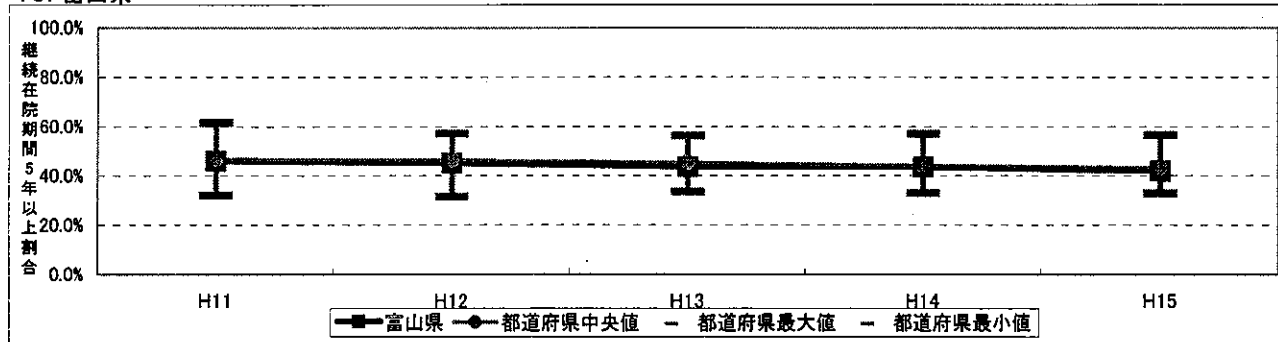
14. 神奈川県



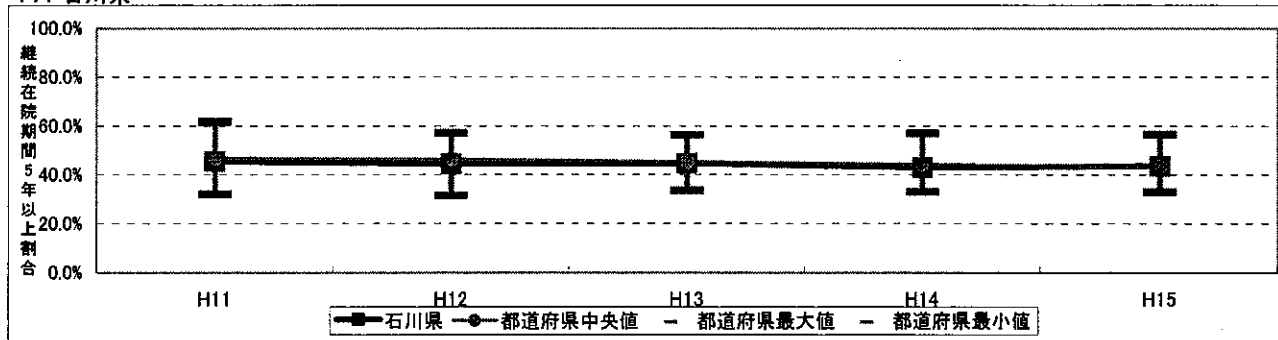
15. 新潟県



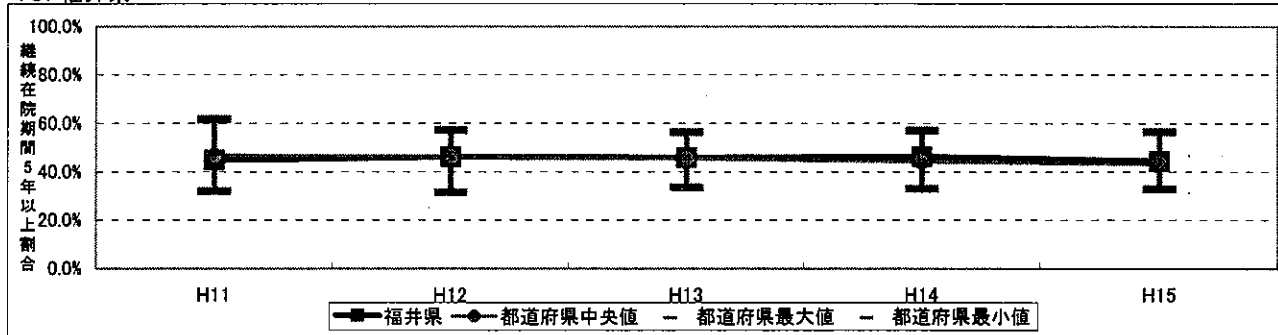
16. 富山県



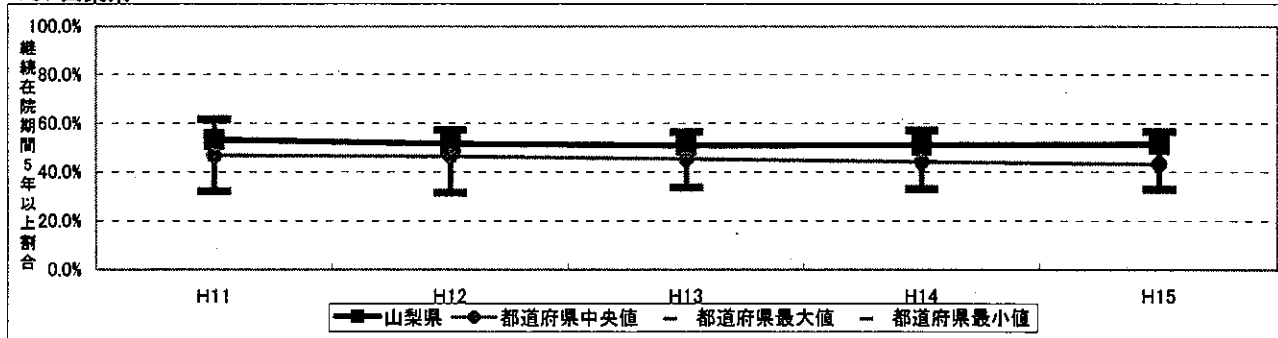
17. 石川県



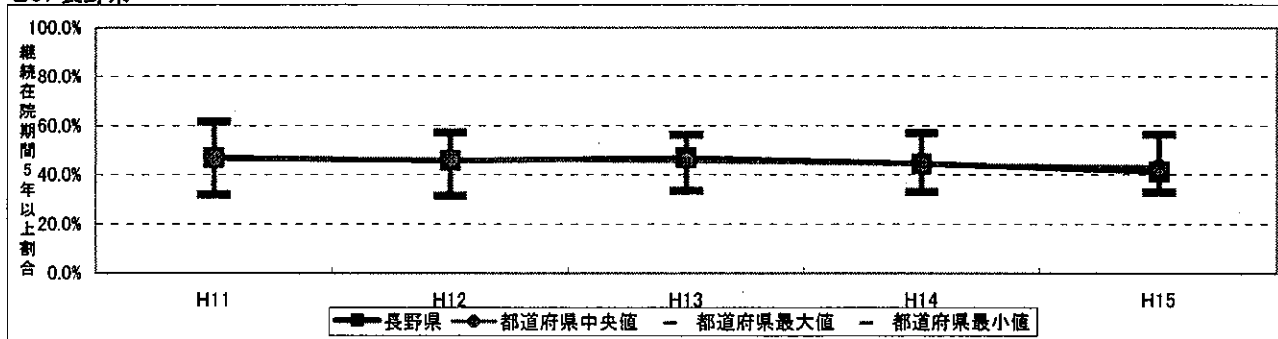
18. 福井県



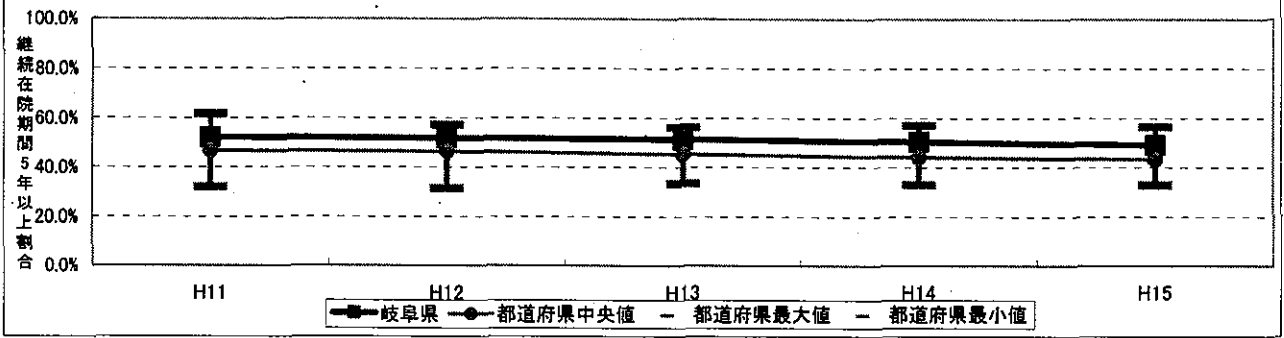
19. 山梨県



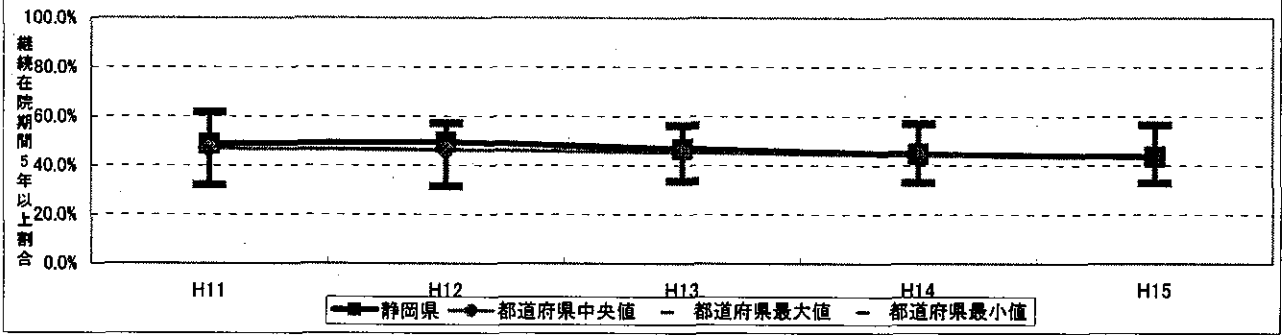
20. 長野県



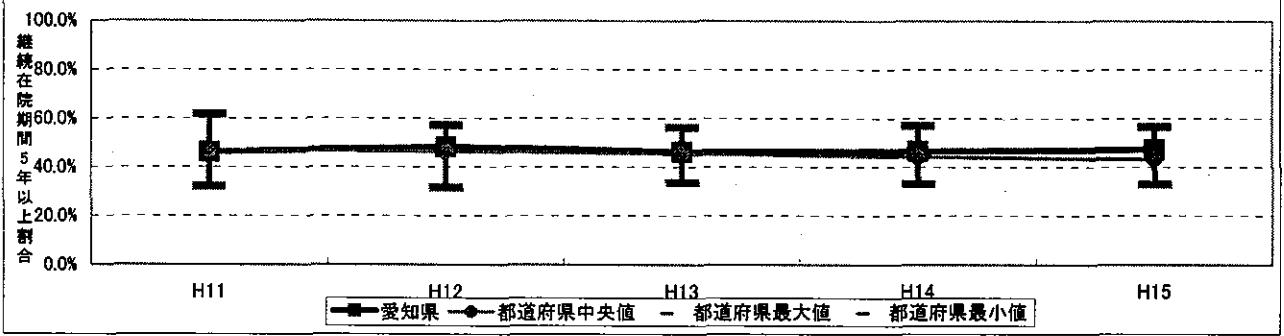
21. 岐阜県



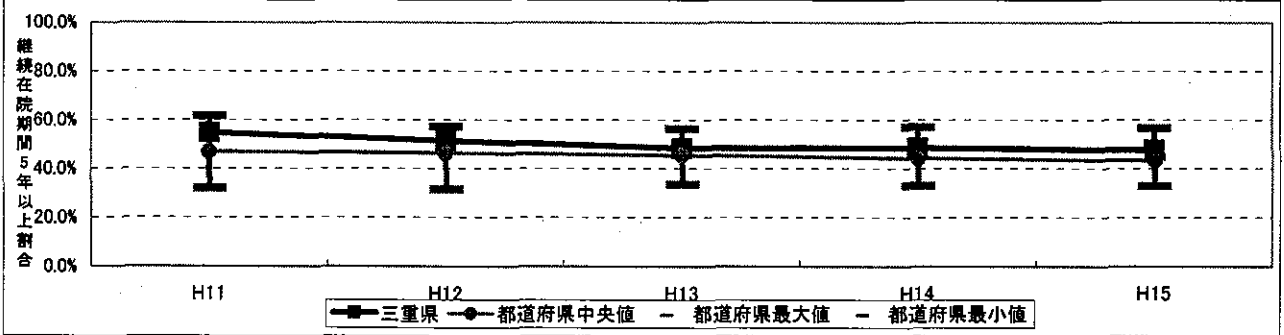
22. 静岡県



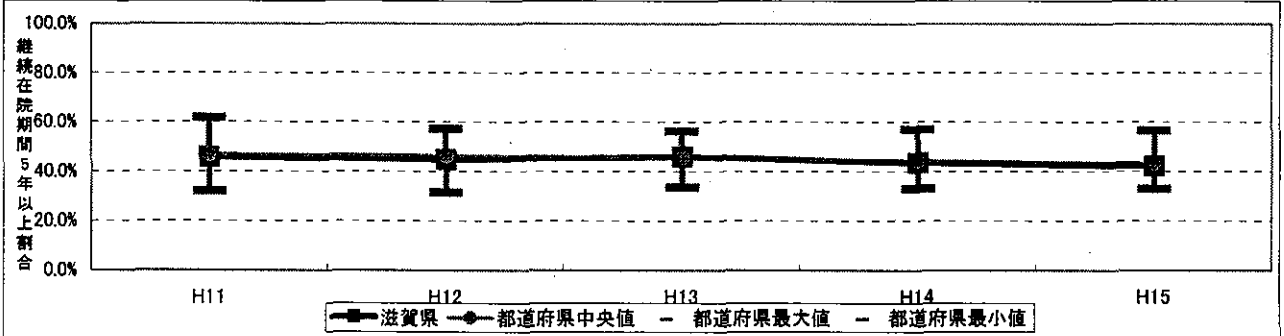
23. 愛知県



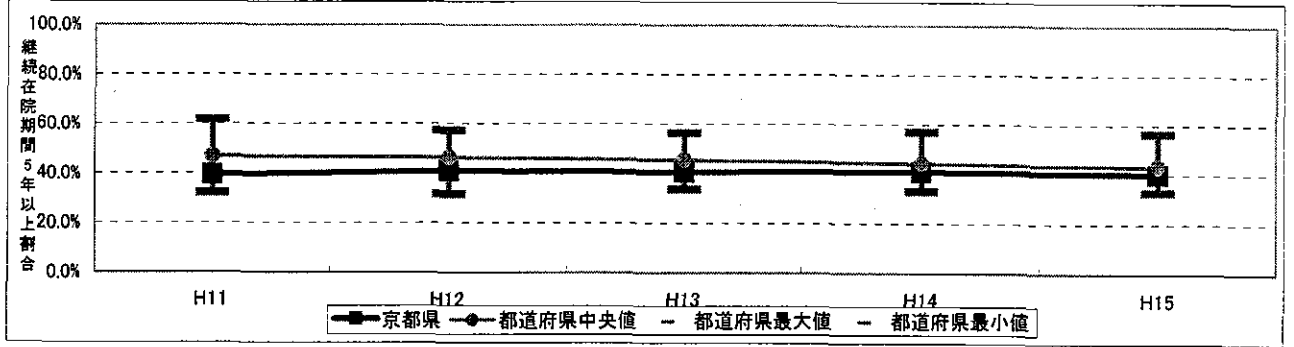
24. 三重県



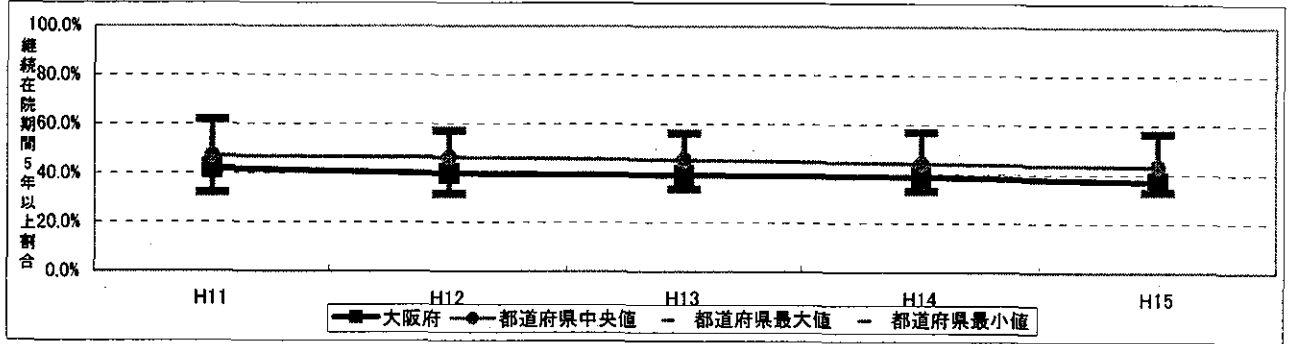
25. 滋賀県



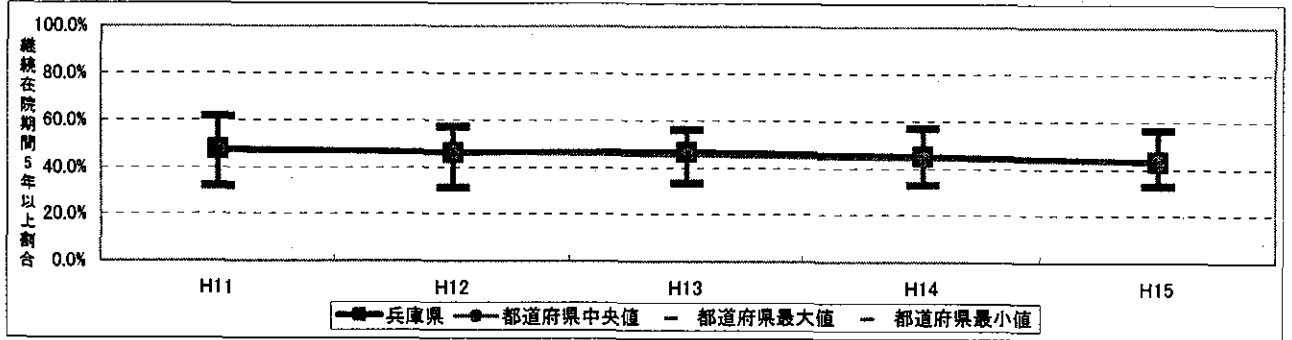
26. 京都府



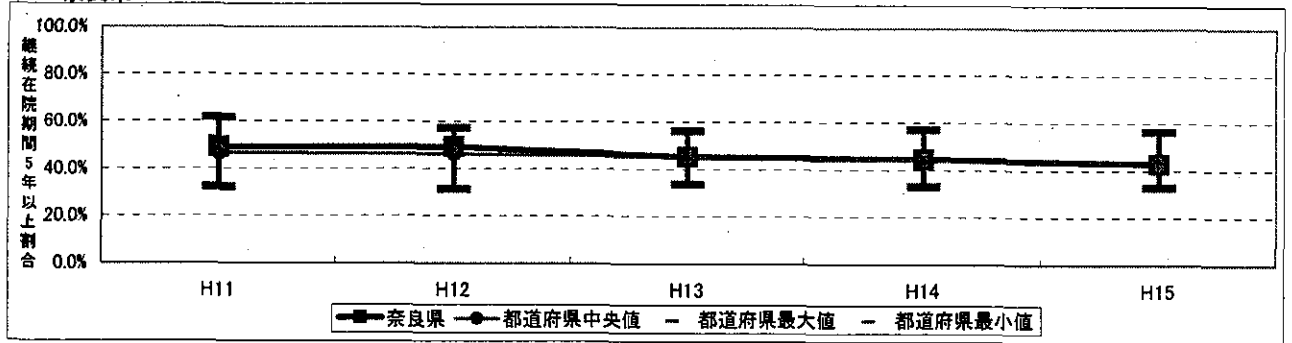
27. 大阪府



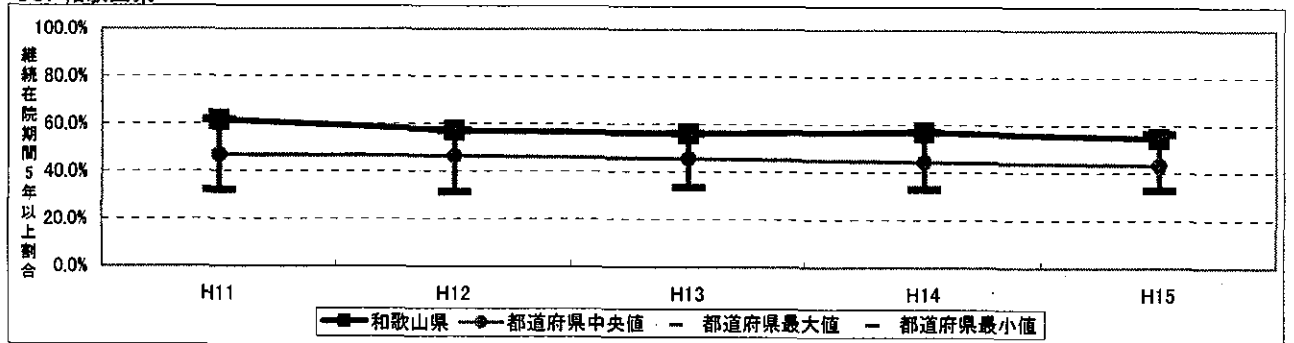
28. 兵庫県



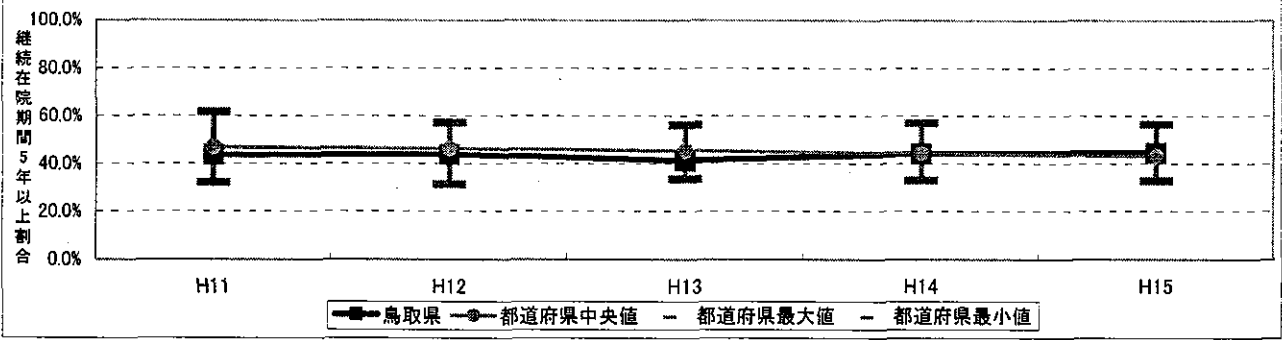
29. 奈良県



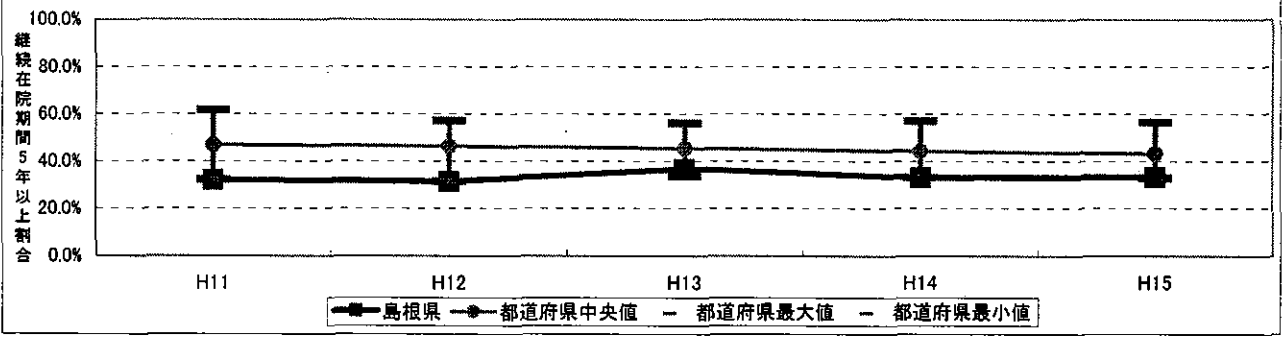
30. 和歌山県



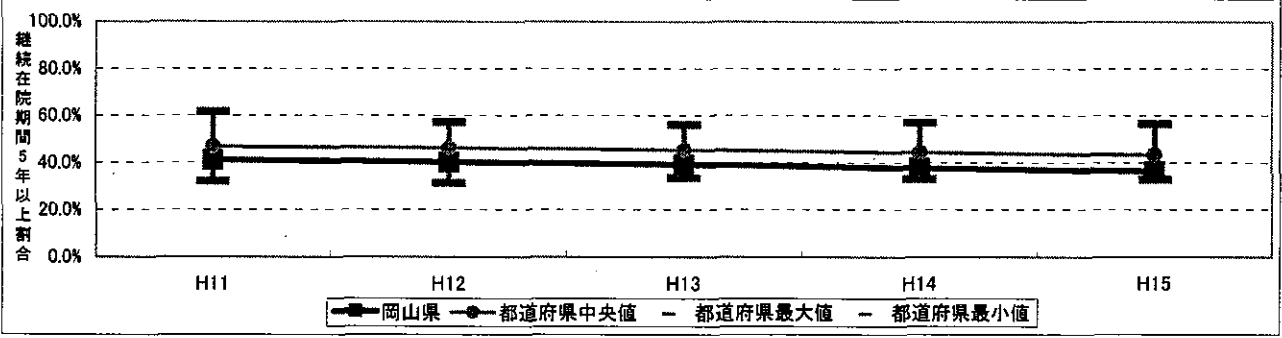
31. 鳥取県



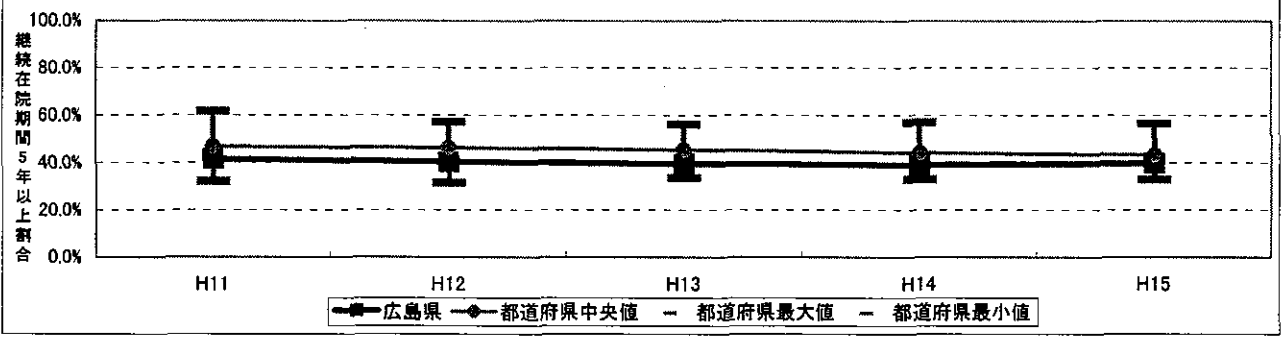
32. 島根県



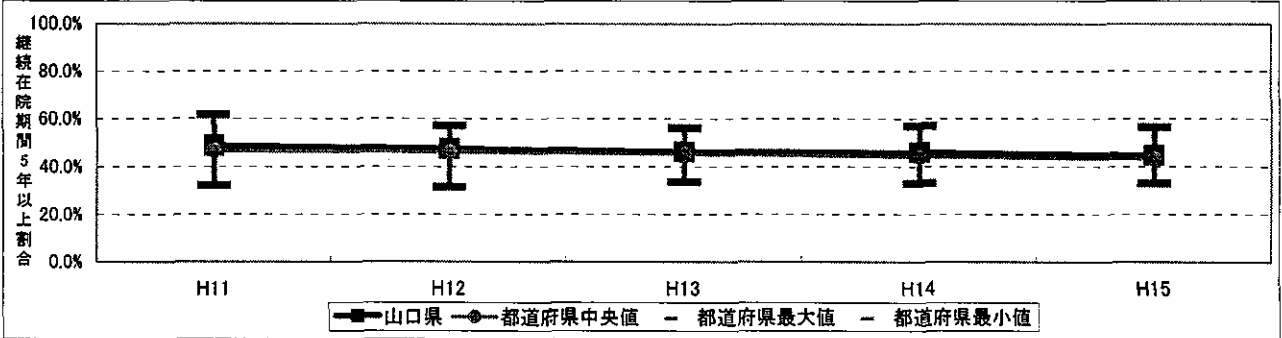
33. 岡山県



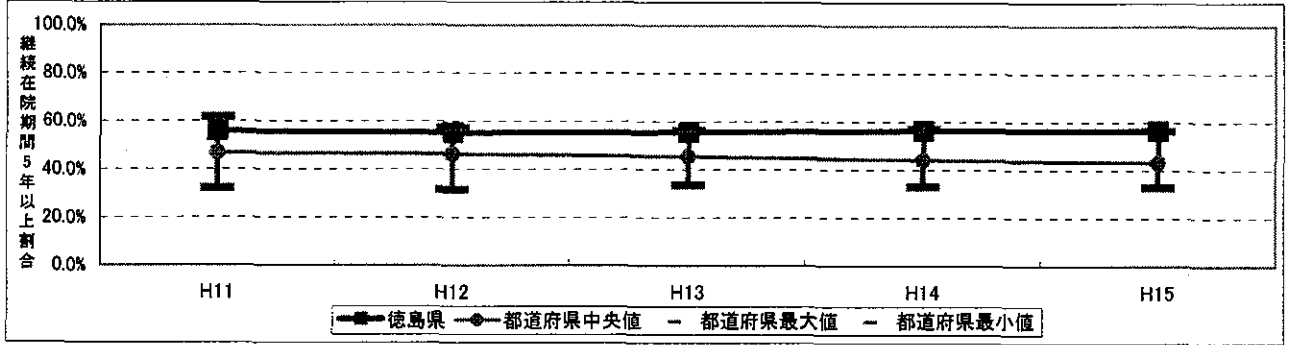
34. 広島県



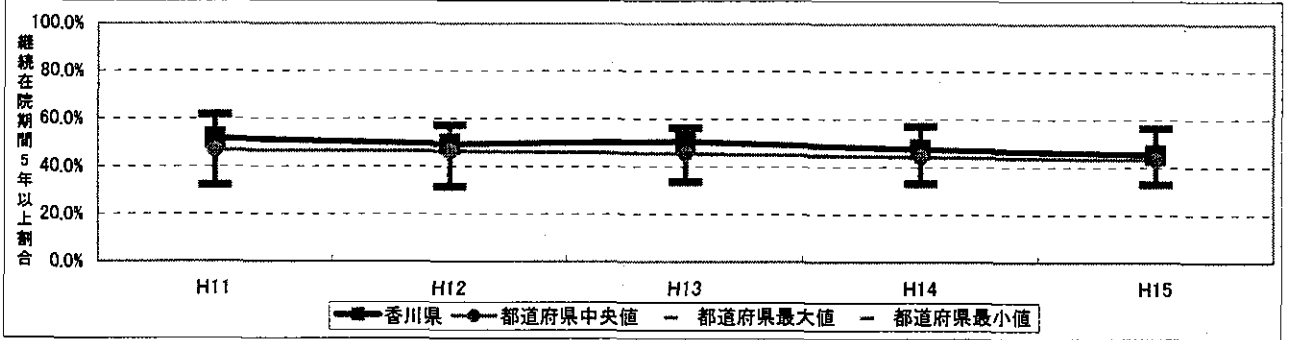
35. 山口県



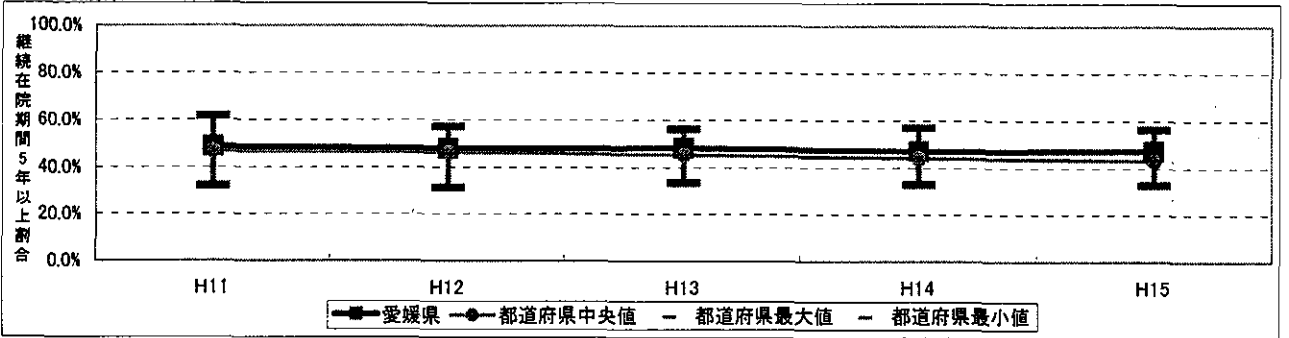
36. 徳島県



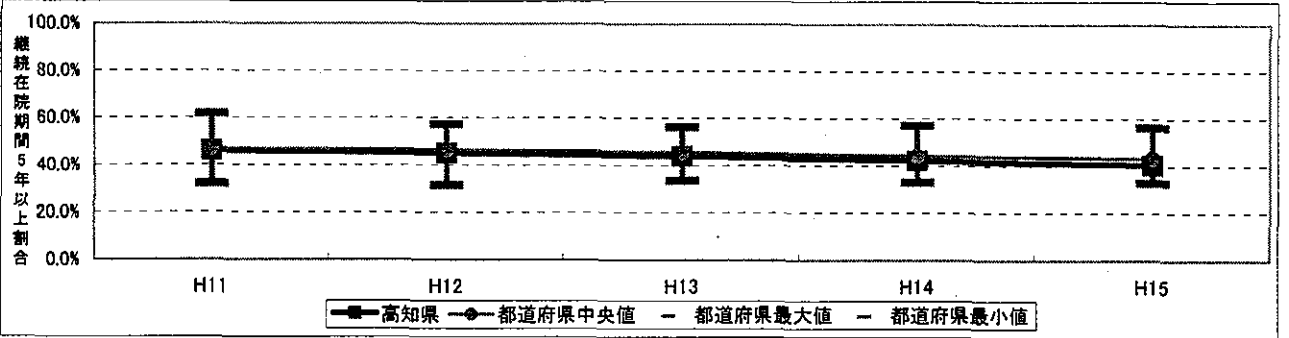
37. 香川県



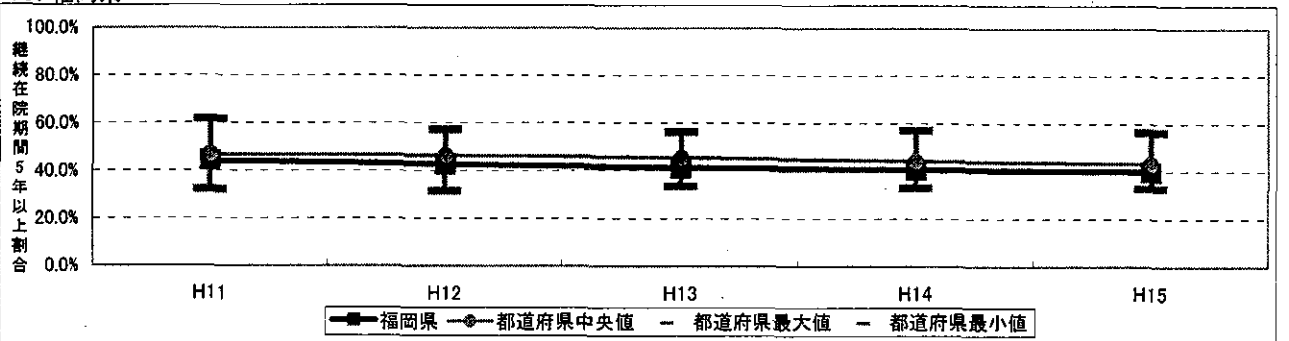
38. 愛媛県



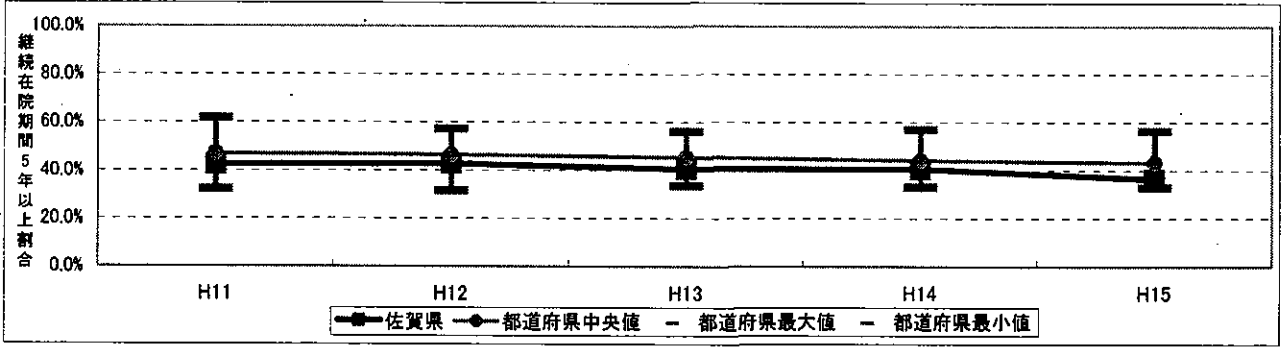
39. 高知県



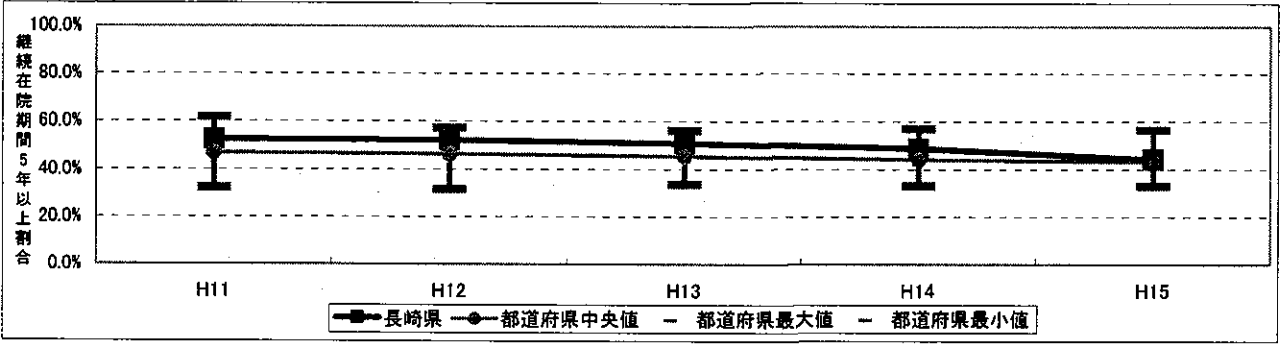
40. 福岡県



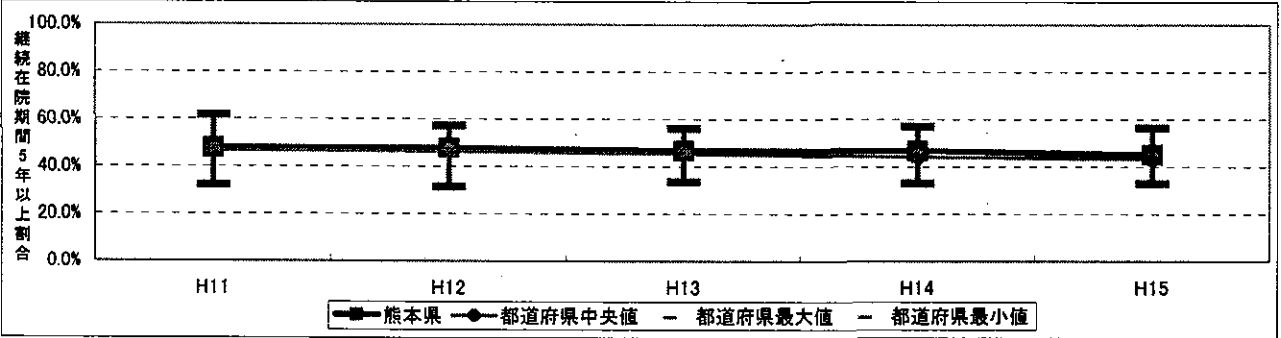
41. 佐賀県



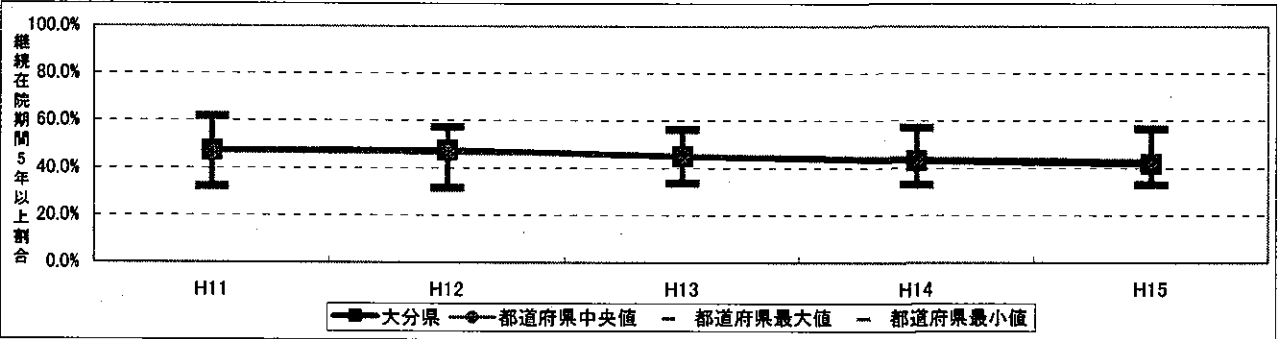
42. 長崎県



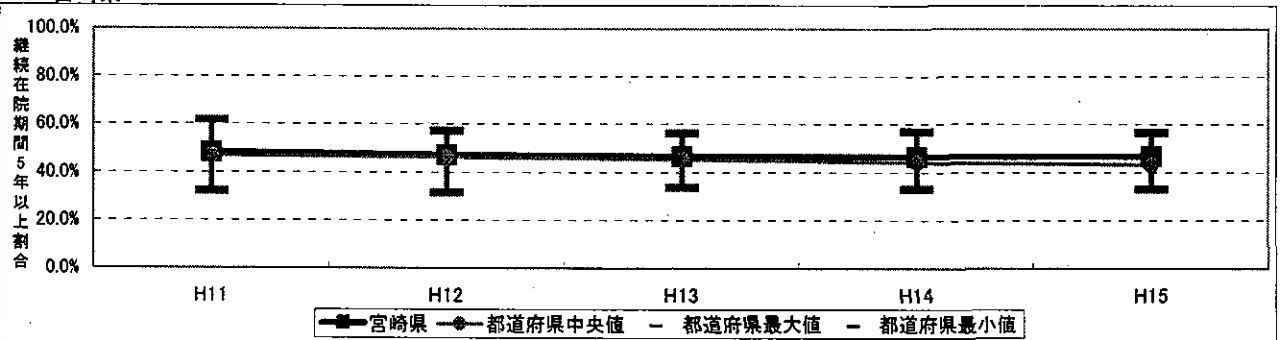
43. 熊本県



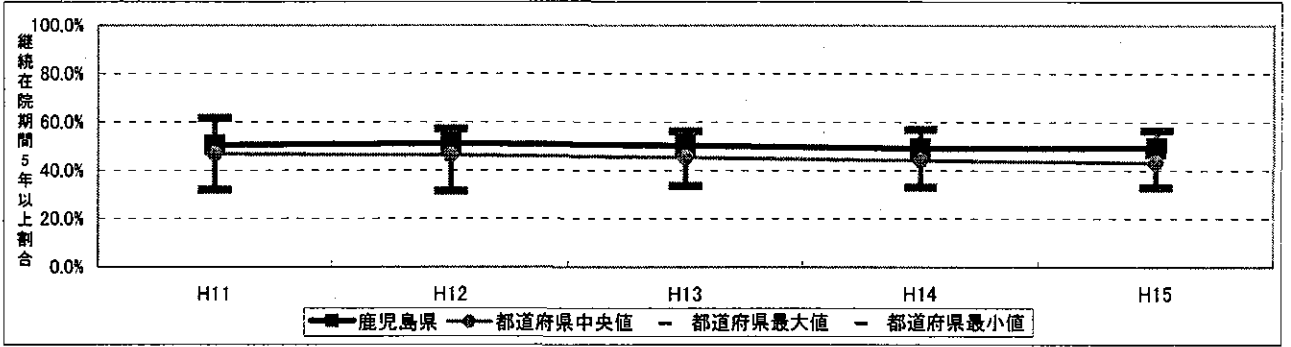
44. 大分県



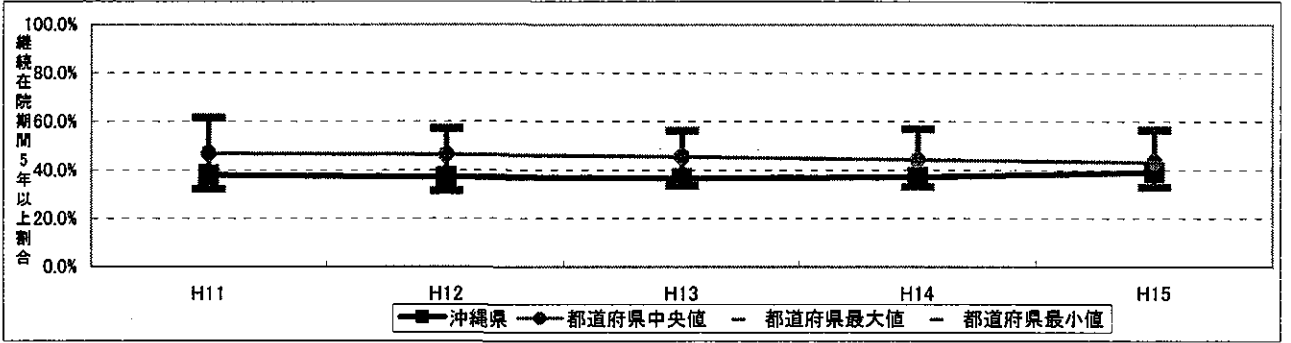
45. 宮崎県



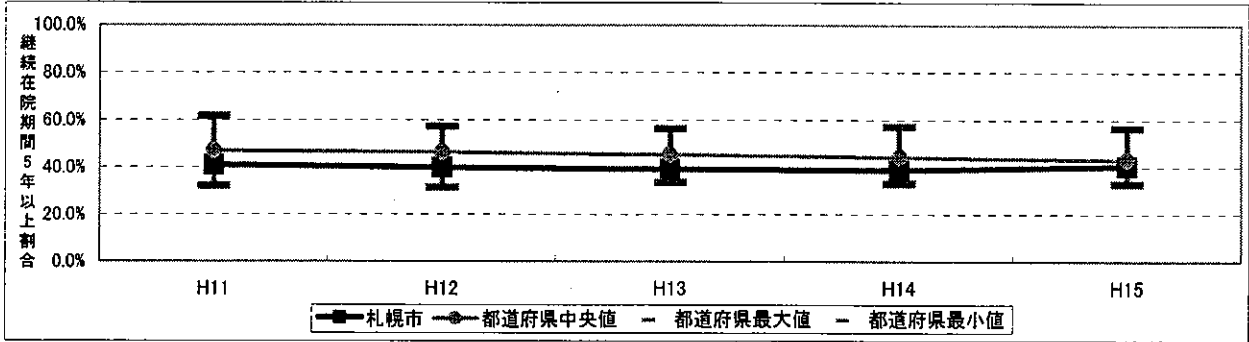
46. 鹿児島県



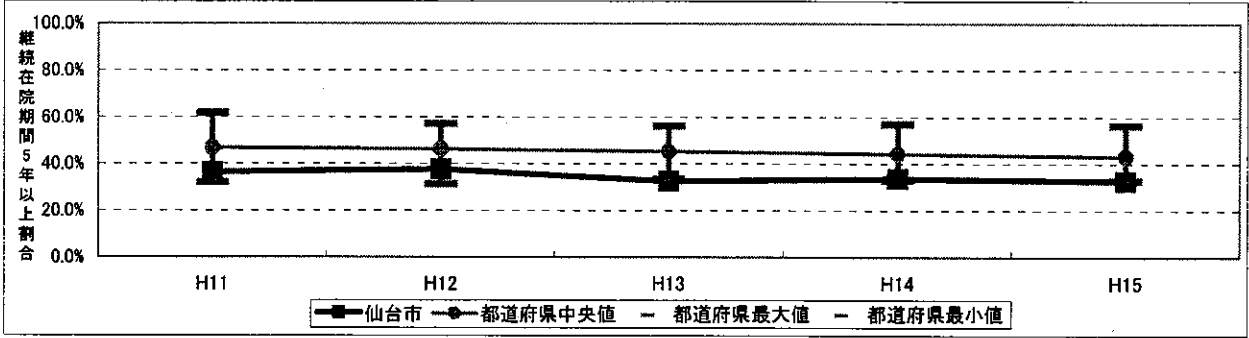
47. 沖縄県



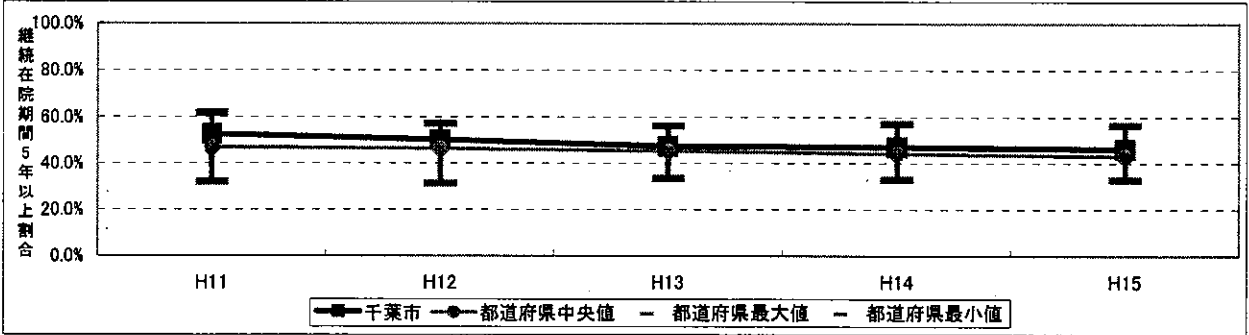
48. 札幌市



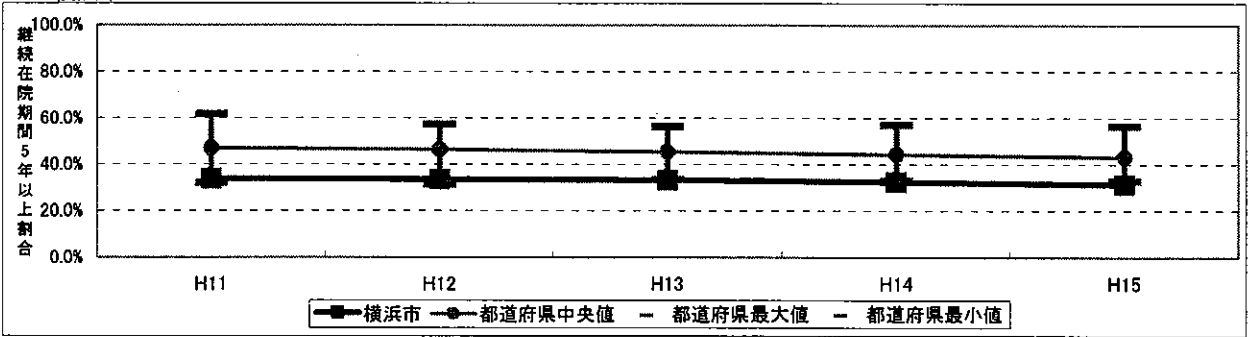
49. 仙台市



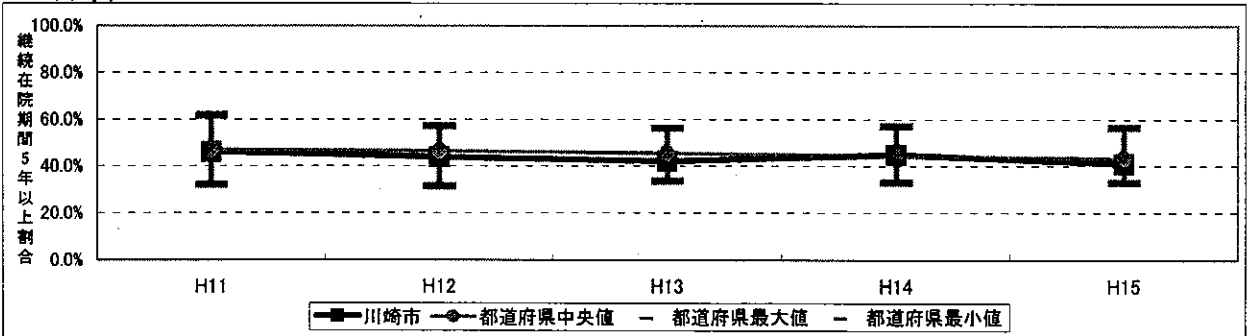
50. 千葉市



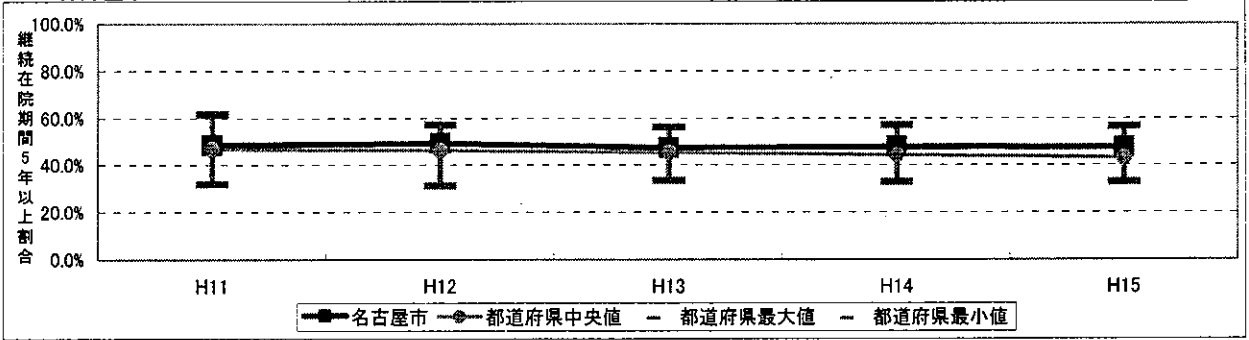
51. 横浜市



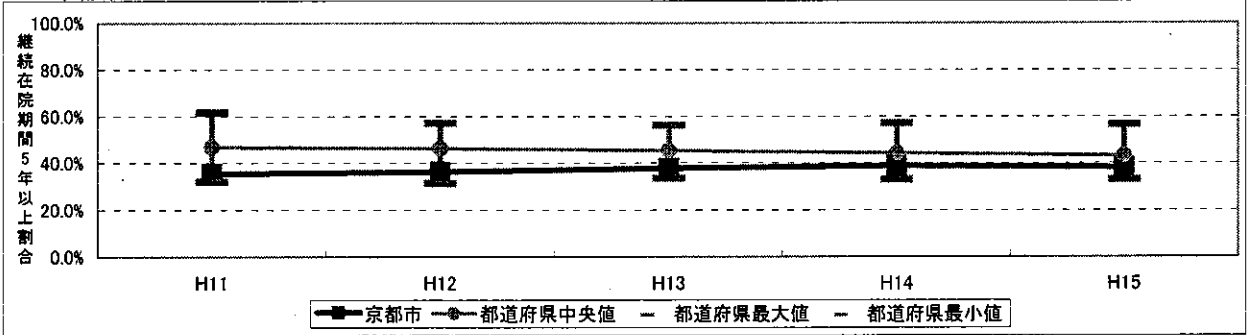
52. 川崎市



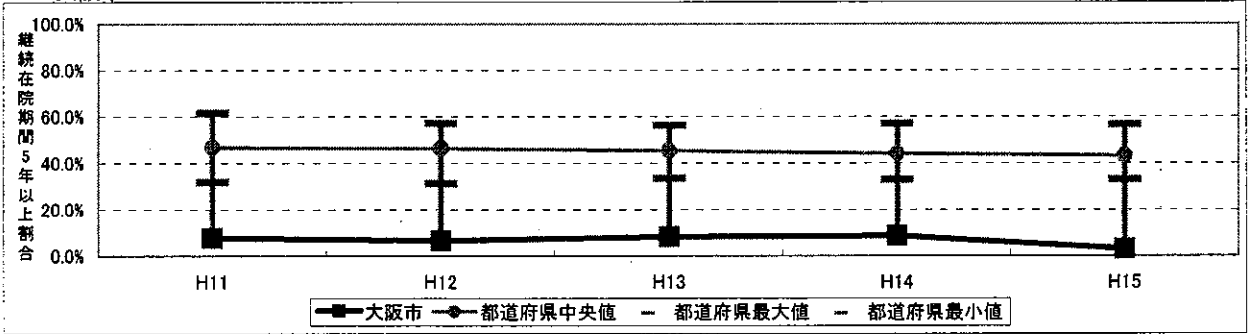
53. 名古屋市



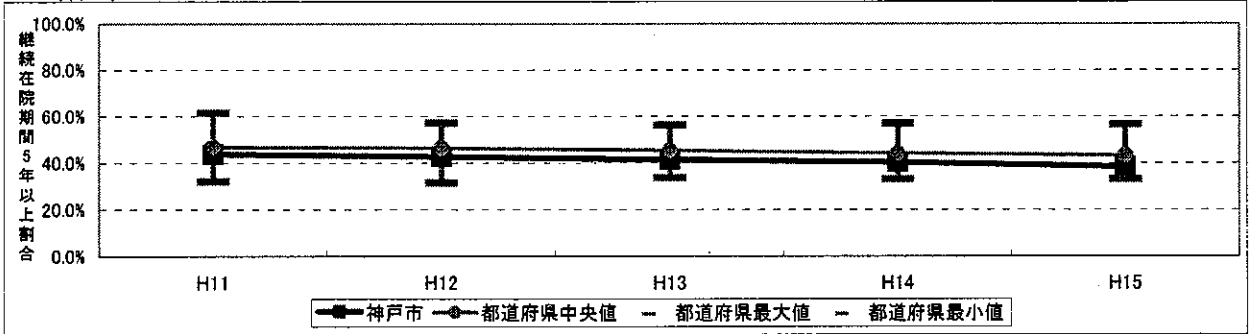
54. 京都市



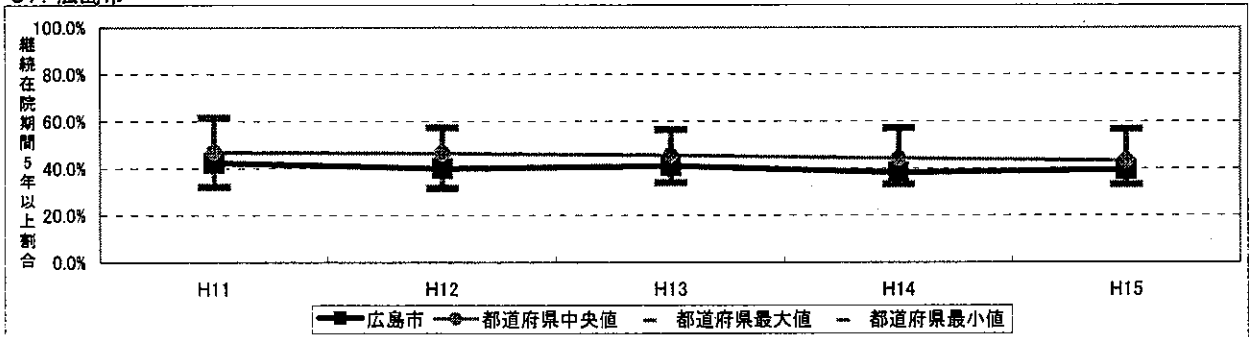
55. 大阪市



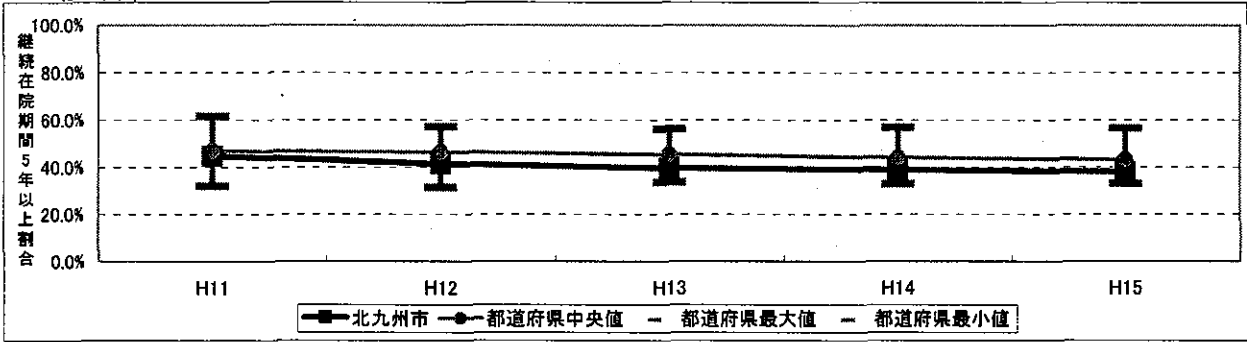
56. 神戸市



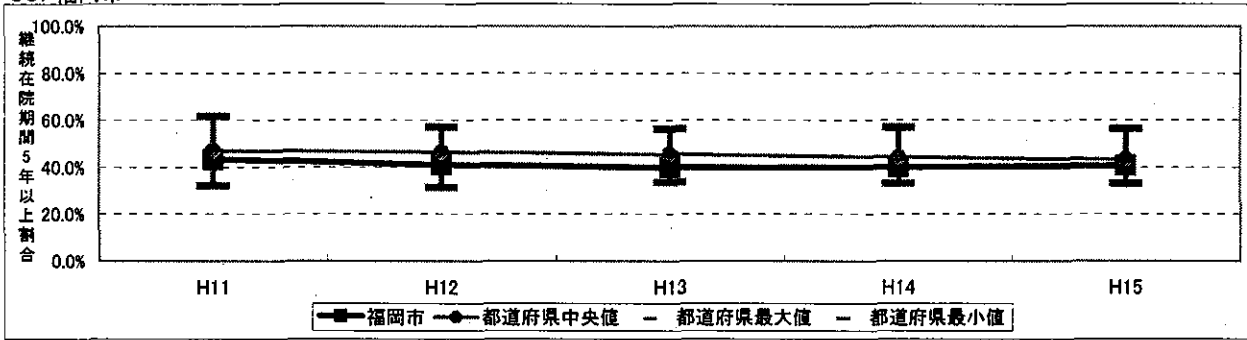
57. 広島市



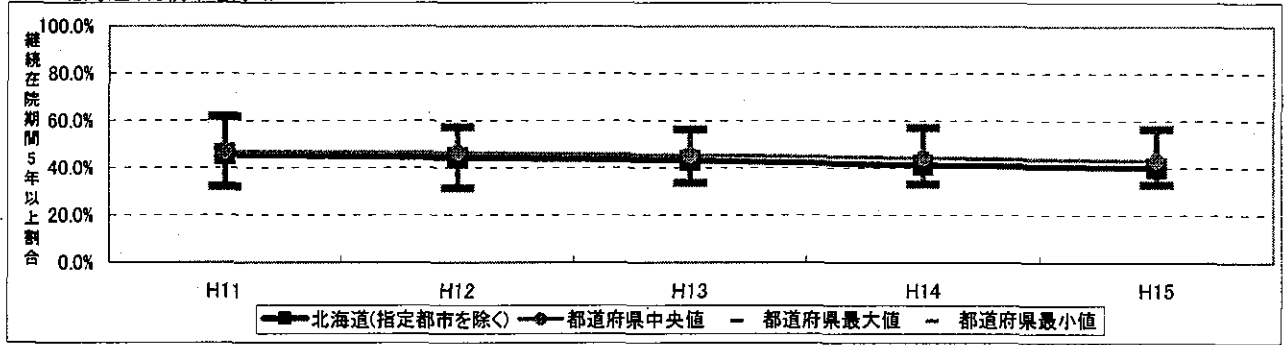
58. 北九州市



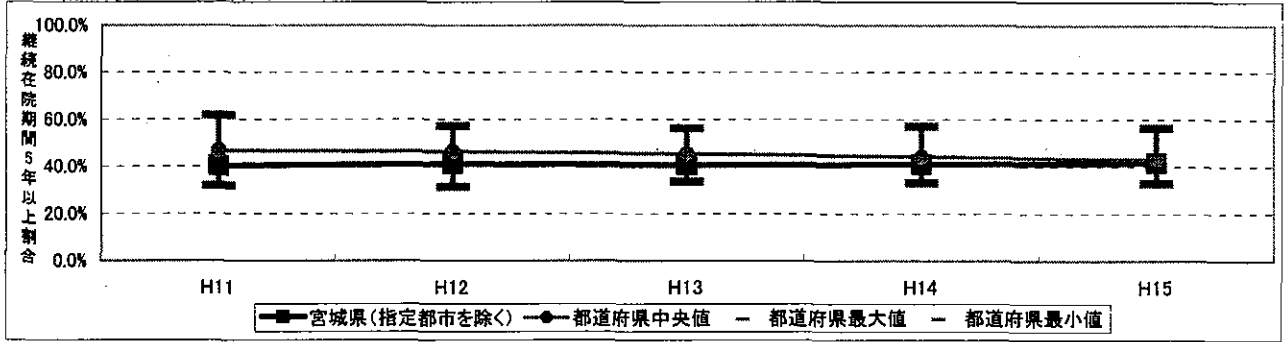
59. 福岡市



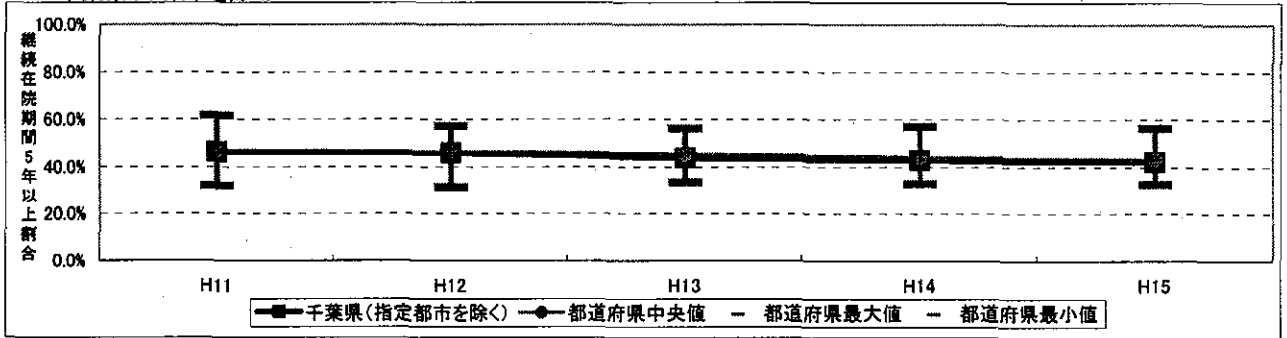
60. 北海道(札幌市を除く)



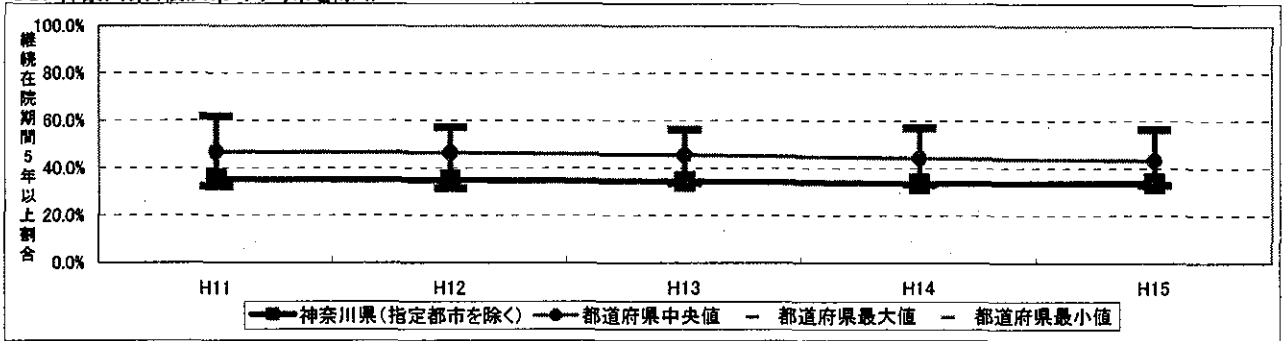
61. 宮城県(仙台市を除く)



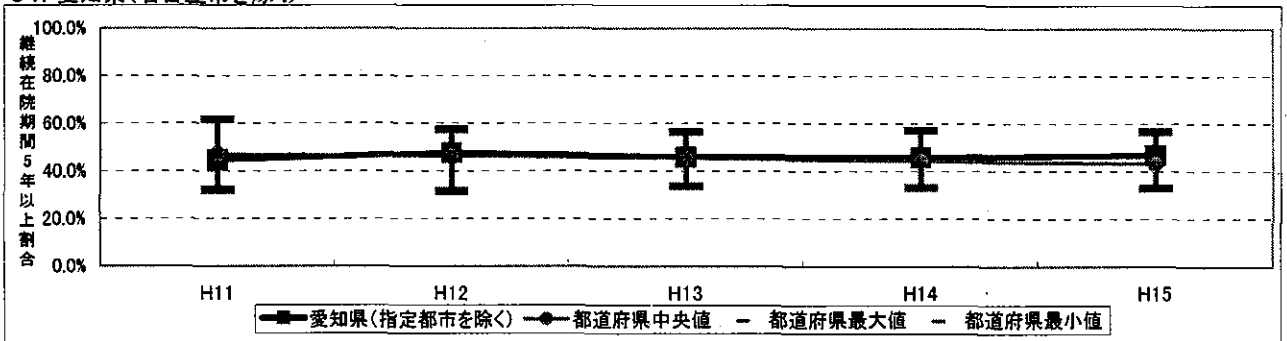
62. 千葉県(千葉市を除く)



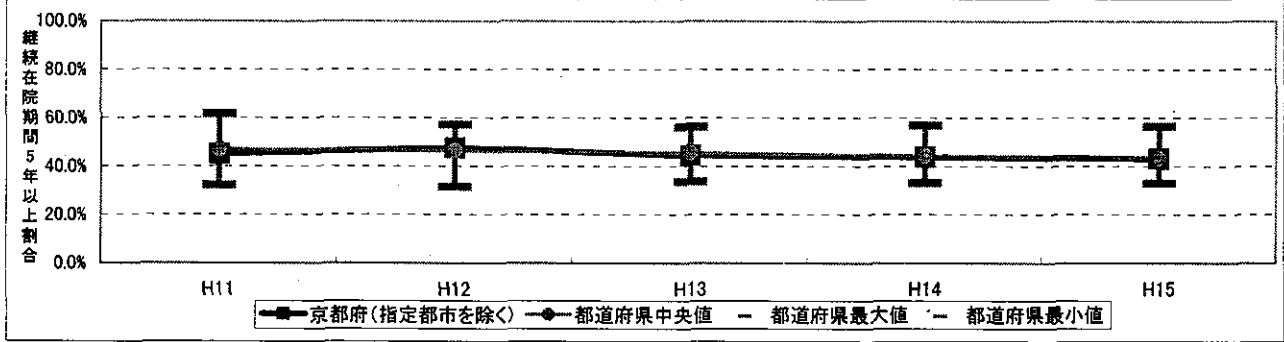
63. 神奈川県(横浜市・川崎市を除く)



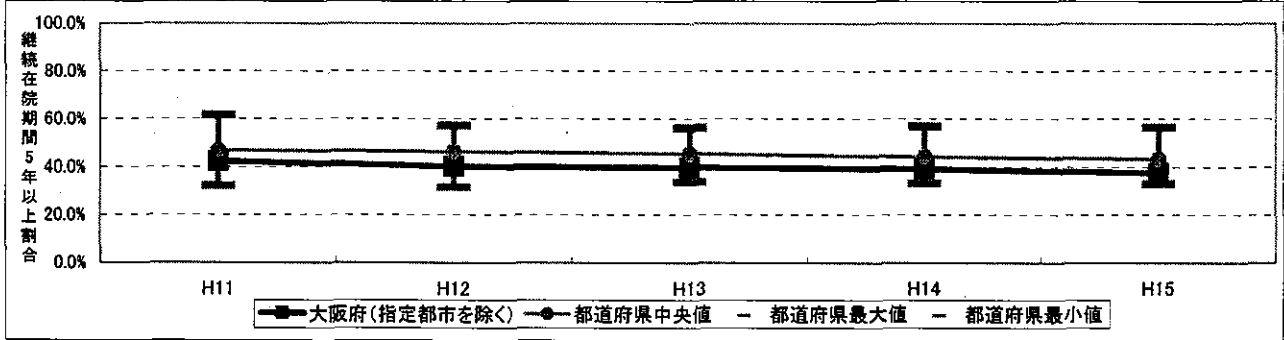
64. 愛知県(名古屋市を除く)



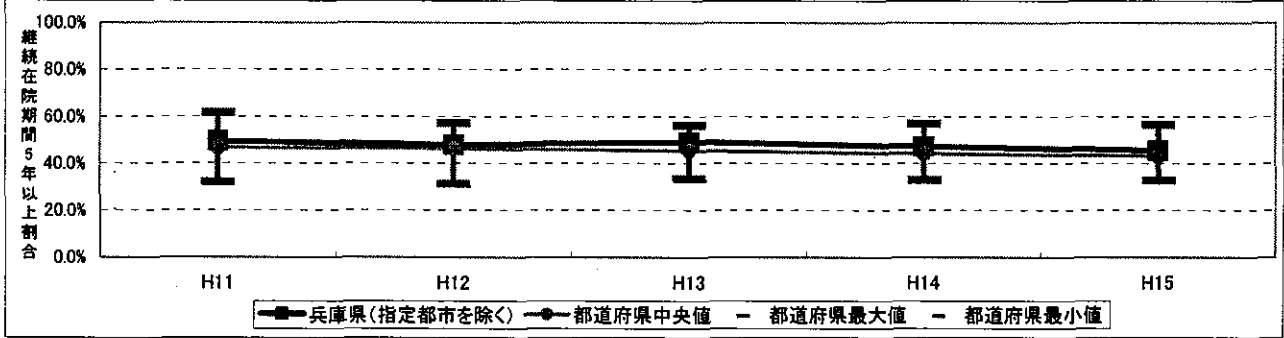
65. 京都府(京都市を除く)



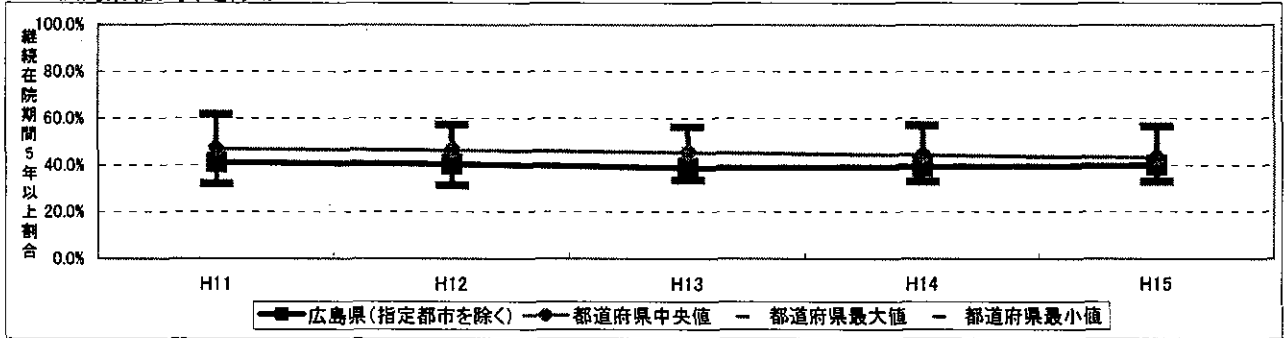
66. 大阪府(大阪市を除く)



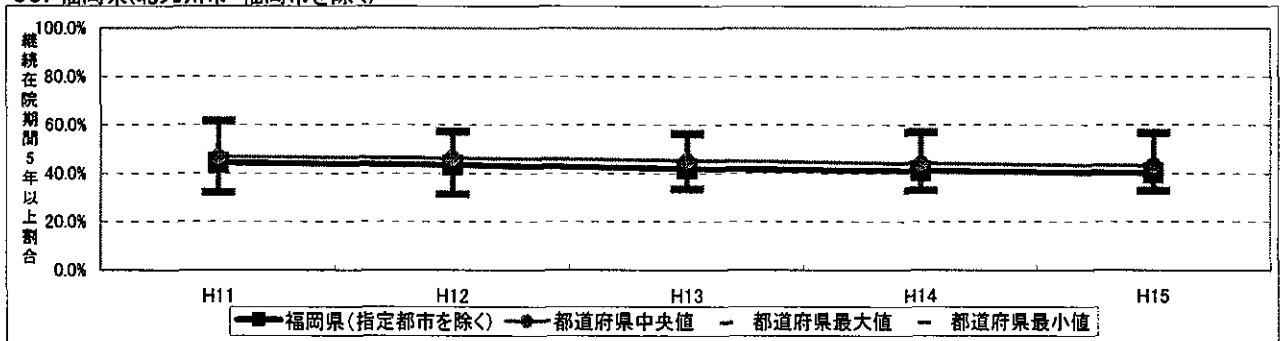
67. 兵庫県(神戸市を除く)



68. 広島県(広島市を除く)



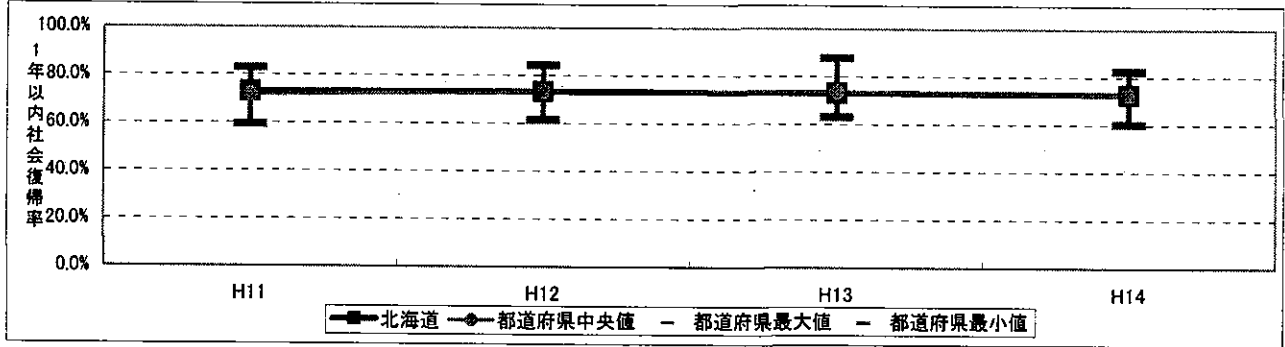
69. 福岡県(北九州市・福岡市を除く)



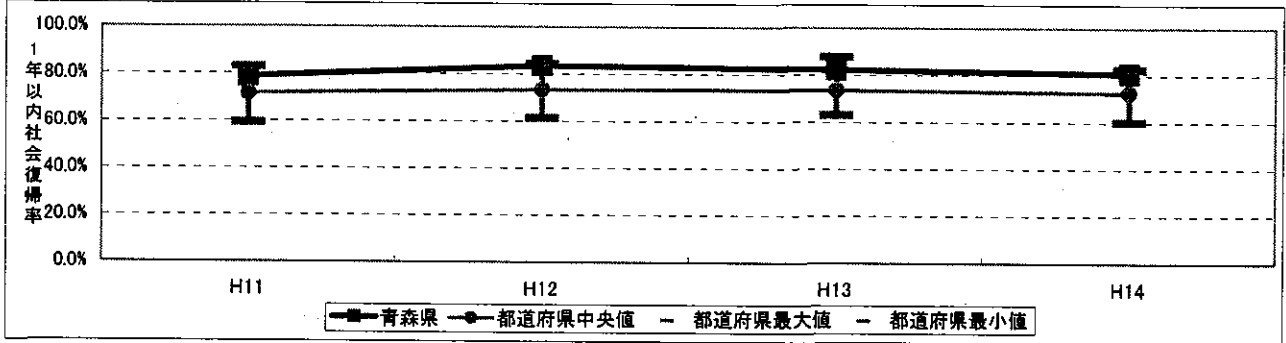
1年以内の社会復帰率

都道府県・指定都市・指定都市を除く都道府県

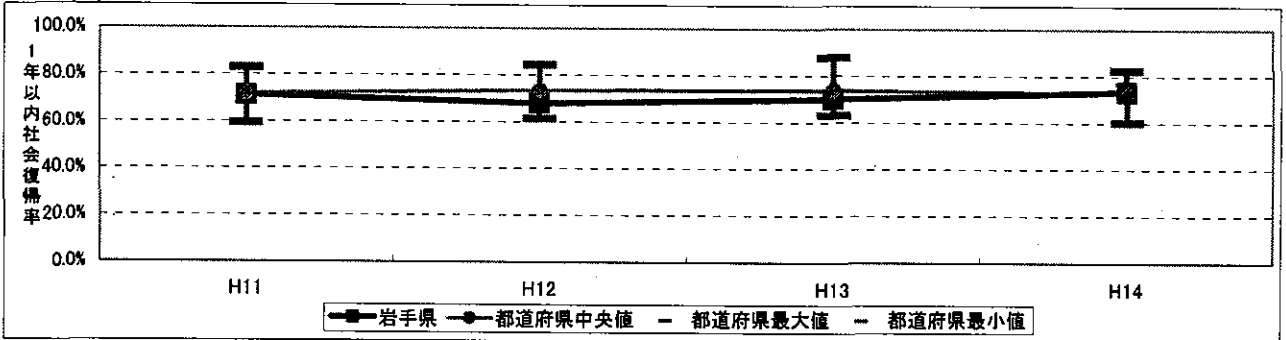
1. 北海道



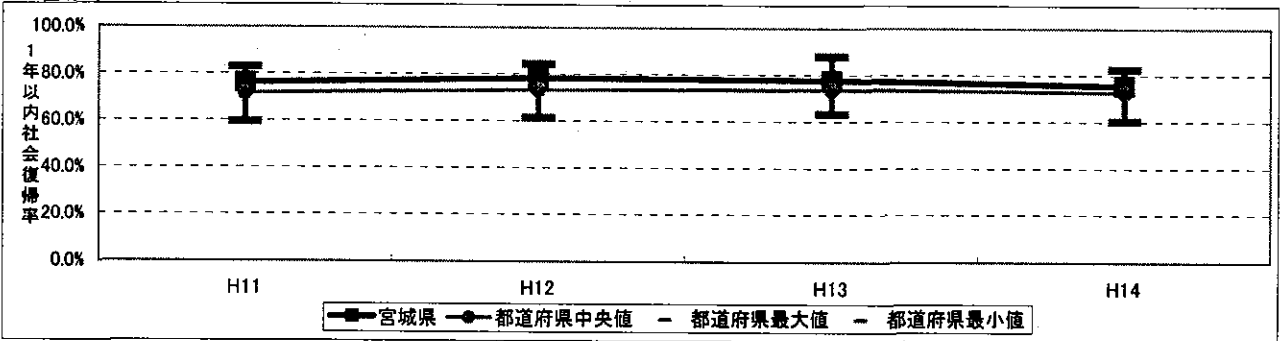
2. 青森県



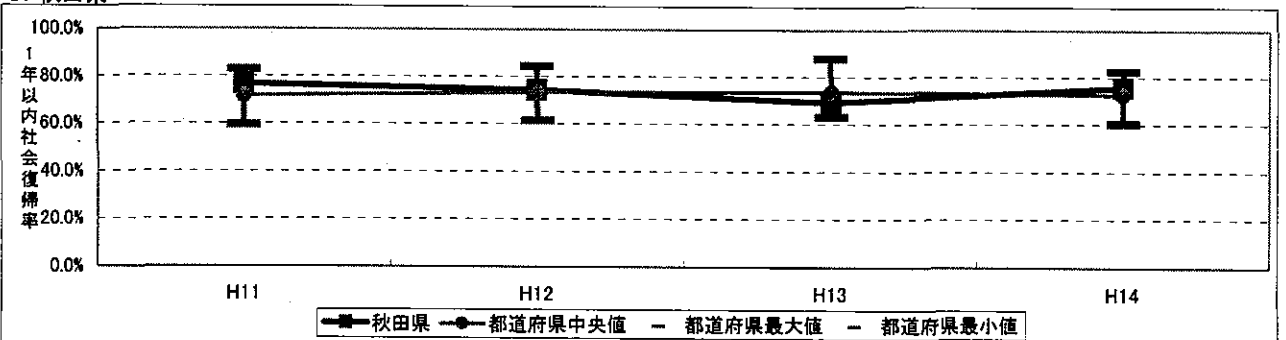
3. 岩手県



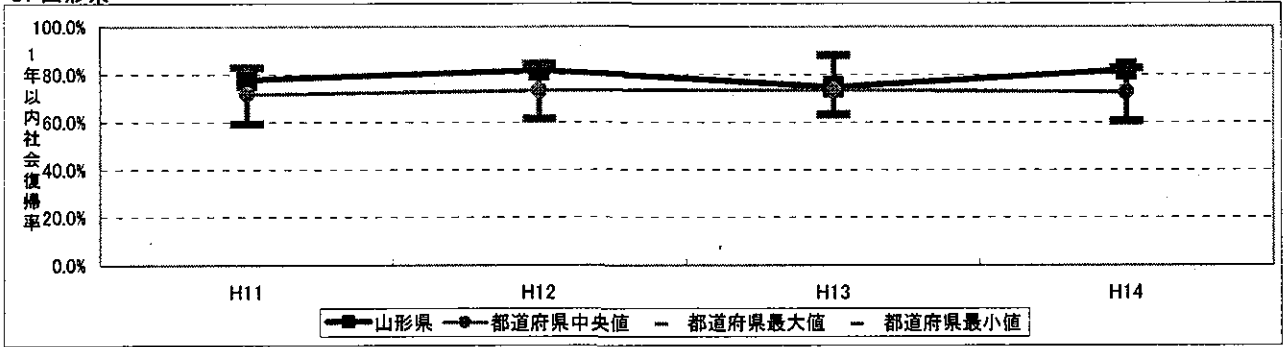
4. 宮城県



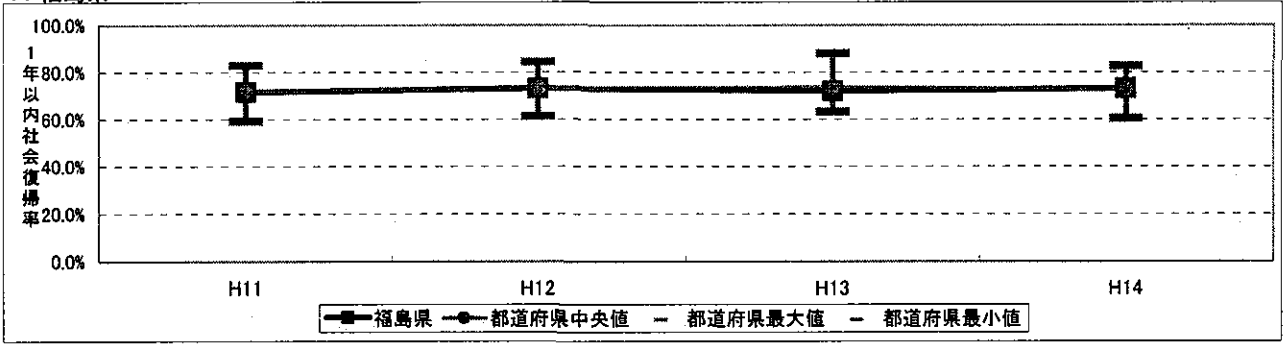
5. 秋田県



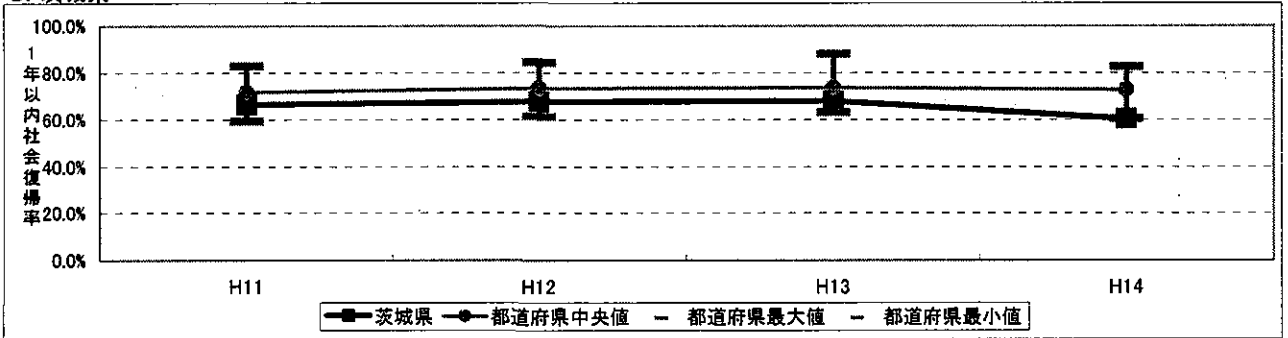
6. 山形県



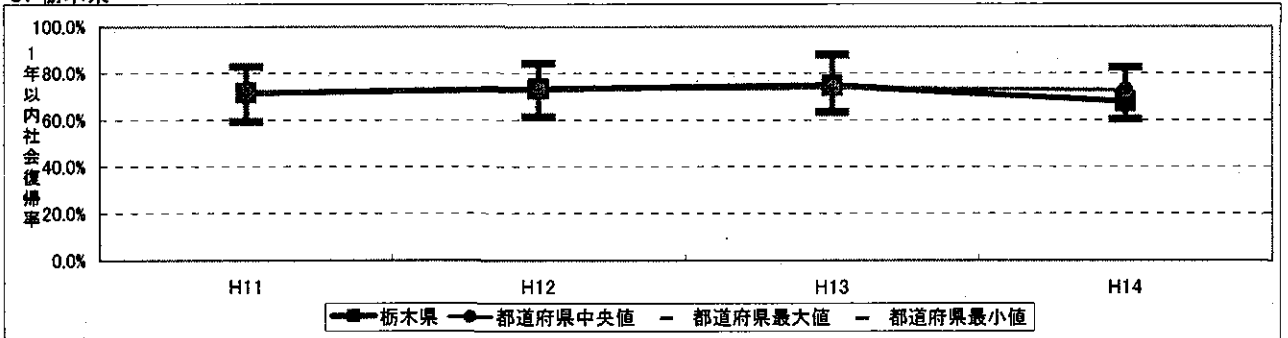
7. 福島県



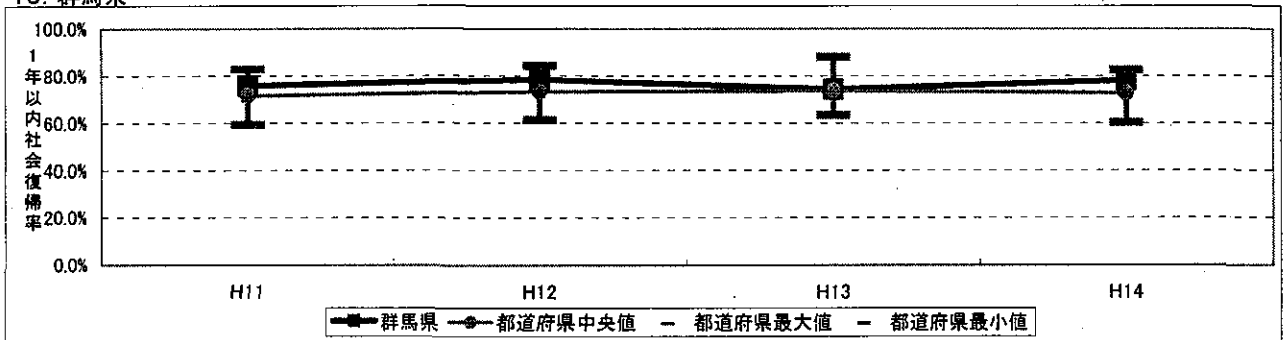
8. 茨城県



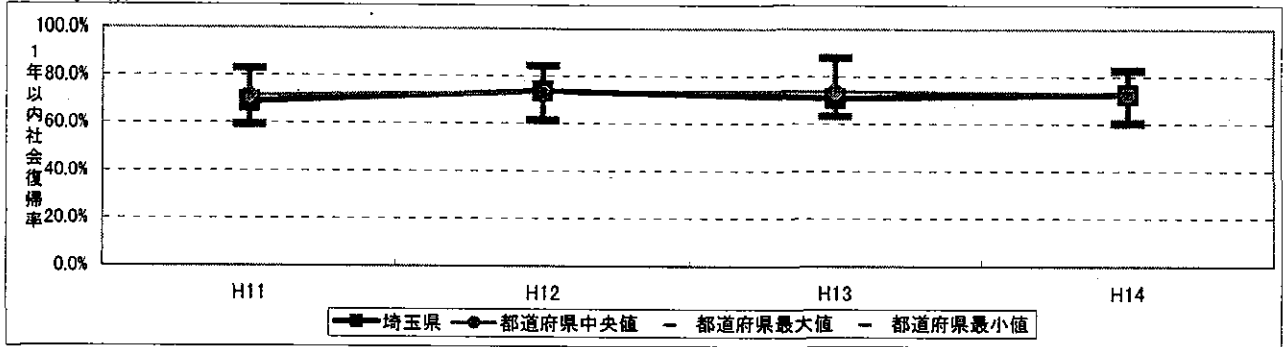
9. 栃木県



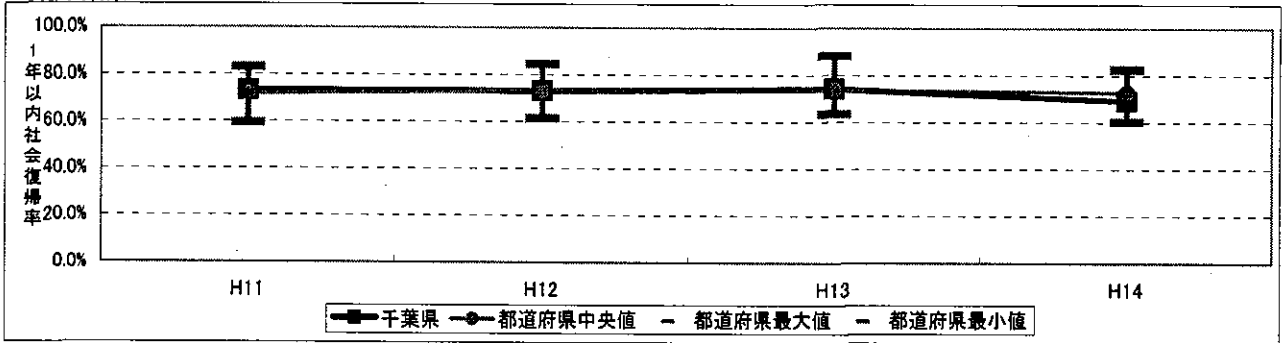
10. 群馬県



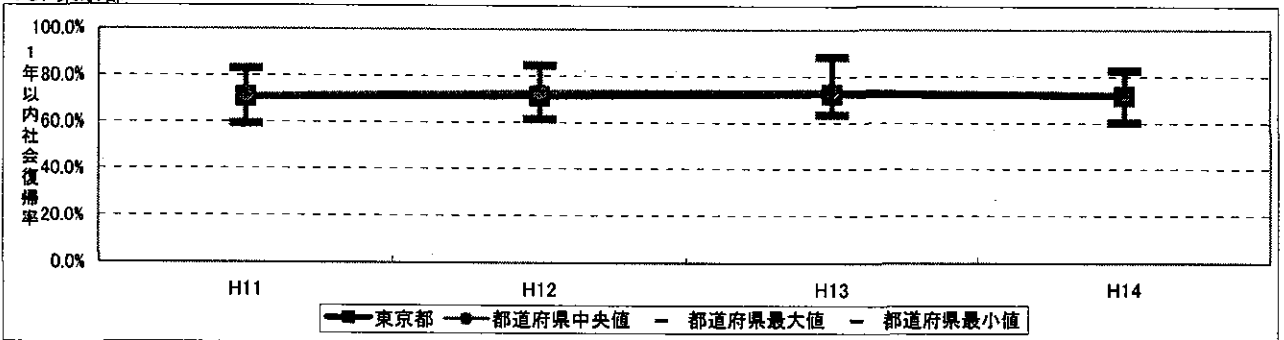
11. 埼玉県



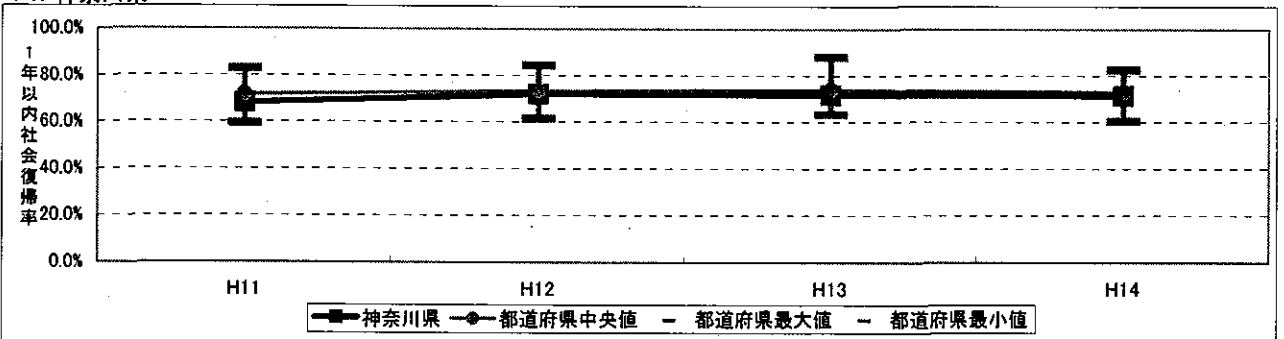
12. 千葉県



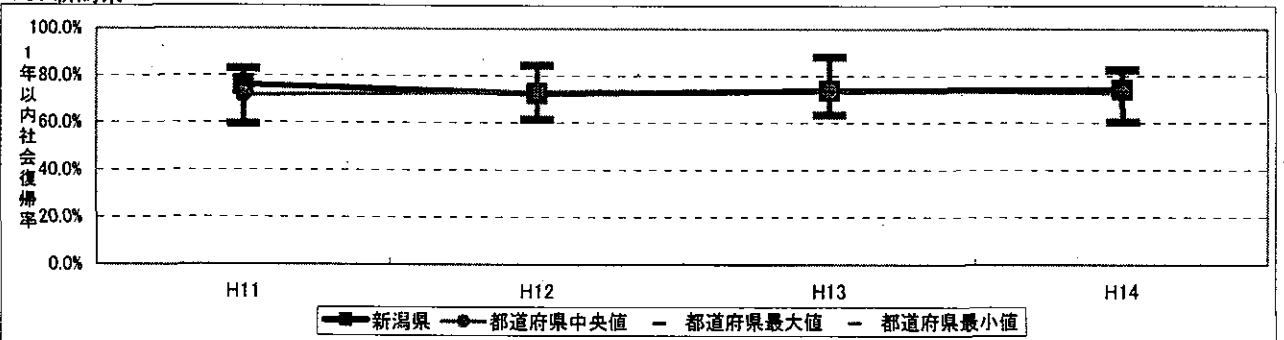
13. 東京都



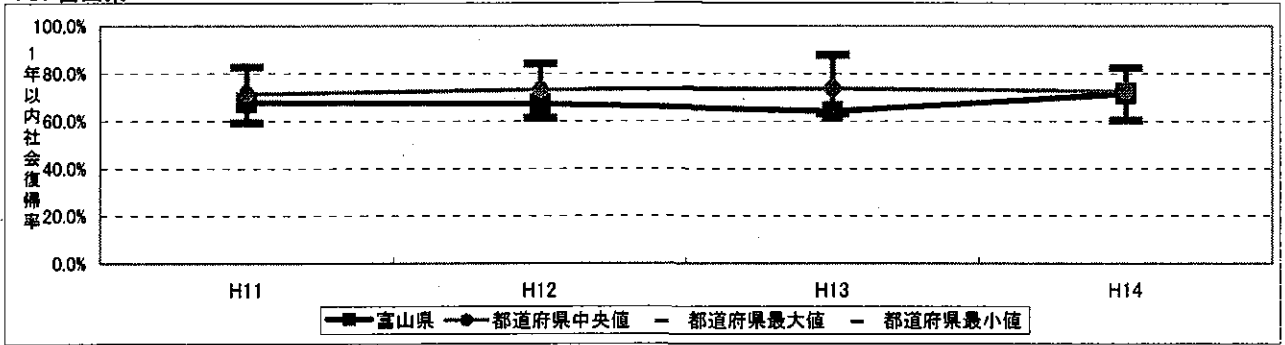
14. 神奈川県



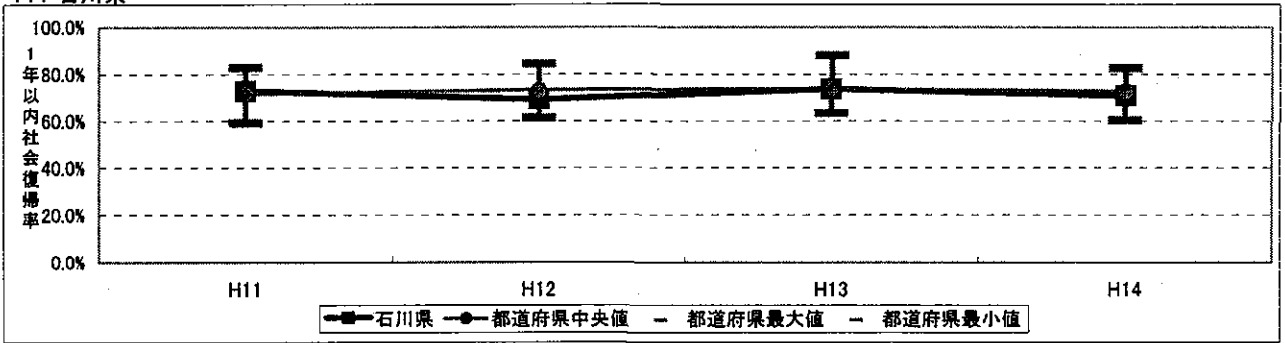
15. 新潟県



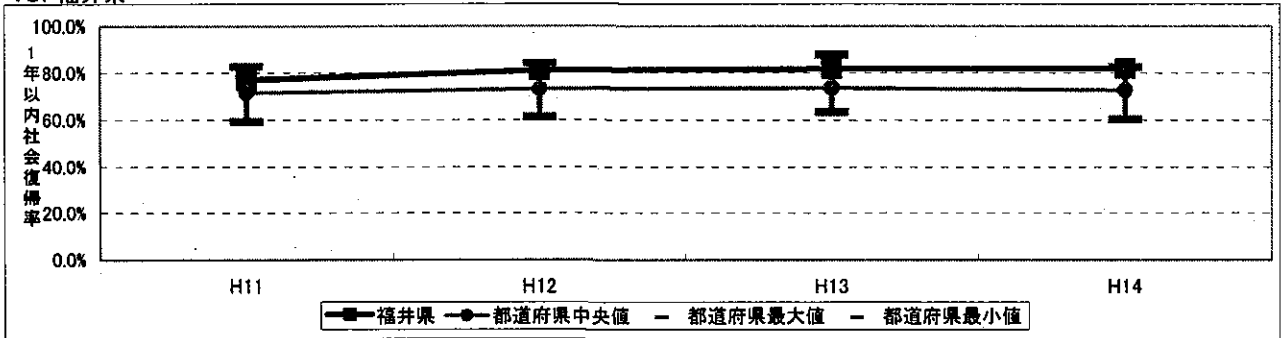
16. 富山県



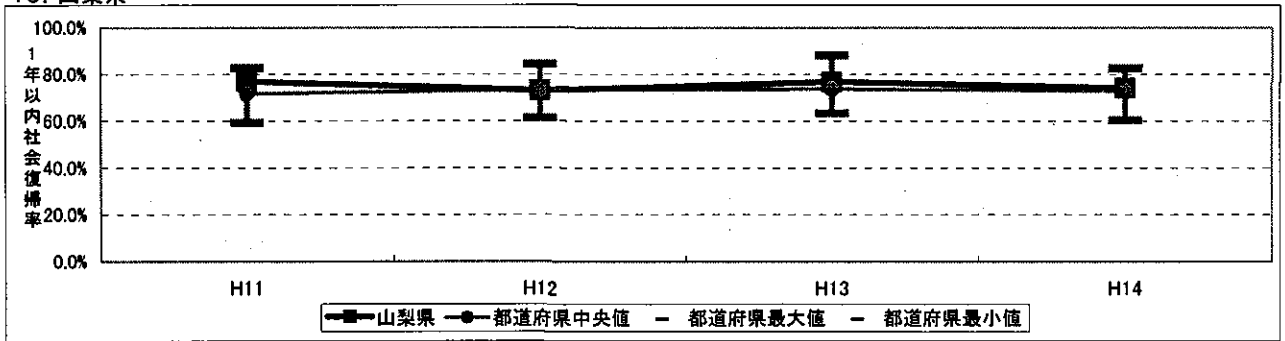
17. 石川県



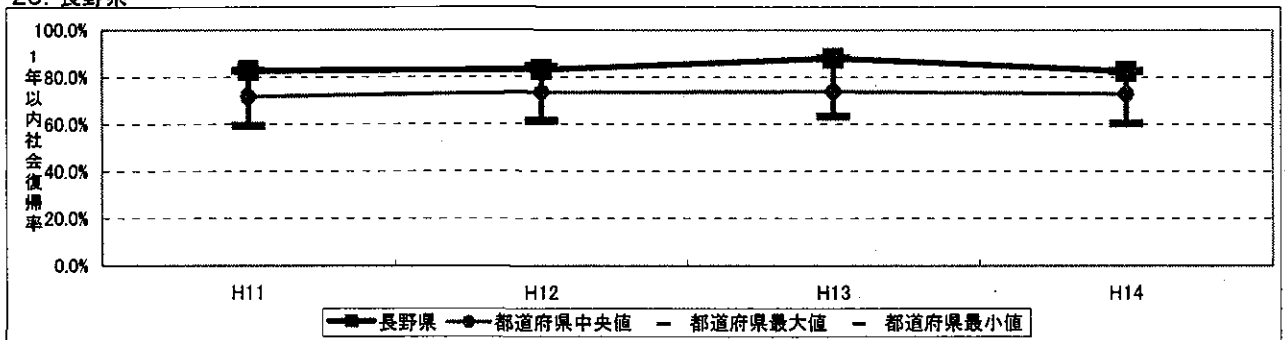
18. 福井県



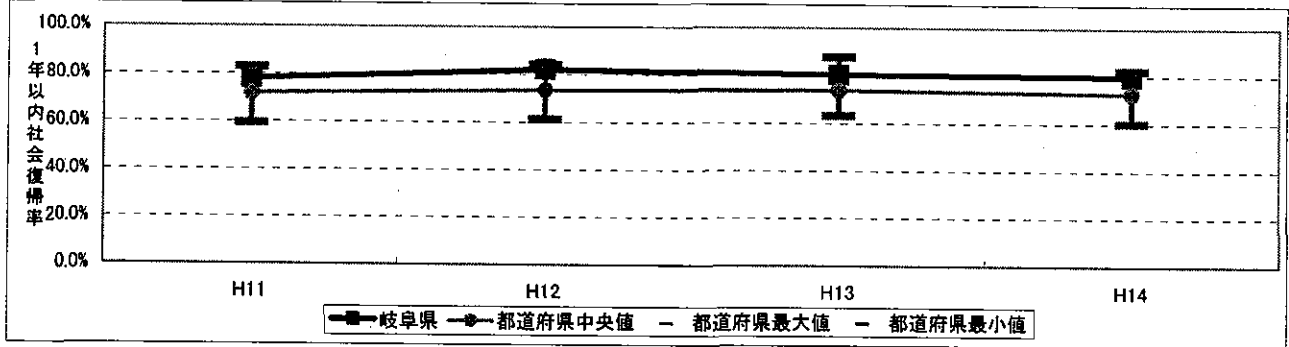
19. 山梨県



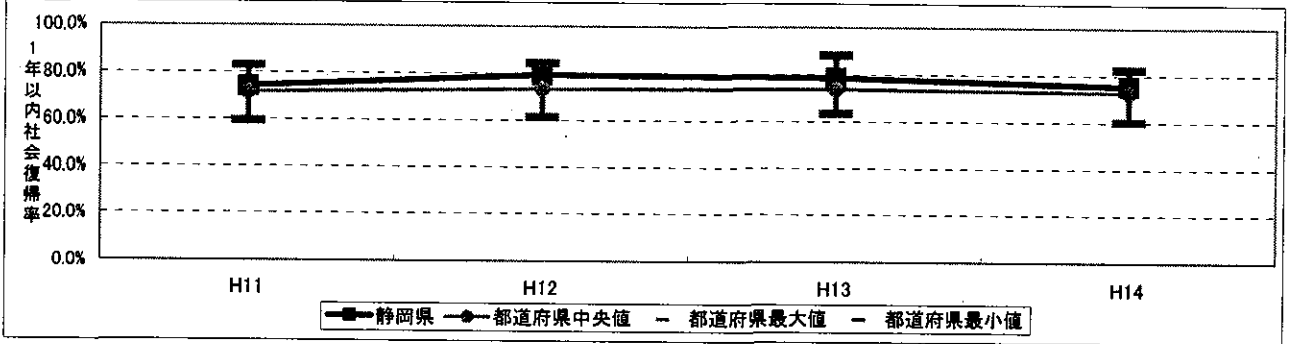
20. 長野県



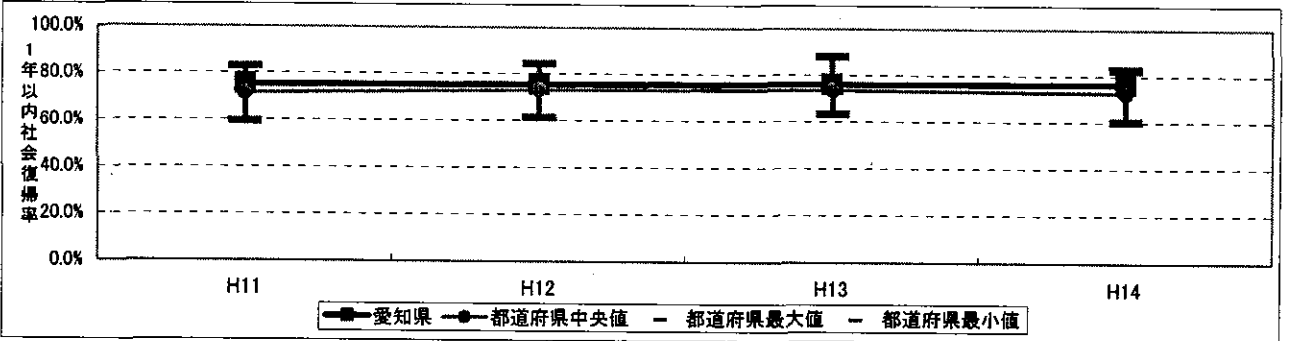
21. 岐阜県



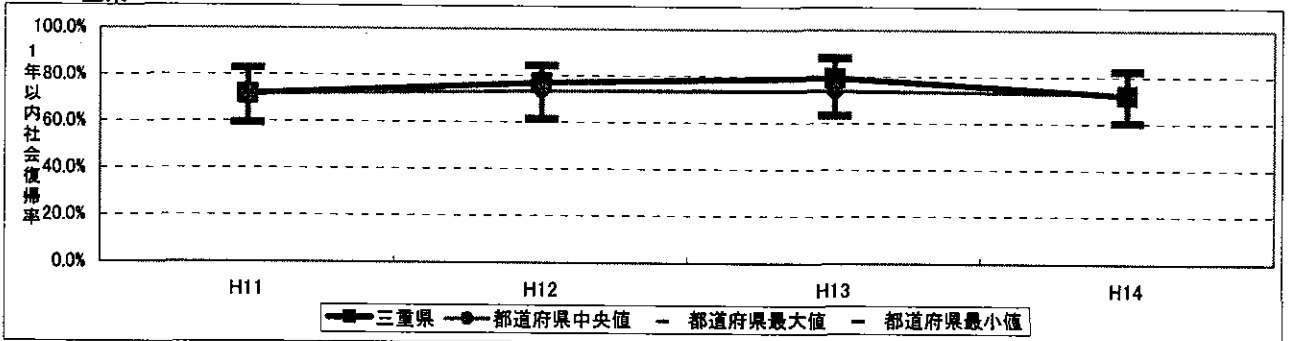
22. 静岡県



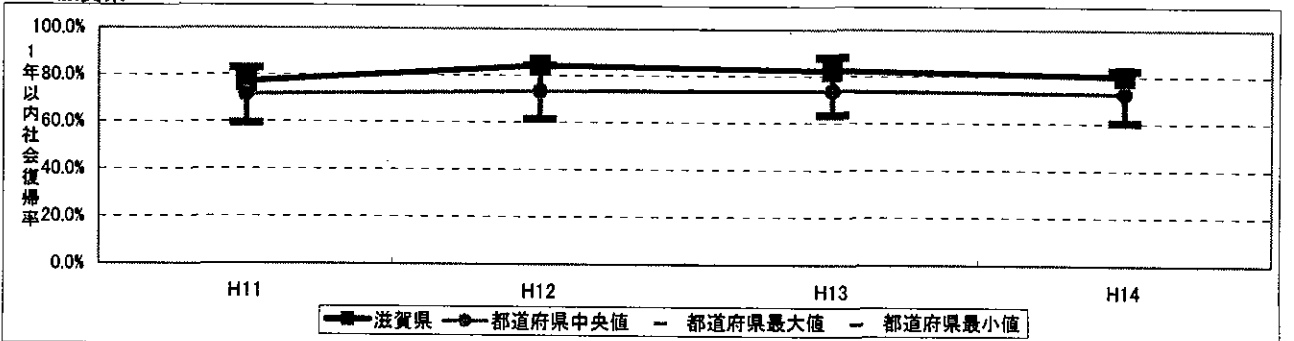
23. 愛知県



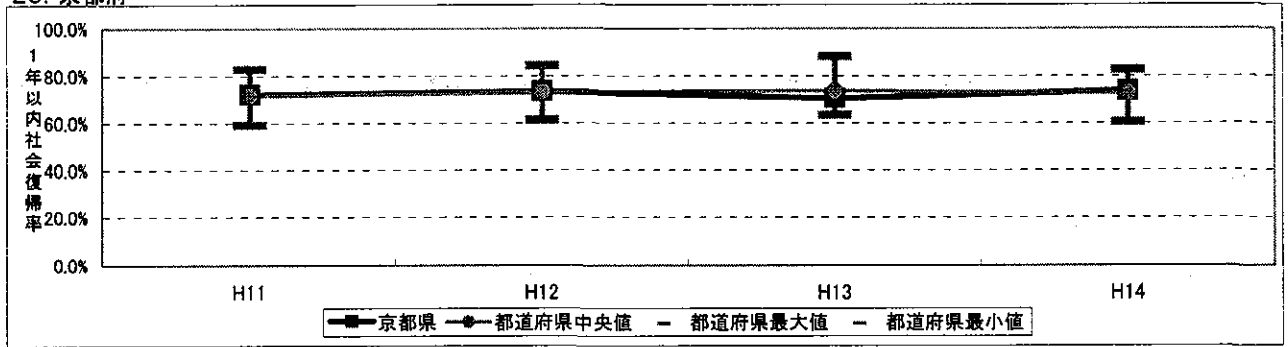
24. 三重県



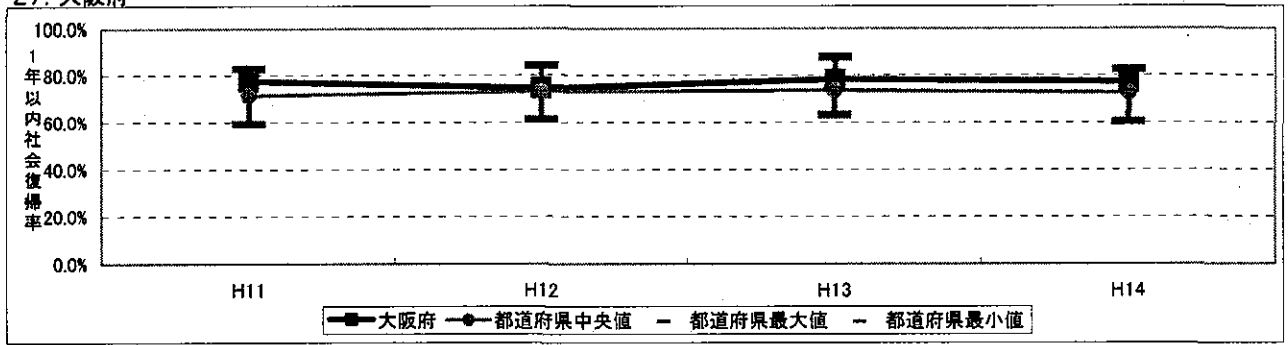
25. 滋賀県



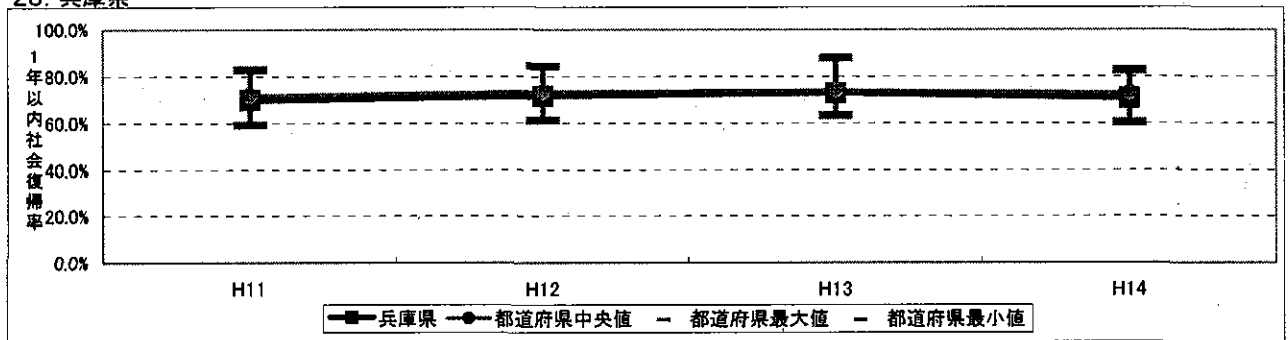
26. 京都府



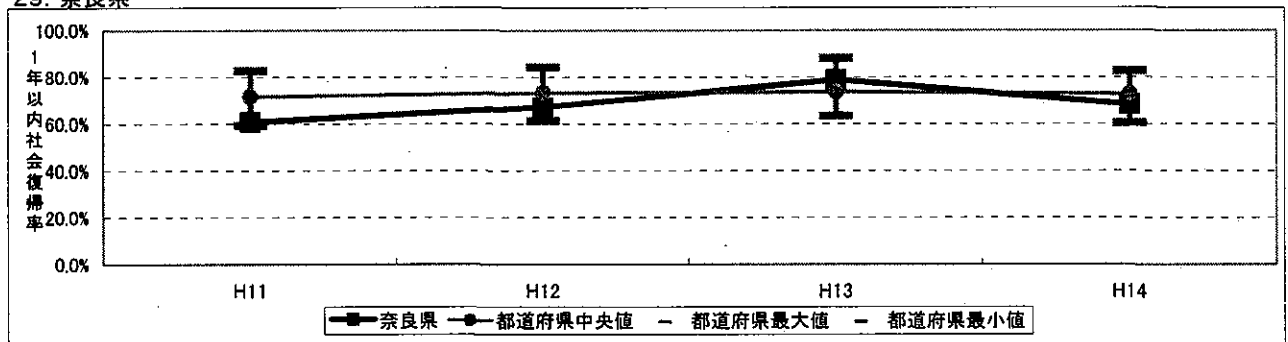
27. 大阪府



28. 兵庫県



29. 奈良県



30. 和歌山県

