

EBV-Positive Burkitt Lymphoma as a Late-Onset Posttransplantation Lymphoproliferative Disorder after Allogeneic Stem Cell Transplantation

Naohiro Sekiguchi,^a Junko Nishimoto,^a Ryuji Tanosaki,^b Nobuko Kubota,^a Yukiko Yokota,^a Yukio Kobayashi,^a Takashi Watanabe,^a Masahiro Kami,^b Yoichi Takaue,^b Yoshihiro Matsuno,^c Kensei Tobinai^a

^aHematology Division, ^bStem Cell Transplant Unit, and ^cClinical Laboratory Division, National Cancer Center Hospital, Tokyo, Japan

Received December 25, 2003; received in revised form January 23, 2004; accepted January 23, 2004

Abstract

Posttransplantation lymphoproliferative disorder (PTLD) is one of the well-recognized complications after allogeneic stem cell transplantation (SCT). It generally occurs early after SCT, and only a few reports of late-onset cases are available. We report a 58-year-old male patient who developed lymphoma 4 years after allogeneic SCT for chronic myeloid leukemia. The presence of *c-myc* translocation and Epstein-Barr virus-encoded RNA in the lymphoma cells, without rearrangement of the 3'-bcr region, confirmed the histopathologic diagnosis of Burkitt lymphoma. DNA chimerism analysis revealed that the lymphoma cells were of donor origin. The patient achieved complete response with intensive chemotherapy. To our knowledge, this is the first report of Burkitt lymphoma as a PTLD occurring after allogeneic SCT.

Int J Hematol. 2004;79:387-389. doi: 10.1532/IJH97.03175

©2004 The Japanese Society of Hematology

Key words: Burkitt lymphoma; Posttransplantation lymphoproliferative disorder; PTLD; Allogeneic stem cell transplantation; Epstein-Barr virus

1. Introduction

Posttransplantation lymphoproliferative disorder (PTLD) is one of the well-recognized complications occurring after allogeneic stem cell transplantation (SCT) [1-5]. PTLD typically develops within 1 year after allogeneic SCT as an early-onset disorder and is frequently fatal [1,2]. Although Burkitt lymphoma has been reported as a rare subtype of PTLD in solid organ transplant recipients [3], there have been no reports of Burkitt lymphoma as a PTLD after allogeneic SCT. We report here a case of Epstein-Barr virus (EBV)-positive Burkitt lymphoma that developed after allogeneic SCT.

2. Case Report

A 54-year-old man visited the National Cancer Center Hospital because of leukocytosis, and his illness was diag-

nosed as chronic myeloid leukemia (CML) in the chronic phase. Allogeneic SCT from his HLA-matched brother was performed, because cytogenetic response was not obtained by administration of interferon (IFN)- α . When he received IFN- α for the treatment of CML, imatinib mesylate was not available. The preparative regimen consisted of 16 mg/kg busulfan and 120 mg/kg cyclophosphamide. Neither T-cell depletion nor the administration of antithymocyte globulin was performed. Cyclosporine-A (CsA) and short-term methotrexate were given for the prophylaxis of graft-versus-host disease (GVHD).

The peripheral blood leukocyte count reached more than $1.0 \times 10^9/L$ on day +14 post-SCT. Acute grade II GVHD symptoms consisting of skin eruption and mild hyperbilirubinemia were controlled by 2 mg/kg methylprednisolone. Cytogenetic complete response (CR) was achieved on day +190. Oral administration of CsA was continued for mild extensive chronic GVHD, and it was discontinued on day +511. No recurrence of chronic GVHD was recognized throughout the patient's clinical course. On day +637, daily oral administration of 10 mg of pravastatin was started for the treatment of hyperlipidemia.

On day +1392, the patient developed lymphadenopathy in his neck and supraclavicular region, and tonsillar swelling was also noted. A biopsy specimen from his supraclavicular

Correspondence and reprint requests: Kensei Tobinai, MD, PhD, Hematology Division, National Cancer Center Hospital, 5-1-1 Tsukiji, Chuo-ku, Tokyo, 104-0045, Japan; 81-3-3542-2511; fax: 81-3-3542-3815 (e-mail: ktobinai@ncc.go.jp).

lymph node showed diffuse and dense infiltration of medium- to-large-sized, atypical lymphoid cells with hyperchromatic nuclei, and a starry sky pattern was recognized (Figures 1A and 1B). Mitotic figures were numerous. Immunohistochemical staining showed that the tumor cells were positive for CD10 and CD20 and negative for CD3, CD68, bcl-2, myeloperoxidase, latent membrane protein-1 (LMP-1), and EBV nuclear antigen-2 (EBNA-2), whereas EBV-encoded RNA-1 (EBER-1) was detected in tumor cells by in situ hybridization (Figure 1C). More than 99% of the tumor cells were Ki-67 positive.

Southern blot analysis revealed no rearrangement of the *3'-bcr* gene, a finding indicating that it was highly unlikely that the patient had lymphoid crisis of CML (data not shown). Fusion of the *c-myc* and Ig heavy chain (IgH) genes was shown by fluorescence in situ hybridization analysis (Figure 2), and the bone marrow was not infiltrated with lymphoma cells. Therefore, this case was diagnosed as EBV-positive Burkitt lymphoma, a subtype of late-onset PTL, according to the World Health Organization (WHO) classification [2]. The clinical stage was II according to both the Ann Arbor and Murphy staging systems. DNA chimerism analysis revealed that the lymphoma cells were of donor origin (data not shown).

The patient achieved CR under intensive chemotherapy administered according to the National Cancer Institute protocol for Burkitt lymphoma, CODOX-M/IVAC [6]. At the time of this report, CR had been maintained without therapy for 17 months.

3. Discussion

PTLD is one of the well-recognized complications after allogeneic SCT; however, its cumulative incidence is reported to be relatively low: $1.0\% \pm 0.3\%$ at 10 years [1]. Curtis et al reported that the incidence of PTL varied markedly with time after SCT, with particularly high rates occurring in the first 5 months, followed by a steep decline in incidence between 6 and 12 months post-SCT [1]. In the Curtis et al report, 14 patients with late-onset PTL occurring among 18,014 patients who underwent allogeneic SCT were documented, and the only risk factor identified for late-onset PTL was extensive chronic GVHD. In contrast, in PTL after solid organ transplantation, late-onset cases are not rare. The risk of PTL development in solid organ transplant recipients varies depending on the type of allograft and immunosuppressive therapy. In solid organ transplant recipients treated with azathioprine, the mean interval between transplantation and development of PTL is 48 months, whereas in those treated with CsA it is 15 months [2]. The reasons for the infrequency of late-onset PTL after allogeneic SCT might include the following: almost all SCTs are performed for malignant neoplasms; some patients undergoing SCT die of disease progression or SCT-related complications; most long-term survivors after SCT are free from immunosuppressive therapy.

In the present case, the patient had been given pravastatin, an inhibitor of hydroxy-methyl-glutaryl coenzyme A reductase (or statin), which is a popular agent for the treatment of hyperlipidemia. A recent in vitro study by Kwak et al showed that statins act as direct inhibitors of the induction

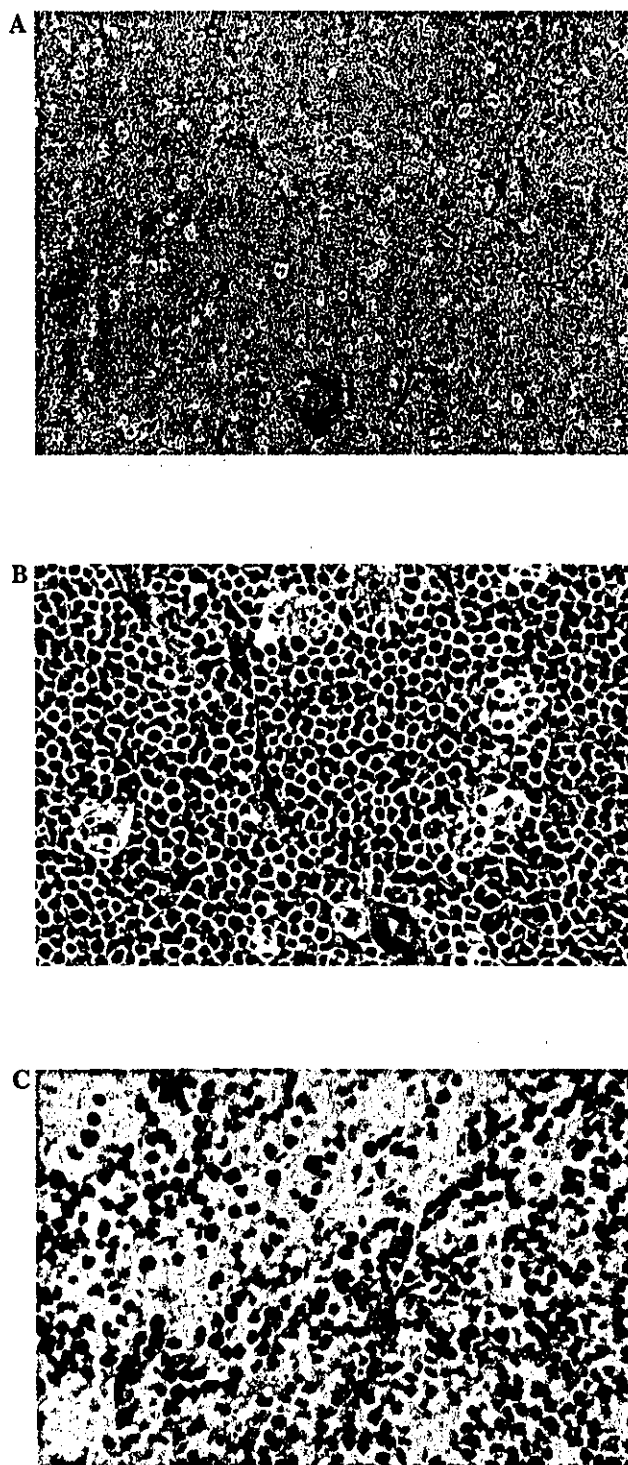


Figure 1. Histopathologic findings of the biopsied supraclavicular lymph node. A, A prominent starry sky pattern was recognized (hematoxylin and eosin, original magnification $\times 100$); B, diffuse and dense infiltration of medium- to large-sized atypical lymphoid cells with hyperchromatic nuclei was recognized (hematoxylin and eosin, original magnification $\times 400$); C, Epstein-Barr virus-encoded RNA 1 was detected in neoplastic cells (in situ hybridization, original magnification $\times 400$).

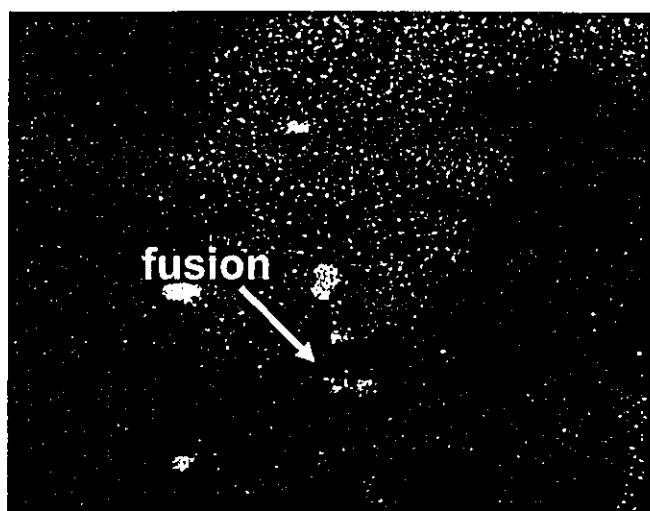


Figure 2. Fluorescence in situ hybridization analysis of the biopsied supraclavicular lymph node. The immunoglobulin (Ig)H/c-myc fusion signal was recognized. The signals represented IgH/c-myc rearrangement (yellow), c-myc (orange), IgH (green) and CEP8 (aqua). To detect IgH/c-myc rearrangements, a dual fusion translocation probe (VYSIS) was used.

of MHC class II-mediated T-cell activation [7]. They proposed recognition of statins as a new type of immunomodulator. A review by Newman et al suggested the potential carcinogenicity of long-term administration of statins in humans based on rodent carcinogenicity studies [8]; however, a recent metaanalysis of 5 large, randomized, placebo-controlled clinical trials showed no association between the use of statins and the risk of fatal or nonfatal cancers including malignant lymphoma [9].

The lymphoma cells in this case were positive for EBV-1. The majority of PTLD cases are associated with EBV infection, although approximately 20% of PTLD cases are not [2,5]. Three clinical variants of Burkitt lymphoma have been recognized: endemic, sporadic, and immunodeficiency-associated variants (including human immunodeficiency virus-associated [10] and PTLD after solid organ transplantation). Interestingly, the frequency of EBV association is quite different among the variants of Burkitt lymphoma [3,10]. Moreover, all of the reported EBV-positive Burkitt lymphoma cases, including immunodeficiency-associated

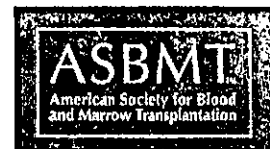
cases, showed a latency I form of EBV infection [3,10], which is lacking EBNA-2 and LMP-1, although most PTLD cases show a latency III pattern. Burkitt lymphoma after solid organ transplantation and EBV-negative PTLD tend to occur later than EBV-positive cases [3,5]. Considering these findings, it is likely that the essential factor in Burkitt lymphoma development as a PTLD is *c-myc* dysregulation caused by genetic instability after prolonged mild immunosuppression, independent of EBV stimulation.

Acknowledgments

This study was supported by a Grant-in-Aid for Cancer Research from the Ministry of Health, Labor and Welfare of Japan (15-11) and a Bristol-Myers Squibb Unrestricted Grant.

References

1. Curtis RE, Travis LB, Rowlings PA, et al. Risk of lymphoproliferative disorders after bone marrow transplantation: a multi-institutional study. *Blood*. 1999;94:2208-2216.
2. Harris NL, Swerdlow SH, Frizzera G, Knowles DM. Post-transplant lymphoproliferative disorders. In: Jaffe ES, Harris NL, Stein H, Vardiman JW, eds. *World Health Organization Classification of Tumours: Pathology & Genetics: Tumours of Haematopoietic and Lymphoid Tissues*. Lyon: IARC Press, 2001;264-269.
3. Gong JZ, Stenzel TT, Bennett ER, et al. Burkitt lymphoma arising in organ transplant recipients. A clinicopathologic study of five cases. *Am J Surg Pathol*. 2003;27:818-827.
4. Au WY, Lie AK, Lee CK, et al. Late onset post-transplantation lymphoproliferative disease of recipient origin following cytogenetic relapse and occult autologous haematopoietic regeneration after allogeneic bone marrow transplantation for acute myeloid leukaemia. *Bone Marrow Transplant*. 2001;28:417-419.
5. Nelson BP, Nalesnik MA, Bahler DW, et al. Epstein-Barr virus-negative post-transplant lymphoproliferative disorders: a distinct entity? *Am J Surg Pathol*. 2000;24:375-385.
6. Magrath I, Adde M, Shad A, et al. Adults and children with small non-cleaved-cell lymphoma have a similar excellent outcome when treated with the same chemotherapy regimen. *J Clin Oncol*. 1996; 14:925-934.
7. Kwak B, Mulhaupt F, Myit S, Mach F. Statins as a newly recognized type of immunomodulator. *Nat Med*. 2000;6:1399-1402.
8. Newman TB, Hulley SB. Carcinogenicity of lipid-lowering drugs. *JAMA*. 1996;275:55-60.
9. Bjerre LM, LeLorier J. Do statins cause cancer? A meta-analysis of large randomized clinical trials. *Am J Med*. 2001;110:716-723.
10. Carbone A. The spectrum of AIDS-related lymphoproliferative disorders. *Adv Clin Pathol*. 1997;1:13-19.



Early Central Nervous System Complications after Reduced-Intensity Stem Cell Transplantation

Yukiko Kishi,¹ Shigesaburo Miyakoshi,² Masahiro Kami,¹ Masayuki Ikeda,³ Yuta Katayama,¹
Naoko Murashige,¹ Eiji Kucumi,² Koichiro Yuji,² Kazuhiko Kobayashi,⁴ Daisuke Kato,² Tamae Hamaki,¹
Tomoko Matsumura,² Sung-Won Kim,¹ Shinichi Morinaga,² Shinichiro Mori,¹ Mineo Kanemaru,⁵
Tatsuyuki Hayashi,⁶ Yoichi Takaue,¹ Shuichi Taniguchi,²
for the Tokyo Stem Cell Transplantation Consortium

¹Hematopoietic Stem-Cell Transplantation Unit, the National Cancer Center Hospital, Tokyo, Japan; ²Department of Hematology, Toranomon Hospital, Tokyo, Japan; ³Department of Neurology, the National Center Hospital for Mental, Nervous and Muscular Disorders, Tokyo, Japan; ⁴Department of Hematology, JR Tokyo General Hospital, Tokyo, Japan; ⁵Department of Internal Medicine, Higashijuyyo Hospital, Tokyo, Japan; ⁶Department of Internal Medicine, Tokyo Metropolitan Police Hospital, Tokyo, Japan

Correspondence and reprint requests: Masahiro Kami, MD, Hematopoietic Stem Cell Transplantation Unit, National Cancer Center Hospital, 5-1-1 Tsukiji, Chuo-ku, Tokyo 104-0045, Japan (e-mail: mkami@ncc.go.jp).

Received February 12, 2004; accepted April 27, 2004

ABSTRACT

To investigate clinical characteristics of early central nervous system (CNS) complications after reduced-intensity stem cell transplantation (RIST), we reviewed the medical records of 232 patients who had undergone RIST for hematologic diseases at our institutions between September 1999 and June 2003. All patients had received purine analog-based preparative regimens. Stem cell sources comprised granulocyte colony-stimulating factor-mobilized blood from HLA-identical or 1 locus-mismatched related donors (n = 151), unrelated bone marrow (n = 44), or unrelated cord blood (n = 37). Graft-versus-host disease prophylaxis incorporated cyclosporine with or without methotrexate. Diagnosis of CNS complications was based on clinical, radiologic, and microbiological findings. CNS complications occurred in 18 patients (7.8%), with a median onset of 22 days, and were infectious (n = 1), metabolic (n = 15), or cerebrovascular (n = 2). Symptoms included seizures (n = 7), visual disturbance (n = 2), headache (n = 8), nausea (n = 8), vomiting (n = 6), impaired consciousness (n = 16), and hemiparesis (n = 3). Complications improved promptly in 10 patients, and 8 patients died without improvement within 30 days. Multivariate analysis with logistic regression identified umbilical cord blood transplantation as a significant risk factor for early CNS complications (odds ratio, 14.5; 95% confidence interval, 3.7-56.9; $P < .0001$). CNS complications are a significant problem after RIST, particularly with umbilical cord blood. Limbic encephalopathy is an unrecognized subtype of neurotoxicity after umbilical cord blood transplantation.

© 2004 American Society for Blood and Marrow Transplantation

KEY WORDS

Allogeneic hematopoietic stem cell transplantation • Graft-versus-host disease • Umbilical cord • Cyclosporine neurotoxicity • Limbic encephalopathy

INTRODUCTION

Research in the area of neurologic complications is limited with regard to allogeneic hematopoietic stem cell transplantation (allo-HSCT). Most studies have been either retrospective or reliant on autopsy records [1-6]. Prospective evaluation of this complication has

been rare [7,8]. The incidence of neurologic complications has varied from 37% to 91%, and such complications have been the cause of death in 6% to 26% of patients [1,3,8]. These findings indicate that neurologic complications represent a significant problem in conventional myeloablative allo-HSCT.

Neurologic complications occur at 3 stages of allo-HSCT: (1) after the use of conditioning agents for marrow ablation, (2) during posttransplantation pan-

Y.K. and S.M. contributed equally to this article.

cytopenia, or (3) after immunosuppressive therapies and graft-versus-host disease (GVHD) [1-3,9]. These complications are usually categorized into 4 groups: (1) infectious, (2) cerebrovascular, (3) metabolic, or (4) immune-mediated disorders. Among these 4 types of neurotoxicity, cerebrovascular disorders and central nervous system (CNS) infection before engraftment have represented significant problems in conventional allo-HSCT [1,4,8]. Whether GVHD can affect the CNS remains controversial [10], and neurotoxicity has thus been regarded as an early complication after allo-HSCT.

A new transplantation strategy using a nonmyeloablative preparative regimen—reduced-intensity stem cell transplantation (RIST)—was developed to decrease regimen-related toxicity while preserving adequate antitumor effects [11,12]. Different pioneering conditioning regimens for RIST have been investigated, such as those including purine analogs [11-13] and total body irradiation (TBI) combined with potent immunosuppressants [14]. Although early reports on RIST emphasized safety advantages [11,15], recent studies have revealed considerable toxicities associated with this type of transplantation [16,17]. Little information is available on CNS complications after RIST. We investigated early CNS complications after RIST with regard to incidence, characteristics, and risk factors.

PATIENTS AND METHODS

Patients

Medical records of all patients who underwent RIST for treatment of hematologic diseases at the National Cancer Center Hospital or Toranomon Hospital between September 1999 and June 2003 were reviewed. Subjects comprised 232 patients (143 men and 89 women) with a median age of 54 years (range, 15-73 years). Primary diseases consisted of acute myeloid leukemia (n = 63), chronic myelogenous leukemia (n = 15), acute lymphoblastic leukemia (n = 8), malignant lymphoma (n = 67), myelodysplastic syndrome (n = 42), adult T-cell leukemia/lymphoma (n = 17), multiple myeloma (n = 10), aplastic anemia (n = 8), and others (n = 2). Hematologic malignancies were refractory to cytotoxic chemotherapy in 142 patients and were in remission or sensitive to treatment in 81 patients. Underlying diseases were not malignant in the remaining 9 patients.

Transplantation Procedures

All patients had received purine analog-based preparative regimens comprising fludarabine/cyclophosphamide (n = 12) [18], fludarabine/busulfan (n = 139) [19], fludarabine/melphalan (n = 55) [20], cladribine/

busulfan (n = 25) [13], and others (n = 1). Rabbit antithymocyte globulin and TBI (4-8 Gy) were added to preparative regimens in 50 and 65 patients, respectively.

Stem cell sources were HLA-identical or 1 locus-mismatched granulocyte colony-stimulating factor-mobilized peripheral blood (n = 151), unrelated bone marrow (n = 44), or unrelated umbilical cord blood (n = 37). GVHD prophylaxis was cyclosporine alone (3 mg/kg) in RIST from an HLA-identical related donor and reduced-intensity umbilical cord blood transplantation (RI-UCBT). Patients who received transplants from a 1 locus-mismatched related donor or a matched unrelated donor received cyclosporine and short-term methotrexate. Grade II to IV acute GVHD was treated with methylprednisolone 2 mg/kg/d in addition to cyclosporine.

Diagnostic Criteria for Early CNS Complications

Early CNS complications were defined as CNS toxicity occurring within 100 days of transplantation. Diagnosis of CNS complications was made by clinical, radiologic, or microbiological findings (or a combination of these). CNS complications were categorized into 4 groups: (1) infectious, (2) cerebrovascular, (3) metabolic, and (4) immune-mediated disorders. CNS complications that occurred after relapse or progression of underlying diseases were excluded from analysis. Diagnosis of cyclosporine encephalopathy was based on the typical radiologic findings, ie, symmetrical white matter lesions mainly localized in the occipital lobe. In the case of limbic encephalopathy, the diagnosis was based on selective involvement of the medial temporal lobe on magnetic resonance imaging (MRI). Diagnosis of cerebrovascular diseases was confirmed by neuroradiologic or postmortem studies (or both). Abnormalities on imaging were defined as areas of low white-matter attenuation on computed tomographic (CT) scans and as areas of T1-weighted hypointensity and T2-weighted hyperintensity on MRI.

End Points and Statistical Analysis

The primary end point of this study was incidence of early CNS complications after RIST. A secondary objective was to investigate characteristics and risk factors for such complications. The median follow-up of surviving patients was 17.5 months (range, 8.5-52.7 months).

Univariate analysis with χ^2 and Mann-Whitney tests was performed to identify risk factors for CNS toxicity. Variables included age, sex, primary disease, disease status (refractory or sensitive to cytotoxic chemotherapy), and type of transplantation. We added multiple logistic regression analysis to assess the fractionated contribution of the above-mentioned potentially predictive factors. Variables that had a *P* value of

<.25 on univariate analysis were entered into the mixed-effects model. Those that contributed <10% to the overall ability of the model to influence serum levels of fluconazole were sequentially eliminated. The level of significance was set at $P < .05$.

RESULTS

Incidences and Types of CNS Complications after RIST

A total of 18 patients (7.8%) developed early CNS complications. Subtypes comprised infectious (invasive aspergillosis; $n = 1$), metabolic ($n = 15$; cyclosporine neurotoxicity, $n = 4$; limbic encephalopathy, $n = 4$; hemophagocytic syndrome, $n = 1$; leukoencephalopathy, $n = 1$; idiopathic, $n = 5$), and cerebrovascular (subdural hematoma, $n = 1$; subarachnoid hemorrhage, $n = 1$) complications. No patient was diagnosed with immune-mediated CNS toxicity.

Clinical and Laboratory Features at Onset of CNS Complications

Backgrounds of the patients who developed CNS complications are shown in Table 1. Except for a patient with aplastic anemia, the remaining 17 patients had refractory hematologic diseases.

Clinical and laboratory findings at the onset of CNS complications are shown in Table 2. The median onset was 22 days (range, 1-74 days). Seizures developed in 7 patients (generalized, $n = 6$; focal, $n = 1$). Other symptoms included headache ($n = 8$), nausea ($n = 8$), vomiting ($n = 6$), impaired consciousness ($n = 16$), and hemiparesis ($n = 3$). Two of 11 evaluable patients developed visual disturbance (blurred vision). Cyclosporine blood levels were higher than target levels (250-350 ng/mL) in 4 patients. Nine patients displayed fever at the onset of CNS complications, and 2 patients were receiving steroid therapy for acute GVHD. Concomitant conditions in the 15 patients with metabolic encephalopathy included systolic hypertension (>170 mm Hg) in 6 patients, diastolic hypertension (>100 mm Hg) in 6, hyponatremia in 8, hypomagnesemia in 6, and hypocholesterolemia in 4. Cerebrospinal fluid obtained from 5 patients showed normal levels of protein and cell counts. No pathogens such as bacteria, fungi, or viruses were cultured from cerebrospinal fluid.

Imaging Studies

Seventeen patients underwent cranial imaging studies: CT only in 6, MRI only in 4, and both CT and MRI in 7. Results are shown in Table 2. Of the 14 patients with metabolic encephalopathy who underwent imaging studies, 7 displayed some abnormal findings. Lesions were located bilaterally in the occipital lobes ($n = 3$), temporal lobes ($n = 3$), or periven-

tricular white matter ($n = 1$). Three patients who had received UCBTs were diagnosed with limbic encephalopathy on the basis of imaging studies (Figure 1).

Treatment and Outcomes

Cyclosporine was continued ($n = 4$) or withheld ($n = 14$) for 1 to 14 days. Two patients received antihypertensive agents. Corticosteroids were used in 16 patients. In most patients, subsequent treatment with cyclosporine was well tolerated without recurrence of neurotoxicity.

Eight patients died within 30 days of developing CNS complications. Causes of death included disease progression ($n = 1$), subarachnoid hemorrhage ($n = 1$), GVHD ($n = 3$), and infection ($n = 3$). CNS complication was a primary cause of death in 2 cases (invasive aspergillosis, $n = 1$; subarachnoid hemorrhage, $n = 1$).

Risk Factors

In univariate analysis, the development of CNS complications was associated with the use of umbilical cord blood ($P < .0001$) and the status of underlying disease (chemorefractory hematologic diseases versus others; $P = .032$). Multivariate analysis showed that the use of umbilical cord blood was significantly correlated with CNS complications after RIST (odds ratio, 14.5; 95% confidence interval, 3.7-56.9; $P < .0001$).

DISCUSSION

In this study, CNS complications occurred in 7.8% of RIST recipients, and mortality with 30 days of its development reached 44%. These findings indicate that early CNS complications are a common and important problem in both RIST and conventional allo-HSCT [1,3,4,8]. However, significant differences existed in clinical characteristics of CNS complications between RIST and conventional myeloablative allo-HSCT.

The incidence of CNS complications was lower in RIST than in conventional allo-HSCT, in which 11% to 44% of patients develop such complications [2,6,7]. In conventional transplantation, the most common causes of CNS complications are cerebrovascular disease and infection after conventional transplantation [1,4,8], and these are mostly attributable to regimen-related toxicity [21,22] or profound myelosuppression before engraftment [1,3,4]. However, in RIST, regimen-related toxicities are minimal, and myelosuppression is short. Acute GVHD, as the most important complication in RIST [16], rarely affects the CNS [23]. RIST has, at the very least, improved the safety of allo-HSCT by decreasing the incidence of CNS complications.

Table 1. Backgrounds of Patients Who Developed CNS Complications after RIST

Patient No.	Type of CNS Complication	Age (y)	Sex	Primary Disease	History of CNS Involvement	No. of Chemotherapy Regimens before Transplantation	Preparative Regimen	GVHD Prophylaxis	Stem Cell Source
1	Cerebrovascular	57	M	ALL	Yes	1	Flu/BU/ATG	Cyclosporine	HLA-identical sibling
2	Cerebrovascular	32	F	Malignant lymphoma	No	1	Flu/Mel/TBI 4 Gy	Cyclosporine	Umbilical cord blood
3	Infectious	40	M	MDS	No	2	Flu/Mel/TBI 4 Gy	Cyclosporine	Umbilical cord blood
4	Metabolic	21	M	Aplastic anemia	No	1	Flu/BU/ATG	Cyclosporine	HLA-identical sibling
5	Metabolic	67	M	Malignant lymphoma	No	1	Flu/Mel/TBI 4 Gy	Cyclosporine	Umbilical cord blood
6	Metabolic	67	M	MDS	No	1	Flu/BU/TBI 4 Gy/ATG	Cyclosporine/Methotrexate	Matched unrelated donor
7	Metabolic	51	M	AML	No	2	Flu/BU/TBI 4 Gy	Cyclosporine	Umbilical cord blood
8	Metabolic	52	M	MDS	No	2	Flu/ATG	Cyclosporine	Mismatched related donor
9	Metabolic	49	M	ALL	No	1	Flu/BU	Cyclosporine	HLA-identical sibling
10	Metabolic	48	F	AML	Yes	3	Flu/BU/ATG	Cyclosporine/Methotrexate	Mismatched related donor
11	Metabolic	57	F	AML	No	1	Flu/Mel/TBI 4 Gy	Cyclosporine	Umbilical cord blood
12	Metabolic	66	M	Malignant lymphoma	No	2	Flu/Mel/TBI 4 Gy	Cyclosporine	Umbilical cord blood
13	Metabolic	63	M	MDS	No	1	Flu/Mel/TBI 4 Gy	Cyclosporine	Umbilical cord blood
14	Metabolic	54	M	AML	No	1	Flu/Mel/TBI 4 Gy	Cyclosporine	Umbilical cord blood
15	Metabolic	55	M	Malignant lymphoma	No	1	Flu/Mel/TBI 4 Gy	Cyclosporine	Umbilical cord blood
16	Metabolic	62	F	ATL	No	1	Flu/Mel/TBI 4 Gy	Cyclosporine	Umbilical cord blood
17	Metabolic	46	M	ATL	No	1	Flu/Mel/TBI 4 Gy	Cyclosporine	Umbilical cord blood
18	Metabolic	54	F	ATL	No	1	Flu/Mel/TBI 4 Gy	Cyclosporine	Umbilical cord blood

AML indicates acute myeloblastic leukemia; MDS, myelodysplastic syndrome; ALL, acute lymphoblastic leukemia; ATL, adult T-cell leukemia/lymphoma; Flu, fludarabine; BU, busulfan; ATG, antithymocyte globulin; TBI, total body irradiation; CNS, central nervous system.

Table 2. Clinical, Laboratory, and Radiologic Characteristics at the Onset of CNS Complications

Patient No.	Type of CNS Complication	Cause	Onset (day)	Impaired Consciousness	Seizures	Visual Disturbance (>38.0°C)	Fever (>38.0°C)	Blood Pressure (mm Hg)			Laboratory Findings						Radiologic Examination			Outcomes			
								Systolic	Diastolic	Mean	Creatinine (mg/dL)	Cyclosporine (ng/mL)	Hemoglobin (g/dL)	Na (mEq)	K (mEq)	Mg (mEq)	T-Chol (mg/dL)	CT	T2-Weighted MRI		Electroencephalogram		
1	Cerebrovascular		16	No	No	No	No	170	87	87	0.6	386	9.0	139	4.3	1.5	NA	NA	Subdural hematoma	NA	NA	Improved	
2	Cerebrovascular		40	Yes	Yes	Yes	Yes	152	98	98	1.6	NA	7	137	3.5	1.3	217	NA	Brain edema associated with subarachnoid hemorrhage	NA	NA	Dead	
3	Infection		68	Yes	No	No	No	108	64	64	1.2	NA	7.5	136	3.4	0.6	140	NA	Mass in the parietal lobe	NA	NA	Dead	
4	Metabolic encephalopathy	Cyclosporine	8	No	No	No	Yes	142	74	74	0.8	316	6.5	140	4.0	1.5	NA	NA	Bilateral parietal and occipital lobes	NA	NA	Improved	
5	Metabolic encephalopathy	Limbic encephalopathy	22	Yes	Yes	No	No	170	108	108	0.3	219	8.2	124	3.5	1.2	143	NA	Bilateral temporal lobes	NA	NA	Improved	
6	Metabolic encephalopathy	Cyclosporine	23	Yes	Yes	Not evaluable	Yes	182	100	100	1.2	266	7.5	141	2.3	1.8	NA	NA	Low-density area in the bilateral occipital lobes	NA	NA	Improved	
7	Metabolic encephalopathy	Cyclosporine	22	Yes	Yes	Not evaluable	No	120	80	80	1.5	348	6.5	139	4.8	1.3	107	Normal	Bilateral occipital lobes	NA	NA	Improved	
8	Metabolic encephalopathy	Cyclosporine	7	Yes	Yes	Not evaluable	Yes	170	78	78	0.8	342	4.1	138	3.4	1.3	145	Normal	NA	NA	NA	Improved	
9	Metabolic encephalopathy	Hemophagocytic syndrome	46	Yes	No	Yes	No	130	64	64	0.7	NA	9.7	139	4.1	NA	110	NA	Normal	Normal	NA	Dead	
10	Metabolic encephalopathy	Lactate encephalopathy	12	Yes	No	No	Yes	110	56	56	1.1	NA	6.5	134	4.0	NA	NA	Normal	Bilateral frontal and parietal lobes (periventricular areas)	NA	NA	Dead	
11	Metabolic encephalopathy		20	Yes	No	No	No	154	100	100	0.8	584	8.2	130	2.9	NA	157	Normal	NA	NA	NA	Dead	
12	Metabolic encephalopathy		13	Yes	No	Not evaluable	Yes	190	120	120	1.5	511	8.1	130	4.2	NA	162	Normal	Normal	Normal	Normal	Improved	
13	Metabolic encephalopathy	Limbic encephalopathy	24	Yes	No	No	No	158	85	85	0.8	68	9.7	131	4.3	NA	NA	Normal	Bilateral temporal lobes	Diffuse slow waves	Diffuse slow waves	Improved	
14	Metabolic encephalopathy		22	Yes	Yes	Not evaluable	Yes	168	86	86	0.8	416	7.8	134	3.9	1.3	107	Normal	Normal	Normal	Diffuse slow waves	Diffuse slow waves	Dead
15	Metabolic encephalopathy		41	Yes	No	No	Yes	180	120	120	NA	52	NA	NA	NA	NA	NA	Normal	NA	NA	Diffuse slow waves	Diffuse slow waves	Dead
16	Metabolic encephalopathy	Limbic encephalopathy	26	Yes	Yes	Not evaluable	Yes	174	98	98	2.4	37	7.4	137	3.4	1.4	130	Normal	Bilateral temporal lobes	Spikes wave in frontal lobes	Spikes wave in frontal lobes	Dead	
17	Metabolic encephalopathy		18	Yes	No	Not evaluable	No	150	100	100	0.4	156	9.7	113	3.7	NA	NA	Normal	Normal	Normal	Diffuse slow waves	Diffuse slow waves	Improved
18	Metabolic encephalopathy		74	Yes	No	No	No	130	80	80	2.2	NA	12.1	119	5.4	NA	NA	NA	NA	NA	NA	NA	Improved

NA indicates not applicable; T-chol, total cholesterol.
 *Continuous infusion of cyclosporin was given at target levels of 250-310 ng/mL.

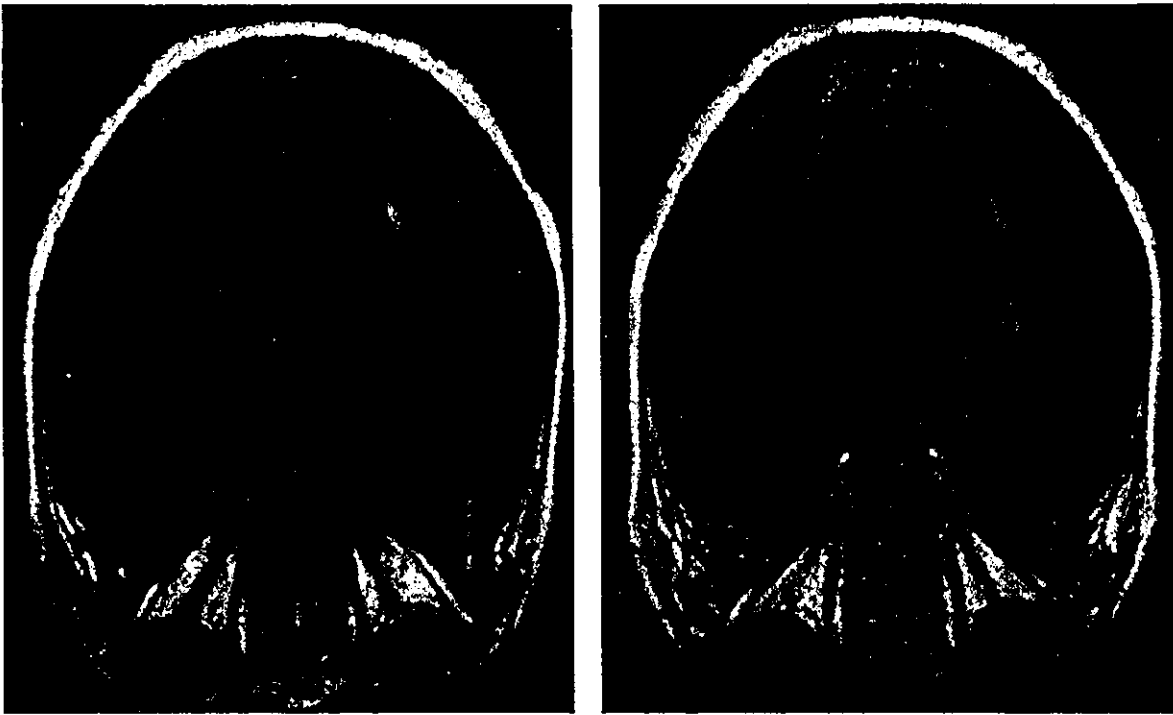


Figure 1. T2-weighted magnetic resonance image of the brain showing high-intensity signals in bilateral temporal lobes. The patient was diagnosed with limbic encephalopathy.

In contrast to conventional allo-HSCT, the incidence of metabolic encephalopathy is increased with RIST. In this study, 15 of 18 CNS complications were metabolic. Of these patients, 4 were diagnosed with cyclosporine encephalopathy on the basis of typical clinical and imaging findings. The incidence of cyclosporine encephalopathy was 1.7% after RIST, which is comparable to that after conventional allo-HSCT in young patients [24]. The median onset was 15 days (range, days 7-22). Three patients displayed seizures and altered mental status that improved after discontinuation of cyclosporine. Blood levels for cyclosporine were normal in all of the 4 patients. Risk factors for cyclosporine encephalopathy have been reported [24,25], and hypertension (2/4), hypocholesterolemia (1/2), and hypomagnesemia (3/4) were observed in our study. These findings are comparable to previous reports on cyclosporine neurotoxicity [24,25]. The growing use of RIST has increased the chance of cyclosporine being administered to elderly patients. Our study does not support the hypothesis that cyclosporine neurotoxicity increases in elderly patients, but further investigation of the safety issues for cyclosporine is warranted. General management such as blood pressure control and electrolyte replacement may be important in preventing adverse effects of cyclosporine.

No findings in the remaining 11 patients with metabolic encephalopathy suggested cyclosporine encephalopathy. However, it should be noted that all 11

patients received a fludarabine-based preparative regimen and that fludarabine has a considerable neurotoxicity [26-32]. These findings suggest that fludarabine might have contributed to the development of CNS toxicity in this study. Except for 1 patient with leukoencephalopathy and hemophagocytic syndrome-related CNS complications, the other 10 patients had undergone UCBT. The incidence of CNS complications after RI-UCBT was 24%. Cord blood as a stem cell source was an independent risk factor in multivariate analysis (odds ratio, 14.5; 95% confidence interval, 3.7-56.9; $P < .0001$). Few studies on CNS complications after myeloablative UCBT have been reported. This complication is possibly characteristic of RI-UCBT. All 10 patients developed altered mental status, including 3 with generalized seizures. Brain imaging in 3 patients showed abnormal signals around the hippocampus, whereas images were normal in the other 6 patients. Hippocampal encephalopathy in the 3 patients involved both white and gray matter and was thus distinct from leukoencephalopathy. Similar findings after RI-UCBT have recently been reported [33]. Although an association with tacrolimus administration has been suggested, none of our patients received tacrolimus, thus indicating other causes. Possibilities include infection, regimen-related toxicity, and immune reaction associated with the use of cord blood. Eight patients who developed metabolic encephalopathy after RI-UCBT had received fludarabine, melphalan, and TBI as a preparative regimen.

This has a higher intensity than most reduced-intensity regimens and might have caused CNS toxicities.

Conversely, CNS complications do not represent a significant concern in bone marrow or peripheral blood transplantation with similar reduced-intensity regimens. Because adult RI-UCBT recipients receive a relatively low dose of CD34⁺ cells, it would raise the concern that there might have been delayed engraftment, leading to an increase in subclinical or undetected CNS viral infections. However, this possibility seemed unlikely. In RI-UCBT with fludarabine, melphalan, and intermediate-dose TBI as a preparative regimen and cyclosporine as GVHD prophylaxis [34], the median day of neutrophil engraftment was 17.5 days. This is comparable to RIST with granulocyte colony-stimulating factor-mobilized blood [11,13]. Furthermore, neither cerebrospinal findings nor blood cultures identified CNS infection in our study, and no patient had GVHD at the onset of CNS complications. Because 4 of the 10 patients who underwent RI-UCBT died soon after the development of CNS complications, symptoms might represent an early manifestation of a systemic disorder predisposing for multiple organ dysfunction syndrome, increasing the risk of transplant-related mortality [35]. However, the association of CNS complications with engraftment is noteworthy in RI-UCBT. We did not use antithymocyte globulin or corticosteroids for preparative regimens or GVHD prophylaxis, respectively, although these practices have been commonly used in previous studies on UCBT [36]. Both agents display strong immunosuppressive properties. The fluid accumulation often observed during this period may have accentuated the tendency for brain edema to develop, as seen in patients with renal decompensation. In RI-UCBT with our regimens [34], the cumulative incidence of complete donor chimerism at day 60 was 93%, and the median time to complete donor chimerism was 22 days. Grade II to IV acute GVHD occurred in 27% of patients. Approximately 60% of RI-UCBT recipients had a noninfectious fever before engraftment (median onset, day 9). Manifestations included a high-grade fever, eruption, and diarrhea, and corticosteroids were effective for ameliorating these reactions. These findings suggest that they might be associated with a cytokine storm induced by massive proliferation of cells with a unique cytokine profile and that the CNS toxicity was attributable to these immune responses. We therefore treated the CNS toxicity with corticosteroids. Because CNS toxicity is associated with considerable morbidity and mortality, optimal preventive measures for CNS complications after RI-UCBT should be established. Intensification of GVHD prophylaxis, such as with methotrexate, might prove beneficial for this purpose.

This investigation was a retrospective study based on medical records. Pathologic examinations were not

used in most patients, and diagnosis of CNS complications was established on the basis of clinical and radiologic findings. Mild neurotoxicity associated with allo-HSCT was likely neglected, and incidences might have been underestimated in this study. Compared with autopsy studies, approximately half of the patients with neurologic complications had been diagnosed during life [4]. Further prospective evaluation is warranted to clarify incidences and clinical characteristics for CNS complications after RIST and to establish optimal preventive and therapeutic measures.

In conclusion, we have demonstrated that CNS complications are a common and frequently fatal complication after RIST, particularly after the use of umbilical cord blood. Metabolic encephalopathy is the most common subtype of CNS complication after RIST, and it frequently manifests as limbic encephalopathy in RIST with umbilical cord blood.

ACKNOWLEDGMENTS

This study was supported by a Grant-in-Aid for Scientific Research from the Ministry of Health, Labor and Welfare.

REFERENCES

1. Patchell RA, White CL III, Clark AW, Beschoner WE, Santos GW. Neurologic complications of bone marrow transplantation. *Neurology*. 1985;35:300-306.
2. Graus F, Saiz A, Sierra J, et al. Neurologic complications of autologous and allogeneic bone marrow transplantation in patients with leukemia: a comparative study. *Neurology*. 1996;46:1004-1009.
3. Wiznitzer M, Packer RJ, August CS, Burkey ED. Neurological complications of bone marrow transplantation in childhood. *Ann Neurol*. 1984;16:569-576.
4. Mohrmann RL, Mah V, Vinters HV. Neuropathologic findings after bone marrow transplantation: an autopsy study. *Hum Pathol*. 1990;21:630-639.
5. Gallardo D, Ferrá C, Berlanga JJ, et al. Neurologic complications after allogeneic bone marrow transplantation. *Bone Marrow Transplant*. 1996;18:1135-1139.
6. de Brabander C, Cornelissen J, Smitt PA, Vecht CJ, van den Bent MJ. Increased incidence of neurological complications in patients receiving an allogeneic bone marrow transplantation from alternative donors. *J Neurol Neurosurg Psychiatry*. 2000;68:36-40.
7. Sostak P, Padovan CS, Yousry TA, Ledderose G, Kolb HJ, Straube A. Prospective evaluation of neurological complications after allogeneic bone marrow transplantation. *Neurology*. 2003;60:842-848.
8. Bleggi-Torres LF, de Medeiros BC, Werner B, et al. Neuropathological findings after bone marrow transplantation: an autopsy study of 180 cases. *Bone Marrow Transplant*. 2000;25:301-307.
9. Openshaw H, Slatkin NE, Parker PM, Forman SJ. Immune-mediated myelopathy after allogeneic marrow transplantation. *Bone Marrow Transplant*. 1995;15:633-636.

10. Rouah E, Gruber R, Shearer W, Armstrong D, Hawkins EP. Graft-versus-host disease in the central nervous system. A real entity? *Am J Clin Pathol*. 1988;89:543-546.
11. Slavin S, Nagler A, Naparstek E, et al. Nonmyeloablative stem cell transplantation and cell therapy as an alternative to conventional bone marrow transplantation with lethal cytoreduction for the treatment of malignant and nonmalignant hematologic diseases. *Blood*. 1998;91:756-763.
12. Giralt S, Estey E, Albitar M, et al. Engraftment of allogeneic hematopoietic progenitor cells with purine analog-containing chemotherapy: harnessing graft-versus-leukemia without myeloablative therapy. *Blood*. 1997;89:4531-4536.
13. Saito T, Kanda Y, Kami M, et al. Therapeutic potential of a reduced-intensity preparative regimen for allogeneic transplantation with cladribine, busulfan, and antithymocyte globulin against advanced/refractory acute leukemia/lymphoma. *Clin Cancer Res*. 2002;8:1014-1020.
14. McSweeney PA, Niederwieser D, Shizuru JA, et al. Hematopoietic cell transplantation in older patients with hematologic malignancies: replacing high-dose cytotoxic therapy with graft-versus-tumor effects. *Blood*. 2001;97:3390-3400.
15. Xun CQ, McSweeney PA, Boeckh M, Storb RF, Broudy VC, Thompson JA. Successful nonmyeloablative allogeneic hematopoietic stem cell transplant in an acute leukemia patient with chemotherapy-induced marrow aplasia and progressive pulmonary aspergillosis. *Blood*. 1999;94:3273-3276.
16. Mielcarek M, Martin PJ, Leisenring W, et al. Graft-versus-host disease after nonmyeloablative versus conventional hematopoietic stem cell transplantation. *Blood*. 2003;102:756-762.
17. Fukuda T, Boeckh M, Carter RA, et al. Risks and outcomes of invasive fungal infections in recipients of allogeneic hematopoietic stem cell transplants after nonmyeloablative conditioning. *Blood*. 2003;102:827-833.
18. Childs R, Chernoff A, Contentin N, et al. Regression of metastatic renal-cell carcinoma after nonmyeloablative allogeneic peripheral-blood stem-cell transplantation. *N Engl J Med*. 2000;343:750-758.
19. Bornhauser M, Thiede C, Schuler U, et al. Dose-reduced conditioning for allogeneic blood stem cell transplantation: durable engraftment without antithymocyte globulin. *Bone Marrow Transplant*. 2000;26:119-125.
20. Giralt S, Thall PF, Khouri I, et al. Melphalan and purine analog-containing preparative regimens: reduced-intensity conditioning for patients with hematologic malignancies undergoing allogeneic progenitor cell transplantation. *Blood*. 2001;97:631-637.
21. De La Camara R, Tomas JF, Figuera A, Berberana M, Fernandez-Ranada JM. High dose busulfan and seizures. *Bone Marrow Transplant*. 1991;7:363-364.
22. Bearman SI, Appelbaum FR, Buckner CD, et al. Regimen-related toxicity in patients undergoing bone marrow transplantation. *J Clin Oncol*. 1988;6:1562-1568.
23. Provenzale JM, Graham ML. Reversible leukoencephalopathy associated with graft-versus-host disease: MR findings. *AJNR Am J Neuroradiol*. 1996;17:1290-1294.
24. Bechstein WO. Neurotoxicity of calcineurin inhibitors: impact and clinical management. *Transpl Int*. 2000;13:313-326.
25. Gijtenbeek JM, van den Bent MJ, Vecht CJ. Cyclosporine neurotoxicity: a review. *J Neurol*. 1999;246:339-346.
26. Von Hoff DD. Phase I clinical trials with fludarabine phosphate. *Semin Oncol*. 1990;17(5 suppl 8):33-38.
27. Chun HG, Leyland-Jones BR, Caryk SM, Hoth DF. Central nervous system toxicity of fludarabine phosphate. *Cancer Treat Rep*. 1986;70:1225-1228.
28. Spriggs DR, Stopa E, Mayer RJ, Schoene W, Kufe DW. Fludarabine phosphate (NSC 312878) infusions for the treatment of acute leukemia: phase I and neuropathological study. *Cancer Res*. 1986;46:5953-5958.
29. Warrell RP Jr, Berman E. Phase I and II study of fludarabine phosphate in leukemia: therapeutic efficacy with delayed central nervous system toxicity. *J Clin Oncol*. 1986;4:74-79.
30. Merkel DE, Griffin NL, Kagan-Hallet K, Von Hoff DD. Central nervous system toxicity with fludarabine. *Cancer Treat Rep*. 1986;70:1449-1450.
31. Vidarsson B, Mosher DF, Salamat MS, Isaksson HJ, Onundarson PT. Progressive multifocal leukoencephalopathy after fludarabine therapy for low-grade lymphoproliferative disease. *Am J Hematol*. 2002;70:51-54.
32. Cohen RB, Abdallah JM, Gray JR, Foss F. Reversible neurologic toxicity in patients treated with standard-dose fludarabine phosphate for mycosis fungoides and chronic lymphocytic leukemia. *Ann Intern Med*. 1993;118:114-116.
33. Wong R, Beguelin GZ, de Lima M, et al. Tacrolimus-associated posterior reversible encephalopathy syndrome after allogeneic haematopoietic stem cell transplantation. *Br J Haematol*. 2003;122:128-134.
34. Miyakoshi S, Yuji K, Kami M, et al. Successful engraftment following reduced-intensity umbilical cord blood transplantation (RI-UCBT) for adult patients with advanced hematologic diseases. *Clin Cancer Res*. 2004;10(11):3586-3592.
35. Gordon B, Lyden E, Lynch J, et al. Central nervous system dysfunction as the first manifestation of multiple organ dysfunction syndrome in stem cell transplant patients. *Bone Marrow Transplant*. 2000;25:79-83.
36. Laughlin MJ, Barker J, Bambach B, et al. Hematopoietic engraftment and survival in adult recipients of umbilical-cord blood from unrelated donors. *N Engl J Med*. 2001;344:1815-1822.

Regimen-related toxicity following reduced-intensity stem-cell transplantation (RIST): comparison between Seattle criteria and National Cancer Center Common Toxicity Criteria (NCI-CTC) version 2.0

M Sakiyama¹, M Kami¹, A Hori¹, O Imataki¹, T Hamaki¹, N Murashige¹, K Kobayashi¹, Y Kishi¹, R Kojima¹, S-W Kim¹, E Kusumi², K Yuji², S Miyakoshi², S Mori¹, R Tanosaki¹, S Taniguchi² and Y Takaue¹, for the Tokyo SCT Consortium

¹Hematopoietic Stem Cell Transplantation Unit, The National Cancer Center Hospital, Tokyo, Japan; and ²Department of Hematology, Toranomon Hospital, Tokyo, Japan

Summary:

Acute regimen-related toxicity (RRT) is minimal in reduced-intensity stem-cell transplantation (RIST). However, the Seattle RRT grading (Bearman *et al*), developed in the context of conventional-intensity transplantation, is frequently applied to RIST. We compared the National Cancer Institute Common Toxicity Criteria (NCI-CTC) version 2.0 with the Seattle criteria after RIST in 86 patients. RRT within 30 days of transplant graded by both sets of criteria were significantly associated with the outcome confirming the predictive value of both the systems. A total of 15 patients died of disease progression, and 12 of transplant-related mortality: RRT ($n=2$), graft-versus-host disease (GVHD) ($n=7$), infection ($n=1$), and others ($n=2$). GVHD-related deaths primarily resulted from infections after steroid treatment ($n=6$) and bronchiolitis obliterans ($n=1$). This study shows that NCI-CTC is appropriate in toxicity evaluation of RIST, and that its application to RIST enables a toxicity comparison between RIST and other types of cancer treatments. Since GVHD is a significant problem in RIST, modifications are required to evaluate immunological complications following RIST.

Bone Marrow Transplantation (2004) 34, 787–794.
doi:10.1038/sj.bmt.1704673

Published online 13 September 2004

Keywords: reduced intensity stem-cell transplantation; regimen-related toxicity; NCI-CTC version 2.0; graft-versus-host disease

Reduced-intensity stem-cell transplantation (RIST) is associated with lower acute regimen-related toxicity (RRT).^{1–6}

The recognition and grading of toxicity caused by RIST is important in practice and in designing clinical trials.

After conventional-intensity stem-cell transplantation (CIST), patients can die of disease progression or complications of therapy. RRT is toxicity that is directly attributable to the conditioning regimen, but usually excludes graft-versus-host disease (GVHD), infection, and hemorrhage. It is often difficult to separate RRT from other toxicities. The Seattle group proposed a toxicity grading system specifically for allogeneic HSCT based upon a retrospective review of 195 patients who underwent CIST.⁷ RRT in RIST is minimal and a significant proportion of morbidity and mortality is secondary to GVHD.⁸ However, the Seattle criteria have been used to evaluate RIST.

The National Cancer Institute Common Toxicity Criteria version 2.0 (NCI-CTC ver. 2.0) has been widely used for development and evaluation of chemotherapeutic agents. If NCI-CTC ver. 2.0 can be applied to RIST, toxicity comparison between RIST and various other cancer treatments would be possible. We studied 86 patients who underwent RIST to see if NCI-CTC ver. 2.0 could be used to predict transplant-related mortality (TRM) and overall survival (OS) after RIST.

Patients and methods

Patients

The medical records of all of the patients ($n=86$) who underwent RIST at the National Cancer Center Hospital between January 1999 and April 2002 were reviewed. All patients and donors gave their written informed consent in accordance with the requirements of the Institutional Review Board of the National Cancer Center Hospital.

The median age was 51 years (range, 4–67). The underlying disease was AML ($n=26$), lymphoma ($n=21$), MDS ($n=11$), CML ($n=5$), ALL ($n=2$), other hematologic diseases ($n=3$), and solid tumors ($n=18$). The hematological malignancies were refractory to chemotherapy in 33 cases, and were in remission or sensitive to

Correspondence: Dr M Kami, Hematopoietic Stem Cell Transplantation Unit, National Cancer Center Hospital, 5-1-1 Tsukiji, Chuo-ku, Tokyo 104-0045, Japan; E-mail: mkami@ncc.go.jp
Received 25 November 2003; accepted 28 June 2004
Published online 13 September 2004

treatment in the remaining 35 cases. All of the patients with solid tumors were refractory to conventional treatments.

Preparative regimens

The preparative regimens comprised busulfan 4 mg/kg daily for 2 days with fludarabine 25 mg/kg daily for 6 days ($n = 64$)⁹ or cladribine 0.11 mg/kg daily for 6 days ($n = 22$).⁵ Rabbit antithymocyte globulin (ATG, Thymoglobulin, IMTIX-SANGSTAT, Lyons, France) 2.5 mg/kg for 2 or 4 days and TBI (4 Gy) were added to the preparative regimen in 49 and three patients, respectively.

Stem-cell source

A total of 64 patients had an HLA-identical related donor and 17 had a one-locus mismatched related donor.¹⁰ Peripheral blood was used for these 81 patients. Five patients received bone marrow from a matched unrelated donor (MUD).

Prophylaxis and treatment of GVHD

Patients who were transplanted from an HLA-identical related donor received cyclosporin alone (3 mg/kg). Those who were transplanted from an HLA-mismatched related donor or MUD received cyclosporin and short-course methotrexate.

The diagnosis of GVHD was made on clinical grounds in conjunction with biopsy of the skin and digestive tract. Acute and chronic GVHD were graded according to the consensus criteria.^{11,12} Grade II–IV acute GVHD was treated with 2 mg/kg/day of methylprednisolone in addition to cyclosporin.

Management of infections

All of the patients stayed in reverse isolation in a laminar airflow-equipped room, and received prophylaxis with trimethoprim/sulfamethoxazole or pentamidine inhaler, ciprofloxacin, and fluconazole against *Pneumocystis carinii*, bacterial, and fungal infection, respectively. Herpes virus prophylaxis with acyclovir was also given as previously described.¹³ CMV pp65 antigenemia was routinely monitored once a week. When antigenemia was detected, pre-emptive therapy with ganciclovir was initiated as previously reported.¹⁴

Toxicity grading

The Seattle criteria assess post transplant RRT in eight organs: the heart, bladder, kidneys, lungs, liver, mucosa, central nervous system (CNS), and gut. As the criteria exclusively assess RRT, they exclude adverse events attributable to GVHD and infection. Similarly, renal failure is excluded when it coincides with the administration of known nephrotoxic agents. RRT was graded with the Seattle criteria on the day of initiation of conditioning regimens and days 0, 7, 14, and 28 (and on day 100 for lungs) post transplant (Table 1).

NCI-CTC ver. 2.0 assesses more than 260 adverse events in 24 organ systems. To make a comparison, 16 items in NCI-CTC ver. 2.0 equivalent to those in the Seattle criteria were regraded. These included arrhythmia, cardiovascular dysfunction, hematuria, renal dysfunction/creatinine levels, lung toxicity, serum levels of bilirubin, aspartate aminotransferase (AST), alanine aminotransferase (ALT) and alkaline phosphatase (ALP), weight gain/ascites, neurological dysfunction, mucositis, and diarrhea (Table 2). All of the observed adverse events were evaluated daily with NCI-CTC ver. 2.0 from the day of initiation of conditioning regimens until day 30 post transplant (and on day 100 for lungs).

Two or more independent physicians graded RRT based on the medical records. If there was discordance between their diagnoses, another physician (MK) made a final diagnosis.

Statistical analysis

The probability of OS was determined with the Kaplan-Meier method as of June 31, 2002. The median follow-up period after transplantation was 252 days (range, 82–1046 days). Surviving patients were censored on the last day of follow-up.

A univariate analysis using the χ^2 test and Mann-Whitney test were performed to identify the risk factors for RRT. A multivariable Cox proportional-hazards analysis was conducted to determine whether the development of RRT was independent of other clinical variables in predicting overall mortality. In RIST for solid tumors and malignant lymphoma, some lesions persist following preparative regimens. Sizes of these lesions frequently show a transient increase until the development of alloimmune responses. When patients die without disease progression, it is difficult to determine whether these deaths are attributable to disease progression or TRM. We therefore used overall mortality instead of nonrelapse deaths.

Clinical variables examined in a univariate analysis were entered in a backward, stepwise Cox proportional-hazards model to identify predictors of mortality. Variables with a *P*-value of less than 0.50 were entered into the model, and those with a *P*-value of less than 0.10 were retained. The *P*-values less than 0.05 were considered to be significant.

Results

Toxicity grading

Grade 3–4 toxicity by the Seattle criteria was observed in the lung (5%), CNS (2%), kidney (1%), and heart (1%) (Table 3). The maximal toxicity of grades 0, 1, 2, 3, and 4 was noted in eight (9%), 38 (44%), 35 (41%), four (5%), and one patient (1%), respectively.

Grade 3–4 toxicity by NCI-CTC ver. 2.0 was observed in all of the organs (Table 4): liver (31%), lung (21%), stomatitis (13%), gastrointestinal tract (9%), heart (6%), CNS (6%), kidney (2%), and bladder (1%). The maximal toxicity of grades 0, 1, 2, 3, and 4 was observed in two

Table 1 Regimen-related toxicity according to the Seattle criteria

Toxicity	Grade 1	Grade 2	Grade 3
Heart	Mild electrocardiogram abnormality, not requiring medical intervention; or noted heart enlargement on CXR with no clinical symptoms	Moderate electrocardiogram abnormalities requiring and responding to medical intervention; or requiring continuous monitoring without treatment; or congestive heart failure responsive to digitalis or diuretics	Severe electrocardiogram abnormalities with no or only partial response to medical intervention; or heart failure with no or only minor response to medical intervention; or decrease in voltage by more than 50%
Bladder	Macroscopic hematuria after 2 days from last chemotherapy dose with no subjective symptoms of cystitis and not caused by infection	Macroscopic hematuria after 7 days from last chemotherapy dose not caused by infection; or hematuria after 2 days with subjective symptoms of cystitis not caused by infection	Hemorrhagic cystitis with frank blood, necessitating invasive local intervention with installation of sclerosing agents, nephrostomy or other surgical procedures
Kidney	Increase in creatinine up to twice the baseline value	Increase in creatinine above twice baseline but not requiring dialysis	Requirement of dialysis
Lung	Dyspnea without CXR changes not caused by infection or congestive heart failure; or CXR showing isolated infiltrate or mild interstitial changes without symptoms not caused by infection or congestive heart failure	CXR with extensive localized infiltrate or moderate interstitial changes combined with dyspnea and not caused by infection or CHF; or decrease of PO ₂ (> 10% from baseline) but not requiring mechanical ventilation or > 50% O ₂ on mask and not caused by infection	Interstitial changes requiring mechanical ventilatory support or > 50% oxygen on mask and not caused by infection or CHF
Liver	Mild hepatic dysfunction with 2.0 mg/dl < bilirubin < 6.0 mg/dl or weight gain > 2.5% and < 5% from baseline, of noncardiac origin; or serum AST increase more than two-fold but less than five-fold from lowest preconditioning	Moderate hepatic dysfunction with bilirubin > 6 mg/dl < 20 mg/dl; or serum AST increase > five-fold from preconditioning; or clinical ascites or image-documented ascites > 100 ml; or weight gain > 5% from baseline of noncardiac origin	Severe hepatic dysfunction with bilirubin > 20 mg/dl; or hepatic encephalopathy; or ascites compromising respiratory function
CNS	Somnolence but the patient is easily arousable and oriented after arousal	Somnolence with confusion after arousal; or other new objective CNS symptoms with no loss of consciousness not more easily explained by other medication, bleeding, or CNS infection	Seizures or coma not explained (documented) by other medication, CNS infection, or bleeding
Stomatitis	Pain and/or ulceration not requiring a continuous i.v. narcotic drug	Pain and/or ulceration requiring a continuous i.v. narcotic drug (morphine drip)	Severe ulceration and/or mucositis requiring preventive intubation; or resulting in documented aspiration pneumonia with or without intubation
GI toxicity	Watery stools > 500 ml but < 2000 ml every day not related to infection	Watery stools > 2000 ml every day not related to infection; or macroscopic hemorrhagic stools with no effect on cardiovascular status not caused by infection; or subileus not related to infection	Ileus requiring nasogastric suction and/or surgery and not related to infection; or hemorrhagic enterocolitis affecting cardiovascular status and requiring transfusion

Grade IV regimen-related toxicity is defined as fatal toxicity.

CXR = chest X ray; i.v. = intravenous; CNS = central nervous system; GI = gastrointestinal; CHF = congestive heart failure.

Table 2 Regimen-related toxicity according to NCI-CTC version 2.0

Toxicity	Grade 1	Grade 2	Grade 3	Grade 4
Heart				
Arrhythmia	Asymptomatic, not requiring treatment	Symptomatic, but not requiring treatment	Symptomatic and requiring treatment	Life-threatening (eg, arrhythmia associated with CHF, hypotension, syncope, shock) Acute myocardial infarction
Ischemia/infarction	Nonspecific T-wave flattening or changes	Asymptomatic, ST- and T-wave changes suggesting ischemia	Angina without evidence of infarction	Severe or refractory CHF or requiring intubation
Left ventricular function	Asymptomatic decline of resting ejection fraction of > 10% but <20% of baseline value; shortening fraction > 24% but <30%	Asymptomatic but resting ejection fraction below LLN for laboratory or decline of resting ejection fraction > 20% of baseline value; <24% shortening fraction	CHF responsive to treatment	
Bladder	Microscopic only	Intermittent gross bleeding, no clots	Persistent gross bleeding or clots; may require catheterization or instrumentation, or transfusion	Open surgery or necrosis or deep bladder ulceration
Kidney	Renal dysfunction	Not defined	Requiring dialysis, but reversible	Requiring dialysis and irreversible
Lung	Renal dysfunction	Not defined	> 3.0–6.0 × ULN	> 6.0 × ULN
	Creatinine levels	> ULN–1.5 × ULN	Decreased O ₂ saturation at rest, requiring supplemental oxygen	Decreased O ₂ saturation, requiring pressure support (CPAP) or assisted ventilation
	Hypoxia	Not defined	Radiographic changes and requiring oxygen	Radiographic changes and requiring assisted ventilation
Liver	Pneumonitis/pulmonary infiltrates	Radiographic changes but asymptomatic or symptoms not requiring steroids	Radiographic changes and requiring steroids or diuretics	
	Bilirubin	> ULN–1.5 × ULN	> 1.5–3.0 × ULN	> 3.0–10.0 × ULN
	Aspartate aminotransferase (AST)	> ULN–2.5 × ULN	> 2.5–5.0 × ULN	> 5.0–20.0 × ULN
	Alanine aminotransferase (ALT)	> ULN–2.5 × ULN	> 2.5–5.0 × ULN	> 20.0 × ULN
	Alkaline phosphatase (ALP)	2–5%	5–10%	> 20.0 × ULN
	Weight gain/asites			≥ 10% or fluid retention resulting in pulmonary failure
CNS	Depressed level of consciousness	Somnolence or sedation not interfering with function	Somnolence or sedation interfering with function, but not interfering with activities of daily living	Coma
Stomatitis	Stomatitis/pharyngitis	Painless ulcers, erythema, or mild soreness in the absence of lesions	Painful erythema, edema or ulcers but can swallow	Severe ulceration requiring prophylactic intubation or resulting in documented aspiration pneumonia
GI toxicity	Diarrhea	Increase of < 4 stools/day over pretreatment	Increase of 4–6 stools/day, or nocturnal stools	Physiologic consequences requiring intensive care; or hemodynamic collapse

ULN = upper limit of normal values; LLN = lower limit of normal value; WNL = within normal limits; CHF = congestive heart failure; GI = gastrointestinal.

Table 3 Toxicity grading using the Seattle criteria in 86 patients undergoing RIST

Grade	0	1	2	3	4
Gut	69	17	0	0	0
Stomatitis	47	29	10	0	0
Central nervous system	78	4	2	2	0
Liver	23	31	31	1	0
Lung	75	4	3	3	1
Kidney	51	31	3	1	0
Bladder	84	2	0	0	0
Heart	70	8	7	1	0
Maximal grades	8	38	35	4	1

Table 4 Toxicity grading using NCI-CTC ver. 2.0 in 86 patients undergoing RIST

Grades	0	1	2	3	4
Gut	50	18	10	7	1
Stomatitis	35	8	32	1	0
Central nervous system	74	5	2	2	3
Liver	5	27	27	22	5
Lung	56	12	0	17	1
Kidney	47	26	11	2	0
Bladder	61	23	1	1	0
Heart	72	6	3	3	2
Maximal grades	2	16	25	35	8

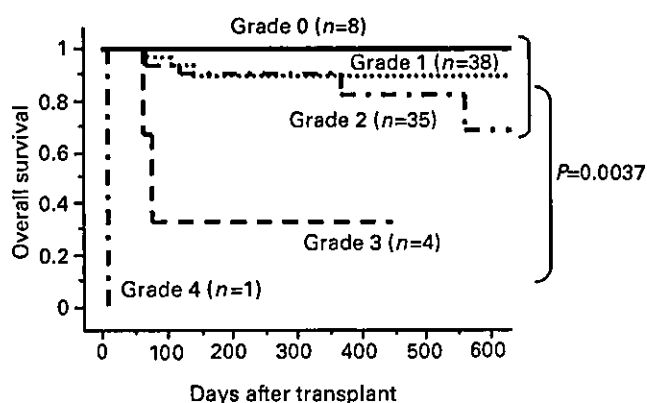


Figure 1 Overall survival evaluated by the Seattle criteria. Five patients had grade 3-4 toxicity in at least one organ, of whom three died (60%). The estimated 1-year OS was 25.0% (95% confidence interval (CI) 0.0-61.7%). In contrast, of the 81 patients with grade 0-2 toxicity in all the organ systems, eight died (9.9%). The estimated 1-year OS was 74.2% (95% CI, 64.2-84.2%). The one-year OS was significantly lower in the patients with grade 3-4 toxicity ($P=0.0037$).

(2%), 16 (19%), 25 (29%), 35 (41%), and eight patients (9%), respectively.

The lung toxicity on day 100 using either the Seattle criteria or NCI-CTC ver. 2.0 was not maximal in any of the 86 patients.

There were 10 cases of the 'up-staging' of the toxicity from the Seattle criteria to NCI-CTC version 2.0: liver ($n=6$), and kidney ($n=4$).

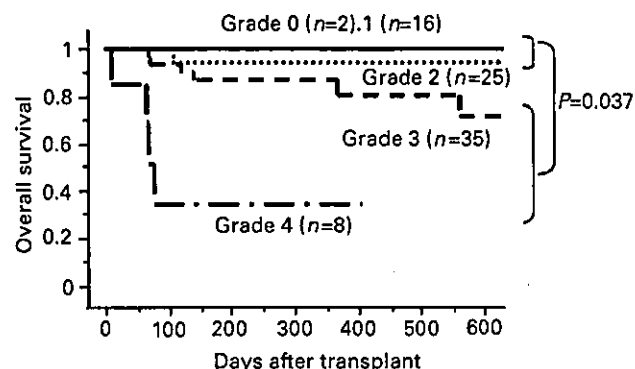


Figure 2 Overall survival evaluated by NCI-CTC version 2.0. In total, 43 patients had grade 3-4 toxicity in at least one organ, of whom 10 patients (23.2%) died of TRM. The estimated 1-year OS was 64.7% (95% CI, 50.2-79.2%). In contrast, of the remaining 43 patients with grade 2 toxicity in all the organ systems, one died of GVHD, resulting in 78.5% (95% CI, 64.8-92.2%) of estimated 1-year OS and 8.8% of TRM. The 1-year OS was significantly lower in the patients with grade 3-4 toxicity ($P=0.037$).

Table 5 Variables influencing the grades of regimen-related toxicity according to NCI-CTC ver. 2.0

Variables	Grade 0-2 (n=43)	Grade 3-4 (n=43)	P-value
Age			
Median (range)	53 (4-65)	50 (19-67)	0.459
Sex			
Male/female	26/17	31/12	0.362
Risk of primary diseases			
High/low	13/30	20/23	0.183
Preparative regimens			
Fludarabine-based/cladribine-based	34/9	30/13	0.459
ATG-containing yes/no	22/21	27/16	0.384
TBI-containing yes/no	1/42	2/41	0.999
GVHD prophylaxis			
Cyclosporine alone/cyclosporine and methotrexate	38/5	32/11	0.165
Donors			
Related/unrelated	41/2	40/3	0.999
Matched/mismatched	37/6	32/11	0.278

ATG = anti-thymocyte globulin, TBI = total body irradiation, GVHD = graft-versus-host disease. Any variables were significant on multivariate analysis.

Association between toxicity grading and survival following RIST

A total of 27 patients died: 16 of disease progression (19%) and 11 of TRM (13%). The 11 patients who died of TRM had the maximal toxicity of grade 2 ($n=1$), grade 3 ($n=6$), and grade 4 ($n=4$) by NCI-CTC ver. 2.0, which was also graded with the Seattle criteria to be grade 1 ($n=3$), grade 2 ($n=5$), grade 3 ($n=2$), and grade 4 ($n=1$). The causes of TRM were GVHD/steroid-related infection ($n=6$), GVHD (bronchiolitis obliterans) ($n=1$), infection ($n=2$), and

Table 6 Regimen-related toxicities (RRT) in studies reported previously

Authors/Reference	n	Preparative regimens	Age years	Primary diseases	GVHD prophylaxis	RRT			Transplant-related mortality (TRM)	
						Criteria	III-IV	III		
Carella et al ¹⁵	15	Flu/CY ^a	34 (19-60)	HD, NHL	CSP/MTX	Details not described			Not described	
Childs et al ⁶	19	Flu/CY ^b	48 (37-65)	RCC	CSP	Details not described			2/19 (11%)	
Giralt et al ¹⁶	86	Flu/Mel ^c (n = 78)	52 (22-70)	AML/MDS, CML, ALL/lymphoma	FK506/MTX	Bearman's criteria	19	13	6	38.0%
Khouri et al ⁴	6	Clad/Mel ^d (=8)	62 (51-71)	CLL	FK506/MTX	Details not described	12	5	7	88.0%
	4	Flu/CY ^a	55 (47-61)	Intermediate-grade lymphoma or in Richter's transformation			0%	0%	0%	
Khouri et al ¹⁷	5	Flu/CY ^f	50 (47-57)	Low-grade lymphoma	FK506/MTX	Bearman's criteria	0%*	0%	0%	3/20 (15%)
	20	Flu/CY ^a or Flu/CY ^f	51 (31-68)	Follicular lymphoma						
Slavin et al ²	26	Flu/BU/ATG	33.5 (1-61)	Acute leukemia, chronic leukemia, NHL, MDS, MM, and genetic diseases	CSP	WHO criteria				4/26 (15%)
Nagler et al ¹⁸	23	Flu/BU/ATG	41 (13-63)	HD, NHL	CSP	Bearman's criteria	17%	13%	4%	7/23 (30%)
	45	TBI 200 cGy	56 (31-71)	ALL, AML, CLL, CML, HD, MM, NHL, WM, CLL, MDS						
McSweeney et al ⁶	86	Clad or Flu/BU ± ATG ^g	51 (4-67)	AML, MDS, CML, ALL, lymphoma, TLBL, ATL, solid tumor	CSP or CSP/MTX	Bearman's criteria	6%	5%	1%	11/86 (13%)
This study							50%	41%	9%	

HD = Hodgkin's lymphoma; NHL = non-Hodgkin's lymphoma; RCC = renal cell carcinoma; AML = acute myeloid leukemia; MDS = myelodysplastic syndrome; CML = chronic myelogenous leukemia; ALL = acute lymphocytic leukemia; CLL = chronic lymphocytic leukemia; MM = multiple myeloma; WM = Waldenstrom's macroglobulinemia.

^aFlu/CY: fludarabine 30 mg/m² with cyclophosphamide 300 mg/m² daily for 3 days.
^bFlu/CY: fludarabine 25 mg/m² given daily for 5 days and cyclophosphamide 60 mg/kg for 2 days.
^cFlu/Mel: fludarabine 25 mg/m² given daily for 5 days and melphalan 90 mg/m² or 70 mg/m² for 2 days.
^dClad/Mel: cladribine 12 mg/m² given daily for 5 days and melphalan 90 mg/m² or 70 mg/m² for 2 days.
^ePFA: cisplatin 25 mg/m² daily for 4 days; fludarabine 30 mg/m²; and cytarabine 500 mg/m² daily for 2 days.
^fFlu/CY: fludarabine 30 mg/m² given daily for 5 days and cyclophosphamide 1000 mg/m² for 2 days.
^gModerate VOD was observed in two and was severe in two subjects.

^hFour with disease progression died from DLI-induced GVHD and infections and three died of transplantation complications without disease progression.
ⁱNo patient experienced regimen-related painful mucositis, severe nausea and vomiting, pulmonary toxicity, cardiac toxicity, hemorrhagic cystitis, or new-onset alopecia.
^jFlu/BU/ATG: fludarabine 30 mg/m² for 6 consecutive days, oral busulfan 4 mg/kg/day for 2 days, and anti-T-lymphocyte globulin 10 mg/kg/day for 4 days.

others ($n=2$). Maximal grades of GVHD in fatal cases were IV ($n=1$), III ($n=1$), II ($n=3$), and I ($n=2$).

Figure 1 demonstrates the association between the maximal toxicity of the Seattle criteria and OS. Five patients had grade 3–4 toxicity in at least one organ, of whom three died (60%). Estimated 1-year OS was 25.0% (95% confidence interval (CI) 0.0–61.7%). In contrast, of the 81 patients with grade 0–2 toxicity in all the organ systems, eight died (9.9%). The estimated 1-year OS was 74.2% (95% CI, 64.2–84.2%). The 1-year OS was significantly lower in the patients with grade 3–4 toxicity ($P=0.0037$).

Figure 2 demonstrates the association between the maximal toxicity of NCI-CTC ver. 2.0 and OS. In all, 43 patients had grade 3–4 toxicity in at least one organ, of whom 10 patients (23.2%) died of TRM. The estimated 1-year OS was 64.7% (95% CI, 50.2–79.2%). In contrast, of the remaining 43 patients with grade 2 toxicity in all the organ systems, one died of GVHD, resulting in 78.5% (95% CI, 64.8–92.2%) of estimated 1-year OS and 8.8% of TRM. The 1-year OS was significantly lower in the patients with grade 3–4 toxicity ($P=0.037$).

Variables influencing RRT

No variables were found to be associated with RRT of NCI-CTC ver. 2.0 by univariate (Table 5) or multivariate analysis.

Variables influencing overall survival

Patients who survived longer than 30 days were included in this analysis. Multivariate analysis showed that survival was significantly different between unrelated vs related donors (hazard ratio 7.5, 95% CI 1.7–32.8, $P=0.0074$), HLA-mismatched vs matched (hazard ratio 3.8, 95% CI 1.1–12.9, $P=0.0295$), and the maximal toxicity grade 3–4 vs grade 2–3 of NCI-CTC ver. 2.0 within day 30 post transplant (hazard ratio 3.0, 95% CI 1.2–7.3, $P=0.0177$).

Discussion

Evaluation of RRT after RIST is not uniform. As a result, toxicity grades vary among studies (Table 6) (2–4, 6, 15–18). Our study shows that both the Seattle criteria and NCI-CTC ver. 2.0 are significantly associated with outcome, and have predictive value.

The prognosis of grade 3 by the Seattle criteria is comparable to that of grade 4 by NCI-CTC ver. 2.0, and the prognosis of grade 2 by the Seattle criteria is comparable to that of grade 3 by NCI-CTC ver. 2.0 (Figures 1 and 2). However, neither criteria can offer a cutoff to predict death since the sensitivity and specificity are insufficient; the threshold of \leq grade 2 by Seattle criteria and \leq grade 3 by NCI-CTC ver. 2.0 would be sensitive but not specific to predict TRM, whereas the threshold of \geq grade 3 by the Seattle criteria and \geq grade 4 by NCI-CTC ver. 2.0 would be specific but not sensitive. These findings suggest that these criteria need to be modified for use in RIST.

There are two types of complications associated with allogeneic HSCT. One is the organ toxicity directly caused by preparative regimens. The other is immunological complications, represented by GVHD. When anti-T-cell antibodies are included in conditioning regimens, the frequency of GVHD is decreased^{19,20} showing that GVHD is influenced by the types of preparative regimens. Given the fact that GVHD is the most common cause of nonrelapse death after RIST,⁸ GVHD should be considered in the safety evaluation of conditioning regimens.

Another common complication after RIST is early progression of the underlying malignancy. This phenomenon could potentially be considered a consequence (and therefore toxicity) of the reduced intensity of the conditioning regimen.

Another consideration is the follow-up duration in evaluating immunological complications following RIST. The duration of observation after chemotherapy is usually 30 days. In contrast, the onset of GVHD can be delayed. The period of 30 days of observation is not long enough to evaluate the safety of RIST. Although the day 100 TRM has been used in RIST, it is not sufficient in evaluation of the immunological complications. We propose that TRM until day 200 should be used in the evaluation criteria for RIST-related toxicity.

Our study shows that both the Seattle criteria and NCI-CTC ver. 2.0 are useful in evaluating toxicity of RIST. Prospective studies are required to establish a proper toxicity grading system for RIST.

References

- 1 Giralt S, Estey E, Albitar M *et al*. Engraftment of allogeneic hematopoietic progenitor cells with purine analog-containing chemotherapy: harnessing graft-versus-leukemia without myeloablative therapy. *Blood* 1997; 89: 4531–4536.
- 2 Slavin S, Nagler A, Naparstek E *et al*. Nonmyeloablative stem cell transplantation and cell therapy as an alternative to conventional bone marrow transplantation with lethal cytoreduction for the treatment of malignant and nonmalignant hematologic diseases. *Blood* 1998; 91: 756–763.
- 3 Childs R, Chernoff A, Contentin N *et al*. Regression of metastatic renal-cell carcinoma after nonmyeloablative allogeneic peripheral-blood stem-cell transplantation. *N Engl J Med* 2000; 343: 750–758.
- 4 Khouri IF, Keating M, Korbling M *et al*. Transplant-lite: induction of graft-versus-malignancy using fludarabine-based nonablative chemotherapy and allogeneic blood progenitor-cell transplantation as treatment for lymphoid malignancies. *J Clin Oncol* 1998; 16: 2817–2824.
- 5 Saito T, Kanda Y, Kami M *et al*. Therapeutic potential of a reduced-intensity preparative regimen for allogeneic transplantation with cladribine, busulfan, and antithymocyte globulin against advanced/refractory acute leukemia/lymphoma. *Clin Cancer Res* 2002; 8: 1014–1020.
- 6 McSweeney PA, Niederwieser D, Shizuru JA *et al*. Hematopoietic cell transplantation in older patients with hematologic malignancies: replacing high-dose cytotoxic therapy with graft-versus-tumor effects. *Blood* 2001; 97: 3390–3400.
- 7 Bearman S, Appelbaum FR, Buckner C *et al*. Regimen-related toxicity in patients undergoing bone marrow transplantation. *J Clin Oncol* 1988; 6: 1562–1568.

- 8 Mielcarek M, Martin PJ, Leisenring W *et al*. Graft-versus-host disease after nonmyeloablative versus conventional hematopoietic stem cell transplantation. *Blood* 2003; 102: 956-962.
- 9 Nijya H, Kanda Y, Saito T *et al*. Early full donor myeloid chimerism after reduced-intensity stem cell transplantation using a combination of fludarabine and busulfan. *Haematologica* 2001; 86: 1071-1074.
- 10 Nakai K, Mineishi S, Kami M *et al*. The feasibility of reduced-intensity allogeneic hematopoietic stem cell transplantation from a related donor with HLA one-antigen with or without one-allele mismatch. *Haematologica* 2003; 88: 115-117.
- 11 Przepiorka D, Weisdorf D, Martin P *et al*. 1994 Consensus Conference on Acute GVHD Grading. *Bone Marrow Transplant* 1995; 15: 825-828.
- 12 Sullivan KM, Agura E, Anasetti C *et al*. Chronic graft-versus-host disease and other late complications of bone marrow transplantation. *Semin Hematol* 1991; 28: 250-259.
- 13 Kanda Y, Mineishi S, Saito T *et al*. Long-term low-dose acyclovir against varicella-zoster virus reactivation after allogeneic hematopoietic stem cell transplantation. *Bone Marrow Transplant* 2001; 28: 689-692.
- 14 Kanda Y, Mineishi S, Saito T *et al*. Response-oriented preemptive therapy against cytomegalovirus disease with low-dose ganciclovir: a prospective evaluation. *Transplantation* 2002; 73: 568-572.
- 15 Carella AM, Cavaliere M, Lerma E *et al*. Autografting followed by nonmyeloablative immunosuppressive chemotherapy and allogeneic peripheral-blood hematopoietic stem-cell transplantation as treatment of resistant Hodgkin's disease and non-Hodgkin's lymphoma. *J Clin Oncol* 2000; 18: 3918-3924.
- 16 Giralt S, Thall PF, Khouri I *et al*. Melphalan and purine analog-containing preparative regimens: reduced-intensity conditioning for patients with hematologic malignancies undergoing allogeneic progenitor cell transplantation. *Blood* 2001; 97: 631-637.
- 17 Khouri IF, Saliba RM, Giralt SA *et al*. Nonablative allogeneic hematopoietic transplantation as adoptive immunotherapy for indolent lymphoma: low incidence of toxicity, acute graft-versus-host disease, and treatment-related mortality. *Blood* 2001; 98: 3595-3599.
- 18 Nagler A, Slavin S, Varadi G *et al*. Allogeneic peripheral blood stem cell transplantation using a fludarabine-based low intensity conditioning regimen for malignant lymphoma. *Bone Marrow Transplant* 2000; 25: 1021-1028.
- 19 Nakai K, Mineishi S, Kami M *et al*. Antithymocyte globulin affects the occurrence of acute and chronic graft-versus-host disease after a reduced-intensity conditioning regimen by modulating mixed chimerism induction and immune reconstitution. *Transplantation* 2003; 75: 2135-2143.
- 20 Chakraverty R, Peggs K, Chopra R *et al*. Limiting transplantation-related mortality following unrelated donor stem cell transplantation by using a nonmyeloablative conditioning regimen. *Blood* 2002; 99: 1071-1078.

Reprinted from

Jpn J Clin Oncol 2004;34(12):707-716

doi:10.1093/jjco/hyh139

Review Article

Reduced-intensity Hematopoietic Stem Cell Transplantation (RIST) for Solid Malignancies

Masahiro Kami, Atsushi Makimoto, Yuji Heike and Yoichi Takaue

Department of Medical Oncology, Hematopoietic Stem Cell Transplantation Unit, The National Cancer Center Hospital,
Tokyo, Japan
