

common events in intestinal-type gastric cancer. Incomplete intestinal metaplasia that contains an accumulation of the above multiple molecular events – that is, ‘metaplastic dysplasia’ – may be viewed as a bud of intestinal-type gastric cancer at genetic and epigenetic levels. An adenoma→carcinoma sequence is found in about 20% of gastric adenomas with *APC* mutations. In addition to these events, *p53* mutation and LOH, reduced *p27* expression, cyclin E expression and presence of *c-met* 6.0-kb transcripts allow malignant transformation from the precancerous lesions to intestinal-type gastric cancer. *DCC* loss, *APC* mutations, 1q LOH, *p27* loss, reduced TGF- $\beta$ RI expression, reduced nm23 expression and *c-erbB* gene amplification are implicated in the progression and metastasis of intestinal-type gastric cancer. Another pathway for carcinogenesis of intestinal-type gastric cancer involves LOH and abnormal expression of the *p73* gene that may be responsible for the development of foveolar-type gastric cancers with *pS2* expression.

On the other hand, LOH at chromosome 17p, mutation or LOH of *p53* and mutation or loss of *E-cadherin* are preferentially involved in the development of diffuse gastric cancers. In addition to these changes, gene amplification of *K-sam* and *c-met* and *p27* loss as well as reduced nm23 obviously confer progression, metastasis and diffusely productive fibrosis.

Mixed gastric carcinomas composed of intestinal and diffuse components exhibit some but not all of the molecular events described for each of the two types of gastric cancer.

## References

- Akagi, M., Yokozaki, H., Kitadai, Y., Ito, R., Yasui, W., Haruma, K., Kajiyama, G. & Tahara, E. (1995) Expression of amphiregulin in human gastric cancer cell lines. *Cancer*, **75**, 1460–1466
- Akagi, M., Yasui, W., Akama, Y., Yokozaki, H., Tahara, H., Haruma, K., Kajiyama, G. & Tahara, E. (1996) Inhibition of cell growth by transforming growth factor beta-1 is associated with *p53*-independent induction of *p21* in gastric cells. *Jpn. J. Cancer Res.*, **87**, 377–384
- Akama, Y., Yasui, W., Yokozaki, H., Kuniyasu, H., Kitahara, K., Ishikawa, T. & Tahara, E. (1995) Frequent amplification of the cyclin E gene in human gastric carcinomas. *Jpn. J. Cancer Res.*, **86**, 617–621
- Akama, Y., Yasui, W., Kuniyasu, H., Yokozaki, H., Akagi, M., Tahara, H., Ishikawa, T. & Tahara, E. (1996a) Genetic status and expression of the cyclin-dependent kinase inhibitors in human gastric carcinoma cell lines. *Jpn. J. Cancer Res.*, **87**, 824–830
- Akama, Y., Yasui, W., Kuniyasu, H., Yokozaki, H., Akagi, M., Tahara, H., Ishikawa, T. & Tahara, E. (1996b) No point mutations but a codon 31 polymorphism and decreased expression of the *p21* *SDI1/WAF1/CIP1/MDA6* gene in human gastric carcinomas. *Mol. Cell Differ.*, **4**, 187–198
- Akhtar, M., Cheng, Y., Magno, R.M., Ashktorab, H., Smoot, D.T., Meltszer, S. J. & Wilson, K.T. (2001) Promoter methylation regulates *Helicobacter pylori*-stimulated cyclooxygenase-2 expression in gastric epithelial cells. *Cancer Res.*, **61**, 2399–2403
- Ayhan, A., Yasui, W., Yokozaki, H., Seto, M., Ueda, R. & Tahara, E. (1994) Loss of heterozygosity at the *bcl-2* gene locus and expression of *bcl-2* in human gastric and colorectal carcinomas. *Jpn. J. Cancer Res.*, **85**, 584–591
- Baffa, R., Veronese, M.L., Santoro, R., Mandes, B., Palazzo, J.P., Rugge, M., Santoro, E., Croce, C.M. & Huebner, K. (1998) Loss of FHIT expression in gastric carcinoma. *Cancer Res.*, **58**, 4708–4714
- Becker, K.F., Atkinson, M.J., Reich, U., Becker, I., Nekarda, H., Siewert, J.R. & Hofler, H. (1994) *E-cadherin* gene mutations provide clues to diffuse type gastric carcinomas. *Cancer Res.*, **54**, 3845–3852
- Caca, K., Kolligs, F.T., Ji, X., Hayes, M., Qian, J., Yahanda, A., Rimm, D.L., Costa, J. & Fearon, E.R. (1999) Beta- and gamma-catenin mutations, but not *E-cadherin* inactivation, underlie T-cell factor/lymphoid enhancer factor transcriptional deregulation in gastric and pancreatic cancer. *Cell Growth Differ.*, **10**, 369–376
- Cahill, D.P., Lengauer, C., Yu, J., Riggins, G.J., Willson, J.K.V., Markowitz, S.D., Kinzler, K.W. & Vogelstein, B. (1998) Mutations of mitotic checkpoint genes in human cancers. *Nature*, **392**, 300–303
- Carvalho, F., Seruca, R., David, L., Amorim, A., Seixas, M., Bennett, E., Clausen, H. & Sobrinho-

- Simoës, M. (1997) MUC1 gene polymorphism and gastric cancer – an epidemiological study. *Glycoconj. J.*, **14**, 107–111
- Chen, Y.J., Chen, P.H., Lee, M.D. & Chang, J.G. (1997a) Aberrant FHIT transcripts in cancerous and corresponding non-cancerous lesions of the digestive tract. *Int. J. Cancer*, **17**, 955–958
- Chen, Y.J., Chang, J.G., Shih, L.S., Chen, P.H., Endo, M., Whang-Peng, J. & Chen, Y.M. (1997b) Frequent detection of aberrant RNA transcripts of the CDKN2 gene in human gastric adenocarcinoma. *Int. J. Cancer*, **71**, 350–354
- Chin, L., Artandi, S., Shen Q., Tam, A., Lee, S.-L., Gottlieb, G.J., Greider, C.W. & DePinho, R.A. (1999) p53 Deficiency rescues the adverse effects of telomere loss and cooperates with telomere dysfunction to accelerate carcinogenesis. *Cell*, **97**, 527–538
- Constancia, M., Seruca, R., Carneiro, F., Silva, F. & Castedo, S. (1994) Retinoblastoma gene structure and product expression in human gastric carcinomas. *Br. J. Cancer*, **70**, 1018–1024
- Cooper, D.L., Dougherty, G., Harn, H.J., Jackson, S., Baptist, E.W., Byers, J., Datta, A., Phillips, G. & Isola, N.R. (1992) The complex CD44 transcriptional unit; alternative splicing of three internal exons generates the epithelial form of CD44. *Biochem. biophys. Res. Commun.*, **182**, 569–578
- Correa, P., Miller, M. & Mannick, E.E. (1997) Oxidative damage during the gastric precancerous process. In: Tahara, E., ed., *Molecular Pathology of Gastroenterological Cancer: Application to Clinical Practice*, Tokyo, Springer-Verlag, pp. 23–29
- Dinarello, C.A. (1992) The biology of interleukin-1. *Chem. Immunol.*, **51**, 1–32
- El-Omar, E.M., Carrington, M., Chow, W.H., McColl, K.E., Bream, J.H., Young, H.A., Herrera, J., Lissowska, J., Yuan, C.C., Rothman, N., Lanyon, G., Martin, M., Fraumeni, J.F., Jr & Rabkin, C.S. (2000) Interleukin-1 polymorphisms associated with increased risk of gastric cancer. *Nature*, **404**, 398–402
- Eslick, G.D., Lim, L.L., Byles, J.E., Xia, H.H. & Talley, N.J. (1999) Association of *Helicobacter pylori* infection with gastric carcinoma: a meta-analysis. *Am. J. Gastroenterol.*, **94**, 2373–2379
- Fleisher, A.S., Esteller, M., Wang, S., Tamura, G., Suzuki, H., Yin, J., Zou, T.-T., Abraham, J.M., Kong, D., Smolinski, K.N., Shi, Y.-Q., Rhyu, M.-G., Powell, S.M., James, S.P., Wilson, K.T., Herman, J.G. & Meltzer, S.J. (1999) Hypermethylation of the hMLH1 gene promoter in human gastric cancers with microsatellite instability. *Cancer Res.*, **59**, 1090–1095
- Fujimoto, J., Yasui, W., Tahara, H., Tahara, E., Kudo, Y., Yokozaki, H. & Tahara, E. (2000) DNA hypermethylation at the pS2 promoter region is associated with early stage of stomach carcinogenesis. *Cancer Lett.*, **149**, 125–134
- Goto, T., Haruma, K., Kitadai, Y., Ito, M., Yoshimura, M., Sumii, K., Hayakawa, N. & Kajiyama, G. (1999) Enhanced expression of inducible nitric oxide synthase and nitrotyrosine in gastric mucosa of gastric cancer patients. *Clin. Cancer Res.*, **5**, 1411–1415
- van Grieken, N.C.T., Weiss, M.M., Meijer, G.A., Hermesen, M.A.J.A., Scholte, G.H.A. Lindeman, J., Craanen, M.E., Bloemena, E., Meuwissen, S.G.M., Baak, J.P.A. & Kuipers, E.J. (2000) *Helicobacter pylori*-related and -non-related gastric cancers do not differ with respect to chromosomal aberrations. *J. Pathol.*, **192**, 301–306
- Guilford, P., Hopkins, J., Harraway, J., McLeod, M., McLeod, N., Harawira, P., Taite, H., Scoular, R. & Miller, A. & Reeve, A.E. (1998) E-Cadherin germline mutations in familial gastric cancer. *Nature*, **392**, 402–405
- Gunther, T., Schneider-Stock, R., Pross, M., Manger, T., Malgertheiner, P., Lippert, H. & Roessner, A. (1998) Alterations of the p16/MTS1-tumor suppressor gene in gastric cancer. *Pathol. Res. Pract.*, **194**, 809–813
- Hackett, J.A., Feldser, D.M. & Greider, C.W. (2001) Telomere dysfunction increases mutation rate and genomic instability. *Cell*, **106**, 275–286
- Hamamoto, T., Yokozaki, H., Semba, S., Yasui, W., Yunotani, S., Miyazaki, K. & Tahara, E. (1997) Altered microsatellites in incomplete-type intestinal metaplasia adjacent to primary gastric cancers. *J. clin. Pathol.*, **50**, 841–846
- Hamilton, S.R. & Aaltonen, L.A., eds (2000) *Pathology and Genetics of Tumours of the Digestive System* (World Health Organization Classification of Tumours), Lyon, IARC Press, p. 38
- Handschuh, G., Candidus, S., Lubert, B., Reich, U., Schott, C., Oswald, S., Becke, H., Hutzler, P.,

- Birchmeier, W., Hofler, H. & Becker, K.F. (1999) Tumour-associated E-cadherin mutations alter cellular morphology, decrease cellular adhesion and increase cellular motility. *Oncogene*, **18**, 4301–4312
- Harper, J.W., Adami, G.R., Wei, N., Keyomarsi, K. & Elledge, S.J. (1993) The p21 Cdk-interacting protein Cip1 is a potent inhibitor of G1 cyclin-dependent kinases. *Cell*, **75**, 805–816
- Harris, C.C. (1991) Chemical and physical carcinogenesis: advances and perspectives for the 1990s. *Cancer Res.*, **51** (Suppl. 18), 5023s–5044s
- Hattori, Y., Odagiri, H., Nakatani, H., Miyagawa, K., Naito, K., Sakamoto, H., Katoh, O., Yoshida, T., Sugimura, T. & Terada, M. (1990) *K-sam*, an amplified gene in stomach cancer, is a member of the heparin-binding growth factor receptor genes. *Proc. natl Acad. Sci. USA*, **87**, 5983–5987
- Hayashi, K., Yokozaki, H., Naka K., Yasui, W., Lotan, R. & Tahara, E. (2001a) Overexpression of retinoic acid receptor induces growth arrest and apoptosis in oral cancer cell lines. *Jpn. J. Cancer Res.*, **92**, 42–50
- Hayashi, K., Yokozaki, H., Goodison, S., Oue, N., Suzuki, T., Lotan, R., Yasui, W. & Tahara, E. (2001b) Inactivation of retinoic acid receptor  $\beta$  by promoter CpG hypermethylation in gastric cancer. *Differentiation*, **68**, 13–21
- Higashikawa, K., Yokozaki, H., Ue, T., Taniyama, K., Ishikawa, T., Tarin, D. & Tahara, E. (1996) Evaluation of CD44 transcription variants in human digestive tract carcinomas and normal tissues. *Int. J. Cancer*, **66**, 11–17
- Honda, R., Ohba, Y., Nagata, A., Okayama, H. & Yasuda, H. (1993) Dephosphorylation of human p34cdc2 kinase on both Thr-14 and Tyr-15 by human cdc25B phosphatase. *FEBS Lett.*, **318**, 331–334
- Huang, J.Q., Sridhar, S., Chen, Y. & Hunt, R.H. (1998) Meta-analysis of the relationship between *Helicobacter pylori* seropositivity and gastric cancer. *Gastroenterology*, **114**, 1169–1179
- Igaki, H., Sasaki, H., Tachimori, Y., Kato, H., Watanabe, H., Kitamura, T., Harada, Y., Sugimura, T. & Terada, M. (1995) Mutation frequency of the p16/CDKN2 gene in primary cancers in the upper digestive tract. *Cancer Res.*, **55**, 3421–3423
- Iida, S., Akiyama, Y., Ichikawa, W., Yamashita, T., Nomizu, T., Nihei, Z., Sugihara, K. & Yuasa, Y. (1999) Infrequent germ-line mutation of the E-cadherin gene in Japanese familial gastric cancer kindreds. *Clin. Cancer Res.*, **5**, 1445–1447
- Iida, S., Akiyama, Y., Nakajima, T., Ichikawa, W., Nihei, Z., Sugihara, K. & Yuasa, Y. (2000) Alterations and hypermethylation of the p14(ARF) gene in gastric cancer. *Int. J. Cancer*, **87**, 654–658
- Isogaki, J., Shinmura, K., Yin, W., Arai, T., Kodo, K., Kimura, T., Kino, I. & Sugimura, H. (1999) Microsatellite instability and K-ras mutations in gastric adenomas, with reference to associated gastric cancers. *Cancer Detect. Prev.*, **23**, 204–214
- Ito, M., Yasui, W., Kyo, E., Yokozaki, H., Nakayama, H., Ito, H. & Tahara, E. (1992a) Growth inhibition of transforming growth factor-beta on human gastric carcinoma cells: receptor and postreceptor signaling. *Cancer Res.*, **52**, 295–300
- Ito, M., Yasui, W., Nakayama, H., Yokozaki, H., Ito, H. & Tahara, E. (1992b) Reduced levels of transforming growth factor-beta type I receptor in human gastric carcinomas. *Jpn. J. Cancer Res.*, **83**, 86–92
- Ito, R., Kitadai, Y., Kyo, E., Yokozaki, H., Yasui, W., Yamashita, U., Nikai, H. & Tahara, E. (1993) Interleukin 1 $\alpha$  acts as autocrine growth stimulator for human gastric carcinoma cells. *Cancer Res.*, **53**, 4102–4106
- Ito, R., Yasui, W., Kuniyasu, H., Yokozaki, H. & Tahara, E. (1997) Expression of interleukin-6 and its effect on the cell growth of gastric carcinoma cell lines. *Jpn. J. Cancer Res.*, **88**, 953–958
- JRSGC (Japanese Research Society for Gastric Cancer) (1999) *Japanese Classification of Gastric Carcinoma*, 13th Ed., Tokyo, Kanehara
- Jinno, S., Suto, K., Nagata, A., Igarashi, M., Kanaoka, Y., Nojima, H. & Okayama, H. (1994) Cdc25A is a novel phosphatase functioning early in the cell cycle. *EMBO J.*, **13**, 1549–1556
- Kameda, T., Yasui, W., Yoshida, K., Tsujino, T., Nakayama, H., Ito, M., Ito, H. & Tahara, E. (1990) Expression of ERBB2 in human gastric carcinomas: relationship between p185 ERBB2 expression and the gene amplification. *Cancer Res.*, **50**, 8002–8009
- Kaplan, K.B., Burds, A.A., Swedlow, J.R., Bekir, S.S., Sorger, P.K. & Näthke, I.S. (2001) A role for the adenomatous polyposis coli protein in chromosome segregation. *Nature Cell Biol.*, **3**, 429–432

- Katoh, M. & Terada, M (1993) Oncogenes and tumor suppressor genes. In: Nishi, M., Ichikawa, H., Nakajima, T., Maruyama, K., Tahara, E., eds, *Gastric Cancer*, Tokyo, Springer-Verlag, pp. 196–208
- Katoh, M., Hattori, Y., Sasaki, H., Tanaka, M., Sugano, K., Yazaki, Y., Sugimura, T. & Terada, M. (1992) K-sam Gene encodes secreted as well as transmembrane receptor tyrosine kinase. *Proc. natl Acad. Sci. USA*, **89**, 2960–2964
- Kawanishi, J., Kato, J., Sasaki, K., Fujii, S., Watanabe, N. & Niitsu, Y. (1995) Loss of E-cadherin-dependent cell-cell adhesion due to mutation of the beta-catenin gene in a human cancer cell line, HSC-39. *Mol. cell. Biol.*, **15**, 1175–1181
- Keller, G., Vogelsang, H., Becker, I., Hutter, J., Ott, K., Candidus, S., Grundei, T., Becker, K.F., Mueller, J., Siewert, J.R. & Hofler, H. (1999) Diffuse type gastric and lobular breast carcinoma in a familial gastric cancer patient with an E-cadherin germline mutation. *Am. J. Pathol.*, **155**, 337–342
- Kim, S.-J., Yang, H.K., Im, Y.-H., Bang, Y.J. & Yang, H.K. (1999) Mechanisms of TGF- $\beta$  receptor inactivation and development of resistance to TGF- $\beta$  in human gastric cancer. In: *Proceedings of the Third International Gastric Cancer Congress, Seoul*, Bologna, Monduzzi Editore, pp. 81–90
- Kinzler, K.W., Nilbert, M.C., Su, L.K., Vogelstein, B., Bryan, T.M., Levy, D.B., Smith, K.J., Preisinger, A.C., Hedge, P., McKechnie, D., Finnear, R., Markham, A., Groffen, J., Boguski, M.S., Altschul, S.F., Horii, A., Miyoshi, Y., Miki, Y., Nishisho, I. & Nakamura, Y. (1991) Identification of FAP locus genes from chromosome 5q21. *Science*, **253**, 661–665
- Kitadai, Y., Yasui, W., Yokozaki, H., Kuniyasu, H., Ayhan, A., Haruma, K., Kajiyama, G., Johnson, G.R. & Tahara, E. (1993a) Expression of amphiregulin, a novel gene of the epidermal growth factor family, in human gastric carcinomas. *Jpn. J. Cancer Res.*, **84**, 879–884
- Kitadai, Y., Yamazaki, H., Yasui, W., Kyo, E., Yokozaki, H., Kajiyama, G., Johnson, A.C., Pastan, I. & Tahara, E. (1993b) GC factor represses transcription of several growth factor/receptor genes and causes growth inhibition of human gastric carcinoma cell lines. *Cell Growth Differ.*, **4**, 291–296
- Kitadai, Y., Haruma, K., Sumii, K., Yamamoto, S., Ue, T., Yokozaki, H., Yasui, W., Ohmoto, Y., Kajiyama, G., Fidler, I.J. & Tahara, E. (1998) Expression of interleukin-8 correlates with vascularity in human gastric carcinomas. *Am. J. Pathol.*, **152**, 93–100
- Kitadai, Y., Haruma, K., Mukaida, N., Ohmoto, Y., Matsutani, N., Yasui, W., Yamamoto, S., Sumii, K., Kajiyama, G., Fidler, I.J. & Tahara, E. (2000) Regulation of disease-progression genes in human gastric carcinoma cells by interleukin-8. *Clin. Cancer Res.*, **6**, 2735–2740
- Kudo, Y., Yasui, W., Ue, T., Yamamoto, S., Yokozaki, H., Nikai, H. & Tahara, E. (1997) Overexpression of cyclin-dependent kinase-activating CDC25B phosphatase in human gastric carcinomas. *Jpn. J. Cancer Res.*, **88**, 947–952
- Kuniyasu, H., Yoshida, K., Yokozaki, H., Yasui, W., Ito, H., Toge, T., Ciardiello, F., Persico, M.G., Saeki, T., Salomon, D.S. & Tahara, E. (1991) Expression of cripto, a novel gene of the epidermal growth factor family, in human gastrointestinal carcinomas. *Jpn. J. Cancer Res.*, **82**, 969–973
- Kuniyasu, H., Yasui, W., Kitadai, Y., Yokozaki, H., Ito, H. & Tahara, E. (1992) Frequent amplification of the c-met gene in scirrhous type stomach cancer. *Biochem. biophys. Res. Commun.*, **189**, 227–232
- Kuniyasu, H., Yasui, W., Yokozaki, H., Kitadai, Y. & Tahara, E. (1993) Aberrant expression of c-met mRNA in human gastric carcinomas. *Int. J. Cancer*, **55**, 72–75
- Kuniyasu, H., Yasui, W., Yokozaki, H., Akagi, M., Akama, Y., Kitahara, K., Fujii, K. & Tahara, E. (1994a) Frequent loss of heterozygosity of the long arm of chromosome 7 is closely associated with progression of human gastric carcinomas. *Int. J. Cancer*, **59**, 597–600
- Kuniyasu, H., Yasui, W., Akama, Y., Akagi, H., Tohdo, H., Ji, Z.-Q., Kitadai, Y., Yokozaki, H. & Tahara, E. (1994b) Expression of cripto in human gastric carcinomas: an association with tumor stage and prognosis. *J. exp. clin. Cancer Res.*, **13**, 151–157
- Kuniyasu, H., Yasui, W., Kitahara, K., Naka, K., Yokozaki, H., Akama, Y., Hamamoto, T., Tahara, H. & Tahara, E. (1997a) Growth inhibitory effect of interferon- $\beta$  is associated with the induction of cyclin-dependent kinase inhibitor p27 Kipl in a human gastric carcinoma cell line. *Cell Growth Differ.*, **8**, 47–52

- Kuniyasu, H., Domen, T., Hamamoto, T., Yokozaki, H., Yasui, W., Tahara, H. & Tahara, E. (1997b) Expression of human telomerase RNA is an early event of stomach carcinogenesis. *Jpn. J. Cancer Res.*, **88**, 103–107
- Lauren, P. (1965) The two histological main types of gastric carcinoma. Diffuse and so-called intestinal type carcinoma. An attempt at histochemical classification. *Acta pathol. microbiol. Scand.*, **64**, 31–49
- Lee, K.H., Lee, J.S., Suh, C., Kim, S.W., Kim, S.B., Lee, J.H., Lee, M.S., Park, M.Y., Sun, H.S. & Kim, S.H. (1995) Clinicopathologic significance of the K-ras gene codon 12 point mutation in stomach cancer. An analysis of 140 cases. *Cancer*, **75**, 2794–2801
- Lee, Y.Y., Kang, S.H., Seo, J.Y., Jung, C.W., Lee, K.U., Choe, K.J., Kim, B.K., Kim, N.K., Koeffler, H.P. & Bang, Y.J. (1997) Alterations of p16INK4A and p15INK4B genes in gastric carcinomas. *Cancer*, **80**, 1889–1896
- Lefebvre, O., Chenard, M.P., Masson, R., Linares, J., Dierich, A., LeMeur, M., Wendling, C., Tomasetto, C., Chambon, P. & Rio, M.C. (1996) Gastric mucosa abnormalities and tumorigenesis in mice lacking the pS2 trefoil protein. *Science*, **274**, 259–262
- Leung, S.Y., Yuen, S.T., Chung, L.P., Chu, K.M., Chan, A.S.Y. & Ho, J.C.I. (1999) hMLH1 promoter methylation and lack of hMLH1 expression in sporadic gastric carcinomas with high-frequency microsatellite instability. *Cancer Res.*, **59**, 159–164
- Lotan, R., Ito, H., Yasui, W., Yokozaki, H., Lotan, D. & Tahara, E. (1994) Expression of a 31-kDa lacto-side-binding lectin in normal human gastric mucosa and in primary and metastatic gastric carcinomas. *Int. J. Cancer*, **56**, 474–480
- Lotan, R., Xu, C., Lippman, S.M., Ro, J.Y., Lee, J.S., Lee, J.J. & Hong, W.K. (1995) Suppression of retinoic acid receptor  $\beta$  in premalignant oral lesions and its upregulation by isotretinoin. *New Engl. J. Med.*, **332**, 1405–1410
- Machado, J.C., Soares, P., Carneiro, F., Rocha, A., Beck, S., Blin, N., Berx, G. & Sobrinho-Simoes, M. (1999) E-Cadherin gene mutations provide a genetic basis for the phenotypic divergence of mixed gastric carcinomas. *Lab. Invest.*, **79**, 459–465
- Maesawa, C., Tamura, G., Suzuki, Y., Ogasawara, S., Sakata, K., Kashiwaba, M. & Satodate, R. (1995) The sequential accumulation of genetic alterations characteristic of the colorectal adenoma–carcinoma sequence does not occur between gastric adenoma and adenocarcinoma. *J. Pathol.*, **176**, 249–258
- Magnusson, P.K.E., Enroth, H., Eriksson, I., Held, M., Nyren, O., Engstrand, L., Hansson, L.E. & Gyllensten, U.B. (2001) Gastric cancer and human leukocyte antigen. *Cancer Res.*, **61**, 2684–2689
- Markowitz, S., Wang, J., Myeroff, L., Parsons, R., Sun, L., Lutterbaugh, J., Fan, R.S., Zborowska, E., Kinzler, K.W., Vogelstein, B., Brattain, M. & Willson, J.K.V. (1995) Inactivation of the type II TGF- $\beta$  receptor in colon cancer cells with microsatellite instability. *Science*, **268**, 1336–1338
- Masiakowski, P., Breathnach, R., Bloch, J., Gannon, F., Krust, A. & Chambon, P. (1982) Cloning of cDNA sequences of hormone-regulated genes from MCF-7 human breast cancer cell lines. *Nucleic Acids Res.*, **10**, 7895–7903
- Matsumura, Y. & Tarin, D. (1992) Significance of CD44 gene products for cancer diagnosis and disease evaluation. *Lancet*, **340**, 1053–1058
- Merlo, A., Herman, J.G., Mao, L., Lee, D.J., Gabrielson, E., Burger, P.C., Baylin, S.B. & Sidransky, D. (1995) 5' CpG island methylation is associated with transcriptional silencing of the tumor suppressor p16/CDKN2/MTS1 in human cancers. *Nature Med.*, **1**, 686–692
- Mirvish, S.S. (1971) Kinetics of nitrosamide formation from alkylureas, N-alkylurethanes, and alkylguanidines: possible implications for the etiology of human gastric cancer. *J. natl Cancer Inst.*, **46**, 1183–1193
- Muta, H., Noguchi, M., Kanai, Y., Ochiai, A., Nawata, H. & Hirohashi, S. (1996) E-Cadherin gene mutations in signet ring cell carcinoma of the stomach. *Jpn. J. Cancer Res.*, **87**, 843–848
- Nagata, A., Igarashi, M., Jinno, S., Suto, K. & Okayama, H. (1991) An additional homolog of the fission yeast *cdc25+* gene occurs in humans and is highly expressed in some cancer cells. *New Biol.*, **3**, 959–968
- Nakatsuru, S., Yanagisawa, A., Ichii, S., Tahara, E., Kato, Y., Nakamura, Y. & Horii, A. (1992) Somatic mutation of the APC gene in gastric cancer: frequent mutations in very well differentiated adenocarcinoma and signet-ring cell carcinoma. *Hum. mol. Genet.*, **1**, 559–563
- Nakatsuru, S., Yanagisawa, A., Furukawa, Y., Ichii, S., Kato, Y., Nakamura, Y. & Horii, A. (1993) Somatic

- mutations of the APC gene in precancerous lesion of the stomach. *Hum. mol. Genet.*, **2**, 1463–1465
- Nakayama, H., Yasui, W., Yokozaki, H. & Tahara, E. (1993) Reduced expression of nm23 is associated with metastasis of human gastric carcinomas. *Jpn. J. Cancer Res.*, **84**, 184–190
- Nishimura, K., Yokozaki, H., Haruma, K., Kajiyama, G. & Tahara, E. (1995) Alterations of the APC gene in carcinoma cell lines and precancerous lesions of the stomach. *Int. J. Oncol.*, **7**, 587–592
- Noguchi, T., Muller, W., Wirtz, H.C., Willers, R. & Gabbert, H.E. (1999) FHIT gene in gastric cancer: association with tumor progression and prognosis. *J. Pathol.*, **188**, 378–381
- Ochiai, A., Akimoto, S., Kanai, Y., Shibata, T., Oyama, T. & Hirohashi, S. (1994) c-erbB-2 Gene product associates with catenins in human cancer cells. *Biochem. biophys. Res. Commun.*, **205**, 73–78
- Ochiai, A., Yamauchi, Y. & Hirohashi, S. (1996) p53 Mutations in the non-neoplastic mucosa of the human stomach showing intestinal metaplasia. *Int. J. Cancer*, **69**, 28–33
- Oda, N., Tsujino, T., Tsuda, T., Yoshida, K., Nakamura, H., Yasui, W. & Tahara, E. (1990) DNA ploidy pattern and amplification of ERBB and ERBB2 genes in human gastric carcinomas. *Virchows Arch. B. Cell Pathol. mol. Pathol.*, **58**, 273–277
- Ohta, M., Inoue, H., Cotticelli, M.G., Kastury, K., Baffa, R., Palazzo, J., Siprashvili, Z., Mori, M., McCue, P., Druck, T., Croce, C.M. & Huebner, K. (1996) The FHIT gene, spanning the chromosome 3p14.2 fragile site and renal carcinoma-associated t(3;8) breakpoint, is abnormal in digestive tract cancers. *Cell*, **84**, 587–597
- Palli, D., Russo, A., Ottini, L., Masala, G., Saieva, C., Amorosi, A., Cama, A., D'Amico, C., Falchetti, M., Palmirotta, R., Decarli, A., Costantini, R.M. & Fraumeni, J.F., Jr (2001) Red meat, family history, and increased risk of gastric cancer with microsatellite instability. *Cancer Res.*, **61**, 5415–5419
- Pellman, D. (2001) Cancer. A CINtillating new job for the APC tumor suppressor. *Science*, **291**, 2555–2556
- Poremba, C., Yandell, D.W., Huang, Q., Little, J.B., Mellin, W., Schmid, K.W., Bocker, W. & Dockhorn-Dworniczak, B. (1995) Frequency and spectrum of p53 mutations in gastric – a molecular genetic and immunohistochemical study. *Virchows Arch.*, **426**, 447–455
- Prinz, C., Schoniger, M., Rad, R., Becker, I., Keiditsch, E., Wagenpfeil, S., Classen, M., Rosch, T., Schepp, W. & Gerhard, M. (2001) Key importance of the *Helicobacter pylori* adherence factor blood group antigen binding adhesin during chronic gastric inflammation. *Cancer Res.*, **61**, 1903–1909
- Sakurai, S., Sano, T. & Nakajima, T. (1995) Clinicopathological and molecular biological studies of gastric adenomas with special reference to p53 abnormality. *Pathol. int.*, **45**, 51–57
- Sano, T., Tsujino, T., Yoshida, K., Nakayama, H., Haruma, K., Ito, H., Nakamura, Y., Kajiyama, G. & Tahara, E. (1991) Frequent loss of heterozygosity on chromosomes 1q, 5q, and 17p in human gastric carcinomas. *Cancer Res.*, **51**, 2926–2931
- Saukkonen, K., Nieminen, O., Van Rees, B., Vilkki, S., Harkonen, M., Juhola, M., Mecklin, J.-P., Sipponen, P. & Ristimaki, A. (2001) Expression of cyclooxygenase-2 in dysplasia of the stomach and in intestinal-type gastric adenocarcinoma. *Clin. Cancer Res.*, **7**, 1923–1931
- Seewaldt, V.L., Johnson, B.S., Parker, M.B., Collins, S.J. & Swisshelm, K. (1995) Expression of retinoic acid receptor- $\beta$  mediates retinoic acid-induced growth arrest and apoptosis in breast cancer cells. *Cell Growth Differ.*, **6**, 1077–1088
- Semba, S., Yokozaki, H., Yamamoto, S., Yasui, W. & Tahara, E. (1996) Microsatellite instability in precancerous lesions and adenocarcinomas of the stomach. *Cancer (Suppl. 8)*, **77**, 1620–1627
- Semba, S., Yokozaki, H., Yasui, W. & Tahara, E. (1998) Frequent microsatellite instability and loss of heterozygosity in the region including BRCA1 (17q21) in young patients with gastric cancer. *Int. J. Oncol.*, **12**, 1245–1251
- Shibata, T., Ochiai, A., Kanai, Y., Akimoto, S., Gotoh, M., Yasui, N., Machinami, R. & Hirohashi, S. (1996) Dominant negative inhibition of the association between beta-catenin and c-erbB-2 by N-terminally deleted beta-catenin suppresses the invasion and metastasis of cancer cells. *Oncogene*, **13**, 883–889
- Shigeishi, H., Yokozaki, H., Kuniyasu, H., Nakagawa, H., Ishikawa, T., Tahara, E. & Yasui, W. (2001) No mutations of the *Bub1* gene in human gastric carcinomas. *Oncol. Rep.*, **8**, 791–794

- Shimizu, N., Inada, K., Nakanishi, H., Tsukamoto, T., Ikehara, Y., Kaminishi, M., Kuramoto, S., Sugiyama, A., Katsuyama, T. & Tatematsu, M. (1999) *Helicobacter pylori* infection enhances glandular stomach carcinogenesis in Mongolian gerbils treated with a chemical carcinogen. *Carcinogenesis*, **20**, 669–676
- Shimizu, N., Ikehara, Y., Inada, K., Nakanishi, H., Tsukamoto, T., Nozaki, K., Kaminishi, M., Kuramoto, S., Sugiyama, A., Katsuyama, T. & Tatematsu, M. (2000) Eradication diminishes enhancing effects of *Helicobacter pylori* infection on glandular stomach carcinogenesis in Mongolian gerbils. *Cancer Res.*, **60**, 1512–1514
- Soman, N.R., Correa, P., Ruiz, B.A. & Wogan, G.N. (1991) The TPR-MET oncogenic rearrangement is present and expressed in human gastric carcinoma and precursor lesions. *Proc. natl Acad. Sci. USA*, **88**, 4892–4896
- Sugimura, T., Fujimura S. & Baba, T. (1970) Tumor production in the glandular stomach and alimentary tract of the rat by *N*-methyl-*N*-nitro-*N*-nitrosoguanidine. *Cancer Res.*, **30**, 455–465
- Sung, J.J., Leung, W.K., Go, M.Y., To, K.F., Cheng, A.S., Ng, E.K. & Chan, F.K. (2000) Cyclooxygenase-2 expression in *Helicobacter pylori*-associated premalignant and malignant gastric lesions. *Am. J. Pathol.*, **157**, 729–735
- Suzuki, T., Yasui, W., Yokozaki, H., Naka, K., Ishikawa, T. & Tahara, E. (1999) Expression of the E2F family in human gastrointestinal carcinomas. *Int. J. Cancer*, **81**, 535–538
- Tahara, E. (1993) Molecular mechanism of stomach carcinogenesis. *J. Cancer Res. clin. Oncol.*, **119**, 265–272
- Tahara, E. (1997) Cell growth regulation and cancer: stromal interaction. In: Sugimura, T. & Sasako, M., eds, *Gastric Cancer*, New York, Oxford University Press, pp. 100–108
- Tahara, E. (1998) Molecular mechanism of human stomach carcinogenesis implicated in *Helicobacter pylori* infection. *Exp. Toxicol. Pathol.*, **50**, 375–378
- Tahara, E. (2002) Histone acetylation and retinoic acid receptor beta DNA methylation as novel targets for gastric cancer therapy. *Drug News Perspect.*, **15**, 581–585
- Tahara, E., Yokozaki, H. & Yasui, W. (1993) Growth factors in gastric cancer. In: Nishi, M., Ichikawa, H., Nakajima, T., Maruyama, K. & Tahara, E., eds, *Gastric Cancer*, Berlin, Springer-Verlag, pp. 209–217
- Tahara, E., Kuniyasu, H., Yasui, W. & Yokozaki, H. (1994) Abnormal expression of growth factors and their receptors in stomach cancer. In: Nakamura, T. & Matsumoto, K., eds, *Gann Monograph on Cancer Research Growth Factors: Cell Growth, Morphogenesis and Transformation*, Tokyo, Japan Scientific Society Press, pp. 163–173
- Tahara, H., Kuniyasu, H., Yokozaki, H., Yasui, W., Shey, J.W., Ide, T. & Tahara, E. (1995) Telomerase activity in preneoplastic and neoplastic gastric and colorectal lesions. *Clin. Cancer Res.*, **1**, 1245–1251
- Tahara, E., Semba, S. & Tahara, H. (1996a) Molecular biological observations in gastric cancer. *Semin. Oncol.*, **23**, 307–315
- Tahara, E., Yasui, W. & Yokozaki, H. (1996b) Abnormal growth factor networks in neoplasia. In: Puztai, L., Lewis, C.E. & Yap, E., eds, *Cell Proliferation in Cancer*, Oxford, Oxford University Press, pp.131–153
- Tahara, E., Yokozaki, H. & Yasui, W. (1999) Stomach-genetic and epigenetic alterations of preneoplastic and neoplastic lesions. In: Srivastava, S., Henson, D.E. & Gazdar, A., eds, *Molecular Pathology of Early Cancer*, Amsterdam, IOS Press, pp. 341–361
- Takahashi, Y., Cleary, K.R., Mai, M., Kitadai, Y., Bucana, C.D. & Ellis, L.M. (1996) Significance of vessel count and vascular endothelial growth factor and its receptor (KDR) in intestinal-type gastric cancer. *Clin. Cancer Res.*, **2**, 1679–1684
- Tamura, G., Kihana, T., Nomura, K., Terada, M., Sugimura, T. & Hirohashi, S. (1991) Detection of frequent p53 gene mutations in primary gastric cancer by cell sorting and polymerase chain reaction single-strand conformation polymorphism analysis. *Cancer Res.*, **51**, 2056–3058
- Tamura, G., Sakata, K., Nishizuka, S., Maesawa, C., Suzuki, Y., Iwaya, T., Terashima, M., Saito, K. & Satodate, R. (1997) Analysis of the fragile histidine triad gene in primary gastric carcinomas and gastric carcinoma cell lines. *Genes Chromosomes Cancer*, **20**, 98–102
- Tanimoto, H., Yoshida, K., Yokozaki, H., Yasui, W., Nakayama, H., Ito, H., Ohama, K. & Tahara, E. (1991) Expression of basic fibroblast growth factor

- in human gastric carcinomas. *Virchows Arch. B. Cell Pathol. mol. Pathol.*, **61**, 263–267
- Tohdo, H., Yokozaki, H., Haruma, K., Kajiyama, G. & Tahara, E. (1993) p53 Gene mutations in gastric adenomas. *Virchows Arch. B. Cell Pathol. mol. Pathol.*, **63**, 191–195
- Uchino, S., Tsuda, H., Noguchi, M., Yokota, J., Terada, M., Saito, T., Kobayashi, M., Sugimura, T. & Hirohashi, S. (1992) Frequent loss of heterozygosity at the DCC locus in gastric cancer. *Cancer Res.*, **52**, 3099–3102
- Uchino, S., Noguchi, M., Ochiai, A., Saito, T., Kobayashi, M. & Hirohashi, S. (1993) p53 Mutation in gastric cancer: a genetic model for carcinogenesis is common to gastric and colorectal cancer. *Int. J. Cancer*, **54** 759–764
- Ue, T., Yokozaki, H., Kitadai, Y., Yamamoto, S., Yasui, W., Ishikawa, T. & Tahara, E. (1998) Co-expression of osteopontin and CD44V9 in gastric cancer. *Int. J. Cancer*, **79**, 127–132
- Weber, G.F., Ashkar, S., Glimcher, M.J. & Cantor, H. (1996) Receptor-ligand interaction between CD44 and osteopontin (Eta-1). *Science*, **271**, 509–512
- Wu, M.S., Lee, C.W., Shun, C.T., Wang, H.P., Lee, W.J., Sheu J.C. & Lin, J.T. (1998) Clinicopathological significance of altered loci of replication error and microsatellite instability-associated mutations in gastric cancer. *Cancer Res.*, **58**, 1494–1497
- Yamamoto, S., Yasui, W., Kitadai, Y., Yokozaki, H., Haruma, K., Kajiyama, G. & Tahara, E. (1998) Expression of vascular endothelial growth factor in human gastric carcinomas. *Pathol. int.*, **48**, 499–506
- Yang, H.-K., Kang, S.H., Kim, Y.-S., Won, K., Bang, Y.-J. & Kim, S.-J. (1999) Truncation of the TGF-beta type II receptor gene results in insensitivity to TGF-beta in human gastric cancer cells. *Oncogene*, **18**, 2213–2219
- Yasui, W., Hata, J., Yokozaki, H., Nakatani, H., Ochiai, A., Ito, H. & Tahara, E. (1988) Interaction between epidermal growth factor and its receptor in progression of human gastric carcinoma. *Int. J. Cancer*, **41**, 211–217
- Yasui, W., Akama, Y., Kuniyasu, H., Yokozaki, H., Semba, S., Shimamoto, F. & Tahara, E. (1996a) Expression of cyclin-dependent kinase inhibitor p21WAF1/CIP1 in non-neoplastic mucosa and neoplasia of the stomach: relation with p53 status and proliferative activity. *J. Pathol.*, **180**, 122–128
- Yasui, W., Yokozaki, H., Kuniyasu, H., Shimamoto, F. & Tahara, E. (1996b) Expression of CDK inhibitor p16CDKN2/MTS1/INK4A in human gastric carcinomas. In: Tahara, E., Sugimachi, K. & Oohara, T., eds, *Recent Advances in Gastroenterological Carcinogenesis I*, Bologna, Monduzzi Editore, pp. 765–769
- Yasui, W., Kudo, Y., Semba, S., Yokozaki, H. & Tahara, E. (1997) Reduced expression of cyclin-dependent kinase inhibitor p27Kip1 is associated with advanced stage and invasiveness of gastric carcinomas. *Jpn. J. Cancer Res.*, **88**, 625–629
- Yasui, W., Tahara, H., Tahara, E., Fujimoto, J., Nakayama, J., Ishikawa, F., Ide, T. & Tahara, E. (1998) Expression of telomerase catalytic component, telomerase reverse transcriptase, in human gastric carcinomas. *Jpn. J. Cancer Res.*, **89**, 1099–1103
- Yasui, W., Naka, K., Suzuki, T., Fujimoto, J., Hayahi, K., Matsutani, N., Yokozaki, H. & Tahara, E. (1999a) Expression of p27Kip1, cyclin E, and E2F-1 in primary and metastatic tumors of gastric carcinoma. *Oncol. Rep.*, **6**, 983–987
- Yasui, W., Tahara, E., Tahara, H., Fujimoto, J., Naka, K., Nakayama, J., Ishikawa, F., Ide, T. & Tahara, E. (1999b) Immunohistochemical detection of human telomerase reverse transcriptase in normal mucosa and precancerous lesions of the stomach. *Jpn. J. Cancer Res.*, **90**, 589–595
- Yokota, J., Yamamoto, T., Miyajima, N., Toyoshima, K., Nomura, N., Sakamoto, H., Yoshida, T., Terada, M. & Sugimura T. (1988) Genetic alterations of the c-erbB-2 oncogene occur frequently in tubular adenocarcinoma of the stomach and are often accompanied by amplification of the v-erbA homologue. *Oncogene*, **2**, 283–287
- Yokozaki, H., Kuniyasu, H., Kitadai, Y., Nishimura, K., Todo, H., Ayhan, A., Yasui, W., Ito, H. & Tahara, E. (1992) p53 Point mutations in primary human gastric carcinomas. *J. Cancer. Res. clin. Oncol.*, **119**, 67–70
- Yokozaki, H., Ito, R., Nakayama, H., Kuniyasu, H., Taniyama, K. & Tahara, E. (1994) Expression of CD44 abnormal transcripts in human gastric carcinomas. *Cancer Lett.*, **83**, 229–234
- Yokozaki, H., Kuniyasu, H., Semba, S., Yasui, W. & Tahara, E. (1997) Molecular bases of human stomach carcinogenesis. In: Tahara, E., ed., *Mole-*



- cular Pathology of Gastroenterological Cancer: Application to Clinical Practice*, Tokyo, Springer-Verlag, pp. 55–70
- Yokozaki, H., Shitara, Y., Fujimoto, J., Hiyama, T., Yasui, W. & Tahara, E. (1999a) Alterations of p73 preferentially occur in gastric adenocarcinomas with foveolar epithelial phenotype. *Int. J. Cancer*, **83**, 192–196
- Yokozaki, H., Semba, S., Fujimoto, J. & Tahara, E. (1999b) Microsatellite instabilities in gastric cancer patients with multiple primary cancers. *Int. J. Oncol.*, **14**, 151–155
- Yonemura, Y., Ninomiya, I., Ohoyama, S., Kimura, H., Yamaguchi, A., Fushida, S., Kosaka, T., Miwa, K., Miyazaki, I., Endou, Y., Tanaka, M. & Sasaki, T. (1991) Expression of c-erbB-2 oncoprotein in gastric carcinoma: immunoreactivity for c-erbB-2 protein is an independent indicator of poor short-term prognosis in patients with gastric carcinoma. *Cancer*, **67**, 2914–2918
- Yoon, K.A., Ku, J.L., Yang, H.K., Kim, W.H., Park, S.Y. & Park, J.G. (1999) Germline mutations of E-cadherin gene in Korean familial gastric cancer patients. *J. hum. Genet.*, **44**, 177–180
- Yoshida, M.C., Wada, M., Satoh, H., Yoshida, T., Sakamoto, H., Miyagawa, K., Yokota, J., Koda, T., Kakinuma, K., Sugimura, T. & Terada, M. (1988) Human *HST1* (*HSTF1*) gene maps to chromosome band 11q13 and co-amplifies with the *INT2* gene in human cancer. *Proc. natl Acad. Sci. USA*, **85**, 4861–4864
- Yoshida, K., Yokozaki, H., Niimoto, M., Ito, H., Ito, M. & Tahara, E. (1989) Expression of TGF- $\alpha$  and pro-collagen type I and type III in human gastric carcinomas. *Int. J. Cancer*, **44**, 394–398
- Yoshida, K., Tsujino, T., Yasui, W., Kameda, T., Sano, T., Nakayama, H., Toge, T. & Tahara, E. (1990) Induction of growth factor-receptor and metallo-proteinase genes by epidermal growth factor and/or transforming growth factor- $\beta$  in human gastric carcinoma cell lines MKN-28. *Jpn. J. Cancer Res.*, **81**, 793–798
- Yoshida, K., Bolodeoku, J., Sugino, T., Goodison, S., Matasumura, Y., Warren, B.F., Toge, T., Tahara, E. & Tarin, D. (1995) Abnormal retention of intron 9 in CD44 gene transcripts in human gastrointestinal tumors. *Cancer Res.*, **55**, 4273–4277
- Yoshida, K., Yasui, W., Kagawa, Y. & Tahara, E. (1996) Multiple genetic alterations and abnormal growth factor network in human esophageal carcinomas. In: Tahara, E., ed., *Molecular Pathology of Gastroenterological Cancer: Application to Clinical Practice*, Tokyo, Springer-Verlag, pp. 31–41
- Yustein, A.S., Harper, J.C., Petroni, G.R., Cummings, O.W., Moskaluk, C.A. & Powell, S.M. (1999) Allelotype of gastric adenocarcinoma. *Cancer Res.*, **59**, 1437–1441

## Corresponding author:

Eiichi Tahara

Radiation Effects Research Foundation  
Hiroshima-Nagasaki, 5-2 Hijiyama Park,  
Minami-ku, Hiroshima 732-0815, Japan  
etahara@cisnet.or.jp

Shunji Matsumura · Naohide Oue · Hirofumi Nakayama  
Yasuhiko Kitadai · Kazuhiro Yoshida  
Yoshiyuki Yamaguchi · Kazue Imai  
Kei Nakachi · Keisuke Matsusaki · Kazuaki Chayama  
Wataru Yasui

## A single nucleotide polymorphism in the *MMP-9* promoter affects tumor progression and invasive phenotype of gastric cancer

Received: 18 June 2004 / Accepted: 16 August 2004 / Published online: 30 September 2004  
© Springer-Verlag 2004

**Abstract Purpose:** Matrix metalloproteinase-9 (MMP-9, gelatinase B) plays a key role in cancer invasion and metastasis by degrading the extracellular matrix (ECM) and basement membrane barriers. A cytosine (C)-thymidine (T) single nucleotide polymorphism (SNP) at position -1562 in the *MMP-9* promoter is reported to affect expression of this gene. The purpose of this study was to investigate the relation between the -1562 C/T polymorphism and the development and progression of gastric cancer. **Methods:** The study population included 177 gastric cancer patients and 224 healthy control subjects. The SNP in the *MMP-9* promoter was analyzed by polymerase chain reaction-restriction fragment length polymorphism (PCR-RFLP) and sequencing. Genotype frequencies were compared between patients and controls, and the association of

genotypes with clinicopathological features was studied. **Results:** Genotype frequencies in gastric cancer patients were similar to those in control subjects ( $P = 0.223$ ). However, significant association was found between degree of tumor invasion, clinical stage, and lymphatic invasion and the *MMP-9* polymorphism in gastric cancer patients ( $P < 0.05$ , for each). **Conclusions:** Our results indicate that the T allele in the *MMP-9* promoter is associated with the invasive phenotype of gastric cancer.

**Keywords** MMP-9 · SNP · Gastric cancer · Depth of tumor invasion · Lymphatic invasion

**Abbreviations** MMP-9: Matrix metalloproteinase-9 · SNP: Single nucleotide polymorphism · C: Cytosine · T: Thymidine · RFLP: Restriction fragment length polymorphism · ECM: Extracellular matrix · PCR: Polymerase chain reaction · OR: Odds ratio · CI: Confidence interval

S. Matsumura · N. Oue · H. Nakayama · W. Yasui (✉)  
Department of Molecular Pathology,  
Hiroshima University Graduate School  
of Biomedical Sciences, 1-2-3 Kasumi, Minami-ku,  
734-8551 Hiroshima,  
Japan  
E-mail: wyasui@hiroshima-u.ac.jp  
Tel.: +81-82-2575145  
Fax: +81-82-2575149

Y. Kitadai · K. Chayama  
Department of Medicine and Molecular Science,  
Hiroshima University Graduate School of Biomedical Sciences,  
Hiroshima, Japan

K. Yoshida · Y. Yamaguchi  
Department of Surgical Oncology,  
Research Institute for Radiation Biology and Medicine,  
Hiroshima University, Hiroshima, Japan

K. Imai · K. Nakachi  
Department of Radiobiology/Molecular Epidemiology,  
Radiation Effects Research Foundation, Hiroshima,  
Japan

K. Matsusaki  
Department of Surgery, Hofu Institute of Gastroenterology,  
Yamaguchi, Japan

### Introduction

Gastric cancer is one of the most common malignancies in the world and is the leading cause of death in Japan. Poor prognosis reflects the invasive and metastatic capabilities of cancer cells. Degradation of the extracellular matrix (ECM) and basement membrane barriers by matrix metalloproteinases (MMPs) plays an important role in tumor invasion and metastasis (Forget et al. 1999; Kohn and Liotta 1995; Liotta et al. 1991). MMP-9 (92-kDa gelatinase, type IV collagenase) is a member of the family of MMP genes, which encode zinc-dependent enzymes that break down ECM through the degradation of type IV collagen (Nagase and Woessner 1999), and promote tumor cell invasion. The prognostic value of MMP-9 expression by tumor tissues has been reported in relation to a variety of cancers (McDonnell and Matri-

sian 1990; Kallakury et al. 2001; Baker and Leaper 2003; Tanioka et al. 2003; Ozalp et al. 2003; Sakata et al. 2004).

Zhang et al. (Zhang et al. 1999) reported that a cytosine (C)-to-thymidine (T) transition at nucleotide -1562 in the *MMP-9* gene promoter generates low-activity (C/C) and high-activity (C/T, T/T) promoter genotypes, which influence gene transcription. This polymorphism is associated with the severity of coronary atherosclerosis in patients with coronary artery disease. However, there have been no studies of the relation between this polymorphism and malignancies. Various genetic and epigenetic alterations are associated with gastric carcinoma (Yasui et al. 2000; Oue et al. 2002; Oue et al. 2003). We previously reported that several polymorphisms are significantly associated with gastric cancer (Kuraoka et al. 2003; Matsumura et al. 2004). With respect to the role of the C/T polymorphism in transcriptional activity and degradation of ECM, we hypothesized that this polymorphism might also act as a genetic modifier in the development and progression of gastric cancer. Therefore, we conducted a case-control study to investigate the association between the different *MMP-9* promoter alleles and gastric cancer. Moreover, we examined the relation between the C/T polymorphism and the clinicopathological features of gastric cancer patients.

## Materials and methods

### Samples

A total of 401 peripheral blood samples from 224 healthy control subjects and 177 gastric cancer patients were used in the present study. Control subjects were randomly selected from among individuals visiting hospitals for regular health checks or because of symptoms such as appetite loss or epigastralgia. Control subjects were confirmed to be free of malignancy by gastrointestinal endoscopy and biopsy. Gastric cancer patients underwent surgical or endoscopic mucosal resection (EMR) at Hiroshima University Hospital or Hofu Institute of Gastroenterology. Gastric cancer patients were 129 men and 48 women; the median age was  $65.1 \pm 11.7$  years. Gastric cancer was classified histologically according to the criteria of Lauren (Lauren 1965); 103 patients had intestinal type gastric cancer, and 74 patients had diffuse type. Intestinal type and diffuse type correspond to well-differentiated type and poorly differentiated type, respectively, of the histological classification system of the Japanese Gastric Cancer Association (Japanese Gastric Cancer Association 1998). Gastric cancer patients were grouped according to TNM classification (Sobin and Wittekind 2002) on the basis of the post-operative histopathological evaluation. Moreover, patients were assigned to two subgroups on the basis of whether they were positive or negative for lymphatic invasion or venous invasion at the time of diagnosis (Japanese Gastric Cancer Association 1998). All patients

and control subjects gave written informed consent prior to enrollment in the study. The Human Genome Research Ethics Screening Committee of Hiroshima University School of Medicine approved the study.

### DNA extraction and polymerase chain reaction-restriction fragment length polymorphism (PCR-RFLP) analysis

A genomic DNA purification kit (Promega, Madison, Wisc., USA) and a QIAamp 96 DNA Blood kit (QIAGEN, Valencia, Calif., USA) were used for DNA extraction. PCR-RFLP assay was used to determine *MMP-9* genotypes as previously described (Zhang et al. 1999). To analyze the -1562 C/T polymorphism, we amplified a region of the *MMP-9* promoter with forward primer 5'-GCC TGG CAC ATA GTA GGC CC-3' and reverse primer 5'-CTT CCT AGC CAG CCG GCA TC -3' (Zhang et al. 1999). The target sequence was amplified in a 25- $\mu$ l reaction volume containing 10–20 ng of genomic DNA, 0.2  $\mu$ M dNTP, 10 mM Tris-HCl (pH 8.3), 50 mM KCl, 2 mM MgCl<sub>2</sub>, 0.3  $\mu$ M of each primer, and 0.75 units of AmpliTaq Gold (Perkin-Elmer, Norwalk, Conn., USA). Amplification conditions were an initial activation step of 94 °C for 10 min followed by 35 cycles of denaturation at 94 °C for 30 s, annealing at 59 °C for 30 s, and extension at 72 °C for 30 s. The 435 bp fragment was then digested with *Sph*I (New England BioLabs, Beverly, Mass., USA) overnight at 37 °C. *Sph*I does not digest the C allele (435 bp) but generates 188 bp and 247 bp fragments for the T allele. Digests were separated by electrophoresis on 2.5% NuSieve 3:1 agarose (FMC BioProducts, Rockland, Me., USA) gels for 60 min at 100 V. Heterozygotes had a combination of both alleles (435 bp, 247 bp, and 188 bp bands).

### Sequencing analysis of PCR products

The PCR products were purified and cloned into pCR2.1 (Invitrogen, Carlsbad, Calif., USA). Plasmid DNA was extracted from individual clones by alkaline lysis plasmid miniprep. The cloned PCR fragments obtained from each sample were sequenced with both M13 reverse and M13 forward primers and the PRISM AmpliTaq DNA Polymerase FS Ready Reaction Dye Terminator Sequencing Kit (PerkinElmer ABI, Foster City, Calif., USA). Reamplified DNA fragments were purified with Centri-Sep Columns (Princeton Separations, Adelphia, N.J., USA) and sequenced with an ABI PRISM 310 Genetic Analyzer (PerkinElmer ABI).

### *Helicobacter pylori* status

Confirmation of *H. pylori* status was based on combinations of histology, <sup>13</sup>C-urea breath test, and serum anti-*H. pylori* IgG antibody. One hundred and seventeen

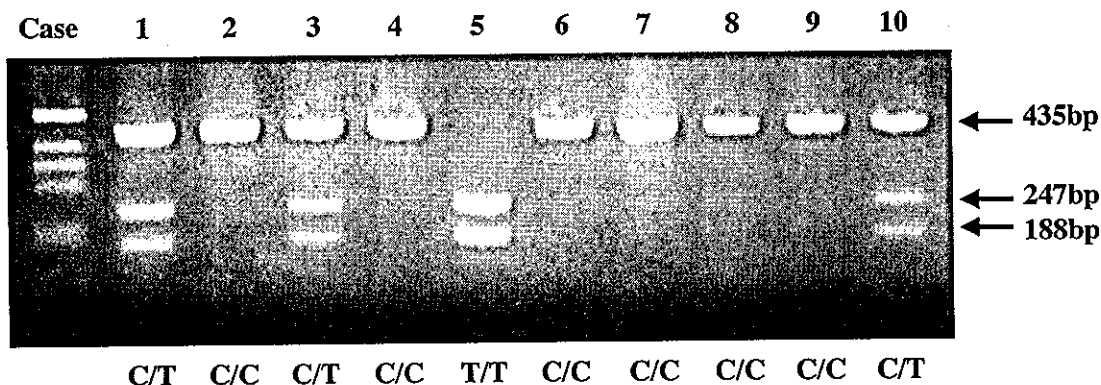


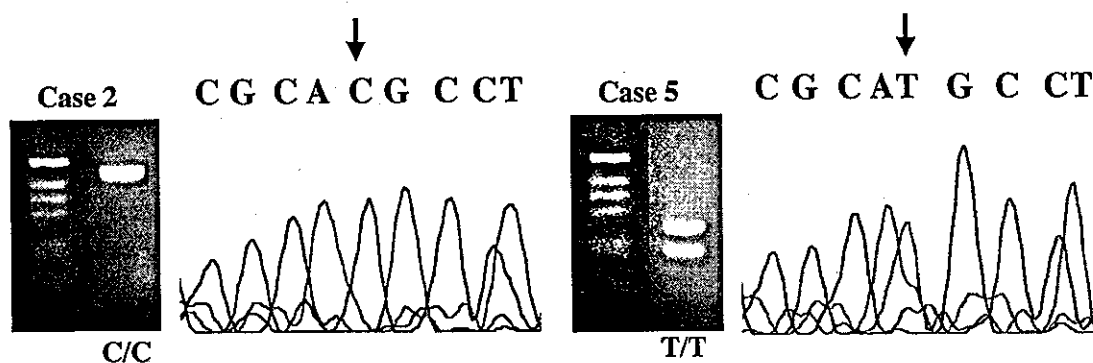
Fig. 1 PCR-RFLP analysis of the  $-1562$  C/T polymorphism in ten patients with gastric cancer. The ethidium bromide-stained 2.5% NuSieve 3:1 agarose gel used for genotyping is shown. The target region (435 bp) of the *MMP-9* gene promoter was PCR amplified and digested with *SphI*, which cleaved the T allele to generate two fragments (247 bp and 188 bp) are indicated, but did not cut the C allele (435 bp). Numbers above the panel are case numbers. Genotypes are indicated below each case

of 224 healthy control subjects and 73 of 177 gastric cancer patients underwent these examinations. Four biopsy specimens were taken, two from the greater curvature of the antrum and two from the upper body of the stomach. When lesions suspected to be cancerous were noted, additional biopsies were performed. Of these four specimens were fixed in formalin and assessed for *H. pylori* by Giemsa staining. The cutoff value of  $^{13}\text{C}$ -urea breath test was 3.5‰. If one or more test were positive, patient was judged to be infected with *H. pylori*. If all *H. pylori* tests were negative, the patient was considered uninfected.

#### Statistical analysis

Statistical analysis was performed with the use of Fisher's exact test.  $P < 0.05$  was considered statistically significant. Odds ratios (ORs) and 95% confidence intervals (95% CIs) were used to estimate the risk of association with genotypes. ORs for the genotypes were

Fig. 2 Representative electropherogram for each genotype for the  $-1562$  C/T polymorphism of *MMP-9*. Genotype of the SNP was C/C in case 2 and T/T in case 5



calculated by the logistic regression model, with adjustments for age and sex; logistic regression analysis was performed for the association between genotypes and clinicopathological factors (SPSS 11.0, SPSS, Chicago, Ill., USA).

#### Results

##### Genotyping and genotype distributions in gastric cancer patients and control subjects

We examined the  $-1562$  C/T polymorphism in the *MMP-9* gene promoter by PCR-RFLP in gastric cancer patients and control subjects. Three PCR-RFLP patterns were detected (Fig. 1). Patients 2, 4, 6, 7, 8, and 9 had a single 435 bp band (C/C genotype), and patient 5 had 247 bp and 188 bp bands (T/T genotype). Patients 1, 3, and 10 had all three bands, indicating the heterozygous genotype (C/T). Subsequent sequencing of representative cases confirmed the genotypes of patients 2 and 5 (Fig. 2). Distribution of the  $-1562$  C/T polymorphism genotypes in gastric cancer patients and control subjects is shown in Table 1. Distribution of genotypes in controls was in good agreement with Hardy-Weinberg equilibrium; distribution in cases also agreed with Hardy-Weinberg equilibrium. Frequency of the T allele (C/T and T/T) was similar between gastric cancer patients (24.9%) and control subjects (30.3%;  $P = 0.22$ , OR = 0.75, 95% CI = 0.48–1.18). In addition, genotype frequencies (C/C vs C/T + T/T) did not differ by sex, age, or *H. pylori* status.

**Table 1** *MMP-9* Genotype distributions in study subjects (OR odds ratio, CI confidence interval)

	Controls <sup>a</sup> (%) (n = 224)	Patients (%) (n = 177)	P value <sup>b</sup>	Crude OR <sup>c</sup> (95% CI)
Overall				
C/C	156 (69.7)	133 (75.1)		
C/T	63 (28.1)	38 (21.5)		
T/T	5 (2.2)	6 (3.4)	0.223	0.758 (0.486–1.182)
Sex				
Male				
C/C	73 (68.2)	97 (75.2)		
C/T	32 (29.9)	28 (21.7)		
T/T	2 (1.9)	4 (3.1)	0.235	0.708 (0.400–1.252)
Female				
C/C	83 (70.9)	36 (75.2)		
C/T	31 (26.5)	10 (20.8)		
T/T	3 (2.6)	2 (4.2)	0.597	0.813 (0.378–1.748)
Age (years)				
< 65				
C/C	78 (67.8)	54 (71.1)		
C/T	35 (30.4)	20 (26.3)		
T/T	2 (1.8)	2 (2.6)	0.636	0.858 (0.456–1.613)
≥ 65				
C/C	78 (71.6)	79 (78.2)		
C/T	28 (35.7)	18 (17.8)		
T/T	3 (2.7)	4 (4.0)	0.267	0.701 (0.373–1.316)
<i>H. pylori</i> infection				
Negative	n = 42	n = 29		
C/C	32 (76.2)	25 (86.2)		
C/T	9 (21.4)	3 (21.7)		
T/T	1 (2.4)	1 (3.5)	0.297	0.512 (0.143–1.827)
Positive	n = 75	n = 44		
C/C	55 (73.3)	32 (72.7)		
C/T	19 (25.3)	12 (27.3)		
T/T	1 (1.4)	0 (0.0)	0.942	1.031 (0.446–2.383)

<sup>a</sup>Observed genotype distribution of controls was in agreement with Hardy-Weinberg equilibrium

<sup>b</sup>Association was analyzed by Fisher's exact test. P are values for C/T+T/T genotype relative to C/C genotype

<sup>c</sup>Odds ratios are for C/T+T/T genotypes relative to C/C genotype

Association between genotypes and clinicopathological features

We next analyzed the association between the -1562 C/T genotypes and clinicopathological features among gastric cancer patients (Table 2). Gastric cancer patients with the T allele (C/T and T/T) showed deeper invasion over the submucosal (sm) layer than did patients with the C/C genotype (crude OR=2.61, 95% CI=1.07–6.33). Advanced-stage gastric cancers were significantly more frequent in patients with the T allele (C/T and T/T) than in patients with the C/C genotype (stage I vs stages II, III, and IV, crude OR=2.25, 95% CI=1.12–4.50). Furthermore, there was a significant difference in genotype distribution (C/T+T/T vs C/C) with respect to lymphatic invasion (lymphatic invasion positive vs negative, crude OR=2.27, 95% CI=1.09–4.73), and risk of venous invasion of gastric cancer was increased (enhanced risk=1.98) in patients with the T allele (venous invasion positive vs negative, crude OR=1.98, 95% CI=0.99–3.96). Histological classification (diffuse type vs intestinal type) and lymph node metastasis was not significantly associated with genotype. Logistic regression analysis revealed that genotype associations with depth of tumor invasion (adjusted OR=2.61, 95% CI=1.07–6.34), TNM classification (adjusted OR=2.26, 95% CI=1.12–4.54), and lymphatic invasion (adjusted OR=2.27, 95%

CI=1.09–4.73) remained significant even after adjustments for age and sex.

## Discussion

In the present study, we examined whether risk of gastric cancer is associated with the -1562 C/T polymorphism in the promoter of *MMP-9* in a Japanese population. It has been suggested that carcinogenesis is a multicellular and multistage process in which breakdown of the microenvironment is required for conversion of normal tissue to tumor (Park et al. 2000). Although we hypothesized that the *MMP-9* polymorphism alters the microenvironment and may be involved in the process of carcinogenesis, the allele frequencies in the gastric cancer patients were similar to those in controls. Our findings suggest that the T allele does not enhance susceptibility to the development of gastric cancer. In contrast, we found a significant association between this polymorphism and clinicopathological features, specifically depth of tumor invasion, TNM classification, and lymphatic invasion. The T allele was detected more frequently in patients with advanced-stage gastric cancers than in those with the C/C genotype (OR=2.26). Moreover, lymphatic invasion was significantly enhanced in gastric cancer patients with the T allele. However, lymph node metastasis showed no signifi-

**Table 2** Association between -1562 C/T polymorphism in *MMP-9* promoter and clinicopathological features of gastric cancer

	Genotype (%)			OR <sup>a</sup> (95% CI)	
	C/C	C/T	T/T	Crude	Adjusted <sup>b</sup>
Age (year)					
< 65 (n = 76)	54 (71.1)	20 (26.3)	2 (2.6)	0.683 (0.345-1.356)	
≥65 (n = 101)	79 (78.2)	18 (17.8)	4 (4.0)		
Sex					
Male (n = 129)	97 (75.2)	28 (21.7)	4 (3.1)	0.990 (0.460-2.129)	
Female (n = 48)	36 (75.0)	10 (20.8)	2 (4.2)		
Histological classification <sup>c</sup>					
Intestinal (n = 103)	81 (78.6)	18 (17.5)	4 (3.9)	1.558 (0.784-3.093)	1.601 (0.778-3.297) P = 0.201
Diffuse (n = 74)	52 (70.3)	20 (27.0)	2 (2.7)		
Depth <sup>d</sup>					
m (n = 51)	44 (86.3)	6 (11.8)	1 (1.9)	2.613 (1.079-6.331)	2.610 (1.074-6.340) P = 0.034
sm ~ (n = 126)	89 (70.6)	32 (25.4)	5 (4.0)		
Lymphatic invasion <sup>e</sup>					
Negative (n = 78)	65 (83.3)	12 (15.4)	1 (1.3)	2.279 (1.097-4.736)	2.274 (1.092-4.736) P = 0.028
Positive (n = 99)	68 (68.7)	26 (26.3)	5 (5.0)		
Venous invasion <sup>e</sup>					
Negative (n = 95)	77 (81.1)	16 (16.8)	2 (2.1)	1.986 (0.994-3.969)	1.984 (0.993-3.967) P = 0.053
Positive (n = 82)	56 (68.3)	22 (26.8)	4 (4.9)		
Lymph node metastasis					
N (-) (n = 114)	89 (78.1)	22 (19.3)	3 (2.6)	1.537 (0.765-3.088)	1.537 (0.761-3.102) P = 0.230
N (+) (n = 63)	44 (69.8)	16 (25.4)	3 (4.8)		
TNM classification <sup>f</sup>					
Stage I (n = 99)	81 (81.8)	16 (16.2)	2 (2.0)	2.250 (1.123-4.507)	2.260 (1.124-4.547) P = 0.022
Stage II, III, IV (n = 78)	52 (66.7)	22 (28.2)	4 (5.1)		
<i>H. pylori</i> infection <sup>g</sup>					
Negative (n = 29)	25 (86.2)	3 (10.3)	1 (3.5)	0.427 (0.123-1.484)	0.416 (0.117-1.473) P = 0.174
Positive (n = 44)	32 (72.7)	12 (27.3)	0 (0.0)		

<sup>a</sup>Odds ratios (ORs) and 95% confidence intervals (CIs) for clinicopathological features with reference to the *MMP-9* promoter polymorphism (C/T + T/T to C/C genotypes)

<sup>b</sup>Adjusted for age and sex, with a logistic regression model

<sup>c</sup>Gastric cancer classified histologically according to the criteria of Lauren

<sup>d</sup>Depth of tumor invasion. (m tumour without invasion of the submucosa. sm ~ tumour invades over the submucosal layer)

<sup>e</sup>Lymphatic invasion and venous invasion classified according to the criteria of Japanese Classification of Gastric Carcinoma, 2nd English edn

<sup>f</sup>TNM grades were according to the criteria of the TNM Classification of Malignant Tumors, 6th edn

<sup>g</sup>*H. pylori* status was based on histology, <sup>13</sup>C-urea breath test, and serum anti-*H. pylori* IgG antibody

cantly associated with genotype. Establishment of metastasis requires the serial processes such as invasion, migration, implantation, and regrowth of cancer cells at the metastatic site. The *MMP-9* polymorphism may affect the initial invasion step of lymph node metastasis. The present findings support our hypothesis that the -1562 C/T polymorphism may have a profound impact on progression and invasion of gastric cancer. To our knowledge, this is the first study to investigate the association of the -1562 C/T polymorphism of *MMP-9* with development and malignant phenotypes of gastric cancer.

The association between the *MMP-9* polymorphism and invasive phenotype of gastric cancer is consistent with the biological function of MMP-9. Overexpression of MMP-9 has been observed in a variety of cancers including gastric cancer, breast cancer, prostate cancer, brain cancer, melanoma, and lymphoma (Murray et al.

1998; Hujanen et al. 1994; Jones et al. 1999; Rao et al. 1993; Sehgal et al. 1996; Chicoine et al. 2002). In gastric cancer, expression of MMP-9 is associated with pathological features such as TNM stage, lymphatic invasion, and tumor depth (Zhang et al. 2003). Furthermore, expression of MMP-9 is associated with poor prognosis in renal cell carcinoma patients (Kallakury et al. 2001). In breast cancer patients, plasma MMP-9 activity is also associated with prognosis (Baker and Leaper 2003). These findings clearly indicate that MMP-9 plays an important role in tumor progression and invasion. Moreover, the C/T polymorphism in *MMP-9* has functional significance. The *MMP-9* promoter with the T allele shows significantly higher transcriptional activity than the C allele in cultured macrophages, and this polymorphism influences the atherosclerotic phenotype (Zhang et al. 1999). The *MMP-9* gene promoter contains binding sites for AP-1, NF- $\kappa$ B, Sp-1, and Ets

transcription factors (Gum et al. 1996). In particular, Ets-1 expression is upregulated together with MMP-9 (Behrens et al. 2001), and this upregulation correlates with tumor invasion in gastric cancer (Nakayama et al. 1996). This polymorphism is located within a transcription factor binding site, and that changing the allele may affect transcription factor binding and therefore expression of MMP-9 (Zhang et al. 1999). We also found the *MMP-9* polymorphism to be associated with depth of tumor invasion, lymphatic invasion, and TNM classification of gastric cancer. Taken together, these results suggest that the T allele may affect expression of MMP-9 in gastric cancer, increasing ECM degradation and leading to subsequent invasion of cancer cells.

## Conclusion

In conclusion, our findings suggest that the T allele of the *MMP-9* promoter may affect expression of MMP-9 and is closely related to the invasive phenotype of gastric cancer. Recently, in vitro studies showed that MMP-9 production is increased more than two times by tumor necrosis factor- $\alpha$  (TNF- $\alpha$ ) (Ferrand et al. 2002) and more than seven times by gastrin (Wroblewski et al. 2002). Moreover, Chicoine et al. (Chicoine et al. 2002) reported that MMP-9 expression is controlled by the methylation status of the *MMP-9* promoter. Further studies of the association between the levels of MMP-9 expression and the -1562 C/T polymorphism in gastric cancer patients are needed with increased numbers of cases to confirm our findings.

**Acknowledgements** We thank Masayoshi Takatani and Mutsumi Ueda, Department of Molecular Pathology, Hiroshima University Graduate School of Biomedical Sciences, for their excellent technical assistance and advice.

## References

- Baker EA, Leaper DJ (2003) The plasminogen activator and matrix metalloproteinase systems in colorectal cancer: relationship to tumour pathology. *Eur J Cancer* 39:981-988
- Behrens P, Rothe M, Wellmann A, Krischler J, Wernert N (2001) The Ets-1 transcription factor is up-regulated together with MMP-1 and MMP-9 in the stroma of pre-invasive breast cancer. *J Pathol* 194:43-50
- Chicoine E, Esteve PO, Robledo O, Van Themsche C, Potworowski EF, St-Pierre Y (2002) Evidence for the role of promoter methylation in the regulation of MMP-9 gene expression. *Biochem Biophys Res Commun* 297:765-772
- Ferrand PE, Parry S, Sammel M, Macones GA, Kuivaniemi H, Romero R, Strauss JF 3rd (2002) A polymorphism in the matrix metalloproteinase-9 promoter is associated with increased risk of preterm premature rupture of membranes in African Americans. *Mol Hum Reprod* 8:494-501
- Forget MA, Desrosiers RR, Beliveau R (1999) Physiological roles of matrix metalloproteinases: implications for tumor growth and metastasis. *Can J Physiol Pharmacol* 77:465-480
- Gum R, Lengyel E, Juarez J, Chen JH, Sato H, Seiki M, Boyd D (1996) Stimulation of 92-kDa gelatinase B promoter activity by ras is mitogen-activated protein kinase kinase 1-independent and requires multiple transcription factor binding sites including closely spaced PEA3/ets and AP-1 sequences. *J Biol Chem* 271:10672-10680
- Hujanen ES, Vaisanen A, Zheng A, Tryggvason K, Turpeenniemi-Hujanen T (1994) Modulation of M(r) 72,000 and M(r) 92,000 type-IV collagenase (gelatinase A and B) gene expression by interferons alpha and gamma in human melanoma. *Int J Cancer* 58:582-586
- Japanese Gastric Cancer Association (1998) Japanese classification of gastric carcinoma. 2nd English Edition. *Gastric Cancer* 1:10-24
- Jones JL, Glynn P, Walker RA (1999) Expression of MMP-2 and MMP-9, their inhibitors, and the activator MT1-MMP in primary breast carcinomas. *J Pathol* 189:161-168
- Kallakury BV, Karikhehalli S, Haholu A, Sheehan CE, Azumi N, Ross JS (2001) Increased expression of matrix metalloproteinases 2 and 9 and tissue inhibitors of metalloproteinases 1 and 2 correlate with poor prognostic variables in renal cell carcinoma. *Clin Cancer Res* 7:3113-3119
- Kohn EC, Liotta LA (1995) Molecular insights into cancer invasion: strategies for prevention and intervention. *Cancer Res* 55:1856-1862
- Kuraoka K, Matsumura S, Hamai Y, Nakachi K, Imai K, Matsusaki K, Oue N, Ito R, Nakayama H, Yasui W (2003) A single nucleotide polymorphism in the transmembrane domain coding region of HER-2 is associated with development and malignant phenotype of gastric cancer. *Int J Cancer* 107:593-596
- Lauren P (1965) The two histological main types of gastric carcinoma. Diffuse and so-called intestinal type carcinoma: an attempt at histological classification. *Acta Pathol Microbiol Scand* 64:31-49
- Liotta LA, Steeg PS, Stetler-Stevenson WG (1991) Cancer metastasis and angiogenesis: an imbalance of positive and negative regulation. *Cell* 64:327-336
- Matsumura S, Oue N, Kitadai Y, Chayama K, Yoshida K, Yamaguchi Y, Toge T, Imai K, Nakachi K, Yasui W (2004) A single nucleotide polymorphism in the MMP-1 promoter is correlated with histological differentiation of gastric cancer. *J Cancer Res Clin Oncol* 130:259-265
- McDonnell S, Matrisian LM (1990) Stromelysin in tumor progression and metastasis. *Cancer Metastasis Rev* 9:305-319
- Murray GI, Duncan ME, Arbuckle E, Melvin WT, Fothergill JE (1998) Matrix metalloproteinases and their inhibitors in gastric cancer. *Gut* 43:791-797
- Nakayama T, Ito M, Ohtsuru A, Naito S, Nakashima M, Fagin JA, Yamashita S, Sekine I (1996) Expression of the Ets-1 proto-oncogene in human gastric carcinoma: correlation with tumor invasion. *Am J Pathol* 149:1931-1939
- Nagase H, Woessner JF Jr (1999) Matrix metalloproteinases. *J Biol Chem* 274:21491-494
- Oue N, Motoshita J, Yokozaki H, Hayashi K, Tahara E, Taniyama K, Matsusaki K, Yasui W (2002) Distinct promoter hypermethylation of p16INK4a, CDH1, and RAR- $\beta$  in intestinal, diffuse-adherent, and diffuse-scattered type gastric carcinomas. *J Pathol* 198:55-59
- Oue N, Oshimo Y, Nakayama H, Ito R, Yoshida K, Matsusaki K, Yasui W (2003) DNA methylation of multiple genes in gastric carcinoma: association with histological type and CpG island methylator phenotype. *Cancer Sci* 94:901-905
- Ozalp S, Tanir HM, Yalcin OT, Kabukcuoglu S, Oner U, Uray M (2003) Prognostic value of matrix metalloproteinase-9 (gelatinase-B) expression in epithelial ovarian tumors. *Eur J Gynaecol Oncol* 24:417-420
- Park CC, Bissell MJ, Barcellos-Hoff MH (2000) The influence of the microenvironment on the malignant phenotype. *Mol Med Today* 6:324-329
- Rao JS, Steck PA, Mohanam S, Stetler-Stevenson WG, Liotta LA, Sawaya R (1993) Elevated levels of M(r) 92,000 type IV collagenase in human brain tumors. *Cancer Res* 53:2208-2211
- Sakata K, Satoh M, Someya M, Asanuma H, Nagakura H, Oouchi A, Nakata K, Kogawa K, Koito K, Hareyama M, Himi T

- (2004) Expression of matrix metalloproteinase 9 is a prognostic factor in patients with non-Hodgkin lymphoma. *Cancer* 100:356–365
- Sehgal I, Baley PA, Thompson TC (1996) Transforming growth factor beta1 stimulates contrasting responses in metastatic versus primary mouse prostate cancer-derived cell lines in vitro. *Cancer Res* 56:3359–3365
- Sobin LH, Wittekind CH (eds) (2002) TNM classification of malignant tumors, 6th edn. Wiley-Liss, New York, pp 65–68
- Tanioka Y, Yoshida T, Yagawa T, Saiki Y, Takeo S, Harada T, Okazawa T, Yanai H, Okita K (2003) Matrix metalloproteinase-7 and matrix metalloproteinase-9 are associated with unfavourable prognosis in superficial oesophageal cancer. *Br J Cancer* 89:2116–2121
- Wroblewski LE, Pritchard DM, Carter S, Varro A (2002) Gastrin-stimulated gastric epithelial cell invasion: the role and mechanism of increased matrix metalloproteinase 9 expression. *Biochem J* 365:873–879
- Yasui W, Yokozaki H, Fujimoto J, Naka K, Kuniyasu H, Tahara E (2000) Genetic and epigenetic alterations in multistep carcinogenesis of the stomach. *J Gastroenterol* 35:111–115
- Zhang B, Ye S, Hermann SM, Eriksson P, de Maat M, Evans A, Arveiler D, Luc G, Cambien F, Hamsten A, Watkins H, Henney AM (1999) Functional polymorphism in the regulatory region of gelatinase B gene in relation to severity of coronary atherosclerosis. *Circulation* 99:1788–794
- Zhang S, Li L, Lin JY, Lin H (2003) Imbalance between expression of matrix metalloproteinase-9 and tissue inhibitor of metalloproteinase-1 in invasiveness and metastasis of human gastric carcinoma. *World J Gastroenterol* 9:899–904



# Gene Expression Profile of Gastric Carcinoma: Identification of Genes and Tags Potentially Involved in Invasion, Metastasis, and Carcinogenesis by Serial Analysis of Gene Expression

Naohide Oue, Yoichi Hamai, Yoshitsugu Mitani, Shunji Matsumura, Yasuhiro Oshimo, Phyu Phyu Aung, Kazuya Kuraoka, Hirofumi Nakayama, and Wataru Yasui

Department of Molecular Pathology, Hiroshima University Graduate School of Biomedical Sciences, Hiroshima, Japan

## ABSTRACT

Gastric carcinoma (GC) is one of the most common malignancies worldwide. To better understand the genetic basis of this disease, we performed serial analysis of gene expression (SAGE) on four primary GC samples and one associated lymph node metastasis. We obtained a total of 137,706 expressed tags (Gene Expression Omnibus accession number GSE 545, SAGE Hiroshima gastric cancer tissue), including 38,903 that were unique. Comparing tags from our GC libraries containing different stages and different histologies, we found several genes and tags that are potentially involved in invasion, metastasis, and carcinogenesis. Among these, we selected 27 genes and measured mRNA expression levels in an additional 46 GC samples by quantitative reverse transcription-PCR. Frequently overexpressed genes (tumor/normal ratio > 2) were *COL1A1* (percentage of cases with overexpression, 78.3%), *CDH17* (73.9%), *APOC1* (67.4%), *COL1A2* (58.7%), *YF13H12* (52.2%), *CEACAM6* (50.0%), *APOE* (50.0%), *REGIV* (47.8%), *SI00A11* (41.3%), and *FUS* (41.3%). Among these genes, mRNA expression levels of *CDH17* and *APOE* were associated with depth of tumor invasion ( $P = 0.0060$  and  $P = 0.0139$ , respectively), and those of *FUS* and *APOE* were associated with degree of lymph node metastasis ( $P = 0.0416$  and  $P = 0.0006$ , respectively). In addition, mRNA expression levels of *FUS*, *COL1A1*, *COL1A2*, and *APOE* were associated with stage ( $P = 0.0414$ ,  $P = 0.0156$ ,  $P = 0.0395$ , and  $P = 0.0125$ , respectively). Quantitative reverse transcription-PCR analysis also showed a high level of *REGIV* expression (>100 arbitrary units) in 14 of 46 GC samples (30.4%) but not in noncancerous tissues. We detected V5-tagged RegIV protein in the culture media of cells transfected with pcDNA-RegIV-V5 by Western blot. Our results provide a list of candidate genes that are potentially involved in invasion, metastasis, and carcinogenesis of GC. *REGIV* may serve as a specific biomarker for GC.

## INTRODUCTION

Gastric carcinoma (GC) is one of the most common human cancers. Despite improvements in cancer therapy, ~650,000 patients with GC die/year (1). A variety of genetic and epigenetic alterations are associated with GC (2-4). However, the underlying mechanism of gastric carcinogenesis is still poorly understood. To identify potential molecular markers for GC and to better understand the development of GC at the molecular level, comprehensive gene expression analysis may be useful. Although several large-scale gene expression studies with cDNA or oligonucleotide arrays have been performed in GC (5-8), they have used different platforms that varied in the number and identity of genes printed on them. On the other hand, serial analysis of

gene expression (SAGE) analyzes 14-bp tags derived from defined positions of cDNAs without *a priori* knowledge of the sequence of the genes expressed (9). Thus, SAGE offers an unbiased, comprehensive gene expression profiling approach. Recently, three SAGE studies of GC were reported, and several up-regulated and down-regulated genes were identified (10-12). However, only one (10) or two samples (11, 12) were examined, and the relation to invasion and metastasis was not analyzed. In the present study, we performed SAGE analysis on four samples of GC of different stages and different histologies. In addition, we performed SAGE analysis on one lymph node metastasis of GC. We report here the identification of several genes and tags potentially involved in invasion, metastasis, and carcinogenesis of GC. Among these, we focused on the *REGIV* gene because this gene is frequently overexpressed in GC, and *REGIV* expression is narrowly restricted in noncancerous tissues. In addition, the amino acid sequence of the RegIV protein suggests that it may be secreted.

## MATERIALS AND METHODS

**Tissue Samples.** For SAGE analysis, four primary GC samples and 1 associated lymph node metastasis were used (Table 1). We confirmed microscopically that the tumor specimens consisted mainly (>80%) of carcinoma tissue with the exception of S219T. For quantitative reverse transcription-PCR (RT-PCR), 46 GC samples and corresponding nonneoplastic mucosa samples were used. Of the 46 GC samples, lymph node metastasis samples were available for 9. The samples were obtained at surgery at Hiroshima University Hospital and affiliated hospitals. Noncancerous samples of the heart, aorta, lung, tongue, esophagus, stomach, duodenum, ileum, colon, liver, gallbladder, pancreas, kidney, urinary bladder, thyroid gland, adrenal gland, spleen, skin, endometrium, and lymph node were obtained at autopsy from a 28-year-old woman diagnosed with multiple sclerosis. Samples were frozen immediately in liquid nitrogen and stored at  $-80^{\circ}\text{C}$  until use. Histological classification of GC was performed according to the Lauren classification system (13). In addition, diffuse-type GC samples were additionally classified into diffuse-adherent and diffuse-scattered subtypes (14). Tumor staging was carried out according to the Tumor-Node-Metastasis Stage Grouping (15).

**SAGE.** SAGE was performed according to SAGE protocol version 1.0e, June 23, 2000. Tags were extracted from the raw sequence data with SAGE2000 analysis software version 4.12 kindly provided by Dr. Kenneth W. Kinzler (The Sidney Kimmel Comprehensive Cancer Center, Johns Hopkins University School of Medicine). Clinicopathological details of the 5 samples are shown in Table 1. To identify genes involved in tumor progression, we analyzed 2 GC samples (W226T and W246T). Both samples were classified as intestinal type GC. However, W226T was early, and W246T was advanced. Early GC is limited to the mucosa or the mucosa and submucosa, regardless of nodal status (16). We confirmed microscopically that these 2 samples showed similar histological features (Fig. 1). To identify genes involved in tumor metastasis, we analyzed 1 GC sample (P208T) and its lymph node metastasis (P208L). Histologically, these samples were classified as diffuse-adherent type, and we confirmed microscopically that both the primary tumor (P208T) and the metastatic tumor (P208L) contained few stromal cells and lymphocytes (Fig. 1). Scirrhous-type GC belongs to the diffuse-scattered type, often occurs in young women, and is characterized by extensive fibrous stroma, infiltrative and rapid growth, and poor prognosis (17). Sample S219T was a scirrhous-type GC showing scattering growth in an abundant fibrous stroma (Fig. 1). To

Received 11/10/03; revised 1/20/04; accepted 1/26/04.

Grant support: Grants-in-Aid for Cancer Research from the Ministry of Education, Culture, Science, Sports, and Technology of Japan and from the Ministry of Health, Labor, and Welfare of Japan.

The costs of publication of this article were defrayed in part by the payment of page charges. This article must therefore be hereby marked *advertisement* in accordance with 18 U.S.C. Section 1734 solely to indicate this fact.

Note: Supplementary data for this article are available at *Cancer Research Online* (<http://cancerres.aacrjournals.org>). This work was carried out with the kind cooperation of the Research Center for Molecular Medicine, Faculty of Medicine, Hiroshima University.

Requests for reprints: Wataru Yasui, Department of Molecular Pathology, Hiroshima University Graduate School of Biomedical Sciences, 1-2-3 Kasumi, Minami-ku, Hiroshima 734-8551, Japan. Fax: 81-82-257-5149; E-mail: [wyasui@hiroshima-u.ac.jp](mailto:wyasui@hiroshima-u.ac.jp).

Table 1 Clinicopathological details of the 5 samples analyzed by serial analysis of gene expression

Sample name	Sample type	Sex	Age (yrs)	Tumor <sup>a</sup>	Node <sup>a</sup>	Metastasis <sup>a</sup>	Stage <sup>a</sup>	Histological classification <sup>b</sup>	Total number of tags	Number of unique tags in each sample
W226T	Primary	Male	59	1	0	0	IA	Intestinal	43,908	16,082
W246T	Primary	Male	44	2	2	0	IIIA	Intestinal	32,174	12,792
S219T	Primary	Female	29	3	3	0	IV	Diffuse-scattered	34,660	14,576
P208T	Primary	Male	60	4	3	0	IV	Diffuse-adherent	11,582	6,135
P208L	Lymph node metastasis of P208T								15,382	7,425
									137,706 <sup>c</sup>	38,903 <sup>d</sup>

<sup>a</sup> Tumor staging of gastric carcinoma (GC) were done according to the Tumor-Node-Metastasis Stage Grouping (15).

<sup>b</sup> Histological classification of GC was done according to the Lauren classification system (13). In addition, diffuse-type GC were additionally classified into diffuse-adherent and diffuse-scattered subtypes (14).

<sup>c</sup> Total number of tags of 5 GC samples.

<sup>d</sup> Total number of unique tags among 5 GC samples.

permit direct comparison, each library was normalized to a total of 1,000,000 tags.

**Cluster Analysis.** The Cluster and TreeView computer programs were obtained from online resources.<sup>1</sup> We compared SAGE tags from 4 primary GC samples with those from samples of normal gastric epithelia [GSM784, SAGE normal gastric body epithelial (10)], available from SAGEmap (18).<sup>2</sup> We also compared SAGE tags from 2 primary GC samples, also available from SAGEmap [GSM757, SAGE gastric cancer-G234 (10) and GSM2385, SAGE gastric cancer-G189] with those from normal gastric epithelia (GSM784) and obtained the 20 most up-regulated and 20 most down-regulated tags. This produced a dataset of 128 tags. These data were imported into the Cluster program and were log-transformed, and complete linkage clustering was performed.

**Quantitative RT-PCR Analysis.** Total RNA was extracted with an RNeasy Mini kit (Qiagen, Hilden, Germany), and 1  $\mu$ g of total RNA was converted to cDNA with a first-strand cDNA synthesis kit (Amersham Pharmacia Biotech, Uppsala, Sweden). PCR was performed with a SYBR Green PCR Core Reagents kit (Applied Biosystems, Foster City, CA). Real-time detection of the emission intensity of SYBR green bound to double-stranded DNA was performed with an ABI PRISM 7700 Sequence Detection System (Applied Biosystems) as described previously (19). The sequences primer are listed in Supplementary Table 1. We calculated the ratio of target gene mRNA expression levels between GC tissue (T) and corresponding nonneoplastic mucosa (N). T/N ratios > 2-fold were considered to represent overexpression. Genes with T/N ratios > 2 in >40% of the samples examined were defined as frequently up-regulated genes.

**Cell Lines, Expression Vector, and Western Blot.** Two cell lines derived from human GC were used. MKN-28 was kindly provided by Dr. Toshimitsu Suzuki. HSC-39 was kindly provided by Dr. Kazuyoshi Yanagihara (20). All cell lines were maintained in RPMI 1640 (Nissui Pharmaceutical Co., Ltd., Tokyo, Japan) containing 10% fetal bovine serum (BioWhittaker, Walkersville, MD) in a humidified atmosphere of 5% CO<sub>2</sub> and 95% air at 37°C. For constitutive expression of the *RegIV* gene, cDNA was PCR amplified and subcloned into pcDNA 3.1 (Invitrogen Corp., Carlsbad, CA) in-frame with a COOH-terminal V5 epitope tag. MKN-28 cells were transfected transiently with *REGIV* cDNA using FuGene6 Transfection Reagent (Roche Diagnostics Co., Indianapolis, IN) according to the manufacturer's instructions. For Western blot analysis, cells and culture media from MKN-28 cells transfected with pcDNA 3.1 or pcDNA-RegIV-V5 were lysed as described previously (21). The culture media was concentrated with a PROTEIN concentrate kit (Takara Bio, Inc., Shiga, Japan). The lysates (40  $\mu$ g) were solubilized in Laemmli sample buffer by boiling and then were subjected to 15% SDS-PAGE followed by electrotransfer onto a nitrocellulose filter. Anti-V5 monoclonal antibody was purchased from Invitrogen Corp. Peroxidase-conjugated antimouse IgG was used as the secondary antibody. The immune complex was visualized with an ECL Western blot detection system (Amersham Pharmacia Biotech).

**Statistical Methods.** Statistical analyses were performed with the Mann-Whitney *U* test. *P* of <0.05 was regarded as statistically significant.

<sup>1</sup>Internet address: <http://www.microarrays.org/software.html>.

<sup>2</sup>Internet address: <http://www.ncbi.nlm.nih.gov/SAGE/>.

## RESULTS

**Generation of SAGE Data.** A total of 137,706 tags was generated, including 38,903 that were unique. The numbers of tags and unique tags are shown in Table 1. Sequence data from our SAGE libraries are publicly available at SAGEmap (GEO accession number GSE 545, SAGE Hiroshima gastric cancer tissue).

**Comparison of Expression Patterns in GCs and Normal Stomach.** We compared SAGE tags from 4 primary GC samples with those from normal gastric epithelia (GSM784). The 20 most up-regulated tags and 20 most down-regulated tags in each GC are shown in Supplementary Table 2. Among the up-regulated tags, 12 were commonly up-regulated in both W226T (intestinal type) and W246T (intestinal type). These tags included *lysozyme (LYZ)*, *trefoil factor 3 (TFF3)*, *aldolase A (ALDOA)*, and *S100 calcium-binding protein*, which may participate in the genesis of intestinal type GC. P208T (diffuse-adherent type) and S219T (diffuse-scattered type) showed many different tags from those of W226T and W246T. The down-regulated tags were similar in all 4 GC samples and included *lipase (LIPF)*, *pepsinogen (PGA5)*, and *antrum mucosa protein (AMP18)*, which are expressed physiologically in normal gastric glands.

The SAGE data were also analyzed by a clustering algorithm to delineate patterns in the expression of 128 tags among all four libraries (our four GC libraries, our one lymph node metastasis library, and three libraries available from SAGEmap<sup>2</sup>; Fig. 2). These tags were selected as described in "Materials and Methods." Clusters of coexpressed tags suggested that the two intestinal type GC libraries (W226T and W246T), despite being derived from 2 different patients at different stages, were the most similar to each other. The primary GC (P208T) and its lymph node metastasis (P208L) appeared not to be similar to each other. To identify ideal biomarkers for GC, we focused on a cluster of 14 tags, the expression of which was up-regulated in 6 GC samples (our four GC libraries plus two GC libraries available from SAGEmap) and 1 lymph node metastasis. Because some genes share the same SAGE tag, these 14 tags represented 22 genes (Fig. 2 and Table 2). To validate the SAGE data, the expression of 12 known genes was analyzed by quantitative RT-PCR of an additional 46 GC samples and corresponding nonneoplastic mucosa samples. Frequently overexpressed genes were *APOC1* (percentage of samples with overexpression: T/N ratio > 2; 67.4%), *YF13H12* (52.2%), and *CEACAM6* (50.0%; Fig. 3A, see also Supplementary Fig. 1). Other genes were less frequently overexpressed. The expression levels of all 12 genes were not associated with T grade (depth of tumor invasion), N grade (degree of lymph node metastasis), or tumor stage.

**Comparison of Expression Patterns in Early and Advanced GC.** To identify genes involved in tumor progression, we compared tags from early GC (W226T) and advanced GC (W246T). The 10

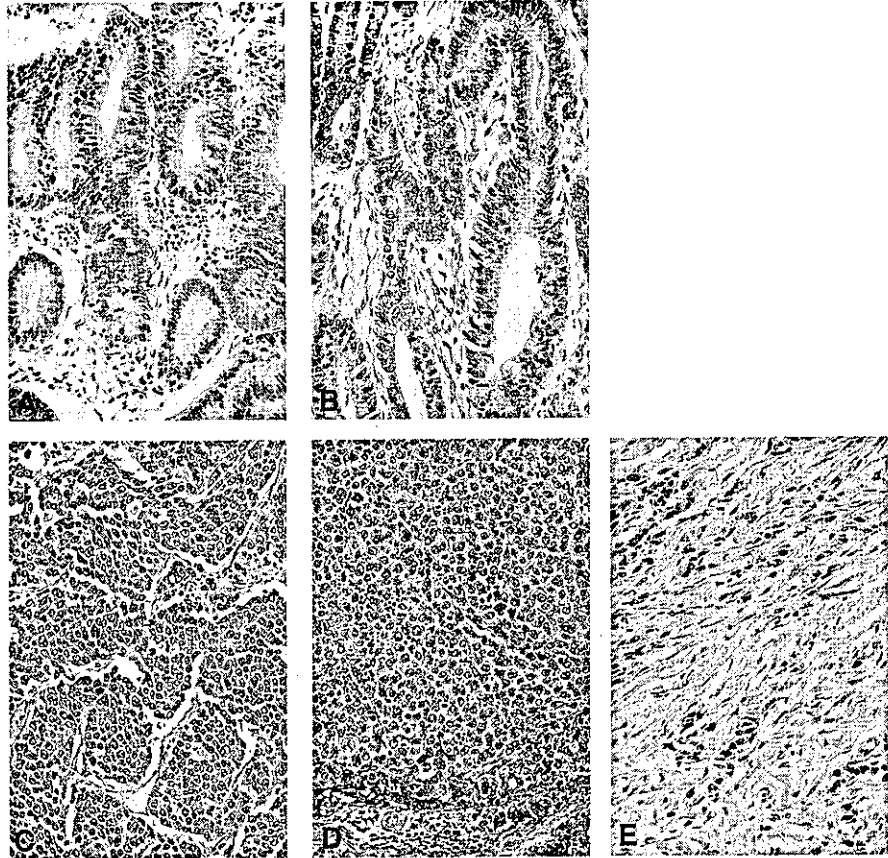


Fig. 1. Histological features of gastric carcinoma (GC) samples analyzed by serial analysis of gene expression. Formalin-fixed, paraffin-embedded sections were stained with H&E. Both W226T (A) and W246T (B) were to intestinal type GC, and histological features were similar. Both P208T (C) and P208L (D) were diffuse-adherent type GC. P208L was a lymph-node metastasis of P208T. S219T (E) was diffuse-scattered type GC. Obvious histological heterogeneity was not seen in all specimens (original magnification,  $\times 100$ ).

most up-regulated tags are shown in Table 3, and the 10 most down-regulated tags are shown in Supplementary Table 3. Because some genes share the same SAGE tag, these up-regulated 10 tags represented 12 genes (Table 3). To validate the SAGE data, the expression of 9 known genes was analyzed by quantitative RT-PCR of an additional 46 GC samples and corresponding nonneoplastic mucosa samples. Genes frequently overexpressed in GC compared with nonneoplastic mucosa were *COL1A1* (78.3%), *CDH17* (73.9%), *COL1A2* (58.7%), and *FUS* (41.3%; Fig. 3B, see also Supplementary Fig. 2). Other genes were less frequently overexpressed. The mRNA expression levels of *CDH17* were associated with T grade ( $P = 0.0060$ ). The mRNA expression levels of *FUS* were associated with N grade ( $P = 0.0416$ ). The mRNA expression levels of *FUS*, *COL1A1*, and *COL1A2* were associated with tumor stage ( $P = 0.0414$ ,  $P = 0.0156$ , and  $P = 0.0395$ , respectively; Table 4).

**Comparison of Expression Patterns in Primary GC and Associated Lymph Node Metastasis.** To identify genes involved in tumor metastasis, we compared tags from primary GC (P208T) and its lymph node metastasis (P208L). The 10 most up-regulated tags are shown in Table 5, and the 10 most down-regulated tags are shown in Supplementary Table 4. The up-regulated tags represented 12 genes (Table 5). To validate the SAGE data, the expression of 5 known genes was analyzed by quantitative RT-PCR of an additional 46 GC samples and their lymph node metastases in 9 samples. A frequently overexpressed gene in lymph node metastasis compared with primary GC was not found (Fig. 3C, see also Supplementary Fig. 3). *APOE* mRNA expression in lymph node metastasis tended to be higher than that in primary GC. Other genes were less frequently overexpressed. Genes frequently overexpressed in GC compared with nonneoplastic

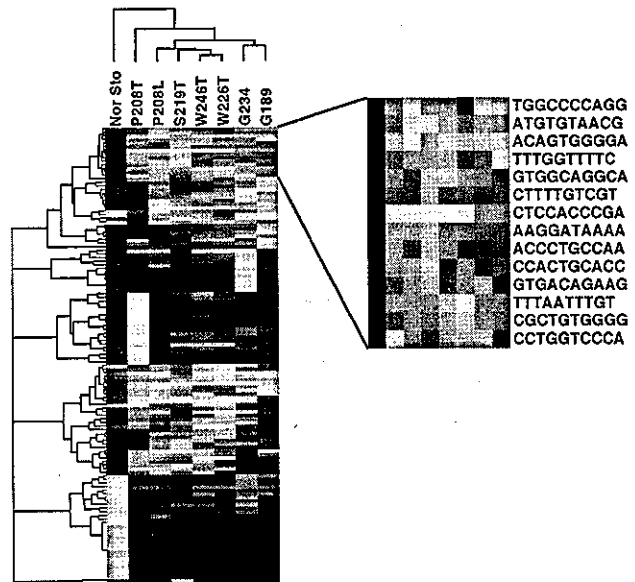


Fig. 2. Cluster analysis of 128 tags from eight serial analysis of gene expression (SAGE) libraries and dendrogram showing similarities in expression patterns among libraries. Tags were selected as described in the "Materials and Methods." Brackets indicate the cluster of tags commonly up-regulated in gastric carcinoma, which is expanded in size on the right for visualization. On the dendrogram, two intestinal type gastric carcinoma samples cluster together, indicating their high degree of similarity. Each row represents a tag, whereas each column corresponds to a SAGE library sample. The absolute abundance of the SAGE tag in the library (SAGE tag number) correlates with the intensity of the red color (black, not present; intense red, highly abundant).

GENE EXPRESSION PROFILE OF GASTRIC CARCINOMA

Table 2 Genes and tags commonly up-regulated in gastric carcinoma obtained by serial analysis of gene expression

Tag sequence	UniGene ID	Symbol	Description
TGGCCCCAGG	Hs.268571	<i>APOC1</i>	Apolipoprotein C-1
ATGTGTAACG	Hs.81256	<i>S100A4</i>	S100 calcium binding protein A4 (calcium protein, Calvasculin, metastasin, murine placental homologue)
	Hs.173611	<i>NDUFS2</i>	NADH dehydrogenase (ubiquinone) Fe-S protein 2, 49 kDa (NADH-coenzyme Q reductase)
ACAGTGGGGA	Hs.278270	<i>TEBP</i>	Unactive progesterone receptor, 23 kDa
	Hs.288443		Homosapiens transcribed sequences
	Hs.355693		Homosapiens transcribed sequence with strong similarity to protein pir:A56211 (H. sapiens) A56211 progesterone receptor-related protein P23-human
TTTGGTTTTC	Hs.179573	<i>COL1A2</i>	Collagen, type I, $\alpha 2$
	Hs.21431	<i>SUFU</i>	Suppressor of fused homologue (Drosophila)
GTGGCAGGCA	Hs.47334	<i>SYAP1</i>	Synapse associated protein 1, SAP47 homologue (Drosophila)
	Hs.13255	<i>KIAA0930</i>	KIAA0930 protein
CTTTTGTCGT	Hs.19597	<i>KIAA1694</i>	KIAA1694 protein
CTCCACCCGA	Hs.82961	<i>TFF3</i>	Trefoil factor 3 (intestinal)
AAGGATAAAA	Hs.73848	<i>CEACAM6</i>	Carcinoembryonic antigen-related cell adhesion molecule 6 (nonspecific cross reacting antigen)
ACCTGCCAA	Hs.405871	<i>FLJ20249</i>	Hypothetical protein FLJ20249
CCACTGCACC	Hs.6853	<i>FLJ22167</i>	Hypothetical protein FLJ22167
	Hs.146844		na similar to hypothetical protein FLJ10891
GTGACAGAAG	Hs.356129	<i>EIF4A1</i>	Eukaryotic translation initiation factor 4A, isoform 1
TTTAAATTTGT	Hs.182793	<i>GOLPH2</i>	Golgi phosphoprotein 2
	Hs.220689	<i>G3BP</i>	Ras-GTPase-activating protein SH3-domain-binding protein
CGCTGTGGGG	Hs.7486	<i>YF13H12</i>	Protein expressed in thyroid
CCTGGTCCCA	Hs.23881	<i>KRT7</i>	Keratin 7
	Hs.167679	<i>SH3BP2</i>	SH3-domain binding protein 2
TGGAAATGAC	Hs.172928	<i>COL1A1</i>	Collagen, type I, $\alpha 1$
	Hs.20506	<i>LOC284371</i>	Hypothetical protein LOC284371

mucosa were *APOE* (50.0%) and *S100A11* (41.3%; Fig. 3D). The mRNA expression levels of *APOE* were associated with T grade ( $P = 0.0139$ ), N grade ( $P = 0.0006$ ), and tumor stage ( $P = 0.0125$ ; Table 4).

**REGIV Overexpression in GC.** Among the 20 up-regulated tags in each GC sample (Supplementary Table 2), we focused on *REGIV* because *REGIV* expression was narrowly restricted by Virtual Northern analysis by SAGEmap (Fig. 4A). Besides GCs, *REGIV* was detected at low levels in only eight libraries, including one colon cancer and two normal colon libraries. Quantitative RT-PCR analysis showed overexpression of the *REGIV* gene in 22 samples of the 46 GC samples (47.8%; Fig. 4B). When we focused on *REGIV* gene expression in GC, high levels of *REGIV* expression ( $>100$ , arbitrary units) were found in 14 of 46 samples (30.4%; Fig. 4C). Among various normal tissues obtained from an autopsy, obvious *REGIV* expression was found in noncancerous stomach, duodenum, ileum, colon, and pancreas, as reported elsewhere (22). However, the levels of *REGIV* expression were low ( $<60$  arbitrary units).

Analysis of the amino acid sequence of the RegIV protein suggests

that it may be secreted. To investigate whether RegIV is a secreted protein, we performed Western blot analysis of cell extracts and culture media of MKN-28 cells transiently transfected with pcDNA 3.1 or pcDNA-RegIV-V5. With an anti-V5 antibody, we detected an approximate  $M_r$  20,000 band corresponding to V5-tagged RegIV protein in cell extracts and culture media from RegIV-V5-expressing MKN-28 cells but not in control cells (Fig. 4D).

DISCUSSION

To identify potential molecular markers for GC and to better understand the development of GC at the molecular level, we performed SAGE on 5 GC samples from 4 patients that showed distinct histological types and tumor stages. We analyzed with respect to (a) commonly up-regulated genes in GC compared with normal stomach, (b) up-regulated genes in advanced compared with early GC (genes potentially involved in tumor progression), (c) up-regulated genes in GC lymph node metastasis compared with primary GC (genes potentially involved in tumor metastasis), and (d) genes specifically ex-

Table 3 The 10 most up-regulated tags in advanced gastric carcinoma in comparison with early gastric carcinoma

Tag sequence	Tags/million		UniGene ID	Symbol	Description
	W226T	W246T			
TCCCCGTAAA	22 <sup>a</sup> (1) <sup>b</sup>	559 (18)			No match
TCCCGTACAT	0 (0)	279 (9)			No match
AAAAGAGTGG	0 (0)	217 (7)	Hs.89436	<i>CDH17</i>	Cadherin 17, LI cadherin (liver-intestine)
			Hs.99969	<i>FUS</i>	Fusion, derived from t(12;16) malignant liposarcoma
CCAGAGAACT	0 (0)	217 (7)	Hs.356442	<i>PRO1073</i>	PRO1073 protein
AACCTCCCCA	0 (0)	186 (6)	Hs.137396		Sapiens cDNA FLJ36926 fis, clone BRACE2005196
			Hs.232092		Sapiens cDNA FLJ30146 fis, clone BRACE2000256
AATACTTTTG	0 (0)	186 (6)	Hs.356427	<i>PAI-RBP1</i>	PAI-1 mRNA-binding protein
			Hs.179573	<i>COL1A2</i>	Collagen, type I, $\alpha 2$
TCCTATTAAG	22 (1)	372 (12)			No match
TGGAAATGAC	0 (0)	186 (6)	Hs.172928	<i>COL1A1</i>	Collagen, type I, $\alpha 1$
			Hs.193076	<i>GRAP2</i>	GRB2-related adaptor protein 2
TCCCCGTACA	227 (10)	3325 (107)	Hs.2730	<i>HNRPL</i>	Heterogeneous nuclear ribonucleoprotein L
			Hs.151734	<i>NUTF2</i>	Nuclear transport factor 2
AAGTGAAACA	0 (0)	155 (5)	Hs.93659	<i>ERP70</i>	Protein disulfide isomerase-related protein (calcium-binding protein, intestinal-related)

<sup>a</sup> The absolute tag counts are normalized to 1,000,000 total tags/sample.

<sup>b</sup> Number in parentheses indicates the absolute tag counts.