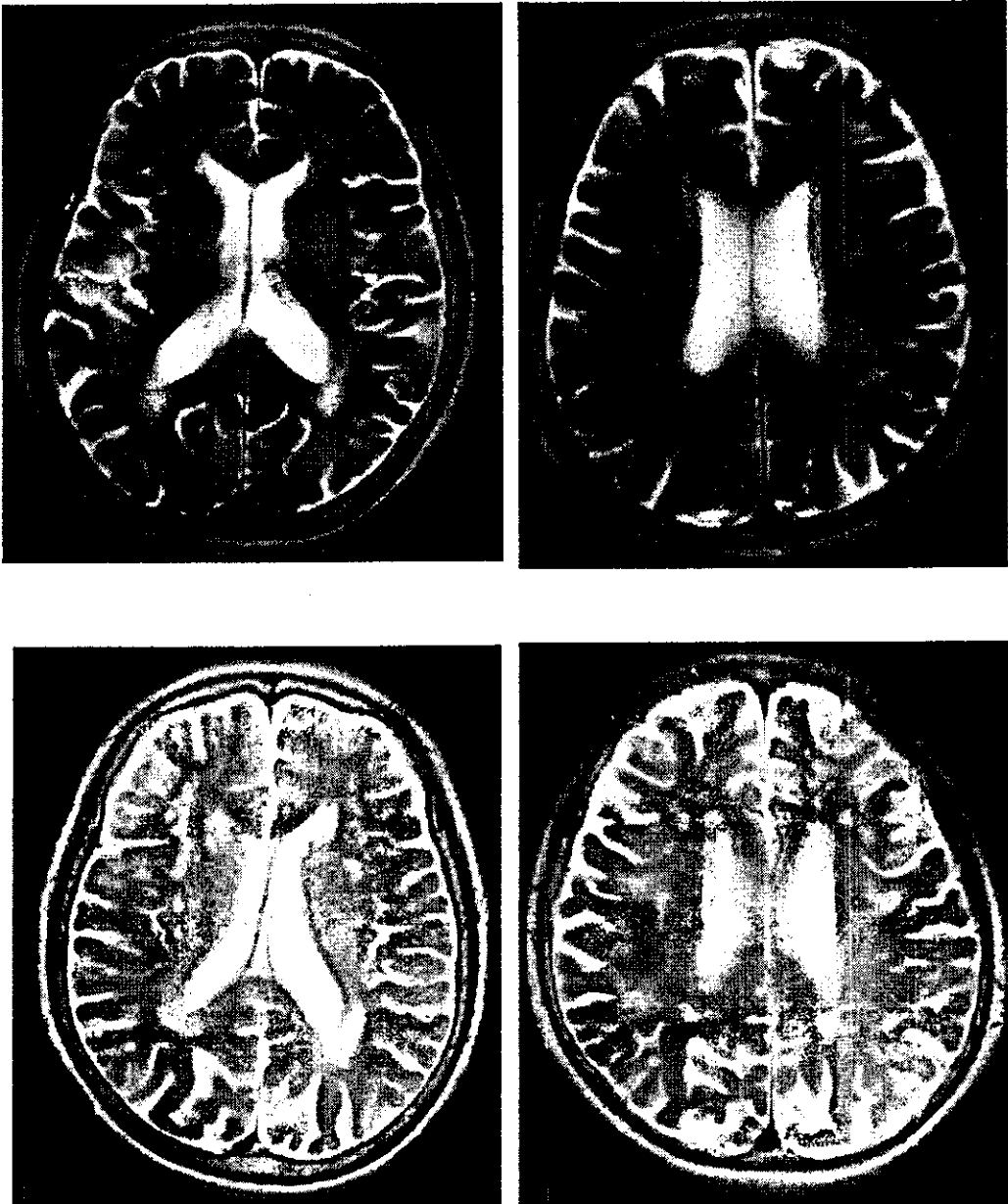
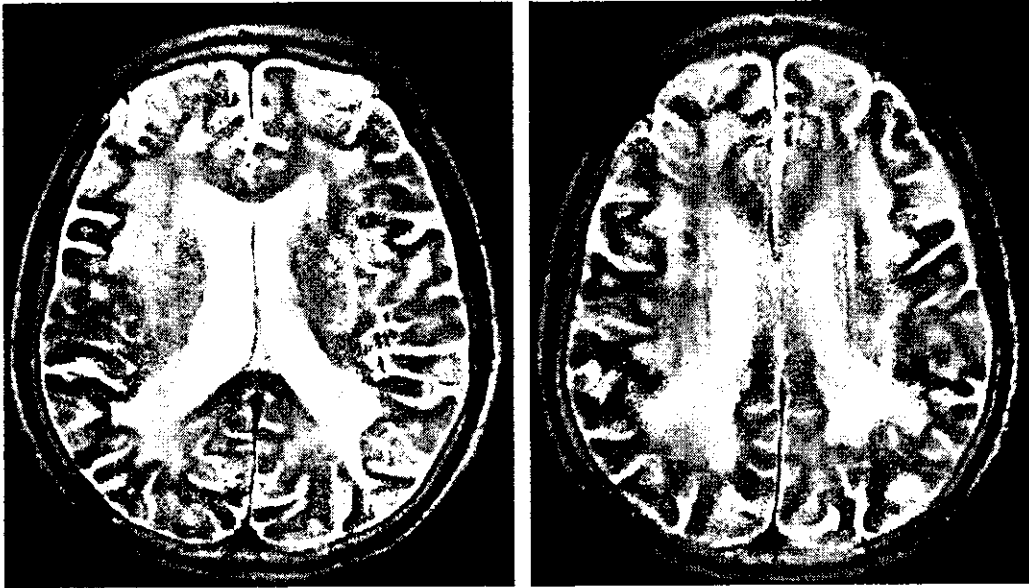


III. multifocal periventricular hyperintense punctuate lesions.

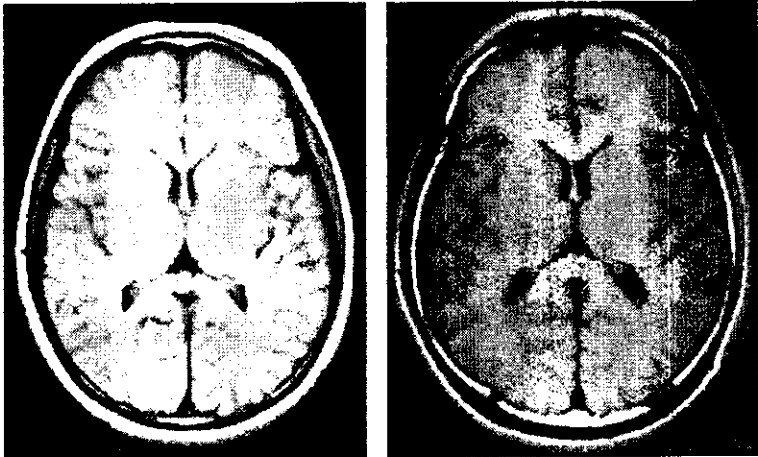


IV. Multiple high signal intensity area that reached confluency in the periventricular region and white matter.

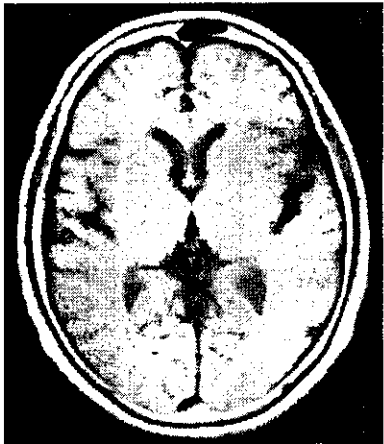


# Ventricular dilatation

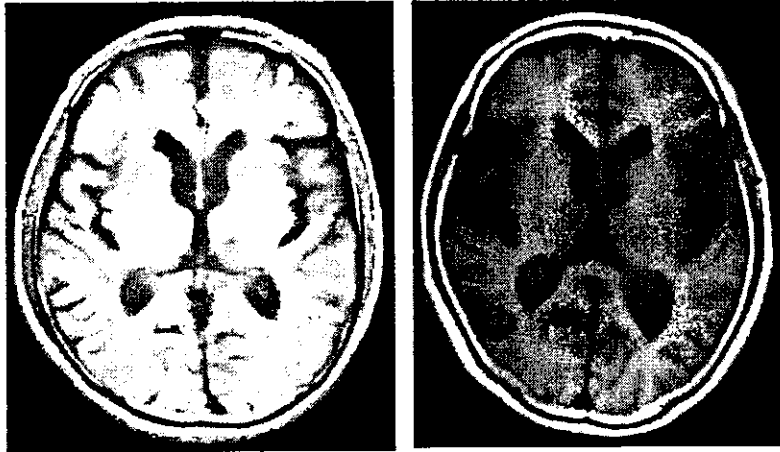
I. none



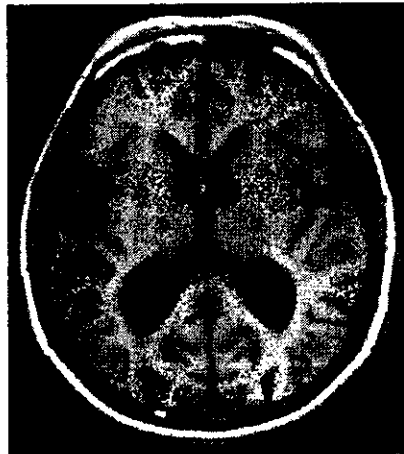
II.mild



III. moderate

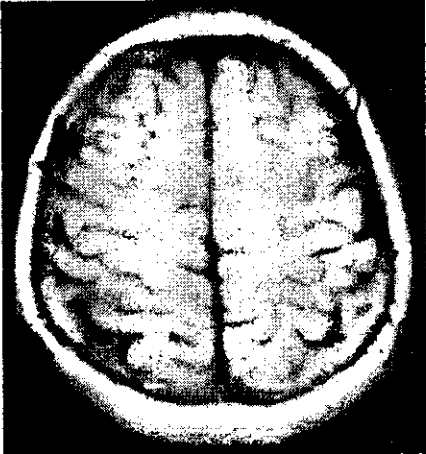


IV. severe

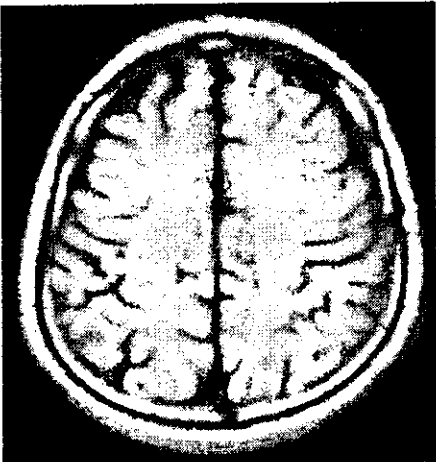
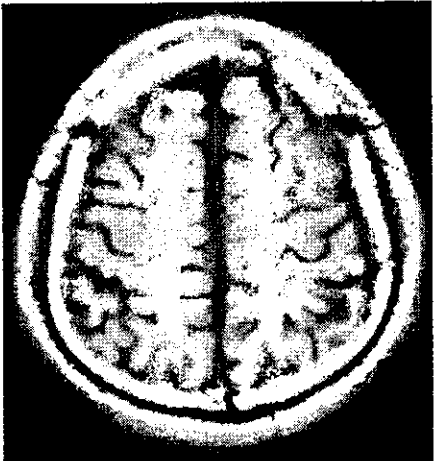


# Brain atrophy

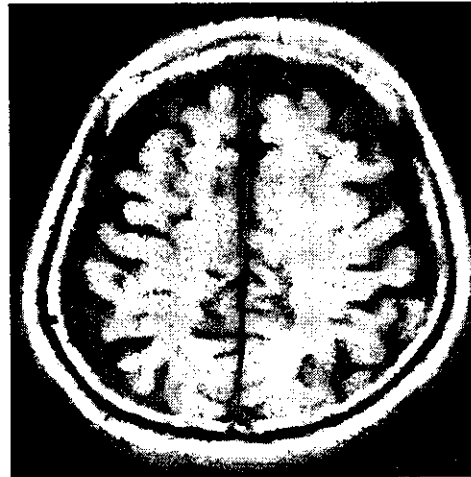
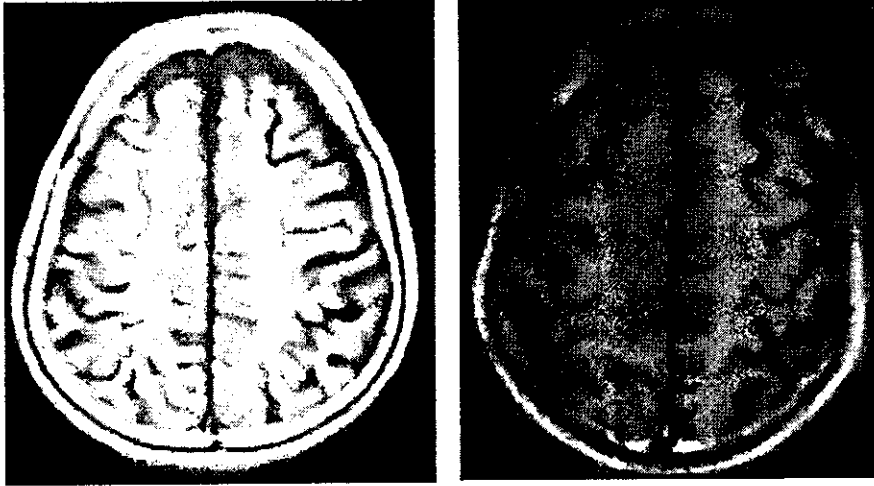
I. none



II. mild



III. Moderate



IV. severe

## 1) Brain Atrophy

		40-49yr		50-59yr		60-69yr		70-79yr		80yr -		Total	
		N	%	N	%	N	%	N	%	N	%	N	%
normal	Male	235	90.0	260	80.2	184	64.8	75	29.8	8	19.0	762	65.5
	Female	289	99.3	271	96.8	239	85.1	164	62.6	14	41.2	977	85.1
	Total	524	94.9	531	87.9	423	74.9	239	46.5	22	28.9	1739	75.2
mild	Male	26	10.0	63	19.4	94	33.1	147	58.3	24	57.1	354	30.4
	Female	2	0.7	9	3.2	41	14.6	95	36.3	18	52.9	165	14.4
	Total	28	5.1	72	11.9	135	23.9	242	47.1	42	55.3	519	22.5
moderate	Male	0	0.0	1	0.3	6	2.1	29	11.5	9	21.4	45	3.9
	Female	0	0.0	0	0.0	1	0.4	3	1.1	2	5.9	6	0.5
	Total	0	0.0	1	0.2	7	1.2	32	6.2	11	14.5	51	2.2
severe	Male	0	0.0	0	0.0	0	0.0	1	0.4	1	2.4	2	0.2
	Female	0	0.0	0	0.0	0	0.0	0	0.0	0	0.0	0	0.0
	Total	0	0.0	0	0.0	0	0.0	1	0.2	1	1.3	2	0.1
Total	Male	261	100.0	324	100.0	284	100.0	252	100.0	42	100.0	1163	100.0
	Female	291	100.0	280	100.0	281	100.0	262	100.0	34	100.0	1148	100.0
	Total	552	100.0	604	100.0	565	100.0	514	100.0	76	100.0	2311	100.0

## 2) Ventricular Dilatation

		40-49yr		50-59yr		60-69yr		70-79yr		80yr-		Total	
		N	%	N	%	N	%	N	%	N	%	N	%
Normal	Male	207	79.3	210	64.8	100	35.2	30	11.9	2	4.8	549	47.2
	Female	265	91.1	233	83.2	186	66.2	78	29.8	5	14.7	767	66.8
	Total	472	85.5	443	73.3	286	50.6	108	21.0	7	9.2	1316	56.9
Mild	Male	54	20.7	109	33.6	166	58.5	131	52.0	23	54.8	483	41.5
	Female	25	8.6	46	16.4	90	32.0	144	55.0	22	64.7	327	28.5
	Total	79	14.3	155	25.7	256	45.3	275	53.5	45	59.2	810	35.0
Moderate	Male	0	0.0	5	1.5	17	6.0	72	28.6	14	33.3	108	9.3
	Female	1	0.3	1	0.4	4	1.4	36	13.7	7	20.6	49	4.3
	Total	1	0.2	6	1.0	21	3.7	108	21.0	21	27.6	157	6.8
Severe	Male	0	0.0	0	0.0	1	0.4	19	7.5	3	7.1	23	2.0
	Female	0	0.0	0	0.0	1	0.4	4	1.5	0	0.0	5	0.4
	Total	0	0.0	0	0.0	2	0.4	23	4.5	3	3.9	28	1.2
Total	Male	261	100.0	324	100.0	284	100.0	252	100.0	42	100.0	1163	100.0
	Female	291	100.0	280	100.0	281	100.0	262	100.0	34	100.0	1148	100.0
	Total	552	100.0	604	100.0	565	100.0	514	100.0	76	100.0	2311	100.0

3) Periventricular hyperintensity (PVH)

		40-49yr		50-59yr		60-69yr		70-79yr		80yr -		Total	
		N	%	N	%	N	%	N	%	N	%	N	%
unreadable	Male	0	0.0	0	0.0	0	0.0	0	0.0	0	0.0	0	0.0
	Female	0	0.0	0	0.0	0	0.0	1	0.4	0	0.0	1	0.1
	Total	0	0.0	0	0.0	0	0.0	1	0.2	0	0.0	1	0.0
no PVH	Male	258	98.9	302	93.2	200	70.4	99	39.3	11	26.2	870	74.8
	Female	287	98.6	257	91.8	201	71.5	96	36.6	13	38.2	854	74.4
	Total	545	98.7	559	92.5	401	71.0	195	37.9	24	31.6	1724	74.6
mild PVH	Male	3	1.1	19	5.9	58	20.4	67	26.6	14	33.3	161	13.8
	Female	1	0.3	20	7.1	55	19.6	72	27.5	11	32.4	159	13.9
	Total	4	0.7	39	6.5	113	20.0	139	27.0	25	32.9	320	13.8
moderate PVH	Male	0	0.0	2	0.6	22	7.7	80	31.7	16	38.1	120	10.3
	Female	3	1.0	3	1.1	24	8.5	86	32.8	9	26.5	125	10.9
	Total	3	0.5	5	0.8	46	8.1	166	32.3	25	32.9	245	10.6
severe PVH	Male	0	0.0	1	0.3	4	1.4	6	2.4	1	2.4	12	1.0
	Female	0	0.0	0	0.0	1	0.4	7	2.7	1	2.9	9	0.8
	Total	0	0.0	1	0.2	5	0.9	13	2.5	2	2.6	21	0.9
Total	Male	261	100.0	324	100.0	284	100.0	252	100.0	42	100.0	1163	100.0
	Female	291	100.0	280	100.0	281	100.0	262	100.0	34	100.0	1148	100.0
	Total	552	100.0	604	100.0	565	100.0	514	100.0	76	100.0	2311	100.0



4) Cerebrovascular Disease (CVD)

Cerebrovascular Disease (CVD)

		40 - 49yr		50 - 59yr		60 - 69yr		70 - 79yr		80yr -		Total	
		N	%	N	%	N	%	N	%	N	%	N	%
unreadable	Male	0	0.0	0	0.0	0	0.0	0	0.0	0	0.0	0	0.0
	Female	0	0.0	0	0.0	0	0.0	3	1.1	0	0.0	3	0.3
	Total	0	0.0	0	0.0	0	0.0	3	0.6	0	0.0	3	0.1
no cvd	Male	258	98.9	305	94.1	240	84.5	161	63.9	19	45.2	983	84.5
	Female	287	98.6	271	96.8	257	91.5	202	77.1	23	67.6	1040	90.6
	Total	545	98.7	576	95.4	497	88.0	363	70.6	42	55.3	2023	87.5
cvd	Male	3	1.1	19	5.9	44	15.5	91	36.1	23	54.8	180	15.5
	Female	4	1.4	9	3.2	24	8.5	57	21.8	11	32.4	105	9.1
	Total	7	1.3	28	4.6	68	12.0	148	28.8	34	44.7	285	12.3
Total	Male	261	100.0	324	100.0	284	100.0	252	100.0	42	100.0	1163	100.0
	Female	291	100.0	280	100.0	281	100.0	262	100.0	34	100.0	1148	100.0
	Total	552	100.0	604	100.0	565	100.0	514	100.0	76	100.0	2311	100.0

Lacuna

		40 - 49yr		50 - 59yr		60 - 69yr		70 - 79yr		80yr -		Total	
		N	%	N	%	N	%	N	%	N	%	N	%
unreadable	Male	0	0.0	0	0.0	0	0.0	0	0.0	0	0.0	0	0.0
	Female	0	0.0	0	0.0	0	0.0	2	0.8	0	0.0	2	0.2
	Total	0	0.0	0	0.0	0	0.0	2	0.4	0	0.0	2	0.1
no lacuna	Male	260	99.6	309	95.4	245	86.3	173	68.7	24	57.1	1011	86.9
	Female	289	99.3	271	96.8	264	94.0	217	82.8	26	76.5	1067	92.9
	Total	549	99.5	580	96.0	509	90.1	390	75.9	50	65.8	2078	89.9
one lacuna	Male	1	0.4	10	3.1	20	7.0	39	15.5	9	21.4	79	6.8
	Female	2	0.7	8	2.9	11	3.9	32	12.2	6	17.6	59	5.1
	Total	3	0.5	18	3.0	31	5.5	71	13.8	15	19.7	138	6.0
multiple lacune	Male	0	0.0	5	1.5	19	6.7	40	15.9	9	21.4	73	6.3
	Female	0	0.0	1	0.4	6	2.1	11	4.2	2	5.9	20	1.7
	Total	0	0.0	6	1.0	25	4.4	51	9.9	11	14.5	93	4.0
Total	Male	261	100.0	324	100.0	284	100.0	252	100.0	42	100.0	1163	100.0
	Female	291	100.0	280	100.0	281	100.0	262	100.0	34	100.0	1148	100.0
	Total	552	100.0	604	100.0	565	100.0	514	100.0	76	100.0	2311	100.0

Thrombosis

		40 - 49yr		50 - 59yr		60 - 69yr		70 - 79yr		80yr -		Total	
		N	%	N	%	N	%	N	%	N	%	N	%
unreadable	Male	0	0.0	0	0.0	0	0.0	0	0.0	0	0.0	0	0.0
	Female	0	0.0	0	0.0	0	0.0	2	0.8	0	0.0	2	0.2
	Total	0	0.0	0	0.0	0	0.0	2	0.4	0	0.0	2	0.1
no thrombosis	Male	261	100.0	323	99.7	282	99.3	242	96.0	35	83.3	1143	98.3
	Female	289	99.3	280	100.0	276	98.2	250	95.4	32	94.1	1127	98.2
	Total	550	99.6	603	99.8	558	98.8	492	95.7	67	88.2	2270	98.2
thrombosis	Male	0	0.0	1	0.3	2	0.7	10	4.0	7	16.7	20	1.7
	Female	2	0.7	0	0.0	5	1.8	10	3.8	2	5.9	19	1.7
	Total	2	0.4	1	0.2	7	1.2	20	3.9	9	11.8	39	1.7
Total	Male	261	100.0	324	100.0	284	100.0	252	100.0	42	100.0	1163	100.0
	Female	291	100.0	280	100.0	281	100.0	262	100.0	34	100.0	1148	100.0
	Total	552	100.0	604	100.0	565	100.0	514	100.0	76	100.0	2311	100.0

Cerebral Embolism

		40 - 49yr		50 - 59yr		60 - 69yr		70 - 79yr		80yr -		Total	
		N	%	N	%	N	%	N	%	N	%	N	%
unreadable	Male	0	0.0	0	0.0	0	0.0	0	0.0	0	0.0	0	0.0
	Female	0	0.0	0	0.0	0	0.0	2	0.8	0	0.0	2	0.2
	Total	0	0.0	0	0.0	0	0.0	2	0.4	0	0.0	2	0.1
no embolism	Male	259	99.2	322	99.4	278	97.9	233	92.5	39	92.9	1131	97.2
	Female	291	100.0	280	100.0	278	98.9	253	96.6	33	97.1	1135	98.9
	Total	550	99.6	602	99.7	556	98.4	486	94.6	72	94.7	2266	98.1
embolism	Male	2	0.8	2	0.6	6	2.1	19	7.5	3	7.1	32	2.8
	Female	0	0.0	0	0.0	3	1.1	7	2.7	1	2.9	11	1.0
	Total	2	0.4	2	0.3	9	1.6	26	5.1	4	5.3	43	1.9
Total	Male	261	100.0	324	100.0	284	100.0	252	100.0	42	100.0	1163	100.0
	Female	291	100.0	280	100.0	281	100.0	262	100.0	34	100.0	1148	100.0
	Total	552	100.0	604	100.0	565	100.0	514	100.0	76	100.0	2311	100.0

Cerebral Bleeding

		40 - 49yr		50 - 59yr		60 - 69yr		70 - 79yr		80yr -		Total	
		N	%	N	%	N	%	N	%	N	%	N	%
unreadable	Male	0	0.0	0	0.0	0	0.0	0	0.0	0	0.0	0	0.0
	Female	0	0.0	0	0.0	0	0.0	3	1.1	0	0.0	3	0.3
	Total	0	0.0	0	0.0	0	0.0	3	0.6	0	0.0	3	0.1
no bleeding	Male	260	99.6	321	99.1	283	99.6	250	99.2	42	100.0	1156	99.4
	Female	291	100.0	280	100.0	280	99.6	258	98.5	33	97.1	1142	99.5
	Total	551	99.8	601	99.5	563	99.6	508	98.8	75	98.7	2298	99.4
cerebral bleeding	Male	1	0.4	3	0.9	1	0.4	2	0.8	0	0.0	7	0.6
	Female	0	0.0	0	0.0	1	0.4	1	0.4	1	2.9	3	0.3
	Total	1	0.2	3	0.5	2	0.4	3	0.6	1	1.3	10	0.4
Total	Male	261	100.0	324	100.0	284	100.0	252	100.0	42	100.0	1163	100.0
	Female	291	100.0	280	100.0	281	100.0	262	100.0	34	100.0	1148	100.0
	Total	552	100.0	604	100.0	565	100.0	514	100.0	76	100.0	2311	100.0

## XIII. Oral examinations

### XIII. Oral examinations

- 1) Caries
- 2) Periodontal index
- 3) Denture use
- 4) Tongue coat

Caries, periodontal index, and tongue coat were evaluated by a well trained dentist with a dental mirror and WHO CPI probe. Denture use was asked at oral examination on verbal.

#### 1) Caries

All teeth were classified into intact, decayed, filled, missing, or caries observation.

#### 2) Periodontal index

Periodontal indices (CPI score) on 10 index teeth (17/16, 11, 26/27, 36/37, 31, 46/47) were derived according to World Health Organization standard.

code 0 : healthy gingival tissue

code 1 : bleeding on probing

code 2 : presence of calculus or defective restoration margins

code 3 : presence of 4mm -6mm pocket

code 4 : presence of more than 6mm pocket

(The highest code was given if two or more phenomena were found on same tooth.)

Missing

Others

#### 3) Denture use

Denture use was asked by a dentist on verbal.

No use

sometimes

always

#### 4) Tongue coat

Score of tongue coat was given by its area on the tongue dorsum.

score 0 : none visible

score 1 : less than one-third on the tongue dorsum

score 2 : less than two-third on the tongue dorsum

score 3 : more than two-third on the tongue dorsum

1) Caries

The numbers of intact, filled, caries observation, decayed, and missing teeth

Number of intact teeth

	40-49yr			50-59yr			60-69yr			70-79yr			80yr-			Total		
	Mean	SD	N	Mean	SD	N	Mean	SD	N	Mean	SD	N	Mean	SD	N	Mean	SD	N
Male	14.9	5.7	258	14.9	6.7	327	12.1	7.8	292	6.3	6.7	266	4.1	5.3	42	11.9	7.7	1185
Female	13.2	5.3	289	11.8	6.2	280	9.6	6.7	279	4.7	5.5	269	3.5	5.9	32	9.7	6.8	1149
Total	14.0	5.6	547	13.5	6.7	607	10.9	7.4	571	5.5	6.2	535	3.9	5.5	74	10.8	7.4	2334

Number of filled teeth

	40-49yr			50-59yr			60-69yr			70-79yr			80yr-			Total		
	Mean	SD	N	Mean	SD	N	Mean	SD	N	Mean	SD	N	Mean	SD	N	Mean	SD	N
Male	11.9	5.1	258	10.0	5.6	327	9.3	5.8	292	8.3	6.6	266	7.4	6.1	42	9.7	6.0	1185
Female	13.5	4.5	289	13.2	5.0	280	12.4	5.5	279	10.5	6.7	269	5.9	6.1	32	12.3	5.7	1149
Total	12.7	4.9	547	11.5	5.6	607	10.8	5.9	571	9.4	6.8	535	6.7	6.1	74	11.0	6.0	2334

Number of caries observation teeth

	40-49yr			50-59yr			60-69yr			70-79yr			80yr-			Total		
	Mean	SD	N	Mean	SD	N	Mean	SD	N	Mean	SD	N	Mean	SD	N	Mean	SD	N
Male	0.3	0.7	258	0.2	0.6	327	0.1	0.4	292	0.0	0.1	266	0.0	0.3	42	0.1	0.5	1185
Female	0.2	0.5	289	0.1	0.4	280	0.1	0.4	279	0.0	0.2	269	0.0	0.0	32	0.1	0.4	1149
Total	0.2	0.6	547	0.2	0.6	607	0.1	0.4	571	0.0	0.2	535	0.0	0.2	74	0.1	0.5	2334

Number of decayed teeth

	40-49yr			50-59yr			60-69yr			70-79yr			80yr-			Total		
	Mean	SD	N	Mean	SD	N	Mean	SD	N	Mean	SD	N	Mean	SD	N	Mean	SD	N
Male	0.5	1.4	258	0.5	1.5	327	0.5	1.5	292	0.5	1.3	266	1.0	2.1	42	0.5	1.4	1185
Female	0.2	1.0	289	0.3	0.9	280	0.2	0.6	279	0.5	1.5	269	0.2	0.5	32	0.3	1.0	1149
Total	0.4	1.2	547	0.4	1.2	607	0.4	1.2	571	0.5	1.4	535	0.7	1.7	74	0.4	1.3	2334

Number of missing teeth

	40-49yr			50-59yr			60-69yr			70-79yr			80yr-			Total		
	Mean	SD	N	Mean	SD	N	Mean	SD	N	Mean	SD	N	Mean	SD	N	Mean	SD	N
Male	4.3	2.5	258	6.3	5.2	327	9.7	7.9	292	16.9	10.1	266	19.3	9.6	42	9.6	8.6	1185
Female	4.7	2.7	289	6.3	4.1	280	9.5	7.2	279	16.2	9.3	269	22.4	9.8	32	9.5	8.0	1149
Total	4.5	2.6	547	6.3	4.7	607	9.6	7.6	571	16.5	9.7	535	20.7	9.7	74	9.5	8.3	2334

Others

	40-49yr			50-59yr			60-69yr			70-79yr			80yr-			Total		
	Mean	SD	N	Mean	SD	N	Mean	SD	N	Mean	SD	N	Mean	SD	N	Mean	SD	N
Male	0.1	0.4	258	0.2	0.5	327	0.3	2.2	292	0.1	0.5	266	0.1	0.4	42	0.2	1.2	1185
Female	0.1	0.4	289	0.1	0.4	280	0.1	0.4	279	0.1	0.4	269	0.0	0.0	32	0.1	0.4	1149
Total	0.1	0.4	547	0.2	0.5	607	0.2	1.6	571	0.1	0.5	535	0.1	0.3	74	0.1	0.9	2334



2) Periodontal index  
 Periodontal indices (CPI score) on 10 index teeth (17/16, 11, 26/27, 36/37, 31, 46/47) were derived according to World Health Organization standard.

Periodontal index  
 17/16

		40-49yr		50-59yr		60-69yr		70-79yr		80yr-		Total	
		N	%	N	%	N	%	N	%	N	%	N	%
Healthy gingival tissues (CPI=0)	Male	66	25.6	63	19.3	33	11.3	10	3.8	0	0.0	172	14.5
	Female	124	42.9	64	22.9	38	13.6	8	3.0	0	0.0	234	20.4
	Total	190	34.7	127	20.9	71	12.5	18	3.4	0	0.0	406	17.4
Bleeding on probing (CPI=1)	Male	4	1.6	2	0.6	4	1.4	0	0.0	0	0.0	10	0.8
	Female	6	2.1	2	0.7	5	1.8	0	0.0	0	0.0	13	1.1
	Total	10	1.8	4	0.7	9	1.6	0	0.0	0	0.0	23	1.0
Calculus detected or defective restoration margins (CPI=2)	Male	118	45.7	111	33.9	75	25.8	44	16.5	7	16.7	355	30.0
	Female	121	41.9	124	44.3	99	35.5	68	25.3	4	12.5	416	36.2
	Total	239	43.7	235	38.7	174	30.5	112	20.9	11	14.9	771	33.0
Pocket >4mm, <6mm (CPI=3)	Male	53	20.5	84	25.7	58	19.9	42	15.8	3	7.1	240	20.3
	Female	25	8.7	61	21.8	60	21.5	61	22.7	3	9.4	210	18.3
	Total	78	14.3	145	23.9	118	20.7	103	19.3	6	8.1	450	19.3
Pocket >6mm (CPI=4)	Male	14	5.4	39	11.9	50	17.2	39	14.7	7	16.7	149	12.6
	Female	8	2.8	13	4.6	28	10.0	23	8.6	2	6.3	74	6.4
	Total	22	4.0	52	8.6	78	13.7	62	11.6	9	12.2	223	9.6
Missing	Male	2	0.8	28	8.6	68	23.4	129	48.5	25	59.5	252	21.3
	Female	5	1.7	16	5.7	48	17.2	107	39.8	23	71.9	199	17.3
	Total	7	1.3	44	7.2	116	20.4	236	44.1	48	64.9	451	19.3
Others	Male	1	0.4	0	0.0	3	1.0	2	0.8	0	0.0	6	0.5
	Female	0	0.0	0	0.0	1	0.4	2	0.7	0	0.0	3	0.3
	Total	1	0.2	0	0.0	4	0.7	4	0.7	0	0.0	9	0.4

Periodontal index  
11

		40-49yr		50-59yr		60-69yr		70-79yr		80yr-		Total	
		N	%	N	%	N	%	N	%	N	%	N	%
Healthy gingival tissues (CPI=0)	Male	111	43.0	101	30.9	67	23.0	25	9.4	4	9.5	308	26.0
	Female	177	61.2	113	40.4	71	25.4	20	7.4	1	3.1	382	33.2
	Total	288	52.7	214	35.3	138	24.2	45	8.4	5	6.8	690	29.6
Bleeding on probing (CPI=1)	Male	11	4.3	7	2.1	6	2.1	3	1.1	0	0.0	27	2.3
	Female	7	2.4	6	2.1	6	2.2	5	1.9	1	3.1	25	2.2
	Total	18	3.3	13	2.1	12	2.1	8	1.5	1	1.4	52	2.2
Calculus detected or defective restoration margins (CPI=2)	Male	87	33.7	111	33.9	72	24.7	53	19.9	4	9.5	327	27.6
	Female	74	25.6	110	39.3	114	40.9	84	31.2	4	12.5	386	33.6
	Total	161	29.4	221	36.4	186	32.6	137	25.6	8	10.8	713	30.6
Pocket >4mm, <6mm (CPI=3)	Male	30	11.6	50	15.3	53	18.2	31	11.7	2	4.8	166	14.0
	Female	14	4.8	23	8.2	27	9.7	38	14.1	2	6.3	104	9.1
	Total	44	8.0	73	12.0	80	14.0	69	12.9	4	5.4	270	11.6
Pocket >6mm (CPI=4)	Male	5	1.9	25	7.6	25	8.6	17	6.4	5	11.9	77	6.5
	Female	6	2.1	11	3.9	10	3.6	9	3.3	4	12.5	40	3.5
	Total	11	2.0	36	5.9	35	6.1	26	4.9	9	12.2	117	5.0
Missing	Male	14	5.4	33	10.1	65	22.3	136	51.1	27	64.3	275	23.2
	Female	11	3.8	17	6.1	51	18.3	111	41.3	20	62.5	210	18.3
	Total	25	4.6	50	8.2	116	20.4	247	46.2	47	63.5	485	20.8
Others	Male	0	0.0	0	0.0	3	1.0	1	0.4	0	0.0	4	0.3
	Female	0	0.0	0	0.0	0	0.0	2	0.7	0	0.0	2	0.2
	Total	0	0.0	0	0.0	3	0.5	3	0.6	0	0.0	6	0.3

Periodontal index  
26/27

		40-49yr		50-59yr		60-69yr		70-79yr		80yr-		Total	
		N	%	N	%	N	%	N	%	N	%	N	%
Healthy gingival tissues (CPI=0)	Male	72	27.9	65	19.9	28	9.6	7	2.6	1	2.4	173	14.6
	Female	121	41.9	72	25.7	43	15.4	17	6.3	0	0.0	253	22.0
	Total	193	35.3	137	22.6	71	12.5	24	4.5	1	1.4	426	18.3
Bleeding on probing (CPI=1)	Male	10	3.9	5	1.5	2	0.7	1	0.4	1	2.4	19	1.6
	Female	8	2.8	4	1.4	3	1.1	1	0.4	0	0.0	16	1.4
	Total	18	3.3	9	1.5	5	0.9	2	0.4	1	1.4	35	1.5
Calculus detected or defective restoration margins (CPI=2)	Male	131	50.8	127	38.8	98	33.7	51	19.2	7	16.7	414	35.0
	Female	131	45.3	138	49.3	120	43.0	73	27.1	4	12.5	466	40.6
	Total	262	47.9	265	43.7	218	38.2	124	23.2	11	14.9	880	37.7
Pocket >4mm, <6mm (CPI=3)	Male	30	11.6	58	17.7	50	17.2	35	13.2	2	4.8	175	14.8
	Female	18	6.2	31	11.1	42	15.1	49	18.2	7	21.9	147	12.8
	Total	48	8.8	89	14.7	92	16.1	84	15.7	9	12.2	322	13.8
Pocket >6mm (CPI=4)	Male	11	4.3	46	14.1	35	12.0	34	12.8	3	7.1	129	10.9
	Female	6	2.1	14	5.0	19	6.8	13	4.8	0	0.0	52	4.5
	Total	17	3.1	60	9.9	54	9.5	47	8.8	3	4.1	181	7.8
Missing	Male	4	1.6	26	8.0	76	26.1	135	50.8	28	66.7	269	22.7
	Female	5	1.7	21	7.5	51	18.3	113	42.0	21	65.6	211	18.4
	Total	9	1.6	47	7.7	127	22.3	248	46.4	49	66.2	480	20.6
Others	Male	0	0.0	0	0.0	2	0.7	3	1.1	0	0.0	5	0.4
	Female	0	0.0	0	0.0	1	0.4	3	1.1	0	0.0	4	0.3
	Total	0	0.0	0	0.0	3	0.5	6	1.1	0	0.0	9	0.4

Periodontal index  
36/37

		40-49yr		50-59yr		60-69yr		70-79yr		80yr-		Total	
		N	%	N	%	N	%	N	%	N	%	N	%
Healthy gingival tissues (CPI=0)	Male	72	27.9	63	19.3	40	13.7	12	4.5	0	0.0	187	15.8
	Female	117	40.5	73	26.1	44	15.8	10	3.7	0	0.0	244	21.2
	Total	189	34.6	136	22.4	84	14.7	22	4.1	0	0.0	431	18.5
Bleeding on probing (CPI=1)	Male	6	2.3	3	0.9	3	1.0	3	1.1	0	0.0	15	1.3
	Female	3	1.0	4	1.4	2	0.7	3	1.1	0	0.0	12	1.0
	Total	9	1.6	7	1.2	5	0.9	6	1.1	0	0.0	27	1.2
Calculus detected or defective restoration margins (CPI=2)	Male	139	53.9	132	40.4	93	32.0	62	23.3	8	19.0	434	36.7
	Female	134	46.4	127	45.4	118	42.3	68	25.3	6	18.8	453	39.4
	Total	273	49.9	259	42.7	211	37.0	130	24.3	14	18.9	887	38.0
Pocket >4mm <6mm (CPI=3)	Male	26	10.1	54	16.5	45	15.5	32	12.0	4	9.5	161	13.6
	Female	16	5.5	28	10.0	40	14.3	33	12.3	2	6.3	119	10.4
	Total	42	7.7	82	13.5	85	14.9	65	12.1	6	8.1	280	12.0
Pocket >6mm (CPI=4)	Male	7	2.7	22	6.7	37	12.7	17	6.4	4	9.5	87	7.3
	Female	4	1.4	13	4.6	6	2.2	15	5.6	0	0.0	38	3.3
	Total	11	2.0	35	5.8	43	7.5	32	6.0	4	5.4	125	5.4
Missing	Male	8	3.1	52	15.9	71	24.4	140	52.6	26	61.9	297	25.1
	Female	14	4.8	33	11.8	69	24.7	138	51.3	24	75.0	278	24.2
	Total	22	4.0	85	14.0	140	24.6	278	52.0	50	67.6	575	24.6
Others	Male	0	0.0	1	0.3	2	0.7	0	0.0	0	0.0	3	0.3
	Female	1	0.3	2	0.7	0	0.0	2	0.7	0	0.0	5	0.4
	Total	1	0.2	3	0.5	2	0.4	2	0.4	0	0.0	8	0.3