

Body composition

1) Dual energy x-ray absorptiometry (DXA) (Hologic QDR-4500)

Head fat weight (kg)

	40 - 49yr			50 - 59yr			60 - 69yr			70 - 79yr			80yr -			Total		
	Mean	SD	N	Mean	SD	N	Mean	SD	N	Mean	SD	N	Mean	SD	N	Mean	SD	N
Male	1.007	0.088	258	1.008	0.089	323	0.979	0.089	289	0.952	0.087	258	0.913	0.083	40	0.985	0.092	1168
Female	0.861	0.081	287	0.879	0.076	283	0.867	0.074	279	0.857	0.082	261	0.804	0.058	32	0.864	0.079	1142
Total	0.930	0.111	545	0.948	0.105	606	0.924	0.099	568	0.905	0.097	519	0.865	0.091	72	0.925	0.105	2310

Head lean weight (kg)

	40 - 49yr			50 - 59yr			60 - 69yr			70 - 79yr			80yr -			Total		
	Mean	SD	N	Mean	SD	N	Mean	SD	N	Mean	SD	N	Mean	SD	N	Mean	SD	N
Male	4.653	0.569	258	4.635	0.586	323	4.630	0.504	289	4.448	0.543	258	4.378	0.629	40	4.587	0.561	1168
Female	4.215	0.592	287	4.156	0.584	283	3.973	0.468	279	3.891	0.476	261	3.667	0.438	32	4.052	0.551	1142
Total	4.422	0.621	545	4.411	0.631	606	4.307	0.587	568	4.168	0.581	519	4.062	0.654	72	4.323	0.617	2310

Left arm fat weight (kg)

	40 - 49yr			50 - 59yr			60 - 69yr			70 - 79yr			80yr -			Total		
	Mean	SD	N	Mean	SD	N	Mean	SD	N	Mean	SD	N	Mean	SD	N	Mean	SD	N
Male	0.770	0.268	258	0.768	0.262	323	0.742	0.257	289	0.737	0.228	258	0.721	0.238	40	0.754	0.254	1168
Female	1.032	0.438	287	1.070	0.347	283	1.074	0.328	279	1.070	0.365	261	0.858	0.342	32	1.055	0.373	1142
Total	0.908	0.390	545	0.909	0.340	606	0.905	0.337	568	0.904	0.347	519	0.782	0.295	72	0.903	0.352	2310

Left arm lean weight (kg)

	40 - 49yr			50 - 59yr			60 - 69yr			70 - 79yr			80yr -			Total		
	Mean	SD	N	Mean	SD	N	Mean	SD	N	Mean	SD	N	Mean	SD	N	Mean	SD	N
Male	3.328	0.495	258	3.219	0.469	323	3.070	0.409	289	2.836	0.399	258	2.614	0.494	40	3.101	0.488	1168
Female	2.009	0.339	287	1.942	0.279	283	1.889	0.280	279	1.809	0.276	261	1.678	0.303	32	1.908	0.306	1142
Total	2.634	0.781	545	2.623	0.748	606	2.490	0.687	568	2.319	0.617	519	2.198	0.627	72	2.511	0.723	2310

Right arm fat weight (kg)

	40 - 49yr			50 - 59yr			60 - 69yr			70 - 79yr			80yr -			Total		
	Mean	SD	N	Mean	SD	N	Mean	SD	N	Mean	SD	N	Mean	SD	N	Mean	SD	N
Male	0.753	0.281	258	0.738	0.252	323	0.723	0.251	289	0.717	0.242	258	0.705	0.258	40	0.732	0.257	1168
Female	1.009	0.441	287	1.044	0.347	283	1.050	0.328	279	1.064	0.374	261	0.846	0.311	32	1.036	0.375	1142
Total	0.887	0.395	545	0.881	0.337	606	0.884	0.334	568	0.892	0.360	519	0.767	0.289	72	0.882	0.355	2310

Right arm lean weight (kg)

	40 - 49yr			50 - 59yr			60 - 69yr			70 - 79yr			80yr -			Total		
	Mean	SD	N	Mean	SD	N	Mean	SD	N	Mean	SD	N	Mean	SD	N	Mean	SD	N
Male	3.589	0.525	258	3.479	0.505	323	3.313	0.420	289	3.034	0.419	258	2.747	0.524	40	3.339	0.524	1168
Female	2.212	0.364	287	2.140	0.306	283	2.079	0.312	279	1.973	0.281	261	1.819	0.316	32	2.096	0.332	1142
Total	2.864	0.821	545	2.854	0.792	606	2.707	0.720	568	2.500	0.639	519	2.334	0.640	72	2.724	0.761	2310

Trunk fat weight (kg)

	40 - 49yr			50 - 59yr			60 - 69yr			70 - 79yr			80yr -			Total		
	Mean	SD	N	Mean	SD	N	Mean	SD	N	Mean	SD	N	Mean	SD	N	Mean	SD	N
Male	7.490	2.949	258	7.554	2.736	323	7.358	2.598	289	6.979	2.531	258	6.844	2.925	40	7.340	2.720	1168
Female	7.443	3.099	287	8.188	2.783	283	8.607	2.522	279	8.663	2.761	261	6.676	2.131	32	8.169	2.834	1142
Total	7.465	3.026	545	7.850	2.774	606	7.971	2.634	568	7.826	2.778	519	6.769	2.586	72	7.750	2.807	2310

Trunk lean weight (kg)

	40 - 49yr			50 - 59yr			60 - 69yr			70 - 79yr			80yr -			Total		
	Mean	SD	N	Mean	SD	N	Mean	SD	N	Mean	SD	N	Mean	SD	N	Mean	SD	N
Male	27.159	3.433	258	26.601	3.055	323	25.481	2.699	289	23.805	2.855	258	22.218	3.496	40	25.679	3.330	1168
Female	20.187	2.553	287	19.496	2.074	283	18.712	2.005	279	17.830	2.118	261	16.382	1.810	32	19.010	2.394	1142
Total	23.487	4.597	545	23.283	4.422	606	22.156	4.141	568	20.800	3.904	519	19.624	4.083	72	22.382	4.422	2310

Left leg fat weight (kg)

	40 - 49yr			50 - 59yr			60 - 69yr			70 - 79yr			80yr -			Total		
	Mean	SD	N	Mean	SD	N	Mean	SD	N	Mean	SD	N	Mean	SD	N	Mean	SD	N
Male	2.261	0.731	258	2.168	0.634	323	2.038	0.650	289	2.008	0.580	258	2.069	0.704	40	2.118	0.658	1168
Female	3.066	0.812	287	2.876	0.750	283	2.712	0.705	279	2.608	0.782	261	2.245	0.743	32	2.805	0.786	1142
Total	2.685	0.872	545	2.498	0.775	606	2.369	0.757	568	2.310	0.751	519	2.147	0.722	72	2.457	0.801	2310

Left leg lean weight (kg)

	40 - 49yr			50 - 59yr			60 - 69yr			70 - 79yr			80yr -			Total		
	Mean	SD	N	Mean	SD	N	Mean	SD	N	Mean	SD	N	Mean	SD	N	Mean	SD	N
Male	9.125	1.368	258	8.687	1.297	323	8.347	1.041	289	7.738	1.059	258	7.120	1.391	40	8.436	1.322	1168
Female	6.458	1.058	287	6.107	0.883	283	5.937	0.826	279	5.574	0.741	261	5.309	0.777	32	6.010	0.945	1142
Total	7.721	1.802	545	7.482	1.708	606	7.163	1.529	568	6.650	1.416	519	6.315	1.466	72	7.237	1.672	2310

Right leg fat weight (kg)

	40 - 49yr			50 - 59yr			60 - 69yr			70 - 79yr			80yr -			Total		
	Mean	SD	N	Mean	SD	N	Mean	SD	N	Mean	SD	N	Mean	SD	N	Mean	SD	N
Male	2.162	0.723	258	2.072	0.632	323	1.982	0.627	289	1.966	0.585	258	2.006	0.675	40	2.044	0.647	1168
Female	3.006	0.795	287	2.836	0.749	283	2.689	0.719	279	2.598	0.778	261	2.289	0.805	32	2.773	0.780	1142
Total	2.606	0.870	545	2.429	0.787	606	2.329	0.760	568	2.284	0.758	519	2.132	0.744	72	2.404	0.803	2310

Right leg lean weight (kg)

	40 - 49yr			50 - 59yr			60 - 69yr			70 - 79yr			80yr -			Total		
	Mean	SD	N	Mean	SD	N	Mean	SD	N	Mean	SD	N	Mean	SD	N	Mean	SD	N
Male	9.279	1.377	258	8.823	1.298	323	8.481	1.076	289	7.875	1.072	258	7.320	1.382	40	8.578	1.333	1168
Female	6.543	1.064	287	6.224	0.903	283	6.026	0.842	279	5.660	0.807	261	5.347	0.799	32	6.102	0.969	1142
Total	7.838	1.833	545	7.610	1.721	606	7.275	1.564	568	6.761	1.458	519	6.443	1.518	72	7.354	1.701	2310

Total fat weight (kg)

	40 - 49yr			50 - 59yr			60 - 69yr			70 - 79yr			80yr -			Total		
	Mean	SD	N	Mean	SD	N	Mean	SD	N	Mean	SD	N	Mean	SD	N	Mean	SD	N
Male	14.4	4.8	258	14.3	4.3	323	13.8	4.2	289	13.4	4.0	258	13.3	4.7	40	14.0	4.4	1168
Female	16.4	5.2	287	16.9	4.6	283	17.0	4.2	279	16.9	4.6	261	13.7	4.0	32	16.7	4.7	1142
Total	15.5	5.1	545	15.5	4.6	606	15.4	4.5	568	15.1	4.7	519	13.5	4.3	72	15.3	4.7	2310

Lean body weight (kg)

	40 - 49yr			50 - 59yr			60 - 69yr			70 - 79yr			80yr -			Total		
	Mean	SD	N	Mean	SD	N	Mean	SD	N	Mean	SD	N	Mean	SD	N	Mean	SD	N
Male	57.1	7.1	258	55.4	6.5	323	53.3	5.4	289	49.7	5.7	258	46.4	7.4	40	53.7	6.9	1168
Female	41.6	5.4	287	40.1	4.5	283	38.6	4.3	279	36.7	4.1	261	34.2	4.1	32	39.2	5.0	1142
Total	49.0	9.9	545	48.3	9.6	606	46.1	8.8	568	43.2	8.2	519	41.0	8.6	72	46.5	9.5	2310

Percent body fat (%)

	40 - 49yr			50 - 59yr			60 - 69yr			70 - 79yr			80yr -			Total		
	Mean	SD	N	Mean	SD	N	Mean	SD	N	Mean	SD	N	Mean	SD	N	Mean	SD	N
Male	19.9	4.5	258	20.3	4.4	323	20.3	4.5	289	20.9	4.5	258	21.7	5.1	40	20.4	4.5	1168
Female	27.8	5.2	287	29.3	5.1	283	30.3	4.7	279	31.0	5.3	261	28.2	4.7	32	29.5	5.2	1142
Total	24.1	6.3	545	24.5	6.5	606	25.2	6.8	568	26.0	7.1	519	24.6	5.9	72	24.9	6.7	2310

2. Body fluid volume by multi-frequency impedance method

Extra-cellular fluid by multi-frequency impedance method (l)

	40 - 49yr			50 - 59yr			60 - 69yr			70 - 79yr			80yr -			Total		
	Mean	SD	N	Mean	SD	N	Mean	SD	N	Mean	SD	N	Mean	SD	N	Mean	SD	N
Male	16.6	2.1	265	16.4	2.0	328	15.8	1.9	291	14.8	1.8	259	14.3	2.3	43	15.9	2.1	1186
Female	12.4	1.7	293	12.3	1.4	281	12.0	1.4	284	11.5	1.4	268	10.5	1.5	34	12.0	1.5	1160
Total	14.4	2.9	558	14.5	2.7	609	13.9	2.5	575	13.1	2.3	527	12.6	2.7	77	14.0	2.7	2346

Intra-cellular fluid by multi-frequency impedance method (l)

	40 - 49yr			50 - 59yr			60 - 69yr			70 - 79yr			80yr -			Total		
	Mean	SD	N	Mean	SD	N	Mean	SD	N	Mean	SD	N	Mean	SD	N	Mean	SD	N
Male	22.5	3.5	265	21.4	3.1	328	19.5	2.9	291	17.0	2.6	259	15.2	3.1	43	20.0	3.8	1186
Female	14.4	2.4	293	13.8	1.9	281	13.2	2.0	284	11.9	1.6	268	10.6	1.8	34	13.3	2.3	1160
Total	18.3	5.0	558	17.9	4.6	609	16.4	4.0	575	14.4	3.3	527	13.1	3.4	77	16.7	4.6	2346

3) Thickness of subcutaneous fat, preperitoneal fat, and muscle tissue

Thickness of subcutaneous fat at anterior upper-arm (mm)

	40 - 49yr			50 - 59yr			60 - 69yr			70 - 79yr			80yr -			Total		
	Mean	SD	N	Mean	SD	N	Mean	SD	N	Mean	SD	N	Mean	SD	N	Mean	SD	N
Male	3.0	1.3	266	2.9	1.2	331	2.8	1.1	297	2.6	1.0	267	2.6	0.9	43	2.8	1.1	1204
Female	4.4	2.2	294	4.1	1.6	285	4.3	1.7	286	4.1	1.6	275	3.0	1.0	34	4.2	1.8	1174
Total	3.8	2.0	560	3.4	1.5	616	3.5	1.6	583	3.3	1.5	542	2.7	1.0	77	3.5	1.7	2378

Thickness of musculus biceps brachii and brachialis (mm)

	40 - 49yr			50 - 59yr			60 - 69yr			70 - 79yr			80yr -			Total		
	Mean	SD	N	Mean	SD	N	Mean	SD	N	Mean	SD	N	Mean	SD	N	Mean	SD	N
Male	26.4	4.8	266	25.9	4.2	331	24.8	4.1	297	23.2	4.0	267	21.3	5.2	43	25.0	4.5	1204
Female	19.9	4.2	294	20.0	3.4	285	19.2	3.8	286	18.1	3.4	275	16.3	2.9	34	19.2	3.8	1174
Total	23.0	5.5	560	23.2	4.8	616	22.0	4.8	583	20.6	4.5	542	19.1	4.9	77	22.1	5.1	2378

Thickness of subcutaneous fat at forearm (mm)

	40 - 49yr			50 - 59yr			60 - 69yr			70 - 79yr			80yr -			Total		
	Mean	SD	N	Mean	SD	N	Mean	SD	N	Mean	SD	N	Mean	SD	N	Mean	SD	N
Male	3.2	1.1	266	3.3	1.2	331	3.2	1.0	297	3.1	1.0	267	3.1	1.2	43	3.2	1.1	1204
Female	3.9	1.4	294	3.9	1.5	285	4.0	1.6	285	3.7	1.5	275	2.9	1.0	34	3.8	1.5	1173
Total	3.6	1.3	560	3.6	1.4	616	3.6	1.4	582	3.4	1.3	542	3.0	1.1	77	3.5	1.4	2377

Thickness of musculus brachioradialis (mm)

	40 - 49yr			50 - 59yr			60 - 69yr			70 - 79yr			80yr -			Total		
	Mean	SD	N	Mean	SD	N	Mean	SD	N	Mean	SD	N	Mean	SD	N	Mean	SD	N
Male	19.9	3.2	266	18.4	2.9	331	17.9	3.1	297	16.6	3.3	267	15.2	2.9	43	18.1	3.3	1204
Female	15.8	2.9	294	14.9	2.7	285	14.7	2.9	285	14.1	2.7	275	13.1	2.7	34	14.8	2.9	1173
Total	17.8	3.7	560	16.8	3.3	616	16.3	3.4	582	15.4	3.3	542	14.3	3.0	77	16.5	3.5	2377

Thickness of subcutaneous fat at right of umbilicus (mm)

	40 - 49yr			50 - 59yr			60 - 69yr			70 - 79yr			80yr -			Total		
	Mean	SD	N	Mean	SD	N	Mean	SD	N	Mean	SD	N	Mean	SD	N	Mean	SD	N
Male	16.7	6.8	266	15.9	5.7	331	14.5	5.1	297	13.3	5.2	267	12.2	4.4	43	15.0	5.8	1204
Female	20.6	9.8	294	22.2	8.4	285	23.2	8.0	286	22.0	8.7	275	15.0	5.2	34	21.8	8.8	1174
Total	18.7	8.7	560	18.8	7.7	616	18.8	7.9	583	17.7	8.4	542	13.5	5.0	77	18.4	8.2	2378

Thickness of musculus rectus abdominis at right of umbilicus (mm)

	40 - 49yr			50 - 59yr			60 - 69yr			70 - 79yr			80yr -			Total		
	Mean	SD	N	Mean	SD	N	Mean	SD	N	Mean	SD	N	Mean	SD	N	Mean	SD	N
Male	11.2	1.9	266	10.7	1.9	331	9.9	1.9	297	9.2	1.7	267	8.6	1.6	43	10.2	2.0	1204
Female	8.8	1.8	294	8.1	1.5	285	7.7	1.6	286	7.3	1.8	275	6.7	1.7	34	7.9	1.8	1174
Total	9.9	2.2	560	9.5	2.2	616	8.8	2.0	583	8.2	2.0	542	7.8	1.9	77	9.1	2.2	2378

Thickness of subcutaneous fat at thigh (mm)

	40 - 49yr			50 - 59yr			60 - 69yr			70 - 79yr			80yr -			Total		
	Mean	SD	N	Mean	SD	N	Mean	SD	N	Mean	SD	N	Mean	SD	N	Mean	SD	N
Male	6.3	2.0	265	6.0	1.9	331	5.6	1.9	295	5.5	1.7	267	5.8	2.0	43	5.8	1.9	1201
Female	10.6	2.8	294	10.0	2.7	285	9.0	2.7	286	8.3	3.1	275	7.2	2.6	34	9.4	3.0	1174
Total	8.5	3.2	559	7.8	3.0	616	7.3	2.9	581	6.9	2.9	542	6.4	2.4	77	7.6	3.1	2375

Thickness of musculus rectus femoris at thigh (mm)

	40 - 49yr			50 - 59yr			60 - 69yr			70 - 79yr			80yr -			Total		
	Mean	SD	N	Mean	SD	N	Mean	SD	N	Mean	SD	N	Mean	SD	N	Mean	SD	N
Male	32.6	6.0	265	31.0	6.3	331	28.8	6.3	295	25.3	5.9	267	23.7	6.6	43	29.3	6.8	1201
Female	29.8	6.8	294	27.0	5.8	285	25.4	5.6	286	21.9	5.3	275	19.6	5.4	34	25.9	6.6	1173
Total	31.2	6.6	559	29.1	6.4	616	27.1	6.2	580	23.5	5.9	542	21.9	6.4	77	27.6	6.9	2374

Thickness of subcutaneous fat at anterior calf (mm)

	40 - 49yr			50 - 59yr			60 - 69yr			70 - 79yr			80yr -			Total		
	Mean	SD	N	Mean	SD	N	Mean	SD	N	Mean	SD	N	Mean	SD	N	Mean	SD	N
Male	2.4	0.7	266	2.3	0.8	330	2.2	0.8	296	2.2	0.7	267	2.2	0.8	43	2.3	0.8	1202
Female	3.6	1.4	294	3.4	1.4	285	3.1	1.3	286	3.1	1.2	275	2.6	1.2	34	3.3	1.3	1174
Total	3.0	1.3	560	2.8	1.2	615	2.6	1.2	582	2.6	1.1	542	2.4	1.0	77	2.8	1.2	2376

Thickness of musculus tibialis anterior (mm)

	40 - 49yr			50 - 59yr			60 - 69yr			70 - 79yr			80yr -			Total		
	Mean	SD	N	Mean	SD	N	Mean	SD	N	Mean	SD	N	Mean	SD	N	Mean	SD	N
Male	26.5	3.0	266	26.4	3.1	331	25.3	3.3	296	23.6	2.9	267	23.3	3.9	43	25.4	3.4	1203
Female	22.5	2.8	294	22.1	2.8	285	22.0	2.7	286	20.8	2.9	275	20.5	2.7	34	21.8	2.8	1174
Total	24.4	3.5	560	24.4	3.7	616	23.7	3.4	582	22.2	3.2	542	22.0	3.7	77	23.6	3.6	2377

Thickness of subcutaneous fat at upper-arm (mm)

	40 - 49yr			50 - 59yr			60 - 69yr			70 - 79yr			80yr -			Total		
	Mean	SD	N	Mean	SD	N	Mean	SD	N	Mean	SD	N	Mean	SD	N	Mean	SD	N
Male	6.1	2.0	266	5.9	1.9	331	5.5	1.7	296	5.4	1.7	266	5.5	1.6	43	5.7	1.8	1202
Female	9.9	2.8	294	9.8	2.7	285	9.7	2.5	286	9.1	2.6	275	8.1	2.2	34	9.6	2.7	1174
Total	8.1	3.1	560	7.7	3.0	616	7.6	3.0	582	7.3	2.9	541	6.7	2.3	77	7.6	3.0	2376

Thickness of musculus triceps brachi (mm)

	40 - 49yr			50 - 59yr			60 - 69yr			70 - 79yr			80yr -			Total		
	Mean	SD	N	Mean	SD	N	Mean	SD	N	Mean	SD	N	Mean	SD	N	Mean	SD	N
Male	24.9	4.9	266	24.2	5.2	331	22.7	4.9	295	20.5	4.9	266	19.7	5.6	43	23.0	5.3	1201
Female	20.0	5.2	294	19.8	4.2	285	19.5	4.7	286	18.6	4.8	275	15.3	3.3	34	19.3	4.8	1174
Total	22.4	5.6	560	22.1	5.3	616	21.1	5.1	581	19.5	4.9	541	17.8	5.2	77	21.2	5.4	2375

Thickness of subcutaneous fat at subscapula (mm)

	40 - 49yr			50 - 59yr			60 - 69yr			70 - 79yr			80yr -			Total		
	Mean	SD	N	Mean	SD	N	Mean	SD	N	Mean	SD	N	Mean	SD	N	Mean	SD	N
Male	8.5	3.0	265	8.0	2.7	331	7.6	2.5	296	7.2	2.4	266	6.9	2.8	43	7.8	2.7	1201
Female	10.0	5.0	294	9.8	3.8	284	9.8	3.7	286	9.4	3.7	275	7.1	3.0	34	9.7	4.1	1173
Total	9.3	4.3	559	8.8	3.4	615	8.7	3.3	582	8.3	3.3	541	7.0	2.9	77	8.7	3.6	2374

Thickness of musculus latissimus dorsi at subscapula (mm)

	40 - 49yr			50 - 59yr			60 - 69yr			70 - 79yr			80yr -			Total		
	Mean	SD	N	Mean	SD	N	Mean	SD	N	Mean	SD	N	Mean	SD	N	Mean	SD	N
Male	5.6	1.5	265	4.9	1.3	331	4.8	1.4	296	4.7	1.5	266	4.2	1.5	43	5.0	1.5	1201
Female	4.2	1.4	294	4.1	1.1	284	4.1	1.2	286	4.1	1.4	275	3.9	1.2	34	4.1	1.3	1173
Total	4.8	1.6	559	4.5	1.3	615	4.5	1.4	582	4.4	1.5	541	4.1	1.3	77	4.5	1.4	2374

Thickness of subcutaneous fat at posterior mid-thigh (mm)

	40 - 49yr			50 - 59yr			60 - 69yr			70 - 79yr			80yr -			Total		
	Mean	SD	N	Mean	SD	N	Mean	SD	N	Mean	SD	N	Mean	SD	N	Mean	SD	N
Male	5.6	1.8	266	5.3	1.7	331	5.1	1.8	296	5.0	1.6	266	5.4	1.8	43	5.3	1.8	1202
Female	9.5	3.3	294	8.7	3.3	285	8.0	3.2	286	7.5	3.5	275	7.6	3.9	34	8.4	3.4	1174
Total	7.7	3.4	560	6.8	3.1	616	6.5	2.9	582	6.3	3.0	541	6.4	3.1	77	6.8	3.1	2376

Thickness of subcutaneous fat at posterior calf (mm)

	40 - 49yr			50 - 59yr			60 - 69yr			70 - 79yr			80yr -			Total		
	Mean	SD	N	Mean	SD	N	Mean	SD	N	Mean	SD	N	Mean	SD	N	Mean	SD	N
Male	4.5	1.3	266	4.3	1.3	331	4.0	1.2	295	3.8	1.3	266	4.1	1.4	43	4.2	1.3	1201
Female	6.7	1.6	294	6.3	1.9	285	5.7	1.9	286	5.4	2.0	274	4.9	2.0	34	6.0	1.9	1173
Total	5.7	1.8	560	5.2	1.9	616	4.8	1.8	581	4.6	1.8	540	4.4	1.7	77	5.1	1.9	2374

Thickness of musculus gastrocnemius and soleus (mm)

	40 - 49yr			50 - 59yr			60 - 69yr			70 - 79yr			80yr -			Total		
	Mean	SD	N	Mean	SD	N	Mean	SD	N	Mean	SD	N	Mean	SD	N	Mean	SD	N
Male	58.9	6.0	264	56.9	5.9	330	55.2	6.2	295	52.2	6.1	266	50.5	7.6	43	55.7	6.6	1198
Female	52.3	6.3	294	50.3	5.5	284	49.8	5.4	286	48.0	5.4	272	47.2	6.0	34	50.0	5.9	1170
Total	55.5	7.0	558	53.9	6.6	614	52.5	6.4	581	50.0	6.1	538	49.1	7.1	77	52.9	6.9	2368

4) Abdominal fat distribution

Intra-abdominal fat area at umbilicus by CT (cm²)

	40 - 49yr			50 - 59yr			60 - 69yr			70 - 79yr			80yr -			Total		
	Mean	SD	N	Mean	SD	N	Mean	SD	N	Mean	SD	N	Mean	SD	N	Mean	SD	N
Male	78.6	36.8	263	89.1	43.1	329	98.5	47.9	296	92.0	49.6	267	91.9	64.0	43	89.9	45.9	1198
Female	40.6	28.6	292	57.4	35.7	282	66.0	34.4	285	81.8	42.4	273	72.6	40.5	34	61.5	38.5	1166
Total	58.6	37.8	555	74.5	42.9	611	82.5	44.9	581	86.9	46.3	540	83.4	55.4	77	75.8	44.7	2364

Subcutaneous fat area at umbilicus by CT (cm²)

	40 - 49yr			50 - 59yr			60 - 69yr			70 - 79yr			80yr -			Total		
	Mean	SD	N	Mean	SD	N	Mean	SD	N	Mean	SD	N	Mean	SD	N	Mean	SD	N
Male	119.3	57.8	263	115.8	50.2	329	115.4	47.2	296	106.5	45.8	267	101.7	46.7	43	113.9	50.4	1198
Female	150.3	81.4	292	163.0	67.5	282	164.7	61.8	285	164.8	68.7	273	121.9	49.5	34	159.5	70.2	1166
Total	135.7	72.8	555	137.5	63.3	611	139.6	60.1	581	136.0	65.3	540	110.6	48.7	77	136.4	65.1	2364

Waist circumference at umbilicus by CT (cm)

	40 - 49yr			50 - 59yr			60 - 69yr			70 - 79yr			80yr -			Total		
	Mean	SD	N	Mean	SD	N	Mean	SD	N	Mean	SD	N	Mean	SD	N	Mean	SD	N
Male	85.3	8.5	262	86.0	8.2	330	86.4	8.3	296	85.0	9.1	267	83.7	11.3	43	85.6	8.6	1198
Female	81.2	10.2	292	84.2	9.2	282	85.5	8.7	285	87.3	10.3	273	82.1	8.6	34	84.4	9.8	1166
Total	83.1	9.6	554	85.1	8.7	612	86.0	8.5	581	86.1	9.7	540	83.0	10.1	77	85.0	9.3	2364

5) Resting metabolic profiles

Resting energy expenditure (kcal/24 h)

	40 - 49yr			50 - 59yr			60 - 69yr			70 - 79yr			80yr -			Total		
	Mean	SD	N	Mean	SD	N	Mean	SD	N	Mean	SD	N	Mean	SD	N	Mean	SD	N
Male	1541.3	259.1	251	1485.4	247.0	301	1366.5	202.1	275	1263.1	193.5	236	1132.4	206.7	39	1408.4	254.6	1102
Female	1215.7	225.6	276	1170.9	188.0	262	1127.9	166.4	267	1086.5	156.2	243	1014.4	165.0	29	1148.4	193.3	1077
Total	1370.8	291.6	527	1339.0	271.3	563	1248.9	220.4	542	1173.5	196.4	479	1082.1	197.6	68	1279.9	261.0	2179

Oxygen intake on resting (l/min)

	40 - 49yr			50 - 59yr			60 - 69yr			70 - 79yr			80yr -			Total		
	Mean	SD	N	Mean	SD	N	Mean	SD	N	Mean	SD	N	Mean	SD	N	Mean	SD	N
Male	0.22	0.04	251	0.21	0.04	301	0.19	0.03	275	0.18	0.03	236	0.16	0.03	39	0.20	0.04	1102
Female	0.17	0.03	276	0.17	0.03	262	0.16	0.03	267	0.15	0.02	243	0.14	0.03	29	0.16	0.03	1077
Total	0.20	0.04	527	0.19	0.04	563	0.18	0.03	542	0.17	0.03	479	0.15	0.03	68	0.18	0.04	2179

Carbon dioxide excretion on resting (l/min)

	40 - 49yr			50 - 59yr			60 - 69yr			70 - 79yr			80yr -			Total		
	Mean	SD	N	Mean	SD	N	Mean	SD	N	Mean	SD	N	Mean	SD	N	Mean	SD	N
Male	0.19	0.03	251	0.18	0.03	301	0.17	0.02	275	0.16	0.02	236	0.14	0.02	39	0.17	0.03	1102
Female	0.15	0.02	276	0.14	0.02	262	0.14	0.02	267	0.13	0.02	243	0.12	0.02	29	0.14	0.02	1077
Total	0.17	0.03	527	0.16	0.03	563	0.15	0.03	542	0.14	0.02	479	0.13	0.02	68	0.16	0.03	2179

Respiratory exchange ratio on resting

	40 - 49yr			50 - 59yr			60 - 69yr			70 - 79yr			80yr -			Total		
	Mean	SD	N	Mean	SD	N	Mean	SD	N	Mean	SD	N	Mean	SD	N	Mean	SD	N
Male	0.87	0.08	251	0.86	0.08	301	0.88	0.08	275	0.88	0.08	236	0.89	0.08	39	0.87	0.08	1102
Female	0.85	0.07	276	0.86	0.08	262	0.87	0.08	267	0.85	0.08	243	0.86	0.09	29	0.86	0.08	1077
Total	0.86	0.08	527	0.86	0.08	563	0.87	0.08	542	0.86	0.08	479	0.88	0.09	68	0.86	0.08	2179

XII. Head MRI Measurements

XII. Head MRI Measurements

MRI was performed on a 1.5T Toshiba instrument (VISART). The scanning protocol included a series of axial T1-(TR500, TE15) and T2-weighted(TR4000, TE120) scans angled parallel to the anterior-posterior commissure line .

1) Brain atrophy

Divided into 4 classes according to an appendix1.

2) Ventricular dilatation

Divided into 4 classes according to an appendix2.

3) Periventricular hyperintensity

Divide into 4 classes according to an appendix3.

4) Cerebrovascular disease

Cerebral infarction

Border zone

Include cerebral cortex

White matter

Basal ganglia, thalamus, internal capsule, midbrain, pons, medulla oblongata

Cerebellar white matter, cerebellar cortex

Decided as following,

Lacuna : The lesions of white matter, basal ganglia, thalamus, internal capsule, midbrain, pons, medulla oblongata and whose size are larger than or equal to 3mm and smaller than or equal to 15mm.

Embolism : Include cerebral or cerebellar cortex, and which is not border zone infarction.

Thrombosis : Other than above.

Cerebral hemorrhage

On T2 weighted image(WI), hyperintensity inside the lesion and no signal around the lesion. Or on T2WI no signal slit lesion.

References

Stroke 1994 vol25, p318-327

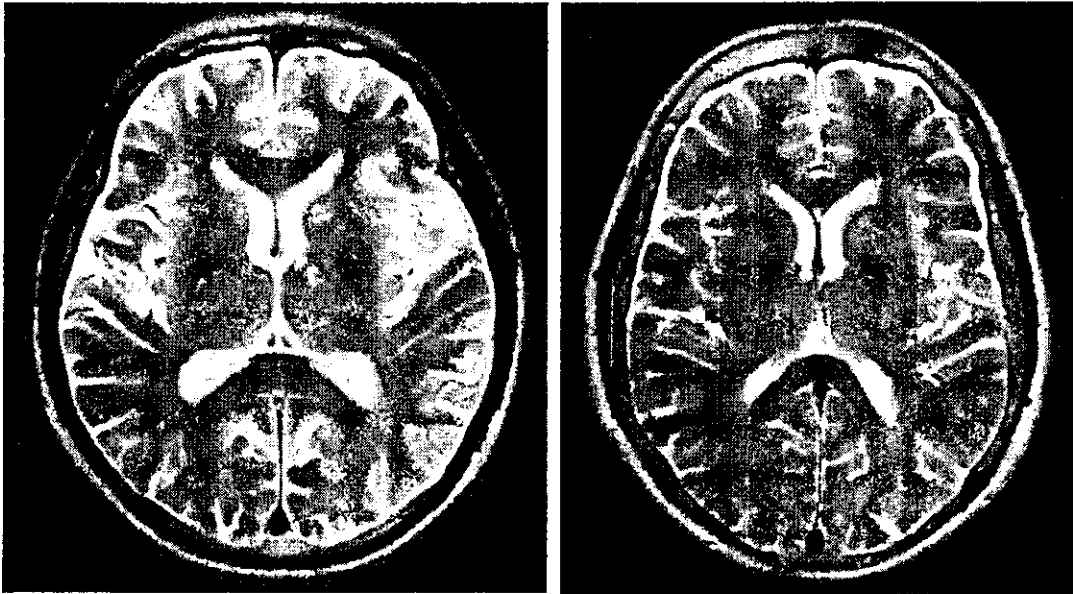
Naika 1997 vol79 (4)

Nihon naika gakkaiishi 1997 vol86

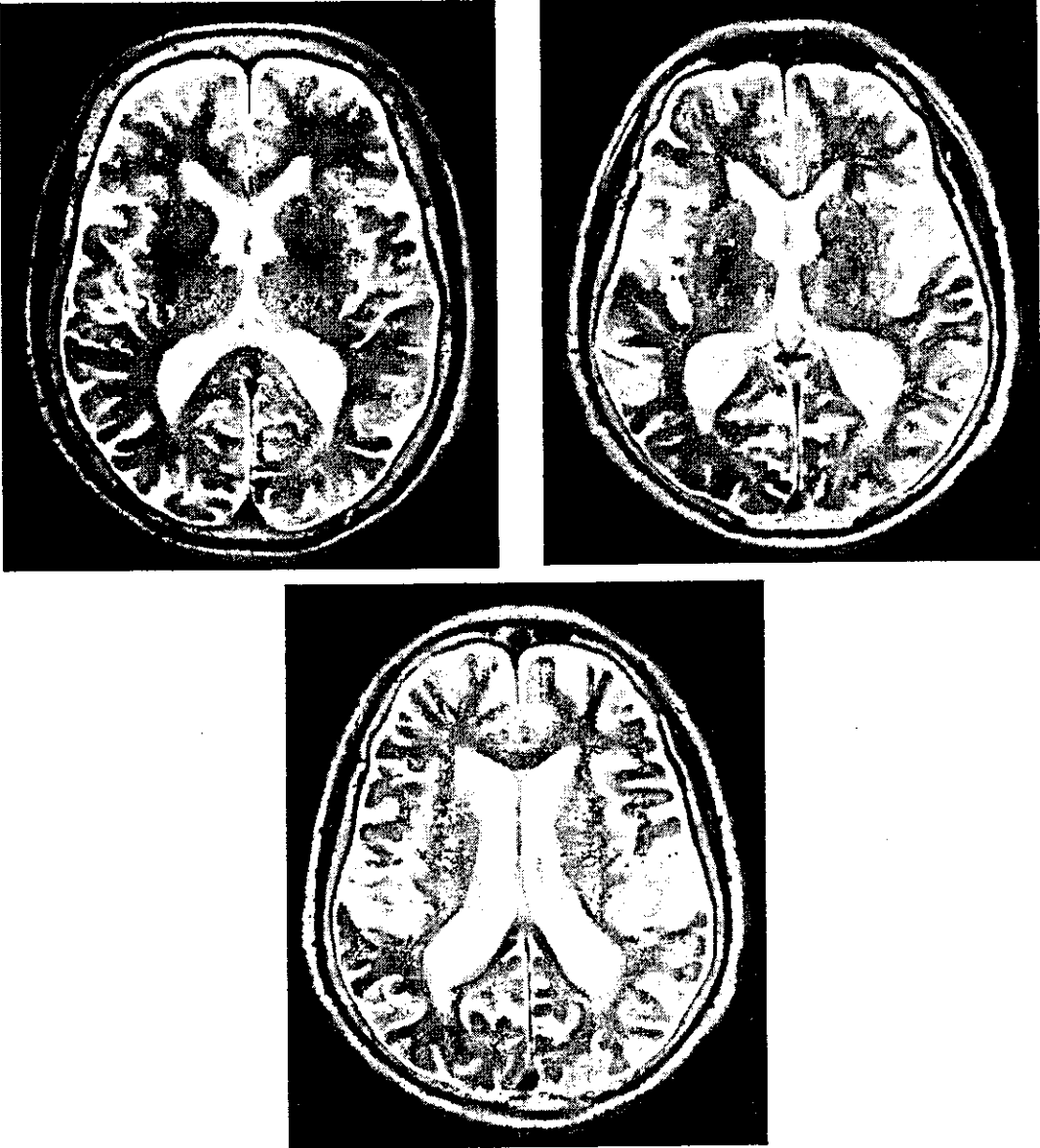
Medicina 1994 vol31 (8)

Periventricular hyperintensity

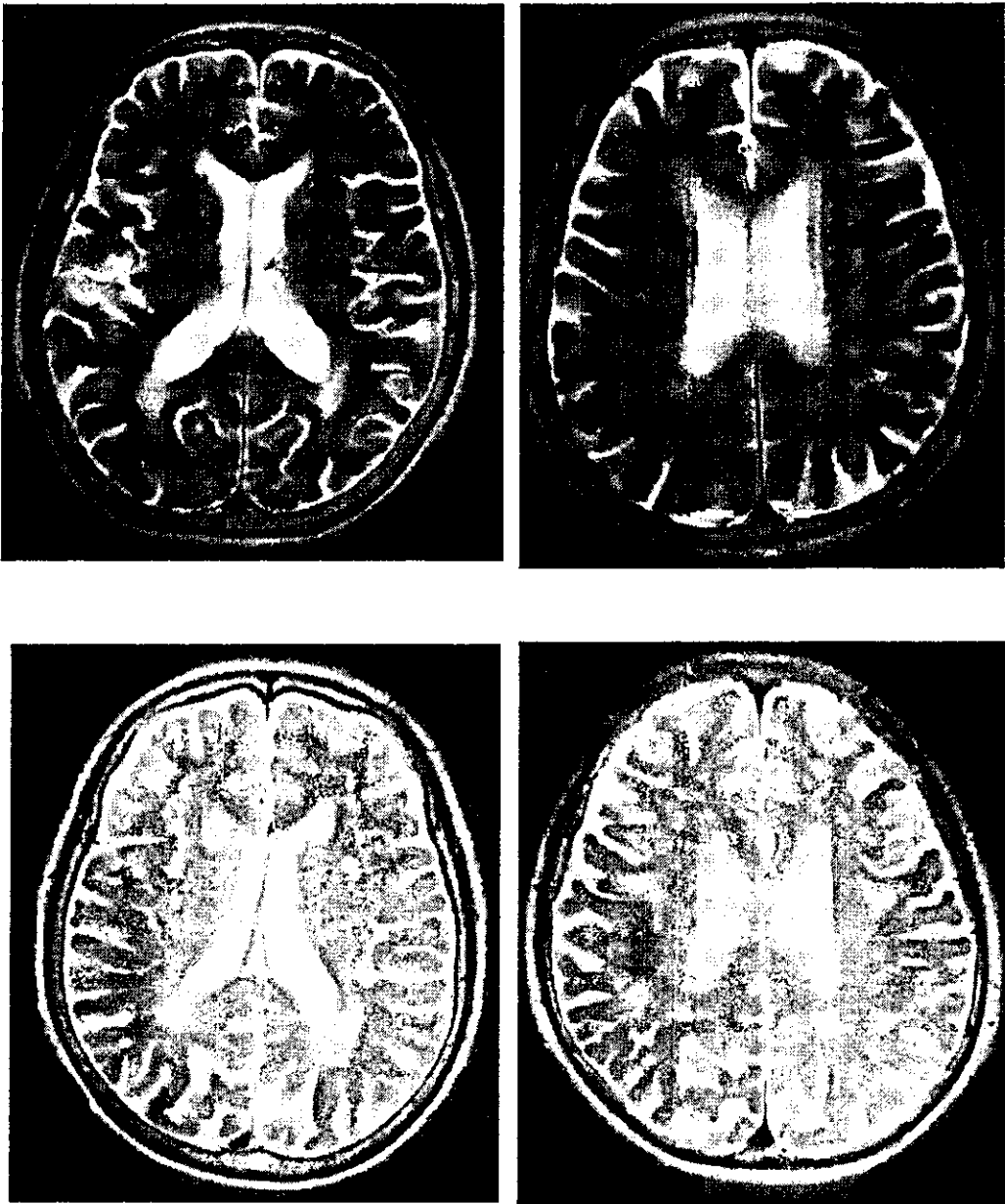
I. None or minimal periventricular signal hyperintensities in the form of caps only in the anterior horn of lateral ventricles.



II. Caps in both anterior and posterior horns of lateral ventricles.



III. multifocal periventricular hyperintense punctuate lesions.

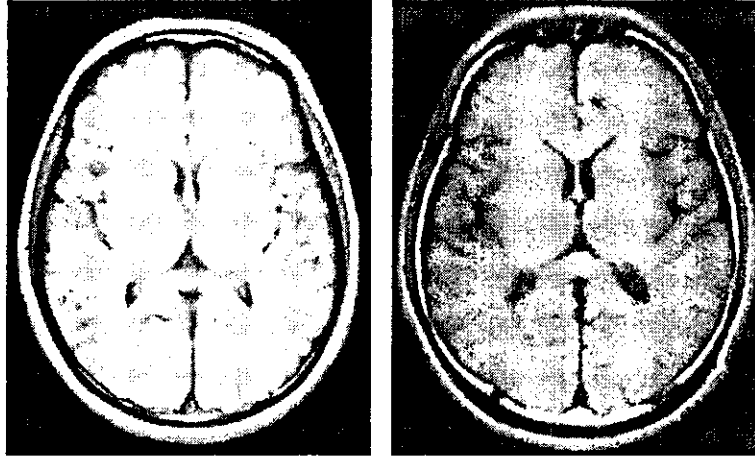


IV. Multiple high signal intensity area that reached confluency in the periventricular region and white matter.

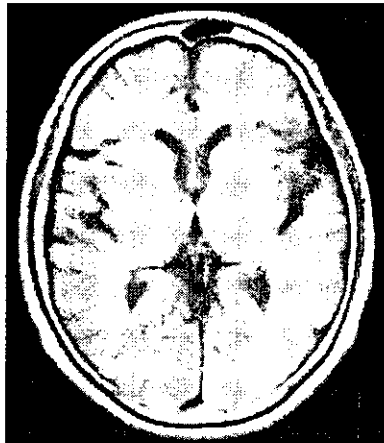


Ventricular dilatation

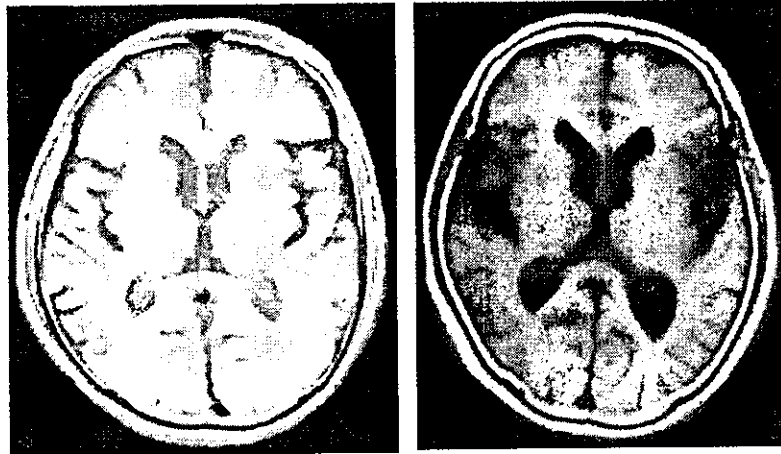
I. none



II. mild



III. moderate



IV. severe

