

Fig. 1. Establishment of Cx32 and vector transfected HepG2. (A) RT-PCR analysis of Cx32 and Cx26 gene expression in HepG2, vector-transfected cells (Vector/HepG2), and Cx32 gene transfected cells (Cx32/HepG2). (B) Image assay of Cx32 gene expression in RT-PCR. Relative densities were standardized to that of a housekeeping gene, glyceraldehyde-3-phosphate dehydrogenase (GAPDH).

mRNA expressed in the Cx32 gene transfected cells was enhanced 2.5- and 1.7-fold in comparison with the HepG2 and empty vector transfected cells, respectively (Fig. 1B). The abilities of functional GJIC in the cells were investigated by the scrape-loading dye transfer technique. The distances of lucifer yellow spreading reflected the functional GJIC in the cells, and the longer distance of dye spreading indicates the higher functional GJIC in the cells. As shown in Fig. 2, the distance of lucifer yellow spreading in Cx32 gene transfected cells was clearly greater than those in HepG2 and empty vector transfected cells. Thus, the distance of dye spreading in Cx32 gene transfected cells was 2.8- and 1.8-fold longer than those in HepG2 and empty vector transfected cells, respectively (Fig. 3). It could be concluded that the Cx32 gene transfection not only increased the expression of Cx32 mRNA, but also significantly enhanced the functional GJIC in HepG2.

#### Localization of Cx32 protein before and after Cx32 gene transfection

To confirm the contribution of Cx32 protein for the formation of functional GJIC after the Cx32 gene

transfection, the localizations of Cx32 protein in the cells were further observed by immunocytochemical staining. The photographs of A, B, and C in Fig. 4 show the localization of Cx32 protein in HepG2, empty vector transfected cells, and Cx32 gene transfected cells, respectively. These results demonstrated that the Cx32 protein was expressed in all the cells, but the localizations of Cx32 protein were clearly different among them. Thus, the Cx32 protein was localized in the cell borders and formed many small gap junction plaques in the Cx32 gene transfected cells, however, the Cx32 protein was limited in the cytoplasm and hardly detected the gap junction plaques in the HepG2 and empty vector transfected cells. The results in the present study suggest that the trafficking of Cx32 protein to the cell membrane in HepG2 was enhanced by Cx32 gene transfection and then increased the functional GJIC in Cx32 gene transfected cells.

#### Liver-specific functions in HepG2 improved by Cx32 gene transfection

For determining the effect of Cx32 gene transfection on the liver-specific functions in HepG2, the albumin secretion ability and ammonia removal activity were continuously monitored in the HepG2, empty vector transfected cells, and Cx32 gene transfected cells, respectively (Fig. 5). Albumin secretion, which was used as a marker for protein synthesis in the liver, showed greater amounts of albumin detected in Cx32 gene transfected cells than HepG2 and empty vector transfected cells (Fig. 5A). Furthermore, ammonia removal activity, which represents the detoxification potentiality of the liver, was significantly higher in the Cx32 gene transfected cells than HepG2 and empty vector transfected cells during the 14 days of culture with 5 mM ammonium chloride (Fig. 5B). It was suggested that the small molecular ammonium was effectively eliminated through the gap junctional channels formed by Cx32 in HepG2. The enhancement of liver-specific functions of HepG2 was suggested to relate to the increasing functional GJIC by Cx32 gene transfection.

#### Discussion

HepG2 cells, a human hepatoma cell line, are deficient in GJIC due to the aberrant expression of Cx32 and low expression of Cx26. In *in vivo* and *in vitro* models, low or no functional GJIC was observed in various kinds of hepatocarcinoma and hepatoma, which was suggested to be involved in the malignant phenotype of cancer and tumor cells [14]. *In vivo*, normal rodent hepatocytes express Cx32 and Cx26, but only Cx32 expression is constant across the liver lobule [6]. Thus, liver gap junction channels composed of Cx32 are

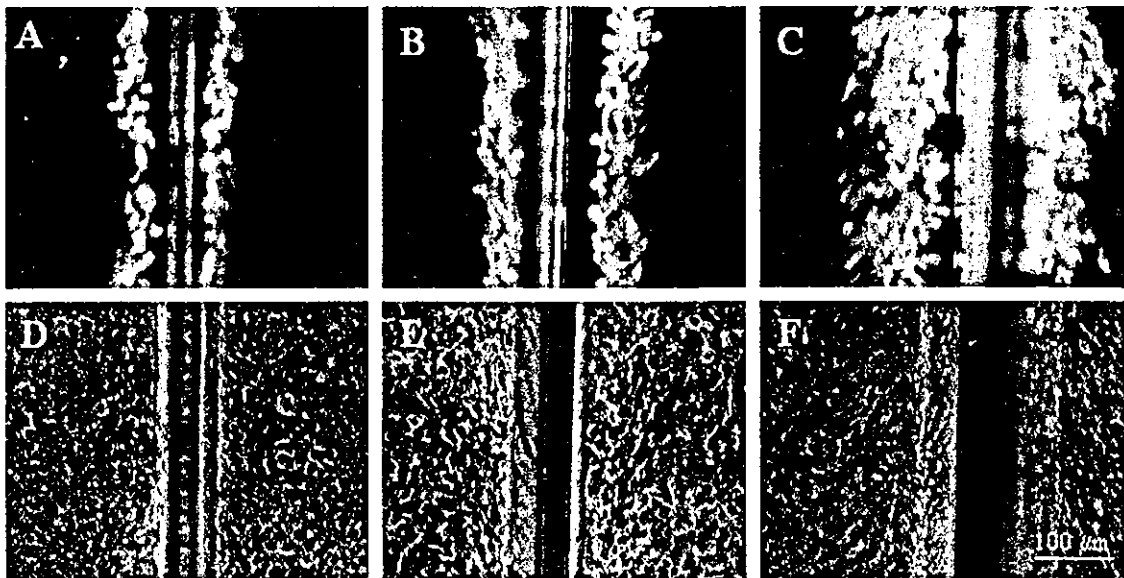


Fig. 2. Fluorescent (A–C) and phase-contrast (D–F) photographs of HepG2 (A and D), vector-transfected HepG2 (Vector/HepG2) (B and E), and Cx32-transfected HepG2 (Cx32/HepG2) (C and F) in the assay of scrape loading and dye transfer (SLDT), same scale in (A–F).

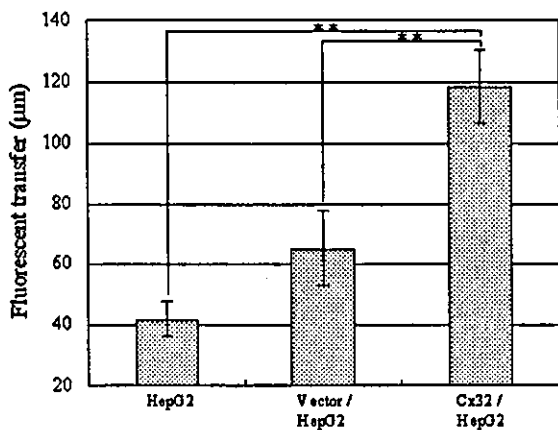


Fig. 3. Functional GJIC in HepG2, vector-transfected HepG2 (Vector/HepG2), and Cx32-transfected HepG2 (Cx32/HepG2) measured by the SLDT method at the seventh day of culture. Values are expressed as means from 20 determinations (\*\* $P < 0.01$ ).

suggested to be important to maintain the normal phenotype of hepatocytes. Therefore, to reduce malignant phenotype and improve liver-specific functions in HepG2, we transfected human Cx32 gene into HepG2 to enhance functional GJIC.

The results of the RT-PCR and SLDT assay in the present study showed that the levels of Cx32 mRNA expressed in Cx32 gene transfected cells were increased greater than twofold compared with HepG2 (Fig. 1) and the functional GJIC was also markedly enhanced by Cx32 gene transfection in HepG2 (Figs. 2 and 3). Analyses of chemically induced rat liver tumors suggest that Cx32 gene is rarely mutated in these tumors but the expression of the Cx32 protein is often reduced or the Cx32 protein is abnormally localized in these cells [15]. In the present study, although the Cx32 protein expression by Western blotting assay showed almost no change even after Cx32 gene transfection (data not shown), a clear difference in the localization of Cx32 protein was observed between before and after Cx32

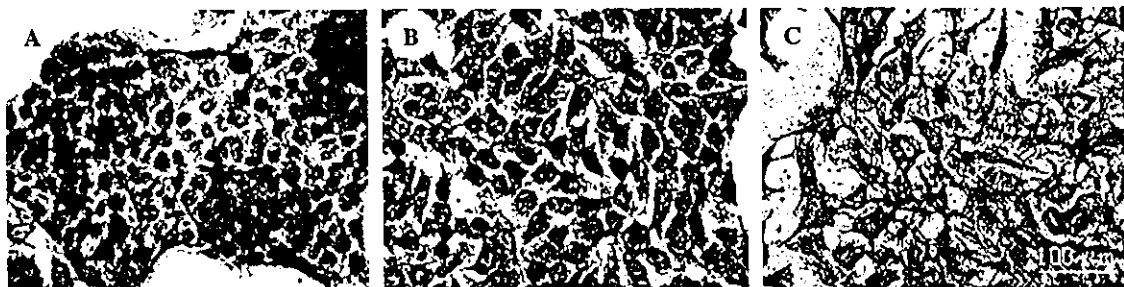


Fig. 4. Localization of Cx32 protein in HepG2 (A), vector-transfected HepG2 (B), and Cx32-transfected HepG2 (C). More gap junction plaques were detected in Cx32 gene transfected cells (arrow) than HepG2 and empty vector transfected cells. Immunocytochemical staining of Cx32 protein was performed with a Vectastain ABC Kit and polyclonal rabbit anti-connexin 32, same scale in (A–C).

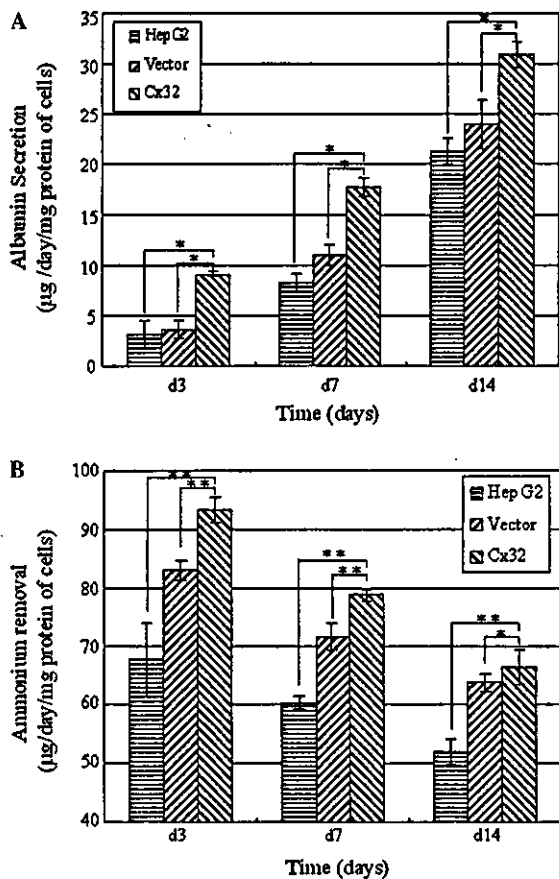


Fig. 5. Liver functions of albumin secretion (A) and ammonia removal (B) of HepG2, vector-transfected HepG2, and Cx32-transfected HepG2 examined on the 3rd, 7th, and 14th day of culture (\* $P < 0.05$ , \*\* $P < 0.01$ ).

gene transfection in HepG2 by immunocytochemical stainings (Fig. 4). The majority of Cx32 protein was localized in the cell borders and formed small gap junction plaques in the Cx32 gene transfected cells, whereas it was limited to the cytoplasm and nucleus before Cx32 gene transfection. Furthermore, the morphologies of the cells showed that Cx32 gene transfected cells grew as a monolayer with the spreading cell shape, while the HepG2 grew as clusters with the spherical cell shape. Cx protein expression, gap junction assembly, and its function are controlled by the transcription, translation, and post-translational modification. In addition, recent studies have suggested that they are also associated with tight junction components and elements of the cytoskeleton [16–18]. Although the precise role of the cellular morphology in gap junctional channel formation between the cells is not clear at present, the results of the present study suggest that the trafficking, assembly of Cx32, and functional GJIC in the cellular membrane are enhanced by forced expression of Cx32 in HepG2.

Furthermore, Cx32 gene transfection into HepG2 markedly enhanced the liver-specific functions of am-

monia removal and albumin secretion with accompanying increase in the functional GJIC (Fig. 5). Ammonia removal activity and albumin secretion ability are typical differentiated functions of the liver, but these functions in HepG2 were significantly lower than those of hepatocytes in vivo. The defect in albumin production was reported to be due to the reduction or absence of albumin gene transcription in some hepatoma cells, and the structure of the albumin gene was detected in all MH1C1, FAO, and 3924A rat hepatoma cells, but a different albumin expression was found to correlate well with methylation state of the albumin gene [19]. The results in the present study showed that the transcription of albumin gene in HepG2 may be enhanced with the increase in the functional GJIC by Cx32 gene transfection, and the albumin production was increased (Fig. 5A). In addition, the studies of ammonia removal activity in HepG2, Cx32 gene transfected cells, and vector transfected cells showed that urea was not detected in the culture media of all cells, and the ability of ammonia removal was higher in the absence than the presence of 4 mM glutamine in the media in all cells (data not shown). In the intact liver, the two major ammonia-detoxification systems, urea and glutamine synthesis, are anatomically present in periportal and pericentral hepatocytes, respectively [20]. In functional terms, this organization represents the sequence of a periportal low-affinity but high-capacity system (ureogenesis) and a pericentral high-affinity system for ammonia detoxification (glutamine synthesis). Therefore, the present results suggested that HepG2 eliminated ammonia via the high-affinity pathway of glutamine synthesis, and the capacity enhanced with the increase in the functional GJIC by forced expression of Cx32, which could be similar to the characters of Cx32 high-expressional pericentral hepatocytes. Furthermore, glutamine is an essential nutrient as a major source of energy and nitrogen for mammalian cells, which would be useful for the development of bioartificial liver. These results showed that the ammonium metabolic activity and albumin secretion in HepG2 were related to the functional gap junctional channel composed of Cx32 proteins. Other studies reported distinct biological roles of the highly homologous Cx proteins in correlations of Cx mRNA isoform expression with the degree of hepatic cellular differentiation (in RLC, FTO.2B, and WB-F344 cell lines), and suggested that Cx gene expression may be a marker of hepatic development: as hepatocytes differentiate, the proportions of Cx43 and then Cx26 mRNA decrease while that of Cx32 mRNA increases [21]. Moreover, the diffusion of second messengers through gap junction channels composed of Cx32 in liver is suggested to be a major determinant for the establishment of metabolic coupling between neighboring hepatocytes and for the proper distribution of signals involved in the promotion of liver-specific functions.

Taken altogether, the recovery of Cx32 expression could be proposed to have an effect on enhancing the liver-specific functions in hepatoma cells, in addition to improving the biological safety of hepatoma cells for the application as tissue engineered artificial liver by the inhibition of malignant growth of tumor cells of HepG2.

In conclusion, this study is the first to report a clear increase in the functional GJIC in HepG2 by transfection of Cx32 gene, and the subsequently enhanced liver-specific functions of ammonia detoxification and albumin synthesis in the Cx32 gene transfected HepG2. It may be expected to improve cellular functions of the hepatoma cell line by Cx32 gene transfection and serve to develop an excellent biohybrid-artificial liver.

### Acknowledgments

We are grateful to the support of Japan Society for the Promotion of Science, and Health and Labour Sciences Research Grants, Research on Advanced Medical Technology, Ministry of Health, Labour and Welfare and Japan Health Sciences Foundation.

### References

- [1] N.M. Kumar, N.B. Gilula, The gap junction communication channel, *Cell* 84 (1996) 381–388.
- [2] A. Ito, F. Katoh, T.R. Kataoka, M. Okada, N. Tsubota, H. Asada, K. Yoshikawa, S. Maeda, Y. Kitamura, H. Yamasaki, H. Nojima, A role for heterologous gap junctions between melanoma and endothelial cells in metastasis, *J. Clin. Invest.* 105 (2000) 1189–1197.
- [3] H. Yamasaki, V. Krutovskikh, M. Mesnil, T. Tanaka, M.L. Zaidan-Dagli, Y. Omori, Role of connexin (gap junction) genes in cell growth control and carcinogenesis, *C.R. Acad. Sci. Paris, Sciences de la vie/Life Sciences* 322 (1999) 151–159.
- [4] R. Bruzzone, T.W. White, D.L. Paul, Connections with connexins: the molecular basis of direct intercellular signaling, *Eur. J. Biochem.* 238 (1996) 1–27.
- [5] D.A. Goodenough, J.A. Goliger, D.L. Paul, Connexins, connexons and intercellular communication, *Annu. Rev. Biochem.* 65 (1996) 475–502.
- [6] D.C. Spray, J.C. Saez, E.L. Hertzberg, R. Dermietzel, Gap junctions in liver, composition, function, and regulation, in: I.M. Arias, J.L. Boyer, N. Fausto, W.B. Jacoby, D.A. Schachter, D.A. Shafritz (Eds.), *The Liver Biology and Pathobiology*, third ed., Raven, New York, 1994, pp. 951–967.
- [7] D.L. Paul, Molecular cloning of cDNA for rat liver gap junction protein, *J. Cell Biol.* 103 (1986) 123–134.
- [8] E. Eghbali, J.A. Kessler, L.M. Reid, C. Roy, D.C. Spray, Involvement of gap junctions in tumorigenesis: transfection of tumor cells with connexin 32 cDNA retards growth in vivo, *Proc. Natl. Acad. Sci. USA* 88 (1991) 10701–10705.
- [9] M. Evert, T. Ott, A. Temme, K. Willecke, F. Dombrowski, Morphology and morphometric investigation of hepatocellular preneoplastic lesions and neoplasms in connexin32-deficient mice, *Carcinogenesis* 23 (2002) 697–703.
- [10] N.L. Sussman, G.T. Gislason, C.A. Conlin, J.H. Kelly, The hepatic extracorporeal liver assist device—initial clinical experience, *Artif. Organs* 18 (1994) 390–396.
- [11] Y. Yamashita, M. Shimada, E. Tsujita, S. Tanaka, H. Iijima, K. Nakazawa, R. Sakiyama, J. Fukuda, T. Ueda, K. Funatsu, K. Sugimachi, Polyurethane foam/spheroid culture system using human hepatoblastoma cell line (HepG2) as a possible new hybrid artificial liver, *Cell Transpl.* 10 (2001) 717–722.
- [12] M. Takagi, N. Fukuda, T. Yoshida, Comparison of different hepatocyte cell lines for use in a hybrid artificial liver model, *Cytotechnology* 24 (1997) 39–45.
- [13] M.H. El-Fouly, J.E. Trosko, C.C. Chang, Scrape-loading and transfer: a rapid and simple technique to study gap junctional intercellular communication, *Exp. Cell Res.* 168 (1987) 422–430.
- [14] H. Yamasaki, V. Krutovskikh, M. Mesnil, T. Tanaka, M.L. Zaidan-Dagli, Y. Omori, Role of connexin (gap junction) genes in cell growth control and carcinogenesis, *C.R. Acad. Sci. III* 322 (1999) 151–159.
- [15] Y. Omori, V. Krutovskikh, N. Mironov, H. Tsuda, H. Yamasaki, Cx32 gene mutation in a chemically induced rat liver tumour, *Carcinogenesis* 17 (1996) 2077–2080.
- [16] P.E.M. Martin, G. Blundell, S. Ahmad, R.J. Errington, W.H. Evans, Multiple pathways in the trafficking and assembly of connexin 26, 32 and 43 into gap junction intercellular communication channels, *J. Cell Sci.* 114 (2001) 3845–3855.
- [17] T. Kojima, D.C. Spray, Y. Kokai, H. Chiba, Y. Mochizuki, N. Sawada, Cx32 formation and/or Cx32-mediated intercellular communication induces expression and function of tight junctions in hepatocytic cell line, *Exp. Cell Res.* 276 (2002) 40–51.
- [18] R.G. Johnson, R.A. Meyer, X.R. Li, D.M. Preus, L. Tan, H. Grunenwald, A.F. Paulson, D.W. Laird, J.D. Sheridan, Gap junctions assemble in the presence of cytoskeletal inhibitors, but enhanced assembly requires microtubules, *Exp. Cell Res.* 275 (2002) 67–80.
- [19] G. Cairo, M. Lucchini, Molecular basis of reduced albumin gene expression in hepatoma cell lines with different growth rates, *Exp. Cell Res.* 206 (1993) 255–260.
- [20] D. Haussinger, Nitrogen metabolism in liver: structural and functional organization and physiological relevance, *Biochem. J.* 267 (1990) 281–290.
- [21] E. Rosenberg, R.A. Faris, D.C. Spray, B. Monfils, S. Abreu, I. Danishefsky, L.M. Reid, Correlation of expression of Connexin mRNA isoforms with degree of cellular differentiation, *Cell Adhes. Commun.* 4 (1996) 223–235.

---

# Neural differentiation of midbrain cells on various protein-immobilized polyethylene films

---

Ryusuke Nakaoka, Toshie Tsuchiya, Akitada Nakamura

Division of Medical Devices, National Institute of Health Sciences, Tokyo 158-8501, Japan

Received 23 July 2001; revised 29 April 2002; accepted 24 May 2002

Published online 27 January 2003 in Wiley InterScience (www.interscience.wiley.com). DOI: 10.1002/jbm.a.10430

**Abstract:** The effect of surface modification of polyethylene (PE) film on differentiation of midbrain (MB) cells obtained from rat embryos was determined by their micromass culture system. When cultured on untreated PE film, cell differentiation was suppressed to approximately two-thirds of that observed in a control culture dish. On the contrary, type I collagen-immobilized PE film increased differentiated foci of the MB cells more than did the untreated PE film. RGDS (Arg-Gly-Asp-Ser) peptide immobilization onto PE film resulted in almost the same differentiation activity as the collagen immobilized PE film. Bovine serum albumin (BSA) immobilization onto PE film enhance the differentiation activity more than did the untreated PE film, but not up to the levels of collagen- and RGDS-immobilized PE. The number of differentiated foci of the MB cells on untreated PE film were increased by the addition of the condition medium

prepared from the collagen-immobilized PE film. However, the number of foci was not increased by the addition of other condition media obtained from control dish, untreated, BSA-, and RGDS-immobilized PE. On the other hand, none of these condition media enhanced a differentiation of the neuronal cell line of PC12 cells, suggesting that some factors effectively differentiate midbrain cells, composed of neuronal epithelial and mesenchymal cells, but not the PC12 cells secreted in the condition media prepared from collagen-immobilized PE. In addition, it is probable that neural growth factor was not secreted in these condition media, which could not induce the differentiation of PC12 cells. © 2003 Wiley Periodicals, Inc. *J Biomed Mater Res* 64A: 439–446, 2003

**Key words:** midbrain cells; cell differentiation; micromass culture system; surface modification; collagen

---

## INTRODUCTION

Implantation of biomaterials still induces many side effects, although recent advances in technology have made it possible to improve biomaterials more safely and effectively. Undesirable inflammatory reactions were often observed around the biomaterials after their implantation, resulting in not only the loss of their expected function but also severe side effects for the patients. For studies on interactions between the biomaterials and the body, in other words, many types of cells should be carefully investigated *in vitro*. The effect of the materials on cell proliferation, differentiation, and function must be estimated in order to improve biomaterials that can be applied to humans. Previously, we reported that when cells were cultured on a polyethylene film, gap-junctional intercellular communication (GJIC) of cells, which is an important function to maintain cell and tissue homeostasis, was inhibited.

Furthermore, the inhibitory level decreased when the surface of the film was modified with collagen.<sup>1</sup> Thus, we suggested that surface modification of biomaterial is one way to diminish undesirable effects on cell and tissue homeostasis. However, it is not clear whether cell differentiation function can be improved with recovery of the GJIC by a surface characteristic of the biomaterial. It is important to design a surface characteristic suitable for normal cell differentiation in order to develop biomaterials, such as a biocompatible scaffold, for tissue engineering. To clarify the effect of biomaterial surface characteristics on cell differentiation and the relationship of biomaterial effects on differentiation and GJIC, we applied a midbrain (MB) micromass culture to estimate the effect. The MB micromass culture system is a convenient *in vitro* assay originally developed for *in vitro* teratogenicity tests.<sup>2</sup> In addition, it has already been suggested that the differentiation level of the MB cells might be related to GJIC inhibitory activity of the biomaterial.<sup>3</sup> In this study, we examined the effect of surfaces modified with various kinds of proteins on cell differentiation under *in vitro* experimental conditions to clarify suitable surface characteristics for producing excellent biomaterials.

Correspondence to: Ryusuke Nakaoka; e-mail: nakaoka@nihs.go.jp

© 2003 Wiley Periodicals, Inc.

## MATERIALS AND METHODS

### Chemicals

A high-density polyethylene (PE) film with no additives was kindly supplied by Mitsui Chemical Industries, Ltd. (Tokyo, Japan). Its thickness was 0.35 mm and the weight-average molecular weight was 153,000. We used acrylic acid monomer obtained from Nakalai Tesque Inc. (Kyoto, Japan) after conventional distillation. Bovine serum albumin (BSA) and Type-I collagen from porcine tendon (cell-matrix, type I-P) were purchased from Sigma Chemical Co. (St. Louis, MO) and Nitta Gelatin Co., Ltd. (Osaka, Japan), respectively. Arg-Gly-Asp-Ser (RGDS) peptide was kindly donated by Yoshiaki Hirano (Osaka Institute of Technology, Japan). Hanks's balanced salt solution (HBSS) and Ham's F12 medium were purchased from Life Technologies, Inc. (Grand Island, NY). We purchased and used without further purification 1-ethyl-3-(3-dimethyl aminopropyl)-carbodiimide (WSC) and other chemicals from Wako Pure Chemical Industries (Osaka, Japan).

### Immobilization of proteins onto PE film

Protein immobilization onto the surface of PE film was carried out according to the method reported previously.<sup>1</sup> Briefly, we subjected PE film to corona discharge to introduce peroxides onto the surface and then placed it in a solution containing acrylic acid monomer in a Pyrex tube, followed by degassing procedure. The tube was kept at 60°C for 1 h to allow the graft polymerization of the monomer to proceed onto the PE surface. After placing grafted film in 0.1 M acetic acid solution (pH 4.5), we added WSC to the solution. The film was transferred to a protein solution to immobilize the protein onto the grafted film. The amount of protein immobilized onto the film was estimated by the nin-

hydrin method after hydrolysis of immobilized protein. The immobilized films were sterilized by immersion in 70% ethanol solution for 12 h at 4°C, and subsequently placed in sterile phosphate-buffered saline solution (PBS, pH 7.4) to remove ethanol just before the assay described below.

### Cell differentiation assay by micromass culture of midbrain cells

MB micromass culture was performed according to the method previously reported.<sup>2</sup> Figure 1 shows the scheme of the assay of the MB micromass culture system. Briefly, MB tissues were separated from the embryos of pregnant Wistar rats (Japan SLC Inc., Shizuoka, Japan) on day 13 of gestation. MB tissues were dissociated into individual cells by successive washing in calcium- and magnesium-free HBSS, and by trypsin digestion for 10 min at 37°C. The cells were suspended at a density of  $5 \times 10^6$  cells per mL in culture medium consisting of Ham's F12 with 10% fetal calf serum (F12-10% FCS). Aliquots of 20  $\mu$ L of cell suspension were seeded on PE film or protein-immobilized PE film placed into 12-well cell culture plates, followed by the addition of 1 mL of F12-10% FCS after 2 h and an incubation at 37°C in a 5% CO<sub>2</sub>-95% air atmosphere for 1 wk. After the cells were fixed and stained with hematoxylin, the extent of nerve cell differentiation was assessed by counting the differentiated cell foci under a dissecting microscope. The differentiated cells on each test film were photographed with a digital microscope VH-8000 (Keyence Co., Ltd., Osaka, Japan). Cytotoxicity of the films was estimated by the alamar Blue<sup>®</sup> assay (BioSource International, Inc., Camarillo, CA), which incorporates an oxidation-reduction indicator based on detection of metabolic activity.<sup>4</sup> After 1 wk of incubation, aliquots of 50  $\mu$ L alamar Blue solution were added to each test dish, followed by a further 4-hr incubation. The fluorescence intensity (excitation 530 nm, emission 570 nm) of supernatant was estimated by CytoFluor<sup>®</sup> II (PerSeptive Biosystems,

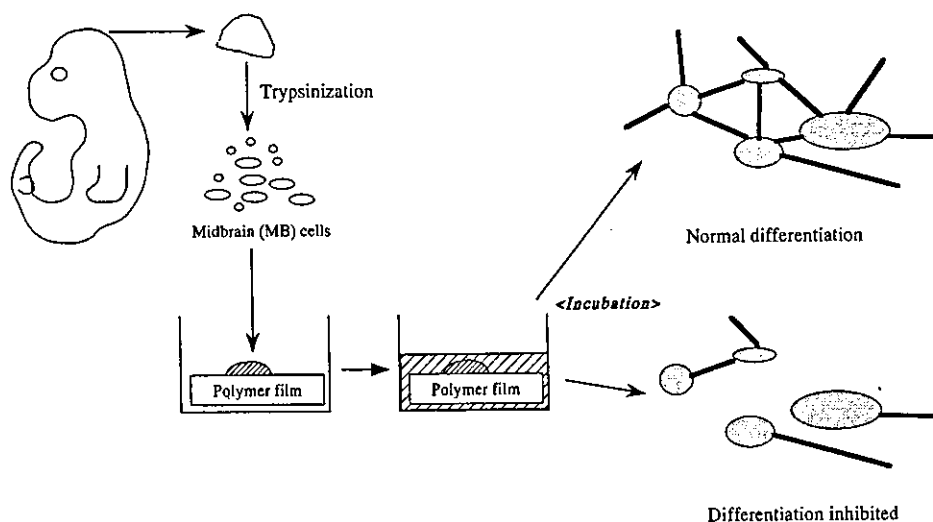


Figure 1. Schematic illustration of micromass culture system using MB cells.

Flamingham, MA). The effects of condition media of MB tissues cultured on Various PE films were estimated as follows: MB cells were collected and cultured on PE films as above, followed by incubation at 37°C in a 5% CO<sub>2</sub>-95% air atmosphere. Then, supernatants of MB cell culture (condition media) were collected after 3 days, followed by the addition of 1 mL F12-10% FCS and an additional 4-day incubation. The condition media were collected again after cultivation of MB cells. All condition media collected were kept at -80°C until we detected an effect on differentiation and proliferation of MB cells. To detect the effect of condition medium, MB cells were subjected to the micromass culture on a normal culture dish, followed by the addition of 500 µL F12-10% FCS and 500 µL the condition medium. The effect was estimated as described above after 1-wk incubation. The experiments were repeated at least three times.

#### Effects of condition medium from MB cell culture on PC12 differentiation

To examine effects of the condition medium on neuronal cell differentiation, we cultured PC12 cells as model neuronal cells, using the condition mediums from MB cultured on various kinds of PE films. PC12 cells were kindly donated by Shuichi Koizumi (National Institute of Health Sciences, Tokyo, Japan) and cultured in a medium consisting of Dulbecco's modified Eagle's medium (MEM) supplemented with 5% FCS and 5% heat-inactivated horse serum. The cells were suspended in the medium at the density of  $2 \times 10^4$  per mL. An aliquot of 500 µL of the suspension was added to 24-well collagen-coated culture plates, followed by a 5-h incubation to adhere the cells onto the plates. Then, an aliquot of 100 µL of the condition medium was added to each plate, and axonal growth from the cells was observed daily by light microscopy to estimate a differentiation level of PC12. For positive control of differentiation of the cell, 25 µg of nerve growth factor (NGF; purchased from Wako Pure Chemical Ltd., Osaka, Japan) was added to the plates and treated as above.

#### Statistic analysis

All data were expressed as the mean value  $\pm$  standard deviation of the data obtained from each experiment and treated statistically with Student's *t* test.

## RESULTS

Figure 2 shows foci of MB cells cultured on various protein-immobilized PE films after a 7-day incubation. MB cells formed many foci, and many neuron-like fibers were observed between the foci when cultured on polystyrene and collagen-coated culture dishes. The

MB cells on untreated PE films developed few neuron fibers compared to those on the polystyrene culture dish, and the cells did not gather to create cell foci. However, a protein immobilization onto PE caused neuron fibers to connect between foci, although the number of fibers observed was affected by the kind of protein immobilized. In Figure 2, it is clear that the size of the focus was also affected by the protein immobilized. When collagen was immobilized, the observed foci were smaller than the other foci. However, the number of fibers from each focus was greater than that of the other PE film, indicating differentiation of MB cells promoted by collagen. Table I indicates the number of differentiated foci of MB cells on various PE films. The PE film inhibited differentiation of MB cells, as seen in the small number of differentiated foci. In addition, the PE film showed high cytotoxicity compared with a control dish. This may be one reason why the differentiation of MB cells was inhibited. By protein immobilization, however, the number of differentiated foci increased in comparison with those of the PE film. Moreover, collagen and RGDS peptide immobilization increased the number of the foci more than that observed on the culture dish.

We estimated the effects of condition media on MB cell differentiation to see whether they include some factors affecting cell differentiation. Table II shows the effects of condition media on MB cell differentiation on a collagen-coated culture dish. Addition of the condition medium from MB cell cultivation on all kinds of PE films showed a cytotoxic effect on MB cells. In addition, the cytotoxic effect was enhanced when collected after 7 days of incubation. This effect might be ascribed to a loss of nutrition from the medium during the first cell culture. The differentiation of MB cells on a collagen-coated dish was suppressed by the addition of the media from MB cells on various PE films on day 3. However, a condition medium from MB cell on collagen-immobilized PE film on day 7 showed many differentiated foci, as many as were induced by a condition medium from MB cells on a collagen-coated culture dish on day 7. Although the medium from the collagen-immobilized film revealed an enhanced effect on differentiation, addition of the condition media from other films suppressed differentiation, as shown in Table II. On the contrary, all condition mediums after 3-day cultivation did not show any enhancement of MB cell differentiation on a culture dish.

PC12 cells cultured with the condition medium from MB cell cultures showed little axonal growth after 1-wk incubation, and the axonal growth was similar among the various condition media of MB cells cultured on the different PE surfaces. On the other hand, the cells cultured with NGF showed strong axonal growth (data not shown), indicating that the con-

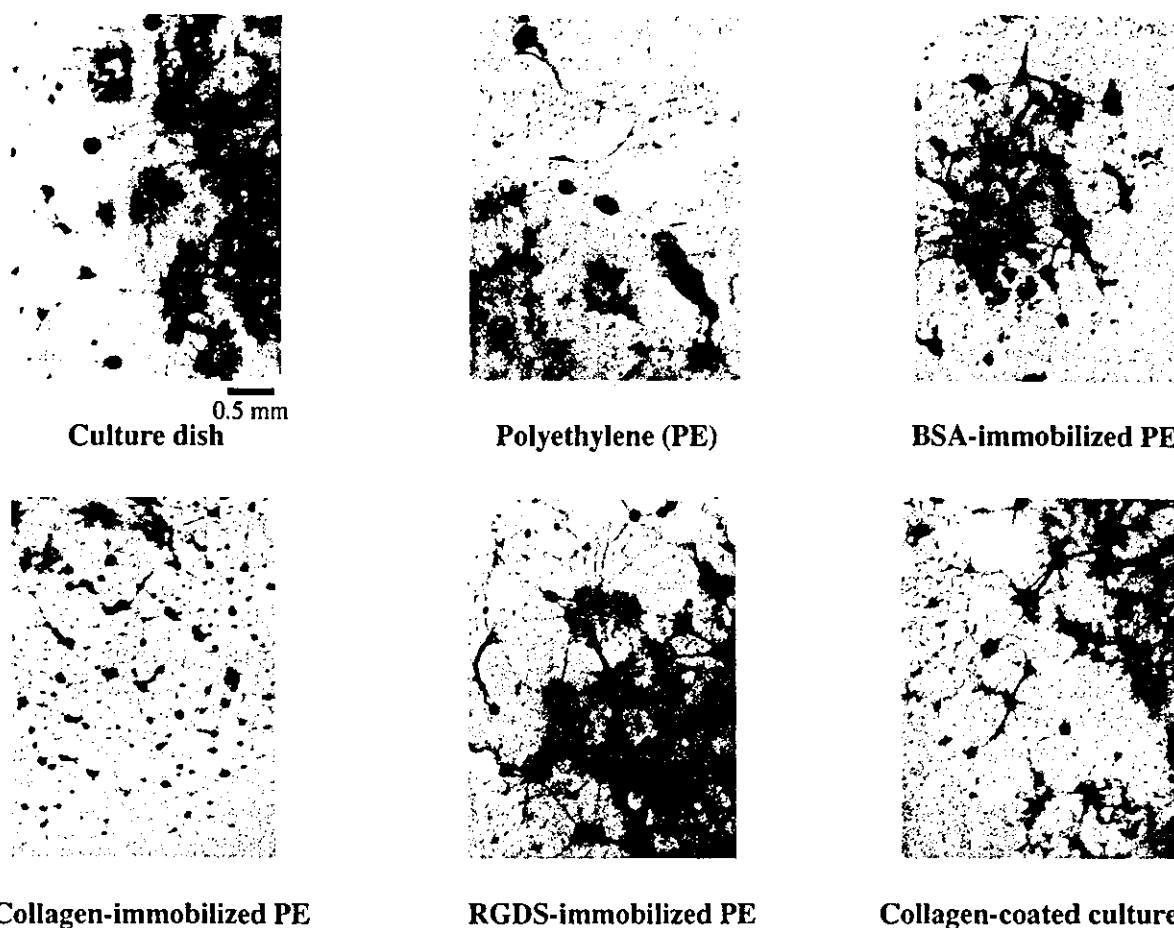


Figure 2. Light micrographs of Delafield's hematoxylin staining cultures of rat MB cells after incubation on various polyethylene surfaces.

dition medium does not contain a factor such as NGF that induces a differentiation of the PC12 cells directly.

## DISCUSSION

Because function and differentiation of cells depend on circumstances such as the kinds of substrates, cell-

substrate contact area, culture condition, and so on,<sup>5-8</sup> we should be very careful to choose the appropriate substrate for cell culture to achieve the desired function. We think this cell-substrate interaction is a very important, not only for basic cell studies but also for studies of hybrid-type artificial organs and tissue engineering. Therefore, in order to develop our tissue-engineering technique, we focused on effects of bio-

TABLE I  
Effect of Surface Modification of Polyethylene Film by Protein Immobilization on Differentiation of Rat Midbrain Cells (mean value  $\pm$  SD;  $n = 4$ )

	Culture Dish	Virgin PE	BSA-PE	Collagen-PE	RGDS-PE	Collagen-Coated Culture Dish
The amount of protein immobilized ( $\mu\text{g}/\text{cm}^2$ )	—	—	2.27	4.19	2.46	— <sup>a</sup>
Cytotoxicity (%)	100 $\pm$ 15.5	61.5 $\pm$ 9.0	75.5 $\pm$ 13.8	73.9 $\pm$ 38.3	43.4 $\pm$ 41.0	137 $\pm$ 10.6
The number of differentiated foci of MB cells	94.0 $\pm$ 16.6	67.0 $\pm$ 17.4	109 $\pm$ 26.5	159 $\pm$ 16.1**	168 $\pm$ 22.7**	174 $\pm$ 15.4 <sup>b</sup>

<sup>a</sup>The coated amounts of collagen unknown.

<sup>b</sup>Significant difference observed among culture dish, PE, and BSA-PE.

\* $p < 0.05$ , \*\* $p < 0.01$



TABLE II  
Effect of Condition Media From Various MB Cell Culture Conditions on MB Cell Differentiation on a Collagen-Coated Culture Dish (mean value  $\pm$  S.D.  $n = 4$ )

	Condition Medium Collected After	Condition Medium Collected From MB Culture				
		Collagen-Coated Culture Dish	PE	BSA-PE	Collagen-PE	RGDS-PE
Cytotoxicity (%)	3 days	100 $\pm$ 6.8	88.7 $\pm$ 9.4*	75.5 $\pm$ 13.8*	68.4 $\pm$ 9.9*	77.1 $\pm$ 15.2*
	7 days	100 $\pm$ 28.1	64.3 $\pm$ 15.9	39.1 $\pm$ 17.2**	50.5 $\pm$ 10.3*	42.7 $\pm$ 28.0**
Number of differentiated foci of MB cells	3 days	126 $\pm$ 12.3	109 $\pm$ 23.0	107 $\pm$ 6.4	100 $\pm$ 5.5	110 $\pm$ 10.4
	7 days	133 $\pm$ 9.3	105 $\pm$ 14.2*	90.0 $\pm$ 25.5*	133 $\pm$ 13.0	87.0 $\pm$ 61.8*

\* $p < 0.05$ , \*\* $p < 0.01$  compared with a collagen-coated culture dish group or with group indicated.

materials on cell differentiation to estimate biocompatibility of materials. Moreover, we expected to find suitable cell scaffolds or substrates for inducing desirable function of targeted cells. In this study, PE film inhibited normal differentiation of MB cells cultured on it, and collagen and RGDS peptide immobilization onto PE surface resulted in an increased number of differentiated foci. In addition, MB cells on a collagen-coated culture plate showed more differentiated foci than those on a normal culture dish, as well as those observed on collagen-immobilized PE film. These results suggest that improvement of cell adhesion and cell proliferation by the immobilization of extracellular matrix protein promotes the differentiation of MB cells.

It has been reported that some materials show a potential to disrupt usual behavior of cells, resulting in undesirable effects on cells or tissues.<sup>1,2,9-12</sup> During these studies, we focused on the inhibitory activity of the materials on GJIC, which was found to play an important role in tumor promotion activity and correlated well with *in vivo* tumor potential.<sup>10,11</sup> In addition, GJIC plays an essential role in homeostasis maintenance by keeping many growth control signals at equilibrium among GJIC-connected cells and tissues.<sup>13</sup> Therefore, it is important to clarify the inhibitory activity of the materials on GJIC to estimate both their biocompatibility and their undesirable effects *in vivo*. In our previous study, PE film showed strong inhibitory activity on GJIC in metabolic cooperation assay systems. This inhibitory activity decreased when a surface of PE film was immobilized with extracellular matrix proteins such as collagen. However, surface modification of PE by immobilization of RGDS peptide, which plays an important role in cell adherence to the protein via integrin molecules on cell membrane, did not improve its inhibitory activity.<sup>14</sup> This result suggested that RGDS sequence in the protein was not sufficient to recover normal cell homeostasis via GJIC. Therefore, we expected that PE film immo-

bilized with RGDS peptide would suppress normal cell differentiation of MB cells when cultured on the film, as well as on untreated PE film. This study showed that untreated PE film inhibited cell differentiation as expected. However, RGDS-immobilized PE showed a potential to differentiate the cells more than that on a control dish. There were many kinds of cells in this MB cell culture system, because primary cells collected from mouse embryos have been suggested to differentiate nerve cells on the layer of other cells, such as mesenchymal cells, in this system.<sup>2</sup> It is possible that growth of mesenchymal cells was improved by the surface modification with the cell-adhesive RGDS peptide, resulting in improved differentiation of the nerve cells. This suggests that interaction between mesenchymal cells normally grown on a substrate, and nerve cells on the layer of the mesenchymal cells, is one of the important factors in the differentiation of MB cells.

Through microscopic observations (Fig. 2), we observed that the number and size of MB cell foci on various kinds of PE films were different. For example, MB cell size was smallest when the cells were cultured on collagen-immobilized PE. On the other hand, when the MB cells were cultured on untreated PE film, the number of foci was fewer and, as observed, their size was larger than the foci seen on other films. In addition, many cell layers uniformly stained by hematoxylin were observed on the PE film. These findings indicate that MB cells could not gather to form foci when cultured on the PE film. However, improving the surface of the PE by protein immobilization recovered mobility of the cells to form the foci, judging from the microscopic observation. These results suggest that protein immobilization makes the surface more feasible for both cell movement and adherence. Considering this microscopic observation and data shown in Table II, it is probable that more nutrition is necessary for adhesion, movement, proliferation, and differentiation of MB cells on various kinds of PE films tested

rather than on a normal culture dish. Although further studies are needed, differences in surface characteristics of various PE films may cause different biological reactions in MB cells, resulting in different utilization of the nutrition in a culture medium.

Despite containing less nutrition, the condition medium from MB cell 7-day cultures on collagen-immobilized PE film might have the potential to improve differentiation of nerve cells, as shown in Table II. This suggests that the condition medium contains some factors that aid differentiation. Results from Table II also suggest that growth factors from the cells that aid differentiation may be secreted at least 3 days after starting MB cell culture, because the condition medium from 3-day cultures did not show any effects on differentiation. However, culture of PC12 cells in the condition medium indicated that growth factors in the medium had little NGF-like potential on differentiation. These results suggest the possibility of improving function of mesenchymal or nerve cells on the collagen-immobilized PE film to produce not NGF, but factors that may induce normal nerve cell differentiation, although the factors were not identified in this study. In addition, the condition medium from the 7-day cultures on other protein-immobilized films suppressed differentiation, although the number of differentiated foci directly on the films was more than

that observed on PE film. This finding suggests that the condition medium did not contain the factors. In addition, this may also reflect lower nutrition in the condition medium than that taken from MB cell cultures on a normal culture dish. These results indicate that mechanisms of MB cell differentiation recovery on collagen-immobilized PE film are different from those of RGDS-immobilized PE. The hypothesis of MB cell differentiation on various PE films from the above findings is illustrated in Figure 3. Immobilization of protein makes a surface more hydrophilic. It is known that a hydrophobic or hydrophilic surface of biomaterials is one factor that affects cell adhesion behavior and function on them.<sup>15</sup> This change in surface characteristic can improve MB cell differentiation through normal adhesion and rearrangement of mesenchymal cells on PE surface. Because collagen and RGDS sequences can bind to a cell through integrins in the cell membrane, it is probable that the rearrangement of mesenchymal cells induces collagen- or RGDS-immobilized PE rather than BSA-immobilized PE. Moreover, collagen-immobilized PE, on which cells are reported to recover GJIC function, induces production of unknown factors that improve MB cell differentiation. Although we did not estimate directly the GJIC function of MB cells on various PE films, it is likely that the inhibitory activity of the PE films on the

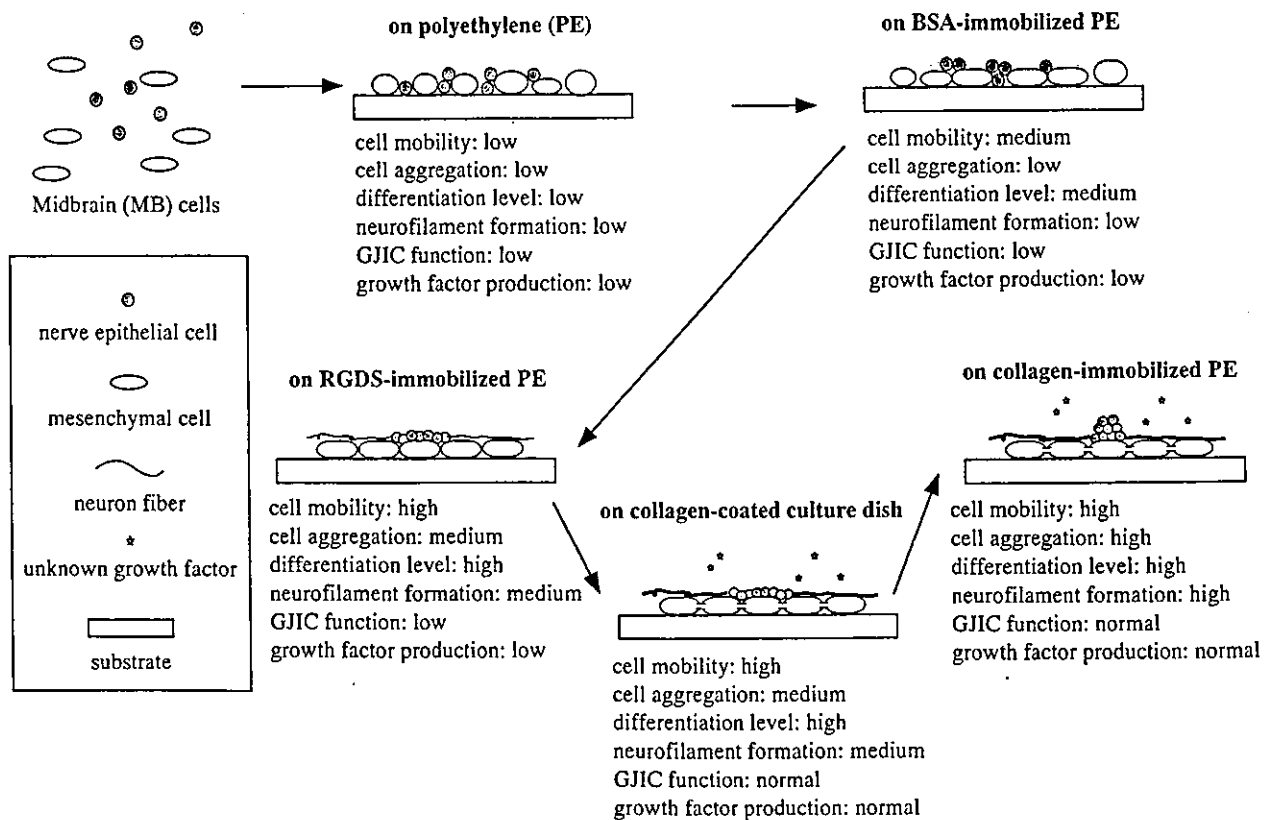


Figure 3. Schematic illustration of assumed differentiation mechanisms of MB nerve cells and mesenchymal cells after cultivation on various kinds of PE films.

GJIC relates to more or less production of the factors. Thus, MB cell differentiation may be affected by immobilized molecules through physicochemical feature of PE surface and recovery in the GJIC function of the mesenchymal cells. To prove this hypothesis about the specificity of the effects of immobilized molecule, it is indispensable to develop another experimental method with competitive chemicals binding to specific integrins.

Although collagen immobilization onto PE film increased differentiated foci of MB cells when cultured on the film, the number of the foci was comparable to that observed on a collagen-coated culture dish. As shown in Table I, however, proliferation of MB cells on the coated collagen is facilitated compared to that on the immobilized collagen. Therefore, there must be a difference in the effect of coated and immobilized collagen on the behavior of MB cells. As shown in Figure 2, the size and shape of the foci were different on the collagen-coated dish and collagen-immobilized PE. In addition, more nutrition was needed for MB cells on collagen-immobilized PE than for those on the collagen-coated dish, judging from the results shown in Table II, which suggests that MB cells on collagen-immobilized PE are more motile than those on the collagen-coated dish, resulting in their rearrangement into aggregated small foci (Figs. 2 and 3). Therefore, it is probable that the difference in MB cell behavior can be ascribed to a difference in molecular structure of coated collagen and immobilized collagen. Table II also indicated that the condition medium from collagen-immobilized PE had the potential to induce MB cell differentiation as well as that from the collagen-coated dish, although its cytotoxicity was higher. This suggests that MB cells on the immobilized PE produce unknown factors that improve their differentiation more than those on the coated dish. It has been reported that recovering GJIC function of dermal fibroblasts results in enhancement of growth factor production.<sup>16</sup> Therefore, it is probable that enhanced GJIC function of MB cells is induced by their aggregation. Although the amount of coated collagen on the dish is unknown, it is likely that immobilized collagen is suitable to prepare a surface for cell culture, biomaterials, scaffolds, and so on. To discuss different features of collagen-coated and collagen-immobilized surfaces for biomaterials more precisely, further studies, including an electrophysiological study of differentiated MB cells, are needed.

In conclusion, not only production of the factors but also direct interaction between the nerve cells and the mesenchymal cells may be responsible for the differentiation of MB cells. Moreover, it is probable that a surface characteristic of the biomaterial affects both the production and the interaction, as well as the GJIC function of cells on the surface. However, this study suggests that surface improvement of biomaterials for

cell adherence is enough, in some cases, to maintain normal cell function and differentiation. Thus, a biomaterial surface should be carefully designed according to the purpose of the biomaterial.

The authors gratefully acknowledge Yoshito Ikada of Suzuka University of Medical Science, associate professor Koichi Kato and assistant professor Masaya Yamamoto of the Institute for Frontier Medical Science, Kyoto University, and Mr. Shojiro Matsuda of GUNZE Ltd. for their kind help with graft polymerization of acrylic acid monomers.

## References

1. Nakaoka R, Tsuchiya T, Kato K, Ikada Y, Nakamura A. Studies on tumor-promoting activity of polyethylene: Inhibitory activity of metabolic cooperation on polyethylene surfaces is markedly decreased by surface modification with collagen but not with RGDS peptide. *J Biomed Mater Res* 1997;35:391-397.
2. Tsuchiya T, Eto K, Bürgin H, Kistler A. Micromass culture of midbrain cells and its relevance to *in vitro* mechanistic studies. *Cong Anom* 1992;32:105-116.
3. Tsuchiya T. A useful marker for evaluating tissue-engineered products: Gap-junctional communication for assessment of the tumor-promoting action and disruption of cell differentiation in tissue-engineered products. *J Biomater Sci Polymer* 2000;11:947-959.
4. Rahman MS, Tsuchiya T. *In vitro* culture of human chondrocytes (1): A novel enhancement action of ferrous sulfate on the differentiation of human chondrocytes. *Cytotechnology* 2002. Forthcoming.
5. Wakabayashi Y, Sasaki J, Fujita H, Fujimoto K, Morita I, Murota S, Kawaguchi H. Effects of surface modification of materials on human neutrophil activation. *Biochim Biophys Acta* 1995;1243:521-528.
6. Nagahara S, Matsuda T. Cell-substrate and cell-cell interactions differently regulate cytoskeletal and extracellular matrix protein gene expression. *J Biomed Mater Res* 1996;32:677-686.
7. Kishida A, Kato S, Ohmura K, Sugimura K, Akashi M. Evaluation of biological responses to polymeric biomaterials by RT-PCR analysis. *Biomaterials* 1996;17:1301-1305.
8. Chen SC, Mrksich M, Huang S, Whitesides GM, Ingber DE. Geometric control of cell life and death. *Science* 1997;276:1425-1428.
9. Nakamura A, Kawasaki Y, Takeda K, Aida Y, Kurokawa Y, Kojima S, Shintani H, Matsui T, Nhomi T, Matsuoka A, Sofuni T, Kurihara M, Miyata N. Differences in tumor incidence and other tissue responses to polyetherurethanes and polydimethylsiloxane in long-term subcutaneous implantation into rats. *J Biomed Mater Res* 1992;26:631-650.
10. Tsuchiya T, Hata H, Nakamura A. Studies on the tumor-promoting activity of biomaterials: Inhibition of metabolic cooperation by polyetherurethane and silicone. *J Biomed Mater Res* 1995;29:113-119.
11. Tsuchiya T, Takahara A, Cooper SL, Nakamura A. Studies on the tumor-promoting activity of polyurethanes: Depletion of inhibitory action of metabolic cooperation on the surface of polyalkyleneurethane but not a polyetherurethane. *J Biomed Mater Res* 1995;29:835-841.
12. Tsuchiya T, Nakaoka R, Degawa H, Nakamura A. Studies on

- the mechanisms of tumorigenesis induced by polyetherurethanes in rats: Leachable and biodegradable oligomers involving the diphenyl carbamate structure acted as an initiator on the transformation of Balb 3T3 cells. *J Biomed Mater Res* 1996;31:299-303.
13. Yamasaki H. Role of disrupted gap junctional intercellular communication in detection and characterization of carcinogens. *Mutat Res* 1996;365:91-105.
  14. Nakaoka R, Tsuchiya T, Kato K, Ikada Y, Nakamura A. Studies on tumor-promoting activity of polyethylene: Inhibitory activity of metabolic cooperation on polyethylene surfaces is markedly decreased by surface modification with collagen but not with RGDS peptide. *J Biomed Mater Res* 1997;35:391-397.
  15. Tamada Y, Ikada Y. Fibroblast growth on polymer surfaces and biosynthesis of collagen. *J Biomed Mater Res* 1994;28:783-789.
  16. Park JU, Tsuchiya T. Increase of gap junctional intercellular communication by high molecular weight hyaluronic acid associated with FGF-2 and KGF-production in normal human dermal fibroblasts. *Tissue Eng* 2002. Forthcoming.



## Enhancing effect of poly(L-lactide) on the differentiation of mouse osteoblast-like MC3T3-E1 cells

Kazuo Isama\*, Toshie Tsuchiya

*Division of Medical Devices, National Institute of Health Sciences, Kamiyoga 1-18-1, Setagaya-ku, Tokyo 158-8501, Japan*

Received 11 October 2002; accepted 24 March 2003

### Abstract

Poly(L-lactide) (PLLA) has bioabsorbability and biocompatibility, and it is used as biodegradable screws, pins and plates for internal bone fixation. The purpose of this study was to clarify the effects of low molecular weight (Mw) PLLA on the proliferation and differentiation of mouse osteoblast-like MC3T3-E1 cells. MC3T3-E1 cells were cultured with the concentration of 5–50 µg/ml of PLLA with weight average Mw of 5000 (PLLA-5k) and 10,000 (PLLA-10k) for 2 weeks using the micromass culture. Both PLLAs did not affect the proliferation of MC3T3-E1 cells. However, the calcifications of MC3T3-E1 cells were stimulated with increasing the concentration of the PLLAs. Then PLLA-5k increased the calcification of MC3T3-E1 cells more than PLLA-10k. Additionally, both PLLAs increased the alkaline phosphatase (ALP) activity and calcium content of MC3T3-E1 cells up to the similar level to the calcification. These results indicated that low Mw PLLA enhanced the differentiation of MC3T3-E1 cells with no effect on the proliferation. Moreover, it was suggested that the increase of the ALP activity was a key step to stimulate the calcification of MC3T3-E1 cells. The osteoconductivity of implanted PLLA would be based on the enhancing effect of low Mw PLLA on the differentiation of the osteoblasts.

© 2003 Elsevier Science Ltd. All rights reserved.

*Keywords:* Poly(L-lactide); Osteoblast; MC3T3-E1 cell; Calcification; Differentiation; Micromass culture

### 1. Introduction

Poly(L-lactide) (PLLA) with a high molecular weight (Mw) is used as biodegradable screws, pins and plates for internal bone fixation in the orthopedics. Bos et al. reported that the mass loss of PLLA was observed after 26 weeks, and no acute or chronic inflammatory reaction to PLLA was observed until 143 weeks with exception of the early part implant period, by subcutaneous implantation into rats [1]. Otto et al. observed lamellar bone formation around the PLLA wire at 2 and 6 months after intramedullary implantation into rat tibiae [2]. Mainil-Varlet et al. also observed decreasing Mw of PLLA after 4 weeks and bone formation around the PLLA pin at 1 month after implantation into the cortex of sheep tibiae [3]. Thus, there have been many reports on the bioabsorbability and biocompatibility of PLLA.

Recently, there were reported that the lower change in the Mw of PLLA by heat treatment [4] and  $\gamma$ -ray irradiation [5] was responsible for enhancing the differentiation of mouse osteoblast-like MC3T3-E1 cells cultured on the PLLA. It was expected that the low Mw PLLA produced by degradation should enhance the differentiation of osteoblasts. Ikarashi et al. examined the response of MC3T3-E1 cells cultured on several PLLAs with different Mws. The alkaline phosphatase (ALP) activity increased when the cells were cultured on the PLLA with weight average Mw of 20,000 for 2 weeks, but not on the PLLA with Mw of 270,000 and 1,370,000. They also reported that the ALP activity increased when MC3T3-E1 cells were cultured with low Mw poly(DL-lactide) (PDLLA) for 2 weeks [6]. However, the proliferation and differentiation of MC3T3-E1 cells cultured with low Mw PLLA have not been clarified, and it is insufficient to discuss osteoblast differentiation only based on the ALP activity.

In the present study, MC3T3-E1 cells were cultured with low Mw PLLA using the micromass culture, and the differentiation of the cells was synthetically

\*Corresponding author. Tel.: +81-3-3700-1141; fax: +81-3-3707-6950.

E-mail address: [isama@nihs.go.jp](mailto:isama@nihs.go.jp) (K. Isama).

evaluated from the ALP activity and calcification. Thus, it was possible to clarify the effects of low Mw PLLA on the proliferation and differentiation of osteoblast-like MC3T3-E1 cells.

## 2. Materials and methods

### 2.1. Materials

PLLA with weight average Mw of 5000 (PLLA-5k) and 10,000 (PLLA-10k) were obtained from Nacalai Tesque, Inc. (Kyoto, Japan). The polydispersity indexes, which were calculated as the ratio of the weight average Mw to the number average Mw, of the PLLA-5k and PLLA-10k were, respectively 2.5 and 2.8, by gel permeation chromatography. The PLLAs were used without any refining.

PLLA-5k and PLLA-10k were, respectively, dissolved in dimethyl sulfoxide (DMSO) to a concentration of 50 mg/ml, and sterilized by filtration through a 0.22 µm filter. The sterilized PLLA solutions were serially diluted with DMSO to give concentrations of 5, 10 and 25 mg/ml.

### 2.2. Cells

Mouse osteoblast-like MC3T3-E1 cells were obtained from RIKEN Cell Bank (Saitama, Japan). MC3T3-E1 cells were grown in alpha minimum essential medium ( $\alpha$ -MEM) (Gibco Laboratories, Grand Island, New York, USA) supplemented with 20% fetal bovine serum (Intergen, Purchase, New York, USA), 100 µg/ml penicillin and 100 mU/ml streptomycin in a 37°C humidified atmosphere of 5% CO<sub>2</sub>. The cells were passaged with 0.05% trypsin and 0.1% ethylenediaminetetraacetic acid tetrasodium salts solution (Gibco Laboratories).

### 2.3. Micromass culture

Cell suspensions were prepared in the culture medium and adjusted to give  $2 \times 10^6$  cells/ml. A 20 µl aliquot of the cell suspensions was delivered into each well of type I collagen coated 24-well plate (Iwaki Glass, Tokyo, Japan). After the spot-like cells were attached on the well, 1 ml of the culture medium containing 10 mM disodium  $\beta$ -glycerophosphate ( $\beta$ -GP) (Sigma Chemical Co., St. Louis, MO, USA) and 1 µl of the serially diluted PLLA solution was added. As a control, 1 µl of DMSO was added to the culture medium instead of the PLLA solution. The culture medium containing each chemical at the same concentration was changed three times a week, and the cells were cultured for 2 weeks.

### 2.4. Proliferation assay

The proliferation of MC3T3-E1 cells was determined by using a cell proliferation assay reagent, TetraColor ONE (Seikagaku Co., Tokyo, Japan). The cell cultures were exchanged with the culture medium containing 0.1 mM 2-(2-methoxy-4-nitrophenyl)-3-(4-nitrophenyl)-5-(2,4-disulfophenyl)-2H-tetrazolium, monosodium salt, 4 µM 1-methoxy-5-methylphenazinium methylsulfate and 3 mM NaCl, and were incubated for 2 h. The absorbance of the medium was read at 450 nm (reference at 600 nm) with a plate reader ( $\mu$ QUANT, Bio-Tek Instruments, Inc., Winooski, VT, USA). It has been proven that the absorbance and cell population show the linear relationship.

### 2.5. Calcification assay

The calcium depositions of MC3T3-E1 cell cultures were stained by alizarin red S solution. The alizarin red S solution was freshly made; 0.1 ml of 28% ammonia solution in 100 ml distilled water was added to 1 g of alizarin red S in 100 ml distilled water to make it pH 6.36–6.40. After the proliferation was determined, the cell cultures were washed three times with Dulbecco's phosphate-buffered saline without calcium and magnesium salts (PBS(-)) and fixed by the addition of 10% formalin dissolved in PBS(-) solution. After fixing, the cell cultures were washed five times with distilled water and stained by alizarin red S solution for 5 min. The transmission digital images of alizarin red S stained cultures were obtained with a color image scanner (GT-9500WIN, SEIKO EPSON Co., Nagano, Japan) with a transparency unit (GT95FLU, SEIKO EPSON Co.), and then, the alizarin red S stained areas were measured using an image processing and analysis software, Scion Image (Scion Co., Frederick, MD, USA).

### 2.6. Preparation of cell lysates

The ALP activity and calcium content of MC3T3-E1 cells cultured with low Mw PLLA for 2 weeks were measured using the cell lysates [7]. The cell cultures were washed twice with PBS(-). The cells were recovered by trypsinization and washed twice with PBS(-) by centrifugation at 1000 rpm for 2 min. The residues were resuspended in 1 ml of 0.2% Nonidet P-40 and sonicated in an ice bath for 2 min using an ultrasonic processor (VC-50T, Sonic & Materials Inc., Danbury, CT, USA). The cell lysates were stored frozen at -20°C until measurement of the ALP activity and calcium content.

### 2.7. ALP activity

The ALP activity of cell lysates was measured according to the method of Ikarashi et al. [4]. The same

quantity of 2 mM  $MgCl_2$  in 0.1 M carbonate buffer (pH 10.2) and 20 mM *p*-nitrophenylphosphate were mixed as the substrate solution, and then, this substrate solution was pre-incubated at 37°C. Twenty microliters of the cell lysates was incubated with 1 ml of the substrate solution at 37°C for 30 min. The enzymatic reaction was stopped by adding 2 ml of 0.25 N NaOH, and the absorbance of *p*-nitrophenol liberated was read at 410 nm. The calibration curve of ALP activity was made by the standard solutions that diluted calf intestine ALP (Boehringer Mannheim GmbH, Germany) at the various concentrations. Total protein content of cell lysates was measured by the method of Lowry et al. [8] with minor modification using bovine serum albumin (Wako Pure Chemical Industries, Ltd.) as a reference standard [5]. The ALP activity of cell lysate was normalized for total protein content of the cell lysate.

### 2.8. Calcium content

The calcium content of cell lysates was determined by using a diagnostic kit, Calcium C (Wako Pure Chemical Industries, Ltd.). The same quantity of the cell lysates and 1 N HCl were mixed, and decalcified for 15 h at room temperature [9]. Ten microliters of the decalcifying solution and 1.0 ml of 0.88 M monoethanolamine buffer (pH 11.0) were mixed, and 100  $\mu$ l of 0.63 mM *o*-cresolphthalein complexon and 69 mM 8-hydroxyquinoline was added. After 15 min at room temperature, the absorbance of the reaction solution was read at 570 nm. The standard calcium solutions of various concentrations were also operated by the same manner in order to make the calibration curve.

### 2.9. Statistical analysis

All measured values were collected in four sets and expressed in means  $\pm$  standard deviation (SD). Differences among the groups were evaluated with one-way or two-way analysis of variance (ANOVA). When significant differences among the groups were found, Tukey–Kramer test was applied for multiple comparisons. A *P*-value of less than 0.05 was considered statistically significant.

## 3. Results

### 3.1. Proliferation

Mouse osteoblast-like MC3T3-E1 cells were cultured with the concentration of 5–50  $\mu$ g/ml of PLLA-5k or PLLA-10k for 2 weeks using the micromass culture. In microscopic observation, the proliferations of MC3T3-E1 cells cultured with PLLA-5k and PLLA-10k were almost the same as that of the control group during the culture period. Fig. 1 shows the effects of PLLA-5k and PLLA-10k on the proliferation of MC3T3-E1 cells. There was no significant difference between the proliferation of the cells cultured with and without PLLA-5k ( $P = 0.7537$ ) and PLLA-10k ( $P = 0.7521$ ) by one-way ANOVA. PLLA-5k and PLLA-10k up to 50  $\mu$ g/ml did not affect the proliferation of MC3T3-E1 cells.

### 3.2. Calcification

The calcium depositions of MC3T3-E1 cell cultures were stained by alizarin red S solution (Fig. 2). Because alizarin red S combines with the calcium and forms the

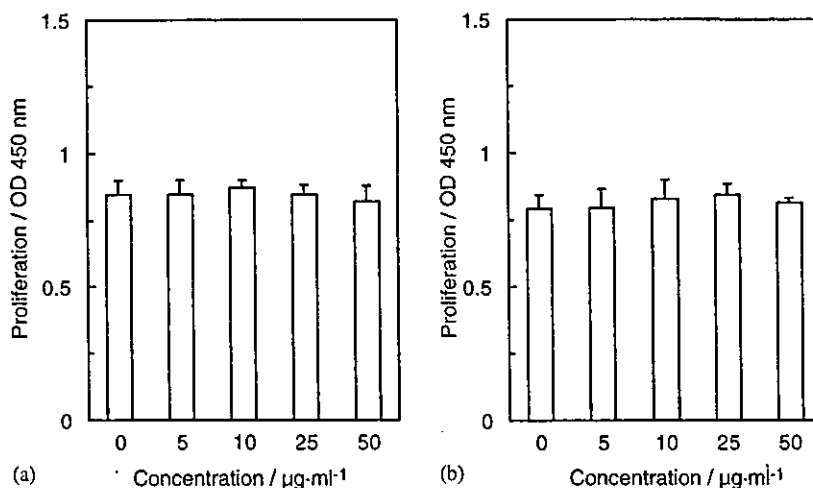


Fig. 1. The effect of PLLA on the proliferation of MC3T3-E1 cells. MC3T3-E1 cells were cultured with the concentration of 5–50  $\mu$ g/ml of PLLA-5k (a) or PLLA-10k (b) for 2 weeks using the micromass culture. The proliferation of MC3T3-E1 cells cultured with the PLLA was determined using a cell proliferation assay reagent, TetraColor ONE (Seikagaku Co.). Values are means  $\pm$  SD for four dishes. Significant difference at  $P < 0.05$  was not found among the groups by one-way ANOVA.

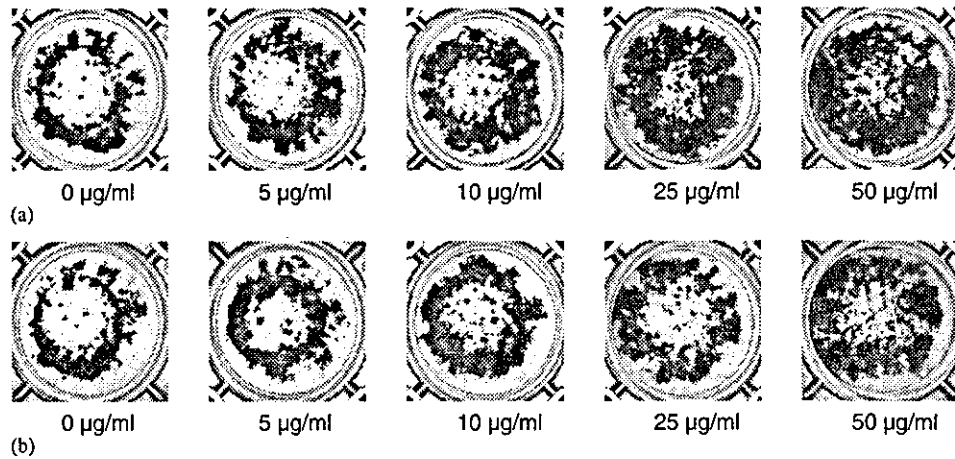


Fig. 2. The appearance of alizarin red S staining of MC3T3-E1 cells cultured with PLLA. MC3T3-E1 cells were cultured with the concentration of 5–50 µg/ml of PLLA-5k (a) or PLLA-10k (b) for 2 weeks using the micromass culture. The culture of MC3T3-E1 cells was stained by alizarin red S solution.

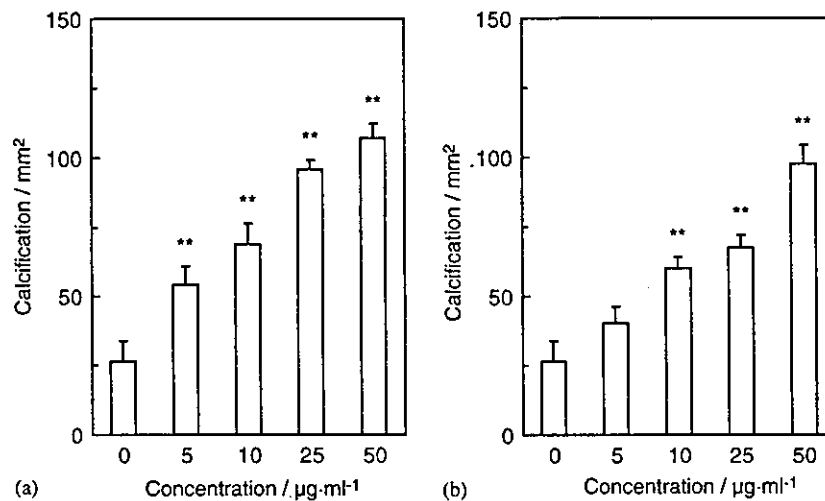


Fig. 3. The effect of PLLA on the calcification of MC3T3-E1 cells. MC3T3-E1 cells were cultured with the concentration of 5–50 µg/ml of PLLA-5k (a) or PLLA-10k (b) for 2 weeks using the micromass culture. The calcification of MC3T3-E1 cells cultured with the PLLA was determined by measuring the alizarin red S stained areas using an image processing and analysis software, Scion Image (Scion Co.). Values are means  $\pm$  SD for four dishes. Significant difference compared with control (without PLLA) at \*\* $P < 0.01$  by Tukey–Kramer test with one-way ANOVA.

lac of poor solubility, the calcification parts in cell cultures are stained dark-red. The calcification parts clearly increased with increasing the concentrations of PLLA-5k and PLLA-10k. The total area of the calcification parts in the well was measured to determine the extent of the calcification of cell cultures. Fig. 3 shows the effect of PLLA-5k and PLLA-10k on the calcification of MC3T3-E1 cells. The calcification of MC3T3-E1 cells cultured with PLLA-5k increased 2.1-fold at 5 µg/ml and increased 4-fold at 50 µg/ml (Fig. 3(a)), and then the calcifications of the cells were significantly increased with increasing the concentrations of the PLLA-5k by one-way ANOVA ( $P < 0.0001$ ). On the other hand, the calcification of MC3T3-E1 cells cultured with PLLA-10k increased 1.5- and 3.7-fold at 5 and 50 µg/ml, respectively (Fig. 3(b)), and then the calcifications of the cells were also significantly increased

with increasing the concentrations of the PLLA-10k by one-way ANOVA ( $P < 0.0001$ ). PLLA-5k and PLLA-10k stimulated the differentiation of MC3T3-E1 cells cultured with the PLLAs, dose-dependently ( $A = 11.86 \sqrt{C_{5k}} + 28.99$ ,  $r = 0.9880$ ,  $P = 0.0016$ ,  $A$ : total area of calcification parts (mm<sup>2</sup>),  $C_{5k}$ : concentration of PLLA-5k (µg/ml);  $A = 9.93 \sqrt{C_{10k}} + 23.73$ ,  $r = 0.9807$ ,  $P = 0.0032$ ,  $C_{10k}$ : concentration of PLLA-10k (µg/ml)). Moreover, when it was compared at the weight concentration of PLLA, PLLA-5k increased the calcification of MC3T3-E1 cells more than PLLA-10k significantly ( $P = 0.0075$  by two-way ANOVA).

### 3.3. ALP activity and calcium content

ALP is a representative enzyme of osteoblastic differentiation, and then ALP activity was determined



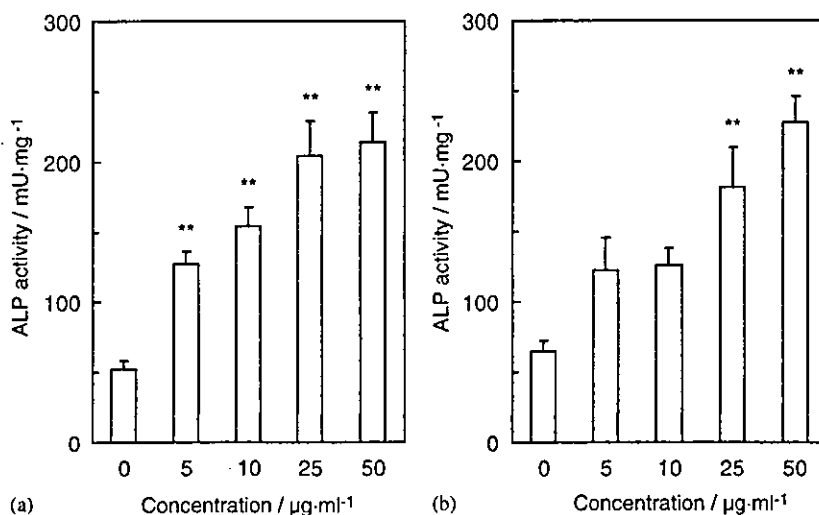


Fig. 4. The ALP activity of MC3T3-E1 cells cultured with PLLA. MC3T3-E1 cells were cultured with the concentration of 5–50 µg/ml of PLLA-5k (a) or PLLA-10k (b) for 2 weeks using the micromass culture. The ALP activity of cell lysate of MC3T3-E1 cells cultured with the PLLA was determined using *p*-nitrophenylphosphate as a substrate. Values are means  $\pm$  SD for four dishes. Significant difference compared with control (without PLLA) at \*\* $P < 0.01$  by Tukey–Kramer test with one-way ANOVA.

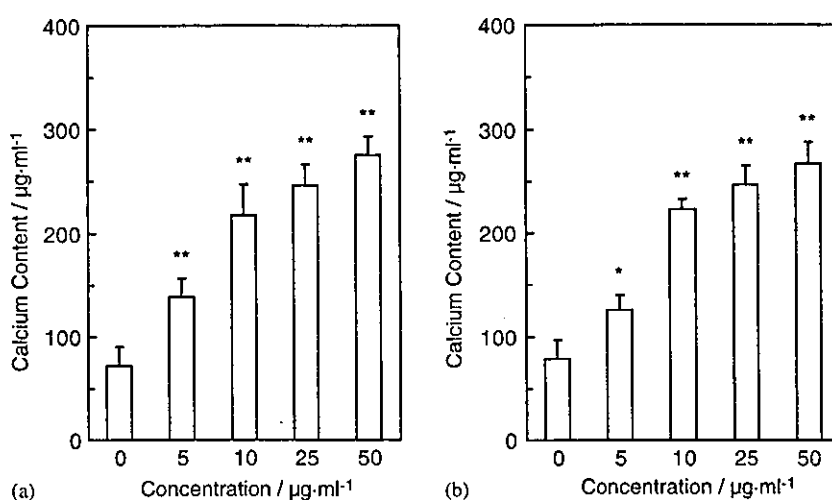


Fig. 5. The calcium content of MC3T3-E1 cells cultured with PLLA. MC3T3-E1 cells were cultured with the concentration of 5–50 µg/ml of PLLA-5k (a) or PLLA-10k (b) for 2 weeks using the micromass culture. The calcium content of cell lysate of MC3T3-E1 cells cultured with the PLLA was determined using a diagnostic kit, Calcium C (Wako Pure Chemical Industries, Ltd.). Values are means  $\pm$  SD for four dishes. Significant difference compared with control (without PLLA) at \* $P < 0.05$  or \*\* $P < 0.01$  by Tukey–Kramer test with one-way ANOVA.

as an indicator of osteoblastic differentiation of MC3T3-E1 cells cultured with PLLA-5k or PLLA-10k. Fig. 4 shows the effects of PLLA-5k and PLLA-10k on the ALP activity of MC3T3-E1 cells. ALP activities of the cells cultured with the PLLA-5k ( $P < 0.0001$ ) and PLLA-10k ( $P < 0.0001$ ) significantly increased with increasing the concentrations of the PLLAs by one-way ANOVA.

Calcification is also an important indicator of osteoblastic differentiation, and the calcium content was determined in order to verify the result of the above calcification assay. Fig. 5 shows the effects of PLLA-5k and PLLA-10k on the calcium content of MC3T3-E1 cells. Calcium contents of the cells cultured with the

PLLA-5k ( $P < 0.0001$ ) and PLLA-10k ( $P < 0.0001$ ) significantly increased with increasing the concentrations of the PLLAs by one-way ANOVA. The results of calcium content completely agreed with the results of calcification assay of the cells cultured with PLLA-5k and PLLA-10k.

#### 4. Discussion

The implanted PLLA nonenzymatically hydrolyzes *in vivo*, and the Mw of the PLLA decreases. Bergsma et al. determined the PLLA particles with number average molecular weight (Mn) of 5600 and 5400 at 3.3 and 5.7

Table 1  
The comparison among the cell responses of MC3T3-E1 cells cultured with PLLA

Sample	Concentration ( $\mu\text{g/ml}$ )	Proliferation (%)	Calcification (%)	ALP activity (%)	Calcium content (%)
PLLA-5k	0	100	100	100	100
	5	100	205	241	193
	10	103	260	293	302
	25	100	361	388	343
	50	97	404	407	384
PLLA-10k	0	100	100	100	100
	5	100	152	188	161
	10	105	227	193	285
	25	106	254	277	316
	50	103	369	349	341

The ratios of the proliferation, calcification, ALP activity and calcium content of MC3T3-E1 cells cultured with PLLA-5k or PLLA-10 to the control (without PLLA) were calculated.

years, respectively, after the implantation of PLLA plates or screws (Mn of 760,000) into patients [10]. Bos et al. reported that the Mw of PLLA rapidly decreased in the first 12 weeks, but the mass loss of the PLLA continued after 78 weeks, after the subcutaneous implantation of PLLA (viscosity average molecular weight (Mv) of 900,000) into rats [1]. Mainil-Varlet et al. also observed that the weight average Mw of PLLA implanted into the cortex of sheep tibiae decreased from 61,900 to 42,600 at 4 weeks, to 20,800 at 12 weeks and to 9206 at 52 weeks [3]. Kinoshita et al. reported that the degradation and absorption of PLLA mesh (Mw of 200,000) implanted subcutaneously in the back and subperiosteally at the calvaria of rats continued after 30 months, and then many macrophages appeared in the circumferential tissue of hydrolyzed PLLA particles [11]. The purpose of the present study was to clarify the effects of low Mw PLLA, which would be produced by degradation, on the proliferation and differentiation of mouse osteoblasts in vitro.

In the present experiment, we added 10 mM  $\beta$ -GP to the  $\alpha$ -MEM medium, and MC3T3-E1 cells were micro-mass cultured with low Mw PLLA.  $\beta$ -GP displays synergistic action with ascorbic acid to further stimulate collagen accumulation and ALP activity in osteoblasts, and mature osteoblasts require  $\beta$ -GP for mineralization [12]. Moreover, Quarles et al. also reported that MC3T3-E1 cells actively proliferated before attaining confluence, but failed to express ALP activity and did not accumulate mineralized extracellular collagenous matrix at this stage. After the cultures underwent growth arrest owing to the attainment of confluence, ALP activity and mineralized extracellular collagenous matrix were expressed [12]. The cell density of the micromass culture is extremely high, and the situation of the micromass culture is similar to state of confluence from initial stage of culture. Ikarashi et al. cultured MC3T3-E1 cells in the  $\alpha$ -MEM without  $\beta$ -GP on the monolayer, and observed the calcification of MC3T3-E1

cells by alizarin red S staining after the culture as long as 4 weeks [6]. However, we cultured MC3T3-E1 cells in the  $\alpha$ -MEM with  $\beta$ -GP using the micromass culture, and succeeded in the detection of the calcification of MC3T3-E1 cells in the short period of 2 weeks (Fig. 2).

The osteogenesis is the most important phenotype of the osteoblasts and it has been confirmed that MC3T3-E1 cells form the calcified bone tissue in vitro [13,14]. Therefore, the calcification was an index of the final differentiation of MC3T3-E1 cells for the present experiment. PLLA-5k and PLLA-10k did not affect the proliferation of MC3T3-E1 cells cultured with the PLLAs (Fig. 1). On the other hand, the calcification of MC3T3-E1 cells cultured with the PLLAs increased with increasing the concentration of the PLLAs dose-dependently (Fig. 3). These results indicate that the low Mw PLLA stimulated the differentiation of MC3T3-E1 cells cultured with the PLLA with no effect on the proliferation. Ikarashi et al. also observed that the poly(DL-lactide) (PDLLA) with weight average Mw of 5000 and 10,000 did not affect the proliferation, but remarkably increased the calcification of MC3T3-E1 cells [6].

The cell responses of MC3T3-E1 cells cultured with the PLLAs were compared (Table 1). As described above, the PLLAs did not effect on the proliferation of MC3T3-E1 cells, but the PLLAs stimulated the calcification of MC3T3-E1 cells. The calcification of MC3T3-E1 cells cultured with 50  $\mu\text{g/ml}$  of PLLA-5k and PLLA-10k increased approximately 4- and 3.7-fold, respectively. ALP activity and calcium content of MC3T3-E1 cells cultured with the PLLAs also increased to the similar level to the calcification. Thompson and Puleo observed that the ALP activity, osteocalcin content and calcium amount of bone marrow stromal cells greatly rose in the later stage of culture. They indicated that the osteoprogenitor cells first differentiated into immature osteoblasts characterized by the expression of ALP and then into mature osteoblasts characterized by the

expression of osteocalcin and calcification [15]. The increase rates of ALP activity and calcification of MC3T3-E1 cells cultured with the PLLAs were almost equal in the present results. As the ALP activity increasing during the process of culture with PLLAs, the calcification of MC3T3-E1 cells would be stimulated. Otto et al. reported when mouse primary osteoblasts were cultured with the PLLA (Mw of 21,500) wire for 48 h, DNA content did not change, but ALP activity increased by 28% [16]. Ikarashi et al. also observed that the ALP activity of MC3T3-E1 cells remarkably increased with no effect on the proliferation, when the cells were cultured on the PLLA (weight average Mw of 20,000) and with the PDLLA for 2 weeks [6]. Our results corresponded to their results.

Ikarashi et al. reported that heat treatment decreased the Mw of PLLA, and then the heat treated PLLA did not effect the proliferation, but increased the differentiation of MC3T3-E1 cells cultured on the PLLA [4]. Isama et al. also reported that the Mw of PLLA was decreased by  $\gamma$ -irradiation, and then the irradiated PLLA increased the differentiation of MC3T3-E1 cells cultured on the PLLA with no effect the proliferation [5]. They describe that lower change in the Mw of PLLA would be responsible for enhancing the differentiation of MC3T3-E1 cells cultured on the heat irradiated or  $\gamma$ -irradiated PLLA. The present result that the low Mw PLLA enhanced the differentiation of MC3T3-E1 cells strongly supports their proposal.

We examined the effects of the low Mw PLLA only in the mouse osteoblast-like MC3T3-E1 cells. The MC3T3-E1 cells are the most widely used for the research of the bone formation. However, culture osteoblasts show various phenotypes according to cell lines [13]. It would be required that further studies to analyze the effect of PLLA on other osteoblasts, such as human osteoblasts if considering clinical use of PLLA.

In conclusion, the effects of low Mw PLLA on the proliferation and differentiation of mouse osteoblast-like MC3T3-E1 cells were investigated. The PLLA did not affect the proliferation of MC3T3-E1 cells. However, the ALP activity and calcification of MC3T3-E1 cells increased with increasing the concentration of the PLLA dose-dependently. These results indicated that the low Mw PLLA enhances the differentiation of MC3T3-E1 cells. Moreover, the increase rates of ALP activity and calcification of MC3T3-E1 cells cultured with the PLLA were almost equal. The increase of the ALP activity would be a critical step to stimulate the calcification of MC3T3-E1 cells. The present findings show that the osteoconductivity of implanted PLLA is based on the enhancing effect of low Mw PLLA on the differentiation of osteoblasts.

## Acknowledgements

The authors thank Dr. Yoshiaki Ikarashi of Division of Medical Devices, National Institute of Health Sciences (Tokyo, Japan) for his helpful advice on this study.

## References

- [1] Bos RRM, Rozema FR, Boering G, Nijenhuis AJ, Pennings AJ, Verwey AB, Nieuwenhuis P, Jansen HWB. Degradation of and tissue reaction to biodegradable poly(L-lactide) for use as internal fixation of fractures: a study in rats. *Biomaterials* 1991;12:32–6.
- [2] Otto TE, Patka P, Haarman HJThM, Klein CPAT, Vriesde R. Intramedullary bone formation after polylactic acid wire implantation. *J Mater Sci: Mater Med* 1994;5:407–10.
- [3] Mainil-Varlet P, Rahn B, Gogolewski S. Long-term in vivo degradation and bone reaction to various polylactides. I. One-year results. *Biomaterials* 1997;18:257–66.
- [4] Ikarashi Y, Tsuchiya T, Nakamura A. Effect of heat treatment of poly(L-lactide) on the response of osteoblast-like MC3T3-E1 cells. *Biomaterials* 2000;21:1259–67.
- [5] Isama K, Tsuchiya T. Effect of  $\gamma$ -ray irradiated poly(L-lactide) on the differentiation of mouse osteoblast-like MC3T3-E1 cells. *J Biomater Sci Polymer Ed* 2002;13:153–66.
- [6] Ikarashi Y, Tsuchiya T, Kaniwa M, Nakamura A. Activation of osteoblast-like MC3T3-E1 cell responses by poly(lactide). *Biol Pharm Bull* 2000;23:1470–6.
- [7] Hakeda Y, Nakatani Y, Hiramatsu M, Kurihara N, Tsunoi M, Ikeda E, Kumegawa M. Inductive effects of prostaglandins on alkaline phosphatase in osteoblastic cells, clone MC3T3-E1. *J Biochem* 1985;97:97–104.
- [8] Lowry OH, Rosebrough NJ, Farr AL, Randall RJ. Protein measurement with the Folin phenol reagent. *J Biol Chem* 1951;193:265–75.
- [9] Fujimori S. Surface characterization of titanium plates with different surface treatments and cellular proliferation and expression of osteoblast-like cells in vitro on their surfaces. *J Jpn Dent Mater* 1995;14:155–68.
- [10] Bergsma JE, de Bruijn WC, Rozema FR, Bos RRM, Boering G. Late degradation tissue response to poly(L-lactide) bone plates and screws. *Biomaterials* 1995;16:25–31.
- [11] Kinoshita Y, Miyamoto M, Yokoya S, Fukuoka S, Ozono S, Oka T, Ikada Y. Long-term tissue reactions of bioabsorbable poly(L-lactide) meshes. Subcutaneously or subperiosteally implanted in rat. *J Jpn Soc Biomater* 2000;18:253–9.
- [12] Quarles LD, Yohay DA, Lever LW, Caton R, Wenstrup RJ. Distinct proliferative and differentiated stages of murine MC3T3-E1 cells in culture: an in vitro model of osteoblast development. *J Bone Miner Res* 1992;7:683–92.
- [13] Yamaguchi A, Ikeda T, Yoshiki S. Culture of osteoblastic cells. *Tissue Culture* 1989;15:155–9.
- [14] Sudo H, Kodama H, Amagai Y, Yamamoto S, Kasai S. In vitro differentiation and calcification in a new clonal osteogenic cell line derived from newborn mouse calvaria. *J Cell Biol* 1983;96:191–8.
- [15] Thompson GJ, Puleo DA. Ti-6Al-4V ion solution inhibition of osteogenic cell phenotype as a function of differentiation time-course in vitro. *Biomaterials* 1996;17:1949–54.
- [16] Otto TE, Nulend JK, Patka P, Burger EH, Haarman HJThM. Effect of (poly)-L-lactic acid on the proliferation and differentiation of primary bone cells in vitro. *J Biomed Mater Res* 1996;32:513–8.

# EVALUATION OF THE CORNEA CELLS AFFECTED BY MULTI-PURPOSE SOLUTIONS FOR CONTACT-LENS

Jeongung PARK and Toshie TSUCHIYA

*Division of Medical Devices, National Institute of Health Sciences,  
1-18-1 kamiyoga, setagaya-ku, Tokyo 158-8501, Japan*

## Abstract

We studied the influence of multi-purpose solutions (MPS) on gap-junctional intercellular communication (GJIC) of cornea cells and its cell toxicity such as cell metabolism and proliferation. This study evaluates long-term safety of three types of multi-purpose solutions (MPS) in the cornea cells. Three types of MPS were investigated using scrape-loading dye transfer (SLDT) method to measure GJIC. Cell toxicity was evaluated for cell viability according to colony method and USP elution method (MEM Elution Test). In the SLDT method, one type solution was significantly showed an inhibitory effect on the GJIC in cornea cells but not the other type solutions. Comparative cytotoxicity potentials of three types of MPS also indicated similar tendency in the result of SLDT method. These results suggest that the evaluation methods are considered to be effective to confirm the safety of MPS.

Key words: multi-purpose solution, contact lense, gap-junctional intercellular communication, cytotoxicity,

## 1. Introduction

Recently, various multi-purpose solutions (MPS) have been introduced to the market. Lens-cleaning products and surfactants also are common component in many types of MPS [1]. These components are the most important factor in safety of cornea cells for a