

sults in activation of proliferative signals that potentially induce senescence independent of telomere shortening.

In this review, we will describe recently accumulating evidence that supports the hypothesis of cellular aging in the vasculature and discuss the potential of antisenescence therapy for age-related human vascular disorders.

2. Occurrence of vascular cell senescence in vivo

Vascular cells have a finite lifespan in vitro and eventually enter an irreversible growth arrest called cellular senescence. Flattened and enlarged cell morphology is known to be one of the characteristics of cellular senescence [11]. Expression of negative regulators for the cell cycle machinery, such as p53 and p16, is increased with cell division and thereby promotes growth arrest [12]. Primary cultured cells undergoing cellular senescence in vitro express the increased activity of β -galactosidase (β -gal) when assayed at pH 6, which is distinguishable from endogenous lysosomal β -gal activity that can be detected at pH 4. This activity, senescence-associated β -gal (SA β -gal) activity, has been shown to correlate with cellular aging and thus is regarded as a biomarker for cellular senescence [13]. The in vitro growth properties of vascular cells derived from human atherosclerotic plaque are impaired, and they develop senescence earlier than those from normal lesions [14,15]. The histology of the lesions of human atherosclerosis has been extensively studied, and these studies have demonstrated that there are endothelial cells (ECs) and vascular smooth muscle cells (VSMCs) that exhibit the morphological features of cellular senescence [16,17]. These suggest the occurrence of cellular senescence in vivo. Recently, this notion has been confirmed by cytochemical analysis in vivo using SA β -gal activity. Fenton et al. [18] have successfully detected SA β -gal-positive vascular cells in rabbit carotid arteries subjected to vascular injury. With repeated denudation, the accumulation of SA β -gal-positive cells was markedly enhanced. The authors have recently demonstrated SA β -gal-positive vascular cells in human atherosclerotic plaque of the coronary arteries obtained from the patients who had ischemic heart disease [19]. SA β -gal-positive cells were predominately localized on the luminal surface of atherosclerotic plaque and identified as ECs, but no positive cells were observed in the internal mammary arteries from the same patients where atherosclerotic changes were minimally observed. In advanced plaque, however, SA β -gal-positive VSMCs were detected in the intima but not in the media [20], which may represent extensive replication in the lesions, as observed in the arteries subjected to double-denudation (Fig. 1). SA β -gal-positive cells exhibit increased expression of p53 and p16, alternative markers for cellular senescence, in human atheroma, suggesting the further evidence of in vivo senescence. These cells also show impaired function, such as the decreased expression of endothelial nitric oxide synthase (eNOS) and the increased expression of pro-inflammatory molecules

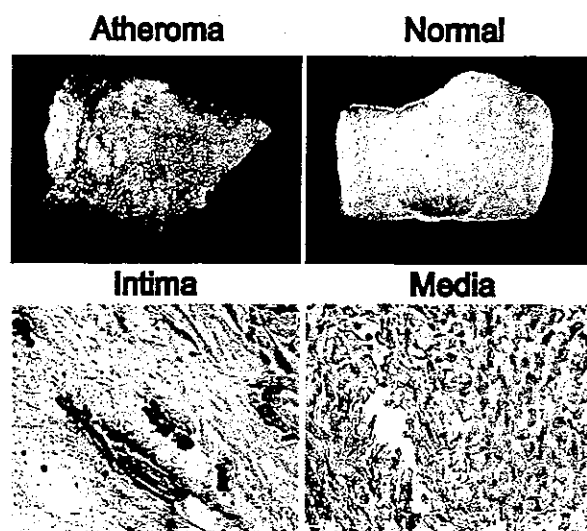


Fig. 1. Senescent vascular cells in human atheroma. Photographs of the luminal surface of human atheroma (atheroma, left) and non-atherosclerotic normal artery (normal, right) stained with SA β -gal staining. SA β -gal activity was observed in human atheroma but not in normal arteries (upper panel). A double staining for SA β -gal and α -smooth muscle actin of the sections of atheroma identified SA β -gal-positive cells as VSMCs in the intima but not in the media (lower panel).

[20]. Thus, cellular senescence in vivo may contribute to the pathogenesis of vascular aging.

3. Role of cellular senescence in vascular pathophysiology

Age-associated changes in the blood vessels include a decrease in compliance and an increase in inflammatory response that promote atherogenesis [21]. It has also been reported that angiogenesis is impaired with advanced age [22,23], whereas aging decreases the antithrombotic property of the endothelium [24]. A number of studies have reported that many of the changes in senescent vascular cell behavior are consistent with known changes seen in age-related vascular diseases, suggesting a critical role of cellular senescence in vascular pathophysiology. The production of nitric oxide (NO) and the eNOS activity are reduced in senescent human ECs [25]. Induction of NO production by shear stress is also decreased in senescent ECs [26]. A decline in the eNOS activity of senescent ECs is attributable to a decrease in expression of eNOS protein as well as in eNOS phosphorylation mediated by Akt [27]. The levels of prostacyclin production are significantly decreased with in vitro aging of ECs [28], whereas senescent ECs upregulate plasminogen activator inhibitor-1 [29]. All these alterations are likely involved in the impairment of endothelium-dependent vasodilation but also increased sensitivity of thrombogenesis in human atherosclerosis. The interaction between monocytes and ECs is enhanced by EC senescence [30], thereby promoting atherogenesis. This appears to be mediated by upregulation of adhesion molecules and pro-inflammatory

cytokines as well as a decrease in the production of NO in senescent ECs [19,26]. It is reported that the ability to form capillary structures in vitro is reduced in senescent ECs [31]. Bone marrow-derived circulating endothelial progenitor cells (EPCs) are known to participate in postnatal neovascularization and vascular repair [32,33]. The in vitro growth property and function of bone marrow-derived EPCs are impaired in the patients with coronary artery disease and negatively correlate with risk factors including age [34,35]. Thus, aging may promote senescence of EPCs as well as ECs, resulting in decreases in angiogenesis and vascular healing.

4. Telomere-dependent vascular cell senescence

Telomeres are non-nucleosomal DNA–protein complexes at the end of chromosomes that serve as protective caps and are substrates for specialized replication mechanisms. As a consequence of semi-conservative DNA replication, the extreme termini of chromosomes are not duplicated completely, resulting in successive shortening of telomeres with each cell division. Critically short telomere was thought to trigger the onset of cellular senescence, but recent studies suggest that the single-strand telomeric overhang and associated proteins are key components for signals of senescence [36,37]. Telomerase is a ribonucleoprotein that adds telomeres onto chromosome ends with its RNA moiety as a template. Forced expression of the catalytic component of telomerase TERT in telomerase-negative human fibroblasts results in the stabilization of telomere length and extension of cell lifespan [38]. This observation has established the importance of telomere shortening in human cellular senescence. It has been also reported that there is another mechanism of telomere maintenance without telomerase activity, called telomerase-independent alternative lengthening of telomeres (ALT) [39]. In the field of vascular biology, it has been shown that telomere shortening with cell divisions occurs in human-cultured ECs and VSMCs, and that introduction of TERT extends cell lifespan of human ECs and VSMCs, suggesting a critical role of telomere shortening in vascular cell senescence as well [31,40,41]. It is likely that shortened telomeres are in some way sensed in a cell, and that a pathway is activated that results in exit from cell cycle (Fig. 2). The p53, p21 and p16 proteins and their downstream effectors are important for cellular senescence, and thus are likely to be a part of the telomere-response pathway. However, less is known about what links telomeres and these factors. Until present, several telomeric-binding proteins have been identified that contribute to the integrity of telomere functions and are potentially involved in the telomere-response pathway [42]. These include protection of telomeres-1 (Pot-1) [43], Ku [44], telomeric repeat-binding factor 1 and 2 (TRF1 and TRF2, respectively) [45]. Pot-1 is identified as a telomeric protein that binds to a tip of telomere and is thought to constitute the telomere shortening signal [46]. The protein

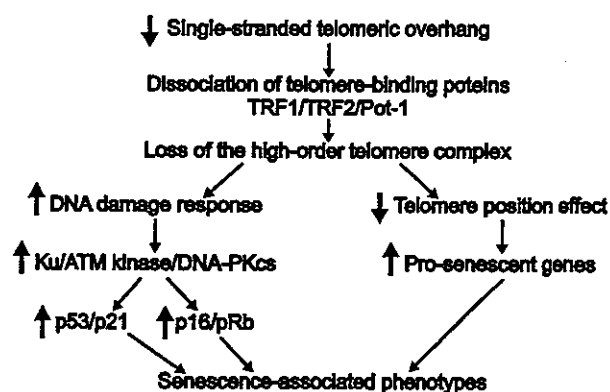


Fig. 2. Putative telomere-responsive pathways. As cells age, single-stranded telomeric overhangs are eroded, resulting in the dissociation of telomeric proteins. Loss of the high-order telomere complex is recognized as DNA breaks, thereby activating the molecules involving DNA repair that also play a critical role for telomere maintenance. These signals of DNA damage response are conducted to the cell cycle machinery. Telomere dysfunction also results in a release of telomere position effects that have the impact on expression of the genes at subtelomeric regions.

Ku, originally defined by its role in the repair of chromosomal DNA breaks, is found at telomeres and is necessary for normal telomere maintenance and functions. Genetic ablation studies demonstrated an essential role of Ku in mediating the telomere-response pathway [47]. Likewise, the catalytic subunit of the DNA-dependent protein kinase complex [48] and ATM kinase [49], both of which function in the double-strand break repair, have been implicated in the signal pathway of telomere shortening. Recently, it has been proposed that telomeres form large duplex loops, and telomeric proteins, TRF1 and TRF2, are essential for their formation [50,51]. Particularly, inhibition of TRF2 function is reported to cause cellular senescence in a p53/p16-dependent manner [19,52]. Thus, it is supposed that, as a result of telomere shortening, the efficacy of forming a high-order telomeric complex is impaired, leading to a release of various telomeric proteins from telomeres that elicit signals for cellular senescence (Fig. 2). Cytologically, telomeric regions are heterochromatic, implying that local DNA folding is increased. Positioning a gene in a telomeric heterochromatic region can impose telomere position effect on that gene. Telomere position effect, which has been characterized in the yeast and recently in human cells, is known to induce the reversible silencing of the gene [53]. Consequently, the modification of gene expression by telomere position effect may also contribute to the signaling pathway for cellular senescence.

5. Telomere shortening and vascular dysfunction

There is evidence indicating that telomere shortening occurs in human vasculature, which may be related to age-associated vascular diseases [54]. In most of the previous reports mentioned, changes in cell phenotypes associated with senescence were studied in vascular cell populations

undergoing replicative senescence, thus suggesting telomere-dependent vascular dysfunction. However, it remains unclear whether phenotypic changes in senescent vascular cells result from telomere dysfunction. Inhibition of TRF2 has been shown to induce either cellular senescence or apoptosis in various cells by destroying telomere loop structure [51,55]. The authors have demonstrated that the introduction of a dominant-negative form of TRF2 into human ECs induces a growth arrest with phenotypic characteristics of cellular senescence [19]. Telomere dysfunction significantly increases expression of pro-inflammatory molecules and reduces the activity of eNOS, suggesting a causal link between telomere and vascular dysfunction associated with senescence.

Telomerase-deficient mice have been developed and found to reveal a normal phenotype at the first generation presumably because of mice having much longer telomeres [56,57]. Telomeres are shortened with successive generations, and they become infertile at the sixth generation due to the impairment of reproductive system. Some aspects of the late generation mice mimic age-associated phenotypes. They exhibit shortened lifespan and a reduced capacity to respond to stress, such as wound healing and hematopoietic ablation [58]. The ability of neovascularization is reduced in the late generation of telomerase-deficient mice [59]. Decreased vessel formation may be attributable to the impaired function and replicative capacity of ECs induced by telomere shortening. Recently, the heart in late generation of telomerase-deficient mice has been shown to mimic the end-stage-dilated cardiac myopathy in humans [60].

6. Telomerase

Since early studies reported that telomerase activity was detected in cancer cells but not normal somatic cells, the idea emerged that telomerase activity might be essential for tumor growth [61]. Multiple tumor-suppressor pathways are likely to repress telomerase expression in normal somatic cells [62]. Increasing evidence has suggested that telomerase activity regulates cell proliferation in normal somatic cells by telomere lengthening or upregulating growth-controlling genes in a telomere length-independent manner [57,63]. Human ECs and VSMCs express telomerase activity, which is drastically activated by mitogenic stimuli via a protein kinase C-dependent pathway [64] but the activity declined with *in vitro* aging due to a decrease in expression of TERT, leading to telomere shortening and cellular senescence [41,65]. Introduction of TERT prevents endothelial dysfunction associated with senescence, such as a decrease in eNOS activity and an increase in monocyte binding to ECs [19,26]. Immortalized human ECs (TERT-ECs) have been established by introduction of TERT [31]. TERT-ECs appear to retain EC characteristics including various cell surface markers. When examined in Matrigel, they form capillary-like structures in response to extracellular matrix signals as efficiently as early

passage of ECs, whereas senescent or transformed ECs do not. In addition, TERT-ECs are more resistant to apoptotic induction than pre-senescent ECs. They maintain a normal growth control and exhibit no transformed phenotype. These telomerized human ECs are functional *in vivo* as demonstrated by the Matrigel implantation mouse model [66]. In this model, whereas primary human EC-derived vessel density decreased with time after implantation, telomerized ECs maintained durable vessels, indicating that telomerase activity is important for the maintenance of a microvascular phenotype.

7. Telomere-independent vascular cell senescence

Signals other than extended proliferation have been shown to result in cells developing a phenotype indistinguishable from that of senescent cells at the end of their replicative lifespan. For example, the constitutive activation of mitogenic stimuli by expression of oncogenic Ras or E2F induce a senescent phenotype [8,67]. Cellular senescence triggered by mitogenic stimuli is independent of replicative age, and these signals act before the replicative limits of cells. Hence, it is apparently telomere independent and thus termed as premature senescence. The constitutive activation of Ras provokes premature senescence in vascular cells, which is associated with accumulation of the proteins p53 as well as p16 [20]. Activation of extracellular signal-regulated kinase (ERK) appears to be critical for Ras-induced senescence since inhibition of ERK restores cell growth arrest elicited by Ras activation [20], whereas introduction of an active form of ERK results in premature senescence involving p53 and p16 [9]. p38 mitogen-activated protein kinase (MAPK) is also implicated in Ras-induced senescence. p38 MAPK is activated in a ERK-dependent fashion, thus indicating that Ras promotes premature senescence by sequentially activating the ERK and p38 MAPK pathway [68].

8. Cell cycle regulators

It is clear that cellular senescence entails the activation of several tumor-suppressor proteins and inactivation of several oncoproteins, each of which ultimately engages either the p53 or pRb pathway and interacts with each other at multiple levels (Fig. 3). p53 activity and in some cases protein levels are increased in senescent cells. The mechanisms responsible for p53 activation in senescent cells remain elusive, however some molecular details are emerging. One cause of p53 activation may be an increase in expression of p14, a tumor-suppressor protein encoded by the INK4a locus. p14 activates p53 through a mechanism involving sequestration of MDM2, a protein that promotes degradation of p53 [69]. p14 is induced by oncogenic Ras and E2F [70], whereas TBX2, a member of T-box family of transcription factors, suppresses p14 expression [71]. Another cause of p53 activation is the

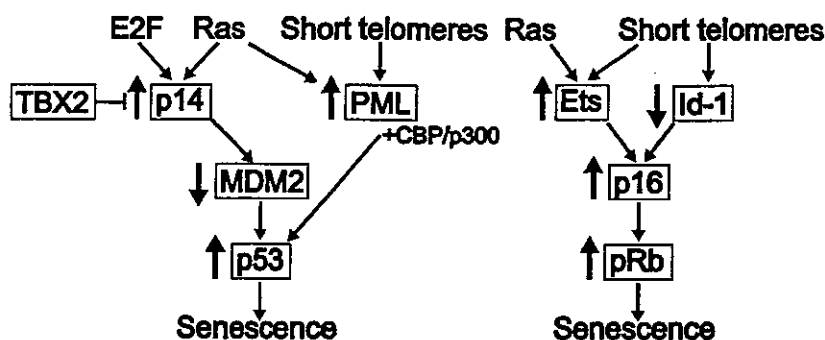


Fig. 3. Control of cellular senescence by the p53/p21 and p16/pRb pathways. Shown are the consequences of senescence-inducing signals on cell cycle regulators in the p53/p21 and p16/pRb pathways. Senescence-inducing signals, such as oncogenic Ras and E2F, increase expression of p14, whereas TBX2 represses p14 promoter activity, thus counteracting with each other. p14 sequesters MDM2, leading to an increase in p53 activity. Signals, such as oncogenic Ras, telomere shortening and possibly other signals increase expression of PML, which interacts with CBP/p300 and stimulates p53 activity. Oncogenic Ras stimulates the activity of Ets that induces p16 transcription by promoting its phosphorylation. Short telomeres lead to an increase in Ets and a decrease in Id, a protein that inhibits Ets activity, resulting in the accumulation of p16. p16 inhibits the cyclin-dependent kinases that phosphorylate pRb, leading to an increase in its active form.

promyelocytic leukemia (PML) tumor suppressor. PML is induced by replicative senescence and Ras activation by unknown mechanisms [72,73]. PML interacts with CBP/p300 acetyltransferase, which acetylates p53, thus stimulating p53 activity. Recently, p53 is found at telomeres and ablation of p53 function restores adverse effects of telomere loss [74], suggesting active roles of p53 in telomere maintenance as well as the telomere-response pathway. pRb exists in hypophosphorylated form that binds to E2F and inhibits cell cycle progression in senescent cells because of high levels of the cyclin-dependent kinase inhibitors, p21 and p16. p21 is transcriptionally induced at least partly by p53, although p53-independent, post-transcriptional mechanisms also contribute to an increase in p21 expression in senescent cells [75]. p16, another tumor-suppressor protein encoded by INK4a locus, increases in part because Ets, a transcription factor that stimulates p16 expression, is induced by senescent signals including telomere shortening and Ras activation, whereas Id1, a protein that inhibits Ets activity, is decreased in senescent cells [76]. It is demonstrated that ectopic expression of the cyclin-dependent kinase inhibitors, such as p21, p16 and p14, causes premature senescence [77], suggesting pivotal roles in the signaling pathways of senescence.

p53 immunoreactivity is present in vascular cells in areas with chronic inflammation of human atheroma, while a few cells positive for p53 immunoreactivity are found in control arteries [78]. p21 immunoreactivity is also detected in human atheroma but not in normal lesions and is colocalized with p53. Forced expression of cyclin-dependent kinase inhibitors induces premature senescence that is associated with cell dysfunction in cultured vascular cells (Minamino et al. unpublished data). These observations suggest a pathological role of p53 and p21 in atherogenesis. However, their precise roles remain unclear. It is demonstrated that atherosclerosis is aggravated in p53/apolipoprotein E (ApoE) double-knockout mice through an increase in p53-controlled proliferation [79]. In contrast, the study using perivascular collar model in ApoE-knockout mice shows that p53 overexpres-

sion results in a marked decrease in the cellular and extracellular contents in the cap lesions, leading to spontaneous plaque rupture [80]. Thus, in the clinical settings, elevated expression of p53 and cyclin-dependent kinase inhibitors may be deleterious in human atherosclerosis.

9. Ras-induced senescence and vascular inflammation

It has been demonstrated that various molecules including growth factors, vasoactive peptides and oxidative stresses, such as ROS and oxidized low-density lipoproteins, are induced during the lesion formation and regulate numerous critical cell functions, thereby contributing to atherogenesis [81]. These stimuli function as mitogens for vascular cells through the signaling cascades that activate Ras [81]. Inhibition of Ras has been reported to prevent intimal formation after vascular injury, suggesting a critical role of Ras activation in VSMC proliferation [82]. In addition to its role in cell proliferation, we have found that constitutive activation of Ras induces vascular cell senescence that is associated with vascular inflammation [20]. Activation of Ras drastically increased expression of pro-inflammatory cytokines partially through ERK activation in cultured vascular cells. Introduction of Ras into balloon-injured arteries enhanced vascular inflammation as well as senescence compared with control-injured arteries (Fig. 4). Moreover, senescent cells express inflammatory molecules in human atherosclerotic plaque, and ERK is activated in these cells, suggesting that telomere-independent mechanisms may also contribute to vascular cell senescence in human atherosclerosis. Consistent with our findings, functional inhibition of Ras has been demonstrated to suppress pro-inflammatory molecules, thereby reducing lesion formation in ApoE-deficient mice [83]. Moreover, angiotensin II, an important atherogenic molecule that activates the Ras-signaling pathway, has been demonstrated to promote vascular cell senescence as well as vascular inflammation [84]. Thus, it is assumed that atherogenic stimuli may

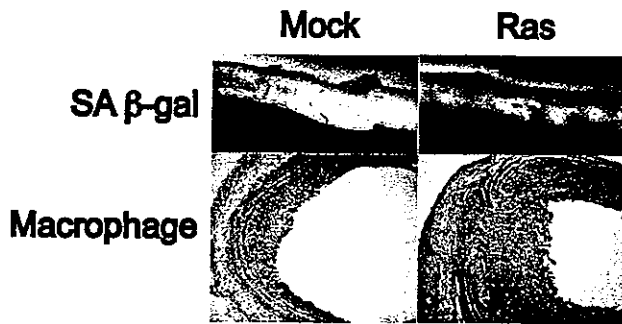


Fig. 4. Activation of Ras induces senescence and inflammation in vivo. The adenoviral vector encoding H-rasV12 (Ras) or the empty vector (Mock) was transduced into rat carotid arteries injured by a balloon catheter. It is known that accumulation of macrophages is minimally involved in the lesion formation in this model. Whereas only a little SA β -gal activity was found in mock-infected injured arteries, transduction of adeno-Ras into injured arteries increased SA β -gal activity (upper panel). The area of accumulated macrophages (brown) in the intima was markedly increased in Ras-infected injured arteries compared with mock-infected injured arteries (lower panel), indicating a causal relationship between Ras activation and vascular inflammation. Adapted from Ref. [20] with permission.

initially promote cell proliferation, and when overstimulated to proliferate, mitogenic-signaling pathways may induce telomere-dependent and telomere-independent senescence, which results in vascular dysfunction. Vascular inflammation is known to induce degradation of extracellular matrix by various proteinases, such as collagenases and gelatinases, and by inhibition of matrix production [85]. Therefore, decreased cellularity and enhanced inflammation associated with vascular cell senescence may contribute to plaque vulnerability.

10. Genetic models for aging

Many molecular mechanisms have been suggested to contribute to human aging and age-associated disease. Recent genetic analyses have demonstrated that reduction-of-function mutations of the signaling pathway of insulin/insulin-like growth factor-1 (IGF-1)/phosphatidylinositol-3 kinase (PI3K)/Akt (also known as protein kinase B) extends the longevity of the nematode *Caenorhabditis elegans* [86–92]. The forkhead transcription factor DAF-16, which is phosphorylated and thereby inactivated by Akt, plays an essential role in this longevity pathway [93,94]. More recently, it has been reported that the genes regulating longevity are conserved in organisms ranging from yeast to mice. The mutation of *Sch9*, which is homologous to *Akt*, extends the lifespan of yeast [95] and mutations that decrease the activity of insulin/IGF-1-like pathway increase the longevity of fruit flies [96] and mice [97,98]. These mutations that extend the lifespan are associated with increased resistance to oxidative stress, which is mediated in part by an increase in expression of antioxidant genes [99–101]. In mammalian cells, activation of Akt has been reported to induce cell proliferation and survival toward tumorigenesis [102–104].

The insulin pathway has also been shown to be essential for the maintenance of normal metabolic homeostasis [105]. Restriction of caloric intake extends the longevity of yeast, worms, fruit flies, mice and probably humans and postpones or prevents age-dependent deterioration and chronic diseases [91]. Since calorie restriction associates with the persistent decrease in the insulin signals, one might think that the insulin pathway could be involved in human aging and age-associated diseases, especially in the patients with diabetes.

Mice models that exhibit an early onset of phenotypes associated with aging have been reported. These include mouse mutants carrying targeted disruption of the genes involving DNA damage repair, such as *ku86* [106], *XPD* [107] and *BRCA1* [108]. Activation of p53 [109] as well as telomerase deficiency [58] also cause premature aging, which is characterized by reduced longevity, osteoporosis, organ atrophy and a diminished stress tolerance. All these molecules have been implicated in cellular senescence. More importantly, cellular senescence in vivo has been detected in premature aging mice [108]. Thus, these results provide in vivo evidence that links cellular senescence to organismal aging.

11. Conclusion

Accumulating evidence indicates a critical role of cellular senescence in organismal aging and age-related disease including atherosclerosis. Young adult bone marrow-derived EPCs have been shown to restore aging-impaired angiogenic function [110]. Chronic treatment with EPCs from young non-atherosclerotic ApoE-deficient mice prevents atherosclerosis progression in ApoE-deficient recipients despite persistent hypercholesterolemia [111]. Moreover, introduction of telomerase into EPCs has been reported to extend cell lifespan and to increase the efficacy of vasculogenesis in vivo [112]. These reports indicate that progressive progenitor cell deficits contribute to age-associated vascular dysfunction and suggest the potential utility of cell-based antisenesescence therapy as a novel therapeutic strategy for vascular aging. Further understanding of mechanisms underlying cellular senescence will provide new insights into the pathogenesis of age-associated vascular disorders.

Acknowledgements

This work was supported by a Grant-in-Aid for Scientific Research, Developmental Scientific Research and Scientific Research on Priority Areas from the Ministry of Education, Science, Sports and Culture, the Program for Promotion of Fundamental Studies in Health Sciences of the Organization for Drug ADR Relief, R&D Promotion and Product Review of Japan (to I.K.) and grants from Takeda Medical Research Foundation, Takeda Science Foundation, Japan Heart Foundation, Mochida Memorial Foundation, Uehara Memorial

Foundation, Mitsubishi Pharma Research Foundation and the Ministry of Education, Science, Sports and Culture of Japan (to T.M.).

References

- [1] Faragher RG, Kipling D. How might replicative senescence contribute to human ageing? *Bioessays* 1998;20:985–91.
- [2] Hayflick L. Current theories of biological aging. *Fed Proc* 1975;34:9–13.
- [3] Schneider EL, Mitsui Y. The relationship between in vitro cellular aging and in vivo human age. *Proc Natl Acad Sci USA* 1976;73:3584–8.
- [4] Rohme D. Evidence for a relationship between longevity of mammalian species and life spans of normal fibroblasts in vitro and erythrocytes in vivo. *Proc Natl Acad Sci USA* 1981;78:5009–13.
- [5] Thompson KV, Holliday R. Genetic effects on the longevity of cultured human fibroblasts. II. DNA repair deficient syndromes. *Gerontology* 1983;29:83–8.
- [6] Campisi J, Kim SH, Lim CS, Rubio M. Cellular senescence, cancer and aging: the telomere connection. *Exp Gerontol* 2001;36:1619–37.
- [7] Serrano M, Blasco MA. Putting the stress on senescence. *Curr Opin Cell Biol* 2001;13:748–53.
- [8] Serrano M, Lin AW, McCurrach ME, Beach D, Lowe SW. Oncogenic ras provokes premature cell senescence associated with accumulation of p53 and p16INK4a. *Cell* 1997;88:593–602.
- [9] Lin AW, Barradas M, Stone JC, van Aelst L, Serrano M, Lowe SW. Premature senescence involving p53 and p16 is activated in response to constitutive MEK/MAPK mitogenic signaling. *Genes Dev* 1998;12:3008–19.
- [10] Zhu J, Woods D, McMahon M, Bishop JM. Senescence of human fibroblasts induced by oncogenic Raf. *Genes Dev* 1998;12:2997–3007.
- [11] Campisi J. The biology of replicative senescence. *Eur J Cancer* 1997;33:703–9.
- [12] Bringold F, Serrano M. Tumor suppressors and oncogenes in cellular senescence. *Exp Gerontol* 2000;35:317–29.
- [13] Dimri GP, Lee X, Basile G, Acosta M, Scott G, Roskelley C, et al. A biomarker that identifies senescent human cells in culture and in aging skin in vivo. *Proc Natl Acad Sci USA* 1995;92:9363–7.
- [14] Kumazaki T, Kobayashi M, Mitsui Y. Enhanced expression of fibronectin during in vivo cellular aging of human vascular endothelial cells and skin fibroblasts. *Exp Cell Res* 1993;205:396–402.
- [15] Bennett MR, Macdonald K, Chan SW, Boyle JJ, Weissberg PL. Cooperative interactions between RB and p53 regulate cell proliferation, cell senescence, and apoptosis in human vascular smooth muscle cells from atherosclerotic plaques. *Circ Res* 1998;82:704–12.
- [16] Buring KF. The endothelium of advanced arteriosclerotic plaques in humans. *Arterioscler Thromb* 1991;11:1678–89.
- [17] Ross R, Wight TN, Strandness E, Thiele B. Human atherosclerosis. I. Cell constitution and characteristics of advanced lesions of the superficial femoral artery. *Am J Pathol* 1984;114:79–93.
- [18] Fenton M, Barker S, Kurz DJ, Erusalimsky JD. Cellular senescence after single and repeated balloon catheter denudations of rabbit carotid arteries. *Arterioscler Thromb Vasc Biol* 2001;21:220–6.
- [19] Minamino T, Miyauchi H, Yoshida T, Ishida Y, Yoshida H, Komuro I. Endothelial cell senescence in human atherosclerosis: role of telomere in endothelial dysfunction. *Circulation* 2002;105:1541–4.
- [20] Minamino T, Yoshida T, Tateno K, Miyauchi H, Zou Y, Toko H, et al. Ras induces vascular smooth muscle cell senescence and inflammation in human atherosclerosis. *Circulation*, 2003 [in press].
- [21] Marin J. Age-related changes in vascular responses: a review. *Mech Ageing Dev* 1995;79:71–114.
- [22] Rivard A, Fabre JE, Silver M, Chen D, Murohara T, Kearney M, et al. Age-dependent impairment of angiogenesis. *Circulation* 1999;99:111–20.
- [23] Rivard A, Berthou-Soulie L, Principe N, Kearney M, Curry C, Branellec D, et al. Age-dependent defect in vascular endothelial growth factor expression is associated with reduced hypoxia-inducible factor 1 activity. *J Biol Chem* 2000;275:29643–7.
- [24] Schneiderman J, Sawdey MS, Keeton MR, Bordin GM, Bernstein EF, Dilley RB, et al. Increased type 1 plasminogen activator inhibitor gene expression in atherosclerotic human arteries. *Proc Natl Acad Sci USA* 1992;89:6998–7002.
- [25] Sato I, Morita I, Kaji K, Ikeda M, Nagao M, Murota S. Reduction of nitric oxide producing activity associated with in vitro aging in cultured human umbilical vein endothelial cell. *Biochem Biophys Res Commun* 1993;195:1070–6.
- [26] Matsushita H, Chang E, Glassford AJ, Cooke JP, Chiu CP, Tsao PS. eNOS activity is reduced in senescent human endothelial cells: preservation by hTERT immortalization. *Circ Res* 2001;89:793–8.
- [27] Hoffmann J, Haendeler J, Aicher A, Rossig L, Vasa M, Zeiher AM, et al. Aging enhances the sensitivity of endothelial cells toward apoptotic stimuli: important role of nitric oxide. *Circ Res* 2001;89:709–15.
- [28] Nakajima M, Hashimoto M, Wang F, Yamanaga K, Nakamura N, Uchida T, et al. Aging decreases the production of PGI₂ in rat aortic endothelial cells. *Exp Gerontol* 1997;32:685–93.
- [29] Comi P, Chiaramonte R, Maier JA. Senescence-dependent regulation of type 1 plasminogen activator inhibitor in human vascular endothelial cells. *Exp Cell Res* 1995;219:304–8.
- [30] Maier JA, Statuto M, Ragnotti G. Senescence stimulates U937-endothelial cell interactions. *Exp Cell Res* 1993;208:270–4.
- [31] Yang J, Chang E, Cherry AM, Bangs CD, Oei Y, Bodnar A, et al. Human endothelial cell life extension by telomerase expression. *J Biol Chem* 1999;274:26141–8.
- [32] Asahara T, Murohara T, Sullivan A, Silver M, van der Zee R, Li T, et al. Isolation of putative progenitor endothelial cells for angiogenesis. *Science* 1997;275:964–7.
- [33] Takahashi T, Kalka C, Masuda H, Chen D, Silver M, Kearney M, et al. Ischemia- and cytokine-induced mobilization of bone marrow-derived endothelial progenitor cells for neovascularization. *Nat Med* 1999;5:434–8.
- [34] Hill JM, Zalos G, Halcox JP, Schenke WH, Waclawiw MA, Quyyumi AA, et al. Circulating endothelial progenitor cells, vascular function, and cardiovascular risk. *New Engl J Med* 2003;348:593–600.
- [35] Vasa M, Fichtlscherer S, Aicher A, Adler K, Urbich C, Martin H, et al. Number and migratory activity of circulating endothelial progenitor cells inversely correlate with risk factors for coronary artery disease. *Circ Res* 2001;89:E1–7.
- [36] Stewart SA, Ben-Porath I, Carey VJ, O'Connor BF, Hahn WC, Weinberg RA. Erosion of the telomeric single-strand overhang at replicative senescence. *Nat Genet* 2003;33:492–6.
- [37] Karlseder J, Smogorzewska A, de Lange T. Senescence induced by altered telomere state, not telomere loss. *Science* 2002;295:2446–9.
- [38] Bodnar AG, Ouellette M, Frolkis M, Holt SE, Chiu CP, Morin GB, et al. Extension of life-span by introduction of telomerase into normal human cells. *Science* 1998;279:349–52.
- [39] Bryan TM, Englezou A, Dalla-Pozza L, Dunham MA, Reddel RR. Evidence for an alternative mechanism for maintaining telomere length in human tumors and tumor-derived cell lines. *Nat Med* 1997;3:1271–4.
- [40] Chang E, Harley CB. Telomere length and replicative aging in human vascular tissues. *Proc Natl Acad Sci USA* 1995;92:11190–4.
- [41] Minamino T, Mitsialis SA, Kourembanas S. Hypoxia extends the life span of vascular smooth muscle cells through telomerase activation. *Mol Cell Biol* 2001;21:3336–42.
- [42] Blackburn EH. Switching and signaling at the telomere. *Cell* 2001;106:661–73.

- [43] Baumann P, Cech TR. Pot1, the putative telomere end-binding protein in fission yeast and humans. *Science* 2001;292:1171–5.
- [44] Hsu HL, Gilley D, Blackburn EH, Chen DJ. Ku is associated with the telomere in mammals. *Proc Natl Acad Sci USA* 1999;96:12454–8.
- [45] Broccoli D, Smogorzewska A, Chong L, de Lange T. Human telomeres contain two distinct Myb-related proteins, TRF1 and TRF2. *Nat Genet* 1997;17:231–5.
- [46] Loayza D, De Lange T. POT1 as a terminal transducer of TRF1 telomere length control. *Nature* 2003;424:1013–8.
- [47] Espejel S, Franco S, Rodriguez-Perales S, Bouffier SD, Cigudosa JC, Blasco MA. Mammalian Ku86 mediates chromosomal fusions and apoptosis caused by critically short telomeres. *EMBO J* 2002;21:2207–19.
- [48] Espejel S, Franco S, Sgura A, Gae D, Bailey SM, Taccioli GE, et al. Functional interaction between DNA-PKcs and telomerase in telomere length maintenance. *EMBO J* 2002;21:6275–87.
- [49] Wong KK, Maser RS, Bachoo RM, Menon J, Carrasco DR, Gu Y, et al. Telomere dysfunction and Atm deficiency compromises organ homeostasis and accelerates ageing. *Nature* 2003;421:643–8.
- [50] Griffith JD, Comeau L, Rosenfield S, Stansel RM, Bianchi A, Moss H, et al. Mammalian telomeres end in a large duplex loop. *Cell* 1999;97:503–14.
- [51] van Steensel B, Smogorzewska A, de Lange T. TRF2 protects human telomeres from end-to-end fusions. *Cell* 1998;92:401–13.
- [52] Smogorzewska A, de Lange T. Different telomere damage signaling pathways in human and mouse cells. *EMBO J* 2002;21:4338–48.
- [53] Baur JA, Zou Y, Shay JW, Wright WE. Telomere position effect in human cells. *Science* 2001;292:2075–7.
- [54] Minamino T, Komuro I. Role of telomere in endothelial dysfunction in atherosclerosis. *Curr Opin Lipidol* 2002;13:537–43.
- [55] Karlseder J, Broccoli D, Dai Y, Hardy S, de Lange T. p53- and ATM-dependent apoptosis induced by telomeres lacking TRF2. *Science* 1999;283:1321–5.
- [56] Blasco MA, Lee HW, Hande MP, Samper E, Lansdorp PM, DePinho RA, et al. Telomere shortening and tumor formation by mouse cells lacking telomerase RNA. *Cell* 1997;91:25–34.
- [57] Lee HW, Blasco MA, Gottlieb GJ, Horner II JW, Greider CW, DePinho RA. Essential role of mouse telomerase in highly proliferative organs. *Nature* 1998;392:569–74.
- [58] Rudolph KL, Chang S, Lee HW, Blasco M, Gottlieb GJ, Greider C, et al. Longevity, stress response, and cancer in aging telomerase-deficient mice. *Cell* 1999;96:701–12.
- [59] Franco S, Segura I, Riese HH, Blasco MA, Decreased B. Decreased B16F10 melanoma growth and impaired vascularization in telomerase-deficient mice with critically short telomeres. *Cancer Res* 2002;62:552–9.
- [60] Leri A, Franco S, Zacheo A, Barlucchi L, Chimenti S, Limana F, et al. Ablation of telomerase and telomere loss leads to cardiac dilatation and heart failure associated with p53 upregulation. *EMBO J* 2003;22:131–9.
- [61] Kim NW, Piatyszek MA, Prowse KR, Harley CB, West MD, Ho PL, et al. Specific association of human telomerase activity with immortal cells and cancer. *Science* 1994;266:2011–5.
- [62] Lin SY, Elledge SJ. Multiple tumor suppressor pathways negatively regulate telomerase. *Cell* 2003;113:881–9.
- [63] Smith LL, Collier HA, Roberts JM. Telomerase modulates expression of growth-controlling genes and enhances cell proliferation. *Nat Cell Biol* 2003;5:474–9.
- [64] Minamino T, Kourembanas S. Mechanisms of telomerase induction during vascular smooth muscle cell proliferation. *Circ Res* 2001;89:237–43.
- [65] Hsiao R, Sharma HW, Ramakrishnan S, Keith E, Narayanan R. Telomerase activity in normal human endothelial cells. *Anticancer Res* 1997;17:827–32.
- [66] Yang J, Nagavarapu U, Relloma K, Sjaastad MD, Moss WC, Pasaniti A, et al. Telomerized human microvasculature is functional in vivo. *Nat Biotechnol* 2001;19:219–24.
- [67] Dimri GP, Itahana K, Acosta M, Campisi J. Regulation of a senescence checkpoint response by the E2F1 transcription factor and p14(ARF) tumor suppressor. *Mol Cell Biol* 2000;20:273–85.
- [68] Wang W, Chen JX, Liao R, Deng Q, Zhou JJ, Huang S, et al. Sequential activation of the MEK-extracellular signal-regulated kinase and MKK3/6-p38 mitogen-activated protein kinase pathways mediates oncogenic ras-induced premature senescence. *Mol Cell Biol* 2002;22:3389–403.
- [69] Sherr CJ. Tumor surveillance via the ARF-p53 pathway. *Gene Dev* 1998;12:2984–91.
- [70] Palmero I, Pantoja C, Serrano M. p19ARF links the tumour suppressor p53 to Ras. *Nature* 1998;395:125–6.
- [71] Jacobs JJ, Keblusek P, Robanus-Maandag E, Kristel P, Lingbeek M, Nederlof PM, et al. Senescence bypass screen identifies TBX2, which represses Cdkn2a (p19(ARF)) and is amplified in a subset of human breast cancers. *Nat Genet* 2000;26:291–9.
- [72] Ferbeyre G, de Stanchina E, Querido E, Baptiste N, Prives C, Lowe SW. PML is induced by oncogenic ras and promotes premature senescence. *Gene Dev* 2000;14:2015–27.
- [73] Pearson M, Carbone R, Sebastiani C, Cioco M, Fagioli M, Saito S, et al. PML regulates p53 acetylation and premature senescence induced by oncogenic Ras. *Nature* 2000;406:207–10.
- [74] Chin L, Artandi SE, Shen Q, Tam A, Lee SL, Gottlieb GJ, et al. p53 deficiency rescues the adverse effects of telomere loss and cooperates with telomere dysfunction to accelerate carcinogenesis. *Cell* 1999;97:527–38.
- [75] Burkhardt BA, Alcorta DA, Chiao C, Isaacs JS, Barrett JC. Two post-transcriptional pathways that regulate p21(Cip1/Waf1/Sdi1) are identified by HPV16-E6 interaction and correlate with life span and cellular senescence. *Exp Cell Res* 1999;247:168–75.
- [76] Ohtani N, Zebede Z, Huot TJ, Stinson JA, Sugimoto M, Ohashi Y, et al. Opposing effects of Ets and Id proteins on p16INK4a expression during cellular senescence. *Nature* 2001;409:1067–70.
- [77] McConnell BB, Starborg M, Brookes S, Peters G. Inhibitors of cyclin-dependent kinases induce features of replicative senescence in early passage human diploid fibroblasts. *Curr Biol* 1998;8:351–4.
- [78] Ihling C, Menzel G, Wellens E, Monting JS, Schaefer HE, Zeiher AM. Topographical association between the cyclin-dependent kinases inhibitor p21, p53 accumulation, and cellular proliferation in human atherosclerotic tissue. *Arterioscler Thromb Vasc Biol* 1997;17:2218–24.
- [79] Guevara NV, Kim HS, Antonova EI, Chan L. The absence of p53 accelerates atherosclerosis by increasing cell proliferation in vivo. *Nat Med* 1999;5:335–9.
- [80] von der Thusen JH, van Vlijmen BJ, Hoeben RC, Kockx MM, Havekes LM, van Berkel TJ, et al. Induction of atherosclerotic plaque rupture in apolipoprotein E-/- mice after adenovirus-mediated transfer of p53. *Circulation* 2002;105:2064–70.
- [81] Lusis AJ. Atherosclerosis. *Nature* 2000;407:233–41.
- [82] Indolfi C, Avvedimento EV, Rapacciuolo A, Di Lorenzo E, Esposito G, Stabile E, et al. Inhibition of cellular ras prevents smooth muscle cell proliferation after vascular injury in vivo. *Nat Med* 1995;1:541–5.
- [83] George J, Afek A, Keren P, Herz I, Goldberg I, Haklai R, et al. Functional inhibition of Ras by S-trans, trans-farnesyl thiosalicylic acid attenuates atherosclerosis in apolipoprotein E knockout mice. *Circulation* 2002;105:2416–22.
- [84] Brasier AR, Recinos III A, Eleidrisi MS. Vascular inflammation and the renin-angiotensin system. *Arterioscler Thromb Vasc Biol* 2002;22:1257–66.
- [85] Libby P, Ridker PM, Maseri A. Inflammation and atherosclerosis. *Circulation* 2002;105:1135–43.
- [86] Guarente L, Kenyon C. Genetic pathways that regulate ageing in model organisms. *Nature* 2000;408:255–62.
- [87] Kenyon C. A conserved regulatory system for aging. *Cell* 2001;105:165–8.

- [88] Kenyon C, Chang J, Gensch E, Rudner A, Tabtiang R. A *C. elegans* mutant that lives twice as long as wild type. *Nature* 1993;366:461–4.
- [89] Lee RY, Hensch J, Ruvkun G. Regulation of *C. elegans* DAF-16 and its human ortholog FKHRL1 by the daf-2 insulin-like signaling pathway. *Curr Biol* 2001;11:1950–7.
- [90] Lin K, Hsin H, Libina N, Kenyon C. Regulation of the *Caenorhabditis elegans* longevity protein DAF-16 by insulin/IGF-1 and germline signaling. *Nat Genet* 2001;28:139–45.
- [91] Longo VD, Finch CE. Evolutionary medicine: from dwarf model systems to healthy centenarians? *Science* 2003;299:1342–6.
- [92] Morris JZ, Tissenbaum HA, Ruvkun G. A phosphatidylinositol-3-OH kinase family member regulating longevity and diapause in *Caenorhabditis elegans*. *Nature* 1996;382:536–9.
- [93] Ogg S, Paradis S, Gottlieb S, Patterson GI, Lee L, Tissenbaum HA, et al. The Fork head transcription factor DAF-16 transduces insulin-like metabolic and longevity signals in *C. elegans*. *Nature* 1997;389:994–9.
- [94] Lin K, Dorman JB, Rodan A, Kenyon C. daf-16: an HNF-3/forkhead family member that can function to double the life-span of *Caenorhabditis elegans*. *Science* 1997;278:1319–22.
- [95] Fabrizio P, Pozza F, Pletcher SD, Gendron CM, Longo VD. Regulation of longevity and stress resistance by Sch9 in yeast. *Science* 2001;292:288–90.
- [96] Tatar M, Kopelman A, Epstein D, Tu MP, Yin CM, Garofalo RS. A mutant *Drosophila* insulin receptor homolog that extends life-span and impairs neuroendocrine function. *Science* 2001;292:107–10.
- [97] Holzenberger M, Dupont J, Ducos B, Leneuve P, Geloën A, Even PC, et al. IGF-1 receptor regulates lifespan and resistance to oxidative stress in mice. *Nature* 2003;421:182–7.
- [98] Blüher M, Kahn BB, Kahn CR. Extended longevity in mice lacking the insulin receptor in adipose tissue. *Science* 2003;299:572–4.
- [99] Fabrizio P, Liou LL, Moy VN, Diaspro A, SelverstoneValentine J, Gralla EB, et al. SOD2 functions downstream of Sch9 to extend longevity in yeast. *Genetics* 2003;163:35–46.
- [100] Honda Y, Honda S. The daf-2 gene network for longevity regulates oxidative stress resistance and Mn-superoxide dismutase gene expression in *Caenorhabditis elegans*. *FASEB J* 1999;13:1385–93.
- [101] Murphy CT, McCarroll SA, Bargmann CI, Fraser A, Kamath RS, Ahringer J, et al. Genes that act downstream of DAF-16 to influence the lifespan of *Caenorhabditis elegans*. *Nature* 2003;424:277–83.
- [102] Datta SR, Brunet A, Greenberg ME. Cellular survival: a play in three Acts. *Genes Dev* 1999;13:2905–27.
- [103] Blume-Jensen P, Hunter T. Oncogenic kinase signalling. *Nature* 2001;411:355–65.
- [104] Testa JR, Bellacosa A. AKT plays a central role in tumorigenesis. *Proc Natl Acad Sci USA* 2001;98:10983–5.
- [105] Cho H, Mu J, Kim JK, Thorvaldsen JL, Chu Q, Crenshaw III EB, et al. Insulin resistance and a diabetes mellitus-like syndrome in mice lacking the protein kinase Akt2 (PKB beta). *Science* 2001;292:1728–31.
- [106] Vogel H, Lim DS, Karsenty G, Finegold M, Hasty P. Deletion of Ku86 causes early onset of senescence in mice. *Proc Natl Acad Sci USA* 1999;96:10770–5.
- [107] de Boer J, Andressoo JO, de Wit J, Huijmans J, Beems RB, van Steeg H, et al. Premature aging in mice deficient in DNA repair and transcription. *Science* 2002;296:1276–9.
- [108] Cao L, Li W, Kim S, Brodie SG, Deng CX. Senescence, aging, and malignant transformation mediated by p53 in mice lacking the Brca1 full-length isoform. *Gene Dev* 2003;17:201–13.
- [109] Tyner SD, Venkatachalam S, Choi J, Jones S, Ghebranious N, Igelmann H, et al. p53 mutant mice that display early ageing-associated phenotypes. *Nature* 2002;415:45–53.
- [110] Edelberg JM, Tang L, Hattori K, Lyden D, Rafii S. Young adult bone marrow-derived endothelial precursor cells restore aging-impaired cardiac angiogenic function. *Circ Res* 2002;90:E89–93.
- [111] Rauscher FM, Goldschmidt-Clermont PJ, Davis BH, Wang T, Gregg D, Ramaswami P, et al. Aging, progenitor cell exhaustion, and atherosclerosis. *Circulation* 2003;108:457–63.
- [112] Murasawa S, Llevadot J, Silver M, Isner JM, Losordo DW, Asahara T. Constitutive human telomerase reverse transcriptase expression enhances regenerative properties of endothelial progenitor cells. *Circulation* 2002;106:1133–9.

Perspective

Akt-Induced Cellular Senescence

Implication for Human Disease

Tohru Minamino
Hideyuki Miyauchi
Kaoru Tateno
Takeshige Kunieda
Issei Komuro*

Department of Cardiovascular Science and Medicine; Chiba University Graduate School of Medicine; Chiba, Japan

*Correspondence to: Issei Komuro; Department of Cardiovascular Science and Medicine; Chiba University Graduate School of Medicine; 1-8-1 Inohana, Chuo-ku, Chiba 260-8670, Japan; Tel: +81.43.226.2097; Fax: +81.43.226.2557; Email: komuro-iky@umin.ac.jp

Received 02/25/04; Accepted 02/26/04

Previously published online as a *Cell Cycle* E-publication:
<http://www.landesbioscience.com/journals/cc/abstract.php?id=819>

KEY WORDS

Akt, insulin, diabetes mellitus, atherosclerosis, senescence

ABSTRACT

Reduction-of-function mutations in components of the insulin/insulin-like growth factor-1/Akt pathway have been shown to extend the lifespan in organisms ranging from yeast to mice. It has also been reported that activation of Akt induces proliferation and survival of mammalian cells, thereby promoting tumorigenesis. We have recently shown that Akt activity increases with cellular senescence and that inhibition of Akt extends the lifespan of primary cultured human endothelial cells. Constitutive activation of Akt promotes senescence-like arrest of cell growth via a p53/p21-dependent pathway, leading to endothelial dysfunction. This novel role of Akt in regulating the cellular lifespan may contribute to various human diseases including atherosclerosis and diabetes mellitus.

Normal human somatic cells have a finite lifespan in vitro and eventually show irreversible growth arrest called cellular senescence. As cells age in vitro, significant phenotypic changes occur. The cells become flattened and enlarged, as well as expressing different genes such as the tumor suppressor gene p53 and cyclin-dependent kinase inhibitors including p21^{Waf1/Cip1} and p16^{Ink4a}.¹ Signals other than extended proliferation have also been shown to produce a phenotype which is indistinguishable from that of senescent cells at the end of their replicative lifespan.² For example, constitutive activation of mitogenic stimuli, DNA damage, or oxidative stress can all prematurely induce cellular senescence.³⁻⁵ In senescent vascular cells, expression of pro-inflammatory molecules is increased and production of vasodilators is decreased,⁶⁻⁹ both of which are well-known changes in the vascular tissues of elderly persons that contribute to the pathogenesis of vascular aging.¹⁰ There is also in vivo evidence cellular senescence.^{11,12} Vascular cells with a similar phenotype to that of senescent vascular cells in vitro have been detected in human atheroma tissues, but not in normal arteries.^{6,7} Such reports suggest that cellular senescence may play an important role in human aging and age-associated diseases. Alternatively, the mechanisms underlying cellular senescence may also regulate the lifespan of the entire organism and vice versa. This concept is supported by recent studies on mice that exhibit early onset of phenotypes associated with aging. These include mouse mutants with targeted disruption of the genes that are involved in the repair of DNA damage, such as *ku86*,¹³ *XPD*¹⁴ and *BRCAl*.¹⁵ Activation of p53 as well as telomerase-deficiency also cause premature aging,^{16,17} which is characterized by reduced longevity, osteoporosis, organ atrophy and a diminished stress tolerance. All of these molecules have been implicated in cellular senescence. More importantly, cellular senescence has been detected in the tissues of mice with premature aging.¹⁵ These results provide further in vivo evidence that links cellular senescence to aging of the organism.

Restriction of calorie intake is known to extend longevity in organisms ranging from yeast to mice and to prevent age-dependent deterioration such as cancer, impaired immune function, and increased inflammation.^{18,19} Calorie restriction decreases the plasma levels of glucose, insulin, and insulin-like growth factor-1 (IGF-1). Recent genetic analyses have demonstrated that reduction-of-function mutations in the glucose or IGF-1-like signaling pathways also extend the lifespan of many organisms, suggesting that these pathways may underlie the mechanism of longevity related to calorie restriction.^{18,20} Among the molecules that exist in these pathways, the Ser/Thr kinase Akt is remarkably well conserved across a broad range of species and is involved in a diverse array of cellular processes.²¹ Although mutations that reduce Akt activity prolong the longevity of yeast and nematodes,^{22,23} activation of Akt has been reported to induce proliferation and survival of mammalian cells, thereby promoting tumorigenesis.^{21,24,25} In a study that was recently published in *EMBO J*,²⁶ we showed that Akt activity increases with cellular senescence and that inhibition of Akt extends the lifespan of primary cultured human endothelial cells.

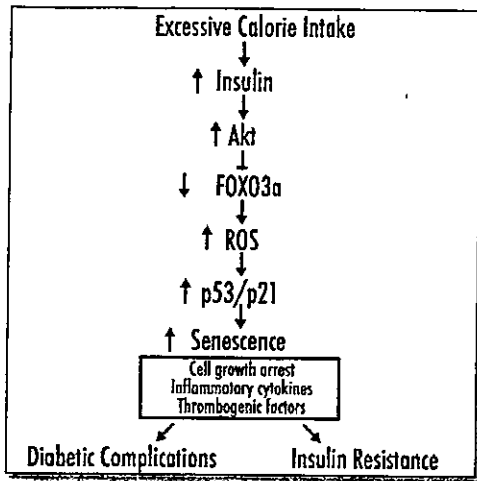


Figure 1. Signaling pathway of insulin/Akt-induced senescence. Excessive calorie intake increases the levels of insulin and results in activation of Akt in the target tissues. Constitutive activation of Akt induces cellular senescence via a p53/p21-dependent pathway, which is mediated by the forkhead transcription factor (FOXO3a), which regulates cellular levels of reactive oxygen species. Accumulation of senescent cells in the target organs causes diabetic complications and promotes insulin resistance because of their senescent phenotypes such as increased production of inflammatory cytokines and thrombogenic factors.

Constitutive activation of Akt promotes senescence-like arrest of cell growth via a p53/p21-dependent pathway. This action is at least partly mediated by the forkhead transcription factor, which regulates cellular levels of reactive oxygen species. Our findings reveal a novel role of Akt in regulating the cellular lifespan and suggest that the mechanism of longevity is conserved in primary cultured human cells.

What is the implication of these findings for human disease? Since various growth factors that contribute to atherosclerosis have been shown to increase Akt activity,²⁷ atherogenic stimuli may activate Akt in the vasculature and thus promote atherogenesis. Consistent with this notion, activation of Akt is observed in human atheroma tissues, but not in normal arteries.²⁶ Constitutive activation of Akt in human endothelial cells not only leads to cellular senescence but also to vascular dysfunction such as impaired angiogenesis and increased inflammation.²⁶ In a similar way, Akt-induced senescence may contribute to other age-associated diseases. Cell division is essential for the survival of multicellular organisms that contain various renewable tissues, but it also puts the organism at risk of developing cancer. Thus, complex organisms have evolved at least two cellular mechanisms to prevent oncogenesis, which are apoptosis and cellular senescence.² In this respect, Akt-induced senescence can be seen as an anti-tumorigenesis mechanism since gain-of-function mutations in the Akt signaling pathway are common in human cancers. Finally, Akt is known to be involved in signaling pathways that mediate the metabolic effects of insulin in several physiologically important target tissues.²⁸ Insulin regulates energy metabolism after food intake by promoting the uptake and storage of glucose, amino acid and fat, while simultaneously antagonizing the catabolism of fuel reserve. The basic role of insulin as a signal that informs the organism of nutritional abundance appears to be well conserved among species.²⁸ We have shown that insulin also increases p53 activity and expression of p21 and that it promotes cellular senescence in an Akt-dependent manner.²⁶ Since hyperinsulinemia is a basic feature of type 2 diabetes

mellitus, insulin-induced senescence may have the direct impact on diabetic complications such as vasculopathy and nephropathy. An inevitable feature of type 2 diabetes mellitus is insulin resistance.²⁸ Some previous studies have suggested that a decline of Akt activity in response to insulin might lead to insulin resistance.²⁹ In contrast, some recent studies have shown that basal Akt activity in the tissues of diabetic patients tends to be higher than in normal subjects and that there is no significant difference in the response of Akt to insulin stimulation.³⁰ Increased plasma and tissue levels of pro-inflammatory cytokines and pro-thrombogenic factors have been demonstrated to exaggerate insulin resistance and to contribute to diabetic complications,^{31,32} and both of these changes are well-known features of senescent cells in vitro.¹² Accordingly, we propose that type 2 diabetes mellitus can be regarded as a premature aging syndrome in which the dysregulation of insulin/Akt signaling promotes cellular senescence, leading to various complications. This suggests that anti-senescence therapy might be effective for the treatment of diabetic complications and insulin resistance.

References

- Faragher RG, Kipling D. How might replicative senescence contribute to human ageing? *Bioessays* 1998; 20:985-91.
- Serrano M, Blasco MA. Putting the stress on senescence. *Curr Opin Cell Biol* 2001; 13:748-53.
- Chen Q, Ames BN. Senescence-like growth arrest induced by hydrogen peroxide in human diploid fibroblast F65 cells. *Proc Natl Acad Sci USA* 1994; 91:4130-4.
- Chen Q, Fischer A, Reagan JD, Yan LJ, Ames BN. Oxidative DNA damage and senescence of human diploid fibroblast cells. *Proc Natl Acad Sci USA* 1995; 92:4337-41.
- Serrano M, Lin AW, McCurrach ME, Beach D, Lowe SW. Oncogenic ras provokes premature cell senescence associated with accumulation of p53 and p16^{INK4a}. *Cell* 1997; 88:593-602.
- Minamino T, Miyauchi H, Yoshida T, Ishida Y, Yoshida H, Komuro I. Endothelial cell senescence in human atherosclerosis: role of telomere in endothelial dysfunction. *Circulation* 2002; 105:1541-4.
- Minamino T, Yoshida T, Tateno K, Miyauchi H, Zou Y, Toko H, et al. Ras induces vascular smooth muscle cell senescence and inflammation in human atherosclerosis. *Circulation* 2003; 108:2264-9.
- Matsushita H, Chang E, Glassford AJ, Cooke JB, Chiu CP, Tsao PS. eNOS activity is reduced in senescent human endothelial cells: Preservation by hTERT immortalization. *Circ Res* 2001; 89:793-8.
- Nakajima M, Hashimoto M, Wang F, Yamanaga K, Nakamura N, Uchida T, et al. Aging decreases the production of PGI2 in rat aortic endothelial cells. *Exp Gerontol* 1997; 32:685-93.
- Lusis AJ. Atherosclerosis. *Nature* 2000; 407:233-41.
- Minamino T, Komuro I. Role of telomere in endothelial dysfunction in atherosclerosis. *Curr Opin Lipidol* 2002; 13:537-43.
- Minamino T, Miyauchi H, Yoshida T, Tateno K, Kunieda T, Komuro I. Vascular cell senescence and vascular aging. *J Mol Cell Cardiol* 2004; 36:175-83.
- Vogel H, Lim DS, Karsenty G, Finegold M, Hasty P. Deletion of Ku86 causes early onset of senescence in mice. *Proc Natl Acad Sci USA* 1999; 96:10770-5.
- de Boer J, Andressoo JO, de Wit J, Huijmans J, Beems RB, van Steeg H, et al. Premature aging in mice deficient in DNA repair and transcription. *Science* 2002; 296:1276-9.
- Cao L, Li W, Kim S, Brodie SG, Deng CX. Senescence, aging, and malignant transformation mediated by p53 in mice lacking the Brca1 full-length isoform. *Genes Dev* 2003; 17:201-13.
- Tyner SD, Venkatachalam S, Choi J, Jones S, Ghebranious N, Igelmann H, et al. p53 mutant mice that display early ageing-associated phenotypes. *Nature* 2002; 415:45-53.
- Rudolph KL, Chang S, Lee HW, Blasco M, Gortlieb GJ, Greider C, et al. Longevity, stress response, and cancer in aging telomerase-deficient mice. *Cell* 1999; 96:701-12.
- Longo VD, Finch CE. Evolutionary medicine: from dwarf model systems to healthy centenarians? *Science* 2003; 299:1342-6.
- Koubova J, Guarente L. How does calorie restriction work? *Genes Dev* 2003; 17:313-21.
- Kenyon C. A conserved regulatory system for aging. *Cell* 2001; 105:165-8.
- Datta SR, Brunet A, Greenberg ME. Cellular survival: a play in three Akts. *Genes Dev* 1999; 13:2905-27.
- Fabrizio P, Pozza F, Pletcher SD, Gendron CM, Longo VD. Regulation of longevity and stress response by Sch9 in yeast. *Science* 2001; 292:288-90.
- Kenyon C, Chang J, Gensch E, Rudner A, Tabtiang RA. C. elegans mutant that lives twice as long as wild type. *Nature* 1993; 366:461-4.
- Blume-Jensen P, Hunter T. Oncogenic kinase signalling. *Nature* 2001; 411:355-65.
- Testa JR, Bellacosa A. AKT plays a central role in tumorigenesis. *Proc Natl Acad Sci USA* 2001; 98:10983-5.

26. Miyauchi H, Minamino T, Tateno K, Kunieda T, Toko H, Komuro I. Akt negatively regulates the in vitro lifespan of human endothelial cells via a p53/p21-dependent pathway. *EMBO J* 2004; 23:212-20.
27. Cantley LC. The phosphoinositide 3-kinase pathway. *Science*. 2002;296:1655-7.
28. Whiteman EL, Cho H, Birnbaum MJ. Role of Akt/protein kinase B in metabolism. *Trends Endocrinol Metab* 2002; 13:444-51.
29. Krook A, Roth RA, Jiang XJ, Zierath JR, Wallberg-Henriksson H. Insulin-stimulated Akt kinase activity is reduced in skeletal muscle from NIDDM subjects. *Diabetes* 1998; 47:1281-6.
30. Hojlund K, Staehr P, Hansen BF, Green KA, Hardie DG, Richter EA, et al. Increased phosphorylation of skeletal muscle glycogen synthase at NH2-terminal sites during physiological hyperinsulinemia in type 2 diabetes. *Diabetes* 2003; 52:1393-402.
31. Rui L, Aguirre V, Kim JK, Shulman GI, Lee A, Corbould A, et al. Insulin/IGF-1 and TNF- α stimulate phosphorylation of IRS-1 at inhibitory Ser307 via distinct pathways. *J Clin Invest* 2001; 107:181-9.
32. Shimomura I, Funahashi T, Takahashi M, Maeda K, Kotani K, Nakamura T, et al. Enhanced expression of PAI-1 in visceral fat: possible contributor to vascular disease in obesity. *Nat Med* 1996; 2:800-3.

42.



Review Article

Vascular cell senescence and vascular aging[☆]

Tohru Minamino, Hideyuki Miyauchi, Toshihiko Yoshida, Kaoru Tateno,
Takeshige Kunieda, Issei Komuro *

Department of Cardiovascular Science and Medicine, Chiba University Graduate School of Medicine, 1-8-1 Inohana, Chuo-ku, Chiba 260-8670, Japan

Received 20 August 2003; received in revised form 15 November 2003; accepted 17 November 2003

Abstract

Vascular cells have a finite lifespan when cultured *in vitro* and eventually enter an irreversible growth arrest called “cellular senescence”. A number of genetic animal models carrying targeted disruption of the genes that confer the protection against senescence *in vitro* have been reported to exhibit the phenotypes of premature aging. Similar mutations have been found in the patients with premature aging syndromes. Many of the changes in senescent vascular cell behavior are consistent with the changes seen in age-related vascular diseases. We have demonstrated the presence of senescent vascular cells in human atherosclerotic lesions but not in non-atherosclerotic lesions. Moreover, these cells express increased levels of pro-inflammatory molecules and decreased levels of endothelial nitric oxide synthase, suggesting that cellular senescence *in vivo* contributes to the pathogenesis of human atherosclerosis. One widely discussed hypothesis of senescence is the telomere hypothesis. An increasing body of evidence has established the critical role of the telomere in vascular cell senescence. Another line of evidence suggests that telomere-independent mechanisms are also involved in vascular cell senescence. Activation of Ras, an important signaling molecule involved in atherogenic stimuli, induces vascular cell senescence and thereby promotes vascular inflammation *in vitro* and *in vivo*. It is possible that mitogenic-signaling pathways induce telomere-dependent and telomere-independent senescence, which results in vascular dysfunction. Further understanding of the mechanism underlying cellular senescence will provide insights into the potential of antisenesescence therapy for vascular aging.

© 2003 Elsevier Ltd. All rights reserved.

Keywords: Senescence; Aging; Atherosclerosis; Telomere; Ras; Akt; Inflammation; Cyclin-dependent kinase inhibitor

1. Introduction

Cellular senescence is the limited ability of primary human cells to divide when cultured *in vitro* and is accompanied by a specific set of phenotypic changes in morphology, gene expression and function. These changes in phenotype have been implicated in human aging [1]. This hypothesis, the hypothesis of cellular aging, was first described by Hayflick [2] and supported by evidence that cellular senescence and the division potential of human primary cultures are dependent on donor age [3] and that the growth potential of cultures correlates well with mean maximum lifespan of the species from which the cultures are derived [4]. Human primary cultures derived from the patients with premature aging syndromes, such as Werner syndrome and Bloom syn-

drome, are known to have shorter lifespan than the cultures from age-matched healthy populations [5], thus supporting the hypothesis of aging. However, until recently, little attention has been paid on the potential impact of vascular cell senescence *in vivo* on age-related vascular disorders.

In the past decades, significant progress has been made in our understanding of the mechanisms underlying cellular senescence. One widely discussed hypothesis is the telomere hypothesis of senescence [6]. A growing body of evidence has demonstrated a critical role of telomere and telomerase in regulating not only cellular lifespan but also organismal aging. However, recent findings suggest that cellular senescence can also be induced by DNA damage, cellular stress or oncogenic activation, which is independent of replicative age [7]. For example, the constitutive activation of mitogenic stimuli by expression of oncogenic Ras induces senescent phenotypes [8–10]. Thus, it is possible that atherogenic stimuli increase cell turnover at the sites of atherosclerosis, thereby promoting telomere shortening, whereas it also re-

[☆] The review process for this manuscript was handled by Consulting Editor, Eduardo Marban.

* Corresponding author. Tel.: +81-43-226-2097; fax: +81-43-226-2557
E-mail address: komuro-iky@umin.ac.jp (I. Komuro).

sults in activation of proliferative signals that potentially induce senescence independent of telomere shortening.

In this review, we will describe recently accumulating evidence that supports the hypothesis of cellular aging in the vasculature and discuss the potential of antisenesescence therapy for age-related human vascular disorders.

2. Occurrence of vascular cell senescence in vivo

Vascular cells have a finite lifespan in vitro and eventually enter an irreversible growth arrest called cellular senescence. Flattened and enlarged cell morphology is known to be one of the characteristics of cellular senescence [11]. Expression of negative regulators for the cell cycle machinery, such as p53 and p16, is increased with cell division and thereby promotes growth arrest [12]. Primary cultured cells undergoing cellular senescence in vitro express the increased activity of β -galactosidase (β -gal) when assayed at pH 6, which is distinguishable from endogenous lysosomal β -gal activity that can be detected at pH 4. This activity, senescence-associated β -gal (SA β -gal) activity, has been shown to correlate with cellular aging and thus is regarded as a biomarker for cellular senescence [13]. The in vitro growth properties of vascular cells derived from human atherosclerotic plaque are impaired, and they develop senescence earlier than those from normal lesions [14,15]. The histology of the lesions of human atherosclerosis has been extensively studied, and these studies have demonstrated that there are endothelial cells (ECs) and vascular smooth muscle cells (VSMCs) that exhibit the morphological features of cellular senescence [16,17]. These suggest the occurrence of cellular senescence in vivo. Recently, this notion has been confirmed by cytochemical analysis in vivo using SA β -gal activity. Fenton et al. [18] have successfully detected SA β -gal-positive vascular cells in rabbit carotid arteries subjected to vascular injury. With repeated denudation, the accumulation of SA β -gal-positive cells was markedly enhanced. The authors have recently demonstrated SA β -gal-positive vascular cells in human atherosclerotic plaque of the coronary arteries obtained from the patients who had ischemic heart disease [19]. SA β -gal-positive cells were predominately localized on the luminal surface of atherosclerotic plaque and identified as ECs, but no positive cells were observed in the internal mammary arteries from the same patients where atherosclerotic changes were minimally observed. In advanced plaque, however, SA β -gal-positive VSMCs were detected in the intima but not in the media [20], which may represent extensive replication in the lesions, as observed in the arteries subjected to double-denudation (Fig. 1). SA β -gal-positive cells exhibit increased expression of p53 and p16, alternative markers for cellular senescence, in human atheroma, suggesting the further evidence of in vivo senescence. These cells also show impaired function, such as the decreased expression of endothelial nitric oxide synthase (eNOS) and the increased expression of pro-inflammatory molecules

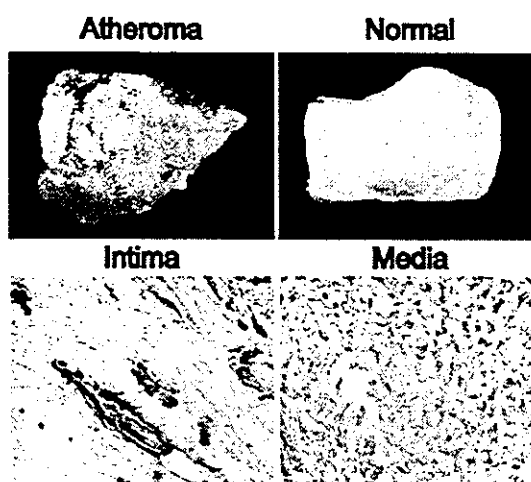


Fig. 1. Senescent vascular cells in human atheroma. Photographs of the luminal surface of human atheroma (atheroma, left) and non-atherosclerotic normal artery (normal, right) stained with SA β -gal staining. SA β -gal activity was observed in human atheroma but not in normal arteries (upper panel). A double staining for SA β -gal and α -smooth muscle actin of the sections of atheroma identified SA β -gal-positive cells as VSMCs in the intima but not in the media (lower panel).

[20]. Thus, cellular senescence in vivo may contribute to the pathogenesis of vascular aging.

3. Role of cellular senescence in vascular pathophysiology

Age-associated changes in the blood vessels include a decrease in compliance and an increase in inflammatory response that promote atherogenesis [21]. It has also been reported that angiogenesis is impaired with advanced age [22,23], whereas aging decreases the antithrombotic property of the endothelium [24]. A number of studies have reported that many of the changes in senescent vascular cell behavior are consistent with known changes seen in age-related vascular diseases, suggesting a critical role of cellular senescence in vascular pathophysiology. The production of nitric oxide (NO) and the eNOS activity are reduced in senescent human ECs [25]. Induction of NO production by shear stress is also decreased in senescent ECs [26]. A decline in the eNOS activity of senescent ECs is attributable to a decrease in expression of eNOS protein as well as in eNOS phosphorylation mediated by Akt [27]. The levels of prostacyclin production are significantly decreased with in vitro aging of ECs [28], whereas senescent ECs upregulate plasminogen activator inhibitor-1 [29]. All these alterations are likely involved in the impairment of endothelium-dependent vasodilation but also increased sensitivity of thrombogenesis in human atherosclerosis. The interaction between monocytes and ECs is enhanced by EC senescence [30], thereby promoting atherogenesis. This appears to be mediated by upregulation of adhesion molecules and pro-inflammatory

cytokines as well as a decrease in the production of NO in senescent ECs [19,26]. It is reported that the ability to form capillary structures in vitro is reduced in senescent ECs [31]. Bone marrow-derived circulating endothelial progenitor cells (EPCs) are known to participate in postnatal neovascularization and vascular repair [32,33]. The in vitro growth property and function of bone marrow-derived EPCs are impaired in the patients with coronary artery disease and negatively correlate with risk factors including age [34,35]. Thus, aging may promote senescence of EPCs as well as ECs, resulting in decreases in angiogenesis and vascular healing.

4. Telomere-dependent vascular cell senescence

Telomeres are non-nucleosomal DNA–protein complexes at the end of chromosomes that serve as protective caps and are substrates for specialized replication mechanisms. As a consequence of semi-conservative DNA replication, the extreme termini of chromosomes are not duplicated completely, resulting in successive shortening of telomeres with each cell division. Critically short telomere was thought to trigger the onset of cellular senescence, but recent studies suggest that the single-strand telomeric overhang and associated proteins are key components for signals of senescence [36,37]. Telomerase is a ribonucleoprotein that adds telomeres onto chromosome ends with its RNA moiety as a template. Forced expression of the catalytic component of telomerase TERT in telomerase-negative human fibroblasts results in the stabilization of telomere length and extension of cell lifespan [38]. This observation has established the importance of telomere shortening in human cellular senescence. It has been also reported that there is another mechanism of telomere maintenance without telomerase activity, called telomerase-independent alternative lengthening of telomeres (ALT) [39]. In the field of vascular biology, it has been shown that telomere shortening with cell divisions occurs in human-cultured ECs and VSMCs, and that introduction of TERT extends cell lifespan of human ECs and VSMCs, suggesting a critical role of telomere shortening in vascular cell senescence as well [31,40,41]. It is likely that shortened telomeres are in some way sensed in a cell, and that a pathway is activated that results in exit from cell cycle (Fig. 2). The p53, p21 and p16 proteins and their downstream effectors are important for cellular senescence, and thus are likely to be a part of the telomere-response pathway. However, less is known about what links telomeres and these factors. Until present, several telomeric-binding proteins have been identified that contribute to the integrity of telomere functions and are potentially involved in the telomere-response pathway [42]. These include protection of telomeres-1 (Pot-1) [43], Ku [44], telomeric repeat-binding factor 1 and 2 (TRF1 and TRF2, respectively) [45]. Pot-1 is identified as a telomeric protein that binds to a tip of telomere and is thought to constitute the telomere shortening signal [46]. The protein

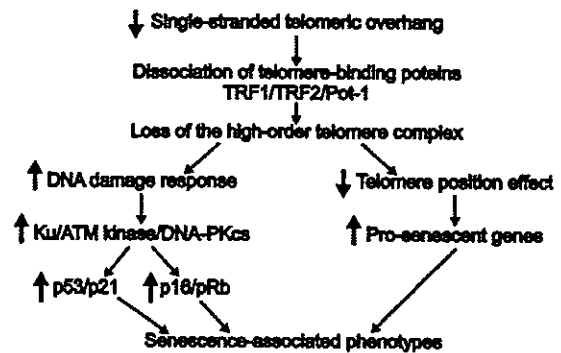


Fig. 2. Putative telomere-responsive pathways. As cells age, single-stranded telomeric overhangs are eroded, resulting in the dissociation of telomeric proteins. Loss of the high-order telomere complex is recognized as DNA breaks, thereby activating the molecules involving DNA repair that also play a critical role for telomere maintenance. These signals of DNA damage response are conducted to the cell cycle machinery. Telomere dysfunction also results in a release of telomere position effects that have the impact on expression of the genes at subtelomeric regions.

Ku, originally defined by its role in the repair of chromosomal DNA breaks, is found at telomeres and is necessary for normal telomere maintenance and functions. Genetic ablation studies demonstrated an essential role of Ku in mediating the telomere-response pathway [47]. Likewise, the catalytic subunit of the DNA-dependent protein kinase complex [48] and ATM kinase [49], both of which function in the double-strand break repair, have been implicated in the signal pathway of telomere shortening. Recently, it has been proposed that telomeres form large duplex loops, and telomeric proteins, TRF1 and TRF2, are essential for their formation [50,51]. Particularly, inhibition of TRF2 function is reported to cause cellular senescence in a p53/p16-dependent manner [19,52]. Thus, it is supposed that, as a result of telomere shortening, the efficacy of forming a high-order telomeric complex is impaired, leading to a release of various telomeric proteins from telomeres that elicit signals for cellular senescence (Fig. 2). Cytologically, telomeric regions are heterochromatic, implying that local DNA folding is increased. Positioning a gene in a telomeric heterochromatic region can impose telomere position effect on that gene. Telomere position effect, which has been characterized in the yeast and recently in human cells, is known to induce the reversible silencing of the gene [53]. Consequently, the modification of gene expression by telomere position effect may also contribute to the signaling pathway for cellular senescence.

5. Telomere shortening and vascular dysfunction

There is evidence indicating that telomere shortening occurs in human vasculature, which may be related to age-associated vascular diseases [54]. In most of the previous reports mentioned, changes in cell phenotypes associated with senescence were studied in vascular cell populations

undergoing replicative senescence, thus suggesting telomere-dependent vascular dysfunction. However, it remains unclear whether phenotypic changes in senescent vascular cells result from telomere dysfunction. Inhibition of TRF2 has been shown to induce either cellular senescence or apoptosis in various cells by destroying telomere loop structure [51,55]. The authors have demonstrated that the introduction of a dominant-negative form of TRF2 into human ECs induces a growth arrest with phenotypic characteristics of cellular senescence [19]. Telomere dysfunction significantly increases expression of pro-inflammatory molecules and reduces the activity of eNOS, suggesting a causal link between telomere and vascular dysfunction associated with senescence.

Telomerase-deficient mice have been developed and found to reveal a normal phenotype at the first generation presumably because of mice having much longer telomeres [56,57]. Telomeres are shortened with successive generations, and they become infertile at the sixth generation due to the impairment of reproductive system. Some aspects of the late generation mice mimic age-associated phenotypes. They exhibit shortened lifespan and a reduced capacity to respond to stress, such as wound healing and hematopoietic ablation [58]. The ability of neovascularization is reduced in the late generation of telomerase-deficient mice [59]. Decreased vessel formation may be attributable to the impaired function and replicative capacity of ECs induced by telomere shortening. Recently, the heart in late generation of telomerase-deficient mice has been shown to mimic the end-stage-dilated cardiac myopathy in humans [60].

6. Telomerase

Since early studies reported that telomerase activity was detected in cancer cells but not normal somatic cells, the idea emerged that telomerase activity might be essential for tumor growth [61]. Multiple tumor-suppressor pathways are likely to repress telomerase expression in normal somatic cells [62]. Increasing evidence has suggested that telomerase activity regulates cell proliferation in normal somatic cells by telomere lengthening or upregulating growth-controlling genes in a telomere length-independent manner [57,63]. Human ECs and VSMCs express telomerase activity, which is drastically activated by mitogenic stimuli via a protein kinase C-dependent pathway [64] but the activity declined with *in vitro* aging due to a decrease in expression of TERT, leading to telomere shortening and cellular senescence [41,65]. Introduction of TERT prevents endothelial dysfunction associated with senescence, such as a decrease in eNOS activity and an increase in monocyte binding to ECs [19,26]. Immortalized human ECs (TERT-ECs) have been established by introduction of TERT [31]. TERT-ECs appear to retain EC characteristics including various cell surface markers. When examined in Matrigel, they form capillary-like structures in response to extracellular matrix signals as efficiently as early

passage of ECs, whereas senescent or transformed ECs do not. In addition, TERT-ECs are more resistant to apoptotic induction than pre-senescent ECs. They maintain a normal growth control and exhibit no transformed phenotype. These telomerized human ECs are functional *in vivo* as demonstrated by the Matrigel implantation mouse model [66]. In this model, whereas primary human EC-derived vessel density decreased with time after implantation, telomerized ECs maintained durable vessels, indicating that telomerase activity is important for the maintenance of a microvascular phenotype.

7. Telomere-independent vascular cell senescence

Signals other than extended proliferation have been shown to result in cells developing a phenotype indistinguishable from that of senescent cells at the end of their replicative lifespan. For example, the constitutive activation of mitogenic stimuli by expression of oncogenic Ras or E2F induce a senescent phenotype [8,67]. Cellular senescence triggered by mitogenic stimuli is independent of replicative age, and these signals act before the replicative limits of cells. Hence, it is apparently telomere independent and thus termed as premature senescence. The constitutive activation of Ras provokes premature senescence in vascular cells, which is associated with accumulation of the proteins p53 as well as p16 [20]. Activation of extracellular signal-regulated kinase (ERK) appears to be critical for Ras-induced senescence since inhibition of ERK restores cell growth arrest elicited by Ras activation [20], whereas introduction of an active form of ERK results in premature senescence involving p53 and p16 [9]. p38 mitogen-activated protein kinase (MAPK) is also implicated in Ras-induced senescence. p38 MAPK is activated in a ERK-dependent fashion, thus indicating that Ras promotes premature senescence by sequentially activating the ERK and p38 MAPK pathway [68].

8. Cell cycle regulators

It is clear that cellular senescence entails the activation of several tumor-suppressor proteins and inactivation of several oncoproteins, each of which ultimately engages either the p53 or pRb pathway and interacts with each other at multiple levels (Fig. 3). p53 activity and in some cases protein levels are increased in senescent cells. The mechanisms responsible for p53 activation in senescent cells remain elusive, however some molecular details are emerging. One cause of p53 activation may be an increase in expression of p14, a tumor-suppressor protein encoded by the INK4a locus. p14 activates p53 through a mechanism involving sequestration of MDM2, a protein that promotes degradation of p53 [69]. p14 is induced by oncogenic Ras and E2F [70], whereas TBX2, a member of T-box family of transcription factors, suppresses p14 expression [71]. Another cause of p53 activation is the

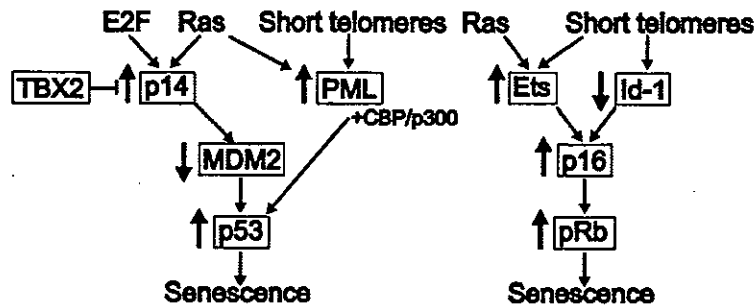


Fig. 3. Control of cellular senescence by the p53/p21 and p16/pRb pathways. Shown are the consequences of senescence-inducing signals on cell cycle regulators in the p53/p21 and p16/pRb pathways. Senescence-inducing signals, such as oncogenic Ras and E2F, increase expression of p14, whereas TBX2 represses p14 promoter activity, thus counteracting with each other. p14 sequesters MDM2, leading to an increase in p53 activity. Signals, such as oncogenic Ras, telomere shortening and possibly other signals increase expression of PML, which interacts with CBP/p300 and stimulates p53 activity. Oncogenic Ras stimulates the activity of Ets that induces p16 transcription by promoting its phosphorylation. Short telomeres lead to an increase in Ets and a decrease in Id, a protein that inhibits Ets activity, resulting in the accumulation of p16. p16 inhibits the cyclin-dependent kinases that phosphorylate pRb, leading to an increase in its active form.

promyelocytic leukemia (PML) tumor suppressor. PML is induced by replicative senescence and Ras activation by unknown mechanisms [72,73]. PML interacts with CBP/p300 acetyltransferase, which acetylates p53, thus stimulating p53 activity. Recently, p53 is found at telomeres and ablation of p53 function restores adverse effects of telomere loss [74], suggesting active roles of p53 in telomere maintenance as well as the telomere-response pathway. pRb exists in hypophosphorylated form that binds to E2F and inhibits cell cycle progression in senescent cells because of high levels of the cyclin-dependent kinase inhibitors, p21 and p16. p21 is transcriptionally induced at least partly by p53, although p53-independent, post-transcriptional mechanisms also contribute to an increase in p21 expression in senescent cells [75]. p16, another tumor-suppressor protein encoded by INK4a locus, increases in part because Ets, a transcription factor that stimulates p16 expression, is induced by senescent signals including telomere shortening and Ras activation, whereas Id1, a protein that inhibits Ets activity, is decreased in senescent cells [76]. It is demonstrated that ectopic expression of the cyclin-dependent kinase inhibitors, such as p21, p16 and p14, causes premature senescence [77], suggesting pivotal roles in the signaling pathways of senescence.

p53 immunoreactivity is present in vascular cells in areas with chronic inflammation of human atheroma, while a few cells positive for p53 immunoreactivity are found in control arteries [78]. p21 immunoreactivity is also detected in human atheroma but not in normal lesions and is colocalized with p53. Forced expression of cyclin-dependent kinase inhibitors induces premature senescence that is associated with cell dysfunction in cultured vascular cells (Minamino et al. unpublished data). These observations suggest a pathological role of p53 and p21 in atherogenesis. However, their precise roles remain unclear. It is demonstrated that atherosclerosis is aggravated in p53/apolipoprotein E (ApoE) double-knockout mice through an increase in p53-controlled proliferation [79]. In contrast, the study using perivascular collar model in ApoE-knockout mice shows that p53 overexpres-

sion results in a marked decrease in the cellular and extracellular contents in the cap lesions, leading to spontaneous plaque rupture [80]. Thus, in the clinical settings, elevated expression of p53 and cyclin-dependent kinase inhibitors may be deleterious in human atherosclerosis.

9. Ras-induced senescence and vascular inflammation

It has been demonstrated that various molecules including growth factors, vasoactive peptides and oxidative stresses, such as ROS and oxidized low-density lipoproteins, are induced during the lesion formation and regulate numerous critical cell functions, thereby contributing to atherogenesis [81]. These stimuli function as mitogens for vascular cells through the signaling cascades that activate Ras [81]. Inhibition of Ras has been reported to prevent intimal formation after vascular injury, suggesting a critical role of Ras activation in VSMC proliferation [82]. In addition to its role in cell proliferation, we have found that constitutive activation of Ras induces vascular cell senescence that is associated with vascular inflammation [20]. Activation of Ras drastically increased expression of pro-inflammatory cytokines partially through ERK activation in cultured vascular cells. Introduction of Ras into balloon-injured arteries enhanced vascular inflammation as well as senescence compared with control-injured arteries (Fig. 4). Moreover, senescent cells express inflammatory molecules in human atherosclerotic plaque, and ERK is activated in these cells, suggesting that telomere-independent mechanisms may also contribute to vascular cell senescence in human atherosclerosis. Consistent with our findings, functional inhibition of Ras has been demonstrated to suppress pro-inflammatory molecules, thereby reducing lesion formation in ApoE-deficient mice [83]. Moreover, angiotensin II, an important atherogenic molecule that activates the Ras-signaling pathway, has been demonstrated to promote vascular cell senescence as well as vascular inflammation [84]. Thus, it is assumed that atherogenic stimuli may

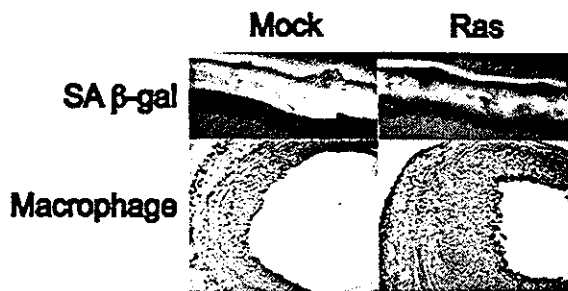


Fig. 4. Activation of Ras induces senescence and inflammation in vivo. The adenoviral vector encoding H-rasV12 (Ras) or the empty vector (Mock) was transduced into rat carotid arteries injured by a balloon catheter. It is known that accumulation of macrophages is minimally involved in the lesion formation in this model. Whereas only a little SA β -gal activity was found in mock-infected injured arteries, transduction of adeno-Ras into injured arteries increased SA β -gal activity (upper panel). The area of accumulated macrophages (brown) in the intima was markedly increased in Ras-infected injured arteries compared with mock-infected injured arteries (lower panel), indicating a causal relationship between Ras activation and vascular inflammation. Adapted from Ref. [20] with permission.

initially promote cell proliferation, and when overstimulated to proliferate, mitogenic-signaling pathways may induce telomere-dependent and telomere-independent senescence, which results in vascular dysfunction. Vascular inflammation is known to induce degradation of extracellular matrix by various proteinases, such as collagenases and gelatinases, and by inhibition of matrix production [85]. Therefore, decreased cellularity and enhanced inflammation associated with vascular cell senescence may contribute to plaque vulnerability.

10. Genetic models for aging

Many molecular mechanisms have been suggested to contribute to human aging and age-associated disease. Recent genetic analyses have demonstrated that reduction-of-function mutations of the signaling pathway of insulin/insulin-like growth factor-1 (IGF-1)/phosphatidylinositol-3 kinase (PI3K)/Akt (also known as protein kinase B) extends the longevity of the nematode *Caenorhabditis elegans* [86–92]. The forkhead transcription factor DAF-16, which is phosphorylated and thereby inactivated by Akt, plays an essential role in this longevity pathway [93,94]. More recently, it has been reported that the genes regulating longevity are conserved in organisms ranging from yeast to mice. The mutation of *Sch9*, which is homologous to *Akt*, extends the lifespan of yeast [95] and mutations that decrease the activity of insulin/IGF-1-like pathway increase the longevity of fruit flies [96] and mice [97,98]. These mutations that extend the lifespan are associated with increased resistance to oxidative stress, which is mediated in part by an increase in expression of antioxidant genes [99–101]. In mammalian cells, activation of Akt has been reported to induce cell proliferation and survival toward tumorigenesis [102–104].

The insulin pathway has also been shown to be essential for the maintenance of normal metabolic homeostasis [105]. Restriction of caloric intake extends the longevity of yeast, worms, fruit flies, mice and probably humans and postpones or prevents age-dependent deterioration and chronic diseases [91]. Since calorie restriction associates with the persistent decrease in the insulin signals, one might think that the insulin pathway could be involved in human aging and age-associated diseases, especially in the patients with diabetes.

Mice models that exhibit an early onset of phenotypes associated with aging have been reported. These include mouse mutants carrying targeted disruption of the genes involving DNA damage repair, such as *ku86* [106], *XPD* [107] and *BRCA1* [108]. Activation of p53 [109] as well as telomerase deficiency [58] also cause premature aging, which is characterized by reduced longevity, osteoporosis, organ atrophy and a diminished stress tolerance. All these molecules have been implicated in cellular senescence. More importantly, cellular senescence in vivo has been detected in premature aging mice [108]. Thus, these results provide in vivo evidence that links cellular senescence to organismal aging.

11. Conclusion

Accumulating evidence indicates a critical role of cellular senescence in organismal aging and age-related disease including atherosclerosis. Young adult bone marrow-derived EPCs have been shown to restore aging-impaired angiogenic function [110]. Chronic treatment with EPCs from young non-atherosclerotic ApoE-deficient mice prevents atherosclerosis progression in ApoE-deficient recipients despite persistent hypercholesterolemia [111]. Moreover, introduction of telomerase into EPCs has been reported to extend cell lifespan and to increase the efficacy of vasculogenesis in vivo [112]. These reports indicate that progressive progenitor cell deficits contribute to age-associated vascular dysfunction and suggest the potential utility of cell-based antisense therapy as a novel therapeutic strategy for vascular aging. Further understanding of mechanisms underlying cellular senescence will provide new insights into the pathogenesis of age-associated vascular disorders.

Acknowledgements

This work was supported by a Grant-in-Aid for Scientific Research, Developmental Scientific Research and Scientific Research on Priority Areas from the Ministry of Education, Science, Sports and Culture, the Program for Promotion of Fundamental Studies in Health Sciences of the Organization for Drug ADR Relief, R&D Promotion and Product Review of Japan (to I.K.) and grants from Takeda Medical Research Foundation, Takeda Science Foundation, Japan Heart Foundation, Mochida Memorial Foundation, Uehara Memorial

Foundation, Mitsubishi Pharma Research Foundation and the Ministry of Education, Science, Sports and Culture of Japan (to T.M.).

References

- [1] Faragher RG, Kipling D. How might replicative senescence contribute to human ageing? *Bioessays* 1998;20:985–91.
- [2] Hayflick L. Current theories of biological aging. *Fed Proc* 1975;34:9–13.
- [3] Schneider EL, Mitsui Y. The relationship between in vitro cellular aging and in vivo human age. *Proc Natl Acad Sci USA* 1976;73:3584–8.
- [4] Rohme D. Evidence for a relationship between longevity of mammalian species and life spans of normal fibroblasts in vitro and erythrocytes in vivo. *Proc Natl Acad Sci USA* 1981;78:5009–13.
- [5] Thompson KV, Holliday R. Genetic effects on the longevity of cultured human fibroblasts. II. DNA repair deficient syndromes. *Gerontology* 1983;29:83–8.
- [6] Campisi J, Kim SH, Lim CS, Rubio M. Cellular senescence, cancer and aging: the telomere connection. *Exp Gerontol* 2001;36:1619–37.
- [7] Serrano M, Blasco MA. Putting the stress on senescence. *Curr Opin Cell Biol* 2001;13:748–53.
- [8] Serrano M, Lin AW, McCurrach ME, Beach D, Lowe SW. Oncogenic ras provokes premature cell senescence associated with accumulation of p53 and p16INK4a. *Cell* 1997;88:593–602.
- [9] Lin AW, Barradas M, Stone JC, van Aelst L, Serrano M, Lowe SW. Premature senescence involving p53 and p16 is activated in response to constitutive MEK/MAPK mitogenic signaling. *Genes Dev* 1998;12:3008–19.
- [10] Zhu J, Woods D, McMahon M, Bishop JM. Senescence of human fibroblasts induced by oncogenic Raf. *Genes Dev* 1998;12:2997–3007.
- [11] Campisi J. The biology of replicative senescence. *Eur J Cancer* 1997;33:703–9.
- [12] Bringold F, Serrano M. Tumor suppressors and oncogenes in cellular senescence. *Exp Gerontol* 2000;35:317–29.
- [13] Dimri GP, Lee X, Basile G, Acosta M, Scott G, Roskelley C, et al. A biomarker that identifies senescent human cells in culture and in aging skin in vivo. *Proc Natl Acad Sci USA* 1995;92:9363–7.
- [14] Kumazaki T, Kobayashi M, Mitsui Y. Enhanced expression of fibronectin during in vivo cellular aging of human vascular endothelial cells and skin fibroblasts. *Exp Cell Res* 1993;205:396–402.
- [15] Bennett MR, Macdonald K, Chan SW, Boyle JJ, Weissberg PL. Cooperative interactions between RB and p53 regulate cell proliferation, cell senescence, and apoptosis in human vascular smooth muscle cells from atherosclerotic plaques. *Circ Res* 1998;82:704–12.
- [16] Burrig KF. The endothelium of advanced arteriosclerotic plaques in humans. *Arterioscler Thromb* 1991;11:1678–89.
- [17] Ross R, Wight TN, Strandness E, Thiele B. Human atherosclerosis. I. Cell constitution and characteristics of advanced lesions of the superficial femoral artery. *Am J Pathol* 1984;114:79–93.
- [18] Fenton M, Barker S, Kurz DJ, Erusalimsky JD. Cellular senescence after single and repeated balloon catheter denudations of rabbit carotid arteries. *Arterioscler Thromb Vasc Biol* 2001;21:220–6.
- [19] Minamino T, Miyauchi H, Yoshida T, Ishida Y, Yoshida H, Komuro I. Endothelial cell senescence in human atherosclerosis: role of telomere in endothelial dysfunction. *Circulation* 2002;105:1541–4.
- [20] Minamino T, Yoshida T, Tateno K, Miyauchi H, Zou Y, Toko H, et al. Ras induces vascular smooth muscle cell senescence and inflammation in human atherosclerosis. *Circulation*, 2003 [in press].
- [21] Marin J. Age-related changes in vascular responses: a review. *Mech Ageing Dev* 1995;79:71–114.
- [22] Rivard A, Fabre JE, Silver M, Chen D, Murohara T, Kearney M, et al. Age-dependent impairment of angiogenesis. *Circulation* 1999;99:111–20.
- [23] Rivard A, Berthou-Soulie L, Principe N, Kearney M, Curry C, Branellec D, et al. Age-dependent defect in vascular endothelial growth factor expression is associated with reduced hypoxia-inducible factor 1 activity. *J Biol Chem* 2000;275:29643–7.
- [24] Schneiderman J, Sawdey MS, Keeton MR, Bordin GM, Bernstein EF, Dilley RB, et al. Increased type 1 plasminogen activator inhibitor gene expression in atherosclerotic human arteries. *Proc Natl Acad Sci USA* 1992;89:6998–7002.
- [25] Sato I, Morita I, Kaji K, Ikeda M, Nagao M, Murota S. Reduction of nitric oxide producing activity associated with in vitro aging in cultured human umbilical vein endothelial cell. *Biochem Biophys Res Commun* 1993;195:1070–6.
- [26] Matsushita H, Chang E, Glassford AJ, Cooke JP, Chiu CP, Tsao PS. eNOS activity is reduced in senescent human endothelial cells: preservation by hTERT immortalization. *Circ Res* 2001;89:793–8.
- [27] Hoffmann J, Haendeler J, Aicher A, Rossig L, Vasa M, Zeiher AM, et al. Aging enhances the sensitivity of endothelial cells toward apoptotic stimuli: important role of nitric oxide. *Circ Res* 2001;89:709–15.
- [28] Nakajima M, Hashimoto M, Wang F, Yamanaga K, Nakamura N, Uchida T, et al. Aging decreases the production of PGI2 in rat aortic endothelial cells. *Exp Gerontol* 1997;32:685–93.
- [29] Comi P, Chiaramonte R, Maier JA. Senescence-dependent regulation of type 1 plasminogen activator inhibitor in human vascular endothelial cells. *Exp Cell Res* 1995;219:304–8.
- [30] Maier JA, Statuto M, Ragnotti G. Senescence stimulates U937-endothelial cell interactions. *Exp Cell Res* 1993;208:270–4.
- [31] Yang J, Chang E, Cherry AM, Bangs CD, Oei Y, Bodnar A, et al. Human endothelial cell life extension by telomerase expression. *J Biol Chem* 1999;274:26141–8.
- [32] Asahara T, Murohara T, Sullivan A, Silver M, van der Zee R, Li T, et al. Isolation of putative progenitor endothelial cells for angiogenesis. *Science* 1997;275:964–7.
- [33] Takahashi T, Kalka C, Masuda H, Chen D, Silver M, Kearney M, et al. Ischemia- and cytokine-induced mobilization of bone marrow-derived endothelial progenitor cells for neovascularization. *Nat Med* 1999;5:434–8.
- [34] Hill JM, Zalos G, Halecox JP, Schenke WH, Waclawiw MA, Quyyumi AA, et al. Circulating endothelial progenitor cells, vascular function, and cardiovascular risk. *New Engl J Med* 2003;348:593–600.
- [35] Vasa M, Fichtlscherer S, Aicher A, Adler K, Urbich C, Martin H, et al. Number and migratory activity of circulating endothelial progenitor cells inversely correlate with risk factors for coronary artery disease. *Circ Res* 2001;89:E1–7.
- [36] Stewart SA, Ben-Porath I, Carey VJ, O'Connor BF, Hahn WC, Weinberg RA. Erosion of the telomeric single-strand overhang at replicative senescence. *Nat Genet* 2003;33:492–6.
- [37] Karlseder J, Smogorzewska A, de Lange T. Senescence induced by altered telomere state, not telomere loss. *Science* 2002;295:2446–9.
- [38] Bodnar AG, Ouellette M, Frolkis M, Holt SE, Chiu CP, Morin GB, et al. Extension of life-span by introduction of telomerase into normal human cells. *Science* 1998;279:349–52.
- [39] Bryan TM, Englezou A, Dalla-Pozza L, Dunham MA, Reddel RR. Evidence for an alternative mechanism for maintaining telomere length in human tumors and tumor-derived cell lines. *Nat Med* 1997;3:1271–4.
- [40] Chang E, Harley CB. Telomere length and replicative aging in human vascular tissues. *Proc Natl Acad Sci USA* 1995;92:11190–4.
- [41] Minamino T, Mitsialis SA, Kourembanas S. Hypoxia extends the life span of vascular smooth muscle cells through telomerase activation. *Mol Cell Biol* 2001;21:3336–42.
- [42] Blackburn EH. Switching and signaling at the telomere. *Cell* 2001;106:661–73.

- [43] Baumann P, Cech TR. Pot1, the putative telomere end-binding protein in fission yeast and humans. *Science* 2001;292:1171–5.
- [44] Hsu HL, Gilley D, Blackburn EH, Chen DJ. Ku is associated with the telomere in mammals. *Proc Natl Acad Sci USA* 1999;96:12454–8.
- [45] Broccoli D, Smogorzewska A, Chong L, de Lange T. Human telomeres contain two distinct Myb-related proteins, TRF1 and TRF2. *Nat Genet* 1997;17:231–5.
- [46] Loayza D, De Lange T. POT1 as a terminal transducer of TRF1 telomere length control. *Nature* 2003;424:1013–8.
- [47] Espejel S, Franco S, Rodriguez-Perales S, Bouffler SD, Cigudosa JC, Blasco MA. Mammalian Ku86 mediates chromosomal fusions and apoptosis caused by critically short telomeres. *EMBO J* 2002;21:2207–19.
- [48] Espejel S, Franco S, Sgura A, Gae D, Bailey SM, Taccioli GE, et al. Functional interaction between DNA-PKCs and telomerase in telomere length maintenance. *EMBO J* 2002;21:6275–87.
- [49] Wong KK, Maser RS, Bachoo RM, Menon J, Carrasco DR, Gu Y, et al. Telomere dysfunction and Atm deficiency compromises organ homeostasis and accelerates ageing. *Nature* 2003;421:643–8.
- [50] Griffith JD, Comeau L, Rosenfield S, Stansel RM, Bianchi A, Moss H, et al. Mammalian telomeres end in a large duplex loop. *Cell* 1999;97:503–14.
- [51] van Steensel B, Smogorzewska A, de Lange T. TRF2 protects human telomeres from end-to-end fusions. *Cell* 1998;92:401–13.
- [52] Smogorzewska A, de Lange T. Different telomere damage signaling pathways in human and mouse cells. *EMBO J* 2002;21:4338–48.
- [53] Baur JA, Zou Y, Shay JW, Wright WE. Telomere position effect in human cells. *Science* 2001;292:2075–7.
- [54] Minamino T, Komuro I. Role of telomere in endothelial dysfunction in atherosclerosis. *Curr Opin Lipidol* 2002;13:537–43.
- [55] Karlseder J, Broccoli D, Dai Y, Hardy S, de Lange T. p53- and ATM-dependent apoptosis induced by telomeres lacking TRF2. *Science* 1999;283:1321–5.
- [56] Blasco MA, Lee HW, Hande MP, Samper E, Lansdorp PM, DePinho RA, et al. Telomere shortening and tumor formation by mouse cells lacking telomerase RNA. *Cell* 1997;91:25–34.
- [57] Lee HW, Blasco MA, Gottlieb GJ, Horner JJ, Greider CW, DePinho RA. Essential role of mouse telomerase in highly proliferative organs. *Nature* 1998;392:569–74.
- [58] Rudolph KL, Chang S, Lee HW, Blasco M, Gottlieb GJ, Greider C, et al. Longevity, stress response, and cancer in aging telomerase-deficient mice. *Cell* 1999;96:701–12.
- [59] Franco S, Segura I, Riese HH, Blasco MA, Decreased B. Decreased B16F10 melanoma growth and impaired vascularization in telomerase-deficient mice with critically short telomeres. *Cancer Res* 2002;62:552–9.
- [60] Leri A, Franco S, Zacheo A, Barlucchi L, Chimenti S, Limana F, et al. Ablation of telomerase and telomere loss leads to cardiac dilatation and heart failure associated with p53 upregulation. *EMBO J* 2003;22:131–9.
- [61] Kim NW, Piatyszek MA, Prowse KR, Harley CB, West MD, Ho PL, et al. Specific association of human telomerase activity with immortal cells and cancer. *Science* 1994;266:2011–5.
- [62] Lin SY, Elledge SJ. Multiple tumor suppressor pathways negatively regulate telomerase. *Cell* 2003;113:881–9.
- [63] Smith LL, Collier HA, Roberts JM. Telomerase modulates expression of growth-controlling genes and enhances cell proliferation. *Nat Cell Biol* 2003;5:474–9.
- [64] Minamino T, Kourembanas S. Mechanisms of telomerase induction during vascular smooth muscle cell proliferation. *Circ Res* 2001;89:237–43.
- [65] Hsiao R, Sharma HW, Ramakrishnan S, Keith E, Narayanan R. Telomerase activity in normal human endothelial cells. *Anticancer Res* 1997;17:827–32.
- [66] Yang J, Nagavarapu U, Relloma K, Sjaastad MD, Moss WC, Pasantiti A, et al. Telomerized human microvasculature is functional in vivo. *Nat Biotechnol* 2001;19:219–24.
- [67] Dimri GP, Itahana K, Acosta M, Campisi J. Regulation of a senescence checkpoint response by the E2F1 transcription factor and p14(ARF) tumor suppressor. *Mol Cell Biol* 2000;20:273–85.
- [68] Wang W, Chen JX, Liao R, Deng Q, Zhou JJ, Huang S, et al. Sequential activation of the MEK-extracellular signal-regulated kinase and MKK3/6-p38 mitogen-activated protein kinase pathways mediates oncogenic ras-induced premature senescence. *Mol Cell Biol* 2002;22:3389–403.
- [69] Sherr CJ. Tumor surveillance via the ARF-p53 pathway. *Gene Dev* 1998;12:2984–91.
- [70] Palmero I, Pantoja C, Serrano M. p19ARF links the tumour suppressor p53 to Ras. *Nature* 1998;395:125–6.
- [71] Jacobs JJ, Keblusek P, Robanus-Maandag E, Kristel P, Lingbeek M, Nederlof PM, et al. Senescence bypass screen identifies TBX2, which represses Cdkn2a (p19(ARF)) and is amplified in a subset of human breast cancers. *Nat Genet* 2000;26:291–9.
- [72] Ferbeyre G, de Stanchina E, Querido E, Baptiste N, Prives C, Lowe SW. PML is induced by oncogenic ras and promotes premature senescence. *Gene Dev* 2000;14:2015–27.
- [73] Pearson M, Carbone R, Sebastiani C, Ciocco M, Fagioli M, Saito S, et al. PML regulates p53 acetylation and premature senescence induced by oncogenic Ras. *Nature* 2000;406:207–10.
- [74] Chin L, Artandi SE, Shen Q, Tam A, Lee SL, Gottlieb GJ, et al. p53 deficiency rescues the adverse effects of telomere loss and cooperates with telomere dysfunction to accelerate carcinogenesis. *Cell* 1999;97:527–38.
- [75] Burkhart BA, Alcorta DA, Chiao C, Isaacs JS, Barrett JC. Two post-transcriptional pathways that regulate p21(Cip1/Waf1/Sdi1) are identified by HPV16-E6 interaction and correlate with life span and cellular senescence. *Exp Cell Res* 1999;247:168–75.
- [76] Ohtani N, Zebedee Z, Huot TJ, Stinson JA, Sugimoto M, Ohashi Y, et al. Opposing effects of Ets and Id proteins on p16INK4a expression during cellular senescence. *Nature* 2001;409:1067–70.
- [77] McConnell BB, Starborg M, Brookes S, Peters G. Inhibitors of cyclin-dependent kinases induce features of replicative senescence in early passage human diploid fibroblasts. *Curr Biol* 1998;8:351–4.
- [78] Ihling C, Menzel G, Wellens E, Monting JS, Schaefer HE, Zeiher AM. Topographical association between the cyclin-dependent kinases inhibitor p21, p53 accumulation, and cellular proliferation in human atherosclerotic tissue. *Arterioscler Thromb Vasc Biol* 1997;17:2218–24.
- [79] Guevara NV, Kim HS, Antonova EI, Chan L. The absence of p53 accelerates atherosclerosis by increasing cell proliferation in vivo. *Nat Med* 1999;5:335–9.
- [80] von der Thusen JH, van Vlijmen BJ, Hoebe RC, Kockx MM, Havekes LM, van Berkel TJ, et al. Induction of atherosclerotic plaque rupture in apolipoprotein E-/- mice after adenovirus-mediated transfer of p53. *Circulation* 2002;105:2064–70.
- [81] Lusis AJ. Atherosclerosis. *Nature* 2000;407:233–41.
- [82] Indolfi C, Avvedimento EV, Rapacciuolo A, Di Lorenzo E, Esposito G, Stabile E, et al. Inhibition of cellular ras prevents smooth muscle cell proliferation after vascular injury in vivo. *Nat Med* 1995;1:541–5.
- [83] George J, Afek A, Keren P, Herz I, Goldberg I, Haklai R, et al. Functional inhibition of Ras by S-trans, trans-farnesyl thiosalicylic acid attenuates atherosclerosis in apolipoprotein E knockout mice. *Circulation* 2002;105:2416–22.
- [84] Brasier AR, Recinos III A, Eleidrisi MS. Vascular inflammation and the renin-angiotensin system. *Arterioscler Thromb Vasc Biol* 2002;22:1257–66.
- [85] Libby P, Ridker PM, Maseri A. Inflammation and atherosclerosis. *Circulation* 2002;105:1135–43.
- [86] Guarente L, Kenyon C. Genetic pathways that regulate ageing in model organisms. *Nature* 2000;408:255–62.
- [87] Kenyon C. A conserved regulatory system for aging. *Cell* 2001;105:165–8.

- [88] Kenyon C, Chang J, Gensch E, Rudner A, Tabtiang R. A *C. elegans* mutant that lives twice as long as wild type. *Nature* 1993;366:461–4.
- [89] Lee RY, Hensch J, Ruvkun G. Regulation of *C. elegans* DAF-16 and its human ortholog FKHL1 by the daf-2 insulin-like signaling pathway. *Curr Biol* 2001;11:1950–7.
- [90] Lin K, Hsin H, Libina N, Kenyon C. Regulation of the *Caenorhabditis elegans* longevity protein DAF-16 by insulin/IGF-1 and germline signaling. *Nat Genet* 2001;28:139–45.
- [91] Longo VD, Finch CE. Evolutionary medicine: from dwarf model systems to healthy centenarians? *Science* 2003;299:1342–6.
- [92] Morris JZ, Tissenbaum HA, Ruvkun G. A phosphatidylinositol-3-OH kinase family member regulating longevity and diapause in *Caenorhabditis elegans*. *Nature* 1996;382:536–9.
- [93] Ogg S, Paradis S, Gottlieb S, Patterson GI, Lee L, Tissenbaum HA, et al. The Fork head transcription factor DAF-16 transduces insulin-like metabolic and longevity signals in *C. elegans*. *Nature* 1997;389:994–9.
- [94] Lin K, Dorman JB, Rodan A, Kenyon C. daf-16: an HNF-3/forkhead family member that can function to double the life-span of *Caenorhabditis elegans*. *Science* 1997;278:1319–22.
- [95] Fabrizio P, Pozza F, Pletcher SD, Gendron CM, Longo VD. Regulation of longevity and stress resistance by Sch9 in yeast. *Science* 2001;292:288–90.
- [96] Tatar M, Kopelman A, Epstein D, Tu MP, Yin CM, Garofalo RS. A mutant *Drosophila* insulin receptor homolog that extends life-span and impairs neuroendocrine function. *Science* 2001;292:107–10.
- [97] Holzenberger M, Dupont J, Ducos B, Leneuve P, Geloën A, Even PC, et al. IGF-1 receptor regulates lifespan and resistance to oxidative stress in mice. *Nature* 2003;421:182–7.
- [98] Blüher M, Kahn BB, Kahn CR. Extended longevity in mice lacking the insulin receptor in adipose tissue. *Science* 2003;299:572–4.
- [99] Fabrizio P, Liou LL, Moy VN, Diaspro A, SelverstoneValentine J, Gralla EB, et al. SOD2 functions downstream of Sch9 to extend longevity in yeast. *Genetics* 2003;163:35–46.
- [100] Honda Y, Honda S. The daf-2 gene network for longevity regulates oxidative stress resistance and Mn-superoxide dismutase gene expression in *Caenorhabditis elegans*. *FASEB J* 1999;13:1385–93.
- [101] Murphy CT, McCarroll SA, Bargmann CI, Fraser A, Kamath RS, Ahringer J, et al. Genes that act downstream of DAF-16 to influence the lifespan of *Caenorhabditis elegans*. *Nature* 2003;424:277–83.
- [102] Datta SR, Brunet A, Greenberg ME. Cellular survival: a play in three Acts. *Genes Dev* 1999;13:2905–27.
- [103] Blume-Jensen P, Hunter T. Oncogenic kinase signalling. *Nature* 2001;411:355–65.
- [104] Testa JR, Bellacosa A. AKT plays a central role in tumorigenesis. *Proc Natl Acad Sci USA* 2001;98:10983–5.
- [105] Cho H, Mu J, Kim JK, Thorvaldsen JL, Chu Q, Crenshaw III EB, et al. Insulin resistance and a diabetes mellitus-like syndrome in mice lacking the protein kinase Akt2 (PKB beta). *Science* 2001;292:1728–31.
- [106] Vogel H, Lim DS, Karsenty G, Finegold M, Hasty P. Deletion of Ku86 causes early onset of senescence in mice. *Proc Natl Acad Sci USA* 1999;96:10770–5.
- [107] de Boer J, Andressoo JO, de Wit J, Huijms J, Beems RB, van Steeg H, et al. Premature aging in mice deficient in DNA repair and transcription. *Science* 2002;296:1276–9.
- [108] Cao L, Li W, Kim S, Brodie SG, Deng CX. Senescence, aging, and malignant transformation mediated by p53 in mice lacking the Brca1 full-length isoform. *Gene Dev* 2003;17:201–13.
- [109] Tyner SD, Venkatachalam S, Choi J, Jones S, Ghebranious N, Igelmann H, et al. p53 mutant mice that display early ageing-associated phenotypes. *Nature* 2002;415:45–53.
- [110] Edelberg JM, Tang L, Hattori K, Lyden D, Rafii S. Young adult bone marrow-derived endothelial precursor cells restore aging-impaired cardiac angiogenic function. *Circ Res* 2002;90:E89–93.
- [111] Rauscher FM, Goldschmidt-Clermont PJ, Davis BH, Wang T, Gregg D, Ramaswami P, et al. Aging, progenitor cell exhaustion, and atherosclerosis. *Circulation* 2003;108:457–63.
- [112] Murasawa S, Llevadot J, Silver M, Isner JM, Losordo DW, Asahara T. Constitutive human telomerase reverse transcriptase expression enhances regenerative properties of endothelial progenitor cells. *Circulation* 2002;106:1133–9.