

Figure 6. Actuarial survival in each group.

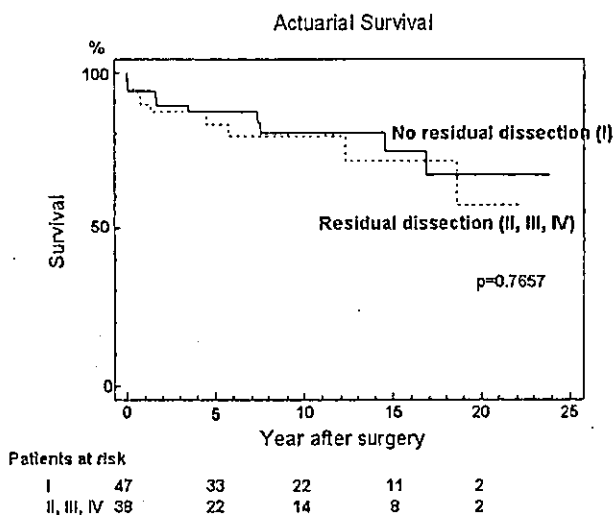


Figure 7. Actuarial survival in patients with and without residual dissection, showing no significant difference ( $P = .7657$ ) between groups.

The introduction of aortic root replacement with a composite graft by Bentall and De Bono<sup>11</sup> in 1968 significantly improved the surgical results in such cases. In recent years, elective surgery has been performed with an operative risk below 5% to provide a full recovery and a normal life-style.<sup>5-7,12</sup> In our series of operations on patients with Marfan syndrome, the mortality among patients with aortic root replacement between 1990 and 2002 was 4.2% (2/48), which was almost half (8.1%) that in earlier experiences between 1977 and 1989. Moreover, the life expectancy of patients with Marfan syndrome has significantly improved

(actuarial survivals were 80% at 10 years and 61% at 20 years).

However, the abnormal aortic tissue in Marfan syndrome requires multiple surgical reconstructions, and the quality of life of patients with Marfan syndrome is significantly restricted by repeated operations. Of all 85 patients in this study, 28 (32.9%) required a total number of 47 subsequent staged operations. This was more common among patients with residual aortic dissection after the initial operation. In this study, the actuarial freedom from reoperation among patients with residual dissection (group II, III, IV) was significantly lower than that among patients without residual dissection (group I). The linearized rate of reoperation was also significantly higher. Unfortunately, this trend of reoperation was immutable even in patients who received concomitant total arch replacement for associated type A dissection. Among patients with aortic dissection in the aortic arch, there was no significant difference in the actuarial freedom from reoperation ( $P = .177$ ) and the linearized rate of reoperation ( $P = .900$ ) between patients with concomitant total arch replacement (group III) and patients with aortic root replacement alone (group IV). Indeed, more than 60% of patients with Marfan syndrome require a reoperation within 10 years, irrespective of whether the total aortic arch is replaced or not. These results showed that concomitant total arch replacement was therapeutic but not curative, because multiple reentries in the fragile dissected septum in Marfan syndrome disturbed the thrombosed closure of the residual false channel.<sup>13-15</sup> On the basis of these results, controversy still continues regarding whether concomitant total arch replacement is necessary for a dissecting aortic arch.<sup>16,17</sup> Concerning the second-stage operation, however, it is generally accepted that replacement of the descending thoracic aorta through left thoracotomy is preferable to total arch replacement through median sternotomy. Additionally, regarding the staged operation for entire aorta replacement, concomitant total arch replacement is more advantageous than aortic root replacement alone. Among our patients, 4 patients in group III had a complete aortic reconstruction with a total of 12 operations, whereas 3 patients in group IV had complete aortic reconstruction with a total of 12 operations (Figure 2). We therefore recommend total arch replacement for type A dissection involving the aortic arch simultaneously with aortic root replacement for annuloaortic ectasia as long as the patient's condition permits this.

Another point highlighted by this study is the late fate of the residual intact arch after aortic root replacement with abnormal tissue, that is, the potential risk of dissection or rupture in the future. This is a key to answering the primary question of whether the intact aortic arch should be replaced prophylactically and aggressively at the time of aortic root replacement for annuloaortic ectasia.

In general, the cause of aortic dissection is the process of injury and repair of the aortic media by the turbulence of blood flow.<sup>18</sup> The initial intimal tear of a dissection is most frequently situated within the first few centimeters of the ascending aorta.<sup>19</sup> In Marfan syndrome, aortic dissection sometimes occurs in a normal-sized ascending aorta, although the aortic root and sinus of Valsalva are enlarged.<sup>8</sup> On the basis of our results, we propose the possible mechanism of a tear in ascending aorta among patients with Marfan syndrome as follows. Turbulence in the ascending aorta is exacerbated by both the velocity of ejected blood and the interface between the ejected blood and the relatively stagnant blood. However, in a normal aortic root, the position of the leaflets helps to reduce turbulence by masking the dilated sinuses and producing a uniform diameter above the ventriculoarterial junction when blood is ejected through the valve orifice.<sup>20-24</sup> In contrast, in a gourdlike aortic root, which is typical of annuloaortic ectasia in Marfan syndrome, this mechanism is not effective. The high-velocity flow of ejected blood reaches the ascending aortic wall with medial degeneration, and turbulence occurs at the junction between the ascending aorta and the dilated sinus of Valsalva because the leaflets cannot mask the dilated sinus of Valsalva (Figure 8).<sup>25</sup> Another factor in dissection is the different tensile strength of the aortic wall itself, which depends on the content of elastic fibers and collagen. The contents of elastic fibers and collagen differ between the ascending aorta and the sinus of Valsalva<sup>26-30</sup> and also between the inner and outer layers of the aortic wall itself. This leads to the "breaking point" of the internal layer in the ascending aorta during aortic dilatation.<sup>21</sup> Therefore these two major factors will be eliminated by composite graft replacement of the dilated sinus of Valsalva and the proximal ascending aorta. This hypothesis is supported by the long-term results of patients with an intact arch in our study. The incidence of new dissection in the residual intact arch after aortic root replacement was extremely low; only 2 of the 53 patients who survived initial hospitalization with an intact arch underwent subsequent total arch replacement for the onset of arch dissection, whereas 4 of the 14 patients who survived initial hospitalization with dissection in the aortic arch underwent subsequent total arch replacement. These results show that prophylactic replacement of the intact aortic arch is not necessary at the time of aortic root replacement for annuloaortic ectasia, because aortic root replacement itself plays a prophylactic role in aortic dissection.

The major limitation of our study was that the time scale of this study ranged through 22 years. During this period mortality and morbidity in aortic surgery were clearly improved by refinements in surgical technique and perioperative management. Additionally, a large proportion of the patients required ongoing treatment and follow-up. Another

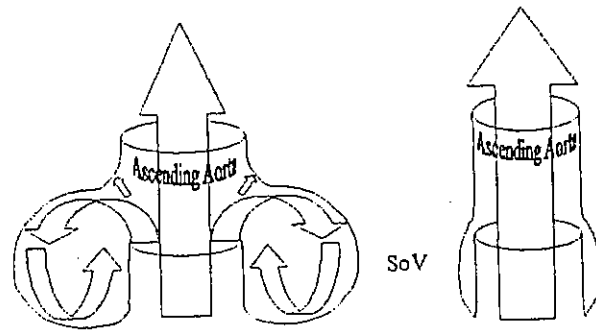


Figure 8. *Right*, Normal aortic root. Position of leaflets helps to reduce turbulence by masking dilated sinus to produce uniform diameter above ventriculoarterial junction when blood is ejected through valve orifice. *Left*, Typical annuloaortic ectasia in Marfan syndrome. High-velocity flow of ejected blood reaches ascending aortic wall with medial degeneration, and turbulence occurs at junction between ascending aorta and dilated sinus of Valsalva (SoV) because leaflets cannot mask dilated sinus. *Arrows* indicate blood flow. Sinus of Valsalva has less elastic fiber than collagen; ascending aorta has more elastic fiber than collagen.

limitation of this study was that the numbers of patients in each group were too small to ascertain any statistically significant difference between groups for operative mortality or the necessity for reintervention.

In conclusion, the incidence of new dissection in the residual intact arch after aortic root replacement is extremely low, because aortic root replacement may remove the factors provoking dissection. According to our results, prophylactic replacement of the intact arch in Marfan syndrome is not necessary during aortic root replacement for annuloaortic ectasia.

#### References

1. Marfan AB. Un cas de déformation congénitale des quatre membres plus prononcé aux extrémités caractérisée par l'allongement des os avec un certain degré d'amincissement. *Bull Mem Soc Med Hop Paris*. 1896;13:220-6.
2. Pyeritz RE, McKusick VA. The Marfan syndrome: diagnosis and management. *N Engl J Med*. 1979;300:772-7.
3. Dietz HC, Pyeritz RE. Mutation in the human gene of fibrillin-1 (FBN1) in the Marfan syndrome and related disorders. *Hum Mol Genet*. 1995;4:1799-809.
4. Loeyls B, Nuytinck L, Delvaux I, De Bie S, De Paepe A. Genotype and phenotype analysis of 171 patients referred for molecular study of the fibrillin-1 gene FBN1 because of suspected Marfan syndrome. *Arch Intern Med*. 2001;161:2447-54.
5. Birks EJ, Webb C, Child A, Radley-Smith R, Yacoub MH. Early and long-term results of a valve-sparing operation for Marfan syndrome. *Circulation*. 1999;100(19 Suppl):II29-35.
6. Baumgartner WA, Cameron DE, Redmond JM, Greene PS, Gott VL. Operative management of Marfan syndrome: the Johns Hopkins experience. *Ann Thorac Surg*. 1999;67:1859-60.
7. Alexiou C, Langley SM, Charlesworth P, Haw MP, Livesey SA, Monro JL. Aortic root replacement in patients with Marfan's syndrome: the Southampton experience. *Ann Thorac Surg*. 2001;72:1502-8.
8. Svensson LG, Khitin L. Aortic cross-sectional area/height ratio timing

- of aortic surgery in asymptomatic patients with Marfan syndrome. *J Thorac Cardiovasc Surg.* 2002;123:360-1.
9. Beighton P, De Paepe A, Danks D, Finidori G, Gedde-Dahl T, Goodman R, et al. International nosology of heritable disorders of connective tissue. *Am J Med Genet.* 1986;29:581-94.
  10. David TE. Current practice in Marfan's aortic root surgery: reconstruction with aortic valve preservation or replacement? What to do with the mitral valve? *J Card Surg.* 1997;12:147-50.
  11. Bentall H, De Bono A. A technique for complete replacement of the ascending aorta. *Thorax.* 1968;23:338-9.
  12. Gott VL, Cameron DE, Alejo DE, Greene PS, Shake JG, Caparelli DJ, Dietz HC. Aortic root replacement in 271 Marfan patients: a 24-year experience. *Ann Thorac Surg.* 2002;73:438-43.
  13. Ando M, Takamoto S, Okita Y, Morota T, Matsukawa R, Kitamura S. Elephant trunk procedure for surgical treatment of aortic dissection. *Ann Thorac Surg.* 1998;66:82-7.
  14. Okita Y, Tagusari O, Minatoya K, Ando M, Kitamura S, Nakajima N, et al. Is distal anastomosis only to the true channel in chronic type B aortic dissection justified? *Ann Thorac Surg.* 1999;68:1586-91.
  15. Ando M, Okita Y, Tagusari O, Morota T, Kitamura S. Three-channeled aortic dissection in Marfan syndrome. *Cardiovasc Surg.* 2000; 8:153-8.
  16. Crawford ES, Kirklin JW, Naftel DC, Svensson LG, Coselli JS, Safi HJ. Surgery for acute dissection of ascending aorta. Should the arch be included? *J Thorac Cardiovasc Surg.* 1992;104:46-59.
  17. Yun KL, Glower DD, Mille DC, Fann JI, Mitchell RS, White WD, et al. Aortic dissection resulting from tear of transverse arch: is concomitant arch repair warranted? *J Thorac Cardiovasc Surg.* 1991;102:355-70.
  18. Schlatmann TJ, Becker AE. Histologic changes in the normal aging aorta: implications for dissecting aortic aneurysm. *Am J Cardiol.* 1977;39:13-20.
  19. Hirst AE Jr, Johnson VJ Jr, Kime SW. Dissecting aneurysm of the aorta: a review of 505 cases. *Medicine.* 1958;37:217-79.
  20. Maier GW, Wechsler AS. Pathophysiology of aortic valve disease. In: Edmunds LH Jr, editor. *Cardiac surgery in the adult.* 1st ed. New York: McGraw-Hill; 1997. p. 835-55.
  21. Robicsek F, Thubrikar M. The mechanism and prevention of aortic dissection in Marfan syndrome. In: Hetzer R, Gehle P, Ennker J, editors. *Cardiovascular aspects of Marfan syndrome.* 1st ed. Berlin, Germany: Springer; 1995. p. 61-70.
  22. Thubrikar M. Geometry of the aortic valve. In: Thubrikar M, editor. *The aortic valve.* 1st ed. Boca Raton (FL): CRC Press; 1990. p. 1-20.
  23. Peacock JA. An in vitro study of the onset of turbulence in the sinus of Valsalva. *Circ Res.* 1990;67:448-60.
  24. Vellhouse BJ. Velocity and pressure distributions in the aortic valve. *J Fluid Mech.* 1969;37:587-600.
  25. Grande-Allen KJ, Cochran RP, Reinhall PG, Kunzelman KS. Mechanisms of aortic valve incompetence: finite-element modeling of Marfan syndrome. *J Thorac Cardiovasc Surg.* 2001;122:946-54.
  26. Perejda AJ, Abraham PA, Carnes WH, Coulson WF, Uitto J. Marfan's syndrome: structural, biochemical, and mechanical studies of the aortic media. *J Lab Clin Med.* 1985;06:376-83.
  27. Hirata K, Triposkiadis F, Sparks E, Bowen J, Wooley CF, Boudoulas H. The Marfan syndrome: abnormal aortic elastic properties. *J Am Coll Cardiol.* 1991;18:57-63.
  28. Jeremy RW, Huang H, Hwa J, McCarron H, Hughes CF, Richards JG. Relation between age, arterial distensibility, and aortic dilatation in the Marfan syndrome. *Am J Cardiol.* 1994;74:369-73.
  29. Sutton JP, Ho SY, Anderson RH. The forgotten interleaflet triangles: a review of the surgical anatomy of the aortic valve. *Ann Thorac Surg.* 1995;59:419-27.
  30. Sheppard M. Diseases of the aorta. In: Sheppard M, Davies MJ, editors. *Practical cardiovascular pathology.* 1st ed. New York: Oxford University Press; 1998. p. 172-90.

## Discussion

**Dr Nicholas Kouchoukos (St Louis, Mo).** In their study, Tagusari and colleagues have focused on the question of whether the aortic

arch should be replaced at the time of replacement of the dilated aortic root in patients with Marfan syndrome. Among the 57 patients with an intact arch at the time of aortic root replacement, only 2 required subsequent arch replacement for new-onset arch dissection. The actuarial freedom of reoperation in this group was 90% at 10 years. These observations are in agreement with the results of other large series of patients with Marfan syndrome and an intact arch who have undergone only aortic root replacement. The aggregate experience strongly suggests that replacement of the arch is not indicated in this setting.

What is less clear is whether the aortic arch should be replaced at the time of aortic root replacement in patients with acute or chronic type A dissection. Albeit the number of patients with dissection in this series was small, 29 patients, no difference in survival or in freedom from any operation was observed at 10 years between the 15 patients undergoing only aortic root replacement and the 13 patients who had aortic root and simultaneous arch replacement. However, the rate of reoperation on the aortic arch was significantly higher among the patients with dissected arch who underwent only aortic root replacement than among the patients with an intact arch. This suggests that replacement of the dissected arch may be advantageous.

Only 10 of the 46 patients with dissection in this series had acute dissection. Tagusari and colleagues did not examine outcomes in this subgroup, presumably because of small numbers. However, the decision to replace the aortic arch in the presence of acute dissection may be associated with higher risk than if the dissection is chronic.

I have several questions for Dr Tagusari. First, on the basis of your findings, what is your current strategy for management of patients undergoing aortic root replacement who have a type A dissection?

**Dr Tagusari.** We perform aortic root replacement with composite graft and total arch replacement.

**Dr Kouchoukos.** Do you manage the patients with acute dissection in this setting any differently than you manage the patients with chronic dissection?

**Dr Tagusari.** In general, the patient with Marfan syndrome who has an aortic dissection is young. Accordingly, we should perform total arch replacement simultaneously to save further operation.

**Dr Kouchoukos.** Do you recommend complete aortic arch replacement in the setting of acute dissection?

**Dr Tagusari.** Yes.

**Dr Kouchoukos.** A valve-sparing procedure was performed in 17 of the 86 patients in the series. How much of the ascending aorta was replaced in these patients? Do you believe, from your experience to date, that this is a durable procedure in patients with Marfan syndrome?

**Dr Tagusari.** For the patient with Marfan syndrome, I prefer a composite graft replacement to valve-sparing operation, especially a remodeling procedure, because in our histologic findings the aortic valve showed concentric layering of collagen fibers mixed with glycosaminoglycans. This means severe degeneration of the leaflet itself. Actually, 4 of the 17 patients who underwent valve-sparing operations (2 of 13 reimplantations and 2 of 4 remodelings) needed aortic valve replacement.

# Total Arterial Off-Pump Coronary Artery Bypass Grafting for Revascularization of the Total Coronary System: Clinical Outcome and Angiographic Evaluation

Osamu Tagusari, MD, Junjiro Kobayashi, MD, Ko Bando, MD, Kazuo Niwaya, MD, Hiroyuki Nakajima, MD, Takeshi Nakatani, MD, Toshikatsu Yagihara, MD, and Soichiro Kitamura, MD

Department of Cardiovascular Surgery, National Cardiovascular Center, Osaka, Japan

Reprinted from  
THE ANNALS OF THORACIC SURGERY  
Volume 78, Number 4, October 2004

# Total Arterial Off-Pump Coronary Artery Bypass Grafting for Revascularization of the Total Coronary System: Clinical Outcome and Angiographic Evaluation

Osamu Tagusari, MD, Junjiro Kobayashi, MD, Ko Bando, MD, Kazuo Niwaya, MD, Hiroyuki Nakajima, MD, Takeshi Nakatani, MD, Toshikatsu Yagihara, MD, and Soichiro Kitamura, MD

Department of Cardiovascular Surgery, National Cardiovascular Center, Osaka, Japan

**Background.** We assessed the clinical outcome and conducted an angiographic study of total arterial off-pump coronary artery bypass grafting for revascularization of the total coronary system.

**Methods.** Of 382 consecutive patients who underwent off-pump coronary artery bypass between April 2000 and December 2002, 235 patients (193 men and 42 women, mean age  $66 \pm 9$  years) with three-vessel disease underwent off-pump coronary artery bypass with all arterial grafts. A total of 872 vessels were bypassed (average number of grafts  $3.7 \pm 0.8$ ). The internal thoracic arteries, radial arteries, and gastroepiploic arteries were used for revascularization of 306, 542, and 24 coronary arteries, respectively. Two hundred twenty-five patients underwent revascularization with composite grafts that were connected to the in situ internal thoracic artery (Y configuration 181, I configuration 55, K configuration 27, X configuration 3, T configuration 1); 10 patients underwent revascularization with all in situ grafts.

**Results.** Three (1.3%) hospital deaths and 1 late death occurred. There were no occurrences of clinical underperfusion syndrome or new intraaortic balloon pump insertion. Cerebral infarction occurred in 2 patients (0.8%). Early postoperative angiography was performed on 833 grafts in 223 patients (95%); the overall patency rate was 98%. Stratified by coronary distribution, the patency rate was 99% (218/221) in the left anterior descending artery, 97% (84/87) in the diagonal artery, 99% (70/71) in the obtuse marginal artery, 98% (262/268) in the posterolateral artery, 98% (167/170) in the posterior descending artery, and 100% (16/16) in the right coronary artery.

**Conclusions.** Total arterial off-pump coronary artery bypass yielded good clinical results and an excellent patency rate of revascularization for the total coronary system.

(Ann Thorac Surg 2004;78:1304–11)

© 2004 by The Society of Thoracic Surgeons

Recently, off-pump coronary artery bypass (OPCAB) operation has been widely used and adopted by many surgical groups due to the accumulation of experience and improvement of surgical techniques and stabilization devices [1–4]. However, a major concern still exists in the accuracy of the coronary anastomosis performed with arterial grafts on a beating heart. Another concern is the ability to perform a complete revascularization in patients with multiple-vessel disease using this technique. The aim of this study was to demonstrate the feasibility of performing total arterial revascularization for the total coronary system with this approach.

## Material and Methods

### Patient Selection

Between April 2000 and December 2002, OPCAB was performed in 451 patients, except for 2 patients who were converted from off-pump to on-pump coronary artery bypass grafting (CABG) because of hemodynamic instability during anastomosis of the left anterior descending artery (LAD). Three hundred thirty-two patients had three-vessel disease. Of these patients, 235 patients underwent revascularization with all arterial grafts. The preoperative characteristics of the patients are summarized in Table 1.

### Conduit Selection

Basically, we used the radial artery (RA) composite graft in combination with one or both internal thoracic arteries (ITA) for revascularization of the total coronary system. In particular, single ITA and the RA as a composite graft were used for elder patients or patients with poor risks. The gastroepiploic artery (GEA) was harvested in pa-

Accepted for publication March 30, 2004.

Presented at the Thirty-ninth Annual Meeting of The Society of Thoracic Surgeons, San Diego, CA, Jan 31–Feb 2, 2003.

Address reprint requests to Dr Tagusari, Department of Cardiovascular Surgery, National Cardiovascular Center, 5-7-1 Fujishirodai, Suita, Osaka 565-8565, Japan; e-mail: otagusar@hsp.ncvc.go.jp.

**Abbreviations and Acronyms**

- CABG = coronary artery bypass grafting
- CK-MB = creatine kinase-MB
- DG = diagonal branch
- EKG = electrocardiogram
- GEA = gastroepiploic artery
- ITA = internal thoracic artery
- LAD = left anterior descending artery
- LITA = left internal thoracic artery
- OM = obtuse marginal
- OPCAB = off-pump coronary artery bypass
- PD = posterior descending
- PL = posterolateral
- RA = radial artery
- RITA = right internal thoracic artery

tients whose RA was not available because of a positive Allen's test in the bilateral forearms or chronic renal failure (serum creatinine > 1.5 mg/dL).

Because possible stenosis of the subclavian artery and celiac artery may be a cause of concern, we routinely evaluate by preoperative imaging such as computed tomography, magnetic resonance angiography, or angiography.

**Preparation of the Conduits**

A conventional, semiskeletonized method was used for the dissection of the ITAs. The RA was harvested from the nondominant arm using an ultrasonic dissection technique [5]. All arterial conduits were wrapped in a sponge soaked with a solution of papaverine hydrochloride. After administration of heparin (1.5 mg/kg), the

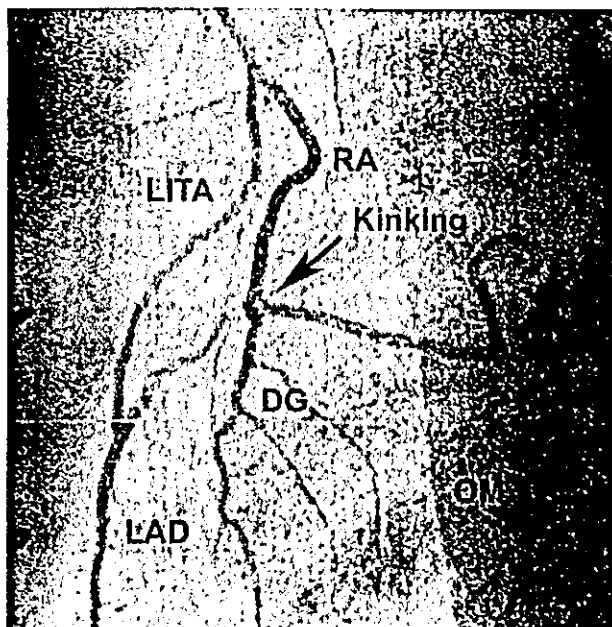


Fig 1. Y composite graft. The radial artery (RA) shows kinking when the RA as a Y composite graft is sewn on the diagonal (DG) that runs parallel to the left anterior descending artery (LAD) in a side-to-side fashion. (LITA = left internal thoracic artery; OM = obtuse marginal.)

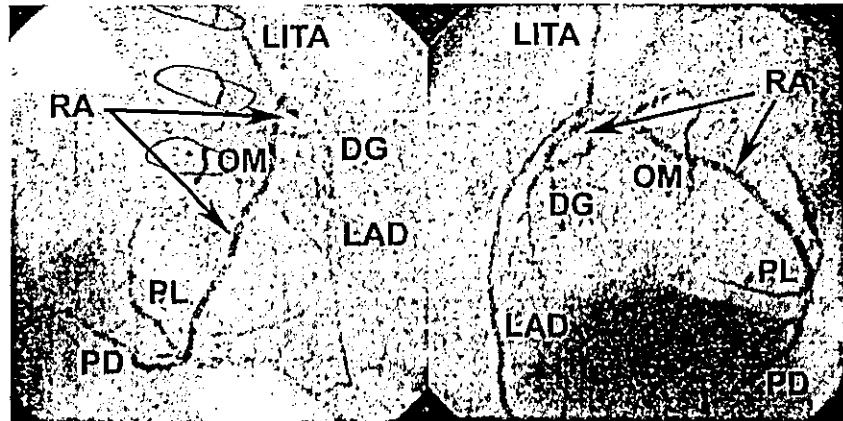
Table 1. Preoperative Characteristics (n = 235)

	Number	Percent
Age (y)		
Mean	66.2 ± 8.7 (range 42-84)	
≥65 y and ≤74 y	99	42
≥75 y	45	19
Male/Female	193/42	
LVEF < 0.35	40	17
Preoperative IABP	7	3
Acute MI	4	2
Emergency case	7	3
Reoperation	7	3
History of PCI	46	20
Diabetes mellitus	83	35
Cerebrovascular disease	51	22
Chronic renal failure	8	3
Hemodialysis	6	3
COPD	7	3
Higgins Score		
Mean	3.3 ± 2.8	
≥5	61	26

COPD = chronic obstructive pulmonary disease; IABP = intra-aortic balloon pumping; LVEF = left ventricular ejection fraction; MI = myocardial infarction; PCI = percutaneous coronary intervention.

arterial grafts were divided. A mixture of blood and a solution of papaverine hydrochloride was gently injected into the lumen of the RA to prevent spasm. The left internal thoracic artery (LITA) was generally used for revascularization of the LAD, or blood source of the RA as various configurations of the composite graft. When the GEA was harvested, it was used as an in situ graft to the posterior descending (PD) or/and posterolateral (PL) artery. The right internal thoracic artery (RITA) was anastomosed to the LAD as an in situ graft or connected to the RA for extension as an I or Y graft. Y configuration was the most common composite graft for multivessel revascularization. A K configuration was used when the diagonal branch (DG) ran parallel to the LAD. The advantage of the K graft is that it spares the length of RA, because a long RA segment is required to avoid kinking when the RA is used as a Y composite graft sewn on the DG that runs parallel to the LAD in a side-to-side fashion (Fig 1). With this K graft, the other end of the RA extends to the PD with a few side-to-side anastomoses (Fig 2). Sequential bypass of the LITA to DG and the LAD was also performed in our series. However, side-to-side anastomosis between the LITA and the DG is technically demanding on the beating heart when the LITA is small. As for the X graft, the RA can extend fully around the heart from the DG to the right coronary artery (Fig 3). All composite grafts except the I configuration were arranged before the distal anastomoses. In the I configuration, the RA was connected to the RITA after the distal anastomoses to adjust the length of the RITA.

Fig 2. K composite graft. The advantage of the K graft is sparing the length of the radial artery (RA), when bypass is necessary for the diagonal (DG) that runs parallel to the left anterior descending artery (LAD). (LITA = left internal thoracic artery; OM = obtuse marginal; PD = posterior descending; PL = posterolateral.)



### Surgical Procedure

A standard median sternotomy was used in all patients. The pericardium was opened and deep pericardial retraction sutures were made. Proper positioning and stabilization of the heart were achieved by pericardial sutures and suction stabilizers (Medtronic Octopus, Starfish, Medtronic, Inc, Minneapolis, MN) with rotation of the operative table. Transesophageal echocardiography and pulmonary artery pressure monitoring were performed to check mitral regurgitation due to extensive left ventricular geometric change and right ventricular outflow obstruction due to the right ventricular geometric change. Only transient proximal compression of the target vessel to control the coronary blood flow was accomplished with a silicone rubber loop. The heart rate and blood pressure control were obtained with diltiazem, landiolol hydrochloride, and norepinephrine. After coronary arteriotomy, an intraluminal shunt was inserted to maintain the coronary blood flow and bloodless operative field. A carbon dioxide saline-blower was also used to eliminate excessive blood from opened coronary vessel. The coronary artery was anastomosed in the order of LAD, DG, obtuse marginal (OM), and PL to the PD. The sequential anastomosis technique is a diamond-shaped (90° crossing) method with the RA, and usually a parallel method with in situ arterial grafts. To prevent arterial spasm, diltiazem (0.5 to 1.0  $\mu\text{g}/\text{kg}$ ) or nicardipine (0.1 to

0.2  $\mu\text{g}/\text{kg}$ ) was infused intraoperatively and during the first 16 hours after the operation. Diltiazem (100 to 200 mg/d) or amlodipine (2.5 to 5.0 mg/d) was then prescribed orally in conjunction with aspirin (162 mg/d) from the next morning.

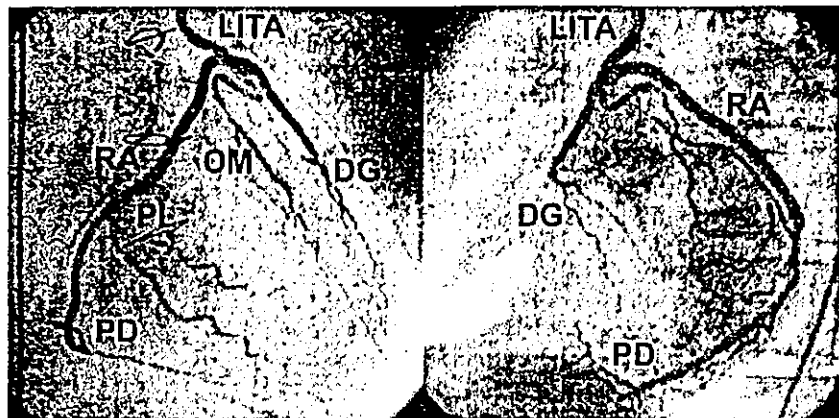
### Angiographic Study

In 223 (94.9%) patients, informed consent was obtained and follow-up angiography was performed before hospital discharge by cardiologists. By means of the Cardiovascular Measurement System (QCA-CMS, version 4.1; Medical Imaging System, Leiden, The Netherlands), the stenotic percentage of anastomosis was calculated by comparing the diameter of anastomosis with that of the proximal portion of the graft at the view of the minimum lumen. A percentage stenosis of less than 50% was assessed to be patent [6, 7].

### Data Collection and Follow-Up

We retrospectively reviewed the data from the operation notes, anesthesia records, clinical histories, laboratory investigations, and cardiac catheterization. This retrospective study was approved by the Internal Review Board of the National Cardiovascular Center. Follow-up data were collected from the medical records of outpatient visits and correspondence with referring physicians.

Fig 3. X composite graft. In an X graft, the radial artery (RA) can extend fully around the heart from the diagonal (DG) to the posterior descending (PD) artery. (LITA = left internal thoracic artery; OM = obtuse marginal; PL = posterolateral.)



All clinical characteristics were accumulated as a computerized database and analyzed.

**Statistical Methods**

All values are expressed as the mean ± standard deviation. The discrete variables were analyzed with the Fisher's exact test between two groups and Kruskal-Wallis rank test for more than three groups. Scheffé's test was performed when a significant difference was recognized in the results of the Kruskal-Wallis test. All statistical analyses were performed using the software package SPSS 10.0 for Windows (SPSS Inc, Chicago, IL). The differences were considered statistically significant when the *p* value was less than 0.05.

**Results**

Eight hundred seventy-two distal anastomoses were performed on 235 patients. The mean number of distal anastomoses was 3.71 ± 0.82 (range 3 to 7). Distal anastomosed sites were 233 LADs, 88 DGs, 73 OMs, 282 PLs, 180 PDs, and 17 right coronary arteries.

Unilateral ITA was used in 127 patients (54.0%) and bilateral ITA in 108 patients (46.0%). The RA was used as a composite graft in 232 patients (98.7%) and the GEA was used as an in situ graft in 16 patients (6.8%). Y, I, K, X, or T configuration was used for the RA composite graft in 181, 55, 27, 3, and 1 patients, respectively. Revascularization with all in situ grafts was performed in 10 patients for 40 distal anastomoses.

**Angiographic Study**

The patency rates according to coronary distribution, graft materials, and anastomotic fashions are shown in Table 2. The patency rates according to the configurations of the composite graft are also shown in Table 3. The overall patency rate was 98.1% (817/833). Stratified by coronary distribution, the patency rate was 98.6% in LAD, 96.6% in DG, 98.6% in OM, 97.8% in PL, 98.2% in PD, and 100% in the right coronary artery. The patency rate was 98.7% with the LITA, 95.9% with the RITA, 98.5% with the RA, and 88.0% with the GEA. The patency rate was 97.6% with the end-to-side fashion and 98.9% with the side-to-side fashion. The patency rate with GEA was significantly lower than that of the other graft materials (LITA versus GEA, *p* = 0.001; RA versus GEA, *p* < 0.001). However, no significant changes were noted in the patency rates between coronary distribution (*p* = 0.846), anastomotic fashion (*p* = 0.197), and the configuration of the composite graft (*p* = 0.779).

Five of 254 composite grafts (2.0%) showed kinking or stenosis of the LITA just proximal to the composite graft anastomosis site with the RA. Four of 303 ITAs (1.3%) showed stenosis in the middle of the vessel probably due to intraoperative injury.

Evident flow competition was observed in 36 patients. Of those, 24 RA composite grafts and 12 of the LITA distal from the anastomotic site of the composite graft to the target coronary artery were not opacified in angiography of the in situ graft, although the target coronary artery

Table 2. Patency for Bypass Distribution, Graft Material and Anastomotic Fashion

	Graft Material														
	LITA			RITA			RA			GEA			Total		
	E-S	S-S	S-S	E-S	S-S	S-S	E-S	S-S	S-S	E-S	S-S	E-S	S-S	E-S	S-S
LAD	199/201 (99.0%)	1*	1*	16/17 (94.1%)	1*	0	1*	0	0	0	0	216/219 (98.6%)	2*	216/219 (98.6%)	2*
DG	7*	12*	23*	6/7 (85.7%)	1*	23*	35/37 (94.6%)	0	0	0	0	48/51 (94.1%)	36*	48/51 (94.1%)	36*
OM	7/8 (87.5%)	0	38*	2*	0	38*	22*	1*	1*	0	0	32/33 (97.0%)	38*	32/33 (97.0%)	38*
PL	6*	2*	158/160 (98.8%)	3*	0	35*	86/88 (97.7%)	1/2 (50.0%)	6/7 (85.7%)	1/2 (50.0%)	0	101/104 (97.1%)	41*	101/104 (97.1%)	161/164 (98.2%)
PD	0	0	0	4*	0	0	114/116 (98.3%)	8/9 (88.9%)	8/9 (88.9%)	6*	0	126/129 (97.7%)	1*	126/129 (97.7%)	41*
RCA	0	0	0	13*	1*	0	2*	0	0	0	0	15*	1*	15*	1*
Total	219/222 (98.6%)	15*	44/46 (95.7%)	3*	3*	254/256 (99.2%)	260/266 (97.7%)	15/17 (88.2%)	15/17 (88.2%)	7/8 (87.5%)	7/8 (87.5%)	538/551 (97.6%)	279/282 (98.9%)	538/551 (97.6%)	279/282 (98.9%)

\* 100% of patency rate.

DG = diagonal; E-S = end-to-side anastomosis; GEA = gastroepiploic artery; LAD = left anterior descending artery; LITA = left internal thoracic artery; OM = obtuse marginal; PL = posterolateral; PD = posterior descending; RCA = right coronary artery; RITA = right internal thoracic artery; S-S = side-to-side anastomosis.



Table 3. Patency for Configurations of Composite Graft

	Configurations of Composite Graft					Total
	Y	I	K	X	T	
	171	53	26	3	1	254
DG	39/42 (92.9%)	0	28 <sup>a</sup>	3 <sup>a</sup>	0	70/73 (95.9%)
OM	54 <sup>a</sup>	0	10 <sup>a</sup>	0	0	64/64
PL	168/169 (99.4%)	45/47 (95.7%)	34 <sup>a</sup>	3 <sup>a</sup>	3 <sup>a</sup>	253/256 (98.8%)
PD	100/102 (98.0%)	46 <sup>a</sup>	12 <sup>a</sup>	2 <sup>a</sup>	1 <sup>a</sup>	161/163 (98.8%)
RCA	3 <sup>a</sup>	6 <sup>a</sup>	0	1 <sup>a</sup>	0	10 <sup>a</sup>
Total	364/370 (98.4%)	97/99 (98.0%)	84 <sup>a</sup>	9 <sup>a</sup>	4 <sup>a</sup>	558/566 (98.6%)

<sup>a</sup> 100% of patency rate

DG = diagonal; OM = obtuse marginal; PD = posterior descending; PL = posterolateral; RCA = right coronary artery.

and its anastomotic site were clearly opacified in the native coronary angiography.

*Early and Late Mortalities and Morbidities*

Table 4 lists the early and late complications. Early death occurred in 3 patients (1.3%) due to intracranial bleeding, aspiration pneumonia, and intestinal hemorrhage. Perioperative myocardial infarction (new Q waves in electrocardiogram [ECG], creatine kinase-MB [CK-MB] more than 50 with ECG change or CK-MB more than 70 without ECG change; normal value less than 11 IU/L in our institute) occurred in 6 patients (2.6%). Two patients had a stroke during rehabilitation, one of which occurred during the postoperative angiographic study. No clinical

underperfusion syndrome was noted and new intraaortic balloon pump insertion was not necessary.

Eleven patients underwent successful percutaneous catheter intervention (balloon angioplasty or coronary stenting), although they were asymptomatic. Balloon angioplasties were performed in the stenosis of the LITA just proximal to the connection of the Y composite graft (Fig 4) in 3 patients, in the stenosis of the middle of the LITA in 4 patients, and in the stenosis of the native coronary artery in 2 patients. Coronary stenting was performed in the stenosis of the RITA just proximal to the connection of the I composite graft (Fig 5) in 1 patient and the stenosis of the middle of the LITA in 1 patient. One patient underwent redo OPCAB before discharge due to occlusion of the LITA to the LAD.

One patient died suddenly 6 months after the operation because of unknown causes. Two patients whose pre-discharge angiography showed anastomotic stenosis

Table 4. Early and Late Results

Results	Number
<b>Early Results</b>	
Hospital mortality	3 (1.3%)
<b>Morbidity</b>	
Perioperative MI	6 (2.6%)
Postoperative IABP	0 (0%)
Early coronary intervention	12 (5.1%)
Reexploration for bleeding	2 (0.8%)
<b>Sternal</b>	
Dehiscence	6 (2.6%)
Infection	0 (0%)
Cerebral infarction	2 (0.8%) <sup>a</sup>
Renal failure with dialysis	2 (0.3%)
<b>Forearm</b>	
Circulatory injury	0 (0%)
Infection	1 (0.4%)
Paresthesia	0 (0%)
<b>Late Results</b>	
Late death	1 (0.4%)
<b>Cardiovascular event</b>	
Admission for angina or CHF	3 (1.3%)
Coronary intervention	2 (0.8%)
Cerebral infarction	4 (1.7%)

<sup>a</sup> One occurred during postoperative angiographic study

CHF = congestive heart failure; MI = myocardial infarction.

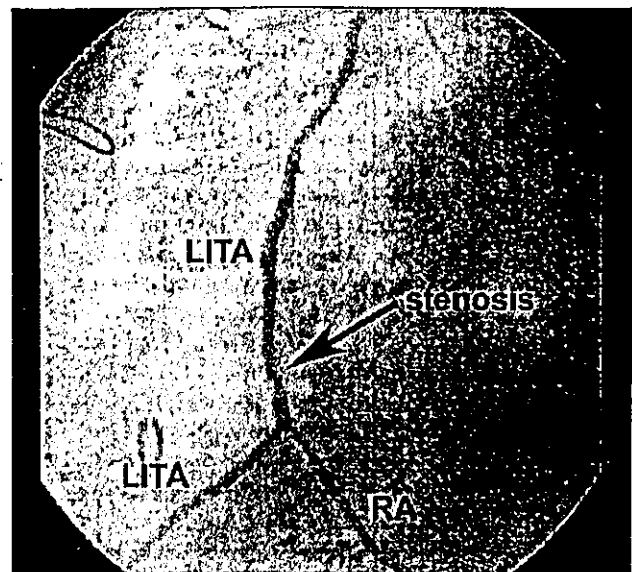


Fig 4. Stenosis of a Y composite graft. Three patients underwent balloon angioplasty, which was performed successfully in the stenosis of the left internal thoracic artery (LITA) just proximal to the connection of the Y composite graft. (RA = radial artery.)

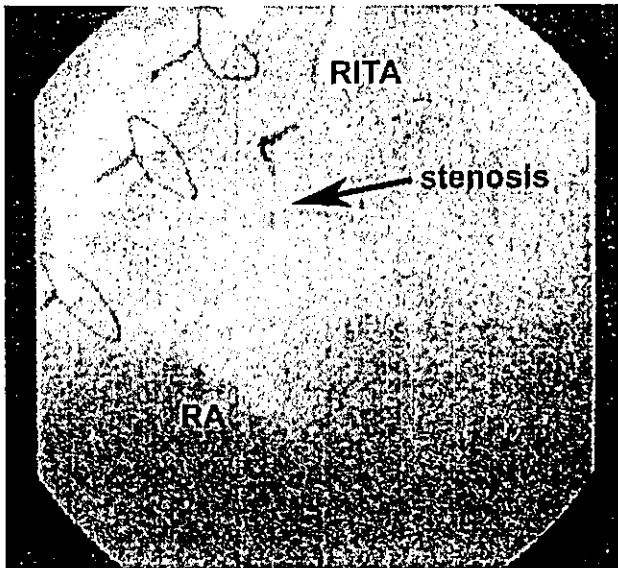


Fig 5. Stenosis of an I composite graft. Coronary stenting was performed in the stenosis of the right internal thoracic artery (RITA) just proximal to the connection of an I composite graft in 1 patient. (RA = radial artery.)

of the LAD returned to the hospital for recurrent angina and underwent successful percutaneous coronary intervention 5 months after the operation. One patient with poor left ventricular function was readmitted for congestive heart failure.

#### Comment

The OPCAB operation is currently considered to be a safe alternative to myocardial revascularization with cardiopulmonary bypass [1-4]. However, the ability of total arterial OPCAB for multivessel disease remains controversial. In our series, the total arterial OPCAB for the total coronary system achieved excellent patency in the early postoperative term and showed good clinical results. No significant changes were noted in the patency rates between coronary distributions ( $p = 0.846$ ), anastomotic fashions ( $p = 0.197$ ), and the configurations of the composite graft ( $p = 0.779$ ), except the graft materials. The patency rate with GEA was significantly lower than that of the other graft materials (LITA versus GEA,  $p = 0.001$ ; RA versus GEA,  $p < 0.001$ ). The size of the GEA was variable and sometimes too small for multivessel revascularization. This finding may be the result of our performing the sequential bypass graft using small GEA. Recently, when the GEA was essential for revascularization, we have used skeletonized GEA using an ultrasonic scalpel to facilitate visual inspection [8].

Our standard technique to achieve total arterial revascularization for total coronary system is the RA composite graft in combination with one or both ITAs. The RA is used as a material for the free arterial graft because of its easier harvesting and handling. The distal sequential bypass to the coronary arteries, a thicker wall, and wider

lumen compared with ITA and GEA allow meticulous anastomosis on the beating heart.

The composite graft technique appears to have advantages over the free graft that is anastomosed to the ascending aorta. First, aorta no-touch OPCAB using a composite graft reduces the incidence of neurologic complications [9, 10]. Second, a composite graft makes more efficient use of the conduit by placing the inflow close to the target coronary arteries [10-12]. Finally, the inflow of the ITA does not expose the free arterial graft to high wall stress, which may cause the early development of intimal hyperplasia [13, 14].

The composite graft technique has the pitfall of total dependence of the coronary bypass flow on the flow of the proximal ITA. We routinely evaluate the subclavian artery and the ITA by preoperative angiography, magnetic resonance angiography, or three-dimensional computed tomographic angiography, because stenosis of the proximal ITA or subclavian artery may be a cause of global ischemia. However, the adaptability of the ITA as a blood source of the arterial composite graft is still a potential risk in this technique. Multiple clinical and experimental studies have examined the suitability of the ITA as a blood source of the arterial composite graft [15-21]. From the results of positron emission tomography, Sakaguchi and colleagues [18] documented that the composite Y graft was not as effective as independent grafts for improving the coronary flow reserve soon after bypass grafting. However, most investigations have reported that the flow reserve of the proximal ITA is sufficient for a blood source of composite graft for multiple coronary revascularizations. Indeed, in the present series, there was no hypoperfusion syndrome or need for new intraaortic balloon pump insertion even in the patients whose total coronary artery system was supplied by single ITA.

In general, hypoperfusion syndrome related to the conventional CABG occurs typically 30 to 40 minutes after discontinuation of a cardiopulmonary bypass [22]. It is conceivable that the reactive hyperemia of the myocardium that presents after removal of the aortic clamp [23-25] may require greater conduit flow while the oxygen debt is repaid. This situation might produce a drastic imbalance between graft flow and myocardial demand, resulting in the hypoperfusion syndrome [17, 26]. In our standard technique, the LAD is revascularized at first by the ITA because it is the most important coronary artery and exposure of the LAD has no major hemodynamic consequences [27]. After revascularization of the LAD, the coronary artery was anastomosed in the order of the diagonal, obtuse marginal, and posterolateral to posterior descending arterial branches with only local ischemia of the target vessel. We predicted that these techniques, which avoid intraoperative global myocardial ischemia, contributed at least partially to avoiding the hypoperfusion syndrome in our patients.

The competitive flow between the native coronary artery and bypass graft is another concern in any composite graft attached to the ITA [28]. This phenomenon was induced by graft-recipient artery mismatch. In 38

patients with composite grafts, the target coronary artery and its anastomotic site were clearly opacified in the native coronary angiography, although the bypass graft to the target coronary artery (ie, the composite graft or the distal ITA of the composite bifurcation) was not opacified in angiography of the in situ graft. Diffuse narrowing of the distal LITA, from the anastomotic site of the composite graft, was recognized in 13 patients who had competitive flow in the distal LITA to the LAD. No definite conclusion has been reached concerning the relationships between the competitive flow, diffuse narrowing, and true graft failure [29-33]. It still remains to be determined whether a particular coronary artery with a noncritical lesion should be grafted prophylactically using the arterial graft for future progression [34]. We prefer to graft to a coronary artery with moderate stenosis in a side-to-side fashion, and the termination of this conduit was to the coronary artery of severe stenosis. When the posterior descending coronary artery had only mild stenosis, we anastomosed the side of the composite graft to that branch and the end of the composite graft to the circumflex branches. In our study, no patient with competitive flow of bypass grafts was readmitted for angina or congestive heart failure. Although late follow-up angiography was performed in only 2 cases with competitive flow of the RA composite graft, the RA was patent at more than 1 year after the operation [10]. These results prompted us to conclude that the RA has potential as a physiologically functional arterial graft that can be recruited on demand with progression of the native coronary artery disease.

In conclusion, the total arterial OPCAB for the total coronary system achieved excellent patency in the early postoperative period and showed good clinical results. These results have prompted us to continue performing complete arterial revascularization, although long-term studies are required to provide evidence of the validity of our technique.

## References

1. Angelini GD, Taylor FC, Reeves BC, Ascione R. Early and midterm outcome after off-pump and on-pump surgery in Beating Heart Against Cardioplegic Arrest Studies (BHACAS I and 2): a pooled analysis of two randomised controlled trials. *Lancet* 2002;359:1194-9.
2. Cheng W, Denton TA, Fontana GP, et al. Off-pump coronary surgery: effect on early mortality and stroke. *J Thorac Cardiovasc Surg* 2002;124:313-20.
3. Omeroglu SN, Kirali K, Guler M, et al. Midterm angiographic assessment of coronary artery bypass grafting without cardiopulmonary bypass. *Ann Thorac Surg* 2000;70:844-50.
4. van Dijk D, Nierich AP, Jansen EW, et al. Early outcome after off-pump versus on-pump coronary bypass surgery: results from a randomized study. *Circulation* 2001;104:1761-6.
5. Ronan JW, Perry LA, Barner HB, Sundt TM 3rd. Radial artery harvest: comparison of ultrasonic dissection with standard technique. *Ann Thorac Surg* 2000;69:113-4.
6. FitzGibbon GM, Burton JR, Leach AJ. Coronary bypass graft fate: angiographic grading of 1400 consecutive grafts early after operation and of 1132 after one year. *Circulation* 1978;57:1070-4.
7. Ryan TJ, Bauman WB, Kennedy JW, et al. Guidelines for percutaneous transluminal coronary angioplasty. A report of the American Heart Association/American College of Cardiology Task Force on Assessment of Diagnostic and Therapeutic Cardiovascular Procedures (Committee on Percutaneous Transluminal Coronary Angioplasty). *Circulation* 1993;88:2987-3007.
8. Asai T, Tabata S. Skeletonization of the right gastroepiploic artery using an ultrasonic scalpel. *Ann Thorac Surg* 2002;74:1715-7.
9. Calafiore AM, Di Mauro M, Teodori G, et al. Impact of aortic manipulation on incidence of cerebrovascular accidents after surgical myocardial revascularization. *Ann Thorac Surg* 2002;73:1387-93.
10. Kobayashi J, Sasako Y, Bando K, et al. Multiple off-pump coronary revascularization with "aorta no-touch" technique using composite and sequential methods. *Heart Surg Forum* 2002;5:114-8.
11. Calafiore AM, Di Giammarco G, Luciani N, Maddestra N, Di Nardo E, Angelini R. Composite arterial conduits for a wider arterial myocardial revascularization. *Ann Thorac Surg* 1994;58:185-90.
12. Royse AG, Royse CF, Raman JS. Exclusive Y graft operation for multivessel coronary revascularization. *Ann Thorac Surg* 1999;68:1612-8.
13. Calafiore AM, Di Giammarco G, Teodori G, et al. Radial artery and inferior epigastric artery in composite grafts: improved midterm angiographic results. *Ann Thorac Surg* 1995;60:517-24.
14. Curtis JJ, Stoney WS, Alford WC Jr, Burrus GR, Thomas CS Jr. Intimal hyperplasia. A cause of radial artery aortocoronary bypass graft failure. *Ann Thorac Surg* 1975;20:628-35.
15. Delatore JR, Theman TE, Garzia FM. Intraoperative flow rate measurements of T-grafts: calculating a flow reserve. *Heart Surg Forum* 1999;2:235-8.
16. Markwirth T, Hennen B, Scheller B, Schafers HJ, Wendler O. Flow wire measurements after complete arterial coronary revascularization with T-grafts. *Ann Thorac Surg* 2001;71:788-93.
17. Royse AG, Royse CF, Groves KL, Bus B, Yu G. Blood flow in composite arterial grafts and effect of native coronary flow. *Ann Thorac Surg* 1999;68:1619-22.
18. Sakaguchi G, Tadamura E, Ohnaka M, Tambara K, Nishimura K, Komeda M. Composite arterial Y graft has less coronary flow reserve than independent grafts. *Ann Thorac Surg* 2002;74:493-6.
19. Spence PA, Lust RM, Zeri RS, et al. Competitive flow from a fully patent coronary artery does not limit acute mammary graft flow. *Ann Thorac Surg* 1992;54:21-6.
20. Tagusari O, Kobayashi J, Bando K, et al. Early adaptation of the left internal thoracic artery as a blood source of y-composite radial artery grafts in off-pump coronary artery bypass grafting. *Heart Surg Forum* 2003;6:E93-8.
21. Wendler O, Hennen B, Markwirth T, et al. T grafts with the right internal thoracic artery to left internal thoracic artery versus the left internal thoracic artery and radial artery: flow dynamics in the internal thoracic artery main stem. *J Thorac Cardiovasc Surg* 1999;118:841-8.
22. Loop FD, Thomas JD. Hypoperfusion after arterial bypass grafting. *Ann Thorac Surg* 1993;56:812-3.
23. Miller MJ. Preconditioning for cardioprotection against ischemia reperfusion injury: the roles of nitric oxide, reactive oxygen species, heat shock proteins, reactive hyperemia and antioxidants—a mini review. *Can J Cardiol* 2001;17:1075-82.
24. Morris JJ 3rd, Hamm DP, Pellom GL, Abd-Elfattah A, Wechsler AS. Differential ventricular ischemic injury: an experimental model of right ventricular failure with a variable degree of left ventricular dysfunction. *J Thorac Cardiovasc Surg* 1988;96:590-9.
25. Sunderdiek U, Schmitz-Spanke S, Korbmacher B, Gams E, Schipke JD. Preconditioning: myocardial function and energetics during coronary hypoperfusion and reperfusion. *Ann Thorac Surg* 2002;74:2147-55.
26. Jones EL, Lattouf OM, Weintraub WS. Catastrophic conse-

- quences of internal mammary artery hypoperfusion. *J Thorac Cardiovasc Surg* 1989;98:902-7.
27. Torracca L, Schreuder JJ, Quarti A, Ismeno G, Franze V, Alfieri O. Acute effects of beating heart coronary surgery on left ventricular performance. *Ann Thorac Surg* 2002;74(suppl):S1348-52.
  28. Lust RM, Zeri RS, Spence PA, et al. Effect of chronic native flow competition on internal thoracic artery grafts. *Ann Thorac Surg* 1994;57:45-50.
  29. Aris A, Borrás X, Ramio J. Patency of internal mammary artery grafts in no-flow situations. *J Thorac Cardiovasc Surg* 1987;93:62-4.
  30. Dincer B, Barner HB. The "occluded" internal mammary artery graft: restoration of patency after apparent occlusion associated with progression of coronary disease. *J Thorac Cardiovasc Surg* 1983;85:318-20.
  31. Kitamura S, Kawachi K, Seki T, Sawabata N, Morita R, Kawata T. Angiographic demonstration of no-flow anatomical patency of internal thoracic-coronary artery bypass grafts. *Ann Thorac Surg* 1992;53:156-9.
  32. Sarabu MR, McClung JA, Fass A, Reed GE. Early postoperative spasm in left internal mammary artery bypass grafts. *Ann Thorac Surg* 1987;44:199-200.
  33. Singh RN, Beg RA, Kay EB. Physiological adaptability: the secret of success of the internal mammary artery grafts. *Ann Thorac Surg* 1986;41:247-50.
  34. Manninen HI, Jaakkola P, Suhonen M, Rehnberg S, Vuorenieniemi R, Matsi PJ. Angiographic predictors of graft patency and disease progression after coronary artery bypass grafting with arterial and venous grafts. *Ann Thorac Surg* 1998;66:1289-94.

## DISCUSSION

DR CRAIG R. SMITH (New York, NY): One minor technical issue: you obviously carried out many side-to-side sequential anastomoses in this group. Based on your data, do you have any opinion as to whether the sequential anastomoses are better done in a diamond orientation, or in a parallel orientation, or do you do both depending on the circumstances?

DR TAGUSARI: I usually use a diamond anastomosis technique for the radial artery and a parallel fashion for the ITA and GEA.

DR HITOSHI HIROSE (Cleveland, OH): We performed a similar study for patients with three-vessel disease undergoing off-pump CABG and published the results in *Surgery* last year. Off-pump CABG provided excellent results compared with on-pump CABG and the angiographic results were competitive, as you reported today. I have several questions for the authors. First, what are the inclusion and exclusion criteria for total arterial off-pump CABG? Although the authors stated total arterial bypass is the goal for cardiac surgery, only 52% of the patients received total arterial bypass; what kind of bypass was performed in the rest of 48%? Were they received saphenous vein grafts? How do you select patients undergoing total arterial bypass? Second, only 3% of patients received a gastroepiploic artery graft. Why are the authors not using the gastroepiploic artery?

Thank you.

DR TAGUSARI: I did not include one- and two-vessel disease in this study. All the patients had three-vessel disease. The rate of complete revascularization is 100% in this series. And the next question. The size of the GEA varies; sometimes it was too small to use as a sequential bypass graft. However, recently we have used skeletonized GEA using an ultrasonic scalpel to facilitate visual inspection. We only used saphenous vein graft for the patients more than 80 years old or the patients whose radial artery was not adequate to use, such as chronic renal failure.

DR SMITH: To that question also, I think 52% was the number of patients who received OPCAB out of the total, not the percent that had total revascularization.

DR CHARLES BRIDGES (Philadelphia, PA): I have a couple of questions. One is how soon after surgery did you perform the

angiogram? I know you showed one slide where it was performed two days after the operation. Another question I had was how you manage your radial artery patients after the operation, are you using nitrates, calcium blockers, and for how long are you using them? Finally, I wanted to learn a little bit more about the patient characteristics. How sick were your patients? What kind of ejection fractions did they have and how much other comorbid disease did they have? I didn't hear that or see that in your abstract, to get an idea of what kind of results we should expect. And then can you help us with the theory behind composite grafting as opposed to taking, say, a radial artery off the aorta or off of a patch of vein, et cetera, from the aorta? What is the evidence that shows us that composite grafting is theoretically superior to the more routine way, even with arterial grafts? Obviously one reason is that with a composite graft you can graft more territory than you could with just taking things off the aorta. But I was wondering if you could comment on your feeling about that.

DR TAGUSARI: We usually perform postoperative Angiography ten to fourteen days after operation. To avoid spasm of the radial artery, we use intravenous diltiazem or nicardipine until the following morning. Since then, a calcium blocker such as amlodipine has been prescribed for a long time because most of the patients have hypertension. As I have showed on the slide. In 17% of the patients, ejection fraction was less than 35%. Long-term follow-up is waiting for evidence that the composite graft is superior to the coronary graft. But, when the radial artery is anastomosed directly to the aorta, it is exposed not only to high blood pressure but also to higher shear stress, which may cause the early development of the intimal hyperplasia. Additionally, we can perform aorta no-touch technique and spare the length of the radial artery and by using as a composite graft.

DR AYHAN OZDEMIR (Bursa, Turkey): The patients you had with low ventricular function, what happened after you did the coronary bypass surgery off-pump? Did their left ventricular function get better or stay the same or worse?

Thank you.

DR TAGUSARI: After the OPCAB, left ventricular function recovered significantly in most cases.

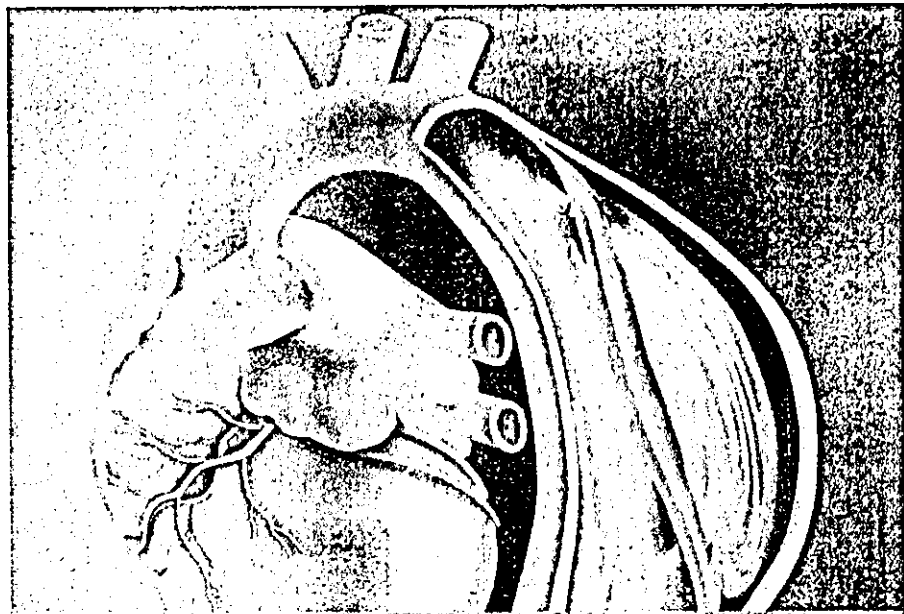
# 心臓病

## 診断と治療の最前線

監修 細田 瑳一・篠山 重威・北村 惣一郎

編集委員 永井 良三・堀 正二・三田村 秀雄・高野 照夫

友池 仁暢・小室 一成・佐野 俊二



新刊

### 心臓病診療に携わる臨床医必読

心臓病診療の最新情報を満載

- 詳細解剖、○ 最新治療薬の最新情報、○ 最新治療薬の最新情報、○ 最新治療薬の最新情報
- 最新治療薬の最新情報、○ 最新治療薬の最新情報、○ 最新治療薬の最新情報
- 最新治療薬の最新情報、○ 最新治療薬の最新情報、○ 最新治療薬の最新情報

100 先端医療技術研究所

先端医療シリーズ 28 心臓病

# 心臓病

— 診断と治療の最前線 —

## 監 修

自治医科大学名誉教授、榊原記念病院院長  
京都大学名誉教授、浜松労災病院院長  
国立循環器病センター総長

細 田 瑳 一  
篠 山 重 威  
北 村 惣 一 郎

## 編集委員

東京大学大学院医学系研究科循環器内科学教授  
大阪大学大学院医学系研究科病態情報内科学教授  
東京都済生会中央病院副院長  
日本医科大学内科学第1講座主任教授  
国立循環器病センター院長  
千葉大学大学院医学研究院循環病態医科学教授  
岡山大学大学院医歯学総合研究科心臓血管外科学教授

永 井 良 三  
堀 正 二  
三 田 村 秀 雄  
高 野 照 夫  
友 池 仁 暢  
小 室 一 成  
佐 野 俊 二

 先端医療技術研究所

ISBN4-925089-34-X

C3047 ¥11429E

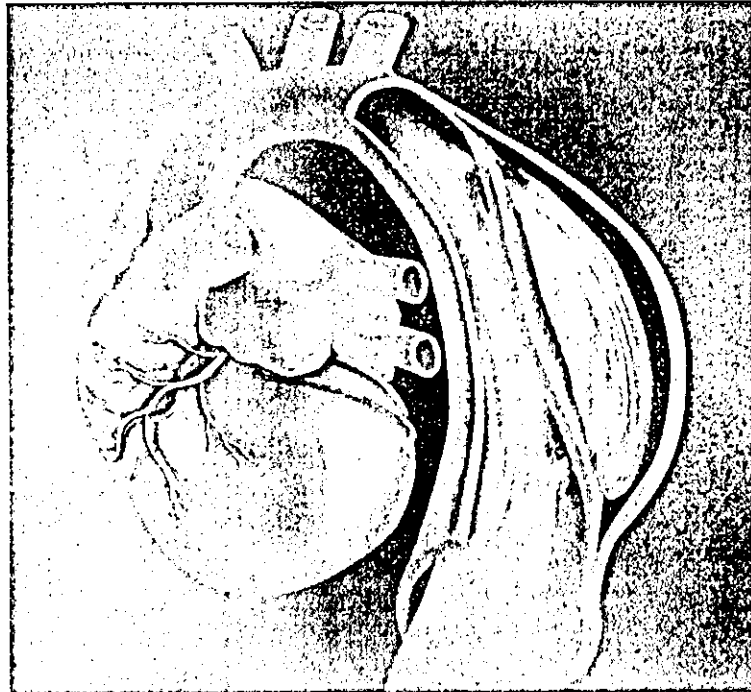
定価12,000円(本体11,429円)



9784925089340



1923047114297



### 先端医療シリーズならびに好評書

- 本誌 (佐野祥雄) 監修 安井久壽海編集主任 | 心臓血管外科手術書 |
- No.12 川島康生 柳田繁二 海山重敏監修 | 心臓病の最新医療 |
- No.14 杉田秀夫 清内貴男 柴崎浩 監修 | 神経筋疾患の最新医療 |
- No.20 泉邦雄 監修 | 肺病の最新医療 |
- No.21 小山博昭 監修 | 乳腺の最新医療 |
- No.22 平澤泰尔 井上三高 岡野夫 編集主任 | 整形外科の最新医療 |
- No.25 原田剛太郎 神田(楓) 松野正記 編集主任 | 肝臓胆膵疾患の最新医療 |
- No.27 島崎俊次 山本保寿 相川直樹 編集主任 | 救急医療の最新書 |
- 5冊計
- シリーズほか2冊 編集委員会 | クリニカルPETの最新書 |
- (No.29) 菊池博康 監修 | 呼吸器科の最新医療 |

# 移植コーディネーター

## 概論

監修 日本組織移植学会

編著 田中秀治 杏林大学医学部臓器組織移植センター  
篠崎尚史 東京歯科大学市川総合病院角膜センター



---

## 巻 頭 言

この度、日本組織移植学会の田中秀治、篠崎尚史両理事の監修により立派な成書として『移植コーディネーター概論』が上梓された。両氏は東日本組織移植ネットワークの中心的存在であり、その設立にも深く関与されてきた専門家である。当学会の理事長としても誠に喜ばしく、かつ時期を得た重要な書であると感じている。臓器移植、組織移植、細胞移植など人からの善意の提供を受けて成り立つ、病める人への治療法には共通した基盤があり、広い領域の医療関係者の連携した努力を必要としている。その最も重要な点は、透明性の高い説明と同意(インフォームドコンセント)と公平な配分である。この基盤点を担っているのが移植コーディネーターといわれる人たちである。

臓器移植に携わるコーディネーターは脳死臓器移植法に則り、臓器移植ネットワークの本部・支部で活躍されている。一方、組織移植に関してはわが国には法的な取り決めはなく、日本組織移植学会のガイドライン(厚生労働省:医薬食品局『生物由来製品の取り扱い基準』を遵守)に則り行われているが、全国的に一律に行われているとは云い難い状況である。この状況を改善する目的で、日本組織移植学会は「組織移植コーディネーター育成規準」「組織移植バンク開設規準」などを作成しているところであるが、わが国での組織移植ネットワーク作りにおける一連の事業のなかでコーディネーターの育成は最も重要な課題であった。本書は、社会的にも経済的にも厳しい状況におかれているわが国の組織移植医療に、情熱をもって取り組んでこられた二人の専門家により完成したおそらく初めての書である。折しも、西日本でも東日本組織移植ネットワークを見本として西日本組織移植ネットワークを構築中であり、新たに組織移植コーディネーターを育成しているところであるが、日本組織移植学会の監修によりコーディネーターのための教科書となる本書が出版されたことは極めて重要である。

本書は移植医療に携わり、支えている広い領域の医師、看護師、臨床工学士、臨床検査技師、そして臓器・組織移植コーディネーターの座右の書として御推薦申し上げたく思っている。

日本組織移植学会  
理事長 北村 惣一郎  
(国立循環器病センター総長)

**JCLIS** <(株)日本著作出版権管理システム委託出版物>

本書の複製権・翻訳権・上映権・譲渡権・公衆送信権  
(送信可能化権を含む)は株式会社へるす出版が保有し  
ます。

本書の無断複写は著作権法上での例外を除き禁じられ  
ています。複写される場合は、その都度事前に(株)日本著  
作出版権管理システム(電話 03-3817-5670, FAX 03-3815-  
8199)の許諾を得てください。

## 移植コーディネーター概論

定価(本体価格3,200円+税)

2004年9月29日 第1版第1刷発行

監修/日本組織移植学会

編著/田中秀治 篠崎尚史

発行者/長谷川恒夫

発行所/株式会社 へるす出版

〒164-0001 東京都中野区中野2-2-3

電話 03-3384-8035(販売) 03-3384-8155(編集)

振替 00180-7-175971

印刷所/三報社印刷株式会社

©2004 Printed in Japan

(検印省略)

落丁本、乱丁本はお取り替えいたします。

ISBN 4-89269-484-3

# 補助循環と心臓移植

中谷武嗣\*

## abstract

慢性心不全において心筋障害が高度な症例に対しては、機械的補助循環あるいは心臓移植を考慮すべきである。補助循環としては、長期補助が可能な補助人工心臓があり、体外設置型においても1年以上の補助が可能となってきた。また、心臓移植もわが国での施行例は17例と少数ではあるが全例生存し、その成績は良好である。慢性心不全に対する補助人工心臓あるいは心臓移植の適応を決定するには、心臓のみならず他臓器や長期にわたる治療が可能であるかなど十分な検討が必要であり、急性心不全への補助循環の適応検討とは異なることに注意が必要である。今後、心臓移植のわが国への定着に加え、補助人工心臓によるbridge to recoveryの可能性の拡大、また、新たな補助人工心臓の導入によるdestination therapyとしての補助人工心臓の役割拡大により、慢性心不全に対する治療戦略の選択の広がり期待される。

## I はじめに

心筋障害が高度な心不全に対しては、機械的な循環補助あるいは置換が必要となり、補助循環あるいは心臓移植が考慮される。本稿では、慢性心不全に対する治療戦略における補助循環と心臓移植についてわが国の現状を中心に概説する。

## II 補助循環<sup>1)</sup>

### 1) 短期的補助循環法

1～数週間程度までの補助が可能なシステムとして、大動脈内バルーンポンピング (intraaortic balloon pumping : IABP) と経皮的心肺補助法

(percutaneous cardiopulmonary support : PCPS) がある。

IABPは下行大動脈内に留置したバルーンによる圧補助法である。その補助能力は自己心拍出量の10～15%程度で、自己心機能に依存し不整脈時には有効な補助効果が得られない。

PCPSは経皮的に大腿部から送・脱血管を挿入し、膜型肺と遠心ポンプにより流量補助を行うもので、緊急時に全身循環の維持が可能である。その補助量は心拍出量の50～70%程度であるが、左心に対しては直接前負荷を軽減せず、補助量を増加させるに伴い自己左心への後負荷が増大し、肺水腫をきたす危険性がある。

### 2) 補助人工心臓 (ventricular assist system : VAS)<sup>2)</sup>

VASは、自己心を温存しその近傍に血液ポンプを設置し心臓ポンプ機能を100%代行する長期施行

\* 国立循環器病センター臓器移植部 部長

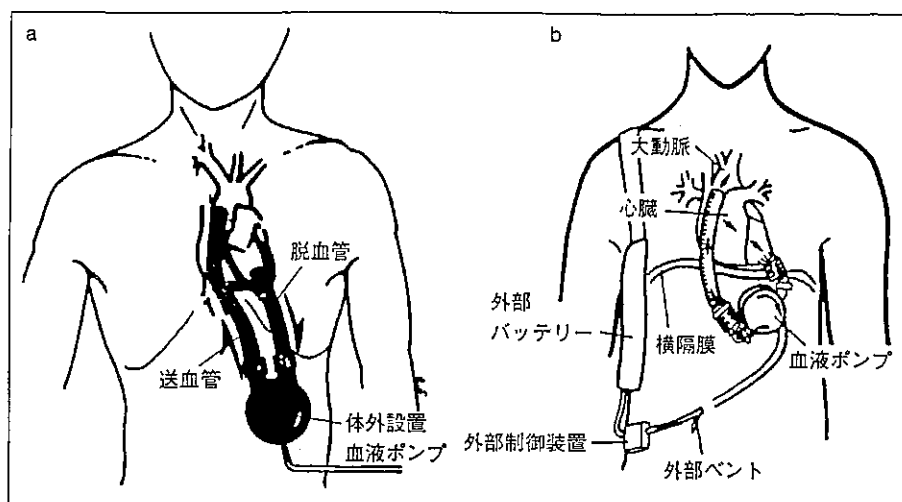


図1  
VAS装着図  
a: 体外設置型 (左室脱血方式)  
b: 体内収納携帯型

可能な補助手段で、血液ポンプを体外に置くものと体内に収納するものがある (図1)。

### ①体外設置型VAS (図1a)

急性重症心不全に対し一時的に補助するシステムとして開発されたもので、わが国には世界で初めて健康保険で適用された2つのシステムがある。

#### a) 東洋紡製国立循環器病センター型 (国循型) VAS

血液ポンプは空気圧駆動ダイアフラム型で、1回拍出量70mL、最大拍出量7L/minである。制御駆動装置は、固有レートおよび心電図同期駆動が選択でき、病棟や病院内の移動が可能である。装着は開胸体外循環下に行い、左心補助人工心臓 (LVAS) では従来右側左房へ心房カフを介して脱血管を挿入し、送血管の人工血管部を上行大動脈へ端側吻合して行われた (左房脱血方式)。最近ではカフを左室心尖に縫着し、このカフを介して脱血管を左室に挿入する左室脱血方式が用いられるようになった。左室脱血方式の採用により補助期間は著明に延長し、1年を超えた補助が行われるようになり、最長例では3年を超えて施行中である。右心補助人工心臓 (RVAS) では、脱血管はカフを介して右房に挿入し、送血管を主肺動脈に装着する。

体外設置型では、送・脱血管を上腹部で体外へ出し、右または左上腹部に設置した血液ポンプに接続し、この血液ポンプと制御駆動装置を駆動チューブで接続し駆動する。

#### b) 日本ゼオン/アイシン精機製東京大学型 (東大型) VAS

血液ポンプは、日本ゼオン製空気圧駆動塩化ビニル製サック型で、血液接触面をポリウレタン・シリコンゴム共重合体のCardiothane®で被覆し、1回拍出量は40mLと60mLのものがある。駆動装置はアイシン精機製で、固有レートおよび心電図同期駆動が可能である。

### ②体内収納携帯型LVAS (図1b)

2つのシステムがあり、Thoratec社製HeartMate® LVASは、プッシャープレート型血液ポンプで、粗面構造の血液接触面とすることで良好な抗血栓性が得られている。空気圧駆動装置によるもの [Implantable pneumatic type (IP)] とモータ駆動携帯型 [Vented Electric type (VE)] がある。また、携帯型の電磁力駆動プッシャープレート方式のNovacor® LVASがあり、耐久性に優れている。

両者とも左室心尖脱血方式で、駆動部を含む血液ポンプは左腹壁内か腹腔内に収納され、制御およびエネルギー供給用のチューブにより体外の装置と接続される。ともに70~80kg前後の成人男性を想定して開発されており、体表面積1.5m<sup>2</sup>未満の小さい体格の人への適応は困難である。

### 3) 補助循環の適応

慢性心不全患者への補助循環適応にあたっては、急性心不全への適応と異なり、心機能の回復は期待しがたいことを念頭に置き、さらにIABPやPCPSの補助能力に限界があり、当初からVASの適応を考