

# Sonic Hedgehog Induces Arteriogenesis in Diabetic Vasa Nervorum and Restores Function in Diabetic Neuropathy

Kengo F. Kusano, Karen L. Allendoerfer, William Munger, Roberto Pola, Marta Bosch-Marce, Rudolf Kirchmair, Young-sup Yoon, Cynthia Curry, Marcy Silver, Marianne Kearney, Takayuki Asahara, Douglas W. Losordo

**Objective**—The embryonic morphogen sonic hedgehog (SHh) has been shown to induce neovascularization of ischemic tissue but has not been shown to play a role in regulating vascular nerve supply. Accordingly, we investigated the hypothesis that systemic injection of SHh protein could improve nerve blood flow and function in diabetic neuropathy (DN).

**Methods and Results**—Twelve weeks after induction of diabetes with streptozotocin, motor and sensory nerve conduction velocities (MCV and SCV) of the sciatic nerves were significantly reduced in diabetic rats. SHh-treated diabetic rats demonstrated marked improvement of both MCV and SCV ( $P < 0.05$ ). Laser Doppler perfusion imaging showed that nerve blood flow was significantly reduced in the diabetic rats but was restored in SHh-treated diabetic rats ( $P < 0.05$  versus diabetic saline-treated rats) to levels similar to those achieved with vascular endothelial growth factor-2 (VEGF-2) gene therapy. In vivo perfusion of Bandeiraea simplicifolia (BS)-1 lectin showed marked reduction in the vasa nervora in diabetic sciatic nerves but restoration of nerve vasculature to nondiabetic levels in the SHh-treated and plasmid DNA encoding human VEGF-2 (phVEGF-2)-treated diabetic nerves. Interestingly, the SHh-induced vasculature was characterized by larger diameter and more smooth muscle cell-containing vessels, compared with VEGF-2 gene-treated diabetic rats.

**Conclusions**—These data indicate that Shh induces arteriogenesis and restores nerve function in DN. (*Arterioscler Thromb Vasc Biol.* 2004;24:2102-2107.)

**Key Words:** angiogenesis ■ diabetes mellitus ■ cytokine ■ microcirculation ■ peripheral vasculature

In the United States alone, >18 million people have diabetes.<sup>1</sup> Diabetic neuropathy (DN) is a frequent complication of diabetes, affecting 1 to 7 million people, including 7% within 1 year of diagnosis and 50% of patients after 25 years. It has also been reported that up to 90% of patients have subclinical levels of neuropathy.<sup>2</sup> Although several factors have been reported to contribute to diabetic polyneuropathy,<sup>3-9</sup> the pathogenic basis has remained uncertain.<sup>10</sup> An association between changes in the vasa nervorum and DN has been noted in multiple previous reports;<sup>11-17</sup> however, the pathophysiologic importance of these observations remains uncertain. The possibility that attenuation of the vasa nervorum might be a major factor in the development of DN is suggested by several recent studies. Impaired ischemia-induced angiogenesis was noted in animal models of diabetes,<sup>18</sup> and more recently we have reported that both ischemic<sup>19</sup> and DN<sup>20</sup> are associated with attenuation of the vasa nervorum and that local delivery of naked DNA encoding for vascular endothelial growth factor (VEGF-1 and VEGF-2) restores the vascular supply and has a favorable effect on the

nerve conduction velocities. These observations, documenting the loss of vasa nervorum in diabetic animals, and restoration of neural vascularity by VEGF, associated with a return of nerve function, suggested that the microangiopathic abnormality is one of the critical factors that cause DN.

Sonic hedgehog (SHh) is a prototypical morphogen known to regulate epithelial/mesenchymal interactions during embryonic development of limb, lung, gut, hair follicles, and bone.<sup>21-23</sup> The hedgehog (Hh) pathway also plays an essential inductive and morphogenetic role in the developing central<sup>24-26</sup> and peripheral nervous system.<sup>27</sup> Recently, we have also reported that SHh protein has an indirect but powerful angiogenic effect in a mouse hind-limb ischemia model.<sup>28</sup>

Together, these previous studies suggested to us the possibility that diabetic polyneuropathy results, at least in part, from attenuation of vasa nervorum, that restoration of nerve blood flow supply can mitigate neuropathy despite persistent diabetes, and that SHh can exert angiogenic effects that could mitigate DN. Accordingly, we performed a series of investigations to test the hypothesis that SHh could replenish vasa

Original received April 5, 2004; final version accepted August 31, 2004.  
From the Division of Cardiovascular Research (K.F.K., R.P., M.B.-M., R.K., Y.Y., C.C., M.S., M.K., T.A., D.W.L.), St. Elizabeth Medical Center, Boston, Mass; and Curis Inc (K.L.A., W.M.), Cambridge, Mass.

Correspondence to Dr Douglas W. Losordo, Division of Cardiovascular Research, St. Elizabeth Medical Center Boston, 736 Cambridge Street, Boston, MA 02135. E-mail: douglas.losordo@tufts.edu

© 2004 American Heart Association, Inc.

*Arterioscler Thromb Vasc Biol.* is available at <http://www.atvbaha.org>

DOI: 10.1161/01.ATV.0000144813.44650.75

nervorum in diabetes, thereby restoring nerve blood flow and nerve function in DN.

## Methods

### Animal Models

All protocols were approved by St. Elizabeth's Institutional Animal Care and Use Committee. In all experiments, investigators performing the follow-up examinations were blinded to identify of the treatment administered.

### Rats

Male Sprague-Dawley rats (Charles River Laboratories, Wilmington, Mass) weighing 200 to 225 grams were used. Rats were fed standard laboratory rodent chow and water ad libitum and housed individually.

### Induction of Diabetes

Rats were made diabetic by a single intraperitoneal injection of streptozotocin (75 mg/kg in 0.9% sterile saline) into anesthetized rats (5 mg/100 g pentobarbital).

### Systemic Treatment With SHh Protein

Human SHh proteins were used to construct SHh rat IgG fusion proteins to increase the half-life, as described.<sup>29</sup> Systemic injection of SHh-rat IgG fusion protein was started 12 weeks after the induction of diabetes. After completion of baseline nerve conduction measurements, animals received subcutaneous injection of SHh proteins (1.0 mg/kg) or saline using 27-gauge needle 3 times per week for 4 weeks.

### phVEGF-2 Plasmid and Gene Transfer

As a positive control, we used naked plasmid DNA encoding human VEGF-2 (phVEGF-2), as described previously.<sup>20</sup>

### Electrophysiological Measurements

Nerve motor and sensory conduction velocity was measured as described previously<sup>20,30</sup> in all rats at baseline (before treatment) and then at 2 and 4 weeks after treatment. All procedures and analyses were performed by an experienced researcher who was blinded to treatment.

### In Vivo Assessment of Perfusion and Vascularity: Laser Doppler Imaging of Vasa Nervorum Blood Flow

Blood perfusion of the sciatic vasa nervorum was measured unilaterally in the hind limb of the rats with a laser Doppler perfusion imager (LDPI) system (Moor Instruments, Wilmington, Del) as described previously,<sup>20</sup> programmed to measure perfusion of surrounding tissue as zero, or background. All perfusion measurements, as well as neurophysiological examinations, were performed with the animal placed on a heating blanket underneath a warming lamp controlled by a thermistor probe applied to the proximal nerve to maintain temperature at 37°C. All procedures and analyses were performed by an experienced researcher who was blinded to treatment assignment.

### Hemodynamic Assessment

To insure that blood pressure was not affected by treatment, subgroups of animals from all treatment groups underwent analysis of blood pressure and heart rate. At the time of euthanization, a 2.0-French high-fidelity Millar pressure catheter (Millar Instruments) was inserted from the left ventricular apex to the ascending aorta, and systolic aortic pressure and heart rate were recorded. Calibration of the Millar catheter was verified before and after each measurement.

### Sciatic Nerve Histology: Fluorescent Imaging of Vasa Nervorum

Vascularity of sciatic nerves from both normal and diabetic rats were assessed by in situ fluorescent staining using the endothelial cell-specific marker Bandeiraea simplicifolia (BS)-1 lectin conjugated to fluorescein isothiocyanate (Vector Laboratories, Burlingame, Calif) as described previously.<sup>20</sup>

### Immunohistochemistry

Sciatic nerves were fixed in 100% methanol and paraffin-embedded sections of 5- $\mu$ m thickness were stained for murine-specific endothelial marker isolectin B4 (Vector Laboratories), factor VIII (Signet Laboratories, Dedham, Mass), or alpha-smooth muscle actin (Sigma Chemical Co, St. Louis, Mo) and counterstained with eosin to detect capillary endothelial cells or smooth muscle cells in the vasa nervora.

### Reverse-Transcription Polymerase Chain Reaction

Total RNA was extracted from sciatic nerves or L<sub>4,5</sub> dorsal root ganglia 1 week after treatment using the Ambion Isolation kit (RNAqueous™) according to the manufacturer's instructions. DNAase digestion was performed after RNA extraction. Reverse-transcription polymerase chain reaction was performed according to the manufacturer's instructions (Clontech, Palo Alto, Calif). All procedures and analyses were performed by an experienced researcher who was blinded to treatment assignment.

### Cultured Nerve Fibroblasts

Primary cultured nerve fibroblasts were obtained from 250- to 350-gram male Sprague Dawley rats according to the method of Bolin.<sup>31</sup> Cells were harvested after 48 hours and reverse-transcription polymerase chain reaction was performed.

### Statistics

All results were expressed mean  $\pm$  SD. Statistical comparisons between groups were performed by ANOVA with Bonferroni correction.  $P < 0.05$  was considered statistically significant.

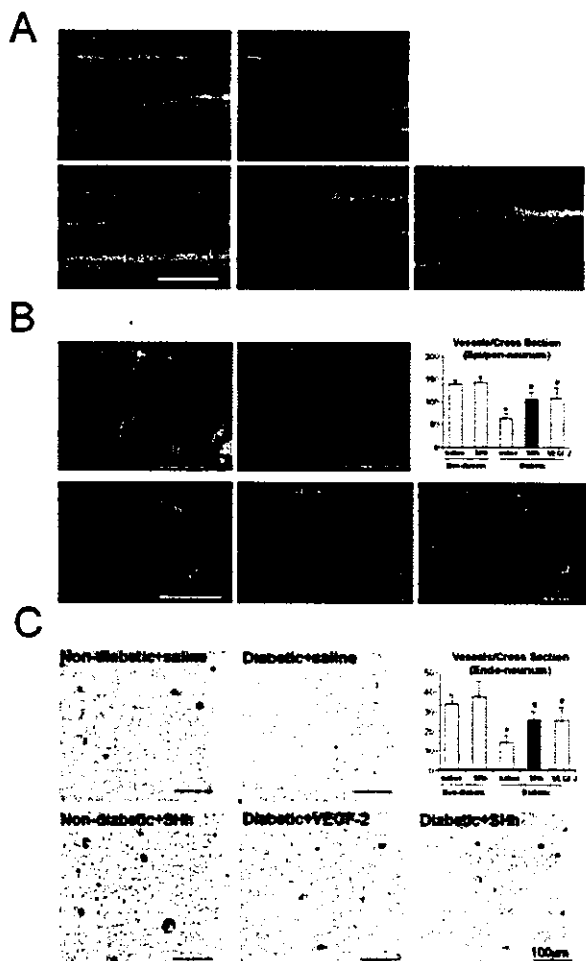
## Results

### DN Model: Treatment With SHh Versus VEGF Versus Saline

As shown in Table I (available at <http://atvb.ahajournals.org>), the serum glucose and blood urea nitrogen were elevated in the diabetic versus nondiabetic rats, as expected. Weight was also reduced in all diabetic animals. There were no significant differences between any of the diabetic treatment groups in these parameters or in blood pressure or heart rate (Table I).

### Depletion of Vasa Nervorum Accompanies DN: SHh Replenishes Nerve Vascular Supply: In Vivo Staining of Vasa Nervorum by BS-1 Lectin Perfusion

Whole-mount staining reveals restoration of vasa nervorum by SHh (Figure 1A). Four weeks after treatment, an endothelial-specific marker, fluorescein isothiocyanate-conjugated BS-1 lectin was injected to permit documentation of vasa nervora. The nondiabetic rat in both saline and SHh showed a regular pattern of vascularity including a superficial longitudinal network and penetrating branches responsible for providing blood flow to the endoneurial vascular network. However, in nerves of diabetic rats treated with saline, the total number of vasa nervora was markedly decreased and the vascular network was substantially destroyed, resulting in an irregular distribution pattern and areas of nonvascularized nerve tissue. In SHh-treated diabetic rats, the vascular net-



**Figure 1.** In vivo perfusion imaging reveals attrition of vasa nervorum by diabetes and recovery induced by SHh. **A**, Representative fluorescent BS-1 lectin-perfused rat sciatic nerves (longitudinal views). In the saline-treated diabetic rat, the total network of vasa nervorum is markedly disrupted. SHh and phVEGF-2 treatment resulted in significant restoration of vasa nervorum. SHh administration to nondiabetic rats had no effect. **B**, Representative fluorescent BS-1 lectin-perfused rat sciatic nerves (cross-section). A reduced number of epineurial/perineurial and endoneurial vessels (**C**) are observed in diabetic rats. SHh-treated (and phVEGF-2 gene therapy as a positive control<sup>20</sup>) rats showed replenished vascularity. The total number of epineurial/perineurial vessels was decreased in saline-treated diabetic rats; however, in SHh-treated diabetic rats, the number of vessels was similar to nondiabetic controls. Similar recovery is noted in VEGF-2 gene therapy-treated diabetic rats. \* $P < 0.01$  vs nondiabetic plus saline, # $P < 0.05$  vs diabetic plus saline. **C**, Representative factor VIII immunostaining of rat sciatic nerve (cross-section). Endoneurial vessels are reduced in diabetic rats. SHh (and phVEGF-2 gene therapy, as a positive control) induced recovery of endoneurial vascularity in diabetic rats. SHh administration to nondiabetic animals had no effect. \* $P < 0.01$  vs nondiabetic plus saline, # $P < 0.05$  vs diabetic plus saline.

work was restored, with both superficial and penetrating branches. Similar findings were disclosed with VEGF-2 gene transfer, which was included as a positive control.<sup>20</sup>

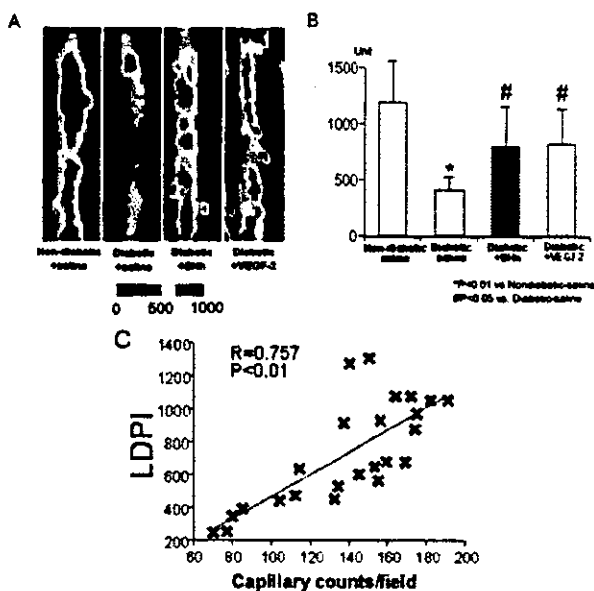
Quantification of epineurial/perineurial and endoneurial capillaries in sciatic nerves documents recovery of vasa nervora in SHh-treated rats (Figure 1B and 1C). To analyze the sciatic nerve capillaries, we counted the number of vessels using

cross-section slides. Figure 1B clearly showed much more epineurial/perineurial capillaries in the nondiabetic nerves compared with saline-treated diabetic nerves (epineurial/perineurial vasa/cross-section:  $138.0 \pm 8.0$  in nondiabetic plus saline,  $n = 7$ ;  $142.0 \pm 12.0$  in nondiabetic plus SHh,  $n = 6$ ; and  $62.2 \pm 11.0$  per section in diabetic plus saline,  $n = 5$ ;  $P < 0.01$ ). There was no significant difference between saline-treated and SHh-treated nondiabetic nerves. Endoneurial capillaries were also significantly reduced in saline-treated diabetic rats (endoneurial vasa/cross-section:  $37.8 \pm 3.3$  in nondiabetic plus saline,  $n = 7$ ;  $38.2 \pm 4.5$  in nondiabetic plus SHh,  $n = 6$ ; and  $21.0 \pm 2.4$  per section in diabetic plus saline,  $n = 5$ ;  $P < 0.01$ ). SHh treatment resulted in recovery of both epineurial/perineurial and endoneurial capillaries (epineurial/perineurial:  $105.7 \pm 14.0$ ; endoneurial:  $36.3 \pm 2.4$  in SHh;  $n = 6$  per section). Similar findings were noted in VEGF-2 gene therapy-treated animals as shown previously (epineurial/perineurial:  $108.3 \pm 22.3$ ; endoneurial:  $35.8 \pm 7.1$  per section in phVEGF-2;  $n = 5$ ) (Figure 1B). Endoneurial capillaries were also counted using factor VIII staining. As shown in Figure 1C, factor VIII-positive vessels were also reduced in saline-treated diabetic rats ( $34.0 \pm 4.5$  in nondiabetic plus saline,  $n = 5$ , and  $37.4 \pm 7.9$  in nondiabetic plus SHh,  $n = 6$ , and  $14.2 \pm 3.5$  per section in diabetic,  $n = 5$ ;  $P < 0.01$ ). SHh treatment resulted in recovery of endoneurial capillaries ( $25.8 \pm 4.8$ ,  $n = 5$ ) similar to the results of VEGF-2 gene therapy ( $25.6 \pm 6.4$  per section,  $n = 5$ ).

#### LDPI of Sciatic Nerve Blood Flow

LDPI was performed to evaluate blood flow in the sciatic nerves of rats in all treatment groups (Figure 2). This blinded analysis revealed markedly reduced nerve blood flow in saline-treated diabetic rats ( $401.0 \pm 106.3$  LDPI units versus  $1185.2 \pm 370.1$  LDPI units in nondiabetic controls;  $P < 0.01$ ) as described previously.<sup>20</sup> SHh treatment in diabetic rats resulted in substantial restoration of sciatic nerve perfusion ( $791.0 \pm 351.4$  LDPI units,  $P < 0.05$ , versus saline-treated diabetic rats; Figure 2B). VEGF-2 gene transfer also restored perfusion of sciatic nerves to a level similar to that seen in SHh-treated diabetic rats ( $816.8 \pm 310.1$  LDPI units,  $P < 0.05$ , versus saline-treated diabetic rats). To further validate the usefulness of LDPI measurements as an indicator of vascular recovery, the capillary counts and LDPI measurements were correlated in randomly selected subgroups from all treatment groups. As shown in Figure 2C, there was a significant ( $P < 0.01$ ) correlation between total (epineurial/perineurial and endoneurial) capillary density in the nerve and LDPI measurements in each animal.

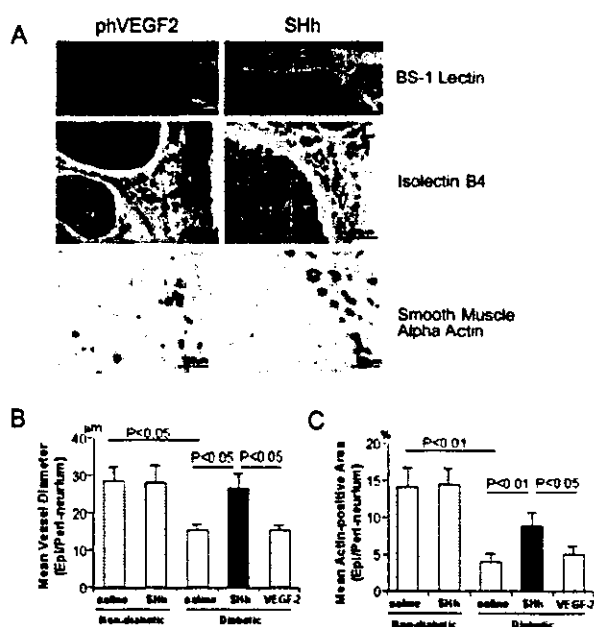
SHh-induced neovasculature is morphologically distinct (Figure 3). During our initial analysis of capillary density, we noted that the vasculature of the epineurium/perineurium appeared larger in size than the vessels in the other treatment groups (Figure 3A top and middle). We measured vessel diameter and found that the epineurial/perineurial vessels in the SHh group were significantly larger than those in the phVEGF-2-treated rats and were similar in size to those in the nondiabetic control rats (mean vessel diameter  $15.3 \mu\text{m}$  in phVEGF-2 group versus  $26.4 \mu\text{m}$  in SHh-treated group,  $P < 0.05$ ) (Figure 3B). Moreover, staining for  $\alpha$ -smooth muscle actin revealed that the SHh-treated nerves contained a greater number of  $\alpha$ -actin-positive cells colocalized in the epineurial/perineurial vessels than in nerves



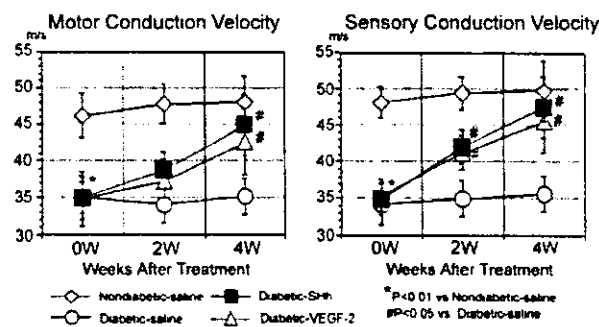
**Figure 2.** Laser Doppler perfusion imaging (LDPI) documents recovery of sciatic nerve blood flow after SHh treatment. A, Representative images of in vivo LDPI depicting blood flow in rat sciatic nerve 4 weeks after treatment. The lowest blood flow is indicated by blue color and maximum blood flow in red. B, Summarized results of LDPI measurements taken from both rat sciatic nerves. Compared with nondiabetic control (n=20), saline-treated diabetic rats (n=10) showed markedly reduced perfusion. Significant improvement in nerve perfusion was observed in SHh-treated (n=12) and pVEGF-2-treated (n=8) diabetic rats. C, Cross-sectional total capillary density and LDPI were assessed in individual animals from all treatment groups (n=23) and were found to exhibit significant correlation ( $P<0.01$ ), indicating that LDPI assessment of flow was corroborated by anatomic evidence of recovery of the vasa nervorum and vice versa.

from pVEGF-2-treated rats.(Figure 3A bottom). We then measured the total area of  $\alpha$ -actin-positive vasculature in all treatment groups and found that the  $\alpha$ -actin-positive vasculature in SHh-treated nerves was significantly closer to the nondiabetic nerves than after VEGF gene therapy. These data indicated that treatment with SHh resulted in a vessel morphology that was distinct from that induced by gene transfer of a single angiogenic cytokine.

SHh restores nerve function in DN (Figure 4). Within 12 weeks of the onset of diabetes induced by streptozotocin, a severe peripheral neuropathy developed in rats, as described previously.<sup>21</sup> Electrophysiological recordings revealed that significant slowing of motor nerve conduction velocity (MCV) and sensory nerve conduction velocity (SCV) was observed in diabetic rats (MCV=35.0±2.9 m/s versus 46.2±3.1 m/s [nondiabetic], SCV=34.2±2.5 m/s [diabetic], and 48.1±3.7 m/s [nondiabetic];  $P<0.01$  for both). Saline-treated diabetic rats showed no change in nerve conduction velocities during the 4 weeks of treatment (MCV=35.2±2.5 m/s and SCV=35.6±3.0 m/s). In contrast, 4 weeks after treatment with systemic injection of SHh protein, all nerve conduction velocities demonstrated a marked improvement (Figure 4). Specifically, MCV in diabetic rats treated with SHh protein increased to 44.9±4.2 m/s and SCV increased to 47.5±7.0 m/s (both  $P<0.01$  versus saline-



**Figure 3.** SHh treatment results in larger neovasculature with greater smooth muscle content. A, Representative photomicrographs of longitudinal views of BS-1 lectin staining (upper), cross-sectional views of isolectin B4 staining (middle), and cross-sectional views of alpha-smooth muscle actin staining (lower). Compared with pVEGF-2-treated nerve (left), the SHh-induced vasculature appears larger and contains a greater number of vessels with a smooth muscle cell layer (right). B, Epineurial/perineurial vessel diameter (upper). We measured 20 randomly selected vessels from each sample (5 sections per nerve) and calculated the mean vessel diameter ( $\times 60$  objectives). The vasculature of the SHh-treated nerves (n=6) was significantly larger in diameter than in the diabetic pVEGF-2-treated nerves (n=5) and was similar to the nondiabetic nerves. Total area of  $\alpha$ -actin-positive vasculature in the epineurium/perineurium in all treatment groups (lower). As shown, VEGF treatment did not increase the  $\alpha$ -actin-positive vasculature, whereas SHh treatment resulted in a significant restitution of larger,  $\alpha$ -actin-positive vessels. Together these findings indicate that SHh induces the formation of neovessels that are similar in multilayered appearance to the native vasculature before diabetes.



**Figure 4.** Motor and sensory nerve conduction is restored by SHh treatment. Before treatment (week 0), both MCV and SCV in diabetic rats (n=11) were significantly decreased compared with age-matched nondiabetic rats (n=22). However, 4 weeks after treatment with systemic injection of SHh protein (n=13), both MCV and SCV were improved significantly. Local gene transfer of VEGF-2 (n=12) also improved function as previously shown and was included as a control.

treated diabetic rats, and  $P=NS$  versus nondiabetic rats). ph-VEGF-2-treated diabetic rats also showed significant improvement in both MCV and SCV 4 weeks after injection. (MCV=42.5±4.6 m/s and SCV=44.5±7.5 m/s).

SHh upregulates expression of multiple angiogenic and neurotrophic cytokines (Figures I and II, available online at <http://atvb.ahajournals.org>). To identify potential mechanisms responsible for the therapeutic effect of SHh, we evaluated the expression of the Hh-related transcriptional factor Gli-1 and certain neurotrophic factors (BDNF and IGF-1) and angiogenic cytokines (VEGF-1, angiopoietin-1, and angiopoietin-2) in treated and control rats. As shown in Figure I, endogenous Gli expression was downregulated in saline-treated diabetic rats, suggesting that the Hh pathway was inactivated in the nerves of diabetic rats. The expression of angiogenic factors and neurotrophic cytokines were also downregulated (Figure I). However, SHh treatment resulted in a significant increase in the expression of mRNA of both endogenous angiogenic cytokines (VEGF-1, angiopoietin-1, and angiopoietin-2) and neurotrophic factors (BDNF, IGF-1), as well as upregulation of Gli-1 mRNA expression to nondiabetic levels. In contrast, phVEGF-2 did not upregulate the expression of angiogenic cytokines or neurotrophic factors, except BDNF.

To verify these findings and to establish a direct effect of SHh on gene expression, we repeated reverse-transcription polymerase chain reaction on primary cultured rat nerve fibroblasts. Expression of Gli-1 was not detected in the cultured fibroblasts (Figure II). However the expression of mRNA for angiogenic cytokines (VEGF-1, angiopoietin-1, and angiopoietin-2) and neurotrophic factors (BDNF, IGF-1), as well as Gli-1, were upregulated by SHh protein (Figure II) in a dose-dependent manner (1, 5, 10  $\mu\text{g}/\text{mL}$ ), suggesting that SHh stimulation of neural fibroblasts can modulate expression of multiple factors with the potential to promote nerve recovery.

### Discussion

The peripheral neuropathy that complicates diabetes results in major morbidity, contributing to the leading cause of hospitalization among diabetic subjects and loss of tissue integrity in the lower extremities. The magnitude of this public health problem has led to aggressive efforts to define the cause and develop preventative measures or treatment strategies for this disabling condition. Despite the identification of multiple potential mechanisms, no therapy attempting to address individual causative factors has proven successful.

Our results demonstrate that SHh induces functional recovery in DN by simultaneously normalizing a repertoire of vascular and neural growth and survival factors and cytokines and replenishing a more mature-appearing vasa nervorum in both endoneurial and epineurial/perineurial capillaries. Notably, and in contrast to a recent report,<sup>29</sup> our data reveal that DN is associated with vascular pathology. Specifically, disruption and loss of vasa nervorum accompany the onset of neuropathy in multiple animal models of DN (and ischemic neuropathy),<sup>20,32</sup> and restitution of vascular architecture and nerve perfusion have now been repeatedly shown to be a consistent component of neurological recovery. These findings are consistent with developmental models that have verified the requirement for coordination between vascular and neurological elements.<sup>33</sup> The role of

vascular recovery in the restoration of neurophysiologic function induced by SHh in diabetes is underscored by the observed decrease in angiogenic factor expression in the effected nerves in diabetic animals and the recovery of expression after SHh treatment. Consistent with the central role of vascular recovery, direct replenishment of an angiogenic cytokine by VEGF-2 gene therapy also results in significant neurophysiologic recovery. Although the neovasculature induced by SHh and VEGF was different in appearance, the recovery of perfusion is similar, as are the degree and rate of physiological recovery. These data support a vasculogenic cause of DN.

The ability of the morphogen SHh to normalize expression of numerous factors downregulated in diabetic subjects resulted in the restoration of vasa nervora that appeared morphologically distinct and more similar in appearance to normal vessels than did the VEGF induced vessels. This is consistent with previous studies in which multiple cytokines were shown to induce formation of multilayered vessels.<sup>34</sup> This observation regarding the vasculature induced by SHh may provide clues to the cause of diabetes-induced attrition of the vasa nervorum and to a better understanding of the mechanisms of neovascularization in vivo.

### Downregulation of Angiogenic Cytokines, Neurotrophic Factors, and Hh Pathway in the Diabetic Sciatic Nerve

Multiple mechanisms have been implicated in the pathogenesis of DN, including modification and inactivation of proteins critical to neural function by nonenzymatic glycosylation,<sup>8</sup> altered neural polyol metabolism,<sup>6,7</sup> reductions in neurotrophin or the availability of neurotrophic factors, and microvascular disease including reduced vasa nervora in the diabetic nerve.<sup>20,35</sup> However, debate still oscillates between propositions based on neurochemical versus vascular events. Our data demonstrate that not only neurotrophic factors but also various angiogenic cytokines were significantly reduced in the diabetic sciatic nerves. These data reveal that downregulation of both neurochemical and of vascular factors is related to the development of DN. After injection of SHh, expression of the Gli-1 transcription factor was upregulated and the expression of multiple endogenous angiogenic cytokines (angiopoietin-1, angiopoietin-2, and VEGF-1) and neurotrophic factors (BDNF and IGF-1) was restored to nondiabetic levels. These observations were also confirmed in vitro. However, phVEGF-2 treatment did not induce upregulation of endogenous cytokines or neurotrophic factors but did restore the vasa nervora with an equal impact on nerve physiology. These data suggest that the vascular pathology plays a key role in the advent of DN.

Anatomically, in situ fluorescent imaging of whole-mounted nerves (Figures 1 and 3) revealed that diabetes resulted in attrition of the vasa vasorum (both epineurium/perineurium and endoneurium) and disruption of the nerve architecture that is also characteristic of ischemic neuropathy, as has been documented previously in this model,<sup>20</sup> resulting in decreased nerve perfusion. All of these phenomena were reversed by SHh. Interestingly, the morphological features of the vasa in SHh-treated rats seemed to more closely resemble the native vasculature, with a range of vessels sizes, in comparison to the restored vasculature in phVEGF-2-treated

rats. Because we show here that SHh upregulates multiple endogenous angiogenic cytokines, including VEGF and angiopoietin-1, the observed differences in morphology appear consistent with the effect of SHh on multiple downstream targets. Similar observations were reported in a model of acute hind-limb ischemia in mice.<sup>28</sup>

In conclusion, these data suggest that SHh targets multiple signaling pathways that can influence the recovery of nerve perfusion in DN. These findings also highlight the potential for SHh to promote the development of a neovasculature that exhibits morphological features of the mature native vasculature and may therefore provide clues to the signaling mechanisms that distinguish arteriogenesis from angiogenesis.

### Acknowledgments

This work supported by National Institutes of Health grants HL 53354, 63695, 66957, and 57516. The authors gratefully acknowledge the assistance of Mickey Neely and Deirdre Costello in the preparation of this manuscript.

### References

- Reiber GE. The epidemiology of diabetic foot problems. *Diabet Med.* 1996;13(suppl 1):S6-S11.
- Partanen J, Niskanen L, Lehtinen J, Mervaala E, Siitonen O, Uusitupa M. Natural history of peripheral neuropathy in patients with non-insulin-dependent diabetes mellitus. *N Engl J Med.* 1995;333:89-94.
- Dyck PJ. Hypoxic neuropathy: does hypoxia play a role in diabetic neuropathy. *Neurology.* 1989;39:111-118.
- Rodriguez-Pena A, Botana M, Gonzalez M, Requejo F. Expression of neurotrophins and their receptors in sciatic nerve of experimentally diabetic rats. *Neurosci Lett.* 1995;200:37-40.
- Apfel SC, Arezzo JC, Brownlee M, Federoff H, Kessler JA. Nerve growth factor administration protects against experimental diabetic sensory neuropathy. *Brain Res.* 1994;634:7-12.
- Cameron NE, Cotter MA. The relationship of vascular changes to metabolic factors in diabetic mellitus and their role in the development of peripheral nerve complications. *Diabetes Metab Rev.* 1994;10:189-224.
- Greene DA, Lattimer SA, Sima AA. Sorbitol, phosphoinositides, and sodium-potassium-ATPase in the pathogenesis of diabetic complications. *N Engl J Med.* 1987;316:599-606.
- Cullum NA, Mahon J, Stringer K, McLean WG. Glycation of rat sciatic nerve tubulin in experimental diabetes mellitus. *Diabetologia.* 1991;34:387-389.
- Schmidt RE, Dorsey DA, Beaudet LN, Plurad SB, Parvin CA, Miller MS. Insulin-like growth factor I reverses experimental diabetic autonomic neuropathy. *Am J Pathol.* 1999;155:1651-1660.
- Simmons Z, Feldman EL. Update on diabetic neuropathy. *Curr Opin Neurol.* 2002;15:595-603.
- Reske-Nielsen E, Lundbaek K. Pathological changes in the central and peripheral nervous system of young long-term diabetics. II. The spinal cord and peripheral nerves. *Diabetologia.* 1968;4:34-43.
- Powell H, Knox D, Lee S, Charters AC, Orloff M, Garrett R, Lampert P. Alloxan diabetic neuropathy: electron microscopic studies. *Neurology.* 1977;27:60-66.
- Tuck RR, Schmelzer JD, Low PA. Endoneurial blood flow and oxygen tension in the sciatic nerves of rats with experimental diabetic neuropathy. *Brain.* 1984;107:935-950.
- Powell HC, Rosoff J, Myers RR. Microangiopathy in human diabetic neuropathy. *Acta Neuropathol (Berl).* 1985;68:295-305.
- Cameron NE, Cotter MA, Low PA. Nerve blood flow in early experimental diabetes in rats: relation to conduction deficits. *Am Journal of Physiology (Heart Circ Physiol 34).* 1991;261:E1-E8.
- Tesfaye S, Harris N, Jakubowski JJ, Mody C, Wilson RM, Rennie JG, Ward JD. Impaired blood flow and arterio-venous shunting in human diabetic neuropathy: a novel technique of nerve photography and fluorescein angiography. *Diabetologia.* 1993;36:1266-1274.
- Stevens EJ, Carrington AL, Tomlinson DR. Nerve ischemia in diabetic rats: time-course of development, effect of insulin treatment plus comparison of streptozotocin and BB models. *Diabetologia.* 1994;37:43-48.
- Rivard A, Silver M, Chen D, Kearney M, Magner M, Annex B, Peters K, Isner JM. Rescue of diabetes-related impairment of angiogenesis by intramuscular gene therapy with adeno-VEGF. *Am J Pathol.* 1999;154:355-363.
- Schratzberger P, Schratzberger G, Silver M, Curry C, Kearney M, Magner M, Alroy J, Adelman LS, Weinberg DH, Ropper AH, Isner JM. Favorable effect of VEGF gene transfer on ischemic peripheral neuropathy. *Nat Med.* 2000;6:405-413.
- Schratzberger P, Walter DH, Rittig K, Bahlmann FH, Pola R, Curry C, Silver M, Krainin JG, Weinberg DH, Ropper AH, Isner JM. Reversal of experimental diabetic neuropathy by VEGF gene transfer. *J Clin Invest.* 2001;107:1083-1092.
- Johnson RL, Tabin CJ. Molecular models for vertebrate limb development. *Cell.* 1997;90:979-990.
- St-Jacques B, Dassule HR, Karavanova I, Botchkarev VA, Li J, Danielian PS, McMahon JA, Lewis PM, Paus R, McMahon AP. Sonic hedgehog signaling is essential for hair development. *Curr Biol.* 1998;8:1058-1068.
- St-Jacques B, Hammerschmidt M, McMahon AP. Indian hedgehog signaling regulates proliferation and differentiation of chondrocytes and is essential for bone formation. *Genes Dev.* 1999;13:2072-2086.
- Chiang C, Litingtung Y, Lee E, Young KE, Corden JL, Westphal H, Beachy PA. Cyclopia and defective axial patterning in mice lacking sonic hedgehog gene function. *Nature.* 1996;383:407-413.
- Wang M, Jin P, Bumcrot DA, Marigo V, McMahon AP, Wang EA, Woolf T, Pang K. Induction of the dopaminergic neuron phenotype in the midbrain by sonic hedgehog protein. *Nat Med.* 1995;1:1184-1188.
- Roelink H, Augsburger A, Heemskerk J, Korzh V, Norlin S, Ruiz i Altaba A, Tanabe Y, Placzek M, Edlund T, Jessell TM. Floor plate and motor neuron induction by Vhh-1, a vertebrate homologue of hedgehog expressed by the notochord. *Cell.* 1994;76:761-755.
- Parmantier E, Lynn B, Lawson D, Turmaine M, Namini SS, Chakrabarti L, McMahon AP, Jessen KR, Mirsky R. Schwann cell-derived Desert hedgehog controls the development of peripheral nerve sheaths. *Neuron.* 1999;23:713-724.
- Pola R, Ling LE, Silver M, Corbley MJ, Taylor FR, Baker DP, Asahara T, Isner JM. The morphogen sonic hedgehog is an indirect angiogenic agent upregulating two families of angiogenic growth factors. *Nat Med.* 2001;7:706-711.
- Calcutt NA, Allendoerfer KL, Mizisin AP, Middlemas A, Freshwater JD, Burgers M, Ranciato R, Delcroix JD, Taylor FR, Shapiro R, Strauch K, Dudek H, Engber TM, Galdes A, Rubin LL, Tomlinson DR. Therapeutic efficacy of sonic hedgehog protein in experimental diabetic neuropathy. *J Clin Invest.* 2003;111:507-514.
- Stanley EF. Sensory and motor nerve conduction velocities and the latency of the H reflex during growth of the rat. *Exp Neurol.* 1981;71:497-506.
- Bolin LM, Iismaa TP, Shooter EM. Isolation of activated adult Schwann cells and a spontaneously immortal Schwann cell clone. *J Neurosci Res.* 1992;33:231-238.
- Mukoyama YS, Shin D, Britsch S, Taniguchi M, Anderson DJ. Sensory nerves determine the pattern of arterial differentiation and blood vessel branching in the skin. *Cell.* 2002;109:693-705.
- Nusslein-Volhard C, Wieschaus W. Mutations affecting segment number and polarity in *Drosophila*. *Nature.* 1980;287:795-801.
- Visconti RP, Richardson CD, Sato TN. Orchestration of angiogenesis and arteriovenous contribution by angiopoietins and vascular endothelial growth factor (VEGF). *Proc Natl Acad Sci U S A.* 2002;99:8219-8224.
- Isner JM, Ropper A, Hirst K. VEGF gene transfer for diabetic neuropathy. *Hum Gene Ther.* 2001;12:1593-1594.

Review

# Post-natal endothelial progenitor cells for neovascularization in tissue regeneration

Haruchika Masuda<sup>a,b,1</sup>, Takayuki Asahara<sup>a,b,c,\*</sup>

<sup>a</sup>Department of Physiology, Tokai University School of Medicine, Bohseidai, Isehara, Kanagawa 259-1193, Japan

<sup>b</sup>Research Center for Regenerative Medicine, Tokai University School of Medicine, Bohseidai, Isehara, Kanagawa 259-1193, Japan

<sup>c</sup>Division of Cardiovascular Research and Medicine, St Elizabeth's Medical Center, 736 Cambridge Street, Brighton, MA 02135-2997, USA

Received 25 September 2002; accepted 15 November 2002

## Abstract

The isolation of endothelial progenitor cells (EPCs) derived from bone marrow (BM) was an outstanding event in the recognition of 'de novo vessel formation' in adults occurring as physiological and pathological responses. The finding that EPCs home to sites of neovascularization and differentiate into endothelial cells (ECs) in situ is consistent with 'vasculogenesis', a critical paradigm well described for embryonic neovascularization, but proposed recently in adults in which a reservoir of stem or progenitor cells contributes to vascular organogenesis. EPCs have also been considered as therapeutic agents to supply the potent origin of neovascularization under pathological conditions. This review provides an update of EPC biology as well as highlighting their potential use for therapeutic regeneration.

© 2003 European Society of Cardiology. Published by Elsevier Science B.V. All rights reserved.

**Keywords:** Experimental; Vasculature; Cellular; Circulatory physiology

## 1. Introduction

Tissue regeneration by somatic stem/progenitor cells has been recognized as a maintenance or recovery system of many organs in adult. The isolation and investigation of these somatic stem/progenitor cells has described how these cells contribute to postnatal organogenesis. On the basis of the regenerative potency, these stem/progenitor cells are expected to develop as a key strategy of therapeutic applications for the damaged organs.

Recently endothelial progenitor cells (EPCs) have been isolated from adult peripheral blood (PB). EPCs are considered to share common stem/progenitor cells with hematopoietic stem cells and have been shown to derive from bone marrow (BM) and to incorporate into foci of

physiological or pathological neovascularization. The finding that EPCs home to sites of neovascularization and differentiate into endothelial cells (ECs) in situ is consistent with 'vasculogenesis', a critical paradigm well described for embryonic neovascularization, but recently proposed in adults in which a reservoir of stem/progenitor cells contributes to post-natal vascular organogenesis. The discovery of EPCs has therefore drastically changed our understanding of adult blood vessel formation. The following review provides an update of EPC biology as well as highlighting their potential utility for therapeutic vascular regeneration.

## 2. Post-natal neovascularization

Through the discovery of EPCs in PB [1,2], our understanding of post-natal neovascularization has been expanded from angiogenesis to angio/vasculogenesis. As previously described [3], post-natal neovascularization was

\*Corresponding author. Present address: Division of Cardiovascular Research and Medicine, St Elizabeth's Medical Center, 736 Cambridge Street, Brighton, MA 02135-2997, USA. Tel.: +1-617-789-3156; fax: +1-617-779-6346.

E-mail addresses: harrymasuda@aol.com (H. Masuda), asa777@aol.com (T. Asahara).

<sup>1</sup>Tel./fax: +81-463-93-1121x2722.

Time for primary review 19 days.

originally recognized to be constituted by the mechanism of 'angiogenesis', which is neovessel formation, operated by in situ proliferation and migration of preexisting endothelial cells. However, the isolation of EPCs resulted in the addition of the new mechanism, 'vasculogenesis', which is de novo vessel formation by in situ incorporation, differentiation, migration, and/or proliferation of BM-derived EPCs [4] (Fig. 1). More recently, tissue specific stem/progenitor cells with the potency of differentiation into myocytes or ECs were isolated in skeletal muscle tissue of murine hindlimb, although the origin remains to be clarified [5]. This finding suggests that the origin of EPCs may not be limited to BM, e.g. tissue specific stem/progenitor cells possibly provide 'in situ EPCs' as other sources of EPCs than BM.

In the event of minor scale neovessel formation, i.e. slight wounds or burns, 'in situ preexisting ECs' causing post-natal angiogenesis may replicate and replace the existing cell population sufficiently, as ECs exhibit the ability for self-repair that preserves their proliferative activity. Neovascularization through differentiated ECs, however, is limited in terms of cellular life span (Hayflick limit) and their inability to incorporate into remote target sites. In the case of large scale tissue repair, such as patients who experienced acute vascular insult secondary to burns, coronary artery bypass grafting (CABG), or acute myocardial infarction [6,7], or in physiological cyclic organogenesis of endometrium [4], BM-derived or in situ EPC kinetics are activated under the influence of appropriate cytokines, hormones and/or growth factors through

the autocrine, paracrine, and/or endocrine systems. Thus the contemporary view of tissue regeneration is that neighboring differentiated ECs are relied upon for vascular regeneration during a minor insult, whereas tissue specific or BM-derived stem/progenitor cells bearing EPCs/ECs are important when an emergent vascular regenerative process is required (Fig. 1).

### 3. Profiles of EPCs in adults

#### 3.1. The evidence of circulating EPCs in adults

In the embryo, evidence suggests that hematopoietic stem cells (HSCs) and EPCs [8,9] are derived from a common precursor (hemangioblast) [10,11]. During embryonic development, multiple blood islands initially fuse to form a yolk sac capillary network [12], which provides the foundation for an arteriovenous vascular system that eventually forms following the onset of blood circulation [8]. The integral relationship between the cells which circulate in the vascular system (the blood cells) and those principally responsible for the vessels themselves (ECs) is suggested by their spatial orientation within the blood islands; those cells destined to generate hematopoietic cells are situated in the center of the blood island (HSCs) while EPCs or angioblasts are located at the periphery of the blood islands. In addition to this arrangement, HSCs and EPCs share common antigens, including CD34, Vascular

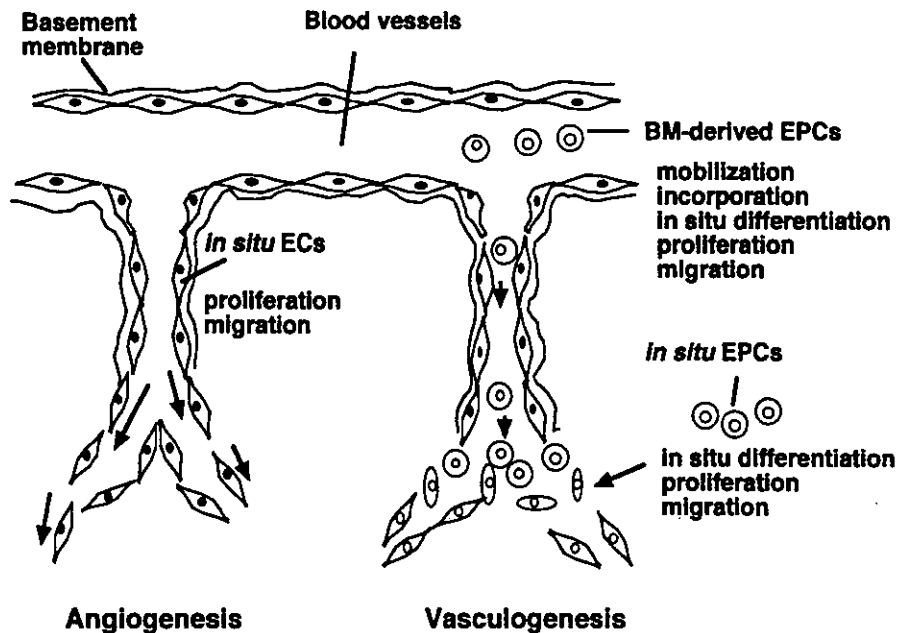


Fig. 1. Post-natal neovascularization in the physiological or pathological events is consistent with neovessel formation contributed by angiogenesis and vasculogenesis at the various rates between their two mechanisms. Angiogenesis and vasculogenesis are due to the activations of in situ ECs and BM-derived or in situ EPCs, respectively.



endothelial growth factor receptor-2 (VEGFR2), Tie-2, CD117, and stem cell antigen-1 (Sca-1) [13].

The existence of HSCs in the PB and BM, and the demonstration of sustained hematopoietic reconstitution with HSC transplantation led to the idea that a closely related cell-type, namely EPCs, may also exist in adult tissues. Recently, EPCs were successfully isolated from circulating mononuclear cells (MNCs) using VEGFR2, CD34, and CD133 antigens shared by both embryonic EPCs and HSCs [1,14,15]. In vitro, these cells differentiate into endothelial lineage cells, and in animal models of ischemia, heterologous, homologous, and autologous EPCs have been shown to incorporate into the foci of neovascularization, contributing to neovascularization. Recently, similar studies with EPCs isolated from human cord blood have demonstrated their analogous differentiation into ECs in vitro and in vivo [16–19].

These findings have raised important questions regarding fundamental concepts of blood vessel growth and development in adults. Does the differentiation of EPCs in situ (vasculogenesis) play an important role in adult neovascularization, and would impairments in this process lead to clinical diseases? There is now a strong body of evidence suggesting that vasculogenesis in fact significantly contributes to postnatal neovascularization. Recent studies with animal BM transplantation (BMT) models in which BM (donor)-derived EPCs could be distinguished have shown that the contribution of EPCs to neovessel formation may range from 5 to 25% in response to granulation tissue formation [20] or growth factor-induced neovascularization [21]. Also, in the tumor neovascularization, the range is approximately 35–45% higher than the former events [22]. The degree of EPC contribution to post-natal neovascularization is predicted to depend on each neovascularizing event or disease.

### 3.2. Isolation of EPCs in circulation

Under the current status, it is impossible to differentiate 'immature EPCs' from primitive HSCs, as those cells share common surface markers, i.e. AC133, CD34, or VEGFR2 as described above. In circulation, the cell population with the capacity of differentiation to EPCs is considered to be included in the cell population expressing AC133 and VEGFR2 markers in the subset of CD34 positive cells [15]. Circulating EPCs are constitutively expressing stem/progenitor markers, i.e. CD34 or VEGFR2 except AC133, and start expressing endothelial lineage specific markers, VE cadherin or E-selectin. On the other hand, following the commitment and differentiation to hematopoietic stem/progenitor cells, the surface markers of AC133 and VEGFR2 are extinguished. Such stem/progenitor cell markers do not express on the differentiated hematopoietic cells. Alternatively, kinds of surface markers are expressed to characterize individual hematopoietic cell populations. AC133 is a marker to

differentiate immature EPCs or primitive HSCs from circulating EPCs. To differentiate EPCs from hematopoietic stem/progenitor cells, VEGFR2, VE cadherin, or E-selectin are useful. Also, circulating EPCs do not express monocyte or myeloid markers, such as CD14 or CD15. Accordingly, circulating EPCs may be isolated via selection by the antigenicity of CD34, VEGFR2, and/or VE cadherin and also circulating immature EPCs by AC133 (Fig. 2).

### 3.3. Diverse identification of human EPCs and their precursors

Since the initial report of EPCs [1,2], a number of groups have set out to define this cell population better. Because EPCs and HSCs share many surface markers, and no simple definition of EPCs exists, various methods of EPC isolation have been reported [1,2,15–18,23–31]. The term EPC may therefore encompass a group of cells that exist in a variety of stages ranging from hemangioblasts to fully differentiated ECs. Although the true differentiation lineage of EPCs and their putative precursors remains to be determined, there is overwhelming evidence in vivo that a population of EPCs exists in human.

Lin et al. cultivated peripheral MNCs from patients receiving gender-mismatched BMT and studied their growth in vitro. In this study, they identified a population of BM (donor)-derived ECs with high proliferative potential (late outgrowth); these BM cells likely represent EPCs [24]. Gunsilius et al. investigated a chronic myelogenous leukemia model and disclosed that BM-derived EPCs contribute to postnatal neovascularization in human [26]. Interestingly, in the report, BM-derived EPCs could be detected even in the wall of quiescent vessels without neovascularization events. This finding suggests that BM-derived EPCs may relate even to the turnover of ECs consisting of quiescent vessels.

Reyes et al. have recently isolated multipotent adult progenitor cells (MAPCs) from BM MNCs, differentiated them into EPCs and proposed MAPCs as an origin of EPCs [22]. These studies therefore provide evidence to support the presence of BM-derived EPCs that take part in neovascularization. Also, as described above, the existence of 'in situ EPCs' as derived from tissue specific stem/progenitor cells in murine skeletal muscle remains to be investigated also in the other tissues [5] (Fig. 2).

## 4. EPC kinetics in adults

### 4.1. EPC kinetics effected by endogenous agents

The incorporation of BM-derived EPCs into foci of physiological and pathological neovascularization has been demonstrated through various animal experiments. One well-established model that allows the detection of BM-

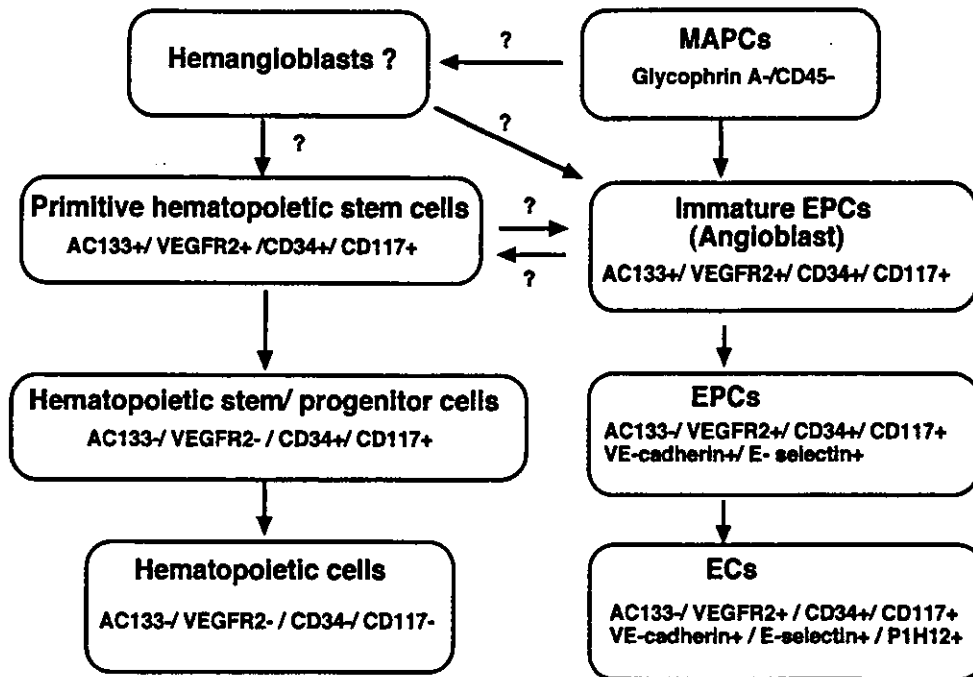


Fig. 2. Origin and differentiation of EPCs in adult BM. EPCs are thought to differentiate not only from putative hemangioblasts, common precursor cells with HSCs, as previously described, but also from MAPCs. Representative antigenicities to stem/progenitor cells are shown (+, positive; -, negative).

derived EPCs includes transplanting wild-type mice with BM cells harvested from transgenic mice in which LacZ expression is regulated by an EC lineage-specific promoter, *flk-1* or *Tie-2* (*flk-1/lacZ/BMT*, *Tie-2/lacZ/BMT*). Using such mice, *flk-1*- or *Tie-2*-expressing endothelial lineage cells derived from BM (EPCs) have been shown to localize to vessels during tumor growth, wound healing, skeletal and cardiac ischemia, corneal neovascularization, and endometrial remodeling following hormone-induced ovulation [4].

Tissue trauma causes mobilization of hematopoietic cells as well as pluripotent stem or progenitor cells from the hematopoietic system [32]. Consistent with the notion that EPCs and HSCs share a common ancestry, recent data from our laboratory have shown that mobilization of BM-derived EPCs constitutes a natural response to tissue ischemia. The aforementioned murine BMT model also provided direct evidence of enhanced BM-derived EPC incorporation into foci of corneal neovascularization following the development of hindlimb ischemia [33]. This finding indicates that circulating EPCs are mobilized endogenously in response to tissue ischemia and can incorporate into neovascular foci to promote tissue repair. These results in animals were recently confirmed by human studies illustrating EPC mobilization in patients following burns [6], CABG, or acute myocardial infarction [7].

As previous studies demonstrated, endogenous mobiliza-

tion of BM-derived EPCs, we considered exogenous mobilization of EPCs as an effective means of augmenting the resident population of EPCs/ECs. Such a strategy is appealing for its potential to overcome the endothelial dysfunction or depletion that may be associated with older, diabetic, or hypercholesterolemic patients. Granulocyte macrophage colony-stimulating factor (GM-CSF) is well known to stimulate hematopoietic progenitor cells and myeloid lineage cells, but has recently been shown to exert a potent stimulatory effect on EPC kinetics. The delivery of this cytokine induced EPC mobilization and enhanced neovascularization of severely ischemic tissues and *de novo* corneal vascularization [33].

The exact mechanism by which EPCs are mobilized to the peripheral circulation remains unknown, but may mimic aspects of embryonic development. Vascular endothelial growth factor (VEGF), critical for angio/vasculogenesis in the embryo [34-36], has recently been shown to be an important stimulus of adult EPC kinetics. Our studies carried out first in mice [37] and subsequently in patients undergoing VEGF gene transfer for critical limb or myocardial ischemia [38] established that a previously unappreciated mechanism by which VEGF contributes to neovascularization is in part by mobilizing BM-derived EPCs. Similar modulation of EPC kinetics has been observed in response to other hematopoietic stimulators, such as granulocyte-colony stimulating factor (G-CSF) and stroma-derived factor-1 (SDF-1) [39].

#### 4.2. EPC kinetics effected by exogenous agents

EPC mobilization has recently been implicated not only by natural hematopoietic or angiogenic stimulants but also by pharmacological agents. For instance, 3-hydroxy-3-methylglutaryl coenzyme A (HMG-CoA) reductase inhibitors (statins) are known to rapidly activate Akt signaling in ECs, thereby stimulating EC bioactivity *in vitro* and enhancing angiogenesis *in vivo* [40]. Recent studies by Dimmeler et al. and our laboratory have demonstrated a novel function of statins by mobilizing BM-derived EPCs through the stimulation of the Akt signaling pathway [41–44]. Therefore this newly appreciated role of statins, along with their already well-established safety and efficacy on hypercholesterolemia, suggests that they can offer benefit in treating various forms of vascular diseases. On the other hand, some antiangiogenic agents, i.e. angiostatin or soluble flk-1, have been shown to inhibit BM-derived EPC kinetics, leading to tumor regression [45], as BM-derived EPC kinetics is a critical factor for tumor growth, in terms of tumor neovascularization [46].

#### 4.3. Clinical profile of EPC kinetics

There is a strong body of evidence to suggest that impaired neovascularization results in part from diminished cytokine production. However, endogenous expression of cytokines is not the only factor leading to impaired neovascularization. Diabetic or hypercholesterolemic animals—like clinical patients—exhibit evidence of dysfunction in mature endothelial cells. While the cellular dysfunction does not necessarily preclude a favorable response to cytokine replacement therapy, the extent of recovery in limb perfusion in these animals fails to reach that of control animals; this suggests another limitation imposed by a diminished responsiveness of EPCs/ECs [47–49].

The aging characterized by impaired neovascularization [50,51] might be associated with dysfunctional EPCs and defective vasculogenesis. Indeed, preliminary results from our laboratory indicate that transplantation of BM (including EPCs) from old mice into young mice led to minimal neovascularization in a corneal micropocket assay, relative to transplantation of young BM. We also demonstrated that EPCs from older patients with clinical ischemia had significantly less therapeutic effect in rescuing ischemic hindlimb of mice compared with those from younger ischemic patients [52]. These studies provide evidence to support an age-dependent impairment in vasculogenesis (as well as angiogenesis) that is heavily influenced by the EPC phenotype. Moreover, analysis of clinical data from older patients at our institution disclosed a significant reduction in the number of EPCs at baseline, as well as that in response to VEGF165 gene transfer [38]. Thus impaired EPC mobilization and/or activity in response to VEGF may contribute to the age-dependent defect in postnatal neovascularization. Recently Vasa et al. have further

investigated EPC kinetics and their relationship to clinical disorders, showing that the number and migratory activity of circulating EPCs inversely correlates with risk factors for coronary artery disease, such as smoking, family history and hypertension [53]. On the basis of these findings, monitoring of BM-derived EPC kinetics in the patients with vascular diseases is expected to be valuable in the evaluation of lesion activity and/or therapeutic efficacy.

### 5. Therapeutic vasculogenesis

#### 5.1. The potential of EPC transplantation

The regenerative potential of stem/progenitor cells is currently under intense investigation. *In vitro*, stem/progenitor cells possess the capability of self-renewal and differentiation into organ-specific cell types. When placed *in vivo*, these cells are then provided with the proper milieu that allows them to reconstitute organ systems. The novel strategy of EPC transplantation (cell therapy) may therefore supplement the classic paradigm of angiogenesis developed by Folkman and colleagues. Our studies indicated that cell therapy with culture-expanded EPCs can successfully promote neovascularization of ischemic tissues, even when administered as 'sole therapy,' i.e. in the absence of angiogenic growth factors. Such a 'supply-side' version of therapeutic neovascularization in which the substrate (EPCs/ECs) rather than ligand (growth factor) comprises the therapeutic agent, was first demonstrated by intravenously transplanting human EPCs to immunodeficient mice with hindlimb ischemia [25]. These findings provided novel evidence that exogenously administered EPCs rescue impaired neovascularization in an animal model of critical limb ischemia. Not only did the heterologous cell transplantation improve neovascularization and blood flow recovery, but also led to important biological outcomes—notably, the reduction of limb necrosis and auto-amputation by 50% in comparison with controls. A similar strategy applied to a model of myocardial ischemia in the nude rat demonstrated that transplanted human EPCs localize to areas of myocardial neovascularization, differentiate into mature ECs and enhance neovascularization. These findings were associated with preserved left ventricular (LV) function and diminished myocardial fibrosis [54]. Murohara et al. reported similar findings in which human cord blood-derived EPCs also augmented neovascularization in a hindlimb ischemic model of nude rats, followed by *in situ* transplantation [17].

More recently, other researchers have explored the therapeutic potential of freshly isolated human CD34+ MNCs (EPC-enriched fraction). Shatteman et al. conducted local injection of freshly isolated human CD34+ MNCs into diabetic nude mice with hindlimb ischemia, and showed an increase in the restoration of limb flow [29].

Similarly Kocher et al. attempted intravenous infusion of freshly isolated human CD34+ MNCs into nude rats with myocardial ischemia, and found preservation of LV function associated with inhibition of cardiomyocyte apoptosis [55]. Thus two approaches of EPC preparation (i.e. both cultured and freshly-isolated human EPCs) may provide therapeutic benefit in vascular diseases, but as described below, will likely require further optimization of techniques to acquire the ideal quality and quantity of EPCs for EPC therapy (Fig. 3).

### 5.2. Future strategy of EPC cell therapy

Ex vivo expansion of EPCs cultured from PB-MNCs of healthy human volunteers typically yields  $5.0 \times 10^6$  cells per 100 ml of blood on day 7. Our animal studies [25] suggest that heterologous transplantation requires systemic injection of  $0.5\text{--}2.0 \times 10^4$  human EPCs/g body weight of the recipient animal to achieve satisfactory reperfusion of an ischemic hindlimb. Rough extrapolation of these data to human suggests that a blood volume of as much as 12 l may be necessary to obtain adequate numbers of EPCs to treat critical limb ischemia in patients. Therefore, the fundamental scarcity of EPCs in the circulation, combined with their possible functional impairment associated with a variety of phenotypes in clinical patients, such as aging, diabetes, hypercholesterolemia, and homocyst(e)inemia

(vide infra), constitute major limitations of primary EPC transplantation. Considering autologous EPC therapy, certain technical improvements that may help to overcome the primary scarcity of a viable and functional EPC population should include: (1) local delivery of EPCs, (2) adjunctive strategies (e.g. growth factor supplements) to promote BM-derived EPC mobilization [33,37], (3) enrichment procedures, i.e. leukapheresis or BM aspiration, or (4) enhancement of EPC function by gene transduction (gene modified EPC therapy, vide infra), (5) culture-expansion of EPCs from self-renewable primitive stem cells in BM or other tissues. Alternatively, unless the quality and quantity of autologous EPCs to satisfy the effectiveness of EPC therapy may be acquired by the technical improvements described above, allogenic EPCs derived from umbilical cord blood or culture-expanded from human embryonic stem cells [17,56], may be available as the sources supplying EPCs.

### 5.3. Gene modified EPC therapy

A strategy that may alleviate potential EPC dysfunction in ischemic disorders is considered reasonable, given the findings that EPC function and mobilization may be impaired in certain disease states. Genetic modification of EPCs to overexpress angiogenic growth factors, to enhance signaling activity of the angiogenic response, and to

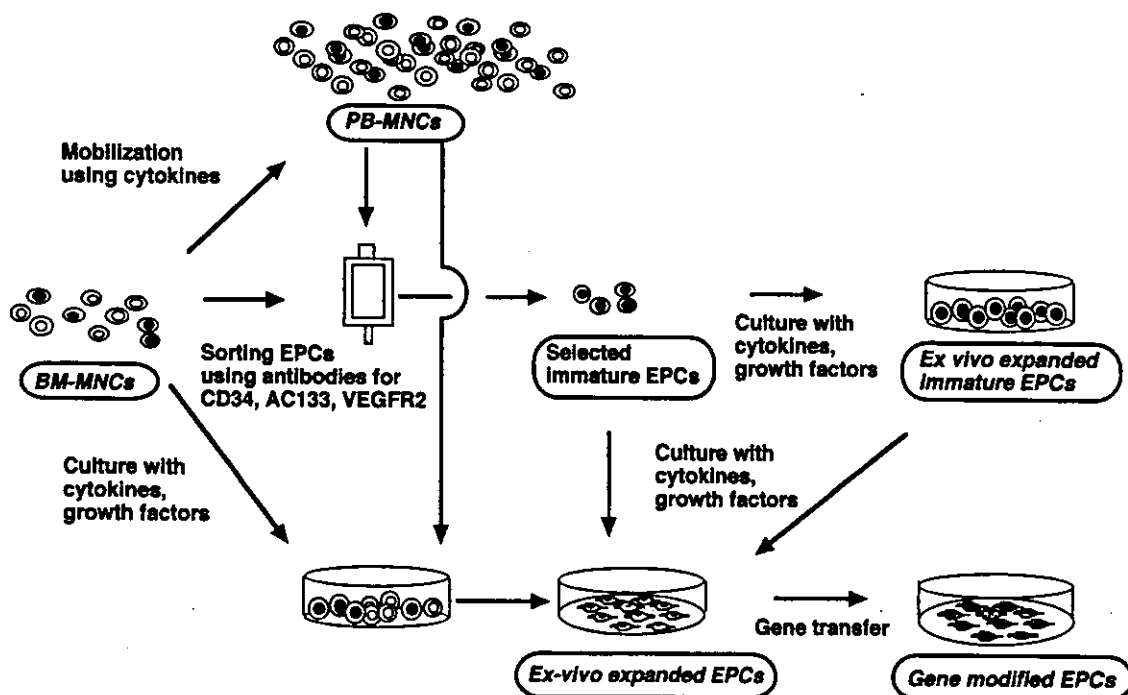


Fig. 3. EPC therapy using autologous EPCs derived from BM for vascular regeneration. Transplantation of BM- or mobilized PB-MNCs are considered 'crude EPC therapy', as EPCs are not selected. BM-MNCs have already been under clinical application. Following the manipulation to acquire the optimized quality and/or quantity, e.g. sorting by surface markers, ex vivo culture-expansion and/or gene transfection, EPC therapy is expected to be the useful strategy for vascular regeneration.

rejuvenate the bioactivity and/or extend the life span of EPCs, can constitute such potential strategies.

We have recently shown for the first time that gene-modified EPCs rescue impaired neovascularization in an animal model of limb ischemia [57]. Transplantation of heterologous EPCs transduced with adenovirus encoding human VEGF165 not only improved neovascularization and blood flow recovery, but also had meaningful biological consequences, i.e. limb necrosis and auto-amputation were reduced by 63.7% in comparison with controls. Notably, the dose of EPCs needed to achieve limb salvage in these *in vivo* experiments was 30 times less than that required in the previous experiments involving unmodified EPCs [25]. Thus, combining EPC cell therapy with gene (i.e. VEGF) therapy may be one option to address the limited number and function of EPCs that can be isolated from peripheral blood in patients.

#### 5.4. BM-MNC transplantation

Nonselected total BM cells or BM-MNCs including immature EPC population have also been investigated for their potential to induce neovascularization. Several experiments have reported that autologous BM administration into rabbit [58] or rat [59] hindlimb ischemic model, and porcine myocardial ischemic model [60,61] could augment neovascularization in ischemic tissue mainly through the production of angiogenic growth factors and less through the differentiation of a portion of the cells into EPCs/ECs *in situ*. Although there are no long-term safety and efficacy data for local delivery of such cell population mostly composed of inflammatory leukocytes, these strategies have already been applied to clinical patients in some institutions and preliminary results are expected soon.

## 6. Other devices of EPCs for clinical application

EPCs have recently been applied to the field of tissue engineering as a means of improving biocompatibility of vascular grafts. Artificial grafts first seeded with autologous CD34+ cells from canine BM and then implanted into the aortae were found to have increased surface endothelialization and vascularization compared with controls [62]. Similarly, when cultured autologous ovine EPCs were seeded onto carotid interposition grafts, the EPC-seeded grafts achieved physiological motility and remained patent for 130 days versus 15 days in non-seeded grafts [63]. Alternatively, as previously reported, the cell sheets of cultured cardiomyocytes may be effective for the improvement of cardiac function in the damaged hearts, i.e. ischemic heart disease or cardiomyopathy [64,65]. The cell sheets consisting of cardiomyocytes with EPCs expected to induce neovessels may be attractive, as blood supply is essential to maintain the homeostasis of implanted cardiomyocytes in such cell sheets.

EPCs have also been investigated in the cerebrovascular field. Embolization of the middle cerebral artery in Tie2/*lacZ*/BMT mice disclosed that the formation of new blood vessels in the adult brain after stroke involves vasculogenesis/EPCs [66]. Similar data were reported using gender-mismatched wild-type mice transplanted with BM from Green Fluorescein Protein transgenic mice [67]. However, whether autologous EPC transplantation would augment cerebral revascularization has yet to be examined.

To date, the role of EPCs in tumor angiogenesis has been demonstrated by several groups. Davidoff et al. showed that BM-derived EPCs contribute to tumor neovascularization and that BM cells transduced with an anti-angiogenic gene can restrict tumor growth in mice [45]. Lyden et al. recently used angiogenic defective, tumor resistant Id-mutant mice and showed the restoration of tumor angiogenesis with BM (donor)-derived EPCs throughout the neovessels following the transplantation of wild-type BM into these mice [46]. These data demonstrate that EPCs are not only important, but also critical, to tumor neovascularization. Given the findings, 'anti-tumor EPC mediated gene therapy' by transplantation of EPCs transferred genes to inhibit tumor growth may be developed in the near future.

Orlic et al. recently demonstrated that lineage marker negative (non-committed) and CD117 positive BM cells can regenerate *de novo* myocardium and ECs and improve cardiac function when they were locally delivered into murine myocardial infarction model [68]. They also reported that mobilization of BM cells by G-CSF and stem cell factor leads to a reduction in infarct size, improves cardiac function and decreases the mortality in this animal model [69]. Jackson et al. showed that BM-derived stem cells (side population cells defined by dye exclusion) can differentiate into cardiomyocytes and ECs at a very low rate in murine cardiac reperfusion injury model following BMT [70]. These studies suggest a clinical use of BM for cardiovascular diseases other than EPCs/therapeutic vasculogenesis. Given the extensive plasticity of BM cells differentiating into neural, hepatic and mesenchymal lineages, BM-derived EPCs may also exhibit such a potential, as seen in the report suggesting the transdifferentiation of endothelial lineage cells into cardiomyocytes [71].

## 7. Conclusion

As the concepts of BM-derived EPCs in adults and postnatal vasculogenesis are further established, clinical applications of EPCs to regenerative medicine are likely to follow. To acquire the more optimized quality and quantity of EPCs, several issues remain to be addressed, such as the development of a more efficient method of EPC purification and expansion, the methods of administration and senescence in EPCs. Alternatively, in the case of im-

possible utility of autologous BM-derived EPCs in the patients with impaired BM function, an appreciable number of EPCs isolated from umbilical cord blood or differentiated from tissue specific stem/progenitor or embryonic stem cells need to be optimized for EPC therapy. However, the unlimited potential of EPCs along with the emerging concepts of autologous cell therapy with gene modification suggests that they may soon reach clinical fruition.

### Acknowledgements

We thank Y. Nakaya for secretarial assistance. Haruchika Masuda is the recipient of grants from the Kanagawa Nanbyo Foundation. Takayuki Asahara is the recipient of Grant-in-Aid 0051121T from the American Heart Association.

### References

- [1] Asahara T, Murohara T, Sullivan A et al. Isolation of putative progenitor endothelial cells for angiogenesis. *Science* 1997;275:964–967.
- [2] Shi Q, Rafi S, Wu MH et al. Evidence for circulating bone marrow-derived endothelial cells. *Blood* 1998;92:362–367.
- [3] Folkman J, Shing Y. Angiogenesis. *J Biol Chem* 1992;267:10931–10934.
- [4] Asahara T, Masuda H, Takahashi T et al. Bone marrow origin of endothelial progenitor cells responsible for postnatal vasculogenesis in physiological and pathological neovascularization. *Circ Res* 1999;85:221–228.
- [5] Tamaki T, Akatsuka A, Ando K et al. Identification of myogenic-endothelial progenitor cells in the interstitial spaces of skeletal muscle. *J Cell Biol* 2002;157:571–577.
- [6] Gill M, Dias S, Hattori K et al. Vascular trauma induces rapid but transient mobilization of VEGFR2(+)AC133(+) endothelial precursor cells. *Circ Res* 2001;88:167–174.
- [7] Shintani S, Murohara T, Ikeda H et al. Mobilization of endothelial progenitor cells in patients with acute myocardial infarction. *Circulation* 2001;103:2776–2779.
- [8] Risau W, Sariola H, Zerwes HG et al. Vasculogenesis and angiogenesis in embryonic-stem-cell-derived embryoid bodies. *Development* 1988;102:471–478.
- [9] Pardanaud L, Altmann C, Kitos P et al. Vasculogenesis in the early quail blastodisc as studied with a monoclonal antibody recognizing endothelial cells. *Development* 1987;100:339–349.
- [10] Flamme I, Risau W. Induction of vasculogenesis and hematopoiesis in vitro. *Development* 1992;116:435–439.
- [11] Weiss MJ, Orkin SH. In vitro differentiation of murine embryonic stem cells. New approaches to old problems. *J Clin Invest* 1996;97:591–595.
- [12] Risau W, Flamme I. Vasculogenesis. *Annu Rev Cell Dev Biol* 1995;11:73–91.
- [13] Choi K, Kennedy M, Kazarov A et al. A common precursor for hematopoietic and endothelial cells. *Development* 1998;125:725–732.
- [14] Yin AH, Miraglia S, Zanjani ED et al. AC133, a novel marker for human hematopoietic stem and progenitor cells. *Blood* 1997;90:5002–5012.
- [15] Peichev M, Naiyer AJ, Pereira D et al. Expression of VEGFR2 and AC133 by circulating human CD34(+) cells identifies a population of functional endothelial precursors. *Blood* 2000;95:952–958.
- [16] Nieda M, Nicol A, Denning Kendall P et al. Endothelial cell precursors are normal components of human umbilical cord blood. *Br J Haematol* 1997;98:775–777.
- [17] Murohara T, Ikeda H, Duan J et al. Transplanted cord blood-derived endothelial precursor cells augment postnatal neovascularization. *J Clin Invest* 2000;105:1527–1536.
- [18] Kang HJ, Kim SC, Kim YJ et al. Short-term phytohemagglutinin-activated mononuclear cells induce endothelial progenitor cells from cord blood CD34+ cells. *Br J Haematol* 2001;113:962–969.
- [19] Crisa L, Cirulli V, Smith KA et al. Human cord blood progenitors sustain thymic T-cell development and a novel form of angiogenesis. *Blood* 1999;94:3928–3940.
- [20] Crosby JR, Kaminski WE, Schatteman G et al. Endothelial cells of hematopoietic origin make a significant contribution to adult blood vessel formation. *Circ Res* 2000;87:728–730.
- [21] Murayama T, Tepper OM, Silver M et al. Determination of bone marrow-derived endothelial progenitor cell significance in angiogenic growth factor-induced neovascularization in vivo. *Exp Hematol* 2002;30:967.
- [22] Reyes M, Dudek A, Jahagirdar B et al. Origin of endothelial progenitors in human postnatal bone marrow. *J Clin Invest* 2002;109:337–346.
- [23] Boyer M, Townsend LE, Vogel LM et al. Isolation of endothelial cells and their progenitor cells from human peripheral blood. *J Vasc Surg* 2000;31:181–189.
- [24] Lin Y, Weisdorf DJ, Solovey A et al. Origins of circulating endothelial cells and endothelial outgrowth from blood. *J Clin Invest* 2000;105:71–77.
- [25] Kalka C, Masuda H, Takahashi T et al. Transplantation of ex vivo expanded endothelial progenitor cells for therapeutic neovascularization. *Proc Natl Acad Sci USA* 2000;97:3422–3427.
- [26] Gunsilius E, Duba HC, Petzer AL et al. Evidence from a leukaemia model for maintenance of vascular endothelium by bone-marrow-derived endothelial cells. *Lancet* 2000;355:1688–1691.
- [27] Gehling UM, Ergun S, Schumacher U et al. In vitro differentiation of endothelial cells from AC133-positive progenitor cells. *Blood* 2000;95:3106–3112.
- [28] Fernandez Pujol B, Lucibello FC et al. Endothelial-like cells derived from human CD14 positive monocytes. *Differentiation* 2000;65:287–300.
- [29] Schatteman GC, Hanlon HD, Jiao C et al. Blood-derived angioblasts accelerate blood-flow restoration in diabetic mice. *J Clin Invest* 2000;106:571–578.
- [30] Harraz M, Jiao C, Hanlon HD et al. CD34- blood-derived human endothelial cell progenitors. *Stem Cells* 2001;19:304–312.
- [31] Quirici N, Soligo D, Caneva L et al. Differentiation and expansion of endothelial cells from human bone marrow CD133(+) cells. *Br J Haematol* 2001;115:186–194.
- [32] Grzelak I, Olszewski WL, Zaleska M et al. Surgical trauma evokes a rise in the frequency of hematopoietic progenitor cells and cytokine levels in blood circulation. *Eur Surg Res* 1998;30:198–204.
- [33] Takahashi T, Kalka C, Masuda H et al. Ischemia- and cytokine-induced mobilization of bone marrow-derived endothelial progenitor cells for neovascularization. *Nat Med* 1999;5:434–438.
- [34] Shalaby F, Rossant J, Yamaguchi TP et al. Failure of blood-island formation and vasculogenesis in Flk-1-deficient mice. *Nature* 1995;376:62–66.
- [35] Carmeliet P, Ferreira V, Breier G et al. Abnormal blood vessel development and lethality in embryos lacking a single VEGF allele. *Nature* 1996;380:435–439.
- [36] Ferrara N, Carver Moore K et al. Heterozygous embryonic lethality induced by targeted inactivation of the VEGF gene. *Nature* 1996;380:439–442.
- [37] Asahara T, Takahashi T, Masuda H et al. VEGF contributes to postnatal neovascularization by mobilizing bone marrow-derived endothelial progenitor cells. *EMBO J* 1999;18:3964–3972.

- [38] Kalka C, Masuda H, Takahashi T et al. Vascular endothelial growth factor(165) gene transfer augments circulating endothelial progenitor cells in human subjects. *Circ Res* 2000;86:1198–1202.
- [39] Moore MA, Hattori K, Heissig B et al. Mobilization of endothelial and hematopoietic stem and progenitor cells by adenovector-mediated elevation of serum levels of SDF-1, VEGF, and angiopoietin-1. *Ann NY Acad Sci* 2001;938:36–45; discussion 45–47.
- [40] Kureishi Y, Luo Z, Shiojima I et al. The HMG-CoA reductase inhibitor simvastatin activates the protein kinase Akt and promotes angiogenesis in normocholesterolemic animals. *Nat Med* 2000;6:1004–1010.
- [41] Llevadot J, Murasawa S, Kureishi Y et al. HMG-CoA reductase inhibitor mobilizes bone marrow-derived endothelial progenitor cells. *J Clin Invest* 2001;108:399–405.
- [42] Dimmeler S, Aicher A, Vasa M et al. HMG-CoA reductase inhibitors (statins) increase endothelial progenitor cells via the PI 3-kinase/Akt pathway. *J Clin Invest* 2001;108:391–397.
- [43] Vasa M, Fichtlscherer S, Adler K et al. Increase in circulating endothelial progenitor cells by statin therapy in patients with stable coronary artery disease. *Circulation* 2001;103:2885–2890.
- [44] Urbich C, Dembach E, Zeiher AM et al. Double-edged role of statins in angiogenesis signaling. *Circ Res* 2002;90:737–744.
- [45] Davidoff AM, Ng CY, Brown P et al. Bone marrow-derived cells contribute to tumor neovasculation and, when modified to express an angiogenesis inhibitor, can restrict tumor growth in mice. *Clin Cancer Res* 2001;7:2870–2879.
- [46] Lyden D, Hattori K, Dias S et al. Impaired recruitment of bone-marrow-derived endothelial and hematopoietic precursor cells blocks tumor angiogenesis and growth. *Nat Med* 2001;7:1194–1201.
- [47] Rivard A, Silver M, Chen D et al. Rescue of diabetes-related impairment of angiogenesis by intramuscular gene therapy with adeno-VEGF. *Am J Pathol* 1999;154:355–363.
- [48] Van Belle E, Rivard A, Chen D et al. Hypercholesterolemia attenuates angiogenesis but does not preclude augmentation by angiogenic cytokines. *Circulation* 1997;96:2667–2674.
- [49] Couffinhal T, Silver M, Kearney M et al. Impaired collateral vessel development associated with reduced expression of vascular endothelial growth factor in ApoE<sup>-/-</sup> mice. *Circulation* 1999;99:3188–3198.
- [50] Rivard A, Berthou Soulie L, Principe N et al. Age-dependent defect in vascular endothelial growth factor expression is associated with reduced hypoxia-inducible factor 1 activity. *J Biol Chem* 2000;275:29643–29647.
- [51] Rivard A, Fabre JE, Silver M et al. Age-dependent impairment of angiogenesis. *Circulation* 1999;99:111–120.
- [52] Murayama T, Kalka C, Silver M et al. Aging impairs therapeutic contribution of human endothelial progenitor cells to postnatal neovascularization [Abstract]. *Circulation* 2001;104:II-68.
- [53] Vasa M, Fichtlscherer S, Aicher A et al. Number and migratory activity of circulating endothelial progenitor cells inversely correlate with risk factors for coronary artery disease. *Circ Res* 2001;89:E1–E7.
- [54] Kawamoto A, Gwon HC, Iwaguro H et al. Therapeutic potential of ex vivo expanded endothelial progenitor cells for myocardial ischemia. *Circulation* 2001;103:634–637.
- [55] Kocher AA, Schuster MD, Szabolcs MJ et al. Neovascularization of ischemic myocardium by human bone-marrow-derived angioblasts prevents cardiomyocyte apoptosis, reduces remodeling and improves cardiac function. *Nat Med* 2001;7:430–436.
- [56] Levenberg S, Golub JS, Amit M et al. Endothelial cells derived from human embryonic stem cells. *Proc Natl Acad Sci USA* 2002;99:4391–4396.
- [57] Iwaguro H, Yamaguchi J, Kalka C et al. Endothelial progenitor cell vascular endothelial growth factor gene transfer for vascular regeneration. *Circulation* 2002;105:732–738.
- [58] Shintani S, Murohara T, Ikeda H et al. Augmentation of postnatal neovascularization with autologous bone marrow transplantation. *Circulation* 2001;103:897–903.
- [59] Hamano K, Li TS, Kobayashi T et al. The induction of angiogenesis by the implantation of autologous bone marrow cells: a novel and simple therapeutic method. *Surgery* 2001;130:44–54.
- [60] Kamihata H, Matsubara H, Nishiue T et al. Implantation of bone marrow mononuclear cells into ischemic myocardium enhances collateral perfusion and regional function via side supply of angioblasts, angiogenic ligands, and cytokines. *Circulation* 2001;104:1046–1052.
- [61] Fuchs S, Baffour R, Zhou YF et al. Transendocardial delivery of autologous bone marrow enhances collateral perfusion and regional function in pigs with chronic experimental myocardial ischemia. *J Am Coll Cardiol* 2001;37:1726–1732.
- [62] Bhattacharya V, McSweeney PA, Shi Q et al. Enhanced endothelialization and microvessel formation in polyester grafts seeded with CD34(+) bone marrow cells. *Blood* 2000;95:581–585.
- [63] Kaushal S, Amiel GE, Guleserian KJ et al. Functional small-diameter neovessels created using endothelial progenitor cells expanded ex vivo. *Nat Med* 2001;7:1035–1040.
- [64] Shimizu T, Yamato M, Isoi Y et al. Fabrication of pulsatile cardiac tissue grafts using a novel 3-dimensional cell sheet manipulation technique and temperature-responsive cell culture surfaces. *Circ Res* 2002;90:e40.
- [65] Shimizu T, Yamato M, Akutsu T et al. Electrically communicating three-dimensional cardiac tissue mimic fabricated by layered cultured cardiomyocyte sheets. *J Biomed Mater Res* 2002;60:110–117.
- [66] Zhang ZG, Zhang L, Jiang Q et al. Bone marrow-derived endothelial progenitor cells participate in cerebral neovascularization after focal cerebral ischemia in the adult mouse. *Circ Res* 2002;90:284–288.
- [67] Hess DC, Hill WD, Martin Studdard A et al. Bone marrow as a source of endothelial cells and NeuN-expressing cells after stroke. *Stroke* 2002;33:1362–1368.
- [68] Orlic D, Kajstura J, Chimenti S et al. Bone marrow cells regenerate infarcted myocardium. *Nature* 2001;410:701–705.
- [69] Orlic D, Kajstura J, Chimenti S et al. Mobilized bone marrow cells repair the infarcted heart, improving function and survival. *Proc Natl Acad Sci USA* 2001;98:10344–10349.
- [70] Jackson KA, Majka SM, Wang H et al. Regeneration of ischemic cardiac muscle and vascular endothelium by adult stem cells. *J Clin Invest* 2001;107:1395–1402.
- [71] Condorelli G, Borello U, De Angelis L et al. Cardiomyocytes induce endothelial cells to trans-differentiate into cardiac muscle: implications for myocardium regeneration. *Proc Natl Acad Sci USA* 2001;98:10733–10738.

# Stromal Cell-Derived Factor-1 Effects on Ex Vivo Expanded Endothelial Progenitor Cell Recruitment for Ischemic Neovascularization

Jun-ichi Yamaguchi, MD, PhD; Kengo Fukushima Kusano, MD, PhD; Osamu Masuo, MD; Atsuhiko Kawamoto, MD, PhD; Marcy Silver, BS; Satoshi Murasawa, MD, PhD; Marta Bosch-Marce, PhD; Haruchika Masuda, MD, PhD; Douglas W. Losordo, MD; Jeffrey M. Isner, MD†; Takayuki Asahara, MD, PhD

**Background**—Stromal cell-derived factor-1 (SDF-1) is a chemokine considered to play an important role in the trafficking of hematopoietic stem cells. Given the close relationship between hematopoietic stem cells and endothelial progenitor cells (EPCs), we investigated the effect of SDF-1 on EPC-mediated vasculogenesis.

**Methods and Results**—Flow cytometric analysis demonstrated expression of CXCR4, the receptor of SDF-1, by  $66 \pm 3\%$  of EPCs after 7 days in culture. In vitro modified Boyden chamber assay showed a dose-dependent EPC migration toward SDF-1 (control versus 10 ng/mL SDF-1 versus 100 ng/mL SDF-1,  $24 \pm 2$  versus  $71 \pm 3$  versus  $140 \pm 6$  cells/mm<sup>2</sup>;  $P < 0.0001$ ). SDF-1 attenuated EPC apoptosis (control versus SDF-1,  $27 \pm 1$  versus  $7 \pm 1\%$ ;  $P < 0.0001$ ). To investigate the effect of SDF-1 in vivo, we locally injected SDF-1 into athymic ischemic hindlimb muscle of nude mice combined with human EPC transplantation to determine whether SDF-1 augmented EPC-induced vasculogenesis. Fluorescence microscopic examination disclosed increased local accumulation of fluorescence-labeled EPCs in ischemic muscle in the SDF-1 treatment group (control versus SDF-1 =  $241 \pm 25$  versus  $445 \pm 24$  cells/mm<sup>2</sup>,  $P < 0.0001$ ). At day 28 after treatment, ischemic tissue perfusion was improved in the SDF-1 group and capillary density was also increased. (control versus SDF-1,  $355 \pm 26$  versus  $551 \pm 30$  cells/mm<sup>2</sup>;  $P < 0.0001$ ).

**Conclusion**—These findings indicate that locally delivered SDF-1 augments vasculogenesis and subsequently contributes to ischemic neovascularization in vivo by augmenting EPC recruitment in ischemic tissues. (*Circulation*. 2003;107:1322-1328.)

**Key Words:** chemokines ■ angiogenesis ■ ischemia ■ endothelium

Stromal cell-derived factor-1 (SDF-1) is a member of the chemokine CXC subfamily originally isolated from murine bone marrow stromal cells.<sup>1</sup> It has a single substantial open reading frame of 267 nucleotides encoding an 89-amino acid polypeptide and expressed on stromal cells of various tissues. On the other hand, CXCR4, a 7-transmembrane-spanning G protein-coupled receptor, is the only known receptor for SDF-1 and is also a coreceptor for HIV type 1 infection.<sup>2</sup> SDF-1/CXCR4 interaction is reported to play an important physiological role during embryogenesis in hematopoiesis,<sup>3</sup> vascular development, cardiogenesis,<sup>4</sup> and cerebellar development.<sup>5</sup>

Recently, several investigators reported that CD34<sup>+</sup> cells, classically considered to be hematopoietic stem cells, expressed CXCR4, and that SDF-1 could induce CD34<sup>+</sup> cell

migration in vitro.<sup>6</sup> Accordingly, SDF-1 is considered as one of the key regulators of hematopoietic stem cell trafficking between the peripheral circulation and bone marrow. SDF-1 has also been shown to effect CD34<sup>+</sup> cell proliferation<sup>7</sup> and mobilization<sup>8</sup> and to induce angiogenesis in vivo.<sup>9</sup>

Bone marrow-derived endothelial progenitor cells (EPCs) have been isolated from the peripheral blood of adult species.<sup>10,11</sup> These cells participate in not only physiological but also pathological neovascularization in response to certain cytokines and/or tissue ischemia.<sup>12-14</sup> More recently, ex vivo expanded EPCs from peripheral blood, transplanted into animal models of ischemic hindlimbs and acute myocardial infarction, successfully augmented neovascularization resulting in physiological recovery documented as limb salvage and improvement in myocardial function.<sup>15,16</sup>

Received August 12, 2002; revision received December 5, 2002; accepted December 5, 2002.

From the Division of Cardiovascular Research and Medicine (J.Y., K.F.K., O.M., A.K., M.S., S.M., M.B.M., D.W.L., J.M.I., T.A.), St Elizabeth's Medical Center, Tufts University School of Medicine, Boston, Mass, and Department of Physiology (H.M., T.A.), Tokai University School of Medicine, Tokai, Japan.

†Deceased.

Correspondence to Takayuki Asahara, MD, PhD, or Douglas W. Losordo, MD, Division of Cardiovascular Research and Medicine, St Elizabeth's Medical Center, 736 Cambridge St, Boston, MA, 02135. E-mail asa777@aol.com (T.A.) or douglas.losordo@tufts.edu

© 2003 American Heart Association, Inc.

*Circulation* is available at <http://www.circulationaha.org>

DOI: 10.1161/01.CIR.0000055313.77510.22



At present, however, enthusiasm for the therapeutic potential of strategies of EPC transplantation is limited by certain practical considerations. For example, adjusting the number of EPCs for injection according to body weight,  $\approx 6$  L of blood would be required for harvesting of EPCs in an average-size patient to administer a dose equivalent to that which yielded therapeutic effects in limb and myocardial ischemia in small animal models. Accordingly, we investigated the hypothesis that locally administered SDF-1 could augment the local accumulation of transplanted EPCs, thereby resulting in enhanced neovascularization. Here we report that EPCs express CXCR4 and that the combination of SDF-1 local administration and EPC transplantation has potential as a strategy for therapeutic neovascularization.

## Methods

### Cell Isolation and Culture

*Ex vivo* expansion of EPCs was performed as described.<sup>10</sup> In brief, total human peripheral blood mononuclear cells were isolated from healthy human volunteers by density-gradient centrifugation with Histopaque-1077 (Sigma) and plated on culture dishes coated with human fibronectin (Sigma). The cells were cultured in endothelial cell basal medium-2 (EBM-2, Clonetics) supplemented with 5% FBS, human vascular endothelial growth factor (VEGF)-A, human fibroblast growth factor-2, human epidermal growth factor, insulin-like growth factor-1, ascorbic acid, and antibiotics. After 4 days in culture, nonadherent cells were removed by washing with PBS, new medium was applied, and the culture was maintained through day 7.

CD34<sup>+</sup> cells from isolated human peripheral blood mononuclear cells were positively selected using the MiniMACS immunomagnetic separation system (Milteney Biotec) according to the manufacturer's instructions as recently described.<sup>7</sup>

### Fluorescence-Activated Cell Sorting

Fluorescence-activated cell sorting (FACS) detection of EPCs was performed after 7 days in culture. The procedure of FACS staining was described previously.<sup>16</sup> In brief, a total of  $2$  to  $3 \times 10^5$  cells were resuspended with 200  $\mu$ L of Dulbecco's PBS (BioWhittaker) containing 10% FBS and 0.01% NaN<sub>3</sub> and incubated for 20 minutes at 4°C with phycoerythrin-conjugated monoclonal antibodies against CXCR4 (PharMingen). After staining, the cells were fixed in 2% paraformaldehyde. Quantitative FACS was performed on a FACStar flow cytometer (Becton Dickinson). All groups were studied at least in triplicate.

### Migration Assay

To investigate EPC migration activity, a modified Boyden chamber assay was performed using a 48-well microchemotaxis chamber (NeuroProbe) as described.<sup>17</sup> In brief, SDF-1 (PharMingen) is diluted to appropriate concentrations in EBM-2 supplemented with 0.1% BSA, and 30  $\mu$ L of the final dilution was placed in the lower compartment of a Boyden chamber. Human EPCs cultured for 7 days were harvested,  $3 \times 10^4$  cells were suspended in 50  $\mu$ L of EBM-2 supplemented with 0.1% BSA, and antibiotics were reseeded in the upper compartment. After incubation for 5 hours at 37°C, the filter was removed, and the cells on the filter were counted manually in random high-power fields ( $\times 100$ ) in each well. All groups were studied at least in triplicate.

### Apoptosis Assay

EPC apoptosis, induced by serum starvation, was quantified to determine whether SDF-1 exerts a survival effect on EPCs. The proportion of apoptotic EPCs after serum starvation was determined by manually counting pyknotic nuclei after DAPI (Roche) staining. In brief, day 7 EPCs were reseeded onto 4-chamber slides ( $1 \times 10^5$  cells per well with 500  $\mu$ L of EPC culture medium). After 24 hours

of incubation, culture medium was removed and replaced with 500  $\mu$ L of EBM-2 without any supplement. After 48 hours of serum deprivation, the medium was supplemented with 100 ng/mL of SDF-1 (versus medium alone) and incubated for 3 hours. DAPI-stained pyknotic nuclei were counted as percentage of 100 cells in each well. Each group was studied at least in triplicate.

### Animal Model of Ischemic Hindlimb

All procedures were performed in accordance with the Institutional Animal Care and Use Committee of St Elizabeth's Medical Center. Male athymic nude mice (CBy-Cg-Foxn1<sup>tm</sup>, The Jackson Laboratory), age 8 to 10 weeks and weighing 18 to 22 g, were anesthetized with sodium pentobarbital (160 mg/kg IP) for operative resection of one femoral artery as described.<sup>16</sup> For euthanization, mice were injected with an overdose of pentobarbital.

### RNA Extraction and Reverse Transcriptase-Polymerase Chain Reaction Analysis

Tissue RNA was extracted from frozen muscle samples (day 7 after hindlimb ischemia) using TRIzol reagent (Invitrogen) according to the manufacturer's instructions. Reverse transcriptase-polymerase chain reaction (RT-PCR) of the VEGF and GAPDH genes was performed using 1  $\mu$ g of total RNA. PCR was performed for 35 cycles for VEGF-A and 25 cycles for GAPDH, with each cycle consisting of 94°C for 30 seconds and 64°C for 3 minutes. Amplification was carried out in 20- $\mu$ L reaction mixtures containing 0.4 U *Taq* polymerase.

### Transplantation of Ex Vivo Expanded EPCs

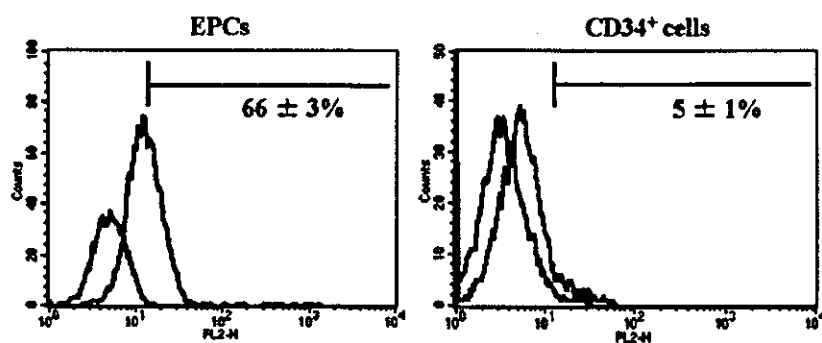
The impact of local administration of SDF-1 after EPC transplantation on therapeutic neovascularization was investigated in a murine model of hindlimb ischemia.<sup>16</sup> Just after operative excision of one femoral artery, athymic nude mice, described above, in which angiogenesis is characteristically impaired, received a local intramuscular injection of 1  $\mu$ g SDF-1 versus PBS in the center of the lower calf muscle followed immediately by an intravenous injection of  $1.5 \times 10^5$  culture-expanded EPCs. To evaluate EPC incorporation into the vasculature in ischemic muscles, some mice were transplanted with EPCs labeled with the fluorescent carbocyanine 1,1'-diiododecyl-1 to 3,3,3',3'-tetramethylidocarbocyanine perchlorate (DiI) dye (Molecular Probes). Before transplantation, EPCs in suspension were washed with PBS and incubated with DiI at a concentration of 2.5  $\mu$ g/mL PBS for 5 minutes at 37°C and 15 minutes at 4°C. After 2 washing steps in PBS, the cells were resuspended in EBM-2. Five mice in the placebo and SDF-1 groups each received  $1.5 \times 10^5$  DiI-labeled EPCs intravenously as described above. Thirty minutes before euthanization at day 3 and day 7, 5 mice in each group received an intravenous injection of 50  $\mu$ g of *Bandeiraea simplicifolia* lectin 1 (BS-1 lectin, Vector Laboratories) to identify the mouse vasculature.

### Physiological Assessment of Transplanted Animals

Laser Doppler perfusion imaging (LDPI, Moor Instruments) was used to record serial blood flow measurements over the course of 4 weeks postoperatively, as previously described.<sup>16</sup> There were 8 mice in the SDF-1 group and 9 in the PBS group. In these digital color-coded images, a red hue indicates the region of maximum perfusion, medium perfusion values are shown in yellow, and the lowest perfusion values are represented by blue. Figure 5B displays absolute values in readable units.

### Histological Assessment of Transplanted Animals

Tissue sections from the lower calf muscles of ischemic and healthy limbs were harvested on days 3, 7, and 28. To examine EPC incorporation at early time points after transplantation (at days 3 and 7) and SDF-1 effect on host endothelial cells, tissues from the mice injected with DiI-labeled EPCs and BS-1 lectin were embedded for frozen section samples. A total of 20 different fields (4 cross sections from each animal) were randomly selected, and the DiI-labeled EPCs were counted ( $\times 40$  magnification).



**Figure 1.** Analysis of CXCR-4 expression by flow cytometry. Results are shown as fluorescence histograms (blue, CXCR-4 expression; red, respective IgG control). Ex vivo expanded EPCs were positive by  $66.0 \pm 3.1\%$  for CXCR-4, and freshly isolated peripheral blood CD34<sup>+</sup> cells by  $5.2 \pm 1.1\%$ . FL2-H indicates fluorescent intensity.

The extent of neovascularization at day 28 was assessed by measuring capillary density in light microscopic sections.<sup>16</sup> Paraffin-embedded sections of 5- $\mu$ m thickness were stained for the mouse endothelial cell marker isolectin B4 (Vector Laboratories) and counterstained with eosin to detect capillary endothelial cells as previously described.<sup>15</sup> A total of 20 different fields were randomly selected (2 or 3 cross sections from each animal), and the capillaries were counted ( $\times 40$  magnification).

#### Statistical Analysis

All results are expressed as mean  $\pm$  SEM. Statistical significance was evaluated using the unpaired Student *t* test for comparisons between 2 means. Multiple comparisons between  $>3$  groups were done by ANOVA. Probability value of  $P < 0.05$  denoted statistical significance.

### Results

#### Fluorescence-Activated Cell Sorting

After 7 days of culture, ex vivo expanded EPCs derived from peripheral blood of healthy human volunteers exhibited spindle-shaped morphology. These progenitor cells have qualitative properties of endothelial lineage cells.<sup>16</sup> FACS analysis elucidated that  $66.0 \pm 3.1\%$  of day 7 cultured EPCs express CXCR4, whereas only  $5.2 \pm 1.1\%$  of freshly isolated human peripheral blood CD34<sup>+</sup> cells showed CXCR4 expression (Figure 1). In addition,  $50.6 \pm 4.7\%$  of CD34<sup>+</sup> cells cultured 24 hours with EPC culture medium expressed CXCR4, which is consistent with previous reports.<sup>7</sup>

#### Migration Assay

To investigate the migratory response of ex vivo expanded EPCs toward an SDF-1, we performed a modified Boyden chamber assay in vitro. SDF-1 induced EPC migration in a dose-dependent manner (Figure 2). The magnitude of migration was similar to that induced by VEGF (data not shown). SDF-1 induced a small, statistically insignificant increase in EPC proliferative activity (data not shown).

#### Apoptosis Assay

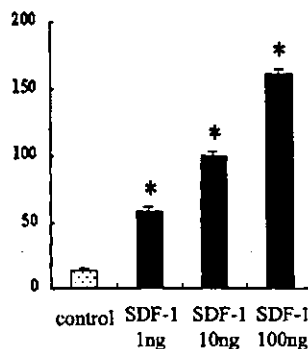
To examine the effect of SDF-1 on ex vivo expanded EPC survival, we quantified apoptosis induced by serum starvation. After 48 hours of serum starvation, ex vivo expanded EPCs were treated with 100 ng/mL of SDF-1 for 3 hours. DAPI staining was performed to determine the proportion of apoptotic cells by manually counting pyknotic nuclei (Figure 3A). SDF-1 reduced apoptosis of EPCs from  $26.6 \pm 1.0\%$  to  $7.1 \pm 0.9\%$  ( $P < 0.0001$ ) (Figure 3B).

#### SDF-1 Upregulates Endogenous VEGF Expression in Hindlimb Ischemic Muscle

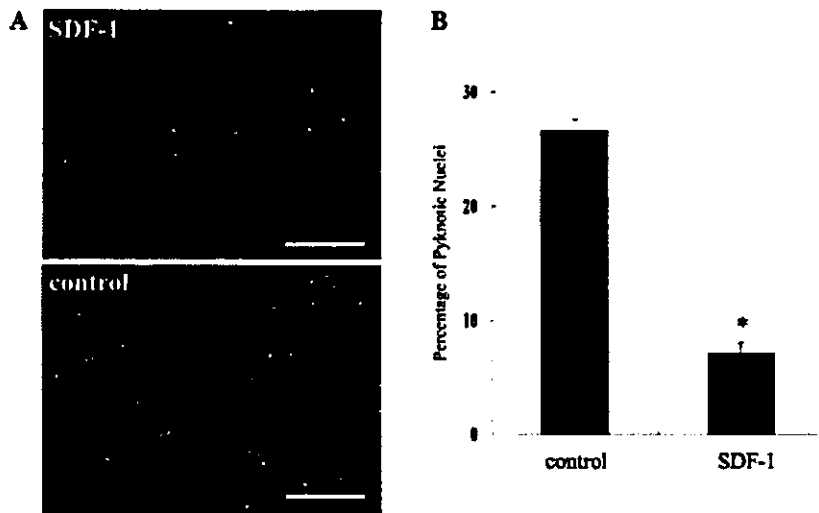
To investigate whether SDF-1 upregulates endogenous VEGF expression, we examined the expression of VEGF-A in the hindlimb ischemic muscle. Figure 4A shows temporal expression of VEGF-A mRNA in hindlimb muscle from mice treated with SDF-1 or PBS. Seven days after the treatment, VEGF-A mRNA expression was increased in SDF-1-treated muscle. Quantitative analysis of expression is shown in Figure 4B.

#### EPC Incorporation Into Ischemic Hindlimb Neovascularature

To elucidate the SDF-1 effect on local recruitment of transplanted EPCs from the systemic circulation and of host endothelial cells, we quantified incorporation of transplanted EPCs into the microvasculature of ischemic limbs and the number of host endothelial cells after local SDF-1 administration in nude mice hindlimbs. Transplanted human EPCs labeled with DiI were identified in tissue sections by red fluorescence, whereas the native mouse vasculature stained by premortem BS-1 lectin administration was identified by green fluorescence in the same tissue sections (Figure 5A). Histological examination disclosed increased local accumulation of DiI-labeled EPCs in the SDF-1 group compared with PBS controls (day 3,  $445 \pm 24$  versus  $241 \pm 25$  cells/mm<sup>2</sup>,  $P < 0.0001$ ; day 7,  $446 \pm 31$  versus  $355 \pm 30$  cells/mm<sup>2</sup>,



**Figure 2.** SDF-1 induced EPC migration. Migratory response of EPCs toward different dosages of SDF-1 stimulation was measured by modified Boyden chamber migration assay. Ex vivo expanded EPCs demonstrated a potent dose-dependent activity toward SDF-1. Control vs 10 ng/mL SDF-1 vs 100 ng/mL SDF-1,  $24 \pm 2$  vs  $71 \pm 3$  vs  $140 \pm 6$  cells/mm<sup>2</sup>;  $^*P < 0.0001$ .



**Figure 3.** SDF-1 attenuated EPCs apoptosis. Serum starvation was used to induce apoptosis in ex vivo expanded EPCs. A, DAPI staining was performed to determine the proportion of apoptotic cells by manually counting pyknotic nuclei (white condensed nuclei in figures). Scale bars=100 μm. B, Quantification of percentage of pyknotic nuclei. Control vs SDF-1, 27 ± 1% vs 7 ± 1%; \**P*<0.0001.

*P*<0.05) (Figure 5B). Moreover, increased numbers of host endothelial cells were observed in the SDF-1 group compared with the PBS group (day 3, 500 ± 19 versus 343 ± 23 cells/mm<sup>2</sup>, *P*<0.0001; day 7, 531 ± 19 versus 386 ± 25 cells/mm<sup>2</sup>, *P*<0.05) (Figure 5C).

**Physiological Assessment of Transplanted Animals**

After systemic human EPC transplantation with local intramuscular administration of SDF-1 or PBS, serial measurements of hindlimb perfusion by LDPI were performed at days 7, 14, 21, and 28. LDPI disclosed profound differences in the limb perfusion 28 days after induction of limb ischemia (Figure 6A). By day 28, the ratio of ischemic/nonischemic blood flow in the SDF-1 treatment group improved to 0.50 ± 0.08 versus 0.26 ± 0.04 in the PBS group (*P*<0.05, Figure 6B). Thus, the homing effect of local SDF-1 injection documented above was accompanied by physiological evidence for enhanced neovascularization, suggesting that the

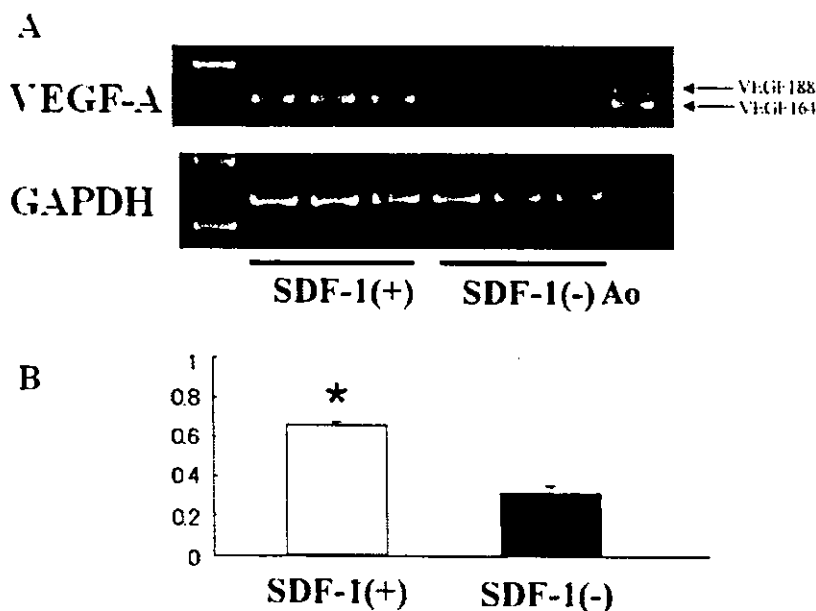
EPCs that were attracted to the ischemic limb by SDF-1 were subsequently incorporated into the developing vasculature. To provide anatomic evidence of EPC-increased vasculature in the SDF-1-treated limbs, histological examination for capillary density was performed.<sup>16</sup>

**Histological Assessment of Transplanted Animals**

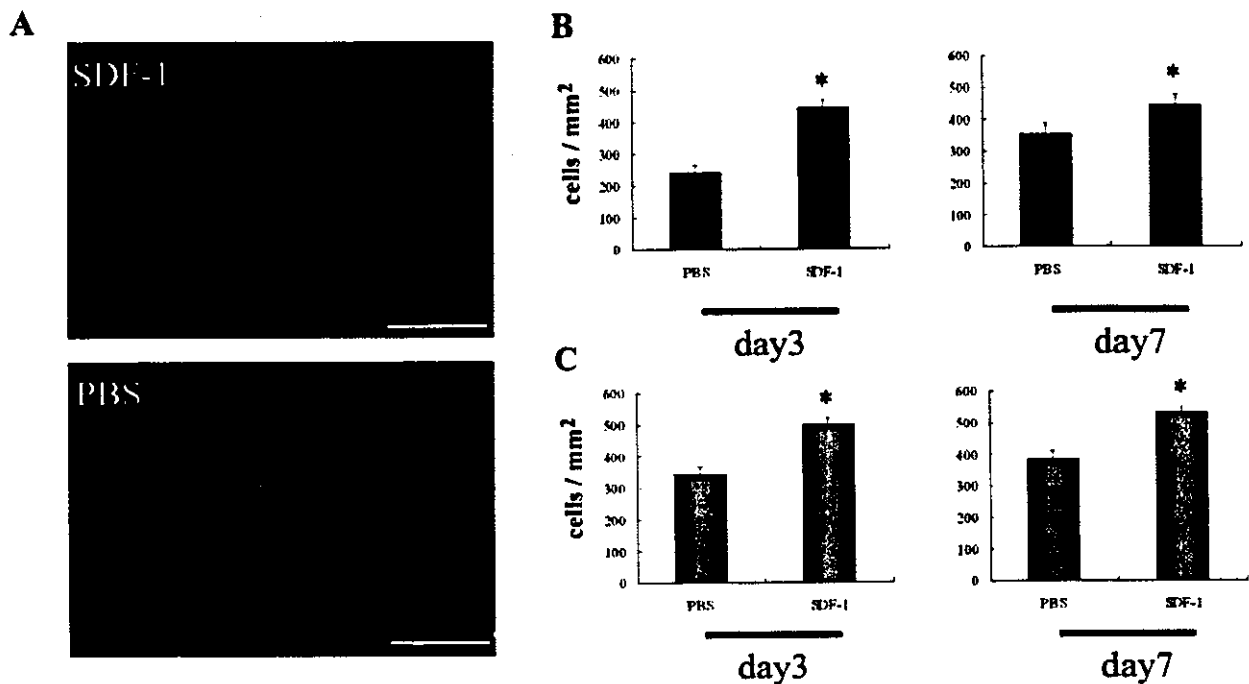
Staining with the endothelial cell marker isolectin B4 was performed on skeletal muscle sections retrieved from the ischemic hindlimbs of mice at day 28 to quantify capillary density (Figure 7A). Capillary density, an index of neovascularization, was significantly higher in the SDF-1 treatment group (551 ± 30 cells/mm<sup>2</sup>) than in the PBS treatment group (241 ± 25 cells/mm<sup>2</sup>, *P*<0.0001) (Figure 7B).

**Discussion**

Our previous studies indicated that ex vivo cell therapy, consisting of systemic implantation of culture-expanded hu-



**Figure 4.** SDF-1 upregulated expression of VEGF-A mRNA in ischemic hindlimb. A, Expression of VEGF-A mRNA in SDF-1-treated and untreated muscle. Each panel shows RT-PCR products for VEGF-A and GAPDH. Ao indicates mouse aortic tissue as positive control. B, Densitometric analysis was performed; ratio of RT-PCR product of VEGF-A (VEGF<sub>164</sub>) to that of GAPDH is shown. Data were obtained from 3 separate experiments and are presented as arbitrary units over controls. \**P*<0.01 (unpaired *t* test) vs SDF-1 (-) group.



**Figure 5.** SDF-1 augmented EPC incorporation at an early time point. Fluorescence microscopic examination disclosed increased local accumulation of EPCs in SDF-1 treatment group compared with PBS group. A, Representative microscopic photographs of double fluorescence in ischemic muscles at day 3. Transplanted human Dil-labeled EPC-derived cells were identified by red fluorescence in histological sections retrieved from ischemic muscles. Host mouse vasculature was identified by green fluorescence in the same tissue sections. Scale bars=100  $\mu$ m. B, Quantitative analysis of incorporated EPCs. Density of Dil-labeled EPCs (red fluorescence) in tissue sections retrieved from ischemic muscles was greater in SDF-1 treatment group than in PBS group at both days 3 and 7 (day 3, control vs SDF-1,  $241 \pm 25$  vs  $445 \pm 24$  cells/mm<sup>2</sup>, \* $P < 0.0001$ ; day 7, control vs SDF-1,  $355 \pm 30$  vs  $446 \pm 31$  cells/mm<sup>2</sup>, \* $P < 0.05$ ). C, Quantitative analysis of host endothelial cells. Density of host endothelial cells (green fluorescence) in tissue sections retrieved from ischemic muscles was greater in SDF-1 treatment group than in PBS group at both days 3 and 7 (day 3, control vs SDF-1,  $343 \pm 23$  vs  $500 \pm 19$  cells/mm<sup>2</sup>, \* $P < 0.0001$ ; day 7, control vs SDF-1,  $386 \pm 25$  vs  $531 \pm 19$  cells/mm<sup>2</sup>, \* $P < 0.05$ ).

man EPCs, successfully promotes neovascularization of ischemic hindlimbs<sup>16</sup> and acute myocardial infarction<sup>15</sup> in immune-deficient animal models. In these studies, heterogeneous cell transplantation not only improved neovascularization but also reduced adverse biological consequences such as limb necrosis and autoamputation in the mouse ischemic hindlimb model. These studies also disclosed that systemic EPC transplantation improved myocardial neovascularization and cardiac function corresponding to reduced left ventricular scarring.

#### SDF-1 Effect on Vasculogenesis

Recent reports<sup>6,7</sup> indicated that SDF-1 was a strong chemoattractant for CD34<sup>+</sup> cells, which express CXCR4, the receptor for SDF-1, and played an important role in hematopoietic stem cell trafficking between the peripheral circulation and bone marrow. In addition, certain evidence suggests that SDF-1 may have direct effects on vasculogenesis. Tachibana et al<sup>4</sup> reported that mice lacking SDF-1 had defective formation of large vessels supplying the gastrointestinal tract. More recently, Hattori et al<sup>8</sup> reported that plasma elevation of SDF-1 induced mobilization of mature and immature hematopoietic progenitors and stem cells, including EPCs.

#### SDF-1 Contributes to Neovascularization by Augmenting Local Accumulation of Transplanted EPCs in Ischemic Tissues

Given the close relationship between hematopoietic stem cells and EPCs, we focused on the chemoattractant properties of SDF-1. We investigated the hypothesis that locally administered SDF-1 might augment the accumulation of EPCs to the site of ischemia, resulting in enhancing the efficacy of neovascularization after systemic EPC transplantation. The factors mediating the recruitment of circulating progenitors to ischemic tissue are not well characterized. Western analysis detected no SDF-1 protein in ischemic muscles (data not shown). We hypothesized that exogenous SDF-1, administered into ischemic tissue, could exert a strong chemoattractant effect for circulating EPCs, augmenting the effect of endogenous angiogenic/chemoattractant factors.

Our *in vitro* data verified the feasibility of this approach. CXCR4, the receptor for SDF-1, is expressed by EPCs, and the percentage of EPCs expressing CXCR4 was 13-fold higher compared with that of freshly isolated peripheral blood-derived CD34<sup>+</sup> cells. SDF-1 induced EPC migration and also exerted a survival effect on cultured EPCs.

*In vivo*, local SDF-1 administration augmented EPC accumulation 3 days after the treatment, which is consistent with