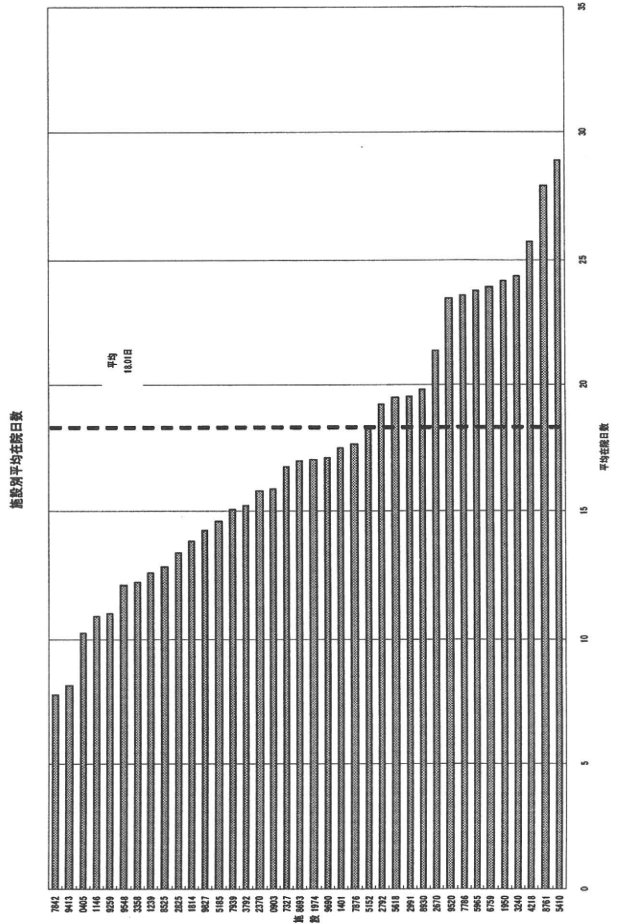
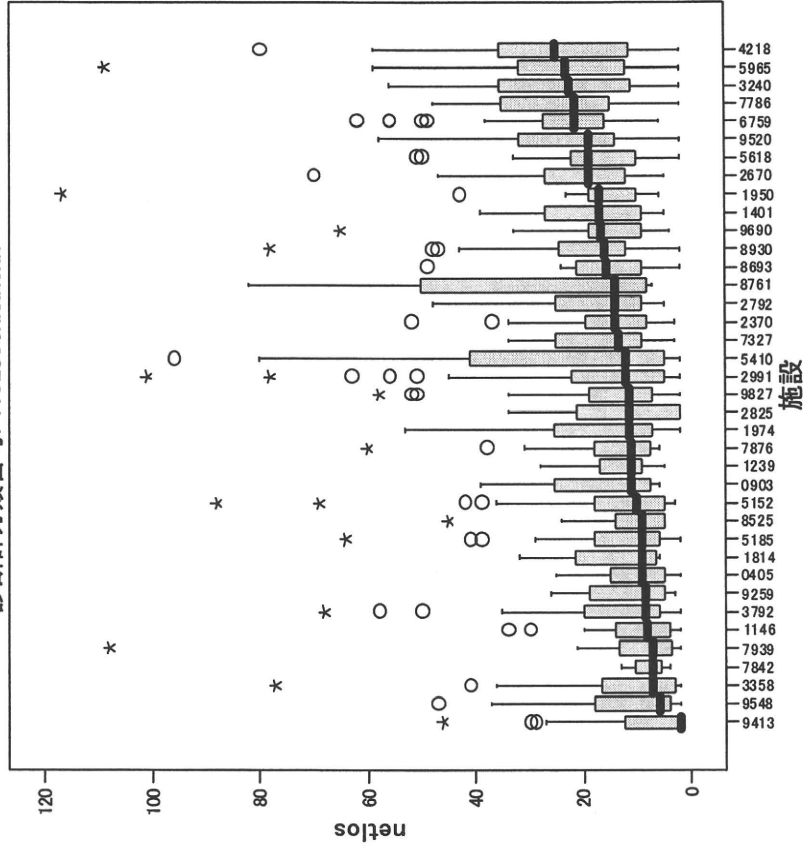
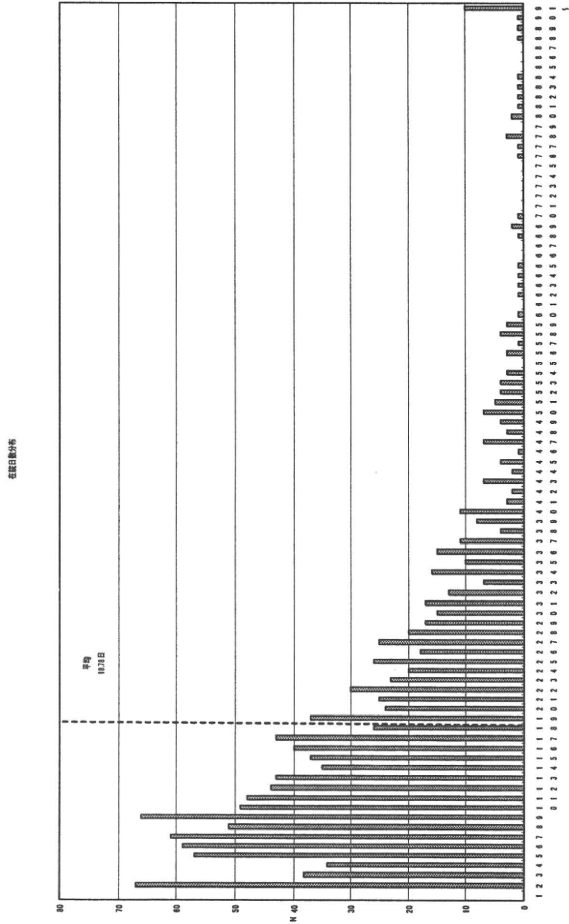
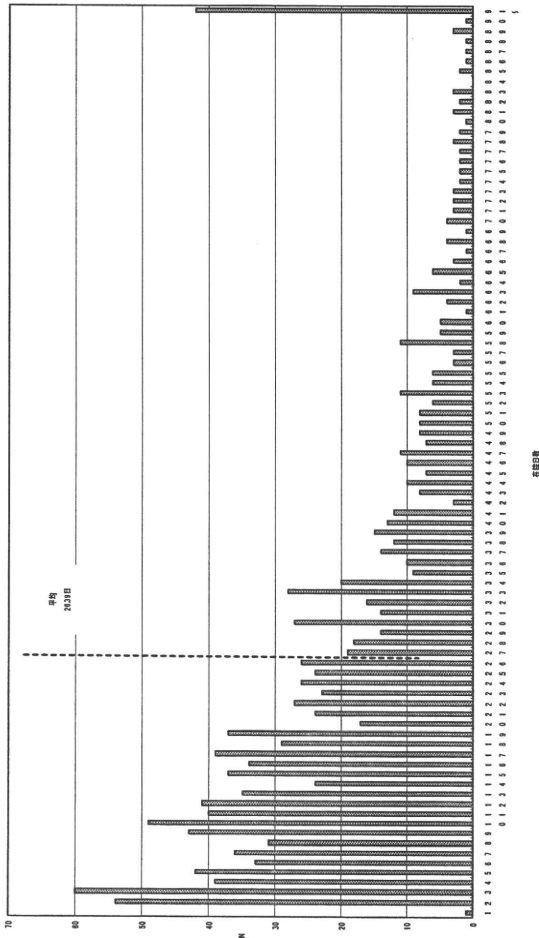


診断群分類番号 1102803xxxx0xx 慢性腎炎症候群・慢性間質性腎炎・慢性腎不全 手術・処置等2なし

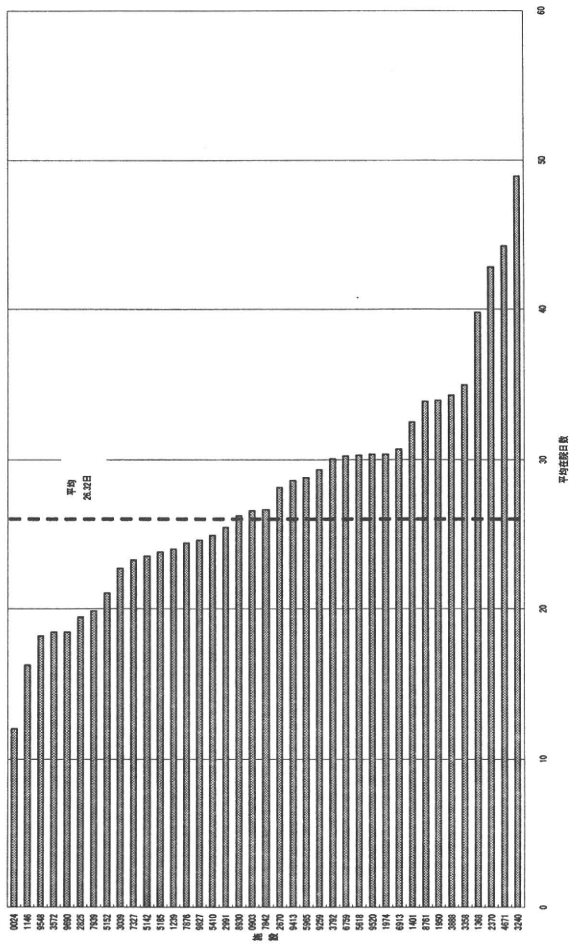
診断群分類番号: 1102803xxxx0xx



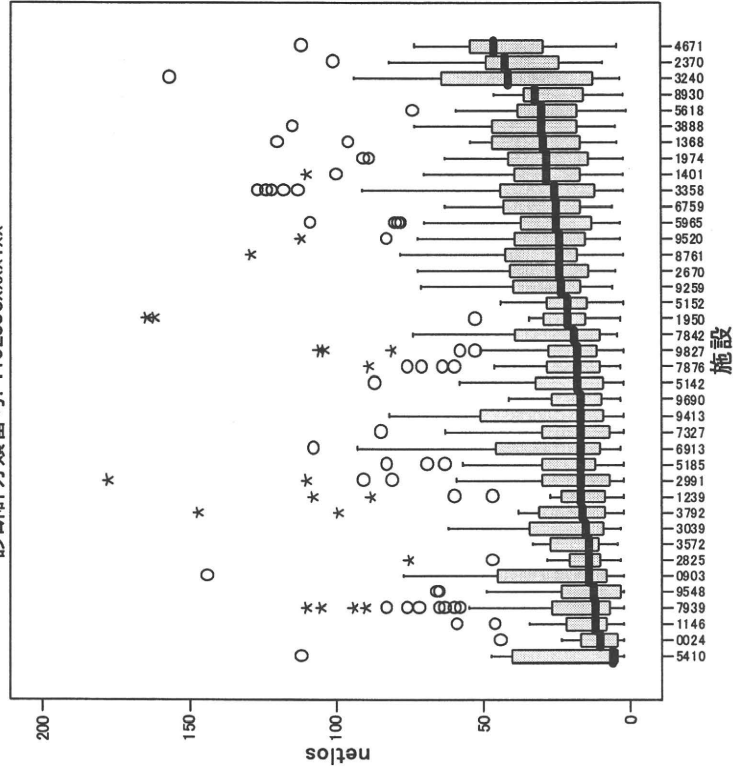
症例数分布

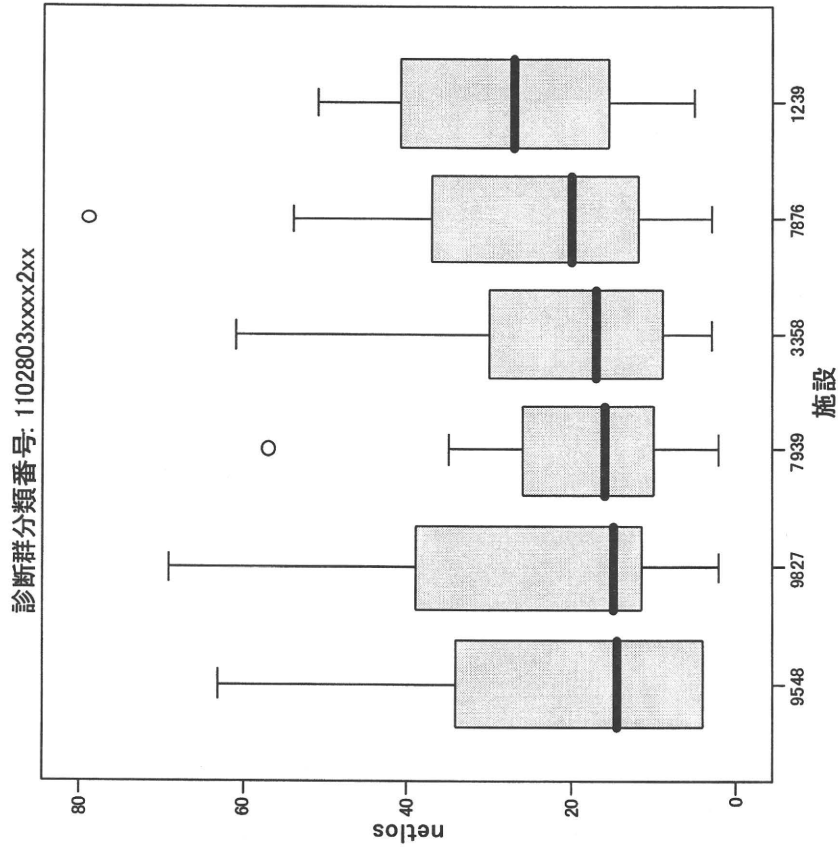
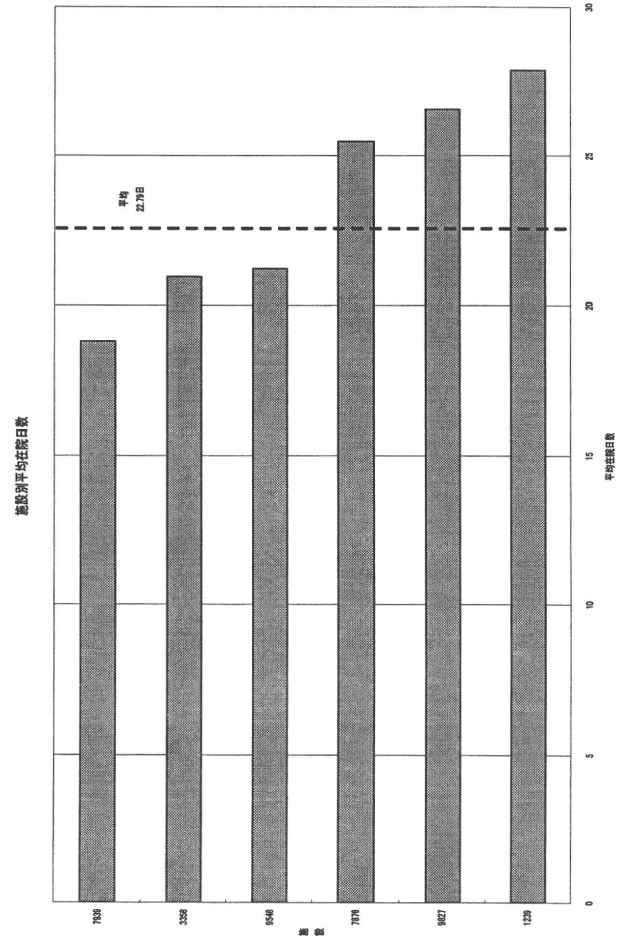
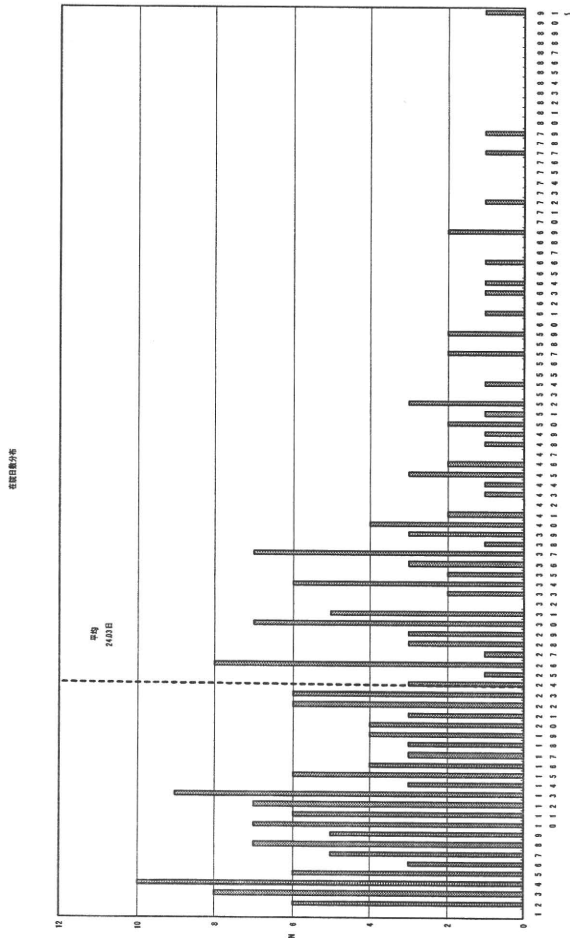


施設別平均在院日数

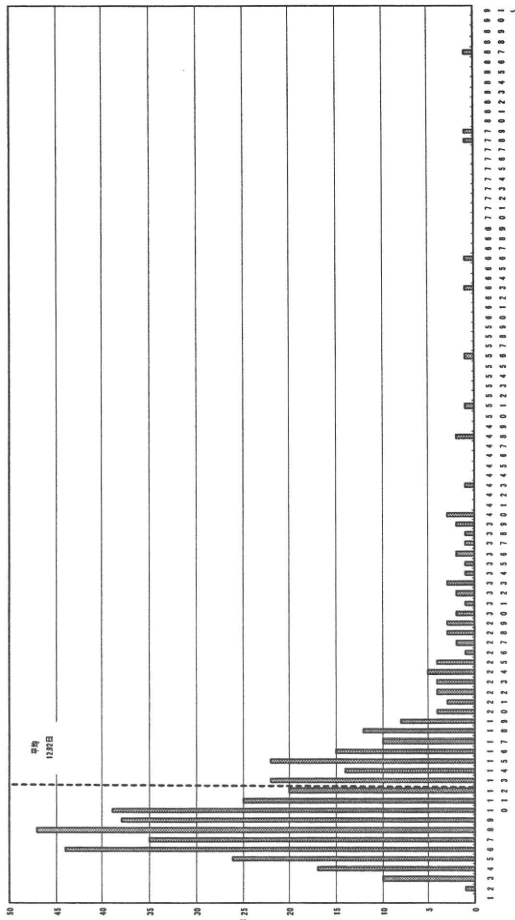


診断群分類番号: 1102803xxxx1xx

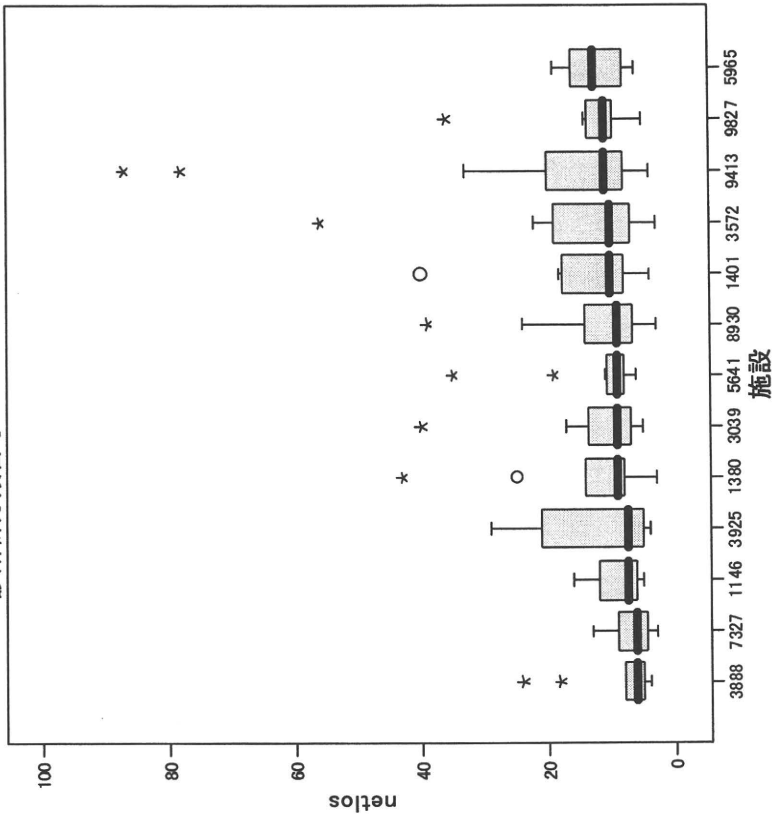




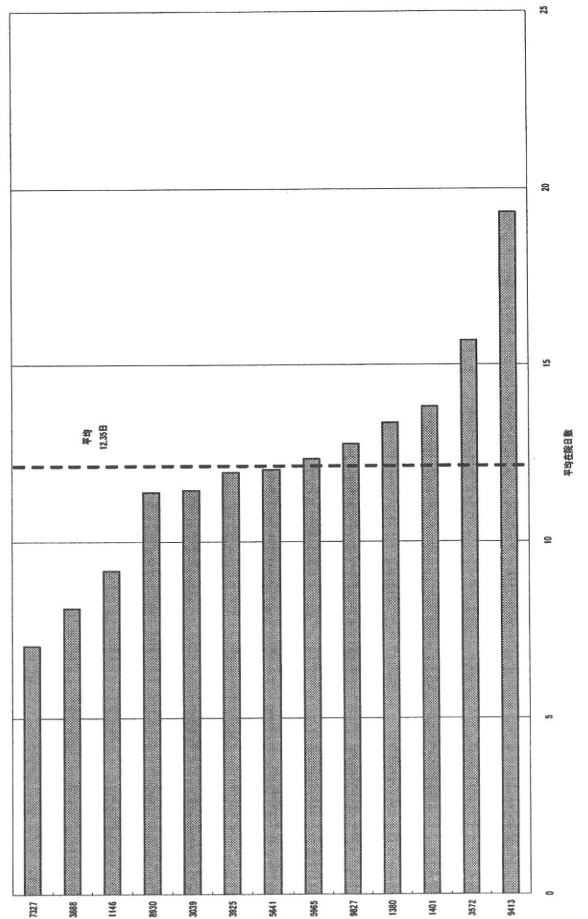
症例数



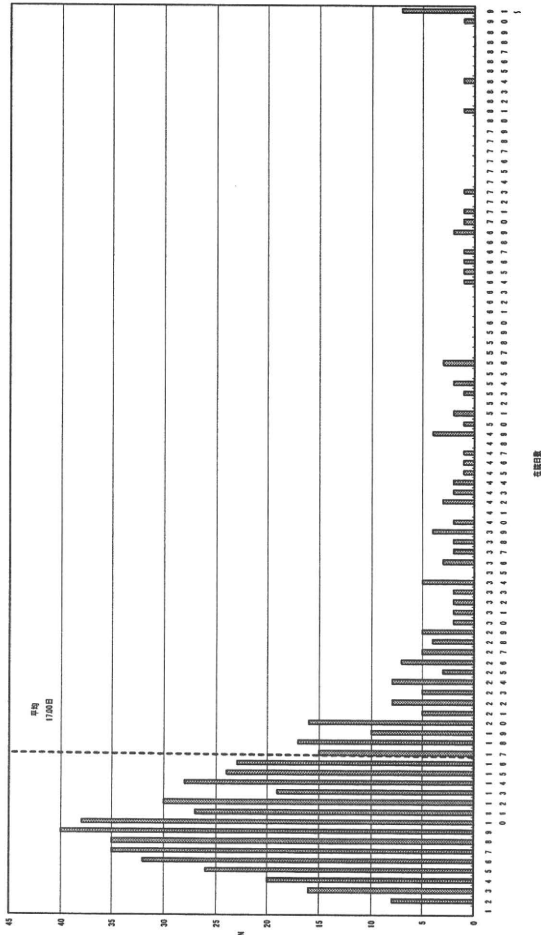
診断群分類番号: 1103103x99xxxx



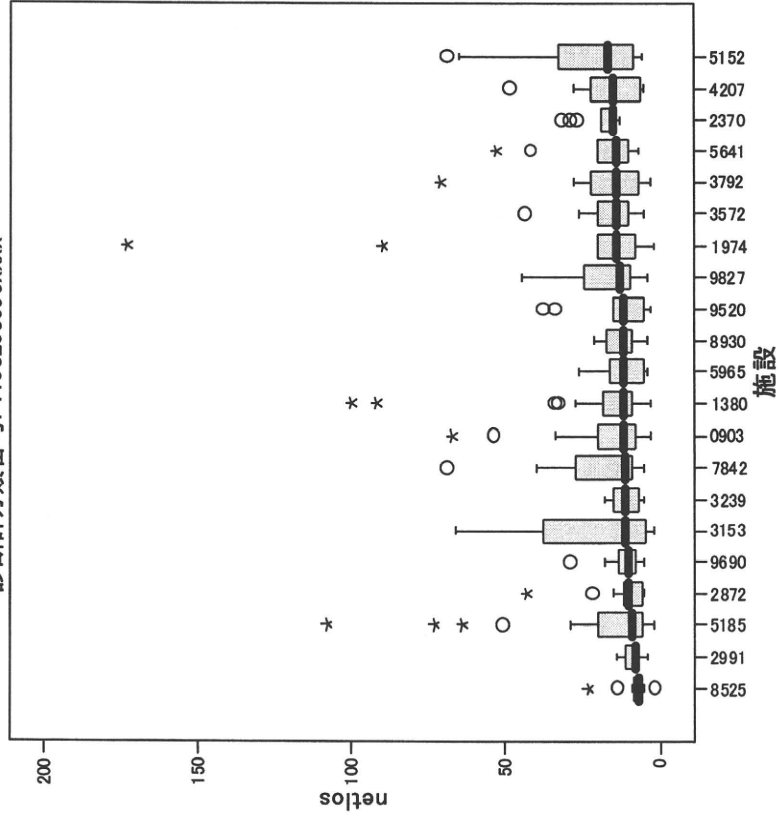
施設別平均滞在日数



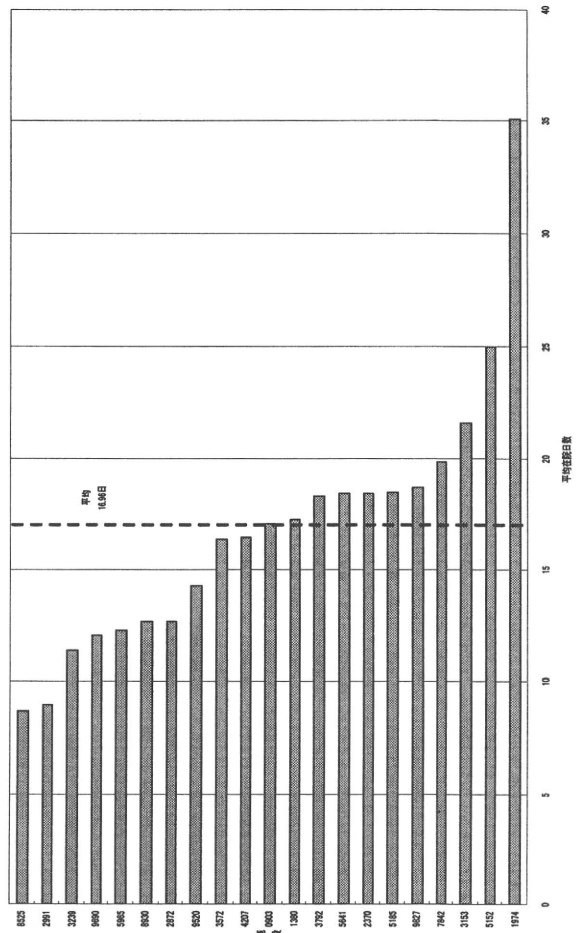
症例数



診断群分類番号: 1103203099xxxx

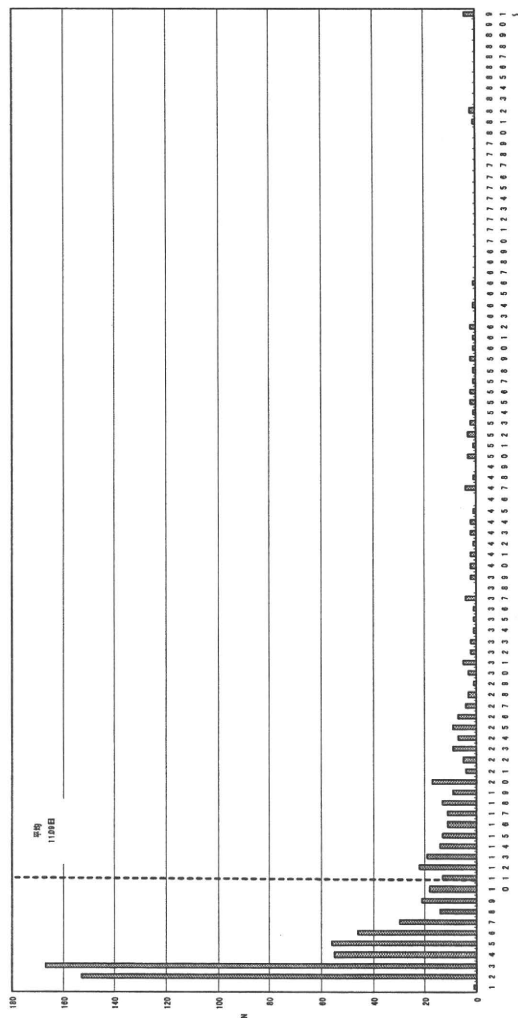


施設別平均在院日数

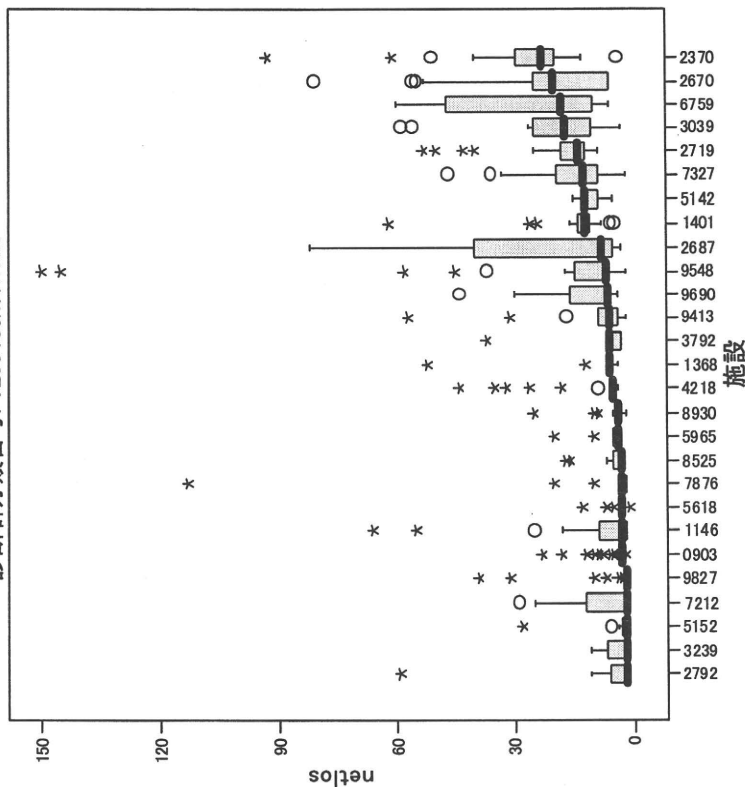


診断群分類番号 1200103x99x10x 卵巣・子宮附属器の悪性腫瘍 手術なし 手術・処置等2あり 副傷病なし

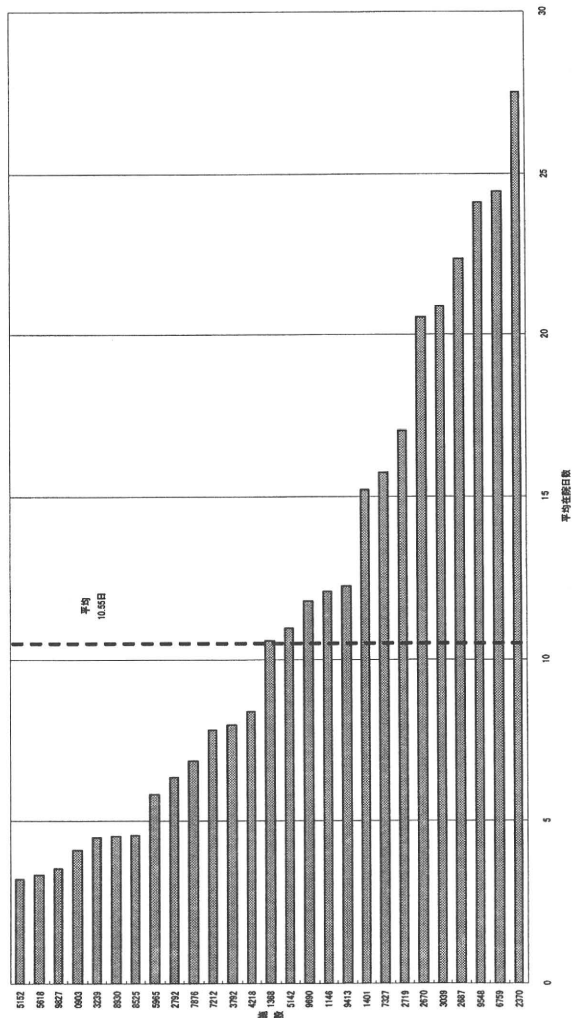
症例数



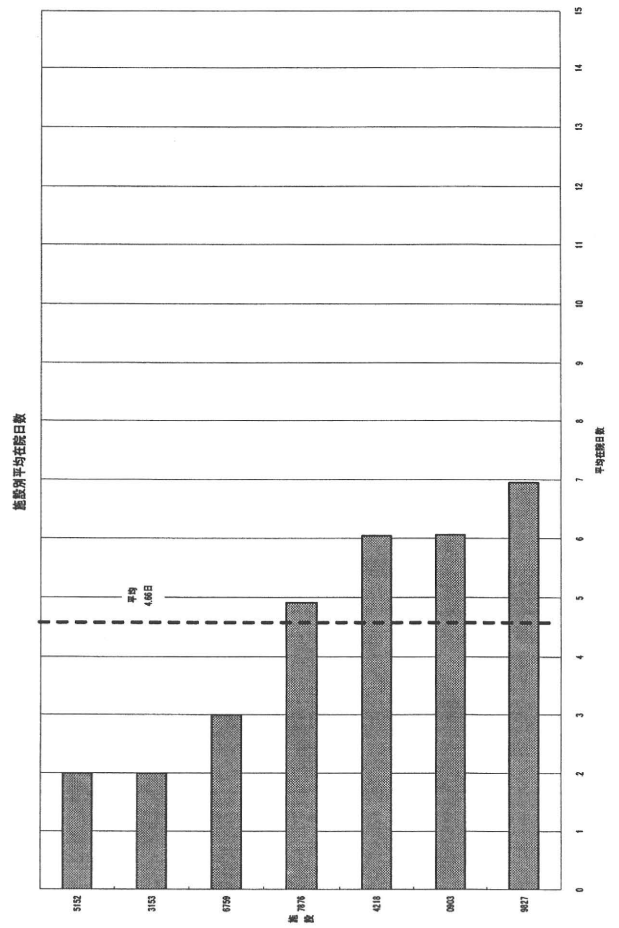
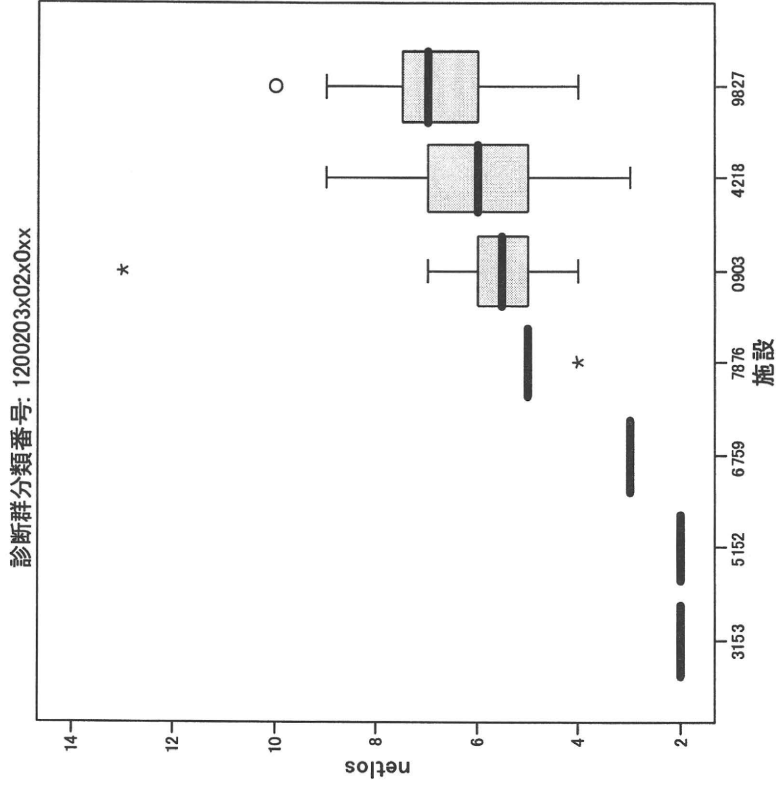
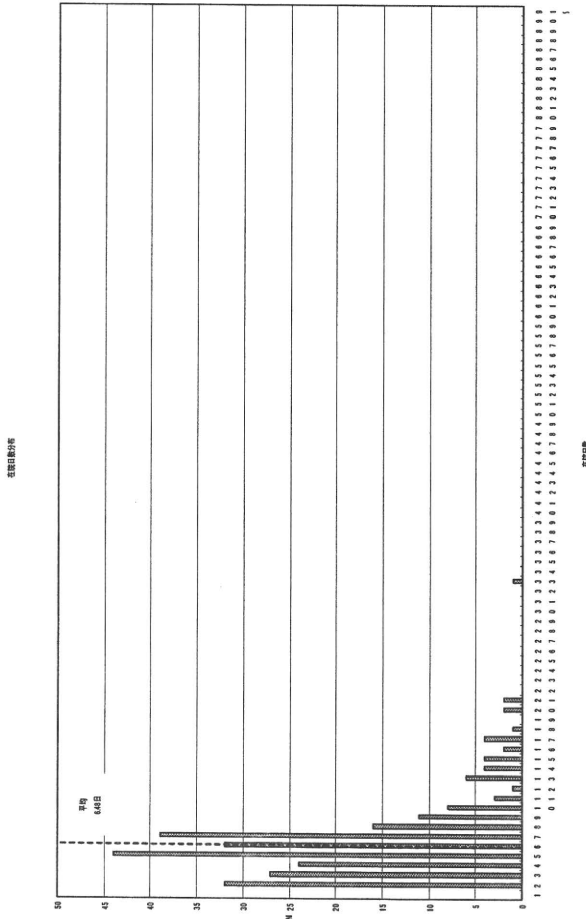
診断群分類番号: 1200103x99x10x



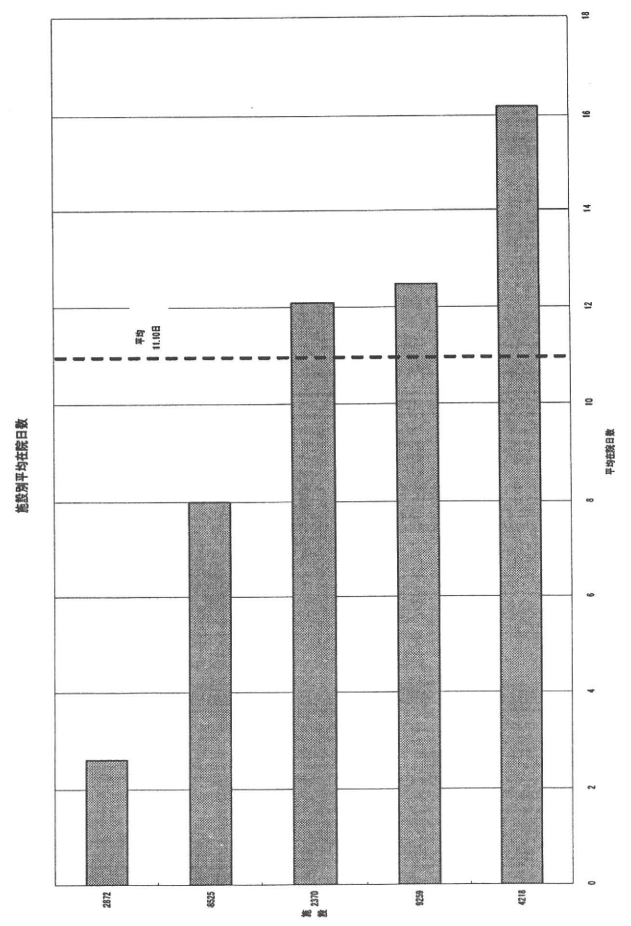
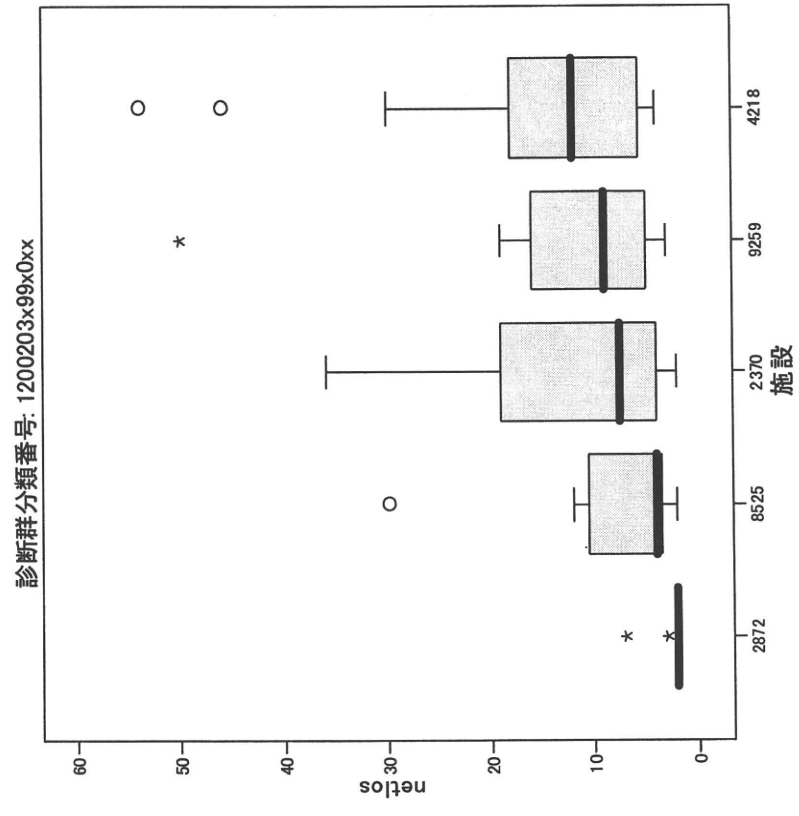
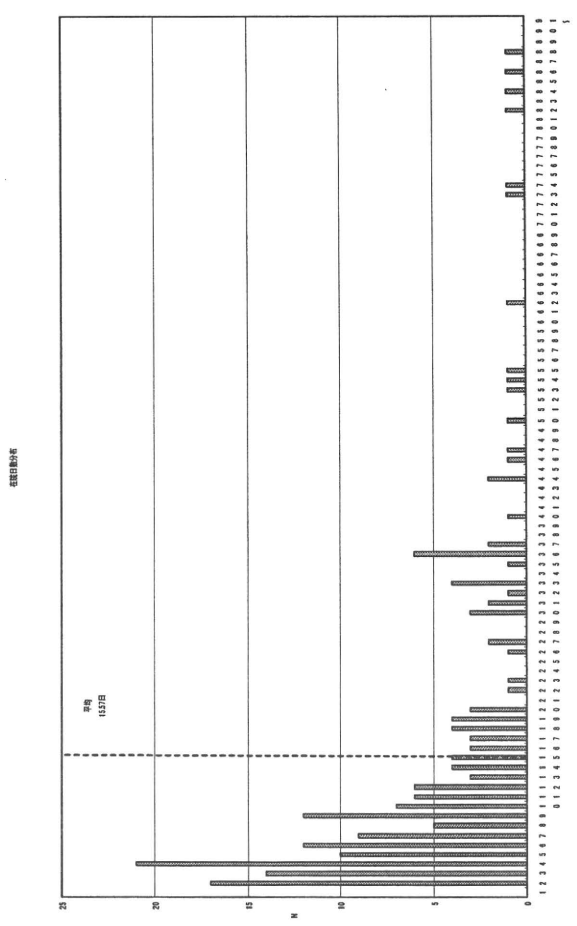
施設別平均在院日数



診断群分類番号 1200203x02x0xx 子宮頸・体部の悪性腫瘍 子宮筋腫瘍 子宮筋腫核出術腔式等 手術・処置等2なし



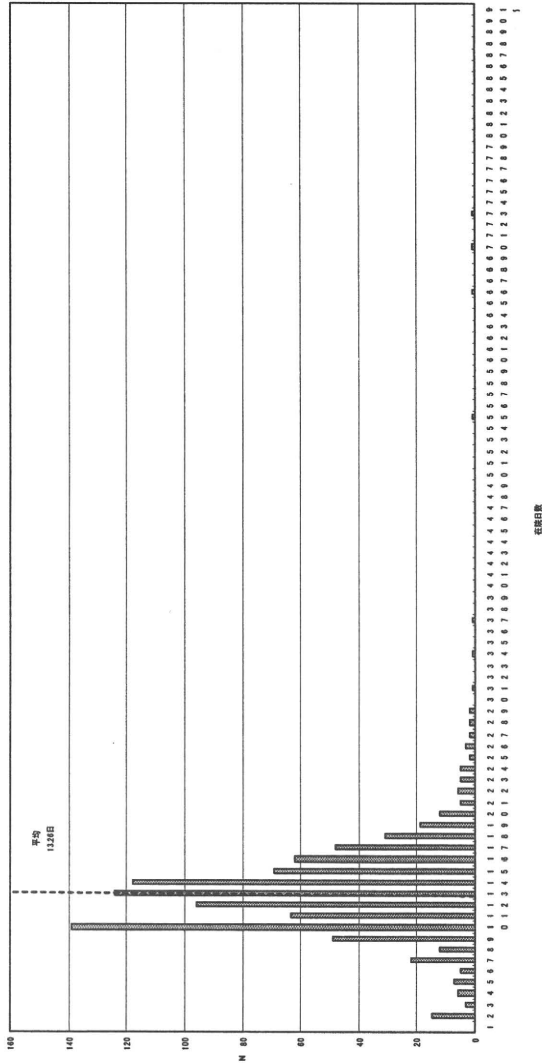
診断群分類番号 1200203x99x0xx 子宮頸・体部の悪性腫瘍 手術なし 手術・処置等2なし



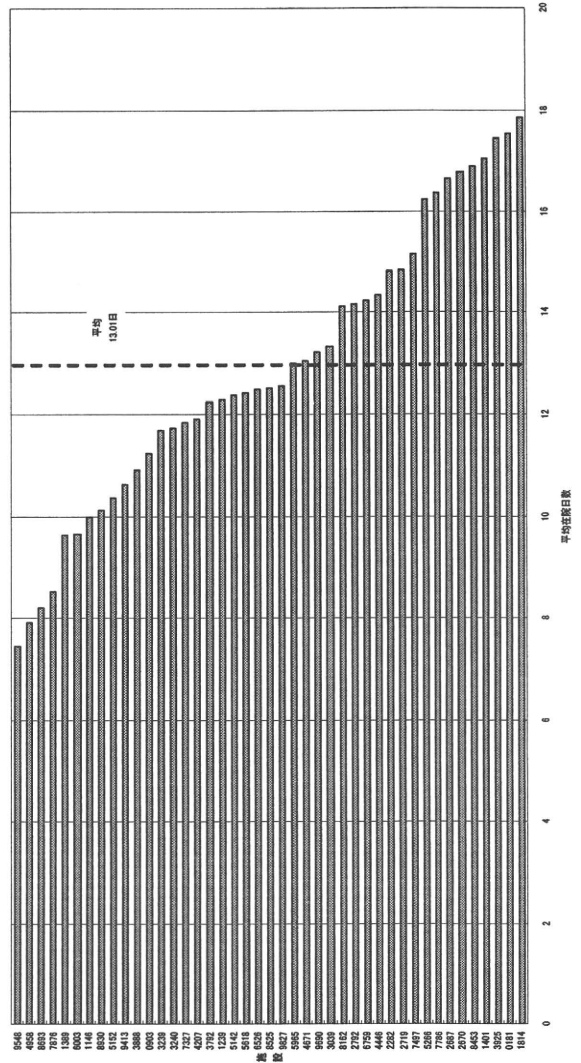


診断群分類番号 1200603x01x0xx 子宮の良性腫瘍 子宮全摘術等 手術・処置等2なし

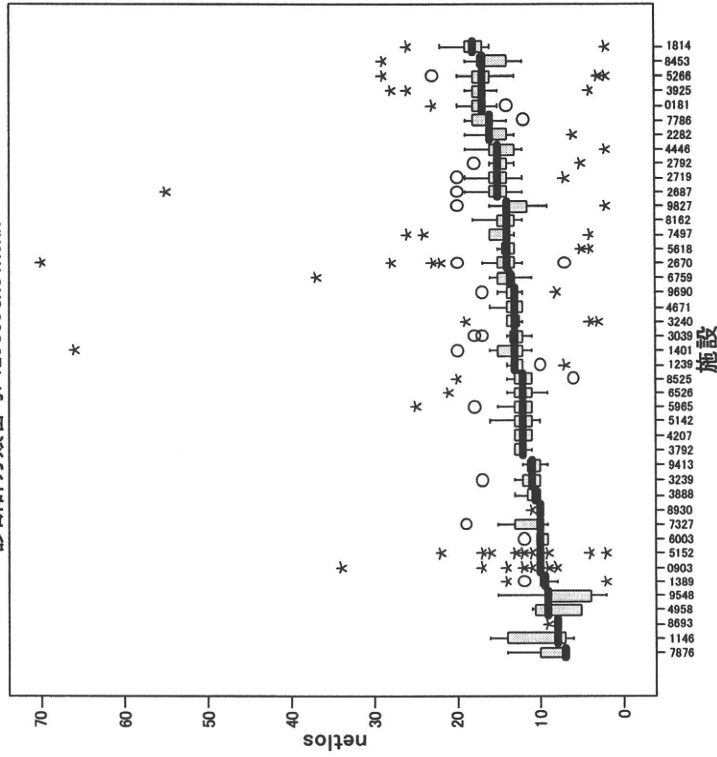
症例数



施設別平均在院日数

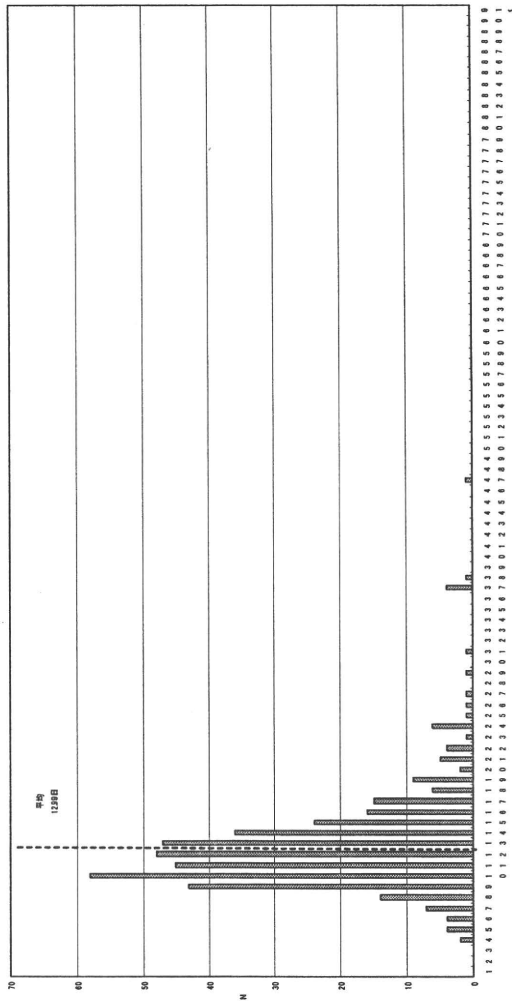


診断群分類番号: 1200603x01x0xx

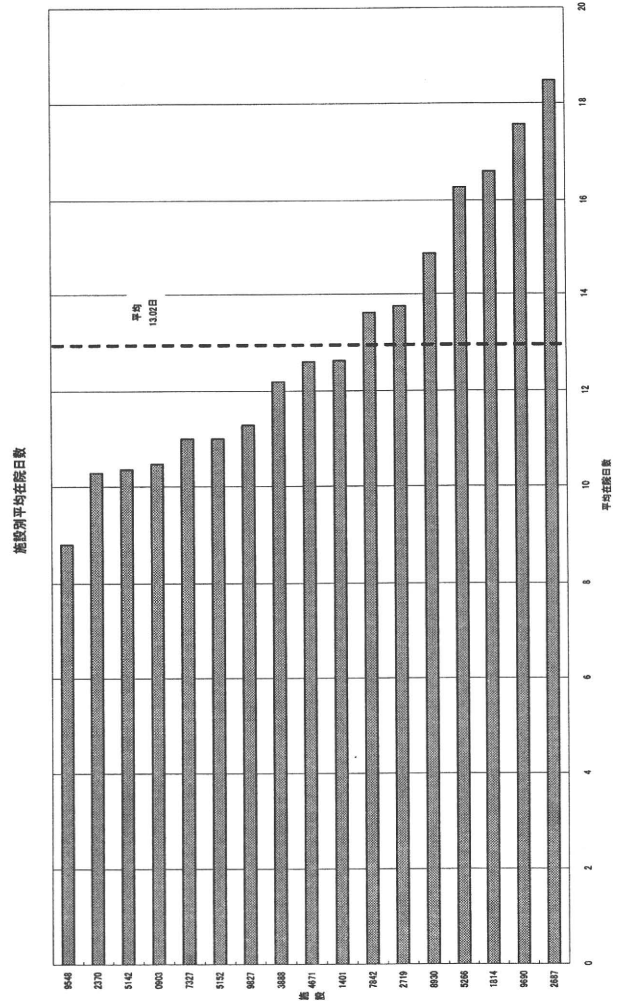


診断群分類番号 1200703x01xxxx 卵巣の良性腫瘍 卵巣部分切除術(腔式を含む。)開腹によるもの等

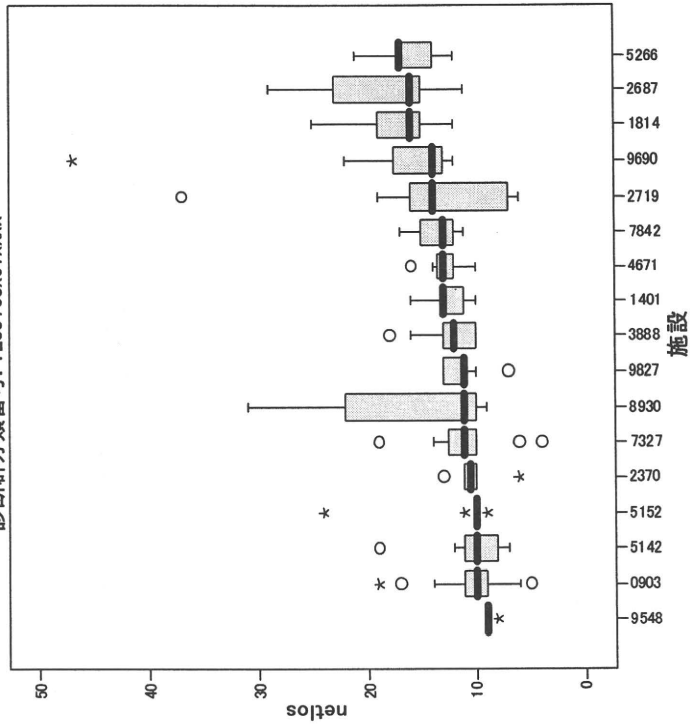
症例数



症例数

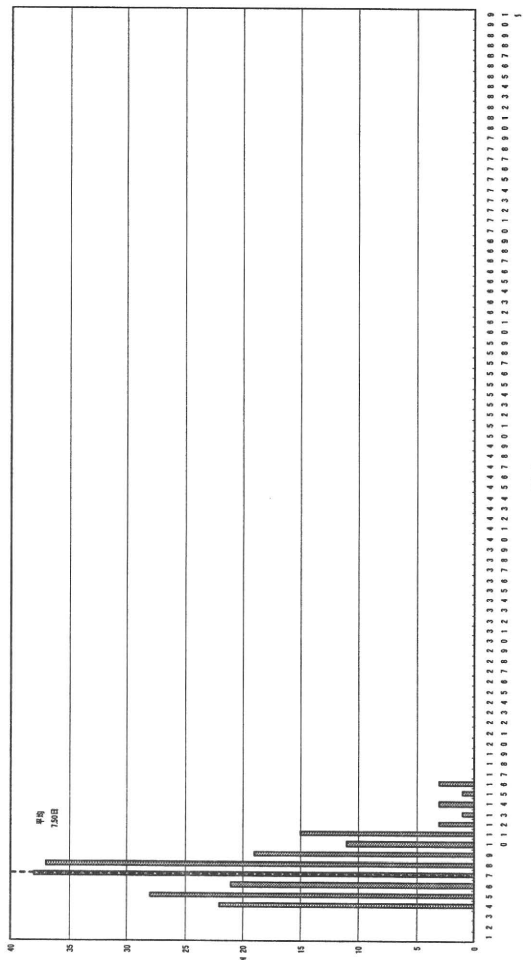


診断群分類番号: 1200703x01xxxx

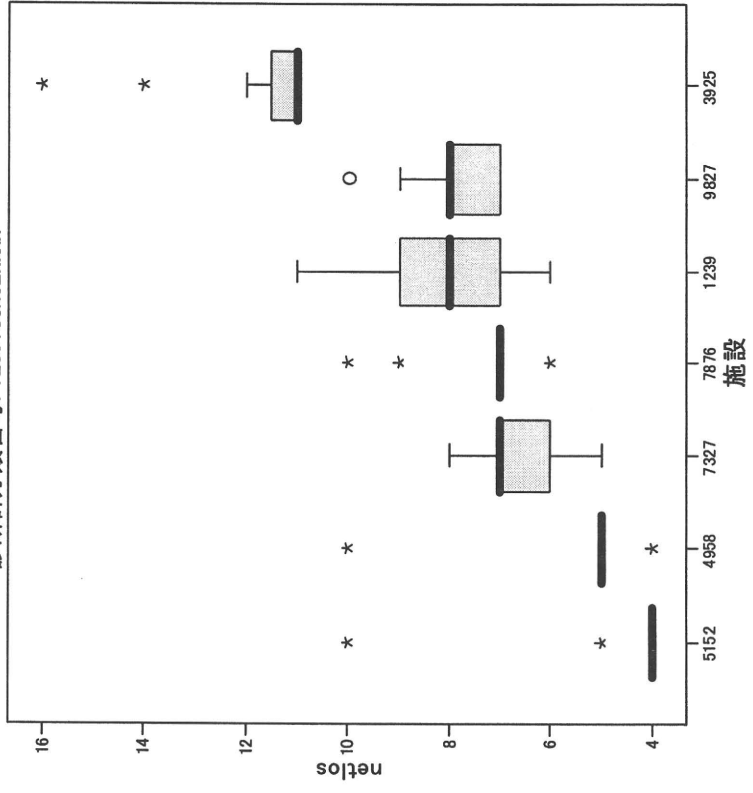


診断群分類番号 1200703x02xxxx 卵巢の良性腫瘍 卵巢部分切除術(腔式を含む。) 腹腔鏡によるもの等

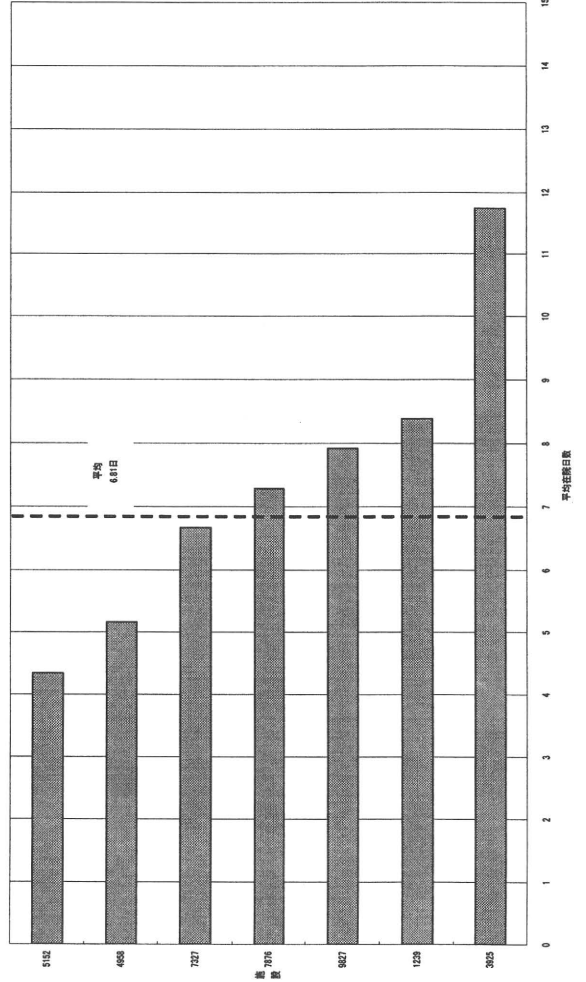
日数別患者数



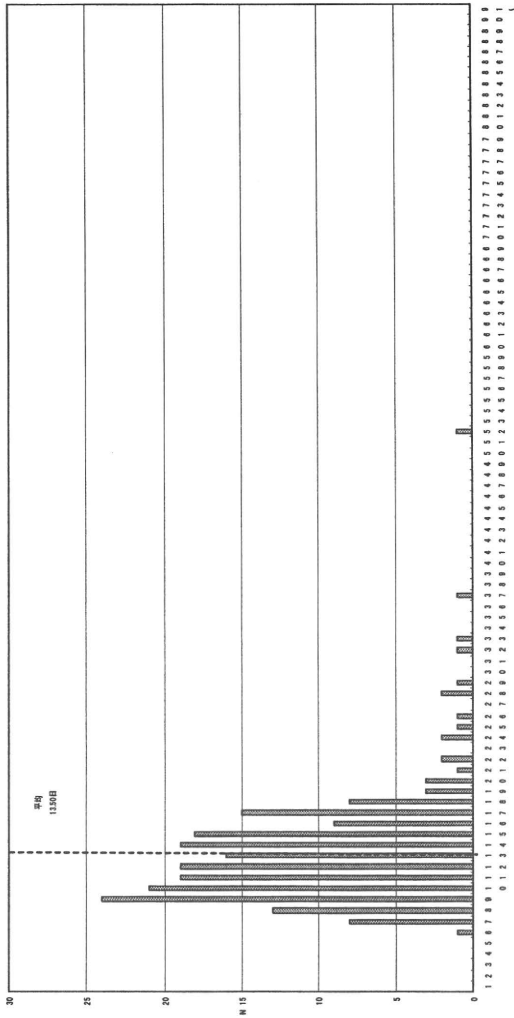
診断群分類番号: 1200703x02xxxx



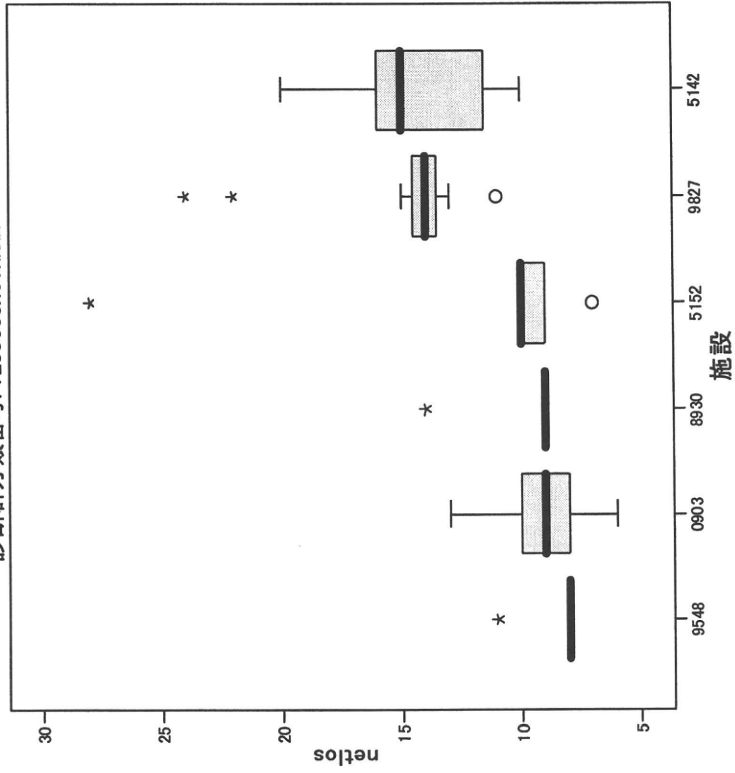
施設別平均在院日数



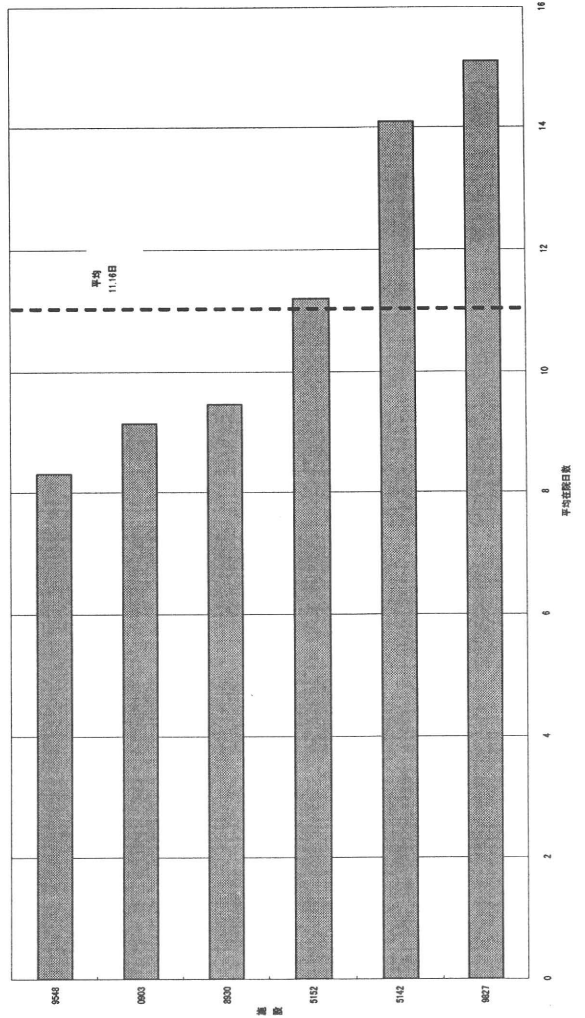
在院日数分布



診断群分類番号: 1200903x01xxxx



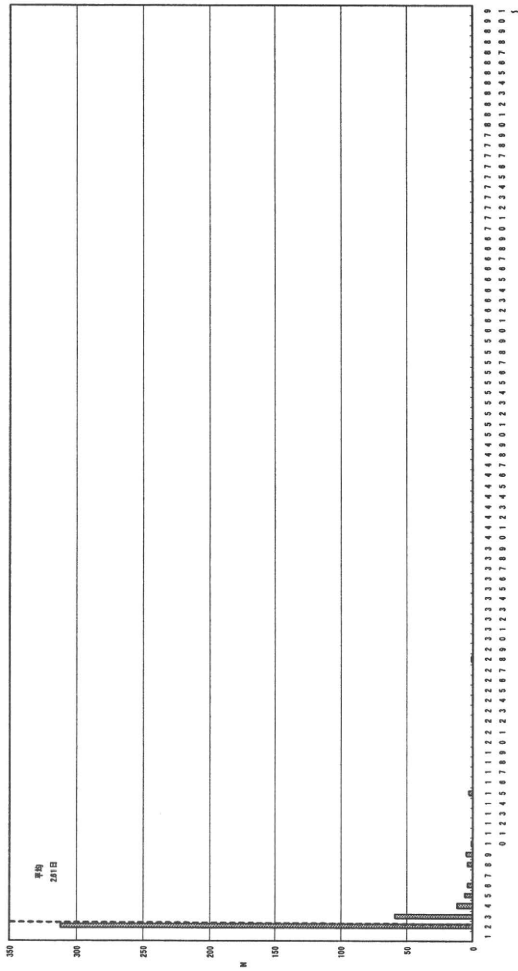
施設別平均在院日数



流産 流産手術

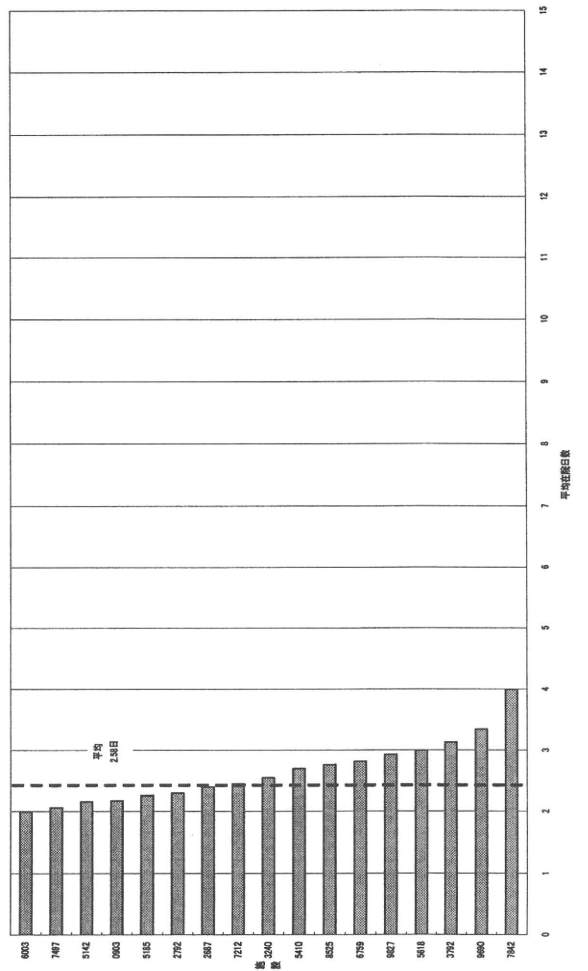
診断群分類番号 1201403x02xxxx

症例数割合

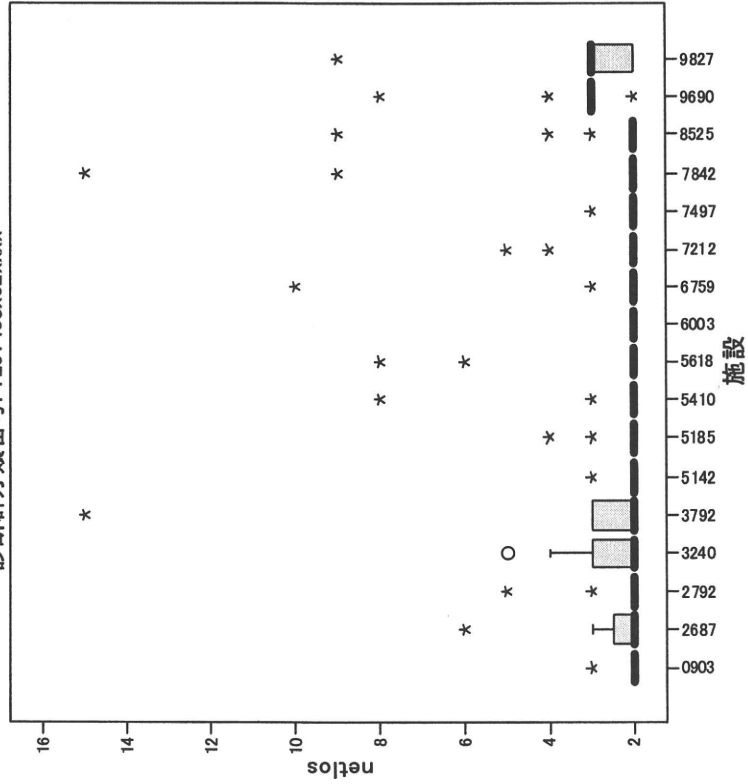


症例数

施設別平均症例数

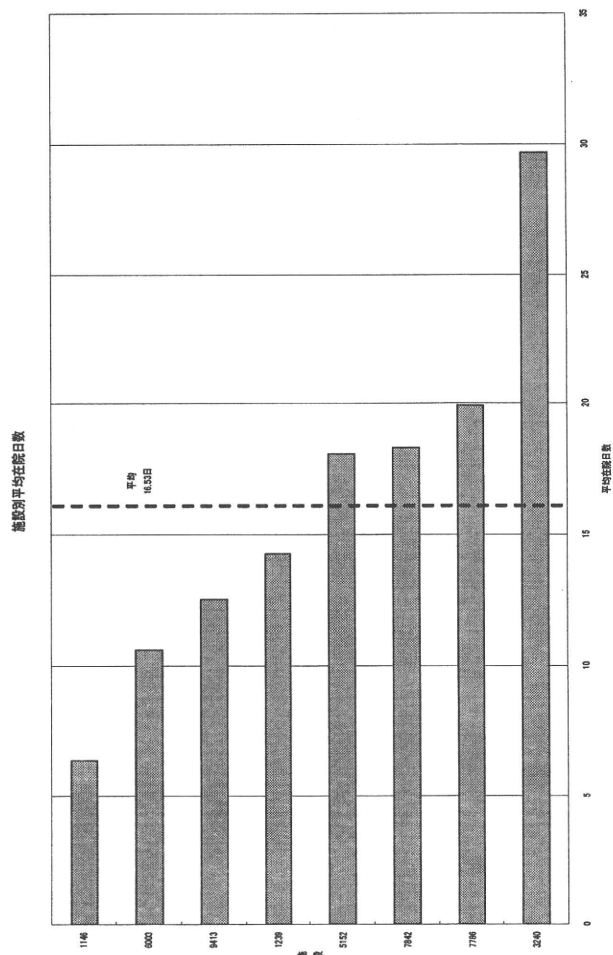
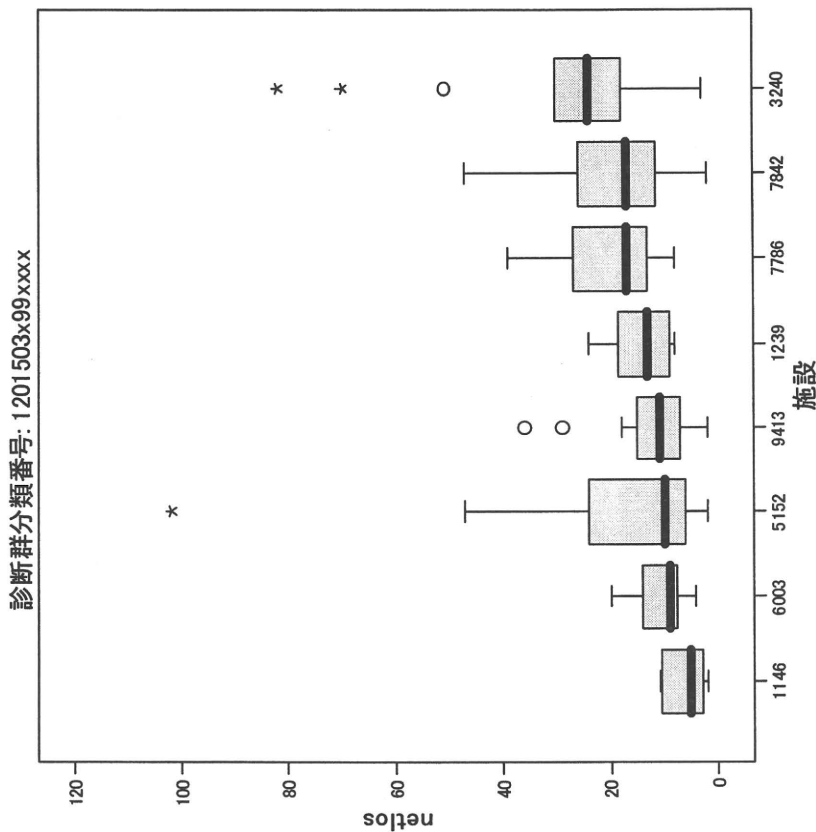
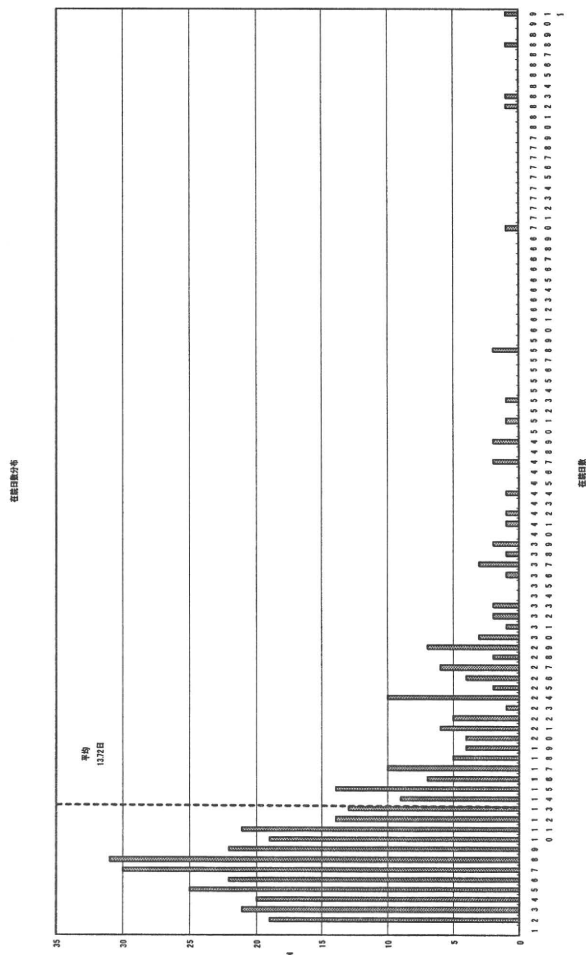


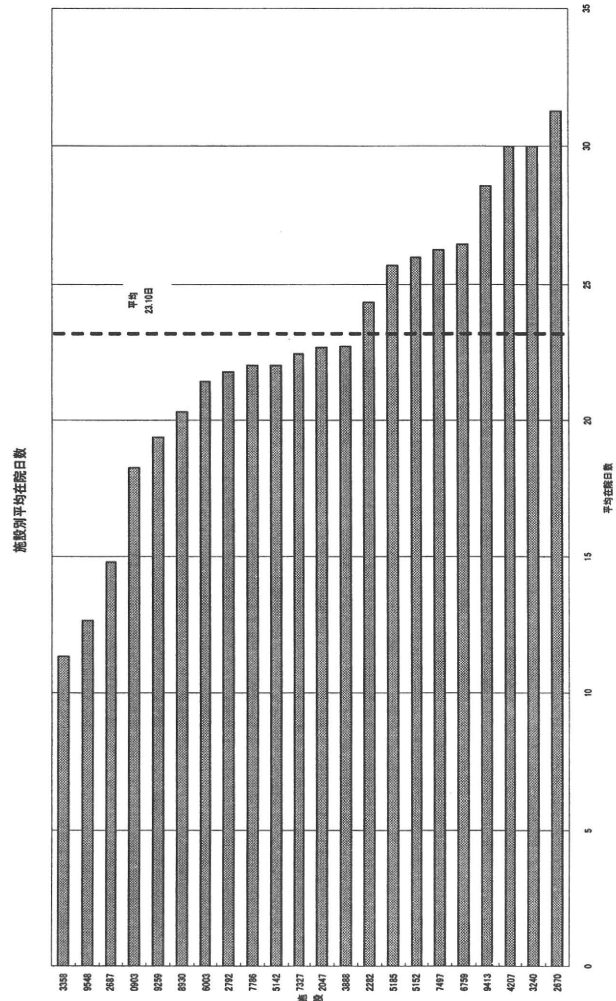
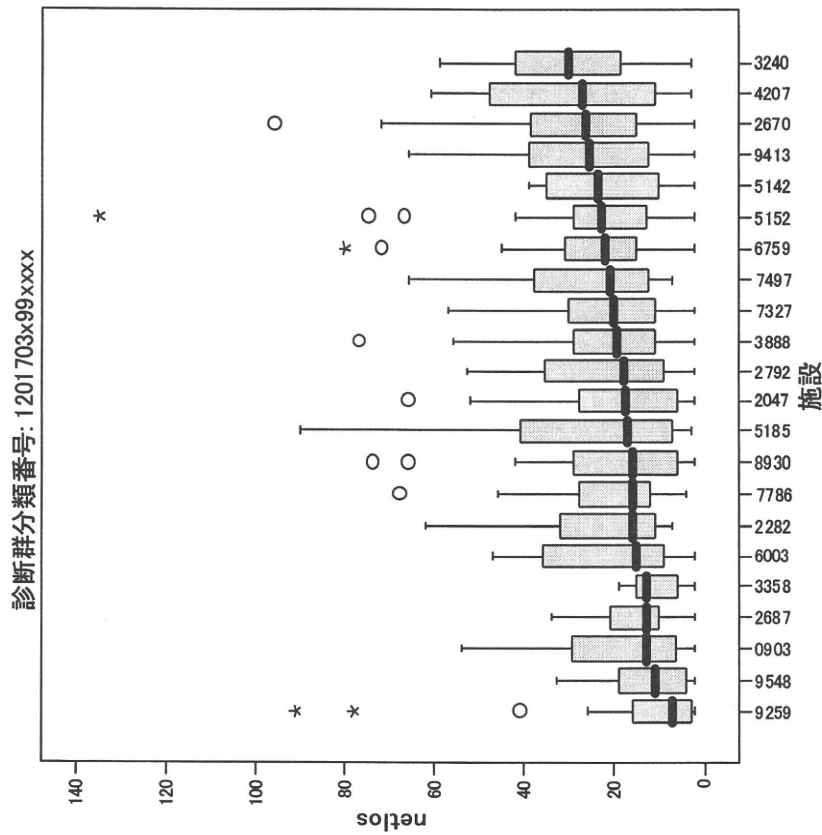
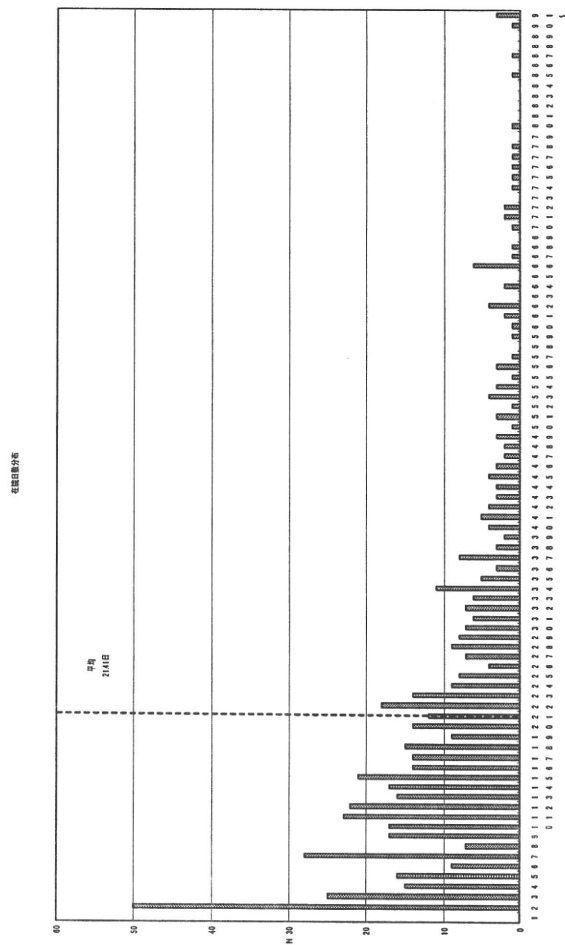
診断群分類番号: 1201403x02xxxx



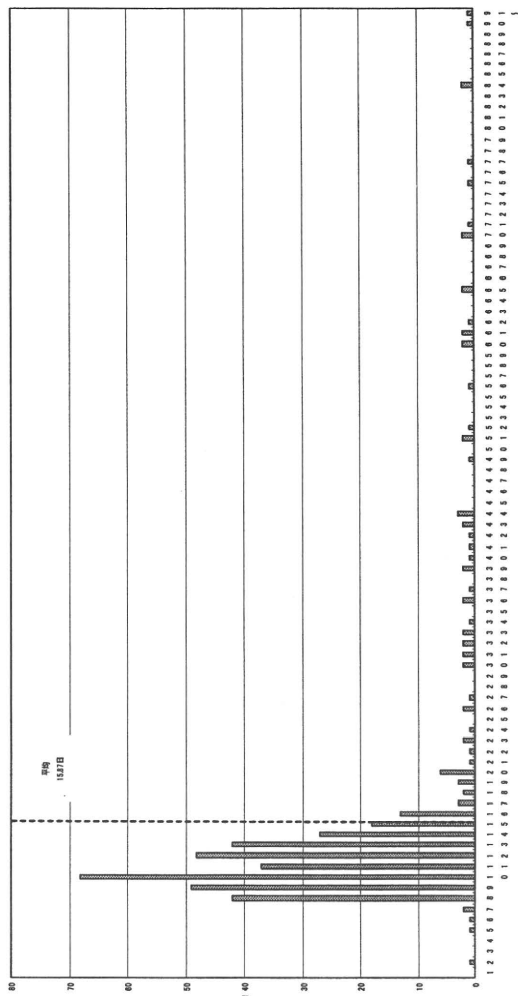
診断群分類番号 1201503x99xxxx

妊娠早期の出血 手術なし

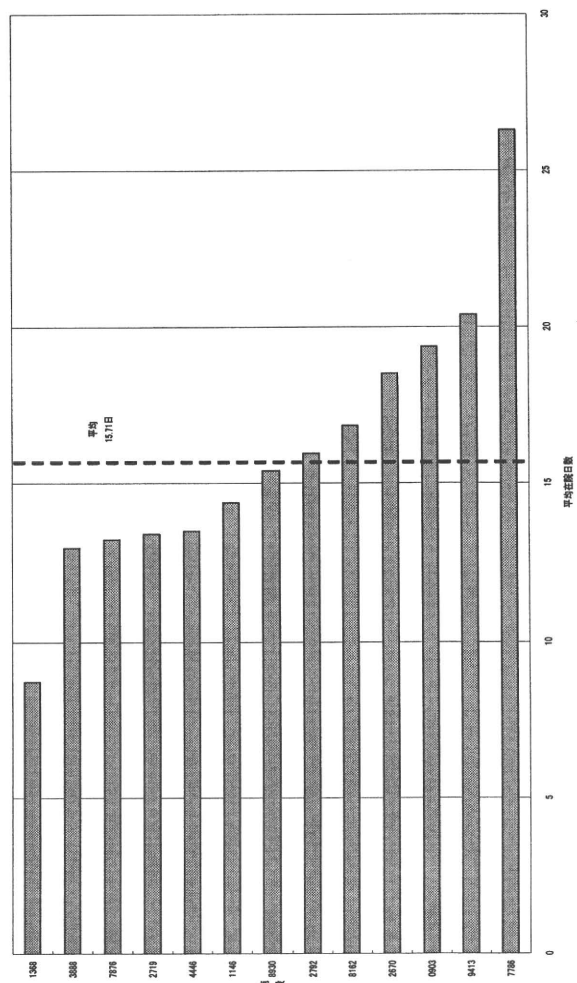




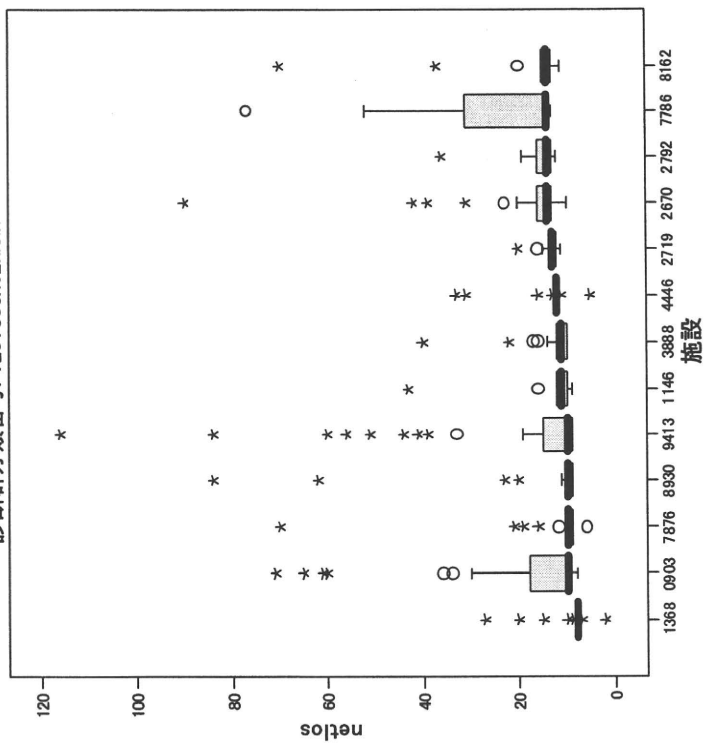
GEN000004



施設別平均在院日数

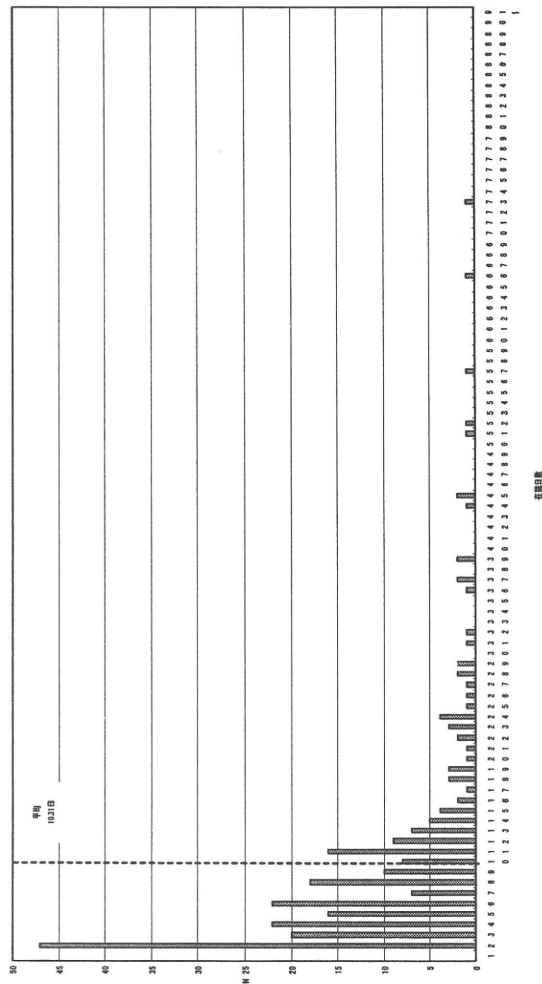


診断群分類番号: 1201803x02xxxx



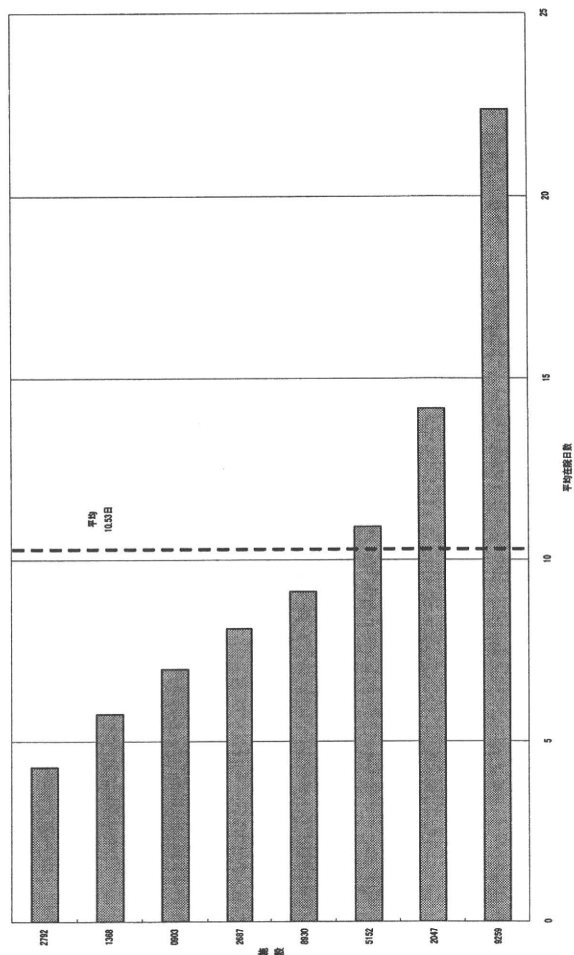


件数

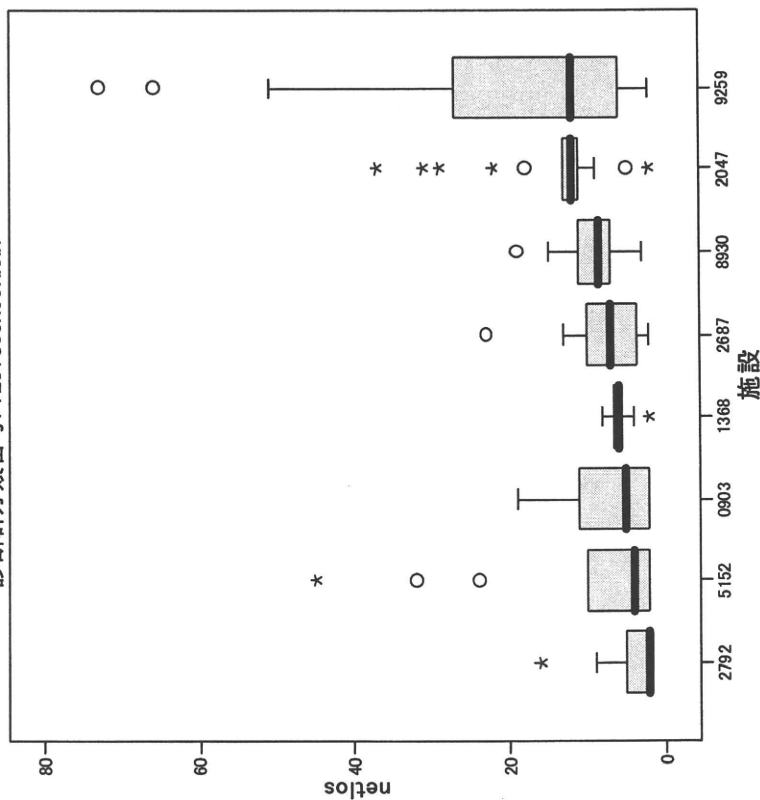


件数

施設別平均滞在日数



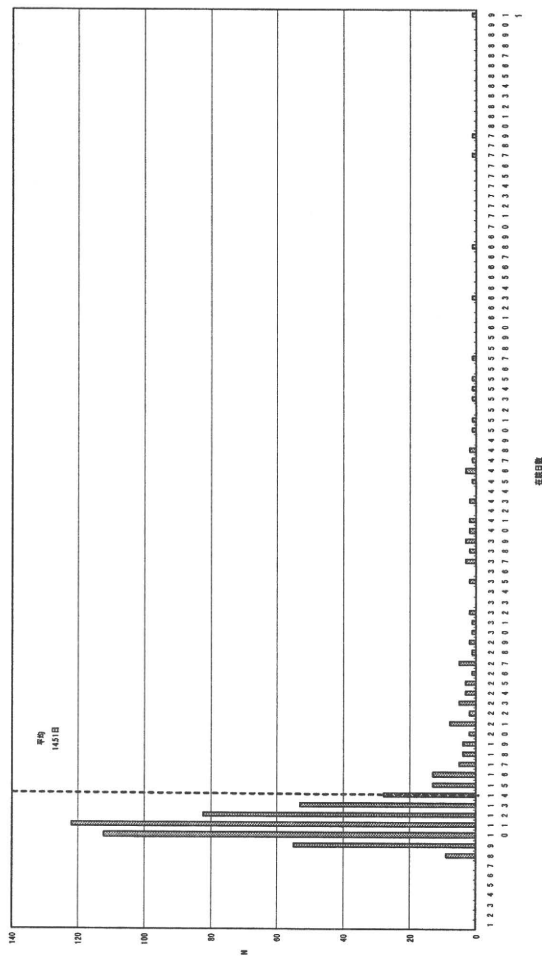
診断群分類番号: 1201803x99xxxx



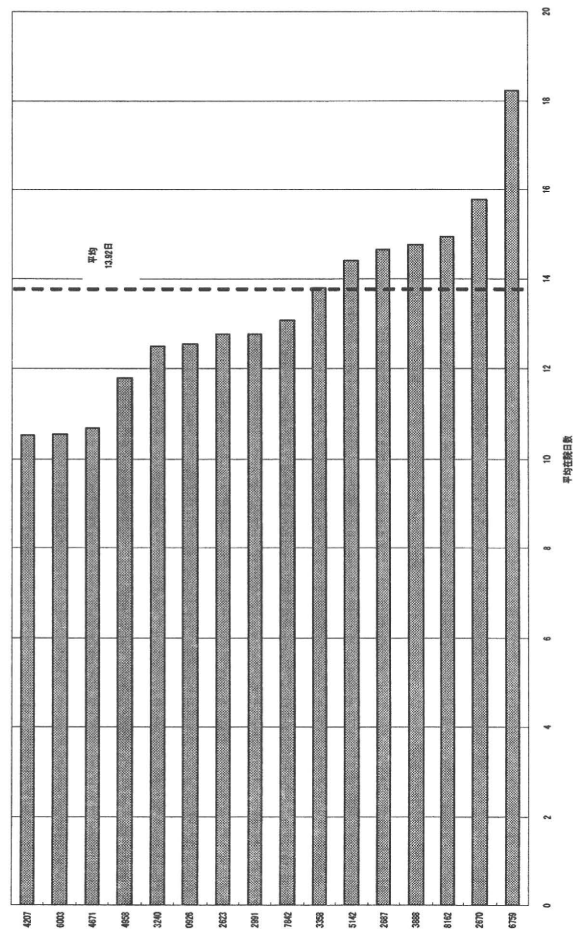
診断群分類番号 1202603x02x0xx

分娩の合併症、産科手術を伴う異常分娩 帝王切開術等 手術・処置等2なし

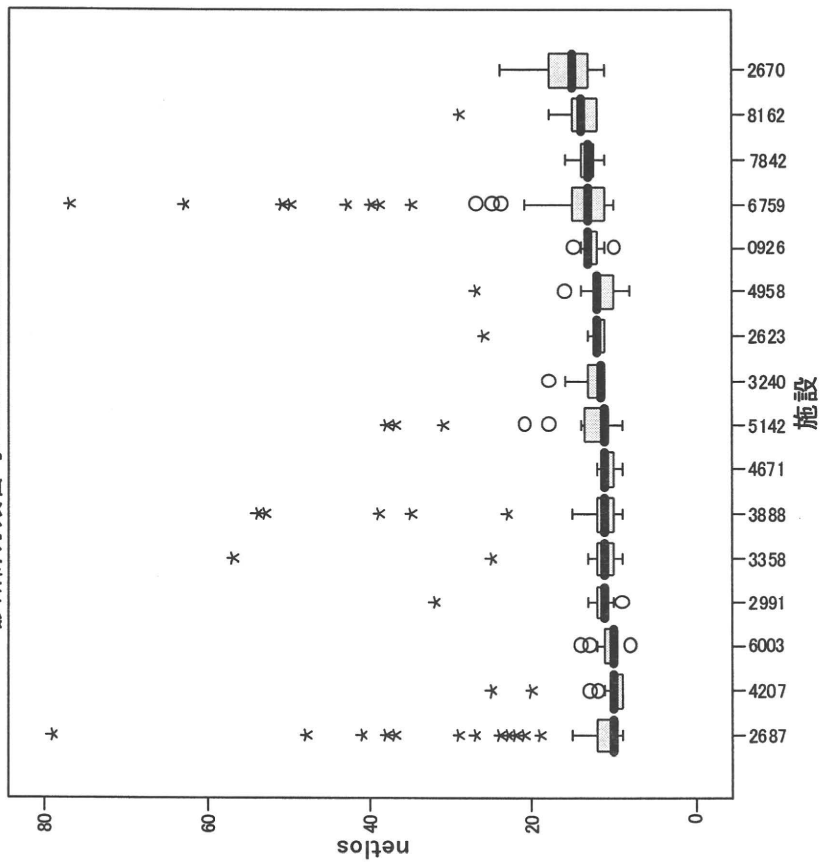
産科手術等



施設別平均在院日数

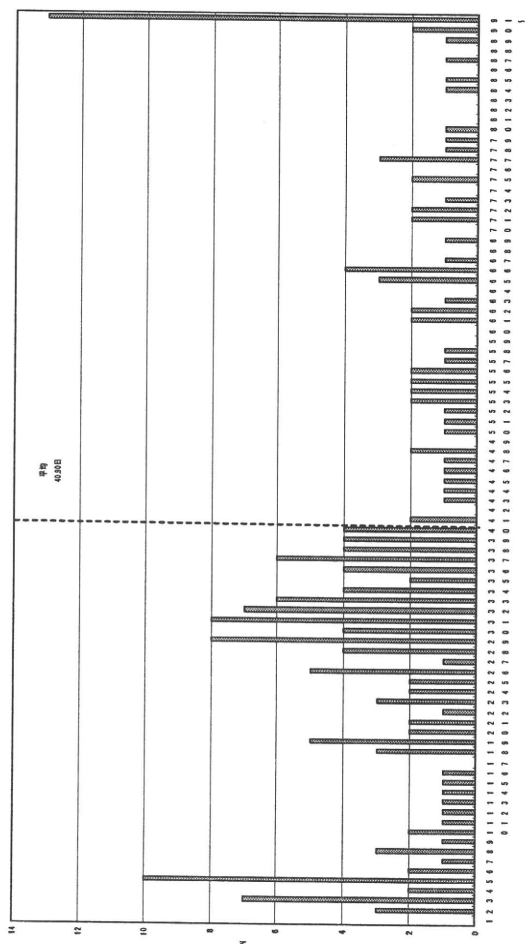


診断群分類番号: 1202603x02x0xx

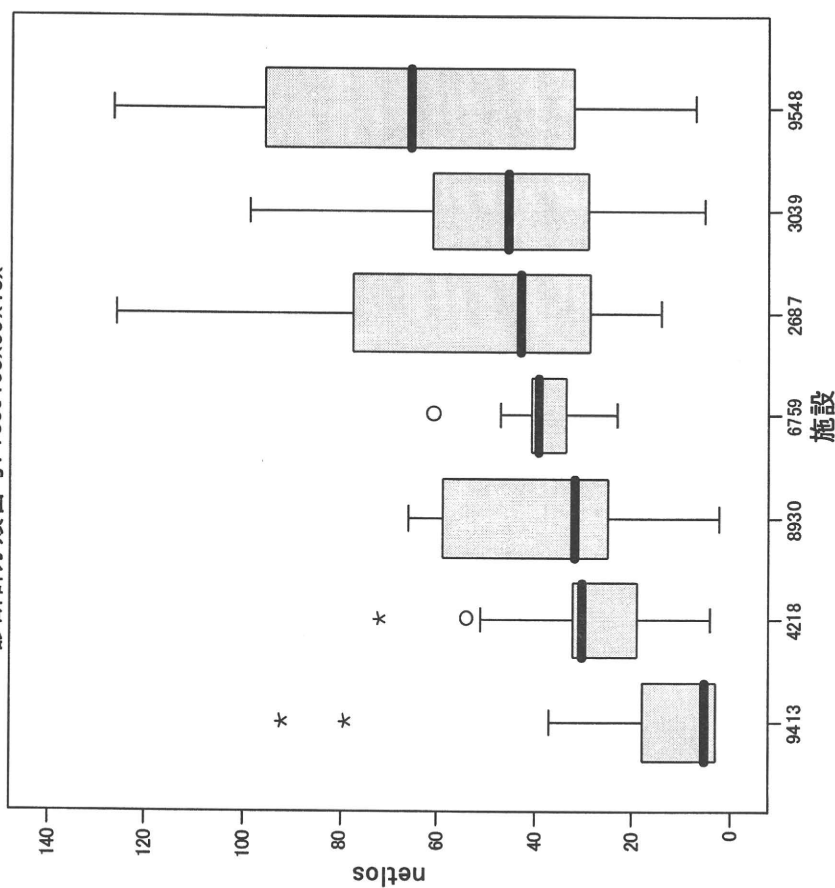


診断群分類番号 1300103x99x10x 急性白血病 手術なし 手術・処置等2あり 副傷病なし

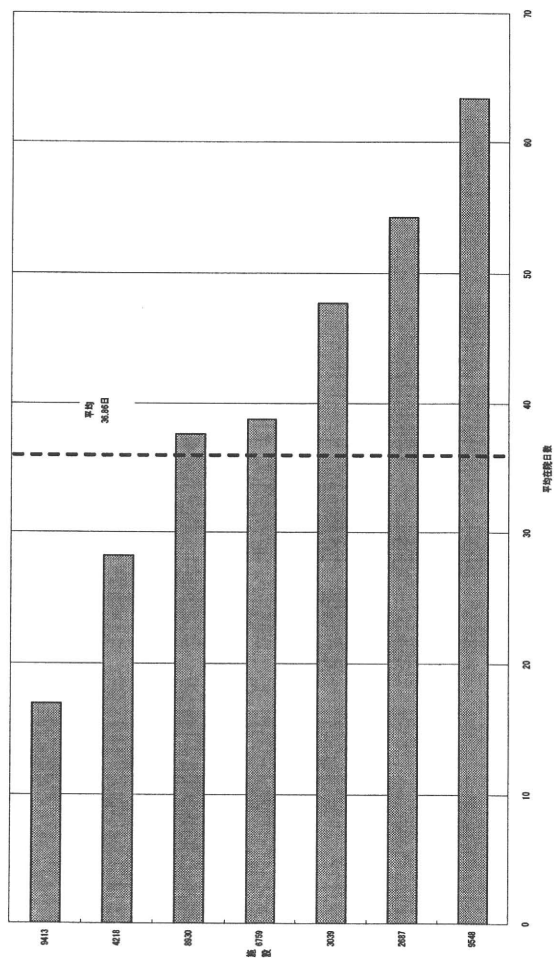
症例数



診断群分類番号: 1300103x99x10x

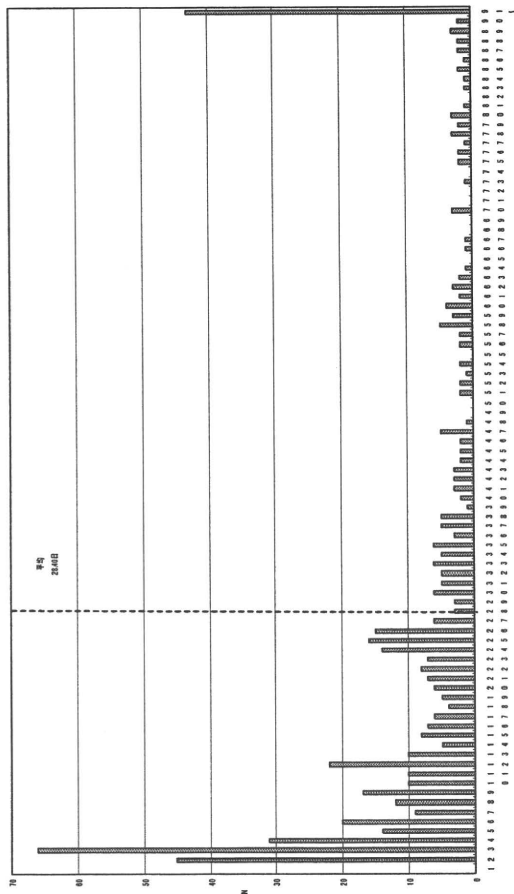


施設別平均在院日数

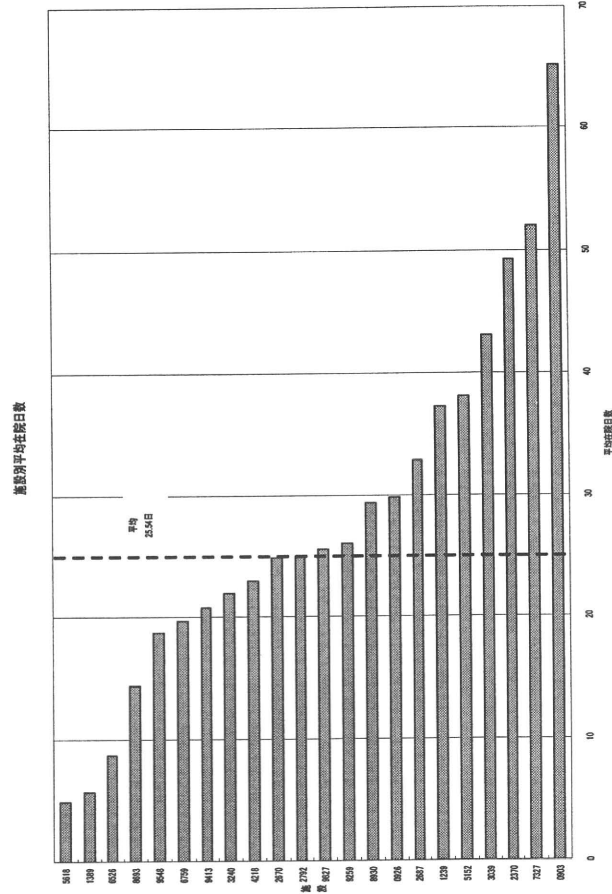


診断群分類番号 1300303x99x20x 非ホジキンリンパ腫 手術なし 手術・処置等22あり 副傷病なし

症例数



症例数



診断群分類番号: 1300303x99x20x

