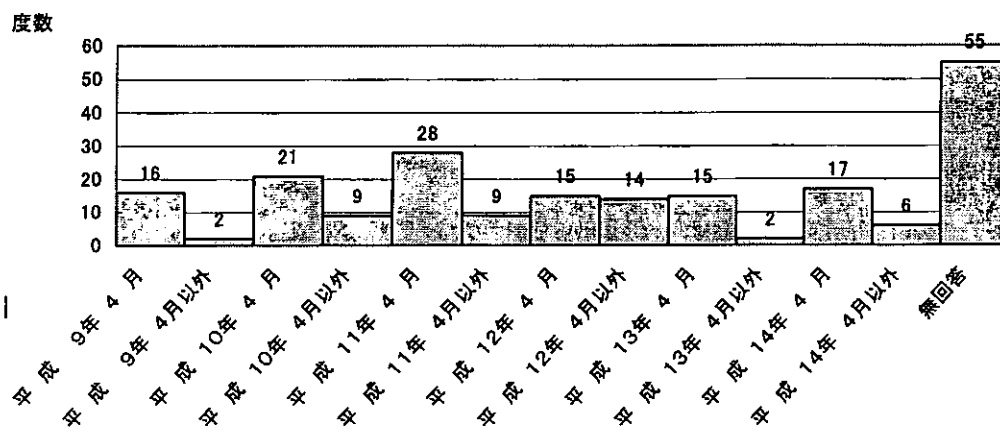
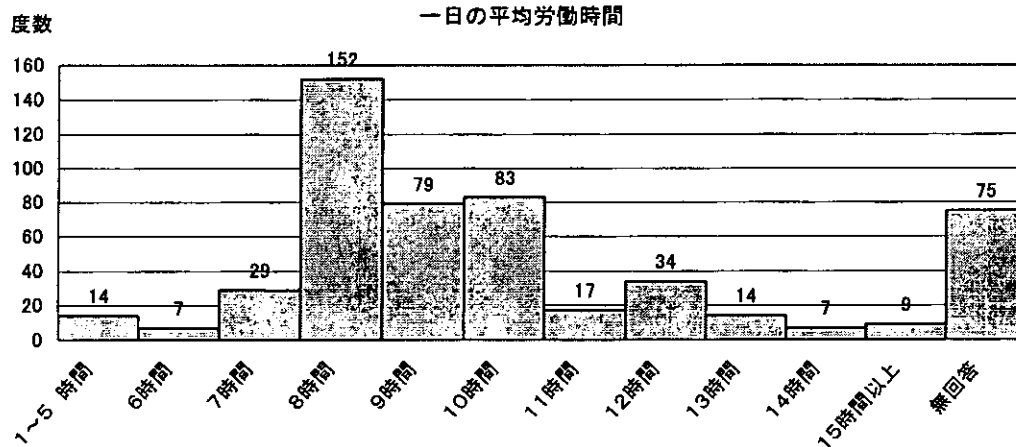


初就業年月5

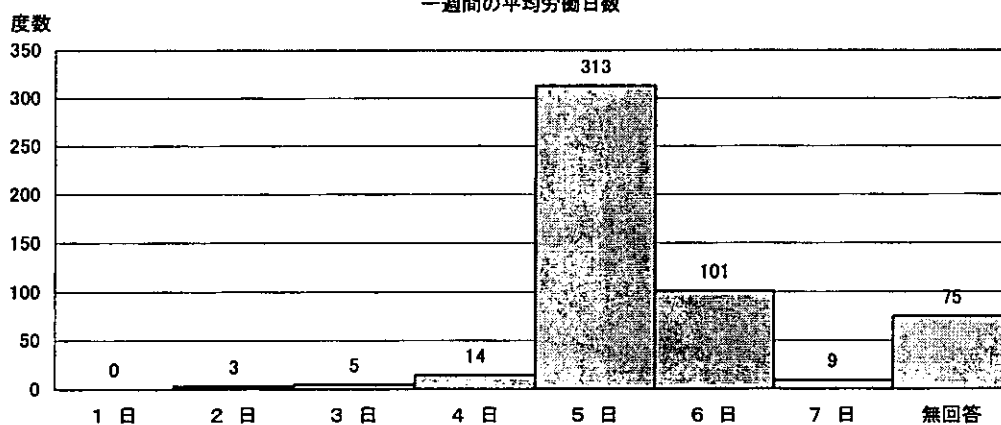


一日の平均労働時間

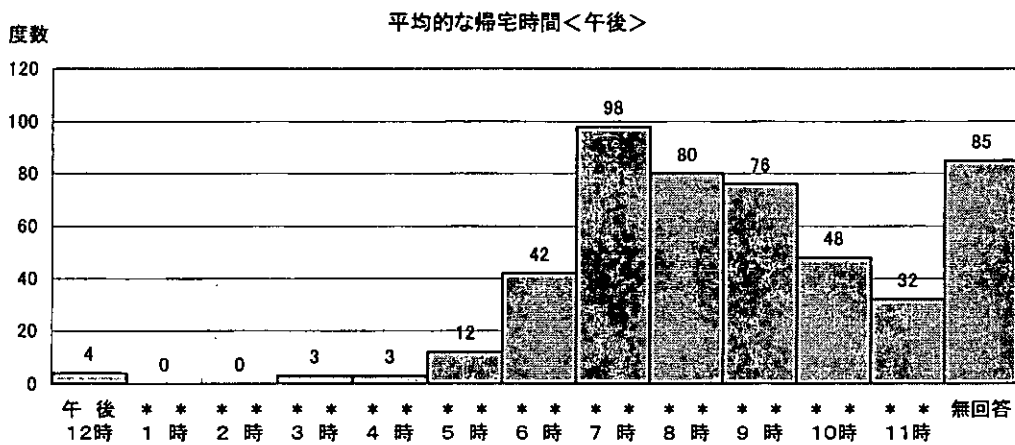
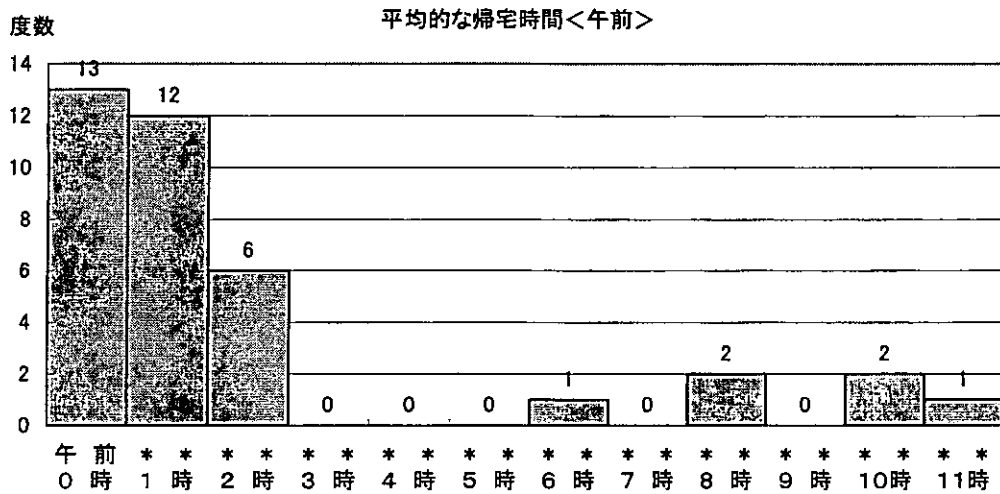
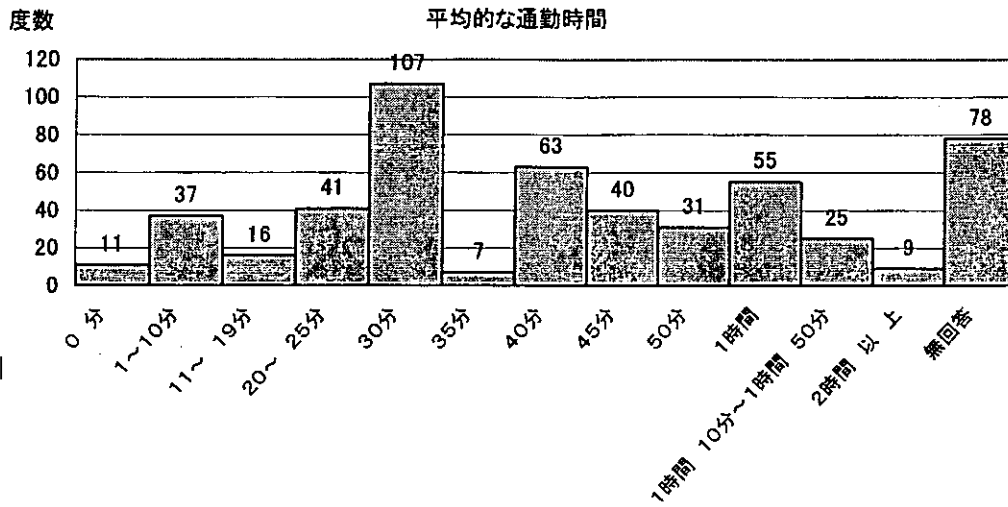


問4-2

一週間の平均労働日数



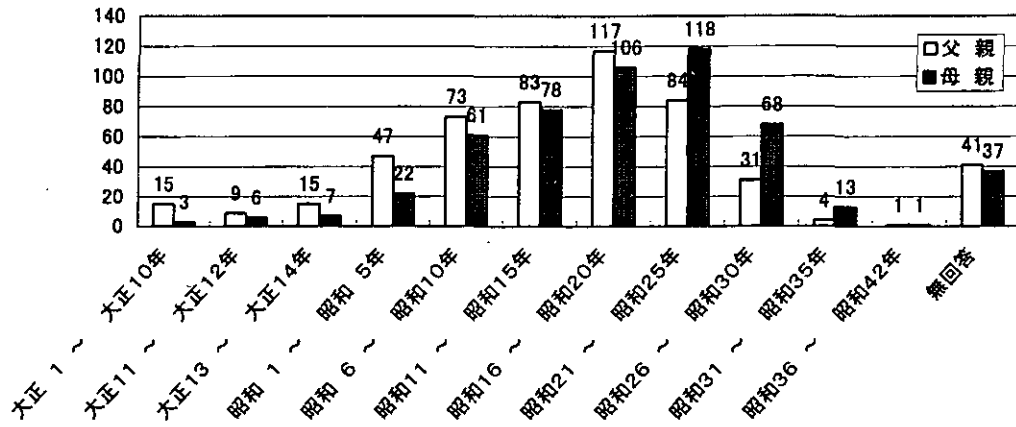
問4-3



問5-1

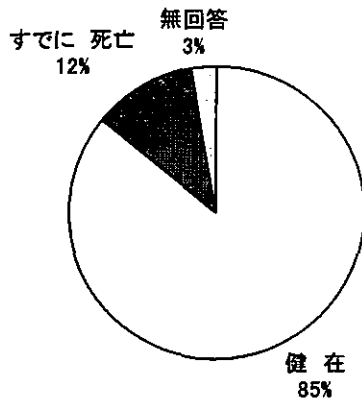
度数

両親の出生年月日

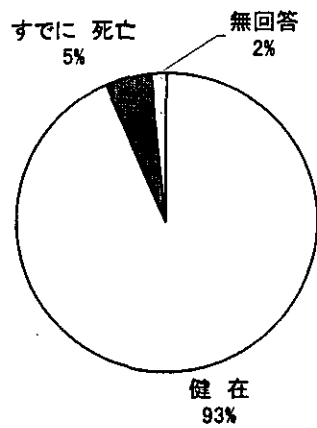


問5-2

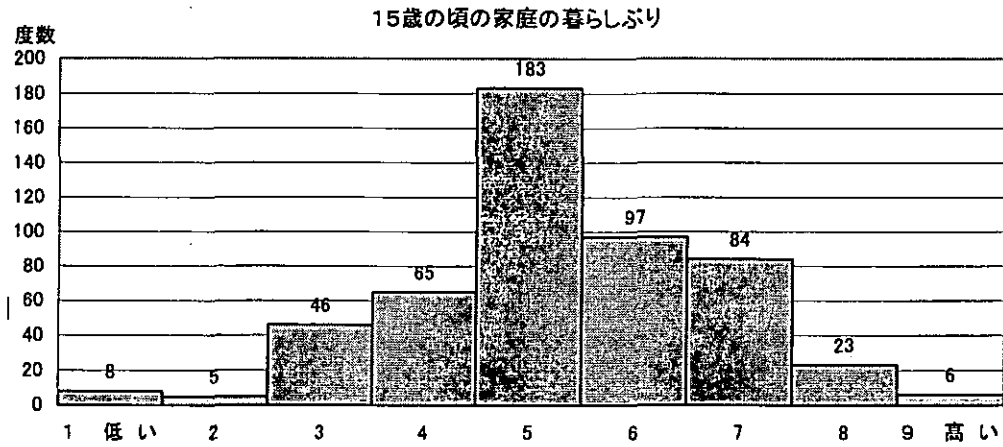
現在の生死別<父親>



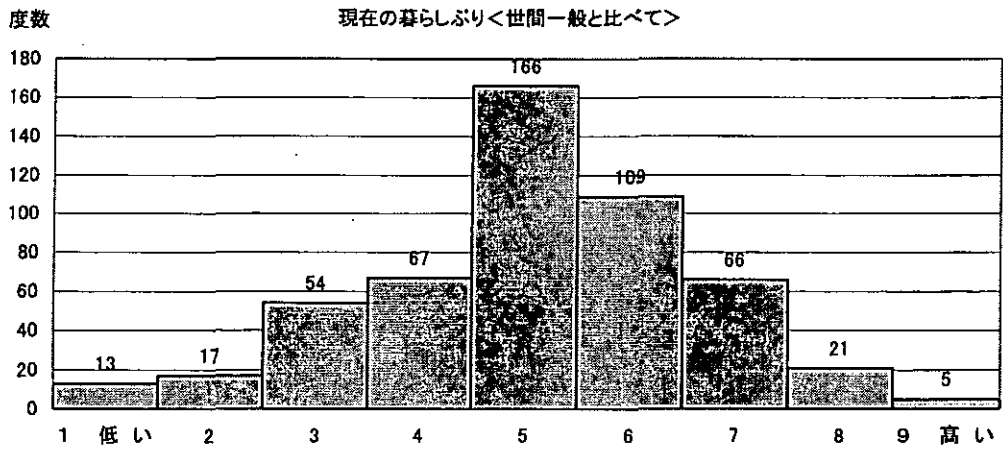
現在の生死別



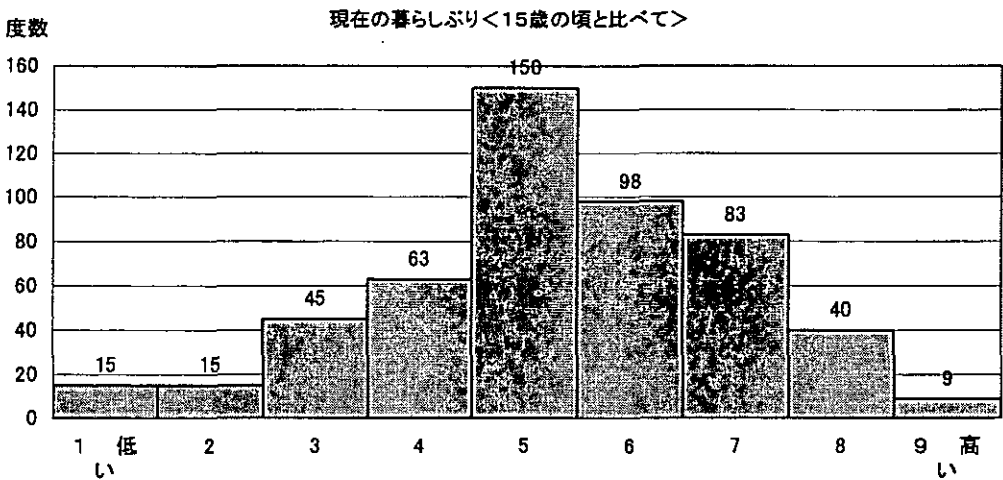
問6



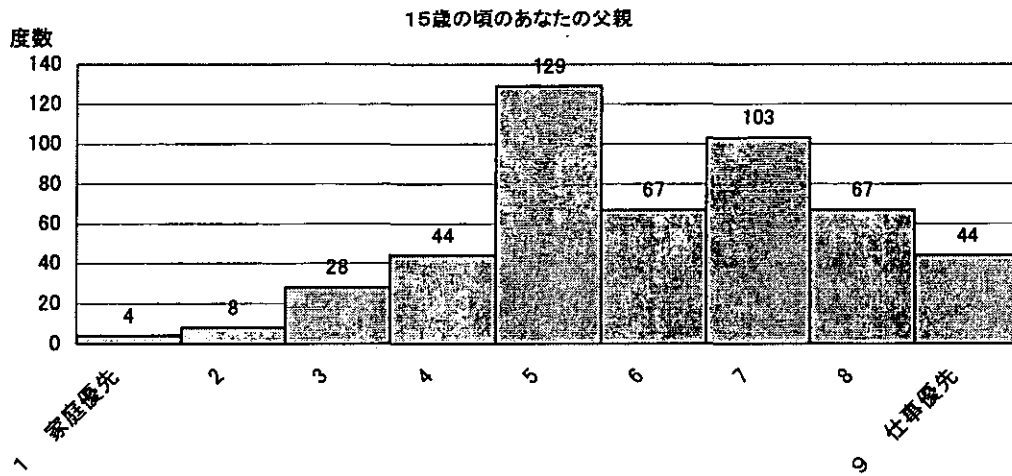
問7



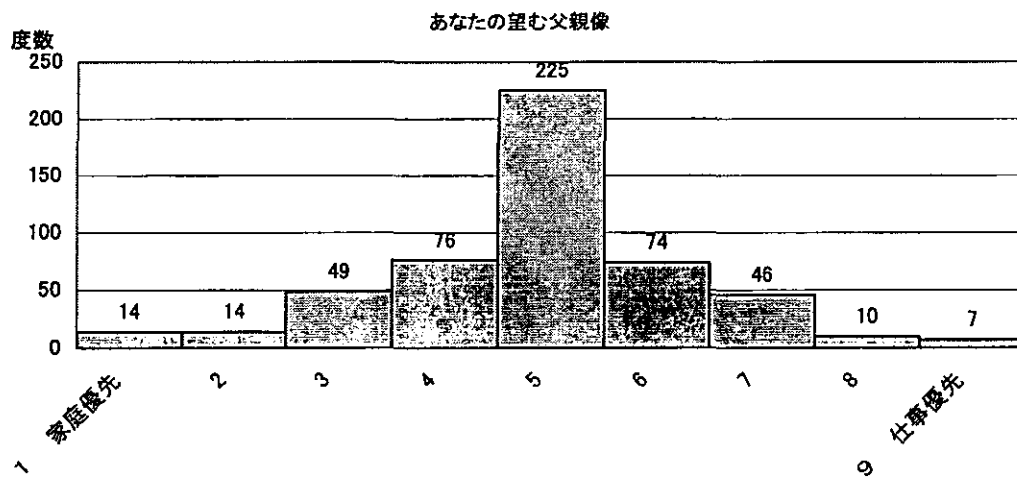
問8



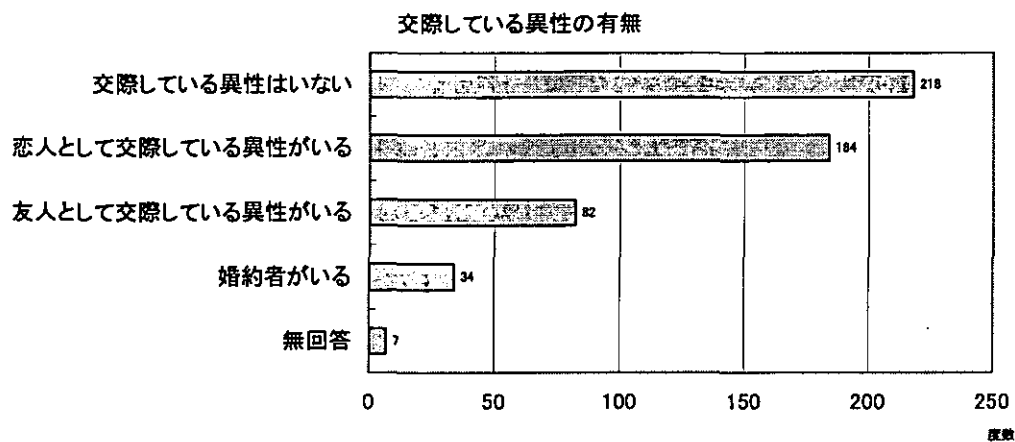
問9-1



問9-2

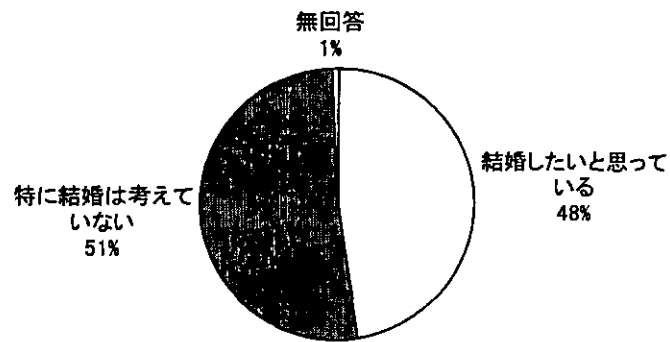


問10-1



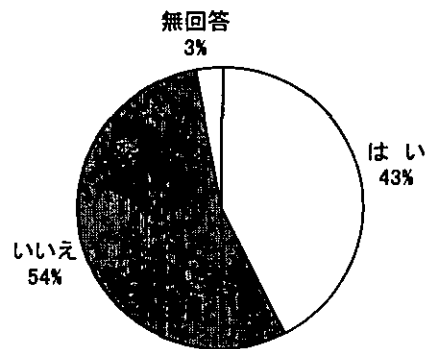
問10-2

交際相手との結婚の希望<N=261>



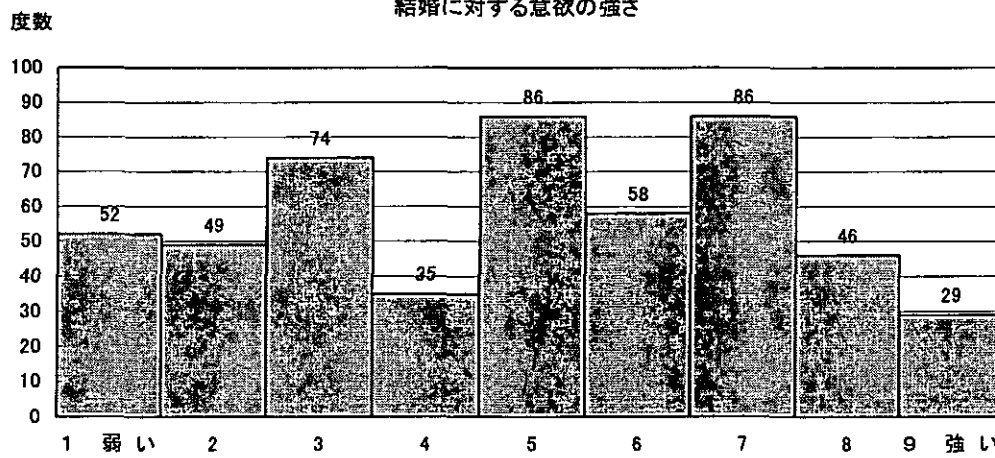
問11

結婚を意識してのパートナー探しの有無<N=479>

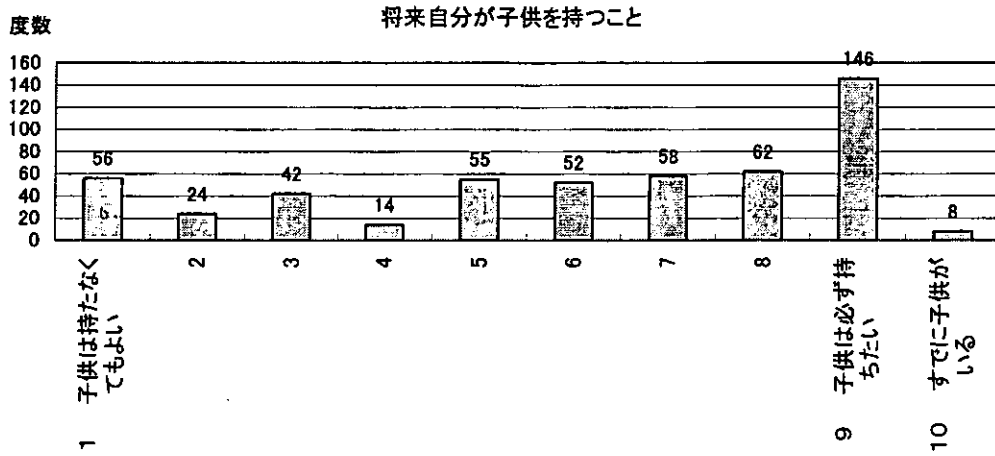


問12

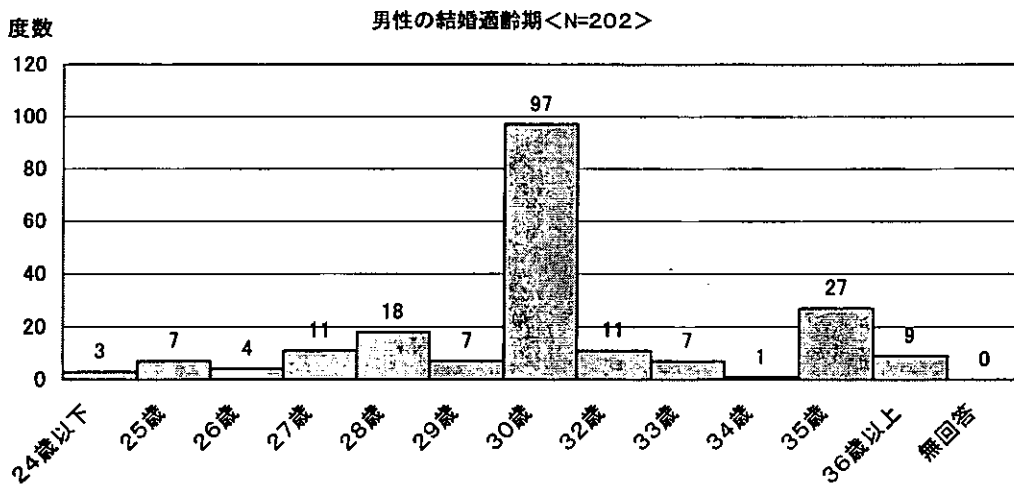
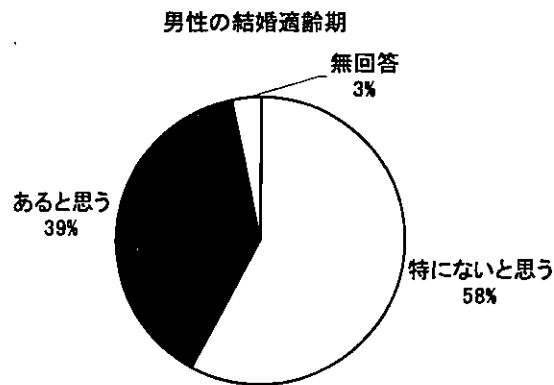
結婚に対する意欲の強さ



問13

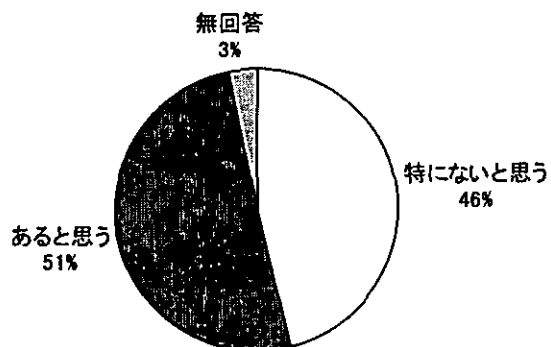


問14

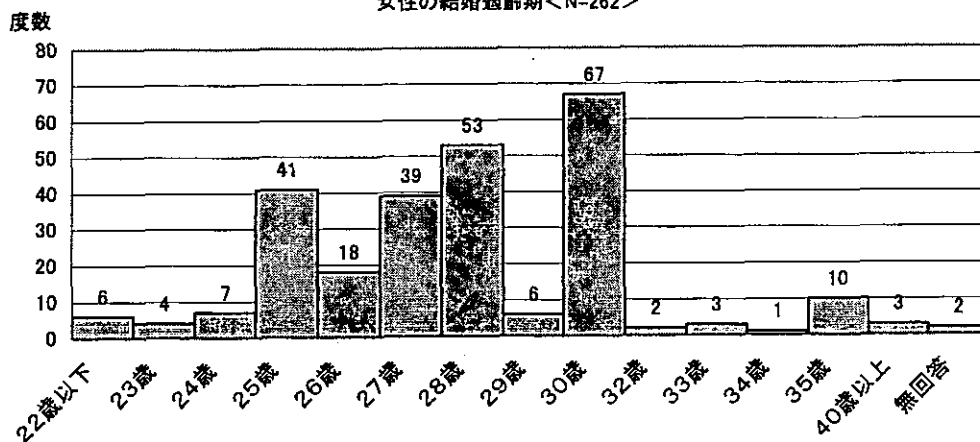


問14

女性の結婚適齢期



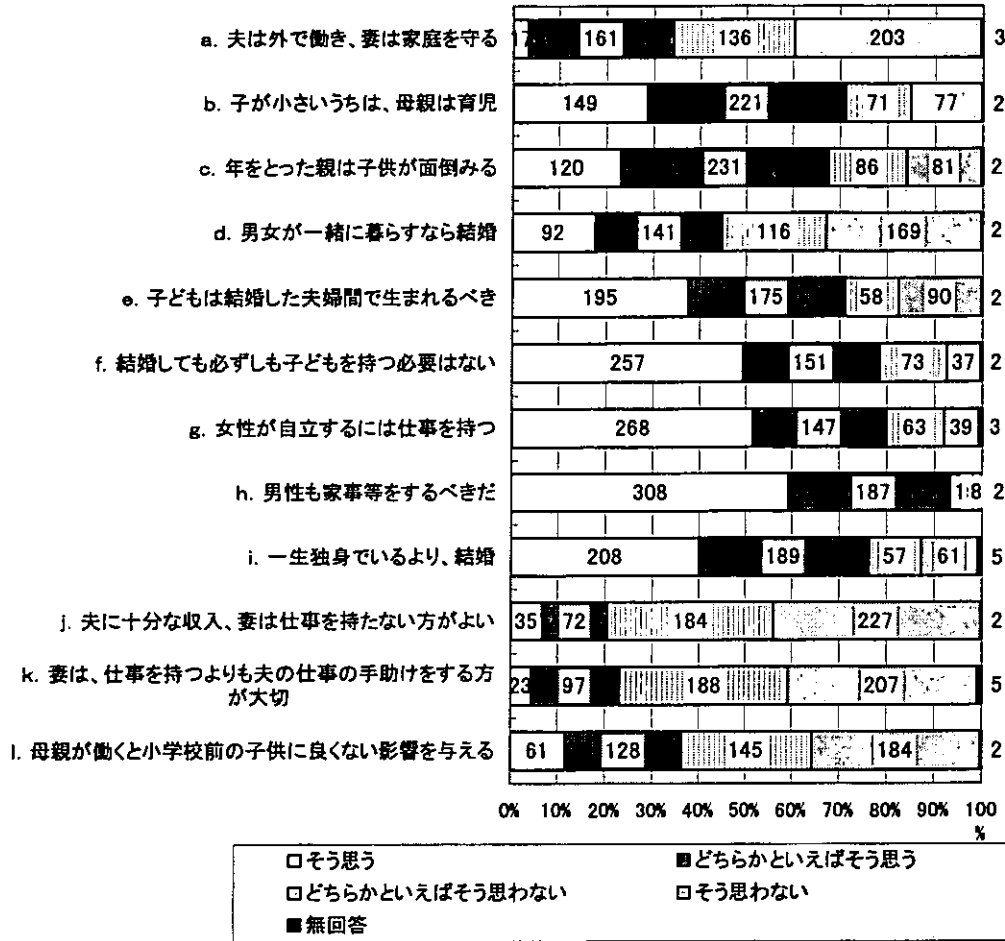
女性の結婚適齢期 <N=262>



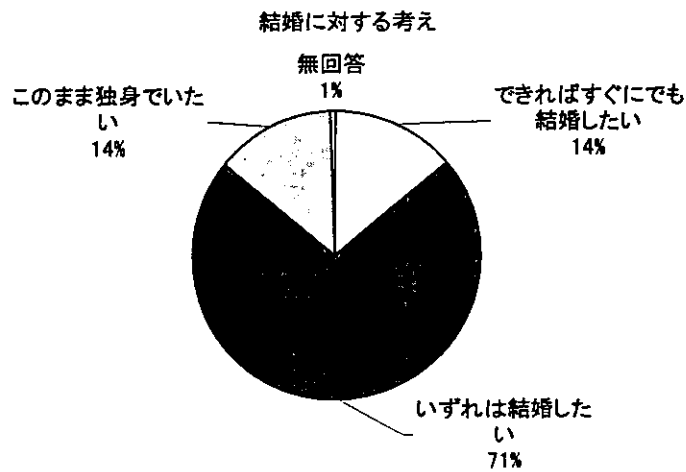


問15

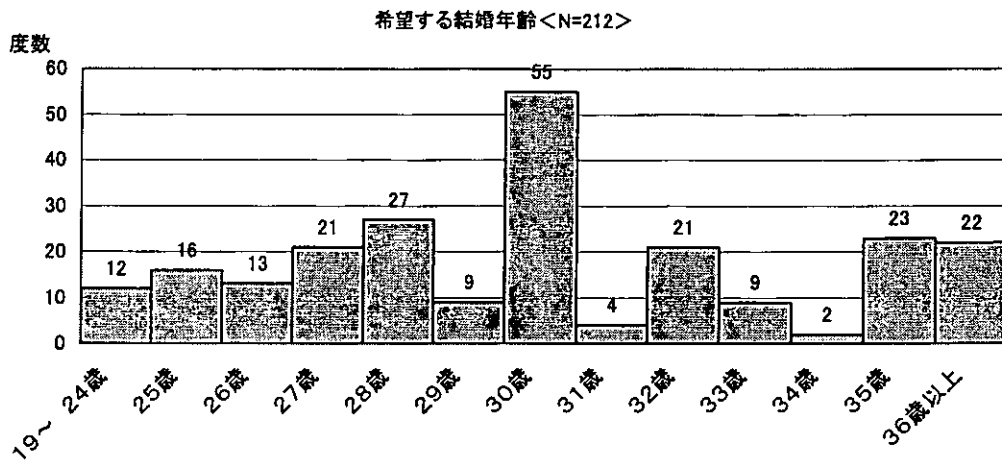
生き方や考え方



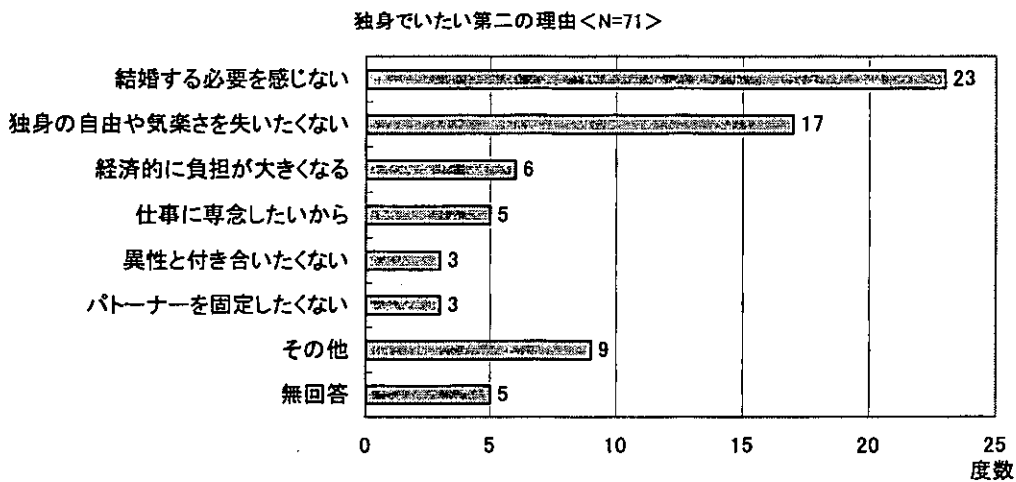
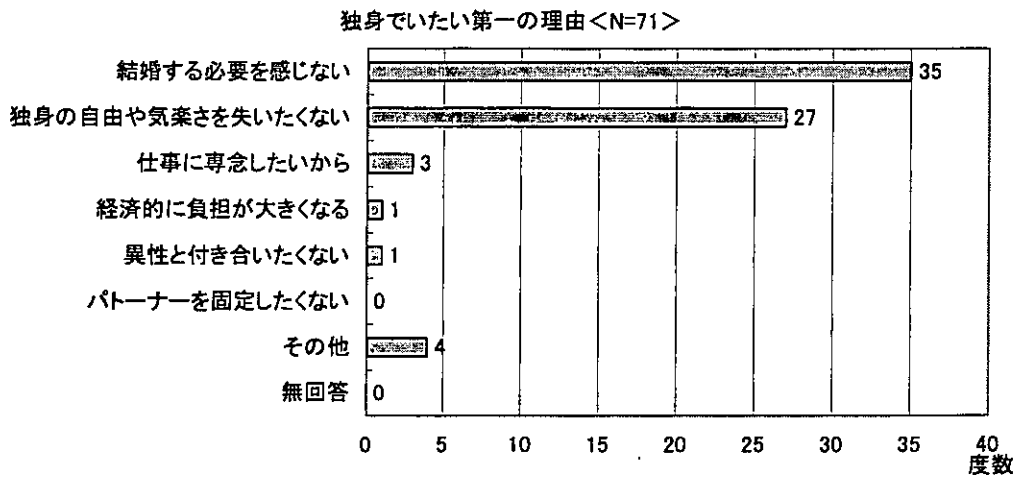
問16



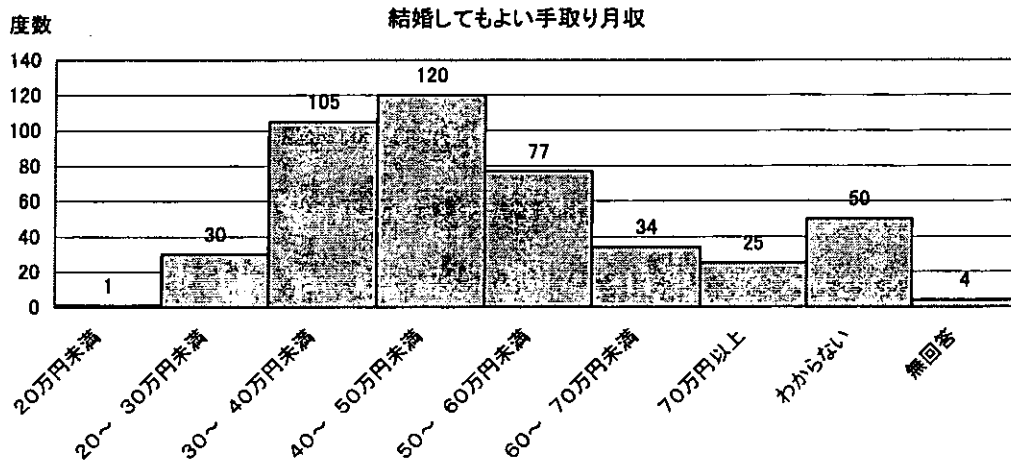
問17



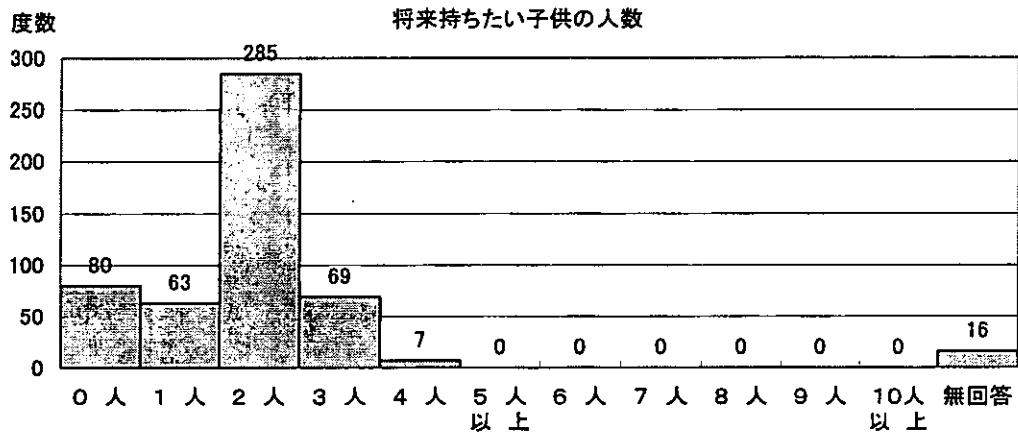
問18



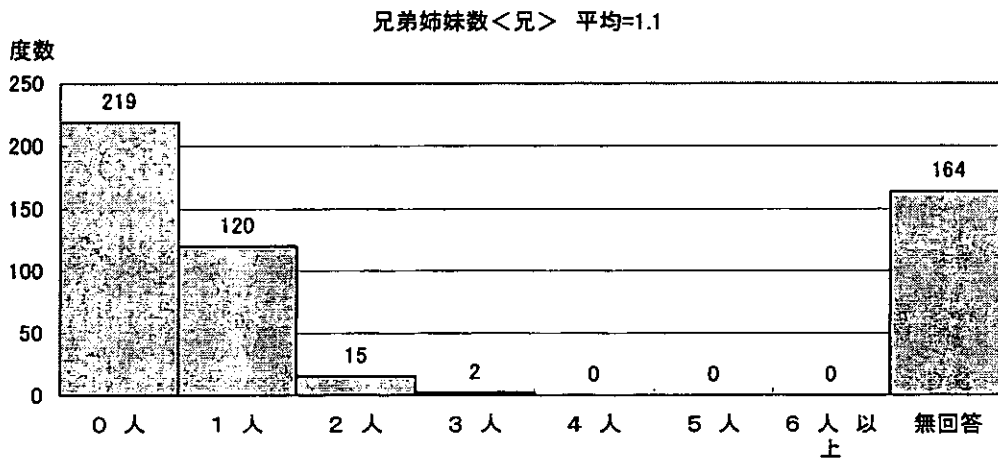
問19

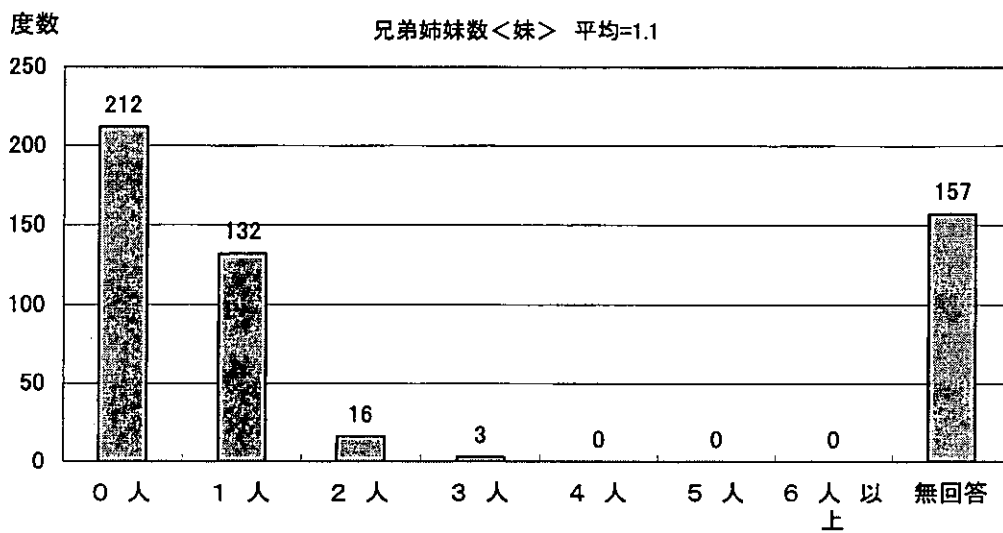
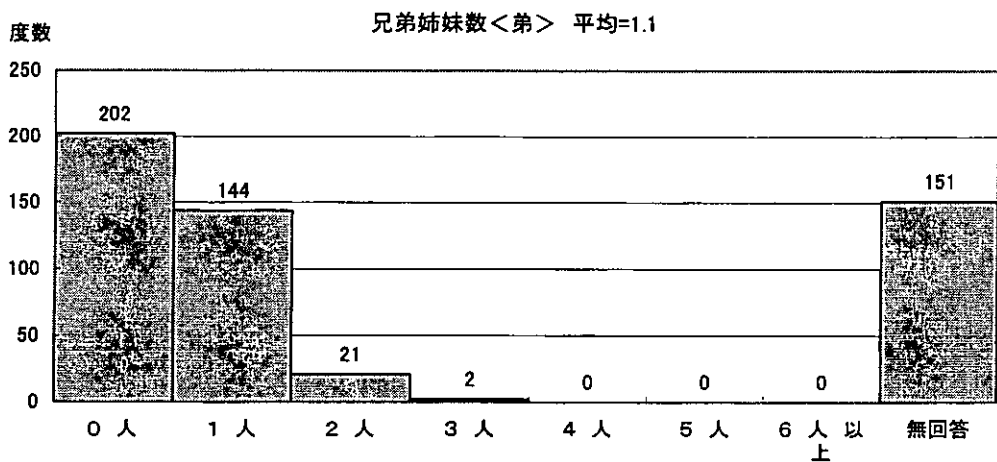
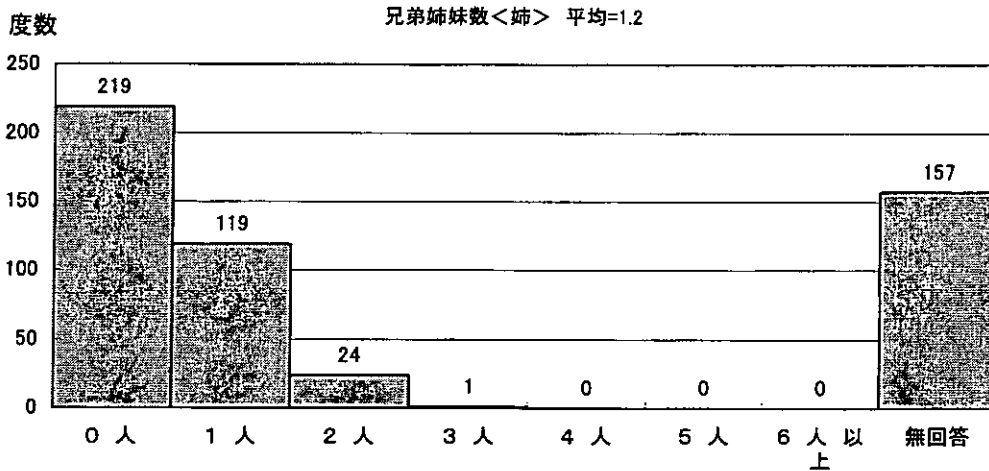


問20

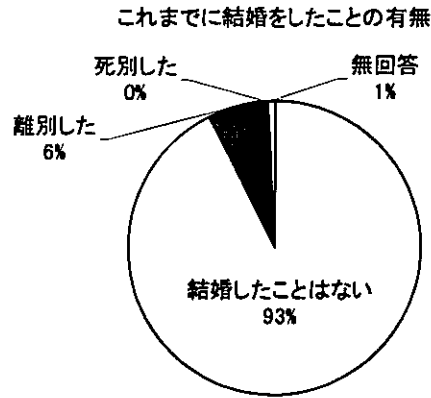


問21

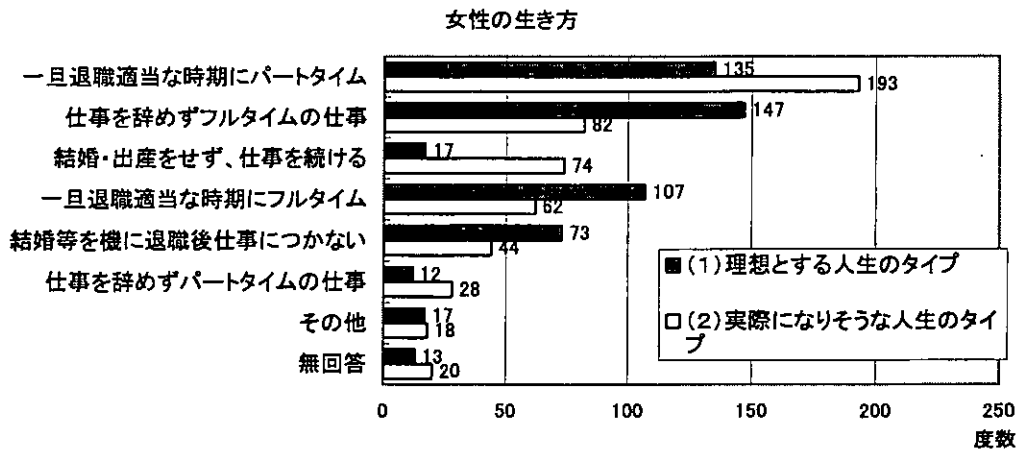




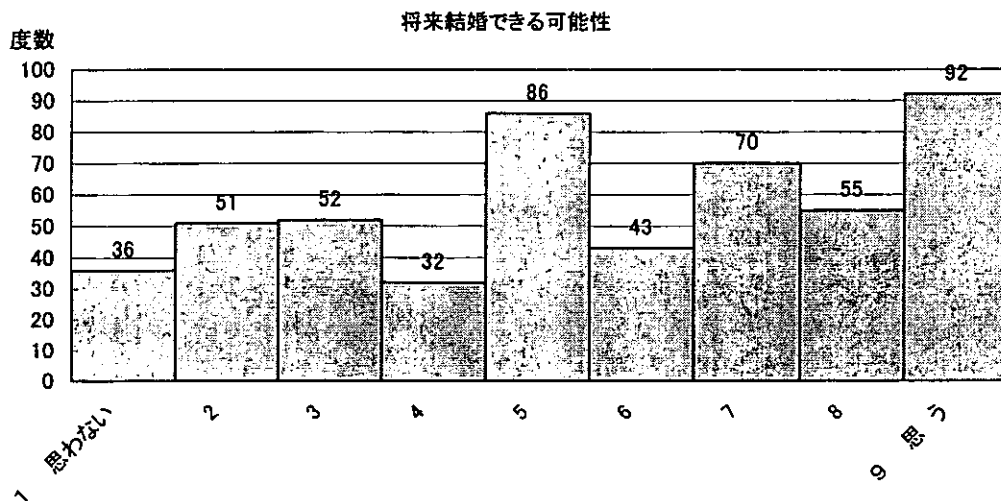
問22



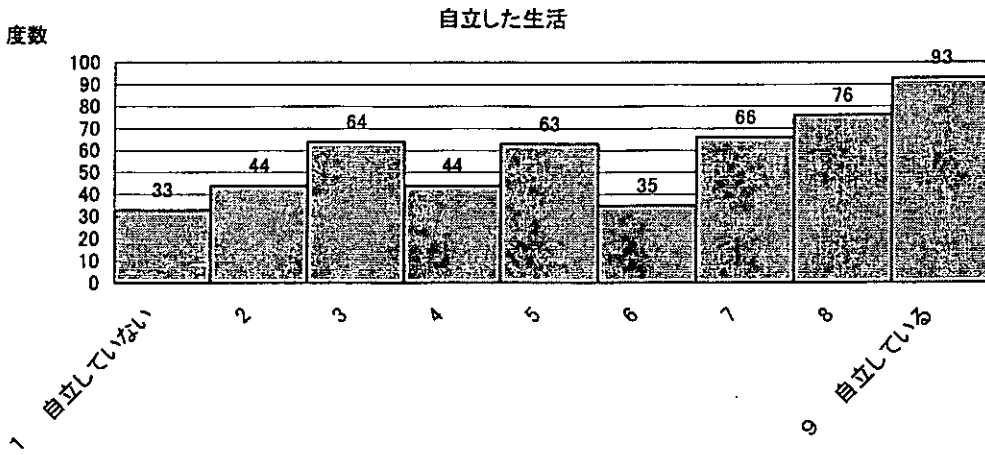
問23



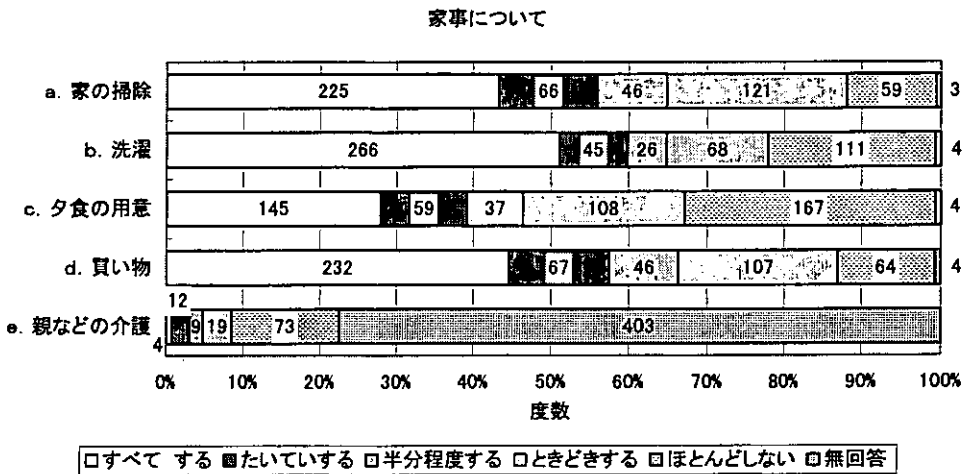
問24



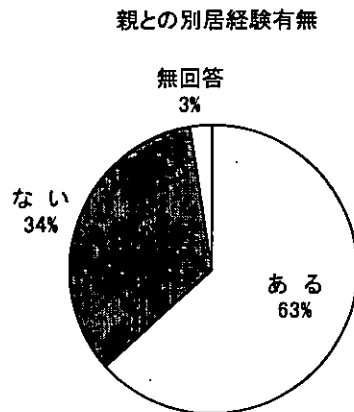
問25



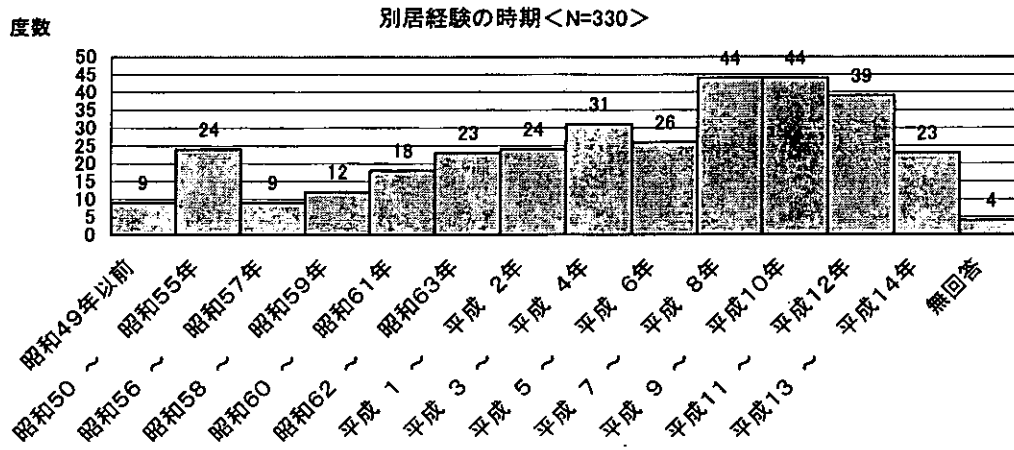
問26



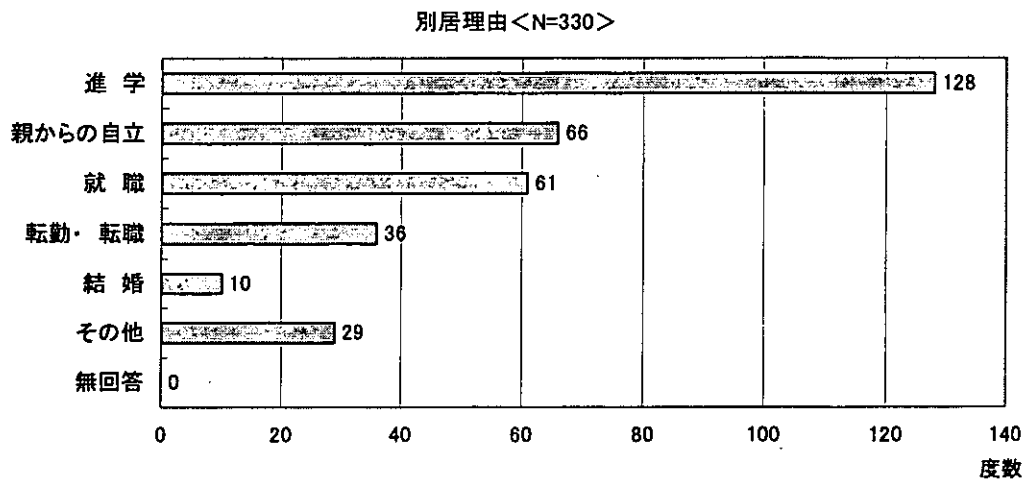
問27



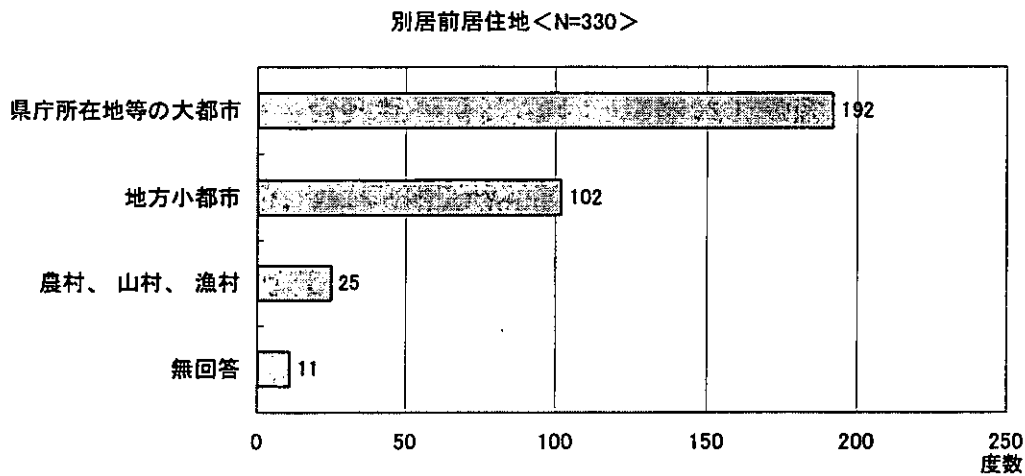
問27-1



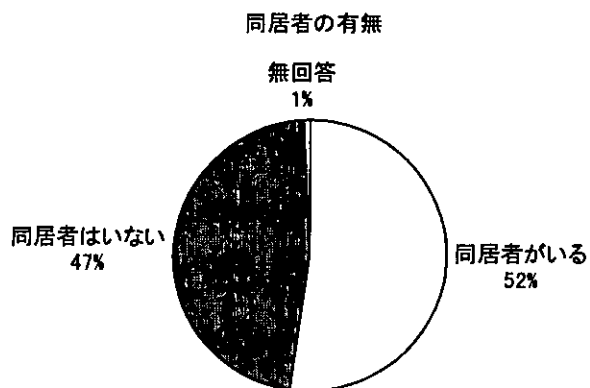
問27-2



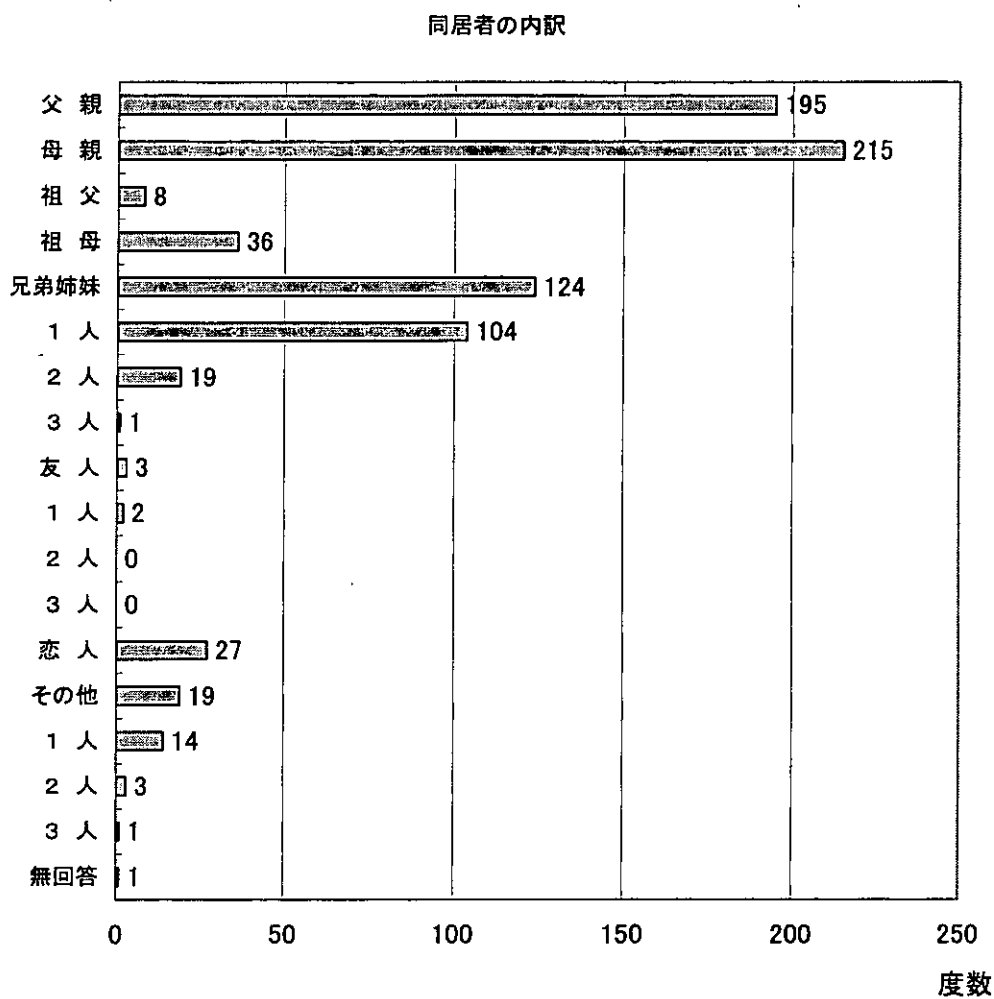
問27-3



問28-1



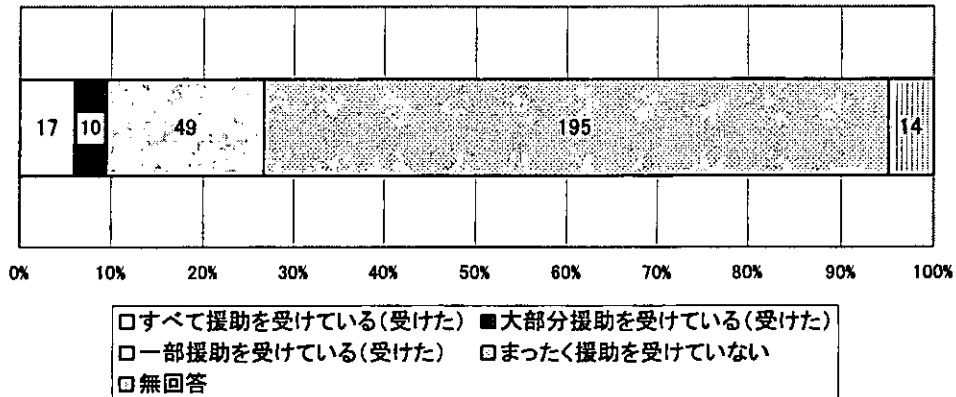
問28-2





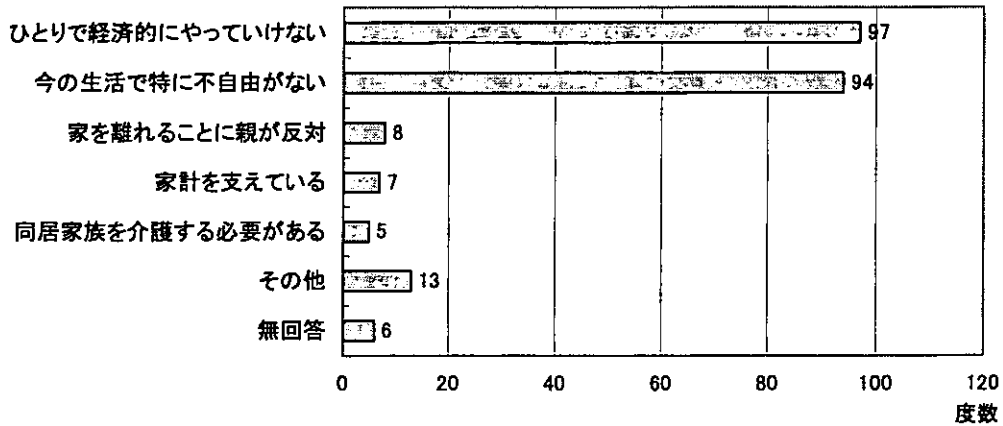
問29

親からの援助

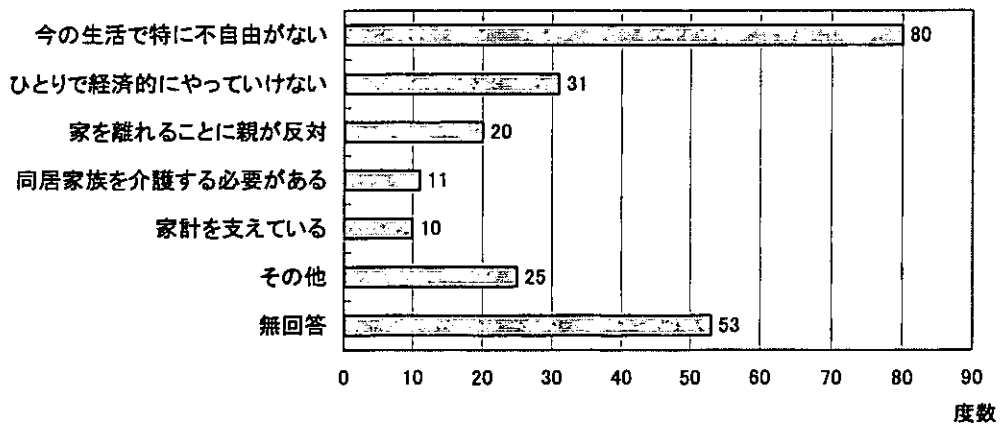


問30

親と同居している第一の理由

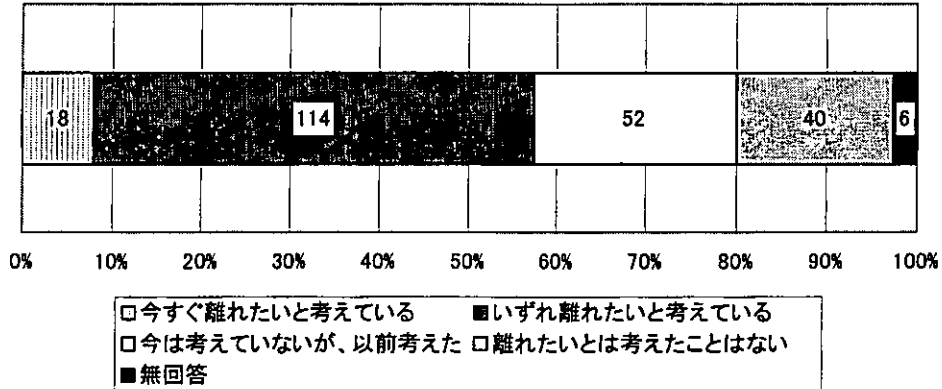


親と同居している第二の理由



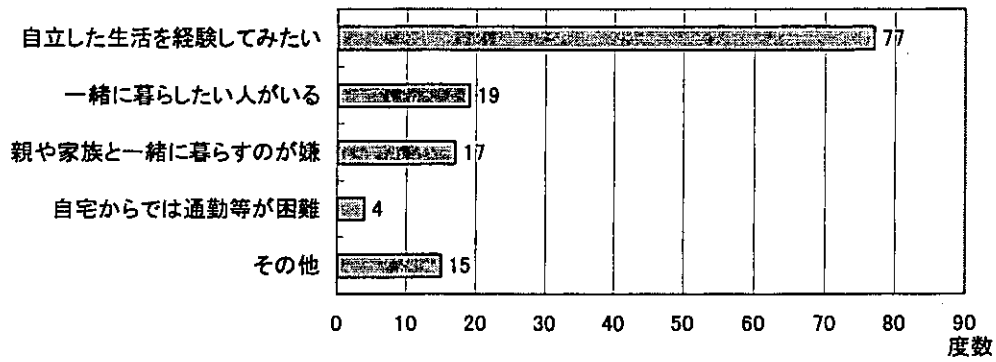
問31-1

別居の意思



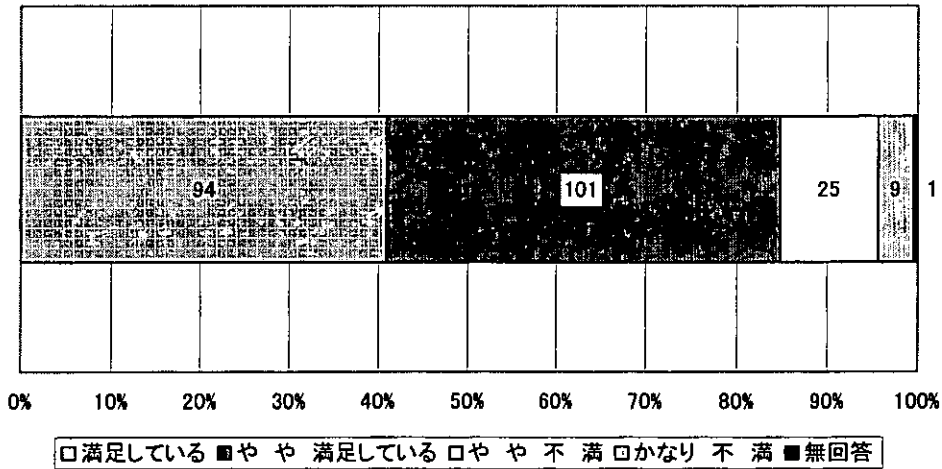
問31-2

別居したい理由



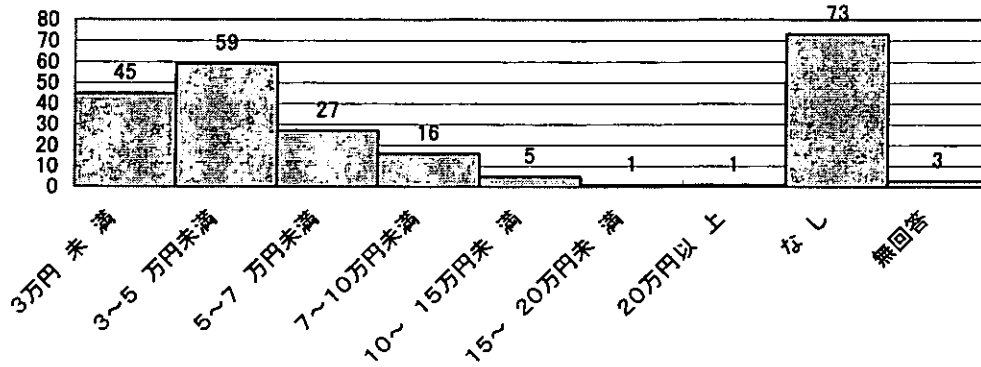
問32

親との同居満足度



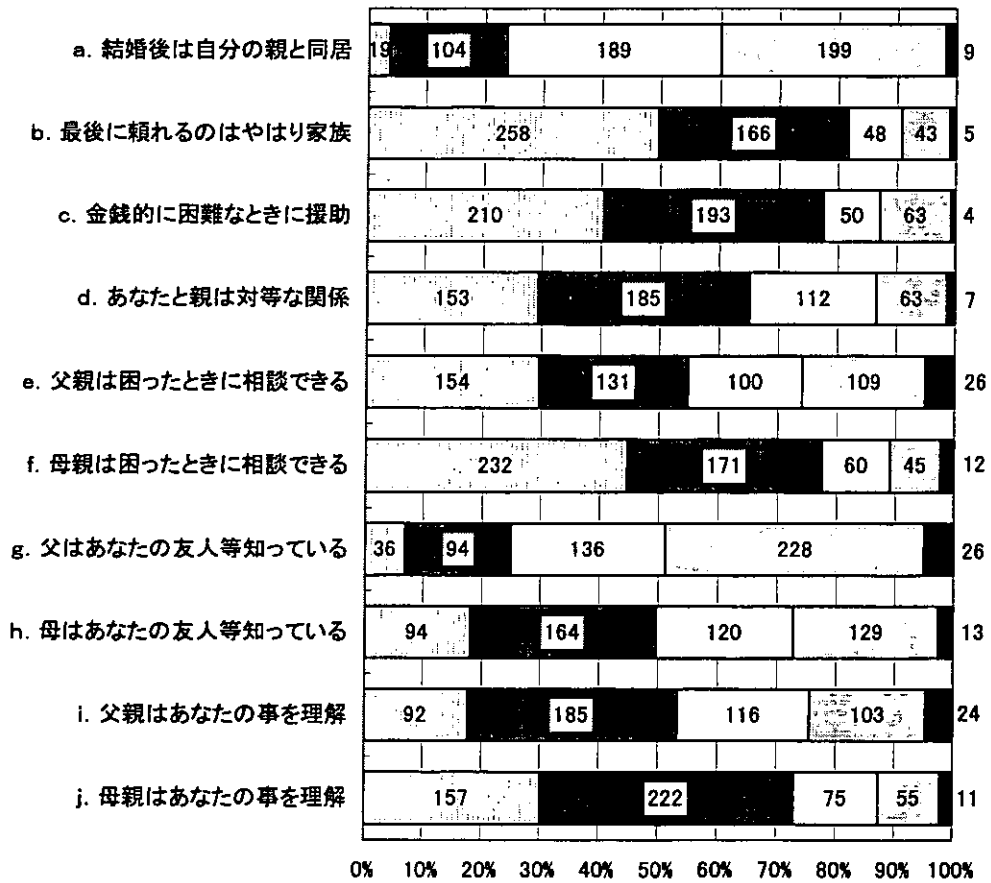
問33

毎月家計に入れる金額



問34

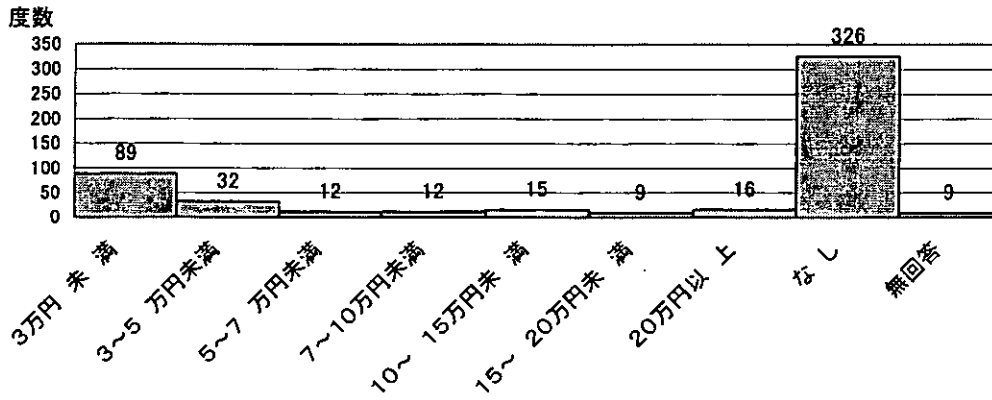
家族に対する考え



口そう思う ■ どちらかといえばそう思う □ どちらかといえばそう思わない □ 口そうは思わない ■ 無回答

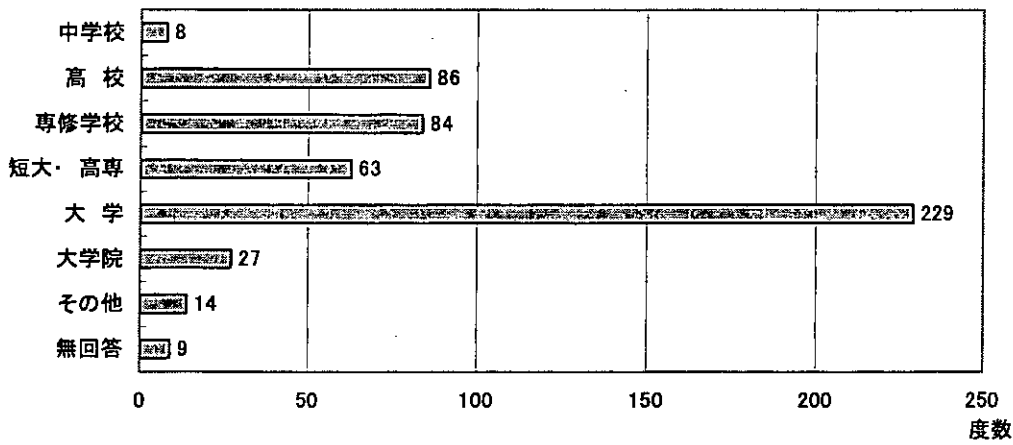
問35

親からの金銭的援助



問36-1

通学していた・通学している学校



問36-2

卒業・在学の別

