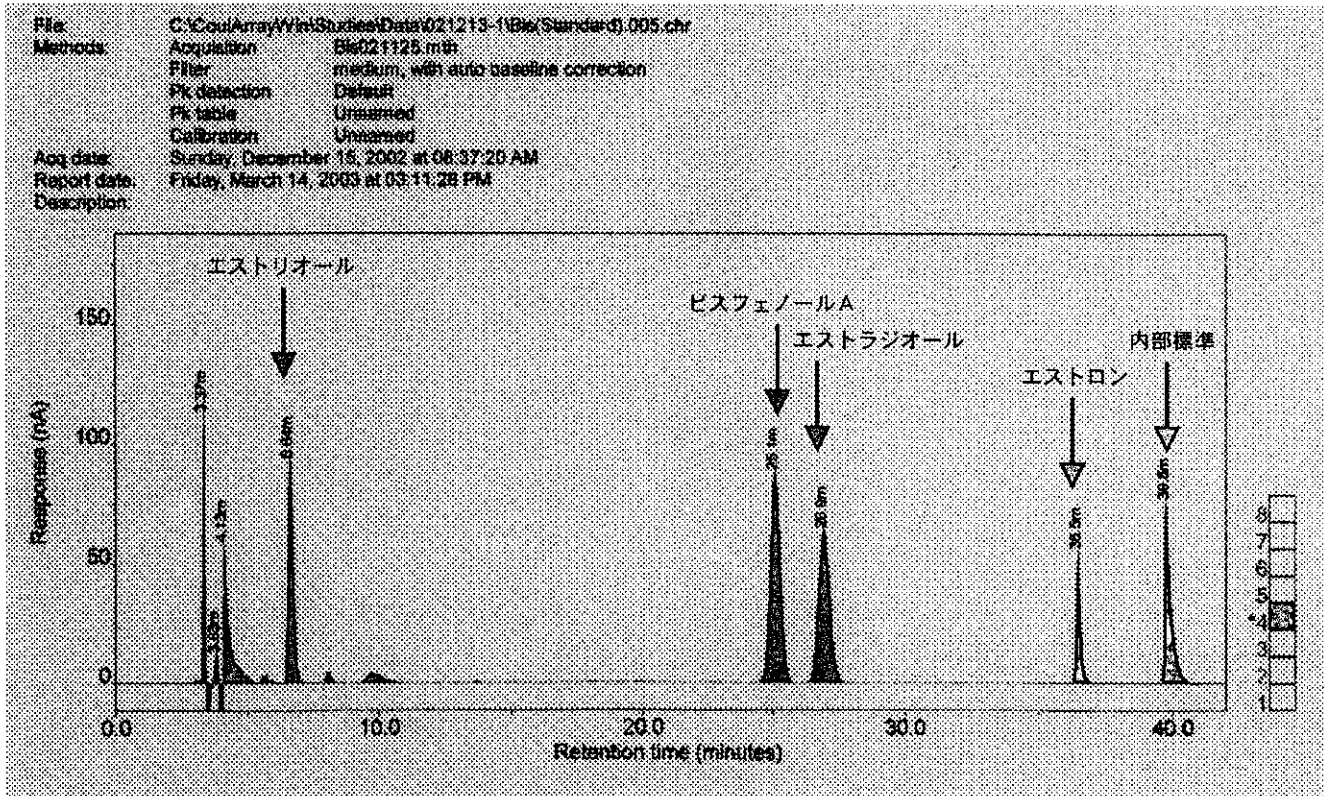


図1 標準物質



尿の分析結果

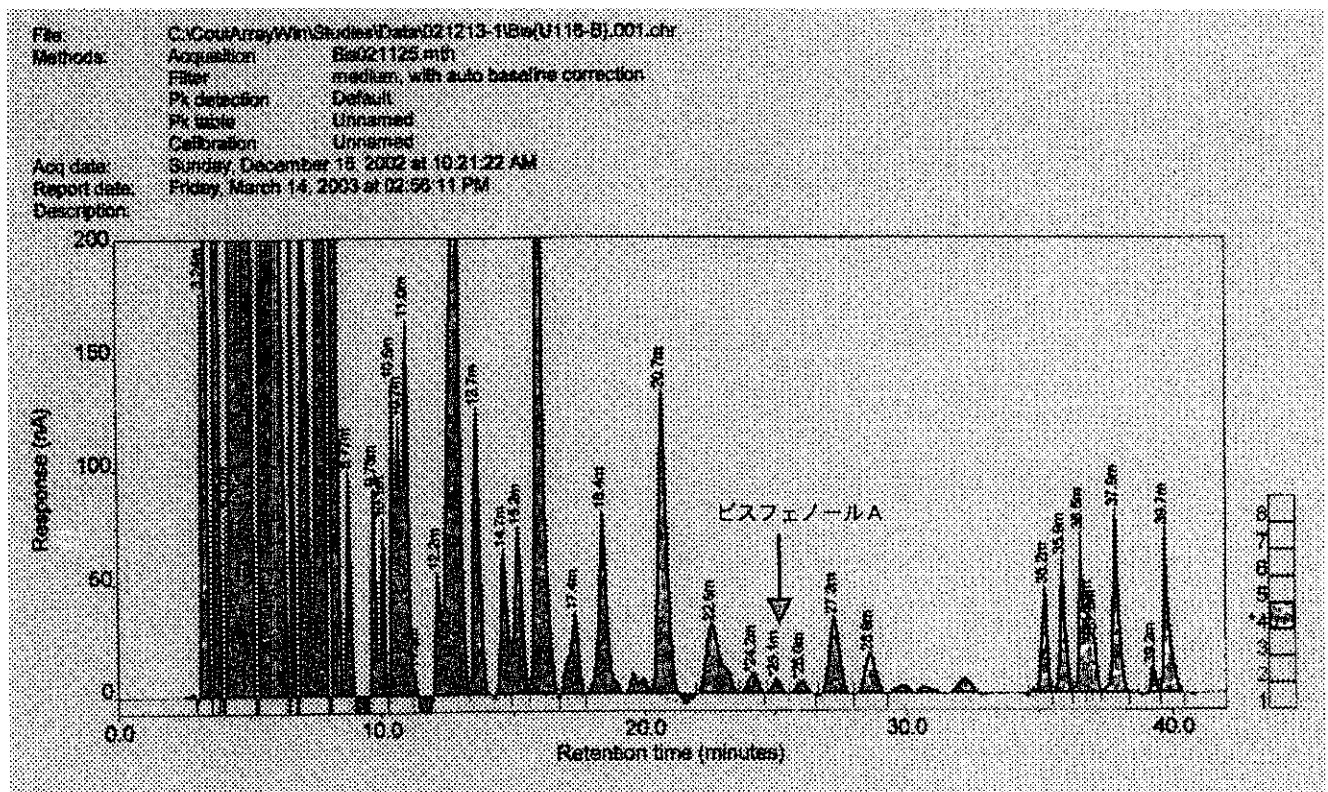


表 1 分析対象物質と毒性等価換算係数 (TEF)

物質名	TEF
ダイオキシン類 (PCDDs/PCDFs/cPCBs)	
2378D	1.0000
12378D	1.0000
123478D	0.1000
123678D	0.1000
123789D	0.1000
1234678D	0.0100
1234679D	0.0000
OCDD	0.0001
2378F	0.1000
12378F	0.0500
23478F	0.5000
123478F	0.1000
123678F	0.1000
123789F	0.1000
234678F	0.1000
1234678F	0.0100
1234789F	0.0100
OCDF	0.0001
3344P (PCB 77)	0.0001
3445P (PCB 81)	0.0001
33445P (PCB 126)	0.1000
334456P (PCB 169)	0.0100
ポリ塩化ビニル (PCB)	
PCB 18	
PCB 28	
PCB 52	
PCB 49	
PCB 44	
PCB 74	
PCB 66	
PCB 101	
PCB 99	
PCB 87	
PCB 110	
PCB 118	0.0001
PCB 105	0.0001
PCB 151	
PCB 149	
PCB 146	
PCB 153	
PCB 138-158	

物質名	TEF
PCB 128	
PCB 167	0.00001
PCB 156	0.0005
PCB 137	0.0005
PCB 178	
PCB 167	
PCB 183	
PCB 177	
PCB 172	
PCB 160	
PCB 170	
PCB 166	
PCB 201	
PCB 196-203	
PCB 195	
PCB 194	
PCB 206	
PCB 209	

有機塩素系農薬

ヘキサクロロベンゼン

β-ヘキサクロロシクロヘキサン

γ-ヘキサクロロシクロヘキサン

△ブタクロロエポキシド

オキシクロルデン

モノクロル

pp-DDE

ディルドリン

op-DDT

pp-DDT

マイレックス

表2 血清中のダイオキシン類 (PCDDs/PCDFs/cPCBs) 量 (血清総脂肪量当り)

2378D (ppt)

	Selected percentiles						Sample size
	10th	25th	50th	75th	90th	95th	
Total	< LOD	< LOD	< LOD	< LOD	< LOD	2.1	137
Age group							
~ 29	< LOD	< LOD	< LOD	< LOD	< LOD	< LOD	28
30 ~ 34	< LOD	< LOD	< LOD	< LOD	1.7	2.6	71
35 ~	< LOD	< LOD	< LOD	< LOD	< LOD	< LOD	38

LOD : 検出下限値

平均値 (無調整値) : 0.16 ppq (検出下限値未満は0として計算。以下同様)

文献による平均値の範囲 (米国) : 3.2 ~ 10.1 ppq

12378D (ppt)

	Selected percentiles						Sample size
	10th	25th	50th	75th	90th	95th	
Total	< LOD	< LOD	< LOD	5	6.5	7.5	137
Age group							
~ 29	< LOD	< LOD	< LOD	< LOD	4.5	5.1	28
30 ~ 34	< LOD	< LOD	< LOD	5.2	5.9	7	71
35 ~	< LOD	< LOD	< LOD	6.3	8.2	10.5	38

LOD : 検出下限値

平均値 (無調整値) : 12.3 ppq

文献による平均値の範囲 (米国) : 6.6 ~ 32 ppq

123478D (ppt)

	Selected percentiles						Sample size
	10th	25th	50th	75th	90th	95th	
Total	< LOD	< LOD	< LOD	< LOD	< LOD	1.8	137
Age group							
~ 29	< LOD	< LOD	< LOD	< LOD	< LOD	< LOD	28
30 ~ 34	< LOD	< LOD	< LOD	< LOD	< LOD	< LOD	71
35 ~	< LOD	< LOD	< LOD	< LOD	< LOD	3.3	38

LOD : 検出下限値

平均値 (無調整値) : 0.79 ppq

文献による平均値の範囲 (米国) : 6.3 ~ 13 ppq

123678D (ppt)

	Selected percentiles						Sample size
	10th	25th	50th	75th	90th	95th	
Total	8.2	19.1	24.8	36.6	49.2	58.1	137
Age group							
~ 29	< LOD	4.1	20.1	30.4	54.6	70.8	28
30 ~ 34	16.2	19.3	25.6	35.7	48	56.6	71
35 ~	16.2	21.1	28.1	42.2	51.8	58.1	38

LOD : 検出下限値

平均値 (無調整値) : 153.3 ppq

文献による平均値の範囲 (米国) : 45 ~ 85 ppq

表2 (つづき) 血清中のダイオキシン類 (PCDDs/PCDFs/cPCBs) 量 (血清総脂肪量当り)

123789D (ppt)

	Selected percentiles						Sample size
	10th	25th	50th	75th	90th	95th	
Total	< LOD	< LOD	< LOD	4	6.4	7.9	137
Age group							
~29	< LOD	< LOD	< LOD	0.8	4.4	10.1	28
30~34	< LOD	< LOD	< LOD	4.1	6.4	7	71
35~	< LOD	< LOD	< LOD	4.9	6.5	8.9	38

LOD : 検出下限値

平均値 (無調整値) : 12.0 ppq

文献による平均値の範囲 (米国) : 7.1~21.9 ppq

1234678D (ppt)

	Selected percentiles						Sample size
	10th	25th	50th	75th	90th	95th	
Total	10.1	14.2	17.7	23.9	30.6	35.2	137
Age group							
~29	12.3	15.1	17.15	22.85	31.2	34.4	28
30~34	9.4	14	17.7	23.9	30.3	35	71
35~	9.8	14.2	19.05	24.8	30.8	60.5	38

平均値 (無調整値) : 114.7 ppq

文献による平均値の範囲 (米国) : 80.3~230 ppq

1234679D (ppt)

	Selected percentiles						Sample size
	10th	25th	50th	75th	90th	95th	
Total	NR	NR	NR	NR	NR	NR	138
Age group							
~29	NR	NR	NR	NR	NR	NR	28
30~34	NR	NR	NR	NR	NR	NR	71
35~	NR	NR	NR	NR	NR	NR	39

NR : 分析精度が悪い (すべてミッシング)

文献による平均値の範囲 (米国) : (データなし)

OCDD (ppt)

	Selected percentiles						Sample size
	10th	25th	50th	75th	90th	95th	
Total	144	187	260	347	605	697	137
Age group							
~29	134	164.5	218.5	274.5	407	513	28
30~34	153	201	262	323	441	646	71
35~	171	209	321.5	465	697	1110	38

平均値 (無調整値) : 1782.1 ppq

文献による平均値の範囲 (米国) : 560~1000 ppq

表2 (つづき) 血清中のダイオキシン類 (PCDDs/PCDFs/cPCBs) 量 (血清総脂肪量当り)

2378F (ppt)

	Selected percentiles						Sample size
	10th	25th	50th	75th	90th	95th	
Total	< LOD	< LOD	< LOD	< LOD	< LOD	< LOD	137
Age group							
~ 29	< LOD	< LOD	< LOD	< LOD	< LOD	< LOD	28
30 ~ 34	< LOD	< LOD	< LOD	< LOD	< LOD	< LOD	71
35 ~	< LOD	< LOD	< LOD	< LOD	< LOD	< LOD	38

LOD : 検出下限値

平均値 (無調整値) : 0.29 ppq

文献による平均値の範囲 (米国) : 1.1 ~ 9 ppq

12378F (ppt)

	Selected percentiles						Sample size
	10th	25th	50th	75th	90th	95th	
Total	< LOD	< LOD	< LOD	< LOD	< LOD	< LOD	137
Age group							
~ 29	< LOD	< LOD	< LOD	< LOD	< LOD	< LOD	28
30 ~ 34	< LOD	< LOD	< LOD	< LOD	< LOD	1.2	71
35 ~	< LOD	< LOD	< LOD	< LOD	< LOD	< LOD	38

LOD : 検出下限値

平均値 (無調整値) : 0.29 ppq

文献による平均値の範囲 (米国) : 検出せず

23478F (ppt)

	Selected percentiles						Sample size
	10th	25th	50th	75th	90th	95th	
Total	5.8	8.7	11.4	13.5	16.8	20.4	137
Age group							
~ 29	4.7	8.15	10.6	12.65	14	15.2	28
30 ~ 34	5.4	8.4	10.9	13.5	16.5	19	71
35 ~	8.3	10.3	12.25	14.7	19.6	21.9	38

平均値 (無調整値) : 62.7 ppq

文献による平均値の範囲 (米国) : 5 ~ 27 ppq

123478F (ppt)

	Selected percentiles						Sample size
	10th	25th	50th	75th	90th	95th	
Total	3.2	4.3	6	8.4	10.5	13.3	137
Age group							
~ 29	3	3.85	6.15	8.1	10.2	12.1	28
30 ~ 34	3.3	4.4	5.9	8.3	10.7	15.1	71
35 ~	2.9	4.3	6.2	9	10.5	12.2	38

平均値 (無調整値) : 36.3 ppq

文献による平均値の範囲 (米国) : 4.5 ~ 11 ppq

表2 (つづき) 血清中のダイオキシン類 (PCDDs/PCDFs/cPCBs) 量 (血清総脂肪量当り)

123678F (ppt)

	Selected percentiles						Sample size
	10th	25th	50th	75th	90th	95th	
Total	3.4	5	6.3	7.8	9.4	11	137
Age group							
~29	< LOD	4.6	6.45	7.5	9.3	9.4	28
30~34	3.8	5	6.3	7.9	9.2	11	71
35~	4.3	5	6.05	7.8	10.1	12.1	38

平均値 (無調整値) : 34.7 ppq

文献による平均値の範囲 (米国) : 4.5~8.5 ppq

123789F (ppt)

	Selected percentiles						Sample size
	10th	25th	50th	75th	90th	95th	
Total	< LOD	< LOD	< LOD	< LOD	< LOD	< LOD	137
Age group							
~29	< LOD	< LOD	< LOD	< LOD	< LOD	< LOD	28
30~34	< LOD	< LOD	< LOD	< LOD	< LOD	< LOD	71
35~	< LOD	< LOD	< LOD	< LOD	< LOD	< LOD	38

LOD : 検出下限値

平均値 (無調整値) : 0.05 ppq

文献による平均値の範囲 (米国) : 検出せず

234678F (ppt)

	Selected percentiles						Sample size
	10th	25th	50th	75th	90th	95th	
Total	< LOD	< LOD	2	3.5	4.2	5	137
Age group							
~29	< LOD	< LOD	< LOD	2.4	4.2	4.4	28
30~34	< LOD	< LOD	2.5	3.7	4.3	5	71
35~	< LOD	< LOD	2.4	3.1	4.1	5.9	38

LOD : 検出下限値

平均値 (無調整値) : 11.0 ppq

文献による平均値の範囲 (米国) : 検出せず

1234678F (ppt)

	Selected percentiles						Sample size
	10th	25th	50th	75th	90th	95th	
Total	< LOD	< LOD	< LOD	5.4	8.3	13.1	137
Age group							
~29	< LOD	< LOD	< LOD	5.65	8.3	13.4	28
30~34	< LOD	< LOD	< LOD	6.1	9.1	10.4	71
35~	< LOD	< LOD	< LOD	4	8.3	13.1	38

LOD : 検出下限値

平均値 (無調整値) : 16.2 ppq

文献による平均値の範囲 (米国) : 8.7~22.8 ppq

表2 (つづき) 血清中のダイオキシン類 (PCDDs/PCDFs/cPCBs) 量 (血清総脂肪量当り)

1234789F (ppt)

	Selected percentiles						Sample size
	10th	25th	50th	75th	90th	95th	
Total	< LOD	< LOD	< LOD	< LOD	< LOD	< LOD	137
Age group							
~29	< LOD	< LOD	< LOD	< LOD	< LOD	< LOD	28
30~34	< LOD	< LOD	< LOD	< LOD	< LOD	< LOD	71
35~	< LOD	< LOD	< LOD	< LOD	< LOD	< LOD	38

LOD : 検出下限値

平均値 (無調整値) : 0.18 ppq

文献による平均値の範囲 (米国) : 検出せず

OCDF (ppt)

	Selected percentiles						Sample size
	10th	25th	50th	75th	90th	95th	
Total	NR	NR	NR	NR	NR	NR	138
Age group							
~29	NR	NR	NR	NR	NR	NR	28
30~34	NR	NR	NR	NR	NR	NR	71
35~	NR	NR	NR	NR	NR	NR	39

NR : 分析精度が悪い (すべてミッシング)

文献による平均値の範囲 (米国) : 検出せず

3344P (PCB 77) (ppt)

	Selected percentiles						Sample size
	10th	25th	50th	75th	90th	95th	
Total	NR	NR	NR	NR	NR	NR	137
Age group							
~29	NR	NR	NR	NR	NR	NR	28
30~34	NR	NR	NR	NR	NR	NR	71
35~	NR	NR	NR	NR	NR	NR	39

NR : 分析精度が悪い (すべてミッシング)

文献による平均値の範囲 (米国) : 11.7 ppq

3445P (PCB 81) (ppt)

	Selected percentiles						Sample size
	10th	25th	50th	75th	90th	95th	
Total	4.8	6.2	8.3	11.6	17.5	19.6	137
Age group							
~29	5	6.1	10.1	14.15	17.5	21.7	28
30~34	4.9	6.4	8.1	11.6	16.3	19.6	71
35~	4.7	6.2	8	11.5	18.4	19.4	38

平均値 (無調整値) : 53.4 ppq

文献による平均値の範囲 (米国) : 10.5 ppq

表2 (つづき) 血清中のダイオキシン類 (PCDDs/PCDFs/cPCBs) 量 (血清総脂肪量当り)

33445P (PCB 126) (ppt)

	Selected percentiles						Sample size
	10th	25th	50th	75th	90th	95th	
Total	21.8	32.1	47.1	64.4	84.6	100	137
Age group							
~ 29	20.6	32.5	40.7	59.15	74.7	80	28
30 ~ 34	21.8	29.1	47.3	65	82	100	71
35 ~	26.6	36.1	47.4	66.2	92.6	105	38

平均値 (無調整値) : 281.0 ppq

文献による平均値の範囲 (米国) : 135 ppq

334455P (PCB 169) (ppt)

	Selected percentiles						Sample size
	10th	25th	50th	75th	90th	95th	
Total	20.2	26.3	33.5	42.7	53.6	61.9	137
Age group							
~ 29	20.2	24.2	27.7	35.5	39.9	43.4	28
30 ~ 34	18.9	22.9	34.2	42.3	53.4	66.9	71
35 ~	26.4	30.1	38.25	46.7	57.7	61.9	38

平均値 (無調整値) : 196.3 ppq

文献による平均値の範囲 (米国) : 69 ppq

総毒性等量 (総TEQ) (ppt)

	Selected percentiles						Sample size
	10th	25th	50th	75th	90th	95th	
Total	9.07	13.16	17.57	22.61	28.52	31.28	137
Age group							
~ 29	9.04	11.555	14.63	17.545	19.94	26.31	28
30 ~ 34	9.48	12.95	17.69	22.92	26.99	29.85	71
35 ~	11.12	15.26	19.27	25.74	32.81	35.39	38

表3 血清中のポリ塩化ビニル (PCB) 量 (血清総脂肪量当り)

PCB 18 (ppb)

	Selected percentiles						Sample size
	10th	25th	50th	75th	90th	95th	
Total	NR	NR	NR	NR	NR	NR	137
Age group							
~29	NR	NR	NR	NR	NR	NR	28
30~34	NR	NR	NR	NR	NR	NR	71
35~	NR	NR	NR	NR	NR	NR	39

NR : 分析精度が低い (すべてミッシング)

PCB 28 (ppb)

	Selected percentiles						Sample size
	10th	25th	50th	75th	90th	95th	
Total	NR	NR	NR	NR	NR	NR	137
Age group							
~29	NR	NR	NR	NR	NR	NR	28
30~34	NR	NR	NR	NR	NR	NR	71
35~	NR	NR	NR	NR	NR	NR	39

NR : 分析精度が低い (すべてミッシング)

PCB 52 (ppb)

	Selected percentiles						Sample size
	10th	25th	50th	75th	90th	95th	
Total	0.4	3.6	5.5	7.6	11	14.3	137
Age group							
~29	2.2	4.6	5.8	8.75	12.8	14.6	28
30~34	< LOD	2.3	5.1	7.1	9.45	11	70
35~	3.1	4.1	5.6	7.6	13.1	15.2	39

LOD : 検出下限値

PCB 49 (ppb)

	Selected percentiles						Sample size
	10th	25th	50th	75th	90th	95th	
Total	< LOD	2.1	3.1	4.2	5.7	6.6	137
Age group							
~29	1.4	2.5	3.25	4.95	6.2	6.6	28
30~34	< LOD	< LOD	3	3.9	5	5.7	70
35~	1.7	2.4	3.1	4.2	6	8.1	39

LOD : 検出下限値

表3 (つづき) 血清中のポリ塩化ビニル (PCB) 量 (血清総脂肪量当り)

PCB 44 (ppb)

	Selected percentiles						Sample size
	10th	25th	50th	75th	90th	95th	
Total	1.7	3.1	4.4	5.7	8	9.4	137
Age group							
~ 29	1.4	3.3	4.55	6.55	8.7	8.9	28
30 ~ 34	1.4	3	4.35	5.5	7.45	8.9	70
35 ~	2.5	3.2	4.3	5.5	9.4	9.9	39

PCB 74 (ppb)

	Selected percentiles						Sample size
	10th	25th	50th	75th	90th	95th	
Total	3.7	4.9	6.3	8.6	11.5	15.2	137
Age group							
~ 29	3.2	4	4.85	5.7	10.9	11.4	28
30 ~ 34	3.65	4.9	6.2	8.6	11.2	13.7	70
35 ~	5.2	6.3	7.5	10.9	12.7	15.6	39

PCB 66 (ppb)

	Selected percentiles						Sample size
	10th	25th	50th	75th	90th	95th	
Total	1.1	1.5	1.9	2.8	3.5	4	137
Age group							
~ 29	0.9	1.35	1.85	2.9	3.5	4.2	28
30 ~ 34	1.15	1.5	2	2.8	3.65	4	70
35 ~	1.3	1.5	1.9	2.6	3.5	3.6	39

PCB 101 (ppb)

	Selected percentiles						Sample size
	10th	25th	50th	75th	90th	95th	
Total	1.3	1.9	2.6	4.1	7.3	7.8	137
Age group							
~ 29	1.6	1.9	2.65	6	7.3	7.8	28
30 ~ 34	1.05	1.8	2.75	3.9	5.75	7.7	70
35 ~	1.5	1.9	2.5	5.1	7.4	8.8	39

表3 (つづき) 血清中のポリ塩化ビニル (PCB) 量 (血清総脂肪量当り)

PCB 99 (ppb)

	Selected percentiles						Sample size
	10th	25th	50th	75th	90th	95th	
Total	3.8	4.7	6.8	8.7	12	14.2	137
Age group							
~29	4	4.6	6.75	7.4	11.5	13.1	28
30~34	3.5	4	6.5	8.7	12.7	13.7	70
35~	4.6	5.9	7.5	10.9	12	17	39

PCB 87 (ppb)

	Selected percentiles						Sample size
	10th	25th	50th	75th	90th	95th	
Total	0.5	0.8	1.1	1.7	2.7	3.2	137
Age group							
~29	0.4	0.65	1	2.25	3	3.5	28
30~34	0.45	0.8	1.15	1.6	2.25	3.2	70
35~	0.6	0.8	1.1	1.9	2.7	3.2	39

PCB 110 (ppb)

	Selected percentiles						Sample size
	10th	25th	50th	75th	90th	95th	
Total	0.7	1.1	1.8	2.8	4.5	5.1	137
Age group							
~29	0.7	1.1	1.8	3.6	4.8	5.7	28
30~34	0.55	1.2	1.85	2.7	4.3	5.1	70
35~	0.7	1	1.7	2.8	4.5	5	39

PCB 118 (ppb)

	Selected percentiles						Sample size
	10th	25th	50th	75th	90th	95th	
Total	5.6	7.05	10.4	14.2	18.4	20.9	137
Age group							
~29	4.7	6.3	8.85	11.9	18.7	20	28
30~34	5.5	6.7	9.9	14.3	18.6	20.5	70
35~	6.9	9.4	11.85	15	18.3	27	38

表3 (つづき) 血清中のポリ塩化ビニル (PCB) 量 (血清総脂肪量当り)

PCB 105 (ppb)

	Selected percentiles						Sample size
	10th	25th	50th	75th	90th	95th	
Total	0.9	1.3	2	2.8	3.6	4.1	137
Age group							
~29	1	1.25	1.7	2.3	3.4	4.2	28
30~34	0.8	1.2	2	2.8	3.65	4	70
35~	1.2	1.6	2.2	2.9	3.6	5.5	39

PCB 151 (ppb)

	Selected percentiles						Sample size
	10th	25th	50th	75th	90th	95th	
Total	0.2	0.4	0.6	0.8	1.2	1.8	137
Age group							
~29	0.1	0.4	0.7	0.9	1.3	1.8	27
30~34	0.2	0.3	0.55	0.8	1.2	1.8	62
35~	0.4	0.5	0.6	0.9	1.2	1.9	39

PCB 149 (ppb)

	Selected percentiles						Sample size
	10th	25th	50th	75th	90th	95th	
Total	NR	NR	NR	NR	NR	NR	137
Age group							
~29	NR	NR	NR	NR	NR	NR	28
30~34	NR	NR	NR	NR	NR	NR	71
35~	NR	NR	NR	NR	NR	NR	39

NR : 分析精度が低い (すべてミッシング)

PCB 146 (ppb)

	Selected percentiles						Sample size
	10th	25th	50th	75th	90th	95th	
Total	2.8	3.5	5.8	7.4	9.4	12.1	137
Age group							
~29	2.5	3	4.2	5.65	7.1	7.9	28
30~34	2.7	3.2	5.2	7.4	9.2	12.1	70
35~	4.6	5.6	6.3	8.4	12	12.9	39

表3 (つづき) 血清中のポリ塩化ビニル (PCB) 量 (血清総脂肪量当り)

PCB 153 (ppb)

	Selected percentiles						Sample size
	10th	25th	50th	75th	90th	95th	
Total	19.3	23.8	35.5	47.3	64.4	75.4	137
Age group							
~29	19.5	21.85	27.85	35.15	43.8	56.2	28
30~34	17.9	21.7	33.35	47.3	62.55	69.3	70
35~	27.4	37.2	43.6	52.7	72.9	82.2	39

PCB 138-158 (ppb)

	Selected percentiles						Sample size
	10th	25th	50th	75th	90th	95th	
Total	9.5	11.4	16.4	25	32.1	39.4	137
Age group							
~29	9.8	10.65	11.7	16.4	18.1	31.1	28
30~34	8.2	11.8	15.7	26	32.7	40.8	70
35~	11.3	14.8	20.4	26.3	35.5	42.7	39

PCB 128 (ppb)

	Selected percentiles						Sample size
	10th	25th	50th	75th	90th	95th	
Total	< LOD	0.2	0.2	0.5	0.7	0.9	137
Age group							
~29	< LOD	0.2	0.2	0.45	0.6	0.7	28
30~34	< LOD	0.2	0.2	0.5	0.85	1	70
35~	< LOD	0.2	0.2	0.4	0.6	0.9	39

LOD : 検出下限値

PCB 167 (ppb)

	Selected percentiles						Sample size
	10th	25th	50th	75th	90th	95th	
Total	0.8	1	1.5	2	2.6	3.2	137
Age group							
~29	0.6	0.8	1.1	1.5	1.9	2.4	27
30~34	0.7	0.9	1.35	2	2.6	3	66
35~	1.4	1.6	1.7	2.4	3.2	4	34

表3 (つづき) 血清中のポリ塩化ビニル (PCB) 量 (血清総脂肪量当り)

PCB 156 (ppb)

	Selected percentiles						Sample size
	10th	25th	50th	75th	90th	95th	
Total	1.7	2.25	3.4	4.7	5.7	6.4	137
Age group							
~29	1.3	1.8	2.2	2.8	3.6	4.7	28
30~34	1.7	2.2	3.3	4.5	5.3	5.6	70
35~	3	3.6	4.7	5.7	6.9	8.1	38

PCB 157 (ppb)

	Selected percentiles						Sample size
	10th	25th	50th	75th	90th	95th	
Total	0.4	0.6	0.9	1.3	1.5	1.6	137
Age group							
~29	0.4	0.4	0.6	0.8	1.1	1.3	28
30~34	0.4	0.6	0.9	1.3	1.5	1.6	68
35~	0.8	0.9	1.1	1.4	1.6	2.2	36

PCB 178 (ppb)

	Selected percentiles						Sample size
	10th	25th	50th	75th	90th	95th	
Total	0.9	1.2	1.9	2.6	3.1	4.4	137
Age group							
~29	0.8	1	1.3	1.75	2.8	2.9	28
30~34	0.8	1.1	1.8	2.6	3.05	4.1	70
35~	1.6	2	2.2	2.7	4.4	4.5	39

PCB 187 (ppb)

	Selected percentiles						Sample size
	10th	25th	50th	75th	90th	95th	
Total	4	5.3	8.1	11.5	14.5	20.2	137
Age group							
~29	4	4.6	6.1	8.5	12.6	13.1	28
30~34	3.75	4.7	7.55	11.5	14.4	20.2	70
35~	6.2	7.8	10.7	12.3	17.4	21.2	39

表3 (つづき) 血清中のポリ塩化ビニル (PCB) 量 (血清総脂肪量当り)

PCB 183 (ppb)

	Selected percentiles						Sample size
	10th	25th	50th	75th	90th	95th	
Total	1.2	1.4	2.2	3.1	4.3	5.3	137
Age group							
~29	1.3	1.4	1.8	2.2	2.9	4.2	28
30~34	1.15	1.3	2.05	3	4.35	4.8	70
35~	1.4	2	2.9	3.4	5.6	5.7	39

PCB 177 (ppb)

	Selected percentiles						Sample size
	10th	25th	50th	75th	90th	95th	
Total	NR	NR	NR	NR	NR	NR	137
Age group							
~29	NR	NR	NR	NR	NR	NR	28
30~34	NR	NR	NR	NR	NR	NR	71
35~	NR	NR	NR	NR	NR	NR	39

NR : 分析精度が低い (すべてミッシング)

PCB 172 (ppb)

	Selected percentiles						Sample size
	10th	25th	50th	75th	90th	95th	
Total	0.7	0.9	1.4	1.9	2.3	3.2	137
Age group							
~29	0.6	0.7	1	1.35	1.9	2.2	28
30~34	0.7	0.9	1.3	1.9	2.25	3.2	70
35~	1.1	1.4	1.8	2.1	3.2	3.5	39

PCB 180 (ppb)

	Selected percentiles						Sample size
	10th	25th	50th	75th	90th	95th	
Total	10.2	13.5	20.7	27.6	35.5	46.9	137
Age group							
~29	9.1	10.55	13.7	17.95	27.6	29.6	28
30~34	9.85	12	19.35	26.4	35.65	44.9	70
35~	16.8	21	25.3	30.9	47.1	49	39

表3 (つづき) 血清中のポリ塩化ビニル (PCB) 量 (血清総脂肪量当り)

PCB 170 (ppb)

	Selected percentiles						Sample size
	10th	25th	50th	75th	90th	95th	
Total	4.2	5.3	7.9	10.7	14.3	17.8	137
Age group							
~29	3.7	4.25	5.3	6.9	10.4	10.5	28
30~34	4.1	5	7.4	10.4	14.3	18.3	70
35~	6.9	8.2	10.2	12	17.6	17.9	39

PCB 189 (ppb)

	Selected percentiles						Sample size
	10th	25th	50th	75th	90th	95th	
Total	0.2	0.2	0.4	0.5	0.6	0.8	137
Age group							
~29	0.2	0.2	0.2	0.4	0.4	0.5	21
30~34	0.2	0.2	0.35	0.5	0.6	0.7	58
35~	0.3	0.4	0.5	0.6	0.9	1	31

PCB 201 (ppb)

	Selected percentiles						Sample size
	10th	25th	50th	75th	90th	95th	
Total	1	1.5	2.3	3.4	4.5	5	137
Age group							
~29	1	1.15	1.65	2.05	3.4	4.8	28
30~34	1	1.4	2.25	3.3	4.55	5	70
35~	1.9	2.4	3.3	3.7	4.6	6.7	39

PCB 196-203 (ppb)

	Selected percentiles						Sample size
	10th	25th	50th	75th	90th	95th	
Total	0.9	1.3	1.9	2.8	3.3	3.8	137
Age group							
~29	0.9	1	1.35	1.8	2.9	3.6	28
30~34	0.9	1.1	1.8	2.8	3.35	3.8	70
35~	1.6	1.9	2.5	3	3.7	5.1	39

表3 (つづき) 血清中のポリ塩化ビニル (PCB) 量 (血清総脂肪量当り)

		Selected percentiles					Sample size	
		10th	25th	50th	75th	90th		95th
Total		0.5	0.6	0.9	1.2	1.7	2.2	137
Age group								
	~ 29	0.4	0.5	0.6	0.8	1.2	1.7	28
	30 ~ 34	0.4	0.6	0.85	1.2	1.7	2.3	70
	35 ~	0.7	0.9	1.1	1.5	2	2.1	39

		Selected percentiles					Sample size	
		10th	25th	50th	75th	90th		95th
Total		1.1	1.5	2.4	3.4	4.4	5.5	137
Age group								
	~ 29	0.9	1.15	1.5	2.05	2.9	4.1	28
	30 ~ 34	1	1.5	2.25	3.4	4.4	5.4	70
	35 ~	2	2.5	3.2	3.8	5.5	7	39

		Selected percentiles					Sample size	
		10th	25th	50th	75th	90th		95th
Total		0.4	0.5	0.8	1	1.3	1.5	137
Age group								
	~ 29	0.4	0.4	0.6	0.7	0.8	0.9	28
	30 ~ 34	0.4	0.5	0.7	1	1.2	1.4	70
	35 ~	0.7	0.8	1	1.2	1.6	1.7	39

		Selected percentiles					Sample size	
		10th	25th	50th	75th	90th		95th
Total		0.4	0.5	0.7	0.9	1.1	1.7	137
Age group								
	~ 29	0.4	0.4	0.5	0.7	0.8	0.8	28
	30 ~ 34	0.3	0.5	0.7	0.9	1.65	2.1	70
	35 ~	0.5	0.6	0.7	0.9	1.2	1.3	39

表3 (つづき) 血清中のポリ塩化ビニル (PCB) 量 (血清総脂肪量当り)

毒性等量 (TEQ) の総和

	Selected percentiles						Sample size
	10th	25th	50th	75th	90th	95th	
Total	< LOD	0.59	1.1	2.92	4.45	5.03	137
Age group							
~29	< LOD	< LOD	0.7	1.195	1.87	4.77	28
30~34	< LOD	0.6	1.015	2.09	4.16	4.57	70
35~	< LOD	0.92	1.83	3.91	5.23	6.78	39

PCB118、PCB105、PCB167、PCB156、PCB157、PCB189より算出

LOD : 検出下限値

表4 血清中の有機塩素系農薬量 (血清総脂肪量当り)

ヘキサクロロベンゼン (ppb)

	Selected percentiles						Sample size
	10th	25th	50th	75th	90th	95th	
Total	< LOD	< LOD	< LOD	< LOD	< LOD	< LOD	137
Age group							
~29	< LOD	< LOD	< LOD	< LOD	< LOD	< LOD	28
30~34	< LOD	< LOD	< LOD	< LOD	< LOD	< LOD	71
35~	< LOD	< LOD	< LOD	< LOD	< LOD	11.6	39

LOD : 検出下限値

β-ヘキサクロロシクロヘキサン (ppb)

	Selected percentiles						Sample size
	10th	25th	50th	75th	90th	95th	
Total	48.7	63.5	91.65	155	243	309	137
Age group							
~29	38	47.8	63.65	80.75	143	207	28
30~34	54.4	62.2	92.7	129	189	292	71
35~	64.8	86.8	155	231	322	371	39

γ-ヘキサクロロシクロヘキサン (ppb)

	Selected percentiles						Sample size
	10th	25th	50th	75th	90th	95th	
Total	< LOD	< LOD	< LOD	< LOD	< LOD	< LOD	137
Age group							
~29	< LOD	< LOD	< LOD	< LOD	< LOD	< LOD	28
30~34	< LOD	< LOD	< LOD	< LOD	< LOD	< LOD	71
35~	< LOD	< LOD	< LOD	< LOD	< LOD	< LOD	39

LOD : 検出下限値

ヘプタクロロエポキシド (ppb)

	Selected percentiles						Sample size
	10th	25th	50th	75th	90th	95th	
Total	< LOD	< LOD	< LOD	< LOD	< LOD	7.7	137
Age group							
~29	< LOD	< LOD	< LOD	< LOD	7.7	11.3	28
30~34	< LOD	< LOD	< LOD	< LOD	< LOD	< LOD	71
35~	< LOD	< LOD	< LOD	< LOD	< LOD	5.4	39

LOD : 検出下限値

表4 (つづき) 血清中の有機塩素系農薬量 (血清総脂肪量当り)

オキシクロルデン (ppb)

	Selected percentiles						Sample size
	10th	25th	50th	75th	90th	95th	
Total	< LOD	< LOD	8.75	12.5	16.2	22.7	137
Age group							
~29	< LOD	< LOD	< LOD	11.75	18.3	19.5	28
30~34	< LOD	< LOD	8.3	12.2	19.9	22.8	71
35~	< LOD	8	10.2	13.2	15.2	23.7	39

LOD : 検出下限値

t-ノナクロル (ppb)

	Selected percentiles						Sample size
	10th	25th	50th	75th	90th	95th	
Total	10.7	15.1	20.3	29.3	41.6	64.3	137
Age group							
~29	10.3	12.35	16.7	28.75	46.4	49	28
30~34	11.4	15.5	20.3	28.9	40.3	67.2	71
35~	13.4	17.5	22.4	29.6	41.2	64.3	39

pp'-DDE (ppb)

	Selected percentiles						Sample size
	10th	25th	50th	75th	90th	95th	
Total	104	150	209	346	578	704	137
Age group							
~29	95.1	149	192	268.5	309	364	28
30~34	104	123	197	323	506	588	71
35~	132	181	277	519	704	1070	39

デイルドリン (ppb)

	Selected percentiles						Sample size
	10th	25th	50th	75th	90th	95th	
Total	< LOD	< LOD	< LOD	< LOD	< LOD	< LOD	137
Age group							
~29	< LOD	< LOD	< LOD	< LOD	< LOD	< LOD	28
30~34	< LOD	< LOD	< LOD	< LOD	< LOD	< LOD	71
35~	< LOD	< LOD	< LOD	< LOD	< LOD	4.9	39

LOD : 検出下限値