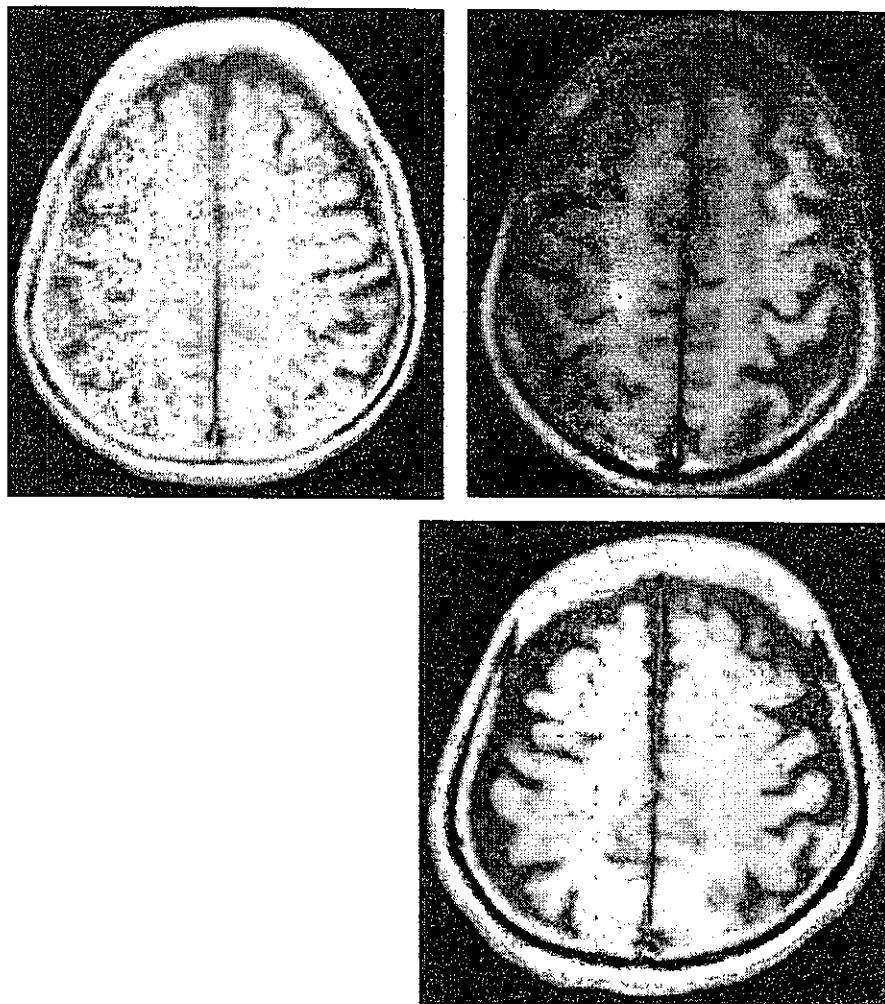


### III. Moderate



### IV. severe

1) Brain Atrophy

		40-49yr		50-59yr		60-69yr		70-79yr		80yr -		Total	
		N	%	N	%	N	%	N	%	N	%	N	%
normal	Male	231	86.5	208	72.0	147	52.3	49	18.5	0	0	635	56.8
	Female	253	97.7	247	88.5	192	72.2	114	44.2	7	31.8	813	75.0
	Total	484	92.0	455	80.1	339	62.0	163	31.2	7	18.4	1448	65.8
mild	Male	36	13.5	81	28.0	130	46.3	189	71.3	15	93.8	451	40.3
	Female	6	2.3	32	11.5	73	27.4	138	53.5	11	50.0	260	24.0
	Total	42	8.0	113	19.9	203	37.1	327	62.5	26	68.4	711	32.3
moderate	Male	0	0	0	0	4	1.4	27	10.2	1	6.3	32	2.9
	Female	0	0	0	0	1	0.4	6	2.3	4	18.2	11	1.0
	Total	0	0	0	0	5	0.9	33	6.3	5	13.2	43	2.0
Total	Male	267	100.0	289	100.0	281	100.0	265	100.0	16	100.0	1118	100.0
	Female	259	100.0	279	100.0	266	100.0	258	100.0	22	100.0	1084	100.0
	Total	526	100.0	568	100.0	547	100.0	523	100.0	38	100.0	2202	100.0

2) Ventricular Dilatation

		40-49yr		50-59yr		60-69yr		70-79yr		80yr-		Total	
		N	%	N	%	N	%	N	%	N	%	N	%
Normal	Male	201	75.3	183	63.3	98	34.9	24	9.1	0	0	506	45.3
	Female	230	88.8	222	79.6	144	54.1	62	24.0	2	9.1	660	60.9
	Total	431	81.9	405	71.3	242	44.2	86	16.4	2	5.3	1166	53.0
Mild	Male	61	22.8	103	35.6	163	58.0	146	55.1	7	43.8	480	42.9
	Female	29	11.2	54	19.4	112	42.1	151	58.5	12	54.5	358	33.0
	Total	90	17.1	157	27.6	275	50.3	297	56.8	19	50.0	838	38.1
Moderate	Male	5	1.9	3	1.0	19	6.8	85	32.1	7	43.8	119	10.6
	Female	0	0	2	0.7	10	3.8	44	17.1	7	31.8	63	5.8
	Total	5	1.0	5	0.9	29	5.3	129	24.7	14	36.8	182	8.3
Severe	Male	0	0	0	0	1	0.4	10	3.8	2	12.5	13	1.2
	Female	0	0	1	0.4	0	0	1	0.4	1	4.5	3	0.3
	Total	0	0	1	0.2	1	0.2	11	2.1	3	7.9	16	0.7
Total	Male	267	100.0	289	100.0	281	100.0	265	100.0	16	100.0	1118	100.0
	Female	259	100.0	279	100.0	266	100.0	258	100.0	22	100.0	1084	100.0
	Total	526	100.0	568	100.0	547	100.0	523	100.0	38	100.0	2202	100.0

3) Periventricular hyperintensity (PVH)

		40-49yr		50-59yr		60-69yr		70-79yr		80yr -		Total	
		N	%	N	%	N	%	N	%	N	%	N	%
not examined	Male	0	0	0	0	0	0	0	0	0	0	0	0
	Female	1	0.4	0	0	0	0	0	0	1	4.5	2	0.2
	Total	1	0.2	0	0	0	0	0	0	1	2.6	2	0.1
no PVH	Male	258	96.6	252	87.2	167	59.4	71	26.8	3	18.8	751	67.2
	Female	244	94.2	242	86.7	157	59.0	82	31.8	3	13.6	728	67.2
	Total	502	95.4	494	87.0	324	59.2	153	29.3	6	15.8	1479	67.2
mild PVH	Male	8	3.0	29	10.0	72	25.6	90	34.0	4	25.0	203	18.2
	Female	11	4.2	30	10.8	67	25.2	81	31.4	9	40.9	198	18.3
	Total	19	3.6	59	10.4	139	25.4	171	32.7	13	34.2	401	18.2
moderate PVH	Male	1	0.4	8	2.8	36	12.8	92	34.7	7	43.8	144	12.9
	Female	3	1.2	7	2.5	40	15.0	84	32.6	7	31.8	141	13.0
	Total	4	0.8	15	2.6	76	13.9	176	33.7	14	36.8	285	12.9
severe PVH	Male	0	0	0	0	6	2.1	12	4.5	2	12.5	20	1.8
	Female	0	0	0	0	2	0.8	11	4.3	2	9.1	15	1.4
	Total	0	0	0	0	8	1.5	23	4.4	4	10.5	35	1.6
Total	Male	267	100.0	289	100.0	281	100.0	265	100.0	16	100.0	1118	100.0
	Female	259	100.0	279	100.0	266	100.0	258	100.0	22	100.0	1084	100.0
	Total	526	100.0	568	100.0	547	100.0	523	100.0	38	100.0	2202	100.0

4) Cerebrovascular Disease (CVD)

		40 - 49yr		50 - 59yr		60 - 69yr		70 - 79yr		80yr -		Total	
		N	%	N	%	N	%	N	%	N	%	N	%
no cvd	Male	262	98.1	275	95.2	232	82.6	165	62.3	7	43.8	941	84.2
	Female	252	97.3	267	95.7	235	88.3	191	74.0	16	72.7	961	88.7
	Total	514	97.7	542	95.4	467	85.4	356	68.1	23	60.5	1902	86.4
cvd	Male	5	1.9	14	4.8	49	17.4	100	37.7	9	56.3	177	15.8
	Female	7	2.7	12	4.3	31	11.7	67	26.0	6	27.3	123	11.3
	Total	12	2.3	26	4.6	80	14.6	167	31.9	15	39.5	300	13.6
Total	Male	267	100.0	289	100.0	281	100.0	265	100.0	16	100.0	1118	100.0
	Female	259	100.0	279	100.0	266	100.0	258	100.0	22	100.0	1084	100.0
	Total	526	100.0	568	100.0	547	100.0	523	100.0	38	100.0	2202	100.0

Lacuna

		40 - 49yr		50 - 59yr		60 - 69yr		70 - 79yr		80yr -		Total	
		N	%	N	%	N	%	N	%	N	%	N	%
no lacuna	Male	262	98.1	276	95.5	235	83.6	181	68.3	10	62.5	964	86.2
	Female	256	98.8	269	96.4	239	89.8	208	80.6	17	77.3	989	91.2
	Total	518	98.5	545	96.0	474	86.7	389	74.4	27	71.1	1953	88.7
one lacuna	Male	5	1.9	7	2.4	29	10.3	43	16.2	3	18.8	87	7.8
	Female	3	1.2	8	2.9	19	7.1	34	13.2	4	18.2	68	6.3
	Total	8	1.5	15	2.6	48	8.8	77	14.7	7	18.4	155	7.0
multiple lacune	Male	0	0	6	2.1	17	6.0	41	15.5	3	18.8	67	6.0
	Female	0	0	2	0.7	8	3.0	16	6.2	1	4.5	27	2.5
	Total	0	0	8	1.4	25	4.6	57	10.9	4	10.5	94	4.3
Total	Male	267	100.0	289	100.0	281	100.0	265	100.0	16	100.0	1118	100.0
	Female	259	100.0	279	100.0	266	100.0	258	100.0	22	100.0	1084	100.0
	Total	526	100.0	568	100.0	547	100.0	523	100.0	38	100.0	2202	100.0

Thrombosis

		40 - 49yr		50 - 59yr		60 - 69yr		70 - 79yr		80yr -		Total	
		N	%	N	%	N	%	N	%	N	%	N	%
no thrombosis	Male	267	100.0	288	99.7	278	98.9	240	90.6	12	75.0	1085	97.0
	Female	255	98.5	277	99.3	262	98.5	243	94.2	22	100.0	1059	97.7
	Total	522	99.2	565	99.5	540	98.7	483	92.4	34	89.5	2144	97.4
thrombosis	Male	0	0	1	0.3	3	1.1	25	9.4	4	25.0	33	3.0
	Female	4	1.5	2	0.7	4	1.5	15	5.8	0	0	25	2.3
	Total	4	0.8	3	0.5	7	1.3	40	7.6	4	10.5	58	2.6
Total	Male	267	100.0	289	100.0	281	100.0	265	100.0	16	100.0	1118	100.0
	Female	259	100.0	279	100.0	266	100.0	258	100.0	22	100.0	1084	100.0
	Total	526	100.0	568	100.0	547	100.0	523	100.0	38	100.0	2202	100.0

Cerebral Embolism

		40 - 49yr		50 - 59yr		60 - 69yr		70 - 79yr		80yr -		Total	
		N	%	N	%	N	%	N	%	N	%	N	%
no embolism	Male	267	100.0	288	99.7	278	98.9	258	97.4	16	100.0	1107	99.0
	Female	257	99.2	279	100.0	265	99.6	250	96.9	21	95.5	1072	98.9
	Total	524	99.6	567	99.8	543	99.3	508	97.1	37	97.4	2179	99.0
embolism	Male	0	0	1	0.3	3	1.1	7	2.6	0	0	11	1.0
	Female	2	0.8	0	0	1	0.4	8	3.1	1	4.5	12	1.1
	Total	2	0.4	1	0.2	4	0.7	15	2.9	1	2.6	23	1.0
Total	Male	267	100.0	289	100.0	281	100.0	265	100.0	16	100.0	1118	100.0
	Female	259	100.0	279	100.0	266	100.0	258	100.0	22	100.0	1084	100.0
	Total	526	100.0	568	100.0	547	100.0	523	100.0	38	100.0	2202	100.0

Cerebral Bleeding

		40 - 49yr		50 - 59yr		60 - 69yr		70 - 79yr		80yr -		Total	
		N	%	N	%	N	%	N	%	N	%	N	%
no bleeding	Male	267	100.0	288	99.7	280	99.6	261	98.5	16	100.0	1112	99.5
	Female	259	100.0	278	99.6	266	100.0	258	100.0	22	100.0	1083	99.9
	Total	526	100.0	566	99.6	546	99.8	519	99.2	38	100.0	2195	99.7
cerebral bleeding	Male	0	0	1	0.3	1	0.4	4	1.5	0	0	6	0.5
	Female	0	0	1	0.4	0	0	0	0	0	0	1	0.1
	Total	0	0	2	0.4	1	0.2	4	0.8	0	0	7	0.3
Total	Male	267	100.0	289	100.0	281	100.0	265	100.0	16	100.0	1118	100.0
	Female	259	100.0	279	100.0	266	100.0	258	100.0	22	100.0	1084	100.0
	Total	526	100.0	568	100.0	547	100.0	523	100.0	38	100.0	2202	100.0