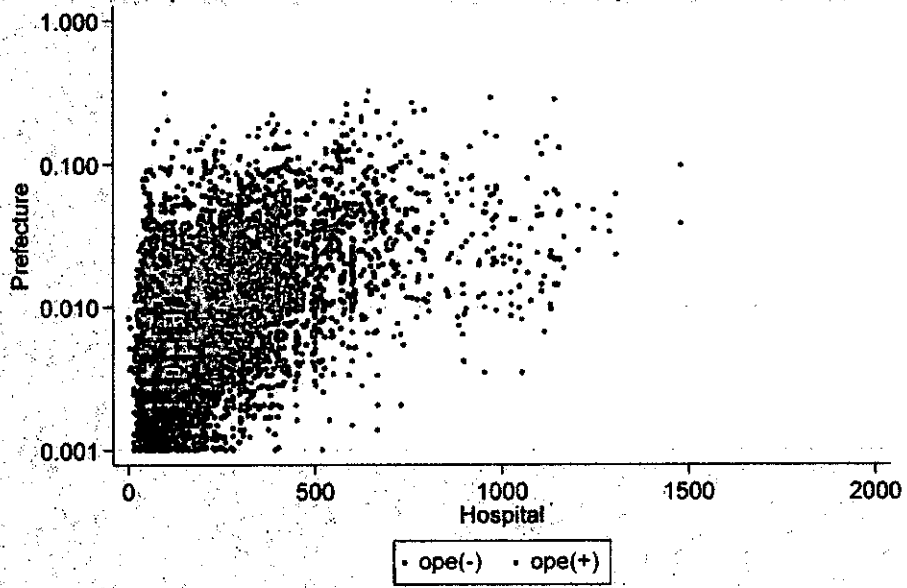
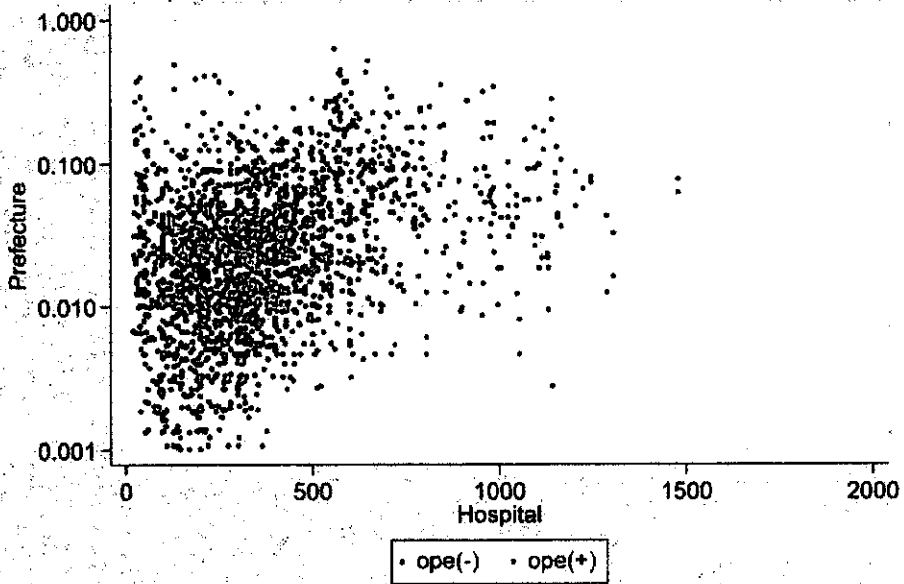
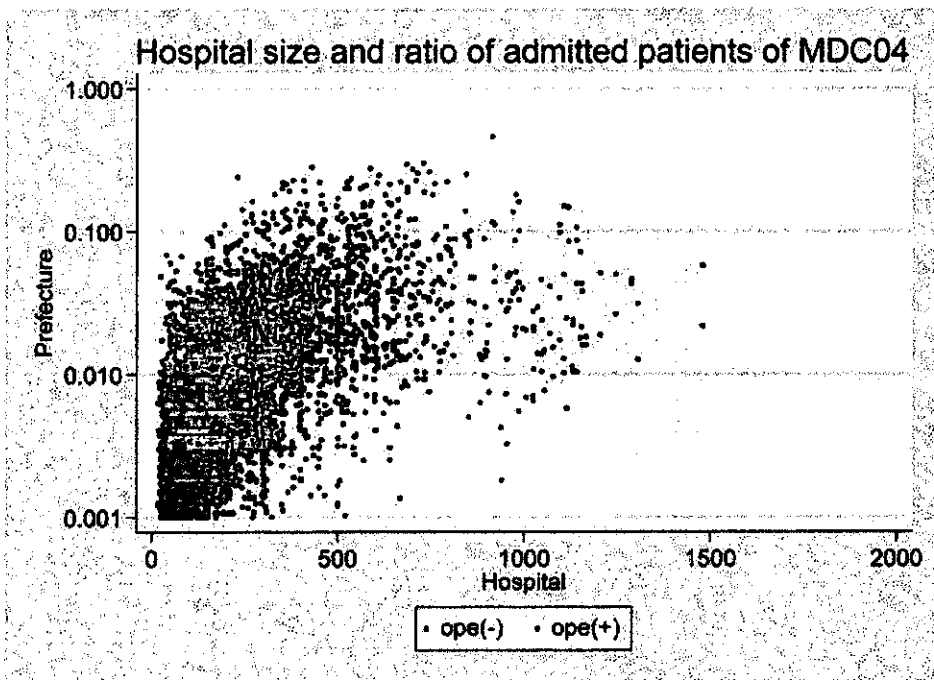
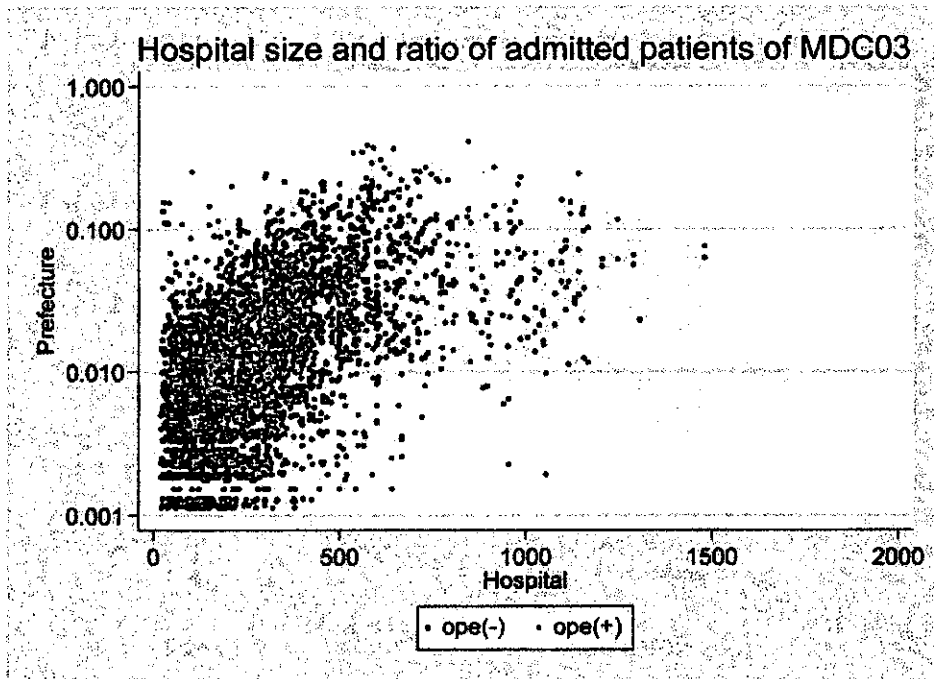


Hospital size and ratio of admitted patients of MDC01

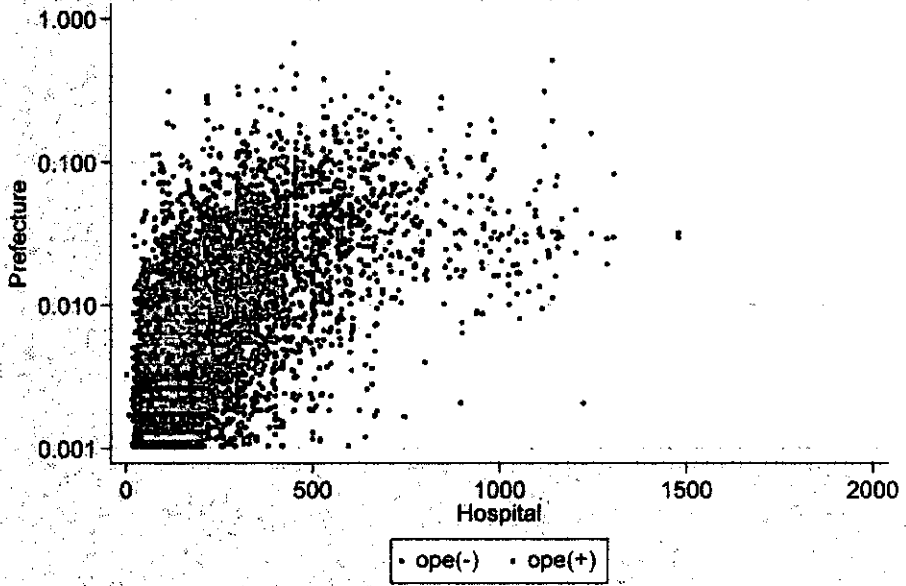


Hospital size and ratio of admitted patients of MDC02

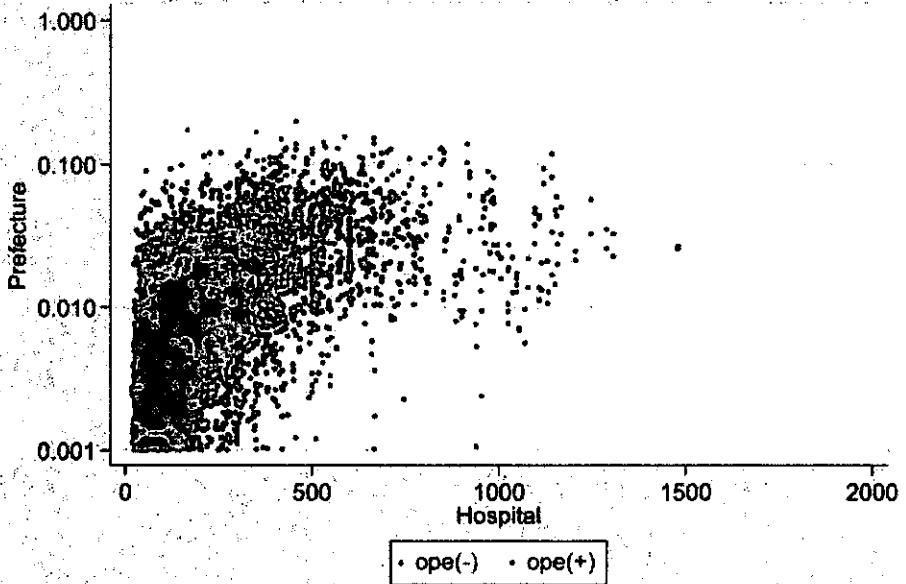


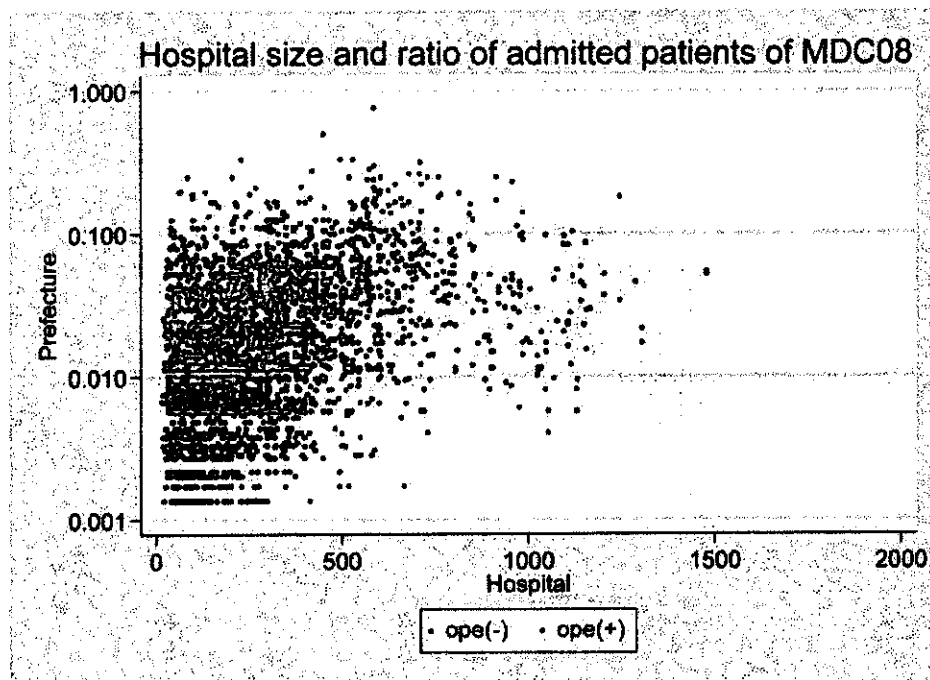
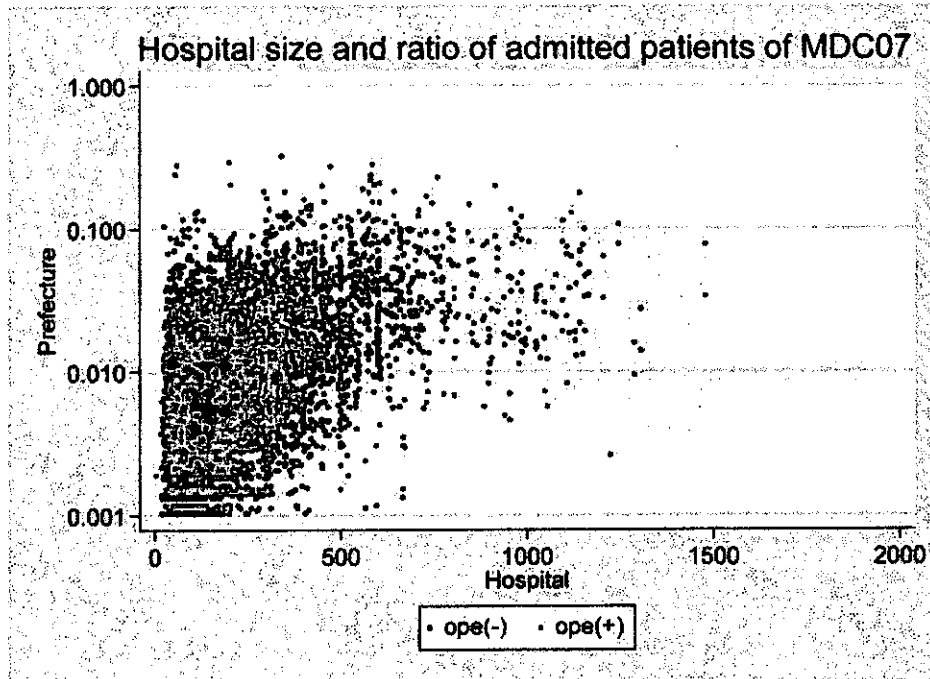


Hospital size and ratio of admitted patients of MDC05

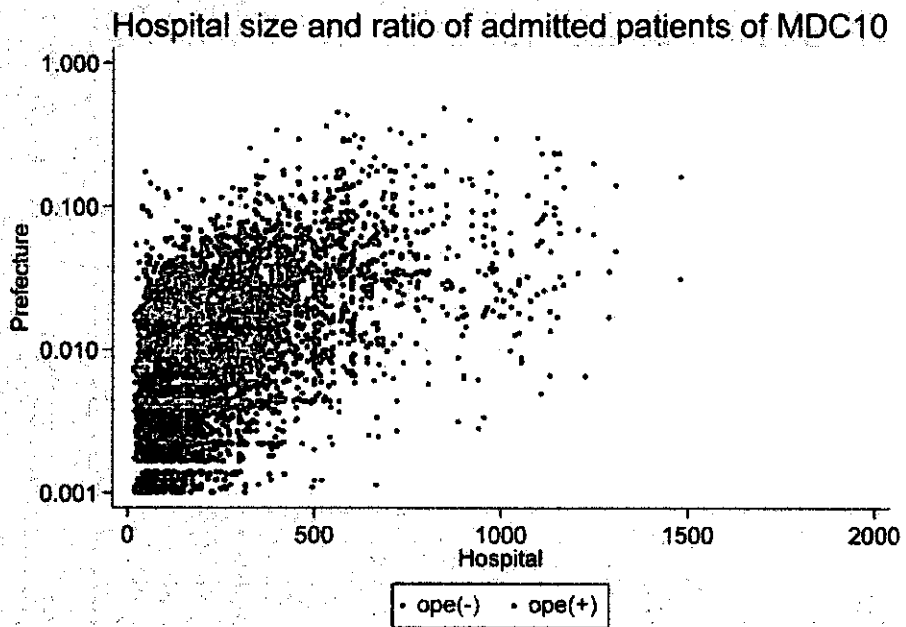
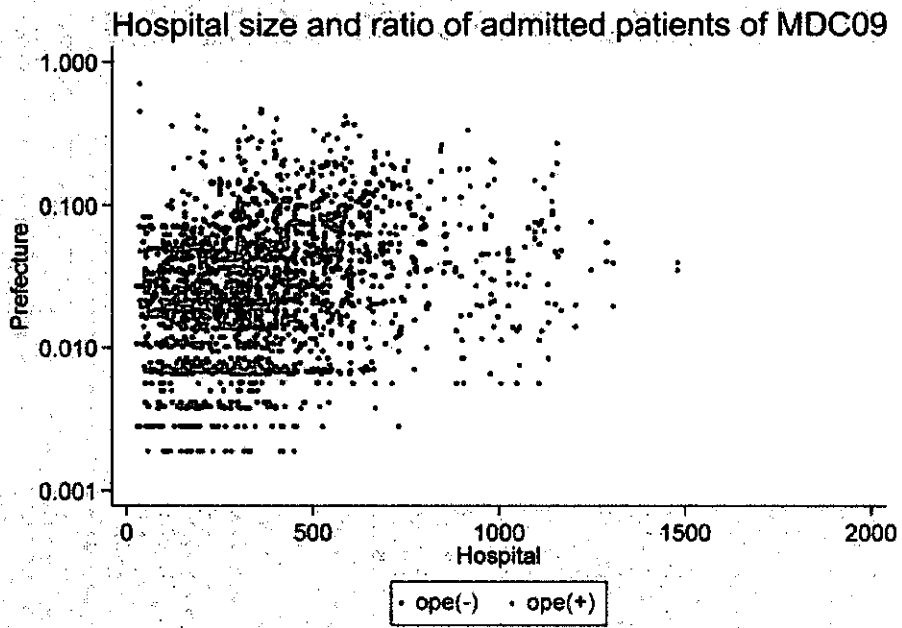


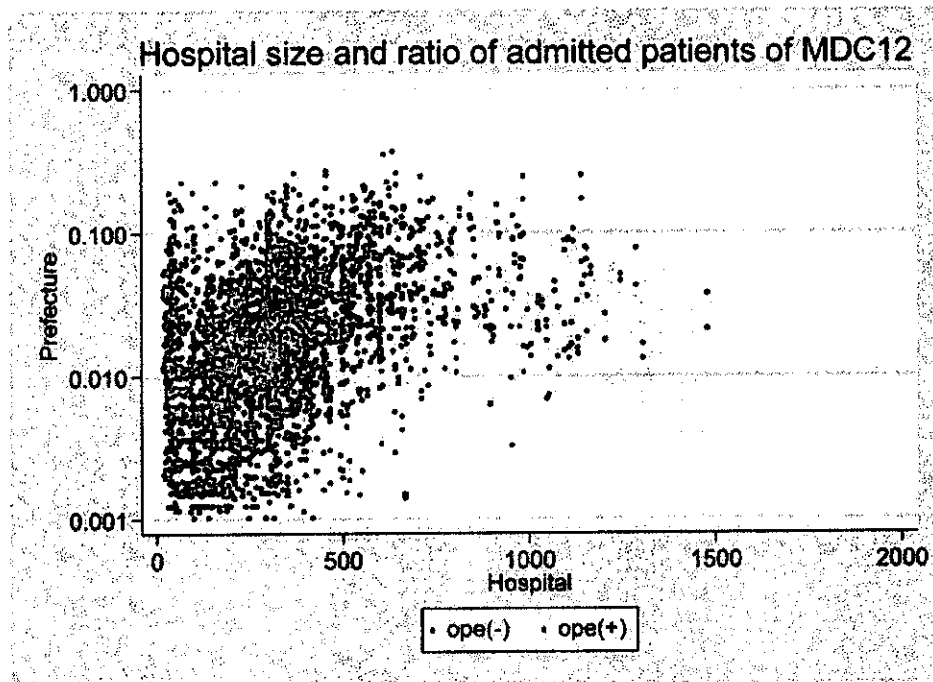
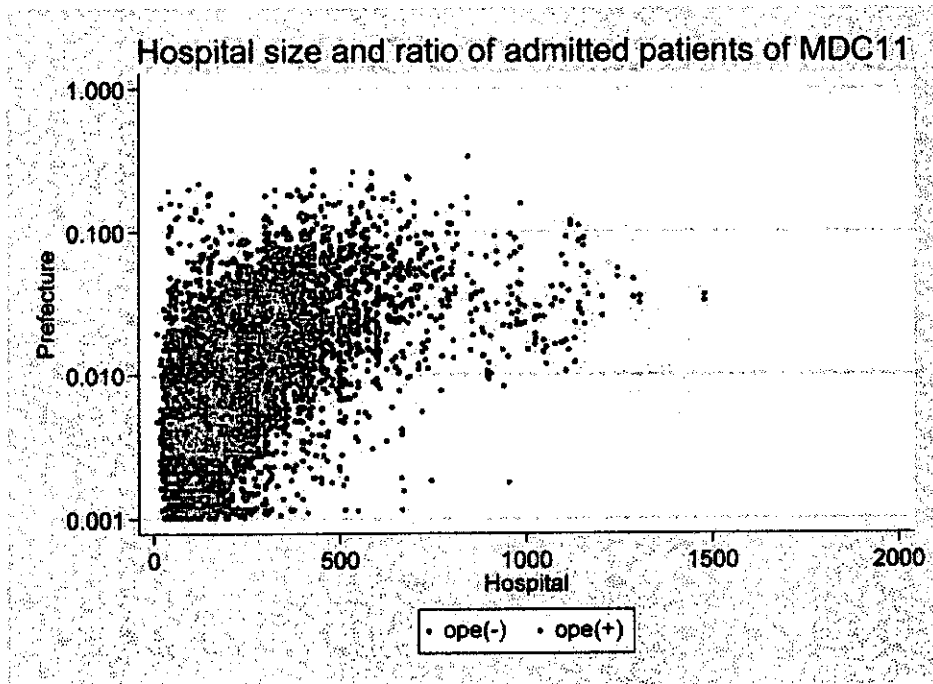
Hospital size and ratio of admitted patients of MDC06

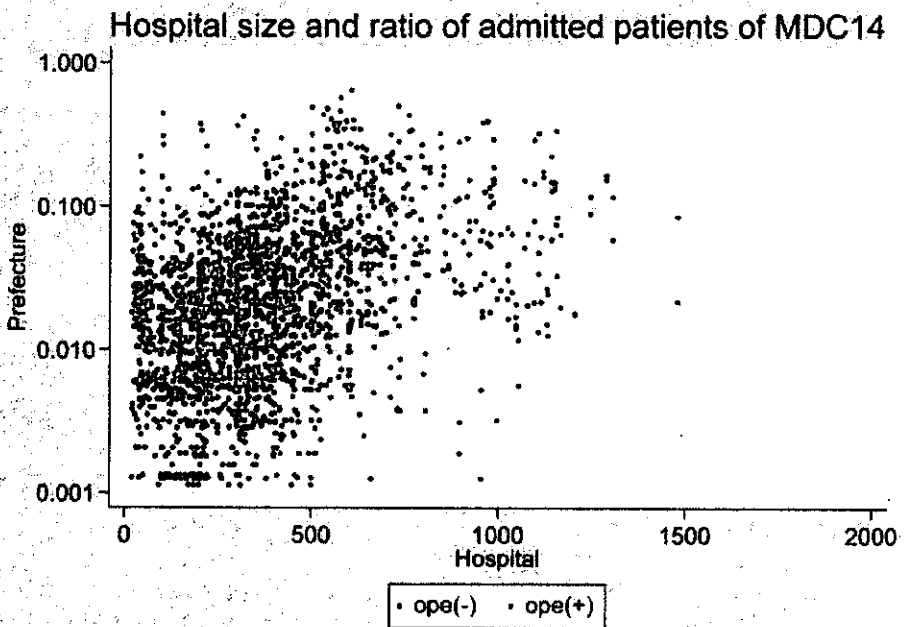
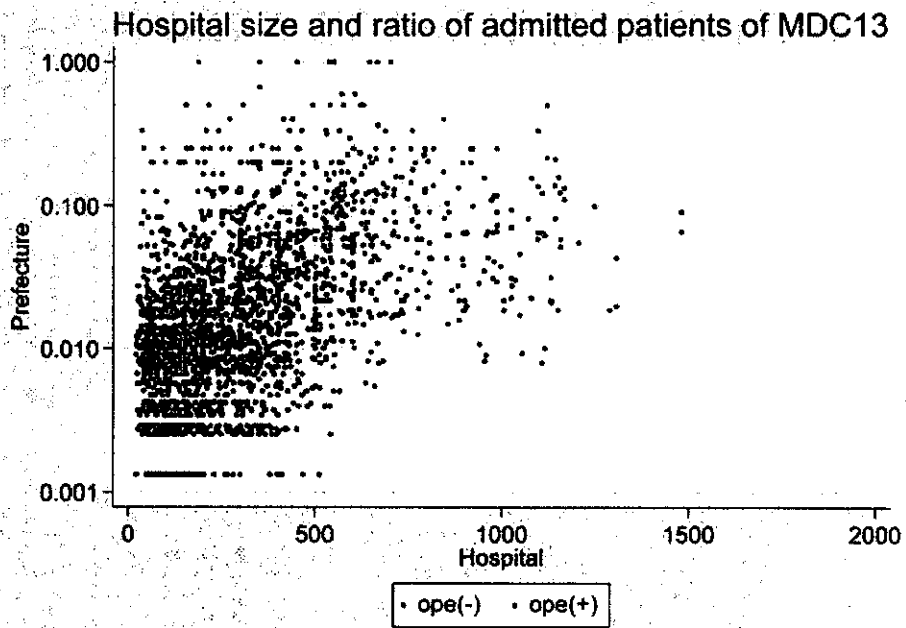


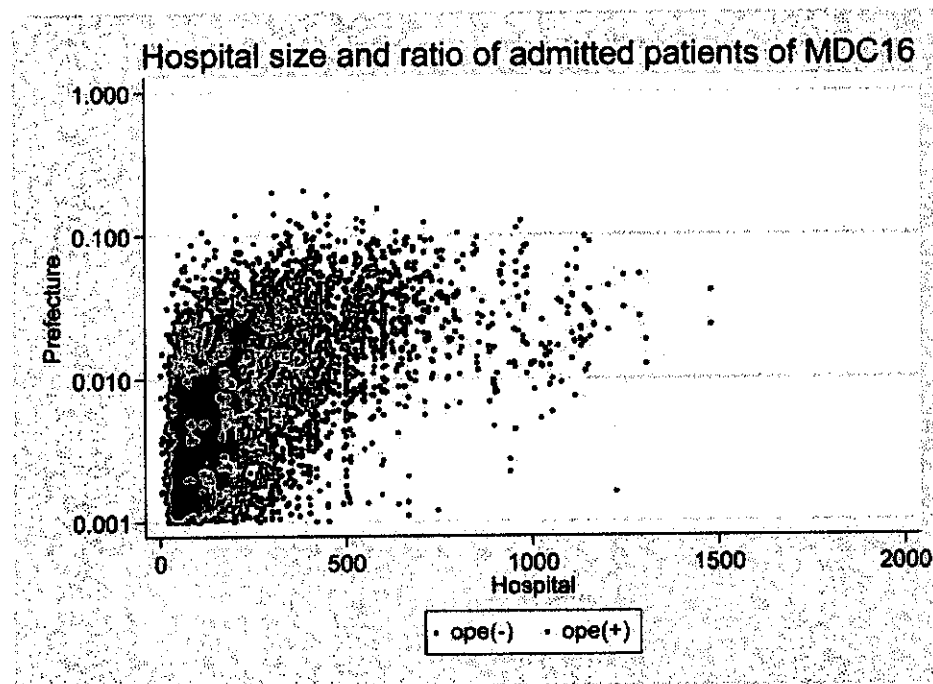
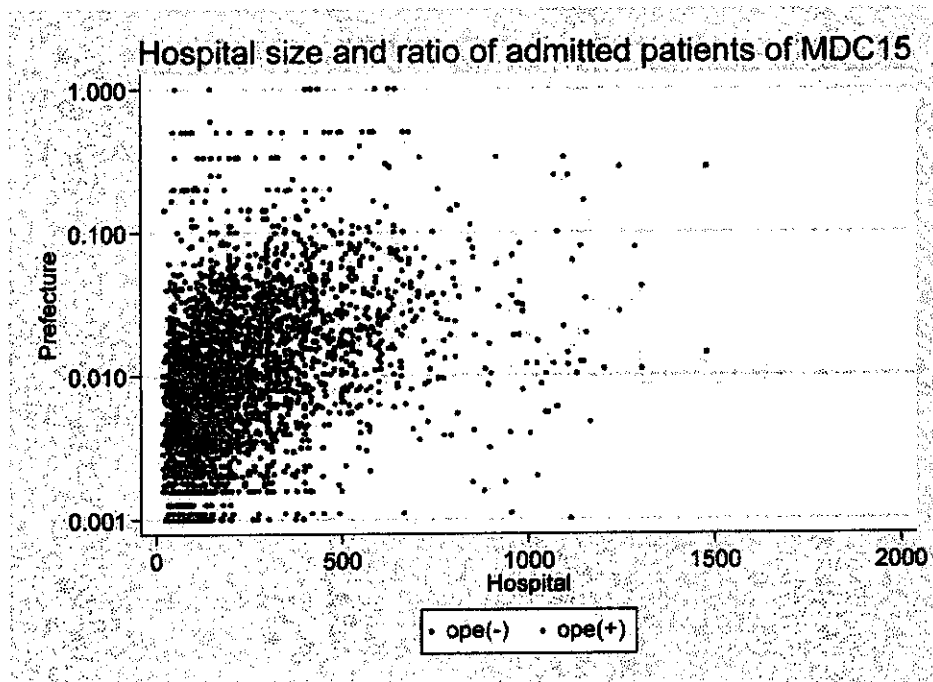




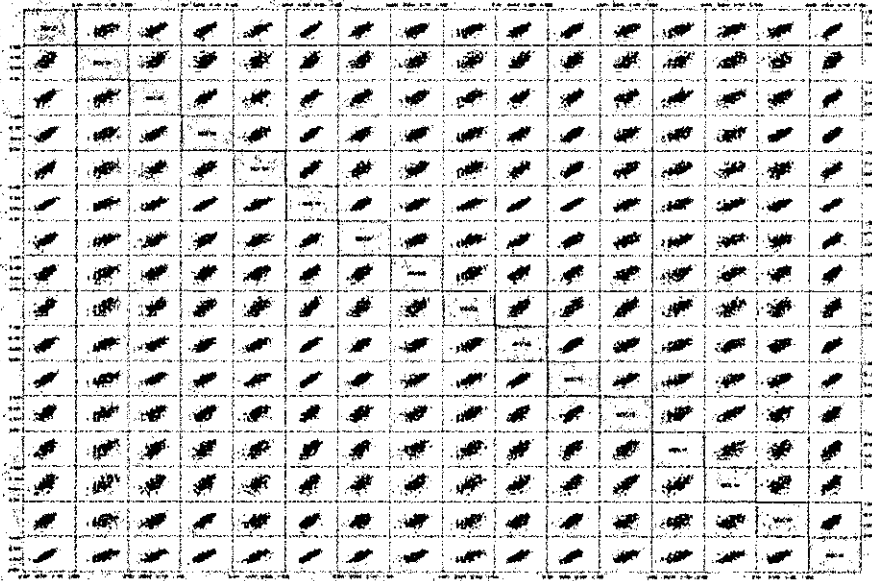




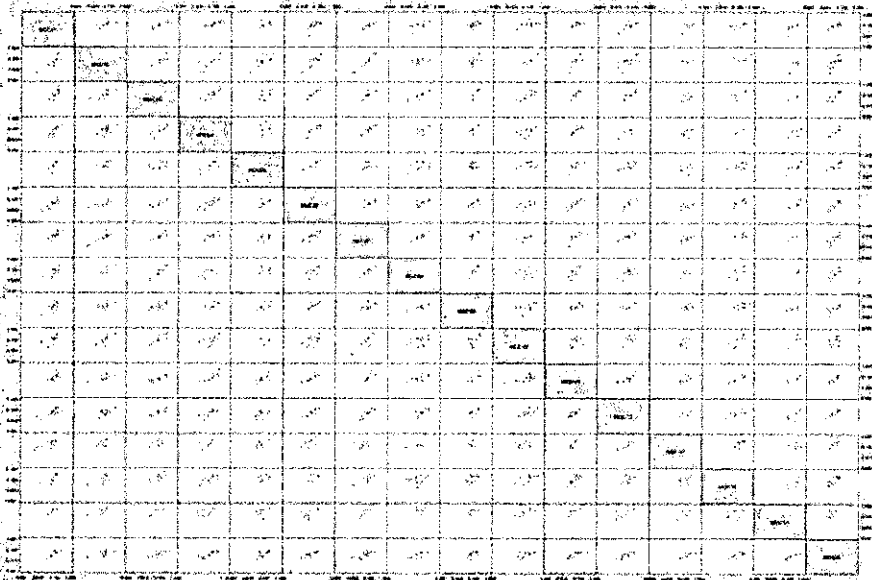


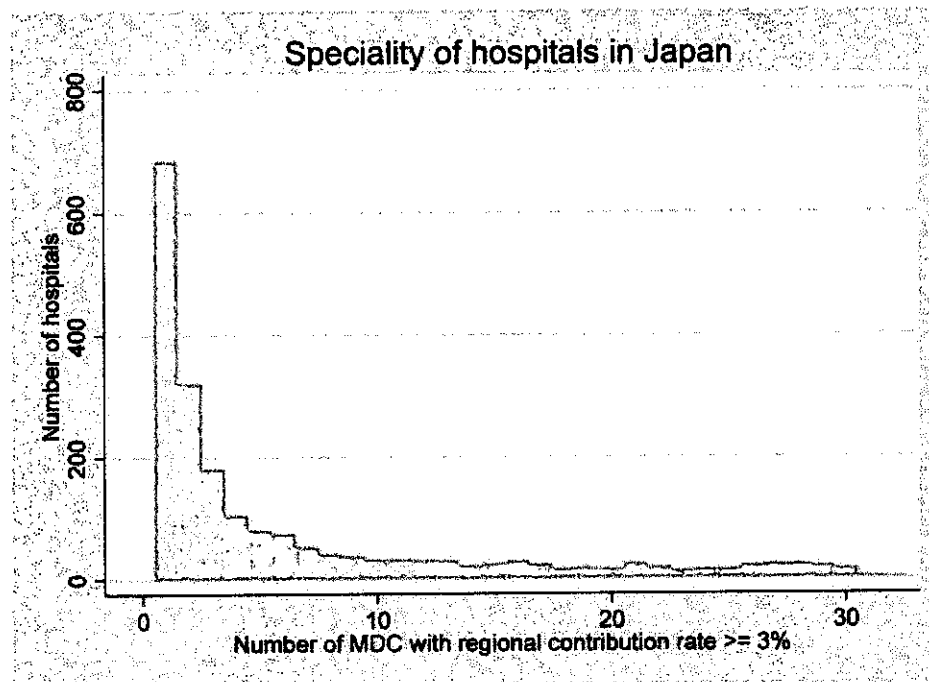
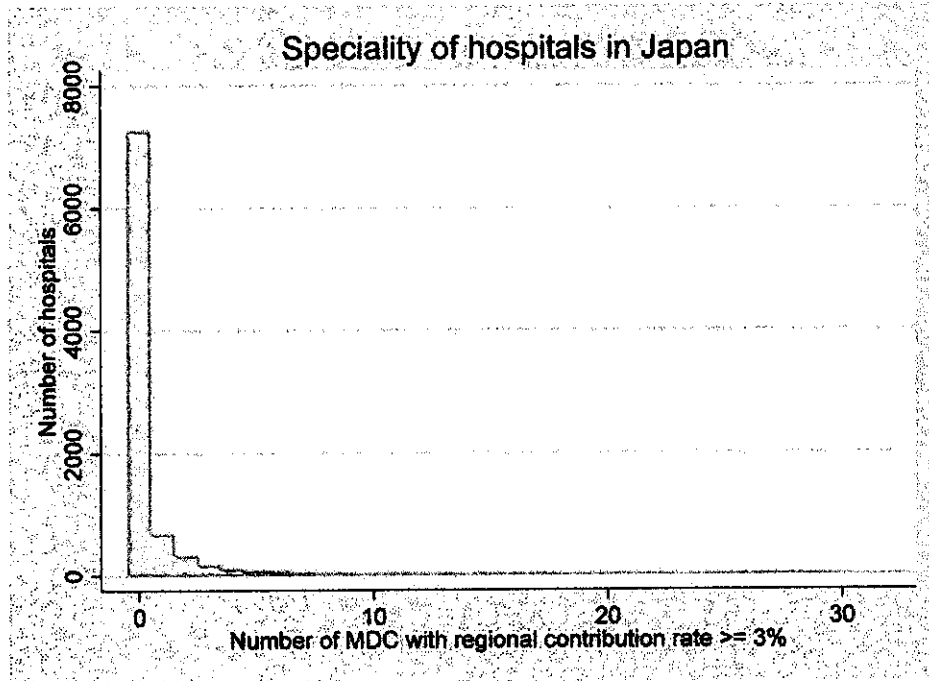


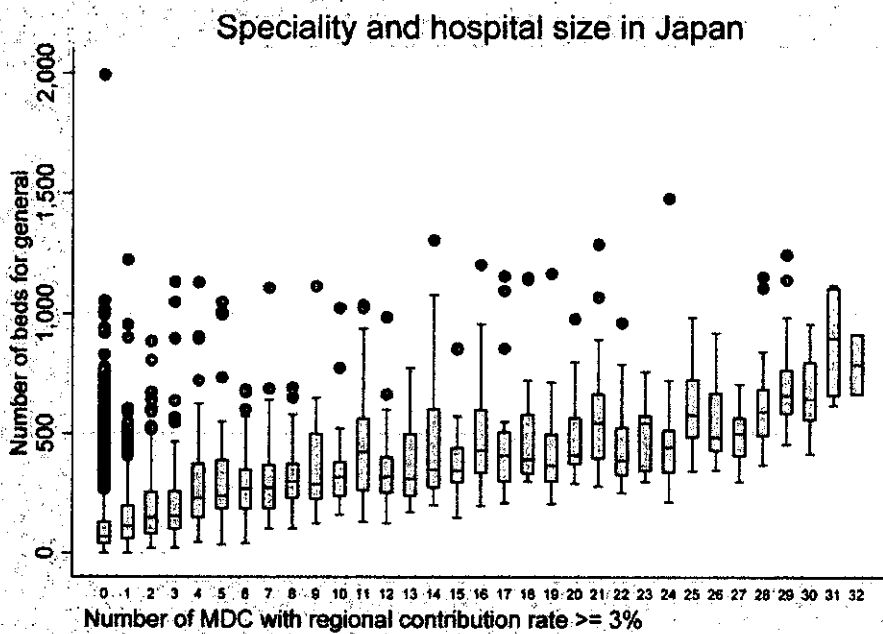
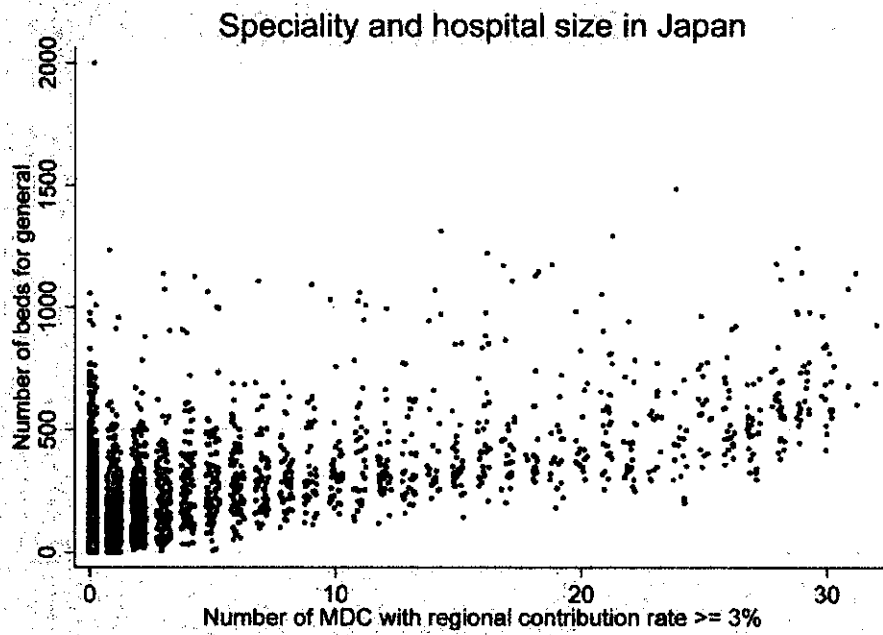
### Relation between MDCs without operations

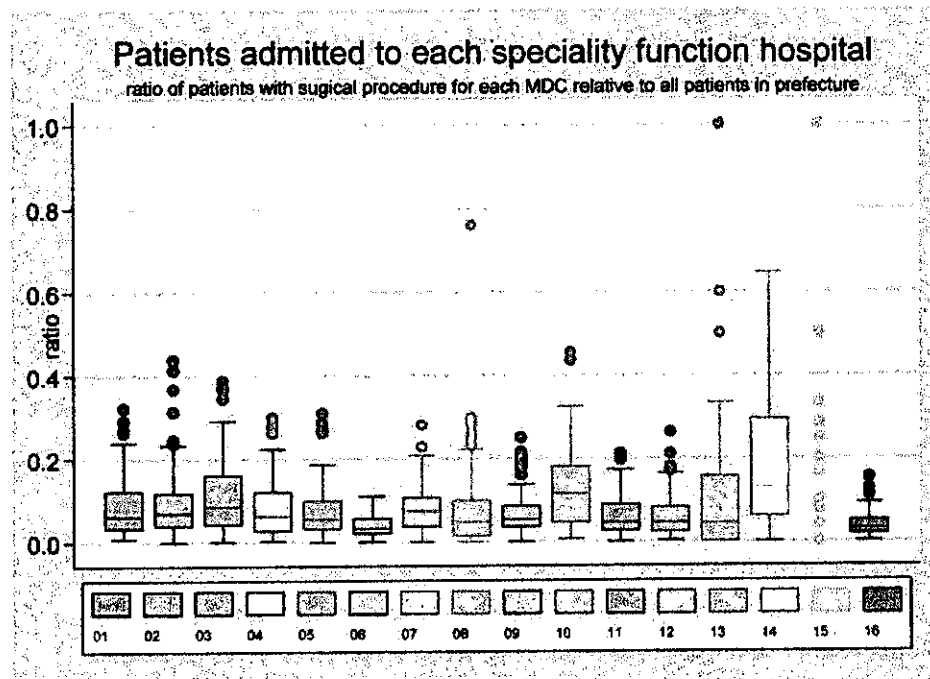
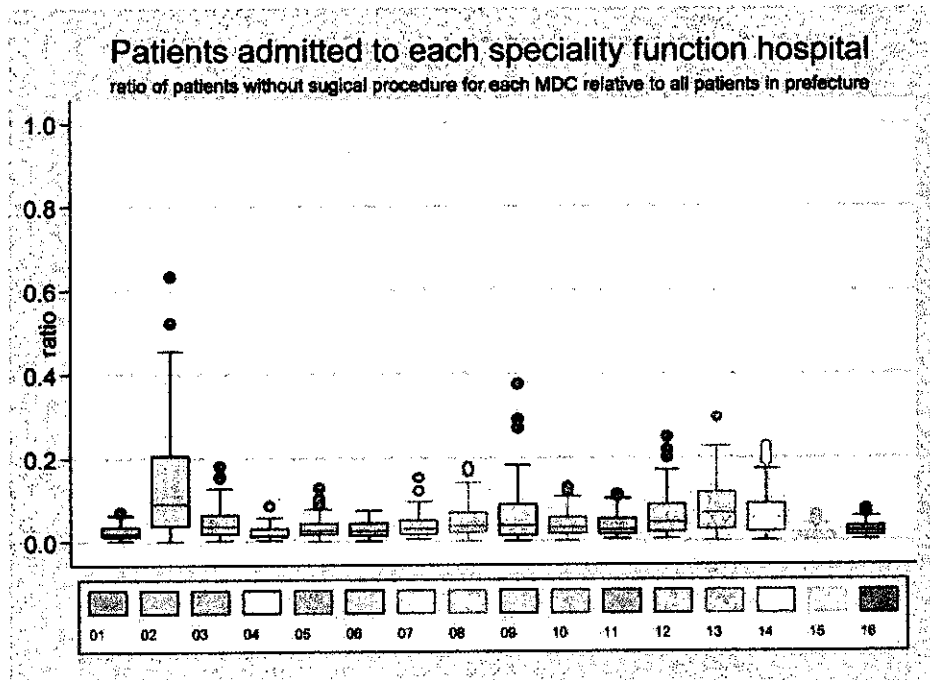


### Relation between MDCs with operations

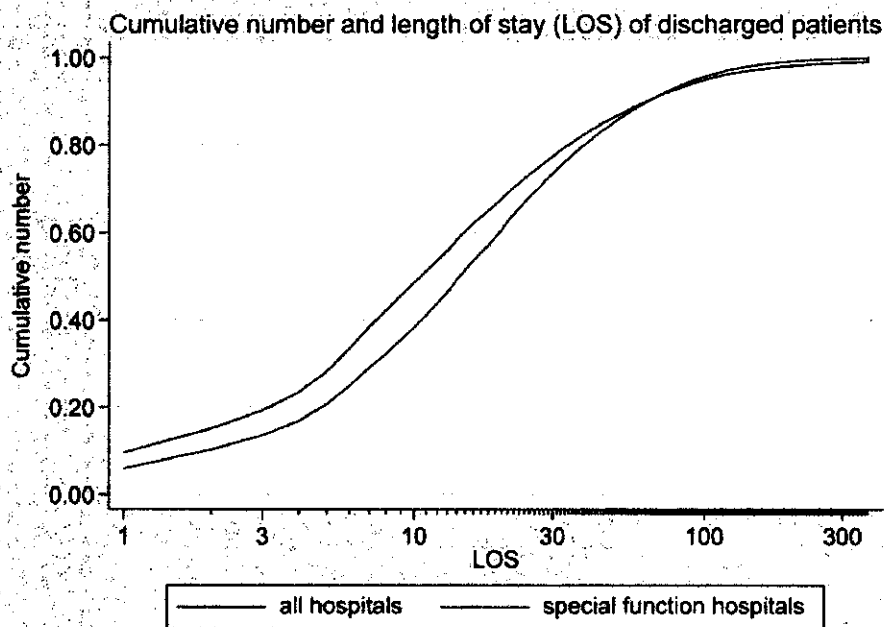
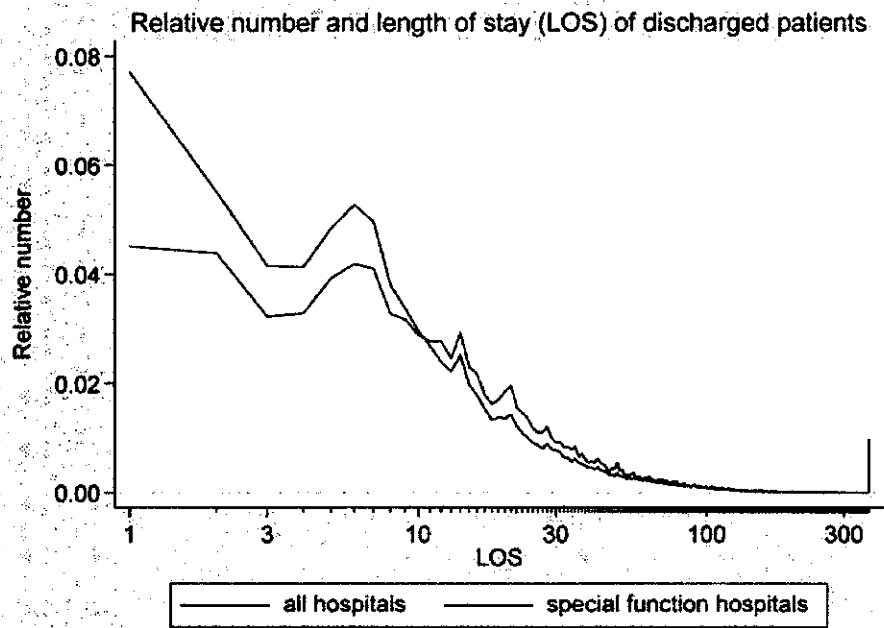


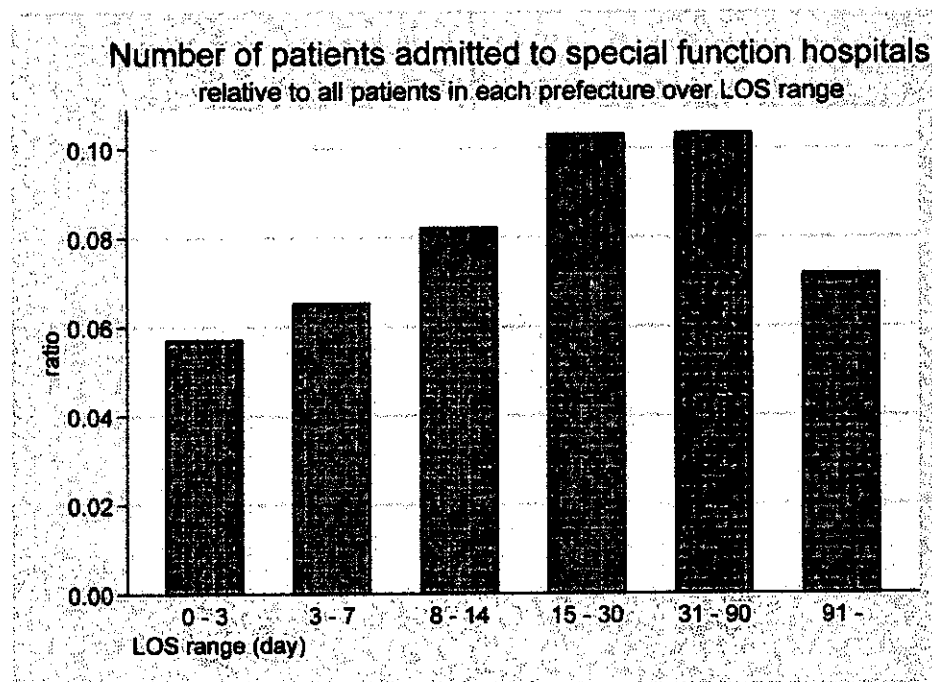
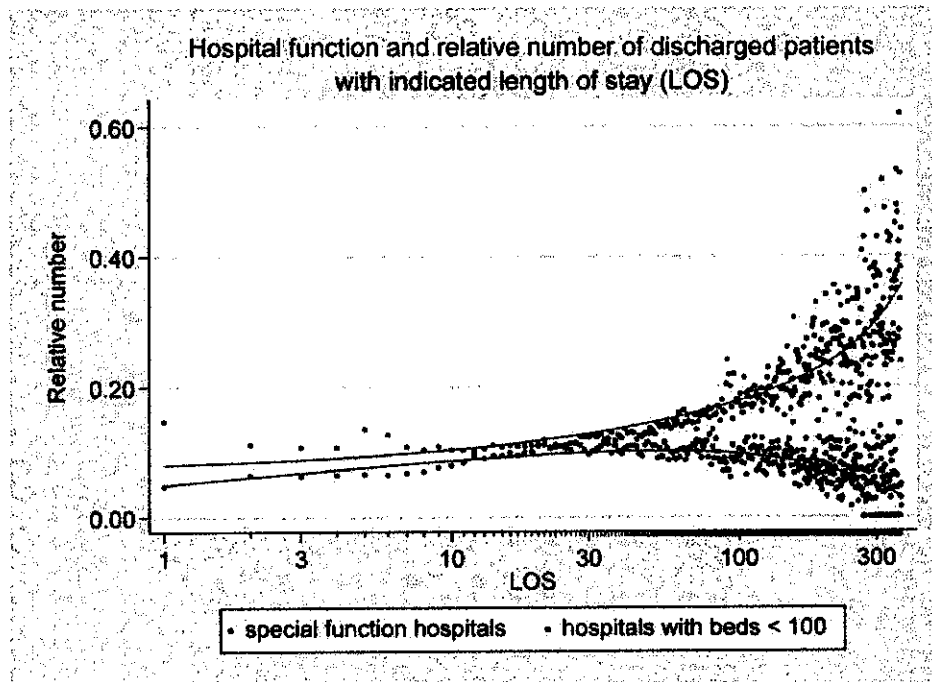












MDC毎の各特定機能病院入院患者数が都道府県内の総入院患者数に占める割合

	Mean ± SD		Max
MDC01	2.4% ± 1.6%	7.0%	
MDC02	13.3% ± 13.0%	63.3%	
MDC03	4.8% ± 3.9%	18.1%	
MDC04	2.0% ± 1.5%	8.5%	
MDC05	3.3% ± 2.4%	12.9%	
MDC06	2.9% ± 1.8%	7.3%	
手術なし MDC07	3.6% ± 2.7%	15.3%	
MDC08	5.0% ± 4.1%	18.0%	
MDC09	5.9% ± 6.7%	37.5%	
MDC10	3.9% ± 2.7%	13.0%	
MDC11	3.6% ± 2.6%	11.2%	
MDC12	6.1% ± 5.0%	24.8%	
MDC13	8.0% ± 6.2%	29.5%	
MDC14	6.9% ± 5.8%	22.4%	
MDC15	1.4% ± 1.4%	6.3%	
MDC16	2.5% ± 1.7%	7.5%	
MDC01	8.5% ± 7.0%	32.3%	
MDC02	9.4% ± 8.9%	43.9%	
MDC03	11.2% ± 9.2%	38.7%	
MDC04	8.3% ± 6.9%	30.0%	
MDC05	7.6% ± 6.5%	31.0%	
MDC06	4.0% ± 2.6%	11.0%	
手術あり MDC07	7.9% ± 5.5%	28.1%	
MDC08	8.2% ± 11.0%	76.0%	
MDC09	7.0% ± 5.6%	25.0%	
MDC10	13.0% ± 10.4%	45.5%	
MDC11	6.0% ± 4.6%	21.1%	
MDC12	5.9% ± 5.0%	26.3%	
MDC13	11.8% ± 19.5%	100.0%	
MDC14	17.7% ± 15.3%	64.5%	
MDC15	5.4% ± 15.0%	100.0%	
MDC16	3.8% ± 3.0%	15.3%	

特定機能病院における高度医療の実施状況  
—全病院における実施数に対する割合—

手技名	Relative number
全身麻酔手術	12.6%
開頭手術	12.2%
人工心肺手術	22.5%
大動脈バルーンパンピング	12.6%
悪性腫瘍手術	14.4%
肺癌手術	18.9%
気管支鏡検査	14.6%
血管造影	15.2%
ラジオアイソトープ診断	18.7%
シングルフォトンエミッションCT	22.4%
マイクロサージェリー	18.3%
ICU患者延数	12.3%
CCU患者延数	12.6%
NICU患者延数	21.4%
周産期ICU患者延数	31.6%
熱傷ICU患者延数	19.4%
無菌室患者延数	33.6%
放射線治療室患者延数	46.5%

