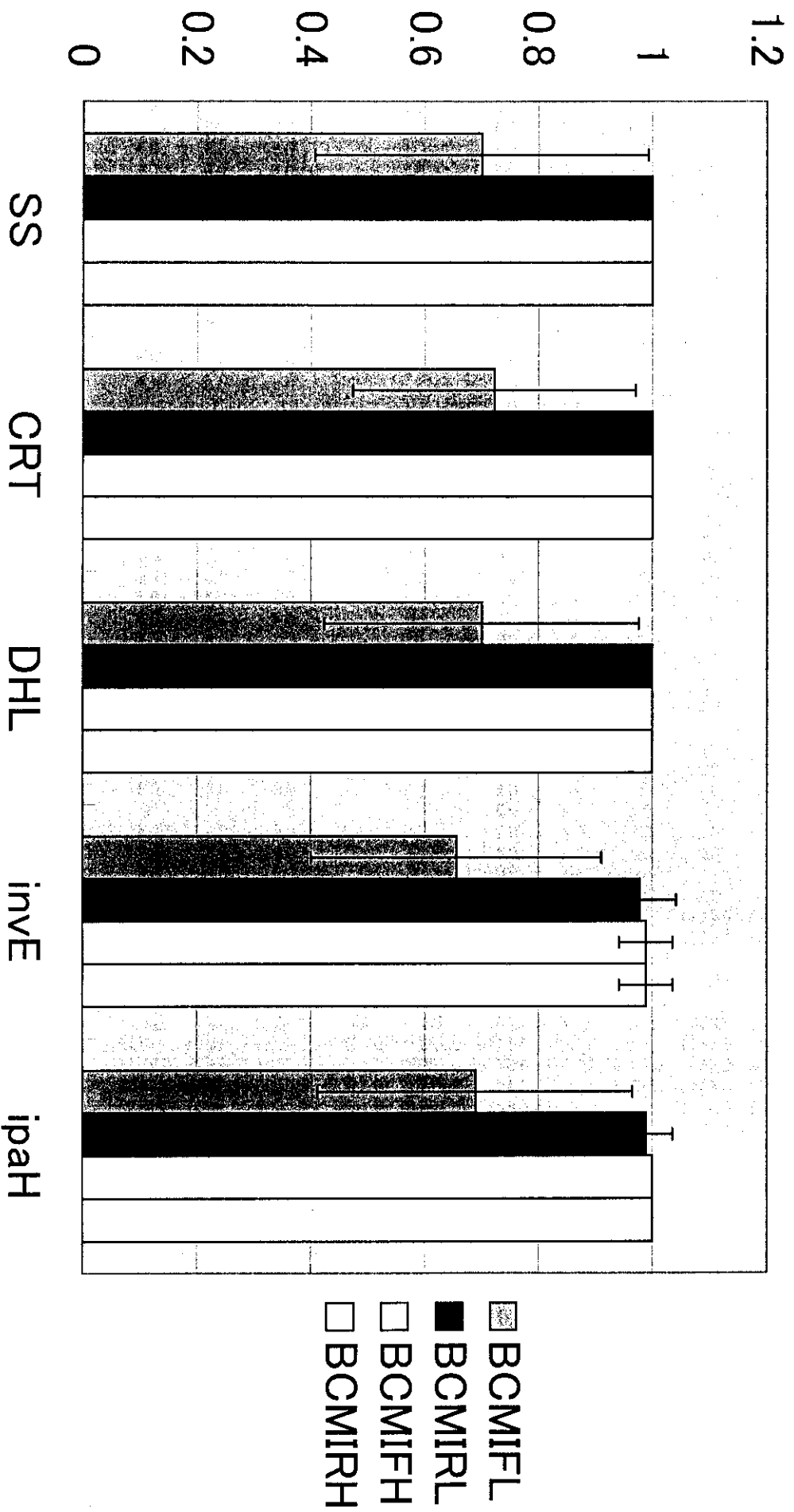


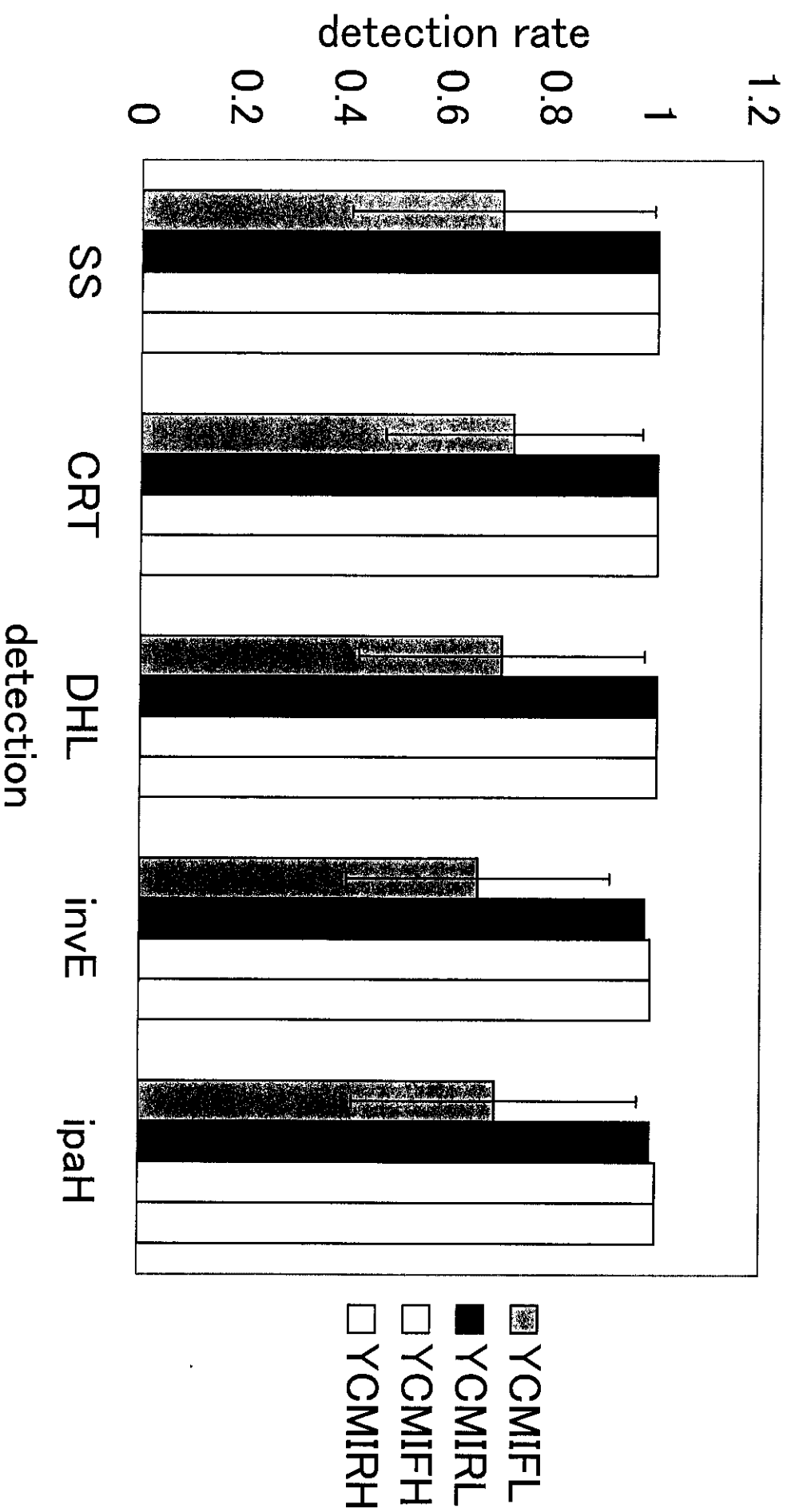
カキの成績(試験法Ⅱ)

		SS	CRT	DHL	invE	ipaH			SS	CRT	DHL	invE	ipaH
OyMIIRL		0.2	0.4	0.6	0.4	0.6	OyMIIRH		1	1	1	1	1
		0.2	0.2	0.2	0.2	0.2			0.6	0.6	0.6	0.6	0.6
		0.4	0.4	0.4	0.4	0.4			0.8	0.8	0.8	0.8	0.8
		0.8	0.8	0.6	0.8	0.8			0.8	0.8	0.8	0.8	0.8
		0.6	0.6	0.4	0.6	0.6			0.6	0.6	0.6	0.6	0.6
		0.8	0.8	0.8	0.8	0.8			0.8	0.8	0.8	0.8	0.8
		0.8	0.8	0.8	0.8	0.8			1	1	1	1	1
		0.2	0.2	0.2	0.4	0.4			0.6	0.6	0.6	0.6	0.6
		0.6	0.6	0.4	0.6	0.6			0.8	0.8	0.8	0.8	0.8
		0.4	0.4	0.4	0.4	0.4			1	1	1	1	1
		0.4	0.4	0.4	1	1			0.6	0.6	0.6	0.6	1
		0.2	0.4	0.2	0.4	0.4			0.8	0.8	0.8	0.8	0.8
		0.8	0.6	0.6	0.8	0.8			1	1	1	1	1
		0.8	0.8	0.8	0.8	0.8			0.8	0.8	0.8	0.8	0.8
		0.4	0.4	0.4	0.4	0.4			0.6	0.6	0.6	0.6	0.6
		0.2	0	0.2	0.4	0.4			1	1	1	1	1
		0.4	0.2	0.2	0.4	0.4			0.8	0.8	0.8	0.8	0.8
		0.6	0.4	0.4	0.6	0.6			1	1	1	1	1
OyMIIRL	X	0.4889	0.4667	0.4444	0.5667	0.5778	OyMIIRH	X	0.8111	0.8111	0.8111	0.8111	0.8333
OyMIIRL	STD	0.2398	0.2376	0.2121	0.2196	0.2157	OyMIIRH	STD	0.1605	0.1605	0.1605	0.1605	0.1572
MIIFL		SS	CRT	DHL	invE	ipaH	MIIFH		SS	CRT	DHL	invE	ipaH
		0	0	0	0	0			0.2	0	0.2	0.2	0.2
		0	0	0	0	0			0	0	0	0	0
		0.2	0.2	0.2	0.2	0.2			0.8	0.8	0.8	0.8	0.8
		0	0	0	0	0			0.2	0.2	0.2	0.2	0.2
		0	0	0	0	0			0.4	0.4	0.4	0.4	0.4
		0	0	0	0	0			0.6	0.6	0.6	0.6	0.6
		0.2	0.2	0.2	0.2	0.2			0.6	0.6	0.6	0.6	0.6
		0	0.2	0	0.2	0.2			0.8	0.8	0.8	0.8	0.8
		0.4	0.2	0.2	0.4	0.4			0.2	0.2	0.2	0	0
		0	0	0	0	0			0.2	0.2	0.2	0.2	0.2
		0	0	0	0	0.2			0.2	0.4	0.4	0.4	0.4
		0.2	0.2	0.2	0.2	0.2			0.2	0.2	0.2	0.2	0.2
		0.2	0.2	0.2	0.2	0.2			0.8	0.8	0.8	0.8	0.8
		0.2	0.2	0.2	0.2	0.2			1	1	1	1	1
		0.2	0.2	0.2	0.2	0.2			0.4	0.4	0.4	0.4	0.4
		0.2	0.2	0.2	0.2	0.4			0.8	0.8	0.8	0.8	0.8
		0	0	0	0	0			0.6	0.6	0.6	0.6	0.6
	0.2	0.2	0.2	0.2	0.2		0	0	0	0	0		
OyMIIFL	X	0.1111	0.1111	0.1	0.1222	0.1444	OyMIIFH	X	0.4444	0.4444	0.4556	0.4444	0.4444
OyMIIFL	STD	0.1231	0.1023	0.1029	0.1215	0.1338	OyMIIFH	STD	0.311	0.3185	0.3053	0.3185	0.3185
			X					STD					
OyMIIFL		0.1111	0.1111	0.1	0.1222	0.1444	0.12314	0.10226	0.1029	0.1215	0.1338		
OyMIIRL		0.4889	0.4667	0.4444	0.5667	0.5778	0.23983	0.23764	0.2121	0.2196	0.2157		
OyMIIFH		0.4444	0.4444	0.4556	0.4444	0.4444	0.31102	0.31849	0.3053	0.3185	0.3185		
OyMIIRH		0.8111	0.8111	0.8111	0.8111	0.8333	0.16047	0.16047	0.1605	0.1605	0.1572		

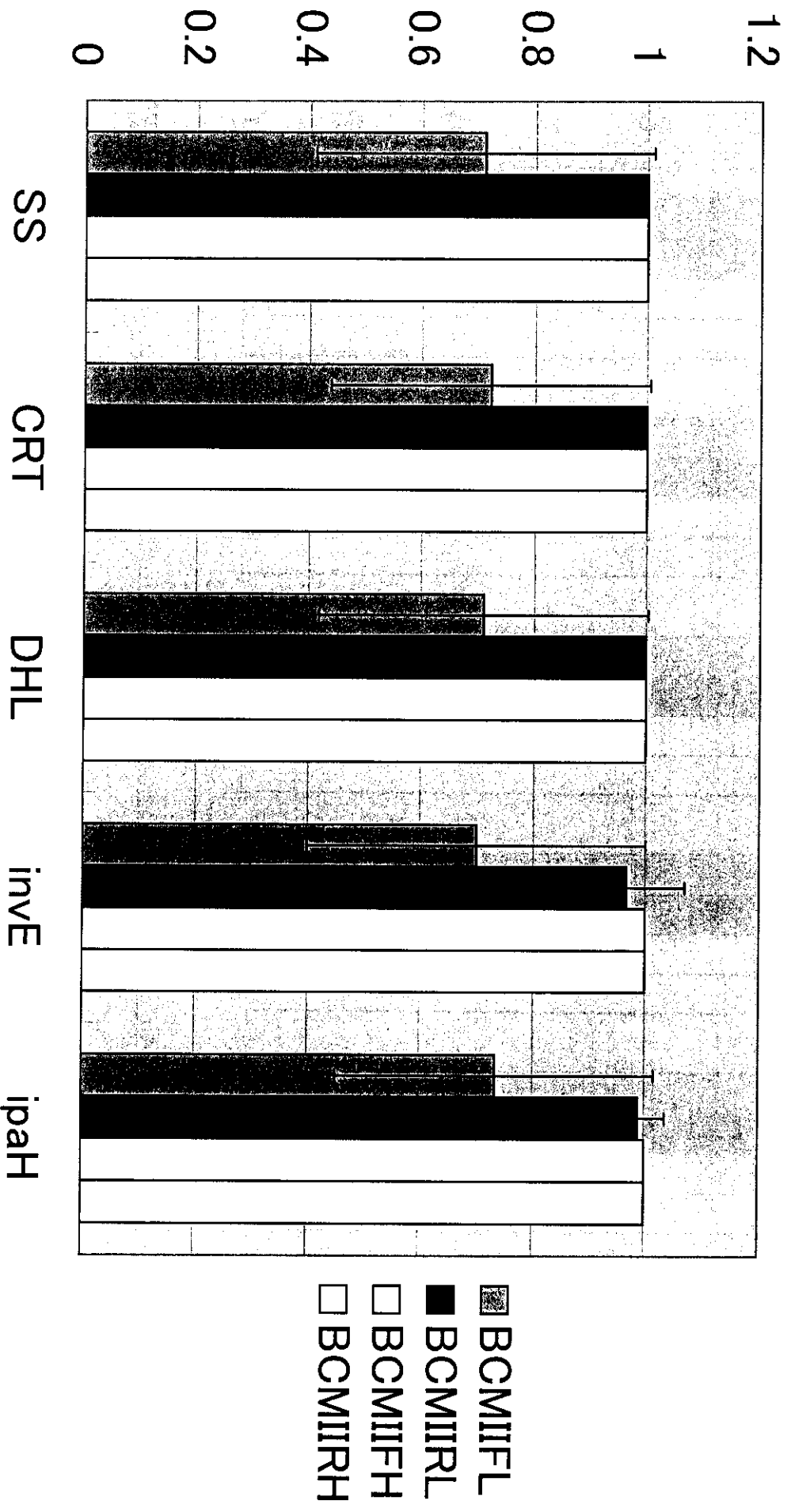
Method I YC



Method I YC



Method II YC



Method II YC

