

Fig.1-B

File : D:\DATA\NOMIYAMA\130228\H.D  
Operator :  
Acquired : 28 Feb 101 2:32 pm using AcqMethod TTC2 TIC  
Instrument : GCD Plus  
Sample Name: H  
Misc Info :  
Vial Number: 6

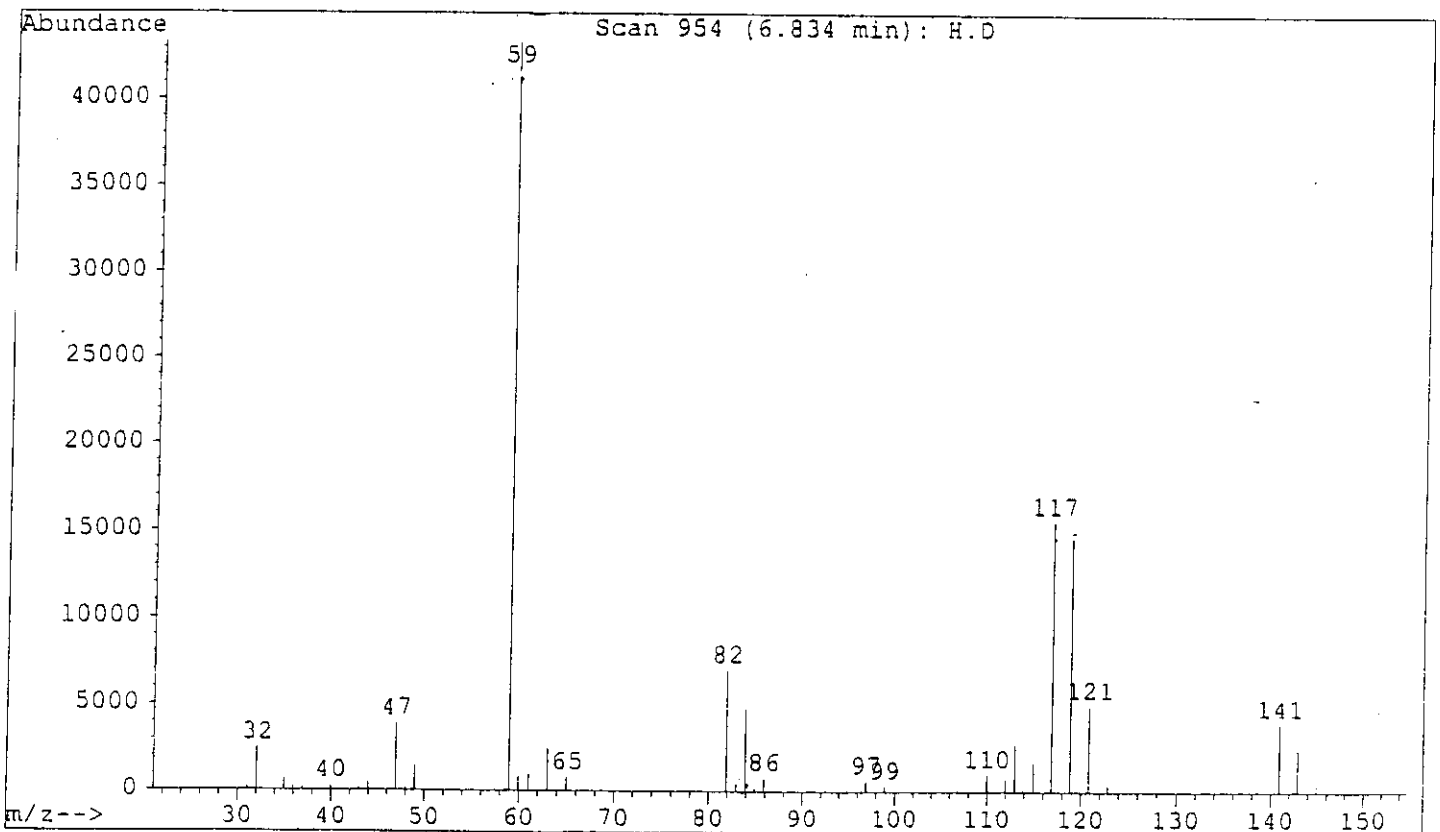
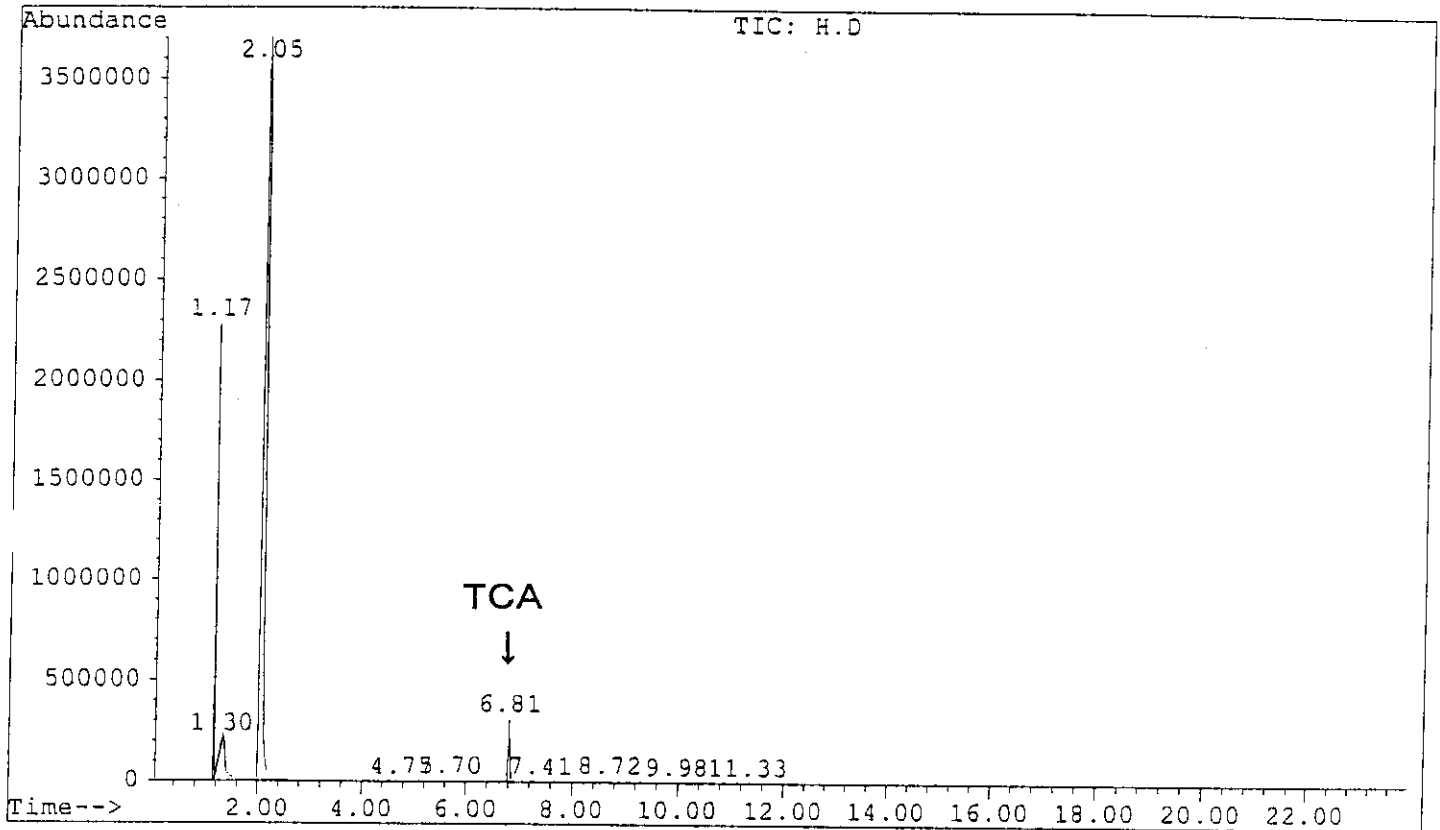


Fig.1-C

File : D:\DATA\NOMIYAMA\130228\D.D  
Operator :  
Acquired : 28 Feb 101 1:27 pm using AcqMethod TTC2 TIC  
Instrument : GCD Plus  
Sample Name: D  
Misc Info :  
Vial Number: 4

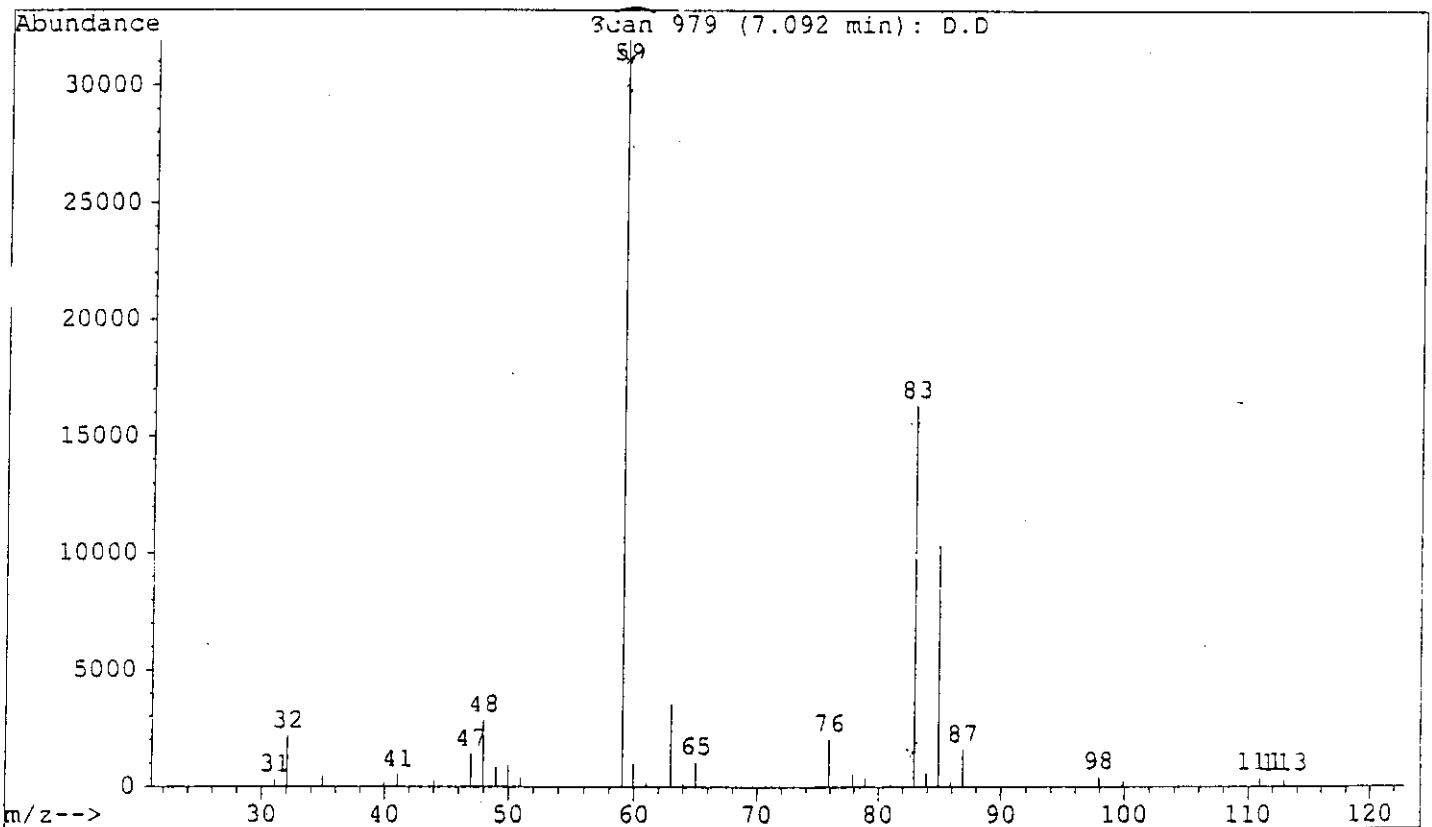
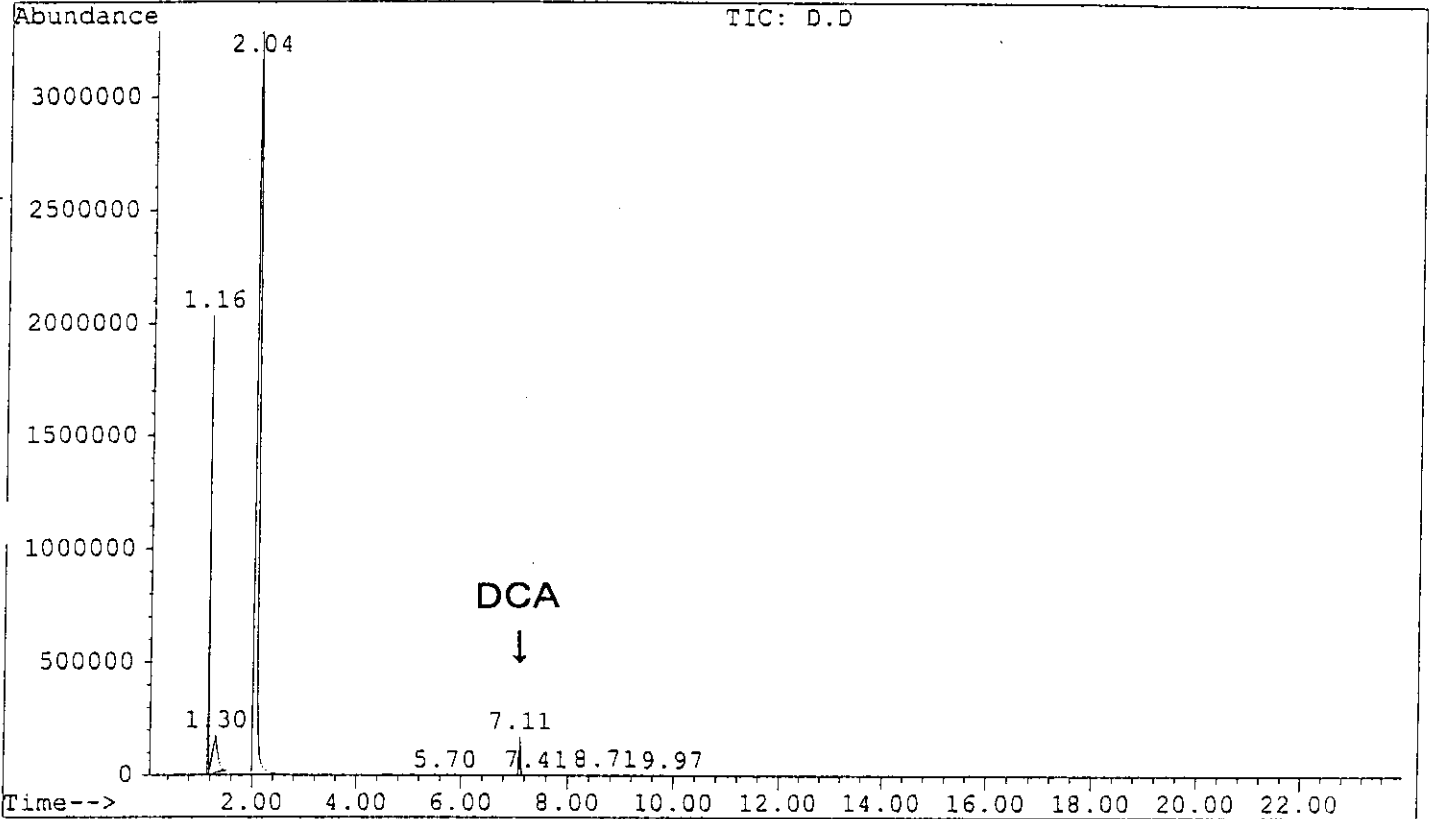


Fig.1-D

File : D:\DATA\NOMIYAMA\130228\E.D  
Operator :  
Acquired : 28 Feb 101 1:59 pm using AcqMethod TTC2 TIC  
Instrument : GCD Plus  
Sample Name: E  
Misc Info :  
Vial Number: 5

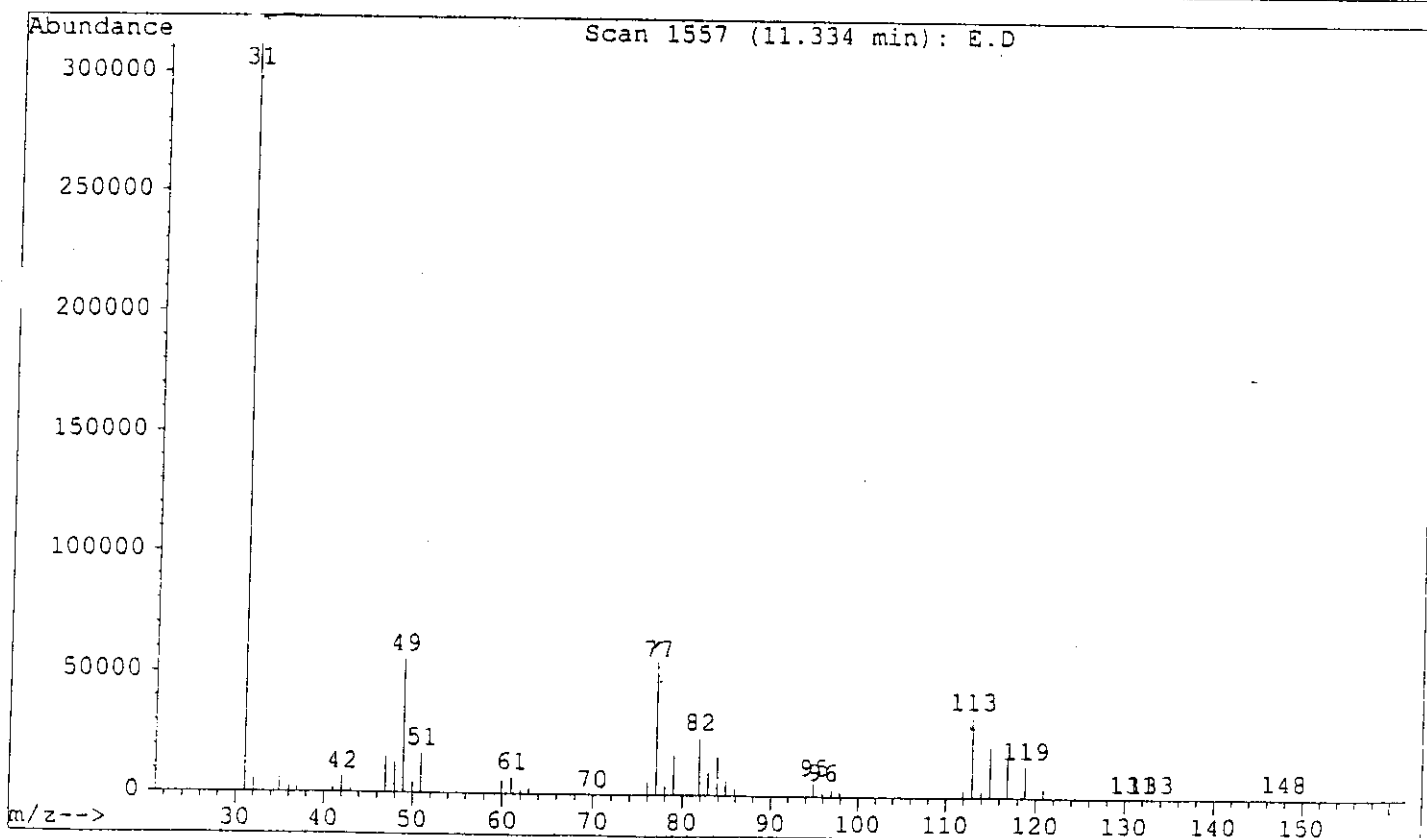
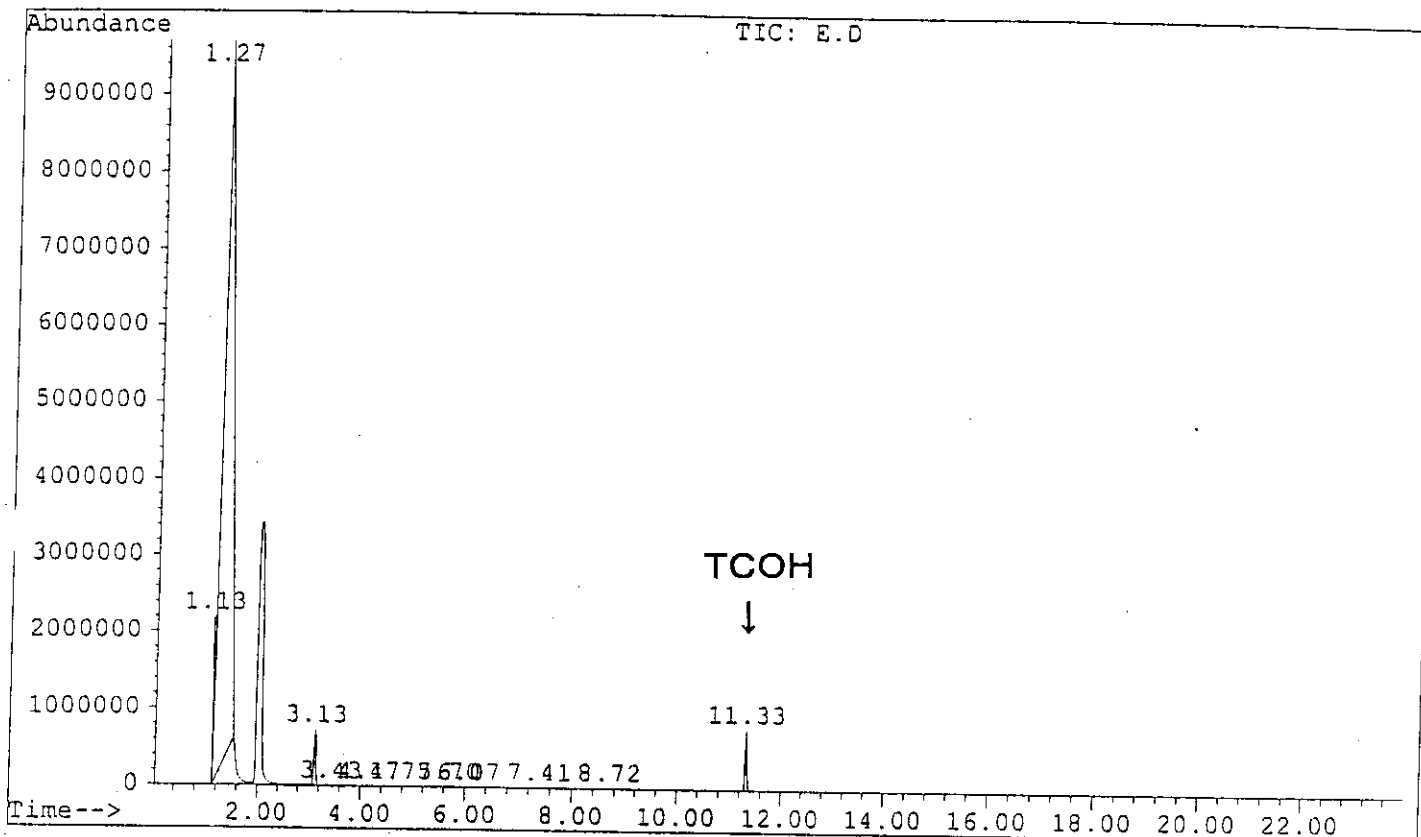
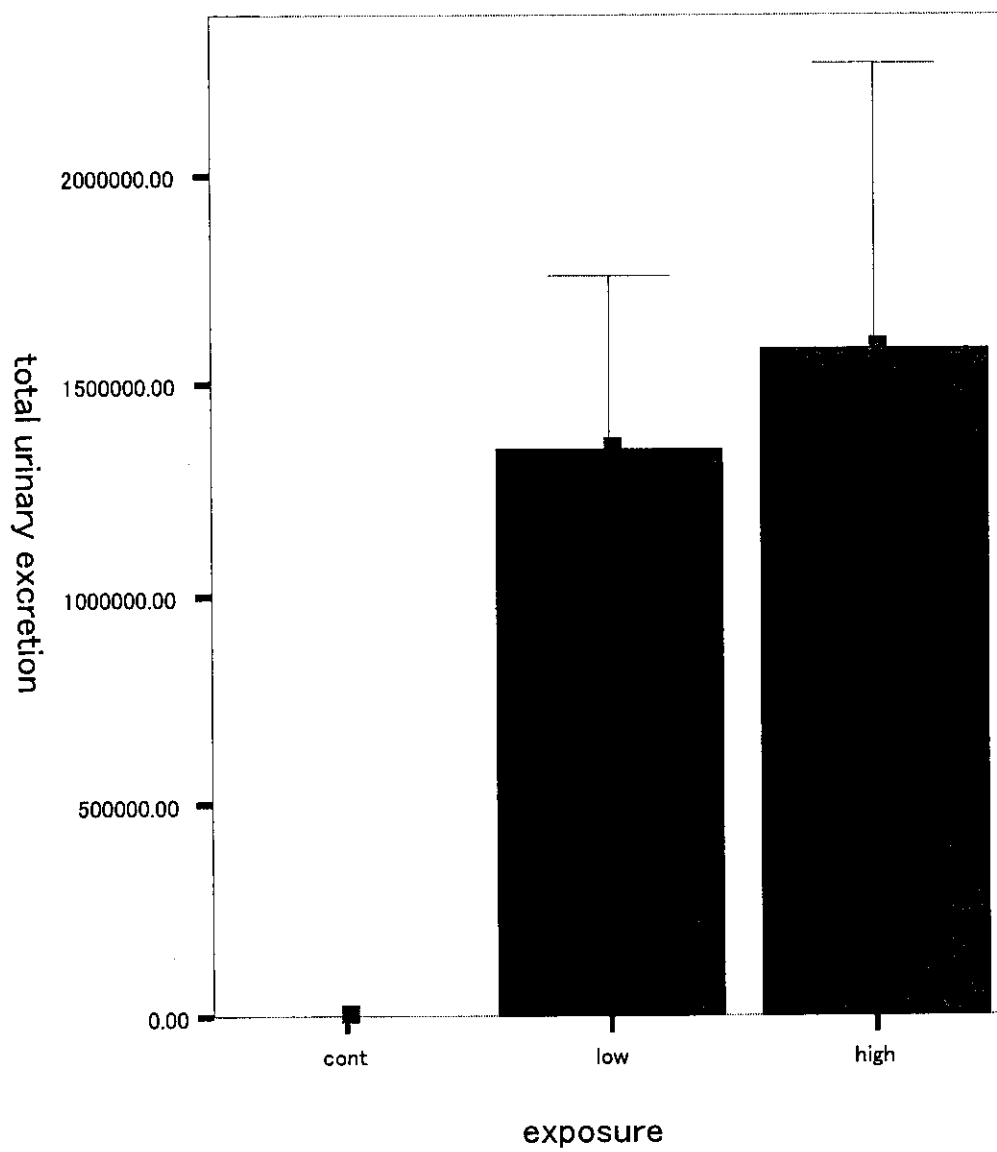


Fig.2 Total urinary TCA excretion



**Fig. 3** Blood TCA concentration

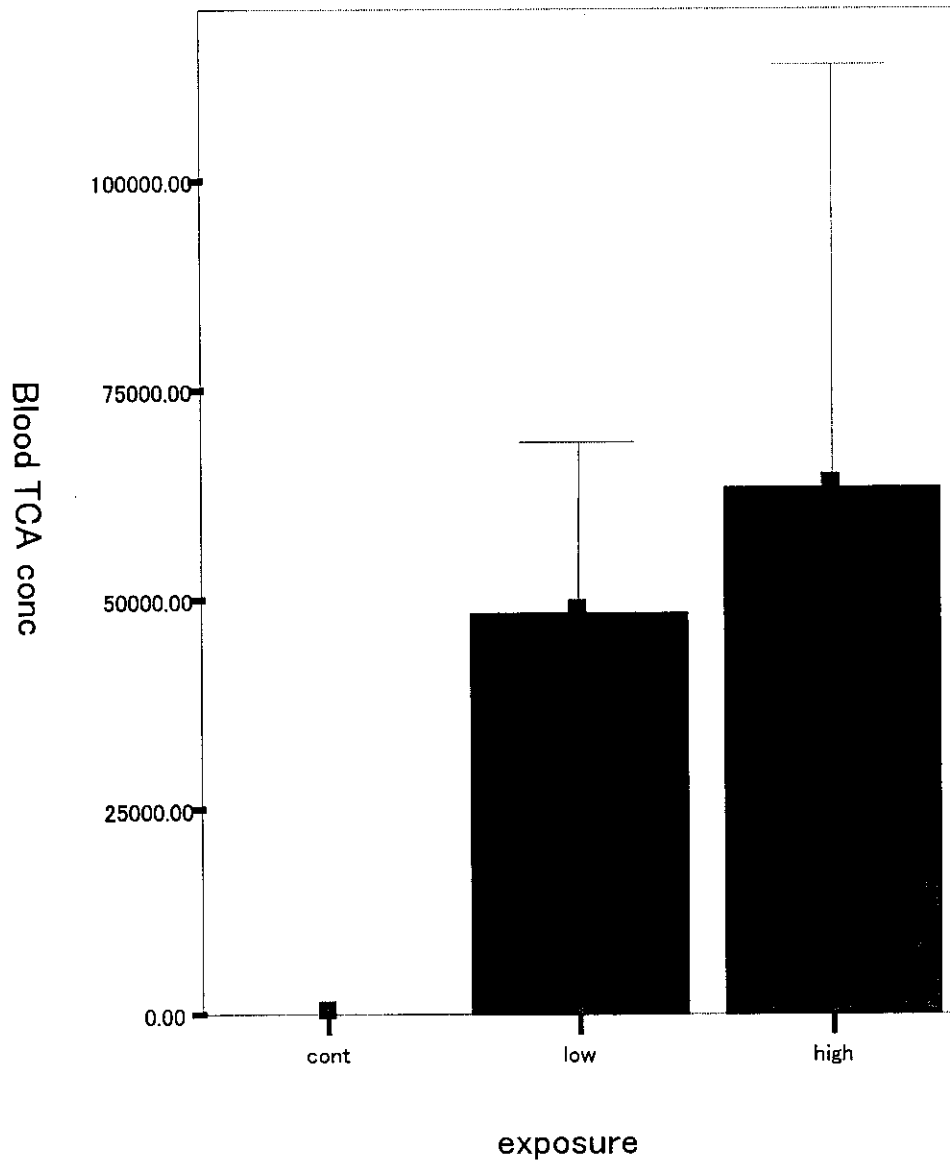


Fig. 4

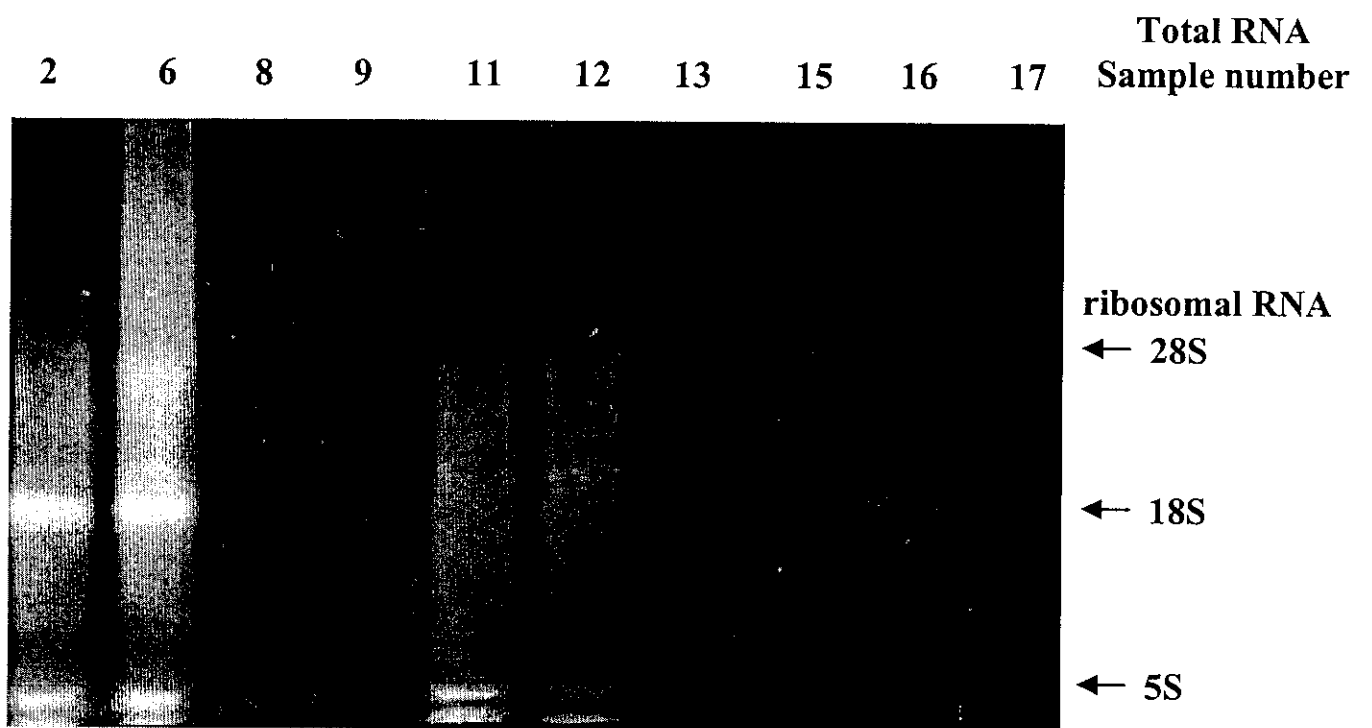
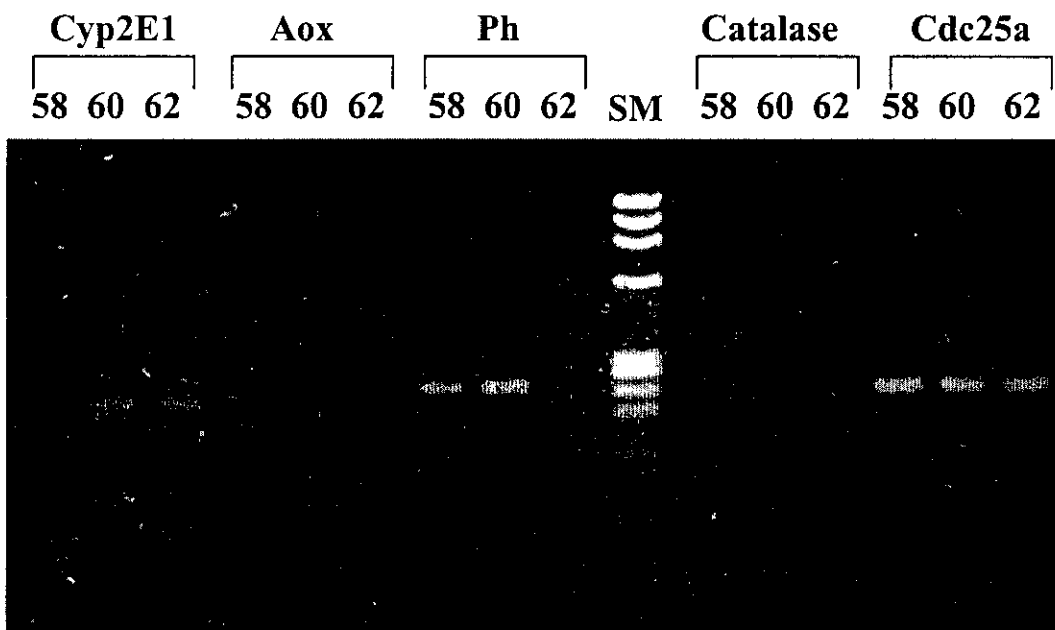
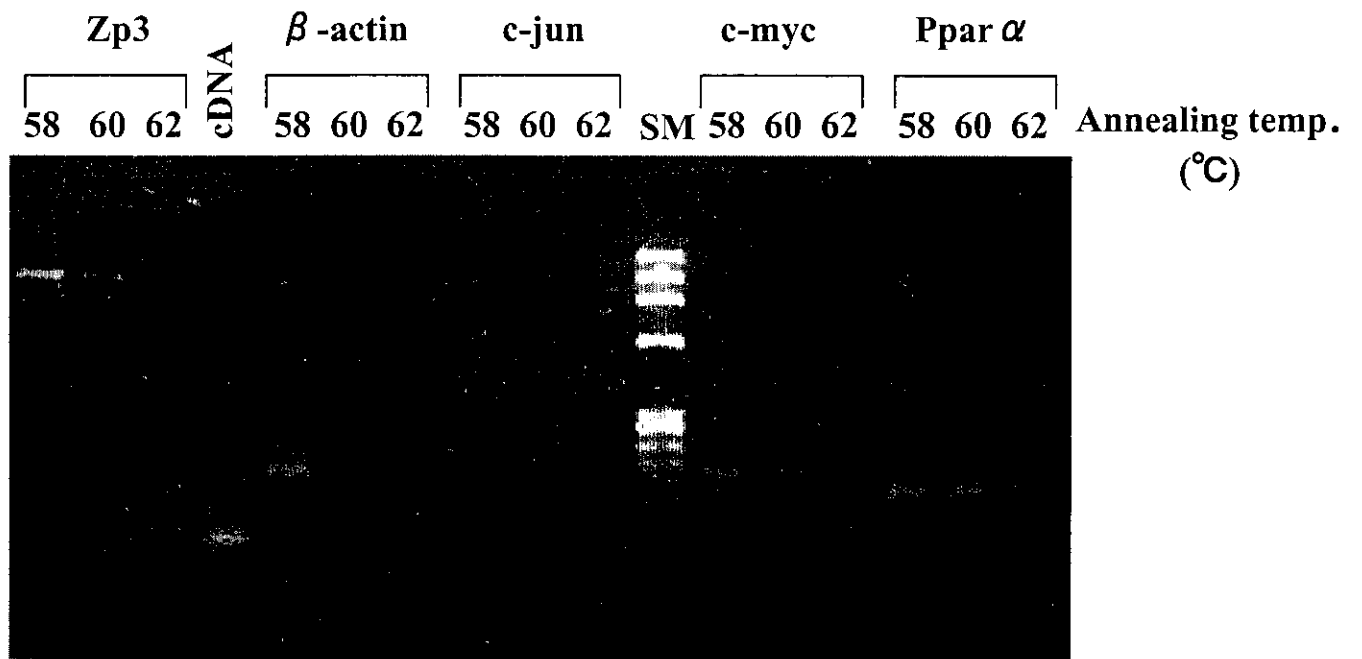
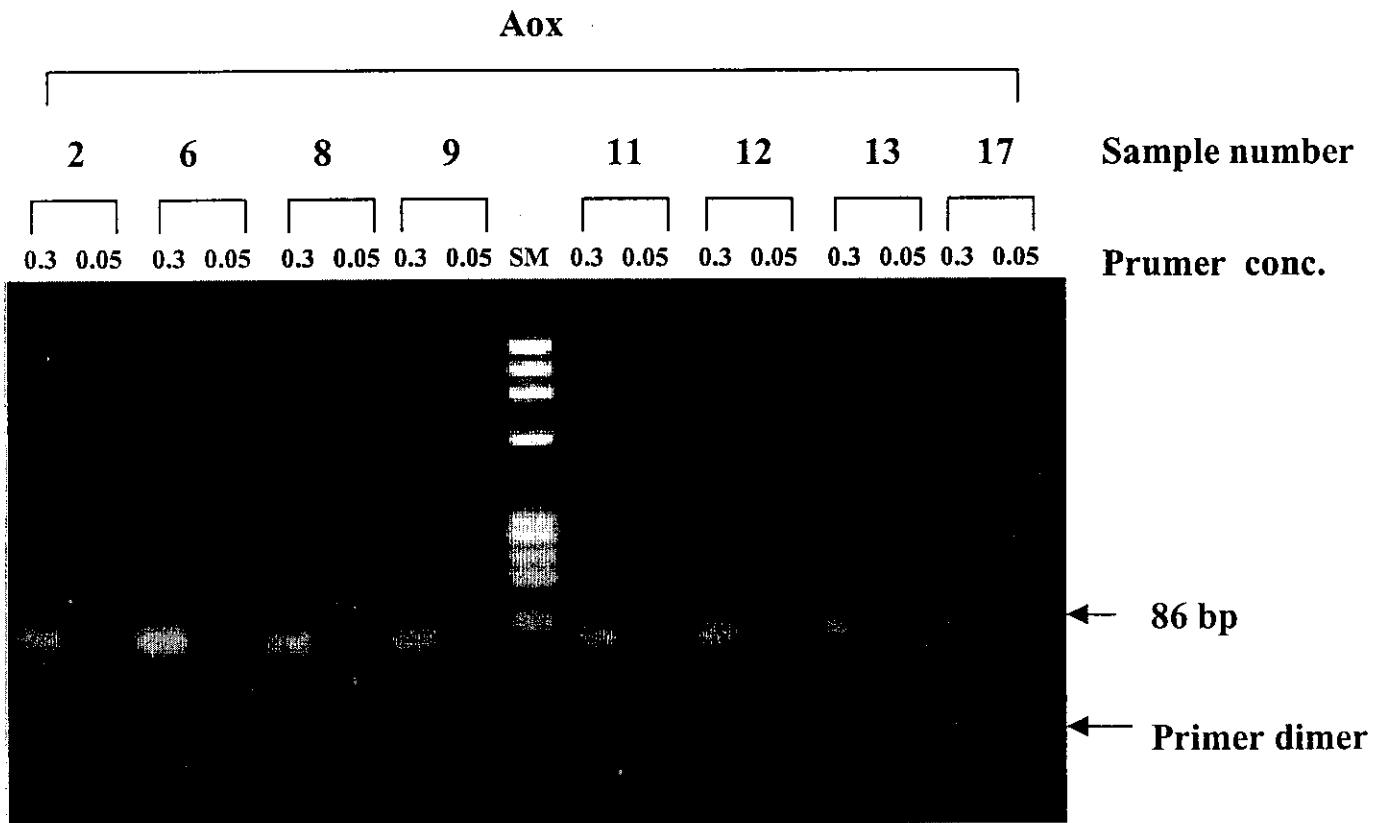


Fig.5

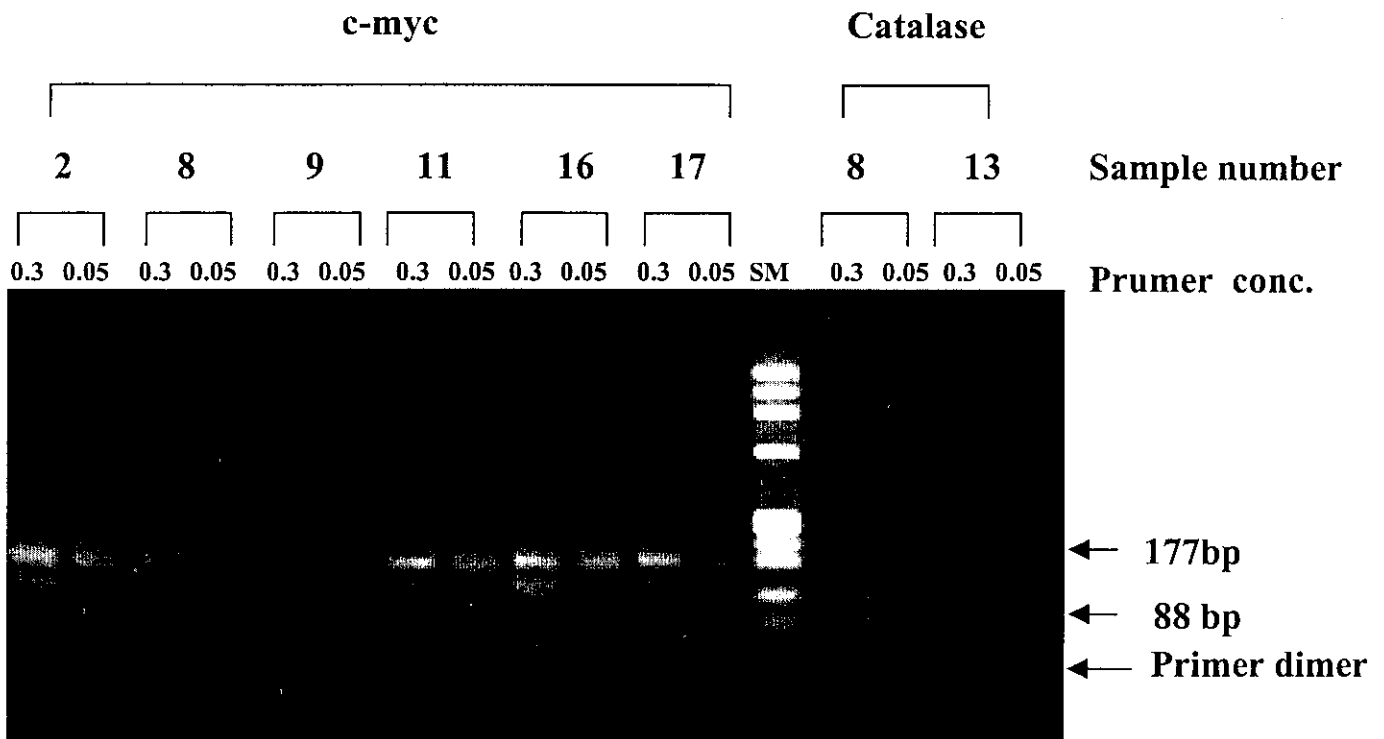


**Fig.6-A**





**Fig.6-B**



**Fig 7-A** Primer conc. condition for c-myc

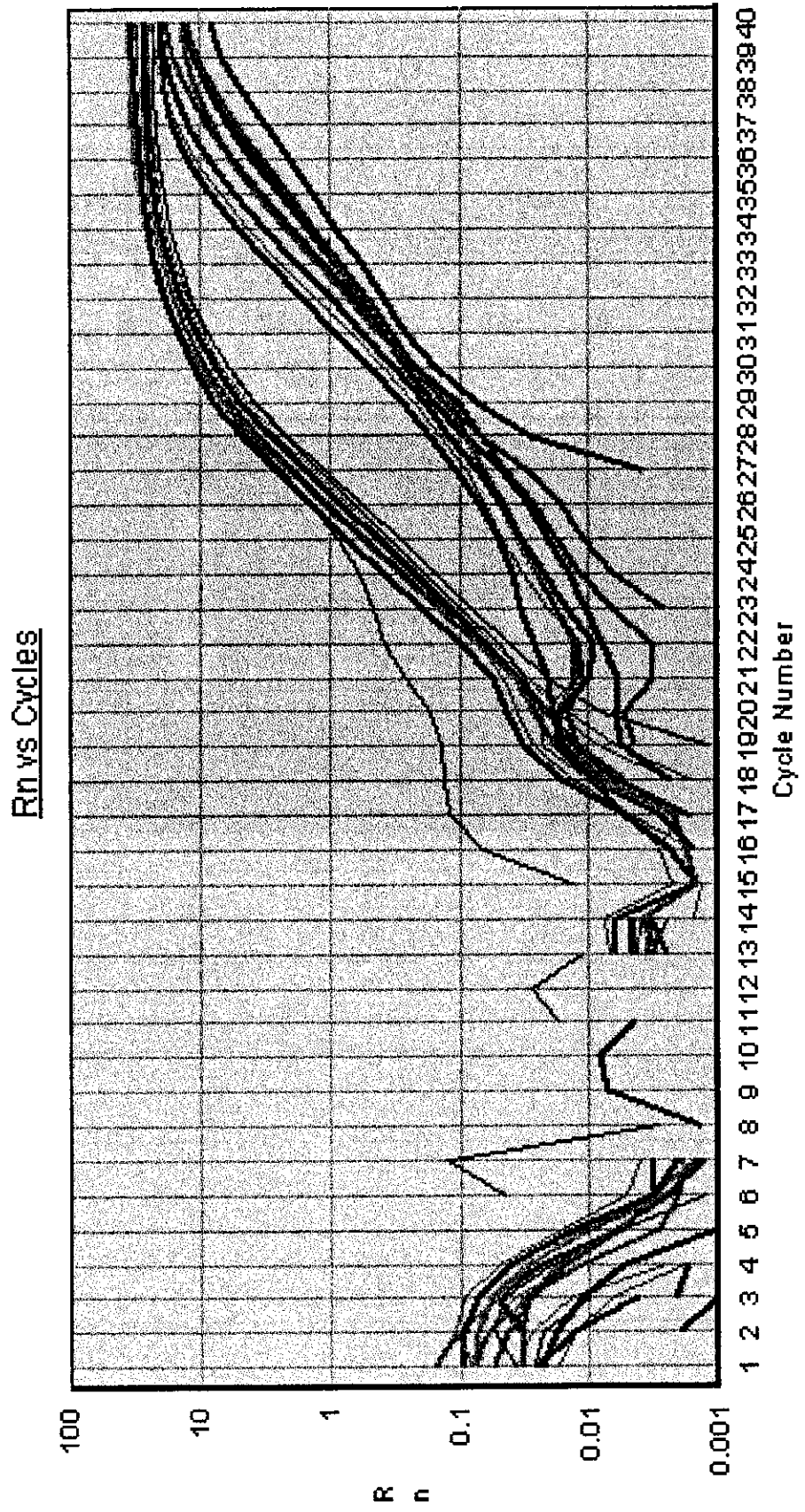
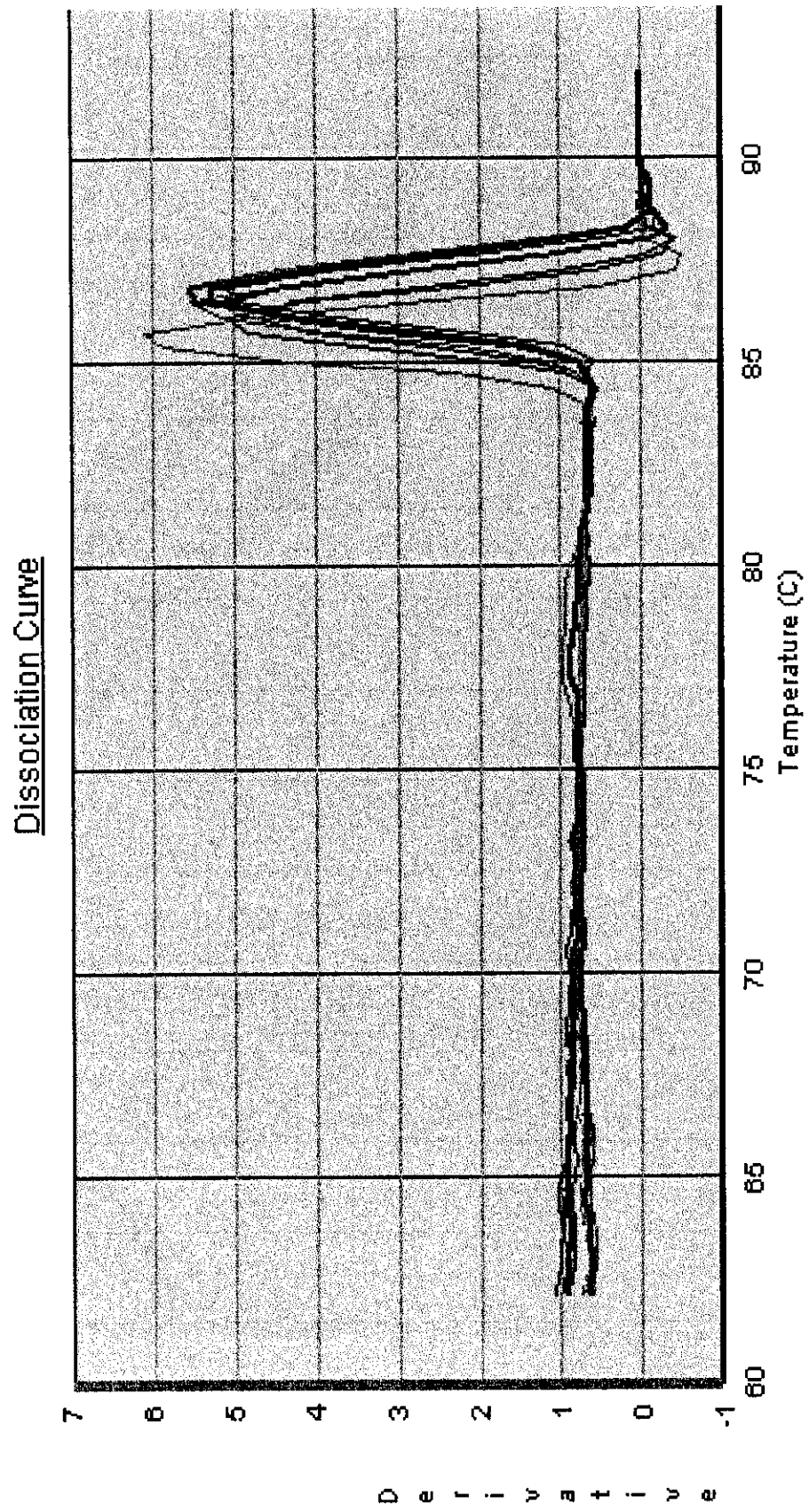


Fig. 7-A Dis. c-myc



**Fig. 7-B** Primer conc. condition for Cyp2E1

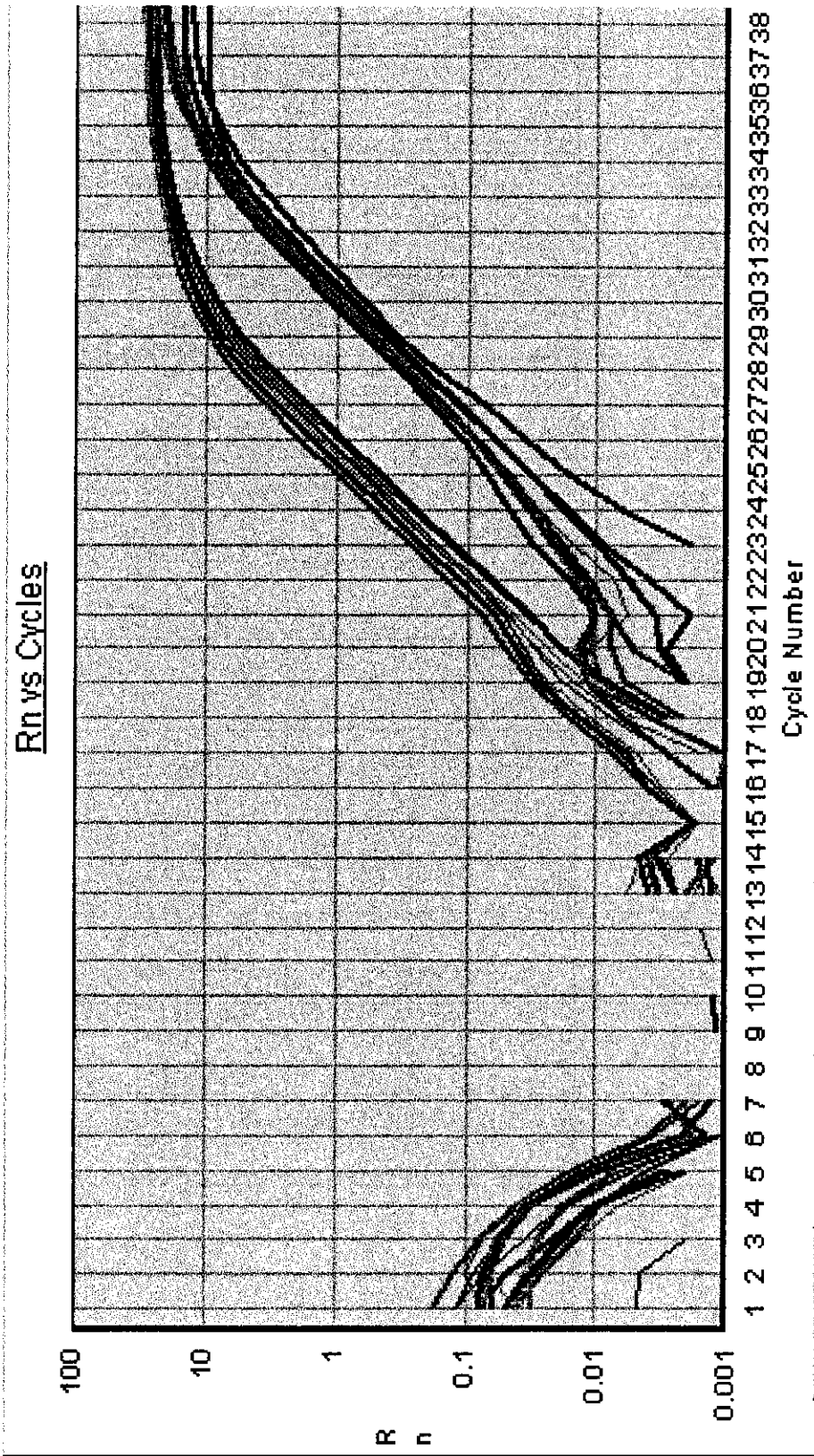
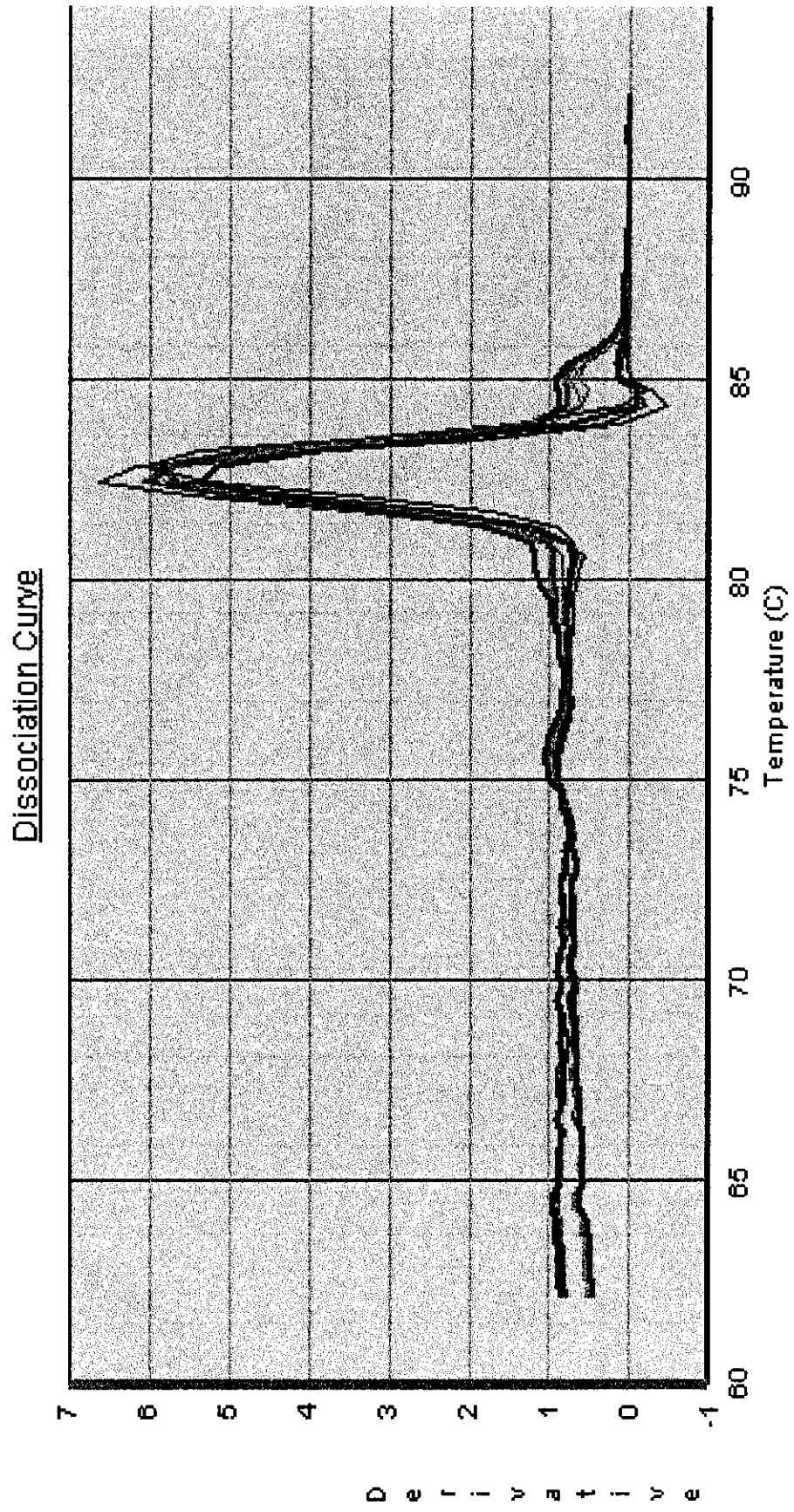


Fig. 7-B Dis. Cyp2E1



**Fig.7-C** Primer conc. condition for Ph

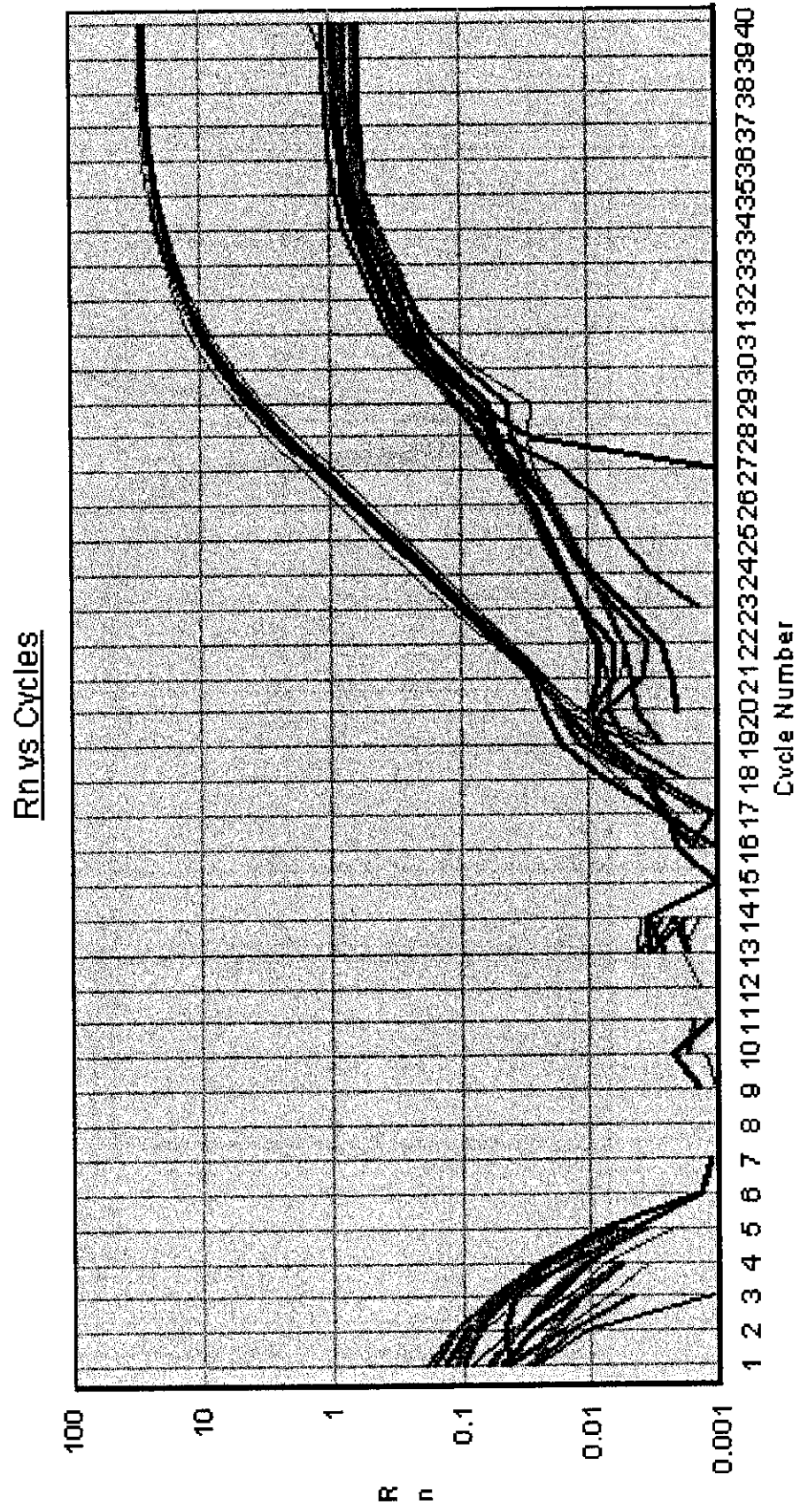
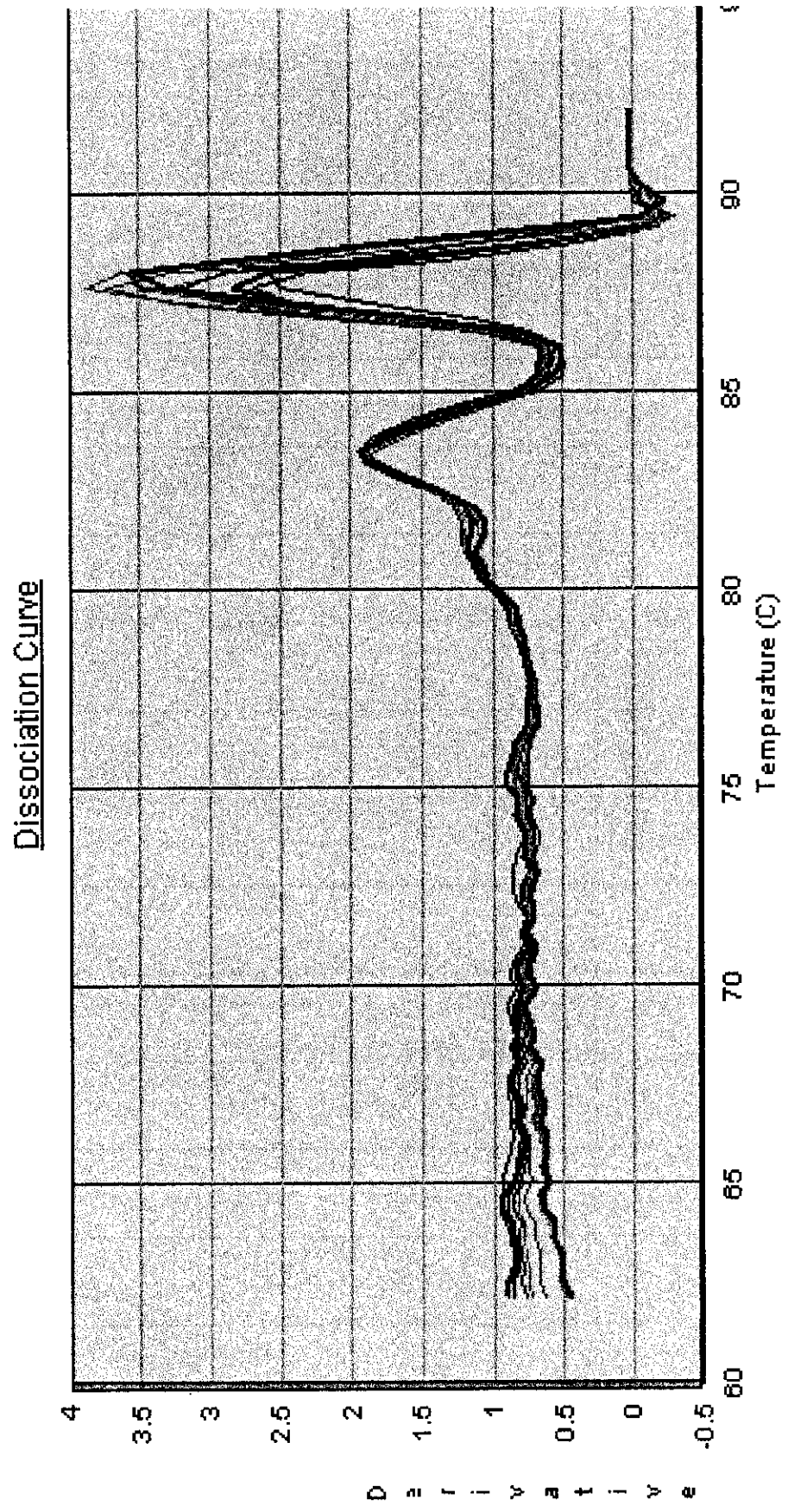
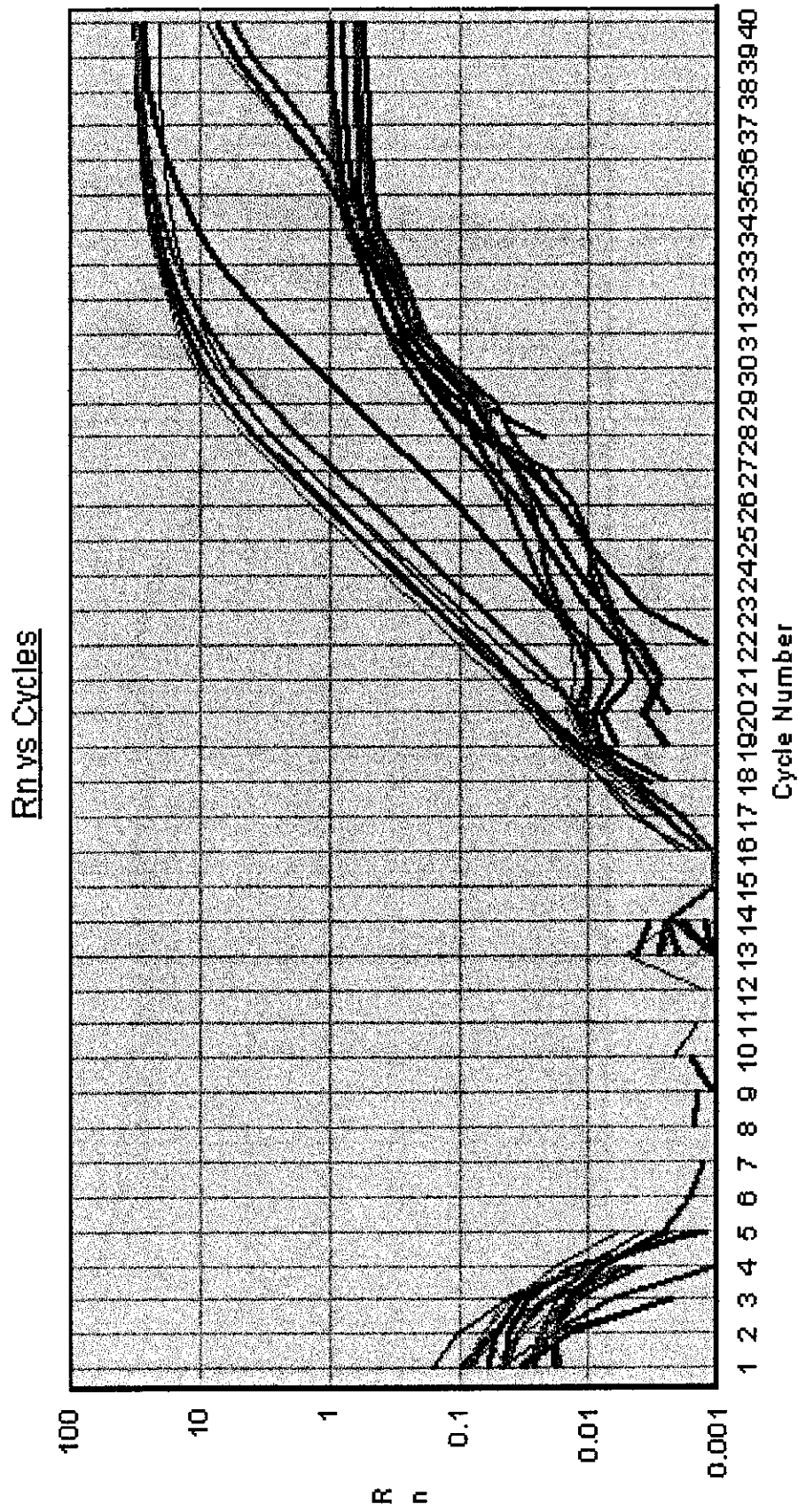




Fig. 7-C Dis. Ph

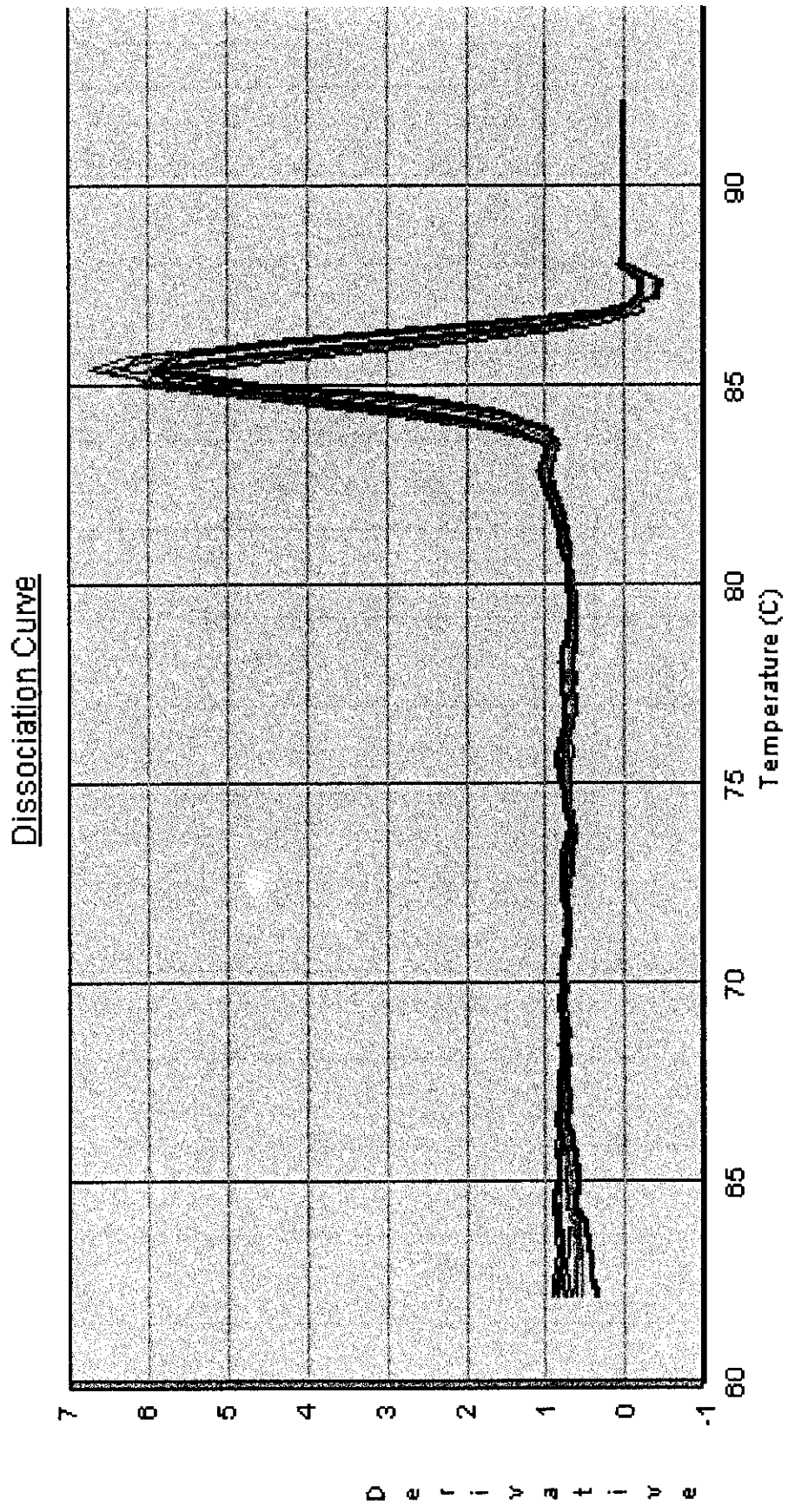


**Fig. 7-D** primer conc. condition for Cdc25A

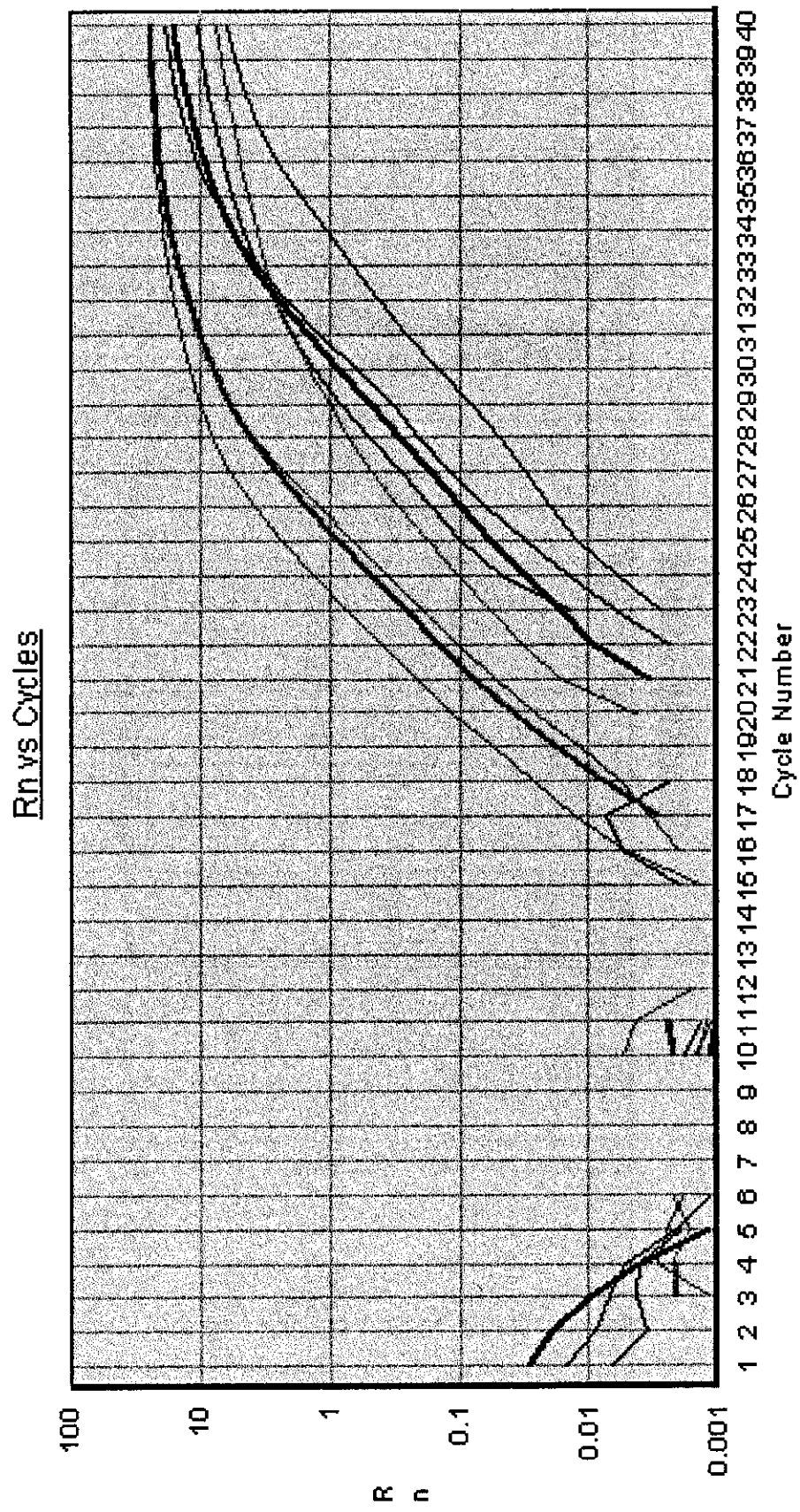




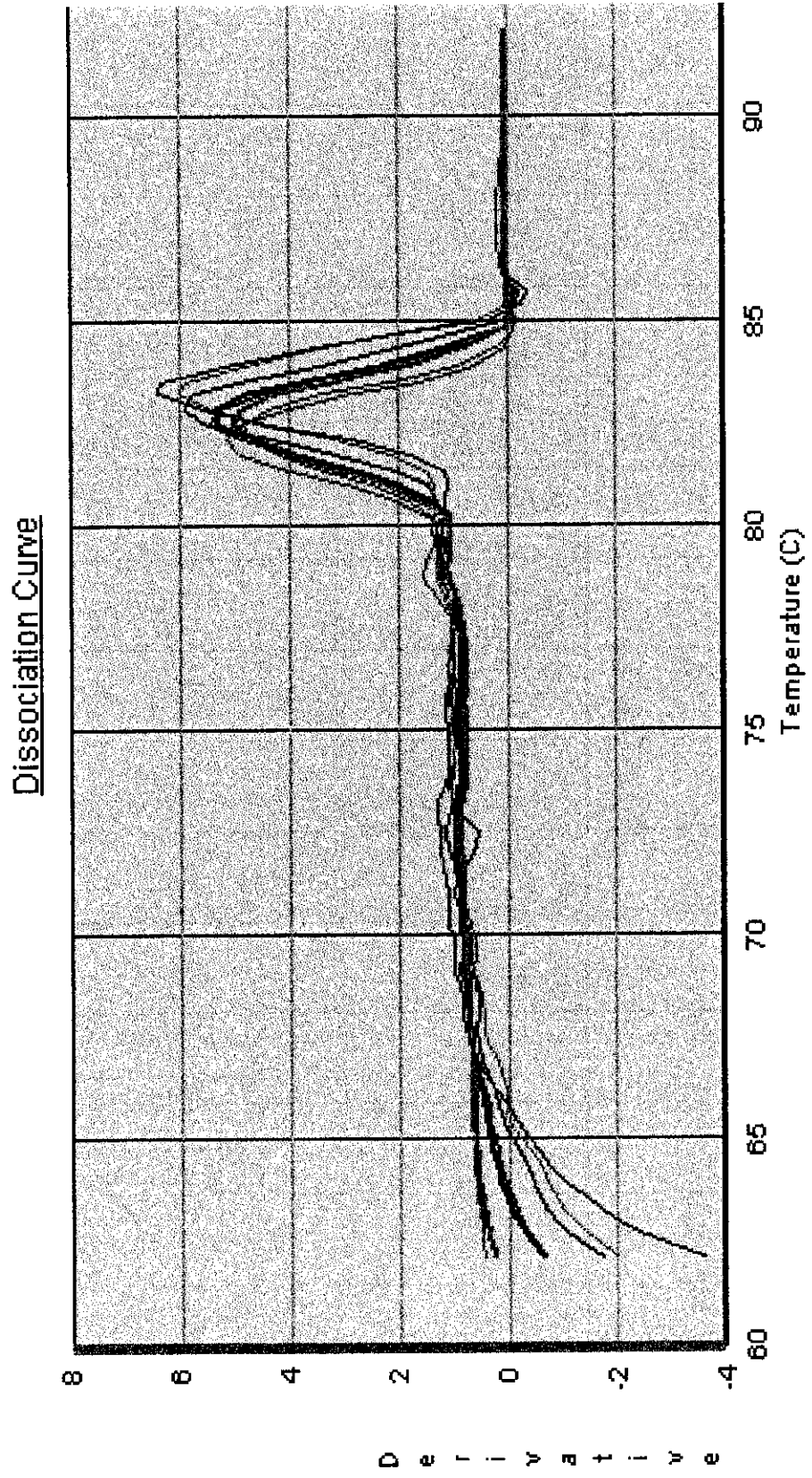
**Fig. 7-D Dis. Cdc25A**



**Fig. 8-A** beta-actin



**Fig.8-A Dis.** beta-actin



**FIG. 8-B** Cyp2E1

