

WORLD TABLES 1995

**Published for the World Bank
The Johns Hopkins University Press
Baltimore and London**

	1973	1974	1975	1976	1977	1978	1979	1980	1981	1982	1983
CURRENT GNP PER CAPITA (US \$)	4,941	5,090	5,244	5,420	5,601	5,789	5,983	6,183	6,330	6,588	6,900
USE AND ORIGIN OF RESOURCES											
Great National Product (GNP)	34.8	47.9	57.7	59.0	70.0	79.7	82.7	92.0	1,033.8	1,171.6	1,316.1
Net Factor Income from Abroad	0.8	32.4	8.0	-18.0	-21.0	-4.0	-34.8	-81.1	-74.3	-74.0	-71.4
GNP at Market Prices	34.0	44.1	59.7	61.2	71.0	75.7	82.7	92.0	1,033.8	1,171.6	1,316.1
Resource Balance	-34.2	-36.5	-48.8	-51.6	-63.7	-60.3	-52.5	-44.3	-46.6	-48.8	-48.8
Exports of Goods & NFServices	100.6	129.3	154.3	166.3	218.4	207.2	200.0	240.7	284.4	280.2	288.2
Imports of Goods & NFServices	134.8	179.8	243.1	237.9	252.1	329.2	333.0	390.0	449.0	479.0	479.0
Domestic Absorption	400.2	520.2	618.5	643.6	761.7	842.2	917.0	1,017.0	1,153.4	1,324.4	1,481.8
Private Consumption, etc.	270.0	320.2	385.3	416.6	481.4	502.2	591.6	702.8	779.4	919.8	983.3
General Gov't Consumption	48.7	65.7	74.7	86.3	98.6	134.2	164.0	179.9	198.0	210.0	218.9
Great Domestic Investment	81.5	124.1	178.6	166.7	179.7	178.7	207.8	281.4	248.7	266.6	271.4
Fixed Investment	74.3	87.5	131.8	133.5	161.6	207.1	231.9	323.1	167.8	167.8	179.3
Indirect Taxes, net	23.2	28.2	35.0	33.7	44.1	58.2	77.7	107.8	116.1	116.1	129.4
GNP at factor cost	340.8	433.3	494.7	578.3	683.9	762.5	786.8	901.6	1,000.3	1,129.5	1,297.4
Agriculture	141.7	178.4	184.3	226.7	235.8	294.9	311.9	333.3	340.3	360.8	407.7
Industry	57.3	73.9	100.6	107.1	127.6	143.3	148.1	172.8	196.4	219.9	273.3
Manufacturing	64.9	68.8	90.3	84.8	90.8	104.8	127.1	139.0	163.3
Services, etc.	141.8	181.0	209.9	244.5	270.5	304.3	328.8	393.5	440.6	489.8	562.4
Great Domestic Saving	45.3	71.6	89.8	109.1	146.0	164.3	169.3	108.9	106.4	130.7	118.1
Great National Saving	47.8	89.3	100.0	91.6	122.5	166.7	79.9	34.1	67.1	126.3	131.1
USE AND ORIGIN OF RESOURCES (Millions of Malawi Kwacha)											
Great National Product	1,959.6	1,732.8	1,837.9	1,833.4	1,921.4	2,176.4	2,193.6	2,114.6	2,023.0	2,091.5	2,189.8
Net Factor Income from Abroad	-44.0	-92.0	-713.2	-538.6	-654.4	-424.7	-555.5	-641.2	-991.5	-601.5	-401.5
GNP at Market Prices	374.6	408.2	449.2	495.3	572.1	654.4	681.0	640.3	521.7	473.3	483.3
Resource Balance	374.6	408.2	449.2	495.3	572.1	654.4	681.0	640.3	521.7	473.3	483.3
Exports of Goods & NFServices	2,076.8	2,215.6	2,312.4	2,424.2	2,547.4	2,802.4	2,832.6	2,830.3	2,559.4	2,621.4	2,767.7
Imports of Goods & NFServices	1,387.5	1,385.4	1,473.7	1,529.1	1,548.3	1,599.3	1,660.0	1,746.1	1,653.7	1,639.0	1,680.0
Domestic Absorption	182.3	183.5	194.8	200.0	206.1	230.0	314.2	314.2	321.3	320.0	320.0
Private Consumption, etc.	492.8	644.7	843.9	690.4	680.2	1,163.2	879.9	740.3	521.1	645.5	714.1
General Gov't Consumption	475.7	472.5	639.4	615.0	648.2	948.7	792.2	686.3	471.7	639.3	481.1
Fixed Investment	1,441.5	1,548.0	1,654.7	1,738.7	1,811.6	1,962.4	2,028.2	2,020.8	1,914.5	1,869.3	2,003.5
Indirect Taxes, net	604.4	618.8	622.5	696.3	745.4	797.1	823.0	768.2	703.2	750.4	783.6
GNP at factor cost	268.2	289.0	339.8	329.0	345.7	397.4	390.3	398.0	384.4	384.9	397.4
Agriculture	211.9	210.8	218.9	229.2	240.6	240.0	241.7	247.9	264.4
Industry	643.2	711.4	691.4	777.9	779.9	856.6	824.9	873.0	873.0
Manufacturing
Services, etc.
Capacity to Import	618.0	648.9	737.8	809.6	837.5	710.3	584.7	754.6	747.4	687.7	624.4
Terms of Trade Adjustment	239.3	239.8	248.8	314.5	325.2	375.8	107.7	116.1	221.7	209.5	163.4
Great Domestic Income	1,821.2	1,584.3	2,067.8	2,199.9	2,300.5	2,631.6	2,384.9	2,465.3	2,389.6	2,430.4	2,487.7
Great National Income	1,821.2	2,012.6	2,126.5	2,167.7	2,344.6	2,452.3	2,303.3	2,330.7	2,246.7	2,300.9	2,334.4
DOMESTIC PRICES/DEFLATORS											
Overall (GDP)	21.01	27.23	29.44	32.46	36.76	36.77	37.96	43.91	51.11	56.08	62.38
Domestic Absorption	19.59	23.11	24.62	27.37	31.29	31.45	35.90	43.92	51.09	56.08	62.38
Agriculture	23.44	28.92	29.59	32.56	36.90	37.00	37.94	43.65	51.09	56.08	62.38
Industry	21.37	25.57	28.61	32.56	36.91	36.99	37.94	43.65	51.09	56.08	62.38
Manufacturing	28.64	32.03	36.68	36.99	37.74	43.66	51.11	56.08	62.38
Consumer Price Index
MANUFACTURING ACTIVITY											
Employment (1987=100)
Real Earnings per Empl. (1987=100)
Real Output per Empl. (1987=100)
Earnings as % of Value Added	41.0	40.4	40.0	43.2	33.0	39.8	40.7	35.1
MONETARY HOLDINGS											
Money Supply, Broadly Defined	96.3	133.9	139.6	137.9	171.7	190.7	193.4	219.5	273.7	317.9	348.5
Money	55.1	73.4	73.6	72.8	102.1	93.8	90.6	97.2	114.8	130.8	177.8
Currency Outside Banks	21.3	28.3	22.8	23.1	24.6	29.8	32.3	35.3	39.4	49.5	50.8
Deposits	31.8	45.1	43.8	49.7	73.5	64.0	58.3	61.9	73.4	81.0	77.7
Quasi-Money	44.1	60.5	64.0	65.1	74.6	96.9	102.8	122.3	159.0	187.1	228.9
GOVERNMENT DEFICIT (+) OR SURPLUS											
Current Revenue	-20.6	-29.5	-48.6	-37.6	-43.2	-24.3	-75.3	-160.3	-137.7	-95.0	-101.6
Current Expenditure	62.2	72.7	91.4	97.4	133.3	169.0	211.2	235.3	237.2	271.6	319.7
Current Budget Balance	37.9	67.4	79.0	84.5	97.7	139.1	148.9	148.9	148.9	148.9	148.9
Capital Receipts	4.3	5.2	14.4	12.9	21.6	29.9	62.3	54.8	-6.7	15.4	11.3
Capital Payments	0.3	0.3	0.3	0.3	0.3	0.3	0.4	0.6	0.4	0.4	1.0
Overall	25.2	35.0	63.2	56.8	73.1	104.6	138.2	215.5	191.4	110.5	119.4

MALAWI	1973	1974	1975	1976	1977	1978	1979	1980	1981	1982	1983	1984	1985	1986	1987	1988	1989	1990	1991	1992	1993	1993
FOREIGN TRADE (CUSTOMS BASED)																						
Value of Exports, fob	98.00	121.00	139.00	165.00	200.00	230.00	233.00	325.00	370.00	311.00	246.00	229.20	309.00	249.00	245.00	278.00	244.00	257.00	418.00	473.00	383.48	320.04
Value of Imports, cif	141.00	181.00	251.00	204.00	233.00	338.00	398.00	440.00	350.00	311.00	246.00	229.20	269.00	235.00	258.00	298.00	297.00	508.00	573.00	703.00	718.30	546.08
Terms of Trade	120.6	121.2	126.1	117.4	143.6	135.8	109.5	96.2	104.2	98.3	116.1	115.5	99.4	96.2	96.2	100.0	97.1	104.4	124.5	104.8	83.9	71.1
Export Prices, fob	50.9	84.2	71.7	67.9	91.5	97.2	93.4	94.3	98.1	90.6	100.0	101.9	81.7	89.6	89.6	100.0	101.9	101.9	124.5	123.6	101.9	83.9
Import Prices, cif	42.2	33.9	56.9	37.8	63.7	71.6	85.3	94.0	94.1	92.2	80.2	84.3	89.2	89.2	93.1	100.0	104.9	107.8	116.7	115.7	118.6	83.9
BALANCE OF PAYMENTS																						
Exports of Goods & Services	145.48	185.09	212.60	196.15	231.20	238.55	314.74	317.55	274.38	233.28	233.28	349.80	283.17	276.18	322.23	334.75	337.00	309.20	456.60	520.10	423.80	333.70
Imports of Goods & Services	223.39	315.90	418.66	316.33	399.79	522.43	590.72	577.54	463.74	346.11	246.11	311.81	245.48	248.41	272.48	294.96	288.40	309.20	475.50	520.10	397.30	334.50
Merchandise, fob	22.29	32.26	35.33	23.44	13.40	21.60	34.77	31.77	43.07	33.06	34.81	35.38	32.98	24.45	40.48	28.19	29.90	37.20	35.70	37.20	20.20	17.00
Nonfactor Services	23.51	37.22	38.61	7.39	13.40	1.07	2.22	1.34	1.32	1.52	1.11	2.62	4.71	3.23	3.26	9.60	10.50	9.30	7.40	7.40	4.30	2.26
Factor Services	184.90	228.86	301.59	266.00	417.71	577.93	637.86	622.51	460.17	497.57	497.57	649.45	443.49	408.42	421.37	483.35	507.80	590.20	748.90	751.10	584.50	516.90
Imports of Merchandise, fob	45.42	66.30	99.25	66.15	117.51	119.35	133.19	176.55	146.77	133.21	141.88	156.29	147.93	139.44	150.91	184.77	196.30	233.30	309.30	350.80	272.00	272.00
Nonfactor Services	16.09	16.48	17.56	17.20	49.42	17.19	151.34	131.46	92.94	101.46	101.46	116.72	118.92	114.88	92.81	45.45	60.40	32.70	51.90	45.20	43.80	43.80
Factor Services	6.00	7.70	8.50	8.40	7.20	16.60	24.20	34.50	33.00	30.30	30.30	30.10	28.90	34.10	28.50	24.50	28.80	33.20	40.80	30.40	24.70	24.70
Long-Term Interest																						
Private Current Transfers, net	2.03	1.56	2.35	0.58	-0.55	7.59	7.10	13.30	11.95	11.84	8.8	11.33	11.11	13.11	13.81	15.07	-13.90	-11.10	-33.30	-17.80	28.50	28.50
Workers' Remittances	-3.58	-2.16	-4.77	-4.62						0.00	0.00	0.00	0.00	0.00	0.00	0.00	0.00	0.00	0.00	0.00	0.00	0.00
Curr. A/C Bal before Off. Transf.	-37.19	-42.21	-46.45	-49.27	-47.83	-213.90	-312.29	-309.82	-193.01	-154.05	-168.8	-70.30	-149.21	-178.12	-83.34	-133.35	-212.50	-144.70	-350.10	-345.10	-221.30	-221.30
Net Official Transfers	9.42	6.49	6.80	36.55	76.03	38.87	46.44	50.19	47.44	37.33	30.8	23.26	25.20	29.70	30.28	80.52	74.50	81.10	59.40	118.60	78.80	78.80
Curr. A/C Bal after Off. Transf.	-27.78	-35.72	-79.65	-42.72	-41.80	-175.03	-263.45	-259.63	-145.57	-116.72	-137.0	46.04	-124.01	-148.42	-53.06	-53.01	-138.00	-63.60	-190.70	-226.50	-142.50	-142.50
Long-Term Capital, net	48.32	69.51	57.19	46.78	37.70	96.12	98.79	100.80	51.27	9.38	9.38	79.23	5.76	37.61	92.54	171.94	93.50	87.10	106.60	92.10	149.70	149.70
Direct Investment	7.35	22.75	8.62	9.70	3.54	9.15	-1.22	9.44	1.12	2.5	2.5	73.50	22.90	80.20	73.00	82.00	93.50	87.10	106.70	92.20	149.50	149.50
Long-Term Loans	27.80	25.40	52.00	48.80	109.80	97.50	120.20	83.70	42.80	41.8	41.8	111.40	64.80	146.00	110.10	116.60	123.20	132.40	170.00	142.50	189.80	189.80
Disbursements	32.70	32.10	60.00	37.80	91.90	109.80	117.00	133.40	39.20	30.50	28.8	82.20	64.00	62.80	62.80	34.60	29.70	43.30	61.30	50.30	40.30	40.30
Repayments	4.90	6.70	8.60	9.00	19.70	19.70	33.20	30.50	28.8	28.8	28.8	0.00	-17.46	-42.99	19.45	89.94	0.00	0.00	-0.10	-0.10	0.20	0.20
Other Long-Term Capital	12.97	21.38	-3.43	-11.74	-31.24	-22.91	3.71	31.21	-33.35	-33.42	21.8	1.46	97.62	51.10	27.00	-7.44	11.80	19.19	112.58	40.45	15.61	15.61
Other Capital, net	13.20	-19.25	4.06	-40.07	55.53	71.97	89.62	62.01	69.03	89.13	3.07	-26.44	20.63	8.70	-48.48	-111.49	32.70	-42.69	-31.48	53.95	-21.81	-21.81
Change in Reserves	-33.94	-16.54	18.40	36.03	-51.0	6.96	77.23	16.72	23.27	18.21	32.7											
MEMO ITEMS																						
Conversion Factor (Annual Avg)	0.819	0.841	0.864	0.913	0.903	0.844	0.817	0.812	0.895	1.056	1.18	1.413	1.719	1.861	2.309	2.561	2.760	2.729	2.803	3.603	4.500	4.500
EXTERNAL DEBT (Total)																						
Long-Term Debt (by debt)	201.8	229.7	239.9	299.0	448.9	546.1	600.6	820.8	812.4	856.6	883	859	1,019.9	1,161.1	1,372.8	1,364.7	1,434.4	1,594.3	1,695.5	1,703.9	1,821.2	1,821.2
Central Bank, incl. IMF credit	201.8	229.7	239.9	299.0	448.9	546.1	600.6	820.8	812.4	856.6	883	859	1,019.9	1,161.1	1,372.8	1,364.7	1,434.4	1,594.3	1,695.5	1,703.9	1,821.2	1,821.2
Central Bank, excl. IMF credit	176.0	197.4	216.1	223.8	266.2	347.2	335.1	414.1	456.8	496.5	563	627.3	725.5	848.8	1,090.3	1,146.3	1,207.2	1,343.8	1,483.4	1,528.9	1,694.3	1,694.3
Rest of Central Government																						
Non-financial Public Enterprises	24.8	31.6	20.2	27.1	46.2	68.6	92.5	131.8	125.6	115.2	87	9.1	51.8	49.2	58.1	51.6	57.8	56.7	41.1	31.7	28.9	28.9
Priv. Sector, incl. non-guaranteed		0.5	0.4	1.1	19.8	39.6	44.3	53.1	44.9	36.8	71	18.5	14.5	13.7	12.5	16.9	10.1	7.1	5.5	1.6	1.3	1.3
Short-Term Debt					69.0	75.0	115.0	116.1	50.0	85.5	71	42.0	80.6	80.1	95.1	90.2	48.7	61.7	30.4	49.8	11.6	11.6
MEMO ITEMS																						
Conversion Factor (Annual Avg)	0.819	0.841	0.864	0.913	0.903	0.844	0.817	0.812	0.895	1.056	1.18	1.413	1.719	1.861	2.309	2.561	2.760	2.729	2.803	3.603	4.500	4.500
EXTERNAL DEBT (Total)																						
Long-Term Debt (by debt)	201.8	229.7	239.9	299.0	448.9	546.1	600.6	820.8	812.4	856.6	883	859	1,019.9	1,161.1	1,372.8	1,364.7	1,434.4	1,594.3	1,695.5	1,703.9	1,821.2	1,821.2
Central Bank, incl. IMF credit	201.8	229.7	239.9	299.0	448.9	546.1	600.6	820.8	812.4	856.6	883	859	1,019.9	1,161.1	1,372.8	1,364.7	1,434.4	1,594.3	1,695.5	1,703.9	1,821.2	1,821.2
Central Bank, excl. IMF credit	176.0	197.4	216.1	223.8	266.2	347.2	335.1	414.1	456.8	496.5	563	627.3	725.5	848.8	1,090.3	1,146.3	1,207.2	1,343.8	1,483.4	1,528.9	1,694.3	1,694.3
Rest of Central Government																						
Non-financial Public Enterprises	24.8	31.6	20.2	27.1	46.2	68.6	92.5	131.8	125.6	115.2	87	9.1	51.8	49.2	58.1	51.6	57.8	56.7	41.1	31.7	28.9	28.9
Priv. Sector, incl. non-guaranteed		0.5	0.4	1.1	19.8	39.6	44.3	53.1	44.9	36.8	71	18.5	14.5	13.7	12.5	16.9	10.1	7.1	5.5	1.6	1.3	1.3
Short-Term Debt					69.0	75.0	115.0	116.1	50.0	85.5	71	42.0	80.6	80.1	95.1	90.2	48.7	61.7	30.4	49.8	11.6	11.6
MEMO ITEMS																						
Conversion Factor (Annual Avg)	0.819	0.841	0.864	0.913	0.903	0.844	0.817	0.812	0.895	1.056	1.18	1.413	1.719	1.861	2.309	2.561	2.760	2.729	2.803	3.603	4.500	4.500
SOCIAL INDICATORS																						
Urban Population, % of total	7.0	7.4	7.7	8.0	8.3	8.5	8.8	9.1	9.4	9.6	9.8	10.1	10.4	10.7	11.0	11.2	11.5	11.8	12.1	12.5	12.8	12.8
Total Fertility Rate																						
Public Expend. on Health (% GDP)																						
Life Expectancy at Birth																						
Infant Mortality Rate																						
Child Mortality (% underweight)																						
Food Production per capita (1987=100)	142.7	137.5	127.3	131.9	131.3	135.3	128.5	123.5	126.0	129.												

UNITED STATES		1973	1974	1975	1976	1977	1978	1979	1980	1981	1982	1983
CURRENT GNP PER CAPITA (US \$)		6,910	7,340	8,070	8,510	9,130	10,250	11,690	12,820	13,720	13,410	13,800
POPULATION (millions)		212	214	216	218	221	223	225	228	230	232	234
USE AND ORIGIN OF RESOURCES												
Gross National Product (GNP)		1,364.1	1,477.5	1,602.3	1,748.8	1,997.4	2,233.2	2,520.2	2,744.6	3,071.3	3,181.7	3,427.8
Net Factor Income from Abroad		13.6	16.9	14.7	18.5	22.0	23.8	24.3	36.3	35.3	33.2	31.5
GNP at Market Prices		1,320.5	1,460.6	1,587.6	1,730.3	1,975.4	2,209.5	2,495.9	2,708.3	3,035.8	3,148.5	3,396.3
Resource Balance		2.8	-2.5	14.3	-9.3	-33.0	-27.7	-35.5	-16.4	-18.3	-23.0	-31.4
Imports of Goods & NFServices		91.7	124.9	137.0	147.8	151.1	164.6	227.2	277.3	301.6	300.2	272.7
Exports of Goods & NFServices		91.2	127.5	122.7	151.1	182.4	212.3	253.7	291.9	317.7	321.1	321.1
Domestic Absorption		1,347.9	1,463.2	1,573.3	1,721.7	2,000.3	2,237.2	2,511.4	2,724.5	3,071.1	3,145.7	3,449.7
Private Consumption, etc.		83.4	91.0	1,004.2	1,120.8	1,247.0	1,379.2	1,547.1	1,708.3	1,847.3	2,016.9	2,201.9
General Gov't Consumption		234.9	263.3	294.6	319.3	346.6	378.1	420.8	476.3	528.4	579.3	620.1
Gross Domestic Investment		279.6	289.3	274.5	333.5	406.7	489.9	543.5	546.4	603.8	590.7	624.4
Gross Domestic Investment		115.1	125.5	135.0	145.8	157.8	168.4	179.5	201.3	237.1	240.9	218.0
Indirect Taxes, net		1,235.1	1,338.1	1,437.8	1,575.0	1,748.4	1,969.8	2,266.6	2,528.2	2,791.7	2,916.3	3,136.3
GNP at factor cost		518.8	523.3	535.0	518.8	543.5	561.1	577.2	603.8	603.8	590.7	624.4
Agriculture		453.5	497.9	521.8	518.8	543.5	561.1	577.2	603.8	603.8	590.7	624.4
Industry		338.6	341.2	340.2	412.3	448.6	522.8	566.6	586.4	641.0	689.3	718.4
Manufacturing		84.1	90.0	1,012.8	1,125.4	1,250.0	1,410.1	1,577.7	1,735.5	1,916.9	2,081.8	2,264.0
Services, etc.		281.2	288.8	300.2	330.2	381.7	442.3	518.0	523.5	618.1	584.3	571.6
Gross Domestic Saving		284.5	302.7	302.6	347.8	402.9	483.0	531.4	559.9	600.0	580.7	596.0
Gross National Saving		284.5	302.7	302.6	347.8	402.9	483.0	531.4	559.9	600.0	580.7	596.0
Gross National Product		3,262.8	3,244.6	3,205.3	3,303.6	3,518.1	3,686.3	3,790.1	3,773.3	3,849.7	3,782.4	3,895.6
GNP at Market Prices		3,229.9	3,207.2	3,193.6	3,238.6	3,479.2	3,647.5	3,738.4	3,723.5	3,806.4	3,723.3	3,837.5
Resource Balance		-41.7	-17.1	7.2	-28.8	-55.6	-53.2	-54.2	14.2	8.6	-13.6	-68.8
Imports of Goods & NFServices		215.6	231.4	228.9	235.9	239.0	262.1	285.2	318.3	318.3	290.0	271.0
Exports of Goods & NFServices		246.3	248.5	241.7	264.7	294.6	315.3	319.4	294.1	304.9	303.7	318.8
Domestic Absorption		3,271.6	3,224.3	3,168.4	3,372.3	3,534.8	3,700.7	3,772.6	3,709.5	3,795.9	3,736.9	3,918.3
Private Consumption, etc.		2,016.6	2,000.0	2,038.3	2,146.3	2,232.6	2,324.4	2,377.2	2,426.6	2,426.6	2,426.6	2,520.3
General Gov't Consumption		582.2	598.3	604.5	611.0	618.3	624.6	642.2	649.9	670.2	686.0	701.1
Gross Domestic Investment		677.2	626.0	523.5	599.9	683.9	749.7	731.2	678.5	723.1	627.8	677.0
Gross Domestic Investment		637.4	599.4	542.2	573.9	643.5	703.4	732.8	683.8	647.7	638.5	675.7
Indirect Taxes, net		2,949.5	2,930.4	2,903.4	3,057.3	3,200.3	3,371.2	3,468.5	3,449.0	3,510.1	3,433.4	3,564.2
GNP at factor cost		41.8	45.54	49.99	53.19	56.78	61.13	64.50	72.73	79.78	84.67	87.99
Agriculture		41.20	45.38	49.66	52.83	56.59	61.00	66.57	73.45	80.41	84.98	88.04
Industry		"	"	"	"	"	"	"	"	"	"	"
Manufacturing		39.07	43.38	47.34	50.06	53.31	57.38	63.85	72.47	79.95	84.87	87.90
Services, etc.		"	"	"	"	"	"	"	"	"	"	"
Memo Items:												
Capacity to Import		261.5	243.6	247.4	258.7	254.3	274.2	287.2	281.5	293.0	280.7	281.6
Terms of Trade Adjustment		48.9	12.1	18.5	22.8	15.2	17.0	2.0	-30.8	-22.4	-9.4	3.6
Gross Domestic Income		3,278.1	3,219.4	3,194.1	3,311.3	3,494.4	3,659.5	3,740.4	3,692.7	3,780.0	3,713.9	3,811.1
Gross National Income		3,311.8	3,256.7	3,223.8	3,346.3	3,533.4	3,686.3	3,792.1	3,742.5	3,824.2	3,733.0	3,899.2
DOMESTIC PRICES/DEFLATORS												
Overall (GNP)		41.81	45.54	49.99	53.19	56.78	61.13	64.50	72.73	79.78	84.67	87.99
Domestic Absorption		41.20	45.38	49.66	52.83	56.59	61.00	66.57	73.45	80.41	84.98	88.04
Agriculture		"	"	"	"	"	"	"	"	"	"	"
Industry		"	"	"	"	"	"	"	"	"	"	"
Manufacturing		"	"	"	"	"	"	"	"	"	"	"
Consumer Price Index		39.07	43.38	47.34	50.06	53.31	57.38	63.85	72.47	79.95	84.87	87.90
MANUFACTURING ACTIVITY												
Employment (1987=100)		106.5	108.7	97.0	99.9	104.5	108.7	111.5	108.9	106.8	106.6	98.7
Real Output per Empl. (1987=100)		100.0	97.0	96.8	98.4	101.3	101.6	97.8	93.5	93.1	95.3	95.7
Real Output per Empl. (1987=100)		44.0	42.1	43.1	41.7	41.4	41.3	39.9	40.9	40.8	41.4	40.1
Earnings as % of Value Added		86.9	91.6	1,031.1	1,169.4	1,291.3	1,391.2	1,520.8	1,659.4	1,846.0	2,052.3	2,273.8
MONETARY HOLDINGS		277.3	286.9	302.0	318.7	345.7	375.2	408.2	432.2	460.3	494.2	540.3
Money Supply, Broadly Defined		61.9	69.1	74.2	79.7	84.0	91.4	107.6	116.8	122.8	131.9	146.6
Currency Outside Banks		215.4	217.8	227.8	239.0	257.7	277.8	300.6	315.4	337.5	362.3	391.7
Demand Deposits		549.6	629.7	726.1	850.7	945.6	1,018.0	1,112.6	1,227.2	1,385.7	1,538.3	1,733.5
Quasi-Money		"	"	"	"	"	"	"	"	"	"	"
GOVERNMENT DEFICIT (-) OR SURPLUS		-16.2	-4.5	-33.9	-74.9	-57.2	-58.9	-35.9	-76.2	-78.7	-133.7	-202.5
Current Revenue		243.9	277.6	311.0	311.1	371.3	416.6	488.6	545.9	639.8	659.6	633.3
Current Expenditure		260.5	282.1	344.9	382.0	428.5	475.5	524.5	621.8	718.5	833.3	1,035.8
Current Budget Balance		-2.5	-6.6	-33.9	-70.9	-57.2						

UNITED STATES		1984	1985	1986	1987	1988	1989	1990	1991	1992	1993	
CURRENT GNP PER CAPITA (US \$)		15,180	16,270	17,840	19,810	21,620	21,040	21,340	22,600	23,790	24,740	
POPULATION (millions)		236	238	241	243	246	248	250	253	255	258	
USE AND ORIGIN OF RESOURCES												
Gross National Product (GNP)		3,792.5	4,077.2	4,246.1	4,308.6	4,469.7	4,222.1	4,319.6	4,611.6	5,033.1	5,275.9	
Net Factor Income from Abroad		29.0	20.6	12.0	12.0	15.7	23.6	20.0	23.2	15.8	16.0	
GNP at Market Prices		3,763.5	4,056.6	4,234.1	4,296.6	4,454.0	4,198.5	4,299.6	4,588.4	5,017.6	5,259.9	
Resource Balance		-107.3	-121.2	-138.7	-150.5	-113.8	-87.3	-79.6	-28.6	-40.2	-26.5	
Imports of Goods & NFServices		297.8	298.4	313.1	356.6	434.4	348.9	344.9	392.3	628.2	671.8	
Exports of Goods & NFServices		405.1	417.6	451.7	507.1	557.2	436.2	414.5	420.9	668.4	724.3	
Domestic Absorption		3,701.9	3,935.4	4,102.4	4,146.1	4,339.9	4,228.8	4,319.6	4,564.2	5,002.4	5,193.9	
Private Consumption, etc.		2,401.9	2,598.4	2,764.7	2,860.6	3,021.4	2,924.4	3,041.7	3,176.3	3,396.9	3,528.5	
General Gov't Consumption		699.7	722.9	741.9	811.0	876.4	818.4	871.9	1,005.5	1,030.4	1,070.4	
Gross Domestic Investment		799.1	811.6	822.8	835.5	895.2	895.6	924.6	883.2	930.3	1,001.1	
Gross Domestic Investment		727.8	740.9	752.9	765.9	829.9	829.9	861.2	883.2	933.5	1,001.1	
Indirect Taxes, net		287.0	309.2	318.6	333.0	354.1	385.6	413.7	449.3	472.3	487.5	
GNP at factor cost		3,476.5	3,767.2	3,912.2	4,163.6	4,499.9	4,181.9	4,271.9	4,507.1	5,045.0	5,272.4	
Agriculture		82.5	85.2	86.5	89.2	88.2	"	"	"	84.0	85.9	
Industry		1,913.8	2,228.9	2,311.6	2,306.6	2,306.6	"	"	"	"	"	
Manufacturing		718.4	797.4	824.4	862.3	862.3	"	"	"	"	"	
Services, etc.		2,486.4	2,706.3	2,892.3	3,100.6	3,100.6	"	"	"	"	"	
Gross Domestic Saving		691.8	690.3	644.1	707.0	779.4	868.3	863.0	854.6	900.0	953.6	
Gross National Saving		711.1	701.4	649.3	706.5	763.2	879.2	880.0	866.0	902.5	953.9	
Gross National Product		4,146.3	4,265.8	4,377.9	4,308.6	4,469.7	4,822.9	4,877.2	4,954.9	4,939.6	5,117.8	
GNP at Market Prices		4,114.5	4,244.0	4,362.0	4,298.6	4,459.7	4,801.1	4,855.6	4,932.2	4,964.6	5,104.6	
Resource Balance		-121.2	-140.7	-157.3	-150.5	-113.8	-89.9	-74.2	-29.2	-53.8	-27.1	
Imports of Goods & NFServices		298.0	301.0	320.9	356.6	434.4	348.9	344.9	392.3	628.2	671.8	
Exports of Goods & NFServices		419.1	417.6	451.7	507.1	557.2	436.2	414.5	420.9	668.4	724.3	
Domestic Absorption		4,235.7	4,384.7	4,519.3	4,647.1	4,799.3	4,691.0	4,924.8	4,972.3	5,002.2	5,201.7</	

UNITED STATES	1973	1974	1975	1976	1977	1978	1979	'80	1981	1982	1983	1984	1985	1986	1987	'88	1989	1990	1991	1992	1993 NOTES UNITED STATES
FOREIGN TRADE (CUSTOMS BASIS)	(Billions of US dollars)																				
Value of Exports, fob	70.22	97.14	108.05	113.32	121.29	143.77	151.02	220.79	223.74	212.23	202.94	224.00	218.03	227.16	254.12	321.81	343.81	393.29	421.73	448.16	464.77
Value of Imports, cif	68.66	107.11	103.94	128.87	160.41	186.04	222.23	256.98	273.55	254.88	269.38	341.18	361.63	382.30	424.64	459.56	493.19	516.99	488.45	554.02	603.44
Terms of Trade	122.3	105.4	108.1	108.3	107.7	102.8	98.0	88.8	91.9	94.4	99.5	99.1	100.9	103.4	100.0	102.1	101.7	99.4	100.3	99.6	100.7
Export Prices, fob	41.1	52.4	58.7	60.6	62.8	67.1	74.4	84.7	84.7	86.8	94.1	98.1	97.4	98.3	100.0	107.1	109.8	110.9	111.9	112.0	112.4
Import Prices, cif	33.6	49.8	54.3	55.9	60.6	65.3	77.9	97.7	100.1	101.4	97.1	99.0	98.5	99.2	100.0	104.9	108.0	111.5	111.5	112.4	111.6
(Index 1987 = 100)																					
BALANCE OF PAYMENTS	(Billions of US dollars)																				
Exports of Goods & Services	110.20	144.72	155.74	171.03	184.29	220.01	227.93	344.44	330.95	341.90	320.71	335.00	331.55	400.40	447.28	537.60	641.48	696.83	717.08	731.39	735.48
Imports of Goods & Services	71.41	94.32	107.08	114.75	129.80	142.08	184.47	224.23	227.05	211.17	201.80	219.95	215.91	223.35	250.21	320.33	342.13	319.31	416.92	440.36	436.87
Merchandise, fob	13.78	16.98	18.98	21.21	22.80	29.59	32.80	40.44	40.97	38.42	34.38	64.80	66.26	78.15	87.79	98.04	115.90	130.47	144.99	156.50	164.21
Nonfactor Services	23.01	31.44	39.68	33.67	37.31	44.36	70.56	79.75	93.95	91.91	90.40	110.27	99.58	109.28	139.34	166.45	177.05	155.17	183.53	194.53	194.40
Exports of Goods & Services	99.01	137.33	152.70	162.14	193.79	229.84	281.65	333.83	344.19	335.83	371.57	474.13	483.99	591.29	600.90	600.90	718.28	754.90	737.16	767.20	827.28
Merchandise, fob	70.50	102.83	98.18	124.22	151.91	176.00	212.01	249.74	247.65	268.98	332.41	332.41	338.09	348.41	409.77	447.19	477.38	480.98	536.46	589.44	639.44
Nonfactor Services	18.45	21.00	21.50	24.11	24.70	31.01	35.56	40.25	44.21	50.24	53.24	65.69	70.79	71.63	87.47	94.35	94.48	112.73	112.35	114.66	121.78
Factor Services	10.06	12.47	13.06	13.81	15.18	22.83	34.28	43.82	54.91	57.94	55.79	76.03	75.11	81.35	94.05	119.36	142.42	143.94	131.80	116.08	116.06
Long-Term Interest																					
Private Current Transfers, net	-1.25	-1.01	-0.92	-0.91	-0.82	-0.86	-0.91	-1.03	-0.51	-0.73	-0.06	-0.75	-0.56	-0.12	-0.53	-1.16	-12.69	-13.04	-13.82	-13.29	-13.72
Workers' Remittances	-0.71	-0.68	-0.59	-0.65	-0.62	-0.60	-0.75	-0.81	-0.07	-0.42	-0.71	-5.17	-3.48	-3.89	-4.45	-6.70	-7.14	-7.41	-7.57	-7.54	-7.46
Curr. A/C Bal before Off. Transf.	9.94	8.38	22.03	8.39	-10.32	-10.69	5.27	9.58	13.25	-3.06	-31.89	-48.88	-112.00	-157.11	-154.57	-115.26	-89.50	-71.11	-21.99	-49.10	-85.53
Net Official Transfers	-2.87	-6.42	-3.97	-4.41	-4.17	-4.71	-5.07	-7.53	-7.20	-8.34	-8.48	-10.84	-13.43	-14.03	-12.49	-15.02	-13.35	-20.43	-20.48	-18.75	-16.40
Curr. A/C Bal after Off. Transf.	7.07	1.96	18.06	4.17	-14.49	-15.40	0.50	2.25	5.05	-11.40	-44.49	-99.72	-125.43	-151.14	-167.06	-128.28	-102.85	-91.74	-48.91	-67.85	-101.93
Long-Term Capital, net	-6.97	-7.51	-19.69	-15.13	-12.36	-10.13	-19.95	-7.23	-0.75	-12.08	-1.67	29.77	61.02	84.04	58.05	69.53	71.51	-33.85	-7.98	-15.94	-55.86
Direct Investment	-4.53	-4.55	-11.64	-7.59	-8.18	-8.16	-13.35	-2.30	15.57	11.49	5.56	13.82	6.61	18.52	31.04	41.82	30.90	17.97	-5.21	-31.12	-96.50
Long-Term Loans																					
Disbursements																					
Repayments																					
Other Long-Term Capital	1.56	-3.23	-4.05	-7.54	-4.18	-1.97	-6.58	-4.93	-16.33	-33.57	-13.23	13.55	34.41	64.52	27.01	27.71	40.61	-51.81	-3.77	15.17	-19.36
Other Capital, net	-4.23	-3.30	-5.32	0.44	-4.19	-6.35	33.56	-2.91	-5.94	25.51	48.10	70.66	70.20	33.31	52.14	22.49	49.26	93.78	-4.89	41.60	91.13
Change in Reserves	4.12	8.85	4.95	18.52	33.04	31.88	-15.83	7.89	1.24	-2.03	4.08	-0.72	-3.80	33.78	56.86	34.77	-16.80	29.81	21.78	62.20	68.65
Memo Items	1.000	1.000	1.000	1.000	1.000	1.000	1.000	1.000	1.000	1.000	1.000	1.000	1.000	1.000	1.000	1.000	1.000	1.000	1.000	1.000	1.000
Conversion Factor (Annual Avg)	(US Dollars per US dollar)																				
EXTERNAL DEBT (Total)	(US dollars)																				
Long-Term Debt (by debtor)																					
Central Bank, incl. IMF credit																					
Central Government																					
Rest of Central Government																					
Non-financial Public Enterprises																					
Priv. Sector, incl. non-guaranteed																					
Short-Term Debt																					
Memo Items																					
Int'l Reserves Excluding Gold	2.73	4.23	4.63	7.15	7.59	6.98	7.78	15.80	18.92	22.81	22.63	73.84	32.10	37.45	34.72	34.74	63.55	73.26	64.66	60.27	60.35
Gold Holdings (at market price)	30.98	51.47	34.33	37.01	45.78	62.47	133.48	153.82	104.96	126.64	100.48	81.02	85.89	102.43	127.02	107.43	105.10	100.84	92.41	87.26	102.27
Conversion Factor (Annual Avg)	(US Dollars per US dollar)																				
SOCIAL INDICATORS	(Billions of US dollars)																				
Urban Population, % of total	73.7	73.7	73.7	73.7	73.7	73.7	73.7	73.7	73.7	73.7	74.2	74.3	74.5	74.6	74.8	74.9	75.1	75.2	75.4	75.6	75.8
Total Fertility Rate						1.8	1.8	1.8	1.8	1.8	1.8										
Life Expectancy at Birth (% GDP)																					
Life Expectancy at Birth			9.1					7.8													
Infant Mortality Rate					73.2																
Child Malaria (% underweight)																					
Food Production per capita (1987 = 100)																					
Public Expend. on Education (% GDP)																					
Adult Female Illiteracy																					
Primary Sch. Enroll. Ratio, Female																					
Secondary Sch. Enroll. Ratio, Female																					
Secondary Sch. Enroll. Ratio, Female																					
Labor Force (millions)	91.45	95.63	97.85	100.15	102.49	104.90	107.36	109.87	111.23	112.59	113.98	115.38	116.80	117.82	118.85	119.90	120.95	122.01	122.93	123.86	124.80
Labor Force, Female (%)	38.1	38.6	39.1	39.6	40.1	40.6	41.1	41.6	41.6	41.6	41.6	41.5	41.5	41.5	41.5	41.5	41.4	41.4	41.4	41.4	41.4

GNP per capita 1999, Atlas method and PPP

Ranking	Economy	Atlas methodology (US dollars)	Ranking	Economy	Purchasing power parity (International dollars)
1	Luxembourg	44,640	1	Luxembourg	38,247
2	Liechtenstein	.. a	4	United States	30,600
3	Switzerland	38,350	6	Switzerland	27,486
4	Bermuda	35,590 a	7	Singapore	27,024
5	Norway	32,880	8	Norway	26,522
6	Japan	32,230	9	Iceland	26,283
7	Denmark	32,030	12	Denmark	24,280
8	United States	30,600	13	Belgium	24,200
9	Singapore	29,610	14	Japan	24,041
10	Cayman Islands	.. a	15	Austria	23,808
11	Iceland	29,280	16	Canada	23,725
12	Austria	25,970	17	Netherlands	23,052
13	Germany	25,350	20	Australia	22,448
14	Monaco	.. a	21	Germany	22,404
15	Sweden	25,040	24	France /b	21,887
16	Belgium	24,510	25	Finland	21,209
17	Brunei	24,630 a	26	Hong Kong, China /c	20,939
18	Netherlands	24,320	27	United Kingdom	20,883
19	Finland	23,780	28	Sweden	20,824
20	Hong Kong, China /c	23,520	29	Italy	20,751
21	France /b	23,480	34	Ireland	19,180
22	United Kingdom	22,640	35	Cyprus	18,395
26	Australia	20,050	41	Spain	16,730
28	Italy	19,710	42	New Zealand	16,568
29	Canada	19,320	45	Portugal	15,147
30	Ireland	19,160	46	Malta	15,066 d
40	Spain	14,000	47	Slovenia	15,062
41	New Zealand	13,780	49	Korea, Rep.	14,637
44	Cyprus	11,960	50	Greece	14,595
45	Greece	11,770	52	Czech Republic	12,289
47	Portugal	10,600	56	Argentina	11,324
49	Slovenia	9,890	60	Hungary	10,479
50	Malta	9,210	63	Seychelles	10,381
51	Korea, Rep.	8,490	64	Slovak Republic	9,811
55	Argentina	7,600	65	St. Kitts and Nevis	9,801
61	Seychelles	6,540	67	Mauritius	8,652
62	St. Kitts and Nevis	6,420	68	Chile	8,370
63	Uruguay	5,900	69	South Africa	8,318 d
85	Czech Republic	5,060	70	Uruguay	8,260
67	Chile	4,740	72	Malaysia	7,963
68	Hungary	4,650	73	Poland	7,894
69	Croatia	4,580	74	Estonia	7,826
70	Brazil	4,420	75	Mexico	7,719 d
71	Mexico	4,400	76	Trinidad and Tobago	7,262
72	Trinidad and Tobago	4,390	78	Croatia	6,915
73	Poland	3,960	79	Belarus	6,518
75	St. Lucia	3,770	80	Russian Federation	6,339
76	Lebanon	3,700	81	Brazil	6,317
77	Venezuela, RB	3,670	82	Turkey	6,126
78	Mauritius	3,590	83	Lithuania	6,093
78	Slovak Republic	3,590	84	Botswana	6,032
80	Estonia	3,480	85	Latvia	5,938
81	Grenada	3,450	86	Grenada	5,847
82	Malaysia	3,400	87	Costa Rica	5,770
83	Gabon	3,350	88	Colombia	5,709
84	Botswana	3,240	89	Romania	5,647
85	Dominica	3,170	90	Thailand	5,599
86	South Africa	3,160	91	Tunisia	5,478
87	Panama	3,070	92	Namibia	5,369 d
88	Turkey	2,900	93	Gabon	5,325
89	Costa Rica	2,740	94	Venezuela, RB	5,268
90	Belize	2,730	95	Iran, Islamic Rep.	5,163

GNP per capita 1999, Atlas method and PPP

Ranking	Economy	Atlas methodology (US dollars)	Ranking	Economy	Purchasing power parity (International dollars)
91	St. Vincent and the Grenadines	2,700	97	St. Lucia	5,022
92	Belarus	2,630	98	Panama	5,016
93	Lithuania	2,620	99	Bulgaria	4,914
94	Latvia	2,470	100	Dominica	4,825
95	Peru	2,390	101	Algeria	4,753 d
97	Jamaica	2,330	102	St. Vincent and the Grenadines	4,667
98	Russian Federation	2,270	103	Dominican Republic	4,653
99	Colombia	2,250	104	Fiji	4,536
100	Fiji	2,210	105	Belize	4,492
101	Tunisia	2,100	106	Kazakhstan	4,408
102	Thailand	1,980	107	Peru	4,387
103	Dominican Republic	1,910	108	Macedonia, FYR	4,339 d
104	El Salvador	1,900	109	Tonga	4,291
105	Namibia	1,890	110	Swaziland	4,200
106	Micronesia, Fed. Sta.	1,810	111	Paraguay	4,193
107	Iran, Islamic Rep.	1,780	113	Lebanon	4,129
108	Tonga	1,720	114	El Salvador	4,048
109	Macedonia, FYR	1,690	115	Samoa	3,915 d
110	Guatemala	1,660	118	Philippines	3,815
112	West Bank and Gaza	1,610	122	Georgia	3,606
113	Paraguay	1,580	123	Maldives	3,545 d
114	Marshall Islands	1,560	124	Jordan	3,542
115	Algeria	1,550	125	Guatemala	3,517
117	Romania	1,520	126	Cape Verde	3,497 d
119	Jordan	1,500	127	Egypt, Arab Rep.	3,303
120	Egypt, Arab Rep.	1,400	128	China	3,291
121	Bulgaria	1,380	129	Jamaica	3,276
122	Swaziland	1,360	130	Guyana	3,242 d
123	Cape Verde	1,330	131	Morocco	3,190
124	Ecuador	1,310	132	Kiribati	3,186
125	Kazakhstan	1,230	133	Ukraine	3,142
126	Morocco	1,200	134	Turkmenistan	3,099
127	Vanuatu	1,170	136	Sri Lanka	3,056
127	Equatorial Guinea	1,170	137	Albania	2,692 d
128	Maldives	1,160	138	Vanuatu	2,771 d
130	Samoa	1,060	139	Syrian Arab Republic	2,761
131	Philippines	1,020	141	Ecuador	2,605
132	Bolivia	1,010	142	Zimbabwe	2,470
134	Syrian Arab Republic	970	143	Indonesia	2,439
135	Kiribati	910	144	Moldova	2,358
136	Albania	870	146	Azerbaijan	2,322
137	Sri Lanka	820	147	Papua New Guinea	2,263
138	Papua New Guinea	800	148	Honduras	2,254
139	Djibouti	790	149	Kyrgyz Republic	2,223
140	China	780	150	Armenia	2,210
141	Guyana	760	151	Bolivia	2,193
141	Honduras	760	152	Nicaragua	2,154 d
143	Ukraine	750	153	India	2,149
143	Solomon Islands	750	154	Uzbekistan	2,092
145	Uzbekistan	720	155	Lesotho	2,058 d
146	Cote d'Ivoire	710	156	Solomon Islands	1,949 d
147	Congo, Rep.	670	157	Ghana	1,793 d
148	Turkmenistan	660	158	Guinea	1,761
149	Georgia	620	159	Pakistan	1,757
150	Indonesia	580	160	Vietnam	1,755
150	Cameroon	580	161	Lao PDR	1,726
152	Lesotho	550	163	Cote d'Ivoire	1,546
152	Azerbaijan	550	164	Mauritania	1,522 d
154	Zimbabwe	520	165	Bhutan	1,496
155	Guinea	510	166	Mongolia	1,496 d
155	Senegal	510	167	Gambia, The	1,492 d
155	Bhutan	510	168	Bangladesh	1,475

GNP per capita 1999, Atlas method and PPP

Ranking	Economy	Atlas methodology (US dollars)	Ranking	Economy	Purchasing power parity (international dollars)
158	Armenia	490	169	Cameroon	1,444
160	Pakistan	470	170	Haiti	1,407 d
161	Haiti	460	171	Comoros	1,360 d
162	India	450	172	Togo	1,346 d
163	Nicaragua	430	173	Senegal	1,341
164	Ghana	390	174	Sao Tome and Principe	1,335
165	Mauritania	380	175	Sudan	1,298 d
165	Benin	380	176	Cambodia	1,286 d
167	Moldova	370	177	Nepal	1,219
167	Bangladesh	370	179	Uganda	1,136 d
167	Vietnam	370	180	Central African Republic	1,131 d
170	Kenya	360	183	Eritrea	1,012 d
171	Mongolia	350	184	Tajikistan	981
171	Comoros	350	185	Kenya	975
171	Yemen, Rep.	350	187	Burkina Faso	898 d
174	Gambia, The	340	188	Congo, Rep.	897
175	Sudan	330	189	Benin	886
178	Togo	320	190	Chad	816 d
178	Zambia	320	191	Mozambique	787 d
178	Uganda	320	192	Madagascar	766
179	Nigeria	310	193	Nigeria	744
180	Kyrgyz Republic	300	194	Niger	727 d
181	Tajikistan	290	196	Mali	693
181	Central African Republic	290	197	Yemen, Rep.	688
184	Lao PDR	280	198	Zambia	686
185	Sao Tome and Principe	270	199	Angola	632 d
186	Cambodia	260	200	Ethiopia	599
187	Madagascar	250	202	Guinea-Bissau	595
187	Rwanda	250	203	Malawi	581
190	Mali	240	204	Burundi	553 d
190	Burkina Faso	240	205	Tanzania /e	478
190	Tanzania /e	240	206	Sierra Leone	414
193	Mozambique	230			
194	Angola	220		Afghanistan	..
194	Nepal	220		American Samoa	..
196	Chad	200		Andorra	..
196	Eritrea	200		Antigua and Barbuda	8,959
199	Malawi	190		Aruba	..
199	Niger	190		Bahamas, The	13,955
201	Guinea-Bissau	160		Bahrain	11,527
203	Sierra Leone	130		Barbados	..
204	Burundi	120		Bermuda	23,302
208	Ethiopia	100		Bosnia and Herzegovina	..
				Brunel	24,824 d
	Afghanistan	.. i		Cayman Islands	..
	American Samoa	.. g		Channel Islands	..
	Andorra	.. f		Congo, Dem. Rep.	731 d
	Antigua and Barbuda	8,620		Cuba	..
	Aruba	.. f		Djibouti	..
	Bahamas, The	.. f		Equatorial Guinea	..
	Bahrain	7,640		Faeroe Islands	..
	Barbados	.. g		French Polynesia	20,586 d
	Bosnia and Herzegovina	.. h		Greenland	..
	Channel Islands	.. f		Guam	..
	Congo, Dem. Rep.	110		Iraq	..
	Cuba	.. h		Isle of Man	..
	Faeroe Islands	.. f		Israel	16,867
	French Polynesia	18,050		Korea, Dem. Rep.	..
	Greenland	.. f		Kuwait	..
	Guam	.. f		Liberia	..
	Iraq	.. h		Libya	..
	Isle of Man	.. g		Liechtenstein	..

GNP per capita 1999, Atlas method and PPP

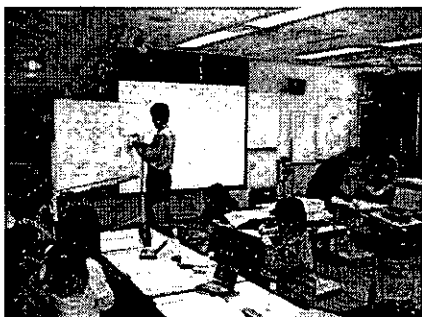
<i>Ranking</i>	<i>Economy</i>	Atlas methodology (US dollars)	<i>Ranking</i>	<i>Economy</i>	Purchasing power parity (International dollars)
	Israel	17,460		Macao, China	..
	Korea, Dem. Rep.	.. l		Marshall Islands	..
	Kuwait	.. f		Mayotte	..
	Liberia	.. l		Micronesia, Fed. Sta.	..
	Libya	.. g		Monaco	..
	Macao, China	.. f		Myanmar	..
	Mayotte	.. g		Netherlands Antilles	..
	Myanmar	.. l		New Caledonia	..
	Netherlands Antilles	.. f		Northern Mariana Islands	..
	New Caledonia	.. f		Oman	..
	Northern Mariana Islands	.. f		Palau	..
	Oman	.. g		Puerto Rico	..
	Palau	.. g		Qatar	..
	Puerto Rico	8,200		Rwanda	..
	Qatar	.. f		Saudi Arabia	10,472 d
	Saudi Arabia	6,910		Somalia	..
	Somalia	.. l		Suriname	..
	Suriname	1,660		United Arab Emirates	18,825
	United Arab Emirates	17,870		Virgin Islands (U.S.)	..
	Virgin Islands (U.S.)	.. f		West Bank and Gaza	..
	Yugoslavia, FR (Serbia/Montenegro)	.. h		Yugoslavia, FR (Serbia/Montenegro)	..
	World	4,890		World	6,490
	Low Income	410		Low Income	1,790
	Middle Income	2,000		Middle Income	4,880
	Lower middle Income	1,200		Lower middle Income	3,960
	Upper middle Income	4,900		Upper middle Income	8,320
	Low & middle Income	1,240		Low & middle Income	3,410
	East Asia & Pacific	1,000		East Asia & Pacific	3,500
	Europe & Central Asia	2,150		Europe & Central Asia	5,580
	Latin America & Caribbean	3,840		Latin America & Caribbean	6,260
	Middle East & North Africa	2,060		Middle East & North Africa	4,600
	South Asia	440		South Asia	2,030
	Sub-Saharan Africa	500		Sub-Saharan Africa	1,450
	High Income	25,730		High Income	24,430
	European Monetary Union	21,680		European Monetary Union	20,990

.. Not available.

Note: Rankings include all 206 Atlas economies, but only those with confirmed 1999 Atlas GNP per capita estimates or those that rank among the top twenty are shown in rank order. Figures in italics are the most recent estimate from 1997 or 1998. a. 1999 data not available; ranking is approximate. b. Data include the French overseas departments of French Guiana, Guadeloupe, Martinique, and Réunion. c. GNP data refer to GDP. d. Estimate is based on regression; other PPP figures are extrapolated from the latest International Comparison Programme benchmark estimates. e. Data refer to mainland Tanzania only. f. Estimated to be high income (\$9,206 or more). g. Estimated to be upper middle income (\$2,996 to \$9,265). h. Estimated to be lower middle income (\$756 to \$2,995). l. Estimated to be low income (\$755 or less).

資料 I -5. ワークショップの実際

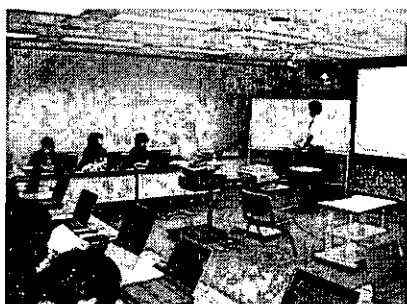
フィールド調査法に関する講義
(ネパール農村における妊産婦の保健行動)



ケーススタディ
(ボリビア・PROSALUD診療所)



コンピュータ・シミュレーション
(費用分析、費用効果分析)



グループディスカッション(ラウンジ)



CASE STUDY: Unsafe Injection in China

Li Li
The University of Tokyo

What is Safe Injection: (WHO's definition)

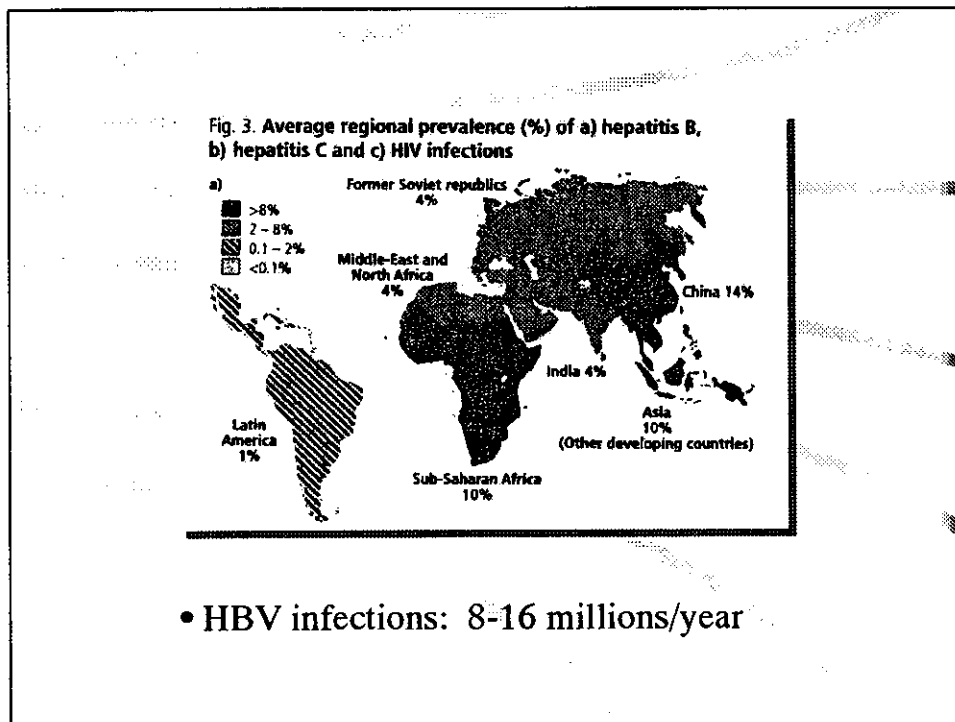
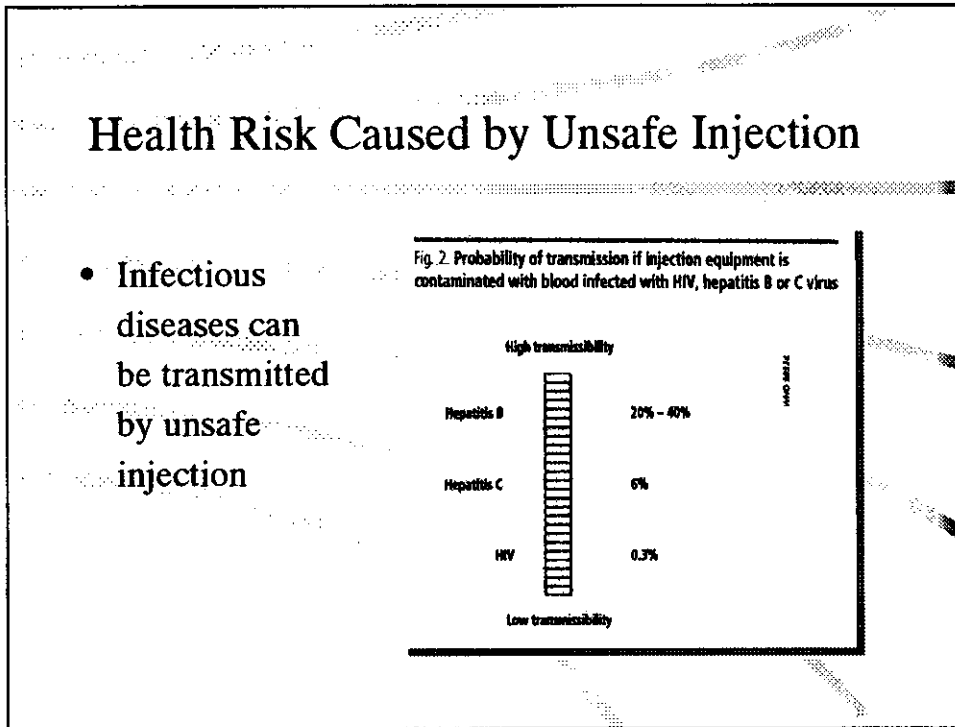
- Does not harm the recipient
- Does not expose the health worker to avoidable risks
- Does not result in waste that puts other people at risk

Unsafe Injection Practice:

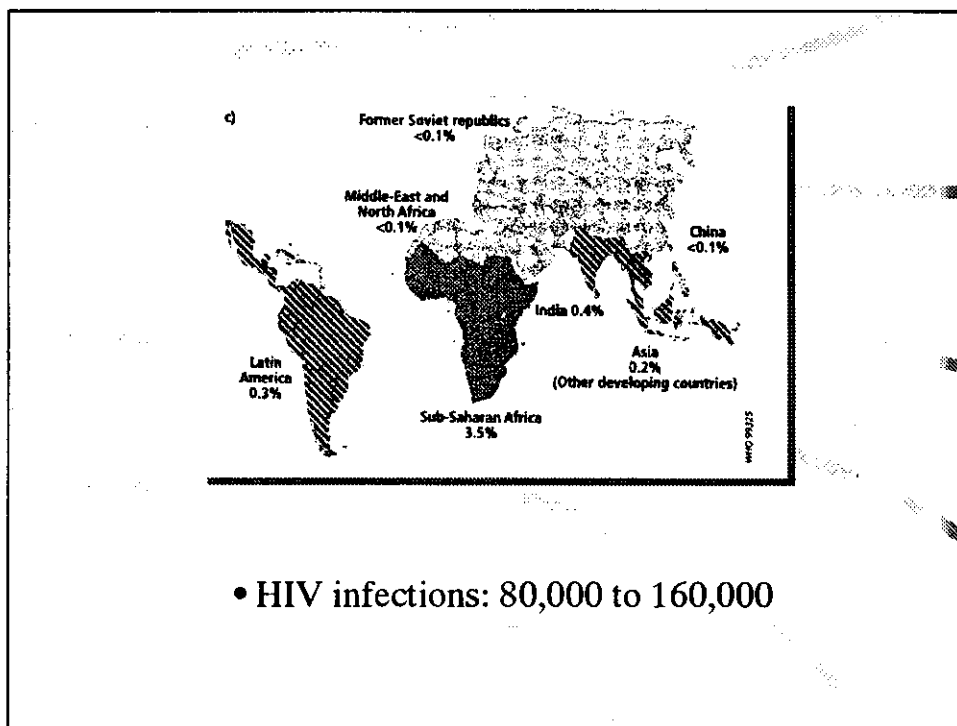
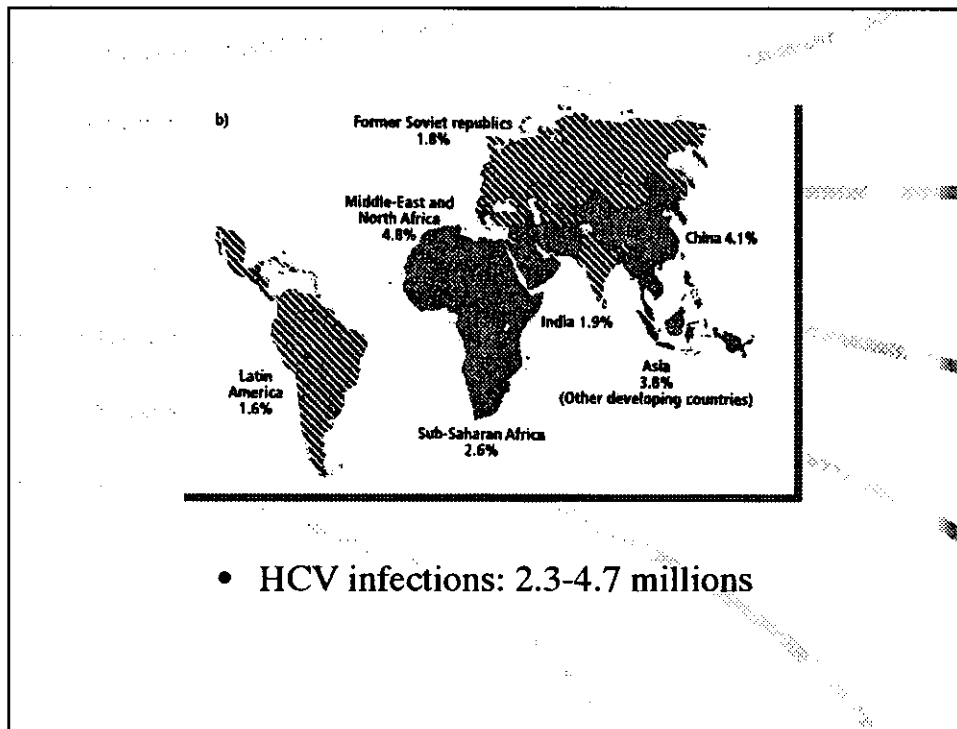
- **Improper administration**
- **Improper disposal and storage**

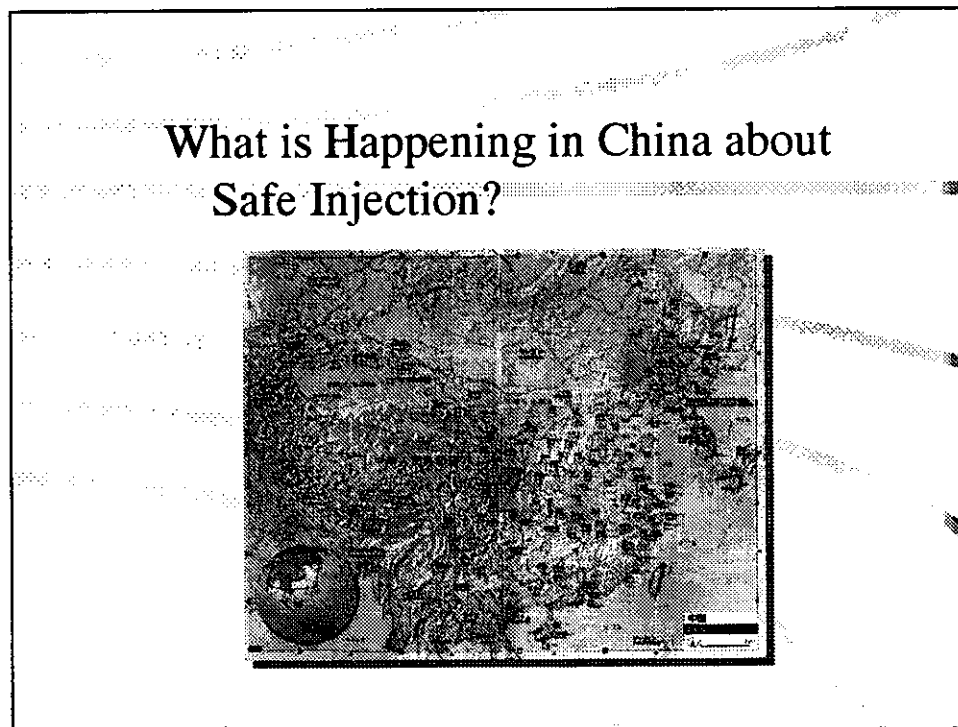
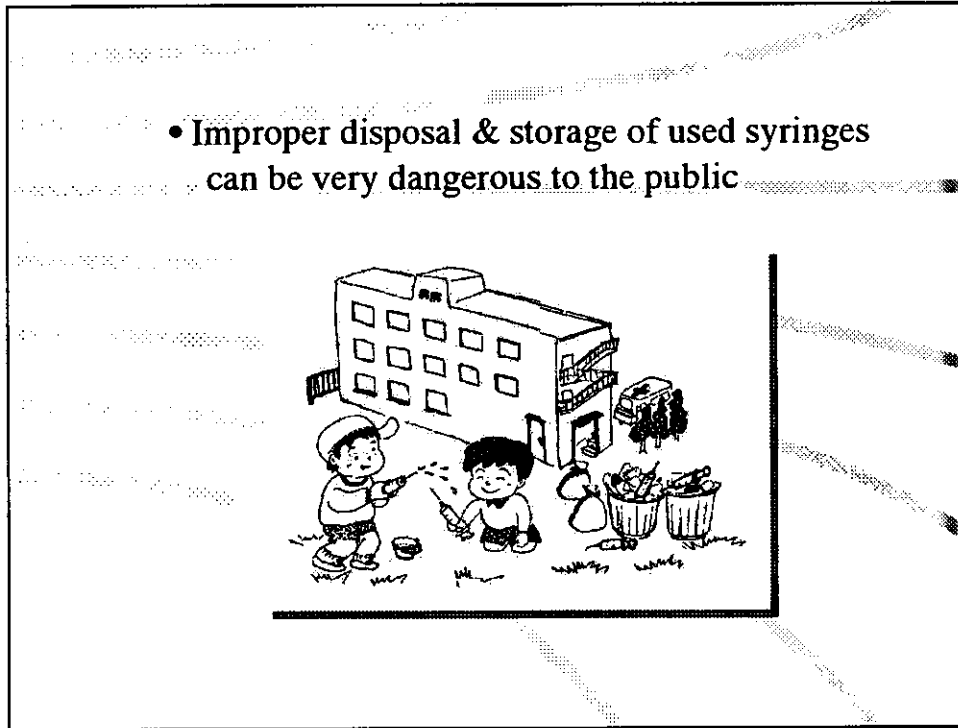
Background of Unsafe Injection:

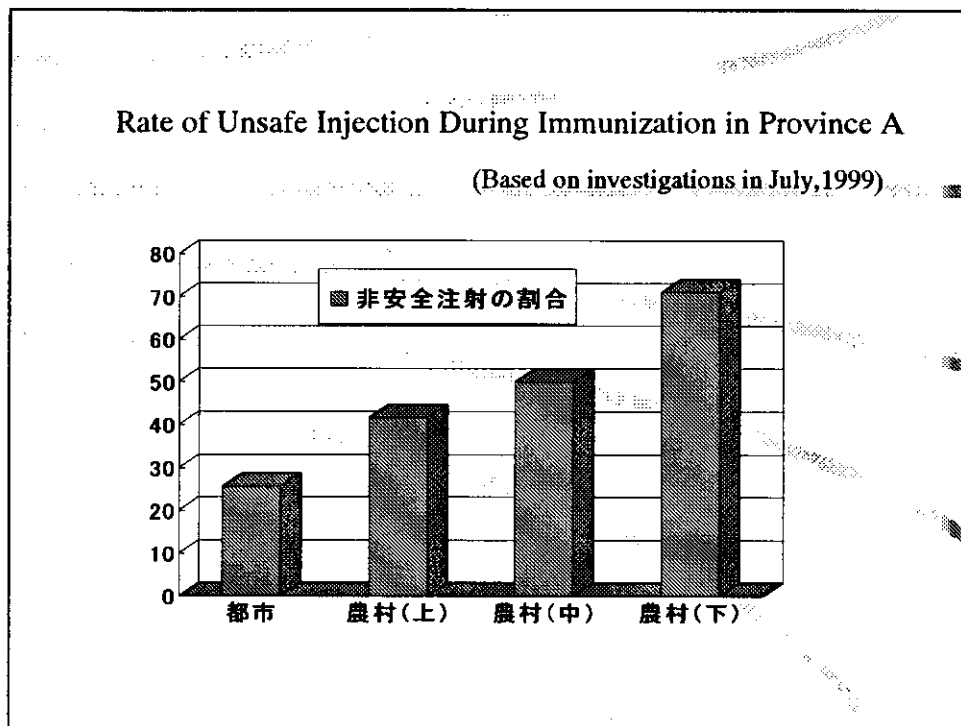
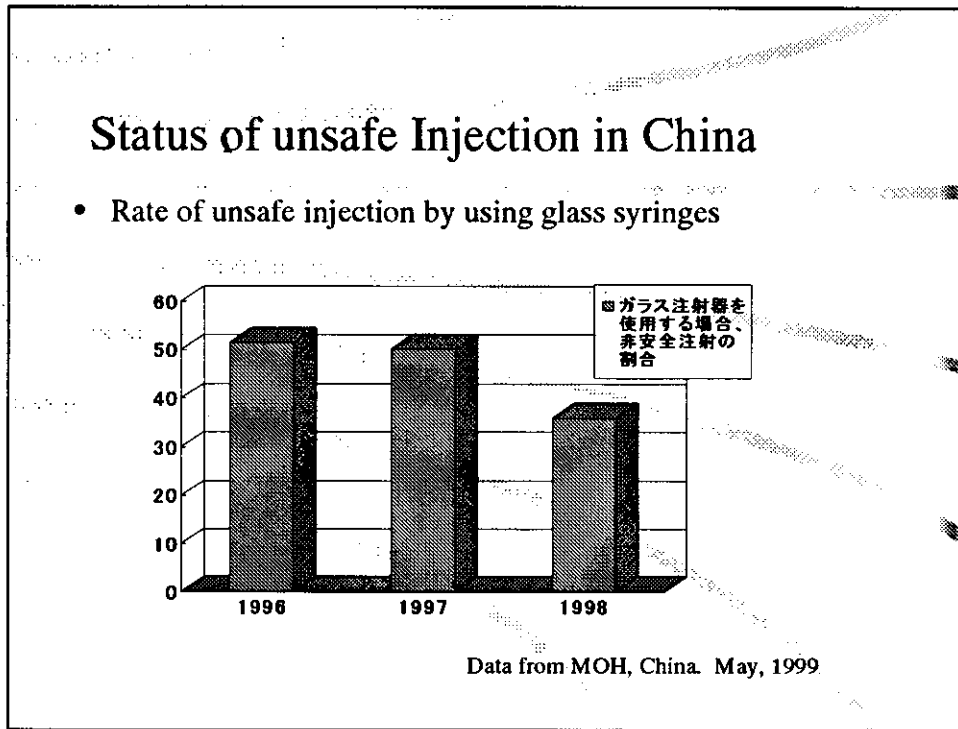
- **12 billion injections are given worldwide yearly; 30% are administered unsafely**
- **50% injections in developing countries are unsafe ones**



資料I-6. ワークショップ参加者の報告 (中国の事例)





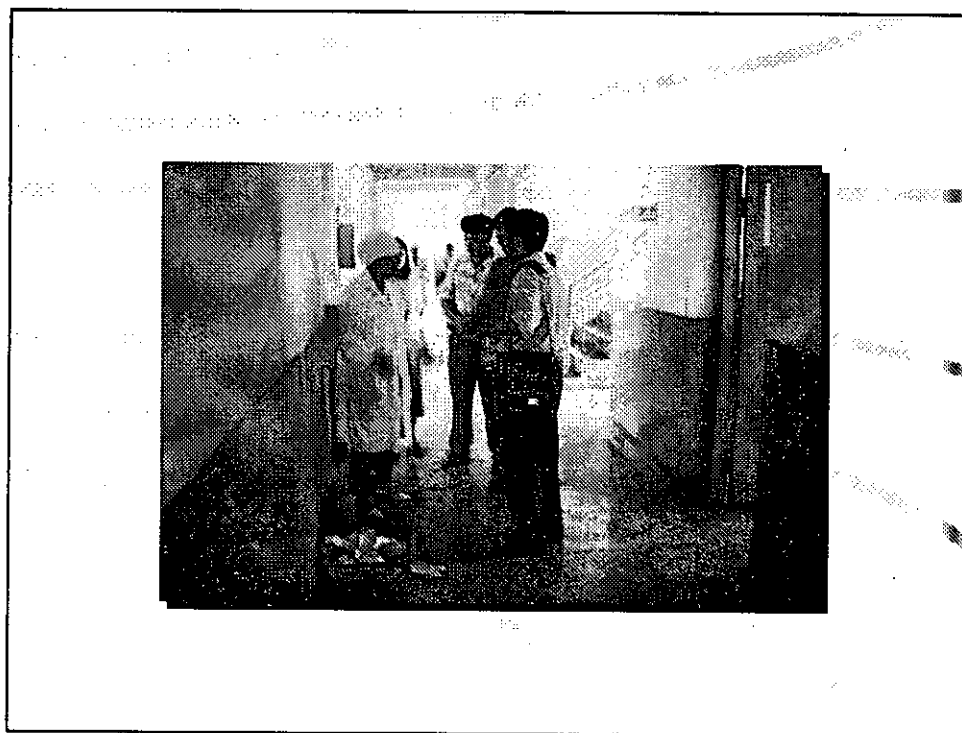
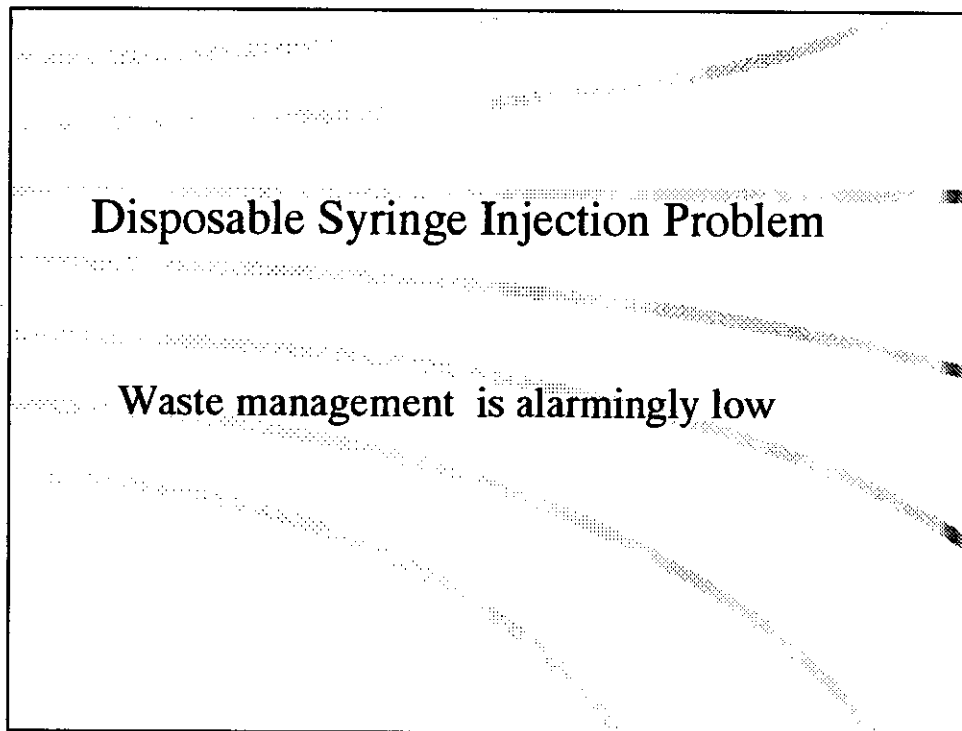


Glass Syringe Injection Problem

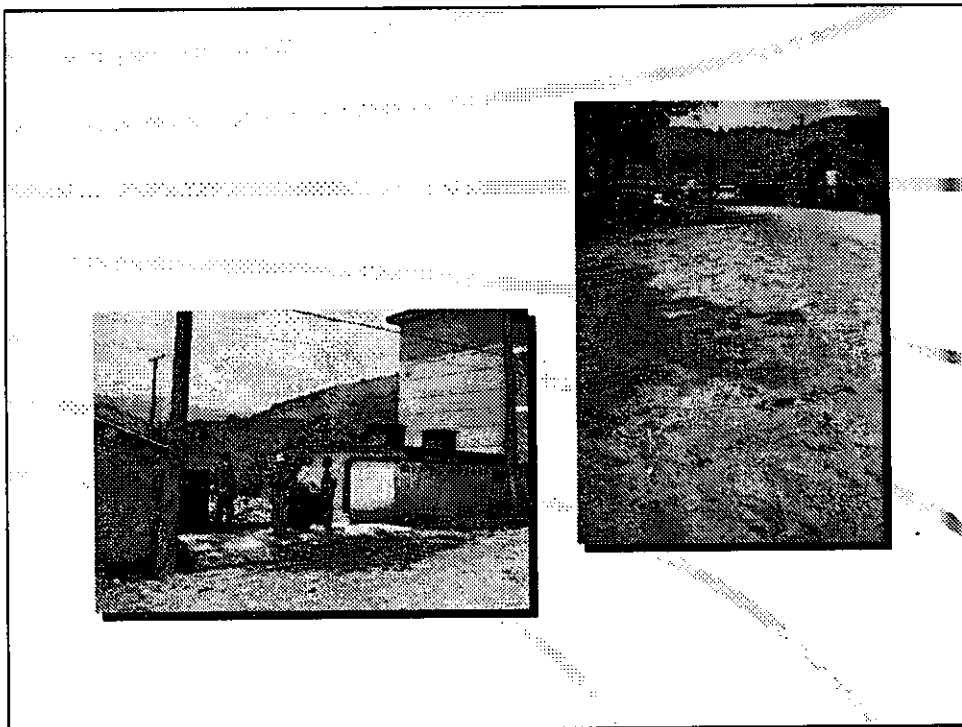
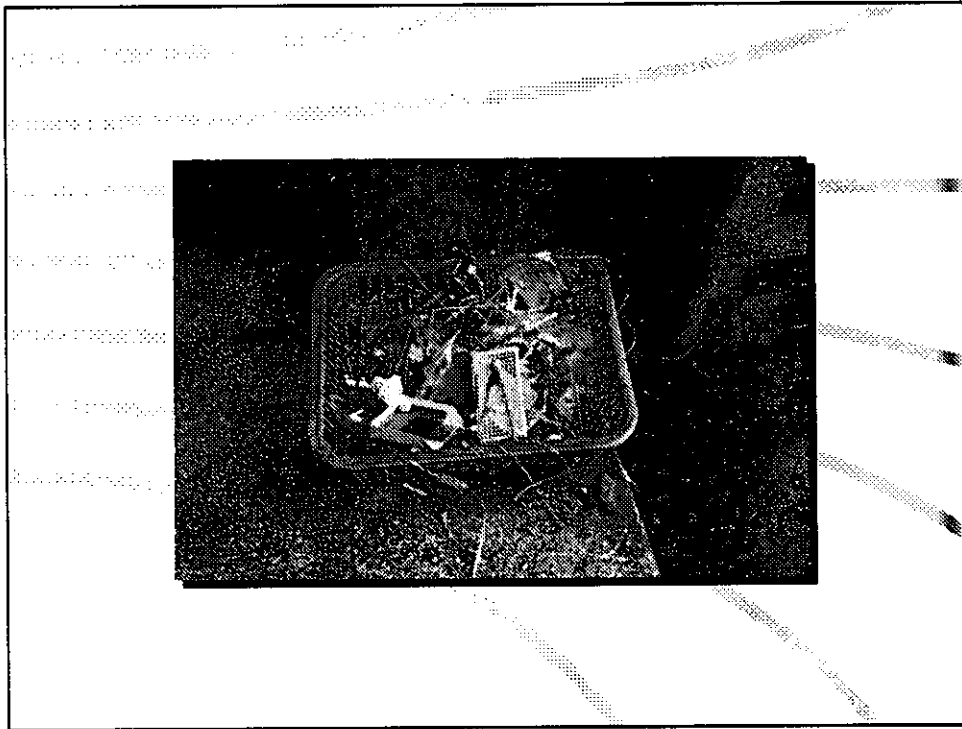
- 56.5% Injections in province A are not always administered in a way that guarantees sterility:
 - 50.9% same syringe but different needles
 - 5.6% same syringe and same needle
- 21.6% sterility measure is incorrect :
 - 19.2% water-boiling
 - 2.3% water-washing

(correct:autoclave)





資料 I-6. ワークショップ参加者の報告 (中国の事例)





Awareness of Unsafe Injection

Correct Rates of Answers to Questions on Safe Injection to Local health Professional

- | | |
|------------------------------------|-------|
| • Hepatitis B | 91.5% |
| • HIV | 63.1% |
| • Contamination of injection place | 83.1% |
| • Waste management | 73.8% |