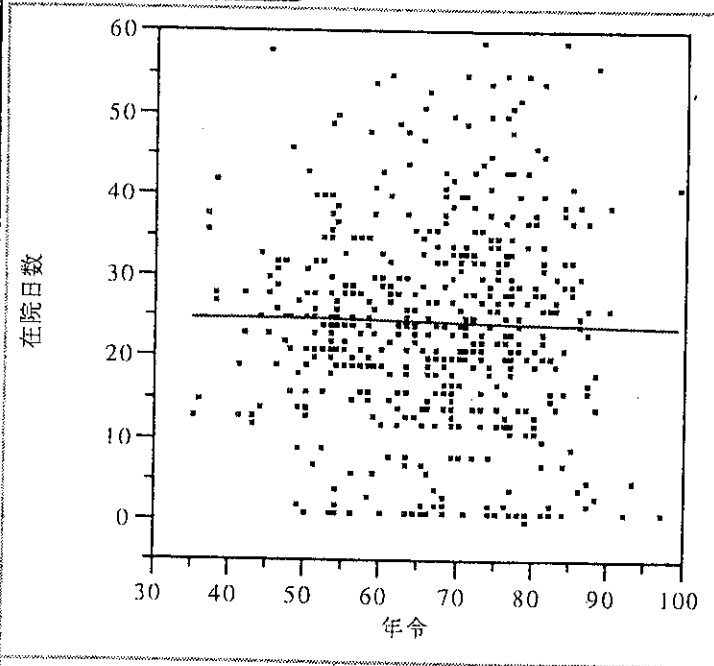


在院日数	
度数	748 例
平均值	27.0 日
中央値	27.0 日
最頻値	29.0 日

図 3

在院日数 By 年令



— Linear Fit

Linear Fit

Summary of Fit

RSquare	0.000294
RSquare Adj	-0.00164
Root Mean Square Error	12.4695
Mean of Response	24.27115
Observations (or Sum Wgts)	520

Analysis of Variance

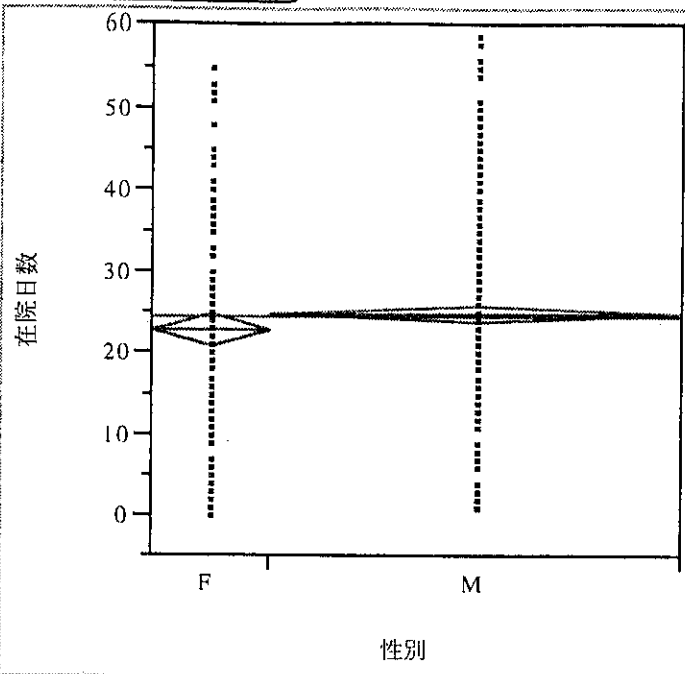
Source	DF	Sum of Squares	Mean Square	F Ratio
Model	1	23.717	23.717	0.1525
Error	518	80543.050	155.489	Prob>F
C Total	519	80566.767		0.6963

Parameter Estimates

Term	Estimate	Std Error	t Ratio	Prob> t
Intercept	25.468733	3.11471	8.18	0.0000
年令	-0.017811	0.0456	-0.39	0.6963

図 4

在院日数 By 性別



Oneway Anova

Summary of Fit

RSquare	0.004942
RSquare Adj	0.003028
Root Mean Square Error	12.42254
Mean of Response	24.27778
Observations (or Sum Wgts)	522

t-Test

t-Test	DF	Prob> t
1.60701825	520	0.1087

Assuming equal variances

Analysis of Variance

Source	DF	Sum of Squares	Mean Square	F Ratio
Model	1	398.532	398.532	2.5825
Error	520	80246.191	154.320	Prob>F
C Total	521	80644.722		0.1087

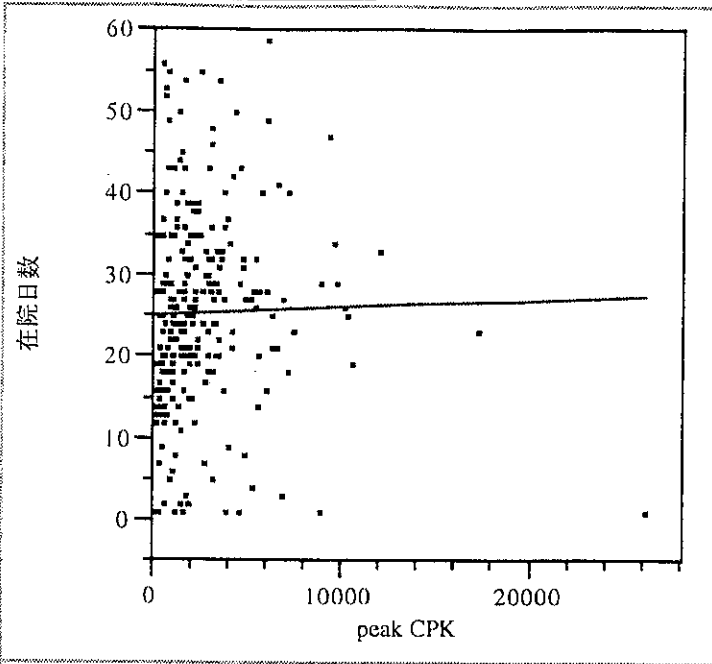
Means for Oneway Anova

Level	Number	Mean	Std Error
F	118	22.6610	1.1436
M	404	24.7500	0.6180

Std Error uses a pooled estimate of error variance

☒ 5

在院日数 By peak CPK



— Linear Fit

Linear Fit

Summary of Fit

RSquare	0.000373
RSquare Adj	-0.00377
Root Mean Square Error	12.1233
Mean of Response	25.39506
Observations (or Sum Wgts)	243

Analysis of Variance

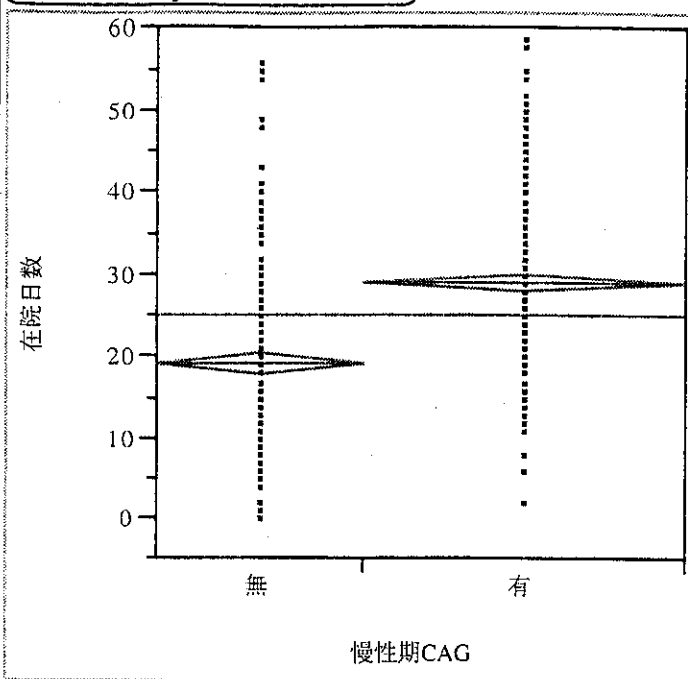
Source	DF	Sum of Squares	Mean Square	F Ratio
Model	1	13.226	13.226	0.0900
Error	241	35420.848	146.974	Prob>F
C Total	242	35434.074		0.7644

Parameter Estimates

Term	Estimate	Std Error	t Ratio	Prob> t
Intercept	25.177185	1.06411	23.66	0.0000
peak CPK	0.0000818	0.00027	0.30	0.7644

☒ 6

在院日数 By 慢性期CAG



Oneway Anova

Summary of Fit

RSquare	0.171608
RSquare Adj	0.169987
Root Mean Square Error	10.59171
Mean of Response	25.01949
Observations (or Sum Wgts)	513

t-Test

t-Test	DF	Prob> t
10.288723	511	0.0000

Assuming equal variances

Analysis of Variance

Source	DF	Sum of Squares	Mean Square	F Ratio
Model	1	11875.593	11875.6	105.8578
Error	511	57326.212	112.2	Prob>F
C Total	512	69201.805		0.0000

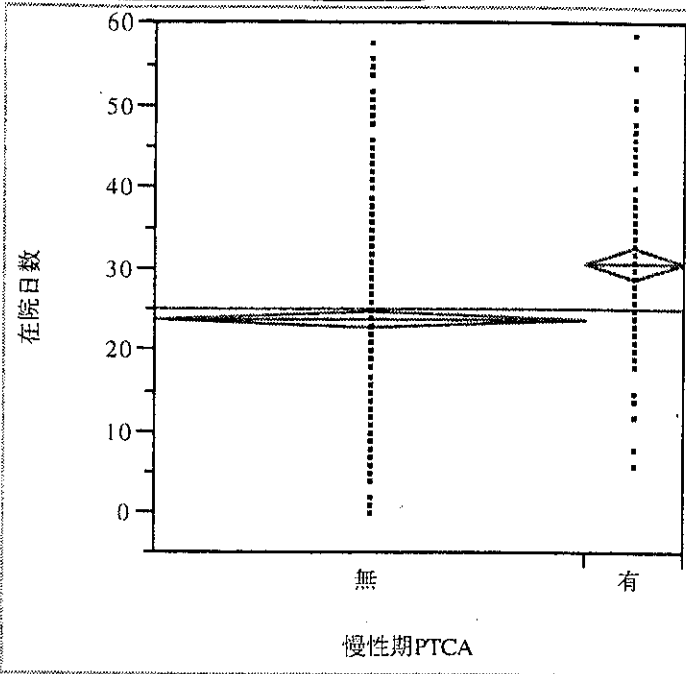
Means for Oneway Anova

Level	Number	Mean	Std Error
無	202	19.0495	0.74523
有	311	28.8971	0.60060

Std Error uses a pooled estimate of error variance

図 7

在院日数 By 慢性期PTCA



Oneway Anova

Summary of Fit

RSquare	0.051777
RSquare Adj	0.049918
Root Mean Square Error	11.33484
Mean of Response	25
Observations (or Sum Wgts)	512

t-Test

t-Test	DF	Prob> t
5.27714176	510	0.0000

Assuming equal variances

Analysis of Variance

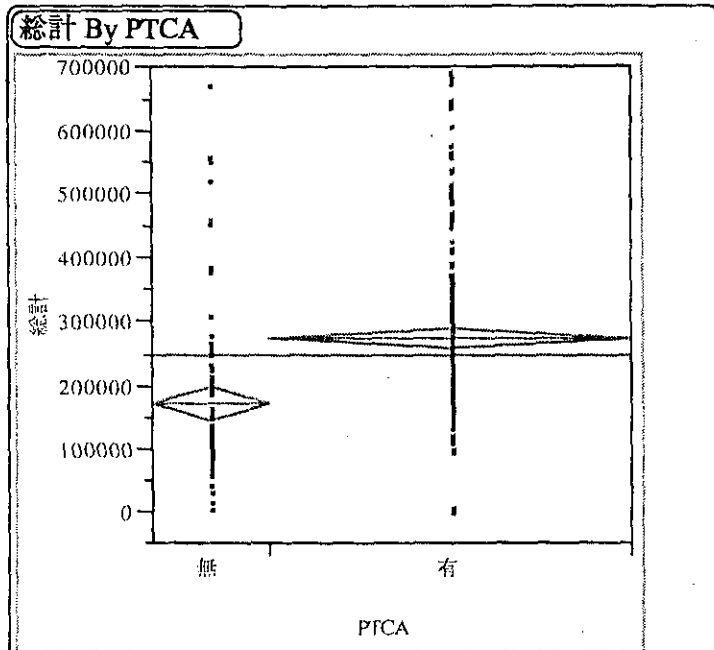
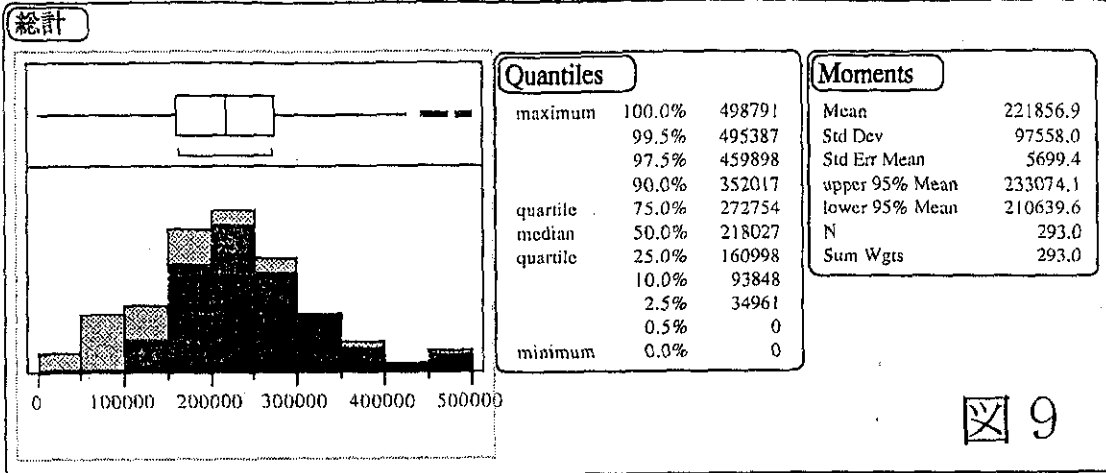
Source	DF	Sum of Squares	Mean Square	F Ratio	Prob>F
Model	1	3577.902	3577.90	27.8482	
Error	510	65524.098	128.48		
C Total	511	69102.000			0.0000

Means for Oneway Anova

Level	Number	Mean	Std Error
無	418	23.7464	0.5544
有	94	30.5745	1.1691

Std Error uses a pooled estimate of error variance

図 8



Oneway Anova

Summary of Fit	
RSquare	0.107987
RSquare Adj	0.10509
Root Mean Square Error	127047.1
Mean of Response	247665.4
Observations (or Sum Wgts)	310

t-Test		
t-Test	DF	Prob> t
6.10625135	308	0.0000

Assuming equal variances

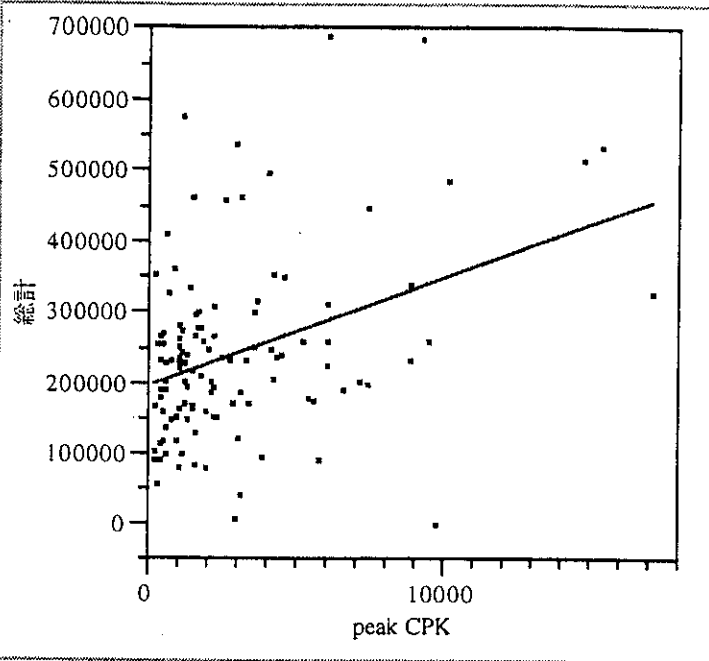
Analysis of Variance				
Source	DF	Sum of Squares	Mean Square	F Ratio
Model	1	6.02e+11	6e+11	37.2863
Error	308	4.97e+12	2e+10	Prob>F
C Total	309	5.57e+12		0.0000

Means for Oneway Anova			
Level	Number	Mean	Std Error
無	76	170351	14573
有	234	272776	8305

Std Error uses a pooled estimate of error variance

☒ 10

総計 By peak CPK



— Linear Fit

Linear Fit

Summary of Fit

RSquare	0.141995
RSquare Adj	0.134468
Root Mean Square Error	118984.2
Mean of Response	240070.5
Observations (or Sum Wgts)	116

Analysis of Variance

Source	DF	Sum of Squares	Mean Square	F Ratio
Model	1	2.67e+11	3e+11	18.8663
Error	114	1.61e+12	1e+10	Prob>F
C Total	115	1.88e+12		0.0000

Parameter Estimates

Term	Estimate	Std Error	t Ratio	Prob> t
Intercept	195584.09	15064.6	12.98	0.0000
peak CPK	15.150719	3.48811	4.34	0.0000

☒ 1 1