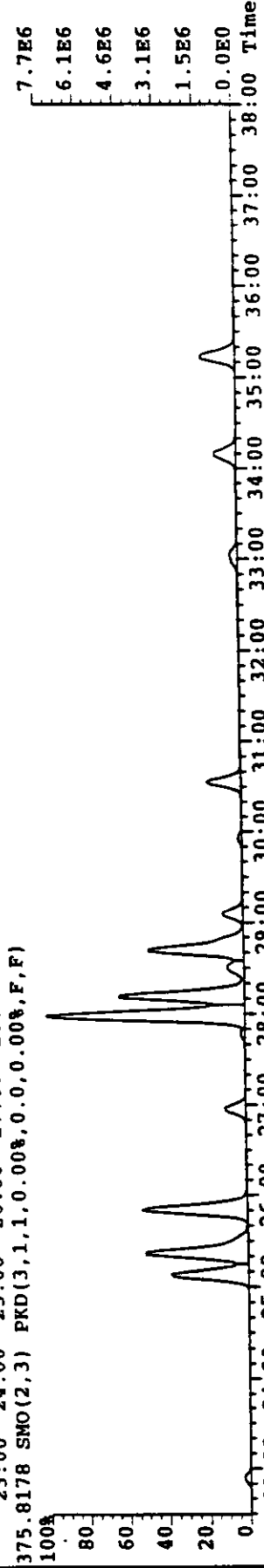
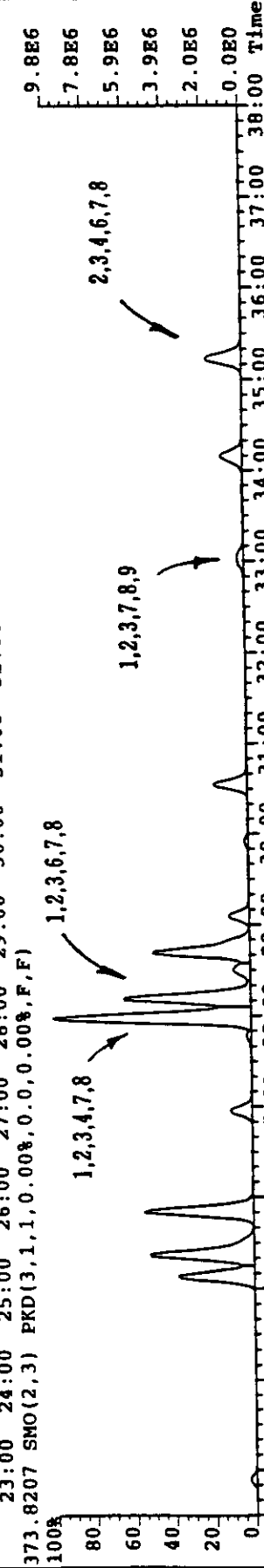
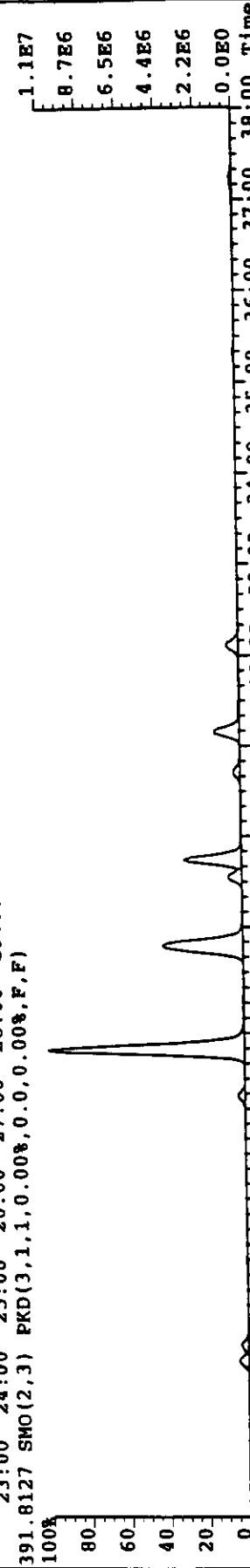
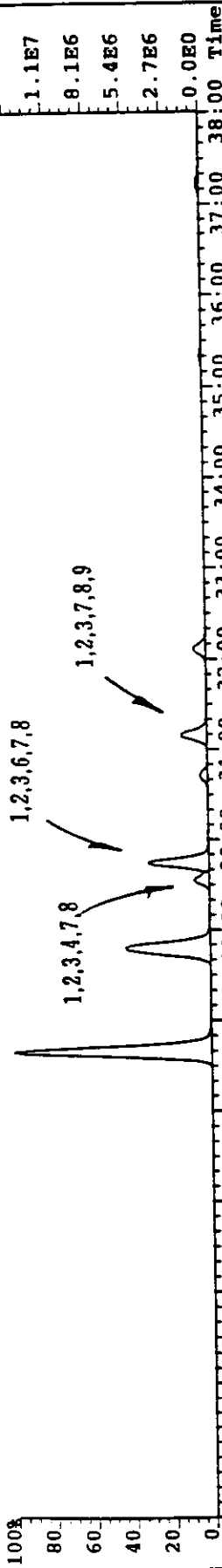


上段: H12.2.15日 STB-60L 釜運転(焼却灰) H₀CDDs
 下段: H12.2.15日 STB-60L 釜運転(焼却灰) H₀CDFs

File: MA01A018 #1-1233 Acq: 2-MAR-2000 08:22:27 GC EI+ Voltage SIR Autospec-D11Time
 Exp: KTR46CL

Sample#1 File Text: SUMI-STB-60L-SYOASH-2/15 Text:
 389.8156 SMO(2,3) PKD(3,1,1,0.00%,0.0,0.00%,F,F)

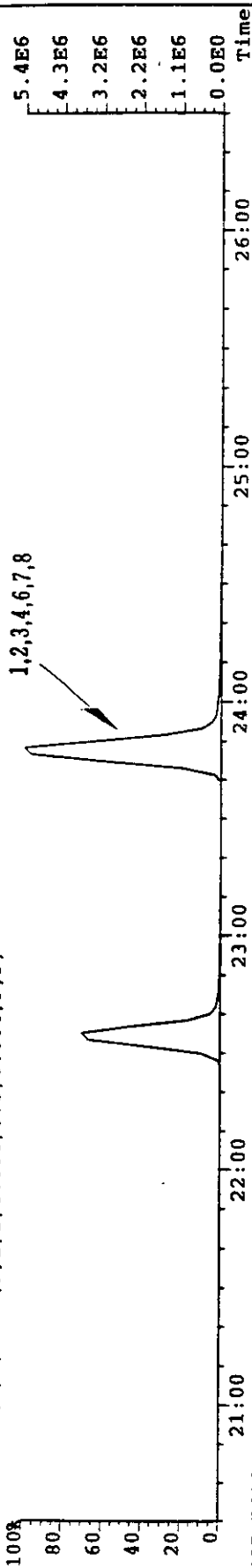


上段 : H12.2.15 日 STB-60L 釜運転(焼却灰) H₇CDDs
 下段 : H12.2.15 日 STB-60L 釜運転(焼却灰) H₇CDFs

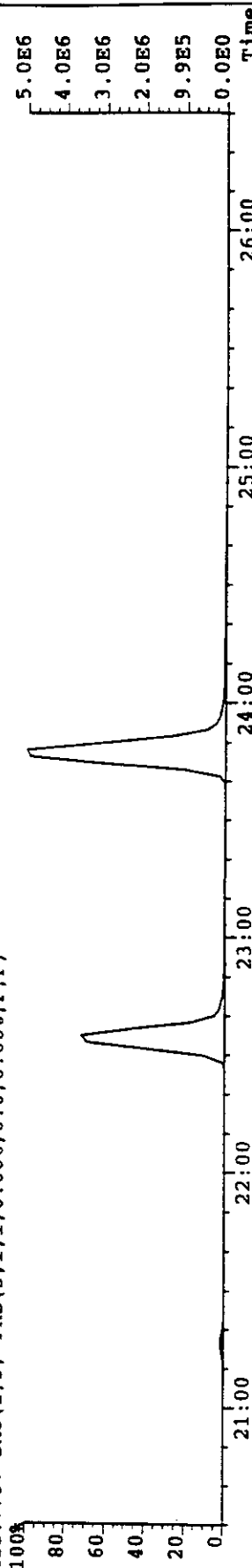
File: MA06E033 #1-1024 Acq: 7-MAR-2000 06:12:46 GC EI+ Voltage SIR Autospec-UITimaE

Sample#1 File Text: SUMI-STB-60L-SYONASH-2/15 Exp: KTR678CL

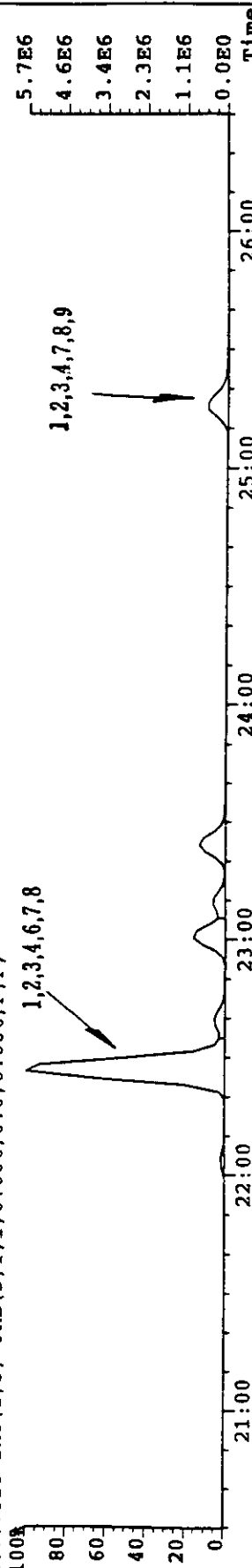
423.7767 SMO(1,3) PKD(3,1,1,0.00%,0.0,0.00%,F,F)



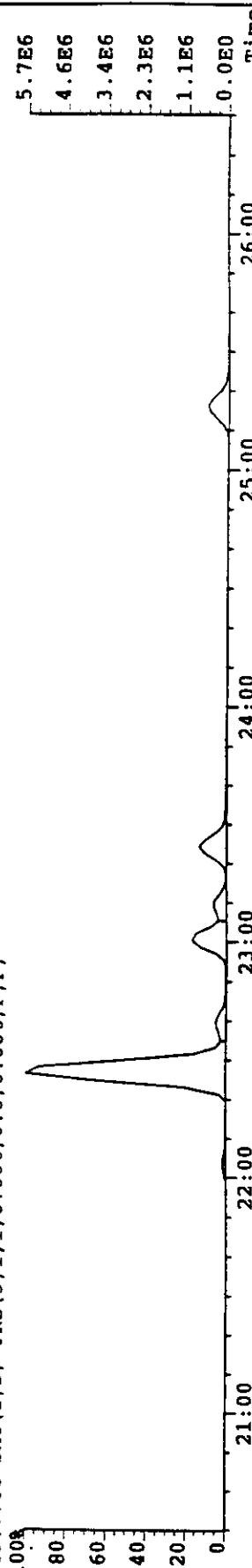
425.7737 SMO(1,3) PKD(3,1,1,0.00%,0.0,0.00%,F,F)



407.7818 SMO(1,3) PKD(3,1,1,0.00%,0.0,0.00%,F,F)



409.7788 SMO(1,3) PKD(3,1,1,0.00%,0.0,0.00%,F,F)

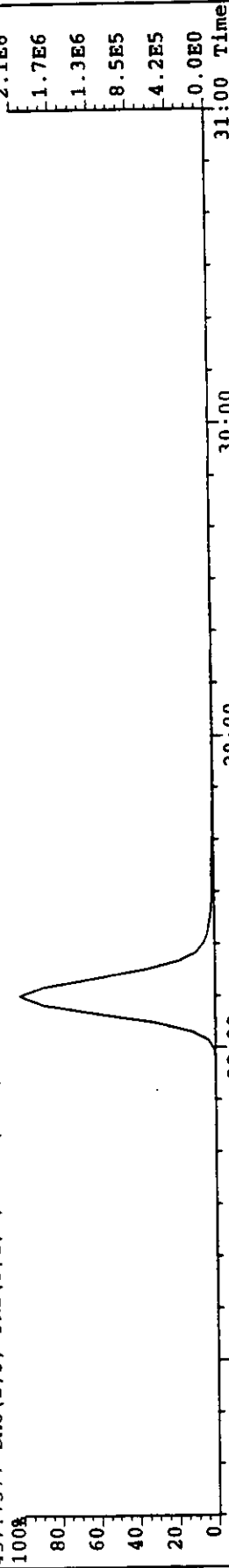


上段: H12.2.15 日 STB-60L 釜運転(焼却灰) O₈ CDD
 下段: H12.2.15 日 STB-60L 釜運転(焼却灰) O₈ F

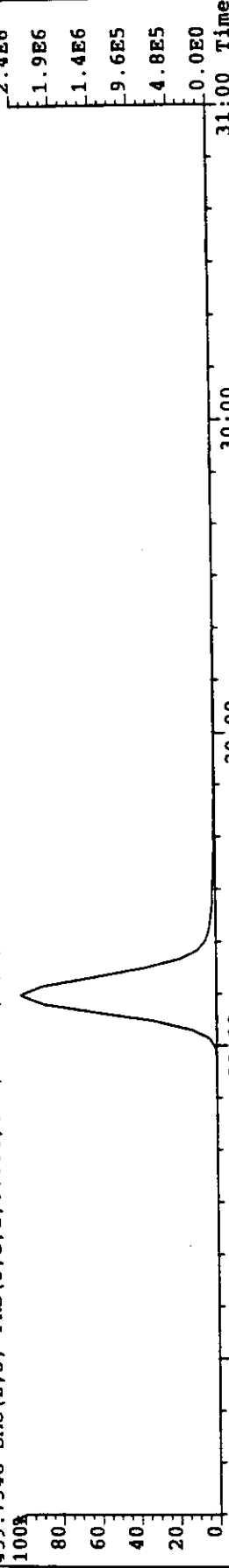
File: MA06B033 #1-1024 Acq: 7-MAR-2000 06:12:46 GC EI+ Voltage SIR Autospec-Uitima

Sample#1 File Text: SUMI-STB-60L-SYOASH-2/15 Exp: KTR678CL

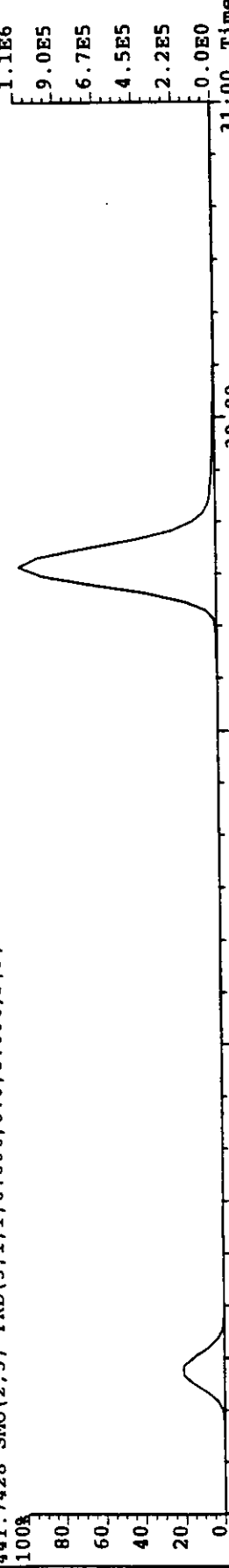
457.7377 SMO(2,3) PKD(3,1,1,0.00%,0.0,0.00%,F,F)



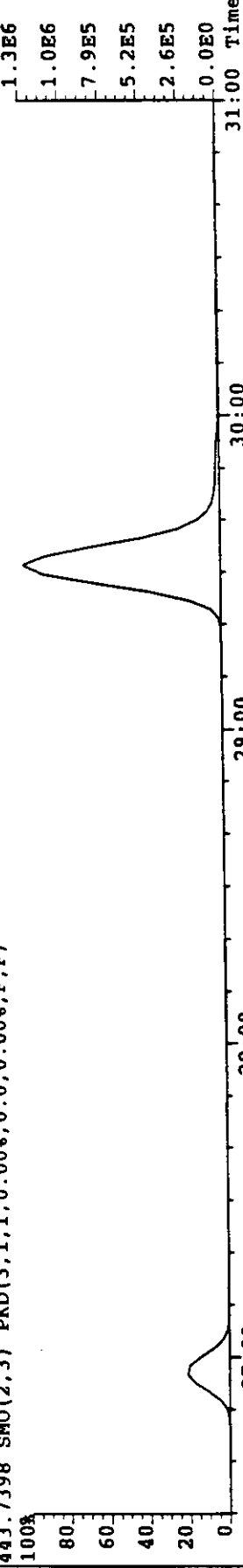
459.7348 SMO(2,3) PKD(3,1,1,0.00%,0.0,0.00%,F,F)



441.7428 SMO(2,3) PKD(3,1,1,0.00%,0.0,0.00%,F,F)

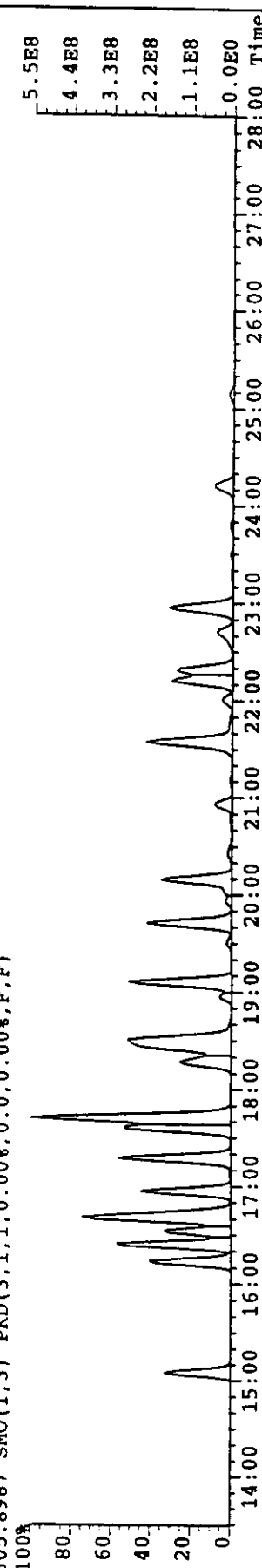
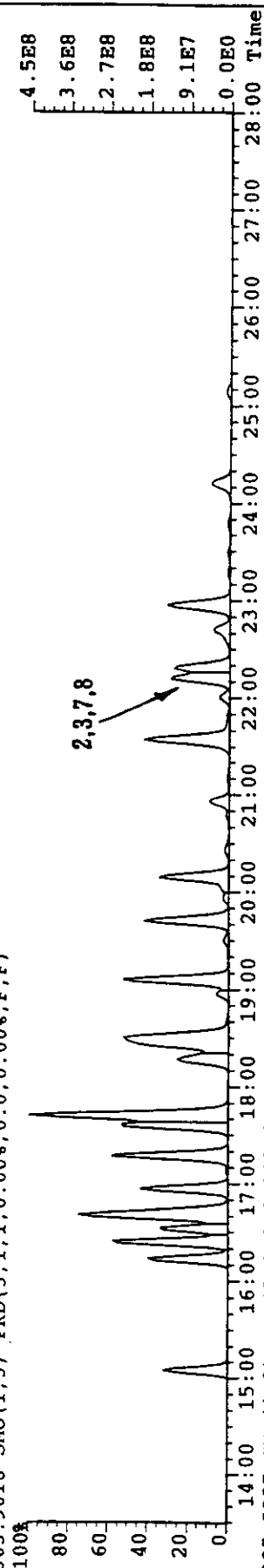
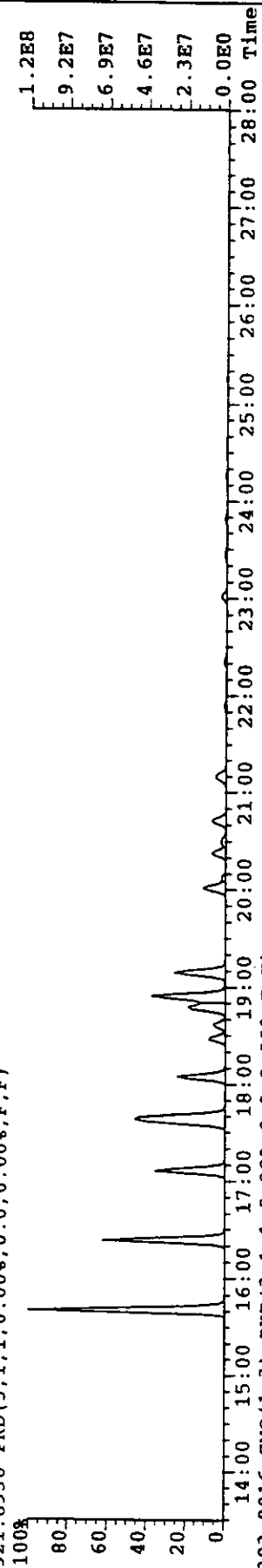
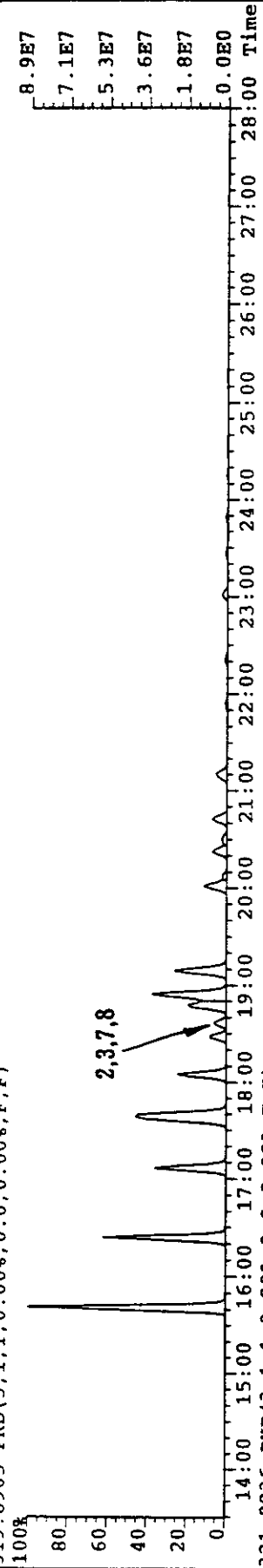


443.7398 SMO(2,3) PKD(3,1,1,0.00%,0.0,0.00%,F,F)



上段: H12.2.25 日 STB マイクロ波運転(焼却灰) T, CDD S
 下段: H12.2.25 日 STB マイクロ波運転(焼却灰) T, CDF S

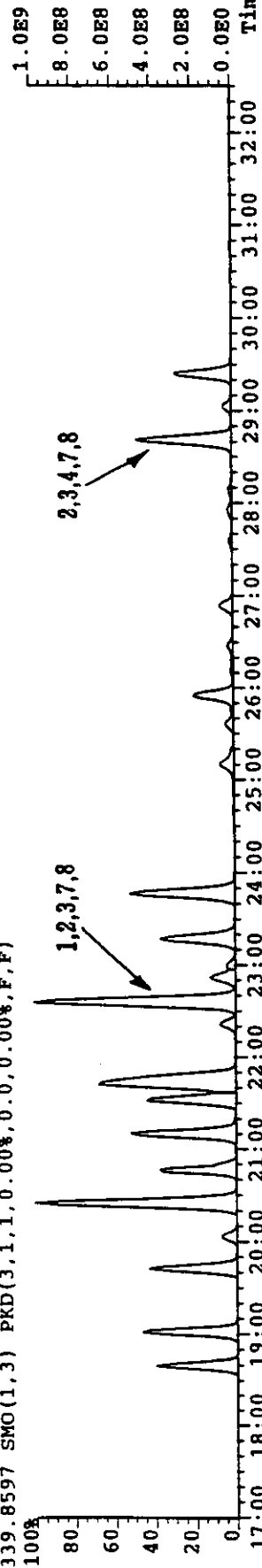
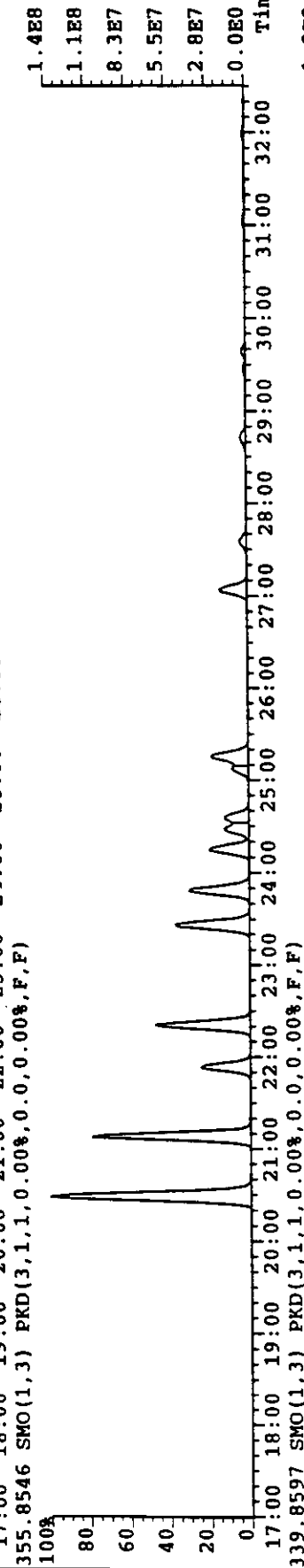
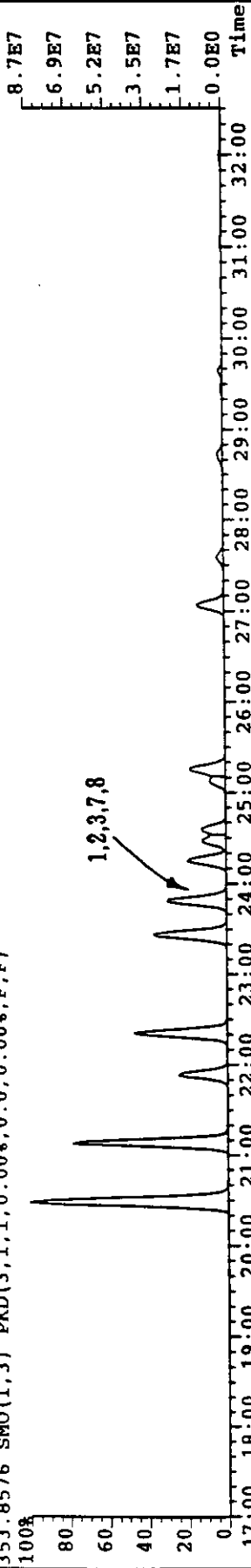
File: MA10A013 #1-1214 Acq:10-MAR-2000 09:55:28 GC EI+ Voltage SIR Autospec-UltimaE
 Sample#1 File Text:SUMI-SFB-ASH Text:
 319.8965 PKD(3,1,1,0.00%,0.0,0.00%,F,F) Exp:KTR46CL



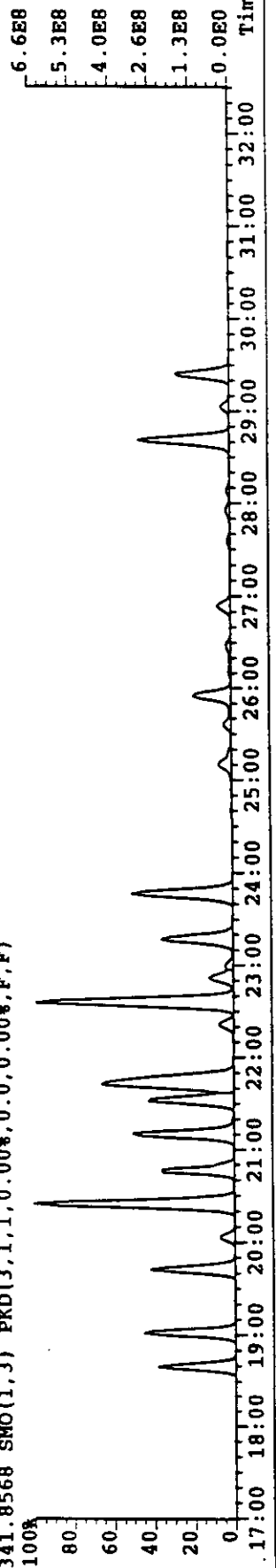
上段: H12.2.25日 STB マイクロ波運転(焼却灰) P.CDDs
 下段: H12.2.25日 STB マイクロ波運転(焼却灰) P.CDFs

File: MA10A013 #I-1214 Acq:10-MAR-2000 09:28 GC EI+ Voltage SIR Autospec-Ultim.
 Exp:KTR46CL

Sample#1 File Text:SUMI-STB-ASH Text:
 353.8576 SMO(1,3) PKD(3,1,1,0.00%,0.0,0.00%,F,F)



341.8568 SMO(1,3) PKD(3,1,1,0.00%,0.0,0.00%,F,F)

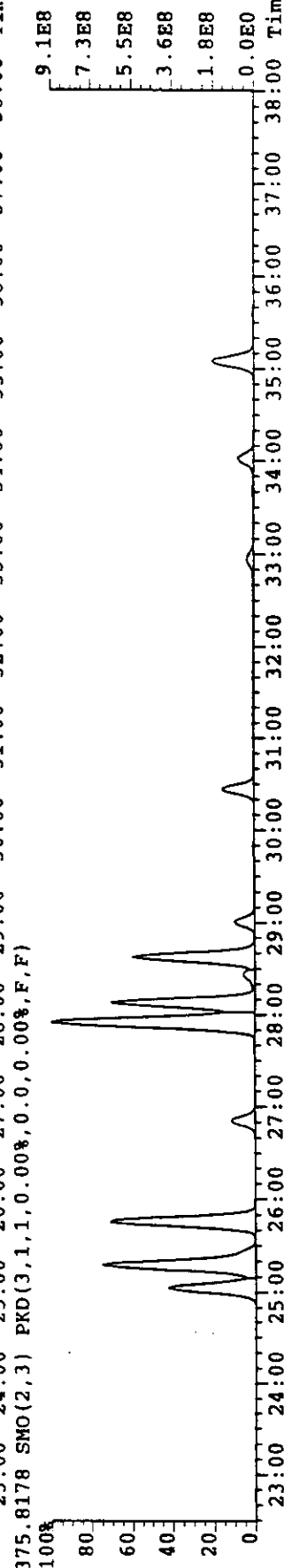
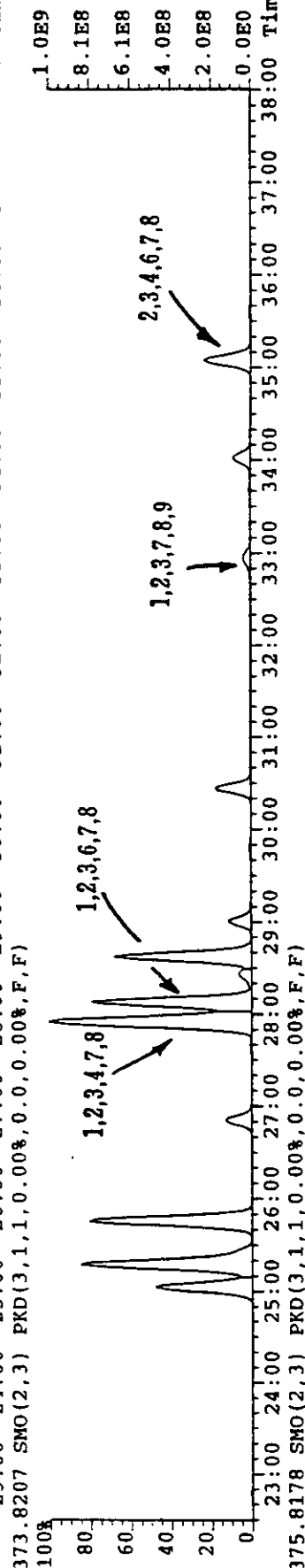
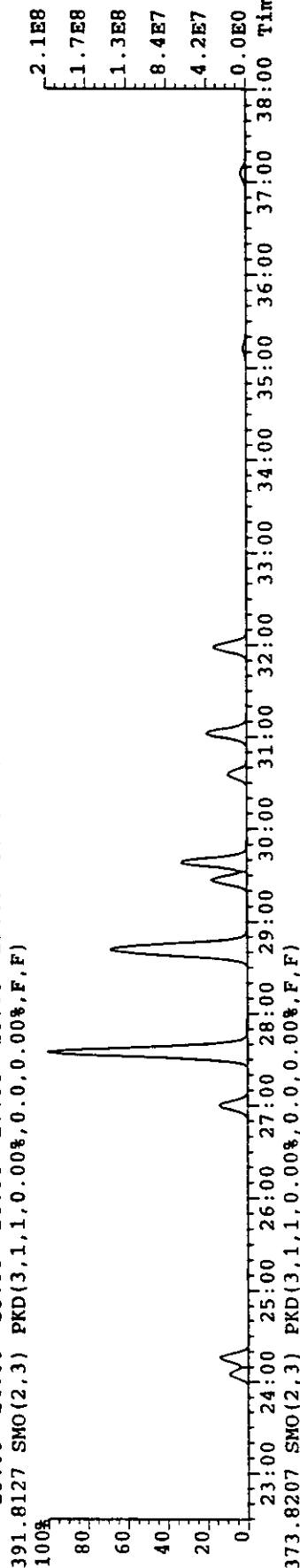
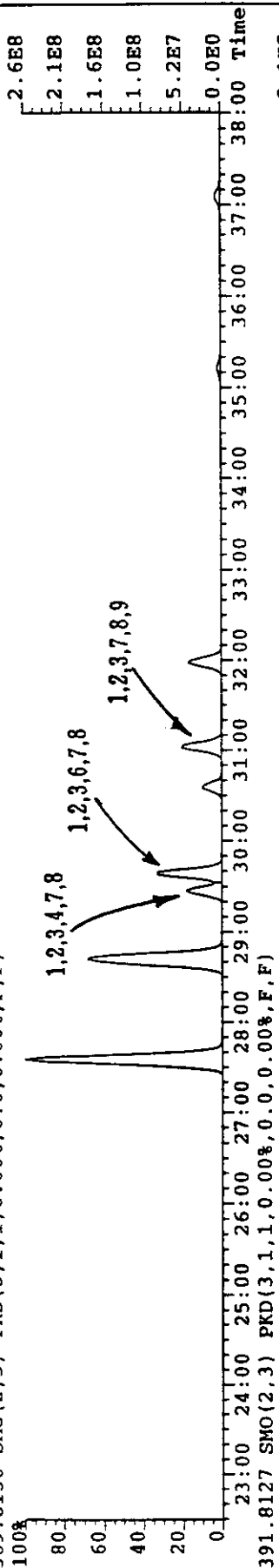


上段: HI2.2.25日 STB マイクロ波運転(焼却灰) H₂CDD S
 下段: HI2.2.25日 STB マイクロ波運転(焼却灰) H₂CDF S

File: MA10A013 #1-1214 Acq: 10-MAR-2000 09:55:28 GC EI+ Voltage SIR Autospec-UIEimaE

Sample#1 File Text: SUMI-STB-ASH Text:

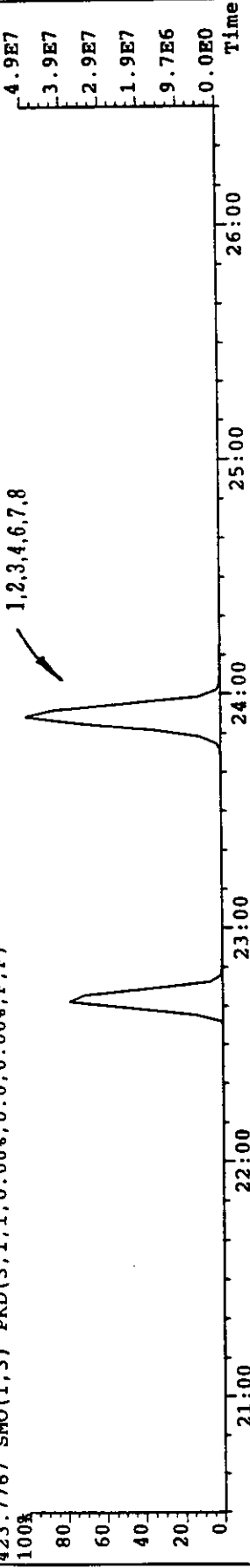
389.8156 SMO(2,3) PKD(3,1,1,0.00%,0.0,0.00%,F,F)



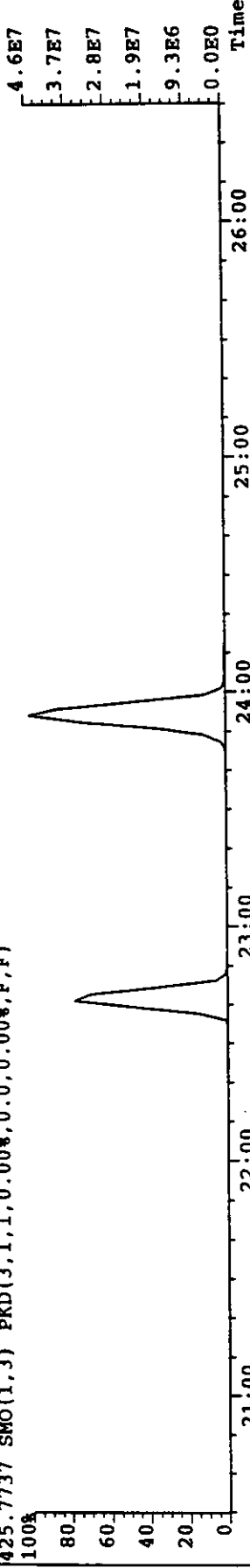
上段: H12.2.25日 STB マイクロ波運転(焼却灰) H₇CDDs
 下) H12.2.25日 STB マイクロ波運転(焼却灰) H₇DFs

File: MA10B031 #1-1023 Acq: 11-MAR-2000 02:06:05 GC EI+ Voltage SIR Autospec-Ultimate

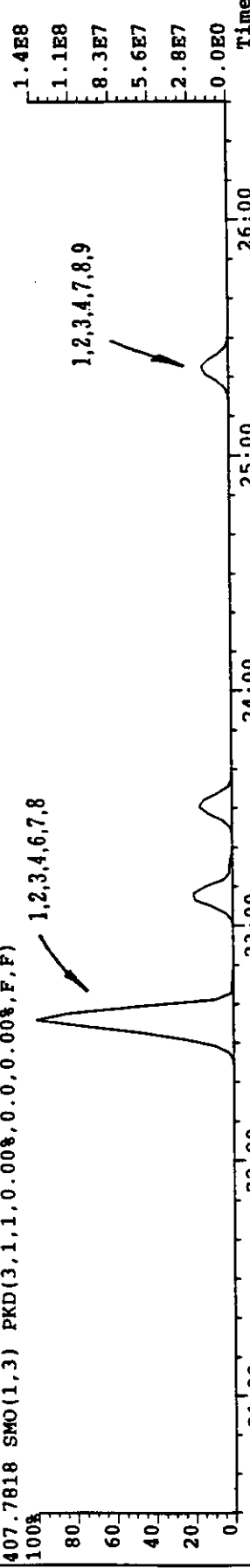
Sample#1 File Text: SUMI-STB-ASH Exp: KTR678CL
 423.7767 SMO(1,3) PKD(3,1,1,0.00%,0.0.0.00%,F,F)



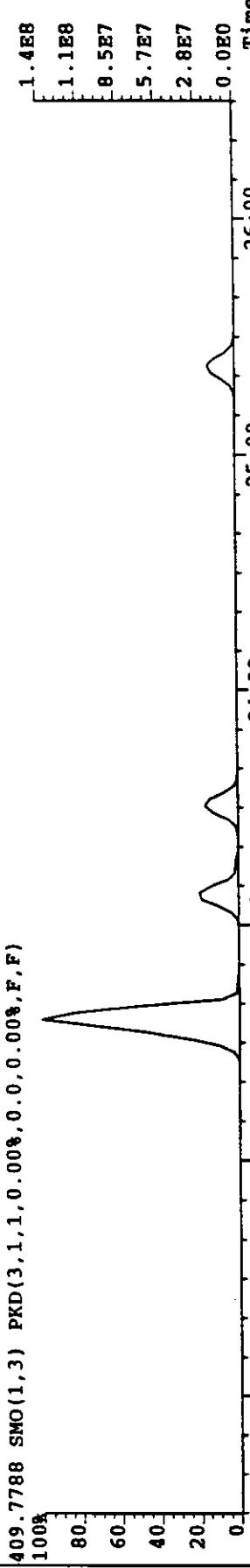
425.7737 SMO(1,3) PKD(3,1,1,0.00%,0.0.0.00%,F,F)



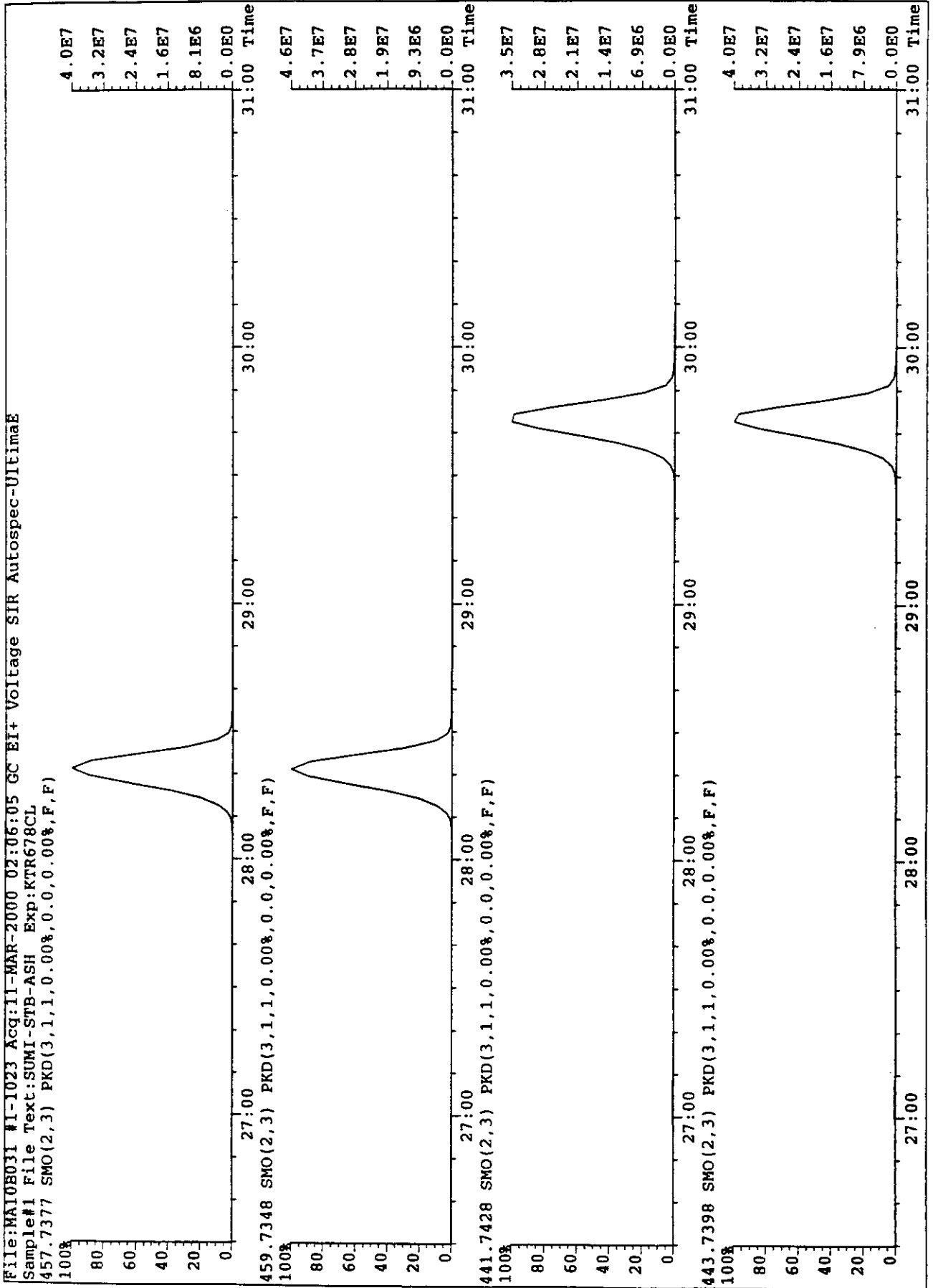
407.7818 SMO(1,3) PKD(3,1,1,0.00%,0.0.0.00%,F,F)



409.7788 SMO(1,3) PKD(3,1,1,0.00%,0.0.0.00%,F,F)



上段 : H12.2.25 日 STB マイクロ波運転(焼却灰) O₆CDD
 下段 : H12.2.25 日 STB マイクロ波運転(焼却灰) O₆CDF



添付資料－Ⅲ

Co-PCBs測定

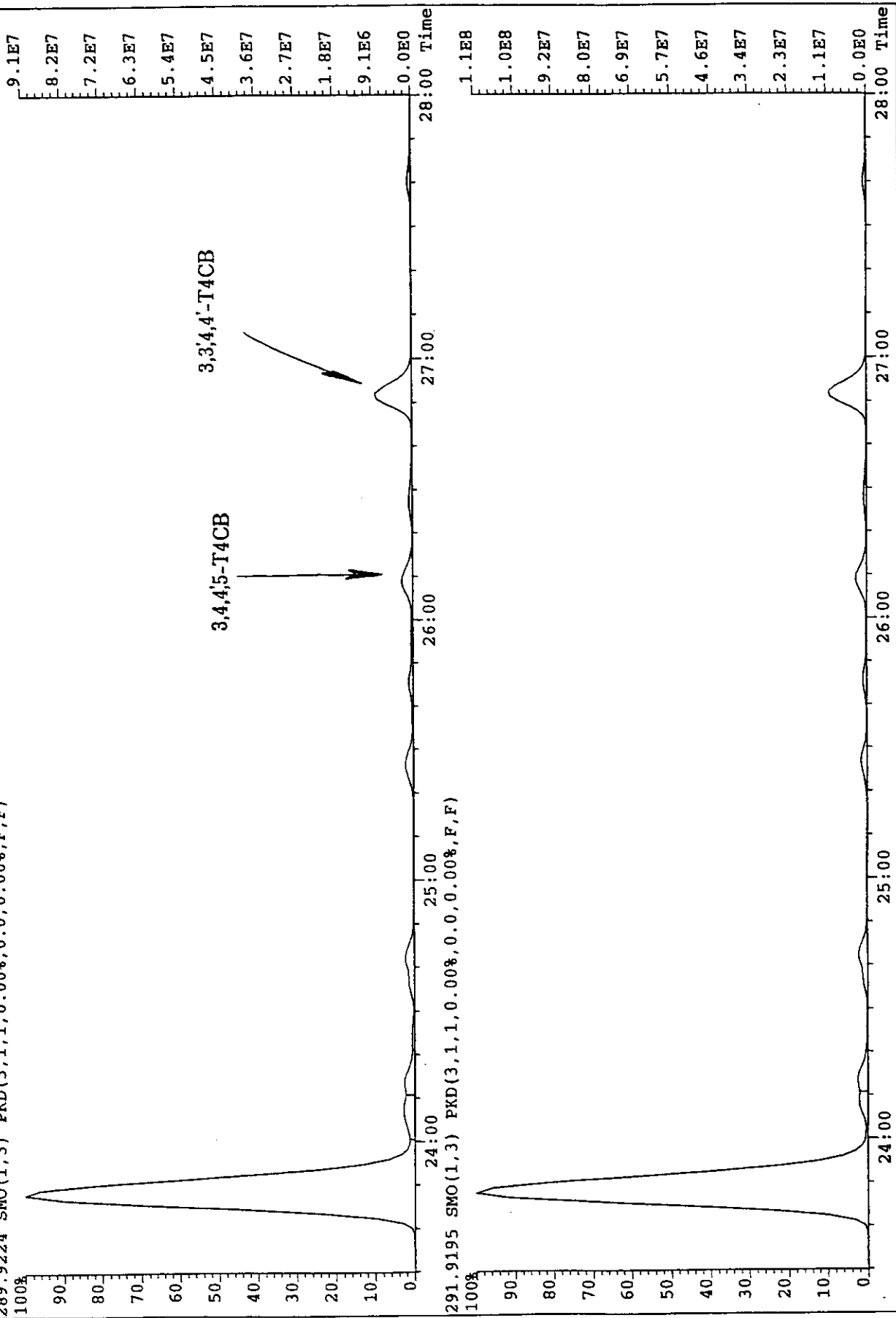
クロマトグラムチャート

試料名: H12.2.11日 冷却強化運転 T₄CB s

File: MA02B005 #1-1956 Acq: 2-MAR-2000 13:52:21 GC EI+ Voltage SIR Autospec-UltimaE

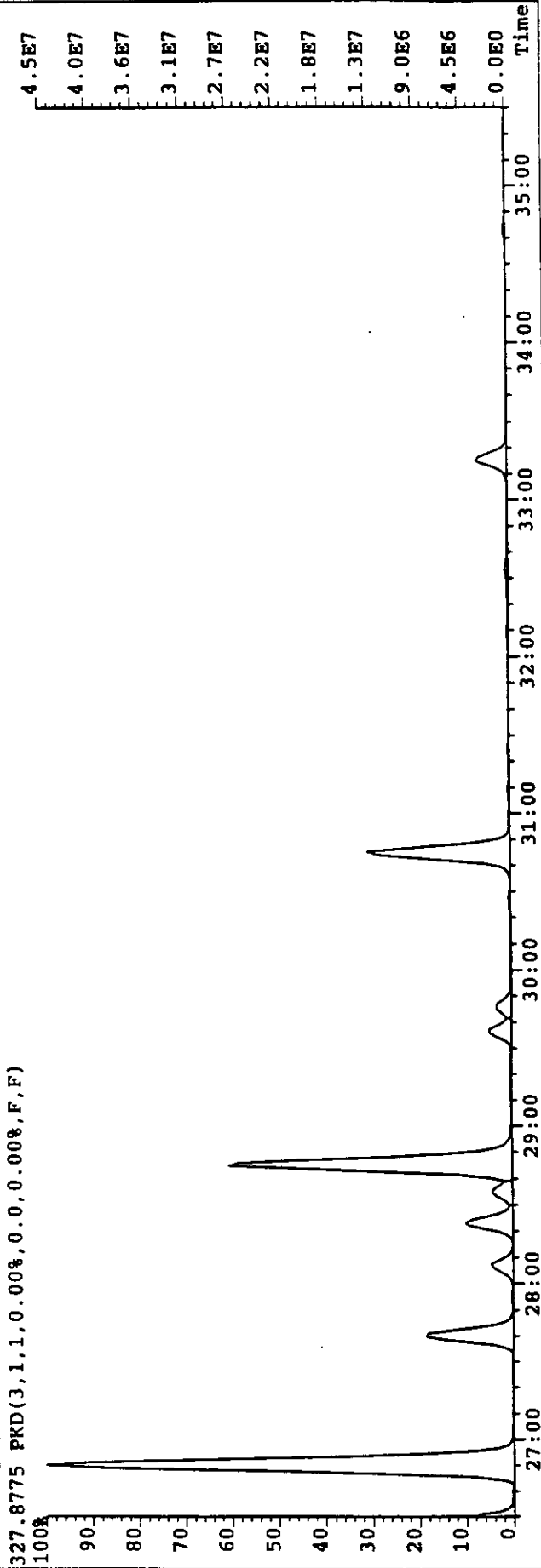
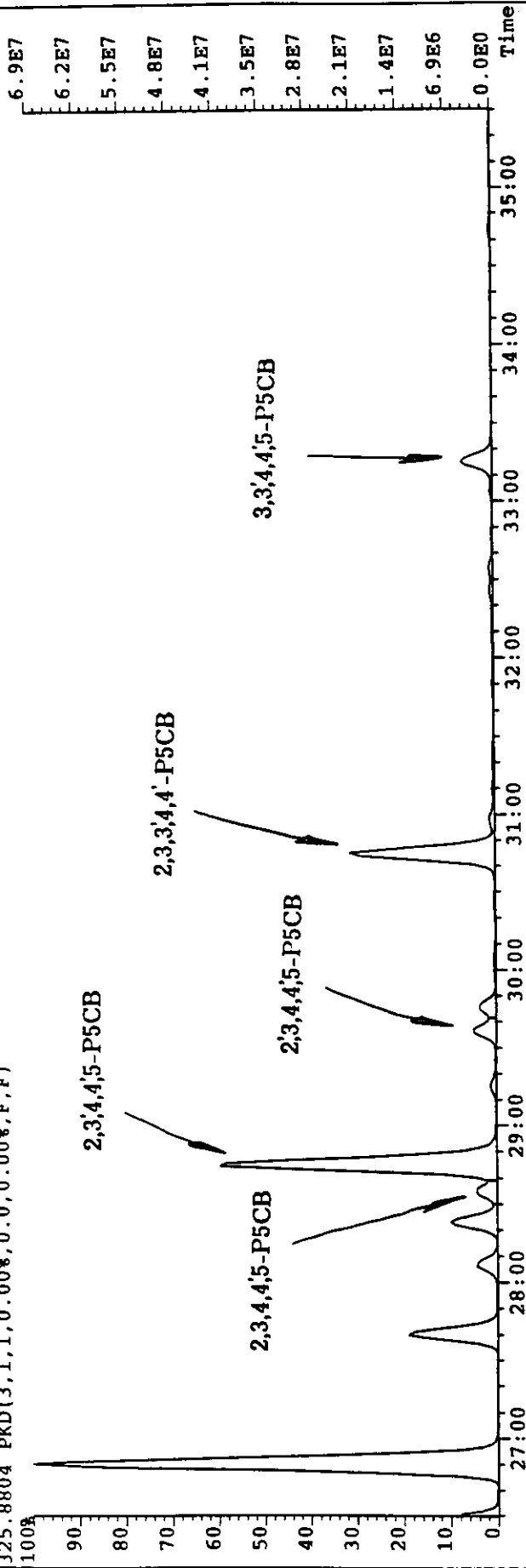
Sample#1 File Text: SUMI-REI-GAS-2/11 Exp: CO-PCB

289.9224 SMO(1,3) PKD(3,1,1,0.00%,0.0,0.00%,F,F)



日名: III2.2.11日 冷却強化運転 P₆ C B S

File: MA02B005 #1-1956 Acq: 2-MAR-2000 13:52:21 GC EI+ Voltage SIR Autospec-UltimaE
 Sample#1 File Text: SUMI-REI-GAS-2/11 Exp: CO-PCB
 325.8804 PKD(3,1,1,0.00%,0.0,0.00%,F,F)

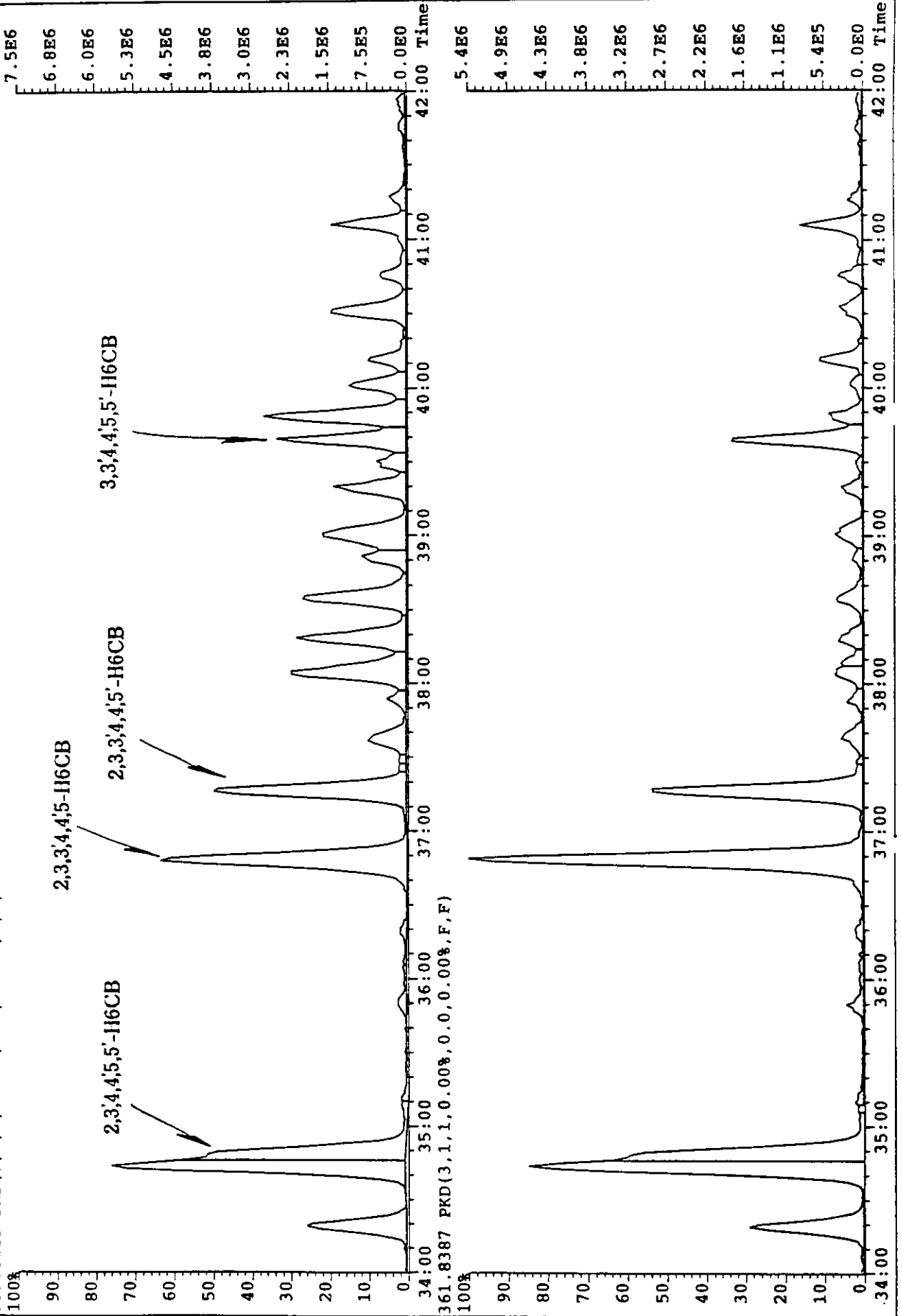


試料名: H12.2.11日 冷却強化運転 H₆ CB S

File: MA02B005 #1-1956 Acq: 2-MAR-2000 13:52:21 GC EI+ Voltage SIR Autospec-UltimaE

Sample#1 File Text: SUMI-REI-GAS-2/11 Exp: CO-PCB

359.8415 PKD(3,1,1,0.00%,0.0,0.00%,F,F)

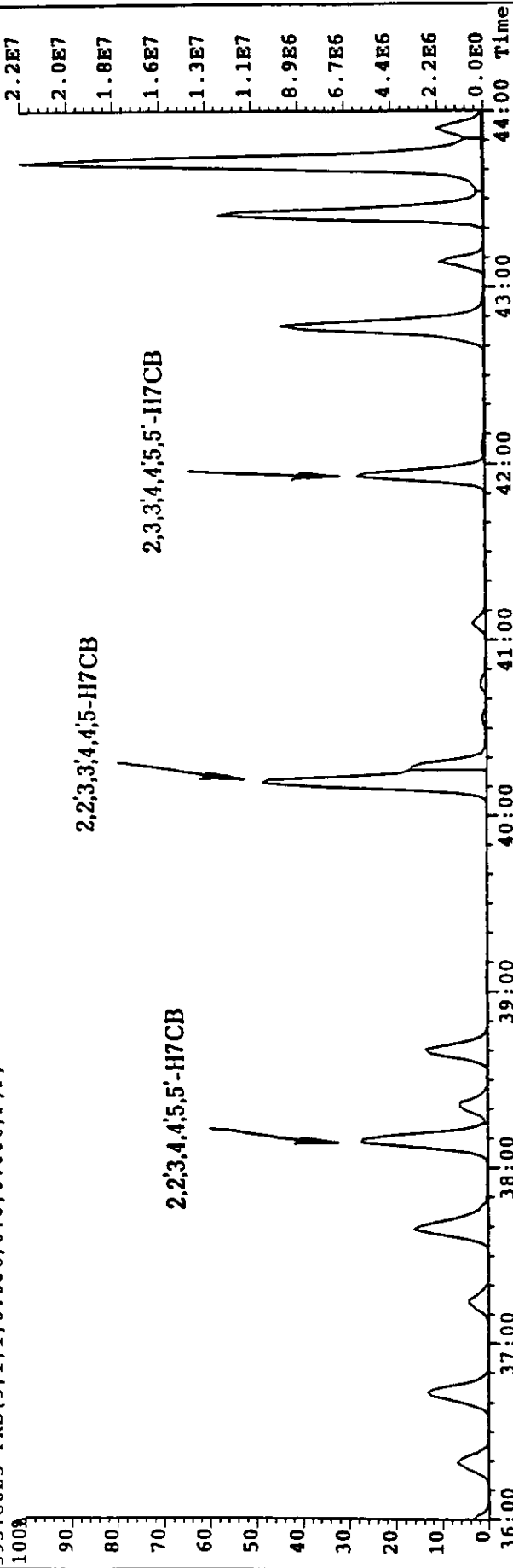


品名: H12.2.11日 冷却強化運転 H₇CBs

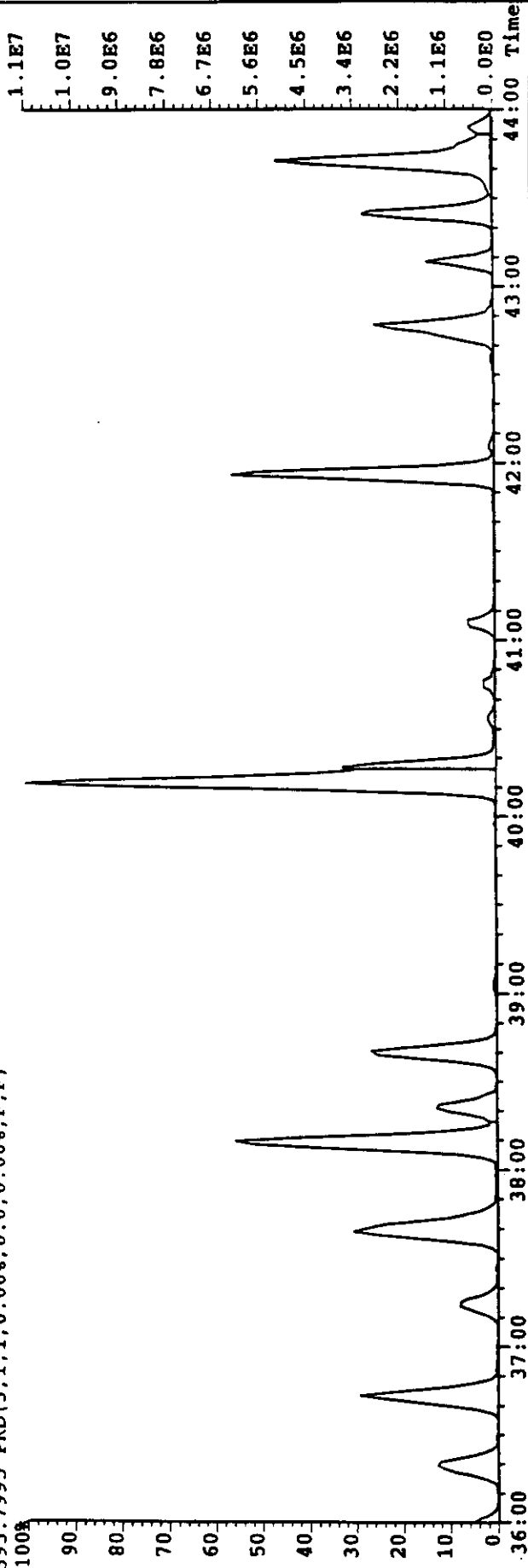
File: MA02B005 #1-1956 Acq: 2-MAR-2000 13:52:21 GC EI+ Voltage SIR Autospec-UIEimaE

Sample#1 File Text: SUMI-REI-GAS-2/11 Exp: CO-PCB

393.8025 PKD(3,1,1,0.00%,0.0,0.00%,F,F)



395.7995 PKD(3,1,1,0.00%,0.0,0.00%,F,F)

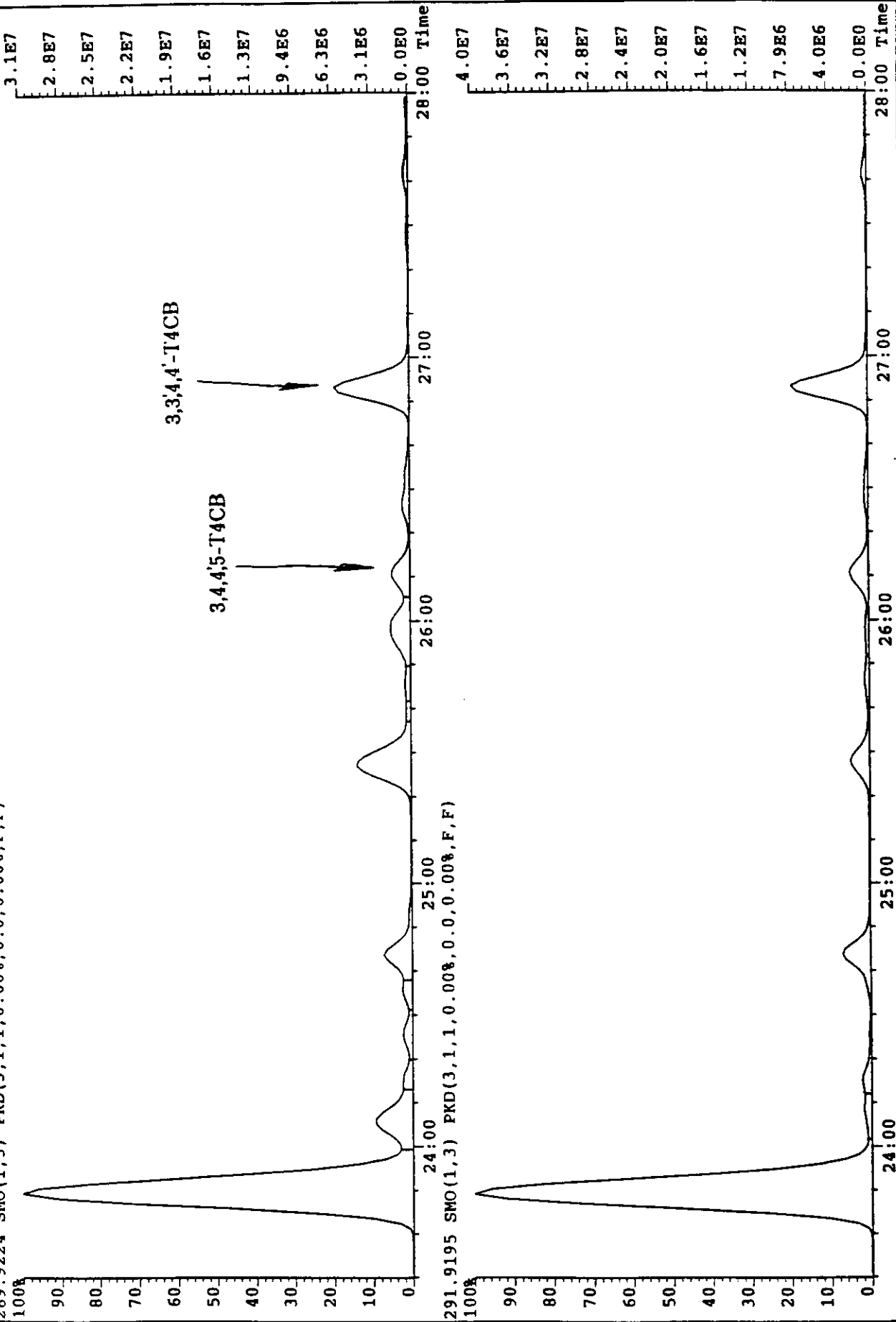


試料名：H12.2.12日 置火無し運転 T₄CB S

File: MA02B006 #1-1970 Acq: 2-MAR-2000 14:38:32 GC EI+ Voltage SIR Autospec-UITimaE

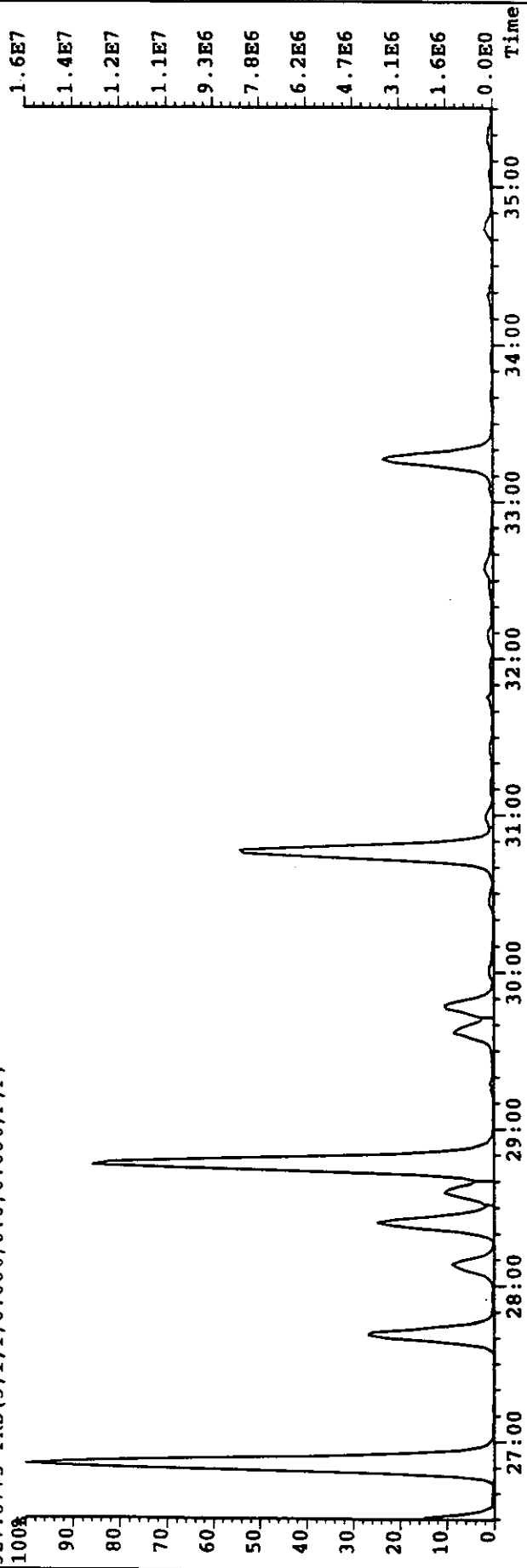
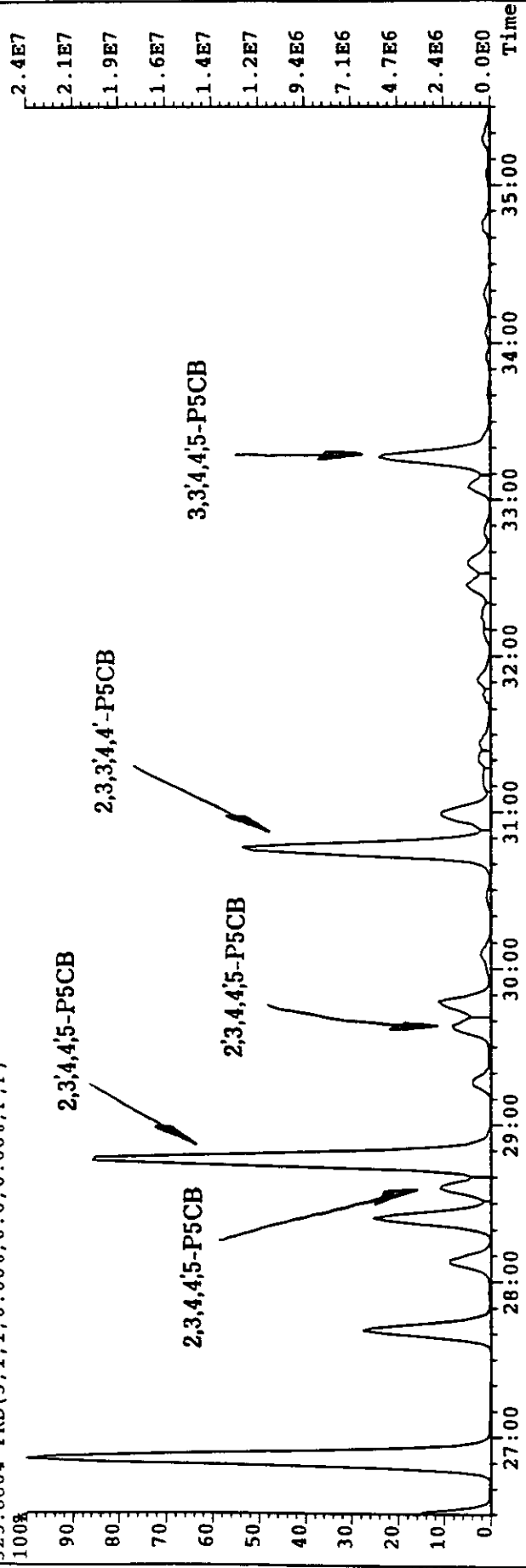
Sample#1 File Text: SUMI-OKI-GAS-2/12 Exp: CO-PCB

289.9224 SMO(1,3) PKD(3,1,1,0.00%,0.0,0.00%,F,F)



名: H12.2.12日 置火無し運転 P₆CB S

File: MA02B006 #1-1970 Acq: 2-MAR-2000 14:38:32 GC EI+ Voltage SIR Autospec-UltimaE
 Sample#1 File Text: SUMI-OKI-GAS-2/12 Exp: CO-PCB
 325.8804 PKD(3,1,1,0.00%,0.0,0.00%,F,F)

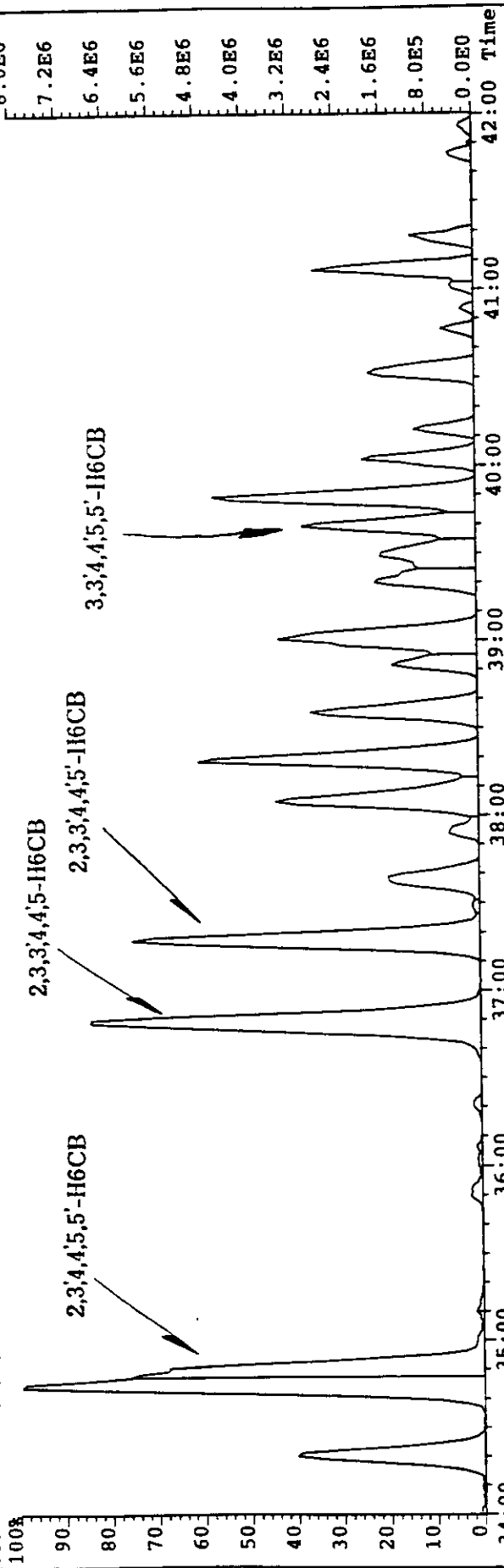


試料名: H12.2.12日 燬火無し運転 H₆CBs

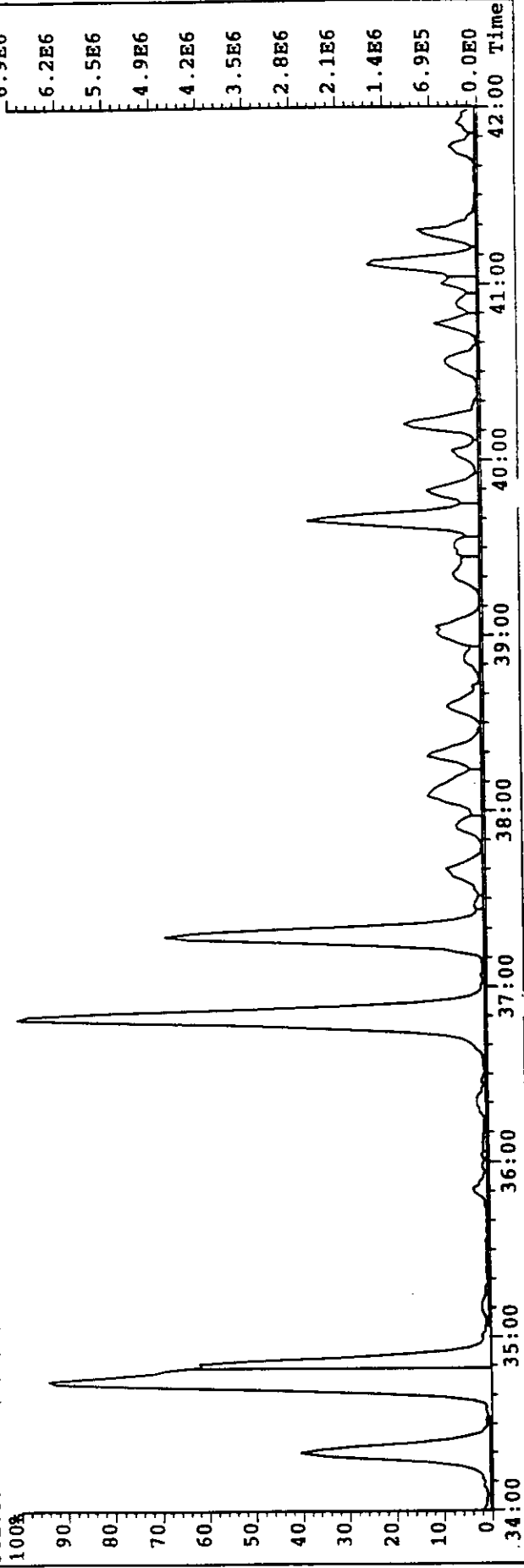
File: MA02B006 #1-1970 Acq: 2-MAR-2000 14:38:32 GC EI+ Voltage SIR Autospec-UltimaE

Sample#1 File Text: SUMI-OKI-GAS-2/12 Exp: CO-PCB

359.8415 PKD(3,1,1,0.00%,0.0,0.00%,F,F)

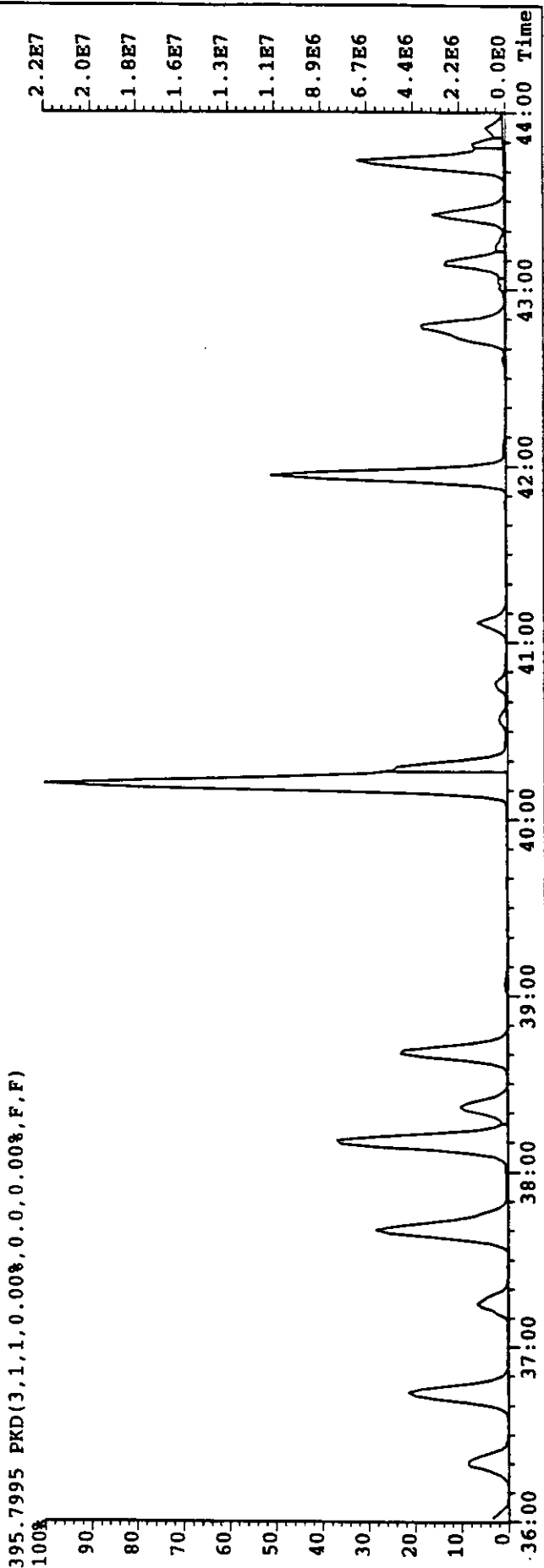
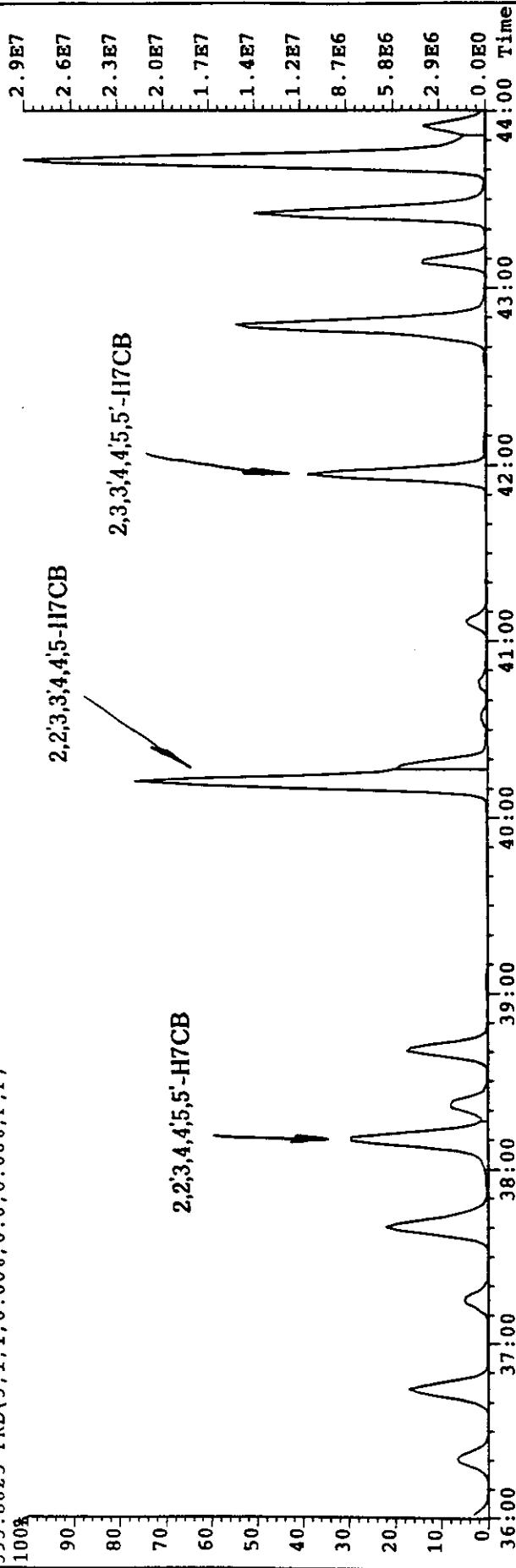


361.8387 PKD(3,1,1,0.00%,0.0,0.00%,F,F)



名: H12.2.12日 置火無し運転 H₇CB S

File:NA02B006 #1-1970 Acq: 2-MAR-2000 14:38:32 GC EI+ Voltage SIR Autospec-UITImae
 Sample#1 File Text:SUMI-OKI-GAS-2/12 Exp:CO-PCB
 393.8025 PKD(3,1,1,0.00%,0.0,0.00%,F,F)

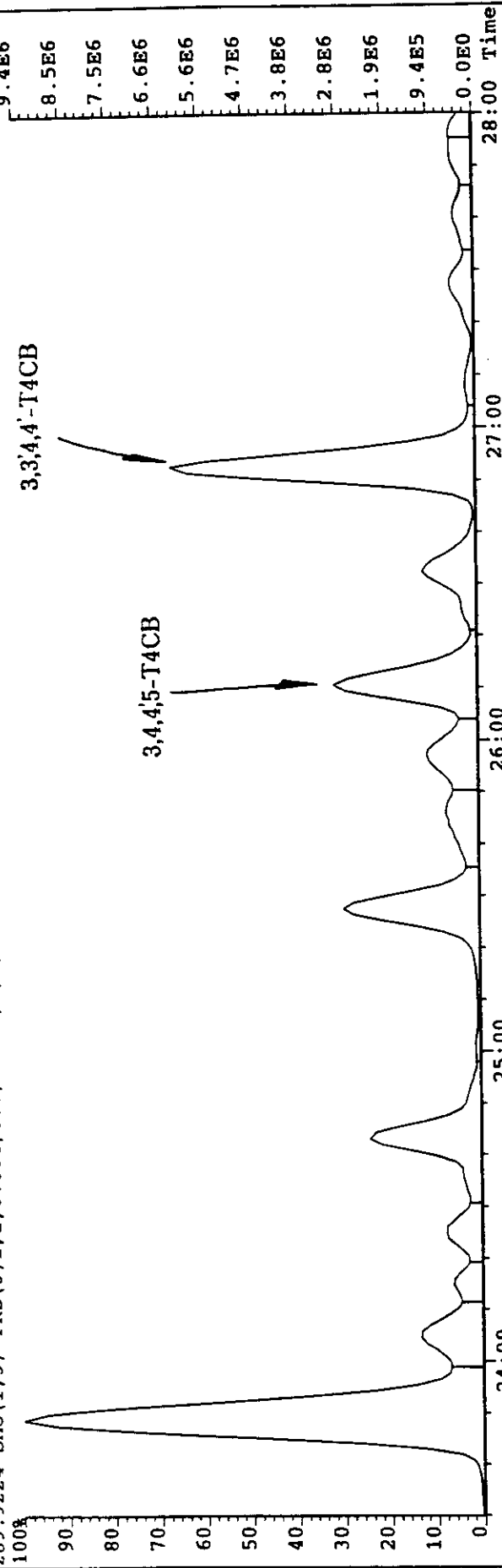


試料名 : H12.2.15 日 STB-60L 釜運転 T₄CB s

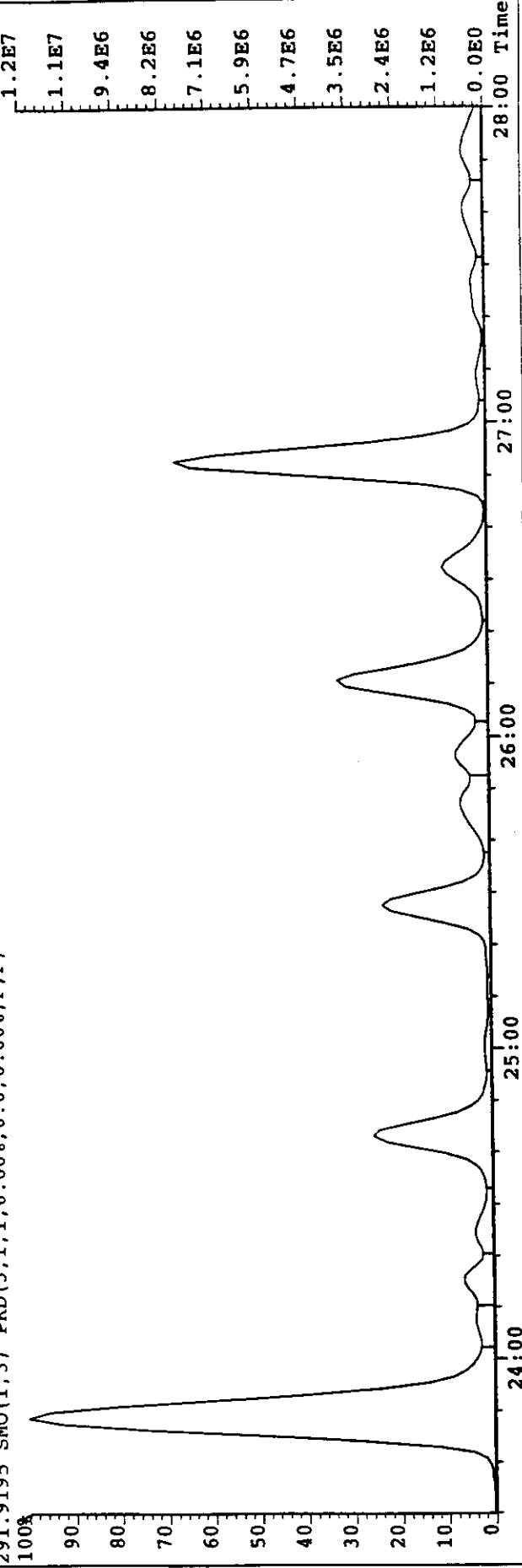
File: MA02B007 #1-1955 Acq: 2-MAR-2000 15:26:14 GC EI+ Voltage SIR Autospec-UltimaE

Sample#1 File Text: SUMI-STB-60L-GAS-2/15 Exp: CO-PCB

289.9224 SMO(1,3) PKD(3,1,1,0.00%,0.0,0.00%,F,F)



291.9195 SMO(1,3) PKD(3,1,1,0.00%,0.0,0.00%,F,F)

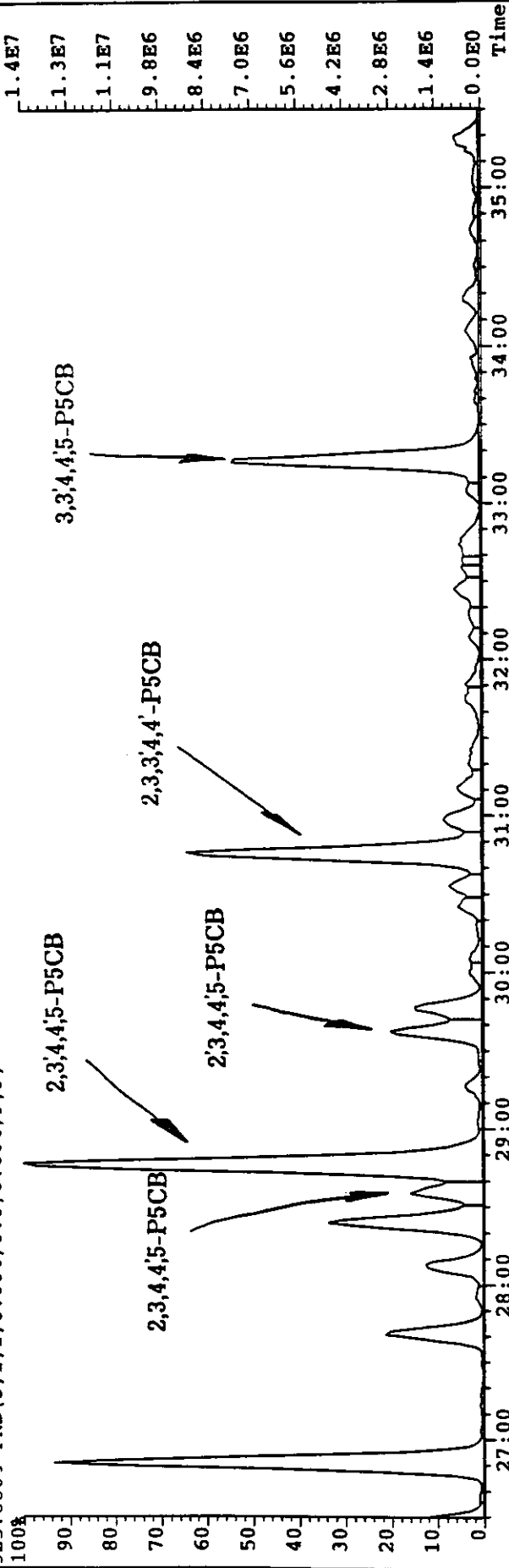


試 3 : HI2.2.15 日 STB-60L 釜運転 P₆CB s

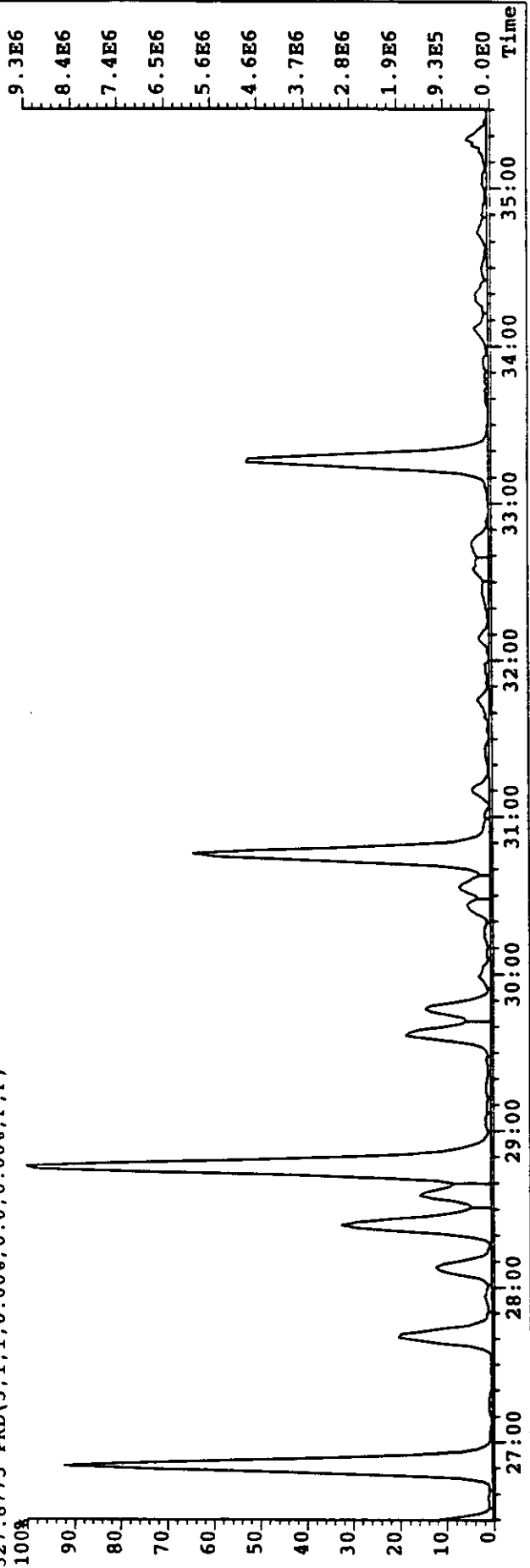
File: MA02B007 #1-1955 Acq: 2-MAR-2000 15:26:14 GC EI+ Voltage SIR Autospec-UltimaE

Sample#1 File Text: SUMI-STB-60L-GAS-2/15 Exp: CO-PCB

325.8804 PKD(3,1,1,0.00%,0.0,0.00%,F,F)



327.8775 PKD(3,1,1,0.00%,0.0,0.00%,F,F)

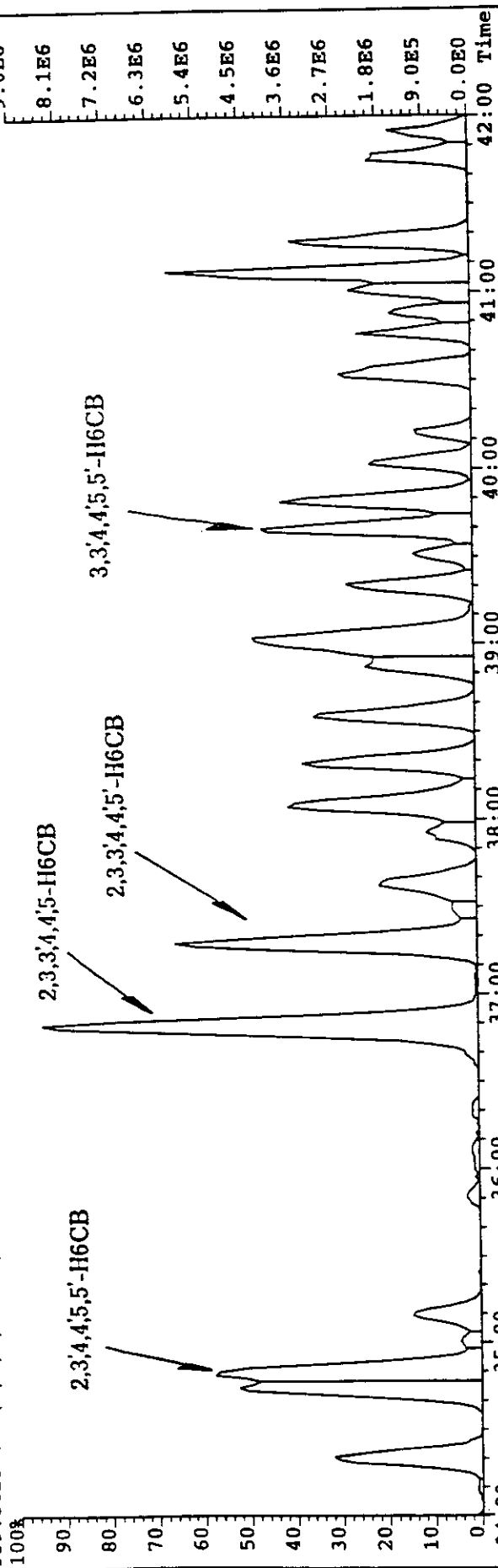


試料名 : H12.2.15日 STB-60L 釜運転 H₆CB S

File: MA02B007 #1-1955 Acq: 2-MAR-2000 15:26:14 GC EI+ Voltage SIR Autospec-UltimaE

Sample#1 File text: SUMI-STB-60L-GAS-2/15 Exp: CO-PCB

359.8415 PKD(3,1,1,0.00%,0.0,0.00%,F,F)



361.8387 PKD(3,1,1,0.00%,0.0,0.00%,F,F)

