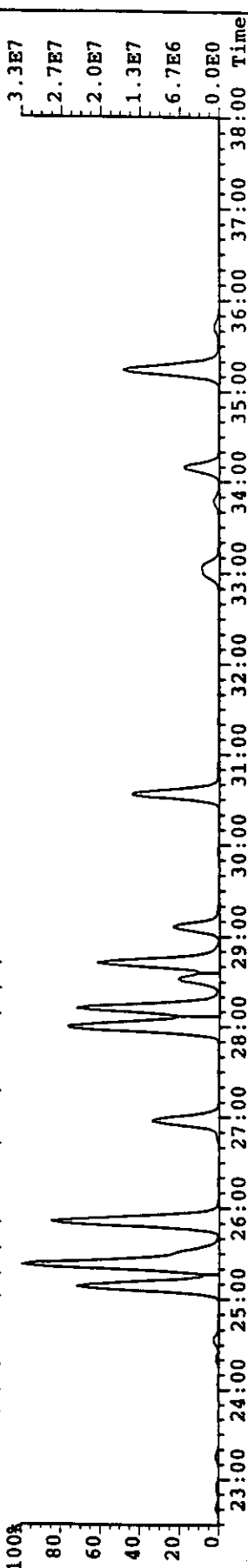
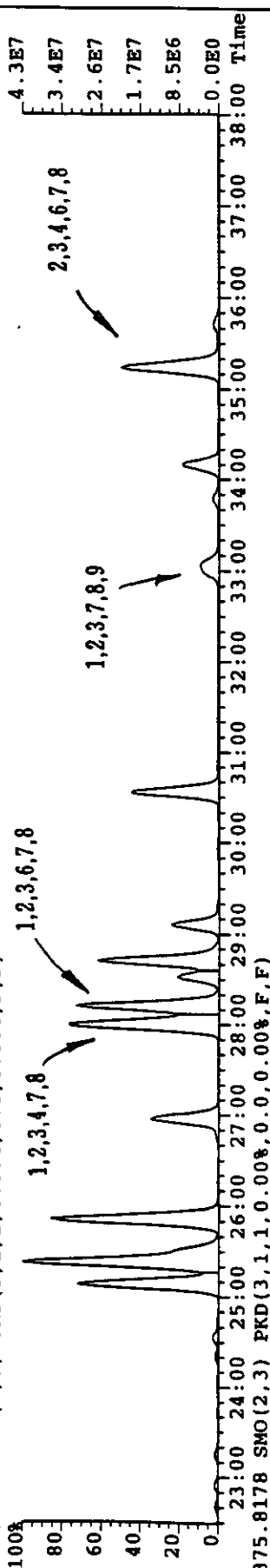
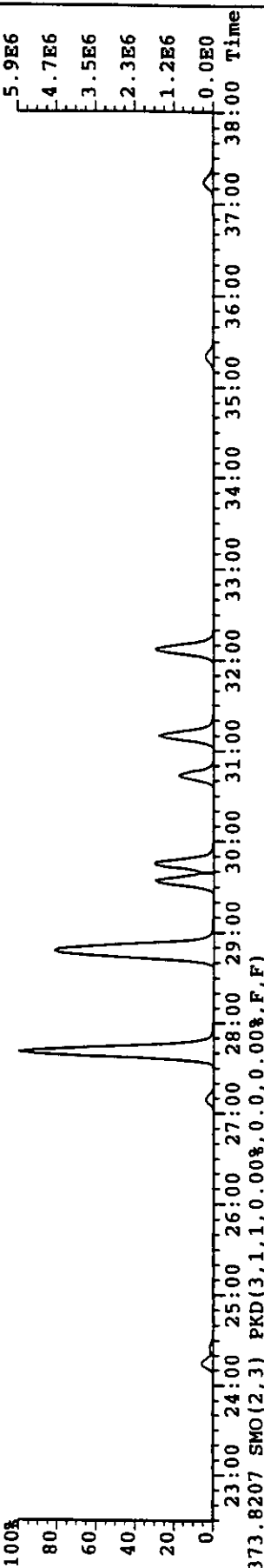
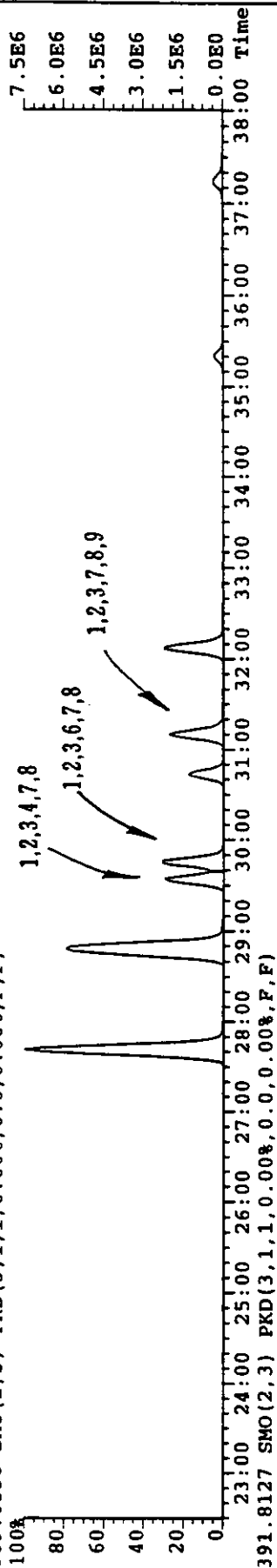


上段: H12.2.15日 STB-60L釜運転 H₂CDDs
下段: H12.2.15日 STB-60L釜運転 H₂CDFS

File: MA01A015 #1-1232 Acq: 2-MAR-2000 05:52:10 GC EI+ Voltage SIR Autospec-UltimaE
Sample#1 File Text: SUMI-STB-60L-GAS-2/15 Text:
389.8156 SMO(2,3) PKD(3,1,1,0.00%,0.0,0.00%,F,F)
Exp: KTR46CL

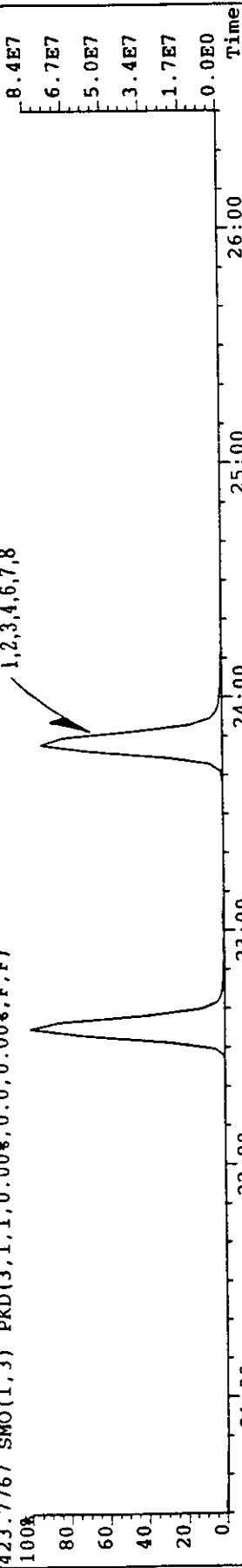


上段: H12.2.15日 STB-60L 釜運転 H₇CDD、
 下段: H12.2.15日 STB-60L 釜運転 H₇CDFS

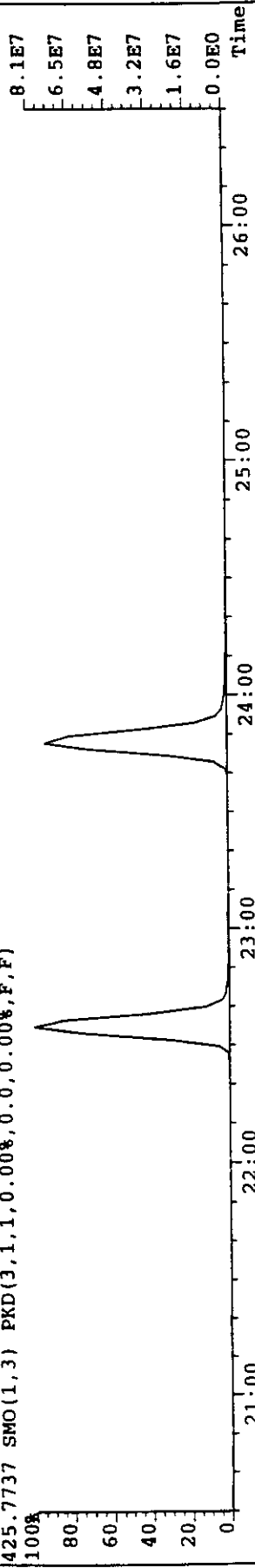
File: MA04B009 #1-1024 Acq: 4-MAR-2000 04:26:18 GC EI+ Voltage SIR Autospec-UltimaE

Sample#1 File Text: SUMI-STB-60L-GAS-2/15 Exp: KTR678CL

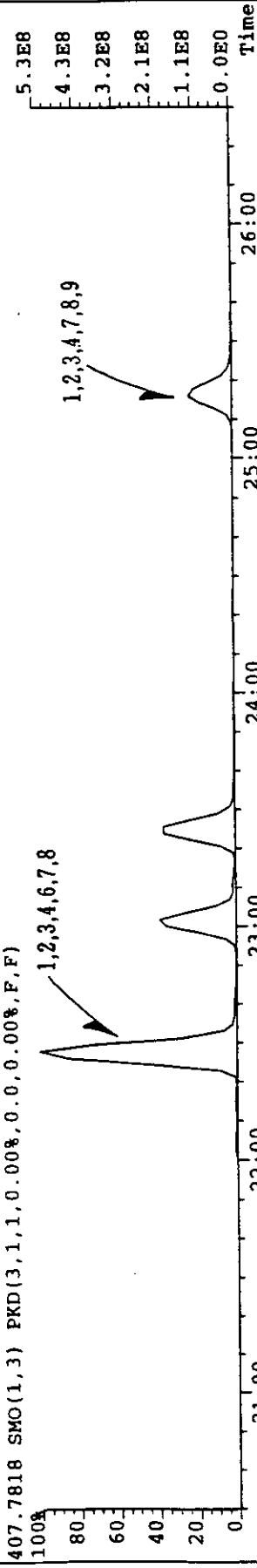
423.7767 SMO(1,3) PKD(3,1,1,0.00%,0.0,0.00%,F,F)



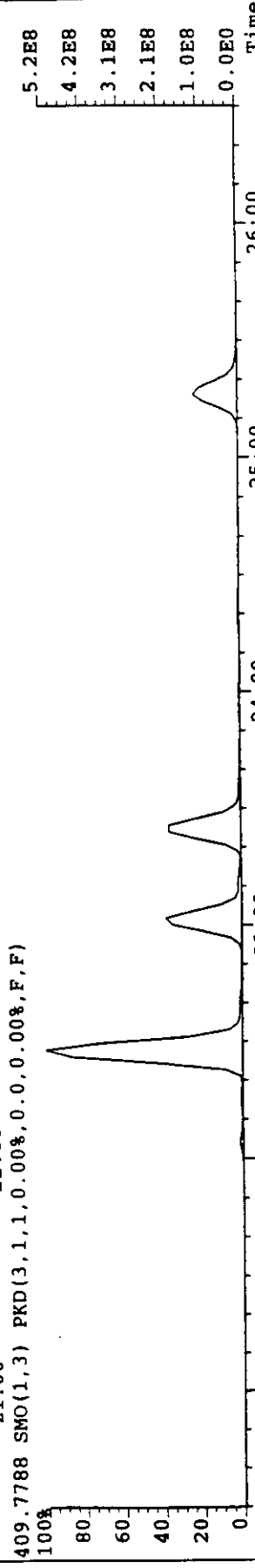
425.7737 SMO(1,3) PKD(3,1,1,0.00%,0.0,0.00%,F,F)



407.7818 SMO(1,3) PKD(3,1,1,0.00%,0.0,0.00%,F,F)

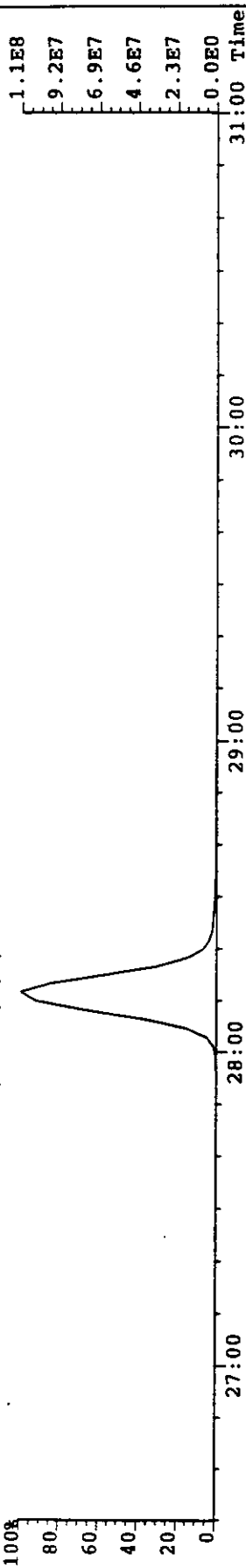


409.7788 SMO(1,3) PKD(3,1,1,0.00%,0.0,0.00%,F,F)

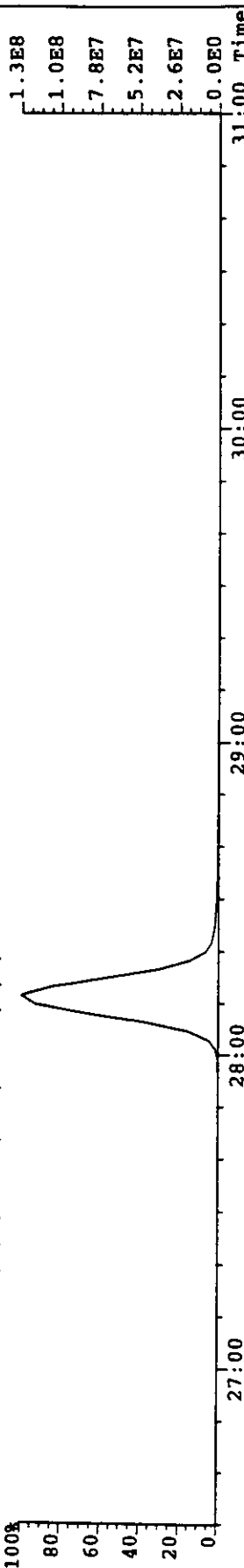


上段: H12.2.15日 STB-60L 金運転 O₈CDD
 . : H12.2.15日 STB-60L 金運転 O₈CDF

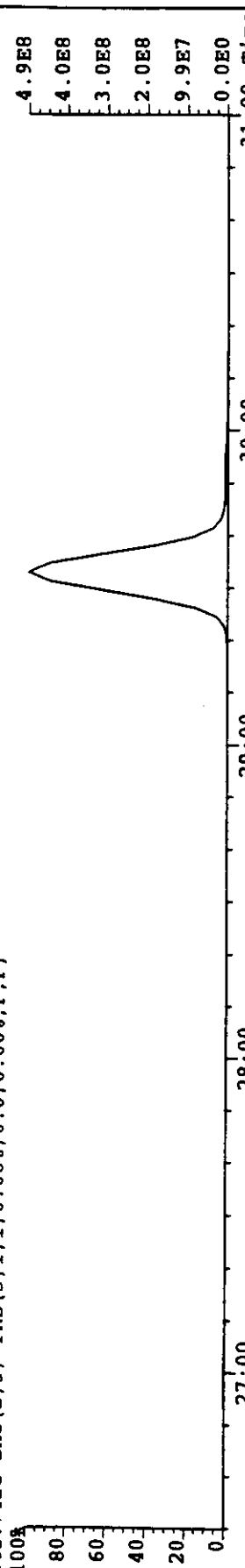
File: MA04B009 #1-1024 Acq: 4-MAR-2000 04:26:18 GC EI+ Voltage SIR Autospec-UltimaE
 Sample#1 File Text: SUMI-STB-60L-GAS-2/15 Exp: KTR678CL
 457.7377 SMO(2,3) PKD(3,1,1,0.00%,0.0,0.00%,F,F)



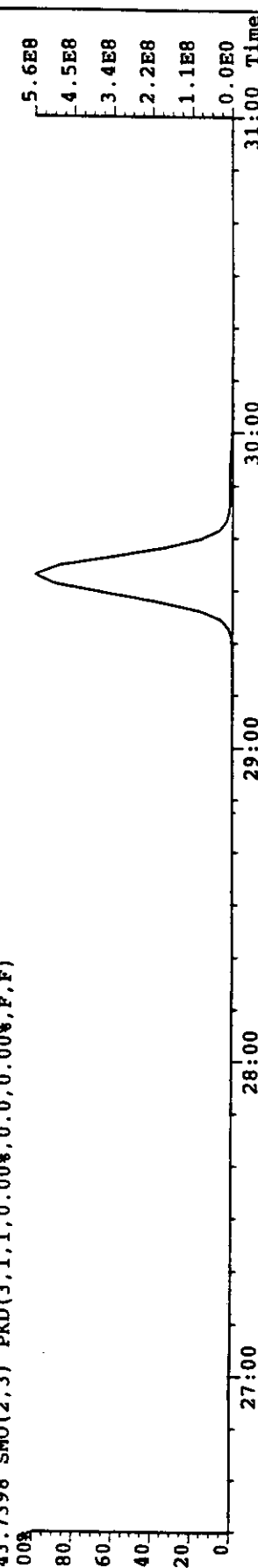
459.7348 SMO(2,3) PKD(3,1,1,0.00%,0.0,0.00%,F,F)



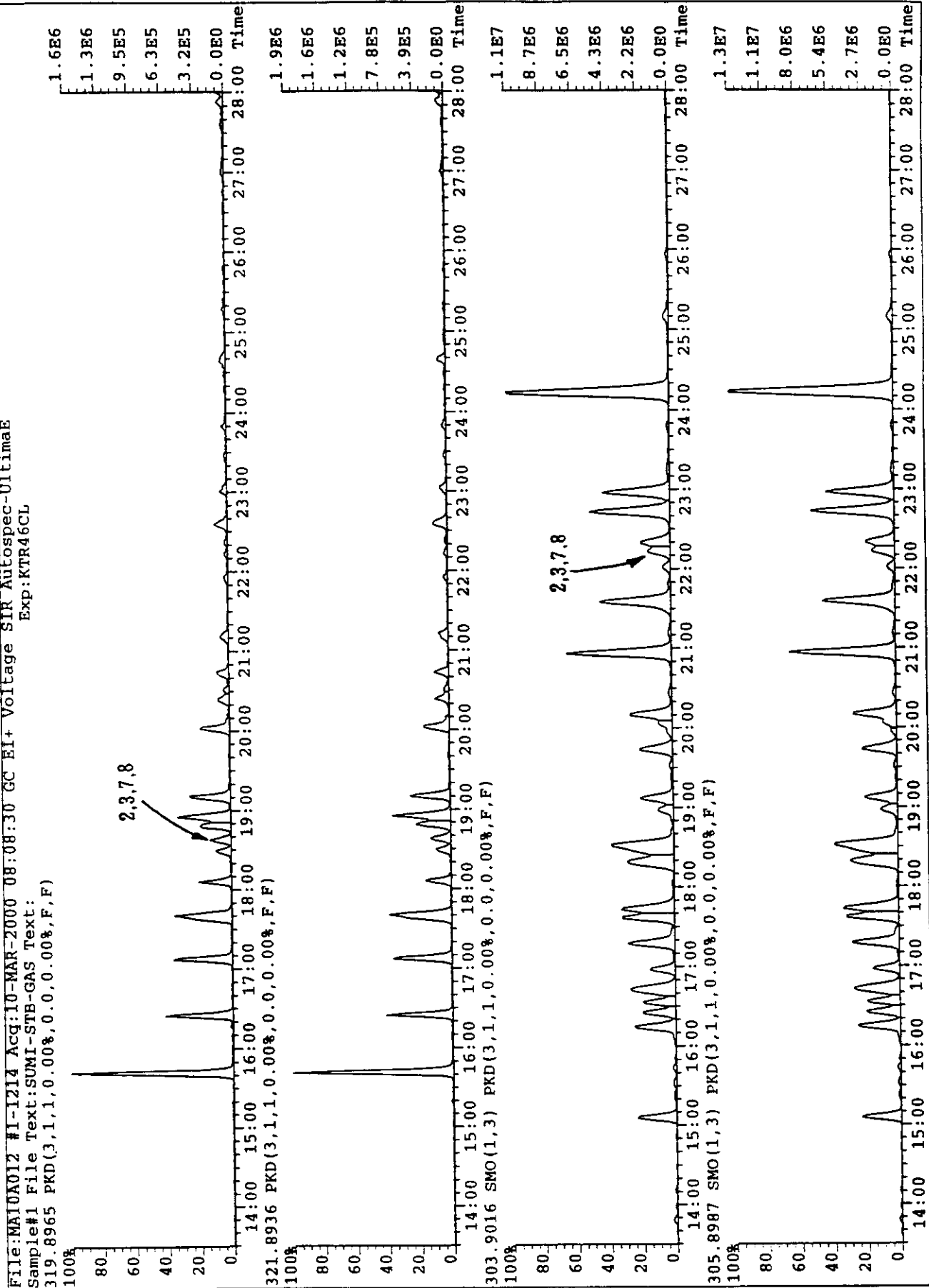
441.7428 SMO(2,3) PKD(3,1,1,0.00%,0.0,0.00%,F,F)



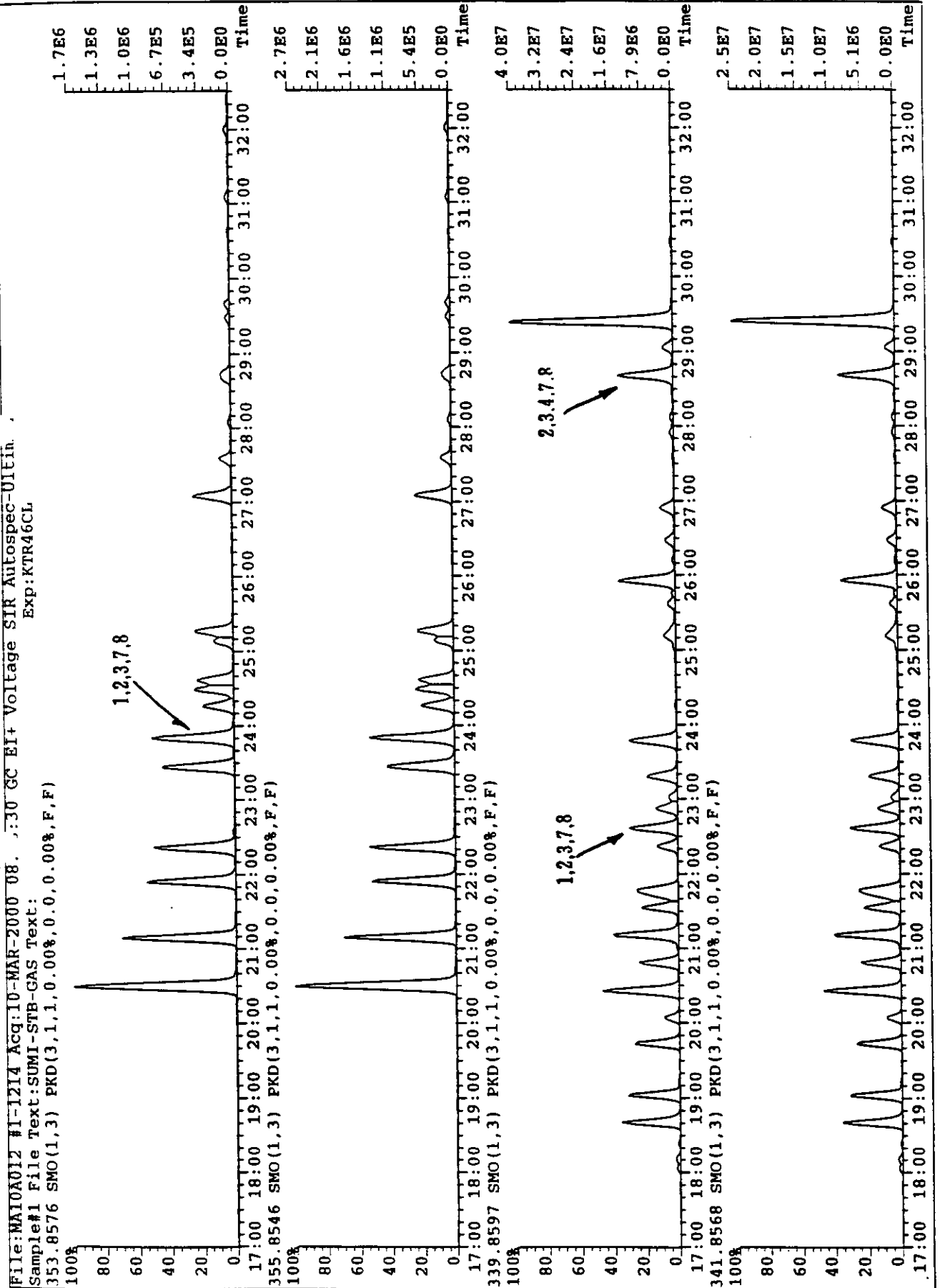
443.7398 SMO(2,3) PKD(3,1,1,0.00%,0.0,0.00%,F,F)



上段: H12.2.25日 STB マイクロ波運転 T₄CDD S
 下段: H12.2.25日 STB マイクロ波運転 T₄CDF S
 Exp: KTR46CL



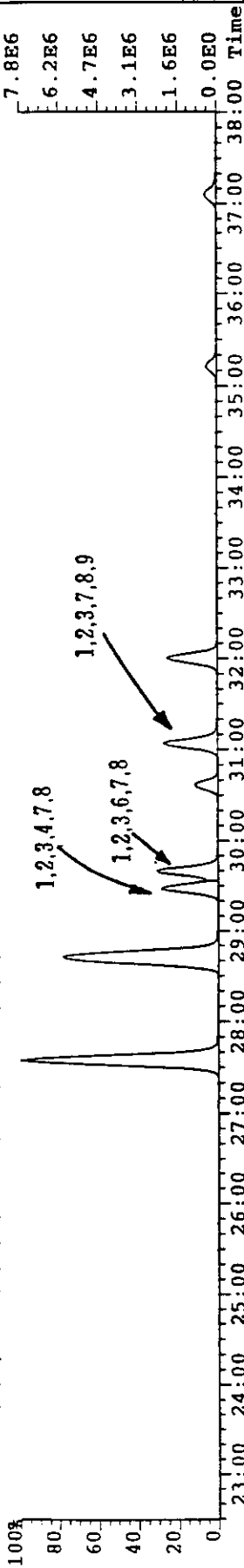
上段: 112.2.25 日 STB マイクロ波運転 P, CDD S
 下段: 112.2.25 日 STB マイクロ波運転 P, CDF F
 File: MA10A012 #1-1214 Acq: 10-MAR-2000 08. :30 GC EI+ Voltage SIR Autospec-UI Fin.
 Sample#1 File Text: SUMI-STB-GAS Text:
 Exp: KTR46CL



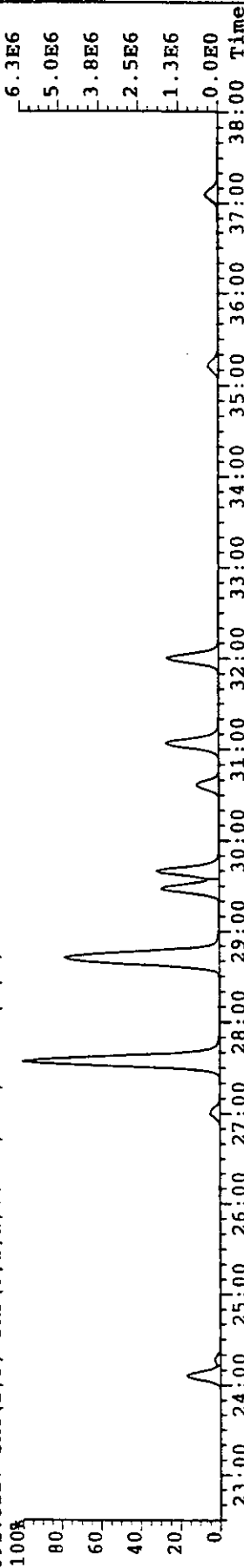
上段: H12.2.25日 STB マイクロ波運転 H₆ CDD S
下段: H12.2.25日 STB マイクロ波運転 H₆ CDF S

File: MA10A012 #1-1214 Acq: 10-MAR-2000 08:08:30 GC EI+ Voltage SIR Autospec-UltimaE
Sample#1 File Text: SUMI-STB-GAS Text: Exp: KTR46CL

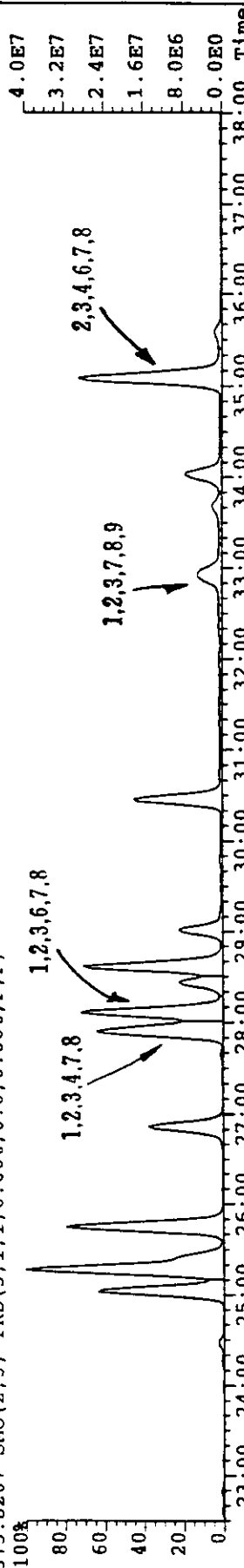
389.8156 SMO(2,3) PKD(3,1,1,0.00%,0.0,0.00%,F,F)



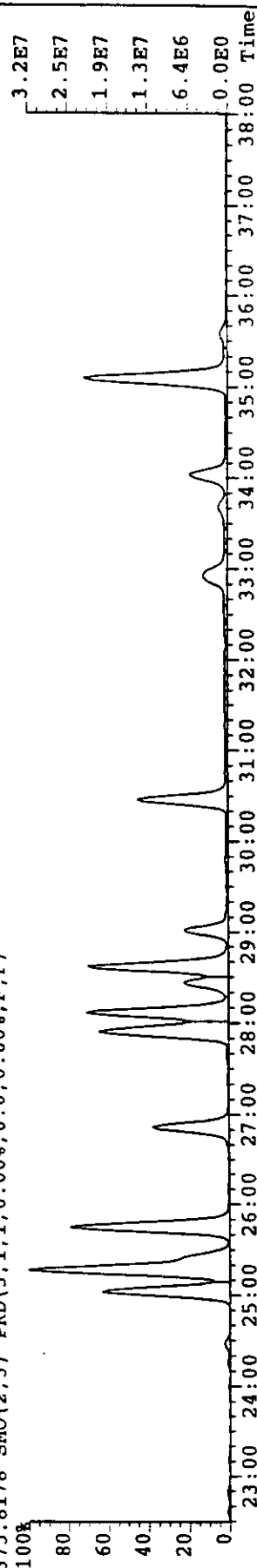
391.8127 SMO(2,3) PKD(3,1,1,0.00%,0.0,0.00%,F,F)



373.8207 SMO(2,3) PKD(3,1,1,0.00%,0.0,0.00%,F,F)



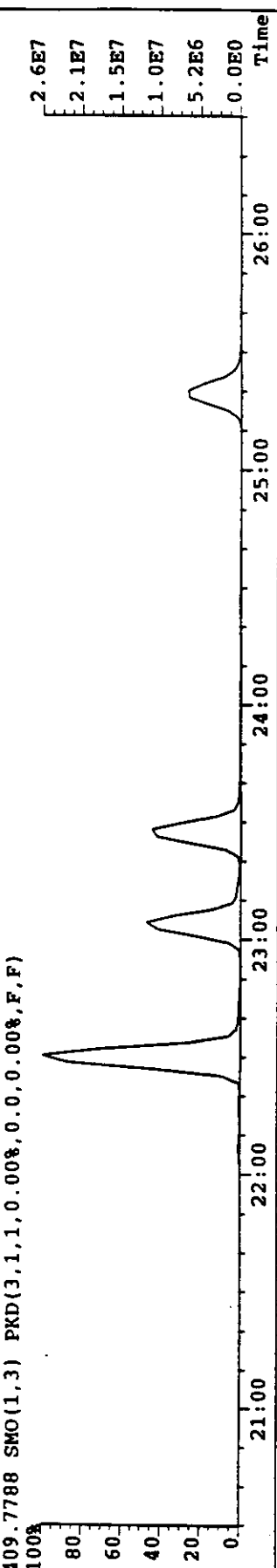
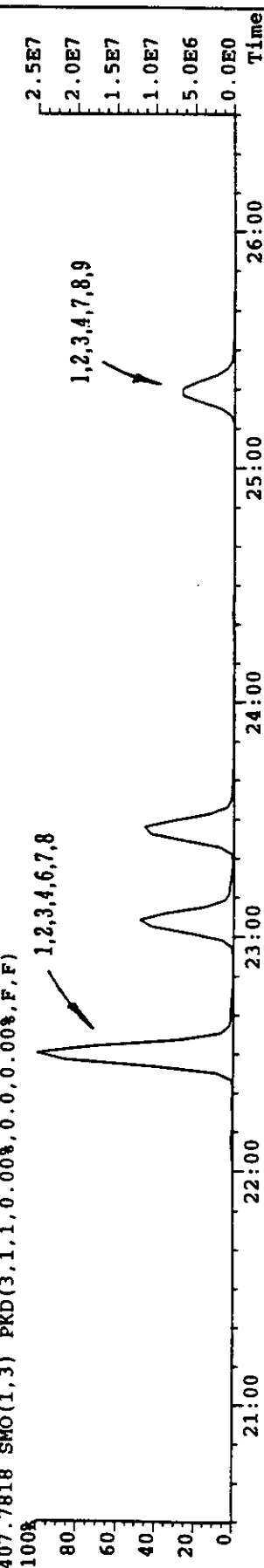
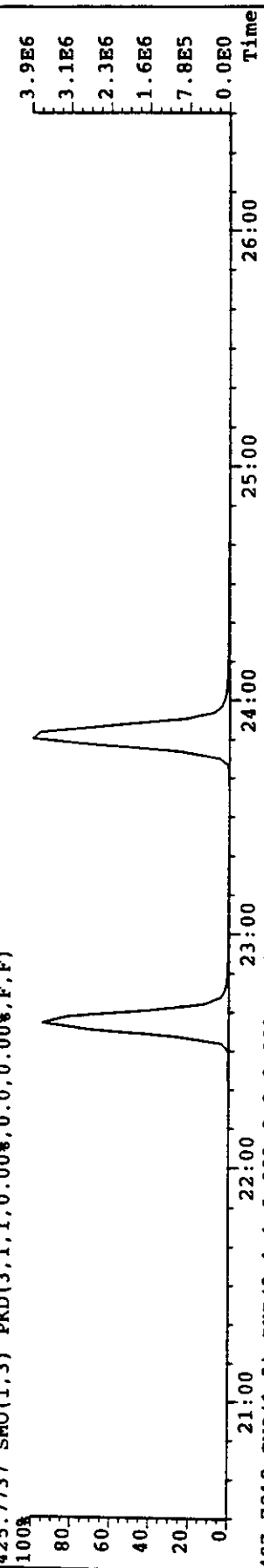
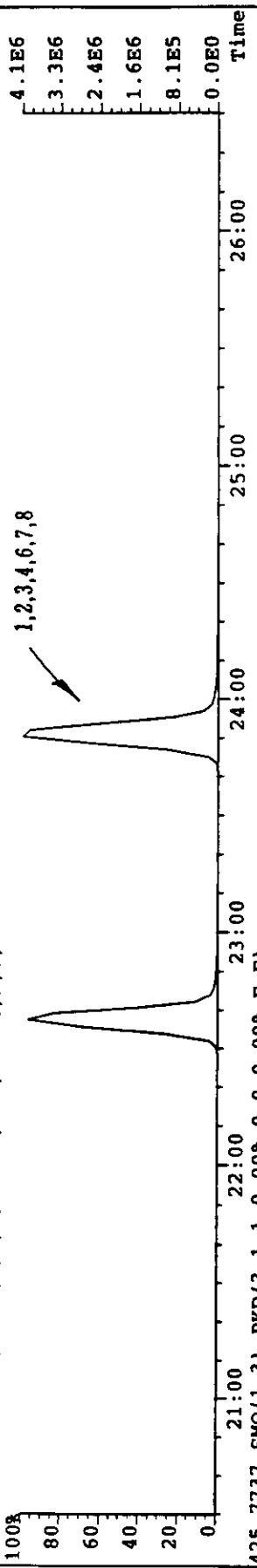
375.8178 SMO(2,3) PKD(3,1,1,0.00%,0.0,0.00%,F,F)



上段: H12.2.25日 STB マイクロ波運転 H, CDDs
 下: H12.2.25日 STB マイクロ波運転 H, CDFs

File: MA10B026 #1-1024 Acq: 10-MAR-2000 22:51:36 GC EI+ Voltage SIR Autospec-UITimaE

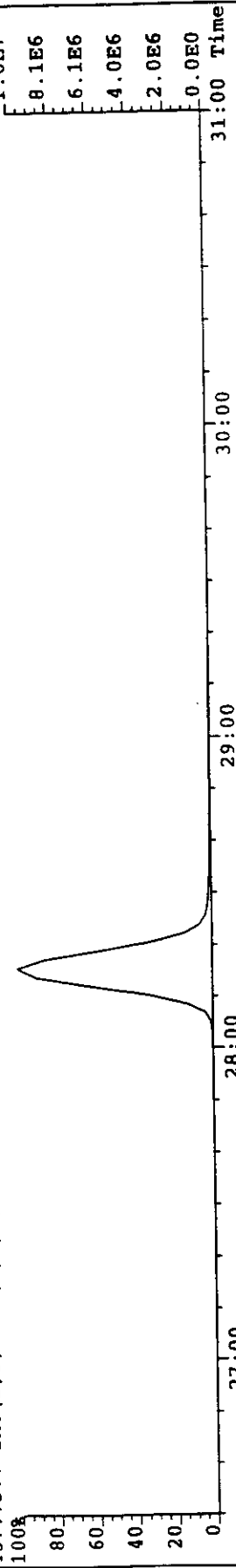
Sample#1 File Text: SUMI-STB-GAS Exp: KTR678CL
 423.7767 SMO(1,3) PKD(3,1,1,0.00%,0.0,0.00%,F,F)



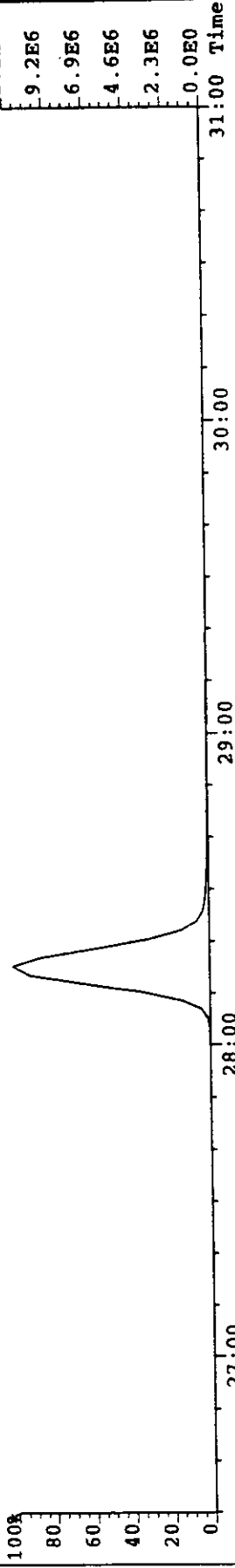
上段：H12.2.25日 STB マイクロ波運転 O₂CDD
 下段：H12.2.25日 STB マイクロ波運転 O₂CDF

File:MA10B026 #I-1024 Acq:10-MAR-2000 22:51:36 GC EI+ Voltage SIR Autospec-UltimaE

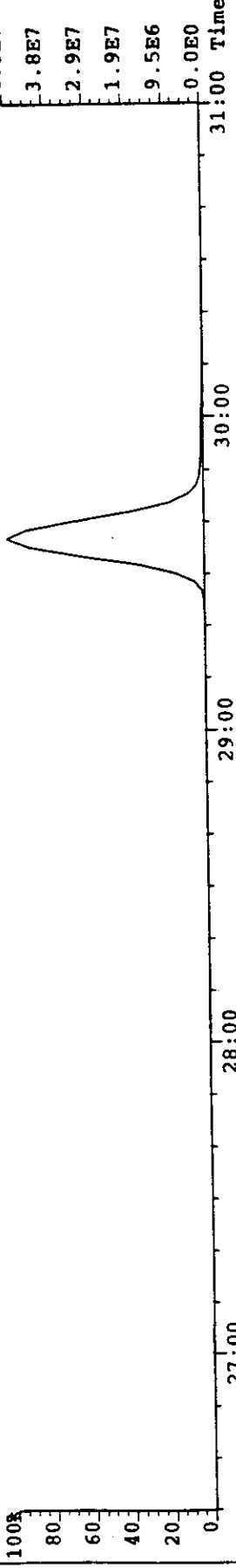
Sample#1 File Text:SUMI-STB-GAS Exp:KTR678CL
 457.7377 SMO(2,3) PKD(3,1,1,0.00%,0.0,0.00%,F,F)



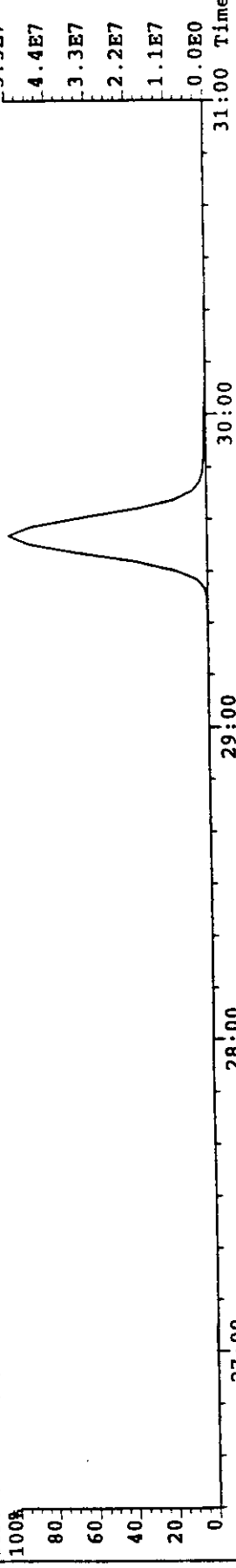
459.7348 SMO(2,3) PKD(3,1,1,0.00%,0.0,0.00%,F,F)



441.7428 SMO(2,3) PKD(3,1,1,0.00%,0.0,0.00%,F,F)

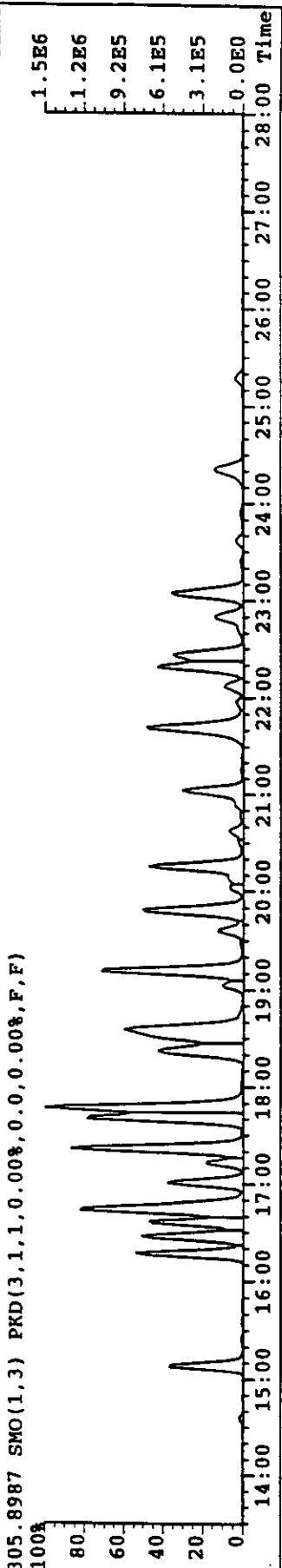
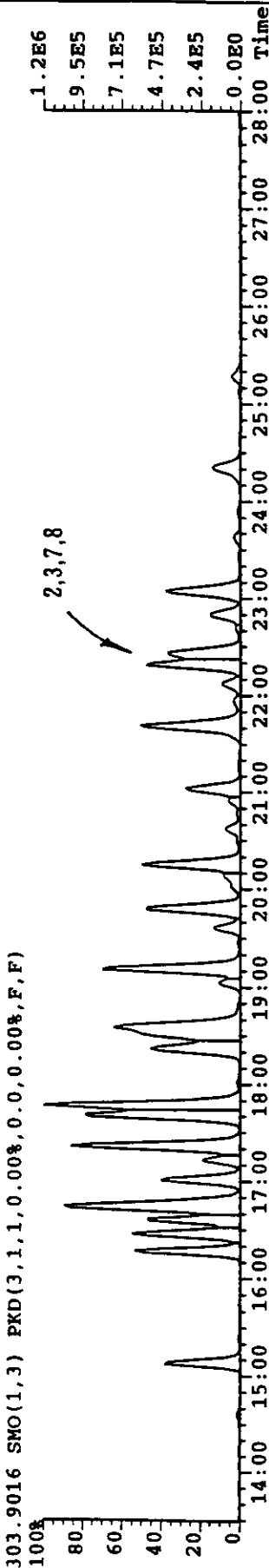
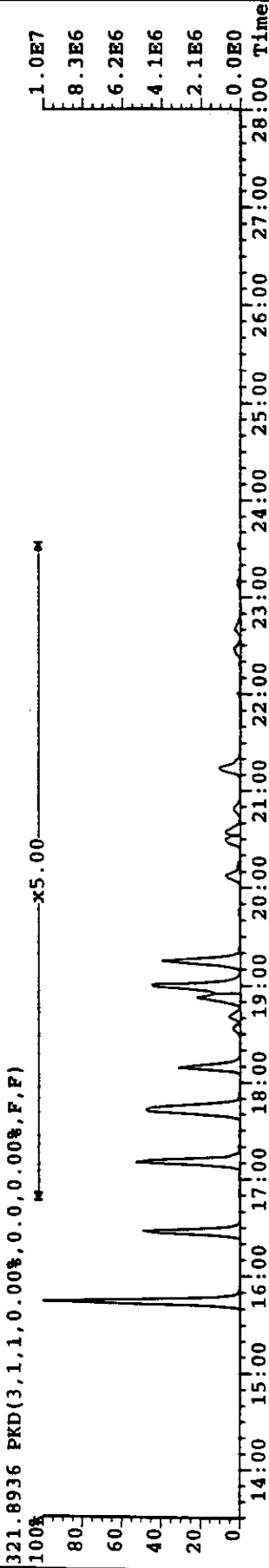
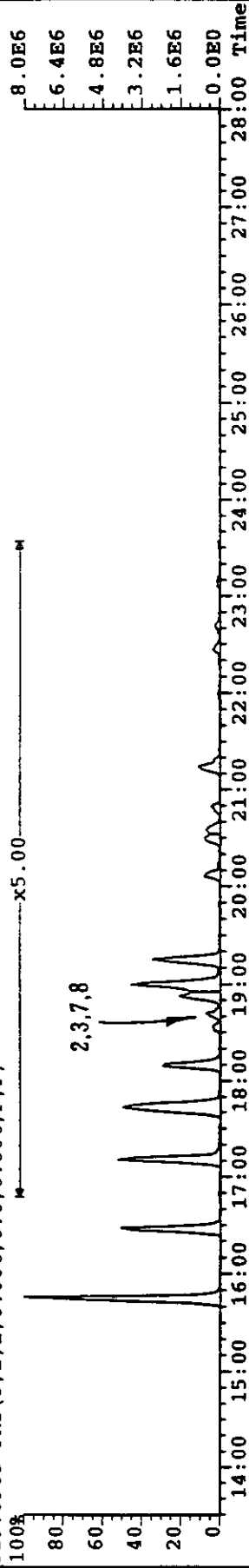


443.7398 SMO(2,3) PKD(3,1,1,0.00%,0.0,0.00%,F,F)



上段：H12.2.11日 冷却強化運転(烧却灰) T,CDDs
 下段：H12.2.11日 冷却強化運転(烧却灰) T,CDFs

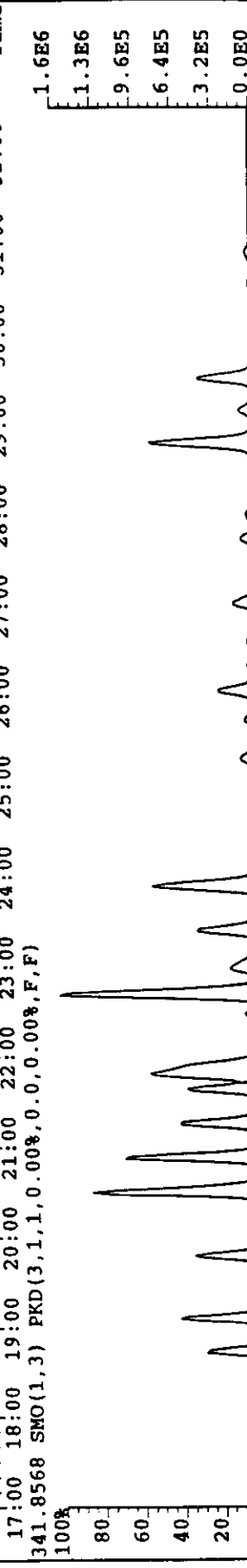
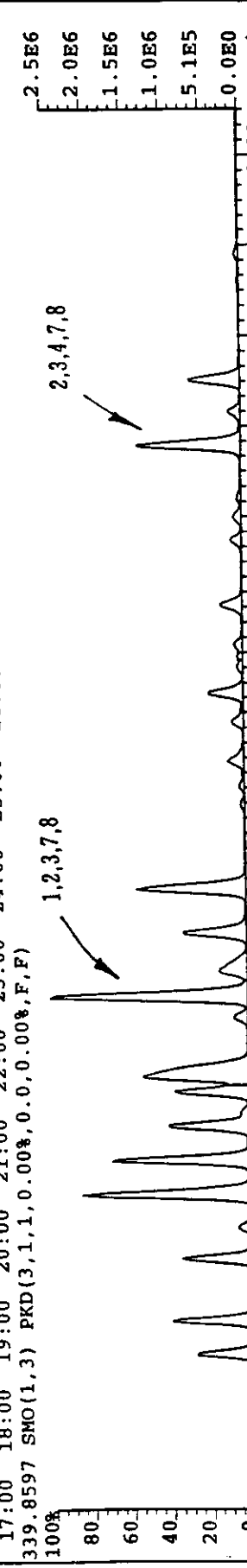
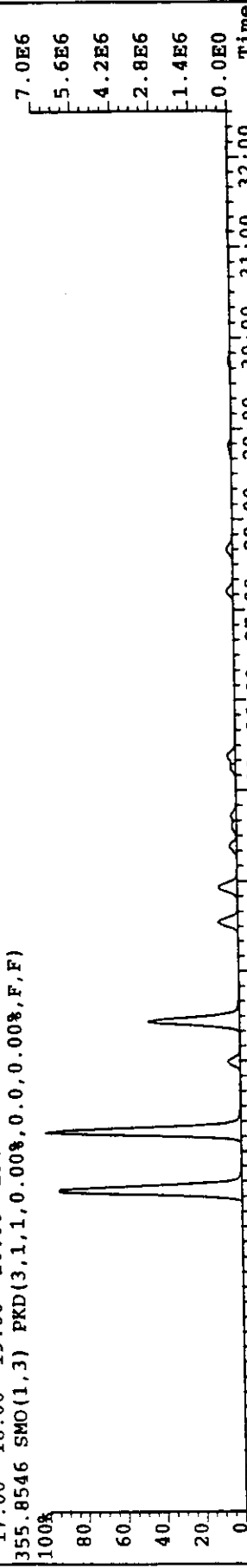
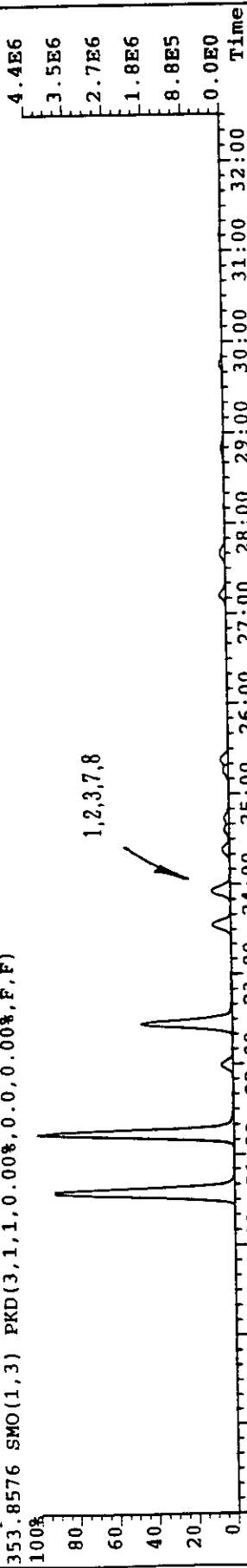
File: MA01A017 #1-1232 Acq: 2-MAR-2000 07:43 GC EI+ Voltage SIR Autospec-UITim...
 Sample#1 File Text: SUMI-SMC-SYOASH-2/11 Text:
 319.8965 PKD(3,1,1,0.00%,0.0,0.00%,F,F) Exp:KTR46CL



上段: H12.2.11日 冷却強化運転(烧却灰) P₆CDD S
 下段: H12.2.11日 冷却強化運転(烧却灰) P₆CDF S

File: MA01A017 #1-1232 Acq: 2-MAR-2000 07:30:43 GC EI+ Voltage SIR Autospec-UltimaE
 Exp: KTR46CL

Sample#1 File Text: SUMI-SMC-SYOASH-2/11 Text:
 353.8576 SMO(1,3) PKD(3,1,1,0.00%,0.0,0.00%,F,F)

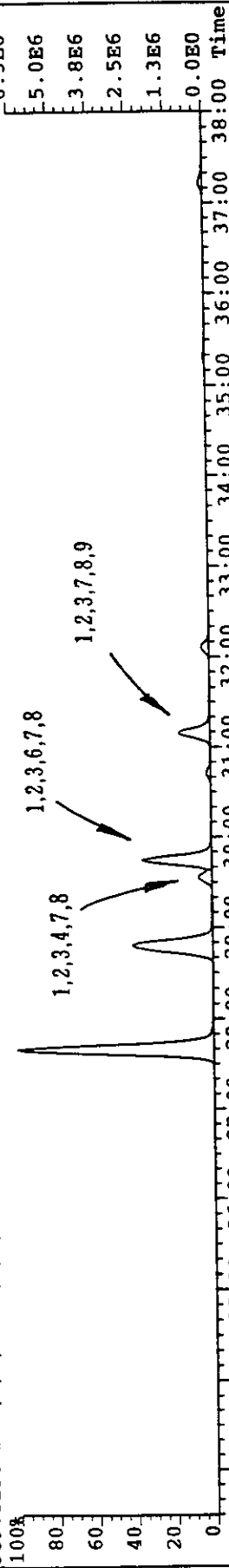


上段: H12.2.11日 冷却強化運転(烧却灰) H₆ CDD S
 下段: H12.2.11日 冷却強化運転(烧却灰) H₆ CDF S

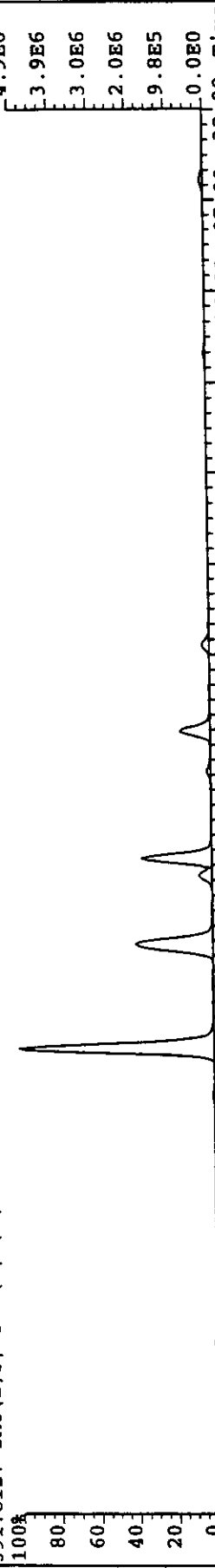
File: MAUIA017 #1-1232 Acq: 2-MAR-2000 07: .43 GC EI+ Voltage SIR Autospec-Ultim.
 Exp: KTR46CL

Sample#1 File Text: SUMI-SMC-SYOASH-2/11 Text:

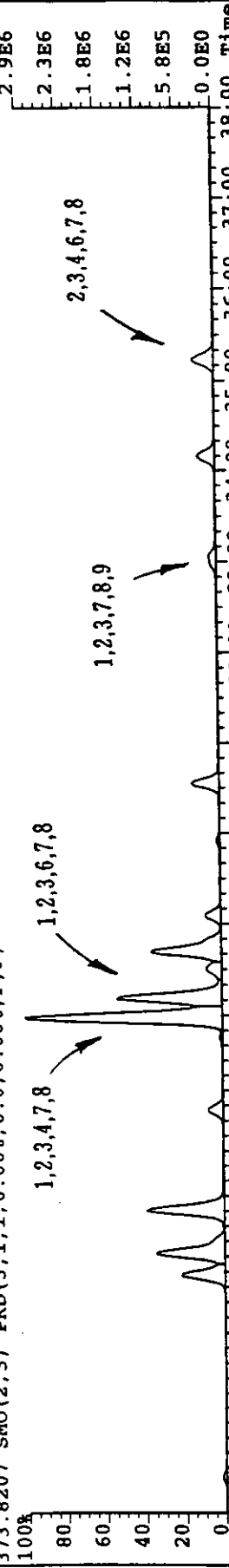
389.8156 SMO(2,3) PKD(3,1,1,0.00%,0.0,0.00%,F,F)



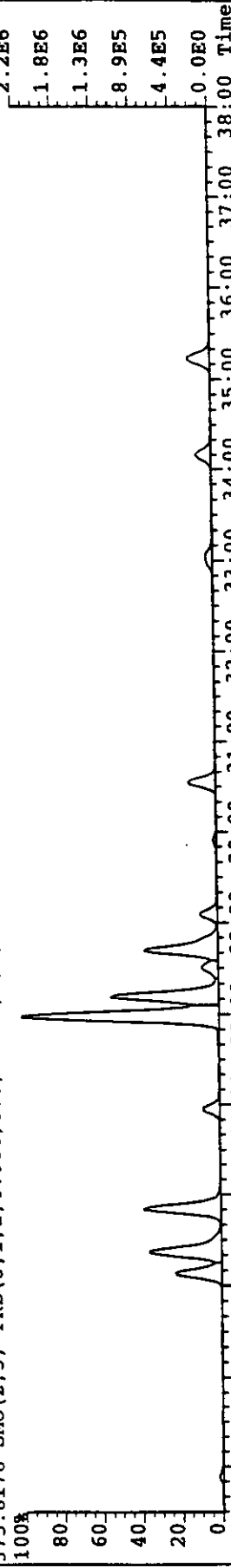
391.8127 SMO(2,3) PKD(3,1,1,0.00%,0.0,0.00%,F,F)



373.8207 SMO(2,3) PKD(3,1,1,0.00%,0.0,0.00%,F,F)



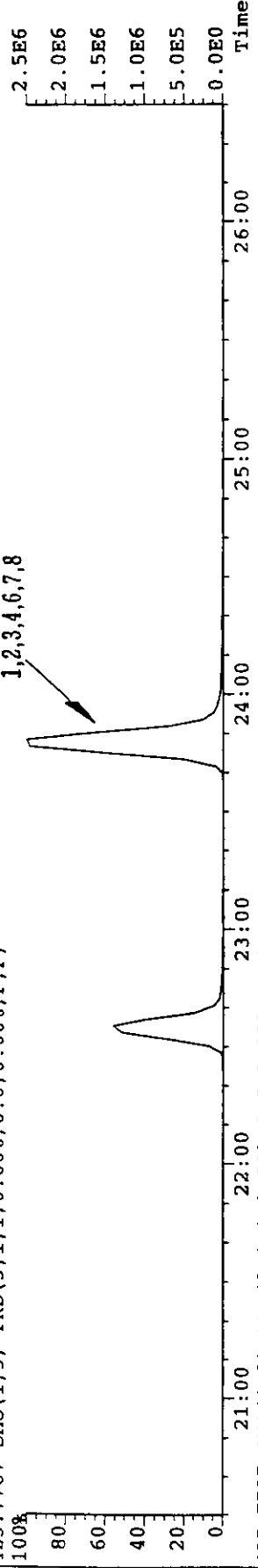
375.8178 SMO(2,3) PKD(3,1,1,0.00%,0.0,0.00%,F,F)



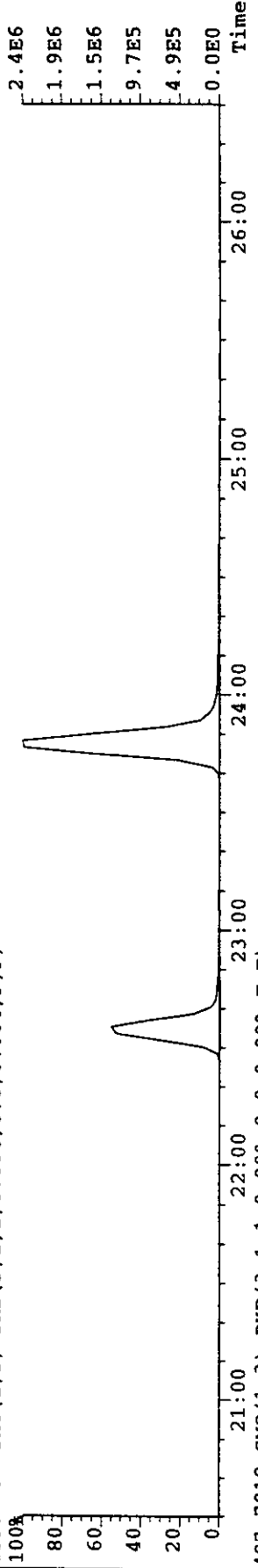
上段: HI2.2.11 日 冷却強化運転(烧却灰) H₇ CDD S
 下段: HI2.2.11 日 冷却強化運転(烧却灰) H₇ CDF S

File: MA06B032 #1-1024 Acq: 7-MAR-2000 05:33:28 GC EI+ Voltage SIR Autospec-UltimaE

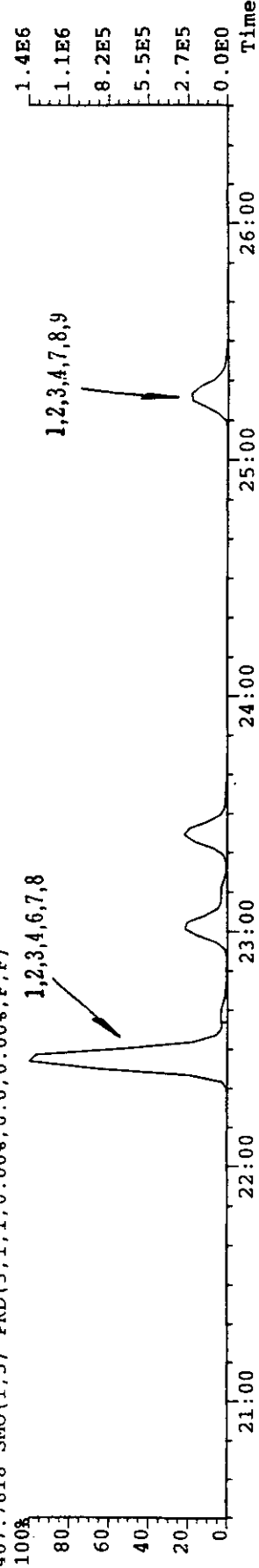
Sample#1 File Text: SUMI-SMC-SYOASH-2/11 Exp: KTR678CL
 423.7767 SMO(1,3) PKD(3,1,1,0.00%,0.0,0.00%,F,F)



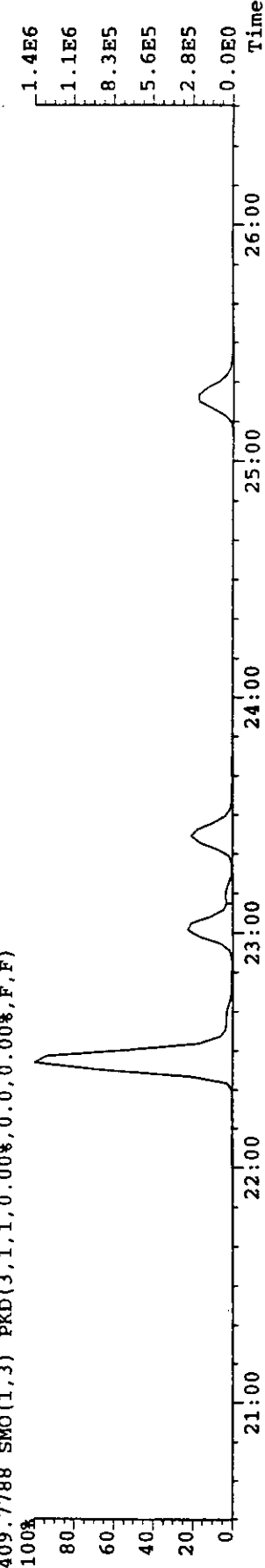
425.7737 SMO(1,3) PKD(3,1,1,0.00%,0.0,0.00%,F,F)



407.7818 SMO(1,3) PKD(3,1,1,0.00%,0.0,0.00%,F,F)



409.7788 SMO(1,3) PKD(3,1,1,0.00%,0.0,0.00%,F,F)

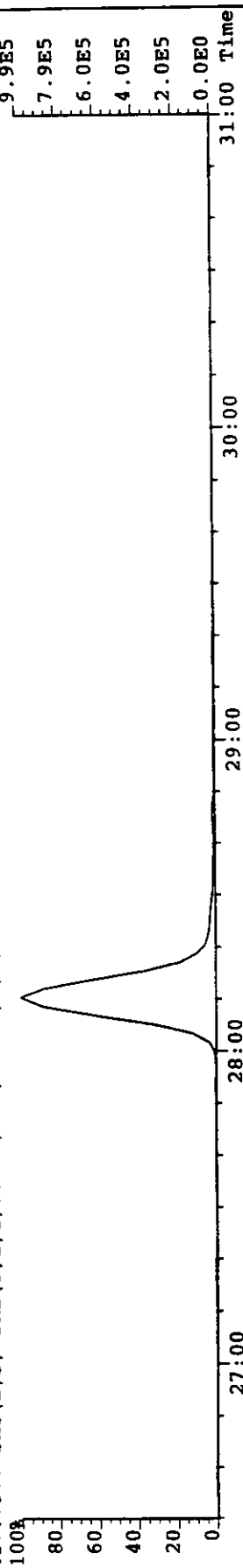


上段: H12.2.11日 冷却強化運転(烧却灰) O₈CDD
 下段: H12.2.11日 冷却強化運転(烧却灰) O₈)F

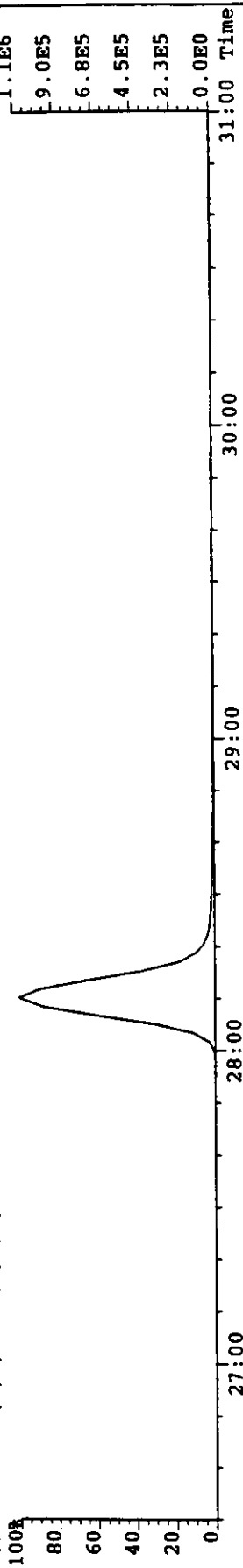
File: MA06B032 #1-1024 Acq: 7-MAR-2000 05:33:28 GC EI+ Voltage SIR Autospec-UltimaE

Sample#1 File Text: SUMI-SMC-SYOASH-2/11 Exp: KTR678CL

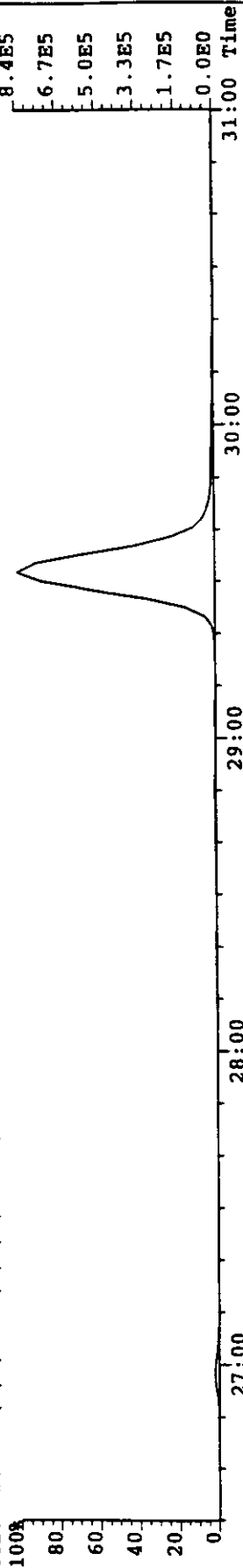
457.7377 SMO(2,3) PKD(3,1,1,0.00%,0.0,0.00%,F,F)



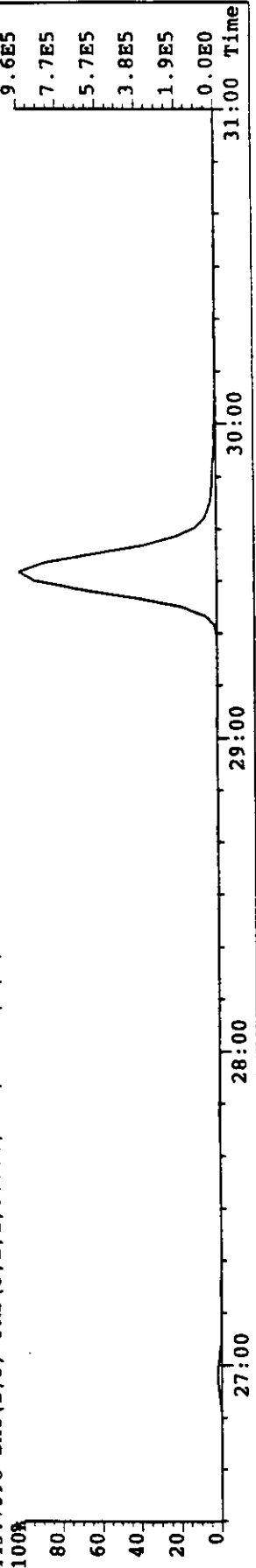
459.7348 SMO(2,3) PKD(3,1,1,0.00%,0.0,0.00%,F,F)



441.7428 SMO(2,3) PKD(3,1,1,0.00%,0.0,0.00%,F,F)

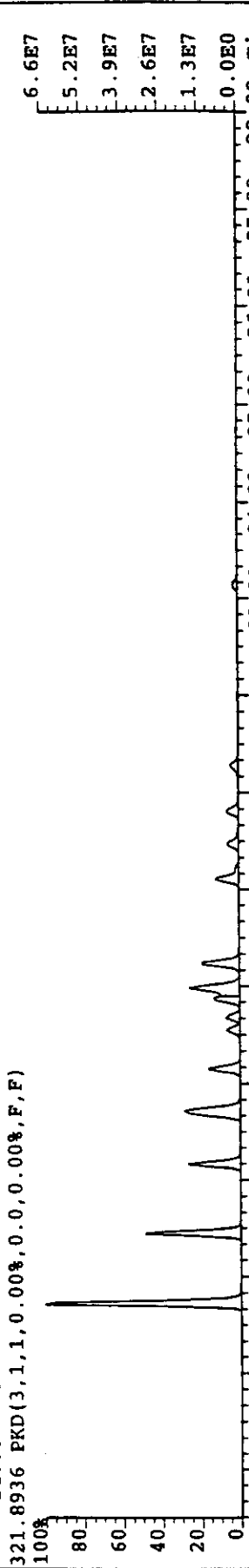
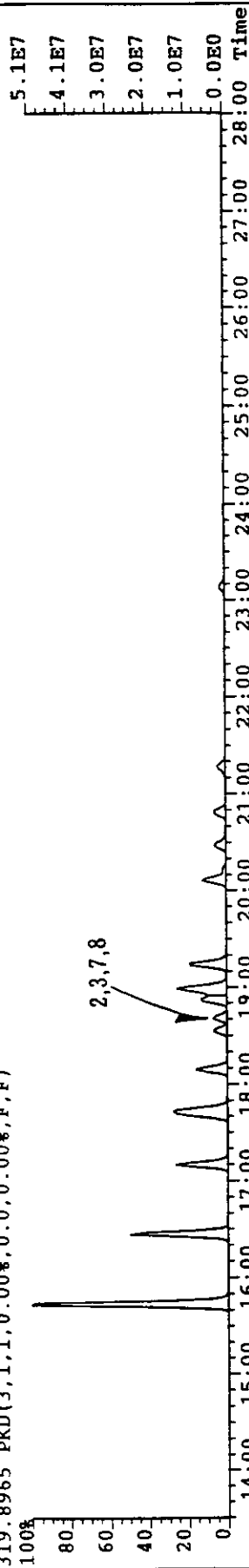


443.7398 SMO(2,3) PKD(3,1,1,0.00%,0.0,0.00%,F,F)



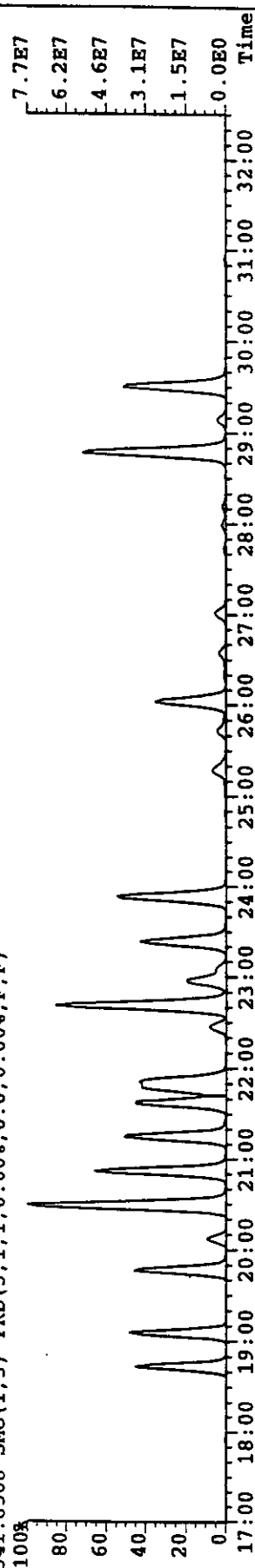
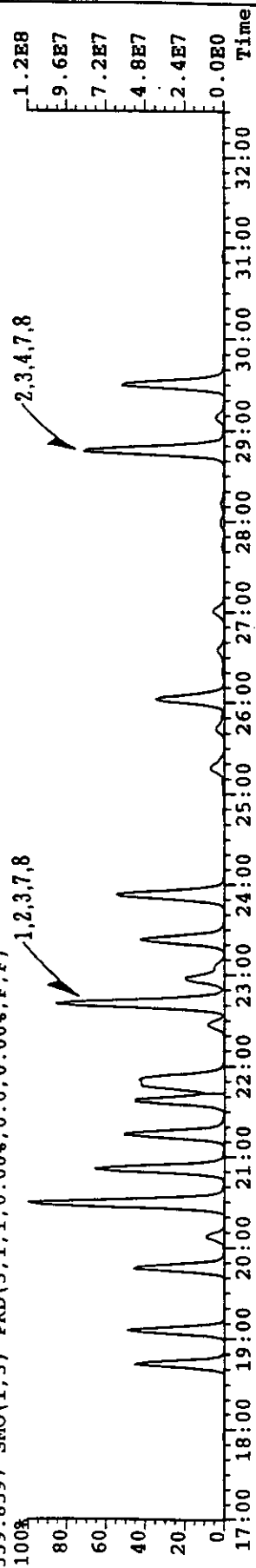
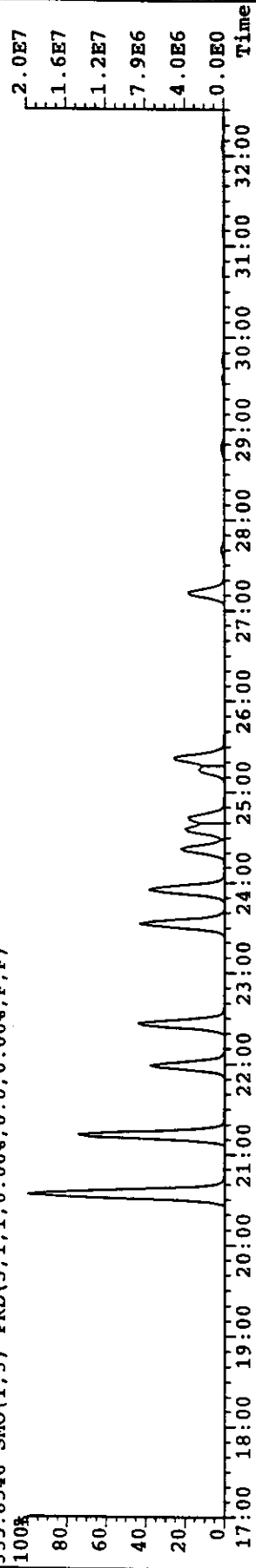
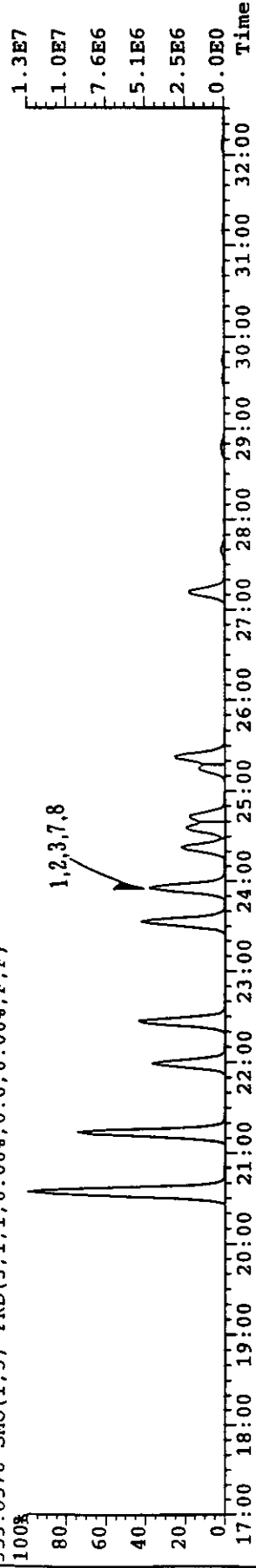
上段: H12.2.12日 置火無し運転(烧却灰) T₄CDDs
 下段: H12.2.12日 置火無し運転(烧却灰) T₄CDFs

File: MA01A016 #1-1232 Acq: 2-MAR-2000 06:40:47 GC EI+ Voltage SIR Autospec-UltimaE
 Sample#1 File Text: SUMI-OKI-SYOASH-2/12 Text:
 319.8965 PKD(3,1,1,0.00%,0.0,0.00%,F,F) Exp: KTR46CL



上段: H12.2.12日 置火無し運転(焼却灰) P₆CDD S
 下段: H12.2.12日 置火無し運転(焼却灰) P-CDF S

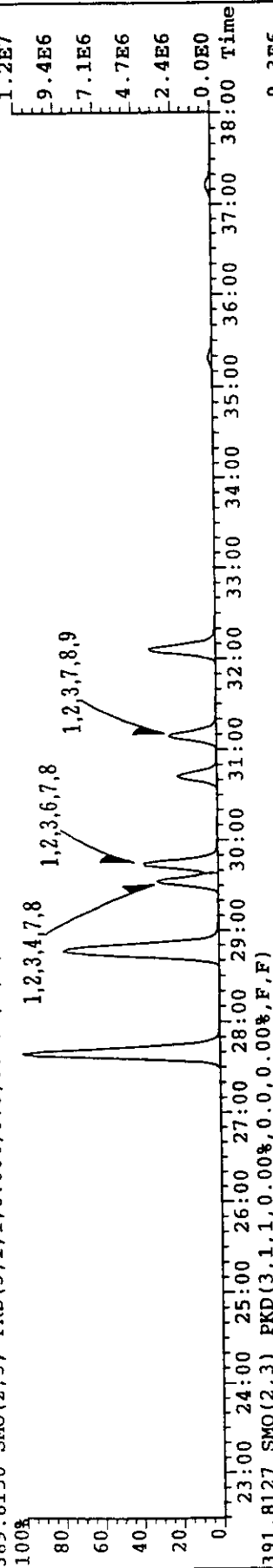
File: MA01A016 #1-1232 Acq: 2-MAR-2000 06 5:47 GC EI+ Voltage SIR Autospec-UIFl. j
 Sample#1 File Text: SDMI-OKI-SYOASH-2/12 Text:
 353.8576 SMO(1,3) PKD(3,1,1,0.00%,0.0,0.00%,F,F)
 Exp: KTR46CL



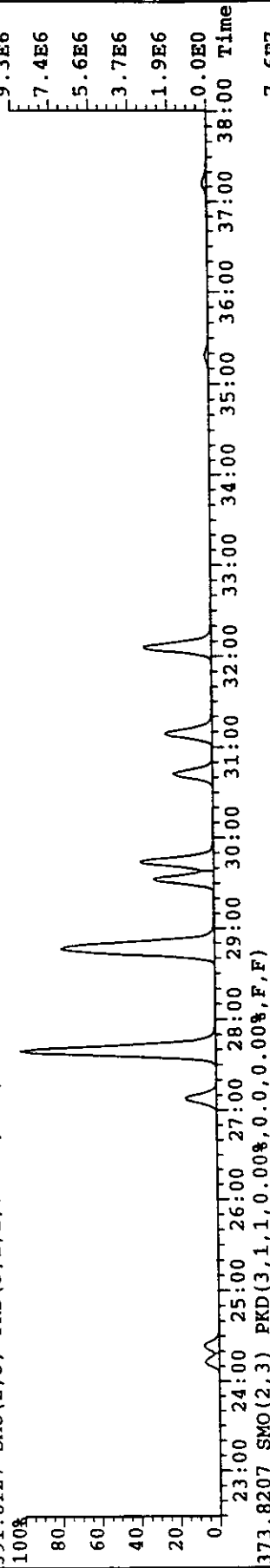
上段: H12.2.12日 置火無し運転(焼却灰) H₂CDDs
 下段: H12.2.12日 置火無し運転(焼却灰) H₂CDFs

File: MA01A016 #1-1232 Acq: 2-MAR-2000 06:40:47 GC EI+ Voltage SIR Autospec-UltimaE
 Exp: KTR46CL

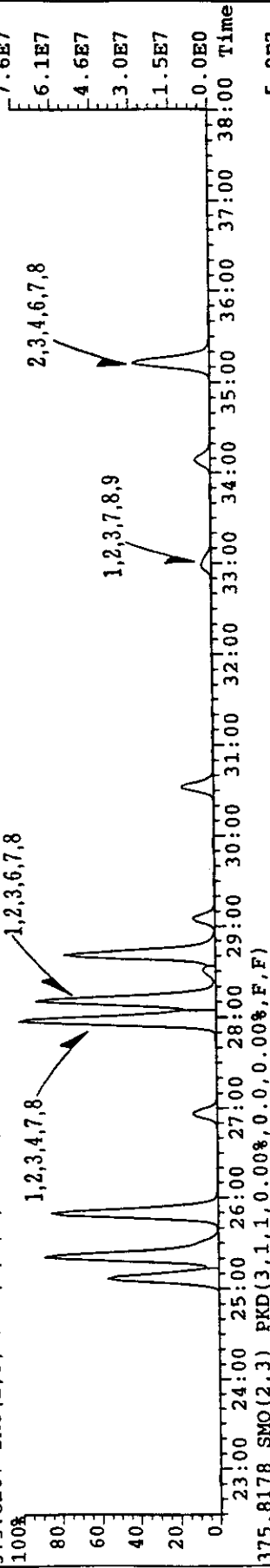
Sample#1 File Text: SUMI-OKI-SYOASH-2/12 Text:
 389.8156 SMO(2,3) PKD(3,1,1,0.00%,0.0,0.00%,F,F)



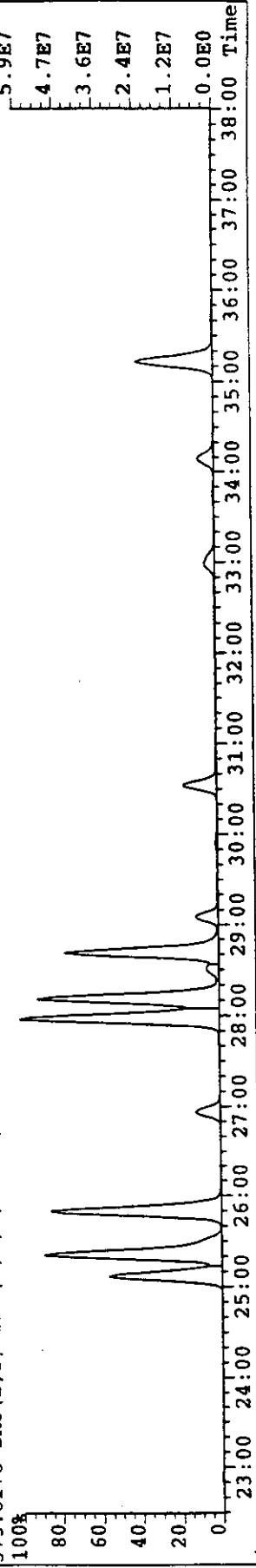
391.8127 SMO(2,3) PKD(3,1,1,0.00%,0.0,0.00%,F,F)



373.8207 SMO(2,3) PKD(3,1,1,0.00%,0.0,0.00%,F,F)



375.8178 SMO(2,3) PKD(3,1,1,0.00%,0.0,0.00%,F,F)

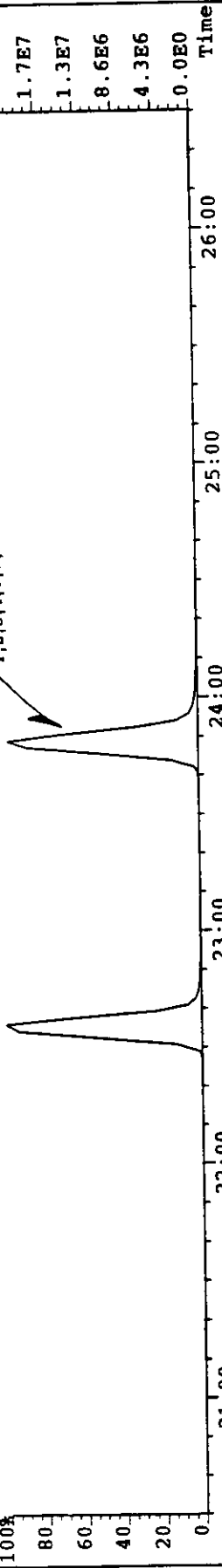


上段: H12.2.12日 覆火無し運転(烧却灰) H₇CDD S
 下段: H12.2.12日 覆火無し運転(烧却灰) H₁ D F S

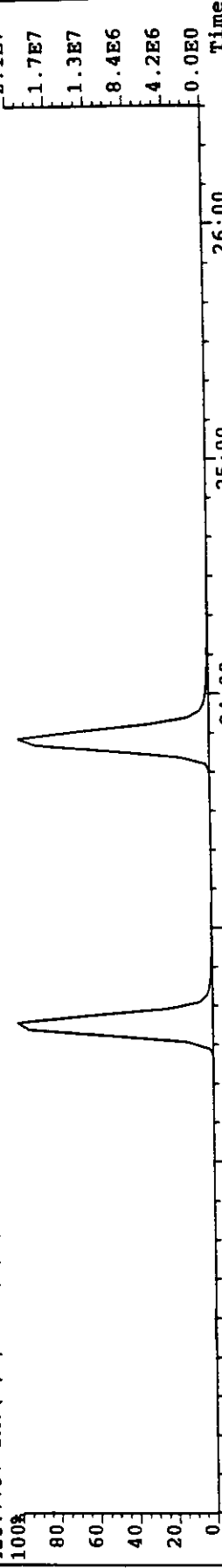
File: MA04B010 #1-1023 Acq: 4-MAR-2000 05:05:18 GC EI+ Voltage SIR Autospec-UltimaE

Sample#1 File Text: SUMI-OKI-SYOASH-2/12 Exp: KTR678CL

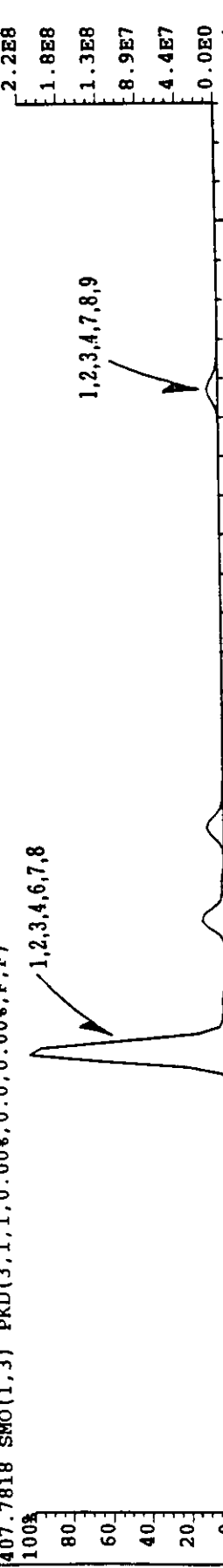
423.7767 SMO(1,3) PKD(3,1,1,0.00%,0.0,0.00%,F,F)



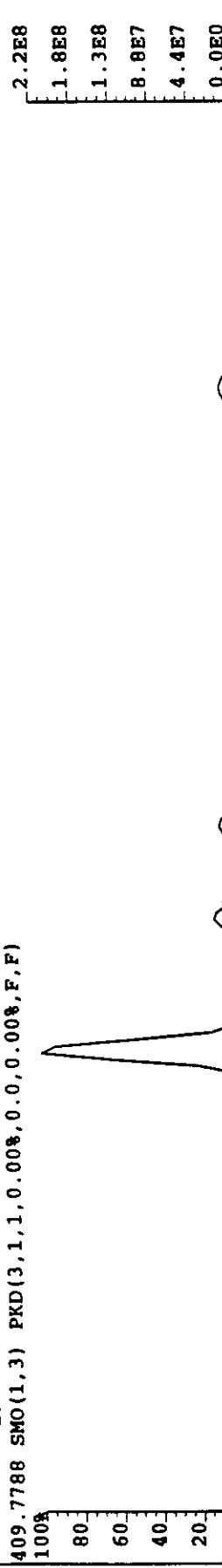
425.7737 SMO(1,3) PKD(3,1,1,0.00%,0.0,0.00%,F,F)



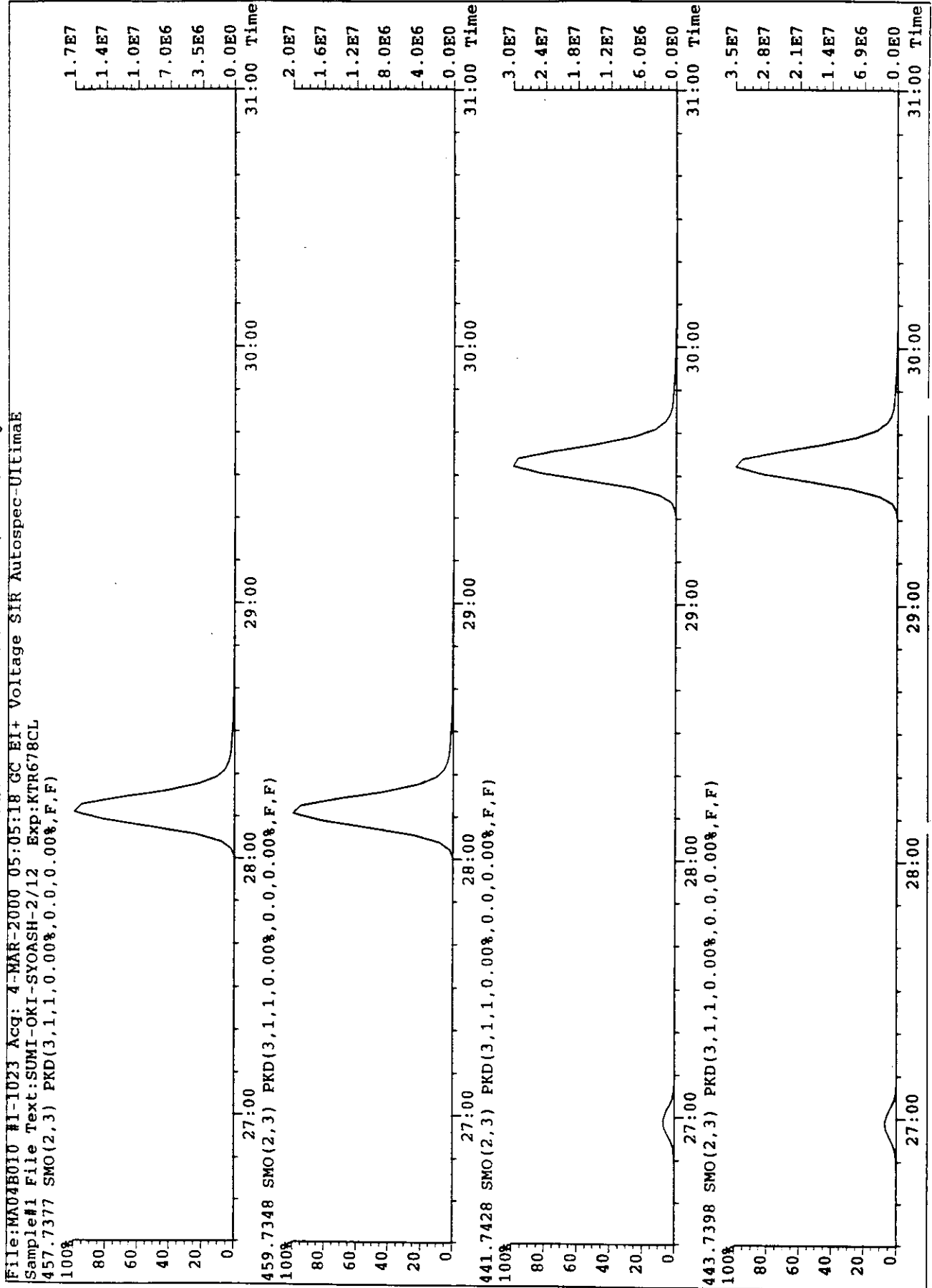
407.7818 SMO(1,3) PKD(3,1,1,0.00%,0.0,0.00%,F,F)



409.7788 SMO(1,3) PKD(3,1,1,0.00%,0.0,0.00%,F,F)



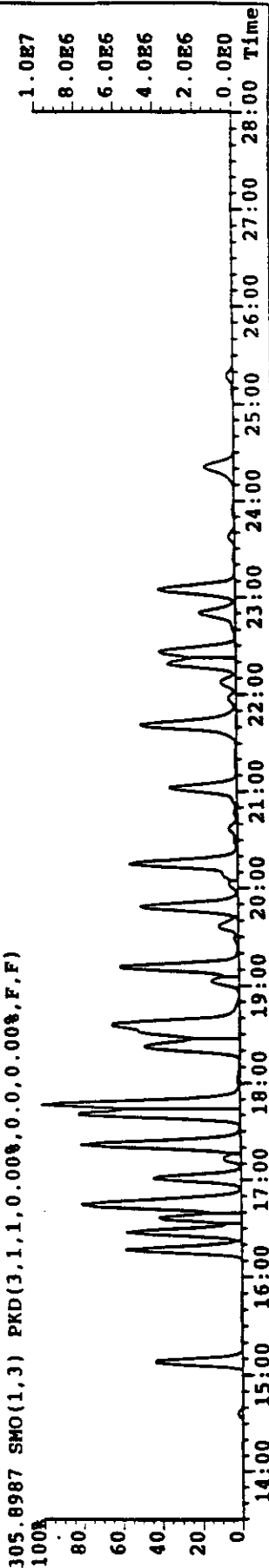
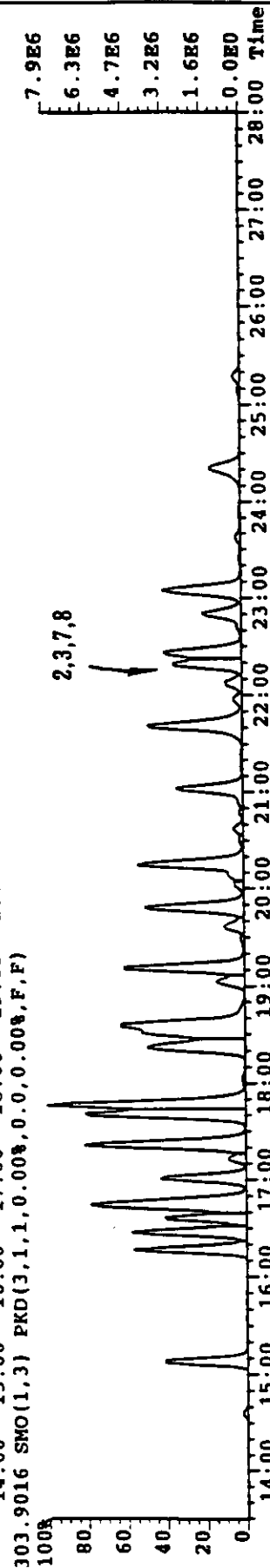
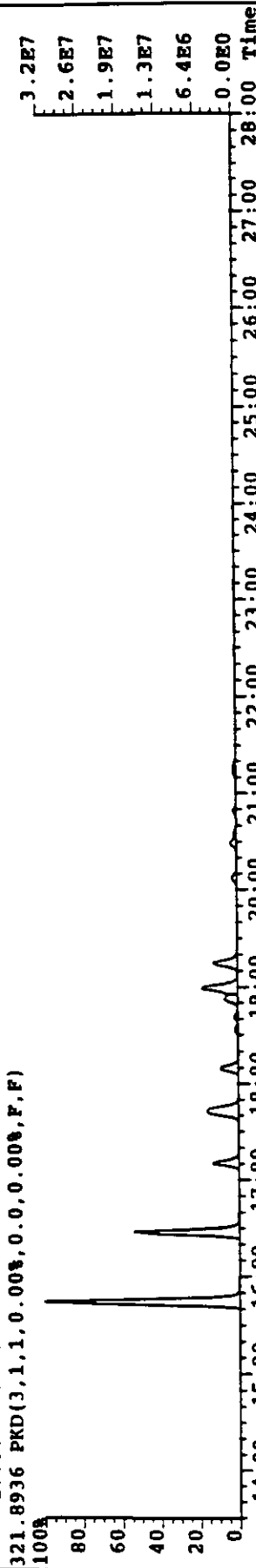
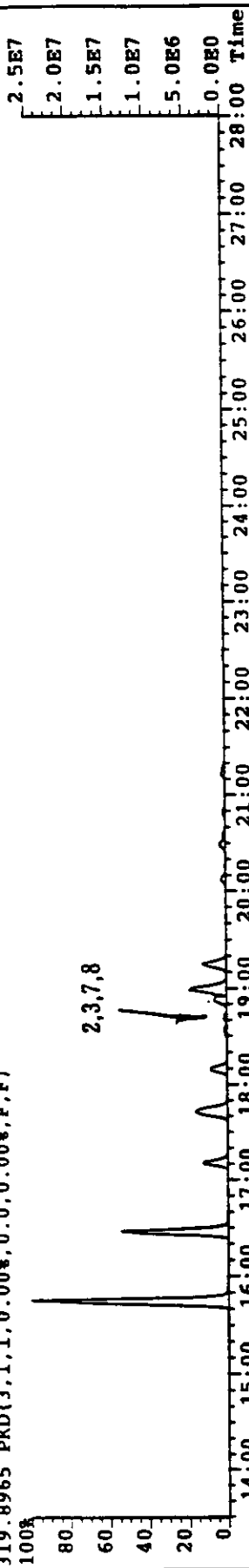
上段: H12.2.12日 燬火無し運転(焼却灰) O₈CDD
 下段: H12.2.12日 燬火無し運転(烧却灰) O₈CDF



上段: III2.2.15日 STB-60L 釜運転(烧却灰) T, CDDs
 下段: III2.2.15日 STB-60L 釜運転(烧却灰) T, CDFs

File: MA01A018 #1-1233 Acq: 2-MAR-2000 08...7:27 GC EI+ Voltage SIR Autospec-UIEti. 5
 Exp: KTR46CL

Sample#1 File Text: SUMI-STB-60L-SYOASH-2/15 Text:
 319.8965 PKD(3,1,1,0.00%,0.0,0.00%,F,F)



上段: H12.2.15日 STB-60L 釜運転(烧却灰) P₆CDDs
 下段: H12.2.15日 STB-60L 釜運転(烧却灰) P₆CDFs

File: NA01A018 #1-1231 Acq: 2-MAR-2000 08:22:27 GC EI+ Voltage SIR Autospec-UITimeE Exp: KTR46CL

Sample#1 File text: SUMI-STB-60L-SYOASH-2/15 Text:
 353.8576 SMO(1,3) PKD(3,1,1,0.00%,0.0,0.00%,F,F)

