

文献

- 1) Methods for dilution antimicrobial susceptibility tests for bacteria that grow aerobically fourth edition, National Committee for Laboratory Standards, Villanova, Pa., (1997)

表1 STEC 0157の由来、H血清型、および志賀毒素（Stx）型

由 来	菌株数	H血清型	志賀毒素型
牛 枝肉ふきとり	113	7 175株	Stx1 31株
牛 肝臓ふきとり	3	- 8株	Stx1/2 100株
牛 糞便	142	不明 130株	Stx2 172株
牛 直腸便	39		不明 10株
牛 盲腸、胃内容物	7		
牛 体表	6		
馬 糞便	3		
計	313		

表2 サルモネラの由来と血清型

由来		血清型	
<hr/>			
鶏由来	(287株)		
と体	114	Infantis	131
盲腸内容物	94	Enteritidis	26
糞便	28	Hadar	19
羽	18	Typhimurium	9
もも肉	8	Newport	4
遺残卵黄	6	Agana	2
肝臓	4	Blockley	2
ささみ	4	Bredanay	2
卵巣	3	Cerro	2
筋胃内容物	2	Virchow	2
心嚢水	2	Zanzibar	2
卵管	2	Anaum	1
卵ふきとり	1	Gatineau	1
ミンチ	1	Heidelberg	1
		Isangi	1
		Kedougou	1
		Sofia	1
		Montevideo	1
		Schwarzengrund	1
		Singapore	1
		不明	77
<hr/>			
豚由来	(103株)		
盲腸内容物	46	Derby	40
糞便	26	Typhimurium	28
枝肉	20	II (04:b:[e, n, x])	4
肝臓	7	Cholerasuis	3
直腸内容物	3	Agana	2
		Infantis	2
		Heidelberg	1
		Brandenburg	1
		Chester	1
		Havana	1
		Livingstone	1
		London	1
		不明	15
<hr/>			
牛由来	(9株)		
枝肉	3	Derby	1
肝臓	3	Dublin	1
糞便	1	Typhimurium	1
腎臓	1	不明	6
脾臓	1		
<hr/>			

表3 腸管出血性大腸菌0157の薬剤耐性パターンと菌株数

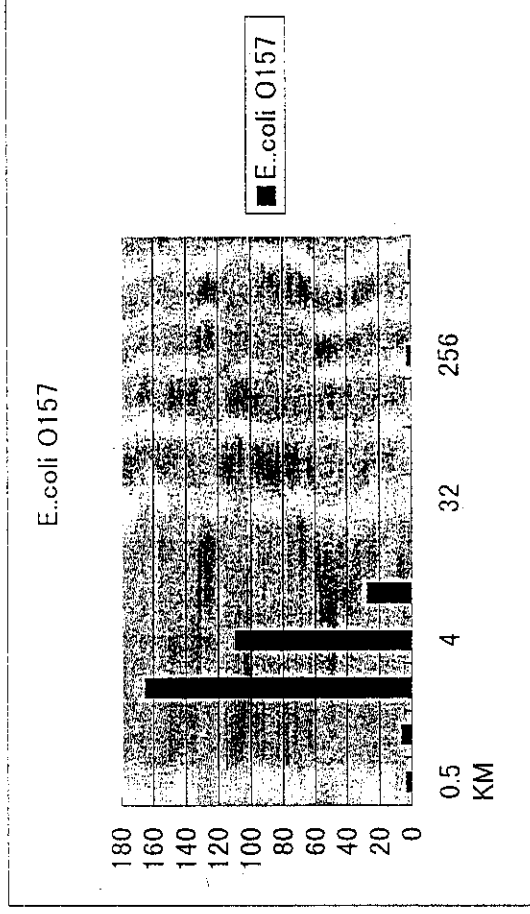
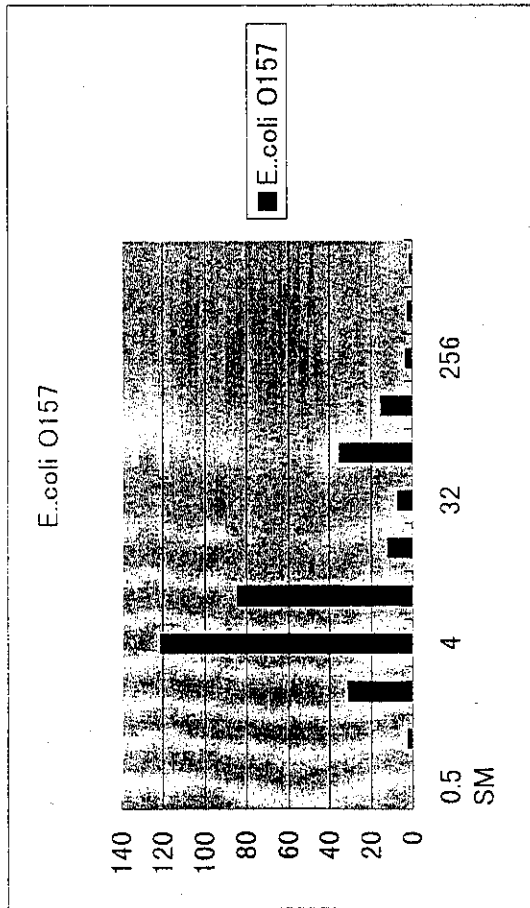
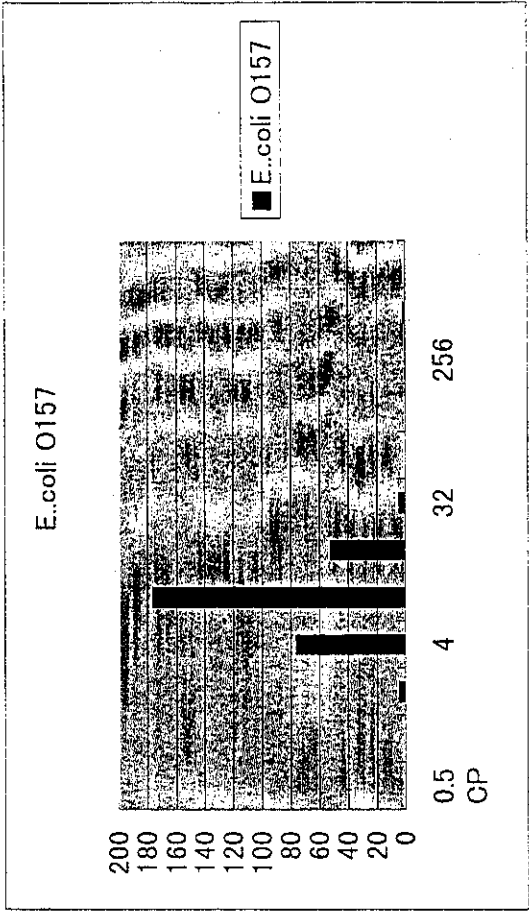
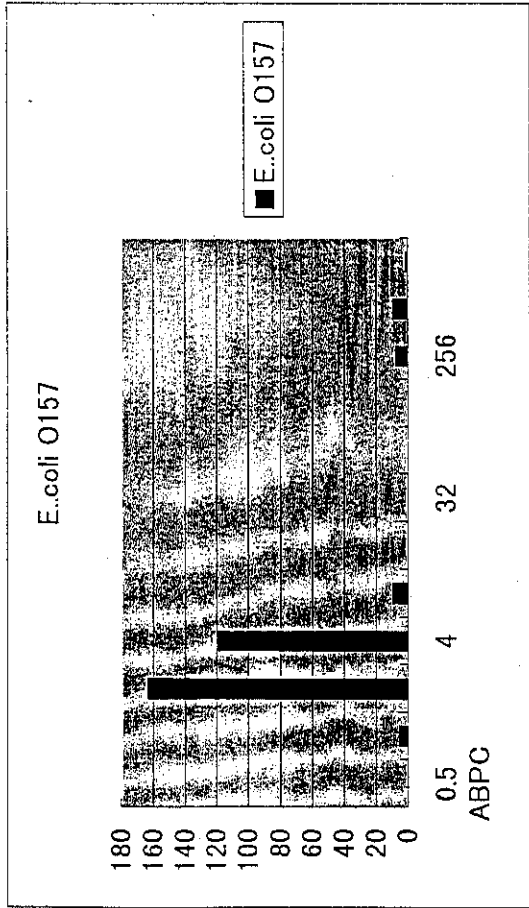
薬剤耐性パターン	株数
薬剤耐性	75 (24.0%)
SM	10
FOM	8
OTC	2
NA	1
SM, OTC	33
ABPC, SM	4
KM, OTC	1
SM, KM	1
ABPC, SM, OTC	12
SM, OTC, NA	2
ABPC, CP, SM, KM, OTC	1
薬剤感受性	238 (76.0%)

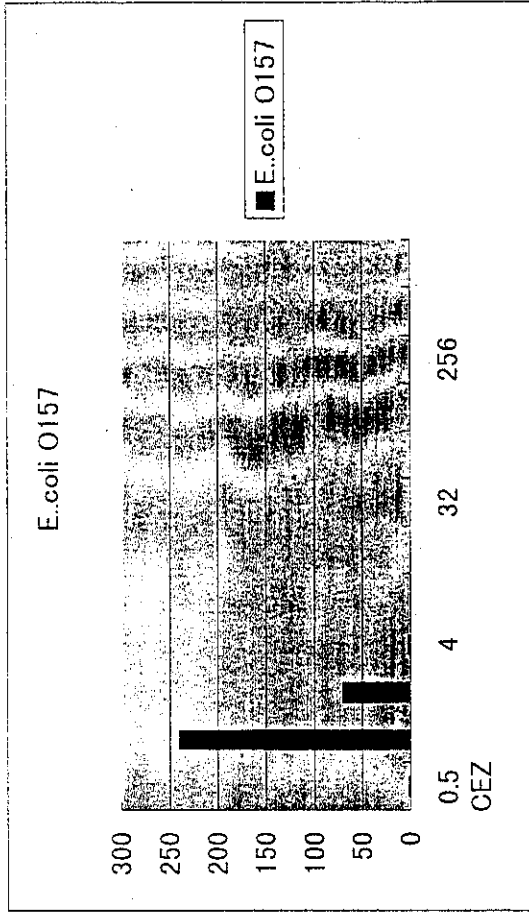
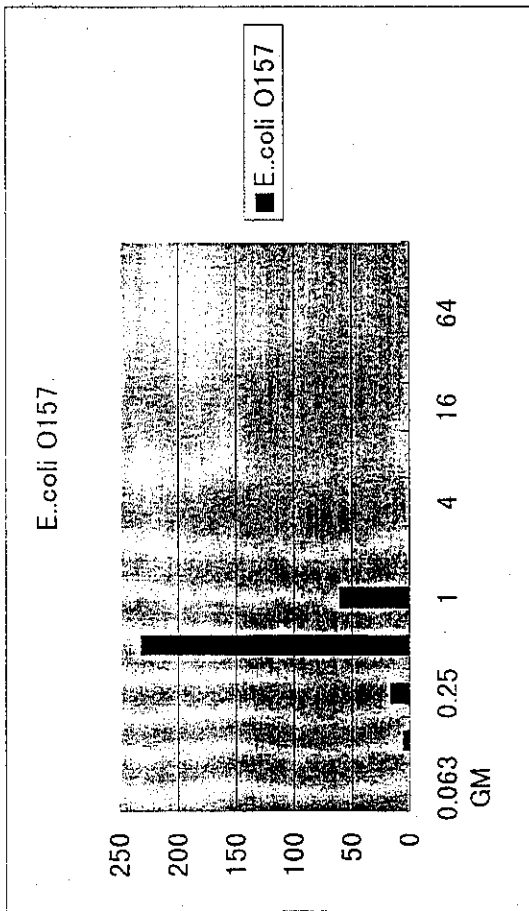
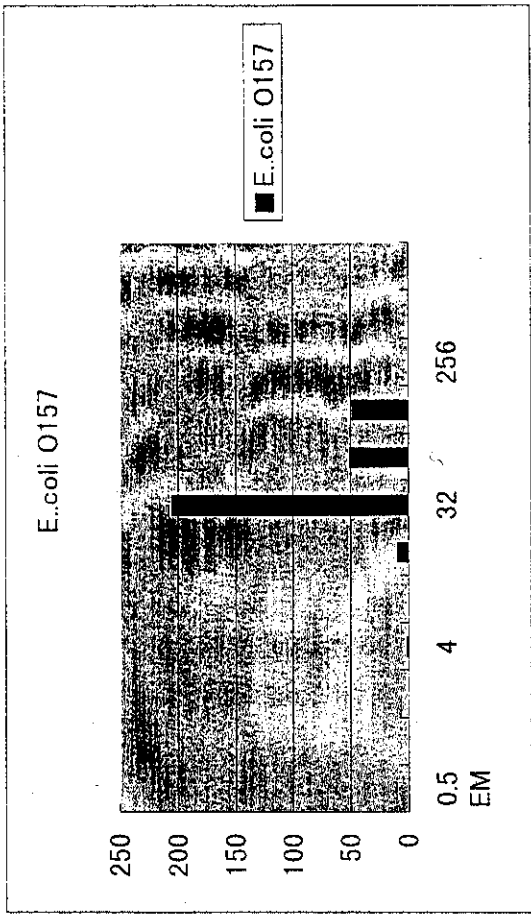
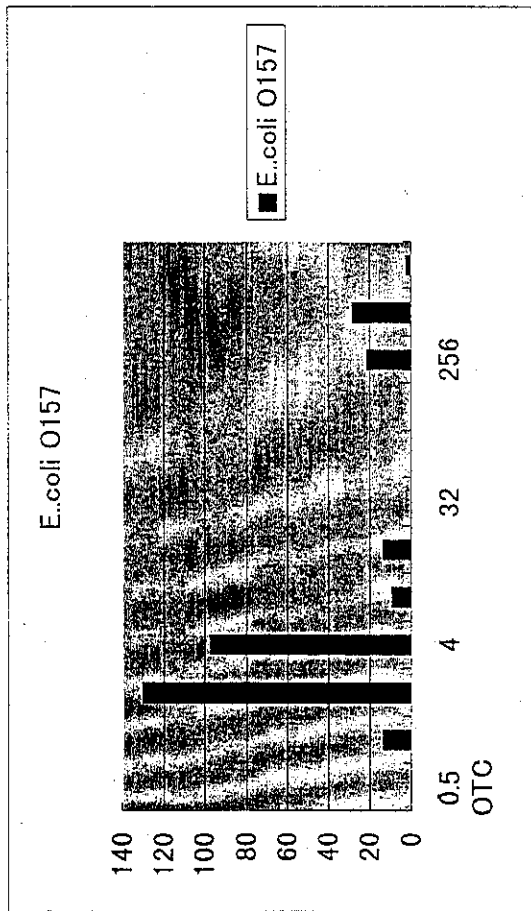
表4 サルモネラ鶏由来株の薬剤耐性パターンと菌株数

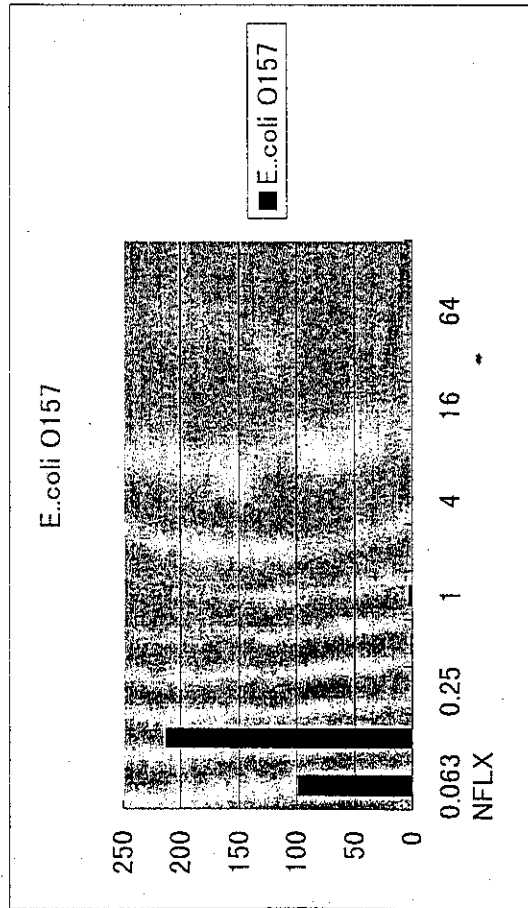
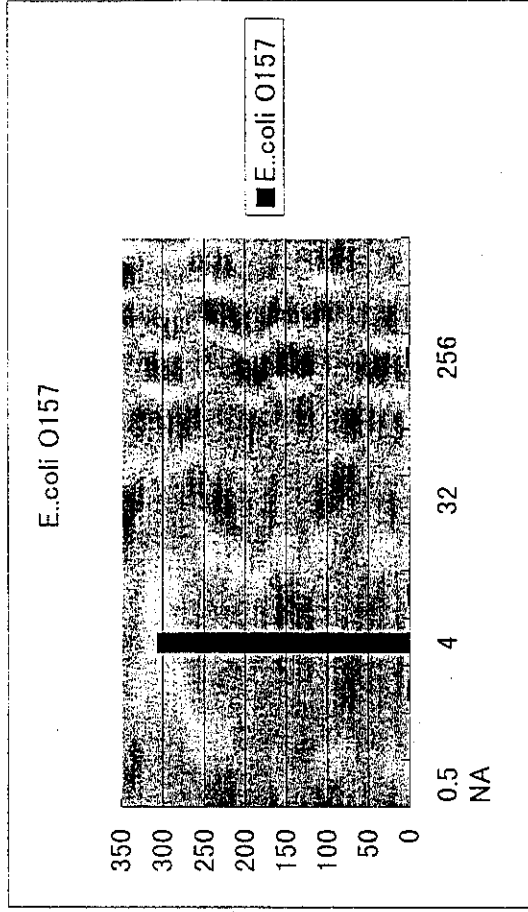
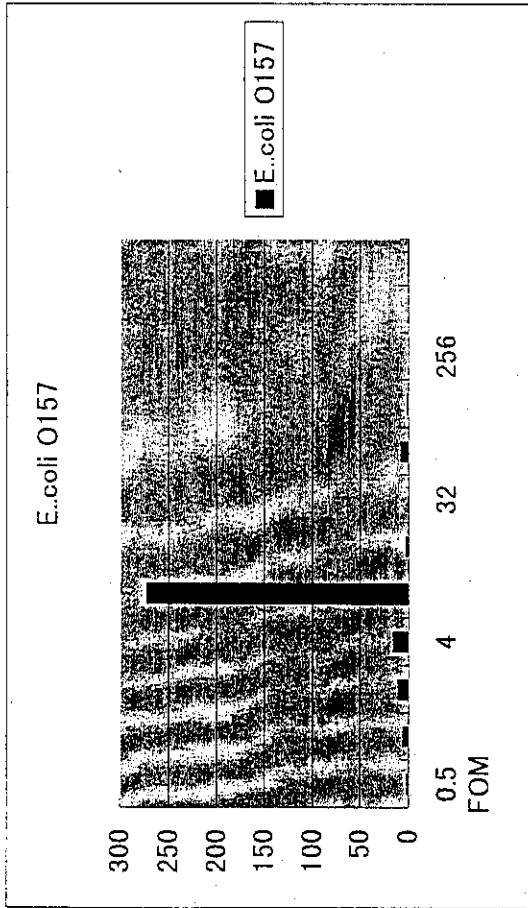
薬剤耐性パターン	菌株数	主な血清型と菌株数
薬剤耐性	230 (80.1%)	
KM	36	不明 30
SM	7	
OTC	2	
NA	1	
SM, OTC	73	Infantis 49
KM, OTC	3	
SM, NA	3	
SM, GM	1	
SM, KM, OTC	78	Infantis 57 Hadar 6
SM, OTC, NA	3	
ABPC, SM, OTC	2	
ABPC, SM, KM, OTC	9	
ABPC, CP, KM, OTC	4	
ABPC, CP, SM, OTC	3	
SM, KM, OTC, NA	2	
SM, OTC, FOM, NA	1	
ABPC, CP, SM, KM, OTC	2	Typhimurium 1 不明 1
薬剤感受性	57 (19.9%)	

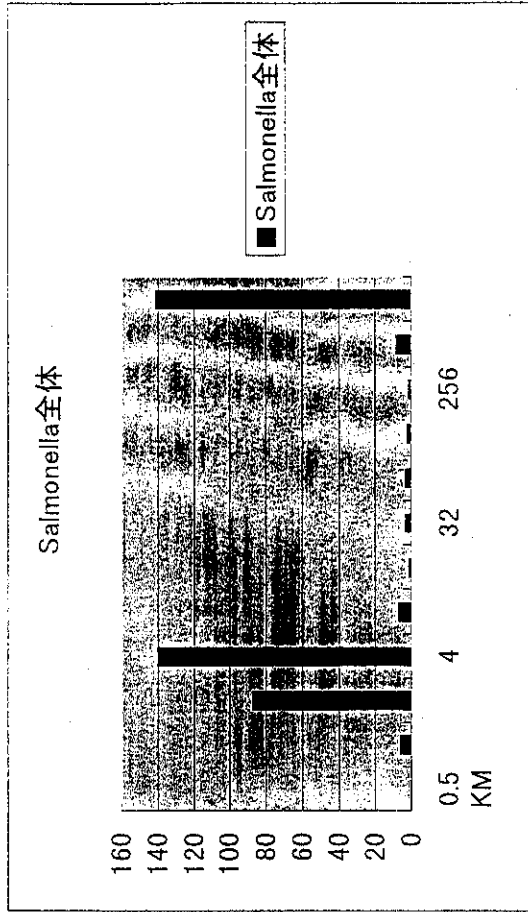
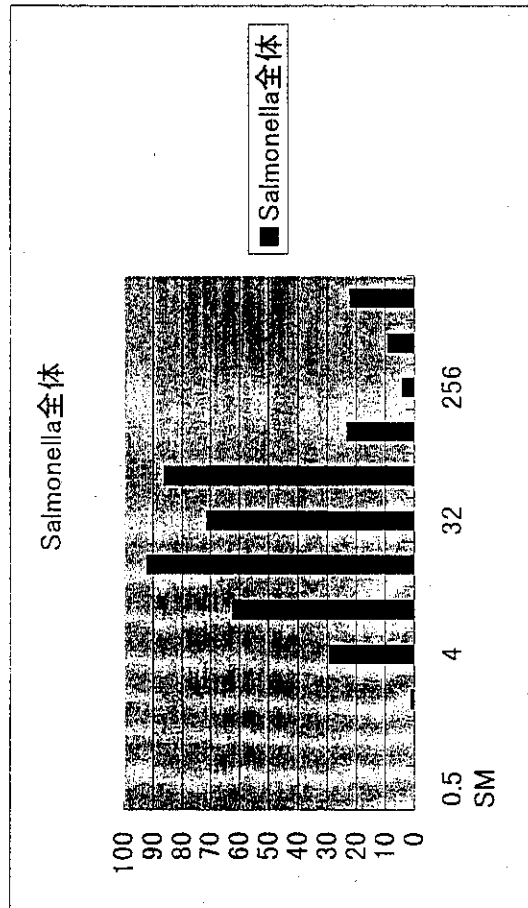
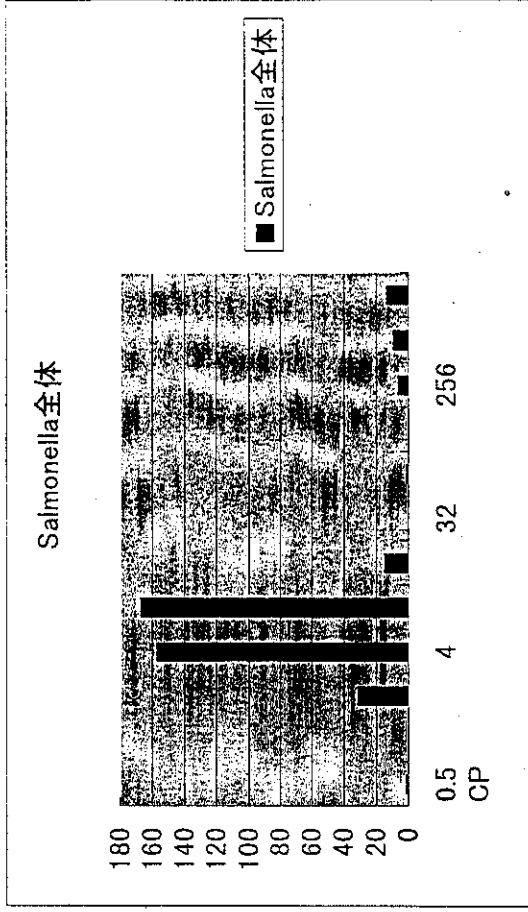
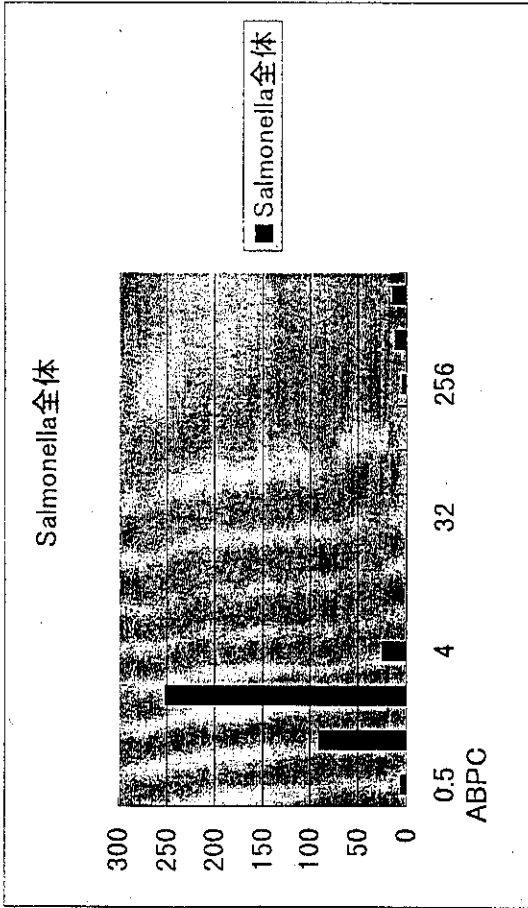
表5 サルモネラ豚由来株の薬剤耐性パターンと菌株数

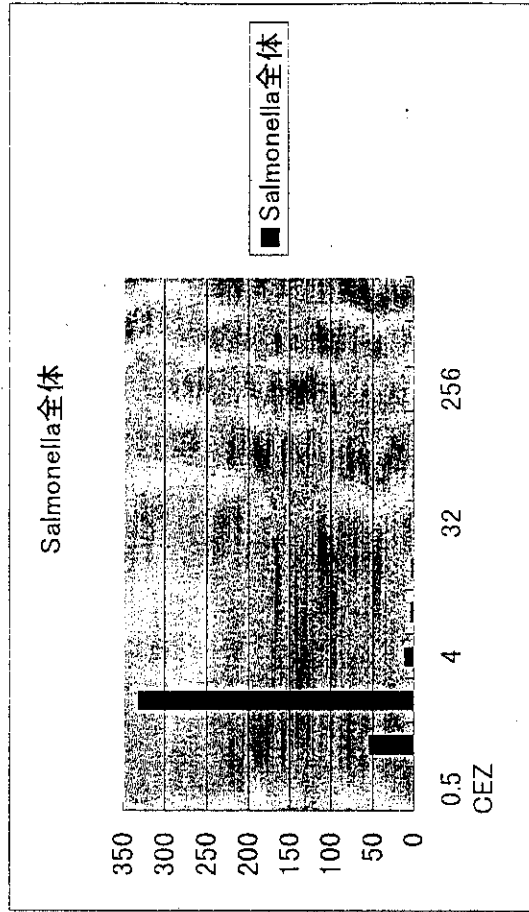
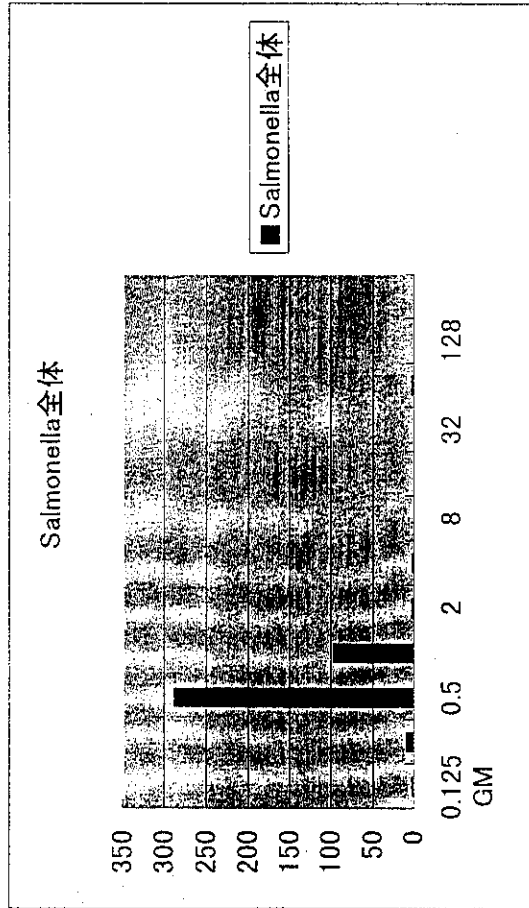
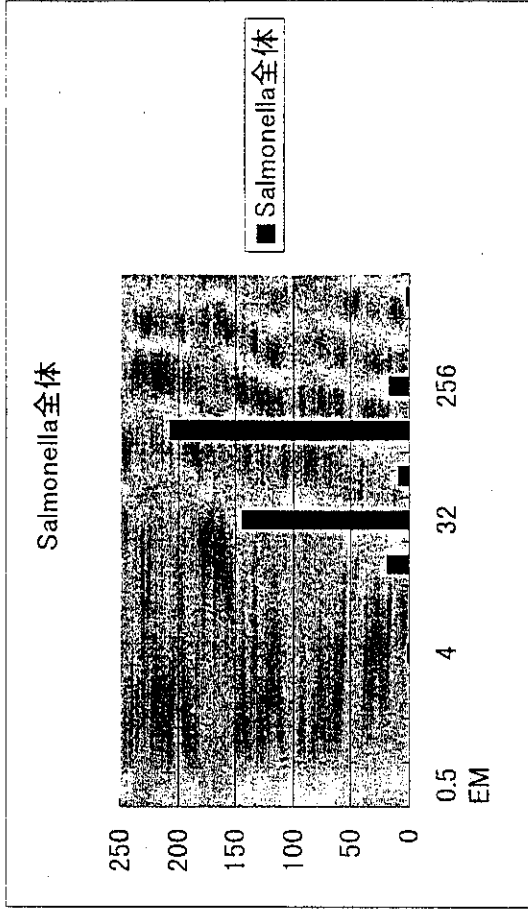
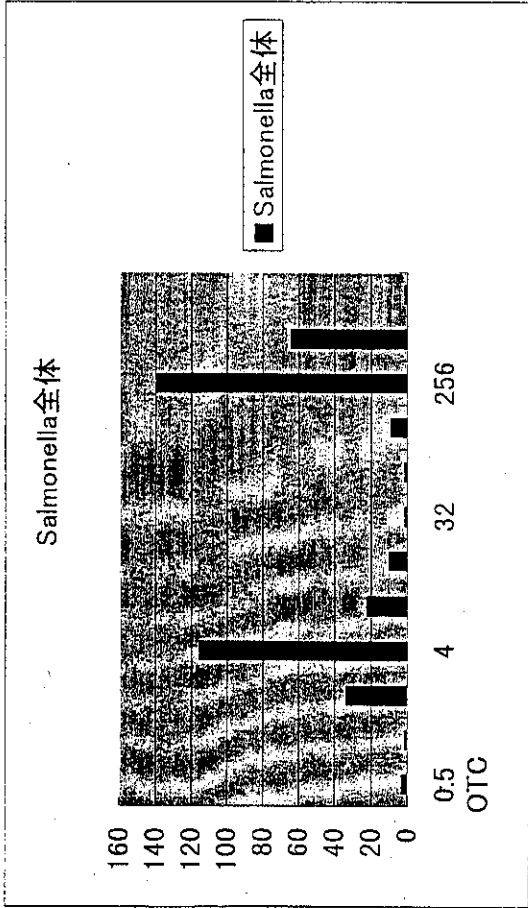
薬剤耐性パターン	菌株数	主な血清型と菌株数
薬剤耐性	34 (33.0%)	
OTC	4	
SM	2	
SM, OTC	7	II (04:b:[e, n, x]) 4
KM, OTC	4	
CP, SM	1	
CP, SM, OTC	1	
CP, SM, KM, OTC	8	Typhimurium 8
ABPC, CP, SM, OTC	2	
ABPC, CP, SM, KM, OTC	4	Typhimurium 2 Derby 1
ABPC, CP, SM, KM, OTC, GM, NA	1	Choleraesuis 1
薬剤感受性	69 (66.9%)	

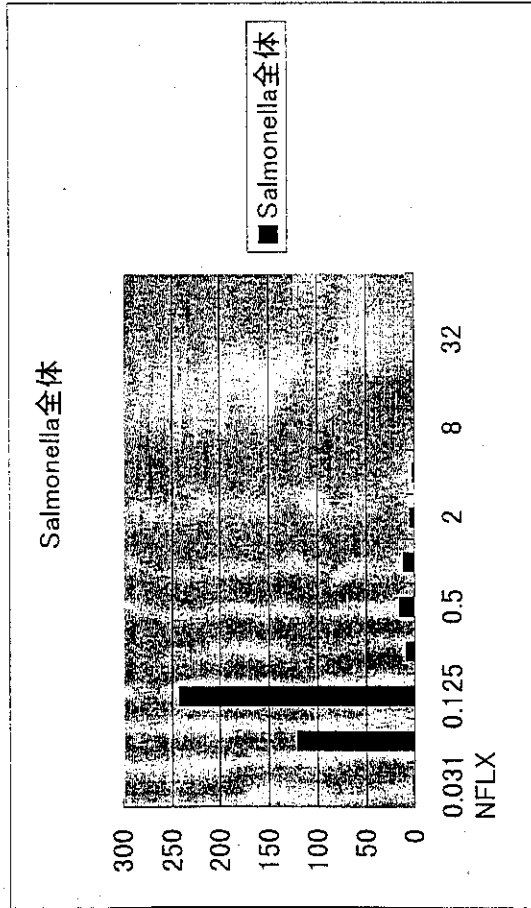
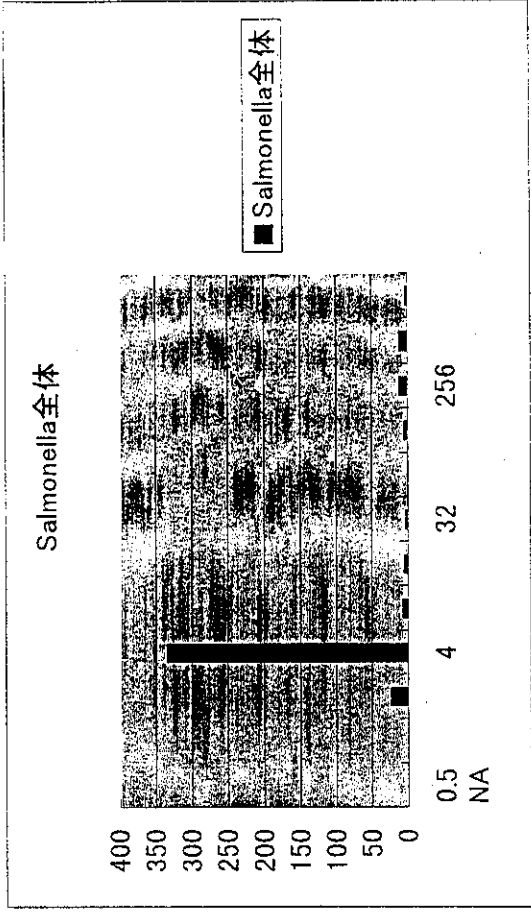
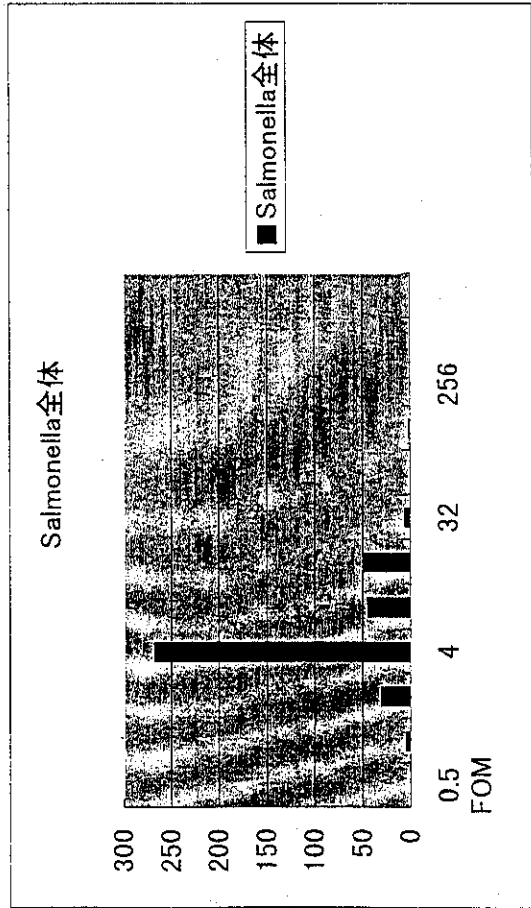




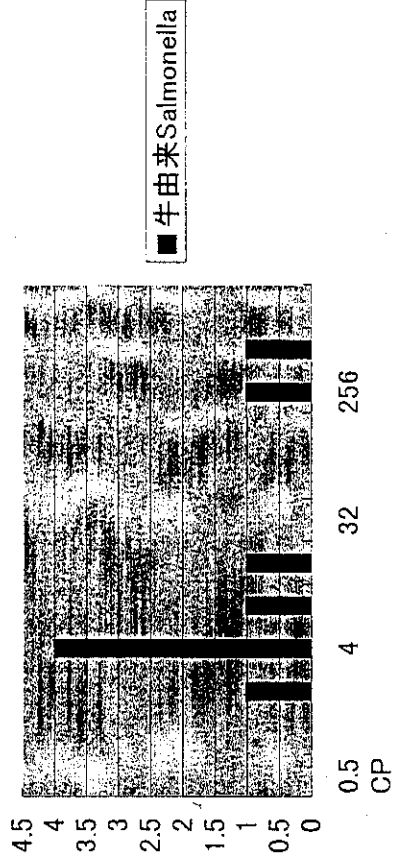




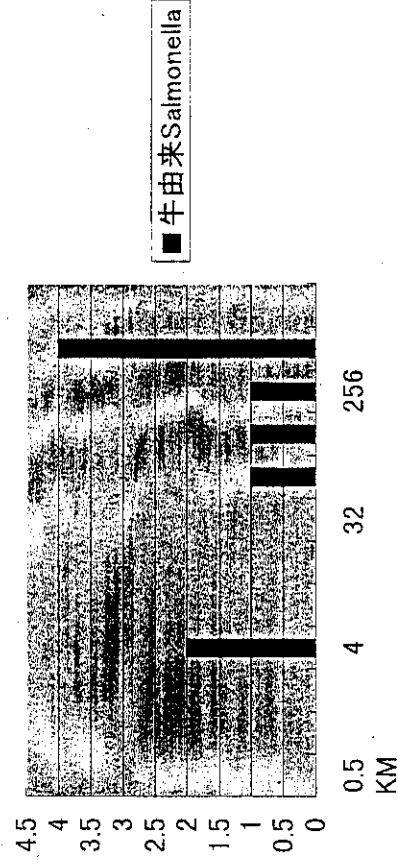




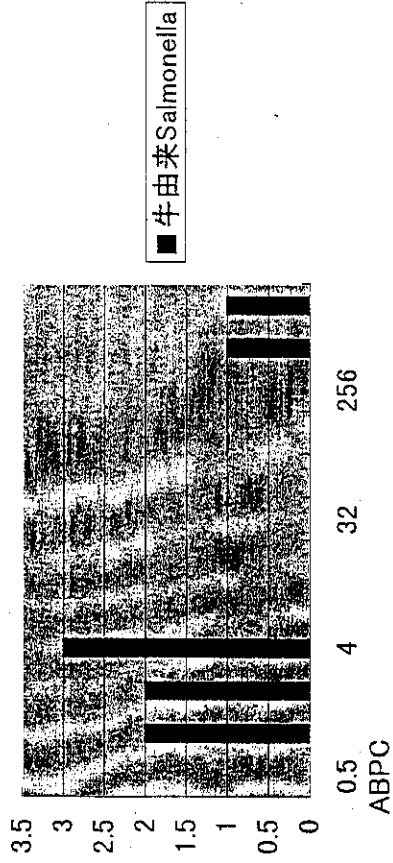
牛由来Salmonella



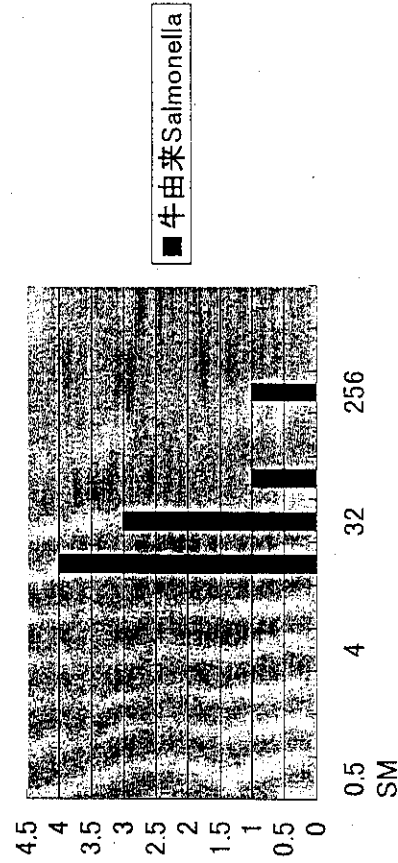
牛由来Salmonella



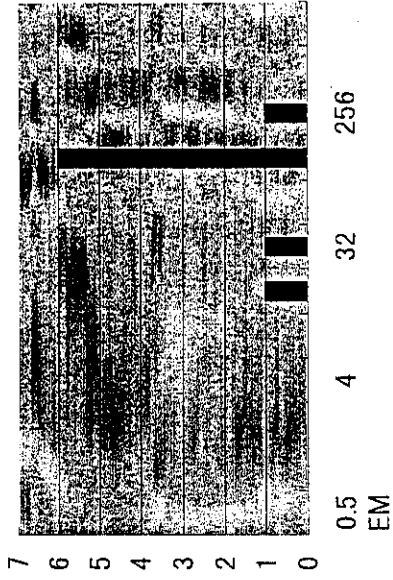
牛由来Salmonella



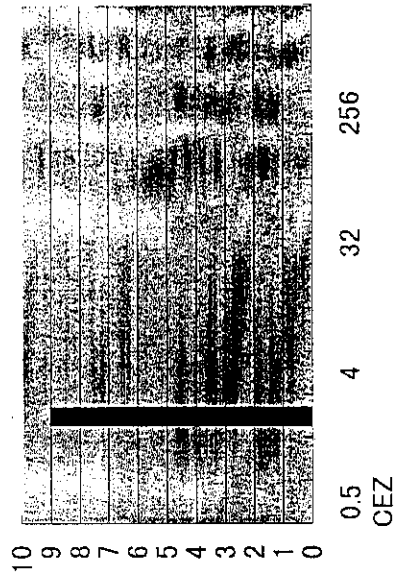
牛由来Salmonella



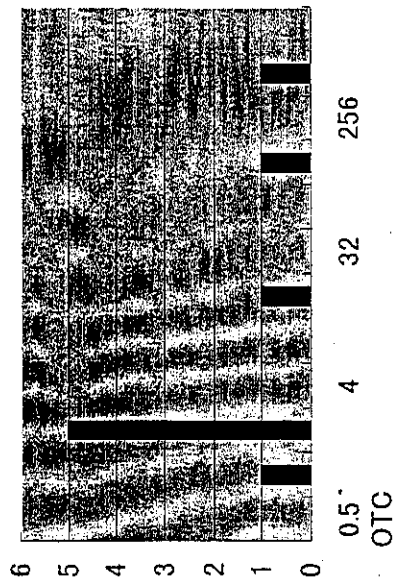
牛由来Salmonella



牛由来Salmonella



牛由来Salmonella



牛由来Salmonella

