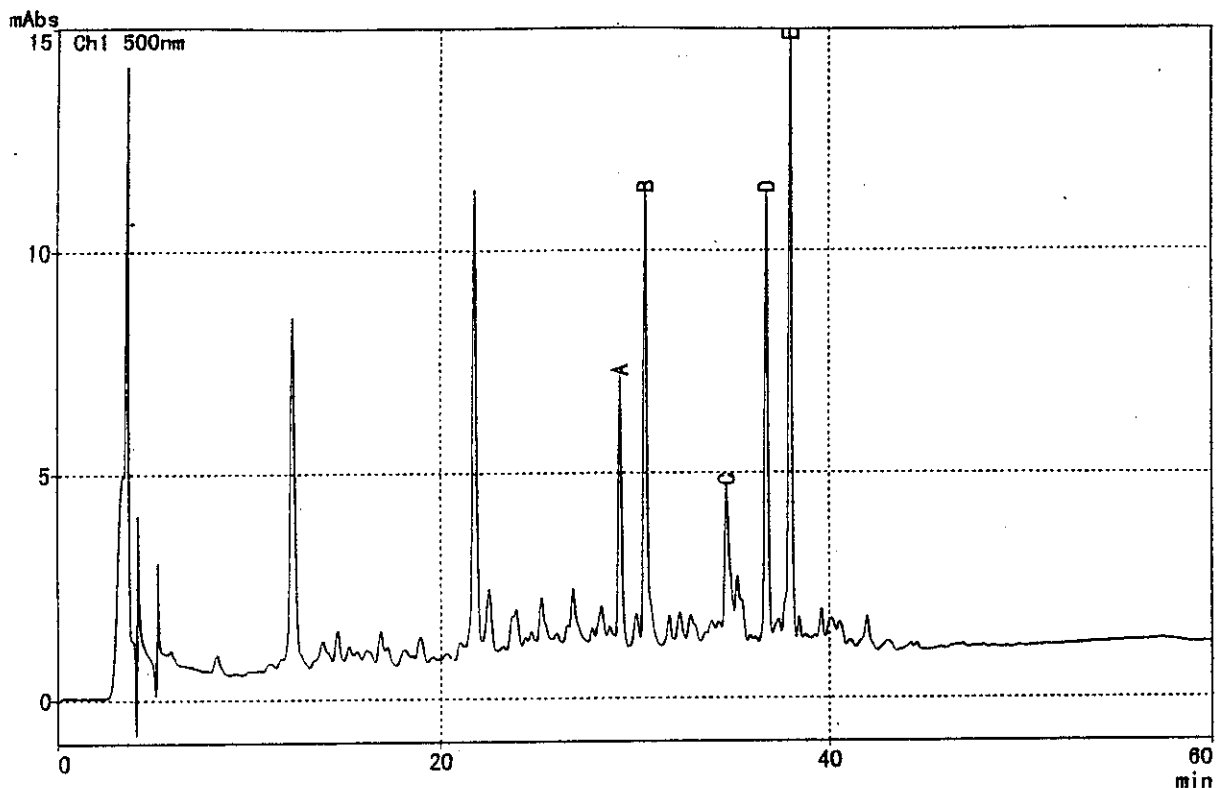


サンプル : 梅のど飴 標準試料混合

\*\*\* クロマトグラム \*\*\*



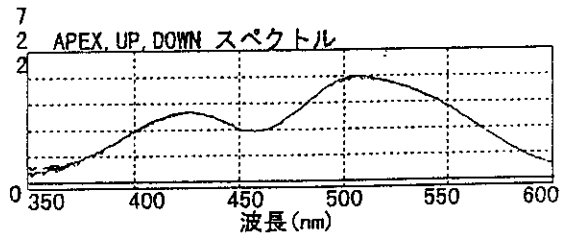
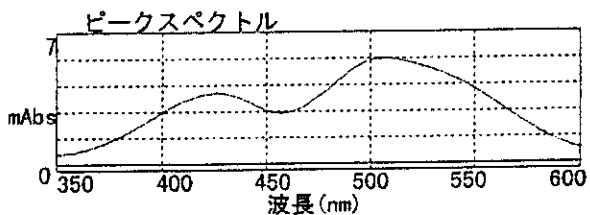
\*\*\* ピークレポート \*\*\*

PKNO	ChNO	NAME	TIME	AREA	HEIGHT
1	1	A	29.292	73583	5925
3	1	B	30.595	139617	10146
11	1	C	34.735	66081	3498
16	1	D	36.784	121798	10079
18	1	E	37.995	169226	13511
				570286	43159

\*\*\* ピークレティビティ情報 \*\*\*

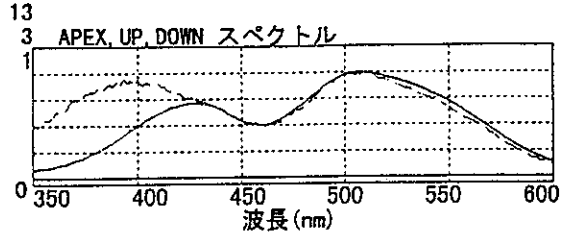
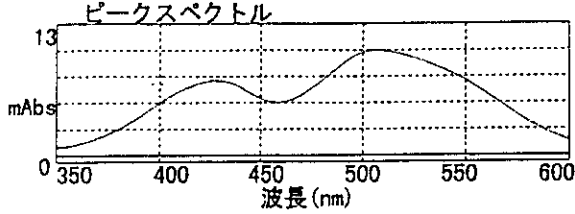
PKNO:1 (Ch1)    ——— APEX    ——— UP    - - - DOWN  
 RT (min)        29.29        29.15        29.43

Max (nm) :        509, 506, 504, 512, 426  
 UP: 0.9994 (0.9999)    DOWN: 0.9996 (0.9999)



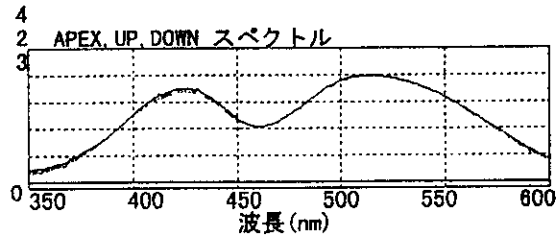
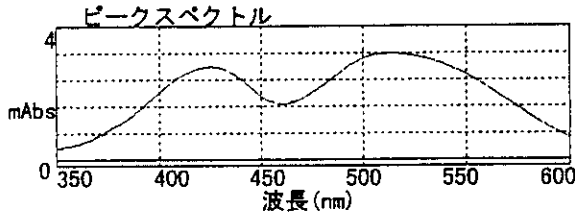
PKNO:3 (Ch1) — APEX — UP — - - DOWN  
 RT (min) 30.60 30.47 30.85

Max (nm) : 509, 425  
 UP:0.9999 (1.0000) DOWN:0.9388 (0.9999)



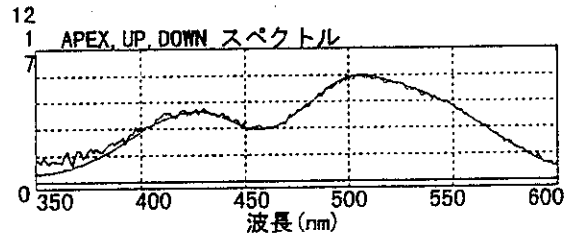
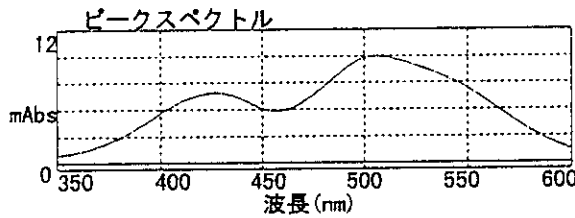
PKNO:11 (Ch1) — APEX — UP — - - DOWN  
 RT (min) 34.73 34.82 34.86

Max (nm) : 516, 514, 510, 523, 526  
 UP:0.9996 (0.9999) DOWN:0.9998 (0.9999)



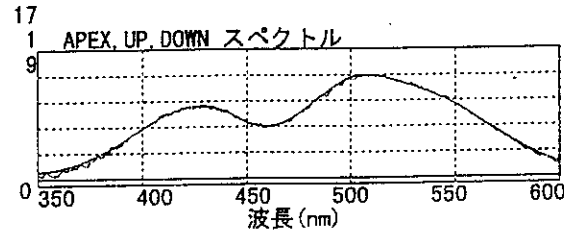
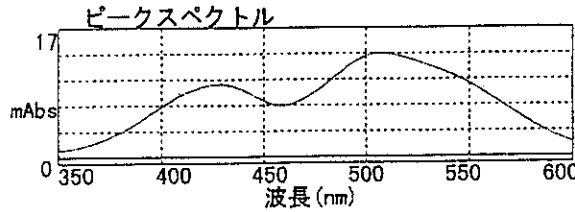
PKNO:16 (Ch1) — APEX — UP — - - DOWN  
 RT (min) 36.78 36.57 36.87

Max (nm) : 507, 426, 429, 455, 355  
 UP:0.9961 (0.9995) DOWN:1.0000 (1.0000)



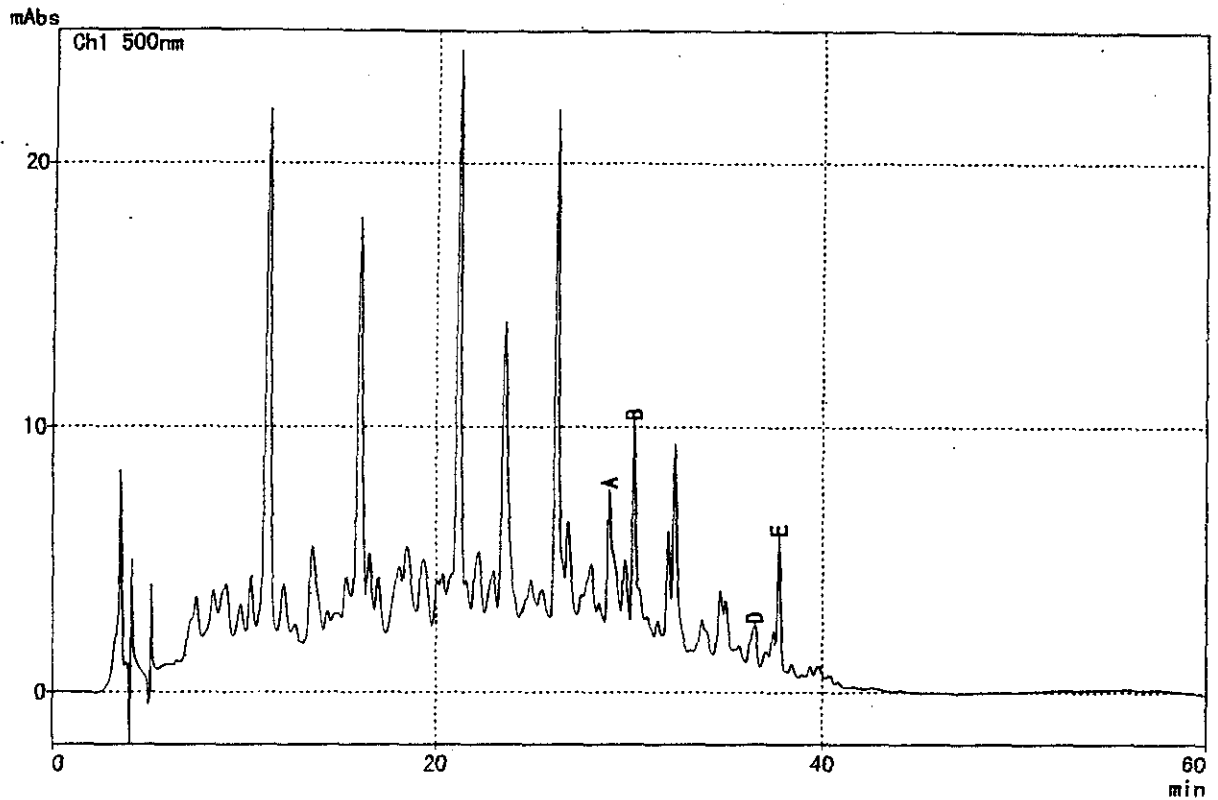
PKNO:18 (Ch1) — APEX — UP — - - DOWN  
 RT (min) 37.99 37.76 38.09

Max (nm) : 507, 429, 426, 351  
 UP:0.9992 (0.9998) DOWN:1.0000 (1.0000)



3) カニチップ

\*\*\* クロマトグラム \*\*\*



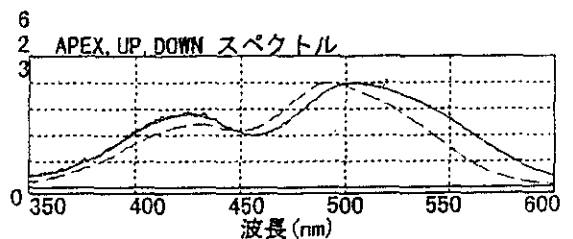
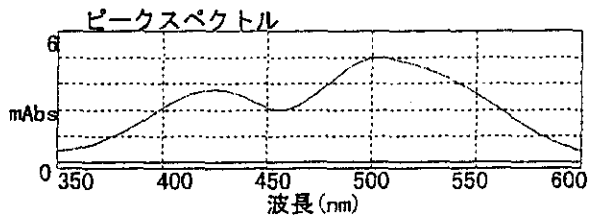
\*\*\* ピークレポート \*\*\*

PKNO	ChNO	NAME	TIME	AREA	HEIGHT
7	1	A	28.989	115187	5035
9	1	B	30.287	104361	7917
19	1	D	36.488	34334	1579
22	1	E	37.746	60310	4997
			314191	19528	

\*\*\* ピークピュリティ情報 \*\*\*

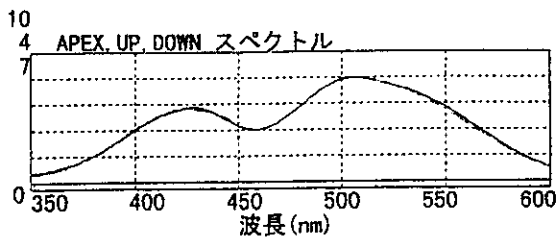
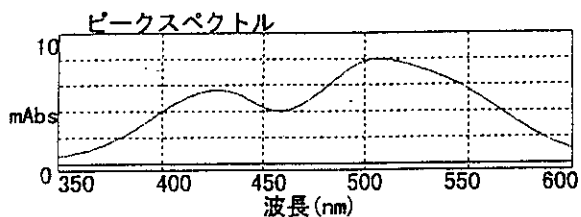
PKNO: 7 (Ch1)    ——— APEX    ——— UP    - - - DOWN  
 RT (min)        28.99        28.87        29.19

Max (nm) :        505, 502, 425, 421, 430  
 UP: 0.9936 (0.9984)    DOWN: 0.9375 (0.9990)



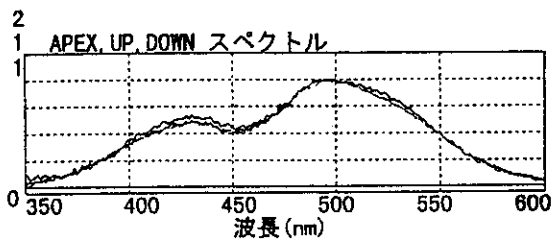
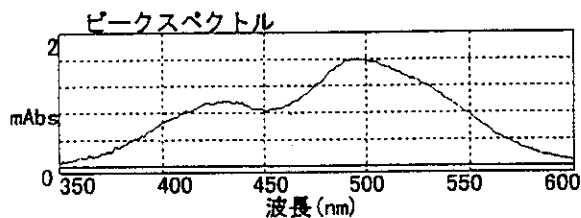
PKNO:9 (Ch1) — APEX — UP — DOWN  
 RT (min) 30.29 30.18 30.36

Max (nm) : 506, 426, 350  
 UP: 0.9996 (0.9994) DOWN: 0.9997 (0.9997)



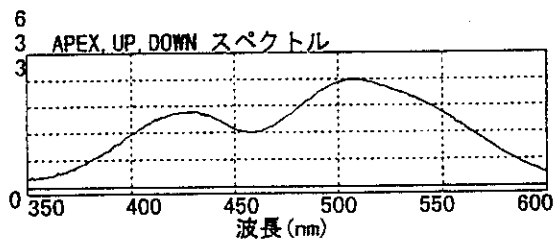
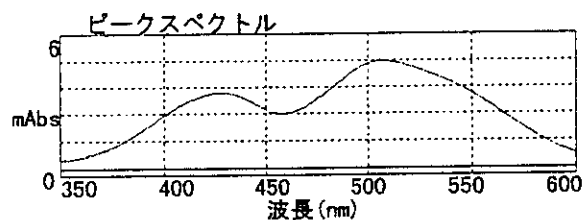
PKNO:19 (Ch1) — APEX — UP — DOWN  
 RT (min) 36.49 36.27 36.58

Max (nm) : 495, 500, 490, 505, 511  
 UP: 0.9931 (0.9890) DOWN: 0.9986 (0.9921)



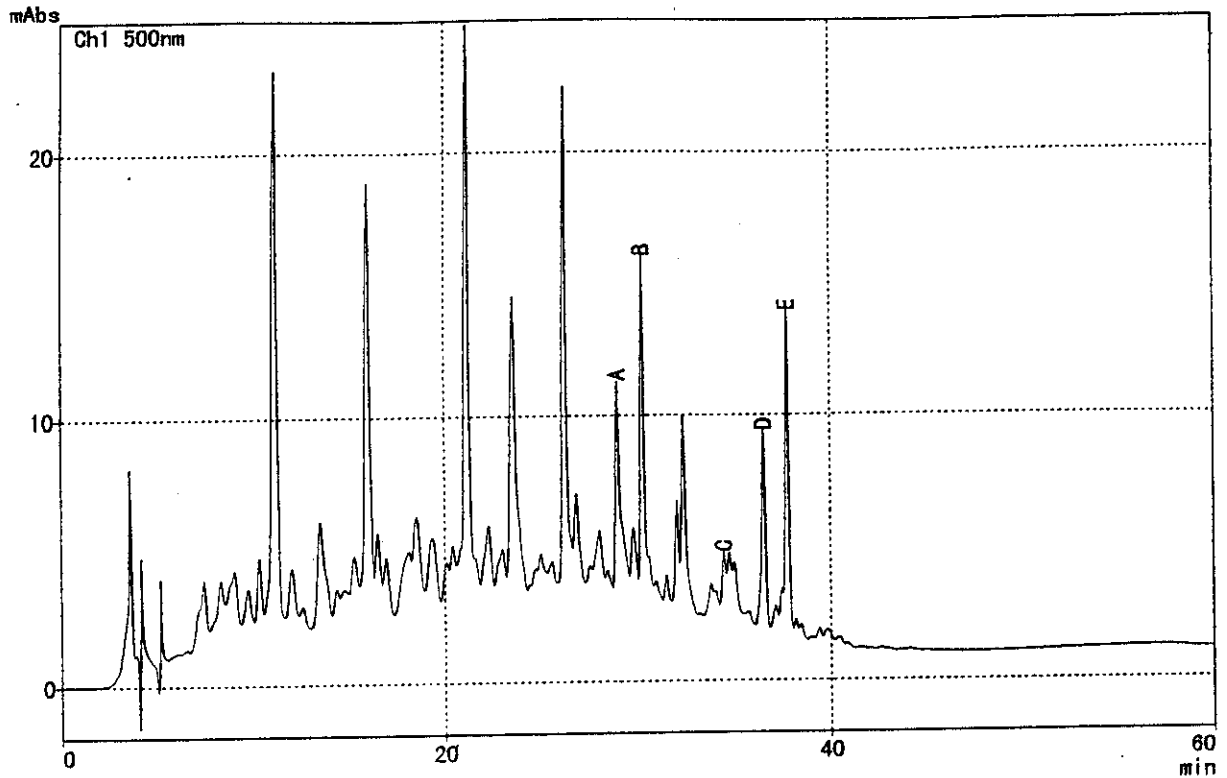
PKNO:22 (Ch1) — APEX — UP — DOWN  
 RT (min) 37.75 37.66 37.85

Max (nm) : 506, 429, 425, 458, 365  
 UP: 0.9998 (0.9989) DOWN: 0.9986 (0.9987)



物質名 : カニチップ 標準試料混合

\*\*\* カマトグラム \*\*\*



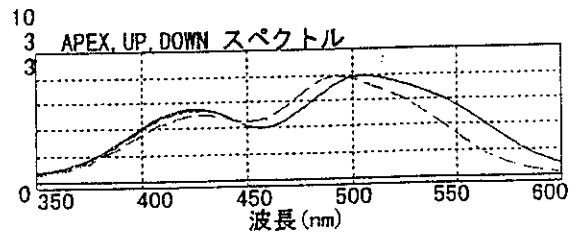
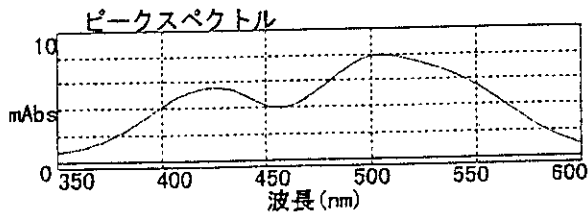
\*\*\* ピークレポート \*\*\*

PKNO	ChNO	NAME	TIME	AREA	HEIGHT
7	1	A	28.990	142875	7791
9	1	B	30.297	156051	12530
16	1	C	34.475	31051	2283
19	1	D	36.529	105622	7402
22	1	E	37.757	145664	12014
				581263	42020

\*\*\* ピークヒューリティー情報 \*\*\*

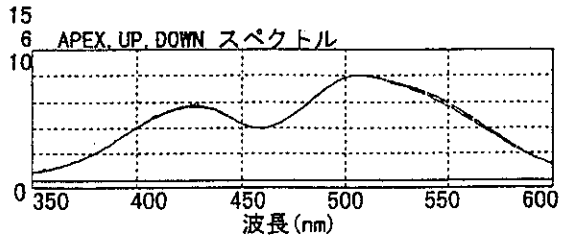
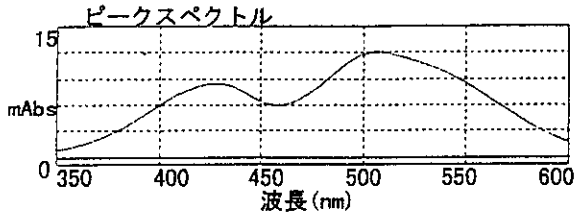
PKNO: 7 (Ch1)    ——— APEX    ——— UP    - - - DOWN  
 RT (min)        28.99        28.87        29.19

Max (nm) :        505, 502, 425, 423, 429  
 UP: 0.9993 (0.9991)    DOWN: 0.9510 (0.9991)



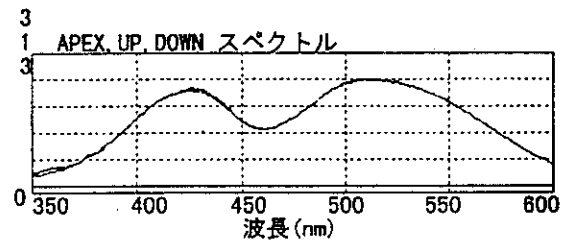
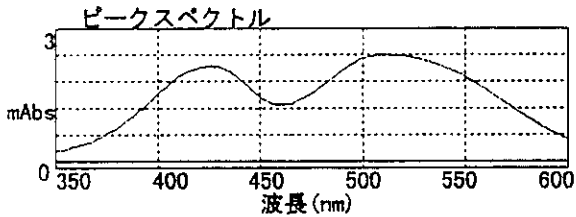
PKNO:9 (Ch1) — APEX — UP --- DOWN  
 RT (min) 30.30 30.18 30.38

Max (nm) : 506, 426, 429, 351  
 UP:0.9997 (0.9997) DOWN:0.9999 (0.9999)



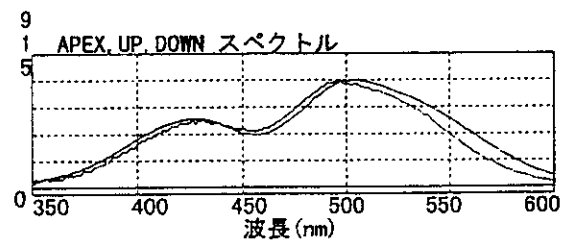
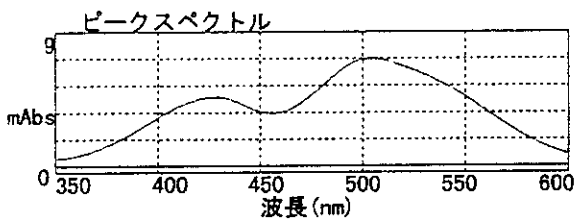
PKNO:16 (Ch1) — APEX — UP --- DOWN  
 RT (min) 34.47 34.36 34.52

Max (nm) : 507, 511, 515, 519, 524  
 UP:0.9973 (0.9964) DOWN:0.9998 (0.9982)



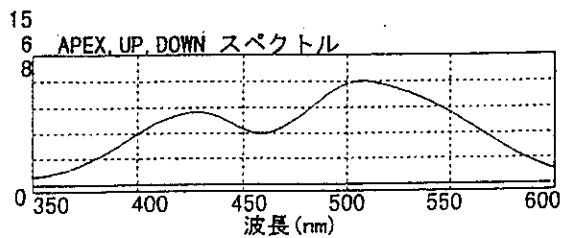
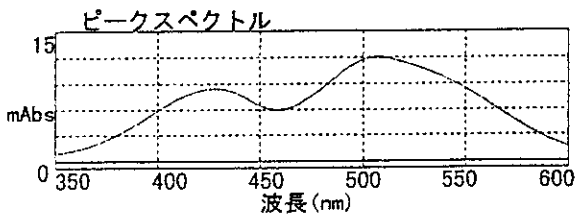
PKNO:19 (Ch1) — APEX — UP --- DOWN  
 RT (min) 36.53 36.31 36.63

Max (nm) : 505, 426, 429, 424, 352  
 UP:0.9839 (0.9964) DOWN:0.9998 (0.9995)



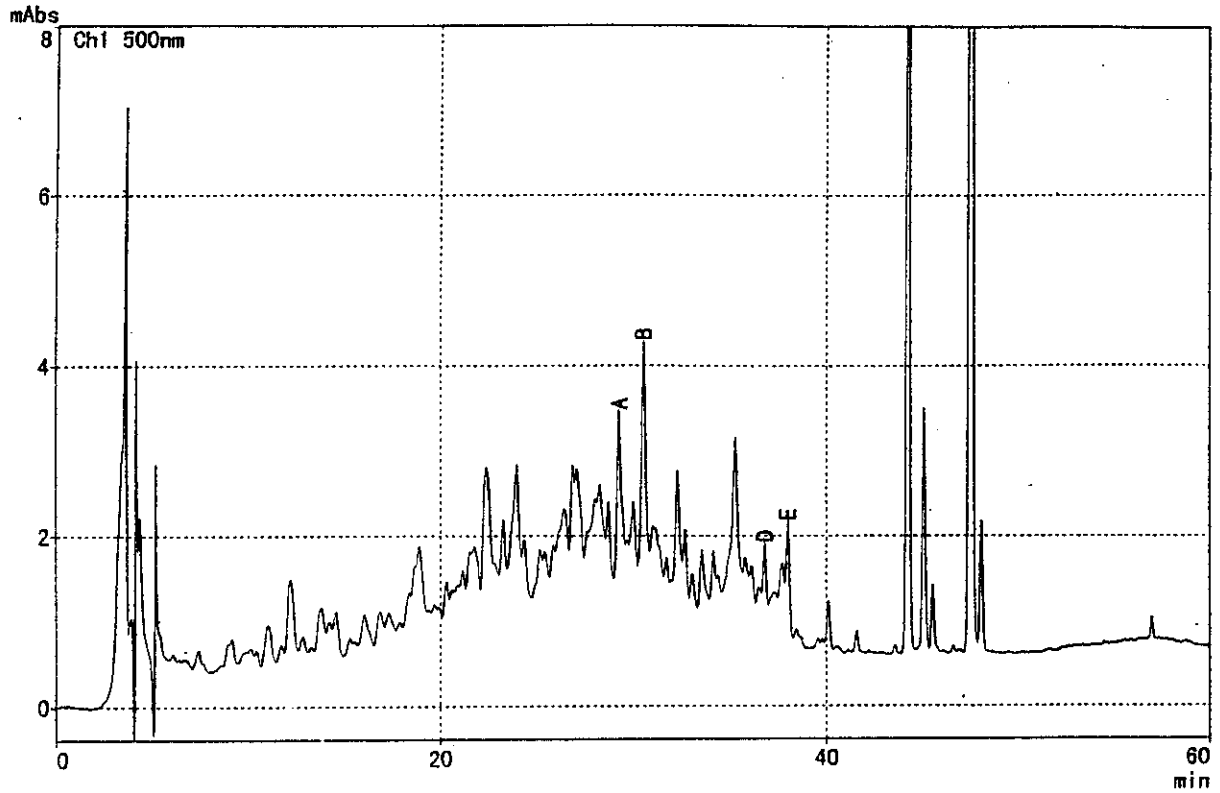
PKNO:22 (Ch1) — APEX — UP --- DOWN  
 RT (min) 37.76 37.65 37.85

Max (nm) : 506, 509, 428  
 UP:0.9998 (0.9997) DOWN:1.0000 (0.9998)



4) 漬物 (キムチ)

\*\*\* カロマトグラム \*\*\*



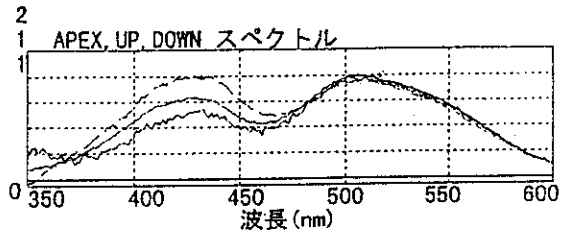
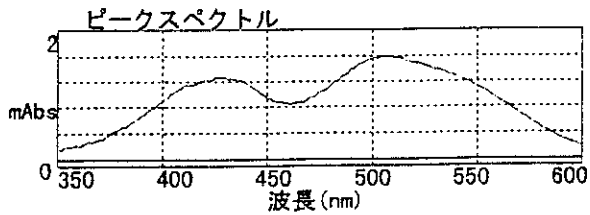
\*\*\* ピークレポート \*\*\*

PKNO	ChNO	NAME	TIME	AREA	HEIGHT
1	1	A	29.304	25990	1825
3	1	B	30.596	39313	2891
17	1	D	38.795	7448	741
19	1	E	37.990	14007	1219
				86758	6476

\*\*\* ピークレティファイ情報 \*\*\*

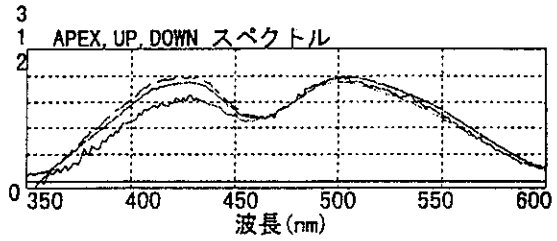
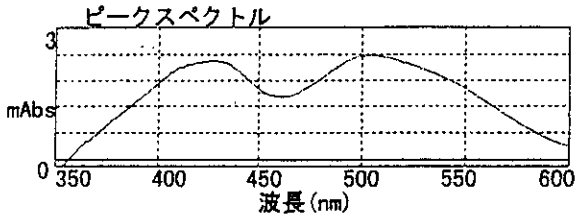
PKNO:1 (Ch1)    — APEX    — UP    - - - DOWN  
 RT (min)        29.30    29.19    29.42

Max (nm) :        505, 501, 514, 523, 525  
 UP: 0.9882 (0.9992)    DOWN: 0.9875 (0.9997)



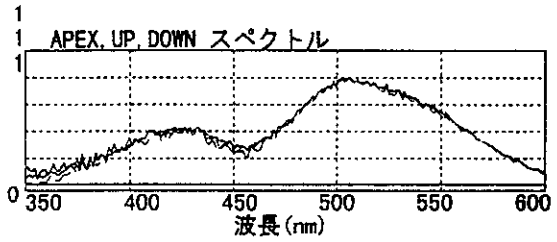
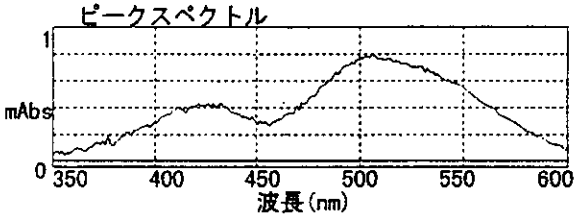
PKNO:3 (Ch1) — APEX — UP — DOWN  
 RT (min) 30.60 30.45 30.70

Max (nm) : 505, 507, 500, 514, 428  
 UP:0.9939 (0.9996) DOWN:0.9965 (0.9999)



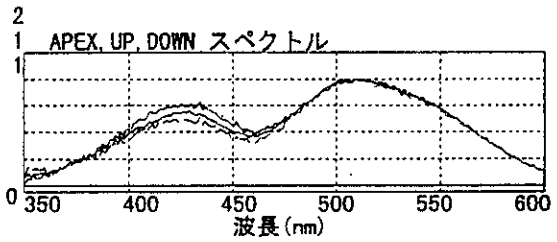
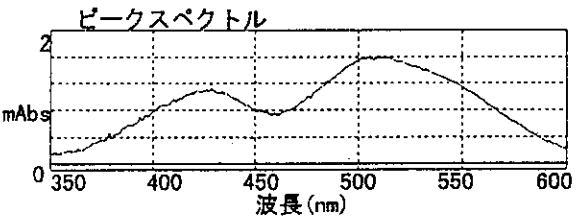
PKNO:17 (Ch1) — APEX — UP — DOWN  
 RT (min) 36.80 36.72 36.86

Max (nm) : 506, 502, 510, 514, 498  
 UP:0.9952 (0.9979) DOWN:0.9969 (0.9986)



PKNO:19 (Ch1) — APEX — UP — DOWN  
 RT (min) 37.99 37.91 38.07

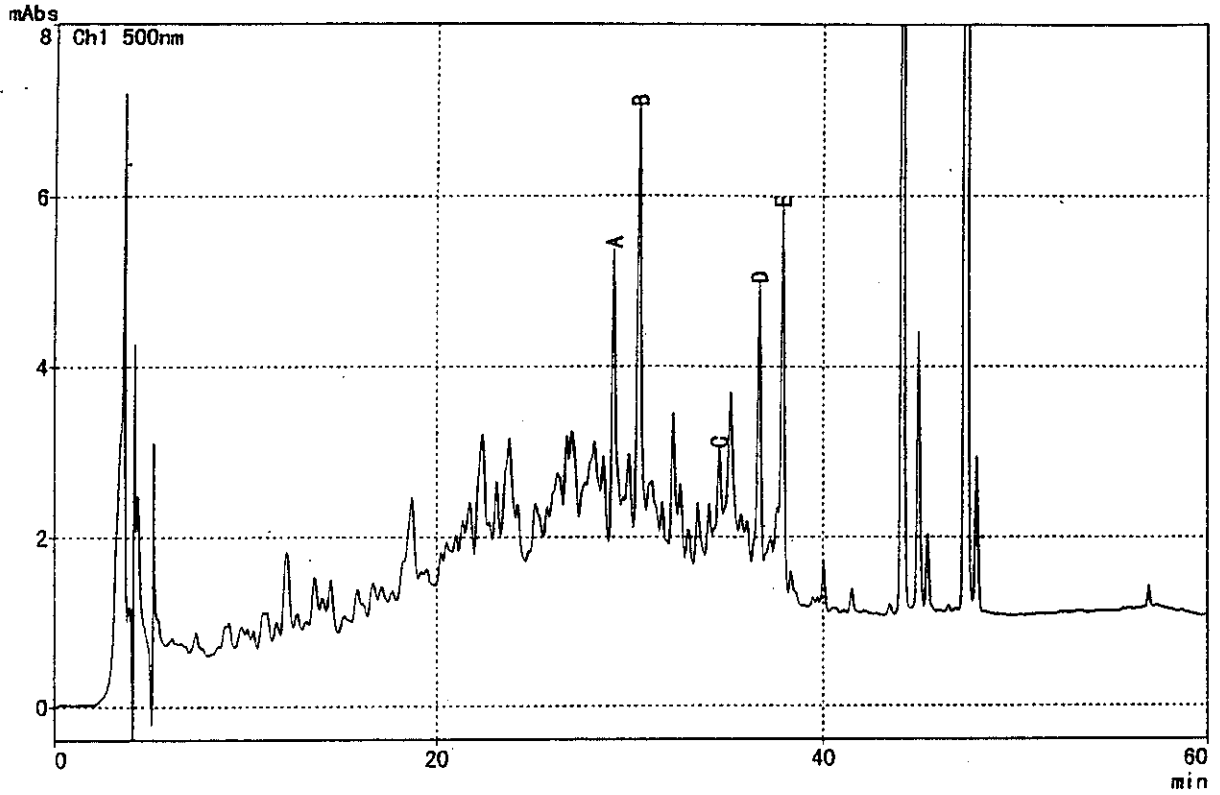
Max (nm) : 505, 510, 515, 512, 520  
 UP:0.9982 (0.9994) DOWN:0.9982 (0.9994)





サンプル : 漬物 (キムチ) 標準試料混合

\*\*\* クロマトグラム \*\*\*



\*\*\* ピークレポート \*\*\*

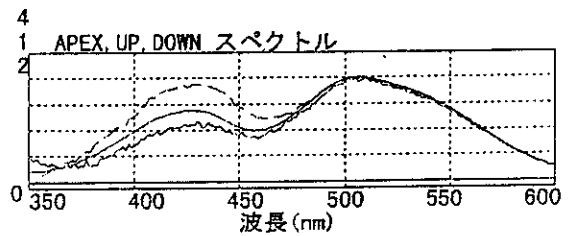
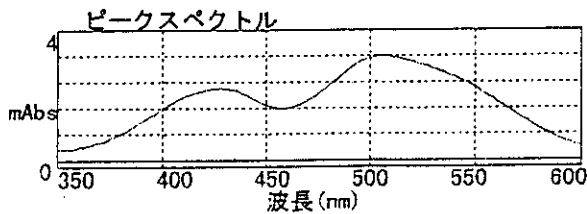
PKNO	ChNO	NAME	TIME	AREA	HEIGHT
4	1	A	29.130	43165	3276
6	1	B	30.437	64645	4880
14	1	C	34.583	11433	951
16	1	D	36.648	36164	3175
18	1	E	37.861	51375	4366

206782 16647

\*\*\* ピークレティーター情報 \*\*\*

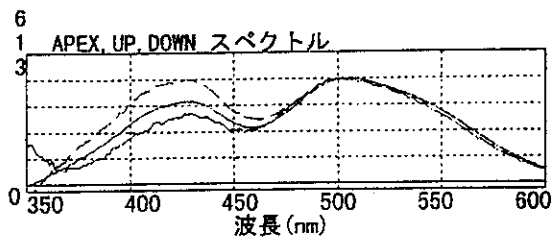
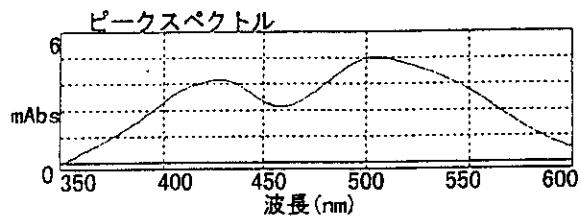
PKNO: 4 (Ch1)    — APEX    — UP    - - - DOWN  
 RT (min)        29.13    29.01    29.26

Max (nm) :        504, 506, 501, 512, 516  
 UP: 0.9939 (0.9996) DOWN: 0.9863 (0.9999)



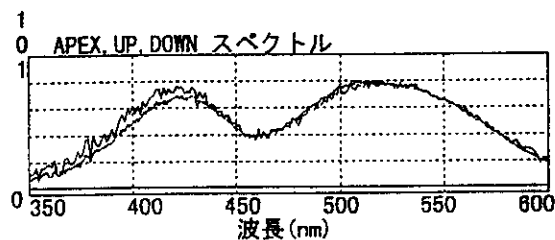
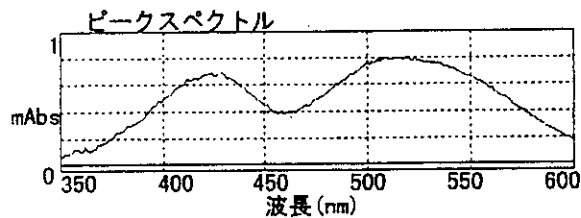
PKNO:6 (Ch1) — APEX — UP --- DOWN  
 RT (min) 30.44 30.29 30.56

Max (nm) : 504, 501, 507, 510, 514  
 UP:0.9876 (0.9998) DOWN:0.9900 (0.9999)



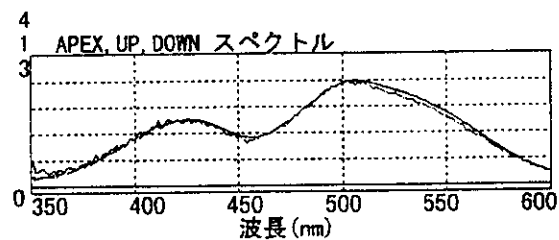
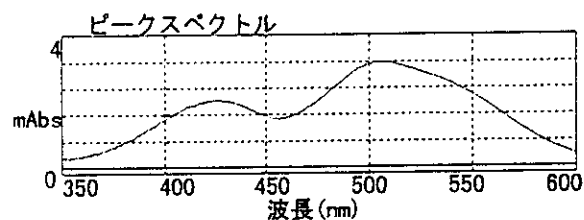
PKNO:14 (Ch1) — APEX — UP --- DOWN  
 RT (min) 34.58 34.48 34.65

Max (nm) : 509, 519, 515, 512, 505  
 UP:0.9934 (0.9985) DOWN:0.9993 (0.9994)



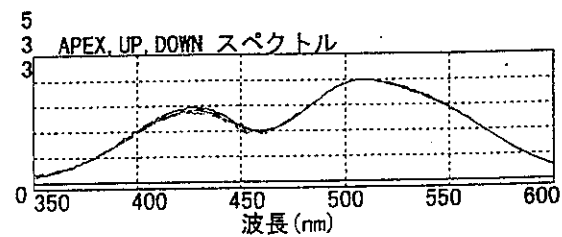
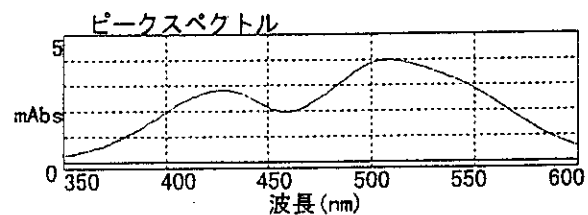
PKNO:16 (Ch1) — APEX — UP --- DOWN  
 RT (min) 36.85 36.52 36.73

Max (nm) : 506, 502, 510, 425, 420  
 UP:0.9978 (0.9995) DOWN:0.9997 (0.9999)



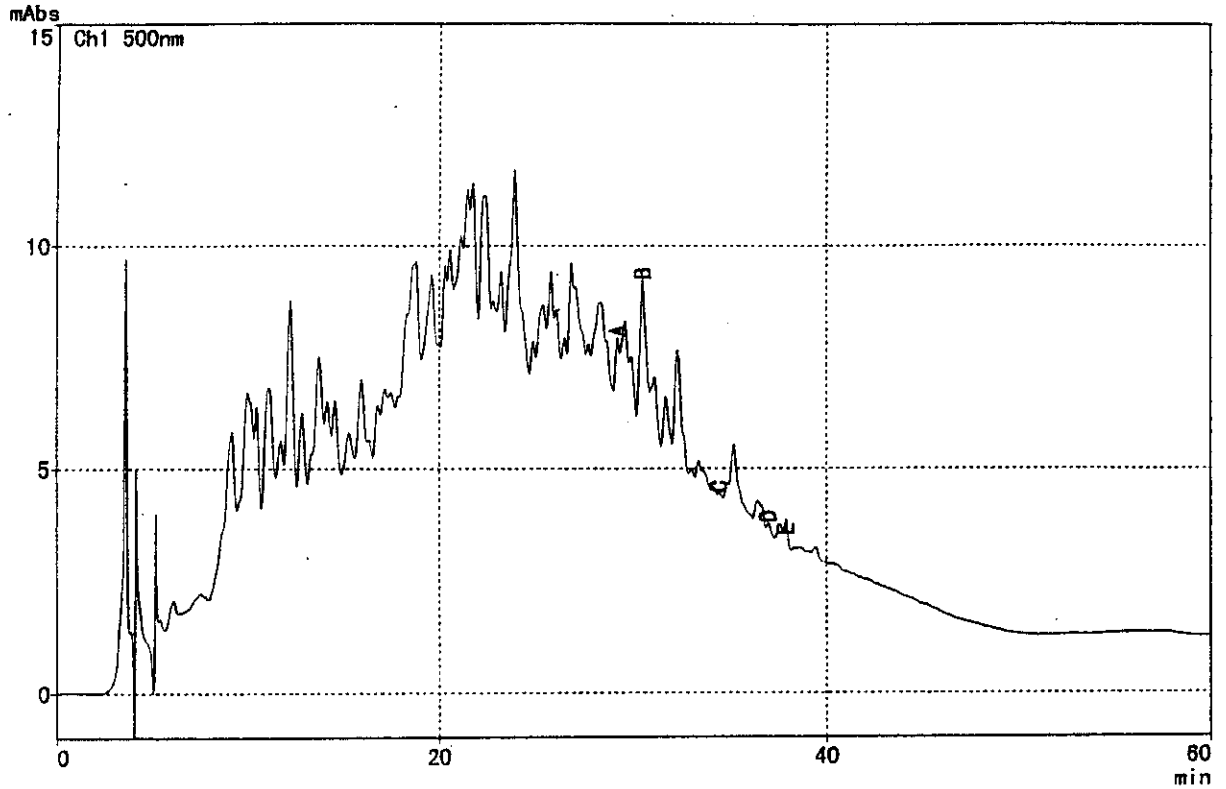
PKNO:18 (Ch1) — APEX — UP --- DOWN  
 RT (min) 37.86 37.77 37.95

Max (nm) : 509, 506, 430, 425, 423  
 UP:0.9997 (0.9999) DOWN:0.9998 (0.9999)



5) ふりかけ (梅ごま)

\*\*\* クロマトグラム \*\*\*



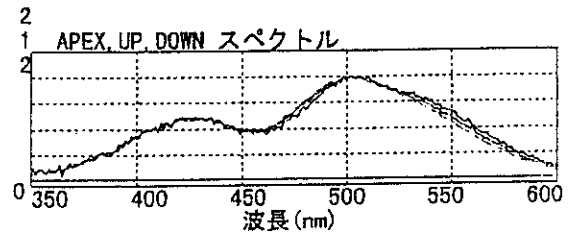
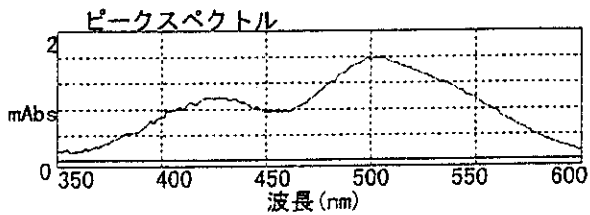
\*\*\* ピークレポート \*\*\*

PKNO	ChNO	NAME	TIME	AREA	HEIGHT
10	1	A	29.205	16538	1317
13	1	B	30.494	72141	3251
21	1	C	34.427	648	64
26	1	D	36.946	2113	178
28	1	E	37.883	7510	614
				98950	5423

\*\*\* ピークピュリティ情報 \*\*\*

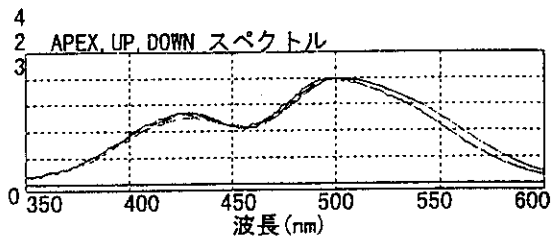
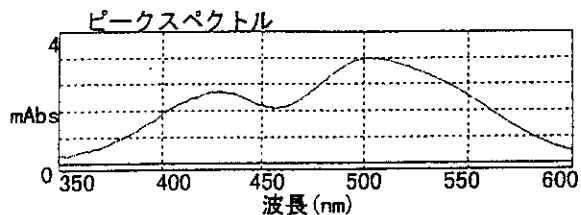
PKNO: 10 (Ch1) — APEX — UP — DOWN  
 RT (min) 29.21 29.10 29.25

Max (nm) : 498, 505, 502, 512, 519  
 UP: 0.9975 (0.9992) DOWN: 0.9991 (0.9996)



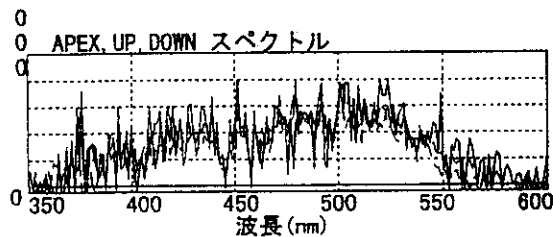
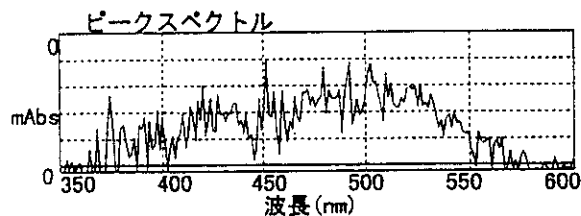
PKNO:13 (Ch1) — APEX — UP — - - DOWN  
 RT (min) 30.49 30.35 30.62

Max (nm) : 502, 506, 425, 428, 435  
 UP:0.9965 (0.9998) DOWN:0.9977 (0.9999)



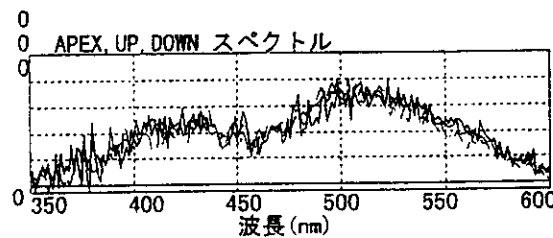
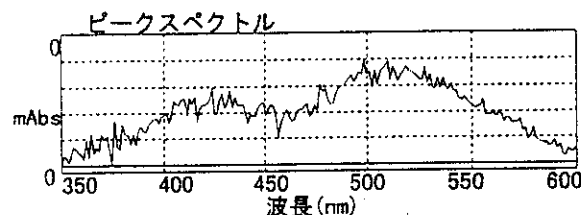
PKNO:21 (Ch1) — APEX — UP — - - DOWN  
 RT (min) 34.43 34.39 34.49

Max (nm) : 452, 492, 502, 480, 510  
 UP:0.7315 (0.7715) DOWN:0.7480 (0.8580)



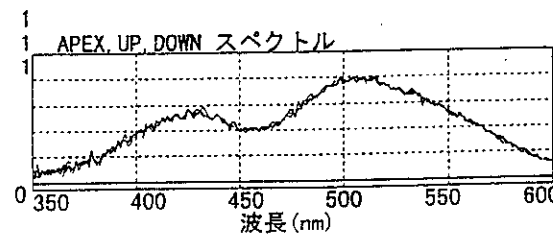
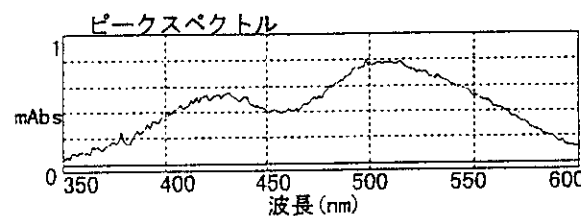
PKNO:26 (Ch1) — APEX — UP — - - DOWN  
 RT (min) 36.95 36.90 37.05

Max (nm) : 498, 510, 519, 512, 528  
 UP:0.9200 (0.9628) DOWN:0.9657 (0.9797)



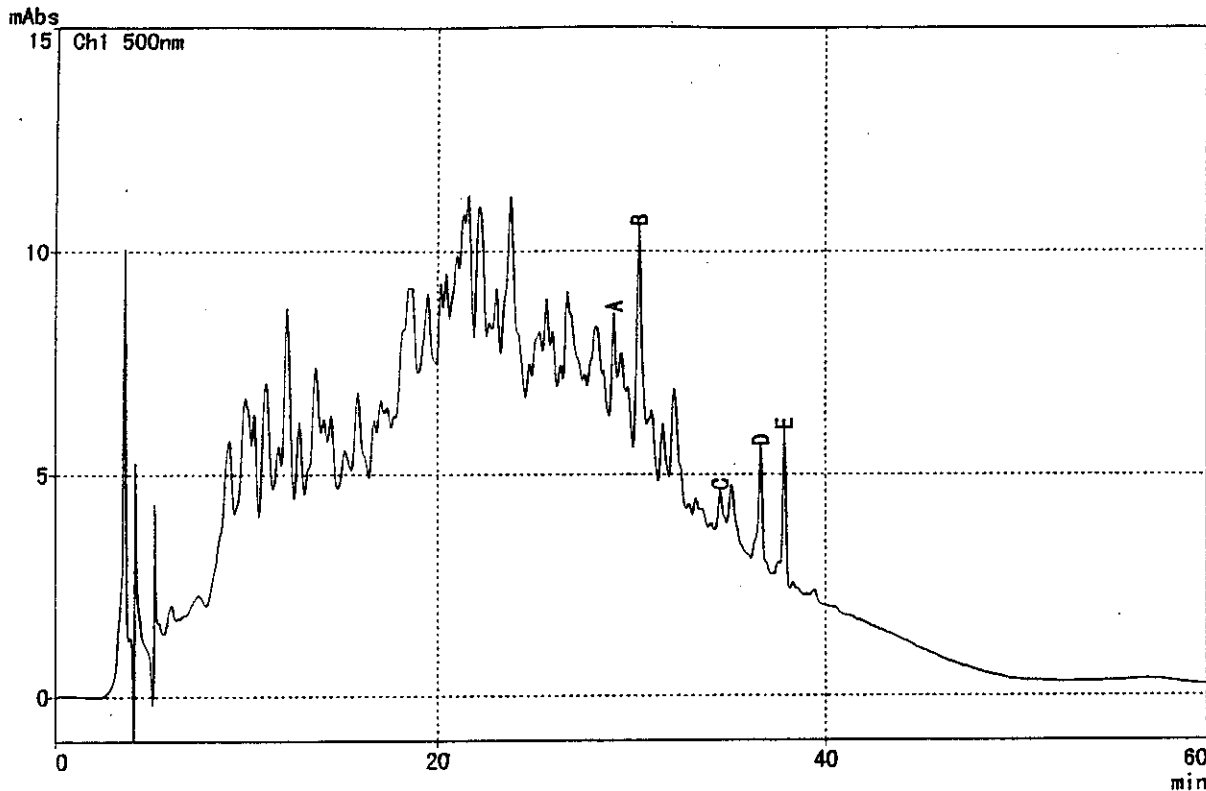
PKNO:28 (Ch1) — APEX — UP — - - DOWN  
 RT (min) 37.88 37.81 37.96

Max (nm) : 498, 515, 505, 507, 510  
 UP:0.9959 (0.9979) DOWN:0.9964 (0.9979)



00/02/25 10:58:56  
 サンプル : ふりかけ (梅ごま) 標準試料混合

\*\*\* カマトク'ラム \*\*\*



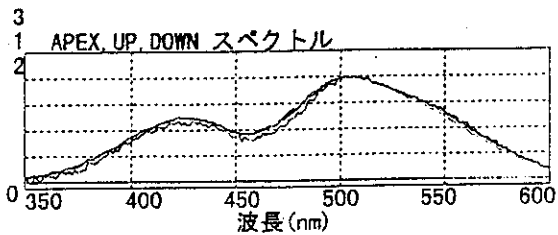
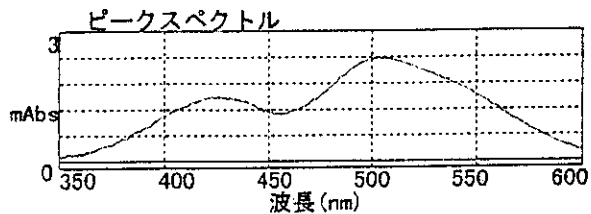
\*\*\* ピークレポート \*\*\*

PKNO	ChNO	NAME	TIME	AREA	HEIGHT
9	1	A	29.130	33488	2450
12	1	B	30.426	95738	5150
19	1	C	34.581	17857	970
21	1	D	36.647	37580	2584
23	1	E	37.859	40114	3448
			224777	14602	

\*\*\* ピークピュリティー情報 \*\*\*

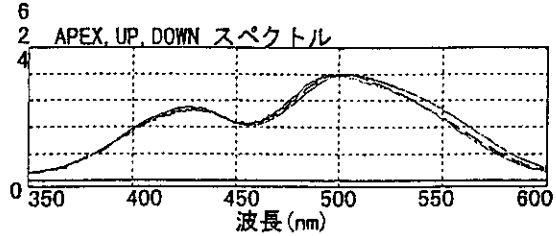
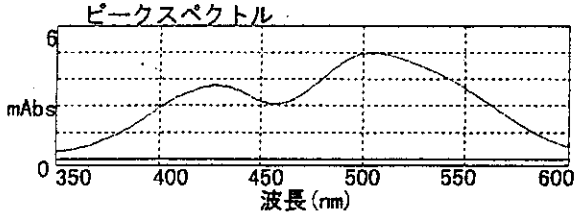
PKNO:9 (Ch1)    — APEX    — UP    - - - DOWN  
 RT (min)        29.13    29.01    29.19

Max (nm) :        506, 504, 509, 501, 514  
 UP: 0.9977 (0.9996)    DOWN: 0.9995 (0.9999)



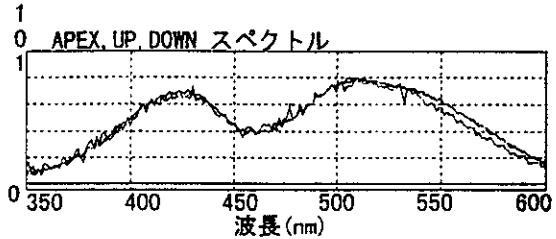
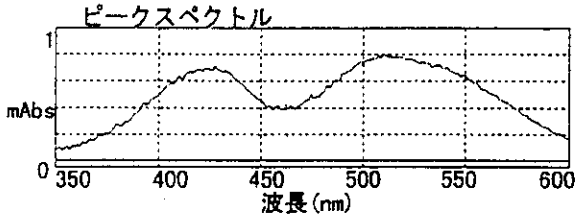
PKNO:12 (Ch1) — APEX — UP --- DOWN  
 RT (min) 30.43 30.27 30.55

Max (nm) : 502, 507, 500, 426, 433  
 UP:0.9960(0.9999) DOWN:0.9982(1.0000)



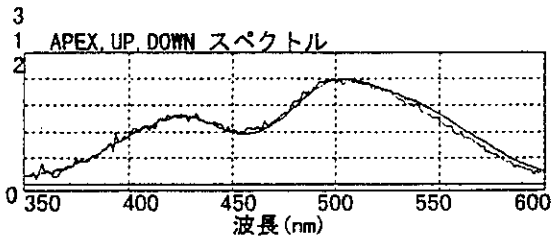
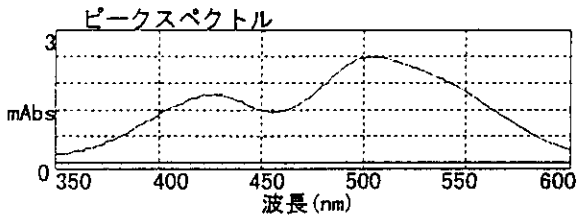
PKNO:19 (Ch1) — APEX — UP --- DOWN  
 RT (min) 34.58 34.44 34.69

Max (nm) : 510, 507, 514, 519, 505  
 UP:0.9943(0.9981) DOWN:0.9984(0.9993)



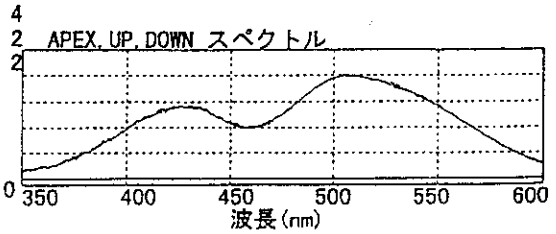
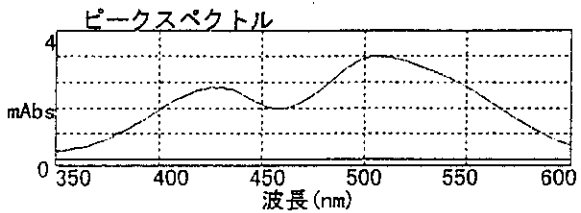
PKNO:21 (Ch1) — APEX — UP --- DOWN  
 RT (min) 36.65 36.40 36.72

Max (nm) : 507, 502, 510, 516, 428  
 UP:0.9959(0.9992) DOWN:0.9998(0.9999)



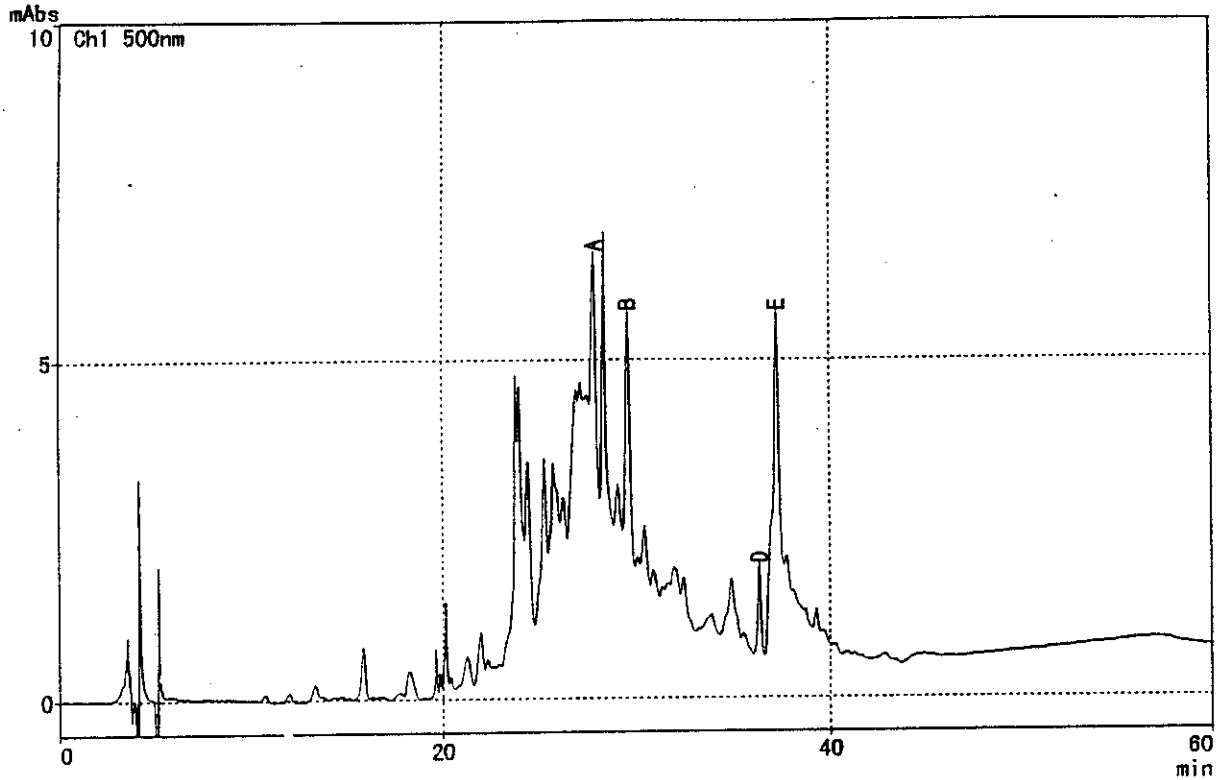
PKNO:23 (Ch1) — APEX — UP --- DOWN  
 RT (min) 37.86 37.76 37.96

Max (nm) : 505, 509, 511, 426, 430  
 UP:0.9997(0.9999) DOWN:0.9998(0.9999)



6) カニ風蒲鉾

\*\*\* カマトケム \*\*\*



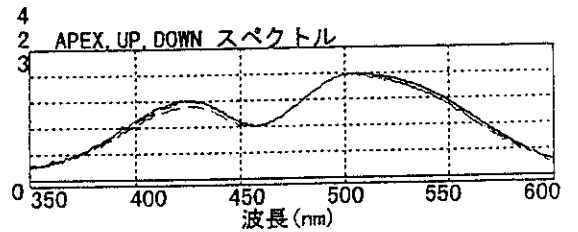
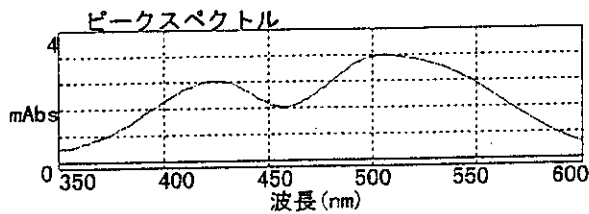
\*\*\* ピークレポート \*\*\*

PKNO	ChNO	NAME	TIME	AREA	HEIGHT
6	1	A	27.878	41410	2885
9	1	B	29.648	52262	3486
17	1	D	36.323	15378	1353
18	1	E	37.251	111099	4656
				220149	12380

\*\*\* ピークピュリティー情報 \*\*\*

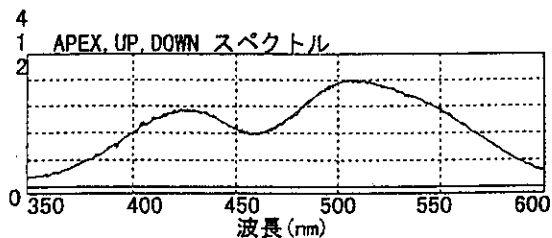
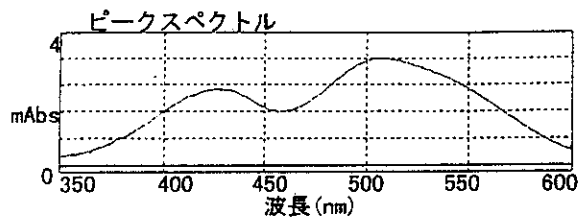
PKNO:6 (Ch1)    — APEX    — UP    --- DOWN  
 RT (min)        27.88    27.76    27.98

Max (nm) :        506, 510, 502, 498, 534  
 UP: 0.9994 (0.9998)    DOWN: 0.9991 (0.9999)



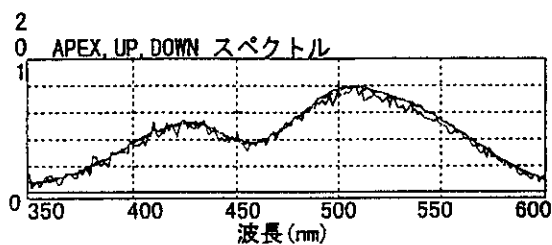
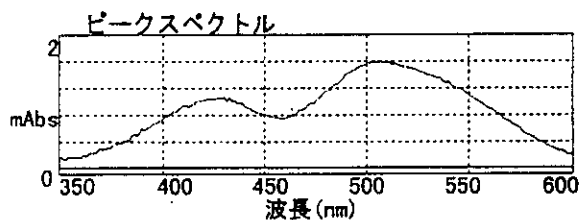
PKNO:9 (Ch1) — APEX — UP --- DOWN  
 RT (min) 29.65 29.50 29.77

Max (nm) : 506, 509, 426, 429, 433  
 UP:0.9993(0.9998) DOWN:0.9998(0.9999)



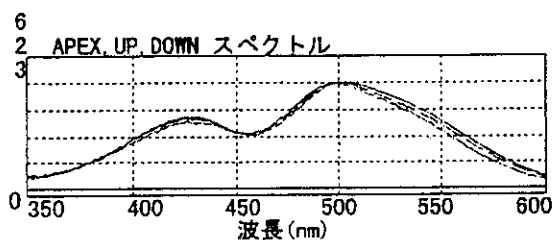
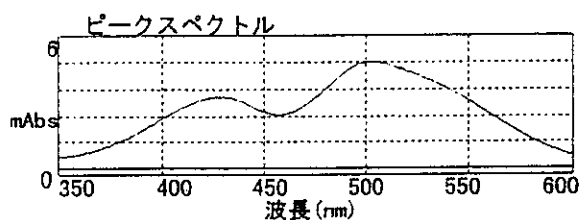
PKNO:17 (Ch1) — APEX — UP --- DOWN  
 RT (min) 36.32 36.18 36.40

Max (nm) : 504, 507, 511, 514, 519  
 UP:0.9929(0.9972) DOWN:0.9990(0.9995)



PKNO:18 (Ch1) — APEX — UP --- DOWN  
 RT (min) 37.25 36.95 37.37

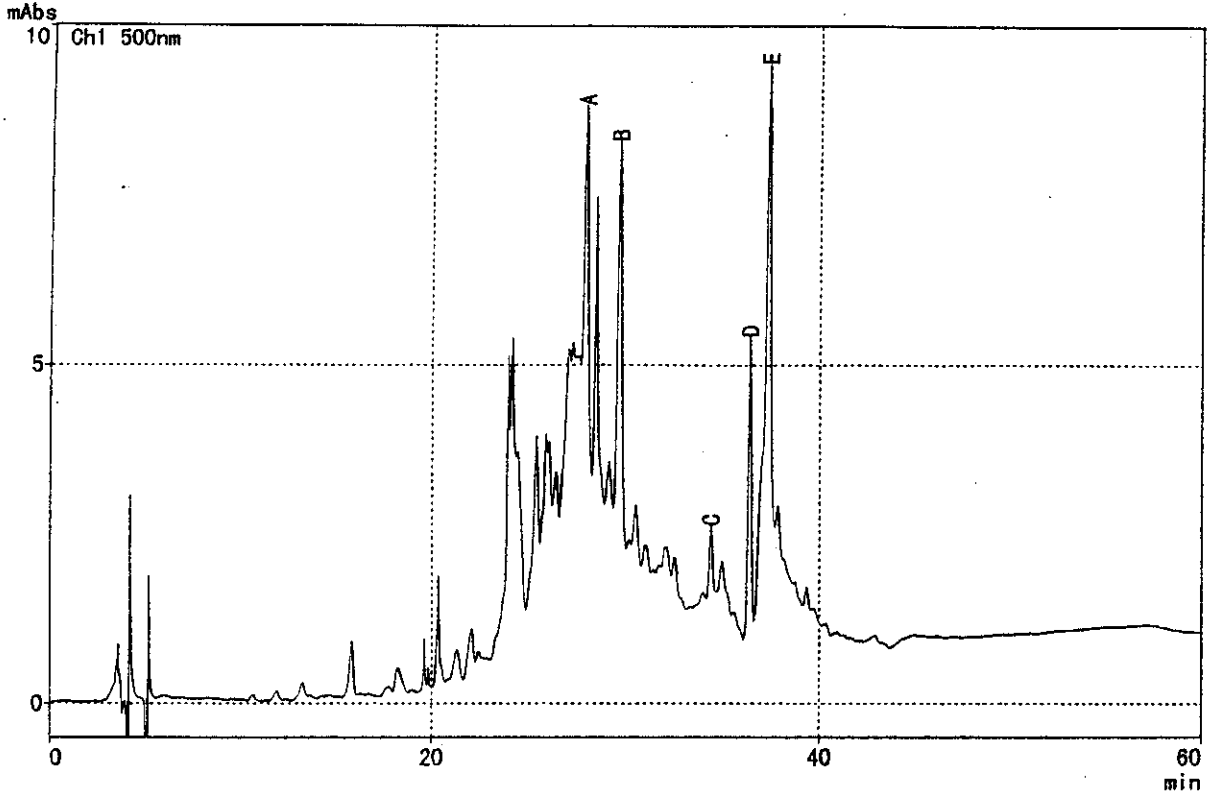
Max (nm) : 504, 501, 507, 430, 426  
 UP:0.9970(0.9999) DOWN:0.9993(0.9999)





サンプル : カニ風蒲鉾 標準試料混合

\*\*\* クロマトグラム \*\*\*



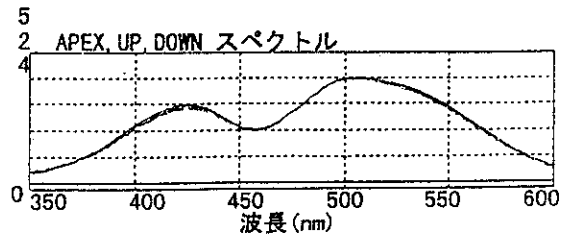
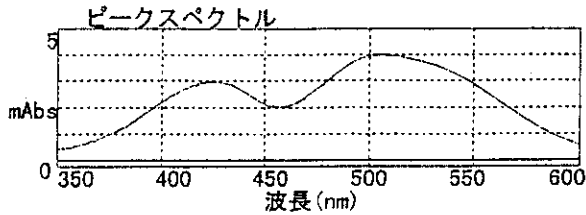
\*\*\* ピークレポート \*\*\*

PKNO	ChNO	NAME	TIME	AREA	HEIGHT
7	1	A	27.941	61424	4493
10	1	B	29.679	87013	5675
15	1	C	34.363	14595	1135
18	1	D	36.352	49957	4339
19	1	E	37.291	183467	7989
				396455	23631

\*\*\* ピークヒリティー情報 \*\*\*

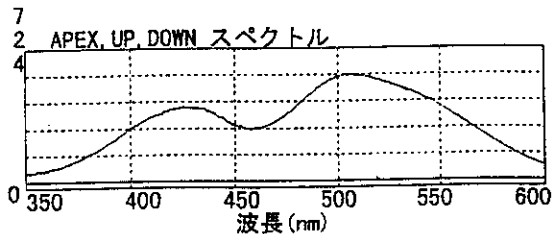
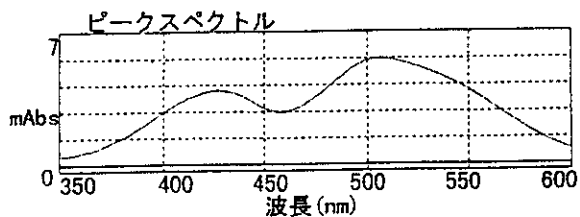
PKNO: 7 (Ch1)    ——— APEX    ——— UP    - - - DOWN  
 RT(min)        27.94        27.83        28.05

Max(nm) :        506, 509, 501, 512, 424  
 UP: 0.9996 (0.9999)    DOWN: 0.9996 (1.0000)



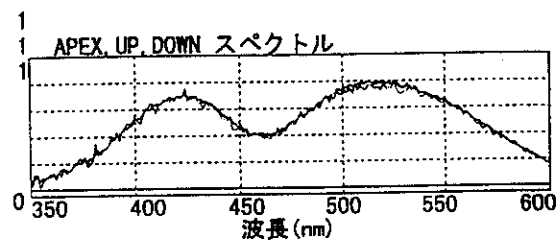
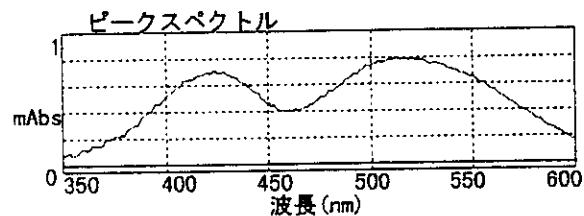
PKNO:10 (Ch1) — APEX — UP --- DOWN  
 RT (min) 29.68 29.53 29.81

Max (nm) : 506, 425, 428, 431, 459  
 UP:0.9999 (0.9999) DOWN:0.9999 (1.0000)



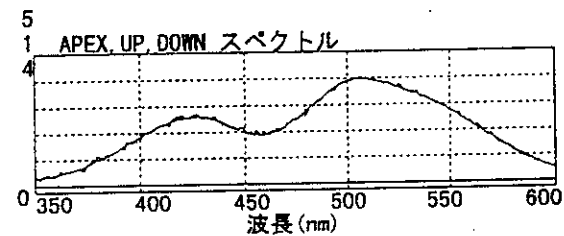
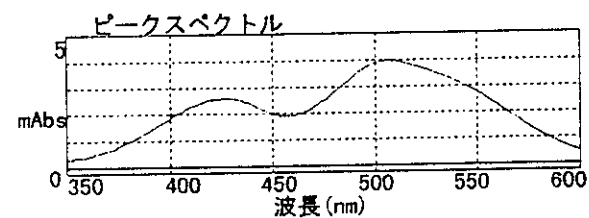
PKNO:15 (Ch1) — APEX — UP --- DOWN  
 RT (min) 34.36 34.25 34.44

Max (nm) : 512, 516, 521, 525, 509  
 UP:0.9979 (0.9989) DOWN:0.9992 (0.9995)



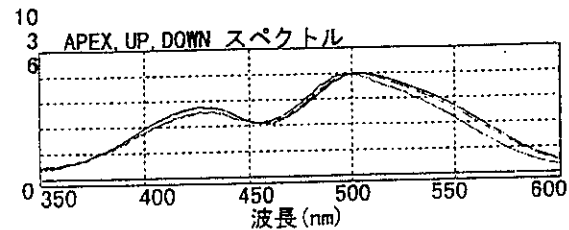
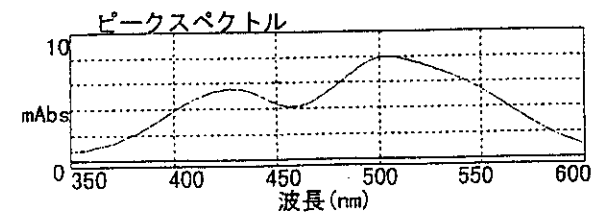
PKNO:18 (Ch1) — APEX — UP --- DOWN  
 RT (min) 36.35 36.20 36.42

Max (nm) : 506, 504, 428, 431, 438  
 UP:0.9991 (0.9997) DOWN:0.9999 (1.0000)



PKNO:19 (Ch1) — APEX — UP --- DOWN  
 RT (min) 37.29 36.92 37.41

Max (nm) : 504, 501, 509, 426, 431  
 UP:0.9953 (0.9999) DOWN:0.9996 (1.0000)



### 3) HPLCによる市販食品中のベニコウジ色素の分析 3.

#### 1. 試料

- ①まぜりゃんせ 明太子 (ブルドッグソース)
- ②千歳飴 赤 (不二家)

#### 2. 装置

高速液体クロマトグラフ (HPLC) Waters 社製  
分光光度計 HP8452A DIODE ARRAY SPECTROPHOTOMETER HEWLETT  
PACKARD

#### 3. 検液の調整

食品10gに70%エタノール50gを混合後、約1時間攪拌抽出した。得られた抽出液を濾過後、分光光度計にてスペクトルを測定した。その後濾液を濃縮し、HPLCにて分析を行った。

#### 4. 分析条件

カラム：TSK-GEL ODS-80TM(4.6mmID × 250mm)、東ソー (株)  
カラム温度：40℃  
流速：0.8 ml/min  
移動層：10%酢酸、メタノール  
注入量：0.1 ml  
グラジエント：0～50 min 50%→100%メタノール(直線グラジエント)  
50～80 min 100%メタノール  
80～100 min 50%メタノール  
測定波長：500 nm (Waters 996 Photodiode Array Detecor)

1) 標準試料

ミレニアム サンプル情報

サンプル名: std

サンプル名: 未知試料

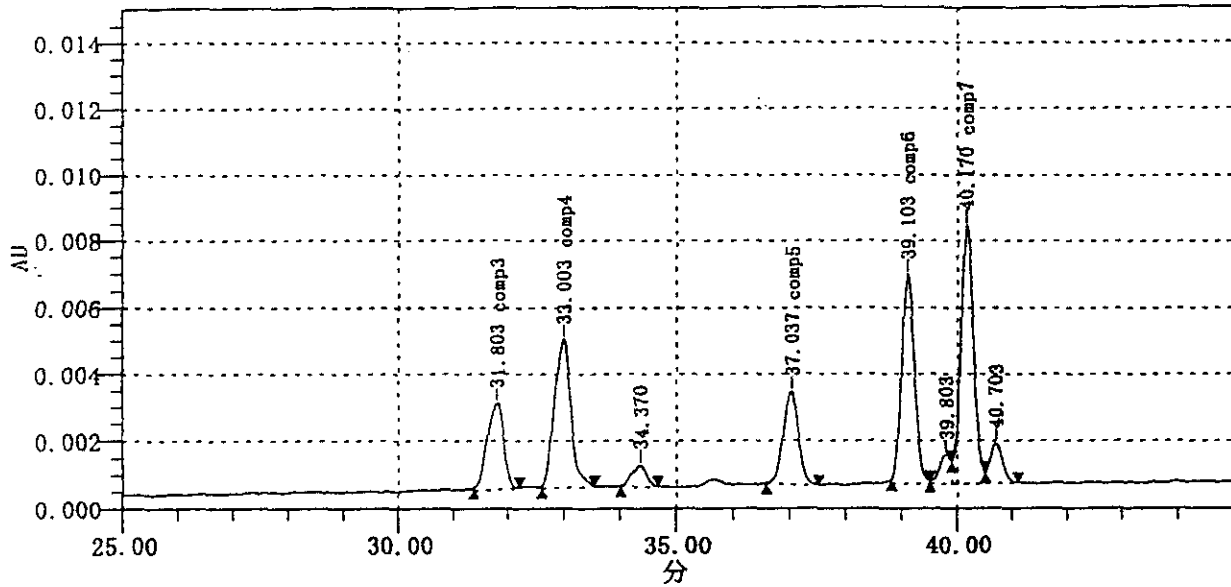
チャンネル: 996

注入量: 50.00

分析年月日: 00/03/08 11:45:27

分析時間: 80.0 min

解析年月日: 00/03/10 04:14:15



ピークテーブル

#	名前	保持時間 (min)	面積 ( $\mu V \cdot sec$ )	高さ ( $\mu V$ )	濃度	分割方法
1	comp3	31.803	52603	2554		VB
2	comp4	33.003	88836	4408		BB
3	comp5	37.037	52025	2769		BB
4	comp6	39.103	101117	6238		VV
5	comp7	40.170	124361	7716		VV

標準試料