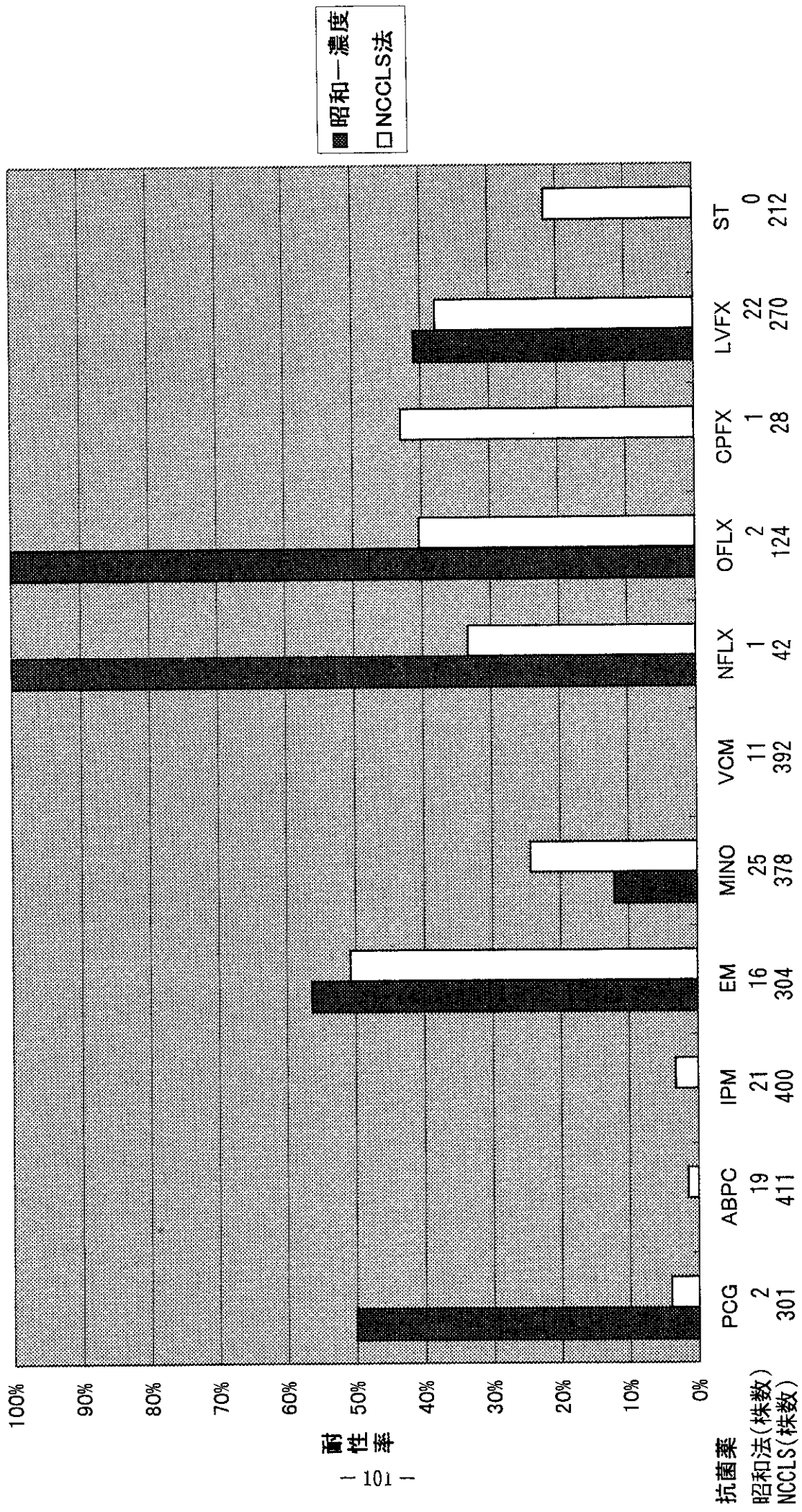


図40 *E. faecalis* - 尿



耐性率

— 101 —

抗菌薬

昭和法(株数)

NCCLS(株数)

図41 *E. faecalis* 一膿

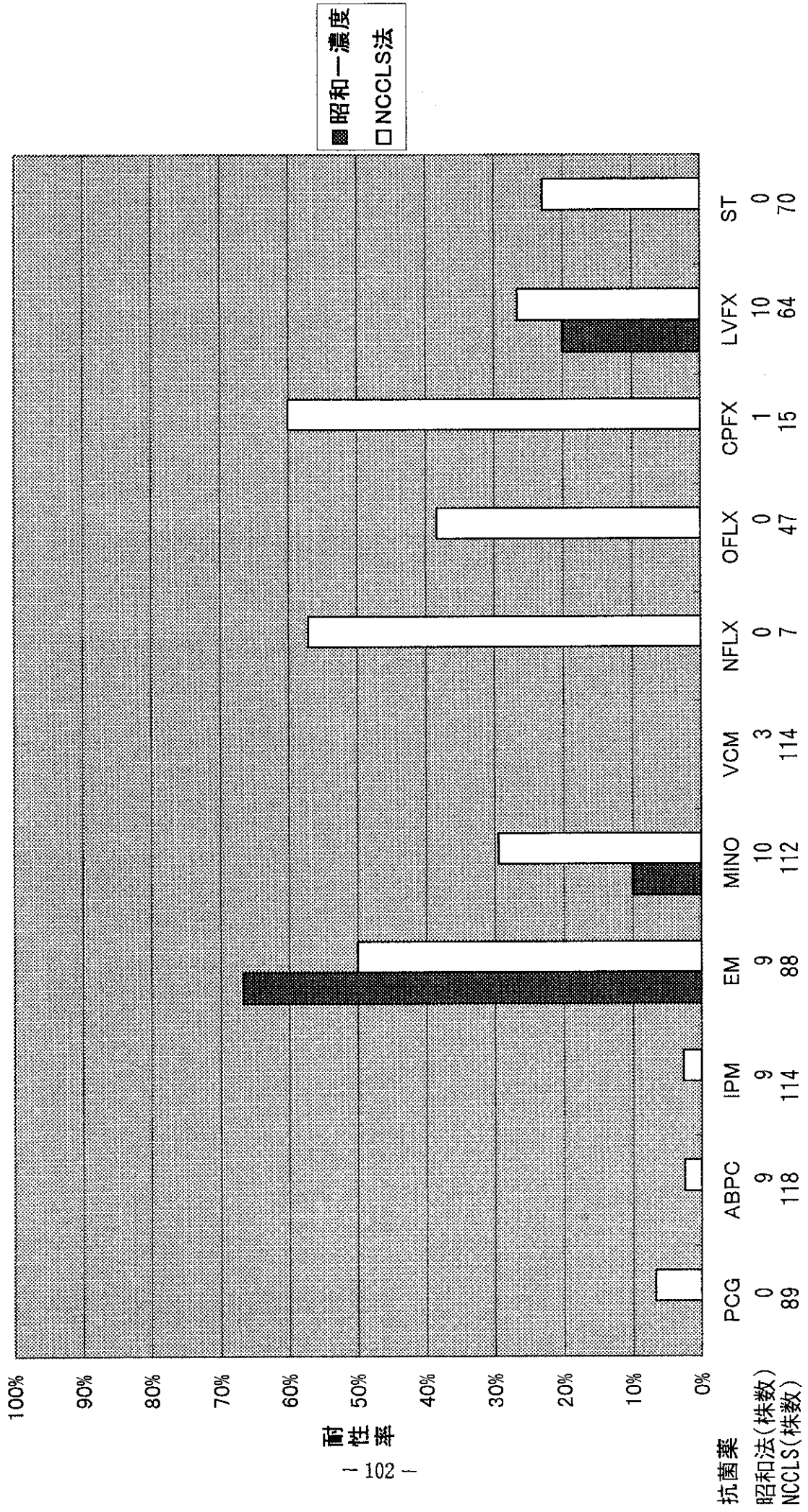


图42 *E. faecalis* - 便

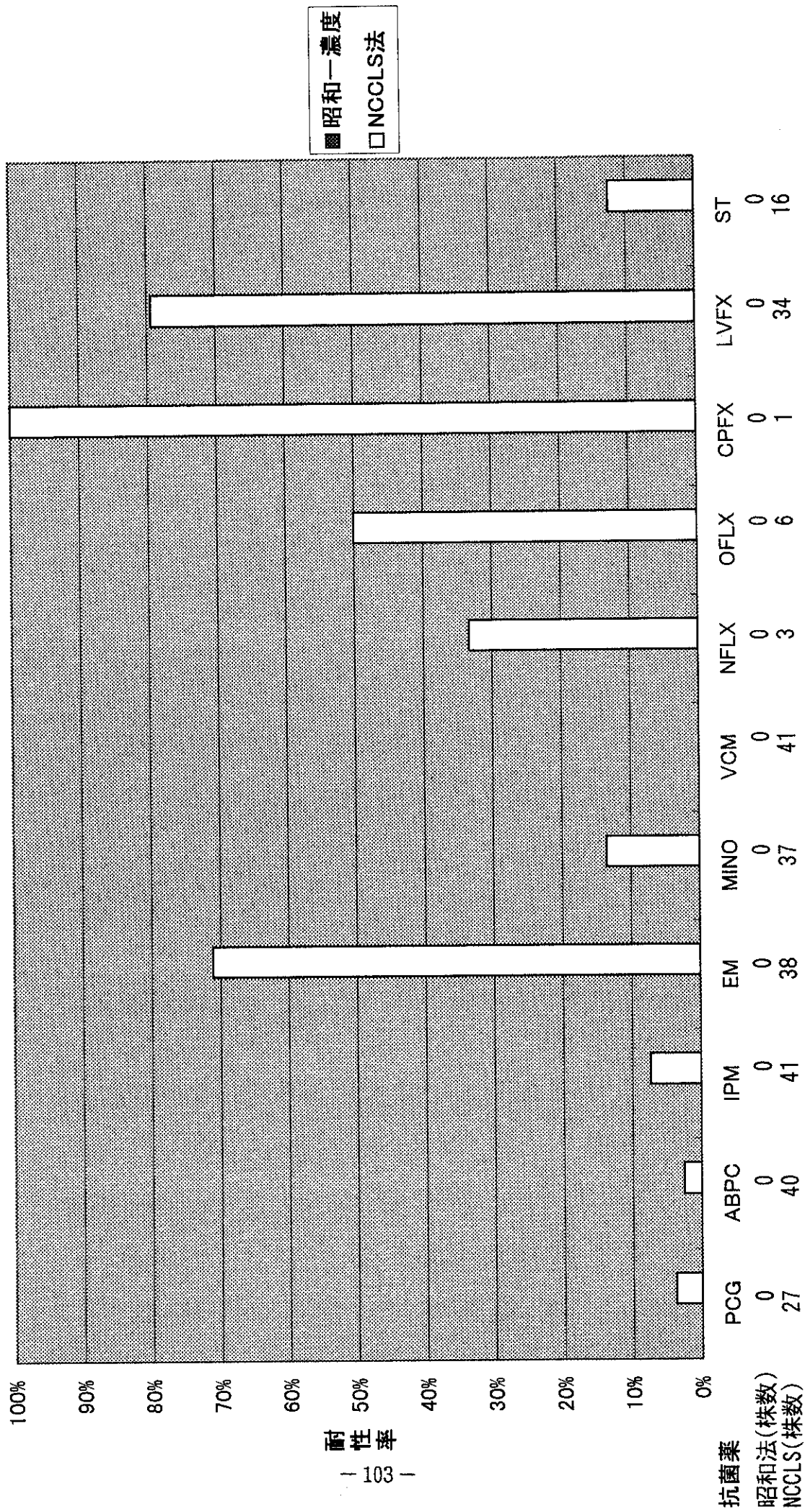
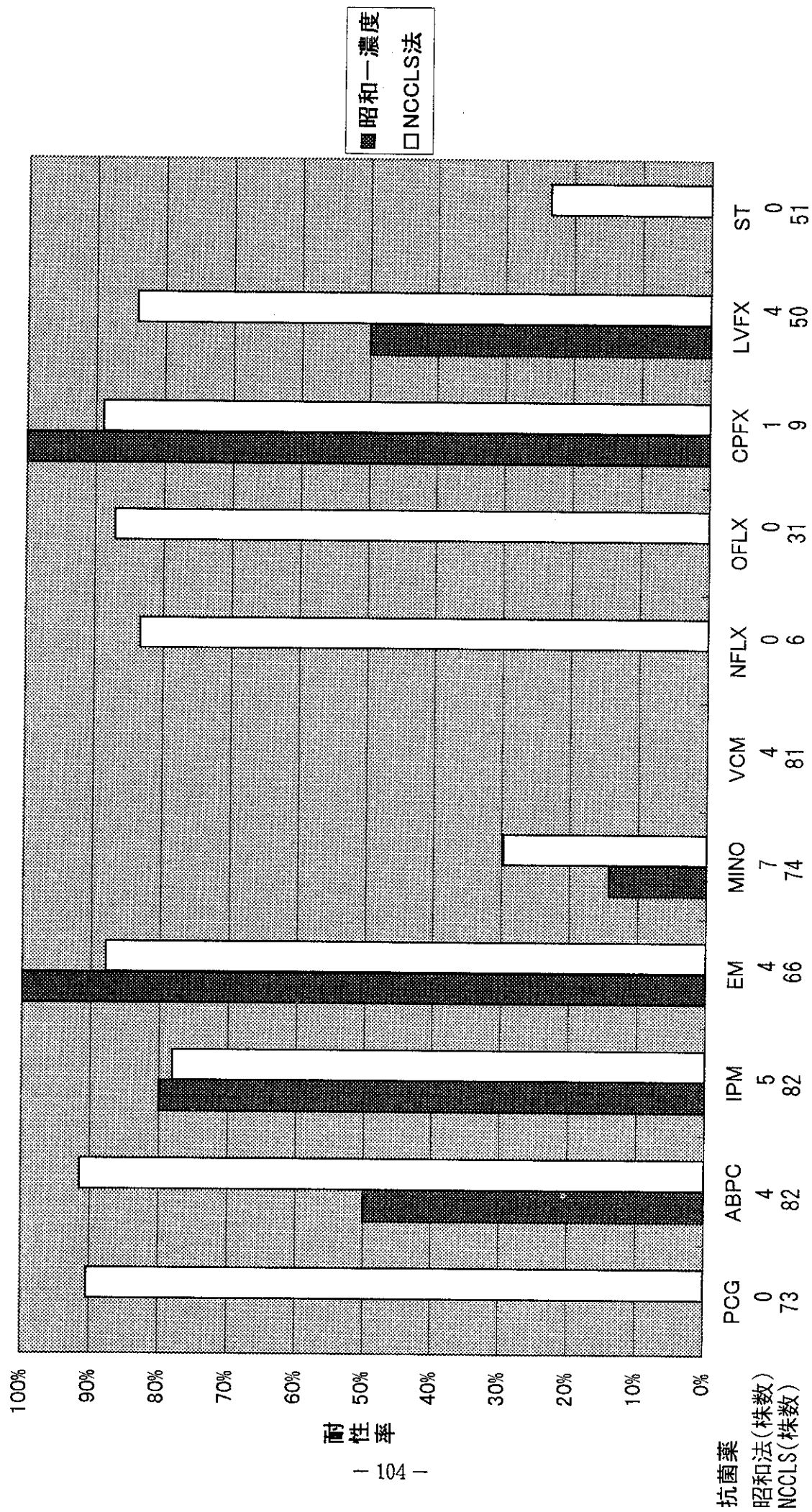


图43 *E. faecium*—尿



耐性率

図44 *E. faecium* 一便

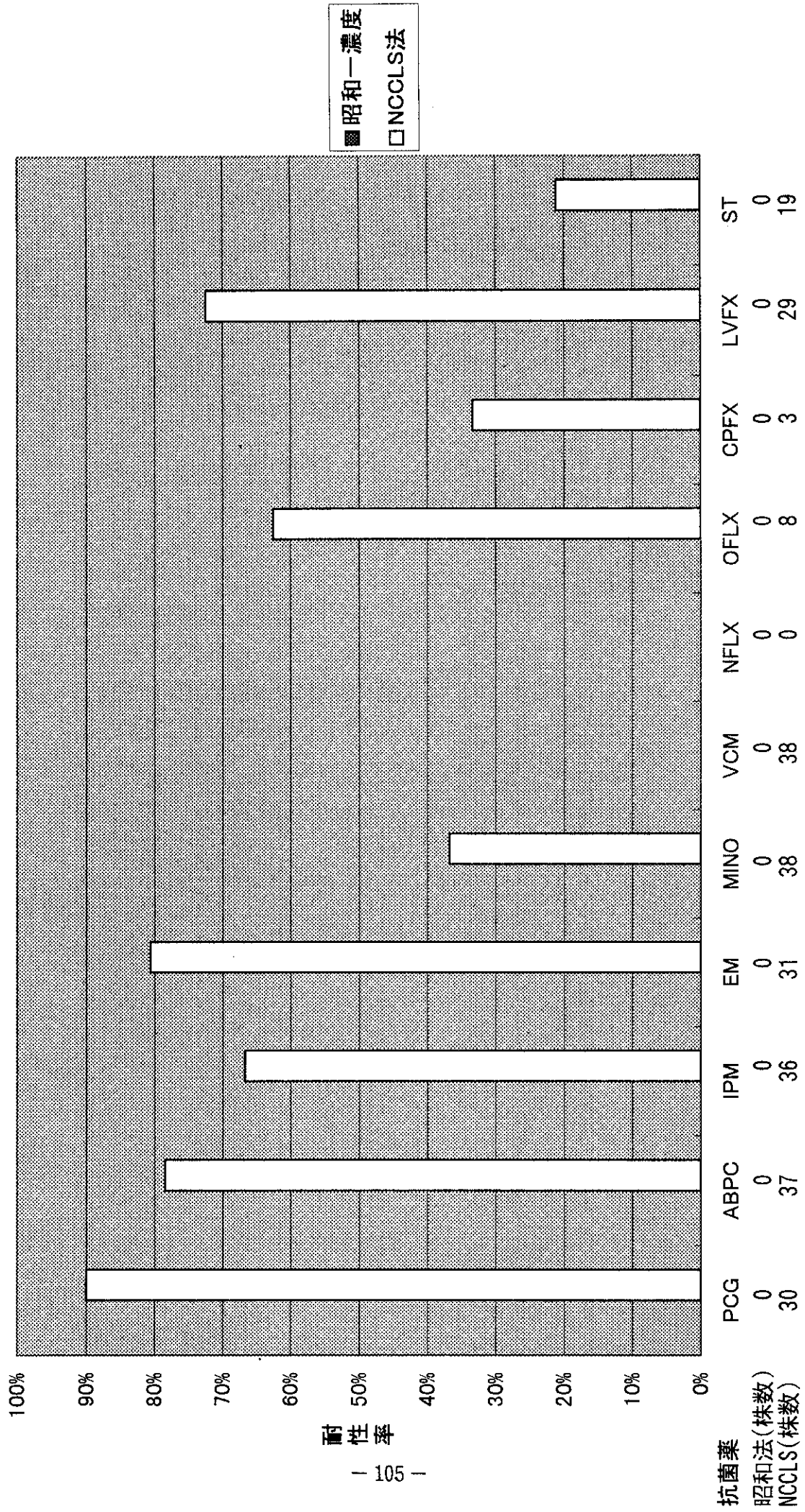


图45 *S. pneumoniae* - 咯痰

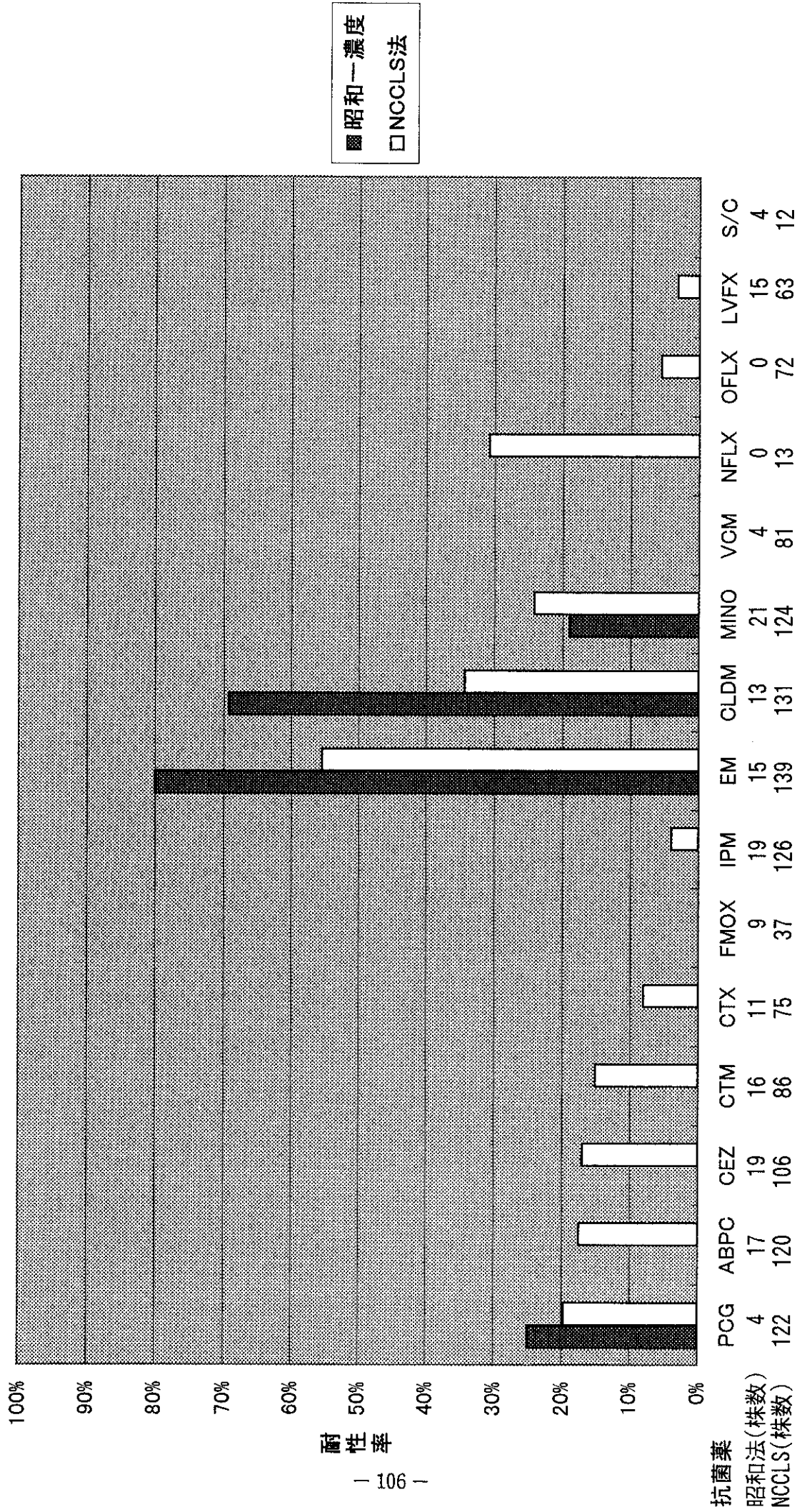
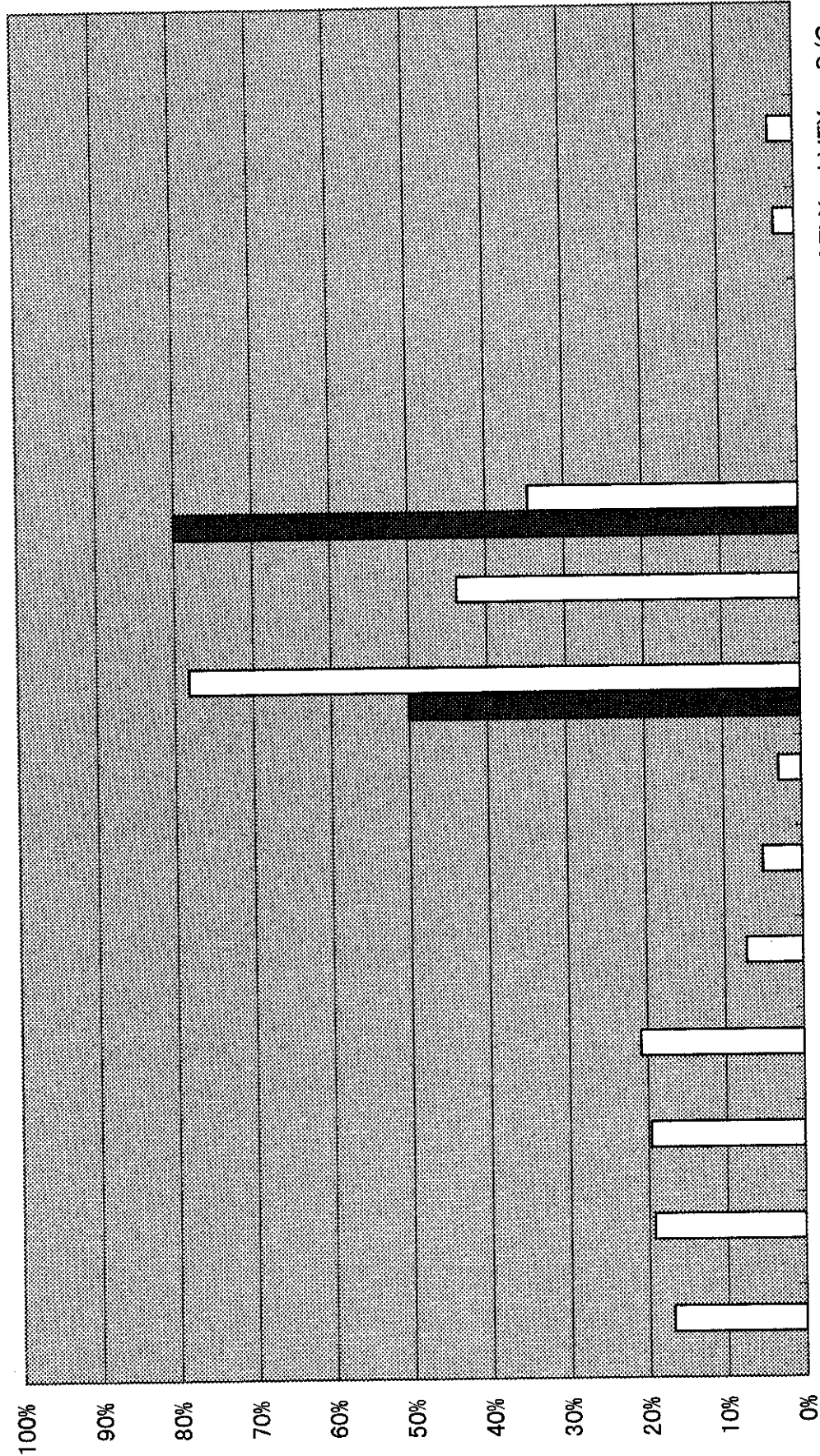


図46 S. pneumoniae - 咽頭



■ 昭和一濃度
□ NCCLS法

抗菌薬	昭和法(株数)	NCCLS(株数)
PCG	4	71
ABPC	4	52
CEZ	5	51
CTM	5	48
CTX	0	56
FMOX	1	20
IPM	0	68
EM	4	69
CLDM	1	64
MINO	5	58
VCM	0	32
NFLX	0	6
OFLX	0	38
LVFX	0	31
S/C	1	6

图47 *S. pyogenes* - 咽頭

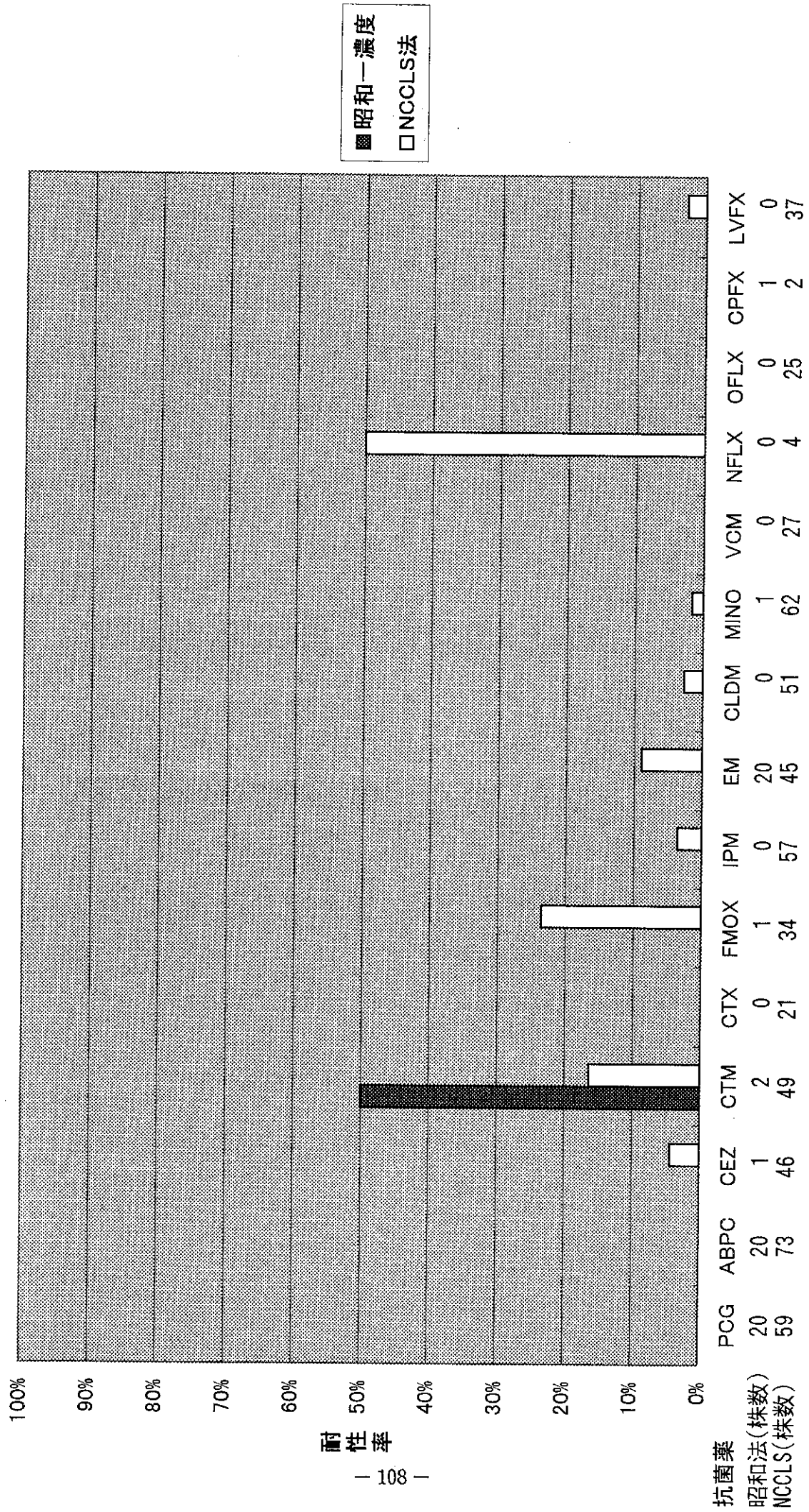
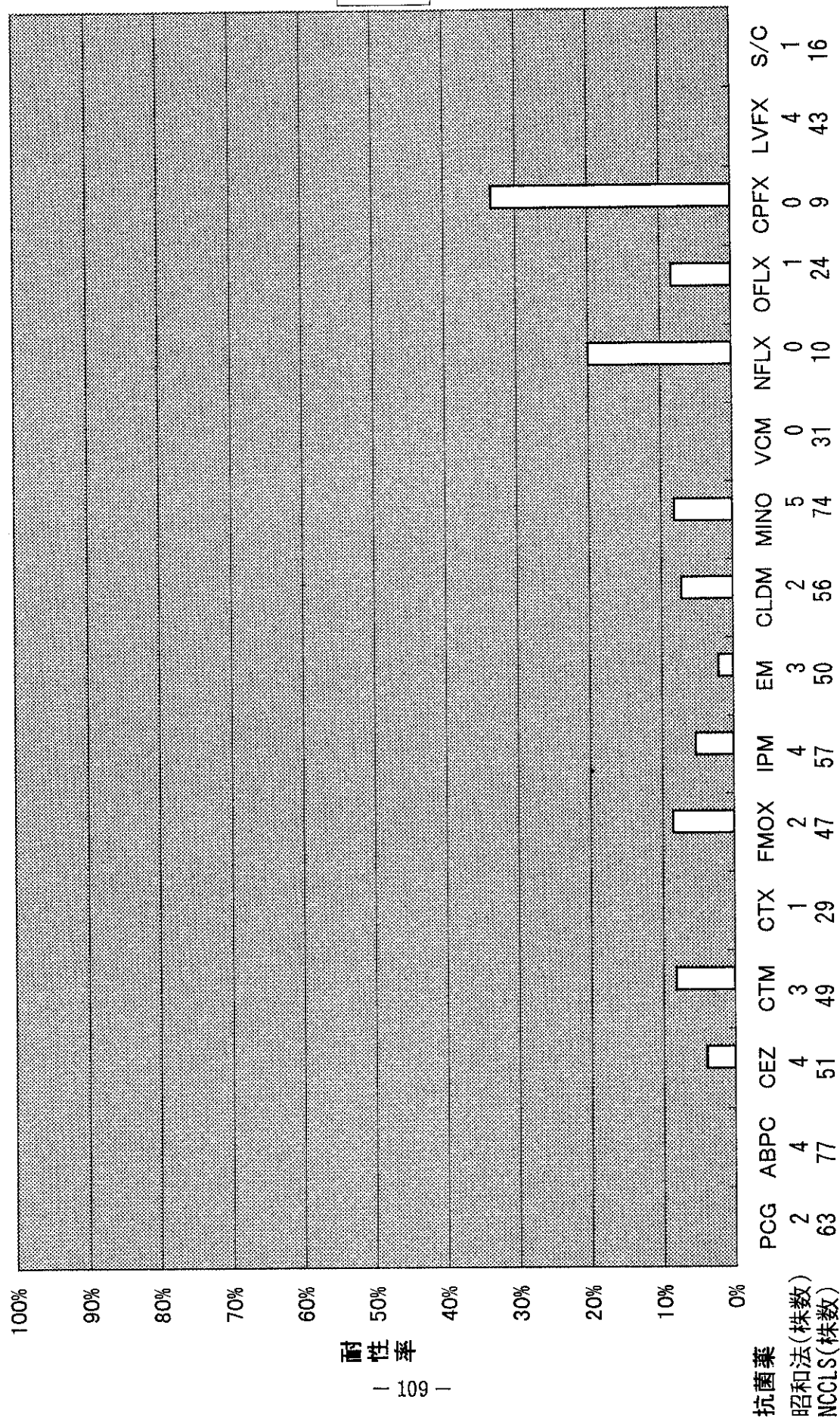


图48 *S. agalactiae* - 尿



耐性率

図49 *S. agalactiae* 一帯下

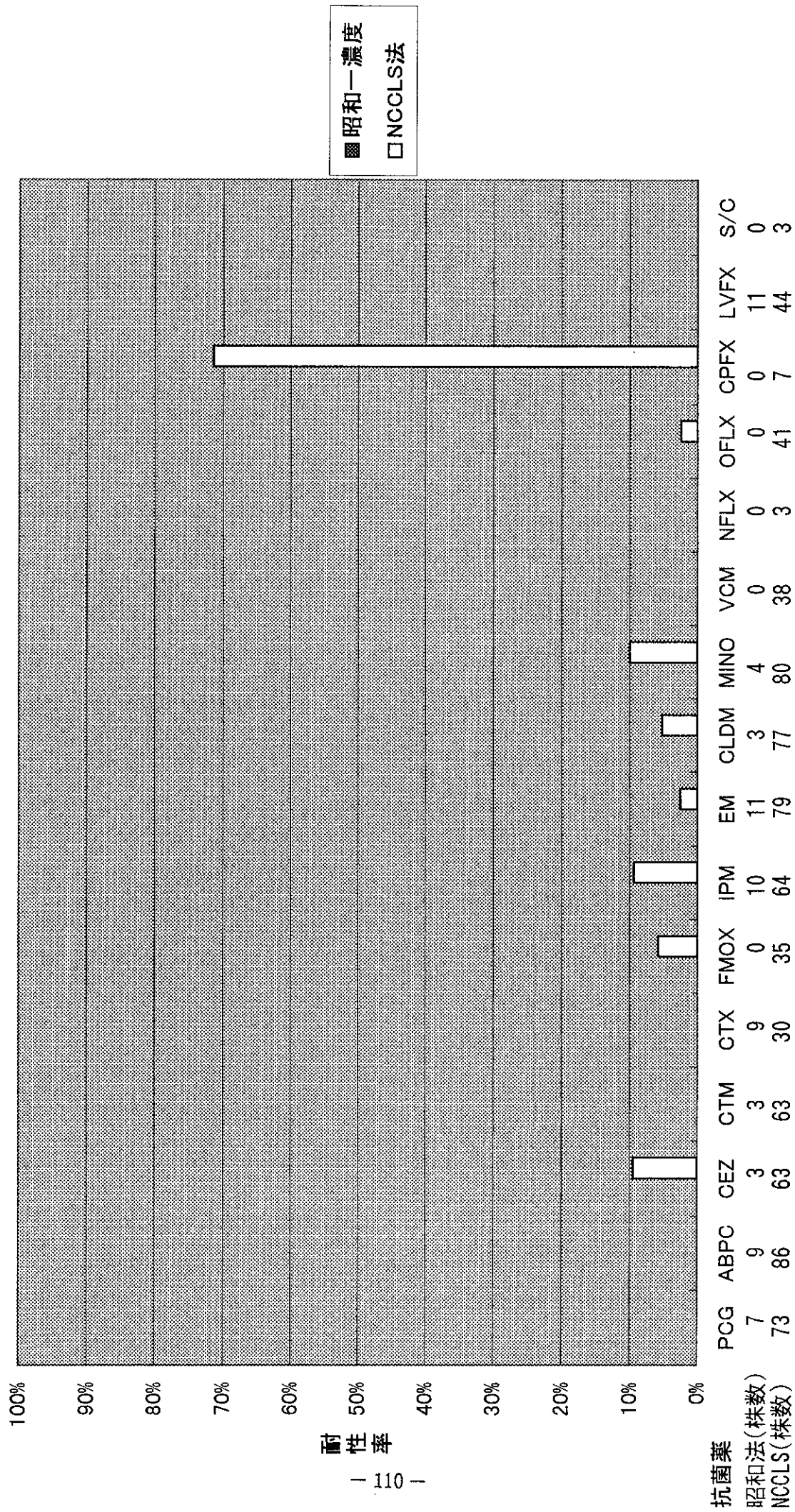
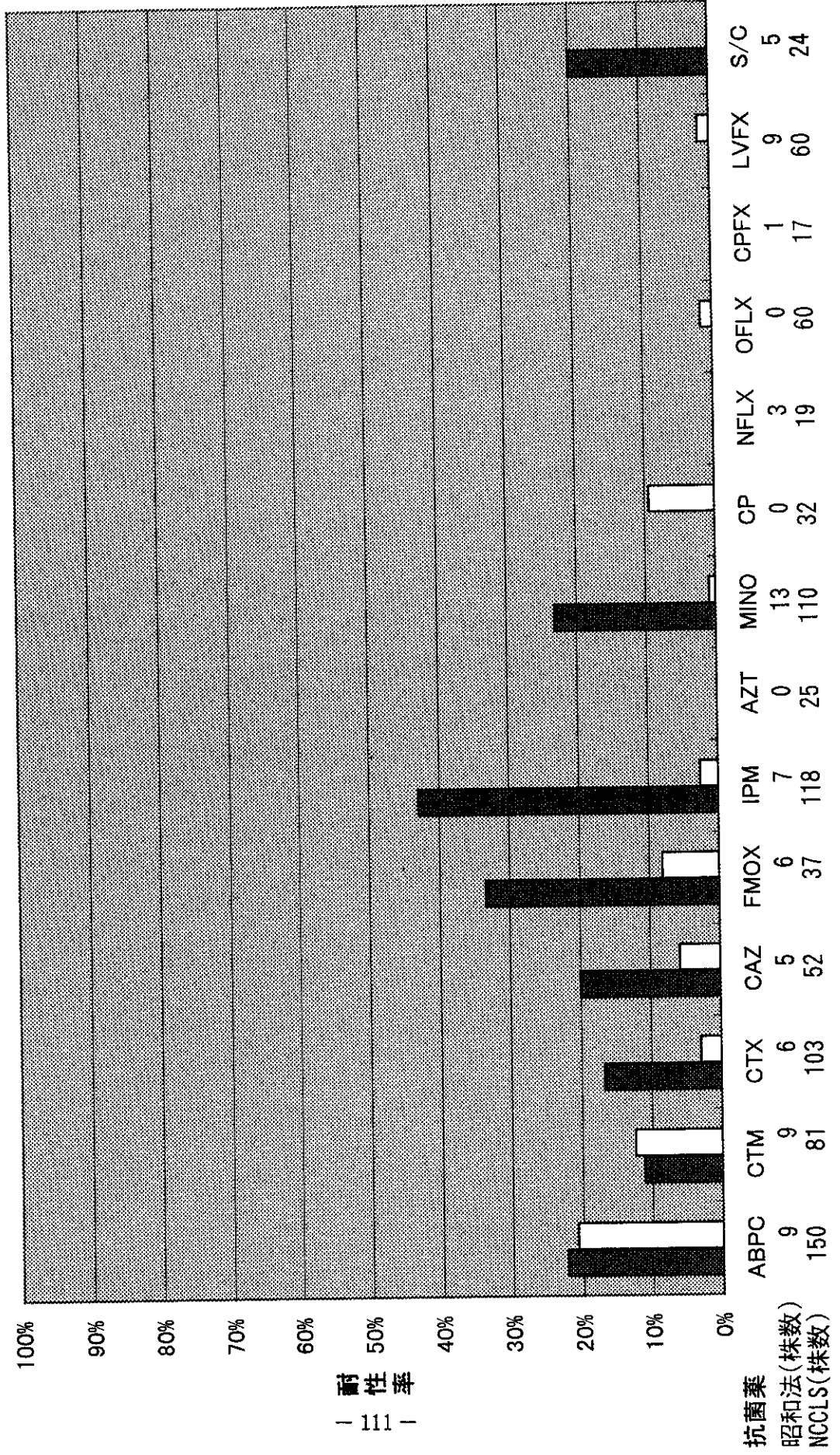


图50 *H. influenzae* — 咯痰



■ 昭和一濃度
□ NCCLS法

图51 *H. influenzae* — 咽頭

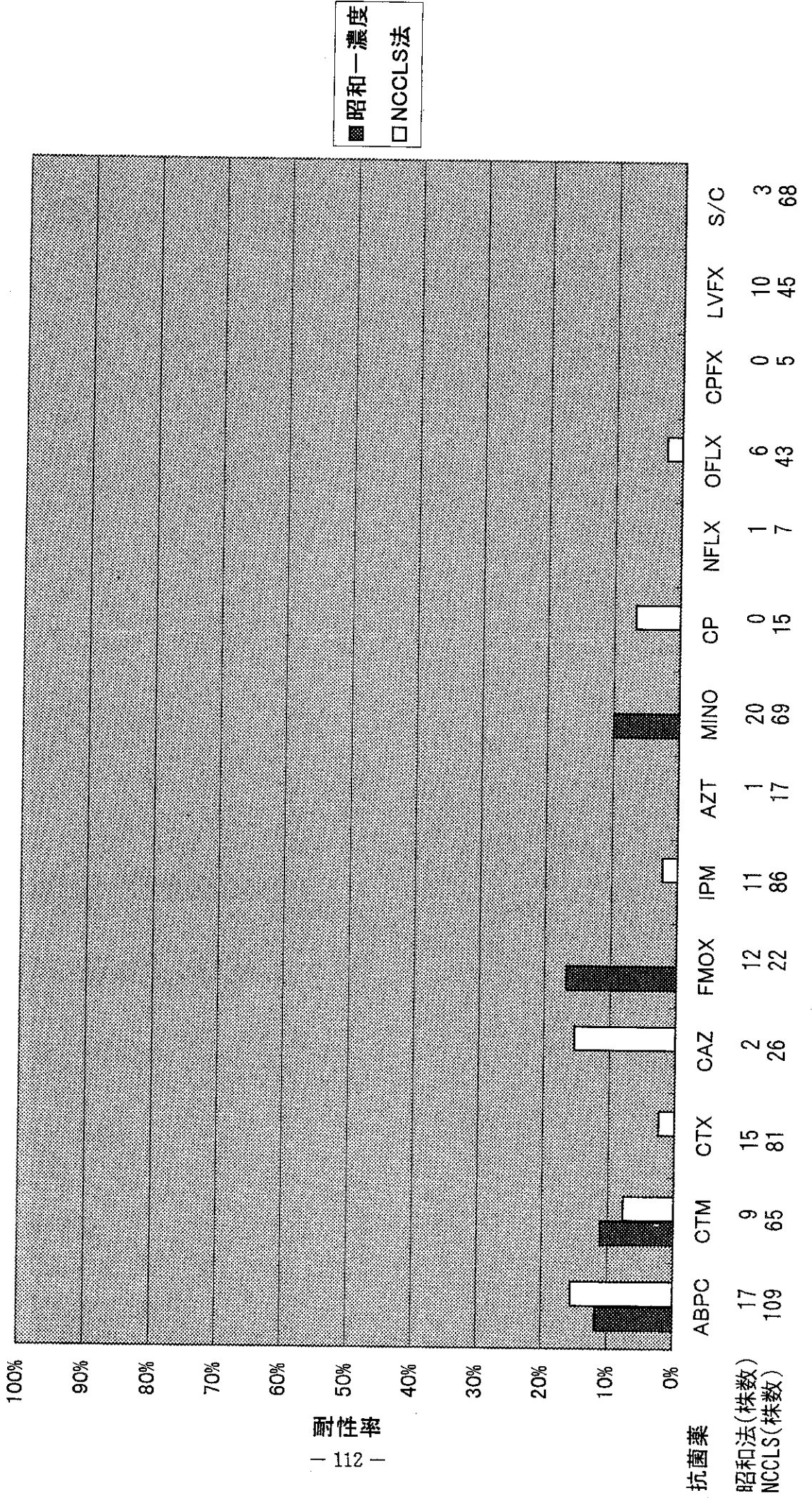
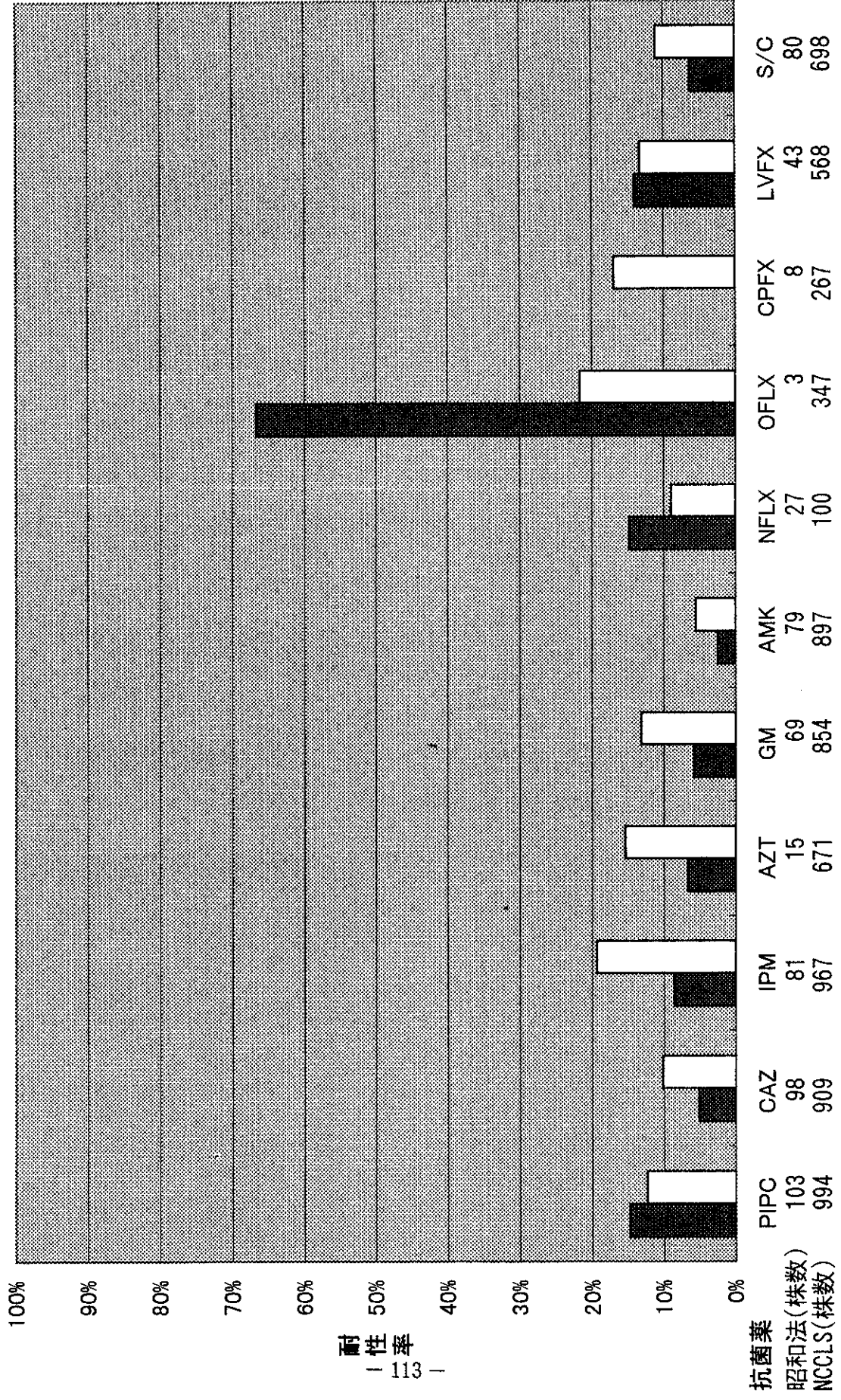
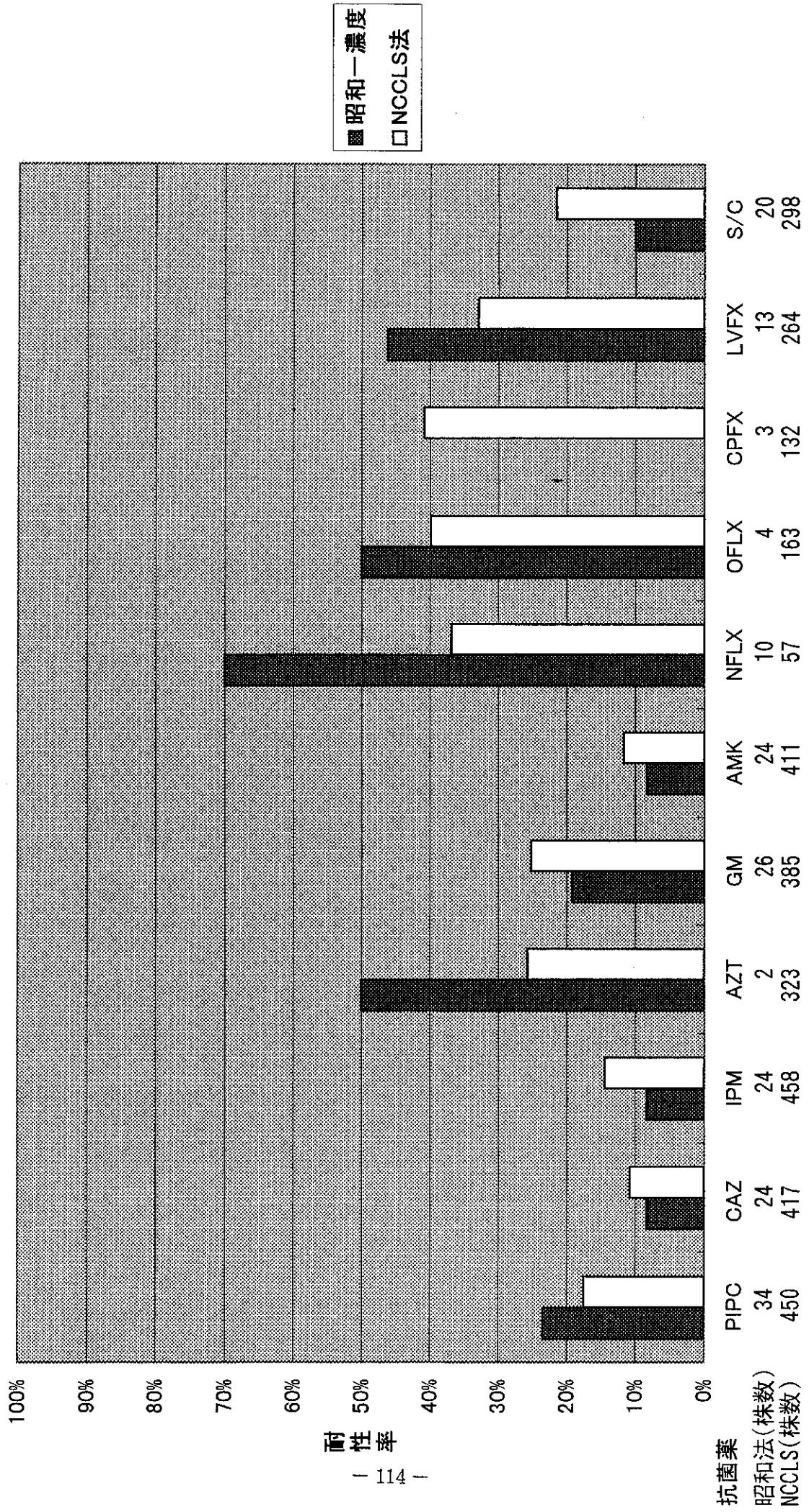


图52 *P.aeruginosa* - 咯痰



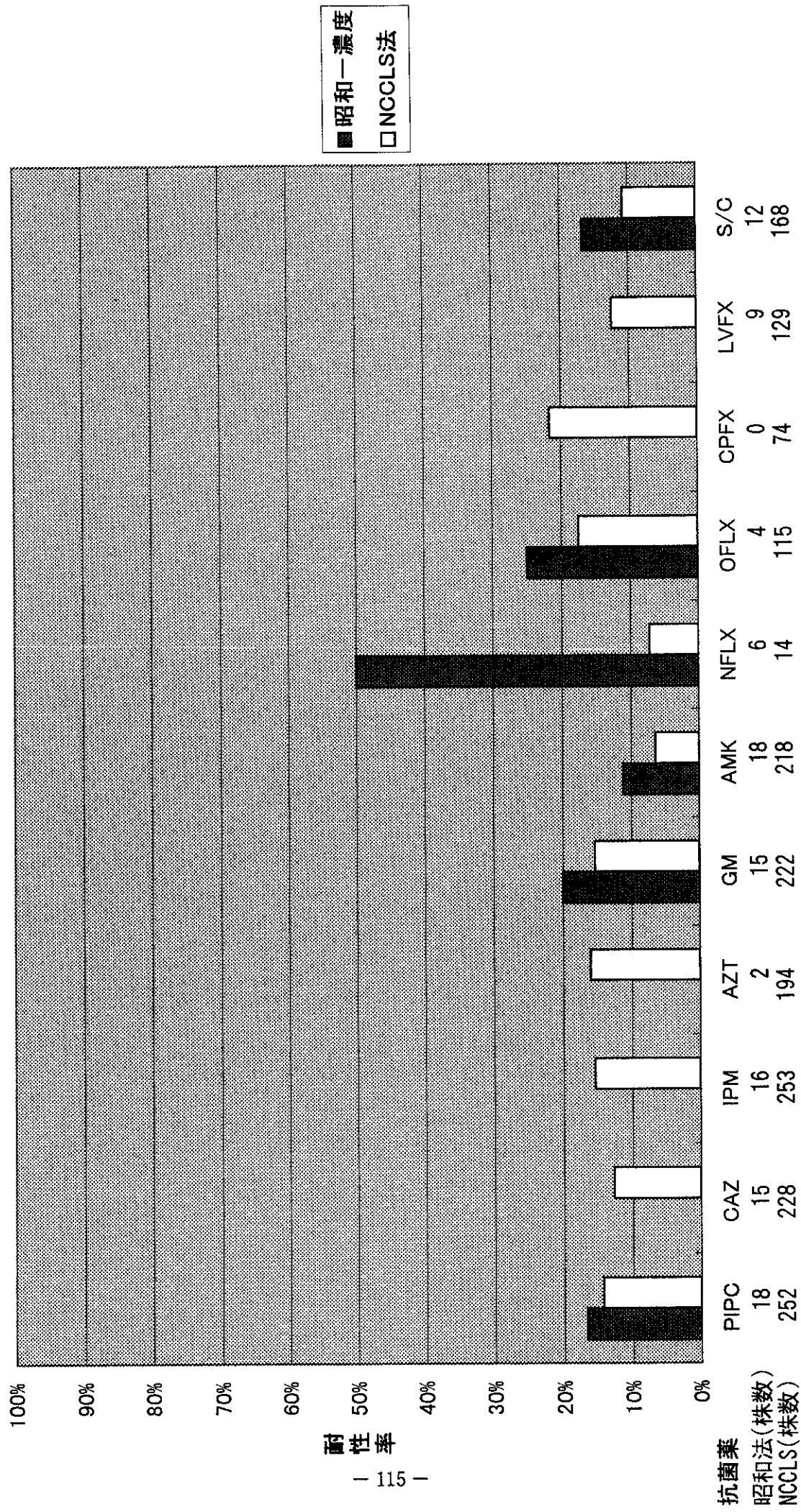
耐性率
113

図53 *P.aeruginosa* - 尿



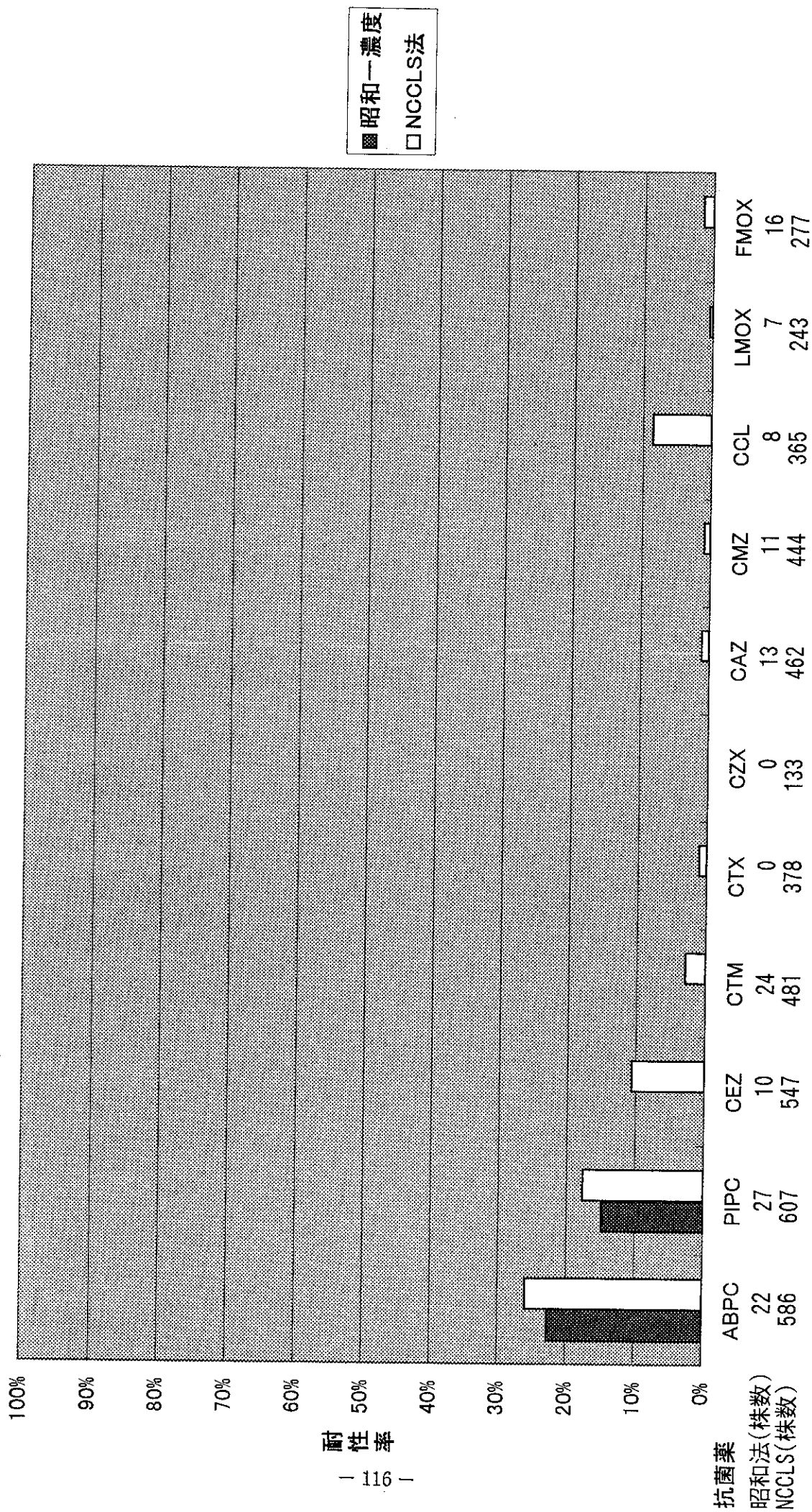
耐性率

图54 *P.aeruginosa* — 膿



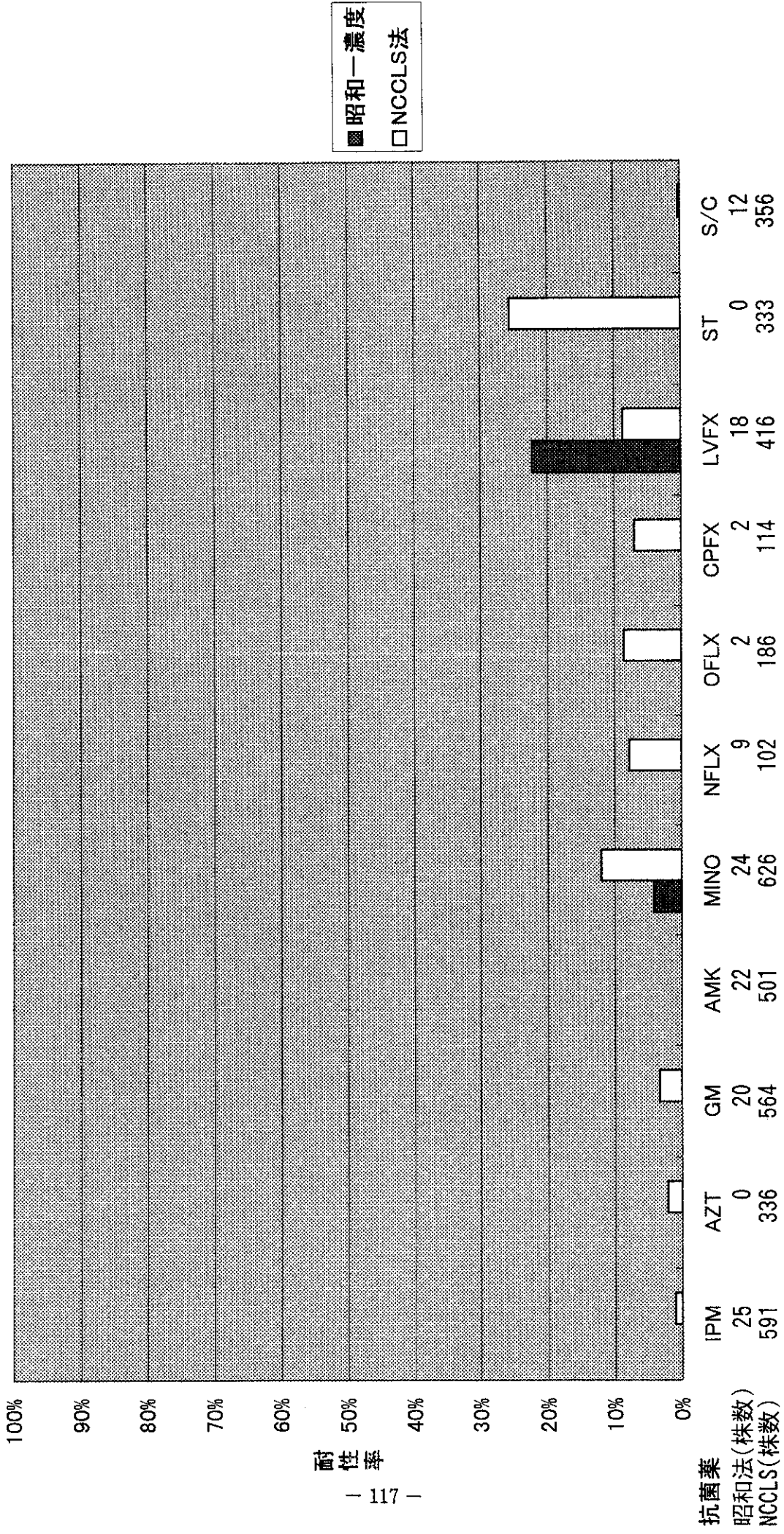
耐性率

图55-1 *E. coli*-尿



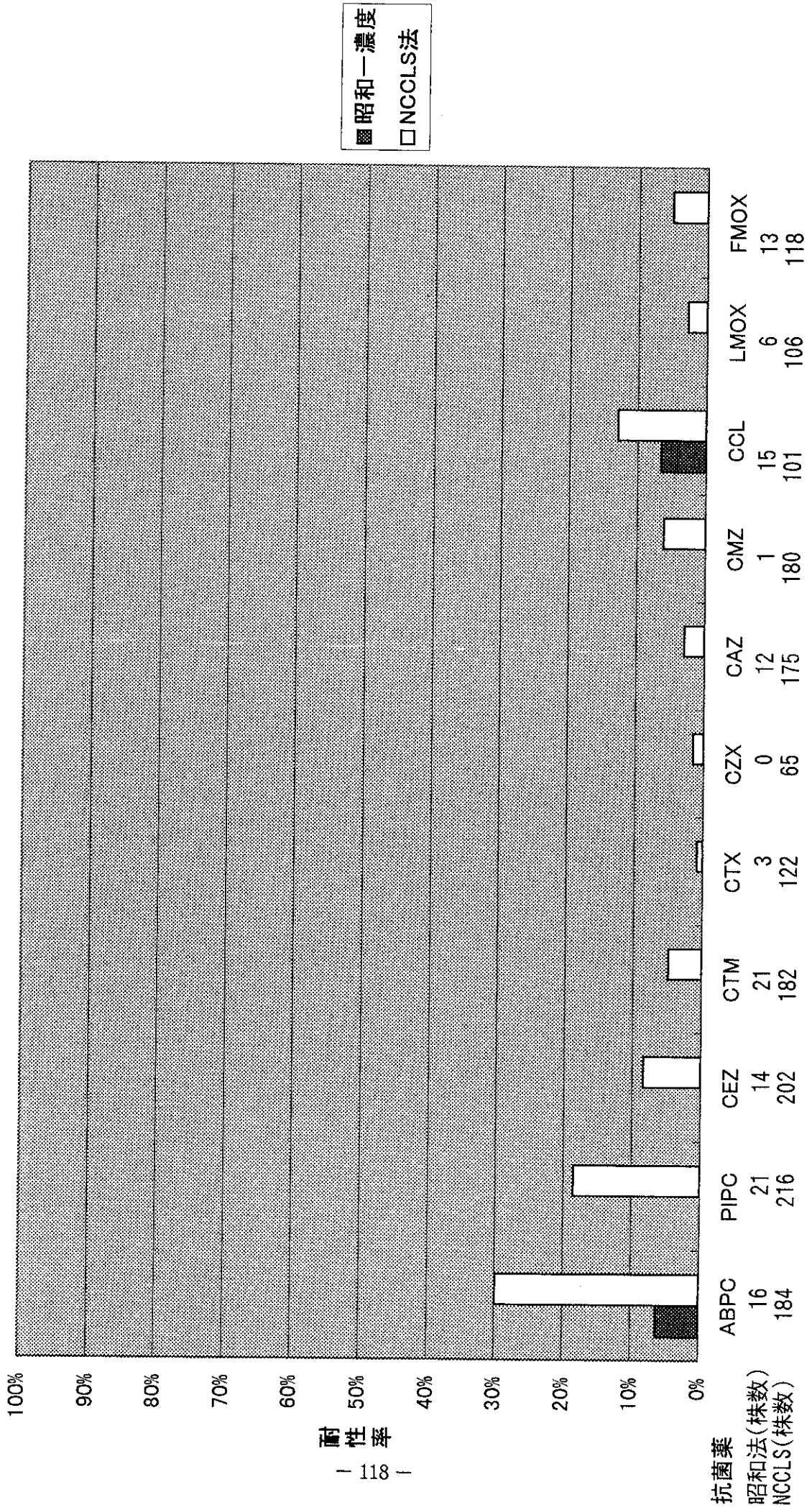
耐性率

图55-2 *E. coli*-尿



耐性率

图56-1 *E. coli*-粪便



耐性率

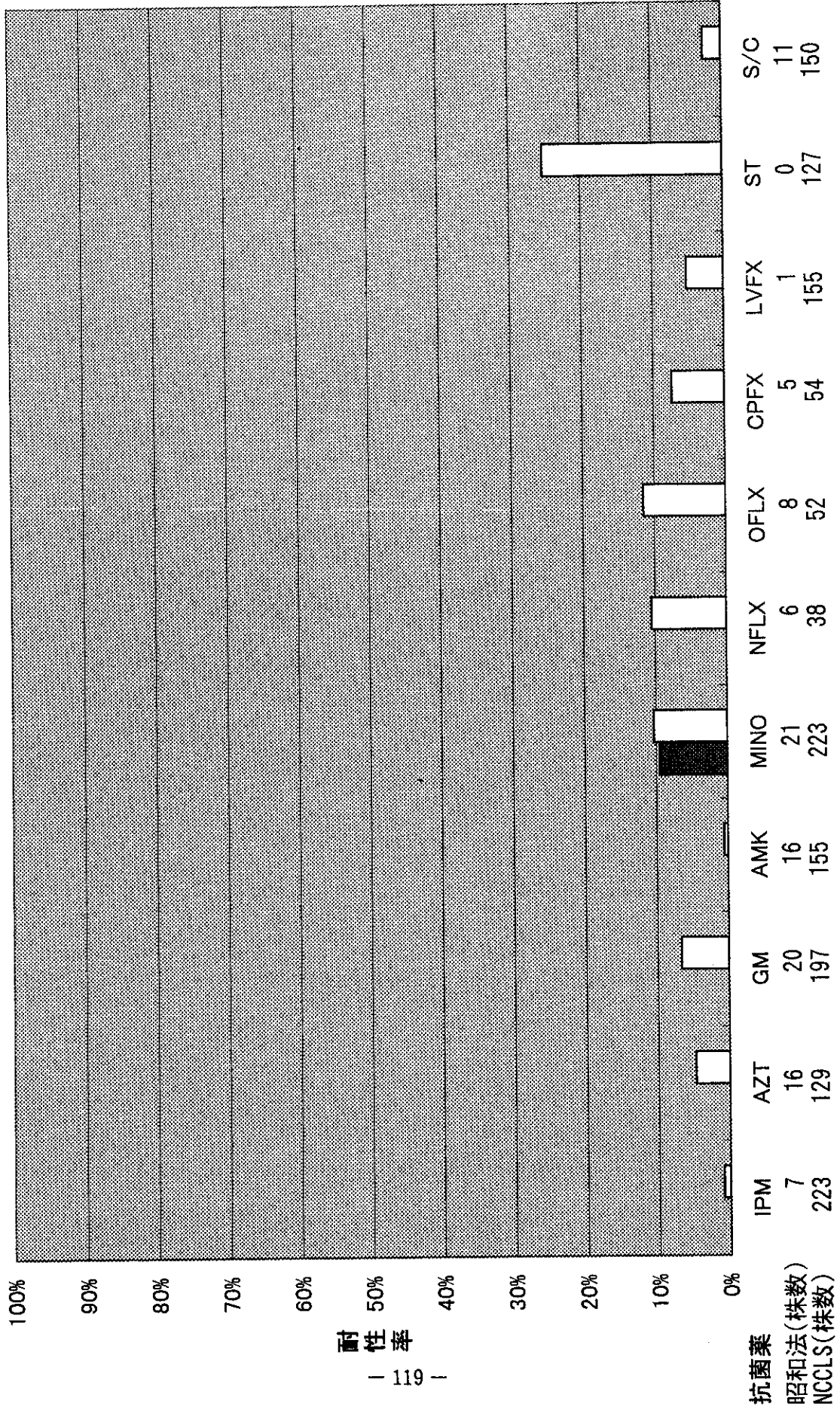
— 昭和一濃度 — NCCLS法

抗菌薬

昭和一濃度(株数)

NCCLS(株数)

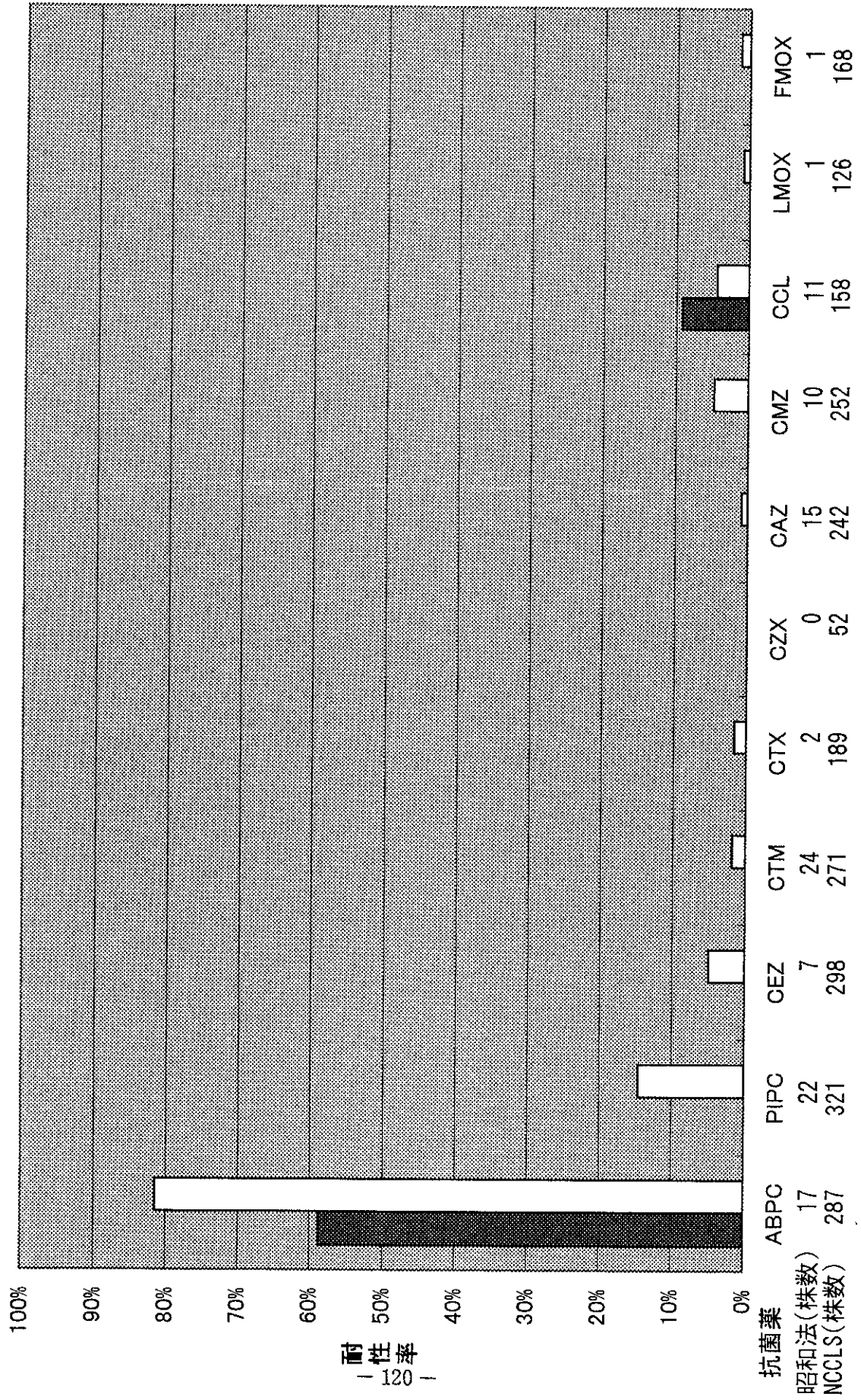
图56-2 E. coli-粪便



■ 昭和一濃度
□ NCCLS法

耐性率
— 119 —

図57-1 *K. pneumoniae* - 喀痰



■ 昭和一濃度
□ NCCLS法