

合計

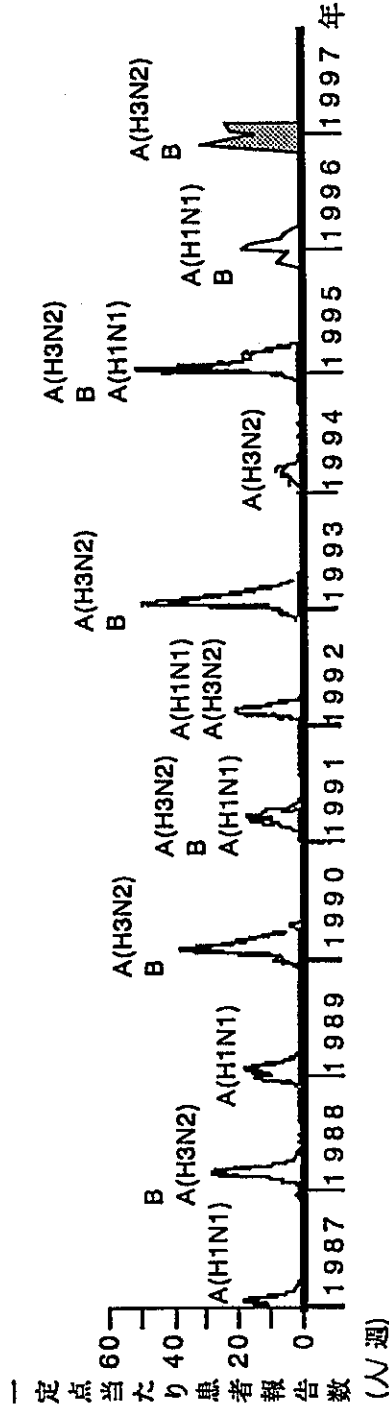
ウイルス型	年齢区分	検査数	H1抗体価の分布										10倍以上		40倍以上	
			<10	10	20	40	80	160	320	≥640	例数	(%)	例数	(%)		
A/シドニー /5/97	0-4	173	75	6	5	8	24	27	14	14	98	57	87	50		
	5-9	178	6	9	30	31	32	30	18	22	172	97	133	75		
	10-14	169	13	7	31	35	27	16	5	156	92	118	70			
	15-19	157	23	19	22	35	18	19	10	11	134	85	93	59		
	20-29	199	50	34	41	28	22	12	6	6	149	75	74	37		
	30-39	208	61	36	38	37	20	9	1	6	147	71	73	35		
	40-49	217	79	39	37	18	25	9	5	5	138	64	62	29		
	50-59	194	88	33	22	21	12	10	2	6	106	55	51	26		
	60-	169	85	21	16	15	12	11	5	4	84	50	47	28		
	計		1664	480	204	242	228	200	154	77	79	1184	71	738	44	
A/福島 /99/98	0-4	173	84	17	23	20	20	7	1	1	89	51	49	28		
	5-9	178	51	34	29	33	20	8	3	127	71	64	36			
	10-14	169	47	43	39	26	13	1	1	122	72	40	24			
	15-19	157	63	38	30	11	7	7	1	94	60	26	17			
	20-29	199	105	45	23	16	8	1	1	94	47	26	13			
	30-39	208	125	44	27	7	4	1	1	83	40	12	6			
	40-49	217	120	51	27	12	6	1	1	97	45	19	9			
	50-59	194	134	32	18	10	10	4	4	60	31	10	5			
	60-	169	114	24	16	5	6	4	4	55	33	15	9			
	計		1664	843	328	232	140	84	29	6	2	821	49	261	16	
A/四川 /346/98	0-4	173	86	4	15	36	16	13	1	2	87	50	68	39		
	5-9	178	11	20	54	35	27	12	13	6	167	94	93	52		
	10-14	169	20	23	44	35	20	17	7	3	149	88	82	49		
	15-19	157	33	29	31	31	14	10	7	2	124	79	64	41		
	20-29	199	74	49	33	21	11	10	1	1	125	63	43	22		
	30-39	208	105	44	27	21	8	2	1	1	103	50	32	15		
	40-49	217	129	38	24	13	8	5	2	1	88	41	26	12		
	50-59	194	137	25	13	4	6	6	2	1	57	29	19	10		
	60-	169	107	25	10	14	9	1	1	2	62	37	27	16		
	計		1664	702	257	251	210	119	76	32	17	962	58	454	27	

合計

ウイルス型	年齢区分	検査数	H I 抗体価の分布										10倍以上		40倍以上	
			<10	10	20	40	80	160	320	≥640	例数	(%)	例数	(%)		
B/山東 /7/97	0-4	173	167	2	2	2	2	1	1	1	1	1	6	3	2	1
	5-9	178	160	7	6	3	1	1	1	1	1	1	18	10	5	3
	10-14	169	128	23	12	4	1	1	1	1	1	1	41	24	6	4
	15-19	157	80	40	16	14	4	1	1	1	1	1	77	49	21	13
	20-29	199	87	42	36	20	8	5	5	5	5	1	112	56	34	17
	30-39	208	132	42	25	9	1	1	1	1	1	1	76	37	9	4
	40-49	217	190	17	5	4	1	1	1	1	1	1	27	12	5	2
	50-59	194	177	10	7	4	1	1	1	1	1	1	17	9	5	2
	60-	169	129	16	16	5	1	1	1	1	1	1	40	24	8	5
	計		1664	1250	199	125	61	16	9	2	2	2	2	414	25	90
B/山梨 /166/98	0-4	173	138	14	12	6	1	2	2	2	2	2	35	20	9	5
	5-9	178	56	33	39	34	12	4	4	4	4	4	122	69	50	28
	10-14	169	32	26	35	40	19	12	4	4	4	1	137	81	76	45
	15-19	157	33	28	37	36	15	7	1	1	1	1	124	79	59	38
	20-29	199	102	44	25	14	6	6	1	1	1	1	97	49	28	14
	30-39	208	111	44	30	19	3	1	1	1	1	1	97	47	23	11
	40-49	217	158	31	21	5	1	1	1	1	1	1	59	27	7	3
	50-59	194	168	17	6	3	1	1	1	1	1	1	26	13	3	2
	60-	169	142	10	7	3	4	2	1	1	1	1	27	16	10	6
	計		1664	940	247	212	160	61	34	7	3	3	3	724	44	265
B/高知 /193/99	0-4	173	124	13	14	6	8	4	4	4	4	4	49	28	22	13
	5-9	178	54	18	24	22	29	19	8	8	8	4	124	70	82	46
	10-14	169	27	18	30	23	24	20	12	12	15	6	142	84	94	56
	15-19	157	28	27	29	26	15	17	9	9	6	6	129	82	73	46
	20-29	199	85	27	26	28	19	8	3	3	3	3	114	57	61	31
	30-39	208	79	39	34	24	15	7	7	7	3	3	129	62	56	27
	40-49	217	125	36	27	17	7	2	2	2	1	1	92	42	29	13
	50-59	194	133	32	11	12	4	2	2	2	2	2	61	31	18	9
	60-	169	121	15	11	10	5	5	2	2	2	2	48	28	22	13
	計		1664	776	225	206	168	126	84	43	36	36	36	888	53	457

インフルエンザ様疾患患者報告数の推移、1987～1997年

(感染症サーベイランス情報)

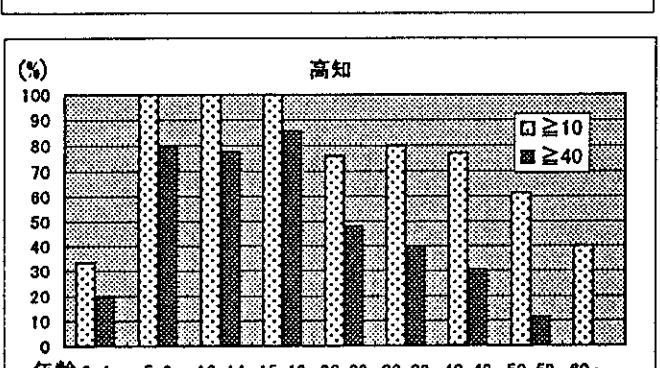
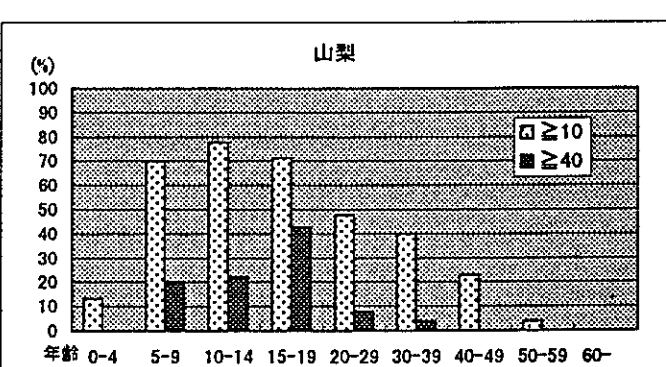
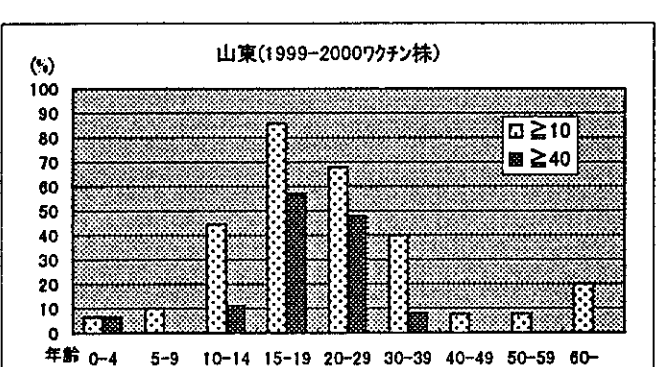
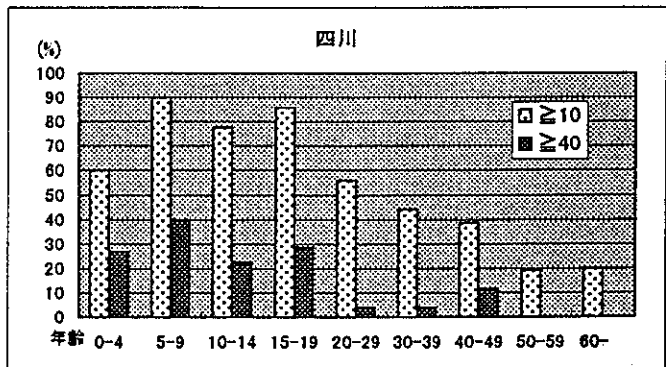
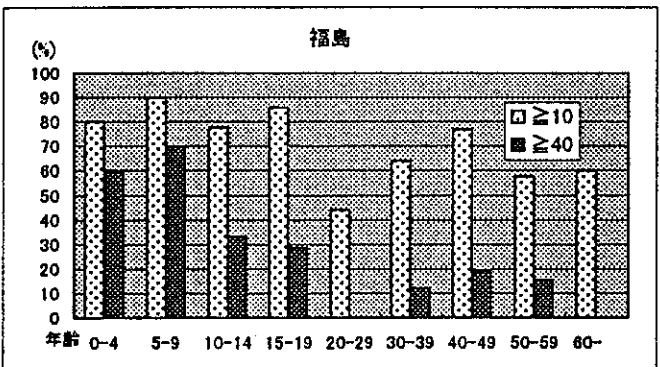
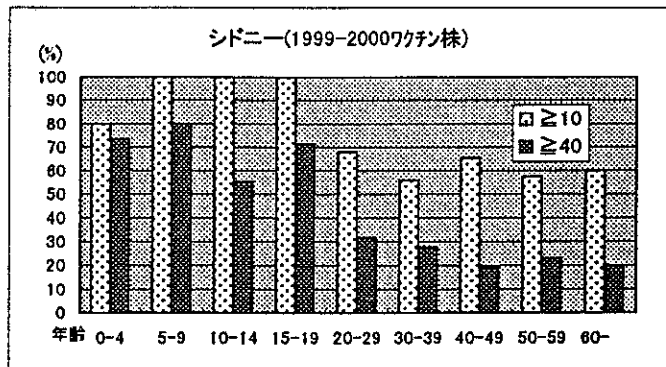
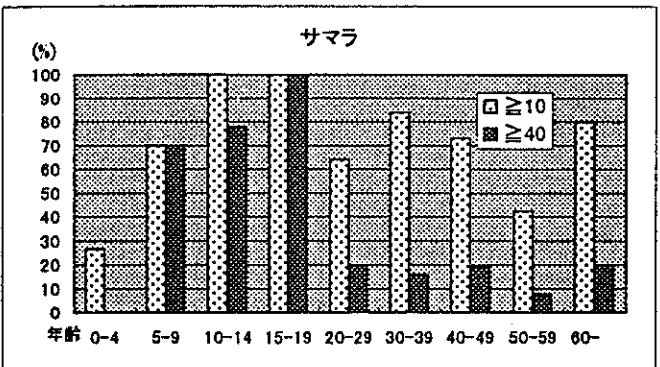
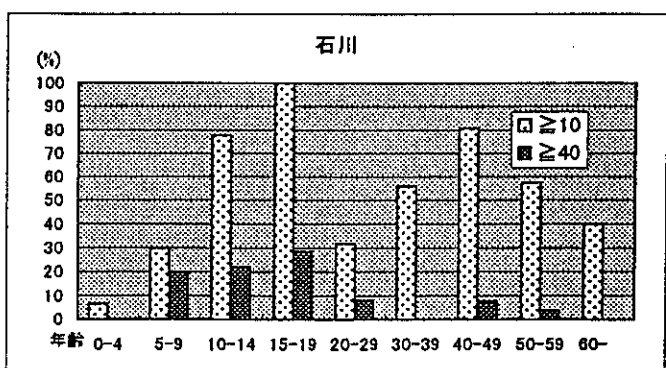
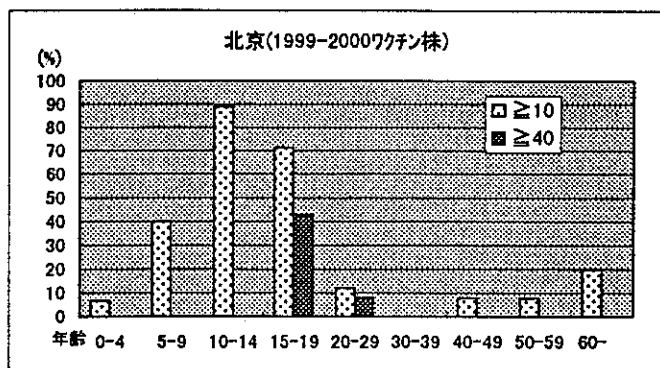


(各シーズンの分離報告数100以上の型を多い順に記載)

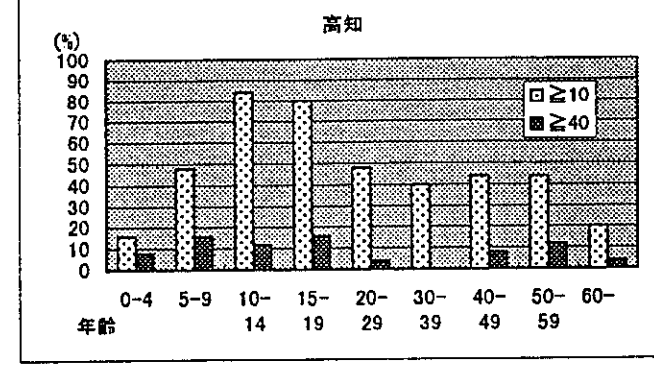
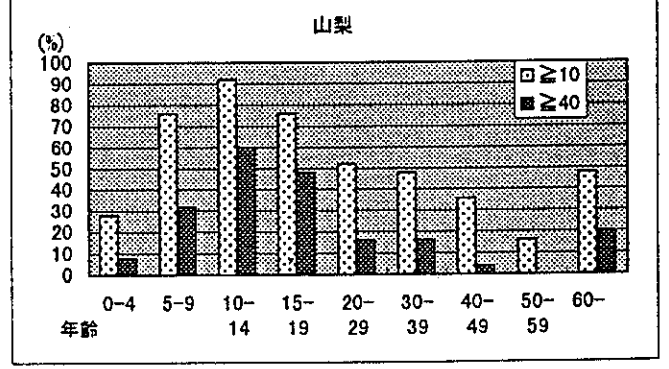
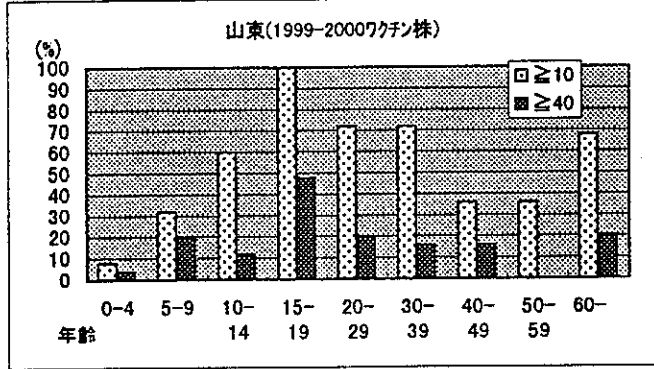
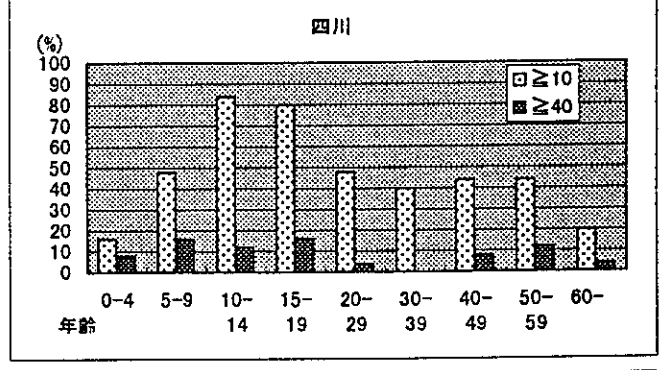
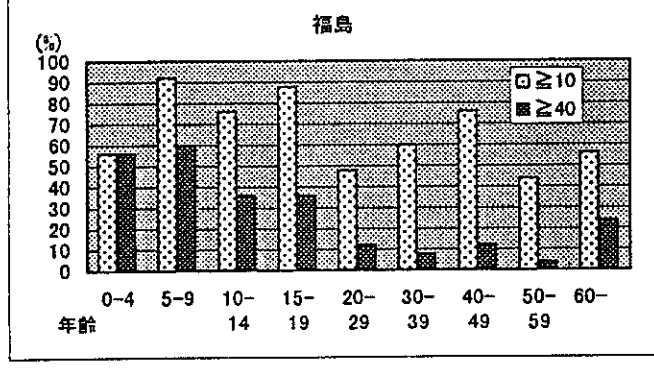
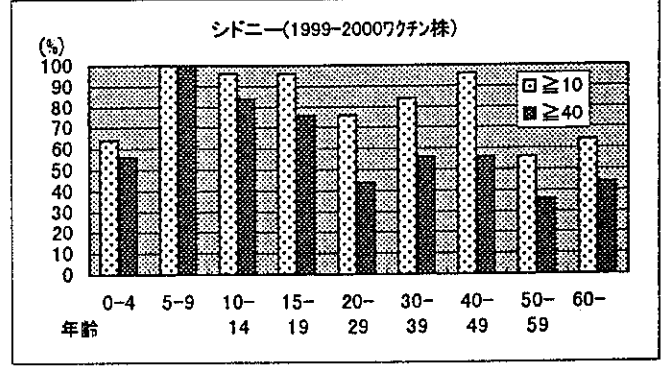
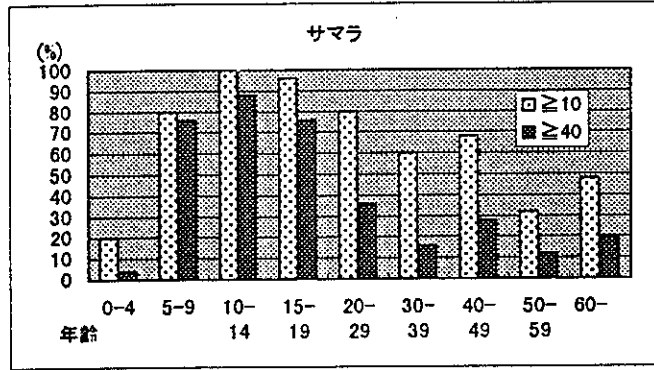
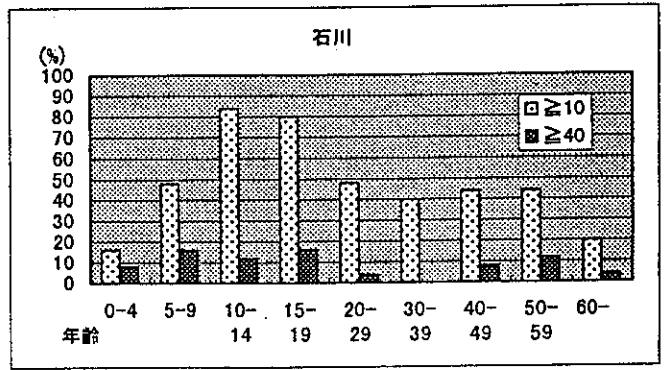
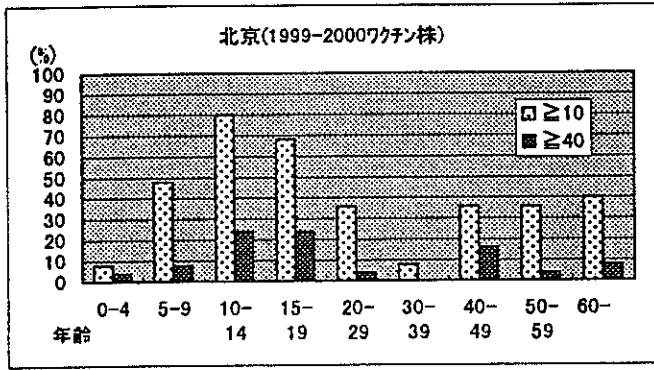
インフルエンザウイルス分離報告数、1982/83シーズン～1996/97シーズン

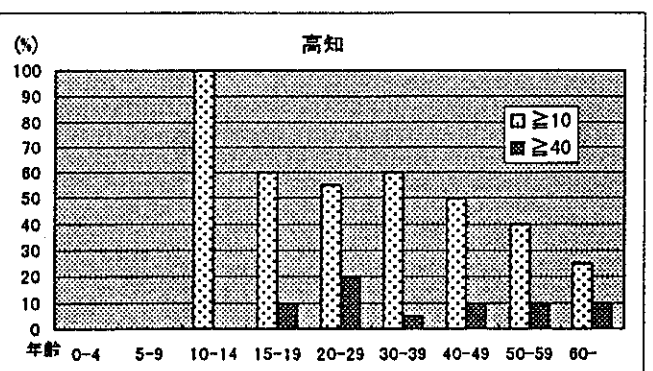
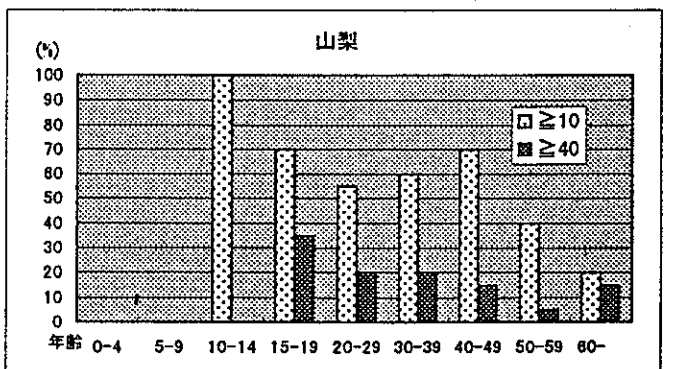
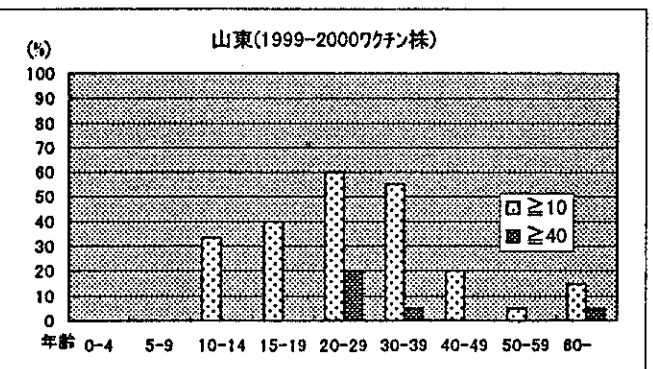
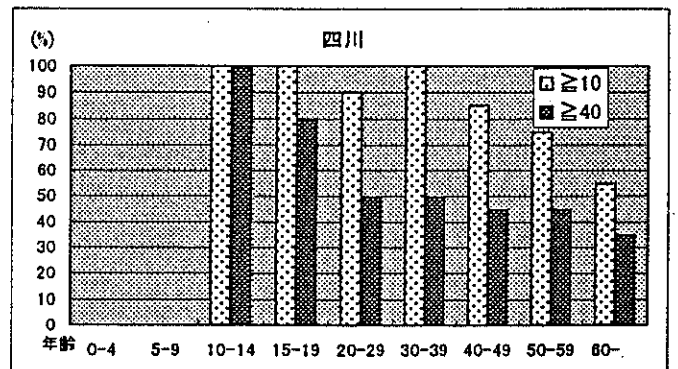
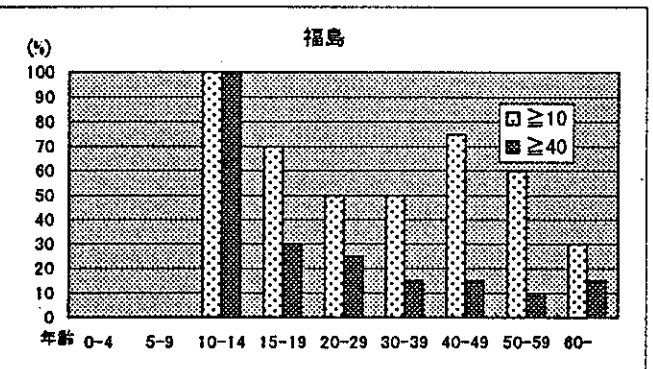
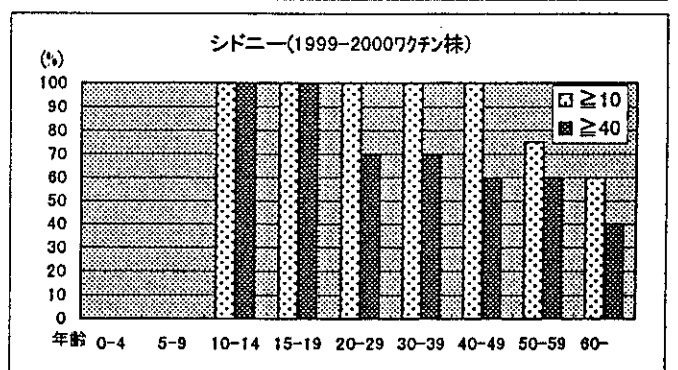
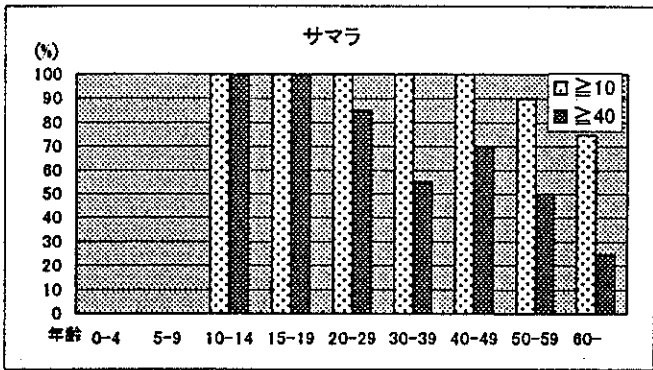
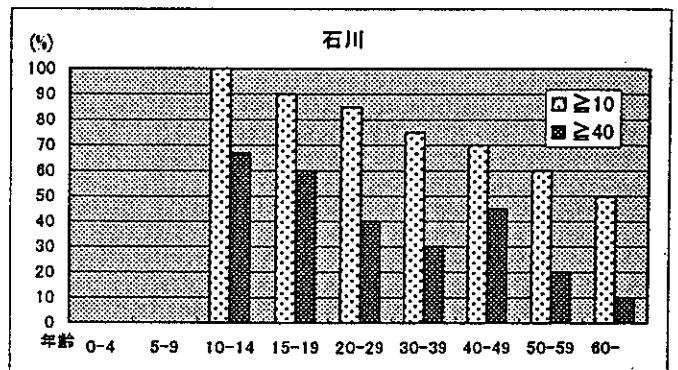
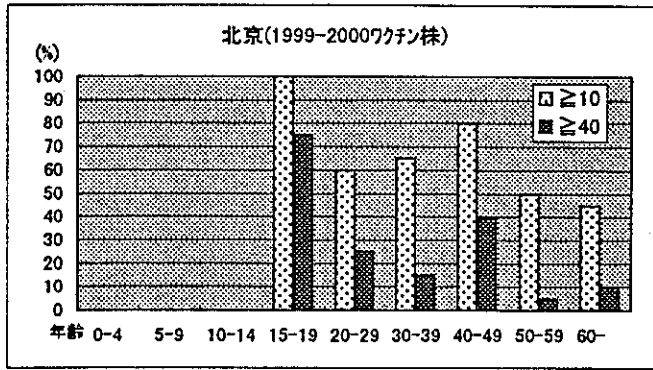
年月	82.9	83.9	84.9	85.9	86.9	87.9	88.9	89.9	90.9	91.9	92.9	93.9	94.9	95.9	96.9
型	/	/	/	/	/	/	/	/	/	/	/	/	/	/	/
	83.8	84.8	85.8	86.8	87.8	88.8	89.8	90.8	91.8	92.8	93.8	94.8	95.8	96.8	97.2.7
A(H1N1)	22	1015	2	181	1122	6	1499	-	248	2017	-	2	114	3303	-
A(H3N2)	1927	-	50	1639	1	705	46	2035	2045	866	2382	1765	3743	407	2201
B	2	31	1940	-	16	1098	33	1586	579	48	2464	189	1890	11	31
A HN未同定	-	-	-	-	36	-	9	-	1	10	9	-	-	9	-
C	2	-	3	1	-	1	6	-	5	-	6	-	-	5	-
合計	1953	1046	1995	1821	1175	1810	1593	3621	2878	2941	4861	1956	5747	3735	2232

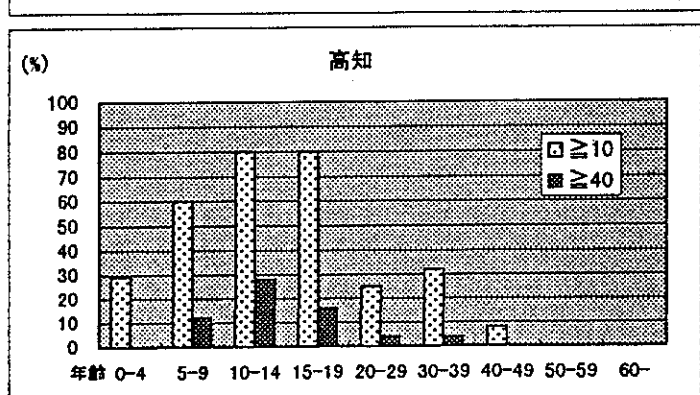
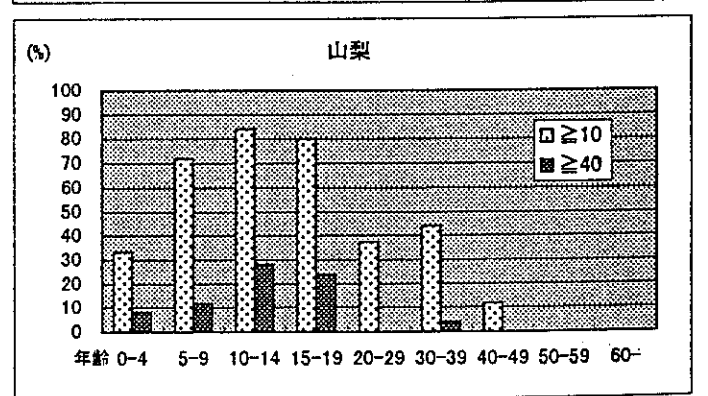
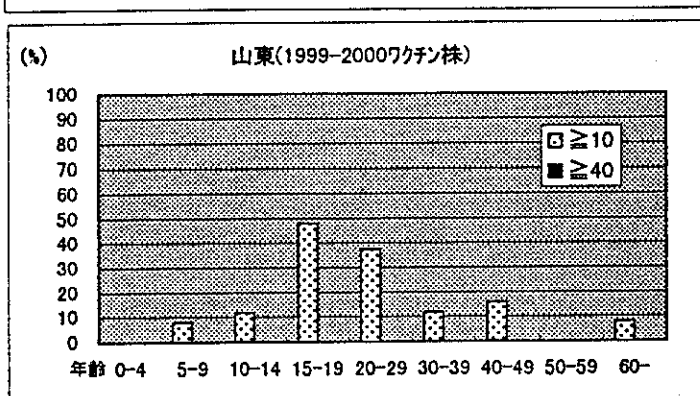
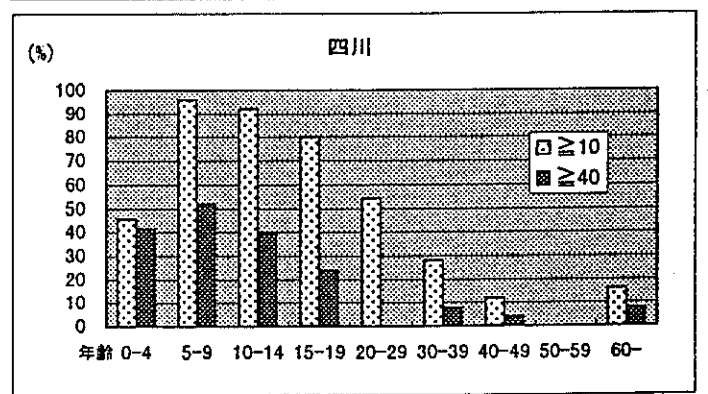
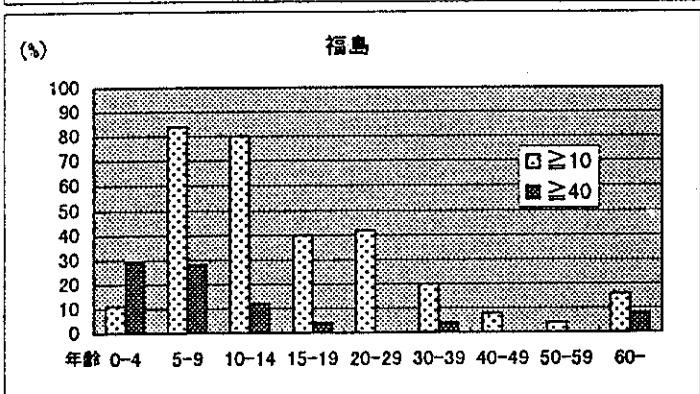
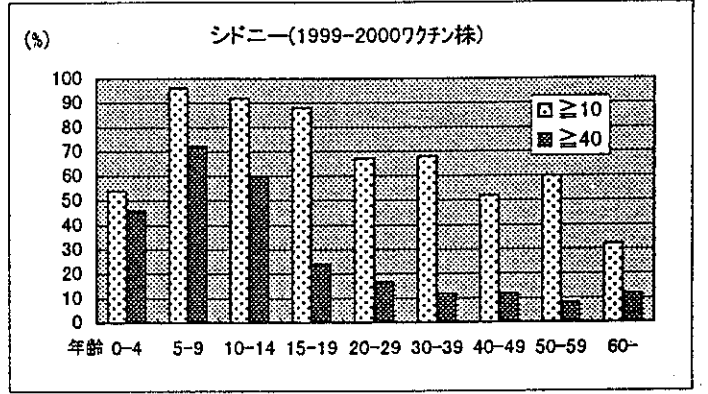
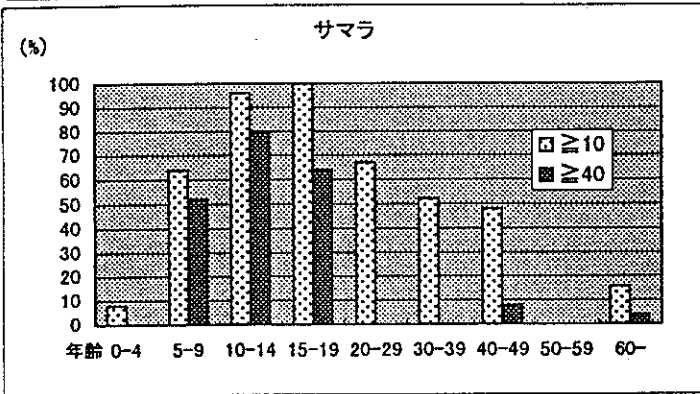
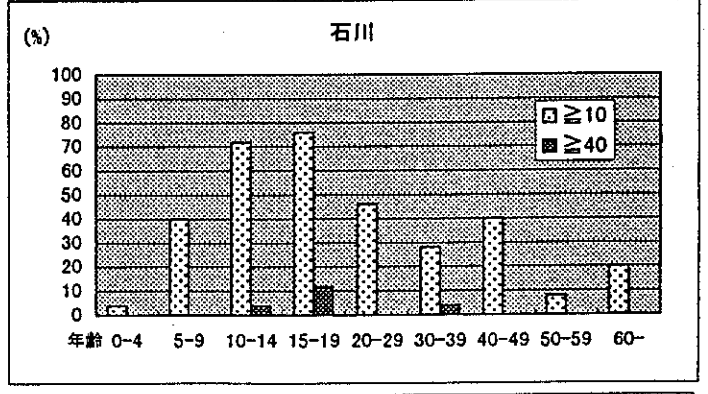
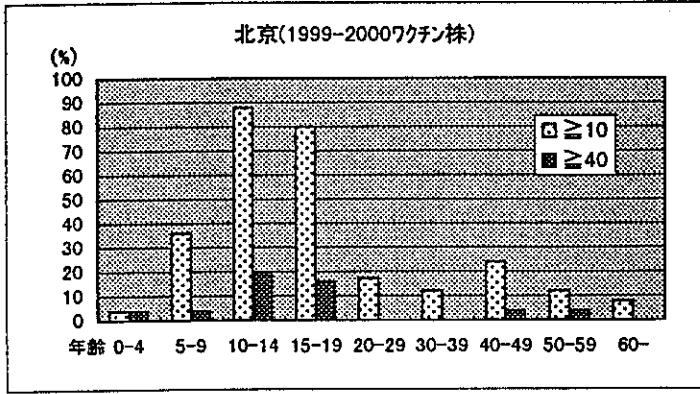
福島県



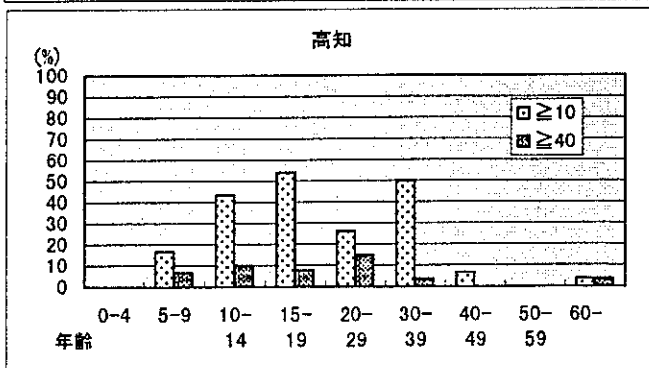
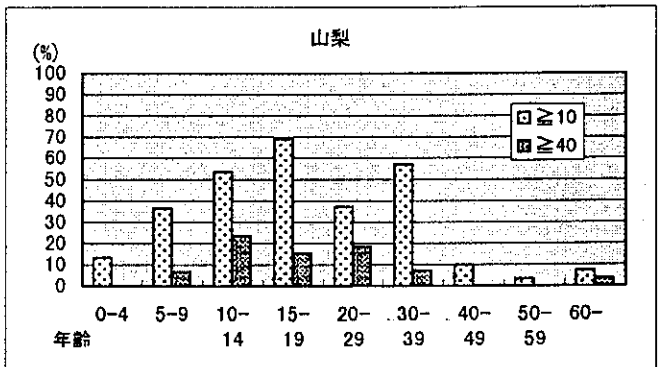
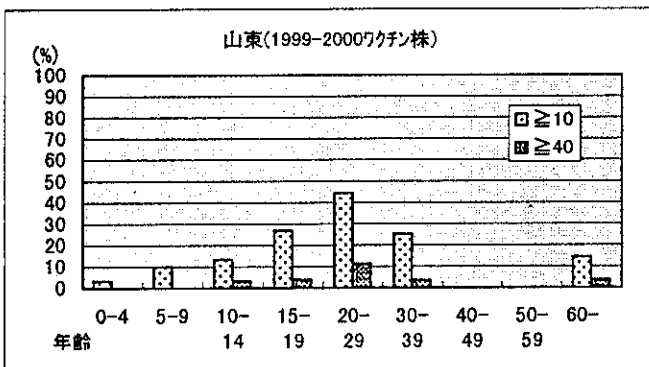
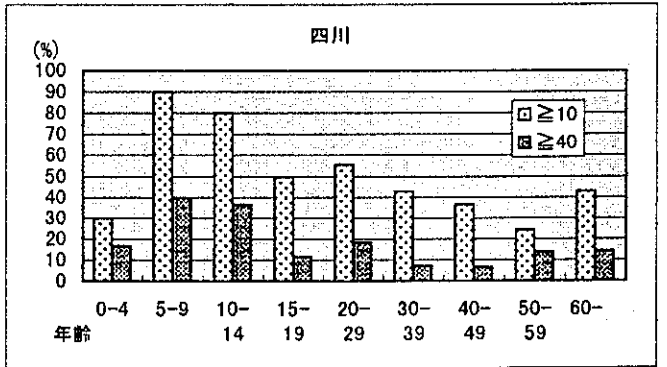
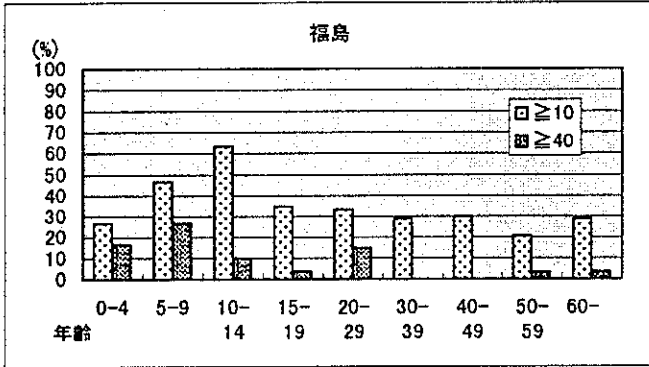
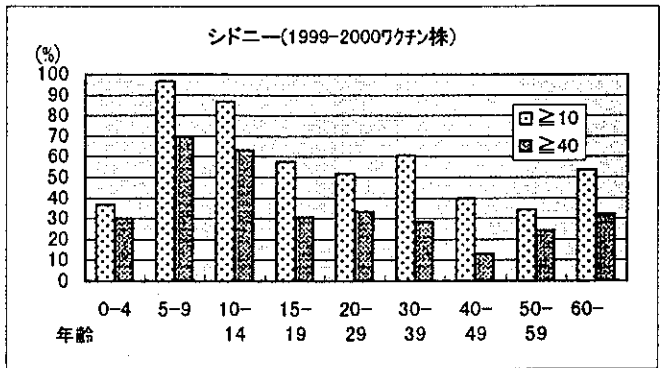
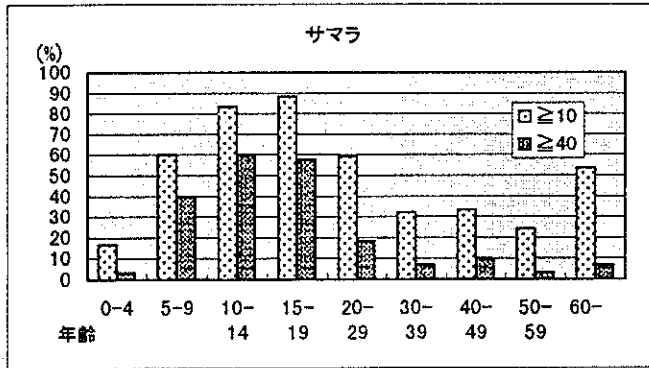
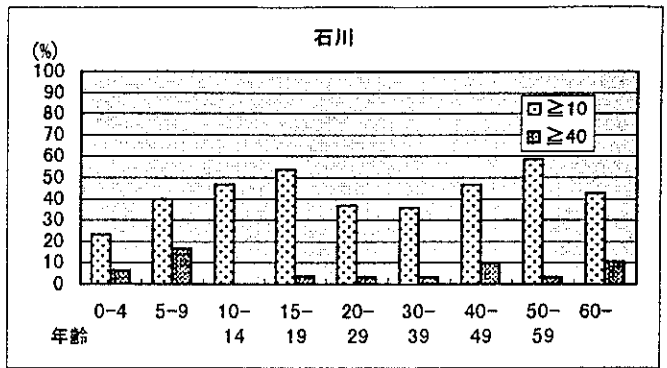
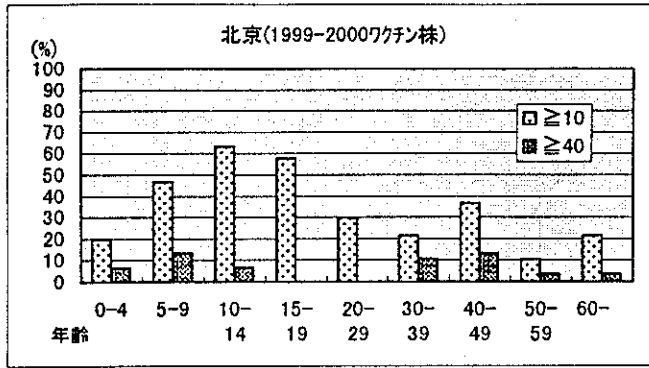
千葉県



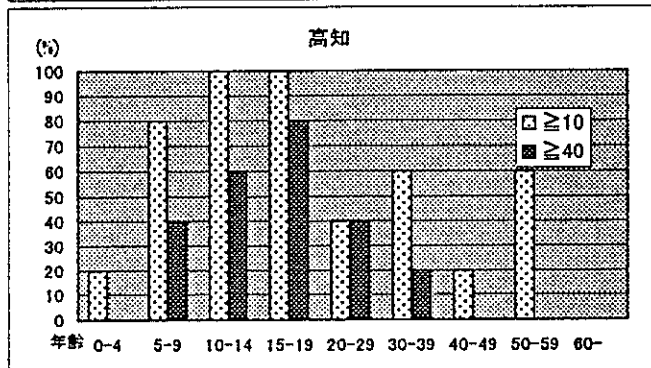
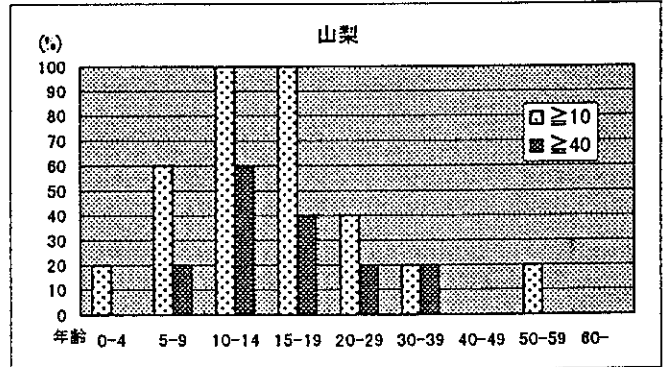
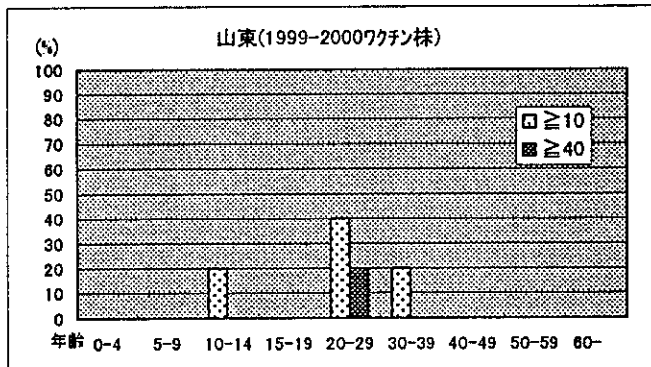
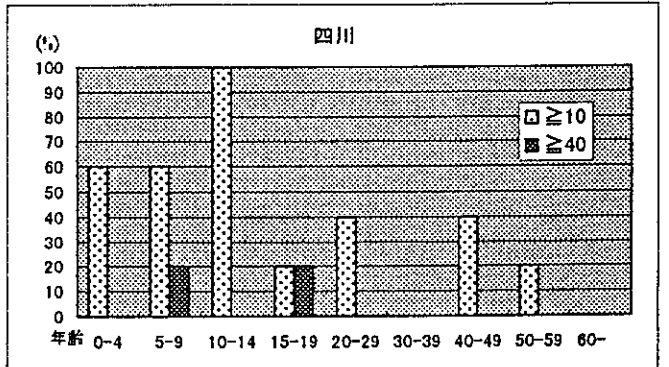
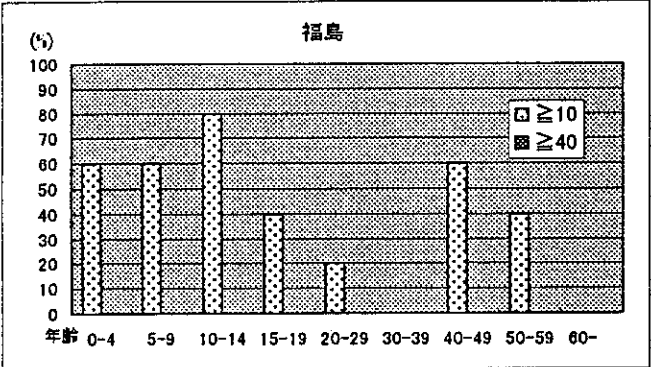
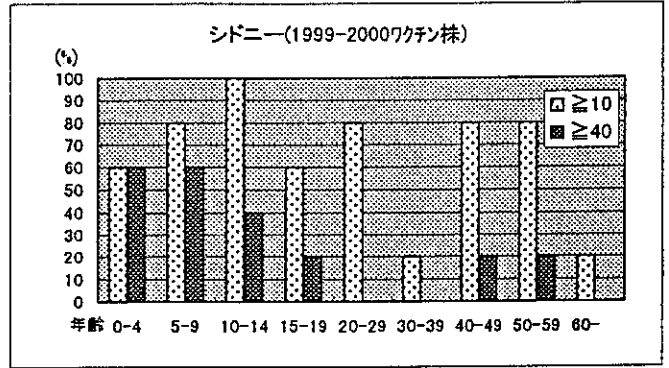
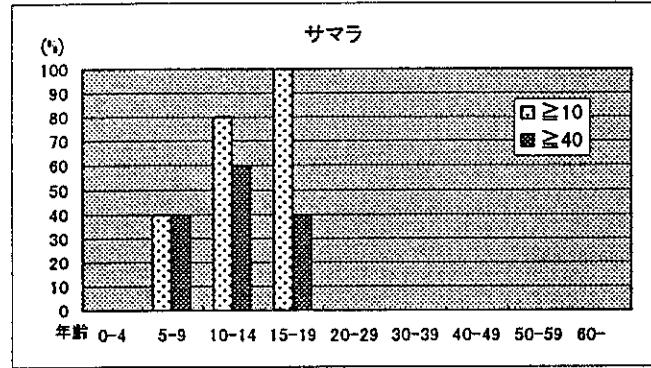
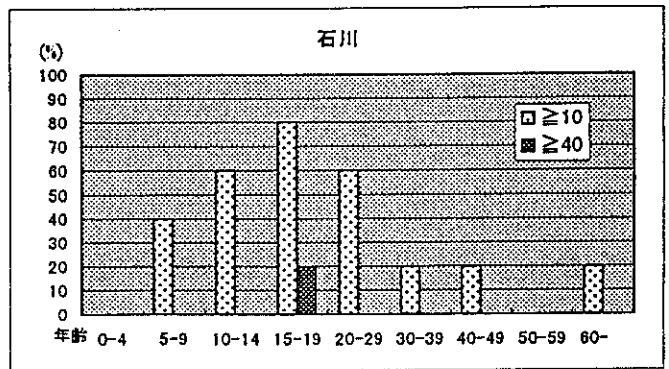
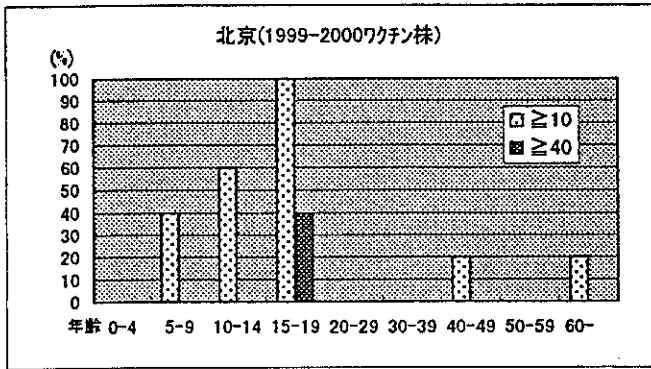




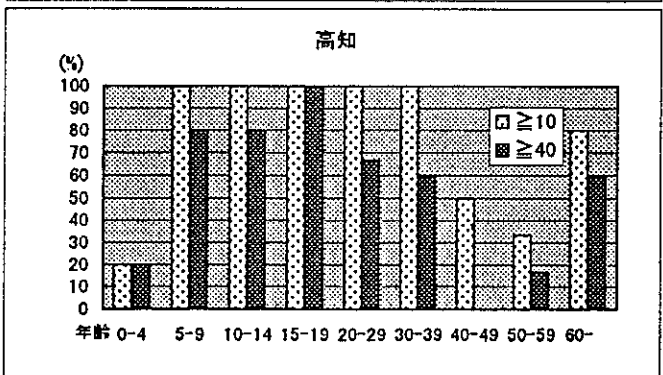
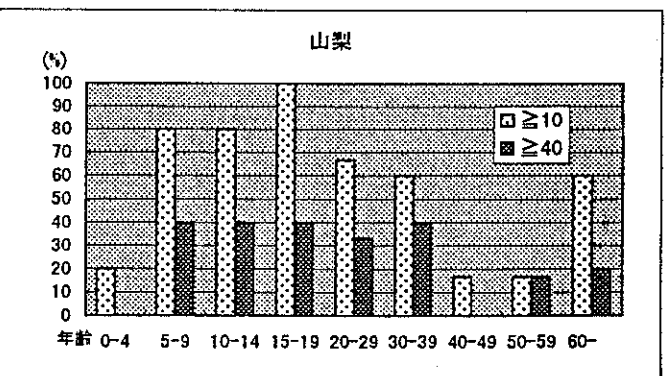
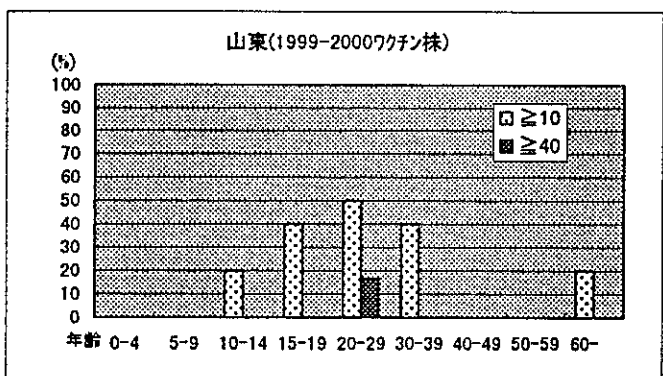
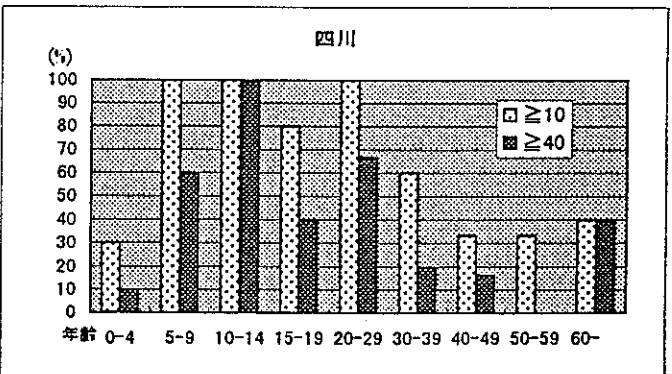
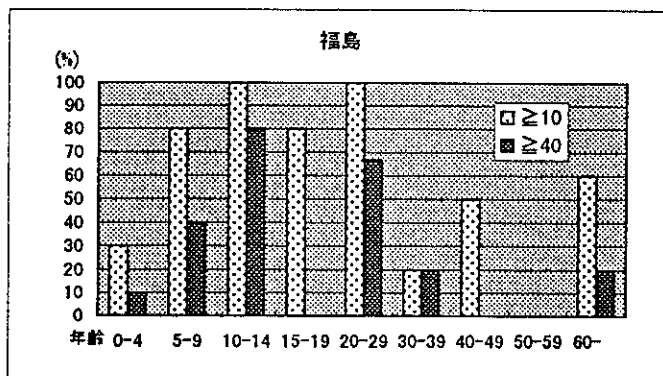
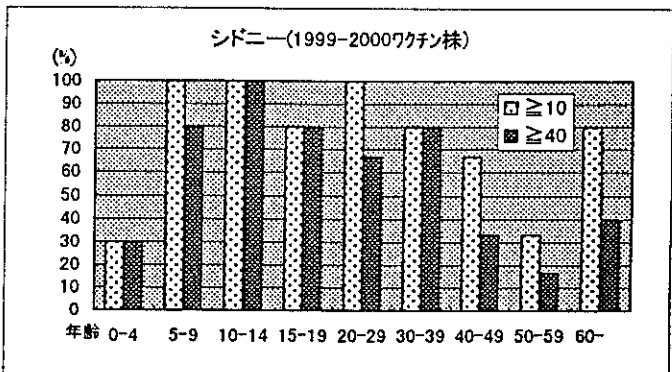
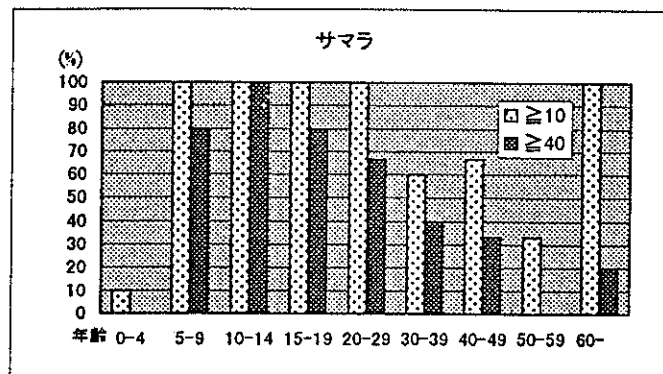
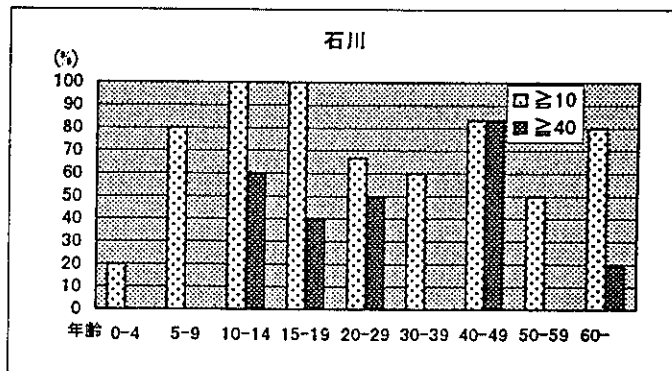
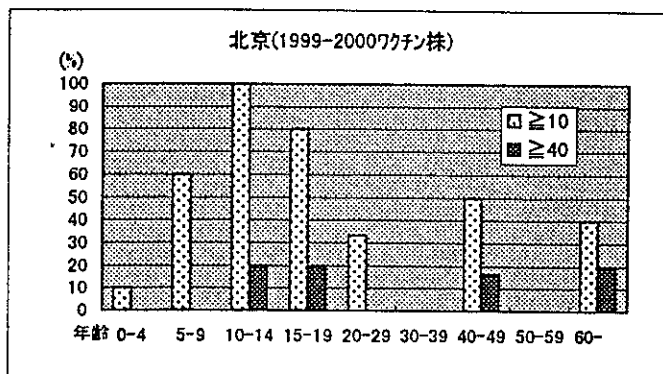
静岡県



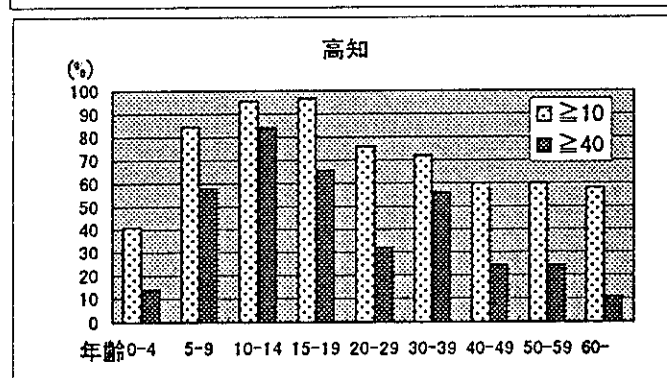
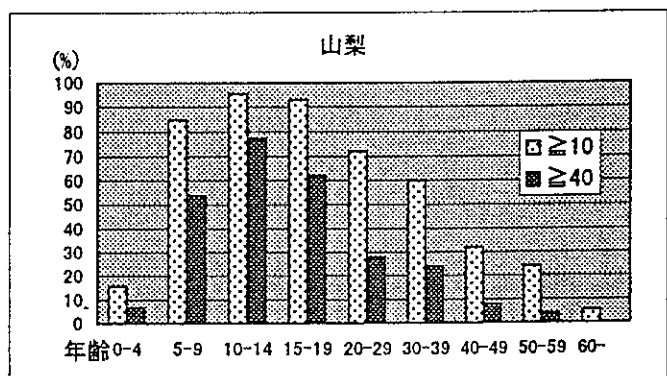
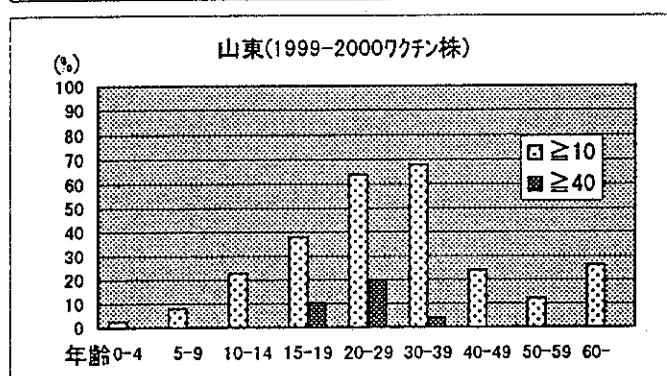
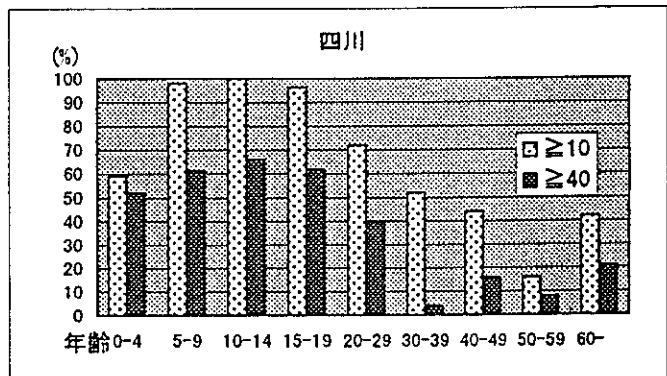
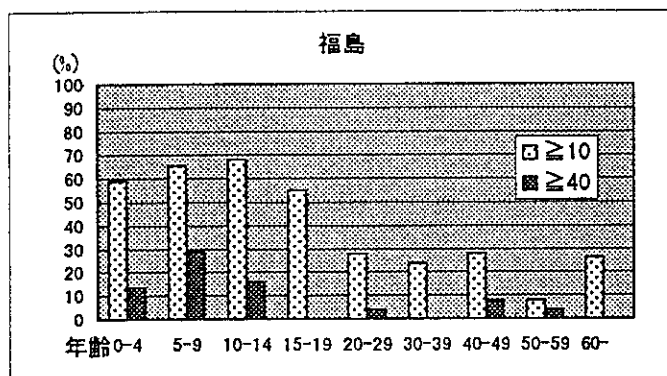
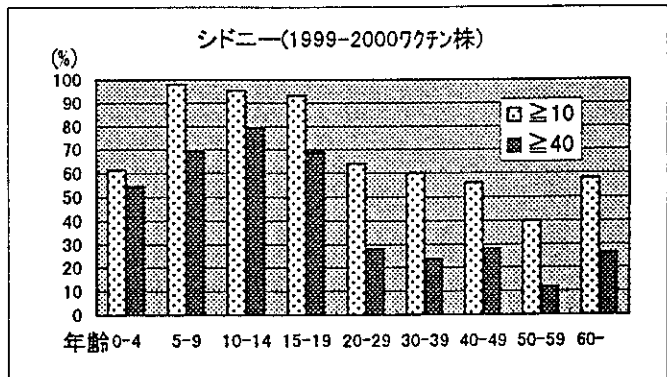
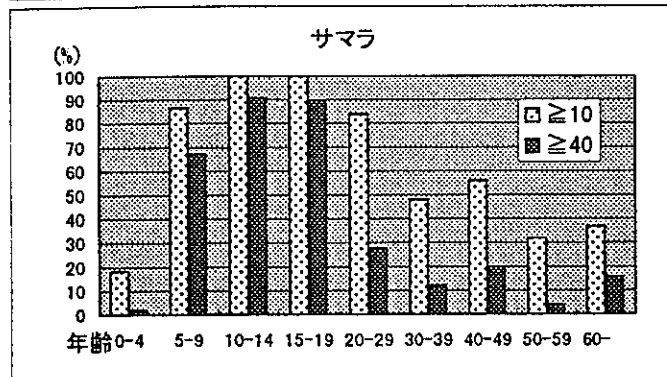
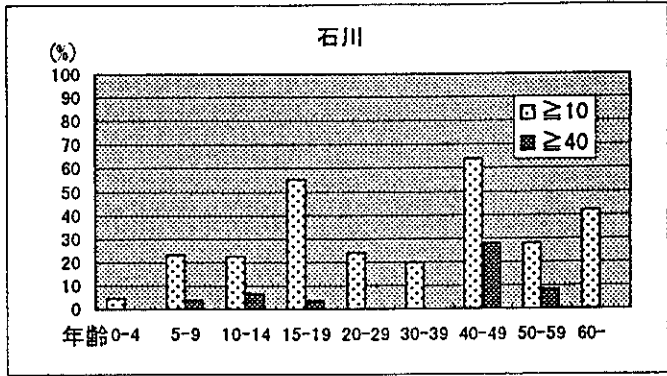
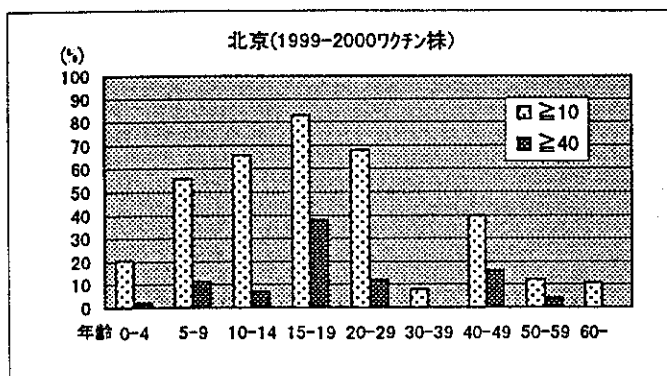
愛知県



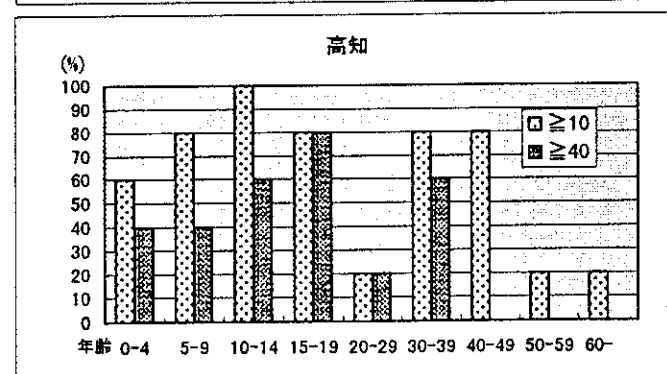
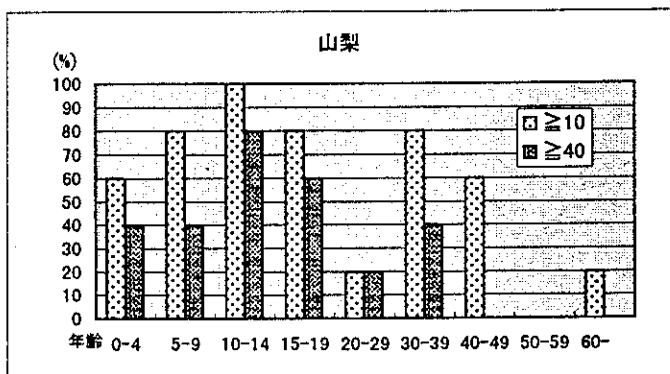
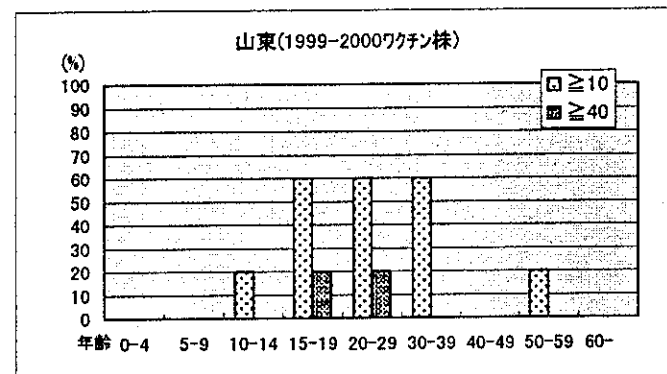
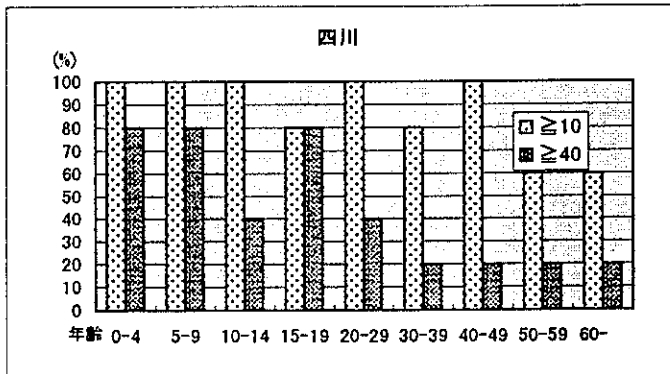
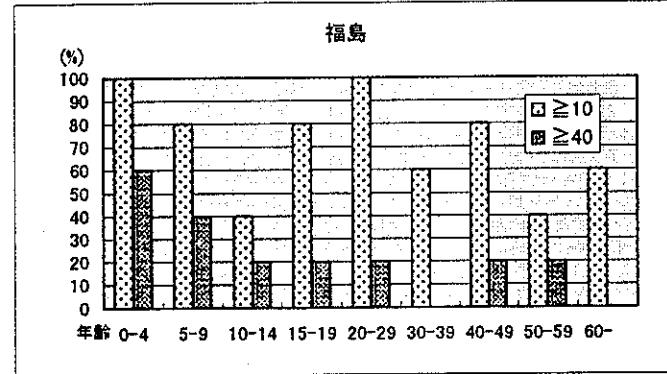
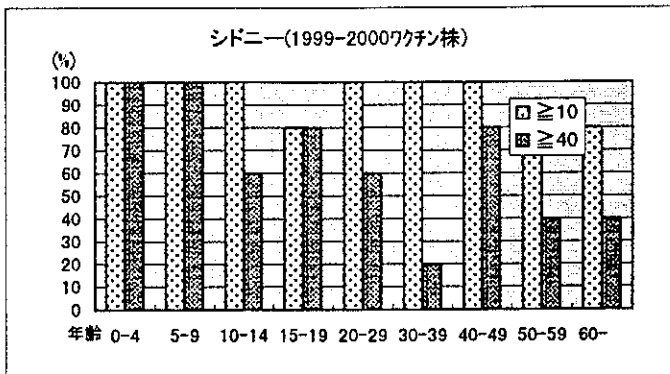
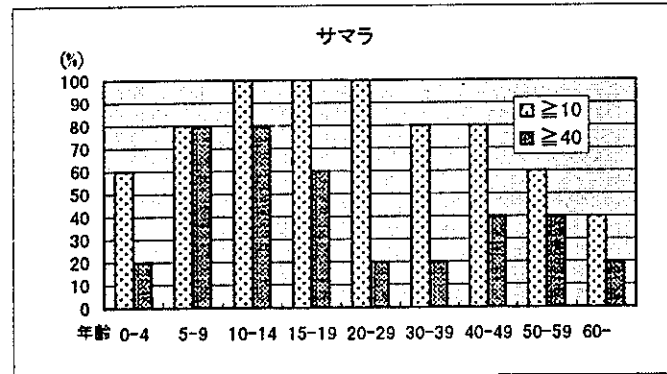
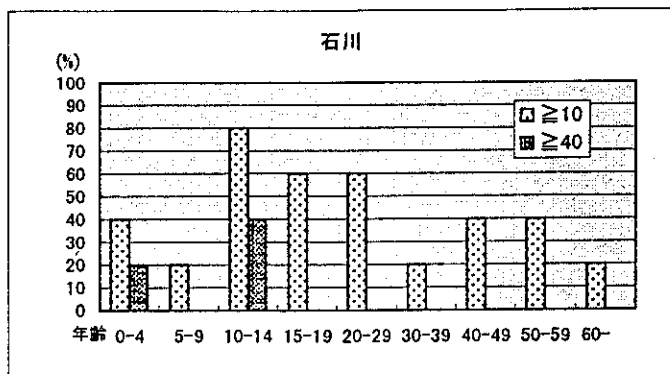
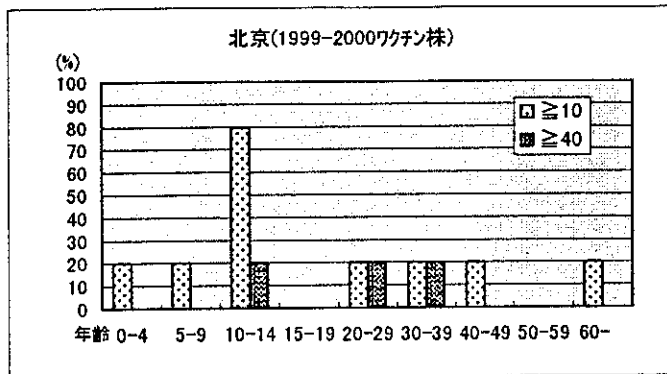
大阪府



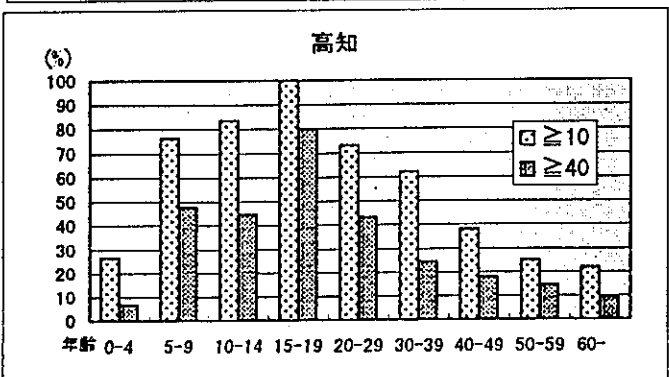
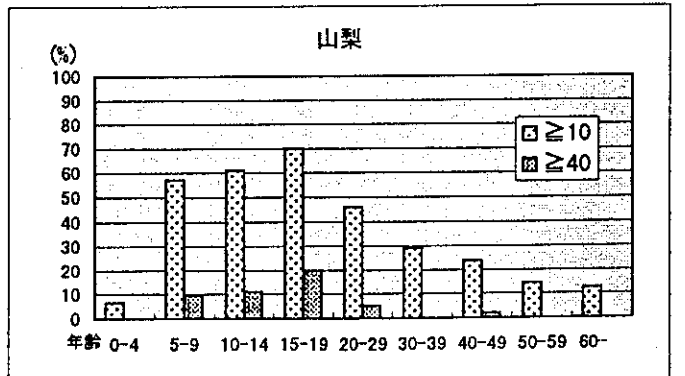
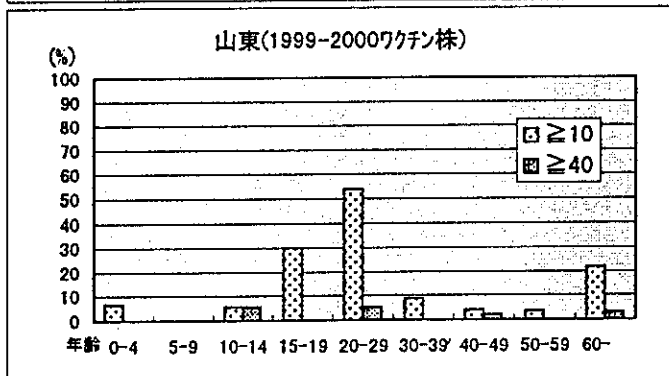
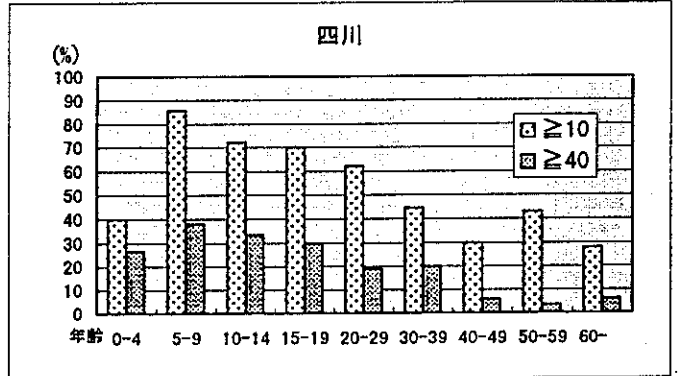
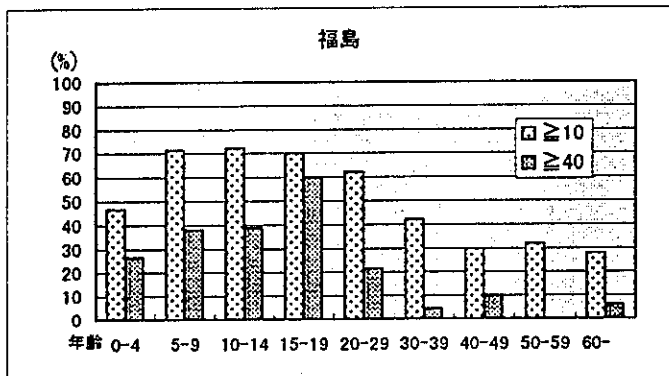
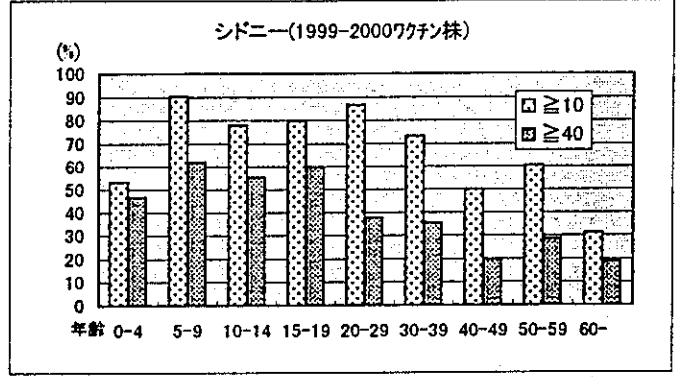
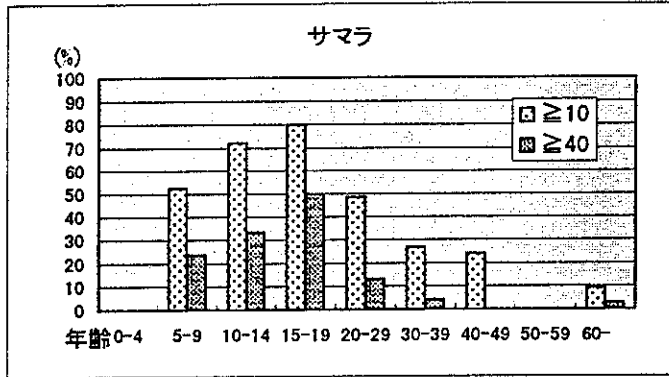
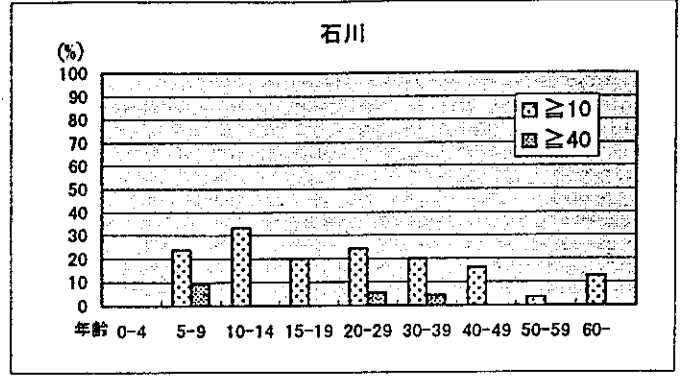
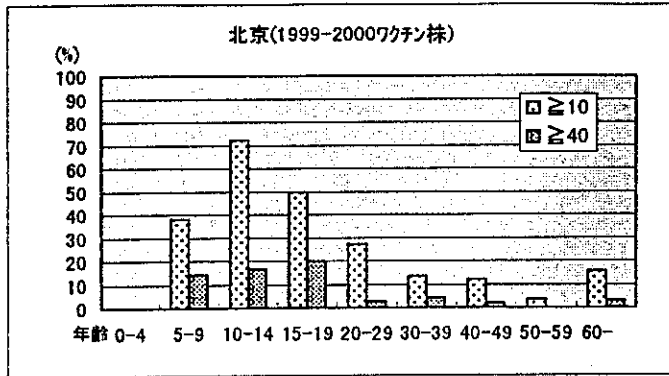
愛媛県



福岡県



鹿児島県



福島県

ウイルス型	年齢区分	検査数	H1抗体価の分布										10倍以上		40倍以上				
			<10	10	20	40	80	160	320	≥640	例数	(%)	例数	(%)					
A/北京 /262/95	0-4	15	14		1														
	5-9	10	6	2											1	7			
	10-14	9	1	5	3										4	40			
	15-19	7	2	2	1	1	1								8	89			
	20-29	25	22	1	1	1									5	71	3	43	
	30-39	25	25												3	12	2	8	
	40-49	26	24	1											2	8			
50-59	26	24	1	1										2	8				
60-	5	4	1											1	20				
計		148	122	12	9	2	2	2	1					26	18	5	3		
A/石川 /42/98	0-4	15	14	1															
	5-9	10	7	1	2										1	7			
	10-14	9	2	1	2	2									3	30	2	20	
	15-19	7	2	2	3	1	1								7	78	2	22	
	20-29	25	17	5	1	2			1						7	100	2	29	
	30-39	25	11	14											8	32	2	8	
	40-49	26	5	15	4	2									14	56	2	8	
50-59	26	11	9	5		1								21	81	2	8		
60-	5	3	2											15	58	1	4		
計		148	70	49	18	9	1	1	1					78	53	11	7		
A/サマラ /234/99	0-4	15	11	3	1														
	5-9	10	3			3	2	1	1						4	27			
	10-14	9	1	1	1	4	4	2	2	1					7	70	7	70	
	15-19	7				1	1	3	2	1					9	100	7	78	
	20-29	25	9	5	6	5	5	5							7	100	7	100	
	30-39	25	4	10	7	4	4	4							16	64	5	20	
	40-49	26	7	10	4	2	3	3							21	84	4	16	
50-59	26	15	7	2	2	2	2							19	73	5	19		
60-	5	1	3	1										11	42	2	8		
計		148	50	39	21	22	8	5	3					98	66	38	26		

福島県

ウイルス型	年齢区分	検査数	H1抗体価の分布										10倍以上		40倍以上	
			<10	10	20	40	80	160	320	≥640	例数	(%)	例数	(%)		
A/シドニー/5/97	0-4	15	3	1	1	4	4	1	1				12	80	11	73
	5-9	10		2	1	3	2					10	100	8	80	
	10-14	9	3	1	4	1						9	100	5	56	
	15-19	7	2	2	2	1						7	100	5	71	
	20-29	25	8	4	5	3	3					17	68	8	32	
	30-39	25	11	3	4	6	1					14	56	7	28	
	40-49	26	9	6	6	1	3	1				17	65	5	19	
	50-59	26	11	4	5	3	3					15	58	6	23	
	60-	5	2	2	1							3	60	1	20	
	計	148	44	25	23	21	21	9	4	1		104	70	56	38	
A/福島/99/98	0-4	15	3	1	2	5	3	1				12	80	9	60	
	5-9	10	1	2	2	3	2					9	90	7	70	
	10-14	9	2	1	3	3						7	78	3	33	
	15-19	7	1	2	2	1	1					6	86	2	29	
	20-29	25	14	10	1							11	44			
	30-39	25	9	6	7	2	1					16	64	3	12	
	40-49	26	6	10	5	3	1	1				20	77	5	19	
	50-59	26	11	9	2	4						15	58	4	15	
	60-	5	2	2	1							3	60			
	計	148	49	43	23	20	8	4	1			99	67	33	22	
A/四川/346/98	0-4	15	6	2	3	3	1					9	60	4	27	
	5-9	10	1	1	4	2	2					9	90	4	40	
	10-14	9	2	2	3	2						7	78	2	22	
	15-19	7	1	2	2	1	1					6	86	2	29	
	20-29	25	11	11	2	1	1					14	56	1	4	
	30-39	25	14	6	4	1						11	44	1	4	
	40-49	26	16	5	2	2	1					10	38	3	12	
	50-59	26	21	4	1							5	19			
	60-	5	4	1								1	20			
	計	148	76	34	21	12	4	1				72	49	17	11	

福島県

ウイルス型	年齢区分	検査数	H1抗体価の分布										10倍以上		40倍以上		
			<10	10	20	40	80	160	320	≥640	例数	(%)	例数	(%)			
B/山東 /7/97	0-4	15	14			1								1	7	1	7
	5-9	10	9	1										1	10		
	10-14	9	5	2	1									4	44	1	11
	15-19	7	1	2	3	1								6	86	4	57
	20-29	25	8	4	8	3	1							17	68	12	48
	30-39	25	15	2	6	2								10	40	2	8
	40-49	26	24	2										2	8		
	50-59	26	24	2										2	8		
	60-	5	4	1										1	20		
	計	148	104	12	12	15	4	1						44	30	20	14
B/山梨 /166/98	0-4	15	13	1	1									2	13		
	5-9	10	3	2	3	1	1							7	70	2	20
	10-14	9	2	3	2	2								7	78	2	22
	15-19	7	2	2	3	3								5	71	3	43
	20-29	25	13	7	3	2								12	48	2	8
	30-39	25	15	5	4	1								10	40	1	4
	40-49	26	20	6										6	23		
	50-59	26	25	1										1	4		
	60-	5	5														
	計	148	98	27	13	9	1							50	34	10	7
B/高知 /193/99	0-4	15	10	1	1	2	1	1						5	33	3	20
	5-9	10			2	1	3	1	1					10	100	8	80
	10-14	9			2	3	1	1	2					9	100	7	78
	15-19	7			2	1	2	3						7	100	6	86
	20-29	25	6	6	1	5	3	4						19	76	12	48
	30-39	25	5	7	3	3	2	3	2					20	80	10	40
	40-49	26	6	5	7	5	2	1						20	77	8	31
	50-59	26	10	11	2	2	1							16	62	3	12
	60-	5	3	1	1									2	40		
	計	148	40	31	20	18	13	16	7	3				108	73	57	39

千葉県

ウイルス型	年齢区分	検査数	H1抗体価の分布										10倍以上		40倍以上		
			<10	10	20	40	80	160	320	≥640	例数	(%)	例数	(%)			
A/北京 /262/95	0-4	25	23		1	1								2	8	1	4
	5-9	25	13	5	5	1						1		12	48	2	8
	10-14	25	5	5	4							2		20	80	6	24
	15-19	25	8	8	2	3	1							17	68	6	24
	20-29	25	16	7	1		1							9	36	1	4
	30-39	25	23	2										2	8		
	40-49	25	16	4	1	2								9	36	4	16
	50-59	25	16	7	1	1								9	36	1	4
	60-	25	15	4	4	1		1						10	40	2	8
	計		225	135	42	25	12	5	3		3		3	90	40	23	10
A/石川 /42/98	0-4	25	21	2		1								4	16	2	8
	5-9	25	13	4	4	3				1				12	48	4	16
	10-14	25	4	13	5	1				1				21	84	3	12
	15-19	25	5	7	9	2	1							20	80	4	16
	20-29	25	13	3	8	1								12	48	1	4
	30-39	25	15	6	4									10	40		
	40-49	25	14	5	4	2								11	44	2	8
	50-59	25	14	3	5	3								11	44	3	12
	60-	25	20	3	1									5	20	1	4
	計		225	119	46	40	14	1	2	2	2		1	106	47	20	9
A/サマラ /234/99	0-4	25	20	3	1	1								5	20	1	4
	5-9	25	5	1		7				2				20	80	19	76
	10-14	25			3	6	3	10	2			1		25	100	22	88
	15-19	25	1	2	3	5	8	5				1		24	96	19	76
	20-29	25	5	5	6	5	3	1						20	80	9	36
	30-39	25	10	4	7	2	1	1						15	60	4	16
	40-49	25	8	6	4	5	2							17	68	7	28
	50-59	25	17	4	1	2			1					8	32	3	12
	60-	25	13	3	4	4	4	1						12	48	5	20
	計		225	79	28	29	37	27	20	3	2		2	146	65	89	40

千葉県

ウイルス型	年齢区分	検査数	H1抗体価の分布										10倍以上		40倍以上	
			<10	10	20	40	80	160	320	≥640	例数	(%)	例数	(%)		
A/シドニー/5/97	0-4	25	9	2				2	2	10			16	64	14	56
	5-9	25	1	1	2	3	2	3	5	12			25	100	25	100
	10-14	25	1	2	3	5	6	5	7	1			24	96	21	84
	15-19	25	6	4	4	3	4	2	1	3			24	96	19	76
	20-29	25	4	3	4	6	4	3	1	1			19	76	11	44
	30-39	25	1	3	4	4	4	3	1	1			21	84	14	56
	40-49	25	11	3	7	4	5	4	1	1			24	96	14	56
	50-59	25	9	2	3	2	3	3	3	1			14	56	9	36
	60-	25	42	20	25	28	32	28	20	30			183	81	138	61
	計		225	11	3	5	8	8	2	2	9	4	14	56	14	56
A/福島/99/98	0-4	25	2	6	4	8	1	2	2	1			23	92	15	60
	5-9	25	3	6	4	5	2	4	1	3			19	76	9	36
	10-14	25	6	8	4	2	4	2	1	1			22	88	9	36
	15-19	25	13	5	4	1	2	1	1	1			12	48	3	12
	20-29	25	10	8	5	1	1	1	1	1			15	60	2	8
	30-39	25	6	10	6	3	3	1	1	1			19	76	3	12
	40-49	25	14	4	6	1	1	1	1	1			11	44	1	4
	50-59	25	11	6	2	2	2	1	3	1			14	56	6	24
	60-	25	76	50	37	22	26	11	3	3			149	66	62	28
	計		225	10	3	6	7	9	3	2	3	2	15	60	15	60
A/四川/346/98	0-4	25	5	3	3	9	4	1	1	1			25	100	16	64
	5-9	25	4	6	6	2	4	1	2	2			20	80	14	56
	10-14	25	14	5	2	2	1	1	1	2			21	84	9	36
	15-19	25	12	6	2	3	1	1	1	1			11	44	4	16
	20-29	25	13	7	3	1	1	1	1	1			13	52	5	20
	30-39	25	17	4	2	2	2	2	2	2			12	48	2	8
	40-49	25	13	5	2	2	3	1	1	1			8	32	2	8
	50-59	25	88	39	26	35	24	8	4	1			137	61	72	32
	60-	25	13	5	2	2	3	3	4	1			12	48	5	20
	計		225	88	39	26	35	24	8	4	1		137	61	72	32

千葉県

ウイルス型	年齢区分	検査数	H1抗体価の分布											10倍以上		40倍以上	
			<10	10	20	40	80	160	320	≥640	例数	(%)	例数	(%)	例数	(%)	
B/山東 /7/97	0-4	25	23	1	1	1	1	1	1	1	1	1	1	2	8	1	4
	5-9	25	17	1	2	3	1	1	1	1	1	1	1	8	32	5	20
	10-14	25	10	7	1	1	1	1	1	1	1	1	1	15	60	3	12
	15-19	25	7	9	4	6	3	1	1	1	1	1	1	25	100	12	48
	20-29	25	7	5	8	2	1	1	1	1	1	1	1	18	72	5	20
	30-39	25	7	9	5	4	4	1	1	1	1	1	1	18	72	4	16
	40-49	25	16	5	5	3	1	1	1	1	1	1	1	9	36	4	16
	50-59	25	16	5	5	4	1	1	1	1	1	1	1	9	36	4	16
	60-	25	8	5	7	3	1	1	1	1	1	1	1	17	68	5	20
	計	225	104	46	36	23	8	4	2	2	2	2	2	121	54	39	17
B/山梨 /166/98	0-4	25	18	3	2	1	1	1	1	1	1	1	1	7	28	2	8
	5-9	25	6	3	8	3	5	2	2	2	2	2	2	19	76	8	32
	10-14	25	2	3	5	5	2	6	2	2	2	2	2	23	92	15	60
	15-19	25	6	1	6	7	3	1	1	1	1	1	1	19	76	12	48
	20-29	25	12	6	3	3	1	2	2	2	2	2	1	13	52	4	16
	30-39	25	13	4	4	3	1	1	1	1	1	1	1	12	48	4	16
	40-49	25	16	3	3	5	1	1	1	1	1	1	1	9	36	1	4
	50-59	25	21	3	3	1	1	1	1	1	1	1	1	4	16	4	16
	60-	25	13	3	3	4	2	2	1	1	1	1	1	12	48	5	20
	計	225	107	29	38	22	15	10	2	2	2	2	2	118	52	51	23
B/高知 /193/99	0-4	25	16	1	1	1	4	1	1	1	1	1	1	9	36	8	32
	5-9	25	4	4	2	8	6	3	3	3	3	3	3	21	84	21	84
	10-14	25	1	2	1	2	3	3	4	4	4	4	4	25	100	22	88
	15-19	25	3	3	2	2	3	5	4	4	4	4	5	24	96	19	76
	20-29	25	9	4	3	3	2	2	2	2	2	2	2	16	64	9	36
	30-39	25	8	3	3	2	5	1	1	1	1	1	2	17	68	11	44
	40-49	25	9	8	4	3	1	1	1	1	1	1	1	16	64	4	16
	50-59	25	16	4	4	3	2	2	2	2	2	2	2	9	36	2	8
	60-	25	8	4	4	2	6	1	2	2	2	2	2	17	68	11	44
	計	225	71	28	19	23	27	18	16	16	16	16	16	154	68	107	48

東京都

ウイルス型	年齢区分	検査数	H1抗体価の分布										10倍以上		40倍以上			
			<10	10	20	40	80	160	320	≥640	例数	(%)	例数	(%)				
A/北京 /262/95	0-4																	
	5-9				1													
	10-14				7	3		1										
	15-19	20	2	3														
	20-29	20	5	2	3	1												
	30-39	20	7	8	2													
	40-49	20	4	3	5	4												
	50-59	20	10	7	2	1												
	60-	20	11	4	3		1											
	計	123	40	29	17	16	9	8	2	2								
A/石川 /42/98	0-4																	
	5-9																	
	10-14	3			1													
	15-19	20	2	3	6	2												
	20-29	20	3	8	1	5	2											
	30-39	20	5	4	5	3	2											
	40-49	20	6	3	2	6	1											
	50-59	20	8	7	1	4												
	60-	20	10	6	2		1											
	計	123	34	32	14	25	8	8	2	2								
A/サマラ /234/99	0-4																	
	5-9																	
	10-14	3																
	15-19	20				1												
	20-29	20		1	2	3												
	30-39	20		5	4	3	3											
	40-49	20		1	5	1	5	6										
	50-59	20		2	5	3	3	3										
	60-	20		5	6	4	1	4										
	計	123	7	18	18	10	20	27	7	16								