

Figure 7-c. Whole body autoradiographs of a rat on the 12th day of gestation 24 hr after oral administration of Benzyl n-butyl phthalate [ring- $^{14}\text{C}(\text{U})$] (Dose : 1.85MBq/250 $\mu\text{g}/\text{kg}$)

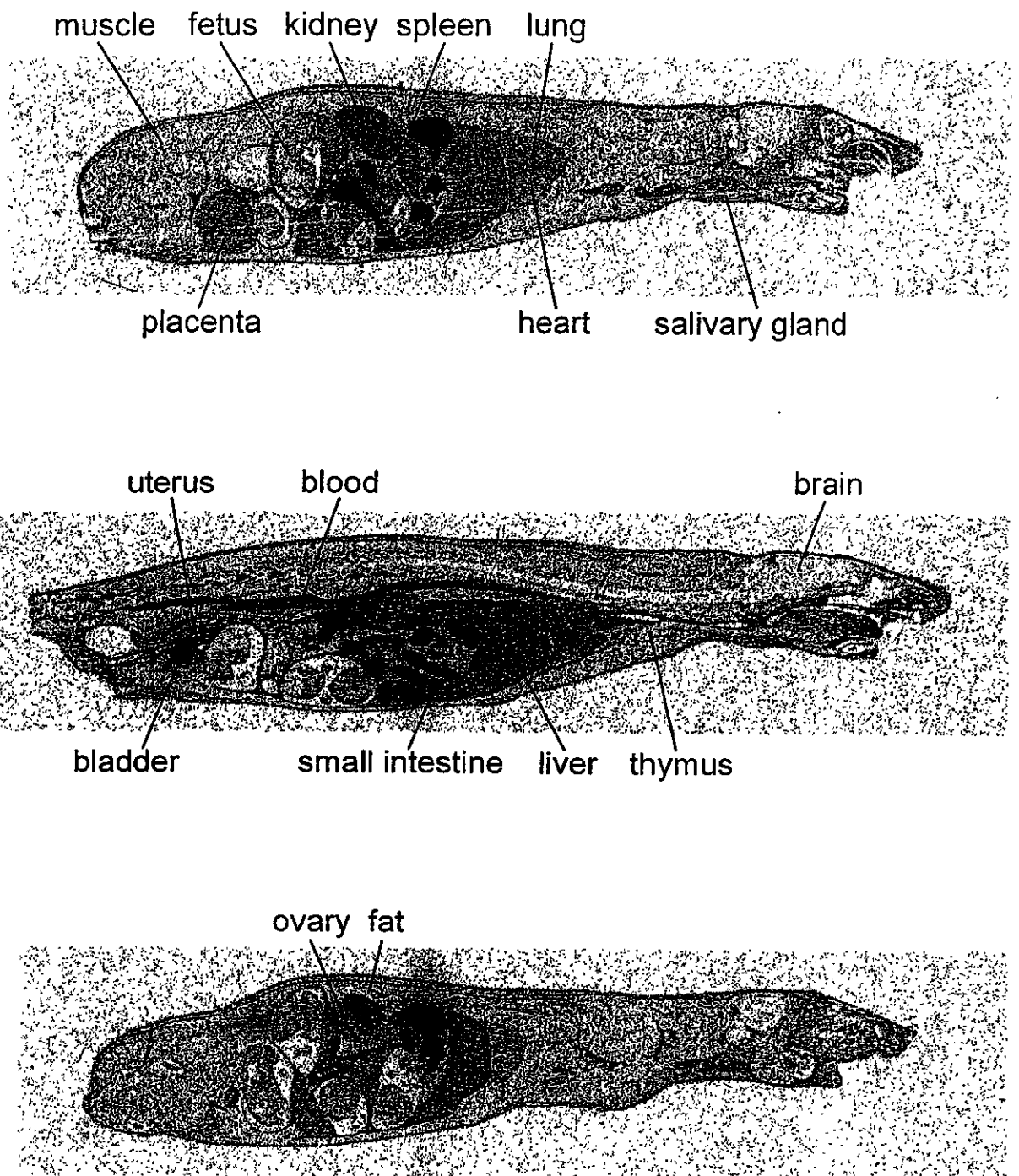


Figure 8-a. Whole body autoradiographs of a rat on the 18th day of gestation 2 hr after oral administration of Benzyl n-butyl phthalate [ring-¹⁴C(U)] (Dose : 1.85MBq/250 μ g/kg)

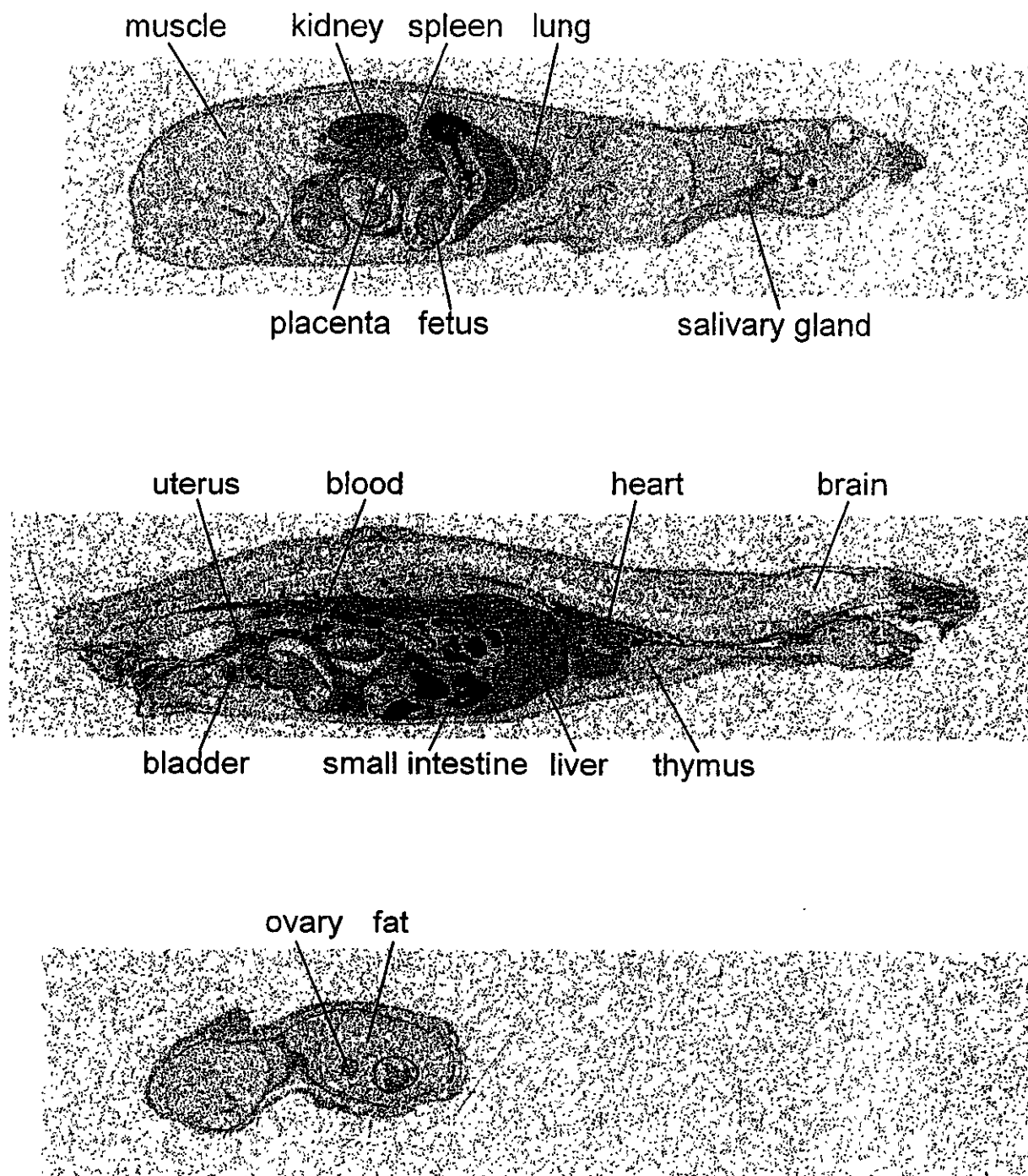


Figure 8-b. Whole body autoradiographs of a rat on the 18th day of gestation 6 hr after oral administration of Benzyl n-butyl phthalate [ring- ^{14}C (U)]
(Dose : 1.85MBq/250 $\mu\text{g}/\text{kg}$)

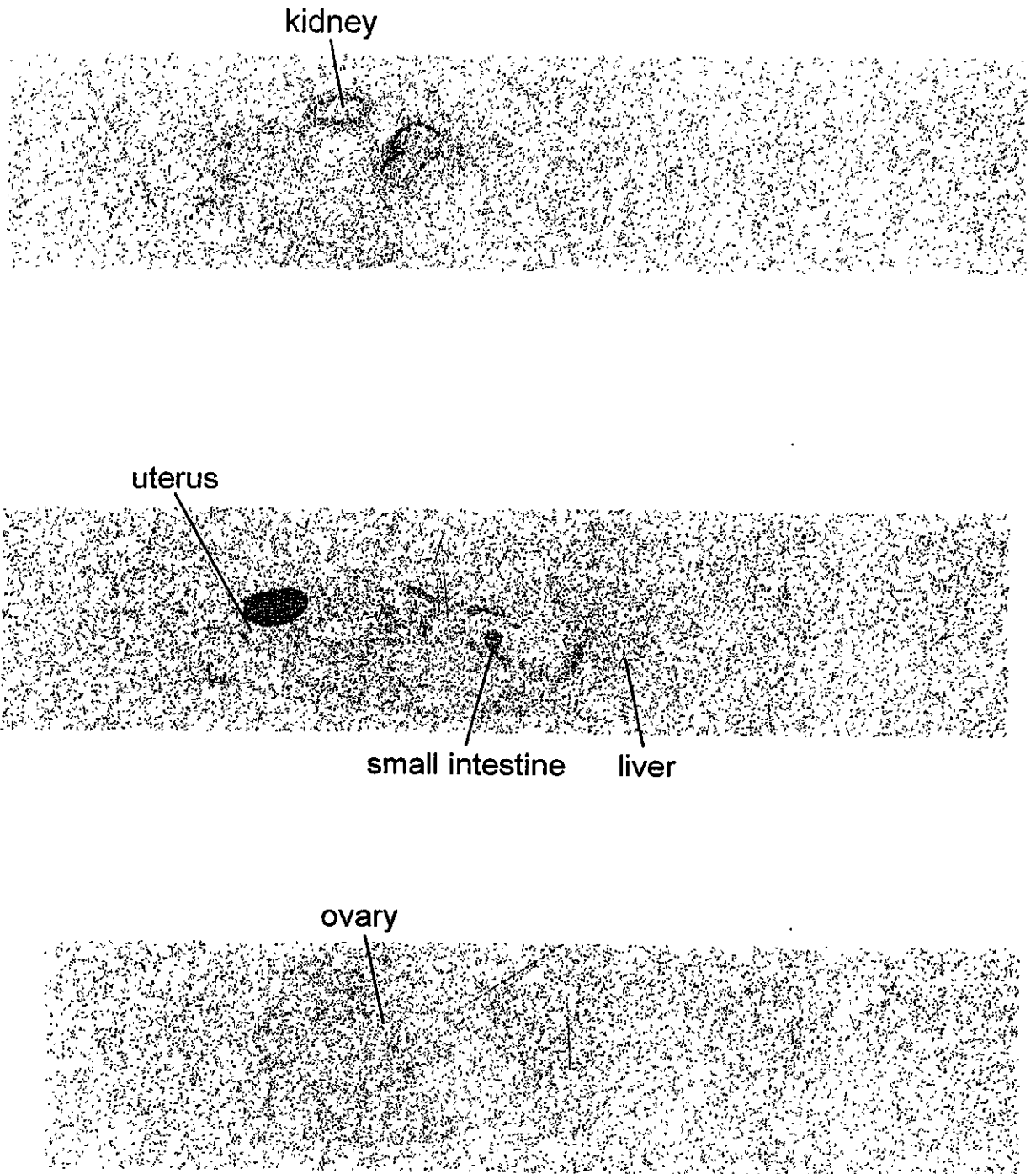


Figure 8-c. Whole body autoradiographs of a rat on the 18th day of gestation 24 hr after oral administration of Benzyl n-butyl phthalate [ring- ^{14}C (U)] (Dose : 1.85MBq/250 μg /kg)

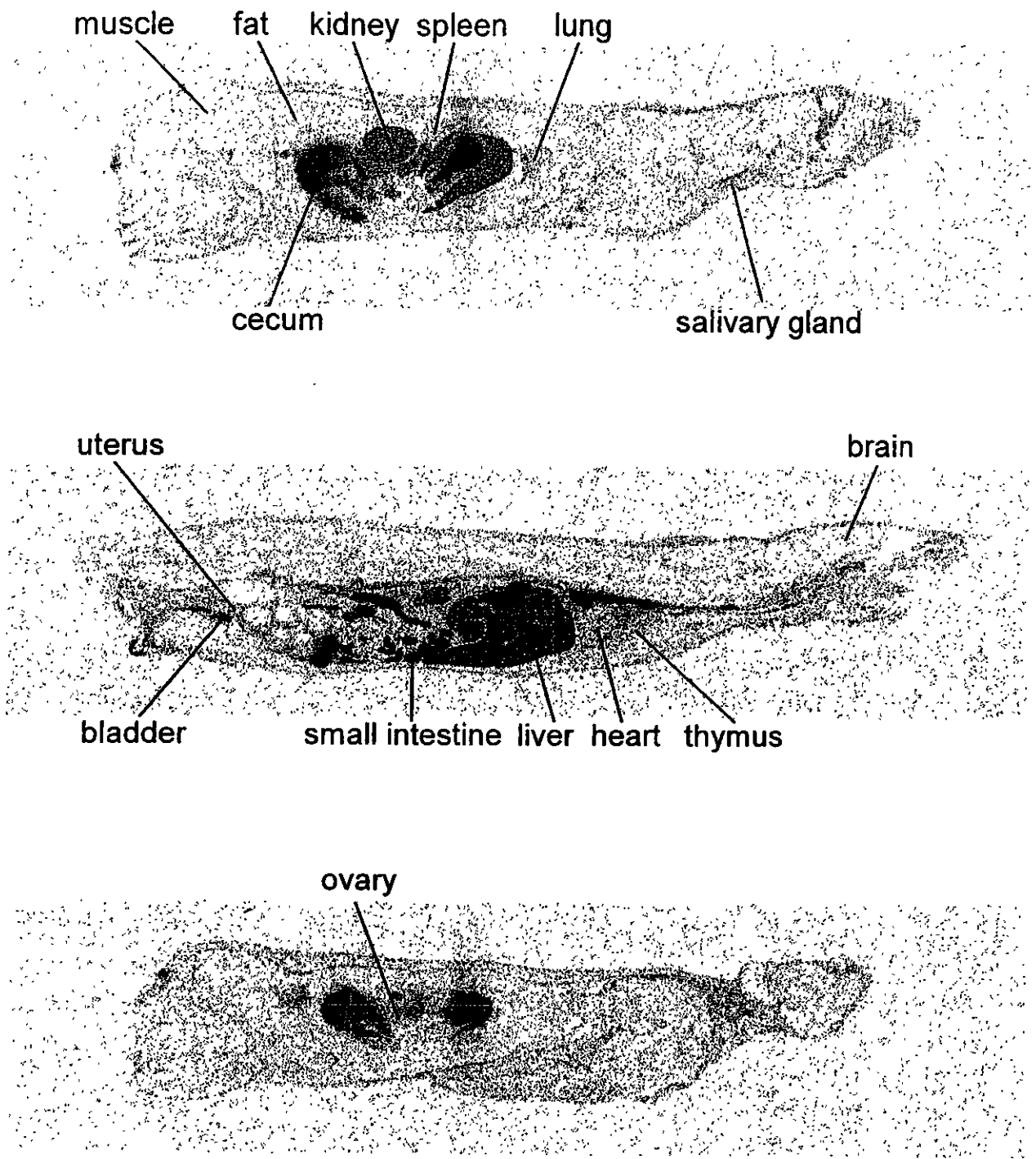


Figure 9-a. Whole body autoradiographs of a rat on the 12th day of gestation 1.5 hr after oral administration of 4-n-Nonylphenol [ring-¹⁴C(U)] (Dose : 1.85MBq/200 μ g/kg)

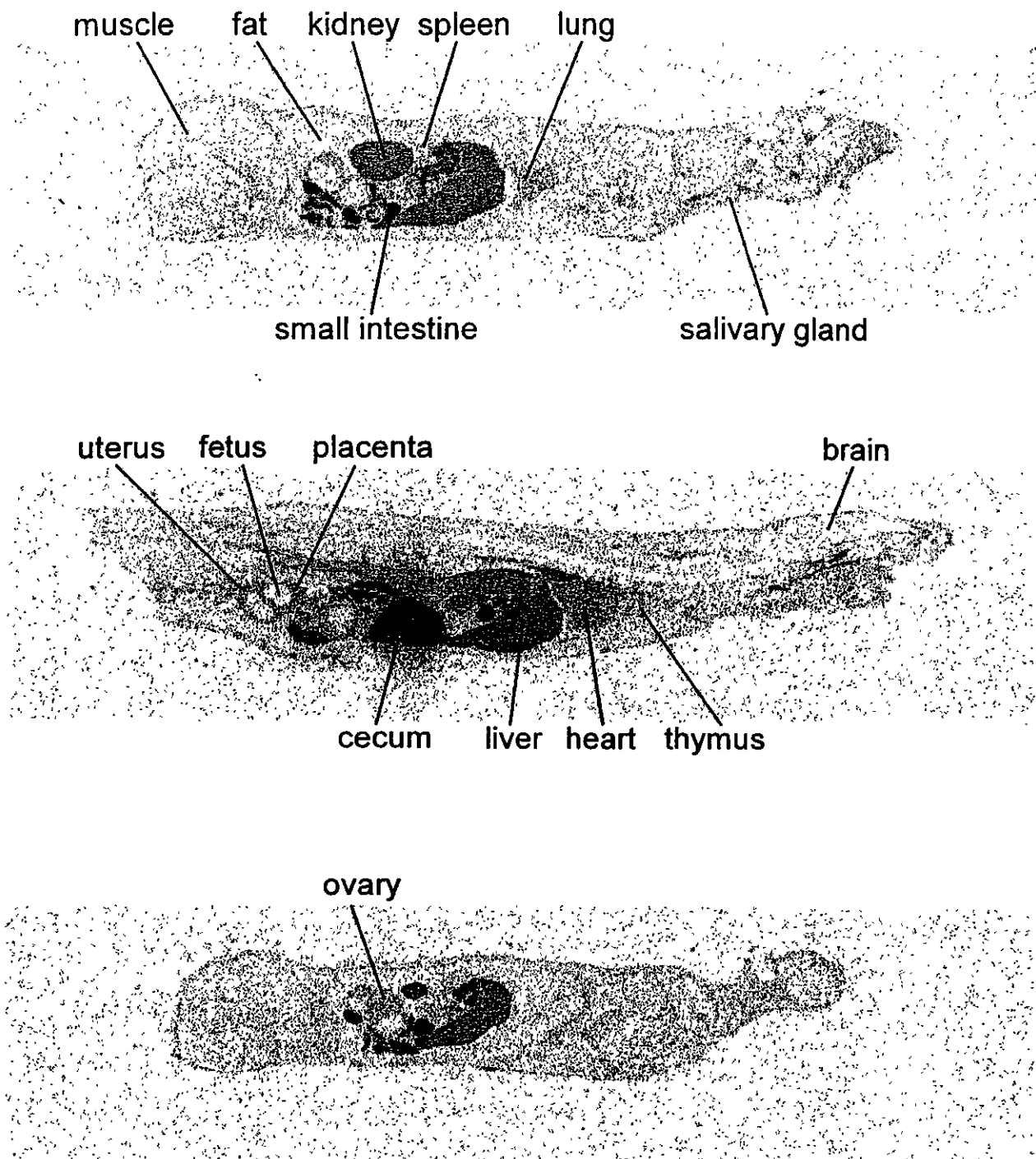


Figure 9-b. Whole body autoradiographs of a rat on the 12th day of gestation 6 hr after oral administration of 4-n-Nonylphenol [ring-¹⁴C(U)] (Dose : 1.85MBq/200 μ g/kg)

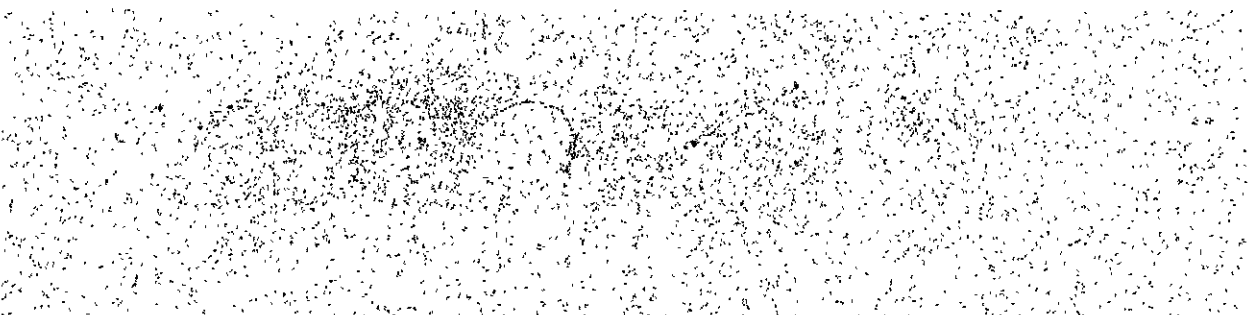
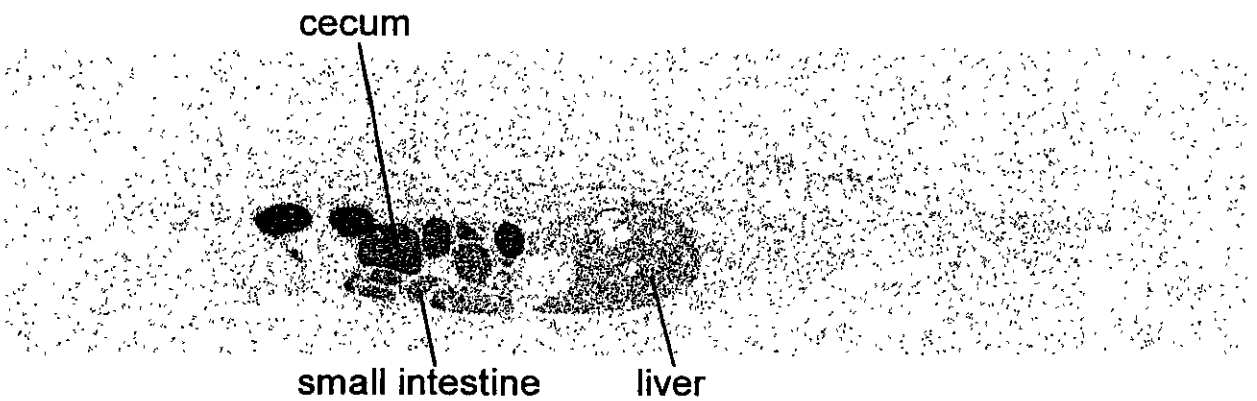
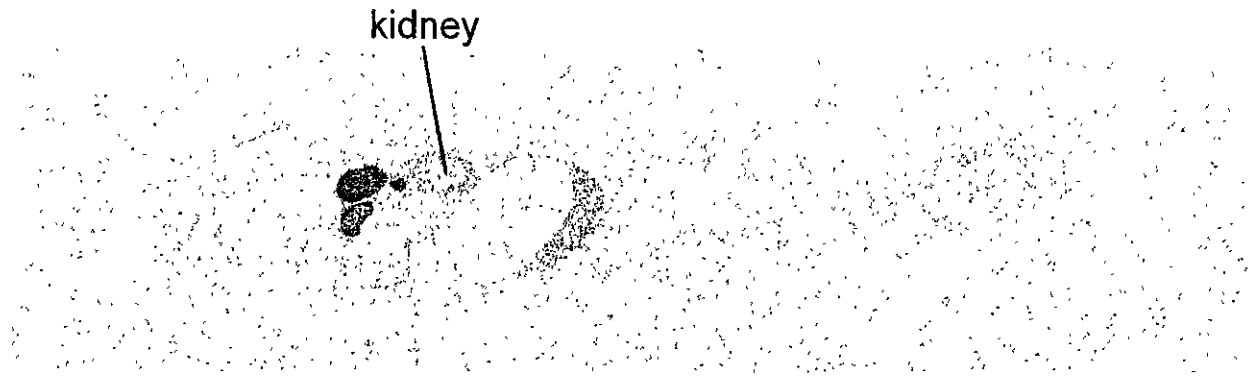


Figure 9-c. Whole body autoradiographs of a rat on the 12th day of gestation 24 hr after oral administration of 4-n-Nonylphenol [ring-¹⁴C(U)] (Dose : 1.85MBq/200 μ g/kg)

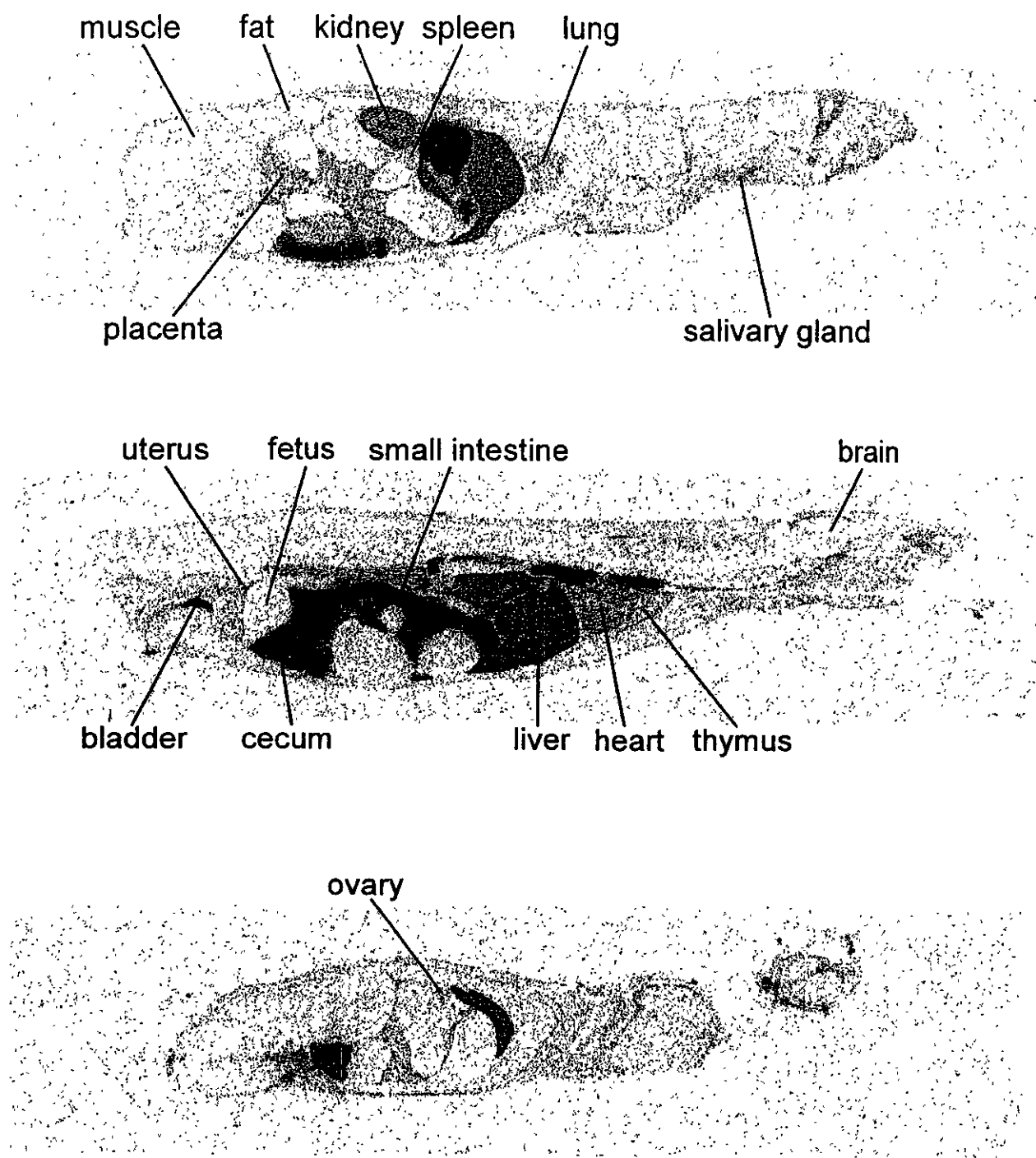


Figure 10-a. Whole body autoradiographs of a rat on the 18th day of gestation 1.5 hr after oral administration of 4-n-Nonylphenol [ring-¹⁴C(U)] (Dose : 1.85MBq/200 μ g/kg)

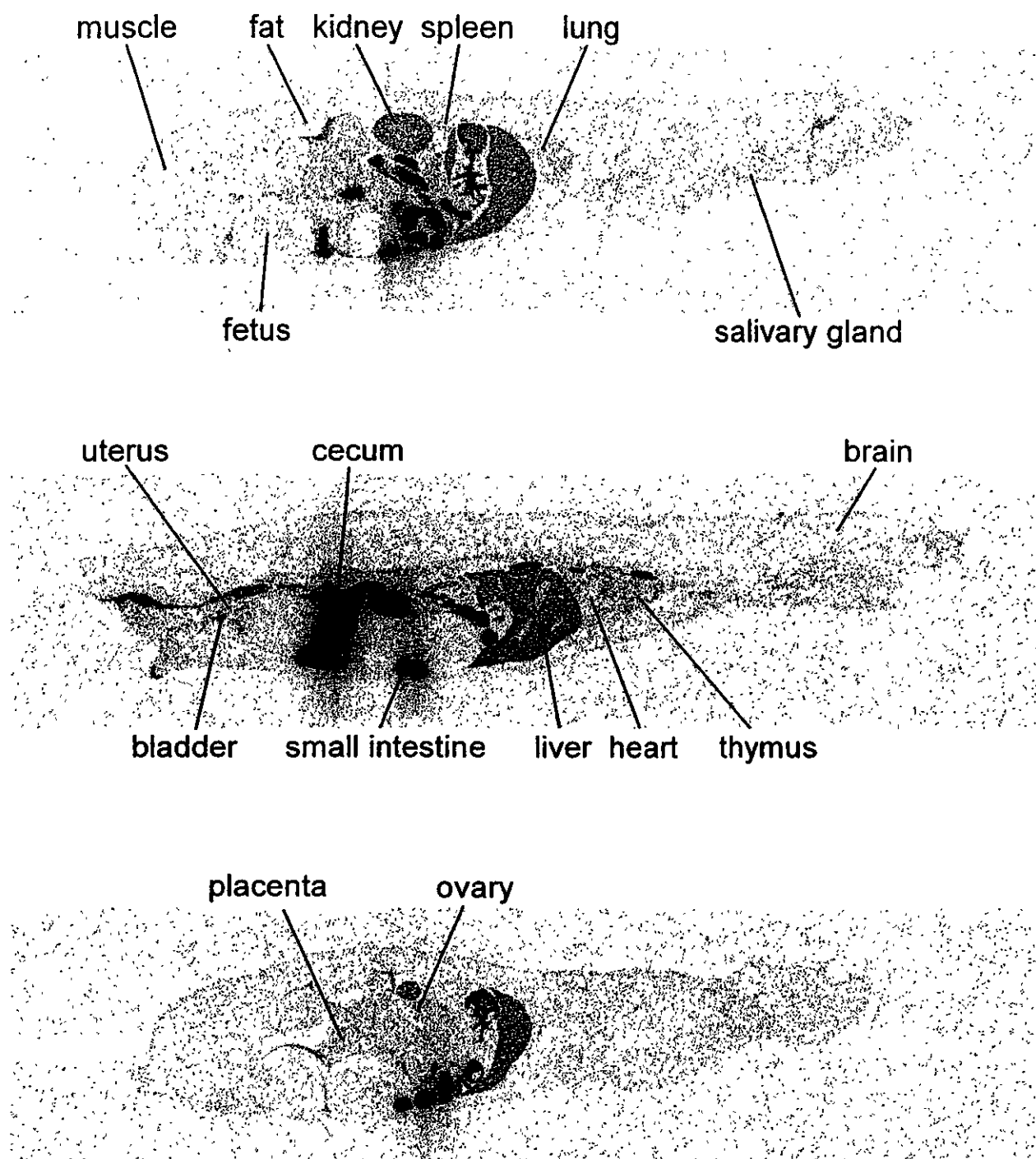


Figure 10-b. Whole body autoradiographs of a rat on the 18th day of gestation 6 hr after oral administration of 4-n-Nonylphenol [ring-¹⁴C(U)] (Dose : 1.85MBq/200 μ g/kg)

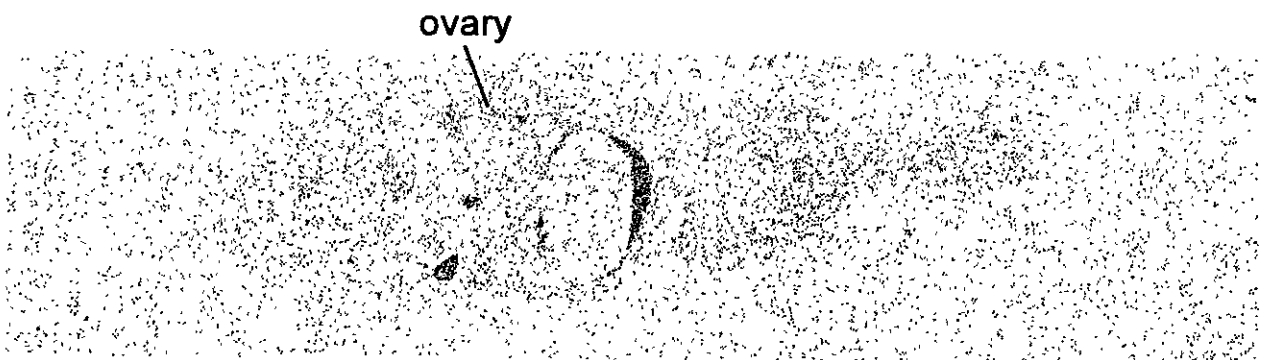
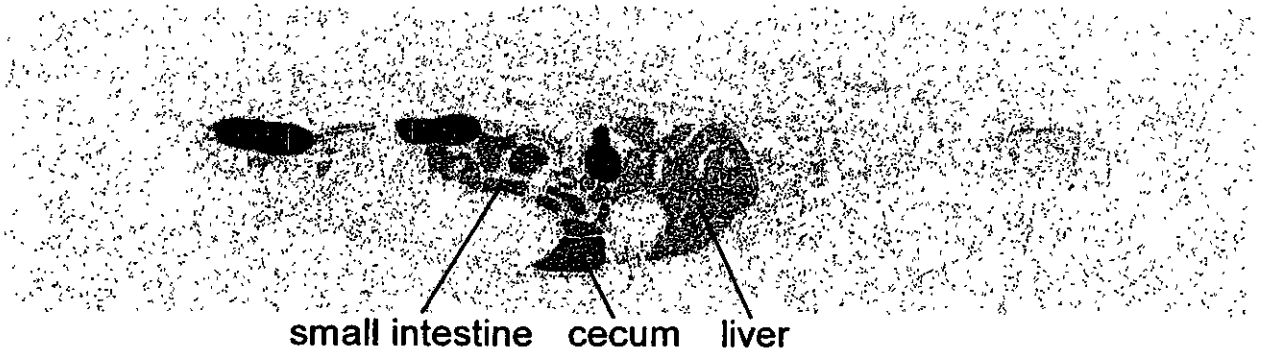
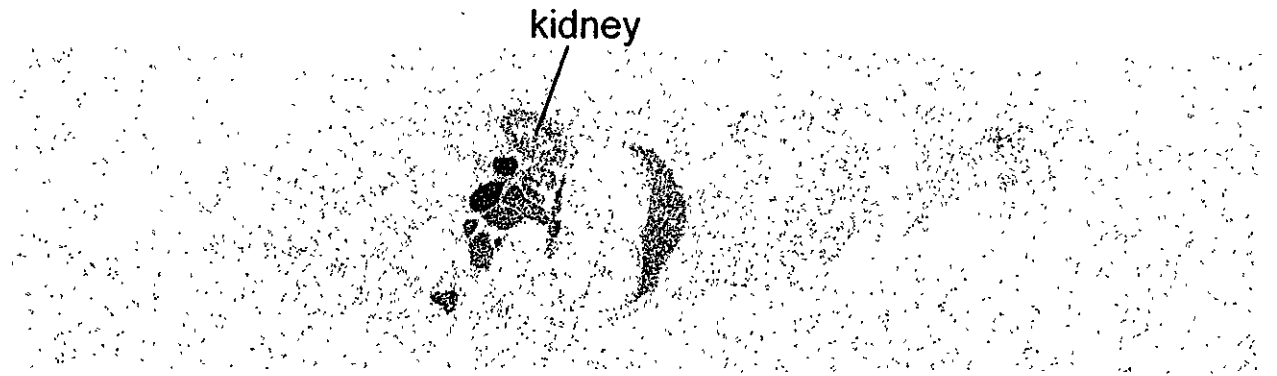


Figure 10-c. Whole body autoradiographs of a rat on the 18th day of gestation 24 hr after oral administration of 4-n-Nonylphenol [ring-¹⁴C(U)]
(Dose : 1.85MBq/200 μ g/kg)

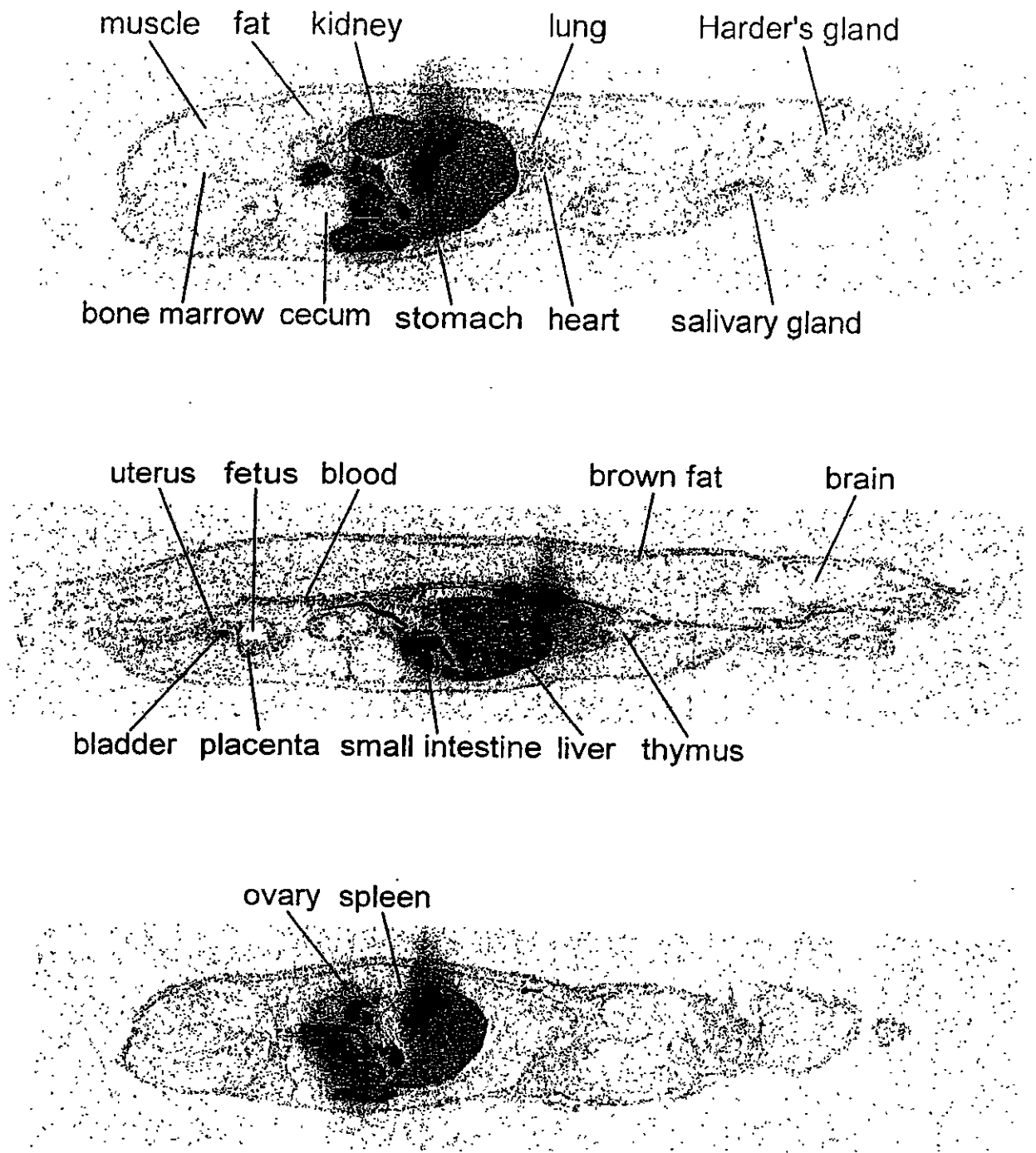


Figure 11-a. Whole body autoradiographs of a rat on the 12th day of gestation 0.5 hr after oral administration of Genistein [dihydroxyphenyl-¹⁴C] (Dose : 1.85MBq/300 μ g/kg)

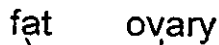
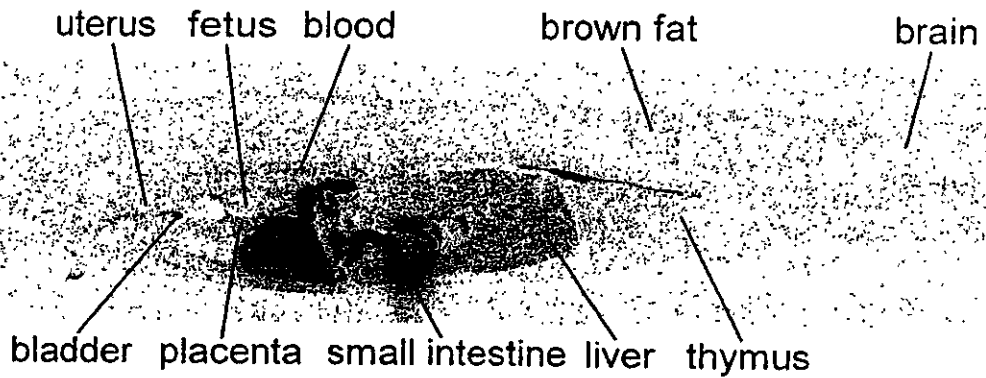
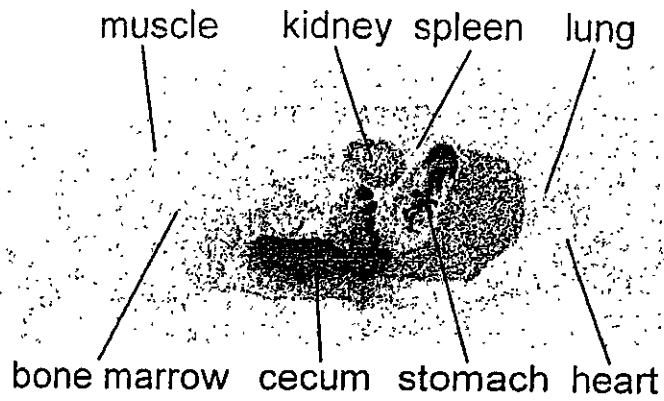


Figure 11-b. Whole body autoradiographs of a rat on the 12th day of gestation 4 hr after oral administration of Genistein [dihydroxyphenyl-¹⁴C] (Dose : 1.85MBq/300 μ g/kg)

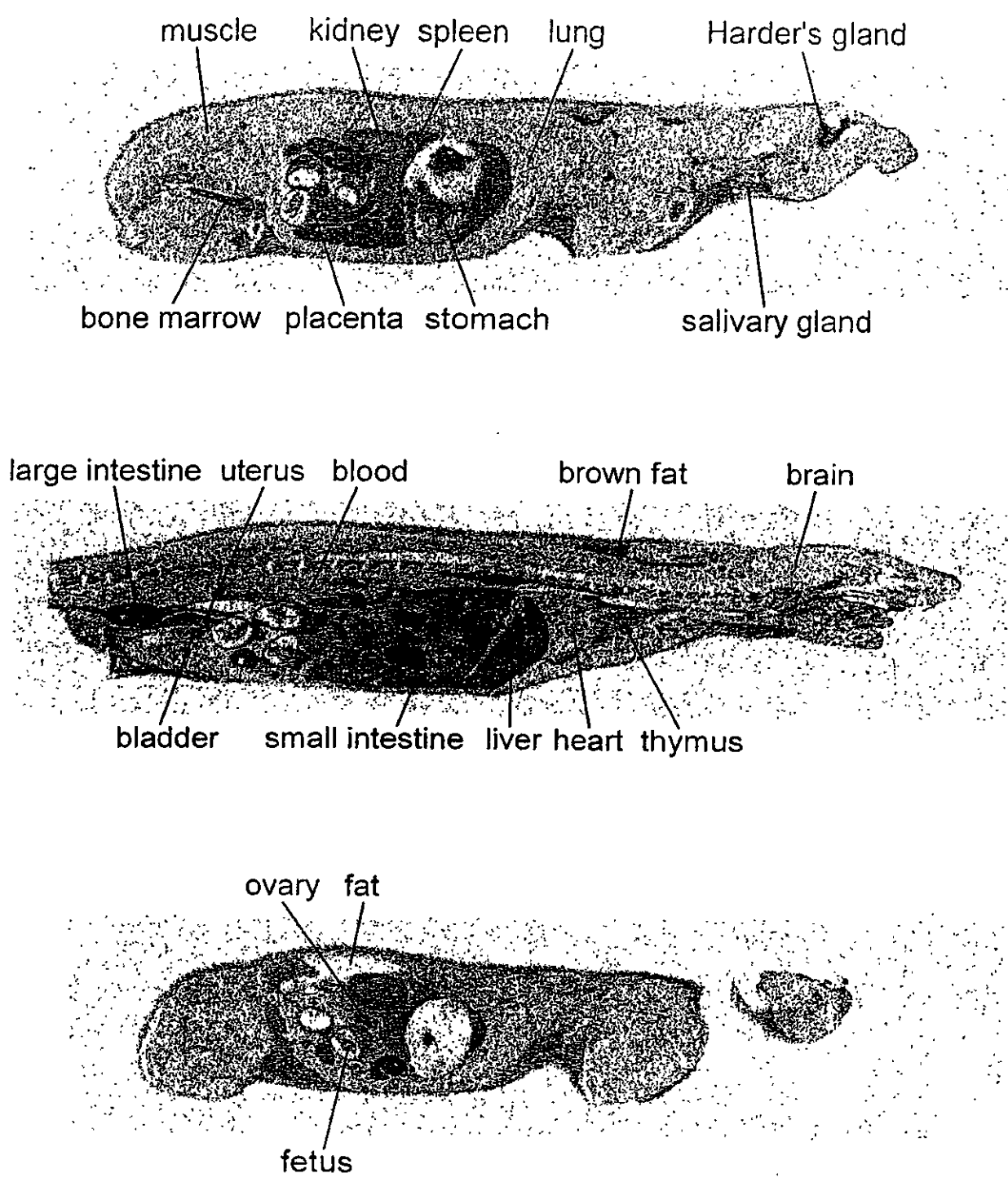


Figure 11-c. Whole body autoradiographs of a rat on the 12th day of gestation 24 hr after oral administration of Genistein [dihydroxyphenyl-¹⁴C] (Dose : 1.85MBq/300 μg/kg)

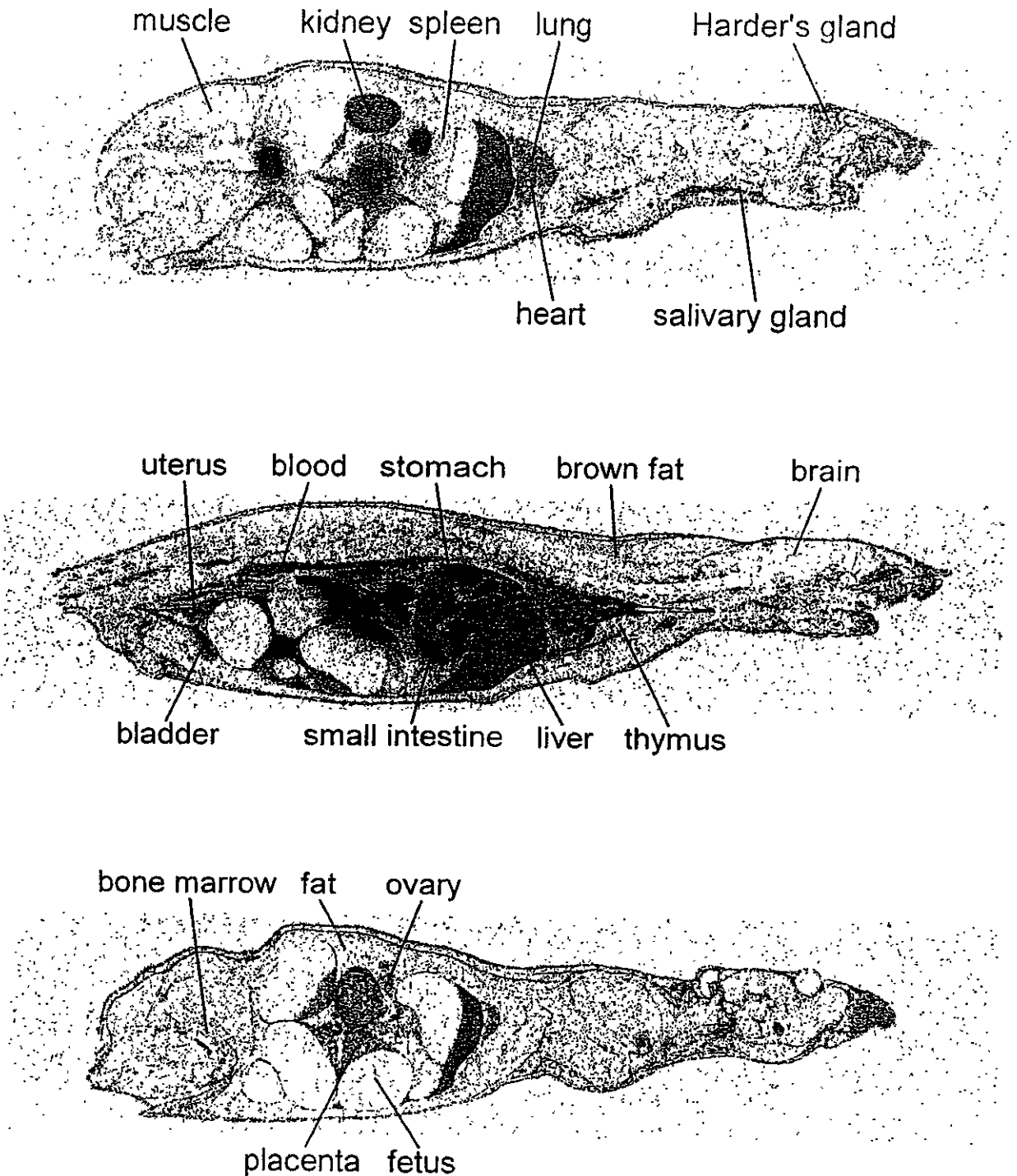


Figure 12-a. Whole body autoradiographs of a rat on the 18th day of gestation 0.5 hr after oral administration of Genistein [dihydroxyphenyl-¹⁴C] (Dose : 1.85MBq/300 μ g/kg)

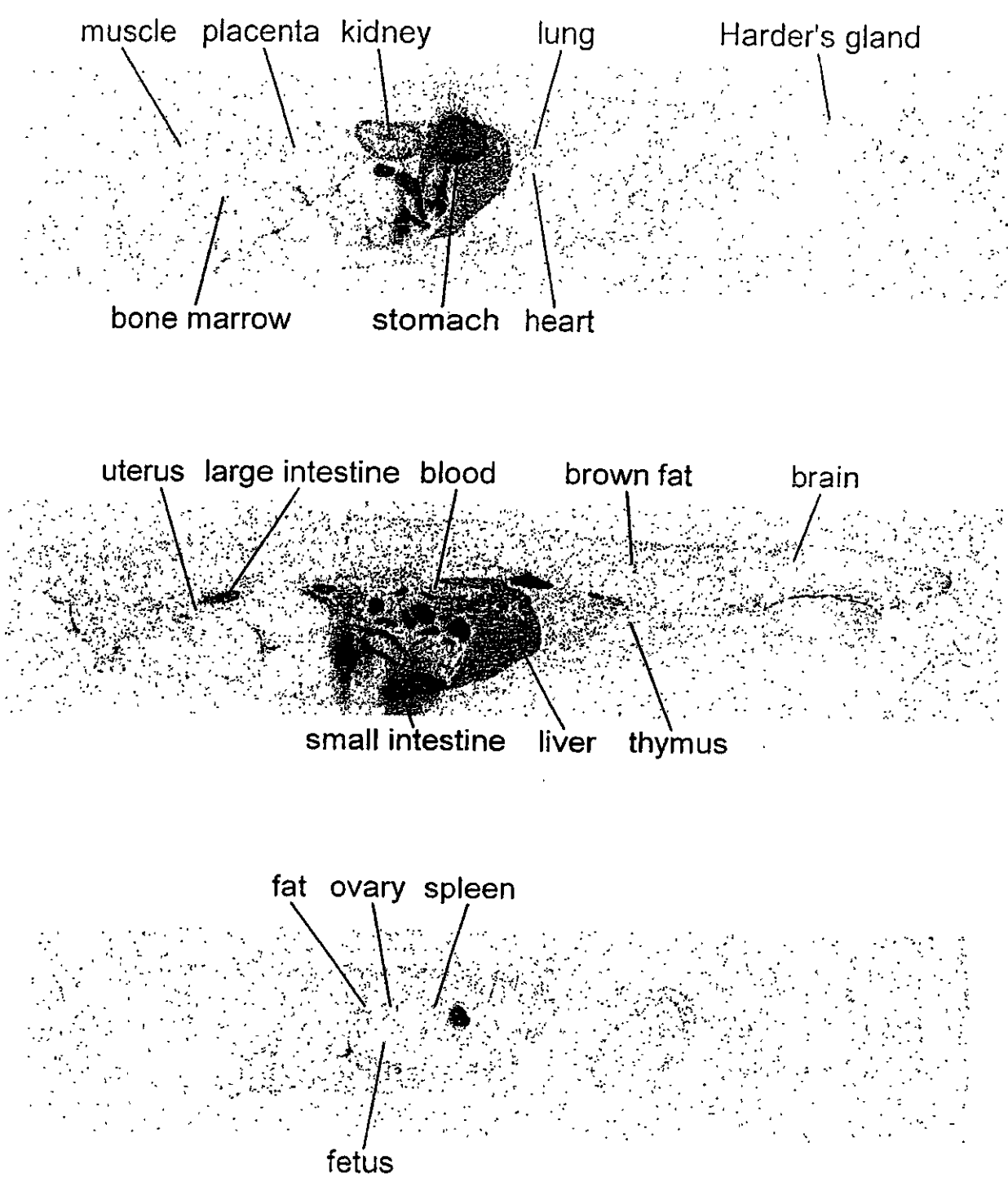


Figure 12-b. Whole body autoradiographs of a rat on the 18th day of gestation 4 hr after oral administration of Genistein [dihydroxyphenyl-¹⁴C] (Dose : 1.85MBq/300 μg/kg)

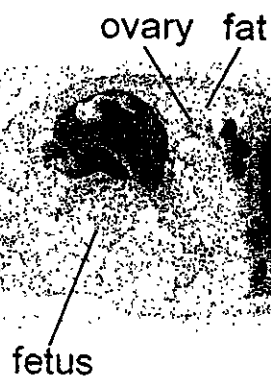
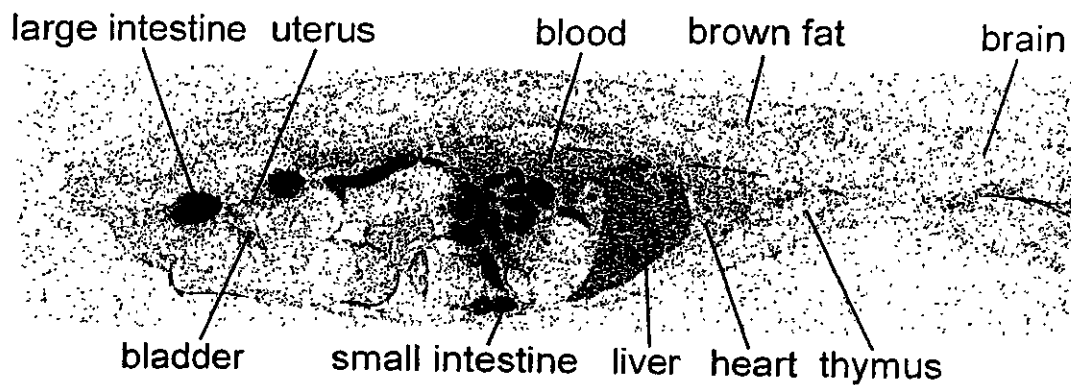
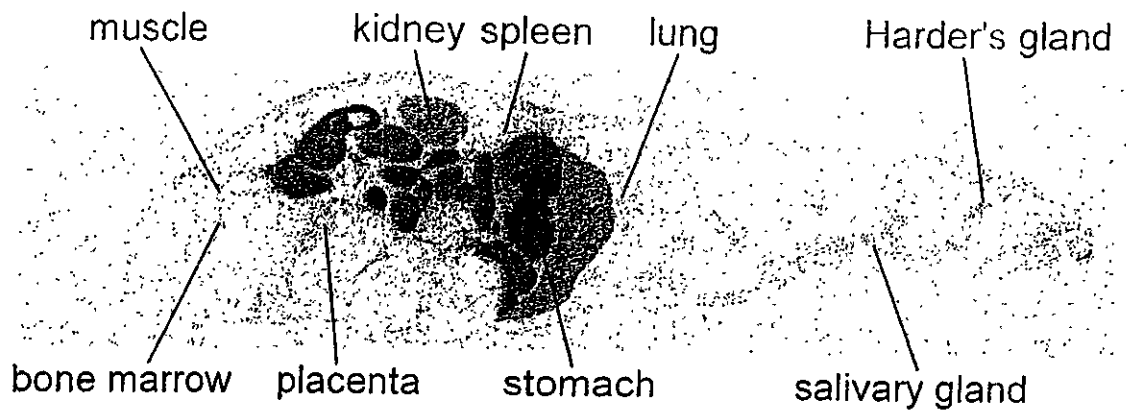


Figure 12-c. Whole body autoradiographs of a rat on the 18th day of gestation 24 hr after oral administration of Genistein [dihydroxyphenyl-¹⁴C] (Dose : 1.85MBq/300 μ g/kg)

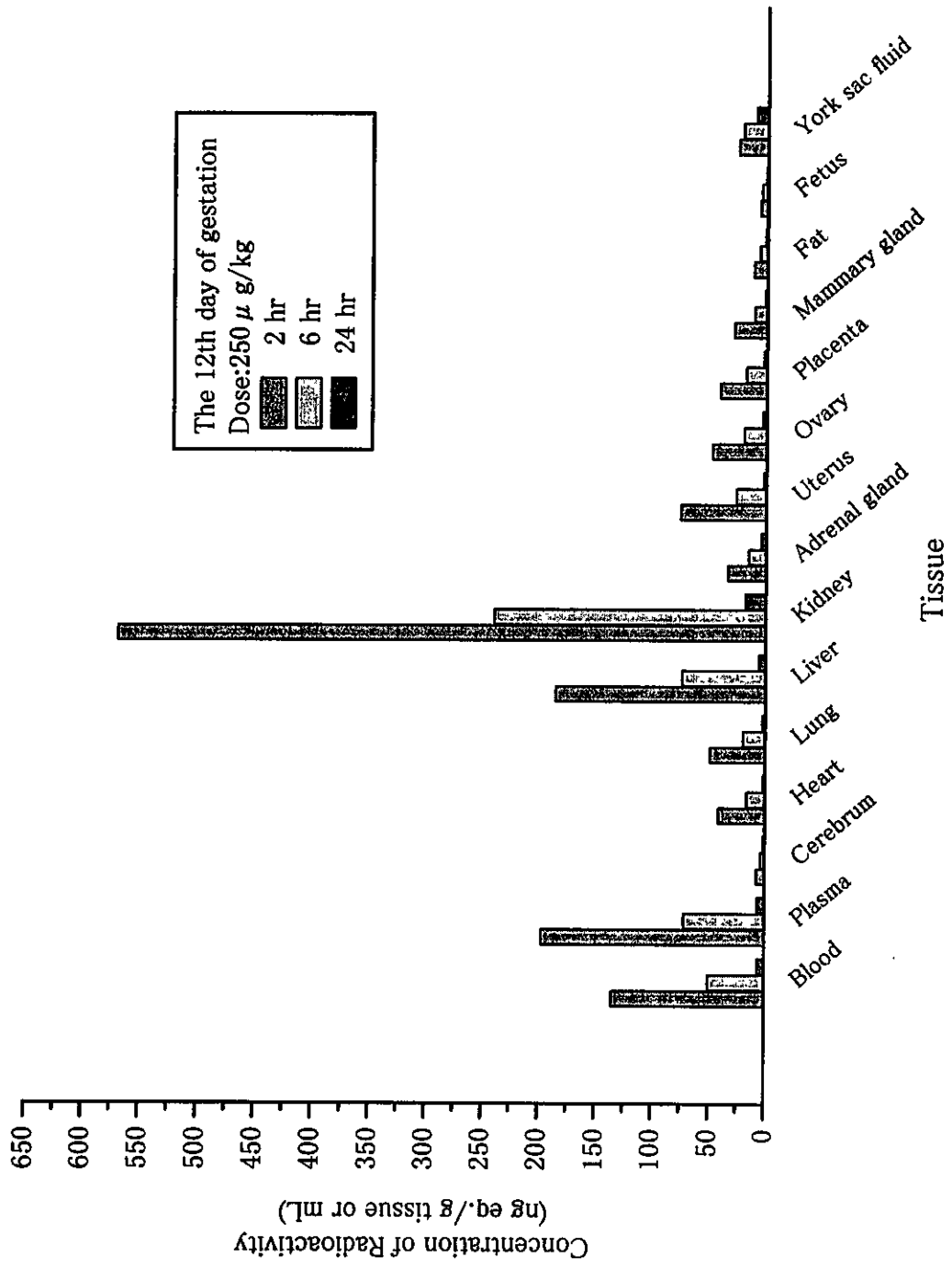


Figure 13-a. Tissue distribution of radioactivity after a single oral administration of Benzyl butyl phthalate [ring-¹⁴C(U)] to pregnant rat on the 12 th day of gestation

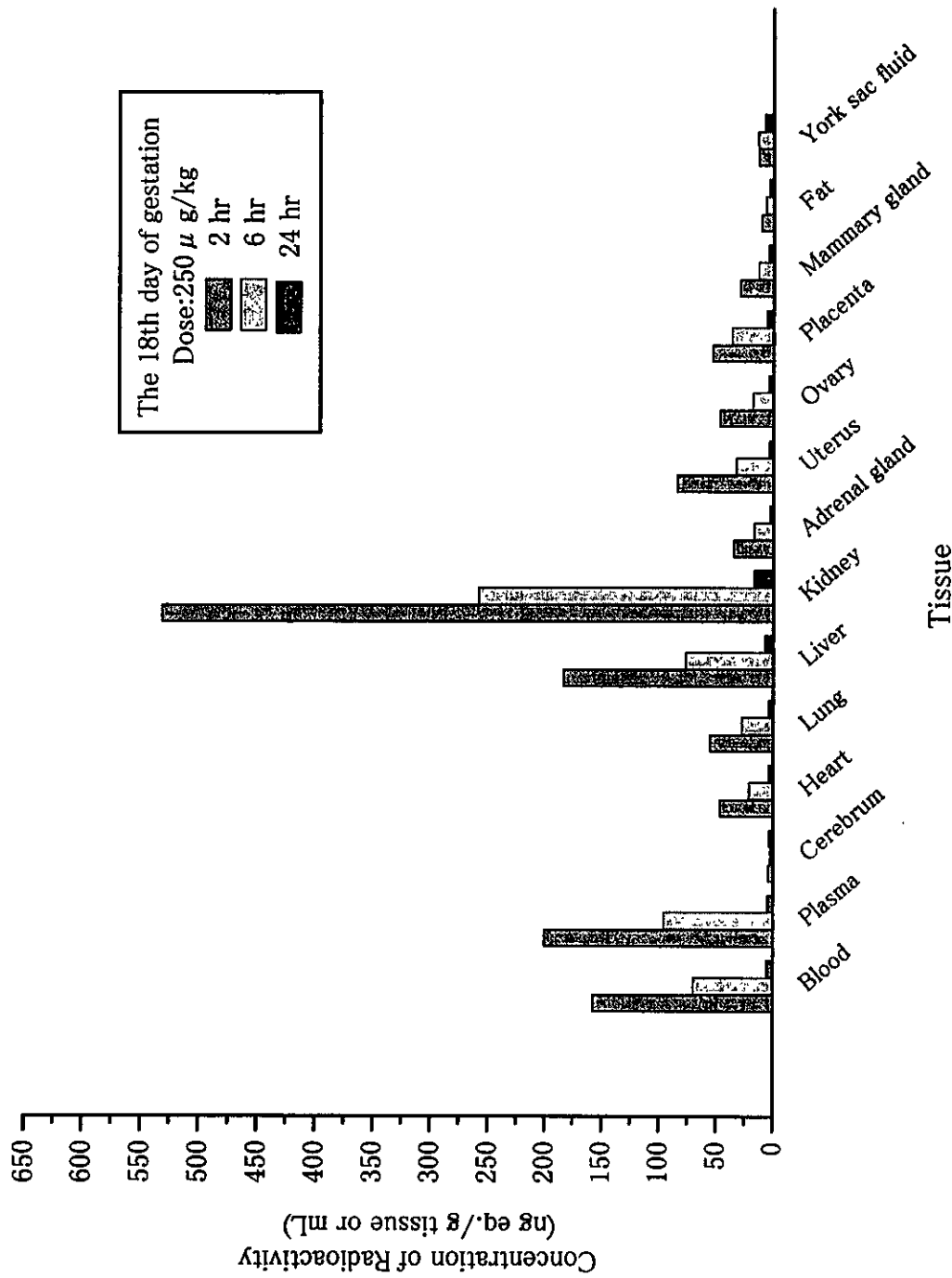


Figure 13-b. Tissue distribution of radioactivity after a single oral administration of Benzyl butyl phthalate [ring-¹⁴C(U)] to pregnant rat on the 18th day of gestation

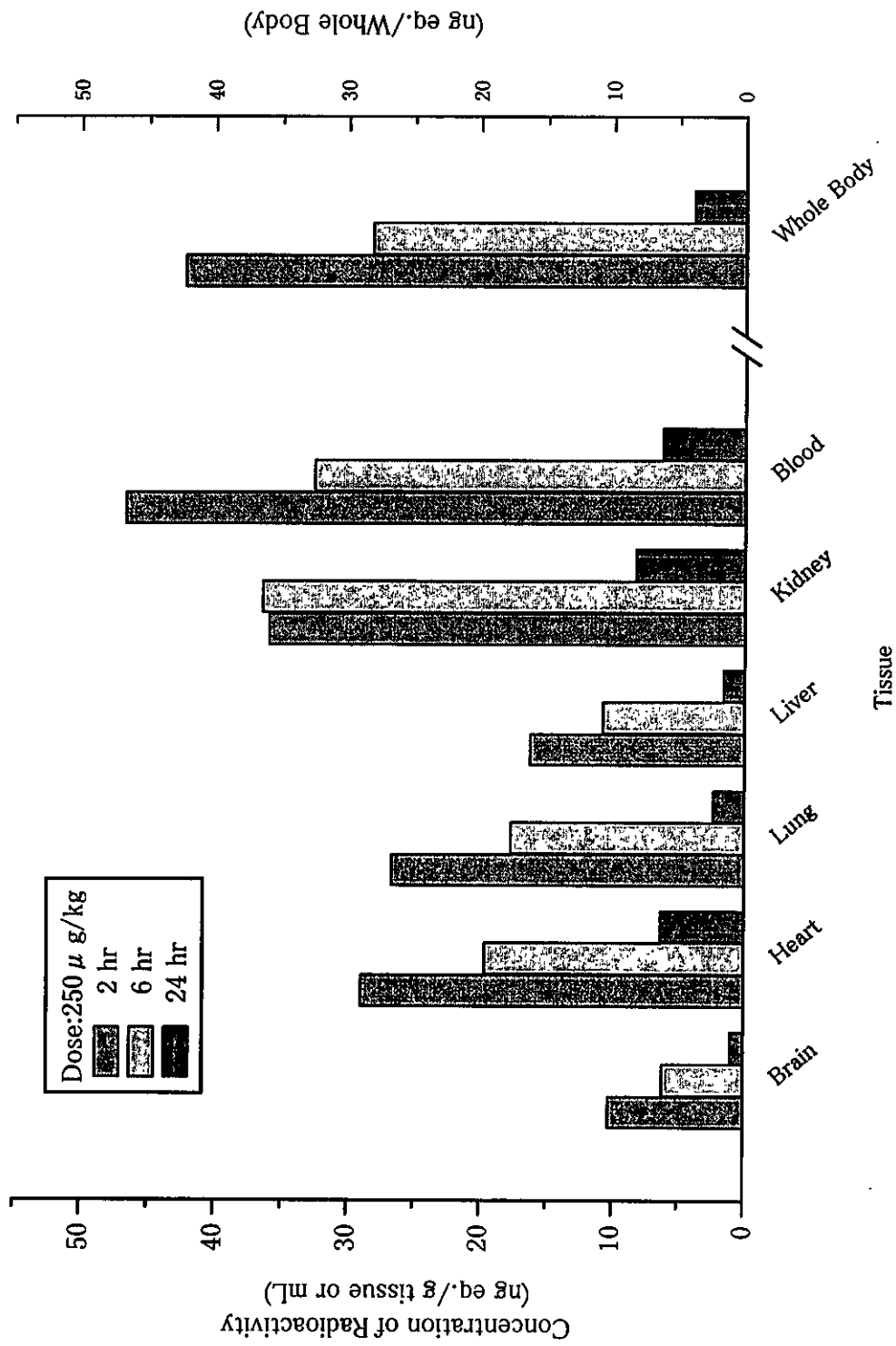


Figure 13-c. Fetal tissue distribution and fetal whole body concentration of radioactivity after a single oral administration of Benzyl butyl phthalate [ring-¹⁴C(U)] to pregnant rat on the 18th day of gestation

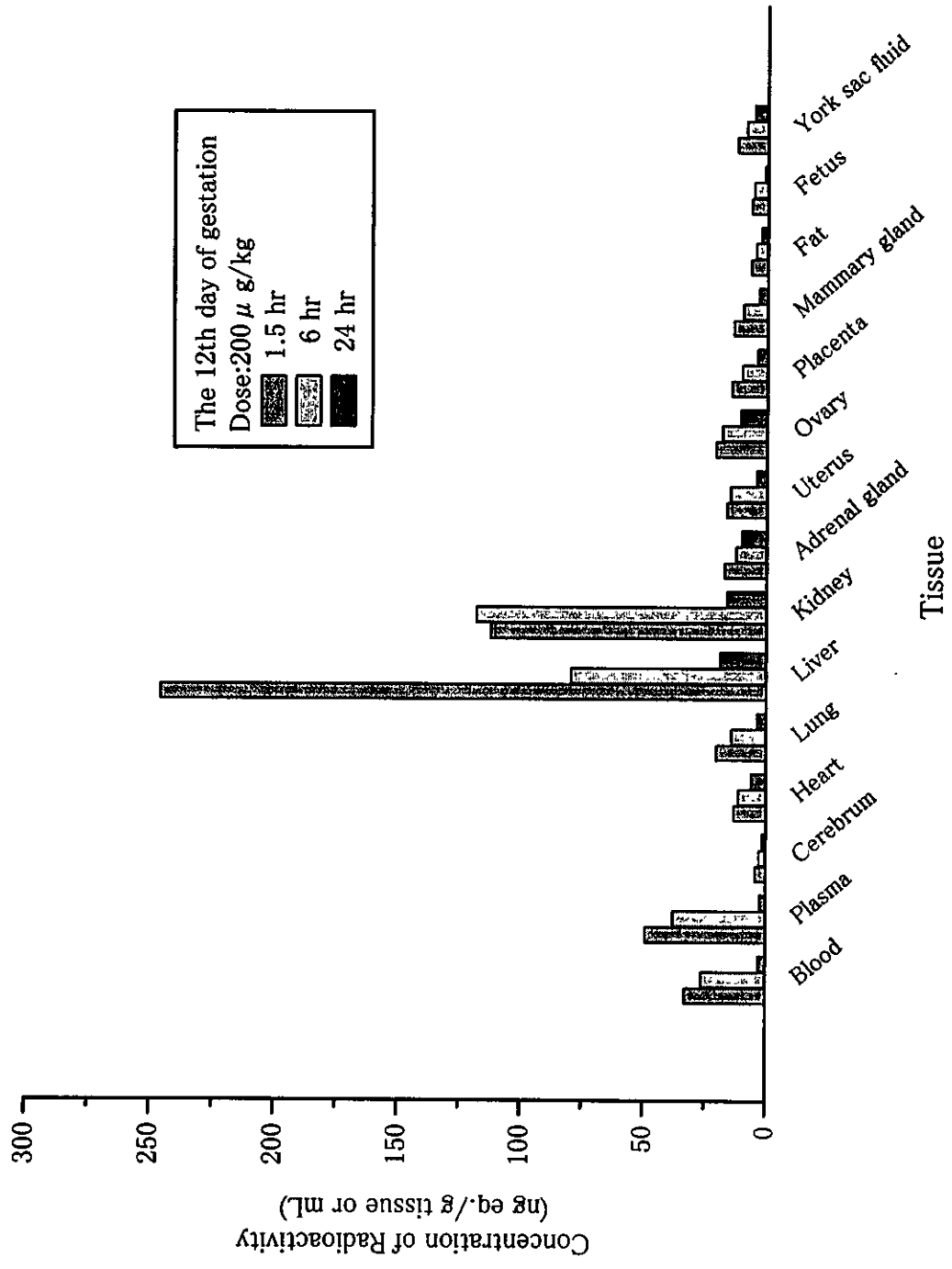


Figure 14-a. Tissue distribution of radioactivity after a single oral administration of 4-Nonylphenol [ring-¹⁴C(U)] to pregnant rat on the 12 th day of gestation