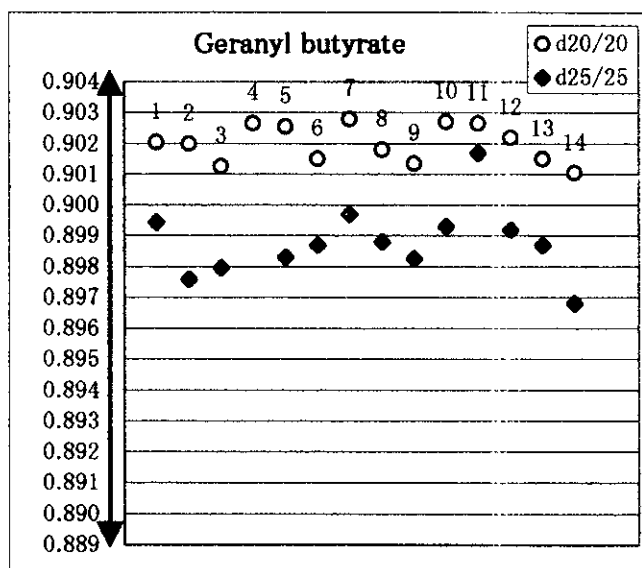
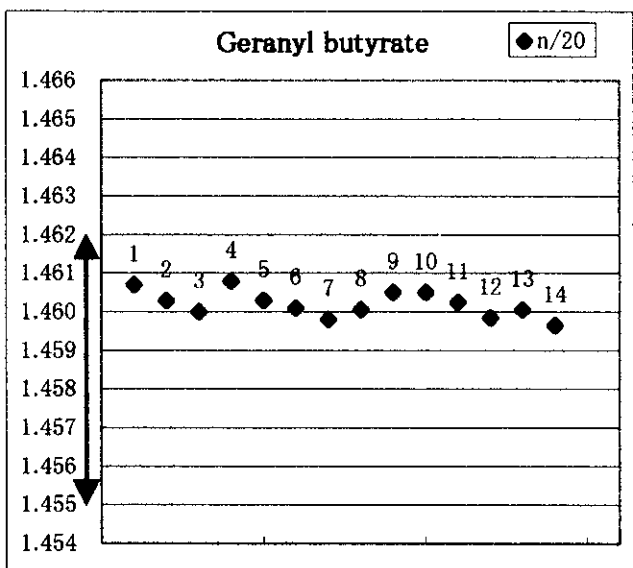


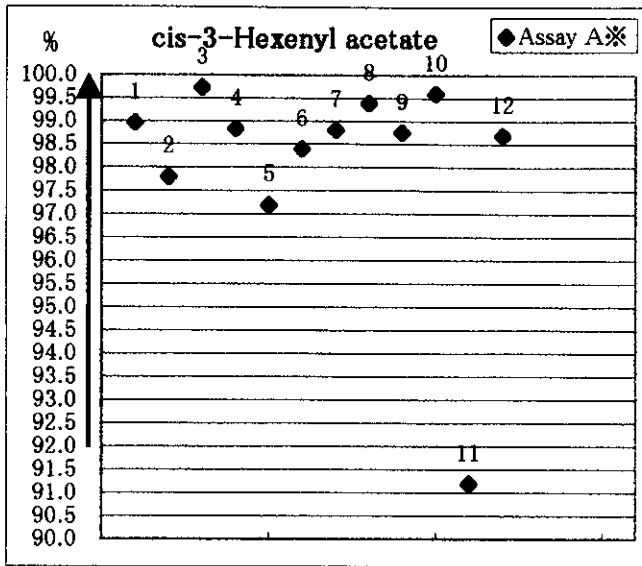
※Ester法



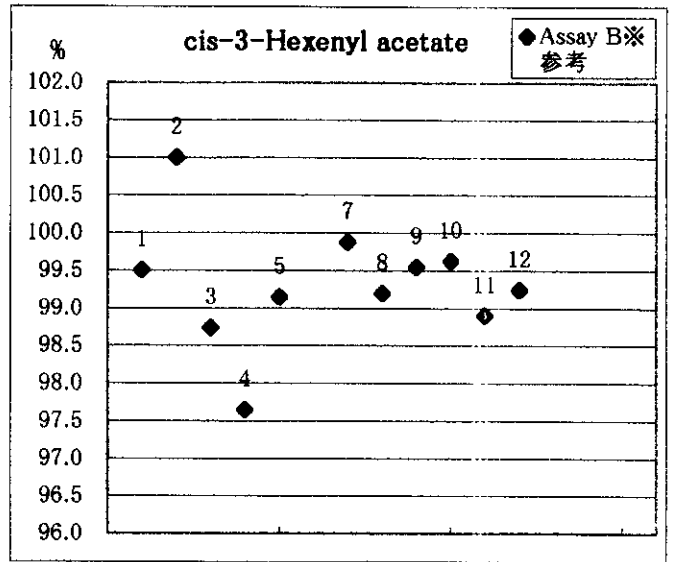
[14] cis-3-Hexenyl acetate

試料番号	Assay A※	Assay B※ 参考	AV	n/20	d20/20	d25/25	Sol/AL※※	注
JECFA上限			1.0	1.429		0.901	溶解する	
JECFA下限	92.0			1.425		0.896		
1	98.97	99.51	0.40	1.4270	0.9022	0.8971	YES	
2	97.80	101.01	1.01	1.4263	0.9041	0.9005	YES	
3	99.73	98.74	0.21	1.4273	0.9021	0.8972	YES	
4	98.84	97.65	0.13	1.4270	0.9020	0.8981	YES	
5	97.20	99.15	0.10	1.4258	0.9024	0.8994	YES	
6	98.40		0.08	1.4265	0.9011	0.8993	YES	
7	98.81	99.88	0.23	1.4274	0.9031	0.8995	YES	
8	99.40	99.20	0.10	1.4273	0.9031	0.8995	YES	
9	98.76	99.55		1.4267	0.9009	0.8991	YES	
10	99.60	99.63	0.07	1.4267	0.9023	0.8986	YES	
11	91.20	98.90	0.10	1.4258	0.8998	0.8961	YES	
12	98.70	99.25	0.03	1.4266	0.9017	0.8970	YES	
Average	98.12	99.31	0.22	1.4267	0.9021	0.8984		

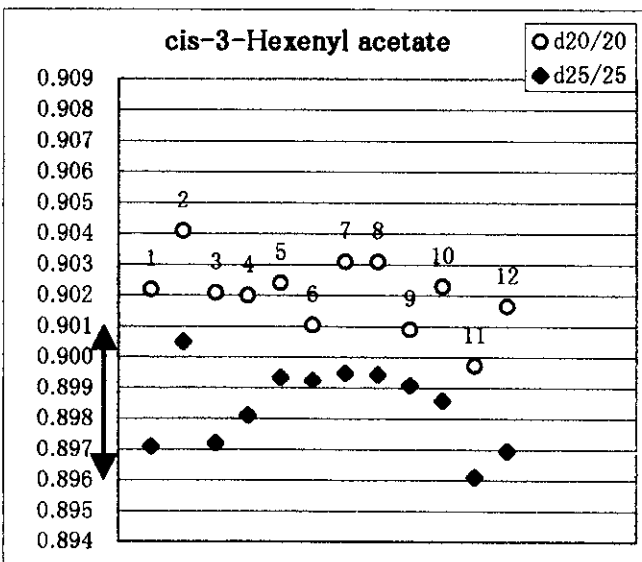
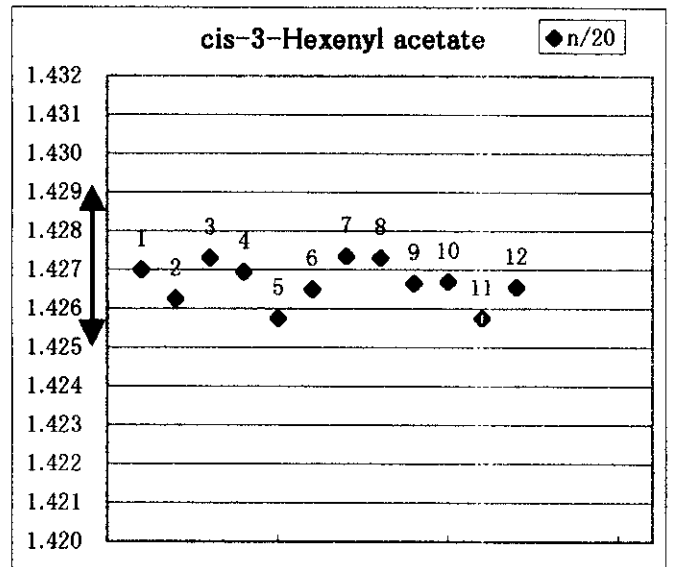
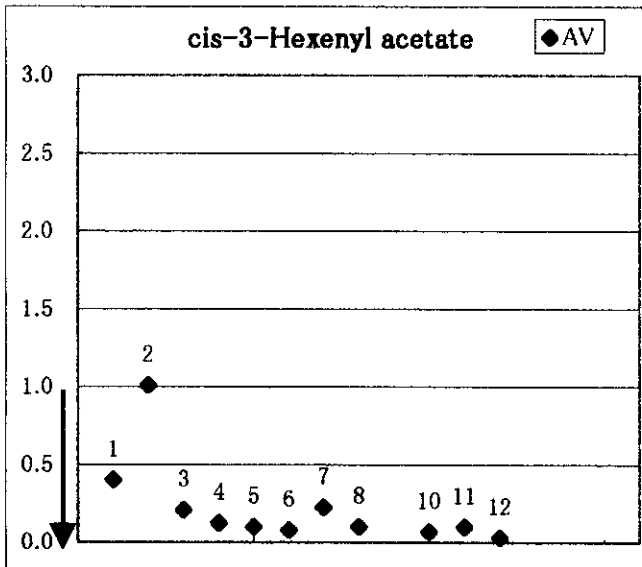
※ Assay A GC法  
 Assay B Ester法  
 ※※1ml in 1ml 95% Ethanol



※Assay A GC法



※ Assay B Ester法

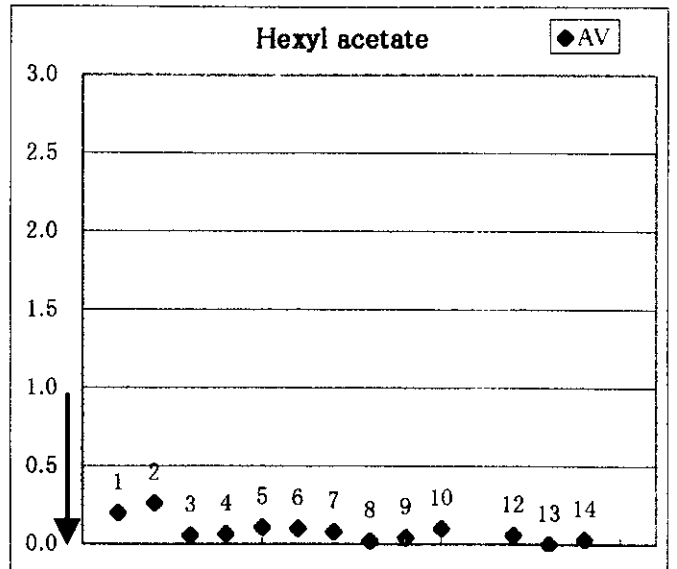
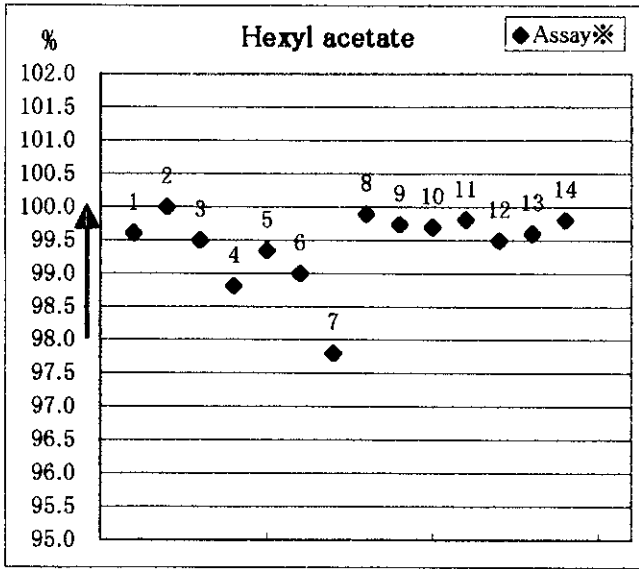


[15] Hexyl acetate

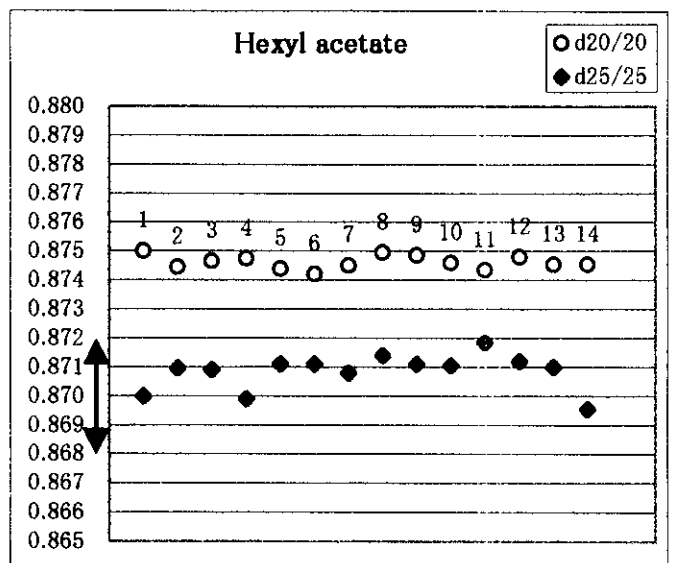
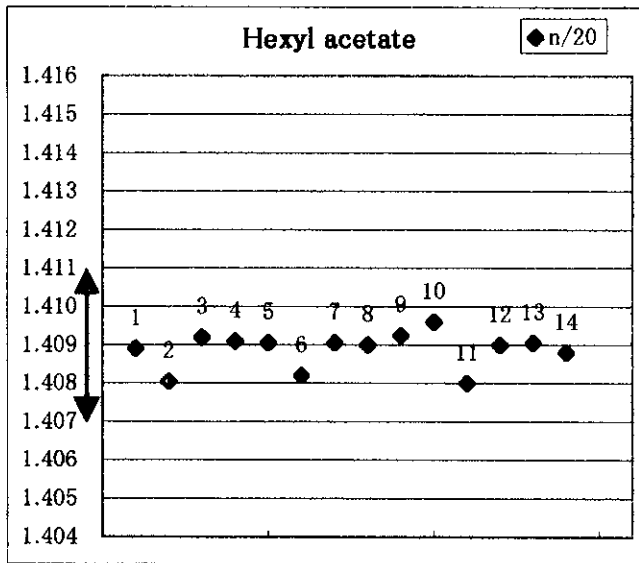
試料番号	Assay※	AV	n/20	d20/20	d25/25	Sol/AL※※	注
JECFA上限		1.0	1.411		0.872	溶解する	
JECFA下限	98.0		1.407		0.868		
1	99.60	0.20	1.4089	0.8750	0.8700	YES	
2	100.00	0.26	1.4081	0.8745	0.8710	YES	
3	99.50	0.06	1.4092	0.8747	0.8709	YES	
4	98.81	0.07	1.4091	0.8748	0.8699	YES	
5	99.34	0.11	1.4091	0.8744	0.8711	YES	
6	99.00	0.10	1.4082	0.8742	0.8711	YES	
7	97.80	0.08	1.4091	0.8745	0.8708	YES	
8	99.89	0.02	1.4090	0.8750	0.8714	YES	
9	99.74	0.04	1.4093	0.8749	0.8711	YES	
10	99.70	0.10	1.4096	0.8746	0.8711	YES	
11	99.81		1.4080	0.8744	0.8719	YES	
12	99.50	0.06	1.4090	0.8748	0.8712	YES	
13	99.60	0.00	1.4091	0.8746	0.8710	YES	
14	99.80	0.03	1.4088	0.8746	0.8696	YES	
Average	99.44	0.09	1.4089	0.8746	0.8709		

※ GC法

※※1ml in 1ml 95% Ethanol



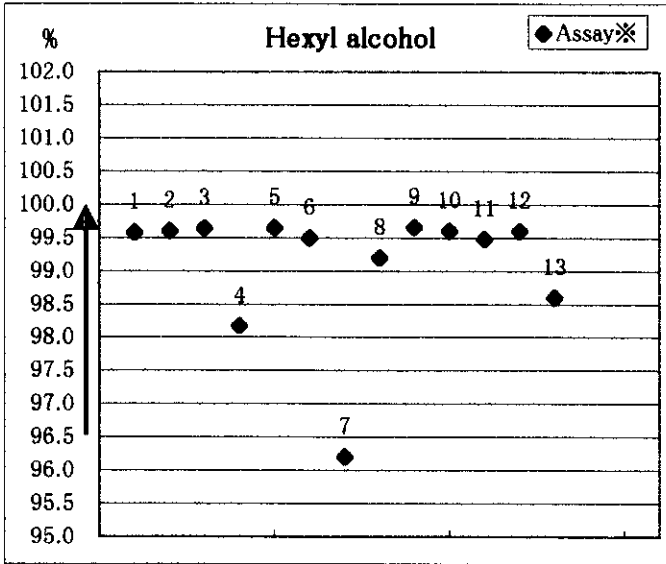
※GC法



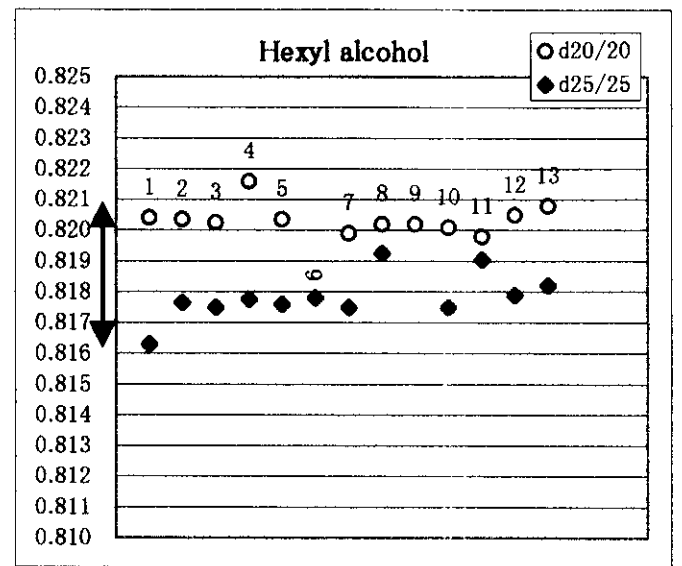
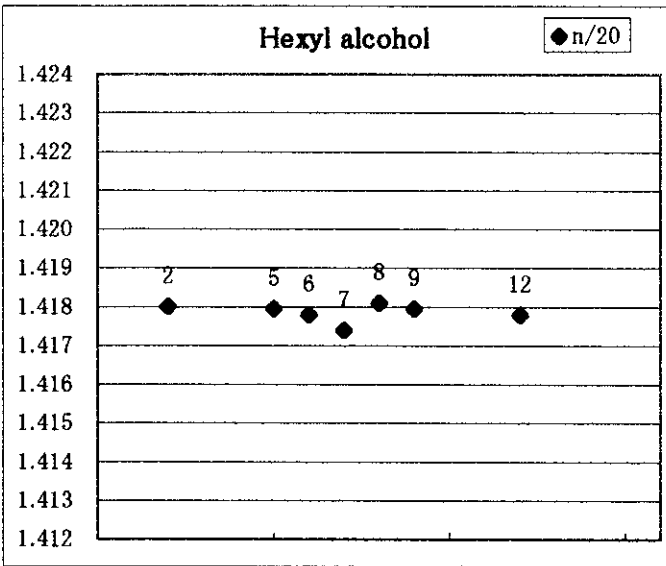
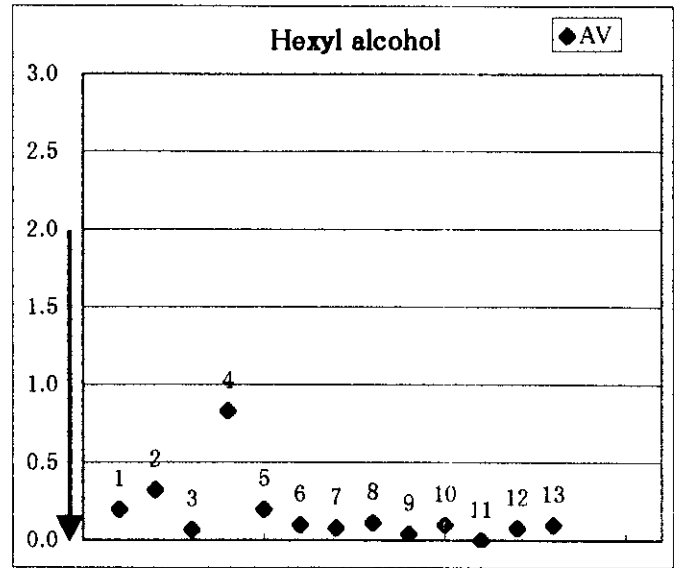
[16] Hexyl alcohol

試料番号	Assay※	AV	n/20	d20/20	d25/25	注
JECFA上限		2.0			0.821	
JECFA下限	96.5				0.816	
1	99.58	0.20		0.8204	0.8163	
2	99.60	0.33	1.4180	0.8204	0.8177	
3	99.64	0.07		0.8203	0.8175	
4	98.17	0.83		0.8216	0.8178	
5	99.65	0.20	1.4180	0.8204	0.8176	
6	99.50	0.10	1.4178		0.8178	
7	96.20	0.08	1.4174	0.8199	0.8175	
8	99.20	0.12	1.4181	0.8202	0.8193	
9	99.66	0.04	1.4180	0.8202	0.8716	
10	99.60	0.10		0.8201	0.8175	
11	99.48	0.00		0.8198	0.8191	
12	99.60	0.08	1.4178	0.8205	0.8179	
13	98.60	0.10		0.8208	0.8182	
Average	99.11	0.17	1.4179	0.8204	0.8220	

※GC法



※GC法

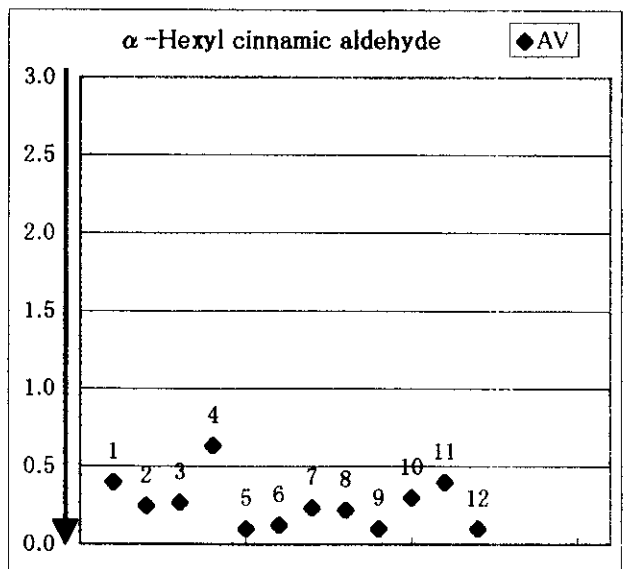
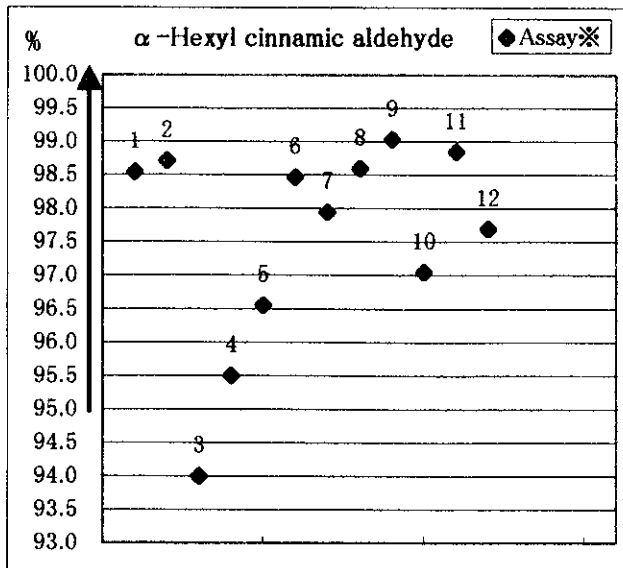


[17]  $\alpha$ -Hexyl cinnamic aldehyde

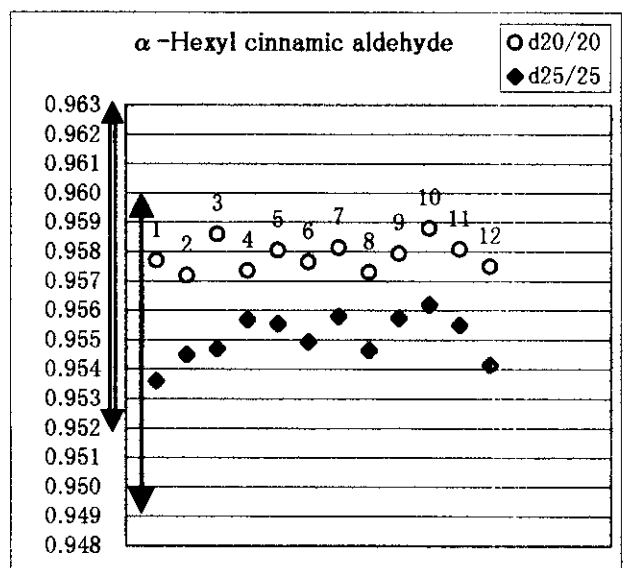
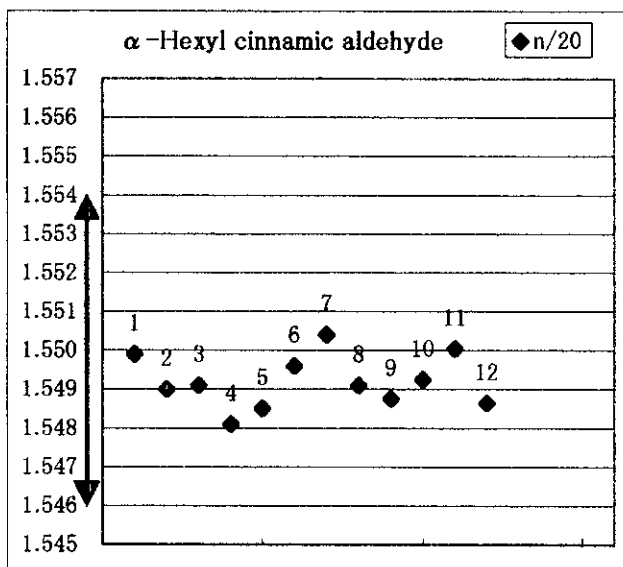
試料番号	Assay※	AV	n/20	d20/20	d25/25	注
JECFA上限	100.5	3.0	1.554	0.963	0.960	
JECFA下限	95		1.546	0.952	0.949	
1	98.54	0.4	1.5499	0.9577	0.9536	
2	98.72	0.25	1.5490	0.9572	0.9545	
3	94.00	0.268	1.5491	0.9586	0.9547	
4	95.50	0.635	1.5481	0.9574	0.9557	
5	96.55	0.1	1.5485	0.9581	0.9556	
6	98.47	0.125	1.5496	0.9577	0.9550	
7	97.95	0.235	1.5504	0.9582	0.9558	
8	98.60	0.22	1.5491	0.9573	0.9547	
9	99.04	0.1	1.5488	0.9580	0.9558	
10	97.05	0.3	1.5493	0.9588	0.9562	
11	98.85	0.4	1.5501	0.9581	0.9555	
12	97.70	0.1	1.5487	0.9575	0.9542	
Average	97.58	0.26	1.5492	0.9579	0.9551	

※Aldehyde, Ketone法





※Aldehyde, Ketone法



[18] iso- $\alpha$ -Methyl ionone

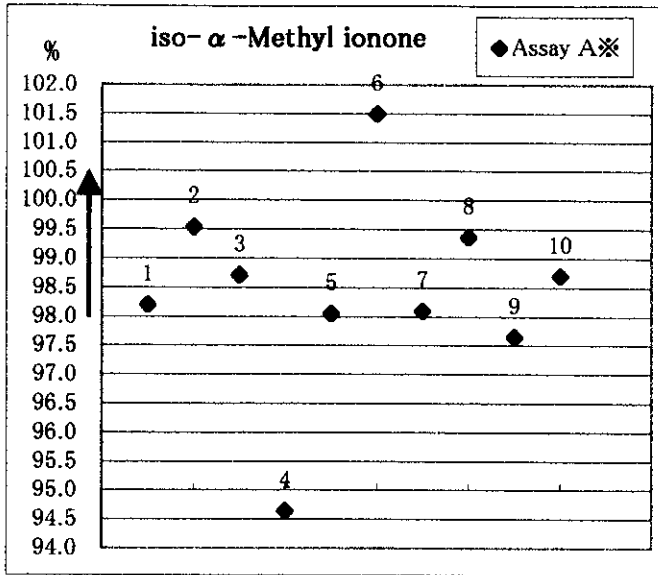
試料番号	Assay A※	Assay B※	n/20	d20/20	d25/25	注
JECFA上限	100.5		1.503	0.937	0.934	
JECFA下限	98	90	1.499	0.932	0.929	
1	98.20	91.60	1.5001	0.9329	0.9303	
2	99.54	56.70	1.5008	0.9319	0.9278	注-1
3	98.71	86.52	1.4999	0.9323	0.9294	
4	94.64		1.5014	0.9331	0.9291	
5	98.05	55.51	1.4994	0.9322	0.9292	注-2
6	101.50	67.00	1.4992	0.9315	0.9290	
7	98.10	64.46	1.4998	0.9327	0.9299	
8	99.38	84.90	1.5007	0.9333	0.9321	
9	97.65	59.70	1.5014	0.9375	0.9348	
10	98.70	96.50	1.5001	0.9329	0.9315	
Average	98.45	73.65	1.5003	0.9330	0.9303	

※Assay A Aldehyde, Ketone法

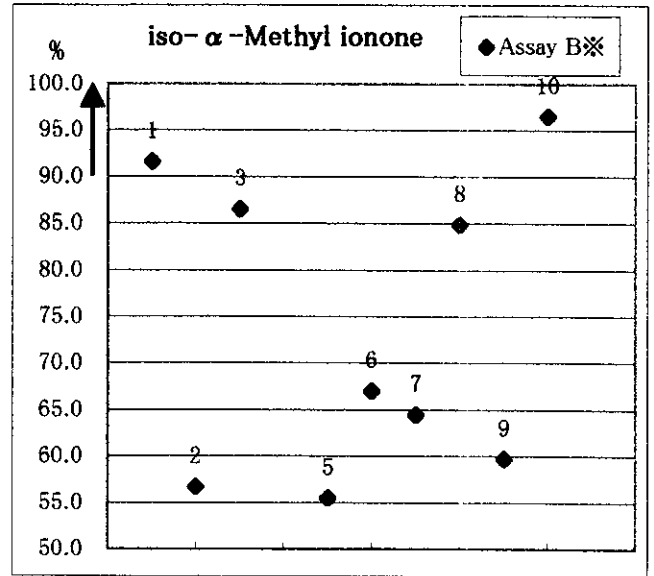
Assay B GC法

注-1 : GC法により n- $\alpha$ -Methyl ionone 26.7%

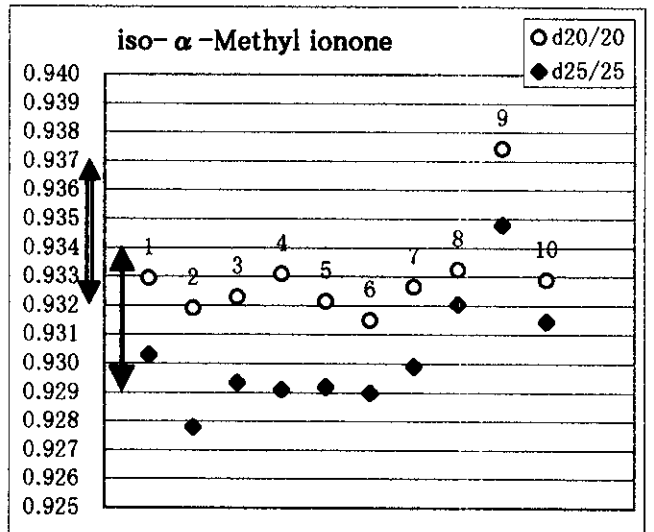
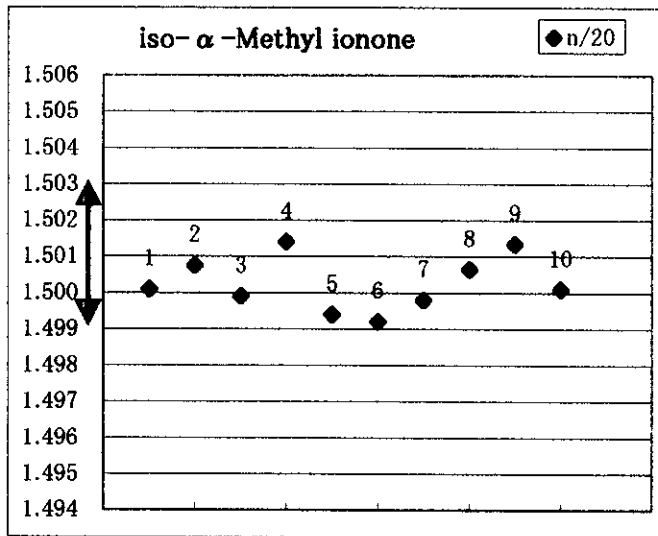
注-2 : GC法により n- $\alpha$ -Methyl ionone 26.8%



※Assay A Aldehyde, Ketone法



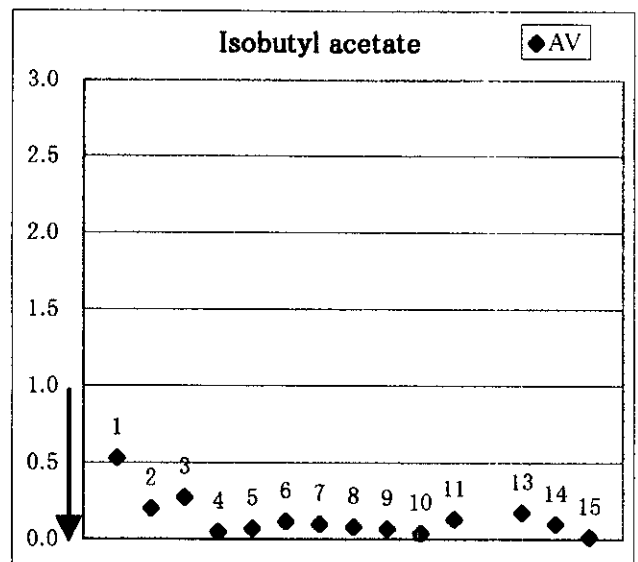
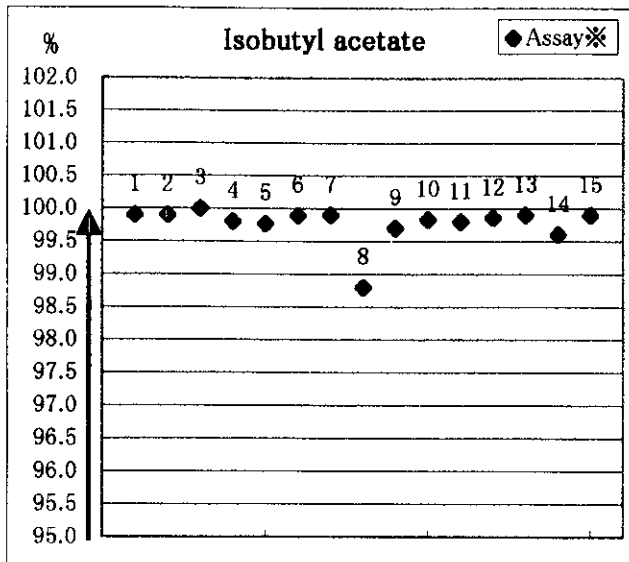
※Assay B GC法



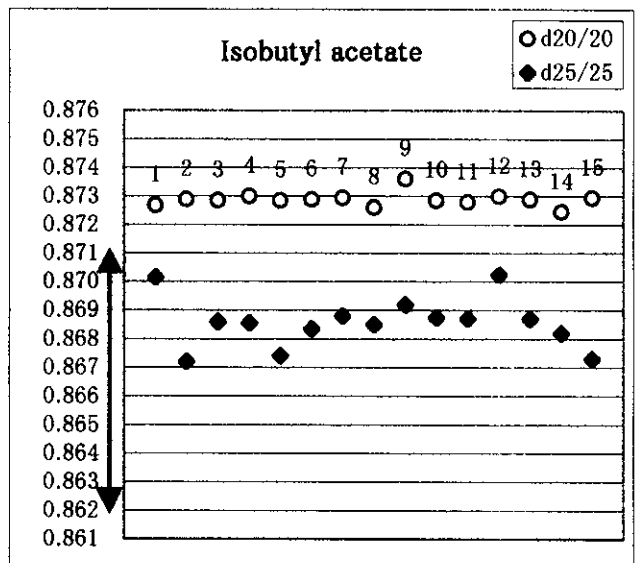
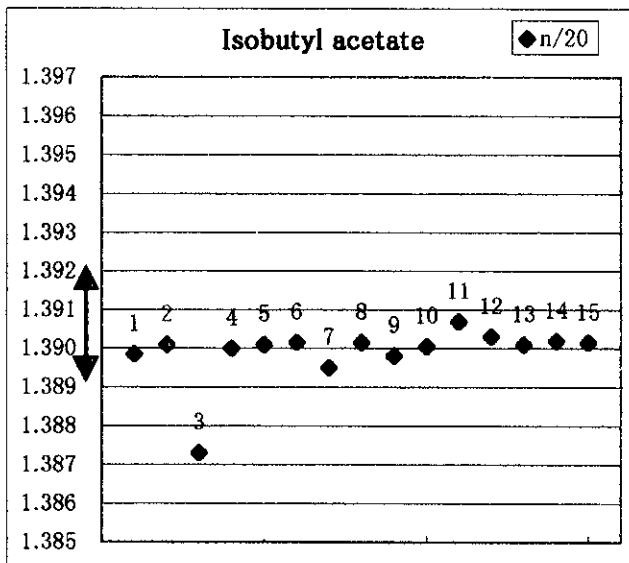
[19] Isobutyl acetate

試料番号	Assay※	AV	n/20	d20/20	d25/25	注
JECFA上限		1.0	1.392		0.871	
JECFA下限	95.0		1.389		0.862	
1	99.90	0.53	1.3899	0.8727	0.8702	
2	99.90	0.20	1.3901	0.8729	0.8672	
3	100.00	0.28	1.3873	0.8729	0.8686	
4	99.80	0.05	1.3900	0.8730	0.8686	
5	99.77	0.07	1.3901	0.8729	0.8674	
6	99.89	0.12	1.3902	0.8729	0.8684	
7	99.90	0.10	1.3895	0.8730	0.8688	
8	98.80	0.08	1.3902	0.8726	0.8685	
9	99.70	0.07	1.3898	0.8736	0.8692	
10	99.83	0.04	1.3901	0.8729	0.8688	
11	99.80	0.13	1.3907	0.8728	0.8687	
12	99.86		1.3903	0.8730	0.8703	
13	99.90	0.18	1.3901	0.8729	0.8687	
14	99.60	0.10	1.3902	0.8725	0.8682	
15	99.90	0.02	1.3902	0.8730	0.8673	
Average	99.77	0.14	1.3899	0.8729	0.8686	

※GC法



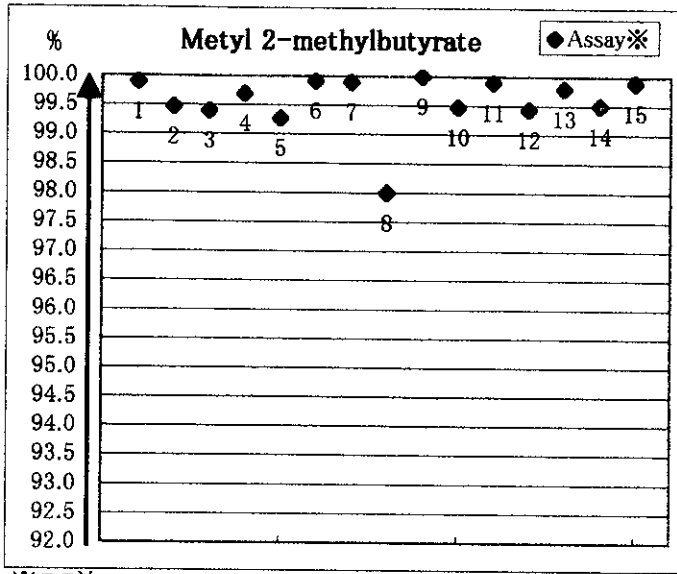
※GC法



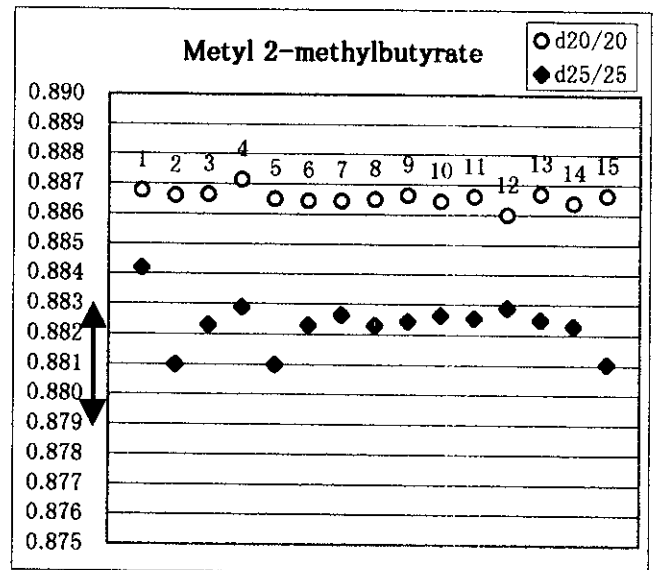
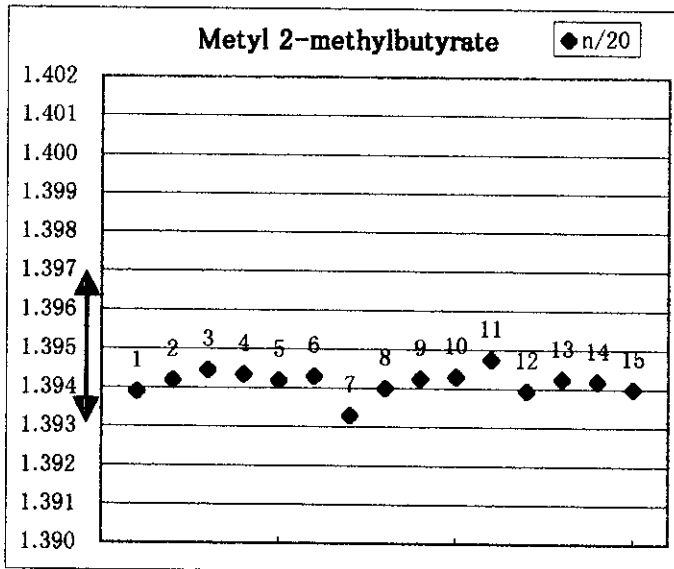
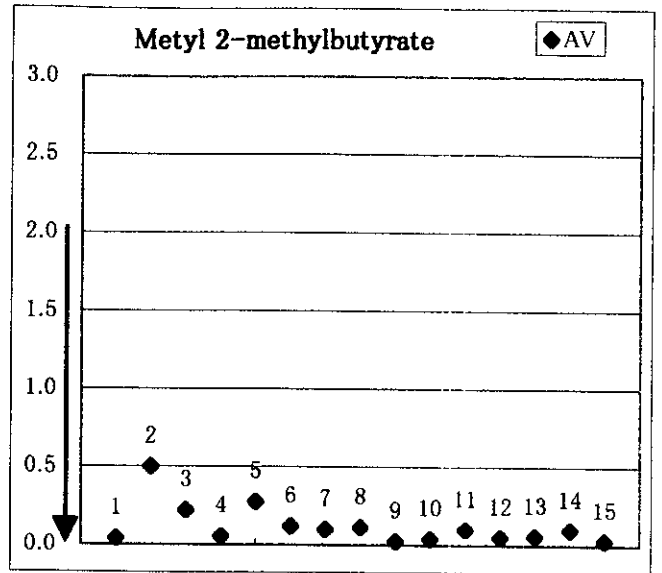
[20] Metyl 2-methylbutyrate

試料番号	Assay※	AV	n/20	d20/20	d25/25	注
JECFA上限		2.0	1.397		0.883	
JECFA下限	92.0		1.393		0.879	
1	99.90	0.04	1.3939	0.8868	0.8842	
2	99.47	0.50	1.3942	0.8866	0.8810	
3	99.40	0.22	1.3945	0.8867	0.8823	
4	99.70	0.06	1.3944	0.8872	0.8829	
5	99.28	0.27	1.3942	0.8865	0.8810	
6	99.92	0.12	1.3943	0.8865	0.8823	
7	99.90	0.10	1.3933	0.8865	0.8827	
8	98.00	0.12	1.3940	0.8865	0.8823	
9	100.00	0.03	1.3943	0.8867	0.8825	
10	99.47	0.04	1.3943	0.8865	0.8827	
11	99.90	0.10	1.3948	0.8866	0.8826	
12	99.44	0.05	1.3940	0.8860	0.8829	
13	99.80	0.06	1.3943	0.8867	0.8825	
14	99.50	0.10	1.3942	0.8864	0.8823	
15	99.90	0.03	1.3940	0.8867	0.8811	
Average	99.57	0.12	1.3942	0.8866	0.8823	

※GC法



※GC法



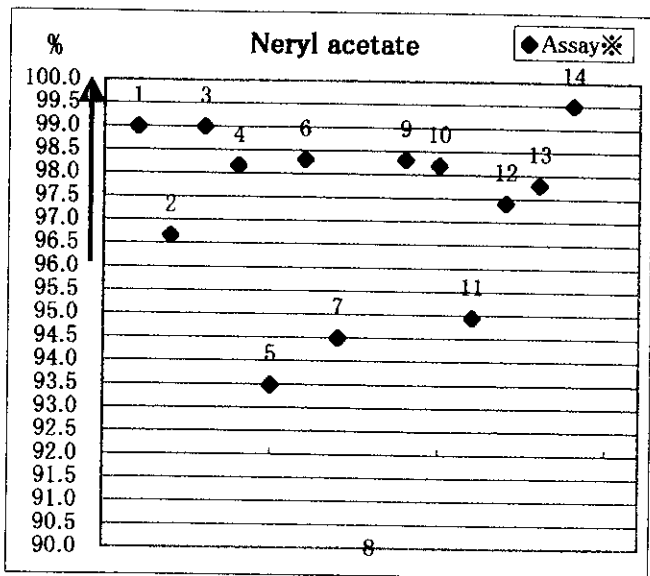
[21] Neryl acetate

試料番号	Assay※	AV	n/20	d20/20	d25/25	Sol/AL※※	注
JECFA上限		1.0	1.464		0.914	溶解する	
JECFA下限	96.0		1.458		0.905		
1	99.00	0.42	1.4609	0.9138	0.9112	YES	
2	96.67	0.50	1.4606	0.9140	0.9094	YES	
3	99.00	0.53	1.4605	0.9137	0.9110	YES	
4	98.17	0.83	1.4608	0.9150	0.9105	YES	
5	93.48	0.31	1.4606	0.9132	0.9098	YES	
6	98.30	0.40	1.4604	0.9130	0.9097	YES	
7	94.50	1.75	1.4605	0.9146	0.9119	YES	
8	39.60	2.30	1.4638	0.9102	0.9071	YES	
9	98.32	0.23	1.4612	0.9130	0.9096	YES	
10	98.20	0.24	1.4611	0.9133	0.9100	YES	
11	94.95	0.10	1.4602	0.9131	0.9113	YES	
12	97.40	0.58	1.4605	0.9145	0.9113	YES	
13	97.80	0.20	1.4606	0.9139	0.9109	YES	
14	99.50	0.06	1.4604	0.9128	0.9082	YES	
Average	93.21	0.60	1.4608	0.9134	0.9101		

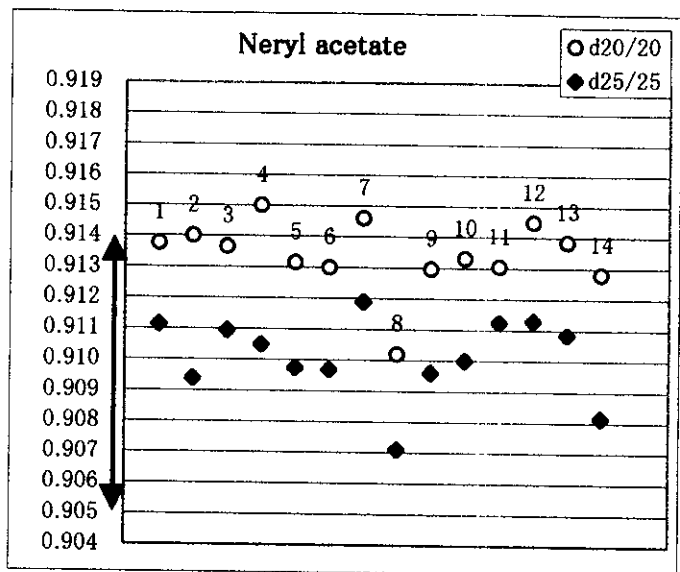
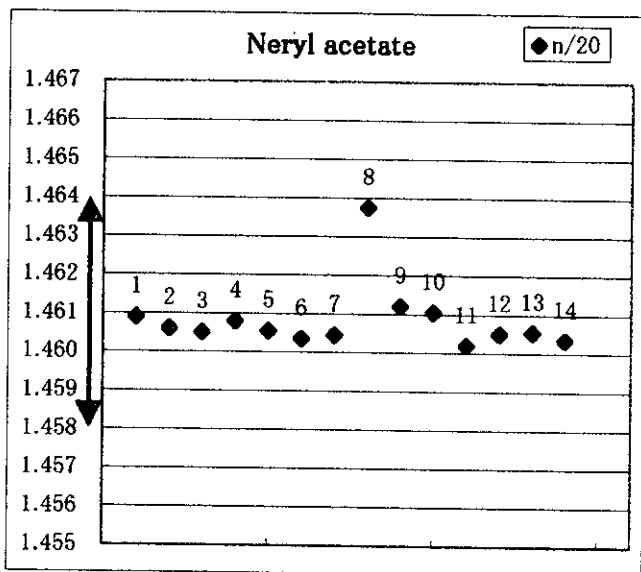
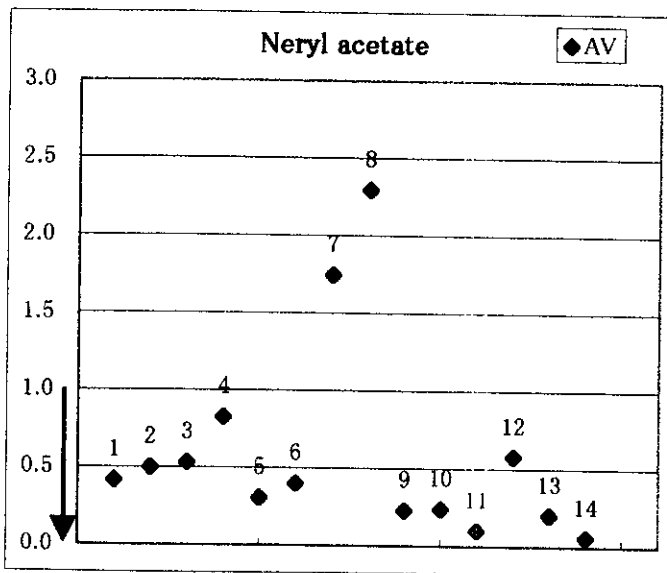
※ GC法

※※1ml in 1ml 95% Ethanol





※GC法

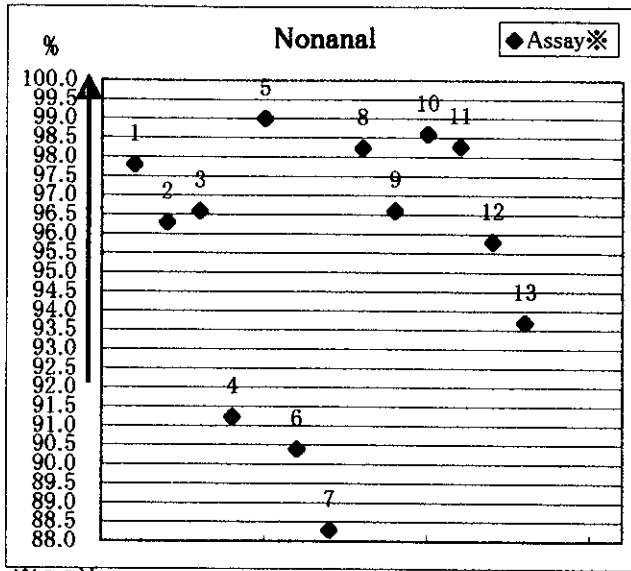


[22] Nonanal

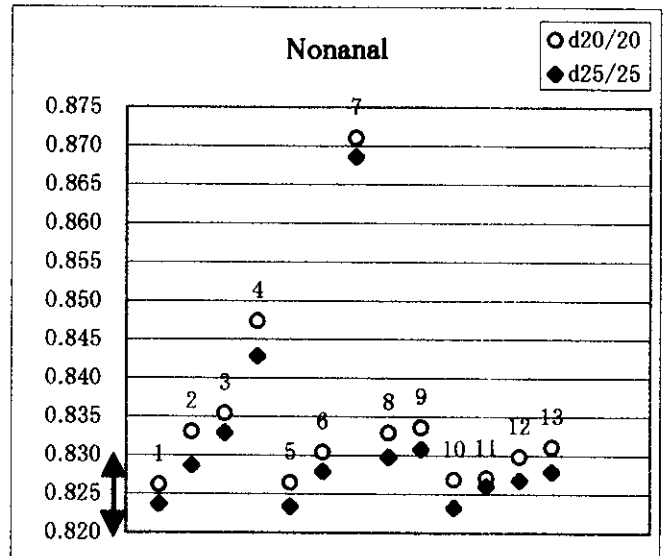
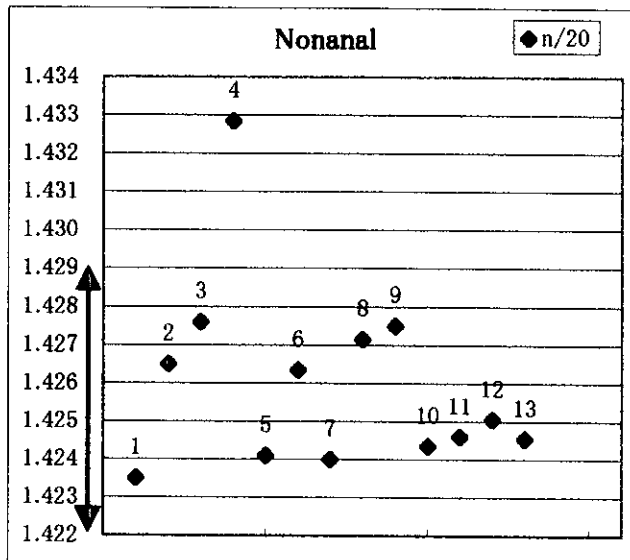
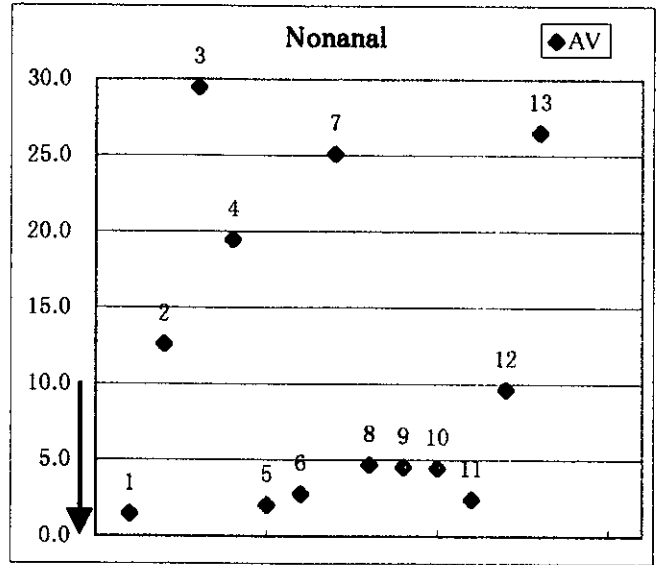
試料番号	Assay※	AV	n/20	d20/20	d25/25	Sol/AL※※	注
JECFA上限		10.0	1.429		0.830	溶解する	
JECFA下限	92.0		1.422		0.820		
1	97.80	1.50	1.4235	0.8262	0.8237	YES	
2	96.30	12.60	1.4265	0.8331	0.8287	YES	
3	96.60	29.46	1.4276	0.8355	0.8330	YES	
4	91.23	19.48	1.4329	0.8474	0.8429	NO	
5	99.00	2.05	1.4241	0.8265	0.8234	YES	
6	90.40	2.80	1.4264	0.8305	0.8280	YES	
7	88.30	25.10	1.4240	0.8711	0.8686	YES	
8	98.23	4.70	1.4272	0.8329	0.8298	YES	
9	96.61	4.55	1.4275	0.8336	0.8309	YES	
10	98.60	4.49	1.4244	0.8269	0.8233	YES	
11	98.28	2.45	1.4246	0.8271	0.8261	YES	
12	95.80	9.63	1.4251	0.8299	0.8268	YES	
13	93.70	26.50	1.4246	0.8311	0.8280	YES	
Average	95.25	11.98	1.4262	0.8355	0.8324		

※ GC法

※※ 1ml in 3ml 70% Ethanol



\*GC法



[23] 1-Octanol

試料番号	Assay※	AV	n/20	d20/20	d25/25	Sol/AL※※	注
JECFA上限		1.0	1.431		0.830	溶解する	
JECFA下限	98.0		1.428		0.822		
1	99.00	0.52	1.4290	0.8269	0.8244	YES	
2	98.29	0.40	1.4294	0.8258	0.8219	NO	注-1
3	99.60	0.14	1.4294	0.8264	0.8240	YES	
4	99.62	0.04	1.4293	0.8269	0.8232	NO	注-1
5	99.82	0.06	1.4294	0.8703	0.8666	YES	
6	98.40	0.10	1.4293	0.8262	0.8237	NO	注-2
7	98.50	0.07	1.4291	0.8267	0.8238	YES	
8	99.92	0.03	1.4295	0.8267	0.8241	YES	
9	98.28	0.04	1.4294	0.8255	0.8231	YES	
10	99.60	0.22	1.4296	0.8269	0.8244	NO	注-1
11	99.75	0.00	1.4288	0.8270	0.8259	YES	
12	99.90	0.04	1.4293	0.8267	0.8241	NO	注-3
13	100.00	0.10	1.4294	0.8262	0.8238	YES	
Average	99.31	0.10	1.4293	0.8301	0.8274		

※ GC法

※※1ml in 5ml 50% Ethanol

注-1 : Sol/ALは6mlで溶解する。

注-2 : Sol/ALは8mlで溶解する。

注-3 : Sol/ALは7mlで溶解する。