

图52 *P.aeruginosa* — 咯痰

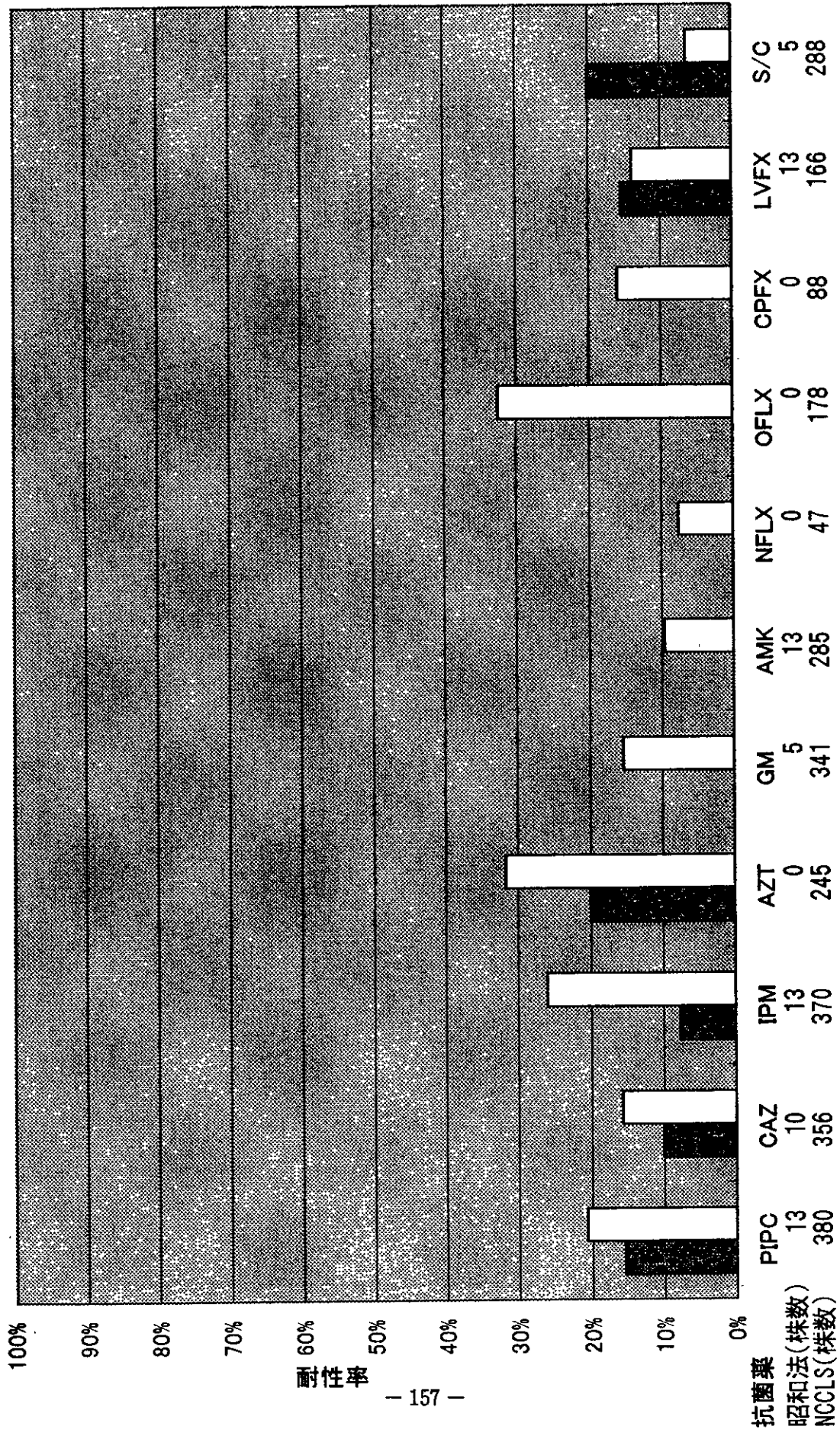


图53 *P.aeruginosa* - 尿

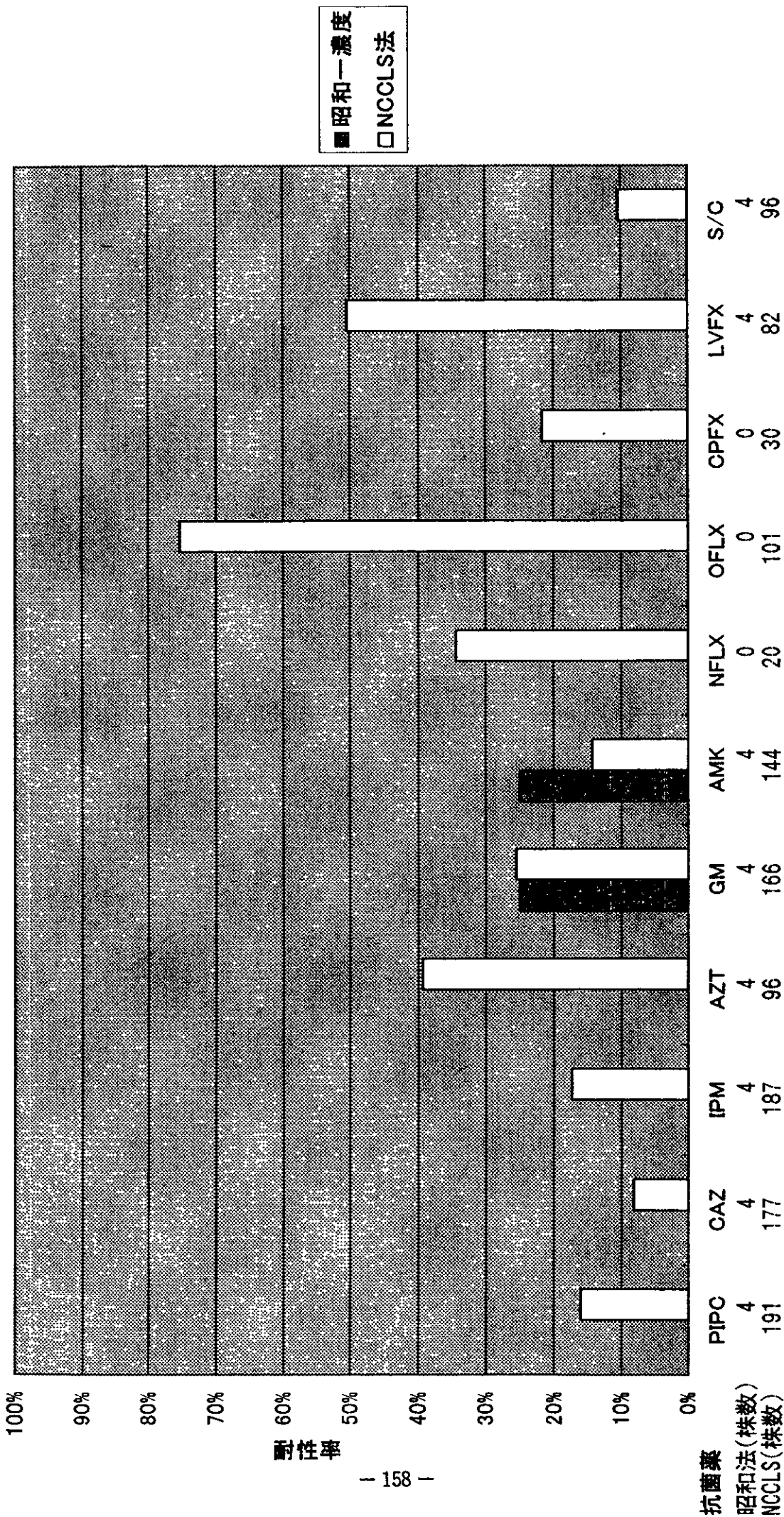


図54 *P.aeruginosa* - 膿

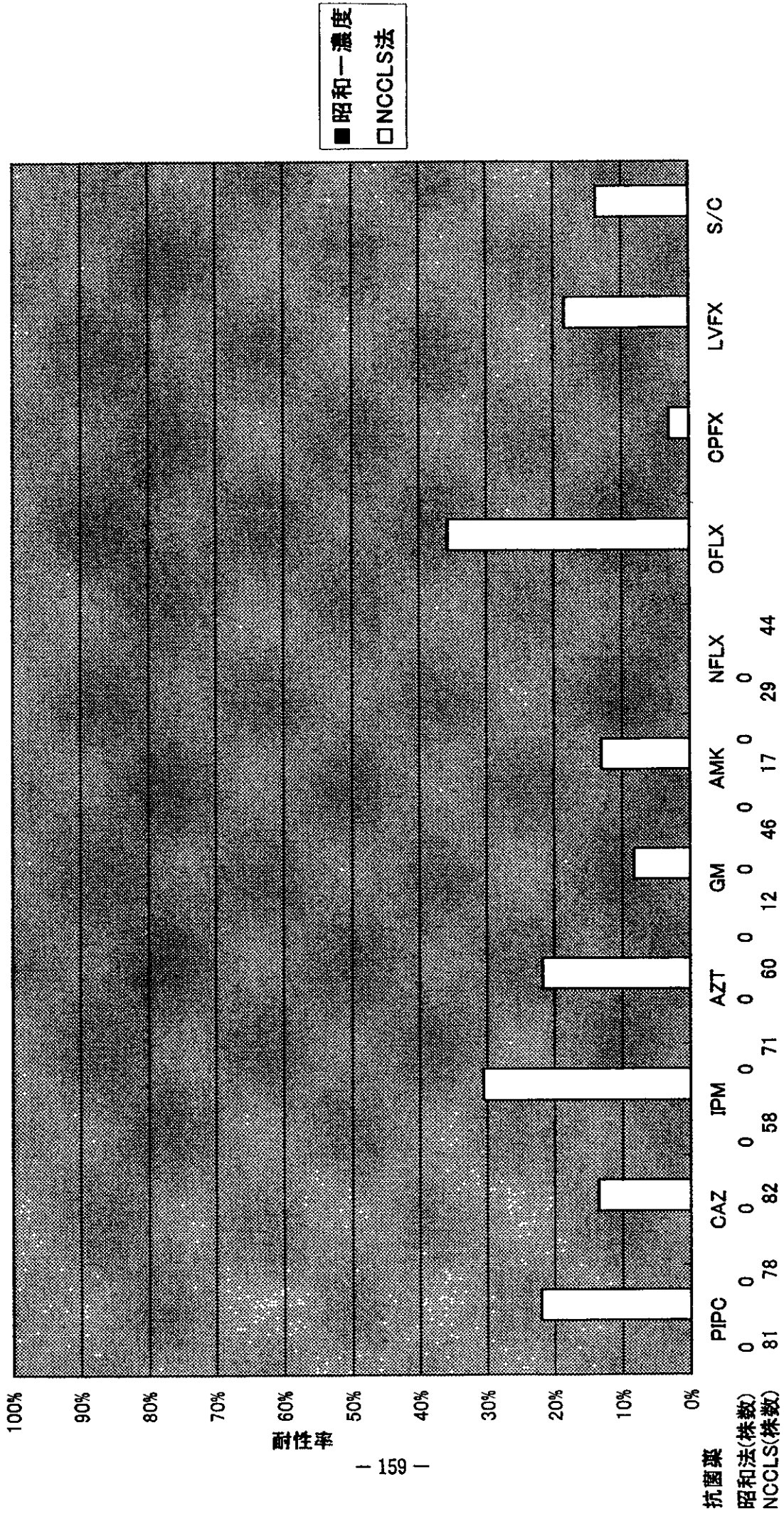
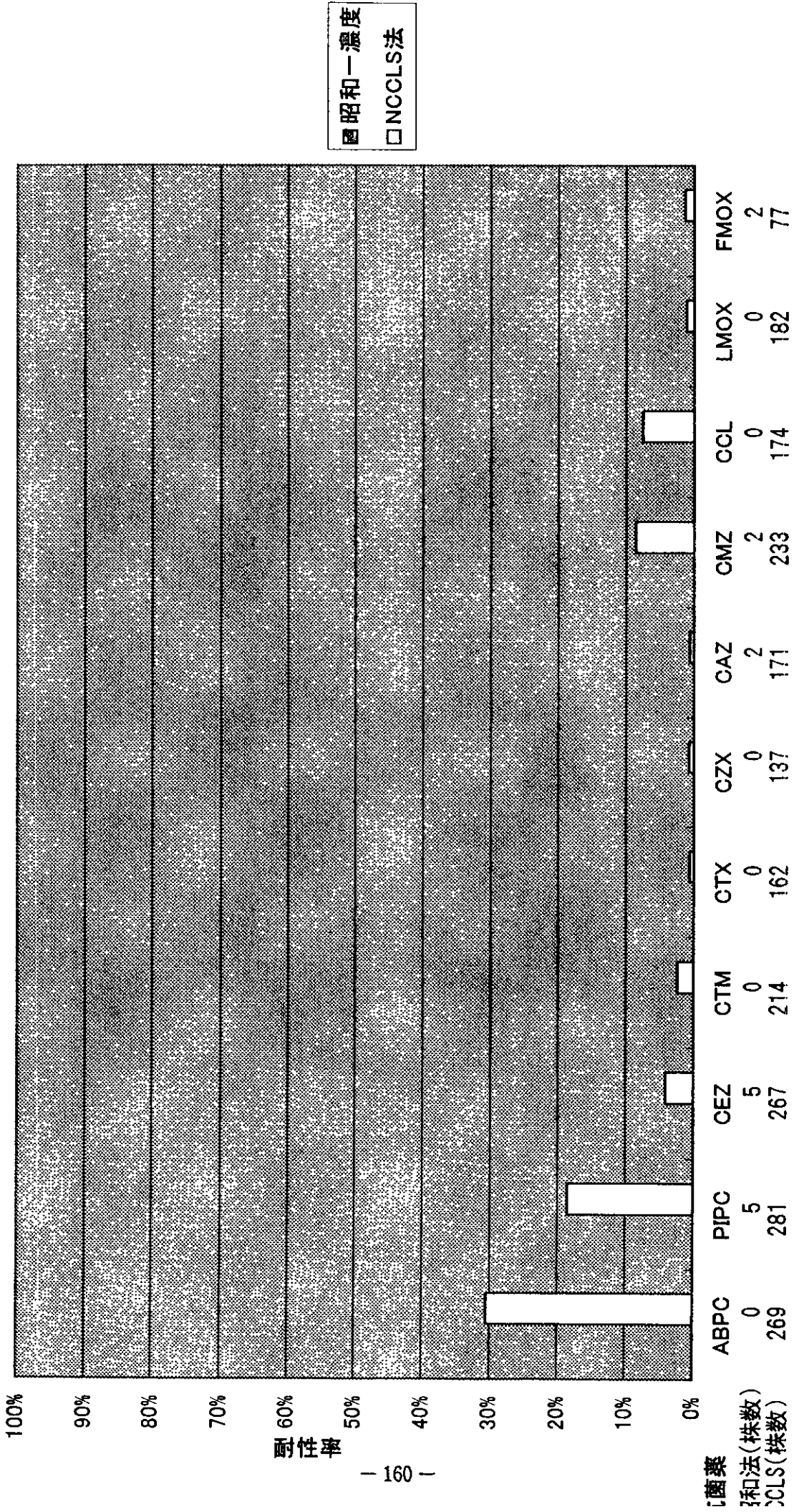


图55-1 E. coli-尿



■ 昭和一濃度  
□ NCCLS法

图55-2 *E. coli*-尿

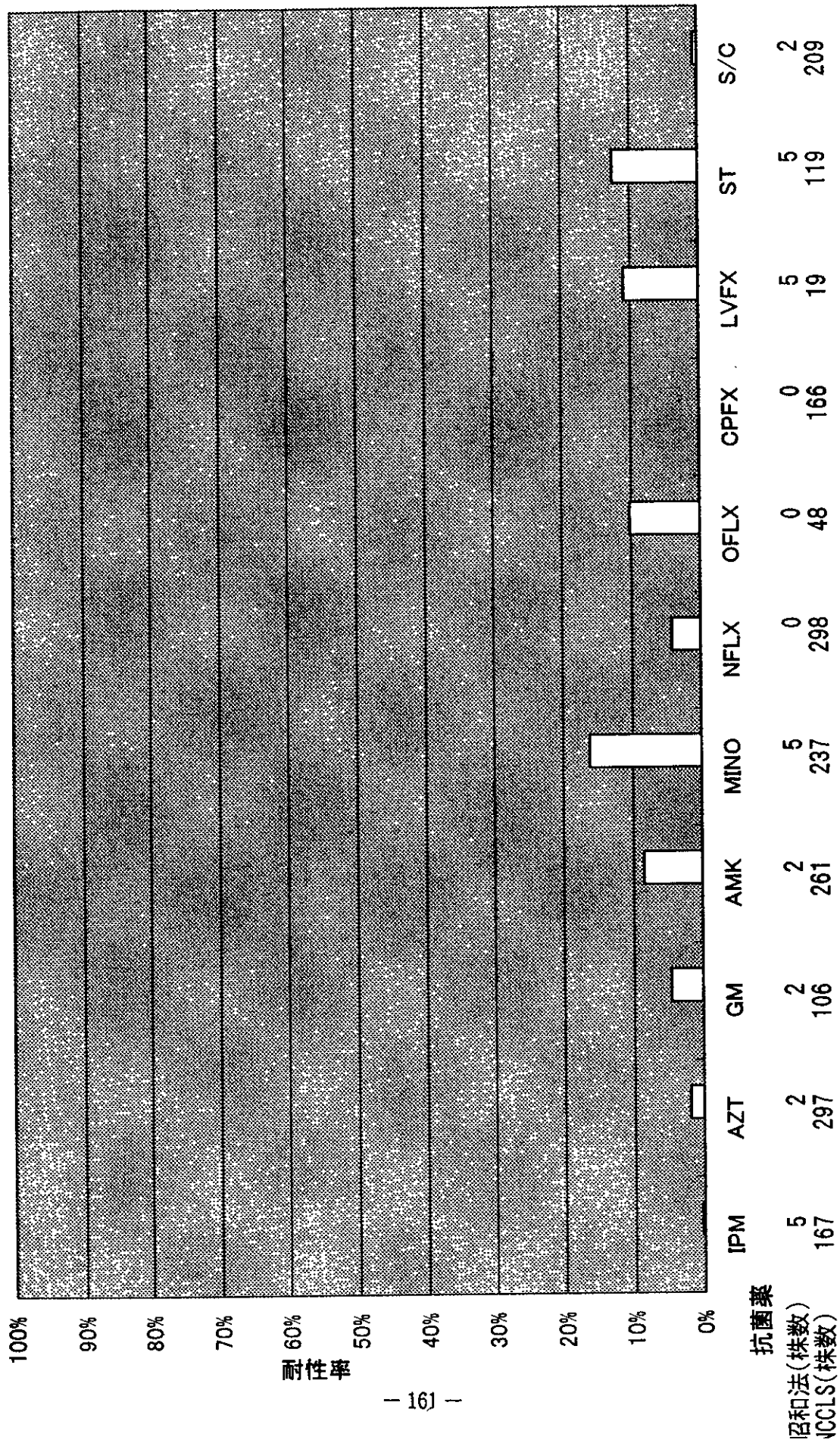
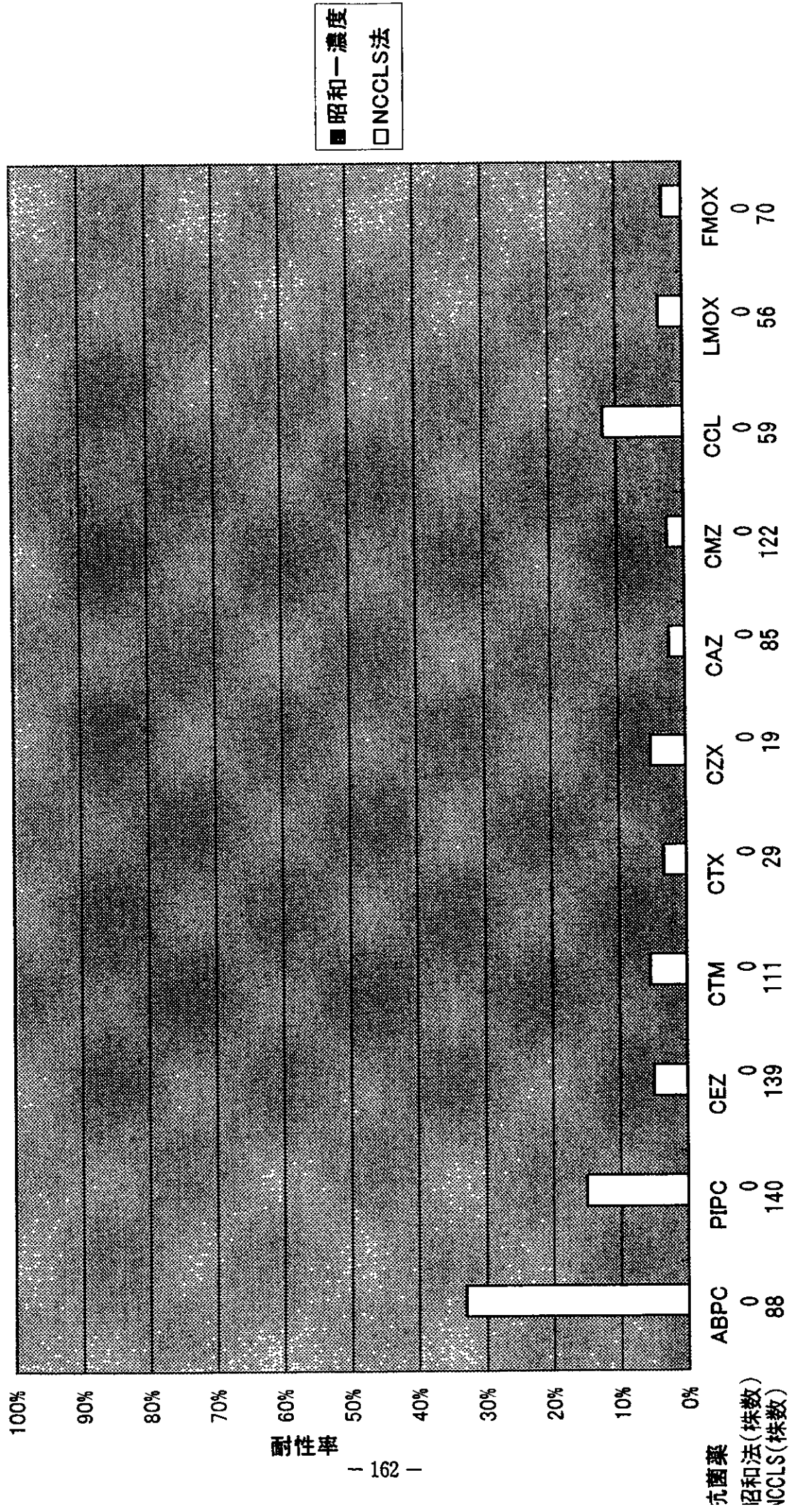


图56-1 E. coli-糞便



野村

图56-2 *E. coli*—糞便

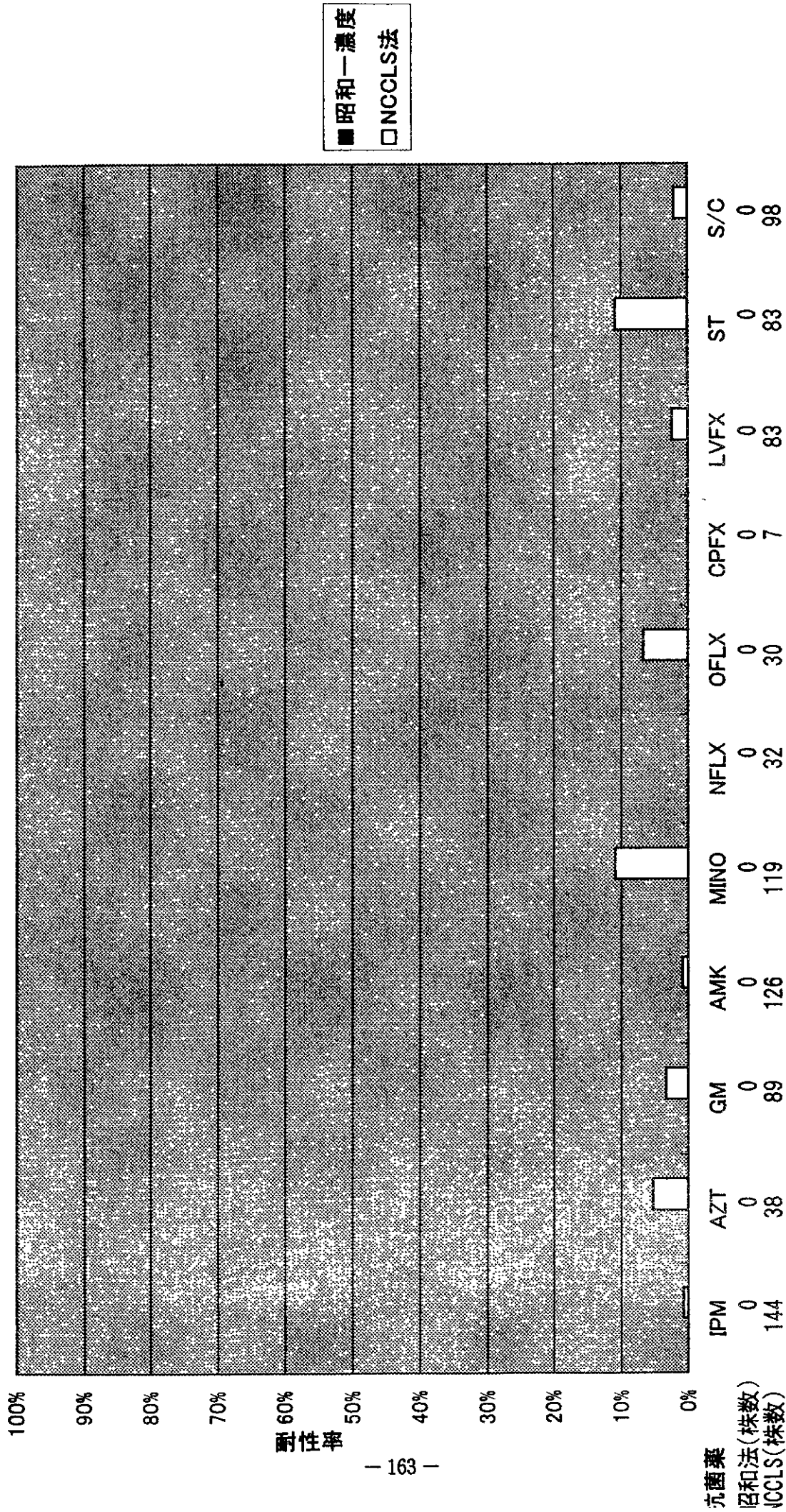


图57-1 *K. pneumoniae* - 咯痰

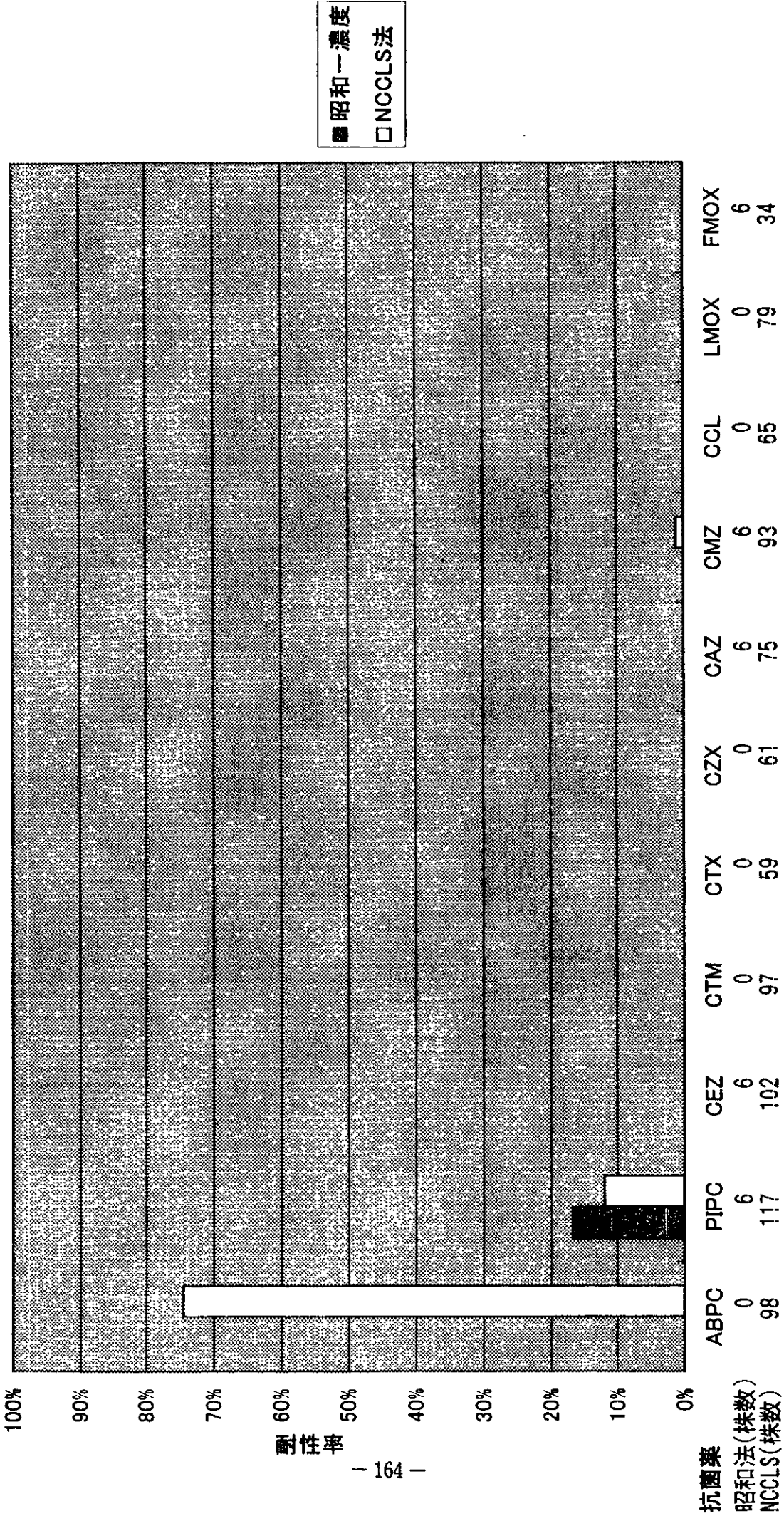
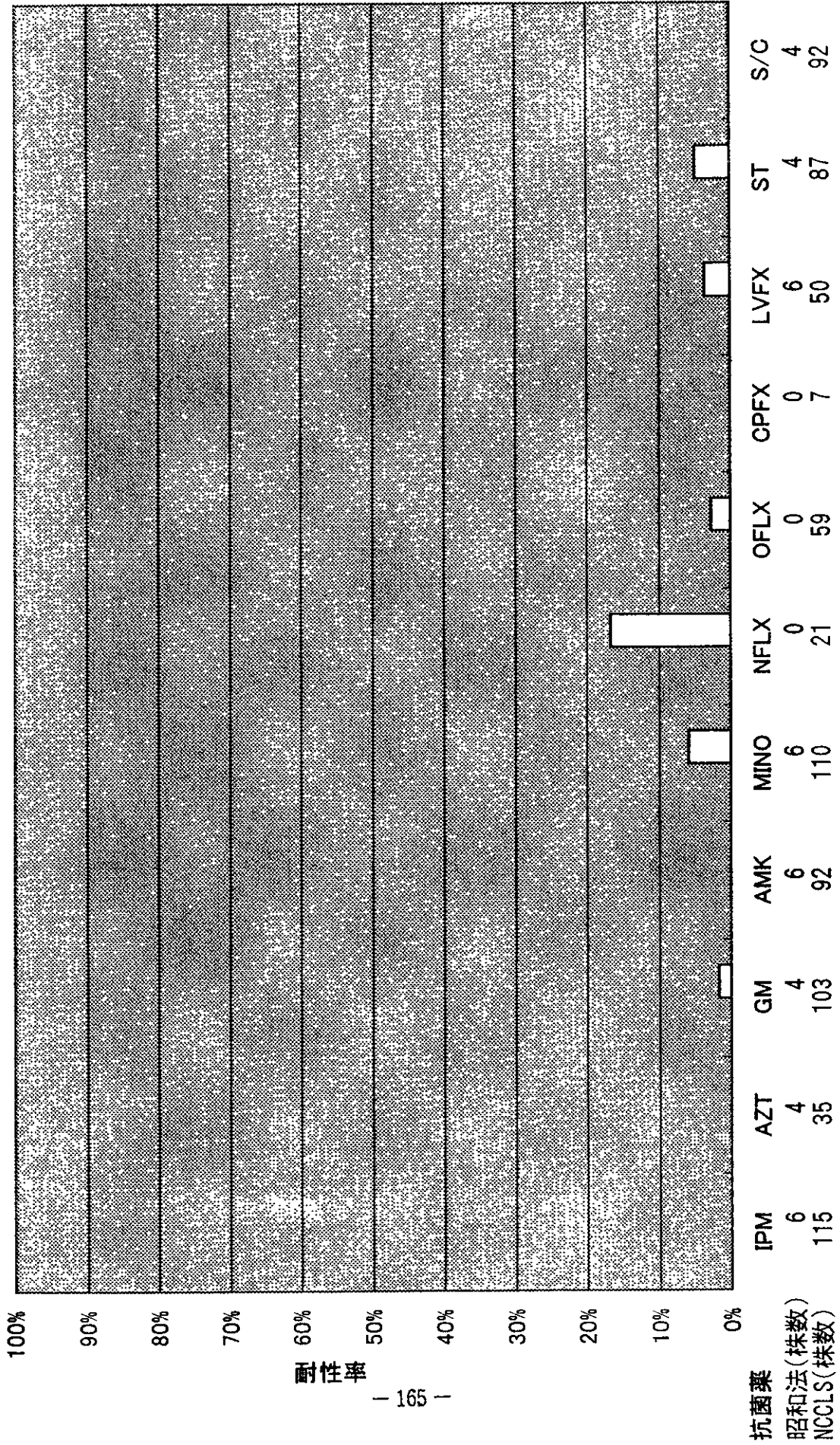




图57-2 *K. pneumoniae* -- 咯痰



耐药率

图58-1 *K. pneumoniae* - 尿

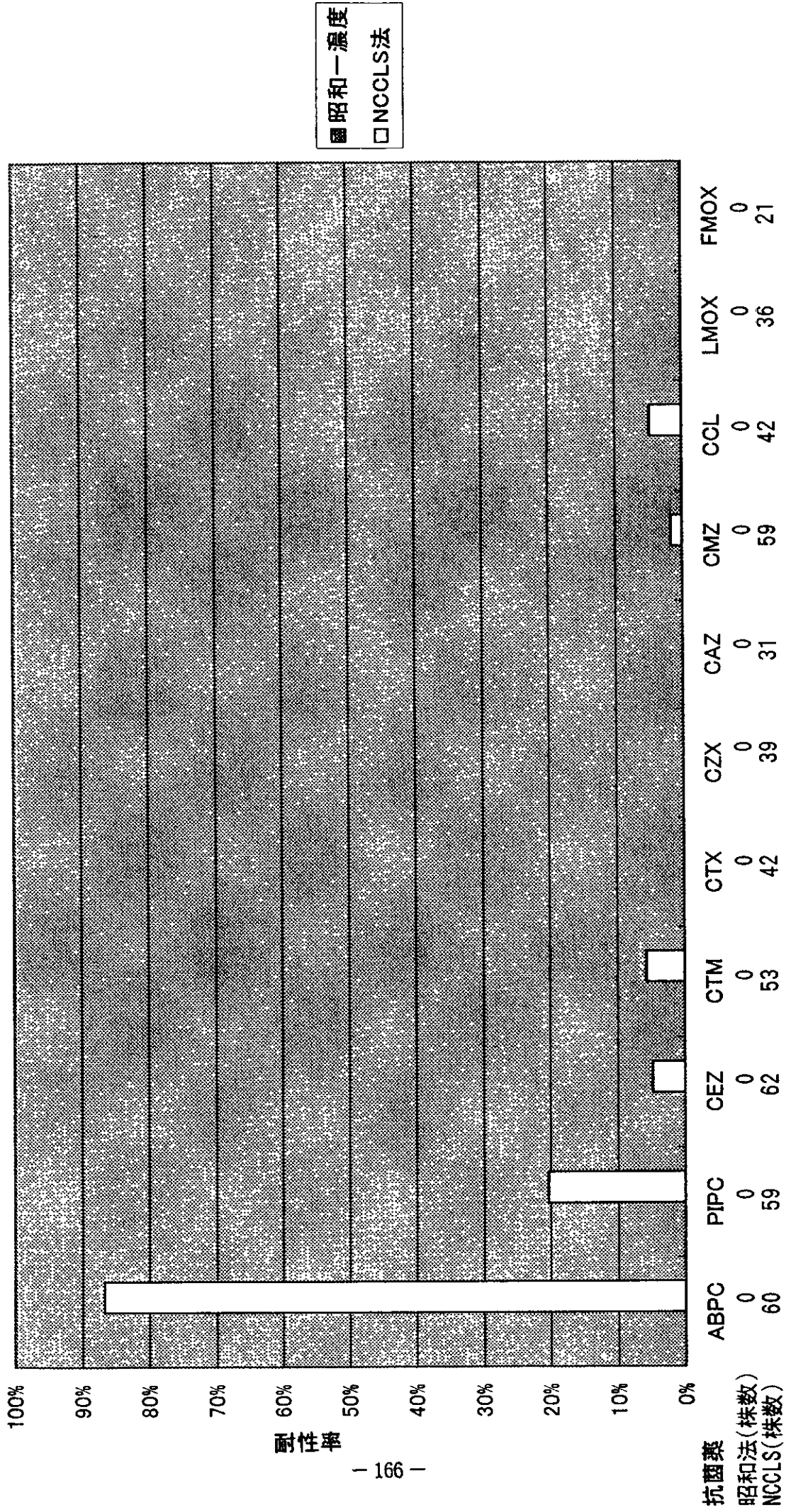
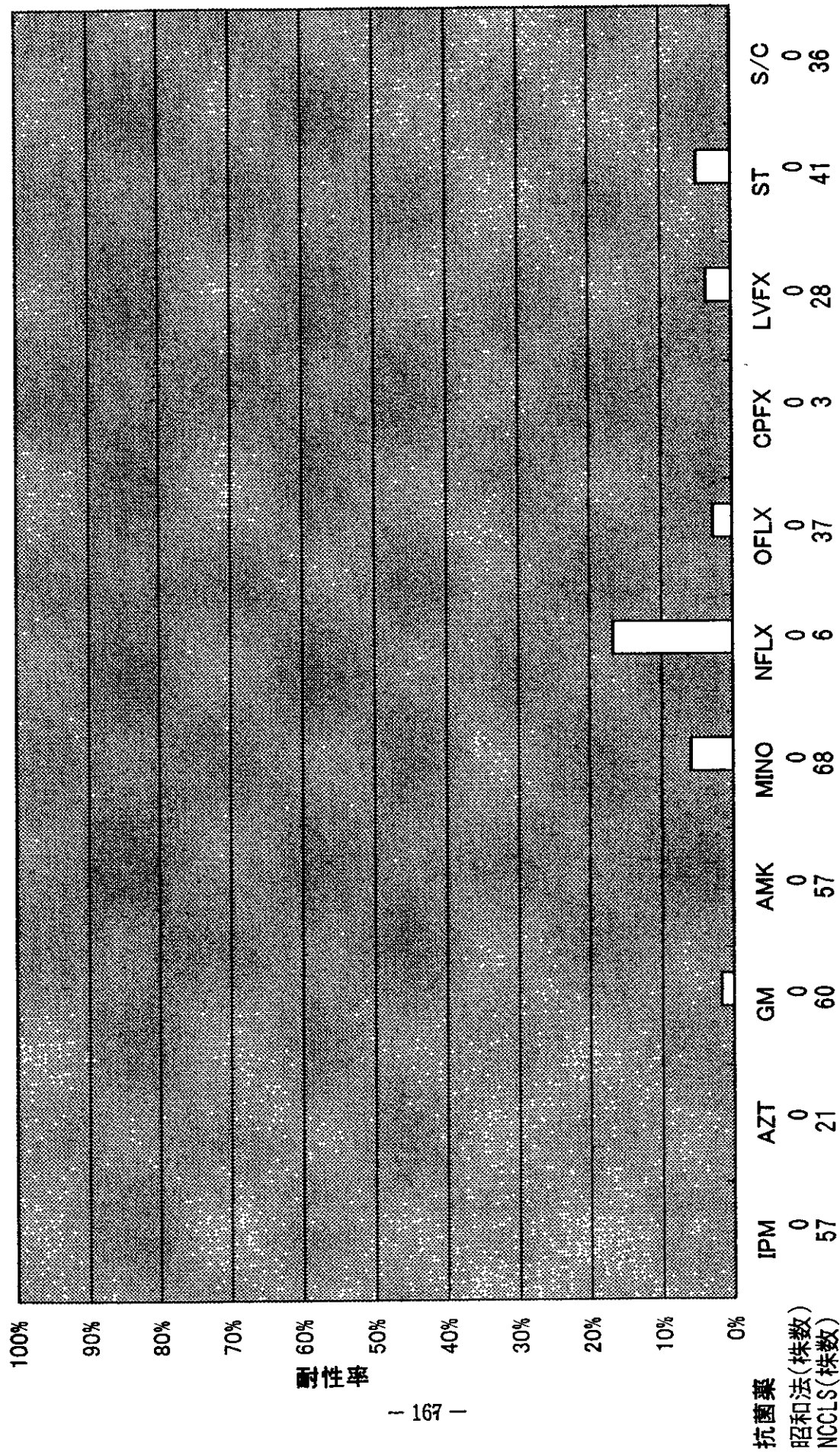


図58-2 *K. pneumoniae* - 尿



■ 昭和一濃度  
□ NCCLS法

图59-1 *Salmonella* spp. - 糞便

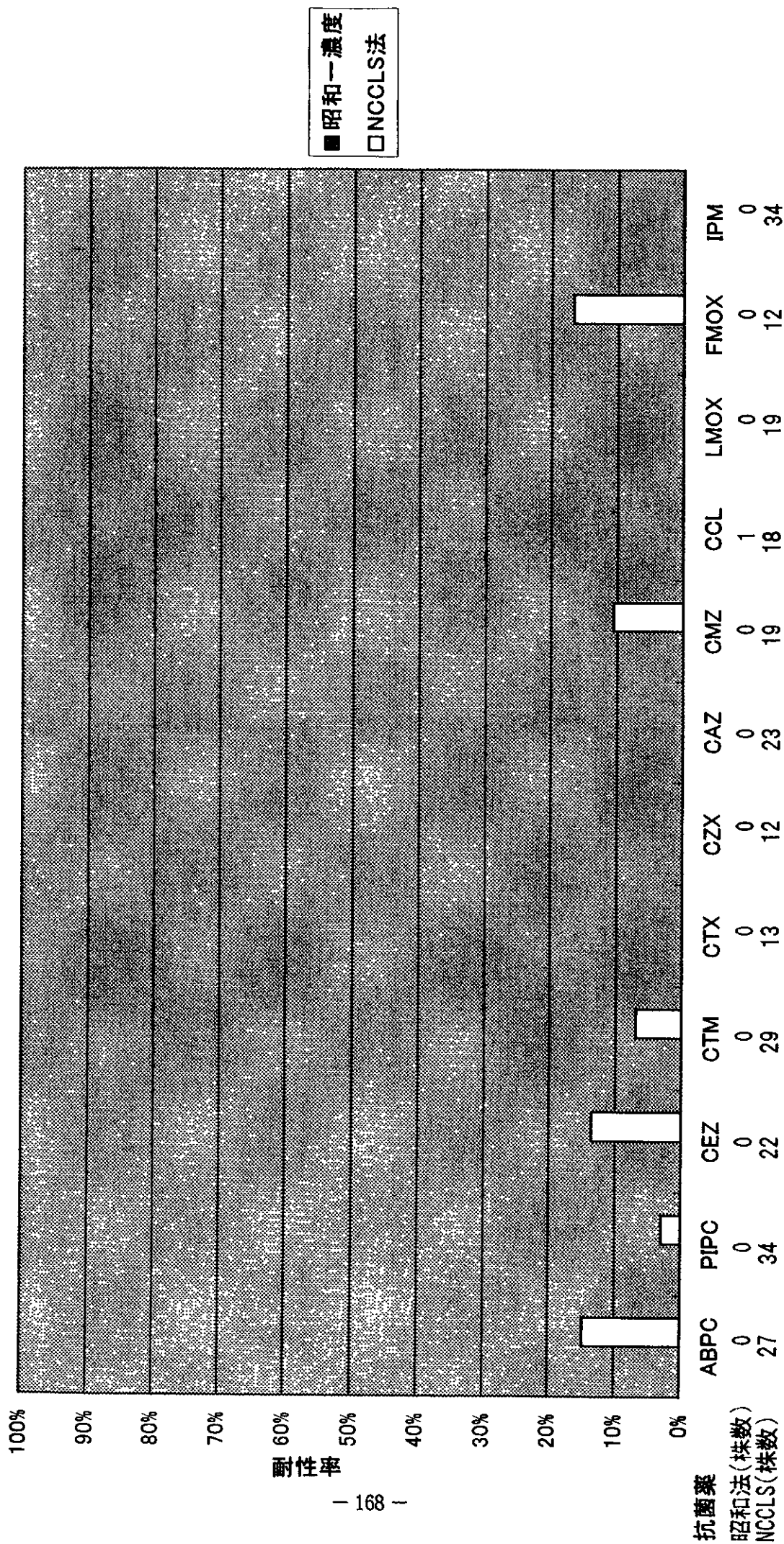
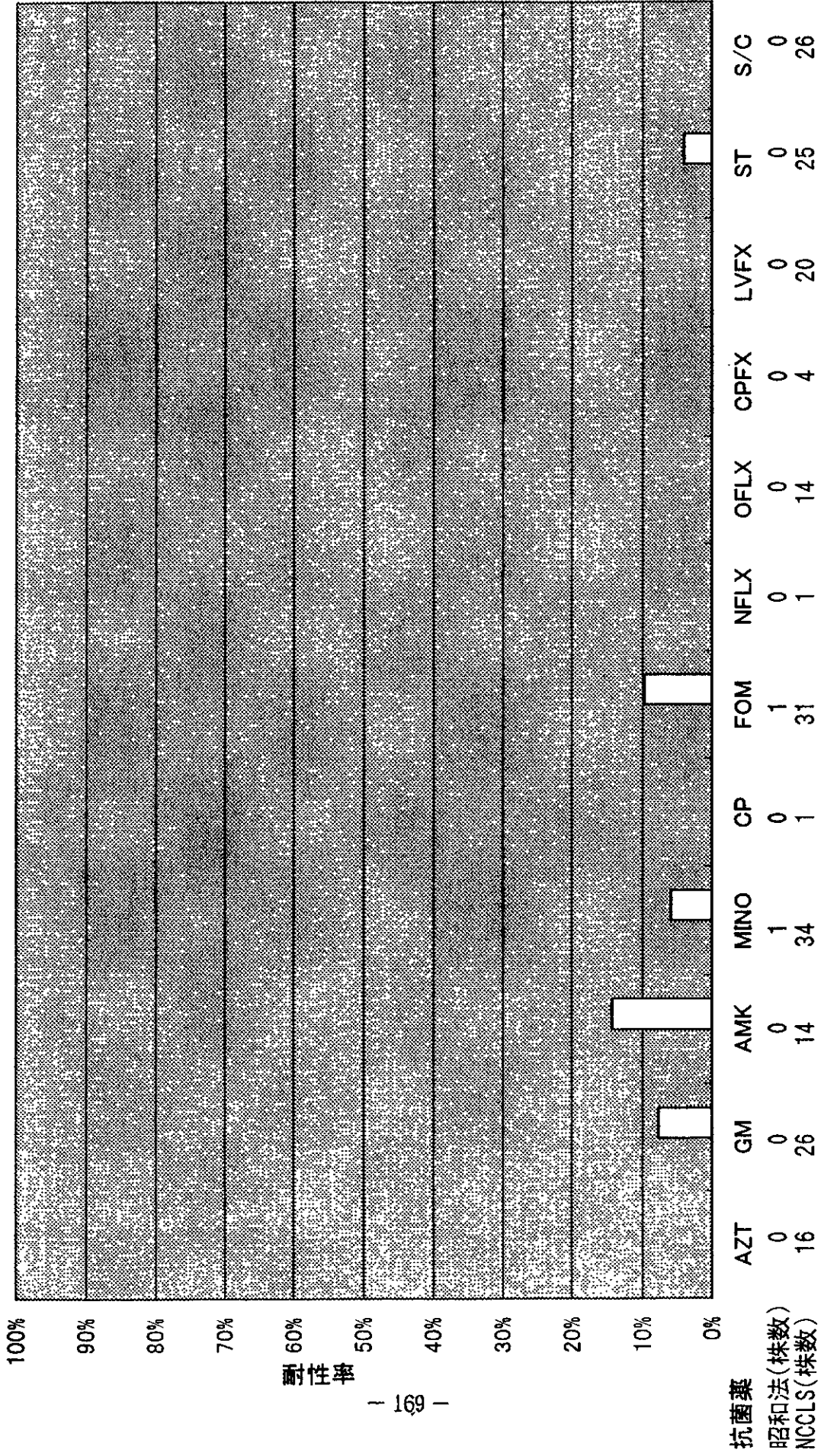


图59-2 *Salmonella* spp. - 糞便



■ 昭和一濃度  
□ NCCLS法

图60-1 MRSA入院·外来別耐性率

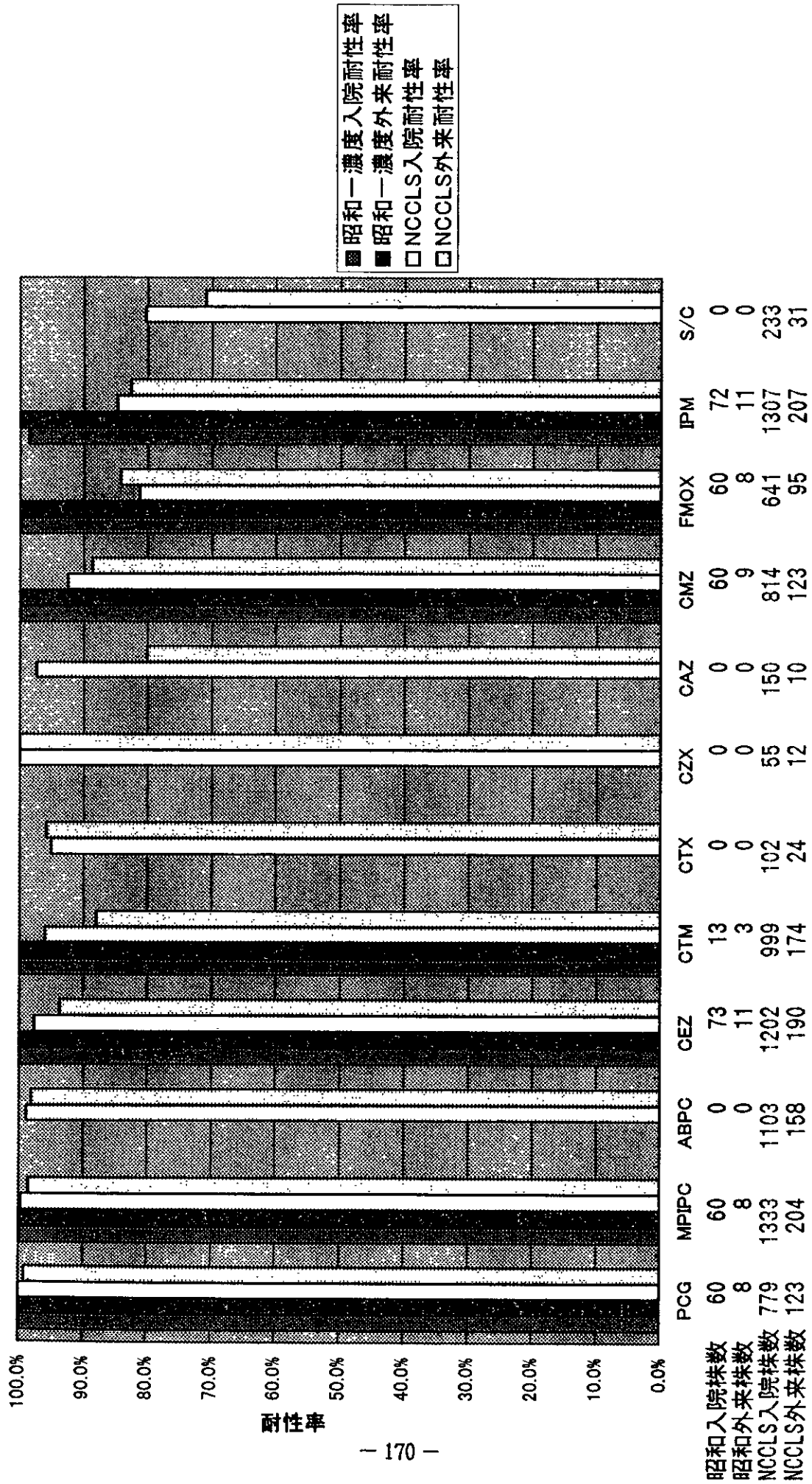


图60-2 MRSA入院·外来別耐性率

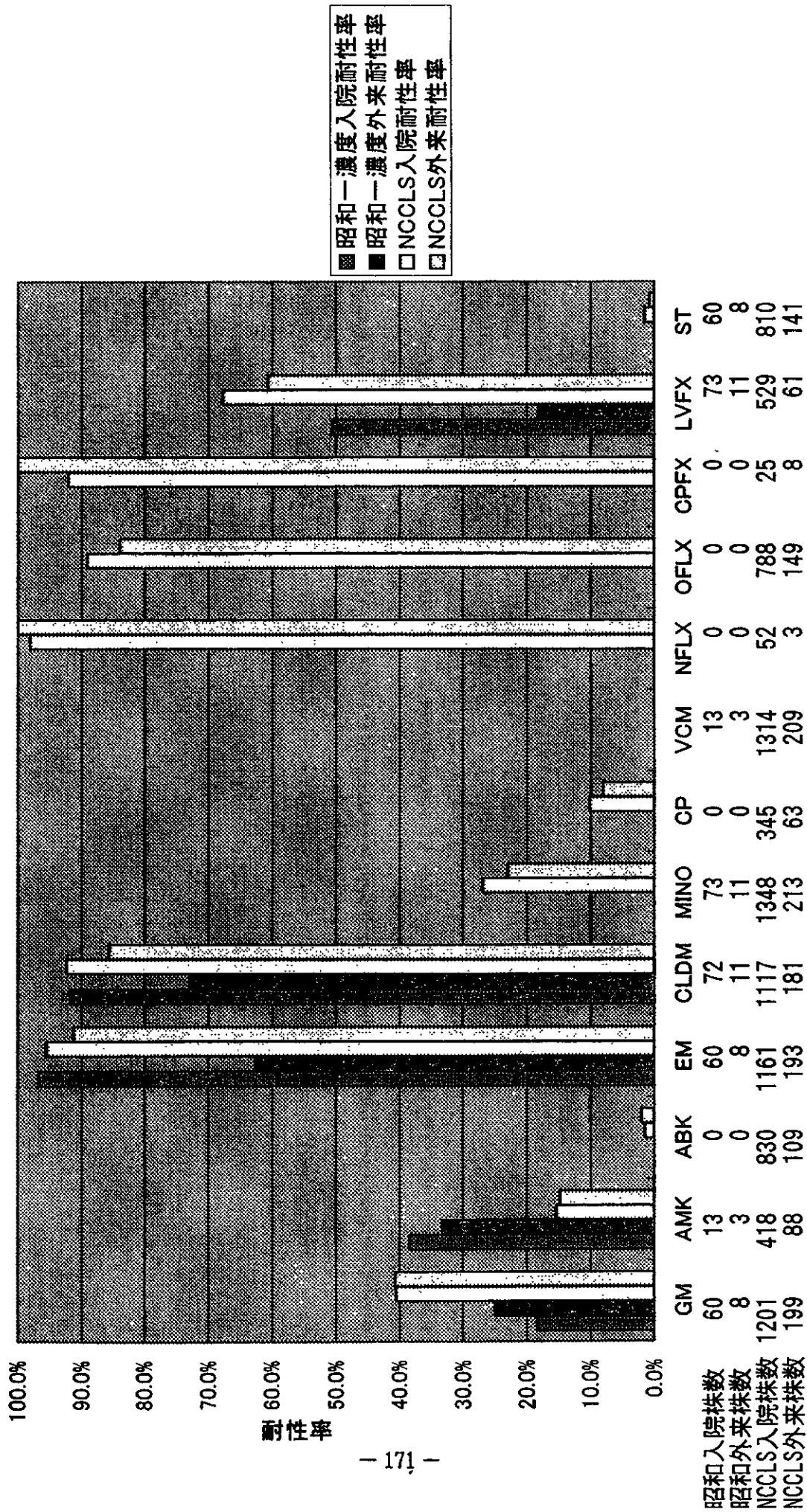


图61-1 MSSA入院·外来別耐性率

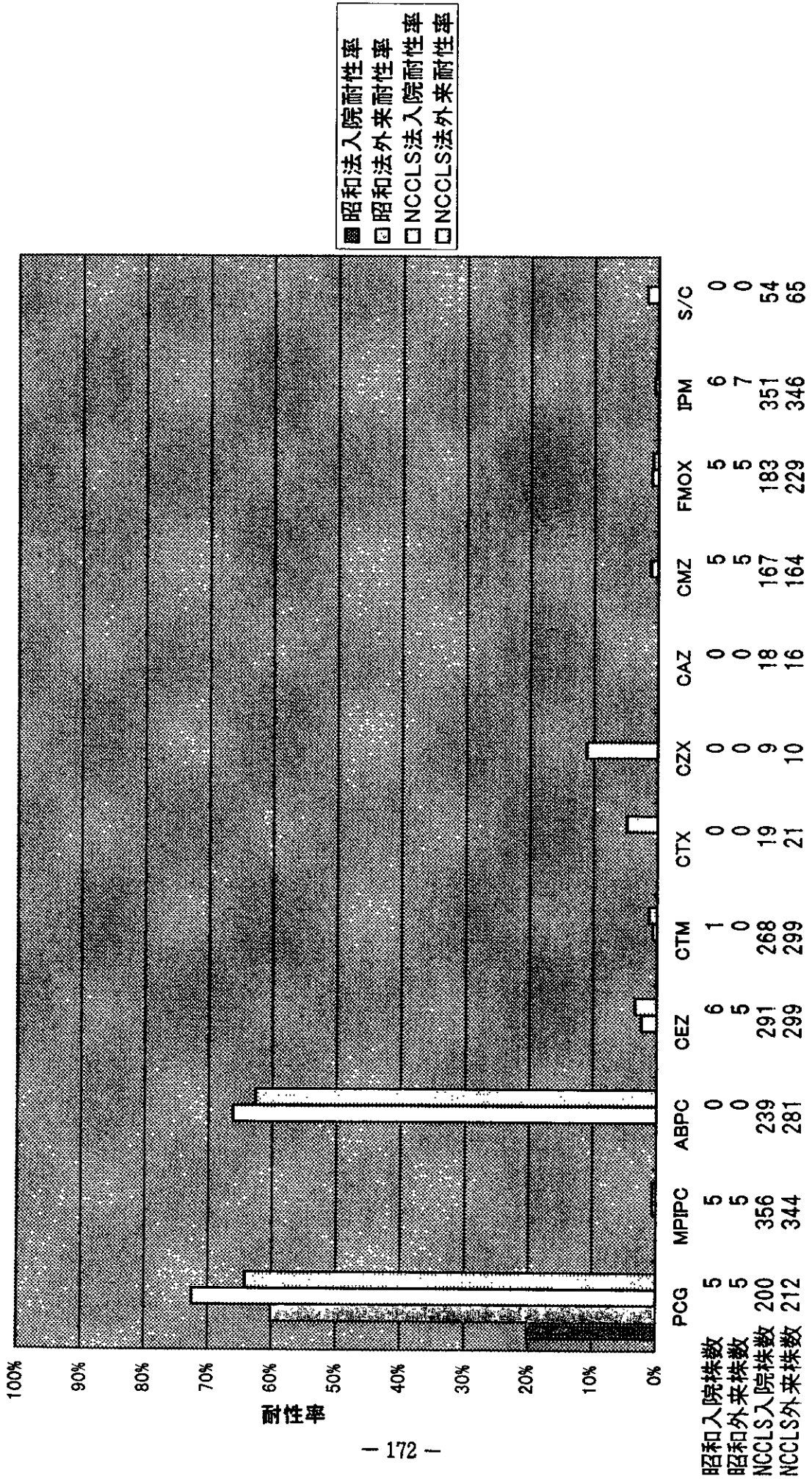




图61-2 MSSA入院·外来別耐性率

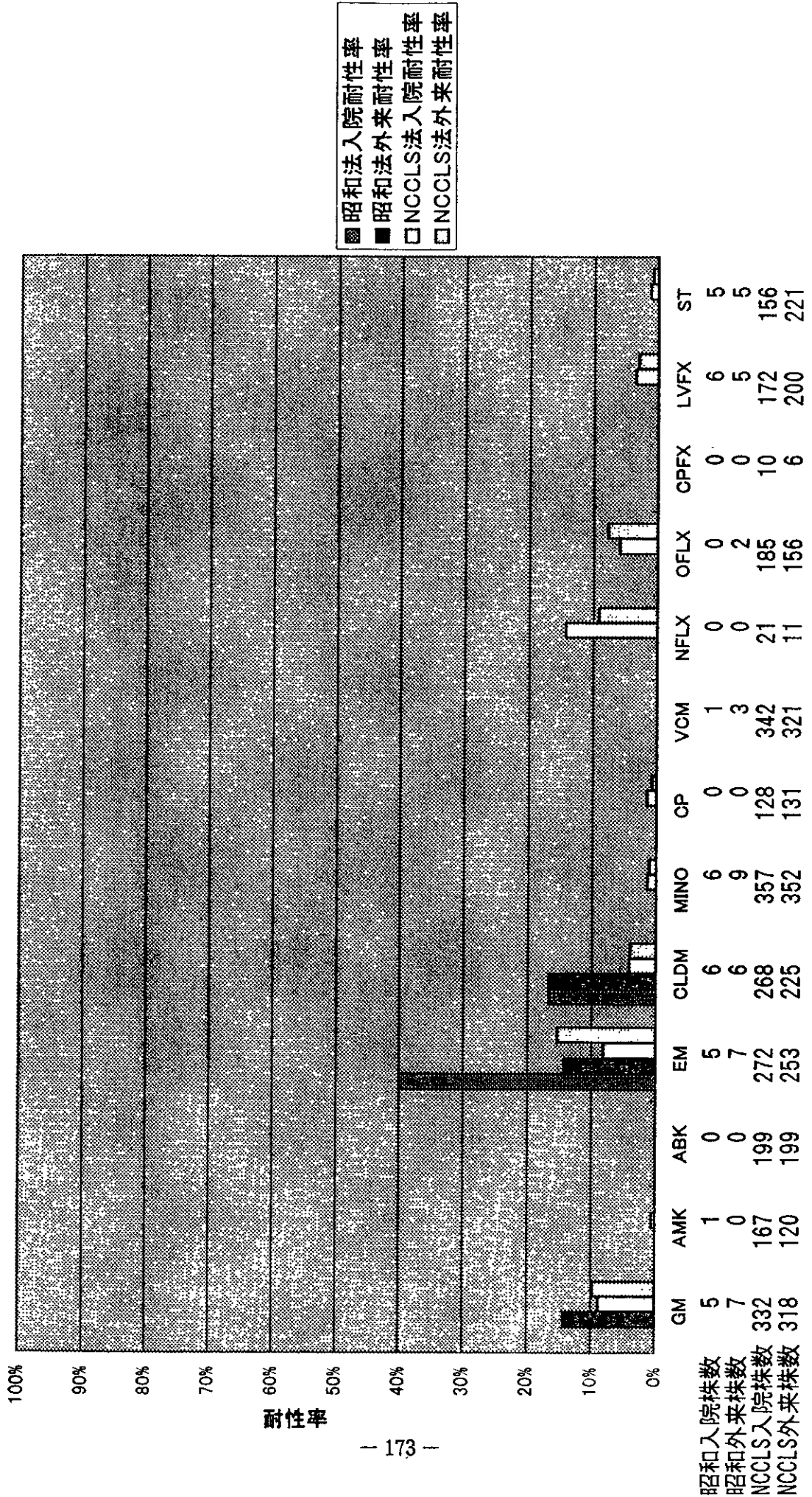


图62-1 CNS入院·外来別耐性率

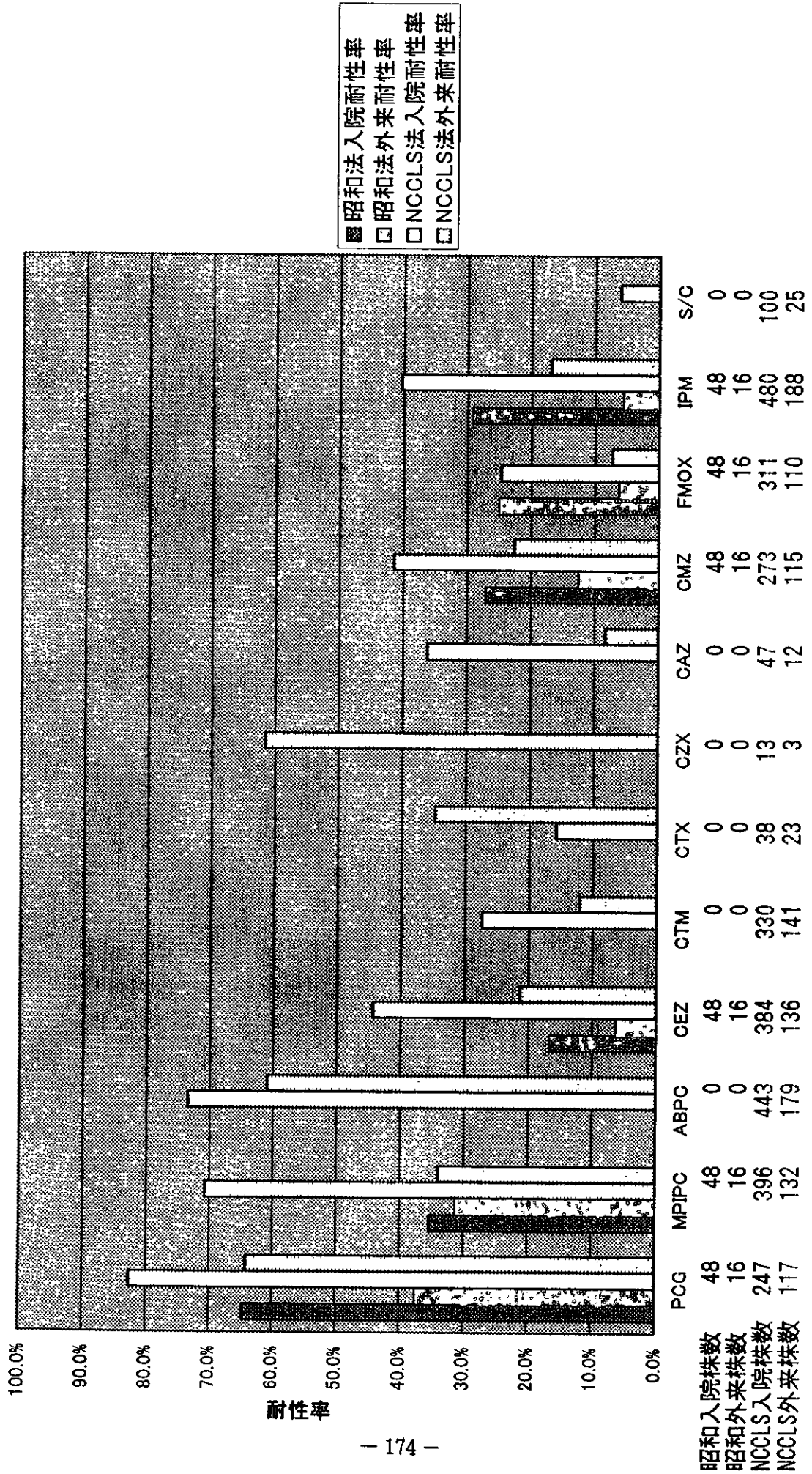


图62-2 CNS入院·外来別耐性率

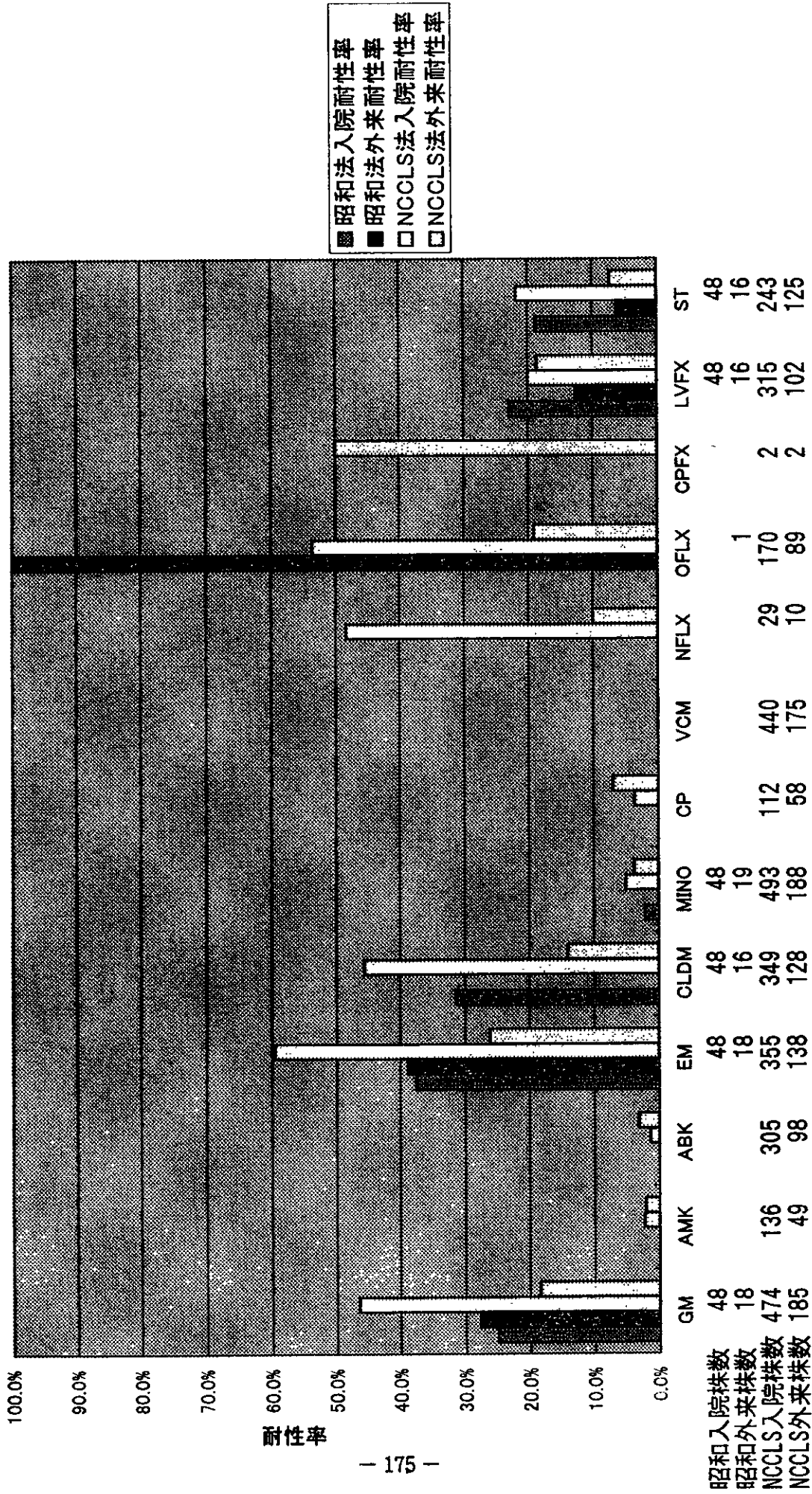


图63 *E. feacalis* - 入院·外来

